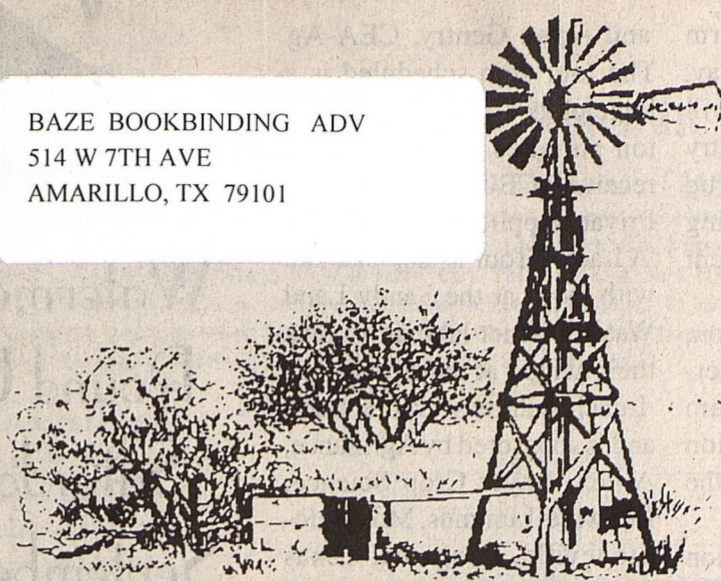


Cowboy Country News

BAZE BOOKBINDING ADV
514 W 7TH AVE
AMARILLO, TX 79101



Published each Wednesday in the county seat of Yoakum County, Plains, Texas Volume XI, Issue 50, August 31 2005

State Funding And The Legislature

By James Haynes,
Plains ISD Superintendent

Thank Goodness the second special session of the Texas Legislature ended without adopting either of the school funding and reform bills being considered by the House and Senate. The blame game has now started and the Speaker of the House has accused the school superintendents of being greedy and causing the whole school reform and property tax reform process to fail. I have a hard time considering myself greedy when I, along with every other superintendent in the state, opposed the bills because they were not good for education.

I think it is greedier and deceitful as well, to play politics with the education of the children of our state. It is much greedier to allow special interests whose only goal is to cut taxes to determine the legislature's course of action instead of listening to professional educators who have dedicated their lives to educating students for solutions.

After the session was over I visited with Delwin Jones, our state representative, and he made a very good point. The legislature did not pass a school funding/property tax decreasing/school reform bill during the regular session and two special sessions, but that was not necessarily a failure. They succeeded in not passing a very bad bill just because some of the leadership wanted to add that legislation to their trophy case. They succeeded because they did what they were elected to do; they represented their respective districts and refused to be bullied by a group of state leaders who are out of control.

Why is developing a school funding bill such a tough job? I believe it's because the legislature is dealing with the two things most people hold closest to their hearts, their children and their money. Our representatives and senators are faced with the task of trying to please everyone. I guess the leadership is stuck because they made promises to voters about making changes in taxation and in school performance without paying attention to all the facts and problems involved. Now they can't deliver. To their credit, our local representative, Delwin Jones, and our senator, Kel Seliger, were extremely helpful in representing the interests of Plains ISD during the regular session and both special sessions.

Enough of the legislators finally got the message from the public during the past session so the bad bills were killed. That doesn't seem to phase the thinking of the leadership, who still want to blame someone else for their failure. The latest shot fired has been by the governor when he issued an executive order to require the Commissioner of Education to develop a procedure to make sure all districts spend at least 65% of their budgets on direct educational costs. This order comes after the great majority of districts in the state performed well on the new financial accountability system they developed and has only been in use for three years.

The strategy here is pretty clear < If you really don't want to fund education properly you set higher standards, complain if all districts in the state don't meet them the minute they are

TURN TO PG. 2, HAYNES

Cowboys drop opener to Steers 13 - 7 Good effort, but early season mistakes spell doom

The Cowboys and Farwell Steers seemed to share a common malady in their football debut here last Friday - ample spirit and desire, but a shortage of execution. Both squads would suffer from penalties and fumbles.

The Cowboys enjoyed early on elation when, just two plays after the opening kickoff, the Steers tossed an errant pass picked off by Blake O'Quinn and returned to put the Cowboy offense in gear at the 45. Good running by John Tyson, Cody Mayes, and an O'Quinn pass to Todd Williams, gave the Cowboys their first down, and a run by Casson Curtis moved the ball to the 15, but an O'Quinn pass was taken by the Steers. They moved the ball to the Cowboys 26, but on the second play Curtis intercepted the ball for a touchback, but the Cowboys could not get the offense in gear, forcing a punt by Michael Therwhanger.

In the second quarter, the Steers managed two quick first downs, but a fumble gave the ball and hope to the Cowboys at the 16, but again their offense sputtered. With some 3 minutes on the clock, a fumble gave the Steers the ball at Plains 20, five plays later the Steers were on the board, 7-0, the score at halftime.

When the second half started, the Cowboys came alive, but after reeling off two quick first downs on the ground, were

TURN TO PG. 4, COWBOYS



Ready to fire up the team and fans, wearing hat at far left, Joe Luis Gallegos, Yesica Calderon, Joani Bell, Ashli Hunter, Lydia Whitzel, Adriana Ponce.

Nationwide crack down on drunk driving Law enforcement agencies statewide to participate

With Labor Day and the last surge of summer road trips just a few days away, the Texas Department of Transportation (TxDOT) announced Texas will be part of a coast-to-coast effort to remove drunk drivers from the nation's streets and highways. Between August 19 and September 5, state troopers and thousands of local law enforcement officers will be stepping up enforcement of the state's DWI laws.

"We're putting drivers on notice; If you drink and drive during the upcoming Labor Day holiday, you're asking for trouble," said Simmons, TxDOT's Deputy Executive Director. " TxDOT is joining the National Highway Traffic Safety Administration (NHTSA), the Texas Department of Public Safety and local law enforcement organizations statewide to get drunk drivers off the road."

NHTSA reports alcohol was involved in almost

half the traffic deaths occurring in Texas in 2003 and predicts alcohol will be a factor in 7 of 10 traffic deaths expected during the Labor Day weekend.

"The national crackdown is a comprehensive impaired driving prevention effort focused on highly visible enforcement, public awareness and paid media to deter impaired driving," said George Chakiris, regional administrator for NHTSA. "Travelers in Texas and across the nation will see plenty of officers taking care of business - getting drunk drivers out from behind the wheel and into jail before they cause injuries and deaths."

This month motorists can also expect billboards, radio and TV ads warning them not to drink and drive. First time DWI offenders can lose their license for as much as a year, pay a fine up to \$2000 and serve up to 180 days in jail.

Bees Are Here !

By ARLAN GENTRY, CEA - AG

Bees are here! Bees are there! Bees are everywhere! "My office has received many calls this summer about swarms of honey bees," said Arlan Gentry, County Extension Agent with Texas Cooperative Extension. They are in trees, carpools, attics, old houses, barns, storage areas, etc.

Honey bees are beneficial insects. Pollination of agricultural crops brings a better quality and quantity of food to our table. About 1/3 of the food we eat is improved by honey bee pollination.

The concern of the calls I've received have to do with the media attention of the Africanized Honey Bees (AHB) aka "Killer Bees". These bees look just like our regular European Honey Bee; same size, same color. All honey bees respond to perceived threats to their colony, which includes their home, stored food and young bees. AHB's are very defensive and more aggressive. AHB's are no more toxic than our regular bees, but because of their aggressiveness, they attack with more numbers.

There are three situations in which you may encounter bees. 1) An **Individual Bee** or small groups of bees foraging for food or water. These bees are not interested in you; if you leave them alone, they will leave you alone. 2) A **Swarm** is a group of bees from the old colony. The swarm flies a few to several hundred yards and lands on a low hanging tree limb or other structure. Then scout bees seek out a suitable location to establish a new colony. Swarms only stay in their temporary location a few hours to a couple of days. Swarms have **No** comb/hive stored food or young bees to protect, therefore they are rarely defensive. 3) An **Established Colony** holds the greatest threat to humans. It is easily recognized by the presence of wax comb, honey, etc. and bees have remained in the location for a week or more. Once a group of bees has produced comb, stored food and started rearing young, they will defend the colony against a perceived

threat.

Bees are easily controlled and destroyed by most insecticides. General use insecticides such as Malathion, liquid Sevin, Orthene, Diazinon and Dursban are very effective. Diazinon and Dursban have been taken off the market, but consumers may still use up any supplies they have on hand. Aerosol cans such as Hot Shot and Raid have not proven as successful as the above mentioned insecticides. Please follow all label directions when mixing sprays.

If bees attack, run out of their territory, seek shelter and pull clothes over face and skin or cover with blankets. If stung, seek safety and remove stingers by scraping at skin surface. Victims of multiple stings and victims allergic to stings should seek medical attention immediately.



A typical bee hive

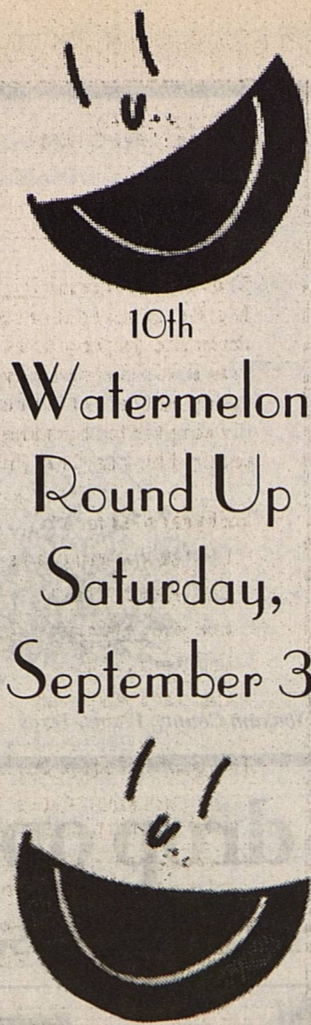


Brick laying crews have finished the initial phase of the display around the new electronic sign, and it makes an outstanding addition to Pioneer Plaza. Commemorative and memorial bricks may still be purchased for \$75. For details contact City Hall. Out of town visitors at the upcoming Watermelon Round Up are invited to inspect the new addition in Plains.

Yoakum County Farm Tour

The Yoakum County Farm Tour is planned for Tuesday, September 13. Participants will meet at the Plains Community Building at 9 AM and finish up with lunch at noon, according to County Extension Agent Arlan Gentry. Texas Cooperative Extension, the Natural Resource Conservation Service and Yoakum Soil and Water Conservation District are co-sponsoring the tour. Producers will get information on harvest aid products, peanut maturity-water management, a crop update and the current insect situation. Speakers will be; Randy Boman, Extension Agronomist, Calvin Trostle, Extension Agronomist, Scott Russell, EA-IPM,

and Arlan Gentry, CEA-Ag. The tour stop scheduled is a large plot systems trial on cotton varieties. Producers will receive 3 CEU credits for their Private Application License. A Lady's Tour is also planned with stops at the Sandy Land Water District laboratory plus their hangar at the airport. Lunch will be served at noon and is sponsored by Agrilience, Alltex, Bayer Crop Science, Beltwide-Lummus, Monsanto-Stoneville, Syngenta, Texas Peanut Producers Board, UAP Southwest, West Texas Agriplex-Americot Seed and Yoakum Soil & Water Conservation District. Door prizes will be given. For info, contact Jackie Pate, 456-3703-3, or Gentry, 456-2263.



10th
Watermelon
Round Up
Saturday,
September 3

To The Citizens Of Yoakum County

I want to announce my intentions to become a candidate for the position of County Judge of Yoakum County. I am a long time citizen of the county, and am very familiar with the social and economic issues we face every day, and am very interested in doing what I can to maintain and improve these conditions. As County Judge, I would have the opportunity to have a positive effect on the many issues we face daily. I have the experience and knowledge of County Government and Commissioners Court, having served several years as County Commissioner representing Precinct #3. I have always been dedicated to issues that have an impact on the entire county, and want the opportunity to serve the entire county as County Judge.

I consider myself conservative and progressive, and I approach all issues with an open mind, and value input from the citizens of the county. With these thoughts in mind, I respectfully ask for your consideration and support in the months to come as I campaign for the opportunity to serve you as County Judge.

Thank you for your consideration and support.

Jim Barron

Political Advertisement Paid For By Jim Barron

Plains Family Health Clinic

Amir Memon, MD

Suzanne Carden, Nurse Practitioner

Serving the medical needs of Plains

See us for your Weight-Loss and Tobacco addiction problems

TEXAS HEALTH STEPS

Office Hours: Monday through Friday 8 am.-5pm.

Will take walk-ins

Appointments preferred

Please call 806-456-6365



MEMBER
2005

TEXAS PRESS ASSOCIATION

Cowboy Country News

Published weekly each Wednesday at 1205 Copeland Ave., PO Box 179, Plains, TX 79355. Gary Dyer, Publisher. Subscription price in Zip Code 793 \$18 annually. Other Zip Codes \$20 annually. Periodicals postage paid at Plains, TX. POSTMASTER: Send address changes to Cowboy Country News, Box 179, Plains TX 79355. E-Mail us at ccn@crosswind.net ID # 017574 Ph. 806-456-8451 Fax 806-456-2010

2 DAUGHTERS
LANDSCAPING & PROPERTY
MAINTENANCE
PLAINS, TEXAS

grass work,
dirt work,
fence repair,
shredding,
tree trimming

Steve Jones
806/456-3200
806/592-1994

Call for estimates

MULTI - PERIL CROP & CROP HAIL

STATE LINE INSURANCE

DANNY BELL

Office 456-3521 Home 456-6325
Mobile 456-7517

FROM PG.1, HAYNES implemented and then use that as an excuse to complain about how poor the school system in the state is and how we should be accountable before any more funding is forthcoming>. The analogy I would use to describe their thinking would be for me to tell one of my teachers to drive to California. I could tell them to get there on their own and I wouldn't give them money for the gas until they got there. Once they achieve that goal I could then require them to make the trip again, but this time they would have to complete the trip in half the time. Even though this "goal" is possible it takes better equipment to accomplish the task, but no money would be given to the teacher to use to accomplish the goal until after the fact. Another analogy would be in the business arena. That seems to be what education is compared to when looking for solutions. What if Ford or Chevrolet wants to build a new car? Do they spend money up front to develop the new model or do they tell their engineers they must make do with what they have and then expect to have a product that will sell? I know these analogies are ridiculous but this is the type of distorted logic educators and the tax payers of this state are faced with at this time.

How do we deal with the issue of adequate revenue to fund the public school system? Right now the bulk of funding for public education comes from property taxes. Maybe the legislature should look for a way to broaden the tax base so enough revenue could be collected to pay for the growing cost of education. An educated population supports new business coming to our state and studies show an educated person is less likely to become incarcerated. This reason alone has the potential of providing cost savings for our government. If these are benefits to all people in our state then all people should be included in raising the money to fund the system. Lowering property taxes means that some people will pay less tax in that area while these same people may have to pay additional tax in another area. This also means some people may have to pay taxes who have never paid taxes before. Once again this highlights the tough decisions that must be made by our elected representatives: The solution will only come when everyone involved understands the importance of the issue and can agree all people must participate in the solution.



Texas farming has a long and rich history. Since prehistoric times, inhabitants have used a variety of agricultural methods to produce the necessary foods for survival. Caddo Indians in East Texas lived in permanent villages and prepared fields to cultivate corn, squash and beans. In West Texas, Pueblo Indians employed irrigation techniques to successfully grow cotton. The Spanish introduced the grapefruit to Texas, which was later adopted as the official fruit of the Lone Star State. After Mexico won independence from Spain in 1821, the government encouraged settlement in the region north of the Rio Grand River by offering land grants.

Stephen F. Austin inherited a land grant from his father, Moses Austin and, together with 300 other families from the United States, helped to settle parts of Central, East, and Southeast Texas. Prior to the Civil War, Texas agriculture primarily consisted of subsistence family farms typically ranging in size from 120 to 160 acres. With the expansion of the railroads, Texas farming grew rapidly creating the opportunity for commercial production.

The Morrill Land-Grant College Act in 1862 established the Agricultural and Mechanical College of Texas, known today as Texas A&M University, to advance research in the fields of farming and ranching. Despite the devastating setbacks caused by the Great Depression and the Dust Bowl, advancements in cultivation, irrigation, crop diversification and equipment modernization lead to improved agricultural productivity.

Today, groups such as the Texas Farm Bureau are advocating for the future of agribusiness in our state. Adding approximately \$40 billion to the state economy each year, Texas is one of our nation's leading farming states. Numerous organizations such as 4-H and the Future Farmers of America are helping to teach Texas' youth the cutting-edge techniques that will keep Texas on the forefront of the international agricultural industry.

Recent legislation will also contribute to the success of Texas' agricultural industry. The Central American Free Trade Agreement, recently passed by Congress and signed into law on August 2nd by President George W. Bush, will have a tremendous impact on the Lone Star State. Texas is currently the fifth-largest state agricultural exporter to CAFTA countries and the nation's number one exporter of cotton.

CAFTA is a comprehensive trade agreement negotiated by the U.S. and Costa Rica, El Salvador, Guatemala, Honduras, Nicaragua and the Dominican Republic. CAFTA will eliminate 80 percent of tariffs on U.S. exports, including the up-to-15 percent tariffs on chemical equipment, machinery, processed food and transportation exports. According to the U.S. Chamber of Commerce, CAFTA will boost Texas' exports to the region, adding \$683 million to the state economy after a year and \$3.6 billion after nine years.

On August 8, President Bush signed into law the Energy Policy Act of 2005. The legislation includes tax credits to encourage the production of clean renewable energies for wind, biomass, geothermal, small irrigation power, landfill gas and trash combustion. The bill also includes the Coastal Impact Assistance Program, which I sponsored in the Senate. This program will improve habitat conservation and restoration, protect estuarine marshes and help improve Texas' air quality. The energy bill also includes a provision to authorize the U.S. Department of Interior to inventory oil and gas resources on the Outer Continental Shelf. This inventory will better enable the federal government to assess the extent of these resources. The increased use of ethanol required by the bill will be a boost to corn growers who must supply the raw products to make ethanol into fuel. Our national energy independence is critical to the future of Texas' agricultural industry.

Also critical to Texas' future is meeting our transportation needs. For 50 years the Federal Aid Highway Program and the states have maintained one of the world's finest highway networks, making highways the first choice to transport most of the goods that drive our economy. This year, Congress was finally able to pass the transportation bill known as the Safe, Accountable, Flexible and Efficient Transportation Equity Act. This bill provides \$286.5 billion in federal funding through Fiscal Year 2009 for transportation projects.

The new law will go a long way toward meeting our transportation needs. Under the previous law, Texas was receiving on average \$2.1 billion annually. The new law will increase the average annual funding by nearly \$800 million, bringing Texas' annual average to \$2.89 billion. Today, there are other critical needs to be addressed such as the increasing amount of American trade stemming from NAFTA. Texas has over 300,000 highway miles, the most of any state in our nation, and it is critical to make the commitment to maintain this system so farmers can move their products to market in an effective way.

Texas is truly a national and international leader in the field of agriculture. Working together, we are improving rural economic development, capitalizing on the latest agricultural research and technologies and improving the nutritional health through Texas A&M University and Texas Tech University. I am proud of the role Texas has earned as a model for agribusiness.

AG INSURANCE PLUS

CROP INSURANCE MPCI-CRC-CAT-CROP HAIL
456-2788

Jim Brown, Agent
Mobile 806-891-0449
or 891-0450
Home 592-3490

Jeff Lowery, Sales Assoc.
Mobile 806-592-1319
Home 456-3195

50-703
(Rev. 07-05)

Notice of Public Hearing on Tax Increase

Last year, the CITY OF PLAINS property tax rate was \$ 0.50. That rate raised \$ 95,071.00, a portion of which was used to fund operations such as:

CITY OPERATIONS

This year, CITY OF PLAINS is proposing a property tax rate of \$ 0.515267. That rate would raise \$ 97,915.00, which is \$ 2,844.00 more than taxes imposed last year.

There will be two public hearings to consider that increase. The first public hearing will be held on SEPT 12, 2005 @6:00 at CITY HALL. The second hearing will be held on SEPT 15, 2005 @ NOON AT CITY HALL.

You have a right to attend the hearings and make comments. You are encouraged to attend and make comments if you wish.

50-212
(Rev. 07-05/7)

Property Tax Rates In

This notice concerns 2005 property tax rates for City of Plains. It presents information about three tax rates. Last year's tax rate is the actual rate the taxing unit used to determine property taxes last year. This year's effective tax rate would impose the same total taxes as last year if you compare properties taxed in both years. This year's rollback tax rate is the highest tax rate the taxing unit can set before taxpayers can start tax rollback procedures. In each case these rates are found by dividing the total amount of taxes by the tax base (the total value of taxable property) with adjustments as required by state law. The rates are given per \$100 of property value.

Last year's tax rate:

Last year's operating taxes	\$	95,070	
Last year's debt taxes	\$	-0-	
Last year's total taxes	\$	95,070	
Last year's tax base	\$	19,014,184	
Last year's total tax rate	\$.5000	\$100

This year's effective tax rate:

Last year's adjusted taxes (after subtracting taxes on lost property)	\$	95,062	
+ This year's adjusted tax base (after subtracting value of new property)	\$	19,002,704	
= This year's effective tax rate	\$.500259	/\$100

(Maximum rate unless unit publishes notices and holds hearings.)

In the first year a hospital district or city collects the additional sales tax to reduce property taxes, it must insert the following lines unless its first adjustment was made last year:

- Sales tax adjustment rate	\$		/\$100
= Effective tax rate	\$		/\$100

This year's rollback tax rate:

Last year's adjusted operating taxes (after subtracting taxes on lost property and adjusting for any transferred function, tax increment financing, state criminal justice mandate, and/or enhanced indigent health care expenditures)	\$	95,062	
+ This year's adjusted tax base	\$	19,002,704	
= This year's effective operating rate	\$.500259	/\$100
x 1.08 = this year's maximum operating rate	\$.540280	/\$100
+ This year's debt rate	\$	-0-	/\$100
= This year's total rollback rate	\$.540280	/\$100

A hospital district or city that collects the additional sales tax to reduce property taxes, including one that collects the tax for the first time this year, must insert the following lines:

- Sales tax adjustment rate	\$		/\$100
= Rollback tax rate	\$		/\$100

For a taxing unit with additional rollback rate for pollution control, insert the following lines:

+ Additional rollback rate for pollution control	\$		/\$100
= Rollback tax rate	\$		/\$100

** NOTICE **

THE CITY OF PLAINS WILL CONDUCT A BUDGET HEARING

MONDAY, SEPTEMBER 12, 2005
ON THE PROPOSED FY 2005 - 2006 BUDGET

The hearing will be held at 6:00 PM at
City of Plains City Hall
1015 Avenue F

The Public Hearing is available to all persons regardless of disability. If you require special assistance to attend this hearing, please contact City Hall at 456-2288 at least four hours in advance of the hearing

Services for Billie McDonnell

Billie Faye McDonnell of Plains, 78, passed away August 28, 2005 at her home.

Mrs. McDonnell was born January 2, 1927 in Shields, TX to Barney and Bessie Lewellen. She moved to the Plains area in 1945 and married the love of her life, Seviere (Tommie) Jan. 5, 1946.

She was an active member of First Baptist Church and the ladies Sunday school class. She loved working with older citizens thru the Meals on Wheels program and the senior citizen center. She worked at the Western Grill in Plains and drove the senior citizens van.

Her children and grandchildren will remember her for her love of the Dallas Cowboys. Her greatest accomplishments were her children and grandchildren.

Left to cherish her memories are her son Jackie, two daughters, Darlene Wilson and Dene Rafferty of Plains; two sisters, Sherry Merryman, Coleman, and Geraldine Graves, Carthage; 5 grandchildren and 7 great grandchildren. She was preceded in death by her husband in 1983, and brother Oran.

Graveside services will be at 10 am Wednesday, Aug. 31 at Plains Cemetery. Celebration of her life will be at 11 am at First Baptist Church, Rev. Bill Wright officiating. The family asks memorials be made to First Baptist Church Plains, My Fathers House, Lubbock, or American Cancer Society

Services were provided by Mark A. Jones Funeral Directors/Plains Memorial Chapel.

PUBLIC NOTICE

City of Plains

FAIR HOUSING PROCLAMATION

The City of Plains has proclaimed the month of September as " Fair Housing Month ". The City of Plains endorses and supports the principle of fair housing and encourages all citizens to support the law of the land in regard to the right of every person to have access to adequate housing of his choice.

Copies of the City's Proclamation are available free of charge to any interested person or group in City Hall

DO YOU TRUST YOUR CAR DEALER?

If you've purchased a car in the last two years, let us review your contract for fraudulent & illegal charges & help you get YOUR money back.

Pay nothing, no fees or expenses, unless we collect.

The Call and Consultation are FREE.

Toll Free 1-800-834-0000

Frenkel & Frenkel LLP, Principal Office Dallas, TX
www.FrenkelFirm.com

Statement of Increase/Decrease

If City of Plains adopts a 2005 tax rate equal to the effective tax rate of \$.500259 per \$100 of value, taxes would increase compared to 2004 taxes by \$ 50.00

Schedule A - Unencumbered Fund Balances

The following estimated balances will be left in the unit's property tax accounts at the end of the fiscal year. These balances are not encumbered by a corresponding debt obligation.

Type of Property Tax Fund	General	Balance
		154,924.80

Schedule B - 2005 Debt Service

The unit plans to pay the following amounts for long-term debts that are secured by property taxes. These amounts will be paid from property tax revenues (or additional sales tax revenues, if applicable).

Description of Debt	Principal or Contract Payment to be Paid from Property Taxes	Interest to be Paid from Property Taxes	Other Amounts to be Paid	Total Payment
	\$	\$	\$	\$
(expand as needed)				
Total required for 2005 debt service			\$	-0-
- Amount (if any) paid from funds listed in Schedule A			\$	
- Amount (if any) paid from other resources			\$	
- Excess collections last year			\$	
= Total to be paid from taxes in 2005			\$	
+ Amount added in anticipation that the unit will collect only <u>100</u> % of its taxes in 2005			\$	
= Total Debt Levy			\$	-0-

Schedule C - Expected Revenue from Additional Sales Tax

(For hospital districts, cities and counties with additional sales tax to reduce property taxes) In calculating its effective and rollback tax rates, the unit estimated that it will receive \$ _____ in additional sales and use tax revenues. For County: The county has excluded any amount that is or will be distributed for economic development grants from this amount of expected sales tax revenue.

Schedule D - State Criminal Justice Mandate (For Counties)

The _____ County Auditor certifies that _____ County has spent \$ _____ in the previous 12 months beginning _____, for the maintenance and operations cost of keeping inmates sentenced to the Texas Department of Criminal Justice. _____ County Sheriff has provided information on these costs, minus the state revenues received for reimbursement of such costs.

Schedule E - Transfer of Department, Function or Activity

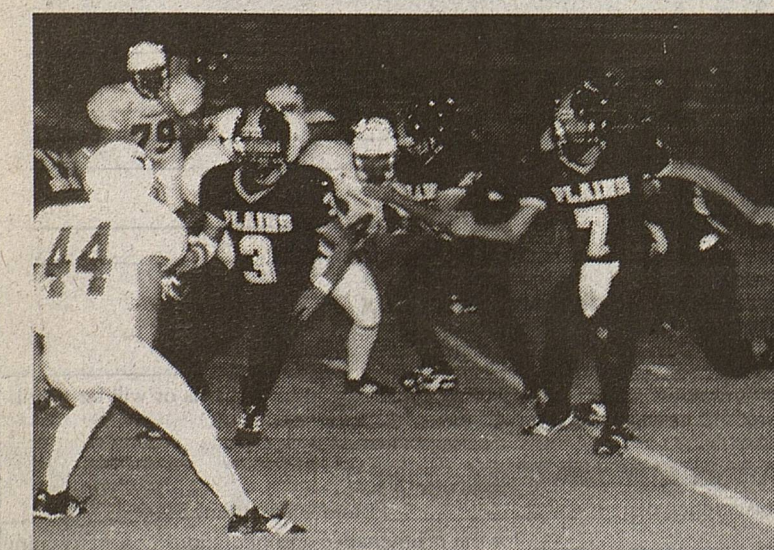
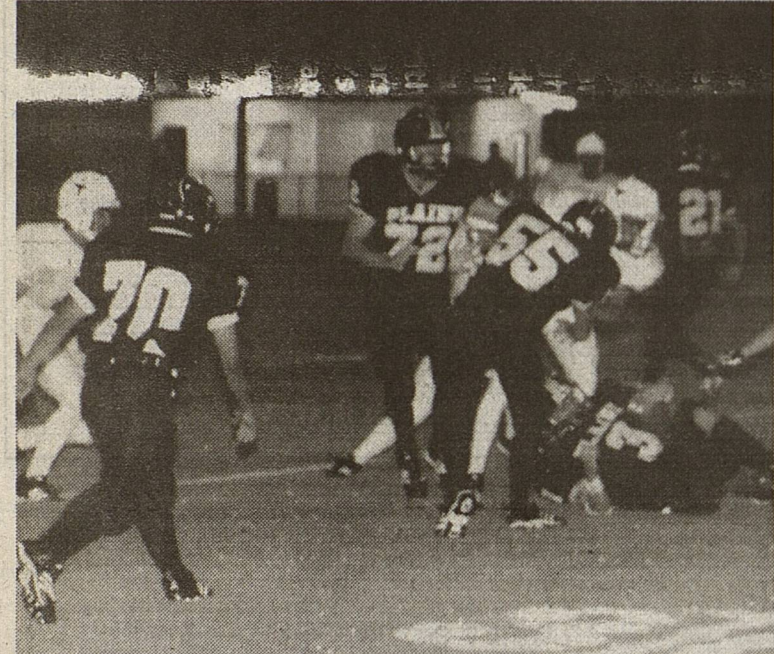
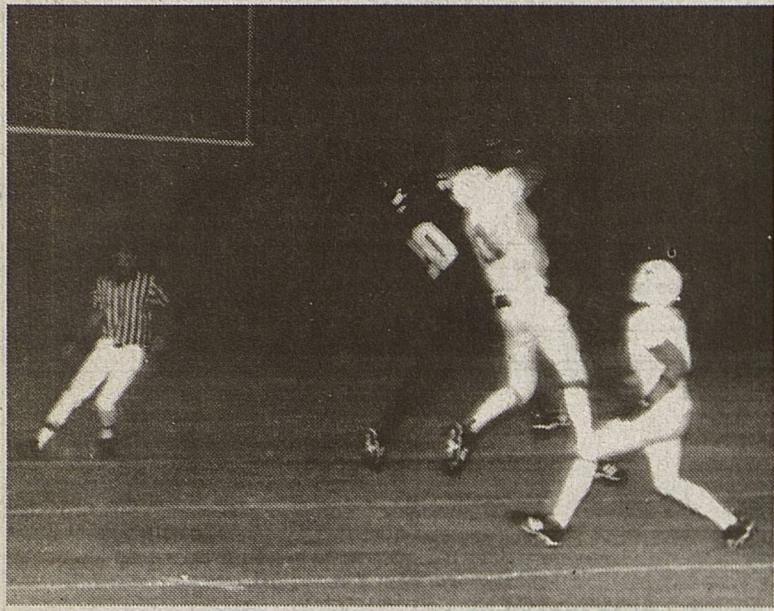
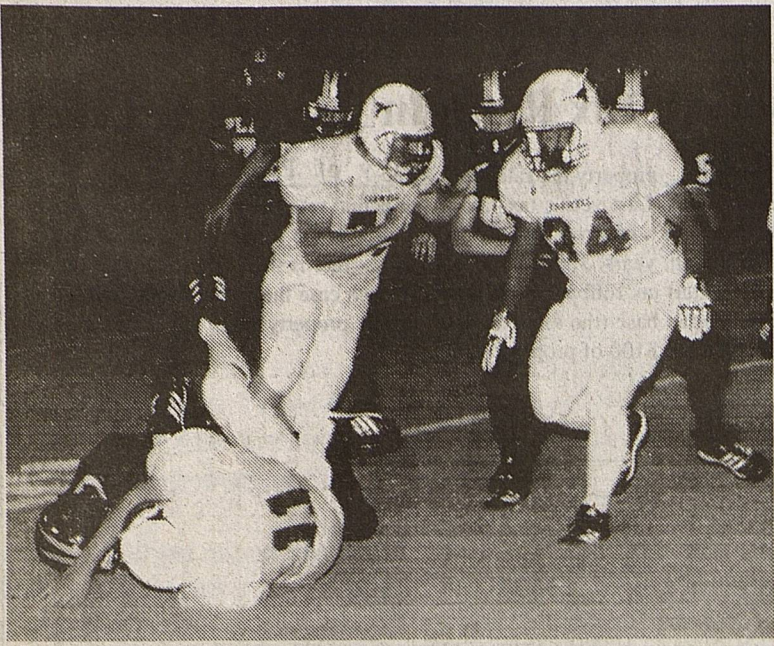
The _____ spent \$ _____ from _____ to _____ on the _____. The _____ operates this function in all or a majority of the _____. (Second Year of Transfer: Modify schedule to show comparison of amount this year and preceding year by unit receiving the function.)

Schedule F - Enhanced Indigent Health Care Expenditures

The _____ spent \$ _____ from _____ to _____ on enhanced indigent health care at the increased minimum eligibility standards, less the amount of state assistance. For the current tax year, the amount of increase above last year's enhanced indigent health care expenditures is \$ _____.

This notice contains a summary of actual effective and rollback tax rates' calculations. You can inspect a copy of the full calculations at Yoakum County Tax Office
Name of person preparing this notice Jan Parrish
Title Tax Assessor-Collector
Date prepared 08/08/05

Cowboy action scenes



FROM PG. 1, COWBOYS. halted by a fumble. The Steers managed a first down before fumbling back to the Cowboys, who again could not move the ball. The Steers would score the second time to go up 13-0 to start the final period.

Cowboys defenders held the Steers in check early in the finale, and The Cowboy offense came alive with the ball on the 32. Ramiro Martinez went over left guard for 16 yards, Curtis added 5 and 3 yard rushes, Williams rushed for gains of 9 and 2 yards, and Curtis added 2 more. O'Quinn passed for 15 yards to move the ball to the 19. Williams advanced to yards to the 15,

Therwhanger for 6 points. Antonio Martinez added the extra point for the final 13-7 score.

The Cowboys managed 166 yards offense to Farwell's 176. Q'Quinn gained 51 yards through the air on 4 completions, leading rushers were Williams, 68 yards, Curtis 49. Chase Guetersloh and Cody Mayes shared a sack for a 12 yard loss, O'Quinn and Curtis had interceptions, and Therwhanger, O'Quinn and Justin Vasquez had tackles for losses.

where Q'quinn hit The Cowboys travel to Crosbyton for a 7:30 PM game next Friday.

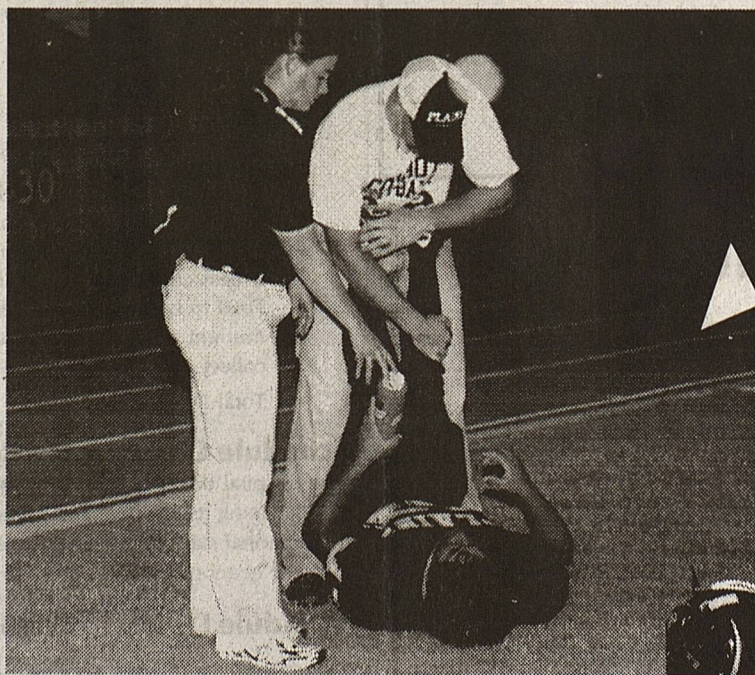
PHS Student of the Week



Student of the Week is Adriana Ponce, a junior and the daughter of Isidro and Nancy Ponce. She was nominated by Mrs. Ortega, who said, "A person who is cheerful impacts those around them in a way no one else can. Adriana is diligent and persistent while always wearing a smile. She draws people to her with her 'get things done' attitude. She can be counted on to complete whatever task is asked of her."

News from the PHS Counselor

* Registration for TAKS testing for students who have left school can be completed in Mrs. Davis' office at high school. The pre-registration forms must be in Austin by September 15. * Students need to begin the college application process. I have applications for many colleges and universities in my office. * Fall ACT test dates (offered at Plains) September 24, late deadline September 2. October 22, deadline September 16. November 5, deadline September 30, December 3, deadline October 28. * PSAT Test October 12, Wednesday. * Scholarship opportunities available on line are: www.coca-colascholars.org - deadline October 31. www.horatiolager.com/scholarships - deadline October 15



This issue ends the 11th year of publishing CCN. Happy Birthday To Us !

Cross Country Teams Update

The Cowboy cross country team got off to another great start this year with a 2nd place team finish at Brownfield Saturday, August 27. They were bested only by district rival Hart who returned all 7 members of last year's 6th place state team. Abel Ramos, Cowboy Captain, paced the effort by capturing first place overall. Ramos was followed by Scott Addison, Joseph Loya and newcomer John Tyson, and all placed in the top 25. Zach Ramos, Bradon Loya and Chandon Loya rounded out the team. The Jr. High Wranglers were crowned heirs to the legacy built by coach McAdams when they claimed their first team title in 4 years. They were led by Jonathan Lira who was followed by Jacob Neudorf, Peter Neudorf, Arthur Ruiz, Jaxon Bean and Kameron Loya.

The Cowgirls did not have a complete team but were represented by Elizabeth Perez and Jennifer Eccles who both ran well. The Wrangler girls did well placing 5th in team competition. They were led by Sarah Neudorf who was followed by Stephanie Addison, Hannah Crump, Courtni Asebedo, Ashley Caballero, Deanna Ramirez and Allison Eccles.

The Cowboys JV boys could not muster a full team but had four individuals running, Chris Addison, David Alldredge, Holden Welch and Chris Gonzales.

All teams will run this weekend at Seminole.

Youth Center Pool Tourney Results

Singles: 1 - A.J. Martinez 2- Rudy Gonzales 3 - Jeff Barrientes
Doubles: 1 - Jacob Rivera, Mareta Trent 2 - A.J. Martinez, Chris Gonzales 3 - Rudy Gonzales, Clarence Cox. Student/Adult - Jeff & dad Alex Barrientes 2 - Chris & dad Rudy Gonzales - 3 - Elias & dad Rocky Moya

Cowgirl VB Tourney Results

Competing in the Frenship tourney last weekend, the Cowgirls lost Friday to Frenship 21-25, 15-25, to Levelland 19-25, 23-25, and Argyle 8-25, 24-26. They came back Saturday to down Levelland 18-25, 25-22, 26-24, beat Brownfield 25-23, 18-25 and 25-14, but fell to Perryton 16-25, 15-25 to take second place in their tournament bracket.

Your Heart is a Work of ART!

Thanks for your GENEROUS support of Yoakum County Art Association's 29th annual Show & Sale August 1. Our hearts are filled with joy!

- PATRON DONATIONS:**
- Wilma Powell
 - T.J & Lois Miller
 - Mary Jo & Pete St. Romain
 - Paul & Johnette Mansur
 - Melba & Johnnie Fitzgerald
 - Ron & Sandy Craft
 - Jack & Janelle Cobb
- PURCHASE AWARDS:**
- Ty & Linda Powell
 - Dolores Davis
 - Jim, Jo Ann Barron
 - Deborah Brown
 - Linda Wall
 - Sandra Ellison
 - Debbie Pollard
 - Vicki Bullard
 - Sundown State Bank
 - Barbara Wright
 - Dallas Brewer
 - Woody Lindsey
 - Linda Harris
 - Dottie Mayes (Johnnie's)
 - Western Sales
 - Virginia Sanders
 - Yoakum Cnty. Co Op Gin
 - Yoakum County Abstract
 - Sigrid Brown
- Lea County Electric**
- Conny Martin
 - Dennis Harrison
 - Royce Blair
 - Linda Huddleston
 - Vaughn, Carolyn Culwell
 - Plains State Bank
 - Marilyn Reinert
 - Jerome, Jeannette Head
 - Yoakum Cnty. Connection
 - Sonnie Stephens
 - Debbie Rushing
 - Mark & LeAnn Lewis
 - Jan Parrish
 - West Texas National Bank
 - Kay & Kompany
 - Don & Carol Corzine
 - Connie, Macky McWhirter
 - Shane Griffiths (Crosswind)
 - Richard, Kathy Clark
 - Bayer Lumber
- Thanks also to:
- City of Plains Staff and Employees
 - Cowboy Country News
 - Denver City Press
 - Liz Chandler, Chair
 - Julia Lemley, Treasurer

Urgent news for people who took VIOXX

Many VIOXX users have been at increased risk for serious cardiovascular injuries, including strokes, heart attacks, blood clots and even death. If you or a loved one took VIOXX and had any of these problems, call us now toll free at 1-800-THE-EAGLE for a free consultation. We practice law only in Arizona, but associate with lawyers throughout the U.S.

GOLDBERG & OSBORNE
1-800-THE-EAGLE
(1-800-843-3245)
www.1800theeagle.com

Open 7 days a week

DO YOU TRUST YOUR CAR DEALER?
If you've purchased a car in the last two years, let us review your contract for fraudulent & illegal charges & help you get YOUR money back.

Pay nothing, no fees or expenses, unless we collect.
The Call and Consultation are FREE.
Toll Free 1-877-677-5333
Jeff Weinstein, Principal Office Athens, TX
www.jeffweinstein.com

CASH NOW As seen on T.V.

FOR STRUCTURED SETTLEMENTS, ANNUITIES and INSURANCE PAYOUTS

(800) 794-7310

J.G. Wentworth means CASH NOW for Structured Settlements!

CFI Local Orientation
Dallas, Laredo & El Paso
Starts September 6th

2004 Earnings
AVG. SOLD: \$49,950 TOP SOLD: \$70,526 TOP TEAM: \$154,222
\$0.05 NE Bonus Pay! Class A CDL Required!

Now hiring student grads.
Starting 26%, potential increases to 86% in 1 year.

1-800-CFI-DRIVE
cfidrive.com (1-800-234-3748)

VIOXX Heart Attacks, Strokes & Sudden Cardiac Deaths

Willis Law Firm
HOUSTON, TEXAS

BOARD CERTIFIED
PERSONAL INJURY TRIAL LAWYER
Texas Board of Legal Specialization
DAVID P. WILLIS - ATTORNEY AT LAW

Toll Free 1-800-893-9858
www.Vioxx-Lawyers.com

In 2004, VIOXX was recalled due to increased risks of heart attacks, strokes and cardiac deaths of VIOXX users. According to recent studies, CELEBREX & BEXTRA, both Cox 2 inhibitors, similar to VIOXX, may have similar risks of heart attacks, strokes and deaths. In 2004, a medical study found that VIOXX users suffered FIVE (5) times as many Heart Attacks as people on an older pain reliever naproxen. Recently in a letter to the FDA, Merck's own study stated that 14.6% of VIOXX patients experienced cardiovascular troubles. VIOXX lawsuits are being filed throughout the U.S.

If you or a loved one have taken VIOXX, Celebrex or Bextra and suffered a heart attack or stroke OR a family member has died due to a sudden cardiac death, then call us for a Free Case Evaluation. Applicable Filing Deadlines and Statutes of Limitations do apply. Call now to get a Free Confidential Consultation. Don't wait!

Lifelines & Styles

50th Celebration



Jack & Janelle Pierce celebrated 50 years of marriage Saturday, August 13, 2005 at Tanoan Country Club in Albuquerque. Jack was one of PHS's outstanding coaches in the 1960's. Janelle was a loyal supporter of PHS, pianist for First Baptist Church, active member of the Fine Arts Club. She was the daughter of Frank and Lillian Whitlock, owner of White's Auto Store. Ray and Sue (Bookout) Faught, both PHS grads, were in attendance. Thank you, Jack and Janelle, for allowing us to be a part of a very special celebration!!

Bob & Billie Blundell

Watermelon Round Up Melon Decorating Contest Rules

1. Entrant must live in Yoakum County or within 10 miles of county line. 2. Awards of \$200 savings bonds go to age groups juniors, 0-9; youth 10-20; adult 21 and up. Any age group is eligible for best of show for \$400 savings bond. 3. Winners must verify savings bonds have the correct name, address and social security number with donor banks. 4. A whole or parts of real watermelon of any variety may be used. 5. No restrictions apply on decoration material but must be in good taste. Chair will determine if inappropriate in case of dispute. 6. Painting or carving may be done on the watermelon(s). 7. Contestant is responsible for a prop if needed to hold melon in certain position. 8. Contestant must leave melon on display from 10 AM until 5 PM on day of contest. Disposal of melon or materials will be handled by chair if contestant does not claim it. 9. Only one entry per person; entry form must be filled out when entering contest. Forms will be available at information desk when entering the contest. 10. A nameplate may accompany entry if it adds to understanding of decorations.

There are very few people who don't become more interesting when they stop talking

FIRST BAPTIST CHURCH
Plains, Texas

Sunday School
9:30 A.M.
Morning Worship
10:45 A.M.
Evening Program
6:00 P.M.

Seniors Corner

This week we'd like to recognize and praise Rosa Lopez. She has been with us just over a year now and has become an integral part of our Senior Center Family. If you have visited the Center lately, you have found her in a wheelchair. Not even considering slowing down, she continues with her responsibilities and everything proceeds as usual. She is anticipating foot surgery next week, so let's keep her in our prayers as she continues to serve us in her capacity as Site Director.

Another of our regular clients, Gladys Sides, is spending time in our local hospital. We send our best wishes to her and look forward to seeing her smiling face back in the lunchroom.

Several have asked about Paul Sweitzer. Wanda reports that he is receiving physical therapy at home at this time. He will be back to the Center as soon as he gains some more strength. He is another we need to keep on our prayer list.

I must share this chuckle for the day that came from my (pastor's wife) daughter. It seems the new pastor was visiting the home of one of his parishioners. It seemed obvious that someone was home but no answer came to his repeated knocks at the door, therefore he took out a card and wrote: "Revelation 3:20" on the back of it and stuck it in the door. When the offering was processed the following Sunday he found his card had been returned. Added to it was this cryptic message: Genesis 3:10." Reaching for his Bible to check out the citation, he broke up in gales of laughter. Revelation 3:20 begins, "Behold, I stand at the door and knock" - Genesis 3:10 reads, "I heard your voice in the garden and I was afraid for I was naked."

I checked with Webster to see what he had to say about "shingles" and found his description to be a thin, oblong piece of wood, or a small signboard as one indicating a doctor's office, or (and this was the final example) a skin eruption. This last one we know about at our house. Elmer is showing some improvement after dealing with it for several weeks. We are thankful for doctors and medicines when mother nature rears her ugly head sometimes, aren't we?

FLASHBACK: The year was 1958. The place was Rupert, Idaho. Homesteading had improved from the previous half century, however, conditions were primitive compared to the standards of the time. This homesteading project was for veterans and we arrived in this beautiful southern Idaho valley from all parts of central and western United States. Each family was alone and most of us were *economically challenged*, having burned all of our bridges to qualify to be there. Our personal bank account totalled \$364.00 after we waved goodbye to the family members who had helped us make the journey.

Qualifications included an established residency and a crop harvested that first season. This included clearing the sagebrush from the land, leveling it, digging irrigation ditches, and planting crops as well as establishing a livable dwelling not on wheels. We bought an old 8' x 24' trailer house someone had abandoned, from which we removed the wheels and to which we added an addition to make a 24' x 24' square dwelling. The floor, roof, and sides were all made of 5/8" plywood (which we planned to use for sub-flooring at some future time in a new house).

Elmer got a job operating equipment on a highway being built through the valley and I went to work in one of the government office. He worked at night and mine was a day job so we could work the farm and watch the children. Having no running water, I did my laundry in town at a "non-automatic" laundry. On washdays, Elmer dropped off the laundry and the children where I worked and I did the laundry before going home.

On this particular night, we passed a slow moving car with no headlights on our desert trail as the children and I were going home. As I was hanging the clothes on our makeshift line across the yard, that car we had passed came lumbering up beside our house and stopped there. No one got out, so I sent twelve year old Michael to ask if they needed something. He came back to tell me they planned to spend the night right there. They were of a different nationality and had been drinking (neither of which I'd had any experience with) so I told Michael to drive to our nearest neighbor, a mile away, and ask what I should do. He came back saying that Darwin had said I should do nothing; that they would probably sleep it off and go on.

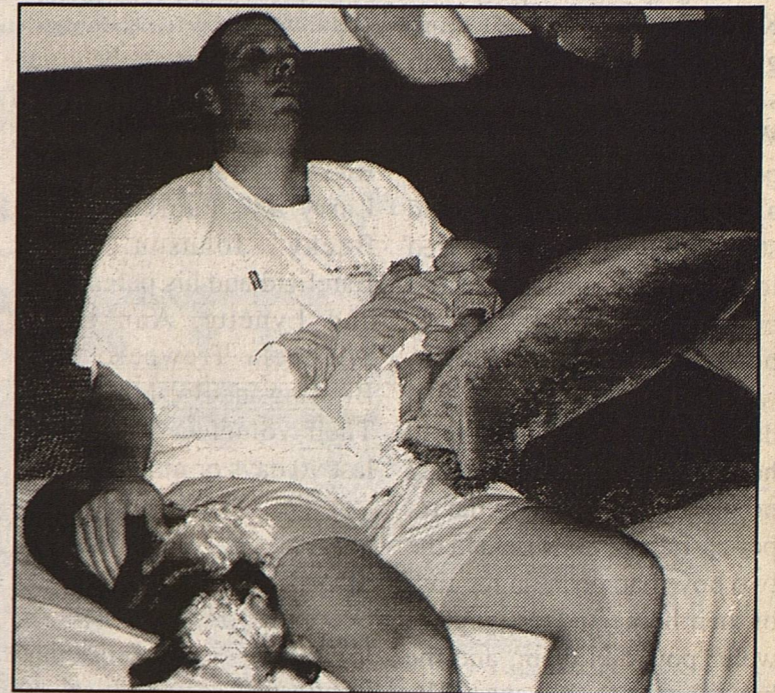
Since our desert "mansion" had neither window curtains nor a lock on the door, I hung sheets over the windows and decided to sit my empty laundry tub in front of the door and balance a pair of pliers over the knob so I would know if anyone tried to open the door. Then I sat down with a gun to guard my children (the old Pioneer Mother syndrome). Since we were working around the clock in those days, I fell asleep. The next thing I knew, the pliers fell into the tub!

In the meantime, Elmer's loud, old vehicle had run out of gas about five miles from home so he had walked the remainder of the way. He saw the unfamiliar car and assessed the situation, so knocked our family knock as he opened the door, but still found himself staring down the barrel of my rifle! He laughed. I cried. Our nocturnal visitors went their merry way!

Thought for Today: "Conscience gets a lot of credit that belongs to cold feet."

The first baby is exhausting work for new fathers

Family dog a bit tired, too



Jay Rushing is shown holding his new daughter Bryleigh Ann in his left hand shortly after her arrival July 29, and family dog Truman in his right. Jay was obviously exhausted by the ordeal, yet new Mom Brooke seemed to be holding up a bit better. The dog Truman strongly resents the baby's competition.

**Yoakum Soil & Water Conservation
District 2nd
Ladies Farm Tour
Sept. 13, 9am - 2 pm
Lunch Provided - Door Prizes
RSVP by Sept. 9
806-456-3703, ext. 3 or
806-592-1426**

You're invited to a
**Wedding Shower honoring
Amber Ellis**
(Bride-Elect of Tanner Blount)
Sunday, September 4, 2005
Home of Jo Lena Wall
3:00 PM - 4:30 PM

Selections - Target, Pier 1,
Nelson's, Image 'n That, Bayer

Yoakum County Hospital

Is searching for dynamic professional people
to join our healthcare team
Great Benefit Packages * Shift Differential
* Excellent Working Environment
* Great People To Work With

Home Health RN
Full Time Position. Fax resume to
Linda French, RN, 806-592-2891

RN and LVN for Shift Work
7 pm until 7 am. Fax resume to
Joyce Tedford, 806-592-2891

Hicks Air & Appliances

Heating/Air Conditioning
Appliances/Carpeting
Sales & Service
806-592-3930
TRANE "It's hard to stop a TRANE"

From The Hack

This has been a difficult issue of CCN for me to finish. Not because it marks the end of eleven years publishing the rag, but because I haven't been able to stay away from the TV coverage of the ravages of Katrina. I cannot recall more graphic scenes of destruction since newsreel coverage of WWII. I saw one female reporter Tuesday morning doing a monologue in a flooded street of Biloxi, and this dazed looking man and two small boys came wading by. The reporter asked where the man was going, and he appeared dazed, confused, and mumbled he didn't know where, he had no place to go. He told the reporter he and his wife and the two boys had been on the roof of their home and the surge of water pounded them, and the house began to split apart. The reporter was obviously stunned, and finally got control and asked the man where his wife was. He was breaking down by then, and managed to choke out, "I don't know, I don't know, we was trying to hold on, and she yelled 'I just can't, I can't', then the house tore apart and she fell in the water,,, we ain't seen her, everything's gone."

There will probably be dozens, hundreds more such reports.

It should not surprise anyone

the First Baptist Church disaster relief crew pulled out here Monday morning. Church officials spoke by cell phone with Blue Cap leader Tim Willis Tuesday, and learned they will spend Tuesday night in Alexandria, then learn their first work assignment. Red Cross officials predict the volunteer crews could serve hundreds of thousands of meal in the massive relief effort. Pastor Bill Wright said the local volunteers "took all our rolling stock and cleaned us completely out of all the food we had here".

Making the sure to be grueling effort are Willis, Ed Watson, Dorothy Herman, Ricky Henson, Linda Wright, Larry and Paula Morrow, Bucky Johnson, Mark Barefield and his parents Phil and Lynette, Ann Eaker, Michaela Traweek, Drew Blessing and Bob McDonnell. Their volunteer work could last 90 days or more.

Thank you Lord, for friend Stephen Henry of the Levelland News-Press - he prints stuff easy to filch, but best of all, he's aware of it and hasn't called the law on me -

Lost Family Pet
Small Male, Grey
Bob Tailed Cat.
Lost in vicinity
of 808 Third St.
in Plains. Please call
806-215-1586
or 456-7457.

About The New Electronic Sign

Personnel at City Hall have graciously agreed to assist the Chamber of Commerce by taking orders for advertising on the new sign in Pioneer Park. **NO TELEPHONE ORDERS** will be accepted. An order form is available at City Hall, and the following information must be written on the form; Date, Name, Address, Phone #, Dates for the ad to run. The message must be written on the form with a maximum of 14 spaces per line of type. Three message frames is maximum length of ad, for a maximum total of 42 spaces per frame. Maximum time for ad to run is one week (seven days). Cost of each ad is \$15. **ALL ADS MUST BE PAID FOR IN ADVANCE AT TIME OF TURNING IN AD ORDER.**

FARM for SALE
C.R. 225, Sec. 218
Approx. 650 acres
PRICE REDUCED
HUNT REALTY
112 N. Main,
Denver City, TX 79323
Ph 806-592-3556
Fax 806-592-8489

yet.
Some truths about gaining maturity:
My wild oats have turned into prunes and All-Bran.
Funny, I don't remember being absent minded.
Some days you're the dog. Some days, you're the hydrant.
It's real hard to make a comeback when you haven't been anywhere.
The only time the world beats a path to your door is when you're in the bathroom.
When I'm holding all the cards, why does everyone decide to play chess?
The only difference in a rut and a grave is the depth.
I spend a lot of time thinking about the hereafter - I go somewhere to get something then wonder what I'm here after.

Texans often refer to political speeches as longhorns - One that often makes two good points, with lots of bull in between

Child Care
in my home, 12 months & up.
Reasonably priced. For more information call 456 - 3562

Grand Entry

Western Wear
110 N. Main
Denver City, TX
Boot & Shoe Repair
806-592-8198

Think Texas
by Agriculture Commissioner
SUSAN COMBS

What larger-than-life building will feature high-energy exhibits, a backyard barbecue, hundreds of Texas products and a cow named Elsie, all with the goal of teaching the world a thing or two about Texas agriculture? It's the Food and Fiber Pavilion at the State Fair of Texas.

The pavilion has been revitalized to include dozens of interactive exhibits and unique events at this year's fair, which makes it the perfect place to relieve the post-summertime blues now that the kids are back in school.

Bring your Lone Star spirit and be ready for fun because the pavilion will include everything from two giant stores with porches for sampling, recipe contests, performances by singer-songwriters and appearances by Borden Dairy's mascots, Elsie and Beaugard.

Kids can construct creatures made from fresh produce at a special nutrition exhibit, and families can learn about the virtues of beef at the Texas Beef Council's backyard barbecue exhibit complete with picnic tables, a barbecue pit and picket fence. Computer games, a writing contest and historical reenactments are just a few of the many other educational activities available.

The fair draws some 3.5 million visitors each year, and the Texas Department of Agriculture's Food and Fiber Pavilion hosts well over half of those visitors. People from all walks of life, all across Texas, come to check out the pavilion and learn about rural Texas, nutrition and the many good things that come from agriculture. The 2005 State Fair of Texas runs from Sept. 30 to Oct. 23, at Fair Park in Dallas.

Plains ISD School "FIRST" Hearing

September 19, 2005

7:30 P.M.

Plains ISD Resource Center

At the regularly scheduled meeting of the Plains ISD Board of Trustees, the board will hear a presentation by the superintendent of schools concerning the Financial Integrity Rating System of Texas (FIRST) and the rating that the district earned from the Texas Education Agency.

The rating of "Superior Achievement" for the district is the highest that can be earned. This is the third such rating the district has earned from this system which has been in use for three years. After the presentation of the information by the superintendent, public comment will be taken and questions can be answered.

Plains ISD has also scheduled a tax rollback election for October 22, 2005. The district is doing so to support the maintenance of all current school programs. The superintendent will also answer questions concerning the election at this meeting.

NOTICE OF PUBLIC HEARING ON THE YOAKUM COUNTY APPRAISAL DISTRICT BUDGET

The Yoakum County Appraisal District will hold a public hearing on the budget for the 2006 fiscal year.

The public hearing will be held on September 12, 2005 at 2:00 PM in the office of the Yoakum County Appraisal District.

A summary of the appraisal district budget follows:

Total amount of the appraisal budget is \$286,186.00.

The total amount of increase from the current year's appraisal budget is \$26,774. 2006 is a reappraisal year.

The total number of employees compensated in the 2006 budget will be 2 full-time employees.

The total number of employees under the current budget is 2 full-time employees.

The appraisal district is supported solely by payments from the local taxing units served by the appraisal district.

By final approval by the appraisal district board of directors at the public hearing, the budget will take effect automatically unless disapproved by the governing bodies of the county, water district, school districts and cities served by the appraisal district.

A copy of the budget is available for inspection in the office of each of the governing bodies. A copy is also available for public inspection at the appraisal district office.

YOAKUM COUNTY APPRAISAL DISTRICT

500 COWBOY WAY

PLAINS, TEXAS 79355

806-456-7101

ROJO Agricultural Services
Authorized
Square D



Dealer
456-7540

Want to purchase minerals and other oil/gas interests.
Send details to:
P.O. Box 13557,
Denver, CO 80201

TERRY COUNTY TRACTOR
Massey Ferguson
Kubota
Bush Hog Shredders,
Lilliston Rolling Cultivators, Lorenz & Buffalo Cultivators,
Baker Disc & Switch Plows, Spray Coupe,
Wilmar Sprayer
Brownfield, Tx.
806-637-4569

CFI Local Orientation
Dallas & Laredo
Week of August 22nd
AVG. SOLO: \$49,950 TOP SOLO: \$70,526 TOP TEAM: \$154,222
\$0.05 NE Bonus Pay! Class A CDI Required!
Now hiring student grads. Starting 26¢, potential increases to 36¢ in 1 year.
1-800-CFI-DRIVE cfidrive.com
(1-800-234-3738)