

50¢

POSTMASTER: Send address changes to Cowboy Country News, Box 179, Plains, Tx. 79355

BAZE BOOKBINDING
514 W 7TH AVE
AMARILLO, TX 79101 0514
ARCHIVES 2

Postage Paid
Texas

Cowboy Country News

Published each Wednesday in the county seat of Yoakum County, Plains, Texas

Volume VI, Issue 38, June 14, 2000

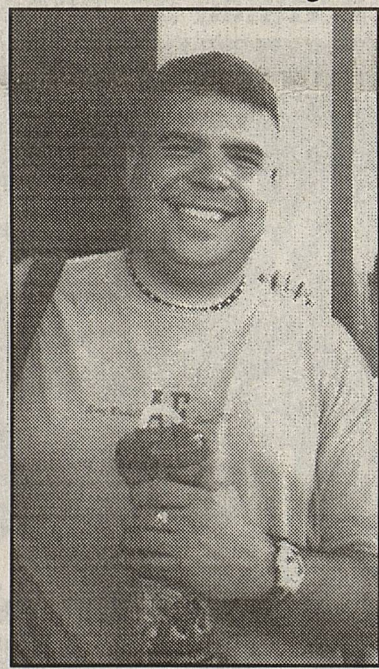


Band Members End Great Year



On May 28 and 29 members of the Plains Cowboy Band, including 3 vocalists, traveled to South West Texas State University in San Marcos to compete at State Solo and Ensemble. Brass Sextet 1 members Alex Tarango, Stanley Caballero, Liz Wilmeth, Kyle Sisson, Chris Gscheidle, and Skyler Johnson earned a division 1. Brass Sextet 2 members Ashley Gonzalez, Kimberly Martinez, Angie Longoria, Ross Rogers, Jordan Bean, and Scott Tirrell earned a division 3. The Baritone Trio members earning a division 2 were Isaac Gonzalez, Chris McGinty, and Skyler Johnson. Isaac Gonzalez's solo earned him a division 1.

Percussion Ensemble 1 members Mandi Rogers, Elizabeth Clanahan, Jill Gray, Krystal Gonzalez, Jeannie Longoria,



Director, Mr. Ray Portillo

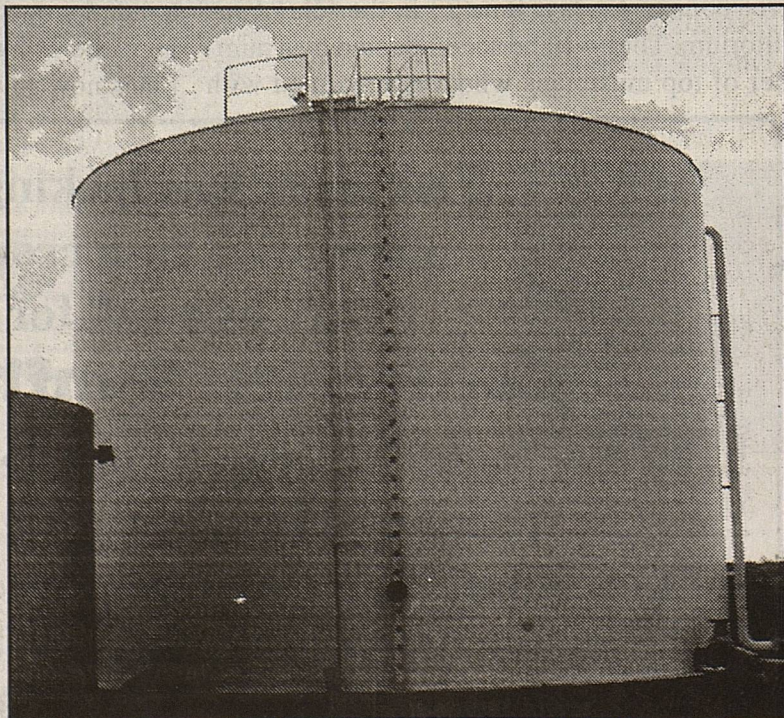
Donita Richardson, Kayla Willis, Amanda Garcia, and Kyle Sisson earned a division 4. Percussion Ensemble 2 members Brad Trent, Mandi Rogers, Elizabeth Clanahan, Stacie Alldredge, Kim Martinez, Becky Coronel, and Sandra Gallegos earned a division 3. The vocalists were Emily Blair, division 1, Lesli Rowe, division 2, and Lisa San Filippo, division 3. Medals were given for division 1 and 2. State Solo and Ensemble was a great way to end a successful year for the members of the Cowboy Band. Cowboy Band members would like to thank all of the sponsors and especially Mr. Portillo for their extremely hard work and dedication.

City water supply in good shape despite drought and heat

At 4 P.M. Friday, June 9, the City of Plains' three main water storage tanks contained some 545,000 gallons of water, near capacity levels. The old water tower on the south side of town contained 135,000 gallons, the main storage tank southwest of city limits held 315,000 gallons, and the new storage tank at the site of the new city wells west of town on section 423 held 95,000 gallons.

City Administrator David Brunson told CCN, "This storage level is consistent with the average level for the past several months. During the extremely high temperatures we experienced the latter part of May, our daily consumption figures rose, but we have experienced no problems maintaining a very sufficient supply of water."

Charts from City Hall records show during May water usage totaled 17,215,000 gallons, with the peak use



Main storage tank showing 27 feet of water - 315,000 gallons

occurring May 31, when 775,000 gallons were pumped. City personnel are now monitoring the five city owned wells each week. Records were formerly kept on the wells performance and levels only monthly. Brunson said the current average daily draw down on the wells is one-half foot, consid-

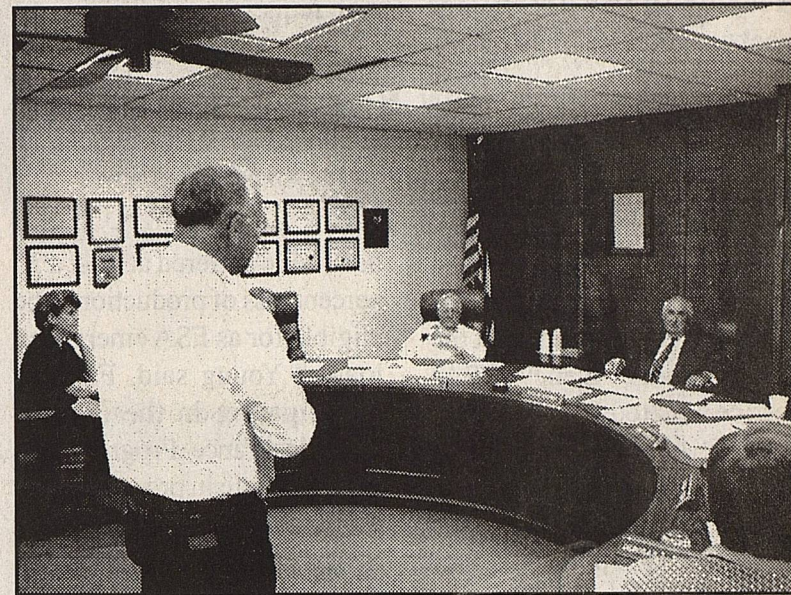
erably less than the figure before three new wells were drilled last year. The average city use of water during the month of May was 550,000 gallons. To date this year, it has not been necessary to pump all five wells each day to meet consumption demands.

Court hears update on county landfill, cloud seeding program

In Monday's session of Commissioners Court, Gary Walker, consultant for Sandy Land Water District and manager of the county landfill, gave a report on the financial condition of the land fill.

He stated the operating cost of the landfill exceeded the 1999 budget by some \$13,000. "The overage was primarily the result of overtime paid to the three full-time employees. We are now operating the site weekdays and half a day on Saturdays, and there is no way we can legally avoid paying overtime wages." He said equipment repairs also contributed to being over budget, and added, "I can't tell you we won't have any more repair bills, for that's one of those necessary evils when you operate machinery."

Sandy Land's 1999 operating budget was \$172,250. The



Gary Walker addresses court

Board of Directors approved a budget of \$181,850 for 2000.

Walker handed out computer generated color maps of precipitation enhancement flights in the area in recent days. He told the court cloud seeding operations in the state extend from the extreme Northern Panhandle, through the South

Plains, with programs operating in areas including Big Spring, San Angelo, the Hill Country around San Antonio and to Corpus Christi.

"We have fully documented data proving these cloud seeding programs in 1999 re-

Turn To Page 4, "COURT UPDATE"

Higher oil prices bring mixed blessings

In the past century, \$30 -a-barrel oil would have blasted the Texas economy through the roof. But this is a new century and a different economy.

Yes, rising oil prices still mean good times for the oil industry - for drillers, oil service companies, landowners and royalty owners. Some parts of the state's economy may feel the pinch more than others.

"In a more diversified economy, some industries are impacted negatively by rising oil prices," says Michael Reissig, Director of Fiscal Management for the Texas Comptroller of Public accounts. The oil industry accounted for 25 percent of the gross state product in 1981. Now it is 9 percent and that mitigates the impact on the state economy whether prices are up or down.

Prices for crude raced above \$30 a barrel earlier this year, sending prices of gasoline and other energy related products higher. In May 1999 oil cost \$11 to \$13 a barrel.

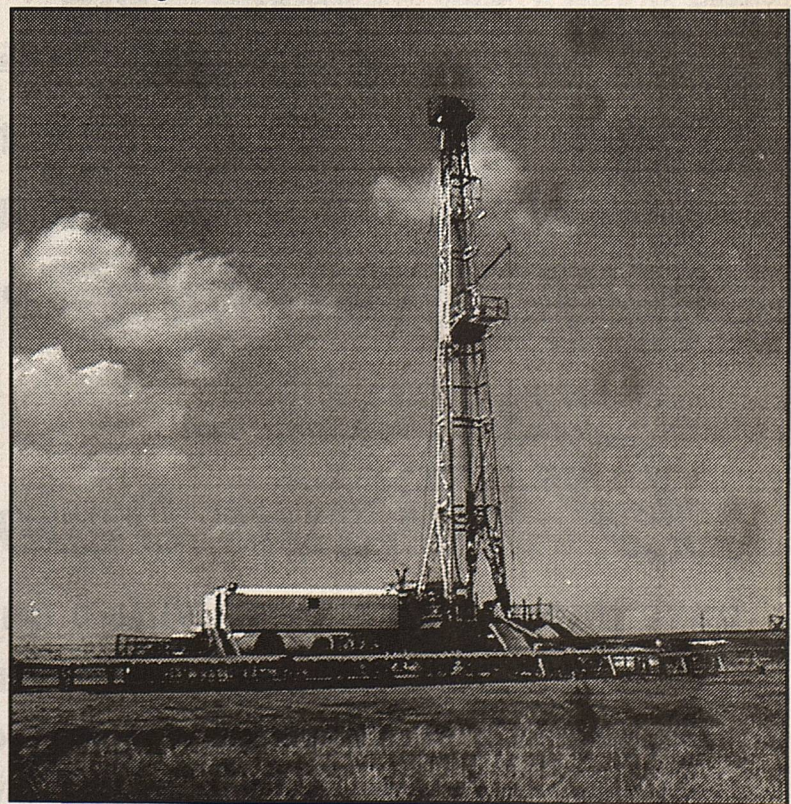
The Dallas Federal Reserve Bank estimates the Texas economy is 80 percent less sensitive to oil price changes than it was in 1982. The Texas Workforce Commission reports the state added an average of 17,942 jobs per month in 1998 and '99, with little help from the oil industry.

Here's a look at the impact on several sectors of the Texas economy.

John Moroney, economics professor at Texas A & M, says the impact on the oil industry may not be great or immediate. The industry wants to see if the price remains at the new levels. "What typically happens is higher prices will stimulate new drilling to find new re-

money in."

Local school districts and two governmental school funds - The Permanent University Fund and the Permanent School Fund - will also benefit from higher prices. School districts will gain higher local property taxes based on the mining operations, and the university and school funds will collect greater royalties for wells on



This drilling rig west of town is indicator of increased oil drilling

serves and developmental drilling to up production. But Texas drillers have been through this before, and they're not sure the prices will stick. Until drillers see stable high prices, they can't arrange financing and they don't like to put their own

state lands. First to feel adverse impact of higher oil prices was the transportation sector, particularly airlines and trucking companies. Rising aviation fuel prices led Houston based

Turn To Page Two, "Oil Prices"

College Tuition Assistance Available

The Texas Workforce Center of Levelland, a division of South Plains Community Action Association, Inc., would like to announce there are limited funds still available for tuition assistance to low income individuals, displaced homemakers or workers that can prove being laid off from an employer.

The funding for this is provided by the Workforce Investment Act of 1998. This program is targeted at assisting individuals to obtain and/or retrain for employment that helps the individual to meet self sufficiency.

The funds are available for residents of Bailey, Cochran, Hockley, Lamb, Terry and Yoakum counties of Texas. In-

dividuals in Hockley, Cochran, Terry and Yoakum counties interested in being considered as a potential participant should call the Texas Work Force Center at (806) 894-5005 or come by 410 Houston In Levelland. Those residing in Bailey and Lamb Counties should call the Texas Workforce Center of Littlefield at (806) 385-9119, or stop by 315 Phelps in Littlefield.

All applicants must meet federal, state and local eligibility and suitability requirements before being considered as a potential participant. The Texas Work Force Center is an equal opportunity employer/program. Auxiliary aides are available upon request.

Emergency Farm Loan Applications Being Accepted

Applications for emergency farm loans for losses caused by extreme wildfire conditions are being accepted at the Farm Service Agency (FSA) office located in Seminole, Tx., FSA Farm Loan Manager, Richard G. Young, said today.

On March 9, 2000, Governor Gary W. Johnson requested that the Secretary of Agriculture, Dan Glickman make Farm Service Agency emergency (EM) loan assistance available to eligible farmers in Lea County, due to losses caused by a wildfire, due to excessive wind and drought that occurred from February 12 thru 14, 2000. Upon approval of Lea County, six Texas counties will be named as contiguous counties where eligible family farmers may qualify for FSA EM loan assistance. Those counties are: Andrews, Cochran, Gaines, Loving, Winkler, and Yoakum.

Young said farmers may be eligible for loans of up to 80 percent of their actual losses or the operating loan needed to continue in business, whichever is less. For farmers unable to obtain credit from private commercial lenders, the interest rate is 3.75 percent.

"As a general rule, a farmer must have suffered at least a 30 percent loss of production to be eligible for as FSA emergency loan," Young said. Farmers participating in the Federal Crop Insurance Program will have to figure in proceeds from those programs in determining their loss.

"Applications for loans under this emergency designation will be accepted until January 16, 2001, but farmers should apply as soon as possible. Delays in applying could create backlogs in processing and possibly over into the new farming season," Young said.

FSA is a credit agency of the U.S. Department of Agriculture. It is authorized to provide disaster emergency loans to recognized farmers who work at and rely on farming for substantial part of their living. Eligibility is extended to individual farmers who are U.S. citizens and to farming partnerships, corporations or cooperatives in which U.S. citizens hold a majority interest.

The FSA office in Seminole is open from 8:00 am to 5:00 pm Monday through Friday.



Texas Rural Communities, Inc. Provides Funds for Rural Projects

The South Plains Association of Governments (SPAG) in Lubbock has been designated to run the USDA's statewide Texas Rural Mediation Center, which will assist in disputes relating to rural issues. In order for the Center to receive final approval from the governor's office and USDA, local matching funds were required. Texas Rural Communities, Inc., (TRC) a non profit corporation that originated as part of the New Deal during the Depression, provided a grant of \$22,000.00 to match a much larger USDA grant. Linda Shoemaker Lowrey, a local rural advocate who chaired the non profit organization's Board of Directors in 1999, currently chairs TRC's grant committee.

Mediation is a process in which a trained, impartial person helps people look at mutual problems, identify and consider options and determine if they can agree on a solution. The function of the mediator, who has no authority to force a de-

From Page One..... "OIL PRICES"

Continental Airlines to impose ticket surcharges, said spokeswoman Julie Gardner. Continental's fleet of planes use 1.5 billion gallons of fuel each year. "We are spending hundreds of millions of dollars more on fuel. It led to the ticket surcharge and increased fares on some routes."

The trucking industry has been hit hard by the price increases. A Texas Motor Transportation official said, "Fuel is the second highest component of a truck companies operating expenses, next to personnel. When fuel prices go up 50%, it cuts into profit margins, which average 2%."

Highly mechanized agricultural production has also been severely impacted by rising costs of diesel fuel. Pump prices for gasoline have soared, but OPEC's decision to increase oil production will eventually stabilize prices, according to industry officials. State tourism numbers may be adversely affected, but mainly for those planning three to four week vacation trips. A spokesman said, "In the 1980's we had

decision, is to facilitate discussions and generate possibilities for settlement between the parties. At the Texas Rural Mediation Center, rural Texans can use mediation on such matters as rural business loans, crop insurance, rural housing disputes and water conservation, to name a few. Fees for mediation are \$50 per hour, with a minimum of one hour, to be equally divided among the parties for any mediation.

Those interested in rural mediation training should contact SPAG at 1-800-858-1809 or 806-762-8721. The first training sessions will be held in Lubbock on June 13th through 15th at the Holiday Inn Park Plaza.

TRC also recently provided a grant of \$1,500.00 for the Yoakum County Connection's Summer Youth Art Program. For more information about Texas Rural Communities' grant and loan programs, call for Sandra Martinez at 1-800-RURAL-TX.

higher oil prices and availability problems that affected tourism and travel, but it was the availability of gasoline that was more troubling to travelers. That's not the case now."

** Material for article courtesy *Fiscal Notes*, a publication of the State Comptroller.

PISD Honor Roll 6th Six Weeks

High School 'A' Honor Roll Ninth Grade

Jordan Bean
Sandra Gallegos
Jill Gray
Allison Butler
Tanner Hamm
Chris Hansen
Roberto Luna
Ragan McGinty
Jarod Newland
Annaliesa O'Quinn
Scott Terrell
Becky Wilmeth

Eleventh Grade

Emily Blair
Lensey Cullins
Roxy Fuentes
Kari Guetersloh
Nicole Haynes
Eric Nixon
Lesli Rowe
Elva Ruiz

Lexi Warren Twelfth Grade

Shay Allsup
Joshua Bell
Justin Bennett
Krystle Blundell
Candace Bowers
Velvet Canada
Leticia Canon
Chris Cleveland
Jessica Flores
Kristen Gray
Wendy Hernandez
Angie Longoria
Brenda Lozano
Fermin Luna
Laura Morales
Nicole Newsom
Anne Palmer
Patty Ruiz
Kyle Sisson
Jason Swann
Staci Tuggle

'A'-1B' Honor Roll Ninth Grade

Krystal Gonzalez
Kim Martinez
Liz Wilmeth
Wendy Fierro
Servando Luna
Jason Mullins
Kelsey Blundell
Aaron Cain
Joel Gallegos
Taylor Gray
Kimbe Jones
Armando Luna
Dustin Sellers
Elizabeth Casillas
Linda Castillo
Isaac Gonzalez
David Granados
America Hernandez
Rustin Knight
Patrick McGinty

Tobacco Money Sent To Local Governments

Texas Comptroller Carole Keeton Rylander in April sent \$100 million from the Texas tobacco lawsuit settlement to 288 Texas cities, counties and hospital districts to help offset costs of providing indigent health care.

The check amounts were determined by a formula and based on the amount spent on unreimbursed indigent health care in the previous year.

The money is from the \$2.275 billion Texas tobacco settlement reached in 1998, and is separate from the \$15.1 billion settlement between tobacco companies and the state. An initial \$450 million was set aside for payments in 1999-2001. The 1999 payment totaled \$300 million.

Under the terms of the settlement agreement, the Comptroller's office will distribute \$50 million in April 2001. The remaining \$1.8 billion was set aside in an untouchable fund, with earnings to be distributed annually beginning next year.

Riverbend Chorale here June 23 Free concert scheduled at school auditorium



The acclaimed 100 member Riverbend Church Chorale of Austin will perform in a free concert Friday, June 23 in the school auditorium. They will be accompanied by a number of top musicians who've performed with

some of the biggest C & W stars. Also featured will be West Texan Johnny Ray Watson, a noted singer who for many years accompanied the Billy Graham Crusade. Make your plans now to attend this outstanding event.

Tired of driving 30 + miles just to pick up your cleaning ??
Professional Cleaners



and



Plains Depot

have joined hands to provide a quality service to the Plains area residents

Plains Depot will now serve as a pick-up/drop-off site for *Professional Cleaners* (Levelland, Tx.), providing full service dry cleaning, laundry and alteration services.

Pick-up/Drop-off will take place **MONDAYS and THURSDAYS** beginning June 1st!!!

Ask Jill at Plains Depot for details, 456-7112

Farmers... looking for alternative cash crop ?

Give us a call for

Confection Sunflower

*100 day maturity - can be planted from April to July

*Low input crop - requires less water than most crops

*Good follow up crop behind wheat

* Contracts now available



For more information contact:

Larry Martin, Lubbock, Texas

806-763-9747 or 1-800-763-9740

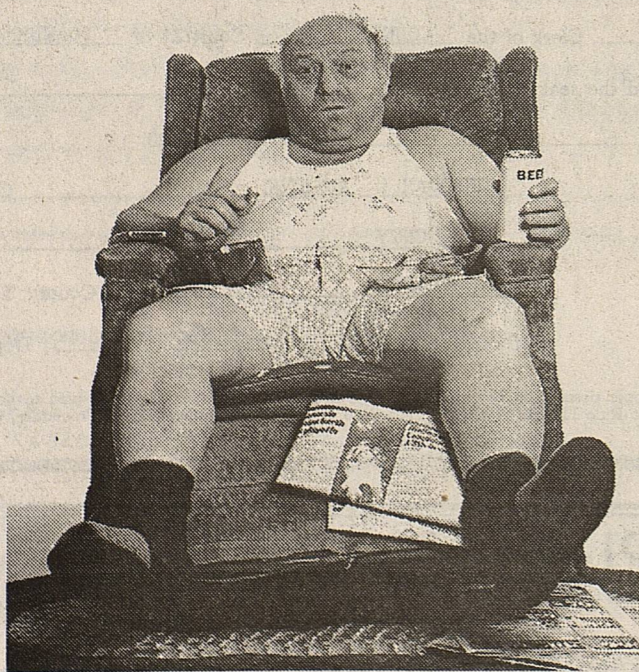
Red River Commodities, Inc.

Denver City's Fly - In, Roughneck Rodeo, Farmboy Jamboree action



A huge breakfast, lots of aircraft, fun in the park, good food, lots of live music, oil field contests, impressive industrial and farm equipment, dozens of shiny, restored vintage autos, and an all-school reunion... a fun day in D.C.

If your TV goes out tonight...
...what will you be looking at?



Let PowerShield help

Starting at \$6.69/month
For more information call Lea County Electric today!
(505) 396-3631 or toll Free: (800) 510-5232



TPA MEMBER 2000
Cowboy Country
News
TEXAS PRESS ASSOCIATION

Cowboy Country News
Published Weekly each Wednesday at 1205
Copeland Ave., PO Box 179, Plains, TX 79355
Holly Dyer, Publisher Gary Dyer, Editor
Subscription price in Zip Code 793 \$15 annually
Other Zip Codes \$18 annually
E-Mail us at ccn@hiplains.net
ID # 017574 806-456-8451 FAX 806-456-2010

CROP INSURANCE MPCI - CRC - CAT - CROP HAIL FARM MACHINERY INSURANCE AG INSURANCE PLUS

Jim Brown 456-2788
Mobile 806-891-0449 or 891-0450 Home 592-3490
Jeff Lowrey
Mobile 806-891-3133 Home 456-3195

Compare Our CD Rates

Bank-issued, FDIC-insured to \$100,000

3 Months	6.35%	APY *
6 Months	6.75%	APY *
1 Year	7.05%	APY *
2 Year	7.10%	APY *
3 Year	7.15%	APY *

MINIMUM DEPOSIT \$ 5,000

* Annual Percentage Yield (APY) - Interest cannot remain on deposit; periodic payout of interest is required. Effective 6-8-2000



Call or stop by today.

Wayne House
PO Box 246
1070 County Road 305
Plains, TX 79355
806-456-3900
www.edwardjones.com

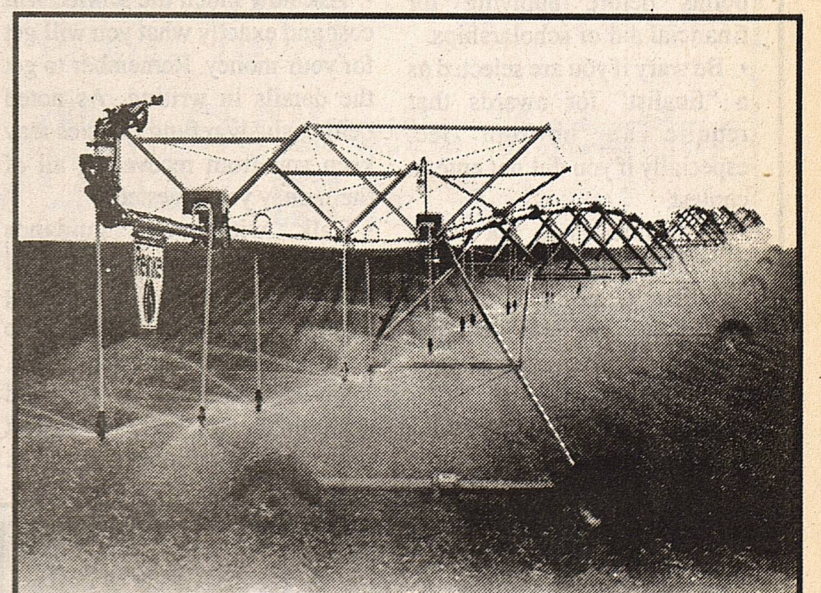
Edward Jones
Serving Individual Investors Since 1871

FERTILIZER FOR SALE

28-0-0-5 \$104 / ton Semi Load
32-0-0 \$108 / ton Semi Load
26-0-3-3 \$108 / ton Semi Load

Call Robert Armstrong or
David Hicks at
915 - 758 - 1100

West Texas Agriplex
Seminole, Texas



Better Design.

Reinke Irrigation Systems are designed to be stronger while maintaining an overall system weight - which means less stress on the drive train and a longer service life for your pivot irrigation system. See your Reinke Dealer today for a system designed to last!

**More strength,
less weight.**

Jack Spears
Drilling Company

Water Well Drilling
& Pump Service
456-4925 - 456-3845



The future of irrigation.
www.reinke.com • 402-365-7251

Tourism Impacts Texas Economy

Travel and tourism is the third largest revenue generating industry in the Loan Star State and is a major area of emphasis for the Texas Department Economic Development-Tourism Division. Texas ranks third (behind California and Florida) as a leisure and business travel destination for U.S. residents and is a popular destination for international travelers. Mexico is the largest international market for Texas.

*Travel and tourism is the third largest industry in Texas, pumping \$34.6 billion into the state's economy in 1998, a 6.5 percent increase over 1997.

*The Texas travel industry employed approximately 370,000 Texans statewide in 1998, with a payroll of \$7.6 billion, an increase of 7.6 percent.

*Since 1990, travel spending in Texas has increased at an average annual rate of 6.1 percent, or 3.3 percent in inflation adjusted terms.

*Local and state tax revenues generated by visitor spending increased at an even greater rate than travel spending. Local tax revenues - not including property taxes - were \$572 million in 1998. State tax revenues were

\$1.7 billion.

*Texas' share of the domestic travel market is 6 percent. Only California and Florida have greater market share.

*International visitors accounted for 10 percent of all travel spending in Texas in 1998. Residents of Texas accounted for 47 percent, while other domestic travelers accounted for 43 percent.

*Many Texas businesses benefited from traveler spending in 1998. The greatest number of jobs were generated in the restaurant industry (110,300 jobs), followed by accommodations (72,500) and recreation (58,800). Retail sales topped the categories of travel spending, generating \$5.4 billion, followed by food and beverage at \$5.07 billion.

From Page 1,
"COURT UPDATE"

sulted in two inches more rainfall than the average amount during the last 54 years," Walker said.

He said the cloud seeding program is very cost effective. "These enhancement programs cost from five cents to fifty cents for each acre foot of rainfall produced around the state. This is cheap, considering a city on

the Texas Gulf Coast has been buying water from the lower Colorado River Authority at \$750 an acre foot."

Walker, along with David and Dain Guetersloh, share flying the cloud seeding aircraft based here. He said some of the flights are in severe turbulence, and said a recent flight produced bruises on his head from hitting the cockpit ceiling a number of times. He said the National Weather Service closely monitors clouds seeding planes are operating in, and if one develops into a severe status, the planes are ordered out of the area for safety's sake, and to ensure they do not contribute to hail storms.

Junior Rodeo

The High Plains Junior Rodeo was held in Melrose, NM June 1-3. Brett Squyres fastest time to date in tie-down roping, 8.96, took first place honors in boys 16-19 group. He placed with both team roping partners for 6th and 7th place, and had an 8th place in chute dogging. In the 16 - 19 girls division, Marcy House was 5th in poles and 6th in breakaway roping. Troy Parrish was 7th in 8 and under boys barrels and goat tying. Blake Parrish had 6th place finishes in 9 - 12 boys steer breakaway and calf breakaway roping.

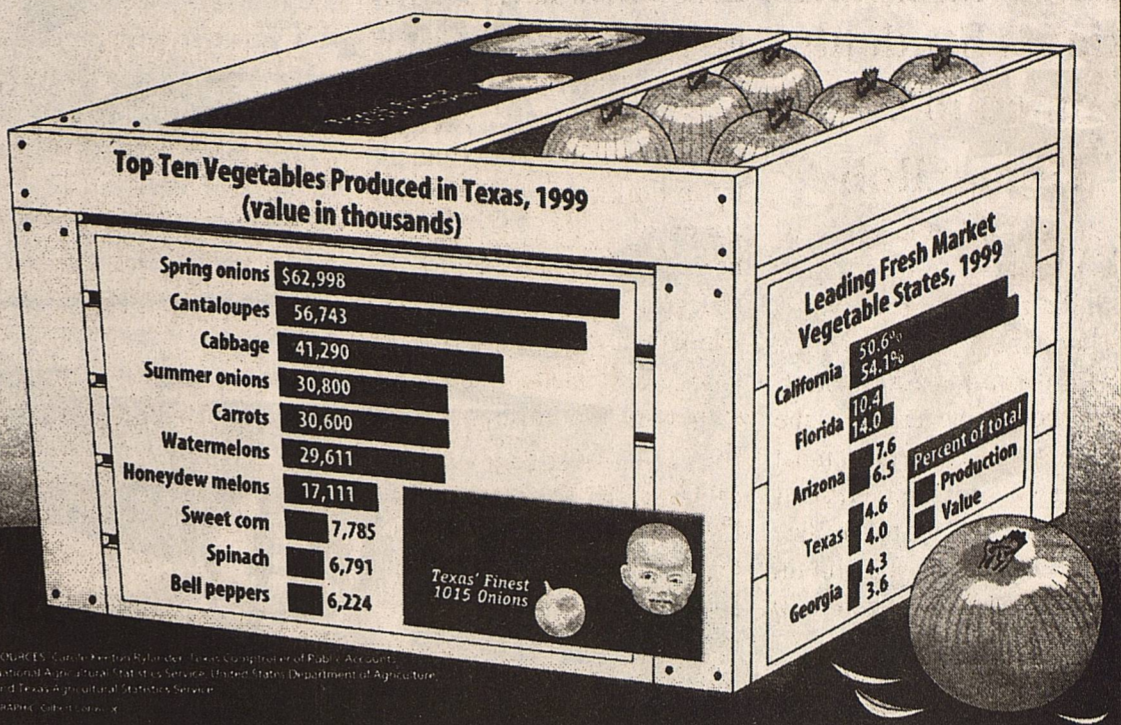
Texas at a Glance

Eat Your Veggies

Among Texas-grown vegetables, the onion runs rings around its colleagues. It's the state's top vegetable, accounting for about \$93 million, 27 percent, of the state's \$335 million in vegetable sales annually.

The 1015 onion, named because it's planted by Oct. 15, accounts for \$63 million in annual sales. It steals the march on competitors such as Georgia's Vidalia onion and others around the United States by reaching the market first. It hits stores in mid-April and

remains available through mid-June. It's also well-regarded for its mildness, sweetness and lack of tear-inducing chemicals. Now Texas A&M University has developed an even earlier onion, called the Texas Legend. Also known as the 1015 Elite, it's harvested two weeks earlier and arrives in produce sections in late March. It could add \$30 million to Texas onion sales. Texas is sixth in national onion production. The state ranks fourth in overall vegetable production.



Don't Get Scammed On Your Way To College

With tuition bills skyrocketing and room and board going through the roof, students are looking for ways to help finance their expensive but valuable college education. Unfortunately, those efforts have fallen victim to many scholarship and financial aid scams claiming to find free money for all promising scholars.



Tips from your
Community Banker-

Don't get deceived. Keep a watchful eye on companies that GUARANTEE a scholarship for an advance fee. And even those money-back guarantee offers can be a setup when accompanied by a list of conditions that make it impossible to receive a refund.

To better understand this con game, review the following points before applying for financial aid or scholarships.

- Be wary if you are selected as a "finalist" for awards that require an up-front fee, especially if you did not enter a contest.

- Companies may ask for a student checking account to "confirm eligibility," only to debit the account without consent. Other companies quote a small monthly fee and ask for the authorization to debit your account without disclosing the

length of time they will be depleting funds.

- Pay attention to phrases resembling, "The scholarship is guaranteed or your money back," "You can't get this information anywhere else," "We'll do all the work," "The scholarship will cost some money" and "I just need your credit card or a bank account number to hold this scholarship."

- Ask how much the service will cost and exactly what you will get for your money. Remember to get the details in writing. As noted before, shady refund policies may keep you from recovering all of the money you invested.

- Talk with your guidance counselor or college Financial Aid Department before spending money. You may be able to get the same assistance for free. In fact, many systems can be accessed through the Internet, the fastest growing information source today.

- Ask companies for a list of local students who have used the same service in the last year. Once in hand, ask participants if they were satisfied with the services they received.

However, know that legitimate companies do provide access to lists of scholarships in exchange for an advance fee and others charge for comparing a student's profile with a database of possible scholarships and offer an outline of qualifying awards. The difference is the participant will still be responsible for applying to programs and there are no promises.

Investigate before committing any money. Talk to your guidance counselors, past graduates, experienced parents and teachers and research scholarship programs and financial aid on the Internet. By doing some research, you will find the names of the most reputable companies to trust and help you achieve your educational goals.

Provided as a public service by the Independent Bankers Association of Texas (IBAT)

Remember
Father's Day
June 18th



Lalitos

For Great Mexican Food

Hours: Tues.-Fri. 11:00 - 9:00 Sat. 11:00 - 8:00
Sun. 11:00 - 2:00

All Major Credit Cards are Accepted
456-2233

HICKS

Carpet *Heating* Air Conditioning
Maytag Appliances
204 N. Main, Denver City
806-592-3973 or 592-3930

TRANE "It's hard to stop a TRANE!"

MULTI-PERIL CROP & CROP HAIL

STATE LINE

INSURANCE

DANNY BELL

Office 456-3521 Home 456-6325
Mobile 456-7517

Nelson's

Prescription Pharmacy

"Your Business is always appreciated"

Use our Toll-Free Number
1-800-658-9604

For All Your Pharmacy Needs!!
805 Tahoka Rd. Brownfield, TX

CITATION BY PUBLICATION

THE STATE OF TEXAS

TO: NIEVES BADILLO CASTRO

P O BOX 1896 (N. FM 88 MI 19 GEORGE LOOKINGBILL SUB-DIVISON)
ELSA, TEXAS 78543

, Defendant, Greeting:

YOU (~~AND KALCHEROWAN~~) ARE HEREBY COMMANDED to appear before the COUNTY Court of YOAKUM County at the Courthouse thereof, in PLAINS, Texas, by filing a written answer at or before 10 o'clock A. M. of the first Monday next after the expiration of forty-two days from the date of the issuance of this citation, same being the 7TH day of JULY A. D. 2000, to Plaintiff's Petition filed in said court, on the 26TH day of MAY A. D. 2000, in this cause, numbered 904+C on the docket of said court and styled THE STATE OF TEXAS, Plaintiff, vs. NIEVES BADILLO CASTRO, Defendant.

A brief statement of the nature of this suit is as follows, to-wit:*

JUDGEMENT NISI ON BOND FORFEITURE

If this citation is not served within ninety days after the date of its issuance, it shall be returned unserved. The officer executing this writ shall promptly serve the same according to requirements of law, and the mandates hereof, and make due return as the law directs.

Witness, DEBORAH L. RUSHING, Clerk of the COUNTY Court of YOAKUM County, Texas.

Issued and given under my hand and the seal of said court at PLAINS, Texas, this the 30TH day of MAY A. D. 2000.

DEBORAH L. RUSHING Clerk,
COUNTY Court,
YOAKUM County, Texas.

By Sheron Smith, Deputy.
SHERON SMITH

*Here give brief statement of nature of suit, proper description of property, if any, and interest defendants are alleged to hold in said property, if they have an interest therein. See Rule 114, Rules of Civil Procedure. See Rule 115, Rules of Civil Procedure, where suit involves land.

High Plains Internet

SERVING PLAINS, DENVER CITY, HIGGINBOTHAM & SURROUNDING AREA

Your Fastest, Easiest, Most Affordable Access To:

WORLD WIDE WEB - E-MAIL - IRC CHAT - WEB PAGES - NEWS GROUPS - AG INFO. - WEATHER - SPORTS - NEWS - RESEARCH LIBRARIES - BUSINESS & STOCKS, AND MUCH, MUCH MORE.

UNLIMITED ACCESS JUST \$24.95 PER MONTH PLUS TAX!
Apple, Macintosh computers welcome

820 N. MUSTANG DR. 592-3359 DENVER CITY

Lifelines & Styles

Plains Students Named to CSW Honor Roll

College of the Southwest recently named two students from Plains to the President's List and the Vice President's List for the spring 2000 semester. In order to be named to the President's List, a student must maintain a semester GPA of 4.0. Students named to the Vice President's List must maintain a semester GPA between 3.70 and 3.99.

Named to The President's List are Catherine Guetersloh and Ray Portillo.

design for the Watermelon Round-Up to be held September 2. T-shirts, aprons and caps will be sold this year. Runner-up in the contest was Kimbe Jones of Plains. Brochures have been mailed and booth space is quickly selling out, reports Cindra Box, craft chair. Doll making was the subject of the art demonstration presented by Ayers. A salad supper was enjoyed by the 12 members present and guests Christy Smith Pagan of Denver City and Lensey Welborn of Wolforth.

by Linda Powell

Youth Summer Reading Program Underway At Library



Over ten dozen youngsters have signed up for the annual library summer reading program. The theme of this year's program is "Invent The Future! READ!"

When a reader finishes 10 books, they receive a certificate of completion, a token for free ice cream at the Dairy Queen, and their choice of a prize from the library.

All of the summer readers names are on stars mounted on two large posters at the library, like the one shown here in photo.

Reminder: Riverbend Chorale Presents 'Takin' It To The West' Tour, June 23rd

Hunter Williams

Receives Award

On June 9, 2000, Hunter Matt Williams received the State Recognition Award in the Talent Identification Program sponsored by Duke University and presented at Texas A&M University. For twenty years, Duke has sponsored the Talent Identification Program to identify and recognize gifted Seventh Graders. The criteria for recognition is determined by a student's score on the SAT or ACT college entrance exams, normally taken by High School Juniors and Seniors. Hunter, who will be an eighth grade student at Knox Junior High In The Woodlands scored 1160 on the SAT. Knox Junior High was the TIP School of Distinction for 2000 for the most outstanding participation in the 16 state region.

Hunter is the son of Ginger & Mat Williams of The Woodlands and the grandson of Carolyn and Eddie Braswell of College Station, Mary Dale and Bud Forbus of Plains and Charles Williams

of Tokio. His great grandmothers are Essie Childress of Robert Lee and Oleta Braswell of Bronte.

2000-2001

Student Body & Class Officers

Student Body Officers: President-Lensey Cullins, Vice President-Jarod Newland, Secretary-Nicole Haynes, Reporter-Annaliesa O'Quinn, Historian-Lesli Rowe. **Seniors:** President-Michaela Traweck, Vice President-Roxanne Villarreal, Secretary-Nicole Haynes, Girl Rep.-Elva Ruiz, Boy Rep.-Taylor Gray. **Juniors:** President-Ashley Gonzalez, Vice President-Becky Wilmeth, Secretary-Arasely Luna, Girl Rep.-Allison Butler, Boy Rep. Tanner Hamm. **Sophomores:** President-Kayla Willis, Vice President-Krystal Gonzales, Secretary-Mandi Rogers, Girl Rep.-Jill Gray, Boy Rep.-Mario Bonilla. **Freshmen:** President-Carmen Ponce, Vice President-Zach Broome, Secretary-Helen Neufeld, Girl Rep.-Stacie Aldredge, Boy Rep.-Richard Diaz.

Art Association Meets

The Yoakum County Art Association met June 6th for a regular monthly meeting. Uvonne Morgan was commended for her past two years' leadership, and newly elected President Marlene Gibson presented her with a gift from the group. The Yoakum County Art Association scholarship winner was Krystle Blundell of Plains. Billie Jo Ayers of Denver City won the \$100.00 prize Yoakum County Connection gave for the winning T-shirt

New Books At The Library

Non-Fiction- *Don't Make Me Stop This Car!*-Al Roker, *Mary Lou Retton's: Gateways To Happiness*-Mary Lou Retton, *Jumping Fire: A Smoke Jumper's Memoir Of Fighting Wildfire*-Murry Taylor, *Necessary Journeys*-Nancy Snyderman.

Fiction- *Off The Mangrove Coast*-Louis L'Amour, *Star Wars Rogue Planet*-Greg Bear, *The Empty Chair*-Jeffery Deaver, *StoneHenge*-Bernard Cornwell, *The Run*-Stuart Woods, *NightShade*-John Saul, *The Second Silence*-Eileen Goudge, *Flash Point*-James Huston, *The Indwelling*-Tim Lahave.

MARY'S BASKET COTTAGE

456-2813

For Father's Day!!!

Let Dad know he's special with a basket filled with bath & body works for men, a man size chocolate bar, peanuts, popcorn, jelly beans or just junk food. Will also make fruit baskets. Please call in advance with fruit preference. Call or come by 1402 16th Street and place your order early.

O⁺ medical

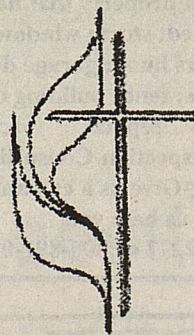
Equipment & Supply

P.O. Box 1347 * Denver City, Texas 79323
* 1-888-209-3706 Pager * (806) 891-0656 Cellular
(806) 592-1000 - Office * 592-3538 - Fax

TOLL FREE 1-800-688-9049

Serving the South Plains Region and BEYOND...

Denver City * Seminole * Plains * Brownfield * Lubbock * Midland
* Odessa * Andrews * Hobbs, NM * Lovington, NM
24-Hour Personal Service * 7 Days A Week



First United Methodist Church of Plains Invites you to Worship!

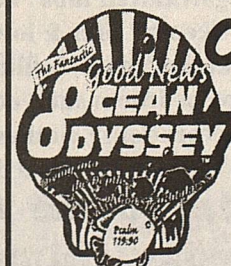
Sunday School 9:45 am
Morning Worship 10:45 am
Evening Worship 6:30 pm
Evening Study 7:00 pm
Thursday Afternoon Study 5:15 pm

Baby Shower



For: Miss Delaney Rae Andrews
Daughter of Kyle & Raynee (Davis) Andrews
Date: June 17, 2000
Time: 10:00 - 11:30 am.
Place: Mrs. Vaughn Culwell
Selections: Target, Toy's R Us & Nelsons

FIRST BAPTIST CHURCH Plains, Texas



Children's Vacation Bible School

July 9-13, 6 - 8:30 p.m.

4 years old thru completed 5th grade



BAYER LUMBER & HARDWARE

1018 Ave. E Plains, Tx 79355
806-456-4800 Voice & Fax



WE ACCEPT VISA, MASTER CARD, and DISCOVER

- | | |
|-----------------------------------|-------------------------|
| PROHOE ROGUE | \$23.50 |
| LIME | \$2.99 BAG |
| 16-8-8 FERTILIZER | \$7.95 40 LB BAG |
| RINSE-N-VAC CARPET CLEANER | |
| \$18.00 PER DAY RENTAL | |

Yoakum County Plains Clinic

Jo Lena Wall PA-C

Will see *minor emergencies, *acute and chronic health problems, *WELL WOMAN exams, *Immunizations.

TEXAS HEALTH STEPS

Office Hours: Monday & Tuesday 8-5
Wednesday 8-12 noon
Thursday & Friday 8-5

Will take walk-ins. Appointments preferred.
Please call 806-456-6365

From The Hack

I am seriously thinking about giving up the game of golf. This is not a hasty decision. I have been considering this seriously since the latter half of 1981, when I first seriously played the game. Now, I am seriously serious.

Perhaps my decision is based on the fact I have played (for me) an abnormal amount of the game the last two weeks. I usually am fortunate to play once a week, very occasionally twice. During the last 11 days, our so called vacation period, I played a total of six times. I'm pretty sure that's a record for me, and all the thieves I played with are still rejoicing at their good fortune. Every single one suggested I quit the paper and stay on the course 8 hour periods seven days a week. They could all retire earlier than planned, they told me.

My most recent sacrificial experience found me playing with four " friends ". What this truly translates is, if you lose filthy lucre to them, they are your friends. Since I always lose to them, I am naturally considered one of their BEST friends.

When I drive up to the county course on Wednesday, (or any other day), one of my usual bunch hustles up, almost salivating, and pants, " Oh, Gary, so good to see you. Can I park your pickup, unload your bags or loan you free balls? We'd sure like to deposit..... er, I mean, share your companionship again for the next 18 holes, and you know, of course, you are ALWAYS welcome to press

any bets we may have! We even allow DOUBLE bets !"

One of the major problems I have in golf is the score keeping. I admit my mathematic skills will never allow me to plot the next NASA shuttle flight to Venus, or either Marfa, Texas, but I can add shots per hole pretty good. In fact, I can add my opponents score much better than mine. I have found, if allowed, this is the only manner I will remotely stand a chance to avoid bankruptcy in 18 normal holes. If I can't dazzle them with my brilliant play, I can confuse Hell out of them with my score keeping,

.....
Some pretty cool anagrams... you know, rearranging letters of words to make other words:
Dormitory - dirty room
Desperation - a rope ends it
The Morse Code - here come dots

Slot Machines - cash lost in 'em
Animosity - is no amity
Snore alarms - Alas, no more Z's
Semolina - is no meal
A decimal point - I'm a dot in place
Eleven plus two - twelve plus one

Contradiction - accord not in it
Year two thousand - a year to shut down
Mother-in-law - woman Hitler
Evangelist - evil's agent

** These are not my creations- you can blame a state line cotton ginner for this.

Plains students named to SPC Honor Lists

Five Plains residents are among those named to the combined President and Dean's Honor Lists for the spring 2000 semester at South Plains College.

Students named to the President's Honor List have maintained a perfect 4.0 or straight A grade point average while enrolled in at least 12 semester hours of college level work.

Students named to the Dean's Honor List have maintained a minimum 3.25 GPA while enrolled in at least 12 semester hours of college level work with no failing grades.

"We want to commend these students for their diligence and hard work in maintaining excellent grades during the spring semester at SPC," said Dr. Gary McDaniel, SPC president. "The President's Honor List and Dean's Honor List are means to recognize their academic achievements."

Named to the President's Honor List are Laura Flores and Yvonne Gonzales, and named to the Dean's Honor List are Joshua Bayer, Dustin Brunson and Kassie Lowe.

* Legal Notice *

The Plains Independent School District, Plains, Texas is accepting bids for the following: Year 2000 Improvements (Band Hall & Activity Gym Asbestos Abatement) for Plains ISD.

All bids must be submitted by 3:00 P.M. local time, 21 June, 2000 at the Superintendent's office, or sealed bids may be mailed directly to:

James Haynes, Superintendent

Plain ISD

PO Box 479, Plains Tx 79355

Plans and specifications are available and may be acquired from: Grimes & Associates, Consulting Engineers

PO Box 65

Wolfforth, Tx 79382

806-863-2462.

A pre-bid conference will be held at 3:00 P.M. local time, 14 June, 2000. All interested parties should meet at the Superintendents office, Plains, Texas. The Plains Independent School District Board of Trustees reserves the right to reject any or all bids, and waive all formalities.

Moving Sale !!

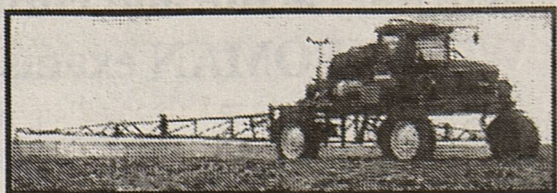
John Deere weed-eater, edger, Coleman 5000 10 h.p. generator* 2 Deerborne gas heaters*
4 electric heaters* 8 - 5' x 12' metal fence panels* water trough* 4 galvanized tubs* fish fryer* 2 seat hot tub* sofa sleeper* sofa & love seat* 2 recliners* china cabinet* desk & filing cabinet* patio table & 4 chairs* 4 pc bedroom suit* comforter & sheets* household items* decorations* clothes* Christmas tree w/ lights* Christmas decorations*

Friday, June 16, 9 am - 5 pm
Saturday, June 17, 9 am - 2pm
3 mi. north of Plains, Hwy 214

BID PROPOSAL

Plains ISD invites interested parties to make proposals to provide integrated learning system software for 20 network workstations to cover the basic skills of reading, writing, and math. Proposals will be accepted until 1:00 P.M., June 19, 2000 at the Administration Office. Proposals should be addressed to James Haynes, Superintendent, Plains ISD, 1000 10th Street, Box 479, Plains, Texas 79355. For questions or other information, please contact Eric Banfield at 806-456-7401.

G. B. Aerial Application, Inc.



From The Air or From The Ground

Professional, Licensed Ag Applications At Affordable Rates !

806-456-6300 Office

806-456-6790 Fax

806-456-7536 David Mobile

806-456-7974 Sarah Mobile

806-632-5375 Dain Mobile

G & B

G & B



Planning on attending college next semester? Need help to pay tuition? *

The Texas Workforce Center has limited funds available to assist low income and dislocated workers (with proof of layoff) to attend college.

Call or stop by today to see if you qualify.

Texas Workforce Center Of Levelland

(806) 894-5005 or 1-800-419-9675

SPCAA is an equal opportunity employer/program. Auxiliary aides are available upon request. * Federal eligibility and suitability requirements must be met.

**

Ask For Becky

**

Your Ad Here Just \$ 6

Price Reduced!

3 Mi. N. of Plains on Hwy. 214. Extra Lge. 3 Br., 2 Ba., 2 car garage, basement, large shop bldg. Must see to appreciate all the extras.

Hunt Realty Office

806-592-3556

Fax 806-592-8489

Handyman Construction License Electrician & Insured-Bondable Time to remodel or build that deck you have always wanted. Light up the yard; get all those little chores done that you have been putting off. Have rent property that needs renovated; storm windows; new doors hung; garage door openers; fence building or repair. Home Inspection-Consulting-Designing-Give us a call and let us help you 806-456-2277 or 806-891-0692

CRP grass seeding *shredding, crop planting and discing* CALL 806-456-7450 456-7550 mobile

TERRY COUNTY TRACTOR Massey Ferguson Kubota Bush Hog Shredders, Lilliston Rolling Cultivators, Lorenz & Buffalo Cultivators, Baker Disc & Switch Plows, Spray Coupe, Wilmar Sprayer Brownfield, Tx. 806-637-4569

Crop Hail Insurance

\$4.90 for \$100 per cotton acre coverage.

100% coverage by June 15, 2000

BIGGERSTAFF CROP INSURANCE

1315 W. Main, Brownfield, Tx. 79316

Phone 1-800-361-7654 Office

806-637-4858 Residence

806-638-7655 Mobile

Plains I. S. D. will accept proposals from vendors for its Annual Contract for Teaching and Instructional Materials until 1 p. m., June 21, 2000 at the Business Office. Proposals should be addressed to Eric Banfield, Business Manager, Plains., 1000 10th Street, Box 479 ,Plains, Texas. 79355. Specifications may be obtained by calling (806) 456 - 7483

House For Sale

4 Br, 2 Bath

1508 Ave. G

For appointment

to see call Tim,

456-7195 or call

662-334-4416

Assistant Manager Trainee Needed \$2,000 monthly full time \$1,000 monthly part time if qualified Call for Information 806-766-7175

FREE!!! No purchase necessary. Register for drawings. Four wonderful prizes. (1) Computer (2) 32" TV (3) Microwave (4) Washer/Dryer. See our NEW Clayton Homes 2005 N. University 877-749-4063

\$999.00 CASH Buys FIXER UPPER Clayton Homes 2005 N. University 877-749-4063

*** For Sale *** 14' x 60' mobile home, 2 br, 1 bath, central heat & air, fireplace, new blinds, new stove, great shape. Call 806-456-2797, leave message

ZERO DOWN with Land Deed. New or Pre-owned homes Clayton Homes 2005 N. University 877-749-4063 or 749-4062

Trailers For Sale: New trailers at good prices, from 8' to 20' in length, can custom build to meet your individual needs, call 505-396-4192

Customer Appreciation Sales Special Finance Rates Each Weekend In May & June. Come see the quality at Clayton Homes 2005 N. University 877-749-4063

Dyck Pump Service Sales & Supply P.O. Box 451 Seminole, Tx. 79360 Welding, Machine Work, Fast Bailing, Well Drilling 915-758-5432 Mobile 758-9671