

NOV 00
LOVETT MEMORIAL LIBRARY
BOX B
MCLEAN, TX 79057-9998

The McLean News



Bank Of Commerce Building
Office No. 5, 201 N. Main St.

Published Weekly
Thursday, July 6, 2000

1-806-779-2141
1-888-849-6599



Trinity Baptist Church recently held their annual Vacation Bible School. The kids were told if attendance reached 75 on any one night, on the closing night of the Bible School they would get to cover Bro. James Mantooth in shaving cream. As you can see...They reached their goal!



The McLean minor league baseball teammates are Trenton Darsey, Mark Smith, Ben Thompson, Tanner Wilhelm, Chase Bohlar, Hogan Ketcherside and Kristen Ellis. Not pictured were Logan Sparling and Tyler Briscoe. The team was coached by Lane Thompson, Mike Darsey and Kevin Sparks. (Darsey & Sparks not pictured)

Roach Win Out, To Face Kessie In General Election In November For DA

Roberts County Attorney Richard Roach won the Republican slot for the 31st District Attorney's primary run-off election unseating incumbent John Mann. Mann had held the DA's position since 1992.

Roach received 1,915 votes to Mann's 1632.

The new primary run-off election was set after

Judge John T. Forbis voided the results of the April run-off primary election in May. Results of that election found

Roach winning by a narrow margin of 1,263 votes to Mann's 1,257 votes.

Mann contested the election, charging that illegal voters and too few ballot boxes skewed the results in favor of Roach.

This time Roach won the counties Gray 1,270 to 1,094, Lipscomb 174 to 11 and Roberts 293 to 92.

Roach will face Hemphill County



Attorney Charles Kessie, the Democrat nominee, in the November general election.

Lefors Man Killed By a Ford Pickup Truck

Allan Bruce Garrett, 46, of Lefors was struck and killed by a 1997 Ford pick-up about 1 mile west of Lefors last week. The accident occurred at about 10:30 p.m. on the south side of Farm to market Road 2375 according to Trooper David O'Brian.

Garret was trying to jump start his 1980 Harley Davidson motorcycle with a '96

Dodge pick-up belonging to his father, Henry Garrett, 63, of Lefors. The two vehicles were on the south shoulder of the road. The Dodge was facing west with its headlights on.

The Ford pickup was westbound on FM 2375 driven by Thomas Townsend, 47 of Pampa and one passenger, Denice Jordan of Kansas. The Ford veered off

the south side of the road, striking the motorcycle, Allan Garrett and the Dodge pick-up. The ford stopped about 50 feet away from the point of impact.

Garrett's body was found in the bar ditch and he was declared dead at the scene by Justice of the Peace Bob Muns.

The accident is still under investigation.



The McLean Ponies T-Ball team was coached by Dan Fish and Doyle Lee. Players are Shiloh Brown, Miranda McMordie, Taylor Fish, Carri Callom, Becca Reyna, Jack Odom, Kelby McClellan, Cassie Callom, Britnie Cooper, Shelby Adams, Kayla Lee, Braxton Cooper, and Ian McMordie.

Puckett's Grocery is now accepting WIC.

Trinity Baptist Church held Vacation Bible School on June 4-9. With a theme of "Focus on the Family - Adventures in Odyssey" 119 youths attended "Training Champions For God". Attendance averaged 104 per night and everyone involved received a Great Blessing.

The mission money collected will be presented to Christian Homes in Abilene, Texas.

The News was saddened to learn of the death of Neda Cash, daughter of Charles Ball of Alanreed. No other information is available at this time.

Correction!

We deeply regret leaving a paragraph out of the story concerning the 64th Annual Alanreed Homecoming. Robert Bruce and Lena Carter were honored with a plaque in commemoration of their many years of service as officers of the homecoming.

We humbly apologize for the mistake and acknowledge their wonderful contribution to the people of Alanreed.



The Alanreed Cemetery Association will meet on July 3 at 7:00 in the Alanreed Gym.

ATTENTION Senior Citizens! Potluck Supper at 5 p.m. on July 11, 2000 at the Senior Center. Party and games afterwards.

McLean Birthdays Anniversaries

- July 6 - James Hefley, Sara Brown.
- July 7 - Darrell Myers, Harold Houdyshell, Bernard McClellan, Zora Petty Billingsley, Nora Petty Loveland, Justin Wehrenberg.
- July 8 - Dale Johnston, Deborah Longino, Aaron Rice.
- July 9 - Beatrice Brown, Gwen Henley, Dick & Pam Crockett (A).
- July 10 - Kay Hallum, Will Shaw, Camrynn Richardson.
- July 11 - Bonnie Nell Fabian, Daniel Harris, Virginia Tolleson, Jimmy Armbrister.
- July 12 - Russell Littlefield, Laura Morris, Justin Phillips.

Remember When...

DO YOU REMEMBER... Five Take Honors At Texas Tech University in Lubbock proved themselves smarter than the general lot of students and placed on the honor roll for the fall semester.

The following students were on the honor roll (grade of each is given with 3.0 representing a straight "A" grade);

- Fern L. Lawders, daughter of Mr. & Mrs. T.A. Landers, 3.0; James L. Cooke, son of Mrs. Vita Cooke, 2.94; Chester Golightly, son of Mr. & Mrs. Frank Golightly, 2.75; John E. Dwyer, son of Mr. & Mrs. John W. Dwyer, 2.71; and Jack W. Grigsby, son of Mr. and Mrs. Arlie L. Grigsby, 2.60.

From the McLean News dated 3-16-1950.

Obituaries

Frances A. Whittenberg PAMPA - Frances A. Whittenberg, 60, died Wednesday, June 28, 2000 in McLean.

Graveside services were held on Friday, June 30 in the Fairview Cemetery with Rev. John Valdez, pastor of the St. Vincent de Paul Catholic Church, officiating.

Mr.s Whittenberg was born in Childress. She lived in Amarillo for 45 years. Survivors included three sons, Dan Nelson and Corky Nelson, both of Stinett and Jim Nelson of Lubbock; a daughter, Earlene Myatt of Stinett; 11 grandchildren and 19 great-grandchildren.

The family suggests memorials be to Children's Home of Lubbock or a favorite charity.

Reminders

Summer School has begun. Watch for children in the school area. The City Council will meet on July 10 at 6:00 p.m.

McLean Church Directory

Church of Christ 4th & Clarendon
779-2548
Sunday Bible School 10 am
Worship 10:40 am & 6 pm
Wed. Bible Class 7:30

First Assembly of God 420 Main St.
Quenton Newton, Pastor 779-2221
Sunday School 9:30 am - Regular Service 10:45 am
Sunday & Wednesday night 7:00 pm
Royal Rangers & Missionettes 5-12 yrs.
Youth 13-18 yrs.

First Baptist Church 206 E. 1st
779-2175
Sunday School 9:45; Worship 11 am & 7 pm
(Youth) & Wed. Bible Study, Prayer Meeting 7 pm

United Methodist Church 2nd & Gray
Pastor Thacker Haynes 779-2049 & 779-2337
Sunday School 9:45 am Worship 10:50 am
Sun. Sr. High Youth Alpha Chi 5 pm
Wed. Choir 7:00 pm

Heald United Methodist Church
Kellerville Road
Sunday 9:15

Trinity Baptist Church 603 Commerce
James Mantooth 779-3207
Sunday School 9:45 am Worship 11 am
Sunday Evening Worship 7 pm
Bible Study & Prayer Meeting Wed 7 pm

Country Corner Texaco

Gas - Diesel - Dell

"The Friendly Place" McLean, Texas
Exit 142 --779-2391

Menu's Posted Daily

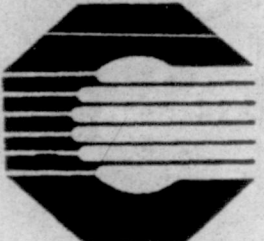
Sunday Lunch Special
Chicken Fried Steak
Peach Cobbler

New T-Shirts

Our Pumps Are Open 24 Hours, 7 Days A Week

As part of the Bank of Commerce's commitment to serve the financial needs of the community we would like to take this opportunity to remind you of some of the service's available.

PASSBOOK SAVING ACCOUNTS
CERTIFICATES OF DEPOSIT
MONEY MARKET DEMAND ACCOUNTS
CHECKING ACCOUNTS
SAFE DEPOSIT BOXES
TRAVELERS CHECKS
CASHIER CHECKS
LOANS FOR:
PERSONAL
AUTO PURCHASES
HOUSEHOLD GOODS
BUSINESS OPERATING
AGRICULTURAL PRODUCTION
REAL ESTATE LOANS




BANK OF COMMERCE

A Subsidiary of GrayCo BancShares, Inc.

FDIC

MEMBER F.D.I.C.



Equal Housing LENDER

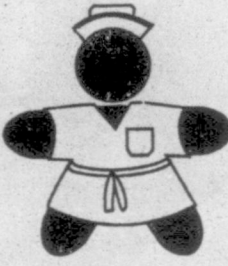
779-2461


Family Healthcare

Clinic Of McLean

NEW HOURS
MON., WED., & FRI.
AFTERNOON, 1:00-4:30

Jerry Wilson, P.A.





Carol Carroll, L.V.N.

DR. CRAIG SHAFFER
MEDICAL DIRECTOR

National Multiple Sclerosis Society Presents 30th Annual MS BeefaThon

The Panhandle Chapter of the National Multiple Sclerosis Society presents the 30th MS BeefaThon on Sunday, June 25th from 12 noon until 5:30 p.m. with proceeds benefiting the Panhandle Chapter of the National Multiple Sclerosis Society. The chapter generates approximately \$45,000 from the BeefaThon, a 5 1/2 hour televised auction. The auction is unique in that it targets the beef industry, and the Panhandle Chapter of the National Multiple Sclerosis Society is the only chapter in the nation to hold an event of this kind.

Merchants and individuals donate services and items to be auctioned throughout the day. Items valued at \$300 or more, autographed items, and artwork will be on the Super Board and will be presented all 5 1/2 hours. Other items will be presented during each 40-minute segment on the Blue, Green and Yellow Boards. This year's Super Board includes artwork by regional artists Ben Konis, Danny Gamble, Manuel Franco, Stuart Dowlen, Cindy Kelleher, R. Russell Brown, James Haney, Ken Cargle, and other local artists, and services and merchandise from local businesses. Also this year, the Super Board will feature a bronze statue, "Centennial", created by artist Laran R. Ghiglieri. Items on the other boards include merchandise and gift certificates donated by local merchants. Many cultural and entertainment venues have donated tickets to their events. There is something for everyone!

Area cattle feed yards and ranchers donate beef that will be sold both in custom-cut quarters and ground beef packages. Edes Custom Meats and Swisher Meats will process cattle and also package the beef quarters

according to the custom orders.

News personalities from KFDD will serve as masters of ceremonies for this year's auction. Other on-air masters of ceremonies will include Mary Lyn Halley from radio station KGNC, Bedford Forrest, a longtime farm and ranch reporter; VIPs from Northwest Texas Healthcare System; Jim Simms, from Amarillo National Bank; local dignitaries; and MS volunteers.

Phones will be open from 12 noon until 6:00 p.m. to accept bids. This year's auction will be aired from the Northwest Texas Healthcare System Pavilion Auditorium. The phone number for placing bids is 351-4BEEF (351-4233) or for long distance call 1-877-287-BEEF (2333).

Multiple Sclerosis is a chronic, often disabling disease of the central nervous system. The symptoms may be mild such as numbness in the limbs, or severe including paralysis or loss of vision. Most people with MS are diagnosed between the ages of 20 and 40 but the unpredictable physical and emotional effects can be lifelong. The progress, severity and specific symptoms of MS in any one person cannot yet be predicted, but advances in research and treatment are giving hope to those affected by the disease. The Panhandle Chapter of the National MS Society serves the 29 counties of the Texas and Oklahoma panhandles and four counties in New Mexico by providing a variety of services to help clients live their lives to the fullest. A portion of the funds raised by the chapter goes toward research efforts into the cause, cure and treatment of MS.

Through research, three drugs are now available for the treatment of MS. The National MS Society

recommends immediate treatment using one of the three drugs following a definitive diagnosis of MS.

For more information on the Society and its services, contact the Panhandle Chapter of the National Multiple Sclerosis Society at (806)468-7500.

History Of The Ambulance

From earliest times, people have required a means of transporting their wounded and sick. The first wounded were probably carried in a hammock strung between two poles. Other unique conveyances included human dhooleys which were used in India; wicker cradles called mule panniers; and Egyptian camel litters. The Mojave Indians devised a litter comprised of a sheet of canvas between two poles carried on the shoulders of two men.

A more formalized ambulance surfaced in the late 15th century, when Ferdinand and Isabella of Spain took an unprecedented interest in the welfare of their troops during their crusade against the Moors. Surgical and

medical supplies were brought together in special tents for the wounded called ambulancias.

The concept of the ambulance was developed further by a man named Dominique-Jean Larrey who had been appalled by the neglected wounded and poor medical conditions he had witnessed during France's war with the Austrians and Prussians in 1792. Larrey came up with the idea of mobile ambulances, light-weight, two wheeled vehicles which stayed with the troops and allowed surgeons to work on the battlefield, an idea he later refined for Napoleon during the General's Italian campaign.

The evolution of the ambulance took yet another turn during the American Civil War when ambulances were too few, often late, and driven by civilian drunkards and thieves. A physician named Jonathan Letterman recognized the field medical service to provide an effective ambulance service for the evacuation of battle casualties. In 1864, an act was passed in Congress entitled "An Act to Establish a Uniform System of Ambulances in the Armies of the United States," which spelled out who was responsible for each phase of the ambulance system.

During the 1864 Convention in Geneva, an agreement was made by several European countries to recognize the neutrality of hospitals, of the sick and wounded, of all persons connected

with relief service, and the adoption of a protective sign or badge.

In America, a similar organization had been functioning during the Civil War, The Sanitary Commission, which 20 years later became the American Red Cross, brought into being in large part due to the efforts of Clara Barton.

Most ambulance innovations took place during wartime, which were then adapted to civilian life. American hospitals initiated their own ambulance services during the late 1860s. Horse-drawn, these ambulances had a moveable floor that could be drawn out to receive the patient. Beneath the driver's seat was a container with: a quart of brandy, two tourniquets, six bandages, six small sponges, splint material, blankets and a two-ounce vial of persulphate of iron.

Pampa CINEMA 4

Coronado Shopping Center
Pampa, TX • 665-7141

Scary Movie

Rated R
Fri, Sat & Sun
3:00, 5:30, 8:00 10:30*
Mon-Thurs 3:45, 6:15, 8:15
Sorry no one under high school without parent or legal guardian



The Perfect Storm

Rated PG-13
Fri, Sat & Sun
2:15, 5:05, 7:50, 10:10*
Mon-Thurs: 3:00, 5:45, 8:30



The Patriot

Rated R
Fri, Sat, Sun 2:30, 5:50, 9:30*
Mon - Fri: 3:15, 7:30
Sorry no one under high school without parent or legal guardian



Big Momma's House

Rated PG-13
Fri, Sat & Sun 4:45, 9:00 11:10*
Mon-Thurs: 6:00, 8:45

Adventures of Rocky and Bullwinkle

Rated G
Fri, Sat, Sun 2:45 7:00
Mon - Thurs 3:30



*Friday & Saturday

Admissions
\$3.50 per person - Matinee Shows starting before 5:00
Children 3-11 or Senior citizens \$3.50, Adults \$5.00

Jelly Bean Junction

Children's Theatre Classes At The Gem

July 10-21 M-F 1-2:30 pm Age 6-7th grade



\$30.00 per child



Call 226-5409

Performances July 21-22 7:30 pm

Summer Fitness Boot Camp 2000

FOR THE SERIOUS COMPETITOR

★ Intense Physical Conditioning

★ Cardiovascular

★ Endurance

★ Strength

Ages: 14 and Up COED

Dates: July 10 - August 1

Days: Mon., Tues., Thur., & Fri.

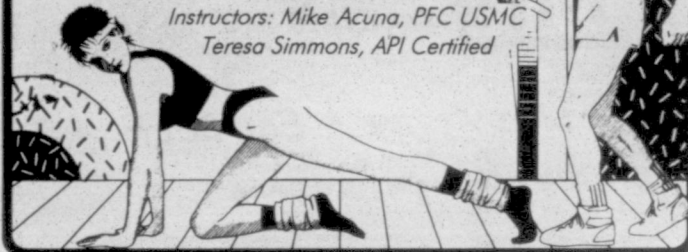
Time: 7:30 p.m. till 9:00 p.m.

Place: VFW Building, McLean

Cost: \$30 for 14 classes

Instructors: Mike Acuna, PFC USMC

Teresa Simmons, API Certified



SALE

JULY 10-14

AT PRAIRIE FLOWERS

218 N. Main Street, McLean

20% OFF

Excluding jewelry consignments & plants.
Buy a pound of fudge-Get 1/2 pound FREE

McLean Care Center News

Sunday activities begin with Sunday School directed by the Methodist Friendship Class. Later in the afternoon they attended Church services with the Trinity Baptist Church.

Along with the regular activities offered we now have Bible Study on Thursday evening. Douglas Graves is very gracious to come by on Thursdays and hold Bible Study for the residents.

There are two new residents, Ruby Key and Beulah Pyett from Pampa, Dee Kincannon from Shamrock and

Fayette Belle Barton from McLean.

We regret the loss of two of our residents, Francis Whittenburg and Dorothy Patterson. They will be missed.

The July Birthday Party is the Saturday, July 8 at 2:30 p.m. The Annual BBQ is July 22 at 12 noon. Everyone is invited.

Thought For The Day

Here's hoping that on Fortune's face you'll never see a frown. And that the corners of your mouth may never be turned down. (Lucinda May)

When a man has devoted his entire life to serving God it is easy for him to hear from God. The man is Rev. Archie Cooper and the messer is "It's time to pray harder". And at that Rev. Cooper knew that he needed to hold a prayer meeting in his house.

The first meeting was Tuesday Jun 27, 2000, 7 pm at 612 N. Waldon, McLean, Texas. The focus of prayer was for our nation and for the future of our children.

There were seven in attendance with four denominations represented.

Rev. Cooper said, "It will take the next generation to turn the nation around," emphasizing we are responsible for the training of our sons and daughters.

Scriptures that Rev. Cooper referred to were Luke 18:1-8, Romans 15:30 and the book of Joel.

Rev. Cooper said, "The better I prepare myself for my nation, the better I prepare myself to meet the needs of others. And that it is time to get serious about prayer and seeking God for our nation's sake. He believes that with fervent prayer we can this thing around."

Oneighty In Wheeler Gearing Up For Summer Events

The Oneighty located in Wheeler is gearing up for the Summer. There will be many special events held during the summer, not just for kids 12 and over, but they are expanding some of the events to include the younger kids also, stated Freddie van Reenen director of the center.

There will be a variety of events during the summer, beginning July 1st from 8 a.m. to 12 p.m. with the Speed and Strength morning. This will include basketball and volleyball for ages 13 and up. That afternoon from 1 p.m. until 3 p.m. there will be a Superstar Olympics for ages 8-13 and that evening the Oneighty will host Power of One

Production.

July 3rd from 8 a.m. to 10 a.m. there will be soccer at the Wheeler school for kids age 6 to 8.

July 22nd Max Dempsey a renowned trampolinist will be in Wheeler to do his thing. Max will participate in a Pastor's breakfast at 8:00 a.m. Beginning at 10 a.m. Max will teach a clinic and at 7 p.m. Max shows off a little of the talent God blessed him with.

August 5th, Seven Doors Down will present a concert at the Oneighty at 7:00 p.m.

Summer time is a great time for kids to be together and celebrate their common bonds. Spend some time at the Oneighty this summer.

Card Of Thanks

Thank you to every business and individual who donated money and food for the Jr. Rodeo concession. You make it a huge success.

Trinity Baptist Church Women's Ministry

Good Neighbor Pharmacy Topics By Don Siggers, Rph What The Big Drug Companies Don't Want You To Know... Who is "Sammy?"

The word is getting out about S-adenosyl-methionine ("Sammy"). This hot "new" nutritional supplement (it has been available in Europe for more than 20 years as a prescription drug. Folks are buying it like hot cakes across the United States. Why all the fuss? Because apparently it works. From what I have read approximately 70% of the depressed patients who try SAME notice improvements in mood within days, not weeks, as is the case with most drugs and herbal therapies. SAME is apparently safe to take. Mild headaches or stomach upset sometimes occurs during the first week or two of use, and very high doses may cause diarrhea. But compared to the potential catastrophes associated with prescription antidepressant drugs, SAME is a lamb. The reason for this may be simple. SAME enhances your body's normal mechanisms, rather than artificially jamming up your system as some drugs do.

This new supplement promises to make joints healthier and improve mood with fewer side effects than some prescription medications. It is reported that 400MG to 800MG taken daily reduced the severity of morning stiffness, pain at rest and pain on movement by helping to maintain cartilage. It also improved the depression associated with osteoarthritis.

Thanks, Don Your Shamrock Herbal Pharmacist
Mahnken's Good Neighbor Pharmacy
Shamrock, Texas 79079
256-2782
Mon-Fri 8 a.m. - 6 p.m.
Health care Participants Gladly Accepted



WRANGLER BULL FIGHTING

Sponsored nightly by Waynes Western Wear and Sowers Ranch

FREE! RODEO TICKETS

With Each .30 Wrangler Purchase

MEN'S STRAW HATS starting at \$19.99

KID'S starting at \$9.00

Rodeo Specials Throughout The Store Too Numerous To Mention

54" Top O' Texas Rodeo July 13, 14 & 15

Kid Pony Show July 9, 10 & 11

Recreation Park, Pampa Texas

Clown Contest Saturday - 4 p.m. Sharp

Dress The Kids Like Rodeo Clowns and Win!

1st Place Wins.....12 Kid's Wrangler Pants.....4 Rodeo Tickets

2nd Place Wins.....6 Kid's Wrangler Pants.....4 Rodeo Tickets

3rd Place Wins.....2 Kid's Wrangler Pants.....2 Rodeo Tickets

Autograph Party & Face Painting...bring the kids in Thursday & Friday between 2-4 p.m. to get their face painted by Professional Rodeo Clowns Jim Bob Felles, Greg Rumohr, Dustin Brewer & Clint Ferguson. We will also have an autograph party from 2-4 p.m. Thursday, Friday & Saturday on Wrangler Posters, plus a FREE Wrangler Bandana.

Waynes Western Wear, Inc.

Daily 9 a.m. to 6 p.m., Thurs. Til 8 p.m., Closed Sunday

1504 N. Hobart • Pampa, Texas • 665-2925

JAMES HEFLEY
"The Sound That Sells"

Licensed AUCTIONEER Bonded

COMPLETE AUCTION SERVICE
806-779-3134
Box 42 - McLean, Tx ♦ FAX 806-7792438

MFY McLean Feedyard Ltd

Live Active ~ Eat BEEF

Neal Odom 806-779-2405
email = MFY@ranches.org

MARK OF QUALITY

HARVEY ELMS
PAUL ELMS

HARVEY'S PRECISION BODY SHOP

806-352-9662
FAX 806-352-9663

3026 BLACKBURN
AMARILLO, TEXAS 79109

L & K's Custom Baling & Swathing

Call : Day - Ruben Baggerman 806-248-7445
Evening - Lacy Kotara 806-537-3257

Lamb Funeral Home

1001 North Main - P.O. Box 230
McLean, Tx 79057
806-779-2424 FAX 779-2475

Serving You With The Dignity & Respect That You Deserve

Offering Pre-Arranged Funeral Plans & Monument Needs

The Gift Box
CHRISTIAN BOOK STORE

We have memorable gifts for any occasion! We also carry Wedding Invitations.

117 S. Kingsmill, Pampa, Tx
669-9881

C & H
SUPPLY-MCLEAN

Custom Fertilizer Blends & Applicators
Farm Bureau Tires & Batteries
Tire Repair - Mounting & Balancing
Evergreen Feeds - bulk & Sacks

For all your BUG & PEST control needs.

301 E. Foster 779-2209

Chamberlain MOTOR COMPANY

Now Selling GM Cars & Trucks
DOWN HILL ALL THE WAY!
874-3527

GOT SOMETHING TO BUY, SELL OR TRADE?
THE CLASSIFIEDS GET RESULTS!
CALL 248-7333 OR 779-2141 TODAY

Rates: 20¢ a word with a \$5.00 minimum. "Cards of Thanks" \$5.00 up to 25 words. Wedding stories printed Free up to 300 words. Over 300 words - 20¢ a word. No charge for pictures.

Deadline for classifieds: Noon Tuesday, All others Monday, 5:00 p.m.

Payment is required at the time you place your ad unless you have an established 30 day account.

Errors: Check your ad on first publication. Not responsible for errors not called to our attention after first publication. The Groom-McLean News does not vouch for the legitimacy of any ad, job or money making opportunity. We suggest that you thoroughly check out any offer before making a commitment.



CUSTOM PLOWING, chiseling or sweeps \$5. per acre. Call Dickie Bennett 874-2362.

HOUSE SETTLING? Cracks in brick or walls? Doors won't close? Call **Childers Brothers Stabilizing & Foundation Leveling.** 1-800-299-9563 or 806-352-9563, Amarillo, TX.

JIM DAVIDSON Century 21 Pampa Realty, Inc. Business 669-0007 Home 669-1863

D.P.S. PHONE NUMBERS MAIN: 806-468-1300 DRIVER LICENSE: 806-468-1450 WEATHER/ROAD 806-468-1488

Political Calendar
 The Groom News is authorized to present the names of the following candidates for office, subject to the Elections to be held on Nov. 8. A fee of \$35.00 has been paid by each candidate for listing in this column from now till the final election in November.

Republican Party
 District Attorney 100th Judicial District Stuart Messer
 District Attorney 31st Judicial District Rick Roach
 Carson County Sheriff Gary Robertson
 Gray County Tax Assessor/Collector Sammie Morris

Constable Precinct 4 Frank Sparling

Democrat Party
 Carson County District Commissioner Precinct 1 Mike Britten

Carson County Tax Assessor/Collector Barbara Cosper

District Attorney 100th Judicial District Randall Sims

District Attorney 31st Judicial District Charles Kessie

ROUTE 66 MINI-STORAGE Has space to rent. Call Kevin Noack 248-1103.

Public Notice Public Notification of Nondiscrimination In Career and Technology (Vocational) Educational Programs

1. The Groom Independent School District offers career and technology education programs in Microcomputer applications and Agriculture. Admission to these programs is based on grade level, prerequisite courses and class availability.

2. It is the policy of the Groom Independent School District not to discriminate on the basis of race, color, national origin, sex or handicap in its vocational programs, services or activities as required by Title VI of the Civil Rights Act of 1964, as amended; Title IX of the Education Amendments of 1972; and Section 504 of the Rehabilitation Act of 1973, as amended.

3. It is the policy of the Groom Independent School District not to discriminate on the basis of race, color, national origin, sex, handicap, or age in its employment practices as required by Title VI of the Civil Rights Act of 1964, as amended; Title IX of the Education Amendments of 1972; the Age Discrimination Act of 1975, as amended; and Section 504 of the Rehabilitation Act of 1973, as amended.

4. The Groom Independent School District will take steps to assure that lack of English language skills will not be a barrier to admission and participation in all educational and vocational programs.

5. For information about your rights or grievance procedures, contact the Title IX Coordinator/Section 504 Coordinator John Wilson at P.O. Box 598, Groom, Texas, 79039.

DOG TO GIVE away to good home. Registered German Shorthair. 1 1/2 years old. Call 248-7466 Groom.

FOR SALE: 1993 Ford F150. Very well maintained. Runs Good. \$4800. Call 248-7265 Ron Kuehler.

ADOPTION

Note: it is illegal to be paid for anything beyond medical and legal expenses in Texas adoption.
 A BRITISH COUPLE long to give a newborn loving home in England. For more information about Henry and Emma, call Yvonne or Nikki. 1-800-648-1807.

TextSCAN Week of July 2, 2000

ADOPTION
 Note: it is illegal to be paid for anything beyond medical and legal expenses in Texas adoption.
 A BRITISH COUPLE long to give a newborn loving home in England. For more information about Henry and Emma, call Yvonne or Nikki. 1-800-648-1807.

AUCTION

AUCTION - JULY 29, GRAHAM, TX. House and 92+/- acres. Selling regardless of price 680+/- acres offered in parcels. 1-800-558-5464, JP King Auction Company, W. Scott Swenson, TX broker lic. # 0425652, TX auction lic. # 7809.

AUTOMOBILES

CHARITY CARS - DONATE your vehicle, tax deductible, free towing. We provide vehicles to needy families. As seen on Oprah and People Magazine. 1-800-442-4451, www.charitycars.org.

DIVORCE

DIVORCE \$175* - COVERS child support, custody, visitation, missing spouses, property debts, military, name change, one signature required. *Excludes govt. fees, uncontested. 1-800-522-6000 (8 am - 8pm), Hallwood, Inc.

DRIVERS WANTED

ATTN. DRIVERS: FLEETWOOD Transportation hiring long-haul flatbed drivers. Peterbilt equipment. Guaranteed home time and complete package of benefits. Also need long-haul owner operators. 1-800-458-4279.

COMPANY PAID CDL training & first year income \$35K - Stevens Transport - OTR drivers wanted! Non-experienced or experienced. 1-800-333-8595. EOE.

DRIVER: COVENANT TRANSPORT* Coast to coast runs * Teams start up to 46cpm * \$1,000 sign-on bonus for experienced company drivers. For experienced drivers, 1-800-441-4394, owner operators 1-877-848-6615. For graduate students 1-800-338-6428.

DRIVER - OWNER OPERATORS and fleet drivers for Landstar Fleet Owners needed immediately! Qualifications: 23 years old; Class A CDL with HazMat; 1 year OTR experience, safe driving record. Call Landstar Inway at 1-800-435-4010. www.landstar.com.

IF YOU ARE the spouse of an over the road truck driver, we will teach you to drive a "Big Rig" w/ automatic transmission in just 2 weeks! Interested, please call 1-800-234-3748.

DRIVERS - CFI HIRING OTR company/student/owner operators. Company with one year experience start at 32 cpm. Students earn \$50 per day. Owner/operator start at \$8.00 all miles. For more information call 1-800-CFI-DRIVE.

DRIVERS - NEW PAY package. Applications processed in 2 hours or less. Long haul and regional drivers. Class A CDL required. Continental Express. 1-800-727-4374.

NOTICE: While most advertisers are reputable, we cannot guarantee products or services advertised. We urge readers to use caution and when in doubt, contact the Texas Attorney General at 1-800-621-0508, or the Federal Trade Commission at 1-877-FTC-Help. The FTC website is www.ftc.gov/bizop.

MCLEAN HOME Health Agency now accepting application for RN's, LVN's & Home Health Aides for Home Health, Private Duty Nursing and Home Market Services. Call 779-2485. EOE

FOR SALE: 2 bedroom, corner lot, 1 bath home, detached garage. Recently redone, 112 Ware Ave. Call 248-7224 or 354-0253, evening.

Printing
 Check with The Groom News or The McLean News for your printing of envelopes, posters, statements, rubber stamps, business cards, etc. We appreciate your business. We will be competitive with our prices! Call 248-7333 or 779-2141.

E-MAIL OFFERS:
 Treat e-mail offers the same as unsolicited telemarketing sales calls. Don't believe promises from strangers. A public service message from The Groom/McLean News.

Brumley Insurance Agency

Johnny Brumley, Agent
 Office (806) 248-7550
 Home (806) 7315

STOP BY TRINITY & COMPANY and see their latest gift ideas for all important occasions.
GROOM SCHOOL is slated to begin classes on Aug. 10.

TEXAS STATEWIDE CLASSIFIED ADVERTISING NETWORK



TextSCAN Week of July 2, 2000

ADOPTION
 Note: it is illegal to be paid for anything beyond medical and legal expenses in Texas adoption.
 A BRITISH COUPLE long to give a newborn loving home in England. For more information about Henry and Emma, call Yvonne or Nikki. 1-800-648-1807.

AUCTION

AUCTION - JULY 29, GRAHAM, TX. House and 92+/- acres. Selling regardless of price 680+/- acres offered in parcels. 1-800-558-5464, JP King Auction Company, W. Scott Swenson, TX broker lic. # 0425652, TX auction lic. # 7809.

AUTOMOBILES

CHARITY CARS - DONATE your vehicle, tax deductible, free towing. We provide vehicles to needy families. As seen on Oprah and People Magazine. 1-800-442-4451, www.charitycars.org.

DIVORCE

DIVORCE \$175* - COVERS child support, custody, visitation, missing spouses, property debts, military, name change, one signature required. *Excludes govt. fees, uncontested. 1-800-522-6000 (8 am - 8pm), Hallwood, Inc.

DRIVERS WANTED

ATTN. DRIVERS: FLEETWOOD Transportation hiring long-haul flatbed drivers. Peterbilt equipment. Guaranteed home time and complete package of benefits. Also need long-haul owner operators. 1-800-458-4279.

COMPANY PAID CDL training & first year income \$35K - Stevens Transport - OTR drivers wanted! Non-experienced or experienced. 1-800-333-8595. EOE.

DRIVER: COVENANT TRANSPORT* Coast to coast runs * Teams start up to 46cpm * \$1,000 sign-on bonus for experienced company drivers. For experienced drivers, 1-800-441-4394, owner operators 1-877-848-6615. For graduate students 1-800-338-6428.

DRIVER - OWNER OPERATORS and fleet drivers for Landstar Fleet Owners needed immediately! Qualifications: 23 years old; Class A CDL with HazMat; 1 year OTR experience, safe driving record. Call Landstar Inway at 1-800-435-4010. www.landstar.com.

IF YOU ARE the spouse of an over the road truck driver, we will teach you to drive a "Big Rig" w/ automatic transmission in just 2 weeks! Interested, please call 1-800-234-3748.

DRIVERS - CFI HIRING OTR company/student/owner operators. Company with one year experience start at 32 cpm. Students earn \$50 per day. Owner/operator start at \$8.00 all miles. For more information call 1-800-CFI-DRIVE.

DRIVERS - NEW PAY package. Applications processed in 2 hours or less. Long haul and regional drivers. Class A CDL required. Continental Express. 1-800-727-4374.

NOTICE: While most advertisers are reputable, we cannot guarantee products or services advertised. We urge readers to use caution and when in doubt, contact the Texas Attorney General at 1-800-621-0508, or the Federal Trade Commission at 1-877-FTC-Help. The FTC website is www.ftc.gov/bizop.

DRIVERS...\$2,000 SIGN on pay increase. Instant health insurance. OTR/regional. Single, teams and owner/operators. vans, flatbeds, or specialized. Class A CDL. Roadrunner Trucking. 1-800-945-BIRD(2473).

DRIVERS...NEW PAY! Experienced drivers start up to 38cpm. 1 year experience equals 33cpm. Regional and OTR. Van and flatbed. Student training available. Arrow Trucking. 1-888-277-6937.

DRIVERS-OWNER/OPS: Run regional. Home weekly! Paid: Base plate, permits, fuel taxes. 81 cpm. Loaded and empty plus fuel surcharge. 1-800-454-2887. Arnold Transportation.

DRIVERS - WHEN IT comes to benefits, we've got all the bells and whistles. *Paid weekly. *Great pay. *\$1,000 sign-on bonus. *Student graduates welcome. SRK toll free: 1-877-BIG-PAYDAY (1-877-244-7293).

OTR DRIVERS - O/O'S 82(+)/cpm, company teams - 36(+)/cpm and solo .28(+)/cpm or 30(+)/cpm. Good miles, excellent equipment and benefits. Experience required. Gulf Coast Transport. 1-888-988-8666.

OWNER OPERATORS - FLATBED: LoneStar Transportation, Ft. Worth, seeks O/O's to run 48 and regional. Great miles, home time, average .95cpm to over .100cpm. Call Tim - 1-877-201-1100.

DRIVER TRAINING
 A \$35,000 PER Year career! C.R. England needs driver trainees. 15 day CDL training. Housing/ meals included. No upfront \$\$\$ Tractor Trailer Training. 1-888-781-8556.

DRIVER - INEXPERIENCED? LEARN to be an OTR professional from a top carrier. Great pay, executive-style benefits and conventional equipment. Minimum investment required. Call today! US Xpress, 1-800-879-7743.

FINANCIAL SERVICES
BE DEBT FREE - years sooner! Low payments. Reduce interest. Stop late fees. Stop collectors. Family credit counseling. Non-profit Christian agency. See habia Espanol. Recorded message: 1-800-729-7964. Free quote - www.familycredit.org.

CHOKING ON DEBT? Stop harassment/high monthly payments. Proven program slashes bills in half. No credit check. Save thousands. Call free quote today. 1-877-479-4479, ext. 125. First Mutual Financing.

FOR SALE
AMAZINGLY LOW PRICES - Wolff Tanning Beds. Buy factory direct. Excellent service, flexible financing available. Home/commercial units. Free color catalog. Call today, 1-800-842-1310.

DELL COMPUTERS... BUILT-to-order. Pentium III available. Resolved credit problems ok \$0 down, low monthly payment - O.A.C. Open 7 days. Limited time free internet access - most areas. 1-800-477-9016, Code VZ27; www.omcsolutions.com.

SAWMILL \$3,795. SAWS logs into boards, planks, beams. Large capacity. Best sawmill values anywhere. Free information. Norwood Sawmills, 252 Sonwil Drive, Buffalo, NY 14225. 1-800-578-1363.

FACTORY SUMMER CLEARANCE! Arch steel buildings: 25x26, 30x32, 40x50, 50x110. Prices slashed on select models. Ideal workshops/storage/garages. Financing available. Call 1-800-341-7007. www.steelmasterusa.com

POOL CITY'S KAYAK Pool, demo homesites wanted to display new maintenance free pool. Save thousands with this unique opportunity! Call today to qualify. 1-800-338-9919. www.poolcitykayak.com.

WANT A COMPUTER? But no cash? MMX Technology will finance with "0" down. Past credit problems, no problem. Call toll free, 1-888-875-1087.

HEALTH/MEDICAL
HERPES - EverCLR STOPS herpes outbreaks! 96% never have another herpes outbreak! Free call: 1-877-EVERCLR. More information: www.everclr.com.

MEDICARE NEBULIZER PATIENTS! Stop paying cash for Albuterol, Atrovent, etc. Medicare pays for them. We bill Medicare and deliver to you. Med-A-Save 1-800-538-9849, ext. 12L.

HELP WANTED
CLAIMS PROCESSOR! \$20-\$40/hour potential. Processing claims is easy! Training provided, must own PC. Call now! 1-888-568-7649, ext. 698.

FOR LOCAL DOCTORS! Data entry. Easy claims processing. Training provided. Computer lit required. No previous experience necessary. Flexible hours. Software \$449.00. Titan Business Solutions. 1-888-968-7793, ext. 7088.

FOREIGN EXCHANGE STUDENTS like Mari, 18, from Sweden arriving in August. Mari likes running, cooking and spinning. Be a host family. Call 1-800-SIBLING or visit our web site at www.ausetok.com to view Mari's and other student profiles online.

LEGAL SERVICES
NURSING HOME NEGLECT - Abuse, bedsores, burns, assaults, weight-loss, falls, deaths. Call free confidential consultation; David P. Willis, Board Certified Personal Injury Trial Lawyer. Houston, TX principal office, 1-800-883-9858.

EDUCATIONAL
EARN LEGAL COLLEGE degree quickly! Bachelors, Masters, Doctorate, by correspondence based upon prior education, experience; short study course. Free catalog, Cambridge State University 1-800-964-8316. 24hrs.

REAL ESTATE
SOUTHERN COLORADO MOUNTAIN bargain! 40 acres from \$36,900. Colorado/New Mexico border. Spectacular ranch acreage. Pinon trees, mountain views, year round access, utilities. Excellent financing. Toll - free 1-877-676-6367.

TRAVEL/VACATION
TIME SHARE UNITS and campground memberships. Distress sales - cheap! Worldwide selections. Call vacation network U.S. and Canada, 1-800-5436173. Free rental information, 1-954-563-5586.

WORLDWIDE TRAVEL - Free information. 1-800-543-6173.

WORLDWIDE TRAVEL - Free information. 1-800-543-6173.

WORLDWIDE TRAVEL - Free information. 1-800-543-6173.

WORLDWIDE TRAVEL - Free information. 1-800-543-6173.

WORLDWIDE TRAVEL - Free information. 1-800-543-6173.

Call this Newspaper to Advertise Statewide and Regionally or Call 512-477-6755.

ONE GREAT SALE



ASSORTED
Fritos® or Cheetos®
REG. \$2.29
2 \$3
FOR



SHURFINE GRADE A
Medium Eggs
DOZEN
2 \$1
FOR



ASSORTED
Shur Saving Mellorine
4 QT.
2 99



SOFT & GENTLE
Bath Tissue
12 ROLL
2 \$5
FOR



SHURFINE ASSORTED
BBQ Sauce
18 OZ.
2 \$1
FOR

Nabisco 20 oz.
Oreo's
2/\$5.00

Nilla Wafers
2/\$5.00
12 CT.

ASSORTED
Squeezits
1 PK.
99¢

SHURFINE ASSORTED
Toasted Oats
12 ROLL
2 \$3
FOR

BETTY CROCKER BROWNIE
MUFFIN MIX REG. 2.99
Pancake Mix Pouch
6.25-10 OZ.
2 99¢
FOR

BETTY CROCKER ASSORTED
Popcorn 3 PK. **1 99**
ASSORTED
Gatorade 34 OZ. **1 99**
FAMILY SIZE
Lipton Tea 24 CT. **1 79**
BRAVNY REG. OR DESIGNER
Paper Towels ROLL **89¢**
SHURFINE
Pinto Beans 1 LB. **1 79**
COMET REG. OR WONDER
Long Grain Rice 28 OZ. **79¢**

ASSORTED
Skinner Pastas 12 OZ. **59¢**
BUSBY'S BEST ASSORTED
Baked Beans 28 OZ. **1 99**
CONTADINA
Tomato Sauce 5 8 OZ. **1 00**
SMACK RAMEN ASSORTED
Noodles 10 3 OZ. **1 00**
SMACK RAMEN ASSORTED
Cup of Soup 3 2.25 OZ. **1 00**

WOLF'S BRAND ASSORTED NO BEAN
Chili 2 15 OZ. **3 00**
ASSORTED
Vlasic Pickles 2 24-16 OZ. **4 00**
HUNT'S
Ketchup 24 OZ. **99¢**
SANTA FE ASSORTED
Salsa 16 OZ. **1 99**
SHUR SAVING
Foam Plates 40 CT. **99¢**
Premium Saltines 40 CT. **99¢**
CRACKERS 16oz. **3/\$5**

CELLO
Lettuce
58¢ EACH

WHITE SEEDLESS Grapes
99¢ LB.

FRESH
Green Beans LB. **99¢**
GREEN GIANT CELLO
Carrots 3 16 OZ. **89¢**
LARGE CALIFORNIA
Nectarine LB. **79¢**
LARGE CALIFORNIA
Peaches LB. **79¢**
PREMIUM 1/2 LARGE HOT HOUSE
Tomatoes LB. **99¢**
SWEET YELLOW
Com 4 FOR **1 00**
YELLOW OR ZUCCHINI
Squash LB. **89¢**

1 LBR 1/2 1/2 TROPICAL
Fruit Roll
12 PK.
3 99

ROLLING PIN GLAZED
Donut Rings
12 PK.
2 \$5
FOR

FROZEN
BLUEBUNNY ASSORTED
Sherbet 1/2 GALLON **1 99**
SHURFINE ASSTD. OR CHERRY
Twin Pops 6 PK. **79¢**
ORE IDA ASSORTED
Potatoes 20-32 OZ. **1 69**
BANQUET CHEESE OR CHICKEN NUGGETS OR
Bread Tenders 2 11-13.5 OZ. **5 00**

DAIRY
PARKAY ASSTD.
Quarters or Spread & Squeeze Btl. 16 OZ. **89¢**
SHURFINE ASSORTED
Yogurt 2 8 OZ. **89¢**
BACK YARD
Lemonade GAL. **1 99**

HEALTH & BEAUTY
SURE, SECRET OR OLD SPICE
Antiperspirant 1.6-1.7 OZ. **2 59**
DOVE ASSORTED
Antiperspirant 2 1.6 OZ. **3 00**
ASSORTED REG. OR NEPILL
Mentadent 3.5-5.2 OZ. **2 79**
SUAVE ASSORTED
Lotion 10 OZ. **1 29**

FAMILY PACK
Drumsticks or Thighs
39¢ LB.

PREFERRED TRIM BONELESS BEEF
Sirloin Tip Steak 1 89 LB.
SCOTCH SMOKED TURKEY OR COOKED HAM
Lunch Makers 89¢ 2.5 OZ.
FRESH PORK
Spareribs 1 69 LB.
WISCONSIN RED RIND LONGHORN
Cheddar Cheese LB. **2 39**
SELECT
Beef Liver LB. **99¢**

PREVIOUSLY FROZEN
Whole Fryer 89¢ LB.
PILGRIM'S PRIDE "GRADE A" CUT UP
Turkey Bologna 16 OZ. **99¢**
LOUIS ROCH
Hash Browns 1 19 10 CT.

MORE MEAT SPECIALS
SEMI-C
Ground Turkey 16 OZ. **79¢**

Venture
FOOD STORES

PRICES EFFECTIVE
July 6 - July 11

Not all items available at all stores
We reserve the right to limit quantities
Not responsible for pictorial or typographic errors

AT AFFILIATED FOODS INC.

GROOM S & H GROCERY

248-0408
We Accept
Wic
Credit Cards
& Lone Star
Cards

Nat
Sta
Livi
Res

The
repre
count
consi
thing
respe
have
flag
posse
proud

The
fundat
Herald
under
indical
metho
flag,
which
and th
is the
Hence,
flag is
or the
Gen
the us
display
from s
buildin
station
open.
patriot
the f
24
prop
durin

A fl
weath
be us
is in
the l
publi
scho
place

C

D
elec
Rep
and
chai
join
dele
from
of t
Part
Hou
for
deve
selec
offic
alter
conv
Phil
selec
Colli
who
Tex
Pres
State
On
Te n
comm

The Groom News

50¢

Volume 74 Number 9

The Groom/McLean News 79039

Thursday, July 6, 2000

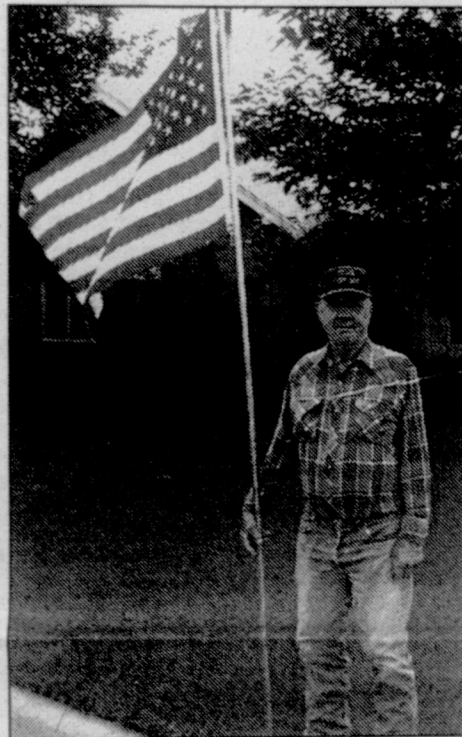
National Flag Stands For A Living Emblem Respect And Pride

The National Flag represents the living country and it is considered to be a living thing emblematic of the respect and pride we have for our nation. Our flag is a precious possession. Display it proudly.

There are certain fundamental rules of Heraldry which, if understood generally, indicate the proper method of displaying the flag. The right arm which is the sword arm and the point of danger, is the place of honor. Hence, the union of the flag is the place of honor or the honor point.

General Display: It is the universal custom to display the flag only from sunrise to sunset on buildings and on stationary flagstaves in the open. However, when a patriotic effect is desired, the flag may be flown 24 hours a day if properly illuminated during hours of darkness.

A flag made of all weather materials should be used out of doors. It is important to display the flag at or on every public institution, such as school houses, polling places on election days,



Lloyd Littlefield, a patriotic veteran who gave 4 years of his life to the USA serving in the Air Corp, is proud to fly "Old Glory" on July 4th.

state and city offices. No flag or pennant should ever be placed on a higher level than the American Flag when flown in the US or its territories. No flag should ever be placed to the right of the US flag. A good rule of thumb is to remember the saying

place the flag to the flag's own right. Only when used on the International level should any flag come above

The correct way to dispose of a flag when it is no longer fit to fly, preferably by burning.

Groom School Board To Decide On Policy Changes

The Groom I.S.D. Board of Trustees will meet next week to decide several changes in policy that will effect the upcoming school year and the student handbook. One of the changes involves changing the attendance policy.

According to Superintendent John Wilson, Principal Noack will address the board with a proposal that would require parents to get a doctor's excuse after a child had been absent for 4 days. The penalty for not having

the note would be an unexcused absence.

Another item on the agenda will be a proposal to discontinue eighth grade graduation exercises.

Anyone wishing to address these issues are welcome to attend the board meeting which will begin at 8:00 p.m. on Tuesday, July 11 in the superintendent's office. Visitors will be asked to give their comments during the "Open Forum"

segment of the agenda. Board discussion of these

issues will take place later in the meeting under the "Principal's Report", which will be item VI.

Other items on the agenda will include: discussion regarding school board member replacement, tour and discussion of the renovation project, Library grant application, discussion of videoconference equipment, budget workshop, auditor's contract and district's report on drugs and violence.

We Saw...

Lots of kids popping fireworks around town.

Lots and lots of mowing going on... everywhere.... all the time.

Stacy Ford getting things ready to open her child care facility. (Stacy is the wife of Mike at the Post Office).

Thane Barkley doing a good deed in true Boy Scout form.



COMMUNITY CALENDER

County Republicans Attend Houston Convention

Debra Kincade, newly elected Carson County Republican Party Chair, and former county chairman, Jeri Osborne joined some 17,00 delegates and alternates from throughout Texas at the largest party gathering of the Texas Republican Party Convention held in Houston on June 12-17, for speeches, meetings developing party platform, selecting state party officials, delegates, and alternated to the FOP convention to be held in Philadelphia, PA. Also selected were Electoral College representatives who will meet to cast Texas votes for the next President of the United States.

Osborne served on the Temporary Rules committee and was

elected to serve on the Permanent Rules committee which adopts the general rules for the convention. She served on the Platform committee during the 1998 Republican convention, that was adopted in that convention and changed very little at this year's convention.

County Chair Kincade lead the Carson County Delegation for the Senate District 30 caucus, as well attending various Texas Republican County Chairs Association meetings.

At the Congressional District caucus, Osborne led the delegation and nominated one of three to the Electoral College, Mr. George Sell of Amarillo. Each district

nominated three delegates, who will meet in Austin after the November General Election along with 34 at large delegates to cast their votes for the next President.

Marian Ward, the Santa Fe High School student who challenged limits on student prayer at football games gave the opening prayer.

Texas GOP Chair Susan Waddington kicked off the convention by asking "Aren't you proud to be a Republican?" to a very enthusiastic reception.

Lt. Governor Rick Perry gave an exciting keynote address.

Other rousing speeches were given by Laura Bush, current First Lady of Texas and Carol Keeten Rylander, State

Comptroller. Mrs. Bush, a former teacher and librarian, drew the most enthusiastic reaction from the crowd when she said voters of the country

have beseeched the governor to be the kind of president who can be a role model for their children and grandchildren.

Rylander was a crowd pleaser as she delivered her super fast fiery speaking style, noting the importance of God, family and a good education.

Jeri Osborne was honored by the State of Texas House of Representatives with a certificate of Recognition for her many years of service and dedication to the Republican Party.

CLASSES BEGIN at Groom School on Aug. 10

PRE-SEASON Football begins in Groom on Aug. 7th.

GROOM DAY meeting will be on July 6 at 7:30 p.m. at the community center.

Looking For Info...

The Groom News needs everyone with Groom Day Activity News to get this turned in so that we can put this information out to those wishing to attend. If you are having class or family reunions, special get togethers etc. please let us know when and where so that others will know where to find you.

Get Ready For Groom Day!

Contact any of the Groom Day volunteers to find out which activities need extra help.

DON'T FORGET to turn in your vacation and summer visitor news.

THE GROOM NEWS office has numerous pictures that you have loaned us, please come get them.


TUESDAY PRICES AT ATTEBURY GRAIN CO.
Wheat-\$2.62
Milo-\$2.62
Corn-\$3.07
Soybeans-\$4.07
1/2" to 2" Rain Reported This Week

The Groom News

USPS 230-380
 Periodicals Postage Paid at Groom, Tx.
 Carson County, Texas, under the Act of Congress
 of March 3, 1879
 Published weekly except Christmas Week
 Publisher - Phillip J. Miller
 Managing Editor - Donna A. Burton
 McLean Editor - Terri Adams
 Postmaster: Please send address changes to
 P.O. Box 460, Groom, Tx 79039-0460
 Carson & Gray County Subscription Rate
 - \$18.00 Yearly
 Annual Rate elsewhere in U.S. - \$20.00 Yearly

TPA MEMBER 2000
TEXAS PRESS ASSOCIATION

Honoring All Other Funeral Home Pre-Arrangements



SCHOOLER
 ARMSTRONG CHAPEL
 On the Square in Claude, Texas

P.O. Box 777 * Claude, Texas * 79019
 Call 226-4040 or FAX 226-5040
Mary Schooler & Jim Schooler, Owners
 Schooler Funeral Home is not associated with Schooler-Gordon Funeral
 Directors, Inc. owned by Service Corp. of Houston, Texas

Local Happenings

Juanita Calloway of Channelview visited this past week with her mother, Julia McGee.

Visitors in the Glynn D Harrell home Sunday were Louise and Bob Mulkey of Panhandle; Beverly and Jim Ingram, Tanya Burke, Rowdy and Emily of Amarillo; Glynda Eschle & Jerry Houchin of Lubbock.

Arnie Kuehler is hope from the hospital.

Groom Birthdays Anniversaries

July 6 - Donald Conrad, Jerry Lynn Thornton, Judy Miller, Nellie Painter.

July 7 - Larry Stephens, Kendall G. Weller, Mr. and Mrs. Arnold J. Kuehler (A).

July 8 - W.R. (Bill) Bohr, Barbara Fraser, Jane Jackson, Mr. and Mrs. Darrell Whatley (A).

July 10 - Sue Wills, Al Alward, Mr. and Mrs. Dan Martin (A).

July 11 - Mark Bivens, Mr. and Mrs. Gregory G. Britten (A), D. Jack and Mary Spencer (A).

July 12 - Pat Ashford, James Huckert.

Rheagan Witt, daughter of Jay Witt of Venus, Texas arrived Saturday for a visit with her grandmother, Helen Witt.

Rosa Lopez pitching in to help a neighbor's dog stay out of trouble.

Locals and out of town-ers on their way to nearby lakes.

SURPRISE PARTY HELD FOR M B BOLDEN

A birthday party honoring M.B. Bolden was held Saturday evening in his home. Those attending were Martha Bolden of the home, Bill and Sue Bolden, Boyle and Mary Fay Mobley and Johnny Richard Painter of Amarillo. Travis and Wynell Bolden of Altus, OK. From Groom were Tony and Tina Painter, children Christy and Brady; Brady and Roni Michelle Miller and Mason; Joe Ray and Kim Richardson; Ronny and Linda Fields; Burl and Nellie Painter. Sandy Drum and Lonnie from Lubbock and a complete surprise was Larry and Deborah Painter and

Matthew and Randall from Bremen, KY. Hamburgers and all the trimmings plus a cake with a man on a lawnmower was served with ice cream. Lots of visiting. The family was very glad they got to surprise M.B. on this special occasion.

Immunization Clinics Offering Vaccines

Immunization Clinics offering vaccines that give protection against several childhood diseases are scheduled for July 2000. Protection is against polio, diphtheria, lock jaw, (tetanus), whooping cough (pertussis), measles, rubella, mumps, and HIB (Haemophilus Influenzae type B), and Varicella (chicken pox).

The Texas Department of Health is charging money to help with the cost of keeping the clinic open. The amount of money charged will be used on family income and size, and the ability to pay.

Vaccinations will be available at the Rural Health Clinic in Claude on July 12 from 2:00 p.m. - 4:00p.m. In Clarendon, at the Texas Department of Health, 114 S. Sully on July 18 from 9:00 a.m. - 12:00 p.m. and from 1:00 p.m. to 4:40 p.m. And in Pampa, July 19 at the Texas Department of Health Family Health Care, 600 W. Kentucky, from 10 a.m. - 12:00 p.m. and 1:00 p.m. - 4:30 p.m.

Visiting in the home of Burl and Nellie Painter over the holidays was Larry and Deborah Painter and their sons Matthew and Randall from Bremen, Ky.

Thank You for all the kindness shown after my shoulder surgery. God Bless You All
 Bettye West

Stacey's Child Care



Registration Pending
 Certified Quality Child Care Provider
 Trained in CPR & First Aid

Accepting children on July 11
 Caring, Loving, Safe & Clean Environment
 With Challenging and Stimulating
 Activities For the Well Being of your Child.
 Call or Come By & Get Acquainted

AFTER SCHOOL CARE AVAILABLE
 Corner of 5th & Ware, Groom
 Call 248-7314
 "Your child's happiness is our business"



STOP N SHOP
 1-40 & FM 2300
 806-248-7977
 Our Pumps Are Open
 24 Hours, 7 Days A Week
 WE HAVE THE ONLY ATM IN TOWN!
 Large Selection of Hats, Shirts,
 Rt. 66 & Texas Souvenirs

COW POKES®

By Ace Reid

<http://www.cowpokes.com>



"You'd be surprised how smooth these ol' broncs travel when they can't breathe."

Ready for the SMOOTHride of a NEW car or truck? Be SURE to SEE US FIRST! By arranging your financing HERE, you'll make a better "CASH" deal on the vehicle of your choice!

THE STATE NATIONAL BANK
 MEMBER FDIC GROOM, TEXAS 248-7531

ATTEBURY GRAIN INC.



Serving you at the following locations:
 Groom - 248-7544
 Lark - 248-7591
 Grandview - 669-3961
 The Corners - 248-7011
 1-800-299-7544

"We don't think there is a better place to haul your grain!"

Fifty-Eight Tiger And Tigerettes Attend Basketball Camp

Coaches Brad Rainer, Larry Reid and Chris Sumrall recently held a basketball camp for fifty-eight area youths.

Those attending the event were: Maddie Wieberg, Tanner Case, Kelby Noack, Morgan Britten, Hali Bohr, Brett Friemel, Myles Friemel, Trevor Friemel, Jordan Rainer, Molly Stewart, James Reid, Ryan Reid, Ashley Randall, Katy Britten, T. J. Moranic, Cara Barnard, Clint Barnard, Call Barnard, Korri Britten, Taylor Fields, Bethany Williamson, Ashley Williamson, Tyler Babcock, Cody Wilson, Stormy Cave, Trent Murry,

Billy Corley, Neva Corley, Saber Bohler, Kecia Howard, Karla Howard, Keeli Howard, Nichole McClendon, Ashley Byran, Sarah Shackelford, Devin Chambers, Kade Brown, Adam Britten, Chance Barkley, Thane Barkley, Chad Barkley, Kyler Barkley, Cater Wilson, Matt Wilson, David Wilson, Eric Torres, Jacob Torres, Brody Britten, Brady Painter, Dana Terhune, Michaela Rosens, Trent Britten, Kendall Weller, and Kelton Weller.

"We had a great time," stated Coach Brad Rainer. "We think the kids learned a few things and had fun in the process."

Potter County Seeking Annexation To Water District

At their meeting on Wednesday, June 14, the Board of Directors accepted a petition signed

by eighty-four validated landowners in Potter County, asking for annexation of the portion of Potter County not currently within the boundaries of High Plains Underground Water Conservation District or Panhandle Groundwater Conservation District into



IT'S A BOY

Raymond Wesley Holsey, Jr. was welcomed into the world on July 2, 2000. He was born at 8:55 p.m. (California time), at the Balbo Naval Hospital in San Diego. He weighed 7 lbs. and 7 oz. and was 20 and a half inches long. He was welcomed home by his parents, Alicia (Woods) and Raymond Holsey of San Diego. Proud grandparents are

Brian and Linda Holsey of Amarillo, and LaVeda Wood of Groom. Great

grandmother is Jessie Jenkins of El Dorado, Texas. Lots of aunts, uncles and cousins are very anxious to meet him, too!

Granny LaVeda was lucky enough to be present at his birth. Dad's ship did not come in in time!

Panhandle G.C.D.

The Board has scheduled two public hearings. The first hearing, on June 21 at 7:00 p.m., will be held at the Amarillo City Commission Chambers, 509 SE 7th, for the Potter County landowners and residents in the territory included in the petition. The second hearing will be held on June 28, 2000, at the PGCD District Office, 201 West Third in White Deer, for the residents of the District. These public hearings are fact finding meetings to determine if the addition of the territory listed in the petition would benefit both the territory to be added and the existing District. At the conclusion of the public

hearings, if the Board determines that all parties would benefit, then the territory can be added to the District by a resolution of the Board, during an open meeting.

Once the resolution is passed by the Board, the local voters in the territory to be added, have the final say. An election must be held in the territory to be added. Since the District is a taxing entity, the local voters must vote for or against the inclusion of the territory into the District and the levy of a tax to cover the operating expenses of the District. If a majority of the voters in the territory vote in favor of the annexation, it becomes final upon the canvassing of the ballots from the election. If the election fails, then no further action would be taken. The targeted election date is August 12, 2000, which is the next uniform election date in the State.

The Panhandle GCD, whose office is located in White Deer, covers all, or parts of, Armstrong, Carson, Donley, Gray, Hemphill, Hutchinson, Roberts, and Wheeler counties.

NATIONAL SCHOOL LUNCH AND CHILD NUTRITION PROGRAMS 2000-2001 INCOME ELIGIBILITY GUIDELINES

GROOM INDEPENDENT SCHOOL DISTRICT

FAMILY SIZE	ANNUALLY		MONTHLY		WEEKLY	
	FREE	REDUCED PRICE	FREE	REDUCED PRICE	FREE	REDUCED PRICE
1	\$10,855	\$15,448	\$905	\$1,288	\$209	\$298
2	14,825	20,813	1,219	1,735	282	401
3	18,395	26,178	1,533	2,182	354	504
4	22,185	31,543	1,848	2,629	427	607
5	25,935	36,908	2,162	3,076	499	710
6	29,705	42,273	2,476	3,523	572	813
7	33,475	47,638	2,790	3,970	644	917
8	37,245	53,003	3,104	4,417	717	1,020
9	41,015	58,368	3,419	4,865	790	1,124
10	44,785	63,733	3,734	5,313	863	1,228
11	48,555	69,098	4,049	5,761	936	1,332
12	52,325	74,463	4,364	6,209	1,009	1,436
For each additional family member add:						
	+\$3,770	+\$5,365	+\$315	+\$448	+\$73	+\$104

Federal meals assistance programs have been announced for the 200-2001 school year. The Groom School District participates in both the breakfast and the lunch programs. The entire range of income eligibility guidelines will be published in the Groom News, reporting weekly, monthly, or annual income figures.

An example of eligibility would be a family of four with total monthly income less than \$2,575.00. Last year's maximum in this category would have been \$2,537.00 monthly.

These income figures qualify Groom School students in the family to receive reduced-price meals. Those prices are breakfast -- 30¢ and lunch for 40¢.

Nutritious meals are served on each school day. The 2000-01 calendar for

students begins on August 10, 2000, and ends on May 24, 2001. Children may buy lunch for \$1.40 (K-6) and \$1.50 (7-12) and breakfast for \$0.75. These meals are to be paid in advance.

Any family now receiving TANF or food stamps can receive breakfast and lunch free for its Groom School students. Persons qualifying under the published income eligibility guidelines may also receive free meals. According to the new criteria, a family of four with a total monthly income less than \$1,810.00 gross earnings would qualify for free meals.

Parents are encouraged to consult the published guidelines to determine if the household is eligible to participate in the Federal program, according to the

Federal letter.

Special situations, such as foster children or handicapped students, are also covered under policy rules.

Once an application has been completed, households have an obligation to advise the school of any change in household size or income. Applications are under the direction of Joyce Hutsell, Business Manager of the School, and any questions should be directed to her at 806--248-7251. Families should also be advised that the application can be made, or changed, at any time during the school year. Families will be advised on the status of the application on file.

The information used to determine eligibility for the meals program is confidential, and the

confidentiality is protected by the application and meal record process. The information may be subject to release only to other means-tested programs conducted by Federal or State government, but no other circumstances.

The operation of this program guarantees that no discrimination because of race, sex, color, national origin, age, or handicap will take place.

Application forms are available throughout the summer at the school business office at 304 West Third Street in Groom as well as by mail if requested at the above telephone number. In addition, students will be given these applications at the time of enrollment for the school year.

★ GRAY COUNTY ★ TITLE CO., INC.

- ★ ABSTRACTS
- ★ TITLE INSURANCE
- ★ ESCROW CLOSINGS

Edith Hill - Manager
PHONE - 665-8241
408 W. KINGSMILL, SUITE 171A

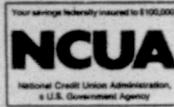


LEFORS FEDERAL CREDIT UNION

SERVING RESIDENTS LIVING IN THE LÉFORS AND McLEAN SCHOOL DISTRICTS
CALL 806-835-2773

SAVINGS AND LOANS

117 E 2nd • P.O. Box 425
Lefors, Texas 79054



The City Of Groom

Has several health care items for residents who may need them temporarily.

They are: A wheelchair, 2 walkers, a potty chair, and a bath stool.

Koetting Construction

Remodeling • House • Leveling
Block & Stone Work
New Construction

1981 E. SHIMMITS • BONDED & INSURED

"When Quality Counts"



Groom Minor League: Back - Coaches Tim Case, Fabian Torres, & James Miller; Trent Britton, Andrew Thompson, Tyler Case, Chaz Leven, Eric Torres, Brett Friemel, Trevor Friemel, & Ricky Davis. Front- Tanner Britten, Brady Miller, Miles Friemel, Jordan Rainer, Jacob Torres, Tyler Babcock, Daniel Wilson. Not pictured were Todd Weinheimer.



Groom T-Ball Players: Coaches Tina Painter, Hop Britten, and Byron Williamson. Back-Stetson Ruthardt, Colby Williamson, Taylor Fields, Trent Murray, Samantha Clendennen, Bethany Williamson, Molly Stewart, & Kevin Reeves. Front- Ryan Reid, Brady Painter, Kyler Barkley, Brody Britten, Tanner Case, Whitney Rasher. Not pictured were Chris Homen, Courtney Head, Mikayla Fancher, and Forrest Yelverton.

Farm Place Can Be A Dangerous Working Place

Farming is a unique industry because children can be exposed to potentially dangerous situations any time of the day. Because the farm is both a work and home environment for many families, there is often not a strong enough distinction between the two.

An estimated 104 children younger than 20 years die annually from agricultural injuries on U.S. farms and ranches. Another 100,000 are seriously injured. No other industry includes children in its injury and death rates.

The areas on a farm most associated with risk are equipment, structures and livestock.

Many injuries to children are not directly related to their work or chores, and could have been prevented by planning and an active commitment to safety.

1. Designate safe play areas, environments where children can play without adult supervision, such as the porch of the farm house or the surrounding yard.

2. Determine other attractions, find out where children like to

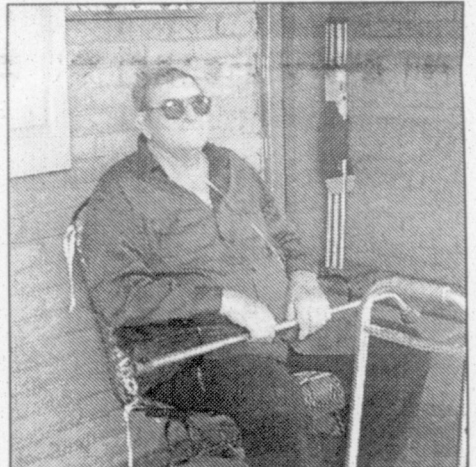
play on the farm and why they like to play there, then explain why off-limit areas are dangerous.

3. Identify hazards around the farm, after creating a safe play area, take a tour of the farm to point out hazard areas and explain why the areas are dangerous.

4. Be a model for safety, set an important example by exhibiting safety-conscious attitudes and behaviors.

Make consistent rules: discussion of safe behavior; assignment of farm chores, with careful supervision, bike safety training and use of bike helmet, motorcycle and ATV safety education and use of helmets;

careful supervision to avoid the risks of young children drinking or eating poison, falling off farm equipment or pickup truck; drowning in pond or stock tank; take precautions to prevent hearing loss around loud machinery and make clear and consistent rules regarding drugs and alcohol. Have clear rewards and consideration for acceptance of adult responsibilities.



Card Of Thanks

We want to thank our friends and family for every kind act and word that has helped us through this latest bout of Arnie's illness. To all

who sent flowers, food and cards and to those who visited us at the hospital and at home, to those who kept our flowers watered and grass mowed; for especially all the prayers, we are so

appreciative.

We are home now and will enjoy your stopping in to visit.

Thanks again,
Arnie & Doris
Kuehler

ARNet
Internet Service
3505 Olsen, Suite 103
Amarillo, TX 79109
Telephone: (806) 355-3539
Facsimile: (806) 355-2705

Marshall Sherwood,
Attorney At Law
Practicing Civil Law in Groom
Office Hours 8:30 a.m. - 5:00 p.m., Fridays Only
Groom Community Center Office
248-7220 No appt. necessary
Stop by and see me!
Not certified by the Texas Board of Legal Specialization

TRINITY & CO.
New Summer Hours: Thur. Fri. & Sat. 1:00-5:00
Sterling Silver Jewelry ... Boyd's Bears ... Candles ...
Gifts for the entire family
Crosses ... Glassware ... Pewter ... Home Decor
248-8016, Groom, TX

DEAN'S PHARMACY
2217 Perryton Parkway 669-6896
"Looking forward to serving our Groom-McLean customers."
9:00 - 6:30 Monday - Friday
9:00 - 1:00 Saturday
WELCOME WELFARE RECIPIENTS
SPECIAL DISCOUNTS TO SENIOR CITIZENS
ON ALL PERSCRPTIONS

Jim Pepper Home 669-9719

Elsie F. Floyd
 PAMPA - Elsie F. Floyd, 73, died Thursday, June 29, 2000.

Services were held on July 1, 2000 at the Charmichael-Whitley Colonial Chapel with the Rev. Todd Dyess, pastor of the First United Methodist Church, officiating. Burial was in Memory Gardens.

Mrs. Floyd was born in Amarillo and lived in Pampa since 1950. She was a secretary for IRI. She was a member of the First United Methodist Church and a member of Epsilon Sigma Alpha.

She married Roy G. Floyd in 1950 at Shattuck, Okla.

Survivors include her husband, a son Terry Floyd of Amarillo, a daughter Barbara Davis of Groom, and two grandchildren.

The family suggests memorials be to BSA Hospice, 800 N. Sumner, Pampa, Texas 79065.

Brother of Local Woman Passes Away

The News was saddened to learn that the brother of Katie Talley has passed away after a long illness. No additional information was available at presstime.



Carson County Sheriff's Report For Past Week

There were 10 persons booked into the Carson County Jail during the week of June 26 through July 2, 2000. Currently, 14 persons are being incarcerated with 9 additional prisoners being held in other jurisdictions.

Arrests for the week include:

Mathew Dominguez, 19, Panhandle, possession marijuana less than 2 ounces and minor in possession;
 Jason Nunn, 19, Panhandle, possession of marijuana less than 2 ox and minor in possession - 3 or more times;
 Russell Jones, 18, Panhandle, Possession of

marijuana less than 2 oz;
 Richard Hoffman, 38, Panhandle, DPS Warrants - traffic;
 Joshua Poteete, 19, Halleyville, AL, theft of gas;
 Joshua Rouse, 20, Halleyville, AL, theft of gas;
 Emmitt Calfy, 39, Pampa, Public Intoxication, Possession if

of Drug paraphernalia & outside agency warrants;
 Lonnie Kerkin, 38, Driving while intoxicated - 3 or more times and possession drug paraphernalia;
 Samuel Cisneros, 24, Outside agency warrants-Theft;
 Jeremy Wright, 19, public intoxication.

ATTN: OWNER OPERATORS and DRIVERS!!
GET PAID, GET HOME!
SINGLES - Earn .84 - .87 CPM *All Miles Paid, Loaded or Empty!*
TEAMS - Earn .87 CPM
 * Paid Plates, Permits & Tolls * No Forced Dispatch
 * Weekly Settlement * Excellent O/O Equipment Available for Drivers
 * QualComm Satellite * No Touch Freight
Call Norm or Lizz Today!
1-800-765-3952

FREE **Satellite TV**
 PROFESSIONAL INSTALLATION! Save \$200⁰⁰ by Subscribing Today!
 Programming starting at \$21⁰⁰/mo. Over 210 digital-quality channels available. Avoid rising cable rates. No monthly contract.
877-DISH-111
 Local Toll-free for Texas

We are currently accepting cases involving **HEART DAMAGE** or **DEATH** due to **HEART ATTACK** or **UNKNOWN CAUSE** (adults)/**SIDS** (infants) while taking
PROPULSID
 FOR INFORMATION, CALL:
 713-847-8934 1-800-752-2716
 Law Offices of Donald W. Puryear
 8121 Broadway, Suite 130 Houston, TX 77061
Not Certified by the Texas Board of Legal Specialization

ATTENTION ALL PAST AND PRESENT ALLIANZ LIFE INSURANCE OF NORTH AMERICA AND / OR FIDELITY UNION LIFE INSURANCE POLICYHOLDERS
 If you purchased a life insurance policy from Allianz Life Insurance Company of North America or Fidelity Union Life Insurance Company between 1981 and 1998, you may be a member of a class action settlement and may have certain legal rights you need to protect.
 For a free consultation, please call
McCallum & Methvin, P.C.
 Attorneys at Law
 Toll Free: **1-800-210-7476**; Toll Free: **1-800-914-9077**
Our office is located in Birmingham, Alabama. We practice law only in Alabama and Mississippi, but associate with lawyers in other states.

ALLSUP'S
Always
 LOW PRICES!

ALL VARIETIES DR PEPPER
 12 PACK \$3.49
 6 PACK \$1.69
 3 LTR. BTL. \$1.59

ALLSUP'S WHITE BREAD
 1-1/2 LB. LOAVES
2/\$1
 OR 69¢ EA.

24 QUART STYROFOAM ICE CHEST
\$1.79
 WITH PURCHASE OF 8 LB. BAG ALLSUP'S ICE
 \$1.99 IF PURCHASED SEPARATELY

BAR-S FRANKS
 12 OZ. PKGS.
3/\$1

ALLSUP'S 1%, WHOLE, SKIM OR SHURFINE 2% MILK
 GALLON
\$1.99

TENDERCRUST 8 CT. PKG. HAMBURGER OR HOT DOG BUNS EA.	69¢	FRENCH'S SQUEEZE MUSTARD 8.1 OZ. BTL.	89¢
BAR-S HAMBURGER PATTIES 5 CT. PKG.	\$1.99	DEL MONTE TOMATO KETCHUP 24 OZ. BTL.	\$1.29

PRICES EFFECTIVE JULY 2 - JULY 15, 2000. WHILE SUPPLIES LAST



Girls Soft Ball: Coaches Tonda Torres and Sharla Miller. Tiffani Kling, Katherine Herndon, Maddie Wieberg, Morgan Britten, Brittany Weinheimer, Berklee Ruthardt, Britney Evenson, Bailee Ruthardt, Whitney Evenson, Ashley Murry and Katy Britten



Groom Major League: Coaches Kevin Noack and Josiah Scott. Back - Chad Barkley, Javier Caro, Carter Wilson, Blaine Britten, Thaone Barkley, & Brandon Jenkins. Front - Kade Brown, Matt Wilson, Joel Horn, Kleby Noack. Not Pictured: T. J. Morante. The Majors placed 2nd in their tournament, losing by 1 run. They had 4 wins and 5 losses.

*The most joyous of occasions
is the union of man and woman
in the celebration of life
Lezlie Brown Stewart
and
Bradley Don Rainer
were joined in life
May twenty-seventh
Two thousand*

*The celebration continues
with a special evening
of food and fellowship
Saturday, July 8 at 7:30
American Legion Hall
Groom, Texas*

Children Welcome No Alcohol

Services held For Gilbert "Gib" Wilson

MEADE- Gilbert William "Gib" Wilson, age 89, died Thursday, June 29, 2000 at the Meade District Hospital, Meade, Kansas.

He was born August 27, 1910, in Denver, Colorado, the son of Walter Howard, and Maude Parthenis (Wilkins) Wilson. As a young boy, he moved with his family to Texas where he completed grade school in Lark, Texas. They later moved to Groom, Texas where he graduated from Groom High School, participating in all of the schools sporting events.

He began working for the Rock Island Railroad at age fifteen in the summers. He later joined the company full time, retiring after fifty years of employment as a Section Foreman.

He was a member of the Brotherhood of maintenance and Ways Union and had been a Deacon, Secretary/Treasurer, and Sunday School Teacher of the Community

Church of Meade for many years.

August 16, 1933 he married Annie C. Black at Panhandle, Texas. After their marriage they continued to make their home in Texas before moving to Meade, Kansas December 16, 1942. She preceded him in death on January 31, 1997.

Survivors include: a son, Wendell and wife Jan Wilson of Woodward, Oklahoma; two daughters, Dorothy and husband C.R. Wilson of Liberal, Kansas, Charlene and husband Tom Larout of Palestine, Texas; a brother Herman Wilson of Amarillo, Texas; a sister Velma Hickox of Amarillo, Texas; eight grandchildren, twenty-nine great grandchildren, and three great-great-grandchildren.

Services were held on July 5, 2000 at the First Baptist Church in Meade Kansas with Rev. Wayde Wilson presiding. Burial was at Graceland Cemetery.

<p>7 Leader in Miles Years in a Row COVENANT TRANSPORT</p> <p>\$1,000 Sign-on Bonus for Exp. Company Drivers</p> <p>Teams Start up to 46c Plus 6c for all miles over 15,000 in a month</p> <p>Owner Operators Solos 83c Teams 88c</p>	<p>Lease Purchase Program Available</p>
	<p>Experienced Drivers 1-800-441-4394</p>
	<p>Owner Operators 1-877-848-6615</p>
	<p>Graduate Students 1-800-338-6428</p>

1st Year Drivers Expect To Earn
\$35,000 To \$40,000
1st Day Benefits

- 1 Year - 29c • 2 Years - 30c
- 3 Years - 31c • 4 Years - 32c
- 5 Years - 33c • Up To 38c Per Mile

Call For Immediate Placement

1-800-395-3331

www.marten.com



Don't Forget

Groom Day is coming!
Be sure to volunteer to help keep Groom Day going!

ATTENTION FORMER STUDENTS OF GROOM

The Groom News is compiling a list of high school honors such as Homecoming Queen, Student Council President, etc. We need your help in finding out who held these honors during the "War" years when there

was no yearbook produced. We would also like to see some pictures of school events during this time period if anyone has some. Please call us at 248-7333.

The Armstrong County Museum & Gem Theatre Claude, Texas

July 15th at 2:30 pm

The String Technicians Country Music
Celebration for the Caprock Roundup and
Old Settlers Reunion

Adults \$9.00, Seniors \$7.00, Children \$3.00

Call 226-5409 For Reservations

Come See Our Selections In The Gift Shop!

Museum Hours: Tuesday-Saturday 9 am-4 pm,
Sunday 1 pm-4 pm, Closed Mondays