

THE
Eripatefic
VIEW

by C.E.C.

by accident two weeks
copy of "Look" magazine
put to my small rented
mat, and I received a dose
of the most disgusting
that has been offered up
public in recent weeks. (Ex-
the possibility of other is-
"Look," which I am proud
missed.)

ult of the magazine con-
a series of articles about
and the theme seems
carried the effect of dan-
carrot in front of the don-
th the over-all shortage of
d green stuff, and the New
not yet having arrived,
se the theory was that
a would lounge through the
na in a dream brought on
pictures.

he front of the article was
are of a young millionaire
eck chair, sipping a scotch
d beside his private swim-
ool. The caption read some-
like "Enjoys Life in
f money."

ent on to point out that
g a million is easier today
has ever been in the past.
alone, is one of the most
statements imaginable,
continue to insult the intel-
e of those who followed the
it said that "all you need
ood idea."

ns that the hero of the e
(the young millionaire) had
ved himself a good idea-
made himself a million-
inherited capital. (The lat-
ree words not having been
ed.)

reason that "Look" chose
so misleading is not known,
it was pressured into an at-
to keep the general public
ing while the hard truth
s by unnoticed.

indisputable fact is that
ng a million is not only hard-
day than ever before, it is
to impossible. Another in-
dole fact is that even scratch-
living is harder than ever
in spite of the new admin-
ion. I seem to recall a ne-
gushed group that finally
l the land of milk and honey,
it took them forty years in-
l of four and the quality of
ership was far better than a
y of our senators possess to-

APTAL is the chief factor in
fight for survival. The idea
f worth about as much
one-legged man in a shin-
ing tuxedo. The capital be-
the idea makes the success
allure . . . And where did the
ndant capital of the past years
pear to? Consider the follow-

ere are those who would say
big business has gobbled it
and at the same time advo-
the giving away of federal
s for the care of all persons
all nations who elbow their
to the front of the line.
at to keep up the gifts, the
ney must be gleaned from a
e source. And since the per-
income tax etc. has reached
a breaking point, the govern-
it is PRESENTLY borrowing
ey from banks at some 3 or 4
cent. This must be done and
nt continue to be done at an
accelerating pace in order
keep handing back out in equal
ns - to the deserving and
ng alike.

he chain of diminishing capi-
tal carries right down to the
zens of Slaton begins with the
eral government upping the
erest on loans. Then the huge
cerns and banks find it more
sible to loan to the government
d receive a positive 4 percent
erest rather than to loan to in-
duals for 8 percent or 10 per-
ent and have an element of risk
olved.

All the taxation from constitu-
s can't carry the load that is
ing distributed (inclusive of
oney-losing government owned
e enterprise) and so loans oth-
er than for the purchase of a new
ashing machines or new cars
10 percent for 12 months are
ooming as scarce as circuit-
ing school teachers.

I talked to one banker who stat-
ed flatly that he didn't care if he
wer made another loan in his
me town so long as he kept
nding bulk loans to the govern-
ent on ninety-day periods.

I would challenge anyone to
ame one business man or mer-
chant who began without capital
nd who remained successful
through the years without ever
aving needed a loan. When loans
re not available then some have
olled and others have proceeded
at a slower pace than would have
een possible otherwise.

When ideas in men's minds
re fruitless because his govern-
ent is draining off all the lend-
ing money, then ideas cease to
ourish, and individuals cease
making an effort on their own.
hen all persons must, of neces-
sity, work for a subsidized pit-

The Slaton Slatonite

"UNITED WITH SLATON IN SERVICE TO ALL"

Volume Fifty Number 20

Slaton, Lubbock County, Texas, Thursday, February 23, 1961

10c per copy

Twelve Page

Tigerettes To Meet Alpine Tuesday



DEPENDING BI-DISTRICT TITLE — Pictured above is its di-district championship of last season Tuesday night 7:30. From left to right are: Judy Dunn, (co-captain), Jo Anne Thomas, Elaine Barnes, Pat Pettigrew, Jeanette Thompson, Thompson, Cathy Claiborne, and Judie Bishop

the Slaton Tigerette basketball squad, which will defend against Alpine in a home game. Game time is set for Carol Self, Elaine Pickens, Nelda Ray, Glenda Bownds, Price, Ronda Pettigrew, Janet Adamek, Fonda Patter-(co-captain)

Will Defend Bi-District Title On Home Court

Slaton's Tigerettes will defend their bi-district title Tuesday night, Feb. 28, on the home court against Alpine. It was announced this week. Game time is scheduled for 7:30 p. m.

The announcement came as a surprise to many cage seers in that McCamie was picked to clinch the title through having led in all pre-tournament action. Alpine, however, downed McCamie by a wide-margin 55-33 in the opening game of the district tourney, and it was then decided that the winner of the second game in the double round-robin affair would represent the district. Alpine then polished off the favorites in a 48-37 victory.

Practice Game Slated
Saturday night, also in a home contest, the tigerettes will play New Deal in a practice game starting at 7:30. The New Deal quintet is champion in its district of "B" conference.

Statistics Even
Looking at the statistics, Coach Paul Boswell's cagers will be the regional tournament will be held in Lubbock the following week end of March 3rd and 4th.

Rotarians Hold Regular Meeting

Raymond Smoot, distributive education teacher for Slaton High School presented the program for the regular meeting of the Rotarians, held Thursday in the Club House.

BULLETIN

The Tigerettes will also play McAdoo here tonight, Feb. 23, in another practice game, beginning at 7:30.

Offense vs. Defense
The Tigerettes appear strong or offensively, having scored a high as 71 points in a game with an average of 55. Alpine hit a high mark of 59 points and retain a 42 point game average.

However, the Alpine team has held its opposition to an average of 38 per game while Slaton's opponents have scored an average of 47 points.

Outstanding on the defensive end of the Alpine team is guard Carmen Sanchez, while Elaine Pickens will be called upon to defend the top scorer for Alpine.

Three New Committees Appointed In Club House Remodeling Project

A group interested in getting the County Club House remodeled met February 15 with the chairman, Mrs. W. K. Fry, presiding.

George Green, county commissioner, was in attendance at the meeting which had reports and estimates of the proposed remodeling given by several of the committees.

More complete estimates are to be presented at the next meeting, to be held March 1 at 2 p. m. at the Club House.

There was a discussion period with all representatives taking

Four File In School District Trustee Election

The annual trustee election of the Slaton Independent Consolidated School District will be held April 1, 1961.

The last date to file names or the ballot is March 2, 1961, and they must be filed in the school business office.

The following names have been filed, according to Chester Williams, school business manager: Dr. Don Hatchett (re-election), Milton Davis (re-election), Dr. Join C. Locke and Max Arrants. There are three vacancies to be filled.

A total of \$126.90 was raised from three different sources in Slaton for the March of Dimes, even though there was no organized drive in the community. Mrs. R. D. Bisbee, Chamber of Commerce secretary, said this week. Since there was no MOD chairman here, money collected was turned in to the chamber, which forwarded it to the Lubbock County organization.

A talent show at the Slaton Theatre was top money-raiser, bringing in a total of \$102.40. Children at Evans School con-

tributed \$14.50 and \$10 was received from the Catholic daughters.

VICTIMS OF LEAP YEAR Barney Wilson, W. R. Lovett, Still Adore Life In The Teenage Bracket

Two Slaton youngsters, W. R. Lovett, and Barney Wilson, get passed by again on the calendar this year as they await another birthday to hit on Feb. 29th.

Lovett, now having celebrated his 18th birthday (born in 1884), says that he feels he has covered a lot of ground for a lad of 18. It's always been a way to tell your good friends too. He says those that don't think much of him always get around to bestowing

held April 1, 1961.

The following names have been filed, according to Chester Williams, school business manager: Dr. Don Hatchett (re-election), Milton Davis (re-election), Dr. Join C. Locke and Max Arrants. There are three vacancies to be filled.

A total of \$126.90 was raised from three different sources in Slaton for the March of Dimes, even though there was no organized drive in the community. Mrs. R. D. Bisbee, Chamber of Commerce secretary, said this week. Since there was no MOD chairman here, money collected was turned in to the chamber, which forwarded it to the Lubbock County organization.

A talent show at the Slaton Theatre was top money-raiser, bringing in a total of \$102.40. Children at Evans School con-

tributed \$14.50 and \$10 was received from the Catholic daughters.

tributed \$14.50 and \$10 was received from the Catholic daughters.

Two Slaton youngsters, W. R. Lovett, and Barney Wilson, get passed by again on the calendar this year as they await another birthday to hit on Feb. 29th.

Lovett, now having celebrated his 18th birthday (born in 1884), says that he feels he has covered a lot of ground for a lad of 18. It's always been a way to tell your good friends too. He says those that don't think much of him always get around to bestowing

gifts only on the 29th. Wilson, on the other hand, is now 13. His only comment is that it's might frustrating to support a wife and family while undergoing the first year as a teenager

First Christian Church To Host Youth Meeting

At 5 p. m. Friday, the Christian Youth Fellowship of District Two will begin registration at the First Christian Church here.

Friday and Saturday, they will be holding their annual "World Fellowship Youth Meet" and are expecting youth, their counselors and ministers from the 18 churches in the area. The theme of the meet is, "Into All The World Together."

The guest speakers are two young people from Jamaica, both of whom are students at Wayland Baptist College in Plainview. Emmins Wilson is a freshman, and is from Spanish Town, Jamaica. She has a double major in physical education and sociology with a minor in English. She plans to return home following her schooling. Winston Williams is a sophomore from Buff Bay, Jamaica. Williams is majoring in Biology and will enter medical school in Canada after completing his work at Wayland. He will be a surgeon when he returns to Jamaica.



SENATE AND CANDIDATE VISITS

John Tower, Republican candidate for the U. S. Senate, visited Slaton Tuesday in his current campaign. The man 'the Belden Poll says is out in front in the April 4th Special Senatorial Election is shown here at left with Mrs. H. L. Yast and W. J. Klattenhoff, two Slaton residents. Several Slaton residents had breakfast with the candidate at an early-morning meeting here Tuesday.

John Tower, Republican candidate for the U. S. Senate, visited Slaton Tuesday on a scheduled stop in his present vigorous campaign trail.

Tower visited with a group of Slaton citizens who braved the early morning cold for a 7:15 breakfast held in Bruce's Cafe.

When quizzed by persons at the breakfast, Tower stated that his primary platform for the Senatorial position was his "consistent conservatism." He believes that he is the only true conservative among all the candidates, and that he is "not obliged to any person, machine, or business interest."

Tower polled over 40 per cent of the state's votes against dual-campaigning Lyndon Johnson in the recent National Election, and the first Belden poll taken after Nov. 14 indicated he was the

HEART SUNDAY

Heart Sunday will be observed here Sunday, Feb. 26th, as part of a nation-wide project designed to raise funds for heart research work.

Locally, the campaign is under the direction of Mrs. W. D. Edwards and Mrs. Joe Wicker, co-chairmen. Anyone wishing to donate may contact either person.

Slaton churches are aiding in this "Heart Sunday" phase of the campaign.

'Sunny Bunny's First Easter' 'Due March 7th

An operette, "Sunny Bunny's First Easter," will be presented in the High School Auditorium March 7th at 7:30 p. m., under the sponsorship of the West Ward Parent-Teacher Association.

In the cast will be: Mother Rabbit, Marilyn Meeks; Sunny Bunny, Jeff Johnson; Grandfather Rabbit, Kim McPherson; Boy Johnny Taylor; Brother Rabbits Landy Bownds, Gary Cook, Starley Miles, Glen Akin and Ricko Rappy; Sister Rabbits, Vicki Milliken, Marsha Streit, Melod Cooper, Kathie Mitchell and Paula Shafer; Trees, Sandy Brake, Sue Brake, Janet Gozsett, Tom Melton, Lynn Swanne Randy Townsend, Judy Boy Sharron Keith, Charlie Geer, Sherill Wilson and Billy Bob Conner; Flowers, Debbie Gartman, Dora Lynn Basinger, Tyra Marti, Glenna Smith and Janet Gass.

The chorus will be of second graders, too. P-T-A representatives said.

Admission will be 10 cents for children and 25 cents for adults with no family to pay more than 1 admission charges.

Last Rites Held For Mr. Rhudy

Last rites for Mrs. Nannie Elizabeth Rhudy, 83, were held 11 a. m. Wednesday in the Will Baptist Church.

Mrs. Rhudy died Monday the home of a daughter, Mrs. W. Parker. She had lived in Slaton since 1941, moving there from East Texas. She was a native Tennessee.

Officiating at the funeral was Rev. H. F. Scott, pastor. Burial was in Wilson Cemetery under direction of Williams Funeral Home of Slaton.

THIS WEEK END!

The Slaton Slatonite

753 S. 9TH STREET VA 8-4201
SLATON TIMES PURCHASED JANUARY 20, 1927

Entered as Second Class Matter at the Post Office at Slaton, Texas, under the Act of March 3, 1897.

NOTICE TO THE PUBLIC—ANY ERRONEOUS REFLECTION UPON THE REPUTATION OR STANDING OF ANY INDIVIDUAL, FIRM OR CORPORATION, THAT MAY APPEAR IN THE COLUMNS OF THE SLATONITE WILL BE GLADLY CORRECTED WHEN CALLED TO OUR ATTENTION.

SUBSCRIPTIONS—PAYABLE IN ADVANCE. LUBBOCK, LUBBOCK, LYNN, GARZA AND CROSBY COUNTIES, \$3.00 PER YEAR. OUTSIDE THESE COUNTIES, \$5.00

DEADLINES

GENERAL NEWS 3 P.M. TUESDAYS
SOCIETY NEWS 12 NOON TUESDAYS
PAGE ONE NEWS 9 A.M. WEDNESDAYS
ALL PICTURES 5 P.M. MONDAYS

JOEL R. COMBS EDITOR AND PUBLISHER
BOBBYE COMBS BOOKKEEPER
DARRELL WEAVER ADVERTISING MANAGER
DON HOWELL PRINTER
CHESTER REESE PRINTER
J. R. BUTLER PRINTER

MEMBER

Texas Press Association
West Texas Press Association
Panhandle Press Association

Thursday, February 23, 1961

EDITORIALS

Post Out Front?

A small cotton-farming community to the south of Slaton... Post City they used to call it... has taken a step which very few could give that community a "push" right out in front in Slaton.

That is, unless we take steps soon, very soon, in the same direction.

At a meeting Wednesday night of last week, 10 men formed an organization to be called Post Developments, Inc. The group, like their name indicates, will be to attract new industry to the community.

Jim Cornish, publisher of the Post Dispatch, had this to say concerning the group:

"What started out to be merely a session to discuss the possibility of such an organization met with such enthusiasm from the ten men present that it was unanimously decided to proceed with organization and incorporation without further delay.

"Irby G. Metcalf was named temporary chairman. Pat Walker was instructed to proceed immediately with incorporation of the new non-profit organization. A committee was named to draw up a proposed set of by-laws. "Thinking of the group was that memberships would cost \$100 annually with the officers empowered to assess up to additional \$200 per member to secure quick funds should a definite need arise.

"Membership will be open to all Post citizens who want to participate in this new, united effort to help Post grow economically.

"Organization of Post Developments, Inc., was simply 'so right' for this community that the group of business and professional men who gathered last night to discuss the proposition jumped right in to get their feet wet. At the same time they threw open the door for everybody who wants to join at the start to develop new opportunities for this community.

"Such enthusiasm we haven't seen in a long time. It speaks well for Post's future growth. Everybody agreed that now is the time.

"It is easy to figure that \$100 a year invested in such an organization as Post Developments, Inc., could be the best money any local business or professional person could invest... not only in his community's future, but thereby in his own as well. The members of this organization are not only going to put their own money to work for their community, but their brains and time as well.

"It was pointed out that Post Developments, Inc., will supplement the good work the Chamber of Commerce is now doing in the industrial development field and will work in close relationship to the Chamber and its industrial committee."

"Nuff said?"

JRC

Spell Quiz

Which of the Following is Spelled Correctly?

Eger Eager Eagar
(Meaning impatiently anxious or impetuous.)

See Classified Page for Correct Answer.

Is Change-of-Life Making You Only Half a Woman?

...Too tense, too tired to be a real companion to your husband? Special women's medicine can relieve "hot flashes", weakness, nervousness... then you can enjoy life fully again! Has change-of-life left you weak, nervous or you feel "half" alive? Lydia Pinkham's Compound can relieve both these feelings and physical distress! In doctor's hands with Pinkham's "hot flashes" medicine, Nervousness was relieved. Then most women can go "miling" through "change-of-life" without suffering! If change-of-life has left you only "half" a woman, get Lydia Pinkham's Vegetable Compound from drugstore. See how fast you can feel "all woman" again!

SLEEP 8 HOURS—WAKE UP TIRED! When due to simple iron-deficiency anemia, like Pinkham Tablets, Iron-rich, they start to strengthen your blood in 1 day!

The Sounding Board

(Editor's Note: Slaton is not the only town which needs a little community mindedness, a recent column in The Andrews County News would indicate. Read on... it came from the column, "Drifting Sands.")

WE have little sympathy or regard for the self-pitying hard-wringer.

We have yet to see a beautiful building built, a dream realized, a new highway constructed, or a community step forward because a group of men stood around wringing their hands in despair over the situation.

And we have yet to see any city gain something it wanted and desired very much because a group sat around alternately wishing and wringing their hands hoping and day-dreaming from a comfortable office chair, and cussing... to high heaven because the other fellow was not working hard enough on the project.

But that's about the situation on the railroad project for Andrews.

No city ever needed railroad as badly as does Andrews. No city ever had its future so intertwined and so dependent on a railroad as Andrews.

Most businessmen, most individuals, and most of the citizens are aware of the city's stake in as railroad... yet never have so many been so willing to let so few do all the work.

It appears that we can't get the rails out to Andrews because we can't get the lead out.

THE facts speak for themselves.

A company has been duly chartered to operate a railroad between Seagraves and Odessa, going in with Santa Fe at the northern terminal and with the T & P at the southern end.

The route has been mapped. The owners of... right-of-way have been charted. The cost of building has been properly estimated. The cost of moving ton of freight a mile is known.

The whole progress of the project in Seagraves, in Seminole, in Andrews, and in Odessa is currently being up on one little simple peg: Freight information.

Shippers of freight and receivers of freight... have been asked to fill out a simple little questionnaire about... how much freight they received over a month's time or a... years time what it weighed, what it was, and where it came from.

Simple enough request for people living in a city whose whole future is dependent upon the project? Over 600 of the questionnaires have been mailed out, handed out, carried out, and after six weeks, how many have been returned. Less than a hundred. Far less than a hundred!

And the project cannot move one foot forward until the freight information is obtained. Because Seagraves and Odessa currently enjoy rail service, Andrews and Seminole were sup-

posed to carry the ball in presenting the case to the authorities. Seminole has completed its survey, Andrews' Hub!

BUT before you hasten to chastise our local business people for their lack of get up and go-don't. It's not altogether their fault.

Think back over the past 20 years in Andrews. Only a few of our business people were in business back here when Andrews people scrapped, fought argued and cajoled for every lousy forward inch.

The highways serving Andrews were scrapped for by Andrews officials and businessmen spending lots of time, energy and money in Austin appearing before stubborn highway commissions. The County-wide school district didn't just happen. People worked their hearts out on the project.

The community building, the youth center, the golf course, the swimming pool, the airport, the first oil field supply store, the first bank, the library—we just didn't wake up on morning and they were there. It took sweat, toil and a few honest tears. Above all, it took an individual's time—seven years to be exact on the youth center.

But in postwar years, we grew fat, sassy and lazy. And we forgot how to work as a team on a project—we didn't need to.

Gasoline plants, district oil company offices, pipeline stations, contracting firms—all fell in the lap of Andrews without anyone here lifting a finger. But those days are gone. Finished Kaput.

Nowadays the town that prospers is the town that can get off its collective derriere, dust off its shiny-in-the-seat britches, and go to work.

A few of our businessmen are past salvation... they've ridden the coattails of others so long they have neither the desire nor the inclination to get off and go to work now... either for their own business or for the community.

But the vast majority are vitally interested in the welfare of Andrews and they can be reclaimed and reworked into a tough, scrapping unit willing to fight tooth and toenail for the betterment of Andrews.

And the best place to start, we believe, is filling out that simple little old freight questionnaire.

SPECIALIZING IN AUTOMATIC TRANSMISSIONS

James Altman at Pete Grandson's Garage, general automotive repair.

ODD CHALKINGS

THERE ARE ABOUT 5000 DIFFERENT LANGUAGES IN THE WORLD.

FIDELITY FEATURES CO.

There are thousands of Different Drugs ready to restore your Health, and we are ready to compound them into Health-Giving Medicines for You!

TEAGUE DRUG
Phone VA. 8-4535

DAILY DIET

TAXES ON UTILITIES, TRANSPORTATION, APPLIANCES — AD NAUSEAM!



All Day Long, And Night, Too

Turned off alarm clock (price \$5, tax 50c) at 7 A. M. and fell out of bed (price \$100, tax \$10). Pushed back electric blanket (price \$28, tax 84). Snapped on 33-cent light bulb (tax 2c). Used electric razor (price \$22, tax \$1.43) on drawn face. Applied sweet smell of success (bay rum—\$1.30 a bottle plus 13c tax). Lost tie clasp (price \$.33, tax 30c) while dressing. Looked forward to breakfast Orange juice in the refri (price \$300, tax \$9). Toast in the toaster (price \$16, tax 48c). Coffee perking on the stove (a \$120 job, disregarding the \$6.30 tax). Phoned Carpool Henry (monthly phone bill \$12, plus \$1.20 tax). Oh well, relax at the station.

Before train pulled n, needed a cigarette (pack costs 13c plus 15c tax). Bearded train. Join three pals for bridge. Clipped in for cards (40c a deck, tax 13c).

Got lots of work done at the office (annual income \$7,500, federal and state withholding \$1,328). Left for lunch (\$1.40 plus 3c tax). Crept back.

Home at last. Thank heavens. Stumbled into the castle (price \$16,000, annual property tax \$210). Kissed wife. No tax.

"Will-yum," said Mama sharply, "we haven't made out our income tax."

The Reader's Angle

Editor,

In reference to "Just Talk" in the February 9th issue of the Slatonite, I would like to take this opportunity to comment on Mr. Jackson's remarks concerning the fire sirens.

I have great respect for Mr. Jackson and have enjoyed his articles for a long time, but when we stop to think of the advantages of the sirens to the disadvantages, it far over rules the discomforts it may cause.

First, since my husband is one of the Volunteer Firemen who depend mostly on the "fire whistle" to hear unless the weather in time to save property and possibly lives, it has a great advantage. Even with the installation of the larger storm warning siren, it is sometimes difficult to hear unless the weather conditions are just right.

Second, the siren on Division Street was installed to serve as a storm warning as well as a fire siren, of which I am grateful, personally, because I have two children that I am greatly concerned for and appreciate the warning of an approaching storm. At this time too, the firemen in Slaton are on call which sometimes leaves me alone to see to the safety of my children.

So you see, although the screeching and wailing the sirens produce are sometimes uncomfortable, I feel just a little safer for knowing they are there.

Respectfully,

Mrs. Bernice Moeller

(Dear Mrs. Moeller, We agree with you 100 percent that the advantages of Slaton's fire and storm sirens far outweigh the disadvantages. In fact, about the only disadvantage we can think of about the sirens is the noise they make, which might awaken someone from a deep slumber or cause some temporary concern to a dog or cat. Even in the middle of the night, though, the noise can be somewhat comforting. It lets you know that someone is on the job and standing by in the event you need them.

(Continued On Page 2)

Old Jack does a thing and howling, we'll bet he would the sirens i the town. In fact, if his fire, he probably would ing they would be louder.

Thank you to se letter, Mrs. Moeller, sure that we are the way" in your urning the fire siren, on step farther... ion, the Volunteer y're more support er organization in doing a tremendous y're one group of all be very, very.

Since The expect after this realize t ion? Let i reader sing New s exceed it.

The M... Of A...

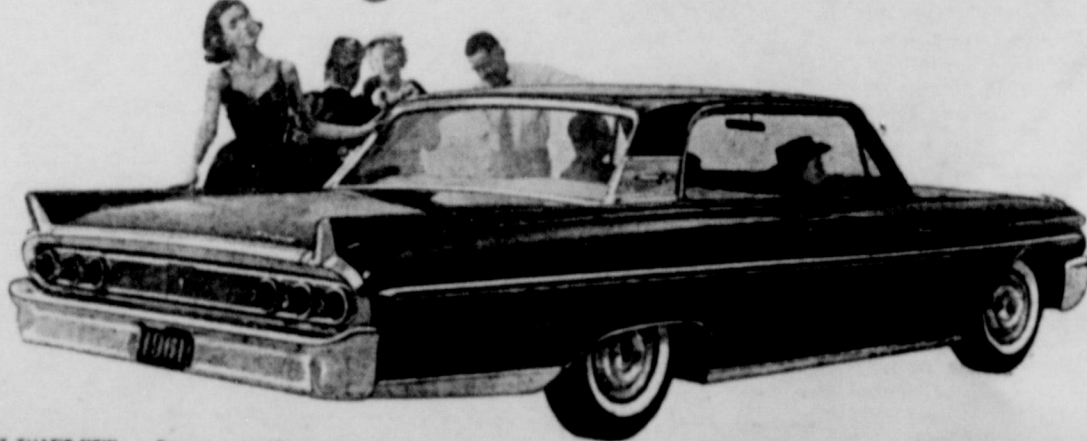
I had quite a about my first on going to go ahead other one anyway that's not so. For other day I went I walked in and never felt better, time I did." I tal a nerve problem, examine me for te told him to go rid if he found ten I of it. Now, right didn't help my nee to have to spend in one spot. Anyw head and examine me one pill for m another one just o ncpials and another act the first tw. It was time for a him to make mis ange. After all the was a sound as a realized how bad was in until he wa statement of the world is in bad sh in the Congo, trou ington. Mr. Kenn the other day wh along. He said he whether we are b

Sample these 6 famous Mercury values...

EXTRA ROOM. Mercury's famous room gets better every year. For '61 there's an even more spacious rear seat, wider doors, and a bigger trunk. (32 cubic feet).	FAMOUS ECONOMY. Up to 15% better mileage than last year with new V-8's and Super Economy "B".	FAMOUS BEAUTY. No frills, no fads. Mercury's lines are trim, clean, classic—stay in style far longer.	SMOOTHER RIDE. Like a sea on wheels. Try exclusive Cushion Ride (on Monterey, Meteor).
EXTRA PEP. Up to 10% more pickup than even last year's brilliant Mercury. Mercury's super-powered engines do the exceptional with matter-of-fact ease.	ALL-ROUND COMFORT. Relax. The ride is steady and quiet. Mercury has longer wheelbase (120"), more weight, more insulation than competitive cars.		

now available in the popular-price range!

- | | | |
|--------------------------------------------------------------------------------------|----------------------------------------------------------------------------------------------|-----------------------------------------------------------------|
| 1 MERCURY MONTEREY
Finest 1961 Mercury—America's lowest-priced luxury car. | 2 MERCURY METEOR 800
Priced to compete with the top series in the low-price field. | 3 MERCURY METEOR
Priced right in the low-price field. |
|--------------------------------------------------------------------------------------|----------------------------------------------------------------------------------------------|-----------------------------------------------------------------|



PLUS A LOT THAT'S NEW... For example, Mercury's new money-savers—7 self-servicing features. Everything from a self-lubricating chassis that lets you drive 30,000 miles between lubrications to self-adjusting brakes. Routine maintenance expense on spark plugs, mufflers, oil changes, and the like is greatly reduced. So don't just sit there. Start saving. See your Mercury dealer. LINCOLN MERCURY DIVISION Ford Motor Company

SLATON MOTOR COMPANY

150 W. LYNN

VA-4

...ch does a...
...d howling...
...t he would...
...as i the...
...act, if his...
...probably...
...r would...
...k you...
...Mrs. Moe...
...hat we are...
...y" in your...
...the fire...
...farther...
...when we get...
...jump in and...
...Volunteer...
...support...
...ization in...
...tremendous...
...group of...
...very, very...
...Since...
...The...
...after this...
...realize the...
...scope of...
...Let me tell...
...yours and...
...The...
...exceeds a...
...million...
...quit it, I...
...The Ed.)

tonite, Slaton, Tex., Thursday, February 23, 1961

OF ACUFF
From Page 2)

output or not. We're also going to have a master plan. We're also going to have a bomb shelter. We're also going to have a jump in and live after.

you would cease writing columns. We had 5,369 calls for columns you expect about that after this week. Let me tell you, the readership of the News and The exceeds a million quit it, I say!

The Ed.)

JUST TALK
BY A. M. J.

JUST TALK
Folks who phone the K. C. Scott residence will most likely be greeted with "this is the wagon yard" instead of the old "hello." This is the greeting the old goat K. C. hands out when he attends the answering assignment. I would be interesting to know what any one under fifty years of age might imagine a wagon yard could be. When I grew up in Paris, Texas, there were wagon yards and saloons on nearly every corner in the down town business section and the farmers, Indians, from the Indi-

worked for twenty-five dollars a month and his eats. Lee has bones that have been broken from rough riding a horse in several parts of his body and he can spot an old cow hand two miles away by the way he moves. Lee still won't walk a half a block, he drives his car if he wants to cross the street just like he used to get on his horse. Lee knows what a wagon yard is and is proud of it.

—Just talk—
The daily papers, television and what few radio programs I listen to just won't let me forget for a second that a missile, an atom bomb or another depression may descend upon us all at any moment and I have been making a galloping poll all over town trying to find out how to dodge any, or all, of them. From the advice I have received from Lon Porter, J. S. Edwards, Charley Austin, J. S. Barry and

three or four barbers one might as well live dangerously and well. Things have gone so far to pot that prices cannot go down nor can unemployment become general without the nation going into bankruptcy and even if we should get all our possessions into cash and dig a big hole, or a small one as the case may be, and bury it, the big blow up will make it worthless and so let us all eat, drink and be merry for if we blow up this time there won't be anything left.

—Just talk—
As a sneaky listener in on telephone conversations among the women, I know now that none of them are interested in receipts or cooking food. The most important information is what new in frozen fish, cakes and breads, who has just appeared in a Jackie Kennedy hair-do and what is the quickest way to lose two or three pounds.

—Just talk—
As a stiff backed gardener who is facing the spring and months with ear and trembling, I would like to pass the information along that a garden book had in it not long ago the February is the best time to spray trees and shrubs with oil sprays. It can be used a great deal stronger at this time of the year when the plants are dormant than it can be later and the bug eggs that are on the bark can be knocked kookoo easier now than when they turn green and start to grow. We have several peach trees that always harbor more borers than they do peaches, an apricot tree that is filled with boa constrictor size worms that eat the fruit like a horse eats hay and some plum trees that dripped white rust all last summer. It is my intention to get our spraying outfit out the first pretty day that comes if my fishing fever does not rise too high.

—Just talk—
Here is another donation from Lon Porter who is always

phailed to supply us with any ephs or cays, and it will be phour or phiv weecs before we can get any. We have ordered the meeting letters and will have to get along without them till they come. We don't like the loox ov this varry ov spelling any better than our readers, but mistax will happen in the ph's and c's and x's and q's hold out we shall ceep (sound the c hard) the Cyclone whirling aftv a phasion till the sorts arrive. It is no joque to us—it's a serious aphair."
—Western Newspaper Union

Weather Aids Producers In Preparing Land For Forthcoming Year

Mild temperature and dry weather the past two weeks has enabled producers to make much needed progress in land preparation for the 1961 crop. Pre-irrigation is already underway in some areas. A small area north of Littlefield received rain, accompanied by hail, yesterday.

Classing Office receipts for the Area have reached a total of 1,865,352, through Wednesday, February 15th. Samples are still arriving daily at the Lubbock Classing Board, Receipts Wednesday of this week totaled 189 bales; Tuesday, 453 b/c. Officials at the Classing Board estimate that about 50% of samples arriving now are called "Wasties."

Members are reminded of the Annual Meeting and Party of this Exchange scheduled next Tuesday, February 21st. A Business meeting of the Membership will be held in the Exchange Offices at 4:00 p. m. and the dinner party at 6:30 p. m. at the Lubbock Country Club. Members may invite guests to the dinner party by paying \$3.00 per Guest. Please notify the Secretary as to the number of Guests you plan to bring so that an attendance estimate estimate may be made. Ballots, which were mailed out last must be returned for tabulation prior to Annual Meeting.

I. M. Robinson, Traveling Freight and Passenger Agent for the Panhandle—Santa Fe Railway, suffered a stroke about two weeks ago and has been in the West Texas Hospital, Lubbock. Mr. Robinson is expected to be transferred to the Santa Fe Hospital in Temple, Friday.

A proposal to reduce the railroad transit charge from 7 1/2 c per CWT to 15c per bale has been approved and is now in effect.

Producers Warehouse Co. of Whiteface has announced that all cotton has been moved inside and the "breaking out" charge, as outlined in their tariff, will apply to both "A" and "B" cotton.

Below is a chart comparing the 14 spot market average discounts, (August through January) with discounts in the 1960 Government program. Qualities shown account for nearly 75% of 1960 Plains Area production. Average Premium and Discounts quoted in the 14 mar-

STRICT LOW		MIDDLING	
Gov't Mkt.	Diff.	Gov't Mkt.	Diff.
15/16	460 389	445 376	
31/32	365 309	370 385	
1 inch	280 209	285 232	

STRICT LOW		MIDDLING	
Gov't Mkt.	Diff.	Gov't Mkt.	Diff.
680	532		
605	470		
525	399		

At the Annual Convention of the National Cotton Council held recently at Memphis, Tennessee, it was announced that a program will be initiated, separate and apart from other council activities, to expand promotion in research work with a \$1.00 per bale contribution by Producers. The program will be started in the West, including this High Plains Area, in 1961 and expanded to other producing areas later.

H. A. Potest

Average Temperatures For Week, Total 53

Temperature at Pioneer Natural Gas Co. for the week of Feb. 12 to Feb. 18 were as follows: Sunday, 78-38; Monday 67-38; Tuesday, 72-30; Wednesday, 62-42; Thursday, 71-38; Friday, 70-42; Saturday, 63-36.

The average temperature for the week was 53.

THEA To Meet Feb. 17-19

Ever wonder what color air is? Members of the Texas Home Association will have a chance to find out when they attend their annual meeting in Houston February 17-19.

"Air" is one of many new spring colors to be featured in the Natural Cotton Council's Fabrics exhibit at the convention. For the benefit of those who won't be attending the meeting, "air" is actually a shade of off-white, according to Miss mamie Hardy, the Council's home economist who is in charge of the exhibit.

Besides seeing air, home economists will get a look at high pressure pink, hot orange, milky violet, acid green, and other colors to be featured this spring and summer.

Built around the theme, "Cotton Is A Natural," the display will give Texas home economists an opportunity to examine the newest textures and finishes in today's cotton fabrics for apparel and home furnishings. Swatches exhibited will range in guaranteed sunfast for two years.

The exhibit is part of the Council's program to keep home economists and other educators informed of the many advantages of cotton products.

Central processing of DHIA records on electronic data processing machines has been underway in Texas for one year, and J. W. Davis, extension dairy husbandman, reports that this new program has met with good acceptance by DHIA members. As a measure of this acceptance, more than one-third of the Texas DHIA herds are now on DHIA—EDPM test.



'61 Chevy with Jet-smooth ride!

Impala 4-Door Sedan—Jet-smooth traveler that rivals the luxury cars in everything but price.

If Chevy loves to go because it goes so well along pavements like a happy tabby. Takes roads in stride and all roads in style. Just why does a Jet-smooth Chevy treat riders really as the high-priced luxury cars? It all about through a delightful blend of Full Coil action, precision-balanced wheels, unique cushioning, and a superb Body by Fisher to hush away road sounds. All this adds up to less sway, less bounce, less dip, less dive, less tilt, less noise, less... well you name it.

Now combine this Jet-smooth ride with conveniences to pamper you and roominess to relax in. Add a full measure of quiet good looks. Voilà, you've got Chevy's formula.

And the proof is in the riding. When you sample a Jet-smooth Chevy at your Chevrolet dealer's we think you'll find it just to your taste.



See your nearest Santa Fe agent

See the new Chevrolet cars, Chevy Corvairs and the new Corvette at your local authorized Chevrolet dealer's

"Doc" Crow Chevrolet

120 N. 9th Slaton, Texas



...when you see this GOLD MEDALLION on a new home, you'll find ELECTRIC HEAT



Wonderfully convenient electric heat. It's clean... silent... draft-free... automatic. It's flameless, fumeless, and chimney-free. Costs less than you think with Reddy's extra-special heating rate. GOLD Medallion Home — you feel like a millionaire in it — but everyone can enjoy it.

EVERY MEDALLION HOME — GOLD OR BRONZE — HAS FULL HOUSEPOWER WORK-SAVING WONDERFUL APPLIANCES LIGHT FOR LIVING

SOUTHWESTERN PUBLIC SERVICE COMPANY

JOE WOOD MARKET & LOCKER Co.
Wholesale Meats cut and wrapped for Your Freezer. Complete Food Service—Any Freezer. Inquire about our savings.
Dial PO-5-9666 305 College Ave.
Lubbock

this week end!

LEGAL NOTICE

CITY OF SLATON, STATE OF TEXAS. ORDINANCE NO. 191 SLATON ELECTRICAL CODE

An ordinance being comprehensive in its terms, creating the Office of Electrical Inspector in charge of and prescribing to qualifications and duties of such office and his staff; establishing a Board of Electrical Examiners specifying their qualifications and duties and authorizing them to issue appropriate certificates and licenses for Master Electricians and Journeyman Electricians under certain specified terms; defining the terms "Installations," "Master Electrician," "Journeyman Electrician" and "Person," establishing the qualifications and charges for permits, for inspection and re-inspection and setting forth certain exemptions from his Code and providing for penalties for violation of this Code and establishing rules for construction; providing a savings clause and a clause making this ordinance cumulative to all other ordinances; directing the manner of publication and effective date of its ordinance.

IT IS ORDAINED BY THE CITY OF SLATON SECTION I: Pursuant to the authority granted in SECTION I, ARTICLE II, of the Charter of the City of Slaton, there is hereby enacted an Electrical Ordinance which shall govern all consumer electrical installations made in the City of Slaton.

SECTION II: Office of the Electrical Inspector Part 1: There is hereby created the Office of the Electrical Inspector in Charge which shall be the Electrical Inspector of the City of Slaton, and within which may be Assistant Electrical Inspectors. A. Requirements: The Electrical Inspector shall be a competent person of good moral character; he shall have had at least four years experience as a journeyman electrician; he shall have adequate knowledge of current and approved methods and practices relating to electrical installations, and he shall have passed the examination for Journeyman Electricians.

B. Appointment: The Electrical Inspector shall be appointed by the City with the approval of the City Commission and shall hold office until his successor is appointed and duly qualified. Assistant Inspectors may be appointed by the City Council whenever occasions demand.

C. Salary: The salary of the Electrical Inspector shall be fixed by the City Council. D. Bond: The Electrical Inspector shall execute a bond to the City of Slaton in the amount of One Thousand Dollars (\$1,000.00).

SECTION III: Powers and Duties of Board Part 1: The Electrical Inspector shall inspect and test electrical installations and systems in all consumer installations when he has reason to believe the same are unsafe, improper, or do not comply with applicable code.

The Electrical Inspector shall inspect all installations, alterations, and repairs of electrical work in consumer installations as hereinafter set out. The Electrical Inspector shall, upon determining the unsafe, improper or unlawful consumer installations exist, immediately notify the owner of said premises for his agent and/or the electrician performing work on said premises, in writing, specifying the exact deficiency is not corrected within the prescribed time, then the Electrical Inspector shall, if he believes public welfare endangered, order the electricity supply to said premises to be discontinued.

The Electrical Inspector and assistants shall, when in the performance of their duties, have the right to enter any owner's building at all reasonable hours for the purpose of any tests or inspections electrical wiring and apparatus contained therein.

The Electrical Inspector shall cause to be kept a record of all permits, licenses, and inspections required under this ordinance. He shall also keep a record of all condemnations of electrical installations.

The Electrical Inspectors shall, upon the installation, alteration, or repair of any electrical work on or in consumer premises whenever, in the opinion of the Electrical Inspector, the work is done in a reckless, careless manner or in a manner which violates the provisions

of this ordinance. Upon determining that particular work should stop, the Inspector shall post a notice to that effect on the consumer's premises and thereafter no person shall proceed with the installation until the inspector has cancelled the stop work notice.

G. The Electrical Inspector shall turn over to the City of Slaton all payments received by the Office of the Electrical Inspector and the Board of Electrical Examiners.

Part 3: Removal: The City Council may remove from office the Electrical Inspector or any of his assistants for incompetency or neglect of duty.

Part 4: Inspectors Not Liable for Damages: Neither the Electrical Inspector nor any of his assistants shall, when acting in good faith and without malice, be liable for damages arising by reason of duties performed under the provisions of this ordinance.

SECTION III: Board of Electrical Examiners Part 1: There is hereby created a Board of Electrical Examiners for the City of Slaton.

A. Membership: The Board of Electrical Examiners shall consist of the following members who shall serve without compensation: A Master Electrician, a Journeyman Electrician, and a third other person, one of which is a representative of Electric Utility or Electrical Distributor classification, who in the opinion of the City Council are qualified through education and practical experience to perform the duties of Electrical Examiner.

B. Appointment: Members shall be appointed by the City Council for the term of two years; provided, however, that one-half of initial appointment shall be for terms ending on January 1, following date electrical ordinance becomes effective. Vacancies shall be filled by appointment for the unexpired term of the departed member.

C. Removal: When good cause exists, a member may be removed by the City Council.

D. The Electrical Inspector shall serve as Secretary to the Board and shall keep a complete record of all proceedings of the Board.

Part 2: Powers and Duties of Board A. The Board shall meet as soon after appointment as possible and select a chairman; it shall thereafter meet at least once each month. B. The Board shall adopt rules and regulations for the examination and re-examination of applicants for electricians' licenses. C. The Board shall submit to the City Council written recommendations and suggestions for and administration of this ordinance.

D. The Board shall cause the issuance of appropriate certificates and licenses to successful applicants therefor.

SECTION IV: Certificates and Licenses Part 1: Definition of Terms:

A. "Installations" shall include all electrical work of any nature performed on, in, or near consumers' premises. B. "Master Electrician" shall include those persons who, being highly skilled in methods and practices of installations, hold themselves out as intending to do installations and propose or do enter into contracts for such installations.

C. "Journeyman Electrician" shall mean one skilled and experienced in the actual physical labor involving electrical installations and who does, or who holds himself up as intending to actually do, electrical work under the employment and supervision of a master electrician. D. "Person" shall be construed to include the plural as well as singular and shall also include corporations and any other type of organization.

Part 2: Certificate and Qualifications: For a Master Electrician and a Journeyman Electrician A. Master Electrician shall make application for issuance of a certificate of qualification to the Board of Electrical Examiners.

(1) The application shall be presented to the Secretary of the Board and shall be accompanied by a fee of \$3.00. (2) The applicant shall submit himself to an examination prepared by the Board. The examination shall consist of questions concerning electrical installations, National Electric Code and other topics related to the occupation of master electricians. (3) If the applicant is successful in the examination, he shall obtain a bond from an approved surety company in the amount of One Thousand Dollars, payable to the City of Slaton and conditioned upon the applicant's strict compliance with this ordinance. (4) The successful applicant shall also pay to the Secretary of the Board, \$50.00.

B. Qualified applicants who comply with the above provisions shall be issued a certificate of qualification to carry on the occupation of master electrician. The certificate shall be valid one year from date of issuance.

C. The certificate of qualification may be renewed by paying to the Secretary of the Board the sum of \$3.00 within ten days after the expiration date of the old certificate. If a certificate of qualification is not renewed, it shall thereafter be void. D. A certificate of qualification shall be issued to an individual and shall not be assignable. E. No person shall engage in the occupation of master electrician without having his current certificate of qualification in his possession, or in case of companies, firms or corporations utilizing electric service was a consumer, without having a holder of such certificate supervising the actual work being performed.

Part 3: Journeyman Electrician License: A. Journeyman Electricians shall make application to the Secretary of the Board of Electrical Examiners for issuance of a license. (1) The application shall be presented to the Secretary of the Board and shall be accompanied by a fee of \$3.00. (2) The applicant shall submit himself to an examination prepared by the Board; the examination shall consist of questions concerning electrical installations, National Electric Code and other topics related to the occupation of journeyman electricians. B. Qualified applicants who comply with the above provisions shall pay to the Secretary of the Board the sum of \$10.00, and shall be issued a license to carry on the occupation of journeyman electrician. The license shall be valid for one year from date of issuance. C. Licenses may be renewed by paying to the Secretary of the Board the sum of \$2.00 within ten days after the expiration date of the old license. If a license is not renewed, it shall thereafter be void. D. The license shall be issued to an individual and shall not be assignable. E. No person shall engage in the occupation of journeyman electrician without having been issued a current license as hereinabove provided; licenses shall keep their licenses in their possession when working as journeyman electricians.

Part 4: Nothing contained in this ordinance shall be construed as preventing Master Electrician and Journeyman Electrician practicing their trade or profession under license agreements of existing ordinances; however, upon expiration of existing license, they shall comply with all provisions of this ordinance.

Part 5: No person shall allow the use of his certificate of qualification, license directly or indirectly by any other person for the purpose of obtaining a permit to do electrical installations. In addition to the penalty provided in Section IX, any person convicted of violating this provision shall forfeit his certificate of qualification and license and it shall thereafter be void. Board of Electrical Examiners Part 6: The decision of the Board shall be reviewed by the City Commission when within ten days, after receiving notice of rejection, the dissatisfied applicant gives notice in writing to the City Manager that he desires a hearing before the City Commission; provided further, however, that period may be waived by the City Commission.

SECTION V: Permits and Inspections Part 1: Permit required: No person, firm or corporation, using electric power as a consumer, shall begin any electrical installation or begin any work of installing, erecting or altering material, wiring fixtures or any other apparatus to be used for the utilization of electricity for light, heat and/or power in or on any building or premises in the City of Slaton, without first securing a permit therefor from the Office of the Electrical Inspector; provided, however, that no permit shall be required for minor work such as repairing flush and tumbler switches, replacing fuses, changing lamp sockets and receptacles; provided further that this section shall not apply to maintenance and repairs on the premises of a person, firm or corporation regularly employing a qualified maintenance electrician for that purpose.

Part 2: Home owners and holders of certificates of qualification shall make application for a permit to the Electrical Inspector, upon proper application for a permit and after payment of required inspection fees, the Electrical Inspector or his representative shall issue the applicant a permit for the proposed work. A. Rough-in-Work: The inspection fee for rough-in-work on all electrical installations shall be as follows: For the first five outlets and switches or fractions thereof, the sum of \$1.00, and for each additional outlet and/or switch the sum of .10c.

B. Fixtures: The inspection fees for the installation of electrical fixtures shall be the sum of \$7.50 for the first eight or fraction thereof and the sum of \$2.00 for each additional fixture. C. Electrical Appliances: If rough-in-work for an electrical appliance is performed at the same time other work is roughed in the electrical appliance outlet shall be considered as one outlet. In all other cases the inspection fee for the installation of an electrical appliance shall be \$1.00. D. Neon Signs and Neon Lighting: The inspection fee for connecting neon signs and neon lighting in which not more than two transformers are used shall be \$1.00 and the sum of .50c shall be charged for each additional transformer; provided, however, that the maximum fee shall be \$5.00. E. Incandescent Signs: For the purpose of this subsection incandescent signs shall include all signs including billboards which are illuminated with one or more incandescent lights. The inspection fee for incandescent signs that require not more than two circuits shall be \$1.00, and the sum of 50c for each additional circuit.

F. Motors: For consumer operation the inspection fee for electric motors shall be in accordance with the horsepower ratings: From zero to five horsepower, \$1.00; for each additional horsepower, the sum of .10c, provided, however, that the maximum fee for any motor or motors operating from one motor shall be \$5.00. G. Generators: For consumer operation the inspection fee for electrical generators including switchboard and exciters of ten kilowatts or less capacity shall be \$3.00 each. H. Motion Picture Machines: The inspection fee for the installation of a motion picture machine shall be \$1.00. I. Electric Welders: The inspection fee for the installation of an electric welder shall be \$1.00. J. Radio and Television Receiving Antenna: The inspection fee for the installation of a radio and television antenna shall be \$1.00. K. Re-inspection: If by reason of faulty work, negligence or omission or for any other reason a subsequent inspection must be made in excess of the rough-in and final inspection herein above provided for, a charge for each re-inspection shall be as follows: For the first re-inspection, a fee of \$1.00; for the second re-inspection, a fee of \$2.00; for the third and each subsequent re-inspection, a fee of \$5.00 each.

Part 3: Notice: Permit holders whose installations are ready for inspection shall allow the Office of the Electrical Inspector twenty-four hours, Sundays and holidays excluded, before proceeding with the installations. SECTION VI: General Requirements Part 1: National Electrical Code as promulgated by the National Board of Fire Underwriters: All installations hereafter installed in the City of Slaton shall be done in accordance with the 1959 and 1960 edition in effect as of the date of this ordinance, with the following additions and deviations there from, and a majority of the governing body of the city may incorporate revisions which may occur from time to time in the National Electrical Code into changes or revisions of this ordinance.

A. Non-metallic sheathed cable may be used in any electrical installation of residential one or two family dwellings. B. The use of ordinary twisted, cotton-covered lamp cord pipe "C" for pendants or drop lights or portable is hereby prohibited and in lieu thereof reinforced or portable cord not smaller than Number Sixteen A.W.G. gauge shall be used. C. All lights in bathrooms, toilets, kitchens and laundry rooms shall be controlled by wall switches located so they are not readily accessible from tub or shower. D. All metal fixtures installed in bathrooms and kitchens, except in ceilings thereof, shall be grounded; provided, however, that they may be grounded to their neutral wire. E. All metal service complete with weatherproof entrance from point of entry to distribution panel shall be used. F. Service entrance grounded-conductor and enclosure should have a connection to an underground metallic water piping system, if available, where voltage to ground does not exceed 300 volts. If ten or more feet of water line are buried between the building and the water meter, it shall be permissible to install a ground wire on the house side of the water meter without bonding around the water meter. Approved ground clamp connecting ground conductor to water pipe or driven ground rod must be used. Minimum size for ground conductor, No. 6 A.W.G. Gauge Conductor. Where driven ground is used in lieu of ten feet of buried water pipe, ground rod shall be eight feet long. G. To be "accessible" as that term is used in the National Electrical Code, an attic shall measure not less than three feet from the top of the ceiling joist to the

bottom of the rafter at the highest point. H. When crossing ceiling joists with non-metallic sheathed cable wiring, it shall be protected by substantial guard strips which are at least as high as the cable. If attic is not accessible by permanent stairs or ladders, protection will only be required within six feet of the nearest edge of the scuttle hole or attic entrance, or alternate when crossing ceiling joists with non-metallic sheathed cable in accessible attics, the ceiling joists shall be bored with ceiling fed through bored openings or approved fastener to side of ceiling joist. I. Service entrance conductors shall not be smaller than No. 4 shall be a three wire 120-230 volt service on all residential installations but may not be required on any residences of 500 square feet or less of floor space in which no more than two circuits will be required. Electric range wiring must be no smaller than three No. 6 A.W.G. Gauge conductor in conduit or approved cable complete with approved receptacles. Built in range surface units or griddle units, or oven or ovens will be considered as separate appliances; conductors and circuits shall be sized to operate such units. Electric dryers of 120-240 volts shall be wired with three No. 8 A.W.G. Gauge conductor, or larger, if required by the load, in conduit or approved cable, complete with approved type dryer receptacles. Each automatic clothes washing machine shall be on a circuit supplying no other load. Any change in electric service or change to new approval by the Electrical Inspector before the electric utility may connect new service. J. All public and commercial buildings and apartments or living area, except one and two family dwellings, all wiring must be in rigid metallic conduit, metal tubing or other metallic raceway may be approved by Electrical Inspector for certain classes of construction.

Part 2: Wiring Restrictions: A. Fuse panels or circuit breakers, etc., shall not be placed in water heating closets, bathrooms or clothes closets. Fuse panels or circuit breakers may not be located in closets of other types if storage of articles or materials will hinder accessibility, but shall be located where they are readily accessible to tenant. Provide two "dead" No. 6, 3 wire cables or two empty one inch conduit rigid or flexible, one to accessible locations in the attic, the other to accessible locations below the first floor for future wiring expansion. B. Temporary installations: The Electrical Inspector is hereby authorized to issue special permits for the use of knob and tube wiring temporary installations, provided, however, that such permits shall state the duration thereof therein. Upon the expiration of a temporary permit, the holder thereof shall immediately discontinue the use of the installation or shall replace same with an installation complying with applicable ordinances. C. Outlets: A. In residential installations, not more than eight current consuming outlets per circuit shall be installed, provided further that the wires forming such circuit shall not be smaller than No. 12 A.W.G. B. In commercial installations, there shall not be more than four current consuming outlets per circuit, and the conductor forming such circuits shall not be smaller than No. 12 conductor. Total wattage load for each of these circuits shall not exceed 80 per cent of the rated current capacity of conductor used. D. Appliance Circuits: Receptacle outlets for electric irons, percolators, toasters and other electric heating devices in kitchens, breakfast rooms, dining rooms and laundry rooms shall be on a separate circuit from the light fixture outlets and no more than four duplex outlets or eight single split wired outlets, when three wire circuit is used, shall be on one circuit, provided further that the wires forming such circuit shall not be smaller than No. 12. E. Type "S" Fuses or Circuit Breakers Required: Type "S" fuses (Fustats and adaptors) shall be used in all plug, fuseable installations; ampere rating must be no larger than the ampere rating of the conductor used. Circuit breaker rating shall not be larger than ampere rating of the conductor used. F. Back-to-Back Installations: Convenience outlets in any room may be connected back-to-back to a convenience outlet provided the total number of convenience outlets on the kitchen circuit does not exceed the four allowed herein. G. Concealed Wiring: Installations wherein there is wiring to be concealed shall be inspected before concealment. The person installing such wires shall notify the Electrical Inspector thereof and the wires shall not be covered or concealed until the Electrical Inspector has approved same. Any person covering or concealing wires before inspection shall be punished as provided in Section IX.

Part 3: Tampering: No person shall molest in any way or tamper with wires installed in any residence; no person shall place any material except incombustible insulation material within one inch of said wire after it has been inspected and approved by the Electrical Inspector. Part 9: Radio and Television Receiving Equipment: A. Antenna Systems: (1) Supports: Outdoor antenna and counterpoise and lead-in conductors shall be securely supported so as to avoid contacts with conductors or other systems. (2) Outdoor antenna, counterpoise and lead-in conductors from an antenna to a building shall not cross over electric light or power circuits and shall be kept well away from all such circuits so as to avoid the possibility of accidental contact. (3) It is recommended that antenna and counterpoise conductor shall be installed as not to cross under electric light or power conductors. B. Self Supporting Antennas: Outdoor antennas, such as vertical rods or dipole structures, shall be of non-corrodible materials and of strength suitable to withstand ice and wind loading conditions and shall be located well away from overhead conductors of electric light and power circuits of over 150 volts to ground so as to avoid the possibility of the antenna or structure falling into an accidental contact with such circuits.

Part 10: Franchises and Street Lighting: The provisions of this ordinance shall not apply to electric light, heat and power companies, telephone and telegraph companies, normally operating or operating under franchise or state laws in the installation, maintenance, removal or repair of wires or other equipment used in connection with their business as producers to supply consumer service, and/or street lighting, illumination of public ways, alleys, parks or communications. Part 11: No person, firm or corporation engaged in the business of transmission and sale of electric current to users thereof shall make any connection of their transmission lines with the electric wiring and/or apparatus in any residence or other consumer installation without first having received the Electrical Inspector's certificates of compliance for said installation.

Part 12: Equipment Ground will be required for electrical food waste disposal, and automatic washers provided, however these appliances may be grounded to the neutral conductor if same is an unbroken ground conductor to approved grounded water pipe or driven ground rod and where the maximum voltage to ground does not exceed 150 volts, or where served by 120-240 volt, 3-wire branch circuits, they may be grounded by connection to the grounded circuit conductors, provided the grounded circuit conductors are not smaller than No. 10 A.W.G., for portable stationary Part 13: Joints-Solder and Taping: Where joints are found to be taped but not soldered, or spliced with an approved mechanical device, the inspector may require all joints be untaped and left untaped until soldered or spliced with an approved mechanical device. It is further provided that such splices and tapes shall be made in an approved metallic junction box.

Part 14: Welders: No electric welder of the transformer reactance type shall be connected in the City of Slaton without same is bearing the name plate of manufacturer and the current rating, and it must bear the stamp of approval of the National Board of Fire Underwriters. Part 15: All wiring materials, wiring devices, such as switches, fuses, panels, lighting fixtures, ballast, transformers, conductors, appliances circuit breakers, and signal devices must bear the stamp of approval of the National Board of Fire Underwriters or "UL" label. SECTION VII: Exemptions: Part 1: Home Owners: Nothing herein shall be construed to prevent the issuance of permits to owners of dwellings for electrical repair work in such dwellings. Nothing herein shall be construed to prevent the issuance of permits to owners who erect a dwelling in which to live, provided, however, that no permit shall be issued under this provision until the owner submits an affidavit showing his ownership of the premises and his bona fide intention to live therein; provided further that in the event of erections, no person shall be issued a permit under the provisions of this paragraph more frequently than once each two calendar years. Part 2: Work Commenced Before Enactment: Installations contracted for before the effective date of this ordinance shall not be governed by the ordinance herein enacted, all other installations shall comply with the provisions of this ordinance. SECTION VIII: Legality: The invalidity of any section, subsection, paragraph, sentence, clause, phrase, word or words shall not invalidate any other part of this ordinance. It is the

ESTATE OF OLLIE AMELIA CULWELL, DECEASED No. 6419 IN THE COUNTY COURT OF NOTICE TO CREDITORS OF ESTATE You are notified that the intent of the City Council in enacting this ordinance that the provisions hereof shall become operative or fail by reason of the invalidity of any other provision. SECTION IX Penalties: Part 1: Any person, firm or corporation violating any of the terms or provisions of this ordinance shall be guilty of a misdemeanor and upon conviction thereof shall be fined in a sum not to exceed \$200.00. Part 2: Each day that any person, firm or corporation shall continue to violate or fail to comply with, a provision of this ordinance shall be a separate offense. Part 3: Upon conviction of the second violation of this ordinance by a person, as that term defined herein, the City Council shall, if it deems desirable, hold a public hearing for the purpose of determining whether or not said person's certificate or license should be revoked, it shall thereafter be void and vest no rights.

SECTION X: This ordinance is made cumulative to all other ordinances of the City of Slaton, Texas, and shall be construed accordingly. SECTION XI: SAVINGS CLAUSE: Should any section, paragraph, sentence, clause or phrase of this ordinance be declared unconstitutional for any reason, the remainder of said ordinance shall not be affected thereby and it is intended that every other section, paragraph, sentence, clause and phrase of this ordinance shall remain in full force and effect. SECTION XII: The City Secretary is hereby directed to cause publication of this ordinance in its entirety once in the official paper of the City of Slaton, Texas and this ordinance shall be effective from and after five days after such publication thereof. AND IT IS SO ORDERED: PASSED AND APPROVED by the City Commission the 23rd day of January, A.D. 1961. PASSED AND APPROVED by vote of the City Commission the 13th day of February, A.D. 1961.

Clark Self, MAYOR ATTEST: J. J. Maxey, CITY SECRETARY

RENT KARTS AT SLATON KART PARK

SLATON PHARMACY A MESSAGE FROM . . . THIS EMBLEM is significant and meaningful in detail. The owl is symbolic of wisdom; knowledge; The plow is the symbol of labor; tillage of the soil; The rising sun is emblematic of progress and new day that will dawn when all farmers are trained and have earned to cooperate; The cross section of an ear of corn represents common agriculture interests since corn is native to America and grown in every state; And the eagle is indicative of the national scope of the organization.

We would like to help you with your LOAN NEEDS To: Building your new home Buying your home Remodeling your home SLATON SAVINGS & LOAN ASSOCIATION VA 8-4731 SLATON, TEXAS

Free A firm which is out, "pays a Texas-based all its profits to pay none." Daniel calls it "hole." Industry and it would be concerned, shrinks. We make it a practice Democracy our service and customer just like other, and as a shrinking dollar, here. Come in and try those good PHILIPPS products. new tax bill is a cause lovy a t all real estate is by Rep.

SELF'S Phillips 66 Station

for you LIQUOR IT'S A FINISH SAFETY HIGH ON LUL

The Slatonite, Slaton, Tex., Thursday, February 23, 1961

ESTATE OF OLLIE AMELIA CULWELL, DECEASED No. 6419 IN THE COUNTY COURT OF NOTICE TO CREDITORS OF ESTATE You are notified that the intent of the City Council in enacting this ordinance that the provisions hereof shall become operative or fail by reason of the invalidity of any other provision. SECTION IX Penalties: Part 1: Any person, firm or corporation violating any of the terms or provisions of this ordinance shall be guilty of a misdemeanor and upon conviction thereof shall be fined in a sum not to exceed \$200.00. Part 2: Each day that any person, firm or corporation shall continue to violate or fail to comply with, a provision of this ordinance shall be a separate offense. Part 3: Upon conviction of the second violation of this ordinance by a person, as that term defined herein, the City Council shall, if it deems desirable, hold a public hearing for the purpose of determining whether or not said person's certificate or license should be revoked, it shall thereafter be void and vest no rights.

SECTION X: This ordinance is made cumulative to all other ordinances of the City of Slaton, Texas, and shall be construed accordingly. SECTION XI: SAVINGS CLAUSE: Should any section, paragraph, sentence, clause or phrase of this ordinance be declared unconstitutional for any reason, the remainder of said ordinance shall not be affected thereby and it is intended that every other section, paragraph, sentence, clause and phrase of this ordinance shall remain in full force and effect. SECTION XII: The City Secretary is hereby directed to cause publication of this ordinance in its entirety once in the official paper of the City of Slaton, Texas and this ordinance shall be effective from and after five days after such publication thereof. AND IT IS SO ORDERED: PASSED AND APPROVED by the City Commission the 23rd day of January, A.D. 1961. PASSED AND APPROVED by vote of the City Commission the 13th day of February, A.D. 1961.

Clark Self, MAYOR ATTEST: J. J. Maxey, CITY SECRETARY

RENT KARTS AT SLATON KART PARK

SLATON PHARMACY A MESSAGE FROM . . . THIS EMBLEM is significant and meaningful in detail. The owl is symbolic of wisdom; knowledge; The plow is the symbol of labor; tillage of the soil; The rising sun is emblematic of progress and new day that will dawn when all farmers are trained and have earned to cooperate; The cross section of an ear of corn represents common agriculture interests since corn is native to America and grown in every state; And the eagle is indicative of the national scope of the organization.

We would like to help you with your LOAN NEEDS To: Building your new home Buying your home Remodeling your home SLATON SAVINGS & LOAN ASSOCIATION VA 8-4731 SLATON, TEXAS

SELF'S Phillips 66 Station

for you LIQUOR IT'S A FINISH SAFETY HIGH ON LUL

The Slatonite, Slaton, Tex., Thursday, February 23, 1961

ESTATE OF OLLIE AMELIA CULWELL, DECEASED No. 6419 IN THE COUNTY COURT OF NOTICE TO CREDITORS OF ESTATE You are notified that the intent of the City Council in enacting this ordinance that the provisions hereof shall become operative or fail by reason of the invalidity of any other provision. SECTION IX Penalties: Part 1: Any person, firm or corporation violating any of the terms or provisions of this ordinance shall be guilty of a misdemeanor and upon conviction thereof shall be fined in a sum not to exceed \$200.00. Part 2: Each day that any person, firm or corporation shall continue to violate or fail to comply with, a provision of this ordinance shall be a separate offense. Part 3: Upon conviction of the second violation of this ordinance by a person, as that term defined herein, the City Council shall, if it deems desirable, hold a public hearing for the purpose of determining whether or not said person's certificate or license should be revoked, it shall thereafter be void and vest no rights.

SECTION X: This ordinance is made cumulative to all other ordinances of the City of Slaton, Texas, and shall be construed accordingly. SECTION XI: SAVINGS CLAUSE: Should any section, paragraph, sentence, clause or phrase of this ordinance be declared unconstitutional for any reason, the remainder of said ordinance shall not be affected thereby and it is intended that every other section, paragraph, sentence, clause and phrase of this ordinance shall remain in full force and effect. SECTION XII: The City Secretary is hereby directed to cause publication of this ordinance in its entirety once in the official paper of the City of Slaton, Texas and this ordinance shall be effective from and after five days after such publication thereof. AND IT IS SO ORDERED: PASSED AND APPROVED by the City Commission the 23rd day of January, A.D. 1961. PASSED AND APPROVED by vote of the City Commission the 13th day of February, A.D. 1961.

Clark Self, MAYOR ATTEST: J. J. Maxey, CITY SECRETARY

RENT KARTS AT SLATON KART PARK

SLATON PHARMACY A MESSAGE FROM . . . THIS EMBLEM is significant and meaningful in detail. The owl is symbolic of wisdom; knowledge; The plow is the symbol of labor; tillage of the soil; The rising sun is emblematic of progress and new day that will dawn when all farmers are trained and have earned to cooperate; The cross section of an ear of corn represents common agriculture interests since corn is native to America and grown in every state; And the eagle is indicative of the national scope of the organization.

We would like to help you with your LOAN NEEDS To: Building your new home Buying your home Remodeling your home SLATON SAVINGS & LOAN ASSOCIATION VA 8-4731 SLATON, TEXAS

SELF'S Phillips 66 Station

for you LIQUOR IT'S A FINISH SAFETY HIGH ON LUL

The Slatonite, Slaton, Tex., Thursday, February 23, 1961

ESTATE OF OLLIE AMELIA CULWELL, DECEASED No. 6419 IN THE COUNTY COURT OF NOTICE TO CREDITORS OF ESTATE You are notified that the intent of the City Council in enacting this ordinance that the provisions hereof shall become operative or fail by reason of the invalidity of any other provision. SECTION IX Penalties: Part 1: Any person, firm or corporation violating any of the terms or provisions of this ordinance shall be guilty of a misdemeanor and upon conviction thereof shall be fined in a sum not to exceed \$200.00. Part 2: Each day that any person, firm or corporation shall continue to violate or fail to comply with, a provision of this ordinance shall be a separate offense. Part 3: Upon conviction of the second violation of this ordinance by a person, as that term defined herein, the City Council shall, if it deems desirable, hold a public hearing for the purpose of determining whether or not said person's certificate or license should be revoked, it shall thereafter be void and vest no rights.

SECTION X: This ordinance is made cumulative to all other ordinances of the City of Slaton, Texas, and shall be construed accordingly. SECTION XI: SAVINGS CLAUSE: Should any section, paragraph, sentence, clause or phrase of this ordinance be declared unconstitutional for any reason, the remainder of said ordinance shall not be affected thereby and it is intended that every other section, paragraph, sentence, clause and phrase of this ordinance shall remain in full force and effect. SECTION XII: The City Secretary is hereby directed to cause publication of this ordinance in its entirety once in the official paper of the City of Slaton, Texas and this ordinance shall be effective from and after five days after such publication thereof. AND IT IS SO ORDERED: PASSED AND APPROVED by the City Commission the 23rd day of January, A.D. 1961. PASSED AND APPROVED by vote of the City Commission the 13th day of February, A.D. 1961.

Clark Self, MAYOR ATTEST: J. J. Maxey, CITY SECRETARY

RENT KARTS AT SLATON KART PARK

SLATON PHARMACY A MESSAGE FROM . . . THIS EMBLEM is significant and meaningful in detail. The owl is symbolic of wisdom; knowledge; The plow is the symbol of labor; tillage of the soil; The rising sun is emblematic of progress and new day that will dawn when all farmers are trained and have earned to cooperate; The cross section of an ear of corn represents common agriculture interests since corn is native to America and grown in every state; And the eagle is indicative of the national scope of the organization.

We would like to help you with your LOAN NEEDS To: Building your new home Buying your home Remodeling your home SLATON SAVINGS & LOAN ASSOCIATION VA 8-4731 SLATON, TEXAS

SELF'S Phillips 66 Station

for you LIQUOR IT'S A FINISH SAFETY HIGH ON LUL

The Slatonite, Slaton, Tex., Thursday, February 23, 1961

STATE CAPITAL Highlights AND Sidelights

by Vern Sanford
TEXAS PRESS ASSOCIATION

AUSTIN, Tex.—Legislature moved toward early showdowns as the House Revenue and Taxation Committee scheduled controversial bills in swift one-third order.

Coming up early on the committee calendar were three of four measure in Gov. Price's special deficit-erasing program. Each renews controversy of last session. They are: A new two-factor formula figuring the franchise tax by interstate corporations and in Texas. At present the franchise tax is computed on the basis of receipts from sales in Texas.

A firm which sells all its products in Texas, the governor is out "pays at a 100% A Texas-based company selling all its products outside Texas pays none."

DEMOCRACY—A formula where people vote as good as the money they spend.

Now the matter is left entirely to the legislators to determine. As most ran on platforms that called for no sales or income tax, these two taxing methods doubtless can be eliminated from further consideration.

Worse RACING ARGUED—Legalized horse racing is still a live issue after a committee hearing had run into the small hours of the morning.

Opponents, mostly ministers and lay church leaders, called gambling a parasite on the economy, and a producer of fewer jobs for the money spent than is possible in any other business.

Supporters called it a clean, popular sport to which Texas climate is ideally suited. And, they declared, a painless revenue raiser.

RE-CUTTING THE PIE—Two congressional re-districting bills have been introduced, one of which could cause anguished howls from the neighborhood of the Pomac.

Rep. Ben Lewis of Dallas has introduced, a proposal to give Dallas County the extra congressional seat Texas and leave other districts as they are.

Rep. Malcolm McGregor has introduced a bill which gives Dallas two congressional seats and re-carves all the other districts.

McGregor's proposal is based strictly on population, with no thought to personalities or politics.

In some instances it would result in two congressmen being put in one district. Some districts would be enlarged, some reduced.

County school superintendents are a touchy subject with the Legislature.

County Superintendent George Corse has come back this session to work for a bill to abolish the county superintendent's office in counties with few or no pupils in county schools.

Under this year's plan, abolishment would be on a local option vote. Supporters say it could save the state \$1,500,000,000 a year.

In this same atmosphere is a bill by Rep. R. A. Bartram of New Braunfels. However it would raise the salaries of assistant county superintendents. Moneyhungry House members killed the bill.

OLD RULES READOPTED—Tacher pay raise advocates were disappointed when both House and Senate adopted the same rules of procedures as they used last session.

These rules prohibit passage of any new spending measure until the general appropriations bill is passed.

Last session passage of the general appropriations bill was virtually the last act before adjournment. Teacher raises and other new spending proposals died without ever coming to a vote.

ALSO RUNNING—Among other measures in the legislative churn are bills that would: exempt from state license fees farm trailers that farmers borrow from cotton gins and grain elevators; provide procedure for acquittal, and ensure of the blot of a criminal record, of persons found to have been convicted of crimes for which they were innocent; set up statewide, rather than countywide, licensing of notaries public; provide for licensing and regulation by the State Health Department of persons engaged in the terminating business; allocate \$1,300,000 more or assistance to the needy aged and blind; raise the

minimum age for receiving a drivers' license from 14 to 16.

"Community Fun in Sixty One" is the theme for the annual Longhorn Recreation Laboratory,

N. H. Roberts
Standard Prices With
Cement Contractor
The Best Yet
In A "Finish"
Also House Leveling
"Dashing"
Pho. VA 8-3151

Dr. J. W. Belote Jr.
Office Hours 9-5
115 South Ninth
Slaton, Texas
Phone VA 8-3766

ROBERTS
PACKAGE STORE is
"Your Closest Store On U. S. 84"
Denzil Boyter — manager
Raymond Roberts — owner
Make Roberts Package Store Your Complete Store. We handle all brands of liquor, wine and beer, and we have a
DRIVE-IN WINDOW
to serve you. We're located 3.1 miles northwest of Slaton at the intersection of FM 1585 and U. S. 84.
PLENTY OF PARKING
Our store has three driveways for easy accessibility... even for the largest type truck!
ROBERTS PACKAGE STORE
"We Appreciate Your Patronage"

TO RELIEVE
SCORE THROAT
Due to a cold, try DURHA ANAESTHESIA-MOP and see how fast and effective a mop can be. Sprays bottle with applicators only at TEAGUE DRUG.
C. R. BIVENS
Distributor of The
AVALANCHE-JOURNAL
VA 8-3815

NO NEED TO
Run ALL Over The Country Looking For A Package Store To Fill Your Needs
PARKER'S PACKAGE STORE
CAN FILL THE BILL
PARKER'S PACKAGE STORE
REMEMBER—It's Parker's For Price!

Free A... EMOCRACY—... ion where peo... ve that other... Daniel calls it "closing a hole." Industry spokesmen... and it would drive business... y, it shrinks. A measure providing or... of the eschaat law, is known as the abandon... Property act, which was de... in 1959 despite the gov... service and trea... vigoruous efforts. A special session if the bill... in regular session. A temporary increase for... from 7 to 10 per... natural gas production. Daniel says this is to... revenue gap while the... al gas sverance benefici... is being thrashed out in... new tax bill introduced in... use levy a two per cent... all real estate transacti... is by Rep. George Hin-

WRITE AD RIMES \$310 Cash Given **FREE**
PAYROLLS - TAXES HELP US ALL
Think up a line to rhyme with

SELF'S
Phillips 66
STOP IN AT
Station VAN'S
PACKAGE STORE
for your favorite Brands of LIQUOR, WINE, BEER
IT'S HOME-OWNED AND OPERATED
TRY US FOR
FINE SELECTION AT Popular Prices SAFE... OFF - THE - HIGHWAY PARKING 1 1/2 MILES WEST of POSEY ON LUBBOCK HIGHWAY

- PLEASANT VALLEY**
GIN Gaylord Kinard
Fair Dealing & Fast Service
Rt 1 Post WY 62011
- SLATON CO-OP GINS**
Owned & Operated By
Farmers:
- DRESS SHOP**
- SLATON DRESS SHOP**
Complete Ladies Wear & Children's Dresses & Lingerie
108 S. 9th VA 8-4621
- DRIVE IN CAFE**
- EL TIGER**
This Ad Good for 10c On The Purchase of Any Sandwich
So. 9th VA 8-3671
- DRUGGIST**
- TEAGUE'S DRUG AND**
3 Registered Pharmacists Giving You Complete Prescription
VA 8-4535
- DRY GOODS STORE**
- WEBB'S**
Ladies & Children's Wear-Shoes - Fabrics-Mens Dress Wear
108 Texas Ave VA 8-3686
- ELECTRICAL CONTR**
- ELDER ELECTRIC**
25 Yrs Experience In The Slaton Area Call Us First
260 E Panhandle VA 8-3220
- KUSS ELECTRIC**
Contracting - Repair
Prompt - Efficient Service
850 So. 16th VA 8-3225
- FLORIST**
- MILDREDS FLOWERS**
Flowers Say The Nicest Things For You
125 So. 11th VA 8-3459
- FURNITURE CO.**
- THOMPSON FURNITURE**
Your Frigidaire Dealer—Quality Furniture at Reasonable Prices
180 Texas Ave VA 8-4455
- GARAGES**
- BUCHANAN & PHILLIPS**
Auto Truck & Tractor Repair
All Makes
175 E. 8th VA 8-3376
- PETE GRANDON GARAGE**
We Specialize In Auto Transmissions-Complete Auto Ser.
110 N. 7th VA 8-3696
- HALEY AUTO REPAIR**
Hydromatic Transmission
Specialist Factory Trained
215 Edwards VA 8-4387
- HENZLER IMPLEMENT**
We Repair Anything From Lawnmowers to Roadgridders
100 S. 7th VA 8-4344
- MANN'S AUTO REPAIR**
Travis Guarantees You A Good Job At A Fair Price

- PAINTS RETAIL**
- SLATON LUMBER CO.**
PITTSBURGH PAINTS"
220 W. Crosby VA 8-4329
- PAWN SHOP**
- SLATON TRADING**
POST. Cash Loans Or Buy Sell Or Trade Anything of Value
110 E. Lubbock VA 8-4632
- PHARMACY**
- M & W PHARMACY**
Baby Needs, Cosmetics, Notions Drive In RX Window.
245 W. Lubbock VA 8-4537
- SLATON PHARMACY**
Service Our Motto
VA 8-4815 165 S. 9th
- PLUMBING**
- E. W. HAM & SON PLUMBING**
Serving Slaton 15 Yrs. Call
430 S. 5th VA 8-3361
- RECREATION**
- SLATON KART PARK**
This Ad And 25c Will Buy You A Fun Ride On A Go Kart Post Hwy VA 8-4514
- LOANS**
- CITIZENS STATE BANK**
Commercial Farm Oper Auto & Installment Loans
100 Tex. Ave VA 8-4545
- GIFT SHOP**
- WALTON DRUG**
\$4.50 Trifling Special for \$225 Westinghouse Clock Radio
\$19.95 VA 8-3376
- GO KARTS**
- BOURN CYCLE SHOP**
Simplex-Schwinn-Cushman Reasonable Prices Easy Pmts.
640 S. 9th VA 8-3614
- HENZLER IMPLEMENT**
Sales & Service, Speed Shop Parts-Repair-Welding etc.
100 So. 7th VA 8-4344
- GROCERY**
- D. A. BROWN FOOD MARKET**
Double Stamps On Wednesday
850 So. 9th VA 8-4240
- HADDOCK FOOD**
240 W. Garza VA 8-3466
- INSURANCE**
- BREWER INSURANCE**
To Be Sure Insure With Brewer
139 S. Main VA 8-33241
- KEYNOLDS INSURANCE AGENCY**
Complete Coverage Through Travelers Ins. Co.
VA 8-4834 205 W. Garza
- IRRIGATION**
- MONTGOMERY IRRIGATION CO.**
Call Us For Free Estimate
1200 So. 8th VA 8-4324
- JEWELERS**
- CHAMPION JEWELERS**
For Quality Watches & Diamonds At Reasonable Prices
124 W. Garza VA 8-3751

- Read These Contest Rules
1. AD-RIMES are impartially judged and a cash or of \$10 will be awarded each week for the best rhyme line; and \$50 for the best the 26 weekly winners. card or plain paper to T Record.
2. Bring or mail entries card or plain paper to T Slatonite.
3. Everyone is eligible except employees of this newspaper. No limit on number of lines submitted by a person.
4. THE HIDDEN SLOGAN must appear on every entry (see Description).
5. All entries must be newspaper office by 5 p. next Monday.
6. Identical duplicate entries given for all ties. Decisions of judges in final.
- WESTERN WEAR**
- FONDY'S WESTERN LEATHER SHOP**—Cowboy Hdqrs. Everything In West
115 N. 9th VA 8-
- WILSON**
- BANKS**
- WILSON STATE BANK**
A Completely Home Owned Institution
Box 188 Wilson
- BUTANE CO.**
- WILSON OIL CO.** Improvements.
Complete Butane Delivery Even In Bad Weather
Box 44 Wilson Nite 2172 2511
- COTTON GINS**
- GATZKI GIN CO.**
Best Service For Stripper Or Picker Type Cotton
Box 186
- GROCCERS**
- WILSON SUPER MKT.**
Quality In Products, Reasonable In Prices
Downtown Wilson
- INSURANCE CO.**
- WILSON INSURANCE**
If You Have An Insurance Item—We Have A Policy To Box 188 Wilson
- SERVICE STATIONS**
- WENDELL RADIO — TV**
Before You Buy A Stereo Or TV See Jake Wendel And Save
850 So. 10th VA 8-3609
- UPHOLSTERING**
- SPRADLEY'S UPHOL. CO.**
Quality Furniture, Auto Uphol. Free Estimates—Pick Up & Del.
166 Texas Ave. VA 8-7143
- WASHERTIA**
- WILKINS HELP YOURSELF LAUNDRY**
Wash & Dry Service Call For Pick Up and Delivery
115 S. Main VA 8-3766VA 8-3482
- WILSON OIL CO.**
Butane—Propane—Gas—Oil-Tires & Batteries—Retail Wh'sle.
Box 128 Wilson
- WELDING**
- R. H. HOLDER SHOP**
Complete Welding & Blacksmith Service
Box 143 WILSON
- J. W. MORTON'S SHOP**
30 Pipe Trailers Hard & Acting Plaw Tools
Downtown Wilson 24



Governor Price Daniel proclaims FFA Week in Texas, February 18-25. L-R are: Dick Wealey Executive Secretary, Texas Association FFA; Governor Daniel; Joe Penn, President of the Texas Association FFA; and George Hurt, State Director, Vocational Agriculture.

June Johnson Green Jacket Pledge At NTSC

Denton - Veretta June Johnson, daughter of Mr. and Mrs. Melvin T. Johnson, Route 1, is a freshman education major at NTSC. She is also a member of the Independent Students' Organization, Student National Education Association and Association for Childhood Education and serves the freshman class as secretary.

Kart Races Cancelled Due To Bad Weather

Go-Kart enthusiasts suffered another disappointment via the weather man Sunday afternoon as cold weather and sleet necessitated the cancelling of races. A full afternoon of good racing had been planned, with contestants to be entered from several neighboring communities. However, again with weather permitting, the kart races will be held in Slaton on Sunday, March 5th. More details about the entries and number of races will be announced in next week's Slatonite.

The Slatonite, Slaton, Tex., Thursday, February 23, 1961

A full afternoon of good racing had been planned, with contestants to be entered from several neighboring communities. However, again with weather permitting, the kart races will be held in Slaton on Sunday, March 5th. More details about the entries and number of races will be announced in next week's Slatonite.

If you need a new ROOF
Call
Slaton Lumber Co.
VA 8-4329

WOMAN WHO CAN DRIVE to call regularly each month on established cosmetic clients in and around Slaton, making necessary deliveries, etc., 3 or 4 hours per day. Route will pay up to \$3.50 per hour. Write Studio Girl Cosmetics, Dept. W14 Glendale, California.

BREWERY INSURANCE AGENCY
139 So. 9th

Important Facts Given At Tech's Agriculture Chemicals Conference

LUBBOCK—Careful use of fertilizers and insect poisons pays greater dividends to farmers than over use of either speakers agreed at the eighth annual Agricultural Chemicals Conference Texas Tech Wednesday.

Approximately 150 farm chemical dealers, agricultural extension workers and manufacturer representatives were on hand for the opening sessions in the Tech Union building. The meeting continues through Thursday afternoon.

Increasing dosage of poisons in hopes of increasing insecticide effectiveness merely causes the point of diminishing returns to be reached almost as soon as the recommended dosage is exceeded. Dr. Ellis Huddleston, Texas Tech entomologist, said "The extra residual activity from increased dosage is usually measured in terms of hours and thereby offers a poor return on the investment in extra insecticide."

STRENGTH FOR THE WEEK

First Methodist Church
By Rollo Davidson, pastor

"Will lift up mine eyes unto the hills from whence cometh my help. My help cometh from the Lord, which made Heaven and Earth." Psalm 121:1-2.

deres Creek winds its way from the Mounds down to the edge of the town with its trees making a green or varied streak across the landscape. Mornning this scene has spoken to me like a spirit, that God is in His world We need strength for each day. We face problems and difficulties that are greater than we can solve alone. We can find that strength by taking a little time to get out into nature and listen for a voice that seems to constantly whisper about a God who is omnipotent and omniscient. We need only to give ear to this voice in order to hear it.

I have a sea shell I brought from the coast that sets on a table in my room. It makes no sound to one in the room until you put it to your ear. Then you can hear the roaring of the ocean and it seems to make a presence near you. So when you need strength take a moment to go to the hill or river, or blue sky or a pen prairie — any part of God's creation will have a voice that assures you that God is still here and stands ready to help you.

HARROD MUSIC CO.
SCHOOL OF MUSIC
Guitar Lessons
1216 Ave. Q P03-1110

A panel discussion on responsibility of banks, dealers, oil mills, producer organizations and farmers in use of farm chemicals, will open the Thursday morning session.

A business meeting of the South Plains Soil Fertility Committee will open the afternoon session. Wlter O'Neal of Lubbock, Chairman.

MAGUIRK ELECTRIC
5th and Murray
4 Blocks East of Porter Lumber Co.
VA 8-3877

CHILDREN
can tell you they hear their parents say how safe they feel with the Browning & Marriott Ins. Agency, over Teague's Drug, looking after their interests. On the **LEVEL** if you entrust all your insurance problems to the Browning & Marriott Agency you'll find that all those details that used to get pretty **ROCKY** are a thing of the past. The Browning & Marriott Agency has the knowledge and experience to make mole hills out of your **MOUNTAINS!**



"I want something to make me strong!"

His world has grown to include the corner store, which stocks everything—or so he thinks. But he'll soon learn that the most powerful form of strength—the one which no man can ever take from him—is one he'll have to find himself . . . *the personal strength that comes from lasting Faith.* You can help him find this strength by teaching him the habit of regular worship in the Church or Synagogue of your choice. Take the whole family this week . . . you'll all be stronger for it.

FIND THE STRENGTH FOR YOUR LIFE—WORSHIP TOGETHER THIS WEEK
Religion In American Life, Inc.

Wilson St. Paul Lutheran Church Rev. G. W. Heinemeier	Church of Christ 340 W. Division Roy Dean Verner	Bible Baptist Church W. Panhandle Rev. H. E. Summar	Grace Lutheran Church 840 W. Jean Rev. Leroy R. Deans	St. Paul Lutheran Church Mo. Synod, W. Rev. R. F. Kamr
First Baptist Church Wilson Rev. F. E. Scott	Assembly of God 950 S. 14th Rev. V. F. Love	Wilson Methodist Church Wilson Rev. Harold Rucker	First Baptist Church 255 S. 9th Rev. Ted E. Gaze	First Nazarene Church 635 W. Scurry Rev. Charles S
Our Lady of Guadalupe Church 700 S. 4th	Missionary Baptist Church	Pentecostal Holiness Church 105 W. Knox Rev. W. L. Comstock	First Christian Church 145 E. Panhandle Rev. E. A. Wilbur	Westview Baptist Church 830 S. 15th Rev. Dwight L
St. Joseph's Catholic Church Msgr. T. D. O'Brien 19th & Lubbock	Southland Baptist Church Rev. Eddie Fortson, Pastor	Trinity Evangelical Methodist Church Rev. Weldon Thomas	Immanuel Lutheran Church Posey Rev. F. A. Wittig	First Methodist Church 305 W. Lubbock Rev. Rollo David
Gordon Church of Christ Marion J. Crump, Minister	Southland Methodist Church Rev. Beane	African Methodist Church Rev. J. S. Gilbert	St. John's Lutheran Church Wilson Rev. J. P. Burnett	Church of God 206 Texas Ave. Rev. J. D. Bruc
Acuff Church of Christ Brooks Terry, Minister	Acuff Baptist Church W. O. Donley, Pastor		First Presbyterian Church 425 W. Lubbock	

THIS SERIES OF MESSAGES IS MADE POSSIBLE BY THE UNSELFISH SUPPORT OF THESE CHURCH-MINDED BUSINESS PEOPLE

Slaton Supporters: O. D. Kenney AUTO PARTS Your Automotive Parts Distributor	Slaton Co-Op Gins "Owned and Operated by Farmers" JIM-DAN-DY CLEANERS Free Pick-Up and Delivery 130 North 10th — VA 8-4347	Our Southland Friends: Basinger Drilling Co. Hackberry Co-op Gin "It's A Pleasure to Serve"	OUR WILSON FRIENDS: WILSON CO-OP Owned and Operated by M. L. Murray, Mgr
SLATON PHARMACY "Service Is Our Motto"	Bruce's Cafe "Where Friends Meet and Eat"	BASINGER GIN	WILSON STATE
Slaton Savings & Loan Association "We Pay You to Save"	WILLIAMS FUNERAL HOME Unlimited Insurance Protection Cadillac Ambulance Service	Southland Hardware "In Southland Since 1898"	CLUBB GRAIN Jimmy Coleman and Associates
Ray C. Ayers & Son, Inc. Grain — Feed — Seed	Union Compress and Warehouse Company		From Acuff: ACUFF CO-OP "It's Your Association"
Janes-Prentice Inc. Sand and Gravel for the Construction Industry			

CABINETS PANELING STORE FIXTURES TRIM WORK OR COMPLETE BUILDING SERVICE
Remines Const. Co.
Ph. VA 8-3358
"Woodwork with Pride"

ECONOMICAL FROZEN FOODS

CORN

SEABROOK
10 OZ.
CREAM STYLE
AND WHOLE
KERNEL

2 FOR 35c

Swanson, for Lent, frozen, HADDOCK DINNER **59c** Seabrook, Leaf & Chopped, frozen SPINACH, 10 oz. **2 for 35c**

Kraft, 8 oz. Jar **29c**
1000 ISLAND
Nabisco, 16 oz. Pkg. **39c**
FIG NEWTONS
Liptons Onion Flavor, SOUP MIX 2 Pkgs. **37c**
Liptons Tomato, SOUP MIX 2 Pkgs. **29c**
Ohio King Size, BOOK MATCHES, Each **29c**
Gerbers Strained, BABY FOOD, 3 Cans **29c**

Dove, Bars **49c**
TOILET SOAP, 2 Bath Size
Planters, 7 1/4 oz. Can **39c**
COCKTAIL PEANUTS
Winislow, All Green **23c**
ASPARAGUS, No. 1 Can
Skinner, 2-7 oz. Pkgs. **27c**
MACARONI,
Wilson, 2-No. 1/2 Cans **37c**
VIENNA SAUSAGE, 2 for
Doeskn, **39c**
TOILET TISSUE, 4 Rolls

TACHILADAS PATIO BEEF NO. 2 CAN **49c**

TAMALES PATIO NO. 300 CAN **23c**

For Your Boys & Girl!
A Colorful Library of Fascinating Knowledge
VOL. 11 **99c**
NOW ON SALE

LIBBY'S
PINEAPPLE JUICE
46 OZ. CAN **29c**

COFFEE MARYLAND CLUB LB. CAN **69c**

VELVEETA KRAFT'S 2 LB. BOX **79c**

TIDE GIANT BOX **73c**

PIGGLY WIGGLY MEAT IS UNCONDITIONALLY GUARANTEED
CHUCK ROAST CHOICE U. S. D. A. BEEF LB. **49c**
PICNICS MOHAWK SMOKED LB. **29c**

FRYERS Fresh dressed, whole, lb. **29c**
Hormel's Dairy, SLICED BACON, 1 lb. **59c**
Booth's, BREADED OYSTERS, 7 oz. Pkg. **49c**
HENS 2 1/2 to 3 1/2 lb. **29c**



DOUBLE EVERY Wed.
WITH \$2.50 PURCHASE OR MORE.
WE RESERVE THE RIGHT TO LIMIT QUANTITIES.

CONTADINA
FRUIT COCKTAIL
NO. 303 CAN **19c**

DEL MONTE **PEACHES** SLICED OR HALVES NO. 2 1/2 CAN **29c**
CHILI PATIO NO. 300 CAN 10c OFF LABEL NET PRICE

BAMA
JELLY AND JAM
3 18 OZ. JARS GRAPE JELLY AND RED PLUM JAM **89c**

FRESH FRUITS AND VEGETABLES
AVOCADOS THE ARISTOCRAT OF SALADS MEDIUM SIZE, EACH **7 1/2c**
POTATOES U. S. NO. 1 REDS, 10 lb. BAG **49c**

VALUES IN THIS AD GOOD IN SLATON, THURSDAY FRIDAY AND SATURDAY.



ANACIN 50 COUNT REG. 73c **2 FOR 99c**
Listerine, Reg. 59c MOUTH WASH, 7 oz. **88c**
Vicks, VAPO RUB, Reg. \$1.00. **77c**

More homemakers buy **BRAND NAME PRODUCTS** from **Piggly Wiggly!**

Shop Rite ... Always Shop **Piggly Wiggly**

SWEETH
Miss Areta Privett,
d King of the ar
ary 8. With the
anis Bell.

JENNIE LI
CHRISMA
Graduate of —
sbell's School of
Beauty Culture,
is now associate
with EURA'S E

SHOP
MANICRE
• Loctol — \$
• Plain — \$1

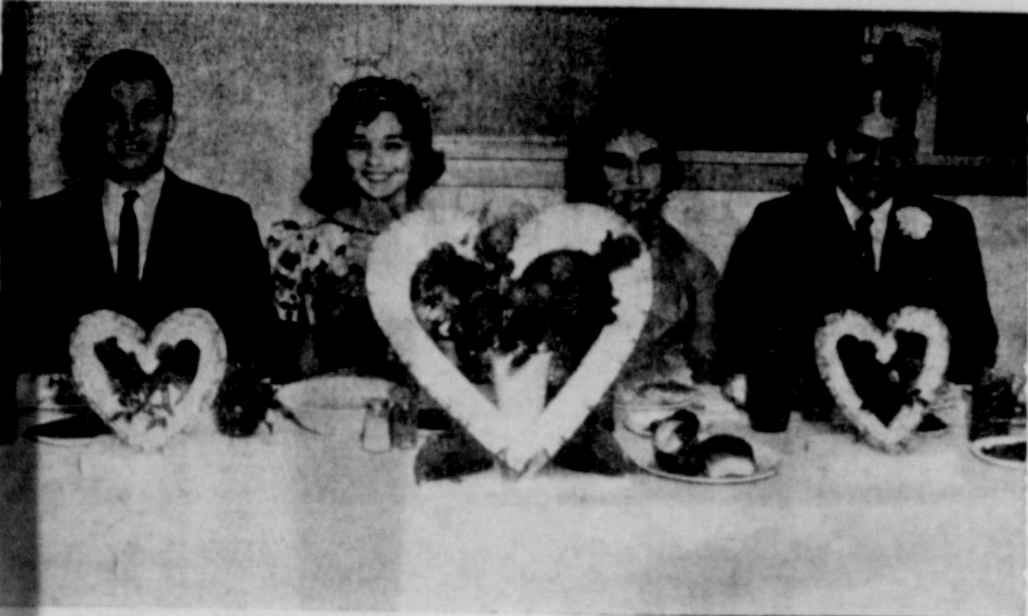
EUR/
930 S. 11th

ANNOUNCI
WE W
AFTER
AFTERN
WE HO
NOT E
AND
ARRAN
PING
Our
be the
Sundays wil
THESE H

M
8
W

The Slaton Slatonite Society Clubs

Thursday, February 23, 1961



SWEETHEART BANQUET KING, QUEEN

Miss Areta Privett, second from left, and David Hunt, right, were crowned Queen and King of the annual Sweetheart Banquet held at the First Baptist Church February 8. With the "royalty" are, left, Roger Comings, and, second from right, Janis Bell.

David Hunt, Miss Areta Privett Are Crowned Sweetheart Banquet Royalty

"Love Through the Ages" was the theme of the annual Sweetheart Banquet at the First Baptist Church on Wednesday evening, February 8. David Hunt and Miss Areta Privett were crowned King and Queen after being elected by popular vote. Approximately one hundred and forty attendees including the youth of the church on Thursday, Feb. 23.

Mrs. J. G. Harper Jr. gave the dismissal prayer.

Refreshments were served to Mesdames Billy Arnold, Ray Belt, Kenneth Brush, George Gamble, Doug Milliken, Wesley Johnson, Cagl, Harper and Greene.

O. E. S. Plans 'Fiesta' For February 24th

Slaton Chapter No. 585, Order of the Eastern Star, scheduled meeting at the Masonic Hall, Feb. 14th.

Mrs. Douglas Wilson, Worthy Matron, and Douglas Wilson, Worthy Patron, presided.

A program, "The Meaning of Valentine," was given by Mrs. R. L. Smith Sr. "Let Me Call You Sweetheart" was sung by the group and dedicated to Mrs. Wilson.

It was announced that the "Rainbow Fiesta" will be held Feb. 24th at the club house. Serving hours will be 6 p. m. and 7:30 p. m.

Following the meeting a social hour was held, serving refreshments from a table decorated in the Valentine motif.

Hostesses were Mrs. W. J. Thomas, Mrs. Larkin Taylor and Mrs. J. E. Vannoy.

Mrs. Stokes Is Lottie Moon Circle Hostess

Mrs. H. G. Stokes was hostess to the Lottie Moon Circle Wednesday, Feb. 15th at 9:30 a. m.

Mrs. E. R. Burns, chairman, presided and Mrs. R. L. Smith gave the program for the Royal Service magazine.

Mrs. Dudley Berry read, "Call to Prayer," and Mrs. Fannie Patterson was program chairman.

Those present were Mesdames Garth Hunt, Joe Teague, Jr., R. Smith, Dudley Berry, Fannie Patterson, E. R. Burns and Stokes.

Posey Ladies Hosted By Mrs. Schroeder

Mrs. Fred Schroeder was hostess Wednesday, Feb. 15th to the Posey Ladies Society at the Educational Building.

Special Series Of Service At Local Church

A series of special services is currently underway at the Bible Baptist Church, 505 W. Panhandle.

Dr. Frank Godsoe of Houston is the evangelist for the services, held nightly at 7:30 o'clock. The series will continue through Saturday night, the pastor, Rev. H. E. Summar, said this week.

Miss Alma Rober Engagement Is Announced

Mr. and Mrs. Ervin Rober Slaton, wish to announce engagement and approach marriage of their daughter Alma Reese, to Carroll Meason of Mr. and Mrs. C. N. Me Wolforth.

Friends and relatives cordially invited to attend.

The meeting was opened with a hymn, "My Faith Looks to Thee." Rev. Witting presided the lesson, "When I Pray What Shall I Say?"

Eleven members and 1 visitor were present.

The offering for the mission will go to American Mission.

Cleaning At It's Finest

QUALITY

Cleaners & Laundry

VA 8-3406

KERTAN

112 SOUTH 9th

PHONE VA 8-3926

Portraits - Frames - Kodak Finishing

"BEAUTIFUL" BEDROOM ENSEMBLE



Regular Price \$39.95

SELF FURNITURE Special price \$19.95

VA 8-

JENNIE LEE CHRISMAN

Graduate of —
Webb's School of
Beauty Culture,
is now associated
with EURA'S BEAUTY SHOP



JENNIE LEE CHRISMAN

Special on Permanent Waves \$5

as a get acquainted offer.

SHOP

MANICURES

• Loctal — \$1.50

• Plain — \$1.25

EURA'S BEAUTY SHOP

930 S. 11th

VA 8-3647

Winsome Class Meets In The Brush Home

The Winsome Sunday School Class of Westview Baptist Church met Friday, Feb. 17, at 9:30 a. m. in the home of Mrs. Richard Brush.

A devotion on friendship was given by Mrs. Bill Green, followed with a prayer by Mrs. "Shorty" Cagle.

The class planned a visitation day and covered dish luncheon.

Church School Attendance Totals 1,426

Attendance church schools in Slaton Sunday, Feb. 19, 1961, totaled 1426 in the 11 churches which reported.

Churches reporting and their attendance was as follows:

First Christian	70
Church of God	58
Church of the Nazarene	33
Westview Baptist	230
Grace Lutheran	100
Church of Christ	226
First Baptist Mission	36
Assembly of God	65
Pentecostal Holiness	58

Willing Workers In February 8th Meeting

The Willing Workers Sunday School Class met Feb. 8 in the home of Janie Phillips for their regular business and social meeting.

The meeting was opened with a prayer by Mrs. Jackson and Mrs. G. E. Taylor gave the devotional.

Mrs. J. S. Vaughn, teacher, presided in the absence of the class president, Frances Keane.

Minutes were read and the treasurer report was given.

A Bible quiz was given by Mrs. Jack Brookshire and Mrs. Ber Hasing presented each member with a lovely hand made handkerchief as a love token.

The meeting was closed with prayer by Mrs. Denton.

Refreshments were served to 9 members and 1 visitor.

WESTERN AUTO associate store



Huge 20-Gallon Galvanized Steel Garbage Can

Super Value!

Resists Corrosion! Tight Lid! Extra Strong. Sizzling Savings!

SLATON REST HOME

VA 8-3681

VA 8-4759

Daphne's BEAUTY SALON

LET JAN and JO DO YOUR EASTER COIFFURE'S. PERMANENT WAVE SPECIAL, \$10 for \$5 plus HAIR CUT. HAIR COLOR \$5 including Set. Special good on Monday, Tuesday and Wednesday each week 'Til Easter.

CALL VA 8-3571 for your appointments.

ANNOUNCEMENT

WE WILL BE CLOSED AFTER 1:00 P. M. SUNDAY AFTERNOONS.

WE HOPE THAT YOU WILL NOT BE INCONVENIENCED.

AND THAT YOU WILL ARRANGE YOUR SHOPPING WITH OUR HOURS.

Our hours on Weekdays will be the same.

Sundays will be 8:00 a. m. to 1:00 p.m.

THESE HOURS ARE EFFECTIVE

MARCH 5th

8 'TIL LATE FOOD

WE'VE MOVED

LOCATION NEXT DOOR TO WALTON DRUG. WATCH FOR OUR FORMAL OPENING.

118 W. GARZA

VA 8-



this week end!



The Slaton Slatonite

FARM REVIEW AND FORECAST



JUNIOR CHAPTER CONDUCTING TEAM

The Junior Conducting Team of the Slaton FFA organization is shown here. They are, left to right, Jim Lowry, student advisor, Travis McCormick, Alan Martin, Alan Teasoner, Leslie Brown, and Ricky Brush. The front three are holding the winner's sign from the Area One Greenhand Division Chapter Conducting Contest, held in 1960.



FFA OFFICERS

These are the officers of the Slaton FFA organization. They are, left to right, Jimmy Siewert, reporter; James Wright, president; Travis Hendrix, secretary; Don Caldwell, treasurer; John Mangum, vice-president and Danny Edwards, sentinel.

WATER - SOLUBLE PHOSPHATES

Knowing the water solubility of the phosphate can mean more profits from the money you spend on fertilizer this year. The tag on the fertilizer bag tells you what % available phosphate (P-205) is in the fertilizer. However, this may be a kind that is not available very quickly. Plenty of phosphorus is important in establishing stands. However, if a high percent of it is not in a water soluble form, you may not get the best results. For this reason, make sure that STARTER FERTILIZERS have at least 50% of the available phosphates in water-soluble form.

How it's applied may determine how much real advantage you get from using the high water soluble fertilizer. Advantage is usually GREATEST WHEN IT IS PUT DOWN IN BANDS. Where it is broadcast

and worked into the soil, most tests indicate there is less difference in the crop effect between the high and low water soluble fertilizers. Higher fertility soils SHOW

LESS INCREASED CROP EFFECT from water-soluble material that lower fertility ground. Soils high in lime, such as Calcareous soils, usually show greatest advantage for high water-soluble phosphates. There is no fertility loss by using high water-soluble phosphate fertilizer. Agronomists say they will not leach out of the soil.

Keep these facts in mind in deciding whether or not to use the more watersoluble types of phosphate fertilizer. All phosphate fertilizers will do a good job in their place. Check with your fertilizer dealer on price and water-solubility.

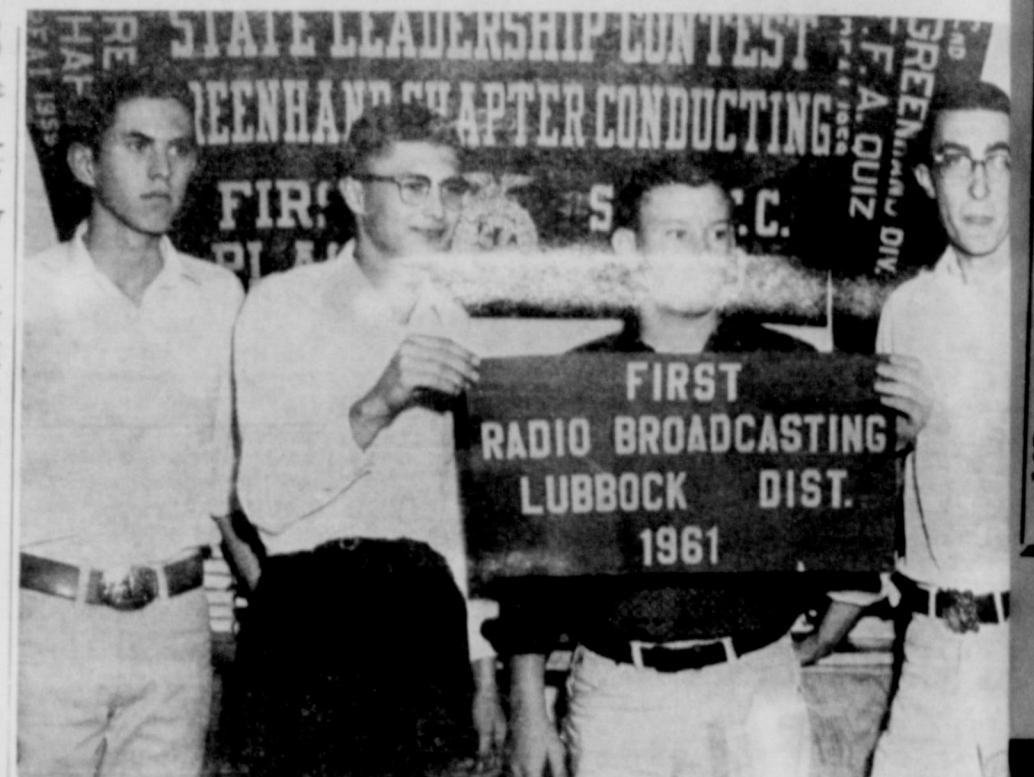
Local 4-H Girl Attends Contest In Chicago

Wanetta Hutton, outstanding Lubock County 4-H Club girl, will leave Sunday, February 19, to participate in the National Cherry Pie Baking Contest in Chicago. She was named earlier this year to represent Texas in the national contest.

Sponsor of the contest is the National Red Cherry Institute of Chicago. Wanetta and her chaperon will receive all-expense trips to Chicago where she will be competing with other state winners for regional and national honors for college scholarships, electric ranges, ranges and cash awards.

Wanetta has completed eight years of 4-H Club work and is the daughter of Mr. and Mrs. Cowan Hutton, Route 1, Shallowater. She is a junior in Shallowater High School and is active in church, school and community affairs in addition to being a top junior leader. Her major demonstrations have been food preparation, frozen foods, dairy foods, poultry, clothing, canning, gardening and bedroom improvement. Her exhibits at the Panhandle South Plains Fair have been awarded many blue ribbons and she has been a member of four county winning demonstration teams. She is a Gold Star Girl and holder of many awards in foods and clothing on the county basis.

In Chicago, Wanetta not only will test her skills in the cherry pie baking contest but will join with the other contestants on tours of the city, pose for photographs, and attend a reception and dinner given by the president of the National Cherry Institute. Wanetta will be judged from the minute she starts to make her pie by a panel of judges which includes leading home economists and educators, on preparation technique, pose, grooming and speed. Appearance, texture and taste will be judged after her pie is baked. Mrs. Joyce Ruebush, Lubock County Assistant Home Demonstration Agent, who has supervised the winner's 4-H program will accompany Wanetta to Chicago. They will return on February 25, according to Extension Service



FIRST PLACE WINNERS

The Slaton FFA Radio Broadcasting team, which won first place in the Lubock District Contest, is shown here. Members are, left to right, Larry Delaney, Don Caldwell and Jimmy Ayres.



SENIOR CHAPTER CONDUCTING TEAM

Members of the Slaton Senior Chapter Conducting Team are shown here. They are, left to right, Billy Cooper, James Cooper, James Mangum, Jim Lowry, Don Caldwell, and Robert Hoffman.



SHYTLES Implement Co.



'CALF SCRAMBLE' WINNER

James Mangum, of the Slaton FFA, is shown here with the calf he won last year at the Houston Fat Stock Show in one of the "Calf Scrambles." James received a \$500 certificate toward the purchase of a heifer, which he got from Frank E. Jordan of Mason. His sponsor is J. N. Hunt of Houston. James will leave at the last of the month to show his heifer at the Houston Fat Stock Show with high hopes of doing well.

SLAUGHTER CATTLE that will finish at good to choice grades around 1,000 pounds in live weight at 18 months of age are good goals to shoot for in raising quality beef at lower costs. W. Brady Anthony of the Auburn University animal husbandry and nutrition department says opportunity for further improvement in systems

The annual Texas 4-H Roundup will be held June 6 and 7 at Texas A & M University. Program details are not available but will be announced well in advance well in advance of the June meeting officials.

Get Your Quality
INTERNATIONAL HARVESTER
Farm Equipment
PARTS AND SERVICE
AT
SLATON IMPLEMENT CO.
Lubbock Hi-way VA 8-3176
YOUR HAT IS OFF
to the Vocational Culture Program today. These young men will build America tomorrow.

DEAL'S MACHINE SHOP
SLATON, TEXAS
Ph. VA 8-4307 Res. VA 8-4114
155 No. 9th St.
FOR YOUR IRRIGATION PUMP AND GEAR HEAD REPAIR
All Makes
General Welding and Machine
—Work—

LEARN SPANISH
Beginners class in everyday conversational Spanish, 12-week course. New night class for adults now being organized. Competent instructor. Complete beginners course only \$36.00. Limited number will be accepted. Register now. Mary Watson, instructor of conversational Spanish, 3601-32nd, phone SW 9-0396 or SW 9-8166, Lubbock. 3TP-19

AYERS SUPREME CHICK STARTER
FOR "EXCEPTIONAL RESULTS AT NO EXTRA COST"
FFA is an outstanding organization, and we are for them all the way!
One stop shopping for those farm and gardening needs. We have all the name brands in fertilizers—plant foods—poisons—seeds—tools. Fertilizers Delivered Direct To Your Farm.
—ORTHO insecticides—
SLATON FARM STORE
166 S. 9th VA 8-4487

HYBRID SEED?
HAVE YOU BOOKED YOUR
• AMAK—R—12 • P—A—G
• GOLDEN ACRES • AMAK—R—10
• TEXAS HYBRIDS
BE SAFE AND RESERVE YOUR SEED NEEDS NOW.
"We are F.F.A. Boosters"
HUSER HATCHERY
310 SOUTH 9th STREET

She LIQ Buy From Slaton to Woodrow Woodrow Slaton. 4. Tahoka F

YOU ARE

WIL

LIQUOR FIRST ST (\$

You'll FIND ONE OF THE FINEST WHISKIES

IN LUBBOCK A DRIVE YOUR CO REMEMBER WHERE APPRECIATE

WIL

HO HO M

BOB ROBI

IT PAYS

WANT ADS WORK WONDERS

The Slatonite, Slaton, Tex., Thursday, February 23, 1961

Spell Quiz

Eager
Correct Answer

McNALLY CASH PACKAGE STORE

Shop our Wide Selection of LIQUOR-WINE-BEER

Buy Here At Thrifty Prices

From Slaton go west on County Road to Woodrow, store is at north edge of Woodrow approximately 10 miles from Slaton. 4.8 miles South of Lubbock on Tahoka Highway.

YOU ARE INVITED TO VISIT ...

WILEY'S, Inc.

LIQUOR-BEER

FIRST STOP ON TAHOKA ROAD (South of Lubbock)

You'll Find

ONE OF THE LARGEST AND FINEST SELECTIONS OF FINE WHISKEYS, WINES, and COLD BEER

IN LUBBOCK COUNTY! And A DRIVE - IN WINDOW for your CONVENIENCE.

REMEMBER ... WILEY'S IS WHERE YOUR BUSINESS IS APPRECIATED MOST.

WILEY'S, Inc.

HOME - OWNED
HOME - OPERATED
M. W. WILEY

BOB ROBER TSON G. L. CARDINAL

IT PAYS TO TRADE AT

Cecil's LIQUOR STORES

Just Follow the Signs in
Odessa - Post - Lubbock

THIS IS A GOOD WAY TO CUT DOWN THE CLOSE SQUEAKS DROUTH BRINGS.

GREAT PLAINS CONSERVATION PROGRAM

CARD OF THANKS

We wish to thank each of you who visited me during my operation and stay in the hospital and for the cards and well wishes. It shortened each day considerably. Also, the wonderful care from the Sisters and Nurses.

Paul Meurer

SALESMAN

Leads Furnished. No experience necessary. Earn \$1,000 per month. Age 21 to 45. Write Dan Crowley, c/o States General Life Insurance Co., 708 Jackson Street, Dallas, Texas.

2tc-20

SHAMROCK TIPS

Reliable Alterations

Men's double-breasted suits changed to single

110-B Erskine, Lubbock
Call PO 3-4497

INCOME TAX SERVICE

F. A. Cunyus
300 So. 10th
Call VA 8-3325
for appointment.

MY HOME FOR SALE OR TRADE

720 S. 18th st. Over 2100 square feet. Fine location—beautiful landscaping. A sacrifice at 60% original cost. Terms Available. See or call Don Crow—Daytime VA 8-4261—nights VA 8-3468.

WE BUY WE SELL WE TRADE

used furniture or anything of value. Call VA 8-4161 or come by the Auction House across the street from Carroll's Station in north edge of Slaton.

Auction Sale . . .
Sunday, 2 p. m.

HELP WANTED FEMALE !!! Ladies 35 to 50.

Avon representatives earn 2 to 3 dollars per hour, 3 available territories open in Slaton. Established customers waiting for service. Full or part time. No experience necessary. Write P. O. Box 935, Lubbock, Texas or phone PO 5-9914.

For Sale

FOR SALE—320 acres near Lubbock, irrigated, on pavement. Priced below market. Have some good G. I. listings, also. Howard Carlson, 2317 34th Street, Lubbock. tfe-35

FOR SALE OR TRADE—Tires, tubes and wheels for trailers, cars and pickup.
TED & JUEL'S GARAGE
1200 S. 9th VA 8-7132 tfe-42

FOR SALE—160 acre farm, 55 acres cotton, 1-8", and 10" well 2 bedroom house. Priced \$350. an acre Howard Carlson, 2317 34th St., Lubbock. tfe-15

FOR SALE OR TRADE—Two, new brick, 3 bedroom houses, 2 baths, carpeted, drapes, storm doors and windows. Call VA 8-4215. W. E. Kidd 3tp18

FOR SALE OR TRADE—2 bedroom home, 713 E. Purdue, Lubbock. My equity is \$3,800 but I am asking \$2,000 and you can take up payments. The house is "completely furnished". Call me at VA 8-3671 or PO 5-5378. tfe-4

FOR SALE—Two-bedroom house with den, carpet, on corner lot, carpeted living room and den, patio, nice yard, low interest rate. G. I. Loan, Good Location. Call VA 8-5353, 1005 S. 19th. TFC-19.

FOR SALE—Full-blood boxer puppies. Two miles north on the Canyon Road, Elsa Smith.

FOR SALE—Steel clothes line poles, \$12.50 and up. Free delivery anywhere in city. Ted & Juel's Garage 1200 So. 9th. Ph. VA 8-7132 TFC-15

FOR SALE—later points, chisels, chisel plows, shanks and shredder worth the money. shredder worth the money. Slaton Farm Store. tfe-6

FOR SALE—One 1952 U Moline tractor and four-row equipment, on butane. Price right. R. W. Cudd, VA8-4121. tfe-19

FOR SALE—1 bedroom house on corner lot, 6 years old, \$2800 will handle. Balance monthly payments, \$59.00. Hickman & Neill Agency, VA8-3306. 2tc-20

FOR SALE—Full - blood boxer puppies. Two miles north on the Canyon Road. Elsa Smith. ttp-20

For Sale. Clean carpets with our Carpet Shampooer FREE, with purchase of Blue Lustre shampoo. Lasater-Hoffman Hardware. ttc-20

FOR SALE—1958 40 hp manual Scott outdoor motor. Very few hours running time. Priced reasonable. Call Bert Stennett, 630 S. 9th St., VA 8-3879. 2TP-20

FOR SALE—Infra-red heat lamps, heating tape, and pipe insulation. Huser Hatchery. TFC-10

FOR SALE—Adjustable Louvered Window Shutters can be had at lower prices and in many sizes in Fruitwood finish at Forrest Lumber Company, 250 S. 9th., Slaton, VA 8-4106. TFC-15

FOR SALE—new ready built house, semi completed. See at Forrest Lumber Co. 250 S. 9th or call VA 8-4106. tfe-14

FOR SALE—One only 1960 Frigidaire 30-inch range. A real buy. Thompson Furniture. ttc-17

FOR SALE—Two wheel enclosed trailer. Excellent condition. \$75. 925 S. 18th. 2TP-20

FOR SALE—Three bedroom home, completely carpeted. West Slaton. FHA loan, payments \$63 per month. ttc-17

ANNOUNCING . . .
AN ADDED SERVICE FROM—

Slaton Floral AND **Chriesman Floral**

VA 8-4214 AND VA 8-3462

"DUPLICATE FUNERAL CARDS"

DESCRIPTION— a card in duplicate, that makes it easy to keep track of flowers and from whom they came. Both funeral director and family prefer this duplicate style funeral card that helps prevent "lost flowers".

For Rent

FOR RENT—Large three bedrooms, two baths, house. Location, 605 9th Street, W. E. Kidd. Telephone VA8-4251. 2TP-19

FOR RENT—Nice two-bedroom house, 1050 W. Lynn. \$65 month. Close to school, and plumbed for washer. Pember Insurance Agency, VA8-3541. tfe-19

FOR RENT—Efficient Apartment, couple only, 650 S 12th. VA 8-3308. Tfe-14

FOR RENT—Five-room house, unfurnished, close in. For information, call VA8-4708. tfe-17

FOR RENT—Bedroom, private entrance, 335 N. 6th or call VA 8-3465 if no answer see Mrs. Brookshire at Teague Drug. TFC-48

FOR RENT—Floor sanders, floor polishers. Lasater-Hoffman Hardware. TFC-11

FOR RENT—Nu-Kleen home cleaning system, \$6.00 a day rent on the machine, plus price of liquid required for your need. Self Furniture. Call VA 8-4407. TFC-7

FOR RENT—Hospital Beds, call Self Furniture Co. VA 8-4407. tfe-50

FOR RENT—Do-it-yourself carpet cleaning machine. Ask us for details. Quality Drive in Cleaners & Laundry, VA 8-3406. tfe-34

FOR RENT—Nu-Clean carpet cleaning machine. Give your carpets a bright new look. Self Furniture. tfe-16

FOR RENT—Nice furnished apartment. Close in. See Hugo Mosser or call VA 8-4510 or VA 8-4475. tfe-16

FOR RENT—small, clean, well furnished house. Knotty pine walls, car port. Will accept 1 small child or could be bachelors apt. Mrs. C. C. Wicker, VA 8-3902. TFC-16

FOR RENT—House with four rooms and bath, 1350 S. 12th. Call VA 8-4833, after 6 p. m.

FOR RENT—three room furnished duplex apartment, 650 S. 12th. James L. Allred, 6124, 21st St., Lubbock. Call VA8-3308. TFC-20

FOR RENT—Four-room furnished apartment, private bath and entrance walk-in closet and hardwood floors, washer connection, front room redecorated. Call VA 8-3306 or see W. W. Clark, 617 S. 9th St. ttp-20

For Rent—3 room furnished apartment at 255 S. 15th. call VA8-4579. ttc-20

For Rent - 3 room house unfurnished. Call VA8-3540 after 2 p.m. ttp-20

FOR RENT—Nice house for rent, 245 S. 17th St. Write J. C. Leach, 4006 Hughes, Amarillo, Texas. TFC-20

FOR RENT—One bedroom house, 425 W. Crosby. Contact Mrs. Earl Eblen, VA8-3236. 2TC-20

FOR RENT—Nice furnished apartment, private yard, small child excepted. See at 135 S. 3rd or call VA4-4654. ttc-20

FOR RENT—Modern home, 3 bedrooms, den, hardwood floors, plenty cabinet storage, garage attached, plumbed for washer. Inquire 1350 S. 10th St. ttp-20

FOR RENT—Business building 12 1/2 x 70' west side of square. See Phil Brewer, 139 S. 9th. tfe-40

FOR SALE—One 2 bedroom new home, with attached garage, 940 S. 21st. \$10,300.00, \$400.00 down, \$75.00 F. H. A. per month see Slaton Lumber Co. VA 8-4329. tfe-8

FOR SALE—Gallon sizes of floor finishes and polishes. Lasater-Hoffman Hardware. TFC-11

FOR SALE—Infra-red heat lamps, heating tape, and pipe insulation. Huser Hatchery. TFC-10

FOR SALE OR TRADE—For sale or trade for small farm by owner. 3 nicely furnished apartments and two-bedroom, small den, panelray heat, Duct air conditioning. In Slaton, Texas. J. L. Allred, 6124-21st, Lubbock, Texas, SW 9-7825. TFC-15

FOR SALE—Adjustable Louvered Window Shutters can be had at lower prices and in many sizes in Fruitwood finish at Forrest Lumber Company, 250 S. 9th., Slaton, VA 8-4106. TFC-15

FOR SALE—new ready built house, semi completed. See at Forrest Lumber Co. 250 S. 9th or call VA 8-4106. tfe-14

FOR SALE—One only 1960 Frigidaire 30-inch range. A real buy. Thompson Furniture. ttc-17

FOR SALE—Two wheel enclosed trailer. Excellent condition. \$75. 925 S. 18th. 2TP-20

FOR SALE—Three bedroom home, completely carpeted. West Slaton. FHA loan, payments \$63 per month. ttc-17

FOR SALE—new ready built house, semi completed. See at Forrest Lumber Co. 250 S. 9th or call VA 8-4106. tfe-14

FOR SALE—One only 1960 Frigidaire 30-inch range. A real buy. Thompson Furniture. ttc-17

FOR SALE—Two wheel enclosed trailer. Excellent condition. \$75. 925 S. 18th. 2TP-20

FOR SALE—Three bedroom home, completely carpeted. West Slaton. FHA loan, payments \$63 per month. ttc-17

FOR SALE—new ready built house, semi completed. See at Forrest Lumber Co. 250 S. 9th or call VA 8-4106. tfe-14

FOR SALE—One only 1960 Frigidaire 30-inch range. A real buy. Thompson Furniture. ttc-17

FOR SALE—Two wheel enclosed trailer. Excellent condition. \$75. 925 S. 18th. 2TP-20

FOR SALE—Three bedroom home, completely carpeted. West Slaton. FHA loan, payments \$63 per month. ttc-17

See the Electric Fence that can be attached to Barb Wire Fences. No Insulators necessary. Slaton Farm Store, VA 8-4487. tfe-7

Triangle Manufacturing Co.

BOX 486 VA 8-32
STEEL OR MASONRY COMMERCIAL BLDG UTILITY, ETC.
JACK SCHUETTE, Mgr.

Miscellaneous

MISC—Use the M & V MACY Drive-In Win your convenience. ph 8-4537.

MISC—Mobile grain and feed mixing service ed by Huser Hatchery

MISC.—Tillie's Furndt holstering offers free mates, reasonable price guaranteed work. Mr. Perdue, 445 W. Scott. VA 8-3760.

MISC-GIFT SHOP • Hats, plaques and novel work, Ivy and Planter. George Bussell, 140 S. 8-4439.

FREE — Part-Cooker mother and puppy. Mot is trained and house. 245 W. Crosby. VA 8-41 W. C. Hight.

FOR SALE—1955 model Admiral electric cook stove, electric clock, timed for 3 outlets, deep well, good condition. \$150. Call after 4:30 p.m., VA8-3534. 2tp-19

FOR SALE—House, Three rooms and bath for sale or trade. On South 11th. Call VA8-4814. 2tc-19

FOR SALE—New and used adding machines and typewriters for sale at very attractive prices. Also typewriters and adding machines for rent. Guaranteed repair work on all makes and models. For quick action see or phone A. M. Jackson, 735 West Lubbock Street, phone VA 8-3568. TFC-11.

FOR SALE OR TRADE EQUITY—three bedroom, two bath, brick, carpeted house. Will take your equity or house, if nice two bedroom. Call VA-3541 Pember Insurance Agency. TFC-19

FOR SALE—Wolverine gloves in all sizes and grades. For the best in gloves, come to Huser Hatchery. TFC-10

FOR SALE OR TRADE—One Way Plow has large disc. Fits most tractors that use cylinders or 3 point hitch. Ted & Juel's Garage 1200 So. 9th. Phone VA 8-7132. TFC-15

FOR SALE—Six-room house on corner lot. Fully carpeted, fenced in back yard, garage. Call VA 8-3783. TFC-18

FOR LEASE—Business building 12 1/2 x 70' west side of square. See Phil Brewer, 139 S. 9th. tfe-40

FOR SALE—One 2 bedroom new home, with attached garage, 940 S. 21st. \$10,300.00, \$400.00 down, \$75.00 F. H. A. per month see Slaton Lumber Co. VA 8-4329. tfe-8

FOR SALE—Gallon sizes of floor finishes and polishes. Lasater-Hoffman Hardware. TFC-11

FOR SALE—Infra-red heat lamps, heating tape, and pipe insulation. Huser Hatchery. TFC-10

FOR SALE OR TRADE—For sale or trade for small farm by owner. 3 nicely furnished apartments and two-bedroom, small den, panelray heat, Duct air conditioning. In Slaton, Texas. J. L. Allred, 6124-21st, Lubbock, Texas, SW 9-7825. TFC-15

FOR SALE—Adjustable Louvered Window Shutters can be had at lower prices and in many sizes in Fruitwood finish at Forrest Lumber Company, 250 S. 9th., Slaton, VA 8-4106. TFC-15

FOR SALE—new ready built house, semi completed. See at Forrest Lumber Co. 250 S. 9th or call VA 8-4106. tfe-14

FOR SALE—One only 1960 Frigidaire 30-inch range. A real buy. Thompson Furniture. ttc-17

FOR SALE—Two wheel enclosed trailer. Excellent condition. \$75. 925 S. 18th. 2TP-20

FOR SALE—Three bedroom home, completely carpeted. West Slaton. FHA loan, payments \$63 per month. ttc-17

Personal

Personal Loans, cash loans, guitars, radios, sewing machines, tools, or anything. Slaton Trading & Shop, 110 E. Lubbock St. 4632.

Wanted

WANTED—Ironing to do home. Mrs. Emma Smith, S. 4th St. Call VA 8-4632. TFC-18

WANTED—Someone to do payments on 1957 Olds, 88 brakes and steering. Go Call VA8-3339 or VA8-4658.

WANTED—If you have first lien notes for sale, B. B. Castleberry VA Slaton Savings & Loan.

WANTED—Experienced work around wrecking. Apply immediately. Lo Auto Salvage, 50th at H. ck.

Have your prescription at TEAGUE DRUG by a registered pharmacist.

WANTED—We operate truck for moving locally VA8-4487. Pick up and rrv service.

WANTED—Ironing to do home. Mrs. A. W. Weir, 4th.

FOR RENT

Power saw, electric floor polisher, electric open saw, electric ers, by hour or day.

Higginbotham-Bartl Co.

Holiday Package Store

3 miles east of rail on E. 50th and Buf Lake Road, Lubbock. handle all brands of liquor, wines and beer. Your closest place serving southeast Lubbock. Everyone treated the same courtesy prompt service. Customer's Drive—In Car Right on the price, on your way to the and right on the back home. Your mess, large or small, be gratefully appreciated. Come by and see one autifully different select your favorite erage. Home-owned home-operated. T. Caffey, manager operator.

See the Electric Fence that can be attached to Barb Wire Fences. No Insulators necessary. Slaton Farm Store, VA 8-4487. tfe-7

Triangle Manufacturing Co.

BOX 486 VA 8-32
STEEL OR MASONRY COMMERCIAL BLDG UTILITY, ETC.
JACK SCHUETTE, Mgr.

ANNOUNCING . . .
AN ADDED SERVICE FROM—

ANNOUNCING . . .
AN ADDED SERVICE FROM—

this week end!

**Senior High
Boys Win In
Three Of Four**

played during the last week, with only one more night of action on tap for the season.

The 7th grade girls defeated Tahoka, 22-13, while the 7th grade boys dropped their tussle by 24-19.

In the 8th grade loop Slaton's Junior High basketball team took three of four games

to wide victory of 41-28. The remaining games are set for Friday night, to be played at Littlefield.

Mrs Lewis Is Winner Of Rhyme Contest

Mrs. Carl Lewis Jr., a local housewife residing at 950 S. 21st Street, is the winner of last week's Ad-Rimes Contest.

Mrs. Lewis correctly identified the hidden slogan, "All these firms merit your patronage," and submitted the winning ad-rime, in the opinion of the judge.

Here is her winning ad-rime: Local merchants merit trade. Shop at home, he will repaid. There were several very fine entries and many of those were on the same theme as Mrs. Lewis. Winnings include \$10 for this effort plus a chance at the \$50 grand prize at the end of the contest.

Lions See Films Of Old Mexico

Lions Club members were shown films of a past Lions International Convention in Old Mexico at their regular meeting held Tuesday in Bruce's Cafe.

Shown by Hack Lassater, the films were brought back by him after he attended the convention. No visitors were in attendance.

Mary Katherine Wells, Troy Livingston Marry

The Rev. Roy Dean Vernon read the double ring wedding vows when Miss Mary Katherine Wells was given in marriage to Troy Livingston at 8 p. m. Sunday, Feb. 19, in the home of the bride, 605 S. 15th St., Slaton, Texas.

Parents of the bride are Mr. and Mrs. J. B. Wells Jr. and the bridegroom's parents are deceased.

The bride wore a beige linen sheath with a purple orchid. Mrs. Joe Baker, sister of the bride, was matron of honor. Her dress was of beige lace sheath with a white gardenia corsage.

Candles were lighted by Lois Wells, aunt of the bride. Joe Baker, brother-in-law of the bride, served the bridegroom as best man.

Wedding selection, "Oh Promise Me" by soloist, Lois Wells was sung.

Decorations consisted of an arch of white candles and florist greenery with baskets of white gladioli.

A reception followed in the home of the bride. The couple will live at 320 W. Lynn, Slaton, when they return from a honeymoon trip to Houston.

Mrs. Livingston is a graduate of Slaton High School and Drughn's Business College and her

husband is employed by J. B. Wells Jr. Trucking Company, Slaton.

Out-of-town guests were Mr. and Mrs. Andy Edwards, Mr. and Mrs. Fritz Wisdom, and Mrs. Lucille Moore, all of Lubbock.

HDC Meets In Home Of Mrs. Paschall

Slaton's Home Demonstration Club met in the home of Mrs. A. L. Paschall Feb. 15, with Mrs. Babh Thorp and Mrs. Beuford McCain bringing the program.

Mrs. Thorp demonstrated the making of wall plaques from plastic doilies, and Mrs. Paschall reported on the council meeting and discussed upholstery.

Nine members attended, including three new members. Next meeting will be at the home of Mrs. Harold Culver.

HOW FAR WILL A FORTUNE GO?

To most American families a check for \$10,000 or more is a bonanza, a windfall — a small fortune. But to a bereaved widow . . . How many teddy bears, how many meals, how much education will it buy? And always the question, "What will happen when it's gone?"

You can save your wife and family a whole lot of worry by answering these questions now. And there is no one better equipped to help you than your Travelers agent. Building brighter futures through insurance of all kinds is our specialty.

For Details Call REYNOLDS INSURANCE AGENCY

210 W. Garza VA 8-4834

THERE'S A DRIVE-IN WINDOW TO SERVE YOU AT—

DUB'S PLACE

3.5 MILES WEST OF SLATON ON US. 84, AT THE EAST EDGE OF POSEY

ALL BRANDS OF Liquor, Wine, Beer

WE SPECIALIZE IN COURTEOUS, FRIENDLY SERVICE

THIS PRICE CANNOT BE BEAT EVEN BY THE OFF BRANDS SAYS MR. BAIN

HUB LIQUOR STORE

HAS Your Favorite Brand Of Liquor, Wine And Beer.

Visit Us Soon!

HUB LIQUOR STORE

NORMAN WILLIAMSON, MANAGER

VA 8-4652

IN HOSPITAL
Mrs. Anna Gentry is in the John Sealy Hospital at Galveston, Texas. Mrs. Gentry said that she would appreciate getting your cards and letters, she is in room 516-A. She entered the hospital Friday, February 17th and is very lonesome.

LAST 3 BIG DAYS OF	WHITE'S	ANNUAL 1c SALE
BRAKE FLUID 44c 121 S. 9th	MOTOR OIL 25c	TRANSMISSION FLUID 45c VA 8-3946



T.G. & Y.
5¢ TO 10¢ STORES

DRESS SPECIAL

LADIES —
Sizes 12 to 20 with 1/4 sleeves

—NO HALF SIZES—

WOVEN GINGHAMS
COTTONS
SYNTHETICS

REGULAR \$3.98
2 FOR \$5.00

READY TO SERVE YOU —

HAL'S

Liquor Store

1/2 mile Southwest of Slaton on the Post Highway

COME SEE US!



YES! Why wonder about the Quality of other brands, when you can get

Whirlpool FULL SIZE ELECTRIC DRYER.

\$139.95

BAIN AUTO STORE

W. GARZA VA 8-4652

OUR OPEN INVITATION

↓

To Our Future Customers & Friends

↓

Offering you the widest selection to choose your favorites from — PLUS — The friendliest, most courteous service On the South Plains

↓

You'll be glad you visited us first —and you'll be glad to return

Located: 2.3 miles East of Lubbock City Limits On U. S. 84

U-DRIVE-INN LIQUORS

NORMAN DALTON
... MANAGER

CLARET LIQUOR STORE

3/4 mile South of Woodrow

IS **OPEN TO**

Serve Friends and Customers with the finest in
Liquors, Wine, and that old favorite

COLD BEER

If You Just Can't Bear It Try Claret!

CLARET

Liquor STORE
J. C. Roberts — owner
"Pancho" Paez — Salesman

Free

Cal

en In Apri

or 2 Com

Action picked

City Election

Only one can

now there

Action picked u

are deadline in

for two Comu

vor.

Only one candi

dnesday of last

re are 10.

Four men seek

missioner from

S. Walker, Jr.,

E. "Bill" Mose

gory.

Four also seek t

missioner post

J. E. Eckert,

I. Bo Becker.

Two will vie fo

yor, L. O. Lem

Mayor Clark

ved one term, c

seek re-election

ly is the Comm

rd One, having

m. He is a barbe

retired railroade

Hanna is the Inc

ree, having serv

has J. E. Eckert

auto body res

Becker is deal

npa.

The election will

April 4 from 7

qualified voters

residing within

for at least six

paid their poi

exemption.

Judges will be V

rd One, Phil Br

o, Jonas Cain ir

I. John D. Webb i

rd One voting be

y Secretary's offi

I be in the Ret

ice, Ward Three i

ce and Ward Fou

of Commerce c

a confusing day fr

sibly is in store

four separate ele

y Hall that day. T

a charter ame

n, which will be

ne places as the

Senatorial Electi

nd Election, both

held in the hall

e. Subsequent is

tonite will attem

o can vote in w

2.

Absentee voting w

ly Election on M

h, and end Marcl

y Secretary's offic

Absentee voting

ial Election will st

the County Cleri

bbock and an abse

located in the

commerce office t

h through 31st, in

Progress M

n Club Ho

remodelin

Progress toward

g the desired reme

ub House has be

ceeding to a rep

om Mrs. W. K. Fr

A meeting was h

ves from 15 organi

nt, and Mrs. Fry

il the repairs prev

would be carried

Details of the me

are plans will be an

week.

Southland S

Play To Be

Field March

Southland's Seni

and "Fuller's Fort

held Friday, March

announced this we

Time for starting

9:30 p.m. in the S

chool Auditorium.

Admission is 25

cents, 50 cents for

clubs (see reserved