

THE SLATON SLATONITE

W. DONALD, Publisher and Owner. \$1.50 Per Year.

SLATON, LUBBOCK COUNTY, TEXAS.

VOL. 9. NO. 36. MAY 21, 1920.

No Charges

BY BECOMING A MEMBER OF THE DISTRICT CLEARING HOUSE OF THE FEDERAL RESERVE BANK WE GIVE OUR CUSTOMERS BENEFIT OF THE EXCHANGE FORMERLY CHARGED WHEN REMITTING FOR CHECKS FROM OUT OF TOWN. NO ONE CAN COME BACK ON YOU FOR EXCHANGE CHARGED BY THIS BANK.

WE MAKE NO CHARGE TO OUR PATRONS IN COLLECTING OUT OF TOWN ITEMS. DRAW YOUR GRAIN AND COTTON DRAFTS OR OTHER COLLECTIONS THROUGH US AND RECEIVE THE NET PROCEEDS FROM SAME.

WE WILL TRANSFER YOUR MONEY TO OR FROM ANY OTHER CITY THE QUICKEST POSSIBLE WAY WITHOUT COST TO YOU.

ONE TRIAL WILL CONVINCING YOU OF OUR ENLARGED PERSONAL SERVICE

Guaranty Fund Bank

THE FIRST STATE BANK

THE BANK OF ENLARGED PERSONAL SERVICE.

OFFICERS

J. H. Brewer President
C. C. Hoffman Vice President
H. C. Jones Vice Pres. and Cashier
I. M. Brewer Assistant Cashier

CARD OF APPRECIATION.

I have resigned the position of city marshal of Slaton because of the fact that it requires too much time from my business. I wish to express my sincere appreciation to those who elected me to this place, and to all others who have shown me courtesies.
S. SELMON.

TEAGUE'S CONFECTIONERY for Candies that are THE BEST.

Movie Theatre PROGRAM.

Monday, May 24, "PEGEEN," by Bessie Love.
Tuesday, May 25, "LOVE AND WOMAN."
Wednesday, May 26, "THE WHIP," race horse story.
Thursday, May 27, "WILD AND WOOLLY," Douglas Fairbanks.
Friday, May 28, "SMASHING THE BARRIERS," by Wm. Duncan, and a good comedy.
Saturday, May 29, "HAPPINESS A LA MODE," by Constance Talmadge.
Matinee 3 p. m. Saturday.
Matinee 3 p. m. Wednesday. Admission 20c and 25c. Two shows at night on this picture, the largest and most expensive picture that has ever been brought to our town. Night prices 25c and 50c. Don't fail to attend the matinee at 3 p. m. We want every one to see this picture, and all that can attend the matinee, in order that we may have plenty of room. Guarantee to please you.

CITY COUNCIL HELD WEEKLY MEETING WEDNESDAY NIGHT

The city council met in regular weekly session at the city hall Wednesday night, with Mayor Payne presiding, City Secretary Brewer, at his desk, and all aldermen present. Routine business was disposed of. The city has authorized the purchase of a 30-acre tract of land in the northwest part of town, upon which will be located a sewage disposal plant in the very near future. City Marshal S. Selmon was present at the meeting Wednesday night and tendered his resignation, which will become effective as soon as his successor has been appointed. Mr. Selmon is resigning the place because it takes too much time from his business and he is unable to properly take care of both. Your attention is directed to his announcement elsewhere in The Slatonite.

PICTURES FOR SALE.

We have a large number of very pretty pictures, suitable for framing, at 25 cents each. If you want any of them come early before they have been picked over.
THE SLATONITE.

GENEROUS RAINFALL HAS SOAKED PLAINS COUNTRY

During the past two weeks this section of the Plains country has been visited by generous rains, and there is sufficient moisture for some time to come. Many farmers had already planted, others are planting as fast as they can, and much sod will now be broken and planted. The outlook for a bountiful crop here is very promising, and there will no doubt be a continuation of the prosperity we are now enjoying.

NOTICE.

Cows in the Sledge & Forrest pasture will have to be removed. Please see me at earliest convenience.
G. L. SLEDGE.

Will trade good vendor lien notes for Ford car that is in good condition. See W. DONALD, at Slatonite office.

SLATON HIGH SCHOOL ANNUAL WILL SOON BE DELIVERED

Volume two of "The Tumbler," published by the 1920 class of Slaton High School, is off the press. It is a very creditable publication and will be read with much interest by many people in this section.

The staff is as follows:
Miss Florence Dodgen, Business Manager.
Miss Dorothy Levey, Assistant Business Manager.
Julian Joplin, Editor-in-Chief.
Miss Mattie Lokey, Social Editor.
Miss Faye Hoffman, Art Editor.
Melvin Cade, Joke Editor.

— Bassenger, Athletic Editor.
Miss Frankie Allison, Cartoonist. Numerous articles in this publication deserve special mention, but we want to call your attention to the work of Miss Frankie Allison, cartoonist. She has furnished original drawings for many of the illustrations that would receive special mention from a competent critic.

The Freshman Class Prophecy, by Sug Robertson, is also fine for such a youngster, as well as "The Advantages of an Enlistment in the U. S. Army," by Garland Tait. This article was the prize winner in the Slaton High School Contest, which was recently conducted by U. S. Army officials.

The book consists of more than 80 pages and is profusely illustrated with half tone cuts and zinc etchings. The advertising section reflects the loyalty of the business people of Slaton to their school. It was printed and bound by The Slatonite.

If you have not already bought a copy of "The Tumbler" you should see some member of the class at once.

"THE WHIP" IS PLEASING IN ITS SCREEN FORM

Melodrama Transferred to America, is Well Staged and Acted—Will Be Shown at the Movie on Wednesday, May 26.

"The Whip," which will be shown at the Movie Theatre on Wednesday, May 26, matinee and night, certainly has plenty of snap.

The settings are excellent and the outdoor scenes show one beautiful bit of nature after another. The fox hunt is well done, and the horses and the dogs used are the right sort; also, the riders can ride and they unearth a real fox.

The horse show scenes were taken at Long Beach last summer, and one sees a number of familiar faces.

One of the most gripping things that ever has been shown on the screen is the race between the motor car and the Saratoga Express, which is rushing on with certain death for "The Whip."

The horse calmly walks out of the box car just as the collision occurs, and it is a regular collision, too.

Add to this perfection of staging and detail an excellent cast and you have a few of the reasons why "The Whip" is one of the best photodramas produced this season.

Irving Cummings is most attractive as Hubert Brancaster, the M. F. H., who wins the hand of Diana Beverly, played by Alma Hanlon, who is blonde and pretty and appealing; Dion Titherage is splendid as Harry Anson, the jockey, and Paul McAllister does good work as Baron Sartoris. The beautiful June Elvidge is Mrs. D'Aquila, and Jean Dumar, Warren Cook and Alfred Hemming complete the cast.

The shifting of the story from England to America necessitated the substitution of the Eden Musee for Mrs. Jarley's Wax Works, but this did not make it less effective. The only weak spot in the story is that Diana has only five minutes in which to change from her summer costume to the green and white satin knicker and coat of the jockey and to get "The Whip" out on the track again. Of course, she does it and wins the race, too.

"The Whip" runs for two hours and is quite as fresh at the finish as at the getaway.

SLATON TEAM DEFEATED BROWNFIELD THURSDAY

On Thursday afternoon of last week the Slaton baseball team went to Brownfield and defeated the latter team by a score of 10 to 7.

Next Sunday afternoon a game will be pulled off here between Slaton and Tahoka, which promises to be interesting as both have strong teams.

See our 48-sheet advertising on "THE WHIP," at the Movie Theatre.

BRIGHTEN UP!

FOR PAINTING AUTOS OR HOUSES SEE ME. I AM EQUIPPED TO TAKE CARE OF YOUR WORK PROMPTLY.

B. R. BAILEY
SLATON, TEXAS



Black Cat Reinforced Hosiery

MOST women are particular as to the quality of the hosiery they buy. They are exacting as to style — they insist upon quality and they must be sure that value and service are always exactly as represented.

In Black Cat Hosiery, with its reinforced toes, soles, heels, knees and garter hems, we offer a variety of styles that can be absolutely depended upon.

A full range of styles to select from. All sizes — for men, women and children await you, at prices no higher than you would pay for ordinary grades

ROBERTSON DRY GOODS CO.

"On the Streets of Everywhere"



THE SHOES ON THE FEET OF THE WOMEN WE MEET DENOTE MUCH THAT IS TASTY, INDIVIDUAL AND CHARACTERISTIC. WE AMERICANS PRIDE OURSELVES THAT THE WOMEN OF OUR LAND HAVE THE BEST DRESSED FEET IN THE WORLD. WITH THIS THOUGHT IN MIND WE HAVE PURCHASED AN EXCEPTIONALLY FINE LINE OF FOOTWEAR FOR SPRING AND SUMMER. COME IN AND SEE THEM; LET US FIT YOU IN A STYLISH, COMFORTABLE PAIR OF SHOES.

ROBERTSON'S

THE HOME OF HART SCHAFFNER & MARX CLOTHES.

MONEY TALKS

Keep money in the BANK when you are young; When you are old it will keep you.



THE TIME TO SAVE IS IN THE STRENGTH OF YOUTH WHEN ACQUIRING IS MOST EASY. WHEN LATER YEARS COME THE POWER HAS DIMINISHED BUT THE NEEDS OF LIFE HAVE NOT BECOME LESS. TODAY IS THE TIME TO LAY BY THE STORE. PROMISE YOURSELF A BANK ACCOUNT, AND ONCE YOU LEARN TO OBEY THE DICTATES OF GOOD REASON, YOU WILL WARD OFF THE HARSHNESS OF LIFE.

WHEN YOU HAVE MONEY—WE WANT IT.
WHEN YOU WANT MONEY—WE HAVE IT.

The Slaton State Bank

THE BANK OF PERSONAL SERVICE.

Slaton Sanitary Grocery

We want your grocery bill during May and will give you the best groceries and service for the money. Make us prove it.

H. W. Ragsdale

TELEPHONE 19 SLATON, TEXAS

"AMERICAN BEAUTY" FLOUR



WE HAVE JUST RECEIVED A CAR OF "AMERICAN BEAUTY" FLOUR —THE BEST THAT CAN BE MADE —HAS THE BEST GUARANTEE OF ANY FLOUR SOLD IN THE TOWN. ALSO A HARD WHEAT FLOUR FOR LIGHT BREAD MAKING, OF THE SAME GRADE. TRY ONE SACK AND YOU WILL BUY IT ALL THE TIME.

THE LARGEST AND MOST COMPLETE STOCK OF HIGH GRADE GROCERIES IN TOWN.

WE HAVE OYSTER SHELLS FOR YOUR HENS; BABY CHICK FEED FOR YOUNG CHICKENS; ALL KINDS OF COW FEED; ALSO FIELD SEEDS SUCH AS SUDAN, CANE, COTTON, CORN AND BEAN SEED.

We Buy and Ship Cream Every Day

Kuykendall Grocery Co.

PHONE 12, SLATON, TEXAS.

J. E. KUYKENDALL, Manager



Pupils of Miss Ramsey Will Appear in Recital.

The music pupils of Miss Jeanette Ramsey will appear in recital Friday evening, May 14, at the School Auditorium. Those interested in music have a very cordial invitation to be present on this occasion. A program has been arranged that will be sure to please music lovers. It follows:

Capricante	Wachs
Frances Hoffman	
Aileen McDonald	
Rendo, from Sonata in A	Mozart
Josephine McHugh	
Cabaletta	Lack
Lois Stallings	
Sweet Clover	Leob-Evans
Lena Klattenhoff	
Gipsy March	Wolf
Royce Pember, Miss Ramsey	
Scarfe Dance	Chaminade
Aileen McDonald	
Arabesque	Meyer-Helmund
Josephine McHugh	
Serenade	Whepley
Frances Hoffman	
Charge of the Uhlans	Bohm
Royce Pember	
Joy of Spring	Lansing
Lena Klattenhoff, Miss Ramsey	
Crystal Spring	Kern
Lois Stallings	
Spinning Song	Mendelssohn
Josephine McHugh	
2nd Valse	Godard
Royce Pember	
Polenaise op. 16	Jah-Slunicko
Frances Hoffman	
Deuxime Valse	Lack
Aileen McDonald	
Slavonic Dance	Dvorak
Hungarian Dance	Moszkowski
Josephine McHugh, Miss Ramsey	

Missionary Society.

The Methodist ladies held a very interesting and profitable meeting at the church last Monday afternoon. The Bible study lesson was led by Mrs. Proctor, and was ably discussed by Mesdames Forrest, Worley, Baird, Wilson, McCann, and Shankle. A very interesting paper was also read by Mrs. Pember.

Hereafter the ladies will meet at 3 o'clock instead of 2:30 p. m. The topic for the next meeting will be "The Far East," with Mrs. A. L. Robertson as leader. The program follows:

Missionary News, Mrs. Worley.
Quiz on Korea and Japan, Miss Kuykendall.

"The New Era in the Far East," Mrs. Pevey.

Quiz on our work in Japan:

Give the main facts concerning the beginnings of our Church in Japan.

When did the Woman's Missionary Council decide to enter?

What phases of the work did they take over?

Describe the work being done by the Lambuth Memorial Bible School.

Tell of the work at Oita.

What is the great need of the woman's work in Japan?

Quiz on our work in Korea:

When and by whom was the work of our Church opened in Korea?

Who was the first missionary of our Woman's Council in Korea?

In what stations have we worked now?

What school for girls have we at Seoul?

When and by whom established?

Where is Holston Institute?

When and by whom was this school established?

In what two ways has it been enlarged and extended?

Why was it necessary for the Mary Helm School to be so incorporated?

What two schools have we at Wonsan?

In co-operation with what other denomination is this work in Wonsan?

How many day schools have we in Korea, and what is their aggregate enrollment?

What feature of mission work has been particularly emphasized in Korea?

How many Bible women are there at work in Korea under our Council?

B. W. M. W.

The attendance was good at last Tuesday's meeting, with a miscellaneous program. Mrs. W. H. Proctor of the Methodist ladies, was a welcome visitor.

On next Tuesday afternoon the ladies of the B. W. M. W. will meet at the church and render the following program:

Subject: "Our Mountain Schools."

Hymn, "O Worship the King."

Scripture, Isaiah 35:1, Mrs. J. B. Stallings.

Prayer, "That this Scripture be fulfilled in the Mountains," Mrs. L. W. Williamson.

Mountain school opportunities, Mrs. J. D. Haney.

Mountain school achievements, Mrs. J. W. Hood.

Our mountain schools, Mrs. W. H. Weaver.

Message from mountain school superintendent, Mrs. Carl Greer.

Select reading, Mrs. J. J. Daniel.

Prayer: That wisdom be given our mountain school leaders.

Special song, Mrs. C. F. Anderson.

Civic and Culture Club.

The annual open meeting of the Civic and Culture Club was held at the pretty home of Hon. and Mrs. R. A. Baldwin last Saturday afternoon, with Mesdames Baldwin, Tait, Tonn, Holland, and Donald, hostesses. The meeting was well attended by the membership and a large number of invited guests were present.

The interior of this home was made more beautiful with decorations of pot plants and cut flowers.

A very interesting musical program was led by Mrs. H. A. Tait, and papers

on the lives of famous authors were read by Mesdames Shankle, Brewer, and Rutter.

Delightful refreshments of cream, cake, mints, and almonds were served.

Election of officers will be held at the next meeting and a full attendance is desired.

SCHOOL ACTIVITIES.

Today (Friday) marks the closing of Slaton public schools and the work done during the past term has been very satisfactory. The work for the year is all over except the festivities.

Some of the classes have already rendered their programs, which were very pleasing to those fortunate enough to be present. On Sunday morning at 11 o'clock the baccalaureate service of the graduating class will be held at the School Auditorium.

The following program has been arranged for the occasion:

Voluntary, Largo

Miss Ramsey

Anthem: Hail, Day of Victory

Geo. Rockwell

Choir

Hymn: Holy, Holy, Lord God Almighty

Congregation

Invocation

Scripture Reading

Offertory: Saluta D'Amour...Edgar

Solo: The Lord is My Shepherd

Geo. Rockwell

Mrs. C. F. Anderson

Sermon

Rev. John B. Gonzales

Subject: The Task of Youth.

Song: All Hail the Power of Jesus Name

Benediction

Commencement Program.

The program for Monday evening, May 17, will be held at the School Auditorium, and has been arranged as follows:

Dance Sketches op. 305, No. 4...Bohm

Frances Hoffman, Miss Ramsey

Valse Caprice

Newland

Josephine McHugh

Over the Meadows Fair

Geibel

High School Chorus

Rapsodie Mignonne

Koelling

Frances Hoffman

La Capricieuse

Lack

Aileen McDonald

Presentation of Junior High School Diplomas

Senora

Nathan

Mrs. Tait, Soprano

Mrs. Call, Pianist

Herbert Tait, Cornet

Garland Tait, Clarinet

Address

Rev. G. W. Shearer

Presentation of Senior Diplomas

Primaries Render Program.

Tuesday evening's delightful entertainment was given by the primary grades of the city school. The play was representative of the four seasons; the costuming and the parts were pronounced excellent. The house was filled to overflowing and the entertainment was the best of its kind ever given in Slaton.

Questions to Consider in Buying LIFE INSURANCE

Do you love your family more than yourself?

Do you know you will live to be old?

Do you know you will accumulate wealth?

Do you know your family can manage your property as well as yourself?

Do you know you will never have dependents, if you are now single?

Do you know that you have increased the protection on your earning power in the same proportion that you have your property since the depreciation of the value of the dollar?

Do you know you can get insurance as easily tomorrow as today?

If you answer in the affirmative do not insure today.

"MEN DIE AT THE
WRONG TIME."

H. A. RUTTER

DISTRICT MANAGER
State Life Insurance Company
Indianapolis, Ind.

JADED APPETITES DON'T LAST LONG IF YOU BUY HERE

THE SORT OF ZEST IN EATING THAT COMES FROM THAT PIQUANT, BETTER TASTE TO YOUR FOOD MAY BE YOURS IF YOU TRADE WITH US. JADED APPETITES DO NOT LAST LONG UNDER OUR CARE; THEY BECOME NORMAL, EAGER AGAIN. WE SPECIALIZE IN THE BEST EATABLES THAT THE WORLD AFFORDS.

Lanham & Smart

J. S. LANHAM

PHONE 5

W. E. SMART

We carry the highest class gents furnishings and at a price you can afford to pay. Better come in and let us fit you up with a new spring suit and other fixin's.



De Long
THE MERCHANT TAILOR

HULON K. FINLEY, M. D.
Consultation and Diagnosis.
Electrical, Mechanical, Chiropractic, Osteopathic-Massage, Light and Heat Therapeutics a Specialty in the Prevention and Treatment of Sub-Acute and Chronic Diseases.
Office Rooms 7 and 8
Burrus Building

MUTON T. COUNCIL, D. C.
Chiropractic Masseuseur.
Phone 540
LUBBOCK, TEXAS

Sanitarium Fees

REPORTS HAVE BEEN PERSISTENTLY CIRCULATED THE PAST FEW WEEKS THAT THE LUBBOCK SANITARIUM HAS RAISED ITS RATES.

THE FACTS ARE THAT OUR RATES HAVE NOT BEEN CHANGED SINCE LAST SEPTEMBER. OUR RATES TODAY ARE THE SAME AS THEY HAVE BEEN FOR EIGHT MONTHS. THIS RATE IS SIX DOLLARS PER DAY, WHICH INCLUDES ROOM, BOARD, AND USUAL NURSING.

THE FEES FOR OPERATIONS ARE JUST THE SAME AS THEY HAVE BEEN EVER SINCE THE INSTITUTION WAS BUILT AND ARE THE USUAL FEES CHARGED EVERYWHERE FOR SUCH WORK.

OUR MANY SATISFIED PATRONS ALL OVER THE COUNTRY WILL TESTIFY TO THE ABOVE FACTS.

Lubbock Sanitarium



"Where's My Oil Can?"

THIS IS A MECHANICAL AGE AND OIL IS THE FOOD MACHINERY MUST HAVE. NOW YOU CAN'T CUT OIL WITH A KNIFE OR CARRY IT IN A PAPER SACK, SO YOU SEE THE IMPORTANCE OF A GOOD OIL CAN, OR RATHER, OIL CANS SUITABLE TO THE DIFFERENT OILS. THAT'S WHERE WE COME IN, WITH AN OIL CAN FOR EVERY PURPOSE. WE CAN MEET YOUR OIL CAN NEEDS.

A. L. Brannon Hardware

DURABLE WARES AT RIGHT PRICES.

PHONE 55, SLATON, TEXAS

RACINE
HORSE-SHOE TIRE ASS'N.
JOHN HOENY, PRESIDENT
F. B. HOENY, VICE PRESIDENT
R. O. BELL, SECY AND TREAS.
CORNER BRYAN AND MASTEN STREET
DALLAS, TEXAS

"Remember the Horse-Shoe Tread" — Why?

Look at the tread of a Horse-Shoe Cord Tire and you will see why the Horse-Shoe Tread is as durable and efficient as it is distinctive.

First, the tread of a 5-inch Horse-Shoe Cord Tire is 4 inches wide, giving this tire a wearing surface considerably larger than that of ordinary tires.

Second, over half of this 4-inch width is almost solid rubber. This extra-wide, compactly-solid, non-skid tread "grips the road like a giant horse-shoe" and wears down slowly and evenly under all conditions.

Once you try a Horse-Shoe Cord Tire you will understand why a million motorists prefer Horse-Shoe Tires to any other brand. No other, you'll agree, gives so much for your money.

BIG STATE GARAGE
Leo Hubbard, Manager
Phone No. 2 Slaton, Texas

RACINE
HORSE-SHOE TIRES

Are You Playing "The Game of Chance?"

ARE YOU BUYING, CHEAP, SHODDY, HOUSE FURNISHINGS? IF SO, WE ARE NOT SURPRISED AT YOUR COMPLAINING OF THE HIGH COST OF LIVING. BUY HERE AND SAVE MONEY.

Howerton's

FURNITURE-HARDWARE-UNDERTAKING

Picture Framing a Specialty With Us Phone 49, Slaton, Texas

Jewelry Worth While

IF YOU ARE INTERESTED IN BUYING A DIAMOND, SILVERWARE, SILVER OR GOLD CUTLERY, RINGS, PINS, CHINA, WATCHES, CLOCKS, OR JEWELRY NOVELTIES OF ANY KIND, YOU CAN'T BEAT THIS SHOP.

PAUL OWENS, Jeweler

Official Watch Inspector A. T. & S. F. Ry. SLATON, TEXAS

Kind of Old Style

But it lasted a long while because it was built of the best lumber obtainable in its time. Why not build with the same lumber? It does not pay to put up crumbly frame works. Come and look through our display yards where there are piles of good lumber. We also handle the best Paints, Posts, Sash, Doors, Glass, Etc.

Rockwell Bros. & Co.

S. F. KING, Manager. SLATON, TEXAS

Reclaimed Army Shoes. New Heels and Soles. Good Work Shoes. \$4.50 to \$5.50

R. A. HENDERSON

CAPS OLD HOTEL BUILDING SLATON, TEXAS

ISN'T IT FUNNY—

That a business man, when the circus comes to town, and plasters up the side of every old building in sight, and fills the newspaper with columns after columns of advertising, describing the wonder of wonders, and circus day arrives and with it the circus and the paint and brass bands and spangles and tights and everything; and Mr. Business Man can't resist and sneaks down the back alley of his store and runs plumb bang into Deacon Jones going somewhere; and Sister Mary Smith with her brother's two little Smiths going somewhere; and wonders why in thunder some folks don't stay at home where they belong; but finally reaches the circus

grounds and sees the circus and beats it back to the store—that he will keep turning down advertising because advertising doesn't pay.

Only \$35 Per Acre.

Can you beat it? We have 238 acres of fine unimproved land, close to good town and fine schools and churches, at only \$35 per acre for a short time. A. M. WATSON CO. Telephone 116.

You lose many opportunities of saving both time and money if you fail to read the advertisements in The Slatonite.

UTILIZE YOUR SPARE MOMENTS.

Why not use your leisure time wisely? What have you gained from your spare time the past year? In every city, town and community in our great Union, some ambitious persons are studying by correspondence, are climbing upward, while their associates are standing around the foot of the ladder of success. Already thousands too busy or too poor to attend college are finding education at their door; already they are studying, mastering, succeeding. We are as near to you as your mail box. An hour a day for three months devoted to one of our courses will make you stronger, wiser, better fitted to cope with the world and wrest success from her hands, success which can be won only by those who are trained in their work.

The demand for trained office assistants, bookkeepers, stenographers, telegraph operators, is now greater than ever before, and salaries are in proportion to the demand. We are teaching, under our money-back guarantee plan, and have for years successfully taught by correspondence, thorough courses of Bookkeeping, Shorthand, Typewriting, Telegraphy, Grammar, Spelling, Arithmetic, Business Law, Penmanship, Salesmanship, Advertising, etc. In a few months' time, without interfering at all with your present employment, we can equip you for a position as a trained office worker, and your income need never cease during the period of training. When you have completed a course of business training with us you will be able to accept a position at a far better salary than you are now receiving. This is the age of specialization; the trained man gets the big salary.

The advantages of a correspondence course are in part as follows: Less cost, not one-sixth of that required to attend school. No lost time or salary. You "earn while you learn," save your leisure time that would otherwise be wasted. Make just as much salary as if you were not studying at odd times. You study at home—the education comes to you. Three months free use of a standard typewriter is given with full Shorthand course. If you decide when partly finished to enter for personal work you may do so without paying additional tuition.

For complete information as to our courses fill in and mail the coupon below for large free catalogue.

Name _____
Address _____
Extension Department, Tyler Commercial College, Tyler, Texas.

HAIL KILLS 200 SHEEP ON BLEDSOE RANCH IN LUBBOCK

Friday Morning's Downpour Drifts Hail in North Lubbock and South Hale.

Floydada.—Last Friday morning when a large portion of Floyd County had its biggest rains little hail damage was done in this county. However, just over in the edge of Lubbock County southwest of Petersburg, one of the biggest hails in history fell, and did great damage.

The Bledsoe Ranch in that county sustained the heaviest damage reported here. According to the report, Mr. Bledsoe had 200 head of sheep killed outright by the hail and several more head injured more or less seriously.

In the southern part of Hale County the hail was also said to have been heavy, drifting in places as high as the running board of an automobile.

The Allmon community in the southwest corner of this county, had two inches of rain in two hours, but little or no hail damage was done.

PRESENCE OF MIND.

A commercial traveler, during an extensive visit in the provinces, took his wife with him. Being nervous about fires, he frequently impressed upon her the necessity of keeping a "cool head" should ever the danger occur, says London Tit-Bits.

At one hotel they were staying a fire actually broke out. The commercial traveler roused his wife, assisted her to dress and to demonstrate the value of presence of mind reached for his frock coat and silk hat and umbrella, and accompanied wife into the street. There they watched the firemen in their work of subduing the outbreak.

"And now," remarked the husband to his wife, "you see the advantage of having a cool head."
"Yes, John, but you might have put your trousers on."



EXACTLY WHAT YOUR DOCTOR ORDERS IS WHAT YOU GET WHEN YOU HAVE A PRESCRIPTION FILLED HERE. THIS IS A DRUG STORE OF SERVICE—THE CAREFUL KIND OF SERVICE THAT IS INDICATED BY THIS NURSE-FACE TRADEMARK. IT IS PROMPT AND COURTEOUS—WATCHFUL FOR YOUR WELFARE. OUR PRICES ARE AS LOW AS IS CONSISTENT WITH QUALITY, BOTH IN SERVICE AND MERCHANDISE. IF YOU HAVE NEED OF TOILET THINGS, HERE ARE SAN-TOX TOILET ARTICLES TO PLEASE THE MOST FASTIDIOUS. ALSO A WONDERFUL LINE OF SAN-TOX PREPARATIONS—EACH OF WHICH IS FOR SOME DEFINITE PURPOSE OF HEALTH OR HYGIENE.

SEE US FOR HEALTH OR BEAUTY

Slaton Drug Co.

J. V. HOLLINGSWORTH, Propr. Phone 92, SLATON, TEXAS

The San-Tox Agency

THAT CRIPPLED CAR

WE WANT YOU TO BRING US THAT CRIPPLED CAR OF YOURS AND LET US PUT IT IN FIRST CLASS SHAPE. WE HAVE FIRST CLASS MECHANICS AND USE THE BEST OF MATERIALS. THERE IS POOR ECONOMY IN RUNNING A CAR THAT IS NOT GIVING YOU MAXIMUM SERVICE. IF YOURS IS POORLY ADJUSTED OR WORN IT WILL PAY YOU TO LET US GIVE THE CAR ATTENTION.

WE ARE THE AUTHORIZED FORD SERVICE STATION AND USE GENUINE FORD PARTS. OUR LINE OF TIRES AND ALL ACCESSORIES ARE ALL THAT COULD BE DESIRED.

Lee Green & Co.

THE SLATON GARAGE. TELEPHONE 73

SIMMONS' GROCERY

THE OLD RELIABLE GROCERY J. M. SIMMONS, Propr.

WHEN IT COMES TO BUYING GROCERIES OUR STORE IS THE TRADING CENTER OF SLATON, BECAUSE WE MAKE GOOD OUR REPUTATION FOR CARRYING ONLY THE BEST GOODS, LOWEST PRICES AND SQUARE DEALING.

R. J. MURRAY & CO.

WE HAVE THE EXCLUSIVE SALE OF ALL LOTS OWNED BY THE SANTA FE RAILWAY COMPANY IN SLATON, AND YOU CAN SAVE TIME BY MAKING YOUR APPLICATION DIRECT TO US. WE WILL TAKE PLEASURE IN SHOWING THE PROPERTY. FOR NINE YEARS WE HAVE BEEN BOOSTING AND BUILDING SLATON, AND STILL BELIEVE THAT MONEY INVESTED IN SLATON WILL BRING GOOD DIVIDENDS. SEE US ALSO FOR FARM AND RANCH LANDS.

R. J. Murray & Co.

J. T. OVERBY, City Salesman SLATON, TEXAS

Tanks! Tanks! Built and Repaired

WELL CASING, GUTTER, FLASHING, FLUES, FLUE TOPS, RAINPROOF MILK TROUGHS, WARM AIR HEATING, OR ANYTHING IN SHEET METAL. RADIATORS REPAIRED AND REBUILT. SEND YOUR WORK TO US. A DAILY TRUCK LINE FROM SLATON TO LUBBOCK. WRITE, PHONE, OR COME TO SEE US.

E. E. Wofford & Co's. Tin Shop

BOX 833. PHONE 576 LUBBOCK, TEXAS

LOCAL AND PERSONAL

Mrs. F. Graves will leave Monday for a visit to Mineral Wells.

Charles Wild of Austin remits cash to pay for The Slatonite.

The front of the Sanitary Grocery is being treated to a new coat of paint.

Arbie Joplin, who has been a student in Tyler Commercial College, has returned home.

Mrs. J. W. Reynolds has been taken to the Lubbock Sanitarium, where she will undergo an operation.

Bonnie Williamson is now with the Red Cross Pharmacy as soda dispenser.

TEAGUE'S CONFECTIONERY for high grade stationery and drug sundries of every kind.

Royal Arch Masons will have work in R. A. degree Monday night, May 24, at 7 p. m.

Mrs. C. O. McManus handed in the cash for The Slatonite and ordered it sent to Denison, Texas.

J. M. Sledge has returned to his home in Austin, after a visit to his son, George Sledge and family here.

Ray Stephenson, assistant cashier of the Slaton State Bank, renews for The Slatonite another year.

WILLARD Batteries, for any make of car, the best made for the money.—BIG STATE GARAGE.

R. H. Tudor of the Tudor Gin Co. hands in his check for \$1.50 to pay for The Slatonite another year.

J. H. Brewer, president of the First State Bank, renews for The Slatonite another year.

FOR the biggest bargain in a new 4-room house, cash or terms, see owner, M. B. TATE.

K. K. Tudor, owner of the Carr Ranch north of town, sends in cash to renew for The Slatonite another year.

B. C. Spooner of this city, was a recent caller at The Slatonite office and renewed for the paper.

E. S. Brooks renews for The Slatonite a year for his sister, Mrs. J. F. Ernst of Houston.

Mrs. L. Lumsden of Wilson, was among the out-of-town shoppers in Slaton Thursday.

Drug Sundries of all kinds at the right prices at TEAGUE'S CONFECTIONERY.

Yardmaster P. L. Eveshine of the Santa Fe hands in cash to pay for The Slatonite another year.

I. J. Osborne of Lubbock, candidate for sheriff, was among the visitors in Slaton yesterday.

WILLARD Batteries, for any make of car, the best made for the money.—BIG STATE GARAGE.

Mr. and Mrs. M. B. Tate and children left Monday for a visit to Mrs. Tate's parents, Mr. and Mrs. T. J. Hudgins, who live near Cisco.

Mrs. Ray Stephenson and little son Leon, have gone to Tuscola for a visit to the former's parents, Mr. and Mrs. A. B. Cox.

Miss Clara Dyess of Abbott, Texas, has arrived here for an extended visit at the home of her uncle, G. L. Sledge and family.

Miss Aline Shepard, teacher in the public schools here, has gone to her home in Quinlan, Hunt County, to spend the summer vacation.

Miss Alma De Shazo, who taught in the public schools here during the past term, has returned to her home in Austin.

Miss Ruby Hoffman, teacher of O. K. school in Lynn County, became suddenly ill Wednesday and was brought to her home in this city.

Misses Jewell and Cora Acker of Mart, Texas, are guests at the home of their sister, Mrs. L. W. Williamson and family.

Mr. and Mrs. J. G. Levey, daughters Misses Irene and Dorothy, and son Gilder, have gone to South Texas for an outing.

Representative and Mrs. R. A. Baldwin left Tuesday for Austin, where Mr. Baldwin goes to attend a special session of the legislature.

Miss Joanna Williams, who taught in the public schools here during the past year, has returned to her home at Redwood, Upshur County.

Mrs. Fitzhugh has returned to her home at Tolar, Hood County, after visiting her daughters, Misses Lilly Mae and Floy Weaver here.

Mrs. S. H. Adams left last Saturday for Plainview where she will spend two weeks visiting her parents, Mr. and Mrs. W. Y. Price.

Henry Dreyer, a substantial farmer of the Wilson community, was a recent caller at The Slatonite office and renewed for his paper another year.

"THE WHIP"

A full line of standard toilet preparations at Teague's Confectionery.

Mayor A. J. Payne renews for The Slatonite another year for his daughter, Mrs. P. V. Burns of Charles City, Iowa.

R. F. Nevils, a good farmer living in hutor route A out of Lubbock, called and renewed for The Slatonite another year.

Mrs. O. M. Hensen, of route 1, Slaton, was a recent caller at The Slatonite office and subscribed for the paper a year.

Joe Bedno, a good farmer, living on route 1, Slaton, is a new reader of The Slatonite, having paid for the paper a year in advance.

Mr. and Mrs. A. J. Clark have returned to their home in Lubbock after a visit to Mr. and Mrs. Earl Prosser and other relatives here.

Miss Frankie Allison, one of the graduates of Slaton High School, has returned to her home in Mineral Wells.

Judge Wm. Pierson of Greenville, is a new reader of The Slatonite, having sent his check to pay for the paper in advance.

Mrs. W. M. Allison of Mineral Wells arrived here last week to be present at the graduation of her daughter, Miss Frankie Allison, and to visit old home friends.

M. F. Klattenhoff, one of the most progressive farmers of the Slaton section, was a recent caller at our office and renewed for The Slatonite a year.

Miss Florence Dodgen, one of the graduates of Slaton High School, has returned to her home at Santa Anna. She was accompanied by her sister, Miss Essie Dodgen, who has been visiting here.

B. M. Holland, vice president and cashier of the Slaton State Bank, accompanied by Mrs. Holland, will leave Sunday for Galveston to attend a meeting of the State Bankers' Association.

J. H. Brewer, president of the First State Bank, will leave Sunday to attend the State Bankers' Convention at Galveston. He will also stop in Fort Worth and Dallas on a business mission.

WANT ADS

FOR SALE: Edison Phonograph, including 40 double records. Bargain if sold at once. Phone 118.

FOR SALE: Sweet potato and tomato plants. 50c per 100. T. C. LEEDY, Tahoka, Texas.

FURNISHED rooms for light house-keeping. CANNON HOUSE.

CANNON AUTO SERVICE CAR.—Phone 151 and we'll be there now.

FOR SALE: 4-room house, corner lot, east front, and well improved.—T. M. HARRIS.

DINING TABLES: Two round tables as good as new, at a genuine bargain.—J. V. HOLLINGSWORTH.

BUSINESS and residence lots in Slaton, will be sold in one or more sales. Easy terms if desired. HUGO SEABERG, Raton, N. M.

STORAGE: If you have merchandise or household goods to store see me. My charges are reasonable. MRS. F. HIGBEE.

COMMERCIAL HOTEL at the old Caps' stand. Everything new and clean; house thoroughly renovated and refurnished. Rooms by the day, week, month, or furnished for light house-keeping. See MRS. F. HIGBEE.

DRUMMERS' SAMPLE ROOM: I have a nice, large sample room at the Commercial Hotel for use of traveling men. MRS. F. HIGBEE.

FOR SALE: Four burner oil stove and oven.—MRS. C. L. PACK.

HOGS FOR SALE. C. JOHNSON.

FOUND: Pair of glasses in black case. Owner can get same by describing and paying for this ad.

FOR SALE: 2 fresh Jersey cows, will give 3 to 5 gallons a day; 2 and 5 years old.—F. V. WILLIAMS.

FOUND: Bunch of keys. Owner can get same by identifying and paying for this ad.

VAUGHN & WHITAKER, dealer in new and second hand Fords. At Big State Garage, Slaton.

FOR SALE: Good Jersey milk cow. Apply at CITY MARKET.

2079 acres well improved ranch, for Hereford cattle, complete in every way, cut in several pastures, 4 and 5 wire fence, 5 wells and mills, nice grove, good correls and outbuildings, 160 acres in farm, 90 per cent agricultural land. Price \$15 per acre. Patent land. \$12,000 will handle. 18 miles north Midland. H. J. GENTRY, Slaton, Texas.

MOVIE THEATRE WILL OCCUPY A NEW HOME

The owners of the Movie Theatre have bought a lot just south of the G. L. Sledge property northwest of the square, facing 100 feet on the east, and will soon commence the erection of a modern theatre and office building. The main auditorium of the theatre building will be 50 by 75 feet, with a large balcony. A large stage and dressing rooms will also be provided. The floors will be of concrete, and the entire building throughout will be made as nearly fireproof as possible.

The owners of the Movie Theatre are Messrs. F. V. Williams, S. Selmon and T. Williams, and under their management it has been very successful. They are providing the theatre-going public with a high class of pictures and deserve the success they have made.



W. P. FLORENCE.

We, the undersigned citizens of Lubbock County, Texas, having known W. P. Florence, Candidate for County Judge, for many years, unqualifiedly recommend him for this position, and recommend his candidacy to the voters of Lubbock County. Mr. Florence is well qualified by education and experience to make Lubbock County a good Judge. He has been a citizen of the county for about twenty years, during which time he has always been prominently connected with the progress of the county, working for better schools and farming conditions. He is a conscientious Christian gentleman and if elected to the position he seeks will fill same to the entire approval of our citizenship.

- E. E. WILSON, Farmer.
- W. R. GRAVES, Contractor.
- COL. L. A. H. SMITH, Confederate Veteran.
- CLAUD V. HALL, Supt. Slaton Schools.
- C. J. RUSSELL, Postmaster.
- J. W. McDONALD, Gin Man and City Alderman.
- J. W. LOKEY, Large Land Owner and Farmer.
- J. T. LOKY, Farmer.
- M. A. PEMBER, Real Estate and Insurance.
- S. SELMON, City Market.
- E. P. NIX, Real Estate.
- J. H. McCAULEY, Pastor Baptist Church.
- J. G. LEVEY, Dispatcher Santa Fe.
- A. V. HENDRICKS, Pastor Methodist Church.
- C. C. HOFFMAN, Real Estate and Insurance.
- R. J. MURRAY, Real Estate.
- J. S. EDWARDS, Retired Banker and Land Owner.
- A. J. PAYNE, Mayor, and Dry Goods Merchant.
- L. B. PARKER, Chief Dispatcher Santa Fe.
- J. V. HOLLINGSWORTH, Druggist, and Member School Board.
- S. H. ADAMS, Physician and Member School Board.
- E. S. BROOKS, Druggist.
- J. H. BREWER, President First State Bank.
- H. C. JONES, Vice President and Cashier First State Bank.
- I. M. BREWER, Assistant Cashier First State Bank.
- S. S. FORREST, Hardware Dealer.
- T. A. WORLEY, Hardware Dealer.
- J. H. TEAGUE, JR., Merchant.
- W. E. SMART, Grocer.
- J. S. LANHAM, Grocer.
- H. B. BARRON.
- H. D. TALLEY, County Commissioner.
- T. J. ABEL, Farmer and Member Slaton School Board.
- R. G. SHANKLE, Farmer and Cattle Dealer.
- BEN WHITE, Cattle Buyer.
- L. G. TALLEY.
- J. S. BAGBY, Barber.
- D. L. HUBBARD, Grocery Clerk.
- J. T. MARTIN.
- E. HOLT.
- C. T. TRAMMELL.
- JOE GARLAND.
- H. A. RUTTER, District Manager State Life Insurance Co.
- T. W. AUSTIN, Transfer man.
- G. L. SLEDGE, Transfer man.
- MRS. LILLIAN B. PEMBER.
- MRS. W. H. PROCTOR.
- MRS. J. S. EDWARDS.
- MRS. S. H. ADAMS.
- MRS. R. J. MURRAY.
- MRS. J. S. LANHAM.
- MRS. W. E. SMART.
- MRS. J. H. BREWER.
- MRS. T. J. ABEL.
- MRS. D. L. HUBBARD.
- MRS. H. D. TALLEY.
- MRS. R. G. SHANKLE.

May 26th, "THE WHIP"



WILLIAM DUNCAN

Before he was an actor, William Duncan was an athletic instructor and a writer for physical culture magazines. He first appeared on the stage with Sandow, the strong man, and later toured the country at the head of his own dramatic company playing Hamlet. Today he is known throughout the world as a serial star and director. Upon completing "Smashing Barriers" Albert E. Smith, president of Vitagraph, furnished Mr. Duncan with a serial the production of which will cost \$1,000,000.

"The Silent Avenger" is the title of the new serial. It was written by Albert E. Smith and Cleveland Moffett. In this Mr. Duncan is given ample opportunity to show his skill as a fancy shot pool player, expert on the tennis court and clever slight of hand performer. The thrills provide the star-director with material in which to demonstrate his strength and ability as an all-round athlete. He insists on realism and will assume great risks to stage a thrill as it should be performed. He will not use dummies or substitutes. If the thrill is in the script, Mr. Duncan insists that it can be performed and he does it regardless of the hazard.

His leading lady, Edith Johnson, is equally courageous and follows William Duncan to the limit. They have been associated in several serials, including "The Man of Might" and "A Fight for Millions."

MRS. W. R. STANDIFER SUFFERED BROKEN WRIST

Mrs. W. R. Standifer, aged 72 years, of the Wilson community, fell a few days ago and suffered a broken wrist in two places. She was attended by Dr. S. H. Adams of this city, and is reported as doing nicely.

C. V. Young was a recent caller at The Slatonite office and left \$1.50 to keep the paper making its weekly visits to the Young home.

F. K. Mitchell of Lubbock, candidate for sheriff, was a recent visitor in Slaton, and took occasion to subscribe for The Slatonite a year.

WAR ON HIGH Priced Clothing!

3-PIECE SUIT

\$26

2-PIECE SUIT

\$24

Something you can't buy for double the money

OUR MOTTO IS TO EXCEL IN STYLE, QUALITY, FIT AND WORKMANSHIP. IF YOU ARE THINKING OF BUYING A HIGH-PRICED SUIT YOU WILL BE BETTER DRESSED FOR LESS MONEY BY BUYING TWO OF OURS. THAT YOU ARE BOUND TO WEAR THESE CLOTHES EVENTUALLY—NOW IS THE TIME TO BEGIN.

NO PROFITEERING

LET US TELL YOU THAT THERE IS ONE COMPANY THAT DOES NOT PROFITEER, AND IS MAINTAINING A FAIR AND JUST PRICE ON MEN'S CLOTHING. 115 NEW SPRING SAMPLES FOR YOU TO CHOOSE FROM. COME IN AND BE CONVINCED. SAMPLES ON DISPLAY AT—

Commercial Hotel Monday and Tuesday, May 24 and 25

C. E. Stewart

REPRESENTING THE A. NASH COMPANY, INC., WHOLESALE TAILORS, CINCINNATI, OHIO.

SLATON SLATONITE

Telephone ----- No. 20

Issued every Friday morning
Slaton, Lubbock County, Texas.

W. DONALD, Editor and Publisher
Miss Cleffie Watson, Society Editor

Subscription, per year ----- \$1.50

Entered as second-class mail matter
at the postoffice at Slaton, Texas.

**FIFTH SUNDAY MEETING
AT GRASSLAND MAY 27-30**

The Fifth Sunday Meeting of the Brownfield Baptist Association will be held with the Grassland Church, from May 27 to 30, inclusive. The program follows:

Thursday Evening.
7:30. Devotional, Rev. L. W. Williamson.

8:00. Christianity in the World Crisis, Dr. E. B. Atwood.

Friday.
9:30 a. m. Devotional, Judge W. W. Price.

10 a. m. Our Present Baptist Obligation, Rev. J. H. McCauley.

10:30 a. m. Prayer and New Testament Revivals, Rev. J. M. Earls.

11 a. m. Sermon, Dr. E. B. Atwood.

2 p. m. Devotional, Rev. Braswell.

2:30 p. m. Enlistment by Literature, Rev. H. D. Heath.

3 p. m. A Pastor's Enlisting Opportunities, Rev. J. Pat Horton.

3:30 p. m. Good Deaconship, Rev. J. F. Curry.

7:30 p. m. Devotional, Rev. D. W. Reed.

8 p. m. Sermon, Rev. J. M. Rankin.

Saturday.
9:30 a. m. Devotional, R. H. Timmons.

10 a. m. Our Country Churches, Rev. H. D. Heath.

10:30 a. m. Our Local Mission Field, Rev. J. E. Anderson.

11 a. m. Sermon, Rev. J. H. McCauley.

1:30 p. m. Board meeting.

2:30 p. m. Growing a Good Sunday School, Dr. Fite.

3:30 p. m. Growing a Good B. Y. P. U., Rev. J. E. Anderson.

7:30 p. m. Devotional, G. R. Leverett.

8 p. m. Sermon, Rev. J. Pat Horton.

Sunday.
9:30 a. m. Sunday School.

10 a. m. Teaching the Bible, Dr. Fite.

11 a. m. Sermon, Rev. J. F. Curry.

3:30 p. m. Special Service for Old People, Rev. J. M. Earls.

7:30 p. m. Devotional, Rev. L. W. Williamson.

8 p. m. Sermon, Rev. J. M. Rankin.

Well Improved Land \$40 Per Acre.

400 acres of good, well improved land, 200 acres in cultivation, two houses, one a new one just completed. Priced at only \$40 per acre.

A. M. WATSON CO.
Telephone 116.

Attention, Masons.

Regular meeting of Slaton Lodge No. 1094 A. F. and A. M. will be held Thursday night, May 27. All members are urged to present and visiting Masons are cordially invited.

You lose many opportunities of saving both time and money if you fail to read the advertisements in The Slatonite.

Dalton
"An Instrument—Not a Machine"

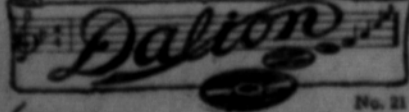


Plays All Records

DO YOU want limited music or your free choice of all? Do you want to be held down to the price and program of just one record maker, or own the instrument that opens to you the complete range of ALL makes of records. Dalton plays ALL and plays them better because it is an instrument of interpretation—not a mechanical garrot.

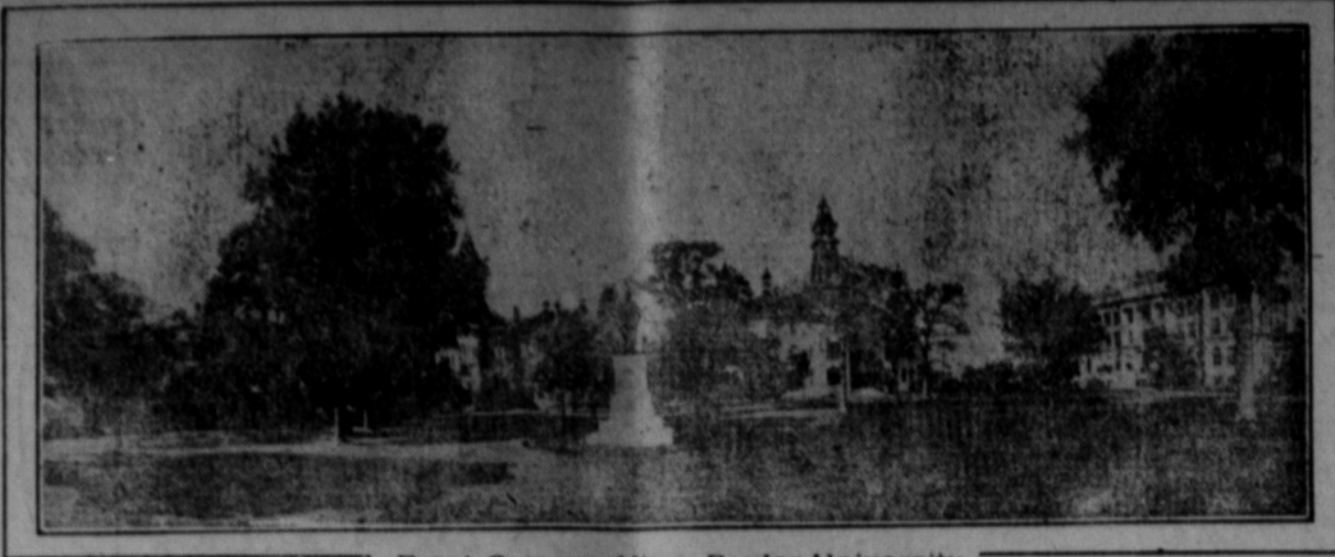
Come and hear your favorite selections rendered as you never heard them before.

"75 Reconstructed Music"



RED CROSS PHARMACY

The Rexall Store Slaton, Texas



Front Campus View, Baylor University

Oldest University In Texas To Celebrate 75th Anniversary In June

Distinguished Statesmen, Poets, Clergymen, University Presidents and Educational Leaders To Be Present On This Historic Occasion.

By Coleman Craig

Celebrating its seventy-fifth anniversary, Baylor University at Waco, Texas, the oldest institution of higher education in Texas, is expecting ten thousand visitors and former students to be in attendance at its Diamond Anniversary exercises, to be held June 12-16. Distinguished men from over the United States will be present on this occasion. President Wilson has appointed as his personal representative to attend the celebration, Postmaster General Burleson, an alumni of Baylor. Among other prominent visitors will be the Hon. Cato Sells, commissioner of Indian Affairs; Senator J. Hamilton Lewis, who was member of the 55th Congress from the state of Washington, later removing to Chicago and elected as senator from Illinois, the author of the resolution recognizing Cuban Independence; Bishop Ainsworth of the M. E. Church South; a group of famous poets, including Edwin Markham, Vachel Lindsay, William Butler Yeats, and Amy Lowell; the presidents and representatives of seventeen universities from ten states: Dr. Geo. W. Truett of Dallas, who will deliver the commencement address; and Dr. Geo. W. McDaniel, who will preach the baccalaureate sermon. Honorary degrees will be conferred on these distinguished guests. As part of the anniversary year's celebration, Baylor had as its guest recently, William Howard Taft, ex-president of the United States, upon whom was conferred the honorary degree of Doctor of Laws.

Bach's Masterpiece to Be Presented For First Time in South.

As part of the Diamond Jubilee program, Bach's masterpiece, The Passion according to St. Matthew, is to be presented. This is the first time in the history of the South that a college or university has ever attempted to render this oratorio. Under the direction of Baylor fine arts department a massed chorus of 500 voices is being trained for the presentation of this most wonderful oratorio in all the realm of music. An orchestra of fifty pieces will furnish the accompaniment in connection with the spring festival of music, the light opera, Pinafore, is also to be given.

Mammoth Rustic Arbor to Be Built

To add a distinctive western atmosphere to the program, a mammoth rustic arbor, seating ten thousand, and similar to the typical Texas arbors, such as have been erected by the thousands on the wide prairies of Texas, will be constructed, where many of the exercises will be held.

Movies Will Film Occasion.

The more dramatic features of the program, and close-ups of the daffin gaudied men and women who will be present, will be taken and shown all over the United States. A corps of newspaper men will also be present to cover every detail of the program, from whose reports a history of the event will be written and preserved in permanent book form.

Degrees to be Conferred On Old Students.

Among the most interesting features of the program will be the conferring of degrees upon the old graduates of Baylor University, when it was located at old Independence, and of the graduates of Waco University, which was in 1886 united with Baylor at Waco. Fully a hundred of these old students, now gray-haired grandfathers and grandmothers, and living in distant sections of the United States, will return to their old alma mater for their degrees and to take part in the Diamond Jubilee celebration. President Brooks is in receipt of letters from these old students, written, in

many cases however, by sons and daughters because of failing eyesight and trembling hand, saying they are planning to be present. Since receiving one such letter, another has been received, written by the daughter, saying that the old mother, who had planned to be present and had been gathering with almost childish enthusiasm pictures and little mementoes of the old class to bring along, had died during her preparation for the trip. It illustrates the age which many of them have reached.

Began With Twenty-four Students.

The celebration of Baylor's seventy-fifth anniversary recalls some interesting historical facts. The institution began with twenty-four students and only one department. The growth has been phenomenal and now Baylor has an enrollment in its different schools of 1600, and departments in fine arts, liberal arts, education, medicine, dentistry and pharmacy. During the institution's history approximately 22,000 students have passed through its doors.

Born In Days of Republic.

Baylor University is older than the state of Texas. It had its birth in



S. P. BROOKS, President Baylor University.

the days when Texas was a republic among the nations of the earth. The charter was granted by the Republic and signed by President Anson Jones, Feb. 1, 1845. Leading up to the founding of the institution, there had been an organization known as Texas Baptist Education Society, which was organized in 1841. Thus the idea and desire among the Texas pioneers for an institution of higher education dates back at least eighty years. The work of this organization was handicapped in the founding of a university, however, by the unsettled condition of the times, General Wolf's Mexican invasion and other disturbances. The leaders of the movement for a university for Texas were Judge R. E. B. Baylor a distinguished jurist for whom the institution was named; Rev. W. M. Tryon and Rev. James Huckins.

Unique Bid Offered for Location of School.

When it was fully determined to found a university in the state there was quite a bit of competitive bidding for the location among several of the towns. One of the bids offered had the following items listed as the inducements to bring the university to the interested town: one section of land, one yoke of oxen, five head of cattle, a cow and calf, one bay mare, one bale of cotton, twenty days' hauling, and \$200 in cash. The old town of Independence won in the bidding and

as here that Baylor was first located. The school remained here until 1886 when it was moved to Waco and consolidated with old Waco University, under the corporate name of Baylor University at Waco. The four towns that made effort to secure the university location were Independence, Huntsville, Travis and Shannon's Prairie.

Idealism of Texas Pioneers.

The men of that time lived in crude surroundings, it is true, but the following sentence taken from the statement of the purpose for which Baylor was founded, attests the genuineness of their idealism: "To found a university upon a plan so broad that the requirements of existing conditions will be fully met, and that will be susceptible of enlargement and development to meet the demands of all ages to come." A sentence surely that would not be ill-fitting, were it framed in the year 1920!

Second Co-educational School in the World.

Baylor University has the distinction of being the second school in the world to admit women on the same basis as men. It is another tribute to the progressive-ness of these pioneer Texans that they were men of such breadth, and living so far ahead of the generally accepted standards of the time. It will add emphasis to their idealism and progressiveness when it is remembered that the men of this time were dividing about equally their efforts in following bloodthirsty Comanches on the war-path, and eking out a living on the virgin prairies of the new country. No railroad had as yet bound the towns and small communities together with bonds of steel. The average citizen of the time, dressed in his coonskin cap and leather breeches, would not have known what a good roads speaker, if there had been such a personage at the time, was speaking about. And yet it was these men who concerned themselves with the task of founding a university that could be developed "to meet the demands of all ages to come."

The Future Program of Baylor.

From the small beginnings just related Baylor University has grown to be an institution with an enrollment of 1600, in its different departments. A new dormitory for men, cost \$300,000 is being erected, and will be ready for occupancy, it is hoped, by the opening of the fall term. Baylor is to receive \$1,500,000 out of the Baptist 75 Million Campaign. This will enable the erection of many other buildings and added equipment. The present library has 40,000 volumes, with 15,000 government documents and 200 magazines. The library is noted as having the second largest collection of works on Browning in the United States. The famous painting of Browning by his son, hangs in the library of Baylor University.

A new department of law has been established and will be opened in September. At the same time a department of agriculture will be opened. It is also proposed in the near future to add a school of journalism.

In its history Baylor University has had distinguished men at its head as presidents. Their terms have been comparatively long, among those serving: Dr. H. L. Graves, its first president; and Dr. R. C. Burleson, a brother of General Burleson of Texas fame. Since 1902 Dr. Samuel Palmer Brooks has been president of the university and during his administration the school has shown its greatest growth and development.

Rich-Tone Is a Friend of the Weak

"It Has Made Me Strong and Well Again."—Says J. R. Martinez.

He writes: "Rich-Tone is a wonderful remedy for people who are weak and lacking in vigor, and all those who desire to gain strength and energy should take this truly famous tonic. It has given me perfect health and cured me of ailments from which I had long suffered."

Take RICH-TONE and gain new energy

Not one penny will Rich-Tone cost you, if it doesn't prove of genuine worth in treating your case. You are to be the judge—try this famous tonic—if it doesn't bring to you new energy, a splendid appetite, restful sleep, peaceful and quiet nerves—if it doesn't destroy that tired feeling and build you up, then Rich-Tone will be free to you—it will not cost you anything—not one penny. You owe it to yourself to try this marvelous remedy. You owe it to your family and friends to be strong, well, happy, bright of eye, brimful of energy, ruddy of cheek, able to go about your work with a smile on your lips! Try Rich-Tone entirely at our risk. Get a bottle today on our money-back guarantee. Sold and guaranteed locally by

RED CROSS PHARMACY

POLITICAL ANNOUNCEMENTS.

- For Representative 122d. Representative District:
HON. R. A. BALDWIN.
- For District Judge:
GEO. R. BEAN
W. R. SPENCER.
JUDGE J. H. MOORE.
- For County Judge:
W. P. FLORENCE.
CARROLL THOMPSON
- For Sheriff and Tax Collector:
C. A. HOLCOMB.
(For re-election second term.)
F. K. MITCHELL.
I. J. OSBORNE.
- For Tax Assessor:
R. C. BURNS. (Re-election.)
A. J. CLARK.
- County and District Clerk:
SAM T. DAVIS. (Re-election.)
- For County Treasurer:
MRS. MARY F. HINTON.
(For second term.)
- For Commissioner Precinct 2:
H. D. TALLEY. (Second Term.)
- For Public Weigher, Precinct 2:
T. W. COVINGTON.
(Second term.)
T. W. AUSTIN.

"We Picked Up Seven Large Dead Rats First Morning Using Rat-Snap."

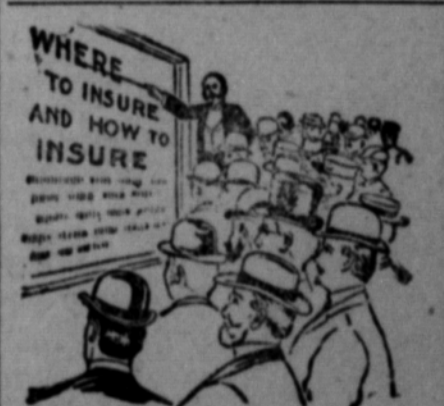
So writes Mr. B. E. Carpenter, Woodbridge, N. J. "We lost 15 small chicks one night, killed by rats. Bought some RAT-SNAP and picked up 7 large dead rats next morning, and in 2 weeks didn't see a single rat. RAT-SNAP is good and sure." Comes in cake ready for use. Three sizes, 25c, 50c, \$1.00. Sold and guaranteed by Forrest Hardware and Slaton Drug Co.

SCHOLARSHIP FOR SALE.

We have a scholarship in the Tyler Commercial College for sale at discount. Positively the best business college anywhere. THE SLATONITE.

Dr. Lewis W. Kitchen

VETERINARY SURGEON
POST, TEXAS
Register No. 10059
DAY OR NIGHT CALLS PROMPTLY ANSWERED.



THROUGH FLAME AND SMOKE

The firemen do their best to protect property from destruction and though they can control a fire they cannot prevent serious losses. The only way yet invented by which an owner can be totally protected is through the insurance companies. Therefore, the person who is fortified by sufficient insurance to amply protect him from fire losses need not worry over a visitation of fire. Such companies as are represented by the Pember Insurance Agency are unquestionably sound and reliable. So by allowing us to place your insurance, you are guaranteed the prompt payment of any loss that you may suffer. We write fire, tornado, hail, plate glass, crop, or any kind of insurance.

Pember Insurance Agency
SLATON, TEXAS

ITCH!
Money back without question if HUNT'S Salve fails in the treatment of ITCH, ECZEMA, RINGWORM, TETTER or other itching skin diseases. Try a 75 cent box at our risk.
SLATON DRUG CO.

START BABY CHICKS RIGHT by feeding Martin's Poultry Regulator. It keeps 'em healthy, makes 'em do better and grow faster. Martin's White Diarrhoea Remedy CURES. Absolutely guaranteed by Slaton Drug Co.

ATTENTION Ladies: Schweizer imported embroidery, dress goods, draperies and novelties. See samples.—MRS. W. H. WEAVER.

STORK SPECIAL.
A. J. Tucker and wife, May 17, boy.
Joe Ehrline and wife, May 19, girl.
\$100,000 picture at the Movie the 26th. Matinee 3 p. m.
E. A. GALE, Painter and paper hanger; paper and paint ordered. Address P. O. Box 81, Slaton, Texas.

DELINQUENT TAXES

List of Delinquent Tax Due the Town of Slaton, and Slaton Independent School District for 1919.

Gerdes, Mrs. B. P. Ab. 259, Cert. 700, Sur. 19, Blk. 24, 23.45 acres, Tracts 22-29 and half Tracts, 18, 23, 28, S.P. H.A. scholo tax \$11.50.
 Koehler, Geo. Cert. 700, N.E. quar. Blks. 13, 24; 152 acres, school tax \$22.80.
 Rook, L. W. Sur. 37, 24 acres, school tax \$1.25.
 Shubert, N. H. Cert. 275, N. W. quar. Blk. 7, school tax \$20.00.
 Wild, Ab. 405, Cert. 694, E. half Blk. 27, 24 acres, school tax \$56.00.
 Adams, Fred A. lots 1, 2, blk. 104, S.S. Add. school \$1.00, town 50c.
 Asel, Elsie, lot 9, blk. 39, S.P. Add. school 50c, town 25c.
 Anthony, Mrs. Wm. C. lot 3, blk. 52, S.P. Add. school 50c, town 25c.
 Benny, John, lot 12, blk. 81, S.P. Add. school 50c, town 25c.
 Beltrand, L. A. lots 5, 6, blk. 17, S.P. Add. school \$1.00, town 50c.
 Beyer, Bertha C. lot 7, blk. 50, S.S. Add. school 50c, town 25c.
 Blackwell, J. S. lots 1, 2, 3, 4, blk. 20, S.S. Add. school \$2.00, town \$1.00.
 Blackwell, J. S. lots 10, 11, 12, blk. 20, S.S. Add. school \$1.50, town 75c.
 Blakesly, H. A. lots 10, 11, 12, blk. 46, S.S. Add. school 50c, town 25c.
 Brannon, Mike, lot 11, blk. 29, S.S. Add. school 50c, town 25c.
 Busch, Mrs. Mary A. lot 4, blk. 39, S.P. Add. school 50c, town 25c.
 Coleman, S. A. lot 5, blk. 56, S.S. Add. school 50c, town 25c.
 Collier, Elmer, lot 12, blk. 78, S.P. Add. school 50c, town 25c.
 Collins, Fred, lots 5, 6, blk. 120, S.P. Add. school 50c, town 25c.
 Carlson, C. T. lots 1, 2, blk. 34, S.S. Add. school \$1.00, town 50c.
 Carlson, C. T. lots 5, 6, blk. 55, S.S. Add. school \$1.00, town 50c.
 Clark, Jonas L. lots 4, 5, 6, blk. 42, S. P. Add. school \$1.50, town 75c.
 Craig, F. D. lot 1, blk. 22, S.S. Add. school 50c, town 25c.
 Chestnat, H. E. lot 9, blk. 37, O.T. school 75c, town 65c.
 Doran, J. R. lot 4, blk. 48, S.P. Add. school 50c, town 25c.
 Day, Frank, lot 3, blk. 76, S.P. Add. school 50c, town 25c.
 Dennis, Mitchell, lots 7, 8, 9, blk. 39, S.S. Add. school \$3.00, town \$1.50.
 Delzell, J. M. lot 5, blk. 34, O.T. school 50c, town 25c.
 Endus, Mrs. W. P. lots 1, 2, blk. 100, S.P. Add. school 50c, town 25c.
 R. D. Fenn, W 1-8th Blk. 85, S. S. Add. school \$3.00, town \$1.50.
 Foreman, Mrs. M. A. lot 3, blk. 115, W.P. Add. school \$2.50, town \$1.25.
 Farrell, G. C. lot 12, blk. 80, S.S. Add. school 50c, town 25c.
 Fowler, D. W. lot 8, blk. 39, S.P. Add. school 50c, town 25c.
 Gatschet, A. A. lot 12, blk. 77, S.P. Add. school 50c, town 25c.
 Grant, B. J. lot 6, blk. 104, S.S. Add. school 50c, town 25c.
 Graham, W. E. lot 3, blk. 70, S.P. Add. school 50c, town 25c.
 George, G. C. lots 9, 10, blk. 40, S.P. Add. school \$1.00, town 50c.
 Gleson, T. J. lots 4, 5, 6, blk. 114, S.S. Add. school 75c, town 40c.
 Gende, Chas. lot 6, blk. 108, S.P. Add. school 50c, town 25c.
 Guetersloh, Fred, lot 5, blk. 48, O.T. school \$3.00, town \$1.50.
 Harmon, J. R. lots 7, 8, blk. 72, S.P. Add. school \$1.00, town 50c.
 Harris, W. N. lot 12, blk. 73, S.P. Add. school 50c, town 25c.
 Harbrough, H. H. lot 12, blk. 70, S.P. Add. school 50c, town 25c.
 Haynie, J. R. lots 8, 9, 10, blk. 81, S.P. Add. school \$1.00, town 50c.
 Hensly, A. M. lot 8, blk. 28, S.S. Add. school 50c, town 25c.
 Hughes, Thos. lot 5, blk. 110, W.P. Add. school \$5.00, town \$2.50.
 Jabara, W. F. lot 11, blk. 40, S.P. Add. school 50c, town 25c.
 Johnson, Ted W. lot 7, blk. 55, S.S. Add. school 50c, town 25c.
 Klingman, A. C. lots 3, 12, blk. 47, O.T. school \$6.00, town \$3.00.
 Klingman, A. C. lots 10, 11, blk. 39, O. T. school \$3.00, town \$1.50.
 Klingman, A. C. lots 5, 6, blk. 41, S.P. Add. school \$2.00, town \$1.00.
 Klingman, A. C. lots 1, 2, blk. 40, O.T. school \$3.00, town \$1.50.
 Kitterman, P. A. lots 1, 2, blk. 107, S.P. Add. school \$1.00, town 50c.
 Kitterman, C. M. lot 3, blk. 45, S.P. Add. school 50c, town 25c.
 Klein, A. F. lot 8, blk. 76, S.P. Add. school 50c, town 25c.
 Keys, A. R. lot 3, blk. 96, O.T. school \$3.75, town \$1.90.
 Kroeger, Nathan, lot 5, blk. 39, S.P. Add. school 50c, town 25c.
 Larria, O. W. lot 12, blk. 48, S.P. Add. school 50c, town 25c.
 Little E. A. lot 11, blk. 105, S.S. Add. school 50c, town 25c.
 Lyon, F. M. lot 7, blk. 29, S.S. Add. school 50c, town 25c.
 Luce, Anna C. lots 7, 8, 9, blk. 99, S.P. Add. school \$1.50, town 75c.
 McGrillis, J. E. lots 5, 6, 7, blk. 21, S.P. Add. school 75c, town 40c.
 Munch, A. C. lots 4, 5, 6, blk. 72, S.P. Add. school \$1.50, town 75c.
 Madison, Kitty S. lots 1, 2, blk. 106, S.P. Add. school \$1.00, town 50c.
 Moore, R. M. lot 6, blk. 58, S.S. Add. school 40c, town 25c.
 Moore, R. M. lot 1, blk. 76, S.S. Add. school 40c, town 25c.
 Oles, Chas. lot 2, blk. 108, S.P. Add. school 50c, town 25c.
 Norman, B. G. lots 11, 12, blk. 100, S.S. Add. school \$1.00, town 50c.
 Piper, Gene, lot 4, blk. 68, S.P. Add. school 50c, town 25c.
 Parsons, C. W. lots 5, 6, blk. 19, S.P. Add. school \$1.00, town 50c.
 Patterson, C. P. lot 9, blk. 28, S.S. Add. school 50c, town 25c.
 Pope, Fred C. lots 7, 8, 9, 10, 11, 12, blk. 32, S.S. Add. school \$2.25, town \$1.13.

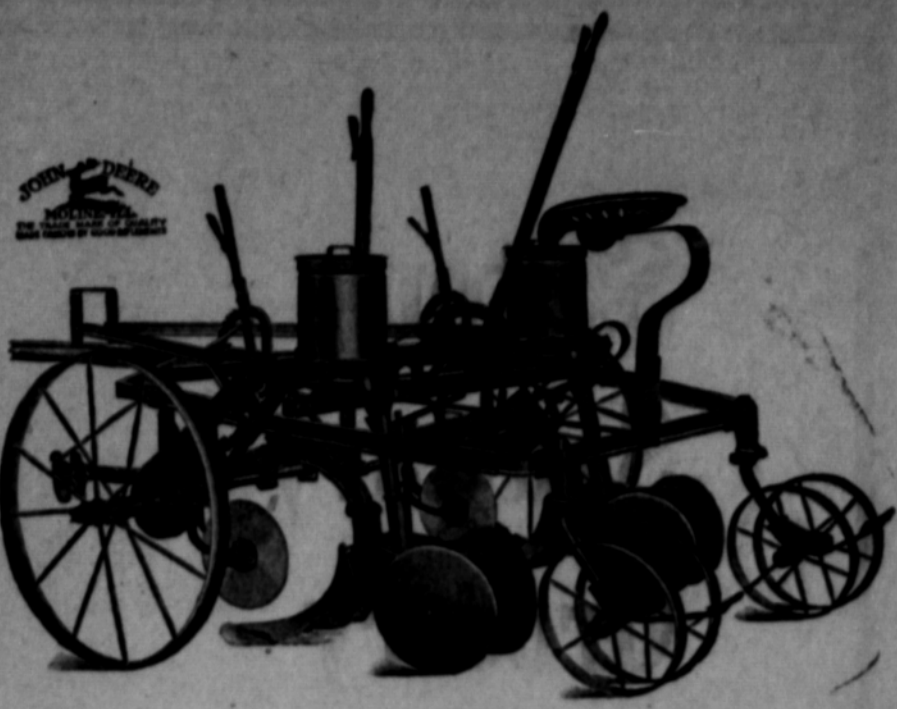
Preechett, W. C. lots 1, 2, 3, blk. 114, S.S. Add. school \$1.25, town 75c.
 Pyeatt, F. E. lots 4, 5, 6, blk. 44, S.P. Add. school 50c, town 25c.
 Purdy, Louise A. lots 10, 11, 12, blk. 69, S.P. Add. school \$1.50, town 75c.
 Powers, L. L. lots 9, 11, blk. 5, S.S. Add. school 50c, town 25c.
 Purcell, J. L. lot 9, blk. 28, S.S. Add. school 50c, town 25c.
 Renner, Susie, lots 5, 6, blk. 100, S.S. Add. school 50c, town 25c.
 Rollins, W. E. lot 10, blk. 101, O.T. school 50c, town 25c.
 Rauburn, Mrs. M. E. lot 3, blk. 18, S.P. Add. school 50c, town 25c.
 Revil, J. E. lots 5, 6, blk. 86, S.S. Add. school \$1.00, town 50c.
 Stewart, Sam, lot 5, blk. 23, O.T. school \$1.00, town 50c.
 Schoburg, E. H. lots 7, 8, blk. 16, S.P. Add. school \$1.00, town 50c.
 Smeltzer, Annie E. lots 2, 3, blk. 49, S.P. Add. school \$1.00, town 50c.
 Smeltzer, Annie E. lots 9, 10, 11, blk. 20, S.P. school \$1.00, town 50c.
 Smeltzer, Annie E. lot 12, blk. 79, S.P. Add. school 50c, town 25c.
 Snyder, A. J. lots 4, 5, blk. 94, O.T. school \$1.00, town 50c.
 Tracy, W. W. lot 12, blk. 72, S.P. Add. school 50c, town 25c.
 Vaughn, Fred, lot 3, blk. 51, S.S. Add. school 50c, town 25c.
 Veatch, Nora, lots 5, 6, blk. 15, S.P. Add. school \$1.00, town 50c.
 Wheeler, J. K. lot 10, blk. 45, O.T. school \$1.00, town 50c.
 Wickware, M. K. lot 11, blk. 31, S.S. Add. school 50c, town 25c.
 Williams, Bert, lot 1, blk. 101, S.P. Add. school 50c, town 25c.
 Wooten, Mrs. Liddie, lot 7, blk. 71, S.P. Add. school 50c, town 25c.
 Woodward, Loveta, lot 1, blk. 41, S.P. Add. school 50c, town 25c.
 White, C. R. lots 5, 6, blk. 37, S.P. Add. school \$1.00, ton 50c. w
 Unknown, lots 7, 8, blk. 37, O. T. school \$1.00, town 50c.
 Unknown, lots 3, 4, blk. 40, O.T. school \$1.00, town 50c.
 Unknown, lots 4, 5, blk. 42, O.T. school \$1.00, town 50c.
 Unknown, lots 11, 12, blk. 50, O.T. school \$1.00, town 50c.
 Unknown, lot 12, blk. 73, O.T. school \$1.00, town 50c.
 Unknown, lot 12, blk. 76, O.T. school 50c, town 25c.
 Unknown, lot 6, blk. 77, O.T. school 50c, town 25c.
 Unknown, lot 1, blk. 94, O.T. school 50c, town 25c.
 Unknown, lot 6, blk. 94, O.T. school 50c, town 25c.
 Unknown, lots 1, 2, 3, blk. 97, O.T. school \$1.50, town 75c.
 Unknown, lot 5, blk. 53, W.P. Add. school 50c, town 25c.
 Unknown, lot 7, blk. 82, W.P. Add. school 50c, town 25c.
 Unknown, lots 1, 2, blk. 91, W.P. Add. school 50c, town 25c.
 Unknown, lot 8, blk. 91, W.P. Add. school 50c, town 25c.
 Unknown, lot 4, blk. 106, W.P. Add. school 50c, town 25c.
 Unknown, lot 2, blk. 108, W.P. Add. school 50c, town 25c.
 Unknown, lots 1, 2, blk. 109, W.P. Add. school \$1.00, town 50c.
 Unknown, lot 6, blk. 109, W.P. Add. school 50c, town 25c.
 Unknown, lot 10, blk. 110, W.P. Add. school 50c, town 25c.
 Unknown, lot 5, blk. 117, W.P. Add. school 50c, town 25c.
 Unknown, lot 3, blk. 6, S.S. Add. school 50c, town 25c.
 Unknown, lots 5, 6, blk. 6, S.S. Add. school \$1.00, town 50c.
 Unknown, lots 7, 8, 9, blk. 7, S.S. Add. school \$1.00, town 50c.
 Unknown, lot 8, blk. 8, S.S. Add. school 50c, town 25c.
 Unknown, lot 1, blk. 9, S.S. Add. school 50c, town 25c.
 Unknown, lots 4, 5, blk. 9, S.S. Add. school 50c, town 25c.
 Unknown, lot 7, blk. 9, S.S. Add. school 50c, town 25c.
 Unknown, lots 1, 2, 3, 4, blk. 15, S.S. Add. school \$1.00, town 50c.
 Unknown, lot 3, blk. 27, S.S. Add. school 50c, town 25c.
 Unknown, lot 2, blk. 28, S.S. Add. school 50c, town 25c.
 Unknown, lots 8, 9, blk. 35, S.S. Add. school \$1.00, town 50c.
 Unknown, lots 1, 2, blk. 68, S.S. Add. school 50c, town 25c.
 Unknown, lot 1, blk. 71, S.S. Add. school 50c, town 25c.
 Unknown, lots 7, 8, blk. 87, S.S. Add. school 50c, town 25c.
 Unknown, lots 9, 10, 11, 12, blk. 90, S.S. Add. school \$1.50, town 75c.
 Unknown, lots 1, 2, 3, 4, blk. 86, S.S. Add. school \$1.00, town 50c.
 Unknown, lot 10, blk. 99, S.S. Add. school 50c, town 25c.
 Unknown, lot 12, blk. 105, S.S. Add. school 50c, town 25c.
 Unknown, lot 6, blk. 106, S.S. Add. school 50c, town 25c.
 Unknown, lot 7, blk. 113, S.S. Add. school 50c, town 25c.
 Unknown, lot 5, blk. 18, S.P. Add. school 50c, town 25c.
 Unknown, lots 1, 2, 3, 4, blk. 22, S.P. Add. school \$1.50, town 75c.
 Unknown, lot 1, blk. 37, S.P. Add. school 50c, town 25c.
 Unknown, lots 3, 4, blk. 37, S.P. Add. school 50c, town 25c.
 Unknown, lots 5, 6, blk. 41, S.P. Add. school 50c, town 25c.
 Unknown, lot 9, blk. 41, S.P. Add. school 50c, town 25c.
 Unknown, lot 7, blk. 42, S.P. Add. school 50c, town 25c.
 Unknown, lot 4, blk. 45, S. P. Add. school 50c, town 25c.
 Unknown, lot 10, blk. 49, S.P. Add. school 50c, town 25c.
 Unknown, lot 8, blk. 50, S.P. Add. school 50c, town 25c.
 Unknown, lots 4, 5, 6, blk. 32, S.P. Add. school \$1.00, town 50c.
 Unknown, lots 1, 2, 3, blk. 67, S.P. Add. school \$1.00, town 50c.
 Unknown, lots 4, 5, 6, blk. 67, S.P. Add. school \$1.00, town 50c.
 Unknown, lots 4, 5, 6, blk. 75, S.P. Add. school \$1.00, town 50c.

Unknown, lots 1, 2, blk. 76, S.P. Add. school 50c, town 25c.
 Unknown, lots 10, 11, blk. 76, S.P. Add. school 50c, town 25c.
 Unknown, lot 4, blk. 78, S.P. Add. school 50c, town 25c.
 Unknown, lot 10, blk. 79, S.P. Add. school 50c, town 25c.
 Unknown, lot 3, blk. 80, S.P. Add. school 50c, town 25c.
 Unknown, lot 4, blk. 101, S.P. Add. school 50c, town 25c.
 Unknown, lot 9, blk. 102, S.P. Add. school 50c, town 25c.
 Unknown, lot 2, blk. 40, S.P. Add. school 50c, town 25c.
 e, A. J. Payne, President of the Board of Trustees of the Slaton Independent School District and Mayor of the Town of Slaton, and J. W. Baker, Assessor and Collector for said District and Town, each do hereby certify that the foregoing is a full, true and correct list of the property within said School District and Town delinquent for taaxes for the year 1919, and to the best of our knowledge and information and belief said list is in all respects true and correct.
 In testimony whereof we have hereunto set our hands at Slaton, Texas, the 16th day of April A. 9. 1920.

A. J. PAYNE,
 President Board of Trustees, Slaton Ind. School District, and Mayor.
 J. W. BAKER,
 Tax Assessor and Collector Slaton Ind. School District and Town.

FARMS AND RANCHES FOR SALE IN SWISHER COUNTY, TEXAS

265 acres, 2-room house, well and windmill, 200 acres in cultivation, 100 acres in wheat. Price \$35 per acre, \$3,000 cash down and the balance one to six years at 6 per cent.
 480 acres unimproved level land; price \$19 per acre; one-half cash, and balance from one to four years at 6 per cent.
 640 acres all fenced, 150 in cultivation, 2-room house, well. Price \$24 per acre; \$6,000 cash, balance from one to eight years at 7 per cent. One mile to school.
 480 acres, 200 acres in cultivation, 150 sowed to wheat, 3-room house, well and windmill. Price \$35 per acre, \$3,500 down, balance from one to five years at 6 per cent.
 1090 acres, two sets of improvements, 100 acres in cultivation, well and windmill, 1920 acres of leased land, 225 head of high grade stock cattle. Price \$40 per acre, with cattle and lease land goes in. Half down, balance from one to three years at 6 per cent.
 If any above property is sold, possession will be given at once. Will answer all letters promptly.
 E. BROOKS
 TULLIA, TEXAS. PHONE 152



The thrifty farmer will use a John Deere two-row Lister with planting attachment and will always get best results. See us for implements.

FORREST HARDWARE

THE HOUSE OF SATISFACTION Phone 6, SLATON, TEXAS

CITY BARBER SHOP
 J. S. BAGBY, Proprietor SLATON, TEXAS
 A CLEAN, SANITARY SHOP, GOOD BATHS, AND THE BEST BARBERS. YOUR BUSINESS IS ALWAYS APPRECIATED. BRING THE CHILDREN IN AND LET US FIX THEM UP.

STOP A MINUTE AND THINK!

Who would fill your shoes as an income earner for your family if you were totally disabled by accident or illness or were to die? If you were forced to bed tomorrow by total disability, to remain there indefinitely, would your income continue to maintain your home or would it stop?

The safest and surest answers to these questions is a policy in THE HOME MUTUAL INSURANCE ASSOCIATION of Slaton. Then in the event of total disability or death your family will have something to take of them. STOP A MINUTE AND THINK!

This Association is purely a home company, managed by home men, and not a single dollar of the money paid into it will be sent away to the North and East, but every dollar will be kept at home and distributed among your neighbors for the payment of death and disability claims.

This insurance is practically inexpensive. As an illustration, the Plainview Mutual Home Insurance Association has been in existence for several years, now having a membership of about 2800, and the cost per \$1,000 insurance carried has been less than \$8.00 per year. Can you find any other class of insurance that will give you the same protection for that small amount each year? STOP A MINUTE AND THINK!

SPECIAL RATE OF \$3.00

The membership fee is \$5.00, but in order to fill up the first number rapidly a special rate of \$3.00 for the first 250 members is made. We are taking many applications daily and if you want to take advantage of this low rate you had better hurry.

The age limit is from 18 to 50 years, for either men or women, and no medical examination is required. In view of this fact there are many people who can obtain insurance in this association that would be excluded by other companies on account of being crippled, etc. but who are just as good risks from a physical standpoint as any.

For further information call on or address—
J. C. STEWART, Secretary
 DON'T PUT IT OFF UNTIL TOO LATE. ATTEND TO IT TODAY.

Store Your Coal Now

During the month of May is the time to buy your coal for next winter, as the low price will pay large returns on the investment. Let us arrange to make deliveries from the cars as they arrive.

PANHANDLE LUMBER CO.

OUR AIM—TO HELP IMPROVE THE PANHANDLE

REAL BARGAINS

YOU CAN'T MISS A BARGAIN
IF YOU BUY FROM US.

A. M. Watson Co.
We Sell the Earth Telephone 116

Regarding House Wiring

BY CLOSELY OBSERVING THE FOLLOWING INFORMATION REGARDING YOUR HOUSE WIRING FOR ELECTRIC LIGHTS YOU WILL SAVE TIME, TROUBLE AND UNNECESSARY EXPENSE:

WE HAVE ALL THE NECESSARY MATERIALS IN TRANSIT THAT WILL BE NEEDED TO TAKE CARE OF ALL RESIDENCES AND COMMERCIAL BUILDINGS WITHIN REACH OF OUR LINES. OUR MR. ELLIOTT WILL CALL ON YOU IN THE NEAR FUTURE.

ALL WIRING MUST BE DONE ACCORDING TO SPECIFICATIONS, RULES AND REGULATIONS OF THE NATIONAL BOARD OF UNDERWRITERS; ALSO SUBJECT TO OUR INSPECTION AND APPROVAL BEFORE CONNECTIONS FOR SERVICE WILL BE MADE.

IF WE WIRE YOUR BUILDING WE FURNISH WITHOUT COST TO YOU TYPE O. A. WESTINGHOUSE WATT METER, NO. 5741 TRUMBULL SERVICE BOX AND MAIN SWITCH, ALSO NECESSARY WIRE TO CONNECT ON POLE. ANY ONE ELSE WIRING BUILDING WILL BE REQUIRED TO FURNISH THIS EQUIPMENT.

Slaton Light Co.

J. A. ELLIOTT, Manager

SLATON, TEXAS

HOGVILLE LOCAL NEWS. (By Dunk Botts.)

Zero Peck has been a close observer of the weather man's forecasts for the past several months and has compared the weather with what he said we would have, and it is hard for him to determine which would have been the better—what we had and what he said we would have.

A stranger was here yesterday and acted rather peculiarly and had a bottle of well known hair tonic in his hip pocket. In less than an hour, Bill Hellwanger, who is as bald as an egg, was seen with two bottles of the same brand of tonic in his hip pocket. As he has not been seen for several hours it is not known how he came out.

Miss Begonia Allsop has read of a case where a jury allowed a girl five hundred dollars for a kiss a man stole from her. And to think, Begonia can't give them away.

The postmaster says he has found that it is not necessary for the people of Hogville to give any thought to any subject—they already know it all.

Alexander Moseley can remember when he was a boy he could get all the sugar he could carry for a dollar. Now you buy a dollar's worth and by the time you get half way home you can't remember whether you bought it or not.

Dan Hocks expects a good fruit crop this year as it was killed only twice this spring.

Gape Allsop believes there is no particular disadvantage in big feet. He has seen many people with them and they don't seem to be much in the way.

Sile Sims, owner of the used automobile which he has never been able to get to run a step, wore a disappointed look on his face when he read of a fellow at Daytona, Florida, who drove a car five miles in just a little more than two minutes.

Zero Peck often wonders why the trains run so fast by the small towns. Zero Peck, who has never been anywhere much, says if you use your eyes right you can see about all you need to close at home, without having to take them out on any sightseeing expeditions.

Yam Barlow fulfilled his social expectations, which consisted of talking, chewing gum and smiling on Peltunia Ridge last Sunday afternoon.

Based on specimens he's seen Gape Allsop believes most self-made men spent a good deal of time building their talking apparatus.

Dan Hocks, Hogville philosopher, says it seems human events are scheduled so that only a small per cent of the people can get ahead and stay ahead, it being arranged so that about the time the average body gets to where he thinks he is about to take the lead, or at least be in the running, his hat blows off.

Don't Always Blame Hens When Eggs Are Scarce.

Rats may be getting them—U. S. Government Bulletins prove they know how to get them. Break a cake of RAT-SNAP into small pieces and place where rats travel. If there, RAT-SNAP will get them—positively. Three sizes, 25c, 50c, \$1.00. Sold and guaranteed by Forrest Hardware and Slaton Drug Co.

LUBBOCK RURAL SCHOOLS RECEIVED STATE AID

County Judge J. H. Moore has received additional state aid money from the State Superintendent, which runs the total received this year up to \$10,709 for the nineteen schools in the county, which makes an average of \$567 per school. Hardy's appropriation was increased from the last report and Shallowater received her full amount, \$679. A noticeable feature about this is that eleven out of the nineteen schools received all they applied for, which is very conclusive evidence that the schools have made good on the requirements by the State Aid Board, and are up among the best in the State.—Lubbock Avalanche.

Let Mrs. Mary Graves Tell You Her Poultry Raising Experience.

"Three years ago bought an incubator, this year I've made money. Rats stole my baby chicks. Didn't know until a friend gave me a cake of RAT-SNAP. Next morning found two dead rats in hennery. Kept finding them. Suddenly they disappeared altogether. It's the only sure rat killer." Take Mrs. Graves' advice. Three sizes, 25c, 50c, \$1.00. Sold and guaranteed by Forrest Hardware and Slaton Drug Co.

DO YOU NEED LABORERS?

If you do, we are advised that there are plenty of Mexican laborers in Southwest Texas that are available now. If you want help of this kind get in touch with the mayor of Slaton or Secretary of the Chamber of Com-

Statement of ownership, management, etc. required by the act of Aug. 24, 1912, of The Slaton Slatonite, published at Slaton, Texas, for April 1, 1920.

W. Donald, editor, publisher, and owner.

Known mortgagees or bondholders, Mergenthaler Linotype Co., New York City.

W. DONALD.

Editor, Publisher, Owner.

Sworn to and subscribed before me this 8th day of May, 1920.

(Seal) H. C. JONES.
Notary Public, Lubbock Co., Texas.
My commission expires June 1, 1921.

P-L-E-A-S-E GET MARRIED.

ECZEMA!

Money back without question if HUNT'S Salve fails in the treatment of ITCH, ECZEMA, RINGWORM, TITLES or other itching skin diseases. Try a 75 cent box at our risk.

Sold by SLATON DRUG CO.

S. H. ADAMS

PHYSICIAN AND SURGEON
SLATON, TEXAS

Office Third Door West of
First State Bank

Phones: Office 10; Residence 26

W. A. TUCKER, M. D.

Offices on Second Floor
Masonic Building

SLATON, TEXAS

Phones: Office 108; Residence 66

Dr. Ben T. Owens

DENTIST

Office in Masonic Temple

Telephone 108 Slaton, Texas

CHIROPRACTIC

Spinal Adjusting for Acute,
Chronic and Nervous Diseases

C. A. SMITH

CHIROPRACTOR

First Door North of Jewelry Store
PHONE 137 SLATON, TEXAS

GET THE BEST
5 1/2 PER CENT

Farm Loans!

WHY PAY MORE?

Long time (5 to 35 years). Easy payments that cancel the debt. The Government's own system of giving Texas people through the Federal Land Bank of Houston CHEAP MONEY. See—

W. E. OLIVE

Secretary-Treasurer, Slaton, Tex.

Service Male

POLLY'S LEE RALEIGH, NO. 178498, REGISTERED JERSEY MALE, AT MY BARN FOR SERVICE. FEE \$5.00 IN ADVANCE.

Forney Henry

SLATON, TEXAS

DON SUNG

Makes Hens Lay

Gets the eggs in any weather. It is easily given in the feed and doesn't force or hurt the hen in any way. Don Sung is a real tonic. Try it—if it doesn't pay for itself and pay you a good profit besides, your money will be promptly refunded. Trial size 50 cents.

SLATON DRUG COMPANY

GET

your cans, trash and ashes all ready, then call G. L. SLEDGE to haul them off. Don't forget to call phone 16 to get your trunk hauled. Phone 16 or 12 for—

FOR QUICK SERVICE

G. L. SLEDGE

TELEPHONE NO. 16

Kodak Finishing

FILMS DEVELOPED
15 CENTS

PRINTS EACH
4 TO 6 CENTS

IF YOU WANT THE BEST
SEND FILMS TO

Mrs. E. B. Manire

SLATON, TEXAS

DURING THE PAST FEW DAYS WE HAVE SOLD TWO PIECES OF CITY PROPERTY AND A DANDY NICE PIECE OF FARM LAND. IF YOU WANT TO SELL SEE US. IF YOU WANT TO BUY WE HAVE BARGAINS THAT YOU CAN'T BEAT.

A. M. WATSON CO. Real Estate
Slaton, Texas.