

STARS' CROWNING ACHIEVEMENT

"The Way of All Flesh" Emil Jannings' first American starring vehicle, comes to the Palace Theatre next Monday and Tuesday, says an announcement from Mr. Kern, the home manager.

According to reports from exhibitors and critics wherever this picture has been shown, it is the crowning achievement of Jannings' brilliant career as the foremost dramatic film actor of the world today.

It finds the great star of "Destruction," "Variety" and "The Last Laugh" in a human, sympathetic role that demands all of his talents. The story takes Jannings through three separate and distinct cycles of life, each demanding an exactitude of treatment that required months of preparation and study.

Belle Bennett, whose "Shall I Dare" established her as a great screen artist, plays opposite. Phyllis Haver is the "other woman."

Mrs. Charles Lee and baby returned here several days ago after visits with relatives in Fort Worth, Mineral Wells, and points in Oklahoma.

CRYSTAL GAZER TO BE AT THE CUSTER



The Custer Theatre, always being on the lookout for the better class of vaudeville, has gone into the purchasing field for big time attractions and has arranged one that recently closed an engagement of the Orpheum Circuit of theatres.

On April 2-5-4 KHAYM, the Master Mentalist, will be the subject featured on the Custer program. In addition to a Johnny Hess picture this act will present a strong bill.

KHAYM is this week featured at the Ladbroke theatre at Lubbock and the Lubbock Avalanche has this to say of the man:

"Khaym, with the aid of a crystal and mental telepathy, picks out individuals in the audience and calls them by name and reports questions they are thinking, and then reports what the crystal reveals in the way of an answer.

"Whether believe or skeptical, Khaym has some real entertainment to offer you, and a visit to his attraction is really worth while."

ICE

For the accommodation of my customers, I am now handling ice in large and small quantities. Drop by when you need ice and let us serve you.

We always handle fresh supplies of potatoes, sugar, corn, and green vegetables, apples, peaches, apples, etc., etc.

Pay us a visit. Just across the street from the Acorn Store.

ICE BURG NO. 1 H. J. CHEVREY, Owner and Manager.

PHIL-UP AND FLY

With Phyllis of Genevieve Airplane Candies. She starts right now.

Miss Pop-Miss Brown—Miss Millage. And give it a trial—your car will tell the rest.

We buy right and sell right—17c. THE GAIN LINE OF ADVERTISING MEMORANDUMS—WE CAN SAVE YOU MONEY.

Harrison Bros.

Community Chest is Not Yet Organized

Because of small attendance at the community chest meeting held last Friday night at the City Hall, no definite organization has yet been formed to care for charity needs of Slaton. It is announced this week. Later meetings will be announced probably, at which the plan will be worked out and put into execution if sufficient local interest is shown, it is stated.

Miss Lottie Brooks is visiting this week with her sister, Mrs. A. A. Elson and family of Levelland.

C. G. Fine was called to Seagraves the latter part of last week on account of the serious illness of a brother, Ralph Fine.

SLATON GIRL INJURED IN "LOOP" AT LUBBOCK

Miss Ruby Lips, daughter of Mr. and Mrs. O. L. Lips of Slaton, sustained a cut on her right arm, and five other passengers in the car in which she was riding were bruised when the car "looped" in the canyon yesterday afternoon. There were three girls and three boys in the car when the accident occurred. The car slid off the road and was thrown into a vertical position with the radiator on the ground and the rear of the car in the air. Lubbock Avalanche.

A. KESSEL Graduate of School of Podiatry, using Dr. Scholl's foot appliances, specializing in correct shoe fitting. No charge for consultation, carrying full stock of corrected shoes. At Kessel's Department Shoes.

Get Your Car Washed!

300-lb. pressure washer. Will clean your engine of dirt and grease. Also first class mechanic to do your repair work. All work guaranteed. Also rent cars and taxis, at Selmon Bldg, Phone 144.

Selmon & Clark

GILBERT PATE Forrest Gilbert, recently of Bangs, Texas, who is connected with the City Bakery here, and Miss Ed Lee Pate, of Comanche, Texas, were married at the Baptist parsonage here last Saturday night, the Rev. B. G. Hallway officiating. Mr. and Mrs. Gilbert will make their home in Slaton. FOR RENT—Two room house. Also bedroom in modern home. Telephone No. 135-A. The Slatonite, \$1.50 per year anywhere within 50 miles of Slaton. Other points \$2.00 per year.

Did You Ever Think? Why Whippet is gaining in popularity? Willys Overland is making and selling 1,000 cars per day. Dealers are passing the cry of the public on to the factory daily for "More Whippets." Why! They are the most modern light car built. Force feed oiling system insuring no bearing or piston trouble. Think what this means. According to motor age specifications, only 5 of the 48 standard makes of cars do not use this type oiling system. Only one of these five sell for above \$1,000 delivered in Slaton. Unequaled Fuel Economy, oil and tire mileage characterize Whippet performance. The Whippet parks in 14 feet of curb space, turns in a 17 foot radius, brakes to a stop in 51 feet from a speed of 40 miles per hr. "POWER"—A Whippet Landean recently towed a 1-ton truck loaded with 4200 lbs. cottonseed up the canyon hill near Slaton. Try it for power. Easy steering and handling unequalled in light cars. See the "blind folded" driver in a Whippet sedan make his drive Monday, April 2nd. See the internal parts of Whippet in our parts room. SCUDDER MOTOR CO. We not only sell you a car, but service it as well.

As In Olden Days In the olden days, when every man donned his best bib and tucker on Easter days, down to the present time when the custom still survives, one of the important items of dress has been the shirt. Our shirts will do themselves proud in supplying this vital portion of men's dress for this day, 'round these parts. Better drop in and pick out your supply before the ones you want are gone. Shoes for Easter When you slip on a pair of these shoes you are due for a brand new fast sensation. We won't tell you what it is, but we do urge you to try it and be convinced. The Newest Laces, in Black and Tan. The MEN'S STORE M. W. UZZELL MILTON THOMAS

Just Arrived—A Car of BLUE RIBBON FEEDS For Poultry Baby Chick Starter, Growing Mash, Lawing Mash. Feed for Any Aged Chicken GUARANTEED TEXAS GROCERY

Hokus Pokus Specials for Saturday FLOUR 1.81 FLOUR .95 MEAL .64 MEAL .31 COMPOUND 1.09 POST TOASTIES .10 LYE .09 CANDY .10 SALT .16 RAISINS .35 PEACHES .46 SALT BACON 1.51-2 And Other Specials Not Mentioned in This Space Just arrived a full line of Blue Ribbon Chicken Feed. AMOUNTS OF \$2.50 AND OVER DELIVERED. PHONE NO. 197. Money Talks

PAYNE'S 11th Anniversary Starts March 30 See the big 4-page circular for particulars SALE

WATCH FOR THE MAN ON THE MOTORCYCLE!

CLASSIFIED ADS

FOR SALE—Good three-year old jersey cow—Scudder Motor Company. 27-tfe

TYPEWRITERS—For sale, trade or rent.—G. W. Bewnds. 27-tfe

SEEDLING—Peach and plum trees for sale.—E. Barton, Phone 88. 28-tfe

RESIDENCES—New and modern, at bargain prices.—T. J. Abel, at Home

APARTMENT—See S. S. Forrest. 1p

WHAT THE DOCTOR SAYS OF OUR MILK

"Slaton, Texas, March 21, 1928.
This certifies that my family has used the Florence Dairy milk, cream and butter continuously for 14 years and have found it always unexcelled in richness, flavor and sanitary conditions, and I heartily recommend it as a good and safe food for old or young.
Signed: S. H. ADAMS,
City Health Officer and Asst. County Health Officer."
We are increasing our capacity for service and desire some new customers. Therefore, we publish the above assurance that our milk is equal to the best.
Deliveries twice daily and on special call.
MR. AND MRS. W. P. FLORENCE,
30-4c

FOR RENT.
Five-room house with bath and garage. Large space for garden. Price right. Also 1 modern 5-room furnished house near the square. See W. Howard Hoffman, upstairs Slaton State Bank Bldg., or phone 59. 30-tfe

FOR SALE—Big German millet and Sudan seed, corn and cotton seed. Also have a few nice pigs and shoats.—E. E. Wilson. 31 3c

NOTICE TO CONTRACTORS
On and after June 1, 1928, the wage scale for Union Carpenters will be \$1.00 per hour, or \$8.00 per day. U. B. of C. and J. Local No. 1266. 30 10c

SUDAN SEED—4 cents per lb., at Fred Kahlich place, on Rt. 1, 3 mi. northwest of Slaton.—George Anger. 26 Sp

THOROUGHBRED—Barred Rock eggs, \$3.00 per hundred.—Mrs. Ernest Taylor, Rt. 1, Slaton, Texas. 28-4p

WANTED—To rent share crop, or a job on farm.—E. C. Houchin, 325 S. 12th St. 29-2tpd.

FOR RENT—Two bed rooms, private entrance, hot and cold water, gas.—405 South 8th St. 1c

TEXAS GROWN—Half and half cotton seed, 2nd year, ginned in 10 and 12 bale lots. Average 48 per cent. Delivered in Slaton in 3-bushel bags, at \$1.50 per bu.—F. H. Sharp, Rt. 1, Post, Texas. 28 tfe

FOR SALE—Nice five room, modern stucco house with two lots, east front; and one nice four-room house with lights and water.—See H. H. Eubanks, 135 South 3rd St. Phone 172, P. O. Box 747. 27-5tp

BARRED ROCK EGGS—\$5.00 per hundred. Won four prizes out of five entries at Slaton show last December.—Mrs. W. B. Leavelle, 2 1-2 mi. north of Posey. 31 2tp

FIVE PER CENT FARM LOANS
Best Safest Lowest Rate Loans written for thirty-six years but you may repay in full or in part after five years.—See J. T. Overby, Sec'y-Treasurer, Slaton National Farm Loan Association.

STRAYED—At the E. Denny farm, 8 mi. west of Slaton, on Woodrow highway. A sorrel pony, wt. about 800 lbs. Owner pay for feed and adv. and get pony. 1c

FOR RENT—Nice front bed room, close in.—230 S. 10th St. 1c

FOUND—Handbag, on Texas Ave. last week. Owner call at Western Union office, Slaton 1c

OWN YOUR HOME—One 5 room modern stucco residence on 12th st., a bargain, easy terms. One 5 room residence on pavement South 10th, St., priced to sell. A nice little home. Will take good car as down payment on either place—See Scudder Motor Company.

WANTED—A man to write insurance on growing crops in the vicinity of Slaton, Texas. This will be our 14th year. Our rates are lower than other reputable companies. We have never failed to pay our losses. We have never been sued by a policy holder nor levied an assessment. We have a good reserve. Write, phone or wire at our expense.—The Groom Mutual Hail Association, Groom, Texas. 31 3c

FOR RENT—Five room house with bath and garage. Large space for garden. Also 2-room house near West Ward School. See Howard Hoffman, upstairs, Slaton State Bank Bldg., or phone 59. 31 tfe

She Likes GermgeT

Dear Sir—I formerly lived in Kansas and used your GermgeT for incubator chicks and have never found anything else as satisfactory. Since coming to Missouri I have not been able to obtain it at all. I wish to know what would be the cost of having it sent here, or if you would like to have an agent for GermgeT. Hope to hear from you soon, as will soon be hatching time. Yours respectfully, Mrs. W. R. D.

Guaranteed and sold by Slaton Produce Company 30 2c

Farm Bargains

160 acre improved farm three miles north east of New Home. Bargain at \$35.00 per acre. \$2,750 Dallas Joint Stock Land Bank Loan can be assumed.

160 acre farm in cultivation seven miles southwest of Slaton. Price \$35.00 per acre.

147 acre improved farm four miles southeast of Levelland. Good buy at \$42.50 per acre, can give good terms.

J. T. Overby

Real Estate—Phone 134

SEE THOSE Pre-Easter Specials

ON

- Hats
- Dresses
- Coats
- Men's Suits
- Boys' Suits
- Shoes

Kessel's
"Where You Do Better"

Come See How

you can make a lovely Paris-designed dress in

45 minutes.



Mary Eaton will show you ALL NEXT WEEK in a striking window display of

GENUINE **Peter Pan** Guaranteed Fast Color

WASH FABRICS

This famous star of the stage and screen will clearly demonstrate, in pictures, the six simple operations in making a dress. Charming dresses, after models created by noted Parisian designers, will show how beautiful Peter Pan fabrics make up. Patterns of these dresses will be on sale in our Pattern Department.

The colorful new Spring and Summer Peter Pan designs will be displayed—all made by leading French artists—all guaranteed absolutely fast.

GUARANTEE
"We will replace any garment made of genuine PETER PAN if it fades."
Peter Pan is a wonderful fabric—delightful to receive and feel, with a soft, smooth weave of fine quality yarn, and long-wearing under the harshest usage.

FORD

The Dallas Assembly Branch of the Ford Motor Company are speeding up their production weekly, and increased deliveries will be made by us in a short time.

Place your order today for the NEW FORD, the greatest Automobile Value that has ever been offered the buying public.

Beauty--Style--Workmanship--Material Power--Speed--Performance--Easy to handle, economical to operate.

Slaton Motor Co.

—Phone 133—

Friday
March
30

PRE-EASTER SALE

Friday
March
30

Daily Specials

Friday

Monday

Ladies' Pure Thread Silk Hose, silk to top—
98c

35c 48x22 inch Turkish Towels, for—
24c

Saturday

9x12 ft. Felt Base Rugs
\$6.95



SPECIALS

Men's Athletic Union Suits—
37c

Men's Grey Work Shirts—
49c

Men's Dress Shirts—
89c

Ladies' Handkerchiefs—
3c each

Our Annual Easter Sale will open with the largest stock and greatest amount of Ready-to-Wear ever in our store at this time of year. We defy all competition in this great Sale. You should not fail to visit our store during these few days.

With each one dollar purchase will be given a ticket and on Saturday, April 7th, we will sell to the lucky number, Ladies' \$10.00 Hat Box for 25c; or a Man's Leather Second Hand Bag, for 25c.

32 inch Gingham
11c yd.

Men's Broadcloth Athletic Union Suits—
69c

9 - 4 Bleached Sheeting—
29c

Men's Overalls—
98c

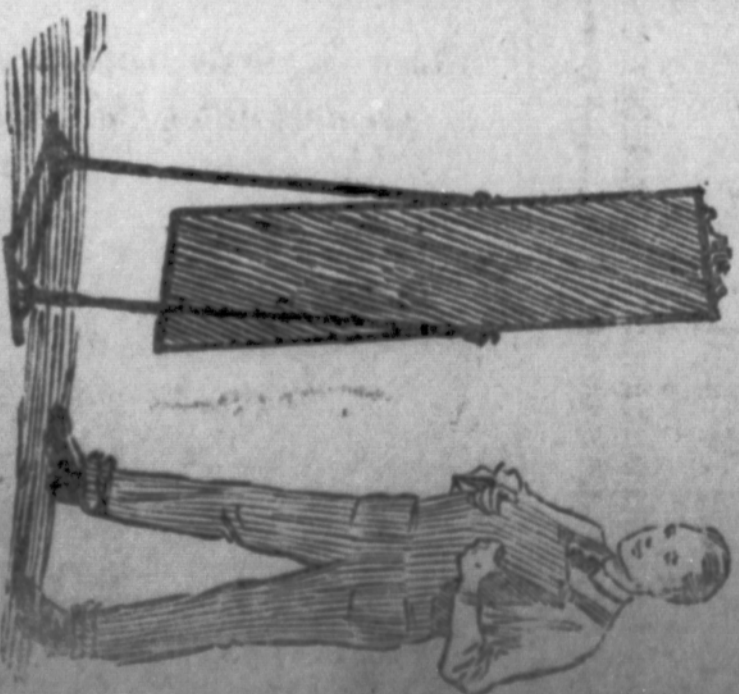
Boys' Overalls—
89c

Grab Boxes—

Grab Box

10c each
15c each

25c each
50c each



Slaton

JONES DRY GOODS INC.

Texas

Big Values In New Merchandise Surpass All Old Acorn Records

An enormous organization in the country's fashion buying district; purchase from the world's production centers by the million for the million, by the most expert of buyers; unlimited cash resources; more than half a century's merchandising experience; absolute reliability of quality; guarantee of satisfaction or money refunded; elimination of so-called SALES

WHEN TRAVELLING

You will find up-to-date Acorn Stores in the following states: Alabama, Arkansas, Florida, Georgia, Louisiana, Maine, Michigan, Mississippi, North Carolina, Ohio, Oklahoma, and Tennessee.

GIVING LOWEST PRICES EVERY DAY ON

EVERYTHING

And achievements given the people who trade
at the **ACORN STORES.**

WHEN TRAVELING

In nearby cities in Texas, you will receive the same prompt service in Acorn Stores at Abilene, Anson, Big Springs, Breckenridge, Brownwood, Bryan, Cisco, Colorado, Ft. Worth, Hamlin, Lubbock, Lufkin, Plainview, Port Arthur, Stamford, Vernon, and Yokum.

New Styles Awakend By the Voice of Spring

Await Your Inspection in an Ample Variety of Fabrics

In this showing of new dresses for spring and Easter we have achieved a most noteworthy ambition—to welcome the new season with a replete display. Featured at the low Acorn Store prices—**\$4.95 to \$14.95**

Our stock of Weartex hosiery awaits your inspection, and we believe that that the quality of our merchandise to be the best on the market.

We have a most unusual, as well as a most attractive display of Acorn Wash Silks and Wash Cottons from which you may pick desired materials for summer's wardrobe.



The smartness of the lines which predominate the modes shown in this array of spring coats again emphasizes this store as the place to come for style. Featured --

\$14.95 to \$21.95

A large assortment of charming new designs in underthings comprise our spring showing. Fine quality at low prices welcomes you.

Keen little hankies, a few plain, but most of them with attractively designed borders and initials.

Typical of our other displays is the showing of children's wear which awaits the busy mother shopper.

SHIRTS

Men's genuine Broadcloth Shirts in solid white, tan, blue, and a wide variety of fancy patterns, colors guaranteed not to fade.

98c up

DRESS PANTS

Men's Dress Pants, a wide variety of new spring colors and styles. Acorn Store prices—

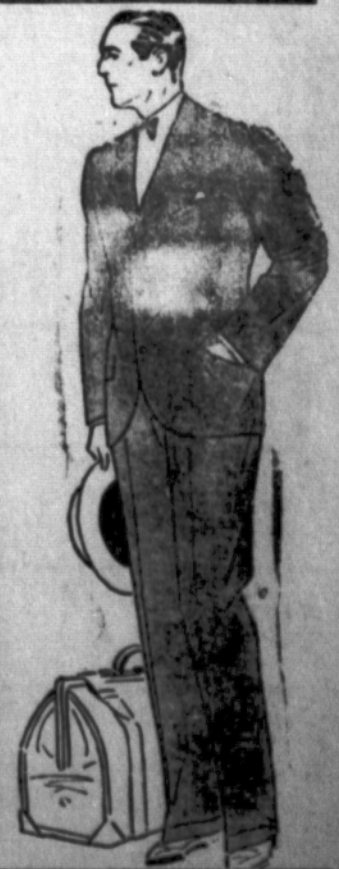
\$2.95 up

WORK PANTS

We are featuring an unusual high grade Khaki Work Pants,

Pair, 98c up

Every Pair Guaranteed



Unusually Attractive Styles in Wonderful Assortment of Ladies' WASH DRESSES. Made of fine printed dimity and other wash materials. Colors guaranteed not to fade. Featured at the unusually low Acorn Store prices, from **69c to \$1.75.**

Excella Patterns

All the newest styles of the famous Excella Patterns reduced to—

15c - 20c - 25c

SHEETS

Ready Made Sheets, Acorn brand, size—

81x90, each ----- **95c**

72x90, each ----- **65c**

A visit to our Crockery and Glassware Department will convince you of the wonderful values that we have secured for you.

Cups and Saucers, plain white, first quality, **59c set**

Plain White Plates, first quality, 9 inch size, **59c set.**

EASTER SUITS

We have just received this week a wonderful assortment of Men's right-up-to-the-minute styles in Spring Suits for Easter. These suits are tailored especially for the Acorn Stores. Some two-button and some three-button models.

Featured at **\$13.95 to \$24.95**

OVERALLS

Acorn Special Overalls. Heavy 220 weight Denim, triple stitched. A new pair if it rips. Big Buying Power brings to Acorn prices—**98c pr.**

THE STORE
of
Greater Values



Acorn Prices are Lower on Standard Tires built by Fisk Tire and Rubber Co.

Tires Tubes
30x3 1-2 Reg. \$5.00 \$1.20
30x3 1-2 O. S. \$5.50 \$1.30
29x4.40 Bl. \$6.50 \$1.40

PRESBYTERIANS RENEW SUNDAY SCHOOL INTEREST

On Wednesday night, March 21, members of the Presbyterian Sunday school held a workers' conference, with a good attendance, and began definite work toward a standard Sunday school, with a view of interesting more people in both Sunday school and church work.

It was pointed out at the meeting that a large per cent of the school enrollment of the Slaton schools is not enrolled in the Sunday schools of the city, and adults, generally, are giving very little thought to the work.

Plans were laid for holding a reception at the church next Tuesday for Rev. James Rayburn, the new pastor, who will arrive this week from Lampasas, and all Presbyterians and friends of the church are urged to be present.

Those present at the meeting were very enthusiastic over the future prospects for the church and Sunday School and plan an active campaign.

The meeting was turned into a social event when Mrs. K. L. Scudder and Mrs. C. A. Bruner served sandwiches, coffee and cocoa, and this feature, too, was enjoyed by all present.

W. E. Olive, Joe H. Teague, Jr., N. A. Stuart, and Jno. T. Lokey were in the Pecos country this week fishing.

Announcements

The Slatonite has been authorized to announce the following persons as candidates for public office, subject to the action of the Democratic Primary in July, 1928. Voters of Slaton and Lubbock county are requested to give careful consideration to those whose names are listed as follows:

For District Judge, 99th Judicial District:

CLARK M. MULLICAN, of Lubbock (for re-election); CHAS. NORDYKE, of Lubbock.

For County Judge:

D. E. KEMP, of Slaton; GEORGE W. FOSTER, of Lubbock.

For County Attorney:

BENJAMIN KUCERA, of Lubbock; VAUGHN E. WILSON, of Lubbock.

For Sheriff:

H. L. (Bud) JOHNSTON, of Lubbock (for re-election); WADE HARDY, of Lubbock; C. A. HOLCOMB, of Lubbock; ROSCOE PARKS, of Lubbock.

For County Clerk:

AMOS H. HOWARD, of Lubbock (for re-election to 2nd term).

For County Treasurer:

VIRGINIA FANN, of Lubbock; MISS ANNIE FORD, of Lubbock.

For Tax Collector:

A. J. CLARK, of Lubbock.

For Tax Assessor:

R. C. (ROLLIE) BURNS, of Lubbock (For Re-Election); CHAS. B. METCALFE, of Lubbock.

For Commissioner of Precinct No. 2:

J. T. PINKSTON, of Slaton (Re-election).

For Public Weigher, Precinct No. 2:

I. E. MADDEN (for re-election); J. G. HARPER.

For Mayor City of Slaton:

(City election to be held Tues. April 3); S. F. KING (re-election); W. G. REESE.

For Justice of Peace, Precinct No. 2:

J. H. PHILLIPS.

IF

You are looking for a **GOOD REAL ESTATE LOAN** Here it is. \$1,374.48 pays out \$1,000.00 loan, including interest in 100 months in **UNITED SAVINGS BANK**, Detroit, Michigan. No stock to buy. Investigate and save the difference. **J. H. BREWER, Agt.** City, Farm and Ranch Loans 1st State Bank, Slaton, Texas

Mrs. Clyde Carr and Miss Morena Wilson visited in Comanche Wednesday. They were accompanied home by Miss Eu Lee Pate of Comanche.

A. C. Hanna returned early this week from Dallas, where he attended the Grand Lodge of the I. O. O. F., and visited a few days with his children.

M. J. Nelson, division accountant, Slaton Division of the Santa Fe, left this week for Topeka, Kan., where he entered the company's general hospital for treatment.

Joe Kuykendall, once a resident of Slaton, and yard master for the Santa Fe here, is moving from Yuba City, California, to Santa Fe, N. M., according to advices received here this week by Uncle George Marriott, special friend of the Kuykendall family.

Mrs. H. V. Jarman and little daughter are visiting her parents, Mr. and Mrs. W. W. Stone, at Anton.

Mrs. Bert Thornton has returned from Dallas where she spent several weeks attending a marionette school.

ADULT CLASS ELECTS

In the election of officers for the adult class of the Presbyterian Sunday school last Sunday, the following were elected: N. A. Stuart, president; G. Pogus, vice-president; Mrs. K. L. Scudder, secretary; Joe K. Rogers, Treasurer; and C. A. Bruner, teacher. The class has had a remarkable growth during the last quarter, it was shown, and without the assistance of regular church services, and now with Rev. Rayburn here for regular preaching services, and advice in Sunday school work, they have hopes for a still larger class.

WATCH!

For the Blindfold Drive MONDAY, April 2nd, at 4:15 p. m.

3--NIGHTS--3

Custer Theatre

Starting Monday, April 2nd

"KHAYM"



Master Mentalist

His Show of Surprises

Ask Him About Love Affairs, Business, Missing Relatives, Etc.

THE USUAL PICTURE PROGRAM FEATURING

JOHNNIE HINES in "HOME MADE"

WATCH FOR THE BLINDFOLDED AUTO DRIVER AT 4:15 P. M. MONDAY

BIG DOUBLE SHOW OF VAUDEVILLE AND PICTURES

Prices 25c and 50c -- DON'T MISS IT

Saturday Specials----

PIGGLY WIGGLY



Through the turnstile at Piggly Wiggly you come before an array of the finest foods in the world. The spacious shelves are so arranged that you may pass leisurely from one to another, making your selections to suit your own judgment.... The freedom one enjoys in Piggly Wiggly stores is one of the secrets of their great popularity.

SUGAR 15 Pound PURE CANE **1.00**

Prunes POPULAR SIZE CALIFORNIA PACK 10 Pound Box **.89**

Spuds EXTRA QUALITY 10 Pound **.29**

Peaches LIBBY DELUXE HEAVY SYRUP 2 1-2 Can **.23**

Bran SKINNERS RAISIN Per Package **.11½**

Malt OLD HEIDELBERG No. 2 1-3 Can **.54**

Tomatoes HAND PACKED No. 1 Can **.05**

Milk CARNATION Large Can **.10**

Coffee LADY ALICE 1 Pound **.34**

Peaches GALLON Per Gallon **.46**

Salmon GENUINE PINK Per Can **.17**

Syrup BLUE BRER RABBIT Per Gallon **.74**

Salt AMERICAN 3 Pkg. for **.10**

Salt TABLE 25 Pound **.33**

Cookies SNOW PEAKS Per Pound **.21**

Market Specials

Pork Roast PER POUND **.18**

Bacon SLICED Per Pound **.38**

Barbecue PER POUND **.18**

