

THE SLATON SLATONITE

(The Slaton Times Absorbed by Purchase January 20, 1927.)

Vol. XVII.

Slaton, Lubbock County, Texas, Thursday, December 8, 1927.

Number 15.

SECOND ANNUAL POULTRY SHOW WAS BIG SUCCESS

IMPORTING DAIRY STOCK WILL BE DISCUSSED MONDAY NIGHT

Bankers, Chamber of Commerce Officials and Farmers Will Have Meeting at City Hall; County Agent Coming.

As the first step in promoting the dairy industry through this section by importation of purebred dairy stock, a meeting has been announced for next Monday night, Dec. 12, at the City Hall, to which farmers are invited if they are interested in securing better grades of dairy cattle. The banks of Slaton will be represented at the meeting by J. H. Brewer, president of the First State Bank, and by W. E. Olive, active vice president of the Slaton State Bank. Three or four Chamber of Commerce officials will attend, and County Agent D. F. Eaton, of Lubbock, has promised to be present. The time of the meeting will be seven-thirty o'clock.

All farmers in the Slaton trade territory who are anxious to secure purebred or good grade dairy cattle are invited to the meeting and are really urged to attend, according to J. W. Hood, president of the Chamber of Commerce. Hood said Wednesday that the plan for importing improved dairy cattle for farmers of this section has been considered for sometime by the Chamber of Commerce, and it is thought the time is now ripe for action. Bankers here have expressed their desire to co-operate in the movement, he said. Any farmer who wishes to better his condition in the dairy industry should attend the meeting, Mr. Hood said.

Receivers Off Hooks Shut Telephone Door

When a telephone is left off the hook, not only is all inward service to that telephone interrupted, but if it is a party line, it is impossible for the operators to ring any other telephones on the line as long as the instrument is off the hook.

There are a surprisingly large number of cases when telephone service is interrupted in this way. In part of New England alone, for one month recently, 10,556 subscribers are cut off from telephone service for a time because of receivers being left off the hooks.

This may be done accidentally when someone is called away from the telephone in a great hurry, or forgets to hang up, but in many cases the subscriber thinks he has hung up the receiver and has left the telephone in perfect condition, when, as a matter of fact, she is virtually leaving it off the hook. In other words, it is necessary to pull the hook clear down and if this isn't done, the result is the same as if the receiver were left off entirely. Oftentimes, a book, a bunch of paper, or a pile of magazines placed nearby by the telephone prevents the receiver from being pulled all the way down, and immediately there is trouble because no one can get that number as long as that condition continues.

CHURCH OF CHRIST

Program for Wednesday evening, Dec. 14th.

Leader—Greer Whitaker.
Scripture and song leader—Jim Cullar.

Christ, the Foundry of Modern Business; Its Principles and Ethics—Bill Fouly.

Song—by the Children.
Conducted by Bro. Badie.

How Does God's Spirit Bear Witness with Our Spirit That We are Children of God—Guy Reese.

Memory Verses—by the Children; and blackboard drill, conducted by Bro. Berry.

JUST Received some nice living room suites and bedroom suites. See them. Elrod's Furniture.

Chamber of Commerce News Notes

Reported by
L. A. WILSON, Secretary.

The poultry show last week was pronounced a big success by local officials and by the visitors attending from other places, some of them having visited other West Texas shows this year, and they declared the Slaton show one of the best they had ever seen in West Texas. The judges were highly enthusiastic about the quality of the birds exhibited, as well as the much larger quantity than were on display at the first show, held last year. The Poultry Association managed the show this year, as they did last year. The Chamber of Commerce assisted in planning the show. Rev. T. L. Kimmel has been re-elected president of the Poultry Association for another year, and has already said he expects the 1928 show to be much bigger and better than the one held this year. Dates for next year's show will be Dec. 6, 7 and 8.

The business interests of Slaton deserve much praise for the liberal financial support given the poultry show this year. A balance will be left in the treasury, it is reported, and this will help out next year. The poultry industry in the Slaton section is growing rapidly, and the 1928 show will likely be twice as good as the one held last week. Poultry raising is a paying industry and should be a part of the farm program all over this country.

Up to last Saturday night, 5,200 bales of cotton had been ginned in Slaton this season, while more than 3,300 had been ginned by the Posey, Union and McClung gins, all located in Slaton's immediate trade territory. Farmers have estimated that eighty-five per cent of the crop has been harvested. On that basis, Slaton would receive about 1,000 more bales this season, and the three community gins would get about 700 more, bringing the grand total to 10,200 bales, of which 6,200 would be received by Slaton gins and 4,000 by the community gins.

The least thing one can do for building up his city and its territory is to keep up his Chamber of Commerce membership, thus helping to support the work done for general development and improvement. Few citizens give much of their personal time to community building—they haven't the opportunity. They must stay on the job with their own business. Financial support for the Chamber of Commerce, then, is about the only opportunity one has to help in building his community. Each man's business will succeed or fail in the same proportion as his community succeeds or fails. Therefore, just as two plus two makes four, each business man and each citizen should be a member of the Chamber of Commerce as a matter of helping his own business. There's no other conclusion. There's just one answer. If you are not a member, we want you to join, regardless of who you are. More members means a better Slaton and a better Slaton trade territory. Your influence and support should not go to waste. Let it go into the proper channel. Put it into the Chamber of Commerce.

MATTRESSES from \$6.50 to a Soaly, Elrod's Furniture.

Making Plans On Annual Chamber of Commerce Banquet

The annual banquet of the Slaton Chamber of Commerce which will be held Tuesday evening, January 10, is being planned out in detail by the officials of the organization, it is announced from the Chamber of Commerce office. The women's organization of the Catholic church here will serve the menu, and the list of the various items to appear on the menu will be published soon.

The largest attendance in the history of Slaton is expected at the banquet. A worth-while program is being planned, though it will not be of such length as to hold those who attend until a late hour, it is stated. Eight directors will be elected at the banquet to serve on the board of directors for another year. They will take the place of those whose terms expire. Seven of the present board will serve again next year, according to J. W. Hood, president of the Chamber of Commerce.

Local Men Go To Executives' Meet Held at Lubbock

The Central South Plains Commercial Executives' Association, an organization formed last April, and composed of Chamber of Commerce secretaries and members of boards of directors over the South Plains section, held the first annual session at the offices of the Chamber of Commerce at Lubbock, Tuesday. Joe Leopold, of Dallas, and Homer D. Wade, manager of the West Texas Chamber of Commerce were the main speakers. L. A. Wilson, Slaton Chamber of Commerce secretary, and F. H. Latham, member of the board of directors, attended the meeting. The former was elected secretary of the South Plains association, succeeding S. W. Cooper, former secretary who has moved to Winters, and therefore is out of the territory. Wm. A. Wilson is president of the association, and he resides at Lamesa. The next meeting of the body will be held next spring when the district convention of the West Texas Chamber of Commerce meets at Lamesa.

SLATON BEATS CANYON TO WIN BIDISTRICT CLASS B CROWN

Smashing Victory of 31 to 7 Carries Tigers to Peak of Season; Dazzling Aerial Work Outwits Canyon Eagles.

Poultry Judge Gives Praise to Slaton Show

To the People of Slaton and Surrounding Territory:

Since Mr. Curry and I have finished our work of judging the Slaton Poultry Show which was held Dec. 1, 2 and 3, I wish to tell you how fine a show you have had this year. I do not hesitate to say that it is one of the best shows I have seen on the Plains in 1927, and I have helped judge a large number of them, with other engagements yet to be filled.

I was greatly surprised at the extraordinary high quality I found in the birds displayed in the Slaton show this year, especially considering that your first show was held last year. Some of the finest fowls I have ever seen in all my experience were exhibited in your show this time. It proves that you have made wonderful progress in this section within a short time, and I wish to congratulate you upon that.

Not only was the quality of the fowls very high, but your show had more birds displayed this year than I had really expected. The big increase in number over last year's record of entries is another cause for my offering you congratulations. Your different officials who have helped plan for the show this year certainly deserve high commendation for the good work they have done.

The men who have had direct management of the show have kept it in first-class condition in every way. It has been a pleasure to note the excellent sanitary conditions which have prevailed.

I am told that the business men of Slaton raised a large fund with which to pay off the premiums for the poultry show this year. Nothing could speak louder in behalf of your progressive spirit than this action on your part. The encouragement you have thus given to the poultry industry in your territory will bring you handsome profits for all future time. Your money was well invested, and I hope you make next year's show even bigger and better than the wonderful show you held this year.

Yours for success,
(signed) H. W. Duke.

Just as the Lamesa Golden Tornados and the Floydada Whirlwinds proved too weak for the smashing, driving, relentless teamwork of the Slaton High School Tigers, so did the Canyon High School Eagles find their wings too weak for prolonged fight here last Friday when Slaton and Canyon met on the local gridiron to determine the bi-district championship, Class B, districts one and two, the North Plains section versus the South Plains region. The score was 31 to 7 for the Mitchellmen. It gave to the Tigers by decisive odds the right to claim themselves as winners over all other contenders in the race for football honors in the Plains region for 1927, Class B high schools.

The Tigers were never in serious danger throughout the contest Friday, maintaining a lead over their opponents throughout. The first score came in the first quarter when Armes crossed over on a long end run, and Owens failed to kick goal. The first half ended with Canyon lacking only six inches of getting the pigskin across, with the score Slaton 6; Canyon 0.

The Tigers scored again in the third, following a pass, Owens to Nichols, for 30 yards, and Owens booted the oval, making the score 13 to 0. It was in this quarter that Canyon succeeded in crossing the Tiger goal line for the only score of the game for Canyon. Pohl fumbled a punt which was recovered by Canyon on the Tiger 8-yard line. A line plunge netted a five-yard gain for the Eagles, and then a pass, Wiggins to Williams, scored a touchdown and goal was kicked. Score Slaton 13; Canyon 7.

The Tigers entered the fourth quarter with a strong offensive rush. In fact, the Slaton eleven was on the offensive almost from the start to finish. A pass, Owens to Hamilton, followed by a spectacular run of 60 yards by Hamilton for a third touchdown, brought the score to 19 to 7. Then Armes twisted around the Canyon end for a fourth score, making it 25 to 7. The final and last score came by serial play, Cannon to Houston, for 25 yards and 6 more points.

MUCH LARGER THAN LAST YEAR AND EXHIBITORS ARE PLEASED

Many Visitors Inspect Display of Twenty Varieties; Event Successfully Financed; Premium List is Given.

The second annual Slaton Poultry Show went over big when held here last Thursday, Friday and Saturday, Dec. 1, 2 and 3. It was housed in the two brick buildings owned by E. Roeder of Plainview, and Mrs. H. T. Shelby of Slaton, located at the corner of Ninth and Garza streets. T. L. Kimmel was the show superintendent this year and has been re-elected president of the Poultry Association for another year. Dates for next year's show will be Thursday, Friday and Saturday, Dec. 6, 7 and 8, he has announced. The show this year, as last year, was under the management of the poultry association. The Chamber of Commerce worked with the association this year in planning the details of the show.

Dr. H. W. Duke and E. J. Curry both of Amarillo, judged the show, and exhibitors are well pleased with the awards made, according to officials of the poultry association.

Fifty per cent more birds were displayed this year than were on exhibit last year when the first Slaton show was held. This is considered an excellent gain, and it is predicted that next year's show will be much larger than the one held this year. The business interests of Slaton contributed liberally to a fund for paying expenses and the many premiums offered in the show this year. Officials report sufficient funds to pay all expenses are in hand, and a surplus will be left over, it is thought when a final check-up is completed. This surplus will probably be held over in reserve for use in the show planned for 1928. It is believed by poultrymen in charge of the details of management. A list of contributors to the poultry show expense fund will be given in the next issue of The Slatonite. A more detailed statement of receipts and disbursements will be made soon, according to show officials.

Dr. Duke, one of the show judges, wrote and signed a statement commending the Slaton show and its officials for the way the event was handled this year. This statement, too, is published elsewhere in this issue of The Slatonite. Mr. Curry, also, expressed himself as being highly pleased with the fine showing made in this year's event for Slaton poultrymen, and said he was greatly surprised at the quality and number of birds displayed.

The awards as made by the judges, up to and including third places, are as follows:

S. C. Rhode Island Reds—John C. Burton, Slaton, first young pen. T. L. Kimmel, Slaton, second young pen, first and second hen, second cockerel, first pullet. Dr. W. L. Huckabay, Slaton, third young pen. E. V. Quattlebaum, Clarendon, first and third cocks, first and third cockerels. Mrs. R. H. Tudor, Slaton, second cock. J. W. Buchanan, Slaton, second and third pullets.

White Leghorns—Dr. W. L. Huckabay, Slaton, first young pen. Mrs. W. N. Williams, Slaton, second young pen. S. M. Shelley, Seymour, first cock, first, second and third hens, first

final score 31 to 7 in favor of the Tigers.

A special train brought about 200 Canyon people to the game, supporting the Eagles for what they believed certain victory. Pop squads were present, and the Canyon delegation made a fine showing. The visitors returned home Friday night.

(Continued on Last Page)

and second cockerels first and third pullets. E. V. Quattlebaum, Clarendon, second cock, third cockerel. W. P. Splawn, Slaton, second pullet.

Light Barred Rocks—Mrs. Lula Pelley, Kirkland, first young pen, second cock, first and second hens, first cockerel second pullet. G. C. Pelley Kirkland, second young pen, first cock, third hen, second cockerel, first pullet. J. E. Taylor, Slaton, third young pen. W. B. Leavelle, Slaton, third cockerel, third pullet.

Dark Barred Rocks—G. C. Pelley, Kirkland, first young pen, third cock, third hen, second cockerel first pullet. Mrs. Lula Pelley, Kirkland, second young pen, second cock, first and second hens, first and third cockerels, second pullet. Mrs. Ragan Reed, Slaton, third young pen. A. A. DeVore, Slaton first cock, third pullet.

Partridge Rocks—D. E. Scott, Slaton, first cock, first and second hens, first and second cockerels, first, second and third pullets.

White Rocks—R. L. Kirksey Slaton, first old pen. Carlton Splawn, Slaton, first and second hens.

White Wyandottes—Pierce Youngblood, Salton, first cock, first hen, second cockerel, first and second pullets. Claxton Mullenix, Slaton, first cockerel. Ralph Dickson, Slaton, third cockerel.

Partridge Wyandottes—Nelson Baxly, Slaton, first hen, first cockerel, third pullet. Joe Privett, Slaton, second cockerel, second pullet. Paul Nesbitt Slaton, first pullet.

Buff Orpingtons—L. G. Krietz, Slaton, first old pen, first and second hens.

Dark Cornish Games—Lee Tudor, Slaton, first young pen. W. E. Brackeen, Slaton, second young pen, first and second hens, first cockerel first pullet. M. R. Williams, Slaton, third hen, second cockerel, second pullet.

R. C. Rhode Island Whites—Mrs. Lula Pelley, Kirkland, first cockerel, first hen, first pullet.

Jersey Black Giants—D. E. Scott, Slaton, first young pen, first cock, second hen. J. A. Russell, Slaton, first hen first cockerel first and second pullets.

Dark Brown Leghorns—Clyde Shaw, Slaton, first old pen, first young pen, first cockerel, first cock.

S. C. Black Minorcas—Mrs. Lula Pelley, Kirkland, first old pen, first young pen, first cock, first hen second cockerel first pullet. G. C. Pelley, Kirkland, second old pen, second young pen, second cock, second hen, first cockerel, second pullet. J. A. Russell, Slaton, third cockerel. Briggs Robertson, Slaton, third pullet.

Buff Minorcas—Theo. Schuhmann, Slaton, first old pen, first young pen. Silver Spangled Hamburgs, Mrs. Forney Henry, Slaton, first cock, first and second hens, first cockerel, first second and third pullets.

Light Brahmas—Ralph Dickson Slaton, first cockerel, first pullet.

Club Boys' Division—Claxton Mullenix, Slaton, first trio, S. C. Leghorns. Ralph Dickson, Slaton, first trio, Light Brahmas, second trio.

White Wyandottes.

Ducks—M. H. Edwards, Slaton, first trio.

Eggs—John C. Burton, Slaton, first display of 13.

Sweetstaks—Pierce Youngblood, Slaton, White Wyandotte cock. E. V. Quattlebaum, Clarendon, S. C. Rhode Island Red cockerel. Mrs. Lula Pelley, Kirkland, Dark Barred Rock hen, S. C. Black Minorca pullet. Largest and best display, Mrs. Lula Pelley, Kirkland, with a loving cup for the grand prize of the entire show.

GET that your... a beautiful bolstered chair... Elrod's

PROFESSIONAL DIRECTORY

BOONE and BOONE
CHIROPRACTIC
Massage Treatments
Corrective Diet
Benton Bldg. Slaton

A. A. DeVORE
GENERAL CONTRACTOR
Efficient Workmen
No Charge for Estimates
Slaton, Texas

Dr. W. S. Ferguson
Off. Phone 535, Res. Phone 930J
DENTAL OFFICE

Dr. J. B. Jackson
IN CHARGE
Lubbock, Texas

Jessie Lee Conger
CHIROPRACTOR
Palmer School Graduate
Using Spear's Painless System of Adjusting
Is Now Located at 135 E. Lubbock Street, Slaton
Hours: 9 to 12 a. m., 1 to 5 p. m.

DR. J. B. WILLIAMS

DR. G. W. SHANKS
DENTISTS
Benton Bldg. Slaton, Texas

W. L. Huckabay, M.D.
Slaton, Texas
Special Attention Given to Diseases of Women and Children
Office in City Drug Store
Phones: Office 243; Res. 175

CALL ME COLLECT
Specializing Farm, Live Stock and Merchandise Sales.

W. H. SEALE
AUCTIONEER
Phone 334 Slaton, Texas

NELMS & ALLEN
CHIROPRACTORS
Carver Graduates
MRS. NELMS, Assistant
Massage Electro Therapy
Phone 540, Leader Bldg.
Lubbock, Texas

All Work Guaranteed.
All Around
PAINTER AND PAPER-HANGER

We make paper-hanging a specialty.

DENTON & NIX

Drs. BOONE & BOONE
CHIROPRACTORS
301 Myrick Bldg.
LUBBOCK, TEXAS

ELLIOTT & LOKEY
Wiring, Electrical Supplies and Radios
PHONE 340
Service Calls Answered Promptly

Coming to Lubbock
DR. MELLENTHIN
SPECIALIST
In Internal Medicine for the Past Fifteen Years

DOES NOT OPERATE
Will be at Merrill Hotel, Monday, Dec. 12th. Office Hours: 10 a. m. to 4 p. m.

ONE DAY ONLY
No Charge for Consultation

Dr. Mellenthin is a regular graduate in medicine and surgery and is licensed by the state of Texas. He does not operate for chronic appendicitis, gall stones, ulcers of stomach, tonsils or adenoids.

He has to his credit wonderful results in diseases of the stomach, liver, bowels, blood, skin, nerves, heart, kidney, bladder, bed wetting, catarrh, weak lungs, rheumatism, sciatica, leg sores and rectal ailments.

Below are the names of a few of his many satisfied patients in Texas who have been treated for one of the above named causes: Mrs. J. H. Sonntag, Cisco; Mrs. T. H. Schmalriede, Mcregor; Mrs. Will Seelig, Haskell; Mrs. Sam Wilson, Brownwood; Mrs. Wright, Abilene; Mrs. P. W. Palestine; Robert Hoffman, Oklahoma; Emil Muehl, Seguin.

Remember above date, that consultation will be free and that his treatment is different.

Married women must be accompanied by their husbands.
Address: 211 Bradbury Bldg., Los Angeles, California. 15-3p

Medical Inspection For School Children Subject Rotary Meet

The Slaton Rotary Club held a very interesting meeting last Friday, at which time attention was turned to the question of medical inspection of school children, how same should be done, whether at public expense, how often inspections should be made, compulsory vaccinations, etc.

Dr. H. Frank Miller and Dr. J. B. Williams had charge of the program, and both read interesting papers on the subject. Dr. C. J. Wagner, of the West Texas Hospital at Lubbock, and member of the Lubbock Rotary Club, was a guest of the Club and was called on for an impromptu discussion of the subject. He responded with a practical talk that was immensely enjoyed by all.

Dr. Wagner strongly emphasized the necessity of such inspections in the interest of the health and well being of school children, and cautioned, however, that the work should be done by only competent physicians, and that it was neither satisfactory nor sound practice to turn the work over to nurses only, valuable as their efforts might be within prescribed limits. The speaker also emphasized the fact that many ills can befall children that need prompt and careful attention besides treatment of eyes, ears

and tonsils. On the question of vaccination, Dr. Wagner explained how modern medical science has completely conquered so many malignant diseases by the discovery and application of antitoxins and anti-serums, mentioning small-pox, diphtheria, and a number of others. Science has clearly proved, he asserted, that those who are vaccinated do not take the particular disease. He then turned his attention to the economic aspects of the question and showed the enormous saving that results by lowering the number of sick days in one's life, and in the life of the family. When the saving in the individual case is multiplied by the individuals in the nation, the economic value in dollars and cents of health and medical inspection, and prevention of disease through vaccination and public and private sanitation and hygiene, the totals become staggering.

Tomorrow the subject will be "My Idea of One Thing that Would Prove Beneficial for Slaton; and How the Idea Should be Carried Into Execution." P. G. Stokes, Sam E. Staggs, Ben G. Holloway, C. Lem Sone and Joe C. Barton are scheduled to discuss this topic.

Fred Anton, of Las Vegas, N. M., formerly superintendent of the Slaton division of the Santa Fe, was here Saturday on business.

Hokus Pokus Specials for Saturday

SOAP	P. & G., 10 Bars	.38
CORN	Our Darling, No. 2 Can Country Gentleman	.15
PRUNES	LARGE SIZE, Per lb.	.09
CRACKERS	3 lbs. B. C. C., Per Box	.35
HONEY	5 lbs. TEXAS COMB, Per Bucket	.76
HONEY	10 lbs. TEXAS COMB, Per Bucket	1.48
PEACHES	NEW CROP, Per lb.	.12
TOMATOES	HAND PACKED, No. 2 Can	.09
PEANUT BUTTER	ARMOURS, 5 lb. can, Per can	.88
BACON	CEM SQUARES, Per lb.	.22
PEACHES	FANCY TABLE, Per can	.17
BACON	NORTHERN SMOKED, Per lb.	.19
FLOUR	MADE RITE, 24 lbs., per sack	.94
CABBAGE	MOUNTAIN, Firm Head, Per lb.	.02 1-2

AMOUNTS OF \$2.50 AND OVER DELIVERED. PHONE NO. 197.

Money Talks



Give Furniture for Christmas and your gifts will retain their beauty and value for a lifetime. It is sure to be accepted with pleasure, too, for nothing is more pleasing to every member of the family than a gift that will add to the beauty and charm of the home. We have on display a large and varied collection of finely made furniture, and whether you desire to give a whole suite or a separate piece you will find it here. And if you wish, we will gladly arrange deferred payments for you.

During the month of December we are offering special pieces at group prices. Which means that you may select any one piece of a suite—and pay no more for it than if you purchase the entire group.

A four piece bedroom suite—of a rich brown walnut veneer and gum wood. Each piece charming of line, soundly constructed and convenient for the use intended. Deep roomy drawers. Wide mirrors.

A three-piece living room suite, upholstered in tapestry, velour, or damask. Loose spring cushions. Harmonious color combinations, in a selection to match any decorative scheme.

Home Furniture Company
SLATON, TEXAS

The New Ford Car

The Greatest Automobile Value ever offered to the public.

ORDERS WILL BE FILLED STRICTLY IN ORDER RECEIVED.

PLACE YOUR ORDER NOW!

Slaton Motor Co.

The Slaton Slatonite
 Published weekly on Thursday at
 Texas Ave. at 7th St. Phone 10
 Slaton, Lubbock County, Texas.
 Mrs. W. Donald, Publisher and Owner
 E. W. Collier, Jr., Editor
 Subscription price, per year - \$2.00
 Display advertising rate,
 per single-column inch -----35c
 Entered as second class mail matter
 at the postoffice at Slaton, Texas.

One of the saddest things in this life is that the world professes to admire a thinker, but just as soon as he begins to express his honest convictions the world begins to condemn him, leaving it to future generations to rear monuments to his memory.

Stay with the crowd, is the social rule. If one gets behind the crowd in his ideas he is branded old fogey, and neglected. If he gets ahead of the crowd in his ideas, he is branded a fanatic, and either persecuted or ignored.

Clarence Derrow, one of America's ablest and most fearless thinkers, and therefore one of the world's most hated sons, says that "Every Organization is fighting independence, courage and real honesty." The more we realize that statement, the more we are forced to admit its truth. He says "every!" Truly every organization is engaged in the business, unconsciously, maybe, of forcing folks to conform to pet dogmas that all of us know the future will discard for something better. Terrible, indeed, is the penalty which society inflicts on one who would depart from the beaten path!

We hope that this thing of not choosing to run will not become so popular that our filver will join the chorus.

One writer at least has offered the suggestion that the Democrats could win next year if permitted to name the G. O. P. candidate while others think that even this hope requires an undue amount of optimism.

But pray tell us precisely how you would be affected, either for woe or joy, if your favorite should be defeated? Do you suppose that you could really tell the difference, so far as your pocketbook and happiness are concerned? Probably not, so just keep your shirt on.

Politics is a game wherein the voters are the pawns.

What we want is a bank that now and then advertises bargain days for making loans.

Now that prosperity is upon the people, very probably, or anyway possibly, money, or at least a few, will pay off old debts that the creditors had given up hope of ever getting. We caution this possibly few debtors to approach their creditors cautiously. Some of them may have weak hearts that could not withstand such a sudden shock.

There are, of course, persons in this world with clear consciences, but certainly whenever such a person is found he will be one who has paid his best debts.

Things on both sides of the Atlantic seem to be pretty well balanced, after all. Europe has her Balkans while we have our Mexico and Nicaragua.

If a stitch in time saves nine, a minute's stop at a railroad crossing may save several lifetimes.

We haven't noticed that our poultry show has much increased our already slim prospects of having a turkey dinner Christmas Day.

One big advantage a help-yourself store has is that no limit is placed on overloading yourself, and you have to pay to get out.

Still there seem to be folks who take Big Bill Thompson of Chicago seriously, but then there can always be found folks lacking in a sense of humor.

As we go to press the Democrats

SOMEBODY SAID

SOMEBODY SAID it is probable that the Slaton country will see greater development in 1928 than ever before in a single year of its history.

SOMEBODY SAID after a prosperous Fall season, Santa Claus will doubtless be loaded down with gifts this Christmas. What will we do about chimney's since we have natural gas service?

SOMEBODY SAID the Slaton country is in the most prosperous condition financially that has been known since 1923. And why? Because we have practiced diversification this year, and cotton has brought a good price on account of a short crop. If farmers will always diversify—raise chickens, hogs, cows and plenty of feedstuff—and plant just about half the amount of cotton they had in 1926, they will be prosperous next year, and the next, etc. Why not do it? It is the only safe plan. Experience has proved it. And banks will ask the farmer next Spring how much diversification he is going to practice—then if the answer is favorable, that note will be signed up.

SOMEBODY SAID the Slaton High School Tigers have certainly made a

and Republicans are still offering a reward for an issue for 1928.

Often, nowadays we see articles dealing with the "alarming increase in divorce," but seldom do we see anything written on "the alarming absence of sound judgment in contracting marriage," so we suppose most folks think the former has no logical connection with the latter. But, hasn't it?

At last the curtain of mystery has been lifted and the new Ford has been seen. And it didn't look a bit like it was expected to, either. Why, actually the thing looked more like an automobile than anything else we could think of right at the moment, or since.

EXCHANGE SHOTS

FOOTBALL FEVER

Twenty thousand people saw the A. & M. College lick the University in a football game on Thanksgiving Day while 5,000 to 7,000 are said to have watched the Canyon Teachers lick Tech. It seems that football is coming to rival the great American game of baseball in popularity; that is, everywhere except in Tehoka. A football game here will hardly bring out a dozen people outside of the school pupils.—Lynn County News.

It takes a good team, a good coach and some prospects of hard competition to make fans out of those who are otherwise disinterested. Slaton has had the best season in the history of her high school football team. Attendance at two or three of the games has gone beyond the 2,000 mark considerably, according to a check upon the gate receipts. Slaton has had a winning team this year, not only winning district honors, but also conquering the Canyon high school team for the bi-district crown. It is the third year within the past four that Slaton High School has won district honors in Class B football. It is the first time, however, that we have won a bi-district championship. Slaton is probably stronger in football spirit than any other South Plains city in the B Class. We have had through the past four years an excellent coach. We have played teams that made our eleven fight hard for honors, and so we have developed football spirit. Slaton is especially proud of her 1927 winning Tigers and their coach, Odus Mitchell, who came

fine football record this season. Beat everything, and then beat Floydada and Canyon, winning the district and bi-district championships. Scored 189 points to 29 for the opposing teams. Coach Mitchell and his Tigers have brought some fine publicity to Slaton through their good work, and have otherwise behaved themselves in a way to do honor to their school and city. The Tigers and their coach are a fine bunch of fellows.

to us last September from Childress. Football is criticized by many, but is liked by many more.

BIG REWARD

Bankers are offering larger rewards for dead robbers than for live ones. That is the right method. Live robbers have a thousand ways of keeping out of jail and robbing other banks while their cases are in court. Dead ones won't bother any more.—Canyon News.

It may at first seem like a cold blooded proposition, but it is just that sort of games that the bank robber plays. Bank robbing has become entirely too common all over the United States. Where the plan now in force with Texas bankers has been tried out, it is said that bank robbing has almost ceased.

It is high time criminals had fear put into their hearts. It seems nothing else will cause them to halt in

CHILDREN'S FATAL DISEASES
 Worms and parasites in the intestines of children undermine health and so weaken their vitality that they are unable to resist the diseases so fatal to child life. The safe course is to give a few doses of White's Cream Vermifuge. It destroys and expels the worms without the slightest injury to the health or activity of the child. Price 35c. Sold by **CATCHING'S DRUG STORE**

Dull Headache and Sluggish Feeling

"We are a healthy family and haven't had to use much medicine," says Mr. J. H. Adams, of Bishop, Ga. "But I have found it necessary to take some medicine."

"I had headaches. My head felt dull, and like I couldn't hold it up."

"I had a bad taste in my mouth; felt sluggish and tired."

"I brought home some Black-Draught and took a few doses, and I got good results. I felt so much better. My head cleared up. I was hungry and wanted to get out and work."

"Black-Draught has proved satisfactory and we have used it ever since."

Thousands of other families have had equally satisfactory experiences.

Sold everywhere in 25 cent and \$1 packages. E-128

Theodorick's BLACK-DRAUGHT
 Purely Vegetable

The Contribution Made By Your Wife

Most men are frankly honest enough to acknowledge, the contribution made by their wives, to whatever of success has been achieved by them.

Most men are just enough to want to relieve their wives of some of the drudgery of housework.

All will frankly agree, that the most helpful servant in the house is Natural Gas.

Make the winter comfortable and easy for your wife by installing this service in your homes.

Do it today.

Gas service is an appropriate Christmas gift for the Housewife or Mother.

WEST TEXAS GAS COMPANY

their courses except the prospect that they are likely to be killed. Of course, we shall continue to have some bank robberies, but our guess is that the quantity of "jobs" performed will be decreased considerably.

KNOW TEXAS

Cotton, the most important crop of Texas, was first grown about the old Spanish missions near San Antonio as early as 1775. Texas produces

about one-third of the cotton crop of the United States and from 20 to 25 per cent of the cotton of the world.

The value of the Texas cotton crop averages approximately as much as all the gold, silver, zinc, lead and copper in the United States.

The annual value of Texas' cotton seed crop ranks third among the crops, occasionally ranking ahead of corn, which generally is second.

FREE! FREE!

With every crank Case drained and filled With **NU PRO MOTOR OIL**, we will give **One Quart FREE.**

D. L. CARMICHAEL & SON

Gifts FOR ALL

Our showing of holiday and gift goods makes it easy to buy pleasing gifts for all, and our stock of toilet sets, candies, fountain pens, purses, kodaks, etc., will please anyone.

SUBSTANTIAL GIFTS ARE PRACTICAL GIFTS.

TEAGUE'S Drug Store

- Study the Man -

A face to face meeting with facts—things accomplished, things left undone—and a searching out of factors which have been millstones about the neck on the road to success, has often resulted in a complete right-about-face for many a man.

It's good practice for all—because one learns that while "money is not everything"—it is a mighty convenient tool. This institution is an advocate of thrift in savings, but there are other important service departments here wherein we can and do serve our patrons to a profit for them.

MAKE THIS BANK YOUR BANK

Slaton State Bank

Officers:
 E. J. MURRAY, Pres.
 W. E. SMART, Vice Pres.
 W. E. OLIVE, Active Vice Pres.
 CARL W. GEORGE, Cashier,
 J. S. TEEKILL, Asst. Cashier.

Directors:
 E. J. MURRAY,
 W. E. SMART,
 W. E. OLIVE,
 CARL W. GEORGE,
 W. S. FOLEY.

Glucose Filled,
 Lemon Flavored,
 Best tested,
RTICAL Co
 Lubbock, Tex.
 Phone 529

Usage of Nat. Gas Discussed by Gas Co. Official

By W. W. GRAVES
Asst. to Vice Pres. & Gen'l. Mgr.

To the men or woman, and especially to the woman, who has used natural gas for years, the cleanliness and convenience is taken for granted. The novelty and luxury stage of using gas for light, heating and cooking, has been lost sight of and gas has become one of the most vital necessities of comfortable living.

That is perhaps the reason that we may at times seem impatient with the prospective consumer who has never used gas and may be timid or reluctant to change from the old, and as they see it, the reliable kerosene. We are prone to urge and insist upon their changing from the fuels they know and understand to the new and to them untried fuel. Knowing our own tendencies along these lines we have undertaken to partially if not entirely relieve the prospective customer's mind of all thought that there can be any question of the advantages to be gained by them in changing from the dirt, ashes, smoke and unsanitary use of other fuels to using gas.

Natural gas is clean, sanitary and safe. Insurance companies recognize the safety of using gas as a fuel over other fuels by lowering insurance rates in cities properly piped for use of gas. Proper inspection as provided in an ordinance, approved by the insurance underwriters, and passed by the city officials is the first step toward giving the consumer the necessary feeling of safety. After the house has been piped and inspected and cooking and heating appliances installed comes the Gas Company's opportunity to further satisfy the consumer by giving free instructions as to use of gas and use of gas appliances. To meet this we have our local agent to whom any trouble may be reported. Go to him freely with your questions and if he is not able to satisfy you he will turn the matter over to our home service department and that department will give you individual consideration and if necessary will go with you to your home and give special study to the conditions causing you trouble. This service costs the consumer nothing and we are only too glad to provide it for them.

It has been remarked by men of long years of experience that never in the history of gas industry has a company been so fortunate in securing so complete a staff of experienced men to start operating and the whole story back of getting these efficient employees can be summed up in the one trite and comprehensive word that is used continuously by the general manager, R. F. Hinchey—SERVICE.

Service may be of two-fold character, that which applies to the community as a whole and that which applies to the individual consumer. Our employees are told to keep both in mind at all times and to give special attention to the personal service they may render to our many consumers.

In any new or untried innovation there are those who go on the theory that "I will try anything once," but the great majority of careful housewives must be sold on the idea of using gas. This also applies to the men folks. In fact the head of the house is oftentimes the harder member of the family to sell on the idea of using the new fuel. The first and most important question to most new consumers is that of safety. GAS IS THE SAFEST FUEL KNOWN. The second question is usually that of cost. GAS IS THE CHEAPEST FUEL KNOWN. The third question is that of efficiency. GAS IS THE MOST EFFICIENT FUEL KNOWN. When satisfied as to these three big questions there comes the question of cost of installation. It can easily be shown that the saving in fuel cost will pay all cost of installation within one or two years and the following expressions from consumers will tell the story.

The wife of a young laboring man who is paying his home through the Building and Loan says—"We wanted to build a new porch and add another room to our home but could not do that and have gas too, so my husband and I decided to use gas and we are SO GLAD now that we did for it has made our little home SO MUCH MORE PLEASANT AND COMFORTABLE that we are glad to wait for the other things and if we are never able to build more room we would not give gas for anything."

A prominent judge says—"Graves you have been used to gas probably for years and are not in a position to

really appreciate what having gas means to one like myself, who never before has enjoyed the privilege. If your company were to come and offer me all the money back that I have paid out to get my home piped and buy my stoves with a profit of 100 per cent and a bonus of \$500.00 I would refuse for gas is the greatest and cheapest luxury I have ever known. No dirt, no kindling, no coal, no getting up of a cold morning and getting peeved at starting fires. Just a match and a pleasant comfortable glowing fire that immediately warms the room. No I would not give it up for any consideration. You people have brought us a real blessing."

Another one who has passed the meridian of life and is nearing his golden sunset and who during all his long and useful career has never before used gas, gets up at 5:30 in the morning slips on his smoking jacket and slippers and to use his expression "just lights a match and turns that little dingus" and then sits chucking before his radiat heater and gazing into the fire compares it with the old wood fireplace—the old coal and grate and cooking stoves and thanks his Maker that his grandchildren are living in a period and a community that is blessed with natural gas.

Here we have the young couple changing their plans of home building to use gas and telling of their appreciation; the mature and careful judge setting a material value to great convenience; and the man whose declining years are blessed with a luxury.

Many millions of money have been spent by men who vision a vast empire on the South Plains to make that empire more certain of realization, to give the people a modern fuel at a price within the means of all classes of citizens and to help to build up

the material wealth of the communities served.

They have done this without asking any favors or bonuses, only asking that you as individuals and as progressive, wide awake communities avail yourselves of the privileges of using the commodity brought you. Many have connected up and are now enjoying their added comfort. Others are anxiously looking forward to having gas connections as soon as our employees can get their meters. Others expect to get their houses piped "some time soon" but a lot of you have not availed to the opportunity of sitting at your fireside. Install gas—do it now, and become one of those who are enjoying this efficient economical fuel.

Lubbock Sanitarium (A Modern Fireproof Building) and Lubbock Sanitarium Clinic

DR. J. T. KRUEGER
Surgery and Consultations
DR. J. T. HUTCHINSON
Eye, Ear, Nose and Throat
DR. M. C. OVERTON
Diseases of Children
DR. J. P. LATTIMORE
General Medicine
DR. F. B. MALONE
Eye, Ear, Nose and Throat
DR. J. H. STILES
General Medicine
DR. L. P. SMITH
General Medicine
MISS MABEL McLENDON
X-Ray and Laboratory
C. E. HUNT
Business Manager

A chartered Training School for Nurses is conducted in connection with the Sanitarium. Young women who desire to enter training may address the Lubbock Sanitarium



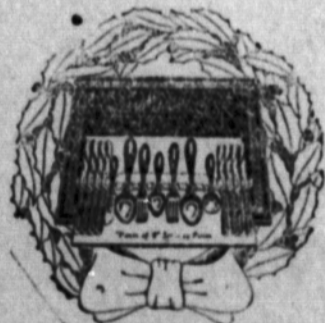
Symbol of Woman's Daintiness

TOILET SET

\$10

Every woman dreams of owning a toilet set—for it is the very symbol of feminine daintiness! What a thrill, then, when she opens the intriguing Christmas package and finds the realization of her dream!

SILVERWARE



—in beautiful gift sets. All standard brands, and the best that can be bought. Nothing could please her better for Christmas than some of our carefully selected silverware.

PAUL OWENS

Jeweler Optometrist
Telephone No. 191 146 W. Garza
SLATON, TEXAS



This Store has made ample provision to aid you in the selection of gift items, especially things that the children would like to receive on Christmas morning, as well as other desirable gifts.

Hats, Caps, Shoes, Hose, Sweaters, etc.

SPECIAL BARGAINS IN ALL STOCKS

Beautiful Gift Sets for Everybody.

W.H. Seale & Co.

Slaton, Texas



- Your Christmas -

For here are gifts for every member of the family. Many of a practical nature throughout the year. It's a pleasure to do your shopping for Christmas giving in this Store, for any gift you may select will assuredly give pleasure to the one to whom it is given. Christmas is just a few days off—why not shop early while you have time to select without being in a jam which is always the case nearing Christmas Day. Come to our Store and make your selection while our Christmas stock is complete.

Slaton Hardware

SLATON, TEXAS
Successor to A. L. Brannon

ZANE GREY WESTERN BRINGS HISTORY TO PALACE SCREEN

The age-long losing struggle of the American Indian to retain his precarious foothold on the land over which he once reigned supreme, which formed the basis of "The Vanishing American" is revealed in an absorbingly different phase in "Drums of the Desert," Paramount's screen translation to Zane Grey's thrilling "Desert Bound," which shows at the Palace Theater Monday and Tuesday.

The picture tells the story of one of the most romantic episodes of Indian history, one of the rare instances on record in which the Indians won, the discovery of oil on the reservation and the unscrupulous efforts of thieving whites to rob the red men of their rights.

Around this situation has been woven a vivid romance that makes "Drums of the Desert" one of the finest Westerns of recent years, according to B. P. Schulberg, studio producing executive for Paramount. The film was given a lavish production by John Waters, who has become noted as one of our outstanding directors in the field of western screen drama.

Marietta Millner, noted Viennese actress, makes her American debut in the leading feminine role, opposite Warner Baxter. Ford Sterling plays the featured comedy part. Wallace MacDonald is the "heavy."

CARD OF THANKS

In behalf of my appreciation of the loyal support of the people, especially the merchants, of Slaton, Texas, who helped me in the race of the "Miss Slaton Contest" I wish to thank each and every one.

The ring which was given away as first prize, was legally mine, as I was ahead in the race with 6125 votes when the hour came for the contest to close which was 11:00 p. m. but as the contest was held until 11:15 o'clock and since many other votes which were cast in my name were not credited to me, therefore I only received second prize, which I appreciate to the fullest extent, especially since I was working in behalf of the BAND BOYS interest and NOT for the CROWN.

Again, let me thank each and every one who helped me, I am,
Sincerely,
Mrs. Annie Higbee-Grisham.

H. G. Stokes, of Abilene, spent Sunday here with his parents, Mr. and Mrs. P. G. Stokes.

R. J. Murray, of Lubbock, transacted business here Saturday.

J. W. Nesbitt and son J. J., have returned from a business trip to San Angelo.

Mr. and Mrs. W. L. Lovett and children returned Sunday from a short visit with their daughter and her husband, Mr. and Mrs. Carl Wallace, of Wink, Texas. Mr. Wallace is with the Hercules Oil Mill Supply company of Fort Worth, which has a branch house at Wink.

FOR HOME AND STABLE

The extraordinary Borosone treatment for flesh wounds, cuts, sores, galls, burns and scalds is just as effective in the stable as in the home. Horse flesh heals with remarkable speed under its powerful influence. The treatment is the same for animals as for humans. First wash out infectious germs with liquid Borosone, and the Borosone Powder completes the healing process. Price (liquid) 30c, 60c and \$1.20. Powder 30c and 60c. Sold by CATCHING'S DRUG STORE

EXTRA! LAUGH AND CRIME WAVES MINGLE

Laugh waves mingled with crime waves are the ruling forces of "Too Many Crooks" the Paramount picture which is coming to the Palace Theater Saturday.

The photoplay which marks Mildred Davis' return to the screen after an absence of almost four years, is a force comedy of a wealthy debutante who believes she is capable of writing a good crook drama. To obtain realism she invites four members of New York's best underworld society to her home for a week-end party that she may study them first hand—which is what starts the laughs, mixups and thrills.

Through the entire production, despite its farcical nature, there runs a fine thread of romance between Miss Davis and Lloyd Hughes, who is co-featured with her.

Fred Newmeyer, the director, made "A Sailor Made Man," "Dr. Jack," "Grandma's Boy" and "Safety Last." Other members of the featured cast are George Bancroft and El Brendel, William V. Mong, Betty Francisco, Otto Matiesen, John St. Polis and Tom Ricketts head the supporting company.

Mrs. T. L. Abington left last Saturday for her home at Zimmerman, La., after visiting here for a few days with her daughter, Mrs. R. W. Collier, Jr., and family.

Miss Olive Nesbitt and Mrs. Devers motored to Lubbock last Thursday.

Ed Warren, editor of the Post Dispatch, was among the Post fans here last Friday attending the Slaton-Canyon football game.

LONE STAR CAFE ADDS GAS-HEATED WAFFLE IRONS

This week the Lone Star Cafe, on Texas Avenue, installed a new and large set of waffle irons, and are now serving many of their customers with hot waffles for breakfast. The irons are equipped with natural gas burners, and E. F. Jarman, owner of the cafe, had them installed as soon as his place was connected with the gas mains.

SOUTHLAND MERCHANT TO STAGE ANNUAL SALE

The Slatonite has delivered large circulars, along with other necessary printing, to G. W. Basinger, owner of the Southland Hardware, dealers in hardware and dry goods, announcing the opening Friday morning of this week, of their annual bargain event. Mr. Basinger is one of Southland's leading merchants and citizens, and keeps abreast of the times in all his activities.

The sale opens at 10 o'clock Friday morning, it is announced.

To introduce my new location in the PALACE THEATRE BLDG.

FREE

During the month of December no charge will be made for extraction of teeth.

Latest technic used. As near painless as possible. Lady Assistant.

Herbert H. Bidwell
DENTIST

201-202 Palace Theatre Building
Phone 1584 LUBBOCK, TEXAS 14-4c

BIRTHDAY DINNER.

A birthday dinner was given Wednesday evening of last week in honor of Mrs. J. W. Nesbitt. The birthday cake held forty-eight candles. It was baked by Mrs. Paul Nesbitt and Miss Olive Nesbitt. A very pleasant evening was spent by all present, and many nice gifts, along with best wishes, were received by the honoree.

McCLUNG COMMUNITY TO GIVE BOX SUPPER

A box and pie supper for the purpose of raising funds with which to purchase a piano for their church, will be given at the McClung schoolhouse on Friday night, Dec. 16, it was stated this week by C. B. Reasoner, of

that community, who and called at The Slaton business. Mr. Reasoner big time for all is and he expresses the ladies who can, grapes or pies for the occasion men folk attend the ed to bid.

For colds, grip and flu take



Relieves the congestion, prevents complications, and hastens recovery.

TANKS

All kinds of storage and stock water Also Casing and other Sheet Metal

LILES SHEET METAL WORK
SLATON, TEXAS

YOUR FATE IS SEALED.

You will be an Old Man or a Dead Man— If you are an Old Man, you will need money. If you are a Dead Man, your folks must have it

GRADIE W. BOWNS, Special Agent

American Central Life Insurance
Old Line Legal Reserve



Listen to Santa's About What to Men

Santa Claus is a man, so why not listen to his advice about men want to get for GIFTS? Here's what he has. Always go to a store where men buy for themselves and the reason we are sure you will find what you want here. At price you wish to pay.

Suit - Gabardine Overcoat - Gladstone Bag - Sweaters - Shoes - Grip - Top Coat - Silk and Wool Under - Gloves - Sox

Neck Wear - Bath Robes, Slippers to match - Wardrobe Dress Shirts - Hats - Caps

If Men Wear It, We Have It - JUST AS Ladies' Silk Hose

The MEN'S STORE

M. W. UZZELL

MILTON

Chicken

Farms

I have three ten-acre tracts, located just north of Depot, has Natural Gas along front of tract, with tap made, with power line and unlimited supply of water available. See me for prices and terms.

I Make 5 per cent and Ranch Loan WHY PAY MORE

J.T. Over Real Estate
(As Old as the Town)
Phone 134 Office Slaton State

SOCIETY and PERSONAL

MRS. S. E. STAGGS

Telephone No. 227

Mrs. George Herd was the charming hostess to the Tres Mesa Bridge Club at her home last Thursday afternoon from 2:30 to 6. The guests were Mrs. J. T. Herd, of Post, and Mrs. N. C. Hardin, of Louisiana, Mrs. Mesdames Herbert Wall, Kirby Brown

and Carroway and Miss Metz, of Slaton, and the regular club members, Mesdames R. A. Baldwin, J. K. Rogers, I. M. Brewer, K. C. Scott, N. A. Stuart, J. M. Wolfskill, Gus Miller, S. E. Staggs and Zeph Ferguson. A lovely two course lunch was served.

Bishop Seaman, of Amarillo, bishop of Protestant Episcopal church, assisted by L. G. H. Williams, rector, of Lubbock, will hold services in the Presbyterian church Sunday night, Dec. 18. The public is cordially invited.

Dr. and Mrs. J. B. Williams were hosts to the following guests Wednesday night: Mr. and Mrs. Richard Ragsdale, Mr. and Mrs. Walter Tomlinson, Floyd Rector, Ray Kirby, Dr. G. W. Shanka, and Misses Faye Tucker, Joann Bullick, Irene Stout.

T. D. Harper, who has been sojourning in California for the past three months, is back home on the Santa Fe.

Miss Fleda Gillimon, West Ward teacher, spent a few days with her sister, Miss Estelle, at Close City.

Mrs. Harry Fry, teacher in Amarillo, will return to Slaton, where Mr. Fry is doing contract work.

Mrs. E. L. Smith, who has been visiting relatives in Kansas, returned home Thursday night. Mrs. Smith was taken very ill while there, but is better.

Mrs. Lendreth, of Wellington, Kans., spent a few days with her husband, looking for location, preparatory to moving here.

Carl Greer and sons and Mr. and Mrs. Carl Stewart, left Saturday morning for Ft. Worth to attend the funeral of Mr. Stewart's father.

Mrs. Stonefield, of Amarillo, who has been visiting Mr. and Mrs. Jim Vaughn, left this week-end for California, where she will spend several months.

Mrs. John Mullens is visiting friends at Ft. Worth and Dallas.

The little children of Mr. and Mrs. J. B. Lowery are better, after having been ill for the past ten days.

R. L. Smith, Earl McAllister and W. N. Atwood attended the engineer's convention at Topeka.

J. B. Moss is reported to be very ill. Preston Guthrie, of Abilene, spent Sunday here with home folks.

George Warren Tower, night chief train dispatcher, who has been taking a vacation, is back on the job.

Mrs. M. F. Leveridge, wife of the Methodist pastor, who has been visiting her mother, Mrs. J. D. Lane, at Cisco, returned home accompanied by her mother, who is enroute to Roswell, N. M.

Mr. and Mrs. H. A. Johnston have as their guests their son, Eddie, and his family, of Sweetwater.

Mr. and Mrs. G. R. Miller have returned to Slaton after a ten day vacation spent in New Mexico.

Mr. and Mrs. Tom Blair and little son have returned from a vacation trip to California, and other points west.

Mr. and Mrs. Poole Robertson are visiting home folks at the V Ranch. Poole and Wade Robertson went to Amarillo Saturday.

Mr. and Mrs. Jesse Mathews, of New Mexico, visited Mrs. Mathew's parents, Mr. and Mrs. S. S. Forrest, before leaving for Glenrose and Houston. The many friends of Mrs. Mathews will be glad to learn she is much improved in health.

Mr. and Mrs. N. C. Hardin, of Louisiana, Mo., who have been the guests of Mr. and Mrs. R. A. Baldwin for the past ten days, have returned north.

The cotton crop of Texas sells as a raw product at from \$400,000,000 to \$600,000,000 a year. Just what this crop finally brings in retail prices to consumers no one ever has estimated, but it would be measured in billions.

Santa Claus letters will be published in next week's issue of The Slatonite.

NOTICE OF DISSOLUTION OF PARTNERSHIP

Notice is hereby given that the partnership between K. L. Scudder and Ollie Waynick was dissolved on the 29th day of Nov., A. D. 1927. All debts due to said partnership are to be paid, and those due from same discharged at the Sam Selman Bldg., on corner of 9th and Lynn Sts., in city of Slaton, Tex., where the business will be continued by said K. L. Scudder, under the firm name of "Piedmont Garage".

Witness our hands, this the 2nd day of December, A. D. 1927.
K. L. SCUDDER,
15-4: OLLIE WAYNICK.

First Christian Church.

Sunday School, 9:45 a. m.
Services at 11 o'clock, by A. L. Page.
Bible class at 3:30 p. m., by Mrs. Page.
All are welcome and urged to come.

St. Joseph's Catholic Church

Sunday, Dec. 11, 1927.
First Mass, 8 o'clock a. m.
Second Mass, 10 o'clock a. m.
REV. THOS. O'BRIEN, Pastor.

EVERYTHING To Make the Home Comfortable

New living room suites, dining room suites, extension breakfast sets, lamps, pictures, rockers, children's rockers, odd dressers, chifferobes, rugs.

And, don't forget to see our new model New Perfection oil stoves, Ray-Glo gas heaters and Detroit Jewel gas ranges—the best gas stoves made.

We do not want to invoice these goods on the first of the year. We want to sell them. So anything you need in the house furnishing line, see us. We have it at the right price.

ELROD FURNITURE

Slaton, Texas

We Have

plenty money to loan to build or refinance your home.

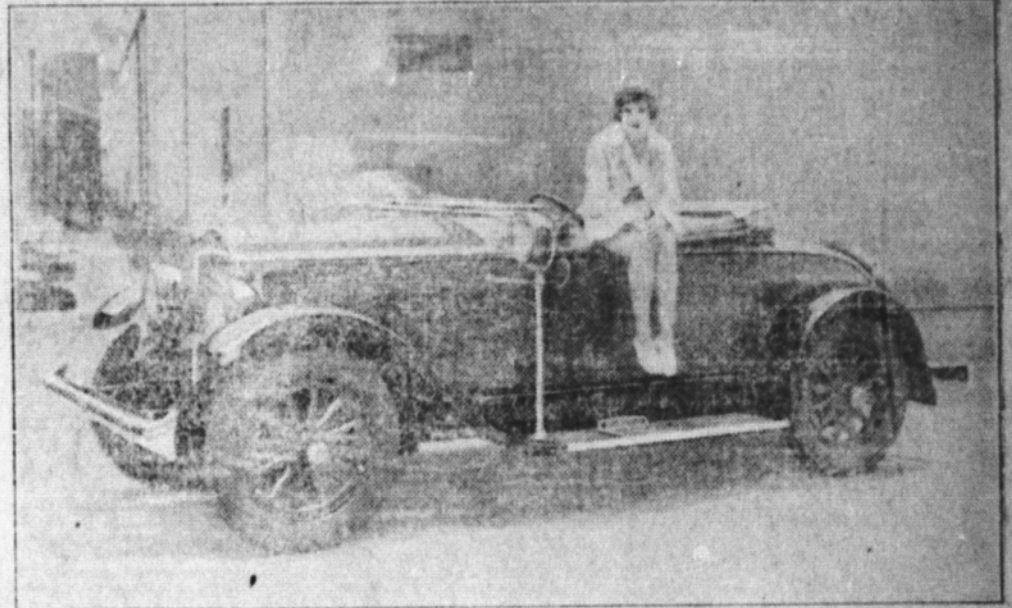
\$12.50 per thousand per month covers both interest and retiring principal over a period of 120 months.

Entire Cost—One percent of amount borrowed as commission, and a flat price of \$20 covers Attorney's fees, preparing papers and abstracting.

Pember & Staggs

Post Office Block

Screen Beauty Buys Buick



The young woman holding down this Buick Sport Roadster is Marie Prevost, famous motion picture actress. Miss Prevost is only one of many film celebrities to whom Buick ownership opens avenues of outdoor enjoyment in California. This photograph was taken on the De Mille lot.

START to SAVE Now for Next Christmas

If you start to save now, and save regularly a certain amount each pay day, you will be surprised at the comfortable balance you will have next Christmas with which to do your Christmas shopping.



The First State Bank

CAPITAL \$40,000.00
"SIXTEEN YEARS SERVING SLATON AND SLATON COMMUNITY"

An Electric Christmas



There Isn't a Gift Suggestion in Our Store Which Will Fail to Please

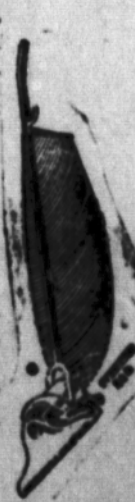
There is nothing more modern—nothing more practical than an Electrical gift at Christmas time. All of our electrical pieces—from hair curling iron to an electric washing machine is guaranteed equipment, passed upon by the best engineering talent in the world. Our patrons know that the piece they select can go onto the regular service account—and the cost distributed over several months.



AN ELECTRIC GRILL—a very thoughtful gift—for mother or wife—or for the bride or bride-to-be. In a number of sizes.



A WAFFLE IRON that will be the means of providing many a simple, impromptu "surprise" for family or friends will be sure to please every one in the home. A high-grade iron, with all important details.



A UNIVERSAL VACUUM CLEANER—to save time and energy—will be a most welcome gift to any housewife. Attachments for every cleaning need. Every improvement.



AN ELECTRIC PERCOLATOR that is at once efficient and economical is a gift that will satisfaction and last for many years. In five, seven, nine and twelve cup sizes.



A UNIVERSAL ELECTRIC HEATING PAD is a necessity at all times—a gift, then, that is practical and sure to be appreciated.

Texas Utilities Company

Cooking Chats with 6 Famous Cooks

(Courtesy of the Domestic Science Department, Perfection Store Company.)

"LET'S MAKE A CAKE!"

(Editor's Note: This is one of the unique series of cooking articles appearing weekly in this paper.)

"Nothing difficult about cake-making so long as you make sure of three things before you start—a steady even temperature, constant air circulation, and the careful, exact measurements of all ingredients," says Mrs. Kate Erey Vaughn, household economist director, Los Angeles Evening Express. "And what a chance for cake variety there is! Here are two of my favorite recipes, date cake, and orange cake."



Mrs. KATE E. VAUGHN

household economist director, Los Angeles Evening Express. "And what a chance for cake variety there is! Here are two of my favorite recipes, date cake, and orange cake."

Date Cake

- 1 cup sugar
 - 2 tablespoons shortening
 - 1 egg
 - 1 cup dates
 - 1 teaspoon salt
 - 1/2 cup nuts
 - 1/2 teaspoon soda
 - 1 cup boiling water
 - 1/2 cup flour
 - 2 teaspoons baking powder
- Put soda and the cup of boiling water over the dates and let stand until you have creamed the sugar and shortening, add the egg (beaten and well beaten), add flour, baking powder, salt. Then add dates, hot water and nuts the last thing. Bake slowly (250 degrees). This may be served with whipped cream as a pudding.

Orange Cake

- 1/2 cup sugar
 - 1/2 cup shortening
 - 2 eggs (separate)
 - 1 cup strained orange juice
 - 1 cup water
 - 1/2 teaspoon grated orange rind
 - 3 cups flour
 - 2 teaspoons baking powder
 - 1/2 teaspoon salt
 - 1 teaspoon orange extract
- Cream the shortening and sugar thoroughly, add a little water. When very light add the well beaten yolks of eggs and as quickly as possible add the dry ingredients which have been sifted together, and the fruit. Beat the whites of eggs and add with the rind as orange and extract.
- Place in 2 or 3 layers in slow oven (250 degrees) and slowly increase heat to 325 degrees F. Increase when bottom is brown. Use orange icing. When the icing has set on cake, press down into same, sections of the oranges in a radial line, wreath about the edge and a star made of the sections, in the center of the cake.
- Always mix cakes thoroughly, work quickly, and bake as soon as mixed.
- After your cakes are in the oven, never reduce the heat until cakes are fully risen.
- Perfect air circulation is necessary for good baking results, as most women know. One manufacturer has invented an oven which uses the "fire heat" principle, and keeps the air in constant circulation. The small holes let the air into the oven, and out. All odors are carried away.

New Orleans Gingerbread

"Good for children, good for adults," says Miss Rosa Michaelis.

Slatonite subscription, \$2.00 per year.

...the most important thing to remember is to keep the temperature constant and the air circulation steady. This is why it is so important to have a steady even temperature, constant air circulation, and the careful, exact measurements of all ingredients.



Delicate Angel Food

Angel food cake is a very light cake. It is made with egg whites, sugar, and flour. It is baked in a special pan called an angel food cake pan. The cake is very light and airy, and it is perfect for those who are watching their weight.

"hen home," close up the cracks, clean up, repair the roof and otherwise arrange to add to the comfort of the flock. Pure, fresh air, without drafts, is important. Keep the temperature as uniform as possible. Provide for direct sunshine.

Raw Material and Finished Product

On most farms the most profitable practice is to produce the raw material, and then convert it into a finished product like eggs, meat and milk. The finished product, is less bulky and can be shipped further at a greater profit. In future farming operations will be planned to turn out the finished product ready for human consumption. A laying hen transforms about 80 pounds of grain and mash, 15 pounds of green feed, three quarters of a pound of oyster shells and grit and 50 gallons of water into approximately 15 to 20 pounds of eggs, besides maintaining the body.

The successful feeder, recognizes most of all the following facts and rules:

- 1. Keep the birds active, especially during the forenoon.
- 2. See to it the birds go to roost with a full crop.
- 3. Do not feed too much grain in the forenoon, but give an abundance in time so they can fill up before it gets too dark to see to eat.
- 4. Light oats is not a desirable feed for laying hens.
- 5. Feed a variety of pure, wholesome feeds.

It is not considered profitable to cook feed. Water is important. The hen's body is 55 per cent water and eggs are 65 per cent. No water, no eggs. Remember the old and oft repeated fact, 'It is the egg mash or dry mash mixture containing a liberal amount of animal foods, like meat scraps and dried milk that really makes eggs.'

Take Care of Flock And Get More Eggs

By F. W. Kazmeier

A successful poultryman, the other day referred to a "hen house" as a "hen home." Perhaps that is a good way of describing a good poultry house. Remove all windows, wash them on both sides and replace them. Clean out all dust and cob-webs on inside of house from top to bottom. Comfort will do much to encourage egg production at this time of the year. What have you done to make the "hen home" for your flock comfortable? Spend a little time in your

SPECIAL BARGAINS

In all clothing, everything that a man wears—Suits, Overcoats, Shirts, Boots, Shoes, Socks, Ties, etc. See our line before you buy. Special attention given to customers Christmas shopping. We know what Men like and will help you select your gifts for them.

O. Z. BALL & COMPANY

"Pay Less and Dress Better"

PIGGLY WIGGLY

It's Foolish to Pay More and Risky to Pay Less.

SPECIALS

for

SATURDAY ONLY

Sugar	IMPERIAL CANE 10 lb. Cloth Bag	.69
SHREDDED WHEAT	PER PACKAGE	.11
Cocoa	HERSHEY'S One lb. can	.29
PORK & BEANS	Van Camp's Medium Can	.09
Soup	VAN CAMP'S Tomato, Per Can	.07 1/2
CATSUP	Van Camp's Large Bottle	.19
Hominy	VAN CAMP'S Medium Can	.07 1/2
KRAUT	Van Camp's Medium Can	.10
CCOANUT	Baker's Southern Style, Per Can	.14
Soap	PALMOLIVE 3 Bars	.19
MEAL	GOLD MEDAL 24 lb. Sack	.68
TAMALES	DELGADOS Large Can	.15
Flour	GOLD MEDAL 12 lb. Sack	.58
GRAPES	RED EMPERORS Per Pound	.10
Mince Meat	WILSON'S 9 oz. Package	.11
PEANUT BUTTER	WILSON'S One lb. Pail	.24
Market Specials		
BEEF ROAST		.19
WEINERS		.23

This Car has been carefully checked and reconditioned where necessary

- ✓ Motor
- ✓ Radiator
- ✓ Rear Axle
- ✓ Transmission
- ✓ Starting
- ✓ Lighting
- ✓ Ignition
- ✓ Battery
- ✓ Tires
- ✓ Upholstery
- ✓ Top
- ✓ Fenders
- ✓ Finish

OK by

CHEVROLET

USED CARS

with an OK that counts

Amazing Values And Easy Terms

Come to our salesroom and inspect our O.K.'d reconditioned cars. We have the car you want at a price that will please you—and our terms are unusually reasonable, with the lowest financing charges available through the General Motors Acceptance Corporation.

The red "O.K." tag is attached to the radiator of every one of our reconditioned cars. It means that the car has been gone over completely by expert mechanics, using genuine parts for all replacements. Look for this tag—and buy with confidence.

Jackson Chevrolet Co.

Slaton Texas

QUALITY AT LOW COST

DID YOU EVER STOP TO THINK

(By Edson R. Waite, Secretary, Shawnee, Okla., Board of Commerce.)

THAT many cities have a few rare birds who, on account of their originality, have a unique way of stopping progress and should be placed in an asylum.

THAT the real boosting citizen is one who doesn't whine—he gets over the hard parts of the road by pushing forward.

THAT these men never know when they are licked.

THAT win or lose, they don't sit down; they steam up, seize the next best thing and go after it.

THAT this is the class of men that build cities.

THAT this is the class of men that has made your city what it is today.

This is the class of men who are building your city for the future; it is the bunch that every live or near-live citizen should join and help them push forward.

CITATION BY PUBLICATION.

THE STATE OF TEXAS.

To the Sheriff or any Constable of Lubbock County, Greeting:

YOU ARE HEREBY COMMAND-

ED to summon Mrs. E. R. Slater, the Unknown heirs of Mrs. E. R. Slater, E. R. Slater, and the unknown heirs of E. R. Slater, deceased, by making publication of this Citation once in each week for four successive weeks previous to the return day hereof, in some newspaper published in your County, to appear at the next regular term of the 99th Judicial District Court of Lubbock County, to be held at the Court House thereof, in Lubbock, Texas, on the 2nd Monday in January, A. D. 1928, then and there to answer plaintiff's first amended original petition filed in said Court on the 6th day of December, A. D. 1927, in a suit, numbered on the docket of said Court as No. 3025, wherein R. A. Lincoln is plaintiff and Mrs. E. R. Slater, a feme sole, the unknown heirs of Mrs. E. R. Slater, E. R. Slater, and the unknown heirs of E. R. Slater, deceased, are defendants; plaintiff's original petition having been filed on July 25, 1927, in cause No. 3025, wherein R. A. Lincoln is plaintiff and Mrs. E. R. Slater is defendant; said amended petition alleging:

That plaintiff R. A. Lincoln and defendants Mrs. E. R. Slater, the unknown heirs of Mrs. E. R. Slater, E. R. Slater and the unknown heirs of E. R. Slater, deceased, are the joint owners in fee simple of the following described land and premises situated in Lubbock County, Texas, to-wit:

First Tract: Tract patented to T. E. Burns by the State of Texas on the 27th day of May, A. D. 1910, by Patent No. 407, Vol. 40, known as the northwest part of Section No. 101, Block No. 20, B. G. Glaser S. F. 137 about 10 miles south of Lubbock and described as beginning at an iron pipe 4 pits the N. E. corner of No. 24, Block E; thence west on the N. E. line of No. 24, 695 varas to a pine stake and 2 pits for the most of N. S. W. corner of this survey; thence north 204 varas to iron pipe and 2 pits for the N. W. corner of this survey; thence east 1288 varas to an iron pipe and 2 pits in the W. B. line of J. L. Obanon survey; thence south 1655.6 to an iron pipe 2 pits in W. B. line of J. H. Standifer survey No. 110; thence west 593 varas to a stake and 2 pits in the E. B. line of No. 24, Block E 1461.4 varas to the place of beginning, containing 200 acres of land, and being Abstract No. 1233.

Second tract: Being the tract patented to T. E. Burns by the State of Texas on the 27th day of May, A. D. 1910, by patent No. 406, Vol. 40, known and described as the north 11-16 of Section No. 24, Block E., E. L. & R. R. Railway Company, certificate No. 965, about 10 miles south of Lubbock beginning at Wagon Spindle set in ground N. E. Corner of No. 23 same Block, for N. W. corner of this survey; thence east 1901 varas to an iron pipe 4 pits for N. E. Corner of this survey; thence south on E. B. line of No. 24, Block E, 1306.7 varas to stake for S. E. corner of this survey; thence west 1901 varas to an iron pipe set in W. B. line of No. 24 for S. W. corner of this survey; thence north 1306.7 varas to place of beginning and containing 440 acres of land, and being Abstract No. 964;

That plaintiff is the owner of an undivided one-half interest in said land and that the said defendants named in the amended petition are the joint owners of the other undivided one-half interest in said land and premises; that plaintiff and defendants are the sole owners thereof, and that the estimated value of said land is twenty-five thousand dollars.

Plaintiff prays that he have judgment for the partition and division of said land; that commissioners be appointed and writ of partition issue, and for possession of that portion of said land that by judgment of court be ascertained and declared to be the property of plaintiff; and for all further relief, etc.

Herein Full Not, and have you before said Court, at its aforesaid next regular term, this writ with your return thereon, showing how you have executed the same.

GIVEN UNDER MY HAND and the Seal of said Court, at office in Lubbock, Texas, this 6th day of December, A. D. 1927.

(SEAL) FLORA GREEN, Clerk, District Court, Lubbock County.

K. & H. Circuit Opens New Theatre at Pyote

Oscar Korn, owner of the Custer and Palace theaters here, was in Pyote last week looking after the opening of the K. & H. new Palace Theater in that city. The show was formally opened Thursday night, it was said, and according to the Pyote Signal, newspaper of that city, the opening was a big event in that booming oil town.

Mr. Korn recently completed a \$50,000 building at Pyote, and the theater occupies a portion of it.

SLATON BOYS BUY THEATER AT SOUTHLAND

The theater at Southland, about seven miles south of here, was purchased last week by Gidney Talley and Hirschell Crawford, of Slaton, and these local boys are now actively engaged in operating their new place of business.

The name of the theater was changed to "The Princess" it was stated, and it is now showing to good crowds every night, the boys report. Formerly the show operated only three nights a week.

J. S. Edwards was in South Plains early this week, looking after business interests there.

Palace Theatre

The Bright Spot of Slaton

Saturday, Dec. 10

Matinee and Night

Admission Only

Today

25c

"TOO MANY CROOKS"

with Mildred Davis, Lloyd Hughes, George Bancroft and El Brendel.

A Paramount Picture
Too many crooks are dangerous! Give them a finger, they'll take a hand. Give 'em a giggle, they'll take every laugh you have! So, watch out!

Also—"PALS" and "HAREM KNIGHTS". Remember prices only

10 AND 25 CENTS

Monday - Tuesday

ZANE GREY'S

"DRUMS OF THE DESERT"

The successor to "Vanishing American". With WARNER BAXTER, FORD STERLING, and MARJETTA MILLNER, from the story, "Desert Bound," by Zane Grey.

Tom-tom! Tom-tom!
The ancient rights of the Indians have been violated—precious lands are in danger of invasion by a band of scheming, lawless white men.

Tom-tom! Tom-tom! Tom-tom!
The drums of the desert beat their summons to war. Zane Grey, the master weaver of breath-taking tales has in "Drums of the Desert" given us a story of gripping reality and touching romance.

Seats 10c-25c-50c

Coming Soon

"JESSE JAMES"

With Fred Thompson

Watch for the Special Christmas Santa Claus picture, for all the kiddies, and the grown-ups, too.

Slaton Girl Active In Texas U. Affairs

From frequent items appearing in The Austin Statesman, and other state daily newspapers, Miss Virginia Montague, daughter of Santa Fe Conductor and Mrs. W. B. Montague, of this city, is very popular in student activities at the University of Texas at Austin. This is Miss Virginia's third college year.

Following is an item taken from a recent issue of The Fort Worth Star-Telegram:

Austin, Nov. 30.—Membership in Scribblers' club at the University of Texas, has been voted to five students, Miss Virginia Montague of Slaton, Miss Ruth Hastings of Stamford, Miss Virginia Fullingim of Pridcah, Miss Doris Brown of Wichita Falls and Trueman O'Quinn of Beaumont.

Members of Scribblers are selected from the faculty and student body of the university, and in order to become a member the individual must be able to write well and have had some of his or her writings published. Officers of the club are Miss Erma Gill of Austin, president; Ed Steere, of Winchester, Va., vice president, and James Park of Livingston, secretary and treasurer.

Mrs. R. H. Stocks returned Friday to her home in Wichita Falls, after visiting here with her sister, Mrs. Thos. R. Cobb. Mrs. Cobb accompanied her to Wichita, and expects to visit relatives there for a few weeks.

Slaton Hunters Bag Some Fine, Fat Ducks

O. N. Lee and "Dutch" Eckert, local employees of the Santa Fe, returned Saturday from a two-day duck hunt in the farming section around Muleshoe. They killed about a half hundred nice, fat ducks, they stated, and thoroughly enjoyed the hunt.

The Slatonite editor and his family were presented with a couple of these wild birds upon the return of the hunters, and we really enjoyed baked duck both Sunday and Monday of this week.



Pure Jersey Milk
Delivered Twice Daily.
We solicit your patronage on the merits of our product.

FLORENCE JERSEY DAIRY

PHONE 86

NEW EQUIPMENT (LADY ASSISTANT)
Phone 125—Day or Night SLATON, TEXAS

Funeral Directors and Embalmers
Ambulance Service
FOSTER UNDERTAKING CO.
E. C. FOSTER MRS. E. C. FOSTER

we sell SHEETROCK Because

It's the sort of product we like to sell—100 per cent right. Made of pure gypsum rock in broad high sheets, in a tough fibre casing. Saws and nails like lumber. Fireproof. An excellent insulator of Summer's sun and Winter's cold. Permanent. Takes any decoration. Stop and examine a sample—then order enough for that extra room you've been planning!

PANHANDLE LUMBER CO.

GIFTS FOR HER

Select Her gift at a Ladies' Shop. For Wife, Mother, Sister, Daughter or Sweetheart, you will find here a wonderful selection of beautiful gifts at a large range of prices.

Beautiful Quilted Robes, Coolie Coats, Kid Gloves, Silk Pajamas, Negligees, Underwear, and Hose. Flowers, Pillows, Christmas Hats, Dresses, Coats, Oriental Novelties and many other useful gifts. Do your Christmas shopping early while you can get good selections.

THE BRUNER STYLE SHOPPE

Exclusively Ladies' Apparel
Phone 77

A Merry Christmas for All

Only Sixteen More Shopping Days Until Christmas. It is a Wise Buyer who Buys Early—Before All Gifts Are Picked Over.

Gifts For Mother

Give Mother something useful, that will be of service to her throughout the entire year. Luncheon Sets, Table Covers, Blankets, Towels, Hose, Purses, Comfortable House Shoes, etc.

Gifts For Father

We suggest practical gifts for Father. He wants something he can use each and every day—Stetson Hats Curlee Suits, Shirts, Ties, Warm Hose, Shoes, etc.

Brother

Brother always appreciates some serviceable wearing apparel. Check over the list Sweaters, Caps, Ties, Belt Sets, Overcoats, Button-Leg Trousers, Bootees, Purse Sets, Traveling Bags, Shirts, etc.



Sister

It would be difficult indeed to select a better variety of gifts for Sister. Dainty and Dainty Allen-A Hose Silk Underwear, Purses, Handkerchief Sets, Garter Sets, New Christmas Hats, Silk Dresses, Slippers, etc.

Gifts for Wives

Most husbands find the selection of gifts for their wives a most puzzling problem. These items have met the test of time as gifts certain to be welcomed warmly: Gloves, Sweaters, Hose, Purses, Wall Vases, Spring Coats, Hats, House Shoes, etc.

Gifts for Husbands

Husbands are often the hardest people in the world to buy gifts for. That's the reason we suggest that you read over the following list carefully: Bath Robes, House Shoes, Silk Scarfs, Ties, Shirts, Gloves, Hose, Belts, Hats, Curlee Suits, etc.

This Year Give Something That is Useful; Something That is Appreciated. THIS IS THE STORE WHERE SANTA LEAVES GIFTS FOR EVERYONE.

JONES DRY GOODS, Inc.
OSCAR KILLIAN, Mgr. SLATON, TEXAS



The Fourth Week

Of

Our Anniversary Celebration

Will Be

Household Week

Dec. 12 to 17

It's here—Winter, with cold days, when the windows are kept closed and the indoors will claim our attention. There are many new things needed throughout the household in order for the family to get the most comfort and enjoyment out of the winter days and the long evenings when all will gather around the fireside. The home can be made much brighter with a small amount of expense, especially if you buy at the ACORN STORE—where prices are the lowest because we buy in such large quantities, being a member of a great chain store organization with unlimited buying capital.

We are making HOUSEHOLD WEEK a time for the people of Slaton and the surrounding country to save money on household necessities. This is not a sale event, but we are featuring household items at the regular LOW, ACORN STORE PRICES, and we want you to help us celebrate our ANNIVERSARY by getting the benefits of these tremendous bargains.

If you need household items, come to the ACORN STORE next week and be assured you will find a wide range of items to select from. The prices and the quality will please you, and we shall be more than pleased to have you visit us during HOUSEHOLD WEEK.

Remember, the ACORN STORE always UNDERSELLS.

FINE ASSORTMENT OF DISHES—23-Piece

Imported Tea Sets,

\$6.98 each

31-Piece Dinner Sets,

\$4.95 each

Broken lots under an assorted list of prices. These are great values.



ELECTRIC IRONS --

Made and guaranteed by the Acorn Stores, Inc. Only **\$2.49**. Lots of people will snap up these bargains.



RUGS—Axminsters and Velours, 9x12, **\$31.85**. Smaller sizes priced in proportion. They will add many times their cost to the comfort and appearance of your home. Quality built-in.



WATER SETS — Very useful, practically an everyday necessity in every home. This glassware has quality, too, and these sets only cost you, **69c to \$1.49**



STEWERS—And other Cooking Utensils in high-grade aluminum. You will find many pieces in our display which will exactly meet your needs. All of them at the usual **LOW, ACORN STORE PRICES**.



FLOOR LAMPS — Beautiful pieces for any home. Large lamps, **\$9.95 to \$13.95**. Smaller lamps for desk, bed, etc., at various prices

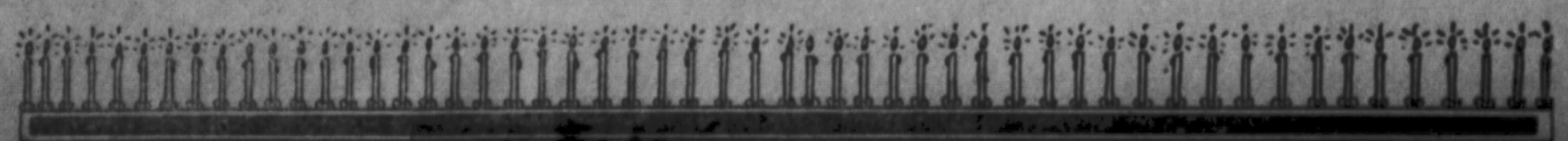


The ACORN STORE

ALWAYS

DEPENDABLE MERCHANDISE





SLATON BEATS CANYON TO WIN BI-DISTRICT TITLE

(Continued from First Page)

About 1,500 people saw the game it was estimated. The attendance was not so large as at the Slaton-Flanagan game on Thanksgiving, because Friday was not a holiday. Many people were here from other South Plains towns for the Slaton-Canyon

contest, and a good turn-out of local people was to be expected, of course. The pep squads of the high school and the Slaton Band rendered valuable assistance in this game as in others in recent weeks.

Prospects are now that no more games will be played by the Tigers this season. Other bi-district winners seem to have withdrawn from further gridiron clashes, and the Tigers,

even if they were all agreed on it, would probably have difficulty in matching another conflict. Coach Mitchell and his entire string of Tigers have done some marvelous high school work this season, and are highly lauded by hundreds of fans.

Summary of Friday's game follows:
Summary
 First downs: Slaton 13; Canyon 7
 Yards gained on running plays: Slaton 178; Canyon 128. Yards lost on running plays: Slaton 4; Canyon 3.
 Passes tried: Slaton 10; Canyon 15.
 Passes completed: Slaton 6 for 141 yds.; Canyon 3 for 28 yds. Slaton in-

tercepts 4 for 15 yds.; Canyon intercepts 1 for 5 yds. Yards gained on returns of kickoffs and punts: Slaton 59 yds.; Canyon 41 yds. Average punting: Slaton 38 yds.; Canyon 35 yds.

FIRST QUARTER

Slaton won the toss and chose to defend the south goal. Canyon kicks 45 yards to Owens, who returns 12 yds. Owens and Woolever, on a series of line plunges, make 12 yds. and the first down. Time out for Canyon. Owens fails to gain thru line. Pohl makes 2 yds. at left tackle and

Owens makes a yard on same play. Nichols punts 41 yds. and out of bounds. Wiggins fumbles but Canyon recovers for 5 yds. gain. O'Donnell makes 4 yds. off right tackle. Wiggins, Eagles' quarter, makes 2 yds. at center. O'Donnell, Eagles' half, slips off tackle for 4 yds. and first down. Hamilton, Tiger Captain and right tackle, downs O'Donnell on line of scrimmage. O'Donnell glides over center for 6 yds. Wiggins punts 36 yds. to Pohl, who returns 9 yds. Bye fails to gain thru line. Nichols punts 31 yds. and ball dies on Slaton 40 yd. line. Cross, Eagles' fullback, makes a yard thru line. Canyon penalized 5 yds. A pass, Wiggins to O'Donnell, fails. O'Donnell makes 2 yds. at center. The Tigers are penalized 5 yds. for off side. A pass, Wiggins to O'Donnell, fails. Canyon penalized for two incomplete passes. Wiggins punts 41 yds. and out of bounds. Slaton's ball on own 20 yd. line. Woolever, Tiger fullback, makes 2 yds. off left tackle. Nichols, Tigers' right end, punts 50 yds. and out of bounds. The Eagles' ball on own 35 yd. line. Wiggins fails to gain thru line. O'Donnell makes 4 yds. thru line. Wiggins punts 40 yds. to Pohl who fumbles, but Nichols recovers for Tigers on midfield. Woolever slips off left tackle and races for 29 yds. and first down. Owens circles left end for 13 yds. and first down. The first quarter ends. Score: Slaton 0; Canyon 0.

SECOND QUARTER

Tigers' ball on Canyon 21 yd. line. Cannon is substituted for Pohl. Owens and Pohl make 2 yds. on line plays. Armes circles left end for 19 yds. and touchdown. Owens fails to kick goal. Ballgame goes in for Lowery. Hamilton kicks 48 yds. to Whitten who returns 12 yds. Wiggins and O'Donnell make 2 yds. thru center. Slaton penalized 5 yds. for off side. A pass, Wiggins to O'Donnell for 8 yds. and first down. Another pass, Wiggins to Williams for 16 yds. and first down. O'Donnell hits line three times for first down. O'Donnell stopped at line of scrimmage by Wilmesmeier. A pass, Wiggins to Laxton, fails. Another pass, Wiggins to Williams, fails. Bye intercepts. Cannon fails to gain thru line. Nichols attempts to punt, but is blocked by Ballgame, but Nichols recovers for a loss. Cannon punts 38 yds. to O'Donnell, who returns 2 yds. Wiggins glides over center for 5 yds. Hamilton punts 45 yds. to Pohl who returns 3 yds. O'Donnell fails to gain thru line. Wiggins makes 2 yds. at center. Slaton penalized 5 yds. O'Donnell slips off tackle for 16 yds. and first down. O'Donnell downed on line of scrimmage by Cooper. O'Donnell makes 2 yds. thru center. O'Donnell slides off right tackle for 10 yds. and first down. O'Donnell makes 4 yds. thru center. Time out for Slaton. Canyon's ball on Slaton 3 yd. line. In two downs O'Donnell makes 2 yds. and the whistle blows for half up. Score: Slaton 6; Canyon 0.

THIRD QUARTER

Slaton defends north goal. Pohl is substituted for Cannon. Canyon kicks 50 yds. to Owens who returns 35 yds. Pohl makes 7 yds. on two off tackle plays. A pass, Bye to Nichols, fails. Owens makes a yard thru line but the ball goes over. Canyon's ball on own 44 yd. line. O'Donnell slides thru left tackle for 7 yds. Bennett pulls Wiggins for a 2 yd. loss. O'Donnell makes 3 yds. at left tackle. Wiggins punts 30 yds. to Pohl who returns 6 yds. Time out for Slaton. Pohl hurt, but not taken from game. Armes circles right end for 11 yds. and first down. A pass, Owens to Pohl, for 8 yds. Woolever makes 2 yds. at center and first down. Owens slides over center for 5 yds. Bye attempts to pass but slips from tackles and makes 11 yds. and first down. Pohl and Owens make 5 yds. on off tackle plays. A pass, Owens to Nichols, for 30 yds. and touchdown. Owens kicks

goal. Hamilton kicks 35 yds. to O'Donnell who returns 4 yds. O'Donnell makes 11 yds. and first down. Hamilton pulls Wiggins for a yard loss. A pass, Wiggins to Williams, fails. O'Donnell makes 4 yds. at center. Wiggins gains 45 yds. to Pohl who fumbles and Canyon recovers on Slaton 9 yd. line. Cannon substituted for Pohl. O'Donnell makes 4 yds. on line play. Hamilton stops O'Donnell on line of scrimmage. A pass, Wiggins to O'Donnell for touchdown. Wiggins kicks goal. Wiggins kicks 50 yds. to Bye who fumbles and Canyon recovers on Slaton 8 yd. line. O'Donnell and Cross make 4 yds. thru line. O'Donnell stopped on line of scrimmage by Hamilton. Quarter up. Score: Slaton 13; Canyon 7.

FOURTH QUARTER

Canyon's ball on Slaton 4 yd. line. A pass, Wiggins to O'Donnell, fails. Ball goes behind goal zone and is placed in Slaton's possession on own 20 yd. line. Owens and Armes make 6 yds. around ends. Owens thru left tackle for 7 yds. and first down. Slaton off side, penalized 5 yds. Penalized again for taking too much time for next play. Owens slips off left tackle for 11 yds. and first down. A pass, Owens to Hamilton for 30 yds. and he ran for 45 yds. and touchdown. Bye attempted a pass for try point. Hamilton kicks 25 yds. to Wiggins who returns 5 yds. A pass, Wiggins to O'Donnell, fails. Another pass, Wiggins to O'Donnell, fails. Armes intercepts for 5 yds. A pass, Owens to Cannon, netted 21 yds. and first down. A pass, Owens to Nichols, fails. Whitten intercepts for 5 yds. A pass, Wiggins to Williams, fails. Another pass, Wiggins to Whitten, fails; Cannon intercepts for 4 yds. A pass, Owens to Nichols, netted 17 yds. and first down. Cannon circles right end for 10 yds. and first down. Owens makes a yard at center. Armes circles end for 6 yds. and touchdown. Owens fails to kick goal. Hamilton kicks over goal zone, Canyon's ball on own 20 yd. line. Wiggins goes over center for 3 yds. O'Donnell makes 8 yds. off tackle. A pass, Wiggins to Williams, fails. Cannon intercepts for 4 yds. Houston is substituted for Woolever. Slaton penalized 15 yds. for substitute talking. A pass, Owens to Cannon, fails. Houston off right tackle for 1 yd. Rich in for Bennett. A pass, Owens to Cooper, fails. McAtee for Shelby. Shelby for Wilmesmeier. Slaton off side, penalized 5 yds. Cannon punts 47 yds. and out of bounds. Dunn in for Cooper. Wiggins punts 31 yds. to Owens who signals for free catch. Slaton ball on Canyon 18 yd. line. Houston fails to gain thru line. Cannon slides off tackle for 9 yds. Austin in for Nichols. Owens and Armes lose 2 yds. each on end runs and ball goes over. Wiggins punts 25 yds. to Bye who signals for free catch. Cannon fails to gain thru line. Armes circles end for 10 yds. and first down. A pass, Cannon to Houston, for 30 yds. and touchdown. Owens fails to kick goal. Hamilton kicks 40 yds. to Johnson, who returns 18 yds. As next play starts a shot is heard for time out. Score: Slaton 31; Canyon 7.

LINE-UP

Slaton	Pos.	Canyon
Armes	l. e.	Laxton
Cooper	l. t.	Johnson
Shelby	l. g.	Gillian
Wilmesmeier	c.	Parker (c.)
Bennett	r. g.	Lowery
Hamilton	r. t.	Redford
Nichols	r. e.	Williams
Bye	q.	Wiggins
Owens	l. h.	Whitten
Pohl	r. h.	O'Donnell
Woolever	f. b.	Cross

Substitutes

Houston	Jarret
Rich	Ballenge
McAtee	Cash
Dunn	Houston
Austin	Dubbe
Cannon	

Officials

Referee, Eckhardt, Texas U; Umpire, Burton, Oklahoma U; Headlinesman, Payne, Simmons.

Does the Government charge the stockmen for grazing their cattle and sheep on the national forests? Explaining the government policy of grazing permits, Will C. Barnes, assistant forester in charge of range management, United States Department of Agriculture, says that each settler or resident is entitled to graze ten head of his domestic stock, such as work or saddle horses, milk cows, and even hogs free of charge, and without permit on national forest ranges. All other animals must be paid for at a rate which at present averages between ten and eleven cents per head per month for cattle and three cents per head per month for sheep. On January 1, 1928, these rates will be slightly increased. The stockmen are now paying into the United States Treasury annually about two and one quarter million dollars in grazing fees.

AN EXHILARATING EFFECT

A bottle of Herbine on the shelf at home is like having a doctor in the house all the time. It gives instant relief when the digestion gets out of order or the bowels fail to act. One or two doses is all that is necessary to start things moving and restore that fine feeling of exhilaration and buoyancy of spirits which belongs only to perfect health. Price 70c. Sold by

CATCHING'S DRUG STORE

HOT WAFFLES

EVERY MORNING with our new natural gas Waffle Iron.

TRY THEM.

LONE STAR CAFE

E. F. JARMAN, Proprietor.

Classified Advertising

BUY a set of dining chairs at Elrod's. Just received a new supply. 1c

KINDERGARTEN—Foundation and First Grade work.—Mrs. J. P. Adams, 310 S. 11th street. 15-4t

MAGAZINES make splendid Christmas gifts. I have the agency for some of the best ones published. See me or telephone No. 135-J. Mrs. W. Donald. 1c

ALL KINDS of window shades. From 75 cents to \$2.50. Big stock to select from.—Elrod's Furniture. 1c

TYPEWRITERS—For rent or sale.—G. W. Bownds. 50-1fc

FOR RENT 3 furnished rooms. 230 South Tenth St. 1c

TAMWORTH PIGS

The bacon breed. I have for sale a limited number of fine, healthy Tamworth pigs, weighing from sixty to eighty pounds. Call A. L. Robertson, Phone 995-F2, Slaton, Texas. 1c

FOR SALE—First class Charter Oak coal range at bargain.—E. Barton, phone 88. 14-1fc

BEAUTIFUL Christmas card samples ready to select from. Prices reasonable for cards with printed messages of greetings. Small cash payment, balance on delivery. Phone 135-j for appointment. Will be glad to call on you.—Mrs. W. Donald. 8-1fc

THE highest priced gas range on the market is the Detroit Jewel. But it is the cheapest in the long run. Elrod's Furniture. 1c

REAL BARGAIN—5-room stucco residence, close in. Small cash payment, balance like rent.—Eugene Holt. 14-2 pd.

SORE GUMS NO CURABLE

You won't be ashamed to smile again, after you use Leto's Pyorrhoea Remedy. This preparation is used and recommended by leading dentists and cannot fail to benefit you. Drug-gist returns money if it fails. TEAGUE DRUG STORE 15-3tc

FARM WANTED—Man with good force wants farm on half and half basis. Call at 625 S. 4th street, or write, in care this paper. 14-2 pd.

A piece of furniture makes an ideal gift for Christmas. Make your selections from the living room, dining room, bed room suites, rugs and gas stoves.—O. D. McClintock.

BUNDLE Sorghum and Higer, 5c delivered.—Jno. P. Hardesty, 2 miles southeast city. Box 157. 14-1fc

WANTED—A man and his wife, without children, to work on ranch. Middle aged couple preferred. Call Mrs. A. B. Robertson at 905-F3.

THREE furnished rooms. Modern, close in. 225 S. Sixth street. Mrs. U. L. George. 1c

TAMWORTH PIGS

The bacon breed. I have for sale a limited number of fine, healthy Tamworth pigs, weighing from sixty to eighty pounds. Call A. L. Robertson, Phone 995-F2, Slaton, Texas. 1c

CROP PAYMENT

We have a few choice quarters, of the best cotton land on the plains to sell on the crop payment plan. This land is well located. Good shallow water; convenient to schools and will grow anything you want to raise.

WHY PAY RENT?

When you can buy good plains land with this part of your crop. The crop payment plan is the BEST AND SAFEST WAY FOR YOU TO OWN YOUR OWN HOME.

Jarrott Brothers, Owners, Lubbock, Texas Room 204, Leader Building, West Broadway. 14-8c

WANTED—Two girls for general housework. Answer to P. O. Box 2413, Amarillo, Texas. 14-3pd.

ALL MERCHANTS will close their places of business all day Monday, Dec. 26, account Christmas coming on Sunday. Retail Merchants Association. 15-3tc

33 1/3% Isn't enough

But that your gasoline does more than one-third of its job. Don't be satisfied merely with quick starting. See that you also get a quick pick-up and real power and mileage. And you get them all with Conoco, the Triple-Test Motor Fuel. Conoco Gasoline does a 100% job in all kinds of weather. Pumps bearing the Conoco sign are the trouble-proof fueling points for motorists.

CONTINENTAL OIL COMPANY
 Producers, Refiners and Marketers
 of high-grade petroleum products in Arkansas, Colorado, Idaho, Kansas, Missouri, Montana, Nebraska, New Mexico, Oklahoma, Oregon, South Dakota, Texas, Utah, Washington and Wyoming

THE triple test MOTOR FUEL

1 Starting
 2 Acceleration
 3 Power and Mileage



SPECIALS for SATURDAY

GALLON	
PICKLES	\$.57
6 POUND BOX	
CRAX	.73
GOLD BAR No. 2 1/2 Can	
PEARS	.29
8 POUNDS	
COMPOUND	1.29
10 POUNDS	
PRUNES	.87
3 lbs. MORNING JOY	
COFFEE	1.44
12 oz. SOUR, for per	
PICKLES	.19
QUART	
MUSTARD	.22
1 POUND	
PEANUT BUTTER	.29
OLD DUTCH	
CLEANSER	.07
No. 1, Per lb.	
WALNUTS	.28

MARKET SPECIALS

PER POUND	?
PER POUND	?



SLATON'S PIONEER SELF-SERVING GROCERY

PIONEER M SYSTEM OF THE SOUTH PLAINS