

SLATON—The Santa Fe Center of West Texas

# THE SLATON SLATONITE

SLATON—The Santa Fe Center of West Texas

(The Slaton Times Absorbed by Purchase January 20, 1927.)

Volume XVI

Slaton, Lubbock County, Texas, Thursday, July 21, 1927.

Number 47.

## Local Hatchery Furnishes Chicks By the Thousands

After furnishing poultry raisers of the Slaton trade territory with thousands of healthy baby chicks, the Progressive Hatchery, of Slaton, recently closed a very successful season of operation, which extended over a period of five months.

During this first season of the Progressive Hatchery's operations, more than fifty thousand baby chicks were delivered to customers, it was stated this week by D. E. Scott, member of the firm, who states that of this number ninety-five per cent of the season's hatch remained in the Slaton trade territory, they having been furnished to nearby farmers and poultry raisers.

The Mammoth Petersime incubators used by the Progressive Hatchery, made splendid records, it is pointed out by Mr. Scott, who gives out the information that of the early spring settings, from 75 to 77 per cent of all eggs hatched, while the percentage of the late hatches dropped down to from 60 to 65.

The Progressive Hatchery uses two machines, with a combined capacity of 30,000 eggs. The hatchery will reopen in August for the fall run, it is stated.

## Many Slaton Baptists At Encampment

The Third Annual Baptist Encampment, which is being held at Two-Draw Lake, near Post, this week, has record daily attendances, it is stated by local Baptists who are enjoying the programs here. Many from Slaton are in attendance each day, it is stated.

Governor Dan Moody will address the assembly Sunday afternoon, the closing day of the encampment, it was announced from the Baptist pulpit here last Sunday.

## Chamber of Commerce News Notes

Reported by L. A. WILSON, Secretary.

Progress on the natural gas line seems very satisfactory. In a letter to the Chamber of Commerce here, the president of the Prairie Oil & Gas Co., of which the West Texas Gas Co. is a subsidiary organization, says the company hopes to have the line finished by the time cool weather arrives.

Slaton's street paving program is completed for the present. Approximately 35 blocks of pavement now testify to Slaton's progressiveness.

The telephone company is going right up with their new building. The Chamber of Commerce is doing its best to secure these badly needed improvements for the town. The system will be thoroughly modern when finished.

Two Lubbock County boys will be sent to College Station by the Slaton Chamber of Commerce to attend the Farmers' Short Course there, July 25 to 30. A complete story about this is published in The Slatonite this week.

Good crops, so far as moisture is concerned, are practically assured for this country. All crops have been growing very rapidly, indicating the possibility for maturing about as early as usual, although planted late.

The people of Slaton and surrounding territory should bear in mind at all times that the Slaton Chamber of Commerce exists for one purpose only, and that is to serve the town and the section surrounding it in whatever way possible, seeking the betterment of all conditions affecting the prosperity and contentment of the citizenship. The organization is a combination of individual forces, united to increase strength, power and accomplishment. The present year now promises to show a large number of very worthwhile things which the organization has done. When the annual report is issued, it will be replete with an account of them. Loyal support by Slaton's citizens is the only thing that makes this possible.

## Rotarians Debate League of Nations Issue

One of the liveliest meetings held in a long time by the Slaton Rotary Club was that of last Friday noon, at the regular weekly luncheon. The program consisted of a debate on the live topic, Should the United States Join the League of Nations? Floyd Rector and Frank Lanham upheld the affirmative, while Will H. Smith and Dr. E. Clayton Foster contended for the negative, both sides supporting their respective contentions very ably, and to the great entertainment of the audience.

Preceding the debate, Joe A. Barton, Division Superintendent of the Santa Fe, and H. G. Sanders, local groceryman, were introduced as the two newest members of the Club, and Ben Holloway was called on to instruct them in some of the fundamentals of Rotary, which he did in a neat, instructive and highly entertaining talk, wherein he explained the classification of each other member of the Club, sometimes in terms that are said to be the soul of wit, namely, exaggeration, and that, too, was enjoyed, perhaps most of all.

Following the serious remarks of Ben Holloway, L. R. Cyfert, leader of ONE of the Club's male quartettes, was recognized by the President for one minute (he had requested five) to launch an electioneering attack upon the cub reporter of this periodical because of certain remarks published in this paper last week that were deemed by the speaker to reflect ignominiously upon his warbling aggregation. Last week's account stated: "L. R. Cyfert, Alex DeLong, J. T. Overby and Earl King established a reputation for themselves as a quartette, in singing, 'Grandfather's Clock,' and what a reputation it was!" Further on the article referred to another of the Club's quartettes who sang "My Old Kentucky Home," composed of W. E. Olive, A. J. Payne, L. A. Wilson and C. F. Anderson, as the Club's "crack" quartette. The speaker averred, alleged and charged that his own quartette was discriminated against because the adjective "crack" was not applied to it and was applied to the aggregation who sang the glories of the old Kentucky home. The cub reporter denied generally any intent at discrimination. First he explained that "crack" was a typographical error and should have been "quack". That would not do, so he said he intended to write it "cracked". Later he retracted that and finally declared that he was sorry and wished he had said more to take back, and there the matter rests—temporarily.

A number of visitors attended the luncheon. They were: Mr. Tillman, Supt. of Safety Department of the Santa Fe; J. A. Stallings, Santa Fe agent at Post; O. L. Peterman, of Continental Gin Co., Ft. Worth; O. H. Cline, of Lubbock; A. A. Eason, of Ft. Worth, and Ben F. Smith, of Stinnett.

The program tomorrow will be "A Dozen Things that Rotary is Not," and will be in charge of J. A. Elliott, Jess Phillips and Alex DeLong.

## Return From Extended Visit to Coast

Mr. and Mrs. Jess Swint returned last Thursday from a four weeks' tour of some of the Western states. They were accompanied by their friends, Mr. and Mrs. E. O. Stewart, of Paducah, the party making the trip in their cars.

Seven states were visited, Mr. Swint states. They are New Mexico, Arizona, California, Nevada, Utah, Wyoming and Colorado, and of the 7 states visited, the party visited five capitol cities.

Among the noted and interesting places visited were Carlsbad Cavern, the Grand Canyon, the Petrified Forest, Golden Gate Park, and numerous others. Mr. Swint states they enjoyed their vacations immensely.

The Detroit Jewel gas range is guaranteed to save 25 per cent on your gas bill. That makes them the cheapest stove on the market.—Elrod's Furniture.

## TWO SLATON BOYS WILL ATTEND A. & M. FARMERS SHORT COURSE

Lads to Reap Benefits From Five-Day Meeting at College Station; Chamber of Commerce Contribute Expense Funds.



L. J. THORNTON

## Excellent Features Coming to Palace Next Week and This

Following "Tell It to the Marines", Lon Chapoy is once more back in his old type of eccentric roles, this time old type of eccentric roles—this time it is in the new and his latest production, "Mr. Wu".

He is an armless man, doing with his feet what other do with their hands, and the strain that he undergoes in this play is almost beyond endurance, yet he acts with his usual grace.

On Saturday, Milton Sills is slated to appear in "The Sea Tiger". He, too, is in a new type of character, playing that of the Canary Island Spaniard. Critics who have just reviewed this play state that it is unquestionably Mr. Sills' greatest piece of work, that it simply rings with action from beginning to end.

Monday and Tuesday, Corinne G. fifth in "A Lady in Ermine" is to appear on the screen, and this is followed by "Dance Magic," the very latest Pauline Starke picture. Slaton is playing this fine production as usual, in advance of some of the larger towns, and the production which has just been released, is receiving the highest praise, from the wonderful moral that it carries, along with the story.

## City Baseball League.

Thursday's Results			
Santa Fe 2, Texas Utilities 0.			
Friday's Results			
North Side 5, Santa Fe 0.			
North Side 5, Santa Fe 3.			
Monday's Results			
Texas Avenue 7, West Side 4.			
Tuesday's Results			
Slaton Motor 19, Texas Utilities 2.			
Wednesday's Results			
Santa Fe 0, North Side 6.			
How They Stand			
	P.	W.	L.
Slaton Motor	12	9	3
North Side	13	9	4
West Side	12	8	4
Santa Fe	13	5	8
Texas Utilities	12	4	8
Texas Avenue	11	2	9

Schedule for Next Week			
Thursday, July 21, Texas Utilities vs. West Side.			
Friday, July 22, Santa Fe vs. Texas Avenue.			
Monday, July 25, Slaton Motor vs. North Side.			
Tuesday, July 26, Texas Avenue vs. Texas Utilities.			
Wednesday, July 27, Santa Fe vs. Slaton Motor.			
Thursday, July 28, West Side vs. North Side.			
Friday, July 29, Slaton Motor vs. Texas Avenue.			

We believe the Detroit Jewel is the best gas range on the market, and have bought it.—Elrod's Furniture.

When the Farmers' Short Course opens at A. & M. College, College Station, on July 25 for a five-day session, Slaton will have two representatives there who will take in the full program from beginning to end, and who will receive, no doubt, much benefit therefrom.

L. J. Thornton, 16-year-old son of Mr. and Mrs. C. C. Thornton of the Posey community, will be one of the boys to go. The other is R. V. Mullenix, 16-year-old son of Mr. and Mrs. C. R. Mullenix of the Union community.

The expenses of the trip will be paid for the boys by the Slaton Chamber of Commerce, according to L. A. Wilson, secretary.

Young Thornton holds a higher record in farm boys' club work than is held by any other club boy in the entire United States at this time. As one example of his many accomplishments, he produced last year on one acre of land slightly more than 6,400 pounds of milo maize. He follows a multiplicity of farm pursuits, however, and has been extremely successful in each of them during the past three years. He is now in his fourth year of club activities.

Recently, Thornton attended the National Club Leaders' Conference at Washington. There he was showered with every thinkable distinction by the other club members attending from the forty-eight states of the nation. He was one of two Texas boys who won highest club honors in the state in 1926 and the Washington trip was awarded them by the Texas Bankers' Association. Last year, Thornton was given a free trip to Chicago as a result of his excellent farm record.

Young Mullenix, the other boy who will go to the meeting from Slaton, is now in his first year of club work, according to his friends, but he has a very encouraging prospect before him. He was selected to represent his community by the boys and girls who belong to the same farm club of which he is a member.

## Classified Adv. is Best Investment Yet

As a direct result of a very inexpensive classified advertisement appearing in last week's issue of The Slatonite, Mrs. H. D. Talley is again the proud possessor of a nice wrist watch which she lost several days ago. Upon learning that Mrs. Talley had lost her watch, Mr. Talley authorized The Slatonite to run a "Want Ad", and early this week he informed The Slatonite that the advertisement got the desired results.

This is only one of many instances of the purchase of an inexpensive advertisement in The Slatonite paying big dividends.

## Makes First Sale to 'South Plains' Merchant

R. T. Williams, representing the Williams Auto Supply here, wholesale and retail automobile accessories, was in South Plains, the new Floyd county town, last Saturday, and placed a nice order for his firm, it was stated upon his return to Slaton.

This was the first order ever sold in South Plains, Mr. Williams stated, but he says prospects for many other sales there are very bright. The town will officially open Friday and Saturday of this week, when an auction sale of lots will be held.

J. S. Edwards, one of the developers of South Plains, accompanied R. T. there last Saturday, and brought back a few copies of The South Plains Sun, a new paper established there by Nunn & Warren, Inc. This new town is located where the Denver road will cross the Floydada-Silverton highway.

Among all the lines of gas ranges we have looked through, we have settled on the Detroit Jewel, and have bought a complete stock.—Elrod's Furniture.

## Slaton and the Co. Road Bond Situation

In last Sunday's Avalanche an editorial appeared on the front page of the second section, with a seven column head, entitled, "Bond Election is Postponed Until September." There seems at this time to be a standstill in the hard surfacing road bond proposal for Lubbock county, and the editorial in question lays the blame for this on Slaton, where it does not belong.

Slaton desires only to protect her own interests, having no desire whatever to do injustice to any other section of the county, and willing to give Lubbock a very large proportion of the advantage. It seems that Lubbock will not concede anything less than the whole hog for herself. She contends in one breath that she does not want Highway No. 9 south of Lubbock hard-surfaced and would be willing to see that highway changed slightly in its routing to run through Slaton. But does she act that way? No, not at all, so far as Slaton has been able to notice it. She says Highway No. 9 cannot be changed, in the least, yet in the next breath proposes a change at the point where it comes closest to Slaton trade territory to make it come two miles closer to Slaton, which, as she knows, leaves it far enough from Slaton to do Slaton no good, and close enough to do Slaton lasting injury. She says established highways cannot be changed, but she got Highway No. 7 changed to make the distance a mile farther from Lubbock to Slaton, all to satisfy her whims.

A good faith application by Lubbock to the highway department to alter Highway No. 9 south from Lubbock would not only evidence good faith toward Slaton, but would be virtually adequate to effect the change.

The editorial in question proposes to create a road district in Lubbock county and leave Slaton out of it. We are not surprised, nor are we in the least disappointed. That program suits Slaton, for this reason:

The Attorney General of Texas has ruled, under existing law, that after a county has once voted a county-wide road bond issue, it is then too late to vote road districts. We assume that also would be the holding of the Supreme Court. It sounds logical. If Slaton followed Lubbock's present program, it would give to Lubbock a regular wagon's wheel of highways radiating out from Lubbock in every direction. Slaton would get one highway, No. 7, and that is all she would ever get from now to the millennium, for the reason that Lubbock would not no never, vote county bonds to build highways for Slaton, and once the county wide issue was voted, it would forever bar Slaton from creating a road district of her own to build for her people hard surfaced highways.

We remarked in this paper some weeks ago that Slaton must depend on herself, and herself alone, in this matter. Slaton has at no time demanded more for herself than a square deal. If her trade territory is served with hard surfaced roads, as Lubbock demands hers shall be, then Slaton trade territory alone, unaided, must build them. To do this she must create a road district, larger than the one she has heretofore created.

We challenge the Avalanche to produce proof that the Highway Department spoke, regarding the re-routing of Highway No. 9 south of Lubbock, with "the cut reply that such a proposal not only is impracticable, but is in a measure absurd on its face." We further challenge it to set forth the reasons for harboring those views on its part, or to disavow them.

In the first place, the proposal does not call for a curt reply, either from the Highway Department, or from Highway officials, or from the Avalanche or from citizens of Lubbock. It is in these curt replies that are largely responsible for the present standstill of the road bond proposition. These curt replies without exception have come from Lubbock and not from Slaton, or the Highway Department.

Slaton citizens believe in good roads. They have done more to get them for Lubbock County than Lubbock has. Slaton taxpayers voted the first and only road district in Lubbock county, and voted and are now paying the only

## Coach of High School Athletics Has Been Named

Odus Mitchell will coach athletics in the Slaton High School during 1927-28, according to Supt. C. L. Stone. Mitchell was at Childress last year and at Post the year previous. His record at each place was excellent, it is said, and the choice of Mitchell has settled the question of securing a satisfactory and capable coach who is also a well qualified and capable teacher of experience.

Mr. Mitchell was graduated from the West Texas State Teachers' College, Canyon, Texas. He will teach history in the high school here, and his wife will teach in one of the grade schools, it is announced.

While in college, Mitchell was picked as an all-state star in each of practically all the leading sports. He was a four-letter man for four years while in College.

The coach succeeds Gus Miller, here for four years, who goes to Trinidad, Colo., high school as head coach this coming term. Miller and Mitchell are products of the same college, and when the former was advised of Mitchell's selection as his successor, he expressed his approbation and pleasure at the choice made. Miller appeared to regret leaving Slaton high school very much, and was anxious that his place be filled with a thoroughly capable man.

Mitchell will have a lot of good material in football, as well as in other sports, this year. The Slaton Tigers have established for themselves a splendid and very enviable record during the past several years. No doubt it will be Mitchell's purpose to carry his team to championship in the district this year, and then perhaps still farther.

## Petty Will Enter Plumbing Business

T. O. Petty, in company with his family who had been visiting with him for the past ten days, returned Monday from Borger. Mr. Petty has resigned his position as manager of a plumbing and sheet metal works at Borger, to re-enter the plumbing business here, he states. Mr. Petty is well known here, having been a resident of Slaton for the past sixteen years, and having previously been engaged in the plumbing and sheet metal business here.

road bonds ever issued in Lubbock county.

It is not a proposition that is susceptible of argument, or that would create any dispute by its assertion, that if Lubbock citizens believed any given county wide road bond proposal would or might be injurious to Lubbock, they would with characteristic unanimity vote it down. Nor would we blame them. Will they concede Slaton's right to do the same?

Slaton is not concerned about military roads, and thinks the proposal is "absurd on its face". Slaton citizens desire commercial highways for peaceable, friendly, profitable, economic intercourse—highways that will serve the people who pay for them and would desire to use them.

It is an erroneous statement when the editorial in question says that Slaton is opposed to the proposal of levying the \$1,000,000 of road bonds, and that she had made public outcry against it. She was among the first to make public outcry for it.

Until Lubbock points out precisely wherein Slaton's proposal is unfair or unjust, or deprives Lubbock of a square deal, or is asking for Slaton more than is Slaton's just deserts, or in what respect it is "absurd on its face", there seems to remain little if any tangible basis for negotiations.

Probably the only alternative that exists is the creation of road districts. We ourselves think not only that it will eventually come to that, but that such course is the preferable one. At this writing we subscribe to it. If the proposal was advanced in a spirit of bluff, Slaton calls the bluff; if it was advanced in good faith, then Slaton commends the wisdom and foresight of him, or them, who conceived the inevitable alternative.

ORDINANCE NO. 83.

An Ordinance Providing Rules and Regulations Governing Plumbers in the Installation of Plumbing Work within the City of Slaton, Providing Penalties and Declaring an Emergency.

BE IT ORDAINED BY THE CITY COMMISSION OF THE CITY OF SLATON, LUBBOCK COUNTY, TEXAS.

SECTION 1. That there is hereby created a board for the examination of plumbers within the City of Slaton, to be known as the EXAMINING AND SUPERVISION BOARD OF PLUMBERS; said board shall consist of the City Engineer, if there be a city engineer, and if there be no City Engineer, the City Physician, and a plumber of not less than five years actual and continuous experience. If such practicable plumber cannot be had, then the City Council may appoint such person as they see fit; The said City Physician and City Engineer (if there be one) shall hold office during their terms of office, and the other members of the board to be elected by the City Council of the City of Slaton, within fifteen days after the passage of this ordinance, and shall hold their position until the first meeting of the new Council in 1929, after which time they shall be elected by the said Council annually at its first meeting after installation of new officers; for until his successor is appointed or elected; any vacancies in said board shall be filled by the City Council for the unexpired term, and their services shall be rendered without emolument.

Who Shall Do Plumbing Work and How License May be Obtained.

SECTION 2. No person shall pursue the business or occupation of a plumber until he shall have secured a plumbing license, which license shall not be transferable. Upon application of any person, made to the chairman of the board of examiners, who desires to stand the plumbers examination to secure a license as hereinafter provided for, accompanied by a fee of \$25.00, said board shall notify said applicant of the time and place of such examination; said board shall provide such examination for applicants for plumbers license as will, in judgment best test their fitness to follow said business; if said applicant shall successfully pass such examination, said board shall issue him a license to do plumbing work in the City of Slaton for a period of one year from date thereof, which license may be renewed by said board at its expiration simply upon the written application of the holder of said license.

Bond of Plumber.

SECTION 3. That all persons, firms or corporations carrying on plumbing business within the City of Slaton, under the terms of this ordinance, before they shall do any work upon the sanitary sewer or make any connection with same, or before they shall do any work or make any connections with the water works system of the City of Slaton, or any intended connections to any water or sewer system, shall hereinafter provided and shall execute and deliver to the City of Slaton, a bond in the sum of Five Hundred (\$500.00) Dollars, payable to the City of Slaton, Texas. Said bond shall be conditioned that all work done upon any sanitary sewer or upon any mains, or pipes of the City water works, shall be done in a good workmanlike manner, and in accordance with the plumbing specifications now in existence in the City of Slaton, or that may hereafter be passed by the City of Slaton, Texas, and such plumbing specifications as are prescribed by this ordinance and by such ordinances as may hereafter be passed; and that the City of Slaton shall be fully indemnified and held whole and harmless from any and all cost, expense or damage, whether real or asserted, on account of any injury done to any person or property in the execution of work, or in consequence of doing such work, or that may arise out of it, or be occasioned by the performance of said work, and said bond shall be further conditioned that it shall be the duty of said person, carrying on such plumbing business to place in a good and workmanlike manner, and restore any portion of any street or alley which may be opened for the purpose of making connections with the water or sewer pipes, mains and all such openings or excavations shall be refilled and restored, and the street be placed in good condition as existed before any such excavation was made. That the said bond shall be further conditioned that all plumbing shall conform to the plumbing specifications provided by this ordinance and all ordinances that shall be hereafter entered, and in case any person so engaged in the plumbing business shall refuse to install or construct any plumbing work in accordance with such plumbing specifications, the owner of such house or premises, who may be aggrieved or injured thereby, may have recourse on such bond; even though such work has been passed by a plumbing inspector. That should a plumbing inspector refuse to issue a certificate of approval of said work on account of the failure of said plumber to comply with the plumbing specifications then in such event the plumbing inspector shall notify the person doing the said work to comply with the said rules and regulations, and in case the said plumber doing the work shall within a reasonable time after the receipt of such notice, and three days shall be considered a reasonable time, fail or refuse to make same comply with the plumbing regulations, it shall be the duty of said sureties on the bond hereinafter required, to make any such change as any such plumbing work so as to comply with the plumbing regulations, and in default of such non-compliance the owner of such house may have recourse against the principal surety on the bond herein provided.

Revocation of License.

SECTION 4. The City shall have the right to revoke at any time any license issued as provided above for cause, and any exorbitant, or unjust charge to his patrons, and use of defective materials, intentionally, or knowingly, or the substitution of materials inferior to that contracted for, without permission of the owner, shall be deemed sufficient cause for revocation.

SECTION 5. The City Engineer, or his substitute if there be no engineer, shall be official City Plumbing Inspector and in his absence the powers and duties of such inspection shall be vested in the chairman of the Sewer Board of Examiners, who shall perform all the duties of sewer and plumbing inspector, or have same done, and it shall be his duty to issue all permits for plumbing work, or have same issued, and to inspect and pass upon all plumbing or have same done and to keep a record of all permits issued by him, it shall be his duty to inspect all plumbing installed, and give written notice as provided in section 9 of this ordinance, and for the purpose of inspection of any such plumbing, the said inspector shall have the right and is hereby given the power to enter any house, or premises of said City of Slaton, at any time between the hours of 9 a. m. and 5 p. m. It shall be the duty of the said inspector to investigate all alleged violations of this ordinance, and to collect all fees and penalties, herein provided for.

Powers of Inspector.

SECTION 6. The City Inspector shall at all times have the right to close or disconnect from the public sewer any private sewer or construction or connection in violation of the clause governing the laying of house sewers, and shall have the power to stop any plumber from work, and revoke his license whenever such plumber shall be found to be violating the provisions of this ordinance. Which revocation of said license shall be effective pending a hearing thereof, upon the application therefor made by the said plumber, to the said City Council at its next meeting after said request is filed, at which meeting the said license may be restored, or permanently revoked.

License Not Transferable.

SECTION 7. Each license and each permit issued shall be personal to the licensee named therein, and shall not be transferred nor the name of the licensee to be used, either directly or indirectly, by any other person for the purpose of obtaining a license or permit, or doing any plumbing work in the City of Slaton, Texas.

Permits.

SECTION 8. No person shall do or have done any plumbing of any character in the said City, until he has received from the City Inspector of plumbing, a permit, the character of the work to be done, and its exact location. No permits shall be required to make repairs, stopping leaks in pipes, traps or cocks, or replacing or repairing broken fixtures, provided such repairs are not so extensive in its character that it will change the plumbing or its connections, in which case a permit will be necessary. The inspector of plumbing shall give the owner or agent in charge of any building written notice of any defects in the plumbing in said buildings or changes or repairs necessary, and such owner or agent shall within five days after such notice make the necessary change or repairs.

Inspection Fees.

SECTION 9. The sum of One dollar for one fixture, or roughing in for one fixture, and fifty cents for each additional fixture, or roughing each in, shall be paid as a permit and inspection fee for the fixtures proposed to be placed in, the work described in the application for permit; which sum or sums shall be paid by the master plumber to whom the permit is issued at the time of application thereof. By the term "Fixture" as used herein, is meant each water closet, sink, bath tub, basin or section of basin in battery, drinking fountain, soda fountain, urinal, laundry tray, or section of laundry tray, sand trap, catch basin, and all other receptacles that may be classed as plumbing fixtures. The permit and inspection fee shall apply to all floor and cellar drains (connecting with the sanitary sewer) septic tanks and sewers, fees to be the same as for plumbing fixtures. A fee of one dollar shall be paid for all outside closets and connections which covers inspection.

A special permit may be issued where additional fixtures are to be made which cannot be practically constructed in accordance with all the provisions of these regulations, provided that nothing shall be held to prevent any express provision of this ordinance regarding plumbing.

Inspection of Work.

SECTION 10. No plumbing shall be covered or concealed until it has been inspected by the City Inspector, which inspection shall be made within two days after he has received notice that work is complete. No "Y" shall be opened or work of any character done upon the mains or laterals of the sewer system of the City, intended to intersect or join or couple to said system at any "Y" or other part of the sewer, except in the presence of the sewer inspector, or his duly authorized deputy.

No plumber shall leave any plumbing work in course of construction without first carefully plugging all portions thereof connected with the main or lateral lines so as to prevent earth or any other substance from entering same.

Responsibility.

SECTION 11. The plumber in charge of any work shall be held responsible for the condition and completion of said work according to the specifications included in this ordinance, and shall be liable on his bond for any defects therein, or damages resulting therefrom.

Methods of Testing.

SECTION 12. All materials used in the plumbing work must be of good quality and free from defects. Application in writing must be made to the inspector when work is ready for inspection at least two days before inspection is desired. All plumbing work shall be inspected by the inspector or his assistant.

No soil, drain or vent pipe shall be covered or concealed from view until after the work has been tested, inspected and approved by the plumbing inspector, which includes connections with the sewer; openings or trenches must not be filled until the sewer connection has been approved, if any part has been covered before such time, it shall be uncovered at the expense of the master plumber, under the directions of the inspector.

WATER TEST: The water test may be applied to the drainage system in its entirety or in sections. If applied to the entire system, all openings in the piping shall be tightly closed except the highest opening above the roof and the system filled with water to the point of overflow above the roof. If the system is tested in sections, each opening shall be tightly plugged, except the highest opening of the section under test, and each section shall be filled with water; but no section shall be tested with less than a 10 foot head of water or a five pound pressure of air. In testing successive sections at least the upper 10 feet of the next preceding section shall be retested, so that no joint or pipe in the building shall have been submitted to a test of less than a 10 foot head of water or a 5 pound pressure of air. Under the test above the pressure shall be the same or constant for not less than 15 minutes without any further addition of water.

There shall be two inspections on all work in any building, one when the roughing in is complete, that is, the entire system shall be prepared for inspection, waste and vent openings shall be sealed, or plugged and system filled with water to top stack on roof; if leaks are indicated, they shall be corrected at once by removing all defective materials and workmanship, and replaced by sound material, again tested and repeated until the work is tight and conforms to this ordinance; final inspection shall be made when the work is fully completed and building is ready for occupancy. After the final inspection is satisfactory, a certificate shall be issued showing acceptance. Before the City water shall be turned onto the premises, or the sewer connection used, the owner of the premises, shall present to the water and sewer departments of this City the final inspection certificate, certifying that all the plumbing on such premises has been found to be in compliance with the rules, regulations and ordinances of this City, and any person turning on such water, or using any sewer connection, without such final certificate having been issued and presented, shall be guilty of a misdemeanor and punished as provided elsewhere in this ordinance.

Fixtures and Materials.

SECTION 13. All receptacles used for water closets, urinals or otherwise for the disposal of human excreta, shall be constructed of materials impervious to moisture and that will not corrode; cast iron, white porcelain and enamel on inside. Flushing Rims. All water closets and pedestal urinals shall be provided with flushing rim constructed so as to flush the entire interior surface of the bowl thereof with water as hereafter in this ordinance provided.

Open Plumbing.

All plumbing fixtures shall be installed or set free and paneled doors, wainscoting, floor bins, open from enclosing woodwork, such as drawers and cupboards for cooking utensils, etc., provided, however, drain boards may be used at end of sinks, and where practical, all waste and supply pipes shall run to wall.

Water Supply to Fixtures. Every water closet or urinal bowl shall be indirectly flushed through a flushing tank or approved flushometer valve of at least three gallons capacity for water closets, and one gallon for urinals; the tank shall be properly supplied with water and the flush pipe to the water closet and at least one and one-quarter inches in diameter, flush pipe to urinals shall be one inch in diameter.

Water Service, Supply Pipes and Fittings. All water pipes used for supplying fixtures and water system shall be merchant steel galvanized—brass pipe—cast iron or lead pipe. All fittings used in water supply system shall be galvanized malleable fittings, galvanized cast iron or brass fittings. All connections and branches on lead service pipes must be made by means of plumbers wiped joints.

Waste and vent pipes; a good grade of cast iron must be used for all vent and waste lines.

Where cast iron soil pipe vent are called for, vents for kitchen sinks, and basins, in private residence of one and two story, may be vented with galvanized steel pipe reamed full pipe size, and galvanized malleable iron fittings, sizes of these vents per single fixture as follows, one and one-half inch for kitchen sinks, and one and one-quarter inches of basins.

Each building shall be provided with at least one four-inch waste, or stack vent, and for every branch of twenty feet or more in length within the building, same shall extend same size and bore through the roof, or be brought back full size of main stack.

No vent stack shall be built so that the escape opening thereof shall be within fifteen feet of any door or opening same horizontal plane within said door or opening, provided that kitchen sinks or lavatories when placed separately may be vented with one and one-half inch galvanized pipe.

Where vent pipe is connected into main stack it shall be at a point at least two feet above highest fixture, and at least two feet between vents.

No continuous re-vent shall be placed more than twelve inches from the trap it serves; and the center of outlet between waste and outlet shall not be set below water seal trap; all closets re-vented in the rough must have re-vent as close to floor as possible; and in no case shall a waste center above the re-vent opening; each and every fixture must be re-vented and

have water seal trap placed as close to fixture as possible; no fixture shall be placed more than four feet from vent serving such fixture, stack vents, and re-vents shall extend through the roof, and opening in roof shall be flashed; all drains from three ft. of building to main sewer must be of the best quality of vitrified pipe, four inches in diameter, and of the bell and spigot type; pipe must be laid to a good grade, without sag, so as to drain quickly and completely, all joints shall be well cemented with mortar made of two parts well screened sand and one part of best Portland cement, and well wiped, no vitrified clay pipe shall be used unless it is at least twelve inches below the top of ground, standard cast iron pipe shall be used where it is less than twelve inches below the surface, and such cast iron pipe shall be calked with lead and oakum cast iron pipe shall be used for a distance of not less than three feet from the stack.

Rain or Water Pipes.

SECTION 14. No rain or down spout pipes, steam boiler pipe, or other pipe used to convey water or other substance of like character, except pipe necessary to plumbing system, shall be connected to any sanitary sewer in the City.

Release From Basement Drains.

SECTION 15. No permit for basement drains shall be issued until owner of building to be served, has executed and signed a written release to the city of Slaton, holding them harmless for any damage that may result from said basement being flooded by the stoppage of the sewer, which release and agreement shall be filed with the inspector of plumbing, and said basement drain shall be installed only when equipped with a back water valve.

Drum Traps and Kitchen Sinks.

SECTION 16. When a patent grease trap is used, same shall be not less than ten inches square, provided that sinks in all hotels, or restaurants must be equipped with grease traps of proper size in proportion to the service performed, which shall be approved by the inspector before being installed.

Soda fountain traps must be connected with a catch basin placed in the floor close to fountain, a two inch pipe to catch basin for fountain will suffice with not less than two inch re-vent pipe. Enameled iron sink set above floor or large grease trap with proper opening left in same for waste pipe, may be used where conditions are such that catch basin cannot be built of brick or concrete, or when same is more desirable.

Urinals.

SECTION 17. All public urinals shall have automatic flush tanks to supply same or perforated brass or lead pipe and the floor under same must be of non-absorbent material. Flush pipe must be at least one inch in diameter.

Lead Bends; Traps; And Water Seals.

SECTION 18. All lead bends and lead traps shall be of drawn lead, of no less than four pounds weight per foot, and all traps not herein provided for, must have a water seal of not less than 2 1/4 inches, and must be set true to the water seal.

Joints.

SECTION 19. All solder joints between brass and lead, copper and lead, or lead and lead, must be plumbers wiped joints, and same must be made in first class manner; no cup, or over cast joint with either soldering iron, or cloth shall be used; all joints in cast iron pipe must be made of picked oakum and lead; the connection of lead pipe to cast iron pipe shall be made with brass ferruled, calked to iron pipe, and wiped to lead pipe; no combination ferrule shall be used, no joints will be allowed.

Flashing.

SECTION 20. All vent pipes must have not less than four pound flashing at roof, and be well calked to vent pipe. All plumbing fixtures shall be installed as open plumbing.

Sectional Wash Trays.

SECTION 21. Sectional wash trays may be trapped and vented as follows: One to three compartments of sectional wash trays may be connected with one or more water seal traps, said trap to be re-vented. Additional compartments may be connected in like manner.

Blow Off Exhausts, and Bleeds.

SECTION 22. Steam boiler blow-offs, pump exhausts, and bleeds, from engines, heaters, and tanks, shall empty into cast iron brick or concrete blow off tank, and vent pipe shall be carried through roof from tank to carry off steam and vapor, the tank to have water seal trap and drain pipe to discharge into catch basin.

Old Work.

SECTION 23. All old work already installed will not be required to stand as severe a test as new work, and for plumbing that can be considered safe, and harmless to the inmates of a building, a permit will be issued for sewer connection. Any plumbing which is already installed which is considered unsafe to the occupants of a building must be so altered to make it safe, and satisfactory to the plumbing inspector. Where it becomes necessary to lay new soil or water pipe, throughout the system it will be considered new work, and must be done in accordance with specifications for new work.

Damage to Sewer System.

SECTION 24. It shall be unlawful for any person, or corporation, firm, to injure, break or remove any portion of manholes, lamp poles, flush tanks, or any part of the sewer system. It shall be unlawful for anyone to throw or deposit in sewer opening or receptacle connection with the sewer system any coffee grounds, garbage, offal, dead animals, vegetable parings, corn, cotton, cobs, ashes, cinders, fruit, rags, or any other materials or things whatsoever, except feces, urine and the necessary toilet papers, and liquid house waste and slop.

Whenever a house sewer, or drain is obstructed, broken, or defective, so that the sewage or gases therefrom escape into the soil or the surrounding premises, the inspector may condemn such sewer and order it removed or repaired. If the sewer is clay pipe he may direct its replacement

with cast iron pipe to an extent conformable with these specifications.

SECTION 25. There shall be and there is hereby established a sewer district. Said sewer district shall include all property within the City Limits, that is within 300 feet of any main, or lateral sewer line in the business district and within 140 feet of any sewer main or lateral in the residence district and it shall be unlawful for anyone to construct or maintain within this district, any surface closet, or urinal.

Septic Tanks.

SECTION 26. It will be lawful to construct sanitary septic tanks at any points within the City limits, that is, within three hundred feet of any sewer line, provided that plans and specifications for the same shall be submitted to the plumbing inspector, showing the location and size of same and the number of persons it is designed to serve, and a permit for same be issued by the inspector.

Where sewers have been constructed all portions of the street curbs, and sidewalks must be restored to their former condition; the trench must be filled and thoroughly tamped within 48 hours after completion, and in case it is necessary to leave trench open overnight it shall be protected by red lights at night, and in other suitable manner during the day.

Sand Traps.

SECTION 27. Garages, barns, and wash racks, etc., shall drain into sand traps. Sand traps are to be considered as fixtures, and must be built of brick, or concrete, with iron covers, made water tight, and have water seal of at least 8 inches in depth; outlet pipe shall be screened, and trap shall be made according to plans on file with the City Secretary, and sewer inspector.

Waste Pipe for Refrigerators.

SECTION 28. Waste pipe for refrigerators or other receptacles in which provisions are stored shall not be connected directly with drain, soil or waste pipe, but must drip into open tray being trapped, and in the lower end of the waste pipe from tray, discharged into some open fixture in constant use.

Penalty.

SECTION 29. That any person, firm, corporation, or association who shall fail to comply with, or violate any of the provisions of this Ordinance, shall be deemed guilty of a misdemeanor, and on conviction thereof shall be fined in a sum of not more than \$100.00.

Clean-Outs.

SECTION 30. A cleanout shall be placed at bottom of each stack, and shall be the same size as pipe up to four inches diameter. No sink waste cleanouts will be permitted under any building where floor is less than two feet from ground, otherwise, same shall be brought through wall or floor in full view. All drain and waste pipes constructed under concrete floors must be provided with cleanouts at end of each branch, and in all cases must be accessible. It must be expressly understood that no cleanout screws will be installed in any position of in any location except where accessible for use, and where impossible to construct cleanouts at base of soil or waste pipe, they may be installed on end of house drain where same connection with the house sewer, and in all cases, brought to grade line.

Bases of all stacks must be constructed with Y and 1-8 bend or two 1-8 bends. Where Y and 1-8 bends are used 1-8 bend must be inserted in horizontal run with Y caulked into 1-8 bend. In no case will a T Y be permitted at base of stack.

Re-vent stacks from groups of more than five fixtures to each floor in buildings more than two stories in height must connect into waste stack or waste branch with Y's and 1-8 bend and must not connect into stack or branch above waste or fixture it serves.

Batteries of water closets or urinals in toilet rooms on same floor from three to twenty in number may be installed by system of loop venting by extending the horizontal line of soil pipe up and return full size to main vent stack at a point one foot above highest fixture or continue separate through roof full size, thus forming a circuit vent system. When more than ten closets or urinals in a battery are vented in this manner, there shall be an additional connecting line between waste and vent full size in center of such battery for the purpose of relieving air pockets.

A soil or waste line shall in no case be of less diameter than the trap of the fixture it serves.

Vents.

SECTION 31. Where a stack or vent pipe extends through a roof within a distance of fifteen feet of any opening above said stack or pipe, the said stack or pipe must extend at least two feet above the top of opening. Flat roof vents must be extended at least six inches above fire wall. No caps, cowl, or bends shall be affixed to the top of any stacks or vents, wire baskets may be used.

Except as otherwise provided in this ordinance, each and every fixture must be re-vented and have water seal trap as close to fixture as practicable.

Steam Boiler Connection.

SECTION 32. All persons are prohibited from connecting pipes whereby high pressure steam boilers may be supplied with water direct from City mains. All such boilers shall be provided with a tank or other receptacle of sufficient capacity to hold at least six hours supply of water in case of a pipe district being shut off to repair mains, fire hydrant or make connections or extensions; and the City shall not be responsible for lack of water for steam boilers for any purpose. Wherever a check valve is installed on the cold-water supply pipe between the street main and the hot-water tank, there shall be installed on the hot-water distribution system a suitable relief valve.

Bath Tub Drain Traps.

SECTION 33. Each bath tub shall be provided with a lead four inch by eight or 1 1/2 inch drum trap. Traps on

bath tubs shall be placed in such manner that the cleanouts will be in plain view and above the floor. The outlet from the drum trap must be wiped into the trap in a position that waste outlet shall be water sealed two and one-half inches; inlet and outlet must not be less than one and one-half inches in diameter.

Each shower bath shall be provided with trap of seal not less than two inches, inlet and outlet trap must not be less than two inches in diameter. Showers installed independent of bath showers must be wasted through a double drainage, floor drain where floor or shower stall is other than regular shower receptor; waste from drain to be re-vented within six inches (on horizontal run) of trap. Waste shall not be connected with another fixture waste, (except closed bend), but shall run independent to closet-bender soil stack, use urinal vent schedule for shower vent sizes.

Traps for wash trays shall be water seal traps. Outlet shall not be less than four inches by eight inches. Extra lead and one trap may be used for battery of three traps. Outlet shall not be less than two inches diameter. Soda fountain waste through a cast iron basin not small than 18x18 inches. Basins must be provided with a removable cover, and to be vented as other fixtures herein provided. Basins may be located in rear of room or building and waste line continue to location of bar or fountain where waste terminates in waste gutter or other receptacle. Waste must be provided with cast iron trap with at least four inch seal. When this kind of construction is used the waste line between catch basin and trap at fountain must be vented (at any point on the line).

Dental Cuspidors.

SECTION 34. Waste pipe from dental cuspidor may be connected with drum trap with one and one-half inch outlet for one to four cuspidors, two inch outlet for five to twenty cuspidors.

Traps.

SECTION 35. Traps shall be placed as near to fixture as possible, and in no case shall a trap be more than two feet from waste outlet of fixture. All traps shall have at least one and one-half seal. The discharge from any fixture must not pass through more than one trap before reaching house drain; traps placed below the floor shall have a brass trap screw for cleaning in plain view, and flush with the floor and must be accessible; all traps shall be rigidly supported and set true with respect to their water level and shall be so located as to protect their waste seal.

No form of traps which depend upon the action of movable parts for its seal shall be used. No trap which depends upon concealed interior partitions for its seal, or which has an interior partition that, in case of defect, would allow the passage of sewer air, shall be used.

All closets, urinals or slop sinks with trap combines shall have visible trap seal.

Long hopper water closets cannot be used inside any building used for human habitation, but may be used in yard closets.

Past and Future Plumbing.

SECTION 36. Soil or waste pipes in any building for future use shall be ventilated, tested and subject to the same rules and in every respect as if intended for immediate use and all openings caulked or soldered.

Old house plumbing can be connected with the sewer only when it is found on examination to conform in all respects to the requirements governing new plumbing.

Gas Hot Water Heater.

SECTION 37. No person, firm or corporation, shall install or connect any hot water heater for heating purposes by use of gas, natural or artificial, unless the same be provided with a metal hood to which shall be connected suitable ventilating pipe not less than the size of the heater opening and said pipe shall extend to a chimney flue or to the open air in such way provided. All such ventilating pipes when placed on the inside of partitions or enclosed in any manner so that said pipes are in contact with wood shall be fully covered and protected with asbestos, or incased in tile pipe lining to fully protect and insure against fire. In case such ventilating pipe shall extend to open air, it shall be provided with a cap or cowl so as to prevent back draft. No heater shall be placed in a closet.

Escaping Steam.

SECTION 38. No escaping steam will be permitted to be discharged in any street or alley of the City, and all discharge pipes must run into a trap, or be extended above the roof of the building.

Emergency Clause.

SECTION 39. The fact that a great deal of the plumbing now in use and being installed in this city is unsanitary and dangerous to the health of the people residing herein, creates an emergency and public necessity demands that this ordinance be in force from and after its passage and publication and it is ordained.

The foregoing Ordinance was on the 6 day of July, A. D. 1927, duly approved by the board of commissioners of the City of Slaton, Texas.

S. F. KING, Mayor.  
J. I. BRADLEY, Commissioner.  
J. T. LOKEY, Commissioner.

ATTEST:  
HARVEY AUSTIN,  
(SEAL) City Secretary.

HOWARD SHOE HOSPITAL

Shoes, Harness and Auto Top Shop

LADIES HEELS RECOVERED LET US FIX

**The Slaton Slatonite**

Published weekly on Thursday at Texas Ave. at 7th St. Phone '0

Slaton, Lubbock County, Texas.

Mrs. W. Donald, Publisher and Owner  
E. W. Collier, Jr., Editor

Subscription price, per year — \$3.00

Display advertising rate, per single-column inch — .35c

Entered as second class mail matter at the postoffice at Slaton, Texas.

Enjoy playday while you can, for payday is coming, when you will be the paymaster.

Back in 1917 and 1918 this country fought a war for the freedom of the seas, and now we are turning our attention to making the air safe for democracy.

Women by their persistent struggle for equal rights have, of course, fought a long, persistent and winning battle, but woman will never be equal to man until she shall have won the right to pay alimony.

It is said that the treasury department contemplates reducing the size of the dollar bill. It will have to be reduced about three-fourths if it is kept in line with its present purchasing power.

Men are prone, of course, to criticize while they are admiring woman for her scanty dress, but woman will never go so far as to admit that she is not at least clothed in her right mind.

If in aerial navigation this twelve mile limit is applied to the air as it has been applied to the sea, gentlemen will be obliged to go 63,360 feet up in the air for their indispensable toddy.

Listen! Times are changing! Tother day we saw an ad of a cigarette and another of a tooth brush that did not have any nude girl in the picture. Actually did! Now if certain automobile and certain yeast ads would only follow suit.

Some call this an amorous age and others say it is a glamorous age. Maybe it is the latter because it has found so many new ways of being the former.

By the way, can you name ten things, aside from yourself, that are wrong with this old world? Try it.

Ordinarily just two things are necessary to accomplish a difficult task. One is to start at it and the other is to keep at it.

Did you, reader, ever stop to consider the enormous amount of advice you get every twelve months in this column, and that the subscription price of this paper is only two dollars for one whole long year?

Furthermore, it doesn't cost you so much as one red penny not to follow our advice, which is less than it costs us to give it.

A certain magazine announces that "Beauty bathes in the sun." Yes, we've noticed that. It's only the girls who aren't so darned good looking that bathe in the water.

**ONE IN TEN**

Neglecting a little wound, cut or abrasion of the flesh may in nine cases out of ten cause no great suffering or inconvenience, but it is the one case in ten that causes blood poisoning, lockjaw or a chronic festering sore. The cheapest, safest and best course is to disinfect the wound with liquid Borosone and apply the Borosone Powder to complete the healing process. Price (liquid) 30c, 60c and \$1.50. Powder 30c and 60c. Sold by CATCHING'S DRUG STORE!

Besides the law nullifiers in this country we also have those who accomplish the same purpose far more effectively by making the law look ridiculous.

The picture of a lady attired in a fig leaf, fanning herself with a palm leaf fan ought to suggest something cool, like a cook stove resembles a refrigerator.

A Kentucky paper remarks that some girls think beauty is knee deep. Observation leads us to believe that not a few of them think it is hip high.

Always, when this column divides folks up into classes, like, for example, the nice and the not nice, it should be understood that we consider ourselves belonging on the side of the nice. Every time!

There is not a great deal of difference between daughter and laughter, so it is little wonder that some daughters make us laugh. They are, some of them, just too funny for anything.

The Henry Ford case seems to have raised with the newspapers this live issue, namely, to-wit: Is it better to know very much, indeed, about a few things with dense ignorance of other things, or to know a little something about everything?

And with all of Henry's dense ignorance of some things, he seems nevertheless to have made a pretty good living.

Gov. Moody vetoed an \$18,000.00 item in the appropriation bill that had for its object adding a few more useless employes to the State's payroll, and the good ladies of the W. C. T. U. say for that reason he is a "Wet". If that makes him wet we would like to see him keep the good work up until he comes in all dripping—soaker, as it were.

An individualist is one who believes that what he does would be very wrong for society as a general practice, but that for himself it is perfectly all right. Practically all of us adults belong to that tribe.

The sweetest words of all, by heck, I hold are these: "Enclosed find check."

The saddest words—they make me sigh—Are when I hear, "The check was dry!"

He who takes my purse steals trash, but he who steals the whole road is just one plain, darned, contemptible road hog, if you know what I mean.

We contend that it is the supply that creates the demand. Had it not been for the enormous supply of suckers there never would have been any demand for these thousands of advertisements offering us something for nothing.

Many a fellow can enjoy the joke when the laugh is on him, who gets peeved promptly when folks begin to grin at him.

Another reason why we are opposed to more than two terms is that eight years is long enough for a poor columnist to have to crack jokes about the same president.

Our idea of a catastrophe would be for a politician to be born at a time when this country no longer needed saving.

A woman recently filed a suit for divorce against her husband just because he remarked to a friend of hers

**CLEM N. GAUSE**

Piano Technician

Place Your Orders at PAYNE'S CASH STORE Phone No. 100

that his vacation would soon be over, and when asked what he meant, said his wife was returning in two weeks from her vacation. Now wha'd'ys think of that!

A French doc'or is said to have discovered an anti-tuberculosis vaccine which he calls "BCG". That means, we suppose, that "Eugs Can't Grow."

Sometimes when we think we would enjoy a vacation along comes some fellow who "just got back" from his and reports a wonderful time, but it was awfully hard work. So after thinking it over pro and con we have just about decided that for our part we shall stay home and hoe weeds for a diversion.

**STATE PRESS AND THE THIRD TERM ISSUE.**

Slaton Slatonite: The editor of The Dallas News wants to know when is a third term and why. A third term, brother, is that term which a President aspires to when he is serving his second. Why does he want it? Because he knows he shouldn't have it and can't have it. Ask us another.

Since you ask to be asked another, we ask you how come he can't have it? The wise men of the East are saying he can have another term if he will only say the word, and the wisest of the wise are saying he will say the word when the saying time comes.

To be plain about it, Calvin Coolidge is certainly serving his second term as President of the United States. But not his second elective term. He has had only one elective term.

The difference of opinion arises as to whether or not an elective term succeeding an appointive term equals two terms. Some say it does, some say it doesn't. If taking the oath of office twice is proof of two terms then the twentieth amendment to the Constitution should forbid more than two terms to a President and define two terms in exact terms. Mr. Coolidge is not an especially popular President.

His strength is in the fact that he is not an unpopular President. There is a Nation-wide feeling that the country could do worse than re-elect him. His conservatism appeals to an electorate which is tired of radicalism. His taciturnity appeals to a people who are a-weary of spellbinders. His pallor appeals to all those who are distrustful of red-hot heroes. Worse than all, the Democrats haven't any body to put up against him that can command the party's full support. The outlook for National Democracy is pickle green.—State Press in Dallas News.

It is said that every time an answer is found to a profound question, it raises from 1 to 100 other questions, so that there is no end or limit to the scope of human inquiry. This time our answer to S. P. raises only one other question, so we are humiliated to think that neither the question nor the answer was as profound as it might have been.

S. P. wants to know how come our amiable Silent Cal can't have a third term? He thinks that because the wise men of the East say Cal can have it if he wants it. Like so many who rely upon the wise men of the east, they rely without requiring proof of their wisdom, and if they are wise we can't take judicial knowledge of it, can we?

We pause here to correct S. P. and rescue him from error. Mr. Coolidge is serving his second elective term. He never did have an appointive term to the presidency. Mark that down. It will clear the air. Mr. Coolidge was in the first instance elected to the vice presidency—elected. The constitutional duties of the President devolve on the V. P. in case of death, disability, etc., of the President. Mr. Harding died. Mr. Coolidge took the oath as president in pursuance of his election to the vice presidency, and thereupon became president. No election was necessary, and no appointment possible, for there was no power to appoint. See? Mr. Coolidge is therefore serving his second elective term. Q. E. D.

Mr. Coolidge, estimable as he is, can't have a third term because tradition against one man having three terms in the White House—a tradition of so long standing—has all the force of a law forbidding it, and more, it has the force of human prejudice. And, as usual, S. P. is preeminently right when he says that the country could do worse than elect Mr. Coolidge to a third term. It could, indeed. And we hope that if the country in 1928 commits any error at all, it will be no more serious than retaining Mr. Calvin Coolidge in the White House.

**EXCHANGE SHOTS**

**THE NEWSPAPER MUST CARRY ON.**

An exchange states that there is one business in town that never cuts expense—The newspaper must go during the dry hard times and all the other kind of times. It must maintain the standard, and keep on smiling even when the merchant cuts his advertising; keep on smiling when work is sent out of town, although the home town shop is equipped to do the work and give as good prices as can be obtained elsewhere. The newspaper is one of the most important enterprises of a town and community and the success, progress and development of the community's greatest assets.—Lynn County News.

It is admitted that human nature prompts us to do wrong things, but one of the worst things a business man or other citizen can do in failing to help his home town is to withhold his support from the home-town newspaper. The Slatonite appreciates the loyalty shown to the institution by Slaton merchants. We hope to be of better service as the weeks come and go.

Subscribe for The Slatonite. Read your local paper.

**SOMEBODY SAID**

SOMEBODY SAID the Slaton country will need very little more rain to mature good crops this year. Prospects are flattering now. Yet a lot of folks got pretty nervous before the splendid rains came in early June.

SOMEBODY SAID farmers of the Slaton territory are getting their share of strenuous work these days. This is a critical period in the cultivation of crops, and close devotion to duty is too. In fact, the work these two boys and many others are doing in Lubbock County right now is having its effect on agriculture in this section.

SOMEBODY SAID according to reliable figures, Slaton is the third largest town on the new gas line coming here from Amarillo. Lubbock is first, Plainview second and Slaton third. At the rate Slaton is growing, she will be at the top of the list in a very few years. Slaton has the brightest future to be found among towns of the South Plains country.

SOMEBODY SAID, "How will you vote on the amendments August 1?"

SOMEBODY SAID the Slaton Chamber of Commerce is doing a fine piece of service in paying the expenses

of two Slaton boys on their trip to the A. & M. Farmers' Short Course, July 25 to 30. Better farmers mean a happier nation. Work of this kind helps to give us better farmers for the future, and the very near future, essential to good harvests this Fall.

**LITTLE TEXAS BEAUTY SHOP.**



- Shampoo ..... \$ .50
  - Henna Pack or Rinse ..... 1.50
  - Scalp Treatment ..... 1.00
  - Marcel ..... .50
  - Round Curl ..... .50
  - Shampoo and Water Wave ..... .75
  - Retrace ..... .35
- MRS. J. W. PHILIPS  
Resident 615 S. 13th St.  
Call Dr. J. W. Philips' Residence for Appointment.

**CITIES SERVICE OILS**

**ONCE - ALWAYS**

Cities Service gasoline is superior in five ways—it gives you—speedier starting, faster acceleration, greater mileage, increased flexibility, minimum carbon. Years of experience in refining make it superior.

**CITIES SERVICE GASOLINE**

**CITIES SERVICE PRODUCTS**

AT  
**CITIES SERVICE STATION**  
Across Street From Piggly Wiggly

**T. P. HORD, Agent**  
WHOLESALE AND RETAIL

**SPRING HATCHING SEASON IS OVER**

And we will remain closed till about the middle of August. We are now booking orders for that date. Write us your desires and we will try to arrange a booking to suit your convenience.

Purebred White Leghorn Pullets now Ready for Delivery.  
Priced Reasonable.

**PROGRESSIVE HATCHERY**  
SLATON, TEXAS

**TANKS**

All kinds of storage and stock water tanks. Also Casing and other Sheet Metal Work.

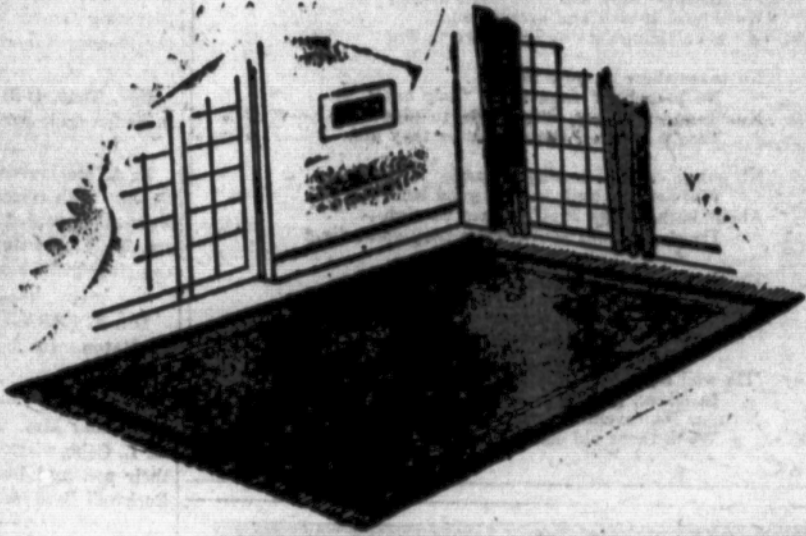
**LILES SHEET METAL WORKS**  
SLATON, TEXAS

Keeping Income balanced with Outgo, and at the same time allowing for a certain specific amount to be saved each and every payday. That is what makes the successful man, the man who is a good solid citizen and one in whom his neighbors can place their confidence when occasion arises.

Let Us Aid You to Plan Your Income to Meet These Entirely Possible and Most Enjoyable Conditions

**The First State Bank**  
Capital \$40,000.00  
"Sixteen years serving Slaton and Slaton people"

# Compare! Compare! Value, Quality and Price ACORN STORE, Inc.



We carry at all times a complete assortment of seamless, high grade Axminster Rugs, priced very low.

**\$1.89, \$4.85, \$6.98, \$11.85, \$13.85, \$19.85, and \$22.85**  
9x12 size, each \$31.85

Men's 220 weight Blue Denim, triple stitched, OVERALLS, pair ..... \$ .89

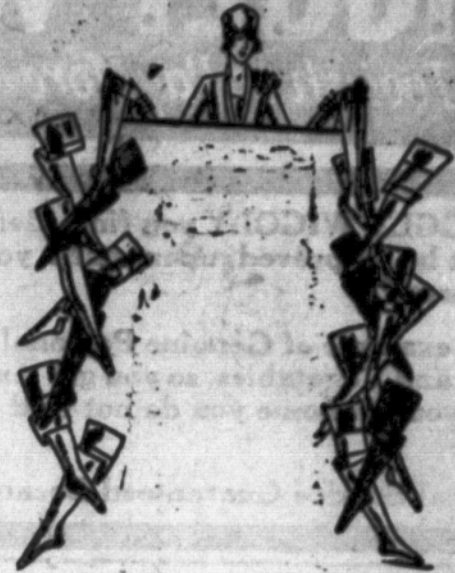
Men's heavy 220 weight, Blue Denim OVERALLS, strong and durable, Union made, a new pair if they rip, regular sizes, pair ..... 1.15

Boys' OVERALLS, same as Men's, age 3 to 8, pair ... .89  
Sizes 8 to 16 ..... .98

### WORK SHIRTS

Men's Golden Rule Blue SHIRTS, each ..... \$ .79

Men's Gray Work SHIRTS, with extra long sleeves and body well made, each .... .95



65c - 79c - \$1.19 - \$1.39 - \$1.69 and \$1.90

is our standard every-day price on Ladies' high quality Weartex HOSIERY.



### AMENDMENT TO ORDINANCE NO. 5.

Be It Ordained by the City of Slaton, Texas:

Section 1. Every person operating or driving a motor or other vehicle upon the public streets and alleys of the City of Slaton, shall operate or drive same in a careful and prudent manner, and at a rate of speed not greater than is reasonable and proper, having due regards for the traffic and the use of said streets and alleys: Provided that it shall be unlawful for any person to operate or drive any motor or other vehicle upon the public streets and alleys of the City of Slaton at a rate of speed in excess of twenty miles per hour.

Section 2. Every person operating or driving a motor or other vehicle upon the public streets of the City of Slaton, when approaching an intersection marked by a stop signal, must bring motor or other vehicle to a complete standstill before proceeding further.

Section 3. The term business section of Slaton, for the purpose of Ordinance No. 5, in addition to those streets or parts of streets set out in Section four of that Ordinance, shall constitute the following streets or parts

of streets in the City of Slaton, Texas, to-wit:

All that portion of Ninth Street between Crosby street and the intersection of Ninth street with the Public Square.

All that portion of north Panhandle Ave., between Lynn Street and the intersection of north Panhandle Ave., with the Public Square.

All that portion of Lynn Street between North Panhandle Ave., and Texas Ave.

Section 4. An emergency is declared and it is ordained that this amendment shall be in full force and effect from and after its passage and publication.

The foregoing amendment to Ordinance No. 5 was on the 16th day of July, A. D. 1927, duly approved and passed by the City Commission of the City of Slaton, Texas.

S. F. KING, Mayor.  
J. R. BRADLEY, Commissioner.  
JOHN T. LOKEY, Commissioner.

ATTEST:  
(SEAL) HARVEY AUSTIN,  
Secretary, City of Slaton, Texas.  
47-3c

London has an open-air reading room.

### DID YOU EVER STOP TO THINK

(By Edson R. Waite, Secretary, Shawnee, Okla., Board of Commerce.)

THAT when the business concerns of a city acquire a reputation of selling honest, high-grade merchandise, they won't have much trouble in holding the business of their trade territory.

THAT great success in business does not just happen.

THAT when the people buy advertised goods they don't go wrong; its non-advertised merchandise that goes wrong—or don't go at all.

THAT satisfaction for the buyer gives satisfaction to the seller.

THAT advertising in home papers keeps home dollars at home. Keeping money in the home city is saving money for the home city.

THAT the best way to keep business from going to some other city is for the local merchants to keep good stocks and then let the people know about them.

THAT stores that are interested in keeping prices down and giving more value render a real service to the public; stores of this kind always advertise.

THAT when a business stops advertising that business in time will stop doing business.

THAT an advertised business succeeds where others fail.  
Newspaper Advertising Will Put Pep in Any Business.

Literal Len  
"I'm striking a happy medium," said the detective as he hit the fake strip-tease over the head.

The average five and ten cent store handles 3,000 different kinds of articles.

Heatless Blaze.  
First Gal—That guy is so wealthy he has money to burn.  
Second Gal—Well, I must say I never suffered from heat while I was out with him.

Nearly 3,000,000 tons of British coal are being sent to France during June July and August.

American hosiery shipped abroad in the last year was valued at \$20,000,000.

Building models of each ship on which he has served is the diversion of a British naval officer.

Italy has a new law prohibiting increases in rents, and requiring reductions in many cases.

## Safety for lovely clothes



### The Westinghouse Automatic Iron

Correct ironing temperature... always

Really a wonderful iron!

As much in advance of the electric iron which you may now consider the last word in safety and convenience, as the first electric iron was over the sad irons heated on top of the stove!

Imagine an iron that turns itself off before it gets too hot — then turns itself on again before it gets too cool!

What a help, and what a safeguard! You don't have to press and pull on fine fabrics to help out an iron that's underheated. You don't have to rush with fussy sheer things for fear your iron will get too hot.

Always there's heat just as it should be, evenly distributed all over the generous broad surface of the iron, down to the very end of the tapering point designed especially for those hard-to-iron places.

The temperature is controlled automatically by the Million Dollar Disc Thermostat — a simple bi-metal disc, nothing to go wrong, nothing to get out of order.

Come in and let us demonstrate it today while our special offer is in force.

Free This month only

With every Westinghouse Automatic Iron sold this month we will give absolutely free (not a metal kitchen stool, 24" high. Every joint electrically welded. Rubber tipped feet. The strongest kitchen stool made.

75¢ down

— will take this wonderful automatic iron home. Only \$1.00 a month with your electric bills for seven months. No interest. No extra charges. We give you 10¢ worth of the regular cash price — \$1.75 — plus a real gemstone. Take advantage of this Special Offer today.

Texas Utilities Co.



We use only purest drugs, compound them with care and exactness for which we ask no more than any such service can be obtained. Make this store your store—by joining the ranks of our satisfied patrons.

Cold Drinks—Confections.

Teague's Drug Store

**Rotary President Names Committees**

President Sam E. Staggs last Friday at the Rotary Club Luncheon announced the personnel of the standing committees for the club for the year ending July 4, 1944, as follows:

**Business Methods:** John W. Hood, Chairman; J. A. Elliott, W. B. Heston and Earl King.

**Publicity:** E. A. Baldwin, Chairman; Frank Miller and Abe Kessel.

**Boys Work and Crippled Children:** Ben G. Holloway, Chairman; W. E. Olive, John W. Hood and Claud F. Anderson.

**Community Service:** Elmo S. Strode, Chairman; Dr. E. C. Foster, J. W. Willbanks and W. H. Smith.

**Rural-Urban Acquaintance:** R. H. Tudor, Chairman; Bill Dorsett, Joe H. Wagner, Jr., O. Z. Ball.

**Rotary Education:** E. A. Baldwin, Chairman; C. L. Sene and Allen J. Eggen.

**Sixth Object—World Peace:** Floyd G. Hester, Chairman; J. T. Overby and J. W. Phillips.

**Classification:** M. W. Uzzell, Chairman; Frank Lanham and Lee Tabor.

**Membership:** P. G. Stokes, Chairman; Jess Swint and Joe K. Rogers.

**Programs:** R. A. Baldwin, Chairman; Ben G. Holloway and Oscar Kern.

**Fellowship:** Rev. J. W. Willbanks, Chairman; Alex DeLong, L. R. Cypert and Joe C. Barton.

**Intercity Relations:** W. E. Olive, Chairman; Sam E. Staggs and F. C. Hester.

**Editor Club Bulletin and Correspondent to Rotarian:** L. A. Wilson.

**WISE AND OTHERWISE**

**By Nora Billingsley.**

One good reason why we should wear our dresses below our knees is that our knees are knobby and unlovely and many of us are bow-legged to boot.

We wished for rain in springtime, when the sun shone hot and clear, when the drouth was hard upon us, and the fields were bare and drear; then at morning, noon or evening,

**Work is God's greatest gift to man.**

Most of us are ease loving loafers, but are continually kicked into line by necessity.

I hate to see a speaker "tear his shirt" over nothing. Often the most banal of platitudes are shouted with the emphasis of a thunderbolt. Why so much stress? Noise cannot take the place of thought—nor perspiration of inspiration.

**Copied from The Slatonite 13 Years Ago**

(From Issue of July 10)

Considerable surprise was occasioned in Slaton business circles the first of the week by the announcement that P. E. Jordan had resigned as cashier of the First State Bank. His stock was purchased by J. S. Edwards, president of the bank.

Mrs. W. H. Proctor and Mr. and Mrs. J. J. McCullum were in Post City over Sunday, the guests of Mr. and Mrs. J. T. Pinkston.

Alex DeLong went to Denver, Colo., last week.

Mr. Vern Johnson and Miss Rotha Ditmore were united in marriage at the home of Mr. and Mrs. F. F. Carpenter in Slaton on Saturday, July 4, 1914. L. P. Loomis, justice of the peace, pronounced the wedding ceremony.

Mrs. W. E. Olive and Miss Bertha Proctor went to Bell, Texas, Thursday to visit at their former home for several days.

R. H. Tudor put down a well last week for G. L. Sledge, and is drilling one this week for D. C. Hoffman.

**Posey Items.**

Mr. and Mrs. O. R. Patterson and little son, Ott Earl, spent Sunday afternoon in Slaton.

Mr. and Mrs. Jay Carroll and Mrs. Doc Carroll are visiting in Mexico.

Miss Marcella and Mr. Leroy Kelly entertained their friends with a party Saturday night.

J. M. Morrison and family and Miss Nina Clifton spent Sunday with Mr. and Mrs. Ramon Johnson.

Mr. and Mrs. J. W. Sisk and Mrs. L. N. Allison visited J. M. Stephens and family, of Slaton, Sunday afternoon.

Miss Marie Stahl returned home Saturday from Amarillo, where she has been spending the past three weeks.

Misses Eda Bell and Jewell Johnson spent Saturday night and Sunday with Miss Nellie Johnson.

The farmers of this community are very busy working out their crops.

Miss Maude Harper, of Slaton, visited her parents Sunday.

Mrs. Sam Gentry's mother and sister, of Levelland, spent the week end in this community.

Miss Zena Patterson spent Sunday afternoon with Miss Marcella Kelly.

Jimmie Johnson, of Levelland spent Saturday night with James Walters.

E. Henderson and I. N. Allison went to Lubbock on business Monday.

**Star Parasite Remover**

Given in water or food with children and turkeys of intestinal worms, disease parasites, blood-sucking lice, mites, flies, blue bugs; improve their health, reduce disease, increase egg production. Run better faster with stronger young chicks or money back.

**FOR SALE BY RED CROSS PHARMACY**

**Wait For The WATKINS MAN**

I am located just north of the East Ward School Bldg. 600 S. 7th St. R. T. Bohannon

**IT COSTS YOU NOTHING**

For me to figure your job.

**A. A. DeVORE**

Building Contractor Slaton, Texas

**General Merchandise For Sale**

Will Trade for small farm. If interested, see

**I. N. ALLISON**  
Posey, Texas

On Slaton and Lubbock Highway, Rt. 1, Slaton.

**MOTHERS**

Watch for symptoms of worms in your children. These parasites are the great destroyers of child life. If you have reason to think your child has worms, act quickly. Give the little one a dose or two of White's Cream Vermifuge. Worms cannot exist where this time-tried and successful remedy is used. It drives out the worms and restores the rosy hue of health to baby cheeks. Price 25c. Sold by

**CATCHING'S DRUG STORE**

**Enjoy GOOD HEALTH**

and the spirit of happiness

**White's Remedy**

For a lovely skin and a sweet breath, avoid auto-intoxication. A SAFE, DEPENDABLE LAXATIVE

**CITY DRUG STORE**

**Amherst to Celebrate Fourth Anniversary**

AMHERST, Texas, July 8.—Amherst will celebrate her Fourth Anniversary on July 29th and 30th, with a monster celebration including free barbecue. Complete Carnival Attractions. Fast Ball Games. Hackberry Slim's Renowned Rodeo. Prominent Speakers. Horse Races. Goat Roping. Foot Races. A Big Dance each night. Band throughout each day. \$1,000.00 in prizes.

Four short years ago, Amherst territory was traversed by the cowboys and lone coyotes. Today she boasts of a town of 1200 citizens. Fine schools, churches, waterworks, and excellent roads. The territory surrounding the city is dotted with fine farm homes with thousands and thousands of acres under cultivation.

10,000 people were present last year. 10,000 more will be present this year. 25 beavers will be slaughtered to satisfy the carnivorous appetites of the masses.



**Pure Jersey Milk**

Delivered Twice Daily. We solicit your patronage on the merits of our product.

**FLORENCE JERSEY DAIRY**

**Taylor's Service Cab**  
Phone 306W  
Meet All Trains DAY OR NIGHT

**SORE GUMS NOW CURABLE**

You won't be ashamed to smile again, after you use Leto's Pyorrhoea Remedy. This preparation is used and recommended by leading dentists and cannot fail to benefit you. Druggist returns money if it fails.

**TEAGUE DRUG STORE.**

**SIGNS YOU CAN BELIEVE IN**

If your breath is bad and you have spells of swimming in the head, poor appetite, constipation and a general no-account feeling, it is a sign your liver is torpid. The one really dependable remedy for all disorders in the liver, stomach and bowels is **Herbine**. It acts powerfully on the liver, strengthens digestion, purifies the bowels and restores a fine feeling of energy, vim and cheerfulness. Price 60c. Sold by

**CATCHING'S DRUG STORE**

**ESTRAY SALE NOTICE (BY COMMISSIONER)**

On Monday, Aug. 1, 1927, I v to the highest bidder, for co E. E. Wilson farm, 1 mile west ton, in Lubbock County, Texas in the hours prescribed by is following described estray etc wit: Two black horse mules, a hands high, no brands. One y on right front leg above knee 6 to 8 years old. Also one bla mule about 14 hands high, no about 6 or 7 years old.

Said stock was estrayed by the 13 day of June, 1927, and held one month, as the law re

**J. T. PINKSTY**  
Co. Commissioner, Precinct Lubbock County, Texas.

**WITH SOFT WATER**

we are enable to give you a better laun service.

**SLATON STEAM LAUNDRY**

If you want to build a home, or take present loan, you may now do so with

**UNITED SAVINGS BANK**  
Detroit, Michigan

—on easy monthly payments. S

**J. H. BREWER, Agent**  
At First State Bank Slaton, T

**Have you ever made good on one job.. for 39 years?**

**THE** extra mileage you get from Dunlop tires starts with the fact that Dunlop has had thirty-nine years of tire-building experience—more than any other tire-maker.

Each part of each Dunlop is built right. Dunlop owns its own cotton mills to spin selected long-fibre cotton into the special Dunlop cable-twist cords.

These cords mean extra strength—an added factor of safety against constant load and pounding of roads—longer life and greater mileage.

They mean extra "stretch"—so the tire carcass will give under blows, and come back to its original shape without the slightest injury.

Every Dunlop you buy has extra miles built into it because Dunlop knows each part of its job. That is why we recommend you put Dunlops on your car.

**JACKSON Chevrolet Co.**  
Slaton, Texas

every 2 1/4 seconds someone buys a

**DUNLOP**

MEMBERS OF THE PNEUMATIC TIRE INDUSTRY

**CHEVROLET**  
for Economical Transportation

**There's a Chevrolet Truck for YOUR Business**

—offering all the quality features that have made Chevrolet the World's Largest Builder of Gear-shift Trucks

Whatever your business may be—whether you operate one truck or a fleet—whether your delivery problem is the transportation of fragile articles or of material of great weight, you can secure in Chevrolet a truck exactly suited to your specific business.

Among the many Chevrolet Truck bodies available, there is a type specially devised for every commercial and industrial requirement. Each offers the Chevrolet advantages of fine appearance, adaptability, driver comfort and protection.

Each is mounted on the famous Chevrolet chassis whose ruggedness is that of over-strength construction of up-to-date type proved on the greatest proving ground, and dependable, economical operation on such modern features as valve-in-head motor, 3-speed sion, over-size brakes, springs set to the load, air cleaner, oil filter.

If you want to speed up your and at the same time secure available ton-mile cost—come tell you about this modern world's largest builder of gear-shift

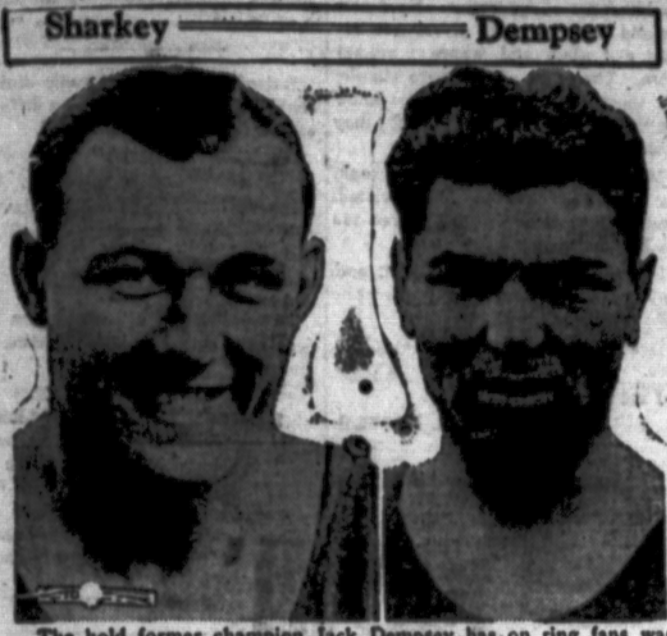
**at these Low Prices**

1-Ton Truck with Stake Body	\$680	1-Ton Truck with Panel Body	\$755	1-Ton Truck Chassis with Cab	\$915
1-Ton Truck Chassis	\$495	1-Ton Truck Chassis	\$395	All prices f. o. b. Flint, Michigan	

Check Chevrolet: Delivered Prices They include the lowest handling and financing charges available.

**Jackson Chevrolet Slaton Texas**

**THE WORLD'S LARGEST BUILDER OF GEAR-SHIFT**



The hold former champion Jack Dempsey has on ring fans was reflected in the big advance sale of tickets to the Dempsey-Sharkey battle in New York, July 21—as "Jack the Giant Killer" started the "comeback" trail for another battle to regain his title which he lost to Gene Tunney last fall.

### This Week



#### WILLIAM HOWARD TAFT. FATHER PLAYS BEAR. AND REASON TO BE THANKFUL. IF I HAD SOME MUSH.

Justice Taft says he likes the law better than the White House and, nearing his seventieth year, announces he will not retire. He certainly should not retire, for he owes to the public many future years of good effort. His mind and his smile are as young as ever, and every well informed man in the United States, big or little, would gladly submit any issue to the judgment of Chief Justice Taft.

In six hours New York's National Guard laid out an airplane base, ready for use, with radio, telephone and all other requirements. A fine achievement.

The United States Government should take as much time as necessary to provide an airplane base for every great city.

Governors Island in New York Harbor should be given up entirely to flying, with a big dock for submarines.

The richest city, New York, containing the United States Sub-Treasury and all its gold, is unprotected from the air.

There ought to be an air field there from which swift United States pursuit planes would rise like mosquitoes from a stagnant pond, to meet any invader.

Human beings are like children. A father plays "bear" with his little child, and the child is relieved when the bear stands up and becomes, once more,

In England the eclipse put out the sun, changing day to night, and everybody knew that it was only make-believe night. Nobody feared that "the devil was eating the sun." Nevertheless, when the eclipse passed and the sun came shining out once more, the crowds cheered. They were glad to have mother nature stop playing bear.

When Uncle Sam's fiscal year ended last week, he found a surplus of \$635,000,000. Secretary Mellon had "guessed" \$625,000,000, a good prophecy.

Uncle Sam really is a rich person and can afford anything he needs. He ought to dig canals, harness water power, build the greatest air and submarine fleets in the world. He should stop trying to persuade Europe to do what it doesn't want to do, attend to his own business and be in a position to make other nations mind theirs. Until this nation is prepared to defend itself against any ten other nations the Government will not have done its duty.

"Well done, but what did you do the next day?" Fokker, airplane builder, would have an answer ready for Napoleon's favorite question. On Wednesday a Fokker plane flew to Honolulu. Next day a Fokker plane reached France. Now Fokker announces a plane to fly, nonstop, for seventy-two hours, and go from Seattle to Tokio, 5,000 miles. This Government should contract with Fokker to keep him here for life building airplanes. Ancient Monarchs and Popes offered any inducement that would bring great artists to their courts. The great artist of today is the airplane artist.

On the Hudson, not ten yards from shore, off Sing Sing Prison, three boys were struggling. Prison guards could not leave their duty to save them. Convicts begged permission to save the boys, but the guards, rifles leveled, forbade them to follow their impulse, jump into the river and pull the drowning boys ashore. The three boys drowned while guards and convicts looked on, some of the latter weeping.

Once more those convicts feel that they never had a chance, not even a chance to help others, at risk to themselves.

They had a bad start in life, most of them, and things have gone wrong with them ever since. When they missed the opportunity to save life they again felt cheated.

If the prisoners had no chance in the beginning is not the fault of society, whose fault is it?

ICE COLD  
**KEGG BEER**

Big Glass  
5 Cents

**MUTT & JEFF**  
Ninth Street



### FRUIT THAT IS ALWAYS FRESH

ALL fruits contain a high percentage of the precious vitamins, as well as fruit acids, sugar, mineral salts and protein in varying quantities. The process of canning is now brought to such a point of perfection that these valuable elements are captured and practically no loss sustained. Hawaiian pineapple is particularly rich in food values, and also possesses medicinal qualities—among the latter a high percentage of bromelin—an aid to protein digestion. This all increases its food value, and since the American housewife has become better acquainted with its adaptability to any part of the menu, it has grown steadily in favor.

Either the crushed or the sliced pineapple is ready to serve just as it comes from the can. Though it combines admirably with other foods in various more or less complicated recipes, the most convenient way to use either kind is in unadorned simplicity, either by itself or with congenial accompaniments. To have this fresh fruit ready to serve without any preliminary hulling, coring, peeling, or cleaning, means a great deal to any housewife, not only in an emergency but in the regular course of household affairs. A few suggestions follow for serving pineapple either by itself or in quick combinations.

Crushed pineapple may be called pineapple sauce, for it is delicious eaten as pineapple sauce with hot biscuits or cake, or as an appetizer at breakfast.

Sliced pineapple has many emergency uses. An easy salad is made by placing slices on lettuce leaves, sprinkling with walnuts, adding a square of cream cheese and serving with mayonnaise dressing. Pineapple slices with ham, lamb chops, roast veal, chicken, or turkey make an excellent combination, the succulent tartness of the pineapple acting as a digestive for the meats. For a dessert, place slice of cake cut with a round cutter, on slices of pineapple, and top the cake with whipped cream or use crushed pineapple as filling for a cake. Ice cream or custard heaped on sliced pineapple makes a welcome variation in quick desserts.

One of the quickest substantial luncheon dishes that can be made is an omelet. A pineapple omelet is a delightful novelty. Make the omelet in the usual way, and when it is ready to be folded, lay slices of pineapple or well-drained crushed pineapple on half of it. Fold over, and serve immediately. Should anyone like the recipe for the omelet here it is: Add one-quarter teaspoon salt to four eggs and beat until light. Add three tablespoons hot water. Melt one tablespoon butter in a frying-pan and turn in the mixture. Cook slowly.

fast. It takes its place as a salad too, and is excellent for mixing with other fruits for a fruit compote, or as a sauce for ice cream, or for use as a filling in cantaloupe.

Sliced pineapple has many emergency uses. An easy salad is made by placing slices on lettuce leaves, sprinkling with walnuts, adding a square of cream cheese and serving with mayonnaise dressing. Pineapple slices with ham, lamb chops, roast veal, chicken, or turkey make an excellent combination, the succulent tartness of the pineapple acting as a digestive for the meats. For a dessert, place slice of cake cut with a round cutter, on slices of pineapple, and top the cake with whipped cream or use crushed pineapple as filling for a cake. Ice cream or custard heaped on sliced pineapple makes a welcome variation in quick desserts.

One of the quickest substantial luncheon dishes that can be made is an omelet. A pineapple omelet is a delightful novelty. Make the omelet in the usual way, and when it is ready to be folded, lay slices of pineapple or well-drained crushed pineapple on half of it. Fold over, and serve immediately. Should anyone like the recipe for the omelet here it is: Add one-quarter teaspoon salt to four eggs and beat until light. Add three tablespoons hot water. Melt one tablespoon butter in a frying-pan and turn in the mixture. Cook slowly.



**J. L. RICE**  
DENTIST  
Rooms 5 and 6, Odd Fellow Bldg.  
On Ninth St.  
Slaton, Texas

### SHEETROCK



**DECORATION**  
SHEETROCK, the fireproof wallboard, takes any decoration—paint, paper, or Textone (the plastic paint). We recommend Sheetrock for this reason, as well as its firesafety, strength, endurance and permanent freedom from vermin.

**Panhandle Lumber Co.**

### Specials for Saturday

GALLON, TEXAS New Crop <b>BLACKBERRIES</b>	.48
48 lbs. Extra High Patent <b>FLOUR</b>	\$1.83
NEW, per pound <b>SPUDS</b>	.04 1-2
No. 1, DRY SALT <b>BACON</b>	.16 1-2
SUGAR CURED GEM <b>BACON</b>	.18
MOTHER'S, With China <b>OATS</b>	.29
2-lb. box COMET <b>RICE</b>	.19
5-lbs. ARMOURS <b>PEANUT BUTTER</b>	.92
No. 2 1/2 Can <b>HOMINY</b>	.09
Per Pound <b>PRUNES</b>	.09
ANY FLAVOR <b>ICE CREAM POWDERS</b>	.09
PACKAGE <b>MACARONI OR SPAGHETTI</b>	.05
MAXWELL HOUSE, 1/4 lb. box <b>TEA</b>	.20
MAXWELL HOUSE, 1/4 lb. box <b>TEA</b>	.38
Box KELLOGG'S <b>BRAN FLAKES</b>	.08

AMOUNTS OF \$2.50 AND OVER DELIVERED. PHONE NO. 197.

**Hokus Pokus**  
Money Talks



**GUARANTEED USED CARS**  
We would be pleased to show you our stock of Used Cars, which have been reconditioned and painted—Made to look and run like new ones.

**Slaton Motor Co.**  
Authorized Sales and Service  
Cars—Trucks—Tractors

Genuine Personal Service at

# PIGGLY WIGGLY

*It's Foolish to Pay More and Risky to Pay Less*

At PIGGLY WIGGLY you find Genuine Personal Service which cannot be improved upon until you find a better way of waiting on yourself.

As an example of Genuine Personal Service, you select your own Fruits and Vegetables, so you get exactly what you want — and when you get home you do not find a few of them spoiled or useless.

Personal Service Guaranteed Because You Do It Yourself.

Coffee	BLOSSOM PEABERRY 3 Pound Can	1.00
Hominy	GOBLIN BRAND No. 2 Can	.06
Peas	SUPERFINE SWEET WRINKLED No. 2 Can	.17
Soap	PALMOLIVE 3 Bars	.19
Post Tosties	LARGE Package	.10
Corn	CONE BRAND No. 2 Can	.10
Tea	LIPTON'S 1-2 lb. Package	.39
Baking powder	K. C. Regular 50c size	.35
Cocoanut	BAKERS 1-4 Pound	.10
Mustard	FRENCH'S 9 oz. Jar	.12 <sup>1</sup> / <sub>2</sub>
Apples	GALLON Cans	.44
Gold Dust	SMALL Package 3 for	.10
Syrup	DOMINO Gallon Size	.74

## MARKET SPECIALS

Beef Roast	PER POUND	.15
Sausage	PURE PORK PER POUND	.18
Barbecue	IN GRAVY PER POUND	.18

### JUST A RHYME

#### PROGRESS.

The world goes on and still improves,  
Though some would block it as it moves;  
To "save from ruin" still they tried  
And fought all progress 'til they died.

These good old souls have helped us out,  
Because they had their stuff about;  
We'll have it still and keep it high,  
E'en though its owners have to die.

No taxes there to ache about,  
No preachers' salaries to "help out,"  
No "beggars" there their trade to ply;  
They'll miss all that when'er they die.

No public school or college grand,  
Will need be built in that good land.  
About such things they'll cease to sigh—  
These good old souls, when they shall die.

Up there no bond election fights,  
For water works or electric lights;  
These things were all arranged on high,  
Before these good old saints could die.

'Tis well all paving has been done,  
In silver, gold and precious stone;  
No new improvements up on high,  
When these old saints and sinners die.

LEM SONE.



H. F. Rice, of Ft. Worth, was a guest of his brother, Dr. J. L. Rice, here Tuesday.

E. L. Sumner and family returned last week from visits in Whitewright and Breckenridge.

C. A. Porter and family returned last Friday from an outing trip. They spent most of the time in the mountains of New Mexico.

Mr. and Mrs. Hugh McCelvy, of Vernon, are here on a visit with the latter's parents, Mr. and Mrs. Jno. Dabney.

Mr. and Mrs. E. E. Phillips are visiting with relatives in Nevada, Texas.

Mr. and Mrs. J. H. Whitaker, Mr. and Mrs. H. G. Whitaker and W. E. Olive and family are enjoying a fishing trip to the Concho.

Mrs. H. C. McDavid and children left Friday for their home in Dallas, after visiting here in the homes of Jno. Dabney and Charlie Suits.

Mr. and Mrs. A. L. Young, young newlyweds of Slaton, left Wednesday, July 20, for California, on their honeymoon. They were accompanied by relatives, Mr. and Mrs. Joe W. Tate. They plan to visit friends and relatives in various parts of California and Old Mexico.

Mr. and Mrs. E. T. Lawrence, who live just east of Slaton, have as their guests this week, their sons, F. R. Lawrence, of Denison, Texas, and Emmett T. Lawrence, Jr., of the U. S. Army, who is stationed at El Paso; and a daughter, Mrs. Irene Moore, and two sons, of Savoy, Texas. They are visiting also with their brother and sister here, Frank L. Lawrence, and Mrs. Lillie Hoover.

Rufus Tekell, of the Slaton State Bank, returned last week from Merrens, Texas, where he enjoyed a visit with his parents, Mr. and Mrs. E. H. Tekell. His parents accompanied him here, and after visiting a few days with their two sons, J. S., and Rufus, left Tuesday for visits to other points.

Mrs. M. B. Tate returned Tuesday from a visit with friends and relatives near Ft. Worth and Weatherford.

Mrs. John Ecker was taken to a Lubbock sanitarium Tuesday evening, where she underwent an operation.

E. T. Williams is in Midland this week, looking after the interests of the Williams Auto Supply there.

Mrs. R. A. Baldwin and children are enjoying a visit with her mother at Long Beach, Calif. Zeka, in a recent letter to his father, Attorney Baldwin here, states he is having a big time fishing and swimming in the Pacific.

Miss Nancy McElreath, of Sherman, was here this week visiting with her cousin, W. W. Dawson, and family.

The O. D. McClintock family returned the latter part of last week from Dallas, where they spent several weeks, while Mr. McClintock received treatment for his eyes. Mr. and Mrs. McClintock are now giving their attention to their furniture store on

N. B. Busby, who lives on Route one, out of Wilson, was in Slaton last Friday on business. Mr. Busby is a breeder of thoroughbred Ancona chickens, and he is placing a few fine cockerels on the market.

L. M. Williams, owner of Williams' Transfer & Storage, returned last Friday from Hot Springs, in New Mexico, where he spent several weeks' vacation. J. W. Nesbitt, who accompanied him there, will remain for another week.

C. V. Head, local architect, has secured contracts on a \$60,000 high school building to be constructed at Quitaque, and on a \$22,000 rural school building for Lazbuddy, near Muleshoe.

Mrs. Eddie Johnson and children returned Saturday to their home at Sweetwater, after visiting here with H. A. Johnson and family, and other relatives and friends.

Mrs. L. E. McCranie is visiting with her parents at Abilene.

Mr. and Mrs. R. H. Todd and children have returned from a trip to Carlsbad Cavern, and other points in New Mexico.

Miss Virginia McKirahan, of Amarillo, is visiting friends here this week.

Mrs. S. A. Peavy and daughter, Doris, are in Long Beach, Calif., where they expect to visit for several weeks.

Mrs. W. H. Bowman has returned from the Lubbock Sanitarium, where she recently underwent an operation. Her condition is reported to be much improved.

F. V. Williams and Fred Jones were business visitors to Lubbock Monday afternoon.

Mr. and Mrs. L. J. Taylor brought their baby home Monday, after having it in a Lubbock sanitarium for several days for treatment. The baby's condition is much improved.

Mrs. W. B. Montague left the latter part of last week for a visit with relatives at Greenville, Texas, and McAlester, Oklahoma.

Art Green and family returned Friday from an extended visit to the coast.

R. C. Darwin has gone to Petersburg, in Hale County, where he will manage a lumber yard, which is being established there by Stephenson Bros., of Tulsa.

Mr. and Mrs. Percy Olive have moved into the R. C. Darwin residence.

Mrs. H. P. Porter, of Marceline, Mo., is here on a visit with her daughter, Mrs. W. R. Lovett, and family. Mrs. Lovett accompanied her mother from Amarillo here Sunday.

H. G. Sanders and A. Kennel visited the oil fields in Ward and Winkler counties the latter part of last week.

Mrs. C. C. Drexell and daughter, Mrs. J. W. Baker, and her family, and V. T. Baker and family, are enjoying a fishing trip to the San Saba river.

Misses Nola and Edna Stonesifer, of Hamlin, Texas, are here this week visiting their sister, Mrs. T. J. Ervin.

Born, to Mr. and Mrs. A. R. Goding, Sunday, July 17, a nine-pound boy.

Mrs. T. M. George and daughter, Miss Maggie Wallace, and Mrs. E. L. Ross, who was visiting here from Blooming Grove, were Lubbock visitors Monday afternoon.

Rev. Thos. O'Brien and sister were in San Angelo early this week.

F. A. Harberson and family visited Sunday with relatives in Ralls. They were accompanied home by their nephew, M. V. Martin, who is visiting in the Harberson home.

Ben E. Smith, of Stinnett, formerly of Slaton, was here last Friday on business.

Mr. and Mrs. T. B. Cobb and son, M. L. Cobb, visited here Tuesday with their son and brother, Roy Cobb, of Rockwell Bros. & Co.

Mr. and Mrs. W. R. Ivy have returned from an extended stay in Florida.

Mrs. E. L. Ross, of Blooming Grove, left Wednesday for Clovis for a visit, after visiting here with her brother, T. M. George, and family. Mrs. Ross was accompanied here by a nephew, Dudley George, of Blooming Grove, and niece, Miss Gene Scott, of Clovis.

Flake Young, son of Mr. and Mrs. C. V. Young, has returned from Houston, where he has been employed as salesman in a shoe store.

John Bull, of Gates Dry Goods, was a business visitor in Lubbock Tuesday.

L. A. Wilson and brother, Carroll, and wife, left Sunday for Edgewood, Texas, where they are visiting their parents, Mr. and Mrs. T. M. Wilson. L. A. will be joined there by his wife and daughter, Lena Lee, who have been visiting with relatives in points in Arkansas.

W. E. Brooks and niece, Miss Ruby Mae Ernest, and Miss Alvesta Lenk, left Tuesday for their homes in Houston, after visiting here with the former's brother, E. S. Brooks, and family.

### Lutheran Church

SOUTHLAND: Sunday School at 9 a. m.  
Services, 10 a. m.  
POSEY: Services, 2:30 p. m.  
Sunday School, 3:30 p. m.  
A. B. WEISS, Pastor.

### CARD OF THANKS.

We take this means to express our thanks to our many friends and acquaintances for their kindness in the loss of our loving husband and father, and for the beautiful floral offering.  
May God bless each of you is the wish of Mrs. H. M. Serratt and children.

### WIN ONE CLASS.

The Win One Class will meet in business and social meeting at the Club House, Friday afternoon, 3 o'clock, July 22. Hostess are those having birthdays in July.

All members are urged to be present and bring someone with you.  
Reporter.

### Posey Items.

The farmers were visited by a fine rain Wednesday afternoon of last week.

Mr. and Mrs. E. Henderson and son, E. J., and Mrs. Castland visited O. R. Patterson and family Saturday night. G. W. Johnson and family spent the week end in New Mexico.

Mrs. Connell, of Roswell, New Mexico, is visiting her sister, Mrs. Dock Carroll.

Mr. and Mrs. W. E. Wallace, of Trenton, Texas, spent Saturday night with I. N. Allison and family.

Mr. and Mrs. Burns, of Los Angeles, California, are visiting in the home of their son, W. E. Burns.

Mr. and Mrs. Mert Gentry spent Sunday afternoon with her mother. Bro. Tidwell, of New Hope, preached to the people of this community Sunday afternoon.

Mrs. Connell spent Monday night with Harvey Carroll and family.

W. E. Burns and family, Mr. and Mrs. Edd Burns, Mrs. Effie Gentry, Mr. Terrell and son, Marvin, and Mrs. Connell spent a delightful day Friday on the canyon, fishing.

Misses Zena Patterson, Nellie Johnson, Baby Burns, Alma Gentry and Messrs. Oda Williams, Boston Patterson, and Walters, and Buck Cresson, were here Sunday afternoon with Miss Baby Allison.

ORDINANCE NO. 50.

BE IT ORDAINED BY THE CITY COMMISSION OF THE CITY OF SLATON, TEXAS:

An ordinance granting a franchise and certain privileges to the West Texas Gas Company (a corporation, with its principal office in the City of Amarillo, Potter County, Texas), and establishing rules and regulations for the use of natural gas for light, heat and power, and establishing a maximum limit for price to be charged for such gas.

WHEREAS, West Texas Gas Company (a corporation) has applied to the Mayor and City Commission of the City of Slaton, Texas to grant said company the right to lay and maintain and operate a gas plant for the distribution of natural gas for light, heat and power within the City of Slaton, Texas, upon the following terms and conditions, and reservations, such rights and franchises to be as follows, to-wit:

**Section 1.**  
That the right to furnish, distribute and sell natural gas for light, heat and power, for all such other purposes for which gas may be used within the City of Slaton, Texas, for a period of twenty years from the date of the passage and approval of this ordinance is hereby granted to the West Texas Gas Company (a corporation), its successors and assigns, hereinafter called the grantee, subject, however, to the provisions hereinafter incorporated in this ordinance and for such additional period or extensions of time as may be satisfactory to the officials of the City of Slaton, and to this grantee, and provided that this ordinance and franchise is to be in effect and run from and after the day and date of its passage and approval.

**Section 2.**  
That the said grantee is to have the right to lay mains, pipes and equipment, and to construct such buildings and install such machinery or equipment and to sell or lease such equipment to the citizens of Slaton, Texas, as may be necessary or advisable in their judgment for the proper performance of the service to be rendered to the City of Slaton, and to its citizens and inhabitants to the best interest of the gas consumers and to have, at all times, access to the streets and alleys of said City for the purpose of laying such mains, pipes and equipment as may be needed from time to time during the term of this franchise, or any extension thereof, provided, that at no time shall the grantee obstruct such streets or alleys so as to interfere with the public use thereof for a period longer than twenty-four hours, and that immediately such streets or alleys shall be replaced in the same or as good condition as before such work was done.

All excavations to be properly guarded by barriers by day and by red lights at night, and the said grantee shall hold the said City of Slaton harmless from any and all damages to persons or property resulting from their negligence in the manner of constructing such distributing plant or system and guarding the same while under construction, by a good and sufficient bond executed by the grantee and some reputable surety company permitted to do business in the State of Texas, in the penal sum of Twenty-Five Thousand Dollars (\$25,000.00).

The work done in connection with the construction, maintenance and operation of said plant and transmission, transportation and distributing system, and the location of regulating stations, vent pipes, gate valves, gauges, stock boxes, manholes, low, intermediate and high pressure mains, pipes, feeders, service pipes and conduits, and service pipe extensions and all appurtenances in the streets, highways, alleys and other public places in the City shall be subject to and governed by the regulations, rules and ordinances now in force or that may be hereafter lawfully adopted.

**Section 3.**  
That all mains shall be laid at least one and one-half feet below the surface of the ground, and so laid as not to interfere in any manner with water mains or pipes or sewer lines of said City, or pipes or conduits of other utilities already installed; and that the connections with the gas mains shall be placed and laid to the property line of the consumer at the expense of grantee. That the grantee shall not be required to extend main lines more than one hundred and fifty (150) feet to any one consumer.

**Section 4.**  
That said grantee shall at all times after said gas distribution system has been established and placed in operation, be prepared to furnish said

**DR. W. N. LEMMON**  
Diseases of Children and Women—Surgery

**DR. W. J. HOWARD**  
Dentist  
224-5 Temple Ellis Bldg., Lubbock, Tex

**Renew Your Health by Purification**

Any physician will tell you that "Perfect Purification of the System is Nature's Foundation of Perfect Health." Why not rid yourself of chronic ailments that are undermining your vitality? Purify your entire system by taking a thorough course of Calotabs—once or twice a week for several weeks—and see how Nature rewards you with health. Calotabs are the greatest of all system purifiers. Get a family package, containing full directions. Only 25 cts. At any drug store. (Adv.)

City and its inhabitants with a good quality of gas for light, heat and power, and other purposes, and said grantee shall furnish such gas for all purposes for which same may be used in sufficient quantities to supply the needs of the said City and its citizens.

The said gas shall be furnished to said City and its inhabitants for domestic use at a net price not to exceed sixty-seven and one-half (67½) cents per thousand cubic feet for all gas used; provided however that gas used for heating public buildings, churches, hotels and apartments shall be sold at the following rates:

- For the first 50,000 cubic feet used per month, 67½ cents per M;
  - For the next 100,000 cubic feet used per month, 50 cents per M;
  - For all used per month in excess of 150,000 cubic feet, 40 cents per M.
- That the maximum rates for industrial gas shall not exceed the rates set out in the following schedule:
- For the first 50,000 cubic feet used per month 45 cents per M;
  - For the next 150,000 cubic feet used per month 35 cents per M;
  - For the net 300,000 cubic feet used per month 30 cents per M;
  - For the next 500,000 cubic feet used per month, 25 cents per M;
  - For the next 10,000,000 cu. ft. used per month 22½ cents per M;
  - For the next 20,000,000 cu. ft. used per month 20 cents per M;
  - For the next 29,000,000 cu. ft. used per month 18 cents per M;
  - For the next 60,000,000 cu. ft. used per month 16½ cents per M;
  - For the next 120,000,000 cu. ft. used per month 15 cents per M.

That all above rates are to be charged for gas used through one meter only.

That all bills shall be due and payable monthly, and within ten days from date rendered, and in case of default or non-payment within said time, the grantee shall have the right to discontinue service to said customer, and to make an additional charge for the gas used for any purpose equal to one-ninth (1-9) of the bill rendered. And in case said consumer shall make application to have services re-established and gas re-connected with his premises, he shall be required to pay all delinquent bills, together with the penalty thereon, and to pay a cut on charge not to exceed \$1.50 for domestic use and heating purposes, and \$2.50 for industrial use. It is further provided that the grantee shall be allowed to make a minimum charge of \$1.50 per month for gas for domestic and heating service and \$25.00 per month for industrial gas service.

All gas furnished or supplied by grantee shall be metered, and for this purpose the grantee shall, at its own cost and expense, provide and install for each consumer a good and accurate meter of standard make, to be approved by the City Commission, and when grantee reads its meters to determine the amount of gas furnished each month, a copy of such reading shall be left with or at the residence or place of business of the consumer. Grantee shall also provide and maintain at its proper cost and expense facilities for testing gas meters, to be to the satisfaction of and approved by the City Commission; and said grantee shall also provide and maintain, at its proper cost and expense a standard meter prover of not less than five cubic feet capacity, to be selected by the City Commission, equipped with suitable thermometers and other necessary accessories which shall be maintained to the accepted standard of accuracy, all to be to the satisfaction and approved by the City Commission.

Such meters shall be and remain the property of the said grantee, and the grantee shall have the right to require the customer or consumer to deposit with it a sum equal to the maximum monthly bill of the consumer, provided, however, that no deposit shall be in a less sum than \$10.00 for domestic meter, and \$15.00 for industrial meter.

**Section 5.**  
The natural gas to be furnished hereunder shall be at all times kept to a standard of eight hundred British thermal heat units or higher per cubic foot at the point of consumption, at a temperature of thirty-two degrees Fahrenheit, or zero Centigrade; and to determine whether the gas supplied is of the heating value above specified, the City of Slaton may have tests made by a competent analyst under recognized and scientific processes, according to the approved method of making such tests, and said tests shall be from samples of gas collected from the grantee's mains at any point or points within the City. If the result of such tests show that during a month the daily average of the gas supplied was below eight hundred British thermal heat units, then there shall be deducted from the customer's bills for gas during such month a proportionate amount, based upon the deficiency below said eight hundred British thermal heat units. In any month when such tests are being made, the city shall advise the grantee of the result of each test within a reasonable time after it is made, and the official report of such analyst, of which said grantee is so advised, shall be taken and accepted as the agreed prima facie correct test of the heating value of the gas furnished during such month and thereafter until a different result is determined or ascertained in a similar manner; said grantee shall furnish gas to consumers at a pressure of not less than four ounces, nor greater than eight ounces, measured at the consumers' meter outlet.

Said grantee shall supply and install not less than four, and as many as may be needed approved self-registering pressure and gas gauges capable of recording the pressure of the gas, in the mains at points in the city designated by the City Commission, and said self-registering pressure gauges shall be placed at stations which, in the opinion of the City Commission, fairly represent the pressure on adjacent territory; and such station shall be securely inclosed under locks, and duplicate keys to said stations shall be retained by the City Manager,

or some officer authorized by the City Commission; and such self-registering pressure gas gauges shall be equipped with removable recording dials to record the pressure, and the said City Manager, or some representative authorized by the City Commission, shall remove or cause to be removed from said pressure gauges the pressure records of the preceding period, and provide the gauges with recording blanks for the next period during which such record is desired by the City; and each record taken from such pressure gauge shall be filed in the office of the City Secretary of the City of Slaton, and a record thereafter be entered upon the books of the City by said City Secretary; and the said City Manager, or some representative authorized by said City Commission, shall keep self-registering dials in said pressure gauges continuously for a month, or as often as is required by the City Commission; and the said gauge record and the said book record shall each be competent and prima facie proof of the pressure at the point at which such record was made at the time as shown by said gauge record.

Each consumer of gas shall install and maintain suitable piping within his property lines and suitable appliances and fixtures, except meters, subject to the approval of the City Commission, or such supervisor, inspector or other representative as may be authorized by said City Commission to pass upon the same.

**Section 6.**  
The City reserves the right to lay and permit to be laid electric conduits, water and other pipe lines or cables, and to do and permit to be done any underground work that may be deemed necessary or proper by the City Commission in, across, along or under any street, alley, highway, or other public place occupied by the grantee; and whenever, by reason of changes in the grade of any streets, or in the location or manner of constructing any water pipes, electric conduits, sewers or other underground structure, it shall be deemed necessary by the City Commission to alter, change, adapt or conform gas mains and service pipes of grantee, such alterations or changes shall be made by the grantee when ordered in writing by the City Commission or any supervisor or other representative of the City Commission so authorized to act, without any claim for reimbursement for damages against the City; said grantee shall indemnify and save harmless the City of Slaton from any and all claims for injury or damages to persons or property occasioned by or arising out of the construction, maintenance, operation or repair of said grantee's transmission, transportation and distributing system, and by the conduct of the business in the City.

**Section 7.**  
The right to use the streets, alleys, highways or other public ways or places of the City of Slaton by the grantee, as provided in Section 2 above, shall be and is subject to the following restriction, limitations and conditions, viz: that in building additional mains or lines of pipe, said grantee shall build and construct the same along and under the alleyways, where alleys exist, rather than along and under streets, and shall only use the streets for same insofar as may be necessary in connecting from one alley to another; and said mains and pipe line shall be so laid that the top of said main or pipe line shall be placed below the surface of the street or alley and so as to protect all paving, wire cables, water pipes, underground wires or sewer laterals, and shall be so constructed and located with reference to water lines and sewer mains as not to interfere therewith, and under the direction and to the satisfaction of the City Commission or the City Engineer.

**Section 8.**  
That the City Commission hereby reserves the right to install at the point where said grantee receives its gas for distribution in the city a meter through which all gas distributed to the City and its inhabitants shall be passed, an adequate self-registering pressure gauge adequate to record the amount of gas distributed to the City and its inhabitants and the pressure at which the same was received by the grantee.

Said grantee shall also supply and install one distant pressure gauge under the direction of the City Commission and at the place designated by the City Commission, which will indicate the pressure at such designated point, said gauge to be placed in the City Hall in the office of the City Engineer.

**Section 9.**  
That said grantee shall make, not oftener than each six months, reports to the City Secretary of the City of Slaton, under the oath of the President, Treasurer or Superintendent of such company, showing the gross amount received from the business done within the city in payment of charges of gas for the six months next preceding.

**Section 10.**  
That after the said gas distribution system shall have been fully constructed, equipped and in operation as herein provided in the City of Slaton, if the said grantee shall then fail to substantially comply with the conditions of this franchise, the City of Slaton shall have the right by ordinance duly passed therefor to forfeit all the rights and franchises herein granted to the said grantee, provided that the City of Slaton shall give the said grantee, its successors and assigns, sixty (60) days' notice in writing, specifying the conditions claimed to have been violated, and giving full and fair opportunity to be heard thereon before declaring such forfeiture, which notice shall fairly and fully set out all of the conditions claimed and complained of and shall be given by the said city and shall be signed by the City Secretary under the seal of said City, after having been properly authorized by the Mayor and City Commission of the said City; provided, however, that the said grantee shall have sixty (60) days after receiving such notice in which to rectify and correct such violations and to sub-

stantially comply with the terms and conditions of the ordinance; should the violations of this ordinance so complained of not have been rectified and corrected and the terms and conditions of this ordinance fully complied with at the end of said sixty (60) days, then, and in that event the City shall have the power to forfeit this franchise on account of the violations specified in said notice. That in case of forfeiture as herein provided, the City of Slaton reserves the right to purchase the distributing plant of the grantee at a fair appraised value or to allow the grantee to remove same within one year from the date of such forfeiture, provided, that before any of said property may be removed, the grantee shall be required to give to the city a good and sufficient bond that the streets and alleys will be placed and left in as good condition as found.

For each and every breach or violation of any of the provisions of this ordinance by the grantee, it shall be liable to a penalty of Twenty-five Dollars to be recovered in any court of competent jurisdiction by suit, of any person, firm or corporation injured or damaged by such breach or violation; and if the breach or violation shall be a continuous one, each day during which such breach or violation continues shall be deemed a separate breach or violation and a separate ground of recovery against the grantee.

**Section 11.**  
That in further consideration of the privileges and franchise granted to the West Texas Gas Company, it shall adopt and use any and all reasonable safeguards to provide for the protection of persons or property against injury or damage growing out of the use of gas and that they shall construct and maintain in good order all mains, pipes and equipment used in said City for the distributing of gas, and shall always be prepared to furnish said City and its inhabitants a sufficient quantity of gas for all purposes, provided, however, that in case of explosion or accidents of any character or nature beyond the control of grantee, to the main lines or to the distributing system provided herein, or shortage of gas supply in the fields from which the grantee secures the gas and the grantee is not able on account of such unavoidable conditions to furnish gas for all purposes, that preference shall be given domestic consumers, schools and hospitals in the use of gas until such time as the supply may prove adequate for all purposes. Provided further that grantee shall not be liable for any damage resulting from such accidents either to the lines of the grantee or to the lines on property of consumers.

**Section 12.**  
That this franchise is granted to the grantee herein on the representations and distinct understanding that similar franchises have been, will be or may be granted to it by the Cities of Canyon, Tulia, Lockney, Plainview, Floydada and Lubbock, and that each franchise will provide for the sale of gas at the same price and that payment therefor will be made on the same terms as provided herein, and it is hereby provided that if at any time any one or more of the above cities makes the requirement that gas shall be sold at a lesser price, or on more favorable terms, and the same are acquiesced in by the grantee, or if the grantee at any time sells to any of the above cities, or the inhabitants thereof, at a lesser price, or on more fav-

orable terms of payment, then and in that event the City shall have and hereby reserves the right to amend this franchise to provide for the sale of gas at the same price or prices for like use, and on the same terms of payment granted to any one or more of the above cities, and the inhabitants thereof, the purpose of this provision being to provide that the rates for the sale of gas for like use and the terms of payment therefor, shall be uniform in this and all of the above named cities, provided however, that in the event gas is found at or near any of the above named cities of sufficient quality and in sufficient quantities to be used therein, that the above provisions as to the equalization of rates shall not apply.

**Section 13.**  
It is provided that the grantee shall be prepared to serve gas to consumers on or before January 1st, 1928, provided, however, that grantee shall not be liable for time consumed out of such period by strikes, acts of providence, acts of constituted legal authorities, or acts beyond the control of grantee.

**Section 14.**  
That the grantee herein shall have the right and privilege of assigning this franchise and all the rights and privileges granted herein, and wherever the word "grantee" appears herein it shall be construed as applying to

**W. L. Huckabay, M. D.**  
Slaton, Texas  
Special Attention Given to Diseases of Women and Children  
Office in City Drug Store  
Phones: Office, 243; Res., 175

its successors and assigns.  
Section 15.  
This ordinance shall take effect and be in force from and after its passage and approval and publication as provided by law.  
PASSED AND APPROVED THIS 6th day of July, A. D. 1927.  
S. F. KING,  
Mayor, City of Slaton, Texas.  
ATTEST:  
(SEAL) HARVEY AUSTIN,  
City Secretary.

STATE OF TEXAS,  
COUNTY OF LUBBOCK,  
CITY OF SLATON, ss.  
We, the undersigned Mayor and City Secretary of the City of Slaton, in Lubbock County, Texas, do hereby certify that the within and foregoing is a true and correct copy of the ordinance and franchise approved and passed granting to the West Texas Gas Company the right and privilege to use the streets and alleys and public grounds of the City of Slaton for the purpose of laying and maintaining gas lines for the distribution of natural gas to the City of Slaton and the inhabitants thereof for a period of twenty (20) years, and that such ordinance was duly read, approved and passed as required by the City Charter of said City, and duly signed by the undersigned Mayor and attested by the undersigned City Secretary this 6th day of July, 1927.

S. F. KING,  
Mayor, City of Slaton, Texas.  
ATTEST:  
(SEAL) HARVEY AUSTIN,  
City Secretary, City of Slaton, Texas.

Slatonite subscription, \$2.00 per year.

**Save Money  
Order Coal  
NOW**

**Now Is The Time to Coal Up**

First of all, prices are less now than they will be later. The supply of Coal which you prefer to burn is greater. We have a supply of good Lump Coal. Order a good supply now and save on your fuel bill.

**Slaton Grain & Coal  
Company**

**Bank Your Money--**

Where you are always certain of getting courteous attention. Where you're given every convenience of the big city bank and where you know your interests are well safeguarded.

For those reasons alone you'll enjoy banking here. We do our utmost to make every patron feel that this is his or her Bank. That they can come in any time, feel right "at home" and free to ask any favor within our power to grant.

**Slaton State Bank**

Officers:  
R. J. MURRAY, Pres.,  
W. E. SMART, Vice Pres.,  
W. E. OLIVE, Active Vice Pres.,  
CARL W. GEORGE, Cashier,  
J. S. TEKELL, Ass't. Cashier.

Directors:  
R. J. MURRAY,  
W. E. SMART,  
W. E. OLIVE,  
CARL W. GEORGE,  
W. S. POSEY.



# Palace Theatre

The Bright Spot of Slaton

FRIDAY, July 22  
At Reduced Prices

LON CHANEY  
In His Latest and Newest Play  
"MR. WU"

Here he is the armless wonder, who eats, drinks, smokes, and does everything with his feet that we use our arms to do. In the realms of Oriental settings, and a new type in store for Chaney. Remember, regular admission prices for this new feature, 10c, 25c, 35c

SAT., July 23, Matinee and Night

MILTON SILLS in  
"THE SEA TIGER"

Here is what we promised you—the fastest action picture Milton Sills ever made. He is in the cast of a Canary Island Spaniard and he lives up to the part. Milton Sills will not only win your approval in this fine story, but he will also win your friendship. There is a Big Storm, and a tense battle—Action, Action and More Action, and every foot spells entertainment. It's the same bill "ONE WILD RIDE" a two-act Fun Comedy.

MONDAY and TUESDAY  
July 25-26

EDDIE BRIDGE  
GRIFFITH in  
"A LADY IN ERMINE"

Founded on the Operetta by Rudolph Schanzer, a story laid to Royal Austrian Society.

WEDNESDAY - THURSDAY  
July 27-28

PAULINE STARKE and BEN LYONS in  
"DANCE MAGIC"

Those who dance must pay the Piper. She danced right into the heart of Broadway and then found Broadway didn't have a heart. The Gay White Way she had seen, in her dreams was just a lot of hokum, loneliness and sin-copation. It's a Big Play, with a Tremendous Moral that strikes over blows. Slaton, as usual, fight home, with sledge-hammer shows this big play first. Watch, the cities will show it soon.

COMING SOON  
"The Eagle of the Sea"  
Paramount Special Production

## PERSONAL MENTION

(Crowded Out Last Week)

Mr. and Mrs. J. M. Stephens and son, Fred, returned Saturday from Whitewright, where they visited several days with relatives.

Giron Bradley, son of Mr. and Mrs. J. I. Bradley, left Wednesday morning for Austin, where he will spend the remainder of the summer.

H. D. Talley has returned from Odessa, where he has spent the past few weeks looking after business matters. Mr. Talley states that Odessa is still booming.

Nat Pace and wife left Wednesday for their home in Houston, after visiting here with the latter's brother, R. W. Ecott.

Mrs. S. A. McClung and daughter, Billie Jo, left early this week for Bonham, in response to a message advising of the serious illness of Mrs. McClung's mother there.

Mrs. Vrona Blanton came in last Wednesday from Lawton, Okla., to visit with her daughters, Mrs. Joe Bickerstaff and Mrs. Dude Forkner.

Mrs. J. W. Story left Tuesday on a two weeks' vacation, which she intends to spend with relatives in Tennessee and Kentucky. She was accompanied from Amarillo by her parents, B. F. Bennett, and family, of that city.

James Florence, son of Mr. and Mrs. W. P. Florence, is able to assist his father on his delivery route, after suffering from a broken arm which he sustained in a recent fall from a tree.

Artie Baker, of Lockney, was in Slaton last Friday transacting business.

### TRAFFIC RULES MUST BE OBEYED

Hereafter all traffic rules must be obeyed. Look after your lights, your brakes and your horn. Drive right—use traffic signals. Go slow—be careful and let's all get along.

S. F. KING, Mayor, City of Slaton.

### Local Marine on Pacific Battleship

SAN DIEGO, Calif., July 18.—After a short period of preliminary training as a U. S. Marine on land, Ernest C. Carroll, of Slaton, Texas, left this post for a tour of sea duty with the U. S. Marine detachment aboard the U. S. S. New Mexico, recently reported to be at Bremerton, Washington.

Although U. S. Marines serve at many shore stations in the United States and in our possessions abroad many of them prefer duty on battleships and cruisers, where they have an opportunity to travel from port to port and occasionally come ashore for recreation and sightseeing.

Ernest lived at the home of his father, William A. Carroll, in Slaton, before he joined the Marine Corps at Los Angeles, last March. Prior to going aboard the New Mexico he was stationed at San Diego, where he received instructions in the drills, customs and duties of marines.

### Union News.

C. R. Mullenix transacted business at the county seat last Saturday.

P. D. McKinnon and family have moved to Midlothian in Ellis county. They were accompanied by Mr. and Mrs. Lacy Shook, who will also make their home there.

There will be a community singing at the Methodist Church next Sunday night, July 21. Everybody come.

R. V. Claxton Mullenix, R. D. and Malcolm Pressly attended the 4-H Club encampment at Lubbock last Friday and Saturday. They were accompanied by their club leader, Mr. Long. A very profitable and enjoyable time was had.

Mrs. Joe B. Shook had returned home from a two weeks' visit in Terrell county, where she visited with her son and daughter, Cyril Shook and Mrs. Thomas.

We understand that Messrs M. G. Davis and Eugene Legg have purchased the Union Gin, and will put it in first class condition.

Miss Naomi Denny, of Lubbock, spent the week end at the home of her parents, Mr. and Mrs. E. Denny.

At a meeting of the 4-H Club a short time ago, presided over by our County Agent, D. F. Eaton, Claxton and R. V. Mullenix were elected to represent the Club at the A. & M. Short Course at College Station. They

will leave Lubbock on next Friday, the 22. The Chamber of Commerce of Slaton, which believes in aiding and abetting all such movements for the improvement and education of the boys who are putting forth every effort for advancement, has generously furnished the Club the means to send these boys to this encampment. The C. of C. of Lubbock also appropriated funds to defray expenses of other club boys to the meeting. We are proud to say that these boys thus honored by their companions, will do their very best to learn all that is possible and make a good report of their visit to this great institution of learning.

Quite a number from here attended the community singing at New Hope last Sunday afternoon. The Gentry quartet from Posey was present and rendered several fine selections. Mr. Lewis Richardson, leader of the New Hope class extends a cordial invitation to everybody to meet with them the next third Sunday, Aug. 17.

The revival meeting of the Union M. E. Church will begin the first Sunday in August, the 7th. Brother Thompson, the pastor, will do the preaching. He is a "sure" good preacher. Come out and hear him. He will entertain you and you will make it a point to attend every meeting after you hear him once. There will be good singing, under the leadership of a competent leader. You are invited to be present with us.

Our good friend, C. R. Crone, has moved his family to Shallowater, where he has been employed to overhaul one of the large gins of that place and will also have the running of the gin the coming season.

### ITEMS FROM LUBBOCK SANITARIUM BULLETIN

Mrs. Alma Moore, of Slaton, who had her tonsils removed several days ago, will return home today.

Mrs. J. L. Sledge, of Slaton, who has been in a very serious condition on account of a ruptured appendix, is much improved at this time.

### Just Tottering, So Weak

"I was in a bad state of health and was going through a critical time of my life," says Mrs. Ella Scarborough, R. F. D. 5, Dothan, Ala. "Several different things were recommended to me, but I did not get any real relief until I began to take Cardui."

"I was just as weak as could be. My legs were shaky, and often I would just totter around the house. I finally got so bad that I was in bed several weeks."

"It was then that I began to take Cardui. I kept it up for quite a while, and at last I regained my health. Cardui was certainly a friend to me in time of need."

"My health is splendid now, and I seldom have to use medicine, but I gladly say a word about Cardui whenever I find a friend going through the same suffering which I endured."

For sale by all druggists. 6-125

TAKE CARDUI A PURELY VEGETABLE TONIC

I am a bothersome bed bug!

I should be killed!

Bee Brand Powder or Liquid kills Flies, Fleas, Mosquitoes, Roaches, Ants, Water Bugs, Bed Bugs, Moths, Crickets, Poultry Lice and many other insects.

Powder Liquid  
100 and 250 500 and 750  
per and \$1.00 \$1.25  
per Spray Gun 500

Write for free booklet on killing house and garden insects

McCormick & Co. Baltimore, Md.

Bee Brand INSECT POWDER or LIQUID

Mrs. W. L. Jones, of Slaton, was operated on Monday and is getting along nicely.

Mrs. J. C. Jones, of Slaton, returned to her home last Wednesday, much improved since her operation.

Miss Dessie Mae Huff, of Slaton, was operated on Wednesday for appendicitis.

Miss Faye Tucker, of Slaton, who was brought to the sanitarium Tuesday, was operated on for appendicitis and is doing well at this time.

### I am the Cheated Child.

Eighty-two per cent of the children of America are born with a chance to be vigorous men and women. Only 17 per cent grow up without a handicap. The 65 per cent are cheated by life. I am the cheated child. I was born into this world with a chance to be happy, healthy and honest. I opened my eyes in a world that needed me. I came the seed of good fruit. I was given love, but not my chance. Tender arms held me; loving eyes smiled at me; soft

voices sang to me. But the gifts that God gave me were thrown away. I am the cheated child.

Those who loved me were blind with the blindness of ignorance. Food and air and light I was given, but not what and when and where I needed them. The rules of life were simple, but those who loved me did not know the rules. They did the best they could, but they did not know.

My mind is slow, my eyes are weak, my nerves are raw, my body twisted. I meet life with doubts and fears—too weak to make a winning fight.

I was born to work and laugh and play. I am 65 per cent of the children of my country.

Dear God, I am the future of my race.

I am the cheated child.

—A. B. FOSTER.

Following an injury to his head, a passenger aboard a liner going from Ireland to New Zealand recently was treated by wireless, the doctor at Londonberry sending directions for treatment through the air.

And Ditto  
He—Do you think men are made of dust?  
She (emphatically)—No. If they were, I imagine you'd dry up once in a while.

Raised characters on radio dials to enable the blind to tune in on different stations have been introduced.

Try This Boys  
Himme—What shape is a kiss?  
Herre—Give me one and we'll call it square.

The number of vitamins in a "hot dog" is soon to be determined by science.

BLEEDING GUMS HEALED.  
The sight of sore gums is sickening. Reliable dentists often report the successful use of Leto's Pyorrhoea Remedy on their very worst cases. If you will get a bottle and use as directed, druggist will return money if it fails.

TEAGUE DRUG STORE.

# We Have

plenty money to loan to build or refinance your home.

\$12.50 per thousand per month covers both interest and retiring principal over a period of 120 months.

Entire Cost—One percent of amount borrowed as commission, and a flat price of \$20 covers Attorney's fees, preparing papers and abstracting.

## Pember & Staggs

Post Office Block

# Easy Fitting Because

## RIGHTLY TAILORED

These Suits are marvels of easy-fitting comfort—Men. We believe it is because they are so well tailored, but of course, the splendid fabrics, the smart styling and the expert cutting all count in the fineness of the finished product.

Take the time to drop in and try on one or more suits. It will be time well spent, whether you are in the market for a suit or not.



We will figure One-Fifth (1-5) the Price Off for the Next Few Days.

# The MEN'S STORE

**CLASSIFIED ADS**

ALL KINDS bottled drinks on ice at the Slaton Produce Co.

FOR RENT—Large upstairs bedrooms, southeast exposure.—785 S. 11th St., Phone 135-J.

FOR RENT—Two room house near high school. Phone 135-J or 20. 1f

OLIVER Typewriter, A-1 condition, at a real bargain.—O. D. McClintock. 1c

WANTED—Second hand furniture. Write us at the Pohl building, east of the square, 165 Garza St.—W. J. Walker. 2tp

WANTED—To buy calves from two to nine months old.—Stone Market & Grocery. 47-1fc

FOR RENT—5-room modern stucco, 3 blocks from square.—J. H. Robertson. 47-2p

THOROUGHbred—Ancona Cockerels, April hatch. Have about 20. Will sell while they last at \$1.25 each.—N. B. Busby, Rt. 1, box 152, Wilson, Texas. 47-2p

Congoleum Rugs, the latest designs, cheap in price, high in quality. Come in to see us, you will find other bargains.—O. D. McClintock's Furn. 1c

PAPER HANGER wanted at the Cannon House.—Mrs. Adams, phone 42-J. 1c

4 GAL. Milk Cow for sale, worth the

money. Can be seen at poultry farm, 1 mi. south of town.—D. E. Scott. 1p

FOUND—Insigna knife. Small charge for adv.—The Slatonite. 1c

OLIVER Typewriter, A-1 condition, at a real bargain.—O. D. McClintock. 1c

FOR RENT—Two room house, near depot. Call 304-J. Unfurnished, or will furnish. 1c

PUREbred White Leghorn pullets 10 weeks old, priced reasonable.—Progressive Hatchery, Box 325. 1c

FOR RENT—Two furnished rooms and bath, in modern home. For information, call 88. 1tc

Congoleum Rugs, the latest designs, cheap in price, high in quality. Come in to see us, you will find other bargains.—O. D. McClintock's Furn. 1c

FOR RENT—Furnished house, close in, garage and all conveniences. Phone 269. 1c

The Col. E. O. Thompson scholarship of \$250 for the most deserving young man who is a member of the junior class, Dayle Wallace of Mount Calm.

The Col. E. O. Thompson scholarship of \$250 for the most deserving young woman who is a member of the junior class, Mrs. E. M. Barnett of Lubbock.

The Pan-Hellenic prize of \$25 for the student in the school of home economics having the highest scholastic standing, Miss Lola McPherson of Amarillo.

**MORGAN MENTIONS.**

Brother Darby preached his regular sermon at the school building Sunday afternoon. And a large crowd was present.

Everyone enjoyed a party at Mr. and Mrs. Rhodes', Saturday night.

Mr. and Mrs. John Gossett left for their home in Gatesville Thursday, after an extended visit with their son, Prof. C. A. Lawrence, and family.

Miss Louise Thompson spent Saturday night and Sunday with Miss Virgie Mills.

Mr. and Mrs. John Cosgrove and children left Saturday for Umbarger, where they will make their home. Mr. Cosgrove teaches school there.

Mr. and Mrs. Vernon Crews spent Saturday night and Sunday with Mr. and Mrs. R. L. Thompson.

Mr. and Mrs. Sherman Mills visited Mrs. Mills' parents, Mr. and Mrs. C. B. Mackie, Saturday and Sunday.

**They Are Like That**

When Dumbora heard that Betty swore she'd never been kissed, she said, if she had never been kissed, she'd swear, too!

**Throwing is Good.**

A forty-ton truck loaded with five thousand imported eggs recently overturned. Probably the truck was just throwing off the foreign yolk.

**Grand Exalted Ruler**



John F. Malley, of Boston, elected grand exalted ruler of the B. P. O. Elks after a bitter fight at a meeting of the Grand Lodge at Cincinnati, O., last week.

**Some More Specials To Look At**

GALLON <b>BLACKBERRIES</b>	\$ .47
NO. 2 CRUSHED, Per Can <b>PINEAPPLE</b>	.19
NO. 2 1/2 Y. C., Per Can <b>PEACHES</b>	.24
PALMOLIVE, 3 bars <b>SOAP</b>	.18
PER PACKAGE <b>POST TOASTIES</b>	.10
3 lbs. M SYSTEM SPECIAL <b>COFFEE</b>	1.24
GALLON <b>PICKLES</b>	.55
2 lbs. SALTINE <b>CRAX</b>	.29
GALLON, COMB <b>HONEY</b>	1.65



SLATON'S PIONEER SELF-SERVING GROCERY — PIONEER M SYSTEM OF THE SOUTH PLAINS

**THIRTEEN SCHOLARSHIPS HAVE BEEN AWARDED AT TEXAS TECH COLLEGE**

LUBBOCK, Texas, July.—Thirteen scholarships in Texas Technological College amounting to \$2300 have been awarded by the president and faculty. The complete list follows:

The W. C. Hedrick scholarship of \$250 for having the highest scholastic standing, Miss Owen Marle Fowler of Lubbock.

The John W. Carpenter scholarship of \$250 for the best work in textile engineering, DeWitt T. McGehee of Way-side.

The Clifford B. Jones scholarship of \$250 for hte best work in the school of agriculture, Warren Huff of San Antonio.

The Star-Telegram scholarship of \$250 for the best all-round athlete, Ransom Walker of Mission.

The faculty scholarship of \$125 for some worthy student, Wilson Drake of Kress.

The scholarship of \$100 for the best college citizen among the young women, Miss Anna Belle Collins of Channing.

The scholarship of \$100 for the best college citizen among the young men, Horace Grady Moore of Floydada.

The Dr. J. T. Hutchinson scholarship of \$100 for the young man who has the highest standing in English, H. C. Hervey of Chatfield.

The Dr. J. T. Hutchinson scholarship of \$100 for the young woman who has the highest standing in English, Miss Frances Smelser of Lubbock.

The scholarship of \$250 for the greatest excellence in oratory, Irwin Coleman of Vernon.

**Hand-Cut Pattern No. 1118**



Jaunty, youthful, becoming—never was a dress style more popular than the new bolero model. It is not only delightfully becoming but very easy to make. You can pick your own color combinations, black with black and white checks is smart. So is navy blue with bright red-and-white checked vestee, collars, cuffs and kerchief. Still another combination would be a solid color such as beige, blue or green with a lighter shade for trimming.

This pattern may be obtained in sizes 16 to 44. Size 36 requires 2 1/2 yards 40 inch material and 1/4 yard 40 inch trimming material. No dress-making experience is needed to make Design No. 1118 if you use this hand-cut individual pattern cut from heavy paper.

Patterns are delivered to any address upon receipt of 25c in cash or U. S. postage. Always mention size wanted. Address: Hand-Cut Pattern Dept., 17 West 28th Street, New York City—and always name this newspaper.

**Jessie Estelle James**



Grand-daughter of the notorious Jesse James is now in Los Angeles to play the part of her great grandmother, or the mother of the James brothers, in a movie of the lives of the West's famed bad men.

"I advise women to use long cigarette holders," declared Farmer Snikle-woffle, "for that will tend to keep them away from tobacco."

**Cash SPECIALS FOR SATURDAY**

- Cured Ham, per lb. 25c
- Boiled Ham, per lb. 42c
- Picnic Ham, per lb. 22c
- Slab Bacon, per lb. 33c
- Sliced Bacon, same grade, per lb. 35c
- These are the very choicest Hams and Bacon.
- Pure Pork Sausage, 1 lb. 20c
- Pure Pork Sausage, 2 lbs. 35c
- Dressed Young Fryers, per lb. 28c

Free Demonstration Sandwiches from Morris' Boiled Ham, and Armour's Grape Juice, will be served during the day. Everybody invited.

**WHITE STAR Market**  
E. M. FINCHER

**FARM LAND BARGAINS**

One 160 acre farm, all in cultivation in cotton, priced below value, crop to go with land, ideal location, see me for prices and terms.

**J. T. OVERBY, Real Estate**  
Phone 134 (As Old as the Town) Slaton State Bldg.

**WILLIAMS TRANSFER & STORAGE**

We Specialize in Moving. Good, Careful and Responsible Men.  
LONG DISTANCE HAULING.  
Daily Truck Service Between Slaton and Lubbock—Truck Leaves Slaton at 8 a. m. Call Us Day or Night.  
OFFICE PHONE 51 NIGHT PHONE 174  
119 NORTH NINTH ST.

**Are you using the right oil?**

YOUR car's life can be prolonged by using the right kind of oil. On the other hand, it will be materially shortened if you use the wrong kind. Conoco Motor Oil is made to meet specific requirements. For instance, there's one grade of Conoco Motor Oil made especially for your car. You'll find it listed on Conoco chart. Use the proper grade of Conoco and forget your lubrication worries.

**CONTINENTAL OIL COMPANY**  
Producers, Refiners and Marketers of high-grade petroleum products in Arkansas, Colorado, Idaho, Kansas, Missouri, Montana, Nebraska, New Mexico, Oklahoma, Oregon, South Dakota, Texas, Utah, Washington and Wyoming.

**CONOCO**  
REG. U. S. PAT. OFF.  
Motor Oils  
**Extra Life for Your Car**  
AND BE SURE TO USE CONOCO GASOLINE packed with extra miles

**"WE'RE IT!"**

It is a great pleasure to know just where you can go any time and get exactly what you want in the drug and drug sundry line. Our store is that store.

COLD DRINKS—CIGARS—CONFECTIONS

**CATCHING'S DRUG STORE**

Your Service PHONE 92