



# BAILEY COUNTY JOURNAL

"The Community of Opportunity-Where Water Makes the Difference"

VOL. 9 NO. 45

8 PAGES

Published Every Sunday at Muleshoe, Bailey County, Texas - 79347

10 CENTS

SUNDAY, NOVEMBER 7, 1971

## Weather...

	HIGH	LOW
Nov. 3	68	29
Nov. 4	59	29
Nov. 5	74	34
Nov. 6	74	34
Moisture for year 16.18		

# Mules Edge Out Levelland 14 - 13

## Baptists Return From Crusade

### Trip To Spain Termed Rewarding

The following is an account given to the Journal by the Reverend Doug DuBose, Pastor of the First Baptist Church, who recently returned from a revival crusade in Spain. Making the trip with him were Mrs. Dubose, Mr. and Mrs. John Crow, Mr. and Mrs. W. G. Harlan, Mr. and Mrs. Mark Grimsley, Kenneth Precure, Mrs. Mildred Neely and Reverend Larry Henry.

On Wednesday, October 13, eleven people joined ninety others from this area at Lubbock Regional Airport for a revival crusade in Spain. By the time this group reached New York, it had grown to 250 people, who boarded a 747 jet for Madrid, Spain. After an all

night flight, the group was greeted by several members of the Spanish Baptist Union at Melia Castilla Hotel. The Spanish Baptists sang "Blessed be the Tie" in Spanish, and the Americans responded by singing "What a Friend We Have in Jesus" in English.

Thursday and Friday was spent in recuperation, gathering material and preparing for the individual crusades. An orientation meeting was held Friday night for the entire group. There to meet us were representatives from the American Embassy, representative from the office of the governor of Spain and mayor's office, and even a representative from the Catholic Bishop's office. Each in his own way extended a hearty welcome. All of the team captains, preachers and singers, had enjoyed a meeting at the American Embassy the night before. We felt honored that Ambassador Bell and three ministers spoke to us personally.

### around muleshoe with the journal staff

Alex Williams was recently elected secretary of the South Plains Association of Governments. The meeting was held at Lubbock and is an organization of city and county governments covering a 14 county area.

Vera Engelking has returned from Omaha, Nebraska where she attended funeral services for an uncle, Herman Kay of Oakland, Iowa. She was accompanied by her cousin, Henry Leaders.

### 'Horns Take Matador In Class B Tilt

The Lazbuddie Longhorns traveled to Matador Friday night. The Matadors were disappointed as the Longhorns ruined their Homecoming.

Halfback Arthur Graves hit pay dirt early in the first quarter from 66 yards out. Mark Barnes kicked the point after. Minutes later, Graves broke through the line and traveled 78 yards untouched for the score. PAT by Barnes failed. Matador came back and saw Bill Barnhill throw a touchdown pass to Dwayne Campbell PAT by Barnhill was good.

The second half saw no scoring as neither team posed a serious threat.

Big Jim Noland teamed up with Mark Barnes and Thomas Kevin to hold Matador to one touchdown. Noland turned in an excellent defensive game accounting for 32 tackles.

The final score was Lazbuddie 13, Matador 7.

The group from Muleshoe was joined by Mrs. Mamie Dunn, a colored lady from Deaver Colorado; Mr. and Mrs. Walter Buice, Greenville, formerly of Muleshoe; and Mr. and Mrs. Gale Dunn from the Richardson Heights Baptist Church where he is the minister of music. Together, we made the trip to Sevilla, Spain. This trip, made by train, took some twelve hours, Sevilla being 300 miles south of Madrid. A large delegation from the church came to meet us, but since we were four hours late, they gave up and went home. Since there was no one to meet us, we were fortunate to have Brother Larry Henry with us, who speaks Spanish. So, we were soon comfortably situated at the Fleming Hotel.

We met with the congregation at Sevilla for the Sunday service. It was an experience of love at first sight. We found these people to be the most gracious, unselfish and loving

### Citizens Protest Loose Dogs

One local woman has expressed her opinion to the Journal on loose dog problem in Muleshoe. She stated that she is tired of loose dogs that relieve themselves in her front yard and tear up her flower beds. The woman, who prefers to remain anonymous, said many of the dogs running loose in Muleshoe have owners who are not keeping them restrained.

At the last city council meeting Albert Field, city manager, was instructed to arrive at a salary to pay a fulltime dog catcher in order to alleviate the stray dog problem in the city limits.



Shown above are Brownies of the Muleshoe Girl Scouts as they were gathering litter and trash in the Babe Ruth field and boy scouts grounds. This was done in honor of Girl Scout Day, Saturday, November 6; and to aid in the Muleshoe clean-

up campaign. Pictured left to right are Jacinda Gleason, April Green, Beth Harvey, Tena Landers, Rachel Chavez, Laurie Seay, Terry McCamish and Terri Martin.

people we had ever met. We could not speak their language, but genuine love is a common language to all.

On Monday morning, we had an audience with the governor of the province in which Sevilla is located. I presented to him an honorary citizenship of the state of Texas signed by Governor Preston Smith, and also our own brochure from the Muleshoe Chamber of Commerce. I informed him that this

### Membership Drive Is County Wide For Water Inc.

Solicitors of the Bailey County Unit of Water, Inc., have launched an intensive 45-day drive for new members. The effort is a part of an area wide membership campaign and is aimed at swelling overall membership totals to 3,000. There are currently 65 paid-up Water, Inc., members in Bailey County.

The campaign was launched with an organization-wide kickoff meeting in Lubbock October 9. The special emphasis will continue throughout the month of November and during the first half of December.

Water, Inc., was formed in 1967. It is a non-profit organization dedicated to the search for water for the future. It has more than 2,500 members in West Texas, Eastern New Mexico and the Oklahoma Panhandle.

Heading up the membership drive in Bailey County is Joe Harbin. He challenged his neighbors in Bailey County not only to give their financial support to Water, Inc., but to participate in county unit activities with an eye toward becoming leaders in the quest for tomorrow's water.

Membership dues to Water, Inc., are deductible as a business expense.

## FHA Has Various Loans Available

The Farmers Home Administration is an agency of the U.S. Department of Agriculture and operates in every county in the United States. The Bailey County office is located at 115 E. Avenue D in Muleshoe. Clinton Kennedy is the county supervisor, Patrick Sultenfuss is the assistant county supervisor, and Dorothy Scott is the county office clerk.

Kennedy informed the Journal that the agency has three objectives: (1) to build the family farm system, (2) to provide adequate housing in small town and rural areas, (3) to provide water and sewer systems for small communities.

He said one of the distinctive features of the agency is that it does not compete with

### Tickets Still Available For Riley Show

BAC chairman, Bob Stovall reports that there are still good tickets available for both performances of the Jeannie C. Riley Show Monday night at 7 and 9 p.m. in the Muleshoe High School auditorium.

Tickets are priced at \$2.50 or general admission in advance, \$3.00 for general admission at the door and \$4.00 for reserved seats.

Members of the Junior Class at Muleshoe High School are in charge of tickets. Tickets can also be bought from any bac member, the local Chamber of Commerce and from several participating merchants.

During intermission of both performances a candy sale will be conducted with prizes donated by local businesses being in hundreds of the bags of candy.

Stovall also stated that there will be some good tickets available at the door Monday night and a booth will be set up before each performance.

The Muleshoe Mules traveled to Levelland Friday night to tangle with the Levelland Lobos. The Mules were ready to play ball from the sound of the starting whistle.

The Levelland Lobos after receiving the ball on a Heathington punt went to the air. Quarterback Craig Hudson threw to halfback Mike Seifert, however, Muleshoe halfback Jaarell Bara came up from his cornerback position and made a jarring tackle and knocked the ball loose. Hayes fell on the ball and set up his first touchdown of the night.

Midway through the first quarter halfback Bobby Hayes broke through the opposing line and traveled 88 yards to pay dirt with 2:12 left on the clock. Don Heathington kicked the extra point to make the score 7-0, Muleshoe favor.

Levelland came back in the first quarter, when quarterback Hudson connected with halfback Mike Seifert for eight yards and the first Levelland score of the night. Steve Kickpatrick kicked the extra points.

With only 2:01 left in the first period, Mules quarterback Don Long pitched to Donnie Wheat who in turn found end, Tommy Clements, open and connected on a fifty-five yard pass play for touchdown. Heathington then kicked the point which later proved to be very important. The second period saw no scoring on the part of either team. The Mules picked up eight first down the first half, to Levelland's four. The two teams went in during intermission with a 14-7, Muleshoe leading.

### Police Report Halloween Night Unusually Calm

Highway patrolmen, Gene Sisemore, reports that last Saturday's Halloween trick or treat night was unusually calm. Last week city police arrested 2 sleepers while county officers took in 3 minors for possession of alcohol, 1 for child support, 2 sleepers, 1 for worthless checks, 4 for felony thefts, one DWI, and 2 drunks.

### Cotton Harvest To Be Next

Late irrigation and wet fall compounded the damage from the freeze for some unlucky farmers but most cotton fields in Bailey County should be turning white. Raining seasons should give way to dry open weather that is favorable for normal opening of the cotton.

Some fields with lake areas were still too wet to get through with a combine at the end of this week. Most combines that were able to run, were running long hours to complete the corn and make a big dent in the grain sorghum crop. 85% of the corn has been harvested and about half of the grain sorghum.

Carrot harvest continues with most of the other vegetables already harvested and the freeze killing what was left.

### Idea Session Sponsored By Chamber

An idea session has been scheduled by the Muleshoe Chamber of Commerce for Tuesday, November 16, at the city council chamber meeting room. The session will begin at 7:30 p.m. with co-chairman and moderator Derrell Oliver going over some of the Chamber projects of the past year. After the brief orientation about what the chamber has done, they will be separated into groups of six to come up with new ideas and suggestion.

Cont. on page 3, col. 2

Cont. on page 3, col. 2



EARLY TOUCHDOWN...Halfback Bobby Hayes (44) carries 88 yards early in the first quarter, to bring Mules first score of the night. Hayes was the leading ground gainer with 176 yards. Hayes now has a total of 52 points for the year.



TWO INJURED; Extensive damage was sustained to two pickups in a wreck which occurred last Tuesday, 6 miles northwest of Muleshoe. Drivers of the vehicles were Jimmy Dale Black and W. B. Harlan. The two were taken to West Plains Hos-

pital. Latest reports were that Black is improving after surgery and no change in Harlan's condition which was considered serious at press time. It was believed he may have sustained internal injuries.





# MULE'S TALE



Official Publication of Muleshoe High School Written and Edited by Students of the Muleshoe Schools

Vol. 7 NO. 9

EDITOR Jan Jinks

SUNDAY, NOVEMBER 7, 1971

## School Spirit Is Promoted At MHS

### Juniors Sack Candy For Musical Show

Monday night, November 1, was the night sixteen Junior class members met at sack candy to be sold during intermission at the Business Activities Committee Sponsored "Jeannie C. Riley Show" which will be held Monday night, November 8. Also present were class sponsors Mr. Kerry Moore, Coach George Washington and Mr. and Mrs. Keith Taylor.

These hard working Juniors sacked 4,000 sacks of candy in one hour and fifty minutes. A coke party was held at the Corral Restaurant afterwards with Mr. Moore picking up the tab. Any one wishing tickets for any of the two performances should contact any of the Sponsors or any Junior. A ticket sale was held Saturday, November 6, at eleven different places downtown. Reserve seat tickets were also sold then.

### Student Council Plans Campaign

About 400 prizes will be given away during intermission Monday, November 8. These prizes were donated by Muleshoe merchants.

### Sophomore Class Meets

The Sophomore Class met Tuesday, November 2, to discuss the result of the "Spook House" at the Halloween Carnival. Half of the profit went to the Fine Arts Department. About 435 people went through the "Spook House." It was really a great success, and the Sophomore Class would like to thank everyone who helped with "The Spook House."

## Miss Rempe Crowned Halloween Queen

The night of October 30, marked the beginning of the annual Halloween Queen Coronation at 10:00 p.m. The festivities began with the Stage Band directed by Mr. Jim Harvey, playing "Promises, Promises" and "Close to You."

Next, the 1970-71 Halloween Queen, Miss Donna Woodard, welcomed all the guests, and began the introduction of the three lovely contestants.

First was Miss Kay Douglas, representing art, second was Miss Jolene Rempe, escorted by Perry Hall. They represent speech II and Thespians. The final contestant was Miss Jenny Milburn, escorted by Danny Blaylock, and representing the Band.

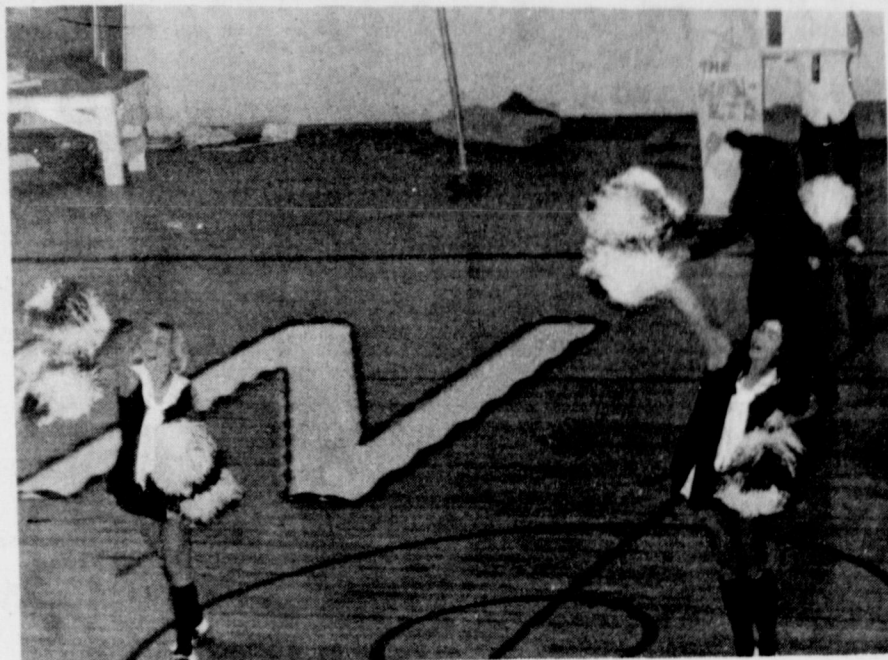
There was an FTA meeting November 3, 1971. Plans for attending the District Convention in Levelland on November 13 were discussed. Jeannie Putman will be running for the District Parliamentarian. FTA members will get together to make posters for her campaign. Lunches will be \$1.75 per person. Those going will meet at 7:30 a.m., at the High School. The convention starts at 9:00 a.m., all FTA members attending will receive 10 points.



KING AND QUEEN...Crowned king and queen of the Halloween Carnival were Perry Hall and Jolene Rempe. They are member of the Thespians Troupe 714.



Rand Baker and a stubborn Mule defense proved to be the winning margin in the Mules victory over Tullia. Rand blocked a Tullia punt on the Hornet's five yard line and Don Heathington recovered to give the Mules the ball inside the one yard line. Bobby Hayes then scored behind the blocking of Donnie Wheat and Ricky Black. Other outstanding defensive plays came from David Wheat and Bobby Hayes. Although the Tullia defense lived up to its reputation, allowing only forty-seven points this season, Don Long directed the Mules to fourteen first downs to Tullia's one. Donnie Wheat churned out most of the yardage against an aggressive, fast, pursuing Hornet defense. The next three games are with Levelland, Canyon, and Perryton. They, along with the Mules, must have three straight wins to have a part in the District Championship. These games are vitally important to the Mules and the Coaches encouraged all Mule fans to come out and back their team.



SENIOR CHEERLEADERS...Judy Winn and Kay Douglass are in great form as they lead the spirited student body in the pep rally before the game between the Muleshoe Mules and the Tullia Hornets.

## Financial Aid Is Available For College Bound Students

Austin, Texas -- Financing one's studies at a college or university may seem, at first, an impossibility for some prospective students, especially those whose families are unable to bear the costs of a higher education. Even some of the more affluent families soon feel the pinch of the tightened purse strings. Unknown to many, however, are the multitude of loans, grants, and scholarships offered by various educational institutions which can provide each student the opportunity to pursue his higher educational goals. Loans are available through both the federal and state governments. For those students who will teach or enter the military service following graduation, the National Defense Student Loan (NDSL) holds special benefits. Up to one-half of the borrowed principal may be cancelled annually at a rate of ten percent or twelve and one-half percent, respectively. As much as \$1,000 per academic year may be borrowed at a deferred yearly interest rate of three percent; the repayment period is ten years after leaving college. To qualify for this loan program, one must prove financial need and the ability to perform college work.

Families in the middle or upper income group who find it a financial strain to support a college student may wish to investigate another government program, the Federally Insured Loan (FIL). Some banks and other participating financial institutions grant loans up to \$1500 annually which are guaranteed by the federal government. If the applicant's family has an adjusted income of less than \$15,000 per year, the federal government will pay all the interest during the duration of his schooling. Upon completion of his studies and a six-month period of grace, the borrower is obligated to commence minimum monthly payments of \$30 and an interest charge of seven percent per annum. Eligibility for this loan requires a good academic standing and at least half-time enrollment, i.e. eight semester hours. For those students anticipating a career in law enforcement, the Law Enforcement Educational Loan may be helpful in solving financial problems. These loans are available to applicants who are enrolled in a program of studies directly related to law enforcement and are planning a career in this field. The maximum amount of the loan is \$1800 per academic year. A program handled by the State of Texas, the Hinson-Hazlewood College Student Loan, is open only to state residents. Up to \$1500 per year may be borrowed under this program at a deferred yearly interest rate of seven percent. Aside from loans, there are other programs designed to assist needy students. The Connally-Carrillo Act provides an exemption from payment of tuition and certain fees if the following conditions are applicable:

1. Placement in the upper 25 percent of one's high school class or a score in the top 20 percent of the national norm on the College Entrance Examination Board of American College Testing Progress Exam; 2. Gross family income for the last tax year not exceeding \$4800; 3. Not accepting any other scholarship awards. Scholarships are administered on the basis of financial need and academic merit; the latter criteria is usually weighted more heavily than it is for loans. A new scholarship fund created by the 62nd Texas Legislature, Regular Session, was available for the first time beginning with the Fall, 1971 semester. It provides additional assistance for students attending public institutions of higher education. Some scholarship funds are established to place more emphasis on financial need rather than academic merit and are awarded by each public senior and junior college in the state. Various other scholarships, indigenous to each particular school, are available as well as the Tuition Scholarship which is awarded in the amount of \$25 per semester for Texas residents who have sufficient financial need. Educational Opportunity Grants are awarded students with exceptional financial need and whose family income is less than \$9,000. The grant, which can be no more than half the student's total assistance, is matched with funds from other loans, scholarships, and jobs. In addition to an acute financial need, one must indicate academic or creative promise and be enrolled on a full-time basis to qualify. Part-time employment is yet another method of meeting educational expenses. College Work-Study, a federal program, is available to those students indicating financial need and who are enrolled on a full-time basis. Under the guidelines of this program, students are placed in various departments and offices on the college campus or in non-profit organizations in the local community. In addition, this program frequently provides full-time summer employment in the student's home town. Other than the programs offered through financial aid offices, there are many other sources of assistance. Students, inquiring independently, often locate scholarships, jobs, and other awards through various local organizations and companies. For more specific information about these and other programs, inquiries should be mailed to the Office of Student Financial Aid at the institution where the student plans to enroll. Each university has different deadlines for the filing of aid applications, some of them being as much as nine months before the beginning of school. To qualify, one must meet these deadlines. If the University of Texas at Austin is a college choice, information may be obtained at the following address: The University of Student Financial Aids, P.O. Box 7758, University Station, Austin, Texas 78712.

## Thespians Pick Donna Woodard

The "Best of MHS" this week is Donna Woodard. She has shown several great abilities this year and has given MHS good representation. Donna is President of MHS Thespians Troop 714, a student council representative and senior class reporter. She was also co-chairman of Jolene Rempe's Halloween Carnival Queen Campaign and a co-chairman of the Senior Class Chili Supper. She has two older brothers and two sisters. One sister, Judy is also a Senior at MHS. Donna and her family moved here her Freshman year from Montana. We congratulate you, Donna, and give you the grateful thanks you deserve.



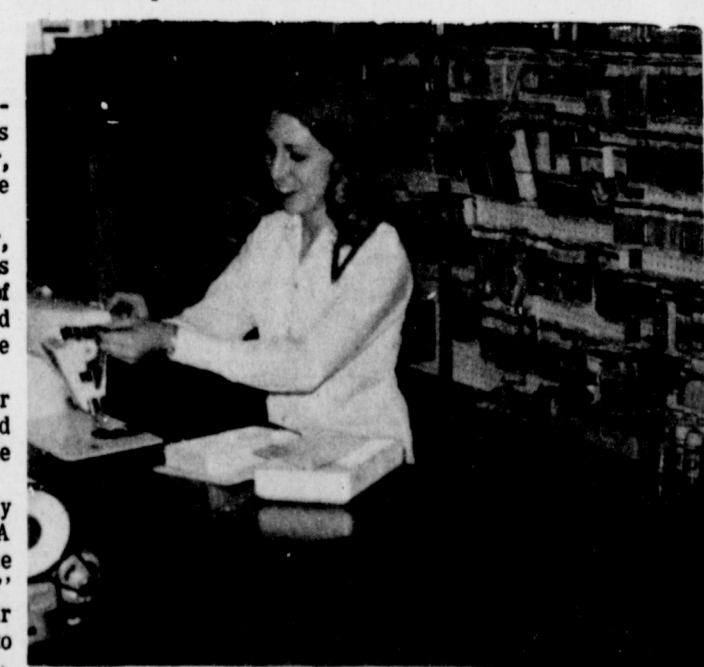
DONNA WOODARD

Silence Is Golden One thing about not talking too much is that you get the benefit of the doubt. -Star, Norfolk.

## Miss Carter Is HECE Student Of The Week

Peggy Carter, a Senior at MHS, is working as a clothing assistant at Harvey Bass Appliance. Some of Peggy's duties are learning to use machines and to demonstrate the different stitches and care for machines. She uses equipment efficiently and safely. Peggy is also learning to recognize characteristics of fiber content, and she assists customers in selection of patterns which are suitable to the fabric, suitable to the customers figure type, of suitable design for the occasion, the correct size, and within the customer's ability to construct. Peggy is the daughter of Mr. and Mrs. J. R. Carter, who live nine miles south of Muleshoe. She is a member of FTA, FHA, and is the President of the Hero Chapter of FFA.

Members of the three Muleshoe High School FFA Chapters will have a family night supper, Tuesday, November 8, in the Cafeteria at 7:30 p.m. In addition to the supper, Homemaking II and III students will present a style show of garments recently completed either as classwork or home experience. Girls will bring the food for the supper. Hot rolls, tea and coffee will be prepared in the lunch room. The purpose of the family supper carries out a goal of FFA "To emphasize the importance of worthy home membership." All FFA members and their families are encouraged to come. Girls please sign up in the Homemaking Department if you and your family plan to attend.



HECE STUDENT...Peggy Carter is learning to use sewing machine so that she may assist her customers.

## Basketball Season Begins

Girls basketball season opened on November 2 with Meadow. Both the Varsity and the B girls played. The Varsity lost to Meadow with 50-42. The B girls also lost with 33-28. The starting forwards for the Varsity were Judy Winn, Jeannie Putman, and Tani Murrach. The guards were Audrey Winn, Regina Hardaway and Lizan Gunter.

The starting forwards for the B girls were Glenda Harlin, Donna Grimsley, and Denette Mann. The guards were Laticia Rogers, Sammye Mardis, and Terry Bryant.

The girls also played Meadow here Saturday at 5:30 in the Junior High Gym.

## Cheerleaders Plan Rally

The Pep Squad met Friday, October 29, 1971. Tickets were sold for the Tullia game and the pep rally was discussed. A card section was planned for the pep rally. Mr. Mark Gist, sponsor, spoke on improving the spirit of the Pep Squad and the student body. Janis St. Clair, head cheerleader, discussed the cheerleaders' plans for the pep rally. Mrs. Glenn Harlin then talked about MHS spirit and ways to improve it. The meeting closed with encouragement for Spirit and a yell as members filed into the hall.

## FFA Schedule Busy Month

The Muleshoe FFA Chapter is very busy at this time of year. Entries for the Houston Livestock Show are being made.

The Citrus Fruit sales have started, and the Chapter is very busy studying Parliamentary Procedure for the Leadership Contest at Friona, November 10, 1971. Also the Chapter has three voting delegates going to the District Banquet at Springlake, December 6, 1971. The delegates are John Street, Ricky Black, and Nicky Nickels. These delegates will be voting for the District Sweetheart. The Muleshoe FFA Chapter's representative for the Sweetheart contest is Brenda St. Clair.



### Muleshoe...

Con't from Page 1  
The monthly meetings of the George White Boy Scout District Committee and Commissioner Staff, and the Boy Scout Leaders Roundtable, will be held at 7:30 p.m. on Monday, November 8 at the First United Methodist Church in Littlefield.

District Chairman Earl Gerstenberger will conduct the district meeting, District Commissioner Warren Dayton will lead the commissioner staff session and the roundtable will be conducted by Tom Hilburn.

Reverend and Mrs. Walter Bartholf returned Thursday morning from Gurdon, Arkansas, where they attended funeral services for Mrs. Laura Langley. She was an aunt of Mrs. Bartholf. Returning with them was Mrs. Lula Trout, who is Mrs. Bartholf's mother.

### School Menu

- MONDAY  
Milk  
Red Beans  
Onions Rings  
Pickles  
Macaroni and Tomatoes  
Cabbage Slaw  
Corn Bread  
Apple Cider
- TUESDAY  
Milk  
Juicy Burger  
Pickles--Onions  
Lettuce and Tomatoes  
Tater Tots  
Whole Apricots  
Frosted Brownies
- WEDNESDAY  
Milk  
Turkey A La King  
Rice  
Green Beans  
Tossed Salad with French Dressing  
Pineapple in Orange Jello  
Cheese Biscuits  
Jelly
- THURSDAY  
Milk  
Hot Dog with Chili  
Creamed Potatoes  
Waldorf Salad  
Cranberry Crunch
- FRIDAY  
Milk  
Fish Portions  
English Peas in Cheese Sauce  
Buttered Corn  
Tomato Wedge  
Hot Rolls  
Harvest Gold Cake

### Football...

Con't from Page 1  
The Mighty "M" Band put on an outstanding halftime performance.

The third quarter saw no scoring. Both teams demonstrated excellent ball control as each team had only two possessions in the third stanza. The fourth and final period was action packed. Early in the final quarter, Lobo quarterback Hudson, connected with half-back Mike Seifert on a twenty-three yard pass to light the boards for the last time. The Lobos decided to run the extra point, but failed. This gave Muleshoe the one point advantage.

### FHA...

Con't from Page 1  
improve houses that are modest in size and cost but adequate to meet family needs. The loans are repayable up to 33 years at interest rates up to 7 1/4%. (5) Farm labor housing loans and grants made to finance low-rent housing for farm workers. The loans and grants may be made to an association of farmers, a county or city or an organization of farm workers. Under certain conditions the grant can be as high as 90% of the cost with the balance in the form of a loan repayable at 1 1/2% interest. Kennedy added that there are other loans available such as mutual self-help housing, rural rental housing, water and waste disposal loans and grants, soil and water loans and home-site development loans.

### Session...

The purpose of the project, according to the coordinator and co-chairman, Dave Sudduth is to give chamber member more of a say in chamber of commerce projects and to come up with new ideas for new projects. The Chamber of Commerce is made up of members who can make the organization go by contributing money, man power and mind power. Chamber members are asked to use their minds as a new technique will be employed to get them to think and really concentrate on what the Muleshoe C of C needs to do and second, how to do it. Mark your calendars now for 7:30 p.m. at the city hall, November 16; give one hour of your time toward building a better Muleshoe, urges chamber manager, Jerry Hutton.

**Bailey County Journal**  
Established March 31, 1963  
Published by Muleshoe Publishing Co., Inc.  
Every Sunday at 304 W. Second Box 449  
Muleshoe, Texas 79347  
Second class postage paid at Muleshoe, Texas  
Muleshoe, Texas, 79347.

TEXAS PRESS ASSOCIATION  
Member Since 1971

L.B. Hall, President  
James P. Hall, Sec.-Treas.  
L.B. Hall, Managing Editor  
Katie Fisher, News Reporter  
Lynette Small, Society  
Elizabeth Barnett, Advertising  
Patty Green, Office Manager  
SUBSCRIPTIONS:  
Zone 1--Bailey-Farmer--Cochran--Lamb  
copies: \$4.00 per year, \$4.50 per year by carrier. With Thursday Muleshoe Journal, both papers \$8.50 per year, \$9.00 per year by carrier.  
Zone 2--Ed-Ed-Territory: \$4.50 per year with Thursday Muleshoe Journal, both papers, \$8.25 per year.  
Mailable by carrier--50¢ single copies--10¢ Advertising rate card on application

### Baptist...

Con't from Page 1  
we represented. It was the first time such an audience had ever been granted to a Protestant delegation. We received the same response the next day in the mayor's office.

Spain has not enjoyed religious liberty and still does not as we know it here. For a Spaniard to become a Protestant, he loses his right to be buried in the city cemetery and must be buried in an unmarked grave with criminals, etc. He often loses his job; he is ostracized by his neighbors, and yet in spite of all this, there are some real dedicated men and women who are paying the price and serving God according to the dictates of their own consciences. In a town of 600,000 with a Baptist church of 85 members, we felt that God had indeed blessed us with nine people making public professions of faith in Christ. The work there continues to grow and we feel that God is opening the door for religious liberty in Spain. We distributed 10,000 pieces of literature, Bibles, tes-

### ONE MINUTE SPORTS QUIZ

1. What college football team recently set a new rush record?
2. Who was Chuck Hughes?
3. When is the Michigan-Ohio State football game?
4. With whom are Auburn's last two football games?
5. Who won the Kaiser Open?

### Answers to Sports Quiz

1. Oklahoma with 711 yards.
2. Detroit Lion's pro footballer who recently died on the field.
3. November 20th.
4. Georgia and Alabama.
5. Billy Casper.

### Chamber Corner

Jerry Hutton  
C of C  
Manager

The big night is this coming Monday night and the efforts of a lot of hard work by many people will come to a climax. The Jeannie C. Riley show is the first show of a big name entertainer in Muleshoe since Roger Miller several years ago. We think the BAC is to be commended for bringing the show to Muleshoe. The Jeannie C. Riley show has gotten a lot of good publicity for Muleshoe and it will also bring many people from surrounding towns into Muleshoe.

Our advance ticket sales have not been as good as we anticipated, so plenty of tickets will be available at the door. We invite you to enjoy a night of top notch entertainment right here in Muleshoe, be sure and come Monday night, November 8, at either the 7 p.m. or 9 p.m. performance.

### Who's Who

DAVID DAVIS  
Elected For  
Who's Who

CANYON, Tex. --David Davis of Muleshoe, was one of 36 junior and senior students selected to represent West Texas State University in the 1971-72 edition of "Who's Who Among Students in American Universities and Colleges." Who's Who is a publication that honors outstanding campus leaders throughout the nation. Davis, son of Mr. David E. Davis of (Route 4), is a pre-dental major. He was the recipient of the Bailey and Lamb County Medical Scholarship. Davis is an active participant in student government.

The students were selected for academic achievement, service to the community, leadership in extracurricular activities and potential. Only juniors and seniors with a minimum grade point average of 1.5 were eligible for nomination.

# \$\$\$ values at LOW PRICES

**BONUS**  
GIANT SIZE  
**69¢**

**NOTE BOOK PAPER**  
500 Count  
**69¢**

**NESTEA Sugar & Lemon Flavored TEA**  
12 oz.  
**49¢**

**GEBHARDT'S JUMBO TAMALES**  
30 oz. can  
**39¢**

**LADIE'S PANTY HOSE**  
2 PR.  
**99¢**

**COCA-COLA**  
16 OZ. 8 BTL. CTN. Full Gallon  
**49¢**



**JIMMY DEAN PURE PORK SAUSAGE**  
2 lb. bag  
**\$1.29**

**WILSONS 12 oz. can LUNCHEON MEAT**  
**49¢**

**WILSON'S BEEF STEW**  
22 oz. can  
**49¢**

**WILSONS CHILI**  
without beans  
24 oz. can  
**55¢**

**WILSON'S VIENNA SAUSAGE**  
9 oz.  
**69¢**

**BANANAS**  
GOLDEN RIPE  
Lb. **7¢**

**WHITE 20 LB. BAG POTATOES**  
**79¢**

**FRESH FIRM CABBAGE**  
**Lb. 5¢**

**BAKE-RITE SHORTENING**  
3 LB. CAN  
**69¢**

**INTERNATIONAL STAINLESS LAWNCREST PATTERN**  
**4 PC. PLACE SETTING ONLY 99¢**  
WITH EACH \$50 PURCHASE OR MORE

**ILLUSTRATED WORLD ENCYCLOPEDIA**  
With any purchase of \$5 or more 21 VOLUME SET  
**VOLUME #9 ONLY \$1.99 EA.**

**if you WANTA SAVE**

**PLAN NOW To Be At Anthony's**

**Wed. Nov. 10, 7PM to 10 PM SNEAK PREVIEW SALE**

**Thur.-12 hr. Sale 9 am-9 pm**

**Friday 9 am to 6 pm**

**Saturday 9 am to 6 pm**

For one of the biggest money saving events in our history... so much value collected under one roof, you'll scarcely believe your eyes

**STOREWIDE FOUNDER'S DAY SALE**

See our advertisement in Thursday's Journal

**QUALITY MERCHANDISE AT SALE PRICES**

**SAVINGS IN EVERY DEPARTMENT**

**Anthony's C.B. ANTHONY CO.**

**Jim's Pay N' Save**

FRIENDLIEST STORE IN TOWN

Specials Good Sun. Nov. 7 thru Sat. Nov. 13 8 a.m. till 10 p.m. 6 Days a Week Sundays 9 a.m. till 10 p.m.

**QUALITY MERCHANDISE AT LOWEST PRICES**

**201 S. 1st. Street**

**if you WANTA SAVE**

**PLAN NOW To Be At Anthony's**

**Wed. Nov. 10, 7PM to 10 PM SNEAK PREVIEW SALE**

**Thur.-12 hr. Sale 9 am-9 pm**

**Friday 9 am to 6 pm**

**Saturday 9 am to 6 pm**

For one of the biggest money saving events in our history... so much value collected under one roof, you'll scarcely believe your eyes

**STOREWIDE FOUNDER'S DAY SALE**

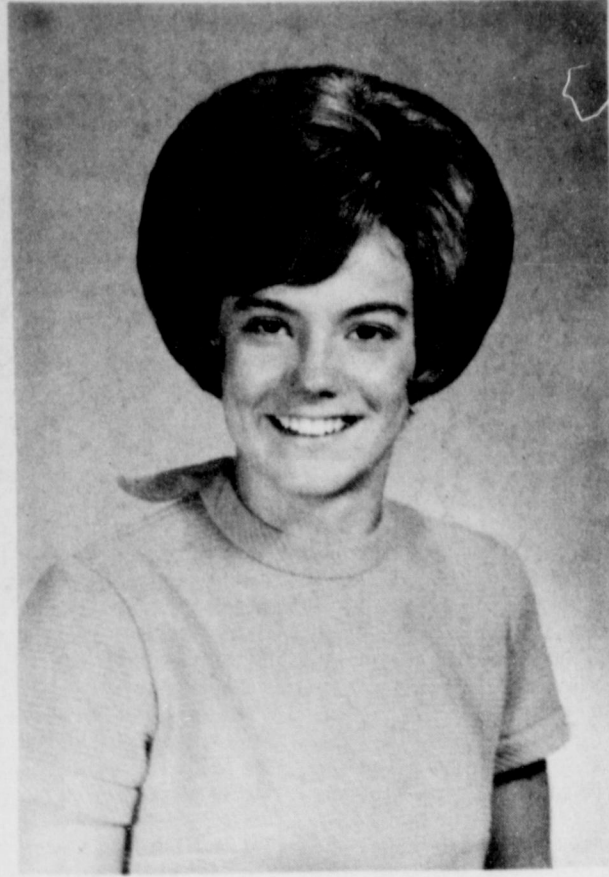
See our advertisement in Thursday's Journal

**QUALITY MERCHANDISE AT SALE PRICES**

**SAVINGS IN EVERY DEPARTMENT**

**Anthony's C.B. ANTHONY CO.**





## Mrs. Leake Visits Eastern Star Chapter

Deputy Grand Matron, Mrs. Alleene Leake made her official visit to the Muleshoe Order of Eastern Star at their regular meeting Tuesday evening Nov. 2 in the Masonic Hall. She was accompanied by Mrs. Florene Moore and Jack Parsons, members of Masonic Ambassadors Committee. They are from Canyon.

A money corsage was presented to Mrs. Leake as the members welcomed her.

## KKI Meets At Bank

The Muleshoe Chapter of Kappa Kappa Iota met Thursday, October 28, in the First National Bank. Serving as hostesses were Judy Harvey, Cheryl Gist and Billie Graves.

Following a brief business meeting, the group enjoyed several Halloween games. A jack-o'-lantern carving contest, fishing for apples and a costume contest were the main event, providing appropriate Halloween prizes. Ramona Pollard received a prize for the most appropriate costume; also receiving prizes were Imogene Tiller and Esther Marie Dillman who came as Siamese Twins.

Members attending were Janet Schroeder, Doreen Harbin, Mary Mardis, Lucy Faye Smith, Joylene Costen, Blanche Johnson, Virginia Bowers, Mrs. Tiller, and Mrs. Dillman and the hostesses. Guests were Wanda Gramling, Cathy Thomas, Barbara Finney and Mrs. Pollard.

## Methodist Women Meet

The Women's Society for Christian Service of the YL Methodist Church met Tuesday afternoon November 2, in the home of Miss Dottie Wilterding for a Fifth Sunday Social. Mrs. D. B. Head and Mrs. ... in various games and awarded prizes to the winners.

The hostess served refreshments to Mrs. E.H. Buhman, Mrs. Arther Ryan, Mrs. John Bickel, Mrs. KIW, Powell, Mrs. Aaron Mitchell, Mrs. Head, Mrs. Oswald and Nora McCormick.

Compliment someone and you'll get smiles for a week.

Greetings were sent from the Worthy Grand Matron Mrs. Alleene Houston of Arlington by Mrs. Leake.

Mrs. Leake gave instructions on the ritual and chapter procedure. Other grand officers present were: Mrs. Lavonne Hinkson, time and talent committee; Mrs. Hazel Nowell, home endowment fund committee; Mrs. Barbara Lust, grand music committee; Elbert Nowell, Masonic Ambassadors Committee; and Glen Lust, founders day committee. All officers were presented corsages and boutonnieres by the Worthy Matron Mrs. Wilford Boren.

Mrs. Boren received a certificate from Grand Chapter in recognition of her chapter being 100% in contributions to the Welfare Program.

Invitations were received from Plainview Chapter No. 37 to friendship night and salad supper on November 19 at 6 p.m.; to an appreciation tea honoring Mrs. Rebecca L. Miles, past grand matron and grand secretary emerita, November 7 from 2 till 4 p.m. in the Eastern Star Home in Arlington.

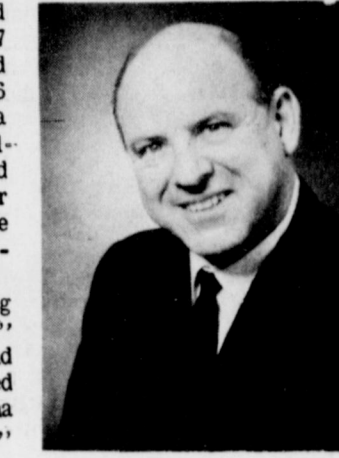
Mrs. Charleta Treider sang "Beautiful Isle of Somewhere" dedicating it to the Deputy Grand Matron. She was accompanied at the piano by Mrs. Martha Hicks. "I've Never Seen God"

by Helene Steiner Rice was read by Phyllis Beavers and dedicated to the other grand officers.

The Worthy Matron Presented those having birthdays: Alex Williams, Spencer Beavers, Mrs. Barbara Lust and Mrs. Betty Jo Davis with cards.

Plans were completed for entertaining the Muleshoe Masons with a sandwich supper November 13 at 7:30 p.m. in the banquet room of Masonic Hall. Alex Williams announced the Annual Grand Cross of Color-banquet to be held Monday evening November 15 at 7 p.m. in the XIT Steak House.

A salad supper was served by the hostess Mrs. Lavonne Hinkson, Martha Hicks and Ruth Williams.



DR. EMILIO CABALLERO

## Dr. Caballero At Art Loft Sunday

Dr. Emilio Caballero, Canyon, nationally known artist, will be honored at a reception today (Sunday) at the Muleshoe Art Loft from 2 till 5 p.m. Some of his recent work

will be on display at the reception, which is open to the public.

Dr. Caballero was born in Newark, New Jersey, and graduated from Columbia High School in South Orange, New Jersey. He has degrees from Amarillo College, West Texas State University in Canyon and received an MA and a Doctorate from Columbia University in New York City. He and his wife, Mary, are the parents of a daughter, Mrs. Gary Shell of Houston, and one son Charles Thomas, a lieutenant in the United States Air Force.

## PTA Slates Monday Meet

Muleshoe elementary PTA will meet Monday, November 8, in the Mary DeShazo cafeteria. Hospitality time will begin at 4 p.m. A business meeting will follow at 4:15 p.m.

Presenting the program for the meeting will be Bill Dillard, executive director of the Central Plains Comprehensive Community Mental Health-Mental Retardation Center in Plainview. With him will be Dr. Jim Jenkins, chief physiologist of the center. The aim of the program will be to give parents pointers in helping to detect mental problems and what parents should be alerted to watch for. He will explain what the center has to offer.

Neither wealth nor position makes a man a gentleman.



MR. AND MRS. VIRGIL NOWELL

## Reception Held For Nowells

The children and grandchildren of Mr. and Mrs. Virgil Nowell hosted a surprise reception Sunday, October 31, in honor of the Nowells 32nd wedding anniversary. Scene of the festivities was the West Camp Baptist Church at 8 p.m.

The refreshment table was covered with a blue cloth and

a white lace overlay. Adorning the table was an arrangement of white and blue mums. Guests were served white punch and white cake made by Mrs. Jimmy White, who is the daughter of the couple. The three tiered cake was accented with sugar bells and blue roses.

Special guests were Mrs. and Mrs. J. W. Phillips, Mr. and Mrs. D. H. Allen and Edith Allen of Littlefield; and Mr. and Mrs. Elbert Nowell of Muleshoe.

Hosting the occasion were Mr. and Mrs. Derrell Nowell, Larry, Tommy and Tonya; and Mr. and Mrs. Jimmy White, Kristi and Kathi.

## Square Thru News

by Nelda Hunt

More hobos than ghosts turned out for the Muleshoe Square Thrus Halloween dance Saturday night, October 23. The social chairman, Curby Brantley, planned a delicious hobo meal, consisting of beans, salads, corn bread and cup cakes. Approximately 100 dancers enjoyed the meal and the caller, Cliff Smith of Littlefield, gave a splendid performance. He called some fine hush singing calls and allowed the dancers to do the hully gully-Amos Moses routine between tips. All ages were on the floor when Amos Moses was called, and I believe Carl Ellington had to remove his "toupee" before he could do the hully gully. He said it was really too hot to wear.

Area clubs represented included the Circle-8 of Littlefield, Levelland South Plains Spinners, Swinging Wings of Cannon AFB, Portales Starlight Swingers, Clovis Y-Squares and Clovis Circle-8. Door prizes were awarded to five lucky people during intermission. Vice - president Carl Ellington conducted the drawing.

It was good to have our new members, Mr. and Mrs. Lowell Boozer, and Mrs. and Mrs. John Bickel out for the dance. Some of the Muleshoe Square Thrus visited in Littlefield and Portales to promote the Halloween dance.

The Muleshoe Square Thrus danced again Monday night, October 25. Host couples were Mr. and Mrs. Bob Copeland and Mr. and Mrs. Jack Dunham, Ed Gunnels of Clovis does a fine job calling for the local club. Prospective members are welcome at our second and fourth Monday night dances. If you are interested in taking square dance lessons, call Jimmy Presley at 272-4753. That's all for now.

Life's Puzzle: "Who writes the words to our popular songs, and why?"

Too many of us are too heavy for light work and too light for heavy work.

## Three Way News

By Mrs. H.W. Garvin

The John Wheelers have a new grandson. He is the son of Mr. and Mrs. Joe Wheeler. The Wheelers went to Floydada to visit there new grandson last week.

Gib Dupler entered Morton Hospital Friday evening for some tests. He was dismissed for the weekend and returned to the hospital late Sunday evening to continue the tests.

Three Way Carnival was held Thursday night. Kay Fine and Lee Sanderson from the Junior class were crowned King and Queen of High School. Judy Miller and Brian Kirby of the 5th grade were crowned King and Queen of grade school.

Mr. and Mrs. L. Polard and son spent the weekend with her parents, the Rayford Mastons.

Mrs. W. Garvin was dismissed from the hospital Friday evening.

South Plains College had its Annual Parents' Day Thursday. Mrs. A. Wittner, Mrs. P. (Dutch) Powell, Rev. and Mrs. Dodd and family, Mrs. Hightower and grandson Corky Long attended. Cynthia Long and Odessa Dodd are in the Texans. The Texans performed after the luncheon along with The Texan Band and the Baker's Dozen Singing Group.

Three Way High won their game against Wellman at Wellman Friday night.

Mrs. Sally Robinson spent Friday and part of Saturday at Muleshoe. Her granddaughter, Mrs. Jane Brantley and family were visiting her parents Mr. and Mrs. Bob Sanders.

Mr. and Mrs. C. Lindsey spent Saturday night with the John Shepards.

## ENGAGEMENT REVEALED ...

Mr. and Mrs. John Hayes announce the engagement and approaching marriage of their daughter, Debra Gayle, to Dennis Beene, son of Mr. and Mrs. Eddie Beene of Needmore. Both are 1970 graduates of Muleshoe High School and are sophomores at West Texas State University at Canyon. The wedding is set for December 31 at the Circleback Baptist Church.

## Friendship Club Has Dinner Meeting

The Friendship Club attended a dinner meeting at the Corral Restaurant on Thursday, November 4. Hostesses were Mrs. Scott Swafford and Gladys Darsey. Tables were decorated in the traditional Thanksgiving decor. Mrs. C. M. King gave the invocation.

At a business meeting which followed the dinner, Mrs. Jackie Tate gave a devotional on how the first Thanksgiving was observed. Mrs. Bert Mathis presided, and Mrs. W. T. Andrews read the minutes and acknowledged letters of thanks. Different committees reported on various ideas for the annual Christmas party which will be held on December 16. This will be called a "red dress" party.

## Charles Baker Tours Library

Field consultant for the Texas State Library, Charles Baker, was in Muleshoe Wednesday, November 3. While here, he conferred with Librarian Anne Camp, the Bookmobile staff and Joe Harbin, chairman of the Muleshoe Area Library Board. After a tour of the new library Baker stated that he was most impressed by such beautiful facilities for a community the size of Muleshoe.

Members present were Mrs. Webb Watts, Mrs. A.J. Shaffer, Mrs. N. C. Moore, Mrs. C. W. Buford, Mrs. George Johnson, Mrs. E. W. Johnson, Mrs. J. W. Witherspoon, Mrs. Joe Damron, Mrs. W. E. Young, Mrs. Mae Busbice, Mrs. Jewell Griffiths, Mrs. Mary Young, Mrs. King, Mrs. Andrews, Mrs. Tate and the hostesses.

**FOR SCHOOL . . .**

**FOR FOOTBALL GAMES . . .**

**FOR DATES . . .**



**Lizan Gunter**

**1971 FFA PLOWGIRL**

★ ★ ★

**Lizan is modeling a Lady Wrangler two piece pant suit.**

*These are separates, the blouse is 100% polyester by Shannon Square.*

Connie suede & leather shoes... plus the gold with brown lace trim bag completes her ensemble

Hmmm . . . Must Remember . . . This Would Make A Nice Gift For Christmas



St. Clair's

A TOTALLY ADVANCED CHROMACOLOR SYSTEM THAT BRINGS YOU A NEW DIMENSION IN TV PERFORMANCE...

NEW 1972 **ZENITH** SOLID-STATE **CHROMACOLOR 110**

25" giant-screen deluxe console tv



The GOYA • C4787P  
French Provincial styled console

Chromacolor 100 Picture Tube • Customized Tuning • 25" diag. Super-Screen Picture • Titan 110 Solid-State Chassis • Solid-State Super Gold Video Guard Tuning System • Zenith AFC • Automatic Tint Guard Control • Ultrasonic UHF Channel Selector • 9" Oval and 5" Round Twin-Cone Speakers.

The quality goes in before the name goes on

GORDON WILSON APPLIANCE

202 Main Muleshoe Ph. 272-3138

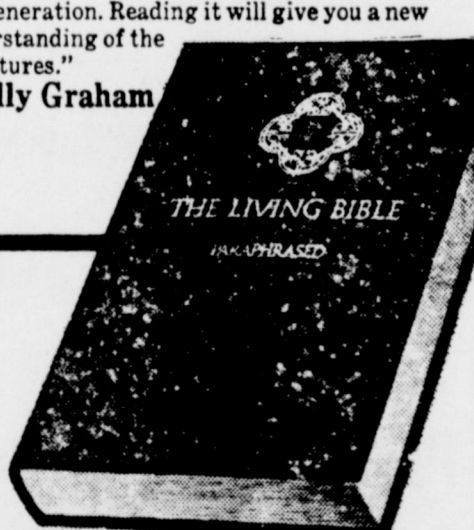
The world's most readable Bible - now in one volume!

THE LIVING BIBLE

PARAPHRASED

Written in the clear and direct style of today's language by Dr. Kenneth N. Taylor, "this paraphrase communicates the message of Christ to our generation. Reading it will give you a new understanding of the Scriptures."

-Billy Graham



\$9.95

Williams Bros. Office

319 Main Supply Muleshoe, Texas  
PHONE 272-3113

Announcing...

Mrs. Bill Cunningham,  
Graduate Of Isbell Powell,  
Lubbock, Now Has

Specialized Wig Service

Rt. 5, Muleshoe. Located South Side Of Needmore.

- \* WIGLETS.....\$3 Cleaning, Style & Set
- \* WIGS- Synthetic.....\$3
- \* WIGS- Human Hair.....\$5

QUICK SERVICE!

For expert high fashion wig styling, bring your hair pieces to Specialized Wig Service.



# Beta Sigma Phi Has Pledge Service



RECEIVE PLEDGE PINS...Shown left to right are Mrs. Delbert Barry, Mrs. Jerry Don Glover, Mrs. Marshall Lee and Mrs. Joel Young. They received pledge pins in a Beta Sigma Phi ritual Tuesday night.

Alpha Zeta Phi Chapter of Beta Sigma Phi held a meeting November 2 at 7:30 p.m. in the home of Mrs. Max King.

A pledge ritual candlelight ceremony was conducted by Mrs. Joe King, Vice-President. Assisting her were Marcia Henry, Mrs. Tom Flowers, Mrs. Glen Watkins and Mrs. Marilyn Neel.

Receiving the pledge degree were Mrs. Jerry Don Glover, Mrs. Joel Young, Mrs. Delbert Barry and Mrs. Marshall Lee. They were presented with pledge pins.

The meeting was called to order by the president, Mrs. Max King. Mrs. Doyce Turner moved that the sorority sponsor a special education class in a Muleshoe school and assist with all the holiday parties. The motion carried. Mrs. Don Rempe then reported on the

bingo carnival to be held November 18 at the American Legion Hall. Tickets for the bingo were distributed for the members to sell.

Hostesses Mrs. Rempe and Mrs. Charles Smith served flaming cherries jubilee, cookies, coffee and cokes.

Members attending were Mrs. Joe King, Mrs. Max King, Mrs. Tom Jinks, Mrs. Curtis Walker, Mrs. C.J. Feagley, Mrs. Bea-

nie Spiawn, Mrs. Eric Smith, Mrs. Charles Pummill, Mrs. Jerry Don Haley, Mrs. Travis Bessire, Mrs. Henry, Mrs. Turner, Mrs. Watkins, Mrs. Flowers, Mrs. Neel, the pledges and hostesses.

A progressive dinner for members and husbands will be November 16 at the homes of Mrs. Dick Johnson, Mrs. Jinks and Mrs. Walker.



CO-CHAIRMEN...Mrs. Charles Smith and Mrs. Don Rempe are shown with the tonkey doll to be given away at the Beta Sigma Phi Bingo Carnival to be held Thursday, November 18. Members are presently selling chances on the doll which will be covered with \$25 in quarters.

## Hobby Club Displays Handmade Articles

The Muleshoe Hobby Club met at 2 p.m. on Thursday, November 4, in the community room of the Muleshoe State Bank. Hallie Briscoe served as hostess.

The following members displayed articles they had made: Juanita Snow, decorator bottles; Blanche Cash, purse and cover-up apron; Edith St. Clair, four bottles; Dora Phipps, styrofoam flowers; Hallie Briscoe, afghan; Levina Pitts, Christmas carol pilgrim couple.

Other members attending were Berna Dement, Delle DeLoach, Ruth Bass, Myrtle Wells, Ola Pesch, Eva Dell Gillis, Myrtle

Chambless, Mabel Caldwell, Bernice Amerson, Allie Barbour and one visitor, Mrs. Lud Taylor.

Mrs. Pesch drew the hostess gift and Mrs. Phipps demona-

strated flower making. The club collected \$20 for the speck fund which is used to purchase white elephant packages.

The next meeting will be held on November 18 with the hostess to be named later.

*In Fashion*

Plaids are very, very popular for suits, coats or dresses.

Footwear feature this season is boots, boots and more boots. They come in a variety of leathers and fabrics.

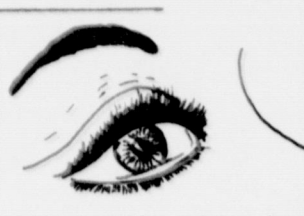
Some sweaters are lengthened to become coats. They may be sleeveless or be fashioned with sleeves.

### DIVORCE & YOUNG

In a recent survey, the Census Bureau has reported that divorce rates are higher for younger married persons than for older ones. It is even more true for blacks than whites. The report was based on data from two decades ending in 1967.

WASTE---Did you know the average American throws away five to seven pounds of solid waste each day? That's over a ton a year, and the amount is increasing, report Extension home economics specialists.

## Mental Health Is ESA Program



Epsilon Chi Chapter of Epsilon Sigma Alpha held a meeting Tuesday, November 2, in the home of Mrs. Gary Smith. Co-hostess was Mrs. Gary Mac Brown.

A program was presented by Bill Dillard and John Patterson from the Central Plains Comprehensive Community Mental Health-Mental Retardation Center in Plainview. They gave the functions of the center and problems of disabilities in small children.

After the program, a business meeting was held. A report was given on the garage sale which netted \$500, of which proceeds will be donated to the Muleshoe Area Public Library. They also discussed plans for the annual Christmas social. Projects now in progress are to aid two or three families at Christmas, and to purchase two

pairs of glasses for needy children. One of the children from the Richland Hills schools has been selected. Another from Mary Deshazo will be selected shortly.

Following the business meeting, a pledge ceremony was held for four new members. Presented with jewel pins were Mrs. Lucian Armand, Mrs. Steven Bass, Mrs. Clifford Black and Mrs. Clem Peden.

The hostesses served refreshments to the following: Mrs. John Blackwell, Mrs. Dick Chitwood, Mrs. John Centry, Mrs. Corky Green, Mrs. Eugene Howard, Mrs. Dick Howard, Mrs. Jerry Hutton, Mrs. Ronnie Johnson, Mrs. Gene McGuire, Mrs. Jack Rennels, Mrs. Paul Wilbanks, Mrs. Leon Wilson, Mrs. Hugh Young, Mrs. Steve Young, and the new members.

Most mothers have been faced with the problem of when to call a physician for a consultation about a sick child. Most think twice about calling the family doctor at 3 a.m.

Doctors urge that a physician be called whenever a child's temperature is exceedingly high. In addition, a headache that has persisted for more than twelve hours, an extreme loss of appetite and a cold or cough that has persisted for three days all merit a physician's attention.

A physician should be consulted when a child has unusual pain in any part of the body, sudden and unusual loss of bladder control, persistent vomiting and indications of intestinal bleeding.

Immediate medical atten-

### HEALTH AND BEAUTY

tion is imperative for an earache and indications of a head injury, particularly when accompanied by vomiting.

Most doctors say it isn't necessary to call a physician when children contract routine colds. However, it is necessary if the cold persists or if the child looks different in general appearance or acts differently.

CHEESE --- According to Extension foods and nutrition specialists, there are more than 400 varieties of natural cheese.

**Singleton-Ellis Funeral Home**  
24 Hour Ambulance Service  
Ph. 272-4574 Muleshoe

Our Farah double knit slacks look as relaxed as you'll be wearing them.

Jean cut fit and 100% polyester knit permits complete freedom of movement. Solids, tweeds and herringbones, all shaped and flared as you like them.

\$17. to \$23.



**FARAH**  
Slacks  
NEVER NEED IRONING



SEE THEM ALL TODAY

OPEN HOUSE  
CLIFFORD B. JONES STATION

1pm-7pm Today

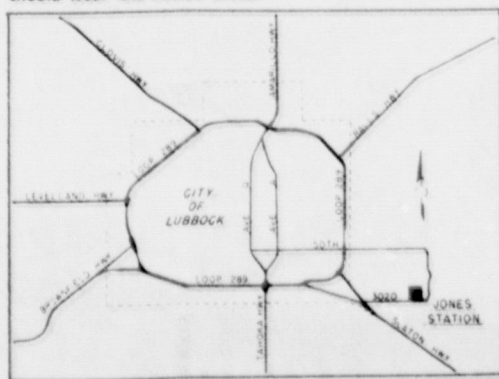
GOLDEN ANNIVERSARY



The ELECTRIC Company

1921-1971

Jones Station is southeast of Lubbock on Farm Road 3020, just west of the Buffalo Springs Lake Road (FM 858). Be sure to dress casually and comfortably for the plant tour and ladies should wear low heeled shoes.





# STATE CAPITAL Highlights AND Sidelights

by Bill Boykin

TEXAS PRESS ASSOCIATION

AUSTIN, Texas -- The Texas Highway Commission remains convinced its new \$20 million state headquarters building should be located near the capitol and the governor's mansion.

A re-evaluation study of the controversial site, ordered by the Legislature, was delivered

last week to Gov. Preston Smith. Legislators suggested the site southwest of the capitol and across the street from the governor's mansion should be developed as a park, parking lot and tourist information center. They recommended moving the new highway building far from the downtown Austin area.

The Commission, on review of its plans, concluded the massive building, rising to 10 stories at its tallest point, would "enhance the beauty and interest of the capitol complex."

At least, observed the new report, the structure will be the most attractive thing ever located on the barren block,

now given over largely to a parking lot and the remains of old buildings.

The historic Lundberg Bakery still on the site will be preserved, incorporated into the new building and used as a tourist center and Texas museum for artifacts uncovered in excavation. The temporary state capitol once stood on the block.

North and east portions of the highway building are planned at two-story level to maintain scale with the governor's mansion and preserve the view of the capitol from there. Maximum height of 10 stories will be reached at the south edge of the block.

Architects plan a public plaza with pools, greenery and shaded walkways along 11th St. nearest the capitol. Landscaping will comprise about 50 per cent of the block if plans are finally approved. The building will be by far the largest of many new state structures in the capitol area.

**BUSINESS GEARS FOR POLITICAL YEAR** -- Organized labor announced its political priorities three weeks ago, and last week in Houston business leaders in Texas looked at their "public affairs" programs for 1972.

At the 49th annual Conference of Texas Industry by the Tex-

as Manufacturers Association, representatives of the business community hears:

Sen. John Tower ask for labor law reform.

Richard Armstrong, Washington, D.C., challenge businesses to develop public affairs departments.

Irving Shapiro, vice president, E.I. duPont de Nemours and Co., ask business to work with labor to develop new national objectives -- with everybody sharing the gains.

TMA also passed resolutions asking state legislators to require 10-year budget projections for all "new" state programs approved by the next legislature.

Senator Tower laid the blame on the nation's existing economic ills on "existing labor laws that are in dire need to reform."

Both Tower and TMA leaders spoke out in opposition of laws which permit strikers to receive food stamps and other state and federal aid programs while on strike.

the Nugent endorsement means nothing to his candidacy. Opponents maintain Price has no more than 42 firm supporters.

Nugent finished first in the straw voting at San Antonio over (in order) Reps. Dean Cobb of Dumas, John Traeger of Seguin, James Slider of Naples, David Finney of Fort Worth and Joe Salem of Corpus Christi. Traeger, Slider and Salem indicated they will go along with Nugent, 48, who will reveal soon whether he will actually make a race.

**REDISTRICTING CHALLENGED** -- An unexpected lawsuit filed in Dallas federal district court challenged constitutionality of the congressional reapportionment by the Legislature this year.

Another suit has been promised attacking state House of Representative redistricting.

The Dallas class action lawsuit maintains the new congressional district lineup does not meet federal requirements that 24 congressional districts be "compact, contiguous and as nearly equal in population as is practicable."

Plaintiffs offered the court a plan of their own, which they said would create districts which vary only .1 per cent in population.

**AG OPINIONS** -- Several reserve accounts with a Veterans Land Fund division can be consolidated in a single depository account if adequate reserves are maintained and identifiable for each bond issue, Atty. Gen. Crawford C. Martin said.

In other recent opinions, Martin concluded:

- \* Retired state employees can get increases in annuities and have their insurance premiums paid by the state, in spite of the wage-price freeze.
- \* Proprietary schools must refund unused tuition, fees and charges when students fail to enter a course, withdraw or are discontinued, under prescribed conditions.
- \* A board of trustees of a firemen's relief and retirement fund may not pay for an actuarial study out of monies from the pension fund more often than once every three years.
- \* There is no provision for travelling state employees to get a flat rate transportation allowance in lieu of the standard .10 cents a mile rate.

**COURTS SPEAK** -- State Supreme Court upheld lower court decisions barring Su Oil Company from using fresh water

from the Ogallala formation beneath a Hockley County farmer's land for injections to build pressure in company oil wells.

High Court set a December 5 hearing on whether private non-profit water supply corporations must pay school taxes.

State laws banning LSD sale or possession were upheld by the Court of Criminal Appeals.

**MOODY FOUNDATION REPORT RELEASED** -- Attorney General Martin, in an investigative report, has called for removal of Shearn Moody Jr., as a trustee of the \$228 million Moody Foundation.

At the same time, Martin said, the Galveston-based foundation should enlarge its board of trustees from seven to nine members. Unless the action he urged is taken voluntarily, the Attorney General stated, he will ask a court order to force the changes.

The report commended six other Foundation trustees who last January asked for an investigation after they were harshly criticized by the chairman of a House of Representatives study group, Louis Dugas Jr., of Orange.

New York attorney Roy Cohn called the report a "one-sided hatchet-job", and said Martin should be removed from office.

**SHORT SNORTS**

Texas Public Employees Association will seek a 10.2 per cent pay raise for state workers in a special legislative session next year.

The sixth annual governor's conference on tourist development is scheduled for the Inn of the Six Flags at Arlington, November 10-11.

Texas' state governmental planning efforts won a national merit award at the American Institute of Planners conference in San Francisco.

Supreme Court memorial services were held last week for the late former Associate Justice Clyde E. Smith of Woodville who died this year at age 73.

Railroad Commission will hold a November 22 hearing to determine whether Dillard Creek is being polluted by brine from Trinity oil field in Houston County.

The Texas Public Welfare Board was informed by budget experts that a welfare reform bill approved by the U.S. House of Representatives would add \$750,000 more to aid rolls, raise the cost \$153.4 million, and impose \$170.9 million in medical aid costs.

Ed Grisham, formerly of Olney, was named director of the governor's office division of planning coordination, succeeding Dan S. Petty who became Governor Smith's top assistant.

Freeze to delay rise in bulk mail rates.



## DOUBLE GREEN STAMPS every Wednesday

with a \$2.50 purchase or more

VALUES GOOD NOV. 8, 9, 10 MULESHOE, TEXAS 501 W. Amer. Blvd

# PEPSI-COLA

32 oz. btl. no deposit, no return

## Pepsi's got a lot to give!


**\$5** FOR

# MELLORINE

Farmer Jones,

# 29¢

1/2-Gallon Carton



# POTATOES



15 Pound Bag

# 59¢

# PORK STEAK



# 48¢

Pound

**...AND YOU GET S&H GREEN STAMPS!**

**Used Furniture Wanted**

By The House Full Or By The Piece...

**Swap Shop**

Muleshoe  
Call 272-3074

**GET A FREE CAR WASH**

with each fill-up AT

**Riehl's Car Wash**

## Time Saver:



Fall fertilizer application is a sure thing. There's little question about weather. You have more time in the fall, too, and much less work to get done.

Take our suggestion: Save time by applying Ammo-Phos or Olin Nitrogen Fertilizers this fall after harvest. Get it over with.

The time you save by fertilizing this fall could mean several more bushels yield next year. And you'll be able to plant faster because the fertilizer you plow under this fall speeds crop residue decomposition, reducing trash problems.

**Try our time saver: Ammo Phos or Olin Nitrogen Fertilizers, applied with another time saver: our Big A applicator. It gets the job done fast, without soil compaction.**

**Time Keeper:**



If you place your order right away for Ammo-Phos or Olin Nitrogen Fertilizers, we'll give you a certificate that enables you to purchase these attractive clocks at special low prices. Call today.

## Western '66' Co.

PLAINVIEW HWY. MULESHOE PHONE 272-4556



# WANT ADS DO THE JOB FAST!

**WANT ADS PH. 272-4536**

**CLASSIFIED RATES**

**OPEN RATES**

First insertion, per word-7¢  
Second and additional insertions-5¢

**NATIONAL RATES**

First insertion per word-9¢  
Second and additional insertions-6¢

Minimum charge-75¢

Card on Thanks-\$1.50 Double rate for blind ads

Classified Display-95¢ per col. inch

\$1.05 col. inch for reverses

**DEADLINE FOR INSERTION**

Thursday's Muleshoe Journal-Noon Tuesday  
Sunday's Bailey County Journal-Noon Friday

The Journals reserve the right to classify, revise or reject any classified ad.

Check advertisement and report any error immediately. Journals are not responsible for error after ad has already run once.

**FOR SALE:** Two bedroom house, Nice location, 818 South First or call 272-3215, 8-44s-2tc

**JAMES GLAZE COMPANY**  
**REAL ESTATE AND FARM & RANCH LOANS**  
Phone 272-4549 219 S. 1st

**FOR SALE:** Large two bedroom house at 613 Austin. Call 272-4863, 8-44t-tfc

**9. AUTOMOBILES FOR SALE**  
**FOR SALE:** 1970 Kawasaki. Good condition. Chopped. Phone 272-3084, 9-44t-3tc

**FOR SALE:** Previously owned Chrysler Industrial 413, engines complete. Call, Smith L.P. Gas, 272-4678, 44t-tfc

**FOR SALE:** 1967 Plymouth Valiant, good condition, 35,000 miles, and 1967 Chevrolet Impala. Call J.V. Peeler, 509 E. Austin, Muleshoe, 9-44t-3tc

**FOR SALE:** Honda 70 less than one year old. Half price. 272-4863, 15-44s-8tc

**10. FARM EQUIP. FOR SALE**

**For Sale:** Two used tri-matic sprinkler. Contact Bill St. Clair 272-4630 on Rt. 3 Muleshoe, ttc-42t

**FOR SALE:** '70 Ford 540 ball-er, excellent shape, \$750.00. John Deere #215 self propelled swather, excellent condition, \$1500. Call 272-4842, 10-41t-tfc

Open front, wire, cotton trailers-3 Colby 8x20x8-\$250, 1-Wards 8x18x7-\$150, 1-Phares-Wilkens 7x18x7-\$150. Old #21 IH Stripper with good belt, fenders and flower wagon hand-\$100. Wire cotton trailer top \$50. Call 272-4844 or 965-2424, 10-45s-tfc

**FOR SALE:** 1958 450 IHC tractor, planter, cultivator and crust buster. Will sale together or separate. Call Wilcy Moore at 272-3007, 10-43s-tfc

**11. FOR SALE OR TRADE**

**FOR SALE OR TRADE:** 317 acres for grassland, at Stegall, of fully allotted cotton, wheat and feed, 25 acres grass dam, paved two sides. Four room house and bath, domestic well and electric pump. Phone 806-272-4752, 11-44t-2tc

**FOR TRADE:** Government inspected, whole hog sausage or registered Duroc Sows for ear corn. Call Neutzler, 927-3177, Maple, Texas, 11-45s-4tc

**12. HOUSEHOLD GOODS**

**FOR SALE:** Player Piano, phone 505-356-6651 or write 101 W. 4th, Portales, M. 88130 12-44t-tfc

**FOR SALE:** Good used spinet type piano. Call 272-3973 or 272-3107, 12-44s-4tc

**SPOTS before your eyes-** on your new carpet-remove them with BLUE LUSTRE. Rent electric shampooer \$1. Perry's 128 Main, 12-15-ttc

Clean rugs, like new, so easy to do with BLUE LUSTRE. Rent electric shampooer \$1. Higginbotham-Bartlett, 215 Main, 12-2s-ttc

**NEED A HOME LOAN?**  
SEE **FIRST FEDERAL**  
FIRST FEDERAL SAVINGS  
AND LOAN  
901 Pile St. 762-4417  
Clovis, New Mexico

Your success, if you are wise, doesn't depend upon someone else.

**13. MISCELLANEOUS**  
**EMBROIDERY** beautiful designs in minutes. Enjoyment for all ages. This and That, 101 Main, Muleshoe, phone 272-4437, 15-43t-tfc

**CESSPOOLS** pumped out. 272-3282 or 272-3036, 15-25s-tfc

**LEARN TO START** your day with God. This and That 101 Main for tapes on Bible study, messages, music, Christian motivation and Bibles designed for each member of your family. Phone 272-4437, 15-43t-tfc

**PLAN TO ATTEND** the fall Lubbock Antique Show, Friday, Saturday, Sunday, November 5, 6, and 7 in the Texas National Guard Armory, 2901 4th Street Lubbock, Texas. Show times are from 10:00 a.m. to 9:00 p.m. Friday and Saturday and noon to 6:00 p.m. Sunday.

The door and merchandise prize will be a 1966 Tallique Annual Plate one of the most sought collectors plate -- worth approximately \$400.00. Admission: \$1.00, 15-44s-3tc

**THIS AND THAT:** What's that? To see at 101 Main, Muleshoe, anytime between 9 a.m. and 5:30 p.m. Monday thru Saturday. Variety of interesting things for entire family. Phone 272-4437, 15-43t-tfc

- MULESHOE ASSEMBLY OF GOD 517 S. First H.D. Hunter, Pastor
- SPANISH ASSEMBLY OF GOD East 6th and Ave. F Rev. Hicolito Pecina
- FIRST UNITED METHODIST CHURCH 507 West Second J.B. Fowler, Jr., Pastor
- PROGRESS BAPTIST CHURCH Progress, Texas Murrell Johns, Pastor
- ZION REST PRIMITIVE BAPTIST CHURCH 207 E. Ave. G Glen Williams, Elder
- FIRST BAPTIST CHURCH 220 W. Ave. E Douglas DuBose, Pastor
- SPANISH BAPTIST MISSION E. 3rd and Ave. E Larry W. Henry, Pastor
- ST. MATTHEW BAPTIST CHURCH W. Third Rev. E. McFrazier, Pastor
- PRIMITIVE BAPTIST CHURCH 621 S. First Afton Richards, Elder

**FIRST CHRISTIAN CHURCH** 130 W. Ave. G Walter Bartholf, Minister Sunday Evening Service 6 p.m.

**IMMACULATE CONCEPTION CATHOLIC CHURCH (Fr.)** Robert O'Leary Northeast of City

**MULESHOE CHURCH OF CHRIST** Clovis Highway Royce Clay, Minister

**SIXTEENTH & D CHURCH OF CHRIST** Sunday-10:30 a.m. Evening-6p.m. Wednesday-7 p.m.

**NORTHSIDE CHURCH OF CHRIST** 117 E. Birch Street Glenn Winston, Minister

**JEHOVAH'S WITNESS** Friona Highway Boyd Lowery, Minister

**RICHLAND HILLS BAPTIST CHURCH** 17th & West Ave. D J.P. Jones, Pastor

**ST. JOHN LUTHERAN** Lariat, Texas Herbert E. Peiman

**LATIN AMERICAN METHODIST MISSION** Ave. D & 5th Street Pastor Rosaleo (Ross) Chavez,

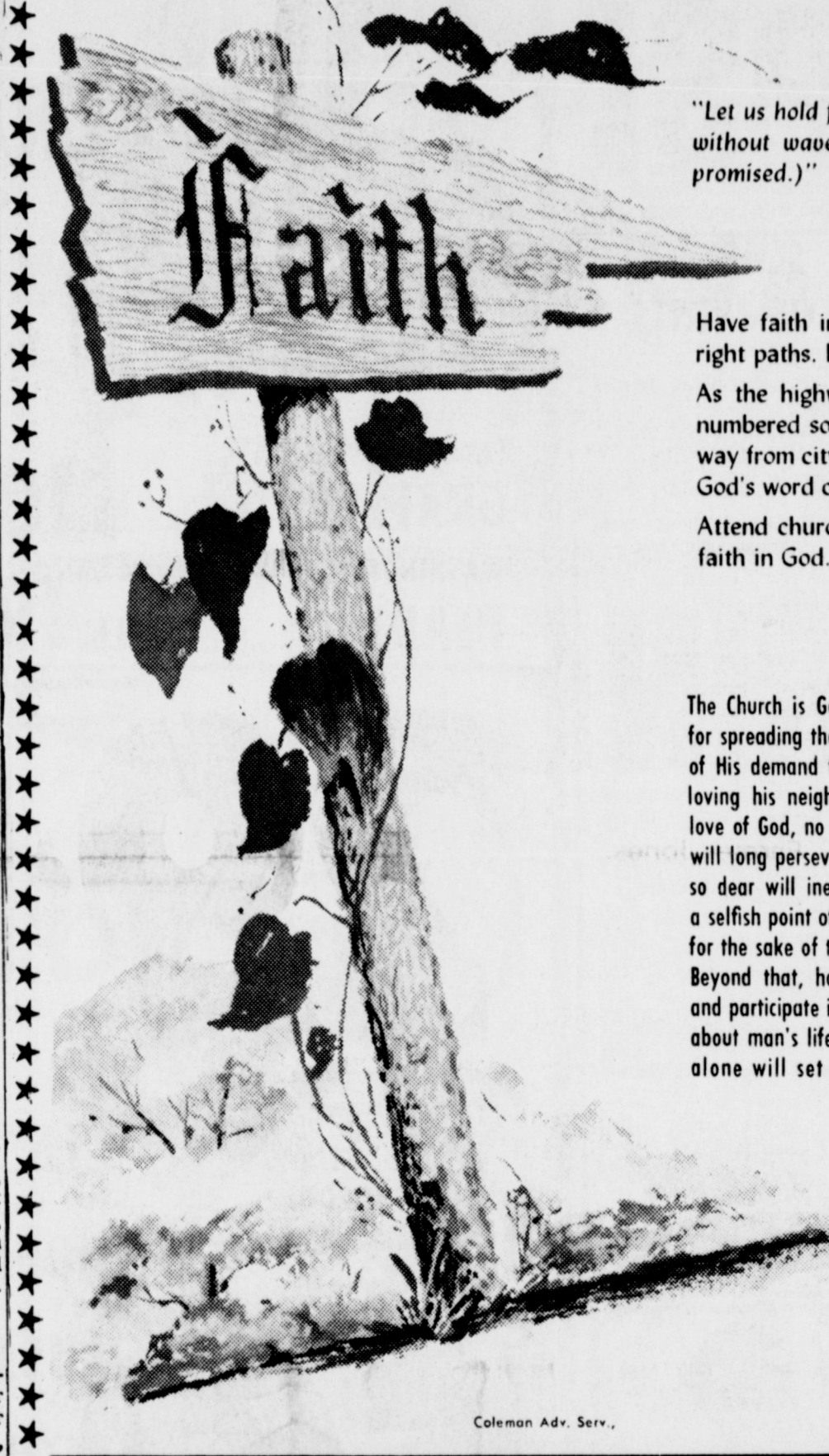
**FIRST PRESBYTERIAN** Morton Highway Edwin L. Manning, Pastor Sunday Morning Service 9a.m.

**CHURCH OF THE NAZARENE** Ninth & Ave. C James W. Humble, Pastor

**CALVARY BAPTIST CHURCH** 1733 W. Ave. C Rev. Charles Kenneth Harvey

**TRINITY BAPTIST CHURCH** 314 E. Ave. B V.L. Huggins, Pastor

**Y.L. METHODIST CHURCH** Rt. 1 Muleshoe Arron L. Mitchell



"Let us hold fast the profession of our faith without wavering: (for he is faithful that promised.)"

Have faith in God. He will lead us in the right paths. He will never fail.

As the highways are clearly marked and numbered so that we might easily find our way from city to city and across the nation. God's word clearly marks life's paths.

Attend church regularly and exercise your faith in God.

The Church is God's appointed agency in this world for spreading the knowledge of His love for man and of His demand for man to respond to that love by loving his neighbor. Without this grounding in the love of God, no government or society or way of life will long persevere and the freedoms which we hold so dear will inevitably perish. Therefore, even from a selfish point of view, one should support the Church for the sake of the welfare of himself and his family. Beyond that, however, every person should uphold and participate in the Church because it tells the truth about man's life, death and destiny; the truth which alone will set him free to live as a child of God.



*The following business firms urge you to attend the church of your choice this Sunday and every Sunday*

- First National Bank** 224 S. First
- St. Clair's** 110 Main
- Fry & Cox** 401 S. First
- Muleshoe State Bank** 304 Main
- Bratcher Motor Supply** 107 E. Ave. B
- Muleshoe Motor Company**
- Charles Lenau Lumber Co.** 202 E. Ash
- Cobb's Department Store** 218 Main
- White's Cashway Grocery** 402 Main
- Western Drug** 114 Main
- Muleshoe Publishing Co.** 304 W. Second
- Muleshoe Co-Op Gins**
- Dari Delite Drive-In** 210 N. First
- Cox Drive-In Theater** Friona Hwy.
- Brock Motor Company** 422 N. First
- Western Auto Store** 228 Main

**Jaycees**  
meets every Monday, 12 Noon  
Jeff Smith, Pres.

**Muleshoe Rotary Club**  
meets every Tuesday at 12:00  
FELLOWSHIP HALL Methodist Church  
Troy Ackinson, President

**Masonic Lodge**  
meets the second Tuesday of each month  
practice night each Thursday  
Fred Horn, WM  
Elbert Nowell, Sec.

**Lions Club**  
meets each Wednesday, 12 Noon  
FELLOWSHIP HALL Methodist Church  
W. T. Millen, President

**VFW Water A. Moeller Post #8570**  
8:00 p.m. 2nd & 4th Mondays  
Old Priboth Skating Rink  
George Tompkins, Commander

**Muleshoe Oddfellows**  
meets each Thursday 1:30 p.m.  
Crispin Green, Noble Grand

**Fine Art Booster**  
MEETS EVERY FOURTH MONDAY  
8:00 p.m.  
Muleshoe High School Band Hall  
DON BRYANT, President

**PERSONALS**  
WE WILL NOT be responsible for anyone's debts other than our own. Herman and Rheata White, 1-44t-3tp

**Carl's Meat Company** smokes turkeys. Bring them to us. Phone 272-4361, 1-44t-5tc

**POODLE GROOMING** by appointment. 221 E. 4th. Call 272-5587 15-28s-tfc

**Planning a Wedding PHOTOGRAPHY** by Oecia  
For Your Pictures Call 385-6083, Littlefield 409 W. 2nd

**Bras & Girdles By PENNYRICH AT Main Street Beauty Salon**  
Truck drivers bitter but call freeze necessary.

**\$100 REWARD** For convicting evidence of anyone removing any dirt, doing any machinery work, or defacing any land or tearing down signs on my land at Stegall. Wilda Fisher, 405 B W. Ave. E, phone 272-4752 1-44t-2tc

**INCHES GOTTA GO?** Then see Nellie at This and That, 101 Main, Muleshoe. Lose inches the easy way. No exercise! No diets! Guaranteed five to ten inches loss in "one magical hour." Phone 272-4437, 1-44t-tfc

**SLIM-Gym** exercisers, water therapy JET-BATH, relax and trim, European wrap kits, portable sauna baths for your own home. Lucille Cherry, phone 272-3258, 1-45s-tfc

**2. LOST & FOUND**  
**LOST:** A blue-point Siamese kitten in Lazbudeite area, Eight months old, male, has collar. Reward is offered. Call 965-2185, 2-45s-4tc

**3. HELP WANTED**  
**NEED IMMEDIATELY:** Full or part time hair stylist, Main Street Beauty Salon. Phone 272-3448 3-35s-tfc

**4. HOUSES FOR RENT**  
**FOR RENT:** Nice two bedroom house, 5 1/2 miles out of town, bills paid, reasonable rent. Call 272-3393 4-44t-tfc

**6. ROOMS FOR RENT**  
**FOR RENT:** Bedrooms, 410 West Second, 6-40t-tfc

**8. REAL ESTATE FOR SALE**  
**FOR SALE:** Vacant lot, plumbed and wired for a trailer house. Small down payment, will carry balance. Call 272-4932, 8-44s-tfc

**IF YOU WANT TO SELL OR** buy see Lee Pool or Woody Goforth.  
**POOL REAL ESTATE**  
Phone 272-4716, 8-44s-tfc

**KREBBS REAL ESTATE**  
210 WEST FIRST  
PHONE 272-3191  
8-23t-tfc

**FOR SALE:** In West Camp area, one quarter and one 80 acres irrigated. Good. Call 925-3510 8-37t-tfc

**FOR SALE:** Three bedroom brick house, two baths, carpeted, central heat. J. Lewis Morris, 429 E. Dallas, Phone 272-3572, 8-45s-tfc

**FOR SALE**  
**Brick Homes**  
**No Down Payments**  
**\$55 up per month**  
**Pantry, 3 & 4 bedroom 1/2 baths,**  
**Utility Room,**  
**attached garage,**  
**built in range and oven located in Muleshoe**  
**Ault Realtors**  
Phone 372-1276 or 355-2367 Collect  
Amarillo, Texas



### News of Our SERVICEMEN



**Larry Elliott**

SAN ANTONIO -- Airman Larry D. Elliott, son of Mr. and Mrs. Buford D. Elliott of 106 E. Garfield, Morton, Texas, has received his first U.S. Air Force duty assignment after completing basic training at Lackland AFB, Texas. The airman has been assigned to Dover AFB, Delaware, for training and duty in the transportation field. Airman Elliott is a 1971 graduate of Morton High School.



**D. McCasland**

SAN ANTONIO -- Airman Michale D. McCasland, son of Mr. and Mrs. Burl D. McCasland of 110 S. W. Fifth, Morton, Texas, has completed basic training at Lackland AFB, Texas. He has been assigned to Lowry AFB, Colorado, for training as an intelligence specialist. Airman McCasland is a 1971 graduate of Morton High School.

**John E. Jones**

CANYON, TEXAS. John E. Jones, a freshman Math Major from Muleshoe, Texas, is enrolled in the ROTC Cadet Corps at West Texas State University this fall. Jones, a 1971 graduate of Lazzbuddie High School, is the son of Mr. and Mrs. Robert Jones, Route 3, Muleshoe. Upon graduation and successful completion of all Military Science courses, Jones will be commissioned as a Second Lieutenant in the United States Army.

**Hayward Glover**

SAN ANTONIO -- Airman Hayward Glover Jr., son of Mr. and Mrs. Hayward Glover Sr. of Rt. 1, Dimmitt, Texas, has received his first U.S. Air Force duty assignment after completing basic training at Lackland AFB, Texas. The airman has been assigned to a unit of the Strategic Air Command at McCoy AFB, Florida, for training and duty in the supply field. Airman Glover attended Dimmitt Senior High School.

**Better Than Ever!**  
**1971 CROP**  
**NORTH DAKOTA SEED POTATOES**

"They Have the Vigor to Produce Profitable Crops!"

The finest crop in many years has just been harvested in North Dakota. A long, cool growing season plus extra care by experienced growers has enabled us to offer you the very "tops" in quality seed potatoes.

CONTACT YOUR SUPPLIER SOON!  
STATE SEED DEPARTMENT  
University Station, Fargo, N. D.

### Johnny Raney Hospital Briefs

Private Johnny M. Raney, 20, son of Mr. and Mrs. Edd Edmiston, 523 W. Fifth, Muleshoe, Texas, recently completed eight weeks of basis training at the United States Army Training Center, Armor, Ft. Knox, Ky. He received instruction in Drill and Ceremonies, Weapons, Map Reading, Combat Tactics, Military Courtesy, Military Justice, First Aid, and Army History and Traditions. His wife, Debra, lives in Littlefield.

**James D. Wolf**

CANYON, TEXAS. James D. Wolfe, a senior Business major from Muleshoe, Texas, is enrolled in the ROTC Cadet Corps at West Texas State University this fall. Wolfe, a 1968 graduate of Muleshoe High School, is the son of Mrs. Mabel Wolfe, 222 W. Ave. F, Muleshoe. While attending Muleshoe High School, Wolfe was chosen as the Outstanding Student as well as the Outstanding Physical Education student. At WTSU, Wolfe is a member of the Scabbard and Blade Society and is a member of the House of Delegates. Upon graduation and successful completion of all Military Science courses, Wolfe will be commissioned as a Second Lieutenant in the United States Army.

### SCHEDULE OF EVENTS

Monday, November 8, 1971  
7:30 p.m. - Rainbow, Masonic Hall  
Muleshoe Square Thru, American Legion Hall  
Tuesday, November 9, 1971  
7:30 p.m. Alcoholics Anonymous, South First  
8:00 p.m. Rebekahs, Odd-fellows Lodge  
7:30 p.m. - OES, Masonic Hall  
Goodland Bible Study  
Llano Estacada, First National Bank  
Muleshoe Art Association, Muleshoe State Bank  
Thursday, November 11, 1971  
Muleshoe Young Home-makers  
4:00-7:00 p.m. Weight Watchers, Catholic Church  
7:00 p.m. TOPS, REA Meeting Room  
Friday, November 12, 1971  
Muleshoe Study Club  
Any upcoming community event for Schedule of Events, please report to the Journal office.

Compliments Of:  
**MULESHOE STATE BANK**  
MEMBER FDIC

### Hospital Briefs

WEST PLAINS HOSPITAL  
ADMISSIONS  
Robert McNeil  
Cloyd Myers  
Juan Morin  
Lee Gable  
Mrs. Etta McMath  
Jim Crawford  
Gloria Mallouf  
Mrs. Inez Hernandez  
David Purdy  
Mrs. Maye Damron  
M. T. Hukill  
Linda Mason  
Beverly Copeland  
Audrey W. Gore  
Jimmy Dale Black  
Jacob S. Dunlap  
W. B. Harlan  
DISMISSAL  
David Purdy  
Jimmy Wall  
Linda Mason  
Beverly Copeland  
Mrs. Maye Damron  
Lowery Pierson  
John Hudson  
Gloria Mallouf

**ON BIRTH LIMIT**  
Census Director George Hay Brown has predicted that the world's population will double within 30 years. He advocates giving serious study to the question of limiting population.

### Mrs. Burris Services Held

Mrs. Virgie LaFlo Burris, 69, of Brownfield and formerly of Muleshoe, died about 9:55 a.m. Saturday in Brownfield General Hospital after a short illness. Services were held Monday at the Church of God in Brownfield, with interment in Terry County Memorial Park. Office.

\*\*\*\*  
This is the season for beauty contests and contest judges.

iating were Reverend R. V. Luna, Garland; Reverend James Qualls, Brownfield and Reverend J. W. Farmer. Survivors include six sons, W. O. and Wallace of Seagraves, M. Ray of Westminster, California, and M. Nelson of Yukon, Oklahoma, Virgil of Amarillo and Bradley of Cypress, California; four daughters, Mrs. Martha Turner of Gila Bend, Arizona, Mrs. Virgie Pruitt of Amarillo, Mrs. JoAnn Shrum of Seminole and Mrs. Sue Herring of Brownfield; three sisters, Mrs. Jewell White of Coleman, Oklahoma, Mrs. Leona Hodett and Mrs. Inez Hokett, both of Atoka, Oklahoma; and 31 grandchildren.

### BIBLE VERSE

"A woman that feareth the Lord, she shall be praised."  
1. Who is the author of this verse?  
2. Who was his father?  
3. What does the word "feareth" mean?  
4. Where may this verse be found?  
**Answers to Bible Verse**  
1. It is thought to be Solomon.  
2. David.  
3. In the Biblical sense, it means have reverence for or solicitude toward.  
4. Proverbs 31:30.

# TOP FOOD VALUES

VALUES GOOD NOV. 8-13

## PRODUCE

**TEXAS RUBY RED GRAPEFRUIT**.....Lb. **10¢**

**WASHINGTON EXTRA FANCY PEARS**.....Lb. **19¢**

**CRANBERRIES**  
OCEAN SPRAY  
1 lb. cello bag **29¢**

## MEATS

**CHUCK ROAST**  
USDA CHOICE GRADE BEEF  
BLADE CUT Lb. **59¢**

**CHUCK ROAST** CENTER CUT Lb. **69¢**

**JIMMY DEAN PURE PORK SAUSAGE**.....2 Lb. Bag **\$1.29**

**WILSON'S CERTIFIED SLICED BACON**.....2 Lb. Pkg. **\$1.29**

## HOME LAUNDRY DASH DETERGENT

**\$3.99**

**NORTHERN BATHROOM TISSUE**  
4 roll pkg. **39¢**

**JIF PEANUT BUTTER**  
28 oz. jar **89¢**

**MARYLAND CLUB COFFEE**  
1 LB. CAN **59¢**  
(limit 1 per family with \$5 purchase)

## ICE CREAM

**CLOVERLAKE DELUXE ICE CREAM**  
½ gal. **59¢**

**HI-C ORANGE DRINK**  
3 FOR **\$1**  
46 oz.

**GALA PAPER TOWELS**  
3 **\$1**  
for JUMBO ROLL

**Shurfine All Vegetable SHORTENING**  
3 lb. can **49¢**  
(limit 1 per family with \$5 purchase)

**FROZEN PATIO MEXICAN OR BEEF ENCHILADA DINNERS**  
each **39¢**

**COCA-COLA DR. PEPPER PEPSI COLA**  
6 BTL. CTN. King Size **35¢**

**Comet**  
Giant Size Only  
**19¢**  
(21 OZ. CAN)

**LAWNCREST PATTERN INTERNATIONAL STAINLESS**  
**4 PC. PLACE SETTING**  
ONLY **99¢**  
WITH EACH \$5.00 PURCHASE OR MORE

## Wagnon Grocery & Mkt.

515 W AMERICAN BLVD. MULESHOE PHONE 272-4406

# MONEY...

## A Favorite Family Subject...

Funny how family discussions seem to become financial talks. Because, money is what helps keep families going and growing. And to help keep you in the money... depend on us, **Tri-County Savings & Loan**

Our savings accounts earn the highest dividends permissible by law. And low-cost loans are available for every good need — car, home, tractor, farm equipment. We are your financial kin!

**Tri-County Savings & Loan**  
MULESHOE