

THE SLATON SLATONITE

VOLUME 6

SLATON, LUBBOCK COUNTY, TEXAS: FRIDAY, MARCH 9, 1917.

NUMBER 28

George Arnett Killed When Car Skidded and Turned Over

George Arnett, manager of the Elwood Ranch near Lubbock, was instantly killed last Saturday morning when the automobile in which he was riding skidded and turned over at a point three miles south of Canyon. He was returning from Amarillo and was in a car with Newton Wilson, driving, and Albert Taylor. They went to Amarillo Friday, Wilson to confer with Tony Chisum about business matters and the others to do some shopping.

The car was said to be traveling about forty-five miles an hour when the railroad was crossed. The road goes down and makes a curve after crossing the track at an angle. The car skidded and turned completely over, pinning Arnett beneath the back of the front seat. Taylor and Wilson escaped with painful but not serious injuries. Wilson was driving at the time and Taylor was sitting in the back seat. Arnett's body was taken to Canyon and shipped to Lubbock Sunday where funeral services were held. Interment was made in the Lubbock cemetery.

The Elwood ranch is owned by William Elwood, an Illinois capitalist, and one or two associates. Arnett had been in charge for some time. He was a young man and was widely known by cattlemen.

Commissioners Court Receives Bids

The bids of the Citizens and Lubbock State Banks were received by the county commissioners in session last week for the depository of county funds, and the following were the bids: Citizens National, 3 per cent on

daily balances; Lubbock State, 2 3/4 per cent on daily balances. The usual good faith check accompanied the bids from each bank. It was decided that the Citizens National Bank, having made the highest bid, that that bank be designated as the official depository for the county funds for the next two years and that upon the presentation of the proper bond, etc., that the funds be transferred to the said Citizens National Bank.

Though there was nothing on the minutes to show for the statement, we understand that the court is considering the purchase of a farm near the city of Lubbock for a county farm, and propositions will be received at an early date for the purchase of this tract of land.—Avalanche.

Makes Nice Profit on Sudan Grass

H. A. Patterson, a Slaton farmer who lives ten miles south of here, was in town Tuesday with two thousand pounds of sudan grass seed which he was marketing and shipping out. He got twenty-three cents a pound for the seed. Mr. Patterson had a ten acre patch of sudan which he cut for feed, not paying any attention to the seed. After feeding about half of the crop he decided to thresh the balance, and secured about three thousand pounds of seed. If he had threshed the crop at first he would have had about \$1,500 worth of seed and hay off of the ten acres. \$150 an acre is pretty fair returns for Slaton South Plains land.

WE HAVE plenty of the good COAL that gives best satisfaction and can fill your orders promptly. Phone No. One.—A. C. Houston Lumber Company.

See York, the tailor, for ear corn and maize.

Sales of Slaton Real Estate for Last Sixty Days Make a Record

There has been an activity in the sale of lots in the Santa Fe Original Townsite of Slaton during the past thirty days such as has never been experienced in the history of the city since the first days of the opening on June 15, 1911. The lots that have been selling so rapidly are residence lots and they have all been purchased by men in the employ of the Santa Fe Railway Company. That there should be such a demand for these lots from the men who are working for the railroad in various capacities from section men to the highest division officials is the best boost that can be given Slaton. It is estimated that the sale of the lots has amounted to \$20,000 in the last thirty days. The average price per lot is from \$125 to \$250, and these sales given here are in the original town and do not include the purchases of residence lots that have been made in the additions.

Call Made for Annual Election of City Officers on April 10th

The city council met Tuesday in a very interesting session and much business was transacted.

The call for the regular city election for the first Tuesday in April was ordered to be posted.

The proposition of securing a dumping ground for tin cans and junk was considered and a committee appointed to cooperate with the citizens in securing this ground and having it fenced.

The report of the committee for properly opening a road from the business district of town south to the Southland crossing over the railroad was accepted and the road ordered opened and such grading as is necessary be done to put the street along this road in first class condition.

The work that is being done on improving the cemetery was satisfactory to the council. The ground is to have a good, substantial and attractive fence, and there are to be three entrance gates to the grounds.

The grading work on the streets will go forward as far as the finances of the city will permit.

Bringing Dairy Cows to Texas

College Station, Texas, March 6.—The Panhandle section of Texas has long been recognized as a cattle country of the first class. Under ranch conditions it was strictly a beef proposition. Under farm conditions new problems have arisen. The larger landholders are still producing quality beef and making money. Bankers and business men have realized, however, that the homesteader with smaller holdings must intensify, hence the determination to introduce the dairy cow business—the high pressure branch of the cattle raising in order to intensify.

The bankers are loaning the money on long time at reasonable rates of interest and the College is furnishing specialists to select the cattle and give instructions in feeding, breeding and management.

All cattle outside of the state will be purchased thru a committee. A purchasing committee will leave Texas on March 16th to purchase several hundred head. C. M. Evans, chief of the animal industry division of the extension service of the A. & M. College, who will represent the college on this trip, says: "Most of this shipment will be mature

cows ready to freshen. Every cow must pass muster under a high standard, determined by the use of milk scales and the "Babcock Tester." Every cow must have a health certificate issued by an approved veterinarian, showing freedom from tuberculosis and other diseases, as nothing but the best will do.

An effort is being made to induce breeders in Texas who have high class animals for sale to hold public sales at some convenient point in order that individual purchasers may have the advantage of selecting from large numbers without much travel.

The first of these sales will be held at the Fort Worth Fat Stock show this month. Others will be held at the Texas Farmers Congress, the Dallas Fair and the Waco Cotton Palace.

The shipments this spring will go only to North Texas on account of the tick fever problem, but other shipments will be made into South Texas as soon as cold weather comes in the fall.

All who expect to get cattle later are being urged to grow abundant feed crops, build silos and take other steps necessary to the proper care of the fine stock they will receive.

The work of fencing the Slaton cemetery is progressing rapidly under the supervision of L. W. Smith, and this ground will be improved until it is made attractive. Panhandle avenue runs almost directly to the main gate in the cemetery and this street should be opened for travel. We should have a tree planting day when every home in Slaton should furnish one tree and have it set on the cemetery grounds.

County Farm Demonstrator Visiting in Slaton This Week

Mr. R. O. Tackett of Lubbock and J. L. Benton, county commissioner from this district, were in Slaton Tuesday meeting the farmers and business men and talking better farming. Mr. Tackett was recently elected county farm demonstrator of this county and he will put in his entire time helping our farmers develop this section of the South Plains. Mr. Tackett is also affiliated with the Extension Division of the Agricultural and Mechanical College of Texas and with the United States Department of Agriculture, both departments cooperating with the county commissioners in farm extension work. He is a very enthusiastic agriculturist and has had considerable experience, and it is firmly believed by our commissioners that he can be of inestimable benefit in our farm development. Mr. Tackett teaches farming, stock growing and community development along social lines as well as along financial lines, and he believes in making the farm life attractive and entertaining so that people will want to stay on the farm rather than move to town.

Special Notice to Property Owners

Now is the time to render your property for taxation.

State and county taxes are to be rendered to H. D. Talley.

School district and city taxes are to be paid to R. A. Baldwin.

The law does not require the assessor to hunt you up for the purpose of assessing your taxes, and unless you render your property the assessors will make the rendition for you.

Avoid trouble by making your renditions NOW yourself.

They are coming to Slaton.

You are Going to be Mighty Sorry if You Don't Come Here First

and look around before buying anything that you want to wear. Our stock is brimful in every department of the best of popular merchandise. And besides we are carrying by far the largest stock in Slaton. You will be surprised, too, at the moderate prices we have. Just before the advance we bought \$17,000.00 worth of new goods. We paid mostly cash and took our discounts. Our stock has grown to such an extent now that we are compelled to move it rapidly.

In order to do this we are making the prices—prices that will mean a great deal to you. All we ask of you is to come here and look. The minute you see the quality and the remarkably low price you are going to get into a trading humor mighty quick. And your neighbors will appreciate it if you will let them know. No matter now what you want, just remember that if it is found in a first class dry goods store we have it, and will be mighty glad to serve you in a way that will make you want to come back.

Robertson Dry Goods Company

The West's Most Progressive Store

Here and Southland

Both Phones 100

New Monograms Off for Pennantville, Tex.

An enthusiastic meeting of baseball fans was held at the McRea hall Wednesday afternoon and the Slaton Baseball Association was organized with A. B. Robertson as president. L. P. Loomis was chosen vice president and R. A. Baldwin secretary treasurer. These officers with Alex DeLong, T. J. Overby and C. F. Anderson were elected a board of directors to control the baseball situation this year.

Mr. Robertson addressed the meeting with a short but very interesting talk on clean sports and healthy amusements. He said in brief that we build up our schools, churches and business property, and that all these movements were necessary to mental and moral development. And yet, he said, in the busy marts of life we need a good, healthy diversion in the way of an exciting game of the national sport and that he was heartily in favor of a good park and a winning team. And that wasn't all—he wants an honest game and a game refined and free from gambling and drinking, and that he believed that the whole city would support a game built on these lines. And just to show that he meant what he said he started the subscription list for

financing the park by subscribing \$100.00.

The meeting decided to build a baseball park on the city park ground, to fence the ground and build a grand stand. Enough money was raised to insure the financing of the work when the rest of the business firms contribute to the account and workmen will be secured to put up the improvements. The 1917 baseball situation for Slaton starts off with a splendid boost towards a very successful season.

The baseball boys were given assurance of liberal support from Supt. A. Ewing, Trainmaster H. A. Tate, Agent W. H. Smith and other officials of the Slaton Santa Fe Division, and the aid of any ball players working for the railway company whenever games are arranged.

Carl Wade was operated on in a hospital at Lubbock Tuesday to relieve an abscess in his head, behind his left ear, the trouble resulting from measles and pneumonia. The operation was successful and the indications are that Carl will soon recover. His mother is with him this week.

Political Announcement

I am a candidate for re-election to the office of mayor and solicit your vote and your support.

Any information you wish in regard to the financial condition of the city I will be pleased to furnish you. L. P. Loomis.

The Close of Each Banking Day Marks a New Period in Growth of the SLATON STATE BANK.

The Growth is the result of service that meets every demand of a progressive bank that adheres to sound banking principles and serves our customers in a spirit of cheerfulness; and by these means we have won a place in the hearts of our customers.

Why not let us number you among our family of customers? To Loan Money—to Help You Make Money—that is our business. Call and see us.

THE SLATON STATE BANK

A GUARANTY FUND BANK

J. C. PAUL, President

J. H. PAUL, Cashier

A. L. ROBERTSON, Vice Pres.

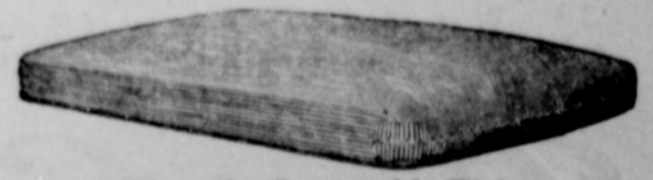
J. G. WADSWORTH, Asst Cash

DON'T MISS THE MONDAY NIGHT FEATURE FILM SHOWS

A High Class Entertainment
Six Nights a Week
Show Starts Promptly at 7.30

Movie Theater
The Shadowland Playhouse

"SANIDOWN"



Note the Removable Tick

Guaranteed for 20 Years--30 Days Free Trial

FORREST HARDWARE
HARDWARE AND FURNITURE

Rainfall Statistics for 1916 at Slaton

A number of requests have been made of the Slatonite for the rainfall record at Slaton for 1916. It may be a great surprise to many people who have in mind the good crops last year to learn that there was a moisture precipitation of only 18.60 inches for the entire year.

Brownfield reports 18.30 inches for 1916 as against 25 inches in 1915.

The rainfall at Snyder last year was 14.13 inches, and the average for the past five years has been 24.70 inches at that place. The smallest record was 10.44 inches in 1911 and the largest 33.05 in 1915.

Spur has a rainfall record for twenty two years, and the average there for that period has been 22.34 inches per year. Of this record the average of those years for the six months from October to March has been 6.79 inches for the period, and for the six months from April to September has been 15.55 inches for the period.

At Stratford in Sherman County the rainfall for 1916 was 8.92 inches; at that a fair crop was raised. For 1915 the rainfall was 18.19 inches.

For the last five years a record has been kept at Slaton, and the average yearly precipitation has been 31 inches. The greatest rainfall was recorded in 1914, when it amounted to 40.75 inches. At the V ranch six miles east of this city the rainfall amounted to 50 inches for that year. The record at Slaton for 1916 is:

Jan. 21	.375
March 24	.50
March 31	1.25
April 14	1.675
April 26	2.675
May 17	.375

June 12	1.
June 14	1.
July 5	.50
Aug. 1 (local)	1.
Aug. 18	1.125
Sept. 2	2.50
Sept. 12	2.125
Oct. 15	2.125
Nov. 6	.125
Nov. 21	.25
Total	18.60

Five Saloons Doing Business in Texico May Lose Licenses

Clovis, N. M., Feb. 21.—The board of county commissioners of Curry county has under advisement at the present time the question of revoking the licenses of the five saloons now doing business in Texico. The matter was brought before the commissioners at their last meeting, when a large number of petitions were presented which set forth grounds alleged to be sufficient in law to provide for revocation of licenses.

The unique scene of commissioners from another state crossing their own state line and appearing in person before the commissioners of this county in behalf of the proposed action was viewed. A large delegation was on hand from Hereford and a number of citizens from Tulla and Farwell, Texas. These men pointed out that their interest lay in the fact that Texico is the only "wet" spot in the Panhandle country, and stated that many violations of law occurring in their towns had to be laid to the saloons of Texico.

The commissioners have taken up the matter thru the office of the district attorney and a decision will be made in the course of ten days or two weeks.

Why pay cash at a credit house?—Dowell Bros. Cash Grocery.

Canned Goods to Rise Thirty-Three Per Cent in Price

Chicago, Feb. 22.—An increase of 33.3 per cent in the price of canned goods for this year is announced by wholesale grocers. The announcement comes just at a time when the government is beginning a drive on the high cost of living to learn just what causes the present high prices.

The heavy frosts in Florida are given as the principal reason for the increase in canned goods. Because a great quantity of fresh vegetables will be kept out of the market canned goods will be more in demand, according to the dealers.

Other reasons given by men in touch with the situation are that tin is scarce and can manufacturers cannot get enough for their business, and farmers are demanding in some cases 100 per cent more for their crops.

More than \$10,000,000 worth of vegetables and other products have been destroyed in Florida, according to produce and fruit men. Argentina also will produce a short crop, because of great swarms of locusts, for one thing. Dry and hot weather conditions also have done much toward ruining a large part of the crop there.

The Big Well at Clovis, N. M., is Reported Splendid Success

The Slatonite had an article several weeks ago regarding a large well that was being sunk at Clovis, N. M., for the purpose of furnishing the city with water. Clovis had always had an inadequate supply of water, and it was supposed to have been due to the fact that there was not enough water under that locality. Last summer the city ordered a large well put down. The well was drilled part way to the water level and a chamber was excavated and a pump house built in it; then the well was drilled on down to tap a lower and stronger strata of water bearing gravel. The well was tested a few days ago and the Journal reports that the test proved the well to be entirely satisfactory. The well pumped water at the rate of two hundred fifty gallons per minute, and a run of six hours per day is sufficient to supply Clovis with water, at a daily cost of operation of four cents per one thousand gallons of water, or \$10.00. Under the old system Clovis had five wells whose capacity was taxed to run continuously and supply the city with water, and the daily cost of operation of \$25.00, or ten cents per thousand gallons. The new well cost \$7,000. The Journal makes this comment on the well:

"The remarkable success of the big well dispels all skepticism as to its value and its saving. This type of well has never been tried in what is termed the deep water country of the Plains, hence many adverse opinions were rendered, but they have been proven unfounded under the showing of the big well."

EFFORT TO ERADICATE RAT

Government Officials Make Public Report on the Work of Exterminating National Plague.

The connection between rats and plague has led to the accumulation of information regarding the frequency of their association with human habitations as well as their destructiveness. Studies have been made which throw light on the question of the number of parasites which have been permitted through carelessness to exist in the immediate neighborhood of man. Until these comparatively recent investigations scarcely anyone would have believed how large a number of rodents find a means of livelihood for themselves in our cities and towns, especially those which have a series of docks and wharves. A special report of plague eradication work at New Orleans, made by the surgeon in charge of the United States public health service work at that point, contains rather startling illuminating facts concerning these parasites, says the Journal of the American Medical Association. "The total number of rodents captured up to November 19 of the last

year runs up to 407,983," says the writer. "Some idea of the immense labor and the meticulous care required for thoroughness in sanitary work may be gathered from the fact that over 300,000 of these rodents had been examined up to the same date, and, though altogether only 285 cases of rodent plague were discovered, it is easy to understand how much of a danger for the dissemination of the disease these animals were. Until the actual report, it would have been almost impossible to believe that a city like New Orleans, with its 500,000 rodents, actually harbored a larger population of rats and mice than it did of human beings.

"New Orleans is probably no worse in this regard than most of the coast cities of the southern part of the country, at least, and it is probable that as careful a hunt for the creatures would reveal their presence in proportionate numbers even in many of the towns of the interior.

"Coast cities like New Orleans, San Francisco, Seattle and some of the other towns on Puget sound have been compelled to take up the problem of obliteration of their rodent parasites by the occurrence of plague. The Journal of the American Medical Association thinks, however, that it would be well worth while for health authorities in other towns and cities to face this problem frankly before it becomes a source of actual immediate danger to health."

Iron for the Future.

That iron is the very basis of our industrial civilization will be admitted by the thoughtful, and many of our greatest supplies of iron ore are being rapidly depleted because of the increased per capita consumption of iron the world over, an increase which is destined to be greater in the future when the races in Asia and Africa increase their consumption of iron. These conditions of increasing consumption of and decreasing reserves have often in the past, particularly about the beginning of this century, says J. E. Johnson in Metallurgical and Chemical Engineering, been used to create a scare, on the ground that our supplies of usable ore were being so rapidly depleted that their exhaustion would occur within two or three generations. This is a preposterous point of view, because as we lower the percentage of iron ore in the rock, which we call "ore," the quantity of such ore increases at a rate out of all proportion to the decrease in iron content, and as we use leaner and leaner ores technical improvements will be made which will minimize any tendency to increased cost of production. The same thing has happened in gold, silver, copper and other ores, and today copper ores are being worked with only 1.5 per cent of copper in them.



"Little Miss Up-to-Date" Enjoys Being Well Dressed

A Mother who takes pride in her little daughter's appearance should exercise care in the selection of her clothes. Our nice line of Dry Goods will interest every mother.

We have purchased a Mammoth Line of Spring Goods

And will be able better than ever to meet the demands of the trade.

Let us supply your every need

The Grand Leader
M. OLIM PROP.
EVERYTHING THAT MAN AND CHILD WEARS IS MADE TO WEAR.

Slaton Store No. 1

Post Store No. 2

Presto LIGHT STATION



We have secured the Presto Station and can supply you with Presto Lights without delay. We are headquarters for Supplies, Accessories and Service.

Slaton Garage

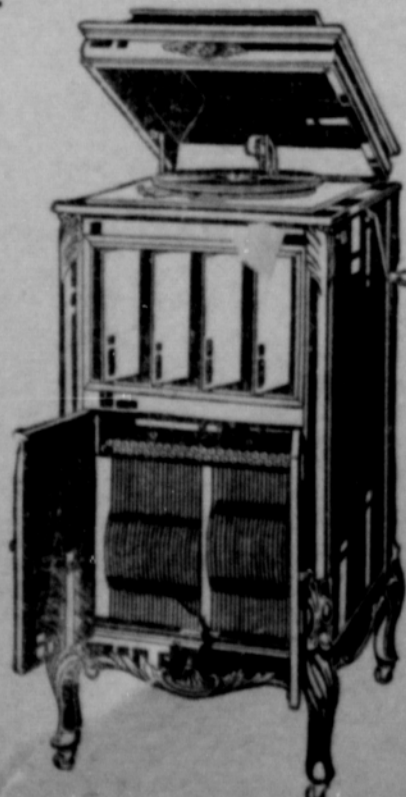
PHONE No. 73

Lee Green and Son. A. K. Green, Manager

The Perfect Music Comes Only from the Master Instrument, the beautiful COLUMBIA GRAFONOLA at \$85.00

We keep a complete inventory of the latest records for our Columbia Patrons.

Howerton's



L I S T E N !

Choose for your friends those who stimulate you, who arouse your ambition, who stir you up with a desire to do something and be somebody in the world.

BUILD YOU A HOME

Slaton Lumber Company

I will pay cash

For anything that you have for sale in the way of second hand furniture, stoves, wagons, hacks, harness, junk, hides and furs.

Highest Prices Paid for Poultry and Egg

Call and see me. On Northeast Corner of Square.

T. W. COVINGTON
Slaton, Texas

We Exercise The Greatest Care

In filling your prescriptions with the best pure drugs on the market. We give you the full benefit of our extended experience in compounding medicines and of our carefully selected stock of drugs.

We hope to retain your confidence in our ability to serve you well.

RED CROSS PHARMACY



SLATON SLATONITE

Slaton, Lubbock County, Texas

Issued Once a Week on Friday Morning
By L. P. LOOMIS
Owner, Editor, and Publisher

SUBSCRIPTION, THE YEAR... \$1.00

Entered as second class mail matter at the post office at Slaton, Texas, on Sept. 15, 1911 under the act of March 3, 1897.

The column of classified ads in the Slatonite is the place to locate just what you are looking for, or to use to locate something that you want. Use this column. We make advertising rates very liberal on classified locals.

Ex Congressman W. R. Smith should feel grateful to Thos. L. Blanton for taking his place away from him. Mr. Smith is now federal judge and will not have to bother about an expensive campaign every two years to retain his office.

The county commissioners of Dawson County had a contract with the man building their new court house that the structure was to be finished on December 20th last, and the contractor was to pay a penalty of \$10.00 per day for every day past that date that he required to finish the building. The penalty was placed on the contractor on Feb. 19th.

The war is not without its golden linings. Among seventy millions of dollars worth of French twenty franc pieces shipped to the United States last year were twenty five millions of the original golden eagles that Uncle Sam paid to the French for their rights to the Panama Canal. The packages came back to the United States unopened. The gold cast across the waters came back four-fold.

The legislature of Texas is composed of two-bit politicians. They can meet and pass little local laws for the benefit of some particular section of the state, but when it comes to a law of universal need they act like a bunch of school boys. The people of Texas called for the submission of prohibition and the legislature won't submit it. The State constitution demands a redistricting of the state after each federal census and the legislature won't redistrict. The people demand a law requiring each man who votes in the state to be a naturalized citizen, and the legislature won't pass the law. So the politicians and the Mexicans will continue to dominate Texas elections.

IN THE "ALL HOME PRINT" CLASS

The Slatonite, always among the brightest and newsiest exchanges that come to our office, has stepped up another notch. Last week it came out an "all home print" sheet, and a most excellent one at that. Editor Loomis is to be congratulated on the improvement and the good people of Slaton and vicinity should take cognizance of the progressive spirit manifested by their newspaper and "come again" just a little more liberally in recognition of it. With news paper and citizens working together, a great deal can be accomplished for the good of the country.—Southwest Plainsman, Amarillo.

Arthur N. Bestor, lecturer, will give an entertainment at the Santa Fe Reading Room on March 11th. Supt. S. E. Busser states that Mr. Bestor's lecture will be the greatest entertainment sent to the Santa Fe folks in Slaton this winter.

The citizens should kindly keep in mind the sanitary ordinance and refrain from dumping dead animals out on the commons. Dead animals should be either buried or burned.

AN UNCLAIMED RIB

Oh, unknown man, whose rib I am,
Why don't you come for me?
A lonely, homesick rib I am
That would with others be!
I want to wed—
There, now, 'tis said!
(I don't deny and fib)—
I want my man to come at once and claim his rib!

Some men have thought that I was theirs,
But only for a bit;
We found out soon it wouldn't do;
We didn't seem to fit.

There's just one place,
The only space
I'll fit—(I will not fib)—
I want my man to come at once and claim his rib!

Oh, don't you sometimes feel a lack,
A new rib needed there?
It's a! Do come and get me soon
Before I have gray hair!
Come get me, dear!
I'm homesick here;
I want—(and I'll not fib)—
I want my man to come at once and his rib!

—New York Times.

YOUR BOY'S LIBERTY

By F. A. Whiteley.

Why should fathers and mothers help their boys and their neighbors' boys out into sin and shame? This is being done. Where is the profit? And who will be benefitted by the down fall of any boy? There are parents growing inmates for the penitentiary. They are giving them the first lessons in lawlessness. One great lesson is the cigarette smoking business, and the other is night hours on the streets.

I am not guessing at what I say. I know the facts.

The boy who smokes cigarettes is a good companion for the boy who stays out nights, if indeed, he is not guilty of both. One leads to the other.

I am writing this because I love the boys, and want them to have the best. But some may say, "That is not a crime." Let's see about that. Facts are facts.

In some states cigarettes are outlawed the same as is liquor. If drunkenness is a crime, then cigarette smoking is a crime. It is such a crime that no cigarette smoker has ever graduated from Baylor University with any honors. Again, not long ago twenty-eight young men graduated from a military school in New York state, and when they went before the medical board for examination nineteen of them were rejected. They were cigarette smokers. Was it any crime for them to smoke? Again, ninety per cent of the young men smoking cigarettes who volunteered for the late war with Spain were rejected and sent home. Was it a crime for these men to injure their physical life that they were not able to fill the humble position of a common soldier?

Many railroads and many banks as well as other important business institutions refuse to employ the cigarette smoker for the same reason that they will not employ a whiskey drinker. They cannot be trusted. Who will deny the criminality of using anything that so destroys our manly powers that we cannot be trusted?

Has any parent the right to teach the boy by precept or example, or allow the boy to follow the teachings of another that will disqualify him for any position of trust or honor?

I think it is high time to wake up on these things. I am for the boy, and I think every parent ought to be the boy's best friend. But they are not always.

Some one has well said, "The cigarette is not much of a mathematician, but it can add to the boys nervous troubles; it can subtract from his physical energy; it can multiply his pains and aches; it can take interest from his work; and discount his chances of success."

Let's save the boy from this curse. Down with the cigarette.

See York, the tailor, for ear corn and maize.

They are coming to Slaton.

IS PATRON SAINT OF BIRDS

Squirrels Depend on Asylum Inmate for Their Supply of Butter-nuts in Winter.

"The patron saint of birds and squirrels" is happy. And though he is sixty years old and has been a patient of the state hospital for the feeble-minded for 36 years, his hair is brown and wavy, his eyes are bright and sparkling and his health is good. He has been in the institution more than half of his life, but his life seems to be more sane than the lives of the thousands who have outstripped him in the life race—and have become wrinkle-cheeked, blear-eyed and hard-fisted.

Albert Gentle has forgotten the world, says the Milwaukee Sentinel. He was entered in the hospital in 1880 because he loved the small animals and food of the forests. He has been there since, spending most of his time gathering nuts or communing with nature, never expressing the slightest desire to get back to the outside world.

"Last year I picked 27,500 butter-nuts for my squirrels," he said. "I need just that many to feed them all. They get so hungry in the winter time. I make so many of them happy. I make so many of them happy. I make so many of them happy."

He said it quietly, with dignity. Imaginatively he somehow emerged from the character of an old simpleton, clothed in an absurd, rusty frock coat, trousers of another day and general appearance of Washington Irving's schoolmaster and became the sanctified keeper of a great trust. What was more important than caring for those little animals?

"Most people do not know how important it is that we should always think of the tiny bits of life that God has put on this earth," he said slowly. "Often they do not think of each other."

MOST POTENT OF WEAPONS

Nothing Devised by Humanity is Able to Stand Against the Assault of Laughter.

In "The Mysterious Stranger"—the just-published posthumous book by Mark Twain—that authority on humor declared that most men possess only "a mongrel perception of humor."

He elaborates his idea by saying: "The multitude see the comic side of a thousand low-grade and trivial things—broad incongruities mainly; grotesqueries, absurdities, evokers of the horse laugh. The 10,000 high-grade comicities which exist in the world are sealed from their full vision."

"Will a day come when the race will detect the funniness of these juvenilities and laugh at them—and by laughing at them destroy them? For your race, in its poverty, has unquestionably one really effective weapon—laughter."

"Power, money, persuasion, supplication, persecution—these can lift at a colossal humbug—push it a little— weaken it a little, century by century; but only laughter can blow it to rags and atoms at a blast. Against the assault of laughter nothing can stand."

Europe's Largest Dam.

The largest dam in Europe has just been completed near Barcelona, Spain. It is built across the chasm through which the Noguera Pallaresa river flowed. Abutting on almost perpendicular cliffs, the dam is constructed of concrete, and measures 330 feet in height and 700 feet in length. The thickness is 230 feet at the base, gradually decreasing to 14 feet at the top. The valley above the dam was bought from the various landholders at a cost of near \$1,000,000, and now filled with water forms an artificial lake 15 1/2 miles long and 3 1/2 miles wide. The water that now passes through the power house yields an electric current of 20,000 horse power. Later it will be increased to 40,000 horse power. The water is carried by a system of canals into an arid district, where it irrigates a surface of nearly 100 square miles.

Peculiar Disease of the Teeth.

The Colorado Dental society has two of its members engaged in the investigation of a mysterious malady of the teeth known, for the want of a better name, as "mottled teeth," which occurs in this country in a number of districts, principally in the southwestern portion of the United States. It has been noted in a somewhat more violent form in Italy, 15 years ago. It manifests itself in children and persists through life, and is often so disfiguring that the victims resort to artificial crowning. It is a defect of the enamel-forming substance, and it is suspected that the cause is due to some element in the drinking water, which it has been impossible to definitely determine.

Re-educating the Maimed.

Among the mechanical devices for re-educating the maimed or crippled limbs of soldiers that are now being used in the French hospitals are bicycles for the arms and legs, machines for exercising the fingers and wrists, for making supple the tendons of the forearm, for intensifying the sense of touch in the blind, for giving practice in manipulating artificial arms and legs, besides many varieties of artificial hands specially designed for operating typewriters and tools of several kinds.—New York World.

A Suggestion.

"Sal, there ought to be some way to make the game laws apply to women's shopping."
"How do you mean?"
"There ought to be some closed season for this sort of hunting."

If any of our gay young Lotharios or Romeos of this bustling and enterprising village have designs on the charming co-eds at the University of Omaha, they are warned to look to their checkbooks. Big, black eyes, pompadoured locks, glistening white teeth and neatly manicured nails don't cut any ice with the Omaha co-eds.

An income of at least \$1,500 annually is the "first inducement bachelors with an inclination to leap into the matrimonial sea with an Omaha co-ed must make. So the co-eds answered Prof. Harry De Lamatre, instructor in economics, when he asked them what they considered a suitable salary for a man who is going to be married.

When De Lamatre said he believed an income of \$1,000 a year was quite sufficient from an economical standpoint, the fair young things burst forth with a simultaneous shout of protest and incredulity: "Who would want to live on that?" they demanded.

The Omaha co-eds don't demand luxurious limousines, birds of paradise for their hats, ermine coats or bejeweled-shoes, but they insist it takes \$1,500 a year to keep a home going.

"Wait and See" in French.

The phrase "wait and see" has bothered the French newspaper correspondents in London lately. No account of the crisis, of course, would have been complete without it, yet only one correspondent, M. Coudurier, of the Journal de Geneve, has attempted to translate it. His version is: "Attendez, et vous verrez ce qui arrivera." Thirteen syllables against three! It is a curious fact, always brought out, for instance, by the polyglot versions of the resolutions of international societies, that English is the tersest language in Europe. The English version on such occasions is always much shorter than the French or Italian. At the beginning of the war, when all cables had to be in English or French, the Italian and Russian correspondents in London chose English, and found their cabling expenses much reduced.—Manchester Guardian.

Prairie Dog Poison

There have been so many demands in the last few days for the Government recipe which has proven so effective for poisoning prairie dogs that we have looked up the recipe and reprint it for your benefit. Cut this out and paste it on the grainary wall:

- 1 ounce powdered strychnine.
- 1 tablespoonful gloss starch.
- 1 ounce powdered bicarbonate of soda.



SOLD AT LEES RACKET STORE

1 tablespoonful heavy corn syrup.

1.8 ounce saccharine.
13 quarts grain, feterita preferred.

Will treat 420 prairie dog holes. DIRECTIONS: Mix the ounce of strychnine in three-fourths of a pint of water; heat to a boiling point.

If the strychnine does not readily dissolve add a tablespoonful or two of vinegar.

Mix starch in one-eighth pint of cold water.

Add to strychnine water the starch solution and boil until a clear paste is formed, then remove from the fire.

Mix soda with one eighth of a pint of water.

Add to the strychnine starch

Greatest Improvement In Seed Planting

PAKRO SEEDTAPE FOR BETTER GARDENS

The tissue paper tape keeps the seed constantly moist—it is simple to understand that they germinate quicker and better. The seeds are spaced the proper distance apart—so no thinning out is necessary. Only the finest selected seeds of thoroughly tested prize winning strains are used. And the labor is reduced to a minimum.

Surely this is what you should use in your garden this year.

Pakro Seedtape is made by the American Seedtape Co., 71 West 23rd St., New York City. Get it at your dealer. Price 10c per package.

solution and stir to a creamy mass.

Add syrup and saccharine and stir.

Pour the solution over thirteen quarts of grain and mix thoroughly until the grains are evenly coated. Let stand several hours before distributing.

For small quantities an ordinary galvanized wash tub is convenient and the mixing may be done with a fire shovel.

Scatter a spoonful of the prepared grain on clean HARD ground NEAR the hole. Feterita is the best grain because of its bright color.

The poison does not soak into the grain but coats it like a sugar coated pill. Cyanide does not add to the efficiency of the poison and should not be used.

Founded and Owned by the Pecos & Northern Texas Ry. Company

4-Way Division Santa Fe System



SLATON LOCATION

SLATON is in the southeast corner of Lubbock County, in the center of the South Plains of central west Texas. Is on the new main Trans-Continental Line of the Santa Fe. Connects with North Texas Lines of that system at Canyon, Texas; with South Texas lines of the Santa Fe at Coleman, Texas; and with New Mexico and Pacific lines of the same system at Texico, N. M. SLATON is the junction of the Lamesa road, Santa Fe System.

Advantages and Improvements

The Railway Company has Division Terminal Facilities at this point, constructed mostly of reinforced concrete material and including a Round House, a Power House, Machine and Blacksmith Shops, Coal Chute, a Sand House, Water Plant, Ice House, etc. Also have a Fred Harvey Eating House, and a Reading Room for Santa Fe employees. Have extensive yard tracks for handling a heavy trans-continental business, both freight and passenger, between the Gulf and Atlantic Coast and the Pacific Coast territories, and on branch lines to Tahoka, Lamesa and other towns.

BUSINESS SECTION AND RESIDENCES BUILT

3000 feet of business streets are graded and macadamized and several residence streets are graded; there are 30 business buildings of brick and reinforced concrete, with others to follow; 700 residences under construction and completed.

SURROUNDED BY A FINE, PRODUCTIVE LAND

A fine agricultural country surrounds the town, with soil dark chocolate color, sandy loam, producing Kaffir Corn, Milo Maize, Cotton, Wheat, Oats, Indian Corn, garden crops and fruit. An inexhaustible supply of pure free stone water from wells 40 to 90 feet deep.

P. and N. T. Railway Company, Owners

THE COMPANY OFFERS for sale a limited number of business lots remaining at original low list prices and residence lots at exceedingly low prices. For further information address either

J. C. Stewart
Local Townsite Agent

R. J. Murray
Local Townsite Agent

H. T. McGee
Local Townsite Agent

Mrs. F. Graves Spring Millinery Opening



...WILL BE...
SATURDAY, MARCH 17
 9 o'Clock a. m. to 5 p. m. St. Patrick's Day



On this occasion will be subject to inspection one of the largest and most stylish aggregations of Millinery ever exhibited on the Plains. Style and quality considered, prices are astonishingly reasonable. In this Millinery Display will be found creations for the most fastidious as well as the moderate dresser.

Any mother buying Millinery worth \$5.00 or more on the Opening Day will be presented with a Gold Ring for the baby if it is under three years old.

Each lady visitor will be given an Historic Souvenir as a memento of the occasion. Every one is extended a cordial invitation to this greatest of all Millinery Openings. You will be greeted with the warmest welcome.

There will be subject to your inspection the latest in Sport Coats, ready made Dresses, Skirts, Waists—in fact every article in a first class Ladies Ready to Wear and Dry Goods Store. Finest and largest line of Hosiery in the city.

Talley-Hubbard Wedding Yesterday

Mr. Leo Hubbard and Miss Viola Talley were united in holy wedlock at the home of the bride's parents, Mr. and Mrs. H. D. Talley, in Slaton Thursday morning, March 8, 1917, at 6 o'clock, the Rev. N. B. Graves pronouncing the ceremony. Only the immediate relatives and a few friends of the couple were in attendance.

Immediately after the ceremony Mr. and Mrs. Hubbard left on the train for Glazier, Texas, where they will visit the groom's sister, Mrs. W. F. Maxwell, until April 1st, when they will return to Slaton and be at home to their friends.

Both these young people have grown up in Slaton and they have a large number of friends here. Mrs. Hubbard is the only daughter of Mr. and Mrs. Talley, and she is an accomplished and estimable young lady, and Mr. Hubbard is the only son of Mr. and Mrs. B. J. Hubbard. He holds a responsible position with the Grand Leader of this city. The Slatonite takes much pleasure in extending congratulations and best wishes to Mr. and Mrs. Leo Hubbard.

Dental Notice.

Dr. B. F. Gregory of Enid, Okla., a dentist of several years' experience has located in Slaton permanently and will have his office open in a few days.

Call on him for all classes of dental work. Uses most modern and humane methods of dentistry.

Planting Seed Tape

The work of laying out a garden has been so much simplified during the past few years that gardening is now something which even the most inexperienced can carry out with assurance of success. Take planting, for instance. Instead of planting seeds one at a time, as we did a few years ago, we can now plant a whole row at a time. The new way is to plant a strip of seeds instead of a handful of seeds. This may sound queer if you have not been following the recent developments in the methods of seed planting, but it is a fact just the same. Instead of buying a package of loose seeds, the careful, busy gardener now buys a roll of seed tape, so all that is necessary to do is to mark off a row and then plant in it a strip of tape. This method enables the novice to plant his garden quite as properly and scientifically as the experienced gardener.

The advantages of this new method of planting are that the planting itself is so much easier, being rid of it's back-breaking labor; no thinning out is necessary because the seed is properly spaced in the tape and the carefully selected seed practically assures full germination. Seed tape is sold at Lees Racket Store.

Loans made on farms and ranches. First vendor lien notes purchased.—L. T. Martin, Lubbock, Texas.

R. J. Murray purchased twenty one residence lots in South Slaton Monday from L. L. Powers of Kansas.

CAR IS HAULED BY BALLOONS

Novel Manner in Which German Engineers Solved a Problem Which Presented Many Difficulties.

Balloons are being put to some practical purpose in Germany, where, at Salzburg, they are employed as a sort of locomotive for hauling a car up a mountainside.

The inventor's idea is merely an adaptation of the captive balloon principle, so arranged that long, but regular, flights are possible. The balloon is attached to a steel rail laid on the mountainside, and upon this it makes its journeys.

It spans great chasms without the necessity of bridging, and by running the rail over any projecting points there is, of course, no need of any tunneling. Fastened to the rail is a heavy steel slide, which holds the balloon captive. From the slide to the balloon runs a steel cable, which permits the balloon to soar about twenty-five feet above the rail, but holds it firmly in place. Suspended from the balloon is a circular car capable of holding ten passengers, which can be equipped with heating devices.

In going up the mountain the balloon is lifted, of course, by the hydrogen gas it contains. No matter how strongly the wind may be blowing and how desperately the captive may tug at its steel cable, it cannot get away, but must ascend directly over the guiding steel rail.

Reaching the top of the mountain, the balloon is simply anchored until the time arrives for beginning the descent.

This is another problem easy of solution. A tank under the car is filled with water, and the entire affair is dragged down-hill by weight and gravity.

Feudalism in the Home.

Nowhere more strongly than in the home does feudalism exist in supposedly civilized communities at the present time. There is still the atmosphere of a "superior" and an "inferior," a "master," and a "servant." Until this feeling is eliminated the home must get-along as best it may without the aid of those who are competent to do housework, but who decline to assume the position of an "inferior."—Judson Grenell in the Detroit Journal.

Seek to End "Creeping."

One of the most troublesome difficulties experienced in the maintenance of railroad tracks is the tendency of the rails to creep in one direction. Creeping is due to wave action induced in the rail by the passage of the heavily loaded wheels. It is much worse on tracks in which the travel is all in one direction, the creep being in the direction of the traffic. Much attention is being directed today to the arresting of this movement, and several forms of every efficient anti-creepers are upon the market. They consist, usually, of an inexpensive form of clip with end jaws which engage the base of the rail, the clips projecting below the base and fetching up against the adjoining ties, thereby locking the rail to the roadbed.

Road Plow for Motorcycles.

Where there is a great deal of clay or mud, a plow may be made for the motorcycle, which will be of sufficient utility to be worth the trouble. Form two flat pieces of metal into an acute angle V and fasten these to the underside of the front fender. The thick-

ness of metal or the fastening should be such as to bring these down to within a half-inch of the tire surface.—D. R. Hobart, New York city.

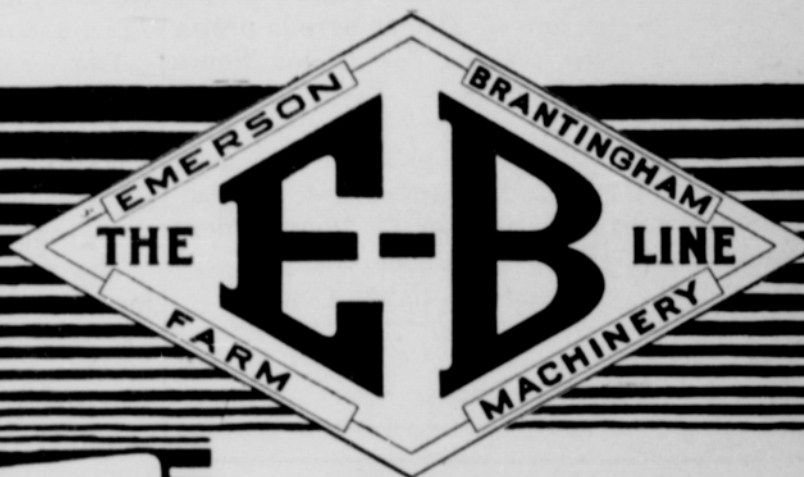
Fastening Metal to Wood.

For fastening metal to wood there has been patented a galvanized steel nail with a lead head, the latter spreading to exclude moisture from the hole the nail makes.

England's Railroad Tunnels.

There are 28 railroad tunnels in England a mile or more long.

19851 Rev 18083 450 li 150x3 Dealer's np 1 26—OK-1917 T.-C.-C. Co.



Your Guide to Better Farming

WE are glad to recommend E-B Implements. We know that they are built up to the highest ideals in quality and are sold at fair prices through economy in manufacturing methods.

Each implement in the E-B line was created to fill an actual need—to do farm work better, in less time or at lower cost.

What do you need in new farm machines for your spring work? Come in and let us fill your needs from the E-B line. If our stock does not include the machine you need, we can quickly get it for you.

The E-B line includes the following:

- | | | |
|-------------|------------------|--------------------|
| Plows | Hay Tools | Tractors, Kerosene |
| Harrows | Listers | Engine Plows |
| Cultivators | Gas Engines | Steam Engines |
| Mowers | Wagons | Threshers |
| Spreaders | Buggies | Corn Shellers |
| Drills | Auto Trailers | Saw Mills |
| Planters | Potato Machinery | Baling Presses |

A. L. BRANNON
 HARDWARE



YOU CAN BUY A SUIT Anywhere for TWENTY-FIVE DOLLARS

But the Question is:
WHAT KIND OF A SUIT?


The quality of fabric that goes into our clothes at THIS PRICE is all you need as evidence that your money buys the BEST when you select an

INTERNATIONAL OR LAMM


Made-to-Measure and to Please Suit

We have a splendid array of Spring Samples for you to choose from and invite you to call and look them over.

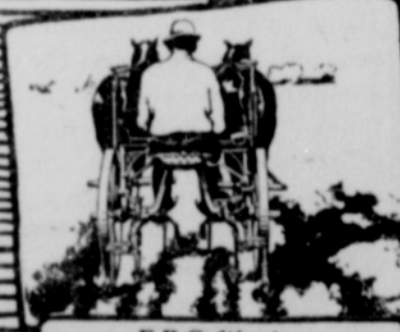
DeLong
 THE MERCHANT TAILOR



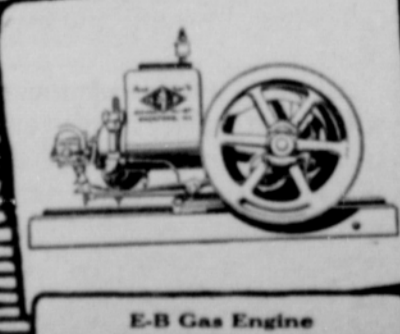
The Emerson Farm Tractor
 12 h. p. on Draw Bar—20 on Belt; 4-cylinder Engine—2 Speeds. Hyatt Roller Bearings. Light Weight—Economical of Fuel.




E-B Foot Lift Plow
 Light draft—easy to handle. Equipped with Quick Detachable Share, removed or replaced in 5 seconds without tools.




E-B Cultivator
 No levers—control it with your feet. Easy control of gangs—easy on the horses' necks. Telescope axle—broad, concave tires—long distance magazine wheel base.



E-B Gas Engine
 1 1/2 to 4 H. P.—magneto equipped—on skids or portable type—for all farm work.



E-B Low Down Spreader
 Spreads evenly 6 in. wider than the wheels. Chain drive—steel construction. Light draft, weight 180 lbs. 50 bushels capacity.



E-B Standard Mower
 Lever and spring transfers cutter bar weight to drive wheels. Increases traction of cutting power.

LOCAL Gossip

Ad day is Tuesday.

Slaton grows every day.

A daughter was born to Mr. and Mrs. Loberth on March 6th.

His honor, J. W. Ritchey, justice of the peace, held court the first of the week and disposed of several civil cases.

FOR SALE.—A scholarship in the Tyler Commercial College We can save you money on a business course.—Slatonite.

W. A. Blakeney is building a modern bungalow residence in east Slaton. The building will have seven rooms and be nicely finished thruout.

LODGES.

I. O. O. F.

Slaton Lodge No. 861 I. O. O. F. meets every Tuesday at 7.30 p. m. Visiting brothers cordially welcome. J. W. Short, N. G. L. P. Loomis, Secy.

A. F. AND A. M.

Slaton Lodge A. F. and A. M. meets every Thursday night on or before each full moon, at 7.30 o'clock. A. E. Howerton, W. M.; J. W. Ritchey, Secy.

O. E. S.

Slaton Chapter No. 555 O. E. S. meets the second and fourth Tuesday evenings of each month, in the Masonic Hall. Mrs. Lula Butler, Worthy Matron; Mrs. Janet B. Lee, Secretary.

WOODMEN.

Slaton Camp No. 2871 W. O. W. meets 1st and 3rd Friday nights in the month at the MacRea Hall. W. E. Olive, C. C. B. C. Morgan, Clerk.

WOODMEN CIRCLE.

Slaton Grove Woodmen Circle No. 1320 meets every other Thursday at 2.30 o'clock in the MacRea hall. Visitors cordially welcomed. Mrs. Almira Hannan, Guardian. Mrs. Nellie Wade, Clerk.

The Brotherhood of American Yeomen meets every second and fourth Fridays at 8.00 p. m., at the hall. J. C. Stewart, Correspondent.

RAILWAY TIME TABLE.

SANTA FE.

California and Gulf Coast Trains. Limited, daily.

No. 921 (west bound) from Galveston arrives in Slaton at 4.25 a. m. Departs for all points west to California 4.35 a. m.

No. 922 (south bound) from California arrives in Slaton at 12.10 p. m. Departs for central Texas and Galveston 12.35 p. m.

Slaton-Amarillo Trains, Eastern and Northern Points, daily.

No. 903 leaves Slaton for Amarillo at 6.40 a. m.

No. 904 from Amarillo arrives in Slaton at 11.55 a. m.

Slaton-Lamesa Local.

Daily Except Sunday.

No. 908 from Lamesa arrives in Slaton at 11.15 a. m.

No. 907 departs from Slaton for Lamesa at 2.00 p. m.

CHURCHES.

METHODIST CHURCH.

T. C. Willett, Pastor. Preaching services every Sunday at 11 o'clock a. m., and at 7.30 p. m.

Sunday School every Sunday at 9.45 a. m. L. P. Loomis, Superintendent. Womans' Missionary Society meets every Monday at 3 p. m.

Union Prayer Meeting every Wednesday night at 8 o'clock at the Methodist church. Everyone welcome.

FIRST BAPTIST CHURCH.

F. A. Whiteley, Pastor. Sunday School every Sunday at 10 a. m. J. G. Maybin, Supt.

Prayer meeting Wednesday nights. Preaching services every Sunday at 11 a. m. and at 7.30 p. m.

Ladies Aid Society meets every Wednesday at 3 p. m.

CHURCH OF CHRIST.

The Church of Christ meets every Lord's Day at 2.30 o'clock for communion. Preaching every Fourth Lord's Day in each month at the Methodist Church at 3 o'clock p. m. by Elder Liff Sanders.

FIRST CHRISTIAN CHURCH.

At the Movie Theater. Sunday School at 10 a. m. followed by Communion Services. J. S. Boone, Supt.

John Brazell Married at Lockney Tuesday

John Brazell of Slaton and Miss Lottie Carsey of Lockney were married at Lockney Tuesday night, March 6th, 1917. The Slatonite has no further particulars of the wedding. Mr. and Mrs. Brazell returned to Slaton yesterday and will be at home to their friends. Mr. Brazell is proprietor of the Brazell barber shop, and is a son of Mrs. T. K. Brazell, proprietor of Cap's Hotel. The many friends of this couple take pleasure in extending congratulations and best wishes, and the Slatonite joins heartily in the felicitations.

Shoe Repairing

I have opened a shoe shop in the Covington Second Hand Store and can handle your shoe repairing promptly. Have a complete line of machinery and the best leather on the market, and am an experienced workman in all branches of leather repair work. Your patronage solicited.

F. A. Erdman.

The ladies of the Home Economic and Civic Improvement Club will hold a story hour at the M. E. Church on the first Saturday in March at 3 o'clock p. m. Children from the ages of six to ten are invited to attend. The story will be conducted by members of the club.

DRESSMAKING—I will do any kind of sewing at reasonable prices and will appreciate your patronage.—Mrs. A. R. Hill on Grand Avenue, South Slaton.

BLACKSMITHING—I have a blacksmith shop at my farm just west of the Santa Fe wells and can do your work. Call and see me.—J. G. Maybin.

Loans made on farms and ranches. First vendor lien notes purchased.—L. T. Martin, Lubbock, Texas.

EDISON DIAMOND POINT phonograph in fine condition and 150 records for sale very cheap.—G. L. Sledge.

We will be pleased to fill your lumber bill. Come and talk it over.—A. C. Houston Lumber Company.

To Those Who Unload Trash in Pastures

Complaint is being made to the city officials that persons in Slaton are taking loads of tin cans and refuse out to pastures and farm lands near the city. If the ones who do this should be prosecuted it may be a dear lesson to them; the practice should be discontinued immediately. The city will designate a dump ground and perhaps pass an ordinance prohibiting the placing of refuse at any other place. The tin cans dumped in a pasture are a serious menace to the stock. A steer will lick the cans and quite often gets one fastened on his mouth, and then starves to death unless he is roped and tied and the can removed. S. I. Johnson has lost several steers in the O Six pastures from this trouble. Don't dump any more cans on land unless you have the owner's consent to use his land.

Keep Sidewalks Clear

The business men will all take notice of the requirements of the city council that the sidewalks and streets in front of their places of business must be kept clear and not used for storage purposes of any kind.

Dry goods boxes, merchandise, kindling, display wares, etc., must be kept off the sidewalk. There is a fine attached to violating this provision, and this is a fair warning to all to avoid paying a fine. The next warning will be made more impressive with a fine attached to it.

FORGET DATE HAS CHANGED

That So Many Forgot to Write "1917" Proves That Man is Creature of Habit.

"That man is a creature of habit," remarked the secretary of a large business firm, "is amply demonstrated by the letters we receive. This letter which I hold in my hand contains an error generally made at this time of the year, not because the writers are careless but because they have cultivated the habit of writing a certain thing mechanically.

"During the life of the year now expired the writers had grown accustomed to putting down the numerals 1916. Doubtless at first it required effort on their part to bear in mind that the last figure of the set was 6 and not 5, but after a time the writing of 6 became a mechanical act rather than a mental act. It became second nature for them to write the date correctly.

"With the birth of a new year, however, the mechanical writers must exert mental effort. When they don't they err. Take this case, for instance. You see the writer has turned out what he considers a perfect letter. He probably reread it and sealed it satisfied that it was correct. But he never thought to look at the date, at least the year part of it. The result is that instead of dating it January, 1917, he has dated it January, 1916. Just a mechanical error, that's all.

"A peculiar phase of the matter is that the error is usually made by persons who write their own correspondence, especially in long hand. Stenographers who are paid to write the correspondence of others on typewriters have developed the habit of being accurate."

PUT BLAME ON BERRY JUICE

Old Seadogs Seemingly Vindicated When the Boat Was Given Temperance Christening.

When fourteen-year-old Myrtle Knudson smashed a bottle of loganberry juice against the stem of the four-masted auxiliary schooner Alpha, first of the "built-in-Portland" fleet, she caused a lot of old seadogs to shake their heads with misgiving, but signaled a victory for the W. C. T. U. Pleas that champagne be used, according to time-honored custom, availed not, but a moment later the seafarers were saying, "I told you so," and few there were who could gainsay them.

The Alpha started sliding down the ways toward the river, when suddenly there was a grating noise and the vessel came to a dead stop, stuck tight and every effort on the part of the engineers availed nothing. The old seadogs wouldn't blame the ways. They insist it was all the fault of the loganberry juice.—Spokane Spokesman-Review.

To Protect Moose.

The secretary of agriculture at Washington has issued the following amendment to the regulations for the protection of game in Alaska, with the object of protecting moose and mountain sheep on the Kenai peninsula and adjoining region in Alaska, the New York Herald says:

"The sale of carcasses or parts thereof of moose and sheep in the region south of latitude 62 degrees north and between longitude 141 degrees west and the western outlet of Lake Clark, in longitude 155 degrees west, or the shipment of carcasses or parts thereof of said animals for sale from Anchorage, Seward or other points on the Kenai peninsula, is hereby prohibited until October 1, 1918, and no carcasses or parts thereof of said animals shall be accepted for shipment to other points in Alaska unless accompanied by affidavit of the owner that they were not purchased and are not intended for sale."

That Broad Expense.

"I tell you, gentlemen," said the great explorer to the crowd in the hotel smoking room, who were listening breathlessly, "you can't imagine what things are like out in the Arctic regions."

"Oh, I don't know," said one. "Even if we haven't seen it, we can imagine what it feels like."

"I doubt it. It's impossible until you've seen it; until you've stood there, a small, insignificant atom, surrounded by vast stretches of white—"

"Yes, I know. I've been like that."

"Really? Where was it, may I ask?"

"First time I appeared in public in a dress shirt."

Lady Beaconfield's Mistake.

An amusing instance of Lady Beaconfield's demonstrative affection for her famous husband is related by Lord Mayo. He had gone to see Lord Beaconfield, and failing to find him said he would wait for him in the library. Accordingly he took his place there in Lord Beaconfield's chair, little thinking it would lead to an honor not intended for him. For presently her ladyship entered in the gloaming and threw her arms round his neck, exclaiming: "You have returned earlier than I expected, darling."

Irrigation in Siam.

The Irrigation department of Siam has taken over the works of a large private irrigation company at Klong Rangsit, in order to extend the irrigation not only to the entire district covered by the activities of the company, but also farther north. The total project is to cost \$50,000,000. Immediate improvements contemplated embrace the expenditure of about \$4,250,000.

The Woman Who Knows Our Groceries Always Extends a Hearty Welcome to An Order from This Store



She knows how fresh and clean they come from this grocery and how fine they taste on the table. Why don't you know them, too? They will cost you a little less than you now pay for groceries, and the quality will be unsurpassed.

We have RED RUST PROOF OATS Bran, Corn Chop, Shorts

We will pay you HIGHEST MARKET PRICE for Butter and Eggs

PHONE No. 5

DOWELL BROS. CASH GROCERY

There is a railroad from the North sea to the Japan sea. It was built by a nation to capture nations. It has failed of its purpose so far. The Trans-Siberian, all things considered, is the most gigantic railroad task that ever was performed. In money it will cost up more than \$1,000,000,000. In lives, it has destroyed thousands. Its earnings are practically negligible. Yet, at this time, the Russians are laying double tracks on it from end to end! Moreover, they are building one branch of it that would reach from New York to Chicago and leave 300 miles for sidings, and that will cost more than \$150,000,000.

If that were only a railroad, it would be the greatest railroad mystery of the ages; but it is not only a railroad. It is like the army and the navy of Russia. It is a national expenditure for the conquest of Asia. Some day, no doubt, when the coffers of Russia are filled again with gold, the rest of the story of the Trans-Siberian will be written. Probably the men who are doing the dreaming will not live to see the writing.—C. M. Keys in the World's Works

SLATON PLANING MILL

R. H. TUDOR, Proprietor

Contracting and Building

Estimates furnished on short notice. All work given careful and prompt attention. Give us a trial.

North Side of the Square

ON THE SAFE SIDE the man is who has his insurance policy ready to realize on when his home or property has been laid waste and in ruins. No one knows what importance that little document is to them till misfortune overtakes him, and he knows that it is the insurance company that suffers the loss.

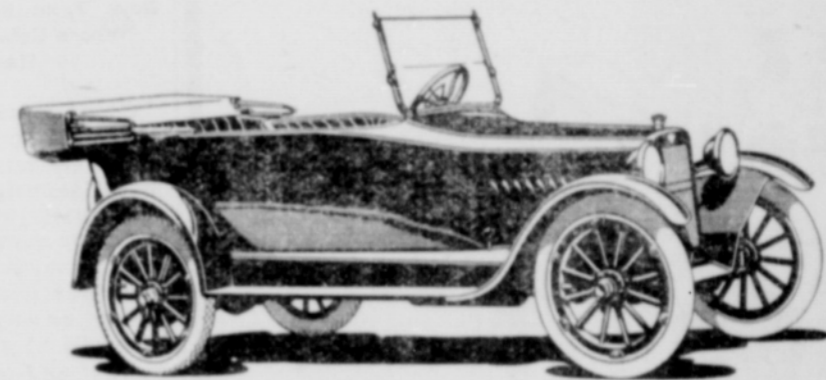


J. H. BREWER AGENCY



SAXON "SIX"

A Big Touring Car for Five People



New Series Saxon "Six"

From the standpoint of radical departures in design this new series Saxon "Six" is unchanged.

But in a score of ways it is a better car, a greater value than ever before.

The events of the past twelve months have conclusively proved the fundamentals of Saxon "Six" construction to be as advanced as is possible in the light of present day automobile knowledge.

This is evident to the public. As evident as it is to ourselves.

Nearly everybody now concedes Saxon "Six" to be a car of uncommonly fine quality—one of the very best cars in the world regardless of price.

So attention was turned to refinement where refinement seemed possible.

These newer attractions naturally group themselves into two classes—those that are evident at a glance and those that reveal themselves in smoothness, abler performance.

In the first class, of course, is the new body. It has been built roomier than ever, and more comfortable.

You'll find the doors wider, entrance and exit easier and more convenient, and the cushions are softer and deeper.

There is little need to speak of the new mode body lines. They impress themselves upon you in the first look.

In the second class of improvements comes the 2 inch crank shaft and other detailed improvements in the motor.

Probably it is in these motor refinements we take the greatest pride. Mainly because it seemed impossible to better the Saxon "Six" motor.

But it was finally found possible to make smoother and more supple even its smooth and supple flow.

Even more rarely than formerly will Saxon "Six" owners resort to gear shifting

In behalf of greater strength and safety the brakes are now a full twelve inches.

And the wonderfully easy riding qualities of Saxon "Six" have been heightened by the 41 1-2 inch rear springs of full cantilever type.

Saxon "Six" is \$950 delivered.

FORREST HARDWARE

Call and See This Beautiful Strong Car. Ask for Demonstration

CLASSIFIED LOCALS

1917 OVERLAND 85, five passenger, for sale at a sacrifice price. Has been run only 200 miles; is in perfect condition. See W. H. Smith, agent, at Santa Fe depot.

CHEVROLET 490, good as new. Will trade for a roadster or live stock or will sell at a bargain.—Dr. L. W. Kitchen, Post.

BECKWITH ORGAN in good condition for sale at a bargain. Will take \$15.00.—Mrs. J. V. Davis.

FOR SALE—Two sulky plows on Wild Bros. farm three miles southwest of Slaton.—J. S. Boone.

SUDAN HAY for sale at T. Covington's store in Slaton. Have three grades to suit your pocketbook.—Andy Caldwell.

FOR SALE—Good gentle work horse at a bargain. Also a good Spaulding buggy and harness.—G. L. Sledge at Slaton Livery Barn.

FOR SALE—Four room house close in, \$900; \$200 cash, balance \$20 per month. Can give possession.—H. D. Talley.

FOR SALE—Lot and small house, close in. Apply to Zuma Jenkins, City.

SHORT HORN RED DURHAM BULL will make the season at my place in South Slaton. Terms: \$2.00 cash with return privilege.—I. W. Meyer.

IF YOU ARE NOT ashamed of your company phone No. 20—that's the Slatonite—and tell us about it.

S. H. ADAMS
Physician and Surgeon
Office at Red Cross Pharmacy
Residence Phone 26
Office Phone 3

Dr. Luther Wall, M. D.
Physician and Surgeon
Office next to City Market
North Side Square, Slaton
Office Phone No. 21
Residence Phone No. 60

Dr. L. W. KITCHEN
Veterinary Surgeon
POST, TEXAS
CALLS ANSWERED AT ANY HOUR, DAY OR NIGHT

The **Western Telephone Company**
Local and Long Distance
Speedy and Sure

LOCAL AND PERSONAL

A. son was born to Mr. and Mrs. Robert Hagler on March 1st.

The Rev. F. A. Whiteley went to Dallas Tuesday on a business trip.

Best coal, \$10.00 per ton. Place your order at once.—A. C. Houston Lumber Company.

Mrs. J. P. REYNOLDS Music Class at residence opposite school house. Two lessons weekly. Tuition \$4 per month.

Coal is now \$1.00 per ton cheaper. Lay in a supply at once that will carry you into the summer.—A. C. Houston Lumber Company.

Pastor T. C. Willett went to Sweetwater Wednesday to attend an inspirational or evangelistic meeting of the preachers and laymen of the Northwest Texas Conference.

Mr. McDonald, the gin man, started a residence for himself a block north of the old Alfalfa property the first of the week. Mr. McDonald is arranging to build a gin here this summer.

Mrs. C. C. Ashley had recovered sufficiently from her recent operation to be brought home from the hospital at Post City the first of the week and she expects soon to be strong again.

The winter is nearly over; pay your coal bill at once. It takes money to handle coal, and we want you to show your appreciation of your credit at this place.—A. C. Houston Lumber Company.

S. T. Montgomery moved from town to his farm just south of Slaton this week. He has just completed the house on his place. S. L. Forrest moved into the Young property vacated by Mr. Montgomery.

Mr. L. T. Martin of Lubbock was in Slaton on business Tuesday. Mr. Martin is organizing a National Bank at Lubbock with a capital of \$50,000 and expects to have the institution open as soon as the charter is issued. He is a capitalist recently from Frederick, Okla.

The Odd Fellows lodge at Brownfield purchased a business lot in the early days of the town and now the lot is valued at \$1,500. Last week the lodge let a contract for a building on the lot, the contractor to build a two-story structure and use the lower story himself, the lodge to have the upper story. The building is frame 24x40 feet.

Mr. and Mrs. Edward Tonn moved to Amarillo this week, as Mr. Tonn has the local freight out of that city as conductor for the Santa Fe on a run that does not permit him to make his layovers in Slaton. The many friends in Slaton of this excellent couple regret that the change in train service takes them away from this city. Mr. Tonn has been running out of Slaton in the train service for several years and Mrs. Tonn was a teacher in the Slaton schools before her marriage.

Card of Thanks

We wish to thank the good people of Slaton who were so kind and who contributed so liberally to our needs in the way of food and fuel during the long siege of measles in which we lost our darling little boy. Our hearts are bowed in sorrow, but we know God's way is best, and we are glad to know God's servants are still with us.

W. H. Thorn and Family.

WANTED—Good piano to rent. Call 81.

RESIDENCE FOR SALE—We will sell the Berry property, just west of the Catholic Church. Or if preferred will sell two acres or a forty-acre tract with house. Very easy terms.—R. J. Murray & Company.

ORIGINAL TOWNSITE AGENTS
Any Lot in Townsite on Liberal Terms. R. J. MURRAY & COMPANY, Townsite Agents

A. Levy of Oklahoma City visited his brother-in-law and his sister, Mr. and Mrs. M. Olim, in Slaton for several days this week.

F. A. Erdman is opening a shoe repair shop in T. W. Covington's second hand store. Mr. Erdman moved to Slaton recently from Hereford.

PLANNING to build? Call and ask for one of our big books of house plans. They will help you.—A. C. Houston Lumber Company.

We extended you credit while you needed coal. We will appreciate your prompt payment of your coal bills.—A. C. Houston Lumber Company.

Mrs. J. T. Phillips was operated on in the hospital at Post City Monday, and she seems to be resting well with indications of an early recovery.

John F. Taylor of Clovis, N. M., former county treasurer of Curry, was in Slaton on business Tuesday and calling on his friends in this city.

N. R. Darnell has purchased the T. B. Elder house and is making some notable changes thereon preparatory to moving his family to town.—Post City Post.

S. S. Forrest is building a large, commodious home on his suburban property just west of the cemetery. Many of the improvements are already completed and work started on the house this week.

Card of Thanks

To all our friends of Union, Slaton and Lubbock who so kindly and tenderly aided during the recent sickness and at the death of our beloved one: We wish to extend our sincere thanks and appreciation for the aid and expressions of sympathy in this time of sorrow, and we pray the blessings of our Father upon each and every one.

S. T. Johnson and family.

Missionary Society

The Missionary society met at the church Monday, March 5th, in a business meeting. A very interesting session was held with Mrs. Lee Green, first vice president, presiding in the absence of the president. The next meeting will be Monday, March 12th, at the church, for Bible study. Questions in first and second Timothy, Titus and Philemon; Who said, "I am chief of sinners?"

What false professors did Paul deliver to Satan?
Who would have all men to be saved?

Who must be apt to teach?
In what things was Timothy to be an example to believers?

What is the reward for the elder that rules well?
With what should we be content?

What can you tell about Timothy's ancestors?
Whom does the Lord know?

How was all the scripture given and for what purpose?
What was Timothy charged to do to preach?

Who was Alexander? What did he do?
What was Titus commissioned to do in Crete?

Unto whom is all things pure?
To What did Christ give himself?

How should the heretic be treated?
Who was Quesinius?

What was the conduct of Quesinius?
To what account were the debts of Quesinius to be charged?

NOW DANCE IN BIG HOTELS

"Society" No Longer Bothers to Take Trouble Which the Giving of a Ball Entails on Hostess.

Where social pleasure reigns and day after day is given to entertainment, in such surroundings "only the trouble of living" is left to disturb the equanimity of the pleasure-seekers. The social correspondent of a newspaper in a large American city, writing of balls and ball-giving, says: "It is a most convenient way to give a ball at an hotel, now that so many people live in the country the greater part of the winter. The guests can defy the elements, blizzards and cyclones alike. They motor to town in the morning and take their time to get their hair dressed, their face massaged and their hands manicured. Their dainty person once thoroughly attended to, after lunching at a friend's and getting in full dancing trim they give a dinner party at the hotel, go to the opera or hear 'Siegfried'—the soothing music of which induces cat-naps of beauty sleep while the lights are down—the acts are long you know, and there are four of them in 'Siegfried!' So they arrive freshened-up for the ball about midnight. It is all so easy. No hustling about anything only the trouble of living. No anxiety as to everything being in good shape. If it is not—sometimes it is not, you know—well, it is not your affair. Your guests blame it on the house, and you do, too."

New Motor Plow.

An English firm is putting out a new plow that is propelled by a farm-horse power motor, that is much like the horse-drawn implement, and can be used successfully for any of the ordinary agricultural tasks, such as plowing, cultivating, scuffling, skinning, hoeing and drilling. As it is only three feet high and two feet four inches wide, it can be used in places where horses cannot work, between fruit trees in orchards, in vineyards and hop gardens, and in rubber, tea and coffee plantations. Unlike other motor plows, it has only two driven road wheels, and the attendant who walks behind it runs the engine and guides the plow by means of star wheels. With one wheel running in a furrow, the plow virtually steers itself, and needs little attention except at the end of the furrows. The makers assert that the machine will do nearly twice as much work a day as a horse-drawn plow, at about one-half the cost an acre. The correctness of the assertion naturally depends somewhat upon the nature of the land on which the machine is set to work.

Vote of Thanks.

Chicago owes a vote of thanks to the men of her steam railroads. The way they met the recent crisis (the street car strike) and helped carry the million workers of this city to and from their tasks was a marvel of speed and efficiency. They lived up to the best traditions of American railroad-ing—and greater praise than that cannot be applied to any work done on steel highways.—Chicago Journal.

Wouldn't Care Anyway.

"I see where a judge has decided that to tickle a mule on the hind leg is contributory negligence." "I shouldn't think a man who did that would care by the time the decision was given what it was."

Let us fill your Bottles with our Pure Fresh Drugs



COUGH SYRUP

We sell all the Best Medicines

We cannot fill your bottles with any but pure, fresh drugs because that is the only kind we allow to come into our store.

You ought to keep a supply of household remedies right in your house so as to be ready for any emergency before the doctor can come. Buy them from us and KNOW they are right.

SLATON DRUG COMPANY
J. V. Hollingsworth, Prop. Phone No. 92

The Woman Who Signs the Checks Knows the Courtesy of Our Bank



The woman who signs the checks is the woman who knows how reliable, trust worthy and obliging the management of the First State Bank is. We loan money on good security, we are always ready and willing to oblige depositors. When you want your relations to be satisfactory, come to us.

THE FIRST STATE BANK of Slaton
J. S. EDWARDS, President J. H. BREWER, Cashier

The Slatonite wants to do that job of Printing for you. Order it now.

All Purchases Carefully Weighed

We are very particular about getting the right weight to you for all groceries bought at our store. We guarantee all our food stuffs to be pure and wholesome. Give us a trial.



For Quick Service Telephone No. 19
Slaton Sanitary Grocery
W. E. SMART, Proprietor