



The Slaton Slatonite

Published Each Week In The Interest Of Slaton And Surrounding Area

Vol. Forty-eight

Number Five

Slaton, Lubbock County, Texas, Thursday, Nov. 13, 1958

10c Per Copy

Twelve Pages



The mystery face in last week's issue stirred up a lot of interest. I finally was able to see the face for myself, and it was really a relief. We received many calls and I think Santa Claus was the leading contender. The face was that of Jesus, in case you haven't found it for yourself.

I received the following letter from Ollie Hill of Pueblo, Colorado:

Dear Madam:

I am a subscriber of your paper although I am a long ways from Slaton, and don't receive my copy until Saturday of each week. But I say the face in the picture is that of Mr. W. A. Baker who wants to serve you at Piggly Wiggly.

Yours truly,
Ollie Hill

Thank you, Ollie, for writing to us. R. L. Forsythe correctly identified the face. Among the guesses, were George Washington, Abe Lincoln, F. D. Roosevelt, and a dog!

A Revival starts at Westview Baptist Church on Nov. 16 and continues thru the 23rd. YOU are invited.

Mary Banks has the Teen-Ager's Beauty Clinic slated for Thursday, Nov. 20. The topic covered in the first session is to be "Care of the Hair." See you there, teeners!

Can you identify that cute kid in Kertan's ad on the Society page. If you are the first to do so, you will receive a \$5 credit on a setting.

I had been wondering who the cutie pie was that entertained us between the acts of the Junior Class Play, and I found out when I read "Teen Talk." She is Betty Lou Johnson, and quite a winning personality, I'd say.

A break for the children 12 years and under is the drawing at T.G.&Y. on Nov. 29th for a free doll. Register once each day and make the odds better, nothing to buy, etc.

Shelby addition is coming along at a nice clip. I am most eager to see the interior of the homes, sure looks nice from the outside.

I still don't have the exact date of the Slaton Bakery opening and I'm trying to be patient.

Taken from the Member's Service Bulletin of the Texas Press Association is this item:

"If you are looking for a suggestion to improve advertising readership, you might take a tip from the proponents of photos in ads. Actual newspaper surveys conducted by Readex, Inc., showed that an ad with a photograph in it will attract, on the average, four times the readers of a pictureless ad of comparable size. You might put it to your local advertisers this way: "When you use a photograph in your ad, you will get the same effect as if we could increase the circulation of our newspaper four times—and at no increase in advertising rates."

I think so, too.

Church Of God Revival Is Underway Here

The Church of God revival got underway here Monday night, according to the pastor, Rev. E. E. Malone.

The church, on Texas Street, has Evangelist Alvis Strickland of Dallas leading the revival. Rev. Malone said everyone is invited to attend the series of services.

Commission Hears First Reading Of City Limits Expansion Law

The first reading of an ordinance expanding the city limits of Slaton was read at Monday night's meeting of the City Commission.

The ordinance, No. 166, would annex property adjacent to the new Shelby addition, as well as the Shelby addition, the new high school building, and the Evans school building, as well as additional areas.

The area to be annexed is roughly as follows:

Begin at the intersection of Highway 84 and Farm Road 400, then south to the intersection of farm road running east and west on the south side of Englewood Cemetery; then west to the right of way of proposed Highway 84 around Slaton, then follow this right of way in a south-southeasterly direction to the intersection of the right of way with Farm Road 2150, then follow this right of way until it intersects the right of way of

the P&SF Railroad, and follow this right of way until it intersects the present corporate limits on the east side of town, and, beginning at the extreme north corporate limit, follow the P&SF right of way to the intersection of Farm Road 400, the point of beginning.

Ordinance Published
Exact limits of the area are defined in the ordinance, which is published in this week's Slatonite.

The second reading of the ordinance will be 30 days after

publication of the ordinance and the third and final reading on Dec. 22, according to J. J. Maxey, city secretary.

Report On Sewer
In other action Monday night, the commissioners heard a report from Bennett Reeves, with the firm of Parkhill, Smith and Cooper of Lubbock, the city's engineers on the sewer expansion project.

The new sewer system is in operation at the present time. The contract covering the project is to be concluded in about two weeks, with only minor details yet to be completed, it was reported.

In connection with the new sewer system's completion George Willis, water superintendent, reminded Slaton residents that they can now tie

into the system if they so desire. Willis asked residents wanting sewer service via the new system to contact him so arrangements could be made.

The commissioners also discussed the development of a potential new addition on the west side of town with an interested individual. Further discussions on this subject are slated for the next meeting of the commission.

Westview Baptist Revival To Start Sunday

Revival services will begin at the Westview Baptist Church in Slaton on Nov. 16.

Rev. C. M. Fields, pastor of the church, will conduct morning and evening services. Morning services will begin at 10 a.m. and evening services are planned for 7:30 p.m.

Leon Hokett of Abernathy will lead the singing, and the revival will continue through Nov. 23.

The Nursery will be open for both morning and evening services, according to Rev. Fields.

R. J. Bednarz Services Held Here Monday

Solemn Requiem Mass for Rudolph John Bednarz, 74, who died at 6 a.m. Nov. 7, was held at 9 a.m. Monday morning.

Mr. Bednarz, a retired farmer, had lived in Slaton since 1920. He was born in Schulenburg. The family residence is at 645 S. 18th. The couple celebrated its Golden Wedding Anniversary two years ago, on Nov. 7, 1956. Mr. Bednarz established

Slaton Teachers Attend Formation Meeting Of Science, Math Workshop

Saturday, Nov. 8, at the new Levelland Junior College, the first meeting of the South Plains Science and Mathematics Workshop was held at which Slaton teachers were represented.

The purpose of the organization are (1) to promote the progress of science and mathematics education in this area, (2) to work for the improvement of science and mathematics instruction, (3) to promote the professional growth of science and mathematics teachers, and (4) to inform the members of the profession and lay public concerning the needs of the science and mathematics departments in the public schools.

The Saturday meeting saw 10 per cent of the schools from this area represented. Slaton teachers who attended were Carl Lee and Mrs. Audean Nowell from the mathematical department; from the junior high school were Mrs. W. H. Legate and Mrs. Jewel Kenney, mathematics, and David Duke and Victor R. Day from the science department. Representing the elementary division was supervisor of schools Mrs. Ruth Smoot.

Guest speaker at the meeting was Dr. Paul Kantz, who spoke on "The Defense Education Act."

Carl Lee was elected vice president of the organization. Working along with Lee for the next meeting, which is the Student Congress, will be Mrs. Audean Nowell.

The Student Congress meets in December. At this meeting, students will present research papers on mathematics and will be given an opportunity to compete in a mathematics test which will be offered to those who care to enter.

The last meeting of the year will be a Science Fair. The



TIGER SENIORS

These 13 Tigers will be playing their last football game for Slaton High School Friday night when the team travels to Post for the concluding game of the 1958 season. They are, front row, left to right, Derry Edwards, Wayne Linder, Robert Hurst and Billy Balmanno. Middle row, same order, Jerry Hogue, Pat Adamek, Sam Wilson and Wayne Banks. Back row, same order, Dale Gordon, Lyndol Maeker, Mackie Klattenhoff, Ronald White and Howard Limmer. (Slatonite Staff Photo)

the Catholic Life Insurance Union in this district.

Officiating at the Monday service was Msgr. T. D. O'Brien, pastor of St. Joseph Catholic Church, assisted by Rev. O. B. Kahlich, a nephew of Mr. Bednarz, and Rev. James Erickson, pastor of My Lady of Guadalupe Catholic Church here.

Funeral services were under the direction of Williams Funeral Home. Interment was in Englewood Cemetery.

Survivors include the wife of the home address; six sons, Edwin, Alfons, Robert, Willie and Walter, all of Slaton, and Alvin of Lorenzo; two daughters, Mrs. Art Wolf and Mrs. Cletus Heinrich, both of Slaton; 27 grandchildren and seven great-grandchildren.

Other survivors include three sisters, Mrs. Fred Berger of Schulenburg, Mrs. Francis Demel of San Antonio and Mrs. Ollie Kahlich of Slaton; and two brothers, John Bednarz of Poth and Willie Bednarz of San Antonio.

Mr. and Mrs. Clifford Young have returned from visiting with their daughter and family, Mr. and Mrs. R. L. King of Phoenix, Ariz. During their trip, they stopped at El Paso and were guests of Mr. and Mrs. Frank Kelley, Kelley is District Land Man for Magnolia Pet. Co. at Colorado City. While there, they attended a "Good Neighbor Commissioners Banquet," at Juarez, Mexico. Governor Price Daniel and the President of Old Mexico also attended.

Police Report 36 Arrests Over Last Week; Aerial Rocket Found Here

Thirty-six arrests were made in Slaton over the past week end, according to a report by Police Chief Bill Daniels.

The charges included drunkenness, vagrancy, disturbing the peace, fighting, and liquor curfew violation. Three persons were charged with driving without a license.

Several incidents of theft occurred in Slaton, with thieves taking a Christian Flag and a U.S. Flag from the First Christian Church. Several hub caps and a car radio were also taken. Five wrecks were investigated by the police department. Larry Lemon, son of Mr. and Mrs. L. O. Lemon, was struck by a car at the intersection of 15th and Jean streets. Facial abrasions and minor bruises were the extent of his injuries.

An unarmed, 36-inch naval aircraft rocket was found lying near tracks at the west end of the Santa Fe Railroad yards here Sunday afternoon.

A Santa Fe yardmaster surrendered the missile to the Slaton

13 Seniors Play Last Game Against Post

Thirteen graduating seniors will take the field against Post Friday night at Slaton's Tiger play their final game of the 1959 football season.

Seniors playing their last game for the Tigers will be Pat Adamek, Howard Limmer, Wayne Linder, Sam Wilson, Dale Gordon, Wayne Banks, Robert Hurst, Mackie Klattenhoff, Linder Maeker, Derry Edwards, Billy Balmanno, Jerry Hogue and Ronald White.

Coach Leonard Ehrler has reported he will take 34 players to Post for the game.

Ehrler and the other coaches of the Red and Black, Marvin Smith and John Taylor, are counting on the team to "bring home the bacon" in this final game.

Returnees next fall will include Randy Sanders, Gary Ward, Johnny Clack, Giles

Junior Varsity Has Undeclared, Untied Season

Slaton's Junior Varsity football team ended its perfect season last week with a 30-0 victory over the Spur B team.

The Jr. Varsity had an undefeated, untied 1959 season and is looking forward to participating with next year's varsity squad.

Leading the team all year as high scorers were Mike Wheeler and Johnny Taylor. The team is made up of sophomores with the exception of two players.

Included on the "first line of defense" for the Junior Varsity were Johnny Clack, Johnny Taylor, James Wright, Mike Wheeler, Glen White, Williamson, Bobby Baxley, Jerry Kitten, Phillip Yberra, Arthur Sumrall and Tommy Claiborne.

Cotton Ginnings Total 23,246 Bales In Area

A total of 23,246 bales of cotton have been ginned at Slaton area gins since the harvest began here, a check has revealed.

Individual ginnings were reported Tuesday as follows:

Slaton Co-op Gins	8,993
Campbell Gin	2,872
Howard Gin	2,350
Union Gin	1,509
Posey Gin	2,125
Pleasant Valley	855
Hackberry Gin	1,517
Gordon Gin	1,350
Basinger Gin	1,675

Coming Events

- THURSDAY, NOV. 13th
 - Rotary, Club House, 12:00
 - Masonic Lodge, Masonic Hall, 7:30 p.m.
 - Jaycee-Ettes, Jaycee Office, 7:30 p.m.
 - Explorer Boy Scout Troop 29, 7:30 p.m.
 - Masonic Banquet, Club House, 6:00 p.m.
- FRIDAY, NOV. 14th
 - Golden Age Club, Club House, 10:00 a.m.
- SUNDAY, NOV. 16th
 - Attend the Church of your choice
- MONDAY, NOV. 17th
 - Boy Scout Troop 29, Scout Hall, 8:00 p.m.
- TUESDAY, NOV. 18th
 - Chamber of Commerce, City Hall
 - B. of L. F. and E., American Legion Hall, 2:30 p.m.
 - Jaycee's, Bruce's Cafe, 8:00 p.m.
- WEDNESDAY, NOV. 17th
 - Choir Practice, Prayer Meeting
- THURSDAY, NOV. 17th
 - Dorcas Class, First Baptist Church, 3:00 p.m.
 - L. A. to B. of R. T., 9:30 a.m.
 - Rotary, Club House, 12:00

R. L. Forsythe Correctly Identified Picture In Last Week's Slatonite

Did you ever figure out the picture in last week's Slatonite we ask you to identify? Well, several did, but the first person to come to the Slatonite office and correctly identify the face in the picture as that of Christ's was R. L. Forsythe, Box 515, Slaton. He gets a free year's subscription to the paper.

Many, many persons called in and came by to tell us who they thought was in the picture. Several were correct. Incorrect guesses included Santa Claus, a dog, a buffalo, George Washington and Franklin D. Roosevelt.

Thanks for such fine participation... we met a lot of new friends and we're sorry they couldn't all win a free year's subscription, but we gotta' eat, ya know!

Chamber of Commerce Plans To Aid Slaton-Area Christmas Shoppers

The Slaton Chamber of Commerce has announced special plans to accommodate shoppers during the Christmas season.

The project, which has the cooperation of the majority of Slaton merchants, will get underway the first week of December.

Included in the plans are arrangements by local merchants to stay open until 8:30 p.m. on

the first three Thursday evenings of December, the 4th, 11th and 18th.

Also, many prizes will be awarded shoppers who are holders of lucky numbers to be posted in the various participating stores. Approximately \$1,000 in merchandise will be given away on the three Thursday nights.

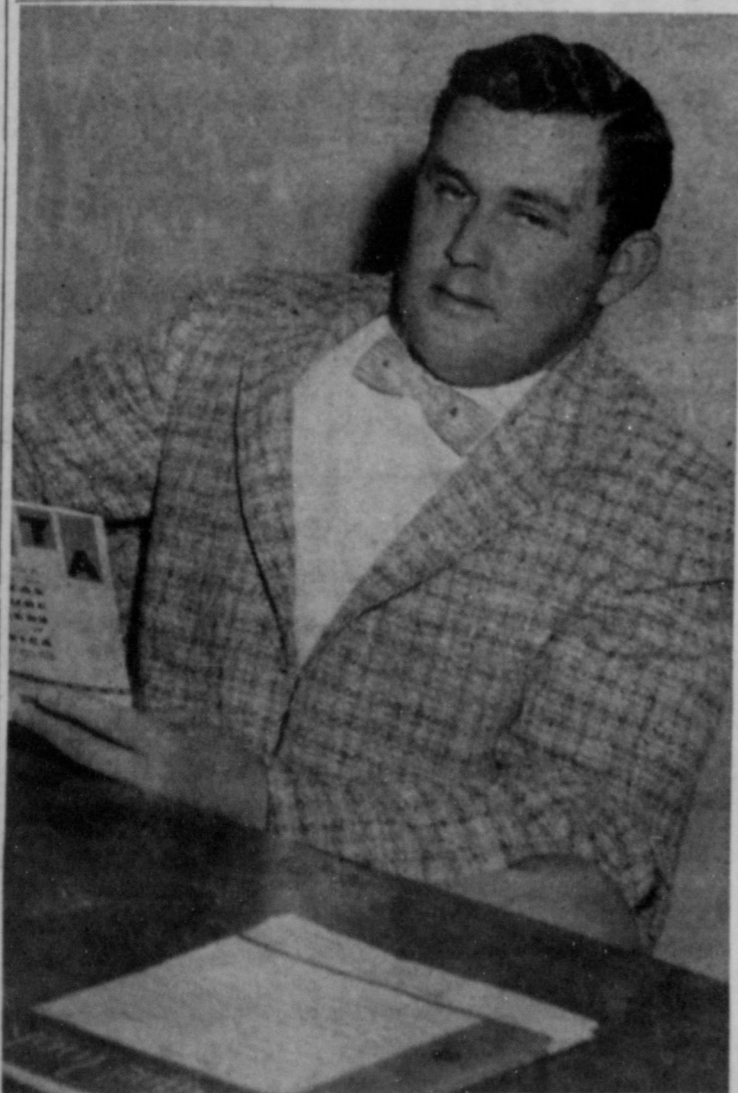
Sometime during the season,

Santa Claus will make his annual visit to Slaton to interview the children and mark down their wishes for his consideration on the night of Christmas Eve.

As an added service to shoppers, several merchants are sponsoring free movies during the last eight shopping days before Christmas. The movies, for children, will start at 3 p.m. each day and will run continuously until after local stores close. The features will change every two days.

Admission to the movies will be by ticket only, with tickets to be acquired from the sponsoring merchants.

Also included in the project are the placing of Christmas lighting and decorations around the downtown area.



ELECTED VEEP

Carl Lee, teacher in the Slaton High School mathematics department, was elected a vice president of the South Plains Science and Mathematics Workshop, which held its formation meeting at the new junior college in Levelland last week. Lee is a graduate of West Texas State College, Canyon, and is in his first year of teaching. (Slatonite Staff Photo)

Girls Basketball Team Gets Season Underway In Saturday Night Game

It's basketball season here, starting Saturday night. At 7 p.m. Saturday, the Slaton High School girls' basketball team will take on Meadow in the first "round-ball" game of the season. The B team game will actually be the one to start at 7 p.m., while the varsity tilt gets underway at 8 o'clock.

The games will be played in the Junior High Gym. Marvin Smith is coach of the girls teams. Workouts for the boys' team will get started next Wednesday.

The Slaton Slatonite

TEXAS PRESS 1958
Member

163 S. 9th., Slaton Lubbock County, Texas
Phone VA 8-4201

Slaton Times purchased January 20, 1927

Thursday, Nov. 13, 1958

Entered as Second Class Matter at the Post Office at Slaton, Texas, under Act of March 3, 1879.

Joel R. Combs, Woody Rosser Jr. and Charles Cullin, Publishers

Joel R. Combs Editor
Woody Rosser Jr. Business Manager
Mary R. Baggett Advertising Manager

NOTICE TO THE PUBLIC—Any erroneous reflection upon the reputation or standing of any individual, firm or corporation, that may appear in the columns of The Slatonite will be gladly corrected when called to our attention.

SUBSCRIPTION IN ADVANCE
Lubbock, Lynn, Garza and Crosby Counties, \$3.00 Outside These Counties, \$5.00. Obituaries, Resolutions, Memorials (Excepting Accounts of Death, News Originating in This Office), 3c Per Word

Following are deadlines which will govern receipt of copy:
General News 3 p.m. Tuesdays
Classified Advertising 5 p.m. Tuesdays
Society News 12 noon Tuesdays
Page One News 5 p.m. Tuesdays
Society Page Pictures 5 p.m. Mondays
Staff Photos, except Society 5 p.m. Mondays
Society Staff Photos 10 a.m. Mondays
Display Advertising 12 noon Tuesdays

EDITORIALS

These Slaton Farmers ...

Slaton area farmers are getting some pretty extensive recognition from the community now ... something they have long deserved.

Not that anyone in this section of Texas hasn't been aware the farmers were providing an exceptional service, we all know that without them most of us "cement-pounders" would starve to death or freeze in the wintertime.

It's just that now the community as a whole seems to be trying to give the farmers credit where credit is due.

A case in point: the recent Farmer Appreciation Dinner sponsored by the Slaton Chamber of Commerce. We understand this was a "huge success" and will probably be repeated next year.

The farmers were invited to town (those who didn't already live in town), provided a fine banquet and speaker and treated to real "Slaton type" hospitality.

Now another move is afoot. The Slaton Jaycees are looking for this area's "Outstanding Young Farmer" to put into competition with others from all over Texas in a search for the outstanding young farmer of the state, who, in turn, will be entered in national competition.

He will be judged on the degree of progress he has made in his agriculture career, the extent of good soil and natural resource conservation he practices and the significance of his contributions made to the well-being of the community, state and nation, as an individual or through leadership in civic, farm, church, fraternal and other organizations.

We certainly ought to have a winner here. Slaton is blessed with some of the finest farms, and wisest farmers, to be found in Texas. Doubt it? Check the story in this week's Slatonite on the record cotton crop now being harvested. That should give you a hint.

And remember the "drought" that hurt farmers and ranchers all over Texas and even prompted a visit by President Eisenhower? This area suffered only to a minor extent compared to others. We wouldn't have been so fortunate on this score had not, several years ago, local farmers seem the practicality of irrigation, and thereby defeated that enemy of agriculture, the rainless sky. Others envied us then, you can be sure.

Then too, consider the contributions to the well-being of Slaton this community has received from its farmers. They include community leadership, economic progress, contributions to charity, and consistently boosting the area in general.

We give a hearty second to these measures of recognition and appreciation now being given local and area farmers.

It takes wise parents to know that their own child was as much at fault as the neighbors'.

Most people pay too much for the things they get for nothing.

The Sounding Board

(Editor's Note: A few items from area newspapers which we thought would be of interest to you.)

From the column, "drifting sands," in the Andrews County News, written by "The Young'un":

If you make a right turn from the left lane you are probably just careless, and not really what the driver behind called you.

People are funny individuals as almost any merchant or businessman can tell you ... and for the most part, the majority of the people in Andrews are the salt of the earth.

But a few are thoughtless—or else are chock full of unmitigated gall ... but the fellow who takes the cake is the one we heard about this week.

Seems this fellow was up in Lubbock and purchased a pair of driller's boots that were on sale for \$12.95. Two weeks later he came into a local merchant's store, complaining that the shoes didn't fit too well. Noticing that the merchant had the same brand of driller's boots on display, he asked the merchant to swap him a different size boot in exchange for the boots he purchased at Lubbock.

The merchant, after he recovered from the initial shock of the strange request, decided to humor the customer and agreed to swap him another size for the three-week-old shoes purchased out of town.

But talk about gall—after the swap was made, the customer noticed that the shoe was priced at \$11.95 in the local store—and asked the merchant to give him a \$1.00 to boot in the swap.

—SOUNDING BOARD—

From the column "Main Street" in the Lorenzo Tribune: The unusually quiet Halloween enjoyed by the community has given rise to two schools of thought: 1 (The kids were all sick, and 2) They are good kids. Mayor Leon Keene belongs to the latter school and asks us to convey his congratulations for the orderly and relatively restrained behavior exhibited by the young folks, which we do herewith. We also think we can speak for the entire community in saying, whatever the cause, we're grateful and relieved.

In spite of one slashed tire, Halowen here was a Sunday school picnic compared to Ralls and Crosbyton, where vandals inflicted thousands of dollars worth of damage to automobiles and business and residential property. The actions of our solitary tire-slasher were far from commendable but they paled into insignificance when compared to the havoc in neighboring towns. At least you're got to admire his restraint.

Chester Maxey and Earl Coulter, the local post office crew, warn that drivers had better be careful not to park over the red splotches on the pavement in front of the "no parking" area at the post office. The mail truck driver, who sounds like a frustrated hot rodder, doesn't at all mind the sound of crunching fenders and has recently added several to his trophy list, they say. What's more, if your car is over the red marks and gets hit by the truck, there's nothing you can do about it. We do not see that driving a mail truck gives anyone the right carelessly or willfully to damage another's property, although it may be infringing on his parking space, but if such is the case, we advise you to be careful when parking near this area.

—SOUNDING BOARD—

An editorial in the Floyd County Hesperian: Justices of The Peace. Currently newspapers are carrying stories of how the justice of the peace system works, with especial reference to the fees which are collected and pocketed. Perhaps, for the record, it should be stated that in Floyd County all fees and fines, while still collected as of yore, are not pocketed by the jay peas but instead recorded, reported and paid into the county treasury. We admit that too many fines are paid because it is easier to pay the fine than to fight the case in court, but that is not the fault of the justice of the peace nor of the court system. When a person charged with traffic violation or other in-

fraction of the law chooses to admit guilt and pay off the justice of the peace can't change his mind for him.

We are convinced that far and away too many fines are paid in justice court, meaning persons pay fines who ought to stand up on their hind legs, especially in traffic cases, but that is not the fault of the system. Its the kind of times in which we live. If it were within the limits of the capacity of a justice court to require that for every line paid witnesses should testify and a jury should pass on the case it would go a long way toward raising respect for the law in small affairs of the community. Too many people pay off in justice and corporate courts without ever facing the court in a formal manner.

School Lunch Menus Reported

The following menus have been announced or the school cafeteria beginning Monday, Nov. 17.

MONDAY, NOV. 17
Meat loaf, creamed potatoes, green beans, salad and peach cobbler.

TUESDAY, NOV. 18
Red beans, macaroni and cheese, kraut, corn bread and apple pie.

WEDNESDAY, NOV. 19
Beef stew with vegetables, salad and chocolate cake.

THURSDAY, NOV. 20
Fried chicken, creamed potatoes, green beans, salad, jello and cake.

FRIDAY, NOV. 21
Cat fish, tartar sauce, corn, English peas and chocolate chip cookies.

Distributive Education Notes

by Raymond M. Smoot

Co-ordinator

Last Saturday, the Distributive education people of the West Texas Area had their first work shop. We met at 9 a.m. in the Monterey High School in Lubbock.

David R. Thompson, our state supervisor, and Lill I. Inkman, our area supervisor, were present to direct the program. We have four general areas of distributive education in Texas and Thompson gave us a report on how things were going over the state. It was good to know the interest in this area of work is growing rapidly. There was only one program that didn't get off the ground last fall, and that was due to con-

solidation. Nine new programs were opened this year and more are in prospect for the new year (next). There is a need for instructors, and our area and state offices would like to have the application of those interested.

The regular D. E. dinner was held last Monday one week earlier than usual, due to so many activities coming up next week. Committee reports were received and comments relative to D. E. Jackets, and the possibilities of purchasing some. Announcement was made that during this month, the club is to elect a "Club Sweetheart". There were 4 present and the reason why we cannot have 100 percent of our members present, there are several who work during the time of the meeting.

Getting a job has been an age-long problem for many of us and these few remarks propose to be of assistance to anyone wanting a job, but it applies to those who are looking for the first time. First, you should have some idea of what kind of a job you would like, it has never been very impressive to tell you interviewer that you are not particular, that you will take anything he has to offer. Then it might help for you to make a list of several occupations you think you might be interested in, then begin looking for reference to these several possibilities. Commercial agencies are good reference. You might like to look in on Civil Service employment. If so, go to the Post Office and ask for a list of the prospective tests. They will be happy to assist you.

Want ads are the best references we know anything about. More people have been employed through want ads than through any other medium. Before you start out looking, it might be well for you to sit down and make a personal history of yourself, telling what you are most interested in, what experience you have had, and with whom you have worked, etc.

Write an application letter. Do it well. This is important and if you have not tried it, do so. When making a call on an employer, be sure and dress appropriately for the occasion. Don't wear an over coat and a pair of rubber boots when ap-

plying for a life guard's position at a summer swimming pool.

There is always the possibility of your being tense and nervous while waiting to see the employer. There are several things you can do to relieve this situation, but in one instance, let me tell you, just be your normal and natural self but do try to be your best self without tenseness. If asked to fill out an application, you know that you are following the routine don't think this means you have a job, but if he tells you that your name and application will be filed in the actives list, then you can have some hope. But don't go home and wait for an answer, go out and find another prospect. Just keep looking, there is a job for every person who is willing to work, and is willing to take the job he is qualified to do. Don't be embarrassed to start at the bottom of the Ladder, there is no elevator to the top of the ladder of success, take the stair case.

Mrs. Edwin H. Haddock was hostess for a Dinner Party Nov. 7th given for her daughter, Ann Haddock, in honor of her 18th birthday. Later, Ann and her friends attended the Junior play.

Do You Remember?

November 13, 1957

Selected this week as captains for the 1958 Slaton High School Tiger Football squad are Pat Adamek and Howard Limmer.

The S-Bar Shooting Resort, located in the W. E. Smart Ranch some seven miles from Slaton on the Acuff Road, opened November 1 and will remain open until February 10.

Mrs. Jessie Prosser, Mrs. Gilbert Jaynes and Mrs. L. T. Arthur returned home Monday evening from California. Mrs. Arthur had spent the summer with her daughter in California and Mrs. Prosser and Mrs. Jaynes were gone about two weeks.

Sandra Wells, a junior student at Slaton High School was named Football Sweetheart for 1957 recently. Recognition came between halves at the Slaton-Tahoka game.

At a reception in the parlor of the First Methodist Church of Lubbock, on Sunday, November 17, Mr. and Mrs. O. D. McClintock, celebrated their Golden Wedding Anniversary.

Mr. H. O. Robertson and daughters of Smyer visited Sunday in the home of Mrs. Robertson's niece, Mrs. Kenneth Rackyer, and family.

Slaton High School Band, under the direction of Bill Townsend, will be a part of the 1957 Gridiron Jubilee marching contest to be held Thursday, November 21, at Jones Stadium, Texas Tech.

November 13, 1953

Slaton's Buddy Poppy sale, held here Saturday, resulted in the sale of 500 poppies and netted \$122.60. It was reported Monday by Mrs. Alvin White and Mrs. Pearl Pinkert, who headed the arrangements committee for the annual poppy sale.

Miss Bette Sue Lyne of Slaton, a Freshman student at McMurry College, is one of forty-nine students who will present a program Monday at the Slaton High School auditorium.

Mr. and Mrs. G. M. Duckett of Slaton celebrated their 68th wedding anniversary Sunday, Nov. 1, in their home. All of their children, four sons and

PART TIME WORK EXCEPTIONAL HIGH EARNINGS FOR ADDED INCOME

Reliable party wanted for this area to handle Nationality Advertiser Radio and Television Tubes such as G.E., Sylvania, R.C.A., and Westinghouse.

Sold through Modern Self-Service Tube Testing Units. To Qualify you must have \$2123.40 or \$1061.70 cash available immediately, automobile, and five spare hours weekly. Should net up to \$650.00 per month.

Company will extend financial assistance to full time if desired.

Please do not answer unless fully qualified for both time and investment.

INCOME STARTS IMMEDIATELY SELLING, SOLICITING OR EXPERIENCE NOT NECESSARY FOR PERSONAL INTERVIEW IN YOUR CITY, WRITE

U. S. ELECTRONICS CO. 1722 Washington Ave. St. Louis 3, Missouri

five daughters, were present for the occasion.

Mr. and Mrs. Heurick Perkins were honored on their 25th wedding anniversary at a party in the home of their daughter, Mrs. Joe Fondy.

Mr. and Mrs. Heinrich celebrated their golden wedding anniversary Sunday, November 8, as honor guests at an all-day observance planned by their children.

Mesdames A. L. Wilson, J. S. Vaughn, D. E. Troyer, Fred Walters, T. V. Ellis, Frank Hazelwood, J. E. Gray, and A. E. Clack of Slaton, and Mrs. A. Posey, represented the Westview Baptist Church at the District Convention of Baptist Women held at the First Baptist Church in Lubbock Monday, Nov. 9.

That the population of Slaton has increased considerably in the past year is definitely indicated by the increase in both gas and the power connections within the period from October 30, 1947 to October 30, 1948.

November 12, 1948

The Slaton Chapter of the American Legion Auxiliary will place boxes at convenient places over the town for the collection of gifts to be sent to the Veterans Christmas Gift Shop at Amarillo.

COAST TO COAST ONLY 1 1/2 CENTS PER MILE FOR GAS!

Pontiac's new Tempest 420E V-8 sets the year's most important economy mark—Here's the story and what it means to you!

PONTIAC COAST-TO-COAST ECONOMY RUN	
San Diego, California to Savannah, Georgia	
COMPLETED OCTOBER 17, 1958	
DISTANCE	2,442.7 MILES
DRIVING TIME	60.72 HOURS
FUEL CONSUMED	112.5 GALLONS
FUEL COST	\$35.79
MILES PER GALLON	21.7 Average for entire trip
AVERAGE SPEED	40.2 MILES PER HOUR
COST PER MILE	1.465 CENTS




We asked one of America's most respected car testers—"Uncle Tom" McCall—to put a standard Pontiac Catalina Sedan with our new economy V-8 to the test.

And with only one specification—that the run would be exactly like you would drive coast to coast yourself—in mountains, in city traffic, across deserts, buying gas wherever the tank ran low.

And here's the phenomenal story in every complete detail—all officially certified by NASCAR, America's top automobile competition authority.

What does it mean to you? Simply—and very importantly—this: For the first time, you can get deep-chested V-8 pep with better mileage than from many smaller so-called "economy cars" . . . and get it on regular fuel!

If you owned a Pontiac with this new Tempest 420E V-8 you'd be saving up to 5 cents a gallon on regular fuel. This new economy V-8 is optional at no extra cost on any Hydra-Matic Pontiac!

See your Pontiac dealer soon—and discover the newest in V-8 performance and economy!

PONTIAC!

America's Number 1 Road Car

3 Totally New Series • Catalina • Star Chief • Bonneville

SEE YOUR LOCAL AUTHORIZED PONTIAC DEALER

KENDRICK PONTIAC

1100 S. 9th

VA 8-4791

Slaton, Texas

SEE THE NEW 1959 Schwinn Bicycles

Priced From \$38.95—All Models in Stock See Our Thorn-Proof Tires

Guaranteed—No Goathead Flats

BOURN CYCLE SHOP

640 S. 9th

VA 8-3614

Wilson Oil Company
Wilson, Texas Phone 2251

- Butane, Propane
- Phillips 66 Gas, Oil, Commercial, Industrial Greases and Batteries
- Lee Tires and Tubes
- Auto Accessories

A COMPLETE AUTO SERVICE FOR WILSON

Buying Selling Renting

For Best Results

READ AND USE THE

WANT ADS

Have your prescriptions filled at **SLATON PHARMACY** by a registered pharmacist. tfe-37

For Sale

FOR SALE—Pheasants, Chucks, Bob Whites. With my birds cages go young birds with sale of all ages. Want to raise birds of all ages. Call or see me at farm, five miles E. Wilson, Phone WY 6-2070, Slaton. J. W. Savell. tfe-4

FOR SALE—Model "A" John Deere tractor, \$200.00. 1-8 ft. Moline One Way \$200.00. Contact C. G. Spears Box 93, Wilson, Texas. tfe-5

FOR SALE—Weyenburg Masagico Shoes, at McWilliam's Dry Goods, 166 W. Garza, Slaton, Texas, VA8-3907. tfe-50

FOR SALE—Nearly new 3 bedroom home on 905 So. 17th. Stocked fence. G. I. Loan, Bob R. Conner, Ph. VA8-3691. tfe-2

FOR SALE—Resistol Hats, \$8.95, 10.95, 12.95, 20.00, 50.00 and \$100.00. McWilliam's Dry Goods, 166 W. Garza, Ph. VA 8-3907. tfe-50

NEW PURINA SOW CHOW—the latest product from Purina Research... is built especially for sows. It's made to help sows farrow big, vigorous litters. New Sow Chow helps in every pig in the litter. Ask Huser Hatchery for Purina Sow Chow. tfe-47

FOR SALE—Gallon sizes of Floor Finishes and Polishers. Lasater-Hoffman Hardware tfe-53

FOR SALE—3 bed room house, 2 baths. Layne Plumbing & Electric. tfe-45

FOR SALE—wheels, 15 inch. for Chevrolet, five or six hole. Fords and most other makes. Tires and tubes. G. I. Loan's Garage. 1200 S. 9th, VA 8-7132. tfe-44

FOR SALE—46 A. near Lubbock, \$265 per acre; 63 A., rock home, near lake and fishing; 640 A. ranch near Mason, Texas. Howard Carlson, office with E. C. Richardson Agency, 2317 34th St. Lubbock. tfe-23

For Sale

2 Bedroom Home with 3 lots, near new high school. Priced \$6500.00.

80 A. 8 miles S. of town, small irrigation well. \$250. per acre.

2 bedroom house on S. 14th; priced \$4,250.

HICKMAN & NEILL
INSURANCE AGENCY
Phone VA 8-3306

Real Estate

Real Estate for Sale

Furnished Duplex Apartment, close in, less than \$15,000 will handle. Terms on balance.

2 bedroom and den on 16th.

2-3 bedroom homes on 14th.

2 bedroom home with 3 lots on 18th, close to new high school.

Several farms, within Slaton territory.

Choice lots on 21st, 18th and West Crosby.

Call or see us before you buy.
W.L. MEURER or A. W. WILD
135 W. Lynn, Phone VA 8-3946

For Sale

FOR SALE—1700 lbs. of sacked Rye seed. \$2.50 per hundred weight. Contact M. M. or Troy Bruster. Phone WYman 6-2651 or 6-2653. tfe-4

FOR SALE—Boy's 26" bicycle, \$10. 200 S. 7th. tfe-5

FOR SALE—Dest model electric sewing machine—5 years old. All attachments including button holer and zig-zagger. Phone VA 8-4315. tfe-4

FOR SALE—1955 four-door Ford sedan, low mileage, clean and fully equipped. May be seen at 245 S. 11th. tfe-5

FOR SALE—One young jersey bull. \$100.00. See owner at Ted & Juel's garage, 1200 S. 9th, Slaton, Phone VA8-7132. tfe-5

FOR SALE—Model "A" John Deere Tractor. Ideal for cotton stripper. Antifreeze & New paint. Ted & Juel's Garage. 1200 S. 9th, Slaton, Phone VA8-7132. tfe-5

FOR SALE—4 room and den at 1225 S. 10th St. Slaton, Call VA8-4161. tfe-4

POULTRY RAISERS are cashing in on today's good egg market. Get the most from your pullets and layers with a Purina Laying Ration. Whether you feed a complete ration, or mix a complete ration, or mix a concentrate with your grain, talk over your needs with Huser Hatchery. He will help you produce eggs economically the Purina Way. tfe-47

FOR SALE—One 6 room house, stucco, and bath, on corner lot, also 3 room stucco and bath on corner lot, priced right. See Mrs. M. Brown, 400 E. Scurry 2tp-4

SELL and REPAIR—Kirby Cleaners, Jack Stewart, Call VA8-3490, 330 E. Lynn St., Slaton, Texas. tfe-3

TRADE—Would like to trade nice home in Slaton for farm. Call VA8-4020. tfe-3

Lost and Found

FOUND—Small black puppy. Three white feet. Call Vickie or Terry Sebesta at VA 8-4712.

For Sale

Two bedroom home with 8 acres. \$9,500 with terms

167 A. Grassland, near Eastland on lake. 9 room and bath. \$20,000.

94 A. the best at Union. \$450 per A.

Two bedroom house on 800 S. 10th. \$8,500 or will carry good loan.

Two bedroom house on S. 10th, \$8,000.

E. C. HOUCHIN
Slaton, VA8-3063 RL. 1

For Sale

54" kitchen sink with steel cabinets, \$99.50; used washing machine and refrigerator, \$49.50 up; used Dr Pepper and Coca Cola box; 10 ft. show cases; dining room suite, \$39.50.

Layne Plumbing Co.
Phone VA 8-3496

FOR SALE

Used living room suites, bedroom suites, stoves, used refrigerators, dinette suites. Many other items of used furniture.

Thompson Furniture
160 Texas VA 8-4445

Have your prescriptions filled at **TEAGUE DRUG STORE** by a registered pharmacist.

Miscellaneous

COST OF THINGS GOING UP faster than your income? You can make more full or part time as a Rawleigh Dealer in Slaton. For full particulars see J. D. Rayburn, 1916 5th, Lubbock or write Rawleigh's, Dept. IXJ-392-RR Memphis, Tenn. tfe-2

TILLIE'S FURNITURE upholstering offers free estimates reasonable prices and guaranteed work. Mrs. Fred Perdue, 455 W. Scott, phone VA 8-3760. tfe-49

For a permanent green winter lawn, spray your lawn with Winter Lawn Concentrate. Buy it by the gallon at Slaton Farm Store. tfe-5

LOFTY pile, free from soil is the carpet cleaned with Blue Lustre. Lasater-Hoffman Hwde. tfe-5

For Rent

FOR RENT—3 room furnished house. Call VA 8-3332. House will be available Nov. 15. tfe-4

FOR RENT—Small efficiency apartment. Couple only. J. L. Allred, 850 S. 12th St., Slaton, Texas. VA 8-3308. tfe-5

FOR RENT—Floor Sanders-Floor Polishers. Lasater-Hoffman Hardware. tfe-53

FOR RENT—Available Nov. 16 unfurnished house, 310 S. 5th. Contact J. E. McMeekan at VA8-4295. tfe-5

FOR RENT—2 bedroom house, stucco. Large garage, unfurnished. Good condition. Call Mrs. Jim Bates, VA 8-3206. tfe-5

FOR RENT—four room furnished apt. Hardwood floors. New linoliums. Private bath and private entrances. 617 S. 9th, Phone VA 8-3559. tfe-5

FOR SALE—Model "A" John Deere tractor, \$200.00. 1-8 ft. Moline One Way, \$200.00. 2tp-4

FOR RENT—Modern five room house with bath and service porch. Storm windows, cow shed, henhouse, brooder house, and garage. Orchard and garden. Located 1550 S. 13th St. W. G. Jenkins, Phone VA 8-4107. tfe-5

FOR RENT—Front bed room with kitchen privileges. Lady or couple. Call VA8-3305 or see Mrs. Frank Lawrence at 420 S. 7th.

FOR RENT—3 rooms and bath unfurnished. 1035 S. 13th St. Slaton, Texas. See C. D. Wiewert two and one half miles northeast of Wilson, Texas or call VA 8-3023.

FOR RENT

Power saw, electric drills, electric sanders, floor polisher, electric copen saw, electric edgers, spray gun, by hour or day.

Higginbotham-Bartlett Co. tfe-4



SHYTTLES Implement Co.

Phone 33 Post, Texas

Wanted

WANTED TO BUY—500 gal. propane tank. E. C. Houchin, Rt. 1, Slaton, Texas, VA 8-3063. tfe-5

WANTED TO BUY—Discarded clothing and household necessities. Shoes, boots, radio, irons, etc. 125 W. Lynn St. tfe-4

WANTED—Young man or middle aged to work in sales dept. of large Southern Co. in Slaton from 6 p.m. to 9 p.m. \$50.00 minimum pay. Write Permanent 2420 A 33rd St. Lubbock, Texas. tfe-5

WANTED—Will do ironing in my home. 820 S. 13th. Phone VA 8-4411, Mrs. W. L. McDonald tfe-5

WANTED—I do nice paper-hanging, inside and outside painting. \$1.75 hour, helper \$1.25 hour. Linoleum laying 75c square yard; cabinet top covering installed \$1.50 running foot. Phone VA 8-4293, see Stinson Behlen, 810 S. 8th St., Slaton. tfe-3&5

HELP WANTED—Beautician—one operator to replace operator who left and one who is unable to work full time. Apply Phol's Beauty Shop. Phone VA8-4623. tfe-5

Have your prescriptions filled at **TEAGUE DRUG STORE** by a registered pharmacist.

FOR SALE

3 room house and bath. Carport with a storage room on rear. Fenced backyard. Would sell house to be moved. 1245 S. 12th or call
VA 8-3836

Have your prescriptions filled at **SLATON PHARMACY** by a registered pharmacist. tfe-37

MAGUIRK ELECTRIC

5th and Murray
4 Blocks East of
Porter Lumber Co.
VA 8-3877

THE STATE OF TEXAS COUNTY OF LUBBOCK SHERIFF'S SALE

WHEREAS, on the 29th day of February, 1958, in Cause No. 5540, in the District Court of 99th Judicial District Lubbock County, Texas, wherein City of Slaton et al were Plaintiffs and Impleaded Party Defendants recovered judgment against Juan Ariaz, Defendant, for taxes, penalty, interest, and cost against the hereinafter described property;

WHEREAS, on the 27th day of October, 1958, by virtue of said judgment and the mandates of the Clerk of the above mentioned District Court of said county did cause to be issued an Order of Sale commanding me as Sheriff of said county to seize, levy upon, and sell in the manner and form as required by law the hereinafter described property;

WHEREAS, by virtue of said judgment and said Order of Sale and the mandates thereof I did on the 31st day of October, 1958, seize and levy upon the property of the above defendant the following described property, situated in Lubbock County, Texas, to-wit:

Lot 9 and the South 1/2 of Lot 10, Block 48, South Park Addition to the Town of Slaton, Lubbock County, Texas. And I will on the first Tuesday in the month of December, 1958, the same being the 2nd day of said month, proceed to sell all the right, title, and interest of the Defendant in and to said property at the Court House door of said county in the city or town of Lubbock, Texas, between the hours of 2:00 p.m.

ORDINANCE NO. 166 ANNEXING THE HEREIN-AFTER DESCRIBED TERRITORY TO THE CITY OF SLATON, LUBBOCK COUNTY, TEXAS, AND EXTENDING THE BOUNDARY LINES OF SAID CITY SO AS TO INCLUDE SAID HEREINAFTER DESCRIBED PROPERTY WITHIN SAID CITY LIMITS, AND GRANTING TO ALL THE INHABITANTS OF SAID TERRITORY ALL OF THE RIGHTS, PRIVILEGES OF OTHER CITIZENS OF SLATON, TEXAS, AND BINDING SAID INHABITANTS BY ALL OF THE ACTS, ORDINANCES, RESOLUTIONS AND REGULATIONS OF SAID CITY THE HEREIN-AFTER DESCRIBED PROPERTY BEING DESCRIBED BY METES AND BOUNDS IN THE BODY OF THIS ORDINANCE: PROVIDING FOR PUBLICATION AND FINAL PASSAGE UNDER THE PROVISIONS OF SECTION 4 (a), OF ARTICLE I OF THE CITY CHARTER OF THE CITY OF SLATON, TEXAS, AND EXTENDING THE CITY LIMITS TO INCLUDE SAID AREAS.

Whereas, the City Commission finds that the areas hereinafter described is in the line of development, growth and expansion being experienced by the City of Slaton, Texas, and that their annexation has been requested, and the Commission further finds that annexation of the described areas will be in the best interest of the public health, morals, safety and general welfare of said areas and of the City of Slaton, Texas, and the City Commission is authorized to annex same under the provisions of its City Charter; NOW, THEREFORE, BE IT ORDAINED BY THE CITY OF SLATON, TEXAS:

Section 1. That the boundaries and limits of the City of Slaton are hereby extended so as to embrace and include the following described areas of land, and the following described areas of land are hereby annexed and made a part of the City of Slaton, Texas, to-wit:

Beginning as the intersection of Panhandle and Santa Fe Railway Company main track and the East line of Survey 48, Block "S"; thence South 56 degrees 04' West along the center line of said Railway Company main track a distance of 113.3 feet to a point, said point being by Railway Station 9832 plus 26.1'; thence at right angles to the right a distance of 100.00 feet to a point in U.S. Highway No. 84 said point being the beginning point of this description and the extreme northerly corner of this survey and being 35.0 feet East of the East line of Survey 48, Block "S"; thence South along a line parallel to and 35.0 feet East of the East line of Survey 48 for a distance of 1821.1 feet to a point, said point being 50.0 feet South of the North line and 35.0 feet East of the West line of Survey 44, Block "S"; thence West along a line parallel to and 50.0 feet South of the North line of Survey 47, Block "S" 2275.5 feet to a point, said point being in the East right of way line of the proposed U.S. Highway No. 84; thence in a Westerly and Southerly direction around a curve with a radius of 200.0 feet a distance of 288.9 feet; thence South 6 degrees 28' West a distance of 580.3 feet; thence South 0 degrees 56' East a distance of 2638.4 feet; thence along a curve to the left, said curve having a radius of 2724.93 feet a distance of 1124.5 feet; thence

along a curve to the left, said curve having a radius of 1146.28 feet a distance of 192.7 feet; thence South 34 degrees 13' East a distance of 503.2 feet; thence along a curve to the left, said curve having a radius of 200.00 feet a distance of 196.8 feet; thence North 89 degrees 24' East a distance of 315.4 feet to a point, said point, being the North right of way line of farm road No. 41 and 50.0 feet North of the South line of Survey 47, Block "S"; thence South 0 degrees 36' East a distance of 100.00 feet to a point in the South right of way line of farm road No. 41 and 50.0 feet South of the North line of Survey 37, Block "24"; thence in a Westerly and Southerly direction around a curve, said curve having a radius of 200.00 feet a distance of 398.5 feet; thence South 24 degrees 46' East a distance of 255.8 feet; thence around a curve to the left, said curve having a radius of 1146.28 feet a distance of 304.3 feet; thence around a curve to the left, said curve having a radius of 2724.93 feet a distance of 745.6 feet; thence South 55 degrees 40' East a distance of 253.6 feet to a point, said point being in the West line of the existing city limits and the West line of Survey 20, Block "24"; thence North 1463.3 feet to a point in the South line of Survey 47, Block "S"; thence 640 feet West to the Southeast corner of Survey 47, Block "S"; thence North 4572 feet to a point in the West line of Survey 44, Block "S"; thence South 55 degrees 33' East 3192 feet to a monument; thence North 34 degrees 32' East 2090 feet to the Southwest corner of Lot No. 30 in Block "A"; thence in a North-westerly direction 1000 feet along the South boundary line of the extension to Block "A" of the Original Town of Slaton, Texas, to the Southwest corner of Lot No. 50 in said extension; thence North 108.3 feet along the West line of said Lot No. 50 to a point in the South right of way line of the Panhandle and Santa Fe Railway Company; thence North 56 degrees 04' West a distance of 3456 feet along the South right of way line of said Panhandle and Santa Fe Railway Company to the point of beginning;

and Beginning at a point in the South city limits, said point being in the 1/2 Sec. line of Survey 20, Block "24" a distance of 2275.8 feet Easterly from the West line of said Survey 20, Block "24"; thence South 55 degrees 40' East along the Northeast right of way line of proposed U.S. Highway No. 84 a distance of 1723.7 feet; thence East a distance of 1378.3 feet to a point, said point being in the East right of way line of the existing U.S. Highway No. 84; thence in a Southerly and Easterly direction around a curve said curve having a radius of 2814.93 feet a distance of 958.4 feet; thence South 49 degrees 38' East along the North right of way line of existing U.S. Highway No. 84 a distance of 1276.2 feet to a point, said point being the intersection of the North right of way line of existing U.S. Highway No. 84 and the North right of way line of farm

KEEP THIS AD!

Over 25,000 Arthritic and Rheumatic Sufferers have taken this Medicine since it has been on the market. It is inexpensive, can be taken in the home. For Free information give name and address to P. O. Box 826, Hot Springs, Arkansas.

and 4:00 p.m. to the highest bidder for cash, provided, however, that none of said property shall be sold to the owner of said property directly or indirectly or to anyone having an interest therein or to any party other than a taxing unit which is a party to this suit for less than the amount of the adjudged value of said property or the aggregate amount of judgments against said property in said suit, whichever is lower, subject also to the right of the Defendant to redeem same in the time and manner provided by law and subject also to the right of the Defendant to have said property divided and sold in less divisions than the whole. DATED at Lubbock, Texas, this 1st day of November, 1958.

Grady Harrist Sheriff
Lubbock County, Texas
By Verlie Shearer, Deputy

road No. 2150; thence South 89 degrees 44' East along the North right of way line of farm road No. 2150 a distance of 1868.8 feet to a point, said point being in the West right of way line of the Panhandle and Santa Fe Railway Company Lamesa Branch and 50.0 feet North of the South line of survey 19, Block "24"; thence North 36 degrees 38' East along the Railway Company West right of way line a distance of 4063.0 feet; thence around a curve to the left, said curve having a radius of 714.08 feet a distance of 90.1 feet; thence North 29 degrees 24' East a distance of 72.9 feet; thence around a curve to the left, said curve having a radius of 1860.08 feet a distance of 2078.4 feet; thence around a curve to the left, said curve having a radius of 934.83 feet a distance of 43.9 feet to a point in the North line of Survey 18, Block "24"; and being 339.8 feet Easterly from the Northwest corner of Survey 18, Block "24"; thence Westerly along the North line of Survey 18, Block "24" a distance of 19.8 feet to a point, said point being in the existing city limit line and being 320.0 feet East of the Northwest corner of Survey 18, Block "24" and also being the South line of Block "117" in the South Slaton Addition to Slaton, Texas; thence Westerly 320 feet along the South boundary line of said Block No. "117" to an iron stake for a corner; thence South on Avenue F 612 feet to the intersection of the South line of Geneva Street and the West boundary line of Survey 18 in Block "24"; thence West on the South boundary line of Geneva Street 2640 feet to a point 30 feet North of the Northeast corner of Lot No. 1, Block "52" in the South Park Addition to the Town of Slaton, Texas; thence South 2009.2 feet to the Southeast corner of the Northwest quarter of Survey 19, Block "24"; thence West 5644.2 feet along the South boundary line of the existing city limits to the point of beginning.

Section 2. Should any Section or part of this ordinance be held unconstitutional, illegal or invalid, such unconstitutionality, illegality or invalidity of said section or part shall in no wise effect impair or invalidate the

beginning of the line of proposed U.S. Highway No. 84 a distance of 1723.7 feet; thence East a distance of 1378.3 feet to a point, said point being in the East right of way line of the existing U.S. Highway No. 84; thence in a Southerly and Easterly direction around a curve said curve having a radius of 2814.93 feet a distance of 958.4 feet; thence South 49 degrees 38' East along the North right of way line of existing U.S. Highway No. 84 a distance of 1276.2 feet to a point, said point being the intersection of the North right of way line of existing U.S. Highway No. 84 and the North right of way line of farm

remaining portion thereof, but as to such remaining portion the same shall be and remain in full force and effect; and should this ordinance for any reason be ineffective as to any part of either of these areas hereby annexed to the City of Slaton, such ineffectiveness of this ordinance as to any part of parts of any such areas shall not effect the effectiveness of this ordinance as to all the remainder of such areas, and the City Commission of the City of Slaton, Texas hereby declares it to be its purpose to annex to the City of Slaton, Texas, any part of the areas described in Section 1. of this ordinance regardless of whether any other part of the land therein described is hereby effectively annexed to the City.

Section 3. That from or after the passage of this ordinance, the inhabitants of the territory hereby annexed shall be entitled to all the rights and privileges of other citizens of the City of Slaton, Texas, and shall be bound by the acts, ordinances, resolutions and regulations of the said City of Slaton, Texas.

Section 4. The City Secretary is hereby directed to publish this ordinance one time in the official newspaper of the City of Slaton, Texas, and this ordinance shall not finally be passed until at least 30 days have elapsed after such publication, and if finally passed in its present form, the boundary limits of the City of Slaton, Texas shall thereby be fixed to include the areas, territory and extension described in Section 1. of this ordinance.

AND IT IS SO ORDERED. This ordinance was ordered to be published by the City Commission of the City of Slaton, Texas at a regular meeting of the City Commission this 10th day of November, A.D., 1958 having on that date been first passed, read and voted upon by the City Commission of the City of Slaton, Texas in regular meeting convened.

O. N. ALCORN, MAYOR
(City Seal)
ATTEST:
J. J. MAXEY,
CITY SECRETARY.

Passenger cars in the U.S. travel an average of 9,359 miles per year.

The eye of a hurricane averages about 14 miles in diameter, according to the Navy's "Hurricane Hunters."

FOR SALE

TWO BEDROOM HOUSE

Good condition, F.H.A. Loan, Small down payment. Located at 255 E. Panhandle. Call VA 8-4106....

FORREST LUMBER CO.

It Won't Be Long Now...
Our Opening Date Will Be
Announced Soon!

SLATON BAKERY

630 W. Division St.

Wishing Well

Fill in this card and Drop it in the Wishing Well

NAME _____

ADDRESS _____

PHONE _____

What You Wish For _____

Price of What You Wish For Is _____

We Will Notify Lucky Winner

Good Luck WALTON'S

\$4.13 Value Cressant Cologne & Liquid Sachet	\$2.20
6c Pepsodent reg. Tooth Paste, limit	39c
\$2.20 Hair Spray and tax Style, by Lamaur	99c
98c Giant Burma Lather Bomb, limit	39c
\$1.00 Size Woodbury Shampoo	39c
29c Pepsodent Tooth Brush	
10c Tube-Paste Both	10c
Pint Size Isopropyl Alcohol, limit	9c

Wishing Well

JEAN HAGLER
WY 6-2639
Southland, Texas

was Lucky Winner last week, come in, look around, you may wish for any thing retailing for \$25.00 or less.

WALTON DRUG

Mr. and Mrs. Ott E. Patterson and son of Olton were visitors in the home of Mr. and Mrs. Henry Bollinger on Sunday, Nov. 2nd.

Mrs. K. W. Campbell spent a week visiting her mother, Mrs. Sue Creamer, of Beaumont.



**HOMEOWNER??
or HOBO??**

What you do about insurance protection within the next 24 hours might very well determine whether you remain a homeowner or wind up "out in the cold" like the gentleman above.

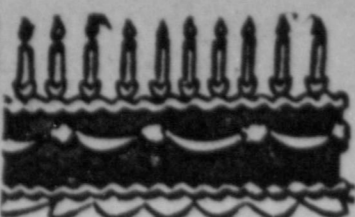
Building costs have doubled. Would you be able to replace your home if it is destroyed tomorrow? Not if it is insured by 1946 standards.

Be sure your insurance protection is up-to-date. Our free protection check costs you nothing, and may save you thousands of dollars.



**BREWER
Insurance
Agency**

139 So. 9th
Phone VA 8-3241



Happy Birthday

November 14 — J. C. Jones.
November 15 — Frank Bernard Schon, Mrs. L. M. Conner, Barbara Meeks, Max Maier.

November 16 — Dru Ann Beard, Lee Ray Willie Tisehler.
November 17 — B. C. Burleson, Mrs. J. J. Klitten, G. E. Taylor, Nancy Louise Edwards, Mrs. Oscar Buxkemper, Bill Lockett, W. L. Blaylock.

November 18 — Ray C. Ayers, Robert E. Ayers, Mrs. Stan H. Jaynes, Mrs. W. H. Eaves, Josie Maxine Allred, Mrs. Oma Faye Brown, Lucille Wyatt, Mrs. G. W. Haliburton.

November 19 — Mrs. Pete King, Mrs. M. L. Abernathy, Jeanette Price, Mrs. G. E. Taylor, Mrs. J. J. Maxey.

November 20 — Ronald Woolver, Judith Ann Kitten, Mrs. Jack Berkley, Mrs. George Green, Mrs. Tony Steffens, Timothy Gaze.

Gomer Harold Trout of Slaton is a pledge of Pi Kappa Alpha social fraternity at Texas Tech, Lubbock.

Slaton Floral
1435 S. 9th VA 8-4214
Flowers Wired Anywhere
Mrs. Bentley Page, owner

**Robert Brake and Douglas Milliken
MANAGERS
Brake & Miliken Garage**
130 W. Lynn VA 8-3396



FFA SWEETHEART

Olivia Sanders, daughter of Mr. and Mrs. Dave Sanders of Slaton, was elected FFA Chapter Sweetheart in a recent meeting of the organization. She is shown above with her brother, Randy, being measured for a jacket to be given her by the chapter. Randy is chapter reporter.

been scheduled November 20-21 at the Hilton Hotel in San Antonio.

**Conference On
Irrigation Set
For Nov. 20-21**

This conference is the second annual meeting sponsored by the Texas Inter-Industry Irrigation Council. Last year the event was held in Lubbock.

According to an announcement by Bob Thurmond, Texas A&M Irrigation Specialist and program chairman for the conference; the meeting will bring together some of the leading irrigation and water conservation authorities in the nation. Thurmond listed the following subjects among those to be discussed: "Future Trends in Irrigation Agriculture in Texas,"

"New Techniques in Irrigation Farming," "Development of Texas Water Resources," Financing the Irrigation Farmer."

CARD OF THANKS

We wish to express to our many friends and neighbors our appreciation for the kindness and help shown in so many ways on the death of our loved one and brother.

Mr. and Mrs. Raymond Short
Mr. and Mrs. Claude Reynolds
Mr. and Mrs. Wayne Reynolds
N. N. Reynolds
Mr. and Mrs. H. S. Johnston
Mrs. Bessie Taylor
Mr. and Mrs. Mike Boyd
Mr. and Mrs. Haley Reynolds

**Self-Employed
Persons Should
Keep Records**

"People who work for themselves on a farm or in a business, trade, or profession should keep complete and accurate records of all of their business transactions," John G. Hutton, manager of the Lubbock social security office, pointed out today.

Maintaining complete and accurate records is good business from many standpoints and these records are particularly valuable when income tax time rolls around, he said.

For the business men, Federal tax returns are not only used to report the amount of their income for income tax purposes but are also used to report the self-employment income for social security credits. This means that the eligibility to social security benefits for these individuals and the amount of their monthly benefits are dependent upon the accuracy of their tax returns and the accuracy of the basic records upon which these returns have been prepared.

Hutton commented that in many cases his office is required to verify the income reported on the self-employment tax returns. The lack of good records has in some instances caused considerable delays in awarding claims for benefits and in several cases has resulted in actual loss of benefits. So, don't gamble on losing what you may be entitled to—keep an accurate and complete record of all of your business transactions, he added.

A representative of the Lubbock Social Security Office will be in Slaton on Nov. 18, 1958, at 8:00 a.m. at the Red Cross Room, City Hall, and will assist in all matters pertaining to Social Security.

Mr. and Mrs. K. C. Scott spent Sunday, Nov. 9th, in Amarillo visiting with Mrs. Scott's mother, Mrs. W. H. Smith on her 88th birthday. Dinner was served to the family in the home of Dr. and Mrs. S. H. Ball. Those attending were Mr. and Mrs. W. H. Smith Jr., Mrs. G. F. Everline, grandchildren and great-grandchildren.

Mrs. Billy White and children, Carol, Elaine and Mike of Amarillo, have recently moved to Slaton. They are making their home with Mrs. W. T. Greer for the present time.

Mr. and Mrs. V. L. Townley and children and Mrs. T. E. Beard of Hamlin were guests in the home of Mr. and Mrs. Lindol Beard, Nov. 1st and 2nd.

Mr. and Mrs. R. D. Brush visited in Brownwood with Mr. and Mrs. J. R. Brush, Sunday, Nov. 2nd.

Mr. and Mrs. Herschel G. Cock visited in Hale Center Nov. 1 with Mr. and Mrs. Alvin G. Cock.

Mr. and Mrs. F. S. Kahlleh visited her parents, Mrs. B. A. Harris of Elida, N. M., over the week end, recently.

Mr. and Mrs. J. D. Barry turned Nov. 3rd from Temple where Barry has been a patient in the hospital.



by J. C. Oakley, Manager

**TELEPHONE
TALK**

NEW FLU VACCINE

If and when a new vaccine against the common cold has been thoroughly tested and proven, the telephone company may have played an important part in the experiment. Employees at the St. Louis headquarters were offered the anti-cold shots, which while still experimental have been proven safe, on a voluntary basis. The location was selected for the test because it offered a conveniently located cross-section of people on whose health records are available. The Southwestern Bell Telephone Company is cooperating at the request of the Common Cold Foundation and the US Public Health Service in this experiment.

Wouldn't it be wonderful to just be able to get a shot and not have to worry with the sniffles?

HOLIDAY GET-TOGETHER BY PHONE

With Thanksgiving at hand, many people are planning a long distance call to family members living out of town.

If all the people in your family won't be with you in person for turkey and all the trimmings, let a telephone call wipe away the miles and still make it "family day."

After all, a long distance "voice visit" is the best thing to be together. Why not plan now to make your call Thanksgiving Day?

"STRANGE CASE OF THE COSMIC RAYS"

The fascinating story of how scientists tracked down science show coming your way on TV on Sunday, November 23. The science eshow coming your way on TV on Sunday, November 23.

"The Strange Case of the Cosmic Rays" was first telecast last year. Today, this program should be even more timely with television viewers, since one of America's satellites spinning around the earth carries special sensitive devices to record these cosmic rays.

Starring Dr. Frank Baxter in the role of the "Scientist" and Richard Carlson as the "Writer", this Bell System science program is another in the series designed for family entertainment.

"The Strange Case of the Cosmic Rays" will be telecast over Channel KCBD-11 at 5:00 p.m., November 23rd Sunday.

Call by number. It's twice as fast.

SOUTHWESTERN BELL TELEPHONE COMPANY



This 4-door Hardtop Cruiser is the luxurious Park Lane by Mercury. Also available in the distinctive Montclair and the popular Monterey series.

**The brand NEW '59 MERCURY
shows you what NEW really means**

Americans are looking at the new cars with a new look in their eyes. They're searching for the best combination of all the things that count in a car. The answer in 1959 comes from this completely new 20th Anniversary Mercury.

SEE NEW CLEAN-DYNAMIC STYLING

Distinctive...Mercury has exclusive body design; it is the only car in its class that does not use a body shared by a low-priced car.

RELAX IN A NEW KIND OF COMFORT

No car in its class has more usable room. For easier entrance, doors are wider than those of costliest cars. Up front...9 inches more knee room! The tunnel-hump in the floor HAS BEEN CUT IN HALF! The man in the middle doesn't

sit with his chin on his knees. And that lower hump makes room for thicker seat cushions.

FEEL LIVELY NEW PERFORMANCE

Not just high horsepower...although Mercury offers up to 345...but a new kind of response, quiet, obedient, effortless.

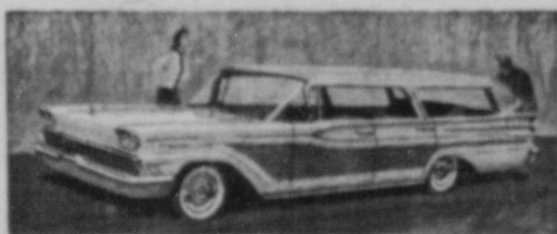
ENJOY NEW ECONOMIES

2 out of 3 new-car buyers can afford Mercury. The big special is the Monterey with its new Economy Engine. You get top performance on regular (not premium) gas...it's like "riding free" 10 miles out of every 100.

Add it up and you get everything you want on wheels...the '59 Mercury. We invite you to try this great car...at our showroom.



NEW COMFORT UP FRONT! That tunnel-hump you'll find on other '59 cars is 50% smaller in Mercury. 3 full-size riders can stretch out (including the man in the middle).



MERCURY'S COUNTRY CRUISERS...Unique hardtop styling. Retractable rear window. Fold-away 3rd seat that faces front. Concealed package compartment.



MERCURY'S FIRST WITH SIDE-TO-SIDE WIPERS...They clear a 42% larger area...a 5-foot swath...including the center section. Only Mercury has this aid to safer driving.

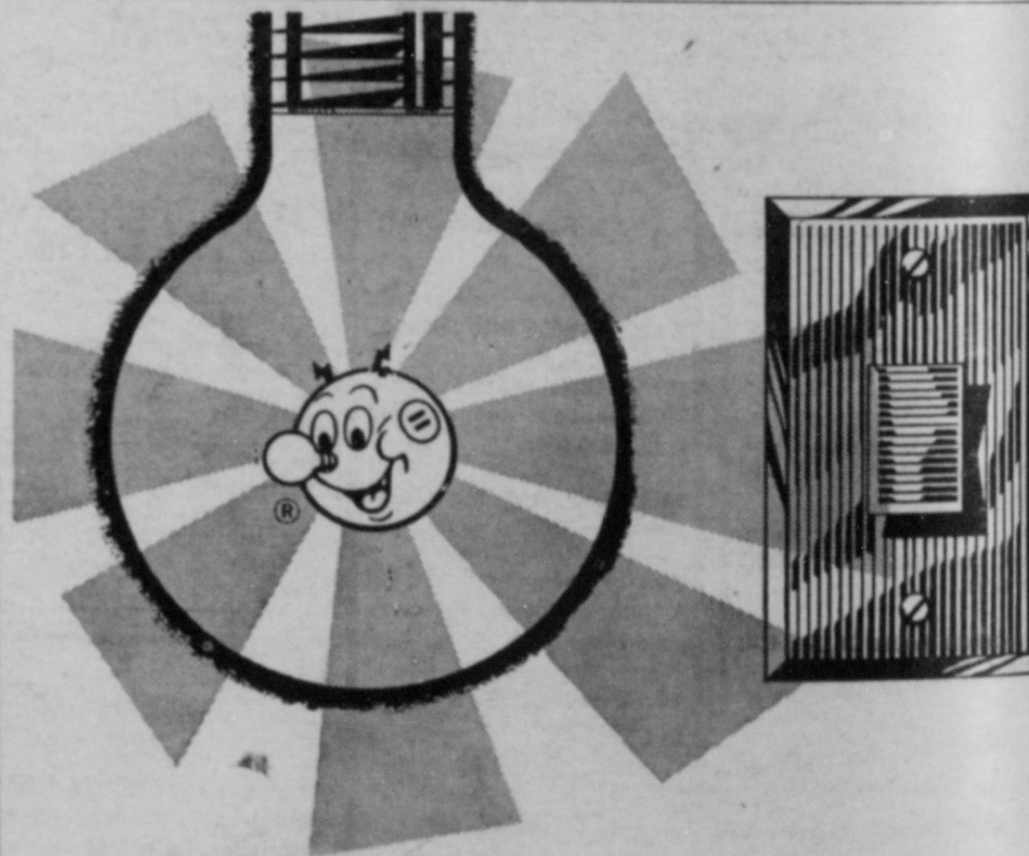
Everything you want on wheels

- NEW STYLING
- NEW COMFORT
- NEW PERFORMANCE
- NEW ECONOMY

All beautifully combined in the 20th Anniversary

MERCURY
BUILT TO LEAD...BUILT TO LAST

ON DISPLAY TOMORROW AT YOUR DEALER'S...TOTALLY NEW FROM ROAD TO ROOF!



**ELECTRIC HEATING...
as easy, safe and clean as switching on a light bulb!**

That little man-of-all-things, Reddy Kilowatt, is ready to heat your home just as easily as he now lights your home. Electric heating is so easy, so safe, so clean — well, it's just like a light bulb — responds instantly to the touch of your finger on a control switch. Imagine, turn on a switch and a light lights up — turn on another switch and you have instant, comfortable, clean electric heat.

P. S. Electric heating is really easier than turning on a light bulb. With thermostatic control you just set it and forget it.

FREE BOOKLET



"The Inside Story of ELECTRIC CLIMATE CONTROL" — a new booklet that tells the facts about modern, convenient electric heating. If you're building or remodeling, you'll want this booklet. Your Public Service manager has a copy for you.

HEATING RATE

There's a new, low electric heating rate now available. To get the facts, see your Public Service manager.

**SOUTHWESTERN
PUBLIC SERVICE
COMPANY**

EXCI
Wor
of r
duri
have
EXCI
Just
spra
—a
EXC
The
thro
rain
out

SEL
FUI
CO.

235 W.

Mrs. Herschel G...
and Mrs. Alvin G...

PHONE
LK

...the common...
...the telephone...
...part in the...
...headquarters...
...while still ex...
...a voluntary...
...because it offe...
...people on wh...
...southwestern...
...the request of...
...US Public Hea...

...be able to get...
...niffles?

PHONE

...y people I kn...
...family membe...

...won't be with...
...imings, let a...
...I still make it...

...visit" is the...
...plan now to mak...

MIC RAYS"

...ists tracked dow...
...on Sunday, N...
...on Sunday, N...

...Rays" was fin...
...a should be eve...
...nce one of Amer...
...th carries specia...
...ic rays.

...role of the "Sci...
...riter", this Be...
...e series designe...

...ays" will be tel...
...November 23r...

COMPANY

NG...
light bulb!

at your home...
o easy, so safe,
y to the touch
h and a light
ortable, clean

ht bulb. With

TE CONTROL"
about modern,
re building of
et. Your Public

SERVICE

The Slaton, Tex., Slatonite
Thursday, Nov. 13, 1958

Mr. and Mrs. Clarence Curby and children from Campbell, Calif., have been guests in the home of Mrs. Curby's parents, Mr. and Mrs. J. L. Allred, for the past two weeks. Family reunion was held Sunday Nov. 8. Guests were Mr. and Mrs. W. J. Flippins, Mrs. J. W. Fimpkins, Mrs. J. W. Fimpkins of Plainview, Mr. and Mrs. C. C. Thorton of Slaton and Mr. and Mrs. John Heartzell of Lubbock.

Rev. J. B. Sharp attended the annual commissioner's meeting in the Methodist Home in Waco Nov. 4 and 5.

Eun Sang Lew of Seoul, Korea, and Richard Argudin of Mexico City, Mexico, were guests of the Methodist Church Sunday. They took part in the worship, speaking on "World Peace." They are students at Texas Technological College in Lubbock.

Rev. C. M. Epps Services Held Last Saturday

The Rev. Cliff Moore Epps, retired Methodist minister, died last Thursday.

Services were held Saturday at the First Methodist Church in Sonora, Texas. The Rev. Mr. Epps served churches in Tennessee and Texas before his retirement. Some Texas Churches were Tulla, Dalhart, Colorado City, Midland and Kerrville.

The Rev. Epps was the father of Mrs. M. M. Schleiter and Mrs. Jim Vickers of Slaton. Other survivors include his wife of Sonora; three sons, Cliff Moore Epps Jr. of Big Spring, Lawrence Epps of Lake Jackson, Texas, and Benny Rex Epps of the U.S. Navy; a brother, Charlie Epps of Nashville, Tenn., and three grandchildren.

Use Slatonite Want Ads



STATE FFA PRESIDENT
Bill McDowell of Whitewright, state FFA president, visited Slaton FFA'ers last week. He is shown here, on the left, with Shirley Kitten, state Future Homemakers of America vice-president in charge of publications, and Truett Babb, Slaton High School principal and former advisor to the local FFA. J. P. Brown is currently chapter advisor. (Slatonite Staff Photo)

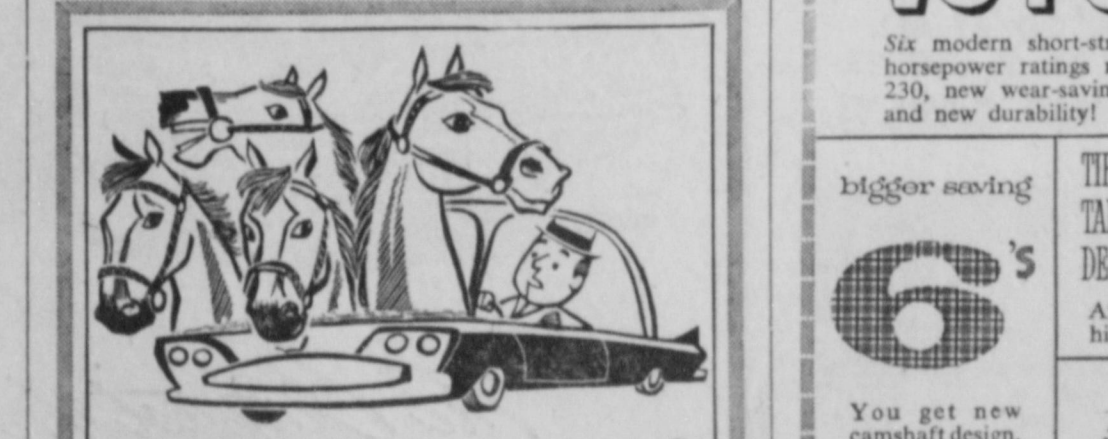
State FFA President, Bill McDowell, Visits Slaton Chapter, Makes Talk

Bill McDowell of Whitewright, president of the State Future Farmers of America Association, visited in Slaton last week. McDowell is currently touring over the state, visiting outstanding chapters, those with gold emblem rating, and his visit to the Slaton Chapter emphasized the high standing the local organization has in the state association.

Slaton's chapter is rated in the top 30 chapters in the state, of which there are 900. McDowell spoke to local FFA members on opportunities in FFA and was the guest of honor at a coffee given by Slaton High School Future Homemakers of America members.

Host for McDowell's visit were all members of the FFA chapter and their officers, James Cole, chapter president; Randy Sanders, chapter reporter; Jerry Harlan, chapter treasurer; Gary Ward, sentinel; Jerry Allen, secretary; and Giles Smith, vice president. J. P. Brown is chapter advisor at Slaton High School and another interested individual at the school was Truett Babb, principal and former advisor.

The Lubbock County Farm Bureau ended this fiscal year Oct. 31 with more than 1,000 members and was recognized at the Texas Farm Bureau Convention in Corpus Christi recently.



How's your horsepower?
You may have plenty of horses under the hood, but if you don't feed 'em right you won't get the kind of performance you were hoping for when you bought that new car.
To make the most of your horsepower, fill your gas tank with clean-burning, high octane Phillips 66 Flite-Fuel. No other gasoline provides the combination of high performance components that make this the "Aristocrat of Motor Fuels."
The performance advantages of Phillips 66 Flite-Fuel are noticeable, and they are noticeable immediately. Easy starting... freedom from stalling... lively acceleration... you get all these when you fill up at the station where you see the orange and black Phillips 66 Shield. Treat your horses right!



Slaton Asked To Have Fat Stock Show 'Day'

Slaton has been invited to have a "day" at the 1959 Southwestern Exposition and Fat Stock Show, which will be held Jan. 30 through Feb. 8 in Fort Worth.

In a letter, W. R. Watt, president-manager of the show, suggested that Slaton select a cowgirl sweetheart who can be introduced at the Stock Show rodeo. Watt also invited the city to send its high school band so that the students may give a concert on the exposition grounds. Band members would be guests of the Stock Show at the rodeo performance.

Watt expressed the hope that a delegation of citizens, wearing hat bands or badges proclaiming their hometown, would attend the exposition. A special section of seats at the rodeo also will be set aside if Slaton residents would like to sit together.

Dale Robertson, star of the TV Western series, "Tales of Wells Fargo," will be featured in all rodeo performances. He will start in a musical act designed especially for the Fort Worth show.

"The 'days' when various towns are honored add color and contribute much to the success of the Stock Show," Watt said in his letter.

He asked that the Chamber of Commerce or any interested group work with the Stock Show officials to plan the special "day."

"The Stock Show is looking forward to your acceptance and will give your plans a wide-spread publicity as possible," Watt said in his letter. "All of us will do everything in our power to make your visit enjoyable."

Postmaster T. E. McClanahan announced today that Rural Mail Carriers will be distributing Dec. 1, 1958, Livestock Survey Cards to patrons on their routes about Nov. 20.

This annual livestock survey, which the Post Office and Agriculture Departments cooperatively have made since 1924, provides basic information to the Texas Crop and Livestock Reporting Service in Austin for estimating number of cattle, hogs, sheep and chickens on Texas farms and ranches.

In order that the Slaton area be well represented in the survey, Postmaster McClanahan requested that each patron receiving a card fill out and return it to his mail box for prompt pick up. Rural mail carriers working on this project are Jack B. Clark, Route One; and Claude S. Wilkinson, Route Two.

Mr. and Mrs. Leonard Alexander of Weirnet and Mr. and Mrs. Quest Withers from Herleigh were guests in the home of Mr. and Mrs. E. D. Robinson recently.

Mr. and Mrs. Tommy LeMaster and Marcie Lynn visited with Mrs. LeMaster's parents, Mr. and Mrs. Charles Simmons of Guyton, Okla., Sunday, Nov. 9.

Mr. and Mrs. Jack Cooper and Mr. and Mrs. L. M. Conner visited in Midland Sunday, Nov. 9, with Mr. and Mrs. Wallace Cooper and Cydney.

Mrs. T. G. Workman and daughter, Judy, from Edmondson visited recently with Mr. and Mrs. W. O. Townsend.

Public Education Week Currently Being Observed

Public Education Week, currently being observed across the nation, brought a reminder this week from Slaton Superintendent of Schools Lee Vardy.

Vardy reminded parents that their visits to any school in the Slaton system is welcome at any time, and not just during this special week. The Slaton School System goes along with the rest of the state in observing Texas Public School Week in the spring each year and does at that time make a special invitation to the public to visit the schools. However, there will be no special events this week in connection with Public Education Week, a nation-wide observance.

Mr. and Mrs. W. O. Townsend visited with their son, Mr. and Mrs. Billy Townsend and children, in Snyder, Sunday, Nov. 9.



\$10,000 FOR \$10

The Comprehensive Personal Liability Policy is a real steal for homeowners.

It gives you protection against legal liability for injuries suffered on your property, for acts of your children, destruction or injury caused by your pets, as well as hunting, fishing, or similar accidents for which you or some member of your family may be held responsible.

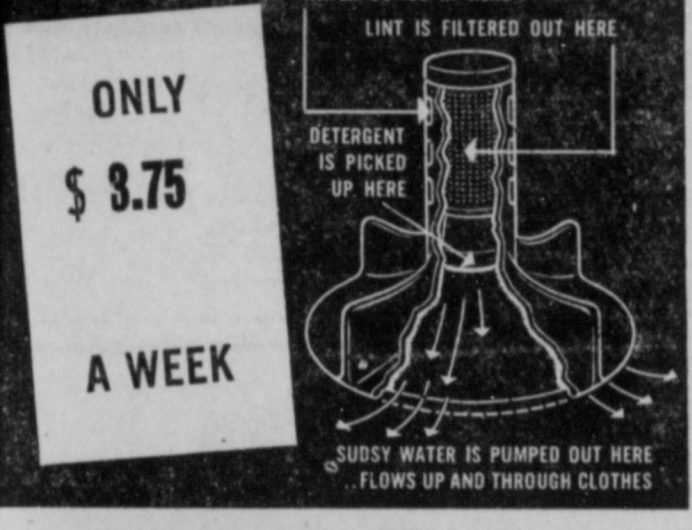
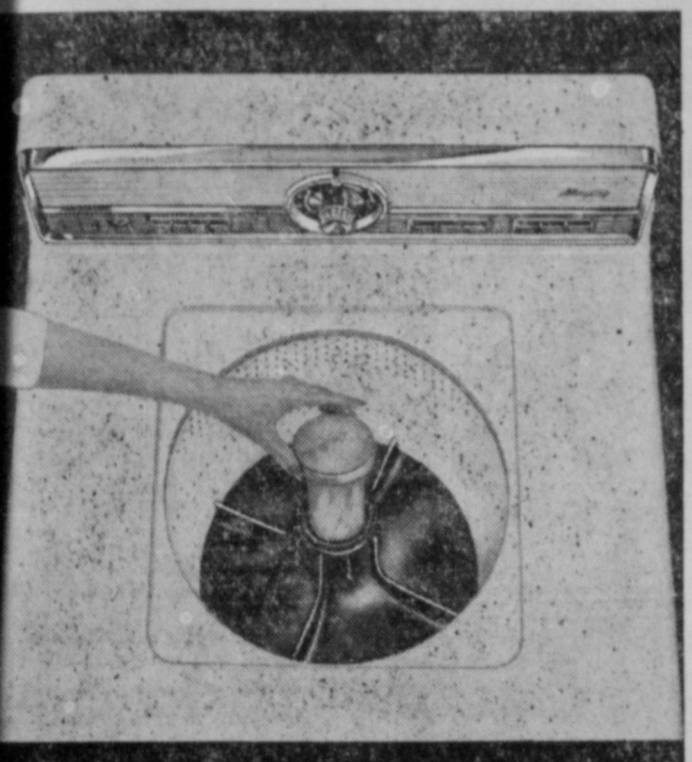
You may be liable not only for damages, but for court costs as well as hospital and medical expenses.

Don't gamble with your security when \$10 a year will buy you this valuable protection.



Wilson Insurance Co.
Wilson State Bank Bldg. WILSON, TEXAS

NEW MAYTAG
ALL-FABRIC AUTOMATIC WITH THE FIRST
FILTER-AGITATOR



ONLY \$ 3.75 A WEEK

EXCLUSIVE NEW UNDERWATER LINT FILTER!
Works under water where the lint is. Gets rid of more lint than ever before possible. Filters during wash and rinse cycle. And, you never have to remove filter to load or unload washer.

EXCLUSIVE NEW SUDS DISPENSER!
Just pour detergent into agitator. Dispenser sprays fully dissolved detergent into wash water—automatically!

EXCLUSIVE NEW WASH ACTION!
The "inner agitator" pumps sudsy water up and through the clothes. Creates a steady stream of rain-soft suds water that gently loosens and lifts out dirt. Gets clothes really clean.

The new Maytag All-Fabric Automatic also includes:

- PUSHBUTTON WATER LEVEL CONTROL Saves you up to 2500 gallons of hot water a year
- TWO WASH SPEEDS, TWO SPIN SPEEDS Let you tailor the action to the type of fabric
- THREE WATER TEMPERATURES INCLUDING "COLD" Let you wash anything safely
- AUTOMATIC RINSE CONDITIONER (optional) Rinses your clothes in rain-soft water
- YOUR CHOICE OF PINK, GREEN, YELLOW OR WHITE

SELF FURNITURE CO.
235 W. Garza St. VA8-4407

MAN'S BEST FRIEND

We agree! But if your Rover happens to take a bite out of someone's leg, it would take an awful bite out of your purse because you are fable. For a low-cost solution, phone us!

Standard Protection

YOUR Independent AGENT

Pember Insurance
135 N. 8th VA 8-3541

How's your horsepower?

You may have plenty of horses under the hood, but if you don't feed 'em right you won't get the kind of performance you were hoping for when you bought that new car.

To make the most of your horsepower, fill your gas tank with clean-burning, high octane Phillips 66 Flite-Fuel. No other gasoline provides the combination of high performance components that make this the "Aristocrat of Motor Fuels."

The performance advantages of Phillips 66 Flite-Fuel are noticeable, and they are noticeable immediately. Easy starting... freedom from stalling... lively acceleration... you get all these when you fill up at the station where you see the orange and black Phillips 66 Shield. Treat your horses right!

Life Insurance Annuities
PHIL BREWER
American United Life Insurance Co
139 S. 9th. Slaton

"NEW" SPARKLE FOR THE FAMILY

The whole family's wardrobe looks crisp, fresh and spic 'n' span when we clean it! Our experts banish even the most stubborn spots and stains... restore "like new" freshness!

Slaton Steam Laundry and DRY CLEANING
169 W. Lubbock St. VA8-3426

Best yet of the best sellers! New Might, New Models, New Money-Saving Power!

Chevrolet Task-Force 59

Take trucks that have shown themselves to be the biggest savers and biggest sellers. Add important engineering developments that mean still greater efficiency and endurance. You've got trucks that promise unparalleled reliability and economy. Here's how Task-Force 59 solidly backs up that promise to stay and save on your job!

<p>more efficient</p> <h2>V8 POWER</h2> <p>Six modern short-stroke V8's offer high horsepower ratings ranging from 160 to 230, new wear-saving thermostat control and new durability!</p>	<p>BUILT-TO-LAST BODIES</p> <p>New Fleetside pickup, for example, offers double-walled sides, select-wood floor, steel skid strips!</p>	<p>durable, comfortable</p> <h2>cabs</h2> <p>Sturdy new cross sill, new interior trim, easy Nu-Flex seat, High-Level ventilation, concealed Safety Steps!</p>	
<p>bigger saving</p> <h2>6's</h2> <p>You get new camshaft design, new valve train durability, high horsepower and torque!</p>	<p>TIRE-SAVING TANDEM AXLE DESIGN</p> <p>Axles "track" on curves, hike G.V.W. to 36,000 lbs.!</p>	<p>POWERMATIC</p> <p>FIRST FULLY AUTOMATIC HEAVY-DUTY TRUCK TRANSMISSION</p> <p>Extra-cost option Series 80 through 100.</p>	
<p>positraction</p> <p>New rear axle helps give sure-gripping traction. Extra-cost option, Series 31 and 32.</p>			<p>NEW CHASSIS REFINEMENTS</p> <p>New brakes in lightweights, new huskier clutches, new rear axle durability in bigger Chevies!</p>

See your local authorized Chevrolet dealer

Doc Crow Chevrolet

126 NORTH NINTH SLATON, TEXAS Phone VA 8-4261

The Slaton, Tex., Slatonite Thursday, Nov. 13, 1958

Mr. and Mrs. J. H. Findley of Tacoma, Wash., were guests in the home of Mr. and Mrs. E. A. Hanna of Slaton over the week end of Nov. 8, 9, and 10.

Mr. and Mrs. William Jones and family of Hart visited with Mr. and Mrs. Jas. Brooks over Nov. 8, 9, 10. Sunday, Nov. 9, Mr. and Mrs. William Jones and Mr. and Mrs. Jas. Brooks visited with Mr. and Mrs. Lee Reed of Justiceburg.

Mr. and Mrs. Henry Molberg and son of Slaton visited in the home of Mr. and Mrs. Max Molberg of Pampa, Sunday, Nov. 9.

Mr. and Mrs. L. A. Bartlett, Mr. and Mrs. Joe Lewis and children of Meadow, Mr. J. I. Bartlett of Southland, Mr. and Mrs. Tuney Basinger and children of Close City, Mr. and Mrs. Johnny Abair of Slaton, and Mr. Elmer Trimble and children of Lubbock were all guests in the home of Mrs. Eva Trimble, Nov. 9.

Mr. and Mrs. Bobby Trimble of Midland announce the arrival of a baby girl weighing 6 lbs., 9 ozs. The named her Tracey Dell. Her grandparents are Mrs. Eva Trimble of Slaton and Mr. and Mrs. L. B. Ham-bright of Muleshoe.

Young Evangelist Alvis Strickland of Dallas is doing the preaching for the revival at the Church of God.

CUSTOM-BUILT TRAILERS
and
COTTON TRAILERS
—General Welding—

Jim's Welding Shop
153 Texas Ave.

Use Slatonite Want Ads

Slaton Lodge No. 1094
AF & AM
Stated Meetings 2nd
and 4th Thursday
Nights in Each
Month.
Fred H. Schmidt,
W.M.
W. T. Brown, Sec'y



STRENGTH FOR THE WEEK

... **THEY WILL BE DONE** ...
—Matthew 6:10
How often we repeat the words of the Lord's Prayer and are only uttering them from the lips out. For one to say from the heart as the Master taught us is one of the hardest things

man kind tries. Yet, when the deed is done and one actually says from the depths of the heart "They will be done," one of the greatest joys known to mortal man comes to bless the heart and soul. Our very nature is in revolt to us committing ourselves wholly to God in this manner.

Satan tries to put a defense against it. He would try to cheat us out of the blessing by offering many excuses. He would tell us that we need to be our own boss; that we need to retain possession of all our abilities and capacities for our own use. Satan would tell us that we have a certain amount of pride that must be kept before the people and that a full surrender to the will of God would make us lose that pride. Oh, how weak and feeble are his excuses! He knows that God would give power and grace to overcome all egotism, all pride, and every weakness if we but submit to Him. Self-will shows that mankind is not grateful for all the blessings that God has provided, for the grace He can bestow, and the lack of faith in Him.

When one has come to a place of surrender to saying the words from the heart, absolute faith in God is proven. We prove our love and trust to families and friends many times, but do we prove our faith to the Creator? The act also makes us to realize that upon our own strength and power we are utterly incapable of making the correct choices for life. We realize that dependence upon God is needed for even the most insignificant of lives problems.

Do the words have a vital meaning in your life? If not, surrender to God and make them real now!

Weldon Thomas
Trinity Evangelical
Methodist Church

Mr. and Mrs. J. S. Avent spent the week end of Nov. 1 and 2 in Abilene, visiting with Mrs. Avent's brother and family, Mr. and Mrs. D. B. Maxcey.

Joe & Maxine
EL TIGER
Slaton,
Texas



Space-planned bodies which provide a totally new experience in passenger comfort in both front and back seats are presented by Mercury in its entirely new cars for 1958. In its 20th anniversary models, Mercury offers a brilliant combination of design, mechanical excellence and superior performance and economy. Designed exclusively for the medium-price field, the new Mercury has 15 models in four series, including the only two-door station wagon in the medium-price range. New compound glass increases glass area more than 60 per cent at the front and 46 per cent at the rear. Mercury's high-compression V-8 engines provide an exciting blend of the most desirable features of economy and power. Pictured is the Lane four-door Cruiser.

Tech Students Use Laboratory On Language

LUBBOCK — In a basement room below the president's office at Texas Tech, students are learning to hear and speak foreign languages in a laboratory that is quieter than most libraries.

The lab contains an electronic "Tower of Babel," established by the foreign languages department to aid students to acquire greater facility in speaking another tongue.

Seen while entering the new lab are signs saying "Ruhe," "Silence," "Silencio" and "Silentium" admonishing you to keep quiet in German, French, Spanish, and Latin—representing the languages taught at Tech.

Headed by Dr. Harley Oberhelman, the Foreign Languages Sound Laboratory is already proving to be a popular place for serious students of languages. The lab contains 20 individual audio tape machines and earphone sets for listening and nine tape recorders to aid in perfecting pronunciation.

"In this lab, students have two ways available to them to aid in language studies," Oberhelman said. "They may listen to material recorded on tape which is correlated with class work. Or, they may listen to drill exercises and questions and record their own answers on the same tape."

While students are not required to use the lab and no grade is given for doing so, more than 200 students used the new facility a total of 164 hours during the first week of operation.

Mrs. John Ecker visited recently with her parents, Mr. and Mrs. Walter Johnson of Blackwell.

Winterize Your Car
—Be Ready For The Cold Weather Ahead

- Battery Check
- Ignition Check
- Cooling System Check

HENZLER IMPLEMENT
100 S. 7th VA 8-4346

DISCIPLES OF CHRIST CHRISTIAN CHURCH

What Is the Lord's Supper?

One of a series of reports about the Christian Church (Disciples of Christ), the largest religious body to originate in America.

ONE OF the most famous of all religious paintings shows Jesus with His disciples at supper. It was the last time they were all together.

Today the Lord's Supper, which Jesus instituted that night, is observed every Sunday in the Christian Churches. It is one of our two ordinances. The other is baptism.

The Lord's Supper, which symbolized Christ's willing sacrifice of His life for those who would follow Him, became a weekly memorial in the early Church, which was established soon after His death. Now, as then, it is a deep period of worship, when Christians re-examine their lives, re-dedicate themselves to Him, and strengthen their faith and fellowship with both God and man.

Because we believe sincerely in the need for unity of all Christian groups, we do not limit the Lord's Supper to our members, but practice "open communion." We are glad to share this warm spiritual experience with other Christians.

The door of every Christian Church is open to you.

FIRST CHRISTIAN CHURCH
145 E. Panhandle
Across from Piggly Wiggly
Claude Wingo Minister

T.G. & Y. Christmas CARDS

BIG VALUES! TOP QUALITY! WIDE CHOICE!

BOX OF 12
RELIGIOUS or MODERN STYLES
LOVELY SCENES GORGEOUS COLORS PRICED JUST **29c** BOX

BOX OF 15
BOXED ASSORTMENT
BEAUTIFUL DISTINCTIVE CARDS—ALL WITH ENVELOPES!
BOXES OF 50 ASSORTED DESIGNS! \$1.00 BOX
Outstanding Values!

BOX OF 21
SCRIPTURE or CONVENTIONAL
UNIQUE DESIGNS AND COLORS! LOW PRICED! **59c** BOX

BOX OF 25
SMART, NEW SLIM JIMS
ONE DESIGN TO A BOX! ALL GOLD TRIMMED EXTRA FINE QUALITY **\$1.00** BOX OF 25

CELLOPHANE PACKAGED CARDS
12 CARDS WITH ENVELOPES IN PACKAGE! BEAUTIFUL DESIGNS! **25c** PK.

SPECIAL TITLE CARDS
5c AND 10c EA.
Wide assortment of Mother, Father, Teacher, Sister, Son, House to House, Across the Miles.

Your Chance To Win A **FREE DOLL**

GOOD AT ALL T.G. & Y. STORES SHOP EARLY!

Drawing Saturday 4 p.m. November 29th

Here's All You Do . . .

- Register at T G & Y Store. (Each T G & Y Store's contest is separate . . . a Slaton child will win this beauty.)
- 12 Years Or Under. (Ages will be checked.) Register 1 ticket per day—every day if you wish! Nothing to buy—you don't have to be present to win!

REGISTER HERE FOR YOUR **FREE DOLL**

COMPARE VALUES and SAVE AT **T.G. & Y.** 5c TO \$1.00 STORES

Oldsmobile for '59 introduces a new styling cycle...

NEW "LINEAR LOOK" A car bursts into the space age! The '59 Oldsmobile opens up a whole new vista in automotive styling! The slim, trim silhouette spells out a travel adventure story!

The Conquest of Space!

MORE ROOM WHERE YOU RIDE... MORE GLASS AREA ALL AROUND!
Interiors surround you with spaciousness . . . more than ever before! There's a greater expanse of glass all around—Safety Plus Glass! New Vista-Panoramic Windshield sweeps up into the roof . . . lets you see above, ahead, aside!

UP TO 64% MORE LUGGAGE SPACE!
Vastly increased luggage space takes suitcases, briefcases, packages of every size and description with room to spare in every respect. It's the roundest Socket ever! Enter the space age . . . at your Olds dealer's today!

DISCOVER THE ADDED VALUES IN **OLDSMOBILE FOR '59**
AT YOUR LOCAL AUTHORIZED QUALITY DEALER'S

DAVIS MOTOR CO., Lubbock Highway

TUNE IN THE "NEW OLDS SHOW," STARRING PATTI PAGE • EVERY WEEK ON ABC-TV

The Slaton, Tex., Slatonite
Thursday, Nov. 13, 1958

Mr. and Mrs. Bob Lewis of Washington, D. C., visited a week with Mr. and Mrs. Don Crow and family of Slaton.

FREE AIR

AT SELF'S SERVICE STATION

A man entered the hospital and for his first meal they served him a bowl of gelatin. He refused to eat it and when asked why, said, "I'm not going to eat anything that's more nervous than I am."

When you hear a guy poke fun at a woman for shopping all day and buying nothing, you can bet he is a bachelor.

A good leader takes a little more than his share of blame; a little less than his share of credit.

Men say women can't be trusted too far; Women say men can't be trusted too near.

You can trust the attendants at Self Service Station to give courteous service all day and buying nothing, you can trust our products to live up to their nationally advertised reputation.

SELF'S
Phillips
66
Station

US Needs College-Trained People In Essential Science Of Agriculture

by J. P. Brown
Teacher, Vocational Agriculture
Slaton High School

If the United States is to maintain her world leadership in agriculture, it is essential that we maintain an adequate number of college trained individuals in the science of agriculture. High school departments of vocational agriculture offer basic college preparatory training for those students who plan to become tomorrow's college trained agricultural leaders and scientists.

The nation needs 15,000 college graduates in agriculture annually. We are getting less than 7,000. The shortage will probably continue for some time. Each year we need 2,000 college graduates for replacements in farming and ranching.

The field of agricultural research, which is responsible for most of the rapid progress we have made in agriculture, needs 1,000 research workers each year. Agricultural education, which has the responsibility of educating farm youth and adults, and others connected with agriculture, needs 3,000 new professional workers each year. Agricultural business and industry, which employs approximately 30 percent of the workers in the United States, needs 6,000 workers annually. Each year we need 1,000 for conservation, 500 for agricultural communications and 1,500 for agricultural services.

E. V. Walton, head of the Department of Agricultural Education, states that, "When and

if global war comes, the difference between Russia and the United States will not be in technology but in agriculture. Agriculture is the one productive area in which we are superior to Russia. We have had a 40 year lead. It is expedient for us to keep this substantial superiority."

High school vocational agriculture students obtain a background that prepares them for college work in these various fields of agricultural sciences.

Next week Brown will discuss "Vocational Agriculture Prepares for Related Farming Occupations."

Our Men In Service

FORT CHAFFEE, Ark. (AHTNC)—Army Pvt. Lavon Stockstill, 21, whose wife, Linda, lives on Route 4, Stephenville, recently completed eight weeks of basic combat training at Fort Chaffee, Ark.

Stockstill, son of Mr. and Mrs. Houston E. A. Stockstill, 435 S. Third st., Slaton, is a 1956 graduate of Huckabay High School. He is a former employe of Western Electric in Fort Worth.

Use Slatonite Want Ads

ELDER ELECTRIC
260 East Panhandle
Slaton, Texas
Contracting
Residential — Industrial — Commercial
T. D. (Tom) Elder Phone VA 8-3320
Johnny Abare Phone VA 8-4342



SANTA'S HELPERS

Members of Slaton Boy Scout Troop 129 are shown above repairing broken toys to distribute to children who might get none at all on Christmas. The troop will repair as many toys as it can between now and Christmas and asks Slatonites who will to contact them if they have broken toys which could be repaired. The troop members shown are, left to right, Wendell Riley and Calvin Riley, front; and Clitis Riley, Robbie Edmondson and Frankie Vardel, back. (R. C. Photo)

Safety Group Urges Leaving Out Punch Bowl At Christmas Parties

CHICAGO—The office party with its flowing bowl was blamed by the National Safety Council today for boosting the Christmas traffic toll.

"Either dry it up or cut it out," the Council urged business and industry.

Surveys made by the Council indicate, it said, that a sizeable percentage of Christmas traffic accidents occur in the early hours of the holiday period. Many of these can be traced back to the office party and its highball hilarity.

"This is no effort to dampen the traditional Christmas spirit,"

the Council emphasized. "It is a practical attempt to eliminate a definite source of death and destruction on the highway at a time they hurt the most—the Christmas season.

"But don't forget—drinking and driving are a lethal combination any time, anywhere, and not just in connection with the Christmas party."

The Council is asking its 8,000 business and industrial member concerns to take a new look at their office parties and either keep the cork in the bottle or eliminate the parties.

"It is tragically ironic," it said, "to celebrate a holiday

dedicated to 'Peace on Earth, Good Will Toward Men' and then send people out on the public highway in a condition to injure or destroy their fellow men."

The Council is enlisting the support of churches of every faith and creed in a united effort to keep the threat of drinking drivers to a minimum over the Christmas holiday season.

"There is no better place to apply practical religion than behind the wheel of a car," it said, "and certainly today's traffic is an ideal place to demonstrate the true Christmas spirit of sharing with others.

"We appeal to every driver to stay away from the wheel after drinking, and to every pedestrian to say out of the street when he isn't in full possession of his faculties.

"The most dangerous drink ever concocted is 'One for the road.' Turn it down. You'll live longer—and so will the other fellow."

Dr. J. W. Belote Jr.
OPTOMETRIST
Office Hours 9-5
Phone VA 8-3766
115 South Ninth
Slaton, Texas

Slide Baptist Church Awarded Recognition
SAN ANTONIO, Nov. 3 (Spl).—The Slide Baptist Church near Lubbock received an honorable recognition award here Monday night in the annual Church Achievement Program sponsored by the Baptist General Convention of Texas.

The special recognition cited the church's outstanding work in all phases of the program's church, community and world improvement categories. The action came during the opening session ceremonies before nearly 5,000 messengers attending the 73rd annual BGCT meeting in San Antonio's Municipal Auditorium.

While the little Slide church did not win one of the main divisions, judges said its record of progress was worthy of special recognition. It marked the first time the honorable recognition award had been given a church participating in the program.

Earlier the Slide church, Rev. Claude W. Cone, pastor, was named winner of the District 9 award, and participated in the statewide judging with 17 other district winners.

The Slide church conducted extensive church improvement projects, including a new \$8,500 education building. Community improvement programs included church-sponsored community clean-up campaigns and youth recreation programs.

The achievement program is designed to stimulate interest in rural church work and to recognize outstanding achievement by pastors and churches.

American Family Independence

that's the life they share

You've read about the Darrows in The Travelers Insurance Companies advertising in leading magazines. For a planned insurance program that leads to American Family Independence for you and your family

Rogers Insurance Service
635 W. Division VA 8-4523

DEAL'S MACHINE SHOP
SLATON, TEXAS
WE SPECIALIZE
IN DOING WHATEVER YOU HAVE TO DO. WE HAVE THE EQUIPMENT AND THE KNOW HOW
WE DON'T CLAIM TO DO GOOD WORK CHEAP. WE DO PROMISE TO DO SATISFACTORY WORK, AT A PRICE YOU CAN AFFORD TO PAY.
BIG ENOUGH TO SERVE YOU
SMALL ENOUGH TO APPRECIATE YOU
Ph. VA 8-4307 Res. VA 8-4114

Dr. Takuo Matsumoto To Speak At First Methodist 'Missionary Night'

The Rev. Dr. Takuo Matsumoto, dean of the School of Religious Studies at Aoyama Gakuin, Tokyo, Japan, and a graduate of two American universities, will speak at the First Methodist Church in Slaton on Tuesday, Nov. 18.

The occasion will be "Missionary Night" at the church and will include a covered-dish supper. The event is to start at 7 p.m.

Dr. Matsumoto, who was president of the Hiroshima Girls' School in August, 1945, when the first atomic bomb fell on the city, is in the United States on a six-month speaking tour. He will be telling the story of five noted Christian schools in Japan, which Methodists support financially through the Division of World Missions of the Board of Missions.



DR. TAKUO MATSUMOTO was in Hiroshima

Dr. Matsumoto attended Ohio Wesleyan University at Delaware and while there lived in the home of Bishop and Mrs. Herbert Welch. Bishop Welch, now the senior bishop of the Methodist Church, then was president of Ohio Wesleyan. After graduation there, Dr. Matsumoto attended Drew Theological Seminary, Madison, N. J. in more recent years, he has done graduate study at Union Theological Seminary and Columbia University in New York.

Prior to World War II, Dr. Matsumoto was vice-president of Chosen Christian University in Seoul, Korea. Later he became president of the Hiroshima Girls' School. He was at his post when the atomic bomb fell in 1945. Dr. Matsumoto's wife and more than 300 students of the school were killed.

Mr. and Mrs. L. O. Lemon and Mr. and Mrs. C. W. Scroggins visited with Mr. and Mrs. Bobby Lemon of Snyder recently. Sunday, Nov. 2nd, was Bobby Lemon's birthday.

Mr. and Mrs. Ray Kitten, Mr. and Mrs. Paul Mosser, all of Slaton, and Mr. and Mrs. Jake Rissig from Lubbock visited with Mr. and Mrs. Gale Hawthorne in Lockney recently.

Mrs. C. E. Gravel is spending the week visiting with her daughter and son-in-law, Mr. and Mrs. J. R. Brush and family of Banks.

Mrs. Bill Alspaugh visited her sister, Mrs. M. L. Nickells of Lubbock on Thursday of week before last.

Electric MOTORS
Sales—Rewinding—Repairing
New and Rebuilt Motors
All Work Guaranteed
Martin Electric Motor Service
110 East Lubbock
Slaton VA8-3715 Texas

Septic Tank and Cess Pool Cleaning, Repairing and Building
16 Years Experience
PAY-LESS SANITATION
Phone Porter 2-5448, Lubbock
"The Price Is Right"
32 years In and Around Lubbock

If You Are Going to Drive on a Trip—

Be Sure to Get a Hunter Wheel Balancing Job Before You Leave

Your car will be safer to drive—it will handle easier and your trip will be more enjoyable if you let us balance your wheels with our Hunter Balancer.

You'll save money, too, because tire wear is reduced as much as 50%—and you'll save money on front-end repairs.

Our Hunter Wheel Balancer is the fastest and most accurate on the market. You can't buy a better balancing job anywhere.

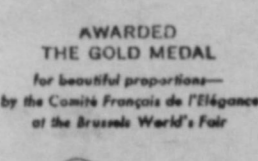
Let us check your wheels, FREE. We can do it in just 2 minutes. Stop in today.

Williams Buick Company
155 N. 8th Phone VA 8-4371
Buick Tune Care

IT'S WINNING TEXAS—as it won the Fashion-Wise at the Brussels World's Fair!

You never had it so beautiful and so all-out new...

59 FORDS



AWARDED THE GOLD MEDAL for beautiful proportions—by the Comité Français de l'Élégance at the Brussels World's Fair

THE WORLD'S MOST BEAUTIFULLY PROPORTIONED CARS

are packed with surprises!

Expect to be dazzled when you see these totally new Fords! Each one of Ford's 19 new models is completely and refreshingly changed in every square inch. Each, in its own way, is the world's most beautifully proportioned car. Each has Thunderbird elegance.

Look for something new and just right in size... and you'll find it! The lowest-priced Fords are 6 stunning inches longer... have 2 extra inches of smooth-riding wheelbase.

Expect something wonderful in savings. For instance, Ford prices for '59 are traditionally down-to-earth prices. (Every model's priced below the equivalent model of Ford's nearest competitor.) Ford's aluminum mufflers—standard equipment—last twice as long as conventional mufflers. Ford's standard V-8 and Six save up to 5¢ a gallon because they require only regular gas. Ford cars need oil changes only every 4000 miles. And Ford's new super enamels never need waxing.

Look for something special in performance. New V-8's concentrate their new punch at speeds from 30 to 70 mph, where you need it most.

Look for newness everywhere... right down to the new Tyrex tires. Let your Ford Dealer show you. You've never had it so new!



The wonderful new Fairlane 500 Club Victoria... one of 19 all-new Fords for '59

*Based on manufacturers' suggested retail delivered prices

FORD DEALERS OF TEXAS

SLATON MOTOR CO
9th and Lynn Streets



Fruit Cake

Grease and flour a 9" square, or tube pan or a 9x5x3" loaf pan. Mix in saucepan . . .

- | | |
|-----------------------|-----------------------------|
| 1 cup brown sugar | 1/2 tsp. nutmeg |
| 1 1/4 cups water | 2 tsp. cinnamon |
| 1/3 cup shortening | 1/2 tsp. cloves, if desired |
| 2 cups seeded raisins | |

Boil for 3 min. Cool. Then add a mixture of:
 1 tsp. soda Sift together and blend in
 1 tsp. salt 2 cups sifted flour
 2 tsp. water 1 tsp. baking powder

TEMPERATURE: 325 degrees (slow mod. oven).

TIME: Bake square 55, loaf 75 min.

Pick up other fruit cake recipes in our store

Fixin's for Fruit Cake

These Prices Become Effective
Thursday After 2:00 p.m.

Liberty's Glace, Natural, Twins PINEAPPLE, 4 oz. pkg.	27¢	Grandma, 12 oz. MOLASSES	27¢
Liberty Citron, Lemon or Orange FRUIT PEELS, 4 oz. pkg.	19¢	Calimyrna, 6 oz. pkg. WHITE FIGS	23¢
Sunmaid Zente 11 oz. pkg. CURRANTS	25¢	Mission, 8 oz. BLACK FIGS	25¢
Sunmaid, Golden, 15 oz. box RAISINS	37¢	Blue Bonnet, 1 lb. quarters MARGARINE	29¢
Petty Extracted, 1 lb. jar HONEY	32¢	Blue Brer Rabbit, 12 oz. SYRUP	25¢

SUGAR FLOUR DATES PECANS

Imperial Brown or Powdered, 1 lb. Ctn.	2 for 25¢
Everlite 5 lb. Bag	39¢
Bordo Pitted 8 oz. pkg.	17¢
Pieces, Ellis, New Crop Large Select Pieces 12 oz. Cello Bag	79¢

FRYERS BACON

Clary's Whole Dressed, lb.	33¢
Swift's Premium Sliced, lb.	59¢

E & R, 1 lb. cello package, all meat FRANKS	49¢	Hereford, 12 oz. package BEEF STEAKS	69¢
Kraft, American Sliced, lb. CHEESE	65¢	USDA Choice Beef, lb. LOIN STEAK	79¢
Booth's, 8 oz. package FISH STICKS	33¢	USDA Choice Beef, lb. RIB STEAK	69¢
USDA Choice Beef, lb. CHUCK ROAST	59¢		

CORN

Cut Frozen Libby's
10 oz. pkg. **15¢**

FRUIT PIES

Apple or Cherry
Frigid Dough
Family Size **39¢**

Swanson, Beef or Chicken
FROZEN PIES, 8 oz. pkg. 2 for **49¢**

Silverdale, Frozen, Cut 10 oz. pkg.
GREEN BEANS **19¢**

Win All, No. 303 can APPLE SAUCE	2 for 25¢
Libby, Freestone, Choice, No. 303 can, halves or slices PEACHES	25¢
Hunt's Bartlett, halves, PEARS, No. 300 can	25¢
River Garden, cut, all green, ASPARAGUS, No. 300 can	23¢
Libby's Deep Brown, 14 oz. can BEANS	15¢
Marshall, Golden, HOMINY, No. 300 can 2 for	25¢
Rosedale, No. 303 can NEW POTATOES	2 for 27¢
Ronco, 12 oz. cello pkg. MACARONI	19¢
Betty, Whole, 22 oz. jar PICKLES	39¢

LETTUCE APPLES

California Firm Heads, lb.	10¢
Extra Fancy, Roman Beauty, lb.	10¢

California, 1 lb. cello bag, each CARROTS	10¢
Texas, 5 lb. bag ORANGES	49¢
Home Grown, lb. SWEET POTATOES	10¢
California, 1 lb. package FRESH DATES	29¢
1 lb. cello bag BRAZIL NUTS	43¢
Diamond, Medium, 1 lb. cello package WALNUTS	49¢

SPRAY HAIR

Tilford Stay Put, \$1.50 Size plus tax	59¢
Breck's 4 oz. bottle SHAMPOO	59¢
Pal, 10 count Single Edge RAZOR BLADES	35¢

FACE POWDER

Pond's Angel Face	59¢
plus tax	

S+H Green Stamps



Double every Tues.
WITH 250 PURCHASE OF MORE

Radiant, Fruit Cake, Lyon's, 16 oz. pkg. CAKE MIX	49¢
Suzan Quart Jar SALAD DRESSING	37¢
Pitts, Plastic Box, While They Last, 4 oz. CHERRIES	2 for 45¢
Par pure Strawberry, 18 oz. jar PRESERVES	39¢
Half Gallon, 10c off label, net price WESSON OIL	\$ 1. 13
Reynolds Wrap, 25 foot roll ALUMINUM FOIL	31¢
Kleenex TABLE NAPKINS	27¢
Northern, 150 count roll PAPER TOWELS	20¢
Northern TISSUE	3 for 27¢

Tiggly Wiggly

SUPER MARKETS

DAVIS & HUMPHRIES, OWNERS & OPERATORS

Slaton FHA Chapters Have Annual Banquet

The Slaton FHA Chapters held their annual banquet Monday, Nov. 10, at the Lubbock Hotel.

The theme of the banquet was "Golden Harvest," and the banquet room was decorated with dried centerpieces sprayed copper.

The program consisted of the following Harvest Tunes: September Song sung by Nita Ward, Ann Wright, and Dana Heaton accompanied by Sharon Perdue; Autumn Leaves sung by Sue Liles, Harriet Perkins, and Jan Smith accompanied by Pat Pettigrew; Autumn Serenade sung by Jennie Lee Christman accompanied by Dorothy Morton; and Shine on Harvest Moon sung by Judy Franke, Barbara White, Carol Self, Rosemarie Philipp, Canzada Lee, and Olivia Sanders accompanied by Melinda Clifton.

Carolyn Etter, Ann Haddock, Tommie McCall, Pam Henry, Gall Huser, and Vicki Kirksey provided the dinner music for the evening.

Mrs. Ima Dora Haile, Chapter Advisor, introduced the guests. Jerry Gregory, Area I FHA president, told the FHAers, their guests, and the School Board of the opportunities gained through the FHA Organization. Shirley Kitten, State FHA Vice-President, told of the opportunities that need to be harvested in the school and community. Robert H. Davis, president of the Board of Education, told the audience how to be a responsible citizen.

The girls on the decoration committee for the banquet were Linda Buxkemper, Pat Pettigrew, and Sue Liles, Co-Chairman, Dixie Clark, Martha McCormick, Sharon Perdue, Nita Ward, Jan Smith, Sharon Boyd, Linda Walker, Jerene Verkamp, Dana Heaton, Donna Wilke, Linda McCarver, Sylvia Cole, Wana Smith, Gloria Magouirk, Lena Lopez, and Pat Holton.

The girls serving on the hostess committee were Judy

The Slaton Slatonite Society Clubs

The Slaton, Tex., Slatonite

Thursday, Nov. 13, 1958

Slaton P-TA Meets Monday Night In The Auditorium At West Ward

Frankie, Chairman; Barbara White, Ann Wright, Kaye Kincer, Karen Henry, Lynn Jurst, Kay Holley, Ophelia Bloxom, Nelda Brooks, Pat Schilling, June Lytle, Kathy Smith, Pat Patterson, Elinor Gallegos, JoAnn Wiley, and Judy Baker.

The Slaton P-TA met Monday night, Nov. 10, in the West Ward Auditorium.

Mrs. Perkins gave a musical selection with a group of 1st graders. The two rooms that won the P-TA Membership drive were, Mrs. Townsend's 1st grade and Mrs. Cummings' 2nd grade. Mrs. Edith Brooks won the award for room count.

Honorable mention was given to Mrs. Daphern and Mrs. Brooks. Mrs. Rush Wheeler was program chairman. Rev. Leroy Dean, minister of the Grace Lutheran Church, spoke on "Maturity of Youth."

The Fall Festival will be held Nov. 21, in West Ward School. There will be no meeting of P-TA in December. The next meeting will be on Jan. 12, 1959.

Kappa Kappa Iota Initiates Six New Members

Six rushees took the Kappa Kappa Iota initiation conducted by Mrs. Leonard Ehrler, president, in her home Tuesday evening, Nov. 4.

Preceding the ceremony, Mrs. John Taylor and Mrs. Ehrler served members and rushees a Mexican dinner.

New K. K. I. members include Mesdames Claude Wingo, Deen Jackson, J. P. Brown, C. R. Lee, S. S. Russell, and Sherrill Boyd.

Members attending were Mesdames J. H. Dodson, Martha Brown, Marvin Smith, M. W. Kerr, Earl Reasoner, R. J. Hurst, John Taylor and Leonard Ehrler.

Plans were made for a Christmas party to be held at Mrs. Hurst's home, Dec. 2 with Mrs. Dodson as hostess.

CFW Meets In The Home Of Mrs. Edmondson

The Christian Women's Fellowship of the First Christian Church met Wednesday, Nov. 5, at 7:30 p.m. in the home of Mrs. H. H. Edmondson.

The regular business meeting was held. Their project for the month of November is to send money and food to the Juliet Fowler Home in Dallas. Plans are still being made for a speaker for Women's Day, Dec. 7. A committee was chosen for the Teachers Banquet. The committee is composed of Mrs. Jack Smith, Mrs. C. C. Wicker and Mrs. Claude Wingo. A study of Haiti, Alaska and Hawaii, was also given at the meeting. The worship was given by Mrs. Phil Hinkle on the topic, "Gratitude Aroused."

After the benediction, refreshments were served by the hostess. Members present were Mesdames T. A. Davis, Elmer Nelson, Claude Wingo, H. H. Edmondson, Earl Reasoner, Hal Sammons, Buddy Brunson, Stenson Behlen, Joe Holland, Phil Hinkle and C. C. Wicker.

Steven Mosser Is Feted With Party On Fifth Birthday

Steven Mosser was entertained by his mother, Mrs. Hugo Mosser, on his fifth birthday last Tuesday, Nov. 4.

The afternoon was spent playing games. Later, refreshments of ice cream, cake and pop were served to Elbert D. Waltston, Terry Mosser, Claude and Linda Kitten, Toni and Jim Melton, Anthony Joplin, Bradley, Carla, and Angela Kitten and Steven's sisters, Carol, Mary and Annette.

The mothers attending were Mrs. Wilford Kitten and Mrs. Clarence Kitten.

WSCS Circles Commemorate UN Declaration

The Woman's Society of Christian Service met in Circles this week for a program commemorating the 10th anniversary of the daophon of the Universal Declaration of Human Rights by the United Nations General Assembly.

Africa Circle met in the home of Mrs. J. S. Edwards Jr. with Mrs. C. A. Womack as program leader.

Ten members of India Circle met with Mrs. Robert Choate and Mrs. T. A. Turner led the program.

Mexico Circle met with Mrs. T. C. Odom and Mrs. W. R. Wilson was program leader. Six members were present and 4 visitors.

Cuba circle met in the home of Mrs. Phil Brewer. Mrs. S. H. Jaynes was program leader.

Jr. Civic, Culture Club Hears Book Review At Meeting

The Junior Civic and Culture Club met on Tuesday, Nov. 4th, at 7:30 p.m. in the home of Mrs. Ray Conner.

The regular business meeting was held. The roll call was answered by each member giving the title of their favorite book. Mrs. W. C. Gilmore gave a book review on the book, "I'll Take Texas," by Mary Laswell.

The hostess then served refreshments.

Those attending were Mesdames M. H. Lasater, J. C. Smith Jr., C. H. Norris, W. A. Wilke, Melvin Kunkle, W. C. Gilmore, Virgie Hunter, Joe Belote, R. M. Shepard, James Caldwell, C. C. Hogue, Bill Christman, C. E. McCoy, R. W. Cudd, Yates Key and Gertrude King.

Mrs. T. B. Todd Is Hostess To Vota Vita Class

Mrs. T. B. Todd was hostess to members of the Vota Vita Sunday School Class of Westview Baptist Church, which met Nov. 4 in her home.

The meeting was opened with Mrs. F. C. Davis presiding. Decisions were made concerning Christmas and other decisions concerning the class. The meeting was closed with a prayer given by Mrs. T. V. Ellis. Other members present were Mesdames Estelle White, T. V. Ellis, Grady Patterson, T. B. Todd, F. C. Davis, Ophie Cooper, Earl Caldwell, and R. A. Thompson.

Has Meeting On Nov. 6

All Circles of the Women's Missionary Union met Thursday, Nov. 6th, at the Westview Baptist Church for their monthly business meeting.

The devotion was given by Mrs. J. S. Vaughn. Prayer by Mrs. Trudie Morris.

Mrs. J. G. Harper Jr. served as acting president. Reports were given by committee chairmen, Auxiliary Directors and Circle Chairmen.

Closing prayer was given by Mrs. L. O. Lemon.

There were fifteen members present.

DRAMATIC EXIT LINE

Carole King JUNIOR



Creating fashion applause at every turn... a freedom-loving panel that swings forth from the neckline of its own accord. Gold printed silk organza over rayon taffeta presents a belted-to-fit front. Sizes 7-15.

Other Carole King styles from \$14.95

RONA'S SHOPPE

225 W. Lubbock

VA8-3597



Won't Grandma Be Surprised?

To the first person that calls VA 8-3926 and correctly identifies this child, Kertan will give a five-dollar credit to apply on a setting.

Yes, and she'll be mighty happy, too. Happy that the folks thought of giving her a portrait of brother and Sis!

YOU HAVE MORE TIME NOW

We Have More Time Now...

Stop in, we offer you our time now... so you may have the finest in portraits for Christmas giving later!

KERTAN STUDIO

112 S. 9th

VA 8-3926

Home-Sewing Lesson #1



It's smarter to be disciplined... choose

There's old-fashioned thrift in the bright new fashions you sew with Bates Disciplined fabric... the cotton that pays off richly with little care, seasons of wonderful wear (even during active growing-up years)! And sewing's a whiz with Disciplined fabric... cuts smoothly, boasts all the handling ease of cotton plus much more! Releases creases • stays clean longer • washes, dries in a wink • needs little ironing • no in-between pressings • colorfast • shrinkage-controlled • never needs starch. Come see our new Bates collection... stunning prints, vibrant Autumn colors for you and all the youngsters in the family.

Per Yard \$1.29



Bates DISCIPLINED FABRIC



Lookie Here! GIFTS

For the Entire Family
SLATON GIFT SHOP
144 W. Garza VA8-3591

Centurettes Study Club Has Meeting

Centurettes Study Club met in the home of Mrs. Earl Johnson Monday, Nov. 10.

Mrs. Joe Holland was presiding president. Program chairman was Mrs. Joe Holland, who gave a talk on "Development of Infancy and Early Childhood."

Refreshments were served to

Mesdames Bill Brown, Jack Haliburton, Jimmy Hogue, Jerry Holt, Jerry Jones, Deen Jackson, Guy Gentry, Edward Maeker, Alfred Blizard, Otis Rogers Jr., Donald Jones, Tim Bourn, Neal Wilson, Joe Holland and Earl Johnson.

The next meeting will be Nov. 24 at Mrs. Jack Haliburton's home.

Wheeler's

Gay Gibson

Dresses



1/2 PRICE SALE STARTS THURSDAY (Today)

1/3 Off

ON ALL MERCHANDISE

Watches, Diamonds, Dinnerware, Norelco Electric Razors, Costume Jewelry, Clocks. Everything in the Store!

Official Time Inspector for Santa Fe—**GREEN JEWELRY**

DUBARRY Seven Winds



BATH LUXURIES

Because she loves the new, the exciting... she wants the newest, most exciting fragrance—SEVEN WINDS—in the bath and after the bath. Why not pamper her—give her all four. Be a knowing Santa!

Bath Powder, 10 oz. Box... 4.00
5 oz. Shaker... 2.50
Bath Oil, 2 oz... 5.00
Cologne Spray Mist, 3 1/2 oz... 3.50
Hand and Bath Soap, 3 cakes... 3.00

prices plus tax except Soap

Slaton Pharmacy

109 S. 9th

VA8-3141



OCTOBER FHA GIRLS OF MONTH

The three girls above, Marilyn Clark, Melinda Clifton and Shirley Kitten, left to right, were FHA Girls of the Month for October. Miss Clark is the daughter of Mr. and Mrs. W. W. Clark, Miss Clifton is the daughter of Mr. and Mrs. A. L. Clifton and Miss Kitten is the daughter of Mr. and Mrs. Ray Kitten. The three earned Girls of the Month points through their activities in October. (Slatonite Staff Photo)

Misses Kitten, Clifton, Clark Are October FHA Girls Of The Month

The FHA Girls of the Month for October are Melinda Clifton, Shirley Kitten and Marilyn Clark.

Shirley Kitten, daughter of Mr. and Mrs. Ray Kitten, had 150 points, which she earned by attending the regular meeting, acting as chairman of the program committee, bringing a guest to the meeting, selling cakes, by special activities as a member of the area and state executive council, and by writing articles for the local, area and state newsletters.

Miss Kitten is a senior at Slaton High School, State FHA vice-president in charge of publications, fifth vice-president of the Slaton Senior FHA Chapter, and president of the pep squad. She is also a member of the Catholic Church, where she is organist and a member of the Sodality.

Marilyn Clark, daughter of Mr. and Mrs. W. W. Clark, was runner-up with 84 points. She earned these points by selling cakes and attending the regular meeting, where she was a member of the program committee.

Miss Clark is a sophomore at Slaton High School and is a member of the Slaton Senior FHA Chapter and the Choralists. She attends the Assembly of God Church, where she is

a member of the choir and sometimes sings with the quartet.

Melinda Clifton, daughter of Mr. and Mrs. A. L. Clifton, was Girl of the Month in the Little Sister Chapter with 39 points. She is a freshman at Slaton High School, where she is president of the Little Sister FHA Chapter

and a member of the pep squad and Treblettes, which she accompanies on the piano.

She is a member of the Methodist Church. Miss Clifton earned her points by attending the regular meeting, serving as hostess for the meeting and selling cakes.

Slaton Band Performs At Tech Game

The Slaton Tiger Band was one of 13 bands which performed at the half time show of the Tech-Arizona football game.

The 788 musicians from area bands spelled out Texas Tech in big block letters. Tech's school song, The Matador Song, was then played.

This show was done in honor of "Band Day" which was sponsored by the Texas Tech Band.

The Slaton, Tex., Slatonite Thursday, Nov. 13, 1958

CARD OF THANKS

We express our sincere thanks for the many spiritual and floral bouquets and food donations. Also, to the wonderful help received from doctors, Sisters of Mercy and nurses, friends and neighbors during the illness and death of our loved one. Words cannot express our gratitude for your sympathy. May God's richest blessings be on each of you.

The Bednarz family

Mr. and Mrs. J. B. Butler and son of Lamesa attended the funeral of Van North Sunday in Spur.

Our Men In Service

SAN DIEGO, Calif. (FHTNC)

—Arthur E. Hopkins, son of Mr. and Mrs. C. A. Hopkins of 300 S. Third St., Slaton completed recruit training Oct. 23 at the Marine Corps Recruit Depot, San Diego, Calif.

The 11-week course included instruction in all basic military subjects and infantry weapons.

Upon completion of training new Marines are assigned to a unit for further infantry training or to one of the many Marine Corps schools.

Mrs. J. R. Phelps and daughter Doris, from Stephenville, were guests in the home of Mr. and Mrs. Luther L. Jones over Nov. 8 and 9.

A typical hurricane will cover an area about 200 miles in diameter. However, the diameter may vary from 100 to 500 miles, according to the Navy's "Hurricane Hunters."

Use Slatonite Want Ads

'Hall Of Earth And Man' Is Open In West Texas Museum At Tech

LUBBOCK — A "Hall of Earth and Man," tracing the earth's history from creation until a 15th century "dust bowl" drive the first farmers from the South Plains, is open in the West Texas Museum on the Texas Tech campus.

The story is told and illustrated in terms a seventh grader can understand. Four years were required in planning and developing the permanent hall. Exhibits trace the history of the earth through more than one billion years of geological time. They tell the story of man and his accumulation of culture, showing how he gradually improved agriculture.

They show how nature wrote its own history of the world, and how man has learned to read that history and lay it out in a museum hall for all it see.

These exhibits will be seen by an estimated 150,000 persons who will visit the hall annually.

Dr. William C. Holden, Museum director, headed a research team which drew on years of study and all that man has learned about his world through the millenniums to prepare the new exhibits. The result is a gallery which cost only \$18,000. It normally would have cost \$70,000 if many authorities had not donated their services.

Included in the exhibits is the "progression of life" mural done by nationally-known sculptor Paul Wright of New Mexico. His mural frieze stretches for 156 feet above the exhibit cases depicting 135 different forms of life of the seas and lands.

The mural itself starts the progression of life with the seaweeds, corals, sponges, starfish and other life of the seas which covered the world from pre-Cambrian into early Mississippian times and ends with Lubbock's "first family" which hunted bison here as least 10,000 years ago.

It shows the great periods of the dinosaurs and how life became more abundant as the earth moved toward modern times, concluding with a scene of an elephant, a bison and a man, woman and child beside early forms of wheat and corn.

Beneath the mural, 33 exhibit cases bring the history of the earth and the life it nourished

into sharp focus.

Exhibits show how the earth originated, emphasizing the formation of the "Staked Plains" on which Lubbock now stands. Also told is the story of the rocks, the wealth nature stored in them and records of life through the ages found in them.

The theory of evolution as recognized by scientists is displayed but the exhibits accept the creation by a Supreme Being.

"The different species may have had separate creations," says the text of this exhibit, "but the Great Architect used the same basic plan."

Evolution is depicted by showing the progression of life from fish to amphibians, to opossums, to gibbons and to man, showing the similarity of bone structure of each to that of the next.

Man's gradual accumulation of culture is illustrated as is man's migration across the Bering Straits into the "New World" and his first ventures into the land where Lubbock now stands.

The gallery concludes the story long before the first European crossed what is now the South Plains—but another gallery already exists at the Museum filling the gap up to the present time.

Hurricane winds greater than 150 miles per hour are uncommon. An average hurricane would be about 120 miles per hour just outside the eye, tapering off to 40 miles on the outer edge of the storm, according to the Navy's "Hurricane Hunters."

YOU'LL COOK BETTER! On An O'Keefe & Merrit Gas Range

... It's a girl's best friend, cooking a pleasure on the Gas Range that has everything.

- One piece lift top . . . so easy to clean!
- "2 in 1" Broiler . . . Combination Grille-ator and Deep Broiler . . . all in one.
- Thematic Top Burner Control
- Built-in Griddle with Cover—with fifth burner under grill

Reg. \$429.95

costs you only

Model No. 9510 less trade-in of \$80.00 Plus Free 4 pc. set Regal Cookware Value \$44.50

\$349.95



SELF Furniture Co.

235 W. Garza

VA 8-4407



Has a reliable Electric man checked your fuse box lately — Remember that an overloaded circuit can cause a fire in your home.

Motor - Appliance Repair Also Light Fixtures For Sale.

Kuss Electric

850 S. 16th VA8-3225

Old Stove Roundup

Now's the BEST time to trade for a NEW GAS RANGE!

- BETTER VALUES...
- BIGGER SELECTIONS...
- HIGHER TRADE-INS...

We invite you to visit your Gas Appliance Dealer's and take a long, leisurely look at the New Gas Ranges. Notice the automatic features such as the Burner-with-a-Brain . . . the clock-controlled Oven (many with automatic rotisserie) . . . the closed-door Broiler that consumes smoke and cooking odors. Reflect on the glamorous sleek-and-chrome styling, finest expression of the designers' art. Then compare the prices. Considering that a new GAS range does so MUCH for so little . . . you'll be wise to criticize your old stove—then see your Gas Appliance Dealer right away!

Don't overlook the free buys available in new Gas Clothes Dryers. You'll save money now . . . and every time you use one!

fuel for a growing empire Pioneer Natural Gas Company

Southland News—

Dean Williams Returns From Navy; Southland To Play Smyer Friday

by Carolyn Ward

Dean Williams, son of Mr. and Mrs. Roy Williams, who has been in the Navy three and a half years, received his discharge and returned to his home last Sunday. Visiting Mr. and Mrs. Dillard Dunn and Ronnie last Sunday was her brother, Mr. and Mrs. D. D. Livingston. They attended Southland Methodist Church. Elmer Hitt, who had surgery at West Texas Hospital in Lubbock last Monday a week ago, returned home last Saturday.

Mrs. Billy Meeks, who has been hospitalized in West Texas Hospital in Lubbock, is now at the home of her mother, Mrs. Larub, in Slaton. Mrs. W. A. Baxley of Wilson, who has been a patient in Mercy Hospital in Slaton, has returned to her home. Clyde Shaw was given a surprise birthday supper last Sunday at his home. Those present were Mr. and Mrs. Cameron Justice from Justiceburg, Mr. and Mrs. Bryan Shaw and their grandson, Bryan Shaw, from Lubbock, Mrs. D. H. Hatchett from Lubbock, Mr. and Mrs. Ed Milliken, and Mr. and Mrs. Bill Swann and son Billy from Idaho. His son, Giles Shaw in California, called him by telephone. Mrs. A. Willingham of Post spent last Monday afternoon with Mrs. Ed Milliken. Visiting their parents, Mr. and Mrs. Roy Williams, last Sunday was their daughter, Mrs. Donald Sikes, Sikes and their two daughters, and Mr. and Mrs. Williams' son, Mr. and Mrs. Billy Ray Williams, all of Slaton. Frank Bean from Snyder, son of Rev. and Mrs. Bean, visited his parents last Sunday and attended church at Methodist Church.

Mrs. Ruth Hall, teacher in the Southland School who had been hospitalized in Methodist Hospital in Lubbock, is back at school. Mrs. W. E. Edmunds entered West Texas Hospital the first of last week and underwent eye surgery. Mr. and Mrs. H. D. Hallman visited their son, Mr. and Mrs. H. D. Hallman Jr., in Fort Worth last week end. Mr. and Mrs. Fred Davidson and Louise visited Mr. and Mrs. Bob Russell in Post last Sunday afternoon. Mr. and Mrs. Travis Dabbs, Lake Charles, La., are the parents of a daughter, born Nov. 9. Mr. and Mrs. Herman Dabbs are the grandparents and she is Mr. and Mrs. S. D. Martin's first great-granddaughter. The Dabbs has two other children. They are boys. Mrs. H. D. Taylor returned home from Methodist Hospital last Saturday. Mr. Billingsley returned home from the Plains Hospital last Friday. Southland played Wellman last Friday evening. The score was 44-16 in favor of Wellman. Southland will play Smyer Friday night at Southland. The Southland WSCS met Monday afternoon for their final session of study on "Concerns of a Continent," taught by Rev. Bean, the pastor.

1,779 Attend Church Schools Here Sunday

Attendance at church schools in Slaton Sunday, Nov. 9, totaled 1,779 in the 14 churches which reported.

Churches reporting and their attendance was as follows:	
First Christian	68
Church of God	54
First Methodist	227
First Baptist	430
Church of the Nazarene	61
Westview Baptist	229
First Presbyterian	74
Grace Lutheran	104
Church of Christ	252
First Baptist Mission	55
Assembly of God	72
Pentecostal Holiness	55
Bible Baptist	67
Trinity Evangelical	31

Curtis Lee Neel, 4 Months Old, Dies Sunday

Curtis Lee Neel, four-month-old, died Sunday in the home of a grandparent, Mrs. A. Jackson, in Slaton.

The infant is the son of Mr. and Mrs. Howard Lee Neel. Neel is in the Air Force and is stationed in Guam, where he has been for the past three months. He was due in Slaton Tuesday.

Funeral services were held Wednesday at 2:30 p.m. in the Westview Baptist Church with Rev. J. T. Bolding officiating, assisted by Rev. C. M. Fields, pastor. Burial was in Englewood under the direction of Williams Funeral Home.

Survivors include a brother, Dennis Wayne, two years old; the parents; the grandparents, Mrs. Jackson of Slaton and Mr. and Mrs. P. A. Neel of Lubbock.

Mrs. M. D. Gamble visited with her son and family, Mr. and Mrs. Joe Gamble of Wilf-ford recently. Patsy Gamble returned home with her grandmother to spend a week visiting with her and Mr. and Mrs. George Gamble.

For decades, newspaper circulation has kept pace with the increasing number of U.S. households. Since 1920, the number of U.S. households has more than doubled; newspaper circulation also has more than doubled.

Record-Breaking Two-Million-Bale Cotton Crop Is Forecast For Area

A record breaking two million bales of cotton may be produced from the 23 counties of the Texas High Plains this fall, agricultural officials said sunshine and fair weather.

Delayed by damp weather, but very little actual rainfall, the most bountiful South Plains cotton harvest in history moved into November with a stupendous total production of

1,988,000 bales in prospect from the 23 counties as less than a third of the crop is now ginned or harvested. The combined November 1 estimate of the Plains Cotton

Growers, Inc. and the Lubbock Cotton Exchange climbed 118,000 bales above the October forecast and places the all-time record of about 1,650,000 bales produced in 1956.

"Observers agree that there is more open cotton on the South Plains now than at any time in history," reported D.C. Prince, Secretary of the Exchange. "We have ginnings ahead of us this season that are nearly equal to last year's total production."

The crop this year is expected to exceed the 1957 production of approximately 1,570,000 bales by some 400,000 bales. Open bolls along with cotton already ginned, now comprise approximately 85 to 90 percent of the crop.

The hike in November estimate is due to "surprisingly high yields on both dryland and irrigated acreages and the fact that the serious infestation of angular leaf spot failed to hurt yields, as was anticipated a month ago." Also the recurrent wet weather apparently has not damaged the quality of the crop as much as had been feared.

Should good weather hold and the expected yield materialize it would surpass all past area crops and probably would be the most cotton ever grown in such a concentrated area in the world.

Freezing temperatures and a killing frost recorded over much of the area October 31 were welcomed by most farmers. The entire crop is mature, and the frost will strip leaves enabling farmers to begin machine harvesting within 10 days to two weeks.

W. E. Franklin, head of the USDA Classing Office here, said recent wet weather probably will not damage the overall quality of the crop. Grades naturally will suffer somewhat, he explained.

Total classings at both Lamesa and Lubbock offices as of November 1 were approximately 600,000 bales, Franklin said. Area gins operated at only 10 to 20 percent of capacity most of last week and samples for grading at the classing office came in at the rate of about 5,000 per day, down from the high of 25,000 per day two weeks ago.

Clear, warm weather October 31 and the first days of November enabled farmers to resume large-scale harvesting operations and if fair weather holds, some gins will begin around-the-clock operations this week. Many farmers are reported just waiting for clear weather to begin stripping of earlier defoliated cotton. Most officials agree that once stripping operations begin, if no long seige of bad weather hits, gins and classing facilities will be rushed past capacity.

Only three counties out of the 23 did not show hikes in the November estimate above the October estimates. These were Dickens, Parmer and Swisher counties.

The 23-county production estimate was compiled by talking to county agents, ginners and other cotton authorities in each county. Comparisons of the October 1 and November 1 estimates are given below:

Counties	Oct. 1	Nov. 1
Bailey	82,000	85,000
Borden	9,000	10,000
Briscoe	20,000	21,000
Castro	55,000	60,000
Cochran	60,000	64,000
Crosby	115,000	120,000
Dawson	125,000	135,000
Deaf Smith	11,000	12,000
Dickens	18,000	18,000
Floyd	93,000	100,000
Gaines	59,000	61,000
Garza	24,000	25,000
Hale	195,000	205,000
Hockley	180,000	184,000
Howard	25,000	39,000
Lamb	170,000	180,000
Lubbock	245,000	255,000
Lynn	125,000	140,000
Motley	9,000	12,000
Parmer	60,000	60,000
Swisher	60,000	60,000
Terry	105,000	115,000
Yoakum	25,000	27,000
Totals	1,870,000	1,988,000

More automobile advertising dollars are invested in newspapers than in any other medium.

In 1922, several makes of cars introduced gasoline gauges on their instrument panels.



KING COTTON

The cotton comes rolling in at Slaton area gins as one of the finest crops in years, expected to be a record-breaker, is currently being harvested. Bad, rainy weather has hindered harvest of the crop to some extent but on the warm, sunny days, scenes like the above, where cotton is being unloaded from a trailer into a local gin, are common. (Slatonite Staff Photo)

CARD OF THANKS
From the depth of our hearts we sincerely and deeply appreciate and thank you for the flowers, food and kind words of sympathy during our recent sorrow, which was the passing of

our husband and father. May the Lord richly bless each one of you.
Mrs. W. W. Gilliland and children
Use Slatonite Want Ads

Mr. and Mrs. Richard J. Hagler went to Amherst Sunday, Nov. 9, to attend the funeral of Mrs. Hagler's uncle, Mr. Willie Berry. He had been ill for a long time.

Athenean Club Hears Talk On 'Miracle Fabrics'

The Athenian Study Club met Nov. 4, in the home of Mrs. Norman Carter.

Mrs. Braian Sartian was program chairman for the evening. The program topic was "Miracle Fabrics." The speaker for the evening was Mr. Roecker, fabric buyer for Dunlop's in Lubbock.

Those present for the evening were Mesdames R. W. Bowman Jr., Norman Carter, Dick Cheatham, Sherman Clark, M. G. Davis, R. C. Hall Jr., George Harlan, Stan James, Randall Cain, Weldon Meador, Joe E. Miles, C. M. McPherson, W. B. Nesbitt, James Perkins and L. A. Reasoner.

The regular business meeting was held and refreshments were served.

with **Payne HEAT** jetglas PROTECTED

Push a Button and PRESTO!

Priceless Comfort comes to Any Home!

Carefree! Trouble-free!

Liles Sheet Metal Works
165 W. Panhandle VA8-4277

A Personal Message From The Bank Of Personal Service

Be a successful Santa!

Santa Says Include A Citizen's State Bank Checkbook On Your Christmas List

If you plan to give money for Christmas — Deposit it in a checking account and present a blank checkbook to that special person.

CITIZENS STATE BANK

Save money... **WORM YOUR PIGS WITH PURINA LIQUID PIG WORMER**

Yes, you can get the right feed for the right age pigs or hogs from Purina Chows. Don't forget we can grind your grain and mix it with the right hog chow supplement.

Easy to use drinking water wormer
Safest pig wormer known
No change in feeding program
Costs only pennies per head
Quickly removes roundworms and nodular worms

● Purina Baby Pig Chow
● Purina Pig Startena
● Purina Hog Chow
● Purina Sow Chow

HUSER HATCHERY
310 S. 9th VA 8-3656

REVIVAL Westview Baptist Church

at 850 S. 15th Street Slaton, Texas

WELCOME

C. M. Fields, Evangelist
Leon Hokett, Singer

November 16-23
MORNING SERVICES 10:00 a.m.
EVENING SERVICES 7:30 p.m.

use the **Want Ads**

STATE CAPITAL Highlights AND Sidelights by Vern Sanford TEXAS PRESS ASSOCIATION

find a Texan who hasn't been involved in a lively discussion recently as to whether the next Legislature should or should not pass a state sales tax or income tax next year.

Most folks are pretty strongly pro or con—no lukewarm feelings.

Property taxes are another matter. People may gripe about them, but they don't often get stirred up about them.

But the latest report by the Texas State Tax Study Commission, "Our Property Taxes," underscores the importance of this levy. It is Texas' biggest money-maker for state and local government. In 1958 property taxes will bring in an estimated \$629,000,000 to the state and all the various local taxing units.

More interesting, the Texas Commission's study of assessments and collection practices and problems indicates that this figure is probably only a fraction of what is legally due.

Shortage of personnel plus the mountainous difficulties of locating and evaluating all the items involved add up to inequalities and haphazard methods.

Under Texas law, individuals and businesses are supposed to pay property taxes on all real estate—land and buildings. In addition, both businesses and individuals are liable for taxes on all "tangible personal property"—cars, airplanes, boats, furniture, jewelry, business equipment, fixtures, inventories, etc. Also, on all "intangible personal property"—money, bonds, stocks, mortgages, etc.

In practice, many of these are just plain ignored by officials

and citizens alike. Many cities make no effort to collect property taxes on cars. As to money, the Commission report observes, "If money in the bank were taxed on January 1, relatively few persons or businesses would have any money on deposit that day."

In other areas where more made, results are spotty. Re-vigorous efforts at collection are searchers found that the same piece of property would net widely varying tax bills in different counties. On one example the range was from \$616 in Harris County to \$1,132 in Travis County.

They also found that some people claim homestead exemptions for more than on house. At \$3,000 each, these add up to unknown thousands in untaxed value.

Exemptions plus low assessments take a big bite from theoretically possible tax collections. In a study of 3,037 house sales, the Commission's research staff found the legal tax due to be \$95,019. Actual taxes levied were \$2,706, only 3 per cent of what strict application of the law would have produced.

Even though many tax officers are undermanned, Texas has 1,500 assessor-collectors. Sometimes a county, city and school district each will have an official doing the same job in the same area. Result: total cost of property tax administration in Texas exceeds \$15,000,000 a year.

CITY RECOMMENDATIONS—Texas League of Municipalities has a series of recommendations—mostly in regard to money—for the next Legislature.

The Slaton, Tex., Slatonite
Thursday, Nov. 13, 1958

Teen Talk

by Karen Henry, Carol Rosser and Martha McCormick

How did everyone enjoy the Junior Play? We heard that Betty Lou Johnson made quite a hit with her "rope" act. We also heard that Maxine Moore had a broken zipper which made her a little self-conscious.

Didn't Ronald Mangum look distinguished with his gray hair? Nelda Brooks still had traces of grey in her hair two or three days after the play. Maybe gray hair will become a "fad."

Looks like Mr. A. Jackson just "blew" his week's pay buying banana splits for his second period shorthand class. He promised a banana split to everyone in the class who made an "A" on a difficult test. I wonder if Betty Heaton, Shirley Kitten, and Robbie Scholer know the calorie content of a banana split.

Ann Basinger, did you really get an orange and chartrouse corsage for the FHA banquet? That is what you told Robert Hurst to get, isn't it?

The first period American History class certainly enjoys hearing Charley "Jeanette" White and Danny "Sheila" Winn continually cause a "dull roar" as they orally fight each other. May the best "girl" win.

Didn't Dorothy Morton's hair look pretty Monday afternoon? Why don't you wear it that way more often Dorothy?

Well, our mighty Tigers have had a two-weeks rest from playing football. They should really be ready to face our arch-enemy team from Post.

George Privett, do you ever get tired of loading that candy machine at S.H.S.? You know, I'll bet more students there get free candy than you realize. For instance, your good friend Ellis Gill, innocent as he may seem, would be rich by now if a candy pawn shop existed.

Lola Fay Hopkins and Peggy Gentry wanted their names in the paper. Well girls, we like to keep everybody happy.

Everyone who attended the FHA banquet certainly had a nice time. Mike Rose, Jerry Hogue, Giles Smith, Ronald Mangum, Sammy Wilson, and Mackie Klattenhoff certainly did look nice.

Wana Smith looked very smart in her new formal, along with others who looked attractive, such as Harriett Perkins, Sue Delaney, Pam Henry, Patsy Preston, and others who caught our eyes.

The Student Council will have Bill McKensie, State President of the Student Council, to attend their supper Wednesday night. They are looking forward to having him as their guest.

The band students are in a dark cloud after having received information about contest marching, especially after hearing information about "apex" of their steps which they will be working on for this year.

Mr. and Mrs. Carter Shaw returned from Mountain Air, N. M., recently. They attended the funeral of Mrs. Shaw's mother, Mrs. Dora Rogers. Mrs. Rogers died at the home of a daughter, Mrs. G. W. Boyson in Tucson, Ariz.

At the turn of the century, on an average day, 15 million newspapers were purchased. Today, 58 million newspapers are purchased on an average day.

In 1957, makers of automotive parts and accessories increased their advertising in newspapers by 141 per cent over the previous year.

Look What's Cookin'

TURKEY DINNER

Sunday, November 23, 1958
Serving Hours—3:30 to 7:00 p.m.

St. Joseph School Cafeteria
Adults \$1.50 Children 75c

FESTIVAL & BAZAAR

Beginning at 2 p.m. same day
St. Joseph Hall

Featuring: A cake walk • ball game • fancy work • country store • religious articles • fish pond • various games.

—To Be Given Away—

Lionel Electric Train, Quilts, TV Horse, Baby Doll and Wardrobe, Flash Camera, Fun for Everyone—Don't miss it!

DANCE — Later in the Evening

Music by
PANHANDLE PLAYBOYS

Admission — \$1.00 per person

**HEY MOM! LOOK!
SAVE 15¢**

Take this Coupon to Your Grocer and Save 15¢ on any bag of Robin Hood Flour

save 15¢
on your next purchase of any bag of Robin Hood Flour

Look for Robin Hood Flour in the bright new bag at your grocer's now. The bag is new, but the flour is the same wonderful flour you have always known. It's milled from a variety of choice wheats, specially selected to give you best results with one flour for all your baking. So use this coupon to save 15¢, and let Robin Hood make all your baking better!

Robin Hood Flour
The Same Fine Flour in a Bright New Bag!

Mr. Grocer: Redeem this coupon as our agent for 15¢ only when applied on purchase of Robin Hood Flour by a customer at your store. Any other use constitutes fraud. Customer must pay any sales tax, if so assessed, we will enclose you 15¢ on surrender of this coupon within 90 days of expiration. Surrender to our salesman or mail to Robin Hood Flour, Box 2097, Commerce Station, Minneapolis, Minn. Redeemable or surrender by or through outside agency or others who are not retail distributors of Robin Hood Flour will not be honored. Invoices proving purchase of sufficient stock within last 90 days to cover coupons redeemed must be shown on request. This coupon is void where prohibited, taxed, license required or otherwise restricted. Cash value 1/20 of 1¢.

INTERNATIONAL MILLING COMPANY

HIT THE SPOT Specials

COFFEE	Maxwell House 2 lb. Can	\$1.49	
KLEENEX	400 Count Box	25c	
COCA COLA	12 Bottle Carton	39c	
CRISCO	3 lb. Can	83c	
ICE CREAM	Swift's 1/2 Gallon	69c	

RINSO BLUE	Giant Box	69c
TISSUE	Hudson, Facial Quality, Toilet	12 1/2c
NAPKINS	Charmin, 80 Count	12 1/2c
CRACKERS	Nabisco, lb. Box	25c

COOKIES	Supreme, Cocoanut Cho. Drop, lb. Sack	49c
COOKIES	Sunshine Apple Sauce, lb. Sack	45c
PICKLES	Quart Sour or Dill	29c

Meat CHOICE CUTS

SAUSAGE	Pinkney's Sunray, 2 lb. Sack	79c
OLEO	Wilson's Golden Brand, 2 lbs.	35c
BISCUITS	Kimbell's, 3 cans	25c
BACON	Pinkney's Sunray, 2 lbs.	\$1.19

GRAPE JUICE	Welch's, 6 oz. Can	2 for 35c
DINNERS	Patio Mexican, each	59c
PIES	Large Family Size Pumpkin, each	45c
FRYERS	Mrs. Chesser's, Cut Up, Pan Ready 1 lb. 10 oz. ea.	89c

PICK O' THE CROP PRODUCE

APPLES	Washington Fancy Red Delicious, lb.	12 1/2c
GRAPE FRUIT	Ruby Red, lb.	9c
POTATOES	Idaho Russetts, 10 lb. Bag	43c
CARROTS	Cello Bag, 5 lb. Bag	9c
ORANGES	5 lb. Bag	39c

ROBIN HOOD FLOUR

5 lb. Bag, With Coupon On This Page

33c

Haddock Food Store