





# Churches

**PRESBYTERIAN CHURCH.**  
 Sunday School, 9:45 a. m.  
 Morning Services 11 a. m.  
 Evening Services, 7:30 p. m.  
 Welcome to all to come and worship with us.  
 J. Paul Stevens, Pastor.

**CHURCH OF CHRIST**  
 Bible Study 9:45 each Sunday morning  
 Preaching at 11:00 and communion at 11:40  
 Evening Services—8:00 p. m.

**Mt. Olive Baptist Church**  
 —Colored—  
**REVIVAL SERVICE**  
 All This Week

Under the direction of Rev. A. W. Williams of Austin, Texas.

White People are cordially invited to attend.

## The Loveless-Groshart Clinic

General Medicine and Surgery  
 X-Ray and Laboratory Facilities

Roy G. Loveless, M. D. O. D. Groshart, M. D.  
 J. Elbert Loveless, M. D.  
 Otis Neill, business manager Slaton, Texas

Ladies Bible class Monday at 3 p. m.  
 Prayer meeting Wednesday evening at 8:00 o'clock.  
 Ernest McCoy, minister

**BAPTIST CHURCH.**  
 Sunday School, 9:45 a. m.  
 Church Services, 11 a. m.  
 B. T. U.—6:30  
 Preaching Service—7:30  
 Rev. W. F. Ferguson, Pastor.

**ST. JOSEPH'S CHURCH.**  
 Rev. T. D. O'Brien, Pastor.  
 Morning services: 8 a. m.; 9:30 a. m. Every Sunday.  
 Week Day Mass 6:30 a. m.  
 "Welcome."

**METHODIST CHURCH.**  
 Rev. H. C. Gordon, Pastor  
 Sunday School, 9:40 a. m.  
 Church Services, 11:00 a. m.  
 Junior League—5:15  
 Epworth League—6:45 p. m.  
 Evening Services—7:30 p. m.

**POSEY LUTHERAN CHURCH**  
 F. T. Sager, Pastor  
 English services every first, second and third Sundays at 10:30 a. m. No services on fourth Sundays. "Come and worship with us."  
 Lutheran Ladies Aid meets every first Thursday of the month. Luther League meets every second Friday of the month at the Slaton club house.

**ASSEMBLY OF GOD CHURCH**  
 Sunday School, 10 a. m.  
 Morning services, 11:00 a. m.  
 Evening Services, 8 p. m.  
 Women's Missionary, Tuesday 2 p. m.  
 Prayer Meeting, Saturday 8 p. m.

**CHRISTIAN CHURCH.**  
 Bible School at 9:45 a. m.  
 Communion Services at 10:45.  
 Christian Endeavor at 7:00 p. m.

### Our Weekly Sermon—

Following what might be termed the prehistoric past, Adam and his wife, Eve, lived in a state of bliss such as has not been experienced by any other human beings—"the last word" in creation. Their occupancy of the Garden of Eden was contingent upon obedience to their Creator; they were NOT to partake of the fruit of a certain tree, "the tree of the knowledge of good and evil." Disobedience caused their expulsion.

The children of this couple have been striving long to re-enter this garden, but without avail. Murmuring have gone up deploring the fact that God would punish them for the sin of Adam and that they should be finally banished from God and His glories.

But true to the claims of Scripture, God has proved Himself faithful and just. "God sending his own Son in the likeness of sinful flesh, and for sin, condemned sin in the flesh," that He might bring us back to Himself and to heaven, the glories of which infinitely surpass the glories of the Garden of Eden. That is to say, "God so loved the world, that he gave his only begotten Son, that whosoever believeth in him should not perish, but have everlasting life."

By believing we mean not the acceptance of historical facts, but a heart allegiance, which is an actual experience. Unlike God's dealing with Adam (the result of whose disobedience has been inherited by the human race as a legacy), God now deals with the human race in the light of the individual's acceptance of His Son, for "he that believeth on the Son hath everlasting life; and he that believeth not on the Son shall not see life."

Let no man despise God's desire, for if he does, he dies alone and that without mercy, although God is "long-suffering to us-ward, not willing that any should perish but that all should come to re-

### LEGION PLANS NAVY RECRUITING



Governor Coke R. Stevenson at his desk in the reception room of the Governor's office, Austin, discusses plans for immediately recruiting two companies for service in the United States Navy or Naval Reserve in Texas with The American Legion, Department Commander Andrew Dilworth of San Antonio and Capt. H. W. Underwood, United States Navy, commanding the Naval ROTC Unit at the University of Texas. The campaign was started by the American Legion in response to a telegram from Secretary of Navy, Legionnaire Frank Knox, asking the American Legion to "recruit a minimum of one company consisting of not less than 140 men \* \* \*. The Navy has 338 ships in commission and 353 building. Need for men is obvious," said the telegram in part.

Commander Dilworth wrote the Secretary of the Navy "Texas will recruit two companies of 140 men each from the Houston and Dallas recruiting area."

Capt. Underwood said "The Naval ROTC unit of the University of Texas is anxious to make any contribution to the success of this campaign."

"I am ready to do all I can for the War and Navy Departments and all-out defense as urged by President Roosevelt, in fact I think I am about two jumps ahead," said Governor Stevenson.

Each American Legion Post is requested to send to the nearest Naval Recruiting Station, or sub-station, at least one recruit for the Navy or the Naval Reserve on or before October 27. Fitting ceremonies will be held on October 27 either at Austin, or Houston and Dallas with high State, Navy and American Legion officials participating.

Governor Stevenson issued a proclamation calling upon Texas citizens to observe Navy Day, October 27 "For it was in October, 1775 that our forefathers \* \* \* came to the conclusion we must have a Navy to maintain peace."

necessarily by actual abuse, but by passive evasion. For "every-one of us (independent of others) shall give an account of himself to God."

Have your Prescriptions filled at TEAGUE DRUG STORE by a Registered Pharmacist

Since the modern farm laborer uses machinery and must have some skill in its maintenance and repair, he makes a good factory worker, according to the Selective Service Board.

Eggs are rich in vitamin D and constitute practically the only farm commodity which can lay claim to being a source of this important vitamin.

## MODEL GROCERY & MARKET

WE DELIVER PHONE 147



**FLOUR Amaryllis**  
 6 lbs. ----- 35c 24 lbs. ----- 97c  
 12 lbs. ----- 57c 48 lbs. ----- \$1.79

**SOUP** Heinz No. 1 can ----- 9c  
**COFFEE** Folger's 1 lb. 31c

**PRUNES** 2 lb. Package ----- 19c  
**CORN** No. 2 can D-X ----- 7 1/2c

**TOMATO JUICE** Cam'ell's 47 oz. 19c

**SHORTENING** Advance  
 4 lbs. ----- 63c 8 lbs. ----- \$1.25

**PORK & BEANS** Brooks 19 oz. can ----- 9c  
**P & G SOAP** 5 giant bars 21c

**SPRY** 3 lb. Pail 63c

**RAISINS** Sunsweet 15 oz. Seedless ----- 9c

Market Specials

**BOLOGNA** lb. ----- 12 1/2c

**BUTTER** Clearbrook Old fash'nd rl. 36c

**BACON** sliced Wilson's cert. lb. 31c

**HAMS** Cured Wil. Cert. 1/2 - whole lb. 27c

**BACON** Wilson's Certified in slab lb. 25c

Fruits and Vegetables

**POTATOES** 10 lbs. Idaho Russets ----- 19c

**LETTUCE** per head 3 1/2c

**APPLES** Fancy Small Delicious dozen ----- 12c

**LEMONS** Large Calif. dozen ----- 15c

**ORANGES** Texas Med. size dozen ----- 19c

Job Printing Neatly Done. Let our Want Ads do your work

# N

EARER, NEARER comes ski weather.

Overnight even now your car gets steely cold. These mornings, as your starter prods the engine, the precious parts that you want to keep fit are rarin' to claw each other. But not after they're Winter OIL-PLATED by the quick simple change to your seasonally correct Conoco N<sup>th</sup> motor oil. Its magnet-like effect holds OIL-PLATING clear up to the topmost piston rings, though your car may stand cold for days. Instead of all quickly draining down, Conoco N<sup>th</sup> makes OIL-PLATING stay up on guard in advance—ready ahead of mere fast-flowing oil—to ease up the coldest starts.

Then when your engine's insides—even in Autumn and Winter—naturally warm up more than a brand new sunburn, your Conoco N<sup>th</sup> oil shows you the type of economy that won the sensational Death Valley Death-Test—certified. 6 identical cars—6 widely advertised oils of quality, including Conoco N<sup>th</sup>—were kept speeding over the desert, each on a different 5-quart fill—locked in—no oil ever added.

5 quarts of one big brand burned up—engine burned out—when the car with Conoco N<sup>th</sup> still had the protection of 3.65 quarts! Even the runner-up's 5-quart fill was consumed, and the engine was junk, when the car with Conoco N<sup>th</sup> still had 2.7 quarts in the crankcase. All impartially certified.

Get the printed evidence at Your Mileage Merchant's Conoco station. There's where to change to this popular-priced Conoco N<sup>th</sup> oil that OIL-PLATES your engine for protected prompt starting. That's more than a promise. It's backed by something real...OIL-PLATING, Continental Oil Company

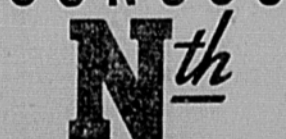
### GAVE TWICE THE ENGINE LIFE!

This oil that OIL-PLATES gave its engine more than twice the life averaged by the engines using the other oils in the Death-Test.

In these times use your car prudently. And use oil that's great for engine life—changing regularly as recommended.

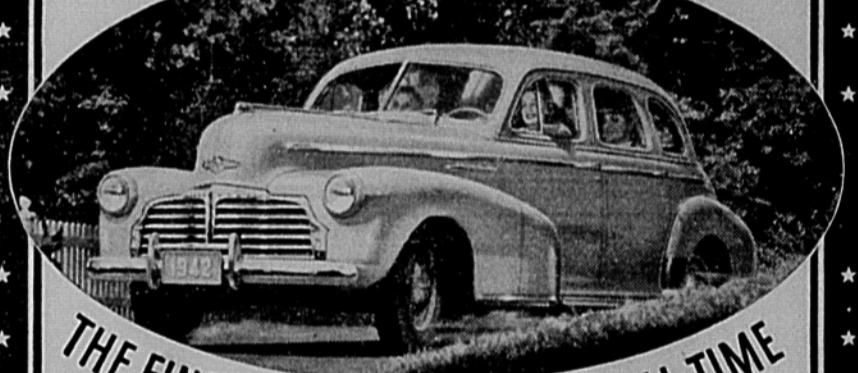
Good starting—good lubrication against all needless wear—helps conserve gasoline, too.

## CONOCO



CONOCO MOTOR OIL

## FOR THE SERVICE OF AMERICA



## THE FINEST CHEVROLET OF ALL TIME

Yesterday... Today... Tomorrow

ITS PROVED VALVE-IN-HEAD "VICTORY" ENGINE leads in all-round performance with economy

It's built of quality materials... It features the same sturdy cast-iron pistons which Chevrolet has developed during twenty years of manufacture of millions upon millions of cars... It's designed and built to out-perform, out-save and OUT-LAST its field!

Drive this car today, at your nearest Chevrolet dealer's, and convince yourself of its leadership.

DESIGNED TO LEAD IN STYLING

DESIGNED TO LEAD IN PERFORMANCE

DESIGNED TO LEAD IN ECONOMY

IT PAYS TO BUY THE LEADER AND GET THE LEADING BUY

# Heinrich Bros. Service Station

235 NORTH 9th.

PHONE 153

SLATON, TEXAS

# Crow-Harral Chevrolet Co.

### The Slaton Slatonite

SLATONITE PUBLISHING CO.  
Slaton, Lubbock County, Texas

Slaton Times Purchased January 20, 1927

Entered as second class mail matter at the postoffice at Slaton, Tex.

A. M. JACKSON, Editor-Publisher  
Frances Crowther, Society Editor

**ADVERTISING RATES**  
DISPLAY ADVERTISING — 35c per column inch to all agencies, with usual discount.

LOCAL READERS—set in 8-pt. 10c per line of Five Words, net. To Agencies, 10c per line, with usual discount.

CARDS OF THANKS — 50 cents. OBITUARIES, Resolutions, Memorials, (excepting accounts of deaths, news originating in this office), 5 cents per line. POETRY, 10 cents per line.

**NOTICE TO THE PUBLIC**  
Any erroneous reflection upon the reputation or standing of any individual, firm or corporation, that may appear in the columns of The Slatonite will be gladly corrected when called to our attention.

**SUBSCRIPTIONS IN ADVANCE**  
Lubbock, Lynn, Garza Co.s — \$1.50  
Outside these counties — \$2.00  
Beyond 6th Postal Zone — \$2.25



**JUST TALK**  
by  
A.M.J.

If one would keep tab on the war news analysts I am sure that they could be proven the biggest liars or the poorest prophets in the world. The analyst disease seems to be spreading and we find editors and commentators on every small town newspaper and squeak radio station. They tell you what Hitler's next move will be, what Turkey is figuring on and when the war will end. None of them agree, they jump from one extreme to the other and try to straddle the fence in every comment they make. Here are my predictions: Hitler will take Moscow if the Russians do not stop him. Turkey will line up with the Germans if they do not fight with the English. Japan will back down or go to

war with the U. S. We will be paying higher and higher taxes and gripe to high heaven about it, but business will be good for a long time and we will all think we are going to get rich but won't. The women will wear shorter and shorter skirts and claim that it is done to save material. I think it should be done.

We will be eating mixtures of stuff never thought of before and blame the indigestion on the food and not on the fact that we have made dogs of ourselves.

Some dope not in the army will write a silly song and every radio, honky tonk and music box in the country will be grinding it out until it will make you sick at the stomach to hear it.

The ladies will be knitting socks that would not fit any living man, the men will go on sinking and proud fathers will still strut around dishing out cigars that they cannot afford to pay for, and the United States will be the best place in the world to live.

All I am waiting for now is the next broadcast by Kaltenbourn, or whatever his name is to find out what will happen next and when to look for it.

A prominent doctor says that more people are developing stomach ulcers because of the war and advises every one to take more rest and not to do so much worrying. Advice of this kind is easy to hand out but hard to follow. The doctor gives no clue as to how his advice can be taken except to have a rich relative die and leave you several hundred thousand dollars.

The advice does not include how you can keep the Government from gobbling up the money in taxes but just the same if I had a rich relative who could leave me the money I'd like to do as the doctor says whether I have a stomach ulcer or not.

Defense, the official weekly bulletin of Defense agencies has this to say regarding automobile prices:

Cooperation between OPA and the 44,000 automobile dealers is fully as important as it is between OPA and the eight automobile companies. Cyrus McCormick, chief of the Automobile and Truck Section of OPA told the Los Angeles Motor Car Dealers Association recently. "There is nothing in the OPA policy that can be taken as a prohibition to a dealer or any other businessman making a fair profit. I have frequently heard it

said that an automobile dealer must retain his margin of gross profit or he will fail. There have been certain increases in prices of automobiles already announced. They are understood and are doubtless a correct reflection of the increased cost of materials and of labor. No one has so far suggested that these increases are unwarranted.

"Nor has anyone inferred that the dealer should now do business upon a smaller margin of gross profit than in normal times," Mr. McCormick continued. "If a dealer's gross margin were doubled, it would doubtless contribute toward inflation. If, however, his margin remains at the present modest percentage, I can see no reason for questioning it. OPA joins you in believing that an automobile company and an automobile dealer must make a profit or he cannot remain in business. We do not seek to stop that. We welcome it. We only seek—we only seek to help you seek—to guard against inflation."

It is not often that you find a man who is not looking for business, but W. T. Davis out at the gin says he hopes the farmers will not come in with any more cotton like the kind he has been getting. He will be getting like the old storekeeper who hid out in the back of his building with his cronies to play checkers. One day his opponent said: "Bill you've got a customer out in front." "Don't say a word," whispered the storekeeper, "maybe she'll go away."

I got in trouble last week when I said that Bob Lovett and his wife had gone to the Ozark Mountains in Arkansas. It seems that the little pimply Ozarks are in Arkansas but the real top grade A-1 Ozarks are in Missouri and Bob and his wife do not want anyone to think that they would stop overnight in Arkansas, it is the Missouri Ozarks that get them trade.

Practically every man, woman and child in this community is stumbling around looking up at the sky, smiling like a cat eating glue when the sun is out, and with tears running down their cheeks when there is a cloud in the sky.

All business men take off several times a day to go out and look at the cotton crop and come back predicting everything from a famine to the biggest boom this section has ever seen. S. S. Forrest is churning up and down the streets like The Robert E. Lee trying to break the steam boat record on the Mississippi river. Howard Swanner is doing a lot of figuring on whether to make bank loans or not, and Kirby Scudder is having a terrible time trying to speak Mexican to the cotton pickers who are storming in here in all the broken-down automobiles in the nation. Judge Sewell is so sure he is going to get rich that he has practically quit work and Charlie Austin is teetering around like a kid on

## THE POCKETBOOK of KNOWLEDGE BY TOPPS

**FISHING LINES NEARLY A MILE LONG ARE USED BY FISHERMEN OF MADIRA PORTUGAL TO CATCH "ESPADAS" THAT SWIM 4,000 FEET BELOW!**

**INDUSTRIAL RESEARCH HAS DEVELOPED A NEW TYPE GLASS THROUGH THE EDGES OF WHICH NAIRS CAN BE DRIVEN**

**FOR DEFENSE—INDUSTRY HAS INCREASED ITS SMOKELESS POWDER PRODUCTION BY 100 PER CENT IN A SINGLE YEAR**

**IT IS ESTIMATED THAT A BEE TO MAKE A POUND OF HONEY BY TRIP WOULD HAVE TO VISIT 62,000 FLOWERS, AND MAKE 2,750,000 TRIPS!**

**GROWTH OF THE U.S. AIRCRAFT INDUSTRY HAS BEEN TENFOLD IN THE FIRST 30 MONTHS, COMPARED TO A SEVENFOLD INCREASE IN SHIPBUILDING DURING THE ENTIRE WORLD WAR**

**GROWTH OF U.S. AIRCRAFT INDUSTRY HAS BEEN TENFOLD IN THE FIRST 30 MONTHS, COMPARED TO A SEVENFOLD INCREASE IN SHIPBUILDING DURING THE ENTIRE WORLD WAR**

roller skates. Dr. Howard has got a new pair of pliers and is getting ready to do a big tooth pulling business this fall and we have ordered a couple of tons of newsprint in case one or two extra subscribers come in begging for the Slatonite. The habit is contagious and I go to the door every hour or two and gaze up at the sky and alternate between doubling my order for paper or wiring in a cancellation. If I don't walk into a post and break my neck I'm afraid I'm going to go bla-bla before the season is over and I am sure half of the population is in the same shape.

One of our young women readers sends in a wail about the contest between the babies in the churches and the choir. In her opinion the babies are winning hands down.

Here is her comment: "I am a church goer. I can't say that I am a worshiper for it is impossible to go to church and worship when there are so many babies crying, screaming and kicking during the services. Why don't the mothers take them out when they start crying. This would make it much easier to worship."

The young lady might be overlooking one advantage the babies might be in a congregation; that is to keep some of the congregation awake but we will overlook this advantage and admit that babies do create disturbances, but mothers cannot leave the babies hitched to the bed post at home. It's a problem too deep for us and we are afraid the pastors in the churches are up against a tough question, however, there's nothing else for us to do but leave it up to the young lady and the ministers we've got to do something about an asthmatic press, bookkeeping irregularities, broken glass in the

front door, late shipments on print paper, names that get misspelled and a winter overcoat.

Mrs. Abernathy, wife of one of the duplicate Abernathy boys over at the Slaton Steam Laundry says that she is the general information bureau over at the Laundry but does not get much credit for all the expert work she does. But that's the way women are, they are like squirrels, they grab everything around a place and store it away in the strangest places and then if you want to know where anything is you have to chisel the information out of them.

Frances Crowther here at the Slatonite has me at her mercy. She has a place for everything but I am not detective enough to trace the places down. Personally I like things convenient, all on the top of the desk so that with a little energetic stirring you can always find just what you are looking for.

... but it's a lot of fun trying to figure out just what a woman will do to make things look neat.

Vascar Browning's registered Bird Dog died last week from yellow jaundice and this disease is reported to be attacking a large number of dogs in this vicinity. It is contagious among dogs and is said to be always fatal to the animals.

John H. Boyles, who has lived near Slaton for many years was taken to the Veteran's Hospital in Amarillo last week where he will undergo treatment. He has been ill for several months.

Let our Want Ads do your work.  
**ELGIN—WALTHAM and MT. VERNON**  
American Made Watches  
You don't have to wait two weeks for your Watch Repairing—Bring it to—  
**SWADER JEWELRY**  
1310 Broadway Lubbock

**Lynch HAT WORKS**  
1106 Ave. J Dial 7171  
LUBBOCK, TEXAS

Let our Want Ads do your work.

**YOU CAN CROW about your CAR**

When our Mechanic, Troy Champion, puts his O. K. on it...and you'll crow about our

**WASHING AND LUBRICATION**

Where you get your car back running like a clock and shining like the noon-day sun. We—

**CALL FOR AND DELIVER Back to You on Time**

**PHONE 570**

**VAN STOKES**

Plymouth DeSoto

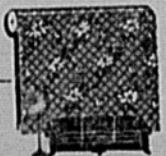
Better Hurry To Our Once a Year

# 1c SALE of WALL PAPER



You Save Approximately

**50 PER CENT**



Offering you over 80 Patterns in newly designed Wall Paper for any room in the house. Buy one roll of any paper in stock and another just like it for only—

**ONE PENNY**

For example—one roll is 20c, two rolls would cost 21c.

It is all fresh stock and this is a real opportunity to SAVE.

This Sale is being offered at both—  
**SLATON AND SOUTHLAND**  
And will continue for a limited time

**Higginbotham - Bartlett Co.**

SLATON, Phone 1

SOUTHLAND, Phone 47

**Off they go!**

**YOUR CIVILIAN "SIGNAL CORPS"**

Platoons of telephone construction men stand ready to roll out in blue-gray Bell trucks to set poles—string wire—install switchboards.

They know that a call for shell fuses now is almost as urgent as a call for serum—that life and death somewhere may hang on the prompt arrival of a shipment of cotton—that spoken messages must carry through the clatter of

mighty mill sheds—must cross vast industrial areas and leap the miles between cities.

They're doing a big job—these telephone men—and the telephone operators and repairmen who work with them. They race with your country's vital needs. They struggle to keep up with a demand for service greater than they have ever known before.

**SOUTHWESTERN BELL TELEPHONE COMPANY**

### Lubbock Sanitarium & Clinic

LUBBOCK, TEXAS

Medical, Surgical & Diagnostic

**General Surgery**  
Dr. J. T. Krueger  
Dr. J. H. Stiles  
Dr. Harrie E. Mast

**Eye, Ear, Nose & Throat**  
Dr. J. T. Hutchinson  
Dr. Ben B. Hutchinson  
Dr. E. M. Blake

**Infants & Children**  
Dr. M. C. Overton  
Dr. Arthur Jenkins

**General Medicine**  
Dr. J. P. Lattimore  
Dr. H. C. Maxwell  
Dr. G. S. Smith  
Dr. R. H. McCarty  
Dr. W. A. Reser  
Dr. J. D. Donalson

**Obstetrics**  
Dr. O. R. Hand

**X-Ray & Laboratory**  
Dr. James D. Wilson

**Resident**  
Dr. Wayne Reeser

Clifford E. Hunt J. H. Felton  
Superintendent Bus. Mgr.

X-Ray and Radium  
Pathological Laboratory  
School of Nursing





**SLATON  
FOOD  
CENTER**

**FORMAL OPENING  
TODAY & TOMORROW**

**FREE 5 lb SUGAR with \$5 purchase each**

You are cordially invited to come in and visit Slaton's newest and most modern Food Center. We are really giving a party for our two opening days . . . Prices that are as scarce as hen's teeth at times like these and, in addition, we will have free demonstrations of Wolf Brand Chili, Tamales, Cookies, Crackers and Coffee. Join the crowd at the Slaton Food Center today and Saturday.

**SLATON  
FOOD  
CENTER**

**Prunes GALLON CAN 29c**

all 5c bars **3c**  
**CANDY**

**GET YOUR VITAMINS FROM THESE**  
*Fresh* **FRUITS AND VEGETABLES**

|              |                                       |         |     |
|--------------|---------------------------------------|---------|-----|
| POTATOES     | IDAHO RUSSETS                         | 10 LBS. | 17c |
| BANANAS      | GOLDEN RIPE                           | DOZ.    | 10c |
| APPLES       | EXTRA FANCY COLORADO JOHNATHAN        | DOZ.    | 10c |
| ORANGES      | MEDIUM SIZE TEXAS SEEDLESS            | EA.     | 1c  |
| TOKAY GRAPES |                                       | 3 lbs.  | 19c |
| YAMS         | FANCY PORTO RICAN AND MARYLAND SWEETS | 10 LBS. | 19c |

**Kimbells Best FLOUR**

|        |      |
|--------|------|
| 6 lb.  | 29c  |
| 12 lb. | 49c  |
| 24 lb. | 95c  |
| 48 lb. | 1.79 |

all 5c pkgs. **3c**  
**GUM**

**Milk** 25c  
Carnation or Pet 6 small or 3 large

**COFFEE ADMIRATION lb. can 28c**

**COOKIES** OATMEAL, VANILLA COCOANUT AND RAISIN LARGE PACKAGE **12 1/2**

**LIFEBUOY** or **LUX** 3 for **19**

**K.C. BAKING POWDER** 25 oz. CAN **19c**

**OATS** Large Box Quick Quaker **19c**

**RINSO** SMALL 9c LARGE 23c

Apple Butter 32 oz. qt. **15c**

**CRACKERS** 2 lb. box **15c**

Grapefruit Juice No. 2 can 3 For **25c**

**SOAP** P. & G. Large bars **5 for 23c**

*Fresh* **MEATS**

**BACON** MORRELL PRIDE 1 lb. Layer **LB. 29c**

**ROAST** FANCY CHUCK **LB. 21c**

**CHEESE** LONGHORN FULL CREAM **LB. 27c**

**SAUSAGE** 100% PURE PORK **LB. 19c**

**OLEO** BANNER BRAND **LB. 12 1/2c**

**BUTTER** Solids ----- lb. 32c Quarters ----- lb. 33c

**PUMPKIN** No. 2 can 3 for **25c**

**CHILI** WOLF BRAND No. 1 can 17c No. 2 can 27c

**CORN** Fancy Field No. 2 cans 3 For **25c**

**PEAS** No. 2 can 2 for **25c**

**Catsup** LeGrande 14 oz. Bottle **9c**

**HOMINY** Uncle William No. 2 1/2 can 3 For **25c**

**MEAL** KIMBELL'S BEST 5 lbs. 15c 10 lbs. 27c

Grape Nuts Flakes 3 for **25c**

**TISSUE** White Cloud 4 roll carton **27c**

Phone **339**  
Free Delivery

**Slaton Food Center**  
"OWNED and OPERATED BY YOUR NEIGHBORS"

Phone **339**  
Free Delivery





# Society - Clubs

## Miss Smith Is Hostess To Club

Miss Naydene Smith, 400 West Lubbock, was hostess to the daughters of Pioneer Study Club Monday night, October 20th.

After the business meeting the usual yearbook program was held. "There is no point where art so nearly touches nature as when it appears in the form of words." The roll call was "Principal Parts of a Verb." Myrtle Teague was the teacher of the study, "Verb Forms." Mrs. Earl Reasoner, instructed a parliamentary drill.

A refreshment plate was served to Mesdames Max Arrants, George Brassell, Curtis Dowell, J. P. Haliburton, Odie A. Hood, R. A. Singer, Melvin Tudor, Reasoner, and Misses Joan Drewry, Teague and the Hostess.

The next meeting will be November 3rd with Mrs. Haliburton as the hostess.

## Baptist W. M. U. In Thomas Home

The W. M. U. of the First Baptist Church met Monday afternoon in the home of Mrs. Milton Thomas, with Mrs. W. O. Bowen as co-hostess.

Singing was led by Mrs. Guy Brown, with Rev. W. F. Ferguson offering an opening prayer. Mrs. Bowen was leader for the Missionary program, which was about South America.

Others having parts on the program were Mesdames: R. L. Smith, Jr., M. H. Lasater, Fred Stottlemire, W. P. Florence, Clifford Young, W. F. Ferguson, and Brown.

Refreshments were served to the 28 present.

## Miss Hanna Is Club Sweetheart

The Delta Sigma Subdeb Club met in the home of Miss Corinne Cates Saturday, October 18th.

At the business meeting plans were discussed concerning the club's Rush Week ceremonies. Miss Gwendolyn Hanna was selected to represent the club as Sweetheart.

A refreshment plate was served by the hostess to Misses Wilda Hanna, Dorris Clifton, Jenny Lou Garland, Connie Henry, Gwendolyn Hanna, Mary Mann Sargeant, Maxine McMillan, Gerry McMillan, Mrs. Howard Hoffman, Sponsor, Frances Crowther, inactive member, and Mrs. Harold Stubbs, a guest.

## Second In Series Of "42" Parties

The Slaton Band Parents will sponsor their second in the series of "42" parties next Tuesday night, October 28, at the club house at 7:30 p. m.

Band students are supplied with tickets to sell at the same prices as last week: 15c for one person and 25c for a couple.

A suggestion has been made that all persons attending the party next Tuesday wear a mask to carry out the Hallowe'en motif.

Everyone who plays 42 is urged to come.

## Club Dines At Mexican Inn

The 1940 Study Club had a dinner at the Mexican Inn in Lubbock Thursday, October 16.

Following the dinner, Mrs. R. C. Williams of Lubbock reviewed A. J. Cronin's "Keys Of The Kingdom."

Fourteen members were present and seven guests.

The next meeting will be in the home of Mrs. R. L. Smith, Jr., 700 South 8th, on November 6. Subject for study will follow the yearbook program.

## Mrs. Evans Hostess To Sunday Dinner

Mrs. L. E. Evans was hostess to a surprise birthday dinner in honor of her husband, Sunday, October 19.

The twenty-four guests present were Messrs. and Mesdames W. F. Raymond and children, Norris, Nelda and Joyce of Wilson; James Adams of Meadow; Orville Pair and children, Gladys and Mary; Earl Johnson and children, Jimmie and Jeanette; J. C. McMillan and son, Don, of Amarillo, cousins of Mrs. Evans; and J. R. Raymond of Slaton.

## Quilting Club In Wilson Home

Mrs. E. E. Wilson was hostess to the Jolly Quilting Club Tuesday, October 21.

A business meeting was held immediately after the cover-dish luncheon.

Members attending were Mesdames J. W. Scott, J. L. Collins, Jess Burton, H. H. Edmondson, R. C. Sanner, J. W. Ward, E. F. Jarman, I. C. Tucker, J. F. Ewing, W. P. Florence and the hostess.

Mrs. Nora Zimmerman of California was a guest. The next meeting will be in the home of Mrs. Florence, 855 So. 14th St., November 4.

## Mrs. Butler Honors Son On Birthday

Mrs. J. B. Butler honored her son, Billy, with a party on his seventh birthday, Tuesday afternoon, at their home at 1105 West Lynn Street.

Guests were Peggy Jean and Faye LaVerne Ely, Shirley Ball, Patsy Hickman, Cynthia Ann Lovelless, Shirley Nell Smith, Jimmie Reed, Harley Castleberry, Billy Ray and Jimmy Glascock, Donald Sikes, Gordon Stephens, Webber Williams, Dural Wilson, Tommy Swanner, Linda Lee Frazier, Donny Hardy, Patsy Mosley, Tracy Crawford, Weldon Edwards, Hazel Gibson, Ray Walters, Betty Jo and Barbara Lyle of Lubbock, Mrs. Glascock, Mrs. Lyle and Gloria Lively. Those sending gifts were Martha Mack, Betty June Deal, James Douglas Drewry, Athleen Reed and Darwin Duckett.

## B. R. T. Banquet At Hilton Hotel

The Banquet held at the Hilton Hotel in Lubbock, October 16, was an outstanding event for the Brotherhood of Railroad Trainmen Lodge 892. Brother Harmon Thompson, chairman of the arrangement committee, made possible this affair, held in honor of Brotherhood Trainmen and Ladies' Auxiliary, with visiting guests from San Angelo and Clovis, New Mexico.

The dinner was served at 7:30 p. m., with 80 persons present. Honor guests present were, Legislature Representative Hop Halsey, and Mrs. Halsey; Senator Marshall Formby; Fireman, Clarence Heaton, and Mrs. Heaton; Engineer L. W. Smith, and Mrs. Smith; Railway Clerk, Homer McDonald, and Mrs. McDonald; and Medical Examiner, Dr. W. E. Payne, and Mrs. Payne. Each of the guests of honor made a short talk.

John M. Hannah, Past President of Lodge 892, was the toastmaster of the evening. After 9:00 p. m., the banquet guests entered the ballroom, where an orchestra rendered music for dancing.

## Woodrow Wilson P. T. A. Meets

The Woodrow Wilson Parent Teacher Association met Tuesday October 14, at 3:00, with Mrs. J. P. Spears presiding.

The meeting was opened with the group singing, "Star Spangled Banner", after which Superintendent M. S. Kavanaugh gave a talk on "Personality Development of the Child." Mrs. Roberts read a "Prayer for Teachers." A short business meeting followed, at which plans were made for the Hallowe'en Carnival, to be on the night of October 30. The meeting date of the P. T. A. was changed to the second Tuesday of each month.

Mr. McKinnon's room won the banner for the month.

Refreshments were served at the close of the meeting.

The next regular meeting will be the second Tuesday in November at 3:00 p. m. All parents are invited to attend.

Julian Kessel of Roswell, spent a few days the first of the week with his parents, Mr. and Mrs. Abe Kessel.

## Stewarts Surprised With House Warming

Friends of Mr. and Mrs. Carl O. Stewart and family, from Slaton and Southland surprised them Sunday afternoon with an old fashioned house warming at their new home, 2419 21st St., in Lubbock. All of the guests met in Slaton and went in a body to Lubbock.

The Stewarts were presented a coffee table and a large number of miscellaneous gifts and several bouquets of flowers.

A program was presented by the group, with Mrs. Mable Greer reading a Scripture and Mrs. T. K. Martin offering a prayer. The song, "Home Sweet Home", was rendered by the guests. Mrs. Fred Schmidt gave an original reading, "Stewarts At Home."

## Methodists' Week Of Prayer To Begin Monday

The Women's Society of Christian Service met in the home of Mrs. L. A. Herral Monday, October 20, at 3:00 p. m.

Mrs. S. H. Adams presided, with Mrs. Roy G. Loveless giving the devotional. Mrs. Adams and Mrs. Elbert Loveless gave the chapter of the study.

Refreshments were served to the group by the hostess.

Week Of Prayer.

Beginning October 27-31, the Methodists will have a week of prayer which will be of value to all members of the church. Members of all denominations are invited to these services. All meetings will be at the church and will follow this schedule: Monday afternoon: 3:00 p. m., Tuesday morning: 9:00-11:00 a. m.; Wednesday morning: 9:00-11:00 a. m.; Thursday afternoon, 3:00 p. m., and Friday morning, 9:00-11:00 a. m.

Now is the time when prayer is needed in the lives of the people. All persons are urged to attend this week of prayer.

**CIVIC AND CULTURE CLUB**

The Senior Civic and Culture Club will meet Saturday, October 25th in the home of Mrs. W. E. Smart, 520 West Garza, for a study of "Literature" with Mrs. J. A. Elliott as leader.

**JOBS FOR GRADUATES.**

Many unfilled positions every month virtually assure immediate employment opportunities on graduation. Urgent demand for graduates both in business and government offices at handsome starting salaries. Phone, call or write today for Special Offer, before rates advance. Draughon's Business College, Lubbock, Texas. 3tp10

## LEGION AUXILIARY TONIGHT.

The American Legion Auxiliary, which was to meet with Mrs. Laura Rhodes will be at the Legion Hall instead, due to the illness of several persons. The meeting will be tonight at 7:30 p. m.

According to government estimate, there were 17 percent more cattle on feed for market in 1941 than in 1940.

cornbelt states on August 1 than one year ago.

Have your prescriptions filled at TEAGUE DRUG STORE by a Registered Pharmacist

## HEAR YOUR FAVORITE GAME OF FOOTBALL



over a clear toned 1942

**ZENITH PORTABLE RADIO**  
The Nation's Favorite at **19.50**

See the New 1942 Models at

**LAYNE PLUMBING & ELECTRIC**

## Quality Foods Economy Prices

AT YOUR TEXAS GROCERY

**COFFEE** FOLGER'S Vacuum Packed LB. **33c**

**SPRY SHORTENING** 3 lb can **61c**

**CATSUP**  
14 oz. bottle **10c**

**CRACKERS**  
BROWN'S SUN-RAY  
2 lb. box **15c**

**JELLO**  
Any flavor **5c**

**POST BRAN or GRAPE-NUTS FLAKES** Reg Size 3 FOR **25c**

**Highest Quality MEATS**

WILSON'S CERTIFIED **BACON LB. 31c**

**BEEF ROAST** Chuck lb. **21c**  
**PORK CHOPS** lb. **25c**  
**BOLOGNA** Sliced lb. **12½c**  
**DRY SALT MEAT** No. 1 qual. lb. **15c**  
**BUTTER** Armour's Solids **34c**

**CRACKERS**  
GRAHAM  
lb. box **15c**

**TAMALES**  
RATLIFF'S NO. 1½ CAN  
2 For **25c**

**CORN**  
MAYFIELD CREAM STYLE  
2 cans **15c**

**OXYDOL** 3 LB. CAN **23c**

**Toilet Tissue** Large Box **19c**

**TEXAS**

Phone 7

**Grocery**

We Deliver



## GAS HEAT

**gives Health and Comfort!**

• There's no place like Home, so why not enjoy it? You will enjoy the health and comfort of Natural Gas Heat.

• Automatically controlled Gas Heating Appliances provide warm air circulated into every corner of the house, making your home more healthful and comfortable.

**WEST TEXAS GAS COMPANY**

## Mutual Insurance

**Fire-Casualty-Auto**  
NON-ASSESSABLE  
Present Savings 25% to 45%  
**LEWIS DOYLE**  
Over Penney's Dial 5332  
Lubbock

## SLATON SURPRISES OLTON, 22-13, IN BIGGEST UPSET OF SEASON

Coach "Stumpy" Hamilton's Slaton Tiger Eleven romped on the Olton Mustangs to the tune of 22 to 13 last Friday night in their third successive conference victory. The Tigers are the second ranking team in the north zone of the 5-A conference district. Levelland is first and tied with Slaton on percentage. This, the Tigers' biggest upset of the season, was a real football battle, with Slaton due to be the underdogs.

In the first play of the game, Olton's Richards threw a 35 yard pass to Scheier, who went over for the touchdown. They failed to convert for the extra point. In the second quarter, Richards scored standing up and then kicked the extra point. Willis Hedges was removed from the game early in the first quarter, due to injuries. In the first quarter, on a ten yard pass from Cooper to Miller, Slaton scored. Collier failed on the kick for extra point, when the ball hit the goal post and bounced back. In the third quarter, Slaton pushed Olton back for a touch-back. In the fourth quarter Miller scored on a long pass from Collier, who bucked the line for the extra point. Again in the fourth quarter, Waldrep scored on a pass from Collier, who again plunged for the extra point.

The Tigers beat the Mustangs in every way conceivable. Slaton had 14 first downs to her opponents' nine. The Tigers had five penetrations, while the Mustangs had only one. Slaton had 35 yards in penalties, while the Olton team had ten. Olton completed two passes out of seven, while Slaton completed four out of eight, with none intercepted.

Every man on the Tiger team was an outstanding player. This was by far the most thrilling exhibition witnessed by the Slaton fans this year.

### Texas Tech Has

(Continued From Page 1)

talk, or indistinct speech due to conditions of the teeth and shape of the jaws," Miss Annah Jo Pendleton, acting head professor, said. There were a number of stutters and stammerers.

Other cases included two persons who spoke indistinctly due to some form of paralysis, one speechless person, and several who did not speak clearly because of poor breathing. A few cases were affected by varying degrees of deafness.

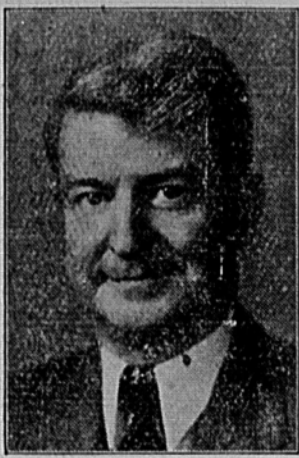
The clinic, which was established at Tech in 1934, serves as a laboratory for advanced speech students and gives assistance to those with speech defects living within commuting distance of the college. Ages of patients vary from six to sixty-five years. Success of treatment depends on the seriousness of the cause and regularity of patients attendance.

Conducting the clinic are Miss Pendleton, Dr. M. L. Curry and John N. Watson of the speech faculty. Hours are 1 to 5 o'clock each Thursday afternoon in Room 205, Administration building.

### W. T. C. C. To Meet In Midland Soon

MIDLAND, OCT.—All out, West Texas!

So titled has been the evening banquet on Tuesday, November 4,



GEORGE H. MINCHIN

The appointment of George H. Minchin as acting general manager of the Santa Fe Western Lines, with headquarters in Amarillo, to fill the vacancy recently created when General Manager John A. Gillies entered military service as Colonel, was announced today by W. K. Etter, vice president in charge of operations of the Santa Fe System.

Minchin is recognized as one of the foremost operating officials in the Southwest and has nearly 40 years with the Santa Fe during which time he rose from station clerk to his present important post.

He has been assistant general manager of the Southern District, Western Lines, since Aug. 1, 1939.

After graduating from the Madoc Teachers College he entered the teaching field but gave up the three "r's" for a fourth, "rail-roading", soon after moving to Denver, Colo. His first job was Santa Fe station clerk at La Junta, in 1902. He then went to Topeka and subsequently became chief clerk to the general manager there. In 1910 he was made transportation inspector of the Illinois division and in 1917 trainmaster. Three years later he became assistant superintendent of that division and in 1921 transferred to the Missouri division. He was made superintendent in 1925.

As acting general manager his Western Lines territorial sphere, largest of the Santa Fe grand divisions, will include areas in Kansas, Oklahoma, Texas, New Mexico and Colorado.

Closing the West Texas chamber of commerce 24th general convention. The theme of West Texas' part and place in national defense will get its final sounding at the dinner gathering expected to overflow the Crystal ballroom of Midland's Scharbauer hotel and to fill the adjoining messanine lounge. Loud speakers will be set up to carry the program to every diner.

Toastmaster at this concluding gathering of Westex hosts will be Mark McGee, lawyer of Fort Worth, and member of the board of Texas Technological college trustees. President of that West Texas institution, Dr. Clifford B. Jones, will be the banquet orator. Jones is a former president of the West Texas chamber of commerce, and the program will honor all other living past presidents. They will sit at the speaker's table and be presented by J. Thos. Davis of Stephenville, now heading the regional chamber.

## Personals

Mr. and Mrs. Harry Argoritz of Borger were weekend guests in the home of Mr. and Mrs. W. E. Edwards.

Mr. and Mrs. G. B. Galliger of

A report on the cotton spinning industry for June shows 104,662,016 active spindle hours in the state for the months. The average hours per spindle in Texas was 431—slightly above the national average of 408 hours per spindle.

Since bacterial canker may be spread in nursery stock, young plum, peach, nectarine and apricot trees purchased for planting should be carefully inspected.

The seasonal decline in milk production between July and August was about 10 percent, the smallest percentage decline ever reported at that season, says the Agricultural Marketing Service.

Houston were recent guests of Mr. and Mrs. Harold Stubbs.

Benjamin Kessel, nephew of Abe Kessel, who is attending Texas Tech, spent the weekend with Mr. and Mrs. Kessel.

Mrs. Faye Rector of Galveston, daughter of Mrs. W. A. Tucker, was a recent guest in the home of her mother.

Richard Ragsdale, sophomore at Texas Tech, spent the weekend with his parents, Mr. and Mrs. R. W. Ragsdale.

W. H. Vermillion, of Plainview, visited here last weekend.

Mr. and Mrs. E. O. Todd and son of Lamesa were guests in the home of Mrs. Todd's parents, Mr. and Mrs. G. T. Hammett, Sunday.

Little Miss Sally Cooper of San Angelo, daughter of Mr. and Mrs. Williams Cooper, who has been visiting in the homes of her grandparents, Mr. and Mrs. L. T. Garland and Mr. and Mrs. B. H. Cooper, returned home Saturday.

Misses Corinne Cates and Garnetta Bailey spent Saturday night and Sunday with friends in Lubbock.

Mrs. Arnold Johnson, Misses Helene Melton and Charlene Fish-e and Mr. Paul Melton spent Sunday in Abilene.

Mr. and Mrs. F. F. Feese and daughters of Lubbock were Sunday guests in the home of Mrs. J. D. Saunders.

Mrs. L. A. Harral and Mrs. Sug Robertson spent Tuesday in Anton.

Mrs. K. S. Scott and her mother,

Mrs. D. J. Neill visited in Amarillo over the week end.

Mrs. Bill McDavid, of Waco, the former Katrina Brewer, and son, Terry, are visiting in the home of Mrs. McDavid's parents, Mr. and Mrs. J. H. Brewer. Mr. and Mrs. Brewer visited in the McDavid home over the week end and their daughter returned with them.

Guests in the home of Mr. and Mrs. L. B. Wootton over the week end were Mrs. Wootton's sisters,

Mrs. J. L. York of Fort Worth and Miss Cora Seely of Albuquerque, New Mexico.

Mrs. H. G. Stokes and son, Gerald, spent the week end with Mrs. Stokes's parents, Mr. and Mrs. J. W. McDonald, in Lamesa.

Mr. and Mrs. W. B. Hestand have as a guest this week, Mrs. Hestand's sister, Mrs. S. H. Montgomery, of Whitewright.

Mrs. Ed Meyers and Mrs. C. E. Ballard visited in Dallas last week with Mrs. Pete Thompson.

Mr. and Mrs. G. H. Orr left Thursday for a visit to Hillsboro and other places in Hill county.

### CLINIC REPORT.

#### TONSILLECTOMY:

Alton Bailey, son of Mr. and Mrs. L. G. Bailey of the Cooper community.

#### BIRTH:

A daughter, to Mr. and Mrs. R. S. Lewis. Mr. Lewis is an employee of the Kessel Department Store.

## 35 Percent Loans

(Continued From Page 1)

The execution of loan papers will be under the supervision of local county AAA committees with such agencies as banks, warehouses and county AAA offices being designated by AAA Committees to assist producers in preparing and executing loan papers.

The notes, which will mature July 31, 1942, bear interest at 3 percent per annum, and are callable on demand, Mr. Lilley said. Loans will be available until May 1, 1942, and will be made only on cotton represented by warehouse receipts issued by warehouses approved by the Commodity Credit Corporation.

SLATON LODGE No. 1094 A.F. & A.M. Stated Communication on 2nd and 4th Thursday night in each month. Visitors welcome. Earl Johnson W.M., R. M. Shepard, Sec.

# FOOD

## VALUES

### MILK

Red and White  
3 large or 6 small cans

# Crisco

3 lb. can

## 59c

---

|         |                      |       |        |
|---------|----------------------|-------|--------|
| LEMONS  | California           | doz   | 15c    |
| LETTUCE | large crisp heads    | each  | 3 1/2c |
| SPUDS   | 10 lbs Idaho Russets |       | 17c    |
| APPLES  | Delicious Large Size | dozen | 15c    |

JELLO PUDDING assorted flavors 3 pkgs. **11c**

COCOANUT Bakers Premium lb. box **25c**

SUNSPUN Salad Dressing pts. **23c** qts. **32c**

CATSUP 14 oz. bottle **10c**

CABBAGE Mountain grown firm head **2c**

COCOA Hershey's lb. can **15c**

GRAPES Tokay lb. 7 1/2c

CELERY large bunches Utah bunch **12c**

CARROTS large bunches 2 for **5c**

COFFEE CHASE & SANBORN in vacuum seal can—lb **28c**

YAMS Maryland Sw. or E. Tex. (bu. 65c) lb. **1 1/2c**

SCOT TISSUE 100 sheet roll 2 for **15c**

CORN FLAKES Red & White pkg **7 1/2c**

SUGAR Brown or P'w'd lb. pkgs 2 for **15c**

---

### GUM

all flavors 4 Pkgs. **11c**

PORK & BEANS lb. can **5c**

MINCE MEAT Red & White 6 lbs ..... **35c**

9 oz. pkge. 3 for **25c**

MEAL 24 lbs ..... **97c**

10 lb. bag **25c**

48 lbs ..... **\$1.79**

### FLOUR

HAMS Wilson Cert. 1/2 or whole lb. **26c**

BACON Morrell Palace 1 lb layers nice and lean—lb **25c**

CHICKENS Bakers nice and young LB. **29c**

O L E O Gem Brand **12 1/2c**

DRY SALT BACON No. 1 lb. **13 1/2c**

BUTTER Br'kfield rolls **34c**; qtr.'s **35c**

---

### CANDY

all 5c bars 3 for **10c**

# MEATS

# BERKLEY & HADDOCK

## GROCERY MARKET

RED & WHITE FRESH CHANNEL CAT FISH PHONE 197  
2 SHIPMENTS EACH WEEK

# phone!

## 20

For

## Office Supplies

## of all kinds