

Plant to Locate in Slaton

With Slaton Industrial & Development Foundation just recently activated, the community's search for new industry has already paid off, it was announced this week.

Slaton will be the site of a new iron foundry plant which has been approved for a loan of some \$427,000 by the Slaton Foundation.

The new industry is Modern Castings Corp., under the management of M. L. Earsley, chief stockholder from Lubbock. The plant will be located on about 5.4 acres of land just north of Triangel Mfg. Co. and on the north side of Santa Fe rail lines.

Bill H. Smith, Foundation board chairman, announced the approval of the plant this week. The local board had received notification Friday that the Small Business Administration had approved a loan of \$350,000 to the Slaton development board. Under this type SBA loan, the local board provides 20 percent of the loan.

Both Sen. Ralph Yarborough and Rep. George Mahon notified local foundation officials of the SBA approval Friday.

Carroll McDonald, Foundation director and chairman of the Slaton Chamber of Commerce industrial committee, said the corporation will be "engaged manufacturing various castings, the primary market at the outset being cast-

ings for the irrigation pump industry."

He added that the company already has enough business committed for one year to operate one shift of employees. The company will employ 21 people immediately with a monthly payroll of about \$10,000 before overtime allowance. It is anticipated the employment and payroll will be expanded within

a year. The company will provide its own working capital. The Slaton foundation loan is for land, building and equipment.

McDonald said Slaton competed with two other West Texas communities in locating the new plant here. Nearness to Lubbock was a contributing factor, aside from the availability of the loan through the local

Foundation board. McDonald and his committee had been working with the prospect since April.

The new plant is scheduled to be in operation by mid-February if plans go as expected. It is reported that very little smoke is discharged into the air from this type of foundry.

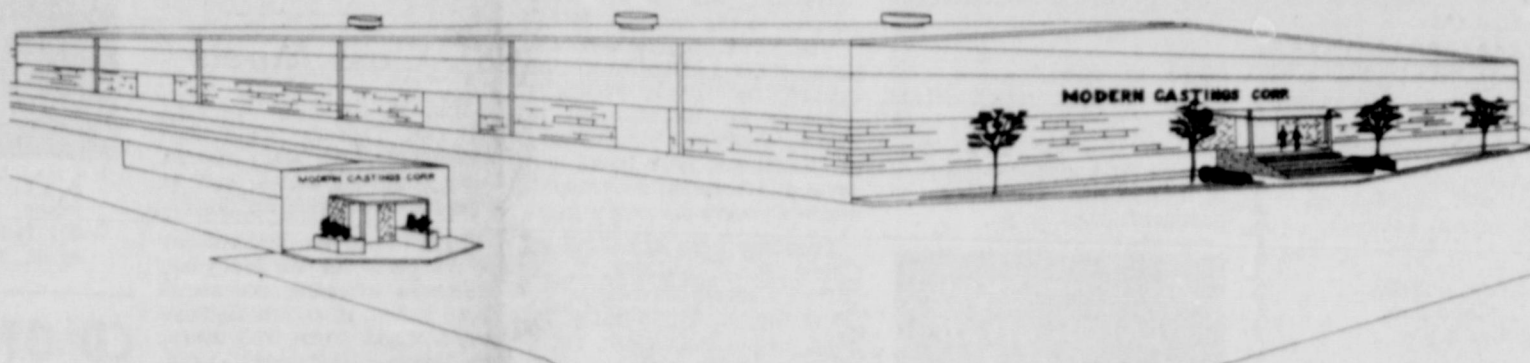
Although the Chamber has been working and studying the

activation of an industrial foundation board for several years, shares in the non-profit organization were sold only in recent months.

Shares and pledges amounting to about \$60,000 were announced last month after the election of directors and officers of the first board. The foundation came as a result of community-wide participation.

Besides Smith as president, other officers of the foundation board include Clark Self Sr., vice president; and Hack Lasater, secretary-treasurer. Other directors are McDonald, Harold Tucker, David Hughes and T. J. Wallace.

Under terms of the pledges in the Foundation, investors paid 10 percent down with the balance on call if a loan was made to an industry. Letters will go out to investors asking for the first of three pledge installments on Nov. 5. Second call will come Feb. 5, 1968, and the final call on June 5, 1968.



JAMES P. CORNETTE
W.S.T.U. President

Honors Teachers

James P. Cornette, president of West Texas State University, will be guest speaker at the annual Rotarians hold their annual appreciation Banquet tonight in the auditorium.

The annual event, honoring all teachers in the public school system, begins at 7:30 p.m. about 150 to 200 Rotarians and teachers and their wives or husbands are expected.

Dr. Hughes, Rotary president, will preside over the ceremonies. VP Claude Craven is chairman, and Vaskar Browning is secretary.

Dr. Cornette's professional activities over the past years have been confined to his administration, he still retains an interest in the field of literature and teaching.

Dr. Cornette's administration at West Texas State (since 1948), enrollment has almost five times, the annual budget of the university has tripled, the major buildings have been built and expanded through additions.

Dr. Cornette is dean at Baylor University for the past two years before going to Canyon. He is a professor of English at Western Kentucky, and former teacher, coach and principal at two Kentucky high schools. He was born in Mississippi and reared in Kentucky.

Dr. Cornette earned his AB at Kentucky State University, his master's degree at the University of Virginia, and his PhD at George Washington University. He and his wife, Mary, have three sons.

Dr. Cornette is a member of the Masonic Lodge, the Baptist Church, he has many affiliations and is former president of the Texas Council of College Presidents, former president of the Association of Presidents of Universities.

Dr. Cornette is also a member of the committee of Potter-Randall Citrus, recipient of Boy Scouts of America Silver Beaver award, and recipient of "Man of the Year" for 1962 by the Dallas News and Globe-Times.

Dr. Cornette has written several books and numerous articles for magazines. Dr. Cornette in recent years has written three different series of half-hour shows.

The Slaton Slatonite

A MEMBER OF MOST FAMILIES IN THE SLATON TRADE AREA

14 Pages

VOLUME 56 NUMBER 52 LUBBOCK COUNTY SLATON, TEXAS THURSDAY, OCTOBER 5, 1967 10 CENTS

TRUSTEES AGREE TO FEDERAL SUGGESTION

Unitary Zone Plan Set For City Schools

Hospital Vote Set Saturday

Lubbock County voters will decide the fate of a hospital district in a special election Saturday, with a "for" or "against" vote needed on three proposals.

The three propositions: Creation of the hospital district, setting a tax levy at a maximum of 75 cents per \$100 of evaluation, issuance of \$4 million in bonds to pay for hospital construction.

Absentee voting ended Tuesday with a total of 118 votes cast—113 in the county clerk's office at Lubbock and 5 at the box in Slaton.

Creation of the district would serve as a preliminary move to boost Texas Tech's chances of securing a medical school. The district would also provide complete and adequate care for the medically indigent in the county.

No organized opposition has been seen to the election, and leaders of the project feel City of Lubbock citizens will approve the district. Proponents see the move as one to benefit the entire West Texas area in that it would pave the way for a major medical center in Lubbock.

It has been estimated that 40 cents will be the necessary tax levy for the district. The maximum levy allowed of 75 cents is required to be placed on the ballot, however.

Officials point out that the election imposes no commitment to build a hospital, should Tech not win approval for a teaching hospital and medical school. The district would be a separate political entity in the assessment of taxes, but directors would be appointed by county commissioners.

Polling places are the same as in the last general election. Only qualified taxpayers will be eligible to vote.

Cub Pack Gets Legion Gift

Cub Pack 128 of Slaton was recipient of a \$70 check from Slaton Legionnaires last week, the money to be used to replace supplies stolen from the Scout Hut recently.

Ray Dickie, commander of Luther Powers Post 438, presented the check on behalf of the post.

The presentation came during a regular pack meeting in the junior high cafeteria, where Cubs also received a new U.S. Flag from the VFW Auxiliary. It was presented by Francis Sargent, Charlotte Becker and Geraldine Mann.

Cubmaster R. M. McMinn presided at the meeting. He introduced Den mothers, distributed Webelos books, and announced awards. Rank of Bear was attained by Roy Belk and Dale Odum, while Wolf ranks went to Curtis Wheeler, Kendon Wheeler and Dale Odum.



BIG RED RAIDER FANS — Texas Tech made the headlines last week with a victory over Texas, and the Raiders have no better supporters than Charles, Michael and Todd—children of Mr. and Mrs. Clark Self Jr. of Slaton. Dad is a Tech ex, which might have something to do with the boys' choice. (Slatonite Photo)

Tigers Try For First League Win at Morton

Smarting from two straight losses, Slaton's Tigers travel to Morton Friday night seeking to get back on the victory trail and chalk up their first District 4-AA triumph.

Kickoff time is 8 p.m. at Morton.

The Tigers catch the Indians at peak strength and after Morton trounced Midland Carver by a 40-6 score last week. It was the first victory for Morton, rated second in the league before the season started.

The Indians were hurt by injuries in the first three games.

Coach Ernie Davis reported the Tigers came out of the Denver City battle without serious injuries. The starting lineup is expected to be the same as usual, but Davis said he might use Dale Harris more as an offensive back.

Harris mans a guard position on defense and subs for full-back Richard Washington on offense. Washington, who played an outstanding defensive game last week, was being tested as a linebacker this week. He normally plays the safety position on defense.

Davis, speaking to the Tiger Club Monday night, was very disappointed over the loss to Denver City, but he credited the team with playing a better game than the score indicated. Films of the game backed up his statement, and he pointed out that "any team in the district could probably take us if we fumble four times and give up three pass interceptions."

The Mustangs' top rusher, Biff Hatfield, had only 49 yards in 15 carries against Slaton—reflecting the short drives D.C. made for scores. By comparison, Harris led Slaton with 43 yards on 6 attempts.

But the Pointes are gone, and the Tigers have a goal of winning the rest of their games and

post Slaton High's first winning football season in nearly two decades.

Morton had the services of star running back Donnie Harvey for the first time last week, and he and Charles Joyce sparked the Indian attack. Joyce scored 14 points in the victory over Carver.

Indian Coach Fred Weaver, a former Slaton assistant, has six starters back from last season. The Indians have good size, comparing favorably with the Tigers. Tackle Dick Van- (See TIGERS, Page 6)

It is our intent to maintain the Super Chief and El

captain operating between Chicago and Los Angeles, the San Francisco Chief between Chicago and San Francisco, the Texas Chief between Chicago and Texas, and certain connecting service to San Diego. The future of these remaining fine trains will depend on continued patronage. We propose to discontinue all other service.

"It is believed this approach will give our territory and customers a passenger service (See POSTAL, Page 7)

Slaton School Board trustees mutually agreed Tuesday night that the district will be forced to yield to Federal pressure and make further changes to comply with laws on desegregation.

U. S. Office of Education officials conferred with Supt. Lee Vardy and school board members the past week, pointing to traces of a dual school system here, making suggestions on how to comply with the law, and indicating action would be taken if compliance was not met.

The three officials gave the board an Oct. 16 deadline to indicate whether or not they intended to comply.

Trustees mutually agreed

Postal Action Forces Change In S-Fe Service

All mail will soon be removed from Santa Fe Railway's passenger trains, because of recent far-reaching decisions by the United States Post Office Department, according to John S. Reed, president.

Second, third and fourth-class mail will shortly be moving in Santa Fe's fast freight service, he noted.

"With the loss of mail revenue from our passenger trains, and faced with a sharply declining trend in passenger travel, there was only one course of action left open," Reed said. "In the next few days Santa Fe will file with the appropriate regulatory agencies proposals which will restructure our passenger operations."

"It is our intent to maintain the Super Chief and El Captain operating between Chicago and Los Angeles, the San Francisco Chief between Chicago and San Francisco, the Texas Chief between Chicago and Texas, and certain connecting service to San Diego. The future of these remaining fine trains will depend on continued patronage. We propose to discontinue all other service.

"It is believed this approach will give our territory and customers a passenger service (See POSTAL, Page 7)

Tuesday night that the district will comply with the beginning of the next school term. Board members, in discussing the matter, made it clear that the action was being taken "with regret and due to Federal pressure."

From the report on the discussion with the officials, it appeared the board had three alternatives, but only one choice.

Thus, when school starts next September, Slaton will use a "unitary" plan rather than a zone plan for school buildings. Although the plan has not been filed with the U. S. Office of Education yet, trustees apparently will go with the following plan:

First, second and third graders will attend West Ward Elementary; fourth and fifth graders will attend Stephen F. Austin Elementary; sixth, seventh and eighth graders will attend Junior High, and 9th through 12th will attend Slaton High School.

This would eliminate Evans School in southeast Slaton next year.

This was the choice. The other two alternatives: put a pro rata share of Anglos in Evans, or refuse to comply. The latter move would probably result in the school district being cited and subject to Federal Court action, said Dr. Vardy.

The board was concerned about adequate facilities to designate school buildings by (See SCHCOL., Page 6)

Veterans Meet Called Here

An important meeting for all interested veterans was announced this week by Ray Dickie, American Legion Post 438 commander.

The meeting, scheduled for 7:30 p.m. on Oct. 10 in the Legion Hall, will be for the purpose of explaining and discussing the Veterans Land Fund constitutional amendment to be voted on Nov. 11.

All veterans, whether members of service organizations or not, are invited to the meeting. Dickie said wives are also invited and lunch will be served.

State Airport Grant Okayed

Slaton has received approval of an \$18,000 grant from the Texas Aeronautics Commission for airport improvements, it was revealed this week by State Sen. H. J. "Doc" Blanchard.

Blanchard announced the grant approval in a telephone call to The Slaton Slatonite Tuesday. The city had already received matching Federal funds in the amount of \$90,912 for construction of a municipal airport north of town on FM-400. Citizens of Slaton had voted an \$85,000 bond project for the airport previously.

Construction is scheduled to get underway soon on the landing strip located about two miles north of the city. An underground pipeline easement has slowed the project in recent weeks.

The City of Slaton has awarded contracts to Pioneer Pavers for the landing strip in the amount of \$85,465.50 and to Frazier & Goble Const. Co. for airport lights in the amount of \$12,366.42.

Total cost of the project is estimated at about \$210,000—including \$96,000 for the 320-acre site purchased by the city. Additional area is tabbed for industrial development sites if needed in the future.

The city recently annexed the airport site, making it a part of the city limits, including the road to and from the airport. At the same time Slaton's grant was approved, Levelland and Littlefield also received \$18,000 each for airport improvements, according to Sen. Blanchard.

COLUMN 1

By Speedy Nieman

On Division Street says the... being prompt at meetings is... no one around to appreciate it.

of the industrial development... were "overjoyed" this week... announcement that a new industry... in the city. Some communities... years after forming an industrial... before a "breakthrough" comes in... of a new plant.

work was laid locally, however... foundation board was officially... month, Slaton Chamber of Com... the guiding force behind the organ... board and the search for new

of Commerce president T. J... industrial chairman Carroll Mc... put in more volunteer hours... people will ever realize. Many... are to be congratulated for their... but I think none will deny the... performed by Wallace and McDonald.

The new industry here, however... community-wide effort and all firms... who joined the Slaton Industrial... Foundation can feel proud in... part to help the community grow

very little comment on the... district election coming up... Perhaps most citizens in Slaton... issue will be decided in the City... way.

doubt in my mind that the... major medical center at Tech... benefit to the entire area... complaining about the continual... but it's hard to draw the line... and medical project of this

Commissioners have scheduled... the next session on appointing... to act as supervisor of... departments—such as a Police... Commissioner, Street-Water Com...

had the opportunity to ask many... the proposal, but the few I've... COLUMN 1, Page 4)

Engagement Announced

Mr. and Mrs. Thomas E. Claiborne, former Slaton residents now living in Lubbock, have announced the engagement of their daughter, Kathleen Elizabeth, to Jackson Halsey Wiggins, son of Mr. and Mrs. Max Wiggins of Hagerman, N.M.

The bride-elect is a Slaton High School graduate, attended Texas Tech, and is currently employed at Margaret's of Lubbock.

Wiggins is attending Texas Tech where he is a senior agriculture engineering student.

The couple plans to marry Dec. 27 in Slaton's First Methodist Church.

HD Club Will Hold Bazaar Saturday

A Fall Bazaar will be held Saturday from 9 a.m. to 6 p.m. in the old Southwestern Public Service Building on the south side of the square. The bazaar is sponsored by the Slaton Home Demonstration Club.

A hanging resin lamp, an 11 x 14 picture frame and two fringe pillows have been made by members to be given away. Tickets may be obtained from any local club member.

The public is invited to the bazaar. All the items on sale will be hand made and free flower seeds will be given away.

Athenians Have Drivers' Quiz

The Athenian Study Club met Tuesday night in the home of Mrs. Truett Bownds for a program on "Think for Two--The Other Driver and You."

A quiz was given on the drivers' license manual, and different phases of driving were discussed. Present were Mmes. Coy Biggs, Harley Martin, Carroll McDonald, Don Mitchell, Ed Moseley, Roy Poage, Clark Self Jr., Tommy Wallace, Paul Buchanan and Bownds.

Ellis P. Schmid, past Post Commander of the 19th District and Mrs. Schmid, 19th District President, attended the American Legion and Auxiliary Fall Convention held in Austin last weekend.

RETURN FROM CALIF.
Mr. and Mrs. Jack Gilliland returned Sunday night by train from a seminar given by a lingerie and cosmetic company in California. They were in California for a week.

More men wear
SLATON STEAM LAUNDRY
shirts

Mrs. Wheeler Is Hostess For Civic Club Meet

Mrs. H. V. Wheeler was hostess when members of the Civic and Culture Club met last Wednesday evening in the Reddy Room for a coffee and the initial meeting of the new club year.

Mrs. M. L. German, president, opened the meeting with a welcome to club members, followed with a business session.

Mrs. C. L. Heaton was elected to serve as secretary replacing Mrs. C. B. Barron who is moving away.

The group voted to send a Christmas box to the State Hospital at Big Spring. Mrs. H. T. Scurlock read a poem, "The Land of Beginning Again", by Louisa Fletcher. Theme for the new year is "Today's World." Mrs. Wheeler distributed year books and gave a brief outline of each month's program.

Attending were Mmes. J. A. Elliott, R. E. Switzer, J. D. Barry, Kenneth Davies, L. B. Hagerman, R. L. Smith, E. R. Legg, Arthur Saage, R. H. Todd, H. E. Anderson, Fred Schmidt, R. C. Hall Sr., Wheeler, German, Heaton and Scurlock.

Sr. Citizens Hear Schantz On Medicare

Gerald S. Schantz, a representative from the Social Security office in Lubbock, was guest speaker when members of the Slaton Senior Citizens Club met last Friday at the club house.

Mrs. Fannie Patterson, president, had charge of the meeting and introduced the speaker.

Mr. Schantz showed slides and spoke to the group on "Medicare." A question and answer period followed.

Forty members of the organization enjoyed lunch and played games in the afternoon.

SS Class Meets

Mrs. W. V. Smith was honored last Thursday night when members of the Mary Martha Sunday School Class met at Bruce's Restaurant for dinner.

Mrs. Smith has been teacher of the class for the past year. Members attending the social were Mmes. R. O. Moore, Raymond Wood, John Thornbury, Joe Fondy, and Speedy Nieman. The class presented Mrs. Smith a gift.



A CENTURY OF BIRTHDAYS---Mrs. Mary Respondek, a resident of Edwards Home, is still having birthdays, and celebrated her 100th Saturday when members of her family gathered at the home in her honor. She was born Oct. 4, 1867 in Poland and came to the U. S. when she was 18 years old.

DR. J. DAVIS ARMISTEAD
DR. R. M. BARTON
DR. JOHN BEALMEAR

OPTOMETRISTS

SLATON OFFICE HOURS: Mon.--8 a.m. to Noon
Wed.--1:30 to 5 p.m.
Fri.--1:30 to 5 p.m.

115 S. 9th ST. SLATON VA8-3385
2132 50th ST. LUBBOCK SH7-1635

CD of A Quilt For Bazaar

The Catholic Daughters of America met Monday at St. Joseph Hall with Mrs. Louie Melcher, Grand Regent, presiding.

A quilting party and covered dish luncheon was held to complete final work on items for the forthcoming bazaar. A cedar chest which will be filled with linens has been purchased and is on display at Self Furniture.

Mrs. Melcher and Mrs. August Kitten will attend a Regional Work-Shop Institute in San Antonio this weekend. Present will be members from five states as well as state and national officers.

Members appointed to a committee to visit the sick during the month of October are Mrs. Paul Bukemper, chairman, Mrs. Alvin Bukemper, Mrs. John Denzer, Mrs. Alphonse Denzer and Mrs. Walter Denzer.

Refreshments and games followed the meeting.

Capt. Shawver Receives Medal

NORTH CHARLESTON, S.C. --Capt. Joe M. Shawver, whose wife, Fonda, is the daughter of Mr. and Mrs. Pat Patterson of Rt. 1, Slaton, has received the U. S. Air Force Commendation Medal at Charleston AFB, S. C. He is the son of Mrs. Alma Shawver of Seymour, Okla. Capt. Shawver was decorated for meritorious service as a supply staff officer at Nakhon Phanom Royal Thai AFB, Thailand. He was cited for his outstanding professional skill, knowledge and leadership.

He is now at Charleston with the Military Airlift Command which operates a global airlift system for U. S. forces employing more than 1,000 modern aircraft.

The captain received his commission in 1962 upon completion of Officer Training School at Lackland AFB, Texas.

A 1957 graduate of Seymour High School, he received his B.B.A. degree in 1962 from North Texas State University.

Mr. and Mrs. L. I. Duckett of Abernathy spent Sunday visiting here in the home of Mr. Duckett's sister, Mr. and Mrs. E. D. (Dutch) Robison. Also visiting was a cousin of Mrs. Robison, Mr. and Mrs. W. T. Melton of Lubbock, and Mr. and Mrs. Hayden Jones and Elmer Wayne of Slaton.

Mrs. Respondek Hails 100th Birthday

BY BERNARDINE GRABBER

Few persons today exceed the allotted age of four-score and ten, and it is rare indeed when one reaches the century mark.

However, Mrs. Mary Respondek, a resident of Edwards Home in Lubbock, celebrated her 100th birthday Saturday, and present to help her were four of her nine children, a number of grandchildren, great-grandchildren and great-great-grandchildren...24 in all.

Born in Kielce, Poland, Oct. 4, 1867, Mrs. Respondek came to America at the age of 18. She was married to John Respondek in Holy Cross Catholic Church at Yorktown, Tex.

The couple then moved to Oregon and Washington, returning after four years to Yorktown. In 1921, the Respondeks moved to the Slaton - Wilson area where they resided until retirement. Mrs. Respondek has been a resident in Edwards

Rest Home for the years.

Her nine children are Paul Dworaczek and his wife, Mrs. Tom Dworaczek; Mrs. Ed of Falls City; Mrs. Jekele of White Deer; Mrs. Respondek of Falls City; Mrs. Respondek of Floyd; Mrs. Respondek of San Antonio; Mrs. Respondek of Idaho. She also has 28 grandchildren and 28 great-grandchildren. Her birthday was celebrated with a decorated daughter, Mrs. S. S. and a great-granddaughter, Rebecca Verkamp.

Cotton Club Meet Oct

The second Lubbock wide meeting of the County Cotton Club Oct. 12 at 1:30 p.m. will be in the Clubhouse on 50th block east of Slide Lubbock.

The Roosevelt ladies will serve at Charles Hay, rooming at Plains Co-op Oil building, will present entitled "The Cottonseed".

ITEM: Keep from heavy items at a lifting height. The higher than your feet, the lower than your elbow.

EBLEN PHARMACY

245 W. LUBBOCK SLATON, TEXAS
VA8-4537

Anthony's

C. R. ANTHONY CO.

DOLLAR DAYS

October SALE!

Men's Cardigan Jackets

Handsome new style. Acrylic knit

Sale Price

\$9.

New high shades in a 100% Orlon® Acrylic knit. Five button front... two button adjustable cuff. Ideal 26" length jacket. Sizes S-M-L-XL.

Men's Sport or Dress Shirts

Shop Save Now 2.99 & 3.99 Quality

2 For \$5

Permanent press, no-ironing needed. Dacron® Polyester and cotton weaves. Choose white, colors, stripes or checks. Button down collar styles or perma stay collars.

Ladies and Teens

40-Denier Nylon Briefs

Ladies S-M-L-X-XX

3 PR. \$1.

SHORT SLEEVE Sweat Shirts

Comfortable Cotton Solid Or Surfer Stripe S-M-L-XL

\$1

40-Denier Nylon Hose

seamless New Shades 8 1/2 to 11

3 PR. \$1.

Boys 6 to 18 Sport Shirts

No Iron Long Sleeve

\$2

Ladies Outing Flannel Gowns

Waltz length. Sizes S-M-L-XL. Regular 1.98

Colorful comfortable cotton flannel gowns. Solid color with print top trim.

2 FOR \$3.

Men's Suits

39.95 & 45. Special Sale Groups

\$33.

Ladies Pixie Slippers

Durable rippled soles

\$1.

Bonded Knits & Bonded Woolens

45" - 60" wide Pastels and deep tones. Big Savings on every yard

2 YDS. \$5.

Knit Sleepers

Children's Sizes 0 to 4. 1.49 Quality

\$1.

2 piece interlock cotton knit sleepers in white or pastel colors. Gripper fasteners, plastic dot feet for anti slip and longer wear.

SPECIAL PRICE GIRLS' Flannel Pajamas

Size 8-14 Reg. \$2.98 Sale Price

2 For \$3

Ladies Girls' Blouses

Values to \$2.99

\$1

KNIGHTS of COLUMBUS ANNUAL BARBECUE

SUNDAY OCT. 8th--- 4 p.m. to 8 p.m.
St. Joseph's Parish Hall---Division & 21st

Adults	\$1.50
Children 12 & Under	75¢



Mrs. Scott Has Program For Study Club

The Daughters of the Pioneer Study Club met Monday in the home of Mrs. J. S. Edwards with 13 members attending. Special guests were Mrs. O. B. Ratliff and daughter, Mrs. Alameda Workman, of Lubbock, and Mrs. Bill Wampler of Slaton.

Mrs. Cecil Scott, program chairman, introduced Mrs. Ratliff who presented a program on "The Art of Self Expression." She displayed paintings, decoupage, dried materials and other forms of crafts and creative art used in the home.

Mrs. D. B. Kiser was presented as a new member.

Officers for the year are Mrs. Don Crow, president; Mrs. M. M. Schlueter, vice-president; Mrs. Weldon Meador, secretary; Mrs. J. S. Edwards, treasurer; Mrs. Howard Hoffman, parliamentarian; Mrs. Jack Nowlin, reporter; and Mrs. Cecil Scott, historian.

Toiletries and other gift items were collected which will be sent to the State Hospital at Big Spring.

Vicki Nowlin Pledges Alpha Phi Fraternity

Miss Vicki Nowlin daughter of Mr. and Mrs. Jack Nowlin, Slaton has pledged Alpha Phi Fraternity for women at Texas Tech Alpha Phi, one of the oldest social sororities for women, was founded in 1872 at Syracuse University, Syracuse, N. Y. It has installed more than 90 chapters and initiated more than 40,000 members.

Cardiac aid is the Alpha Phi philanthropy, and the Alpha Phi Foundation its newest project. The Foundation's primary purpose is to provide financial help for students' higher education and to institutions of higher education.

Miss Nowlin, a freshman, was graduated from Slaton High.

Donald Angerer To Newport, R. I.

Communications Yeoman Third Class Donald K. Angerer, USNR, son of Mr. and Mrs. Aanton J. Angerer of 310 W. Lynn, and husband of the former Miss Brenda J. Holly of Post, has returned to Newport, R. I. after a four-month deployment to Northern Europe and the Mediterranean aboard the anti-submarine warfare support aircraft carrier USS Essex.

During the deployment the Essex participated in NATO operations with Norwegian, Danish and Dutch navies. The operation consisted of detecting, localizing, tracking and simulated kills of enemy submarines.

The Essex was also on a good will mission and hosted more than 35,000 visitors from Hamburg, Germany.



FIFTH GENERATION IN SPOTLIGHT---Little Stacy DeAnn, born Sept. 25 to Mr. and Mrs. Bobby Brake, is really in the spotlight. She doesn't know it yet, but she has four generations of parents and grandparents on both sides of her family, both being on the grandmothers' sides of the family. In the picture with Stacy DeAnn is her mother and father, seated, and her grandmothers, Mrs. Ed Stricklin and Mrs. Robert Brake, standing. Other grandparents include the grandfathers Mr. Stricklin and Mr. Brake (of course), Mrs. Stricklin's parents, Mr. and Mrs. L. D. McCullough of Slaton; Mrs. McCullough's mother, Mrs. Nora Carnes, 82, of Slaton; and Mr. McCullough's mother, Mrs. Emma McCullough, 88, of Slaton; Mrs. Brake's parents, Mr. and Mrs. Jim Dorsett of Leonard; Mrs. Dorsett's mother, Mrs. Nancy Brandon, 92, of Leonard; and mother of Mr. Dorsett, Mrs. Rebecca Ann Dorsett, 87, of Leonard. (SLATONITE PHOTO)

WINNERS---Eight members of the Slaton Home Demonstration Club entered their items in the Panhandle South Plains Fair and brought a total of 28 ribbons. Pictured with their winning entries are Mmes. E. E. Bishop, Joe H. Baker, Wilfred Kitten, B. B. Green, Milt Ardrey, and J. M. Breland, Also winning ribbons but not pictured is Mrs. Earl Stahl. (SLATONITE PHOTO)

Teague and her brother-in-law, Mr. Carr, left from Slaton by train for a week. They visited with relatives in Port Neches in Port Neches, La. Eugene Green, former Slaton, and Albert Camp, Slaton.

BIRTHS



10-1-67-- Mr. and Mrs. Oliver A. McDougal, Box 623, Post, a girl, Bertha Ann, 9 lbs., 1 oz.

10-2-67-- Mr. and Mrs. William D. Jaynes, 207 So. Ave I, Post, a girl, Kimberley, 8 lbs., 2 1/2 oz.

10-2-67-- Mr. and Mrs. John Baigen Jr., 945 So. 2nd St., Slaton, a girl, Rosa Linda, 5 lbs., 10 1/2 oz.

HD Club Wins 28 Ribbons

Eight members of the Slaton Home Demonstration Club entered individual items in the Panhandle South Plains Fair last week and came home with 28 ribbons.

Mrs. Milt Ardrey won 13 ribbons. She won first in Christmas candies, cherry jelly, pickled okra and antique cup; second in tomatoes, seed and bean picture, blouse, throw pillow and grape jelly and third in boys shirt, peach jelly, plum jelly, and pickled beets.

Mrs. Joe Baker won five ribbons with first in cupcases and shirt and third in fudge, baby dress and Christmas candles.

Other winners were Mrs. J. M. Breland, first in resin lamp; Mrs. B. B. Green, first in knitted shell and pears and third in pear preserves; Mrs. Wilfred Kitten, second in embroidered pillowcases.

Others were Mrs. Alton Meeks, second in embroidered scarf; Mrs. E. E. Bishop, second in fabric picture and crocheted pot holder; and Mrs. Earl Stahl, second in pillowcases and third in antique dish.

ITEM: A shoe bag with lots of pockets makes a good toy bag, carry-all and litter bag for hooking over the seat of a car.

BERRELLA'S NORMAN Public Studio

LEVI Headquarters
BLUE DENIM-CORDUROY
STA-PRESSED
All Colors
McWILLIAMS
DRY GOODS
NORTH SIDE OF SQUARE
N. GARZA VA8-3907

Tigers of the Week



RICHARD WASHINGTON
...player of the week

DALE HARRIS
...lineman of the week

Citizens State Bank proudly salutes the "Tigers of the Week" --players named by the coaching staff for outstanding performances the past week.

Richard Washington, 185-pound junior halfback, was selected as back of the week. Coaches praised his great work on defense in the Denver City game.

Dale Harris, 195-pound senior, was named lineman of the week, but part of the recognition came from his performance as offensive fullback. He is a guard on defense.



TRADE MART WORKERS---These four members of the American Legion Auxiliary along with others will have everything ready for the annual Trade Mart Friday and Saturday which will be held in the Legion Hall and the old Southwestern Public Service building. Shown with just a sample of some of the clothes and other items that will be on sale are Mrs. Earl F. Wilson, chairman, Mmes. H. E. Woods, Ellis P. Schmid and F. C. Boyd. (SLATONITE PHOTO)

Girls Win At NBTA Contest

Five Slaton girls were entered in competition at the 14th annual NBTA Twirling Festival held Saturday at the Panhandle-South Plains Fair Grounds.

Contestants were entered in two divisions . . . national open competition and Lubbock City-County contest.

Vicki Little, 6, daughter of Mr. and Mrs. Joe D. Little, placed 2nd in intermediate solo, 0-6; 4th in advanced basic, 0-6; and 3rd in military, 0-6. In LC-C solo, she placed second in 0-6 and first in advanced basic, 0-6.

Leisa Rea, 6, daughter of Mrs. Nan Rea, won first in advanced solo, 0-6, open; 2nd in two-baton, 0-10; 3rd in T-strut, 0-6; 3rd in advanced basic strutting, 0-6; and 4th in military, 0-6. In LC-C competition, she placed 2nd in advanced solo and first in advanced basic. She is also a member of the Junior Matorador Corps which won a first place trophy in corps twirling routine.

Angela Wilkins, 10, daughter of Mr. and Mrs. Ray Wilkins, placed 2nd in open flag baton, LC-C solo, 7-10; T-strut, LC-C, 7-10; and 3rd in open hoop baton, 0-20.

Carla Wilkins, 5, Angela's sister, placed in six events, winning 2nd in LC-C basic strutting and beginner's solo; 3rd in LC-C T-strut; 4th in open T-strut; 5th in open basic strut; and 5th in open beginner's solo.

Robin Kerr, 8, daughter of Mr. and Mrs. M. W. Kerr, won first in open military strutting, 7-10; 3rd in open advanced basic strutting; 4th in two-baton in 7-10; 2nd in open advanced solo, 7-8; and 2nd in open advanced strutting routine, 7-8. In LC-C, 7-10, she placed 2nd in basic strutting; 2nd in advanced strutting routine; and 3rd in advanced solo.

HAPPY BIRTHDAY

- | | |
|--|---|
| <p>OCTOBER 5
Cindy Cade
Eva Johnson
Tommy Weaver
Ruth Mimms</p> <p>OCTOBER 6
Mrs. O. M. Baxley
Mrs. Bill Mosley
Mrs. J. F. Procter
Daymon Fikes
Raymon Fikes
Nicky Hopkins
Carla Crumley
Mrs. Milton Paul
Stella Shelton
Cleve Woolley
Mike Ragland</p> <p>OCTOBER 7
Kay Stell
Mack Allen Mosely
Patricia Rowan
Cleve Woolley
Norris Behrend
Davis Behrend</p> <p>OCTOBER 8
Ann Ayers
Mrs. William Jones
Mrs. Danny Edwards
Patsy Gamble
Gib Ragland
Velma Ratliff</p> | <p>OCTOBER 9
Mrs. Cecil Self
Mrs. Virgil Jones
Tommy Davis (W. T. Jr.)
Billy Meurer
Charlie Hunter</p> <p>OCTOBER 10
Lee Vardy
Dr. Joe Belote, Jr.
Mrs. George Gamble
Tommy Davis (W. T. Jr.)
David Hammett
Mrs. Pearl Bruedigam
Renee Michelle Lindsey</p> <p>OCTOBER 11
Mrs. Chris Kirksey
Stephen Ball
Mrs. Max Arrants
Tyra Dewan Gilliland
John Thornton
Steve Thornton
Agnes Schoppa
Carvin Norris
Carroll McDonald</p> |
|--|---|

New Beauty Salon Opens

Slaton has another new business, Alma's Beauty Salon is now open and taking appointments.

Owner of the salon is Mrs. Dan Winn Jr. The salon is located at her home at 1125 W. Crosby. Mrs. Winn recently graduated from Jessie Lee's Hair Design Institute in Lubbock.

1/2 PRICE
on all summer
SLACKS
& BLOUSES
shop with
DOLLY & MARY
at the
GIFT GALLERY

Some People Like The
CARDINALS
And Some Like The
RED SOX

No matter what you like, we probably have something that will make a hit with you. One thing for sure, you can not error if you play ball with us.

You're home safe with a series for any room in your house. Let us make our pitch on the merits of our merchandise. We won't throw you a curve. You won't be caught off base and be put out about your furniture if we furnish your home, and it doesn't require a big sacrifice. So go to bat today with your furniture problems and let us umpire.

the BANK
with a HEART

CHECKING ACCOUNTS
SAVINGS ACCOUNTS
NIGHT DEPOSITORY
SAFE DEPOSIT BOXES

Now Open
For
Appointments

Alma's Beauty Salon
ALMA WINN
owner and operator
Graduate of Jessie Lee's

Call VA8-4337 for appointment
1125 W. Crosby

Bland's Furniture

**Chili Supper
Set by Club**

The Tiger Club has scheduled a "Chili Supper" prior to the Post football game here Oct. 13, it was announced this week by club president Pete Williams.

The supper will be held from 5 to 7 p.m. preceding the Homecoming game with Post. It will be served in the junior high cafeteria with tickets selling for 75 cents each.

Williams said good, homemade chili will be served and no canned chili on the menu. Proceeds go toward the club's work in boosting the school athletic programs.

The club sold some \$700 worth of light bulbs in a door-to-door sale last Monday night.

ARTICLE ON CHAMBER PROJECT

Old Newspaper Proves Interesting to Davis

M. G. Davis found some old newspapers recently, and they turned out to be especially interesting to the Slaton Lumber manager.

People turn up with old papers frequently, but an article in this one made the event more noteworthy.

Davis, who is chairman of the beautification committee of Slaton Chamber of Commerce, looked through the pages of "The Fort Worth Star Telegram" of August, 1927, and

found a story concerning a "pretty Lawn Contest" being conducted in Slaton.

He thought it quite a coincidence that almost 40 years to the day that the Chamber sponsored its first beautification project, the chairman of the present committee should happen to "run across" the article.

The old Star Telegram issues were found at the Ralph Hayes farm home between Slaton and Posey--a house known by many oldtimers as the Klatenhoff home place, Slaton Lumber employees were doing a remodeling job and almost discarded the papers before Davis spotted them.

The issue also reported top agricultural prospects in Dawson County around Lamesa (pop. 5,243), rapid development of Floyd County schools, growth around Lockney and construction at South Plains -- where it was reported that J. S. Edwards of Slaton proposed to build a two-story hotel.

The article on Slaton's beautification work stated, in part: "The Pretty Lawn Contest which the Chamber of Commerce is sponsoring will close Monday. At that time, out-of-town judges will make a tour of inspection through the city to determine four winners of cash prizes offered by the organization."

"The work which will confront the judges will probably be very difficult. Thirty-seven homes have been entered in the contest, and close competition is expected, according to J. T. Overby, chairman of the committee which arranged for the details for the race for the four prizes."

"Having an unlimited supply of city water at their disposal, and with special irrigation rates offered to home beautifiers by the city commission, the contestants have been able to keep their flowers, hedges, grass and trees abundantly supplied with water throughout the Spring and Summer, though for the past two months ample rain has fallen and little irrigation has been necessary....."

"It has been estimated that, as a direct or indirect result of the prize offerings this season, the Chamber of Commerce has been responsible for approximately 2,000 shade trees having been put out this year on home premises in Slaton. An inestimable quantity of flowers of all kinds have been planted, many hedges have been started and numerous lawns have been sodded."

"Serving on the committee of which Overby is chairman are C. L. Sone and J. L. Bradley. They are one of the 12 standing committees of the Chamber."

Front page story in the Aug. 18, 1927 edition, reported that the monoplane Woolaroc, piloted by movie stunt pilot Arthur Goebel, won first prize of \$25,000 in an air race from Oakland, Calif., to Hawaii. Time was about 28 hours, 16 minutes.

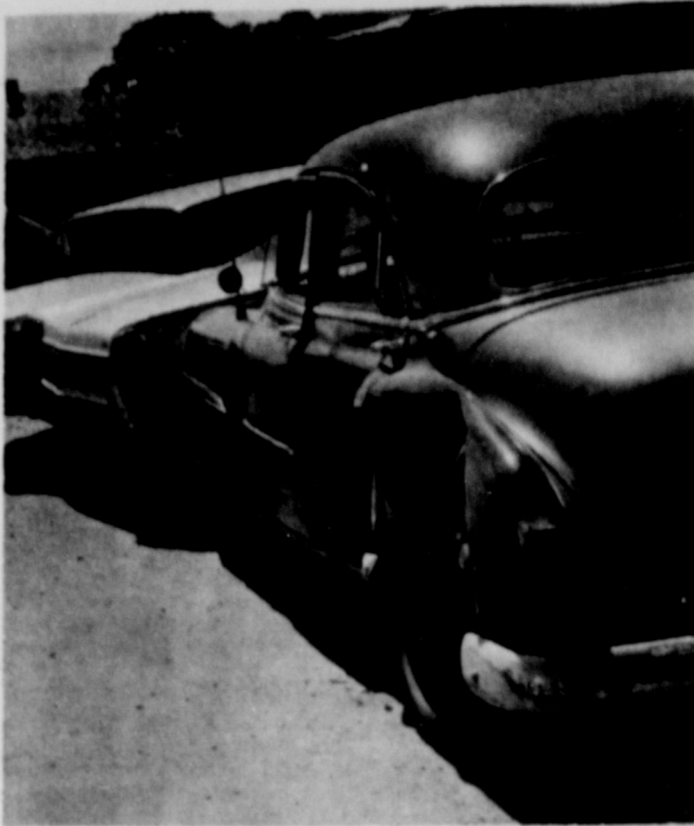
The sports page reported Jack Dempsey in serious training for a comeback battle against champion Gene Tunney. Babe Ruth had hit 38 homers in 111 games.

Sanger Bros. offered men's summer suits for \$9.95. Strippling's offered dresses for \$8.85, wall paper for one room for \$1.69.

In his column "Today", Arthur Brisbane reported: "A French writer, back from Japan, says there is no doubt that the Japanese are preparing for a great war....in America we feel sure the Japanese, our friends, as we are their friends, and intelligent as well as friendly, would never dream of attacking the United States."

"At the same time we might be dragged into a war between Europe and Japan, and we ought to be ready for anything, with plenty of flying ships and submarines of our own and nobody to tell us what size we may make them or how many."

ITEM: Croton plants make a lavish display of color all by themselves, and can also be combined in a window box or patio planter with other foliage or flowers. These highly prized tropical plants keep best in partial shade and can be slipped into planters, clay pots and all.



SCENE OF ACCIDENT--O. C. Slay was charged with running a stop sign at Lubbock and 4th Streets Saturday when a car driven by Robert Henry Simonton hit Slay's car, and while the car was out of control damaged two parked cars as shown in the picture above. (SLATONITE PHOTO)

Police Check Armed Robber

Slaton Police are investigating an armed robbery that occurred at Wylie Shamrock Service Station on US 84 By-Pass last Thursday night about 8:30.

Edgar Herron, the night attendant, told police that two Negro men entered the station, asked for change and when he opened the cash drawer, one of the men held a revolver to his back and put him in the rest room.

Sometime Thursday night, Guest Drug Store and Pauline's Flowers were broken into. It was reported that about \$600 in merchandise was taken from Guest's and nothing was missing from Pauline's. An attempted break-in was also reported from Claude Cravens at his law office.

Lubbock and 4th Streets was the scene of a four-car accident Saturday afternoon. A car driven by Robert Henry Simonton hit the left side of a car driven by O. C. Slay, when Slay failed to stop at a stop sign.

Slay's car went out of control and hit two parked cars. Slay was taken to the hospital, spent the night there and was released Saturday. He was fined \$100 for traffic violations and a \$500 bond charge.

Gene Lewis Ends Boy Scout Visit

Mrs. L. W. Lewis Monday from a two-day visit to relatives in Lubbock. She also attended exercises for her son who completed his training at San Diego.

Before returning to Slaton, Lewis visited a brother-in-law in Carlsbad, attended the Los Angeles Fair at Pomona, Fort Cemetery and Hunter's cemetery.

The Slaton Slatonite

O. G. (Speedy) NIEMAN, Publisher

Entered as Second Class Matter at the Post Office at Slaton, Texas, under the act of March 3, 1897.

Published at 163 S. 9th St., Slaton, 79364

SLATON TIMES PURCHASED JANUARY 20, 1927.

Notice to the Public: Any erroneous reflection upon the reputation or standing of any individual, firm, or corporation that may appear in the columns of the Slatonite will gladly be corrected when called to our attention.

SUBSCRIPTIONS: Payable in advance. LUBBOCK, LYNN, GARZA, and CROSBY counties -- \$3 per year.

Outside these counties -- \$5 per year.

Member of West Texas Press Assn., Texas Press Assn.



On our 2nd Anniversary we would like to THANK all our patrons for your business the past two years.

---WE OFFER THESE SERVICES---

Florafax & FTA Wire Service Flowers for Funerals, Hospital, Parties or Weddings.

Citywide delivery.

Bo-Kay Flower Shoppe

Junction 84 & 41 VAS-4198

Flower Shoppe Celebrates Anniversary

Bo-Kay Flower Shoppe will celebrate its second anniversary tomorrow, Oct. 6. The new business was built onto the home of Mrs. Jewel Jones located at Junction 84 and 41 and a formal open house was held in early December 1965.

Mrs. Jones and Mrs. Alpha Binion Lee are co-owners of the shop. Mrs. Jones has nine years experience in the flower business and Mrs. Lee has four years experience.

Boy Scouts Hold Family Night

Boy Scout Troop 125 held Family Night Monday at 7:30 p.m. in Fellowship Hall of the First Methodist Church. Alex Webb is scoutmaster for the troop.

J. E. Eckert Jr. conducted a Tenderfoot Investiture. Randy Marshall and Craig Mann received troop neckerchiefs and tender foot rank.

Receiving the advancement in rank to first class scouts were Gordon Becker, Jay Burks, and Bruce Jones. Marvin McCain conducted the service.

J. E. Eckert Jr. presented a plaque in appreciation for his work as scoutmaster and his son, Dinks, received his second gold palm.

Boys receiving merit badges were Robert Englund, Wicker Nowlin, Tate Fondy, Joe w. Fondy, Wesley Fondy, Gordon Becker, Jay Burks, Bruce Jones, Jack Webb, Curtis McCain, Mark Nesbitt, Clay Nesbitt, Dickie Jones, Dinks Eckert, Stan Jaynes and Billy Janes.

A sharpshooter certificate went to Tate Fondy and a marksmanship certificate was presented to Billy Jaynes.

Slides of the troop's summer camp were shown and refreshments of homemade ice cream and cookies were served to the 50 persons in attendance.

Tank Saver

Keep your home fuel oil tank filled during summer and it will last longer. Unless the tank is kept full, moisture is likely to condense on the inside walls and cause it to rust. Since basements are notoriously damp during summer months, the protection of tanks against corrosion is especially important at this time.

asked are not very favorable to the idea. It seems to me that being commissioner for a certain part of town is asking for enough headaches without taking on responsibility for specific departments.

And what does a commissioner know about running the police department?

ooo

Slaton School trustees "swallowed a bitter pill" this week in agreeing to comply with U. S. Office Education "suggestions" to change to a unitary zone system instead of geographic zones.

Board member Ted Swanner remarked at the meeting that "we are no longer an independent school district...maybe we ought to change the

name to Slaton Federal School System

Slaton had sidestepped the issue for most, however, it is one of the largest of its size in the West Texas area around to full compliance as outlined.

Board members said Federal of them here last week that it made no how the Negro community felt about Evans school, all the government is with is compliance with the Civil Rights Act.

Factors like how far a first grade walk to school, or what to do with building that must be discarded -- local problems with which the government has no interest.

Who is the government?

LAST THREE DAYS

Franciscan earthenware

25% off

16 PC. STARTER SETS

Now you can save \$5.00 on 16 piece starter sets in America's favorite earthenware--Franciscan. Hand-crafted patterns, California-designed and made, are chip resistant, color-fast, will never craze. Can be used safely in oven and dishwasher. All patterns offer you a wide choice of multi-use accessories, which you can buy at any time. Each starter set includes four of each: dinner plate, bread/butter plate, cup and saucer. Come in now... sale ends October 7.

Also on sale--Madeira and El Dorado--regularly \$22.95, now \$17.95

\$14.95

REGULARLY \$19.95

DESERT ROSE

The Gift Gallery

...a selective gift for a selective homemaker

Residential customers of Southwestern Public Service Company who new electric range from a Reddy Kilowatt Electric Appliance Dealer October or November, 1967 may choose, with our compliments, any of these Selective Gifts. See your Reddy Kilowatt Dealer now and start on better ELECTRICALLY!

Clean ELECTRIC Cooking

BUY THE STOVE WITH RED ON THE FRONT

\$100 DOWN---Low Payments WE WILL SAVE YOU MONEY

Monthly Payments

'64 CORVETTE 327 4 SPEED	----- \$88
'61 IMPALA 2 DR HT. V-8, auto	----- \$36
or 6 cylinder std.	----- \$44
'62 IMPALA SPT CPE. V-8, 4 Speed	----- \$48
'63 FORD GAL. 500 2 DR HT V-8, std.	----- \$52
'64 IMPALA SUPER SPT., 4 Speed, V-8	----- \$56
'65 IMPALA SPT CPE, V-8, std.	----- \$64
'66 GRAND PRIX. Loaded	----- \$78
'67 IMPALA SPT CPE. Air, power	----- \$88

The No 1 selling team ----- FO 3-2978

Bob Robertson **Gene Allen**

Mobile Phone PO2-0471 Ext. 714 or 715

W. G. & Y.
5¢ TO 10¢ STORES

MON 8:30-7:00 MONDAY THRU SATURDAY
GOOD THRU SATURDAY WHILE QUANTITIES LAST

Welcome FALL

2 PIECE SKIRT SUITS

ALL BONDED KNIT
BEAUTIFUL BEIGE LACE WITH SATIN
CUFF AND COLLAR. SIZES 8-18

\$9.99

SOLID COLORS WITH STRIPED TIE
INCLUDES DOUBLE BREASTED JACKET
WITH 8 BUTTON FRONT IN SIZES 8-18.



2 PIECE PANT SUITS

OUTSTANDING BUY ON THESE! BEAUTIFUL
PRINT TOP WITH SOLID PANTS IN SIZES 8-18

\$5.99

OTHER PANTS SUITS TO \$8.99



FAMILY SIZE
GLEEM
TOOTH PASTE
REG. 67¢

47¢

LADIES' & MISSES
Fishnet HOSE
ALL SIZES, ASST. COLORS

99¢

PAIR



ASH TRAYS METAL
ASST. COLOR
REG. 19¢

11¢

EVEREADY 9-VOLT REG. 69¢ EA.

Transistor BATTERY **47¢**

SEGO DIET DRINK
ALL FLAVORS
REG. 31¢ CAN
OUR LOW PRICE.

4 FOR \$1

INFAMIL BABY FORMULA
24-CAN CASE
ONLY \$5.88

24¢
CAN

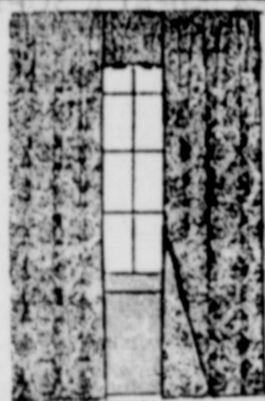
RETURN ADDRESS
ENVELOPES 9 1/2"
7-CT. PKG.
REG. 10¢

4¢
PKG.

PLASTIC DRAPES

LYLINED
REG. 97¢

47¢



REG. OR MENTHOL
RISE LATHER

11-OZ. CAN
79¢ VALUE



57¢

MENS
DRESS SHIRTS

LONG SLEEVE WHITE
PERMANENT PRESS
FULL SIZE RANGE

\$1.99



HAIR SPRAY
AQUA NET

13-OZ. CAN
REG. OR SUPER

44¢



SOAP BUBBLES REG. 9¢

4¢
EA.

HERSHEY
CANDY BARS REG. 5¢

4¢

1 ASST. LITTLE GIRLS
BARRETTES REG.
10 & 15 ¢

4¢

GAYLA
BOBBY PINS BLACK
AND
SILVER
ONLY REG. 10¢

4¢

ASST. ZIPPERS REG.
7¢
EACH

4¢

DRESSMAKER'S
SILK PINS 75-CT
PACKAGE
REG. 10¢

4¢

FIBER AND RUBBER
FAUCET WASHERS REG.
19¢

9¢

GOLDFISH LIVE AND
HEALTHY
REG. 19¢ EA.

9¢
EACH

GEORGIA
BATHROOM TISSUE

10-ROLL PACK
WHITE AND PINK

57¢
PACKAGE



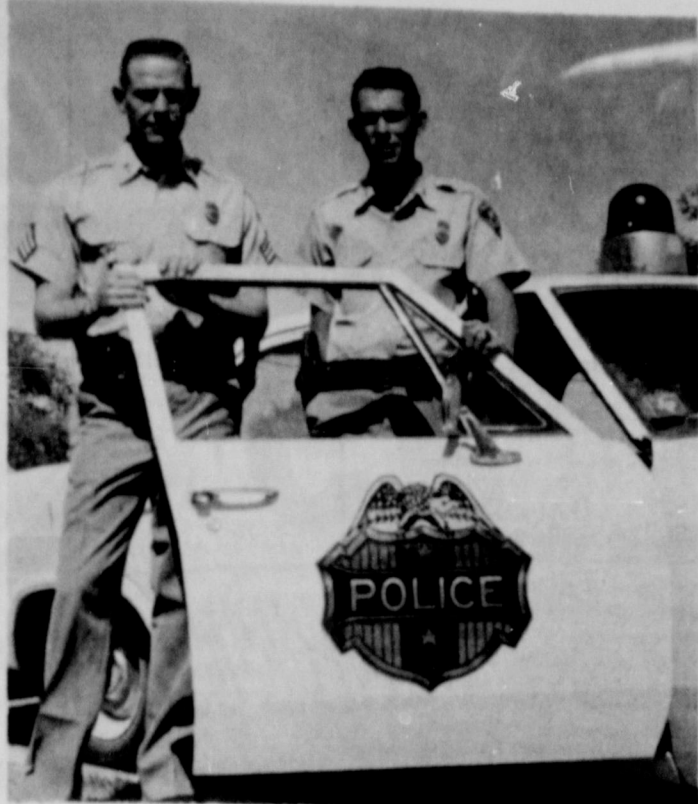
FAMILY SIZE
JERGEN'S LOTION

1-PINT BOTTLE
WITH DISPENSER
REG. \$1.33

99¢



New Policemen Named Here



TWO NEW PATROLMEN--Sgt. Glenn Farmer, left, and patrolman Jeff Creager are new additions to the Slaton Police Department. The officers stand by a patrol car which bears new police decals for the Slaton units. (SLATONITE PHOTO)

Two new officers -- including a new sergeant -- have recently been added to the Slaton Police Department. Chief Walter Head recently announced the employment of Sgt. Glenn W. Farmer, formerly of Greeley, Colo., and patrolman Jeffrey L. Creager of Lubbock.

SCHOOL MENUS

- SCHOOL MENU
Oct. 9-13
- MONDAY
Italian Spaghetti
Green beans
Tossed salad
Bran muffins & butter
Apple crisp
1/2 pint milk
- TUESDAY
Chicken & noodle casserole
Black eyed peas
Sliced tomatoes
Yeast biscuits & butter
Plum cobbler
1/2 pint milk
- WEDNESDAY
Barbecued beef
Creamed potatoes
Cabbage, apple & carrot salad
Hot rolls & butter
Pineapple pudding
1/2 pint milk
- THURSDAY
Baked chopped meat
Lima beans
Cheese wedges
Diced beets
Corn bread & butter
Apple sauce
1/2 pint milk
- FRIDAY
Fish portion with catsup
Buttered potatoes
Buttered spinach
Oatmeal cookies
Orange juice

A graduate of Baylor University with a BA degree, Farmer was reared in Carlsbad and Clayton, N.M., and graduated from Clayton High in New Mexico. He is an Army veteran.

Creager, 21, is a native of Ohio and graduated from Midvale, Ohio High School. He was an air policeman in the U. S. Air Force and spent a tour of duty at Reese AFB in Lubbock. He was a recruit patrolman for the Texas Department of Public Safety and held other jobs in Lubbock before coming here.



CUBS RECEIVE \$70--Darrell Bednarz, a member of Cub Scout Pack 128, is shown receiving a check in the amount of \$70 from Ray Dickie, commander of Luther Powers Post 438. The pack also was given a flag from the VFW Auxiliary. (SLATONITE PHOTO)

POSEY NEWS

Greetings! Thanks to our Heavenly Father for the lovely fall weather.

FAMILY NIGHT
The Lutheran Church here at Posey is having a family night Saturday night, Pastor James Otterness of Odessa will be the guest speaker. The Lutheran Churches of Wilson and Slaton have been invited to attend.

Due to the fact that the election to create a Lubbock County Hospital falls on the same date of the church meeting, the election will be held at the office here at Posey, thanks to Mr. Tudor.

ENJOY OUTING
Floyd Kitchens, Rev. John Pratt, Clinton Gandy, Tom Burrows and Paul Dwayne Kitchens, all of the Assembly of God Church of Slaton, sponsored a group of "Royal Rangers" with a picnic Saturday afternoon at Buffalo Lakes. The group enjoyed a cook-out, boat riding and water skiing.

Guests of Mr. and Mrs. Fred Stolle recently were Rev. Luther Rostrold of Portales, N. M., Mr. and Mrs. A. W. Stolle, also of Portales, Mr. and Mrs. Robert Stolle and Rev. Jimmy Leuders.

We are happy to report that Mr. and Mrs. Albert Johnson are home from the hospital al-

though they will have to return for treatments occasionally.

Guest of the Bobby Townsends Monday was Mrs. Townsend's niece, Mrs. Jerry Cooper of Midland. She attended the Fair at Lubbock Monday night with the Townsends.

Mrs. Earl Foerster's brother, Lt. James Harris of Patuxent River, Md., visited them Tuesday.

Flowers for Mr. and Mrs. Bill Ehlo's 41st Wedding Anniversary were given to them Sunday by their daughter, Dorothy.

SYMPATHY
Our heartfelt sympathy goes out to Mrs. Guy Gentry and family on the loss of her father, Ed Cox, who passed away early Friday morning in Amarillo. Mrs. George Hays accompanied the children of Mr. Cox to the funeral held in Amarillo.

Mr. and Mrs. Mert Gentry visited Gilbert Self Sunday afternoon.

Mr. and Mrs. Meridith Harper visited Mr. and Mrs. Turner in Lubbock Sunday evening. Guests of Mrs. Anna B. Gentry recently were Mr. and Mrs. Ray Johnson and Brenda, Mrs. T. A. Johnson, Mr. and Mrs. Wayne Mangum. The Wayne Mangums are being transferred to Kansas, Wayne

MRS. P.C. KITCHENS

works for a TV cable company.

The house that has been moved recently on the corner of the Loke farm on FM 1585 is the new home of Mr. and Mrs. Alvis Joe Loke. They moved

into their home last week. "There is one kind of work that the doctor never advises against that of reaching down to help our fellow man. This kind of exercise is always good on the heart." Trust to see you next week.

Hospital District Topic at Rotary

Dr. Q. Brandon Hull of Lubbock was guest speaker at the regular luncheon meeting of Slaton Rotary Club last Thursday, explaining the importance of a Lubbock County Hospital District.

Dr. Hull, a proponent of the move, said there are two primary reasons for setting up the district--to provide a teaching hospital at Texas Tech, and to provide adequate medical care for indigent persons in the county.

The speaker, president-elect of Lubbock Chamber of Commerce, discussed the background on the hospital district election. He has served as the chamber's committee chairman on the hospital district for three years.

Forgetting the economic advantages, he pointed out that the action would provide "a major medical center for West Texas". He added that many people who now have to go to Houston, Dallas and other points, "would be able to go to Lubbock once the center is established."

Dr. Hull also pointed out that the hospital district will place Lubbock County on an equal

with other aggressive counties in Texas and provide funds for constructing a new, modern teaching hospital. The total hospital complex fully developed will result in a \$15 million medical care facility for the citizens of this area. The cost to county citizens will be about a third of that amount.

The doctor also answered questions at the end of his talk. Dee Bowman was program chairman for the day. Dr. Hull was introduced by Max Arrants, county commissioner from Slaton.

Wayne Yearout, Santa Fe clerk, was inducted as a new member of the Slaton Rotary Club prior to the program. Dr. Lee Vardy presented the new Rotarian.

POSTAL---
(Continued From Page 1)
more nearly tailored to its present needs," Reed stated. On Sept. 6 Santa Fe was notified by the United States Post Office Dept. that by Oct. 6, 1967, all but two Railway Post Office cars would be removed for its passenger trains. Additionally, the Post Office Department announced it will pay for the transportation of all 2nd, 3rd and 4th class mail at such a reduced rate it is no longer feasible or practicable to handle this mail in passenger train service.

"Nearly \$35 million of annual mail revenue, the backbone of our passenger trains, will no longer be available to help support these trains, which were already marginal or operating at a loss. The loss of mail was a sudden, devastating blow," the rail president said. Reed pointed to the growing popularity of highway and air travel with accompanying governmental expenditures for highway construction, meteorological and guidance systems, and airport facilities, as factors which enticed passengers away from the railroads.

Reed emphasized that Santa

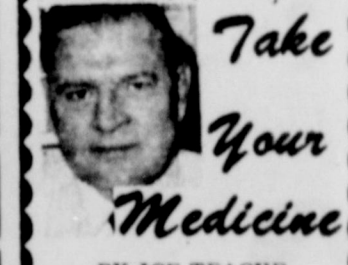
Fe has spent \$136 million since 1946 on passenger cars and locomotives, advertised and promoted aggressively, and introduced numerous fare and service innovations in an effort to attract patronage. "Santa Fe did not abandon the traveling public -- travelers show an increasing preference to drive or fly," he said.

"It is logical to assume that restructuring of our passenger train service will affect some of our personnel; however, we are unable at this time to forecast with accuracy the impact on individual employes brought about by this change," the rail president said.

"The territory we serve, our patrons, our stockholders and the largest number of our employes will benefit in the long run if we are relieved of the serious future monetary drain with unnecessary passenger train service will impose. These funds should be devoted to types and concepts of service which will create additional employment opportunities and meet the needs of the public," he said.

Reed noted Santa Fe's recent investment for new freight equipment, diesels, signal and communications systems, and yard facilities. He mentioned Santa Fe plans for bold new types of freight service in the near future, including expansion of container freight operations and special equipment.

"All of these plans and more will tend to create new employment opportunities. These and other new ideas are being implemented to gain additional business as we move toward better ways to keep Santa Fe a progressive and profitable railroad," he concluded.



Take Your Medicine
BY JOE TEAGUE

We know a fellow whose life is so dull, he looks forward to his dental appointments...

He had a serious operation -- his unemployment checks were cut off...

The fact that silence is golden may explain why there's so little of it...

One thing about being married -- you can't make a fool of yourself and not know it.

You know you're getting old when your thoughts of passion turn to pension... When your thoughts turn to drug needs, go to TEAGUE DRUG, VA8-4535.

LATE CLASSIFY WANTED

MAN to take over elderly sick... VAS-496.4, 52-1tp.

SALE
BEDROOM stucco... 52-tfc.

TO SETTLE ES... Acre irrigated... south hackberry... irrigation wells... underground pipe... water whole farm... and barns. Con... Fleming, Route 1... or call Area... 52-1tc.

farm 12 1/2... of Quah, Tex. on... Highway. Greenbelt... line runs... 6 acres pasture... been checked for... water. Good wheat... cotton allotment... Foster, Jr., Quan... Area 817, MO 3... P.M. 52-5tc.

FOR quick Sale: 1... Refrigerated... VAS-5314, 52-1tc.

GIVE AWAY
BERD Dog (1 yr.)... to be given away... Preferably in... 6th St. 52-1tc.

Prizes Win
Trophies

and Raymon Will... home seven of the... given at the Lubbock... Airplane contest... of Mr. and Mrs. ... won a first place... three balloons in... He also won a third... combat. ... a first in balloon... bursting the ... 27 seconds. In addi... veteran... a third place in... and a third in open... turned a first place... rate, and a first... of troops... veterans... living in... to pay... in full, ... has held... years ... property... or no... with the... from ... ven prior... aments... who are... and who... also ... trans ...

MRS BAIRD'S



ays Fresh Longer



I PLEDGE
my HEAD
to never thinking
my HEART
greater loyalty
my HANDS
to better service and
my HEALTH
to better living for
my club
my community,
and my country.

To Make the Best Better

SALUTE TO 4-H -- Citizens State Bank salutes Slaton 4-H Club officers and all members and workers during the observance of National 4-H Club Week, Sept. 30-Oct. 7. Left to right, Jay Wimmer, secretary-treasurer; Walter L. Denzer, council representative; Cathy Riney, vice president; Doris Kitten, president; Lin-la Kahlich, council rep.; and Joe Kitten, reporter.

RCA VICTOR WEEK

OCTOBER 1 thru 7

FREE GIFT!
JUST FOR LOOKING AND LISTENING
This Deluxe 5-Piece Pen Set
Hurry—Supply Limited!

RCA Victor presents the
Lowest Price ever on
Quality Color TV.

PRICED TOO LOW

Model 507
14" diag. 102 sq. in. picture

\$339.95

EARLY AMERICAN MAPLE

- RCA Solid Copper Circuit
- RCA Automatic Color Purifier
- Simplified Color-Quick Tuning

Model 577
295 Sq. in. Picture

WAS \$655.00
NOW \$539.95 W/T

DANISH STYLING

- RCA Hi-Lite Color Picture Tube
- UHF and VHF Controls
- 25,000 Volt Picture Power

Model 668
295 Sq. in. Picture

WAS \$655.00
NOW \$539.95 W/T

SWIVEL BASE

- Super-Powerful New Vista Tuner
- Shatter-proof Picture Tube
- RCA Automatic Color Purifier

Model 692
295 Sq. in. Picture

WAS \$655.00
NOW \$549.95 W/T

THE KEEPSAKE
RK 12

The Puckette comes in a rugged plastic case and operates on one 9-volt battery. Complete with ear phone and carrying case.

\$6.95

6-speaker stereo with free stereo headphones

Model VJ750

\$69.95

RCA VICTOR

Wendel's Radio & TV

Super Performance at a Portable Price!

SEVENTEEN MAGAZINE says PIGGLY WIGGLY is "IN" For SUPER SHOPPING!



Another Piggly Wiggly Exclusive

GENUINE IMPORTED Translucent Porcelain China
 START YOUR SET TODAY... SAVE OVER \$50
 This is high quality porcelain china, fashioned by artisans with more than five centuries of heritage in the creation of fine dinnerware.

CHINA FEATURE OF THE WEEK:
 10 1/4" DINNER PLATE **29¢** with each \$5 purchase
 Only **29¢** each \$5 purchase



FREE! A 99c Value!
 Porcelain Translucent China
 10 1/4" Dinner Plate
 ... with the purchase of a 4 PIECE PLACE SETTING
 • Luncheon Plate
 • Bread & Butter Plate
 • Cup & Saucer
 All 5 Pieces Only **\$1.99**

Each week a lovely piece of china will be offered at only 29c each with every \$5 purchase. These pieces will include a dinner plate, luncheon or salad plate, bread and butter plate, cup and saucer.
 Buy two at 29c each with a \$10 purchase and so forth. See how easy it is to build a complete service for four, six, eight and even twelve!
SEE OUR COLLECTION OF COMPLETER PIECES TOO!

PRO-SCORE
\$100.00 Winner!
 Walter Johnson
 1928-Ave. O - Lubbock

ENJOY A HOLIDAY FOR BUDGETS..

<p>GROUND BEEF Dated to Assure Freshness 2 Pounds 98¢ Picnic Cut, Lean Northern Pork Pork Roast Pound 43¢ Cedar Valley Sliced Bacon Pound Package 63¢ Blue Morrow's Chicken Fried, Pre-Cooked Breaded Steaks Pound 99¢</p>	<p>PICNICS Smoked, Decker's Lean Fine Smoky Flavor Whole 33¢ Pound</p>	<p>TURKEYS Norbest, U.S.D.A. Grade A, 10 to 14 Pound Average 35¢ Pound</p>	<p>SLICED CHEESE Shop Rite, American or Pimento, 3 6-Ounce Packages Farmer Jones, 100% All Meat Frankfurters Pound Package 50¢ Tradewinds, Cod or Perch Fish Fillets Pound Package 40¢ U.S.D.A. Choice, Aged Heavy Beef, Boneless Round Steak Pound \$1.00</p>
---	---	---	--

<p>Suzan Salad DRESSING Quart Jar 29¢</p>	<p>MARYLAND CLUB, All Grinds COFFEE A delightfully fragrant blend. Vacuum packed to insure freshness. 2 Pound can. . . \$1.31 3 Pound can. . . \$1.95 66¢ Pound Can</p>	<p>Plains or Home Treat BREAD RAINBO, BALDRIDGE'S or MRS. BAIRD'S 10¢ LOAF</p>
<p>Sugary Sam Yams No. 3 Squat Can 22¢</p>	<p>Doumat, Miniature Marshmallows 10 1/2-Oz. Pkg. 19¢</p>	<p>Rosedale, Sweet Peas 2 No. 303 Cans 35¢</p>
	<p>Bell, Borden's or Foremost Buttermilk 1/2 Gallon 37¢</p>	<p>Lucky Leaf Applesauce 25-Oz. Jar 35¢</p>

Win!
\$100.00 CASH!
 PLUS HUNDREDS OF OTHER PRIZES!

Play PRO-SCORES!
 TO WIN, SIMPLY MATCH THE SCORE OF THE . . .
Dallas Cowboys vs. Washington
 To Be Played October 8
GET YOUR FREE PRO-SCORES TICKET FOR NEXT SUNDAYS GAME AT PIGGLY WIGGLY TODAY!

Frozen Selections for Your Freezer!

<p>APPLES Delicious, New Crop 19¢ Pound</p>	<p>SQUASH ACORN, Pound 19¢</p>	<p>California, Full-O-Juice LEMONS Pound 29¢</p>
<p>CARROTS Texas, Fresh, 2 Pound Cello Bag 19¢</p>	<p>ORANGES TEXAS, Pound 12 1/2¢</p>	

Waffle Syrup Blackburn's 48-Oz. Jar
Tomato Juice Tesco 48-Oz. Jar
Vegetable Oil Bessie Lee 48-Oz. Jar
SOAP DIAL, 2 Reg. Bkts.

Frozen Selections for Your Freezer!
STRAWBERRIES Adair Sliced 2 10-Ounce Packages
SPINACH Libby's, Chopped or Leaf 2 10-Oz. Pkgs.
CHEESE CAKE Sara Lee, Pineapple 11-Oz. Pkg.
CUT CORN Libby's in Butter Sauce 3 10-Ounce Packages

More food for LESS... always at...
PIGGLY WIGGLY

<p>Houseware Buy COVERED CAKE PAN Mirro Aluminum, 12" x 9" With See Thru Cover Regular \$1.79, Each \$1.19</p>	<p>Health and Beauty COTTON POPE Johnson & Johnson, Soft Moist... Regular 260 Count Pkg.</p>
--	---

Tigers Bobble, Mustangs Gobble Up 40-6 Victory



Yea!
JUNIOR
HIGH!

Golf Is An Easy Game

Everyone knows how to play golf. Once a player has mastered the grip and stance, all he has to bear in mind, in the brief two-second interval it takes to swing, is to keep his left elbow pointed in toward the left hip and his right arm loose and closer to the body than the left . . . and take the clubhead straight back and low along the ground until his hands are past his right knee . . . and then break the wrist at just the right instant while the left arm stays glued to the body . . . and the hips come around in a perfect circle . . . and meanwhile everything will be mucked up unless the weight is 60 per cent on the left foot and 40 per cent on the right at the start . . . not an ounce more or less . . . and at just the right point in the turn the left knee bends in toward the right in a dragging motion until the left heel comes up off the ground . . . but not too far . . . and be sure the hands at the top of the swing are high and the shaft points along a line parallel with the ground . . . and if it's a downhill lie, the shaft is supposed to be pointed downhill, too . . . and pause at the top of the swing and count one, jerk the left arm straight down like a bell ringer yanking a bell-rope . . . and don't unlock the wrists too soon and pull the left hip around in a circle . . . but don't let the shoulders turn with the hips, they have to be facing the hole . . . and now transfer the weight 60 per cent to the left foot and 40 per cent on the right . . . not an ounce more or less . . . and tilt the left foot now so the right side of it is off the ground . . . but not too far . . . and keep the left leg straight . . . that's the one you hit against . . . and watch out for the left hand, it's supposed to be extended . . . but not too stiff or the shot won't go anywhere . . . and don't let it get loose or you'll hook and let the wrists uncock . . . but don't force them or you'll smother the shot . . . and don't break them too soon but keep your head down . . . AND HIT THE BALL!

RCA Victor New Vista
COLOR TV

"WHERE SERVICE MAKES A DIFFERENCE"

Radio & TV

Roosevelt Bows To Petersburg

Roosevelt's Eagles were blanked at Petersburg, 32-0, in a District 4-A opener Friday night. The strong Buffaloes tallied three times in the first quarter and used reserves freely in the second half. The Eagles travel to Ralls for another tough district encounter this week. Scoring for Petersburg in the first period last week were Mike Thompson on a 12-yard pass from David Scarborough, Mike Richardson on a 3-yard plunge, and Sam Canales on a 12-yard scamper. Richardson scored again in the second period on a long 60-yard dash. Joe Robertson finished off the scoring in the third period with a 3-yard run for the Buffs. Roosevelt is now 1-1-2 on the season, while Petersburg evened its record at 2-2.

BY SPEEDY NIEMAN

Denver City gave Slaton its annual lesson how to play football Friday night, and the Tigers flunked again, 40-6. The Mustangs, displaying efficient, hard-nosed football, simply out-classed and outplayed the hopeful Tigers. Slaton made it easy for the visitors, however, handing over four fumbles and three pass interceptions to give Denver City a larger margin of victory than necessary. And, no one hated it more than the Tigers for they were playing before what was believed to be the largest crowd ever to see a Slaton football game -- the attendance estimated at more than 2,500. Slaton's west-side stands were packed and hundreds were standing with hopes of seeing the Tigers whip Denver City for the first time. The Tigers could never muster an offensive threat against the tough D. C. defense, and the only score came on a great 88-yard kickoff return by Richardson. The score came in the third period after the Hosses had already put 34 points on the board. The Mustangs scored the first time they got the ball, moving 63 yards. Then they tallied on drives of 10, 15 and 33 yards following Slaton fumbles; returned a pass interception 40 yards for a score, and marched

GAME STATISTICS

SLATON	DENVER CITY
7 First downs	16
66 Net yds. rushing	218
72 Net yds. passing	51
138 Total yds.	269
6-16 Passes comp.	4-9
2 Passes intct. by	3
4 Fumbles lost	0
6-28 Punts, avg.	6-35
4-40 Penalties	3-25

claimed another fumble on the Tiger 15. Two plays later, Hatfield tallied for two points made it 20-0 with 6:51 left in the half. Slaton moved the kickoff out to the Tiger 49 with the aid of Williams to Ethridge pass for 14 yards. Then a long Williams' toss was short and Gene Richardson intercepted for D. C. on his own 25 and returned to the Mustang 47. Slaton held and forced a punt, then the Tigers had their best drive of the night before time ran out. Williams hit Allison and Claude Stricklin on short passes, and Harris blasted for 10 up the middle to carry to the Tiger 47. Then Williams hit Ethridge with a pass, and the halfback lateraled off to Washington on a play carrying to the D. C. 25. That ended the second period, however. With two of the scores coming after fumbles, Slaton fans still had hopes at the intermission. But the Mustangs quickly dispelled those notions with two quick scores in the third period. Williams hit 5 of 9 aeriels for 60 yards in the first half, but was 0 for 6 and had two intercepted in the second half, Washington, the team's top rusher, was completely stalled by the Mustangs. Big Dale Harris wound up as Slaton's best runner with 43 yards on just 6 tries. Washington, Larry Allison and Tom Davis were the defensive leaders. According to a tackle chart kept on the game, Washington had 8 tackles and 6 assists; Allison was 4 and 6, and Davis 2 and 7, Williams was next with four tackles and 3 assists. Slaton took the opening kickoff and was forced to punt after three plays. The Mustangs started from their own 37, then picked up a first down to the 48. After a yard plunge into the line, fullback Jimmy McKee won a deceptive play and raced 51 yards for a touchdown. The kick was wide. Each team chalked up a first down and had to punt in the next two exchanges. Slaton started in a hole after Washington was nailed on the four-yard line on a punt. Then disaster struck as the Mustangs recovered a fumbled handoff on the Tiger 2-yard line on third down. However, Slaton put up a great goal-line stand, and Denver City found itself giving up the ball on the 9-yard line four plays later. Johnny Lakey, Doyle Ethridge, Davis and Williams turned in outstanding jobs. But Slaton gave the ball right back on the first play when Washington was hit hard and the ball punched loose on the 10. Guard Steve Steadham recovered for D. C., and it took the Mustangs all four downs before Biff Hatfield plunged across. A pass for extra points failed, but it was 12-0 with the second period just getting underway. The teams exchanged punts again with Slaton starting anew from its own 20, Williams was separated from the ball on a handoff, and the Mustangs

Southland In First Defeat

The Southland Eagles lost a close 16-14 game at Three Way Friday night, handing the Southland team its first loss after three straight victories. Three Way won the close contest by making both of its two-point conversion pass attempts good. It was the final non-district game for Southland. The Eagles are open this week and start district 8-man action at Loop on Oct. 13. Southland tallied in the second period at Three Way Friday night when Stanley Abshire ran 20 yards, Abshire passed to Joe Basinger for two points. Three Way tied it at 8-8 in the second period on a 20-yard run by Monty Toombs. Bruce Pruitt ran for two points. Southland went ahead in the third stanza as Bill Bevers pounded 4 yards for a score. The all-important conversion attempt failed. Pruitt passed 30 yards to Johnny Ferguson for a fourth quarter score, then passed to Bill Williams for the winning points.

Green At LCC

Roy Green, son of Mr. and Mrs. B. B. Green, Rt. 2, has enrolled for the fall semester at Lubbock Christian College. A 1967 graduate of Slaton High School, Green is majoring in physical education at LCC. While in high school he participated in chorus and football. He was named to the All-District football team in 1966 as tackle. Visiting relatives and friends over the weekend were Charles Fisher and Oren Smith, now attending Cisco Junior College. Fisher has a football scholarship and Smith will tryout for the college basketball team.

Cooper Scores 22-8 Victory

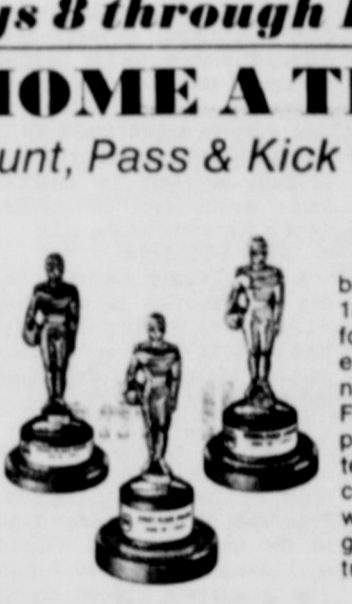
Halfback Mike Ehler sparked Cooper's Pirates to a 22-8 district victory over Whiteface Friday night as he scored touchdowns in the third and fourth periods. The victory evened Cooper's district mark at 1-1 and the season record at 2-2. The Pirates lost the Wilson Mustangs in an important district clash Friday night. Cooper took an 8-0 lead at halftime at Whiteface last Friday night after quarterback Keith Burkett hit Emmett Car-

Boys 8 through 13

Registration is open for our Punt, Pass & Kick Competition! If you're between the ages of 8 through 13 you could win one of 18 handsome all-metal trophies and a PP&K shoulder patch! And, you could go on to win all-expense trips to NFL games PLUS the "Tour of Champions" to Washington, D.C., and the NFL Play-Off game in Miami, with both mom and dad!

BRING HOME A TROPHY

Enter our big Punt, Pass & Kick Competition



ONLY 2 DAYS LEFT TO REGISTER
Bring Mom or Dad Today! Sign up at...

SMITH FORD, INC.

4 AA ROUNDUP

Ponies In Driver's Seat Once More

Former Oklahoma University gridmaster, Bud Wilkerson, during his long years in Sooner Country, once said something about psychology being half the game. Don Orr, Denver City's successful grid boss, must have listened to that same theory in the infant years of his head coaching career. Last Friday night, Orr's Mustangs belted Slaton, 40-6, putting District 4-AA back into normalcy -- it in itself representing the essence of psychological warfare. Only once in the last decade has Denver City's supremacy in football ever really been challenged. That was in 1966 when Post turned the tables. Many observers -- including Orr -- felt Denver City might have to be content with a second-place ball club again. Slaton was tabbed as the probable choice to knock off the Ponies. Slaton fans had good reason to believe that the Tigers were ready to accept the challenge. Tiger Coach Ernie Davis now had his feet on the ground as head coach, the Tigers had its share of top 4-AA athletes, and

the Tigers had displayed a stout defense. However, frustration soon became the name of the game as Denver City quickly placed the Tigers in a catch-up position. Odds-makers rated the game a tossup, but for the first time Tiger fans had more than sheer hope on which to base expectations. But pounds of frustration, wrapped in the dangerous Red and White, made Slaton feel like a pumpkin at midnight -- or however the story goes. Slaton went into the 4-AA

opener with an eye-catcher 2-1 record, including a one-point defeat to Croshton. Despite it being the week of league openers, most 4-AA followers felt the conference championship would be decided in the Slaton - Denver City struggle. The victory upset the Pony ledger to 3-1. Unless someone slips up on the Mustangs' blind side, we're likely to see Don Orr on the sideline opposite 3-AA Oilton in a bi-district clash. Morton took the bandages off a season of injuries and waxed Midland Carver, 40-6, leaving few of the questions unanswered about the loop's newest member. Morton is 1-3 for the season and the Hornet own a 1-2-1 record. Post, the defending 4-AA champion, got its initial taste of victory this year by dumping local Frenship 14-6. In the only non-conference affair involving a 4-AA team, Stanton boxed to McCamey, 33-22. Stanton is 1-3 for the year.

The thought of upset-lendered good judgment last week. Our parking percentage dipped to .708. Denver City - 24, Muleshoe - 18 -- The Mustangs are rolling. However, Class AAA Muleshoe should provide stiff competition during the Mustangs' week break from conference play. Slaton - 21, Morton - 14 -- The Tigers will rebound in hopes someone will eventually knock off the Ponies. Midland Carver - 14, Post - 6 -- Carver is not as strong as expected but Post has made no signs of developing a winner. Stanton - 36, Frenship - 6 -- Stanton has had some respected non-league foes which should help in 4-AA play.

Sponsored by
WYLIES' SHAMROCK STATION



We Proudly Support
The Wilson Mustangs

WILSON MUSTANG SCHEDULE

- Wilson-14 Ralls-33
- Wilson-37 Jayton-0
- Wilson-28 Sundown-0

- *Oct. 6-Cooper-There
- *Oct. 13-Meadow-Here
- *Oct. 20-Anton-There
- *Oct. 27-New Home-Here
- *Nov. 3-Amherst-There
- *Nov. 10-Whiteface-Here
- *Nov. 17-Hopes-Here
- *-Conference Games
- Bob Davis-Head Coach
- Al Mitts-Assistant
- Mickey Rundell-Assistant



WILSON CO-OP GIN

WILSON STATE BANK

GATZKI GIN CO.

NOTHING TO LOSE...EVERYTHING TO WIN

Football CONTEST

**Enter Our Contest Each Week
...Nothing to buy - Just Pick Winners**

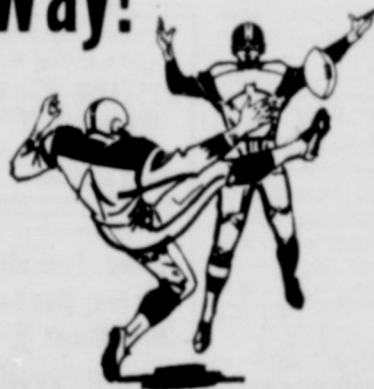
**HERE'S YOUR CHANCE TO
WIN CASH PRIZES**

**FIRST PRIZE \$10
SECOND PRIZE \$5
THIRD PRIZE \$2**



**It's so easy... Anyone can enter!
Read the rules... Start Winning**

**Back the
TIGERS
All the
Way!**



RULES OF THE CONTEST:

- Teams playing in this week's contest games are listed in ads and numbered 1 through 48. Use the entry form at the bottom of the page and circle the numbers of the teams you think will win. To pick a tie, circle both numbers of the teams playing.
- Be sure to guess total score on the "tie-breaker" game. In case of ties, the entrant nearer to that total score will be the winner. If tie also occurs on total score, prize money will be split between place winners. This also applies to "jackpot" winner.
- Have your entry blank signed or stamped by a participating merchant, and get it to The Slatonite office by 5 p.m. Friday before the games are played. Only two entries for each person; all persons 12 or older eligible except Slatonite employees and their families.

**\$25
JACKPOT
FOR
PERFECT ENTRY!**



LAST WEEK'S WINNERS:

- 1st.-Johnny Hennington, Jr. \$10
2nd--- H. H. White \$5
3rd.--- Joe Sparkman \$2

SLATON CO-OP GINS
#1 VA8-4861 #2 VA8-4301
19. POST AT
20. MIDLAND CARVER

M.D. GEER TEXACO
VA8-3456
21. MEMPHIS AT
22. DIMMITT

**TEAGUE
DRUG**
VA8-4535
3. SLATON AT
4. MORTON

**HENZLER
GROCERY**
VA8-4949
7. FLORIDA ST. AT
8. TEXAS A&M

**MUSTANG
CAFE**
WILSON
11. TCU AT
12. ARKANSAS

**FONDYS
WESTERN
LEATHER SHOP**
VA8-4846
15. DENVER CITY AT
16. MULESHOE

**HAILEY'S
AUTO REPAIR**
VA8-4387
23. FLOYDADA AT
24. OLTON

WINDALE'S SERVICE VA8-3331
ROBERTS Construction VA8-4991
THE ART GALLERY VA8-5349
WAIN'S ENCO VA8-7108
MEMBER INSURANCE AGENCY VA8-3541
SLATON STEAM LAUNDRY & DRY CLEANING VA8-3426
WALKER BROS. MOBIL VA8-7127
CO. VA8-4554

The ELECTRIC Company
25. HALE CENTER AT
26. ABERNATHY

SLATON PHARMACY
"THE DOCTORS AID"
PHONE VA 8-4815 SLATON, TEXAS
27. ROOSEVELT AT
28. RALLS

KENDRICK INSURANCE AGENCY
VA8-3993
29. WILSON AT
30. COOPER

WHITE'S AUTO STORE
VA8-3946
31. PETERSBURG AT
32. IDALOU

SLATON STEAM LAUNDRY & DRY CLEANING
VA8-3426
33. PLAINS AT
34. SUDAN

BRUCE'S RESTAURANT
VA8-7114
35. LORENZO AT
36. CROSBYTON

LASATER-HOFFMAN HARDWARE
VA8-3716
37. LITTLEFIELD AT
38. LUB. DUNBAR

CARNATION HOUSE
VA8-4855
39. LAMESA AT
40. SNYDER

SLATON MOTORS, INC.
VA8-4554
43. SUNDOWN AT
44. MEADOW

OFFICIAL ENTRY FORM
for week ending October 7

NAME _____ ADDRESS _____

PARTICIPATING MERCHANT _____

Circle The Number Of The Teams You Pick To Win

1 2 3 4 5 6 7 8 9 10 11 12 13 14 15 16 17 18 19 20 21 22 23 24
25 26 27 28 29 30 31 32 33 34 35 36 37 38 39 40 41 42 43 44 45 46 47 48

Guess Total Score This Game : SLATON - MORTON _____ TIE-BREAKER

GULF OIL PRODUCTS
Custer's
Howard's
Perkins Auto
45. BORGER AT
46. DUMAS

O.Z. BALL
VA8-3247
47. MISSISSIPPI AT
48. ALABAMA

CLASSIFIED ADS

CLASSIFIED RATES
5 cents per word, minimum of 50 cents each insertion. Legal rate: 5 cents per word first insertion; 4 cents per word for subsequent insertions of same legal notice.

FOR SALE

BISSELL RUG Shampoo, Rent machine \$1 day. Self Furniture. 35-tfc.

GOOD USED WASHER, 2 GE's, 1 RCA Whirlpool and 1 Maytag. Bain Auto Store. 51-tfc.

Brake Shoes- \$18.95 Installed
Shock Absorbers \$20.00 Installed
WHITE'S AUTO

A. C. COMBINE, 2-row, A-1 condition. Ideal for soybeans. Call Southland 996-2585. 52-2tp.

TRI-HIST BLU CAPSULES, Guaranteed relief for Hay Fever, Head Colds & Nasal Allergies. Available at Slaton Pharmacy. 35-tfc.

MOTOROLA TV sales and service. Black & White, Stereo-TV combinations, MOSSER RADIO & TV, 110 Texas Avenue, VA8-4475. 17-tfc.

EBLEN PHARMACY has hearing aid batteries. 26-tfc.

HOUSE WITH AUTO SHOP and equipment for sale. Priced low. See at 810 S. Main, Lamesa, Tex. Must sell on account of illness. 23-tfc.

FOR MEDICINE at night, Call Joe Teague, VA8-4500. 30-tfc.

CASH LOANS

SLATON TRADING POST AND PAWN SHOP

VIVIANE WOODARD Cosmetics, Christmas selection ready for lay-away. Gift wrap, Delivery. Joyce Johnson, VA8-3740, 255 So. 11th St. 52-tfc.

Film and flashbulbs at Eblen Pharmacy. 26-tfc.

HOUSE TO BE moved, 5 room & bath, attached garage, Ph. VA8-3075. 52-tfc.

Front Nylon SEAT COVERS \$8.95
WHITE'S AUTO

FARMERS... Complete stock of adjustable Brass stencils on sale at THE SLATONITE. Ideal to put letters on cotton trailers. Buy them by the set or by the letter. 45-tfc.

REPAIRS on all makes adding machines, typewriters, calculators and other office machines. Guaranteed 30 days. KNOW YOUR REPAIRMAN. Call The Slatonite, VA8-4201.

FOR SALE
3 Bedroom brick house in Shelby Addition,
2-Bedroom house on 12th St.
3 Bedroom home on So. 12th St.
3 Bedroom house with attached garage, Store room on back of lot, So. 23rd St.
HICKMAN & WILLIAMS
Insurance & Real Estate
Slaton, Texas

FALL SEED
*RYE
Balboa
Elbon
*WHEAT
Tascosa Treated
*OATS
*BARLEY
*COPPER KARB
*LAWN FERTILIZERS
For Fall
HUSER FEED & SEED
310 South 9th, VA8-3656
"The Store With The CHECKERBOARD Sign"

FOR SALE

REBUILT TRANSMISSIONS: STANDARD AND OVER-DRIVES, New Tubes 13-14-15 & 16 inch for \$2.50 each. Tires and Wheels, TED & JUEL'S GARAGE, 1200 South 9th, phone VA8-7132. 38-tfc.

TRI-HIST BLU CAPSULES, Guaranteed relief for Hay Fever, Head Colds & Nasal Allergies. Available at Teague Drug. 35-tfc.

REPOSED 1966 model Singer sewing machine in walnut console, Zig-zags, blind hems, fancy patterns. Take over 4 payments at \$7.46. Must have good credit. Write Credit Manager, 1114 19th Street, Lubbock, Tex. 46-tfc.

BERLOU MOTH Spray at Self Furniture. 35-tfc.

REPAIRS

Bikes, Mowers, Engines
BOURN CYCLE

AIR COMPRESSOR and VALVE MACHINE for sale. Priced to sell. See at 810 S. Main St., Lamesa. Must sell because of illness. 23-tfc.

FOR SALE
NEW ECLIPSE & SUN-BEAM Lawn Mowers & used mowers for sale. We repair all makes, sharpen blades, etc. All work Guaranteed. RADIATORS-Used and Rebuilt For Sale. We also clean and repair all types Radiators.

HENZLER AUTOMOTIVE
100 So. 7th St. 26-tfc.

SAVE Big! Do your own rug and upholstery cleaning with Blue Lustre. Rent electric shampooer \$1. Lasater - Hoffman Hardware. 52-tfc.

SLIDE RULES for sale at The Slatonite. \$1.95. Ideal for school. 47-tfc.

See the NEW 1968 WASHER, FREEZER REFRIGERATOR, WHITE'S

TWO BEDROOM & bath stucco house on two lots. Send bids to School Superintendent, Wilson, Texas. Sealed bids to be opened Oct. 24; school reserves right to reject any/all bids. 49-tfc.

FREE AIR

At **Martindale's**

"Doctor, I have a ringing in my ears."
"Does it disturb you very much?"
"Only when I answer it."

And there was the little lad who was asked what we learn from the story of Jonah and the whale. He responded knowingly, "People make whales sick."

The meeting of the town council had been stormy, and tempers were waxing hot.
"You, Sir," shouted one member at another, "are about the most pigheaded fool I have ever met!"
"Order, order!" interrupted the chairman. "You gentlemen seem to forget that I am in the room."

Sign in a suburban paint store: "Husbands choosing colors must have notes from their wives."
Martindale
PHILLIPS 66
STATION

FOR SALE

Living room furniture in good condition, 160 Texas Ave. 46-tfc.

TWO-BEDROOM house in Wilson. See or call Hugo Maeker, Rt. 2, Wilson, Phone 628-2953, WI400n. 26-tfc.

9 X 12 RUGS \$4.95
SLATON TRADING POST

FULL BLOOD Boxer puppies, exceptionally good, \$30.00 each. 735 So. 21st, Ph. VA8-3780. 52-tfc.

PARKER and CROSS pens and pencils. Buy one from the selection at THE SLATONITE.

LARGE THREE BEDROOM HOUSE with garage and plumbed for washer and dryer, Phone VA8-3471, 1565 W. Lynn 52-nc 1-tfc.

'65 CATALINA PONTIAC, air, power brakes, good condition. VA8-4443 after 6 p.m. 52-tfc.

HOUSE FURNITURE IN GOOD CONDITION. Call VA8-3713. 46-tfc.

TWO LOTS on corner South 5th St. Call Floydada, YU3-2734 or VA8-3947 50-3tc.

FOR MEDICINE at night, Call Joe Teague, VA8-4500. 30-tfc.

GOOD USED 6 & 12 Volt batteries, \$3.95 each. Ted & Juel's Garage, 1200 So. 9th St., Ph. VA8-7132. 47-tfc.

BUSINESS BUILDING 50' by 85'. Large balcony, 160 Texas Ave. 46-tfc.

IRRIGATED 10-Acre farm near Slaton. Two - bedroom stucco house, garage, concrete cellar, deep-well pressure system, 4-inch electric irrigation well. Will give possession Jan. 1, 1968. See Lewis Richey, Ralls, Texas. 52-tfc.

20 SHARES in Slaton Savings & Loan stock. Call VA8-3734. 51-tfc.

THREE BEDROOM stucco house at 310 So. 4th. Reasonable, sell to anyone with good credit rating. Make own arrangements for payment. W. V. Childers, 140 N. 5th, Ph. VA8-3685 after 5 p.m. 51-3tc.

LINDSEY TRADING POST is moving to Lubbock. LAST DAYS-Thurs., Fri. & Sat. Selling dinette suites, refrigerators, 2-ton chain hoist; one camper & equipment; bedroom suite. Clothes at unbelievable prices--Dresses-10c; Men's suits-51, etc! 900 So. 9th St. 52-1tp.

TEXACO SERVICE STATION
For Lease
on Highway 84 By-Pass
See **HAROLD TUCKER**
at Harold Tucker Oil Co.
Slaton, Texas

TOP Quality
JOB PRINTING
SLAT-CO PRINTING
Arvin Stafford
VA8-4202 Slatonite Office
Slaton, Texas

CROSSWORD PUZZLE

LAST WEEKS ANSWER

ACROSS	DOWN
1. Farmstead	1. Recollect
4. Topic	2. Girl's name
11. Explode, as a volcano	3. Unfeeling
12. More infrequent	4. Auditor
13. Peruvian goddess	abbr.
14. Roomer	5. Altitude
15. Subside	7. Owned
16. Buddy	8. To fish
17. Marks as correct	9. Hence
18. Pronoun	9. Decile
19. Passage-way	10. Trans-gressa
21. Escape	14. Unmarried girl
27. Timber wolves	16. Fish
28. Rouse	17. So. Am. mountain range
30. Sheets, tablecloths, etc.	
31. Like shale	
32. 21 shrillings abbr.	
33. Arabian garment	
34. Tibetan gazelle	
37. Girl's name	
38. Arabian garment	
39. Harm	
41. Impede	
42. Rental contract	
43. Roman outer garments	
44. Peapatty center	
45. Urechina	

FOR SALE

HOUSE NEAR Junior High School. Needs repair. No down payment, move in fixup and pay like rent. Call Area Code 915-872-5403. 50-4tc.

'62 CHEVROLET VAN, Phone VA8-4991, Jim Roberts, 1305 S. 11th. 52-1tp.

TWO BEDROOM house to be moved. Call VA8-3947. 52-1tp.

MEMO LABELS are useful in dozens of ways. Personalize stationery, parcels, books documents, music, toys, phonograph records. Personal gummed labels can now be ordered at THE SLATONITE, VA8-4201.

ATTENTION CHURCHES! You can't go wrong when you buy construction paper and memo paper from THE SLATONITE.

WOULD YOU BELIEVE?

\$4.50
FOR 6 ROLLS
CARBON
T.W. RIBBON
TREMENDOUS VALUE!
TOP QUALITY RIBBON

The Slatonite
VA8-4201

FOR SALE
73 Choice Locations to Build On.
BREWER INSURANCE AGENCY
139-B So. 9th St.
Slaton, Texas
VA8-3241-VA8-3292

FOR SALE
3-Bedroom home, garage apartment, large corner lot, W Garza St.
One 3-Bedroom on So. 12th St.
BROWNING and MARRIOTT
100 N. 8th
VA8-3216

FOR RENT

FOR RENT: Bedroom, private entrance, 335 N. 6th St. or call VA8-3465, if no answer, see Mr. R. T. Brookshire at Haddock's grocery. 29-tfc.

RENTALS--Furnished or unfurnished, W. E. Kidd, VA8-4215. 43-tfc.

HOUSES FOR Rent, furnished or unfurnished, B. H. Bollinger, Ph. VA8-3979. 43-tfc.

FOR RENT: Furnished apartments and unfurnished house for rent. Call VA8-4475 Hugo Mosser. 33-tfc.

UNFURNISHED one Bedroom house at 640 W. Crosby, Call VA8-3494. 7-1tp-tfc.

EBLEN PHARMACY HAS walkers and wheel chairs for rent. 28-tfc.

TWO-BEDROOM home, plumbed for washer. Located at 310 Texas Ave. \$50 mo. Call H.G. Castleberry, VA8-4804, 20-tfc.

THREE ROOM house, Inquire at Bain Auto Store. 42-tfc.

TWO BEDROOM house, unfurnished, with garage, Call VA8-5289. 50-tfc.

2 - ROOM & bath apartment, Bills paid, 930 W. Lubbock, VA8-3761, Middle-aged woman or couple preferred. 50-tfc.

FIVE ROOM house in country, bills paid, Call between 6:30 and 8 a.m. VA8-4069. 52-tfc.

ONE BEDROOM furnished house. Call VA8-4962. 51-tfc.

ON OR BEFORE OCT. 15th, nearly new 3-bedroom home in Russell Addition at 1565 West Lynn St. Call VA8-3734. 52-tfc.

GARAGE & REPAIR Shop at 225 West Edwards, fully equipped. Call VA8-3433. 52-tfc.

GOOD TWO Bedroom house, back yard fenced, good location, Call VA8-7178, J.A. Warren. 46-tfc.

3-ROOM FURNISHED cottage at rear of lot, Water paid, 215 So. 5th St. Apply 135 So. 6th St. Ideal for retired person or couple. 47-tfc.

FURNISHED APARTMENT ONE BEDROOM Bills paid close to high school and West Ward, Phone VA8-3284. 51-2tc.

TWO BEDROOM house, Kiser Agency, Ph. VA8-4332. 44-tfc.

TWO BEDROOM house, carpets, venetian blinds, utility room plumbed for washer - dryer, fenced, 645 So. 13th St. Hoffman Realty Co. VA8-3262. 50-tfc.

THREE BEDROOM house at 145 W. Scott, plumbed for washer, wired for dryer or stove, fenced in yard, Call VA8-4126. 52-1tc.

FIVE ROOM & bath furnished house, Call VA8-3705 or come to 715 So. 7th St. 52-1tp.

3-ROOM FURNISHED house, 340 W. Dayton, Call VA7-3475 after 1 p.m. 52-tfc.

SMALL TWO - Bedroom house on Division, Ph. VA8-4332. 52-tfc.

FOR RENT
Two bedroom house 320 So. 7th St.
Two bedroom house 650 West Crosby.

FOR SALE
Newly redecorated three bedroom house on S. 13th, FHA Loan, \$300 down plus closing.
Two bedroom home on S. 13th, St.
--SEE--
PEMBER Insurance Agency
Ph. VA8-3541
144 WEST GARZA SLATON, TEXAS

BUSINESS SERVICES

BOWMAN BOOKKEEPING--TAX SERVICE: Complete book-keeping or part time accounts including government reports and income tax, VA8-3918. 5-tfc.

BOB'S PLUMBING and Repair
Call **VA8-5323**
BOB BRASFIELD

KIRBY VACUUM CLEANERS
For Free Demonstration
Call VA8-4475
Mosser Radio & TV

WE OPERATE a van truck for moving locally. Call VA8-4487. Pick-up and delivery service. 47-tfc.

STRICKLIN PLUMBING
For all your plumbing and heating needs, call **VA8-4434**
1025 S. 20TH ST.

SLATON APPLIANCE REPAIR
REPAIRS ON all makes and models of refrigerators, freezers, dishwashers, electric ranges, disposals, central air conditioning and heating, commercial refrigeration. VA8-4470, Night VA8-5213. 15-tfc.

LINDY UTILITY markers in all colors, 39¢ each. THE SLATONITE

GOING TO THE GAME? I'll keep your children in my home on Friday nights, Saturday afternoon or Saturday nights, 725 So. 10th St., Ph. VA8-3620. 49-tfc.

STANLEY HOME Products need extra help for fall and Christmas rush business at Slaton and surrounding towns. 4 hours daily - \$50 weekly. Write or call Collect SW9-4134, Edna Sorrells, 3803 - 49th St., Lubbock. 49-4tc.

Stamp Out Cold & Dust Add Lasting Home Beauty
WESTERN STORM DOORS Windows & Awnings
Free Estimates
Paul Mosser VA8-3855

Shop Towels, Fender Covers, Rental Uniforms, Dust Mops & Entry Mats
now available at **SLATON STEAM LAUNDRY VA8-3426**

FOUND
SET OF KEYS at Kotn Kar Wash, Owner identify & pay for ad. Slatonite office. 47-tfc.

FOR SALE
*Wheat Seed
*Rye Seed
*Barley SEED
-Also-
*Chisel Plows
*Stalk Shredders
SLATON FARM STORE

WELDING
Custom MFG. & Rep
DEAL'S Machine
155 No. 9th St.
Ph. VA8-4307

MISCELLANEOUS

IF YOU DRINK, your business, if you're drinking, that's your Ph. VA8-3777

FOR MEDICINE at Joe Teague, VA8-4500

BILL REED'S DDT plastic pipe, back pools pumped and 4814.

FOR MEDICINE at Joe Teague, VA8-4500

Two day fast service stamps. Also all pads, ink, etc.

HAVE YOUR present at Eblen Pharmacy

***HEAD COLDS *SINUS SEC *HAY FEVER -ITCHING**
Don't Suffer
Relief Guaranteed
Ask for **TRI-HIST**
at your favorite

HAVE YOUR present at TEAGUE by a registered

HEARING AID for sale at Eblen Pharmacy

SOMETHING NEW SLATONITE: Men's personalized in envelopes, 50¢ 5 styles, 50¢ leather case. SEE SLATONITE.

CARD OF THANKS

I WOULD like to sincerely thank you for the Slaton Cemetery fellow workers, connected with Epiphany for allowing with you the

Our heartfelt extended comfort and help in our For the food, and other kindnesses, deeply grateful, thanks to the staff Home and to the sisters at Mercy Home. God bless each prayer.

J. E. LATHAM & W. A. LATHAM & W. A. LATHAM & MRS. W. M. BALLEW MRS. JESS SULLIVAN

multiplication buttons. C adding maci records ever only 11 lbs. try a Ou.

portable type-merwo them in

Bras Adjust STENO Typ

Horizontal letter into a whole page. 21 and see

PICA A

SLATON

SLATON

SLATON

SLATON

SLATON

SLATON

SLATON

Annual Bible Week, Oct. 15-23

of our times demands of us that we should be diligent in our spiritual life. This year will mark the 150th Anniversary of the Society's donation and distribution of scriptures to the military, which began with a gift of 65 Bibles to the crewman of the USS John Adams in 1817.

"A family of Bible readers has created a spiritual bond by reading the same selections each day during World-wide Bible Reading," said Rev. Moore, "when millions pause and turn toward their Creator." More than 300 Million free book marks with daily selections have been distributed by the American Bible Society since 1943.

Rev. Moore said the book marks are offered again this year through the First Christian Church and the Slatonite.

Lectureship Begins Sunday

A lectureship is scheduled to begin Sunday at the Ivory Street Church of Christ in Slaton, and continue through next Friday, Oct. 13.

Services will be held Sunday at 10 a.m. and 6 p.m., and on week nights at 7:30 p.m. A spokesman said there will be a different speaker each night, and the meetings are open to the public.

Rev. Eastman Preaching At San Angelo

Rev. Clinton L. Eastman, pastor of the Westview Baptist Church, is doing the preaching in a revival for the Fort Concho Baptist Church in San Angelo this week.

He will be in his pulpit at Westview Sunday night and Bob Norris will bring the morning message. Harley Castleberry gave the prayer meeting message last night.

GRACE LUTHERAN SETS DATE FOR P. T. AND R. MISSION

A Preaching, Teaching and Reaching Mission will be held at Grace Lutheran Church, 15th and Jean Streets, from Oct. 15 to 18th. Services will be held at 7:30 each evening.

Theme for the P. T. & R. Mission will be "Chosen by Grace". Speaker for the services will be Rev. Orris Sougstad, pastor of the Beautiful Savior Lutheran Church, Amarillo, since 1963. A graduate of Augustana College, Sioux Falls, S.D., and Luther Theological Seminary, St. Paul, Minn., Sougstad was also a combat flier during World War II.

Rev. Sougstad has taught three years at Carver Senior High School in Amarillo in the Bible Chair Program. He moderates and conducts "Religious Questions" on TV-10, Amarillo, TV-8, Sayre, Okla., and TV-12, Clovis, N.M., weekly for the Amarillo Ministers' Association. He serves as chairman of the radio-TV committee, and is vice-president of the Panhandle Mental Health Association.

He is also chaplain (Major) Group I, Texas Wing, Civil Air Patrol, USAF Auxiliary and contact pastor at Amarillo Air Force Base for the Lutheran Council in the USA.



REV. ORRIS SOUGSTAD

Rev. Robert C. Richardson, pastor of Grace Lutheran Church has received a scholarship from the Southern District of the American Lutheran Church to attend the Town & Country conference to be held at Texas A & M University this month. This conference is represented by Protestant, Catholic and Jewish clergymen.

Grace Lutheran NEWS

The Dorcas Circle will meet at 8 p.m. Tuesday, Oct. 10 in the home of Mrs. Willie Beckner Jr. with Mrs. Earl Schoenke serving as co-hostess. Mrs. Earl Foerster will lead the Bible study on "Prayer".

The Grace Circle will meet Oct. 12 at 8 p.m. in Parish Hall. The Bible study will be led by Mrs. Robert Camden. This will be a family night pot-luck. Thanksgiving boxes will be started at both circle meetings.

Rev. Richardson announces that Catechism classes for first year students will be held from 9:30 to 10:30 a.m. Saturday, Oct. 7 and second year students will meet from 10:45 to 11:45 a.m.

Members of Grace Lutheran are invited to Immanuel Lutheran at Posey on Oct. 7 at 7 p.m. for a pot-luck supper. Pastor James Otterness of Odessa will speak on "Lutheran Ingathering for Education".

Mr. and Mrs. Everett Hodge, former Slaton residents who now reside in Denver City, were here Friday night for the football game.

SURE I'D LIKE TO TAKE A TRIP TO THE MOON! - BUT I'D HATE TO BE WHERE I COULDN'T GET A PRESCRIPTION FILLED AT

TEAGUE DRUG

TEAGUE DRUG

PRESCRIPTIONS ACCURATELY FILLED

VAB-4535

136 W. GARZA - SLATON

F-A-S-T Printing Service

VAB-4202

SLAT-CO PRINTING

Helen Nixon Circle Meets

The Helen Nixon Circle of the First Baptist Church met in Fellowship Hall Sept. 26 at 7:30 p.m. and viewed a film on "Africa".

New officers elected at the meeting were Mrs. John E. Todd, circle chairman; Mrs. Bo Linn, co-chairman; Mrs. Truett Hownds, secretary - treasurer; Mrs. M. J. Etter, state missions; Mrs. Johnnie Norris, prayer chairman; Mrs. Harley Martin, program chairman and Mrs. Harvey Tunnell, community missions.

WMU Officers Installed

The WMU of the First Baptist Church met Wednesday morning for installation of officers. New officers were installed by the pastor, Rev. J. L. Cartrite.

Mrs. William Jones was installed as president. Other officers are Mrs. W. V. Smith, vice-president; Mrs. Joe Nell, secretary - treasurer; and Mrs. Kenneth Davies.

Chairmen installed are Mrs. Kenneth Davies, state mission; Mrs. E. R. Burns, prayer; Mrs. Harry Stokes, program; Mrs. Roy Collins, community missions; Mrs. Larry Branscum, YWA director; Mrs. Lindol Beard, enlistment; Mrs. J. L. Cartrite, Girls Auxiliary; Miss Jane Tefferteller, Sunbeam; and Mrs. Wayne Latham, assistant Sunbeam.

Other chairmen are Mrs. Truett Hownds, social; Mrs. Bell Alspaugh, stewardship; Mrs. Fred Stephens, publications; Mrs. Bruce Graves and Mrs. James Downey, intermediate GA counselors; Mrs. Elton Smith and Mrs. M. H. Lasater, junior GA counselors; and Mrs. George Privett, publicity.

The WMU will meet the first Wednesday of each month at 9:30 a.m.

ITEM: If you are planning to build a sewing center, don't forget to include space for the iron and ironing board nearby.

Dorcas Class Installs New Officers

The Dorcas Sunday School Class of the First Baptist Church met at 7 p.m. Monday in the home of Mrs. Edgar Moseley for installation of officers for the new year.

Preceding the service, a salad supper was served. Mrs. Sam Wilson presided for the meeting, and opening prayer was given by Mrs. J. L. Cartrite.

Mrs. Boyd Meeks read minutes of the last meeting and gave the treasurer's report. Mrs. Fred Stephens acted as installing officer and used as her theme "Christ, Our Doctor and Helper."

Officers installed were Mrs. R. L. Smith, teacher; Mrs. Wade Thompson, president; Mrs. Lois Rogers, first vice-president; Mrs. Boyd Meeks, secretary; Mrs. H. E. Woods, assistant secretary; Mrs. Ernest Carroll, reporter; and Mrs. Sam Wilson, Mrs. E. W. Ham and Mrs. Edgar Moseley, group captains.

Two visitors, Mrs. J. L. Cartrite and Mrs. Fred Stephens, were in attendance. Members present included Mrs. Nell Sartain, S. T. Brunson, Ham, Thompson, Wilson, Woods, Meeks, Carroll, Moseley, Smith, and Miss Fannie Castleberry.

Mrs. Sartain closed the meeting with prayer.

Westview Plans For Revival

Westview Baptist Church will hold a revival Oct. 15-22 with music and messages scheduled daily at 10 a.m. and 7:30 p.m.

Rev. Clinton Eastman announced that Evangelist Mike McMahon of Houston will bring the messages and Dale Coady of Lawton, Okla. will lead the music.

ITEM: You can refrigerate cooked rice for as long as a week if it's stored in a covered container.

Gospel Meeting Set At Gordon

Cline Drake, a former evangelist with the Gordon Church of Christ for six years, and now of Cotton Center, is scheduled to conduct a series of Gospel meetings at the Gordon Church Oct. 10-11-12.

Drake is well known in this area, having served as evangelist at Idalou, Ralls and Crosbyton.

Services will begin each evening at 8:30 p.m. A spokesman for the congregation said that an invitation has been extended to the public to hear the gospel messages brought by Brother Drake.

NOTICE

The American Legion will hold an executive meeting tomorrow night at 7:30 p.m. in the Legion Hall.

Members are asked to attend. Discussion will be held concerning adding onto the present building.

Mrs. Edwards Gives Program At WSCS Meet

The Woman's Society of the First Methodist Church met Monday in the chapel for a general meeting.

Mrs. R. T. Farley opened the meeting with prayer. Mrs. Carroll McDonald, president, conducted a brief business session.

Mrs. J. S. Edwards led the program "The American Indian." She was assisted by Mrs. H. T. Scurlock who related "My Visit to the Navaho Indian Reservation."

The next meeting is scheduled at 9:30 a.m. Monday in the church chapel.

ITEM: If you worry about smudging nylon and fragile accessories while washing them, here's a good way to avoid it. Use a large gallon jar and fill it half way with warm water and soap or detergent. Shake the jar gently until articles are clean. If you wish, rinse garments the same way.

A Special Invitation to You & Your Family to hear CLINE DRAKE in a GOSPEL MEETING at GORDON CHURCH of CHRIST Tuesday through Thursday OCT. 10-11-12 at 8:30 p.m. A Welcome awaits you!

SLATON'S DEALER for Olivetti Underwood

11-pound tax expert

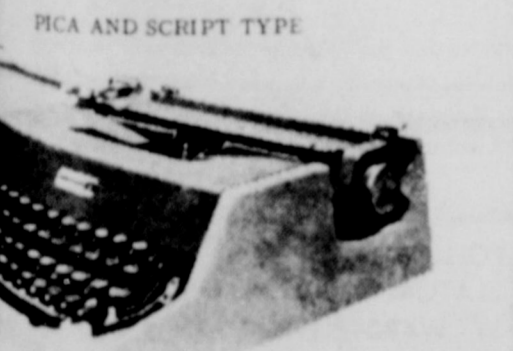
(It's portable and electric.)

Why work so hard? A "Quanta" will go with you to the office, home, on trips and client calls. It'll do the addition, multiplication, and credit balances; all you do is push the buttons. Quanta is Olivetti Underwood's portable adding machine that totals up to 11 digits and records every calculation. Even with its carrying weight only 11 lbs. But it'll take more than that off your back. Try a Quanta and see.

Variables typewriter

Underwood 21 them in.

Controlled from the keyboard. Vertical and horizontal half-spacing difference. Vertically, you click up for above-the-line symbols like 7. Horizontally, you can squeeze letter into a 1/2 space and save whole page. Come type on an Underwood 21 and see. A big value and



The Slatonite

VAB-4201

Furniture Office Machines Office Supplies

Triumph Baptist Has Guest Preacher

Guest pastor at the Triumph Baptist Church, Geneva Street, Sunday was Rev. J. L. Lispeomb of Oakland, Calif. He is pastor of the Stewart Baptist Church there.

Rev. Lispeomb's parents are Mr. and Mrs. Charlie Freeman, members of the church here. He preached both services Sunday.

Rev. M. A. Brown is pastor of the church.

Mr. and Mrs. Knox Rawlings of Boulder Creek, Colo. are here visiting in the home of Mrs. De-Ima Hodge. Mrs. Rawlings and Mrs. Hodge are sisters.

Attend The Church of Your Choice Sunday

Knowing God

"You shall therefore love the Lord your God, and keep his charge, his statutes, his ordinances, and his commandments always." - Deuteronomy 11:1

God is not an overseer. God's commandments are not posted like highway signs along the pathway of life. God sends no written instructions, delivers no oral pronouncements.

Each man knows God in his own way. Each man seeks, or ignores.

But, for every man, there is the waiting guidelines to be found in Christian living.

You will know God, love God, if you apply the principles of Christianity to every pursuit, to every facet of daily living.

Read your BIBLE daily and GO TO CHURCH SUNDAY

These Church Listings Presented as a Public Service By The Above Merchants

Slaton Churches		
FIRST BAPTIST 255 South 9th Rev. J. L. Cartrite	FREE WILL MISSIONARY BAPTIST 1040 Arizona	ST. JOSEPH'S CATHOLIC CHURCH 19th & Lubbock Msgr. Peter Morsch
WESTVIEW BAPTIST 830 South 15th Rev. Clinton Eastman	TEMPLO BAUTISTA (Latin Baptist Mission) East Panhandle	OUR LADY OF GUADALUPE 710 South 4th Rev. James Erickson
BIBLE BAPTIST 525 West Panhandle Rev. H. E. Summar	FIRST METHODIST 305 West Lubbock Rev. Bruce Parks	GRACE LUTHERAN 840 West Jean Rev. Robert C. Richardson
21st ST. BAPTIST 1010 South 21st	TRINITY EVANGELICAL METHODIST Rev. Linam Prentice	FIRST CHRISTIAN 22nd & Division Rev. Johnnie Moore
TRIUMPH BAPTIST East Geneva Rev. M. A. Brown	AFRICAN METHODIST Rev. R. E. Brown	FIRST PRESBYTERIAN 425 West Lubbock Rev. Edwin Hall
MT. OLIVE BAPTIST Corner of Jean & Geneva Rev. E. W. Wyatt	L.M.E. METHODIST Rev. W. D. Atkins	
WILSON St. Paul Lutheran Rev. R. F. Kamrath St. John Lutheran Rev. Fred G. Hamilton Wilson Baptist Rev. Benny Hagan Wilson Methodist Rev. Wendell Leach	GORDON Church of Christ Stephen Mazurek	
	PLEASANT VALLEY Baptist Church Rt. 1, Post Rev. Sherman H. Levin	
	ACUFF Church of Christ Robert Tompkins Acuff Baptist W. O. Donley	
	CANYON CHURCH Baptist 1st & 3rd Sunday Rev. Curtis Jackson Methodist 2nd & 4th Sunday Rev. W. O. Rucker	
		FIRST ASSEMBLY OF GOD 14th & Jean Rev. John K. Pratt
		PENTECOSTAL HOLINESS 105 West Knox Rev. Archie Cooper
		CHURCH OF CHRIST 11th & Division C. L. Newcomb
		CHURCH OF GOD 206 Texas Ave. Rev. C. A. Starks
		CHURCH OF GOD IN CHRIST #2 Rev. Freddy L. Clark
		CHURCH OF THE NAZARENE 635 West Scott Rev. David Powers
		FIRST Immanuel Lutheran Rev. Jimmy C. Landers
		SOUTH AND Southland Baptist Rev. W. H. Hill Southland Methodist Rev. Charles Hasting

Office Furniture Office Machines Office Supplies

New Fords Make Debut in City

The 1968 Ford, substantially altered in appearance, offers something for every car buyer. The lineup includes three more models than in 1967, a host of new mechanical and safety features, and two new engine options.

With the 1968 Ford, "we feel we are better equipped than ever to go after a substantial share of both low and medium price markets," said M. S. (Matt) McLaughlin, Ford Motor Company vice president and Ford Division general manager.

"Our LTD and XL series match the medium-price cars in luxury and comfort, while our Galaxie 500 and Custom 500 models continue to offer the low-price car buyer the type of transportation he seeks."

The addition of a Galaxie 500 two-door hardtop with a formal roof line and two Custom 500 Ranch Wagons brings the total of 1968 Ford models to 21. One of the wagons is a six-passenger model; the other, a 10-passenger with dual facing rear seats.

New sheet metal below the window line gives the new Ford a longer, lower profile. Three separate roof treatments distinguish the hardtop models, which include a new fastback version of the XL and Galaxie 500. The new die-cast grille in the LTD, XL and Country Squire models has horizontal headlights with retractable doors.

Ford Motor Company's Improved Combustion System is standard on all models equipped with the Cruise-O-Matic transmission. Ford's Thermactor Emission Control System is standard on all models equipped with a manual transmission. Both systems are designed to reduce the emission of hydrocarbons and carbon monoxide in the engine exhaust.

A 302-cubic-inch V-8 engine replaces the 289 as the basic V-8 engine in the Ford line. The high performance powerplant is a hydraulic valve version of Ford's famous 427-cubic-inch engine, rated at 390 horsepower, which is available only with a Cruise-O-Matic transmission.

Safety features on all 1968 Fords include a new energy-absorbing steering column that compresses under heavy impacts; a redesigned instrument panel offering improved injury protection;



A new simulated air scoop on the side quarter panel, standard hood louvers and a new grille readily identify the 1968 Mustang, America's favorite fun car. The GT 2+2 fastback above features a new accent stripe and the convertible model below has the optional, low gloss black louver stripes and hidden boot fasteners. A wide range of engines up to a powerful 427-cubic-inch V-8 is available. New options include wide-oval radial ply tires and AM/FM multiplex stereo radio.

A dual, hydraulic brake system, and squeeze-type inside door handles.

A number of new options are available for Ford buyers in 1968, including an AM/FM Stereo Radio that produces true stereophonic sound through two front-door-mounted speakers. An automatic load leveler and a rear-window defogger have appeal for the driver who seeks maximum comfort and convenience.

Available on all Ford models are Ford's new front disc/rear drum, power-assisted brakes which provide improved cooling characteristics and better braking action.

All Ford models will be on display in dealer showrooms September 22.

STYLING

A new grille, new sheet metal below the window line and redesigned roof areas on all hardtop models give the 1968 Ford an impressive new look for 1968.

The forward-thrusting front fenders have sculptured windplite along the sides that follow the curved contour of the body profile. A slight dip in the door area provides overall styling continuity.

Each series has ornamentation and distinctive identification features. Custom 500 models have a thin spear molding running the full length of the body side. The Galaxie 500 has a bright rocker panel molding joining the bright frames around the wheel openings.

XL and LTD models have wide rocker panel moldings with fender and quarter panel extensions joined by wheel lip moldings. Vinyl tape stripes above the rocker panel distinguish the XL models. LTD models have contrasting paint pinstripes extending the full-length of the body.

Imparting a new look to the hardtops are the rooflines. The fastback has more sweep to its rear window and new ridges at the window's sides for a sporty look. Both the formal two-door and the four-door hardtop models have rear roof pillars and less slant to the rear window. Both versions offer a vinyl roof option.

At the front, the new grille sweeps forward at the sides to join the thrusting fenders and create a scoop effect. A deep-sectioned, one-piece bumper enhances the look of luxury. XL, LTD and Country Squire models feature a special die-cast grille. Retractable headlamp doors extend the grille pattern to the full width of the car. A vacuum motor activated by the light switch opens the doors automatically.

Interiors of all Ford models have been restyled. The XL has new, wider foam-padded bucket seats with a standard center console. LTD models have a new, luxury Brougham, ill-cloth trim option. Wall-to-wall nylon carpeting is standard on LTD models. Other models have nylon/ rayon carpeting.

A deeply recessed instrument panel puts all controls and instrumentation directly in front of the driver. The entire panel is covered with force-distributing padding devoid of sharp edges. The instrument panel padding, windshield wiper arms and blades, and many other items in the driver's field of vision have low gloss surfaces.

POWER TEAMS

Two new V-8 engines join the line-up of powerplants available in the 1968 Ford—a 302-cubic-inch engine that is standard in the LTD and Squire models, and a high performance, hydraulic valve 427-cubic-inch engine.

Optional on other Ford models, the 302 is the newest branch on

the 289 family tree. Although the bore of the cylinders remains the same, the increased displacement results from longer cylinders which accommodate an increased stroke.

Equipped with a two-barrel carburetor, the 302 produces 210 horsepower at 4,600 rpm. The four-barrel version produces 230 horsepower at 4,800 rpm. The 427 engine offered in 1968 differs from earlier versions in that it has hydraulic rather than mechanical valve lifters for quieter operation and reduced maintenance requirements.

The 240-cubic-inch engine remains standard in all six-cylinder Fords except the LTD and Squire models. Available again in 1968 are two- and four-barrel versions of the 390-cubic-inch V-8 and a four-barrel 428-cubic-inch V-8.

The fully synchronized, three-speed manual transmission is standard on all models. The popular Select Shift Cruise-O-Matic transmission is available as an option on all models. A four-speed manual transmission is available with the four-barrel 390 and 428 engines.

SAFETY FEATURES

All 1968 Fords are equipped with safety features ranging from a redesigned steering wheel and column to squeeze-type interior door handles.

The two-spoke wheel and fully padded hub deform under impact conditions while the force builds up to overcome the initial inertial load of the new collapsible column. The lower end of the column has an outer bellows-like section of metal covered with a specially treated plastic. The shifting and steering shafts consist of two sections each, one slightly smaller in diameter. The two sections are held together by a plastic material and teles-

cope one into the other. In impact situations, the outer bellows and telescoping shafts permit the columns to compress as much as eight inches.

The interiors of all Ford Division products have been redesigned for 1968. A squeeze-type door handle is recessed within the arm rest for added protection against accidental opening and injury through side impacts.



An exciting new XL fastback (above) and an LTD 2-door hardtop with a new formal roof line are but two of 21 Ford models for 1968. All LTD, XL and Country Squire models feature a special die-cast grille with retractable headlamp doors. A new 302-cubic-inch V-8 engine is standard in LTD and Squire models and optional in all other Fords. New options for 1968 include AM/FM multiplex stereo radio, an automatic load leveler system, a rear window defogger and tilt steering wheel.

Maintenance of Texas highways costs the taxpayers 15 cents out of every highway dollar, compared to a national average of 25 cents.

Most highly developed rural highway system in the United States is the completely paved, 38,000-mile Texas farm to market road network.

Three SWPS Employees To Be Honored

Three Slaton employees of the Southwestern Public Service Company are among 73 from the electric company's Southern Division who will be honored tonight (Thursday) at the 19th annual service awards dinner in Lubbock.

Carroll McDonald will be recognized for 15 years service, while 5 year awards will go to Nell Marie Brake and Ronnie Lee Kennedy.

Tonight's top honoree, Homer Moss, maintenance foreman at the company's Denver City Plant, will receive a 45 year award. This is the longest period of service being honored anywhere in the company this year.

The awards will be made by Roy Toik, president of Southwestern Public Service Company, who will also make a brief address to the awardees

Slaton M In South

Dwayne Presley

one member of a crew from South Cooperative Electric call for help from

the "family" of the cooperative

As the rural led to restore more than a and other person ing in the area.

and their guests. Tonight's 73 have a combined 1005 years of company's service employees whose 5,360 years at awards dinner

THE LUBBOCK COUNTY HOSPITAL DISTRICT IS IMPORTANT

You.

★ IT WILL PROVIDE NEEDED MEDICAL FACILITIES

The Hospital District will have the authority and responsibility to plan and develop a county-wide health care program. This will include hospital facilities to meet the needs of a growing county and area and provide a Teaching Hospital and needed medical facilities.



★ IT IS ESSENTIAL FOR THE ESTABLISHMENT OF A TEACHING HOSPITAL

The Hospital District is being created by the boundaries of Lubbock County. Its creation provides the funds necessary to build and operate a Teaching Hospital required by the Medical Board. The district will provide funds and adequately caring for the medically indigent of Lubbock County. The financing of the district is currently being provided by Lubbock County. The Department for hospital care of the City-County Health Department Outpatient Clinic will in time be transferred to the District's jurisdiction. This will result in the administration of these services which are a more efficient and economical means of providing health care.

The Hospital District will be composed of seven Lubbock County citizens appointed by Lubbock County Commissioners Court with approval of the Commissioners Court. The responsibility of operating the Teaching Hospital and providing care for the medically indigent in the county. The hospital itself is modern of its kind, providing absolute services for all citizens of the county.

★ IT WILL PROVIDE A BOOST TO OUR ECONOMY

The citizens of Lubbock County will receive a \$10 million per year which will be paid for with other funds available for medical care. Operating costs will be more than \$3 million annually, most of which will go directly into the Lubbock County economy. Staffing of the hospital will add more than 230 new jobs to the economic strength of the county.

The Hospital District will place Lubbock County on an equal footing with other progressive counties in Texas. It will provide funds for construction of a modern Teaching Hospital for physician training and clinical research. This is true in Dallas (Parkland Hospital), and other locations. The creation of a Lubbock County Hospital District, this can be a major step for Texas.

Expenditures for the Hospital District will result not only in return to the local economy; but, more important, will help improve the area, stimulate new programs and research at Texas Tech, and attract industries for further economic growth.

POLLING PLACES —

- SLATON CLUBHOUSE / 700 W. GARZA
- W. WARD ELEMENTARY / 600 W. LUBBOCK
- E. WARD ELEMENTARY / 700 S. 7th

★ COSTS WILL BE NOMINAL

The Teaching Hospital Complex when completed will represent a \$15 million facility (this does not include the medical school — \$10 million). Outside funds — for use in assisting communities constructing teaching hospitals — will be utilized. By using these funds, the cost to Lubbock County citizens would be \$5.2 million, \$4 million in bonds and \$1.2 million in accumulated Hospital District funds.

The operation of the Hospital District and the amortization of bonds will require the levying of a tax in the amount of approximately 40c per \$100 valuation on property in the county.

The state constitution provides that a maximum of 75c per \$100 valuation may be levied for such purposes. In this case, only 40c of the maximum will be required.

The citizens of Lubbock County have one of the lowest county tax rates and lowest bonded indebtedness in Texas. The projected tax appears realistic in terms of legal limits, comparative levels for attracting new industries, and benefits derived.

VOTE FOR THE LUBBOCK COUNTY HOSPITAL DISTRICT AND FOR THE BONDS AND FUNDS TO MAKE IT A REALITY SATURDAY, OCTOBER 7TH

(Paid for by the Committee for the Lubbock County Hospital)

FAMILY POT LUCK

BY HELEN HALE

Those Little Touches

Making a specialty of brunch? Scramble eggs, add crumbled, cooked bacon and ripe olive wedges to the eggs as they cook.

Green beans are ordinary enough, but not in a salad when they're treated in this way: drain and let stand for an hour in French dressing, then toss with crisp onion rings, coarsely chopped celery and a pinch of tarragon.

Snip those dates with kitchen scissors, then fold into whipped cream which has been sweetened with brown sugar and spiced with a bit of ground cinnamon and instant coffee. Serve in tall glasses for dessert.

A bowl of creamy chowder tastes good on those first cool days. Use frozen potato soup and add to it some cooked or canned peas while garnishing the top with a dollop of sour cream and chopped green onion tops.


Create an interesting sandwich — open-faced cheese. Top with shredded lettuce and a dressing made of mayonnaise, a dash of tabasco sauce and crumbled bacon.

Vegetables need variety? Give them a touch of elegance with toasted, sliced almonds whisked into the melted butter. This does something special to sliced carrots, green peas or Brussels sprouts.

Helen's Favorites:
Chicken Salad Plate
(Serves 4-5)
2 cups moist leftover chicken, diced
1/2 cup French dressing
1/2 cup salad dressing
1 cup celery hearts, sliced thin
Chilled, canned fruits for salad, drained
Place diced chicken on pie plate and drizzle with French dressing. Cover and chill in refrigerator for several hours. Before serving, drain chicken and mix with salad dressing, celery hearts and some fruits. Serve in lettuce cups, using remaining fruit for garnish.

PRINTING OF ALL KINDS

Slat-Co PRINTING
Telephone VA 8-4202
Located in
The Slatonite Building
SLATON, TEXAS

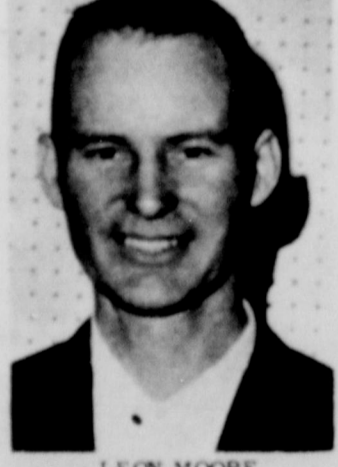


PETE WILLIAMS

Each month Smith Ford recognizes its "Salesman of the Month" for outstanding achievement, but the September records indicate we have a tie between Pete Williams and Leon Moore.

So, with outstanding salesMEN of the month, we invite you to come by and let one of these men figure you a deal on a new Ford.

You'll discover a deal that can't be beat, and you'll help determine the SALESMAN of the month for October.
Visit Smith Ford today!



LEON MOORE

Will the Salesmen of the Month please step forward?

US-84 BYPASS

Slaton
VAB-4221

Smith FORD, Inc.

Lubbock
POS-8000