

Soaking Rains Again Roam Slaton Area

The Slaton Slatonite

A MEMBER OF MOST FAMILIES IN THE SLATON TRADE AREA

57TH YEAR ISSUE NO. 41

LUBBOCK COUNTY SLATON, TEXAS

THURSDAY, JULY 18, 1968

10 PAGES

10 CENTS

• SCHOOL BOARD ISSUES STATEMENTS ON TAX NEEDS •

New Look Taken at Farm Values

A tax controversy, brought on by a joint school-city reappraisal program, continued to be a prime topic of conversation in Slaton this week as the school invited farmers to discuss the formula for valuating irrigated land with tax appraisers, and a committee of farmers began an investigation of their own into farm values.

And, at an informal meeting Monday, Slaton School trustees approved the issuance of two comprehensive statements in connection with the recent tax reappraisal and revaluation.

One statement explains the operational costs of the independent school district, including comparisons of per-pupil costs with that of other schools, the amounts of funds paid by State and local sources, estimated costs for the next five years, and a breakdown on taxes paid within the city and outside the city limits.

The other statement deals primarily with how and why big tax increases for schools has become necessary over the past 10 years. The statement points out that the school's local fund assignment, which is determined by the State, has increased more than 400 percent since 1957.

Trustees point out that additional revenue must be provided "even to maintain the school program on a status quo, and to improve schools, an additional increase is urgently needed."

On a percentage breakdown, trustees said taxpayers within the city last year provided 71.5 percent of the tax revenue while those outside the city limits paid 28.5 percent. Under the new revaluation, the board said the division showed school taxpayers in the city would be paying 54 percent and rural taxpayers 46 percent.

According to a study made by trustees, the cost per-pupil in Slaton schools is \$357.82 per year. This is a low in Lubbock County, ranging to a top average of \$397.86. Average cost over the state, in schools of comparable size, is \$435.25, according to Texas Educational Agency figures.

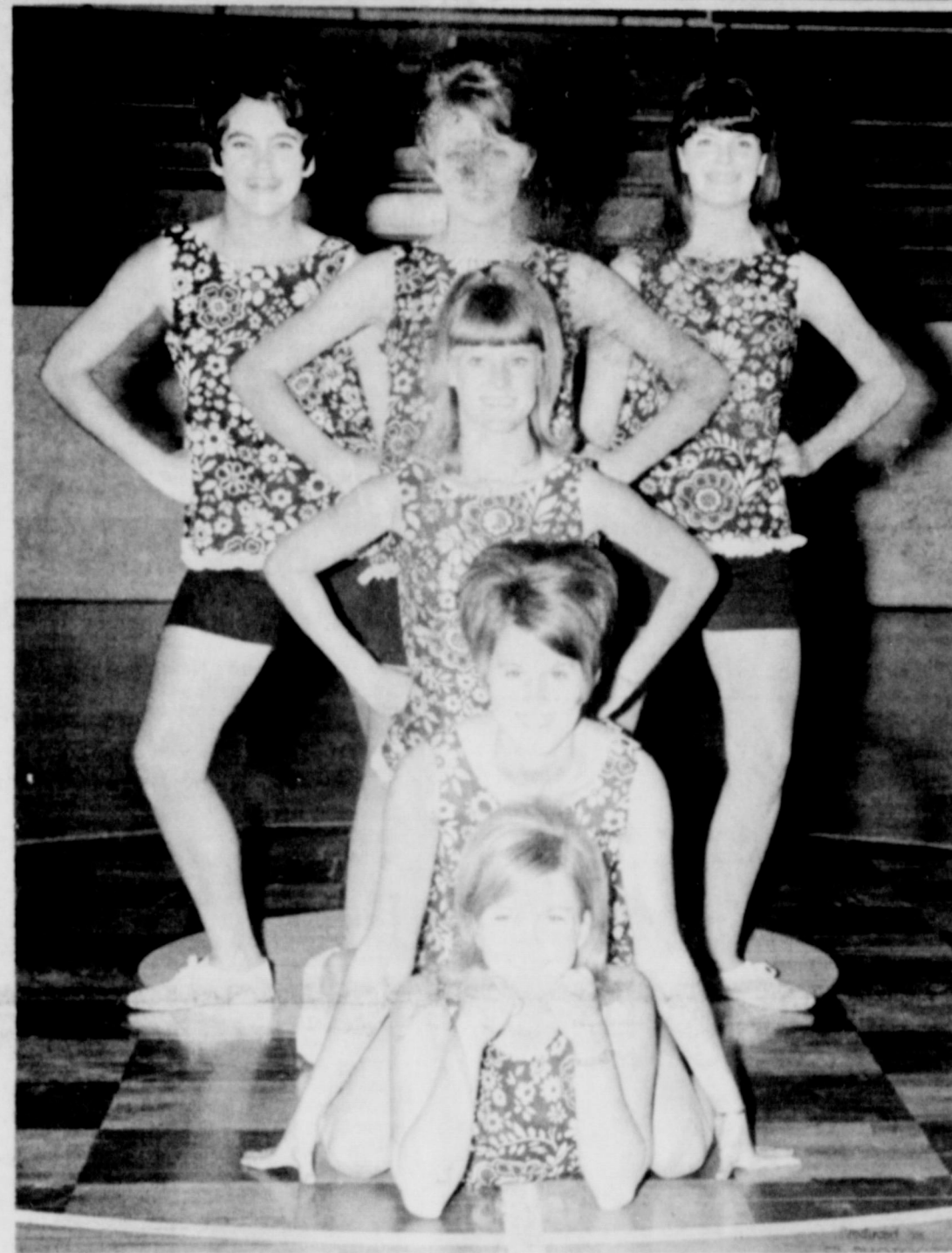
Pointing to these statistics, trustees call the school effort in Slaton "below par" in comparison with average figures. In another breakdown, the board said the State paid \$532,396 for the operation of local schools last year, while the local district provided \$289,000.

Trustees Call Needs Urgent

The Slaton School has operated upon a basis of meeting acceptable standards as set out by various accreditation agencies. It is hoped and desired that these standards can be elevated to a plane where the educational level in Slaton will be above the minimum level and provide a program desired by the people of Slaton. The program in the Slaton School must and should be improved to give adequate advantages to the young people that live here.

Even to maintain the program on a status quo basis, additional revenue must be provided. In order to improve our schools an additional increase is urgently needed. In its formula upon which the State of Texas distributes its funds, the Slaton school is allowed \$44,400 for the fiscal operation of the Slaton School. The amount of money is not sufficient to pay for the custodial services, such as salaries, utilities, supplies and other cost of care and the transportation system to transport pupils to and from schools during the school year.

Any other items such as library books, teaching supplies, equipment, office expense, general maintenance of building other than daily care, and in-



IT IS FOR TIGERS--Slaton High cheerleaders are pictured during a cheer camp workout at Cloudford, N.M. the past week. The girls won first in their division at the "Camp of Champs". Across the top of the "T" are Debbie Donaldson, Johnnie Sue Mosser, and Judy Eblen, and--from top--Dee Dee Carter, Cindy McWilliams and Cynthia Akin.

The WEATHER

(Courtesy of Pioneer Nat. Gas)

	HIGH	LOW
July 17	98	70
July 16	98	70
July 15	90	66
July 14	90	67
July 13	92	65
July 12	89	70
July 11	98	68

Slaton Police Aid In Area Wide Hunt

Slaton police set up a watch Tuesday south of Slaton in connection with an area-wide search for Hearne Edward Smith, 27, who stabbed a Hale County deputy sheriff and made his escape early Tuesday morning. Smith had been taken to Plainview on a bench warrant while serving a 60-year sentence in Huntsville for murder and kidnapping.

Hale County Deputy E. L. Hatfield, 50, underwent surgery for the stab wounds in a Snyder hospital Tuesday.

The suspect was captured Tuesday night near Snyder by two of the victim's brothers and a son.

Smith and Hatfield were reported to have stopped on the US 84 by-pass for gas after midnight Monday after they had run out of gas. Smith had apparently overpowered Hatfield in Lubbock about 6 p.m. Monday.

Officers Tuesday set up a watch south of Slaton on a report that Smith might return this way.

In other action of the week, a house fire at 850 Oklahoma, Tuesday was quickly extinguished by city firemen shortly before noon. The fire did minor damage to the frame house belonging to Gene Mask. Closter Bryant, who occupies the house, was not at home at the time of the fire.

Since the police department is broadcasting fire calls during the illness of Ollie Baxley, Slaton citizens have been requested to withhold all calls concerning a fire at least ten minutes after the alarm is sounded.

Sunday, there was a hit-and-

run accident reported. Ernest Gipson's car was backed into a Mustang while Gipson was inside a cafe.

Last Tuesday, July 9th, in the 100 block of West Garza two cars backed into each other. No one was injured, but both drivers said they failed to see the other.

There were two jail arrests, and 19 traffic tickets issued during the week.

For the month of June, there were 44 jail arrests, 11 traffic accidents, and 84 traffic tickets issued.

Teachers' Pay Raise Factor In New Taxes

The Slaton Schools have attempted to operate economically and efficiently as possible through the past several years. Many items have contributed to the rising cost of public schools of Slaton and in fact all schools in Texas and throughout the United States.

Some of the factors that have added cost to the operation of the schools are: inflation, increase in cost of supplies and materials, the federal minimum wage law, increase in the teachers salaries on a state wide basis, increase in utility cost, additional services as special education such as speech therapy and the slow learners, improvement of buildings and facilities, expansion of the general program, providing additional personnel in the physical education department, increase in the economic index by which each school district is required to contribute to the support of its school to get state support for the schools, and the meeting of the requested demands of the people of the Slaton schools for things they deem essential to the operation of a school system.

Most all candidates for state offices have agreed to support a state-wide increase in the salaries of all teachers. The increase that these people have agreed upon will cost the Slaton school locally about \$20,000 since each district must pay a part of the increase as required by the general laws of Texas. School support in Texas is based upon a percentage of support on the State level and a percentage on the local level.

The increase in cost caused by inflation is well known by all people, as it is reflected both in household cost and other

(See SCHOOL, Page 4)

Shower Planned For Baugh Family

Some friends of the Derrel Baugh family have planned a "Community Miscellaneous Shower" for the Baugh family who lost almost everything in an early morning fire July 7.

The Baugh's three-bedroom home at 1050 So. 14th and their company pick-up were a total loss.

The shower will be held Friday, July 19, from 7:30 to 9 p.m. in the Slaton Clubhouse. Everyone is invited.

Sizes for the family are: Derrel, 14-14 1/2 shirt and 30-31 pants; Doris, 14 dress, 36 blouse; Leslie, 5 junior petite; Duane, 16 shirt and 28-29 pants; Cheryl, 8 dress; Ricky, 9 slim pants; Jerry, 4 shirt and 3 pants.

Slaton farmers and citizens had enjoyed about all the rain they could stand as the week began, and they were hopeful that the dry, hot weather of Monday and Tuesday would continue to bless the area.

Residents of the area normally worry more about droughty weather, but after four days of rambling thunderstorms and a July total which neared the yearly average, farmers and most citizens in general were ready for a dry spell.

Nightly rains Thursday through Sunday soaked the area with moisture ranging from a total of 2 inches on up to 6 or more in some spots.

Bill Alspaugh, who farms just north of Slaton, has recorded 8 inches of rain in July. Glen Akin, southwest of town, reports a whopping 13 inches this month. Unofficial estimates in town ranged from 2 to 3 inches for the four nights.

The past week's rainfall came on the heels of damaging thunderstorms and hail the previous week. The heavy rain was not expected to cause much damage, if the sun and hot weather continued its hold for a good period.

Heaviest rains the past week were west and south of Slaton. Clarence Kitten and other farmers in the Union area reported large amounts of rain Saturday and Sunday nights. Some farm roads turned into rivers in the area.

The wave of thunderstorms and hail left crop prospects "fair to poor", according to one farm observer. Many crops could still be termed "bumper" if the weather cooperates from here on in. Hall had left heavy damage the previous week in a hit-and-miss pattern, and there were a few farms that lost their crops.

Lubbock was hit hard Sunday morning with inches or more of rain dumped on the Hub City in a three-hour deluge. Damage was estimated at \$160,000 to homes, business firms, cars and city parks.

The A cuff area received from about 2 to 6 inches over the weekend, according to one report. Hall damage had been high in some area there the previous week.

Skies were clear early Wednesday, but the U. S. Weather Bureau's 30-day forecast called for moisture above average in the South Plains area.

Babe Ruth Stars Whip Lamesa In District Meet

Slaton's Babe Ruth League All-Stars knocked off Lamesa, 10-6, in the opening game of the district tournament at Post Tuesday.

Bruce Schuette and Allen Sanders led the batting attack, and Fred Tamer went all the way on the mound for Slaton. The locals were to meet Tri-City Wednesday afternoon in the second round of the double elimination tourney.

Manager Kenny Kitten praised the team's effort Wednesday, and announced Doug Smallwood as the mound choice for the second game. Schuette had four hits in the opening game, while Sanders socked a home run and a double.

Slaton played fine defensive ball in the opener, with catcher Terry Mosser, second baseman Terry Woolever and third baseman Randy Davis turning in some fielding gems.

The tourney continues through Saturday, with a team being eliminated after two losses. The champion advances to the state meet in San Antonio.



TENNIS WINNERS--Four of the winners in the Slaton City Tennis Tournament are shown with their trophies after champs were determined Saturday. Left to right: Clifford Summers, Ronnie Rogers, Dru Ann Beard, and Kenneth Housden. (SLATONITE PHOTO)

\$100 PRIZE
Clearance
Items Slated

Shoppers will be treated to a "Citywide Sale" and offered a chance to win a \$100 prize. The monthly Fabulous Friday promotion is back. Merchants have mailed out Fabulous Friday circulars to area residents. The mailer lists price items, along with rules for the "Scrambled Sentence Contest". Extra entries will be accepted at the Slatonite office. The contest started Friday last month, and no one has won the correct answer. The prize for this month's contest.

Participating merchant will have a chance to win the \$100 prize. Shop by each store and ask for their Fabulous Friday circular. After all words (14 of them) have been secured, entrants should write in the proper sequence and send (in writing) to The Slatonite office. The prize for this month's contest.

The trade committee of Slaton Commerce sponsors the contest. Be sure to pick up a Fabulous Friday circular at the participating merchants for Friday, and enter the Scrambled Sentence Contest!

Producers in minority

Producers in minority in Slaton. The Slaton School trustees have approved the issuance of two comprehensive statements in connection with the recent tax reappraisal and revaluation.

One statement explains the operational costs of the independent school district, including comparisons of per-pupil costs with that of other schools, the amounts of funds paid by State and local sources, estimated costs for the next five years, and a breakdown on taxes paid within the city and outside the city limits.

The other statement deals primarily with how and why big tax increases for schools has become necessary over the past 10 years. The statement points out that the school's local fund assignment, which is determined by the State, has increased more than 400 percent since 1957.

Trustees point out that additional revenue must be provided "even to maintain the school program on a status quo, and to improve schools, an additional increase is urgently needed."

On a percentage breakdown, trustees said taxpayers within the city last year provided 71.5 percent of the tax revenue while those outside the city limits paid 28.5 percent. Under the new revaluation, the board said the division showed school taxpayers in the city would be paying 54 percent and rural taxpayers 46 percent.

According to a study made by trustees, the cost per-pupil in Slaton schools is \$357.82 per year. This is a low in Lubbock County, ranging to a top average of \$397.86. Average cost over the state, in schools of comparable size, is \$435.25, according to Texas Educational Agency figures.

Pointing to these statistics, trustees call the school effort in Slaton "below par" in comparison with average figures. In another breakdown, the board said the State paid \$532,396 for the operation of local schools last year, while the local district provided \$289,000.

The Slaton School has operated upon a basis of meeting acceptable standards as set out by various accreditation agencies. It is hoped and desired that these standards can be elevated to a plane where the educational level in Slaton will be above the minimum level and provide a program desired by the people of Slaton.

Even to maintain the program on a status quo basis, additional revenue must be provided. In order to improve our schools an additional increase is urgently needed. In its formula upon which the State of Texas distributes its funds, the Slaton school is allowed \$44,400 for the fiscal operation of the Slaton School.

The amount of money is not sufficient to pay for the custodial services, such as salaries, utilities, supplies and other cost of care and the transportation system to transport pupils to and from schools during the school year.

Any other items such as library books, teaching supplies, equipment, office expense, general maintenance of building other than daily care, and in-

run accident reported. Ernest Gipson's car was backed into a Mustang while Gipson was inside a cafe.

Last Tuesday, July 9th, in the 100 block of West Garza two cars backed into each other. No one was injured, but both drivers said they failed to see the other.

There were two jail arrests, and 19 traffic tickets issued during the week.

For the month of June, there were 44 jail arrests, 11 traffic accidents, and 84 traffic tickets issued.

Slaton police set up a watch Tuesday south of Slaton in connection with an area-wide search for Hearne Edward Smith, 27, who stabbed a Hale County deputy sheriff and made his escape early Tuesday morning.

Smith had been taken to Plainview on a bench warrant while serving a 60-year sentence in Huntsville for murder and kidnapping.

Hale County Deputy E. L. Hatfield, 50, underwent surgery for the stab wounds in a Snyder hospital Tuesday.

The suspect was captured Tuesday night near Snyder by two of the victim's brothers and a son.

Smith and Hatfield were reported to have stopped on the US 84 by-pass for gas after midnight Monday after they had run out of gas. Smith had apparently overpowered Hatfield in Lubbock about 6 p.m. Monday.

Officers Tuesday set up a watch south of Slaton on a report that Smith might return this way.

Stephens-Davis Vows Repeated

The Slaton Church of Christ was the site for the wedding of Miss Pamela Claudette Davis and Sparky Joe Stephens Saturday evening at 8 o'clock. Double ring wedding vows were repeated before an arch of

greenery with candles on each side. C. L. Newcomb, minister of the church, officiated.

The bride is the daughter of Mr. and Mrs. Ben Davis of Slaton. Parents of the bridegroom are Mr. and Mrs. Billy

Joe Stephens, Rt. 5, Hereford.

Given in marriage by her father, the bride wore a formal floor length gown of silk organza over peau-de-sole. The empire bodice featured stand-up ruffles around the V-neck and a wide satin belt. She carried a graceful crescent cascade of butterfly roses and stephenitis accented with seed pearls. Her floorlength veil of silk illusion was attached to silk organza roses topped with seed pearls.

Mrs. Bobby Brake of Slaton served as the bride's matron of honor. Bridesmaids were Miss Karen Zinch of Clayton, N.M., and Miss Janette Johnston, Lubbock, cousin of the bride. The bridal attendants wore formal length apricot colored satin gowns featuring empire waistlines. Each carried an apricot daisy.

Bobby Brake of Slaton was best man. Groomsmen were Commie Oats and Bobby Joe Harlan of Slaton. Skipper Woods, Wicker Nowlin served as ushers and Mrs. Nicky Patterson registered guests at the church.

Serving as ring bearer was Lance Bownds, cousin of the bride. Miss Tonya Hancock, Lorenzo, was flower girl, Randy Davis, brother of the bride, and Miss Janette Johnston were candle lighters.

Wedding music was provided by the "Wedding Chorus" of the church. Soloists were Mickey Mason of Southland and Donald Sikes. Their selections included "The Twelfth of Never", "Always", "Wedding Prayer", "Truly", and "Whether Thou Goest".

Following the wedding ceremony, a reception was given in the Slaton Clubhouse honoring the couple. Serving guests were Misses Judy Angel, Dallas, Caron Caldwell and Jane Tefertiller. Assisting in the house party were Meses. Elford Stricklin, Max Jackson, B. B. Green, John Dodson, Richard Heigt, Othel Chambers, Wayne West, Harvey Hancock and Jimmy McMeeken.

Following a wedding trip to



MRS. SPARKY JOE STEPHENS
... Pamela Davis

Shower Honors Jane Tefertiller

A personal shower, honoring Miss Jane Tefertiller, bride-elect of Kenneth Winchester, was given at 8 p.m. Monday in the home of Caron Caldwell. Assisting as hostess was Joan Claiborne.

Refreshments of cake and iced tea were served. Hostess gift was lingerie.

Attending were Meses. C.B. Tefertiller, A. W. Latham, Sammy Wilson, Clarence Scott, Larry Schneider, Carter Caldwell and Tom Claiborne.

Also, Meses Cheryl Clark, Jackie Clark, Barbara Bingham, Gwenda Stricklin, Rita Payne, Donna Hatchett, Nancy McSween, Nita Latham, Caldwell and Claiborne.

Mr. and Mrs. Bill Chriesman went to see Paul Green's "Texas" Monday night at Palo Duro Canyon Amphitheatre near Canyon. Making the trip with them and visiting in their home were two of Mrs. Chriesman's cousins, Mrs. Ida Mae Wilkinson of Dallas and Mrs. Zollie Castevens of Fort Worth.

Sgt. Larry W. Huffman, who has been stationed at Holloman AFB, N.M., visited here over the weekend with Mrs. F. M. McNear and Charles. He was enroute to his new station at Cambridge Research Lab in Massachusetts.

Six Flags Over Texas, the couple is at home at 520 West Geneva, Slaton.

A 1966 graduate of Slaton High School, the bride completed her second year at West Texas State University at Canyon. She is majoring in English education, was listed on the Dean's Honor Roll and was a member of the Mary E. Hudspeth Honor Society at the university.

The bridegroom is a 1965 graduate of Slaton High School. He was recently discharged from the U. S. Army after serving two years, one of which was in Vietnam. He is presently employed by Santa Fe Railway in Slaton.



RAMONA CARTWRIGHT

Vows Set August 3

Miss Ramona Grace Cartwright will become the bride of Terry Lee Bishop in nuptial ceremonies set for August 3 at 7:30 p.m. in the bride's home at 1102 East 44th St., Odessa.

The bride - elect is the daughter of Mr. and Mrs. Everett D. Cartwright of Odessa. Parents of the prospective bridegroom are Mr. and Mrs. E. E. Bishop of Slaton.

A graduate of Permian High School in Odessa, the bride - elect also attended Odessa College and Lubbock Christian College and was a member of Kappa Phi Kappa.

The prospective bridegroom is a graduate of Slaton High School, attended Lubbock Christian College where he was a member of the Meistersinger Chorus. He is employed with Modern Castings Corp.

Luncheon Honors Miss Davis And Attendants

A "bridesmaid's luncheon" was given Saturday in the home of Mrs. Truett Bownds honoring Miss Pam Davis, bride-elect of Sparky Joe Stephens, and her attendants. Assisting with hostess duties was Mrs. Bownds' daughter, Mrs. Jan Brieger. Miss Davis is the niece of Mrs. Bownds.

A salad luncheon was served to the attendants, Miss Karen Zinch of Clayton, N.M., Mrs. Bobby Brake and other guests, Mrs. Ben Davis, mother of the bride - elect; Mrs. Billy Joe Stephens of Hereford, mother of the bridegroom; and Mrs. Joe Stephens, grandmother of the bridegroom. Miss Janette Johnston, another bridesmaid, was unable to attend.

The table was centered with a crystal bowl of daisies. Hostess gift was crystal. The couple was wed Saturday night in the Slaton Church of Christ.

Grandson Of Slatonite In Central America

Les Tucker, grandson of Mrs. L. C. Tucker of Slaton and son of Mr. and Mrs. J. C. Tucker of Brawley, Calif. is in Central America this summer as a participant in a Rotary Exchange program.

He was one of four Panamabound and six Nicaragua bound students from Rotary District 534 in California.

A graduate of Brawley High School, Les was a member of the BUHS American Field Service Clue for three years, on the wrestling team four years and on the football team three years. He was a member of the Westmorland 4-H Club for five years. He plans to attend Imperial Valley College in California.

He left June 15 for Nicaragua to stay with his foster family until Aug. 14. His foster parents, Dr. and Mrs. Horacio Castillon have seven children, ranging in age from 21 to 4 years. His foster father is a doctor for the army and holds the rank of colonel.

Mr. and Mrs. J. P. Hallburton visited Mr. and Mrs. Courtney Sanders in Morton last weekend.

Book Sale Begins Today

The Friends of the Lubbock City - County Libraries are sponsoring a book sale Thursday and Friday of this week. A choice of 6,000 books, ranging from one cent to \$10 will be on sale from 9 a.m. to 6 p.m. each day.

The sale will be held in the Daisy Godeke Lecture Room at the Lubbock Library located on 19th Street. All proceeds will be used in projects to benefit the library. Slaton residents are invited to the sale.

Mrs. Townsend Has Visitors

Visiting with Mrs. W. O. Townsend last week were her grandson and his family, Staff Sgt. and Mrs. Loyd B. White and three children, Sandra, Loyd and Rhonda. Sgt. White recently returned from the Philippines where he was stationed with the Air Force. The family has visited relatives in California, Texas, Louisiana and Mississippi.

Later this month the Whites will leave from Maguire Air Force Base in New Jersey for Frankfurt, Germany, where Loyd will begin a four - year tour of duty.

Mrs. Townsend also had visitors from Bakersfield, Calif., her daughter, Lona and her granddaughter and husband, Mr. and Mrs. Wayne Clerley.

Over the weekend, four of Mrs. Townsend's six children visited in her home. They were Mr. and Mrs. Carl Townsend of Odessa; Mr. and Mrs. Wayne Townsend and son, Glen and his family of Lubbock; Mr. and Mrs. Billy Townsend, also of Lubbock; and Mr. and Mrs. L. G. White of Bakersfield.

Oops! Our Mistake

In last week's Slatonite, the information of the birthday of Mrs. Mollie Fountain was in error. It was reported that she is 88 years old. . . . not just 81.

Senior Citizens Hear Newcomb

C. L. Newcomb, Church of Christ minister, brought a message for the Senior Citizens at the clubhouse last Friday. He spoke on "Faith" from the 11th Chapter of Hebrews.

The business was conducted by Mrs. Fannie Patterson, president. The singing was led by Mrs. Alvin White, accompanied by Mrs. Anna Bell Tucker on the piano. The minutes were read by Mrs. Elmer Burns.

Newcomb gave thanks for the meal and ate with the 25 members present. The club had three visitors, Miss Mabel Scudder of Austin, who is visiting her mother, Mrs. W. L. Scudder; Jan and Diana Carothers of Levelland, who were visiting their grandmother, Mrs. Elmer Burns.

HELLO WORLD

7-11-68-- Mr. and Mrs. Robert T. Hurst, 725 So. 20th, Slaton, parents of a boy, born in Methodist Hospital, Randall Marlon, 7 lbs., 10 ozs.

7-10-68-- Mr. and Mrs. Willy Ben Greathouse, 616 E. Oak, Post, parents of a boy, Craig Dean, 6 lbs., 15 1/2 ozs.

7-13-68-- Mr. and Mrs. Guillermo G. Rocha, 1235 So. 8th St., Slaton, parents of twin boys, Paul Rene, 4 lbs., 6 1/2 ozs., and Phillip Rene, 5 lbs., 5 ozs.

7-14-68-- Mr. and Mrs. Manuel B. Soliz, Rt. 2, Box 200, Slaton, parents of a girl, Jenevieve, 8 lbs., 3 1/2 ozs.

7-14-68-- Mr. and Mrs. Edwin Freddie Townsend, Rt. 1, Box 181B, Slaton, parents of a boy, Edwin Freddie, Jr., 6 lbs., 2 ozs.



HANDS ARE FULL--Mrs. Willie G. Rocha, 1235 So. 8th St., Slaton, finds both hands full as she holds her two fine sons born Saturday at Mercy Hospital. Peter, the older weighed 5 pounds, 5 ounces and Paul weighed 4 pounds, 15 ounces. Mr. and Mrs. Rocha, who have lived in Slaton all their lives, have two other children, Carlos, 7, and 17 months. The babies' grandmother, Mrs. Cayenne (Slaton) Rocha, also lives here.

Polk-Moore Wedding Set

Friends and relatives are invited to the wedding of Miss Debbie Moore and Ricky Polk Saturday at 8 p.m. in the First Christian Church.

The bride - elect is the daughter of Mr. and Mrs. Robert E. Moore and the bridegroom is the son of Mr. and Mrs. W. E. Polk.

Mrs. L. W. Smith has been hostess the past week to Mr. and Mrs. Owen Afreth and son, Bowie, of Chappaqua, N.Y. The Afreths stopped in Slaton, Wichita Falls and Amarillo after visiting in San Francisco and San Diego, Calif., and Grand Canyon, Ariz. Mrs. Afreth is the daughter of Mrs. Smith.

Mr. and Mrs. W. O. Townsend last week were her grandson and his family, Staff Sgt. and Mrs. Loyd B. White and three children, Sandra, Loyd and Rhonda. Sgt. White recently returned from the Philippines where he was stationed with the Air Force. The family has visited relatives in California, Texas, Louisiana and Mississippi.

The Slaton Slatonite

O. G. (Speedy) NIEMAN, Publisher

Entered as Second Class Matter at the Post Office at Slaton, Texas, under the act of March 3, 1897.

Published at 163 S. 9th St., Slaton, 79364

SLATON TIMES PURCHASED JANUARY 20, 1962

Notice to the Public: Any erroneous reflection of reputation or standing of any individual, firm, or corporation that may appear in the columns of the Slatonite will be corrected when called to our attention.

SUBSCRIPTIONS: Payable in advance. LUBBOCK COUNTY, TEXAS: \$3.50 per year. OUTSIDE THESE COUNTIES -- \$5 per year.

Member of West Texas Press Assn., Texas Press Assn.

Member 1968 TEXAS PRESS ASSOCIATION

Free Pick-up & Delivery



One Stop Service Slaton Laundry & Dry Cleaning

828-3426

169 W.

Just like having a picnic in your own living room!!!



outdoor freshness with ELECTRIC AIR CONDITIONING



Comfort ELECTRIC Cooling

graduate NOW to modern electric air conditioning!!!



Summer CLEARANCE on numerous items throught the store. Gift Gallery

O.Z.'s Sale Starts Thursday July 18, 8 p.m.

Miss Martindale Shower Honoree

A miscellaneous bridal shower, honoring Miss Resa Martindale, bride-elect of Mike Ward, was held from 7-9 p.m. Monday at the Slaton club house. Hostesses for the occasion were Mmes. Floyd Boyd, C. F. Bradford, Bob Brasfield, Robert Breedlove, Richard Brush, Boyd Bryant, Howard Bryant, Alvin Cheney, E. D. Duncan, Alton Edwards, Gene Ethridge, W. G. Gass; Also, Mmes. Gaynor McCook, L. D. McCullough, Robert Moore, Leroy Poer, L. A. Reasoner, Don Roberts, Johnnie Norris, Raymon Wilkins, C. C. Hunter Jr., R. J. Hurst and Bobbie Hutcheson.



MISS CYNTHIA SPIKES

Engagement Announced

Mrs. June Scott Spikes, 2301 Austin, Amarillo, and Robert F. Spikes, 2309 Hancock, Amarillo, announce the engagement and approaching marriage of their daughter, Cynthia, to Robert Allen Reynolds, son of Mr. and Mrs. Gordon C. Reynolds of Seattle, Wash.

Miss Spikes resided here with her grandmother, Mrs. K. C. Scott, for several years before moving to Amarillo. She is a graduate of Tascosa High School, attended Texas Tech and West Texas State University at Canyon.

The bridegroom - elect is a professional baseball player with the San Francisco Giants, presently playing with the Amarillo Giants.

The wedding is set Sept. 7 in St. Peter's Episcopal Church of Amarillo.

Cheerleaders Win First

Slaton High School cheerleaders returned this weekend from Cloudford, N.M. where they attended a cheerleading school called "The Camp of Champs".

The Slaton six had the most points in their group division and were awarded a trophy Friday morning. Cindy McWilliams also won a "jumping contest" while there.

Three of the girls came home by plane and three with parents.

Cheerleaders are Debbie Donaldson, Johnnie Sue Mosser, Judy Eblen, Dee Dee Carter, Cindy McWilliams and Cynthia Akin.

It's a woman's WHIRL



BY LAVON NIEMAN

A pioneer of this area used to tell about his community where everyone was forced to haul water. He said they seldom had a death because about the time a man was sick enough to die, he had to haul some water. - Douglas Meador in Matador Tribune.

Statistics show that more books have been checked out in 1968 compared to the same time of year in 1967 at the Slaton Branch Library. The library moved to a downtown location the first of 1968 and several improvements have been made in addition to now having more up to date books on the shelves.

In June of 1967 a total of 381 books were checked out. June of this year, books checked out almost tripled at the downtown Slaton Branch location with a total number of 1,053 books checked out plus a total of 301 books checked out from the bookmobile that comes to Slaton every other Monday.

It was pointed out that more books were checked out from the bookmobile when it was in Slaton than any other stop it makes in the county. The bookmobile was in Slaton 25 hours during the month of June and records revealed 301 books were checked out. In comparison to this, the bookmobile was in Shallowater for 27 hours and 154 books were checked out in June.

Two goals that "Friends of the Library" are hoping to reach in the near future is to be able to keep the Slaton Branch Library open 40 hours a week and to include the "best seller rental program" on the library's budget.

We think our library has come a long long way since January, and at the rate books are being checked out, it proves it really does pay off for citizens to work together to better their community.

I'd like to compliment W. A. Shelton, the new man who takes care of the grounds around the Slaton Municipal building and the inside for taking such an interest in the way the square looks. He's keeping the weeds out, the grass mowed and with he and the mayor taking an interest in those bushes that have recently been donated we finally have an attractive "city hall lawn". They will still gladly accept any rose bushes anyone would like to donate to make it even prettier.

With baseball season drawing to a close, I would like to give a GREAT BIG SALUTE to everyone who had a part in making the Little League, Babe Ruth, American Legion and Girls Softball Program the success that it has been.

HAPPY BIRTHDAY

- JULY 18
 - Marilyn Kitten
 - Lonnie Kuss
 - Mrs. Fannie Patterson
 - Mrs. Victor Heinrich
 - Sylvia Brake
 - Lee Ham
 - Jerome Schwertner
 - Evie Winniford
 - Marilyn Janelia Hodge
 - W. H. Bartlett
 - Allen McDonald
 - Brenda McDonald
- JULY 19
 - Leon Vaughn
 - Mrs. T. E. McClanahan
- JULY 20
 - Eddie McCarver
 - David Jaynes
 - Neill Carter
 - Fay Crossland
 - Roxanne McDonald
 - Jimmie Jean Edwards
- JULY 21
 - Harold Wilson
 - Mrs. Lee Wooten
 - C. E. Hogue
 - Rose Marie Johnson
 - Carl Kahlich
 - Dee Dee Carter
 - R. C. Travis
 - Travis Jones
 - Teri Pack
 - David Johnson
- JULY 22
 - Deborah Cade
 - Robert Sandidge
 - Mrs. C. M. Viney
 - Ronnie Miller
 - Mrs. H. E. Atmip
 - Burma Forts
 - Wesley Campbell
- JULY 23
 - Allen Miles
 - Claude Cravens
 - B. G. Busby
 - Neva Darby
 - Melba McCormick
- JULY 24
 - Leo Henzler
 - J. T. Crumley
 - James Sinclair
 - William Lee Harris, Sr.
 - T. L. Rampy
 - Nita Simmons

Farm Bureau Queen Contest Deadline Near

Applications are being taken for the annual queen's contest sponsored by the Lubbock County Farm Bureau.

This year's competition will be held Thursday, Aug. 1 in Coronado High School auditorium at 8 p.m., according to Earl Foerster, president of the Lubbock County Farm Bureau. Entrants must be single, between the ages of 16-22, and have a father or brother actively engaged in agriculture or agricultural products. Each girl must have attained the age of 16 by September, 1968, and may not be over the age of 22.

The contest is judged on the basis of poise, personality, beauty, and the ability to speak. Those interested in entering the contest, which is the preliminary for the district queen's contest, may contact Lubbock County Farm Bureau, 5605 Ave. Q, SH7-5271.

Deadline for applicants is July 26.

Mr. and Mrs. Doc Reasoner were in Houston recently visiting their daughter and family, Mr. and Mrs. Lyndon Maeker and Mark, who celebrated his first birthday while they were there. They went to three baseball games in the Astro-dome and to the musical production of "Oklahoma".

ROOSEVELT NEWS

KATHY WALTER

Dress Revue Set Tuesday

Debbie McMellan and Jeanie Foster are two members of the vocal-instrumental combo, "The Heartbeats," which will appear on the national television program, "Happening '68." The show which was taped in Los Angeles June 16, will be shown at 12:30 p.m. Saturday on KLBK-TV, Channel 13, Lubbock. They will also be on the August 3 show, which will show them winning the semi-finals of the competition, allowing them to return for the August 24 show.

"The Heartbeats" are the first group to appear on this show from this area, and the second to appear from Texas. The combo consists of four girls who play for civic groups, openings, stage shows and school assemblies. The group was the main feature at the Student Council - sponsored Christmas assembly last year.

Debbie is the daughter of Mr. and Mrs. Curtis McMellan. She was a cheerleader and participated in 4-H, Camp Fire Girls and basketball. She plays bass for the group.

Jeanie is the daughter of Mr. and Mrs. Freeman Foster. She was a cheerleader, and has won awards in guitar contests. She does most of the lead singing in the combo.

The Canyon Methodist Youth Fellowship held a retreat at White River Lake last Saturday. Those attending included Bettie Crumley, Carol Woolley, Elaine Reynolds, Jana Parchman, Ronnie Daniel, Carla Crumley, Jack Parks, John Germany Bound

Mrs. Danny Bailey, who has been making her home in Slaton with her husbands parents, Mr. and Mrs. Dock J. Bailey, will leave August 6th or 7th for Frankfurt, Germany where she will join her husband, who is in the service.

Mr. and Mrs. J. P. Halburton and Mr. and Mrs. Bill Wampler returned July 7th from a trip to San Francisco, Calif.

Mr. and Mrs. Glen Akin traveled to Cloudford last week. They brought their daughter, Cynthia, and Johnnie Sue Mosser home from cheerleading school. On their way home, they stayed overnight in Ruidoso, N.M.

The Calvin Lambs and Wayne Lambs spent the weekend in Ruidoso, N.M.

Hamilton and Wendy Cromer, Sponsor of the group is Jack Sides.

FHA volunteers in HeadStart this week are Rhonda Jo Davis, Ann Culver, and Carol Craze. NEW OFFICERS

The Young People for Christ from the Roosevelt Community have elected their officers for the coming year. They are Roy Jim Davis, president; Patricia Rowan, vice president; Don Jackson, secretary; Wendy Cromer, treasurer; and Marsha Belcher, recreation chairman. The group, with an active membership of 14 made \$60 on the bake sale they sponsored last Thursday.

MEMBERSHIP DRIVE The Young People for Christ are sponsoring a membership drive which will climax with a picnic. The picnic will be held at 7:30 p.m., July 30, in Mackenzie Park. Anyone interested in joining should attend the activities. All members must bring two guests. Approximately fifty members and prospective members are expected. Sponsors for the group are Mr. and Mrs. Les MacDowell and Brother and Mrs. Regeon of the Roosevelt Baptist Church.

Mrs. Jimmie Davis is in West Texas Hospital where she has been since last Thursday. We hope she recovers quickly and is home before long.

Roosevelt FFA will be well represented at the State FFA Convention in Lubbock this week. Randy Thomas, past-president of the Roosevelt Chapter, will serve on the welcoming corps. Lloyd Maines and Pat Pounds are delegates to the convention. The meeting will last until Friday.

DRESS REVUE

The Lubbock County 4-H Dress Revue has been set July 23. Those working on the committee to make the public revue a success are a number of faces from the Roosevelt Club. Elaine Reynolds is chairman of the decoration committee, and Pam Mimms is among those working on this committee. Working on the exhibit committee are Joyce Thomas and Kathy Stennett. Kathy Walter is one of two acting as narrators and writing the script. All of these plus several others will enter the dress revue. A more complete list of those entering will be available at a later date.

Attending a 4-H record workshop from Roosevelt were Roy Jim Davis, working in field crops; Nedra Davis, working with her project in dog care and training; and Kathy Walter, working in dress revue and home improvement.

Mr. and Mrs. Roy Cox had company in their home last Sunday. Mrs. Ethel Davis, her son, Jimmie Davis and his family, Roy Jim and Vicki Jan; Mrs. Ruby Thomas; and Mrs. Edna Thomas, her daughter and family, Mr. and Mrs. Eugene Searcy, Larry and Lowell Don of Kress.

Please send news or call news of community interest to this column at Route 2, Box 226 or 842-3470.

CINDERELLA'S MERLE NORMAN Cosmetic Studio

Call VA8-3516 for appointment. Corner of 4th & Lubbock Sts.

EBLEN PHARMACY

245 W. LUBBOCK SLATON, TEXAS
828-4537

MRS BAIRD'S

Fresh Longer

MEET ONE OF OUR FAMILY . . .

MR. SMITH
BUSINESSMAN

BE A PARTNER WITH CSB!

owns a growing concern . . . one of the reasons it's prospering is the loan he took out here for expansion. Terms were arranged to accommodate his income on a convenient period of time.

the BANK with a HEART

FDIC

COMMERCIAL LOANS
INSTALLMENT LOANS
FARM LOANS
HOME IMPROVEMENT LOANS

CHECKING ACCOUNTS
SAVINGS ACCOUNTS
NIGHT DEPOSITORY
SAFE DEPOSIT BOXES

SLATON HOME DEMONSTRATION CLUB

Is Another one of the participating sponsors of WELCOME WAGON IN SLATON

GOOD CITIZENS BUILD BETTER COMMUNITIES

Citizenship involves more than casting a ballot, attending a civic club meeting, and obeying the law. Citizenship means wholehearted, day-to-day support of both government and the civic and philanthropic agencies which work for community improvement.

Slaton HD Club benefits your community and -directly or indirectly- benefits you and yours. And your help is appreciated, needed and deserved.

Help, won't you?

Welcome Wagon

Shop the Storewide Clearance Sale at Bland's Furniture!

POSEY NEWS MRS. P.C. KITCHENS

Greetings! We here at Posey have enjoyed the nice showers this week and crops of this area are pretty, although we certainly have a feeling for those near Slaton who were hailed out. We're not like the story that was told of a farmer who had a complete crop failure but said one good thing about it was his neighbors did too, being aware of how much is invested in a crop, it's certainly bad to receive hail this late in the year.

Mrs. Fred Meyers was honored with a birthday supper at the Marvin Dorsett home in Lubbock Friday evening. Mr. and Mrs. Meyers visited relatives while in Lubbock.

Mrs. P. C. Kitchens visited with Mrs. Fred Stolle Friday afternoon.

Kit, Ann, Julia, Sandra, James and John Kveton of Abernathy were weekend guests of the L. B. Kitten family.

Mr. and Mrs. Ed Maeker visited Mrs. Heddie Kelly and Fabian Stahl Friday night.

Robert Stolle has been hospitalized in Methodist Hospital but is home at this time and improving.

The Sammy Gentry family and the Bobby Townsend family took their children skating in Lubbock Saturday evening.

Cecil Menzel's parents, Mr. and Mrs. E. J. Menzel of Thordale, are spending the weekend with the Menzel family. Irvin and Allen Menzel are also visiting.

Mrs. W. A. Wilke's mother, Mrs. J. A. Taylor, has been hospitalized in Methodist Hospital for two weeks with a broken hip.

Dee Dee Carter and Brad Doherty were Sunday guests of the Alvis Joe Loke family.

Mr. and Mrs. Mert Gentry visited in the Mizzie Shelton home Sunday afternoon. While there they visited with old-time friends, Mr. and Mrs. Bill Cooper of Pampa.

Misty and Melody spent the

weekend with Mr. and Mrs. Clay Oats.

The youth group of the Posey Lutheran Church will join the youth group of the Slaton Lutheran Church in a picnic at the Slaton park Sunday afternoon.

Mr. and Mrs. Ed Maeker spent Saturday with Mr. and Mrs. R. J. Maeker of Wilson and enjoyed a birthday dinner given for R. J.

Mr. and Mrs. Meridith Harper and daughter enjoyed a fish fry with the Richard Turners Friday evening. The results of a deep sea fishing trip were served. The Turners just returned from Padre Island where they caught lots of Red Snapper.

We heard from the Floyd Kitchens in Phoenix, Ariz. last week. They had received one-half inch of rain, the first they'd had in 115 days. As one neighbor here at Posey put it, "sounds like a good dew", as we've received another inch of rain since starting this writing.

Albert Johnson is still in critical condition in the intensive care unit at Methodist Hospital at this writing.

Guests of Mrs. Anna B. Gentry recently were Rev. and Mrs. Linam Prentice, Lorene Mangum and sister, Ruth, the Charles Gentry family, the Bobby Swann family and Everett Mangum.

Mrs. Arlene Gentry arrived home Sunday night from San Angelo where she and her children attended a church meeting.

"The man who is carried away with enthusiasm sometimes has to walk back".

Trust to see you next week.

The Choice
Over 5,000 new food items are introduced in a single year. But only 1,500 of them are accepted for sale by grocers. And of these, only 500 survive more than a year.

Writer's Cramp
The standard 7-inch pencil can draw a line 35 miles long.



MADE IN SLATON---D. L. Williamson, owner and manager of Slaton Sheet Metal, stands beside a farrowing crate which the firm has put into mass production in recent months. The firm has produced about 240 of the crates this year and has another 200 on order--a story of home-grown industry making good. (SLATONITE PHOTO)

School - - -
(Continued from Page One)

cost as farm, machinery, other machinery and transportation items, etc.

All schools must have teaching supplies and materials as well as modern equipment to provide an adequate educational program for their pupils. In order to keep the buildings and grounds in usable condition, additional supplies and equipment are essential. These supplies and pieces of equipment have increased in cost over the past 30 years.

The education that is provided for your children now will influence their lives, success, and happiness in the future. It is the responsibility of every school to prepare their children for a fast changing world. No one can predict every demand that these children will meet but it is essential to educate each child so they can meet new problems and responsibilities of the future.

The federal minimum wage law increased salaries, hence caused an increase in the amount of money needed to operate the schools. There has been a continuous increase in teacher salaries over a long period of time. Most of these increases have resulted from a State wide increase due to State laws enacted.

However, each increase is paid in part by the state as well as by each local school district. Schools must meet these obligations in order to get the aid provided by the State under these laws. Some increase in salaries have been done on a local basis only.

There are young people from Slaton who have prepared to be a teacher, who have gone elsewhere to teach. When these people have been contacted to teach in Slaton, the reply in all cases is that salaries are larger in other schools than they are in Slaton. Slaton is losing potential ability of these people as it is impossible to meet their salary demands. Slaton needs all of its young people to make further growth and improvements possible. Therefore it is important for Slaton to provide the necessary opportunities for its young people.

There has been an increase in the cost of public utilities in the Slaton school system. This condition has resulted from additional buildings to provide for the increase in enrollment of the Slaton schools and from an increase in the cost of service.

Many requests for educational services for certain types of pupils has been received by the Slaton School. In as far as possible, these services have been provided. Specifically these services have been directed toward speech problems and the slow learners. One of the major problem confronted in these areas is obtaining trained personnel.

Many schools pay a salary for these trained people in excess of \$1,000 more than Slaton has been able to pay. In the same thinking, they are not sufficient available people to fill all the position available, hence the shortage of teachers shows up in schools which are not able to meet the salary competition.

An effort has been made to provide acceptable school facilities for the students of the Slaton School District. The addition of new buildings and other facilities to put Slaton in some semblance of comparison to the schools in its class, as well as improving existing facilities, has called for additional expenditures from operation funds and from money derived by the sale of bonds. This condition has caused for additional money to pay for the bonds that were sold for the new building.

The Slaton School has attempted to expand its services and program as changing condition demands. No program can remain the same and be adequate for its pupil. It is essential that the necessary change be made to enable the student of Slaton to compete with other people from other areas. The expansion to meet

local needs of the area has caused a need for additional items to be used in the classroom, such as teaching machines, projectors, tape recorders, reading machines, etc. It is imperative that this demand of additional equipment be met.

Many people see a need for better educational services for their children. This observation usually reaches the ear of the School Board, which in turn evaluates and makes such improvement, if at all possible, whenever the need is considered to be essential to the school program.

The requirement placed upon each school district by the State of Texas is called the economic index. Primarily the economic index is based upon the production of a county, both in the field of agriculture and industry, upon the tax pattern as reflected by the county tax evaluation and on population.

The major factor in determining the amount of money that Slaton school is required to raise is based upon the production of the area, as it counts for 80% of the evaluation. The tax potential and population count for the other 20%.

The amount set aside for each school district to raise is called

**Local Industry Expansion Te...
With Special Hog Pen... 3' T...**

One of Slaton's smaller industries has expanded recently, fabricating products and performing installation work from Stratford to Gonzales, from El Paso to Hamlin, and shipping out of state.

The firm is Slaton Sheet Metal and the name of the game is Sun Portal Douglas Village, a huge Coral Gables, Fla. landmark that was once a major gateway to the city, is an authentic replica of a Mediterranean town square. It was originally called "La Puerto del Sol," The Sun Portal.

The local fund assignment. The local fund assignment for Slaton has been raised from \$22,800 in 1957-58 to \$92,150 in 1968-69.

This is the amount the state deducts from its allocation, and the allocation does not include funds for buildings or for bond payments.

In a matter of 11 years, the local fund assignment has increased more than 400 percent or four times as much as it was in 1957-58. This item can tell the story as to the vast increase of the cost of schools. These figures are tabulated by the Texas Education Agency.

"farrowing crates," Owner and manager D. L. Williamson explains that requests for the farrowing crates came from a specific order and "people must have liked our product and the word spread around!"

Orders for the crates came in so fast, in fact, that Williamson had to add employees and expand his firm into a building next door.

Slaton Sheet Metal has turned out some 240 of the farrowing crates this year and is working on orders for 200 more. The firm is also manufacturing hog feeders, in addition to its already established cooling, heating and allied sheet metal services.

Williamson said the first request on a special pen for farrowing came from the Lubbock Swine Breeders Association. The members needed a source for good crates, and the association has been helpful to Slaton Sheet Metal in securing orders.

The Slaton firm has been doing heating and air conditioning installation jobs on farrowing barns, but the recent venture was their first in fabricating the farrowing crates. They started building the spec-

al pens last December. The firm also installed and recently putting together crates for a breeder in 90 for a breeder in The order for 90 single order taken to complete farrowing for \$106.50, Williamson said. Slaton Sheet Metal employs eight people, working on part-time when Reliable Crates recently, Williamson said the additional space his firm.

Williamson has since 1964, purchased Heating & Plumbing at the same location. W. Panhandle, Lubbock in business here since

over City, Williamson won the bid to help by down the night. Without a doubt, Brown's in the town one hit. Farrowing and weas in the for in the sl errors in

its two run by Don K run with a David Brer with a do lid line. leading be the tourney, four hits. B had the o

ber Curt W only two hits the fatal fo mero gave single over

uesday g only two hits ill. Tri - nes in the errors and edat 2-2 be



J. DAVIS ARMISTEAD, O.D.
J. M. BEALMEAR, O.D.
D. L. GRIFFITH, O.D.
DOCTORS OF OPTOMETRY
Tuesday & Thursday
1:30 - 5 P.M.
LUBBOCK 2132 - 50th SLATON 828-3385
West Side Square

CITIZENS STATE BANK
Statement Of Condition
State Bank No. 1650
REPORT OF CONDITION OF "CITIZENS STATE BANK" of Slaton in the State of Texas at the close of business on June 29, 1968.

ASSETS	
1. Cash, balances with other banks, and cash items in process of collection.....	1,259,678.54
2. United States Government obligations.....	100,000.00
3. Obligations of States and political subdivisions.....	709,466.99
4. Securities of Federal agencies and corporations.....	150,000.00
7. Other loans and discounts.....	5,006,422.04
8. Bank premises, furniture and fixtures, and other assets representing bank premises.....	172,977.50
11. Other assets.....	16,990.83
12. TOTAL ASSETS.....	7,415,535.90
LIABILITIES	
13. Demand deposits of individuals, partnerships, and corporations.....	3,351,314.94
14. Time and savings deposits of individuals, partnerships, and corporations.....	2,522,345.58
15. Deposits of United States Government.....	6,286.79
16. Deposits of States and political subdivisions.....	745,358.09
18. Deposits of commercial banks.....	160,000.00
19. Certified and officers' checks, etc.....	57,943.46
20. TOTAL DEPOSITS.....	\$6,843,248.86
(a) Total demand deposits.....	\$4,091,124.56
(b) Total time and savings deposits.....	\$2,752,124.30
24. Other liabilities (including \$ -0- mortgages and other liens on bank premises and other real estate).....	31,000.00
25. TOTAL LIABILITIES.....	6,874,248.86
CAPITAL ACCOUNTS	
26. (c) Common stock-total par value.....	100,000.00
No. shares authorized 10,000	
No. shares outstanding 10,000	
27. Surplus.....	250,000.00
28. Undivided profits.....	83,209.57
29. Reserve for contingencies and other capital reserves.....	108,077.47
30. TOTAL CAPITAL ACCOUNTS.....	541,287.04
31. TOTAL LIABILITIES AND CAPITAL ACCOUNTS.....	7,415,535.90
MEMORANDA	
1. Average of total deposits for the 15 calendar days ending with call date.....	6,829,646.34
2. Average of total loans for the 15 calendar days ending with call date.....	5,313,255.74
3. Loans as shown in item 7 of "Assets" are after deduction of valuation reserves of.....	155,316.93

I, T.A. Worley, Jr., V.P. & Cashier, of the above-named bank, do solemnly (SWEAR) that this report of condition is true and correct, to the best of my knowledge and belief.
Correct-Attest: T.A. Worley, Jr.
s/H. T. Swanner
s/T. J. Wallace
s/Edward Moseley
Directors.

(MAKE MARK FOR NOTARY'S SEAL)
State of Texas, County of Lubbock, ss:
Sworn to and subscribed before me this 11th day of July, 1968, My commission expires 6-1-69 s/Tommie Wicker, Notary Public.

Comments By KEY ELY

"[MAY] I WOULD'VE GIVE 'O GO'D
In the old days, IF you saved money, you was a miser... nowadays if you save money, you're a WONDER.

8 'TIL-LATE FOOD STORE
BEST SERVICE IN SLATON
PH. VAB-7102
South 9th Street

O.Z.'s Sale Starts Thursday July 18, 8 p.m.

"Hi, Grandad!"

A Long Distance call is a big occasion for Susan. She likes to talk and Grandad happens to be one of her favorite people.

Making sure her call goes through with the same speed and clarity as that of our most important business customer is one of the things we like best about the telephone business. It's a challenge. One we gladly accept.

Sending little voices on big trips is the way we're trying to make your every real good buy.

Southwestern Bell

Team Bows 3' Tourney

their first two 13-year-old team lost in third round elimination week. Slaton's Brownfield team, despite a record of four wins, was eliminated Wednesday.

Plans Underway For Junior Rodeo In Slaton

Plans are underway for a junior rodeo to be held on Slaton Rodeo Grounds August 16 and 17th. Brannon Busby, who holds the lease on the property, is donating the use of the grounds and will be rodeo director. His wife will serve as rodeo secretary.

The rodeo will be sponsored by the local VFW Post with net proceeds going to the Little League and Babe Ruth baseball programs.

Brannon said the grounds are being improved for the event and they are hoping for a good turnout of contestants as well as spectators. Area youths are invited to participate.

For further information, you may call the Busbys at 828-6144.

ABERDEEN PROVING GROUND, MD. (AHTNC)-- Private Jerry L. Luman, 19, son of Mr. and Mrs. N. J. Luman, Route 2, Slaton, Tex., completed an automotive repair course June 28 at the Army Ordnance Center and School, Aberdeen Proving Ground, Md.

During the 14-week course, he was trained in the maintenance and repair of engines for the Army's tracked and wheeled vehicles.



CHAMPIONSHIP TEAM--The championship girls softball team in the intermediate age bracket this year are front row Linda Kitten, Frana Gass, Patti Melton, Angela Wilkins, Jo Edna Smith, Carla Wilkins (batgirl), Elaine Boyle, Kathy Eblen, and Angela Kitten. Second row Cindy Kenny, Lu Anne Fondy, Gretta Stricklin, Keri Kern, Kay Stephen, Vickie Wilkins, Doris Meurer, Becky Culver, Pam Martindale, and Karla Kitten, Mr. and Mrs. Ray Wilkins, back row, are the team coaches. Not pictured is Annette Mosser. (SLATONITE PHOTO)

★★★★★ Slaton Girls Win 3 Games

Slaton's girl baseball teams chalked up three triumphs over Idalou teams here last Thursday.

All three teams will play Ralls here today (Thursday) starting at 5 p.m. at Little League or Pee Wee Park.

Slaton's senior girls (14 and over) scored a close 9-8 win over Idalou last week. Karla Kitten had three hits, including a triple, and Shirley Hightower three singles and was the winning pitcher. Jackie Clark, Debbie Breedlove and Terri Sikes each had two hits.

The intermediate girls (11-13) scored a 6-4 victory over the Idalou girls. Karla Kitten also had three hits in this game, including a triple, while Linda Kitten, Lu Ann Fondy, Gretta Stricklin and Cindy Kenney had two each. Cindy was the winning pitcher.

The junior girls (8-10) won their game by 4-2 over Idalou. Karla Kendrick had two hits, including a double. Rhonda Biggs was the winning pitcher.

First Well
The first natural gas well was drilled in the United States in 1821. Drilled by William A. Hart, at Fredonia, New York, the well was only 27 feet deep, but it supplied enough gas to light homes and businesses in the town.

CHAMPIONS NAMED IN CITY TENNIS TOURNAMENT HERE

City Tennis Tournament winners in six boys' divisions and three girls' divisions were awarded trophies at the end of competition Saturday in Slaton City-County Park.

Directors Tell Plans at Rotary Club Meeting

Directors and committee chairman outlined objectives for the new year when Slaton Rotary Club held its weekly luncheon meeting at Slaton Clubhouse last Thursday.

Claude Cravens, president, presented Tommy Wallace, director chairman for club service, and Vaskar Browning, director chairman for vocational service, for reports to the club assembly. Directors J. P. Spears and Peter Morsch will outline objective for community service and international service at a later assembly.

Committeemen Bruce Pemberton, B. B. Castleberry, Bentley Page and Dee Bowman also gave brief reports.

In tribute to past president David Hughes, a record was played for the club. The title was "I'd Rather Be a Texas Aggie."

Several guests and visiting Rotarians were introduced.

Ronnie Rogers was a triple winner in the tourney -- taking first in senior singles, teaming with Clifford Summers to win the senior doubles, and teaming with Kenneth Housden to win the open doubles.

Housden also claimed three firsts with another win in open singles, and teamed with Dru Ann Beard to win mixed doubles. Charlie Geer and Elaine Townsend won two first-places.

The tournament was sponsored by Slaton Lions Club and was open to all city residents. Housden served as director.

- BOYS**
- Jr. Singles -- 1. Charlie Geer; 2. Paul Payne.
 - Jr. Doubles -- 1. Charlie Geer and Paul Payne; 2. Steve Nieman and Tom Mosser.
 - Sr. Singles -- 1. Rogers 2. Terry Mosser.
 - Sr. Doubles -- 1. Rogers and Clifford Summers; 2. Rod Jahn and Greg Jahn.
 - Open Singles -- 1. Kenneth Housden; 2. Rogers.
 - Open Doubles -- 1. Housden and Rogers; 2. Hoby Chapple and Mosser.

- GIRLS**
- Singles -- 1. Elaine Townsend; 2. Debbie Greenfield.
 - Doubles -- 1. Townsend and Greenfield; 2. Judy Boyd and Glenna Smith.

- MIXED DOUBLES**
- 1. Dru Ann Beard and Housden; 2. Judy Boyd and R. Rogers.

LL TEAM IN TOURNNEY

Slaton's Little League Tournament Team drew a first round bye in the Area 1 tourney at Lubbock this weekend, and will meet the Ralls - Eastern Lubbock winner at 7:30 p.m. Friday.

Should Slaton win the game, it would advance into the finals Saturday at 7:30 in the single elimination tournament. J. Martin Basinger is manager of the team, and Steve Ball is coach.

The tourney starts tonight with Northwest Lubbock and Crosbyton meeting at 5:30, and Ralls going against Eastern at 7:30. Northeast drew a bye in the upper bracket and meets the Northwest - Crosbyton winner at 5:30 Friday.

The tournament is being held at the Northwest Lubbock Little League Park. The losers of the two Thursday games will meet at 5:30 Saturday in a consolation game.

Slaton's Tournament Team is composed of Mike Lewis, Al Lewis, Bobby King, Rodney Kuss, J. Ray Basinger, Bobby Breedlove, Greg Lester, Steve Bourne, Gregory Sokora, Rudy Escobar, Danny Pinkert, Dwayne Mosser, Buck Kitten, David Luna.

The All - Stars played a practice game against Southern Lubbock here Saturday night, winning a close extra - inning game by 7-6. The game went nine innings with Escobar, Al and Mike Lewis, and Greg Lester pitching for Slaton.

Mrs. Connie Locke attended the board meeting for state heart association in Dallas recently.

Robert England, son of Mr. and Mrs. Bud England, spent the weekend with his grandparents in Roswell, N.M. and in Ruidoso.

Legion Ends Play With 9-9 Record

Slaton's American Legion baseball team finished up its season the past week, winning two and losing two to complete the year with an even 9-9 record.

Slaton divided a doubleheader with Plainview here Saturday night in the final games, losing the opener by 5-0 and taking the nightcap by 7-3 behind the home-run hitting of Carlton Bradshaw and Jerry Burrell.

The locals took a 7-4 win over Littlefield here Friday night with Bradshaw connecting on two round - trippers. Last Wednesday, Slaton lost a 10-5 decision at Levelland against the league leaders.

Bradshaw, Burrell and Richard Washington provided the bat power as Slaton won the final game Saturday night. Claude Stricklin scattered nine hits and left eight runners stranded in picking up the mound victory.

Bradshaw singled in a run in the first and scored on a single by Washington. Then, Bradshaw socked a two - run homer in the third, and Burrell rapped a three-run homer in the fifth. Slaton had only six hits.

In the opener Saturday, Slaton was shutout on just two hits. Stricklin had both the hits -- singles in the second and fifth innings. Larry Heinrich yielded just five hits to Plainview in the loss.

In the Friday night game against Littlefield, the score was tied at 4-4 in the seventh when Washington clouted a two-run homer and Bradshaw followed with a bases - empty home run. Allen Walters scattered nine hits for the victory, giving up four of the hits in the first inning. Johnny Petty had two singles for Slaton.

In Wednesday night's game at Levelland, the league leaders overcame an early 3-0 Slaton lead with a big six-run inning, and went on to take the 10-5 triumph.

Slaton garnered only five hits off two Levelland hurlers. The winners rapped three Slaton hurlers for 12 hits, with starter Larry Heinrich taking the loss. Levelland had 10 runners stranded.

Petty had two singles for Slaton, while Burrell, Kitten and Larry Heinrich had the other safeties.

Milt Ardrey served as manager of the Legion team this season, while Eb Stricklin was his coach.

Mrs. Nora Kirk recently returned from a week's trip to the Sherman area visiting relatives.

SNIDER CHIROPRACTIC CLINIC
DR. J. D. SNIDER, D.C.
125 West Lynn 828-3606

Be A JUNIOR ~~ALYX~~ MILLIONAIRE!
\$5 OPENS A Junior SAVINGS ACCOUNT
SLATON SAVINGS and Loan Association

The Perfect Way to Antique or Stain
MOORE'S BENWOOD Superior Spray Finishes
Antiquing--Now, transform that old piece of furniture into a handsome and useful decorative furnishing.
Whether you are antiquing new or old furnishings, it is wonderfully easy when you use Benwood aerosol sprays. Old finishes need not be removed, and a variety of decorative effects such as highlighting, graining and marbling can be accomplished with ease.
Staining--every bit as simple to accomplish as antiquing when using Benwood Spray Finishes. Available in popular wood tones ranging from pale platinum to dark walnut or mahogany.
and receive, without charge, a colorfully illustrated folder describing various ways to stain, or refinish.
Benjamin Moore paints
828-6106
250 S. 9th

Letters To The Editor:

Dear Editor,
In regard to your Column One of last week on taxes, it is quite clear that you have heard only one side.

Who is responsible for educating our children? I say the main responsibility lays with we parents and with the community second.

The landowners of this district pay approximately one-half of the school taxes, while maybe one-fourth of the children are theirs. Is that really fair?

So it is time to change the tradition, all right. Let us change it to be fair. Suggestions:

1. Let each child in school pay a small fee -- the poorest family in Slaton can afford to pay \$10 per child, easier than the land owners can afford what is being asked of them.
2. Or, each person over 21 living in the district pay a small fee.
3. Or, an income tax.
4. Or tax stocks, bonds, savings, etc.

There are people living in Slaton making good salaries that have never paid a dime of school tax because they don't own anything. These same people's children laughed at our children back in 1952-53-54 when our crops failed, because our children wore home-made patched clothes to school. At the same time we were paying school taxes to educate them. Is that fair?

Yes, the farmers have had a few good years. During these good years maybe we could afford this extreme tax increase. We've lived on the farm almost

50 years and we KNOW that those dry, hard years will return -- they always have. How do you think we can pay taxes then?

A farm is supposed to be an asset -- when the rent won't pay the taxes, it becomes a liability.

It is unfortunate that some of the merchants were threatened with being boycotted. The farmers were calling for HELP. They just used the wrong method.

What if you were being robbed and a shoe merchant chanced by, and you asked him to help. He replied that he didn't want to get involved and turned his back. The next week you need a pair of shoes. There is this same merchant and another one a few blocks down the street-- where would you buy your shoes?

My husband is one of the most successful dryland farmers in this district. He is lucky if he averages 75 cents an hour for his labor. The youngest hoe hand you can hire gets a dollar. Alton works an average of 10 hours a day, seven days a week the year round. If he worked only 40 hours a week, we would have starved out years ago.

Come on you townfolks and farm with us. The work is hard, the hours are long, and the pay is poor. Why be a farmer? PRIDE IN THE LAND.

That farm he manages to pay for is all the sick benefits, unemployment compensation, and pension he has.

Sincerely,
Mrs. Alton Meeks
Box 45, Slaton

after you see your doctor . . .
bring your prescription to
Teague's Drug Store
VA8-4535 Night VA8-4500

GOOD NEWS
HEAR
Christ Preached
BY PAUL F. JOHNSTON
JULY 22-28
The Public Is Invited
PAUL F. JOHNSTON
Services Daily -7a.m., 8 p.m.
Sunday - 10:45 a.m., 6 p.m.
CHURCH OF CHRIST
C. L. NEWCOMB, MINISTER
11th and Division Streets

WILSON NEWS

MRS. POLLY MELUGIN

BRIDAL SHOWER

A miscellaneous bridal shower was given last Tuesday, in the home of Mrs. Floyd Heck, Rt. 2, Wilson, honoring Mrs. Harold Key, the former Miss Marjorie Ramsey, from 3-5 p.m.

Approximately 50 guests were registered by Mrs. H. F. Scott, Mrs. Cecil Fields and Mrs. E. R. Petty waited on the serving table which featured the honoree's chosen colors of blue and white. The table was covered with a leaf green linen cloth with a centerpiece of white daisies. Punch, cookies and mints were served to the guests.

Hostesses for the occasion were Meses, Dan Cook, E. R. Petty, Cecil Fields, H. F. Scott, Pat Campbell, J. P. White, Ed Crowder, C. E. Campbell, Virgil Kimbrell, Harry Hewlett and Floyd Heck.

Hostess gift was an electric blender.

Mr. and Mrs. J. B. Rackler Jr. and Jeff were home from Waco over the 4th of July visiting their parents. They plan a return visit July 20.

Sunday visitors of Mr. and Mrs. Elbert Gumm were their daughter and family, Mr. and Mrs. Gilbert Kaatz of Lubbock, Sue Kaatz visited last week with her grandparents and with Mr. and Mrs. Edwin Martin, Clinton, LaNell, Karen and Diane.

Saturday night visitors in the home of Mr. and Mrs. Ted Melugin enjoying homemade ice-cream were Mr. and Mrs. Hugh Forehand, Mrs. Bobbie Greer, Francelle, Mack and Mrs. Mae Melugin all of Slaton.

Lynda Melugin was a guest of the Loyd Horton family of Slaton at Lake Whitney a few days last week.

Gini Gatzki visited in the Melugin home Thursday. She is attending summer session at Texas Tech.

A minor league All-Star Tournament was held on the Little League field last Thursday through Monday. The Wilson Minor League All Stars are Benny Garcia, Timothy James, Victor Ortega, Randy Talkmitt, Jessie Guzman, Carlton Henderson, David Henderson, Margarito Garcia, Leslie Peterson, Santos, Tony Arrellano and Wesley Wilke.

Teams entered in the tournament were from Wilson, New Home and Cooper. New Home was ahead Monday with 2 wins, Cooper had a score of 1 loss and 1 win.

FUN ACTION PARTY
A "Fun Action" party was given Tuesday July 16 at 8 p.m., hosted by Miss Pat Fields in Wilson. Young people of the Wilson community were invited. Refreshments and entertainment were enjoyed.

David Peterson's mother, Mrs. Maggie Peterson is visiting the Peterson family from Irving.

Miss Resa Martindale and

Mike Ward will be united in marriage Saturday, July 20 in the First Baptist Church in Slaton.

Miss Martindale is the daughter of Mr. and Mrs. J. W. (Curly) Martindale of Slaton and a senior of Slaton High. Mike is the son of Glen Ward of Rt. 2, Wilson, a graduate of Wilson High School and attended San Angelo College and Texas Tech.

A bridal shower was given Monday honoring Miss Martindale from 7:30 - 9 p.m. in the Slaton Clubhouse.

Phil and Michael Thomas, grandsons of Mr. and Mrs. Sam Crowson, are visiting from Houma, La., during the summer.

Mr. and Mrs. Hugo Maeker and Mr. and Mrs. Orville Maeker and Tommy visited Sunday afternoon in Crosbyton with Mr. and Mrs. Larry Maeker and sons Jeff and David.

BIRTHDAY PARTY
Mr. and Mrs. Tommy Stell of Lubbock honored their son, Michael, on his 4th birthday with a party in their home July 9.

Twelve children were present including the eight-month old brother of the honoree, Paul.

Honored guests included grandparents, Mr. and Mrs. Claude Roper, Rt. 2, Wilson, Mr. and Mrs. J. D. Stell and an aunt, Kay Stell of Rt. 1, Slaton.

Special guests included the famous, Go-E the Clown of Lubbock, who blew up balloons of all shapes to the delight of the youngsters.

Birthday cake, ice-cream and soft drinks were served.

Mrs. Dessie Womack of Ft. Worth and Mrs. Nova James of Snyder visited with Mr. and Mrs. Claude Roper and other friends last week.

Mrs. Anton Ahrens is a patient in Slaton's Mercy Hospital, entering last week.

Due to heavy rainfall in the Wilson area, the news was sent in early this week. Call 628-2996, Wilson News.

Former Slaton Man Is Cited

James W. Cole, former Slatonite, was recently recognized in the American Bar Association bulletin for signing up the 100,000 member.

Cole is an assistant professor of business law at Texas A&M. He is the son of Mr. and Mrs. James A. Cole, former Slaton residents who moved to Burnet about a year ago.

The 26-year-old law professor is a graduate of SMU Law School and received a degree in agricultural economics from Texas Tech. He was the valedictorian of his class at Slaton High School.



ELECTRICAL VIEW --- 4-H Club members from District 2 of the Texas Extension Service, and their adult leaders, spent the week of July 8-12 at Camp Scott Able, in the Sacramento Mountains of New Mexico. Hosting the group at an electric camp was the southwestern Public Service Company. Pictured with Carl Reed of Lubbock, one of the camp instructors, are Lubbock County representatives (front row) David Butler, Danny Baker and Clarke Watkins, (back row) Vicki Winter, Debra Gates, Joyce Thomas, D'Lynn McGinty, assistant home demonstration agent, and Kathy Walter, the Slatonite's correspondent from Roosevelt.

Last Rites Read For Billingsley

Basil Nelson Billingsley, 95, died at 6:15 a.m. Tuesday in Methodist Hospital following an illness of several weeks. Services were held Wednesday at 2 p.m. in Sanders Funeral Home Memorial Chapel in Lubbock with Blanton Martin and the Rev. R. W. Harris officiating.

A retired pioneer farmer of the Hackberry Community, Billingsley moved to Lubbock in the late 40's and resided at 2129 21st St. He came to the Hackberry community in the early 20's.

Survivors include his wife, Nora; a daughter, Mrs. Grady Taylor, Post; two granddaughters and a great-grandson.

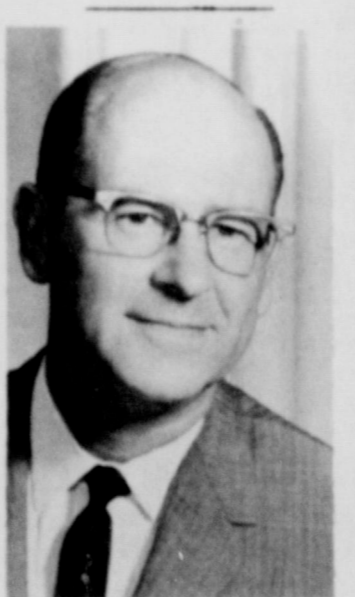
Mr. and Mrs. Speedy Nieman left today to take their sons, Steve and Craig and Jerry Hopper, son of Mr. and Mrs. Bob Hopper, to Tres Ritos, N.M. where the boys will spend two weeks visiting Mr. Nieman's parents, Mr. and Mrs. A. D. Nieman.

Sgt. Rampy, a squad leader in the battalion's Company B, entered the Army in November 1963. He completed basic training at Ft. Polk, La., and arrived in Vietnam in September 1966.

He attended Slaton High School, and was employed as a meat cutter by Haddock's Food Store, before entering the Army.

Daily Bible Readings

- July 18 -- Ezek. -- 18:25-32
- July 19 -- Ezek. -- 36:22-32
- July 20 -- Ezek. -- 36:26
- July 21 -- Psalms -- 51:10-17
- July 22 -- Dan. -- 1:8-21
- July 23 -- Dan. -- 2:17-23
- July 24 -- Dan. -- 6:1-11



GOSPEL MEETING -- Paul F. Johnston, pictured above, will be the evangelist for a gospel meeting at the Slaton Church of Christ which will begin Monday and continue through July 28th. Times of services will be 7 a.m. and 8 p.m. C. L. Newcomb, minister of the church, cordially invites the public to the services.

SOUTHLAND NEWS

Greetings to you from our small but swell little community. We are still getting a shower of rain just about every night, so everything is looking fairly good. So many of the fields of cotton looks so thin and beat-up, but perhaps it will all turn out better than we think it will. Sure hope so!

Mrs. Otto Klaus was a patient at Mercy Hospital, Slaton, for nearly a week. She came home this morning (Monday). We hope that all goes well with you, Mrs. Klaus.

Mrs. Nellie Mathis's grandson, Ronnie Mathis and family, lost their trailer house and all their belongings in a fire recently. They live in Oregon.

Jerry Pennell's father-in-law, Albert Johnson of Slaton, who was struck by a car recently, is still in serious condition. We pray for God's blessings for this family, Kim Pennell, daughter of Mr. and Mrs. Jerry Pennell, spent several days here in the home of her grandparents, Mr. and Mrs.

Lutheran Women At Posey Meet

The American Lutheran Church Women of Posey held their regular meeting last Thursday.

The meeting was opened with prayer by Mrs. Edwin Meyer who also led the Bible study entitled "God Speaks To Me In The Psalms About National Distress". Psalms 127 and 67 were studied. Mrs. Melvin Walter gave the offering meditation and prayer.

A letter of resignation was read from Mrs. Alvin Neugebauer, who has been serving as president.

It was announced that there would be no family night during the month of August. The Sunday School picnic will take its place.

Mr. and Mrs. Speedy Nieman and sons spent Sunday in Lamesa visiting her parents, Mr. and Mrs. Vernon Stewart.

Donald Pennell, Gene Giles and two sons, Terry and John, from Duncan, Okla., visited with Mr. and Mrs. G. D. Ellis on Sunday. Gene is the son of Mrs. Ellis.

Late, late Thursday night visitors in our home were Mr. and Mrs. Max Arrants of Slaton and Mr. and Mrs. Delmar Wilke and girls, Angie and Sheryl.

SYMPATHY
We extend our deepest sympathies to the family of Nobel Wynn who passed away at Methodist Hospital last Saturday, and was buried on Monday in Resthaven Memorial Park in Lubbock. He is survived by his wife, one daughter, two brothers, two sisters and two grandchildren. May God comfort this family in their sorrow.

Mrs. Iva Basinger has returned from a trip to Temple where she went for a medical checkup. She was accompanied by her two daughters, Mrs. Ruby Ellis and Mrs. Opal Boyd.

Mr. and Mrs. F. W. Callaway spent a couple of days at White River. They were joined on Saturday night by Mr. and Mrs. Kenneth Callaway, Jay and Stacy.

AT RETREAT
Sherri Wilke attended a Lutheran League Retreat this past week-end which was held at White River Dam. Adult sponsors were Mr. and Mrs. Loyd Hagens, Mr. and Mrs. Otho Dillard and Mr. and Mrs. Richard Becker. Others attending were Cathy Riney, Kathy Walter, Larry Becker, Gary Dillard, Ricky Becker and Jane Webb.

The Southland Cheerleaders, Dayneen Dunn, Laura Bevers, and Sherri Wilke, returned from Texas Tech Friday, tired but rewarded. They did very well having won 2 first places, 1 third place and one honorable mention in their competition. They also won an honorable mention in the "Poster Division". They are all enthusiastic now, ready for the "Football" games to start!

Mrs. Robert Dyess, Blane and Monica, will be spending a few days in Lovington, N.M., this week with her parents,

MRS. TOMMY

Mr. and Mrs. Dayneen Dunn spent the day at Post at a Mr. and Mrs. G. D. Ellis and children. Mrs. Willie Moore children from the week-end with Mr. and Mrs. G.



MRS. PAULINE

CELEBRATES
Mrs. Pauline celebrated her 80th birthday, July 11, in the home of Mrs. A. resident of 1915, Mrs. Sherry children, two grand one great-grand

Attending the bestides Mr. and Stollie were Mr. and Camden, Mrs. Dan Danny, Mrs. Jim Shelley, Mrs. Selma Judy, Mr. and Mrs. and Rhona Lynn.

Hope to HEAR the week.

Not very much so I will close with Does Love Look Like "It has the heart of It has the feet of poor and needy. It has the eyes to and want, It has the ears to sighs and sorrows That is what love

AUTO IN KENDRICK

HO... 11... 12... 13... 14... 15... 16... 17... 18... 19... 20... 21... 22... 23... 24... 25... 26... 27... 28... 29... 30... 31... 32... 33... 34... 35... 36... 37... 38... 39... 40... 41... 42... 43... 44... 45... 46... 47... 48... 49... 50... 51... 52... 53... 54... 55... 56... 57... 58... 59... 60... 61... 62... 63... 64... 65... 66... 67... 68... 69... 70... 71... 72... 73... 74... 75... 76... 77... 78... 79... 80... 81... 82... 83... 84... 85... 86... 87... 88... 89... 90... 91... 92... 93... 94... 95... 96... 97... 98... 99... 100...

Attend The Church of Your Choice Sunday

- SLATON SAYINGS & LOAN ASS'N**
"We Pay You To Save"
- SLATON CO-OP GINS**
"Owned and Operated By Farmers"
- JAMES PRENTICE INC. SAND & GRAVEL**
For The Construction Industry
- ACUFF FRIENDS ACUFF CO-OP GINS**
"It's Your Association"
- WILSON STATE BANK**
- BECKER BROS. MOBIL SERV. STA.**
405 So. 9th St. VA8-7127

Courage

"Fear not, for I am with you, be not dismayed, for I am your God; I will strengthen you, I will help you, I will uphold you with my victorious right hand."
— Isaiah 41:10

Faith is courage. The man who believes in God is a man with strength to face the challenges of life because he knows that he is never alone. Life isn't always easy. Regardless of our financial standing, regardless of what we do or who we are, every single living soul upon this earth finds frequently moments of challenge, of temptation, of indecision, along the pathways of life. There is comfort in the words of Isaiah. There is a source of courage. There is the knowledge that help is near at hand.

Read your BIBLE daily and GO TO CHURCH SUNDAY

These Church Listings Presented as a Public Service By The Above Merchants

- Slaton Churches**
- FIRST BAPTIST**
255 South 9th
Rev. J.L. Cartrite
 - MT. OLIVE BAPTIST**
Corner of Jean & Geneva
Rev. E.W. Wyatt
 - L.M.E. METHODIST**
Rev. W.D. Atkins
 - WESTVIEW BAPTIST**
830 South 15th
Rev. Clinton Eastman
 - FREEWILL MISSIONARY BAPTIST**
Rev. F.D. Conwright
 - ST. JOSEPH'S CATHOLIC CHURCH**
19th & Lubbock
Mgr. Peter Morsch
 - BI LE BAPTIST**
525 West Panhandle
Rev. H.E. Summar
 - TEMPLO BAUTISTA (Latin Baptist Mission)**
East Panhandle
 - OUR LADY OF GUADALUPE**
710 South 4th
Rev. James Erickson
 - FIRST METHODIST**
305 West Lubbock
Rev. Bruce Parks
 - GRACE LUTHERAN**
840 West Jean
Rev. Robert C. Richardson
 - 21st ST. BAPTIST**
1010 South 21st
Rev. Jack Bell
 - TRINITY EVANGELICAL METHODIST**
Rev. Linam Prentice
 - FIRST CHRISTIAN**
22nd & Division
Rev. Johnnie Moore
 - TRUMPH BAPTIST**
East Geneva
Rev. M.A. Brown
 - AFRICAN METHODIST**
Rev. R.E. Brown
 - FIRST PRESBYTERIAN**
425 West Lubbock
- Area Churches**
- WILSON**
St. Paul Lutheran
Rev. Francis Koessel
St. John Lutheran
Rev. Fred G. Hamilton
Wilson Baptist
Rev. Benny Hagan
Wilson Methodist
Rev. Roscoe Trostle
 - GORDON**
Church of Christ
Stephen Mazurek
 - PLEASANT VALLEY**
Baptist Church
Rt. 1, Post
Rev. Sherman H. Ervin
 - ACUFF**
Church of Christ
Robert Tompkins
Roosevelt Baptist
Rev. L.D. Reagon
 - CANYON CHURCH**
Baptist 1st & 3rd Sunday
Rev. Curtis Jackson
Methodist 2nd & 4th Sunday
Rev. Joe B. Allen
 - POSEY**
Immanuel Lutheran
Rev. Jimmy C. ...
 - SOUTHLAND**
Southland Baptist
Rev. Ike Harris
Southland Methodist
Rev. Charles ...
 - FIRST ASSEMBLY OF GOD**
14th & Jean
Rev. John K. Pratt
 - PENTECOSTAL HOLINESS**
105 West Knox
Rev. Archie Cooper
 - CHURCH OF CHRIST**
11th & Division
C.L. Newcomb
 - CHURCH OF GOD**
206 Texas Ave.
Rev. Clifford Hilton
 - CHURCH OF GOD IN CHRIST**
Rev. Freddy L. Clark
 - CHURCH OF THE NAZARENE**
635 West Scurry

FLIES can't resist PURINA FLY BAIT

Scatter it where flies gather.

It attracts houseflies, kills even resistant strains quickly. Long-lasting and low-cost, it's safe and easy to use.

Get Purina Fly Bait in the big 10 or 25 pound bag—priced for low-cost farm use.

Huser Hatchery

PURINA HEALTH PRODUCTS

O.Z.'s Sale Starts Thursday July 18, 8 p.m.

CLASSIFIED ADS

SLATONITE CLASSIFIED ADS SELL
828-6201 And Ask For Ad Taker

Classified Rates
per word..... 5 cents
per line..... 50 cents
Class. Ads..... \$1.00 inch
Thanks..... \$1.00 min. Charge (Limit 50 Words or less)

ADDITIONS: Lubbock, Lynn, Garza and Crosby counties, \$3.50 year
Outside these counties, \$5.00 year

FOR SALE
THREE BEDROOM house, 835 So. 17th St., Ph. 828-3273. 38-tfc.

FOR SALE
COUCH, Contemporary, black & cocoa - brown tweed, See Jim Lowry, 755 So. 15th or call 828-6827. 38-tfc.

FOR SALE
MOTOROLA TV sales and service. Black & White, Stereo-TV combinations, MOSSER RADIO & TV, 110 Texas Avenue, 828-6475. 17-tfc.

FOR SALE
BEAUTIFUL SPINET PIANO for sale in this area. Nothing down, Small monthly payments, Write Credit Manager, Box 3035, Lubbock, Texas, 79410. 41-tfc.

FOR SALE
BONUS TICKET books to HemisFair. Childrens and adults. Inquire at Slatonite. 39-tfc.

FOR SALE
ALMOST PRUE-BRED beagle male puppies six weeks old, \$10.00, Call 828-6210 after 5 p.m. or weekends. 40-tfc.

FOR SALE
EBLEN PHARMACY has hearing aid batteries. 26-tfc.

FOR SALE
ALL TYPES of felt tip pens at THE SLATONITE. 34-tfc.

FOR SALE
THREE BEDROOM, 1565 W. Lynn, house nearly new, plumbed for washer & dryer, 3 large bedrooms, available Aug. 1. Ph. 828-3734. 41-tfc.

FOR SALE
FIVE ROOM HOUSE, cottage in rear, 100 feet frontage, 215 So. 5th St. Write J. A. Low, 2301 Harrison Ave., Fort Worth, Tex. 76110. 39-tfc.

FOR SALE
FOR MEDICINE at night, Call Joe Teague, 828-6500. 30-tfc.

FOR SALE
9 X 12 RUGS \$4.95 SLATON TRADING POST

FOR SALE
graduate to Olivetti Underwood's permanent portables The Slatonite

FOR SALE
73 Choice Locations to Build On. PHIL BREWER 410 W. GARZA Slaton, Texas 828-3292

FOR SALE
3-Bedroom, large den & playroom in new addition One 3-Bedroom on So. 12th St.

FOR SALE
BROWNING and MARIOTT 100 W. 8th 828-3216

FOR SALE
Lawn Mowers-Gasoline or Electric-New-Rebuilt Used, Let us Overhaul or Tune - up Your Mower. HENZLER AUTOMOTIVE Ph. VA8-4344

FOR SALE
FIVE LOTS, West Park Addition of Slaton, Mike Haddock, VA8-3610. 18-tfc.

FOR SALE
FOR MEDICINE at night, Call Joe Teague, 828-6500. 30-tfc.

FOR SALE
"Reposessed 1967 Singer sewing machine in 4 drawer walnut cabinet. Will zig-zag, blind hem, fancy patterns, etc. Assume 4 payments of \$7.46. Must have good credit. Write Credit Manager, 1114 19th Street, Lubbock, Texas." 14-tfc.

FOR SALE
BEDROOM SUITE and other pieces of furniture, 245 W. Scurry, 828-3384. 41-tfc.

FOR SALE
FILM and flashbulbs at Eblen Pharmacy. 26-tfc.

FOR SALE
PIGS, ONE sow, 5 shoats, 640 So. Mexico St., Albert Altison, 39-4tp.

FOR SALE
USED UNDERWOOD Olivetti Portable typewriter in very good condition, \$70. THE SLATONITE.

FOR SALE
'57 CHEVROLET in good condition. No motor, electric windows and seat, 828-3708. 40-tfc.

FOR SALE
130 Ft. of Cyclone fence, 4 ft. high. Good condition at 1/2 price. 828-3625. 39-3tc.

FOR SALE
REAL ESTATE, Near Pecos, Texas 187 A. cotton acres, 2 wells, one section, 15 mi. north, 2 wells, cotton acres, 1288 A. 18 mi. south, 8 wells, cotton acres, 1600 A. 30 mi. south, acres & wells, 720 A. 3 wells, no cotton acres, 15 mi. south, 597 A. 2 wells, cotton acres, 15 mi. south & east, 210 A. 5 mi. south, cotton acres, in Bermuda, highway frontage, 640 A. 3 wells, 5 mi. south & west, cotton acres, 200 A. Balmorea, was experiment station, north edge parallel to Interstate 10, will sell all or separately, KELLY REAL ESTATE, 915-263-6854, 1406 Tuscon Road, Big Spring, Texas 79720. 40-2tc.

FOR SALE
HAVE YOU tried the wix-stik pens with Microton ink? All colors at THE SLATONITE.

FOR SALE OR RENT
BUSINESS BUILDING on 9th St. Call 996-2212 or 3W5-6500. 15-tfc.

FOR SALE
TWO - BEDROOM HOUSE in southwest Slaton. Carpeted, fenced & nice yard. 828-6474. 40-tfc.

FOR SALE
FOR SALE, LEASE OR RENT 3-BEDROOM, carpet, store - house, connections for electric stove, washer & dryer. Fenced yard. One block off square. 828-6208. 41-tfc.

FOR SALE
OLD BUT COMFORTABLE 4-bedroom with 14x28 family room. Easier to heat or cool than most new houses. A bargain at only \$8,500.00, 905 W. Jean. VA8-3987. 28-tfc.

FOR SALE
3 Bedroom home on So. 12th St.
3-BR stucco, W. Croshy 3-Bedroom, So. 23rd St.
4-BR stucco on W. Lubbock
3 Bedroom house on No. 12th St.
HICKMAN & WILLIAMS INSURANCE AGENCY 145 No. 8th St.

FOR SALE
3-Bedroom, large den & playroom in new addition One 3-Bedroom on So. 12th St.

FOR SALE
Lawn Mowers-Gasoline or Electric-New-Rebuilt Used, Let us Overhaul or Tune - up Your Mower. HENZLER AUTOMOTIVE Ph. VA8-4344

CROSSWORD PUZZLE

ACROSS

- Approach
- Mark of a wound
- One who stays by himself
- Residents of Lublin
- Peruvian Indian
- Legislative body
- Christmas song
- Finish lava
- Liquid measure
- Torrent
- Hateful
- Mountain Latin
- Children's game
- Chemical suffix
- Let it stand
- Take the plug out
- Body
- Sun god
- Heatation syllable
- Land measure
- Rolls of money
- Spoke
- Incite
- Glaze
- Scathe

DOWN

- Cone-shaped
- At one time
- Repeat of
- See 34 across
- Exhaust
- Dooms
- Wing
- Keep
- Cant
- Acoustic mammals
- Observes
- Insect
- Comfort
- Dance

LAST WEEKS ANSWER

19. Nether-lands measure
21. Roman road
22. Cereal goodies
25. Half ems
26. Rabbit's tails
27. A Mexican food
28. Employed
29. Trial
30. Doughy
32. Rugged mountain crest
36. Mark on skin from whip
37. Dextrous
39. Marshy meadow
42. Argent: sym.

WANTED

Help Wanted
WORK AT HOME, REPAIRING APPLIANCES: BIG INCOME. NO EXP. NEC. WRITE EQUI-MATRIX T-280-W, P. O. BOX 31306, SAN FRANCISCO, CALIFORNIA 94131. 38-4tc.

NO EXPERIENCE necessary. . . . to earn good income with AVON COSMETICS. We will train you. For information write P. O. Box 935, Lubbock, or call collect SH7-1209. 41-tfc.

Need a carrying case for your Olivetti - Underwood adding machine? See at THE SLATONITE.

SOMEONE TO STAY with elderly lady. Phone 828-6471. 41-tfc.

WE BUY junk batteries. Ted & Juel's Garage, 1200 So. 9th, Ph. 828-7132. 41-tfc.

TO GIVE AWAY, 8-week old half German Shepherd, half Chow male dog. Ph. 996-3373, Lloyd Hagens. 41-tfc.

WAITRESSES AND COOKS, male or female. See Lou McDaniel, Shamrock Cafe, US 84 By-pass. 41-tfc.

LADY to stay with elderly woman, daytime only, light cooking. Ph. 828-5202. 41-tfc.

MISCELLANEOUS

BILL REED'S DITCHING--- plastic pipe, back hoe, cess pools pumped and drilled, VA8-6814 30-tfc.

FOR MEDICINE at night, Call Joe Teague, 828-6500. 30-tfc.

IF YOU DRINK, that's your business. If you want to stop drinking, that's our business. Ph. 828-3777.

HEARING AID batteries for sale at Eblen Pharmacy. 26-tfc.

HAVE YOUR prescription filled at Eblen Pharmacy. 25-tfc.

IDEAL Bookkeeping books for all types of businesses. THE SLATONITE. 22-tfc.

PLANNING A WEDDING?? Order your personalized napkins, engraved wedding invitations and Thank You notes from THE SLATONITE. Guaranteed to please. 34-tfc.

FARM AND RANCH Ideal Bookkeeping books are on sale at THE SLATONITE plus books for all other types of businesses. THE SLATONITE.

FOR OFFICE MACHINE REPAIRS, call or bring your machine to The Slatonite. Our repairman, Tom Crites, is here each Thursday. 828-6201

BUDGET LINE metal desk just arrived at The Slatonite. Tan metal with walnut color top. Also secretarial chair and filing cabinet to match. See them at THE SLATONITE. 24-tfc.

HAVE YOUR prescriptions filled at TEAGUE DRUG STORE by a registered pharmacist. 31-tfc.

CLASSIFIED ADVERTISING
828-6201

SLAT-CO PRINTING 828-6202

KIRBY VACUUM CLEANERS For Free Demonstration Call 828-4475

Mosser Radio & TV

FOR RENT

LARGE 2 BR. DUPLEXES *All brick, two bedroom, carpeted, draped, Duplexes. Unfurnished, 900 sq. ft., double closets.

*All electric kitchens with range, refrigerator, disposal and fruitwood factory cabinets. *Electric heating with individual room control, air conditioned.

*Ceramic baths with combination tub, shower. Also private drive, fenced yard, clothesline. Yard maintenance furnished. *Also furnished apts. at slightly higher rates.

PLAZA DUPLEXES Slaton, Texas 828-6779 16-26tp.

FARM HOUSE, 5 room and bath, located between Southland and Slaton. Call 996-2423 after 4:30. 40-2tp.

LARGE FURNISHED apartment. Carpeted, drapes, air conditioned, bills paid. 105 N. 20th St., 828-3902. 39-tfc.

FIVE ROOM unfurnished house, 255 N. 4th. See or call Evelyn Dunlap at Eblen Pharmacy. 8-tfc.

See Arvin Stafford at Slat-Co Printing for printing needs.

FOR RENT: Bedroom, private entrance, 335 N. 6th St. or call 828-3465. If no answer, see Mr. R. T. Brookshire at Haddock's grocery. 29-tfc.

RENTALS---Furnished or unfurnished. W. E. Kidd, VA8-6215. tfc.

HOUSES FOR RENT, furnished or unfurnished, B.H. Bollinger, Ph. 828-3579. 43-tfc.

FOR RENT: Furnished apartments and unfurnished house for rent. Call 828-6475 Hugo Mosser. 33-tfc.

LARGE, NICELY furnished 2-Bedroom apartment, carpeted, air conditioned, plumbed for washer, bills paid. Ph. 828-6835. 41-tfc.

NICE 2-BEDROOM house, 330 W. Panhandle, Hoffman Realty, 828-3262. (38 tfc)

EBLEN PHARMACY HAS walkers and wheel chairs for rent. 28-tfc.

SMALL TWO - Bedroom house on 13th St. Ph. 828-6332. 52-tfc.

TWO BEDROOM house, Kiser Agency, Ph. 828-6332. 44-tfc.

NICE ONE-BEDROOM furnished apartment, 955-B West Lynn. Call 828-3284. 40-tfc.

UNFURNISHED THREE - room house & bath, 325 So. 4th St., Ph. 828-3508. 39-tfc.

ONE BEDROOM HOUSE, furnished. Call 828-6962. 40-tfc.

TWO ROOM furnished house. Ph. 828-6855. 39-tfc.

FOUR ROOM house -- 2 bedrooms and bath, furnished or unfurnished. Newly decorated inside and out. Available August 1st. See Gladys Williams, 500 W. Lynn. 41-tfc.

BUSINESS SERVICES

SLATON APPLIANCE REPAIR
REPAIRS ON all makes and models of refrigerators, freezers, dishwashers, electric ranges, disposals, central air conditioning and heating, commercial refrigeration. 828-6470. 15-tfc.

SEWING & ALTERATIONS of all kinds. Machine made buttons, button holes & belts. Gladys Williams, 500 W. Lynn. 41-tfc.

Quality Printing represents you well wherever it goes! See SLAT-CO PRINTING.

HORSESHOEING AND TRIMMING, after 5 p.m. and weekends. Call Victor Eckert, 996-2926. 41-tfc.

WE OPERATE a van truck for moving locally. Call 828-6487. Pick-up and deliver service. 47-tfc.

BOWMAN BOOKKEEPING--- TAX SERVICE: Complete bookkeeping or part time accounts including government reports and income tax. 828-3918. 41-tfc.

WOULD YOU BELIEVE
\$4.50 CARBON T.W. RIBBON TREMENDOUS VALUE! TOP QUALITY RIBBON

The Slatonite

NEED HOSPITAL INS. KENDRICK INS. 828-6201

USED ELECTRIC REMINGTON adding machine. Good adder at low price. THE SLATONITE. 19-tfc.

Visit the LIBRARY your mind's magic carpet

CALL 828-6201 CLASSIFIED ADS



"That reminds me - our lines will please you to"

We'll please you, and there are no "curves" to it. Get the habit of driving in regularly. When we KNOW your car better we can give you better service.

Wilson Oil Company
Phone 628-2061
Wilson, Texas
* PHILLIPS 66 GAS, OIL

RUBBER STAMPS

- Fast Service
- Expert Workmanship
- Unconditionally Guaranteed
- Low in Cost
- Hundreds of Uses

Call Us Now!
828-6201
The Slatonite

PHILLIPS 66 **Wilson Oil Company**
Phone 628-2061
Wilson, Texas

- *BUTANE, PROPANE
- *PHILLIPS TIRES and TUBES
- *COMMERCIAL, INDUSTRIAL GREASES and BATTERIES
- *PHILLIPS 66 GAS, OIL
- *AUTO ACCESSORIES

BRYANT FARM SUPPLY
NORTH 20TH ST. SLATON
828-6646
JUST ARRIVED!
HI-SPEED JOHN DEERE CULTIVATOR SWEEPS

- 8" - \$1.01
- 10" - 1.12
- 12" - 1.64

WELDING

Custom MFG. & Repairs

DEAL'S Machine Shop

155 No. 9th St. 828-3722
Ph. VA8-4307

DIAL 828-6201 FOR CLASSIFIED ADS

Trustees - - -

(Continued from Page One)

\$146,000 would be needed, hence the school effort in Slaton is far below par. The State of Texas contributed a total of \$474,860 state money plus \$57,536 special funds allocated under a government program for special usage, making a total of \$532,396 in the past year. The

Slaton School District contributed a total of \$289,000 to its schools, hence the State of Texas paid almost twice as much as the local district for its school. The local district money is divided into two parts, one part for operation, and one part for the retirement of bonded indebtedness and the principal on all bonds. The Slaton School Board re-

cently concluded a six-month study on the various needs of the school. This study reflected the needs as could be projected for five years in the future. After this time the board felt that additional cost due to various situations as inflation, expansion etc., could be met by a steady increase in additional property that would be built in the Slaton District. The total yearly cost for the

next five years, needed a local income of \$350,000. The overall appraised value of the Slaton School District is 40 million dollars. In order to raise the above money the board set an evaluation rate of 50% of the total or 20 million dollars and a rate of \$1.75 per one hundred valuation which will derive the revenue necessary. After this increase Slaton School District pupil cost will

only rise to \$389.82 against a state average of schools in its class of \$435.25 per pupil cost. Based on the tax roll for 1967 the taxes were divided as follows: Within the City of Slaton-71.5% Outside the city limits of Slaton-28.5% Based on the new appraisal the taxes will be divided as follows: Within the City limits of Slaton

--54% Outside the City Limits of Slaton--46% **Old Idea** Delivering letters is one of the oldest public services. In 500 B.C., Darius the great operated a postal system throughout Persia. Post is derived from the Latin *positus*, meaning "placed," because horses were stationed at intervals to relay Roman dispatches.

Don Edwards In Musicals

Don Edwards, son of Mr. and Mrs. J. S. Edwards Jr., is in the chorus in the Dallas summer musicals at Fair Parks this summer. He sometimes also has a small part in the plays. The musicals that have been presented so far are "Desert Song" starring Ann Blythe; "Carousel" starring John Dav-

idson; and now "The Bells Are Ringing" starring Van Johnson. A graduate of the University of North Texas, Don will graduate from the University of Iowa in Ames, Iowa in August where he will join the American Chorus for a week tour.

Borden's, Assorted Flavors

ICE CREAM

1/2-Gallon Tub **79¢**

CORN OIL

Bessie Lee 24-Oz. Bottle **45¢**

COKE'S

King Size, Plus Deposit 6-Bottle Carton **39¢**

WE GIVE

WIN UP TO \$1,000, ... WATCH and PLAY...

ALL STAR BINGO!

"CRAZY! CORN-ARAMA" AT PIGGLY WIGGLY

Piggly Wiggly Quality Meats!



CHUCK ROAST

Blade Cuts of U.S.D.A. Choice, Valu-Trimmed Beef **48¢**

Pound



Lean Center Cuts of Beef Chuck

Family Style Steak Lb. **58¢**

Extra Lean, Dated for Freshness

Ground Chuck Pound **59¢**

SWISS STEAK

Arm Round Cuts of U.S.D.A. Choice, Valu-Trimmed Beef **88¢**

Pound

Sliced Salami or Spiced Luncheon, Farmer Jones

Lunch Meats 12-Oz. Pkg. **63¢**

Farmer Jones, American or Pimento

Sliced Cheese 8-Oz. Pkg. **45¢**

CORN DOGS

Happy Times, Made With All Meat Franks **49¢**

Package

Family Pack, 1/4 Pork Loin

Pork Chops Pound **79¢**

Ranch and Rail

Sliced Bacon Pound Package **59¢**

2-Pound Package \$1.19

CORNISH GAME HEN **69¢**

Plump, Tender, Individual Size, Swift's Premium

Each

Stokely's Whole Kernel or Cream Style, Golden

CORN

No. 303 Can **17¢**

Detergent

TIDE

Giant Box **69¢**

PIGGLY WIGGLY is 1ST in SAVINGS!

Maryland Club, All Grinds

COFFEE

2-Pound Can \$1.25
3-Pound Can \$1.87

1-Pound Can **63¢**

Pure Vegetable Shortening

CRISCO

3-Lb. Can **59¢**

LIMIT 1 Thereafter 79¢

Sani-Flush Powdered Bowl Cleaner 34-Oz. Can **53¢**

Tissue Coronet, Floral Prints 2g Off Label 2-Roll Package **29¢**

Instant Tea Nestea, Sweetened and Lemon Flavored 4-Oz. Jar \$1.07 8-Oz. Jar **61¢**

Corn Meal Aunt Jemima White or Yellow 5-Pound Bag **49¢**

Barbecue Sauce Heinz 26-Oz. Bottle **59¢**

Instant Coffee Folger's 10-Oz. Jar **\$1.39**

Chocolate Drink Stokely's 46-Oz. Can **31¢**

Fabric Softener Nu Soft 10g Off Quart Bottle **79¢**

Open Sundays

9 A.M. To 6 P.M.

Jergen's, 10g Off Label, Regular \$1.09 Retail

HAND LOTION Large Size **69¢**

Noxzema Medicated, Regular 80g Retail

4-Oz. Jar **SKIN CREAM 69¢**

Golden Korn, Corn Oil

1-Lb. Carton **MARGARINE 25¢**

ALL STAR BINGO WINNERS

+15.00 H.R. CHENOWETH 525 SE 2nd TULIA, TEX.

+30.00 ELMO ALEXANDER 313 W. MATHEWS ROSWELL, N.M.

Piggly Wiggly Ultra Fresh Produce!

Large, Well Filled Ears

CORN ON THE COB 3 19¢

For

GREEN ONIONS 2 Large Crisp Bunches **19¢**

POTATOES New, Red Thin Skin 2-Pounds **25¢**

SQUASH Yellow, Tender Small Pound **19¢**

GRAPEFRUIT California Ruby Red Pound **25¢**

Santa Rose, Large, Ripe

PLUMS Pound **19¢**

These Values Good JULY 18, 19, 20, 21, 22 In SLATON, TEX. We Reserve Right to Limit Quantities Purchased.

Fresh Frozen Foods

CUT CORN

Libby's 6 10-Oz. Pkgs. **\$1**

Shoe Peg Corn, Broccoli Spears, LaSueur Peas, In Buttersauce

GREEN GIANT VEGETABLES 10-Oz. Package **45¢**

CORN MUFFINS Morton's 3 10-Oz. Pkgs. **\$1.00**

FRENCH FRIES

Cal-Ida 4 2-Lb. Bags **\$1**

PIGGLY WIGGLY

1st in Savings