

SAMPLE

1964 No. 1204

Date: October 26, 1968
SPECIAL ELECTION
CITY OF SLATON
Note: Voter's Signature To Be Affixed on the Reverse Side.

INSTRUCTIONS: Place an "X" in the box beside the statement indicating how you wish to vote.

FOR adoption of a one percent (1%) local sales and use tax within the City.

AGAINST adoption of a one percent (1%) local sales and use tax within the City.

TURN CLOCK BACK ONE HOUR SUNDAY

Adjust your watches! Savings Time ends Sunday at 2 a.m. Those who didn't like the change in the time, you might work in an extra hour's time on Saturday night. Turn up with the time, ALL CLOCKS WILL TURN BACK ONE HOUR when we go to bed Saturday night--or at 2 a.m. if you prefer. How you perform the time change, a month period for sunshine addicts and an end, and Central Standard Time will affect Sunday!

Let's boost Veterans Day program

COLUMN
BY SPEEDY NIEMAN

Bill on Division Street says man is creature. . . he buys his tickets 30 days in advance, and his gift shopping until the night before.

OOO
For the big Veterans Day parade and there are shaping up nicely. Waggoner acceptance to be guest speaker adds to the ambitious program being planned by the Legion, VFW, Chamber of Commerce and Ministerial Alliance.

OOO
The parade provides good publicity for the Legion. We hope all citizens cooperate with a special observance.

OOO
Your Presidential choice? We plan to have results of one "straw ballot" in Slaton. Ted Weaver, Chamber of Commerce, has sent out "ballots" to C of C members to get an idea of local preferences. Have one of the ballots, take it to your office or mail to Box 782. No return is required, of course. We'll check results next week.

OOO
The edition shows George Washington as the favorite in a straw ballot at High School.

OOO
Officials have made it clear for several months that another major source of revenue is necessary. We believe the Slaton Commission made the right decision in giving voters a choice of the city sales and use tax rates.

OOO
Other apparent source of revenue would be an increase in the ad tax. Here we have a case of placing much of the load on the over-burdened owner.

OOO
Other, ad valorem taxpayers have been hit recently with increased city and county taxes, and with a new county hospital tax. A too-high property tax not only adds to property owners, it is a deterrent to commercial expansion.

OOO
Sales tax is the fairest and most equitable way of distributing the cost of our services to those using the services, regardless of whether they live in or out of the city limits.

OOO
But because everyone pays in proportion to what he or she has to spend,

Sales Tax Election Due Here Saturday

Slaton voters--perhaps in small numbers--will decide the fate of a one per cent municipal sales tax here Saturday. Little interest has been indicated for the special election, with no organized support "for" or "against" the proposal yet exhibited this week.

Some observers think the indifference may indicate that most voters have accepted the sales tax plan as "the lesser of two evils."

In calling the election, Slaton City Commission announced the city would require additional revenue and that it would have to come either from a city sales tax or from much higher water rates.

Whether that theory is true, or whether most voters have made up their minds to vote against the tax, or whether many just don't care, the decision will be made Saturday at Slaton Municipal Building. The lone polling place will be open from 7 a.m. to 7 p.m. Every registered voter in the city is eligible to vote.

If voters of Slaton pass the tax, it would go into effect April 1, 1969, the Slatonite was informed this week by Mayor Jonas Cain. Effective date is set by the state, allowing a full quarter to pass before the tax is collected. It would then be July 1969 before the City of Slaton received revenue from the tax.

A one-cent sales tax in Slaton is estimated to yield in excess of \$67,000 per year. This is based on a per capita average of \$9.68 per year--an estimate for Lubbock County given by the Texas League of Municipalities.

The city sales tax would be paid on all items which are now covered by the state sales tax, thus a four-cent tax would be applied. Local merchants would report and pay the local sales tax to the State Comptroller, who retains two percent of the collections and returns the balance to the city.

The rising cost of water was a big factor in the need for more revenue. Like Levelland, Brownfield, Tahoka and Lamesa--all who have passed the city sales tax recently--Slaton starts payment on the Canadian River Water Authority project this year.

Payment on the CRMWA project will leave the general fund about \$40,000 short of funds which are normally transferred from the water department. The city commission also points to rising costs of operation, and the need for street and equipment maintenance funds as other factors causing a need for more revenue.

Should the tax election be defeated, the city commission has announced intentions of putting a water rate increase into effect in order to secure more revenue.

One proposal being considered would raise the minimum bill from \$3.50 to \$5.25 a month. Over the minimum, rates would also be stepped up, with the average bill being hiked \$38.96 per year. The proposed rates would bring in about \$75,000 more in revenue.

Should the sales tax be approved, Mayor Cain said this week that a study indicates no water increase would be necessary for at least 12 to 18 months, if it becomes necessary at all.

The Slaton Slatonite

A MEMBER OF MOST FAMILIES IN THE SLATON TRADE AREA

58th YEAR ISSUE No. 3

LUBBOCK COUNTY SLATON, TEXAS THURSDAY, OCTOBER 24, 1968

10 CENTS



(Courtesy of Pioneer Nat. Gas)

TEMP.	HIGH	LOW
Oct. 23	80 est.	46
Oct. 22	74	46
Oct. 21	83	60
Oct. 20	86	48
Oct. 19	91	39
Oct. 18	74	34
Oct. 17	62	38

LIGHT FROST BENEFICIAL, NO 'KILLING FREEZE' YET

Harvest Underway With 4,792 Bales Out

The harvest of King Cotton was underway in the Slaton area this week, with the first unofficial bale count showing 4,792 bales of cotton already ginned.

Some of the area gins were not expecting to really get going until the first "killing freeze." A light frost was recorded last Friday when the Lubbock Weather Bureau station reported a low of 32 degrees, and Pioneer Natural Gas in Slaton recorded 34.

Most observers seem to think the frost was beneficial to the majority of farmers. The frost apparently didn't last long enough to defoliate the crops. After a shower Monday morning, another warming trend set in to help the harvest picture.

Temperature was predicted

around 80 Wednesday, and in the low 40's last night. The warm, dry weather was a boost to the mechanical cotton pickers which have invaded the area.

The Slatonite's first bale count of the season Wednesday included nine Slaton and area gins, with some not underway yet. Slaton Co-Op Gin led the way with 2,314 bales. Other reports included: Farmers Gin 471, Union Co-Op 655, Hackberry 200, Wilson Co-Op 448, Wayside Gin 650, Acuff 27, and Gatzki 25.

The USDA Consumer & Marketing Service at Lubbock reported 6,550 samples of new crop cotton classed for the week ending Oct. 18. Samples classed this season totaled 11,700.

Last season at this time, a total of 7,300 samples had been classed. The predominant grades for the South Plains were Middling, Strict Low Middling and Middling Light Spotted.

The average staple was 1 1/32 inches and the micronaire readings for the week were 3.5 and better (95 percent), 3.3 to 3.4 (3 percent) and 3.0 to 3.2 (2 percent).

Prices reported to USDA at Lubbock ranged from \$15 to \$20 per bale over the government loan values for white grades in the 3.5 to 4.9 mike range. Prices paid producers for cottonseed averaged \$50 per ton.

Bingham Misses Just One Game In Grid Contest

Only the Texas Tech - Mississippi State tie kept Mike Bingham from having a perfect entry in the Slatonite Football Contest last week.

Mike took the \$10 first prize by picking 23 of the 24 winners, while nine other entrants missed only two games. Charles Didway of Post won second place and \$5, while two tied for third place and split the \$2. Didway came closer on the tie-breaker score with a guess of 35.

Carlton Bradshaw and Tom Hoffman each had 42 on the total score of the tie-breaker game to tie for third. Others who missed two games were Pete Williams, Jane Winchester, Mike Williams, Jerry Burrell, Barbara Bingham, and Kenneth Hughie.

A total of 21 entrants missed only three games in what was apparently an easy week of pickings! Join the fun and enter this week's contest. . . you could be a cash winner!

Nixon To Visit Lubbock Nov. 1

Word was received this week that Lubbock has been included in Richard Nixon's campaign itinerary for the afternoon of Friday, Nov. 1. Definite time will be established within the next few days.

Following his address in Lubbock, he will depart for San Antonio where he will make a televised appearance the same evening.

Nixon's visit will mark the third appearance of a Republican Presidential candidate in Lubbock. General Eisenhower came in 1952 and Barry Goldwater in 1964.

Jack Markham, the Lubbock County Chairman for Nixon-Agnew, says, "Tentative plans now call for Mr. Nixon to speak privately with community leaders from throughout the South Plains, preceding his address from a grandstand to be erected at Municipal Airport." He added, "We have requested that Mr. Nixon express his views on such subjects as the farm program, the depletion allowance issue, right to work law, and the Nixon Human Rights Program."

Homecoming Set Nov. 1 At Wilson

Wilson High School will hold its annual homecoming Friday, Nov. 1. According to Mrs. Thomas Autry, reporter for the Wilson Exes, activities will include a pancake supper and registration in the school lunch room between 5 and 7 p.m.; the Wilson - Hermleigh football game at 7:30 and a coffee following the game in the school lunch room.

The classes of 1941-42-43 will be honored but all exes are invited and expected to attend.



BANQUET PRINCIPALS--Slaton Rotary Club held its annual Teacher Appreciation Banquet last Thursday night with Mr. and Mrs. Roy Bass, left, of Lubbock as guest speakers. Pictured with them are Dee Bowman and Claude Cravens, who served as masters of ceremonies. Cravens is club president. (SLATONITE PHOTO)

Rotary Club Has Banquet For Teachers

Some 150 persons heard Mr. and Mrs. Roy Bass of Lubbock discuss "How A Thinking Man Thinks" when members of the Slaton Rotary Club honored the local teachers with an "Appreciation Night" last Thursday at the junior high cafeteria.

Bass, a prominent Lubbock attorney, and his wife, Anita, are active in a number of civic organizations and are well-known throughout the area. In their discussion they pointed out the words which are most overworked in our language, namely, "love", "home", "friendship" and "thanks." They emphasized that most uses of these words are phony, and that in the process of self-justification, a majority of the people suffer from "paralysis of analysis."

Claude Cravens and Dee Bowman shared duties as master of ceremony. Jerry Gentry gave the response on behalf of the teachers.

Entertainment was furnished by Bernie Howell and the "Triolins" of Lubbock.

Tigers Tackle Unbeaten Estacado Here Friday

Slaton's Tigers took a rest from the tough 3-AAA football action last week, and it couldn't have come at a better time--they get back into action Friday night by hosting the undefeated and highly-ranked Estacado Matadors from Lubbock.

Kickoff time is 7:30 p.m. at Tiger Stadium with a near-capacity crowd expected. Avid Slaton fans will be hoping their Tigers can surprise the 5th-ranked Matadors, while others

may be on hand just to see the much-talked about Lubbock team in action.

Estacado sports a 6-0 record and was unscored on until lightly-regarded Lake View broke for a touchdown last week. The Matadors put 73 points on the board, however, to turn their total to 268 points in six games. Slaton has a 2-3 mark with 66 points scored to 144 for the opposition.

Slaton has only one more home game after Estacado, meeting Brownfield here Nov. 8. Coach Ernie Davis reported his Tigers in good physical shape this week, with the exception of linebacker Don Smith. He was injured in the Sweetwater game and is listed for limited action tomorrow night. Otherwise, Davis says the Tigers "are ready to go."

The Tiger mentor was pleased with workouts this week, reporting that backs Richard Washington and Larry Moore were both going at top speed. Washington, top ground gainer, missed most of the Sweetwater contest.

Slaton's starting lineups are expected to be about the same as in previous games. Brice Hill, 160, senior guard, will probably draw the starting-linebacker role on defense along with regular Buddy Pettigrew.

Little needs to be said about the Matador defense--yielding just six points in six games. The Lubbock team was ranked 5th in the state AAA ratings this week.

Other defensive starters will probably be Randall Choate and Ronnie Romines at guards, Roy King and Allen McDonald at tackles, Brent Lamb and Randal Partain at ends, Hobby Chapple and Morris Dixon at halfbacks, and Washington at safety.

On offense, its Romines at center, Hill and John Petty at guards, King and Choate at tackles, Partain and Lamb (or Robert Englund) at ends, Jimmy Williams at quarterback, Moore and Farrell at halfbacks, and Washington at fullback.

Depth is expected to be a big problem for Slaton again. Estacado, large enough to be in Class AAAA, has 20 boys starting on offense and defense. The Tigers make only three or four changes on defense.

Estacado is sparked on offense by quarterback Kenneth Wallace and power-running backs Larry Miller and James Mosley. Speedster Jesse Lethridge adds break-away power, and all of the backs are among the loop's top scorers.

Little needs to be said about the Matador defense--yielding just six points in six games. The Lubbock team was ranked 5th in the state AAA ratings this week.

Estacado is sparked on offense by quarterback Kenneth Wallace and power-running backs Larry Miller and James Mosley. Speedster Jesse Lethridge adds break-away power, and all of the backs are among the loop's top scorers.

Little needs to be said about the Matador defense--yielding just six points in six games. The Lubbock team was ranked 5th in the state AAA ratings this week.

Estacado is sparked on offense by quarterback Kenneth Wallace and power-running backs Larry Miller and James Mosley. Speedster Jesse Lethridge adds break-away power, and all of the backs are among the loop's top scorers.

SHS Students Pick Wallace

George Wallace is the presidential choice at Slaton High School, according to a poll conducted last week by "Tiger's Cage", the journalism class. Wallace was given 44 percent of the student vote; Humphrey was second with 31 percent, and Nixon took 25 percent. The survey also asked students if U.S. forces should be withdrawn from Vietnam, and a majority voted "no" to the

question. A majority also agreed that the voting age should be lowered to 18, and that President Johnson could not have won re-election if he chose to run.

All the classes had Wallace as the top choice, while Humphrey was second with the seniors and freshmen. Nixon was picked second by the juniors and sophomores.

Scout Campaign Starts Tuesday

A kickoff meeting for the Boy Scout sustaining membership drive, Mackenzie Trail district, will be held Tuesday morning at Bruce's, it was announced this week by Ansel O'Neal, general chairman.

O'Neal urged all volunteer workers to be present for the breakfast meeting and secure prospect cards. "We want to complete the campaign next week," he added.

Other members of the local steering committee include Harley Castleberry, Hack Lasater, Rev. Johnny Moore, Buford Duff, Bud Englund, Dee Bowman and Speedy Nieman.

O'Neal has appointed team leaders to sign up volunteer workers in the Scout drive. The chairman reported that the number of Scouts per capita in Slaton rates above the national average.

Absentee Vote Slow in City

Absentee voting for the Nov. 5 general election has been slow at the Slaton ballot box, with Beverly Kercheval reporting only 10 votes cast yesterday morning. The absentee balloting began Oct. 16 and the Slaton box is located at Kertan Studio, west side of the square.

You may vote from 8:30 a.m. to 5 p.m., Monday through Friday. Final day for absentee voting is Nov. 1.

Voters should bring voter registration certificates with them when they ballot. Anyone who will be out of the county at the time of election, Nov. 5, may cast an absentee ballot.

Citizens should remind relatives and friends in the armed forces to send their voter registration along with a request for an absentee ballot to the County Clerk's office, Lubbock, just as soon as possible. The County Clerk's office will mail them an absentee ballot.

MR. BUSINESSMAN

WIKIPIA



BAND HATS--Debbie King is seeing how one of the hats fits Pat Edwards. Band members have been looking forward to wearing the hats all year and will be wearing them Friday night at the football game performance for the homecoming. Band members raised money for the hats through game sales last year. They are made of black fur with white stripes and red braid. The Tiger Band has 103 members and Bill Townsend is director. (SLATONITE PHOTO)

Watch for
'A SALUTE TO SANTA FE'
Next Week

Venereal Disease Program Given

Seventy-five attended the meeting of the Slaton Home Demonstration Club last Wednesday, Oct. 16, when Dwight Favre, Lubbock County venereal disease investigator, gave the program.

Assisting him with the program were Joanie Stephens, state investigator and Don Cook, Lubbock County investigator. They showed a film entitled "A Quarter of a Million Teenagers". A lecture and question

and answer period followed. During the period Favre said "Slaton is the cesspool of venereal disease in Lubbock County". He was asked, "What can we do as citizens to help prevent this?" He said, "educate the people, especially the teenagers". He was then asked, "Has this film been offered to our schools?" He said, "Yes we were refused." It was suggested that we as parents, impress on our school board and school officials to have this program made available to our teenagers.

Favre said that venereal disease was a respecter of no age or race, and this program could be given to any size group requesting it, in schools, churches or clubs. He said the Slaton Home Demonstration Club was the first request he had had for such a program in Slaton, although he said he felt there was a dire need here.

Mrs. Alton Meeks presided over the business meeting.

Mmes. Elford Stricklin, R. A. Hardesty, E. E. Bishop and J. H. Lambright served refreshments to 54 guests, 16 members and five new members, including Mmes. Wayne Biggs, Travis Dabbs, Othel Chambers, A. A. Traveek and Clifford Hilton. The door prize

Homemakers Hear Program On Politics

The Roosevelt Young Homemakers met Tuesday in the Roosevelt Club House. Mrs. Bob Craze introduced the guest speaker, Mrs. Lee Heatley of Lubbock who spoke on "Is Politics Your Business?"

The members voted to send cookies and candy to service boys of our area. The program for the club's next meeting will be "Cookies and Cake Decorating".

Guests Tuesday were Mmes. Lonnie Adams, DeWayne Hopkins and Guy Leatherwood. New members welcomed into the club were Mmes. Don Fore and James Walter.

was won by Mrs. E. J. Wimmer. The club's next regular meeting will be Nov. 6, a covered dish luncheon. A membership program will begin at 11 a.m. at the club house. Mrs. Meeks will demonstrate pie making for the program. Lunch will be served at 12 noon and at 1 p.m. Mrs. Wilfred Kitten will give a demonstration on "Tissue Paper Flowers".

The club extends a cordial invitation to any area ladies who would like to attend.

Showers Honor Miss Maeker

Miss Valerie Maeker, bride-elect of Steve Webb, was honored last Thursday at 7 p.m. with a bridal shower in Fellowship Hall of Woodrow Baptist Church.

The bride's chosen colors of ivory and avocado were carried out in the table decorations.

Hostess gift was an electric mixer.

Special guests were the couple's mothers, Mrs. H.E. Webb Jr. and Mrs. Ray Maeker, and Mrs. Hugo Maeker, grandmother of the bride.

Hostesses were Mmes. Robert Alexander, Bobby Joplin, Dick Cade, Bill Slater, Glen Allen Jr., Gaylord Kinard, Otho Doyle, Jack Beard, Moody White, Cecil Dickey and George Gamble.

Miss Maeker was also honored with a lingerie shower Wednesday of last week in the home of Miss Ronda Kirk of Rt. 6, Lubbock.

Co-hostesses were Misses Polly Dickey, Gloria Cooper, Cindy Cade and Twallah Mote. Punch and individual cakes were served.

The couple was wed last night at 7 p.m. in the Woodrow Baptist Church.

Webb-Maeker Vows Scheduled Tonight

Double ring wedding vows will unite Miss Valerie Jean Maeker and Steve Jerome Webb in marriage tonight at 7 p.m. in the Woodrow Baptist Church. The Rev. Cletus Caswell, pastor, will officiate.

Parents of the couple are Mr. and Mrs. Ray Maeker, Rt. 1, Slaton and Mr. and Mrs. H.E. Webb, Jr., Rt. 4, Lubbock.

The bride's father will give her in marriage. She will wear a formal length hand-clipped Chantilly lace cape over a sheath of peau-de-sole. The lace cape has a scalloped pearl neckline accented with pearls and sequins and the bishop sleeves are also scalloped. The loose cage A-line extends into a bouffant chapel length train with a bow accenting the back. Her headpiece is a small open wedding ring accented with lace and pearls and a bouffant veil of imported silk illusion. She will carry a traditional cascade of white frenched spider mums with English ivy centered with a white cymbidium orchid.

Mrs. Wayne Woodward of Lubbock will serve her sister as matron of honor. Other attendants will be Misses Rhonda Kirk and Polly Dicky, both of Lubbock. They will wear formal-length gowns of avocado

green Saki fashioned with bateau necklines and three-quarter sleeves edged in flare ruffles with Venice overlay. The empire bodice features two small string bows. The back of the dresses have a sewn in full panel with a large bow at the neckline. Their headpieces are in matching color bows of tulle with velvet leaves in the center and double butterfly veils. They will carry bouquets of apricot spider mums accented with rich apricot velvet ribbon.

Gary Byrd of Lubbock will serve as best man. Groomsmen will be Ernest Luker and Jackie Kirk of Lubbock and ushers will be Ricky Smith and Gary Beard of Lubbock.

A reception will honor the couple in Fellowship Hall following the wedding. Assisting in the house party will be Mmes. Larry Sanford, George Gamble, Bill Slater, Otho Doyle, C.A. Chidley, Cecil Dickey, Gaylord Kinard, Dick Cade, Orville Maeker and Robert Alexander.

After a wedding trip to New Mexico the couple will reside in Lubbock.

The bride will be a fall graduate of Cooper High School. The bridegroom is employed by Perry Kilman Drywall - Sheet-rocker, Lubbock.



MRS. STEVE JEROME WEBB ... Valerie Jean Maeker

See the New
China
Stainless Steel
Gift Ideas
Stationary & Notes
Bath Accessories
Purses
Dresses
Blouses
Pants
Robes
Cards & Books

Gift Gallery

Anthony's
C. R. ANTHONY CO.

Men's Cushion Arch Oxfords or Loafers

9.99

Two great styles. Cushion arch and full cushion insoles. Genuine leather quarter linings. High gloss leather uppers. Long wearing, man made soles. Sizes 6 1/2 to 12 in B or D widths.

What's the score on quality

It's styling, workmanship, top grade leathers. Things like fine, finish, attention to detail. Just try on a pair. You'll find out what we mean. They're your kind of shoes.

Wing Brogue Oxfords

The bold new look

Compare At 13.99

\$10.

OCTOBER SALE

They're new and they're traditional. . . . these brogues that give attention to important details. The heavier lines, the bullet perfs, the extension soles are newly rugged. Plus great brogue styling.

Durashine Oxfords or Slip-Ons

Anthony's own quality footwear
High gloss leather uppers. Black only.

YOUTHS'	BOYS'	MEN'S
8 1/2 to 3	3 1/2 to 6	6 1/2 to 12
5.99	6.99	7.99

The Durashine leather uppers practically take care of themselves. They resist scuff and scrape marks. The Duramold sole, will under normal conditions, outlive the life of the shoe.

Men's Work Oxfords

Comfortable, durable. Oil-resistant sole. Cushion insole.

8.99

A shoe built for comfort and long wear. Rugged leather uppers specially tanned to be soft and flexible. Steel shank, cushioned insole toe to heel. Sizes 6 1/2 to 12.

OUTSTANDING VALUES

Velvet step BEAUTY DUTY SHOES FOR BUSY WOMEN

You won't believe how comfortable they are until you come in and try on a pair. And style . . . they're specially designed to add that finishing touch to your wardrobe. For playing, partying, shopping or traveling. There's a place in your life for these Velvet Step casuals.

NU-TEPEE \$7.99
Smooth leathers. 5 1/2 wedge heel. Full cushion insole. • White • Black

RASCAL \$9.99
Soft Glove Leather. Toe-to-heel cushion. 5 1/2 wedge heel, crepe sole. • White • Black

- EASY TO CLEAN
- FEATHER LIGHT
- CUSHIONED COMFORT
- CREPE SOLES

Check For Your Size and Width Here!

Anthony's
C. R. ANTHONY CO.

Suzy Dawson Is Honoree At Bridal Shower

A bridal shower honoring Miss Suzy Dawson was given last night from 7:30 to 9 p.m. in the Slaton Club House. She is the bride-elect of Ronald Wagner. The couple plan to wed Oct. 26.

Greeting guests at the door were Mmes. Leon Moore and Paul Melton. The honoree and the couple's mothers, Mrs. Phillip Dawson and Mrs. Lester F. Wagner of Hereford were in the receiving line.

The serving table was laid with a white cloth and centered with an arrangement of purple colored flowers. Punch and cookies were served from crystal appointments.

Hostess gift was an electric blanket and cookbook. Robin Wicker registered guests, alternating at the serving table were Debbie McWilliams, Debbie Busby, Debbie Donaldson and Glenna Smith.

Special guests included Mrs. John W. Hall of Hereford; Mrs. W. H. Dawson, grandmother of the bride-elect; and Mrs. Edna Mathis, great-aunt of the honoree.

Hostesses for the occasion were Misses Debbie Donaldson, Janis Wolf, Debbie McWilliams, Becky Hartman, Debbie Busby, Robin Wicker, Brenda Wooten, Tyra Martin, Glenna Smith, Debra Greenfield, Johnnie Sue Mooser, Phyllis Pitwonka, Judy Boyd, Melissa Holloman, Linda Johnson, Dorothy Lee Jones and Melody Cooper.

Others were Mmes. Dolly Brown, Bill Wilson, John Locke, Nora Kirk, Kenneth Davies, H. Perkins, L. A. Reasoner, G.C. Hunter, Paul Melton, Lula Caldwell, Leon Moore, John C. Griffith, Phil Brewer and Jean Gunn Edwards.

WGA in Play Tuesday

The Slaton Women's Golf Association met Tuesday morning at the local course for a regular session.

Included in a threesome were Dodie Griffith, Cora Dickson and Mina Eblen. Also playing were Maurice Wilson and Beth Gill.

Miss Kercheval Completes Course

Miss Beverly Kercheval, co-owner of Kertan Studio, has recently completed a 40 hour course offered by Lefler School of Color of Springfield, Mo. The school was sponsored in Lubbock by a group of Lubbock professional photographers.

Instructor for the course was Viva Fay Lefler, CR, Phot. ASP. She writes a monthly column for a magazine, "Professional Photographers". The name of her column is "Photo Colorist".

Miss Kercheval coloring with oils seven years. She is an art course from Mae Kitten.

Need Extra Help?
Wonderful opportunity. No experience necessary. Full or Part Time. Need 3 people at 828-6443 after 5 p.m.

A TIME FOR DECISION

A Presidential election, the most important one in our lifetime, is close upon us. With three candidates in the race Texans are confronted with such a variety of appeals that some confusion is not surprising. We see some of our top state political leaders urging support of Hubert Humphrey on the self-serving appeal of party loyalty. We see fine Texans tempted to support George Wallace because they like his outspoken position on certain issues and are thus swayed by an appeal of sheer emotion. With full respect for the right of every Texan to make a personal decision, this message in behalf of Richard Nixon is offered as

... AN APPEAL TO REASON!

HUBERT HUMPHREY WILL NOT
change. He has proved consistently anti-Texas. He is famous for his filibuster against Texas owning its tidelands. He has fought our right-to-work laws and sought to destroy our vital oil depletion allowance. On every issue of world importance his position is contrary to that of most Texans. Humphrey, an ultra-liberal founder of the ADA organization, would gain executive authority for radical minority viewpoints should he become president. This cannot happen by popular vote. In view of his vicious attacks upon George Wallace, what a ghastly miscarriage of intent it would be if Wallace supporters themselves should throw the election into the House of Representatives where every Wallace vote in Texas would automatically go to Humphrey!

GEORGE WALLACE CANNOT
be denied his impressive showing. A number of fine people head his third party call. The very least that can be said is that he has dramatized the desires of many people for a change of direction in the affairs of our government. However, the very most his supporters can hope for is to split the popular vote so that all of us would be at the mercy of Washington politicians who would elect our president for us. This is Hubert Humphrey's only hope for election. The more positive way to vote for change is to recognize the many fine merits of Richard Nixon and his program, then vote for Nixon to assure the election of our president by the people instead of by the Congress!

RICHARD NIXON CAN... AND WILL
supply dynamic, experienced leadership for an immediate change of direction—at the top—in all our national affairs at home and around the world. Your concerns are his concerns!

- **NIXON ON LAW AND ORDER** is pledged to help improve local police protection, to appoint an Attorney General dedicated to rooting out crime, to restore balance in our courts strengthening peace forces against criminal elements and to cease freeing so many of the guilty on technicalities.
- **NIXON ON VIET NAM** will call upon his experience as vice-president during eight great Eisenhower years of peace to reform world alliances now in disarray, to redirect our strategy on new global terms. He will end this war and avoid future ones by dealing with adversaries in the only way they respect—through strength, collective security and patience.
- **NIXON ON LOCAL GOVERNMENT** is pledged to move control of local schools and all other governmental functions which properly belong at the local level closer to the people.
- **NIXON ON OTHER PROBLEMS** has solid solutions PLUS solid backing of enough members of Congress to implement those solutions.

IF YOU REALLY WANT A CHANGE... AND IF YOU WANT TO BE SURE YOU REALLY GET IT... VOTE FOR NIXON/AGNEW

NIXON'S THE ONE!

TEXANS for NIXON

Political Advertising Paid for by Texans for Nixon

Engagement Announced

Mr. and Mrs. Edward Gaydos Sr. announce the engagement and approaching marriage of their daughter, Patricia, to David Lee Lowe, son of Mr. and Mrs. Sam Lowe of Rt. 2, Lubbock.

Miss Gaydos is a senior at Slaton High School and is employed as a D.E. student at Stuckey's.

Lowe is a 1967 graduate of Cooper High School and is employed as assistant manager at the Carnation House in Lubbock. The couple will marry Nov. 2.

Seniors Give \$35 To Projects

Clark Self Jr. was host of the Athenian Study Club Oct. 15, in her home at 1515. Twelve members present, Mrs. Tom Sims.

The group discussed the Spring Festival during its business meeting. The women voted to donate \$10 to a Negro Boy Scout Troop and \$25 to the purchase of a X-Ray machine for Mercy Hospital. The Mercy Hospital Auxiliary is sponsoring the drive to raise money for the machine.

Mr. and Mrs. G. A. Franklin of Sherman visited this week in the home of their son, Mr. and Mrs. Bill Franklin and family.



NEWCOMERS---Pictured are nine of Slaton's newcomers who attended the Newcomer Coffee held last Thursday in the Reddy Room. They are, left to right, Doc Hale, Mmes. Jeanne Cleveland, T. D. Dabbs, J. C. Clements, C. W. Eanes, Jo Ann Basinger, Ted Weaver, M. L. McCreary and J. W. Holt.

Coffee Given For Newcomers

The Newcomer Coffee given last Thursday morning in the Reddy Room with all Slaton newcomers invited was an informal affair where a lot of visiting and talking was done. The only way it could have been a better and bigger success was for more newcomers to attend.

For the nine newcomers who did attend, free gifts were given and a drawing for a \$10 saving account at Citizens State Bank was won by Mrs. Ted Weaver.

Coffee, hot spiced tea and brownies were served from a table decorated by Mrs. E. E. Bishop, a member of the newcomer committee. A burlap cloth was laid over a white linen cloth and a centerpiece of artificial flowers made of different shades of burlap material was used. Bronze appointments were used.

fee were Mmes. M. L. McCreary, J. W. Holt and Brent, Ted Weaver, Jo Ann Basinger, C. W. Eanes, J. C. Clements, T. D. Dabbs, Jeanne Cleveland and Mr. Doc Hale. Others attending were representatives from various clubs, organizations and churches who extended a cordial invitation to the newcomers. Ted Weaver, Chamber of Commerce manager, welcomed the newcomers to the coffee. Those on the chamber committee are Mrs. Bill Smith, chairman, Carroll McDonald, Howard Hoffman, Milt Ardrey, B. H. Crandall, Speedy Nieman and Bishop. These women, along with the Slaton Chamber of Commerce, were hostesses for the coffee.

Rev. Moore Speaks To Senior Citizens

Friday was Senior Citizens Day at the Slaton Clubhouse. A large number of members gathered early for a day of visiting, dominoes and "42".

The Rev. Johnnie Moore, pastor of the First Christian Church, spoke to the group using a text taken from the 18th Chapter of Luke. His subject was "Prayer in General". He gave thanks for the meal with his closing prayer.

The opening prayer was given by Chaplain F. B. Sexton and Mrs. Alvin White led the singing, accompanied by Mrs. Anna Bell Tucker at the piano.

ITEM: There is no such thing as an "all purpose" paint. Today's paints have been scientifically formulated to enhance and protect different surfaces. There are rust resistant paints for metal, alkali resistant paints for masonry, fume resistant paints for use in industrial areas, and so forth. The list of specialized paints is growing. Consult your paint dealer for the right paint for any surface.

Scotch 4-Some Set Sunday

A Scotch Foursome is scheduled at 3 p.m. Sunday at the Slaton Municipal Golf Course by members of the Women's Golf Association.

Refreshments will be served following the afternoon's activities.



BEST IN FULL SWING--Slaton area farmers were bringing in the cotton this week, A. A. Wimmer was one of many who unhooked a trailer of machine-picked cotton, a light freeze last week, warm weather was helping get the harvest on the move.

the BANK with a HEART

Citizens State Bank salutes Slaton area farmers this week, recognizing that the harvest of King Cotton has started and that the cultivation of the earth is the most important labor of man. Regardless of the business we might engage in as individuals, in our town and area we depend either directly or indirectly on a healthy agricultural economy. CSB is proud to be a partner in the agricultural affairs of the community, as in other financial aspects of the economy. Come by and visit us today for any banking services!

- use our drive-in banking windows
- COMMERCIAL LOANS
- INSTALLMENT LOANS
- SAVINGS ACCOUNTS
- NIGHT DEPOSITORY
- SAFE DEPOSIT BOXES
- IMPROVEMENT LOANS

Cooper FHA End Project

The Cooper Chapter of Future Homemakers of America have been selling household products for their fund-raising project this year, which was terminated recently with a party in the high school cafeteria at which time the high point salesmen for the 10-day period was determined.

Attending were Cindy Payton, Marsha Cade, Teresa Pringle, Susie and Linda Kahlich, Gloria Dunnam, Jane Short, Rosa Perez, Candy Hendrix, Janie Gonzales, Deloris Gonzales, Kathy Dunn;

Also, Brenda Cooper, Janie Blair, Margarita Alonzo, Amy Vasquez, Doris Schwertner, Ann Dorsett, Ann McWhirter, and Mmes. Velma McWhirter, Zack Payton, Dick Cade, H.M. Cade, M. D. Gamble, E. W. Pringle, Dottie Samples, Locadio Vasquez and S.R. Perez. Candy Hendrix and Cindy Payton were high point salesmen and each won a watch. Six girls won rings for selling \$25 worth of merchandise, and two received necklaces for selling \$15 in merchandise.



TWIN GIRLS--Mr. and Mrs. Robert Mohon were "doubly" happy Monday when they became parents of identical twin girls. With two sons, Jamie, 5, and Bobby, 7, already, two girls were just what "the doctor ordered". Mrs. Mohon is shown holding the twins, Kimberly Dawn, six pounds, 11 ounces, on the left, and Tammie Renee, six pounds, nine ounces, Mohon is employed by Wendel Radio and TV. (SLATONITE PHOTO)

Either Way - You Just Can't Find A Greater Leader For The Economy!

BLAND'S FURNITURE

When you Elect to buy at Bland's, you've got the Winning Candidates for value on a quality-economy ticket that just can't be defeated!

For 22 years Bland's has been fighting inflationary furniture prices, offering the people the greatest dollar-stretching home furnishing values at the lowest price consistent with good business practice.

It is a campaign for everyone...Spanish with sizzling new accents...Traditional with the latest in old-fashioned appeal...and a Modern line that could give lessons to our opponents.

When it's Time to Change the the domestic scene - put Bland's Furniture at the top of the list and Mark your Ballot for the People's Choice.

Bland's Furniture

Knights of Columbus Annual

BAR-B-Q

Sunday Oct. 27th 4-8 p.m.

St. Joseph's Hall

Tickets on sale and available at door.

All You Can Eat!

ADULTS \$1⁵⁰

CHILDREN (12 & Under) 75¢

ROOSEVELT NEWS

KATHY WALTER

Homecoming Plans Complete

The Roosevelt Homecoming will be held Friday night as the Eagles meet the Petersburg Buffaloes. The RHS Varsity will be looking for its third consecutive win in district play. The contest will begin at 7:30 on the Eagle field.

Pre-game registration and distribution of mums will be conducted for the Exes beginning after school Friday in the elementary building. Refreshments will be served following the game in the cafeteria.

A half-time show will feature the Eagle Band and presentation of "Coming Home" and "Homecoming" Queens. Candidates for Homecoming Queen are Wendy Woolley, senior; Wanda Turman, senior; and Shirley Dickey, junior. Escorts will be Claude Ehler, Bud Barnett and Ray Campbell, seniors.

The candidates for "Coming Home" Queen are Sue (Weaver) Sides, escorted by her husband, Benny Sides; Margie (Solley) Hopkins, escorted by her son, Donald Hopkins; and Mary (Fulke) Miller, escorted by her husband, Charles Miller.

To get spirit reaching a peak by game time Friday, three candidates for Mr. and Miss Flame have been announced. They are Priscilla Bentley,

Dessie Bobo and Marsha Belcher; and competing for Mr. Flame are Royal Carlson, Roy Jim Davis and Ray Campbell.

The two with the most week-long spirit will be crowned as Mr. and Miss Flame Thursday night at the bonfire. The community-wide affair is scheduled to begin at 7:45. Everyone is urged to come and support the Eagles!

Congratulations to the Varsity football team on their win against Crosbyton last Friday night. They are now hanging on to a tie for the district lead with Ralls, as each are 2-0 on the district level.

JUNIOR PROJECT
At a Junior Class meeting last week, it was decided to begin selling pecans as a money-making project. They are the large, shelled, whole style of nut. Anyone interested in helping support this school project may purchase pecans from any junior.

The Senior Class will sponsor a Senior Class Play during the second semester. It was decided last week. They also decided on other money-raising projects for later in the year, and drapes for the girls for senior pictures.

The Acuff Beauty Shop is

now open with Crene Morris as the new operator.

The Roosevelt Junior High teams won two games against Crosbyton last Thursday. The seventh won with a 22-0 score, while the eighth put away the Chiefs 30-12.

Scoring for the seventh were Joseph Brown, Noe Gonzales and Gary Thornton.

HALLOWEEN PARTY
The Roosevelt 4-H Club is sponsoring a Halloween Party this Saturday night at 7:30. All 4-H'ers will meet in the Roosevelt Clubhouse, and then go "Trick or Treating". They will gather canned goods to be given to charity. Tina Latham is in charge of the recreation, and Kathy Stennett is the refreshment chairman.

Parents and students as well as Roosevelt teachers attended an open house last Monday night. Refreshments were served in the Homemaking department. The Roosevelt Choir made its first appearance as it presented the entertainment.

Also victorious last week was the Freshman football team, as they rolled by the Idalou Fish. This was the first time in the history of football at Roosevelt that all four teams won, and by large margins as well. The RHS Fish will challenge the Ropes Freshmen tonight at Ropesville.

Weekend guest in the home of Mr. and Mrs. W. H. Walter was Kathy Hinton of Happy.

Remember to back RHS at the bonfire tonight, and at homecoming tomorrow night. Also, if you wish to submit news for the Slatonite's Roosevelt News, call 842-3470.



ROOSEVELT COACHES---The Roosevelt Eagles are already assured of the school's best football record in its young grid history, and these coaches are helping make it possible. Left to right are Gene Mims, John Alexander, Les McDowell, Head Coach Huston Powell, and Don Black.

Roosevelt 4-H'er Shows Grand Champion

A medium Duroc owned by Chris Marshall was reserve grand champion barrow at the Junior Livestock Show at the State Fair of Texas last week. Chris is the 12-year-old son of Mr. and Mrs. A. W. Marshall, Rt. 1, Lorenzo and is a seventh grader at Roosevelt Schools. He is a member of the Roosevelt 4-H Club. His Duroc was six months old and weighed 216 pounds.

Clay Mitchell, 11, son of Mr. and Mrs. Don Mitchell, showed three barrow pigs at the State Fair and his Poland China placed first in the heavy class. In the Crossbred division, his pig placed eighth in the medium class and Duroc placed 17th in the light class. Clay is a sixth grader at Slaton Junior High and his father is vocational ag teacher at SHS.

Others area winners in the junior livestock show include: Junior Barrows -- Berkshire -- Class - Light, 4, Don Moore, Roosevelt, 9, Wayne Kahlich, Cooper, 12, Nathan Griffin, Cooper, Class - Medium, 10, Gary Schaffner, Cooper, Class - Heavy, 4, Lannie Marshall, Cooper, 6, Kenneth Kahlich, Cooper.

Duroc -- Class - Light, 15, Dex Moore, Roosevelt, Class - Medium, 12, James Parker, Roosevelt, 22, Don Moore, Roosevelt, 23, Dex Moore, Roosevelt, 25, Dale Schaffner, Cooper.

Degree Rites Sponsored By Cooper FHA

The Cooper Chapter of the Future Homemakers of America met recently for a monthly program and degree ceremony.

Ann Dorsett, president, led the opening ceremony. Teresa Pringle presented the qualifications of the Junior Degree candidates with Cindy Cade presenting the certificates, keys and a long-stemmed red rose.

Candidates were Marsha Cade, Teresa Pringle, Margaret Luker, Oralia Padilla, Denise Robertson, Linda Harden and Linda Louder.

Marsha Cade presented corsages and hurricane candles to the State Degree candidates, Cindy Cade and Ann Dorsett. Mrs. Velma McWhirter, chapter advisor, Mmes. O.K. Dorsett, Dick Cade, T. Aguilar and Clifford Robertson, chapter mothers, were each presented a red rose by their daughters for the assistance and cooperation in all chapter projects as well as for their attendance at chapter, area and state meetings.

Following the degree ceremony, three new officers were elected. They are Linda Louder, pianist; Mary Jane Aguilar, parliamentarian; and Cookie Hendrix, historian.

Junior Choir nominees are Oralia Padilla and Denise Robertson. Linda Alexander will represent the senior choir at the area meeting and will also try-out for the state and national chorus.

Chapter members voted to "Trick or Treat" for UNICEF at 6 p.m., Saturday night. All three classes are making "dirty bags" for the "Salute for Soldiers" which will be mailed by the American Red Cross in time for Christmas.

Linda Alexander, representative to Girls State this past summer, told of her experiences and explained the duties of a citizen.

Refreshments were served by Cookie Hendrix, Linda Harden and Teresa Nuberry.



\$100 TO AUXILIARY--Luther Gregory, representing the American Legion Luthery Powers Post #438, presents a check for \$100 to Mrs. Jerry Melcher, president of Mercy Hospital Auxiliary. The money will go toward the purchase of a new X-ray machine which the organization will purchase for use at the local hospital. (SLATONITE PHOTO)

DANCE

SPONSORED BY SONS OF HERMAN LODGE NO. 16 AT ST. JOSEPH'S HALL, SATURDAY NIGHT, OCT. 26, MUSIC BY "THE RHYTHM FIRE FIGHTERS" OF LUBBOCK. TICKETS FOR \$1.50 PER PERSON MUST BE SOLD IN ADVANCE.

CALL 828-3444 or 828-3568

TURKEY Dinner

WITH ALL TRIMMINGS

AND ANNUAL BAZAAR

Sunday NOV. 10th

DINNER AT ST. JOSEPH'S HALL--4 to 7 P.M.

SPONSORED BY --- ALTAR SOCIETY

All You Can Eat

BAZAAR AT SCHOOL--3 TO 8 P.M.

BINGO & GAMES FOR EVERYONE

Sponsored by CATHOLIC DAUGHTERS

Come One! Come All!

MAKE YOUR OWN TV TEST

- Star of daytime drama, "The Edge of Night" Sidney Stalworth
Laurence Hugo
J. H. Walton
- "The Undersea World of Lloyd Bridges" Lloyd Bridges
Jacques Costeau
- Star of movie, "Stars in My Crown" Joel McCrea
David Niven
Patrick Nolan
- Victoria Barkley of "The Big Valley" Ann Bancroft
Ann Page
Barbara Stanwyck
- Star of movie, "The Girl from Jones Beach" Virginia Mayo
Debra Paget
Corinne Calvet

ANSWERS: Hugo Costeau, Sidney Stalworth, J. H. Walton, Jacques Costeau, Lloyd Bridges, David Niven, Patrick Nolan, Ann Bancroft, Ann Page, Barbara Stanwyck, Virginia Mayo, Debra Paget, Corinne Calvet.

STORK CLUB

10-15-68-- Mr. and Mrs. Carlos Leyva, Box 126, Justiceburg, parents of a girl, Margaret Rivers, 7 lbs., 15 1/2 ozs.

10-16-68-- Mr. and Mrs. Max Jackson, Box 403, Slaton, live in Roosevelt, parents of a boy, Dan Lance, 8 lbs., 4 ozs.

10-17-68-- Mr. and Mrs. Joseph D. Heinrich, Rt. 1, Box 123, Slaton, parents of a boy, Wesley Paul, 9 lbs., 4 ozs.

10-21-68-- Mr. and Mrs. Robert Houston Mohon, 645 S. 13th, Slaton, parents of twin girls, Tammie Renee, 6 lbs., 9 ozs., and Kimberly Dawn, 6 lbs., 11 ozs.

Diphtheria Shot Urged For Children Here

Because of an outbreak of 60 cases of diphtheria in Austin, Slaton parents are urged to have their school-age children immunized against diphtheria if they have not been immunized. Two victims have died in Austin. Officials there were calling for mass inoculations.

Outbreaks can occur and children here should be inoculated to prevent their possible contraction of the disease. A local doctor told The Slatonite that children should be immunized every three years.

SCHOOL MENUS

AT WEST WARD

OCT. 28-NOV. 2

MONDAY
Country fried steak
Buttered rice
Green beans
Sliced tomatoes
Rolls, butter & honey
1/2 pint milk

TUESDAY
Beef stew with fresh vegetables
Buttered corn
Tossed salad
Yeast biscuits & butter
Peanut butter cake
1/2 pint milk

WEDNESDAY
Baked turkey & dressing
Mixed vegetables
Cranberry sauce
Celery sticks
Rolls & butter
Jello with fruit
1/2 pint milk

THURSDAY
Baked macaroni & cheese with bacon
Blackeyed peas
Cabbage & pineapple salad
Rolled wheat muffins & butter
Plum cobbler
1/2 pint milk

FRIDAY
Salmon croquets with catsup
Scalloped potatoes
Buttered spinach
Cornbread & butter
Cake with strawberries
1/2 pint milk

with each bag of Purina Pig-Plus you can

- Provide additional nutrient boost
- Give a boost to runny piglets
- Get pigs to market early
- Treat scours
- Stimulate growth
- Supply 3 antibiotics
- 8 vitamins - 5 minerals
- Get feeder pigs off to good start
- Reduce cervical abscesses
- Help prevent scours
- Overcome stresses
- Improve feed efficiency
- Maintain weight gains in presence of atrophy

Ask for Purina Pig-Plus the time you visit our store.

HUSER FEED & SEED
PURINA HEALTH AIDS

HEY KIDS!

DON'T FORGET THE 1st ANNUAL

KEAS - T.G.&Y.

5¢ TO 11¢ STORES

KIDS KARNIVAL

★SATURDAY OCTOBER 26

★AT T. G. & Y.

★10:30 TO 11:30

★REGISTER FOR FREE BICYCLE

PRIZES FOR BEST COSTUME

FREE DRINKS FREE CANDY

CARDS OF THANKS

Our heartfelt thanks to all our friends and neighbors of the Acuff, Canyon, Midway and Roosevelt Communities for the lovely cards, flowers and food we received during our recuperation. May God's blessing be with each of you always. Bert and Ted Armstrong

CAR WASHING & GREASING

"Come on in, the washin's fine." Car washing and lubrication are specialized services with us. We have the right lubricant and we KNOW where it should go. When we wash your car we CLEAN IT inside and out.

Wilson Oil Company

Phone 628-2061
Wilson, Texas
PHILLIPS 66 GAS, OIL

WELCOME EXES!!

to

ROOSEVELT

HOMECOMING

1968

ROOSEVELT EAGLES SCHEDULE

ROOSEVELT SCHEDULE

Roosevelt 27 Whiteface 6
Roosevelt 6 Cooper 25
Roosevelt 19 Ropesville 24
Roosevelt 15 Post 20
Roosevelt 31 Lorenzo 0
Roosevelt 17 Crosbyton 6
Oct. 25--Petersburg
Nov. 1--At Ralls
Nov. 8--Spir
Nov. 15--At New Deal

Coaches

HOUSTON POWELL
JOHN ALEXANDER
DON BLACK
LES MACDOWELL
GENE MIMS

ACUFF CO-OP GIN

McCLUNG GIN

ACUFF FARM SUPP

Who Pays For Scouting? Five-Way Plan Outlined

The money comes from the parents of the boys, or the church where the Scout unit is located. The council spends the money to set straight exactly who pays for Scouting. The boy comes first, and he pays his annual national membership fee, buys his own uniform, books, and equipment, and pays dues into his troop treasury. He pays for these things himself, preferably earning his own money in accordance with basic Scouting policy that each boy should learn self-reliance and thrift by paying his own way.

The Scout unit spends money for camping expeditions, "Good Turn" projects, badges, books, craft supplies, and other materials. Its source of income are the weekly dues that boys pay and approved money-earning efforts such as paper or scrap drives.

The institution which is chartered to use the Scouting program gives help in developing money-earning projects, but the sponsor that regularly pays all of the Scout unit's bills def-



TCU BAND MEMBER--Diane Jaynes is among the 115 members of the Horned Frog Marching Band Texas Christian University in Fort Worth. She is a 1968 graduate of Slaton High School and the daughter of Dr. and Mrs. S. H. Jaynes. She is pictured with her band director, James A. Jacobsen.

SOUTHLAND NEWS

MRS. TOMMY WILKE

Pastor And Family Move Here

Hello out there in "Newspaper Land". Hope each of you are well, contented and happy wherever you are or whatever you are doing. It rained a little here in Southland Monday. No use to worry about this weather, because "what will be will be", but it is kind keeping the farmers in a bind! Guess they will just have to continue picking cotton, cutting soybeans and grain in between showers!

Little Angie Wilke, daughter of Mr. and Mrs. Delmar Wilke, celebrated her fourth birthday last Wednesday night, Oct. 16, with one great big party. Those helping her to celebrate were her grandparents, Mr. and Mrs. Max Arrants from Slaton and Mr. and Mrs. Marcus Wilke from Southland, and her great grandparents, Mr. and Mrs. Jake Mueller from Wilson; Mr. and Mrs. Leroy Poer, Christi and Max, Mr. and Mrs. Jerry Harlan and Michele, Mr. and Mrs. E. C. Stabeno and Lynn; Mr. and Mrs. Glenn Kiesel and Rhea Lynn; and Darrell Wilke. Angie's cake was decorated with "Snow White" and the "Seven Dwarfs" and was very beautiful. Congratulations and a belated "Happy Birthday", Angie.

EAGLES PLAY LOOP HERE Southland's football team traveled to Wellman last Friday night, for its first conference game, but the results weren't too great for us, because we got beat 36-12. Larry Bevers and Stanley Abshire ran the two touchdowns for Southland. Better luck to the Southland Eagles this week when they meet Loop here on their own field.

Mrs. James Shelton gave the local 4-H club a hayride and supper at her home Saturday night.

Mr. and Mrs. Robert Long, Larry and Cathy, went to Plainview on Saturday where they visited with Mr. and Mrs. Arlie Romines. Mrs. Romines fell recently and broke her hip and she is in the Plainview Hospital. May God grant her a speedy recovery.

Mr. and Mrs. Gail from Kingsland came Monday for a visit with Mr. and Mrs. Marcus Wilke. They are neighbors down on LBJ Lake.

Mr. and Mrs. Otto Klaus returned to their home here in Southland after a week's visit in South Texas.

from Lubbock to 835 S. 12th St., Lubbock Swine Breeders Assn., Lubbock; and Willie Earl Buckett, 635 W. Murray.

Mrs. Jeanne Cleveland, from Christoval to 335 Texas Ave., a Lubbock printing company; Andrew Deanda, from Pleasant Valley to 530 W. Division, Lubbock; Nina Duff, 1005 S. 11th; Charles Eades, 501 Plaza D.; Doug Hansen, from the valley to 325 S. 10th, self employed in cotton harvest; and J. B. Hawk, 705 W. Garza (R).

Vernon Keith, from Bryan to 700 S. 14th (R), Lee Optical, Lubbock; M. L. McCreary, from Amarillo to Reasoner Apts., Santa Fe; Floyd Morgan, from Lubbock to 645 W. Murray, TG&Y Warehouse, Lubbock; James Munselle, 115 S. 4th; Willie Bill Perry, 950 S. Arizona; Calvin Schultz, from Guy to 516 Plaza Dr., self employed; L. Dean Sims, 1540 W. Garza, Santa Fe; Tom Sims, from Burkburnett to 521 Plaza Dr., owner of Tom Sims Chevrolet; and Thomas Thompson, 610 S. 10th St.

DINNER AT CHURCH Those from this community attending a "Teacher Appreciation" dinner at Grace Lutheran Church, Slaton, Sunday were: Mrs. Selma Kiesel; Mr. and Mrs. Arthur Stolle; Mrs. Pauline Siewert; Mr. and Mrs. Loyd Hagens, Karen, Kathy and Debbie; Mrs. Douglas Neugebauer, Gayle and Joel; and Mr. and Mrs. Edmund Wilke and Sherri. A Halloween theme was carried out in the decorations.

After the dinner, Rev. Robert Richardson presented a short program in honor of the Sunday school teachers and later the group played Progressive "42".

NEW PASTOR We have another new family in Southland. Rev. and Mrs. William T. Dodd and family from Lubbock moved into the Baptist parsonage last week and Rev. Dodd will be the new pastor of the Southland Baptist Church. The Dodds have one daughter in Texas Tech, one daughter that is a junior in high school and a son that is in junior high. We extend a most hearty "Welcome" to Rev. and Mrs. Dodd and family and may God's richest blessings be theirs in their new home and church.

TO COLORADO D. D. Pennell and sons, Jerry and Don Harlan, left one day last week for Pagosa Springs, Colo., where they planned to meet a group of men for an "Elk Hunting Trip" up in the mountains. They plan on returning to Southland sometime this week.

Mr. and Mrs. Billy Lester visited with Mr. and Mrs. Othello Gary and family in Well-

man on Friday. Douglas Neugebauer and E. C. Stabeno went deer hunting at Mason this past week.

FISHING TRIP Mrs. Ethel Barber and Mrs. Maxine Davis, from Cleburn, Texas, met Mr. and Mrs. Neil Crosby recently at Oak Creek Lake for a visit. After fishing at Oak Creek for a few days, the four went to San Antonio where they visited with Mrs. Crosby's sister and brother-in-law, M/Sgt. and Mrs. Pierson. They stayed a few days there visiting and fishing and then went on to Canado on the Gulf and visited with a nephew and his wife, Mr. and Mrs. Jerry D. Bassham, again doing some fishing. After spending some time there, the four then went to Hughes Springs to the Lake of the Pines and visited with a brother and wife, Mr. and Mrs. J. D. Bassham, who have a beautiful new home on the lake. They spent a week there, fishing and visiting, and they enjoyed several big fish-frys. They were gone for two weeks.

Mrs. Alice Martin had 18 guests for dinner on Sunday. They were: Mr. and Mrs. Herman Dabbs and David; Mr. and Mrs. Blanton Martin from Hart Camp and their daughter and son-in-law, Mr. and Mrs. Gerry Pierce; Mr. and Mrs. Harley Martin and children, Mrs. Ed Moseley and Mrs. Travis Dabbs and children, all from Slaton. Guess this is about all for this week. Sure wish that YOU would "shake a leg on down here" or call me at home and give me your news! Thanks to those that did. See you next week.

Breathalyzers To Test Drivers For Drinking

Erinking drivers run a new risk of being nabbed -- through a tell-tale scientific breath analysis device going into use in Texas.

Co. Wilson E. (Pat) Speir, Department of Public Safety Director, announced that 90 new "breathalyzers" have been purchased by the DPS and 450 highway patrolmen trained to operate them. Device will test a suspect's breath to determine the percentage of alcohol in the bloodstream.

Instruments, simple to operate and read, will be placed in 80 of the state's most populous counties, at fixed locations and used under strictly controlled scientific conditions.

Suspects who consent to the test will blow into a tube and the percentage of alcohol in their blood will register on indicators. About 15 minutes' waiting time is allowed before testing begins and actual test takes only five minutes. Experts report a direct relationship between alcohol content in blood and breath.

Drinking, according to DPS statistics, figures in 40 to 50 per cent of Texas' traffic deaths -- perhaps more than 1,600

of last year's 3,367 highway fatalities. Over the nation, use of alcohol leads to annual traffic death toll of 25,000 and 800,000 vehicle accidents -- the largest single factor in fatal crashes.

A driver with 0.15 per cent blood alcohol content by weight is 25 times more likely to be involved in a wreck than a non-drinking driver. Average person achieves that danger point after consuming five ounces of 100 proof alcohol an hour without eating. DPS chemists figure. Consumption leading to intoxication, of course, varies with weight, time between drinks and amount of food eaten.

Tests will "clear" drivers suspected of being drunk who are actually driving erratically due to illness or other reasons.

19 New Families Move Here In September

According to a newcomers report compiled by the Slaton Chamber of Commerce, 19 families moved to Slaton during the month of September. Of these 19 families, five are employed in Lubbock.

Following is a list of the newcomers with the name of the head of the household, where they moved from, their new address and where employed when known:

Dale Ashford, from Seymour to 855 S. 14th, self-employed truck driver; Mrs. Jo Ann Basinger, from Post to 230 N. 12th, homemaker; David Brown,

A-Z-BOY RECLINA-ROCKER

The La-Z-Boy® Reclina-Rocker® is as beautiful as it is comfortable. In style with the chair that has a reputation for quality. There are styles for every room... Modern, Early American, Traditional and Contemporary. It reacts easily and gently to your every wish... Reading, lounging, watching TV, even full reclining. Come in and see us today.

15 Chairs
Now In Stock
10 Styles

Make Your Selection Now for Christmas!

SELF FURNITURE

Give yourself a treat! All the Good

CATFISH

you can eat--Served with Golden Brown HUSH PUPPIES

Tarter Sauce - French Fries at

PAPPY'S CAT FISH

1 mi. So. of Circle on Taboka Hwy.
Ph. SH4-9000 for Take Out
Open 11-11 Fri. & Sat. - 11-9 - Weekdays

These are the things to look for in a great road car. And every day more and more people are finding them in the 1969 Ford.

Wider. The '69 Ford hugs the road with as wide a track as Cadillac.

Longer. The '69 Ford smooths your ride with a longer wheelbase than Chevrolet. Yet it turns in a smaller circle than last year's Ford.

Roomier. We've grouped all the controls in front of the driver, made our front passenger compartment so spacious people are calling it the Front Room.

Quieter. Our '69 LTD is designed to ride even quieter than the LTD that rode quieter than Rolls-Royce.

Record first-month sales of the '69 Ford tell us we've got a good thing going. A test drive will tell you.

FORD



The place you've got to go to see what's going on--your Ford Dealer!

SMITH FORD, INC.

84 BYPASS 828-6221

Be ready for all kinds of weather...

BRING IN YOUR WINTER CLOTHES TODAY!

OR CALL FOR

FREE PICK-UP AND DELIVERY

Slaton Laundry & Dry Cleaning

828-3426 169 W. Lubbock

The Exciting, New

Radarange

MADE BY **Amana**

Now in Stock at

WENDELS TV & APPLIANCE

Come in for a FREE Demonstration

Fast Electronic Cooking

MICROWAVE OVEN

The WONDER of the

Radarange

A new way to cook!

OUR WINNERS LAST THURSDAY:

M.E. BRUEDIGAM, Rt. 2, Slaton
MRS. D.J. HUTCHESON, Wilson

Wendel's

TV & Appliance
Ph. 828-3609



FRESHMEN OFFICERS--Dan Davis, left, will serve the freshman class at Slaton High School as its president this year. Other officers are Nedra Moseley, secretary; Susan Green, treasurer; and Brad Winchester, vice-president. (SLATONITE PHOTO)

Malcom Presley Dies In Calif.

Word has been received by Slaton friends that Malcom Presley died at his home in Fresno, Calif., Oct. 12 after a short illness. He is a former Slaton and Union Community resident.

Presley is survived by his wife, Kathy, three brothers, R. D. of Abernathy, W. J. of Denver City, and Clay of Fresno; two sisters, Mrs. Ivy Pair, Levelland and Mrs. Joy Jones, Oklahoma City.

Privetts Have Grandchild

Mr. and Mrs. George Privett are the proud grandparents of their first grandchild, little Miss Deborah Lynn, who was born Oct. 18 in Lexington, Ky. She weighed six pounds, 8 ounces.

Parents of the baby girl are Dr. and Mrs. George Privett, Jr. of Lexington.



TO IDAHO--Airman Hezekiah Thomas Jr., son of Mr. and Mrs. Hezekiah Thomas of Slaton, has completed basic training at Lackland AFB, Tex. He is now assigned as a materiel specialist with a unit of the Tactical Air Command at Mountain Home AFB, Idaho. Airman Thomas attended Slaton High School.

SLATON UPHOLSTERY
Free estimates,
Free pickup & delivery
176 N. Texas 828-7143

EBLEN PHARMACY
245 W. LUBBOCK SLATON, TEXAS
828-4537

Be A JUNIOR MILLIONAIRE!
\$5 OPENS A Junior SAVINGS ACCOUNT
SLATON SAVINGS and Loan Association

Busby Home From Hospital

After checking on the condition of Brannon Busby, a Slaton Santa Fe Railway employee who was injured in Plainview Oct. 9, it was learned that he would probably come home from Lubbock's Methodist Hospital this week.

Brannon was thrown from the car in which he was riding when it bumped into five other cars on the identical track. He suffered a crushed foot and was treated for shock.

Edwin McCarver Begins Combat Training

SAN DIEGO (PHTNC) Oct.--Marine Private Edwin R. McCarver, 19, son of Mr. and Mrs. Ira McCarver of 925 W. Lynn, Slaton, Tex., was graduated from eight weeks of recruit training at the Marine Corps Recruit Depot here.

He will now undergo from two to four weeks of individual combat training and then, after leave at home, will report to his first Marine Corps assignment.

The intensified Marine recruit training emphasizes rigid physical conditioning and survival techniques, both at sea and ashore, to develop self-confidence and endurance. Marksmanship with the M-14 rifle and 45-caliber pistol are equally stressed, and close order drill instills the traditions of Marine Corps teamwork.

A thorough study of basic military subjects, hygiene, first aid and sanitation, and the customs, courtesies, history and mission of the Marine Corps serve to polish the new Marine's recruit education and prepare him to join the Marine combat forces.

ITEM: To get full return for the money you spend on clothing, make a clothing plan, watch price and quality, and then care for garments properly.

ITEM: Cordless appliances use power stored in batteries rather than power drawn, via a line cord, from an electrical outlet. Some are run on primary-cell batteries that are replaced when they run down; others use rechargeable batteries that can be recharged at minimal cost.

HAPPY BIRTHDAY

- OCTOBER 24
Mrs. H. F. Pricer
Mrs. Robert Hurst
Hubert Schwertner
C. B. Bentley
Helen Jones
Jan Hall
Ricki West
Paul Dwayne Kitchens
- OCTOBER 25
Mrs. Fred Stottlemire
Jerry Kitten
Mrs. B. B. Castleberry
Gary Wimmer
Gail Viney
Charles Dickey
Harvey Howell
Elza Smith
- OCTOBER 26
James Wilbanks
Kim Marie Rylant
Cheryl Lynn Dickey
- OCTOBER 27
Jerry Burrell
Mrs. Mike Haddock
Mrs. E. L. Bloxom
H. P. Gregory
Pat Buckman
Mrs. Alice Jarman
- OCTOBER 28
Vicki Nowlin
Albin Kahllich
Mary Earl Crumley
Richie Crossland
Bobby Gregory
Eunice Montgomery
Mary Earl Sides
Kevin Walter
T. A. Davis
- OCTOBER 29
Mrs. Jack D. Gilliland
Albert Kuss
- OCTOBER 30
Jonas Cain
Dick Davis
Mrs. Arlie Bownds
Tommy McClanahan
Frankie Brown
Arvin Stafford
Sue Bilderbach
Joe Dale Gaydos

Citizens Asked To Tape Message To Candidates

The voter talks -- the candidate listens is the format of a "Speak to Nixon-Agnew" program scheduled for noon Friday, Oct. 25, at the Student Union Building on the Texas Tech campus.

Citizens of the Lubbock area, regardless of their political affiliations, are invited to express their views in a tape recorded message to either of the Republican candidates.

United Citizens for Nixon-Agnew, an organization comprised of Democrats, Republicans and Independents, is sponsoring the program.

Charles S. Rhyne, national chairman of the United Citizens group describes the program as part of a nationwide effort to take the pulse of American political thought.

"The average American has become the forgotten man in political discussion. This unique program will afford the voters an opportunity to present their views directly to a Presidential candidate."

Troy Pickens Rites Scheduled Today

Services for Troy Pickens, 50, have been set for today at 2 p.m. in the First United Methodist Church. The Rev. J. B. Sharp, former Slaton pastor and now of Amarillo, will officiate. Entertaining will be directed by Englands in Englewood Cemetery.

Pickens died at 9:20 p.m. Monday at Santa Fe Hospital in Temple.

He was born June 1, 1918 in Texas and lived in Slaton nearly all his life. He was a graduate of Slaton High School and Texas Tech. He was a Santa Fe Railroad engineer and a veteran of World War II. He was a member of the Masonic Lodge here.

Survivors include his wife, Doris; a son, Larry, college student; a daughter, Mrs. Elaine Herman of Trinidad in the Port of Spain; his parents, Mr. and Mrs. E. N. Pickens of Slaton; and two grandchildren.

Pallbearers will be Howard

Hoffman, Jack Smith, Loyd Madden, C. E. McCoy, Earl Eblen and Dr. H. B. Segrest. The Masonic Lodge will serve as honorary pallbearers.

Cain Named On Committee

Mayor Jonas Cain of Slaton has been appointed chairman of the Physical Features Area as committee of the Lubbock Metropolitan Council of Governments. It was announced this week by County Judge Rod Shaw, who serves as president of LMCOG.

The executive committee of LMCOG made the appointment, also named Mayor J. H. Galey of Shallowater, Mayor Roy Jones of Abernathy and Mayor Fritz Jack of Wolforth on the committee.

The group will study an analysis presented by an engineering company and report comments and suggestions at the next general meeting of LMCOG.

Mexico Circle Meets In Legg Home

Mrs. Nan Tudor, program chairman, led a discussion entitled "Moving In A World of Mass Communication" when the Mexico Circle of Women's Society of Christian Service of the Methodist Church met in the home of Mrs. E. R. Legg Monday at 2 p.m.

Mrs. L. A. Harral, circle chairman, opened the meeting with a prayer by Peter Marshall.

Mrs. Tudor was assisted in her discussion by Mmes. W.S. McWilliams, H. V. Wheeler and C. L. Heaton.

Those attending were Mmes. J. D. Holt, L. C. Odum, Tudor, Legg, McWilliams, Harral, Wheeler, Heaton and one new member, Mrs. J.C. McDougal.

Soto Gets Purple Heart

L/Cpl. Tino Soto, a resident of Slaton until entering the service, recently spent 19 days aboard the USS Rescue recuperating from a shrapnel wound in the leg. Serving with the U.S. Marines in Vietnam, Soto was presented the Purple Heart in a ceremony Oct. 10, 1968. He is a graduate of Slaton High School and attended Texas Tech. His family now lives in Marlin.

Mrs. Steve Smith returned home Tuesday from Mercy Hospital after undergoing surgery there last week.

Mr. and Mrs. Vernon Stewart, parents of Mrs. Speedy Nieman, are visiting in the Nieman home this week.

Daily Bible Readings

- October 24 -- Eph. -- 2:11-22
October 25 -- Eph. -- 3:14-21
October 26 -- 1 Pet. -- 2:9
October 27 -- 1 Pet. -- 1:1-12
October 28 -- 1 Pet. -- 2:13-25
October 29 -- 1 Pet. -- 3:8-12
October 30 -- 1 Pet. -- 3:13-22

Mrs. Steve Smith returned home Tuesday from Mercy Hospital after undergoing surgery there last week.

Mr. and Mrs. Vernon Stewart, parents of Mrs. Speedy Nieman, are visiting in the Nieman home this week.

J. DAVIS ARMISTEAD, O.D.
DOCTOR OF OPTOMETRY
LUBBOCK 2132 - 50th
SLATON 828-3385
West Side Square



COMPLETES BASIC -- Airman Tommy C. Williams, son of Mr. and Mrs. Carl H. Williams of 1505 W. Lynn, has completed basic training at Lackland AFB, Tex. He has been assigned to the Air Force Technical Training Center at Keesler AFB, Miss., for specialized schooling as an air traffic specialist. Airman Williams is a graduate of Slaton High School.

Let Prayer Bring You Peace

When family or business problems seem beyond solution... when the worries and turmoil of daily life bring pressures beyond the bearable... Quiet meditation and prayer offer solace and respite... an opportunity to reappraise day-to-day circumstance in light of scripture... to seek guidance of a greater power. Whatever your faith... whatever your beliefs... worship this week, and let prayer bring you peace.

Clinic Set For Crippled Youth

The fall 1968 session of St. John's Crippled Children's Clinic will be conducted from 1 to 5 p.m. Saturday, Nov. 2, at St. John's Methodist Church, 15th St. and University Avenue, in Lubbock.

The clinic is financed through contributions. Clinicians will arrange for transportation and further care when needed. Braces and appliances have been provided for 150 through the clinic. Additional pairs of shoes have been provided for more than 700 children. The first clinic session conducted in 1963, which was accompanied by a nurse or guardian.

Baugh Move To Florida

The Darrell Baugh family moved from Slaton this week to Eustis, Fla. Mrs. Baugh is the former Miss Doris Bartlett and had lived in Slaton all her life.

They operated Baugh Electric here for the past six years and will have an electric shop there.

Oscar Stone of Los Angeles, Calif., was a guest of his sister, Mrs. Arman, last week. They are Mr. and Mrs. Lee Stone of Brownfield.

SLATON MINISTERIAL ALLIANCE
is one of the sponsors
WELCOME WAGON in Slaton.
The Alliance urges you to worship each week in one of the friendly Slaton Churches.

LET PRAYER BRING YOU PEACE
When family or business problems seem beyond solution... when the worries and turmoil of daily life bring pressures beyond the bearable... Quiet meditation and prayer offer solace and respite... an opportunity to reappraise day-to-day circumstance in light of scripture... to seek guidance of a greater power. Whatever your faith... whatever your beliefs... worship this week, and let prayer bring you peace.

Welcome Wagon

Attend The Church of Your Choice Sunday

Unity
"Behold, how good and how pleasant it is for brethren to dwell together in unity." -- Psalm 133:1

Unity is an example of people working together. You can see unity in the "team" sports such as baseball and football. You can see team effort by watching the progress of a building under construction.

Unity among men of different philosophies and beliefs is more difficult to achieve. It may never be fully realized. We can, however, as Christians, do our part to help achieve a world of greater understanding and co-operation -- among our neighbors, and in our communities.

It's simple. Live a life of Christian charity.

Read your BIBLE daily and GO TO CHURCH SUNDAY

SLATON SAVINGS & LOAN ASS'N
"We Pay You To Save"

SLATON CO-OP GINS
"Owned and Operated by Farmers"

JANES PRENTICE INC. SAND & GRAVEL
For The Construction Industry

ACUFF FRIENDS ACUFF CO-OP GINS
"It's Your Association"

WILSON STATE BANK

RECKER BROS. MOBIL SERV. STA.
405 So. 9th St. YAB-7127

UNION COMPRESS AND WAREHOUSE COMPANY

O.D. KENNEY AUTO PARTS
"Your Automotive Distributor"

GRAIN DIVISION
Supreme Feed Mills, etc.

Englewood
235 So. 9th St.
Slaton, Texas, 79660

CITIZENS STATE BANK
The Bank With A Heart

This Space For Sale

These Church Listings Presented as a Public Service By The Above Merchants

Slaton Churches

FIRST BAPTIST 255 South 9th Rev. J.L. Cartrite	MT. OLIVE BAPTIST Corner of Jean & Geneva Rev. E.W. Wyatt	L.M.E. METHODIST Rev. W.D. Atkins	FIR ASSEMBLY OF GOD 14th & Jean Rev. John K. Pratt
WESTVIEW BAPTIST 830 South 15th Rev. Clinton Eastman	FREEWILL MISSIONARY BAPTIST Rev. F.D. Conwright	ST. JOSEPH'S CATHOLIC CHURCH 19th & Lubbock Magr. Peter Morsch	PENTECOSTAL HOLINESS 105 West Knox Rev. Mrs. J. L. Jolly
BIBLE BAPTIST 525 West Panhandle Rev. H.E. Summar	TEMPLO BAUTISTA (Latin Baptist Mission) East Panhandle	OUR LADY OF GUADALUPE 710 South 4th Rev. James Erickson	CHURCH OF CHRIST 11th & Division C.L. Newcomb
21st ST. BAPTIST 1010 South 21st Rev. Jack Bell	FIRST METHODIST 305 West Lubbock Rev. Bruce Parks	GRACE LUTHERAN 840 West Jean Rev. Robert C. Richardson	CHURCH OF GOD 206 Texas Ave. Rev. Clifford Hilton
TRIUMPH BAPTIST East Geneva Rev. M.A. Brown	TRINITY EVANGELICAL METHODIST Rev. Linam Prentice	FIRST CHRISTIAN 22nd & Division Rev. Johnnie Moore	CHURCH OF GOD IN CHRIST Rev. Freddy L. Clark
	AFRICAN METHODIST Rev. R.E. Brown	FIRST PRESBYTERIAN 425 West Lubbock	CHURCH OF THE NAZARENS 635 West Scurry

Area Churches

WILSON St. Paul Lutheran Rev. Francis Koessel St. John Lutheran Rev. Fred G. Hamilton Wilson Baptist Rev. Benny Hagan Wilson Methodist Rev. Roscoe Trostle	GORDON Church of Christ Stephen Mazurek	ACUFF Church of Christ Robert Tompkins Roosevelt Baptist Rev. L.D. Regeon	CANYON CHURCH Baptist 1st & 3rd Sunday Rev. Curtis Jackson Methodist 2nd & 4th Sunday Rev. Joe B. Allen	POSEY Immanuel Lutheran Rev. Jimmy C. Loeb
	PLEASANT VALLEY Baptist Church Rt. 1, Post Rev. Sherman H. Ervin		SOUTHLAND Southland Baptist Rev. William T. Dood Southland Methodist Rev. Charles Hastings	

Senior Play Set Saturday

Senior Play Class will present a musical play "Gypsy" at 8 p.m. Saturday at the high school auditorium. Sponsors are Mrs. Evelyn Nelson and Mrs. Evelyn Nelson.

of Richardson, and Mr. and Mrs. Buddy Maeker and John of Albuquerque, N.M.

first six weeks include: Seniors-A-B -- Kathy Christopher and Mac Young; Juniors-A-B -- Steven Brieger, Mary Mason, Steve Meador, Betty Shaw and Janie Young; Sophomores-A-B -- Steve Bednarz, Karen Hobbs, Brad Moore, Nan Steen and David Wied; Freshman-A-B -- Donna Kitten, Suzy McCormick, Donna Moerbe and Juana Ortega.



SLATON FFA OFFICERS---Recently named as officers of the Slaton High Future Farmers chapter were, left to right, front--Dale Kitchens, president; Mark Schwertner, vice president; Brad Kitten, secretary; back--Skipper Woods, sentinel; Glen Akin Jr., treasurer; and Gary Cook, reporter.

FFA Elect Officers And Sweetheart

About 50 members attending the meeting of the Slaton Chapter of the Future Farmers of America last week and elected new officers. Dale Kitchens was elected president of the chapter. Other officers are Mark Schwertner, vice-president; Bradley Kitten, secretary; Glen Akin, treasurer; and Skipper Woods, sentinel and tall-twister. Johnnie Sue Mosser was elected FFA sweetheart and Debbie Donaldson was runner-up. Johnnie Sue will compete against other chapter sweethearts at the district meeting. Greenhand initiation was set for Nov. 4. Part of the initiation includes greenhands wearing green gloves. They must wear green gloves from Oct. 28 to Nov. 4 and if they take it off for any reason and are

seen by another member, he gets an award on initiation night. Bradley Kitten was appointed as chairman of the refreshment committee. Others on the committee are Stanley Heinrich, Mike Speer, and Rodney Simmons. Don Mitchell, ag teacher, suggested that Clyde Fort, agricultural representative of Lubbock National Bank, be contacted to speak to the chapter on Australian agriculture. He has slides on his trip to Australia. ITEM: Sometime in the future you may be able to buy smoked boneless lamb shoulder, marinated lamb mutton in a boil-in-the-bag package or thrifty breakfast sausage made of lamb or lamb in combination with other meats.

SLATON MINISTERIAL ALLIANCE is one of the sponsors of the youth meet at a church to begin their return for refreshment.

STANLEY BAKER visited in the Elbert Gumm home Thursday. He is their nephew and resides in Lubbock. TRASH HAUL The Juniors sponsored a trash haul Saturday in an effort to raise funds for the Junior-Senior banquet. They wish to thank all who contributed to the drive.

FAMILY MOVES The Ted Melugin family moved closer to Wilson last weekend when they moved into another house on their property. Mrs. Melugin has been employed by a Slaton firm recently, so please call in your news after 5 p.m. on weekdays and on weekends to 628-2956. The news should be turned in as early as possible during the week in order to meet the Monday deadline. Your cooperation is appreciated.

WINNER Congratulations to Mrs. D.J. Wilson who won the first watch given by the APT and Appliance last night. Mrs. Ina Savell accepted Mrs. Hutcheson to accept her gift.

WILSON MENU WILSON SCHOOL MENU Oct. 28-Nov. 1 Monday: Vegetable Beef Soup, Cabbage & Pepper Slaw, Crackers, Milk, Cinnamon Rolls. Tuesday: Salmon Croquet, Scalloped Potatoes, Turnips /w greens, Celery Sticks, Hot Rolls, Milk, Catsup, Plain Muffins. Wednesday: Pig-N-Blanket, Green Peas, Buttered Corn, Milk, Orange Juice, Plum Cobbler. Thursday: Meat Loaf, Buttered Carrots, Great Northern Beans, Tossed Salad, Corn Bread, Butter, Milk, Fruit Jello. Friday: Hamburger/or Fish-burger, Vegetable Salad, Onions, Pickles, Ranch Style Beans, Mustard, Buns, Butter, Milk, Orange Juice, Chips, Buttered Rice.

Beef BONANZA "BELOW" DISCOUNT PRICES!

UNITED SUPER MARKETS WE GIVE GOLD BOND STAMPS

SAVE! **98¢** STEAK (ROUND, SIRLOIN, CLUB, T-BONE) **98¢** STEAK (CENTER-CUT)

BACON 4 LB. BOX **89¢**

GROUND BEEF 1 lb. **39¢**

BACON one lb. pack **59¢**

STEAK Ranch Style 1 lb. **59¢**

OLEO 1 lb. crtns. **10¢**

FRESH FRYER BREASTS LB. **49¢**

CHEESE 43¢

FRANKS 39¢

NEW GROP RED DELICIOUS APPLES Extra Fancy 15¢ lb.

MARYLAND SWEET YAMS Jumbo LB. **10¢**

FRESH CALIF. ICEBERG LETTUCE 2 LARGE HEADS **29¢**

FREE HALLOWEEN MAKE-UP KIT 3 for \$1

SHURFRESH Saltine CRACKERS 1 lb. box **19¢**

CROWN PEANUT BUTTER LARGE 2 1/2 lb. JAR **89¢**

KIDS! Be sure to enter UNITED'S Coloring Contest. Deadline is Oct. 29th!

NABISCO OREOS choc. creme filled 2 1 lb. pkgs. **89¢**

KING SIZE Dr. Pepper or COKE 6 1/2 oz. **39¢**

WILSON CERTIFIED POTTED MEAT 10 10c cans **10¢**

VIENNA SAUSAGE 5 cans **5¢**

CHILI 2 LARGE 24 oz. cans **10¢**

UNITED SUPER MARKETS GRADE A LARGE EGGS DOZ **49¢**

EXTRA WHITENING POWER Oxydol 25¢ OFF KING-SIZE **98¢**

MRS BAIRD'S Days Fresh Longer

TON'S OWN MERLE ROSE

MRS BAIRD'S

**SELF'S
FURNITURE
828-6407**

1. ESTACADO AT
2. SLATON

**WENDEL
RADIO & TV
828-3609**

5. LEVELLAND AT
6. LAKE VIEW

**GUEST DRUG
The 4th
Largest**

9. COOPER AT
10. SEAGRAVES

**GULF
OIL PRODUCTS
Custer's
Howards
Perkins Auto**

13. WILSON
14. NEW HOME

**O. Z. BALL
& CO.
828-3247**

17. ABERNATHY AT
18. HALE CENTER

ENTER TODAY WIN CASH PRIZES

CONTEST

FOOTBALL

Get in on the fun plus win money too. Be a lucky winner. Use your skill by trying to predict who the winners will be. That's all. Use the official entry blank. There has to be a winner — why not you!



**FIRST
PRIZE**

\$10

**SECOND
PRIZE**

\$5

**THIRD
PRIZE**

\$2



RULES OF THE CONTEST:

- ◆ Teams playing in this week's contest games are listed in ads and numbered 1 through 48. Use the entry form at the bottom of the page and circle the numbers of the teams you think will win. To pick a tie, circle both numbers of the teams playing.
- ◆ Be sure to guess total score on the "tie-breaker" game. In case of ties, the entrant nearer to that total score will be the winner. If tie also occurs on total score, prize money will be split between place winners. This also applies to "jackpot" winner.
- ◆ Have your entry blank signed or stamped by a participating merchant, and get it to The Slatonite office by 5 p.m. Friday before the games are played. Only two entries for each person; all persons 12 or older eligible except Slatonite employees and their families.

Back the TIGERS

LAST WEEK'S WINNERS

**\$25. JACKPOT
FOR PERFECT ENTRY**

**ANTHONY'S
Complete School Dept. Store**

19. RALLS AT
20. NEW DEAL

**Mike Bingham 1st
Charles Didway 2nd
Carlton Bradshaw 3rd
Tom Hoffman**

**M. D. GEER TEXACO
828-3456**

21. TAHOKA AT
22. IDALOU

**KENDRICK INSURANCE AGENCY
828-3993**
25. DENVER CITY AT
26. MORTON

**THE GIFT GALLERY
828-5349**
27. SEMINOLE AT
28. MONAHANS

SLATON PHARMACY
29. BORGER AT
30. PLAINVIEW

**SLATON MOTORS INC.
828-6554**
31. DIMMITT AT
32. SPUR

**DAIRY BAR DRIVE-IN
828-3852**
33. FRENSHIP AT
34. POST

SLATON CO-OP GINS
35. CROSBYTON AT
36. LORENZO

**Total
ELECTRIC
Living**
37. SMU AT
38. TEXAS TECH

**WYLIE OIL CO.
Open 24 Hrs. Per Day**
39. TCU AT
40. LSU

**HUSER FEED
& SEED**

41. TEXAS AT
42. RICE

**TEAGUE DRUG
828-6535**

43. TEXAS A&M AT
44. BAYLOR

OFFICIAL ENTRY FORM for week ending October 26

NAME _____ ADDRESS _____

Participating Merchant _____

CIRCLE THE NUMBER OF THE TEAMS YOU PICK TO WIN

1 2 3 4 5 6 7 8 9 10 11 12 13 14 15 16 17 18 19 20 21 22 23 24

25 26 27 28 29 30 31 32 33 34 35 36 37 38 39 40 41 42 43 44 45 46 47 48

Guess Total Score This Game: SLATON-ESTACADO _____ Tie-Breaker _____

**HENZLER
GROCERY
828-6949**

45. NORTH TEXAS AT
46. ARKANSAS

**PEMBER
INSURANCE**

47. GREEN BAY AT
48. DALLAS

**MOSSE
RADIO &
828-647**

3. COLORADO CITY
4. SWEETWATER

**FONDY'S
WESTERN
LEATHER S**

7. SNYDER AT
8. LITTLEFIELD

**BAIN AU
Whirlpool
Dealer**

11. PETERSBURG
12. ROOSEVELT

**BECKER
BROS
MOBILE
828-71**

15. LOOP AT
16. SOUTHLAND

**For Good
THE
CARNATION
HOUSE**

23. PRIONA AT
24. FLOYDADA

Roosevelt Downs Chiefs By 17-6

The Eagle defense had to defend against three fumble recoveries that gave Crosbyton scoring opportunities, and the Chiefs were able to cash in only one of them. Roosevelt led all the way, jumping to a 7-0 lead the first time the Eagles got the ball.

The Chiefs came back with a touchdown, however, and the Eagles led by just 7-6 until Brown kicked the field goal in the fourth period. Then the Eagles iced it away and were driving for another score when the game ended.

Roosevelt marched 53 yards early in the first period, with Hughes leading the way, and Guess carried in from the 14 with 5:56 left in the opening stanza. The Chiefs recovered a fumble on the Roosevelt 28 minutes later, and scored when Johnny Williams swept end just as the second quarter got underway.

Crosbyton recovered a fumble on the Roosevelt 13 in the third period, but the Eagles held, then marched to the Chief 11 before running out of gas. Brown booted his field goal from the 18, getting credit for a 28-yard kick. That made it 10-7 with 10 1/2 minutes left in the game.

The last Eagle drive went 48 yards, with Guess plunging over from the 7. Roosevelt got the ball on a fumbled kickoff, but the Chiefs held inside the 1 as the game ended.



HUGHES ON THE MOVE---Roosevelt's Randall Hughes (44) is shown picking up a good gain at Crosbyton Saturday night. Hughes was the top ground gainer in the contest, won by Roosevelt, 17-6. Other Eagles (in dark jerseys) are Jerome Chaney (32) and George Henry (73). (CROSBYTON REVIEW PHOTO)

8TH GRADE TOPS LITTLEFIELD, DEFEATED BY PLAINVIEW TEAM

Slaton's Junior High graders won 1 game out of 4 the past week, playing two at Littlefield last week and two against Plainview Estacado here Tuesday night.

Plainview scored a 34-15 win in the 8th grade game here, and the visitors won a 20-6 decision in the 7th grade contest.

Slaton won the 8th grade game by 20-18 at Littlefield last Thursday, but the 7th graders lost by 28-0 to the Littlefield 8th grade "B" team.

Curt Woolever and Steve Nieman led the Slaton rushing attack Tuesday night against the big Plainview team. Mike Lewis scored both touchdowns on quarterback sneaks, and Steve Ethridge kicked one point and ran for two. Nieman returned a kickoff 75 yards, but the score was nullified by a clipping penalty.

Plainview scored twice on long passes. The visitors led by 12-0 at halftime and 18-7 after three quarters.

Steve Bourn scored for the Slaton 7th graders with seconds left in the game. He also ran for the conversion points.

At Littlefield last week, the 8th graders took a 20-6 lead into the final quarter and held on for a close 20-18 win. Ethridge kicked two extra points for the margin of victory.

Slaton scores came on a 1-yard plunge by Lewis, a 55-yard run by Nieman, and a 4-

yard plunge by Woolever. Woolever, Kenny Schuette, Dan Butler, David Brake and James Hensarling led the defensive crew.

Slaton's 7th graders were outclassed by the bigger Littlefield 8th grade "B" team, and lost by a 28-0 shutout.

The junior high teams host Frenship next Tuesday, with the 7th grade game starting at 5:30. The 8th grade team has won 2 and lost 4, while the 7th graders are 1-5 for the year.

It Takes Two
The Chamber of Commerce and YOU
BY TED WEAVER
Slaton C of C Mgr.

The Beautification Committee of your Slaton Chamber of Commerce will make its first "yard-of-the-month" award Tuesday of next week.

A secret panel of judges, even secret to each other, will select a winner. The judging is to be based on the pride that the resident shows in his property. The winner should be a clean, neat yard with the sides and ally also showing pride.

A yard sign proclaiming that this is the yard of the month will be displayed by the winner until the next month's judging. The award will be made in October and November and the Christmas Decoration winner will be the "December Yard of the Month". The contest will be discontinued until Spring to begin anew in March or April.

The goal of this effort is to bring about pride in our homes and yards and to recognize those that excel. Nominations for yard of the month can be phoned or mailed to your Chamber of Commerce Office.

YOU DON'T HAVE TO VOTE! We should be proud that we are not required to vote but that it is a privilege of our free democracy. We do however, have an obligation to preserve this privilege by using it. Remember to vote in the Sales Tax Election in Slaton Saturday and the General Election November 5th.

Buy your office supplies in Slaton. THE SLATONITE wants your business.

Comments By KEY ELY

A man who won't lie to a woman, has very little consideration for her feelings.



HOSPITAL WEEK? LET'S GO TO

8 'TIL-LATE FOOD STORE
BEST SERVICE IN SLATON
PH. 828-7102
South 9th Street

Unbeaten Cats Top Southland

Wellman's Wildcats remained undefeated in eight-man football by scoring a 36-12 victory over Southland last Friday night at Wellman.

Larry Bevers and Stanley Abshire scored touchdowns for the Southland team. The Eagles take on Loop at home Friday night. The loss was only the second of the season for Southland against four wins, but it was the first district game.

Randall Redman and Wally Arrezola led the scoring for Wellman last week.

TAX MAN SAM SEZ:

If your spouse is so cantankerous that you can't live with him (or her) the Texas community property law may cause you an income tax problem: IRS must consider the income of each spouse as community income up to the date of divorce.

Even if you haven't seen them or spoken to them all year, before you file separate returns you have to take the income of both spouses and split the com-

Slaton Lad Wins Zone PP&K Contest

Slaton has a Zone Punt, Pass and Kick winner! Phil Bruedigam placed first among 9-year-olds Saturday in Lubbock, qualifying him for the area contest in Dallas next weekend. The event will be held at Samuel Grand Park Stadium.

Phil made a score of 179 in the Slaton contest to qualify for zone, and had a point performance of 212 in Lubbock Saturday to beat all other 9-year olds. He beat the second place performer by one foot. The same boy had beat Phil for first place last year when Phil came in second.

Phil, along with his parents, Mr. and Mrs. Eugene Bruedigam and his brother, Joel, 5, will be in Dallas for the contest Saturday. His expenses are paid by the sponsoring Ford agency, Smith-Ford, Inc.

Good luck, Phil. Slatonites hope you come back a winner!

Slaton---
Your
Kind of Town!

GRID 'EXPERTS' PICK THE WINNERS

GAME	BALL	BINGHAM	DAVIS	MCDONALD	NIEMAN	CONCENSUS
	44-28 (.611)	51-21 (.708)	52-20 (.722)	57-15 (.792)	52-20 (.722)	56-16 (.778)
C. City--Sweetwater	Sweetwater	Sweetwater	Sweetwater	Sweetwater	Sweetwater	Sweetwater
Levelland--Lake View	Lake View	Levelland	Levelland	Lake View	Lake View	Lake View
Snyder--Littlefield	Snyder	Snyder	Snyder	Littlefield	Snyder	Snyder
Cooper--Seagraves	Seagraves	Seagraves	Seagraves	Seagraves	Seagraves	Seagraves
Petersburg--Roosevelt	Roosevelt	Petersburg	Petersburg	Petersburg	Petersburg	Petersburg
Wilson--New Home	Wilson	Wilson	Wilson	Wilson	Wilson	Wilson
Loop--Southland	Southland	Southland	Southland	Southland	Southland	Southland
SMU--Tech	Tech	Tech	Tech	Tech	Tech	Tech
TCU--LSU	LSU	LSU	LSU	LSU	LSU	LSU
Texas--Rice	Texas	Texas	Texas	Texas	Texas	Texas
A&M--Baylor	A&M	A&M	A&M	A&M	A&M	A&M
Green Bay--Dallas	Dallas	Dallas	Dallas	Dallas	Dallas	Dallas

LETTERS TO EDITOR

To the Slatonite Staff,
I wish to express personally, as a 4-H member, my thanks and appreciation for that great write-up and also the cooperation and understanding you gave us during "4-H Week". You helped us in making our "goal" a success.

Thanks again,
Marsha Bednarz
4-H Club President

Vote for C.C. (Cliff) WEAVER
Republican Candidate for
CONSTABLE, PCT. 2

Subject to Action Democratic
Primary, Nov. 5, 1968
(Pd. Pol. Adv.)

Congratulations

To PHIL BRUEDIGAM
Winner Of The 9-Year-Old Division
In The Zone
Punt Pass & Kick Contest



Good Luck, Phil, In The
District Contest In Dallas Saturday
SMITH FORD, INC.
828-6221

T.G. & Y.
5¢ TO 10¢ STORES
HALLOWEEN HEADQUARTERS
PRICES GOOD THRU SATURDAY WHILE QUANTITIES LAST!
Open 8:30-6:00 Monday-Friday 8:30-8:00 Saturday

K C A S — T. G. & Y.
KIDS DAY KARNIVAL
Saturday Oct. 26th 10:30 AM At T.G. & Y.

- ★ COSTUME CONTEST
- ★ FREE DRINKS
- ★ FREE CANDY
- ★ PRIZES FOR 6 BEST COSTUMES
- ★ FREE LOOT BAGS
- ★ FUN FOR EVERYONE

BE SURE AND REGISTER SATURDAY MORNING FOR A GRAND PRIZE OF A BOY'S OR GIRL'S BICYCLE 38.00 VALUE TO BE GIVEN AWAY AT CONCLUSION OF CONTEST

COSTUMES

POPULAR CHARACTERS FOR YOUNG "ACTORS"
FLAME RETARDANT MATERIALS
SAF-T-C EYEHOLE MASKS
SIZES S-M-L

99¢ TO \$1.97

Character WIGS
Fresh and Clean, Flame Retardant
Includes many different styles for both girls and boys.
8 styles **59¢ EA.**

DISGUISE Set
be the life of the party!
Horror Mask with nose, glasses, mustache and beard removable teeth
Safe but scary!
10¢

Trick or Treat BAG
a big one!
For All the Candy (Like Gummies, Ample Size, 12x14 1/2x4 1/2) Will Hold All "Treat"
5¢ EA.

Full Face CHILD'S MASKS
add ZEST to the merry making!
choose from an intriguing group
10¢ & 19¢ EA.

MAKE-UP PARTY KIT
Nose Putty, Black Wax, Make-Up Sticks...
29¢ KH.

CHILD'S Reflector & Character MASKS
All FULL FACE, Colorful and Scary Animals and Characters. ALSO, Full Face Tooth Masks.
29¢ EA.

Editorial

The appearance of the Slaton High School's campus as well as the students of Slaton High expresses to everyone the pride, concern and awareness of what education means. The students are urged to dress properly and look well-groomed. The boys should keep their hair trimmed--out of their ears and eyes. The girls are to wear their dresses three inches above the knee or longer, no jeans, slacks only, no bloomer dresses, or short pant dresses.

A common tie among high school students is an interest in fashions and the reactions they get.

"I think that I shall never see
A thing as ugly as a knee
Above whose knarled and knotted crest
The mini hemline comes to rest,
Or one that's even worse than that
When padded with repulsive fat.
A knee that may in summer wear
Nothing at all, but be quite bare,
Behind whose flex there oft remains
A net of blue and broken veins.

The campus is also in bad shape. As people drive, they look at Slaton High and see coke cans, paper, broken bottles lying around and not in the trash cans donated to the school by local merchants.

This is our school and we are all responsible for its appearance. Fellow students of Slaton High School -- get with it! Let's get to work.

TIGER CALENDAR

Thursday, Oct. 24, 1968
7:00 Jr. Varsity vs. Levelland THERE
5:30 Freshmen vs. PostTHERE
Friday, Oct. 25, 1968
7:30 Varsity vs. EstacadoHERE
Tuesday, Oct. 29, 1968
Nine Weeks' Examinations--
Even Periods
Wednesday, Oct. 30, 1968
11:15 Pep Squad Assembly
Thursday, Oct. 31, 1968
Nine Weeks' Examinations--
Odd Periods
5:30 Jr. Varsity vs. Dunbar
HERE
5:30 Freshmen vs. Frenship
THERE
Friday, Nov. 1, 1968
7:30 Varsity vs. Colorado City
THERE
End of First Nine Weeks
Tuesday, Nov. 5, 1968
Marching Contest for Band at
Canyon
Wednesday, Nov. 6, 1968
Report Cards

Aptitude Tests

The Freshman Aptitude test was given Oct. 13-14 in the high school auditorium under the direction of Mrs. Charlene Davis, the student counselor. The purpose was to test the student's ability to do work on the high school level.

The Preliminary Scholastic Aptitude Test was given Tuesday Oct. 22 in the high school auditorium under the direction of Mrs. Davis. The purpose of the test will be to prepare Junior students for college.

SLATON LUMBER CO.
Everything to build anything

FTA Officers Are Named

The Future Teachers of America chapter held its first meeting Oct. 15 in the Home-making Department with 30 members present.

Robin Wicker was elected president, and Toni Melcher will serve as vice-president. The other officers elected are Debbie Bushy, secretary; Glena Smith, treasurer; Laura Lynn Basinger, parliamentarian; Linda Johnson, historian; and Georgia Geer, reporter. Dee Dee Carter will be the chairman of the constitution committee, and Judy Boyd is the chairman of the refreshment committee.

The F.T.A. will meet the first Wednesday of each month after school. Miss Garlene Harris is the sponsor.

DE Classes Study Careers

The D.E. classes, under the supervision of Mr. W. O. Harrell, have been studying the origin and history of distribution. They have studied about the first trading posts, their location, general merchandise stores, rise of supermarkets, mail order houses and discounting.

Also, the students learned of the many careers in distribution. They were informed of the 3% sales tax that took effect this month. They are now studying telephone courtesies.

They have no definite plans set for the future except for a banquet scheduled for March 14.

Two small boys watched a pretty little girl walk by. One of the lads exclaimed to his pal: "Boy, when I stop hating girls, she is the one I'll stop hating first."

BEAT THE MATADORS



VOLUME 49 NO. 2 SLATON HIGH SCHOOL OCTOBER 24, 1968

Seniors Of The Week



EDWARD CRISTAN

Edward, who is five feet six inches and weighs 130 pounds, was born Sept. 30, 1950. He has brown eyes and black hair. His favorites are band - Rocky Gil and the Bishops; pastime - listening to soul music; teacher - Coach Franklin; subject - track; color - blue; food - anything that's good; and car - Pontiac.

Edward's high school achievements are football - 1-4; track - 1-4.

His pet peeve is small freshmen. When asked for his most embarrassing moment, he replied, "None".

His advice to freshmen is, "Don't flunk physical science," and his philosophy of life is "Get ahead and don't look back."

His plans for the future are to join the Air Force or to go to college.



ROBIN WICKER

A five-foot, two-inch, blue-eyed blond, who just turned 17 is Robin Wicker. Robin's pet peeve is people who are slow and she says to ask Donaldson about her most embarrassing moment.

Robin likes The Pearly Gates, the song "Over You", sleeping, Mrs. Walker, English, steak, the color yellow, and Mercury Montego.

Robin's achievements during high school are: 2 vice-president of FTA, 1; basketball, 1-2, president of FTA, 4.

Robin advises freshmen to take it easy your senior year and her philosophy of life is "Do unto others as you would want them to do unto you."



DEBBIE DONALDSON

Debbie Donaldson, head cheerleader of 69, was born Jan. 15, 1951 in Slaton. She has blue eyes, dark brown hair and stands five feet six inches tall.

Dennis lists his favorites as: band, The Boys; song, "Hush, Hush"; pastime, going to Wilson; teacher, Mr. Johnson and Coach Gerber; subject, Vocational Agriculture Co-op; color, red; food, Mexican; and car, Ford, the only way to go.

Dennis' achievements during high school are: football, 1-3, basketball, 1, track, 1, Ag, 1-3, Tech land judging team, 2 years, Chapter Conducting team, 2 years, and Distributive Education, 1.

Dennis won't tell about his most embarrassing moment, but his advice to freshmen is "Don't ever get down, pick up your chin and go onward."



DENNIS MEURER

After graduating, Dennis plans to work, work, work, and then go see Uncle Sam.

Her high school achievements are: Band, 1-4, F.H.A., 1-3, Junior Degree, 2nd Vice President, 1, Devotional Chairman, 3, Inter - scholastic Typing, 2, Interscholastic League, Journalism, 3, Co - Editor, Tigers Cage, 3, National Honor Society, 3-4, Secretary, 4, Junior - Class Favorite, Cheerleader - 3-4, Head Cheerleader, 4, Student Council, 4, Miss Flame, 4, Basketball, 1, and Junior Play.

Debbie's pet peeve is the common cold and her most embarrassing moment was getting stopped on the square for disturbing the peace, and a certain broken zipper.

Her philosophy of life is "Smile! It works when all else fails," and her advice to freshmen is "Don't get caught!"

When asked for her future plans she replied, "Unpredictable".



Jimmy Marriott On TV Friday

Friday night at 9 p.m. "Judd for Defense" will be on Channel 13 as usual. But something Slaton people should watch for is a band that will be on the program known as "The Pearly Gate", formerly known as "The Sparkies".

Jimmy Marriott, son of Mr. and Mrs. Charles Marriott, and a graduate of Slaton High School will be featured drummer with the group.

NHS Members Name

New members of the National Honor Society were installed at assembly Oct. 17. The senior members gave opening speeches on "Leadership, Character, Scholarship, Service."

Speakers were as follows: Morris Dixon, Jimmy Boyd, Laura Childress, Jackie Clark, Debbie Donaldson, Molly Mitchell, Hobby Chappell, Johnnie Sue Mosser, Karlene Eastman.

The new members were introduced by Johnnie Sue Mosser. They are as follows: Barbara Brush, Susan Cagle, Dee Dee Carter, Marilyn Davis, Jimmy Williams, Dale Kitchens, Mary Deleon, Judy Eblen, Wayne Fagin, Paula Boyle, Robert England, Pat Edwards, Tina Mize, Georgia Geer, Laura Green, Darlene Hlavaty, Penny Johnston, Dickie Jones, Diane Kenney, Clifford Sum-

Lions Host Student Leaders

Cheerleaders and Student officers were honored at the weekly meeting of the Lion's Club last week.

The cheerleaders and the topic of their speech, are as follows: Debbie Donaldson, introduced other cheerleaders and told how they were elected; Johnnie Sue Mosser, raising money; Dee Dee Carter, over-all conduct of a cheerleader; Judy Eblen, decorating the halls; Cindy McWilliams, cheerleading school; and Cynthia Akin, pep rallies.

The Student Council officers, Jimmy Williams - president; Janet Williams - vice-president; and Johnnie Sue Mosser - secretary - treasurer, spoke mainly on raising money, election of members and officers, meetings, and furnishings for the school.

'Whole Truth' Set Nov. 12

"The Whole Truth", a farce in three acts, will be presented Nov. 12 in the Slaton High School auditorium, under the direction of Mrs. Velma Figley.

The following people will portray these parts: Mr. Joseph Martin, Clifford Summar; Mrs. Mildred Martin, Debra Robinson; Elizabeth Martin, Mary Frances Browning; Johnny Martin, Lonnie Kuss; Lucille Armitage, Linda Johnson; Tom de North, Nick Farrell; Helen Martin, Dee Dee Carter; Reverend Jacob Teasle, Tony Pri- vett; G. Whitford Munderf, Robert England; Aunt Mat Worth, Jan Griffith; Johnson, the butler, Tracy Buskemper; Harriet, the maid, Judy Eblen.

Childhood: The time of life when all you need to do to lose weight is to bathe.

Guillotine -- the first real cure for dandruff.

<p>SELF FURNITURE SLATON, TEXAS BOOSTING THE SLATON TIGERS</p>	<p>FARMER'S GIN INC. POST HIGHWAY 828-5212</p>	<p>K C A S 1050 On Your Dial 828-6217</p>	<p>Tiger's Cage Staff Editor: Susan Cagle Co-Editor: Dee Dee Carter Business Manager: Allen McDonald Advertisements: Clay Nesbitt, Brad Doherty, Barney Blair, Tony Maldonado, Nick Farrell Typists: Linda Thomas, Terry Creswell Reporters: Roy King, Brenda Brasfield, John Bukemper, Phil Corona, Duane Cox, Jan Griffith Sports Editor: Jimmie Rogers, Louie Scott Advisor: Mrs. Buford Duff</p>	<p>For Plumbing Repairs Call ELZA SMITH 828-3836</p>	<p>Bo-Kay Flower Shoppe UNION ROAD 828-6198</p>	<p>MOSSER T Your Motor "Quasar Dealer" 110 Tex. Ave. Slaton, Texas</p>
<p>TEAGUE DRUG 828-6535 Slaton</p>	<p>PEMBER INSURANCE AGENCY 144 West Garza 828-3541</p>	<p>MARTINDALE'S 66</p>	<p>SLATON PHARMACY "THE DOCTORS AID" PHONE 828-6815 SLATON</p>	<p>KENDRICK INS. AGENCY</p>	<p>SUPPORT Your Local POLICE DEPARTMENT 828-6212</p>	<p>HUMBLE SERVICE 400 S. 9th SLATON</p>
<p>There's Something For Every Man And Boy at O.Z.'s</p>	<p>SLATON BAKERY WEDDING CAKES A SPECIALTY 650 W. Division Slaton, Texas</p>	<p>THE BANK WITH A HEART CITIZENS STATE BANK SLATON, TEXAS</p>	<p>CUSTER'S GULF 350 S. 9th 828-7128 SLATON</p>	<p>CECIL SELF TEXACO 855 S. 9th 828-6744 Slaton, Texas</p>	<p>SLATON MOTORS, INC. 130 W. LYNN SLATON, TEXAS Business Phones: 828-6554 P02-0844</p>	<p>WENDELL Radio & TV 109 S. 9th 828-3609</p>
<p>O. D. KENNEY Auto Parts 828-6147 Your Automotive Parts Distributor</p>	<p>DAIRY BAR 1610 S. 9th 828-3852</p>	<p>BECKER BROTHERS MOBIL 828-7127</p>	<p>LASATER-HOFFMAN HDW. CO. 157 W. LUBBOCK 828-3716</p>	<p>PERKIN'S AUTO POST HIGHWAY 828-6240</p>	<p>GEER'S TEXACO 305 N. 9th 828-3456</p>	<p>BROWNING & MARRIOTT "your friendly agency" 828-3216</p>

mar, Linda Johnson, Kuss, Clifford Kitten Eckerl, Tony Privat cher, Miles Beare Ratliff, Kris Richa my Rogers, Don Stephens, Gwend Vicky Tamlinson, and Mike Braks.

Meet the Fa

★ **M. W. KER**
The most familar round SHS is Princi Kerr. After attendi State College in Edw and Texas Tech, Slaton in August of Kerr's wife, Hel here at Slaton High have two children and Robin-9.

Coach Kerr enjoy cause of the frien and says that studen how to act. "To im students should "im ing and parking habi our campus and kee pus clean." Mr. K this advice to studen prove study habits many honors as poe in high school."

★ **ERNIE DAV**
Our hard - work Athletic director of School is Coach Ernie Coach Davis grad McMurtry College school in Odessa, Slaton in 1966, Be ing, Mr. Davis won oil fields.

Mr. Davis and h have three childr 10, Ricky - 7, and Coach Davis saye lots of embarrass He likes the spiri High School, but school must grow I improve. His advi is to "take prid school."

★ **BOB MARTH**
"Never accept anything you do, vice of Coach Bob before coming to Slat Coach Martin attend Tech and taught in Mr. Martin teaches English, Coach Martin wife, Linda, has two Phyllis, 7, and Rob When asked abou embarrassing moma Martin just replied He likes the friend Slaton and SIS but that we "get even the same way--voti"

SMITH FOR INC.
U.S. HIGHWAY BYPASS 828-6220

MONTGOMERY
IRRIGATION SERVICE
F.M. RD. 4

SLATON SAVING & LOAN
We pay you

CLASSIFIED ADS

SLATONITE
CLASSIFIED ADS SELL
Call 828-6201 And Ask For Ad Taker

Classified Rates
Minimum charge..... 50 cents
100 words or more..... \$1.00
SPECIAL: Lubbock, Lynn, Garza and Crosby counties, \$3.50 year
Outside these counties, \$5.00 year

FOR SALE
TWO FARM Dwellings to be moved. Call 828-3306, 52-tfc.

FOR SALE
MICROPOINT felt tip pens in three sizes. Ball point pens in medium or fine only 19¢ each. THE SLATONITE.

House For Sale
945 So. 5th
Slaton, Texas
Small Down Payment
Ph. Florida Collect
A/C 904-359-2918
Mr. Black 1-4tc

LAWN MOWERS
Sales & Service
All Makes
BOURN CYCLE
MOTOROLA TV sales and service. Black & White, Stereo TV combinations, MOSSER RADIO & TV, 110 Texas Avenue, 828-6475. 17-tfc.

WENDEL TV & APPLIANCE
Your authorized
ZENITH Dealer
Sales & Service
109 So. 9th - 828-3609

FOR SALE
2-Bedroom Stucco
South 11th St.

FOR SALE
3-Bedroom, large den & playroom in new addition
FOR RENT
2 Furn. Apts. on W. Garza St.

BROWNING and MARRIOTT
100 N. 8th
828-3216

KIRBY VACUUM CLEANERS
For Free Demonstration
Call 828-4475
Mosses Radio & TV

FOR SALE

REAL NICE 4-room & bath on pavement; two 50-ft. lots, home-owner neighborhood, beautiful Burket pecan trees. Priced to sell. 100 So. 4th. Ph. 828-6638, 47-tfc

FOR MEDICINE at night, Call Joe Teague, 828-6500, 30-tfc.

BOOK YOUR T.E. 66 seed now with Bob Huser at Huser Feed & Seed, 48-tfc.

NEW, ONLY 1 yr. old, 3 bdr., 1 large bath with shower & huge walk-in closets, 14 X 16 kitchen with extra eating area. Has 501 DuPont carpeting throughout. Also, storm screens & windows. Owners moved, need to sell, good location. Call 828-3777. 52-tfc.

REBUILT TRANSMISSIONS, Standard and Overdrives. Ted & Jewel's Garage, Ph. 828-7132, 50-tfc.

"REPOSSESSED 1968 model Singer sewing machine in walnut cabinet. Will zig-zag, buttonhole, blind hem, etc. Balance \$27.85 or five payments at \$6.40. Write Credit Manager, 1114-19th Street, Lubbock, Texas." 1-tfc

MOVED TO
160 TEXAS AVE.
SLATON TRADING POST
OPEN SUNDAYS

HAYGRAZER HAY, 60¢ a bale. See J. H. Thomas 6 miles north on golf course road or 5 miles south of Acuff on pavement. 52-tfc.

FOR MEDICINE at night, Call Joe Teague, 828-6500, 30-tfc.

FIVE LOTS, West Park Addition of Slaton, Mike Haddock, 828-3610. 18-tfc.

STORM DOOR, Screen Door, electric edger, couch, 2 baby beds, 130 N. Terry Drive, 828-5235. 2-tfc.

SWEET POTATOES, 900 W. Crosby, Ph. 828-6965 or 828-3433. 2-tfc.

SIX 2 - BALE Trailers, good shape. One GMC '55 Model 2-Ton truck. Also, one wire trailer net. Ikey Kubacak, 996-3352. 3-1tp.

USED TV's, Wendel TV & Appliances, 109 So. 9th, Ph. 828-3609. 2-tfc.

3-BEDROOM BRICK home, Double garage & storm cellar, 1300 So. 11th, Call 828-6612. 1-tfc

TOMATOES, RIPE or green; Pepper, Bell or hot; sweet potatoes and turnips, 460 So. 2nd St. K. L. Scudder, SW5-2073, 3-1tp.

HERMES used portable typewriter with elite type. Clean with new ribbon. See at THE SLATONITE. 3-tfc.

CROSSWORD PUZZLE

HORIZONTAL

1. Spar
2. Vainish
3. Part of
4. Dies
5. Cicatrix
6. Scint
7. Period of time
8. Cornbread
9. Father
10. Ampere
11. Man's name
12. Insect eggs
13. Post
14. Lair
15. Son of Seth
16. VERTICAL
17. Girl's name
18. Bryophytic plant
19. Cuckoo
20. A color
21. Chum
22. Mine
23. Rail bird
24. Quiver
25. Most in- significant
26. Fortify
27. Juliet's surname
28. Hasten
29. Bolaced
30. Like a gland
31. Fore- ordain
32. Constel- lation
33. Meadow
34. African antelope
35. Free of dirt
36. Ireland
37. Defense alliance (abbr.)
38. Hardy heroine
39. Umbrella support
40. Wood sorrel
41. Before: a prefix

VERTICAL

42. Roster
43. Open (poetic)
44. Quiver
45. Sacred
46. Man's name
47. Insect eggs
48. Post
49. Lair
50. Son of Seth
51. Bryophytic plant
52. Cuckoo
53. A color
54. Chum
55. Mine
56. Rail bird
57. Quiver
58. Most in- significant
59. Fortify
60. Juliet's surname
61. Hasten
62. Bolaced
63. Like a gland
64. Fore- ordain
65. Constel- lation
66. Meadow
67. African antelope
68. Free of dirt
69. Ireland
70. Defense alliance (abbr.)
71. Hardy heroine
72. Umbrella support
73. Wood sorrel
74. Before: a prefix

Last Week's Answer

DOWN
1. RAIN
2. GATE
3. JUNE
4. LIPS
5. CRYSTAL
6. MEAT
7. KISS
8. DANCE
9. FIVE
10. WIND
11. MARY
12. STAR
13. BIRD
14. FISH
15. TREE
16. ROCK
17. SAND
18. WOOD
19. LEAF
20. WIND
21. RAIN
22. GATE
23. JUNE
24. LIPS
25. CRYSTAL
26. MEAT
27. KISS
28. DANCE
29. FIVE
30. WIND
31. MARY
32. STAR
33. BIRD
34. FISH
35. TREE
36. ROCK
37. SAND
38. WOOD
39. LEAF
40. WIND
41. RAIN
42. GATE
43. JUNE
44. LIPS
45. CRYSTAL
46. MEAT
47. KISS
48. DANCE
49. FIVE
50. WIND
51. MARY
52. STAR
53. BIRD
54. FISH
55. TREE
56. ROCK
57. SAND
58. WOOD
59. LEAF
60. WIND
61. RAIN
62. GATE
63. JUNE
64. LIPS
65. CRYSTAL
66. MEAT
67. KISS
68. DANCE
69. FIVE
70. WIND
71. MARY
72. STAR
73. BIRD
74. FISH
75. TREE
76. ROCK
77. SAND
78. WOOD
79. LEAF
80. WIND
81. RAIN
82. GATE
83. JUNE
84. LIPS
85. CRYSTAL
86. MEAT
87. KISS
88. DANCE
89. FIVE
90. WIND
91. MARY
92. STAR
93. BIRD
94. FISH
95. TREE
96. ROCK
97. SAND
98. WOOD
99. LEAF
100. WIND
101. RAIN
102. GATE
103. JUNE
104. LIPS
105. CRYSTAL
106. MEAT
107. KISS
108. DANCE
109. FIVE
110. WIND
111. MARY
112. STAR
113. BIRD
114. FISH
115. TREE
116. ROCK
117. SAND
118. WOOD
119. LEAF
120. WIND
121. RAIN
122. GATE
123. JUNE
124. LIPS
125. CRYSTAL
126. MEAT
127. KISS
128. DANCE
129. FIVE
130. WIND
131. MARY
132. STAR
133. BIRD
134. FISH
135. TREE
136. ROCK
137. SAND
138. WOOD
139. LEAF
140. WIND
141. RAIN
142. GATE
143. JUNE
144. LIPS
145. CRYSTAL
146. MEAT
147. KISS
148. DANCE
149. FIVE
150. WIND
151. MARY
152. STAR
153. BIRD
154. FISH
155. TREE
156. ROCK
157. SAND
158. WOOD
159. LEAF
160. WIND
161. RAIN
162. GATE
163. JUNE
164. LIPS
165. CRYSTAL
166. MEAT
167. KISS
168. DANCE
169. FIVE
170. WIND
171. MARY
172. STAR
173. BIRD
174. FISH
175. TREE
176. ROCK
177. SAND
178. WOOD
179. LEAF
180. WIND
181. RAIN
182. GATE
183. JUNE
184. LIPS
185. CRYSTAL
186. MEAT
187. KISS
188. DANCE
189. FIVE
190. WIND
191. MARY
192. STAR
193. BIRD
194. FISH
195. TREE
196. ROCK
197. SAND
198. WOOD
199. LEAF
200. WIND
201. RAIN
202. GATE
203. JUNE
204. LIPS
205. CRYSTAL
206. MEAT
207. KISS
208. DANCE
209. FIVE
210. WIND
211. MARY
212. STAR
213. BIRD
214. FISH
215. TREE
216. ROCK
217. SAND
218. WOOD
219. LEAF
220. WIND
221. RAIN
222. GATE
223. JUNE
224. LIPS
225. CRYSTAL
226. MEAT
227. KISS
228. DANCE
229. FIVE
230. WIND
231. MARY
232. STAR
233. BIRD
234. FISH
235. TREE
236. ROCK
237. SAND
238. WOOD
239. LEAF
240. WIND
241. RAIN
242. GATE
243. JUNE
244. LIPS
245. CRYSTAL
246. MEAT
247. KISS
248. DANCE
249. FIVE
250. WIND
251. MARY
252. STAR
253. BIRD
254. FISH
255. TREE
256. ROCK
257. SAND
258. WOOD
259. LEAF
260. WIND
261. RAIN
262. GATE
263. JUNE
264. LIPS
265. CRYSTAL
266. MEAT
267. KISS
268. DANCE
269. FIVE
270. WIND
271. MARY
272. STAR
273. BIRD
274. FISH
275. TREE
276. ROCK
277. SAND
278. WOOD
279. LEAF
280. WIND
281. RAIN
282. GATE
283. JUNE
284. LIPS
285. CRYSTAL
286. MEAT
287. KISS
288. DANCE
289. FIVE
290. WIND
291. MARY
292. STAR
293. BIRD
294. FISH
295. TREE
296. ROCK
297. SAND
298. WOOD
299. LEAF
300. WIND
301. RAIN
302. GATE
303. JUNE
304. LIPS
305. CRYSTAL
306. MEAT
307. KISS
308. DANCE
309. FIVE
310. WIND
311. MARY
312. STAR
313. BIRD
314. FISH
315. TREE
316. ROCK
317. SAND
318. WOOD
319. LEAF
320. WIND
321. RAIN
322. GATE
323. JUNE
324. LIPS
325. CRYSTAL
326. MEAT
327. KISS
328. DANCE
329. FIVE
330. WIND
331. MARY
332. STAR
333. BIRD
334. FISH
335. TREE
336. ROCK
337. SAND
338. WOOD
339. LEAF
340. WIND
341. RAIN
342. GATE
343. JUNE
344. LIPS
345. CRYSTAL
346. MEAT
347. KISS
348. DANCE
349. FIVE
350. WIND
351. MARY
352. STAR
353. BIRD
354. FISH
355. TREE
356. ROCK
357. SAND
358. WOOD
359. LEAF
360. WIND
361. RAIN
362. GATE
363. JUNE
364. LIPS
365. CRYSTAL
366. MEAT
367. KISS
368. DANCE
369. FIVE
370. WIND
371. MARY
372. STAR
373. BIRD
374. FISH
375. TREE
376. ROCK
377. SAND
378. WOOD
379. LEAF
380. WIND
381. RAIN
382. GATE
383. JUNE
384. LIPS
385. CRYSTAL
386. MEAT
387. KISS
388. DANCE
389. FIVE
390. WIND
391. MARY
392. STAR
393. BIRD
394. FISH
395. TREE
396. ROCK
397. SAND
398. WOOD
399. LEAF
400. WIND
401. RAIN
402. GATE
403. JUNE
404. LIPS
405. CRYSTAL
406. MEAT
407. KISS
408. DANCE
409. FIVE
410. WIND
411. MARY
412. STAR
413. BIRD
414. FISH
415. TREE
416. ROCK
417. SAND
418. WOOD
419. LEAF
420. WIND
421. RAIN
422. GATE
423. JUNE
424. LIPS
425. CRYSTAL
426. MEAT
427. KISS
428. DANCE
429. FIVE
430. WIND
431. MARY
432. STAR
433. BIRD
434. FISH
435. TREE
436. ROCK
437. SAND
438. WOOD
439. LEAF
440. WIND
441. RAIN
442. GATE
443. JUNE
444. LIPS
445. CRYSTAL
446. MEAT
447. KISS
448. DANCE
449. FIVE
450. WIND
451. MARY
452. STAR
453. BIRD
454. FISH
455. TREE
456. ROCK
457. SAND
458. WOOD
459. LEAF
460. WIND
461. RAIN
462. GATE
463. JUNE
464. LIPS
465. CRYSTAL
466. MEAT
467. KISS
468. DANCE
469. FIVE
470. WIND
471. MARY
472. STAR
473. BIRD
474. FISH
475. TREE
476. ROCK
477. SAND
478. WOOD
479. LEAF
480. WIND
481. RAIN
482. GATE
483. JUNE
484. LIPS
485. CRYSTAL
486. MEAT
487. KISS
488. DANCE
489. FIVE
490. WIND
491. MARY
492. STAR
493. BIRD
494. FISH
495. TREE
496. ROCK
497. SAND
498. WOOD
499. LEAF
500. WIND
501. RAIN
502. GATE
503. JUNE
504. LIPS
505. CRYSTAL
506. MEAT
507. KISS
508. DANCE
509. FIVE
510. WIND
511. MARY
512. STAR
513. BIRD
514. FISH
515. TREE
516. ROCK
517. SAND
518. WOOD
519. LEAF
520. WIND
521. RAIN
522. GATE
523. JUNE
524. LIPS
525. CRYSTAL
526. MEAT
527. KISS
528. DANCE
529. FIVE
530. WIND
531. MARY
532. STAR
533. BIRD
534. FISH
535. TREE
536. ROCK
537. SAND
538. WOOD
539. LEAF
540. WIND
541. RAIN
542. GATE
543. JUNE
544. LIPS
545. CRYSTAL
546. MEAT
547. KISS
548. DANCE
549. FIVE
550. WIND
551. MARY
552. STAR
553. BIRD
554. FISH
555. TREE
556. ROCK
557. SAND
558. WOOD
559. LEAF
560. WIND
561. RAIN
562. GATE
563. JUNE
564. LIPS
565. CRYSTAL
566. MEAT
567. KISS
568. DANCE
569. FIVE
570. WIND
571. MARY
572. STAR
573. BIRD
574. FISH
575. TREE
576. ROCK
577. SAND
578. WOOD
579. LEAF
580. WIND
581. RAIN
582. GATE
583. JUNE
584. LIPS
585. CRYSTAL
586. MEAT
587. KISS
588. DANCE
589. FIVE
590. WIND
591. MARY
592. STAR
593. BIRD
594. FISH
595. TREE
596. ROCK
597. SAND
598. WOOD
599. LEAF
600. WIND
601. RAIN
602. GATE
603. JUNE
604. LIPS
605. CRYSTAL
606. MEAT
607. KISS
608. DANCE
609. FIVE
610. WIND
611. MARY
612. STAR
613. BIRD
614. FISH
615. TREE
616. ROCK
617. SAND
618. WOOD
619. LEAF
620. WIND
621. RAIN
622. GATE
623. JUNE
624. LIPS
625. CRYSTAL
626. MEAT
627. KISS
628. DANCE
629. FIVE
630. WIND
631. MARY
632. STAR
633. BIRD
634. FISH
635. TREE
636. ROCK
637. SAND
638. WOOD
639. LEAF
640. WIND
641. RAIN
642. GATE
643. JUNE
644. LIPS
645. CRYSTAL
646. MEAT
647. KISS
648. DANCE
649. FIVE
650. WIND
651. MARY
652. STAR
653. BIRD
654. FISH
655. TREE
656. ROCK
657. SAND
658. WOOD
659. LEAF
660. WIND
661. RAIN
662. GATE
663. JUNE
664. LIPS
665. CRYSTAL
666. MEAT
667. KISS
668. DANCE
669. FIVE
670. WIND
671. MARY
672. STAR
673. BIRD
674. FISH
675. TREE
676. ROCK
677. SAND
678. WOOD
679. LEAF
680. WIND
681. RAIN
682. GATE
683. JUNE
684. LIPS
685. CRYSTAL
686. MEAT
687. KISS
688. DANCE
689. FIVE
690. WIND
691. MARY
692. STAR
693. BIRD
694. FISH
695. TREE
696. ROCK
697. SAND
698. WOOD
699. LEAF
700. WIND
701. RAIN
702. GATE
703. JUNE
704. LIPS
705. CRYSTAL
706. MEAT
707. KISS
708. DANCE
709. FIVE
710. WIND
711. MARY
712. STAR
713. BIRD
714. FISH
715. TREE
716. ROCK
717. SAND
718. WOOD
719. LEAF
720. WIND
721. RAIN
722. GATE
723. JUNE
724. LIPS
725. CRYSTAL
726. MEAT
727. KISS
728. DANCE
729. FIVE
730. WIND
731. MARY
732. STAR
733. BIRD
734. FISH
735. TREE
736. ROCK
737. SAND
738. WOOD
739. LEAF
740. WIND
741. RAIN
742. GATE
743. JUNE
744. LIPS
745. CRYSTAL
746. MEAT
747. KISS
748. DANCE
749. FIVE
750. WIND
751. MARY
752. STAR
753. BIRD
754. FISH
755. TREE
756. ROCK
757. SAND
758. WOOD
759. LEAF
760. WIND
761. RAIN
762. GATE
763. JUNE
764. LIPS
765. CRYSTAL
766. MEAT
767. KISS
768. DANCE
769. FIVE
770. WIND
771. MARY
772. STAR
773. BIRD
774. FISH
775. TREE
776. ROCK
777. SAND
778. WOOD
779. LEAF
780. WIND
781. RAIN
782. GATE
783. JUNE
784. LIPS
785. CRYSTAL
786. MEAT
787. KISS
788. DANCE
789. FIVE
790. WIND
791. MARY
792. STAR
793. BIRD
794. FISH
795. TREE
796. ROCK
797. SAND
798. WOOD
799. LEAF
800. WIND
801. RAIN
802. GATE
803. JUNE
804. LIPS
805. CRYSTAL
806. MEAT
807. KISS
808. DANCE
809. FIVE
810. WIND
811. MARY
812. STAR
813. BIRD
814. FISH
815. TREE
816. ROCK
817. SAND
818. WOOD
819. LEAF
820. WIND
821. RAIN
822. GATE
823. JUNE
824. LIPS
825. CRYSTAL
826. MEAT
827. KISS
828. DANCE
829. FIVE
830. WIND
831. MARY
832. STAR
833. BIRD
834. FISH
835. TREE
836. ROCK
837. SAND
838. WOOD
839. LEAF
840. WIND
841. RAIN
842. GATE
843. JUNE
844. LIPS
845. CRYSTAL
846. MEAT
847. KISS
848. DANCE
849. FIVE
850. WIND
851. MARY
852. STAR
853. BIRD
854. FISH
855. TREE
856. ROCK
857. SAND
858. WOOD
859. LEAF
860. WIND
861. RAIN
862. GATE
863. JUNE
864. LIPS
865. CRYSTAL
866. MEAT
867. KISS
868. DANCE
869. FIVE
870. WIND
871. MARY
872. STAR
873. BIRD
874. FISH
875. TREE
876. ROCK
877. SAND
878. WOOD
879. LEAF
880. WIND
881. RAIN
882. GATE
883. JUNE
884. LIPS
885. CRYSTAL
886. MEAT
887. KISS
888. DANCE
889. FIVE
890. WIND
891. MARY
892. STAR
893. BIRD
894. FISH
895. TREE
896. ROCK
897. SAND
898. WOOD
899. LEAF
900. WIND
901. RAIN
902. GATE
903. JUNE
904. LIPS
905. CRYSTAL
906. MEAT
907. KISS
908. DANCE
909. FIVE
910. WIND
911. MARY
912. STAR
913. BIRD
914. FISH
915. TREE
916. ROCK
917. SAND
918. WOOD
919. LEAF
920. WIND
921. RAIN
922. GATE
923. JUNE
924. LIPS
925. CRYSTAL
926. MEAT
927. KISS
928. DANCE
929. FIVE
930. WIND
931. MARY
932. STAR
933. BIRD
934. FISH
935. TREE
936. ROCK
937. SAND
938. WOOD
939. LEAF
940. WIND
941. RAIN
942. GATE
943. JUNE
944. LIPS
945. CRYSTAL
946. MEAT
947. KISS
948. DANCE
949. FIVE
950. WIND
951. MARY
952. STAR
953. BIRD
954. FISH
955. TREE
956. ROCK
957. SAND
958. WOOD
959. LEAF
960. WIND
961. RAIN
962. GATE
963. JUNE
964. LIPS
965. CRYSTAL
966. MEAT
967. KISS
968. DANCE
969. FIVE
970. WIND
971. MARY
972. STAR
973. BIRD
974. FISH
975. TREE
976. ROCK
977. SAND
978. WOOD
979. LEAF
980. WIND
981. RAIN
982. GATE
983. JUNE
984. LIPS
985. CRYSTAL
986. MEAT
987. KISS
988. DANCE
989. FIVE
990. WIND
991. MARY
992. STAR
993. BIRD
994. FISH
995. TREE
996. ROCK
997. SAND
998. WOOD
999. LEAF
1000. WIND

1	2	3	4	5	6	7	8	9	10	11
12				13					14	
15				16					17	
18				19					20	21
22				23					24	25
26	27	28								
31				32					33	
34				35					36	
37				38					39	
42				43					44	
45	46			47	48				49	
50				51					52	
53				54					55	

FOR SALE
LUDWIG PLAYER PIANO, Cherry finish, Re-conditioned with electric motor. Contact Layon Nieman, The Slatonite, 828-6201. 50-tfc.

PENTEL felt tip markers. All colors, 29¢ each. THE SLATONITE. 2-tfc.

EBLEN PHARMACY has hearing aid batteries. 26-tfc.

FOR SALE OR RENT
NICE 2-BEDROOM house with carpet and car port. 820 So. 13th St. Call W. L. McDonald, 828-6411. 3-3tp.

THREE BEDROOM, fenced backyard, plumbed for washer & dryer, carpeted front room, central heating, air conditioned at 1565 W. Lynn St. Call 828-3734 or 828-3946 ask for Dee Eta. 3-tfc.

THREE BEDROOM HOUSE, Call 828-3581 for information. 3-tfc.

BUSINESS BUILDING on 9th St. Call 996-2212 or SW5-6500. 15-tfc.

MISCELLANEOUS
FOR MEDICINE at night, Call Joe Teague, 828-6500, 30-tfc.

CLASSIFIED ADS 828-6201

HEARING AID batteries for sale at Ebelen Pharmacy, 26-tfc.

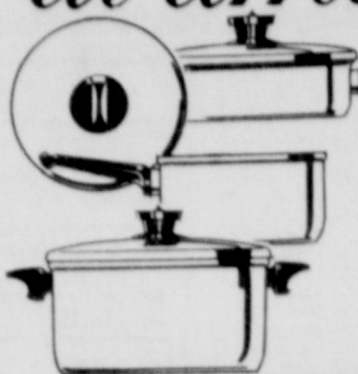
HAVE YOUR prescription filled at Ebelen Pharmacy. 25-tfc.

HOSPITAL BEDS, Sick room supplies, EBLEN PHARMACY. 46-tfc.

HAVE YOUR prescriptions filled at TEAGUE DRUG STORE by a registered pharmacist. 31-tfc.

Revere *Town 'n Country* Cookware

with Perma-Loc[®], the "locked-on" teflon
at amazing savings!



Plus: 100 FREE S&W GREEN STAMPS
WITH THE PURCHASE OF EACH PIECE



A NEW
PIECE
EACH
WEEK

this week
1 1/4 QUART
Casserole

\$3.99
Regular \$5.20

Town 'n Country
designer in
popular
avocado green

SAVE OVER \$12.00 ON A COMPLETE SET!

FRYER SALE AT PIGGLY WIGGLY



U.S.D.A. Pan Ready, Whole

FRYERS

Pound

29¢

Small, Perfect For Broiling

FRYERS

U.S.D.A. Grade A, Cut-Up, Pan Ready

Pound

33¢

Necks, Backs and Wings

Dumpling Pack Pound **19¢**

Hormel's, 100% All Meat

Franks 12-Ounce Package **49¢**

Children's Favorite

DRUMSTICKS

Pound

49¢

THIGHS

Pound

59¢

U.S.D.A. Choice, Valu-Trimmed Beef

Sirloin Steak Pound **98¢**

Hormel's Black Label

Sliced Bacon Pound **69¢**

Juicy Dark Meat

Kraft's Cracker Barrel, Sharp or Extra Sharp

Cheddar Cheese 10-Oz. Pkg. **79¢**

All White, Tender Meat

Fryer Breast Pound **69¢**

Pure Vegetable Shortening

CRISCO

3 Pound Can **59¢**

Bakerite Shortening
3-Pound Can 49¢

Van Camp's White or Golden

HOMINY No. 300 Can **10¢**

MIXED GREENS No. 300 Can **10¢**

Champ, Red Label

DOG FOOD 15-Ounce Can **10¢**

King Size, Plus Deposit

COKES

6 Bottle Carton **39¢**

Dr Pepper, King Size, Plus Deposit
6-Bottle Carton 39¢

Gold Medal, Kitchen Tested Flour

FLOUR Golden West, 5-Pound Bag **47¢**
5-Pound Bag **49¢**

Chunk Style

TUNA Carnation No. 1/2 Can **25¢**

30¢ Off Label, Bonne', Heavy Duty

DETERGENT King Size Box **99¢**

Green, Libby's Cut

BEANS

No. 303 Can **17¢**

Steele, Cut Green Beans
No. 303 Can 14¢

Betty Crocker, Assorted Flavors

CAKE MIXES 19-Ounce Box **29¢**

Hunt's, Yellow Cling, Sliced or Halves

PEACHES No. 2 1/2 Can **35¢**

Ellis, Assorted

BEANS & PEAS No. 300 Can **10¢**

Sweet, Stokely's, Honey Pod

PEAS

No. 303 Can **17¢**

Rosedale, Sweet Peas
No. 303 Can 16¢



IMPERIAL SUGAR
5 Pound Bag **47¢**

Sweet 10 Sweetener
6-Oz. Bottle 79¢

MOUTHWASH Micrin, Regular \$1.15 Retail
Large Bottle **89¢**

VITAMIN Chocs, Regular \$1.29
100-Count Bottle **\$2.99**

TOMATOES

High Plains

No. 303 Can

13¢

OPEN DAILY

8 a.m. to 8 p.m.

OPEN SUNDAYS

9 a.m. to 6 p.m.

THE TALK OF THE TOWN SPECIALS

FRUIT PIES

Morton's, Apple, Coconut Custard,

20-Oz. Pkg.

25¢

Patio, Cheese Enchilada

Dinners

12-Oz. Pkg. **42¢**

Patio

Beef Enchiladas 22-Oz. Pkg. **63¢**

GREEN PEAS

Silverdale

10-Oz. Pkg.

15¢



These Values Good
October 24-28, 1968
in SLATON, TEXAS.

We Reserve the
Right to Limit
Quantities.

LETTUCE

Crisp, Green, Well
Trimmed Heads

Pound

15¢

Flame Red

Tokay Grapes Pound **29¢**

Firm, Green Heads

Cabbage Pound **12 1/2¢**

APPLES

New Crop

4 Pound Bag

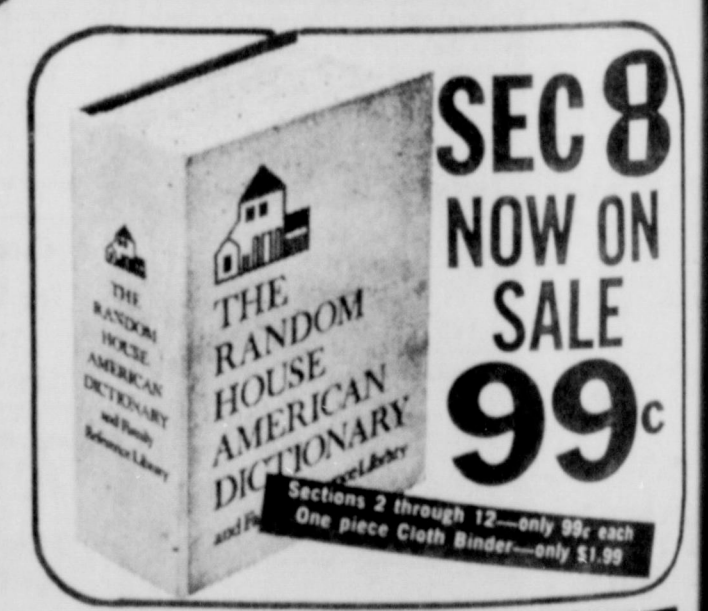
39¢

Red, Thin Skin

New Potatoes Pound **12 1/2¢**

Large, Crisp Bunches

Green Onions 2 For **19¢**



SEC 8 NOW ON SALE 99¢

Sections 2 through 12—only 89¢ each
One piece Cloth Binder—only \$1.99

TUES NOV