

—It Costs No More to Buy "La Dainty" Toilet Preparations.



—There's so much satisfaction now in knowing that you can buy the better grade of toilet preparations for the same money that you have been paying for the common grades. We are pleased to announce that we are exclusive dealers for the celebrated "La Dainty" brand of toilet preparations. Call and let us tell you more about them.

CITY DRUG STORE

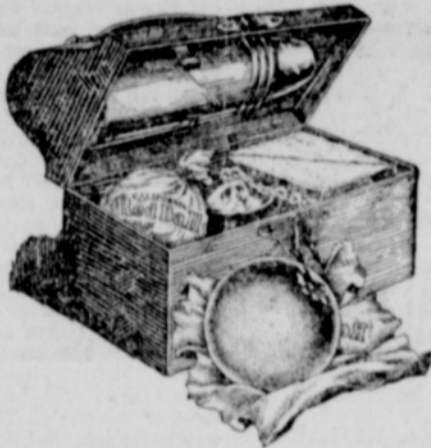
John Dabney & Son Slaton, Texas

ECONOMY—

—Economy is not in buying goods, because they are cheap in price. The BEST is the CHEAPEST all the time.

—Let us acquaint you with true economy in order that your savings may be greater and your grocery results highly satisfactory.

TRADE YOUR NEXT BILL WITH US.



THE TEXAS GROCERY

Telephone No. 7 Slaton, Texas

—Buy in Slaton and help build a bigger city. We are making Ice Cream and nothing but the best goes into it. Once you try it you will always buy it. Just like our drinks, you can't find better anywhere.

Slaton Ice Cream & Bottling Works

Telephone 75 Slaton, Texas

Refresh Yourself Here—

—In addition to our delicious fountain drinks, candies and other confections, we are serving Hamburgers that are good. Drop in and refresh yourself here.

IDEAL CONFECTIONERY

Williams Building Slaton, Texas

Ice Cream and Bottling Works Now in Their New Location

The plant of the Slaton Ice Cream and Bottling Works has been moved to the new brick recently erected for it. This plant is modern in every respect and electrically driven throughout. You should visit it at your first opportunity and inspect a real up-to-date and sanitary plant.

With possibly one exception, the dealers of Slaton are using the home products, and that one dealer should by all means be persuaded to do so. There is no good reason for sending Slaton money out of town when you can buy just as good at home.

This plant is owned by Joe Montgomery, one of our best known citizens. Mrs. Montgomery has charge of the office, and is assisted by capable people of long experience in the making of ice cream, bottled goods and by-products.

These people have the exclusive franchise for two very popular bottled drinks. They have recently sent samples of each to the manufacturers and we are quoting a portion of letters relative to same.

From the Delaware Punch Co. of San Antonio: "These samples are the most wonderful piece of goods that has ever been sent us by any of our bottlers, in fact it is too wonderful."

From Cherry Blossoms Co., Newton, Iowa: "The bottle of Cherry Blossoms which you kindly sent us has just been examined along with several others, and when I tell you that we find it PERFECT I also want to tell you that we have never in all of our examinations examined a better Cherry Blossoms than your own, the blending having been PERFECT, and is made up good and rich."

The editor of the Slatonite, together with his family, enjoyed a gallon of strawberry cream on last Sunday, donated by the Slaton Ice Cream and Bottling Works, and we are prepared to say that it was good, as good as any made anywhere, and better than some we have eaten.

Many Inquiries on Purchase Plan for Ford Motor Cars

"I have received many inquiries asking if the Ford Weekly Purchase Plan includes only passenger cars," H. G. Stokes, local Ford dealer, said.

"In reply to those I wish to say that the Ford Motor Company has arranged it so that the plan includes also the purchase of Ford Trucks and Fordson Tractors.

"Many a business man operating a small establishment has seen the need of a truck for speeding up his hauling and delivery service and to meet modern requirements, but has refrained from making the purchase because of the outlay necessary to be taken from his business at the start.

"He may now purchase a truck on the Ford Weekly Purchase Plan by setting aside each week a very small amount toward the truck.

"Within a short time he will have the truck and with the service it will render he will be better able to build up and expand his business, with profits increasing accordingly.

"And the same thing applies to the farmer who is desirous of motor transportation for his products to town and who wishes to put his farm on a better paying basis by the use of the Fordson Tractor.

"Under the Ford Weekly Purchase Plan he can attain both these desires within a surprisingly short period of time and in so doing place his farm on an efficient operating system which will not only enable him to produce his crops more economically but which will permit him to deliver them to the markets more quickly and at less cost.

"The Ford Weekly Purchase Plan takes in all Ford products. Cars, Trucks and Tractors, and makes the way for the ownership of any of these necessities easier than ever before.

AT THE METHODIST CHURCH.

Sunday School at 9:50 a. m. Let's make it 400; we had 380 in all departments last Sunday.

At 11 a. m. the ladies of the W. M. S. will have charge of the service, and it will be a service which you will undoubtedly enjoy. Be sure to come. B. W. DODSON, Pastor.

NOTICE OF DISSOLUTION.

By mutual consent the firm of Whalen & Beal, a firm composed of C. B. Beal and P. H. Whalen, and operated under the name of The Slaton Confectionery, has this day by mutual consent been dissolved. C. B. Beal withdrawing from the firm, and all accounts due said firm will be paid to the parties continuing the business, and the parties continuing the business are to pay any and all outstanding debts, and the retiring member is fully released from any and all liabilities for any past or future debts.

COMING

—TO—
Wilselma Theatre

May 16 and 17

"The Four Horsemen"

Dad-don't say it!
It can't be true!



THE THIRD ALARM

Benefit Local Firemen, May 21 and 22

WILSELMA THEATRE

Admission 25c and 50c.

Remember Our Store—

—When you are ready for the next grocery order, do not fail to visit our store, where you get nice, fresh groceries, and the meats, ah! how juicy and tender!

—We appreciate your trade enough to ask for it. You buy from us once and you will appreciate our service and quality goods enough to ask for them.

City Market & Grocery

C. O. Hefner, Propr.

Phone 43

SERVICE!—

—Service is rather a small word, but it's really one of the biggest things in the world.

—There is honest, sincere service back of every success, every friend, every ship, every important movement.

—We pride ourselves upon the excellent

Grocery Service we can render. Service is what makes our grocery the best grocery store for you. If you want prompt, reliable, modern grocery service we offer it to you.

—We would like for you to investigate, try us out, and we assure you we will not disappoint you.

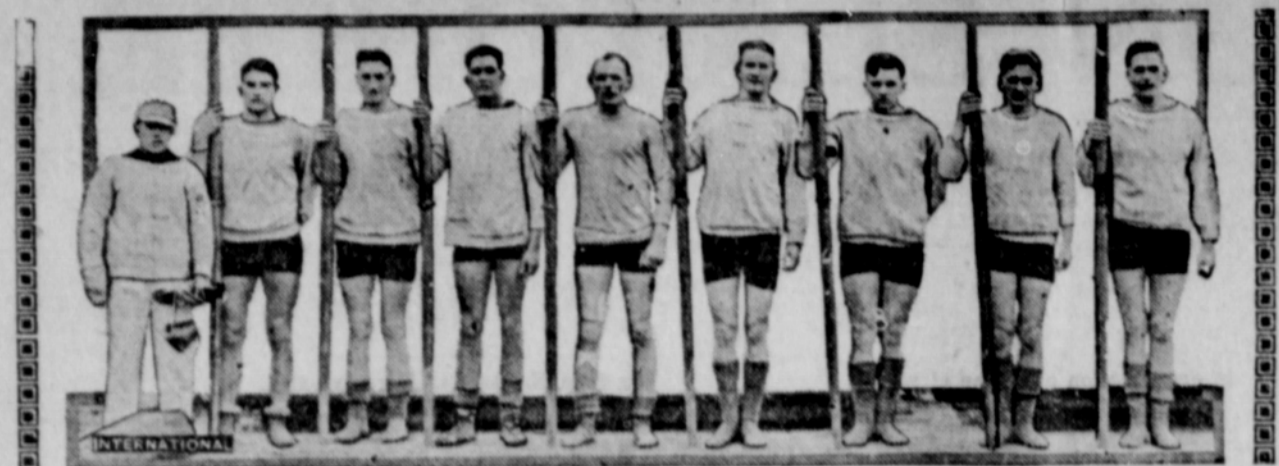
THE BLUE FRONT GROCERY

One Price—One Quality—One Service
—The Best Possible—

Phone 94

Slaton, Texas

NAVAL ACADEMY CREW HAS FIRST PRACTICE ON WATER



NEW PARIS WRAPS

Capes and Coats for Outdoor Wear Are Very Rich and Picturesque.

Parisian designers are reveling in wraps. There has been a fine development in this direction, and at all the openings gorgeous specimens were shown, according to a Paris correspondent in the New York Times.

Madeleine et Madeleine are partial to capes simple in line and made with great width. They have one wrap cape made with full pointed inserts at the sides, which folds together in front with a graceful closing. The same effect is repeated at the back. The long sides fall almost to the ground, and they are so handled that they form sleeves without seeming to do so.

Premet is showing a lovely wrap made of rep and covered with the handsomest sort of embroidery, which forms a series of arabesques over the entire front of the garment. This same embroidery, then, is repeated on the rolling collar and on the end of the wide sleeves.

Jenny's wraps have the largest and most ornamental sort of sleeves, some of them made with godets inserted over the shoulders, which fall to widen the sleeves at their lowest edges. She makes these coats of the softest of silks and satins.

Caret has a wrapping coat that is full as to the skirt section, with the largest sort of sleeves, and a collar trimmed with fur. Some of his wraps, made of plain materials, have collars shaped from handsome brocades and embroidered materials.

Poirot has a wrap covered with embroidery in a large flower pattern that has every semblance of the most modern designs. It is very full in design with a gracefulness of movement that is impressive.

Marion Belle has a very usable cape made with two materials which can be worn either side out. There is a high collar that adjusts itself becomingly around the throat and head, no

Lace Over Georgette for the Dinner Frock



Soft lace over georgette makes a charming spring dinner frock. A heavy satin ribbon sash adds to its charm.

matter which side of the mantle is exposed to the public gaze.

At Doucet's there is to be seen a picturesque sort of cape made of white silk. Its high rolling collar has black monkey fur, alternated with white of the same sort. This fur in black and white combination is again used for the trimming of the wrap.

Beer is showing wraps extremely reserved in their first appearance, but which are found to be made in a very intricate manner. They are bound and faced with narrow metal ribbons, or provided with panels faced with gorgeously woven ribbons. Some of the afternoon wraps are trimmed with a series of little capes superimposed over the longer cape line, and these are trimmed with embroidery and Chinese brocade.

Plain or Wrap-Around Skirts Are in Favor

Suit skirts are either plain or of the wrap-around type. The platted skirts, however, are finding favor among the sports suits. White, gray or tan flannel finely platted is used for many of the smart suits whose jackets are those short colorful affairs.

The little jackets of colored suede are the latest word from Paris and Vienna. These short leather jackets are to be one of the most important items for sports wear this season. They are designed somewhat looser than the suit jacket and are trimmed in contrasting colors and worn with cotton velvet skirts of the color of the jacket. Often they are matched by suede caps very similar to the aviator's cap.

Pongee for Wee Ones.

Pretty, practical and new are little girls' dresses of pongee trimmed with vermilion embroidery in the same tone.

Pussywillow Material for "King Tut" Dress



This new dress with Egyptian earmarks is made of pussywillow material. It is of vermilion red and royal blue.

Plain Embroidery With Net for Evening Gowns

Embroidery in faint colors and beading in bold patterns are put on coarse net for evening gowns that are cut on straight lines, but when drapery is to be manipulated beading is omitted.

Despite the fact that Egyptian drapery is put on the front of skirts in preference to the side draping and that the front and back cascade is a new feature of frocks, the straight gown persists. To whisper the truth, the French imports recently brought to this country show an amazing return to it.

On the net, bead and embroidered frocks the girdle is conspicuous, but not placed as far down on the hips as it was in the autumn. Here and there drifting like leaves before the wind, one sees normal waistlines. Many women show no hesitancy in wearing the narrow leather belt at its old accustomed place. They may drop it about two inches below the actual curve in the figure, but that's all.

The metal belt has gone the way of all popular fashions. It leaves the

field to bright leather, platted like a horse bridle or a dog leash.

Gray Velvet Girdles Among Spring Fashions

Gray velvet ribbon girdles or sashes combined with lavender or orchid velvet ribbon with artificial flowers forming the center of the knot are among the smart things for spring. Grosgrain ribbon also combines in bows and girdles and sashes with a velvet ribbon. An effective bow that resembles a flower is made by tying a single knot loosely at the end of each loop of ribbon. With a background of velvet ribbon tied in tailored loops, such as grosgrain or moire ribbon is indeed artistic and easy to look at.

For Children.

Children's rompers of crepe de chine or pussy willow come in delicate pinks and blues, and are smocked, feather-stitched or embroidered in very simple patterns.

CHAMPION HOPPE IS IMPROVING IN PLAY

Really Remarkable How He Manages to Hold On to Balk-Line Billiard Championship.

It is really remarkable how that man Hoppe manages to hang on to the balk-line billiard championship.

He held it for years and years, and then young Jake Schaefer, a real chip of the old block, took it from him, only to have it won back again by Hoppe the year after.

Then Schaefer challenged him some days ago, and while at first it looked as if he would wrest the title from Hoppe again, he wound up 150 points behind him when the whole thing was over.

It was a match of three sessions of 500 points each, and it really did look as if there was nothing to it but Schaefer during the first evening.

Hoppe played a wretched game. Seldom had he shown himself to such disadvantage.

He was off in his stroke, and what is particularly strange for him, seemed very nervous.

When the first night's play was over, Schaefer had finished his first block of 500, and Hoppe only made 277, or 223 behind him.

To most billiard players that would have been an almost unsurmountable barrier to winning the tourney, but not so to Hoppe.

Whatever happened to him on the first night is hard to explain, for he could hardly have been so sure of himself, hardly have taken such chances as to deliberately let his rival get that far ahead of him.

On the second night, however, he was entirely himself again. He kept nursing the balls against the rail and got 80 caroms in a field less than six inches square.

His high run was 143.

Schaefer during this competition only managed to secure 494 points, and Hoppe actually got 723, thereby filling the two blocks of 500 each, for the first and second nights.

Then he started the third and last night with only six ahead of Schaefer, but by wonderful manipulation of the balls, and absolute sang-froid, managed to run out at a time when Schaefer had only a total for the three evenings of 1,341 to his credit.

Who the next challenger will be is hard to tell, but it may be decided by an elimination process.

Mathews Is Champion



Midshipman Bo Mathews of the United States Naval academy and who hails from Denver, Colo., is the intercollegiate boxing champion for 1922-23—meaning that he has defeated the best college boxers in America. Spike Webb, boxing coach of the academy, states that "Bo" is the best man he ever trained.

Wally Schang Strongest Man in Major Leagues

Who is the most powerful man in the major leagues?

A glance at Babe Ruth of the New York Yankee, or George Kelly of the Giants would make it seem the honor belonged to them.

While Ruth and Kelly are both giants in stature, well over six feet and better than 200 pounds, neither can be classed as the most powerful man in the majors.

Wally Schang of the New York Americans is regarded as the most powerful athlete in the big show, despite the fact that he doesn't look it in baseball togs. Schang is the last word in physique, beautifully muscled, the possessor of a world of vitality.

"He doesn't know his own strength" applies perfectly to Schang.

New York players say that in friendly wrestling matches in the clubhouse he tosses Ruth around like a rubber ball.

DEPENDS ON VETERANS

Manager Branch Rickey of the St. Louis Cardinals is quoted as saying he does not base hopes on any of his new pitchers coming through this season—if one does he will be agreeably surprised—and that the veterans of the staff will have to carry the burden. By the time 1924 rolls around, however, Rickey thinks the younger pitchers will be far enough advanced to take charge of the situation. Hi Myers will make his outfield, says Rickey, so that now it is up to the pitchers, infielders and catchers to put the Cardinals in the first division.

Leads U. S. Fencers.

Ma. J. F. J. Honeycutt, U. S. A., will captain the American fencing team that will meet British swordsmen in a series of matches in London in July for the Robert M. Thompson trophy.

Will Row at Olympics.

Winning crews in this year's Canadian Henley regatta to be rowed over the St. Catherines course in July will represent the Dominion of Canada in the Olympics in Paris next year.

A Long Reach.

Luis Angel Firpo, the Argentine heavyweight pugilist, is twenty-two years old. He stands 6½ feet in height and weighs 235 pounds, and has a reach of 79 inches.

Cleveland Bars Smoking.

Smoking while in uniform has been banned during the playing season of the Cleveland Indians.

ALEX WAS WAGNER'S JINX

If there were many Grover Alexanders in the National league during the days of Honus Wagner, that mighty batsman wouldn't possess the impressive batting record he now has. Honus Wagner, during the period that he and Grover Alexander were playing the circuit, faced each other 100 times and the man from Nebraska held the man from Allegheny county, Pennsylvania, to 20 base hits, which meant an insignificant batting average of .200. Honus made no homers, no triples and only two doubles in the 100 times he tried to solve the curves of the truly great hurler.

Mrs. C. W. Wightman



Mrs. C. W. Wightman, the greatest woman doubles player, who is considered unbeatable in this country, will have as her partner on a tour of France, "Big Bill" Tilden, American tennis champion. Mrs. Wightman was formerly Miss Hazel Hotchkiss of California.

Manager Frank Chance Has Been Panned Before

Back in 1906 Chicago fans became very angry when the Cubs gave a raft of players to Brooklyn for Jimmy Sheppard. Among the players Frank Chance passed over to the Dodgers were Pitcher Buttons Briggs, Outfielder Boots McCarthy, Infielder Jimmy Casey and Catcher Maloney.

Cub fans didn't mind the acquisition of Sheppard, but they thought that Charles Webb Murphy, the new Chicago owner, gave too much of the club's strength for one man.

It turned out that the coming of Sheppard proved just the thing to convert the Cubs into a championship machine. He helped Chicago win pennants and world's championships, while the players Chicago sent to Brooklyn soon drifted out of the fast set and the transaction that Cub patrons thought to be so daring turned out to be the biggest "sucker" trade in years.

Perhaps history will repeat itself in this Penneck trade. Pitcher Murray, Infielder McMillan and Outfielder Skinner have never been first-string men, although, of course, they may improve, but yet it must stand on the records that the Yanks gave some of their important strength, yet received one of the best pitchers in the nation.

Veteran Bill Brennan Has Retired From Ring

Bill Brennan, the veteran heavy-weight, has retired from the boxing game for all time. Brennan announced, after leaving the hospital where he was under the care of physicians following the bout, that he would never enter the ring again, and he has again reiterated his intention. He is preparing to go into business.

A Whole Bunch.

Not so long ago Tris Speaker of the Cleveland Indians was the only playing manager in the big leagues. Four others have joined him. They are: Donnie Bush of Washington, Bill Kilmer of the Chicago Cubs, Ty Cobb of Detroit and Arthur Fletcher of the Philadelphia Nationals.

Amateur Golfer

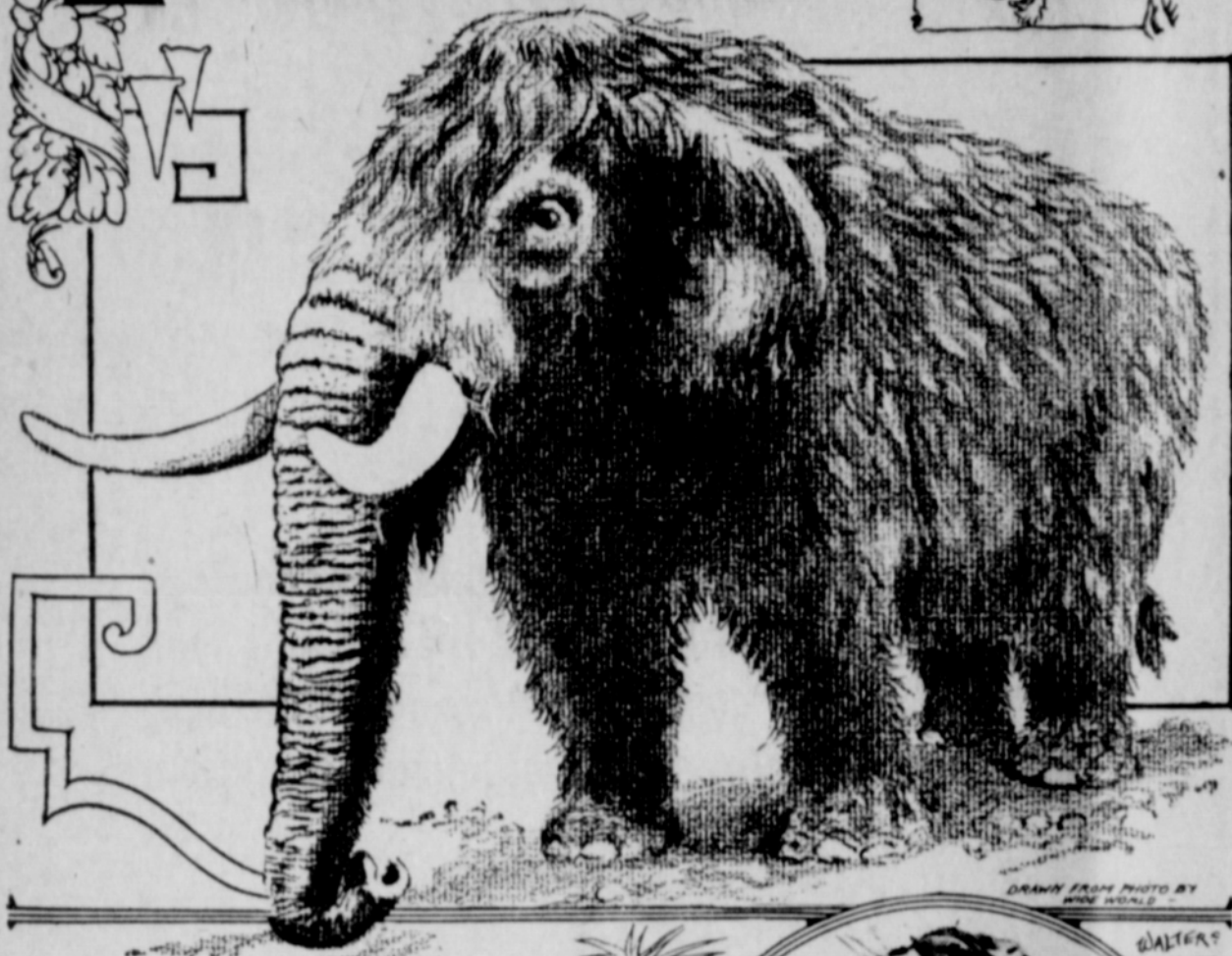


Harrison R. (Jimmy) Johnston of St. Paul, winner of the Minnesota state amateur championship the past two years, who has been selected to play on the American golf team which will invade England to defend the Walker cup. Johnston's forte is his long tee shots.

All Seats Gone.

Although the English lawn tennis classic at Wimbledon is not to begin until June 25, it is announced all its 16,000 seats in the new stadium have been applied for.

Mighty Mastodon Unearthed



By JOHN DICKINSON SHERMAN

SPADES are trumps these days. It would seem as if the archeologists and paleontologists and many other "ologists," to say nothing of plain antiquarians and fossil hunters, were digging all over the globe. More power to their elbows. They are trying to wrest both historical and prehistorical secrets from Mother Earth in the interest of science. And we all want to know how old man is, at what stage of the evolution of the modern animal world he put in an appearance, and what he did.

One of the pet theories of the paleontologists is that Asia is the "mother of continents" and the cradle of life on this globe. Dr. Henry Fairfield Osborn, director of the American Museum of Natural History, put forward this hypothesis in 1900. He based it on the fact that two great deposits of the remains of animals at the dawn period of mammalian life on the northern hemisphere have been found at widely separated points—one in Europe, the other in the American Rockies. He reasoned that these animals could not have originated where the remains were found, else they would have spread westward and eastward respectively. His conclusion was that they must have originated at some half-way spot on the other side of the globe. That is why the third Asiatic expedition of the museum is now in the Gobi desert in Mongolia in search of the paleontologic garden of Eden and the "missing link."

Luck plays its part in this business of wresting secrets from the earth with a shovel, just as it does in politics and horse racing. It is a curious fact that mining, road-building, and the ordinary activities of civilized men have brought to light by accident many of the most important fossils.

A mighty mastodon—or at least its skeletal parts—has just been unearthed at Los Angeles. By accident? Well, rather. It was found by workmen in a brickyard within a stone's throw of the Mission road.

And it is a "mighty mastodon." The tusk measures nine feet and weighs 165 pounds—the largest mastodon tusk ever discovered in America.

Any other city but Los Angeles would be excited over this mastodon, but the finding of prehistoric mammals is an old story in this region. Out of this locality, centering in the brickyard, have been dug skeletal parts of a Columbian elephant, an Imperial elephant, and another mastodon. The bones of mylodons (giant ground sloths), horses, camels, deer, and many other herbivores have also been found.

Besides all this, seven miles from the center of the city are the famous La Brea asphalt pits from which have been taken the remains of over 2,000 sabretooth tigers, seventeen specimens of the elephant family, and 185 dire wolves, together with an im-



mense mass of the bones of camels, sloths, cave-bears, deer and bison and of lesser animals and of birds.

One wishes for the imagination of a Dante to vision the pictures suggested by this brickyard and these asphalt pits and their contents. There are two significant facts to be noted. One is that the claybanks of the brickyards contain the bones of herb-eaters only. The other is that the asphalt pits were the common burial ground of herb-eaters and flesh-eaters. On these two facts hangs a thrilling story of the prehistoric tragedy of the Ice Age.

This big mastodon of the claypits and the sabretooth tigers of the asphalt pits belong to the Ice Age of the Pleistocene epoch, which some authorities think may have begun 500,000 years ago and lasted until 25,000 years ago. It was after the "Age of Reptiles" and before the "Age of Man."

The brickyard excavation extends back from the ancient bed of the Los Angeles river in the form of a horse-shoe into a thirty-foot bank. This perpendicular bank of clay shows four levels of drift material, which were washed down from the mountains and deposited layer by layer during four inter-glacial seasons of the Ice Age. In each layer are the fossils of the animals that met their death in the river during the corresponding time. The mastodon was found in the lowest layer of the four. Before the Los Angeles river changed its bed this brickyard basin was a soft-clay quagmire about a quarter of a mile wide.

The La Brea asphalt pits were originally blown out by eruptions of gas. In these miniature craters oil collected. Evaporation changed this oil into asphalt with a semi-solid crust. Water seeped in on the crust, and sufficient vegetation grew to camouflage the death-trap.

The stage is set. Now for the tragedies of the river quagmire and the asphalt death-trap.

Before the ice cap marched down from the north the climate of all the country from Alaska to Los Angeles was tropical. So the mammals had nothing to do but eat, increase in size and multiply. The ice cap and the cold drove the vast animal herds steadily south. The weight of the ice

cap, miles in thickness, forced up volcanic fires, with their poisonous gases. The feeding areas decreased. Food for the grass-eaters, grew correspondingly scarce. In time every green spot was the center of the herbivores surrounded by the carnivores which preyed upon them.

The region about Los Angeles may have been the scene of the final tragedy.

Picture a bison driven by a sabretooth tiger onto the surface of a La Brea pit! The heavy bison cuts through the crust. It falls. The tiger leaps upon it, since a beast of prey will usually follow its prey into any danger the distance of one leap. The tiger in turn is stuck in the asphalt. Both perish. Down swoops a bird of prey to pick their bones and to perish in turn.

Picture our mastodon feeding on the edge of the river marsh and attacked by a pack of dire wolves, too strong to be driven off! The giant father of elephants takes to the marsh. The wolves do not follow him, since neither canines nor felines will usually wade or swim after their prey. The mastodon becomes mired in the soft clay, to perish miserably and to be covered in time by debris swept down by the stream from the mountains, and in later ages to be uncovered by civilized man excavating clay for bricks.

If you have the imagination, you may draw other pictures. Doubtless hunger drove many a grass-eater upon the asphalt death-traps and into the soft-clay quagmire, in spite of the instinct that ordinarily keeps wild things out of such dangers. Doubtless there were earthquakes, and in time of earthquake wild life goes crazy with fear. And certainly the carnivores outlasted the herbivores. It may be that the final struggle for survival among the flesh-eaters was around and even on the La Brea death-traps.

In any event, this was the end of the prehistoric horse, camel, elephant, mastodon, ox and tiger, on the North American continent. Man probably did not suffer in this tragedy of the animal world. He probably came, whether from the south or from the west, after the final ice cap had withdrawn into the north.

CORN BORER IS SERIOUS MENACE

Up to Present Time Insect Has Not Done Much Damage to Crops.

CONSTANTLY THREATENS WEST

Steady Movement of Little Pest Indicates That It is About to Invade Area of Most Intensive Corn Production.

(Prepared by the United States Department of Agriculture.)

To date the European corn borer, first found in the United States in 1917, has done little damage to the corn crop except in a few sections where this grain is not of major importance, but it has occupied territory that makes it a constant menace to the great corn-growing region and its steady movement westward indicates that the insect is about to invade the area of most intensive corn production. In anticipation of the need of corn growers for detailed descriptions and information on this pest, the United States Department of Agriculture has just issued Farmers' Bulletin 1294, "The European Corn Borer and Its Control," by D. J. Caffrey and L. H. Worthley. The bulletin is intended to supply practical information to corn growers, corn campers, dealers in green vegetables, and market and home gardeners.

When first found in this country the European corn borer occupied an area of about 100 square miles in the vicinity of Boston, Mass., and in the past five years it has spread over a total area of nearly 7,700 square miles. It is found in eastern Massachusetts, southeastern New Hampshire, eastern New York, and in a narrow belt along Lake Erie in New York, Pennsylvania, Ohio and Michigan. There is an extensive infested area in Ontario, and it may be that fields on the American side of the lake were first infested by insects originating in Canadian fields. The insect is thought to have been brought into New England in 1909 or 1910 in broom corn imported from Hungary and Italy.

Insect Attacks Other Crops.
Although in this country corn seems to be its favorite food, the insect also attacks other field crops, vegetables, flowers, large-stemmed grasses, and weeds. It will use any kind of corn as a host, but seems to prefer sweet and flint, with dent corn next in favor, and corn in general is preferred to any other plant grown in this country. Among the garden vegetables, celery, beets and rhubarb are affected to the greatest extent.

The damage to corn is done by the larvae, or borers, chiefly in the ears and stalks, but they also tunnel within the tassel, the midrib of the leaf, the brace roots, and the stubble. In addition, the young larvae often feed on the surface of the plant to a slight extent, particularly upon the leaf blades, the tassel buds, the husks and silks, and between the leaf sheath and the stalk. The injury to plants other than corn is of the same general character as that of corn, except that in some instances special parts of the plants appear to be preferred as food or shelter.

One reason why corn growers and others are urged to study the habits and appearance of the European corn borer is that there are several insects that may be mistaken for this pest. Among them are the corn earworm, the stalk-borer, the smartweed borer, the celery stalkworm, the lined stalk-borer, and the larger corn stalk-borer. All of these pests are described in the bulletin, also the appearance of the plants that have been attacked.

The most conspicuous sign of in-

festation in a field of growing corn is the breaking over of tassel stalks caused by the boring of the larvae. In some fields as high as 80 per cent of broken tassels have been counted.

Some Measures of Control.

The department has established quarantines covering the known infested areas and violations of the regulations bring on severe penalties. These regulations are discussed in the bulletin. It also gives control measures that are effective in the different localities, the methods varying a good deal because of the different nature of the agriculture in the various regions. In a general way the principal control measures are as follows: Burn, or otherwise destroy, before May 1 of each year all cornstalks, corn cobs, corn stubble, vegetable field, and flower crop remnants, weeds, and large-stemmed grasses of the previous year. Remove all remnants of leaves from rhubarb stems before marketing. Cut and remove sweet-corn fodder from the field as soon as the ears are harvested. Feed direct to the live stock, place in the silo, or destroy by burning. Cut and remove field corn from the field as soon as ears are mature. Feed the stalks to live stock as soon as possible and burn or otherwise dispose of the uneaten parts before May 1 following. Shred or cut the fodder to increase its consumption. Plow under thoroughly in the fall all infested cornstalks, corn stubble, other crop remnants, weeds and similar material which it is impractical to destroy in any other manner. When necessary to adopt this practice, an attempt should be made to plow under all of the material to a depth of at least six inches. Small areas of trap crops may be planted. Other procedures are described in the bulletin.

Copies of the bulletin may be obtained without cost from the Department of Agriculture, Washington, D. C.

CONCRETE FAILURES DUE TO WATER LACK

Some years ago considerable attention was attracted by a toy which provided means by which a boy could make his own building blocks out of portland cement mortar, but for some reason many of these blocks were not a success. The reason was finally discovered. "We put the blocks on the radiator to dry and as soon as they were dry they crumbled all up."

"This serves to illustrate how far most people fail to realize the definite distinction between the hardening of lime mortar and the setting of portland cement. The first is accomplished by dehydration or drying out. The second takes place through a crystallization, requiring the presence of water until the process is complete.

The failure to understand this distinction has been responsible for many concrete failures. Sometimes the fault is not the result of ignorance of the action of cement but of failure to appreciate the extreme evaporating powers of hot sun and dry air. Concrete work in desert areas has given considerable trouble from this abuse. The water evaporates before the concrete is thoroughly cured, with the result that much of it disintegrates while other portions are of extremely low strength. It is of no small interest in this connection to note that it has been found by experiment that the application of water to the concrete, which is weak because of this cause, may be measurably strengthened by a subsequent period of thorough saturation, even though several years have elapsed since the concrete was poured. But this example is an extreme one. The same faults have occurred to a minor degree in humid climates. Concrete must be protected against evaporation of the water of crystallization until the process of curing is thoroughly completed.

WEATHER EFFECTS ON CROPS

Studies Conducted by Department of Agriculture to Determine Influence of Yields.

Definite relations exist between weather conditions and the yields of various important crops. Studies have been conducted by the weather bureau, United States Department of Agriculture, to determine the influence of the weather on the yield of potatoes, corn, oats and cotton. The effort has been to show the kind of weather that has the greatest influence in varying yield of a crop, as well as the most critical period of growth. There is a possibility, many believe, that the yield of several important crops may be predicted considerably before harvest time from a knowledge of antecedent weather conditions. The weather must be taken into account up to about the harvest date for oats, but the probable yield for corn can be determined by the end of July and of cotton at the end of June in the eastern part of the belt.

CRUDE OIL TO DESTROY RATS

Destructive Little Rodents Will Leave Vicinity if Petroleum is Placed in Runs.

There is a remedy for the rat nuisance—one that is cheap and effective. If crude oil (petroleum) is placed in the runs, the rats will leave the vicinity. If they are caught in their runs, so that they have to breathe the fumes for an hour or more, they will be poisoned. Meat that contains petroleum can be used as bait to catch this offensive rodent. Experiments proved that rats which ate meat treated with crude oil died in 15 minutes.

Manure Loses Value.

Barnyard manure, if exposed, will lose 50 per cent of its value during the rainy season. Better put it on and give that thin spot a double dose.

Eggs Under a Hen.

Ten or twelve eggs under a hen should be the maximum, even when the hen is of the large, broody type.

OPTOMETRY



—Artificial eyes fitted, any lense duplicated, eyes tested, glasses fitted properly with the most modern and scientific instruments. Remember that Dr. Swart has four offices and he is at his Slaton office only on Saturday and Mondays. Let me serve you.

Millard F. Swart, Opt. D. Eyesight Specialist

Only Exclusive Optometrist In Lubbock Co.

Office Slaton Drug Co. Phone 92

CLASSIFIED ADS

WANTED: Plain and fancy sewing. Low prices.—MRS. HOLT, 2nd door north of T. J. Abel's residence.

FOR SALE: 100,000 Red Field Beauty Tomato plants; 50c per 100.—T. C. LEEDY, Tahoka, Texas.

PURE LONE STAR cotton seed for sale. \$2 per bushel.—T. W. COVINGTON, Slaton, Texas.

FOR RENT: Furnished 4-room house. See F. J. DARWIN, or phone 78.

S. C. BUFF Minorca eggs \$1.50 per 15; \$8 per 100. 5 miles southeast of Slaton on James farm.—J. R. RAYMOND, Rt. No. 2, box 83.

PURE MEBANE Improved Planting Seed for sale.—McDONALD BROS. Gin, Slaton, Texas.

FOR SALE: Piano in good condition; priced reasonable; terms. See Mrs. Arthur Maxcey, first door west of phone office.

FOR SALE: Oliver 2-wheel, tongue-hitch planter; in good condition. \$25.—T. N. TILLMAN, near Union school house.

MRS. E. M. LOTT, Spirella Corset-ierre. Phone 95.

FOR SALE: Kitchen cabinet.—MRS. J. D. HANEY.

WHY WASTE ENERGY?

—It takes 65 muscles of the face to make a frown; 13 to produce a smile. Our plumbing will prevent the waste of these 52 muscles every hour in the day. We may not always be the lowest bidder, but there may be a difference in quality of material.

Located at Brannon Hardware

Harris & Haney

T. M. Harris J. D. Haney

FURNITURE Repairing, upholstering, enameling, packing and crating. Second hand furniture for sale.—J. E. BROCK, 3rd door east of laundry.

FOR SALE: 54-inch solid oak dining table, Vernice Martin brass bed, kitchen cabinet. Call at once.—MRS. F. V. GATES.

FOR SALE: Fresh Jersey milk cow, with young calf. Cash or terms.—E. E. WILSON.

CUT FLOWERS for Mothers' Day at Slaton Greenhouse. Two blocks east of East Ward school.

FOR EXCHANGE: 8-room furnished house in Denton, during summer months for home in Slaton. Apply Lynch-Egan Variety Store, former Gates building.

A SNAP: 1923 Fordson Tractor and Oliver plow. Terms or cash.—M. H. TATE.

FOR RENT: Front bedroom, modern conveniences. Apply MRS. E. M. LOTT or phone 95.

FORD COUPE For Sale: Less than one year old. Worth the money. Cash or terms.—W. DONALD.

FOR SALE: A large 2-room house to be moved off lot. See W. W. DAWSON at Gates Dry Goods Co.

WANTED: Agents to write Hail Insurance. See us at Lubbock.—Texas Land Exchange, Chas. and Ed Alexander.

"Day by day in every way" our shoe repairing is getting better and better.—WHITAKER & WHITE.

We have a complete line of both Poultry and Cow Feeds, at attractive prices.—Kelly Produce Co. Phone 204.

Now that spring is here let us put a new top on that car.—WHITAKER & WHITE.

Junk Wanted: Will pay \$2.50 per ton for scrap iron.—Elrod's Second Hand Furniture.

SLATON ENCAMPMENT NO. 37, I. O. O. F. meets at Shopbell Hall every first and third Friday nights. Visiting Patriarchs cordially invited to meet with us.—F. V. Williams, Chief Patriarch; J. A. Staggs, Scribe.

EGGS and Baby Chicks. See MRS. B. C. MORGAN.

FOR fancy dressmaking see Mrs. G. A. Bourland, north Christian church.

FOR RENT: Large two room house, large garage. Apply GLEFFIE WATSON, Slatonite Office.

SAND AND GRAVEL delivered on the job in Slaton 50c per 100 lbs. Also Cement Blocks for foundations or other construction.—H. L. (BUD) JOHNSTON.

SALES TICKETS. We are now carrying stock of sales tickets, with carbon copies, suitable for grocery, market, or any merchandise line.—THE SLATONITE, Phone 20.

As clear as the purest water is Liquid Borozone, yet it is the most powerful healing remedy for flesh wounds, sores, burns, and scalds that medical science has ever produced. Try it. Price 30c, 60c and \$1.20. Sold by Slaton Drug Co.

O. E. Smith, of McKinney, building inspector for the Postoffice Department, was here this week inspecting new locations for the postoffice. It is not yet known where the postoffice will be moved.

Smartly styled Silk Dresses, secured by special purchase, fashioned of novelty Crepes, Tricotines, Pharaoh Crepe and Printed Crepe de Chine, in all popular shades and combinations. They are to be found at GATES, the popular dry goods store of Slaton.

TAX NOTICE

All tax payers who have not rendered their property on the 14th of May will go on the unknown roll. See me at my office or see J. C. Stewart at Slaton before the above date.

R. C. BURNS, Tax Assessor Lubbock County.

D. W. LILES Sheet Metal Works

—Now open for business in former Highway Garage building on Panhandle Ave.

—Tanks, Roofs, or anything in sheet metal at prices you can afford. Before placing an order get an estimate here.

REPAIR WORK DONE PROMPTLY

To Close Out Millinery—

—I have just received a large shipment of mid-summer millinery, but to close out all my spring and summer millinery I am offering some attractive prices. Remember me when you want sewing done.

Mrs. Ola Sanders

Dressmaker and Milliner Southeast East Ward School

—Spring is here and you have wanted those rooms repapered.

SPECIAL FOR ONE WEEK

—Paper for one ordinary size room complete, per room **\$3.50**

—And will give free with each room purchase one odd roll that can be used to advantage in papering closet or pantry.

—See our selection of Porch Swings, 48 inches to 72 inches wide.

Foster Furniture Company

House Furnishing Undertakers

—D. & M. Baseball goods, balls, gloves, bats, mits, etc. at Teague's Confectionery.

Announcing Change in Ownership

—I have bought the Star Garage, operated on Ninth St. and am making a number of improvements on same. My aim is to give better service and when more courtesy and service is desired you can always find it at the Star Garage.

—A leading feature of our shop is the all-night service, any hour of the day or night you will find our place open and a man ready to wait on you. Take advantage of this unusual service offered for your convenience.

THE STAR GARAGE

DON D. BARTON, Propr. "Service You Can Trust"

Hail Insurance Protects Against Loss to Growing Crops Caused By Hail Storms.

"YOU MAY DELAY, BUT HAIL WILL NOT."

—If a hailstorm directed its efforts of destruction at your crops, causing damage or loss, as it has done hundreds of times to other crops in years past and will undoubtedly do this season to many others, WOULD IT FIND YOU UNPREPARED?

—The records show that hardly a year passes on the Plains in which there is not some locality, often a large area, that is visited by a destructive hail. Old-timers predict more hail than usual this season. We hope this prediction fails, but it behooves all of us to prepare.

OLD LINE INSURANCE.

—Old line companies are stock companies which are required to deposit bonds or securities with the State Insurance Department for protection of policyholders. When you apply for insurance membership is not required. You are not obligated to pay losses of any other person insured by the same company. You are positively protected by State laws. You pay only the premium agreed upon. Be sure you use the best of our companies, such as the Hartford or Aetna.

Stephenson Bros. Insurance Agency

Office Over Postoffice Phone 166, Slaton, Texas

Personal Mention.

Bert Ball and family of Snyder visited at the home of R. H. McCurdy.

Mrs. S. A. Feavy has returned from a visit to relatives at Brownwood.

Baptist W. A. will have a sale at Slaton Drug Co. Saturday afternoon.

Mrs. George Green is visiting her parents, Mr. and Mrs. Stone, near Sayre, Okla.

Pangburn's Mothers' Day Chocolates in 1 pound boxes at City Drug Store, John Dabney & Son, Proprs.

Miss Tressie Hanna is spending the week in Lubbock, a guest of Mrs. Harry Morris.

Messrs. J. M. Stephens and H. G. Rowley were business visitors in Clovis, N. M. Saturday.

Mr. and Mrs. G. W. Catchings and son J. W. of New Mexico, are guests at the home of E. Barton and family.

Mrs. L. B. Wootton is visiting relatives and old home friends at Gail, Borden county.

We have a complete line of both Poultry and Cow Feeds, at attractive prices.—Kelly Produce Co. Phone 204.

A. H. Grantham of Phoenix, Ariz., is here visiting his daughter, Mrs. J. S. McDonald.

Mrs. J. H. Teague, Jr. and children are visiting the former's parents, Mr. and Mrs. W. R. Green, at Sayre, Okla.

We have a complete line of both Poultry and Cow Feeds, at attractive prices.—Kelly Produce Co. Phone 204.

Pangburn's Mothers' Day Chocolates in 1 pound boxes at City Drug Store, John Dabney & Son, Proprs.

Mrs. Harry G. Stokes is visiting her mother, Mrs. J. W. McDonald and other relatives in Abilene.

Mrs. R. M. Ellis has gone to Strawn for a visit to her parents, and other relatives and friends.

We have a complete line of both Poultry and Cow Feeds, at attractive prices.—Kelly Produce Co. Phone 204.

Pangburn's Mothers' Day Chocolates in 1 pound boxes at City Drug Store, John Dabney & Son, Proprs.

Coe Howard of Portales, N. M., visited in the home of C. F. Anderson during the past week.

We have a complete line of both Poultry and Cow Feeds, at attractive prices.—Kelly Produce Co. Phone 204.

Mrs. Hollis Rutter of Canadian is expected in Slaton soon for a visit to Mrs. W. H. McKirahan.

Mr. and Mrs. R. B. Haynes of Tahoka visited friends in Slaton last Sunday afternoon.

Mr. and Mrs. L. Lumsden of Wilson were visitors in Slaton last Sunday afternoon.

Mrs. J. Weldon Walters is visiting relatives and friends in Dallas and Corpus Christi.

Circle No. 3 of the Baptist W. A. will meet at the home of Mrs. Harry Burrus Tuesday afternoon.

Miss Lillian McKinney of Ballinger is a guest at the home of her brother, Eld. J. W. McKinney and family.

Nothing is more appropriate for mother on Mothers' Day than a box of our delicious chocolates.—Teague & Son, Confectionery.

A dance will be given at the Kessel new brick building Saturday night. It is stated that the general public is invited.

Mesdames R. J. Murray and W. H. Proctor have returned from Temple, where Mrs. Murray has been undergoing treatment.

Chas. Wild, 5-year-old son of Mrs. C. A. Wild, was taken to a Lubbock sanitarium this week for an operation.

Mr. and Mrs. R. Q. Edgell and Mr. and Mrs. C. E. Hall visited friends in Crosbyton Sunday.

Mr. and Mrs. Leonard Perkins of McKinney, but more recently of Lubbock, were here Tuesday en route to San Angelo.

Mrs. T. O. Petty and children and Mrs. Effie Dunn and son Raymond, visited a relative, Lester Berry, at Littlefield last Sunday.

The mild cathartic action of Herbine is well liked by ladies. It purifies the system without griping or sickening the stomach. Price 60c. Sold by Slaton Drug Co.

Mrs. J. W. Phillips left Sunday for Houston, where she went as representative of Slaton Temple of Pythian Sisters, to the Grand Temple now in session in Houston.

Children who have worms are pale, sickly and peevish. A dose or two of White's-Cream Vermifuge will clear them out and restore rosy cheeks and cheerful spirits. Price 35c. Sold by Slaton Drug Co.

Novelties in laces, collars, hair ornaments, etc. are on display; also a large assortment of piece goods. Reasonable prices for quality goods.—GATES D. G. CO. Inc.

Mrs. C. C. Sims is here visiting her parents, Mr. and Mrs. J. W. White. She is en route from Fort Worth to Denver, Colorado, where she will reside in future.

Apply Ballard's Snow Liniment to joints that ache. It relieves bone ache, muscle ache and neuralgic pain. Three sizes, 30c, 60c and \$1.20 per bottle. Sold by Slaton Drug Co.

Make mother happy with a gift in ready-to-wear, something to remind her often of the giver. Sunday, May 13, is Mother's Day. Dad too, would appreciate a gift from his son or daughter.—GATES D. G. CO.

Miss Maurice Hardesty, teacher in the East Ward school, has gone to San Marcos, where she will finish the term as teacher in the State Normal there, and will remain there to take the summer course of work.

A torpid liver needs overhauling with Herbine. Its benefits are immediately apparent. Energy takes the place of laziness, appetite returns, and the hour of rest brings with it sound, refreshing sleep. Price 60c. Sold by Slaton Drug Co.

Textbook Award is Asked for by Baldwin

Austin, May 5.—A resolution instructing state officials to take cognizance of the joint legislative committee report on text book awards and to carry out recommendations of the report, has been prepared by Representative R. A. Baldwin of Lubbock, and will be introduced in both houses.

The resolution was prepared, Baldwin said, as a means of officially notifying state officials of the recommendations. He said two state officials have stated no notice will be taken of the recommendations until they are officially informed by the legislature.

District Conference Adjourned Sunday

The Lubbock District Conference of the Methodist Church closed a pleasant session last Sunday night.

The opening sermon was preached Thursday night, May 3, by Rev. I. A. Smith of Lamesa. Sermons were preached by Rev. J. E. Oden, Rev. S. M. Roberts, Rev. J. T. Howell, Rev. J. W. Watson, and Rev. C. N. Ferguson, who closed the Conference with a strong sermon on Sunday night.

The high water mark of the preaching was reached Sunday morning in a great sermon by Dr. E. E. Robinson, Presiding Elder of the Lubbock District.

Reports show that the affairs of the district were making good progress in everything except the Centenary collections, which are considerably behind.

One brother was licensed to preach; and among the delegates and alternate delegates elected to the Annual Conference appear the names of W. R. Wilson, J. L. Tunnell and Mrs. B. W. Dodson.

A resolution was passed asking the Annual Conference to investigate our schools and see if all the teachers were believers in the fundamental doctrines of Christianity; but all the speakers acknowledged that so far as known no preacher within the bounds of the Northwest Texas Conference is unsound in the faith.

The Conference will meet next year in Idalou. The delegates expressed themselves as greatly pleased with the hospitality and Christian courtesy of the people of Slaton. We are glad that these Methodist brethren and sisters have been among us.

LUBBOCK AVALANCHE PLANT BURNED SUNDAY NIGHT

The Lubbock Avalanche plant was burned just before midnight Sunday, fire originating in a grocery store next door. The loss to the Avalanche has been estimated as high as \$75,000, with only \$18,000 insurance.

The Daily and Semi-Weekly Avalanche is now being printed in the Amarillo News plant until a new plant can be installed.

ONE OF LOCAL FIREBOYS WILL BE TRIED MONDAY

One of the local fireboys will be tried at the City Hall on next Monday night. The charge against him is of such a serious nature that we are forbid to publish it. Judge J. L. Ratliff will prosecute the case and Judge Koons will represent the defendant. The firemen are staging this entertainment for the purpose of raising money. Go out and hear this trial. You will enjoy it. Admission 10 and 15 cents.

NOTICE.

W. O. W. Camp No. 2871, Slaton, Texas, will have a special meeting Friday night, May 11th, at Panhandle Lumber Co. office. All members of the Woodmen of the World are invited to be present. Sov. R. M. Mason, District Manager, will be with us, and we expect to have a good time. Come and be one of the crowd.

W. E. OLIVE, Clerk.

Radio Program.

Through the courtesy of the Los Angeles Examiner, the Orpheus Four Male Quartet will broadcast a program from Los Angeles Sunday, May 13, beginning at 9 o'clock p. m. (Pacific time), according to C. L. Sone, who received a communication from them.

You get what you want when you want it at Gates dry goods store. One of our highest aims is to handle merchandise that will please the public, and we shall strive always to increase this aim. We invite you to do your next shopping with us.

HAIL! HAIL! HAIL!

If you want protection on your cotton see our representative at King & George's grocery store, Slaton, Saturday, and we will explain our rates, terms, etc.—Texas Land Exchange, Chas. and Ed Alexander, Lubbock.

You should see the big line of shoes for men, women and children that we are now displaying, shoes that will stand the test of time in durability and appearance, brands that you will recognize as leaders. See them at GATES D. G. CO.

A large shipment of new mid-summer hats arrived, and are going fast. The latest creations included in them. Another shipment of Sport Hats is expected to arrive today or tomorrow.—GATES D. G. CO. Inc.

\$5 ENROLLS YOU
 YOU CAN NOW BUY AND PAY FOR A FORD
 CAR OUT OF YOUR WEEKLY EARNINGS ON

FORD WEEKLY PURCHASE PLAN

—Thousands of families are taking advantage of this new way of buying a Ford and will soon be driving their own cars, enjoying all the benefits and advantages of motor transportation.

—The Ford Weekly Purchase Plan is amazingly simple. You can enroll with an initial payment as low as 5.00. Each week you add to your first payment, as much or as little as you feel you can afford. This money is placed in the bank and draws interest. In a short time your deposits, plus the interest paid by the bank, will be sufficient to obtain delivery of the car.

—Start today and before you realize it you will driving your own Ford car.

FORD MOTOR COMPANY

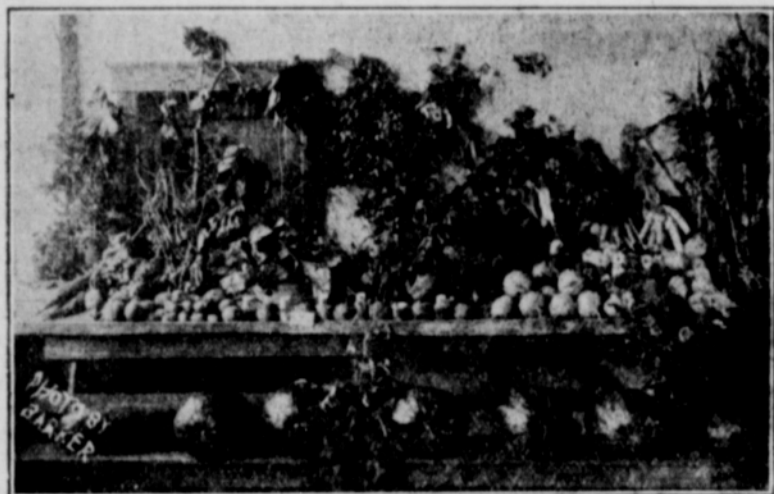
Detroit, Michigan

Come in and let us give you full particulars

SLATON MOTOR COMPANY

Depository for Ford Weekly Purchase Plan Payment, The Slaton State Bank.

FARM SCENES AROUND SLATON.



—If interested in acquiring agricultural land in this section address The Slatonite or the Chamber of Commerce, who will put you in touch with reliable dealers in farm lands.



HOME OF THE SLATON SLATONITE.

THE... ITR
Now in S... are let us put
a new top on that car... WHITAKER
& WHITE.

Kill Hen House Bugs
and keep them away by painting with Taroline, a lasting tar oil that penetrates cracks and crevices. For insects on poultry feed Martin Blue Bug Remedy. Money back guarantee by Red Cross Drug Co.

THE KASH KIDS



—Since combining the hardware stock of the Slaton Furniture Co. with my grocery business I have enjoyed a splendid trade. If it's hardware or groceries you need you can save money here.

Lanham's
Cash Grocery
"It Pays to Pay Cash"

"QUALITY and ECONOMY"



—If you have never owned a Cream Separator you lose lots of time and money.

—Come in and let us explain our Cream Separators to you. You will buy one and be glad that we published this advertisement.

—We have everything you need for your Dairy.

A. L. BRANNON HARDWARE

Our Hardware Wears

Telephone 55



THE
STUDEBAKER
LIGHT-SIX SEDAN
\$1550

Studebaker

—But You Can't Ride on the Paint!

Imitation diamonds can be made to look so real and sparkle so brightly that it is difficult to tell them from the genuine.

But try to sell one and you will find out its real worth in a flash.

Same with automobiles. Weaknesses of construction in a closed car can be hidden, for a time, with paint and varnish and fancy fittings. But all is not quality that glitters.

You can't ride on the paint. And when you place such a car in the second hand market, you suffer a heavy depreciation because it lacked real intrinsic value at the outset. Use will never improve a mediocre product.

The second hand floor is the melting pot for automobile values. Cars are stripped of artificial values and only inherent worth counts.

Motor car owners tell us that the trade-in value of any Studebaker car at the end of three or four or five years of useful life is greater than on any other car built today—the percentage of depreciation is the lowest.

No wonder the Studebaker Light-Six Sedan is the fastest selling quality Sedan in the world!

The name Studebaker stands for quality, durability, comfort and integrity.

Four wide-opening doors. Eight-day clock. Quick-action cowl ventilator. Attractive coach lamps. Heater. Mohair velvet

plush upholstery. Glare-proof visor and windshield cleaner. Dome light. Thief-proof transmission lock.

BIG STATE GARAGE

"The house by the side of the road"

Phone 2, Slaton, Texas

MODELS AND PRICES—f. o. b. factories		
LIGHT SIX	SPECIAL SIX	BIG SIX
5-Pass. 117" W. B. 40 H. P.	5-Pass. 117" W. B. 30 H. P.	7-Pass. 124" W. B. 30 H. P.
Touring \$975	Touring \$1275	Touring \$1750
Roadster (3-Pass.) 975	Roadster (2-Pass.) 1250	Speedster (5-Pass.) 1835
Coupe-Roadster (3-Pass.) 1225	Coupe (3-Pass.) 1975	Coupe (5-Pass.) 2550
Belton 1550	Belton 2050	Belton 2750

Terms to Meet Your Convenience

THIS IS A STUDEBAKER YEAR

SLAT'S DIARY.

Friday: We was out for dinner to-nite at supper time and when we was a comeing home ma jumps onto pa & ast him why did he reject the gravy when he likes it so much and Mrs. Gillem had made it a specally for his benefits as she had always new he liked it. pa sed the reason he diddent care for none of it was because he seen a cupple of hairs in it and he prefers his Gravy ball headed.

Saturday: pa was asting the new dr. how was bisness now and if he had got menny customers yet and the new dr. replied and sed they was lots of fellows comieng in and trying to get prescriptions. And once in a grate wile they was sumbody cums in witch was sick.

Sunday: Joe Hix is a going to quit smokeing he says. He red in a paper where evry Cigaret you smoke it nox a week off of the tale end of yure life and he got to figgering. He has been useing 10 a day for the past 5 yrs. since the war and it shows that he has beat hisself out of 347 years.

Monday: Uncle Hen was hear this evening and he and ma was a tawking and he sed he thot a woman shud awt to no how she erns evry ct she gets a holt of and he says how do you figger that? She sed if you new how hard it is for me to get money out of my husbend you wood say I ernt it. Uncle Hen is a ole bachlor and owns a race horse.

Tuesday: I was a telling Jane that Uncle Hen's horse had win the Derby last winter down to Nu Olens, and she sed well what in the wirlde does a horse want with a derby. they cant wear them can they. I ansered her in latin & sed packs of biskets witch means peace be with you.

Wednesday: The traffick cop told pa he cudent stop in the middel of the st today and pa just laffed and sed I gess you are not acquainted with this car of mine.

Thursday: Ma wooddent let me ware tion to spill ink on my old ones. But I diddent. I disided it wasent enny use of biteing up yure face to spike yure nose as the proverb goes.

WILSON.

This vicinity was visited by naother good rain Sunday night.

The farmers are progressing nicely with their work. Cotton planting is th eorder of the day.

Miss Vera Pilley underwent a very serious operation in a Lubbock sanitarium last week. She was getting along nice at last reports.

Miss Ida Staggs returned home last week after a month's visit with relatives at Tuscola.

Miss Lucile Cobb, our expression teacher, is very sick at present.

Misses Florence Nagy and Margaret Deavers of Morgan attended Sunday School at Wilson Sunday.

A large crowd of young folks enjoyed a singing at P. E. Bird's home Sunday evening.

Mrs. J. W. Holland is on the sick list thai week.

Several from here attended services at Dixie School House Sunday.

Mr. and Mrs. C. N. Heath visited in the Morgan community Sunday afternoon.

O. B. Staggs made a business trip to Slaton Monday.

Mrs. Margaret Cobb is at home after a month's visit with relatives at Ballinger and Winters.

Last Fall our Board of Trustees offered a prize to the grade getting the largest sum of money to buy seats for the auditorium of our new school building. All grades entered the contest with much enthusiasm, the seventh and eighth grades being the winners. They were given a picnic last Thursday, being chaperoned by Mr. Key and Miss Myrtle Hembre to Tahoka Lake, where a nice lunch and ice cream was serv'd. All report a fine time in addition to enjoying their faithful work during the contest.

FT. WORTH STAR-TELEGRAM BOOSTING FOR WEST TEXAS

A "mass meeting" at Greenville protests against the appropriation of money for the founding of the Texas Technological College in West Texas "at this time."

Does it not come with bad grace that such a demand should be made by Hunt County?

Most West Texas counties have been paying in more taxes to the State than they get back for years.

Hunt County gets back every year considerably more than it pays.

Suppose West Texas counties decided to quit paying in this surplus?

If the Legislature wants to start a real movement to divide the State and create a new State in West Texas, let them repeal the law creating the Texas Technological College.—Fort Worth Star-Telegram.

"Day by day in every way" our shoe repairing is getting better and better.—WHITAKER & WHITE.

"DO IT ELECTRICALLY"

The Electric Shop

J. W. Thaxton, Manager

—I have opened an Electric Shop in the Williams Building, just north of the City Market & Grocery.

—Electrical repairs, house wiring and general electrical contracting done.

—Also carry a stock of Lamps and handle all electrical equipment.

—Your business will be appreciated, and you can rest assured that the price will be low enough.

Ford Weekly Purchase Plan

ENROLL TODAY AND YOU WILL SOON BE DRIVING YOUR OWN FORD CAR

—If you are interested in purchasing a Ford Car, come in and let us explain how the Ford Weekly Purchase Plan provides the way for realizing that desire.

—Here is your opportunity to buy a Ford Car in a simple, easy yet practical way.

—You know the advantages enjoyed by your friends who drive their own motor cars. They can go when and where they choose.

\$5

Enrolls You. Small Weekly Payments.

—Start today by making the initial payment and then arrange to make regular weekly payments which will be credited to your account and draw interest at the regular savings rate.

—Ask us for full particulars or go to the Slaton Motor Company, Ford Dealers.

THE SLATON STATE BANK



Rise Above the Common Herd

—It can be done. The most important single thing for you to do is to be ready for opportunity. Ready money is the best preparedness. To have ready money, to be ready for opportunity, to rise above the common herd, open an account at this bank today.

Member Federal Reserve System

THE SLATON STATE BANK

Active Officers

R. J. MURRAY, President W. E. OLIVE, Cashier
C. C. HOFFMAN, Vice Pres CARL GEORGE, Asst. Cashier

Directors

R. J. MURRAY, President
C. C. Hoffman W. E. Olive
W. E. Olive W. S. Posey

A REAL VARIETY STORE

—Where you will find an extensive line of dishes, aluminum ware, candies, etc.

—We particularly feature this week laces of every kind.

KELLEY'S CASH STORE

5c, 10c and 25c Goods Texas Ave.

A REAL BUSINESS FIRM



MR. FARMER "AND COMPANY"
Who's the "Company?"

—Statistics (not hearsay) show that the farmer who raises some of most everything and especially feedstuff, and actually makes partners of his cows, his hogs, and his poultry, is the man to whom his neighbors go for advice. He usually has a surplus of cash. He never wants to borrow money, seldom has to, and always can do so when necessity requires.

—WHY? Come to us for the answer.

THE FIRST STATE BANK



The Bank for Everybody



Officers

J. H. BREWER, President R. M. ELLIS, JR., Asst. Cashier
W. C. WRIGHT, Cashier DOROTHY LEVEY, Bookkeeper
—DIRECTORS: J. H. Brewer, C. F. Anderson, W. C. Wright, H. W. Ragsdale, S. H. Adams.

**Whitaker Brothers
Are Building Up a
Modern Dairy Farm**

Dixie Dairy and Hog Farm is located about two miles south of Slaton and operated by Messrs. H. G. and Greer Whitaker, two of the best and most favorably known men in this section of the Plains country. They are progressives, too, in everything they undertake.

At present Messrs. Whitaker are milking 27 Holstein cows, they sell 20 gallons of cream daily, and feed two barrels of skim milk to their herd of hogs, besides raising a bunch of young calves. They state that each cow is producing a revenue of 75c per day in cash net.

They have just installed a large power driven cream separator, that will separate 1000 pounds per hour or two gallons a minute. They also plan to install up-to-date milking machines in the near future, and go into the dairy business on a larger scale than ever.

Messrs. Whitaker have also just recently bought a very fine registered Holstein male from New York State to head their already fine herd.

**MOTHERS' DAY PROGRAM AT
FIRST BAPTIST CHURCH**

At 11 o'clock next Sunday morning a Mothers' Day program will be rendered at the First Baptist church. Everybody attend and help us honor our mothers—our best earthly friends. The program follows:

Song, "My Mother of Pearl," Miss Artie Champion.
Reading, "The Bravest Battle," Mrs. C. S. Greer.
Song, "When Mother Sang to Me," Mrs. C. F. Anderson.
Reading, "Mother," Miss Wilks.
Song, "Your Mother's Your Friend All the Time," Mrs. J. L. Cruce.
Reading, Lillie Tucker.
Song, Audrey Maxey.
Reading, Flora Mae Cook.
Closing remarks by the pastor.

Fathers' Day Program.
At night beginning at 8:30 a Fathers' Day program will be rendered as follows:

Reading, "Daddies," C. S. Greer, Jr.
Reading, "Grandpa," Glenn Douglas.
Male quartette.
Reading, "The Old Fashioned Pair," Miss Whitaker.

**REV. DODSON TO PREACH
COMMENCEMENT SERMONS**

Rev. B. W. Dodson will go to Stanton to preach the commencement sermon on Sunday, May 13, to the Stanton high school graduates.

On Sunday night, May 20, he will deliver a commencement address to the Floydada high school graduates in that city.

On Sunday morning, May 27, he will preach the commencement sermon to the Slaton high school graduates at the First Baptist church of this city.

BASEBALL.

Snyder was here Sunday and Monday for games. Sunday the score was 7 to 0 in favor of Snyder. On Monday the order of things was reversed and the score stood 15 to 4 in favor of Slaton.

Next Sunday Tahoka will be here for a game, and on Monday Crosbyton will be here.

Dress Form Demonstration.

Miss Mabel Marsh announces that on next Wednesday, her regular Slaton day, she will demonstrate home made dress forms. She especially invites all the ladies, both from the rural districts and the city, to be at the City Hall at 2 o'clock, as at that hour the demonstration begins.

**Every Man to
His Job!**

—The ant is a wonderful architect, yet he can't build a spider's web. The man who mends watches does not polish pianos.

—We confine ourselves to knowing the clothes needs of our customers, and in satisfying their requirements.

—Men's wear bought from here gives long wear, better value, and lasting satisfaction. They're an investment in good appearance.

—We are displaying a complete range of the newest and most fashionable Spring fabrics in colors, stripes and plaids.

O. Z. BALL

"Pay Less and Dress Better"
Gents Furnishings and Tailor Shop
Phone 16



Enjoy Life—

—Wherever you go this summer, go properly equipped. That's real enjoyment.

—Let us provide your vacation clothes equipment. We can do it exactly right and save you money.

—We have the Khaki Hiking Breeches for the men; Ladies' Hiking Suits, shoes and hats to fit the occasion.



Our Services and Prices Are Free

—Our Motto: Pay Cash and Live Better.

—The time is now here and you should realize your money is worth 100 cents on the dollar. You can now increase your bank deposits each month by calling at our general store and taking advantage of the rock-bottom prices.

—Bring a list of what is necessary for the family. With your good judgment and our low prices you will at once see this is the place to do your trading.

—SUGAR: We are with the Government on sugar prices. We are in position to sell sugar to our regular customers at ten lbs. to the dollar, regardless of the present 12c price the speculators have on same. Only one dollar's worth at the time sold at this price. Our motto: "Save sugar and help bring the price down."

—A big decorated Angel Food Cake given away Free each Saturday.

FORREST HARDWARE CO.

Homer Hall, Mgr. Phone 6, Slaton

—When you want good sweet bread,
call for the—

"BLUE RIBBON BREAD"

HALL & EDGELL BAKERY
Phone 53 Slaton, Texas

ARE YOU PREPARED
"Financially" to Die?

—STRONG MEN ARE PAYING THE SUPREME PENALTY DAILY. IF YOU ARE NOT READY BETTER GET THAT LIFE INSURANCE TODAY.

W. E. OLIVE

FARM LOANS AND INSURANCE SLATON, TEXAS

The Home Attractive—Music

—A house cannot be called "home" unless music is there. That's how you can always recognize a real home. A piano is the most practical and substantial musical instrument made. If you're not a musician then furnish your home with a Self-Player.

F. E. BOURLAND
The Slaton Piano Man Slaton, Texas

—I have made arrangements with Fincher Bros., Coal and Grain Dealers to take care of telephone and warehouse orders while I am out on deliveries.

—Phone 224 for orders in my line.

Producers Refining Co.
A. E. MAY, Agent

Bargains in Real Estate:

—Four room house, located on two east front lots, within five blocks of square. Can sell if sold at once, for \$1450.00. \$250.00 cash, balance \$30.00 per month. This property is located on one of the best streets in Slaton.

—Two business lots located on Texas Avenue, at bargain. See me for prices and terms.

—40 acre tract. Will sell and give good terms. Located within three-fourths mile of Slaton. Would also consider taking in some Slaton property in trade.

—If interested in buying either business or resident lots, see me. I have the exclusive sale of all the Original Town, East and West Park Addition. These lots have advanced in value but not in price.

J. T. OVERBY, Real Estate

Office Rear Slaton State Bank Phone 134, Slaton, Texas

There's Joy and Comfort in Keeping the Old Home Place Beautiful.

—You can do this with occasional slight repairs, and with a coat of our good paint. We have materials for a new home, too, including every item down to the paper. And you'd be surprised at how little they cost.

Forrest Lumber Company

Telephone 156 SLATON, TEXAS

HOME DEMONSTRATION AGENT
HERE EACH WEDNESDAY

Miss Mabel Marsh, county home demonstration agent, has been given the closest co-operation of the Slaton Chamber of Commerce, that body having been instrumental in making it possible for Miss Marsh to use an office in the ladies' rest room of the Slaton City Hall each Wednesday, beginning on May 9th.

Owing to the fact that there are a number of people of the immediate vicinity of Slaton who will appreciate the assistance of the home demonstration agent, her greatest concern has been to devise some means of serving all of them to the very best advantage, and after enlisting the co-operation of the Chamber of Commerce it was not at all hard to arrange the day each week to work in Slaton.

S. E. Staggs, secretary-manager of the Chamber of Commerce, is one of the most alert organization officials in West Texas and he may be depended upon to push everything designed to further the possibilities of the great South Plains.

The people of Slaton are splendidly loyal to us in our work of offering home demonstration service to the people of that section of the county, and "especially have the business men shown themselves willing to work in behalf of the rural population of Lubbock county," Miss Marsh said while discussing the Slaton venture.

A publicity campaign has been started in order that the people of Slaton and vicinity might know that the services for the county home demonstration agent are available on each Wednesday.

Miss Marsh has exerted every effort to serve the people of Lubbock county well in her capacity, and has done a great deal of constructive work, as a result of which some of the most active boys and girls clubs of West Texas are to be found under her supervision.

The Avalanche welcomes anything designed to bind the people of Lubbock and Slaton communities closer together in the cause of developing this section of the Plains, and it is with a great deal of satisfaction that we give circulation to the news of Miss Marsh's success in establishing an office in Slaton, which will make for better work with the people of that section of the county.—Lubbock Daily Avalanche.

FORD SEDAN \$300.

Ford Sedan, good running condition, for only \$300, terms to suit.
W. DONALD.

WHO WANTS TO BE A WALLFLOWER?

Who wants to be? Why, nobody, of course. A wall flower is to social affairs what parsley is to steak, more ornamental than useful.

One of the best ways to get out of the wallflower class is through exercise and frequent bathing.

A bath a day stimulates health, energy, pep, and a man or woman who has these can't be a wallflower.

But regular bathing is not possible without a bathroom.

There should be a bathroom in every home. No room is more important. From it radiates the life and happiness that go to make a home a real home.

Yes, every home should have one bath room at least. If it is a large home—if there are four or five in a family—two bathrooms are a wise investment. How can four or five people get up in the morning, take a bath, and be fit for the day, if only one bathroom is in the home? They can't. Better turn that odd room into a bathroom.

It is a pleasure to give you estimates on your plumbing. Our engineering department is at your service. Our lifetime experience should be worth something to you in getting first class plumbing. Do not fail to see us. Call in and look over our line. We will be more than glad to show you how to have your house plumbing put in right.

B. C. MORGAN

THE PLUMBER THAT PLUMBS YOUR HOUSE RIGHT.

Best in the Long Run



The finest tire value in the land today—and you don't have to go outside of town to prove it!

STOVER GARAGE
Chevrolet Sales and Service
STOVER, MO.



J. H. Hamlett A. C. Hanna

Hamlett & Hanna
REAL ESTATE.

Office With Whitaker & White.

—We have two well located 4-room houses, east front lots, city. Priced at \$1,000 each. No use to pay rent when you can buy bargains like these. Let us show you.

—We have some genuine bargains in both city property and farm lands. If you want to buy something worth the money. If you want to sell your real estate list it with me.

FEED AND FUEL

—We are handling a full line of feed and the best Colorado Coal that can be bought.

—Give us a trial and we are sure that you will be pleased with both quality and prices.

FINCHER BROS.

Feed and Fuel Phone 224



\$490 f. o. b. factory



\$785 f. o. b. factory

The Economy Car

—The Gray's claim that it is an economy car has been definitely established by performance that has been made an official record. —A Gray stock touring car was driven in the Fall of 1922 from San Francisco to New York under ordinary driving conditions. The car had no special equipment and was accompanied the entire journey by an official observer of the American Automobile Association.

—This sturdy car established a new economy record—one that will undoubtedly stand for a long time to come—an average of 33.8 miles per gallon of gasoline for 4819 miles of travel.

—The Gray is an achievement. To build a car that could establish such a remarkable economy performance, that included such a high quality in every detail, that was so easy riding and so graceful in appearance is no small accomplishment.

Williams Motor Co.

F. V. Williams Business phone 234; Res. 84 R. T. Williams



\$685 f. o. b. factory



\$835 f. o. b. factory

SLATON COMMERCIAL COLLEGE

Now open in the new Williams Building.

—Standard courses of study are being taught day and night and every advantage that can be had anywhere is available right here at home.

—Mr. W. Ira Walter, Instructor in charge, is a man of broad experience, thoroughly qualified by education and experience, to give you, because of the limited number in attendance, more than you could possibly get by going away.

—W. Ira Walker, Ph. D. and Psychologist, comes from Iron City College, Pittsburgh, Pa., and lately from Denver, Colo., where he spent ten years in the best schools there. He has not only a theoretical, but a practical knowledge of the business world.

—Diplomas issued and positions secured by the West Texas Commercial College of Sweetwater.

Slaton Commercial College

Alton H. Perry, President

W. Ira Walter, Principal

ACREAGE TRACTS

—Have you seen the fine acreage tracts I am offering? I have several five acre blocks and one fine 25-acre block all located within a few blocks of school and the shops.

—Let me show you these tracts and give you price and terms on them.

M. A. PEMBER

Real Estate Dealer

Slaton, Texas

BETTER BUSINESS—

—Better business for us means better prices for you. No wonder our business is good! People know values when they see them. At our store you get value received for your money put out. A value is measured by the quality and price of merchandise.

—Yours for better values.

THE BLUE FRONT GROCERY

One Price—One Quality—One Service
—The Best Possible—

Phone 94 Slaton, Texas



—Their "home" was sold, no doubt to someone who learned the lesson of this unavoidable predicament! It is not really a home unless it is your home.

—Benefit by the experiences of others and start now—Own Your Home. Have one of our experts come to you and outline the plans for your new home.

ROCKWELL BROS. & CO.

LUMBERMEN

F. E. Callaway, Manager Phone 15, Slaton, Texas

Understanding Items in Grocery Trade

—We have studied the wants of Slaton people and always buy accordingly. We do not buy goods that we can make most profit on. On the other hand we prefer a smaller profit and more satisfied customers. That is the secret of a successful grocer. We will appreciate your next order.



THE TEXAS GROCERY

Telephone No. 7 Slaton, Texas

WILSON.

Our thriving little town is growing. Just completed a brick building and now our bank is equal to any in the country in appearance.

W. M. Crump and wife of New Home were shopping in Wilson Monday.

Rev. J. F. Curry, our county missionary, preached Sunday night at Wilson.

Several from here attended the Fifth Sunday meeting at New Home. C. H. Staggs and family of Joe Stokes community, spent Sunday with O. B. Staggs.

Miss Katherine Noid of Tahoka visited in the West home from Saturday until Monday.

The Camp Fire Girls will entertain the Mothers' Club with a program at our next regular meeting.

Walter May and wife visited their daughter, Mrs. W. B. Baker at Lorenzo Sunday.

George and Byron Deavers of Morgan community, have bought land two miles south of Wilson and are improving it. They will put a portion of it incultivation this year.

Rayborn Metcalf moved his family to Tahoka last week.

P. E. Bird and family attended church at New Home Sunday.

Quite a few people from the Morgan community attended church here Sunday night. We are always glad to welcome visitors to our church. Come again.

We are arranging for a Mothers' Day program for the second Sunday in May.

The State of Texas.

To the Sheriff or Any Constable of Lubbock county, Greeting:

You are hereby commanded to cause to be published once a week, for twenty days, exclusive of the first day of publication, before the return date hereof, in some newspaper of general circulation, published in said county, which has been continuously and regularly published in said county for a period of not less than one year from the date of the first publication hereof, and also cause to be posted, for twenty days, exclusive of the day of posting, before the return day hereof, in three of the most public places in your county, one of which shall be at the courthouse door, and no two in the same city or town, copies of the following notice:

The State of Texas.
To all persons interested in the Estate of Cora Blanch Brasfield, Deceased.

Notice is hereby given that Jesse Brasfield, Administrator of the Estate of Cora Blanch Brasfield, Deceased, having on the 16th day of April, A. D. 1923, filed in the County Court of Lubbock County, Texas, his application to sell the following described lands belonging to said estate:

"An undivided one-half interest in and to 180 acres of land out of the north part of Survey No. 78, in Block S, in Lubbock County, Texas."

Now therefore, these are to notify all persons interested in said estate, to be and personally appear at the next regular term of the Honorable County Court, to be holden at the courthouse in the city of Lubbock, on the third Monday in May, A. D. 1923, same being the 21st day of said month, and then and there to show cause why such sale should not be made, should they choose to do so.

Given under my hand and seal of office this 16 day of April, A. D. 1923.

HERBERT STUBBS,
Clerk County Court, Lubbock County, Texas.

I hereby certify that the above and foregoing is a true and correct copy of the original citation now in my hands.

H. L. JOHNSTON, Sheriff.
By D. F. OWENS, Deputy.

COMING

—TO—

Wilselma Theatre

May 16 and 17

"The Four Horsemen"

Kill Hen House Bugs
and keep them away by painting with Taroline, a lasting tar oil that penetrates cracks and crevices. For insects on poultry feed "Martin's Insectimune." Money back guarantee by Slaton Drug Co.

Fruit, Shade and Ornamental Trees Best Suited to the West.

—Our trees are giving satisfaction in West Texas and New Mexico. We are growing the varieties best suited to this climate.

—We ship by Parcel Post and Express and Prepay charges on all orders over \$5.00.

—Send us a list of what you want or see our agent, A. I. KUYKENDALL, Slaton, Texas. Catalog on request.

—Our Everbearing Strawberries are the best strain to be had.

Plainview Nursery

Plainview Texas

TORNADO AND HAIL INSURANCE

—Now is the beginning of the Tornado and Hail season. There is hardly a year but what Slaton territory is visited by one or more disastrous WIND and HAIL storms. INSURANCE is the only human protection against them, and it only costs you a few cents per day to protect your houses, barns, mercantile buildings and their contents. Can you afford to take the risk when it costs so very little to be protected?

"If It's Insurance We Write It"

Stephenson Bros. Insurance Agency

Office Over Postoffice

Ray Stephenson

Telephone 166

Roy Stephenson

IT'S MADE IN SLATON

The Best Soda Water in Bottles
5 cents at all dealers

Slaton Ice Cream & Bottling Works

Telephone 75 Slaton, Texas

Boot, Shoe and Auto Top Garage

An army "hob" or a dancing pump,
The President's wife or Andy Gump,
Whatever the job, or who it's from,
We'll do it and do it right, by gum!

—We do shoe and harness repairing that pleases you, at a price that you can afford.

—We also carry a full line of new harness. Let us supply your needs.

—We recover auto tops, repair and put on new upholstery, seat covers, etc. Let us recover that top or put on a set of seat covers. They save your upholstery.

Whitaker & White

Telephone 111

Slaton, Texas

—D. & M. Baseball goods, balls, gloves, bats, mits, etc. at Teague's Confectionery.

UNPREPARED—

—Spring marks a dangerous season of the year, with its ever changing weather conditions. And an empty medicine chest truly shows unpreparedness. Always keep a stock of reliable remedies in the home for any possible contingency.

—We know drugs and will help you fill that medicine chest with worth-while remedies.

—Our line of drugs, toilet preparations and drug sundries is second to none on the South Plains.

—Visit our fountain often.

SLATON DRUG COMPANY

J. V. Hollingsworth, Propr.

Phone 92, Slaton, Texas

THIRTEEN HUNDRED (\$1300.00) DOLLARS IN PRIZES TO BE GIVEN AWAY BY THE

Big State Garage

First prize, New Dodge Touring Car, \$1025.00	Fourth prize, Cash \$ 50.00
Second prize, Cash \$ 100.00	Fifth prize, Cash \$ 25.00
Third prize, Cash \$ 75.00	Sixth prize, Cash \$ 25.00

—THIS IS THE PLAN: We are going to sell 2200 regular size cans of Cold Patch at one dollar per can, and after the last can is sold all prizes will be given away as outlined above. We want at least ten ladies in this contest, and not over fifteen. Any lady that enters this contest will be paid for her work even though she fails to win a prize. We will pay her 15 per cent for every dollar's worth she sells.

—This cannot be anything but a fair contest, as we are only going to sell 2200 cans, and after they are all sold all prizes will be given away and all ladies that fail to get a prize will be paid as stated above.

—Think of selling something that is sold all over the world for \$1.00 per can, and is used by everyone that has an automobile. Think if only ten ladies enter this contest, equally divided they would have only 220 cans each to sell. We expect to start this contest about May 10th.

—Any ladies, single or married, that want to enter this contest call or write D. L. Hubbard at Big State Garage. Ladies in Slaton, Southland, Wilson and adjoining country around these towns are invited to enter this contest. Call or write us and we will explain the plan in detail.

The Big State Garage

Dodge, Studebaker, Willys Knight and Baby Overland Dealers
 "The House By the Side of the Road" Telephone No. 2, Slaton, Texas

Ford Weekly Purchase Plan

\$5

ENROLLS YOU

—Have you investigated the Ford Weekly Purchase Plan by which thousands of families all over the country are finding it easy to buy the Ford Car they have always wanted?

—If not, go to the nearest Ford dealer at once and ask him for full details of this plan, which provides a simple and easy way of becoming a Ford owner. You owe it to yourself to get the facts—they will interest you.

FORD MOTOR COMPANY
 Detroit, Michigan

Come in and let us give you full particulars
SLATON MOTOR COMPANY

Depository for Ford Weekly Purchase Plan Payments: **THE SLATON STATE BANK**

Milady Chooses Styles to Suit

The American woman looks to the designers of her own land for her best expression in clothes, and this season much has been done to please the smartly dressed woman, writes a fashion correspondent in the New York Times. The designers say we no longer must be extremely young in our appearance, neither must we

flourishings and panelings, the sleeves sink into a secondary place, and then, in their humility, are made short and tight and with no trimming whatsoever.

Draped dresses are the order of the day. The silk or crepe or the light woolen material is taken in hand by the clever designer and the folds are swirled and swooped about the figure until there results a frock that is simply a series of beautifully conceived lines put together in a miraculous way. For these dresses there is little or no trimming. If there is a girde or a buckle or a bow to finish off the ending of their folds, these decorations are done in colors and shapes that harmonize splendidly with the general design of the frock itself.

Evening frocks are in two distinct classes. One of these is the draped class, and the materials used in making are crepe and satin and moire, the latter being the newest thing upon the horizon. Then there are the frocks with full skirts and tight little bodices. They are made from taffeta or many layers of chiffon and they are particularly quaint in their designs, suited to the more youthful types of figure, which can afford to carry about layers of fullness and many bows with dripping ribbon trimmings.

Printed Dress is Featured.

The printed dress is one of the features for spring. One sees it everywhere. There is no end to the patterns and designs and the combinations of color that are represented by the frocks of printed silk. They are made, usually, over the plainest of models. But they certainly are becoming and beautiful in the extreme, and every woman is likely to decide upon having at least one of them.

When the whole dress is not made of the printed material, then half of it manages to show a pattern, and the lower part of the dress is made of a woolen material or a plain silk or something that contrasts with the pattern of the silk above. There are printed silks and printed chiffons, all of them most interesting when made up in the plain little frocks which will be popular all through the spring and summer seasons.

Dresses for the street are made of the softest of woolen materials, some in kasha cloth, some in lightweight velours and others in wool crepes. One of the newest outlines is the skirt with three tiers. These flounces are made over a circular pattern, a skirt that is particularly becoming to the slim and youthful figure. The dress of this character has trimmings of black around the edges and the frock itself is made of a light shade of tan. After the black has been applied along the edges there ensues an interval of black and white striped ribbon that helps to accentuate the decoration.

Wraps for the spring are made along large and ample lines. There is, first of all, the straight coat, which ties on the side with a bow of ribbon and usually has a huge bow of satin ribbon to tie the coat together on one side. There is a fur collar, too, and a straight line to the coat which carries out the idea of the silhouette of the season. Some of these coats are embroidered in all-over designs and there is no portion of the coat which is left without that embroidered ornamentation.

Light-colored short coats will be worn with white skirts or light-toned dresses. And the dark coats covered with embroidery will be worn with the darker toned silk dresses during the early spring to demonstrate the fashion as it exists at the present time.



The Three-Tiered Skirt, Indicative of Spring Styles in Daytime Wear.

make any effort to be too noticeably dignified. We are to be allowed, it seems, to choose our own styles from among so many models and designs that it will be our own fault if we should fail to find just the proper and most becoming thing.

Among the many creations we find high lights. They are important in that they go to make up the fashion, but none of them is so startling as to constitute a complete change. The gowns as they appear to the casual eye are still straight and rather long. But the straightness is made up of more fullness of material than has been the case in the past. The length is a static thing that stays where it was through the last season, and, in some cases, is shorter by some inches. The tailored suits of tweed, for instance, will be quite short, and as the skirts are tight they are often slit at the left side, so that the leg appears when walking almost up to the knee.

One designer goes so far as to believe that American women eventually will wear bloomers, instead of petticoats, under all of their daytime dresses. She is making models of printed crepe, of white broadcloth, of rajah silks—in fact, of any fabric that is used for wear during the daytime.

The skirts open at one side all the way to the waistline. They button at the hem with three buttons. They can be left closed or swing open and loose. And the bloomers underneath, made of the same material, serve to complete that dress.

Sleeves Large and Flowing. Sleeves are still large and flowing in many of the costumes. They are trimmed gorgeously. In some of the suits and dresses they hold the center of interest, pushing all other features of the design aside. As the skirts grow wider and are trimmed with

Graceful Short Coats Will Be Strong Feature

There are short, graceful and draped coats which will be a strong feature of the early spring styles and they promise to carry over into the summer. A short coat can be made of almost any material. It may be embroidered, made of some brightly colored fabric, or it can have the same tone as the skirt; made of another sort of material. The fact is that there is so much chance with these little bloused jackets to create differing and unusual effects that they have been pounced upon by the smart women and worn so that they display the foremost elements of fashion.

There are some straight box coats to be seen and these are made of the same materials that go to make up the shorter boxline coats. Then we are working our way slowly toward a three-quarter coat which will be popular about the middle of the summer.

Many of the three-piece suits are made with short coats that come to a long waistline and end there, showing a skirt that is made of the same material and a bodice or a top to the skirt

that is made of some brilliantly contrasting material. Many of the three-piece suits show coats that are exaggerated in their shortness, but others are displaying coats longer and more conservative in line. If a woman is at all large about the hips she does not want to indulge too strenuously in the coat that spans across the hips, but she can well afford to adhere to the coat that is of three-quarter length and without a belt or anything to accentuate the hip line or the waist. Many of the costume suits are made on this general plan and they are really the most satisfactory things that the American designers have produced. They show a surface that is dark in color or light in tone with the same shade running all the way from the shoulders to the heels, and then they have blouses or bodices, as the case may be, that are brilliant and altogether charming in their coloring. When the coat swings apart in the front, as it always does in the springtime, the blouse underneath plays a large part in the design of the costume as a whole.

ODDS AND ENDS OF SPORT

Pasadena has formed a swimming club for women.

Jole Ray's father 30 years ago boxed Jake Kilrain 20 rounds.

There are, it is estimated, 30,000 bowling alleys in this country.

Rowing at Harvard cost the Cambridge institution \$55,000 in 1922.

Penn will endeavor to form an intercollegiate baseball league for 1924.

The Toronto club of the International has sold infielder Harry Stupp to the Beaumont club of the Texas league.

"Nap" Rucker, old National league pitcher, may become coach at Princeton.

Yale's rifle team scored a perfect 500 in a telegraphic match with Princeton.

Shift of Dugan to second and Ward to third is said to be contemplated by the Yankees.

Charlie O'Hearn, of Brookline, Mass., star forward on Yale's hockey team, was elected captain of the 1923 squad.

The Bristol club of the Appalachian league announces the sale of two pitchers—Frank Farley to Rochester and Albert McCabe to Mobile.

Tom Davies, former college star, sent to Toledo by the New York Nationals, expects to land a berth in the Mud Hens' outfield this year.

Brooklyn plans an 18-hole golf course at Dyker Beach park.

Ohio State university has added polo to its curriculum of athletic games.

More than 800,000 fans witnessed the first round games in the English soccer cup race.

Another catcher has been added to the Yankee list. He is Eddie Brucker, a Los Angeles youngster.

Georgetown university is another college to feel the effects of professional leagues grabbing off its stars. No less than three have been signed up this year—all by one team.

It is expected 2,000 players will participate in the playgrounds lawn tennis competitions, a yearly event in San Francisco. A total of 25 courts will be used.

McGill university, Montreal, will hold the first Dominion of Canada athletic track and field championships for schoolboys over thirteen and below the junior matriculation class May 26.

One less rival for Earl Sheely's position as first baseman for the Chicago White Sox when Harold Buhser was released to the Kalamazoo club of the Mint league.

Report from the Giants is that John McGraw is much pleased with the form Travis Jackson is showing and is predicting that the youngster from Little Rock will make a great shortstop.

Speed.
He—"I read women like an open book." She—"Really?" He—"Yes, I usually skip the introduction."

WHY TAKE LAXATIVES?

Discovery by Science Has Replaced Them.

Pills and salts give temporary relief from constipation only at the expense of permanent injury, says an eminent medical authority.

Science has found a newer, better way—a means as simple as Nature itself.

In perfect health a natural lubricant keeps the food waste soft and moving. But when constipation exists this natural lubricant is not sufficient. Doctors prescribe Nujol because it acts like this natural lubricant and thus secures regular bowel movements by Nature's own method—lubrication.

As Nujol is not a medicine or laxative, it cannot gripe and, like pure water, it is harmless and pleasant.

Nujol is used in leading hospitals. Get a bottle from your druggist today.—Advertisement.

Ever notice how easy it is for a man to be good-natured when everything is coming his way?

Famous Puritan Writer.
Sir Thomas Browne (1605-1682) was a physician and writer of the Puritan age, noted for the stateliness and rhythm of his style. His leading work is "Urn Burial."

Fresh, sweet, white, dainty clothes for baby, if you use Red Cross Ball Blue. Never streaks or injures them. All good grocers sell it.—Advertisement.

Keeps Off Rust.
A few drops of linseed oil applied with a cloth to the outside of the gas stove or the inside of the oven will keep the stove from rusting and will make it easier to care for.

CATARRHAL DEAFNESS
is often caused by an inflamed condition of the mucous lining of the Eustachian Tube. When this tube is inflamed you have a rumbling sound or imperfect hearing. Unless the inflammation can be reduced, your hearing may be destroyed forever.

HALL'S CATARRH MEDICINE will do what we claim for it—rid your system of Catarrh or Deafness caused by Catarrh. HALL'S CATARRH MEDICINE has been successful in the treatment of Catarrh for over Forty Years.

Sold by all druggists.
F. J. Cheney & Co., Toledo, O.

Insulted.
She (dreamily)—"Do you care for children?" He—"No; what do you think I am, a nursemaid?"

After EVERY Meal

give your digestion a "kick" with WRIGLEY'S.

Sound teeth, a good appetite and proper digestion mean MUCH to your health.

WRIGLEY'S is a helper in all this work—a pleasant, beneficial pick-me-up.



Mothers of the World Mothers!! Write for 32-Page Booklet, "Mothers of the World"

Lloyd Loom Products The Lloyd Mfg. Co. Pat. Process

CHICKS - DUCKLINGS and hatching eggs from exhibition heavy egg laying strain, 120 and up, 100% live delivery guaranteed.

100 GOSNEY'S GENUINE ASPIRIN TABLETS-CERTIFIED 45 cents. Pay postman on delivery.

EASY TO USE Bixey's JET-OIL SHOE POLISHES Liquids or Pastes All Popular Shades

Someone Will Take Him. "Do you think I am going to be an old bachelor?" "I should be sure of it but for one thing."

When a girl pretends to be angry she imagines that her eyes are flashing fire.

CASTORIA For Infants and Children In Use For Over 30 Years Always bears the Signature of J.C. Holt

SPOHN'S DISTEMPER COMPOUND Are your horses coughing or running at the nose? If so, give them "SPOHN'S," A valuable remedy for Coughs, Colds, Distemper, Influenza, Pink Eye and Worms among horses and mules.

Hair Thin? You need Quick Hair Tonic to strengthen it and to grow new hair—its vitality the roots and stop hair falling out—its hair sports rapidly. Try it! At all good druggists, 30c. 78 Street from BEXIK-ELLS, Chicago, Evanston, Ill.

W. N. U., DALLAS, NO. 16-1923.

ALAB

ALABASTINE

The Sanitary Wall Coating

Look for the Cross and Circle

Printed in Red on Every Package of Genuine Alabastine

Alabastine

Instead of Kalsomine or Wall Paper

Because only genuine Alabastine will give you those soft delicate, artistic Alabastine colors, which add so much to the beauty of your home.

Good decorators use Alabastine. Nearly all stores selling paints carry it in stock. Ask your dealer or decorator to show you samples and explain the Alabastine-Opaline Process—the newest and most beautiful method of interior decoration.

The Alabastine Company
Grand Rapids, Mich.

S. H. ADAMS, M. D.
Physician and Surgeon
Office 3rd door west First State Bank
Phones: Office 10; Res. 26.

Dr. Millard F. Swart
OPTOMETRIST
By Standard Examination
Office With Slaton Drug Co. Phone 22

W. L. Huckabay, M. D.
Special attention given to diseases of women and children.
Office Upstairs Slaton State Bank
Phones: Office 171, Residence 175

CHIROPRACTIC
Spinal Adjusting for Acute, Chronic and Nervous Diseases.
C. A. Smith
Chiropractor Phone 137

H. F. MILLER, M. D.
SALLIE W. MILLER, M. D.
Office Upstairs Slaton State Bank
Phones: Office 194; Res. 14.

W. A. TUCKER, M. D.
Physician and Surgeon
Offices 2nd floor Masonic Building
Phones: Office 108; Residence 66

DR. BEN T. OWENS
DENTIST
Office Upstairs Slaton State Bank
Telephone 167

Dr. Ruby Morris Reed
The only lady Chiropractor in Slaton—Women's and children's diseases a specialty. Office hours 9 to 12; 2 to 6.—Phone 236, room 5, upstairs in Williams Building.

LANE & RATLIFF
Attorneys at Law
Practice in all the Courts
Special Attention to Collections
Office Upstairs Twaddle Bldg.

PAUL OWENS
OPTOMETRIST
By Standard Examination
Office, Owens & Ragsdale, Jewelers
Telephone 191

J. P. MARKHAM
CIVIL ENGINEER and SURVEYOR
—Engineering and Surveying done promptly and correctly.
Office Over Post Office.

Dr. Jesse W. Philips
Dentist and Oral Surgeon
Office Upstairs Twaddle Building
Slaton, Texas

R. A. BALDWIN W. A. KOONS
Attorneys At Law
Offices Upstairs Shopbell Building
State and Federal Practice

THE LUBBOCK SANITARIUM
A Modern Fireproof Building
Equipped for Medical and Surgical Cases—X-Ray and Pathological Laboratories
Dr. J. T. Krueger
General Surgery
Dr. J. T. Hutchinson
Eye, Ear, Nose and Throat
Dr. M. C. Overton
General Medicine
Dr. O. F. Poebler
General Medicine
Miss E. De Mink, R. N.
Superintendent
Miss E. Clemenshaw, R. N.
Ass't. Supt.
Helen E. Griffith, R. N.
Dietitian
C. E. Hunt, Business Mgr.
A chartered Training School is conducted by Miss Anne D. Logan, R. N., Superintendent. Bright, healthy young women who desire to enter may address Miss Logan

If you have anything in furniture repair work see me.—Elrod's Second Hand Furniture.

W. T. Hill's Tailor Shop
Telephone 124

is enjoying liberal business, but wants more. Bring your dirty clothes here and see how they look after we're through with them. We make a specialty of dyeing, also. The small charge will certainly meet your approval, too.

HAIL INSURANCE
on Growing Crops.

—We are having good rains and likely will have hail storms. Insure your crops and be protected. I represent K. T. Martin & Co. of Fort Worth, and several other good companies. Get that hail insurance and be safe.

J. G. LEVEY
Insurance, Real Estate
Office Rear fo First State Bank.

111 4 more
cigarettes
24 for 15
The AMERICAN TOBACCO CO.

Foster's Weekly Weather Bulletin
(Copyrighted)

Washington, May 3.—May, first of the four most important crop weather months, is with us and many millions of people are anxious to know what the harvest will be. I regret to say it, but duty calls and I must. The prospects are not good. Probably one-third of the cultivated lands of North America will produce fair crops, one-third half crops and one-third bad. These partial failures will be caused by what you would name as a second-class drouth, but I call it a shortage of moisture. The real and severe drouth has great evaporation, quickly dries the soil; the second-class drouths have very little evaporation. Don't make a mistake; read carefully; the above is for the average of the whole continent. The amount of moisture east of Rockies' crest will differ largely, more than usual, from that west of Rockies' crest. It is a big risk to put out such a forecast, but I am absolutely confident that it will prove correct.
Section 5, Slaton and vicinity: South of 39, west of 90; lowest temperatures near May 6 and 17; highest near May 11; average normal; most rain of month before 18.
Severe storms are expected during week centering on May 6. See highest temperatures forecasted for your



BILLIE BILDIT'S LOG

—“We admit it! We have beautiful trees cut down, but it's for a grand and noble purpose, HOMES.”

—Our lumber stocks come from the finest and most select timber in the land. The quality of all our materials is of the very highest. And yet our prices are no higher than those on inferior grades.

PANHANDLE LUMBER CO.
OUR AIM—
TO HELP IMPROVE THE PANHANDLE
J. W. Hood, Mgr. Phone 1

section of that week; the storms will be clear; study them before they get to you. If they pass south of you a cool wave will follow.

BUSINESS IS SEEKING YOUNG MEN AND WOMEN!

A country-wide investigation of employment conditions to get information as to the type of help in greatest demand showed the following results: 1338 of 2445 advertisements for help specified a business training, and 524 of the remaining 1107 advertisements were for positions that office assistants grow into. No other profession can claim one-fifth as great a demand. In fact this proves that there is a greater demand for business training than for all other trades and professions; the average income of a lawyer is \$1500, of a doctor \$1800, others in proportion, while the average income of a business man is \$3000 a year. There can be no question but that the business world offers you the best opportunities.

You can be sure of success if you enter the world of business trained in the Tyler Commercial College. You must be prepared. This is an age of specialization. The trained man gets the big job and the big salary. You must know how to do one thing well, that the business man will pay you for doing. Let us train you in Book-keeping, Shorthand, Business Finance, Telegraphy, Cotton Classing, Typewriting, Salesmanship, Radio and Civil Service and we will secure you a position at a good salary that will also serve as a stepping stone to higher things.
Thousands of young people who spend a few months are on the road to success and we can help you. Some of our graduates are now drawing salaries of twenty-five thousand dollars a year; we can give you the same thorough, complete and practical training in a few months time and at a small cost, that gave them their start. The fact that we are the largest business training institution in America, with an average annual enrollment of over 3600 the last five years, is indisputable evidence as to the merit of our courses, for no inferior school could ever build up and hold a large patronage.
You are not going to pass up a business training and its wonderful opportunities to become a day laborer, house maid, department store clerk, telephone operator, factory hand, or live on the back end of some one else's farm. You can't afford it when you can spend a few months with us and make sure of your success.
Make up your mind to enter now. Fill in and mail coupon to Tyler Commercial College, Tyler, Texas, for large free catalogue.
Name _____
Address _____

GREAT DEMAND FOR FORDSON TRACTORS IN TWO BIG FIELDS

Both agriculture and industry are making increasing demands for the Fordson Tractor, according to H. G. Stokes, manager of the Slaton Motor Company.
While the use of the Fordson as a farm implement is extending in every agricultural section of the country as farmers come to realize the advantages and economy of power farming, a most noticeable feature of the sales is the growing use of this sturdy and dependable power plant in industrial and commercial activities.
Contractors and builders are everywhere adapting the Fordson to meet their needs for power, either movable or stationary, and road engineers throughout the country are specifying its use with highway construction machinery.
To meet this growing demand for Fordson Tractors, production is now at capacity and for the first three months of the year reached a total of 27,087 as compared with 8,340 for the same period a year ago.

ATKINS' MARKET
Fresh and cured meats at prices you can afford.
We Appreciate Your Business
Telephone No. 5
North Side Sanitary Grocery Bldg.

C. F. Evans Grady Wilson
“THE HOUSE OF SERVICE”
—Unless we please you we are not pleased. Our guarantee works.
—We are here to clean, repair, alter and press your clothes to your approval, and solicit your patronage.
—Our delivery service is always ready, and we are “as near as your phone.”
—We appreciate your business.
EVANS & WILSON, Tailors
Phone 235 West Side Ninth St.

SUPERIOR
STOCK & POULTRY FEEDS
Guarantee
The Superior Guarantee
“Pigs is Pigs”
Slaton Grain & Coal Co. Inc.
DISTRIBUTORS

MICHELIN
Regular Size Cord Tires
You can now buy quality cord tires at less than fabric prices. And you don't have to buy two in changing from fabrics to cords, as Michelin Regular Size Cords can be used opposite fabrics without unbalancing the car.
ONE QUALITY ONLY
—THE BEST—
BIG STATE GARAGE
Leo Hubbard, Mgr. Phone 2, Slaton

WHEN MAN DRESSES UP—
—What is the right price for good Spring and Summer Clothes? That question is answered when you look at our exceptionally large assortment of samples and note the prices offered at. Do not overlook our Spring and Summer Straw Hats when you buy.
De Long
THE MERCHANT TAILOR