

"Covering Slaton, Wil- son, Southland and sur- rounding areas like the South Plains Summer Sun."

The Slaton Slatonite

Slatonite Classifieds —
"Biggest Little Sellers
On The South Plains."

Vol. Forty-eight Number Forty-five

Slaton, Lubbock County, Texas Thursday, August 20, 1959

10c Per Copy

Twenty-four Pages

Wet-Dry Election Activities Increase

The wet-dry election possibilities in Slaton and Lubbock County Precinct Two took on added emphasis this week when the first step toward an election to legalize the sale of beer in cafes and taverns in the community was taken Monday.

That action was the filing of an application for local option election petitions in the county clerk's office in Lubbock.

The Slaton Chamber of Commerce is planning a public "Haystack Ballot" type discussion on the subject at the band stand on the City Hall lawn Saturday night. The get-together will be complete with music and speakers for both sides of the controversy, according to chamber

manager Bill Ball. The actual voting in the "Haystack Ballot" will be the following Saturday in five local stores. In addition to the application already filed, another group of southeastern Lubbock County residents has announced that an application for local option election petitions for Justice Precinct 2 will be filed this week in the clerk's office.

An attorney for Robert Stroile, Posey blacksmith, said Monday he expects to file later this week an application for petition seeking an election to legalize package stores in Justice Precinct 2, which includes rural southeastern Lubbock County.

May File Saturday
The attorney, Lawrence McCricker, said he guessed that the application would be filed Saturday morning.

If the issue Stroile proposes were passed, all liquor could be sold in southeastern Lubbock County, but only for off-premises consumption.

Signers Are Listed
Signers of the application submitted Monday, all of Slaton, were Albert Artison, box 626; Lewis Thomas Jr., box 454; Earnest Deavereau, box 202; Mack Arrant, box 452; John Brown, 400 E. Scurry; Ethel Mae Jones, box 464; Willie Jones, box 214; G. K. Haile, box 292; Harry Krug, 155 S. 3rd St.; Grady L. Clark, 455 N. 7th St.; C. W. Kalick, who gave his address only as Slaton R. R.; Lawrence Cheney, 625 W. Geneva; H. E. Woods, box 174; and Melvin P. Ver Schneider, 225 W. Crosby.

S. P. Bowling, Lubbock attorney, filed the application for the signers.

Khrushchev Is Invited To Visit Slaton

A local minister, Rev. H. E. Summar of the Bible Baptist Church, has invited Russia's Nikita Khrushchev to Slaton on his forthcoming visit to the United States.

Rev. Summar in a letter to Senator Lyndon Johnson, said, "Dear Senator Johnson, 'Along with other Americans, I hope the visit of Mr. Khrushchev will do much good toward world peace.'"

"I believe that no visit would be complete unless he saw first hand the freedom of worship we enjoy in our churches, where the message of Christ may be preached without fear of any."

"As pastor of a small town Baptist Church, I would like to extend to Mr. Khrushchev a special invitation to attend our services while in this country. Our morning worship is at 11 a. m. Sunday. The evening services are at 7:30 p. m. Sunday and Wednesday nights."

"Sincerely,
Rev. H. E. Summar, pastor
'Bible Baptist Church'"

Schools To Start Here August 31

The Slaton Schools will open their doors August 31, 1959. This is an earlier date than usual due to several circumstances. Schools in Slaton normally open the first Tuesday after Labor Day but due to its lateness it would be impossible to close prior to May 29 if we waited until September 8 to start classes. Also football season starts Sept. 4 and is very necessary that school start prior to the first football game.

All necessary repairs will be made if all items that have been ordered are received in time to place in position. There are a few items that are in transit that could not be ordered until

the results of the bond election was known. Certain items had to be changed after the bond election. A petition is being placed in the library of the high school to make it into two classrooms. This will limit the use of the library but it is necessary due to the increase need of more classrooms. All buildings have been repainted and all floors have been checked, cleaned and waxed or varnished as the occasion demanded.

An enrollment of more than 1900 is expected for the year 1959-60. This will be an increase of about 100.

Teachers will begin meeting

Thursday August 27 and this in-service program will continue through Saturday. Special emphasis is being placed on the science program in the elementary grades. The State is providing new texts in this area for this year. Miss Chris Christopher of the D. C. Health Publishing Company, the publisher of the new text, is providing the leadership in the program of acquainting the teachers with the new books. Teachers from other schools in Lubbock County will also be present to receive this additional information. Friday will be used for this part of the program.

AT Farmer-Merchant Banquet

First Bale Of Cotton To Earn Farmer \$150 Award

The second annual Farmer-Merchant presentation Banquet, scheduled for 7 p. m. Monday, Sept. 14, at the Slaton Gymnasium, corner of 10th and Jean Streets, will see cash awards given to the producers of the first three bales of cotton grown in the Slaton trade territory.

A cash award of \$150.00 will be given to the producer of the first bale, or 400 lbs., and the producer of the second bale will get \$75.00 while the third bale producer will be awarded \$25.00.

There will be approximately 50 door prizes also, valued at over \$500.

The "strictly informal" af-

fair is held to let farmers and merchants sit together, "have a good meal, smoke a good cigar and pop up our feet," according to Bill Ball, manager of the Slaton Chamber of Commerce, which sponsors the affair.

Tickets are now being distributed to area farmers by all gins in the vicinity of Slaton. Host tickets are being sold to local merchants, which pays for their own meal and the meal of a farmer.

Ball said, "The banquet provides an opportunity for our merchants to meet and greet the farmers who bring new dollars into the Slaton Trade Territory each year."

The chamber, meeting Monday night, also discussed other activities which are under consideration or underway.

Involved in the discussions were a new budget plan and set of books for the chamber, the endorsement of the efforts to acquire a special train to the first Tiger football game, in Canyon Sept. 4, the possibilities of letting an air strip for Slaton, and the latest developments in the efforts to acquire a local golf course.

It was also announced that the chamber's telephone number had been changed. The number is now VA 8-4895. Formerly it has been VA 83878.

AT 10 a. m., August 28

New Storm Warning Alarm To Be Tested

A combination storm warning siren and fire alarm will be put into service soon in the southwest area of town, just off Division Street and near Mercy Hospital.

The siren, which will be given a public test at 10 a. m. Friday, August 28, will considerably extend the range of the single siren which is located atop the fire department downtown at present. It will be sounded simultaneously with the downtown siren in the event of severe weather approaching Slaton or a fire.

A message from the fire and police departments to the people of Slaton says, "The severe weather alarm to Slaton residents is sounded for your safety through the cooperation of your police force and fire department."

"The possibility of a storm or the evidence of a storm within a hundred mile radius of Slaton caused an auxiliary police unit to be dispatched to an approximate distance of 30 to 40 miles out of Slaton in the direction of the storm. A city police unit is dispatched out in the same direction approximately 15 to 20 miles, therefore assuring radio contact between auxiliary police unit and Slaton police station."

"In case the storm is traveling in the direction of Slaton, the city unit moves back toward town in front of the storm and the auxiliary unit moves back following the storm. The city unit reports the rate of speed and direction of travel of the storm and the auxiliary unit reports the severity of the storm as to damages."

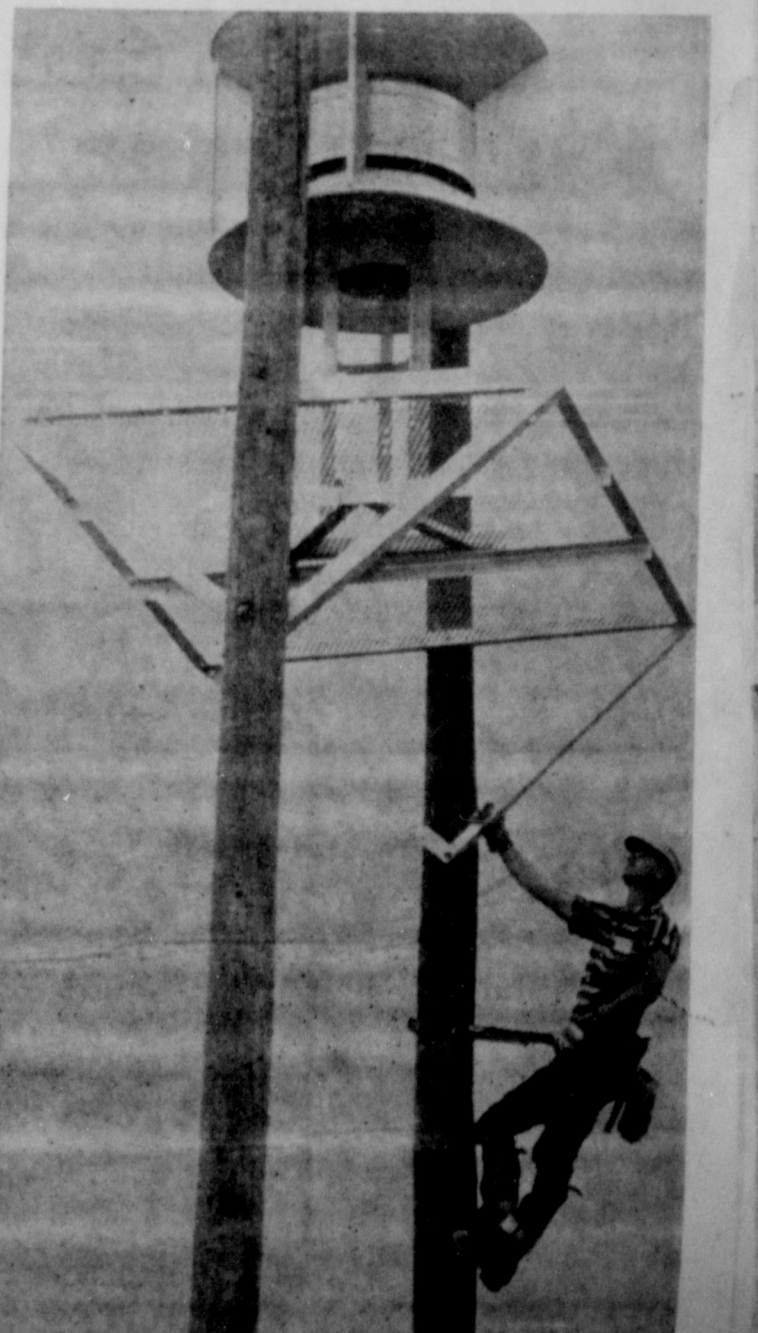
"As the storm approaches to within a distance of from 5 to 10 miles of the city limits, the police station will contact the fire station, reporting by telephone the progress and severity of the storm. The fire department in turn sounds the severe weather alarm if needed. The severe weather alarm is a series of four short blasts and a one minute silence, then four short blasts and so on until the alarm operator is forced to take shelter."

"The short blasts are not to be confused with the fire alarm, which is two or three long blasts

from the same alarms. For the information of Slaton residents and also as a test on the new

alarm system, the fire department will sound the severe weather alarm at 10 a. m. August 28.

"In case of severe weather or the possibility of severe weather please do not call the fire department or the police station, as these telephones are very busy and a call from you could, on either telephone, delay the alarm and thereby endanger everyone in Slaton.



CHECKIN' HER OVER

Charles Chisum, an employee of the local telephone company, is shown here looking over the new combination warning alarm and fire siren which is to be put into local use shortly. The siren will be given a public test at 10 a. m. Friday, August 28.



GETTING READY

Slaton High School Tiger footballers are now going through two-a-day workouts in preparation for the coming season. Here they are shown in a "shorts" session. The Tigers open September 4th against Canyon, there. Efforts are underway to get a special train for fans to accompany the team to the game.

Chief In Statement On Bootleg Liquor Policy

(Editor's Note: Police Chief Eugene Martin wants it made clear to residents of this community what his department will do as concerns the illegal sale of alcoholic beverages in Slaton. Here is his statement.)

As the Chief of Police of Slaton, I, Eugene L. Martin, do

hereby make a solemn oath to the good people of our city. As long as the sale of liquor is illegal within our city, your Police Department will do all in its power to make our city as dry as possible, by the arrest of each and every violator and prosecution of each and every

violator to the full extent of the law.

This past week end, the Police Department confiscated 505 quarts of illegal beer and two automobiles and turned them over to the state liquor control board. This was a typical week end.

At the present time, we have a City Ordinance making it illegal to consume alcoholic beverages in public, and this serves to abolish the consumption of alcoholic beverages in public places or public gatherings. The Police Department has made many arrests for violations of this ordinance and will continue to arrest and prosecute violators of this ordinance.

We have an element of people in our city who would like to profit from the illegal sale of alcohol. These people are continually under surveillance by the Police Department and we in the Police Department are now and will continue to make the illegal sale of alcoholic as hazardous to this element of people as is possible under the laws that exist.

Eugene L. Martin

Football Special To Canyon Game Sought

A special train to the Tigers' first football game in Canyon!

That is the goal of the Slaton Touchdown Club and Chamber of Commerce. Those two organizations will begin efforts this week to sell at least 325 tickets on such a train.

Santa Fe has said that it would provide the train for the equivalent of 325 adult tickets at a special price which would total a little over \$1,100. Tickets will be \$3.63, tax included, for adults.

Booths will be set up in various locations about downtown Slaton this week for the purpose of selling the tickets, or vouchers for the tickets. Santa Fe must be notified by August 28th if the arrangements are to be made for the special train.

The game will be played at 8 p. m. Friday, September 4. Persons desiring to ride the Football Special should contact any member of the Touchdown Club or Chamber of Commerce, or purchase a ticket voucher from any of the various booths to be set up downtown.

Top Teenagers Are Honored By Jaycees

Nine local teen agers were honored by the Slaton Jaycees Tuesday night in a banquet held at the First Methodist Church.

The nine all had been named "Teenagers of the Month" for various months during the last school year and June. Honored were Melinda Cliff (continued on page 5)

Christian Youth Round Up Program Is Scheduled Here

Next week, August 23-28th, the First Christian Church will be participating in the Christian Youth Round Up program of the Christian Churches which spreads throughout Texas and into New Mexico, Oklahoma, and Arkansas. With the team arriving sometime Saturday, the church will be in the full swing of the program by Sunday with the Round Up preacher preaching in the morning service.

Mr. Bill Koberg and Miss Sylvia Coalsen from Texas Christian University (or Phil-

lips University) are the Round Up leaders for the week. Mr. Koberg will do the preaching and Miss Coalsen will lead the singing and recreation each evening.

Rev. Claude Wingo, minister of the First Christian Church, wishes to make this an invitation to the whole community in order for them to share in this youth sponsored summer church program.

Services start each evening at 7:30 o'clock Sunday through Friday night.



BILL KOBERG
... to do preaching



SYLVIA COALSON
... song leader

Right-of-Way Tax Defeated By Voters

An election calling for a 15-cent highway maintenance tax to finance purchase of right-of-way for four-lane divided highways in Lubbock County carried by a very slight majority in two of the three Slaton boxes, but failed county wide in voting Tuesday.

The election, which would have provided right-of-way for a Slaton by-pass if it had carried, was the first ever recorded against an improvement program of any type in Lubbock county and marked a setback for the completion of the county's major highway system.

The issue failed by a margin of 202 votes in one of the lightest vote totals ever cast in the history of the county on a major countywide program.

The county total was: for the special tax, 1,832 votes; against the tax, 2,034 votes. In Slaton, the vote was 255 for the tax to 244 against. Chamber of Commerce Manager Bill Ball pointed out that the total was only 2 per cent off the results of the unofficial "Haystack Ballot" taken here a cou-

Local Pastors' Fellowship Is Set For Tonight

Local ministers and their families are planning a City Pastors Social Fellowship at the First Christian Church parsonage and on the lawn of the church to night at 6:30.

All local ministers and their families are invited and asked to bring a covered dish. Supper will be spread on tables on the parsonage lawn. Silver and paper plates will be furnished.

RITES ARE HELD

Martha Valderaz died Sunday morning about 4 a. m. in the home of her parents near Southland.

Burial was in Englewood Cemetery under the direction of William Funeral Home.

The Slaton Slatonite

TEXAS PRESS ASSOCIATION
Member 1959

163 S. 9th, Slaton, Lubbock County, Texas
Phone VA 8-4201

Slaton Times purchased January 20, 1927

Thursday, August 20, 1959

Entered as Second Class Matter at the Post Office at Slaton, Texas, under Act of March 3, 1897.

Joel R. Combs, Editor and Publisher

Bobby Combs Bookkeeper

NOTICE TO THE PUBLIC—Any erroneous reflection upon the reputation or standing of any individual, firm or corporation, that may appear in the columns of The Slatonite will be gladly corrected when called to our attention.

SUBSCRIPTION IN ADVANCE

Lubbock, Lynn, Garza and Crosby Counties, \$3.00. Outside These Counties, \$5.00. Obituaries, Resolutions, Memoirs (Excepting Accounts of Death, News Originating in This Office), 3c Per Word.

Following are deadlines which will govern receipt of copy:

General News	3 p. m. Tuesdays
Classified Advertising	5 p. m. Tuesdays
Society News	12 noon Tuesdays
Page One News	5 p. m. Tuesdays
Society Page Pictures	5 p. m. Mondays
Staff Photos, except Society	5 p. m. Mondays
Society Staff Photos	10 a. m. Mondays
Display Advertising	12 noon Tuesdays

EDITORIALS

The Lord Helps Those Who Help Themselves . . .

Some towns and cities have become famous and have reaped revenue because of some natural feature such as Carlsbad Caverns, some have been made famous because some individual, or group of individuals, developed some industry in its limits and some have grown and prospered from no apparent reasons at all.

What could be done in Slaton to bring favorable attention to the town? There are perhaps a number of them if by some good fortune they could be brought to the attention of the people who are in position to publicize them and to develop the latent talent that may be hidden in our community.

One instance that can be pointed out is the good work that Mr. Truett Fulcher has done as a swimming instructor. He has consistently developed both individual and team swimmers each year and done it apparently with a minimum of assistance. With more cooperation from future aspirants who would like to become experts in this line and with some well placed publicity, top quality swimming teams from Slaton could be well worthwhile. Years ago Slaton could boast some exceptional musical talent and perhaps could do so now if some performers, who may live here, could be encouraged to appear. There are several concerns in Slaton that turn out products that are far above those produced in even the most advanced centers in the United States. Perhaps with a little encouragement these business concerns could be encouraged to do more than they judge themselves capable of doing.

The old adage about the better mouse trap and the beaten path to your door is no longer true, it takes a rooster to do some crowing and some help in the way of money and confidence in those who have the ability and artistry to produce, but perhaps do not have the proper managing capabilities or will power to promote more of the things that could help them and Slaton too. A. M. J.

It May Be Later Than You Think

Right now is a little late for those who have been waiting for the exact peak to invest in Slaton property, in land in this County and on the South Plains. Future increase in value in both business ventures and in real estate is most promising.

Compared with other parts of the state, and of the nation, the prosperity of this area is far above the average. There are no depressed areas and it is hard to conceive how there could be. There are no vast industrial plants that could be tied up by paralyzing strikes, most wage earners are steadily employed, living conditions are good and any able-bodied man or woman, who is willing to work, is employed. The day has gone when it was possible to amass a vast fortune but the residents of Slaton are faring better now than at any time anyone in Slaton can remember.

It is to be expected that some expressions of caution will be heard but the lid is off and the South Plains is no doubt scheduled to grow faster and stronger than it has ever grown before and Slaton is slap bang in the middle of the richest belt of land and in an area of irrigation that weather, labor strife and political furor are not likely to change.

It is a good time to put your trust in our section of the world. . . "it is later than you think." A. M. J.

Groucho Marx, on "overexposure": "Matrimony and comedy are not dissimilar. Both should be used sparingly. Indifference breeds contempt. If you have contempt, you don't have much laughter."

These small foreign cars are attracting worlds of attention these days. A story goes round about the big man who looked at a very small imported car, and asked the salesman:

"How do you get into this thing?"

"You don't," said the salesman, "you just put it on."

And there is one about the man who was crossing the street when a big hound dog, running at top speed side-swiped him and knocked him down. As he was getting to his feet a small car hit him, and down he went again.

Bystanders helped him to his feet, and one asked if he was hurt? He said:

"No, I'm not really hurt. I don't think. In fact, is it the dog knocking me down that bothers me, but the car that hit me gave me an awful wallop."

HARVEST MOON



Drawn by Lou Grant for the National Safety Council

The Sounding Board

Bill Neal in the McLean News: "The height of self-control is to eat one salted peanut . . . and quit."

Good friend Ed Eakin, editor of the Quanah Tribune-Chief, had some pretty strong words in his column last week, to wit: "Quanah needs label changers; a rugged individual who refuses to fit preconceived images; an iconoclast, if you please. Let him stretch the seams of the coat of it does not fit. What he has to offer let him offer it; a painting of his own hand, not a carbon copy of another . . ."

Most of Ed's readers, I predict, will nod approvingly and murmur, "Ain't it so? One thing about me, I sure do as I please and don't care what other folks think." Then chances are that in a couple of days they'll buy a new suit or dress because their old one is "out of style," or attended that "silly" party of Mrs. Smith's because "after all, it's expected of us," or sneak off in the back room for a "highball" since there's "no use causin' talk." And they will go on holding the same political, social and religious beliefs as their grandfathers, etc.

An iconoclast is an image breaker, one who spoofs at long-standing beliefs or superstitions—yes, a radical. And it's the accepted idea that anyone whose beliefs seem much different from what most folks think, is a

countless trivial days of utter boredom that are as sand ballast on the barge of life.

To say that we can not select our enemies is not always true. In most instances we create an enemy with more deliberation than we do a friend. Also it requires about as much effort to keep an enemyship active as is needed to keep pulse in a friendship.

Each time I condescend to the point of offering technical advice to a contemporary I am jolted back on the spur pieces of my boots with the affront that I have made a mess of my own endeavors.

Women are not difficult to understand when their behavior is considered from hypothesis that logic is irrelevant and past experience is a classic but preposterous experiment.

Modern washing and drying machines have an acceptable place in the home of today but they furl the most enchanting flag of domesticity in making the clothes line obsolete.

To measure a man by the amount of money he has acquired is as meaningless as to measure the sea by the amount of kelp it contains.

Honestly is not a policy but the formula for life. The truly great down through the ages have essayed first to be honest with themselves.

A popular saying affirms that "flattery will get you no where" but a prudent wife is not given to offer her endorsement.

—SOUNDING BOARD—

Douglas Meador in The Matarador Tribune:

Perhaps one of the kindest features of a poor memory is the relief from remembering the

IT'S A "SNAP"

To Make Your Own

JAM and JELLY

WITH

PEN-JEL

NATURAL APPLE PECTIN

SOUTHLAND SEED AND DELINTING

is now

OPEN AND OPERATING!

CUSTOM SEED PROCESSING

Saw Delinted, Culled, Treated and Fertilized

ALL KINDS
Of State Certified Seed

SOUTHLAND SEED AND DELINTING

Five Blocks East of Lubbock Highway In Southland
Owned and Operated by C. E. Basinger and Sonny Hitt

WY 6-2331

WY 6-2766

VALUE-RATE the ROCKET
AT YOUR AUTHORIZED QUALITY DEALER'S

Of course
an Olds
is worth more...
and your dealer
can prove it!

Total value is the secret of Oldsmobile's Rocketing sales success! Total value takes into consideration both first cost and what you get back at trade-in time.

Total value means things like Rocket Engine power . . . a Wide-Stroke Chassis . . . Air-Scoop Brakes on all four wheels! It means all the extra pleasure and pride that's yours when you own an Olds! It means you are getting the best built car in the medium price class . . . the best value for your money!

Ask your Oldsmobile dealer to Value-Rate the Rocket for you before another day passes!



OLDS BY EVERY MEASURE . . . THE VALUE CAR OF THE MEDIUM PRICE CLASS!

DAVIS MOTOR CO., Lubbock Highway

Washer* DISHWATER HANDS



Lovely hands, aren't they? So different from dishwasher hands. When you wash dishes by hand — they should be in 150° water for two minutes — think what that does to your hands — even with gloves on. You end all this with an electric dishwasher. It takes the hot water in stride inside the cabinet. Your hands will be smoother, softer, lovelier. Manicures will last longer, too. Don't have dishwasher hands — have lovely dishwasher hands.

ATTENTION! HUSBANDS

Remember how lovely her hands were before you made a dishwasher out of her? Well, don't let her be a dishwasher — buy one Reddy's way to run it will be 1/10c a day.



*AVAILABLE IN BUILT-IN OR PORTABLE MODELS

SEE YOUR
REDDY KILOWATT
ELECTRIC
APPLIANCE DEALER



SOUTHWESTERN
PUBLIC SERVICE
COMPANY

KNOW YOUR SLATON BUSINESS MEN AND FIRMS

In order to encourage the people of this area to become better acquainted with leading South Plains business firms and the men who are and those who have been instrumental in their establishment and growth the Slatonite will carry historical sketches at regular intervals. The information will be told in a way to make it as interesting as possible

and it is hoped that each sketch will be read by everyone who is interested in the growth of this area.

Do business with these firms when possible and you will do your share toward the further development of the South Plains and they in turn will be of benefit to you by being able to give you better service and quite often more economical prices.

Bownds Body Shop
Radiators and Repairs
Auto Glass and Installation
Fender Repairs and Auto Painting
1000 S. 9th VA 8-4447

Teague Drug Store
Prescription Specialists
Phone VA 8-4535

Porter Lumber Co.
Quality Building Materials
At Reasonable Prices
1350 S. 9th VA 8-3711

- Pax Crabgrass and Soil Pest Control
- Turfmagic (Ironized) Plant Food
- Ortho C-56 For Johnson Grass Control
- Benzac Bindweed Control

Ayers Supreme Feed Slaton Farm Store



SLATON FARM STORE

The Slaton Farm Store, located at 608 South 8th Street, is the subject for this week. It is owned and operated by Joe Van Ness. When first established the firm only handled feed, now the store is the local dealer for Ayers Supreme Feeds, which are manufactured by Ray C. Ayers and son, the modern feed plant located here in Slaton. This firm is also the distributor of aluminum irrigation pipe for the Brown Supply Co.



JOE VAN NESS and CHARLEY AGUILAR, left

Slaton Farm Store also handles a complete line of garden supplies and soil fertilizers. They are also handlers of Ortho insecticides and cotton poisons. The firm also carries a line of plastic pipes from 1/2 inch to 2 inches in width. Mr. Van Ness was born in Anson, Texas. He came to Slaton on Nov. 1, 1945 after his discharge from the military service. He then lived at 225 W. Crosby. He and his mother now reside at 655 South 11th Street. For the best in farm supplies and friendly service, see Joe Van Ness or Charley Aguilar at the Slaton Farm Store. You'll enjoy it.

CARROLL SERVICE STATION
COSDEN PRODUCTS All Brands of Oil
Butane and Propane
MANSFIELD TIRES
932 Railroad Avenue VA 8-4206

There's
Something
For Every Man
and Boy
at
O.Z.'s

Slaton Implement Co.
your
International-Harvester
dealer
Sales and Service
300 S. 9th VA 8-3176

Custer Gulf Service
See us for that famous
Gulfpride Motor Oil
Three Outstanding Gasolines.
Expert wash and grease job.
E. B. and T. D. Custer
305 S. 9th VA 8-7128

Slaton Bakery
Home-made Bread
Baked Daily
Full Line of Pastries
Open till 12:00 Sunday
640 W. Division VA 8-3253

Around and About Slaton

J. B. Huckabay, who for a good many years was a member of the civil engineering staff of The Santa Fe here as water expert, but who is now stationed in Clovis, was a visitor in Slaton over last week end looking spry.

James Cole, Sr., local contractor and builder, lost a small section of one of his fingers while operating an electric saw. You gotta watch those things.

Mrs. June Spikes, who is employed in the business department of the Santa Fe, at last report was slowly recovering from a long siege of summer flu.

Mrs. W. C. Crawford, formerly Miss Ruth Austin, whose home is, Clovis, New Mexico, at last report was recovering as rapidly as could be expected from a major operation. Her two young sons who have been spending the last two weeks with their grandparents, Mr. and Mrs. Charley Austin, and will return home loaded with gifts of bicycles, guns, etc. When informed by Mrs. Austin that their grandparents are planning on building a new home in Slaton and moving away from their farm, both pleaded that such plans should be abandoned. "Stay out here and be old fashioned" is their suggestion.

"Things never are right in the real estate business" complains one local dealer "used to be it was very difficult to find a buyer, now it is practically impossible to find a seller. If it were not for our insurance business we would be getting hungry right here in the middle of the most prosperous times this section has ever enjoyed."

One of the street corner cynics is sure it is not a scourge of intestinal flu that has the doctors so busy but just the annual black eyed pea season in full swing. "Don't let anyone give you a big mess of peas," he says, "it will bring on trouble every time."

Mr. and Mrs. Otis Browning, of Lamesa, were visitors in Slaton last week. Both are former Slaton residents.

Mrs. Le Roy Holt, Phillip and Rebecca Holt are visiting Mr. and Mrs. J. D. Holt and Mrs. Holt's mother in Lubbock. Le Roy Holt is spending a vacation from his studies at Weatherford, Okla., with his parents. Mrs. A. M. Jackson returned

last Sunday from Dallas where she went for a physical examination at Saint Paul's Hospital.

Mr. and Mrs. Howard Swanner and Mr. and Mrs. Harry Stokes returned last Sunday from a trip to Red River, Ruidoso and other points in New Mexico. Enroute home they visited what Howard estimates as one of the biggest Nurseries in the United States and perhaps the world. "Never saw as many plants, trees and things to spend money on in my life," said the weary traveler.

A. M. J.

RETURNS HOME

Mr. and Mrs. Delma Hodge have just returned home from a vacation to South Fork, Colo., where they attended the Hodge Reunion. Those attending were Mr. and Mrs. W. S. Hodge of Winslow, Ariz.; Mr. and Mrs. J. L. Smith and Judy and Mr. A. H. Hodge, Terry and Elaine all of Slaton; Mr. and Mrs. R. L. Taylor and Betty of Littlefield; Mr. and Mrs. J. B. Butler, Eva and Sharon of Cactus; Mr. and Mrs. Donnie Bill Hodge and children of Winslow, Ariz.; Mr. and Mrs. Bill Miller and children of Winslow, Ariz.; Mr. and Mrs. Claude Hodge of Falado, Texas, and Mrs. Delbert Geer and Steven of Slaton.

The Hodes then left there and went to Wichita, Kansas, where they spent a week with Mr. and Mrs. Bennie Johns, Cal and Tanya. Mr. and Mrs. Johns accompanied them to Lake of the Ozarks in Missouri. They came back by way of Oklahoma City where they visited a little frontier city. They then went to Cactus and returned to Slaton Thursday.

Dr. and Mrs. William Wootten of Minneapolis, Minnesota, visited with their parents, the Rev. and Mrs. F. A. Wittig last week. The Woottens are on their way to Phoenix, Arizona where Dr. Wootten will be teaching at the University of Arizona, beginning in September.

**Slaton Lodge No. 1094
AF & AM**
Stated Meetings 2nd and 4th Thursday Nights in Each Month.
R. L. Smith, W.M.
J. H. Gordon, Secretary

SEIDLITZ
OUR FINEST QUALITY PAINTS
PAINT SALE
porch & floor enamel... 99¢ qt. (a \$2.15 Value)
54 COLORS
decorators house paint... \$4.98 gal. (a \$6.05 Value)
178 COLORS AND WHITE
Seidlitz exterior house paint... \$5.89 gal. (a \$7.15 Value)
178 COLORS AND WHITE
Many other Seidlitz products also sale priced... for limited time only
Guaranteed by Good Housekeeping

LASATER-HOFFMAN HARDWARE

Bland's Furniture
U. S. Koylon Bedding
Mohawk Carpet
Strato Lounge Chairs
Armstrong and Goldseal
Floor Covering
General Electric Appliances

Why Not Buy The Best?
Whirlpool Washers
R C A Victor Hi-Fi and Television
Coolmore Air Conditioners
Essick Air Conditioners
Scott and Oliver Motors
Bain Auto Store
146 W. Garza VA 8-4652

Famous Name Brands at Huser Hatchery
• PURINA
• DEKALB
• GREEN LIGHT
• DOW
• ORTHO
• DR. SALSBUURY
• LEDERLE
• PTIZER TERRAMYCIN
• TEX CERTIFIED FIELD SEED

We Cater all types of WEDDINGS at **CHURCH HOME** and RECEPTION
We do the details of all the decorating at a specified price... Estimates given.
Chriesman Floral
142 Texas Ave. VA 8-3452

Henzler Grocery
Colorado Alberta Peaches, lb. 10c
Borden's Home Treat Mellorine 39c
White Spuds, 10 lbs. 49c
Plenty of Black Diamond Watermelons.
930 S. 9th VA 8-3192

N. H. ROBERTS
Cement Contractor
For YOUR best in cement work, we take pride in QUALITY work.
Give Us A Try
ALL TYPES OF WORK GUARANTEED
1305 So. 11th VA 8-3151

Self
Furniture

WATER

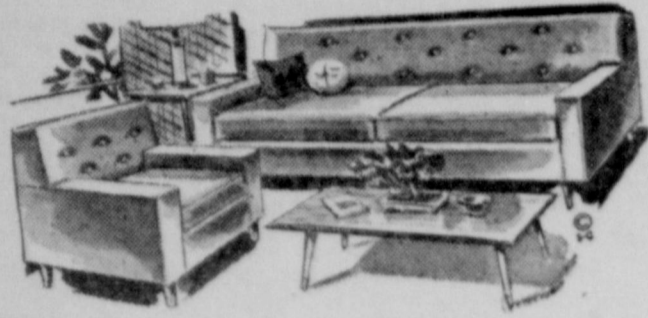
DAMAGE

Self
Furniture

SALE

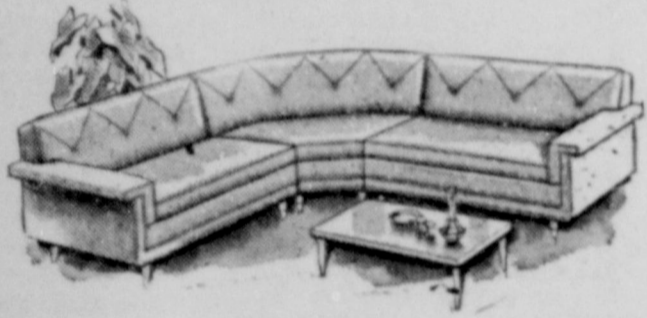
Damage has been confined to a few items, however all items are on sale. All items will be on display for your inspection, NO REFUNDS OR EXCHANGES. All sales will be cash, no trade in's except on items as marked. All items sold strictly as is.

2pc LIVING ROOM SUITES



- Brown 2pc Suite regularly \$169.50 NOW \$99.50
- Print 2pc Studio Suite with skirt, regularly \$149.50 NOW \$79.50
- Foam Rubber Cushion 2pc Living Room Suite, reg. 229.50 NOW \$159.50
- Bumper Ends 2pc Studio Suite, regularly \$219.50 NOW \$149.50
- Supported Plastic 2pc Sofa Bed & Chair, reg. \$229.50 NOW \$199.50

SECTIONALS



- New Estron Fabric 3pc Davis Foam Rubber Sectional, regularly \$429.50 NOW \$299.50
- 3pc Maddox Sectional, regularly \$269.50 NOW \$179.50

ASSORTED, DAMAGED, LIVING ROOM

TABLES.. \$ 5⁰⁰

CHAIRS

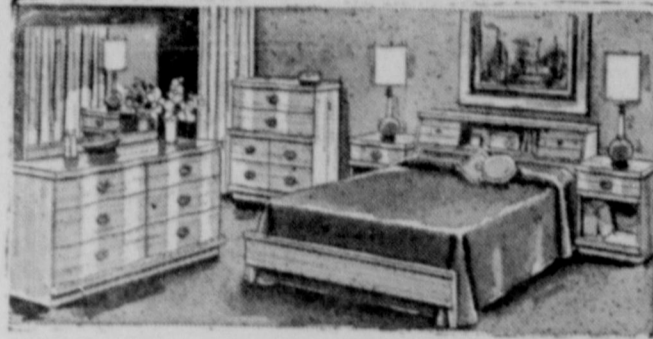
- Early American spot chairs print cover, reg. \$69.50 NOW \$39.50
- Early American club chairs, reg. \$119.50 NOW \$79.50
- Foam Rubber Berkline recliner, reg. \$139.50 NOW \$99.50
- Rockin-N-Rest Maxwell Royal, rockers, reg. \$119.50 NOW \$89.50
- Patchwork Maxwell Royal rockers, \$119.50 NOW \$89.50
- Recliners, regularly \$89.95 NOW \$59.95
- Assortment of chairs, values to \$69.50 NOW \$34.50
- Swivel rockers by Maxwell Royal, reg. \$139.50 NOW \$99.50
- High Back Fire Side Chairs Skirts Solided, reg. \$99.50 NOW \$49.50

APPLIANCES & T.V.

- OKeefe & Marriott Range, reg. \$429.50 NOW \$299.50 plus trade
- Tappan Range, reg. \$299.50 NOW \$199.50 plus trade
- Admiral Portable Dishwasher, reg. \$249.50 NOW \$199.50
- Admiral 13 cu. ft. 2 door Dual Temp refrigerator, regularly \$499.50 NOW \$399.50
- Admiral 13 cu. ft. automatic defrost refrigerator, regularly \$399.50 NOW \$279.50
- Admiral 21" remote control T.V. base free, reg. \$349.50 NOW \$269.50
- Maple 21" T.V. HiFi Decorator-original cabinet, reg. \$499.50 NOW \$379.50

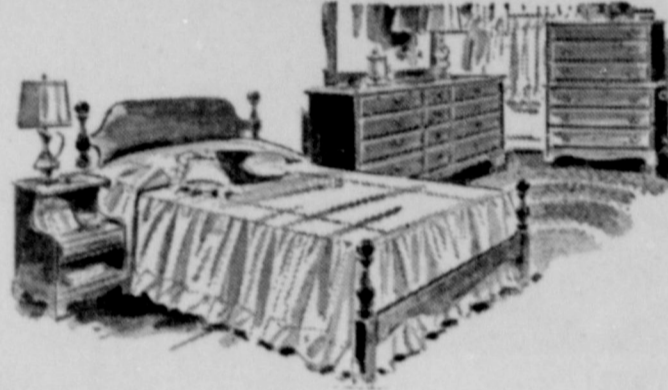
- Bronze 7pc Dinette by Falcon, reg. \$149.50 **\$99.50**
- 7pc Dinette Suite, reg. \$129.50 **\$79.50**

BEDROOM SUITES



- Grey 3pc Basset bed room suite triple dresser, reg. \$329.50 NOW \$229.50
- Mahogany 3pc bed room suite, regularly \$269.50 NOW \$169.50
- Brown tone 2pc Basset bed room suite, reg. \$189.50 NOW \$139.50
- Limed Oak 2pc bedroom suite, regularly \$159.50 NOW \$109.50

MAPLE BEDROOM SUITES



- Solid Maple top on Double Dresser, with bed, reg. \$139.50 NOW \$99.50
- Solid Maple 3pc bedroom suite, by National, reg. \$299.50 NOW \$199.50
- Colony Arts bed, nite stand, chest, Triple dresser with damaged Top, reg. \$379.50 NOW \$229.50
- Solid Maple double dresser, bed, & nite stand, reg. \$279.50 NOW \$199.50

WHITE HOUSE PAINT

48 GALLONS LEFT

\$6.95 \$3.95

REG. NOW

LIONEL ELECTRIC TRAINS

WHILE THEY LAST

\$49.95 \$19.95

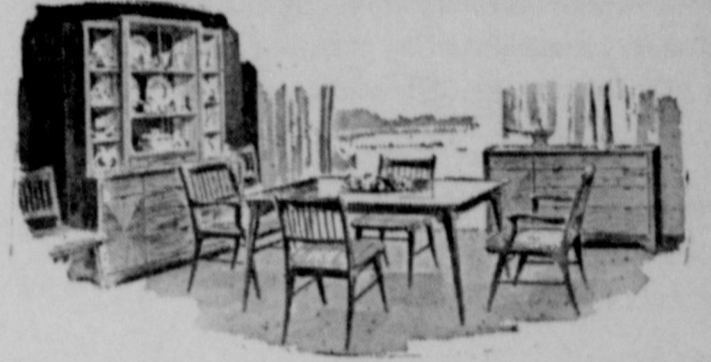
REG. NOW

ASSORTED

LIVING ROOM FURNITURE

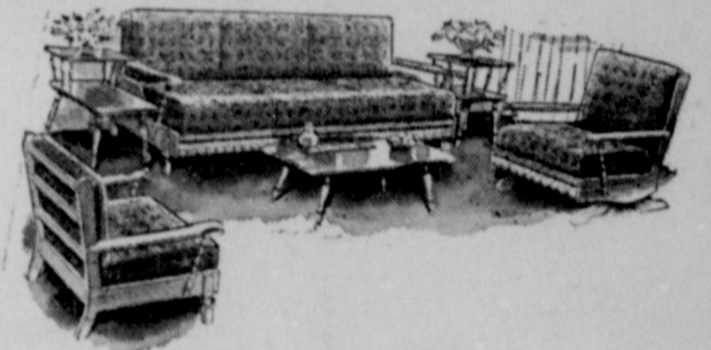
- Quilted Sofa, reg. \$350.00 NOW \$229.50
- Float-in-Ez Sofa, reg. \$269.50 NOW \$179.50
- Colony Arts Sofa Bed Combination, reg. \$249.50 NOW \$179.50
- Maddox Lounge Sofa Foam Rubber, reg. \$149.50 NOW \$99.50
- Sofa Sleepers by Englander & Rush Foam Cushions with Interspring Mattresses \$179.50
- Maddox Sofa in beautiful toast material, reg. \$269.50 NOW \$179.50
- Sealy Lounge Sofa Plastic Cover, reg. \$99.50 NOW \$69.50
- Charcoal Couch 100", reg. \$279.50 NOW \$179.50

DINING ROOM SUITES



- Solid Walnut 8pc D.R. suite table damaged, reg. \$369.50 NOW \$199.50
- Ivory 8pc Basset D.R. suite, regularly \$389.50 NOW \$249.50
- Dulaney Sectional regularly \$329.50 NOW \$229.50

MAPLE Living Room SUITES



- M.—LR suite 5pc sofa bed, swivel rocker, 2 steptables and Coffeetable, reg. \$249.50 NOW \$139.50
- M. studio suite 3pc, reg. \$249.50 NOW \$149.50

CEDAR CHESTS 29.50 up

FLOOR COVERING

- 100% wool carpet installed over waffle pad, reg. \$9.95 NOW \$7.49
- 100% wool wilton carpet installed over rubber pad, reg. \$12.95 NOW \$9.95
- All damaged Sandran vinyl linoleum \$1.29 per yard

EARLY AMERICAN ACCESSORIES

As Much As 50% Off

MISCELLANEOUS ITEMS

- Sealy Mattress Slightly water damaged, reg. \$49.50 NOW \$29.50
- Sealy Mattress, Golden Sealy, reg. \$59.50 NOW \$39.50
- Sealy Box Springs Golden Sealy, reg. \$59.50 NOW \$39.50
- Admiral Hi-Fi (mhg.) Console, reg. \$139.50 NOW \$99.50
- Admiral Stero-Portable, reg. \$149.50 NOW \$99.50
- Admiral Stero-Console (pecan-wood) reg. \$299.50 NOW \$199.50
- White Metal Cabinets as low as \$9.95
- Dresso-Desks in solid Ash, ideal for school children, reg. \$79.50 NOW \$44.50
- Hollywood Headboards \$5.00 and up
- Bunk Beds with Mattresses, reg. \$129.50 NOW \$79.50
- Unfinished Corner Cabinets, reg. \$27.50 NOW \$17.50
- Baby Bed Double Drop Side, reg. \$39.50 NOW \$29.50
- Baby Mattress, reg. \$12.95 NOW \$9.95
- Lamps \$5.00 and up

SELF FURNITURE



LOST • RENT • SELL • BUY • HIRE • TRADE

"YOU'LL FIND IT IN THE WANT ADS!"

FOUND • SERVICE • EMPLOYMENT • PERSONAL



The Slaton, Texas, Slatonite Thursday, August 20, 1959

For Rent

FOR RENT—Service station or Read's drive-in by Post Office. Call VA 8-3907, McWilliams Day Goods Store. tfe-10

FOR RENT—Bedroom private entrance. 355 N. 6th. Call VA 8-3465 if no answer see Mrs. Brookshire at Teague Drug. tfe-44

FOR RENT, or sale—Wicker school lunch bar equipped for operation. Reference, VA 8-3902 or VA 8-4627. tfe

FOR RENT—Floor Sanders—Floor Polishers. Lasater-Hoffman Hardware. tfe-53

FOR RENT—Front bed room, private entrance near bath. 325 So. 5th. VA 8-3850. ttp-45

FOR RENT—Front bedroom adjoining bath. Just east of West Ward School. 230 S. 12th. Call VA 8-3421. tfe-45

FOR RENT—Nice bedrooms. 230 S. 5th or Call VA 8-3600. tte-45

FOR RENT—Private entrance bedroom, across hall from bath. Call VA 8-3808. tfe-45

FOR RENT—Five room furnished apt. very reasonable price. R. E. Whitehead, VA 8-3661, 209 1/2 Garza St. 2tp-45

FOR RENT—Nicely furnished 2 bedroom apartment, carpeted throughout, air conditioned, plumbed for washer, bills paid. Call VA 8-4835. tte-45

FOR RENT—Four room furnished apartment. VA 8-3892, 120 W. Panhandle. tfe-45

Miscellaneous

MATTRESSES—Bring your mattress problems to us. Mattresses of all kinds. Felted—Box spring and innersprings starting at \$19.50. Call Lola Palmer, Slaton representative, VA 8-4824. American Mattress Co. tfe-26

WE OFFER—Complete Fur Service... Cold Storage, cleaning, glazing, electrifying. Bonded and insured. Quality Drive-In Cleaners. VA 8-3406. tfe-32

FOR DITCHING, landscaping and back filling, see or call A. D. (Buz) Klader, shop pho. VA 8-3971, Residence VA 8-4608 or C. C. (Cliff) Weaver, pho. VA 8-4797. tfe-15

TILLI'S FURNITURE upholstery offers free estimates reasonable prices and guaranteed work. Mrs. Fred Perdue, 45. W. Scott, phone VA 8-3760. tfe-49

SPOTS before your eyes—on your new carpet—remove them with Blue Lustre. Lasater-Hoffman Hardware. tte-45

MAGUIRK ELECTRIC

5th and Murray
4 Blocks East of
Porter Lumber Co.
VA 8-3877

For Sale

FOR SALE—Used automatic washers, at Self Furniture. tfe-43

FOR SALE—Equity in Duplex House. Complete furnishings in one apartment. Car be seen at 325 W. Lynn or call VA 8-4890. tte-43

FOR SALE—Three one-bedroom houses in excellent location. Always rented. \$650 down for all three. All must be sold together. Call VA 8-3918 R. W. Bowman Jr. TFC-43

FOR SALE—Three bedroom house, carpeted, never vacant, reasonable price. 220 S. 5th or Call VA 8-3600. tte-45

FOR SALE—Three room house, bath and fixtures, utility room wired and plumbed for washer and dryer. 1240 S. 10th, VA 8-4435, Wesley Reed. tte-45

FOR SALE—One-wheel trailer, equipped for travel. Boxed-in and waterproof. racks, etc. Call H. B. Richardson, VA 8-3890, 255 W. Crosby. ttp-45

FOR SALE—Admiral 30 inch Electric range 3 years old Guaranteed \$99.00, at Self Furniture. tfe

FOR SALE—Used Smith-Corona hand-operated adding machine. In very good condition. A really good buy at \$55. See it at Slaton's home-town office supply center, The Slatonite. tfe-37

FOR SALE—Gallon sizes of Floor Finishes and Polishers. Lasater-Hoffman Hardware tfe-53

FOR SALE—wheels, 15 inch, for Chevrolet, five or six hole Fords and most other makes. Tires and tubes. Ted and Juell's Garage. 1200 S. 9th, VA 8-7132. tfe-44

FOR SALE—Good as new, used Electric Guitar and amplifier, VA 8-3781, 605 South 16th St. ttp-25

FOR SALE—Black-eyed peas, \$75 a bushel and you pick them. 5 miles south of Slaton. Phone VA 8-4024, W. T. Joines. 2tc-44

Appliances repaired, call VA 8-4833 1330 So. 12th St. R. E. (Lige) Shewmake. tfe-43

LOST bright carpet colors... restore them with Blue Lustre carpet and upholstery cleaner. Lasater-Hoffman Hardware. tte-45

NEW—19 inch rotary mower, heavy cast aluminum base, \$49.50.

NEW—5 H.P. outboard motor, 3 gal. remote tank weight 30 lbs. \$139.50.

FOR FLYING MODELS, see Bourn Cycle.

FOR MOHAWK mowers, see Bourn Cycle.

BOURN CYCLE SHOP
640 S. 9th VA 8-3614

Wanted

WANTED—Lady for soda fountain help, contact Mrs. Warren, at Slaton Pharmacy, VA 8-3141. tte-45

WANTED—Sand and gravel to haul. Call VA 8-4250, Arvil Cheak. tte-45

WANTED—I will keep children in my home daily for working mothers or will sit in your home at night. Call VA 8-3968, Mrs. Inez Bruster. tte-45

WANTED—Children to keep in my home daily or will sit in your home at night. Call VA 8-3968, Mrs. Inez Bruster. tte-45

WANTED—Discarded clothing and household necessities. Shoes, boots, radio, irons, etc. 125 W. Lynn St. tfe-13

WANTED—Cotton seed for delinting. Southland Seed and Delinting, WY 6-2331 or WY 6-2766, Southland. tfe-23

WANTED—Inside help. Good wages for the efficient person. Wing Ding Drive-In. tfe-44

FOR RENT—Bedroom, private entrance across hall from bath. Call VA 8-3808. tfe-44

MODERN cleaning ingredients in Blue Lustre are the mildest. Leaves pile soft and bouncy. Lasater-Hoffman Hardware. tte-45

FOR SALE or **TRADE**—1952 Studebaker Starlight coupe, clean, Jack Brookshire, 1040 S. 21 st., Slaton. Ph. VA 8-3706. 2tp-45

FOR SALE—nice selection of good used refrigerators, at Self Furniture. tfe-43

\$400 MONTHLY SPARE TIME Regiling and collecting money from our high grade candy, nuts and gum machines in this area. No selling! To qualify for work you must have car, references, \$600 to \$1900 Cash. Secured by inventory. Devoting 7 hours a week to business your end of percentages of collections will net up to \$400 monthly. With very good possibilities of taking over full time. Income increasing accordingly. For interview include phone, write P.O. Box 1055, Boise, Idaho. ttp-45

You are commanded to appear by filing a written answer to the plaintiff's petition and First Supplemental Petition at or before 10 o'clock A. M. of the first Monday after the expiration of 42 days from the date of issuance of this Citation, the same being Monday the 14 day of September, A. D. 1959, at or before 10 o'clock A. M. before the Honorable 99th Court of Lubbock County, at the Court House in Lubbock, Texas.

Said plaintiff's petition was filed on the 21 day of April, 1959.

The names of the parties in said suit are: Horace Walker as Plaintiff, and B. W. Maxwell, Nettie Bisbee and husband, S. C. Bisbee, Fannie M. Scott and all those cited in this citation, as

Defendant.

The nature of said suit being substantially as follows, to wit: This is a Trespass to Try Title Suit in which the Plaintiff seeks title and possession of Lots One (1), Two (2), Three (3) and Four (4) in Block Seventy-five (75) of the South Slaton Addition to the Town of Slaton, Lubbock County, Texas, and being or containing four town lots of land.

Plaintiff specially pleads that he has title under the 5 and 10 year Statutes of limitations regarding land in Texas as set forth in the Revised Civil Statutes of Texas.

If this Citation is not served within 90 days after the date of its issuance, it shall be returned unserved.

Issued this the 27 day of July

Real Estate

REAL ESTATE—Howard Carlson, offices with E. G. Richerson, 2317 34th, Lubbock. 160 acres, well improved and irrigated, near Slaton. Small acreage, improved, near Slaton. TFC-29

For Sale

FOR SALE—A \$300.00 trumpet used only one year by student. \$150 cash. See it at 850 So. 12th St. or Phone VA8-3886. 4tp-42

Have your prescriptions filled at **TEAGUE DRUG STORE** by a registered pharmacist

FOR TRADE—Equity in 10x45 trailer house for two or three bedroom house across from Santa Fe depot, A. B. Thompson 2tp-44

FOR SALE—Good Jersey cow, fresh. John A. Steffens. ttp-45

FOR SALE—Brand new const. trombone with streamline case for \$225. Call VA 8-3541 or see Bob Kern, or Pember Insurance Agency. TFC-45

FOR SALE or **TRADE**—1952 Studebaker Starlight coupe, clean, Jack Brookshire, 1040 S. 21 st., Slaton. Ph. VA 8-3706. 2tp-45

FOR SALE—nice selection of good used refrigerators, at Self Furniture. tfe-43

\$400 MONTHLY SPARE TIME Regiling and collecting money from our high grade candy, nuts and gum machines in this area. No selling! To qualify for work you must have car, references, \$600 to \$1900 Cash. Secured by inventory. Devoting 7 hours a week to business your end of percentages of collections will net up to \$400 monthly. With very good possibilities of taking over full time. Income increasing accordingly. For interview include phone, write P.O. Box 1055, Boise, Idaho. ttp-45

You are commanded to appear by filing a written answer to the plaintiff's petition and First Supplemental Petition at or before 10 o'clock A. M. of the first Monday after the expiration of 42 days from the date of issuance of this Citation, the same being Monday the 14 day of September, A. D. 1959, at or before 10 o'clock A. M. before the Honorable 99th Court of Lubbock County, at the Court House in Lubbock, Texas.

Said plaintiff's petition was filed on the 21 day of April, 1959.

The names of the parties in said suit are: Horace Walker as Plaintiff, and B. W. Maxwell, Nettie Bisbee and husband, S. C. Bisbee, Fannie M. Scott and all those cited in this citation, as

Defendant.

The nature of said suit being substantially as follows, to wit: This is a Trespass to Try Title Suit in which the Plaintiff seeks title and possession of Lots One (1), Two (2), Three (3) and Four (4) in Block Seventy-five (75) of the South Slaton Addition to the Town of Slaton, Lubbock County, Texas, and being or containing four town lots of land.

Plaintiff specially pleads that he has title under the 5 and 10 year Statutes of limitations regarding land in Texas as set forth in the Revised Civil Statutes of Texas.

If this Citation is not served within 90 days after the date of its issuance, it shall be returned unserved.

Issued this the 27 day of July

Legals

THE STATE OF TEXAS

TO: Pauline Carmichael and Fred P. Carmichael; all persons claiming any title or interest in the hereinafter described land under the deed heretofore given to J. Foster Scott, Jr., whose residence is shown in said deed to be the County of Curry, State of New Mexico, dated November 21, 1912, and of record in Volume 46 at page 79 of the Lubbock County, Texas Deed Records, reference to which record is hereby made for all legal purposes; all persons claiming any title or interest in the hereinafter described land under the deed heretofore given to George L. Sledge, whose residence is shown in said deed to be in the County of Lubbock State of Texas, as grantee dated September 4, 1911, and of record in Volume 39 at page 290 of the Lubbock County, Texas Deed Records, reference to which record is hereby made for all legal purposes; all persons claiming any title or interest in the hereinafter described land under the deed heretofore given to Ida Nix et al., the residence of each whom is shown in said deed to be the County of Lubbock, State of Texas, as grantees dated January 17, 1920, and of record in Volume 61 at page 449 of the Deed Records of Lubbock County, Texas, reference to which record is hereby made for all legal purposes; and all persons claiming any title or interest in the hereinafter described land under the deed heretofore given to Pauline Carmichael* dated April 23, 1927 and of record in Volume 114 at page 340 of the Deed Records of Lubbock County, Texas, reference to which record is hereby made for all legal purposes. F. Foster Scott and anyone claiming under F. Foster Scott* whose residence is shown in such deed to be Lubbock County, Texas.

GREETINGS: You are commanded to appear by filing a written answer to the plaintiff's petition and First Supplemental Petition at or before 10 o'clock A. M. of the first Monday after the expiration of 42 days from the date of issuance of this Citation, the same being Monday the 14 day of September, A. D. 1959, at or before 10 o'clock A. M. before the Honorable 99th Court of Lubbock County, at the Court House in Lubbock, Texas.

Said plaintiff's petition was filed on the 21 day of April, 1959.

The names of the parties in said suit are: Horace Walker as Plaintiff, and B. W. Maxwell, Nettie Bisbee and husband, S. C. Bisbee, Fannie M. Scott and all those cited in this citation, as

Defendant.

The nature of said suit being substantially as follows, to wit: This is a Trespass to Try Title Suit in which the Plaintiff seeks title and possession of Lots One (1), Two (2), Three (3) and Four (4) in Block Seventy-five (75) of the South Slaton Addition to the Town of Slaton, Lubbock County, Texas, and being or containing four town lots of land.

Plaintiff specially pleads that he has title under the 5 and 10 year Statutes of limitations regarding land in Texas as set forth in the Revised Civil Statutes of Texas.

If this Citation is not served within 90 days after the date of its issuance, it shall be returned unserved.

Issued this the 27 day of July

Police Handle Seven Felonies

A busy Slaton police department has handled seven felony arrests during the past few weeks while confiscating numerous quarts of bootleg beer and in general making it rough for law violators.

Three men were arrested in connection with forgery activities, three persons were filed on for felony and 112 were ticketed for traffic violations since July 1.

Trial will be held August 24 or Ervin Mitchell, Clyde Marisweather and John W. Harde-man, three local colored males, on charges of forgery and passing. The trial will be in district court, Lubbock. The three were arrested after a forged instrument was passed at the local Piggy-Wiggly store.

Felony theft charges were filed against Margaret Arant, Herbert Clark Smith and H. W. Jones. Bonds of \$1,000 have been set in the three separate cases and trial dates are not yet set.

Frank Green is charged in district court with the burglary of a cafe on New Mexico street and is charged in county court with transporting liquor in a dry area.

So far during August alone, the department has confiscated approximately 800 quarts of beer and 24 pints of wine and turned it in to the Liquor Control Board.

During July, the local police investigated five burglaries and three attempted burglaries, two felony theft cases, six misdemeanor thefts, and one theft of auto accessories, clearing the two felony theft cases. One burglary was clear by arrest and two cases of vandalism were investigated.

A total of 19 offenses were reported during the month, with 11 still active at the month's end report made by Chief Eugene L. Martin.

Misdemeanor cases during the month ranged from consuming an alcoholic beverage in public to breach of the peace by A. D. 1959.

Given under my hand and seal of said Court, at office in Lubbock, Texas, this 27 day of July A. D., 1959.

Emzy Pieratt, District Clerk 99th District Court, Lubbock County Texas.

By Lee Taylor, Deputy. 4TC-44

Touchdown Club Elects Officers For New Year

The Touchdown Club, boosters of Slaton High School athletic teams, elected officers and got organized for the school year at a meeting Monday night.

Dave Sanders will serve the group as president for the next year. Elton Smith will be vice-president and J. W. Bagby will serve as secretary-treasurer.

Sanders and Coach M. W. Kerr will be in charge of the printing committee while A. C. Burk and Howell Sammons will direct the activities of the advertising committee.

Membership sales will be headed by Robert Huser. Chairmen have not yet been selected for the program sales and camera man committees.

The club has already functioning, also, as it voted to purchase new sideline markers for the football field at this first meeting.

Top Teenagers...

(continued from page 1)

ton for October: June Johnson, November; Shirley Kitten, December; Dick Martin, January; James Murphy, February; Judy Dunn, March; Patsy Pettigrew, April; James Cole, May; and Gerald Kendrick, June. Kendrick was winner of the local Jaycee Safe-Driving Teenage Road-e-o.

The teenagers were picked as outstanding for their contributions to the community through their activities in school, churches and through good citizenship.

Chosen from these nine as "Outstanding Junior Citizen of the Year," and given an appropriate trophy, was June Johnson.

Sneaker for the evening was Melvin Lisman of Lubbock, Chief of Police Eugene Martin, Mayor Clark self Sr., and School Superintendent Lee Vardy were on the program, distributing certificates, naming the outstanding junior citizen, ect.

COUNTY MANAGER

MEN or WOMEN

To do contact work, compile information for Internationally recognized corporation. Highly rated in Dun and Bradstreet. Party accepted will be placed in a position where earnings should exceed \$100.00 weekly.

For immediate personal interview write BOX W % Slatonite, Slaton, Texas, giving age, address, phone number and occupation.

NOTICE

CHURCH HILL GROCERY

WILL BE CHURCH HILL GROCERY AGAIN

The school grocery wishes to invite the school children back for hot lunches again this year.

It will be run by Dorothy Height, the daughter of Mrs. Churchill until her return.

THANK YOU!

VA 8-4827



SHYTLES Implement Co.

Phone 33 Post, Texas



PEMBER Insurance Agency

135 N. 8th VA8-3541

USED FURNITURE BARGAINS

Several Big Bargains in Refrigerators
An extra nice Dining Suit. Four big bargains in Living Room Suits. We need room and have cut our prices to almost nothing.

Thompson Furniture
160 Texas VA 8-4445



FAST SERVICE Job Printing

EXPERT WORK AT MODERATE PRICES
Slatonite

For big, B-I-G! Used Appliance Bargains
Good used Freezers, refrigerators, and washing machines.

Layne Plumbing COMPANY
VA 8-3496

Remodeling LOANS

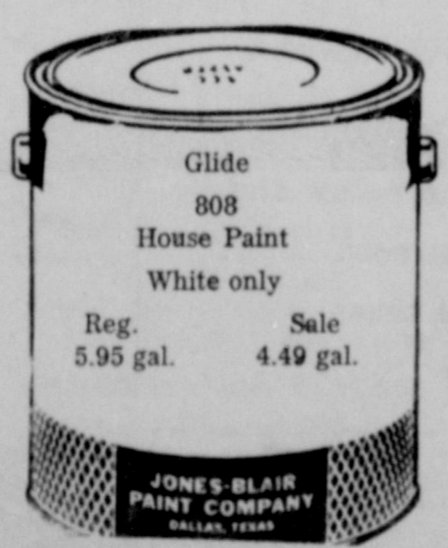
On all kinds of rebuilding Water Heaters, Bath Fixtures and Plumbing
Layne Plumbing Co.
Phone VA 8-3496

FOR RENT

Power saw, electric drills, electric sanders, floor polisher, electric copen saw, electric edgers, spray gun, by hour or day.

Higginbotham-Bartlett Co. tte

JONES-BLAIR PAINT SALE CONTINUES!



Higginbotham-Bartlett Co.
Phone VA 8-3159 Slaton, Texas

Sundial
100% House Paint
white only
Reg. 6.95 gal. Sale 5.49 gal.

Glide
808 House Paint
White only
Reg. 5.95 gal. Sale 4.49 gal.

STARK BRO'S

Fruit Trees Vines
Dwarf Fruit Trees Roses
Shrubs Perennials
Shade Trees Bulbs, etc.

Add \$1,000.00 or more to the value of your home.

Let me show you actual color photographs of Stark Exclusive Leader Varieties. No obligation. Telephone or write.

W. B. BROWN, Jr.
750 S. 10th VA 8-4449

STATE CAPITAL Highlights AND Sidelights

by Vern Sanford
TEXAS PRESS ASSOCIATION

Austin—None of the money-raising bills that failed to pass the Legislature during the past seven months were put away to

RICKER REFRIGERATION
905 W. Dickens St. VA 8-3786
PHILCO SUPERVISED AUTHORIZED SERVICE
on all makes Cooling and Heating Systems
REPAIRS — INSTALLATION —
ASPEN PAK — COOLING PADS

ROTO-HOE serves you all year long

It's Mow fun with an... Islander by ROTO-HOE Full 20" cutting width.

It's the multipurpose unit with an attachment for every use!

Change with ease using the PRESS-MATIC attachment system. Come in today—see for yourself what Roto-Hoe does for you... at a \$129.50 price you can easily afford.

THE DEAN OF INSURANCE

Bourn Cycle Shop
640 S. 9th. VA 8-3614

gather dust. They'll be on parade again if a fourth special session is held to raise money to increase public school teachers' salaries. Gov. Price Daniel has said he will call the session if the public demands it. Texas State Teachers Association has its campaign rolling to create this demand.

TSDA's goal is a program that would cost \$63,000,000 over a two-year period. Of this \$56,000,000 would go for a \$405 increase in annual base pay for teachers.

This would bring teachers' base pay up to \$3,610 a year. Hale-Aikin Committee recommended a minimum of \$3,800 a year plus a number of other school improvements that would have totaled some \$200,000,000 for a two year period. But TSTA decided that getting that big a tax bill would be too tough. For the time being, the 70,000-member teacher lobby will settle for a package one-third this size with emphasis on the item it wants most—pay raises.

Time most discussed for the new special session is the politically crucial month of January. This will give the teachers, scattered in summer, time to get organized. It also is the month for poll tax paying, with Jan. 31 as the deadline. (Gov. Daniel said, "January or February would be the time.")

Next year, for the first time, January will be the month for candidates for office to make their announcements. New law makes Feb. 1 the deadline for filing for state primaries.

There's talk that Governor Daniel will announce for a third term if teacher raises are turned down. On this the governor says,

THE DEAN OF INSURANCE

INSURANCE can prevent poverty and if YOU do not have adequate insurance to protect yourself and family in case of emergency, call us today. Before some trouble catches YOU Insure with us—all wise folks do.

Rogers Insurance Service
VA 8-4523
"Insurance Service Specialists"
Slaton Savings and Loan Building

2 From Wilson Take Luther League Posts

Two Luther Leaguers from St. John Lutheran Church, Wilson, received honors recently while at their Bible Camp, Camp Chrysalis, Kerrville, when Rodney Maeker was elected president of the Northwest Texas Federation and Audrey Klaus was elected secretary.

The Wilson Luther League was the host League and was in charge of all the arrangements. The pastor, James P. Burnett, was the director.

Activities were as follows: Guided Meditations, led by Rev. David Heidtke, San Angelo; Bible Study on the Book of James, Rev. Daniel Schorlemer, Amarillo; Study on Religions, led by Rev. Arnold Windecker, Lockney; and a forum on "Christian Teenager in the Modern World" led by Rev. Elmer Sprecker, Stamford.

A total of 114 registered full-time for the camp, held August 2 through 7.

Those from Wilson attending were Pastor and Mrs. James Burnett, Betty Gindorf, Audrey and Donald Klaus, Coy, Albert, Buford and Vondal Rinne, Rodney Maeker, Stanley Krause and Milton Ehlers.

Our Men In Service

Long Beach, Calif. (FHTNC) David E. Walker, yeoman third class, USN, son of Mr. and Mrs. P. A. Walker of 515 W. Garza, Slaton, Texas, returned to Long Beach, Calif., Aug. 14, aboard the radar picket destroyer USS Higbee after a six-month tour of duty with the U. S. Seventh Fleet in the Western Pacific. During the cruise he visited Hawaii, Japan, Hong Kong, and the Philippines, and patrolled the Pormosan Straits during the month of April.

The children of Mrs. W. C. Church visited with her this week-end. They are as follows: Rev. and Mrs. R. L. Willingham and daughter, Helen Carolyn of Albuquerque; Mrs. Clara Dwiggins and daughter, Linda Ann of Anson; Mr. and Mrs. Clarence Church and children, Jerry and Joyce of Wilson; Mr. and Mrs. R. A. Shaver and children, R. A. III and Massha of Rochester; Mr. and Mrs. M. C. Church and children, Charles and Myra Sue of Halfway and Mrs. W. C. Church's granddaughter and family, Mr. and Mrs. Jerry McGehee and boys, Allen Earl, Larry Lynn and Bobby of Lubbock.

Mrs. Glen Ward, Glenda and Mike of Wilson, just returned home from a trip to Belen, Grants and Gallop, N. M. They accompanied Mrs. Ward's mother, Mrs. Hillyer of Lubbock on the trip.

an economic blow." Most Texas officials, including Governor Daniel, are opposed to getting the money through a hike in the federal gasoline tax, as recommended by the President.

Life Insurance Annuities
PHIL BREWER
American United Life Insurance Co.
139 S. 9th. Slaton

Interested in Bowling?

Register now for a spot on a league team to play in the upcoming, new SLATON BOWL!

If you would like to bowl with a league team at the new Slaton Bowl this fall, fill in the box below and

MAIL TO SLATON BOWL
BOX 567 SLATON, TEXAS
VA 8-4436

NAME _____
ADDRESS _____
CITY _____
NIGHT PREFERRED _____

Mr. and Mrs. Carl Erickson, John and Anna Marie of Port Arthur visited with Rev. and Mrs. F. A. Wittig last week.

The ninth annual Comanche County Reunion will be held in Mackenzie State Park in Lubbock, Texas the 4th Sunday in August. A basket lunch will be served at 12:30 o'clock and then there will be singing in the afternoon. Everybody is invited to

For great baked potatoes Cheez Whiz'em!

Spoon it! Into hot foods
Heat it! for cheese sauce
Spread it! for snacks

KRAFT'S amazing pasteurized process cheese spread for dozens of fast cheese treats

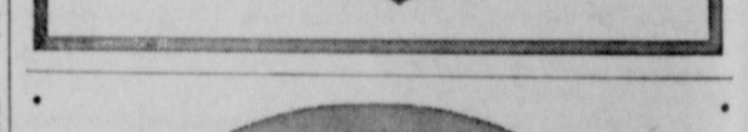
Our Men In Service

"Previously Owned by a Little Old Lady..."

Surprisingly, that gentle little old lady who never drove over 30 miles an hour was really tough on her car's motor. The fact is that start-and-stop driving at low speeds means the motor doesn't warm up enough for its own good. Sludge forms in the motor oil. Damage to the engine will result.

Most of us do a lot of start-and-stop driving these days, and that's why it's wise to protect with Phillips 66 Trop-Artic Motor Oil. It flows quickly in a cold engine... resists sludge formation... then keeps on protecting your motor on long, hot drives.

Trop-Artic is an all-season oil. Get it from your Phillips 66 Dealer.



Santa Fe

Ship and travel Santa Fe... the longest railroad in the U. S. A.



See your nearest Santa Fe agent

Two Chevy middleweights prove their rawhide stamina!



Top hands on high-country hauls!

Ask any trucker who's been over Wolf Creek Pass, 10,850 feet up in the San Juans: a 9-mile pull to the summit and low gear all the way down. Mr. C. H. Phillips of Alamosa, Colorado, has a 6403 and a 6503 Chevrolet truck that are up over this route the year round, taking sheep and beef to pasture, later marketing the stock in Denver. In less than a year, his Chevy middleweights have averaged about 50,000 miles of this kind of treatment—and they're going stronger than ever!

Watch Chevy trucks at work out in range country. It's a sight to see the way they pack into high-up mountain pastures and handle through brush and rock like a cowman's favorite cutting horse. Take any truck work for that matter. Chevy middleweights probably handle a bigger variety of jobs than any trucks alive. About anything you name, including work that used to be reserved strictly for bigger rigs. When a truck's built the way a Chevy is, lean-muscled and rawhide-tough, it takes to ugly trails the same way most trucks roll over the highway. It just keeps going, without a big to-do, but looking good every mile of the way. How they do it is your Chevrolet dealer's department. He'll be glad to supply details and specifications on the type of models you need.

No job's too tough for a Chevrolet truck! See your local authorized Chevrolet dealer

"Doc" Crow Chevrolet
126 NORTH SIXTH SLATON, TEXAS Phone VA 8-4361

Southland News...

By Mrs. Jesse Ward
(Delayed from last week)

Captain John Norcross, stationed in Boston, Mass., is visiting his father, Rev. C. A. Norcross, Lubbock, who is pastor of the Southland Methodist Church. He accompanied his father to Southland last Sunday and was the speaker at the 11 a. m. service. He is making the Army a career. He and his father were dinner guests of Mr. and Mrs. Earl Morris after church.

Mr. and Mrs. Eckert, who formerly lived on the Lazy K Ranch and moved to Lubbock, have moved back to Southland and moved into the house vacated by Mr. and Mrs. John Leake.

Mr. and Mrs. Dillard Dunn and Ronnie attended church at the Methodist Church in Slaton last Sunday morning. Their son, Rev. Ross Dunn, preached. He has been youth director there this summer.

The revival at the Gordon Church of Christ will continue all this week and will close next Sunday night.

Mr. and Mrs. John McGehee and sons from Muleshoe spent last Sunday with his brother, Mr. and Mrs. Weldon McGehee and family.

Karen Ann McGehee entered Mercy Hospital in Slaton last Monday evening, where she had surgery, an appendectomy, last Tuesday morning. We are wishing for her a quick recovery.

Mr. and Mrs. Joe Lester and children of Wellington, Kans., spent Saturday night with his parents, Mr. and Mrs. W. P. Lester. Joe returned last week end to Wellington. Mrs. Lester and the children remained for a longer visit with relatives.

Elder and Mrs. Jack Courtney and Elder Fred Douglas and Mrs. J. F. Rackler were supper guests of Mr. and Mrs. J. B. Rackler and children last Monday night.

Mrs. William Mayo, L. D., Mike and Donna of Amherst spent Tuesday with Mrs. J. F. Rackler and attended church at New Lynn.

Mr. and Mrs. J. B. Rackler, J. B. Jr. and Beverly left Tuesday for Murfreesboro, Tenn., to visit relatives.

Mrs. J. F. Rackler was a dinner and supper guest of Mr. and Mrs. C. Terry last Wednesday. Other friends gathered at the Terrys in the afternoon and canned peas for their pastor's wife, Mrs. Jack Courtney.

Mrs. G. W. Basinger, who has been visiting relatives in Okla-

homa the last two weeks, has returned home.

Mr. and Mrs. John Leake have moved to Gordon and are operating the Gordon Store.

Mr. and Mrs. Wade Haire and daughters have moved back here from Massachusetts, where they have been living for some time. They have not located and are visiting relatives and friends.

Mr. and Mrs. Haire are former residents of this community.

Mr. and Mrs. Billy Lester and children spent last Wednesday with her sister, Mr. and Mrs. John Allen Kelley and children in Lubbock.

Jerry Hitt, who has been employed in Abilene, is home for a vacation with his parents, Mr. and Mrs. Elmer Hitt.

Charlie Scott was taken to the hospital in Post last week and was later transferred to Methodist Hospital in Lubbock where he is being treated for encephalitis at last report. We hope for him a quick recovery.

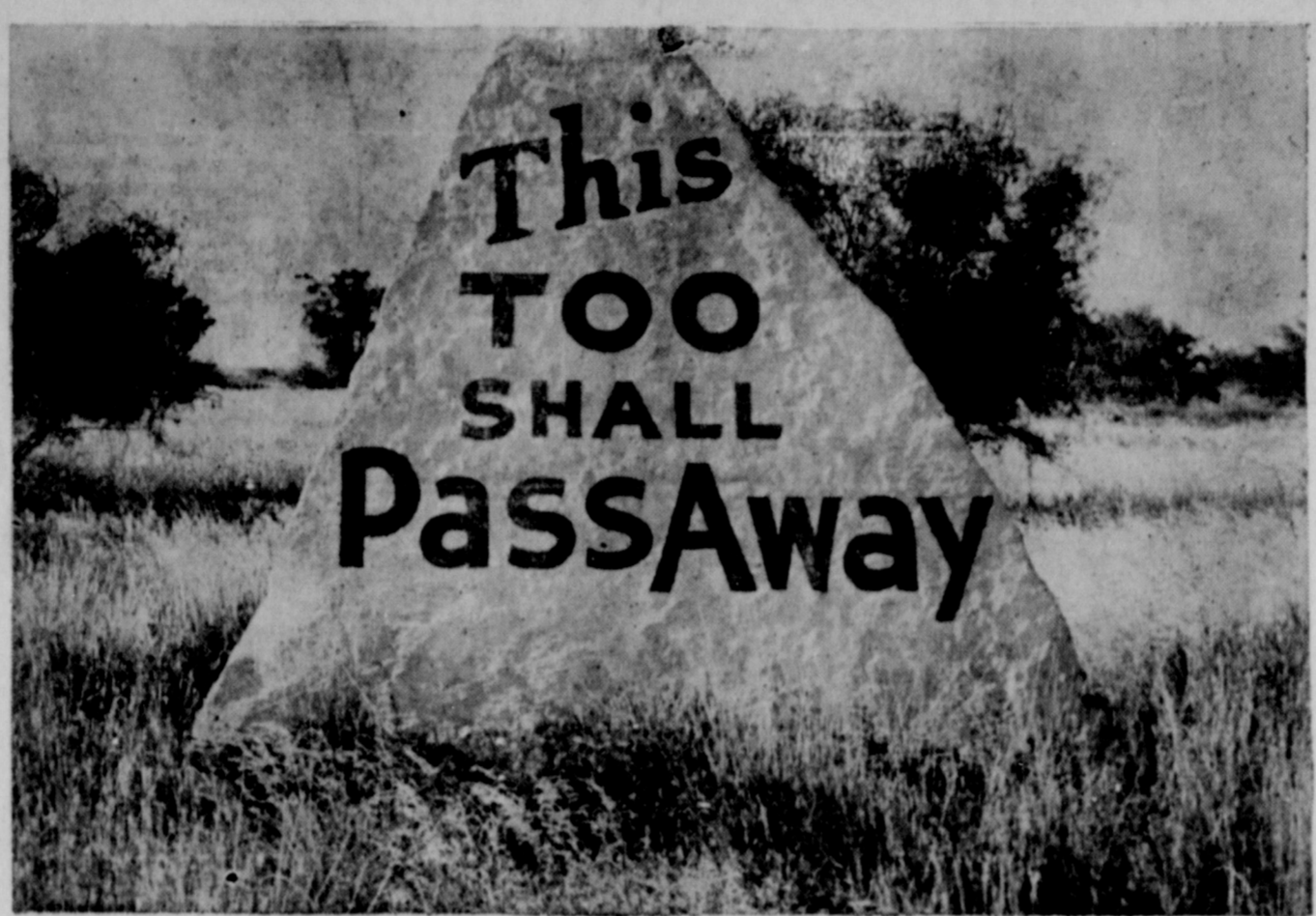
The revival meeting will begin next Sunday at the Pleasant Valley Baptist Church.

Mr. and Mrs. Waldo McMaster of Lubbock; Mrs. Rackler's daughter, Mr. and Mrs. Claude Rober, Jr., Linda and Nelda of Lubbock were dinner guests of Mrs. J. F. Rackler and spent the afternoon last Sunday.

The Baptist Revival at New Lynn closed last Sunday night with eight additions to the church. Seven were by baptism.

Visiting Mr. and Mrs. Gus Gatzki is their granddaughter, B'Les Cartright of Plainview.

Mr. and Mrs. A. M. Robbins and children of Midland spent the week end with her parents, Mr. and Mrs. W. A. Pritchard, Robert and Sue.

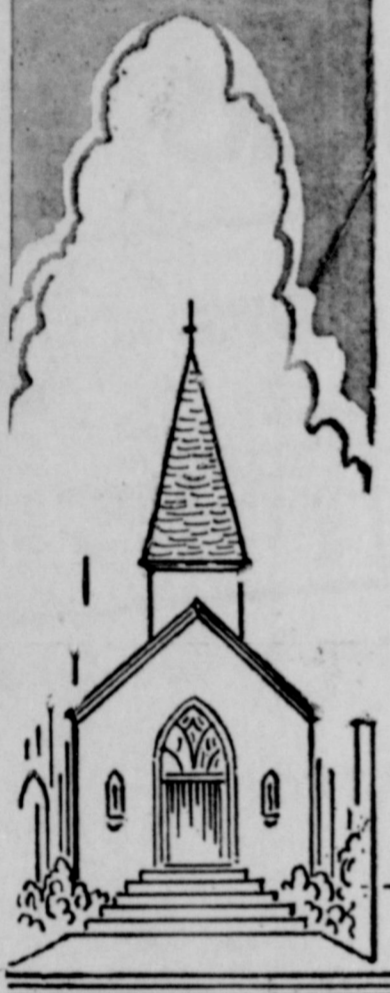


Silently stands this rock beside the highway. Yet, how thunderous is its message to the passerby.

It is a faithful reminder that there are two worlds: *Time and Eternity.*

The man who has no *Time* to think about *Eternity* shall have *Eternity* to think about *Time*. Yes, memory is immortal! (Luke 16:19-31).

"Behold, *Now* is the accepted time; Behold, *Now* is the day of salvation." (2nd Corinthians 6:2).



"Other foundation can no man lay than that is laid, which is Jesus Christ."

ATTEND THE CHURCH OF YOUR CHOICE

- First Presbyterian Church
425 W. Lubbock
Rev. C. N. Wylie
- First Nazarene Church
635 W. Scurry
Rev. W. E. Rhoads
- Westview Baptist Church
830 S. 15th
Rev. C. M. Fields
- First Methodist Church
305 W. Lubbock
Rev. Rollo Davidson
- Church of God
206 Texas Ave.
Rev. E. E. Malone
- Grace Lutheran Church
840 W. Jean
Rev. Leroy R. Deans
- First Baptist Church
255 S. 9th
Rev. Ted E. Gaze
- First Christian Church
145 E. Panhandle
Rev. Claude Wingo
- Immanuel Lutheran Church
Posey
Rev. F. A. Wittig
- St. John's Lutheran Church
Wilson
Rev. J. P. Burnett
- Bible Baptist Church
W. Panhandle
Rev. H. E. Summar
- Wilson Methodist Church
Wilson
Rev. Harold Rucker
- Pentecostal Holiness Church
105 W. Knox
Rev. W. L. Comstock
- Trinity Evangelical Methodist Church
Rev. Weldon Thomas
- African Methodist Church
Rev. J. S. Gilbert
- Church of Christ
340 W. Division
Harold D. Mobley
- Assembly of God
950 S. 14th
Rev. V. F. Love
- Missionary Baptist Church
- Southland Baptist Church
Southland
Rev. Tony Longval
- Southland Methodist Church
Rev. Beane
- St. Paul Lutheran Church
Wilson
Rev. G. W. Heinemeier
- First Baptist Church
Wilson
Rev. F. E. Scott
- Our Lady of Guadalupe Church
700 S. 4th
- St. Joseph's Catholic Church
Father O'Brien
S. 19th Street

This Message Made Possible By The Following Public-Spirited Business Firms

CARROLL'S OIL CO. Slaton, Texas Arrants Wholesale Meats and Lockers Ray C. Ayers & Son, Inc. Grain — Feed — Seed Slaton Co-Op Gins "Owned and Operated by Farmers" OUR WILSON FRIENDS: Mustang Cafe Lloyd and Mary Beth WILSON STATE BANK Wilson Machine Shop General Machine, Pump and Gear head Work; Pumps pulled, Set — Wells Developed	S & J CLEANERS Free Pick-Up and Delivery 130 North 10th — VA 8-4347 E. W. Ham & Son Plumbing VA 8-3361 Higginbotham-Bartlett Company Lumber Ed Williams, Mgr. Union Compress and Warehouse Company Bruce's Cafe "Where Friends Meet and Eat" P. M. WHEATLEY "We Believe in Our Churches" "Find the Faith by Which to Live" WILLIAMS FUNERAL HOME Unlimited Insurance Protection Cadillac Ambulance Service GEER TEXACO SERVICE "The Best Friend Your Car Ever Had" VA 8-7100 D. D. KERNEY AUTO PARTS Your Automobile Parts Distributor	Slaton Implement Co. "Your Farmall Dealer" El Lora Motel Lora Wicker MONTGOMERY IRRIGATION SERVICE 1200 South 8th — VA 8-4324 FISH & ROBINSON CESS POOL DRILLING "Have Rig—Will Dig" VA 8-4805 Slaton VA 8-3435 Chris C. Kirksey Gulf Oil Products Magouirk Electric Pember Insurance Agency Insurance — Real Estate — Loans SLATON PHARMACY "Service Is Our Motto"	J. D. Snider, D.C. 805 South 9th — VA 8-3606 Slaton Savings & Loan Association "We Pay You to Save" LASATER-HOFFMAN HARDWARE COMPANY SLATON STEAM LAUNDRY AND DRY CLEANING REED'S WRECKING Post Highway Day: VA 8-4814 Night: VA 8-4557 OUR SOUTHLAND FRIENDS: BASINGER GIN Southland Hardware "In Southland Since 1920" BASINGER DRILLING CO. Dunn's Food Store "Where You Meet Your Neighbors" Phone WY 6-2311 Southland Butane Co. and Big State Garage
---	---	---	---



BREWER INSURANCE Agency
139 So. 9th
SLATON, TEXAS

YOUR Special Invitation to
EVANGELISTIC SERVICES

Great Gospel Messages
Finest Hymn Singing

August 32—30

Services 10:00 A. M. 7:30 P. M.

First Baptist Church

COME AND BRING A FRIEND

Dr. Woodson Armes, Evangelist

Wilson Oil Company
Wilson, Texas Phone 2251

- Butane, Propane
- Phillips 66 Gas, Oil, Commercial, Industrial Greases and Batteries
- Lee Tires and Tubes
- Auto Accessories

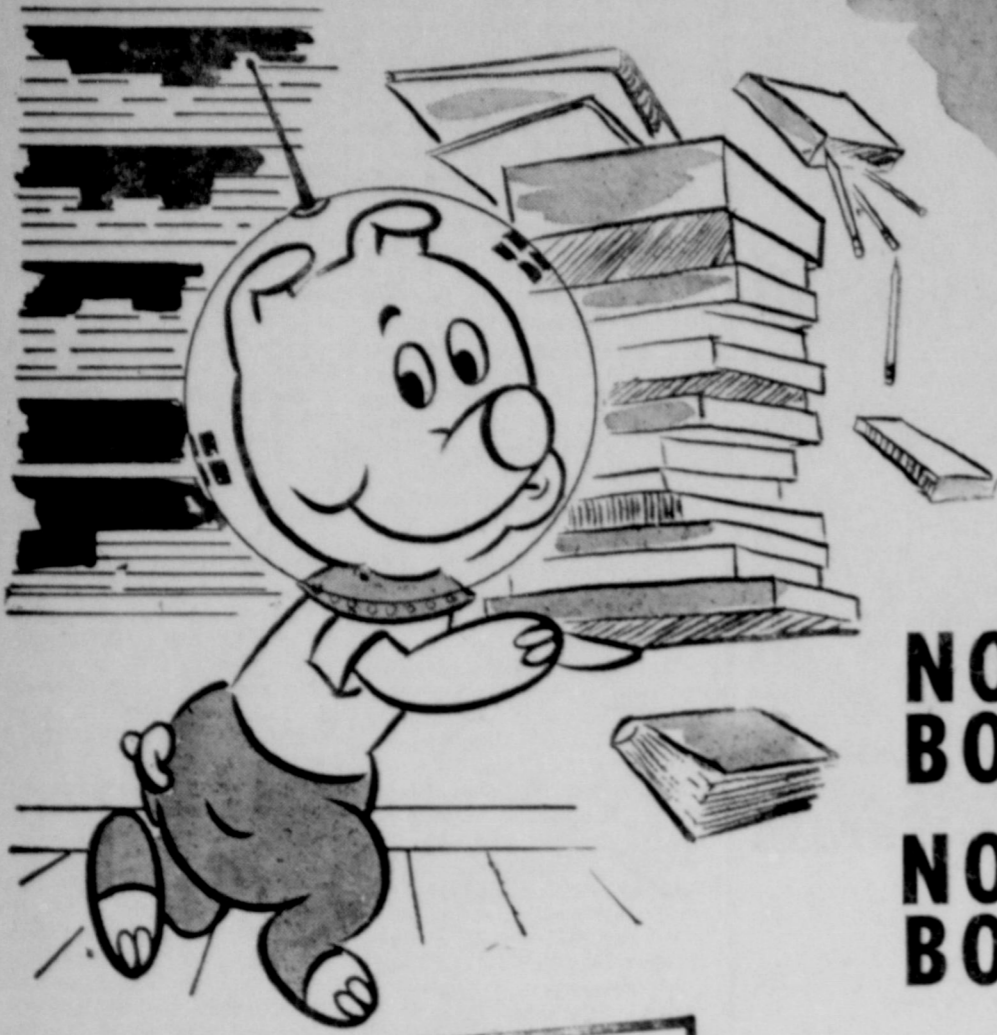
A COMPLETE AUTO SERVICE FOR WILSON

DEAL'S MACHINE SHOP
SLATON, TEXAS
Ph. VA 8-4307 Res. VA 8-4114
155 No. 9th St.

FOR YOUR IRRIGATION PUMP AND GEAR HEAD REPAIR
All Makes

General Welding and Machine Work

SCHOOL REGISTRATION STARTS AUGUST 31st ...
IT'S COUNT DOWN TIME...ORBIT INTO SAVINGS ON



SCHOOL SUPPLIES

FREE FOOTBALL SCHEDULES
AVAILABLE AT CHECKING
STAND

NOTE BOOK	FILLER	NO. 8439	25c
		50c SIZE	
NOTE BOOK	FILLER	NO. 9193	49c
		\$1. SIZE	

Play...
'ORBIT'
A NEW EXCITING
TV GAME
EVERY THUR. 6:30 P.M.
ON KCBD TV, CHANNEL 11

HUNDREDS OF
GROCERY PRIZES EACH WK.
HUNDREDS OF
WINNERS EACH WK.

This weeks ORBIT Prize
E & R SLICED BACON
2 Lb. Package

GLIDER NO. 515
PENCILS EACH **1c**

PLASTIC, 12 INCH
RULERS EACH **4c**

Executive, No. 8908 Genuine Leather,
\$4.29 Value, Tax Inc. **3.49**

BINDERS
Prestige, No. 6808 Genuine Leather
\$2.98 Value, Tax Inc. **2.49**

BINDERS
Pannant, No. 8364, \$1.00 Value
FOUNTAIN PEN **79c**

INK SKRIP 2 OZ. **9c**

Big Chief, 25c Size **19c**

TABLETS **25c**

Kraft 8 oz. Bottle **25c**

FRENCH DRESSING **31c**

Ajax, Large Box 2 For **31c**

CLEANSER **31c**

Cashmere Bouquet, Reglar Bar, 3 For **31c**

TOILET SOAP **30c**

Large Box, 03c Off Label, Net Price **30c**

FAB **32c**

Palmolive Regular Bar, 01c Sale 4 For **32c**

TOILET SOAP **33c**

Large Box **39c**

VEL **39c**

Vel Beauty Bar 2 For **39c**

TOILET SOAP **36c**

Large Box **43c**

AD **41c**

Swift 16 oz. Jar **43c**

PEANUT BUTTER **41c**

Large Can **41c**

LIQUID VEL **41c**

Cartridge, Saber, No. 1838, \$1.00 Value **79c**

FOUNTAIN PEN

Carters 25c Size **15c**

WHITE PAPER

Top Punch **1.29**

MAGNETIC BINDER

No. 5942, 25c Size **15c**

SPIRAL NOTE BOOKS

GREEN GIANT, 3c OFF LABEL NET PRICE

PEAS 303 CAN 2 FOR **27c**

MARYLAND CLUB

COFFEE 1 LB. CAN **59c**

MIRACLE WHIP, SALAD

DRESSING QT. **49c**

LEMONADE GOLDEN GOBLET WHITE OR PINK 6 OZ. FROZEN **10c**

Ore-Ida, 16 oz. Frozen Package **29c**

TATER TOTS

Hills O Home, 14 oz. Frozen Package **29c**

CANDIED YAMS

SHAMPOO MODART 75c SIZE **37c**

Morton's 4 lb. Carton **19c**

ICE CREAM SALT

Woodbury 1.00 Size, Plus Tax **50c**

HAND LOTION

HAZEL BISHOP, 59c SIZE, NAIL **57c**

POLISH **49c**

PLUS TAX

Philips, 12 oz. Bottle **57c**

MILK OF MAGNESIA

THOMPSON SEEDLESS
GRAPES LB. **12 1/2c**

CALIFORNIA, EXTRA FANCY, HALE
PEACHES LB. **12 1/2c**

California 1 lb. Cello Bag, Each **10c**

CARROTS **10c**

Firm Heads, lb.

LETTUCE **10c**

Yellow, Home Grown, lb. **5c**

SQUASH

California, Large Size, Each **10c**

AVACODOS

E & R BRAND THICK SLICED
BACON 2 LB. PKG. **97c**

4 FISHERMEN, PERCH
FILLETS 1 LB. PKG. **39c**

Smoked, Lb. **23c**

BACON SQUARES

Pillsbury's **23c**

BISCUITS

Blue Plated, 10 oz. Pkg. **59c**

BREADER SHRIMP

Fresh Ground, Lb. **49c**

GROUND BEEF **69c**

USDA Good Beef, Pinbone, Lb.

LOIN STEAK **55c**

USDA GOOD Beef, Center Cut, Lb.

CHUCK ROAST

BOBBY 3 FOR **89c**

SOX

Triple Row, Heavy Duty, Best Quality, Childs Sizes 6 thru 8 1/2

Triple Row, Heavy Duty, Best Quality, Misses Sizes 8 1/2 thru 11

2 FOR **79c**



The Slaton Slatonite Society Clubs

The Slaton, Tex., Slatonite

Thursday, August 20, 1959

Informal Initiation For Slaton Little Sisters In FHA Slated For August 25

The informal initiation for Slaton Little Sisters will be held Tuesday afternoon, August 25, from 2:30 to 5 p. m. in local park. Big Sisters are to bring a sack lunch for their Little Sisters, who are to be dressed as "little sisters." All big sisters are urged to initiate during this appointed time only.

The Little Sisters are girls who will be in FHA for the first year, and must be taking or have had homemaking in junior or senior high school. Little Sisters and their big sisters are: Judy Adamek-Patty Clark, Jo Anne Thomas, Nita Ward, Nancy Anderson-Judie Bishop, Jan Smith, Fonda Patterson, Sue Armstrong-Kay Holley, Donna Wilke, Sue Reasoner, Barbara Arrants-Catha Walker, Ann Wright, Nancy Johnston, Elaine Barnes-Cail Johnson, Diane Heinrich, Kathy Buxkemper, Mariorie Baxley-Mary Elliott, Jerrie Hodges, Elaine Pickens, Linda Bownds-Olivia Sanders, Sharon Perdue Dene Brooks-Ann Basinger, Lena Glasscock, Peggy Draner, Betty Brookshire-Ronda Eanes, June Johnson;

Nancy Buxkemper-Sue Liles, Harriet Perkins, Pam Henry; Connie Cochran-Carolyn Rhoads, Ann Haddock; Bonnie Cole-Rosemarie Philipps, Conda Wyatt; Annie Coffield-De Etta Buxkemper, Janice Kahlich, Debra Kayser; Gerry Clark-Dana Heaton, Linda Walker, Ronda Pettigrew, Norma Clark-Sheeluh McCormick, Sue Cone, Janette George, Barbara George; Judy Davis-Betty Lou Johnson, Beverly Myers; Mary Diaz-Eleanor

Gallegos; Jerry Eddings-Barbara Childress, Peggy Gentry, Marilyn Nelson; Cammelita Edwards Sylvia Cole, Deanne Cole, Rose Marie Smith; Yolanda Franco-Carmen Perez, Rosa Perez;

Janet Gannels-Jo Ann Wiley, Judy Smith; Marie Goldman-Nelda Brooks, Lola Hopkins, Karen Henry; Carolyn Harper-Martha Strube, Lynn Hurst, Lettie Traweck; Sharon Heinrich-Judy Kitten, Judy Franke; Charlene Kitten-Maxine Moore, Suzie Cooper, Tommie McCall; Carol Lee, Marilyn Clark, Kay Baker; Dorothy Lewis-Patsy Pettigrew, Colene Gilliland; Suzan Lovelady-Jan Brown-Is Dolores Heinrich; Patricia McSween-Doretta Schuette, Janet Adamek, Margaret Meeks-Linda Hogue, Linda Shelton, Marilyn Gilmore;

Vernell Meurer-Carol Self, Canzada Lee, Janice Hill; Kannie Perre-Lena Lopez; Areta Privat-Melinda Clifton, Pam Stansell; Sue Reed-Rita West, Sue Delaney; Lundie Roche-Norma Bednarz, LaNell Heinrich; Carlene Taylor-Judy Dunn, Katie Wicker, Charlotte Brand; Linda Slizer-Patsy Preston, Kay Short, Carolyn Howell, Melva Well-Jeanette Price, Sharon Boyd, Carolyn Etter; Nelda Ray-Zana House, Doris Patterson; Marilyn White-Steffie Johnson and Claudine Townsend.

Mrs. Jones Is Hostess To The Dorcas Class

The Dorcas Sunday School Class of the First Baptist Church met in the home of Mrs. Virgil Jones, August 13, at 3 p. m. The meeting was opened with prayer by Mrs. Dudley Berry. The members gave their memory verses with roll call. Mrs. Clyde Shaw brought the devotion on "Windows of Heaven."

The business meeting followed. Mrs. H. E. Wood brought the secretary and treasurer's report. A committee was appointed to select officers for the new year. They were Mesdames Ernest Carroll, Boyd Meeks and Virgil Jones. New and old business was discussed by the class. The class had a prayer session for the coming revival. Mrs. Clyde Shaw closed the meeting with a prayer.

Refreshments of cake and punch were served to the following members and visitors: Mesdames Clyde Shaw, Dudley Berry, Clyde McGinley, H. E. Wood, Boyd Meeks, Ernest Carroll, Bill Deaver, Jones, and S. T. Brunson. The visitors were Mrs. Jones two relatives, a sister, Mrs. F. C. Ferguson and a sister-in-law, Mrs. J. R. Ryon of Savory, Texas.

Wedding Will Be In September

Mr. and Mrs. Floyd B. Pair of Route 1, Slaton, are announcing the forthcoming marriage of their daughter, Martha Ann, to Jesse Eldon Willard, son of Mr. and Mrs. E. V. Willard, Kress, Texas.

Vows will be exchanged at 3 p. m. September 6 at the Cooper Methodist Church in Woodrow, Texas, with the Rev. John Ferguson, Kress, officiating. Reception will follow in the Fellowship Hall.

All friends and relatives are invited to attend.

TRY OUR
TEXTURSIZING
FOR
COTTONS
THEY SPARKLE
QUALITY DRIVE-IN
CLEANERS

325 W. Lubbock VA 8-3406



MRS. TOM SUBER HARKEY

Helen Joyce Church And Tom Suber Harkey Marry

The wedding of Miss Helen Joyce Church, daughter of Mr. and Mrs. Clarence Church of Wilson, and Tom Suber Harkey, son of Mr. and Mrs. H. L. Harkey, Sr. of Crystal City, Texas, was solemnized at eight p. m., Saturday, August 15 in the First Methodist Church, Slaton, Texas.

Double ring vows were read by Rev. Leonard Garrett, Crystal City, before an altar banked with Emerald Leaves and white tapers. Baskets of white mums completed the arrangement.

Mrs. R. A. Shaver of Rochester, Tex., aunt of the bride, played traditional wedding music and accompanied Mr. Gary Clark of Crystal City as he sang "I Love You Truly," "Because," and "The Lord's Prayer."

Given in marriage by her father, the bride wore an original gown of white French lace over net and satin designed with a portrait neckline outlined by scalloped lace embroidered with iridescent sequins and seed pearls. The fitted bodice featured long sleeves ending in sequin and pearl embroidered petal-points. Stemming from a rounded waistline marked by flower appliques of lace, the fully shirred lace skirt was styled with a stiffened lower edge. The immense fullness of lace, net and satin swept into a chapel length train.

Her veil of silk illusion depended from a bandeau-type cap of lace embroidered with iridescent sequins and seed pearls to match the bridal gown. The bride carried a cascade bouquet of white cushion mums centered

Bloxom-Dempsey Rites Read

Miss Ophelia Bloxom, daughter of Mr. and Mrs. C. B. Bloxom of 235 N. 6th, became the bride of W. H. (Butch) Dempsey of 140 N. 9th, son of Mr. and Mrs. J. W. Dempsey of Hockley, Texas, in a double ring ceremony in the Westview Baptist Church, Slaton, Sunday, August 9, at 4 p. m. The Rev. Ted Gaze performed the ceremony.

For the wedding the bride wore a beige two piece suit with black and white accessories. Her corsage was composed of white ribbons and pom-poms.

For a honeymoon trip to Houston, Texas, the bride wore a black and white checked cotton two-piece dress with white accessories.

The bride is a 1959 graduate of Slaton High School and she is employed at Piggly Wiggly. The groom attended Waller High School and he is employed by Liles Sheet Metal Works.

The couple will be at home at 635 South 7th in Slaton.



MRS. W. H. DEMPSEY

Shower Honors Tina Crumbley

A bridal shower in the form of a miscellaneous tea, honoring Miss Tina Crumbley, bride-elect of Glenn Edmunds, was held Monday night, August 10 from 7 until 9 p. m. in the home of Mrs. Leon Kenney, 1355 W. Crosby.

Refreshments were served from a table laid with brown linen and lace with a yellow centerpiece.

Hostesses for the occasion were Mesdames J. L. House, Delma Hodge, J. L. Reed, A. H. Grigsby, W. A. Sikes, Chester Campbell, A. J. Hoover, Charles Whalen, Dwayne Walters, Edgar Williams, W. L. Jones, Gilliland, Jo Delaney, Alton Meeks, J. B. Wells, Floyd Holton, Herschel Glasscock, Earnest Short, Verna

Barkley, Rhoda Barton, and Misses Mary Alice Kenney, Barbara Grigsby, Ora Mining, Patsy Jones, Colene Gilliland, and Cleo Wolf.

Approximately 35 guests attended.

Dr. J. W. Belote Jr.
OPTOMETRIST

Office Hours 9-5
Phone VA 8-3766

115 South Ninth

Slaton, Texas

REGISTER NOW FOR FALL
DANCING CLASSES

TAP - BALLET - ACROBAT

at Shirley Williams School of Dance.

CALL SW 9-2339 in Lubbock or VA 8-4588 in Slaton

Or Write 4117 33rd St., Lubbock for information.

Ladies Classes Offered.



BLACK - TAUPE
TRAIL BLUE
CURRENT RED

DRESS SHOP

108 So. 9th

VA 8-4621



MRS. WYMAN RICHEY

Double Ring Ceremony Unites Oliver-Richey

Miss Mary Lou Oliver and Wyman Richey were united in marriage in a double ring ceremony August 18 at 3 p. m. in the Smyer Baptist Church. The ceremony was read by the Rev. Joe Allen.

Parents of the couple are Mr. and Mrs. S. W. Oliver of Route 1, Shallowater, and Mr. and Mrs. F. Richey of Slaton.

The bride was given in marriage by her father. She wore a full length dress that had a scalloped neck line with a lace collar over taffeta with iridescent sequins and full length setal point sleeves. The floor length dress had a ruffled tulle over taffeta highlighted by a lace apron covering the front of the dress. The veil was a pure silk bridal illusion with finger-ring veil attached to a lace cap with seeded pearls.

Miss Dolores Oliver, sister of the bride, was the maid of honor and the bridesmaids were Miss Geraldine Oliver, sister of the bride from Smyer; Mrs. L. E. Bevel, Jr., sister of the bride of Anton; and Misses Doris Jean Crisp and Shirley Floyd of Smyer. They wore organza over taffeta fashioned with portrait necklines and full skirts. Matching tiaras completed their ensembles.

Candelighters were Misses Carol and Elyne White of Slaton, cousins of the groom. They wore blue organza over taffeta dresses. The flower girl was Miss La Vone Bevel, niece of the bride from Anton, and she wore a pink taffeta dress. Ring bearer was Mike Griggs, cousin of the bride from Cotton Center.

Wedding music was provided by Mrs. J. J. Jenkins and the soloist was Miss Dolores Oliver.

Best man was John Wayne Richey, brother of the groom. Ushers were Tipton Culver, cousin of the groom of Slaton; Wayne Oliver, brother of the bride of Smyer; L. E. Bevel, Jr., brother-in-law of the bride of Anton and Jeffrey Edwards of Smyer.

When the couple departed for a wedding trip to Colorado, the bride wore a black and white suit of all imported silk and wool, an original of Harrods of California.

The bride is a graduate of Smyer High School. The bridegroom is a graduate of Slaton High School and Texas Tech. He is now employed as the Principal of Smyer High School.

Recent visitors at the First Christian Church include Randy Lewis of Brownfield; Mrs. Joe Smith of Angleton; Mrs. C. A. Bailey, Jr. of Lake Johnson; Miss Sharon Campbell and Mrs. Ed Tatum of Harrison, Ark.

TEAGUE'S DRUG STORE

LILES
SHEET METAL WORKS

165 W. Panhandle
VA 8-4277

"Have It Made in Slaton"

JUST TALK

BY A. M. J.



Allen Ferrell, who claims to be well acquainted with Vascar Brownings' bird dog, having hunted with the dog several times, says he is sure the Fox that Vascar and his family saw playing in the pen with the dog must have been some kind of relative as the dog is sneaky, not too reliable and too smart for most humans. Just like a fox.

Mr. Will Rogers, who has a nice home out near Buffalo Lakes, says things are a lot wilder out here in wild West Texas than most people realize. He has seen skunks, foxes, coy-

otes and a lot of wild dogs and cats around his place and the signs of a lot of wild men and women on the roadside in the way of beer cans and empty bottles. If you want to see nature in the rough go out to Buffalo Lakes in the good old summer time and hang around till after midnight when the roaming starts.

You never can tell who or what is going to turn up. Last week our phone rang and a lady from O'Donnell asked if she could come out and talk to me about the past history of Slaton and the Ku Klux Klan. Her son, who lives in Dallas, is preparing a thesis on the Ku Klux Klan of Texas and she is helping him get information on the subject. The editor of the paper in Lubbock recommended Slaton as a gold mine of Ku Klux Klan activities when it was in full bloom and she thought I might give her some information. It was pretty

much of a water haul for I did not come here until 1940 but I promised to try to run down some lurid tales I had heard in the past. However Ku Klux Klan details are like nuclear fusion material to monkey with and I am not all optimistic about getting accurate information. Being timid, wobbly, a coward, easily discouraged and out of fix generally I am willing to try but I don't want to be overloaded.

Leo Henzler, the motor boat enthusiast, or perhaps it would be proper to call it motor boat mania, explained some of the thrills about racing shells. Leo designs and manufactures his own and makes them for other enthusiasts. A racing shell is actually a boat just big enough to hold one person and a powerful motor. The boat is designed of ply wood and finished off to a mirror finish. The motors are doctored up to produce as much speed as possible. Some of these outfits represent several thousand dollars per unit and according to Leo if you get careless and run into a paper cup or anything that large or larger you will tear a hole in the shell two or three feet in diameter. "What happens then," I asked and Leo replied, "you hang on and try to save your motor."

Now right there is where I claim enthusiasm is out of reason and borders on something

else. Anytime you catch me hanging onto a hundred pound motor in a lake of water you can give up because in the first place I am not going to get into any such contraption and in the second place the motor could probably swim better than I can unless I have improved a lot since I moved to West Texas. Before that time a forty foot of very still water was my capacity.

Leo says more and more people are going for motor boating and for racing shells than ever before and that he has many calls for equipment of this kind. As for me he can include me out.

Not long ago I watched a young lady using an electric typewriter and I admired her speed, her flowery touch and the smooth with which the typewriter glided along with the just the whisper on the keys and I wondered how it would operate under my four fingered pounding and I realized how antiquated my methods have become. My old fashioned hand powered typewriter is too fast for me as it is and before I know it I have written words that are so misspelled that I do not even know what I thought I was writing before the typewriter got so mixed up. Even though I have tried hard to keep up with the times I know I am fighting a losing battle for there is no way for me to get a flat top hair cut. I've gotten too timid to drive over 80 miles per hour and a steady diet of hot dogs gets me terribly upset. I am not quite sure what a hi-fi is and I cannot help it but I despise rock and roll music.

It is very disappointing to me to view the advertising for men fall and winter wearing apparel, they're going to put those narrow brim dunce caps back on us men again. That is about the only kind of hat that a man can buy unless he gets one of the old staple umbrella size Buffalo Bill models that they call Western style. My pate is getting bald and the winds may be extra cold this next winter but I'm not going to wear a hat at all until things change a lot and I predict that you will see a lot of middle aged jelly beans going around the same way unless the hat makers improve their ideas.

Billy had been racing from room to room, screaming at the top of his lungs. When his father could stand no more, he suggested that the boy go out and play with the ball he'd found the day before.

"I can't," Billy replied in all innocence. "I might run into the boy I found it from."

That boy is going to be a sure business success is my prediction.

Mr. and Mrs. Benno Junermann of Kountze, Texas visited with their relatives, the Rev. and Mrs. F. A. Wittig, the beginning of the week.

Society



Mrs. Glenn Edmunds

Crumbly And Edmunds Exchange Wedding Vows

Double ring wedding vows were exchanged by Miss Tina Crumbly and Glenn Edmunds on Friday, August 14 at 8 p. m. in the Slaton Church of Christ. C. L. Newcomb of Midland officiated, before an altar decorated with an archway of greenery of white gladiolas and a white picket gate.

The bride, who was given in marriage by her father wore a gown of chantilly lace over taffeta, fashioned with portrait neckline embroidered in iridescent sequins. The molded bodice had long sleeves that tapered to petal points and terminated with point at center front waist line. The voluminous skirt, custom circular lined flowed to a chapel train.

Her veil of silk illusion flowed from a crown of pearls and sequins. She carried a white orchid surrounded by white rosebuds atop a white Bible.

For something old and borrowed, she wore a ruby belonging to her mother; for something new, she wore a pearl necklace, a gift of the bridegroom; for something blue, she wore a blue garter; and she carried a penny in her shoe.

Mrs. Harold Moore of Smyer served as Matron of Honor. Her dress was a rose pink organza over matching taffeta with a scoop neckline. The full gathered skirt was accented by a matching cumerbund. The bridesmaids were Misses Lena Glasscock and Barbara Grigsby, both of Slaton. They wore identical dresses of baby pink organza over matching taffeta. Their basque waists were fashioned with a fold neckline with a bow in the back, with a full gathered skirt. Their headbands were of matching organza petals. They all carried cascade bouquets of carnations matching the color of their dresses.

Marquita Crumbly of Brownfield, niece of the bride was flower girl. Her dress was designed after the matron of honor's, baby pink organza over matching taffeta. She carried a basket of rose petals.

Dale Edmunds of Slaton, brother of the bridegroom, was best man. The candles were lighted by Le Voy Reed of Slaton and Eddie Nelson of Southland. Serving as ushers were Charles Edmunds of Lubbock, Donald Edmunds of Southland, brothers of bridegroom and Le Voy Reed and Eddie Nelson.

The Broadway Church of Christ Chorus sang "I Pledge My Love," "Because," and "Be With Us Lord."

The reception was held in the home of the bride's parents following the ceremony. Mrs. Marcus Crumbly of Brownfield, sister-in-law of the bride served from a table laid with an imported lace over pink. The white three tiered cake trimmed with pink rosebuds topped with a miniature bride and groom. The cake was surrounded by the bride's and attendant's bouquets.

Others in the house party were Mesdames Delma Hodge, J. L. Reed, W. A. Sikes, Sr., A. H. Grigsby, Jasper Campbell, A. J. Hoover, Charlie Whalen, Edgar Williams, Herschel Glass-

cock, Donald Edmunds, Roy Lynn Wells, Don Wade, Cleo Wolf, and Misses Ora Mining, Colene Gilliland, and Mary Alice Kenney.

For traveling the bride chose a brown dress maker suit of silk with brown and tangerine accessories and an orchid corsage. The couple will be at home in Lubbock.

The bride is a graduate of Slaton High School and has been employed as bookkeeper for Paris and Co. in Lubbock for the past 2 years.

The bridegroom is a graduate of Southland High School and attended Texas Tech. He is now employed at Moss-Gordin Co. in Lubbock.

Have Meeting Willing Workers

The Willing Workers Sunday School Class of the Westview Baptist Church met in the home of Mrs. J. B. Patterson for their regular business and social meeting.

Opening prayer was given by Mrs. T. V. Ellis. The devotion was given by Mrs. G. E. Taylor. A previous SS lesson on Ruth was brought on the request of Mrs. Patterson by the teacher, Mrs. J. S. Vaughn. Mrs. George Green closed the meeting with a prayer.

Refreshments was served to 11 members and 3 visitors. Mrs. Patterson has been confined to her home for several months on account of her health.

The Slaton, Tex., Sis Thursday, August 20, Helen Church.

Following a wedding Ruidoso, New Mexico, she will reside at 4501 42nd Lubbock. For travel, she selected a Copenhagen blue silk shirtwaist dress. A hat of Copenhagen blue suede shoes and bag, and kid gloves completed her outfit. Her corsage was the orchid which centered the bouquet.

A graduate of Wilson School, the bride is a student at Texas Tech. The bride graduated from Crysta High School and received a S. degree from Texas Tech. She will return to Lubbock where Mr. Harkey will continue his Master's degree.

Use Slatonite Want

Wedding Portraits Commercial

For Any and All Purposes

Needs Call

R - C Photo 600 S. 14th VA 8

Announcing ...

The opening of new fall goods, the latest and newest things in imported woollens brocade silk velveteens corduroy, and all kinds of cotton goods at guaranteed lowest price.

Come look, sew and save. Register for the prizes!

SANDERS DRESS SHOP

720 So. 6th

VA 8-3929

WHITE'S Auto Store

AND MANAGER

DAVE STRALEY

Wish to thank the people and businesses of Slaton for their warm response to our grand opening.

121 So. 9th

VA 8-3946

PLASTIC LAUNDRY BASKET

REGULARLY \$2.98

Polyethylene plastic the perfect carryall for wash day. Will not mar table tops, rust or snag clothes. 17 1/4 x 23 in. top size, 10 in. high.

99c

AT by clipping this ad.

BEN FRANKLIN

HUMBLE TIPS

by

Richard and Charlee Becker



"Mon, is he washable?"

No car or truck is too big for us to wash and lubricate. We go "all out" and "all in" besides. Inside and out your car is clean when we do the job.

BECKER HUMBLE SER. Where Customers Send Their Friends Free Pickup & Delivery Ser. 400 S. 9th VA8-7108

SWEETS

to the sweet and insurance problems to the Browning and Marriott Agency, over Teague's Drug. Many folks who have consulted the Browning and Marriott Agency have

FOUND GOOD

reason to return next time they had an insurance problem. The Browning and Marriott Agency does a good job

FOR

their policy holders because they know the insurance business. That's the prime requisite these days any way you

FIGURE!

FINAL CLEARANCE

ON

MEN AND BOYS

SPORT SHIRTS

ALL PRICES GREATLY REDUCED

Wheeler's

165 So. 9th

VA 8-4151

CHRISTIAN YOUTH

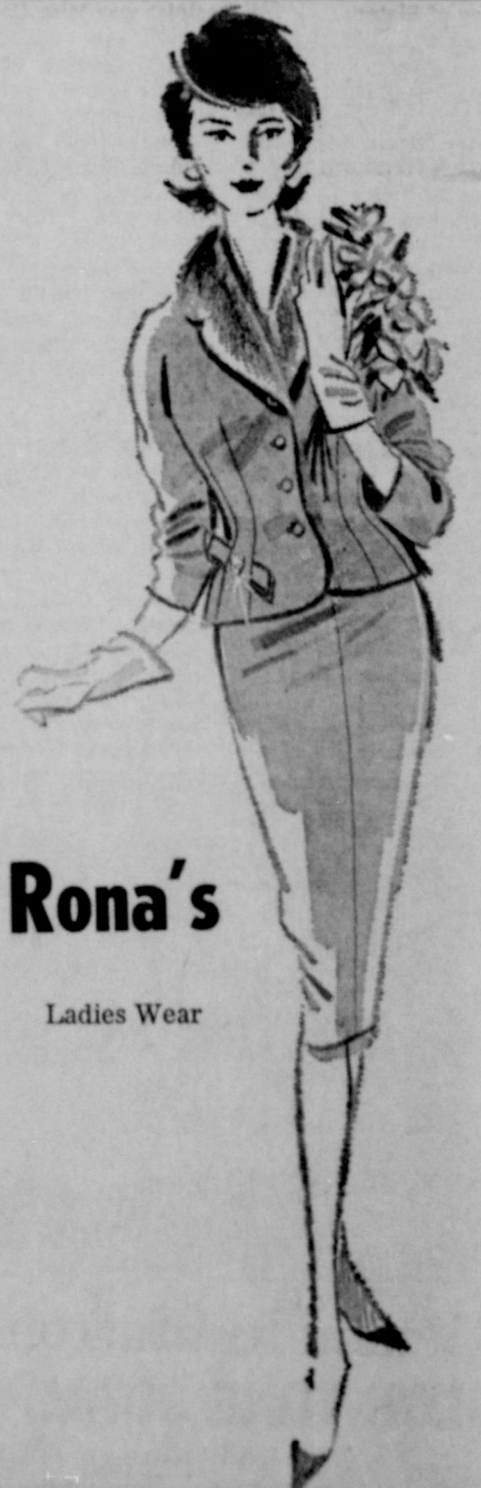


Round Up

FIRST CHRISTIAN CHURCH

AUGUST 23-28 * EACH EVENING AT 7:30
PREACHING - SINGING - FELLOWSHIP

each night for the entire family. All youth and their parents are invited to attend these inspiring services under the sponsorship of the youth of the First Christian Church.



Rona's

Ladies Wear

225 W. Lubbock

VA 8-3597

SPECIALS AUGUST 20-21-22

COCOA-COLAS, 12 Bottles, Reg. or King Size	.49
FLOUR, 5 lbs. Gold Medal	.49
FRYERS, Armour's Star, lb.	.37
COCONUT, 1/4 lb., Premium Shred	.19
BISCUITS	.09
COFFEE, Maxwell House, lb.	.67
PEACHES, Del Monte, No. 2 1/2 Can	.29
FRUIT COCKTAIL, No. 303 Del Monte	.25
BAKRITE, 3 lbs.	.69
TEA, Kimbell's 1/2 lb.	49c; 1/4 lb. .27
CHEER, Giant Size	74c; Regular Size .31
SUGAR, 10 lbs.	1.03
SALAD DRESSING, Kimbell's, Quart	.39
BLUEBERRY MUFFIN MIX, Betty Crocker	.39
CORN, White Swan, Cream Style, No. 303 Can	.19

Model Grocery and Market

118 West Garza

Phone VA8-3402

Society

The Slaton, Tex., Slatonite Thursday, August 20, 1959

Circle Is Host To The Society

The Africa Circle of the Woman's Society of Christian Service of the First Methodist Church was host to the Society, Monday morning, August 17, in Fellowship Hall.

The devotion, "Faith with Korks—the Local Church," was given by Mrs. Rollo Davidson.

A panel discussion emphasizing the work of the local church was presented by Mesdames S. H. Jaynes, H. W. Jeter, Fred Tudor and H. T. Scurlock, who used a small, lighted church as a worship center. A question and answer period followed.

A short business session was conducted by Mrs. S. H. Jaynes. Mrs. A. C. Burk, Secretary of Promotion, outlined the work of her department for the coming year. Mrs. J. S. Edwards, Jr., stressed the program of Youth Activities Week, August 17-21. Refreshments were served by the Africa Circle.

Vicki Jo Hill Is Honored On Fifth Birthday

Miss Vicki Jo Hill, daughter of Mr. and Mrs. Genavon Hill, was honored on her fifth birthday, August 11 with a party given by her older sister, Janice.

Dale Burruss, son of Mr. and Mrs. D. L. Burruss of New Deal and cousin of Vicki and Janice, also celebrated his ninth birthday.

Games were played and refreshments were served to Donna Sue and David Byrd, Steve Bourn, Dick Davis, Jim, Tom and Pattie Melton, Caryn, Chris and Sid Cheatum, Jenny and Tom Wright, Jill Moeller, Cindy, Marrietta, Gale and Patricia Burruss of Lubbock, Brenda Johnson of Ropes and Mark Burruss of New Deal.

Grace Mission Workers Have Meeting Thurs.

The Grace Mission Workers of Grace Lutheran Church met Thursday, August 13, for their monthly meeting. The meeting opened with the singing of a hymn and a prayer. Mrs. Arthur Stolle gave the devotion. The Bible Study from Ephesian, chapter 5 verse 21 through chapter 6 verse 9, was led by Mrs. C. M. McPherson. The meeting closed with the singing of "Hark! I Hear The Savior Calling."

During the business, the election of officers was held. The following were elected for 1960: President: Mrs. James Siney, Vice President: Mrs. W. H. Walter.

Secretary: Mrs. Carlton Schaffer.


Treasurer: Mrs. Alvin Becker. Reporter: Mrs. R. N. McMin. Mrs. James Clark accepted the job of Welfare Chairman for the Slaton Welfare for the next six months. The president appointed three members to plan a Mission Festival, which will possibly be held in Oct. or Nov. The pastor will also help the committee plan the Mission Festival.

After the meeting refreshments were served to twenty members and one guest. Mrs. Max Eckerman of Holland, Texas, Hostesses were Mrs. Etta Cathing and Mrs. C. M. McPherson.

temperatures, reports that a week ago the temperatures were: Sunday, hi. 86; lo. 72. Monday, hi. 90; lo. 64. Tuesday, hi. 94; lo. 68. Wednesday, hi. 94; lo. 68. Thursday, hi. 94; lo. 68. Friday, hi. 94; lo. 70. and Saturday, hi. 92; lo. 68.

Slaton Floral
1435 S. 9th VA 8-4214
Flowers Wired Anywhere
Mrs. Bentley Page, owner

Temperature Averages 80
An average temperature of 80 degrees prevailed in Slaton last week, with high for the week reaching 94 and the low, 64. Pioneer Natural Gas Company, which keeps a record of the tem-



Anthony's
YOUR FAMILY STORE

Be out in FRONT BACK-TO-SCHOOL

... in **STYLE**
QUALITY
ECONOMY!

Men's—Youngmen's and Boys' 13 3/4 Ounce BUCKHIDE JEANS

- Western styled—perfect fitting
- Sanforized Shrunken
- Reinforced at strain points
- Heavy duty zipper fly
- Coarse weave white back denim

Millions of men and boys prefer Buckhide Jeans above all others because of perfect fit and long wear. Double-stitched construction, bartacked and copper riveted at all points of strain. Two slash pockets in front, two patch pockets on back with circle-stitch scroll. Remember when you buy Buckhides you buy the best.

Boys' Sizes 4-16
Regulars-Slims-Muskies
Odd and Even Sizes



2.39

Men's & Youngmen's Sizes 28-36

2.98

- Wide Belt Loops
- Stitched with tough Orange Thread
- Worn and Approved by Millions

Men's and Boys' Popular Short Sleeve "ACRILAN" WASH-N-WEAR SPORT SHIRTS



Men's Sizes S-M-L
ONLY **\$2**

Boys' Sizes S-M-L
2 FOR \$3

Knit shirts... a vital part of a well-rounded wardrobe for any man or boy. Metallic buttons on plaid, one pocket, cross emblem on pocket, permanent collar stays, straight bottom. Each shirt packed in plastic bag with stand-up collar. Assorted colors of white, black, light blue, red or oxford heather.

Dyed-To-Match-Mates Sweater & Skirt BAN-LON SWEATERS

These dyed-to-match mates are a must to your fall wardrobe... whether you are Back-to-School bound, a busy housewife or a career girl. The short sleeve, soft slip-on with matching cordigan is something you can't resist. Sizes 22 to 30.

SLIPOVER CARDIGAN
3.98 4.98

WOOL FLANNEL SKIRT


The slip-on and cardigan sweaters have been dyed to match the slim skirts of wool flannel. SKIRT is designed with saddle stitched dart front and self-arrow head waist and a lined seat. A skirt that will be indispensable to your sweater wardrobe. See and buy these lovely match mates at your Anthony Store, Sizes 22 to 30.

Thrifty Anthony Priced **5.95**




36-Inch, Solid Color
CORDUROY
88c yd.

If you like to sew and save and with Fall and Back-to-School days just around the corner you will find dozens of uses for this fine, first quality corduroy. Choose from a wide selection of the most popular, solid colors.



Lovely Tina Faillie Cotton
GIRLS' SKIRTS
Sizes 7-14 **3.98**

For the young student who is sure to rate an A on smart fashions. Shifflie embroidered tab trim, straight and gored styles. Navy, red or blue. Mothers, this is a skirt that will go to school and pass every test with honors.



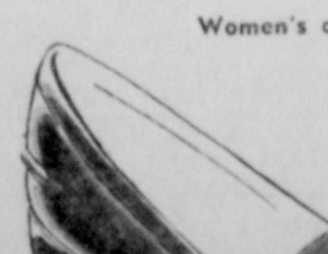
Girls' Pretty Broadcloth
BLOUSES
Sizes 3-6x and 7-14 **1.98**

Blouses with a very special look for the young and the very, very young. Perfect for school, too. Tailored or fuzzy styles in white or solid colors. So reasonably priced at your Anthony Store.



Lightweight, Bicycle Type
GIRLS' SCHOOL OXFORDS
Sizes 8 1/2 - 4 **2.66**

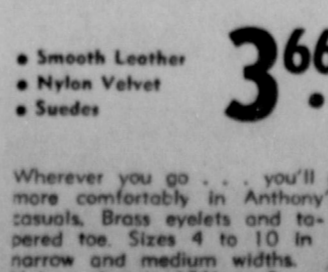
Favorites that will take busy, young feet on a round of activities. Black, smooth leather, 5-eyelet tie. Sure footing for the young, Back-to-School student. Special savings now afoot at Anthony's.



Women's and Misses' Smooth or Suede
PENNY LOAFERS
Step Anthony's way for the most comfortable shoe to be had... the loafer in suede or smooth leather. The right fashion... right price... right fit.

3.66
Sizes 4-10
N & M Widths

BICYCLE TYPE CASUAL SHOES



• Smooth Leather
• Nylon Velvet
• Suedes **3.66**

Wherever you go... you'll go more comfortably in Anthony's casuals. Brass eyelets and tapered toe. Sizes 4 to 10 in narrow and medium widths. Nylon velvet in 12 1/2 to 3, medium width.

Smart new fashions by the yard
Pretty Fall
COTTONS
Sew and Save for School
36-45
Inch Widths **48c** yd.

The smartest school fashions will be made of Fall cottons from Anthony's. For skirts, blouses, dresses and other Back-to-School items choose from this grand assortment of combed gingham, Scottie plaid suitings, printed plaids and novelties, everglaze prints, drip-dry prints, novelty weaves, broadcloth, Oxford cloth, Flouard prints, printed sailcloth.

Famous "DAN RIVER" GINGHAMS

Looking ahead to Back-to-School, smart Mothers will be looking to Anthony's for good buys in fabrics with which to sew and save. They will find terrific savings as well as a beautiful array of patterns and colors when they select the famous Dan River gingham. Famous Wrinkl-Shed with Dri-Dan Finish.



So Easy to Work With **79c** yd.

50 and 60 Inch Widths — New Fall
WOOLENS
1.99 yd.

You will have the time of your life choosing from Anthony's new Fall flannels, tweeds and shirting plaids in the beautiful new Fall colors. Bath skirt and dress weights. Select a pattern from Simplicity's smart, chic styles... then choose your fabric. One stop at Anthony's will do it all.

Ladies' Full Fashioned—First Quality Lovely Sheer 60-15 Nylon Hosiery

• Self Seam • Dark Seam
2 PAIR 88c

Wear these lovely, sheer, full-fashioned hose day or evening with sports shoes, town pumps or the barest of sandals. For real wear... Anthony hosiery that lasts—lasts—and lasts. Sleek flattery in the newest fall shades. Self seam or dark seam. Sizes 8 1/2-11.

100% Pima Broadcloth "Lady No-Fade" BLOUSES

• White **2.98**

A casual blouse, comfort loving and smart is this white Pima Broadcloth blouse. Drip-Dry-N-Wear, requires little or no ironing. Has these outstanding features... washable by hand, machine or laundry... bleach or heavy-duty detergent will not harm or yellow fabric... drip-dries quickly.

FOR YOUR
WELDING NEEDS...
WE HAVE THE BEST EQUIPMENT, AND YOUR JOB WILL RECEIVE OUR EXPERT ATTENTION.
SEE US FOR YOUR
BOATING FUN NEEDS,
BOATS, ACCESSORIES,
AND MARINE GASOLINE.
HENZLER IMPLEMENT
100 S. 7th VA 8-4344

it's **QUICK-CHILLING!**
Imperial FI-15B
New RCA WHIRLPOOL 15-cubic-foot refrigerator-freezer
New Jet-Cold Shelf chills food faster—without freezing. Activated-Cold Air Purifying System keeps food fresher, longer. Automatic defrosting. 163-pound "true-zero" freezer. Built-in styling, colors or white. **DELIVERS**
RCA Whirlpool
BAIN AUTO STORE
146 W. Garza VA 8-4632

HADDOCK FOOD STORE

EXTENDS THEIR

Congratulation to Santa Fe, on it's 100th birth day. We wish to express our appreciation to the Santa Fe Railroad, for their many years of service to Slaton and its trade territory, and for their interest in our community. The way they have helped our children, schools, churches, civic organizations, and businesses.

We join hands with the other businesses in saying welcome for another 100 years, to Santa Fe.

MELLORINE ^{1/2 GAL.} 1.00

4 FOR ...

PEAS	DEL MONTE, EARLY GARDEN, 303 Can, 2 For	29c
PEACHES	SPICED, HEUIT BRAND, NO. 2 1/2 Can	25c
PINEAPPLE	CRUSHED, DOLE'S No. 2 Can	25c
CRISCO	3 POUND CAN	79c
PINEAPPLE JUICE	DOLE'S, 46 oz. Can	33c
TOMATO JUICE	DEL MONTE, 46 oz. Can	25c
FLOUR	KIMBELL'S, 5 Lb. Sack	39c
MIRACLE WHIP	PINT JAR	33c
CATSUP	KUNER'S, 14 oz. Bottle	19c
COLGATE	DENTAL CREAM, Giant Tubes, 2 For	89c
PICKLES	MILE HIGH, Sour or Dill, Quart	29c
MARGARINE	KRAFT DELUX, Lb. 2 For	49c
PORK & BEANS	UNCLE WILLIAMS, 300 Can, 3 For	29c
SUNSHINE Hi Ho, Pound Box		35c
NABISCO WHEAT THINS, 10 1/2 oz. Box		35c
SUPREME HONEY GRAHAMS, Pound Box		29c
GREEN BEANS	JACK AND BEAN STALK, 303 Can	19c
NEW POTATOES	DURAND'S FANCY WHOLE, 303 Can	10c
SPINACH	DEL MONTE, 303 Can	15c
CORN	OUR DARLING, CREAM STYLE, 303 Can	19c
TOMATOES	SUNNY ACRES, 303 Can	10c

FROZEN FOODS

Pink Lemonade, 6 oz. Can, 2 for	19c
Patio Enchiloda Dinners, each	39c
Strawberries, 10 oz. Pkg.	19c

Bacon, Swift Sweet Rasher, lb.	39c
Beef Ribs, pound	29c
Pork Chops, End Cuts, Lb.	39c
Town & Country Frozen Steak, 8 to pk.	79c

PRICES ARE EFFECTIVE AFTER 2:00 P. M. THURSDAY

LEMONS	CALIFORNIA SUNKIST, Pound	10c
Red GRAPES	POUND	12 1/2c
TOMATOES	VINE RIPENED, Pound	19c
BANANAS	POUND	10c

We Give and Redeem Town Value STAMPS



DOUBLE ON TUESDAY

The Slaton, Texas, Slatonite Thursday, August 20, 1959

Wilson FHA Officers Meet

On August 14 the Wilson FHA Officers met in the home of Linda Roper to plan the year's work. With President Doris Lamb presiding different committee chairmen were appointed. They are as follows: Points Chairman, Nancy Wuensche; Degree and Yearbook Chairman, Linda Roper, and Tag Chairman, Jo Williamson.

After the business meeting refreshments were served to the officers.

The officers for 1959-60 are: President-Doris Lamb; Vice-president-Linda Roper; Secretary-Glenda Young; Treasurer-Sue Campbell; Parliamentarian: Nancy Wuensche; Historian-Shirley Behrend; Reporter-Joe Williamson; Photographer-Carol Lamb; Pianist-Sue Coleman; Song Leader-Geneva Wuensche; Sponsor-Mrs. Velma McWhirly.

Local Youth Wins Tech Scholarship

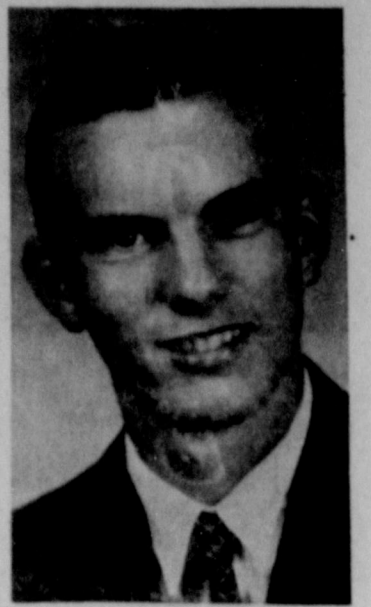
Lubbock - Eight South Plains students have been awarded \$1,600 in freshman scholarships at Texas Tech by the Kuykendall Foundation of Lubbock.

The \$200 grants are awarded on basis of scholarship, citizenship and character, with consideration given to need, according to James G. Allen, dean of student life, who announced the grants on behalf of Tech committee on scholarship and awards.

SLATON—James Elby Murphy, Chapter mothers-Mrs. Frank Schneider, Mrs. John Forbes, Mrs. Claude Roper, Mrs. Luke Coleman.

Mr. and Mrs. Leeman Reasoner and family have been on vacation for a few days.

phy, Slaton High School graduate. He was voted "most likely to succeed" and was a member of the library and science clubs.



JAMES MURPHY ... gets scholarship

Anthony's YOUR FAMILY STORE *Introducing*

OUR BRAND NEW BUCKHIDE SUPER BOYS' JEANS



- RUGGED 11 1/4 OUNCE DENIM
- REGULARS—SLIMS—HUSKIES
- ODD AND EVEN SIZES 4 TO 16
- DOUBLE KNEES SIZES 4 TO 12
- REGULAR KNEES SIZES 13 TO 16
- AUTHENTIC WESTERN STYLED
- STRONG JAM-PROOF ZIPPER

17% NYLON

75% MORE WEAR GUARANTEED WITH Caprolan Nylon

Introductory Sale Price

2.57

2 PAIR \$5

Regular Price 2.69 After Aug. 22nd.

- 17% NYLON FOR EXTRA WEAR
- VAT DYED-NO FADING EVER
- SANFORIZED FOR LASTING FIT
- STITCHED WITH TOUGH WHITE THREAD
- WELL MADE FOR PERFECT FIT
- REINFORCED AT POINTS OF STRAIN
- AUTHENTIC WESTERN CUT
- REGULAR SIZES 4-16
- SLIM SIZES 4-16
- HUSKIES WAIST SIZES 24-35
- STRONG JAM PROOF ZIPPER

Here they are... Boy's Super Buckhide Jeans that give 75% more wear. Sturdily constructed of 11 1/4 ounce blue denim with 17% Caprolan nylon. Western styled and cut for perfect fit. Vat dyed... no fading ever. Bar tacked and riveted at strain points. Stitched with tough white thread. Heavy jam-proof zipper. Compare price... compare quality... discover for yourself... super Buckhides are your best buy.

Early History Of The Santa Fe In Slaton Area

By Ralph W. Ater

The summer of 1904 found the lines of the Santa Fe Railway, organized in Texas as the Pecos and Northern Texas, pushing in a Southwesterly direction across the upper Panhandle of Texas and reaching by north Texas to the Gulf, and rumors flying thick and fast about a railroad to be built south from Canyon City, through Tullia, Plainview, Lubbock and Slaton,

to connect with the Gulf Lines. These were exciting rumors, for it would open the Plains to rail traffic with the Gulf Coast, and with the West and North. To investigate this current talk, James Dun, Chief Engineer of the Santa Fe System came to Amarillo and Canyon City and interviewed the citizenry. He found that a Mr. C. L. Tallmadge wanted to undertake the construction of a railroad, but that

the leading citizens of the community favored the project only if undertaken by a strong railroad company. The road which was to serve Lubbock was proposed as a branch to the Pecos and Northern Texas. After conferring with Mr. Avery Turner, then vice president and general manager of the Pecos and Northern Texas Railway at Amarillo, Dun decided in July, 1904, to have a

survey made for the best route southward over the Plains. J. V. Key, a locating engineer, completed his survey in September of 1904, with several routes—a west line from Umbarger to Lubbock, a west line from Canyon City to Lubbock, and an east line from Canyon City to Lubbock which passed through Tullia and Plainview. This latter route was the farthest, but the best as it served existing commun-

ities and also presented fewer construction problems. The first step in bringing rails to Lubbock and Slaton was the construction of the line from Canyon to Plainview. The railroad in August, 1905, contracted with Major E. B. Stahlman, of Nashville, Tenn., and C. L. Tallmadge of Chicago, promoters, operating under the name of the Northern Texas Construction Company of Amarillo, Texas, to secure the necessary right of way and station grounds, and gave them 60 days to do it in. These gentlemen were to acquire and deliver clear title without cost to the railway, and the Santa Fe agreed to build a railroad from Canyon to Plainview on or before January 1, 1907.

Things began to hum. A contract for grading from Canyon to Plainview was let in January, 1906 to Mr. A. Moore, railroad contractor of Newton, Kansas. Plans were made to lay 56 and 52 pound relay rails on the main line, and 52 and 48 pound rail on the sidings. Close estimates figured it would cost ten thousand dollars a mile to build such a road in those days.

Mr. H. T. McGee was appointed Chief Engineer of the Pecos and Northern Texas Railway and set up headquarters at Canyon City to push the rails southward. The first two bridges out of Canyon was started in August 1906 and Plainview was reached December 29, 1906 by exerting every effort right through Christmas holidays.

By January 20, 1907, a daily mixed train plied both ways between Plainview and Canyon City. Although the line was not officially opened for business until February 18, 1907 and people were talking about the rest of way to Lubbock. The right of way agents, Mr. Tallmadge and his associates, wanted to locate the line south from Umbarger, passing 8 or 10 miles west of Tullia, thru the western half of Hale and Lubbock counties and missing Plainview 8 miles and Lubbock 3 miles, this because of certain land speculation plans of theirs.

The Slaton Slatonite SANTA FE EDITION

The Slaton, Tex., Slatonite Thursday, August 20, 1959



PASSENGER SERVICE
Fast, efficient, comfortable passenger service is provided by the Santa Fe. In this photo, a train, representative of the type which now serves in the Slaton Division, roars across the scene.

(An Editorial) The Santa Fe And Slaton

This issue of The Slatonite, which will go out to approximately 3,000 more readers than usual, carries ads of congratulations to the Santa Fe Railroad and its employees on the occasion of the 100th Anniversary of the granting of the firm's charter.

The importance of Santa Fe and Santa Fe personnel to Slaton cannot be over emphasized here. Slaton was actually built and started by the railroad and owes much of what it is today to the line.

Santa Fe's place in Slaton's economy today is reflected in part by these facts:

The line employs an average of 425 people at Slaton, providing an annual payroll of \$2,720,000 in round figures.

Santa Fe operates two daily passenger trains through Slaton, and an average of 25 freight trains daily.

The Santa Fe pays a tax bill of approximately \$75,000 annually in Lubbock County. This figure includes those Santa Fe taxes local to Slaton, where the railroad in 1958 paid city taxes of \$5,250 and Slaton school taxes of \$7,279.1.

Slaton, of course, is headquarters of the Slaton division of the Santa Fe's Western lines. It comprises 1186.9 miles of mainline railroad, not including mileage of passing or auxiliary tracks. The Slaton division is the largest operating division on the Western lines.

Geographically, the Slaton division's Plainview district extends from Canyon to Lubbock. The first district extends from Slaton to Texico. The second district is the segment from Slaton to Sweetwater. The Floydada district comprises the branch line from Plainview to Floydada, and the Crosbyton district branch to Crosbyton from Lubbock. Lamesa district runs from Slaton to Lamesa, and the Seagraves district extends between Lubbock and Seagraves. The Lehman district covers the 62.8 miles from Lubbock to Bledsoe. The Hamlin, Sayard, Fort Stockton and Alpine districts combined stretch from Altus, Oklahoma, to Presidio, Texas. The Sonora district is the line south from San Angelo to Sonora.

Many of the Santa Fe's top executives started on the Slaton division or have seen service here. Outstanding examples are the top three men on the dispatcher's seniority list at Slaton. Number one man on this seniority list is John N. Landreth, now general manager of the Santa Fe's West Lines at Los Angeles, California. Second on the list is Raymond D. Shelton, assistant vice president at Chicago, Illinois. Number three position is held by Raymond M. Champion, assistant to the general manager, Western lines, at Amarillo.

We would like to take this opportunity also to welcome to the new Slaton superintendent, Mr. Kenneth C. May, whose appointment was effective August 1.

Santa Fe Was Chartered 100 Years Ago In Topeka

—“For each age is a dream that is dying Or one that is coming of birth”.

In 1854, a young Pennsylvania lawyer, named Cyrus K. Holliday, arrived in Kansas from Pennsylvania. Railroad building was already in his blood. A few years before, to draw up a charter for a railroad they proposed building, young Holliday had been engaged by a group of promoters, studying the proposed route, decided that the road was a promising business venture and much as he needed cash, in this his first year of legal practice, he asked that his pay be in shares of stock in the new road. Within a year after the line was built it sold at quite a profit and Holliday was committed to a future of railroad promotion.

Leaving most of his capital at home with his wife, Mary, Cyrus Holliday started west to Kansas. He settled first at Lawrence but after only a few months he and a new friend, Enoch Chase, and a few other men set out for a tiny settlement on the Kaw River called Papan's Ferry, a stopping place on the westward trail.

To the amazement of the French-Canadian family who operated the site, Holliday and party announced that a new town was about to spring up there. With the aid of only a watch compass and string, they laid out the future townsite. Then with a burst of optimism, Holliday announced that he was settling aside a twenty-acre site for the future state capitol.

So impressed were the rest of the party at his confidence, they elected him president of the new place, and for a few days he presided seated on a flour sack.

Within six years, to the complete confusion of the scoffers, Topeka was the state capitol, due largely to Holliday's efforts. However, in January 1855, Holliday was to write to his wife: “There is neither bed, chair nor table in the entire city limits of Topeka”. He added that he had taken a city lot and a farm claim.

Cyrus Holliday's dream was a long time and for a period of almost ten years events conspired to keep it from fulfillment. Kansas was primarily a free-soil territory and the first trouble to beset the new territory was the invasion of the Missouri “Border Ruffians” who stormed across the state line to drive off the Free Soilers from the voting places and were largely responsible for Holliday not being elected as representative from the third district.

Now virtual civil war erupted in the territory. In the siege of Lawrence in December 1855, Holliday was made a Colonel and placed in command of the Second Kansas Regiment.

In 1859, in the midst of this chaos, Colonel Cyrus K. Holliday drew up the charter of what was to become the Atchison, Topeka and Santa Fe railroad and presented it to the legislature which accepted

It as it stood on February 11, 1859.

In his document Colonel Holliday continued on Page Eight

This rushed things so far as

train operation was concerned, and the Hale Center committee really did not request the specials, but when the Santa Fe officials found out about the plans, they wanted to help promote the development of Hale Center and arranged the special service.

In the meantime, these excursions inspired the city to the city to the south of what now is Abernathy to action. The Lubbock Commercial Club under the leadership of Mr. Don H. Biggers, its secretary, began plans for a celebration when the rails reached Lubbock.

Engineer Harris revealed to Biggers that it would be November 1, 1909 before full operations into Lubbock could begin although even then the buildings would not be complete nor water stations, houses or telegraph lines ready.

However, to help open up the communities of Hale Center and Abernathy, the new railroad handled freight in carload lots from Plainview to Hale Center and Abernathy beginning about the middle of August, handling these cars at Texas Commission rates and at the owners' risk, in trains used to haul construction materials to the end of the line. By October 1, 1909, Harris was arranging to handle freight all the way to Lubbock on the same basis.

With the opening of regular rail service in January, 1910, the Plains began to boom in earnest. The Plainview-Floydada branch was building and mixed train service started on it in March of 1910.

In the meantime surveys were being rushed to completion to determine the best route south from Lubbock to connect with the Santa Fe's Gulf lines at Coleman.

Too, the location of a division point for the railroad's operation became important to the people of Lubbock.

By March of 1909 the Santa Fe's construction engineers had reached a decision to build over the route the road now follows, and W. T. Cliver was employed to secure right of way from Lubbock to Sweetwater.

Among the business men of Lubbock who dealt with Abernathy, Cliver, and the Santa Fe's engineers and executives were such names as O. L. Slaton, H. B. Reid, B. O. McWorter, J. J. Dillard and Don Biggers, secretary of the Lubbock Commercial Club.

The track laying on the Lubbock-Coleman line began at Lubbock, October 13, 1909, and simultaneously from Coleman heading north. Connection completing the track laying was made at noon, May 1, 1911, 153.9 miles from Coleman and 46.1 miles from Lubbock.

When Santa Fe's executives made it known that they planned to locate a division point about 15 miles southeast of Lubbock, some of the promoters of the rail line at Lubbock became fearful that the railroad would promote a town so close to Lubbock as to detract from the development of Lubbock.

It should be made clear that the division point was selected for railroad operating reasons, one freight run, or 110 miles

from Clovis (a division point) and 103 miles (one freight run) from Sweetwater, a proposed division point.

W. B. Storey, Jr., Santa Fe's vice president in charge of construction, corresponded at some length with Don H. Biggers, secretary of the Lubbock Commercial Club, on this subject.

It was pointed out that had Lubbock been laid out five miles further to the southeast the Santa Fe could have placed its division point adjacent to the town.

The Lubbock people offered to pay a subsidy in land or cash to reimburse the railroad for establishing and maintaining a “short division” but Storey explained that “the expense to a railroad company of such a short division is perpetual and goes on increasing every year as the amount of business over the road increases. Sooner or later economic reasons would compel the moving of the division point from Lubbock.” therefore, it was better to place it at the right mileage distance now as it would be “better for the development of the country and for all the people in it to have our transportation facilities arranged in such a way as to enable us to give the most economical handling of business.”

However, Mr. Storey repeatedly assured Lubbock the railroad did not wish to establish any sort of a station that would be detrimental to Lubbock. He asserted the railroad company was in no hurry to build a town at its division point until there was necessity for a settlement there, thus giving the city planners of Lubbock every opportunity to benefit first from the coming of the railroads.

Mr. Storey wrote Mr. Biggers on December 20, 1909, that the Santa Fe was in no hurry, but that it would build a town. He gave his opinion that this action would not affect Lubbock as far as its ultimate future was concerned.

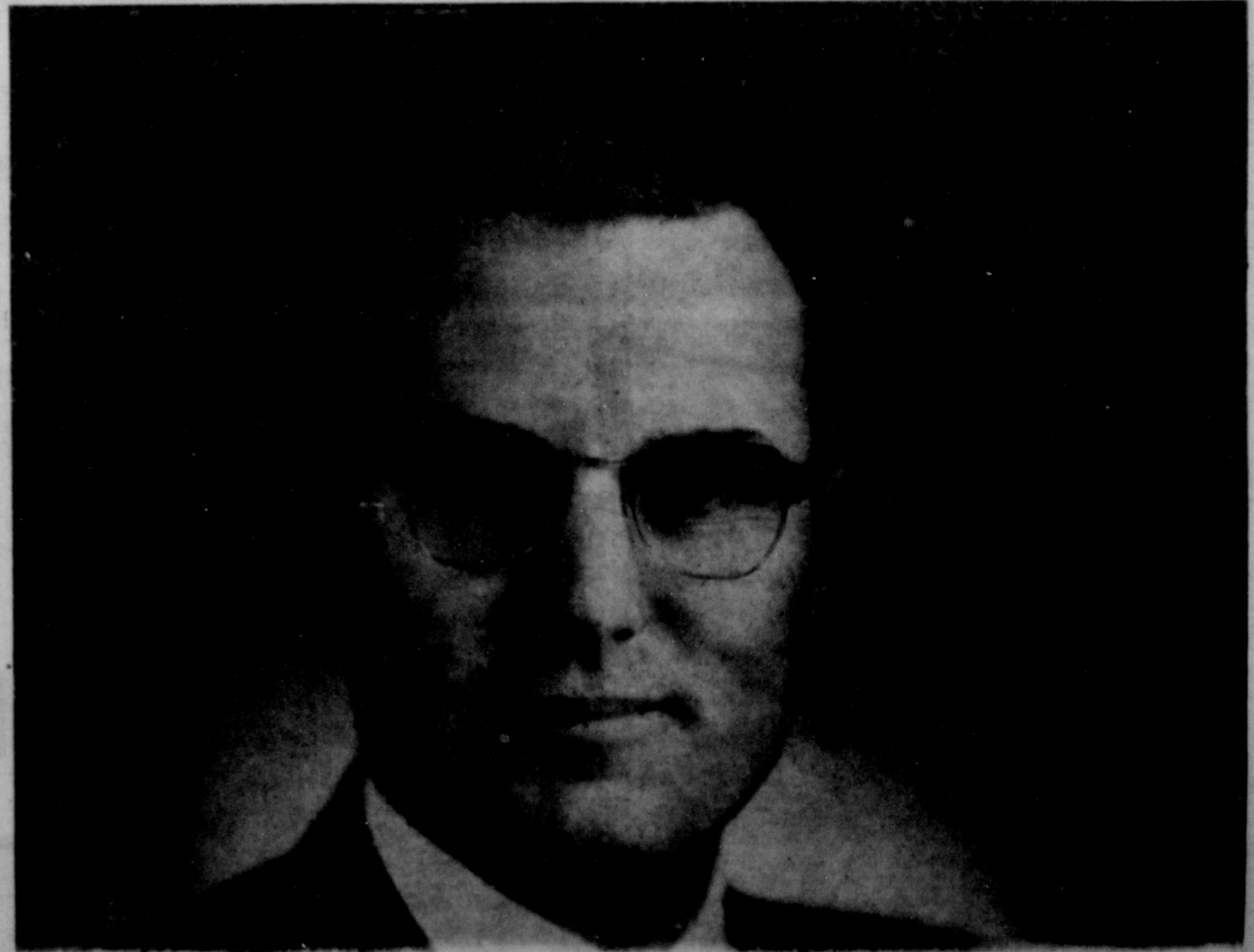
Mr. Storey's judgment and wisdom in assuring the Lubbock people has proven correct.

He wrote—“I consider that it (Lubbock) has the promise of being one of the important centers of the Plains and the fact that we will have roads radiating in three directions from same should in itself be enough to make you an important trading point.

“I wish to state further that we have a very genuine respect for the driving business-like methods of the Lubbock people, and I cannot see how, with such men back of it to push the place, it should not continue on the path it has so well begun.”

True to his promise, Storey did not reach the decision to sell townsite lots and develop the present town of Slaton, the disputed division point, until April, 1911, or about a year and a half after he appraised the Lubbock people of the economic reasons for not locating at Lubbock.

By June of 1910 the construction department was operating freight and passenger service in a mixed train south of Lubbock to Lamesa, and by June of 1911 they were operating, in addition



Kenneth C. May, Superintendent, Santa Fe Railway, Slaton, Texas

Englishman Fred Harvey Made Millions On Railroad Restaurants

Took Action Against Deplorable Conditions In RR Restaurants

In 1875 a new name entered the railroad business, a name now better known to American travelers than that of any railroad builder.

Fred Harvey, an Englishman who came to America in 1850 and worked first in a restaurant and later as a railroad mail clerk well knew the deplorable conditions under which travelers of that suffered day at what meals they could get.

In 1875 he approached Charles Morse, superintendent of the Santa Fe, with his idea of a cooperative working agreement between the railroad and him. Morse, who appreciated good food, liked the idea and so began a partnership, sealed with a hand-shake, that existed for years on a verbal agreement and would probably still have no agreement on paper were it not for the government regulations requiring such formalities.

Harvey bought a small eating place in the old Topeka depot. The Santa Fe supplied the space some materials and supplies. Fred Harvey his experience and idea.

During a two day close down to clean, paint and refurbish, new table cloths and napkins were bought, silver polished and the first Harvey House was ready to open. In two weeks it was a hit not only with passengers but with the residents of Topeka.

Next the Santa Fe and Fred Harvey decided to extend their restaurant operations. Harvey supplied the capital and together they bought and overhauled an old hotel in Florence, Kansas. Mr. and Mrs. Harvey bought the furnishings which were a sensation in Kansas in that day.

Most of the heavy walnut furniture is still around Eastern Kansas. The silver came from England, the linen from Ireland. The chef, lured by \$5,000 a year,

came from the Palmer House in Chicago to become the wealthiest man in Florence. The Florence House soon became so famous people went (continued on Page 6)

Your Family Gets Most From

Foremost

ASK FOR



- MILK
- BUTTERMILK
- CHOCOLATE MILK
- CREAM
- COTTAGE CHEESE
- BUTTER
- ICE CREAM

FOREMOST DAIRIES

PO 2-3311

3202 E 3 Pl.

LUBBOCK

TILE

for
Every Purpose

LOW PRICES

LET US GIVE YOU OUR ESTIMATES

SAVE AT

KELLYS TILE & SUPPLY

SW 9-4317

3208 34th

LUBBOCK

Serving The Great Plains Area

STOTTS
TRUCKING
COMPANY

FULLY INSURED

PO 2-3712

36th & Quirt

LUBBOCK

TILE for Every
PURPOSE

West Texas
Tile Co.

LET US GIVE YOU AN ESTIMATE
YOU WILL SAVE MONEY

SH 7-1636


3021 34th St.

LUBBOCK

The Future Shall Be Even Greater!

Over 21,000 Farmers, Ginners, Business Men of 23 Counties Grouped Together
... For The Progress of Irrigated and Dry Land Production of Cotton ... Producing a Dependable Source of Supply and a Wide Range of Quality Cotton.

The Plains Cotton Growers Inc. Is Built on Research, Service and Promotion

PLAINS  OTTON GROWERS, INC.

1720 Ave. M — Lubbock, Texas

TO BETTER SERVE THE PEOPLE OF THE SOUTH PLAINS . . . WE HAVE INSTITUTED MANY NEW SERVICES . . .

TEACHING STUDIOS—PRACTICE ROOMS
PIANO & ORGAN SERVICE BY SKILLED TECHNICIANS
COMPLETE SHEET MUSIC SERVICE
BAND INSTRUMENTS & SUPPLIES
STRING INSTRUMENTS & SUPPLIES

HAMMOND ORGANS
(all Models)
PORTABLE ORGANS
PORTABLE CHORD ORGANS

CABLE-NELSON PIANOS
STEINWAY PIANOS
CHICKERING PIANOS
EVERETT PIANOS
GEORGE STECK PIANOS

MAGNAVOX HIGH FIDELITY & STEROPHONIC

JENKINS
Music Co.

13th & Ave. Q

Phone PO 3-6487

OF TEXAS

Lubbock's Complete Music Store

HIGHEST PRICES PAID FOR
YOUR MILO GRAIN

LEWTER GRAIN CO.

SH 4-4587

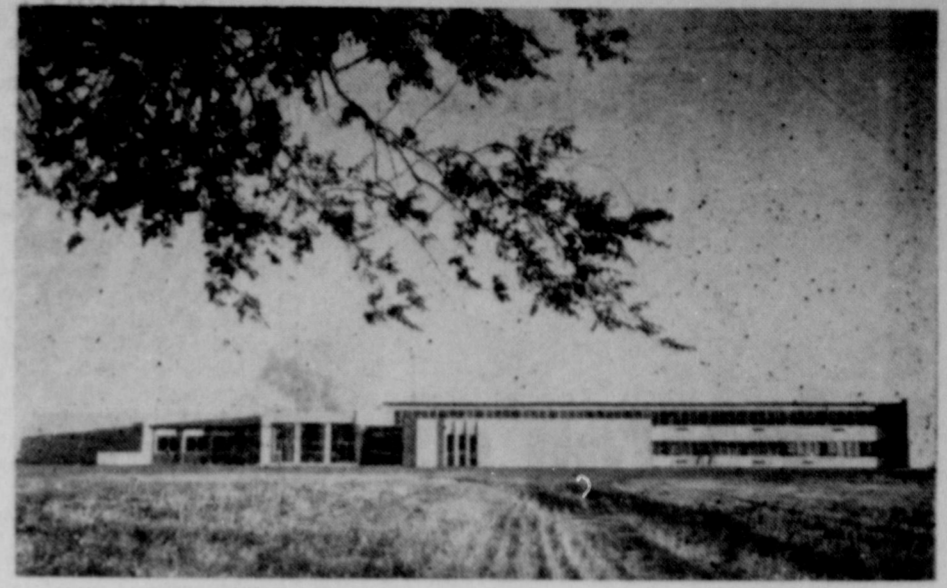
SLATON HIGHWAY

LUBBOCK

**YOU TOO —
CAN SAVE
LOWEST PRICES +
GREATEST TRADES EVER!**
on the New Beautiful 1959
BUICK
Scoggin-Dickey Buick Co.

SALES BUICK SERVICE
1917 TEXAS PO 5-7415 LUBBOCK

Everyday
Low Prices
on
Highest Quality
Carpets
BEFORE YOU BUY
GET OUR PRICES!
**TUFTWICK
CARPET MILLS**
Located At
Commercial Section of Municipal Airport
Building North of Water Tower
PO 3-7188
LUBBOCK



INVEST IN YOUR FUTURE ENROLL
NOW FOR FALL TERM
Lubbock Christian College

— FACTS OF INTEREST —

- A PRIVATE LIBERAL ARTS JUNIOR COLLEGE
- BASIC COURSES IN 15 FIELDS OF STUDY
- A HIGHLY TRAINED FACULTY, EACH A SPECIALIST
- MEMBER OF AMERICAN ASSN. OF JUNIOR COLLEGES
- SMALL CLASSES AND PERSONAL COUNSELING
- A WHOLESOME CHRISTIAN ENVIRONMENT
- UNEXCELLED OPPORTUNITIES FOR STUDENT LEADERSHIP
- INTERCOLLEGIATE ATHLETICS: BASKETBALL, TRACK, TENNIS, GOLF, OUTSTANDING CHORUS, BAND, ORCHESTRA
- LOW EXPENSES—SEND FOR CATALOG—Box 1339, Lubbock, Texas

"TRAINING TOMORROW'S LEADERS"

F. W. MATTOX, Ph.D., Pres. J. W. BATES, Ph.D., Dean
H. O. WILSON, Ph.D., Registrar

SAVE MONEY WITH
OUR
**Ready-Built
Homes**

Moved Direct To Your Lot
Easy Terms

SEE
Avinger Lumber Co.
"The Originator of Ready-Built Homes"

126 E. Broadway and 515 E. 34th
PO 3-7373 LUBBOCK SH 7-2573

28 Years
of
Serving
the
AREA

AMERICA, 1804
Oliver Evans of Philadelphia has built a machine on wheels that is also a boat. When he drove it into the Delaware River it left its wagon body and paddled off. In these days when there is so much talk of canals, it may be a great thing.

Godwin's

Home of
LADIES
FINE FOOTWEAR
and
LADIES
READY-TO-WEAR
FASHIONS

13th and Ave. K
LUBBOCK

Reliable and Dependable
Service To The Area

**WESTERN
Irrigation Supply Co.**

Incorporated
Dealers For

**"GOLD CROWN"
WESTERN PUMPS**

PO 2-3848
602 19th STREET
LUBBOCK

All Makes or Models

AUTOMOBILE OR TRUCK

MOTORS

Fully Rebuilt and Guaranteed

DALTON MOTOR EXCHANGE

FINANCING ARRANGED
WRITTEN GUARANTEES

SH 4-2085
3107 AVE. H
LUBBOCK

**Complete
Reproduction Service**

Blue Prints
Photo Copies
Engineering Supplies

**Midwest Reproduction
Co.**
PO 5-7461
Quick Reliable Service
1012 19th St. Lubbock

Before You
MOVE!
INVESTIGATE OUR
LOW RATES
AND
QUICK SERVICE

**B & H
WAREHOUSE
Company**

Agents For
DEAN VAN LINES
Local & Nation Wide
Movers

PO 5-7773
1405 AVE. A
LUBBOCK

SEE THE
BEAUTIFUL
PIANO'S
and
ORGANS

at
**B. E.
ADAIR
Music Co.**

PO 3-2848
1112 AVE. Q
LUBBOCK

FOR BETTER FARMING RESULTS

USE

OLIVER FARM EQUIPMENT

FINEST IN FARM MACHINERY

TRACTORS — COMBINES and
COTTON HARVESTERS

WE ARE ALSO FRANCHISE DEALERS FOR
GEHL SILAGE EQUIPMENT

Oliver Machinery Co.

JOHN WHEELER — OWNERS — FRANK MELCHER
COMPLETE LINE OF FARM EQUIPMENT
SALES-SERVICE — OLIVER — PARTS

SH 4-4271
52nd St. and Ave. A LUBBOCK

CONGRATULATIONS SANTA FE

PIONEERS IN QUALITY

FOODS

ASK FOR

Morton's

FRESH POTATO CHIPS
AT YOUR FAVORITE
FOOD STORE

MORTON FOODS CO.

LUBBOCK

Early History . . .

(Continued from Page 1)

to combined freight and work train service, passenger service from Amarillo to Sweetwater over the new line, connecting with the Texas & Pacific there to give service to Ft. Worth.

The road was completed and turned over to the operating department December 1, 1911, and Lubbock had a rail connection direct to the Gulf of Mexico.

The line from Lubbock to Texico was completed November 12, 1913, shortening the distance to the Pacific Coast. Operation of this section of the road began March 1, 1914.

The station at Lubbock was designed by Louis Curtiss, architect of Kansas City, Missouri, and was completed in the Spring of 1911.

The Lubbock to Crosbyton line was completed and service began on April 10, 1911.

The Pecos and Northern Texas, the construction property, was leased to the Panhandle & Santa Fe Railway on July 1, 1914, and has since been operated under that name. (See Note below).

The Lubbock to Seagraves line was placed in operation July 1, 1918.

The Dowd to Bledsoe line was placed in operation December

1, 1925.

Both passenger and freight service have been continuous since their inception during construction days, with expansion and improvements to meet the needs of the growing area. Yard and industrial trackage has been expanded as Lubbock has grown and Santa Fe's traffic department has worked toward Lubbock's industrialization in helping to locate industries on Santa Fe's trackage—served industrial properties in the Lubbock area.

New technologies have been applied as developed, both to railroad operations through Slaton and to facilities at Slaton. The stations have been remodeled from time to time as business increased; the freight station was completely remodeled and modernized in 1948.

Highway service to Lubbock

shippers was added in 1947

when the Santa Fe Trail Transportation Company began operating into Lubbock. Small trucks of the Trailways served Lubbock and Slaton with pick-up and delivery service for the railroad.

With the recent (1950) acquisition of additional industrial property in Lubbock and increased use of Diesel power for freight, switching and passenger service, the Santa Fe is endeavoring to keep pace with the expanding Lubbock and Slaton scene.

It took vision to build railroads and towns in the early 1900's and the foresight and drive of men like Monroe Abernathy, O. McWorter, J.J. Dillard, B. O. McWorter, J. J. Dillard, Don Biggers and those early Santa Fe railroad executives with whom they dealt account

today for the prosperity of the whole Plains area.

As James Marshall points out in his history of the Santa Fe, the young roads of those days, including the Santa Fe, were not promoters' dreams or speculative adventures, as they were in many eastern sections—they were down-to-earth projects, financed by men who knew the value of money and calculated the chances.

Marshall also reveals that out of the lawyer, merchants and farmers who dreamed, built and operated it, the Santa Fe made not a single millionaire. But, like other granger roads, it created enough wealth out of almost nothing to make thousands of people wealthy and millions prosperous.

* "Santa Fe—The Railroad That Built An Empire"—Random House.

Note: The Pecos and Northern Texas Railway Company was emerged on December 31, 1948, with Panhandle and Santa Fe Railway Company and the Pecos corporation was dissolved on January 20, 1949.

Serving The Great Plains Area!

Southwestern Electric Supply

WHOLESALE ONLY

818 AVE. G

LUBBOCK

SERVING THE AREA!

**EDWARDS & REED
PACKING CO.**

PACKERS OF

BEEF & PORK

HAMS, BACON, FRANKS AND LUNCH MEATS

PO 5-9446

WEST ERSKINE ST.

LUBBOCK

CUSTOM MADE MATTRESSES

TO YOUR ORDER

ANY SIZE OR FIRMNESS

Renovating Service

FREE DELIVERY ON NEW
MATTRESSES UP TO 100 MILES

Save Money
From Factory To You

PO 2-4261

AMERICAN MATTRESS CO.

C. H. TALLISON

1715 Ave. H

LUBBOCK

FOR BETTER FARMING SEE
AND USE TODAY'S MOST ADVANCED
LINE OF
COMBINES ON THE MARKET

MASSEY-FERGUSON

Tractors & Farm Machinery

FARMERS SUPPLY

SALES PARTS SERVICE

ALSO DISTRIBUTORS OF

ROILINE GAS ENGINES — CONTINENTAL
RED SEAL ENGINES — MF DAVIS WORK-BULL
INDUSTRIAL EQUIPMENT

Phone SH 4-8467

2608 AVE. H

LUBBOCK

WE MANUFACTURE

SUPERIOR PLASTICS FOR

AGRICULTURE & INDUSTRIAL

USES

IRRIGATION SUPPLIES

NATURAL GAS & WATER LINE PIPE

**SOUTHWESTERN INDUSTRIAL
PRODUCTS CO.**

SH 4-6525

1 MILE SOUTH TRAFFIC CIRCLE ON TAHOKA HWY

LUBBOCK

PIONEERS IN SERVING THE
GREAT PLAINS AREA

Homer G. Maxey & Co.

WHOLESALE DISTRIBUTORS

PLUMBING — AIR CONDITIONING & ELECTRICAL

ELJER — RHEEN — PAYNE — WESTINGHOUSE

LUBBOCK — AMARILLO

SERVING THE AREA!

**LUBBOCK
ELECTRIC
COMPANY**

Electric Motors & Controls

Service & Sales

SH 4-2336

1108 34th

LUBBOCK

Progressing With Lubbock County

**Farmers Co-op
Compress**

TOM BROWN, Mgr.

SLATON HWY

LUBBOCK

Railroad Moved Settlers West In Boxcars-Coaches

Of prime interest to a railroad in its progress westward was the establishment of towns along its right of way and the settling of these towns.

The Santa Fe moved settlers west in boxcars and coaches. There was a standing rule that

if a settler's car had livestock aboard an attendant would be carried free. Thus the practice came into existence of taking with the family a couple of chickens when all other livestock was before the move. Then as the plowshares, stove

and other home and farm equipment were loaded aboard a Zulu car, as these freight cars came to be known, the chickens were loaded and Father or a son boarded the freight car to take care of the livestock. The Santa Fe sold land along

the road to early settlers, hauled in supplies to them and through easy financing, cheap rates west and even shipments of food and other goods to them during droughts and the difficulties of making a start, and was largely responsible for the welfare of the early settlers.

First priority for a long time went to the cattlemen. Every possible concession was made to help the cattle trade since the cattle hauled to market were the first cash business of any road west.

When a herd was sighted, the train built up speed, then the steam was shut off, passengers

warned not to shoot at the herd, and the train coasted past the herd as silently as possible so as to not disturb the beef animals.

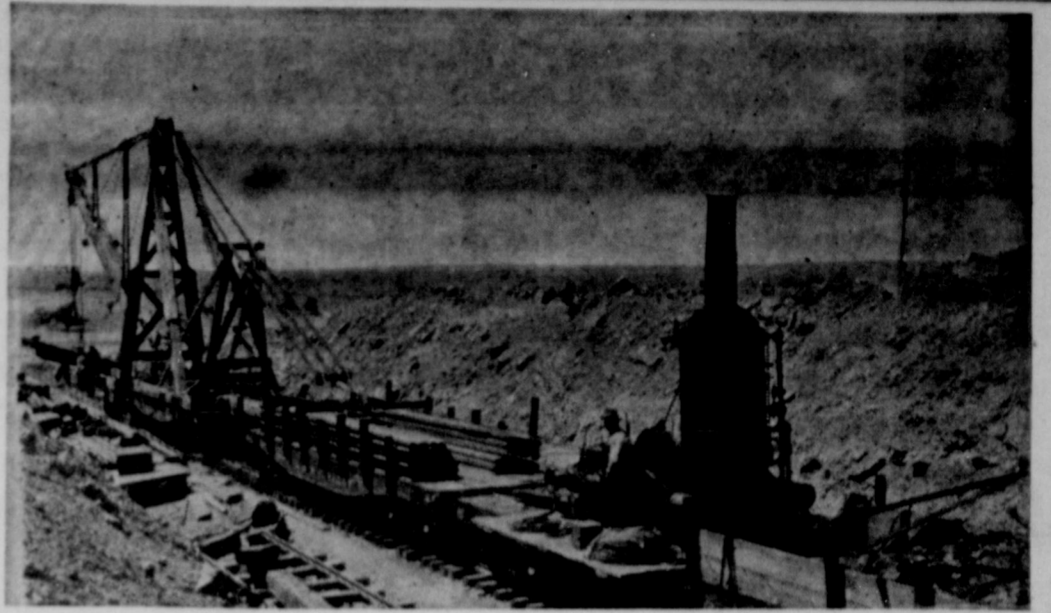
AMERICA, 1829

Horatio Allen has brought an English locomotive to this country. It has a lion's face painted on the front end of its boiler, and is called "The Stourbridge Lion." Allen is trying it out on a railroad for coal cars that have been built in Pennsylvania.

ENGLAND, 1825

Rails are the thing. The new Stockton-Darlington Railway is using both horses and steam machines to pull wagons on rails. One engine pulling 22 wagon-loads of passengers and 12 filled with coal and flour has won a race against a horse-drawn train.

Use Slatonite Want Ads



RAIL-LAYING MACHINE

This rail-laying machine is shown at work on the Coleman-Lubbock line in 1909. Many a farmer or rancher stopped to stare in wonder at the machine as it crossed the prairie.

SERVING THE GREAT PLAINS AREA!

GOODPASTURE GRAIN & MILLING
COMPANY

FERTILIZERS & INSECTICIDES
BOOSTING
SOUTH PLAINS AGRICULTURE

HOME OFFICE
BROWNFIELD

OFFICES:

LUBBOCK — BROWNFIELD — SEAGRAVES — TAHOKA — LITTLEFIELD
SHALLOWATER — PLAINS — WELCH — SEMINOLE — ROPESVILLE

Sale Every

Thursday

WHOLESALE

TO

DEALERS ONLY

LUBBOCK

Auto Auction

SH 4-1444

1122 E. 34th

Lubbock

ENGINEERS & MANUFACTURERS

of

PORTABLE DRILLING EQUIPMENT

CORE DRILLS

OIL FIELD SUPPLIES

MAYHEW

Supply Company, Inc.

P. O. BOX 922

PO 5-9468

1802 ERSKINE

LUBBOCK

FOR

EVERYTHING FOR

THE

DAIRY FARMER

SEE

BRUMLEY DAIRY SUPPLY

PO 3-2233

2421 2nd Place

LUBBOCK

CONGRATULATIONS

TO OUR

SANTA FE FRIENDS

Anthony's
THE C.R. ANTHONY CO.



SERVING THE FARMERS OF THIS AREA
QUALITY GRAINS TO GIVE
MAXIMUM PRODUCTION & GREATER YIELDS

S. E. CONE
Grain & Seed Co.

PO 2-8747

302 Broadway

Lubbock

ENGLISHMAN . . .
(continued from Page 2)

coming to town just to eat and spend the night and this, in turn, brought business to the Santa Fe. As the fame of Harvey meals and service spread, business on the Santa Fe increased since only on this line could one obtain such food or such service.

Although much of the credit has been given to Fred Harvey for "civilizing the West," a large

share must certainly be given to the Harvey Girls. These girls, carefully selected, came west in answer to ads placed in papers in the East and Mid-West, calling for "young women of good character, attractive and intelligent, 18-30." The good character requirement was a rigid one and the girls led a carefully supervised life.

The Harvey Girls were well paid and were able to save a good bit. It has been estimated

that 5,000 girls married as a result of acquaintances met in Fred Harvey dining rooms.

These young wives brought to their frontier home and communities the niceties and social poise that were the hallmark of Harvey service.

ENGLAND, 1802

Richard Trevithick has made another of those steam machines we heard such tales about 20 years ago. He has mounted it on a wagon, and claims it can pull ten tons of coal, on rails, at 5 miles an hour! But it isn't practical; it ruins the roadbed.

AMERICA, 1825

John Stevens, Hoboken, N. J. resident, has completed the building of a tiny locomotive with a multitubular boiler and is operating it on a circular track in his garden. The small car attached to it will carry six passengers. Stevens has been experimenting with steam engines for 30-odd years.

WEST TEXAS AND THE SANTA FE

The Lampassas Line of the Santa Fe continued west from Lampassas and through Ballinger to San Angelo. The railroad through this area opened up to market vast tracts of the richest stock country in the west and for years thousands of cattle, sheep and horses were shipped over this branch of the Santa Fe.

The arrival of the Santa Fe in San Angelo touched off one of the biggest celebrations of the day. A parade including artillery, bells, a sixteen-piece band and four school playgrounds in San Angelo, marched through the town. At the end of the parade a

barbecue was held at which Frank Lubbock, after whom Lubbock was named, welcomed civilization to San Angelo, known at that time as "The End of the Rainbow."

The evening was climaxed by a grand ball to which, according to a contemporary report, the ladies wore "skirts of dancing length, but none were en-train." The account goes on to state "There were but few dress coats—The Texan scorn the Spiketail."

In later years Santa Fe part and four school playgrounds in San Angelo were the gifts of the Santa Fe System.

DEVELOPING OIL IN WEST TEXAS

ALAMO CORPORATION

OIL PRODUCERS

1004 LUBBOCK NATL. BANK BLDG.

LUBBOCK

See The Newest

Arrivals

OF

WESTINGHOUSE

FULL LINE

OF

APPLIANCES — TELEVISIONS — HI-FI's — RADIOS

TOWER

Television & Appliances

"Easiest Terms in Town"

SW 9-3605

3602 34th STREET

LUBBOCK

While In Lubbock . . .

Shop For

Extra Values

IN

Food

AT

BROOKS SUPER MARKET

224 AVE. H

LUBBOCK

PO 2-1636

We

Buy and

Sell

Used Farm

Machinery

A & B

TRACTOR & EQUIPMENT COMPANY

PO 2-2510

122 Idalou Hwy.

Lubbock

We Are Headquarters For

John Deere

Industrial Equipment

Sales

Service

Yellowhouse Machinery Co

PO 5-8259

North Ave. Q at Plainview Hwy.

LUBBOCK

Mattresses Renovated

ONE DAY SERVICE

ALSO

NEW MATTRESSES — ALL SIZES

ALL TYPES

Acme MATTRESS Co.

WE SPECIALIZE IN KING SIZE CUSTOM BILT

MATTRESSES AND BOX SPRINGS

See Our Large Selection of Materials

Phone SH 4-8471

SLATON HWY

510 E 34th ST.

LUBBOCK

In The Interest of The Progress of Our Cotton Farmers

R. S. TAPP & CO.

Cotton Merchants

MEMBERS OF

- NEW YORK COTTON EXCHANGE
- NEW ORLEANS COTTON EXCHANGE
- LUBBOCK COTTON EXCHANGE
- TEXAS COTTON ASSOCIATION
- AMERICAN COTTON SHIPPERS EXCHANGE

Phone PO 2-1273

1515 TEXAS ST.

Lubbock

Quick Reliable Service To the Area

READY—MIXED

CONCRETE

Phone PO 3-6464

Cement & Supply Co

CEMENT — SAND — GRAVEL

RADIO DISPATCHED

Lubbock

Now The Finest

Dairy Products

AVAILABLE

IN

THIS AREA

OAK FARMS

DAIRIES

COMPLETE
MACHINE SHOP
SERVICE

**Liberty
Machine Shop**

SH 7-2577
4029 AVE. A
LUBBOCK

SERVING THE GREAT
PLAINS RURAL AREAS!

**South Plains
Telephone
CO - OP**

OFFICES
NEW SLATON HWY
LUBBOCK

PIONEERS IN SERVING
THE AREA

NUNN Electric Supply

WHOLESALE ONLY
2425 TEXAS
LUBBOCK

SERVING THE AREA

P. H BENTON & Son

TRUCKING CONTRACTORS
HEAVY HAULING OF
COTTON & IRRIGATION
EQUIPMENT
FULLY INSURED SERVICE

SH 4-6047
4900 QUIRT
LUBBOCK

WIN A TRIP TO EUROPE
ALL EXPENSES PAID
A ST. BERNARD PUPPY
A year's supply of VET'S dog food

There will be one or more winners in every area, with a grand prize of a vacation in Europe. Details and entry blank are on every carton of Dr Pepper. Enter today!



ENTER THE **Dr Pepper**

"NAME the DOGS" CONTEST

If you select winning names for the Dr Pepper St. Bernards, you'll receive a registered St. Bernard puppy, plus a year's supply of new VET'S Dog Food. And you'll be automatically entered in the contest for the grand prize—a two-week trip to Europe by jet,

all expenses paid. You'll visit London, Paris, Rome and Montreux, home of the St. Bernard dogs. Pick a pack of Dr Pepper and enter today!



Copyright Dr Pepper Company 1959

frosty, man, frosty!

DR. PEPPER BOTTLING COMPANY
LUBBOCK

WE PAY TRIBUTE TO THE PIONEERS
and THE SANTA FE RAILROAD PERSONNEL

Porter Clinic Hospital

An Osteopathic Institution

Lubbock

THE MOST MODERN NEW

Federal Inspected Beef Killing Plant

- I. A new market for your fed cattle
- II. A new source of supply for quantity buyers of Federally Inspected and Graded Beef.

Chuck Mady — Head Cattle Buyer
Dick Borling — Sales Manager
F. C. Kain — General Manager

SUPREME BEEF COMPANY

SH 7-1683
LUBBOCK
OLD SLATON HWY

Serving The Area 21 Years
QUALITY FLOOR COVERINGS

LINOLEUM

ASPHALT TILE

RUBBER TILE

WALL PAPER

PAINTS

Paul Graham Company

BUILDERS SUPPLY

PO 5-6608

1501 AVE. N

LUBBOCK

Pioneers In Service To The

Great Plains Area

LUBBOCK

**Hardware & Supply
Co., Inc.**

WHOLESALE DISTRIBUTOR

607 MAIN

LUBBOCK

Beautify your Home!

WITH

TOWN & COUNTRY INTERIORS

WE SPECIALIZE IN
Custom Made Draperies

OVER 4000 SAMPLES TO SELECT FROM
Guaranteed Workmanship & Installation

PHONE PO 2-8229

312 COLLEGE

LUBBOCK

Santa Fe

(continued from Page 1)
 liday started his line at Atchison, extended it through Topeka and west and south of the old buffalo grounds — "To such a point on the southern of western boundary of Kansas territory in the direction of

Santa Fe as may be convenient and suitable Then he added: To any points on the southern boundary of Kansas territory in the direction of the Gulf of Mexico".

In mid-September, three men met at Atchison to organize the new railroad. Still all was dreams and planning

as the Civil War put a virtual end to new construction. In 1863, when the war picture seemed favorable to the North, the directors of the company met and with great faith in the future voted to go beyond Kansas in building their road.

By 1871 the Santa Fe reached Newton, Kansas and thus cut off the Chisholm trail to the north. Now the cattle that had for years traveled the Chisholm

trail north to the bluestem pastures of Kansas and Oklahoma could board the trains for their last ride.

From here on the going became even rougher. Gun crews went armed, construction crews were guarded by men with rifles and often the trains became moving forts as the crews exchanged shots with would be bandits and drunks along the right of way.

Many an early preacher con-

ducted his services in the saloons using a barrel as his lectern. At the close of services a cowboy passed through the crowd with hat in one hand and gun in the other, taking up a collection for the minister.

Colonel Holliday had long since retired from the presidency of the road and returned East to solicit funds, as secretary of the company. His road was now a reality.

Special Care On Trains

There are various types of club cars, usually affording lounge chairs, tables, bar service, and magazines. Some club cars are also observation cars, placed at the end of the train.

If you have Pullman space on a train you may use every facility the train provides, except the private space of other Pullman passengers. If you are riding in a coach you may use the diner. Many railroads provide coffee shop or grill cars for coach travelers, which can be used for lounging purposes between and after meals. Club cars, however, are normally reserved for the use of Pullman passengers. An exception is the fine club cars on full coach

trains, and, on many trains, the exciting observations-dome cars. If you are in any doubt about your rights and privileges on a train, ask the conductor or any uniformed train attendant.

Smoking

Smoking rules vary from one road to another. Smoking is permissible in any room-type accommodation and in lounges and diners. Some railroads let you smoke anywhere in coaches, while others post signs permitting smoking only in certain cars, washrooms or section of cars. Remember that moking rules are for your protection.

CONGRATULATIONS SANTA FE

COMPLIMENTS OF

CENTRAL AMERICAN

Life Insurance Co.

L. B. PULLEN, Pres.

HOME OFFICE

LUBBOCK

Complete Roofing Service

Featuring
 OLD AMERICAN
 Bonded Roofs

HAMILTON ROOFING CO.

Residential Commercial

ROOFERS
 SHEET METAL WORKS

— SERVICE IS OUR MOTTO —

PO 5-5583
 2113 BAYLOR DRIVE
 LUBBOCK

THANKS SLATON FOR

YOUR CONTINUED PATRONAGE

GORDIN MACHINERY

COMPANY

SH 4-0358
 CONTRACTORS MACHINERY

2804 AVE. A
 LUBBOCK



C. L. HEATON
 convention delegate

Brotherhood Locomotive Firemen, Enginemen Holds 37th Convention

St. Paul, Minn.—The Brotherhood of Locomotive Firemen and Enginemen, one of the oldest labor organizations in the United States and Canada, held its 37th Convention here.

The major task facing 940 delegates was the formulation of a program to defend and enhance the craft of locomotive firemen, according to H. E. Gilbert, International President

of the 90,000-member rail union.

Gilbert told the delegates a militant, modern program was needed to counteract the "vicious campaign of vilification," which he said the rail industry is waging against all its employees, including locomotive firemen.

Among the delegates is C. L. Heaton, 530 W. Lynn St., Slaton, who is shown (In PHOTO) ex-

amining the Brotherhood's National Safety Award, the D. B. Robertson trophy. Heaton is the delegate from Lodge 278.

The silver and ebony trophy is part of the BLF&E's safety awards program which it inaugurated to promote safety and honor locomotive firemen for their skill and heroism in preventing rail accidents and saving lives.

STRIVING THE FARMERS OF
 THE GREAT PLAINS AREA

PLAINS COOPERATIVE OIL MILL

ROY B. DAVIS, Mgr.

LUBBOCK

WE WELCOME YOUR
 BUSINESS

BRING YOUR LIVESTOCK
 TO US

KEETON LIVESTOCK

Commission Co.

SH 4-8441
 Slaton Highway
 Lubbock

Smile at the Sky

with a LYDICK Roof

QUALITY

WORKMANSHIP AND MATERIALS

FREE ESTIMATES
LYDICK ROOFING CO.

DAN ELLIS, Mgr.
 Phone PO 5-5577
 424 Avenut N
 LUBBOCK, TEXAS
 Mail Box 1675

Pioneers In Quality

Dunlap's

One Hour Free Parking With Any Purchase

ONE HOUR FREE PARKING WITH
 EVERY PURCHASE

LUBBOCK, TEXAS

**C
 O
 N
 G
 R
 A
 T
 U
 L
 A
 T
 I
 O
 N
 S**

TO THE
Santa Fe
 from
O. Z.'s
 38 Years With The
 Santa Fe—In Slaton

Santa Fe Had Stormy History When Tracks First Laid In Texas

Writ To Cancel Charter Issued To No Avail

The Santa Fe reached Texas calls in its building history. In 1887, in one of the closest Two years previously the old

Gulf railroad was bought by the Santa Fe and an agreement reached that the Gulf would continue building north to meet the southbound work crews of the Santa Fe. By the terms of the charter granted for this section of the road, the Santa Fe had to have trackage to Purcell and a connection going south by April 20, 1887. Toward the last it looked as though the deadline could not be

met and a writ to cancel the charter was issued by the government at Muskogee and given to a United States Marshal to serve.

Colonel J. W. F. Hughes, of Topeka, the roadmaster, heard the news and wired Engineer Robinson in Topeka. Robinson sent his chief clerk, C. H. Curtis, to see if anything could be done to speed the work.

Curtis took over an engine and a bank car at the Arkansas City depot and went down the line picking up all employees including station agents and telegraph operators as he went. The track was deserted.

The car full of assorted workers was sidetracked at Purcell and all hands fell to. Five hundred men and more than 200 teams worked laying ties and putting down steel. The marshal could find no one on whom to serve the writ.

At the end of the day, the tired marshal and a still more tired horse straggled into Purcell a few

hours too late to see the meeting of the northbound and southbound crews at five in the afternoon. A new record had been established for tracklaying.

Later that day Curtis encountered the Marshal and asked what his trouble was. The marshal explained that since the track had not met the deadline he must serve cancellation papers. To his amazement Curtis showed him the connection and that was the end of the cancellation action.

CONGRATULATIONS SANTA FE

CONGRATULATIONS

SANTA FE

AND SANTA FE EMPLOYEES

FONDY'S WESTERN LEATHER SHOP

Congratulations To Santa Fe

On Your 100th Birthday

HEADQUARTERS FOR YOUR FISHING LICENSE, HUNTING LICENSE AND AMMUNITION.

LASATER-HOFFMAN

BEST WISHES

SANTA FE

AND SANTA FE FRIENDS
ON 100 YEARS OF PROGRESS

SLATON STEAM LAUNDRY
AND DRY CLEANING

CONGRATULATIONS...

SANTA FE FRIENDS

FREE PICKUP AND DELIVERY

130 N. 10th VA 8-4347

S & J CLEANERS

Present Name To Be Changed Soon

CONGRATULATIONS...

SANTA FE

AND SANTA FE EMPLOYEES
ON YOUR ANNIVERSARY

SLATON DRESS SHOP

109 S. 9th Phone VA 8-4621

BEST WISHES TO OUR

FRIENDS AT

SANTA FE

ON YOUR 100th BIRTHDAY

Wheeler's

CONGRATULATIONS...

MAY YOUR NEXT 100 YEARS
BE EVEN GREATER.



SLATON, TEXAS

CONGRATULATIONS SANTA FE AND

SANTA FE EMPLOYEES

AND BEST WISHES FOR ANOTHER

100 YEARS OF SERVICE

TEAGUE'S DRUG

CONGRATULATIONS TO

SANTA FE

And Their Employees

SLATON LUMBER CO.

LUMBER — WINDOW AND PLATE GLASS
ROOFING • PLYWOOD

PITTSBURGH PAINTS

When It's Lumber — Call Our Number

VA 8-4329

**C
O
N
G
R
A
T
U
L
A
T
I
O
N
S**

Santa Fe

THE SLATONITE

HAPPY
BIRTHDAY
TO OUR
SANTA FE
FRIENDS

Slaton Decorator
and Gift Shop

SLATON, TEXAS

CONGRATULATIONS

TO OUR SANTA FE FRIENDS

ON YOUR 100th ANNIVERSARY

BREWER INSURANCE AGENCY

Phone VA 8-3241 — Res. VA 8-3292
SLATON, TEXAS

CONGRATULATIONS

SANTA FE

AND SANTA FE EMPLOYEES

SLATON HARDWARE

OUR VERY BEST TO ALL OF YOU AT

SANTA FE

ON YOUR 100th BIRTHDAY

SLATON PHARMACY

YOUR REXALL STORE

PHONE VA 8-4815

CONGRATULATIONS SANTA FE

ON YOUR BIRTHDAY

WE ARE BEHIND YOU 100%. WE ARE PROUD OF YOUR
PROGRESS THE PAST 100 YEARS.

SELF FURNITURE CO

325 WEST GARZA

LOOKING FORWARD TO
SERVING OUR SANTA FE
FRIENDS ANOTHER 100 YEARS

Quality Drive-In Cleaners

Consist

The "consist" of a train is the number and type of cars that make up the train. Behind the locomotive are the express, baggage or mail cars, known as the "headend" cars. Behind these usually are coaches and then parlor cars and sleeping cars. The dining cars and club cars are usually near the center of the train and the observation cars are at the rear. There are individual variations of this basic arrangement. Thus some trains are entirely coach trains, with special club and dining cars, and others are entirely Pullman.

Family tradition is a fine thing only when used to set a course in life—not as an anchor.

CONGRATULATIONS SANTA FE

BEST WISHES TO
SANTA FE

AND OUR FRIENDS AT
SANTA FE ON 100 YEARS
OF HELPING OUR NATION
AND SLATON GROW.

HIGGINBOTHAM-BARTLETT
Lumber Company

THERE'S AN

INTERNATIONAL TRUCK



TO FIT YOUR NEEDS

INTERNATIONAL HARVESTER CO.
TRUCK DIVISION

SH 7-1626

301 E. 34th St.

LUBBOCK

BOWL

WHERE YOUR
FRIENDS MEET

AT

LUBBOCK BOWLING CLUB

TEAMS NOW FORMING

- 24 Lanes Featuring The Very Latest AMF Automatic Pinspotter And "MAGIC CIRCLE" Equipment.
- Bowling Balls Measured and Drilled While You Wait, 18 years experience in fitting Bowling Balls.
- Free Instructions By Qualified Personnel.
- Home Of The Lubbock Major League.
- Make Your Reservations Now For Our Fall Leagues.

PARTNERS 50th IN PROGRESS
BEN BROWN—CHRIS CHRISTENSEN

LUBBOCK BOWLING CLUB

4020 Ave. Q LUBBOCK SH 4-5535

HAPPY BIRTHDAY

TO OUR FRIENDS AT

SANTA FE

BLAND'S FURNITURE

SHOP FOR EVERYTHING FOR THE BAND

AT

Earl Ray

BAND
COMPANY

LEADING NAMES IN MUSIC

SELMER — BUNDY — CONN — OLDS

WFL DRUMS

INSTRUMENTS & REPAIRS

ACCESSORIES — MUSIC

Phone PO 2-2187

1112 AVE Q

IN ADAIR MUSIC STORE

LUBBOCK

WE CONGRATULATE OUR

FRIENDS AT
SANTA FE

ON YOUR 100th ANNIVERSARY AND FOR HELPING TO BUILD

A GREATER WEST TEXAS.

PAY YOURSELF FIRST!

BY OPENING A SAVINGS ACCOUNT

The Place to Save is Here — The Time to Start is Now!

Slaton Savings & Loan Association

BUILDERS OF A GREATER
GREAT PLAINS AREA

W. G. McMillan & Son

CONSTRUCTION CO.

General Contractor



SH 4-2329

216 36th St.

Lubbock, Texas

SERVING THE AREA:

READY-MIXED CONCRETE

LIGHTWEIGHT CONCRETE BLOCKS — CEMENT — PLASTER — METAL
LATHE — GYPSUM LATH — MASONRY CEMENT — LIME — SAND —

GRAVEL — WALL TILE

BUILDERS PRODUCTS

EVERYTHING FOR THE BUILDER EXCEPT LUMBER

LUBBOCK BUILDING PRODUCTS

PO 5-7721

214 AVE. M

LUBBOCK

NOTHING BEATS THE

Jeep

FOR ALL-AROUND SERVICE

AT LOW PRICE!

SEE

Cole Motor Co.

SALES — WILLYS JEEP — SERVICE

SH 4-8552

3302 AVE. H

LUBBOCK

Serving The Great
South Plains Area For Over
25 Years

Paymaster

BRAND COTTONSEED PRODUCTS

IT PAYS TO FEED PAYMASTER

FEEDS

PRODUCT OF

WESTERN Cottonoil Co.

LUBBOCK

CONGRATULATIONS SANTA FE ON YOUR 100th BIRTHDAY WE ARE PROUD OF YOU

CONGRATULATIONS . . .

FRIENDS AT

SANTA FE

On Your 100 Years Of Service

ARRANTS WHOLESALE MEATS
AND LOCKERS

Best Wishes To Our Friends

At Santa Fe

ON YOUR BIRTHDAY

Slaton Motor Company

Congratulations . . .

SANTA FE

AND SANTA FE EMPLOYEES ON
YOUR 100 YEARS OF SERVICE

Loyd & Harold Tucker

SLATON, TEXAS

Congratulations . . .

SANTA FE

ON YOUR 100th ANNIVERSARY

SLATON IMPLEMENT CO

300 South Ninth

Slaton, Texas

Greetings from

DOC CROW



TO THE SLATON EMPLOYEES OF P & SF
RY CO. HERE'S LOOKING FORWARD
TO THE 100th ANNIVERSARY OF
SANTA FE IN SLATON.

Congratulations . . .

SANTA FE
AND SANTA FE EMPLOYEES
ON 100 YEARS OF SERVICE TO
THE GREAT PLAINS AREA



HOLT INSURANCE AGENCY
111 North 9th St. Slaton, Texas VA 8-4687

Congratulations . . .

SANTA FE

AND ALL OF OUR FRIENDS
AT SANTA FE

DAVIS MOTOR CO.

Your Oldsmobile Dealer

CONGRATULATIONS . . .

SANTA FE

AND SANTA FE EMPLOYEES

ON YOUR 100th ANNIVERSARY

Becker Bros. Humble Service

HAPPY BIRTHDAY

SANTA FE

AND SANTA FE EMPLOYEES

BOURN CYCLE SHOP

Congratulations . . .

TO SANTA FE RY.
AND IT'S EMPLOYEES
ON 100 YEARS SERVICE

HICKMAN & NEILL INSURANCE AGENCY
P. O. Box 337 — Telephone Valley 8-3306
SLATON, TEXAS

OUR VERY BEST TO

SANTA FE

AND SANTA FE
EMPLOYEES

ON YOUR 100th

BIRTHDAY

SELF'S 66



SERVICE STATION

CONGRATULATIONS

ON YOUR 100th BIRTHDAY

FROM ANOTHER SLATON PIONEER



Everything for the Builder!

CONGRATULATIONS . . .

TO OUR FRIENDS AT

SANTA FE

BROWNING AND MARRIOTT

Insurance — Real Estate
Slaton, Texas
Phone VA 8-3216

CONGRATULATIONS . . .

TO OUR FRIENDS AT

SANTA FE

ON THEIR 100th BIRTHDAY

WALTON DRUG

HAPPY BIRTHDAY

SANTA FE

AND SANTA FE EMPLOYEES
ON YOUR 100th ANNIVERSARY

Western Auto Associate Store

OUR BEST WISHES TO

SANTA FE

ON THE 100th ANNIVERSARY OF THE
GRANTING OF THEIR CHARTER

BRUCE'S CAFE

ACROSS FROM SANTA FE DEPOT FOR 8 YEARS

CONGRATULATIONS

SANTA FE

On Your 100th Birthday

We Are Proud Of You

Ray C. Ayers & Son Inc.

and
Tokio
ogers
K
L
K
ac
s a
you
you
like
ing
r to
ig a
inta
sary
mall
urs-
per,
our
al-
fast
pers
sted
n.
Hall,
op 29,
House,
9
your
i
p. m.
1
a. m.
or 2
Joseph

Coaches

The average modern coach has two rows of comfortable seats, on either side of a centr-

al aisle. Coach seats are scientifically designed for maximum comfort. They are deeply cushioned, each individually adjustable for various positions, mak-

ing them excellent for overnight travel. Many have special foot rests.

Windows are wide — tightly sealed against dirt and draft.

The cars themselves are usually air-conditioned. The baggage racks above the seats are broad and safe.

CONGRATULATIONS!

100

YEARS OLD IN 1959

We wish everyone at Santa Fe Another 100 Years of Progress.

MARINELL PORTRAITS
154 S. 8th St. VA 8-3386

CONGRATULATIONS

SANTA FE
AND SANTA FE EMPLOYEES
ON YOUR 100th ANNIVERSARY

O. D. KENNEY AUTO PARTS
Your Automotive Parts Distributor

SLATON, TEXAS — BOX 846
Railroad Center Of West Texas

Congratulations . . .

TO OUR FRIENDS AT
SANTA FE
ON YOUR 100th ANNIVERSARY

OREE GLASSCOCK

READY-MIX CONCRETE
Railroad Ave. and Dawson St.

CONGRATULATIONS
SANTA FE
THE BEST RAILROAD
PORTER LUMBER CO.

CONGRATULATIONS
TO
SANTA FE
AND SANTA FE EMPLOYEES
ON YOUR 100th BIRTHDAY
THOMPSON FURNITURE
Your Frigidaire Dealer

160 Texas Ave. VA 8-448

Congratulations . . .

SANTA FE
On Your 100th Birthday

8 'TIL LATE FOOD

CONGRATULATIONS
TO THE
SANTA FE RAILROAD
ON YOUR 100th BIRTHDAY

Model Grocery and Market

Congratulations . . .

SANTA FE
ON YOUR 100th BIRTHDAY

SLATON CO-OP GMS

Owned and Operated By Farmers

PERSONALIZED
MEMORIALS
and MARKERS

Georgia Crystalline
Marble
Winnsboro Blue
Granite
Sienna Pink

A Personal Memorial Is Your Personal Chapter
in the History of Time—A Personal Tribute.
Visit Our Beautiful, Inspiring Display of
Monuments and Markers.

Call SH 4-4818

**LUBBOCK
MONUMENT WORKS**

KEITH FRANKLIN, Owner
918 E. 34th St., Slaton Hiway

CONGRATULATIONS

SANTA FE
ON A CENTURY OF
PROGRESS

We At

CITIZENS STATE BANK
SALUTE YOU

AND YOUR EMPLOYEES WITH BEST WISHES FOR ANOTHER 100 YEARS OF SERVICE.



**Featherlite
BLOCKS**

ABILENE • LUBBOCK • MIDLAND
TEXAS
CONCRETE
BLOCK
COMPANY
BUILT RIGHT WITH FEATHERLITE

- ABILENE Phone OR 3-7368
- LUBBOCK Phone PO 3-8202
- MIDLAND Phone MU 4-8041
- ODESSA Phone FE 7-0919

Congratulations . . .

SANTA FE
AND SANTA FE EMPLOYEES
ON THE 100th ANNIVERSARY OF THE
GRANTING OF YOUR CHARTER

CUSTER'S GULF

E. B. and T. D. Custer

CONGRATULATIONS

TO EVERYONE AT SANTA FE
ON YOUR 100th BIRTHDAY

SANDERS GROCERY

THANKS
TO
SANTA FE
FOR
ALL YOU HAVE MEANT TO
SLATON



PEMBER INSURANCE AGENCY
39 Years Your Agent

BEST WISHES
SANTA FE
AND EMPLOYEES
ON OUR 100th BIRTHDAY
CHAMPION JEWELRY

Best Wishes To Our Friends

At
SANTA FE

WE ARE CLOSING OUT OUR STOCK OF 1959 PONTIACS.
SEE US FOR THAT SPECIAL DEAL.

Kendrick Pontiac

Five
nigh
to a
over
pres

Ju
F

On
today
Slate
and
mere
for e
tee a
to th
Sept.
San
for
speci
mini
been
reach
ticket
train
must
if it l
To

Ri
Is

The
tion d
Russel
by the
Monda
The
Phil
Jake I
Alton
approv
proval
Claude
In o
and a
appear
reque
the st
provid
where
The
that d
ed and
water
superi
the pr
servic
been
range
where
block
The
ired a
chari
narti
factor
navig
block
ed a
walks
of th