

# The Slaton Slatonite

"UNITED WITH SLATON IN SERVICE TO ALL"

VOLUME 51, NUMBER 16

THURSDAY, FEBRUARY 1, 1962 SLATON, LUBBOCK COUNTY, TEXAS

8 PAGES

## AT CHAMBER OF COMMERCE BANQUET

### Dr. Lee Vardy Is Named Outstanding Man Of Year

#### Mrs. Mary Fry Is Slaton's Outstanding Woman Of Year

Dr. Lee Vardy, superintendent of schools, was named outstanding citizen of the year at the annual Chamber of Commerce banquet Monday night.

More than 300 persons attended the affair at the Junior High Cafeteria, at which John McKee, regional civic and governmental affairs director for Ford Motor Co., Dallas, was principal speaker.

Other special honor awards went to Mrs. W. K. Fry as the outstanding woman of the year, and to the Slaton Jaycees as the distinguished service club of the year, accepted by Don Kendrick, president.

New chamber officers installed for 1962 were John Schmidt, president; Truitt Bownds, vice president; and Phil Brewer, secretary.

In receiving the plaque for the outstanding citizen, Dr. Vardy was cited for his work in the Rotary Club and various civic committees. He presently is a director of the chamber, and is a Sunday School teacher in the First Methodist Church. Bill Smith, outgoing vice president, made the award.

Mrs. Fry was chairman of the club house committee during the past year, and was instrumental in bringing about a complete remodeling of the community building, which is utilized by Slaton organizations and groups. Mrs. J. E. Eckert, last year's outstanding woman, made the presentation.

In the main address McKee spoke on the "Challenge of Foreign Competition." He emphasized that "survival in the business world has become of utmost importance."

"Foreign competition," he said, "is beating us at our own game. We have been seriously challenged as the leader in selling low cost, quality merchandise on the world market." He stressed that "economic isolation will only bring (Continued on next page.)"

#### Tigerettes Down Stanton

Slaton's Tigerettes downed Stanton by 53-51 Friday night and then fell to Tahoka Tuesday night by 35-29, in the first game of the second round in the district.

Against Stanton Jane Thompson led the scoring with 19 points, followed by Elaine Barnes and Glenda Bownds, both with 17.

At the end of the first quarter the Tigerettes were tied with Stanton, 15-15, and then took a narrow lead at halftime, 28-26. Going into the final period they were in front by 40-37.

SLIM LOSS TO TAHOKA  
Against Tahoka, the Tigerettes were trailing 10-9 after the first quarter, and at halftime were behind by a slim 15-15. Going into the last quarter Slaton led by 23-22, but were outscored 13-6 in the final.

Glenda Bownds led with 13 points, followed by Elaine Barnes with 12.

Next game for the Tigerettes will be Friday at Post.



NEW SLATON CHAMBER OFFICERS -- John Schmidt, left, was installed as president of the Slaton Chamber of Commerce for the coming year at the group's banquet in the Junior High School cafeteria Monday. Other officers installed included Truitt Bownds, center, vice president; and Phil Brewer, right, secretary.

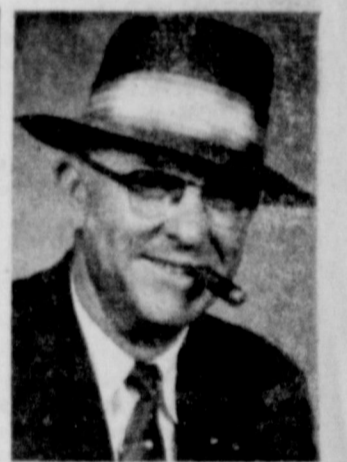
#### Directors Are Named By Slaton Chamber

Slaton's new directors for the Chamber of Commerce were named Tuesday following balloting at the organization's annual banquet Monday night.

Elected were Bob Clodfelter, Earl Eblen, J. S. Edwards, Jr., Bud Englund, Wille Heinrich, and Dr. Bob Van Meter.

New officers for the chamber are Johnny Schmidt, president; Truitt Bownds, vice president; and Phil Brewer, secretary. Directors are elected to two-year terms.

#### John Berkley, Longtime Resident Of Slaton Dies Friday, Jan. 26



JOHN BERKLEY

John H. Berkley, 54, a retired business man and a longtime resident of Slaton, passed away at his home, 805 West Lubbock, last Friday night, January 26, at 11:50. After his retirement in December of 1956, his health had gradually failed and he had been seriously ill for the past two years.

Mr. Berkley was born near Merkel, Texas on April 1, 1907. He came to Slaton in 1918 and had made his home here until the time of death. He went to work at an early age to help support his widowed mother, and on May 26, 1927, he assisted in the opening of the Figgly Wiggly Store as its market manager. He continued in that capacity until September of 1939, at which time he and Ed Haddock opened the Berkley and Haddock Grocery and Market on the west side of the square. This partnership continued until John's retirement.

He was active in civic affairs throughout his business career. A longtime member of the Rotary Club, he served as its president for one year. During that time, new street markers were purchased and erected. He also served as a member, director and president of the Chamber of Commerce for many years. During his presidency, arrangements were made for the placing of Engine 1809 on Texas Avenue, near the depot.

He was a member of the local Church of Christ for nearly 30 years, and served as one of its deacons for many years. He was active in the planning and erecting of the present church auditorium.

Funeral services were conducted in this auditorium on Sunday afternoon, January 28, at 2:30. Roy L. Foutz, minister of the Southside Church of Christ in Greenville and a longtime friend of John, preached the sermon. He was assisted by Roy Verner, local minister. Horace Coffman, of Lubbock, and a mixed quartet, sang appropriate songs for the occasion. Williams Funeral Home was in charge of arrangements.

#### RETIRED OFFICERS

##### Ells Schmid Is Officer In SP Organization

The South Plains Retired Officers Association has announced the election of the following officers to serve the Association for 1962:

President - Colonel Harry N. Tower, USAF, Rtd.  
1st Vice President - Lt. Comdr. Alfred P. Couch, USN, Rtd.

2nd Vice President - Captain John L. Gillispie, USMC, Rtd.  
3rd Vice President - Major Ellis P. Schmid, USA, Rtd.  
Secretary-Treasurer - Captain W. Dudley Hunter, USAF, Rtd.

Legal Counsel - Lt. Col. Fred E. Young, USA, Rtd.  
The local chapter of the Retired Officers Association now has 27 active members and is planning a membership drive among the more than 100 retired military officers in the Lubbock area.

Colonel Tower announced that the next meeting of the Association will be a dinner meeting at Reese Air Force Base Officers Club on Friday, February 16.

#### Slatonite Under New Management

The Slaton Slatonite this week is published under the ownership of Francis E. Perry and R. H. Perry, as a sale was completed the first of the week with Joel Combs. Mr. Combs has been the publisher for the past three years. His future plans have not been announced.

The Perrys were owners of the Slatonite from 1953 until it was sold in 1958. Richard Perry will remain in Ballinger, Texas, as publisher of The Ballinger Ledger. Francis Perry and Mrs. Perry will operate The Slatonite.

During the 51 years of operation of The Slatonite, Slaton has enjoyed a good weekly newspaper, under the various owners. It shall be the policy of the Perrys to continue publishing a good newspaper, and of course when possible make it even a better one for the merchants and the people of this area.

The present printing of the paper has been done by the offset process at Friona, Texas. As soon as possible the printing will be moved back to Slaton and all mechanical operations done in the plant now in Slaton. This will bring an additional payroll to our city.

Whether a newspaper does well or bad, whether or not it is a good paper that promotes business for all the merchants depends on two things: The management, and the support of the merchants. The number of pages a newspaper prints each week depends entirely upon the amount of advertising for that week. The more pages in our newspaper with news and advertising about Slaton, the better this is for all the merchants in business here.

Our policy will be to treat each and every merchant equally and fairly at all times, publish a good newspaper, carry the news of Slaton, and work for the betterment of our town and the people here. We're glad we're back, we have a big job to do, we like our work, and ask that all work with us for the good of The Slatonite and Slaton.

Francis E. Perry  
Publisher, The Slaton Slatonite

#### Tigers Win One; Lose One In Week

Slaton's Tigers lost to Stanton by a slim 58-53 Friday night, and then crushed Tahoka 61-45 Tuesday night in district action last week.

In the crucial Stanton contest, the Tigers led by 16-11 after the first quarter, but were trailing 29-25 at halftime.

In the final quarter the Tigers pepped up by outscoring Stanton 15-9, but the gap was too wide.

Larry Burk led with 18 points, followed by Ronnie Jones with 14.

EASY TILT OVER BULLDOGS  
Against Tahoka, the Tigers took a 14-9 first-quarter margin and never fell back. They led at the half, 29-19, and going into the final quarter commanded a 46-33 advantage.

Jones led the scoring with 25, and Webber Tefertiller had 11.

Next game is Friday at Post, followed by a non-district tilt with McAdoo there on Feb. 6.

Then the Tigers return home for a game with Denver City on Feb. 9.



DISTINGUISHED CLUB AWARD -- Don Kendrick is pictured with a trophy presented the Slaton Junior Chamber of Commerce at the annual Chamber of Commerce banquet Monday.

#### Nine Novices Initiated Into Shrine Temple

Nine novices were initiated into the Shrine Temple, Amarillo, in ceremonies at 6 p.m. Monday in Slaton Masonic Hall. Initiated were: John Lock, John R. Colliard Jr., of Spear-

tions. Also on hand was Henry Bollinger of Slaton, an aid of the potentate. Initiated were: John Lock, Max Arrens, Jess Edwards, R.

# The Slaton Slatonite

163 S. 9th Street VA 9-4201  
SLATON TIMES PURCHASED JANUARY 20, 1957

Entered as Second Class Matter at the Post Office at Slaton, Texas, under the Act of March 3, 1897.

NOTICE TO THE PUBLIC--Any erroneous reflection upon the reputation or standing of any individual firm or corporation that may appear in the columns of the Slatonite will be gladly corrected when called to our attention.

SUBSCRIPTIONS. Payable in advance. Lubbock, Lynn, Garza and Crosby Counties, \$3.00 per year. Outside these counties, \$5.00.

| DEADLINES     |                    |
|---------------|--------------------|
| GENERAL NEWS  | 12 Noon Tuesdays   |
| SOCIETY NEWS  | 12 Noon Tuesdays   |
| PAGE ONE NEWS | 9 a. m. Wednesdays |
| ALL PICTURES  | 5 p. m. Mondays    |

Joel R. Combs . . . . . Publisher  
 Bobby Combs . . . . . Bookkeeper  
 Charles E. Cullin . . . . . Editor  
 Vernon Stewart . . . . . Advertising Mgr.  
 Pat Shelby . . . . . Office Manager

MEMBER:  
 Texas Press Association  
 West Texas Press Association  
 Panhandle Press Association

## EDITORIALS

### Record Of Achievement

The year that recently closed was a year of steady progress in medical research and in clinical medicine. That is the gist of a poll of deans of medical schools which was made by the American Medical Association.

Here are a few highlights which the deans noted; Rapidly expanding knowledge in medical genetics, so important that the time is now approaching when many very serious human diseases may be eliminated entirely; new forward strides in the search for drugs that will cure or prevent cancer; development and discovery of new pharmaceuticals, particularly the new live polio vaccine, the measles vaccine, and synthetic penicillin; important new knowledge about hepatitis which may eventually lead to a vaccine against the one remaining epidemic disease which is still increasing in the United States; progress in the application of electronics and computers to medicine, a further bringing together of machinery and equipment, skills and techniques, men, money and methods to the benefit of mankind.

So the story goes -- a story which brings new hope and health to legions of people. It is a story of medical achievement, in all its many and varied branches, under a free system. Who can say, with reason or justice, that this country needs, wants, or can afford socialized or government dominated medicine?

### "The Norman Rockwell Album"

For those who love the arts, Doubleday & Company has just published a book named the "Norman Rockwell Album", which contains some 200 pages of prints of Rockwell's paintings in full color, as well as black and white sketches. The book includes many of the cover illustrations from the Saturday Evening Post depicting classic examples of the warm and human side of the American scene. Perhaps most of us are more familiar with the artist as a Post illustrator, but the "Rockwell Album" gives a more comprehensive view of the scope and variety of his work.

Mr. Rockwell has earned an enviable place in the roster of recognized and accomplished American artists by his presentation of the characteristics, the fads and the fancies of our conglomerate society.

The "Album" itself is a work of art, and will be prized in homes and libraries the world over. The paintings and sketches are thought provoking, and many will bring a chuckle or a tear, depending on the memories of the viewers.

### Powering Progress

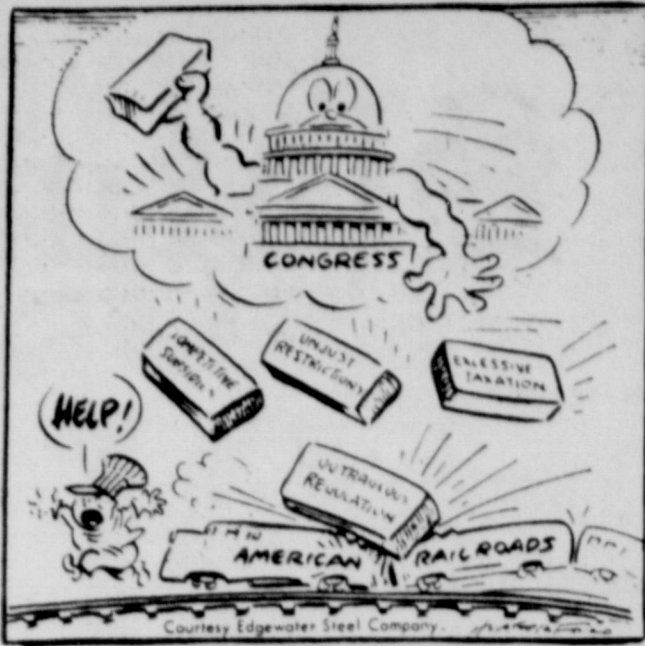
The theme for the seventh annual observance of National Electrical Week is "Electricity Powers Progress". It occurs during the week of February 11, birthday of Thomas Alva Edison. And these three words add up to much more than just an attractive slogan. They constitute a fact. The life of the nation--in industry, on the farm, in the home--depends on an abundant supply of electrical energy. So, in large measure, does the national defense. The push of a switch can produce miracles.

No one denies such facts as these. But there is a vast area of disagreement as to the proper source of our electrical power. There are those who believe that it should be a function of government--preferably the federal government. They would socialize the industry, at a staggering cost to the taxpayers, and create a government monopoly with life and death power over the resources of this nation and the directions its enterprises and individuals are to take.

In the light of that, consider a few facts. Despite the inroads of tax-exempt socialized power, the business-managed, investor-owned, taxpaying utilities of this country produce about 80 per cent of all our electricity. Today, with only one-sixteenth of the world's population, we have one-third of the world's electric power-producing capacity. We have more capacity than the next five leading power-producing countries in the world combined. We have a huge lead on Russia, our cold war enemy, and it is a lead that will be maintained. Specifically, Soviet goals aim at a per capita production of 3,000 kilowatt hours in 1970. We expect to reach a per capita production of 7,500 in that year.

These are matters of record. How can it be rationally argued that government--and, especially, at a time when government has its hands full and then some with problems that only government can deal with--should be dominant factor, much less a monopolistic factor, in supplying electric power. Private enterprise brought it to record-breaking size, before government ever got into the picture.

### BACKBREAKING FALLOUT!



### Notes On An American

From Bill Turner's column, "Spoutin' Off," in the Olton Enterprise:

WHAT IS AN American? For Khrushchev's benefit, here's how the Maysville (Mo.) Record-Herald answers that question:

"He yells for the government to balance the budget and then takes the last dime he has to make the down payment on his car. He whips the enemy nations and then gives 'em the shirt off his back. He yells for speed laws that will stop fast driving, and then won't buy a car if it won't make 100 miles an hour.

"An American gets scared to death if we vote a billion dollars for education -- but he's cool as a cucumber when he finds out we're spending three billion dollars a year for smoking tobacco. He gripes about the high prices of the things he has to buy, but gripes still more about the low prices of things he has to sell. He knows the lineup of every baseball team in the American and National League's -- and doesn't know half the words in "The Star Spangled Banner."

"An American will get mad at his wife for not running their home with the efficiency of a hotel, and then he'll get mad at the hotel for not operating like a home. He'll spend half a day looking for vitamin pills to make him live longer -- then drive 90 miles an hour on slick pavement to make up for the time he lost.

"An American is a man who will fall out with his wife over her cooking and then go on a fishing trip and swallow half-fried potatoes, burnt fish, and gritty creek water coffee made in a rusty gallon bucket -- and think it is good.

"An American will work hard on a farm so he can move into town where he can make more money so he can move back to the farm.

"When an American is in his office he talks about baseball, football or fishing -- when he is out at the games or on the creek bank, he talks about business.

"He is the only fellow in the world who will pay 50 cents to park his car while he eats a 25-cent sandwich.

"An American likes to cuss his government but gets fighting mad if a foreigner does it. "We're the country that has more food to eat than any other country in the world and more diets to keep us from eating it. We're the most ambitious people on earth, and we run from morning until night trying to keep our earning power up with your yearning power.

"We're supposed to be the most civilized, Christian nation on earth, but still can't deliver

payrolls without an armored car.

"In America we have more experts on marriage than any other country in the world--and more divorces.

"But we're still pretty nice folks. Calling a person "A real American" is the best compliment we can pay him. Most of the world is itching for what we have -- but they'll never have it until they start scratching for it the way we did."

### Twist Is Waltz Of Our Times

From Douglas Meador's "Trail Dust," in the Matador Tribune:

History is the child of its environment and other things being relevant, it might be said with some reservations that the twist is the waltz of our times.

The scars that anger leaves on the hearts of man vanish in the miracle of healing that may follow the passing of great sorrow.

Decency, honesty and humility are the roots that nourish the tree of character to growth--greater than the highest hills of obstacles.

The craftsman who produces less than his best has desecrated a responsibility to his profession and cheapened the esteem with which posterity will evaluate his work.

Great music is a flame that lights the tapers of man's noblest thoughts and drives shadows from the corridors of his soul.

If truth has a single fault it is charged to the silent sandals worn in making an unexpected appearance.

The split-level ranch home is returning to vogue in West Texas. The earlier models were usually a one - room boxing plank house joined to a half-dugout. Central heating in the homes built here 50 to 60 years ago was provided by a fireplace often cut from the dirt wall of the dug - out. A den frequently was another dugout or a lean-to on the house, where boys slept and hung their socks that were not changed every day.

Mr. and Mrs. W. H. Bartlett had supper with their son and family, Mr. and Mrs. B. J. Bartlett and family of Lubbock Saturday night.

Dr. and Mrs. Joe Belote and children visited in the home of Mr. and Mrs. Joe Belote Sr. in Paducah over the weekend. Mrs. Preston Owens, Mrs. Belote's mother, who had been visiting here accompanied them

### Jehovah's Witnesses Set Meet

Jehovah's Witnesses' local meetings are being cancelled from Jan. 26-28 for their Texas Circuit No. 9 assembly in Fair Park Coliseum.

The program activities for the 18-congregation circuit from Texas and New Mexico will be built around the theme, "Assist One Another to Do God's Will." Bob Perko, presiding minister of the Congregations, said, "This assembly is designed to

help all age groups to assist one another; for this reason, entire families of Witnesses and good-will persons will be in attendance."

### John Berkley--

Cemetery. Survivors include: the widow, Mrs. Daphne Berkley, of the home address; two sons, Jack, 905 West Lubbock; and Gene, 455 West Lubbock; one daughter, Mrs. Coy Biggs, 1255 South 10th; one brother, W. R. Berkley, Sweetwater; two sisters, Mrs. Walter Dunn, Portales, New Mexico and Mrs. W. C. Mitchell, Big Sur, California; 3 grandchildren and a host of other relatives and friends.

### Outstanding Man--

damaging retaliation. He must participate in or support every effort of American business."

McKee said that the continuance of the "two institutions that have not been influenced by the state -- freedom of worship and the free public schools -- are dependent upon the survival of the free enterprise, competitive system in America."

Clark Self Jr., outgoing president, was master of ceremonies. Invocation was by Rev. Leroy Deans, pastor, Grace Lutheran Church.

Mrs. N. R. Boyce visited Mr. and Mrs. Bill Butler and family in Lamesa last Thursday.

Visiting Mr. and Mrs. during the recent illness of family were Mr. and Mrs. of Hereford, J. B. Butler, his pastor and wife, Bill Butler, of Lamesa, Butler sister Mrs. Cass, and son of Levelland, Mrs. Owen Hall of Lamesa.



Wag - That's really clean the way we're just thorough in our methods of service. GOOD job. We know how we welcome the opportunity to prove it to you. WYLLIE OIL COMPANY 1400 S. 9th VA 8

From the country of 1100 springs  
**Pearl LAGER BEER**  
 CLIFF "SLIM" PROFFITT  
 Distributor



YOUR Independent AGENT  
**PEMBER INSURANCE AGENCY**  
 135 N. 8th VA 8-3541

Always A  
 Dryer At  
**QUALITY COIN LAUNDROMAT**  
 (Next Door To Quality Cleaners)

1 step dries your clothes  
**Electrically!**

It's so easy -- so convenient... one step from your washer to your dryer... no wind to muss your hair -- no cold to redden sensitive skin... no snow, no sleet! You'll wonder how you ever got along without the convenience of your electric clothes dryer. And, clothes dry so nicely -- soft and fluffy... nothing harsh about an electric clothes dryer. Does other things, too, like fluffing pillows or gently fluffing dust out of drapes and curtains. You can start now to laugh at the weather... dry your clothes anytime -- with an electric clothes dryer.

**WASHER**  
**DRYER**  
 BUY YOUR **ELECTRIC Clothes Dryer NOW**  
 SEE YOUR REDDY KILOWATT APPLIANCE DEALER

**REDDY KILOWATT**  
 COMPANY

**DEAL'S MACHINE SHOP**  
 SLATON, TEXAS  
 VA 8-4307 Res. VA 8-4114  
 155 No. 9th. St.  
 FOR YOUR IRRIGATION PUMP AND GEAR HEAD REPAIR  
**General Welding And Machine Shop**

**PHILLIPS 66 Wilson Oil Company**  
 Wilson, Texas Phone 2251  
 \* BUTANE, PROPANE COMMERCIAL, INDUSTRIAL  
 \* PHILLIPS 66 GAS, OIL, GREASES and BATTERIES  
 \* AUTO ACCESSORIES

# Today's RANCH and FARM

## Weekly Cotton Market Review

**WESTERN AREA** (Texas and Oklahoma) The remainder of season's crop was held cold, wet weather. Spot were moderately active. Producers were expressing more interest in Midding 1" cotton in the Dallas, Galveston and Lubbock markets. The week, quoted Thursday 25, at 33.50 cents, and 33.00 cents, respectively, compared with 33.05, 33.25, and 32.85 cents a week ago. The Houston price of 33.25 cents was unchanged from last week. Cotton harvesting is nearing a completion in the late producing sections. There remains considerable scrambling to be done in a good many localities. Many gins have closed or have setginning days. Producers continued to offer current ginnings freely. Trade demand for most qualities was good. Prices held up well until early in the week when the demand weakened and prices eased off according to reports. Shippers were fairly active with buying more selective. The demand remained best for the lower grades of good character and Micronaire. Supplies were light and in firm hands with prices restricting some trading.

Texas cotton ginned through January 15 this season averaged slightly higher in grade but shorter in staple length than that ginned a year ago. In Oklahoma cotton averaged lower in grade and slightly longer in staple length than that ginned during the previous season. During the ginning period December 1 - January 15 the grade index in Texas was 91.3 (Midding White equals 100) and in Oklahoma 87.0 compared with 90.7 and 86.6, respectively, during the same period last year.

Domestic mill activity increased this week. Inquiries were more numerous with the best demand for the medium and lower qualities. Prices confined purchases to a small to moderate volume which included some Midding and higher grades. Some mills were expressing interest for forward deliveries extending into next season. Foreign interest was stronger this week. Inquiries increased but many were for information purposes. Bidding prices were about unchanged from the previous week, limiting purchases to a moderate volume.

Producers in the Valley area were pre-irrigating in preparation to planting cotton after February 1. In the Corpus Christi area most sections will need a good rain before planting can begin.

## Depreciation Is Tax Choice Which Aids Farmers In Annual Reporting

College Station, Feb.—Depreciation takes its toll from farm machinery, buildings and other farm investments every year. It's just simple economics that capital goods lose value as they age. There is a bright spot, however, because farmers can deduct this depreciation from their income tax, says C. H. Bates, extension farm management specialist.

All farmers, whether they complete their own tax returns or provide information to an accountant for filing, should study the choices on depreciation available to them. A copy of the 1962 Farmers Tax Guide, which may be obtained from the local county agent, provides an explanation of the alternatives available. The discussion in Chapter 9 of the Guide explains how each of these choices can affect the amount of tax to be paid in a particular year.

A rather recent change in the tax law allows what is called Additional First Year Depreciation. This is a flat 20 percent deduction allowed the first year on personal property used in farming (or business) provided the assets have a useful life of six or more years. The total amount on which this deduction can be taken is \$10,000 on a single tax return, or \$20,000 on a joint return, explains Bates.

For computing regular year-to-year depreciation, the farmer has a choice of three different methods. If the Straight Line Method is used, the farmer subtracts a reasonable salvage value from the cost of the asset, and then divides the remainder by the number of years of estimated useful life. This gives the annual depreciation allowance, which is the same amount every year.

Under the Declining Balance Method, the rate of depreciation on new assets is double the rate used in straight line method. For example, on a tractor having 10-year life, the

depreciation is computed by taking 20 percent of the cost as the first year's allowance. This is then subtracted from the cost, and 20 percent of the remainder is the second year's allowance. Bates points out. No salvage value is required under the Declining Balance Method since there is a "remainder" after 10 years deductions.

The farmer's choice of the Declining Balance Method or other fast write-off on an asset would depend on his need of larger deductions. For example, in a year of unusually good income, a tractor, combine or other asset bought could be placed on this method, thereby doubling the depreciation. Conversely, if the year's income is small, any asset bought could be placed on the Straight Line Method, thereby holding the depreciation to the lowest possible level.

Farmers should also remember that depreciation may be taken on breeding stock. It should be claimed on those animals that are purchased at a cost considerably above what they will bring when discarded from the herd. It is believed that many farmers can manage to claim larger deductions on their business assets, thus reducing their tax obligation, says Bates. Get a copy of the 1962 Farmers Tax Guide and study the choices you have in claiming this important business deduction.



HISTORY OF WILLS

Courts see that your intention or "will" as to property is carried out after you die. Before then you may revoke or change it any time.

The passing of property to heirs is one of man's oldest transactions. As far back as the Egyptian, Assyrian and Jewish civilizations, we have wills written and witnessed on papyrus, clay tablets, etc. In one will an early testator left some of his property to his wife and named a guardian for his children.

The Hammurabi code (2100 B. C.) permitted a father by deed to favor his son. Under early Roman law the head of a house could tell the patrician assembly his wishes, but later Roman law favored a written will to keep the testator's plans secret until death. It also favored having a firm record of his wishes, not resting on memory.

By 2100 A. D. England, where we got our law of wills, was quite well advanced. The church courts (like our probate courts) supervised disposition of property according to a "testament" of how the testator wanted his property to go. Church courts supervised

personal property (movables like armor or personal effects); land was passed on by wills which the king's court handled. Hence today we speak of "last will and testament" since English courts came to pass on both real and personal property, so that one court could handle the whole estate. English church courts had "executors" who carried out one's testament. To die "intestate" (without a testament) was almost like dying unconfessed. Sometimes the church in the interests of a man's soul could give some of the man's goods to others besides his family. Then, as now, some property had to be left to the surviving wife and children.

By the time of the American colonies, the laws were well settled, and law courts, rather than church courts, administered and distributed estates here. (This newfeature, prepared by the State Bar of Texas, is written to inform—not to advise. No person should ever apply or interpret any law without the aid of an attorney who is fully advised concerning the facts involved, because a slight variance in facts may change the application of the law.)

A trail cutter is a man employed to stop marching herds and inspect them for cattle which do not properly belong to them.

## Happy Birthday

- Earl Eblen, Mrs. W. J. Lloyd Meurer, E. R. ss, Mrs. Haskell Ed-Lucille Lewis, Lloyd Green.
- Mr. Kitten, Mrs. Dubby, Bobby Lynn Baxley, Murphy.
- Zenith B. Riney, Cris Mrs. Rudolph Sch-beety Joyce Kitchens, Williams, Mrs. J. W. s, R. B. Lain.

## Hancock To Seek State Senate

Don Hancock, former resident of Lubbock, and now County Judge of Yoakum County, at Plains, Texas, today announces his filing with the County Democratic Chairman for nomination by the Democratic Party for State Senator for the 28th District.

Hancock attended Lubbock High School and Texas Technological College where he was selected to Who's Who in American Colleges and Universities, Kemas (now Phi Gamma Delta), Alpha Chi, and scholastic honorary society, and Student Assistant in the Government Department; he also served in the Saddle Tramps and as yell leader, and received a B. A. Degree in Government.

Attending Southern Methodist School of Law on a Regional Scholarship, Hancock was selected to the Student Bar Association and received his law degree from that school.

He is a member of the Texas, New Mexico and American Bar Associations, the Denver City, and Plains Lions Clubs, Chambers of Commerce and Jaycees, the Plains First Baptist Church and IOOF.

Serving as City Attorney of both Plains and Denver City prior to his election as County Judge, he has, since been associated with Claude C. Freeman, Jr. in the firm of Hancock and Freeman.

As Secretary - Treasurer of Central Communications, Inc., he has been active in the community antenna television field for several years in several South Plains towns, including Denver City and Seminole.

Hancock is married to the former Shannon Rutherford of Levelland, a graduate in speech therapy from Baylor, and has three children, Kim, Scott and Steve.

## Church Report

Attendance at church schools in Slaton, January 28 totaled 1,464 in the 11 churches which reported.

- Churches reporting and their attendance was as follows:
- First Christian, . . . . . 62
  - Church of God, . . . . . 32
  - First Methodist, . . . . . 251
  - First Baptist, . . . . . 354
  - Westview Baptist, . . . . . 204
  - First Presbyterian, . . . . . 66
  - Grace Lutheran, . . . . . 95
  - Church of God, . . . . . 240
  - Pentecostal Holiness, . . . . . 54
  - Bible Baptist, . . . . . 52
  - Slaton Missional Baptist, . . . . . 54

Mrs. W. H. Bartlett, who broke her collarbone about 4 weeks ago, is coming along nicely.

Rev. Floyd Lawhon of Abilene will hold services each evening at 7:30 p.m. at the Church of God.

Visiting Big Springs this week-end were Mr. and Mrs. Ernest Carroll. They came back through Snyder.

Mr. J. W. Alspaugh, who has been in Methodist Hospital, is doing a lot better.

**Triangle Manufacturing Co.**  
VA 8-3259  
STEEL BLDGS. FOR FARM OR HOME, BARN, UTILITY, ETC.  
STEEL OR MASONRY COMMERCIAL BLDGS.  
JACK SCHUETTE, Mgr.

Oven Proof 2 1/2 Qt.  
**CASSEROLE**  
With Serving Stand 2<sup>95</sup>  
All Artificial  
**FRUIT And FLOWERS**  
Just 1/2 Price  
Oven Cleaner  
**VAPOR BRITE**  
Only 79c  
Wearever Magic Kote--  
Cook Without Grease  
**GREASELESS SKILLET**  
7.95 Value 5<sup>95</sup>  
Treat Your Stomach Right--No Grease.  
Zebco Spin**ROD AND REEL SET**  
Value 20.90 13<sup>88</sup>  
**MIXING BOWLS** 98c  
Plastic, 1.50 Value  
**LASSATER-HOFFMAN HARDWARE**

## It's Great to Be NEEDED

IN a community like this of ours, you don't have to be rich, or a genius, or the right man's son-in-law, to be useful and respected. Here there is room and opportunity for the fulfillment of every man's true destiny—service to his fellowman—in contrast to the case in great population centers, where it is the role of millions of modestly endowed folks to live out their lives in obscurity.

★ Here there is more satisfaction in living, and broader opportunity for the development of latent genius in leadership. Consequently, from the smaller communities like ours have come virtually all of our country's great men.

**TRADE AT HOME WHERE YOUR MONEY BENEFITS YOU**

These Firms Are Genuinely Interested in the Future of Our Community and Your Welfare

- Slaton Pharmacy**  
109 S. 9th VA 8-4815
- Bland's Furniture**  
215 W. Lubbock VA8-3166
- Slaton Steam Laundry**  
169 W. Lubbock VA 8-3426
- West Texas Monuments**  
Lubbock Hwy. VA 8-4653
- T. G. & Y.**  
107 W. Lubbock VA 8-4711
- White Auto**  
121 S. 9th VA 8-3946
- Henzler Grocery**  
930 S. 9th VA 8-4949
- Teague Drug**  
136 W. Garza VA 8-4535
- Walton Drug**
- The Slatonite**

## See Air

CRACY—is a con-where people bel-hat other people good as they are.

as the dollar is ned, confident-hrinks.

ake it a point to Democracy in vice and treat one er just like an-and as for the ing dollar, it still a lot of service Come in soon and se good PHILLIPS ducts.

**R** Exactly what the doctor ordered for you

It is our responsibility to keep our stock of pharmaceuticals abreast of the latest achievements of medical science and product research, so that we can always fill your doctor's prescription promptly. We're at your service around the clock!

**SLATON PHARMACY**  
Prescriptions Filled with Precision

"We Give S&H Green Stamps"

**SELF'S**  
Phillips  
ation

**FINANCED BY SAVINGS-AND LOAN**  
Let us handle your home financing

# The Slaton Slatonite Society Clubs



**Miss Rosemary Kay To Wed Ezra E. Corley**

Mr. and Mrs. Charles D. Kay of 3419-32nd St. Lubbock, announce the engagement and approaching marriage of their daughter, Rosemary to Ezra E. Corley, son of Mr. and Mrs. Charles E. Corley of Slaton. Miss Rosemary Kay, attended Texas Tech and is an ex-employee of the Lubbock-Avalanche, at present she is employed by American Airlines as a stewardess. She is presently living in Dallas.

The prospective bridegroom is a graduate of McMurry College, and is presently on the varsity coaching staff at McArthur High School in San Antonio. He will receive his master degree at Texas Tech next summer.

A June wedding is planned in Ford Memorial Chapel at the First Baptist Church in Lubbock.

## Wesleyan Service Hostesses To WSCS

The members of the Wesleyan Service Guild were hostesses for the annual joint meeting of the Women's Society of Christian Service and the Wesleyan Service Guild on Monday, January 15, in the Fellowship Hall of the First Methodist Church. After a delicious meal, served by the guild, the group went to the chapel for an interesting program on the work of the World Federation of Methodist Women. A special feature of the program, presented by the Women's Society of Christian Service, was the filmstrip on the world wide work of the Federation. Approximately twenty-five women attended.

## Federated Church Women Met At Presbyterian Church

The Federated Church Women met at the First Presbyterian Church at 3 p.m. on January 29.

The Welcome and Invocation was given by Mrs. Byron Johnson.

In the absence of the president, Mrs. Larkin Taylor, Mrs. L. R. Gregory took care of the business of the meeting.

Special music and song was given by Miss Carol Sue Walston. Musical accompanist by Mrs. C. W. Space.

The devotion was given by Mrs. Tom Turner entitled "Service by Love".

Mrs. Fred Schmidt topic was a "Struggle Between Self and the Eternal Christ."

Benediction given by Mrs. R. L. Smith.

## Camp Fire Girls To Be In Slaton Friday Selling Candy

The Camp Fire Girls will be in Slaton February 3 for a door to door sale of Kings candy. The proceeds for this drive will go to the National and District Scout of Camp Fire Girls.

There will be 12 members in the troop selling candy around Slaton. Mrs. C. T. Reynolds is the guardian of the troop. The name of the troop is Wica-Wa-On.

The drive will be held from February 2 through the 16.

**LAYNE Plumbing And Electric**  
Features The Famous **HOTPOINT LINE** Drop In, Let Us Show You The Hotpoint Combination Refrigerator-Freezers

## Twins Celebrate Birthday With Family Reunion

Mr. and Mrs. J. T. Earwood and his twin sister, Mrs. Earl Gentry of Whittier California, celebrated their birthdays with a family reunion, in the home of Mr. and Mrs. J. T. Earwood and their son Charles at Wilson, Texas Sunday, January 21.

Attending were Mr. and Mrs. J. D. Earwood of Portales, Mr. and Mrs. Raymond Earwood of Alamogordo, Mr. and Mrs. Raymond Tabor, of Causey N. M., Mr. and Mrs. Curtis Earwood, Clovis, Mrs. Willa Taylor, Mr. and Mrs. Gilbert Earwood and Mrs. Earl Henly all of Los Angeles, Mr. and Mrs. W. L. Moore, Mr. and Mrs. Gerrold Moore, Loyce and Gena Rainy of Commerce, Mr. and Mrs. Perry Earwood, Mr. and Mrs. Johnny Earwood, Mrs. and Mrs. Cecil Earwood all of Ft. Worth, Mr. and Mrs. W. R. Jimison of Spur, Mr. and Mrs. J. L. Jimison of Ropesville, Mr. and Mrs. Gerold Earwood of Amarillo, Mr. and Mrs. Cullman Earwood, Mr. and Mrs. Ray Earwood, Mr. and Mrs. Hubert Cook and girls, Mr. and Mrs. Gershell Fox, Mr. and Mrs. Dale McNabb, Mr. and Mrs. Bud Self, Charles and Melba, Mr. and Mrs. Bill Brown all of Lubbock, Mr. and Mrs. Ed Taylor, Mr. and Mrs. Ross Baron, Mrs. Alla Mae Ford, Mrs. Ralph Hayes of Slaton, Mr. and Mrs. R. T. Moore, Mr. and Mrs. Glynn Moore

and Family. Mr. and Mrs. J. L. Turner and Family from Wilson.

Mr. Loyd Faulkner, General Chairman for the B of R T from Kansas City, Mo., and Mr. D. R. Jones, Vice-President of the B of R T from Cleveland, Ohio, were guests of the Slaton Lodge Sunday at a covered dish luncheon served by the Ladies Auxiliary to the B of R T.

After the luncheon, which was at the Club House, a meeting of the B of R T was held.

Mr. Faulkner and Mr. Jones gave talks on the Rules Movement.

## Faulkner Jones Visit B of RT

Mr. Loyd Faulkner, General Chairman for the B of R T from Kansas City, Mo., and Mr. D. R. Jones, Vice-President of the B of R T from Cleveland, Ohio, were guests of the Slaton Lodge Sunday at a covered dish luncheon served by the Ladies Auxiliary to the B of R T.

After the luncheon, which was at the Club House, a meeting of the B of R T was held.

Mr. Faulkner and Mr. Jones gave talks on the Rules Movement.

## Dr. Montgomery Guest Speaker At Lion's Club

Dr. C. L. Montgomery, was the guest speaker at the Lion's Club meeting held at Bruce's Cafe Tuesday.

Dr. Montgomery gave a talk on his work for heart disease. Dr. Montgomery is a 1946 graduate of Austin High School, a graduate of University of Texas in 1950, a 1954 graduate of University of Texas School of Medicine in Galveston, served in the U.S. Navy from 1954-1957. He has been in General Practice in the American Heart Assn.

He is now serving at West Texas Hospital in Lubbock.

There were 19 members present at the meeting.

The Lion's Club will be in charge of the Local Heart Drive in Slaton starting in February.

## Bluebonnet Club Meets In The Roy Parks Home

The Bluebonnet Club met Wednesday, January 24, at 2:30 p.m. in the home of Mrs. Roy Parks.

Mrs. M. C. Hodge, president, presided over the business meeting.

Members answered roll call with miscellaneous topics.

Mrs. Fannie Patterson gave a parliamentary drill.

Those attending were Mesdames M. C. Hodge, Ford Stansell, W. F. Blackerby, F. B. Tudor, Fannie Patterson, Joe Teague Jr., R. C. Standerfer, Roy Wyatt, T. E. McClanahan, H. V. Jarman, R. C. Sanner, H. H. Edmondson, C. C. Wicker, E. A. Wilbur, and two visitors, Mrs. Dan Liles and Mrs. Kay Fancher.

The next meeting will be February 14 at 2:30 p.m. in the home of Mrs. Ford Stansell.

## Lions Club Met For Mid-Winter Meeting

The Lions District 2-T2 Mid-Winter conference met at Snyder January 27.

The meeting was called to order by Jack F. Strong District Governor. The report of the Texas Lions Camp was given by Jim Edd Waller, president of the Texas Lions Camp. Master of Ceremonies was Dr. John Hamblen, First Vice-President, of Snyder Downtown Lions.

Presentation of Special Award was Pete Cheaney, Cabinet Secretary, Barney Greenfield, pres. Mr. and Mrs. "Hack" Lasater, zone chairman, Charles Marriott, director, and Bland Tumbinson, Sec.

Really now, isn't the most curious thing in the world a woman who isn't?

## Dr. Montgomery Guest Speaker At Lion's Club

Dr. C. L. Montgomery, was the guest speaker at the Lion's Club meeting held at Bruce's Cafe Tuesday.

Dr. Montgomery gave a talk on his work for heart disease. Dr. Montgomery is a 1946 graduate of Austin High School, a graduate of University of Texas in 1950, a 1954 graduate of University of Texas School of Medicine in Galveston, served in the U.S. Navy from 1954-1957. He has been in General Practice in the American Heart Assn.

He is now serving at West Texas Hospital in Lubbock.

There were 19 members present at the meeting.

The Lion's Club will be in charge of the Local Heart Drive in Slaton starting in February.

## Bluebonnet Club Meets In The Roy Parks Home

The Bluebonnet Club met Wednesday, January 24, at 2:30 p.m. in the home of Mrs. Roy Parks.

Mrs. M. C. Hodge, president, presided over the business meeting.

Members answered roll call with miscellaneous topics.

Mrs. Fannie Patterson gave a parliamentary drill.

Those attending were Mesdames M. C. Hodge, Ford Stansell, W. F. Blackerby, F. B. Tudor, Fannie Patterson, Joe Teague Jr., R. C. Standerfer, Roy Wyatt, T. E. McClanahan, H. V. Jarman, R. C. Sanner, H. H. Edmondson, C. C. Wicker, E. A. Wilbur, and two visitors, Mrs. Dan Liles and Mrs. Kay Fancher.

The next meeting will be February 14 at 2:30 p.m. in the home of Mrs. Ford Stansell.



Pictured here are Miss McSweeney, Past Worthy Advisor and Miss Eddings, newly elected Worthy Advisor.

## Rainbow Girls Install New Officers

Slaton Assembly 164 Order of the Rainbow for Girls, had open installation of officers, January 27 in the Masonic Hall. Miss Jerry Eddings was installed as Worthy Advisor and Mrs. Hazel Cowdry as Mother Advisor. Other officers were Charlotte Vaughn, Worthy Assoc. Advisor, Charity-Gerry Clark, Hope-Laurel Choate, Drill Leader Marilyn McSweeney, Faith Paula Dunn, Rec. Order-Gienna Payne, Chaplain-Elaime Eddings, Choir Director, Joy Agin, Fidelity-Melody Peik, Patriotism - Barbara Henderson, Service-Kay Choate, Outer Observer-Sherilyn Mann, Confid. Obs-Barbara McCook.

Installing officers were as follows, Installing Officer Patricia McSweeney, Marshall, Rhonda Eanes, Chaplain-Janice Hill, Musician-Melinda Clifton, and Recorder, Mrs. D. R. Wilson. Mrs. Wilson also served as installing officer for the members of the board and the Mother Advisor.

Guests were greeted by Junior Past Worthy Advisor, Patricia McSweeney and the Worthy Advisor Elect, Jerry Eddings. Gerry Clark presided at the guest book.

The theme chosen by the Worthy Advisor was "Love." The scripture taken from Proverbs 31:10, colors red-love, white-purity, flower-red tea rose.

The program was a reading "Creation" given by Janice Hill and a short address was given by Rev. Dwight E. Lusk, Westview Baptist Church. The Worthy Advisor was installed by her father, Eugene Eddings. Following the service was presented a gavel by her Mother, a past Worthy Advisor in Oklahoma, Patricia McSweeney was

awarded a Past Worthy Advisor pin by the Mother Advisor.

Mr. B. H. Bollinger was elected the new chairman of the board. Other members installed were-Mrs. B. H. Bollinger, Mr. and Mrs. F. T. Longtin, Mr. and Mrs. R. M. McMinn, Mr. and Mrs. C. E. Baron, Mr. and Mrs. Homer Cowdry, Mrs. A. A. Treweck, Mrs. J. Vannoy, Mrs. J. E. Elliott.

The invocation was given by the outgoing chairman of the board, Chas. Baron and the benediction given by Rev. Lusk.

A reception followed in the dining hall.

Other Officers elected were Musician-Sharon Lusk, Treas.-Patricia McSweeney, Love-Nancy Smith, Religion-Cathy Ayers, Nature-Elena Wiley, Immortality-Judy Swartz.

## Louis Limberlake Guest Speaker At Jaycees Club

Mr. Louis Limberlake, state president of the Jaycees was guest speaker at the Jaycees meeting Tuesday at Bruce's Cafe.

Mr. Limberlake spoke on "The Responsibility of The Young Men In The Community." The need for men to live up to the responsibility through the Jaycees.

There were several Jaycees members guest from Lubbock. The final plans were made for the Wednesday night door to door light bulb sale. 21 members attended the meeting.

Mayor L. O. Lemon was special guest.

## Read John 4:6-15

"The hour is coming, and now is, when the true worshippers will worship the Father in spirit and truth, for such the Father seeks to worship him." (John 4:21) When we were children on the farm, we frequently spent Sunday afternoon the summer climbing the hills. By the time we thought we were high enough to drink water from a stream, we scooped up a cool drink with our hands. We were thirsty, we did not miss the usual containers from which to drink. Being thirsty and in the presence of pure water, did we stand looking at our admiring them, discussing size and shape of palms, and length and taper of them. No, we washed them and drank of the fresh water.

In the story of the woman of Samaria, we read that she later left her water jar for the higher mission, Can we today worship the Father "in spirit and truth" we leave our water jars for the higher mission--worship of God and truth with one another?

PRAYER: Our Father, teach us that true worship is not achieved merely by our beautiful church structures or admiring the splendid equipment they contain. Grant us contrite hearts and humbleness of mind that we may worship in spirit and in truth; through Christ our Lord. Amen.

THOUGHT FOR THE DAY  
The church is the fountain from which we drink the living water.

Myrtle Smith

|  |   |
|--|---|
| Wilson<br>St. Paul Lutheran Church<br>Rev. G. W. Heinemeier            | St. Paul Lutheran Church<br>Mo. Synod, Wilson<br>Rev. R. F. Kamrath |
| First Baptist Church<br>Wilson<br>Rev. F. E. Scott                     | First Nazarene Church<br>635 W. Scurry<br>Rev. Charles Stuart       |
| Our Lady Of Guadalupe<br>Church<br>700 S. 4th.                         | Westview Baptist Church<br>830 S. 15th,<br>Rev. Dwight Lusk         |
| St. Joseph's Catholic Church<br>Msgr. T. D. O'Brien<br>19th. & Lubbock | First Methodist Church<br>305 W. Lubbock<br>Rev. Rollo Davidson     |
| Gordon Church Of Christ<br>Marion J. Crump, Minister                   | Church Of God<br>206 Texas Ave.<br>"Rev. B. E. Coker"               |
| Acuff Church Of Christ<br>Brooks Terry, Minister                       |   |

## THIS MESSAGE IS MADE POSSIBLE BY THESE SLATON SUPPORTERS:

- |  |   |
|--|---|
| <b>O.D. Kenney</b><br>AUTO PARTS<br>Your Automotive<br>Parts Distributor                     | <b>MERCHANTS</b>  |
| <b>Slaton Pharmacy</b><br>"Service Is Our Motto"   | Grace Lutheran Church<br>840 W. Jean<br>Rev. Leroy R. Deans       |
| <b>Slaton Savings &amp; Loan Association</b><br>"We Pay You To Save"                         | First Baptist Church<br>255 S. 9th,<br>Dr. Charles Wood           |
| <b>Ray C. Ayres &amp; Son, Inc.</b><br>Grain--Feed--Seed                                     | First Christian Church<br>145 E. Panhandle<br>Rev. E. A. Wilbur   |
| <b>Janes-Prentice Inc.</b><br>Sand and Gravel For The<br>Construction Industry               | Immanuel Lutheran Church<br>Posey<br>Rev. F. A. Wittig            |
| <b>Union Compress and Warehouse Company</b>  | St. John's Lutheran Church<br>Wilson<br>Rev. J. P. Burnett        |
| <b>Slaton Co-Op Gins</b><br>"Owned and Operated By Farmers"                                  | First Presbyterian Church<br>425 W. Lubbock                       |
| <b>Becker Humble Products Service Station</b><br>400 S. 9th. VA 8-7108                       | Church Of Christ<br>340 W. Division<br>Roy Dean Verner            |
| <b>Bruce's Cafe</b><br>"Where Friends Meet and Eat"  | Assembly Of God<br>950 S. 14th,<br>Rev. V. F. Love                |
| <b>Williams Funeral Home</b><br>Unlimited Insurance Protection<br>Cadillac Ambulance Service | Missionary Baptist Church   |
| <b>Jack Berkley Trucking Co.</b><br>Lubbock Hwy. VA 8-3711                                   | Southland Baptist Church<br>Rev. Eddie Fortson, Pastor            |
| <b>Bland's Furniture</b><br>215 W. Lubbock VA 8-4944   | Southland Methodist Church<br>Rev. Beane                          |
| <b>SOUTHLAND FRIENDS:</b>  | Acuff Baptist Church<br>W. O. Donley, Pastor                      |
| <b>Basinger Drilling Co.</b>   | Bible Baptist Church<br>W. Panhandle<br>Rev. H. E. Sumner         |
| <b>WILSON FRIENDS:</b>   | Wilson Methodist Church<br>Wilson<br>Rev. Harold Rucker           |
| <b>Wilson Co-Op Gin</b><br>"You Own Your Own Business... Be Its Best Customer!"              | Pentecostal Holiness Church<br>105 W. Knox<br>Rev. W. L. Comstock |
| <b>Wilson State Bank</b>   | Trinity Evangelical Methodist Church<br>Rev. Weldon Thomas        |
| <b>FROM ACUFF:</b>   | African Methodist Church<br>Rev. J. S. Gilbert                    |
|  | <b>Bruce's Cafe</b><br>Lubbock Hwy. VA 8-7110                     |
|  | <b>Custer's Gulf Service Station</b><br>350 S. 9th VA 8-7100      |
|  | <b>Gibson Motor Freight</b><br>151 Texas Ave. VA 8-4000           |
|  | <b>Browning &amp; Marriot</b><br>116 1/2 W. Garza VA 8-3000       |
|  | <b>Ely's Eight 'Till Late</b><br>965 S. 9th VA 8-4900             |
|  | <b>E.W. Ham &amp; Son Plumbers</b><br>430 S. 5th VA 8-4000        |
|  | <b>Higginbotham-Bartlett Lumber Co.</b><br>225 N. 7th VA 8-4000   |

**BEN FRANKLIN**  
GET A KICK DISCOVERING NOW YOU CAN PURCHASE A CAR WITH A LOW COST AUTO BANK LOAN.  
CITIZENS STATE BANK

**ODD CHALKINS**  
A SINGLE ORCHID SEED POD CAN CONTAIN A MILLION SEEDS...  
FIDELITY FEATURES CO.  
A Single Prescription can contain a Powerful Drug that can shorten your illness... We can supply your Every Single Drug Need!  
**TEAGUE DRUG**  
Phone VA. 8-4535

**Outs To Assume Duties--**

|                  |                    |                 |
|------------------|--------------------|-----------------|
| <b>Fire</b>      | David Green        | agin            |
| <b>CE DEPT.</b>  |                    |                 |
|                  | Tom Davis          | Allen Miles     |
|                  | Bobby Ball         | Billy Martin    |
|                  | J. E. Eckert       | Carleton Jones  |
|                  | Randall Johnson    | John Hodge      |
|                  | Arthur Enloe       | Miles Beard     |
|                  | Hoby Chapple       | Brent Lamb      |
|                  | Danny Heinrich     | David Edwards   |
|                  | Wicker Nowlin      | Randall Choate  |
| <b>PATROLMEN</b> |                    |                 |
|                  | Allen Miles        | Arthur Enloe    |
|                  | Milford Woods      | Wicker Nowlin   |
|                  | David Todd         | Bobby Ball      |
|                  | Pat Wheeler        | Danny Heinrich  |
|                  | Miles Beard        | Tom Davis       |
|                  | Randy Langham      | Buddy Holton    |
|                  | Joe Fondy          | Randy Johnson   |
|                  | John Hodge         | Mac Mosely      |
|                  | Wayne Fagin        | J. E. Eckert    |
|                  | Buddy Holton       | Hoby Chapple    |
|                  | Y. Allen Underwood | William Lyman   |
|                  | Steve Meeks        | Mike Green      |
|                  | To Randall Choate  | Steve Meeks     |
|                  | William Lyman      | Allen Underwood |
|                  | Of Mike Morris     | David Green     |
|                  | David Edwards      | Pat Wheeler     |



**Bowling**

|                        |        |        |
|------------------------|--------|--------|
| Slaton Gas & Equip.    | 49     | 27     |
| Piggly Wiggly          | 42     | 34     |
| Five Mixers            | 42     | 34     |
| Slaton Co-op           | 41     | 35     |
| Hopper Electric        | 36     | 40     |
| Liles Sheet Metal      | 35     | 41     |
| Hackberry Co-op        | 29     | 47     |
| Arp Bros.              | 28     | 48     |
| Slaton Bowl            | 27     | 49     |
| Santa Fe Diesel        | 26 1/2 | 49 1/2 |
| <b>Guys &amp; Gals</b> |        |        |
| Night Hawks            | 59     | 25     |
| Lamb Chops             | 58     | 26     |
| Smith Bros.            | 51     | 33     |
| Bowl Pullers           | 45     | 39     |
| Slaton Hardware        | 43     | 41     |
| Tucker Butane          | 43     | 41     |
| Mildred's              |        |        |
| Flowers                | .40    | .44    |

|                           |    |    |
|---------------------------|----|----|
| Four Squares              | 35 | 49 |
| Lions Club                | 35 | 49 |
| Flying Pins               | 33 | 51 |
| Conner's Garage           | 32 | 52 |
| Self's Service            | 31 | 53 |
| <b>Thursday Morning</b>   |    |    |
| Team #1                   | 51 | 21 |
| Team #5                   | 38 | 34 |
| Team #3                   | 37 | 35 |
| Team #4                   | 31 | 41 |
| Team #2                   | 31 | 41 |
| Team #6                   | 28 | 44 |
| <b>Slaton City League</b> |    |    |
| Quality Cleaners          | 56 | 20 |
| Wilson Lbr. & Supply      | 48 | 28 |
| Citizens State Bank       | 45 | 31 |
| Palace Barber             | 43 | 33 |
| Triangle Mfg.             | 43 | 33 |

|                       |        |        |
|-----------------------|--------|--------|
| Carries Truck Stop    | 41     | 35     |
| Slaton Savings & Loan | 35     | 41     |
| Slaton Co-op          | 35     | 41     |
| Arrants Meats         | 30     | 46     |
| Maeker Shoes          | 30     | 46     |
| Hestand Gro.          | 30     | 46     |
| Gatzki Gin            | 20     | 56     |
| <b>Bowlettes</b>      |        |        |
| Mosser's TV           | 53     | 27     |
| Dental Ass'ts         | 49 1/2 | 30 1/2 |
| Rockets               | 46     | 34     |
| Teague Drug           | 44     | 36     |
| Ricker Refg.          | 44     | 36     |
| Slaton Motor Co.      | 43 1/2 | 36 1/2 |
| Citizens State Bank   | 42     | 37     |
| Police Dept.          | 38     | 42     |
| Anthony's             | 35     | 45     |

|                           |        |        |
|---------------------------|--------|--------|
| Hackberry Butane          | 32     | 48     |
| Bill Ware Pharmacy        | 30 1/2 | 49 1/2 |
| Slatonite                 | 22 1/2 | 57 1/2 |
| <b>Early Bird League</b>  |        |        |
| Don Juans                 | 65     | 19     |
| R.&G. Art Shop            | 53     | 31     |
| Scott & Wright            | 51     | 33     |
| Jim Dandy                 | 48     | 36     |
| The Owls                  | 42     | 42     |
| Lucky Strikes             | 42     | 42     |
| The Four Aces             | 38     | 46     |
| The Undertakers           | 35 1/2 | 48 1/2 |
| Pay Less                  | 35 1/2 | 48 1/2 |
| Piggly Wiggly             | 35     | 49     |
| The Twisters              | 33     | 51     |
| The Amateurs              | 26     | 58     |
| <b>Town &amp; Country</b> |        |        |
| Dents                     | 52 1/2 | 31 1/2 |
| Smoothies                 | 49     | 35     |

|                       |        |        |
|-----------------------|--------|--------|
| Jaycee's              | 49     | 35     |
| West Butane           | 44     | 40     |
| Becker Humble         | 44     | 40     |
| Forrest Lumberjacks   | 43     | 41     |
| Brewer Ins.           | 41 1/2 | 42 1/2 |
| Slaton Motor          | 40     | 44     |
| Bownds Body Shop      | 38 1/2 | 45 1/2 |
| Slaton Co-Op          | 36 1/2 | 47 1/2 |
| Spradley              | 35     | 49     |
| M&S Implement         | 31     | 53     |
| <b>Queen Pins</b>     |        |        |
| Higginbotham Bartlett | 60     | 20     |
| Pay Less              | 43     | 37     |
| Cecil's               | 43     | 37     |
| Ideal Cleaners        | 35     | 45     |
| M. H. Edwards         | 31 1/2 | 48 1/2 |
| Fondy                 | 30 1/2 | 39 1/2 |

**LIGHT UP THESE DARK, WINTER NIGHTS**

**THE ECONOMICAL Ready-Lite\***

- OFF BY DAY
- ON AT NIGHT
- NO DOWN PAYMENT
- NO CARRYING CHARGES
- 24 MONTHS TO PAY

\*ELECTRIC, OF COURSE

4 ATTRACTIVE MODELS TO CHOOSE FROM

**\$4950 and \$5950**

PLUS SALES TAX

**SOUTHWESTERN PUBLIC SERVICE**

**265 STORES in 20 STATES**

# ANTHONY'S

**DON'T SETTLE FOR ONE - GET ALL 3... •QUALITY •STYLE •SAVINGS - SATISFACTION GUARANTEED**

## Look what a Dollar will Buy!

A million dollar piece-goods event . . . Anthony's huge purchasing power for 265 Stores in 20 States brings you real savings on all of your spring sewing needs. Select patterns and colors from famous nationally known mills. This is the money savingest piece goods event in our history! See these lovely fabrics at your nearby Anthony store today!

**39c - 49c Quality, Peerless 80-Square Percales**

### COLORFUL NEW SPRING COTTONS

Full Bolt Pieces, First Quality

- Floral Prints
- Geometric Prints
- Novelty Checks
- Nursery Prints
- Miniature Prints

Dozens and dozens of beautiful new printed patterns to choose from . . . all of spring's new colors are represented. For dresses, blouses, shirts, play-clothes, curtains and dozens of other uses. Anthony outstanding values!

**4 YARDS \$1**

**49c - 59c - 69c Quality, Drip Dry Cottons**

### PRINTS-EMBOSSSED-SOLIDS

Every Yard Guaranteed First Quality

- Embossed Prints
- Combed Twist Solids
- Printed Crepe
- Batik Prints
- Dots & Stripes
- Printed Batiste
- Superb Prints
- Skirt Prints

When you see this beautiful assortment of colorful cottons you'll want to sew up a whole spring and summer wardrobe . . . thrifty shoppers will buy yards and yards and save dollars and dollars. Realistic savings at Anthony's!

**3 YARDS \$1**

**79c - 89c - 98c Quality, Famous Mills, Cottons**

### SPORTSWEAR and DRESS FABRICS

36" & 45" Widths, All First Quality

- Sportswear Prints
- South Seas Prints
- Woven Cords
- Woven Seersuckers
- Solid Colors
- Dress Prints
- Skirt Prints
- Everglaze Sateens

Most every type of fabric is represented in this super value group of easy care cottons. Sew and save . . . capri pants, slim jims, shorts, blouses, shirts, skirts, dresses, jackets, curtains . . . what ever your need, you'll save at Anthony's. Satisfaction always guaranteed.

**2 YARDS \$1**

**1.49 - 1.98 - 2.49 Quality, Nationally Known Fabrics**

### COTTONS and COTTON DACRON BLENDS

36" & 45" Widths, All First Quality

- Fine Seersucker
- Sport Whipcord
- Embroiderette
- Cotton Brocade
- Imported Pimas
- Dacron Prints
- Jacquard Weaves
- Woven Plaids

Fabrics from such famous mills as Galey and Lord, Cohama and others . . . Dacron polyester and cotton seersucker, all cotton seersucker, yarn dyed textured cotton, all combed cotton brocades, 2 x 2 imported pima cottons, 100% Dacron polyester prints, woven jacquard dress prints of Dacron polyester, Orlon acrylic, and cotton. Fashions most wanted qual-

**1 yard \$1**

## Old Friends

Roy Foutz, class of 1932, was in town this week to conduct the funeral of John Berkley. Roy is the pastor of the South Side Church of Christ, Greenville. Roy is one of many outstanding preachers that are numbered in our ex-students. Roy loves the ministry and puts the same zeal into his work as he did in his high school football playing. The Foutz family is at home at 3912 Wellington, Greenville, Texas.

Mrs. Douglas Chambers (Josephine Shepard) class of 1951, is with her husband in Japan. Lieutenant Chambers is in the Air Force and stationed at Itazuke, Japan.

Roland McCormack and wife (Martha Cudd) were in town this week. Both Roland and Martha were in the class of 1946. They are now living in Muleshoe.

We were loaned a 1919 Slaton High School annual called the "Tumbler." The senior class had eleven members. How many of these do you know? Beatrice Robertson, Lois Rodgers, Besse Wilber, Marie McDonald, Jesse Brasfield, Margaret Haney, Rubye Hoffman, Norene Robertson, Frances Hoffman, Vera Green and Zona Bean. Marie McDonald was class president and now is a business woman in Big Spring. Lois Rodgers and Jess Brasfield are both farmers in this community. Frances Hoffman lives in Lubbock. Margaret Haney lives in California and was here for our reunion last summer. Vera Green (Mrs. Dick Ragsdale) is deceased.

It is said that to think of the past is a sign of age but I believe that there are few who do not like to reminisce just a little bit. In 1919 the high school and grade school were both located on the site of our present west ward. There were eleven seniors, eight juniors, seven sophomores and seventeen freshmen that year. Wouldn't our present high school faculty (that has almost three hundred students to teach) like to have had those forty three young people. We note that John Bagby, presently chief clerk for the Santa Fe here in Slaton, was president of the sophomore class. Mrs. H. G. Stokes and Mrs. Joe Johnson were members of that same class. Bruce Pember and Virta Zuma Shepard were freshmen that year. It is interesting to note that there were no athletic activities that year but the literary society (with Jess Brasfield as president), the domestic science and art groups were given full coverage. Aileen McDonald won first honors in senior spelling at the interscholastic meet (it would have been nice if my office girls could have studied under those teachers). There was also a full round of social events.

All in all the classes were small but the results were all good. Of course some of the students that year became ordinary citizens and some outstanding in various fields but few if any mediocre.

Your executive committee met this week and discussed plans for our next reunion. It was decided to set the date as June thirtieth. That is one hundred fifty

days from now. It will take the efforts of all local exes to assure the kind of party that you will enjoy. Slaton doesn't fail at anything so let's get with it and make this reunion outstanding. Some of the committee will be calling on you within a few days for your dues, pay 'em. Some of you will be asked to serve on various committees, don't turn us down. Remember, you get out of anything just what you put into it.

# Texas Cotton Ginners List Points For Forthcoming Year

Lubbock, Texas -- January 23 - Members of the Texas Cotton Ginners' Association's Board of Directors and allied industry leaders unanimously approved a 14-point program stating the Association's position on cotton legislation for the coming year.

In addition, Association President R. L. Massey announced the group approved a resolution opposing proposed interpretations of P. L. 78 (Bracero Program) as outlined by the U. S. Department of Labor's Memorandum No. 1028. The Association's 14-point

legislative platform is as follows:

1. Any program without a minimum of 16,310,000 or more acres is unacceptable.
2. That any farm program should include some provisions for adequate farmer protection and support.
3. Making cotton competitive in the world market place at one price to both domestic and foreign mills.
4. That the traditional method of lawmaking be protected in this country through open hearings in Congress.
5. That any limitations on payments what-so-ever is not only unacceptable, but discriminatory, and has no basis for fair and equitable participation for any farmer, regardless of size.
6. That marketing orders are not desirable and not workable with respect to cotton.
7. That cross-compliance would be unreasonable and unfair to cotton growers.
8. That any program devised

which does not take into account all industry representation as far as cotton is concerned will be unworkable and unfair.

9. That quotas should be in acres and not pounds or bales.
10. We favor an enlarged and ever-expanding cotton research and educational program in the fields of production, marketing and utilization, both in private institutions and with public funds. We are particularly concerned, and shall support research programs designed to lower costs of production, marketing and in every phase of cotton.
11. As American cotton is the largest single means of maintaining the balance of trade, we favor a high level of international trade, recognizing that

foreign markets are vital to the American cotton industry and that world commerce is essential to maintain world peace.

12. We favor cotton being handled in normal trade channels so as to preserve the private enterprise system, and we believe in the principles of less government control instead of more government control.
13. We favor the present regulations providing for release and reapportionment of cotton acreage.
14. We support the continuation of the present law governing price supports and acreage for cotton until a better proposal is made that will satisfy the above objectives by maintaining farmer's income, expanding markets and reducing government costs.



Congratulations to Mr. and Mrs. Joe Kitten, Slaton, on the birth of a son, born January 25, weighing 6 lbs. 2 ozs., named Lester John.

Congratulations to Mr. and Mrs. Monroe Buxkemper, Post, on the birth of a daughter, born January 27, weighing 7 lbs. named Connie Louise.

Congratulations to Mr. and Mrs. Robert Doyle Montgomery, Slaton, on the birth of a son, born January 28, weighing 6 lbs. 7 3/4 ozs., named Robert Shannon.

Congratulations to Mr. and Mrs. Roy Jones, Slaton, on the birth of a son, born January 29, weighing 8 lbs. 4 ozs., named Terry Joe.

Congratulations to Mr. and Mrs. Manuel Fernandez, Slaton, on the birth of a son, born January 30, weighing 6 lbs. 6 ozs.

## Our Men In Service

Army Pvt. William G. Tucker, son of Mr. and Mrs. William F. Tucker 635 N. 9th St. Slaton, is attending the eight-week course in personnel administration at Ft. Carson, Colo.

Tucker, 22 is a 1957 graduate of Slaton High School, and a former student of Texas Tech. His wife, Anna Lee, lives in Colorado Springs.

Tucker entered the Army in October 1961, and recently completed basic training at Ft. Carson.

## Two Sworn In As Board Members Of Hi-Plains Water District

Two area men were recently sworn in as members of the Board of Directors of the High Plains Underground Water Conservation District.

During luncheon ceremonies, which highlighted the first annual meeting of the Water District's Board, Howard C. Davison, Judge of the 99th District Court in Lubbock, administered the oath - of - office to newly-elected members, J. R. Belt, Jr. of Lockney and Henry J. Schmidly of Levelland. Each will serve a two-year term of office.

During the business meeting following the luncheon ceremonies, T. L. Sparkman, Jr., of

Hereford was elected to serve as Board Chairman for 1962. Elmer Blankenship of Wilson was elected Vice - Chairman and Belt was selected to serve as Secretary-Treasurer.

Returns of the recently-held Water District elections were canvassed by the Board during the business meeting.

John Gammon of Lazbuddie, out-going Chairman of the Board, presided over the luncheon ceremonies and business meeting.

Mr. and Mrs. Harry Bell and family of Muleshoe visited in the home of Mr. and Mrs. Truett Bounds and family over the weekend.

## American Ballet To Be In Lubbock For Performances On February 3rd

"AMERICAN BALLETT" in Lubbock Feb. 3. Civic Lubbock, Inc. will present the "American Ballet Theatre" at 8:30 P. M. Saturday, February 3rd on the stage of the Lubbock Municipal Auditorium.

The "American Ballet Theatre," America's oldest and most honored native ballet company, has become a great national cultural asset, both here and abroad. It has toured more than any other company in history and has helped popularize ballet in this country over and above any other group.

In its 22 years, the company has produced 103 ballets, of which 32 were world premieres. Many of these ballets have become American classics, among them: "Fall River Legend," "Fancy Free," "Redeo," "Pillar of Fire," and "Billy the Kid." Billy the Kidd" will be one of the selections for the Lubbock program.

There is a good selection in all sections and tickets are now on sale at the box office in the lobby of the Auditorium. For more information, call PO 2-4616.

## Monthly News

FEBRUARY, 1962

### HOW IS YOUR DENTAL HEALTH?

Do you know the average adult, who has not visited his Dentist during the past year is walking around with about 4 cavities in his mouth? They can not only cause much pain and unpleasant breath, but also endanger health because it may be more difficult to properly chew food.

### MANY CHILDREN'S TEETH ARE NEGLECTED.

If the "baby" or temporary teeth are not taken care of and prematurely lost, the permanent teeth may come in irregularly, often causing an unsightly appearance.

### PYORRHEA IS CAUSING MUCH DISCOMFORT.

About 44% of adults in their forties and about 80% of those past sixty suffer from its inflammatory form called "Gingivitis."

### WHY SHOULD PEOPLE AVOID DENTAL CARE?

Modern techniques and analgesics make visits to a Dentist almost a pleasure. Future pain and loss of teeth can be prevented. If you have not consulted a dentist within the past year be wise. Do it soon.

### OUR DENTAL AIDS STOCKS ARE COMPLETE.

Ask your dentist to write the exact medication, tooth brushes or paste and antiseptics he judges best for you and we will be glad to supply his exact specifications.

## TEAGUE DRUG

PRESCRIPTION CHEMISTS

Phone VA 8-4535 For Dependable Deliveries

Copyright 1962 (M-2-62)

**SHYTLES Implement Co.**  
Phone 33 Post, Texas

## BACON

Wright Or Cudahy

Pound

98¢

Boneless Rolled

## HAMS

1/2 Or Whole, Lb.

79¢

## PORK LOINS

1/2 Or Whole Pound

59¢

All Meat

## FRANKS

Pound

49¢

## ARRANTS

Meat & Locker Plant

Don't Forget To Check The Number On The Calendar We Gave You Against The Lucky Number Posted In Our Store

**ANNOUNCING!**  
NEW WAY TO CLEAN RUGS & UPHOLSTERY

**Lustre Foam SHAMPOO**

APPLY-LET DRY-NO RINSE-NO WIPE  
Emulsifies Soil-Brightens Colors  
Safe-Easy-Economical  
Guaranteed 1 Bottle Makes

SELL • BUY • TRADE • HIRE • SERVICE • HELP WANTED • EMPLOYMENT OPPORTUNITIES

Notice CLASSIFIED RATES... D-IN-ADVANCE... per word, minimum of each insertion, legal cents per word first; 2 cents per word subsequent insertions of all notices.

New 20" mower, price \$37.50 at Bourn pop. tfn-49

Lost Silver Black keys, looks like a husk 20" tall with a tie, Contact D. L. White 650 1TP-15

One Strider Baby Please return, Mrs. tfn-16

For Sale E. G. E. Electric and Dear Borne T. U. circulating hea- tables, and coffee and, Call Skip Tomlin-4848, 2TP-15

Lister shares, chisels, plow, hog feed- ers, hard surface, Lis- ters, Hydraulic hose, 514 tuck, VA-8-4487 166 t. Slaton Farm Store

FREE AIR HELP'S SERVICE STATION

ing I've learned in ing old, if you've noticed is to whom you advice, ve advice to you.

think the trouble e world today is re educating too hildren and not parents.

Education in the that obtained by ng to make a n today and we cate you on the service that your ds for the best performance. e are sure that PHILLIPS 66 will make a hit u.

Get Your Quality INTERNATIONAL HARVESTER Farm Equipment PARTS AND SERVICE SLATON IMPLEMENT CO. VA 8-3176

PAYS TO TRADE AT Ceils LIQUOR STORES

Just Follow the Signs in Odessa - Post - Lubbock

FOR SALE New 3 Bedroom Homes With Attached Garage. \$289.50 Moves You In SLATON LUMBER COMPANY VA 8-4255

FOR SALE... We loan carpet shampooers FREE with Blue Lustre purchase or rent electric shampooer. Lasater-Hoffman Hardware.

FOR SALE: 3 bedroom FHA in Southwest Slaton, Or 100% GI Loan. Built-in range, knotty pine cabinets. FORREST LUMBER CO, VA 8-4106.

FOR SALE! Good selection of used refrigerators from \$59.50. Self Furniture

FOR SALE - Extra nice efficiency apartment, to be moved. Call VA 8-3459 or see, 1430 S. 11th. St., at rear. TFC-12

FOR SALE - An attractive home of quality construction at 205 No. 18th. 2B/R, carpeted, two rooms upstairs on corner lot 75x140 on pavement close to High School. Financing available. Brewer Insurance Agency

FOR SALE... Bring back the high shine to vinyl floors with Seal Gloss acrylic finish. Lasater-Hoffman Hardware

FOR SALE... 2 B/R Carpeted, Fenced, 4 year old home on S. 19th. St. One owner home in excellent condition. The whole works will F. H. A. or G. I. loan with payments less than \$70.

FOR SALE... 2 B/R home on S. 11th St. near Jr. high school. Fine location, corner lot. Areal good buy. Terms available. BREWER INSURANCE AGENCY 139 So. 9th. VA 8-3241

FOR SALE: Bred Gilts and 2 boars. One purebred Yorkshire 10 mo. old boar, Troy Bruster Call Va-8-3828. 3tp-14

MISC. TILLIE'S FURNITURE upholstery offers free estimates, reasonable prices and guaranteed work. Mrs. Fred Perdue, 445 W. Scott, phone VA 8-3760. tfc-28

Where well dressed men dress up... O. Z. Ball & Co.

FOR SALE OR RENT... Lot for a trailer house, 745 S. 7th Contact John Rex Mull, 2802 3rd St. or call PO3-3757 2TP-16

FOR SALE--FRESH GRADE A EGGS, Available daily at Huser Hatchery.

NEW PURINA--Rat Kill is a carry home Bait rats haul back to the nest to their young. It is palatable, economical, kills rats in 3 to 10 days. Huser Hatchery.

FOR SALE: Texas Certified Western Storm Proof Cotton Seed, Book Your Order Now, Huser Hatchery. tfc-14

FOR SALE--Tires, tubes, and wheels for trailer, cars and pickups. 1200 S. 9th St. Phone VA 8-7132, Ted & Juel's Garage tfc-35

FOR SALE... PURINA LIQUID PIG WORMER... No change in feeding necessary. Easy to use. Huser Hatchery.

FOR SALE - Used automatic washer, kitchen sink cabinets, cook stoves, and refrigerators, \$29.50 and up. Used bath fixtures all kinds, meat slicer electric. Adding machine, counter billing machine. See at Layne Plumbing & Electric.

FOR SALE... Give roaches the business with long lasting invisible Roach Filmz. It gets 'em. Lasater - Hoffman Hardware.

FOR SALE -- Income Producing Property - Modern Trailer Court on West Crosby St. Slaton, Good location, 12 trailer spaces, store house & storm shelter. Financing available. Phil Brewer Ins. Agcy.

FOR SALE OR TRADE EQUITY... Three bedroom, two bath, brick carpeted house. Will take your equity of house, if nice two bedroom. Call Va-8-3541, Pember Insurance Agency.

FOR RENT... 740 S. 12th St. 3 room duplex apartment furnished on South side \$45.00. PEMBER INSURANCE AGENCY VA-8-3541 135 N. 8th St. Slaton, Texas

Misc... For best bargains in tools, see Self Surplus Supply.

FOR SALE: One good used Maytag dryer: \$79.50 Self Furniture.

Special: Nitrosal Paint \$3.95 gal. Exterior or interior: Self Surplus Supply

Shoes that fit the man & boy... O. Z. Ball & Co.

FOR SALE: Tarpaulins of all sizes. Plenty of them at Self Surplus Supply. From \$5.95 up. tfc-4

FOR SALE - Two bedroom house, corner lot, fenced in back yard, plumbed for washer, electric stove, 300 S. 4th St. Call VA 8-4365, \$5,000. tfc-10

FOR SALE -- Large 3 bedroom, 2 bath house, two blocks from square. Areal opportunity to acquire a home at small down payment and balance equal to rent. See A. Kessel Valley 8-3200 1TC-16

FOR SALE... 3 bedroom, garage, and apartment, Call VA8-4312 2TP-16

Misc HAVE YOUR prescriptions filled at TEAGUE DRUG STORE by a registered pharmacist tfc-31

Now is the time rid your lawn of crab grass, Apply Crab Grass Killer Now. Huser Hatchery. tfc-14

Wanted WANTED: Rugs to shampoo, at Quality Carpet Cleaners. Va-8-3406. tfc-14

WANTED... We operate a van truck for moving locally. Call VA8-4487. Pick-up and delivery service. tfc-31

WANTED... Plain cotton rugs, no strings, no overalls, 8c a lb, 10c a lb for sheets, Slaton Slatonite. TFC-16

WANTED -- If you have good lien notes for sale, contact B. Castleberry at VA 8-4731, Slaton Savings and Loan Association. tfc-28

WANTED... Women to work coin operated hair dryer at Quality Laundramat and Cleaners. TFC-16

For Rent FOR RENT: Floor sanders, floor polisher. Lasater-Hoffman Hardware. TFC-31

FOR RENT... Two bedroom house, unfurnished, 600 S. 14th St. See or Call Walter Lee Bednarz, VA8-4343 TFC-15

FOR RENT... One room furnished, 420 W. Panhandle, VA 8-3293 1TP-15

RENTALS One-2 bedroom house, clean and nice, 125 F. Division St. 1-3 bedroom, 2-bath, large dining kitchen combined, carpet and drapes, storm window. Sell or Trade. W. I. Kidd 1015 S. 11th St. VA 8-4215.

FOR RENT -- Two houses, one 3 bedroom, and one 2 bedroom, close in. See A. Kessel VA 8-3200 1TC-16

FOR RENT... 4 room furnished house, 210 S. 7th St, Call VA 8-4298 TFC-16

FOR RENT... One - Two room furnished apartment, VA-8-3597 E. H. Bollinger. TFC-6

FOR RENT... Bedroom, private entrance, 335 N. 6th St. or Call VA 8-3456, if no answer, see Mrs. Brookshire at Teague Drug. TFC-31

FOR RENT... 3 room and bath, unfurnished house, walk-in closet, storm windows and doors. Call VA8-4816 or inquire at 1045 S. 11th St. TFC-15

FOR RENT: 1 bedroom house unfurnished, \$40 per month, 115 E. Scurry. Call VA 8-4962. tfn-44.

FOR RENT... Large nicely furnished 3 rooms and bath apartment, Bills paid, No pets. Phone VA 8-3858 2TP-16

FOR RENT... Lovely large unfurnished 2 bedroom apartment, walk-in closet, large cabinets, wall to wall carpeting, plumbed for washer, fenced in yard, Bills paid, Phone VA8-4276 1TC-16

FOR RENT: Small furnished apartment for rent, close-in town, Call Hugo Mosser, Va-8-4475. tfc-14

FOR RENT... Four room furnished apartment, New Linoleums, newly decorated, hardwood floors, private bath and entrance. Walk-in closets and washer connections. Available, Call VA 8-3596 or W. W. Clark 617 S. 9th St. 3TP-16

FOR RENT... Just redecorated, extra large bedroom, Private bath, walk-in closet and outside entrance, 420 W. Lubbock. TFC-42

FOR RENT... Bedroom close-in with outside entrance handy to bath, at 200 E. Lubbock St. Phone VA8-3694 1TP-16

New Top coats and suits for every man & boy O. Z. Ball & Co.

Card of Thanks We wish to extend our heartfelt thanks to our friends who were so kind and helpful. Also to Dr. Payne and the hospital staff for their kindness, during my recent illness. May God continue his blessings to all. John Butler & Family.

Credit unions operate in 62 countries and have over 17,000,000 members.

NOTICE For Ditching, Storm Cellars, Fallout Shelters, Levelling, Plowing And All Dirt Work... See... Or Call.....

C. C. WEAVER VA 8-4797 1125 S. 12th Slaton, Texas

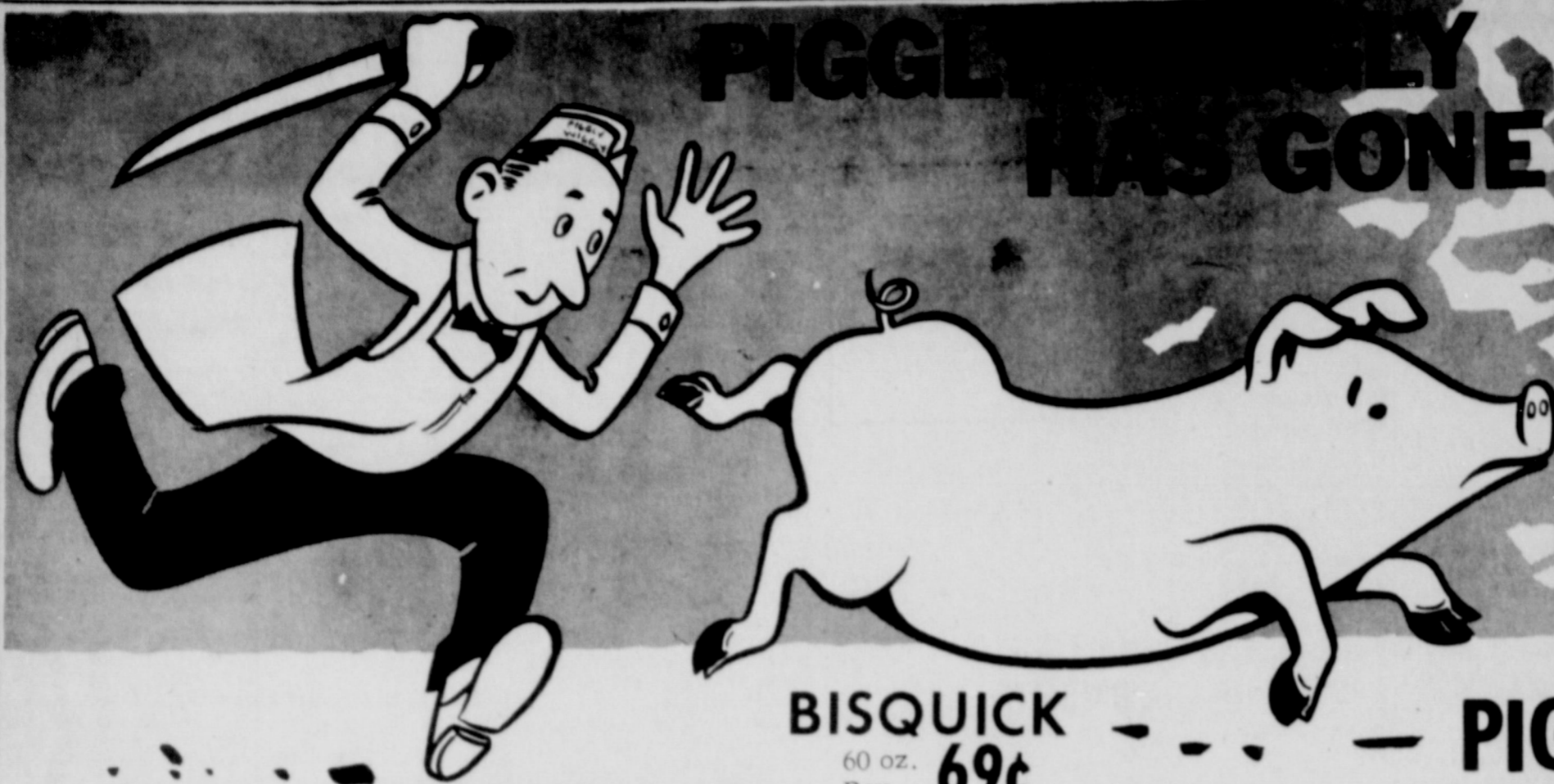
Mrs. Robert Brake Hostess To Winsome Class

The Winsome Class of Westview Baptist Church held their regular meeting January 18 at 9:30 p.m. in the home of Mrs. Robert Brake, 1100 S. 13th St. The meeting was called to order by the president Mrs. Virginia Mason. Mrs. Dorothy Brush brought the devotion. Opening prayer was led by Mrs. Mason. Prayer was led by Mrs. Dorothy Gossett.

A regular business meeting followed. The secretary read the minutes of the December meeting and were approved. It was noted to continue giving aid to members who are hospitalized and a new testament to all new babies born to class members. Two groups, captains were voted on. They were Mrs. Dorothy Gossett and Johnnie Saddler.

Closing prayer was led by Mrs. Lillie Harper. Refreshments were served to Mrs. Lillie Harper, Dean Belt, Martel Holt, Dorothy Gossett, Norma Jean Ledbetter, Dorothy Johnson, Jimmie Ma this, Dorothy Brush, Betty Romines, Billie Gamble, Virginia Mason, Geneta Brush, and Neil Brake.

BLAND'S CARPET Clearance 575 562 551 516 487 555 708 BLAND'S FURNITURE



**PIGGLY WIGGLY HAS GONE**

**HOG WILD**

**PRICES SLASHED ON PIGGLY WIGGLY PRODUCTS**

**APPLE SAUCE**  
Apple Bay  
No. 303 Can  
**10¢**

**BISQUICK**  
60 oz. Box **69¢**

**HORMEL LUNCHEON MEAT SPAM**  
12 Oz. Can **39¢**

**ROAST PORK**  
Lean, Tasty Picnic Cut Pork Pound **29¢**

**MIRACLE WHIP**  
Kraft's Quart Jar **49¢**

**PORK CHOPS**  
Lean Center Cut Rib Chops Pound **59¢**

**FRESH PRODUCE**

|             |                 |        |                |
|-------------|-----------------|--------|----------------|
| Acorn       | <b>SQUASH</b>   | lb.    | <b>15¢</b>     |
| Mexico      | <b>ORANGES</b>  | lb.    | <b>10¢</b>     |
| Russett     | <b>POTATOES</b> | 25 lb. | <b>69¢</b>     |
| Clipped Top | <b>TURNIPS</b>  | lb.    | <b>12 1/2¢</b> |

We Reserve The Right To Limit Quantities.

Lipton's **TEA**  
4 oz. Pkg. **43¢**

**5¢ Off Label**  
**CRISCO**  
3 Pound Can **79¢**

**HEALTH AND BEAUTY AIDS**

**HAND LOTION**  
Four Season's \$2.00 Retail Plus 7¢ Tax **67¢**

|                                 |                              |  |               |
|---------------------------------|------------------------------|--|---------------|
| Lanolin Plus                    | <b>HAND CREAM</b>            | Reg. \$3.00 Size 10 oz. Jar                  | <b>\$1.49</b> |
| Toni's Deep Magic, Plus 5¢ Tax. | <b>LIQUID CLEANSER</b>       | Regular \$1.00 Size                          | <b>49¢</b>    |
| Lanolin Plus,                   | <b>NAIL POLISH</b>           | Assorted Colors, Plus 7¢ Tax, Regular \$1.00 | <b>66¢</b>    |
| Wax Away,                       | <b>Wax Remover</b>           | Quart Bottle                                 | <b>89¢</b>    |
| Lipton's,                       | <b>Tea Bags</b>              | 16 Count Box                                 | <b>27¢</b>    |
| Lipton's,                       | <b>Instant Tea</b>           | 1 1/2 oz. Jar                                | <b>49¢</b>    |
| Pillsbury's Best                | <b>Flour</b>                 | 25 Pound Bag                                 | <b>\$2.39</b> |
| American Beauty,                | <b>Macaroni or Spaghetti</b> | 12 oz. Pkg.                                  | <b>21¢</b>    |
| Dial, 7¢ Off Net Price          | <b>Toilet Soap</b>           | 3 Regular Bar Pack                           | <b>39¢</b>    |
| Mazola, Corn Oil,               | <b>Cooking Oil</b>           | Pint Bottle                                  | <b>47¢</b>    |
| Faultless, Spray On             | <b>Starch</b>                | 16 oz. Can                                   | <b>69¢</b>    |

**Look For SEABROOK FROZEN FOODS**

|                                    |    |              |        |
|------------------------------------|----|--------------|--------|
| Seabrook, Chopped or Leaf, Spinach | 10 | 10 oz. Pkgs. | \$1.00 |
| Seabrook Green Peas                | 6  | 10 oz. Pkgs. | \$1.00 |
| Seabrook, Cut, Golden, Corn        | 8  | 10 oz. Pkgs. | \$1.00 |
| Seabrook Whole Okra                | 5  | 10 oz. Pkgs. | \$1.00 |

|                         |  |
|-------------------------|--|
| <b>PORK LOINS</b>       | Half or Whole, Pound                               |
| <b>SPARE RIBS</b>       | Small, Lean Riblets, Pound....                     |
| <b>PORK NECK BONES</b>  | Fresh, Excellent With Vegetables, Pound....        |
| <b>PIGS FEET</b>        | Fresh, Ideal With Sour Kraut, Pound....            |
| <b>SLICED SIDE PORK</b> | Fresh, Try With Hominy Grits, Pound....            |
| <b>LEG OF PORK</b>      | Half or Whole, Pound                               |
| <b>PORK LIVER</b>       | Fresh, Sliced, Pound....                           |
| <b>SIRLOIN STEAK</b>    | Boneless, Ideal For Broiling, Pound....            |
| <b>GROUND BEEF</b>      | Lean, Dated For Freshness... 3 Pound               |
| <b>CHUCK ROAST</b>      | Armour's Star, Heavy Beef, "Value Trim", Pound.... |
| <b>OYSTERS</b>          | Fresh Frozen, East Point, 10 oz. Can.....          |

**PORK AND BEANS 3**  
**CHERRIES 5**  
**TISSUE**  
**CORN**  
**BABY FOOD 3**  
**HI-C DRINKS**

These Values Good In Slaton February 1 - 5

Lowest Prices... Greatest Variety... always at...

**Piggly Wiggly**

JUST AROUND SLATON Mrs. Ellen

Around To... of The... with this... each week... the first colu... front page... says rate first... that's the... in It... informal ch... telling th... things about p... appenings, a... in the store... it will be... implies, "and in order... will need the... who have so... round your... ty and thing... interesti... to know... cts and l... operating... having been... ure years... een so cord... ne that we ju... eing happy to

will need y... order to gh... hometown... ave guests... risting, if y... baby or h... reunion or... rried, we'd... us about it... r is VA 8... py to have y

always a b... ke over a nu... as been no... first day in... checking... and sper... with a sale... come th... we should... line of suppl... d tell us the... f we don't l

I know... of our co... for gri... we don't st... for it... have radi... phones, rec... ns of othe... life comf... Sunday nigh... in Slaton... telephone, n... a radio b... and we re... depended o... in contact... We... ne now h... so quiet y... p without... to... one... ll be back... time of eve... e.

he other... land's F... ked throug... w a larg... the bab... lately I s... ing to em... of his l... when... an to cr... right, a... little g... which giv... you sho... gher, M... two year... we have... Slaton... re ever... a rea... me back... cause we... some w... regular