

The Slaton Slatonite

"UNITED WITH SLATON IN SERVICE TO ALL"

VOLUME 50, NUMBER 50

THURSDAY, SEPTEMBER 28, 1961

SLATON, LUBBOCK COUNTY, TEXAS

10 CENTS PER COPY

16 PAGES

Proposal Made For Boundary Move In Local Voting Wards

City May Acquire "Lake" Area For Health Improvement

Authorization for the preparation of an ordinance calling for the moving of the north and south boundaries of Slaton's four voting wards was given by the City Commission at its regular meeting Monday night.

Rev. Waters Conducts Revival Here Soon

Trinity Evangelical Methodist Church, 700 So. 19th St., will conduct its fall revival campaign September 30 through October 8. Rev. J. C. Waters, Jr., of Odessa, will be the evangelist and the song services will be under the direction of Rev. William Mayo of Lubbock. The services will be held each evening at 7:30 and each week day morning at 10:00 a.m. with regular worship services on Sunday morning.

Promotion Held In Presbyterian Church Here

On Sunday, September 24th, the Sunday School of the First Presbyterian Church held promotion exercises. Twelve children were promoted from one department into another one. Children and young people in the Sunday School led the School in worship.



REV. J. C. WATERS JR.

Slaton Men Return

Four Slaton men, including Bob Clodfelter, Don Hatchett, Earl Eblen and Max Arrants, returned Sunday from a three day fishing trip at Lake Angostura, in Old Mexico located 90 miles south of Douglas Arizona.

The men flew both ways, and returned with 85 bass and three frightened individuals after Clodfelter made the landing.

David L. Conner Dies In Slaton

David Lawson Conner, 88, resident of Slaton for 40 years, died Friday in Brownwood. Funeral services were held at 2:30 p.m. Sunday, September 24, in the Williams Funeral Home chapel. Roy Dean Verner, Church of Christ minister, officiated.

Burial was in the Englewood Cemetery. Survivors include two sons, A. L. Conner, Hobbs; and L. M. Conner, Slaton; a daughter, Mrs. Raymond Gentry, Slaton; four grandchildren and seven great grandchildren.



REV. FRED A. RYLE

Rev. Fred Ryle To Be Installed

The Presbytery of the Plains will install the Rev. Fred A. Ryle, Jr. as the Pastor of the First Presbyterian Church on Friday, September 29th at 7:30 p.m. in the Sanctuary. Although Mr. Ryle has been in Slaton for some two months, this service will begin his official relationship with the church.

Three Ministers of the Presbytery, along with two Ministers from Trinity Presbytery, will conduct the service of Worship and Installation. The Rev. Clarence N. Wylie, who retired from the pastorate of the Slaton Church in 1960, will preside and officially install Mr. Ryle. The Rev. C. M. Schindler of Lubbock will charge the new Pastor concerning his duties of the church, and the Rev. C. Edward Herring of Post will charge the congregation with their duties concerning their pastor.

The Rev. L. Wayne Bryan of the First Presbyterian Church in Whitesboro will deliver the sermon, based on Isaiah 40:1-11. The Rev. Julian T. Hendren of the Central Presbyterian Church in Sherman, where Mr. Ryle was baptized, will lead the opening worship service.

Everyone is invited to attend this service of worship.

Clothing drive

Mrs. T. E. Bishop and Mrs. W. L. Roach in behalf of Slaton Demonstration Club, wishes to thank all the people in Slaton who helped for the clothing drive to be a high success. We wish to thank also, all the people who helped for the success of this drive. The response was wonderful.

Meet Set For Babe Ruth Preparations

On Tuesday, October 3rd, there will be a meeting of parents interested in the Babe Ruth League, to be held at 7:30 in the upstairs room of the Citizens Bank Building. Entrance to the room is by the back door.

The purpose of the meeting is to discuss next year's operations and to elect new officers for the coming year.

This meeting is being held in the interest of all youths who have and who may participate in the program. The attendance of anyone interested, whether parent or not will be appreciated.

Presbyterians To Observe Communion Sunday

Next Sunday, October 1st, the First Presbyterian Church will join with churches in every country of the world in observing Holy Communion. This Sunday has been set aside for this observance so that we will remember our fellowship and unity with other Christians in Christ.

This will be the first Communion Service in some months in the church, and every member and friend is urged to attend this important service.

Dr. Logan To Speak For Church Conference To Be Held Here

Trinity Evangelical Methodist Church, 700 So 19th St., will host the 1961 Texas District Prayer and Planning Conference of the Evangelical Methodist Church September 28 and 29. The Conference convening Thursday afternoon will be under the supervision of Rev. Jack W. Weaso, District Superintendent of Sweetwater. The theme of the conference will be "Revival--The Need and the Results." In addition to committee



DR. J. S. LOGAN



CANDIDATE FOR LT. GOVERNOR -- Pictured above in center is O. W. "Bill" Hayes, Republican candidate for Lt. Governor in the forthcoming election. At left is Bill Klattenhoff, District Chairman for the Republican party, and at right is Clark Self Jr., president of the Slaton Chamber of Commerce, who was welcoming Hayes to the community.

Larry White Is Week's Winner In Football Contest

Larry White was winner this week in the Slatonite's Football Contest, with nine correct guesses and 16 points off the tie breaker.

R. A. Lamb ran a trim second, also having nine correct but missing the tie-breaking game by 28 points.

White will receive \$5.00 and will be another in contention for the Cotton Bowl Trip. Others hitting close with eight correct guesses were Al Clary, Skip Tomlinson, John Hennington, Wallace Becker, Eddie Nelson, P. E. Boswell, Robert Hoffman, Gerald Kendrick, Larry Burk and Donald Sikes.

Former Slaton Teacher Now On College Faculty

Mr. and Mrs. Harold Wilkinson, former residents of Slaton, have been added to the faculty of Abilene Christian College.

He is an associate professor of education and she is an assistant professor of history and a counselor.

Mrs. Wilkinson, who is a former teacher at Slaton High School, received her master of education degree from Texas Tech in 1951. Wilkinson was awarded the doctor of education degree from Texas Tech this fall. He served as the elementary principal in the Lamesa School system from 1954-1959.

Mr. and Mrs. Wilkinson are living at 926 N. 12th in Abilene.

Candidate For Lt. Governor Visits Slaton

O. W. "Bill" Hayes, of Temple, a candidate on the Republican ticket for Lt. Governor of Texas visited in Slaton Tuesday.

Hayes is the first Republican to announce for a state office, and is running as the "Conservative Republican Candidate."

Hayes, 43, is a member of the Republican State Executive Committee, and has served in the past on a state legislature. He was discharged from the Air Force with the rank of Captain, and spent 13 years in professional baseball prior to becoming an executive with a desk manufacturing company.

Upon being questioned, Hayes made the following statement on his political philosophy:

"In my considerable travels throughout the state, I have talked with thousands of Texans and have found a ground swell of conservatism and also tremendous resentment against operation of the state's business by professional politicians. Liberal and socialist trends have no place in sound economics. The people of Texas in effect issued a mandate in the election of John Tower to the United States Senate. I believe that we conservatives, whether republican or democrat, must stand up and be counted; we must exert every team effort to assure victory for our cause. The Republican Party offers this conservative leadership. I am announcing my candidacy for Lieutenant Governor because I feel my legislative

background will contribute to better government in Texas. I intend to carry the banner of conservatism to all 254 counties of Texas. If elected, I pledge to the people of Texas that I will serve out my full two-year term."

Promotion Held In Presbyterian Church Here

On Sunday, September 24th, the Sunday School of the First Presbyterian Church held promotion exercises. Twelve children were promoted from one department into another one. Children and young people in the Sunday School led the School in worship.

Teachers for the coming year were recognized. These teachers will serve until next September: Mrs. Alton Kenny, Mrs. A. N. Dickson, Mrs. D. W. Walston, Jr., Mrs. M. G. Mitchell, Mrs. Byron Johnson, Mr. Dick Cheatham, Mrs. Virgie Hunter, Mrs. Raymond Johnson, Mr. Byron Johnson, Mrs. Hunter is the Superintendent of the Sunday School, and Mrs. C. M. Simmons is the Secretary.

The Health Information Foundation observes that one of the most important results of medical progress in this century has been a large increase in the average American's working-life expectancy. An American male baby born in 1958 had a working-life expectancy of 42.3 years -- 11.2 years over the comparable figure for a baby born in the 1900-02 period.

Tigers Meet Tough Crosbyton In Road Game Tomorrow Night

Slaton's Tigers, already with as many victories under belts as they had last season, go against another tough team Friday night when they meet Crosbyton's Chiefs there in a game beginning at 8 p.m.

Coach M. W. Kerr's Tigers will carry a 2-2 mark into the game against Crosbyton, which has a 1-1-2 record. The Chiefs opened the season with a 6-6 tie with O'Donnell, and then defeated Tahoka by 19-0. Seagraves, a power in its district, managed a 32-6 win over Crosbyton and then the Chiefs tied with Spur last week by 22-22. Making it tough for the Tigers

may be the offensive element of Coach Dean Wright's Chiefs. They have never failed to score in a game, and have hit three touchdowns in two contests. This essentially means the burden will be on Slaton's defensive half to stop them, especially that with the exception of Tahoka, they have encountered tough teams on the defense.

Posing the main threat for the Chiefs will be halfback C. P. Roberts (Number 33), who has scored 26 of the total 53 points rostered by Crosbyton. Another threat will be quarterback Jody Ogle, who has scored two touchdowns himself, passed for one

other, and has passed for four points in gaining the extra points.

The Chiefs will average 174 pounds in the line, and 161 pounds in the backfield. They will send seven seniors, and four juniors against the Tigers. Slaton will field a slightly heavier line but an equal backfield, and will have only two seniors on the team.

E B, Pember	12	140
E G, Nowlin	12	145
OB B, Pember	12	140
HB S, Ball	42	165
HB W, Tefertiller	20	145
FB K, Bownds	33	140

CROSBYTON

Pos.	Name	No.	Wt.
E	D, Potter	12	157
T	F, Griffin	44	182
G	T, Lancet	66	172
C	E, Wheelless	53	143
G	J, Jones	65	145
T	D, Davis	73	200
E	C, Perkins	88	150
QB	J, Ogle	11	140
WB	C, P, Roberts	33	145
HB	M, Rethel	30	157
FB	C, Brints	22	144

Church Report

Attendance at church schools in Slaton Sunday, September 17, totaled 1640 in the 12 churches which reported.

Churches reporting and their attendance was as follows:	Attendance
Church of God	35
First Methodist	278
First Baptist	420
Church of the Nazarene	40
Westview Baptist	232
First Presbyterian	70
Grace Lutheran	91
Church of Christ	27
First Baptist Mission	35
Assembly of God	57
Pentecostal Holiness	50
Bible Baptist	61

In Hollywood, when a movie star tells a child a bedtime story, it usually goes like this: "Once upon a time, there was a Mama Bear, a Papa Bear and a Baby Bear by a previous marriage..."

Vertical text on the left edge of the page, including page numbers and other markings.

THURSDAY, SEPTEMBER 28, 1961

THE SLATON SLATONITE

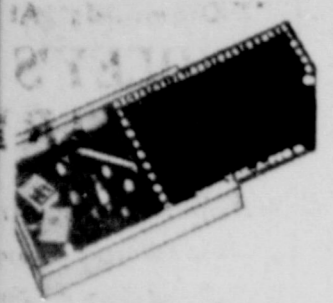
T.G.&Y.

5¢ TO \$1.00 STORES

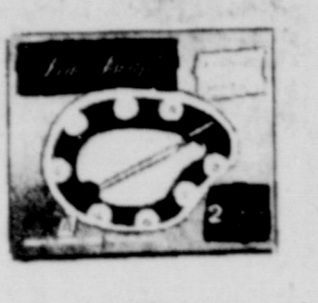
BIG VALUES! BIG SAVINGS!
Shop Early For Choice Selection!
Ideal For Giving Anytime...
Birthdays, Parties, Christmas Gifts!

TOY SALE

98¢ TO \$1.49 VALUES



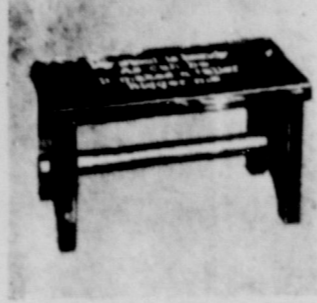
TAK-A-PEG DESK SET
 Masonite Blackboard, Peg Board with 77 holes. Set consists of:
 • Pegs & Hammer
 • Chalk & Eraser
 • Self-contained Case
77¢



PAINT BY NUMBERS
 Two large 8" x 10" panels... 8 different colors in all points. Wonderful for kids!
 • Brushes
 • Paints
 • Pictures
77¢



JACK-IN-THE BOX
 Clever cartoon figures... Choose your favorite character!
 • Colorfully Boxed
 • 4 1/2" x 4 1/2" Box
 • Loads of Fun
77¢



HANDI STOOL
 Sturdy finished lumber... light enough for finest tot to carry!
 • Non-Toxic Enamel
 • Durable
 • Top Quality
77¢



17 PC. CHINA TEA SET
 Exceptional buy... Ideal for every little girl!
 • 4 Cups & Saucers
 • 4 Plates
 • Sugar, Creamer & Teapot
77¢



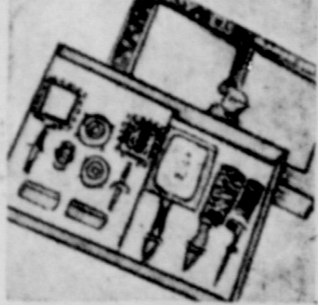
TOD-L-DOLLS
 Molded vinyl plastic dolls with movable head.
 • Non-Toxic Colors
 • 10 1/2" Tall
 • Two-Tone Voice
77¢



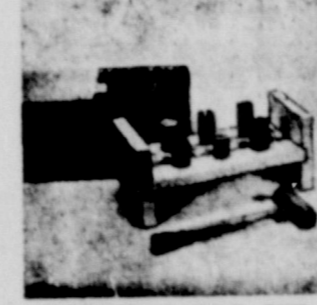
8-KEY PIANO
 8 Different tones... wood construction. Assorted colors.
 • Entertaining
 • Educational
 • Stained Finish
77¢



MEXICAN CHAIR
 Hand painted wood frame with strong woven seat.
 • 17" Tall
 • Useful—Sturdy
 • Colorful Design
77¢



'DOLLY & ME' SET
 Helps teach little girls good grooming. Three Styles.
 • Vanity Set
 • Missy Vanity Set and Accessories
 • Pink or Blue
77¢



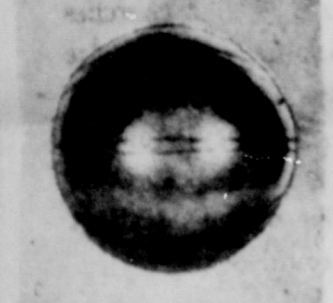
POUND-A-PEG SET
 A basic development toy. Pegs can be driven from either side.
 • Hammer
 • Peg Board
 • Colored Pegs
77¢



BOBBY BOX
 A new exquisite gift for any little girl... she will be delighted!
 • Plastic Handle
 • Smart Styling
 • Colorful Design
77¢



PONYTAIL TEA SET
 Metal Plates & Saucers... Plastic Cups, Teapot, Teaspoons, Sugar & Creamer.
 • 11 Pieces
 • "Pony Tail" Design
 • Lovely Colors
77¢



BASKETBALL
 Outdoor fun and exercise for boys and girls alike!
 • Pebble Grained
 • "No Leak" Plug
 • Durable Plastic
77¢



HELICOPTER
 Plastic front dome... Friction pistons give realistic action.
 • 10 1/2" Long
 • U. S. Airforce
 • All Metal Body
77¢



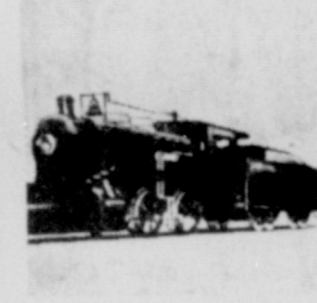
13 1/2" AIRPLANE
 Replica of American Airlines DC7... Four revolving propellers.
 • Friction Powered
 • All Metal
 • Rubber Tires
77¢



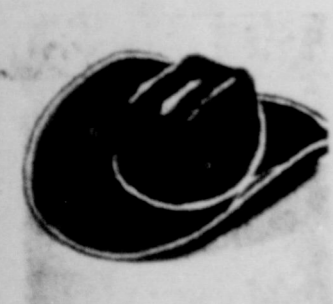
FORD SPORT COUPE
 Authentic Fairlane 500 model with friction motor.
 • All Metal
 • Rubber Tires
 • 10 1/2" Long
77¢



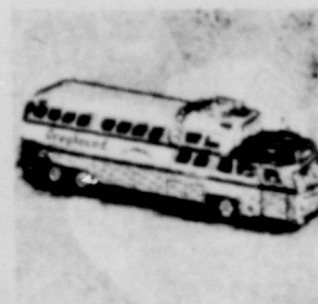
STATION WAGON
 Authentic model Ford wagon... Friction powered... Plastic windshield.
 • All Metal
 • Rubber Tires
 • 10 1/2" Long
77¢



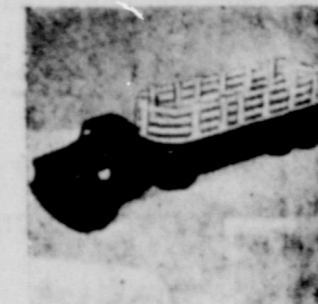
FREIGHT TRAIN
 Durable 21" Poly Freight Train... Just what little boys want!
 • Unbreakable
 • Colored Wheels
 • Engine Bell
77¢



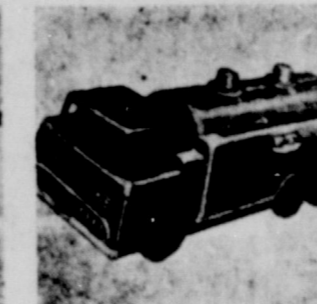
WESTERN HAT
 Big Bronco western style for all cowboys!
 • New Fall
 • Assorted Colors
 • Wire Reinforced Brim
77¢



GREYHOUND BUS
 "Scenicruiser" style... Friction powered. Metal Construction.
 • Rubber Wheels
 • Realistic
 • 11" Long
77¢



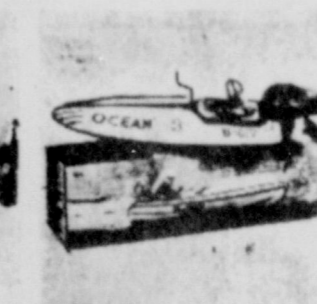
STAKE TRUCK
 Poly plastic semi-trailer truck... just made for little boys!
 • Molded Wheels, Tires
 • Large Size
 • 20" Long
77¢



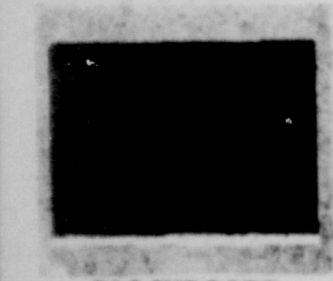
OIL TRUCK
 Strong, durable poly plastic... removable plug for filling.
 • Holds Water
 • Complete With Hose
 • 13 1/2" Long
77¢



'FOREST RANGER' JEEP
 Just like the Rangers use! Sturdy... a little boy's delight!
 • 9 1/2" Long
 • All Metal
 • Rubber Tires
 • Friction Powered
77¢



SPEED BOAT
 Outboard Friction engine with movable propeller. So realistic!
 • All Metal
 • Gaily Painted
 • 12" Long
77¢



BLACKBOARD
 Top quality "Parma Slate" blackboard... Full length chalk rail.
 • 18" x 24"
 • Hangs on Wall
 • Chalk & Eraser
77¢



STUFFED ANIMALS
 Choose from: Lambs, Dogs, Elephants, Horses... Cute, clever & lovable.
 • Plastic Covered
 • Large Size
 • 10 1/2" x 13 1/2" High
77¢



A-B-C & NUMBERS
 2" High numbers & letters, easy to handle. A truly educational toy!
 • Play Tested
 • Unbreakable
 • Washable
77¢

A TOT GUIDANCE TOY
COLORFUL SNAP BEADS 77¢
 Play Tested—Unbreakable—Washable
 Package

YOUR COMPLETE TOY HEADQUARTERS
T.G.&Y.
 5¢ TO \$1.00 STORES

How The Tigers Stand

(Composite Of First Four Games)

SLATON	Total Plays	Times Carried
206	Passing Attempts	Net Yards
41	Passes Complete	Passing Attempts
12	TD Passes	Passes completed for 34 yards
0	Net Yards Rushing	Ronnie Edwards
696	Net Yards Rushing	Times Carried
234	Total Yards	Net Yards
930	First Downs	Pass Attempts
43	Fumbles	Passes Complete
12	Own fumbles rec.	Ronnie Jones
4	Own fumbles lost	Times Carried
8	Opp. fumbles rec.	Net Yards
5		Passing Attempts
		Passes completed for 95 yards

Individual leaders	Times Carried
Webber Tefertiller	40
Times Carried	221
Net Yards	19
Pass Attempted	9
Pass Complete	15
for 105 yards passing	30
Punts	
Punts Average per kick	
Steve Ball	46
Times Carried	262
Net Yards	4
Passing Attempts	0
Passing Completed	
Kelley Bownds	

New Arrivals

Boundary... would have their white support. Three different... cost of collecting trash... in the down town... again reviewed by... mission. These sur... made in December... November 1960 and... and in most cases... decided increase in... those made in 1958... and in a great major... the cost showed more... \$1.00 per month... Commission discus... problem and indicat... would recommend... at the next meeting.

Mr. and Mrs. Manuel Flores, of Southland, are the parents of a son, Christopher Gene. He was born September 19 and weighed 8 lb and 10 oz.

A son, Adam, was born to Mr. and Mrs. Trinidad Garcia, of Slaton. He weighed 8 lb and 5 oz and was born on September 20.

Mr. and Mrs. Jerry Don Everage, Slaton, are the parents of a daughter, Canzada Lee, born September 21 and weighing 7 lb and 1 1/2 oz.

A son, Lyndal Martin, was born to Mr. and Mrs. Robert Hurst of Slaton, on September 22. He weighed 7 lb and 11/2 oz.

Mr. and Mrs. Jack O. Pearson, Slaton, are the parents of a girl, Roson Lee. She was born on September 23 and weighed 8 lb and 8 oz.

A girl, Ellen was born to Mrs. Magdalena Garcia, Lubbock, on September 24. Ellen weighed 7 lb and 6 1/2 oz.

Mr. and Mrs. Calvin Mensch, Slaton, are the parents of a girl. She was born on September 24 and weighed 5 lb and 6 oz.

Twins, a boy and a girl, were born to Mr. and Mrs. Mike Solorzano, Wilson, September 25. The girl weighed 4 lb and 15 1/2 and the boy weighed 4 lb and 7 3/4 oz.

Mr. and Mrs. Charles L. Goff, Lorenzo, are the parents of a son. He was born September 25 and weighed 7 lb and

If you need a **ROOF**
 Call Slaton Lumber VA 8-4329

VACANCY For Elderly W Personal Phone VA

DURHAM SWIVEL ST

- BALL BEARING SWIVEL
- SELF-LEVELING GLIDES
- EASY-POSTURE
- CHROME FOOT RINGS

ALSO AVAILABLE WITHOUT BACK 24" DR 30" SEAT HEIGHT

10.95

Bland's Furintu

Fried Chicken

1/4 ----- 85¢

1/2 ----- 1.50

Whole Chicken ----- 2.85

Sandwiches	Hamburgers	30	French Fries	15-20
Super Dog	Cheeseburgers	35	Onion Rings	35
Delux Dog	Boston Burgers	50	Malts	
Chicken Salad	Barbecue On Bun	45	Banana	40
Steak			Others	30
Ham				
Ham & Cheese				
Pimento Cheese				
Grilled Cheese				

Phone Your Order In
VA8-4421
 We'll Have Your Food Waiting For You

BOSTON SUPER DOG
 1250 S. 9th Slaton, Texas

Fountain Treats

Cokes & Dr. Pepper	5 - 10 - 15 - 25
Root Beer & Orange	5 - 10 - 15 - 25
Grape & Cherry Lime	5 - 10 - 15 - 25
Sour Or Sweet Limes	5 - 10 - 15 - 25
800	10 - 15 - 25
Boston Chocolate Ice	15 - 25

Sundaes

Pineapple, Strawberry, Cherry, Pecan	
Chocolate, Butterscotch	20 - 30

Shakes -- Banana - 35¢ Others -- 25¢

Try Our Jumbo Fried Shrimp 1/2 Doz 1.50

COTTON DEFOLIATION

Yes, It's That Time Again, And Here's Good News:
The Original SHED-A-LEAF
 Is Now Available In Slaton At Our
 Complete Fertilizer And Chemical Store,
 Manufactured By Chipman Chemical
 Company. Many Firms Have Attempted To
 Duplicate This Famous Defoliant Solution, But There's
 Only One Original. And We Have It.

Also See Us For
RED BARN Permanent Type ANTI FREEZE



8-4782 Intersection Of FM 400 & Hwy. 84

LAY-A-WAY NOW



We Have The Largest Selection Of Gift
 Items Ever. For Your Convenience, A
 Small Deposit Holds Your Choices Until
 Christmas.

- **Toys** For Youngsters Of Every Age
And Interest Group.
- **Dolls & Bicycles**
- **Electric Blankets** And
Large And Small Appliances

Plus Many Other Items



Whites Auto Store

Bobby Pornor-Owner

Ph. VA 8-3946

SPOTLIGHT ON--

Hometown Business People

BY VERN STEWART
 Discussions by and about
 local merchants and improving
 the business climate in Slaton
 will be the usual contents of
 this feature, and new and out-

standing sales and merchandising
 programs being adopted by
 small town merchants will also
 get plugs here.

This feature will aim at both
 the businessman and the consumer.

-jvs-
 There have been several
 special sales events, some
 business openings, and of
 course showing of the '62 model
 automobiles catching the busi-

ness spotlight in Slaton the past
 couple of weeks.

Self Surplus Supply, which
 will be operated by Clark Self
 and Clark Jr. is open for busi-
 ness on West Panhandle, and
 Davis Olds Inc. moved into its
 new home on West Lynn just
 in time for the showing of the
 1962 Oldsmobile.

-jvs-
 Boston Superdog, has em-
 barked on a new campaign to
 make Slatonites aware of their
 fast service on call in food
 orders.

James Briggs, manager of
 the drive-in, which is located
 on South 9th, says by persuad-
 ing customers to call in their
 orders, the drive-in can keep
 up with orders better, and work-
 ing people who find a 30 minute
 or one hour lunch period too
 short to spend part of it waiting
 for a food order will also be
 benefited by being able to drive
 up to the window and pick up



IT'S DIFFICULT FOR
 SOME FOLKS TO BE HONEST
 WHEN THE SQUEEZE COMES

Be Sure YOU Come By Our
 Station For Some Of That
 Fine Texaco Oil And Gas

JERNIGAN'S TEXACO
 Big Enough To Accomodate.....
 Small Enough To Appreciate
 855 S. 9th VA 8-7100

Magouik Electric
 Electrical
 Wiring & Repairs
 Electrical Supplies
 4 - Blocks East
 Of Porter Lumber
 Ph. VA8-3877
 If No Answer Call
 VA 8-4712

If you need a new
ROOF
 Call Slaton Lumber Co.
 VA 8-4329

their food as soon as they get
 off work, provided of course
 that they called the order in.

-jvs-
 The Slatonite gets its share
 of compliments from customers
 on advertising results from
 promotional and other ad-
 vertising messages, but there
 are also some merchants who
 have tried to increase sales of
 a certain item or promote a
 special event in the past, and
 were disappointed with their
 results and therefore quit ad-
 vertising altogether.

A well-conducted campaign,
 sustained over a period of
 months will definitely pay for
 itself in increased sales. Some-
 times the one-shot promotionals
 in local newspapers do not
 draw as well as expected, but
 the fault usually does not lie
 entirely with the newspaper.

A Florida merchant, who op-
 erates a hardware store in a
 town with a population of 8,000
 summed up the attitude
 merchants should have when
 planning a promotion--"When
 I was a boy, I learned that you
 get no more out of anything
 than you put into it. I'm not
 a boy any longer, but I haven't
 forgotten the lesson."

The hardware man said that
 when he hears a retailer com-
 plain that a promotion didn't
 pay off in sales, "after they've
 talked a few minutes, it be-

comes evident they hadn't put
 out much effort to make them
 pay off."

A promotion in the local
 newspaper can tell 5,000
 potential buyers what your store
 has to offer in pleasant con-
 vincing manner.

With top merchandising
 practices, merchandise that is
 attractive, and good selling
 practices to back up a news-
 paper promotion, increased
 sales will convince most re-
 tailers of the value of a news-
 paper advertising program.

The trucking industry alone em-
 ploys 6 1/2 million persons. There
 are 790,000 people in automotive
 plants. Road maintenance takes
 493,000 people. The crude oil and
 refining industry has created jobs
 for another 294,000. In addition,
 there are 193,000 service stations
 in the United States.

**Feature Lock-
 Diamonds At
 FINDLEY'S
 JEWELRY**
 Also
 Watches And Jewelry
 Guaranteed Watch Repair
 129 S. 9th Slaton, Texas



The Best Way of Life

★ Buy... where your
 trade helps to
 sustain prosperity
 you can enjoy

**It Pays to Buy
 where you Live**

It depends on what you
 like, of course. There is the warm neigh-
 borliness... the dignity and satisfaction
 of life in a community like ours... and
 there is life as it is lived in the cities...
 as one of the scrambling herd... where
 neighborliness is viewed with suspicion
 ... and squalor is the lot of anybody who
 gets pushed aside in the rat race.

• Those of us who live here have al-
 ready voted our preference... for this
 more tranquil smaller community unit

as a way of living. We like churches
 where everybody knows everybody else
 ... and schools where we know our chil-
 dren's teachers... and they know us.
 We like living that is more calm, easier,
 safer... and we like business dealings
 with neighbors we can depend on.

• But happy communities don't just
 grow... they have to be built. It takes
 revolving money... local trade volume
 ... to build and maintain and enrich our
 chosen way of life.

TRADE AT HOME WHERE YOUR MONEY BENEFITS YOU

*These Firms Are Genuinely Interested in the
 Future of Our Community and Your Welfare*

Bland's Furniture
 215 W. Lubbock VA 8-3166

T. G. & Y.
 107 W. Lubbock VA 8-4711

Slaton Steam Laundry
 169 W. Lubbock VA 8-3426

Henzler Grocery
 930 S. 9th VA 8-4949

West Texas Monuments
 Lubbock Hwy. VA 8-4653

Bourn Cycle
 640 S. 9th VA 8-3614

Fondy's Western Leather
 115 N. 9th VA 8-4846

Teague Drug
 136 W. Garza VA 8-4535

Walton Drug
 112 W. Garza VA 8-3376

"Doc" Crow
 120 N. 9th VA 8-4261

Shrimp & Fried Chicken
 To Go - Try It!

BOSTON'S SUPER DOG

Save Time!
Phone VA8-4421
 Pick Up Your Order
 When You Arrive

No Waiting!
Phone VA8-4421

Your Order Will Be Ready
 When You Arrive.

ADS IN THE SLATONITE PAY OFF BIG!

ANNOUNCING!
NEW WAY TO CLEAN
RUGS & UPHOLSTERY

Lustre Foam
SHAMPOO

APPLY - LET DRY - NO RINSE - NO WIPE
Emulsifies Soil Brightens Colors
Safe - Easy - Economical

GUARANTEED
1 Bottle Makes
3 Gallons

Clean Sofa, 2 Chairs, 9X12 Rug for only \$1.98
or \$3.49

Bland's Furniture

HIGHBOY ROOM DIVIDER
by **DURHAM** gives you that needed
decorative touch.



- Bronze frame, black or grey shelves. Blends with all colors.
 - Strong, steel shelving, beautifully finished in durable enamel.
 - Shelf length, 36". Depth of lower shelves, 16", upper, 10".
- Handsome in any room. Can be used as dinette server. Even pinch-hits as a breakfast. Most useful, decorative furniture unit we've seen!

Bland's Furniture

25% more wear is knitted into Berkshire stockings

THE NAME of Berkshire's secret is NYLOC. And only Berkshire stockings have it. Only Berkshire stockings have this marvelous Run-Barrier at top and toe, to stop 95% of stocking runs. NYLOC is guaranteed to stop runs that start in the top and toe when entering the sheer leg area—or you get a new pair free!

Sheer sheer Berkshires come in your choice of "Color Spice" shades for fall. With seams that are seamless. From \$1.35 a pair.

Webb's



Slaton City	10	2
Citizens State Bank	9	3
Carrie's Truck Shop	9	3
Slaton Co-op Gins	8	4
Quality Cleaners	7	5
Slaton Savings	7	5
Arants Meats	7	5
Wilson Lumber & Supply	5	7
Triangle MFG.	5	7
Meaker Shoes	2	10
Hestand Grocery	2	10
Hackberry Co-op Gin	1	11

GUYS & GALS	W.	L.
Lamb Chops	12	0
Gear Grinders	9	3
Smith Bros. Farms	7	5
Lion's Club	7	5
Slaton Hardware	6	6

Mildred's Flowers	6	6
Tucker's Butane	6	6
Ball-Pullers	6	6
Flying Pins	5	7
Four Squares	4	8
Conner's Garage	3	9
Self's Service	1	11

THE OWLS	W.	L.
The Owls	10	2
Lucky Strike	10	2
Don Juans	9	3
The Undertakers	8	4
Payless	8	4
Scott & Wright	6	6
The Four Acers	5	7
Jim-Dan-Dy-Cleaners	5	7
R & G Art Shop	3	9
The Ball Wiewies	3	9
The Amateurs	3	9
Piggly-Wiggly	2	10

YOUR Independent AGENT

PEMBER Insurance Agency
135 N. 8th VA 8-3541

QUEEN PINS	W.	L.
Pay Less # 6	9	3
Cecil's # 1	8	4
Keal Cleaners # 4	6	6
Higginbotham Lumber # 5	5	7
M. H. Edwards # 3	2	10

INDUSTRIAL LEAGUE	W.	L.
Teague Drug	11	1
Piggly-Wiggly	8	4
Slaton Bowl	8	4
Hopper Electric	5	3
Slaton Gas & Equipment	6	6
L & H Hardware	6	6
Santa Fe Diesels	5	7
Five Mixers	5	7
Arp's	3	5
Hackberry Co-op Gin	4	8
Liles Sheet Metal	1	11

DR. J. W. BELOTE JR.
Optometrist

Office Hours 9-5
Phone VA 8-3766

115 South Ninth
Slaton, Texas

Shower Held For Miss Buxkemper

Miss Jeanette Buxkemper, bride elect of Darris Linder, was honored at a miscellaneous bridal shower Sunday, September 24 in the home of Mrs. Paul Meurer, Cooper Road.

The table was laid with a lace tablecloth, and centered with a archway of small white flowers for a miniature bride and groom. Candles were placed on both sides. The bride's colors of orchid and white were used throughout. Miss Buxkemper was honored with a portable electric mixer by the hostesses.

Approximately 75 guests were present. They were served refreshments by Conda Wyatt, DeEtta Buxkemper, Kathy Buxkemper, and

House party members were Mrs. Lloyd Meurer, Mrs. Joe Shilling, Mrs. Victor Buxkemper, Mrs. L. J. Kahllick, Mrs. C. O. Buxkemper, Mrs. Ruby Owen, Mrs. Zelma Malone, Mrs. Jewell Cooper, Mrs. Estel Barlett, Mrs. Quinton Strube, Mrs. C. W. Buxkemper, Mrs. Oscar Buxkemper, Mrs. Leon Buxkemper, Mrs. Paul Buxkemper, Mrs. Landis Franke, Mrs. Alex Bednarz, Mrs. Ray Kitten, Mrs. August Kitten, Mrs. Sylevester Verkamp, Mrs. Edwin Bednarz, Mrs. C. B. Schneirs, and Mrs. Allen Strube.

30 Gal. Water Heater
1 Year Guarantee
Rheem Glass Lined
\$49.95

WHY Settle For Less Than The Very Best -- A Rheem Water Heater
30 Gal.
Water Heater
10 Year Guarantee
Glass Lined Rheem
\$54.95

Mr. Farmer!
Our Current Stock Makes Us Headquarters For
TRAILER LIGHTS

Bain Auto Store
146 W. Garza VA 8-4652

FRIDAY
A New World of Worth from Chevrolet for '62!



'62 CHEVROLET *Rich new styling with Jet-smooth ride!*

Here's everything a car fancier could want. Fresh-minted style that comes to a climax in the sportiest sport coupe you've seen yet. A road-gentling Jet-smooth ride. A new choice of V8 skedaddle. Rich Body by Fisher interiors. Beauty that's specially built to stay beautiful. Here in '62 is more than ever to please you from the make that pleases most people.

It's like owning an expensive car without the expense. Check it over from its clean-thrusting prow to its rakish rear deck. Look inside the deep-well trunk. Then—head for the open highway. ■ That sittin'-on-satin feeling you get is Chevrolet's famous Jet-smooth ride at work—with a pliant Full Coil spring cushioning at each wheel. The standard six and V8 are triggered to do special things on regular gas, and for real hair-trigger reflexes you have a choice of four optional-at-extra-cost V8's with out-

put all the way up to 409 hp. ■ Hard-working helpers (like the new steel front fender underskirts that guard against corrosion) give this '62 its built-for-keeps beauty. Even the heater and defroster come as standard equipment this year. This is the kind of car that will make you feel luxurious all over, and your Chevrolet dealer will be only too happy to show you how easy it is to have one of your own.



THE '62 CORVAIR MONZA

Meet the car that puts sport in the driver's seat! Bigger new brakes and Corvair's renowned rear-engine traction offer just about the surest footed going on the road. A new Monza Station Wagon makes its debut. And all models sport freshly tailored upholstery inside matched by sassy new styling accents outside.

This jim-dandy's got the stuff that drivers dote on. ■ Backstage you have a standard aluminum air-cooled engine that turns up 80 hp. (or if you like more razzmatazz, one that uncorks 102 hp!). ■ Sure enough, there's independent suspension on all four wheels to keep the ride as amiable as ever. Inside, you'll find a heater and defroster, cigarette lighter, dual sunshades, front-door armrests and automatic choke as standard equipment on most models. ■ There are lots of reasons for liking what's new—and tried and true—in the '62 Corvair. And your dealer's eager to tick 'em off for you.

*Optional at extra cost.



HERE'S THE NEW CHEVY II

Here's modern basic transportation in a totally new line of cars with all the solid, time-tested Chevrolet virtues—plus some surprises you've never seen on any car before. A full line of saucy new-size models. Thrifty? Choice of a frugal 4- or spunky 6-cylinder engine (in most models). Roomy? Sedans seat six solid citizens. Price? A real pleasant surprise!

This plucky new Chevy II comes about as close as a car can to perpetual motion. ■ All nine models (station wagons, a hardtop, even a convertible will soon be available in the lineup) are designed to save you money and service. Major front-end sections, including fenders, bolt on for easy replacement in case of damage. The heater and defroster are yours as standard equipment. Tough—but ever-so-gentle—Mono-Plate rear springs eliminate the friction of old-fashioned multi-leaf springs. ■ And, maneuverable and sensibly sized as this Chevy II is, it gives you the kind of room that'll make many a "big" car wonder how it's done.

See the '62 Chevrolets, the new Chevy II's and '62 Corvairs at your local authorized Chevrolet dealer's

"DOC" CROW CHEVROLET
120 N. 9th. Slaton

THURSDAY, SEPTEMBER 28, 1961

THE STATE OF TEXAS
COUNTY OF LUBBOCK
In The Name and by the Authority of the State of Texas To:
W. B. Stone and anyone claiming under W. B. Stone, whose residence is unknown, Frank Harpe and anyone claiming

under Frank Harpe, whose residence is unknown, the respective unknown heirs and legal representatives of all the above named parties, W. B. Stone and Frank Harpe, and anyone claiming under them, the unknown owner or owners of the hereinafter described property and their heirs and legal representatives, whose names and places of residence are unknown, and any and all other persons, including adverse claimants, owning, or having, or claiming any legal or equitable interest in or lien upon the hereinafter described property delinquent to plaintiff--herein for taxes.

YOU ARE HEREBY NOTIFIED that suit has been brought and is now pending in the Honorable District Court, 72nd Judicial District, Lubbock County, Texas, wherein Slaton Consolidated Independent School District is plaintiff; The State of Texas, County of Lubbock, the High Plains Water District and the Lubbock County Water Improvement District is/are impleaded party defendants; and Meteo Martine, (one and the same person as Mateo Martinez) W. B. Stone, and Frank Harpe and anyone claiming under W. B. Stone and Frank Harpe and the other parties as shown above and the unknown heirs, and legal representatives of all indicated defendants are defendants,--by the filing by said plaintiff--of a petition on the 4th day of June, 1960, and supplemental pleadings and the file number of said suit being No. 5568 and the nature of which is a suit to collect delinquent ad valorem taxes on the following described property, to-wit:

Lot Six (6) in Block Seventy-one (71) of the South Park Addition to the Town of Slaton, Lubbock County, Texas, and Lots Seven (7), and Eight (8) and Nine (9) in Block Seventy-eight (78) of the South Park Addition to the Town of Slaton, Lubbock County, Texas, together with interest, penalties, costs, charges, and expenses of suit which have accrued and which may legally accrue thereon.

The amount of taxes due each plaintiff, exclusive of interest, penalties and costs is as follows:
(Name of Taxing Unit)--Slaton Consolidated Independent School District, \$138.69.
TOTAL.....\$138.69

The names of all taxing units which assess and collect taxes on said property not made party to this suit are None.
Plaintiff and all other taxing units who may set up their tax claims herein seek recovery of delinquent ad valorem taxes on the property hereinabove described, and in addition to the taxes all interest, penalties, and costs allowed by law thereon up

to and including the day of judgment herein, and the establishment and foreclosure of liens, if any, securing the payment of same, as provided by law.

All parties to this suit, including plaintiff, defendants, and intervenors, shall take notice that claims not only for any taxes which were delinquent on said property at the time this suit was filed but all taxes becoming delinquent thereon at any time thereafter up to the day of judgment, including all interest, penalties, and costs allowed by law thereon, may, upon request therefor, be recovered herein without further citation or notice to any parties herein, and all said parties shall take notice of and plead and answer to all claims and pleadings now on file and which may hereafter be filed in said cause by all other parties herein, and all of those taxing units above named who may intervene herein and set up their respective tax claims against said property.

You are hereby commanded to appear by filing a written answer and defend such suit on the first Monday after the expiration of forty-two (42) days from and after the date of issuance hereof, the same being the 13 day of November, A.D. 1961 (which is the return day of such citation), before the honorable District Court of Lubbock County, Texas, to be held at the courthouse thereof, then and there to show cause why judgment shall not be rendered for such taxes, penalties, interest and costs, and condemning said property and ordering foreclosure of the constitutional and statutory tax liens thereon for taxes due the plaintiff and the taxing units parties hereto, and those who may intervene herein, together with all interest, penalties, and costs allowed by law up to and including the day of judgment herein, and all costs of this suit.

Issued and given under my hand and seal of said court in the City of Lubbock, Lubbock County, Texas, this 26 day of Sept. A. D. 1961.

E. Pieratt, Clerk of the District Court
Lubbock County, Texas,
72nd Judicial District
By Verna Boyd, Deputy
50-2tc

SALE

Actually, Everyday Is Sale Day At Self Surplus Supply, Slaton's Genuine Saving Center. But A Few Items Deserve Special Consideration As Bargains This Week.

ELECTRIC BLANKETS Single - Control Type By Casco **\$12⁸⁸**

Exterior Interior Nitrosol **PAINT \$3⁹⁵** Gal. Set Of 4 Regal Ware **\$17⁸⁸** Cooking Utensils Goes Good With Electric Range

Set Of 4 Cal-Dak With Roller Stands **TV TRAYS \$8⁸⁸**

Ike Jackets \$1⁹⁵ ea. Genuine Army Surplus

SELF SURPLUS SUPPLY

Next Door To Liles Tin Shop On West Panhandle

COME SEE

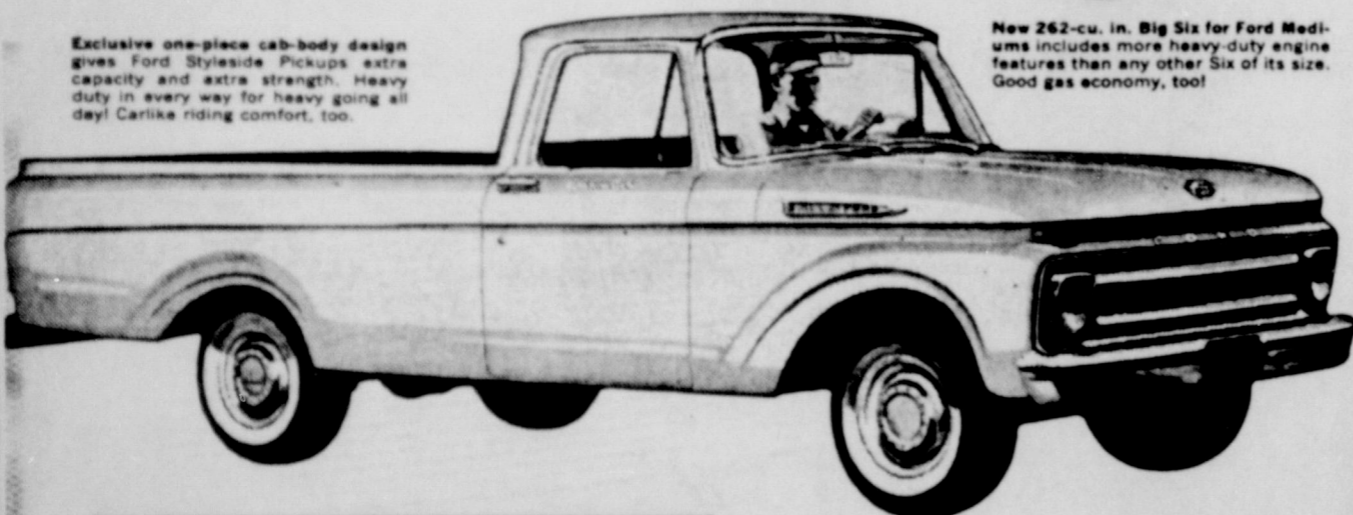
new Ford Trucks for '62



America's best selling van--and small wonder! Priced far under popular conventional six-ft. panels but has larger loadspace (204 cu. ft.)! It can save \$100 a year on gas, oil, tires.



New 262-cu. in. Big Six for Ford Mediums includes more heavy-duty engine features than any other Six of its size. Good gas economy, too!



COME SAVE

with full-time economy

Come meet the trucks that make saving money a full-time business... the new Ford Trucks for '62... a selection of over 600 models in all! Come see the truck that's right for your job, whatever your job. Come see the trucks you can buy and operate at lower cost... trucks that can save you money mile after mile, load after load, year after year!

Ford's full-time economy only starts with low price. It includes savings on gas and oil. It includes savings on tires and on maintenance--wherever there's a chance to save. Come in today and let us show you how. Check out the facts. Work out a deal.

FORD TRUCKS COST LESS

SAVE NOW... SAVE FROM NOW ON!

PRODUCTS OF FORD MOTOR COMPANY

COME IN!!!!

Slaton Motor Company Inc.

9th. & Lynn

Slaton

Your Church's Door Is Always Open!

One of the disturbing discoveries of life is that the truth one man cherishes seems a mystery to another. But is that surprising? We live in a world of doors and locks. To the man with the Key a door opens. To another it remains closed.

Among the keys to spiritual truth is one called HUMILITY. It accounts for many of the millions who worship God every Sunday in the churches of our land.

An American President once said, "I have been driven many times to my knees by the knowledge that my own strength, and that of all around me, was insufficient for that day."

He ruled a nation divided. But neither Blue nor Gray ever questioned the humility of the man who signed his name, "A. Lincoln."

Not only the portal, but the Truth of God's House, is every Sunday an Open Door to humble men!



Wilson St. Paul Lutheran Church Rev. G. W. Heinemeier
First Baptist Church Wilson Rev. F. E. Scott
Our Lady Of Guadalupe Church 700 S. 4th.
St. Joseph's Catholic Church Mgr. T. D. O'Brien 19th. & Lubbock
Gordon Church Of Christ Marion J. Crump, Minister
Acuff Church Of Christ Brooks Terry, Minister

St. Paul Lutheran Church Mo. Synod. Wilson Rev. R. F. Kamrath
First Nazarene Church 635 W. Scurry Rev. Charles Stuart
Westview Baptist Church 830 S. 15th, Rev. Dwight Lusk
First Methodist Church 308 W. Lubbock Rev. Rollo Davidson
Church Of God 206 Texas Ave. "Rev. B. E. Coker"

THIS MESSAGE IS MADE POSSIBLE BY THESE MERCHANTS SLATON SUPPORTERS:

O.D. Kenney
AUTO PARTS
Your Automotive
Parts Distributor

Slaton Pharmacy
"Service Is Our Motto"

Slaton Savings & Loan Association
"We Pay You To Save"

Ray C. Ayers & Son, Inc.
Grain--Feed--Seed

Janes-Prentice Inc.
Sand and Gravel For The
Construction Industry

Union Compress and Warehouse Company

Slaton Co-Op Gins
"Owned and Operated By Farmers"

JIM-DAN-DY CLEANERS
Free Pick-Up and Delivery
130 North 10th. --VA 8-4347

Bruce's Cafe
"Where Friends Meet and Eat"

Williams Funeral Home
Unlimited Insurance Protection
Cadillac Ambulance Service

WILSON FRIENDS:
Wilson Co-Op Gin
"You Own Your Own
Business... Be Its
Best Customer!"

Wilson State Bank

Clubb Grain Co.
Jimmy Coleman and
Associates

FROM ACUFF:

Acuff Co-Op Gins
"It's Your Association"

Grace Lutheran Church 840 W. Jean Rev. Leroy R. Deans
First Baptist Church 255 S. 9th, Dr. Charles Wood
First Christian Church 145 E. Panhandle Rev. E. A. Wilbur
Immanuel Lutheran Church Posey Rev. F. A. Wittig
St. John's Lutheran Church Wilson Rev. J. P. Burnett
First Presbyterian Church 425 W. Lubbock

Church Of Christ 340 W. Division Roy Dean Verner
Assembly Of God 950 S. 14th, Rev. V. F. Love
Missionary Baptist Church
Southland Baptist Church Rev. Eddie Fortson, Pastor
Southland Methodist Church Rev. Beane
Acuff Baptist Church W. O. Donley, Pastor

Bible Baptist Church W. Panhandle Rev. H. E. Summar
Wilson Methodist Church Wilson Rev. Harold Rucker
Pentecostal Holiness Church 105 W. Knox Rev. W. L. Comstock
Trinity Evangelical Methodist Church Rev. Weldon Thomas
African Methodist Church Rev. J. S. Gilbert

SOUTHLAND FRIENDS

Basinger Drilling Co.

Hackberry Co-Op Gin
"It's A Pleasure To Serve"

Southland Hardware
"In Southland Since 1920"

SHAMROCK TIPS



"They always try to serve the ladies first."
We welcome Mrs. Motorist, always - and she'll be thrilled at the friendly service we give. When your wife wants the windshield cleaned tell her to drive in.

WYLIE OIL COMPANY
1400 S. 9th VA 8 7110

The Slaton Slatonite Society Clubs

Altar Society Has Meeting

The St. Joseph's Altar Society met September 14 with Mrs. O. E. Heinrich, president, presiding. Delegates named to attend the DCCW Convention at Lubbock October 3 and 4 are Mrs. Jerry

Melcher and Mrs. Paul Buxkemper, and all the ladies were invited to attend this convention. It was decided to form small groups and each group would be designated a month to make clothing for the Catholic Children's Home at Panhandle. A clothes collection was also taken up for the Texas Coast Storm victims. Plans were discussed for the annual Turkey Dinner.

Civic And Culture Club Has Meeting

The Junior Civic and Culture Club met Tuesday, September 19, in the home of Mrs. W. A. Wilke. Mrs. Charlie Brake presided over a business session. Roll call was answered by showing either an artificial flower or a dried arrangement made by each member.

Present were mesdames: Joe Belote, Brake, Oma Faye Brown, Chriesman, Ray Conner, W. K. Fry, W. C. Gilmore, C. E. Hogue, Virgie Hunter, Yates Key, L. T. Kincer, Melvin Kunkel, M. H. Lasater, J. J. Maxey, Lois Merrell, R. M. Shepard, Jow Wicker, J. A. Wright, and the hostess, Mrs. W. A. Wilke.

Jo Sherwood Is Honored

A bridal shower honoring Jo Sherwood, bride elect of Don Wendel, was given Sunday at the home of Mrs. Bernard Steffens. Assisting hostess were: Mmes. Gene Ethridge, Bernard Steffens, Kenneth Jobe, Edward Gaydas, Harold Steffens, Louie Melcher, John Taylor, Bill Seifman, Galen Weaver, S. C. Steffens, Hilda Ressig, Jinnie Lee Chrisman, and Pat Shelby.

In the receiving line were the honoree, her mother, Mrs. Rye, the groom's mother, Mrs. Leo Wendel, and the honoree daughter, Cindy.

Mrs. Louie Melcher registered the guest, which totaled fifty. The serving table was covered with a orchid and white table cloth with a center piece of dahlias and mums.

A hostess gift of a toaster was presented to the honoree. Jo and Don will exchange vows October 7 at 10:00 a. m. in Our Lady of Grace Church in Lubbock.

Mrs. Guelker Is Speaker For Athenian Group

The Athenians Study Club met in the home of Mrs. E. O. Chaddock on September 19th with sixteen members present. Mrs. Floyd Guelker led the program which was entitled, "Our Heritage-Show and Tell." Each member brought family heirlooms, antiques or childhood possessions and told the history of them.

Refreshments were served to the following members: Mesdames Phil Brewer, Chaddock, Surman Clark, M. G. Davis, Tommy Davis, Guelker, R. C. Hall, Jr., George Harlan, S. H. Jaynes, Bob Kern, Joe Miles, James Perkins, George Privett, Leeman, Reasoner, J. D. Stell, and Bill Ware.



Tiffany... The STANDARD of Jerseys duster robe... pamper yourself in 100% Arnel Jersey

Be comfortable... look feminine... and relax in a soft, tailored cover-up that practically takes care of itself. It has special knack for washing easily, drip-drying quickly with no ironing necessary. Always looks wrinkle-free fresh, too. (Essential for traveling... packs in small space without musing!) Very prettily fashioned in Navy, Firmament Blue, Glitter Red, Ceranium, Gold or Aquatone... with white cording trim.

Sizes 8 to 18 \$9.98

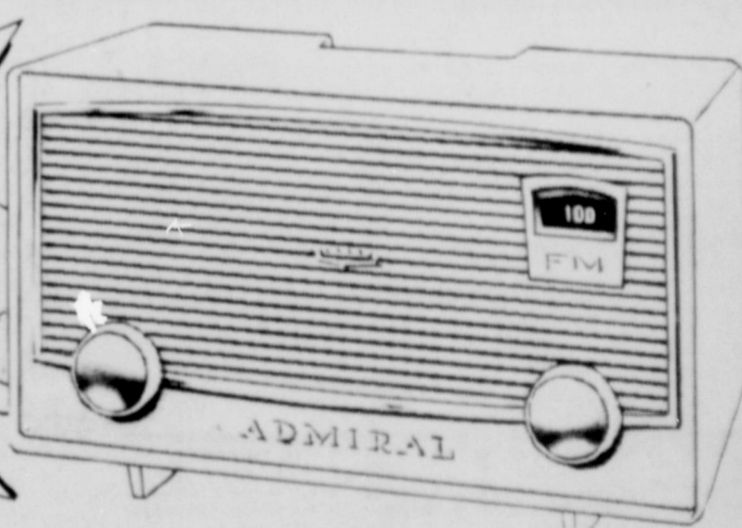


Special!

CARPET CLEANING Regularly 10c sq. ft. 8c SQ. FT. FREE ESTIMATE Quality Drive-In Cleaners & Laundry 235 W. Lubbock VA 8-3406

NEW 1961 ADMIRAL

America's Greatest Value In a Quality FM Radio!



INCLUDES 1 YEAR FREE SERVICE

Admiral combines the finest in FM performance with distinctive table model styling. You'll hear your favorite FM stations with remarkable tonal clarity and richness... completely free of station drift or static!

The STANTON Model Y3080 Desert Beige and White ONLY \$00.00

plus THESE EXTRA QUALITY FEATURES...

- Long range monopole antenna pulls in distant stations sharp and clear!
- Powerful 4" full-fidelity speaker!
- Vernier tuning for fast, accurate station selection!
- Powerful 5-tube chassis with tuned I-F transformer insures maximum sensitivity and selectivity!
- Non-breakable cabinet has enclosed back for richer, undistorted sound!

SELF FURNITURE

235 W. Garza

VA 8-4407

WEDNESDAY, SEPTEMBER 28, 1961

complaint. "Ten is a lot of money for a tooth that just takes a couple of seconds to do."

"Well, if you wish," purred the dentist, "I can pull it very slowly."

Kertan's

Portraits - Frames - Kodak Finishing South 9th. Phone VA 8-2926



BEST way to BEAT HEAT with year 'round

GAS conditioning!

Cools in summer for little more than the cost of winter heating. Available in two types—compact, dual unit for pre-planned installations, and an add-on cooling unit for existing central heating systems. Call us tomorrow for all the facts.

MODERN... FOR LESS... WITH GAS! Deer Natural Gas Company

ARCHIMEDES
GREEK PHYSICIST WHOSE DISCOVERIES ENRICHED MATHEMATICS.

AND NOW FOR THE PRINCIPLE OF BUOYANCY...??

You can figure where your money is going.

NO PROBLEM HERE!

Citizen's State Bank
100 Texas Avenue VA8-4545
Member F.D.I.C.

The Ford in your future will be here tomorrow!

tomorrow at your Ford Dealer's, you will discover Ford's so long, so new, so varied that everyone has his personal Ford—the car that fits his pleasure precisely! For those who want a true luxury there are two distinguished new series of Galaxies—well as a rumor, silent as a secret. With Thunderbird and quality that sets a new industry standard, the Galaxies give you every essential feature of far more.

If you are looking for economy without compromise, look to America's favorite compact: this year there are more Falcons than ever to choose from—13 in all. Wagon fanciers will find unprecedented variety—from a new wagon that seats eight to a Falcon Squire Wagon with the rich woodlike finish of the famous Country Squire. Pick the Ford in your future with this confidence: every 1962 Ford is built to a standard of quality so high that it will change all your ideas of how fine, how quiet, how enduring a car can be.



...easier than ever to move up to fine car luxuries—at the low Ford price. All Galaxies are beautifully built to be more service free. They go 30,000 miles between major lubrications. 6,000 miles between oil changes and minor lubrications. Brakes adjust themselves automatically.



'62 Fords

FALCON FORDOR SEDAN Just one of 13 Falcons for 1962, this 4-door sedan has an improved version of the Falcon Six engine that last spring recorded the best gas mileage for a Six or Eight in the 23-year history of the Mobilgas-Economy Run.

...Brand new for '62, it's sleek and inside, it is available with Futura bucket seats and it has elegant woodlike steel side paneling.

Features of the future—now

Slaton Motor Company Inc.

Slaton

Open!

Church
Wilson
Kamrath
Church
Stuart
Church
15th,
Lusk
Church
Davidson
God
Ave,
Coker

MERCHANT

Church
Jean
R. Deans
Church
9th,
Wood
Church
ndie
ilbur
Church
Wittig
Church
Burnett
Church
ubbeck

Christ
vision
Verner
Of God
14th,
Love
Church
Church
son, Pastor
ethodist
h
ne
Church
ey, Pastor

Church
andle
Summar
Church
d Rucker
1 Holiness
rch
Knox
Comstock

ngelical
church
n Thomas
odist Church
Gilbert

FRIENDS

illing Co.
Co-Op Gin
To Serve

Hardware
Since 1927

THURSDAY, SEPTEMBER 28, 1961

THE SLATON SLATONITE

Reunion Is Held At Mrs. Keane's



Left to right: Mrs. McFall, Mrs. Bridgeman, and Mrs. Elkins

The T. P. Keane residence was the scene of a family reunion Tuesday. Two sisters, Mrs. R. H. Elkins of Pampa and Mrs. W. O. McFall of Slaton, who are 93 and 89 respectively, and their niece Mrs.

Jim Bridgeman of Lubbock who is 72 spent much time reminiscing over old times. More than 40 years have lapsed since they have all been together. Their families were pioneer settlers in Scurry County in the

days of open ranges and Indian warfare.

Mrs. Keane is the niece of Mrs. Elkins and Mrs. G. G. Atmip of Slaton is the granddaughter of Mrs. McFall. Also present for the occasion was Mrs. Bridgeman's daughter, Mrs. Clayton Lawrence, of Lubbock and a son, Dawson Bridgeman, of Dallas. Mrs. Bridgemans makes her home with Mrs. Lawrence, who resides at 6640 Slide Road in Lubbock.

Sleyton Place--

How you say it often counts more than what you say.

With that kind thought I think I'll say goodbye for another week and shut up. Except...be sure to remember that a miser isn't much fun to live with, but he sure makes a wonderful ancestor.

Open House For Slaton Couple Is Announced



Left to right, Mr. & Mrs. Roy A. Meeks. Ely and Callie Cook, sister of Mrs. Meeks.

The man who works all of his life is as big a sap as the man who loafs all of his days.



Mr. and Mrs. Roy A. Meeks will observe their Golden Wedding anniversary Sunday, Oct. 1 at the Slaton Club House. Residents of Slaton since 1916, Mr. and Mrs. Meeks were married October 1, 1911 at Texas. They moved to Slaton in the fall of 1916 where they still reside. He is a retired and raises chickens as a hobby now. Hosts for the open house will be their sons and daughters-in-law, assisted by their children. They are as follows: Mr. and Mrs. W. L. Meeks, Greg & Becky of Morton, Mr. and Mrs. Alton Meeks, Carl and Margaret of Slaton; Mr. and Mrs. Robert Meeks, and Joe and Marilyn of Slaton. Members of the house party are: Mrs. Roy Foster of Slaton; Mrs. Meeks; Mrs. Waymon Adcock and daughter Ann of Merkel, niece and grandniece of Mrs. Meeks; Mrs. Boyd Meeks, sister-in-law of Mr. Meeks; and Mrs. Richard Becker and Mrs. Meeks, nieces of Mr. Meeks; Friends and relatives of the family are invited to call between 2:00 and 4:30 p. m.

Miss Pratt Is Guest At HD Club

The Woodrow Home Demonstration Club met recently in the home of Mrs. L. J. Kahlich. Ten members were present at the meeting. Roll call was answered by an improvement each member had made in their living area. Miss Clara Pratt gave demonstration on furniture buying. The club gift was won by Miss Clara Pratt. Council meeting was to October 6. The next meeting will be the home of Mrs. J. R. right on October 4 at 2

Make Those Meals
Something To Crow About

By Building Them Around High Quality
Low Cost Meats Available At Arrant's.

Meat Is The Basic Food In A Well-Balanced Diet, And Arrants Has Both
The Best and Most Economical.



For Fall
Appetites

Shop Arrants For All
Cuts Of Beef Steaks
Roasts, Ground Lean Meat,
Bacon, Pork Chops, Sausage,
Poultry, Fish, Cheese,
Lunch Meat, Bread, Milk
and Other Food Items.

Picnic
Hams
29¢ Lb.

FRANKS
3 lbs. For \$1.
Banner Margarine
15¢ Lb. Pkg.

Club
Steaks
69¢ Lb.

ARRANT'S

Wholesale Meats And Lockers

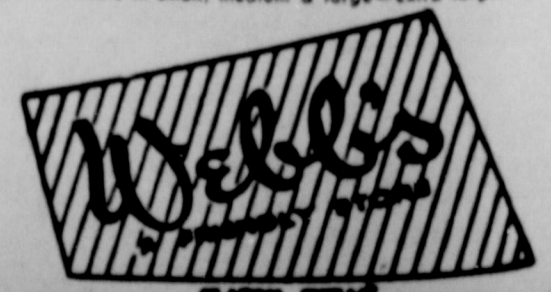
FREE *Silf Skin* Garme
of customer's choice each week
for 3 weeks. Nothing to buy... just
register every time your in WE
so confident... so glamorous... so comfort

Silf Skin
IN THREE
LENGTHS



Style #208 - Rayon - Knee-length panty girdle...slims you from your waist to just a whisper above the knees... \$7.50
Style #28 - Nylon... \$8.95
Style #400 - 14" Rayon - Full-fashioned, all elastic, rayon satin overlaid front panel... \$5.00
Style #415 - Rayon - 15"... \$5.95
Style #4 - Nylon - 15"... \$7.50
Style #200-2 - 14" Full-fashioned... Supports and smooths... a wrinkle...
Style #2 - 15" - Nylon
Style #20 - 15" - Nylon

all styles available in small, medium & large - extra large slightly higher



The Slaton Slatonite

10th Street Slaton, VA 8-4201
SLATON TIMES PURCHASED JANUARY 13, 1977

Second Class Matter at the Post Office at Slaton, Va., under the Act of March 3, 1879.

NOTICE TO THE PUBLIC--Any erroneous reflection upon reputation or standing of any individual firm or corporation appearing in the columns of the Slatonite will be gladly corrected when called to our attention.

ADVERTISEMENTS Payable in advance. Lubbock, Lynn, Garza, Crosby Counties, \$3.00 per year. Outside these counties, \$4.00.

DEADLINES	
LOCAL NEWS	12 Noon Tuesdays
CITY NEWS	12 Noon Tuesdays
COUNTRY NEWS	9 a. m. Wednesdays
PICTURES	5 p. m. Mondays

Publisher: Bookkeeper
 Editor: Printer
 Office Manager: Advertising
 Society: Society
 Apprentice: Apprentice

Texas Press Association
 West Texas Press Association
 Panhandle Press Association

EDITORIALS

Those Who Made The Farmer-Merchant Dinner Possible

Slaton's annual Farmer-Merchant was a tremendously successful event. It was well attended, and from every quarter came comments on how it was enjoyed. It is a unique occasion, and yet an extremely commendable one. For one big thing it brings together the two groups of people who have no other opportunity to meet under such circumstances. The farmers of the trade territory are all to the well-being of the merchants further to the well-being of the entire community. The F-M dinner gives the merchants an opportunity to express this appreciation as well as furnishing an enjoyable evening.

First, we would like to commend all the merchants who participated. It reveals their interest in their area as well as their desire to pay tribute to the farmers. All in complete accord they provided the success of the event.

Secondly we would like to commend those individuals whose co-ordinated effort brought the entire evening about. The Chamber of Commerce sponsored the dinner. But behind this name are men who put in the work and time that is necessary.

A special note of recognition should go to Bob Clodfelter as Chairman of the Farmer-Merchant Dinner Committee. He directed the event and brought about what was the best ever held.

And special thanks should go to all the

CoC directors. These men have just as many business details to take care of as they did before being elected as a director. They are just as tired at 6 p. m. as they were before.

But because they are willing to give of their time and effort, Slaton is allowed to enjoy good things, and worthwhile things, and things that make it a good solid place in which to live.

These few lines may seem little tribute for the enormity of their tasks, but it is our way to serve up a big commendation for a big job that was well done.

The Sounding Board

The first comments of this week come from Douglas Meador of the Matador Tribune. Incidentally, Mr. Meador is one of the most quoted men in the nation.

Recently, when adding up the contributions of his that were used in "Quotes," a national magazine, it was found that he was in between Khrushchev and Nixon on the number of times quoted.

Meador is truly one of the notable writers of our time. Here is his column for the week:

Men whose ambitions once provoked incendiary intentions on the world, frequently have sons who are content to devote their interest on strips of asphalt slightly wider than a high speed automobile.

The wind was like the laughter of lovers, brave and wholesome, as it pressed fingers against the soft lips of night; the leaves whispered. There were no tears in the parting. Summer went quickly leaving the echoes of birds singing and the fragrance of warm twilights.

It is easy enough to make excuses for natural faults but it requires better phrasing to exonerate the malfunction of accepted duties.

Gossips are social vultures who flutter to the cliffs of respectability when disturbed while feeding at carrion in the alleys of depravity.

There was a time when a boy reached the lower mesa of adulthood in playing his first game of marbles for keeps. It was a grim hour in which the strategy of life first stood immense and naked in his presence.

If scientists are seeking a delicate trigger for an atomic blast they might try a blonde hair on a coat collar.

The following from the column, "Baker's Dozen," in the Alpine paper:

This faithful member attended every service, and had the habit of dozing off as the minister got underway on his sermon. The preacher decided to arouse the sleeping worshipper in a subtle manner. One morning, right after reading the text, the preacher made a positive statement and then out, loud and clear: "Isn't that right, Brother Brown?"

Sounding of his name had the

DEEP THINK DAY IN THE WHITE HOUSE



permitted to doze unchallenged.

Another story which is of an entirely different type, but told here recently by George R. Bentley, the Grandfalls dirt mover delux. As George tells it a Beatnik type was standing on a New York street with the usual vacant look, but snapping his fingers in a steady rhythm. A buddy strolled up and in Beatnik lingo asked why he was snapping his fingers. "Why to keep the elephants away, man!"

replied the snapper. "You're crazy, man no elephants within 4,500 miles of here," was the reply. "See (snap) it works (snap)," was the calm response as the snapping continued.

And lastly, from "Just Talk," in the Knox City News, written by James Hill:

ERRORS -- We admittedly make so many we have lost our tally sheet, but every now and

then the big city papers make a few too.

Wichita Falls gave Knox City a most commendable write-up on our Red Cross Blood donations last Friday and said we had a record turn-out of 6 pints!

Dr. Charles Markward has worked night and day to promote the new blood bank program here in cooperation with the Red Cross and has been afraid everything wouldn't come off just as planned.

Our goal of 60 pints of blood was met with a total of 66 pints donated.

Due to the time the Bloodmobile was here, a number of persons were unable to make their contributions.

As usual Knox City could be depended upon to come to the front when they were asked.

FOOT - IN - MOUTH -- Rev. Larry Young was telling us last week of a man who quit a good paying job to become a minister.

"He had a real good job, and took a big reduction in pay to become a preacher," Larry said.

"Yes, but he had to work at least 40 hours a week instead of two," I said without thinking.

HONOR ROLL -- Mrs. Mollie Hubbard of Stephenville was in to see us Monday. Said she read all of the Herald and liked it very much.

Mollie said she wanted to see if her subscription was out. It wasn't, and believe you me, Mrs. Hubbard will always get her paper too!

VARIED OPINIONS -- Zeb Smith was telling me about a former resident attending Sunday School at his church recently and commented on the large amount of gossip that was flying around.

"Seems like every time I come back here, I hear more and more-- I just don't understand it," she complained.

Another person said she didn't ever hear any gossip. "Darnit," she whispered.

Knox City is a typical small town--if there isn't any news, just hang around awhile and we will start some on someone.

The middle-aged man's wife had been badgering him for days to take some "youth pills" she bought for him. He finally relented one evening and took several of them before going to bed.

Next morning, she found it difficult to wake him. She shook him repeatedly and yelled, "Get up, it's time you were out of bed!"

"All right, all right," he answered, eyes squinted. "I'll get up--but I won't go to school."

1962 MERCURYS

best-looking buys...now in each size

FIRST SHOWING! THE NEW 1962 MERCURYS (COMPACT AND BIG)

MERCURY COMET
smarter ahead of the compact crowd

MERCURY MONTEREY
the best-looking buy for the big-car man

HIGHLIGHTS: COMPACT MERCURY COMET. Talk value and you're talking Mercury COMET. It's the compact with the extras that make the difference. Take beauty. This is the only compact with fine-car styling. You get extra room plus a smoother ride (up to 7.5-inch longer wheelbase than other compacts). Extra trunk space for as many as six extra suitcases. Extra savings on oil and upkeep. This year you can drive 6,000 miles between oil changes. A new type anti-freeze, anti-rust coolant lasts two years or 30,000 miles. Extra resale value, too (best record of any compact). The price? With or below most compacts.

HIGHLIGHTS: BIG, LUXURIOUS MERCURY MONTEREY. This is Mercury's finest car. The very top of the line. It is specially built for the big-car man--with those big extra values a man likes. More room than other cars near its price--for long legs and big families. An extra-long wheelbase (120") for that solid, luxury-car "feel." A smoother, quieter ride--the result of exclusive Cushion-Link Suspension. A wide engine choice--"6" or three V-8's. Plus the kind of savings that really cut upkeep. Routine service is needed only twice a year (at 6,000- to 30,000-mile intervals)! The price? Well within the popular-price range.

WIN A 1962 MERCURY AT OUR ANNOUNCEMENT SHOWING. 18 CARS GIVEN AWAY. 12,680 PRIZES IN ALL!

(See your Mercury dealer and see how you can win one of these fabulous prizes. Now to October 14.)

Slaton Motor Company Inc.

150 W. Lynn

"COMMUNITY SERVICE RADIO"

KUKO

SLATON BROADCAST SCHEDULE

1370 On Your Dial

--- MONDAY THRU FRIDAY ---

<p>9:00 - 10:00 A.M. Slaton Bandstand The best in recorded musical entertainment.</p> <p>11:00 - 11:30 Hymns Of The Hour By O. D. Kenney Auto Parts</p>	<p>1:00 - 2:00 P.M. 1 - 1:10 Slaton Local News & World Headlines Sponsored by: Slaton Pharmacy</p> <p>1:10 - 1:15 Music</p> <p>1:15 - 1:30 Cash on the Line Sponsored by: Jim Dandy Cleaners Western Auto</p> <p>1:30 - 2:00 Slaton Matinee</p> <p>1:30 Hymns Of The Hour By O. D. Kenney Auto Parts</p>
-------------------------------------------------------------------------------------------------------------------------------------------------------------------------	----------------------------------------------------------------------------------------------------------------------------------------------------------------------------------------------------------------------------------------------------------------------------------------------------------------------------------

Guess The Mileage On The KUKO Football Car

SATURDAY

SLATON TIGER FOOTBALL!
Saturday Mornings At 9:00 A.M.

SPONSORED BY:
Citizens State Bank -- White Auto -- Wark Pharmacy -- Wendel Radio & TV
Thompson Furniture -- O. Z. Ball & Co. -- Forrest Lumber Co. -- Piggly Wiggly

--SUNDAY--

7:45 A.M. Hymns And Meditations
Sponsored By Church Of Christ
To Report Local News Call Mrs. L. C. Odum At VAR-4469
Studio: 139A S. Ninth --- Phone VAR-5300

Mike Malone, Mgr.



we don't like to blow our own horn, but...

BRAND NAMES do not Backfire.....

Buy with confidence and save in the long run. When in our store look for these leading lines and feel safe when you buy.

ARROW SHIRTS *James* SEAMLESS STOCKINGS

BERKSHIRE *Southwest*
Basila

Buster Brown® Knitwear

Bobbie Brooks *Billy the Kid*

Buttons *Schwanda* *Catalina*

CLAIRE TIFFANY® CURLEE

dotty Dan *Donovan-Galvani*

DOBBS

Fluffy Ruffling FABRICS

Dallas Handbag

Exquisite Form *Grace Walker* SHOES FOR WOMEN

Gossard *Gems* YOUNG SHOE FASHIONS

Munsingwear *Mercury*

DF Flyers

JOHN C. Roberts SHOES FOR MEN



Stones wear

Ship'n Shore

Texsheen

Silly Skin



ghwe
96,0
Texas Highway
approved
\$196,000.00
of new Farm
mileage 1
as part of the
program, anno
Highway Engine
of Lubbock.
District Engi
is in this c
The wo
supervisi
DeShazo, Sr.
Box 772.
work authoriz
part of the 1
Construction
will involve 13
the state.
of new farm
under the
MIAMI BEACH LLD
RESPONSIBLE RAT
THE NEW
ation
POOL - CABIN
FRONT JUL 1
NORTH OF LIN
restored and Her
New Decorat
Private Beach - J
Miami - Cabana C
Radio to E-275
ENTERTAINING
BEACH CHAI
3
Daily Per
Quota
May 1 to 3
Per Day
May 1 to 3
MIAMI BEACH
FLORIDA
You'
Favo
Gene'
Onl
Of S
Dr
NO
Walde
Behind
On G
Open
1 P.M.
C
All You

Highway Commission Approves \$6,000 For Roads In County

The Highway Commission approved the expenditure of \$6,000 for construction of new Farm-to-Market Roads in Lubbock County as part of the 1961 FM program, announced District Engineer, O. L. Lubbock.

District Engineer said that this county will be supervised by Mr. DeSaso, Sr. Resident Engineer, Box 772, Lubbock.

Work authorized for this part of the \$15 million Construction Program will involve 133 counties in the state. Some 600 new farm roads will be under the program.

Unlike previous farm road construction programs, this one is for one year only instead of two years. The Highway Commission said the reduced one-year program is the result of Governor Price Daniel's recent veto of a \$15 million farm road appropriation which would have come to the Highway Department next year.

The Governor recently vetoed the Colson-Briscoe farm roads allocation for the second year of the current biennium on the grounds that there should be more flexibility in the use of the funds in order to provide for proper maintenance of the farm roads system.

In approving the 1961 farm roads program, the Commission said it is vital that the 1962 Colson-Briscoe appropriation be reinstated at the forthcoming special legislative session if the Highway Department is to continue the Farm-to-Market Road Program at current pace.

The Commission reiterated its hope and belief that the legislature at the special session will see fit to reinstate the second-year farm roads appropriation together with statutory provision for adequate flexibility in the use of farm road funds for maintenance, as recommended by Governor Daniel.

The Commission said that maintenance of all FM Roads had been paid for out of trunk highway funds since the inception of the Colson-Briscoe program in 1949, and that this was advisable during this period due to the necessity for construction of the 34,000 miles of Farm-to-Market Roads that have already been built. The Department has now reached the point where a portion of the total earmarked FM Road funds must be used for maintenance purposes, the Commission said.

District Engineer, O. L. Crain, said a total of 44.3 miles in this highway district would be involved in the program at a total cost of \$14,000.00. The following project (s) will take place in this County:

In Lubbock County a Farm-to-Market Road extending from the Hockley County Line to U.S. Highway 84, 4.0 miles southeast of Shallowater, a distance of approximately 7.5 miles. Type of Work: grading, structures and surfacing. Estimated cost \$136,000.00.

HIGHLIGHTS AND SIDELIGHTS From The State Capitol

AUSTIN, Tex.--As the weeks go by and new emergencies arise, Gov. Price Daniel finds more reasons for calling Texas Legislators back to Austin for another special session.

In addition to the Governor's unfinished program, Hurricane Carla has produced other reasons.

It is definite now that the Governor will ask for more money for the Highway Patrol and for the National Guard. He had to advance money to the Guard, from his emergency fund, to pay salaries and expenses of Guard units called up for hurricane duty.

Major General James E. Taylor, the state adjutant general, said that the 2,300 men and 800 vehicles called out for hurricane duty made up the largest peacetime operation in Guard history.

After Governor Daniel's aerial tour of the hurricane-struck coastal area, he estimated that some 3,000 lives would have been lost had it not been for the organization of civil defense, coordinating with local groups, to evacuate the area.

He also estimated \$400,000,000 loss to public and private property.

"I can see now that we need to provide more money for the National Guard and we need to provide more Highway Patrolmen, too," said the Governor. "I am sure I will add those to the call for a special session."

Rep. C. W. Peary Jr. of Temple proposed that the legislature permit cities and counties to issue bonds to make loans to disaster victims.

Speaker James A. Turman asked the House general investigating committee to start an inquiry into the payment of insurance claims as a result of Carla. He said many hurricane victims were surprised to learn that much of the damage was not covered by insurance. Adjusters held that their windstorm and hurricane policies did not include flood damage, even though caused by the hurricane.

Governor Daniel, irked over

the adjusters' interpretations, urged policy holders not to be too hasty in settling their claims.

STORM CROP DAMAGE EXTENSIVE--The U. S. Department of Agriculture at Austin says the recent hurricane caused the most extensive wind and rain damage to crops, fields and pastures, ever experienced.

Of the prospective 100,000 bales of cotton in the fields, about \$11,000,000 worth was probably lost, the USDA said. Additional losses will result from grade reductions, the agency states.

JANUARY SESSION TALKED--Chances are that Governor Daniel will have legislators back in Austin during January.

Rep. Murray Watson of Mart suggests that Daniel set up a grass-roots committee of citizens to bring in proposals for removing inequities in the new sales tax law for action at the agency states.

Comptroller Robert S. Calvert continues to explain the law. He ruled that the American Red Cross is exempt from the sales tax on its purchases, since it is an agency of the Federal government.

Calvert is studying a request from some large industrial firms that they be allowed to be "direct" payers of the tax. Theory is that life would be simpler if they could keep records and pay the tax once each quarter, instead of paying it hundreds of times a day in the normal course of business.

TAX DOLLAR ANALYZED--Texas Legislative Council has taken a new look at where the State's tax dollar comes from and where it goes.

Study reveals that 52 per cent of it is derived from the several types of sales taxes levied in the state, including 15.8% from the new 2% limited sales tax.

Oil and gas production and severance taxes account for 19.1%, business taxes 11.4%, motor vehicle registration fees 9.5%, state property taxes 4.1%, inheritance tax 1.3%, others

2.6%.

Motorists get tapped for 33.9% of the tax dollar, including the motor fuel tax at 21.4%, the sales tax at 3%, and registration fees at 9.5%. Nine per cent comes from tobacco taxes and 2.2% from alcoholic beverage levies.

Our free public school system is taking 33.9% of the tax dollar. Highways and roads are next at 26.8%. Public welfare gets 15.8%. Higher education comes in for 9.6%, while health, hospitals and special schools account for 4.5%.

NEW FARM ROADS APPROVED--A one year program calling for construction of 613 miles of new farm to market roads costing \$15,200,000 has been approved by the State Highway Commission.

This was approximately half of the usual program authorized by the Commission, as the result of Governor Daniel's veto of the \$15,000,000 for this purpose in the second half of the biennial appropriations bill.

Governor Daniel cut out the second year allocation in order that more flexibility might be attained in providing maintenance for the farm roads system.

Since 1949, under the Colson-Briscoe act \$15,000,000 annually have been earmarked for the construction of farm to market roads, causing all maintenance costs to come out of trunk highway funds.

While this arrangement was necessary for many years, to build up farm road mileage, the highway commission says the problem now is financing the maintenance of these roads. Therefore, at least a portion of the earmarked funds needs to go for this purpose.

Action on this matter is expected in the next special session of the legislature.

OIL PRODUCTION CUT--Allowable oil production in Texas for October has been reduced by an estimated 48,490 barrels per day, on order of the Railroad Commission. Order was based on estimated market demands.

An eight-day producing pattern was ordered for most of the state. This will result in a total allowable production of 2,683,214 barrels daily.

Eleven out of 12 major purchasers of Texas crude oil had recommended the eight-day pattern. Sun Oil Company suggested nine days of production.

TEXAS GETS MOON ROCKET LAB--Selection of Texas as the site for a laboratory to develop the nation's first moon rocket was hailed by Governor Daniel as one of the most important signs pointing to future progress for the state.

"The Federal government's choice of Harris County for the \$600,000,000 space laboratory means that some of the world's most important work in the peaceful conquest of outer space will be undertaken at the location near Houston," said Daniel.

"It will attract scientific personnel and plants to the state and increase the importance of the Houston area as a center of civilian, military, space and medical research," he observed.

RETAIL SALES INCREASE--Retail sales increased seven per cent during August, the Bureau of Business Research at UT reported.

The impending sales tax which went into effect September 1 was called a major factor in the increase. Namely, buying before the tax went into effect.

It was referred to as a "brisk rise" compared to the two per cent decline sales took during

July.

Furniture and appliance stores led the field with a 23 per cent increase for August, where the usual increase from July to August is one per cent.

Apparel stores also increased, primarily with the back to school rush for clothes. Steady increases were forecast because of a Texas birth rate considerably higher than the national average.

Births in the first six months of this year totaled 121,796 compared with 115,730 during the first half of 1960.

NEW MEDICAL SCIENCE--Two University of Texas scientists are looking into a new branch of medical science through which it may some day be possible to determine in advance a person's susceptibility to certain diseases and ailments.

Drs. Robert J. Williams and Frank L. Seigel, reporting on the new science called "propetology" in the American Journal of Medicine, say the technique needs only to be developed, that it must be based on increased knowledge about individuality in the areas of anatomy, physiology and biochemistry.

Knowing in advance who might get what, the scientists say it may be possible to avoid such diseases as gout, arthritis, atherosclerosis, muscular dystrophy, multiple sclerosis, cardiac and circulatory diseases, cancer, allergies and numerous other types of diseases and ailments.

"There is probably no single disease among those mentioned which might not be prevented, at least to a substantial degree, if we knew what the roots of resistance are and took appropriate measures," they said.


Owners of early printed books are sometimes puzzled by phrases that are crossed out, apparently without reason. In many cases these "crossing-out" are signs of emphasis, the same as our underlining. What seems to be "omit" is really "note well."

FREE AIR AT SELF'S SERVICE STATION

If this is a man's world how come the wives get the blame for everything? Always drive so that your license will expire before you do.

"Dear Mom and Dad," a young college student wrote home to his family. "I haven't heard from you in nearly a month. Please send a check so I'll know you're all right."

We want you to know more about our personal service for your car. We wash, lubricate and clean all makes of cars with infinite care, we have your car ready on time and we will call for and deliver if you desire--Always Call



SELF'S Station

HUB LIQUOR STORE HAS Your Favorite Brand Of Liquor, Wine And Beer. Visit Us Soon! HUB LIQUOR STORE NORMAN WILLIAMSON, MANAGER

National

POOL - CABANA CLUB
SHORT - JUST ONE HALF MILE NORTH OF LINCOLN RD.
Entertainment Beach Chairs

1877 Collins Ave.
MIAMI BEACH FLORIDA

TULSA
HOLIDAY INN

- *Roomside Parking
- *Heated Swimming Pool
- *Snacks at Poolside
- *Holiday Dining Room
- *Food and Beverage Room Service
- *One Day Laundry and Valet Service
- *Television, Radio and Central Music
- *Tilt and Dressing Room
- *Wall-to-Wall Carpeting
- *Tubs and Showers
- *Two, Three, and Four Room Suites
- *Children's Playroom
- *Gift Shop
- *Physician
- *Baby Sitter Service

Holiday Inn WEST MOTOR HOTEL

1010 S. W. 21st St.
TULSA, OKLAHOMA

THE AMERICAN WAY
AS REVIEWED BY
M. J. [Signature]

SOCIALIZED MEDICINE EXPOSED

The July 1961 issue of "Nation's Business" carried an article "I Quit Socialized Medicine" by Dr. E. Lloyd Dawe. A refugee from England's National Health Service, he is now in full-time private psychiatric practice in Danbury, Conn.

As an intern in a London hospital and later in general practice in that city, Dr. Dawe saw the waste, interference and bureaucratic regimentation that accompanies Britain's unwieldy social experiment.

Says Dr. Dawe: "Politicians who favor enactment of new federal medical care in the U.S.A. today are making the same wishful promises... that were heard in England 13 years ago." And he advises that "Americans should heed the lesson taught in England, and guard well the high medical standards and freedoms they now possess."

Dr. Dawe points out what should definitely be a warning to America: Britain's National Health Service is now costing the British taxpayers more than five times the original estimate.

Dr. Dawe says he came to the U.S.A. to practice medicine without regimentation, restrictions and interference. "I want only two people in the medical relationship -- myself and my patient. There should be no impersonal governmental third party... The best medical care can be given only where a doctor is not a government clerk, but an individual with professional dignity and freedom."

You can obtain a reprint of Dr. Dawe's "I Quit Socialized Medicine" by sending 10 cents to Nation's Business, 1615 H. St., N.W., Washington 6, D.C. Most heartily we recommend that you do so.

The Baker's 3 R's

Rest
Relaxation
Recreation

Economical package plans for one or the whole family.

WRITE * or * CALL
BAKER HOTEL
Mineral Wells, Texas
FAirfax 8-3221


IT PAYS TO TRADE AT

Cecils

LIQUOR STORES

Just Follow the Signs in
Odessa - Post - Lubbock

SELF'S Station



Station

THE RED BARN

COLDEST BEER

In Lubbock County!

Also A Wide Selection Of Wines.

We're Open Weekdays
From 9 A. M. Until
Midnight... On Sundays

From 1 P. M. Until
Midnight... And On
Saturday Nights From
9 A. M. Until 1 A. M.

We Handle All Brands Of Your Favorite Beer And Wines...
And Also Picnic Snacks.

THE RED BARN

You'll Find All Your Favorite Beverages At Gene's Package Store

Only Four Miles North Of Slaton On Highway 400.

Drop By Soon

NOW OPEN!

Waldo's Drive-In

Behind John's Liquor Store
On Golf Course Road.
Open 7 Days Each Week
1 P.M. To Midnight Sunday

Cold Beer And All Your Favorite Beverages



The man who had imbibed too freely, and who was late getting home, was berated by his wife for keeping her up; but his alibi was that he took the wrong bus.

"That I can understand, seeing the shape you are in," was her sarcastic reply, "but tell me--how did you find out you were on the wrong bus?"

"Well I kind of thought it was," replied the confused man.

"When it stood at one corner a couple of hours without going anywhere, but what finally tipped me off was this--people kept coming in and ordering hamburgers."

ROBERTS PACKAGE STORE

"Your Favorite Store On U.S. 84"

Has Your Favorite Beverage In Stock

Located: 3.1 Miles West Of Slaton On The Lubbock Highway

The Slatonite FARM PAGE



Report Indicates Cotton Planting Seed Will Be Scarce Next Year

Due to recent weather conditions, many Texas farmers have had stored supplies of cottonseed damaged while others have been unable to harvest good quality seed from this year's crop. As a result, seed for next year's planting will very likely be in short supply, points out Fred Elliott, extension cotton specialist.

Some growers do have a supply of good quality seed which they carried over and which were harvested under favorable weather conditions. Also, some of the stored supplies that have been damaged may still contain some salvageable seed. These supplies will help take up some of the shortage.

Since there will be a shortage, however, people who do have stored seed should take every precaution to make sure these supplies are not damaged. C. F. Garner, extension entomologist, says the stored sup-

plies should be checked for insect infestation, and the storage bins and surrounding area should be kept clean. If a stored supply has been partially damaged, the seed should be removed from the bin and separated. Before the undamaged seed is returned to storage, the bin should be thoroughly cleaned and dried.

After the bin and area have been thoroughly cleaned, they should be sprayed with either methoxychlor, TDE or premium grade malathion. A 2 1/2 percent formulation of one of these insecticides should be used at the rate of about two gallons per 100 square feet of surface

area, says Garner. Methoxychlor and TDE are also available as wettable powders and emulsion concentrates.

The cottonseed may be treated with a 20 percent toxaphene, 5 percent DDT or 5 percent malathion dust. The dust material should be mixed thoroughly with the seed at the rate of 2 ounces per bushel. This treatment should give satisfactory control against stored-grain pests for at least one storage season. Garner cautions that seed so treated should not be crushed or used for feed under any circumstances.

High Plains Water District Lowers Cost Of Crop

Most any farmer you talk with today will tell you that this 1961 crop is one of the least expensive he has produced in some time.

Why? There are perhaps many reasons, but one is because most farmers have not had to do a great deal of irrigating. The snows and rains have come at times when they were most needed.

Now with the 1961 crop laid-by in most communities of the High Plains, it is not too early to commence thinking about next year's plans.

Keeping in mind the fact that irrigation is generally one of the largest expenses involved in making a crop, why isn't it good business for you to try and fig-

ure out how to better use natural precipitation both where it falls and also by pumping from lakes thereby minimizing the use of underground water. The loss of irrigation "tail-water" is also a problem that confronts most irrigators, at least to some degree. This expensive loss should be alleviated, or at least minimized.

With records of the High Plains Underground Water Conservation District indicating that underground water levels are dropping annually, it becomes apparent that if this High Plains country is to continue as a major agricultural area, rainfall must be used more efficiently.

Before you bed your land for next year's crop talk with your High Plains Water District people, the Soil Conservation Service folks or your County Agent about some of the things others are doing to conserve rainfall and underground water. You can probably make some simple inexpensive changes in farming methods that could result in more net income to you from the crops you raise.

After all, isn't financial gain one of the primary reasons you're in the farming business?

Inexpensive Way Devised To Rid Pastures Of Kidneyworms

A simple, inexpensive way to rid pastures of swine kidneyworms has been devised by scientists of the U. S. Department of Agriculture and the Georgia College of Agriculture Experiment Station at Tifton, reports Dr. C. M. Paterson, extension veterinarian.

These parasites, which occur primarily in the eastern half of Texas, cause considerable losses to producers.

By using only gilts (young sows) for breeding, then removing them from the premises after their pigs are weaned, producers can eradicate infestations within three or four breeding seasons—about two years, Dr. Paterson says.

This method is based on studies by parasitologists of USDA's Agricultural Research Service and animal husbandmen of the Georgia Station. The researchers found that kidneyworms may require as long as a year to attain maturity and lay eggs in swine. Thus a gilt can wean her pigs and be disposed of before any kidneyworm eggs are released in her urine, he adds.

The new system should cost farmers little if any more than the conventional practice of retaining older sows, which are frequently infested with the parasites. When only gilts are bred, hog lots will be free of the parasite after three or four farrowing seasons. Farmers may then use older sows for

breeding. This is the only effective method that has been found for ridding farms of swine kidneyworms. Drugs have been ineffective against these parasites, which attack numerous areas of the pig's body, including the liver, kidneys, kidney fat, loin muscles, and central nervous system.

The USDA-Georgia study began with kidneyworm-infested sows and a contaminated pasture. The litters farrowed and weaned by these sows acquired the parasite. In the second season, gilts from these infested litters were bred and left on the pasture until they produced and weaned their pigs. The gilts were then disposed of. When the pigs were slaughtered for market, fewer than half showed kidneyworm damage.

The third season, both the third-generation gilts saved for breeding and their fourth-generation offspring were free of

the parasites. Thus, in three breeding seasons, the hog pasture was cleared of kidneyworms.

Other studies have shown that kidneyworm eggs and larvae are killed by direct sunlight, drying, or unusually high or low temperatures. Larvae beneath litter in a pasture, however, may survive three to six months.

When the pigs were slaughtered for market, fewer than half showed kidneyworm damage.

The third season, both the third-generation gilts saved for breeding and their fourth-generation offspring were free of

SHYTLES Implement Co.
Phone 33 Post, Texas

BREWER INSURANCE AGENCY
139 So. 9th.

Triangle Manufacturing Co.
BOX 486 VA 8-3259
STEEL BLDGS. FOR FARM OR HOME, BARN, UTILITY, ETC.
STEEL OR MASONRY COMMERCIAL BLDGS.
JACK SCHUETTE, Mgr.

Get Your Quality **INTERNATIONAL HARVESTER** Farm Equipment PARTS AND SERVICE
SLATON IMPLEMENT CO.
Lubbock Hi-way VA 8-3176

FARMERS INSURANCE GROUP
ALL TYPES of Fire and Casualty Insurance, Workmen's Compensation, Automobile, Liability.
Let us show you how you can save money on your insurance... See your Farmer's Insurance Group Agent today!
BILL SLEDGE INSURANCE AGENCY
130 W. Lynn VA 8-4687

PHILLIPS 66 Wilson Oil Company
Wilson, Texas Phone 2251
* BUTANE, PROPANE * PHILLIPS 66 GAS, OIL, COMMERCIAL, INDUSTRIAL GREASES and BATTERIES
* LEE TIRES and TUBES * AUTO ACCESSORIES
A Complete Auto Service For Wilson

DEAL'S MACHINE SHOP
SLATON, TEXAS
Ph. VA 8-4307 Res. VA 8-4114
155 No. 9th. St.
FOR YOUR IRRIGATION PUMP AND GEAR HEAD REPAIR
All Makes
General Welding And Machine
— Work —

Improve Ag Program In Area

The U. S. Department of Agriculture is moving rapidly to carry out the broad-scale improvements in the supervised agricultural credit program brought about by the Agricultural Act of 1961, Secretary of Agriculture Orville L. Freeman said today.

Five regional meetings will be held during the next three weeks with agency's field staff to review the new regulations prior to placing the program in effect Oct. 15.

L. J. Capleman, State Director of Texas, has announced a meeting at the Hilton Hotel in Plainview, Oct. 5 and 6, to discuss the new regulations with county personnel of the Panhandle and South Plains.

The expanded rural housing program, under which owners of tracts in small rural communities as well as farmers may apply for loans to build or remodel homes, will also be discussed.

The rule of the Farmers Home Administration in the Rural Areas Development Program will be a third major item on the agenda. Recently the agency has been assigned the responsibility of coordinating the technical services of the USDA in the RAD program.

"Never in the history of the Farmers Home Administration has there been such

Avalanche-Journal Distributor
Office Open 1-15 Of Each Month
202 W. Garza
J.P. HAMMONS
VA 8-4911- 320 W. Garza

TAKE YOUR COMFORT IN STRIDE

Wherever you go... go in comfort

Webb's
A FRIENDLY STORE
SLATON, TEXAS

3 for \$2.95

ARROW STRIDE UNDERWEAR

- 100% COMBED COTTON
- FULL CUT TO ARROW STANDARDS
- TAILORED FOR TRIM FIT
- PROCESSED FOR MINIMUM SHRINKAGE

Athletic Shirts Tee Shirts Briefs

There's SOMETHING EXTRA about owning an OLDS!

You can feel 4 big advantages of Oldsmobile's smooth '62 4-S HYDRA-MATIC!



Smooth powerful V8 action in every **OLDSMOBILE**
— SEE THE '62 OLDSMOBILES... NOW ON DISPLAY... AT YOUR LOCAL AUTHORIZED OLDSMOBILE QUALITY DEALER! —

DAVIS OLDS INC.
135 W. Lynn
TUNE IN EVERY TUESDAY! DON'T MISS "THE GARRY MOORE SHOW" • CBS-TV

- NEW SMOOTHNESS!**
New Pressure-Compensated Shift Pattern adds new smoothness... without sacrificing Hydra-Matic's power-performance characteristics!
 - NEW SILENCE!**
From first take-off through all four stages of thrust, 1962 4-S Hydra-Matic features a silent silence all its own!
 - ADDED SAFETY!**
More efficient downhill engine braking plus an authoritative passing gear, provides better control, extra safety!
 - SUPERIOR RESPONSE!**
When you ask for action... you get it! 4-S Hydra-Matic is the performance transmission with the solid "feel!"
- * 4-S Hydra-Matic is standard on Ninety-Eight Starfire, optional on extra cost on other models.
- Perfect partner to Oldsmobile's famous Rocket Engine!

Student Named As Photographer Of Yearbook

(Slaton, Okla.)—A professional photographer will be added to the yearbook staff at TCU, where he handled the majority of that school's camera work two years.

Action scenes, which he likes to take best, and on-campus activity pictures will comprise most of White's subject matter as he strives to attain the goal of all yearbook photographers--the variety needed to make the current edition differ from its predecessor.

A few years ago he shot color-film movies of a bullfight in Monterrey, Mexico, and in the TCU yearbooks are aerial

films of the campus that he took from a helicopter. His repertoire also embraces commercial, still-life, figure-studies, and portrait photography, and he has started making his own Christmas cards. In his own words, "Starting out with nothing and seeing the picture develop is a challenge."

White's background other than photography reveals an assortment of varied experiences. In high school days he worked on a ranch during the spring and fall roundups, getting a start on the rodeo circuit with the Amateur Rodeo Cowboys. A navy veteran, he has owned a lieutenant's commission in the auxiliary police at Slaton and has carried mail.

He is enrolled as a pre-pharmacy major at Southwestern and lives on the campus with his wife, Geraldine, and son, Robert, one year. (Mat Enclosed)

Business Review Shows Increase In Postal Receipts, Unemployed

At the latest report of the business review from Texas cities, it was indicated that for the past month Slaton showed an increase in annual rate of deposit turnover, and in manufacturing employment.

Showing decreases were the percent unemployed, and the issuance of building permits. For the past year the largest favorable increase was percent in unemployed and the rise in total postal receipts. Building permits for the entire year were off.

A table, showing all the results for the past month, and for the year preceding this month is as follows:

	Percent change		
	July 1961	From June 1961	From July 1960
SLATON (pop. 6,568)			
Postal receipts*	\$ 3,863	+ 3	+ 15
Building permits, less federal contracts †	7,900	- 84	- 73
Bank debits (thousands)	\$ 3,027	+ 13	+ 7
End-of-month deposits (thousands) ‡	\$ 3,456	- 3	**
Annual rate of deposit turnover	10.4	+ 18	+ 8
Employment (area)	49,500	**	- 7
Manufacturing employment (area)	5,800	+ 2	+ 6
Percent unemployed (area)	5.2	- 2	+ 37

AG PROGRAM--

to the previous year. In addition the non-real estate loans held by banks and Federally sponsored agencies, which represent about two-thirds of the total non-real estate debt, increased only 4 per cent in 1960 compared with almost 16 per cent during 1959. The proportion of farm mortgage loans used to refinance existing debts increased. The demand for Farmers Home Administration loans rose sharply and the volume of loans made by this agency that serves only farmers unable to obtain credit elsewhere increased from \$309 million in fiscal 1960 to an all time high of \$396 million in fiscal 1961."

Emergency loans can now be made to farmers who need credit as the result of a natural disaster in areas where the disaster -- such as a flash flood -- was not widespread enough to warrant an emergency area designation.

"The increase in the operating loan limits will enable the agency to more adequately serve the credit needs of family farmers," the Secretary said. "The technical revolution has greatly increased the amount of capital farmers have to invest in their operations. Many young farmers who are just getting started, and established farmers who need to make major adjustments in their operations will benefit from the modernizing of this credit regulation."

"The broadening of the authority to make farm purchase and enlargement loans will also help young farmers, as well as others. In the past many young farmers were unable to obtain a loan to buy their family farm simply because the farm was worth more than the average family farm in the county in which it is located."

"All of the provisions of the new law, to the extent that they make the program more flexible and enable the Farmers Home Administration to serve the credit needs of family farmers who were previously ineligible, will increase the effectiveness of supervised credit in rural areas development. One new provision that should prove especially useful in growing communities is the authority to buy and enlarge small farms."

The new legislation both expands and improves the supervised credit service of the Farmers Home Administration. Operating loans for equipment, livestock, feed, seed, fertilizer and similar items can now be made in amounts up to \$35,000. The previous limit was \$20,000. Loans to buy and enlarge farms may now be made on any family farm if the total indebtedness on the farm is not more than \$60,000 when the loan is closed. Previously these loans had been limited to farms whose value was no greater than that of the average family farm in the county.

Loans may now be made to farmers with off-farm income to buy and enlarge small farms. Previously such loans could be made only on farms large enough to support a family without the aid of off-farm income.

Small loans for farm real estate improvement can now be made without taking a mortgage on the farm.

The authority to make real estate loans solely for refinancing has been placed on a permanent basis.

Loans to groups of farmers for the development of rural community water systems, irrigation and drainage systems now have a ceiling of \$500,000 when made from appropriated funds and \$1 million when insured loan funds are used. The previous limit was \$250,000 on both direct and insured loans.

Rural community water systems may now be made to associations serving farmers and rural residents without the prior restriction that farmers be the main users of the water supply system.

The broadening of the authority to make farm purchase and enlargement loans will also help young farmers, as well as others. In the past many young farmers were unable to obtain a loan to buy their family farm simply because the farm was worth more than the average family farm in the county in which it is located."

"All of the provisions of the new law, to the extent that they make the program more flexible and enable the Farmers Home Administration to serve the credit needs of family farmers who were previously ineligible, will increase the effectiveness of supervised credit in rural areas development. One new provision that should prove especially useful in growing communities is the authority to buy and enlarge small farms."

TELEPHONE TALK

C. Oakley, Manager

TELEPHONE SERVICE NEAR NORMAL AFTER HURRICANE CARLA STRIKES


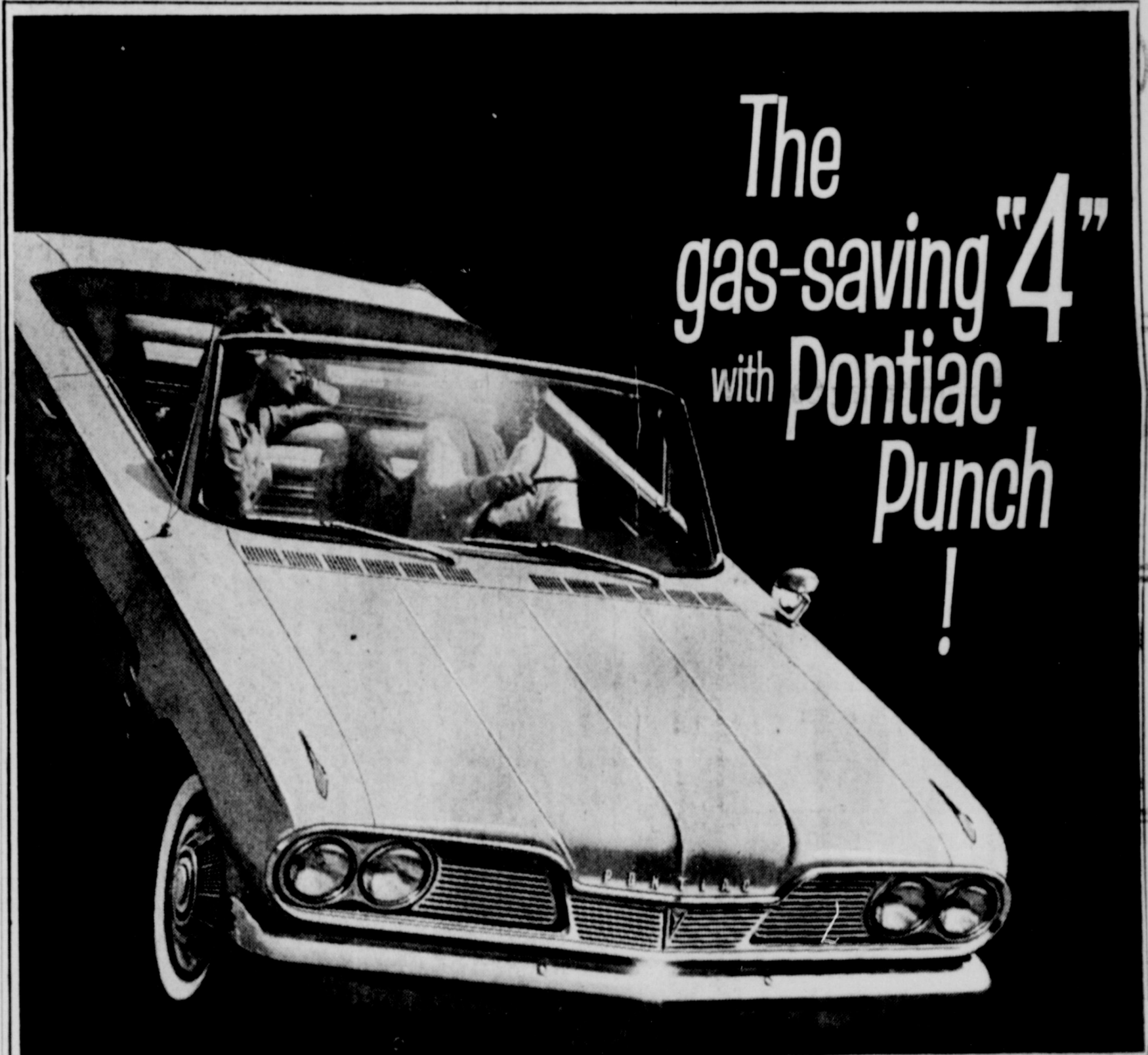
Hurricane Carla has come and gone, and I know we are all glad to see her go. Even though we were not affected here in Slaton, I'd like to tell you a little about what she did to telephone service on the Gulf Coast and Southwestern Bell did about it. It's an interesting and interesting story.

Carla faded northward after her terrible blow at the coast, she left behind:

- Damage totalling \$6 1/2 billion to telephone facilities
- 44,000 telephones knocked out along a 500-mile stretch of coastal front and inland points
- Thousands of telephone lines and poles flattened in a twisted maze of wire and splintered wood
- 35 Southwestern Bell exchanges completely isolated, including Freeport, Bay City, and El Campo, along with 28 other communities
- Those people were ready for the emergency. Before the rains had subsided, Southwestern Bell had equipment rolling to the disaster area to restore telephone service.
- A team of 5,400 telephone men from many cities and was hastily assembled in the Galveston-Corpus Victoria area. More than 900 came from points in Texas, Oklahoma, Arkansas, Kansas, and Missouri.
- Equipment Flown In
- At the same time, the company flew emergency generating sets for electric power into the storm area from many of our five-state territory. From other cities in North special mobile radio trucks converged on the stricken area to help bridge the gap left by the silenced telephones, emergency messages, and maintain contact with the world.
- Joined forces with the men, trucks, and other emergency equipment which Southwestern Bell already had in the area as a precautionary measure when hurricanes were first issued.
- Operators From West Texas
- Repair crews began the work of restoration, 150 operators from Lubbock, Amarillo, Abilene and West Texas points were sent to Houston and other cities to help handle the tremendous volume of distance calls . . . many of them vital messages, police, public health, civil defense, and other agencies. Skill, determination, and co-ordinated teamwork. Southwestern Bell people worked 'round the clock until all were restored and all telephones back in service (the condition of homes and businesses permitted). The service in the disaster area is now back to normal. A tremendous job, carried out under trying conditions.
- When Hurricane Carla struck, telephone people "came out" 100 per cent in the emergency. Southwestern Bell "telephone team" of men and women again demonstrated their ability to meet the challenge of the storm in the best traditions of "The Spirit of Service."



Santa Fe
... serving the West and Southwest . . . the railroad that is always toward a better way.

The gas-saving "4" with Pontiac Punch!

PONTIAC TRIGGERS ANOTHER TEAM OF WINNERS. Every one is a fancy mover. Convertible. Sedan. Wagon. Two Coupes. Choice of 110, 115, 120 or 140 h.p., gas-saving 4-cylinder engine. A couple of extra cost options: Put on a 4-barrel carb and get 166 h.p. The citizen who wants even more can go for an aluminum V-8 option that pulls 185 horses.

TEMPEST HAS INDEPENDENT SUSPENSION—FRONT AND REAR! Each wheel (and it's a big 15" one) moves up and down independently of the opposite wheel. There's no solid axle in the rear. Result: Firm ride on pavement, soft ride in the boon docks! Swing axles in the rear help the Tempest to carve out clean, firm curves.

TEMPEST HAS A FRONT ENGINE/REAR TRANSMISSION! (The only American car with this feature.) It gives Tempest equal weight at every wheel. It has biting traction on the bricks or in the mud. Tires last longer. Brakes take hold like they mean it. The front floor is practically flat (no big hump in the middle). Tempest seats six—easily!

PLUSH NEW SERIES—THE LE MANS (LUH-MAHNZ). The Tempest Convertible and Coupe are out this year in special custom trim. Call them the Le Mans! They both have sports-type bucket seats, full carpeting, floor mounted stick shift, acceleration rear axle option—no extra cost. Extra cost option: 4-speed gearbox. Take one out—it's a going machine!

Drive America's only front engine/rear transmission car . . . it's balanced like none of the others!

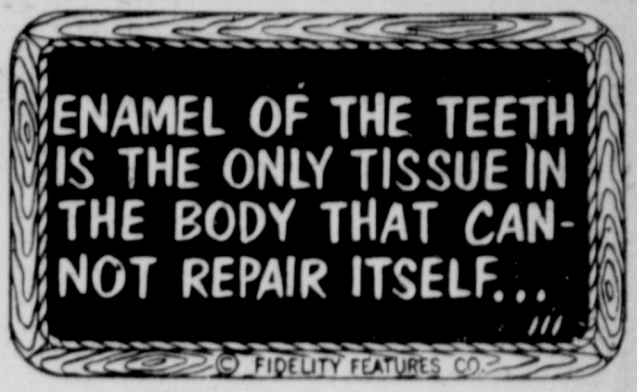
TODAY! '62 TEMPEST

PONTIAC'S NEW TEMPEST IS ON DISPLAY TODAY AT YOUR LOCAL AUTHORIZED PONTIAC DEALERSHIP

KENDRICK PONTIAC CO.

1100 S. 9th. Slaton

ODD CHALKINS



ENAMEL OF THE TEETH IS THE ONLY TISSUE IN THE BODY THAT CANNOT REPAIR ITSELF. . .

Healthy Tissues build Stronger bodies! Only your Doctor and Pharmacist, working together, can help repair your Health. . . Your Prescription Pharmacy. . .

TEAGUE DRUG
Phone VA. 8-4535

Follow The Tigers To Crosbyton. Boost Them Toward Their Third Victory Of The Season

SLATON VS CROSBYTON 8 P.M. At Crosbyton



Big Billy Patterson, Slaton's left tackle, was named this week as "Player Of The Week," following last Friday night's victory over the Friendship Tigers.

Patterson, a senior this year, was cited by many for exceptional defensive action in the game.

Coaches concurred that this was Billy's best game of the year, and he should develop through the remainder of the season as one of the area's top linemen.

Choosing the player of the week honor was close this week, as all of the Tigers played outstanding football. Particularly, lineman John George and fullback Kelly Bownds ranked as standouts.

HILL PATTERSON--TACKLE

Kendrick Pontiac

1100 S. 9th. VA 8-4791

This Page Made Possible By Sponsors Listed.

Player Of The Week



Last Week In The District

Tahoka 14 - Idalou 8
Post 8 - Ballinger 42
Stanton 14 - Ozona
Denver City 44 - Abernathy 0

Team	Won	Lost
Denver City	4	0
Stanton	3	1
Slaton	2	2
Post	1	3
Tahoka	1	3

Cast Your Vote!

My Vote This Week
For The "Player Of
The Week" Is

Either Mail To
Slatonite or Drop In
Box At Slatonite Office



RICKY BRUSH--TACKLE



MIKE HALL--GUARD KELLY BOWNDS--FULLBACK TOMMY SIMMONS--TACKLE

Williams Funeral Home **Higginbotham Bartlett Lumber** **Self Service**
305 S. 9th. VA 8-3331



GREG NOWLIN--END RONNY JONES--QB JODY RHOADES--END

Bourn Cycle Shop
BICYCLES--LAWN MOWERS--GO CARTS--COMPLETE SERVICE
Boosting The Tigers For 37 Years
DON BOURN OWNER

SLATON TIGERS

Sept. 22 Friendship Here
Sept. 29 Crosbyton There
Oct. 6 Lockney There
Oct. 13 Tahoka There
Oct. 20 (Open)
Oct. 27 Post Here
Nov. 3 Stanton There
Nov. 10 Denver City Here

WILSON MUSTANGS

Sept. 22 Anton Here
Sept. 29 Whiteface Here
Oct. 6 Open Date
Oct. 13 Sands There
Oct. 21 New Home (Homecoming) . . Here
Oct. 27 New Deal There
Nov. 3 Lorenzo There
Nov. 10 Cooper Here

SOUTHLAND

Sept. 22 Patton Springs There
Sept. 29 Roaring Springs Here
Oct. 6 Open
Oct. 13 Wellman (Homecoming) . . Here
Oct. 20 Gall There
Oct. 27 Pettit Here
Nov. 3 Loop Here
Nov. 10 Smyer There



BRUCE PEMBER Jr.--QB JOHN GEORGE--GUARD CORKY NALL--END

Bruce Pember Insurance **Tucker Oil Co.** **Boston Super**
Bruce Pember Insurance "A Tiger Booster For 41 Years" Lubbock Highway VA 8-4131 1250 S. 9th. VA 8-



TRAVIS MCCORMICK--END MIKE DUBBS--GUARD MIKE HUNTER--TACKLE

White Auto Store **Becker Humble Service** **Butler Monum**
121 S. 9th. VA 8-3946 400 S. 9th. VA 8-7109 Works



W.M. CARTER--QB JOL HARGRAVES--END PAUL BOSWELL Asst. Coach M.W. KERR Head Coach TOMMY LACEWELL Asst. Coach RONNIE EDWARDS--END LARRY GAMBLE--QB GAYLORD HOOVER--END

THOMPSON FURNITURE **THE SLATONITE** **SLATON SAVINGS & LOANS** **SLATON IMPLEMENT**
100 Texas Ave. VA 8-4455 "Slatons Grown-Up Newspaper" "We Pay You To Save" Lubbock Highway VA 8-4



ALAN MARTIN--Tackle LARRY SMITH--END SONNY LEE--TACKLE LESLIE BROWN--FB WEBBER TEFERTILLER--HB JERRY TEFERTILLER--TACKLE STEVE BALL--HB PAUL DUBBS--QB

Bain Auto Store **Reynolds Insurance** **"DOC" CROW CHEVROLET**
140 W. Garza VA 8-4682 210 W. Garza VA 8-4834 120 N. 9th. VA 8-



JOHN HENNINGTON--HB BOBBY DRAKE--HB GLEN WILHOIT--TACKLE RICHARD HEIGHT--CENTER LEONARD HURST--CENTER ASCENSION PEREZ--GUARD ROGER BUXKEMPER--TACKLE JIM CHRISMAN--HB

Slaton Co-op Gin **Henzler Grocery** **Browning & Marriott** **BO BECKER PUMP SERVICE** **CHRISMA FLORAL**
VA 8-4861 VA 8-4301 930 S. 9th. VA 8-4889 116 1/2 W. Garza VA 8-3216 220 N. 5th. VA 8-3951



Fans, Bands, Fanfares, Spirit Was High In Win Over Frenship

By J.K.C.

The Tigers took it all last Friday night! The football game, halftime show, concession stand, fist fights and ladies' hairdos.

And from it all, something practically unheard of in these parts emerged.

At Texas A. & M. and in the Marines they call it esprit de corps, in some towns they call it "football fever" and in other places it's merely "spirit."

But whatever it's called it usually takes the form of loud yells, vigorous hand-clapping, liberal (excuse the word choice) patting of the back and broad, happy grins. It often results in more wins because that magic quality seems to propel individual effort for group benefit and a severe distaste for defeat.

In any regard, it was evident in abundance at Tiger Field last Friday night. The team was cheered roundly, even when it was behind, and the cheers turned to roars of approval as the young crew took another notch in its belt and came back to roundly trounce a good Frenship team that scored the first time it got its hands on the ball.

And then, Bill Townsend's Tiger Band took the field at halftime and you would have thought the Communists had thrown in the towel. One hun-

dred black-coated youngsters marched and played while fans clapped, yelled and watched in ecstasy.

And after the game, the players were pretty happy with themselves, too. They "hooted and hollered" and congratulated each other all the way from the field to the dressing room near High School. There they took up the chant, "Beat Crosbyton" . . . and chances are they'll do just that if the "spirit" finds a home among 7,700 win-hungry Slatonites.

Tigers Drub Frenship By 30-18; To Meet Crosbyton In Road Game

Slaton's Tigers fought their way back from the short end of a first quarter score Friday night to trounce a touch and determined Frenship squad by 30-18 in a contest played on the home field. The win put the Tigers at 2-2 for the season, a victory margin that many in the area had calculated the Tigers couldn't reach in the entire year.

Bownds thundered off right tackle all the way in for the final score of the night. The attempt for the bonus points failed and put the score at 30-18.

Particular standouts in the Slaton forward wall were guard John George and tackles Billy Patterson and Tommy Simmons. Defensively, Greg Nowlin in the line and Pember in the secondary were exceptional.

Halfback Tefertiller led in yards gained offensively with 115, and Ball was second with 114.

Fullback Bownds, playing his most brilliant game since an early season injury, furnished the power thrust of the offense with 64 yards in 11 carries.

The Tigers rolled up 294 yards rushing to a slim 83 for Frenship. They fell behind in the passing department however, with 39 yards to 122 for Frenship.

Slaton fumbled three times, recovering one, while Frenship fumbled four times but managed to recover all of them.

This Friday the Tigers go on the road to Crosbyton in a game scheduled to begin at 8 p. m. A pre-game story appears on the sports page of this issue.

Frenship started the night by scoring the first time it had the ball. Pushing to the Tigers' 16, the "statue of liberty" play put halfback Jim Stapleton around the left end for around the left end for the initial touchdown. They failed to get the points after.

Slaton then came bounding back as Bruce Pember picked off a Frenship aerial and raced 54 yards to set up the score. Halfback Steve Ball carried over for the TD, with fullback Kelly Bownds pounding for two extra points.

Then Slaton widened the gap in the second quarter when Ball again broke loose, going for 44 yards to the end zone. He then ran the extra points to put the

score at 16-6.

In the third quarter Frenship cut the Tiger lead with a 65-yard punt return, but they again failed to make the extra points.

Then on the Tigers' first play from scrimmage after the kickoff, halfback Webber Tefertiller raced 62 yards for another Slaton tally. He also ran for the points after to put Slaton in the lead by 24-12.

The stubborn Frenship gridgers hung on, however, as they pushed a sustained drive to the Tiger 13, and then passed for another score, putting them behind by 24-18.

Battling into the late minutes of the final period the Tigers pushed to the Frenship 23. And then clinching the victory,

TIPS for OUTDOORSMEN

Scope Has Many Advantages

Open sight shooting has many advocates. But many good bucks are missed because the hunter didn't have a scope sight on his gun when needed. This is especially true of dusk shooting. It is then that a scope can tell you if the deer you see is a buck, and just where to place a killing shot.

Pump Gun Caution

Beginners should remember never to hold down the trigger of a pump gun when working the action, as the gun is liable to fire accidentally. Reload carefully until familiar with gun.

Quick as Jack Robinson

Here's a quick way to skin a rabbit for the pot. Slit across rabbit's back with a sharp knife. Grab hold of each side of slit and pull.

The skin comes off as easily as you skin a banana. Cut legs off at lower joint and your rabbit is ready.

Football Contest Results

Below are the week's top entries in the Slatonite's Football Contest:

Name	Number Correct
Larry White	9
R. A. Lamb	9
(No Name)	9
Al Clary	8
Skip Tomlinson	8
Wallace Becker	8
Eddie Nelson	8
P. E. Boswell	8
Robert Hoffman	8
Gerald Kendrick	8
Larry Burk	8
John Hennington	8
Donald Sikes	8
Howard Lemon	7
C. M. Borton	5

Care With Fire Necessary

Winter woods are dry and easy to catch fire, so take the proper precautions to prevent fire.

Hold burnt matches until cool, then break them. Shred your cigarette butts, as soldiers are taught to do. Douse your campfire thoroughly with water — then inspect it carefully before leaving.

On Cooking Eels

Eels make great eating — once you get over the idea that they are kin to snakes.

You'll be won over the first time if you prepare them this way: Skin eel with pliers, then cut into inch-thick chunks (as you slice bread). Fry until meat is flaky and white.

Legend has it that cooked eel meat will turn raw again if laid aside to cool. Experiment proves this to be at least partially true.

Choke Improves Shooting

By using an adjustable choke on your single barrel shotgun you can increase your kills greatly.

This is not an ad for any special brand of choke, but is a worthwhile tip on how to increase your shooting skill.

Don't Overfeed Hunting Dog

A lean dog makes a good hunter.

Don't feed your dog all his appetite calls for, or he'll get sluggish and hunt poorly. Better for his ribs to show a little — it's a sign he's in top shape.

Cooking Rabbit—Texas Style

Ever eat rabbit fixed Texas style? If not, you are in for a treat.

Cut up two choice cottontails as you would a frying-size chicken. Season well with chili powder, and brown in olive oil. Put pieces in well-greased casserole. Season with salt and pepper, parsley, and chopped onion. Cover with fine white wine, and bake slowly until most of the wine is soaked up — or until the meat is thoroughly done.

Make a gravy by thickening juices left in casserole with flour and cream.

For Easier Lacing

Harden the tips of your rawhide shoe laces by holding them over the flame of a match, until match burns out, or until the rawhide is thoroughly charred. You'll find they lace much easier.

Roastin' others is a good way to cook your goose.

Trailer Material Special

	Per 100
1/4" x 2-3/4" Carriage Bolts . . .	\$2.70
1/4" x 2-3/4" Machine Bolts . . .	\$2.60
1/4" x 3" Carriage Bolts . . .	\$2.70
3/8" x 4-1/2" Carriage Bolts . . .	\$6.95

48" Welded Wire 1"x2" Per Roll .	\$27.50
35" Welded Wire 1"x2" Per Roll .	\$22.50
1/6 #2 Y. P. Rough 8 - 20 ft. . .	\$13.50
per 100 bd. ft.	
1/4 #2 Y. P. Rough 8 - 20 ft. . .	\$12.50
per 100 bd. ft.	
1/4 #2 S4S Y. P. 8 - 20 ft. . .	\$12.50
per 100 bd. ft.	

We Have A Good Supply

Of Cotton Trailers 18 & 20 Ft.

Slatted Or Wire Sides

Higginbotham - Bartlett Lumber Co.

VA 8-4523

225 N. 7th.

Football CONTEST

Weekly Winners Receive \$5 For The Highest Score.

Grand Prize Winner Receives Free Trip To Cotton

Bowl Game In Dallas Jan. 1, With Free Tickets

And Hotel Reservations For Two.

PREDICT EVERY WEEK -- YOU MAY WIN!

Larry White Won Last Week's Contest With 9 Correct Predictions.

Self's Service "Your Phillips 66 Dealer"

305 S. 9 VA 8-3331

Higginbotham Bartlett Lumber Co. "Good Lumber"

Slaton Motor Co. "Your Ford Dealer"

150 W. Lynn VA 8-4221

Lasater-Hoffman Hardware 157 W. Lubbock

Reynolds Insurance Agency 210 W Garza VA 8-4834

Sanders Grocery & Mkt. 705 S. 9 VA 8-4683

HERE'S HOW YOU WIN: Listed in the box at right are some of the football games to be played this weekend which will be watched with interest by area fans. Indicate your selections by marking an x beside the teams you think will be winners and mail or bring them to the Slatonite before 5 p. m. each Friday. Predict the score on the tie-breaker only. The contestant with the largest number of correct guesses will receive \$5 in the weekly contest, and the contestant with the best score at the end of the contest will have earned a free trip to the Cotton Bowl game. Everyone is eligible to enter except Slatonite employees and members of their families.

Name		
Slaton	vs	Crosbyton
(Tie-breaker, predict score)		
Phillips	vs	Perryton
Dimmitt	vs	Muleshoe
Floydada	vs	Post
Tahoka	vs	Ralls
Crane	vs	Denver City
Idalou	vs	Springlake
Whiteface	vs	Wilson
Lamesa	vs	Brownfield
Texas Tech	vs	Texas University
Baylor	vs	Pittsburg
T. C. U.	vs	Ohio State

Browning & Marriott Insurance Agency



Tucker Texaco Products Butane - Propane

The Slatonite "Slaton's Grown-Up Newspaper"

Contest Is Made Possible By Support Of The Merchants On This Page.

Humble Service VA 8-7108



Bo Becker Pump Service VA 8-3951 220

Slaton Co-op Gin

Power Insurance Agency 139 S. 9th

ODD CHALKINS

ENAMEL OF THE TEETH IS THE ONLY TISSUE IN THE BODY THAT CANNOT REPAIR ITSELF...

Healthy Tissues build Stronger bodies! Only your Doctor and Pharmacist, working together, can help repair your Health. . . Your Prescription Pharmacy. . .



41% of the Nation's homes FINANCED BY SAVINGS AND LOAN

Let us handle your home financing **SLATON SAVINGS and LOAN**

YOUR Piggly Wiggly STORE MANAGER SALE



Ray Belt
155 E. Lubbock St.

Ray Belt, your Piggly Wiggly store manager has really gone on a mark-down spree! This can mean a savings spree for you, if you'll take advantage of the low, low prices on the shelves at Piggly Wiggly now! And if you do not already know Ray, come on in and meet him soon! He's anxious to serve you in every way!

FLOUR 5 Lb. 29

SNOWDRIFT 3 Lb. 7

GOLDEN WEST

NOW at Piggly Wiggly ALL THE VITAMINS YOU MAY NEED FOR ONLY 99¢ PER MONTH
(Don't Confuse Price With Value)

Vita King VITA CHAMF and MIN VITE Multi-Vitamin Mineral products, exclusive at Piggly Wiggly contain 27 to 34 valuable dietary supplements. All are labeled to conform to the rigid requirements of the United States Pure Food and Drug Administration. None better at any price! Unconditionally guaranteed two or all on all your purchases at Piggly Wiggly.

MIRACLE WHIP

These Values Good In Slaton
September 28, 29, 30, &
October 1 & 2, 1961

We Reserve The Right To Limit Quantities.

Quart Jar **49¢**

Genuine Social
DIAMOND RINGS
Forever Rich in Precious Gems

Available To Our Customers For Only 27 Certificates.

YOU GET FIRST DIAMOND CERTIFICATE WORTH \$15 FREE!
Visit Our Store . . . You Don't Have to Buy Anything . . . Ask The Cashier For One.

IT'S EASY... HERE'S HOW TO OBTAIN YOUR OTHER DIAMOND CERTIFICATE

Anytime you spend \$5 here, you're entitled to get one diamond Cash Certificate for only \$1.15 (includes Federal Tax) plus local or State tax. If you spend \$10, you get two certificates, etc. When you save up 27, which includes your one FREE \$1.15 Starter Certificate, redeem them for the ring you want . . . at a mere fraction of its true value!

SHOP-RITE FOR HIGH QUALITY MEATS

LAMB ROAST	Armour's Star Square Cut Shoulder, Lb.	39¢
BACON	Armour's Star Sliced Lb.	69¢
Leg O'Lamb	Armour's Star Half or Whole, lb.	59¢
Lamb Loin Chops	Armour's Star Small Lean Chops, lb.	69¢
Lamb Rib Chops	Armour's Star, Fancy Small Chops, Lb.	59¢
Lamb	Armour's Star Half or Whole Cut & Freezer Wrapped, lb.	39¢
Fryers	Grade A Whole, lb.	29¢
Breaded Shrimp	Fisherboy, 10 oz.	43¢

Shop RITE For The Lowest Price In Household Needs!

Prestone,	1 Gal. Can.	\$1.00
Anti-Freeze	1 Gal. Can.	\$1.00
Listerine,	7 oz. Bottle, Reg. 59¢	59¢
Antiseptic	Boyer H A, \$1.00 Size Btl. W/4oz Size Bottle, \$1.49	1.00
Hair Dressing	Plus To F.E.T.	1.00
Air Filters For Heaters	Dustgard Fiber With Hexachlorophene, All Sizes Available.	1.00

- Napkins Scot Family, 2 - 80 ct. Pkgs. **25¢**
- Peaches Pacific Gold, C, In Syrup, 4 - No. 2 1/2 Cans **\$1.00**
- Fruit Cocktail Pacific Gold, Heavy Syrup 3-No. 2 1/2 Cans **\$1.00**
- Hominy Campfire, White & Golden, 12 - No. 300 Cans **\$1.00**
- Pie Mix Wilderness, Apple Cherry & Lemon 3 - No. 2 Cans **\$1.00**
- Pork & Beans Campfire, 12, No. 300 Cans **\$1.00**
- Corn Rosedale, Golden, C.S., 8 - No. 303 Cans **\$1.00**
- Honey Sioux Bee, Extract, 4 - lb. Jar **99¢**
- Marshmallow Creme Kraft, Pint Jar **25¢**
- French Dressing Kraft, 8 oz. Bottle **25¢**
- Toilet Soap Dove, 2 Regular Bars **39¢**
- Vinegar Heinz, White, Pint Bottle **21¢**
- Tomatoes Stockton, No. 2 1/2 Can **23¢**
- Pumpkin Cock O Walk, 2 - No. 303 Cans **25¢**
- Asparagus Lawrence, Cut Green, No. 300 Can. **23¢**

Bonus Offer To Our Customers Save Up To 40% !!

Beautiful and efficient, VOGUE STAINLESS STEEL, "Waterless" Cookware for Easier, tastier cooking at Low Cost!

EXTRA SPECIAL!

1 QT. COVERED SAUCE PAN
\$3.50 Value
only \$1.99

Build your own Complete matched set. See it on display in our store!

GRAPEFRUIT JUICE

House Of George 46 oz. Can **19¢**

SHOP RITE FOR FRESHER PRODUCE

MELONS	Honey Dew, Delicious Flavor, lb.	7 1/2¢
CABBAGE	Fresh, Green Heads, lb.	3¢
APPLES	Red, Delicious, Extra Fancy, lb.	19¢
AVOCADOS	California, Med. Size, Each	12 1/2¢

SHOP RITE FOR FRESH FROSTED FOODS

MEAT PIES

Parkerhouse Rolls	Frozen, 24 Ct. Pkg.	31¢
Seabrook, Frozen,	6 - 9 oz. Pkgs. for Somerdale,	\$1.00
Garden Vegetables,	10 oz. Pkg. Frozen	17¢

SOAP Dove Toilet 2 Bath Bars **49¢**

PRESERVES Bama Grape Jam Red Plum and Peach Preserves 3 18 oz. Jars **\$1.00**

MEAT PIES Morton 8 oz. Size Beef, Chicken and Turkey..... **19¢**

Cheese Pizza, Prima, Frozen, 5 - 4 oz. Sizes for Libbys, Frozen, 3 - 6 oz. Cans for **39¢**

DOUBLE EVERY WED. WITH 2.50 PURCHASE OR MORE

- | | | | | | |
|-----------------|------------------------------|---------------|-------------------|-------------------------|---------------|
| SCOTTIES | 200 Count Box..... | 10¢ | PEAS | Libby's 5 No. 303 Cans | \$1.00 |
| TISSUE | Scot 1,000 Sheet 8 Rolls For | \$1.00 | WESSON OIL | New 24 oz. | 43¢ |
| TOWELS | Scot 250 Count Rolls..... | 29¢ | TAMALES | Campfire 5 No. 300 Cans | \$1.00 |

Shop Rite . . . Always Shop

Piggly Wiggly