

# The Slaton Slatonite

"UNITED WITH SLATON IN SERVICE TO ALL"

VOLUME 51, NUMBER 1

THURSDAY, OCTOBER 19, 1961

SLATON, LUBBOCK COUNTY, TEXAS

10 CENTS PER COPY

16 PAGES

## Smith Sources For Office

Preston Smith of Slaton announced that he is a candidate for Lt. Gov. of Texas. He is the second candidate for the state's second highest office. He ran in 1950, losing in a field of 12 candidates and leading the ticket.

Smith, a veteran and businessman, was previously elected president of the Senate during a special session of the Legislature. He served as Texas August Governor of Gov. Price and Lt. Gov. Ben

Smith in Texas government in 1944 when he was elected to the House of Representatives, where he served three terms. In 1956 he was elected state senator for the 28th Senatorial District and was re-elected in 1960.

Smith is a graduate of Texas Tech University in Lubbock, Texas. He and his wife, Ima, have two children, Mickey, 20, and Jan

Smith will return to Slaton from Amarillo, Texas, where he will go to Windom, Texas, on the 5th of Nov. to a meeting in the First Church of Windom. This is the first of several revival meetings which since his student days.

BRADSHAW rivals an electrician in its ability to do up to 100,000,000 bits of work during your lifetime according to a recent report by British scientists.



NEW GIN PLANT - Pictured above is the new gin plant of the Slaton Cooperative Gin, located on the Wilson Highway. Open House for the new plant is set for Sunday, from 1 to 5 p.m.

## Nine-Man Advisory Board Formed For Mercy Hospital

Announcement was made this week of the initial forming of a nine-man Advisory Board for Slaton's Mercy Hospital. The forming of the board came as the result of a request by Sister Mercedes, superintendent of the hospital.

Prior to now the hospital has been operated administratively by a Governing Board, consisting of Sister Mercedes and a Sister Superior

in St. Louis, Mo. The scope and complexity of the operation created the necessity of the new board. After the request was made, a group of citizens met to consider the new board. Attending were Joe Walker Jr., Howard Hoffman, R. H. Todd, Jr., Vascar Browning, August Kitten and the five local doctors. The men briefed several

copies of constitutions and by-laws of other similar hospitals operating with an advisory board and took one specifically to study. After a second meeting, held Monday night, the following men were placed on the board: Walker, Hoffman, Todd, Browning, Kitten, A. H. Grigsby, Ray Belt, Walter Bednarz and B. B. Castelleberry.

## Winners Named In Slaton's Phase Of Punt, Pass & Kick Contest

Paul Martin, Lee Wayne Clodfelter, John Taylor, Jr., Clifford Summar, and Jimmy Williams were the top five boys in Slaton competing in the Ford Motor Company's "Punt, Pass & Kick" contest.

The five boys were winners in their age bracket, and will now have the opportunity to compete in an advanced stage of the national eliminations. By ages, Martin won in the six year old; Clodfelter in the seven year old; Taylor in the eight year old; Summar in the nine year old; and Williams in the 10 year old.

Coach M. W. Kerr, Bob Fondy, Allen Martin, and Richard Height carried out the administrative end of the contest. First place winners received a complete football uniform; second place winners received a warm-up jacket; and

third place winners received an official football. A total of 83 boys competed. Top three winners in the age categories were as follows: Six Year Olds

- 1st Place - Paul Martin
- 2nd Place - Tommy Taylor
- 3rd Place - Benny Miller
- Seven Year Olds
- 1st Place - Lee Wayne Clodfelter
- 2nd Place - Randall Davis
- 3rd Place - Gary Dillard
- Eight Year Olds
- 1st Place - John Taylor, Jr.
- 2nd Place - Don W. Jackson
- 3rd Place - Tommy Hargrove
- Nine Year Olds
- 1st Place - Clifford Summar
- 2nd Place - Donald Heinrich
- 3rd Place - Hilton Merriman
- Ten Year Olds
- 1st Place - Jimmy Williams
- 2nd Place - Bobby Space
- 3rd Place - Eddie Ethridge

## Slaton Cooperative Gin Announces New Plant Opening

### Open House Set Sunday, October 22

Slaton Cooperative Gin announced this week the opening of their third gin plant, with an Open House scheduled for Sunday afternoon, October 22nd. All the public is cordially invited to attend. The new plant is located at the site of the plant already located on the Wilson highway.

The new gin displays all the latest features in cotton processing, both in design of machinery and installation engineering. These two features combined, make this gin the only one of its kind on the plains.

Four of Murray Company's new 80-18" saw gins provide the heart of the gin plant with much greater capacity in the processing of bales per hour, but at the same time giving a quality job of ginning.

Another feature of the plant is the two separate overhead cleaning, drying and bur extraction systems, with either system able to operate independently or in conjunction with the other. Double drying is provided on each system by a Big Reel drier and a 24 shelf tower drier. Bur extraction on each system is provided by an 18" Bur extractor.

An outstanding feature of the gin is the introduction of a Fiber-Rite heat control unit. This unit operates with an electronic brain that regulates the temperature on each drier according to the actual moisture in the cotton as it is brought into the gin. This eliminates the human element of determining how much temperature should be used. This unit has also been added to their two existing plants.

Double lint cleaning consists of individual cleaners behind each gin and a super constellation Moss the same as in their other plants. With the addition of this plant the average production of bales ginned each 24 hours will be over 650.

## Former Area Resident Killed In Cave-In

Mr. Dee Henry (Dick) Bradshaw, a carpenter foreman of 330 Grandview, Black Point, California, was killed recently when an excavation caved in during a construction job in Marin County.

Bradshaw formerly lived near the Hackberry Community in Garza County, and received his schooling at Dora, New Mexico. Funeral services were held Thursday in Keaton's Mortuary in San Rafael, California.

Along with one other man who was killed, Bradshaw was crushed to death when the excavation, measuring three feet in width and 14 feet in depth, caved in. A third man miraculously was recovered alive.

Survivors of Mr. Bradshaw include his wife, Clara; four children of the home, Sharon Sue, Linda Lou, John Dee, and Laura Lee; his mother, Mrs. Suzie Bradshaw; one sister, Mrs. Robert Lee Hagler, both of Rt. 2, Post; and two brothers, Newton Bradshaw of Saugus, California, and Thomas Bradshaw, of Pelaluma, California.

PRIVATE PILOT license applicants on Okinawa have obtained a Federal Aviation Agency exemption from the requirement that they fly 100 miles over land to prove they can "read" landmarks and terrain. Okinawa is only 62 miles long and its two airports are 40 miles apart.



First bale of cotton ginned. Board Of Directors, Manager Proud Of New, Modern Plant

The Board of Directors and manager of Slaton Cooperative Gins were happy to announce this week the Open House in the new plant this Sunday from 1 to 5 p.m. Manager Jay Gray stated that all the public is cordially invited to attend the open house. Located at the site of the existing gin on the Wilson Highway, Gray stated that the new plant was one of the finest and most modern, and is capable of easily ginning 15 bales per hour. On one trial day this week the new plant ginned two bales in eight minutes.

Alex Bednarz, president of the Board of Directors also stated that they were extremely happy with the new plant. It operates with two suction, and has a double lint cleaning process. He added that it was the finest and most modern gin "west of the Mississippi."

Other board directors of the gin include Fred Stephens, Ray Kitten, J. B. Lamb, and M. M. Brieder.

## Mrs. Burk Winner In Grid Contest

Mrs. A. C. Burk joined the ranks of the winners in the Slatonite Football Contest this week by guessing correctly nine of the games listed and missing the tie-breaker by a scant two points.

A total of seven persons had nine guesses correct, but the tie-breaking points made the difference. Also registering the top total of nine were G. D. Hennington, 16 points off; Billy Vern Hennington, four points off; Al Clary, 21 points off; and Joe Sparkman, 26 points off.

Husband to wife: "I'm wearing my golf socks today."  
Wife: "What golf socks?"  
Husband: "You know. The ones with the eighteen holes."

## Pat Adamek Wins First Place At Andrews

Pat Adamek walked away with first prize in the bull riding contest held at Andrews last Sunday. Pat was unlucky in the first go-round of bull riding, but came back to win first place in the second go-round.

Also riding at Andrews were Howard Limmer, Ronnie White, and Rickey Polk. Attending the Andrews bull riding session were Janet Adamek and Carolyn Pohl.

DILLON, MONT., EXAMINER: "A recent suggestion... urge tax subsidies for new-weds marks another crackpot attempt to demote Americans into a class of think-not, know-not, do-nots clods, stripped of the last vestiges of self-respect, ambition and pride of accomplishment."



PASS AND KICK CHAMPS--These four future grid stars took first places in their age groups at the punt, pass and kick contest conducted Saturday under sponsorship of Slaton Motor Co. From left to right are Jimmy Williams, 10; Lee Wayne Clodfelter, 7; Paul Ray Martin, 6; John Taylor, Jr., 8; and Clifford Summar, 9. The boys are wearing the complete uniforms, which were donated by the contest.



Pictured above is the site for the new "Quality Laundromat" which will be constructed in the next month. The building will be adjacent to the Quality Cleaners on 235 West Lubbock.



# SPORTS AFIELD

By Ted Kesting

More than 200 elementary, secondary, and college English teachers, including teachers from Slaton, are expected to attend District XIII English Workshop Conference scheduled at South Plains College at Levelland, Saturday, November 11.

Assisting South Plains College as host are Levelland Public Schools and Levelland Chamber of Commerce.

To stress the importance of worthwhile reading material, the Workshop has selected for its theme: "Literature as a Key to Understanding Life." Highlights planned for the one-day meeting include a workshop, guest speakers, and a luncheon.

The organization extends a cordial invitation to administrators and language arts teachers on all levels: elementary, junior high school, senior high school, and college for the purpose of sharing experiences that will help English teachers in recognizing and fulfilling duties in all phases of the educational program.

Officers are: Mrs. Nina Birticel, Levelland Senior High School, general chairman; Mrs. Francis Watkins, South Plains College, program chairman; Mrs. Ethel Pyle, Lorenzo High School, recording secretary; Mrs. Inez Grant, South Plains College, corresponding secretary.

One of my new friends has another answer: "Pray as if it were up to God and work as if it were up to you."

retary; Mr. Jim Baker, Lubbock Christian College, treasurer; and Mrs. Louise Hair, Levelland Junior High School, publicity chairman.

## English Teachers From Slaton Will Attend Workshop In Levelland

## Rev. E. A. Wilbur To Attend Convention

A District Convention will be held on Oct. 22 at Plainview. Clyde Foltz Minister of Memorial Christian in Midland, will be the speaker. He will discuss the World Council of Churches which will be meeting soon in New Delhi, India. Rev. E. A. Wilbur of the First Christian Church will be on the leaders.

## COMING EVENTS

Thursday: Rotary, Club House, noon. Jaycees Ettes, 7:30 p.m.  
 Friday: Senior Citizens, Club House, 10:00 a.m.  
 Saturday: Visit shut in friends.  
 Sunday: Attend the church of your choice.  
 Monday: City Commission, city hall 7:00 p.m. American Legion Auxiliary, Legion Hall 7:00 p.m.  
 Tuesday: B. of L. F. & E. American Legion Hall, 2:30 p.m. A. A. meets in the basement of First Christian Church, W.O.W., W. O. W. Hall 7:00 p.m. Drivers Licence Examier, Lions, Bruces Cafe, noon.  
 Wednesday: V. F. W., V. F. W. Hall 7:30 p.m.

## Slaton Resident Cited In Army As "Outstanding Trainee" By General

James B. Smoot RA. 54-166-575, has completed his basic training at Fort Ord, California. He will be stationed at Omaha, Nebraska with the 6th Missile Battalion, 28th Art'y group, 43rd Art'y (NH). Upon completion of basic training at Fort Ord, James was issued a citation by the standing aptitude and attention to duty displayed while taking basic combat training at Fort Ord, California in recognition of this exemplary performance of duty. Private James Smoot was selected as "Outstanding Trainee of Company 'A', 3rd Battle Group, 1st Brigade (training) by order of the commanding General 12 Oct 1961. James formerly lived at Slaton

and was employed by Santa Fe Railroad Company. His wife and three children will go to Omaha with him. He is the son of Mr. and Mrs. Raymond M. Smoot of Slaton.

**VACANCY . . . .**  
**For**  
**Elderly Women.**  
**Personal Care.**  
 Phone VA 8-3681



# ANTHONY MONTH



## A 26 SELLING DAY BONANZA OF REAL BONA FIDE BARGAINS

**Avalanche-Journal Distributor**  
 Office Open 1-15 Of Each Month  
 202 W. Garza  
**J.P. HAMMONS**  
 VA 8-4911- 320 W. Garza

Men's Handsome Long Sleeve Sport Shirts  
 Special Sale Price  
**2.66 For \$5**



PLAID SHEET BLANKETS  
 The "Siesta" light color plaid sheet blanket with 3 inch acetate binding. Soft and warm, ideal for many uses. Made of select cotton to insure longer wear.



**1.88**  
 Size: 70" x 80"

SOLID COLOR BLANKETS  
 90% Rayon, 10% Acrylic Fibers, very slight imperfections of Westminster seconds that will not impair the blanket. Choose from solid color pastels. Size 72" x 90", wide satin binding. Buy several, you'll save.



**2.99**  
 Size: 72" x 90"

**Kertan's**  
 Frames - Kodak Finishing  
 Phone VA 8-2926

All Wool Classic "ANTONIAN" COAT  
**29.95**  
 Sizes: 10 to 20



First Quality Seamless NYLON HOSE  
 1 Pair and a Spare  
**78c**



Buy 1 Pair and get 1 Extra Stocking

RAYON DAMASK LUNCH CLOTH WITH 8 MATCHING NAPKINS  
 Lovely Colors  
**2.99**



**Attention Farmers**

The "Riviera" Multi-tone Stripe Chenille SPREADS  
**3.99**  
 Full & Twin



Cotton Bedford Cord HOODED STYLE CAR COAT  
**8.95**  
 Sizes 10 to 18  
 Warmly pile lined!



2 Year Guarantee - Single Control Electric Blanket  
**10.88**  
 SIZE 72"x84"



**Bull Catchers**  
 Canvas Only \$ 4.95  
 Hardware \$16.95  
 SEE AT **WHITE'S**  
 Home Owned & Operated By **Bobby Poyner**

One of the most beautiful chenille spreads you have ever seen. Multi-toned striped featuring rayon, cotton and acetate fibres with luxurious bullion fringe. Full size 90 x 105 and twin size, 72 x 105. We urge you to see these, you'll buy for your home, you'll buy for gifts, especially at this money saving price.

"Everwarm"—automatic electric blanket, 80% rayon, 20% cotton. Single control, 72 x 84, suitable for twin or full size bed. 6 inch nylon binding at top, stitched bottom. Unconditionally guaranteed for two years. Choose from lovely colors: pink, red, turquoise and camel. One of the greatest automatic blanket buys at this thrifty Anthony price.



THURSDAY, OCTOBER 19, 1961

THE SLATON SLATONITE

1100 ON THE DIAL

# Baptist Church Now Broadcasting Daily

Slaton's First Baptist Church, utilizing a recently developed method, now broadcasts daily radio programs in the mornings, and carries each worship service on a live transmission system that can be picked up on all area radios. The station was installed recently, and transmits programs Monday through Friday from 8 a.m. until 12 noon, and on Sunday from 11 a.m. to 12 noon and from 7:30 to 8:30 p.m. Programs from the church studio can be heard at 1100 on the dial with a radius of the city of Slaton and immediate fringe areas.

The new transmitting system was developed by a Brownfield firm, and is carried to area radios through existing power lines.

Contemporary radio transmitting is done through the air, but the new system for small stations carries it along the wires of established communications systems, and even over wire fences etc.

Because of the limitations of the area of coverage, the station owned by the church requires no Federal Communications Commission license, but is received on radios in the area as perfectly as any major station.

It is the first of such a system to be utilized, and is now only used by churches, schools, etc. The FCC authorized the firm to sell a limited quantity of the systems, and restricted its use to cities of less than 10,000 population.

Presently, the programming from the church is done by Dr. Charles Wood, pastor, and



BROADCASTS DAILY - Shown above is the new transmitting system owned by Slaton's First Baptist Church which sends out programs daily and carries each worship service. Seated is Garth Hunt, Educational Director of the church, who operates the station along with Dr. Charles Wood, pastor.

Garth Hunt, Educational Director.

Each morning at 8 a.m. the station signs on, with recorded music until 9 a.m. Then until 9:15 a.m. Dr. Wood broadcasts a daily devotional. At 10 a.m., until 10:15 (Rev. Hunt broadcasts a children's program of Bible stories and children's records.

The remainder of the morning is recorded music.

On Wednesday, from 7 p.m. until 9 a.m. the midweek prayer service is broadcast, and on Sundays the regular worship services are carried.

According to Dr. Wood, the chief purpose of the station is to transmit the regular services and devotional to mem-

bers who cannot attend, but everyone is invited to tune in on 1100 and listen whenever they choose.

The new concept in transmission may later bring regulations in regard to FCC rules, but presently the revolutionary system is ideal for the organization or churchbody in reaching only members of one community.

## The Slaton Slatonite Sports

# Tigers Hit Early Bad Break; Lose District Tilt To Tahoka

After an early bad break that put them behind in the game, Slaton's Tigers fought back with an exceptional effort but fell by a margin of 16-8 to Tahoka's Bulldogs in their initial district game.

The Tigers lost the opening kickoff to Tahoka on the 25 yard line and gave up an important score. For the remainder of the four quarters they played tight, hard football but couldn't pass the fired-up Bulldogs who were performing before a homecoming crowd.

Slaton led in first downs by 16-11 and took a whopping advantage in yards gained, although they couldn't manage the necessary score for the win.

After Tahoka recovered the opening kick it required six plays to penetrate the end zone.

Then Slaton hounded back in the second period with a 70-yard drive that evened the

score. The touchdown came when back Webber Tefertiller ripped 23 yards over right end. Halfback Steve Hall ran the points.

The Bulldogs pulled ahead minutes later and then scored the extras to put the mark at 16-8 at halftime.

In the final two quarters neither team scored. The heart-breaker for the Tigers came in the final stanza when a pass from Tefertiller to Bruce Pember put them on the two yard line. A stiffened Bulldog line held, however, and time ran out.

Standouts for Slaton's defensive action were end Greg

Nowlin and guard John George. Offensively, Tefertiller and Hall led the attack.

Coach M. W. Kerr's grid-ers rest this week with an open date before hosting Post here the following Friday in the second district game.

STATISTICS	
SLATON	TAHOKA
212	yds. rushing 170
79	yds. passing 10
291	total yards 180

16 first downs  
10 pass att.  
3 pass comp.  
0 fumbles  
0 own families rec'd

**If you need a ROOF**  
Call Slaton Lumber VA 8-4329

Get Your Quality **INTERNATIONAL HARVEST** Farm Equipment PARTS AND SERVICE

**SLATON IMPLEMENT CO.**  
Lubbock Hi-way VA 8

IENT...2 bedr  
furnace, hardw  
s. Call VA 8-36

RD OF TH

CARD OF TH  
wish to ex  
thanks to ev  
d make Mr. R  
day a very  
Thank You,  
C. T. Reed & P

r fixing things  
nothing be  
handy with a  
... Santa Fe

G.I. HOMES  
ADDITION

ved Sub-D  
G.I.

10.00 Down

le Baths  
1 In Color  
d Streets

our Plans

st High School

ARTLETT  
ER

ER, Exclusive



ERY PACKAGE  
k by Princess  
hable Cone Lure  
type fabric. Sk  
bodie detailed  
d.

Calls  
16

UKO

Only  
ve

GRAM  
A.M.

Anthony's Fall Piece  
Goods Make Their Bargain  
Debut With These Price Reductions.

**SAVINGS**

**FALL WOOLENS**  
54 & 60 Inch Widths

REG. 2.99 Yd.	NOW 2.44 Yd.
1.99 Yd.	1.44 Yd.

**SAVE PRINTED CORDUROY 88¢ Yd.**

**Anthony's**  
C. R. ANTHONY CO.

## Farm Facts

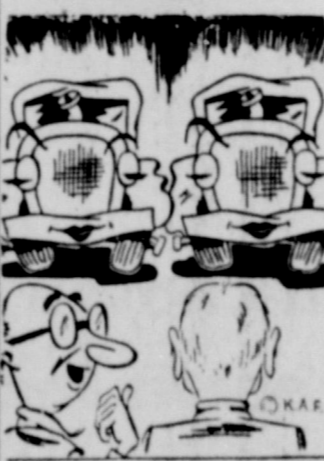
"Actually," Secretary of Agriculture Freeman pointed out in a recent speech, "the real cost of food in this country is the cost in terms of how much labor it takes to buy it--is lower than anywhere else in the world--1/5 of our take-home pay.

Compared with the Russians, our farmers annually produce some 80% more output on 1/3 fewer planted acres--and with only 1/8 of the number of the workers employed in agriculture.

"This is a comparison of almost staggering significance. That some 8 million persons working on U. S. farms should produce 60% more than 48 million persons working in Russian agriculture is almost unbelievable, but it is true.

"Our farmers have achieved for us the dream that man has sought through the centuries. For the first time, we in the United States can produce enough food and fiber to meet all our needs, with vast quantities left over to help supply the needs of millions throughout the world.

### SHAMROCK TIPS



"Which one has the ton?" Perhaps you can't tell one car from another-but WE can. We know how to service your car properly. For expert lubrication or service... check with us.

**WYLIE OIL COMPANY**  
1400 S. 9th VA 8 7110

**REDUCED**  
One Group Ladies Better Sweaters

REG. \$14.95 → NOW \$12.00  
12.95 → 10.00  
8.95 → 6.00  
5.95 → 4.00

**Anthony's**  
C. R. ANTHONY CO.

1/4 --- 85¢  
1/2 --- 1.50  
Whole Chicken --- 2.85

Sandwiches	
Super Dog	20
Delux Dog	30
Chicken Salad	40
Steak	45
Ham	35
Ham & Cheese	45
Pimento Cheese	35
Grilled Cheese	35

Hamburgers	30
Cheeseburgers	35
Boston Burgers	50
Barbecue On Bun	45

French Fries	15-20
Onion Rings	35
Malts	
Banana	40
Others	30

**Phone Your Order In VA8-4421**  
We'll Have Your Food Waiting For You

**BOSTON SUPER DOG**  
"Slaton's Leading Fountain Service"  
1250 S. 9th Slaton, Texas

Fountain Treats		
Cokes & Dr. Pepper	5 - 10	15 - 25
Root Beer & Orange	5 - 10	15 - 25
Grape & Cherry Lime	5 - 10	15 - 25
Sour Or Sweet Limes	5 - 10	15 - 25
800	10 - 15	25
Boston Chocolate Ice	15	25

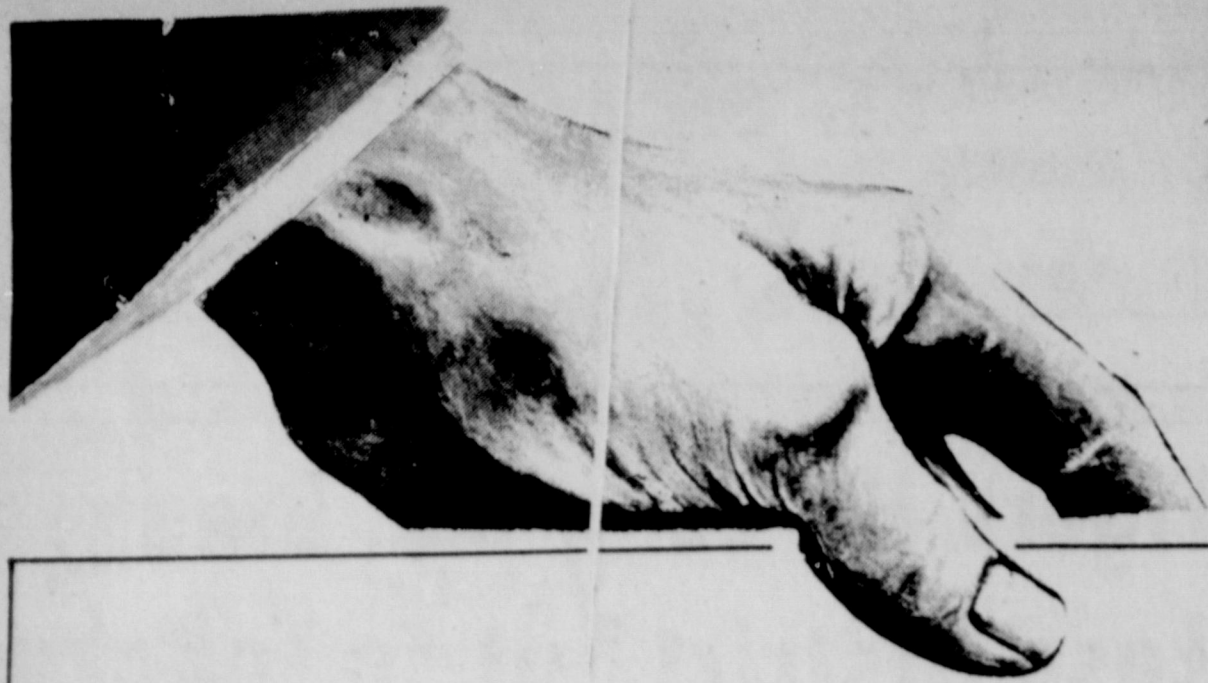
**Sundaes**  
Pineapple, Strawberry, Cherry, Peican  
Chocolate, Butterscotch --- 20 - 30

**Shakes -- Banana - 35¢ Others -- 25¢**

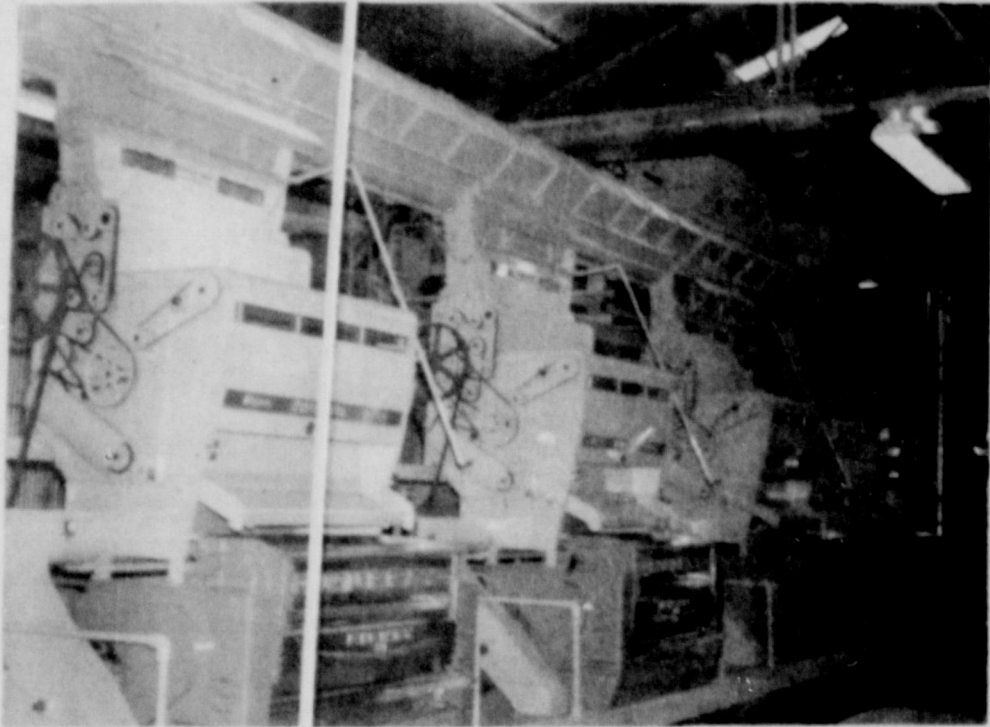
Try Our Jumbo Fried Shrim

# CONGRATULATIONS

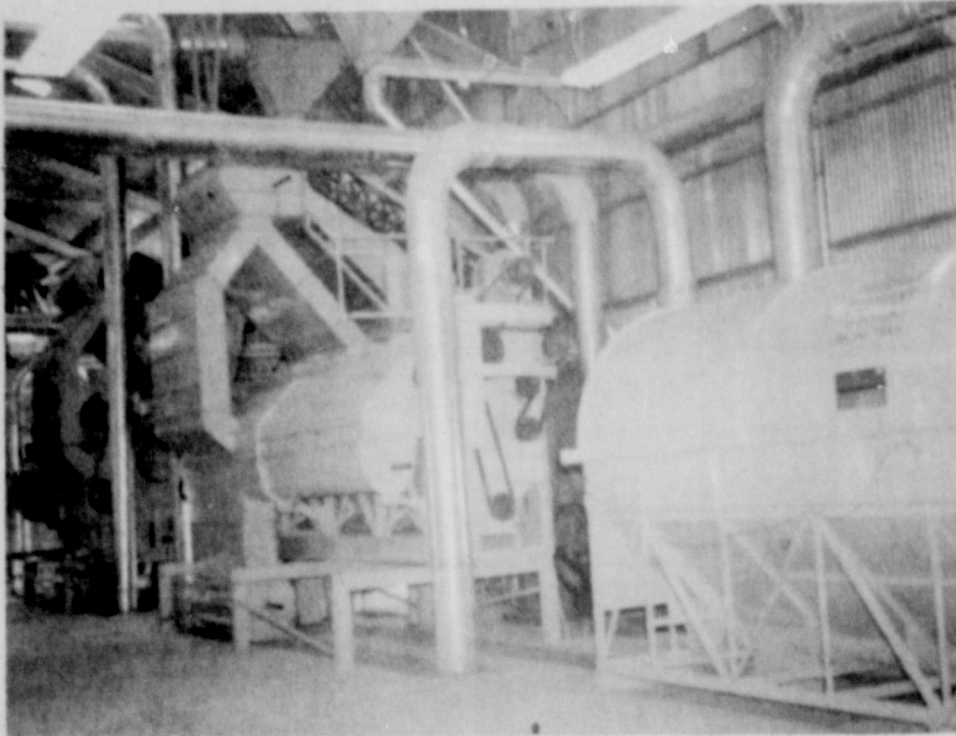
## TO SLATON CO-OP GIN ON COMPLETION OF THE NEW GIN PLANT



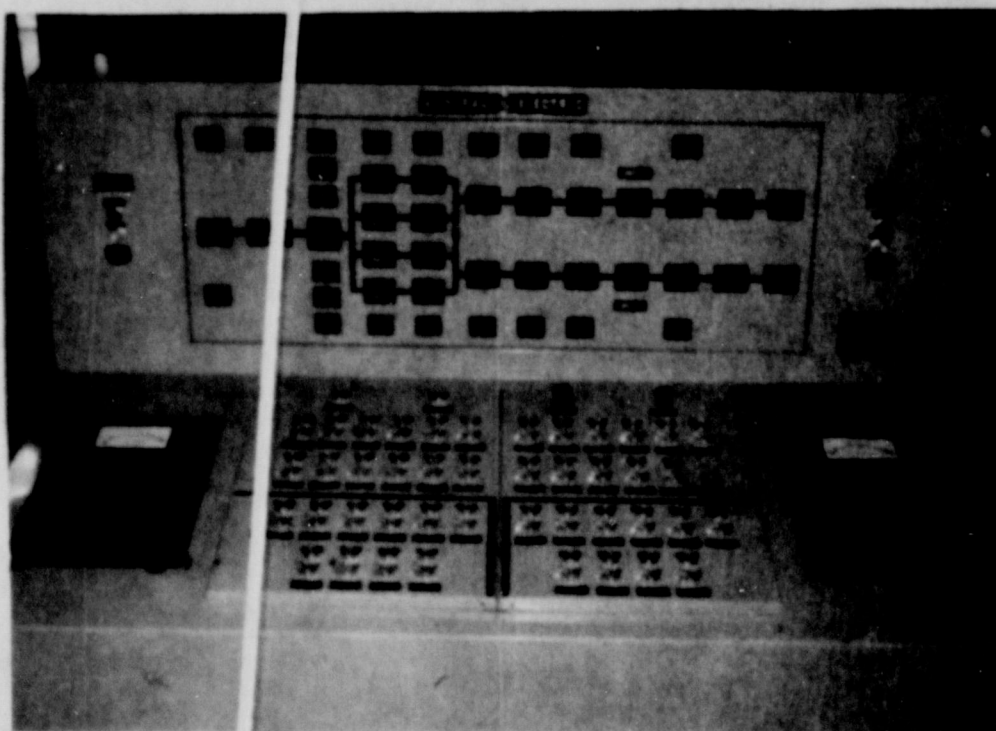
MURRAY'S FOUR GIN UNITS--Shown below are the four, Eighty 18-inch saw gins.



CLEANING AND DRYING--This view shows the first stage of the split cleaning system. This portion of the gin features two big reel dryers with two 18-foot burr extractors.



CONTROL CENTER--From this control center, the ginner has complete control of the various processes. At lower left and lower right are the controls for the Murray Fiber-Rite Moisture Control.



COMPLETING THE BALE--This view shows the press, tramper and pusher installation. Bales will go out of this installation almost as fast as the two other Co-op Gin plants combined can now turn out bales.



### We Feel Honored To Have Been Chosen To Install Our Ultra-Modern Equipment In This Gin.

The stock holders and management of Slaton Co-op Gins have a new gin plant that they can certainly be proud of. The modern metal building houses equipment that will perform rapidly and well.

Murray Cotton Gin Equipment has been established as an outstanding name in the cotton ginning industry. With the addition of this new plant, Slaton Co-op Gin will be able to

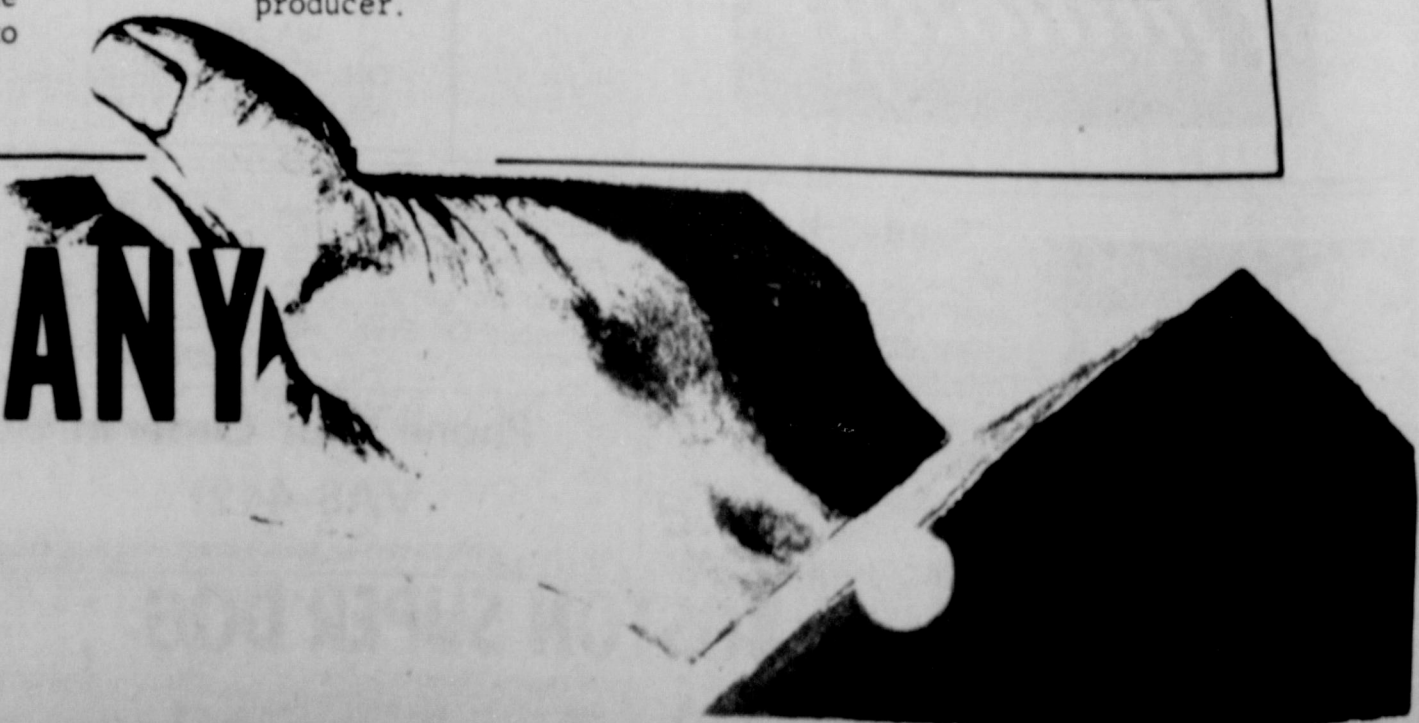
meet the peak harvest rush almost twice as well this year as in past seasons, since the new plant will gin almost as many bales as the two old plants combined.

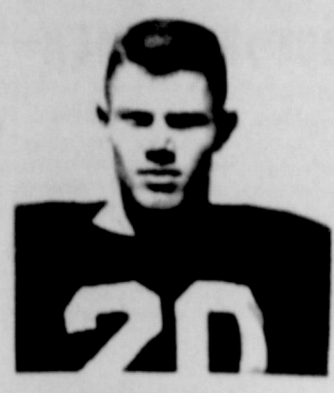
Come to the open house at the new gin Sunday, Oct. 22 and see for yourself the advantages it offers the cotton producer.

# THE MURRAY COMPANY

## Of Texas, Inc.

### Cotton Gin Division





WINNER TLFERTILLER



STEVE HALL



HILL PATTERSON



KELLY HOWNDS



JOHN GEORGE



GREG NOWLIN

Suzy Secretary Sez



I add a few drops of olive oil to the water when I wash out my doekin or chemise gloves. Then after they dry, they're soft and pliant.

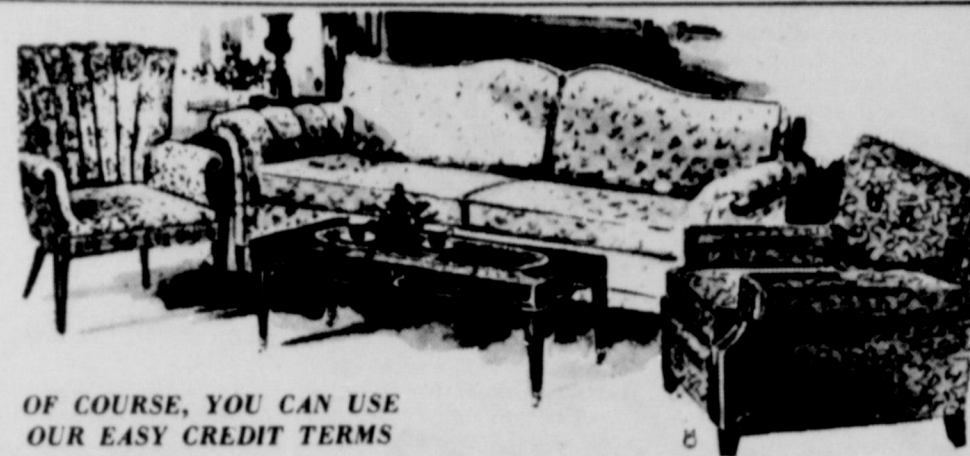
Players Of Week For First Seven Games

Pictured above and at left are the seven "Players of the Week" so far this season. The players are picked weekly by readers, and at the end of the season, the Slatonite will award a trophy to the "Player Of The Year" as determined by the vote of the fans and the coaches. The Tigers rest this week with an open date, and then host Post the next Friday in the second district game.

Your Old Furniture Will Never Be Worth More!

Trade It For New Furniture Now... And Get An Extra Harvest Bonus On Any Purchase At

BLAND'S FURNITURE



OF COURSE, YOU CAN USE OUR EASY CREDIT TERMS

FREE - Two Lamps Of Matching Style And Design When You Purchase Any Living Room In Stock.

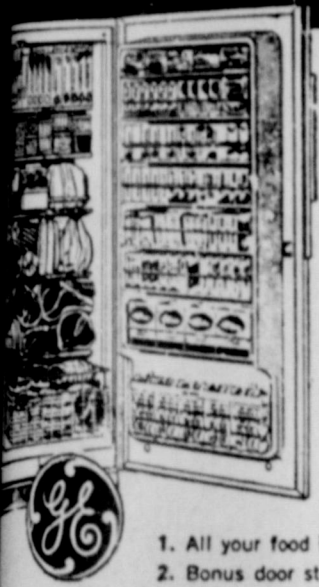


Here's Your Colonial Living Room SIX PIECES IN AUTHENTIC STYLING

Three Tables Included

You get a platform rocker too, in addition to the three cushion sofa and comfortable lounge chair, PLUS the three tables. A really GOOD buy!

BIG CAPACITY Cubic-Foot G-E Freezer



Model HU-18T GENERAL ELECTRIC "Book-Shelf" FREEZER

- 1. All your food in easy reach! 2. Bonus door storage 3. Fits in one square yard of space! 4. Close-up freezing action! 5. G-E extras like slide-out basket! 6. Three-way warranties!

FREE GE PORTABLE MIXER

When You Purchase Any Refrigerator, Freezer, Cooking Range, Washer Dryer or Other Major Appliance

Select From Our Complete Stock. You Can't Beat Our Prices!

FOR and AGAINST



for CHRIST-against COMMUNISM BY BILLY JAMES HARGIS, LL. D. FOUNDER CHRISTIAN CRUSADE

The War Against American Production

In the April 30, 1961 Worker the communists complained as follows: "In 1947 some 500 Ford workers were needed to make 60,000 to 65,000 pistons. In 1961 some 20 men make 16,000 pistons." Here the communists are complaining because the Ford Motor Company has increased production per person of pistons from 200 to 800. This complaint in the official communist weekly newspaper touches upon an important aspect of the conspiracy against our American free enterprise system. The fight against American production is a part of the Marxist class struggle which communists and their ideological allies have been waging inside our nation for years.

about increased production of pistons by the Ford Motor Company and look at the entire automobile industry. In 1910, 140,000 persons were employed in the United States in the newly created automobile industry. Prices of automobiles were very high. In 1920 the product had been improved, its cost reduced, and as a result the automobile industry employed 250,000 people because more people were able to buy automobiles. By 1930, as the product improved further and reduction of prices continued, more and more automobiles were sold and employment in the industry rose to 380,000. These increases have continued since 1930.

The central idea of this resistance against increased production is that such an increase will knock people out of jobs. The big error in this line of thinking is that its proponents look only at the immediate effect of increased production on one group of people rather than the long-range effect upon the entire population. Increased production through the use of improved machinery over the years has brought prices down to where many people are able to buy goods they could not have afforded otherwise. Furthermore, increased production in our nation through the years has created more jobs in a number of fields.

The introduction of the automatic dialing system in 1919 caused much fear among female switchboard operators. However, the Bell system now employs 182,000 operators for special calls. If we still relied upon switchboard operators there would not be enough women in our nation today to operate the phone system. The average American would have no possible chance of telephone service in his home today had the present day communist-socialist struggle against increased production been in effect and succeeded.

For example, let us look beyond the communist complaint

Address your questions to Dr. Hargis, Christian Crusade, Tulsa 2, Oklahoma.

A Japanese student, who was attending an American university, wrote his father in Tokyo about his new school. "An American university," he wrote, "is a vast athletic institution where, fortunately, some studies are maintained for the benefit of the feeble-bodied."

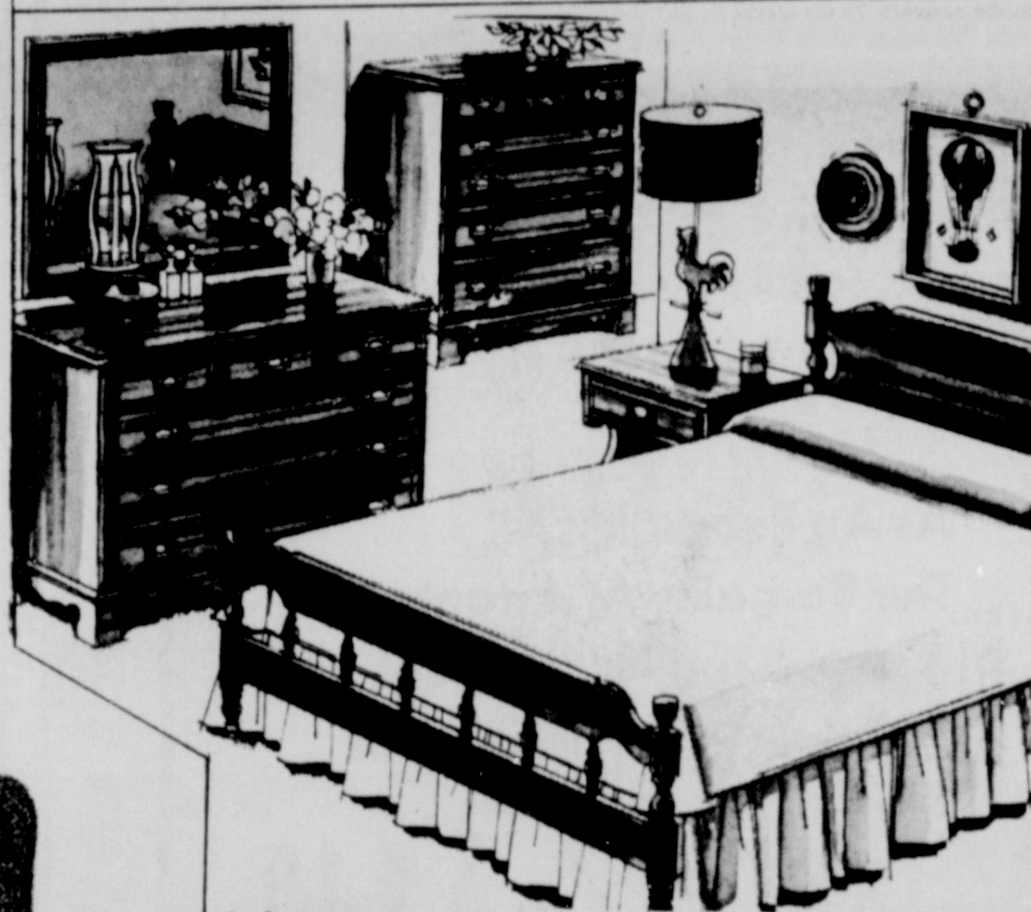
Careless driving can wreck a tender-or a family.



WHEN YOUR AUTO HAS AN AILMENT, BRING IT IN FOR SOME TEXACO SERVICE

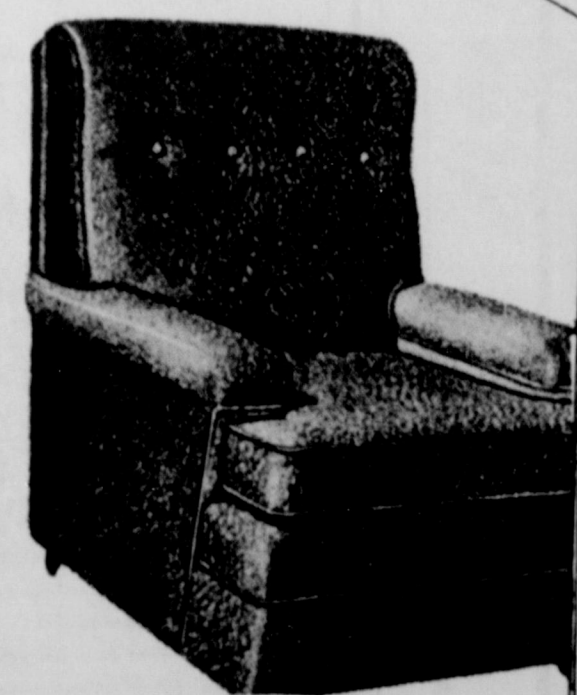
JERNIGAN'S TEXACO Big Enough To Accomodate..... Small Enough To Appreciate 855 S. 9th VA 8-7100

Your Future Starts The Day You Plan For It! JUNIOR BANKS Your Slaton Representative For The Western & Southern Life Insurance Co. A 73 Year-Old Mutual Company Withover \$5 Billion Of Insurance Income. Ph VA8-3388



Select Any Bedroom Suit, And Your Harvest Bonus Is

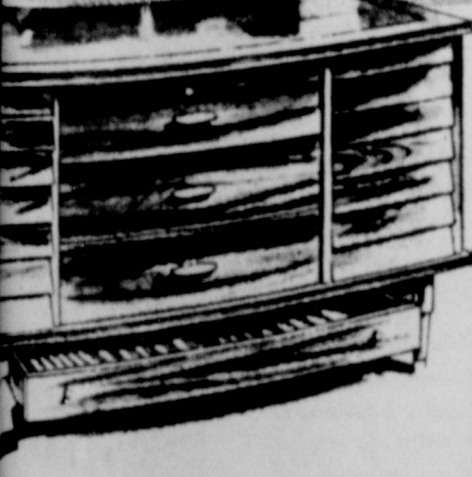
FREE - Your Choice Of Accessories Worth 10 % Of The Purchase Price



FREE - Hassock With Purchase Of Any Chair.

FREE - French Poodle

With The Purchase Of Any Lane Chest, Also A Miniature Hope Chest-- A Harvest Bonus.



Value Hunting!

THE LOWEST PRICES and THE BEST BARGAINS!! await you HERE!

BLAND'S FURNITURE

Slaton

ANNOUNCING! NEW WAY TO CLEAN RUGS & UPHOLSTERY Lustre Foam SHAMPOO APPLY - LET DRY - NO RINSE - NO WIPE Emulsifies Soil Brightens Colors Safe - Easy - Economical GUARANTEED 1 Bottle Makes 3 Gallons Clean Sofa, 2 Chairs, 9X12 Rug for only \$1.98 or \$3.49 Bland's Furniture

# Mahon Urges Speed In Dam Project

Word was received this week by Rep. George Mahon that he had urged the Reclamation Bureau to expediate planning and construction of the proposed \$102 million Canadian River Dam and aqueduct system.

The project will furnish Slaton and 10 other South Plains cities with water.

Noting that Congress during the recent session appropriated \$4,200,000 to acquire land and start construction, Mahon said reclamation officials ex-

pected much more than that amount to be asked for the fiscal year starting next July 1.

He said the government officials were enthusiastic over the Canadian River project, which contemplates the largest repayment contract in Reclamation Bureau history, and hope to award a contract early next year for beginning construction of the dam.

1964 Completion Date

Specifications on the dam, which is estimated to cost \$30 million, are expected to be

mailed to prospective bidders in November. Completion of the dam is expected in 1964.

Eleven Texas cities compose the Canadian River Municipal Water Authority, which eventually is to repay 95 per cent of the project cost. Water will be paid for by domestic, industrial and agricultural users.

Mahon said he conferred with reclamation officials also on behalf of Rep. Walter Rogers (D-Tex.) The cities involved are in their adjoining districts. These are Amarillo, Borger,

Pampa, Lubbock, Plainview, Tahoka, Lamesa, O'Donnell, Slaton, Levelland and Brownfield.

Raps Brands Proposal

In another conference during the day, Mahon protested to the Agriculture Department against a proposal to discontinue federal cattle brand inspections in Texas through agents of the Texas & Southwestern Cattle Raisers Assn.

Mahon said the effect of the order would be to discontinue all federal cattle brand in-

# Results Of Grid Contest

Name	No. Correct
C. B. Martin	8
A. C. Burk	8
Larry Burk	8
Verna Patterson	8
Johnny Hennington	8
John Hennington Jr.	8
Donald Polk	8
Lofs Polk	8
Henry Adamek	8
Pete Harris	8
Doris Lamb	8
Judy Millikin	7
Norbert Sokoll	7
Donald Sikes	7
David Elder	7
Hert Stinnett	7
Gordon Stinnett	7
R. A. Lamb	7
Gerald Kendrick	7
H. H. White	6
Arthur Davies	6
R. R. Pritchard	6
Ronnie Kennedy	6
George Jamieson	5
Jan White	4
Belinda Becker	4
Eddie Nelson	4

Inspections in Texas. He said this would tend to encourage loose handling of cattle in the state.

# TIPS for OUTDOORSMEN

## Scope Has Many Advantages

Open sight shooting has many advocates. But many good bucks are missed because the hunter didn't have a scope sight on his gun when needed. This is especially true of dusk shooting. It is then that a scope can tell you if the deer you see is a buck, and just where to place a killing shot.

## Pump Gun Caution

Beginners should remember never to hold down the trigger of a pump gun when working the action, as the gun is liable to fire accidentally. Reload carefully until familiar with gun.

## Quick as Jack Robinson

Here's a quick way to skin a rabbit for the pot. Slit across rabbit's back with a sharp knife. Grab hold of each side of slit and pull.

The skin comes off as easily as you skin a banana. Cut legs off at lower joint and your rabbit is ready.

## Care With Fire Necessary

Winter woods are dry and easy to catch fire, so take the proper precautions to prevent fire.

Hold burnt matches until cool, then break them. Shred your cigarette butts, as soldiers are taught to do. Douse your campfire thoroughly with water — then inspect it carefully before leaving.

## On Cooking Eels

Eels make great eating — once you get over the idea that they are kin to snakes.

You'll be won over the first time if you prepare them this way: Skin eel with pliers, then cut into inch-thick chunks (as you slice bread). Fry until meat is flaky and white.

Legend has it the meat will turn red laid aside to cool. Proves this to be totally true.

Choke Improves Shooting  
By using an edge on your single barrel you can increase greatly.

This is not an actual brand of choke worthwhile tip on crease your shooting.

Don't Overfeed Your Hunter  
A lean dog makes a better hunter.

Don't feed your appetite calls for sluggish and hunter for his ribs to — it's a sign he's overfed.

Cooking Rabbit—Treat  
Ever eat rabbit style? If not, you're missing a treat.

Cut up two chickens as you would a chicken. Season with powder, and brown. Put pieces in water, serole. Season with pepper, parsley, onion. Cover with wine, and bake slowly until the meat is done.

Make a gravy by juices left in case flour and cream.

For Easier Lacing  
Harden the tips of hide shoe laces by over the flame of a match burns out the rawhide is thorough. You'll find them easier.

Because of his student Taft bought for himself when the theater and sport them. Worked once he discovered bought two on aisles—and one on

# Something GOOD is

# Cooking



It's an enjoyable nourishing fall meal built around a wholesome meat dish. Meat builds the menu, and if your family is eating plenty of healthful meats, they are well-fed.

Anytime meal planning becomes a chore, a brief trip to Arrants meat display counter makes menu planning a delight. Scan the choice cuts of beef and pork, in addition to poultry, and immediately, some original ideas for tasty meals will come to mind.

Arrants also has milk, eggs, butter and bread. So when you come to Arrants, you'll find all the fundamental items needed in a nourishing diet.

## HOW DID "BROADCLOTH" GET ITS NAME?



BROADCLOTH WAS ORIGINALLY WOVEN IN BOLTS TWO YARDS WIDE; HENCE THE NAME.

**Before you buy any vitamin product ...**

**MAKE SURE** you're getting **MINERALS** for **BETTER NUTRITIONAL BALANCE** to guard against vitamin-mineral deficiencies.

We recommend the quality product

**Rexall**

**SUPER PLENAMIN**  
America's Largest Selling Vitamin-Mineral Product

11 VITAMINS • 11 MINERALS

Get more complete dietary protection with this modern nutritional formula that includes important minerals, with true liver concentrate and iron. As stated on the label, one tablet gives you more than your daily minimum requirement of all essential vitamins with established minimums, plus eleven minerals. So before you buy, compare formulas. Get the most and the BEST for your money.

73 Tablets **4.79**

ALSO AVAILABLE IN THESE SIZES:

36's	2.59	288's	13.90
144's	7.95	365's	17.50

SUPER PLENAMINS, JR. Tablets or Liquid / Special formulas for children 1 and over

**ONLY AT Rexall DRUG STORE**

**SLATON PHARMACY**  
165 S. 9th Ph. VA8-

As An Example Of  
The Bargains At Arrants  
This Weekend, We Present  
These Specially Priced-Items

**BACON** Cudahy Puritan 2 Lb. Carton **\$1 10**

**PICNIC HAMS** **29c** Lb.

# ARRANTS

WHOLESALE MEATS & LOCKERS



OCTOBER 19, 1961

THE SLATON SLATONITE

# The Slaton Slatonite

VA 8-4201  
SLATON TIMES PURCHASED JANUARY 20, 1927

Second Class Matter at the Post Office at Slaton, Texas under the Act of March 3, 1897.

TO THE PUBLIC—Any erroneous reflection upon the character or standing of any individual firm or corporation appearing in the columns of the Slatonite will be gladly withdrawn when called to our attention.

Subscriptions Payable in Advance. Lubbock, Lynn, Garza Counties, \$3.00 per year. Outside these counties, \$4.00 per year.

DEADLINES	
NEWS	12 Noon Tuesdays
NEWS	12 Noon Tuesdays
NEWS	9 a. m. Wednesdays
PICTURES	5 p. m. Mondays

Publisher: [Name]  
 Bookkeeper: [Name]  
 Editor: [Name]  
 Advertising Mgr.: [Name]  
 Office Manager: [Name]

Press Association  
 Texas Press Association  
 Press Association

## \$969 a Month on Relief

From the Chattanooga News-Free Press

Do you like to get \$969 a month—and without any effort on your part?

One family is doing it, all at taxpayers' expense. In Newark, New Jersey, a check of "welfare" has turned up a case of a "family unit" of 15 children—15 of whom are illegitimate.

The more children, the more tax support. So the taxpayers are paying \$969 a month, through one check or another, to support a huge den of immorality.

New Jersey state senator making the investigation that turned up this case has suggested some changes in the welfare program will be proposed. They are realistic, he can batten down his hatches and expect a real storm from the "bleeding hearts" who are out for those abusing welfare programs, but they have a tear for the taxpayers who are being asked to pay for a ride.

John Newburgh, New York, acted reasonably to withdraw, it quickly came under organized attack.

The question constantly arises as to whether taxpayers should be forced to subsidize the repeated production of illegitimate children. The immediate answer ought to be an emphatic "No." Necessarily, the answer with that answer is a responsibility to take care of the children while denying assistance to the adults involved in immorality.

There are two reasonable ways of doing this. The first, and most realistic, is to require the mothers of illegitimate children to take court action to require financial support by the fathers before any application for public aid is entertained. This would put the responsibility where it belongs. And in those cases where this does not bring solution, foster homes should be considered to protect children but public funds to immoral adults.

It is time for Americans to face up to the facts of welfare chiseling, applying both hard common sense and a spirit of humanity.

Are you looking for a new stove, see W. S. [Name], 723 7th St. N.W., D.C. Been selling since the Civil War. The community of Alaska, is built on ice, and is towed to place when it is to be done. It's probably the best thing since sliced bread. It's probably the best thing since sliced bread. It's probably the best thing since sliced bread.

The Bureau of Commercial Fisheries has been given \$1,179,000 to study the problems fish have in getting over dams in 1962. There are 310,298 Den Mothers in the U. S. This notice appears in the woods near Bluff Park, Ala.: "One Tree Makes a Million Matches—But One Match Can Destroy A Million Trees"

From Andrews comes the commentary on what people like to read in newspapers: One of the best things to have up your sleeve is a funny bone.

A constant, continuing discussion exists in the newspaper profession as to what readers want the most in their newspapers.

And most of the time, at least as far as weekly and semi-weekly newspapers are concerned, the discussion usually revolves around the liberal use of names.

Polls have been taken time and time again among readers to find out just what they would like to read in their newspapers and the result is usually the same: names.

But now comes a newspaper editor in Montana who with tongue in cheek, composed a

## THE AMERICAN WAY



Can't Win -- Can't Even Score



From Douglas Meador's "Trail Dust" in the Matador Tribune: The expansive outlook on life from the inside of a wrap around windshield may become pinched and extremely narrow when work and responsibility are involved. Self esteem does not produce an executive-type man except by the same qualification that reading a medical book will produce a physician. There must be an investment of time, study and experience before dividends are justified.

Writers are told that all the basic plots have been used almost since the beginning of the recorded word. Late TV movies certainly leave no room for doubt in the statement.

The wind was singing and dancing in spasms of ecstasy across the autumn skies when jealous winter clouds spread chill, like broken glass on a ball room floor.

The hills, the valleys and the plains are empty now. The herds of bawling cattle are gone, and the cowboys that gathered, branded and drove them are gone. There is a melancholy emptiness from the high divide with its stock-pile of distance. The sea of grass laps the keels of phantom, forgotten ships.

It may be a coincidence but the newspapers have ceased publishing articles about crime schools conducted by gangsters since television programs have extended the scope of juvenile education.

From Andrews comes the commentary on what people like to read in newspapers: One of the best things to have up your sleeve is a funny bone.

A constant, continuing discussion exists in the newspaper profession as to what readers want the most in their newspapers.

And most of the time, at least as far as weekly and semi-weekly newspapers are concerned, the discussion usually revolves around the liberal use of names.

Polls have been taken time and time again among readers to find out just what they would like to read in their newspapers and the result is usually the same: names.

But now comes a newspaper editor in Montana who with tongue in cheek, composed a

## Fires Deal Death and Destruction

Fire killed some 11,250 persons and injured 70,000 others in 1960.

And the National Fire Protection Association reports that approximately half the deaths by fire occurred in homes. 30 per cent of the casualties were children. In 76 instances, families were virtually wiped out when four or more members were killed in a single dwelling fire.

The grim figures turned up a record. Destruction of property by fire totalled a record high of approximately \$1,541,000,000. It was the first time the property-loss figure topped the billion-and-a-half mark.

The holocaust last month aboard the aircraft flattop Constellation in the Brooklyn New York, Navy Yard was 1960's largest single loss in both lives and property. 50 workmen died in the fire. Largest single loss in building fires last year was the \$8,000,000 destruction of a manufacturing plant in Clifton, N. J.

Sixty per cent of the world still does its calculating on the abacus, the instrument consisting of a frame crossed by stiff wires on which balls or beads are strung. The UN reports that Tokyo, with a population of 8,302,565, is the world's largest city; New York, with 7,781,984, is second, and Shanghai and Moscow are third and fourth.

An old Indian stood on the top of a hill with his young son, looking over a beautiful valley below them. After a period of silence, the old Indian spoke: "Some day, my son, all this land will belong to the Indians again. Paleface all go to the moon."

Sign in an auto repair shop: May I have the next dents?

17. More letters to the editor naming the crooks we have in town.

18. A full page of local news, a full page of national news, 16 pages of sports, 26 pages of comics, one page on divorcees, and three pages on all the domestic troubles we are having in town.

19. Less stuff about how cute everybody else's kids are. My kids are better looking than those you rave on about.

20. A complete biographical sketch about the "most important citizen in town," and be sure you spell my name right.

21. My name.  
22. A front page article showing how crooked the city government is most of the time.

3. My wife's name.  
4. A feature article showing 25 ways on how to cheat on income tax forms.

5. My kids' name.  
6. A local news item about the affair my neighbor is having.

7. A classified ad offering a new home for sale at \$4,000.  
8. More news about law-breakers.

9. Less news about law-breakers. I was picked up last night and I should not have to pay a fine.

10. An editorial condemning high school teachers for being too liberal with "F's".

11. A wedding picture of the groom instead of the bride when he is more handsome than she is pretty.

12. A sports picture of me when I bowled 183.

13. More advertisements on things that merchants are giving away.

14. A front page picture of my neighbor being hauled out of the bar by his wife.

15. A front page spread about the deadbeat who lives across the street from me who just had his car repossessed.

16. Forget the last one. I just got word from the finance company that they're coming after my car.

17. More letters to the editor naming the crooks we have in town.

18. A full page of local news, a full page of national news, 16 pages of sports, 26 pages of comics, one page on divorcees, and three pages on all the domestic troubles we are having in town.

19. Less stuff about how cute everybody else's kids are. My kids are better looking than those you rave on about.

20. A complete biographical sketch about the "most important citizen in town," and be sure you spell my name right.

21. My name.  
22. A front page article showing how crooked the city government is most of the time.

*Invitation*  
TO OWNERS  
OF COMPACT CARS

**Try something BIGGER and a whale of a lot BETTER!**



There's "SOMETHING EXTRA" about owning an **OLDS F-85**

**Sized right... for savings and easy handling!** And with extra inches where it counts for comfort... nearly two inches more rear-seat stretch-out room in sedans! These F-85 advantages add so much to driving satisfaction... and they're showing up in favorable trade-in value!

**V-8 power... at no extra cost!** Full eight-cylinder action... 165 and 185 horsepower... gives the smooth, sure performance that little engines in little cars simply can't match! And no other car in its field offers the 1962 4-S Hydra-Matic—the performance transmission with the smooth new "feel"!

**In a class by itself... in the low-price field!** Every inch an Olds, the fun-to-drive F-85 has style you can be proud of... stability and steadiness on the road... smoother-than-ever ride to carry you in comfort on the longest trips! Built for the buyer who wants "something extra" in a low-priced car!

Built to a new concept of quality and reliability that makes every Oldsmobile a car of superiority!

SEE YOUR LOCAL AUTHORIZED OLDSMOBILE QUALITY DEALER

**DAVIS OLDS INC.**

150 Lynn Slaton

Josie: Frances was afraid the girls wouldn't notice her engagement ring.  
Kitty: Did they?  
Josie: Did they? Six of them recognized it at once.

**BEN FRANKLIN**

GET A KICK DISCOVERING HOW YOU CAN PURCHASE A CAR WITH A LOW COST AUTO BANK LOAN.



**Citizen's State Bank**

100 Texas Avenue VA8-4545  
Member F.D.I.C.



**FREE ELECTRIC BLANKET**

WHEN YOU BUY AN ELECTRIC CLOTHES DRYER OR WATER HEATER ■ SEE YOUR REDDY KILOWATT ELECTRIC APPLIANCE DEALER

YOUR CHOICE OF COLORS AS LONG AS IT'S

**PINK PINK PINK**

SOUTHWESTERN PUBLIC SERVICE COMPANY

This Offer Good To Southwestern Public Service Co. Residential Customers Only.

**ODD CHALKINS**

THE ICE CAP OF GREENLAND IS TWO MILES THICK IN SOME PLACES...

In Slaton, The Place is LEAGUE'S for Prescriptions. Always have a Skilled Pharmacist on hand, and stock The Best Pharmaceuticals!

**LEAGUE DRUG**  
Phone VA. 8-4535

YOUR Independent AGENT

**BREWER INSURANCE AGENCY**

139 So. 9th.

THURSDAY, OCTOBER 19, 1961

THE SLATON SLATONITE



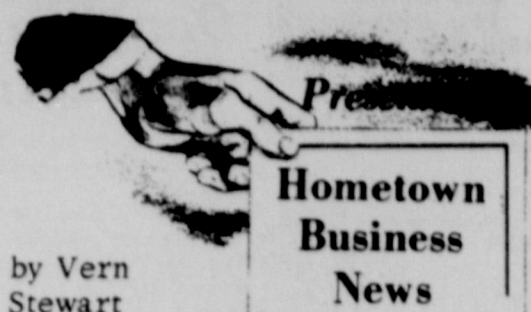
**FALSE CLAIMS**  
The United States Office of Education aided and abetted by the National Education Association continues to propagandize for Federal Aid to Education. These two organizations maintain that only by Federal Government stepping into the school situation can the nation have enough classrooms with adequate pay for teachers.

As surveys made by the Rockefeller Brothers Foundation and the Committee for Economic Development definitely prove that the individual states are taking

care of the school situation and will be able to do so in the future, there can be only one motivating reason for those clamoring for Federal Aid to Education—to put control of education in the hands of the Washington bureaucracy.

But, let's assume that USOE and NEA are right in their claims that the individual states cannot finance their own school programs—which RBE and CED have proven to be false. We admit that the Federal Government has made that financing more difficult because it siphons such a staggering sum out of the states by virtue of the personal federal income tax.

Enactment of the Proposed 23rd Amendment will leave the proponents of Federal Aid to Education with no leg to stand on. This Amendment will abolish the personal Federal income tax.



A Lubbock radio station which makes vague attempts at being colorful recognizes various South Plains cities and communities during their daily programming.

"Slaton, a commuter city," is the description this particular headquarters for the "top forty" uses to recognize our city.

While this term may sound somewhat unfavorable to business people of Slaton, fitting this description actually has more advantages than disadvantages.

Recently a survey was made by a press association to determine which type of town has the best business potential and therefore the best newspaper potential.

The survey shows that a city

In Slaton's population bracket, connected with a larger city by a four-lane highway has more potential for growth than one which has a larger distinct trade area all its own and is far removed from any larger cities.

Other advantages brought out in the survey, which Slaton definitely has, includes above average and stable farm income, good schools and churches and proximity to an educational institution such as Texas Tech.

Slaton will always need to work on projects to get Slatonites to trade at home, but the advantages of being near Lubbock far outweigh the disadvantages.

Clark Self Jr. of Self Surplus Supply had some handbills printed recently in Spanish and the Latin American population, which the handbills were distributed to, were apparently impressed, since they turned out in large numbers last weekend to buy the specials advertised in the circulars.

Bland's Furniture Store has its annual Harvest Bonus Days in progress.

Persons making purchases there during October will receive valuable bonus gifts free.

Printing by photo-lithography, which the Slatonite utilizes has many advantages for small town newspapers. But it also has disadvantages. The most serious one is that this new printing procedure makes it possible for anyone with a typewriter and some credit to start his own "newspaper."

Established publishers are alarmed by this unfortunate by-product of an otherwise wonderful invention. They are almost always able to outlast the would-be competition. But the threat of having to share the newspaper advertising business an enthusiastic newcomer who has a typewriter and credit has caused many sleepless nights in the lives of a publisher who has a large investment and established business to protect. Fortunately, almost without exception, the newcomer can endure only as long as his credit lasts, and then things return to normal.

The man who had imbibed too freely, and who was late getting home, was berated by his wife for keeping her up; but his alibi was that he took the wrong bus.

"That I can understand, seeing the shape you are in," was her sarcastic reply, "but tell me—how did you find out you were on the wrong bus?"

"Well I kind of thought it was," replied the confused man, "when it stood at one corner a couple of hours without going anywhere, but what finally tipped me off was this—people kept coming in and ordering hamburgers."

# TIPS for OUTDOORSMEN

**Hunting a Broken Quail Covey**  
Quail hunters following a broken covey that lights here and there as singles, often are puzzled to find that their dogs can't locate the birds, or blunder smack-dab into them with no chance to stand.

This happens because:

- (1) An alighting quail usually hits the ground running and ends up a "far piece" from the spot where it landed.
- (2) Your dog can't smell such a bird out because the newly-grounded quail has air-washed its body odor away in flight.

You can get around this by waiting patiently for about half an hour before going after the singles. This gives the birds time to regain the distinctive scent the dogs depend on.

but they will surprise you by the number of geese they will decoy to your blind.

Stuffed decoys have been used by many sportsmen with great success.

**To Find Squirrels—Hunt Nest**  
In the South, most squirrels build their nests around a vine, either a grape vine or whatever sort comes handy.

Smart hunters look for these vines, then shake them vigorously. If there is a squirrel in the nest, out it comes into the open.

**Hunt Woodcock on Wet Days**  
Best woodcock hunting can be had on muggy, humid, or downright wet days. The birds are more active then, and the scent lingers longer on the ground for your dog to nose out.

**Shot Size is Important**  
When hunting turkeys on the wing use No. 2 shot in a modified barrel — 12 gauge, or 20. The gauge makes little difference.

If ground shooting, best results are obtained with No. 6 or 8 shot, aiming for the head only.

Rifle hunters should use a Hornet, or 22 long rifle loads.

Shoot for the head, if you are confident, and save good meat.

**Tunes for Coons**  
Coon hunters can get out into the open by hiding in a leafy tree, a silent dog with harmonica, or tune.

**Lighter Guns for Coon**  
As a man gets out into the open, he should improve his shot by slowing reflexes.

When the gun is slow, you can reach 70 year bracket, or your shooting is progressively worse, 12 gauge, and pipe.

**Carry Chlorine Tablets**  
Boil all water you are not absolutely sure is safe. Carry a bottle of chlorine tablets with you.

If you talk a bound to say something occasionally — but are no one will

**NOW OPEN!**  
**Waldo's Drive-In**  
Behind John's Liquor Store  
On Golf Course Road.  
Open 7 Days Each Week  
1 P.M. To Midnight Sunday  
Cold Beer And  
All Your Favorite Beverages



**The Baker's 3 R's**

Rest  
Relaxation  
Recreation

Economical package plans for one or the whole family.

WRITE • or • CALL  
**BAKER HOTEL**  
Mineral Wells, Texas  
FAirline 8-2329

## Sligh Asks Incentives For Growth

The way to meet the challenge of the future lies in less centralization of power and authority in Washington and in greater freedom and responsibility for the individual and his local and state governments.

Charles R. Sligh, Jr., executive vice president of the National Association of Manufacturers, told the 65th Congress of American Industry in New York this month.

Also, he said, we must have governmental fiscal and tax policies which will encourage, not discourage, the growth and expansion of our economy, and we must increase our productive efficiency and keep costs down so we can meet foreign competition.

"However, public opinion will not demand spending restraint and less centralization of power and responsibility in Washington," Mr. Sligh continued, "unless the public, and lawmakers, understand the inflationary effect of big spending and the threat which centralized authority poses to our federal-state-local system and ultimately to our individual liberties."

"Public opinion cannot be expected to support the sound tax rate reform which is necessary for maximum economic growth until the public, and lawmakers, understand how excessive and discriminatory tax rates hamper the establishment and expansion of businesses, the creation of more and better jobs, and the achievement of a higher standard of living."

"Public opinion will not insist on the effective control of union monopoly power, which raises our costs of production, prices us out of markets and results in inflation which does great harm to everyone—unless the public, and lawmakers, understand how such power distorts the operation of our economy."



**HUB LIQUOR STORE HAS Your Favorite Brand Of Liquor, Wine And Beer.**

Visit Us Soon!  
HUB LIQUOR STORE  
NORMAN WILLIAMSON, MANAGER

## SPORTS AFIELD

By Ted Kesting

The major interest of canoeists today centers around what they are made of. No wonder—the ingredients are such to make any old guide give a long head-shake, and to make any Indian who remembers birchbark even more speechless than usual.

Aluminum canoes are the most popular. Not pure aluminum of course, but alloyed now to be corrosion-resistant. Painting for the latest models seems hardly necessary even for salt water; storing out of the water and some fresh-water washing is enough. While aluminum canoes caught on at once when first introduced about 15 years ago, states Willard Crandall, Boating Editor of Sports Afield Magazine, it was some time before it could be determined how long they would stand up. They now have proved themselves in that respect.

Aluminum canoes are light, though ultralight ones are disproportionately weaker and therefore seldom suggested save for special cases. They can be left around any old place outdoors with less damage from sun and weather than almost anything else. Wet rags left in contact might cause some corrosion; ice forming in seams might do some damage; but really this only emphasizes how little looking-after these canoes need.

Molded plywood canoes are quite light—a 16-footer offered now weighs 52 pounds—and, no question, this construction

**TULSA OKLAHOMA**

**Holiday Inn**

- Roomwide Parking
- Heated Swimming Pool
- Smoker at Poolside
- Holiday Dining Room
- Food and Beverage Room Service
- One-Day Laundry and Valet Service
- Television, Radio and Central Music
- Tile Bath and Dressing Room
- Wall-to-Wall Carpeting
- Tubs and Showers
- Two, Three, and Four Room Suites
- Children's Playground
- Gift Shop
- Physician
- Bath Sitter Service

MIAMI BEACH FLORIDA

**Natic**

MIAMI BEACH FLORIDA

**IT PAYS TO TRADE AT Cecils LIQUOR STORES**

Just Follow the Signs in  
Odessa - Post - Lubbock

**ROBERTS PACKAGE STORE**

"Your Favorite Store On U.S. 84"

Has Your Favorite Beverage In Stock

Located: 3.1 Miles West Of Slaton On The Lubbock Highway.



**JAX Beer**

**AN ADVENTURE IN TASTE**

**JAX Beer**

**AN ADVENTURE IN TASTE**

# The Tigers Have An Open Date This Week But Will Be Back In Action Oct. 27 Against Post

### Cast Your Vote!

My Vote This Week  
For The "Player Of  
The Week" Is

Either Mail To  
Slatonite or Drop In  
Box At Slatonite Office



## Player Of The Week

Greg Nowlin, Slaton Tiger end, was named this week as the "Player of the Week," following the opening game in district action against Tahoka.

Nowlin was particularly outstanding defensively for the Tigers, who held the Bulldogs scoreless for most of the game, but gave up the winning margin on an initial bad break.

Nowlin has been cited by coaches many times for both his offensive and defensive play. As a junior this year, Nowlin has another full season with the Tigers, and is expected to be one of Slaton's outstanding linemen.



RICKY BRUSKI --TACKLE

## This Week In The District

Denver City 80 - Post 0  
Tahoka 16 - Slaton 0

## How They Stand

Team	Seasons Record		District Record	
	W	L	W	L
Denver	7	0	1	0
Tahoka	2	5	1	0
X Slaton	2	5	0	1
Post	1	6	0	1
Stanton	3	3		(Open Date)

This Page Made Possible By Sponsors Listed.



Kendrick Pontiac  
1100 S. 9th. VA 8-4791



MIKE BALL--GUARD KELLY BOWNDS--FULLBACK TOMMY SIMMONS--TACKLE  
**Williams Higginbotham Bartlett Self Service**  
Funeral Home Lumber 305 S. 9th. VA 8-3331



GREG NOWLIN--END. RONNY JONES--QB JOEY RHOADES--END  
**Bourn Cycle Shop**  
BICYCLES--LAWN MOWERS--GO CARTS--COMPLETE SERVICE  
Boosting The Tigers For 37 Years  
DON BOURN OWNER

## SLATON TIGERS

Oct. 13 Tahoka . . . . . There  
Oct. 20 (Open)  
Oct. 27 Post . . . . . Here  
Nov. 3 Stanton . . . . . There  
Nov. 10 Denver City . . . . . Here

## WILSON MUSTANGS

Oct. 13 Sands . . . . . There  
Oct. 21 New Home (Homecoming) . . . . . Here  
Oct. 27 New Deal . . . . . There  
Nov. 3 Lorenzo . . . . . There  
Nov. 10 Cooper . . . . . Here

## SOUTHLAND

Oct. 13 Wellman (Homecoming) . . . . . Here  
Oct. 20 Gail . . . . . There  
Oct. 27 Pettit . . . . . Here  
Nov. 3 Loop . . . . . Here  
Nov. 10 Smyer . . . . . There



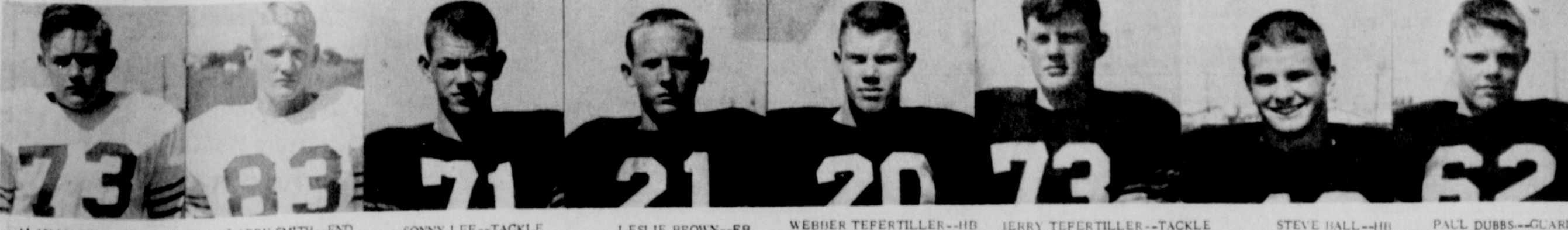
BRUCE PEMBER Jr.--QB JOHN GEORGE--GUARD CORKY NALL--END  
**Bruce Pember Insurance Tucker Oil Boston Super Dog**  
Bruce Pember Insurance Co. Lubbock Highway VA 8-4131 1250 S. 9th. VA 8-4421  
"A Tiger Booster For 41 Years"



TRAVIS MCCORMICK--END MIKE DUBBS--GUARD MIKE HUNTER--TACKLE  
**Henzler Grocery Becker Humble Service**  
400 S. 9th. VA 8-7109



WADE CARTER--QB JOE HARGRAVES--END PAUL BOSWELL Asst. Coach M.W. KERR Head Coach TOMMY LACEWELL Asst. Coach RONNIE EDWARDS--END LARRY GAMBLE--QB GAYLORD HOOVER--GUARD  
**THOMPSON FURNITURE THE SLATONITE SLATON SAVINGS & LOAN SLATON IMPLEMENT**  
190 Texas Ave. VA 8-4455 "Slaton's Growth-Up Newspaper" "We Pay You To Save" Lubbock Highway VA 8-4933



ALAN MARTIN--Tackle LARRY SMITH--END SONNY LEE--TACKLE LESLIE BROWN--FB WEBBER TEFERTILLER--HB JERRY TEFERTILLER--TACKLE STEVE HALL--HB PAUL DUBBS--GUARD  
**Bain Auto Store Reynolds Insurance "DOC" CROW CHEVROLET**  
190 W. Garza VA 8-4052 210 W. Garza VA 8-4834 120 N. 9th. VA 8-4261



JOHN HENNINGTON--HB BOBBY BRAKE--HB GLEN WILHOIT--TACKLE RICHARD HEIGHT--CENTER LEONARD HURST--CENTER ASCENSION PEREZ--GUARD ROGER BUXKEMPER--TACKLE JIM CHRISMAN--CENTER  
**Slaton Co-op Gin White's Auto Store Browning & Marriott BO BECKER PUMP SERVICE CHRISMAN FLORAL**  
VA 8-4861 VA 8-4301 1 1/2 W. Garza VA 8-3216 220 N. 5th. VA 8-3951

DOORS...  
Tuna for Coon...  
Lighter Guns for...  
Carry Chlorine Ta...  
Roach Treat...  
\$2 Per Ro...  
Year Guar...  
Termite Tre...  
7c Squar...  
Boned & Lic...  
LONE STAR...  
CONTROL...  
MIAMI BEACH...  
AT SENSIBLE...  
THE NE...  
Natio...  
EL - POOL - CH...  
EASTFRONT...  
7K NORTH OF...  
conditioned and...  
rious New Deco...  
Private Beach...  
Room - Cabana...  
Radio In Eve...  
ENTERTAIN...  
BEACH CH...  
350...  
MI BEA...  
FLORIDA

# Slatonite

# FARM PAGE



## County Supervisor Announces Expansion In Existing Rural Housing Loan Program

Families living in small rural communities and in rural areas, even though not engaged in farming may now be eligible for the housing loans made by the Farmers Home Administration, according to Ralph E. Griffiths, the agency's county supervisor for Lubbock county.

The Housing Act of 1961 broadened the eligibility requirements for rural housing loans. As a result owners of non-farm tracts in rural areas and in small rural communities of not more than 2,500, as well as farmers, may be eligible

for this type of credit.

"This program is an important new tool in promoting the development of rural areas," Mr. Griffiths said. "Rural housing loans will not only help families obtain better homes but will put more carpenters, plumbers, and electricians to work, and will increase the sales in lumber yards and building supply firms."

Housing loans are made for the construction, repair, and remodeling of dwellings and essential farm buildings and to provide water for farmstead

and household use.

In addition to major construction, funds are available to modernize homes—add bathrooms, central heating, modern kitchens, and other home improvements, as well as to enlarge and remodel farm service buildings and put in related facilities such as paved feedlots, yard fences, and driveways.

Rural housing loans may also be used for the construction of fall-out and storm shelters. The interest rate is 4 percent per year on the unpaid balance of the loan. Loans may be scheduled for repayment over periods up to 33 years. The proposed housing must be adequate to meet the family's needs yet modest in size and design.

To be eligible an applicant must own a farm or a housing site in a rural area; be without decent, safe and sanitary housing; be unable to obtain the needed credit from other sources; and be without sufficient resources to provide the necessary housing on his own account. He must also have or be able to obtain sufficient income to meet payments on existing debts, take care of his other expenses, and make the payments on the proposed loan. The local county supervisor

of the Farmers Home Administration will review building plans and inspect the housing construction as it progresses in order to make certain that the borrower obtains sound and acceptable construction.

The local county or area committee of the Farmers Home Administration determines the eligibility of applicants. Farmers who need to enlarge or develop their farming operations in order to obtain enough income to pay for housing loans may obtain farm enlargement and development loans and farm management help from the Farmers Home Administration.

Rural families who need emergency housing repairs and do not have the ability to repay a loan may be able to obtain small grants for such purposes as repairing a roof,

screening windows, and providing a sanitary supply of water.

All loans are secured to the extent necessary to protect the Government's interest. Small improvement loans made in amounts of less than \$1,500 with repayments scheduled over periods up to 10 years may be secured by a promissory note. Other loans are secured by mortgages.

Under certain circumstances building loans may be made to lessees of farms.

More than \$400 million has been authorized for rural housing loans over the next four years.

The Housing Act of 1961 also authorizes the Farmers Home Administration to insure loans for housing and related facilities for domestic farm labor. These loans may be made to farm owners, associations of farmers, state and local government units and non-profit associations.

Funds for these insured loans are provided by private investors. The Farmers Home Administration will make and service the loans, and insure their

repayment. The total volume of insured loans may not exceed \$25 million in any one year.

Further information on rural housing loans may be obtained at the county office of the Farmers Home Administration located at Room 208, Post Office Building, Lubbock, Texas.

Wet skin conducts electricity 100 to 600 times as well as dry skin.

**Maguire Electric**

5th & Murray  
4 blocks East of  
Porter Lumber Co.  
VA8-3877

**Wilson Oil Company**

Wilson, Texas Phone 2251

• BUTANE, PROPANE • PHILLIPS 66 GAS, OIL, COMMERCIAL, INDUSTRIAL GREASES and BATTERIES  
• LEE TIRES and TUBES • AUTO ACCESSORIES

A Complete Auto Service For Wilson

**DEAL'S MACHINE SHOP**  
SLATON, TEXAS  
VA 8-4307 Res. VA 8-4114  
155 No. 9th. St.  
FOR YOUR IRRIGATION PUMP AND GEAR HEAD REPAIR  
All Makes  
**General Welding And Machine — Work —**

**FARMERS INSURANCE GROUP**  
ALL TYPES  
of Fire and Casualty Insurance, Workmen's Compensation, Automobile, Liability.  
Let us show you how you can save money on your insurance... See your Farmer's Insurance Group Agent today:  
BILL SLEDGE INSURANCE AGENCY  
130 W. Lynn VA 8-4687

Cotton Bowl  
Football  
**CONTEST**

Weekly Winners Receive \$5 For The Highest Score.  
Grand Prize Winner Receives Free Trip To Cotton Bowl Game In Dallas Jan. 1, With Free Tickets And Hotel Reservations For Two.  
**PREDICT EVERY WEEK -- YOU MAY WIN!**

This Contest Is Made Possible By Support Of The Local Merchants Listed On This Page.

**HERE'S HOW YOU WIN:**  
Listed in the box at right are some of the football games to be played this weekend which will be watched with interest by area fans. Indicate your selections by marking an X beside the teams you think will be winners and mail or bring them to the Slatonite before 5 p. m. each Friday. Predict the score on the tie-breaker only. The contestant with the largest number of correct guesses will receive \$5 in the weekly contest, and the contestant with the best score at the end of the contest will have earned a free trip to the Cotton Bowl game. Everyone is eligible to enter except Slatonite employees and members of their families.  
REMARKS: Each entry must be on this official form and only one entry per person will be considered.

**Becker Humble Service**  
400 S. 9th VA 8-7108

**"DOC" CROW CHEVROLET Slaton**

**Bo Becker Pump Service**  
Ph. VA 8-3951 220

**Slaton Co-op Gin**

**Brewer Insurance Agency**  
139 S. 9th

Name		vs	Post
Tahoka		vs	Post
(Tie-Breaker, pick exact Score)			
Spur		vs	Anson
Lamesa		vs	Sweetwater
Springlake		vs	Kress
Farwell		vs	Hale Center
Petersburg		vs	Ralls
Morton		vs	Olton
Texas Tech		vs	Baylor
Arkansas		vs	Texas
Texas A&M		vs	T.C.U.
Rice		vs	S.M.U.
Amarillo		vs	Monterey
Brownfield		vs	Andrews
Tulia		vs	Dimmitt

**Browning & Marriott Insurance Agency**

**Tucker Texaco Products**  
Butane - Propane

Mrs. A. C. Burke Won Last Week With 9 Correct Predictions

**Self's Service "Your Phillips 66 Dealer"**  
305 S. 9 VA 8-3331

**Higginbotham Bartlett Lumber Co.**  
"Good Lumber"

**Slaton Motor Co. "Your Ford Dealer"**  
150 W. Lynn VA 8-4221

**Lasater-Hoffman Hardware**  
157 W. Lubbock

**Reynolds Insurance Agency**  
210 W Garza VA 8-4834

**Sanders Grocery & Mkt.**  
705 S. 9 VA 8-4683

**Everyone Knows About West Texas Winters, But Some Folks Forget To Buy Anti-Freeze.**

**We Have A Ware House Full Of The Top Solution Available**

**Red Barn Permanent Type ANTI - FREEZE**  
Ethylene Glycol Base By The Case Or Gallon \$150 Gal

**RED BARN FERTILIZERS • CHEMICALS**  
VA 8-4782 Intersection Of FM 400 & Hwy. 84

... and other building supplies

Complete Stock Of Jones-Blair Paints

**COTTON TRAILERS**  
Painted And Ready To Roll.  
Take Your Pick 18 Or 20 Ft.

**Higginbotham-Bartlett Lumber Co.**  
Ph. VA 8-4523 Slaton

Occasional what power to give as c...  
On March City Chart...  
a corporati...  
One of...  
Court for...  
"Corporati...  
defined and...  
of Texas...  
the Legislat...  
Sixteen of...  
of this Stat...  
As set o...  
point, as i...  
of the City...  
may or ma...  
two years...  
cretion of...  
shall be fi...  
The Cor...  
territorial...  
arising un...  
jurisdiction...  
arising un...  
is exceed \$2...  
The Ci...  
files to be...  
For mi...  
Judge by t...  
worked w...  
by the fa...  
the people...  
with a tot...  
fore the...  
of Mayor...  
represent...  
of Comm...  
angles of...  
the two...  
Mayor a...  
Judge. A...  
The Mi...  
and if...  
position...  
two jobs...  
per mont...  
Corporat...  
making...  
Mayor d...  
Judge ge...  
\$15,00 p...  
and the...  
being w...  
The p...  
position...  
of City C...

During...  
tring ap...

**VIEWING:**

**Your City Government**  
by J. J. Maxey, City Secretary

Occasionally we are asked about our corporation court, what powers it has and what its duties are. We will attempt to give as clear an explanation as we can in this short space.

On March 19, 1929 when the citizens of Slaton voted their City Charter there was a section devoted to the creation of a corporation court. This section entitled Article Two, Section One of the City Charter states - There shall be created a Court for the trial of misdemeanor offenses, known as the "Corporation Court," with such powers and duties as are defined and described in an act of the Legislature of the State of Texas, and by any Acts amendatory thereof. This act of the Legislature creating corporation courts appear as Chapter Sixteen of Title Twenty Six of the 1925 Revised Civil Statutes of this State.

As set out in our charter the City Commission shall appoint, as its organization meeting, some well qualified citizen of the City of Slaton to be Judge of this Court. The appointee may or may not be the Mayor. The term of office shall be for two years or may be removed from office at the will and discretion of the City Commission. The salary for this office shall be fixed by the City Commission by ordinance.

The Corporation Court shall have jurisdiction within the territorial limits of the City of Slaton in all criminal cases arising under the ordinances of this City and has concurrent jurisdiction with any Justice of the Peace in all criminal cases arising under the criminal laws of this State in which the punishment is by fine only, and where the maximum fine does not exceed \$200.00.

The City Commission sets the minimum and maximum fines to be charged by this court in all types of cases.

For many years the Mayor had been appointed as City Judge by the City Commission. In some ways this arrangement worked well but in most cases the Judge was handicapped by the fact that he was Mayor and depended on the votes of the people for his job. On February 9, 1959 three committees with a total membership of seventeen citizens appeared before the Commission and recommended that the position of Mayor and City Judge be separated. These committees represented the Board of City Development, the Junior Chamber of Commerce and a citizens group. After considering all angles of this problem the Commission decided to separate the two jobs and the then Mayor, O. N. Alcorn, resigned as Mayor and was immediately appointed to the position of City Judge. A position that he has held continuously since that date.

The Mayor's salary is set by Charter at \$15.00 per month and if the Mayor serves as City Judge his salary for that position is set at \$100.00 per month, prior to the time that the two jobs were separated the Mayor was being paid \$15.00 per month for being Mayor and \$100.00 per month for being Corporate Court Judge and \$85.00 per month as car expense making a total of \$200.00 per month. At the present time the Mayor draws \$15.00 per month and the Corporation Court Judge gets \$200.00 per month. It actually only costs the City \$15.00 per month to have the jobs separated as they are now and the Judge can devote his full time to the position without being worried about having to be elected each two years.

The present City Judge, O. M. Alcorn, has served in this position for six years and is very familiar with the procedures of City Court.

**Parents Day Set At Wayland College On October 23rd**

Plainview, Texas, Special: Parents' Day at Wayland Baptist College Oct. 23 will welcome parents of Wayland students to the campus where activities centered around a Western theme will provide for their entertainment and help to acquaint them with the college.

Hosts for the day's activities include Katherine Smith, 620 S. 13th.

Highlighting the day will be dedicatory ceremonies at 2:30 p.m. for the two newest structures on the Wayland scene, Owen Hall where the program will take place and Allison-Conkright Hall, Owen Hall, 100-unit residence for women, has been named by the trustees in honor of Dr. A. Hope Owen, president. Two bedrooms are connected with baths having individual storage space for the girls. Modern furnishings in the spacious bedrooms, which have bedspreads and bolsters in vibrant colors, give the young women unusually attractive accommodations.

President Owen and Dave Causey, Hendersonville, N. C., president of the Student Government Assn. Betty Mathews, Stigler, Okla., will read the scripture and Jim Myers, Gooding, Idaho, will lead in prayer. Singing will be led by Charles Lovell, Plainview, with Annette Massingill, Phillips, at the organ and Mrs. Jera Lynn Saul, Fort Collins, Colo., at the piano. The International Singers, eight - member ensemble from the International Choir, will sing under direction of Cram. Dr. Howard will serve as master of ceremonies.

A question and answer session with members of the administration and faculty at 1:30 p.m. will give parents opportunity to ask about Wayland and college in general. The day's program will close at 3:30 p.m.

**Doctors May Send Children To Clinic**

Local physicians are invited to send cerebral palsied children to the regular monthly clinic at the Lubbock Cerebral Palsy Treatment Center, 3502 Avenue N, on Thursday morning, November 2, 1961.

Dr. Esther E. Snell, Director of the Center, points out that nearly 50% of the children now being referred to the Center are less than two years old. Starting treatment at an early age aids greatly in the child's habilitation. In 1960, 87% of the children of school age who were under care at the Center were able to attend regular school.

The Center is supported by contributions from interested individuals and organizations, and is able to offer treatment without charge to all cerebral palsied children referred by their own physicians.

**Total Of 26 Accidents In County**

The Highway Patrol investigated 26 accidents on rural highways in Lubbock County during the month of September, according to Capt. E. L. Posey, Highway Patrol Supervisor of this area.

These wrecks accounted for 1 person killed, 28 persons injured and a property damage of \$16,173.00.

The rural traffic accident summary for Lubbock County from January through September of 1961 shows a total of 217 crashes. As a result of these crashes there were 24 persons killed and 134 persons injured. The estimated property damage amounted to \$124,326.00.

Shorter days and longer nights spell disaster on the streets and highways," Capt. Posey said. Next time you turn on your headlights, glance at your watch and see how much earlier you are using lights than you did only a week or two ago. And, as time moves on during the next three months, car-lights will be needed earlier day by day.

No matter what anyone may tell you as to how good a driver he is after dark, you had better take it with a grain of salt, because no human sees as clearly or as well after dark as he does in the daylight. Some people may see better than others, and some may not be bothered too much by bright lights in traffic; but, if they will admit that they do not consistently employ the same driving tactics after dark as they do in the daylight, the veteran Highway Patrol Supervisor added that night driving is different; therefore, it calls for a driving technique very different from that used during the daytime.

WHY NOT KEEP UP WITH THE JONESES.

Their car is a slightly battered '56 model. The house could use a coat of paint and some new rugs all around. The family couldn't get away for a vacation last summer. Why should anyone envy them -- . . . unless it's a case of their contagious happiness.

They're close as a family, self-sufficient, self-reliant with what they have. Faith in themselves plays a big part in their happiness; a deep religious Faith plays a bigger part. Take a look at your life and see if it could be fuller. Regular worship at your church or synagogue can help you find what you've been missing.



**Worship Together This Week!**

Wilson St. Paul Lutheran Church Rev. G. W. Heinemeier	St. Paul Lutheran Church, Mo. Synod, Wilson Rev. R. F. Kamrath
First Baptist Church Wilson Rev. F. E. Scott	First Nazarene Church 635 W. Scurry Rev. Charles Stuart
Our Lady Of Guadalupe Church 700 S. 4th.	Westview Baptist Church 830 S. 15th. Rev. Dwight Lusk
St. Joseph's Catholic Church Mgr. T. D. O'Brien 19th. & Lubbock	First Methodist Church 306 W. Lubbock Rev. Rollo Davidson
Gordon Church Of Christ Marion J. Crump, Minister	Church Of God 206 Texas Ave. "Rev. B. E. Coker"
Acuff Church Of Christ Brooks Terry, Minister	

THIS MESSAGE IS MADE POSSIBLE BY THESE MERCHANTS SLATON SUPPORTERS:

- O.D. Kenney  
AUTO PARTS  
Your Automotive  
Parts Distributor
- Slaton Pharmacy  
"Service Is Our Motto"
- Slaton Savings & Loan  
Association  
"We Pay You To Save"
- Ray C. Ayers & Son, Inc.  
Grain--Feed--Seed
- Janes-Prentice Inc.  
Sand and Gravel For The  
Construction Industry
- Union Compress and  
Warehouse Company
- Slaton Co-Op Gins  
"Owned and Operated By Farmers"
- JIM-DAN-DY CLEANERS  
Free Pick-Up and Delivery  
130 North 10th. --VA 8-4347
- Bruce's Cafe  
"Where Friends Meet and Eat"
- Williams Funeral Home  
Unlimited Insurance Protection  
Cadillac Ambulance Service
- WILSON FRIENDS:  
Wilson Co-Op Gin  
"You Own Your Own  
Business... Be Its  
Best Customer!"
- Wilson State Bank
- Clubb Grain Co.  
Jimmy Coleman and  
Associates
- FROM ACUFF:  
Acuff Co-Op Gins  
"It's Your Association"
- SOUTHLAND FRIENDS:  
Basinger Drilling Co
- Southland Hardware  
"In Southland Since 1920"
- Church Of Christ  
840 W. Jean  
Rev. Leroy R. Deans
- First Baptist Church  
Your Automotive  
255 S. 9th,  
Dr. Charles Wood
- First Christian Church  
145 E. Panhandle  
Rev. E. A. Wilbur
- Immanuel Lutheran Church  
Posey  
Rev. F. A. Wittig
- St. John's Lutheran Church  
Wilson  
Rev. J. P. Burnett
- First Presbyterian Church  
425 W. Lubbock.
- Church Of Christ  
340 W. Division  
Roy Dean Verner
- Assembly Of God  
950 S. 14th,  
Rev. V. F. Love
- Missionary Baptist Church
- Southland Baptist Church  
Rev. Eddie Fortson, Pastor
- Southland Methodist  
Church  
Rev. Beane
- Acuff Baptist Church  
W. O. Donley, Pastor
- Bible Baptist Church  
W. Panhandle  
Rev. H. E. Summar
- Wilson Methodist Church  
Wilson  
Rev. Harold Rucker
- Pentecostal Holiness  
Church  
105 W. Knox  
Rev. W. L. Comstock
- Trinity Evangelical  
Methodist Church  
Rev. Weldon Thomas
- African Methodist Church  
Rev. J. S. Gilbert

HO HUM!  
During a pause in a long,  
tiring speech, one guest said

to another: "What follows this  
speaker?"  
Second guest: "Wednesday."

**SHORT AND SWEET**



Iran reserves its small output of golden imperial caviar exclusively for the Shah . . . The National Geographic Magazine reports the Civil War was the last one in which generals personally led their troops into action . . . The cows which graze peacefully on South Uist, Scotland's rocket range, are herded to safer pastures before a rocket is fired . . . For every \$7 in domestic sales last year, U. S. machine tool makers sold \$3 worth abroad . . .

**FREE AIR AT SELF'S SERVICE STATION**

It is much better to tell people how to get on than to tell them where to get off.

When a man says a thing can't be done, it only means that he doesn't know how to do it.

Among the guests at a reception was a distinguished man of letters. He was grave and somewhat taciturn. One of the ladies present suggested to the hostess that he seemed to be out of place at such a party.

"Yes," replied the hostess with a bright smile, "he can't talk anything but sense."

We are talking sense when we remind you of the fine Phillips products and top-notch service featured at our station.

**SELF'S**  
Phillips  
66  
Station

**NOW SEE ALL 13 FALCONS AT YOUR (HOMETOWN) FORD DEALER'S!**

1962 FALCON CLUB WAGON  
1962 FALCON FORDOR WAGON  
1962 FALCON FUTURA  
1962 FALCON SQUIRE  
1962 FALCON FORDOR SEDAN

**Again America's all-around economy champ!**

More to see, more to save, more to love—from the car America loves most! Biggest compact choice under one roof anywhere! See the new Falcon Squire, only compact wagon with elegant woodlike trim on its steel side panels . . . optional bucket seats . . . the longest loadspace of any compact wagon! The Falcon Club Wagon that can sleep four, seat eight. The Futura, world's most luxurious compact. New styling, new colors, new fabrics, new cost-cutting features, new quiet ride. Plus the Falcon Six that last spring recorded the best gas mileage for a 6- or 8-cylinder car in the 25-year history of the Mobilgas Economy Run. All at Falcon's famous low price! Start saving today!



**Ford Falcon 62**  
BEST SHAPE ECONOMY'S EVER BEEN IN

SEE YOUR FORD DEALER TODAY

**Slaton Motor Company Inc.**  
9th & Lynn

Miss Baker Enrolls in Draughtons

LUBBOCK, TEXAS -- September 28, 1961--Miss Sandra Baker, daughter of Mr. and William A. Baker, 1025 Dickens, has entered Johnson's Business College in Lubbock where she plans to continue her secretarial work. Miss Baker is a 1961 graduate of Slaton High School. While in high school she was a member of the Future Homemakers of America, receiving two home-maker degrees. She was also a member of the high school choir, and served as school librarian for two years.

Miss Baker is a 1961 graduate of Slaton High School. While in high school she was a member of the Future Homemakers of America, receiving two home-maker degrees. She was also a member of the high school choir, and served as school librarian for two years.

The Old Timer



Old Friends

SLATON OLD FRIENDS STET HEAD SENT THIS WEEK. This column is being prepared and written by the Slaton Ex-Students Association for their sole use and benefit and does not necessarily reflect the views and or the writing style of this newspaper. Joel has promised us all the space we wanted for the dissemination of our news so--from week to week or time to time you will be able to get news of ex-students, where they live and what they are doing.

We have chosen to name this column 'Old Friends' because as time goes on we like to recall the friendships that were formed in our teens. Last June at the occasion of our banquet some two hundred eighty old friends met, some for the first time in many years. There was lots of handshaking, hugging and kissing and a general renewing of friendships that were begun many years ago.

In thinking back we recall a particular friend in the class of '28, Howard "Luke" Shelby. Luke left Slaton in 1933 to go to Chicago where he hoped to make his fortune. Luke has done rather well for himself. He is now chief engineer for the Manaster Brothers Packing Company in Chicago. Luke and his family reside at 15530 Vine Avenue, Harvey, Illinois. Harvey is a suburb of Chicago. Luke and Margaret have twelve children, three of which Slatonites know very well. Pat is now employed at the Slatonite, Jimmy who went to school here his freshman year in high school and Donny who was the captain of our football team last year. Many of you remember Luke as probably the smallest guard every to make "all district football team" from Slaton. We see Luke from time to time when he visits his Mother here in Slaton. He is still the sincere, straightforward friend that we remember.

You exes that are interested in keeping in touch with old friends can help us by sending in information about exes, what they are doing and where they are. We would like to publish names, addresses and anything that will be interesting to ex-students. This information may be sent to J. J. Maxey, City Hall or to Mrs. Jack Shepard, 125 North Fourth Street, Slaton.

Former Slaton Resident Named As Santa Fe San Angelo Trainmaster

Raymond M. Champton, Jr., of Chicago, has been named trainmaster of the Santa Fe's Slaton division with headquarters at San Angelo, effective October 16.

Champton succeeds Earl Gillmore who has been transferred to Winslow, Ariz., as trainmaster.

Born in Slaton, Tex., December 10, 1926, Champton is a

graduate of Slaton High School, holds a B.S. degree in civil engineering from Texas A & M and a law degree from the University of Michigan. He entered Santa Fe service in 1943 as a chairman at Clovis, N. M., and worked in various engineering and operating department capacities there and at Dodge City, Kas., Las Vegas, N.M., Pueblo, Colo., and Amarillo, Tex. He also worked as assistant right of way agent at Dallas and Los Angeles. While working as transportation inspector at Winslow in September, 1959, Champton was appointed assistant director of transportation in the cost analysis and research department of the Santa Fe at Chicago, which position he held at the time of his appointment to San Angelo. Gillmore has been trainmaster at San Angelo since August 1, 1959.

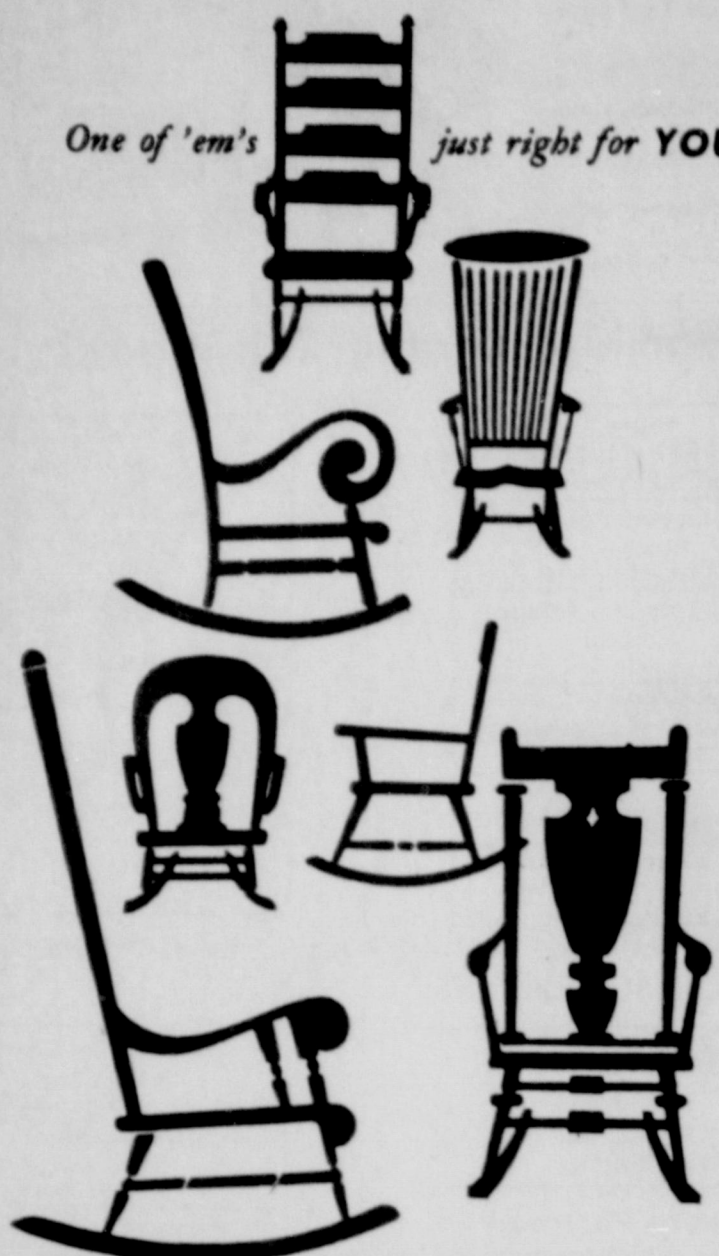
My Neighbors



"Well--I'm waiting!"

DR. J. W. BELOTE JR. Optometrist Office Hours 9-5 Phone VA 8-3766 115 South Ninth Slaton, Texas

One of 'em's just right for YOU!



BIG ONES... TALL ONES... SHORT ONES... SMALL ONES--

We've got Tell City Rockers all over the place. One of 'em's just right for YOU!

SELF FURNITURE

235 W. Garza

VA 8-4407

Slaton Students Enrolled Now In Lubbock Christian College

Glenn Bentley, son of Mr. and Mrs. W. D. Bentley of Rt. 1 Box 74; Sue Delaney, daughter of Mrs. Jo Delaney of 700 South 11th St., Ray DeBusk, son of Mr. and Mrs. R. L. DeBusk of 620 South 11th St., Mike Rose, son of Mr. and Mrs. M. M. Rose of 910 South 10th St., and Arlene Short daughter of Mr. and Mrs. J. E. Short of 620 South 10th St. are presently enrolled in Lubbock Christian College, Lubbock, Texas.

The college is in its fifth year of operation with a present student body of 450.

LCC, a Christian liberal arts junior college supported by members of the Churches of Christ, is the largest church-related junior college in Texas.

In Hatley, Wis., junk yard employee Roy Gardner hit the jackpot of a 45-year-old slot machine--with a sledge hammer. A shower of quarters, the newest minted in 1912, poured from the machine... 25 years ago, the presidential campaign of President Franklin D. Roosevelt and Governor Alfred Landon was the first to use radio facilities... The Boston (Mass.) Latin School is our oldest public school. Established in 1635...

Our Men In Service

OKINAWA (FHTCN) -- Participating in Exercise "Warm-Up", a joint naval-marine amphibious operation in the Okinawa area, while serving with the Second Battalion of the Ninth Marine Regiment, is Marine Pfc. Billy J. Summerlin, son of Mr. and Mrs. J. R. Summerlin of Route 2, Slaton, Tex.

The battalion, a unit of the Third Marine Division based on Okinawa, is one of the division's components participating in the exercise with units of the Seventh Fleet.

Farm Facts



350,000 tobacco seed weigh only an ounce.

The tobacco seed is so tiny it takes 350,000 to weigh an ounce or about 5.6 million to weigh a pound.

If each seed germinated and could be transplanted, a pound of seed would be sufficient to plant about 750 acres.

Actually, however, growers sow about an ounce of seed in seedbeds for each 3 to 4 acres to be planted. This is to assure them of enough plants during a relatively short transplanting season.

One tobacco seed represents a potential of about 75 cigarettes. On an equivalent domestic farm sales weight basis, about 370 cigarettes are produced from a pound of tobacco.

It takes the cured leaf from about five plants to weigh a pound.

Tobacco ranks fourth among crops in cash receipts, according to the U. S. Department of Agriculture. It is exceeded only by cotton, wheat, and corn.

There are six major classes of tobacco--flue-cured, fire-cured, air-cured, cigar filler, cigar binder, and cigar wrapper.

If you're sleepy at the wheel, you're likely to hit more than the hay.

SAVE... you'll be glad you did!



...for your children's education

Love and understanding is NOT always enough. Help your children save by making them to save today! Plan for their college education by opening their own college savings account at your Savings and Loan Association. This month in Texas Savings and Loan Thrift Month... help your children for tomorrow with a savings account today! Insured savings were deposited at a liberal rate.

OCTOBER IS TEXAS SAVINGS AND LOAN THRIFT MONTH

Slaton Savings & Loan

Report of Condition of Citizens State Bank

of Slaton, Lubbock, Texas at the close of business on Sept. 27, 1961. State Bank No. 1650 Federal Reserve District No. 11

ASSETS table with columns for item number, description, and amount.

LIABILITIES table with columns for item number, description, and amount.

CAPITAL ACCOUNTS table with columns for item number, description, and amount.

I, T. A. Worley, Jr. Cashier, of the above-named bank do solemnly swear that this report of condition (including the information below and on the reverse side hereof) is true and correct to the best of my knowledge and belief.

T. A. Worley Jr. Correct Attest J. S. Edwards Jr. H. Swanner Bob Merrell, Directors

State of Texas, County Lubbock, ss: Sworn to and subscribed before me this 5th of October, 1961, and I hereby certify that I am not an officer or director of this bank. My commission expires 6-1-63 Theresa Woodfin, Notary Public

Low CHEVROLET A New World of Worth from Chevrolet



New Chevrolet Impala Sport Coupe

Impala's this one got it, though! Fourteen lovely, lively models to choose from, with your pick of an economical 6 or your special favorite of five vigorous V8's (right up to a 409-hp powerhouse\*). For putting that power to work just the way you want it, there are four transmissions. More? Plenty. You've got Jet-smooth ride, Body by Fisher craftsmanship, and handy helpers like longer lived mufflers for all engines. Still more? You bet. And your Chevrolet dealer's just itching to tick it off for you firsthand. \*optional at extra cost



New Chevy II 300 4-Dr. Sedan

NEW CHEVY II

Sensibility at its Sunday best in a totally new line of cars! Here's sturdy simplicity to save money in service and maintenance. Uncompromising economy (your choice of a 4- or 6-cylinder engine in most models). Steadfast Chevrolet dependability. Body by Fisher craftsmanship. Engineering advances like the Mono-Plate rear springs to eliminate the squeaking and friction of multi-leaf springs. Nine new-size models in all (including the soon-to-be-available hardtop, convertible and wagons) with roominess to spare. More details? Your dealer's loaded with 'em.

See the '62 Chevrolet, the new Chevy II and '62 Corvair at your local authorized Chevrolet dealer's

"DOC" CROW CHEVROLET

O N. 9th. Slaton VA8-4261

# NEW IDEA



**BAKERY TREATS**  
for dessert!

Our new idea in baking takes the best of the modern baking innovations and mingles these with all the old-time baking traditions that flavored Grandma's home-made bread.

We bake for all kinds of special occasions.

We don't "go for" the "modern" additives and preservatives most bakeries do these days. . . but we do use the modern health ingredients, such as Mazola, that doctors say is important to your health.

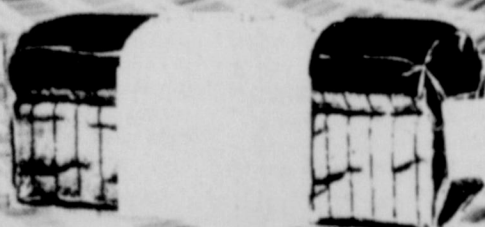
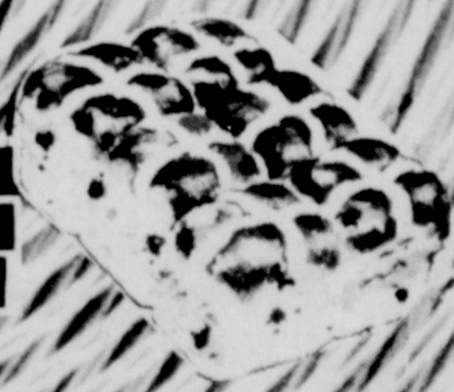
And too, our bread isn't hauled all day on a truck . . . it's baked each day and you buy it and serve it soon after it comes out of the oven!

You should watch your health . . . and Mazola helps you do it! Eat bread prepared with Mazola only! We use only Mazola in the preparation of our baked goods and fried goods. . . doughnuts, cakes, bread or what-have-you!

YOU'LL LIKE BARNEY'S HOME-MAKE BREAD . . . try a loaf today!

Try  
**Barney's Homemade**  
Bread Soon

**FRESH** BREAD  
CAKES  
PIES



# SLATON BAKERY

Barney Wilson  
Owner

325 South 13th

VA8-3523

THURSDAY, OCTOBER 19, 1961

Church Report

Attendance at church schools in Slaton Sunday, Oct. 15 totaled 1,673 in the 12 churches which reported.

Churches reporting and their attendance was as follows:

First Christian.....	71
Church of God.....	45
First Methodist.....	262
First Baptist.....	383
Church of the Nazarene.....	45
Westview Baptist.....	206
First Presbyterian.....	98
Grace Lutheran.....	98
Church of Christ.....	281
First Baptist Mission.....	44
Assembly of God.....	63
Penitential Holiness.....	66

WISH I'D SAID THAT



"His thoughts were slow, his words were few, and never formed to glisten; but he was a joy to all his friends —you should have heard him listen." —Gerald K. Young, Blakesburg (Ia.) Excelsior.

"If you are too busy to take an interest in government, feel that getting mixed up with politics is bad for your business or beneath your dignity, then at least take time for one thing... Teach your children to count in rubles." —Sidney Yudain, Washington (D.C.) Roll Call.

"They say truth is stranger than fiction—and it's surprising how many people refuse to associate with strangers." —Charles W. Koenig, Long Island (N.Y.) Graphic.

"There is, so to speak, a greater resemblance than appears on the surface between prayer meetings and peace conferences: the people who need them least attend." —J. W. Richards, Page Land (S.C.) Journal.

"If Mother could return to her traditional duties in our economically broken homes, the forces of juvenile delinquency would receive a greater assist than Federal millions will ever provide." —Hla W. McGenty, Harmony (Minn.) News.

"The new Wage-Hour law is a spectacular addition to the jungle of regulatory red tape that is slowly choking progress in every field from railroads to rockets." —Will and Edna Long, Hebron (Neb.) Journal-Register.

"If you criticize the wealthy these days, you may be accused of being anti-labor." —Roderick I. Chalmers, Minneapolis (Minn.) Argus.

Happy Birthday

Oct. 20: Harold Tucker, J. B. Fondy, Claude Kiten, Sandra Baker, B. R. Underwood.

Oct. 21: Mrs. J. W. Damm, S. A. Peavy, Al Eckert, Larry White.

Oct. 22: Mrs. H. T. Schuete, Denver Cavens, Mrs. C. L. Tanner, Mrs. Warren West, John East.

Oct. 23: Barbara Jean Sehon, Mrs. W. T. Taylor, Mrs. A. A. Trawick, Mrs. Mildred Lokey, Byron Johnson, L.M. Cole, Mrs. Joe Johnson, Mrs. Willie Saunders.

Oct. 24: Herbert Schwertner, Mrs. H. F. Priecer, Mary Lou Gergross, Mrs. Robert Hurst.

Oct. 25: Mrs. Fred Stottlemire, Mrs. Jerry Jones, Mrs. Mac Hudgins, Jerry Kitten, David Todd, Gary Wimmer, Mrs. B. B. Castleberry, Wanda Junkele, Elizabeth Phillips.

Oct. 26: Mrs. Jack Cooper, Cathy Plavonka, Mrs. L. C. Bond, Charles William Eames, Barbara Jean Edwards, Mrs. Edgar Williams, F. B. Dement, David Weaver.

Etiquette is knowing which finger to put in your mouth when you whistle for the waiter.

**The Timid Soul** A WEATHER CLASSIC

CASPAR: IT'S SEVEN O'CLOCK HADN'T YOU BETTER GET THE CAR OUT SO WE CAN START?

EE-UH—I DON'T THINK WE SHOULD GO UNTIL EIGHT FIFTEEN.

STATISTICS SHOW THAT MOST MOTOR FATALITIES OCCUR BETWEEN 7 AND 8 P.M.

BABY FOOD



Gerbers Strained **4 For 25¢**

DOUBLE EVERY WED.

With 2.50 Purchase Or More

- Ten-dri-zist, 1 lb box
- Crackers 29¢
- Early California, Select, No. 1 Libby, No. 303 can
- Ripe Olives tall can 29¢ Kraut 12 1/2¢
- Quick Quaker, 20 oz box Hillsdale, Broken St., 1 1/4 size
- Oats 23¢ Pineapple 19¢
- Folgers, 10 oz. jar, 30¢ Off Net Rosedale, No. 303 can
- Instant Coffee \$1.39 Peas 15¢
- 60 oz box Hunt's, No. 300 can
- Bisquick 63¢ Potatoes 10¢

With \$5 Purchase

**FREE** your choice

1 Qt. Mirade Whip Or

12-Bottle Carton Cokes

Or 3Lb. Can Vegetole Shortening

- Shop Rite For Frozen Foods
- DINNERS Banquet Enchilada 10 oz. ... **3 for \$1**
- Libby's 10 oz pkg Cauliflower 21¢
- Patio, 15 count pkg Tortillas 15¢
- Cheri-Pi-Pak, 20 oz can Cherries 35¢
- Downyflake Waffles 2/6 ct. pkg. 25¢

- Ice Cream or Glader Club 1/2 Gal. **39¢**
- 1/2 Gal. MILK Bells, Bordens Or Foremost **39¢**

- Shop Rite For Fresher Produce
- APPLES California Delicious 12 1/2¢
- ORANGES OR GRAPEFRUIT New Crop Texas 20¢ bag \$1.19
- CUCUMBERS fresh long green slicers 10¢
- ROMAINE Fresh & Crisp two bunches 29¢

Buy One Unit A Week!

Beautiful Vogue STAINLESS STEEL Waterless Cookware

4 Qt. Covered Sauce Pan \$3.69

\$6.45 Value

**PICK PORK**

and **SAVE** at **Piggly Wiggly**

- PORK CHOPS** Fresh Northern Center Cut Rib Chops Lb..... **5**
- PORK ROAST** Fresh Picnic Cuts Perfect Roasting Lb.... **2**
- SMOKED HAM** Rodeo Brand, Sweet, Smoke Flavor, Shank, Lb.... **39¢** Butt
- Spare Ribs Extra tender, small lean ribs, lb. 49¢
- Pork Steak Lean cuts of Boston butts, lb. 35¢
- Fresh Pork Loins Half or whole, cut & wrapped, freezer ready, lb. 49¢
- Pork Liver Very nutritious, no chunks or pieces, lb. 19¢
- Pork Loin Chops Extra lean tenderloin chops, lb. 39¢
- Pork Sausage Blue Morrow cloth bag, lb. 39¢
- Natural Cheese Kraft's sliced, Swiss, Muenster, Caraway or Br. 39¢
- Game Hens Golden Rock Cornish. Bake with Wild Rice, 14 oz each.

Big Chief **PINTO BEANS**

**4 39¢**

Lb. Bag

OH BOY! Kraft Caramel Apple Time!

Recipe and FREE sticks on every bag

Juicy Red (Variety) APPLES... **39¢**

Kraft CARMELS **39¢**

Shop Rite For Health And Beauty Aids

Gleem 53¢ Size with 25¢ Size Crayolas

Toothpaste 78¢ Value

Buy 14 oz. Bottle Receive 3 oz.

Listerine Bottle Free

Large Bottle of 100's Regular \$1.23

Bufferin Bottle of 20's Regular 98¢ Size

Anahist Tablets

**Pineapple Juice**

Santa-Rosa 46 oz. can **19¢**

**YAMS** Bruce Whole And Cut No. 3 Squat Can

Lowest Prices... Greatest Variety... always at **Piggly Wiggly**

**DOBBS HATS**

the classic Western hat...

**THE DOBBS "WESTWARD"**

You'll know you have the finest in the free and easy spirit of Western hats with the excellence of the Dobbs "Westward." Every detail tells you that it's a classic.

Webb's