

PARKERS RETURN FROM FUNERAL

Mr. and Mrs. Robert Parker returned this week from Marshal where they had been on the sad mission of attending the funeral of her father, Lewis Beasley. The Parkers live near Ropes

HOUSE WARMING

We are requested to announce the friends of Mr. and Mrs. James L. Means Jr. are invited to attend a house warming in their new home west of Ropes at 8 o'clock Friday evening. You are invited.

GRANDDAUGHTER VISITS WHITLOCKS

Mr. and Mrs. Bob Whitlock have as their visitor this week their granddaughter, Janice Lamb. She is the daughter of Mr. and Mrs. Harvey Lamb of Lubbock.

WHEN TROUBLES (COME THEY POUR

Mr. and Mrs. Jim Gotcher were informed this week their grandson, Dennis Ray, son of Mr. and Mrs. Garin Gotcher at Floydada, had been returned home to await further developments. Dennis Ray was injured while pole valuting.

And that troubles do not come singly is proven by the fact Garth had gangreen in one leg and his wife is confined to her room on account of illness.

VISITS PARENTS

Mrs. Lillian Gryder and boys spent the week end visiting in the home of her parents, Mr. and Mrs. Emory Hobbs. The Gryders live in Brownfield.

WANTED

Lawn mowing. Call 562-3852 and ask for Artie Thomas.

Read the ads in the Ropes Plainsman and trade at home. Prices in Ropes will meet all competition.

FIRST BAPTIST CHURCH

Order of Services:
Wayne Perry, Pastor
Sunday School 9:45 a.m.
Worship Service 11:00 a.m.
Training Union 6:00 p.m.
Evening Worship 7:00 p.m.
Midweek Prayer
Service 7:00 p.m.
W.M.U. Tuesday after first and third Sundays - 3 p.m.
Sunbeams, G. A.'s and R. A.'s 3:45 p.m.

SPANISH MISSION

Located at Busterville, four miles east of Ropes on the pavement.
Sunday School 10:00 a.m.
Morning worship.....11:00 a.m.
Evening worship 6:00 p.m.

Church of the Nazarene

Rev. W. O. Johnson, Pastor
Sunday Services:
Sunday School 9:45
Morning worship 11:00
N.Y.P.S. 6:30 p.m.
Evening Service 7 p.m.
Wednesday Evening:
Prayer Meeting 7:30 p.m.

If you have news to report, dial 562-3661 instead of 3711. That is our new telephone number. Help us make the Plainsman a more representative paper by calling us your news.

LOCKETTVILLE HD CLUB TO HAVE PICNIC AUGUST 21st

The Lockettville Home Demonstration Club will have their summer picnic on Friday, August 21st, at 7:30 p.m., to be held at the Community Building in Ropes. For information call Mrs. Dalton Redman, 562-3477.

DATES TO CONTACT MAN CONCERNING SOCIAL SECURITY

If you need information about Social Security, you may contact a representative of the Lubbock Social Security office at Brownfield or Levelland on the dates designated below:

Brownfield, in court house, 9:00 A.M., on Thursdays, July 2, 9, 16, 23 and 30. August 6, 13, 20 and 27. September 3, 10, 17 and 24.
Levelland, county courtroom 9:30 A.M., Mondays, July 6, 13, 20 and 27. August 3, 10, 17, 24 and 31. September 14, 21 and 28.

WANTED!

MEN TO EARN UP TO \$1,000 PER MONTH. Investigate auto and traffic accidents for insurance and adjusting companies. We train you for this exciting career at home in your spare time while you keep your present job. For personal interview in your area, write: **NORTH AMERICAN CLAIMS-TRAINING DIVISION** 666 Sherman Street, Denver, Colo. 80203

Fill Cracks And Holes Better

Handles like putty. Hardens like wood.
PLASTIC WOOD
The Genuine - Accept No Substitute.

New! Gillette SLIM Adjustable Razor



You turn dial from 1 to 9 for the exact setting that matches your skin and beard. With new Stainless Steel Blades.

NEW LOW PRICE \$1.50 COMPLETE

Good Neighbor Review, Levelland

FIRST NATIONAL BANK

This prominent bank is located at 624 Avenue H in Levelland, phone 894-3101.

The First National Bank is an institution of financial strength and safety, and may well be termed "The Friendly Bank".

It was founded by men of character and integrity who were very prominent in business and commercial activities, and have progressed in this district itself has grown and progressed.

Under the management of efficient and capable men, they invite accounts of business men and women, farmers, laborers, or all people who desire a profitable connection with a modern banking institution.

At this bank you will find strength, seasoned judgment, dependability and accuracy in handling details and breadth of vision all to be applied to the management of your personal and commercial affairs.

In making this Review, we wish to make the statement that at the First National Bank you may at all times save with safety.

In making this Review, we wish to make the statement that at the First National Bank you may at all times save with safety.

LEVELLAND STATE BANK

MEMBER OF F.D.I.C.

A strong bank instills confidence in a community. This bank is not only able but will care for every reasonable want of its customers. Located at 824 Austin in Levelland. Phone 894-6131.

Our readers will find this bank a friendly place, providing all the facilities and services of a city bank together with personal interest in each and every customer. Be prepared to take advantage of any opportunity by having a reserve deposited in this strong bank. When you are contemplating making an investment of any kind, it is a safe plan to consult with the officers of this bank.

Since January 1st every share is owned by the people of Hockley County. Many new services are available for the agricultural industry. The new officers are Homer Johnson, of Johnson Oil &

Butane, Bob Reid, the Chevrolet dealer, and Thad McDannell, President. They are public spirited men who believe in the future of this community and believe in the man who is energetic and works with a plan backed by sound judgment and reasoning.

In this Review we are glad to recommend this bank.

ELLIS PHARMACY

Where pharmacy is a profession. These stores are located at 1213 Houston, phone 894-6050, and 411 Austin, phone 894-3211, in Levelland. They are well known in this territory for fine service and the best in drugs, such as nursery and sick room supplies, Stock and Veterinary supplies.

It has been said that a druggist to have a complete

stock of popular drugs, including patents as well as standard drugs, would need over 25,000 items. So, for anything in the drug line you may need, see the Ellis Pharmacy.

The prescription from your doctor will be scientifically filled to his exact order. There is no need to substitute drugs at this store. A registered pharmacist is on

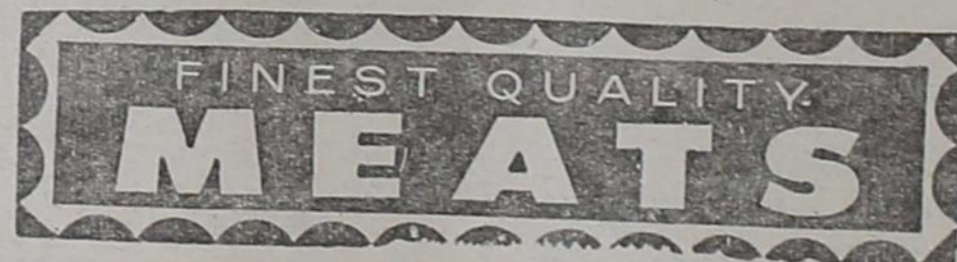
duty at all times to see that the proper drugs are compounded and who understands how to read any prescription.

"Quick Service" is their motto, so if you live in the rural district just ask for your order to be sent by the postman. It can be in your mail box the next day.

SPECIALS

FOR FRIDAY AND SATURDAY PLUS GOLD BOND STAMPS

SHURFRESH	ONLY	
BISCUITS,	12 CANS	.95
SHURFINE FROZEN	6 OUNCES	
ORANGE JUICE	4 FOR	\$1
SHURFINE	303 SIZE	
FRUIT COCKTAIL	4 FOR	.89
SHURFINE	FLAT CAN	
CRUSHED PINEAPPLE	2 FOR	.29
SHURFINE	46 OZ. CAN	
PINEAPPLE JUICE	3 FOR	\$1
HI C	46 OZ.	
ORANGE DRINK,	3 CANS	.89
SHURFINE	ONLY	
DRINKS	12 CANS	\$1
SHURFINE	300 SIZE	
ASPARAGUS	4 FOR	\$1
SHURFINE	303 SIZE	
CORN,	8 FOR	\$1
Shurfine Chopped Mustard	303 SIZE CAN	
GREENS		.10
SHURFINE	303 SIZE CAN	
HOMINY	3 FOR	.25
MOUNTAIN PASS	CANS	
TOMATO SAUCE,	12 FOR	\$1
MAXWELL HOUSE	POUND	
COFFEE		.79
LIPTON	ONE FOURTH POUND	
TEA		.39
SHURFINE	FALL CANS	
MILK	8 FOR	\$1



CORN KINGBACON	POUND	.49
CLARYS FRYERS	POUND	.33
ALL MEAT		
WILSON BOLOGNA	POUND	.39
PORK CHOPS	POUND	.55

DOUBLE STAMPS EVERY WEDNESDAY

E V A N S FOOD STORE

Specials for Friday & Saturday

PLUS GOLD BOND STAMPS

GIANT SIZE

FAB65

SHURFINE 2 TALL CANS

MILK25

REGULAR SIZE LIQUID

VEL33

MRS. TUCKERS 3 LBS.

SHORTENING59

SHURFINE POUND

COFFEE69

WOLDORF TOILET

TISSUE, 4 ROLL PKG. .35

SHURFINE 300 SIZE 2 FOR

PORK & BEANS23

OSCAR MAYERS 12 OZ.

LUNCHEON MEAT'35

LIBBYS VIENNAS 2 FOR

SAUSAGE39

FOOD KING W. K. 300 SIZE

CORN 2 FOR .21

MISSION SWEET 303 CAN

PEAS, 2 FOR .25

SANTA ROSA CRUSHED 7 OUNCES

PINEAPPLE 2 FOR .19

14 OUNCES

Tang **.69**

SHURFINE 5 POUNDS

FLOUR39

ECONOMY SIZE REYNOLDS

WRAP69

AUSTEX 300 SIZE

CHILI WITH BEANS33

VERMONT MAID 24 OZ.

SYRUP55

SHURFINE QT. SOUR OR DILL

PICKLES27

Finest Quality
MEATS

FRESH GROUND

Hamburger 3lb. \$1

SLAB POUND

BACON,45

BEEF POUND

LIVER29

PRESSED

HAM 3 POUNDS \$1

GRADE A POUND

FRYERS29

ARMOURS STAR ALL MEAT POUND

FRANKS45

Garden Fresh
Vegetables

POUND

PLUMS19

CELLO

CARROTS 2 FOR .19

POUND

BANANAS12½

Quick
Convenient FROZEN FOODS

SHURFINE 10 OUNCES

GREEN PEAS, 2 FOR .33

SEA FREEZE 10 OZ.

FISH STICKS19

FOOD KING 10 OUNCES

STRAWBERRIES21

Wednesday Is Double Stamp Day

THE ROPES FOOD STORE