

Bailey County Journal

"The Community of Opportunity - Where Water Makes the Difference"
Published every Sunday at Muleshoe, Bailey County, Texas - 79347

VOL. 6 NO. 36 16 PAGES NEWS STAND PRICE 10¢ SUNDAY, SEPTEMBER 8, 1968

City-County Bond Elections Tuesday-Time of Decision

No Tax Increase Needed Nine Improvement Issues on City Ballot

Utilize Sales Tax

Chamber Board Sparks Election With Backing

At the regular monthly Board Meeting of the Muleshoe Chamber of Commerce, the Board of Directors voted, unanimously, to support the passage of the up-coming City-County Bond Election. The deciding factor was that the proposed Capital Improvements, so badly needed by Muleshoe and Bailey County, can be financed without a tax increase to both the personal and real property tax paying citizens of Bailey County.

The Board felt that the proposed Capital Improvements are necessary for the City and the area are to grow and progress in the future, as in the past. There has been a noticeable lag in major Capital Improvements, especially buildings, during the last several years.

The Board felt that the citizens of Muleshoe and Bailey County should take a long look at our present facilities before they go to the polls.

The two main questions the voter should ask are:

1. Is there a need?
2. Can we afford it?

A close study of the facilities we have now definitely indicates a need for the Capital Improvements. City and County officials, City Planning experts, and Financial Advisors tell us that the proposals can be financed without a tax raise at this time. The Board urges every registered personal and real property tax paying voter to exercise their rights as an American citizen of Muleshoe, and vote in the up-coming Bond Election on Tuesday, September 10, 1968.

Bailey County residents are in the 'countdown' stretch to make up their minds if they will take advantage of city and county improvements, without an increase in taxes and water and sewer rates, or turn 'thumbs down' on the two issues which will inevitably add much needed facilities and show that this county has the civic pride it should reflect.

The polls open at 7 a.m. and close at 7 p.m., and it will be during this time, Tuesday, September 10, that the taxpayers of this county decide the outcome of these vital issues.

POLLS

In the county election, which is for the Law Enforcement Center, voters in Precinct 1, will cast their ballots at the American Legion Hall; and Precinct 1-A residents will vote at City Hall; Rural Box II will be at the West Camp Baptist Church; Box III will be at the Longview Baptist Church; Box IV will be at Three Way School House; Box V will be at the Needmore Community Center and Box VI will be at the Buda School.

In the city election, those voting on the Capital Improvement Program will cast their ballots at City Hall. City election judge will be Ernest Kerr assisted by Mrs. Bill Taylor.

County election judge for Precinct 1 will be Ronald Johnson assisted by Mrs. Ailie Keith, Precinct 11 judge will be Jeff Feeler assisted by Mrs. W.R. Bowers; Box II judge will be Lonnie Wilite assisted by D.O. Burlsmith; Box III judge is Bert Seales to be assisted by Ed Etheridge; Box IV judge is George Tyson assisted by F.E. Knox; Box V judge is Mrs. Rudolph Moraw assisted by Mrs. Mary Phipps and Mrs. G.B. Salver has been named as judge of Box VI with her assistant yet to be named.

CIVIC SERVICE

Again this election day, the Muleshoe Jaycees will provide rides to the polls for those persons who cannot otherwise get to the polls to vote their convictions on these issues. Those who need to take advantage of this free civic service may call Richard Hulse, Texaco phone 272-4856, Jerry Hutton, chairman of the transportation committee will arrange for automobile to pick up the voters.

CAPITAL IMPROVEMENTS

A careful study of the City of Muleshoe Comprehensive Plan prepared by Kenneth W. Larsen and Associates, and upon the recommendation of the City Planning Commission, the City Council called the September 10 election for a Capital Improvement Program for the City of Muleshoe.

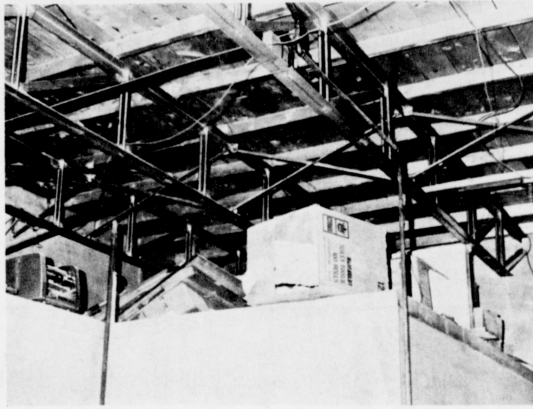
The program of improvements will include waterworks and sewer system, construction of a city hall, improvements for the park system, street improvements, a library, a community center, and a suburban fire station.

CONSULTANTS

No increase in property taxes or water and sewer rates are proposed to finance this program. The study prior to the calling of the election was extensive and thorough. Planning consultant was Kenneth W. Larsen, Albuquerque. Ralph Douglas, consulting Engineer, Muleshoe; Bill W. Cantrell, architect, Lubbock; Joe W. Smith financial advisor, First Southwest Company, Lubbock; and Dumas, Huguenin and Boothman, Bond Attorney, Dallas, legal consultants.

FINANCING

The proposed plan enables the city to plan over a period of 20 years.



IMPRESSIVE STORAGE? This is a portion of the storage space at City Hall. Boxes with various items which must be kept are stored on top of a half-wall type enclosure. This is for lack of storage space. The inside of the back portion of City Hall is the entrance to the City Police Department. This also shows a ceiling view with open steel and wood exposed along with electrical wires dangling.

Centralizing Center More Effective

This is not a fairy story... it sounds more like what Ripley would want for his famous Believe-It-Or-Not feature. Yet, it is a true story in Bailey County.

Although, effective law enforcement requires that men from the Texas Department of Public Safety, the Sheriff and his deputies and the Chief of Police and city patrolmen all work together for the same purpose... enforcement of the law, all records are housed under three separate roofs. Thus... complicating the matter for all departments.

Dispatchers are often called upon during the night at City Hall for information unavailable to them, such as records on suspects. They are not available because they are locked inside the office of one of the other departments. This hampers the men on duty and makes the departments less effective.

Sorghum Midge Appears

Populations of sorghum midge have now reached damaging levels in Bailey County, reports County Agricultural Agent J.K. Adams.

Fields of grain sorghum which have not yet completed blooming will need insecticide treatment in order to prevent yield losses from midge damage, emphasizes the agent.

First application should be made when about 90 percent of the heads have emerged from the boot stage. A second application will be needed about three or four days after the first application. If pollination is still occurring, a third application or even possibly a fourth will be required.

Producers can determine whether or not to spray for midge.

The new law enforcement center proposed for the county election will place the Sheriff's Office, the Texas Highway Patrol, the City of Muleshoe Police Department and the Drivers License division under one roof, therefore placing all records at the fingertips of Irene Spawn who is office deputy and day dispatcher for the Sheriff's office and night dispatchers Tommy Williams, Melba Cunningham and Ruth Briscoe who operated the service from city hall during the night, and on weekends and holidays.

A central center would also eliminate the daily taking of the logs to and from city hall to the Sheriff's office, a routine that must occur twice daily. Incidents logged during the day by Mrs. Spawn at the Sheriff's office must be taken to City Hall at 5 p.m., in order that the night dispatcher may have at hand, the happenings of the day and then the night logs must be taken to the Sheriff's office each morning, in order for officers to know the happenings of the previous night.

Filing quarter in both city hall and the Sheriff's office are small and inadequate. The dispatchers not only serve the law officers, but the fire department, liquor control board officers, ambulance and constable.

made when about 90 percent of the heads have emerged from the boot stage. A second application will be needed about three or four days after the first application. If pollination is still occurring, a third application or even possibly a fourth will be required.

Producers can determine whether or not to spray for midge.

Jail Bond County Issue Present Jail Condemned

Plans are in the final stages for a bond election called for September 10 which will enable Bailey County to have an all modern "Bailey County Law Enforcement Center".

Architects have submitted scale drawing of a building to be located on the northwestern corner of the present courthouse square to house all law enforcement agencies, Bailey County Sheriff's office, Muleshoe City Police Department, State Highway Patrol office and Texas Driver's License division.

In addition to these offices, plans call for a jail which will be a secure place for prisoners, in-as-much-as it will be an adequate jail in which prisoners can be contained without fear of escape during the night. This also protects you, the citizens.

Where there is now no one on duty at the present jail, the new structure would be centrally used and a dispatcher on duty in the same building with the jail at all times.

It will also be constructed so as to comply with state and federal regulations, enabling Bailey County to retain their own federal prisoners and those for other counties which would qualify the county for federal funds for keeping such prisoners.

Lubbock now gets money from Bailey County for this service with transporting the prisoners on back and forth, jail and food totaling around \$9,000 per year. This amount is included in the county budget.

By constructing the central law enforcement center, there will not be a tax increase either for the city or the county.

Bailey County Judge Don Chah outlines the program in this manner:

On August 12th, 1968, the Commissioner's Court of Bailey County voted to call a jail bond election to be held on September 10, 1968. The amount of the proposed bond issue is \$175,000.

Most persons in this County are familiar with the present County jail, built in 1925 on the third floor of the Courthouse. It has a capacity for 12 men prisoners with no separate facilities for women and juvenile offenders. The new jail would have a capacity for 33 men, and

Open Meeting Held Thursday

The pros and cons of the upcoming bond elections to be voted on Tuesday by both city and county residents were discussed at length in an open meeting held Thursday evening at Muleshoe high school cafeteria.

City and county officials and those assisting with the Comprehensive Planning, were on hand to present to approximately 100 persons who attended, the facts concerning the upcoming election.

The nine items which are appearing on the city bond issue were presented and the general public asked the questions remaining in their minds concerning each of the issues.

Also, the central law enforcement center which is up for a county-wide vote Tuesday, September 10, was discussed.

The forward movement for Muleshoe and Bailey County was expressed as a 'must' if we expect to progress instead of regress.

Slides and charts were shown for the benefit of those attending.

Charts of the proposed improvements were shown and comments made in explanation of the need for each of them

around muleshoe with the journal staff

Recent guests in the R.F. Meeks home included Mr. and Mrs. Charles White, Globe, Ariz., Mr. and Mrs. Jim Gregory, Lubbock, Mr. and Mrs. Douglas Parish, Earth, Mr. and Mrs. Clifford Meeks, Muleshoe and Mr. and Mrs. Charles Jacobs, Friona.

Mrs. White is the former Cleo Meeks.

Visiting in the home of Mr. and Mrs. Edd Edmiston this week is Mr. and Mrs. F. J. Hurd from Brady, Texas. The Hurds are the parents of Edd Edmiston.

Roger Albertson, manager of Cobbe, has returned from the fall gift show market at Dallas.

Mr. and Mrs. Charles White from Globe, Ariz. visited with Mr. and Mrs. R.F. Meeks the past weekend. The guests also visited in Hereford with Mr. and Mrs. J.R. White. Mrs. Charles White is the former Cleo Meeks. Other guests in the home of R.F. Meeks were Mr. and Mrs. Jim Gregory, Lubbock, Mr. and Mrs. Clifford Meeks, Muleshoe and Mr. and Mrs. Charles Jacobs, Friona.

Richard Puckett and son, Larry, spent a week visiting his parents in Oklahoma.

Mr. and Mrs. Joe Albro and daughter have returned from a two weeks vacation.

Earl Ladd is in Detroit, Mich. attending a dealer's meeting and the 1969 GMC truck and pickup showing.

Broom Sale Set By Lions Club

The annual Lions Clubroom sale will be conducted in Muleshoe Wednesday, September 10 and Thursday, September 12. Chairmen of the drive, Jim Shafer and Owen Jones announced.

W.E. Young, local Lions Club president today praised the Lions Club for its efforts to help the blind citizens of Texas to help themselves and at the same time to raise funds for Muleshoe Lions Club

1968 County Goal Short

Savings Bond sales through July 1968 in Bailey County totaled \$2,456, according to a report received from Robert Alford, Chairman of the Bailey County Savings Bonds Committee. This represents 34 percent of the county's goal of \$70,000 for 1968.

Sales of U.S. Savings Bonds and Freedom Shares in Texas for the first seven months were \$106,830,122 -- an increase of 8.9 percent over sales during



CITY DISPATCHERS---These are the women responsible for operating the dispatching service during the holidays, at night and on weekends. They are Ruth Briscoe, Melba Cunningham and Tommie Williams, pictured left to right. They operated from City Hall, taking care of local calls from all departments of law enforcement here, ambulance, wrecker, fire department, in addition to many other things.



DAY DUTY---Irene Spawn is shown in the Sheriff's office where she serves during the day as dispatcher and office deputy. Her work includes many things. She is in charge of taking calls from all units of law enforcement, ambulance, fire, wrecker and emergencies during the day. In addition, she keeps the jail book for all departments which is only a brief resume of her many duties.

Editorial Will Tuesday Be Muleshoe's Finest Hour?

Tuesday, the citizens of Muleshoe will go to the polls and vote on a bond issue to provide our town with many needed, overdue improvements.

After days of hard work, study and discussion, our city government, composed of men with honest and Christian backgrounds, has put together a bond issue that will satisfy the basic requirements for the physical and environmental growth of our community.

The results of a 20-year Comprehensive Plan survey, compiled by professional city planners, correlated with advice from Municipal Bond experts, have brought forth a bond issue free of a tax increase. This is possible by utilizing income from the City Sales Tax and scheduling improvements over a period of time in two stages.

If we expect to set an example of "can-do" attitude for the youth of our community and create an atmosphere of accomplishment this bond issue should pass.

For generations, progress has been symbolic of the American democratic way of life as well as the privilege self-expression by vote.

The Journal urges you to exercise this privilege to vote and make Tuesday Muleshoe's finest hour.

CITY TAX RATES	
MULESHOE:	25 percent of market value \$1.10 is tax rate on \$100, valuation
MORTON:	40 percent of market value \$1.40 is tax rate on \$100, valuation
LITTLEFIELD:	33 1/3 percent of market value \$1.09 is tax rate on \$100, valuation
FRIONA:	42 percent of market value \$1.30 is tax rate on \$100, valuation
DIMITT:	33 1/3 percent of market value \$1.50 is tax rate on \$100, valuation

Jail...
 From Page 1
 facilities for 6 women and 4 juveniles.

Most persons in the County are also familiar with the escapes we have had from the present jail. Sheriff Dee Clements has reported that the County Health Officer was contemplating ordering the present jail closed for health reasons. Sheriff Clements also reports that the present jail is not being used for prisoners who receive sentences of over one week, in keeping with the Health Officer's wishes. These prisoners are transferred to Lubbock, which means that we pay other counties for safekeeping our prisoners, and the deputies must be out of the county more than if we had adequate facilities in this county. We do not need a "nice" jail to keep sentenced prisoners and those awaiting trial, but we do need a secure ground floor jail which complies with health standards so that when a person receives a sentence or is awaiting trial, the people of the county and particularly the victims of criminal offenses will know that the persons arrested will be available for trial, and that the sentenced prisoner will be kept for the full duration of his sentence.

If the bond election passes, plans will be made to sell the bonds after the first of the year, so that the first payment will not be due until after the first of the year of 1970. If this is done, it will not

be necessary to create an interest sinking fund in the County budget until September of 1969.

The Constitution of Texas allows a County to levy a tax of .80¢ on every \$100.00 assessed valuation for four purposes; the general fund, now set at 49¢; the jury fund, now set at 4¢; the permanent improvement fund, now set at 8¢, and the road and bridge fund, now set at 19¢. No matter how large a bond issue is passed, and there are limits set down by law as to the amount, the money to repay the construction bonds must come from this .80¢, and a County may not levy additional taxes to pay for permanent improvements.

With our present assessed valuation of \$15,200,000.00, there are two ways to pay for jail bonds. One is to ARBITRARILY increase assessed valuation to 17 or 18 million dollars, which in my opinion is no way to pay for a jail, because it does not take into consideration that some persons may have their property properly assessed now, and this would automatically increase their taxes. People are becoming increasingly critical of raising taxes to pay for programs that their representatives think they need. But, there is another way to repay jail bonds without raising taxes or valuation one bit. This way, in the budget for 1969, to cut the levy from some of these other three funds and add it to the permanent improvement fund. THIS WILL NOT IN-

crease assessed valuation, but it will increase the amount of money available to pay for jail bonds. This will not increase assessed valuation, but it will increase the amount of money available to pay for jail bonds.

CREASE TAXES OR VALUATION AND WE WILL STILL BE ABLE TO PAY FOR THE JAIL BONDS.

The general fund is now set at a levy of 49¢ for a total income in 1968 of \$70,956.00 and total expenditures of \$70,770.92. We will probably be able to cut this levy 2 or 3 cents since the \$9000.00 budgeted for transporting prisoners and jail expense payable to other counties will be reduced with a new jail. We might cut this fund 14¢ and do away with the bookmobile program, purchase of any new vehicles for the sheriff's department, any charity at all, such as grocery orders and hospital bills, the dispatcher's salary, the county agent's and the home demonstration agent's travel expense, the entire salary of the Veteran's Service Officer and a few other matters, but I believe that these things play an important role in the service that your elected officials are able to give to the people of this County.

The Road and Bridge fund is now set at 19¢. If we do not obligate this fund in the coming year, we could plan now to cut this fund from 19¢ to 7¢, and with the 2 or 3 cents from the general fund put in the Permanent Improvement fund this would be sufficient to pay the bond issue and the utilities for the new building.

Now cutting 12¢ from the road and bridge fund seems a lot, but in addition to the 7¢ remaining in that fund, there are additional levies of 15¢ and 30¢ going into road and bridge fund, approximately \$100,000.00 annually in license plate fees, and \$23,000.00 in state aid. Actually 15¢ of road and bridge money has been used to retire warrants to pay for the purchase of Right of Way. These warrants have recently been

retired, so road machinery and the operating capital of the precincts will not be decreased. Total county income for the year 1967 was some \$443,000.00 and of this amount, over \$200,000.00 was spent from road and bridge funds so that instead of increasing the amount of money spent in operating the precincts, we could use this levy to retire jail bonds.

We must make up your own minds as to whether we need this new jail, but it can be done without raising your taxes or your valuation arbitrarily. You are urged to visit our present facilities, and to view the proposed plans for the new jail and law enforcement center, and if you would like to see the new jail, tell your commissioner that you are aware that such can be accomplished without a raise in taxes and support the bond election on September 10, 1968.

Meeting...

Con't from Page 1
 and how they could be obtained without an increase in taxes and water and sewer rates.

Slides were also shown of some of the 'sore spots' in the city and the ideas brought forth that this is part of our community as it stands now and that progress must be made to eliminate these existing conditions.

Muleshoe...

Con't from Page 1
 The infant son of Mr. and Mrs. Travis Bessire, five-week old Todd Bessire, underwent surgery in Lubbock Saturday morning.

Mr. and Mrs. Charles Stewart returned home from Vernon where they visited Mrs. Stewart's aunt, Mary Barnett.

Improvements...

Con't from Page 1
 years with state and Federal agencies, assured of the necessary funds to match grants that may be needed. In short, once the bond issue passes and the city is assured of their share of the funds required, then funds will be available to the City from the Federal and State funds.

In addition, three primary sources of current income are available and will be utilized. The key local level factor is the one percent sales tax which is 'new' money for Muleshoe. The other two of the three primary sources of current income are ad valorem taxes and the revenues of the water and sewer system.

In addition to these three sources are added the second source of income including a garbage charge, utility franchise taxes, fines, and various license.

The City of Muleshoe was authorized to levy and collect a one percent sales tax at an election held December 16, 1967. Collection of this tax was commenced April 1. Actual collections are made by the Comptroller of Public Accounts, Austin, and the proceeds, less two percent deducted by the Comptroller for their expense, is remitted to the City of Muleshoe quarterly.

It is estimated that the City of Muleshoe may expect to derive from this sales tax from \$35,000 to \$60,000 annually. This money will be in addition to the amount which has been collected from ad valorem taxes and other sources of income listed above.

FINANCE ABILITY
 According to the Capital Improvement findings, the City of Muleshoe is well within all

legal and de facto limits in relation to its interest and Sinking Fund rate, Net and total debt ratios are low.

Based on the 1967 assessed valuation of \$10,372,161, a total debt ratio of seven percent would allow the City to have outstanding \$726,000 in general obligation bonds. Deducting present outstanding bonds of \$289,000 a balance of \$437,000 would be available.

It is apparent that \$350,000 General Obligation Bond could be issued at this time and \$70,000 at a later date and the position of the General Fund and General Obligation Bond maintained as the Sales Tax will more than compensate the General Fund.

The same is true with the Waterworks and Sewer System Revenue Bond issue.

Nine issues appear on the city election ballot.

For the waterworks system, all of the improvements for the period 1968-72 will be accomplished as soon as practicable, as they are essential to the provision of a sufficient supply of water and the maintenance of a sound distribution system which can deliver water at a suitable pressure. The basic program includes:

1. Present wells do not furnish sufficient water during peak demand hours. As a result, these wells, located north and west of town are overloaded and are being depleted too rapidly.
 Two new wells and a booster station will be developed on the 1,700 acres of water rights owned by the City south of the town. These will be interconnected with existing wells by an 18 inch supply line running to the proposed 12 inch arterial main to be installed along the south side of the city.

An automatic control system will be installed in place of the present individual pressure switches at each well so that an efficient, automatic operating system of interconnected wells and booster stations can be developed.

A 1,000,000 gallon ground storage tank will be constructed at the site of the new wells to provide adequate reserve storage for the system.

The 18 inch well field supply line is capable of handling the eventual connection of nine wells from this area, and would at that time transport the City's entire water supply. Concentration of these supply, pumping and storage facilities as the older wells are eventually abandoned will allow further efficiencies and economy of operation.

A 12 inch arterial main trunk line will be installed along the south and west sides of the City, and all existing lines along this segment of the perimeter will be connected to this artery. Areas of low water pressures will be eliminated by this procedure, for the sewer system's only major problem is in the treatment of collected sewage, as the collection system is generally adequate.

The system for sewage treatment now operates through an eight inch outfall line that runs to two lagoons south of the City. Other than oxidation in these lagoons no treatment is provided, and this is below standards established by the Texas State Department of Health. The eight inch line is badly understudied.

An adequate sewage treatment system will be developed by installing a new 10 inch outfall line parallel to the present eight inch line, and by the construction of an aeration type unit and an additional lagoon. All of this system will be designed to meet state approval.

There is no question that the City of Muleshoe is very deficient in park and recreational facilities, as noted in the Comprehensive Plan. Children and youth, as well as adults, need some reasonable facilities which are within the City's means.

The City Council has developed a park program that will be effected in two stages. Under the Federal Government's 'Open Space' program, two park sites will be acquired, with the Government matching the City's funds. One site will be located in the southwest part of the City and is proposed to comprise about 100 acres, and a second, a smaller site will be located in the northeast area. These acquisitions will be made as the above mentioned matching funds are available.

The larger tract will serve as a community park, and possibly as a site for the community center discussed later. The smaller northeast location will be a neighborhood park. The existing neighborhood park

in the east section of town will be developed along with the new site. Other than play equipment for the two neighborhood parks, extensive development will wait for the later phase.

A new, well designed, functional City Hall, located in the general downtown area would unquestionably improve the City's ability to serve its citizens, and would be a definite asset to the appearance of the City.

Since Bailey County is planning the construction of a badly needed jail, the city will not have to construct jail facilities and will be able to locate its police and law enforcement operations in this county building. Duplication of equipment will be avoided and efficiency of operations will be increased through joint use of communications, etc.

The funds asked for will provide money for land acquisition and construction. Adequate areas for parking will be provided.

Another of the nine issues on the ballot will be a new library. The present library, located in the industrial section near the railroad will be replaced by a modern, well designed structure located in the general downtown area. The library in Muleshoe is used, both by patrons at the library and through the bookmobile.

The library now has about 10,000 volumes, including paperbacks, and should increase to 30,000 volumes within a few years. At present there is no room for expansion.

The bookmobile accounts for approximately 3,500 volumes monthly in its four-county service area.

The new library will provide area for 22,000 hard back volumes or 30,000 volumes including paperbacks. Parking facilities and a storage area for the bookmobile will be included. The Federal Government through the Texas State Library, Austin, has a program of matching funds for library construction.

A site, to be donated by the County, is available on the southeast corner of the block immediately across the street from the Courthouse.

The City now has no community center as such, and no recreational facilities are available except for one room in the old American Legion building or in the churches.

A community center, located in the community park or other suitable site would be of great value to the community through use by youth civic clubs, and the general public. Certainly it would be a very attractive inducement for industry or an individual considering location in Muleshoe.

The Federal Government has a program under which matching funds of up to two-thirds of the cost of a community center can be acquired. The city will apply for funds under this program.

Con't on Page 7

SINGLETON FUNERAL HOME

24 HOUR AMBULANCE SERVICE
 PHONE 777-4574 MULESHOE

SPECIALS GOOD THROUGH WEDNESDAY
 "WHERE YOU ALWAYS BUY THE BEST FOR LESS"
GIBSON'S DISCOUNT CENTER
 Muleshoe, Texas— Open 9A.M. to 8P.M. Weekdays

Ingraham #14-002, 14-003
TRAVEL ALARM CLOCK
 \$2.97



Ingraham Comet
ALARM CLOCK
 #15-401
 Gibson's Low Price \$1.97



Ladies' Popular-Color Vinyl
SHOE TOTE BAG
 1.98 Val. \$1.27

Health & Beauty Aids
 AT DISCOUNT PRICES

Stripe King Size TOOTH PASTE	43c
Mierin 18 oz. Size 1.45 Value ORAL ANTISEPTIC	87c
Head & Shoulders Large Jar 1.85 Value SHAMPOO	1.07
Lilt Special 1.69 Value PERMANENT	87c
Childrens 36's 69¢ Value BUFFERIN	43c
Squibb 12 oz. Size MILK OF MAGNESIA	49c
4 oz. Bottle ABSORBINE JR.	87c
Schick Lather 11 oz. Size SHAVE CREAM	59c
One Pound Package RID-X	97c
Lysol 14 oz. Size 1.69 Value SPRAY DISINFECTANT	1.07

SAMSONITE TABLE
 #7723
 6.95 Value
\$4.77

Huffy Dragster BIKE
 3 Speed-Boys #2044-Girls 2045
\$39.97

Samsonite CHAIR
 #2523
 6.95 Val.
\$4.77

Men & Boys' Hi Top or Oxfords BASKETBALL SHOES
 Size 12 to 6 .6 1/2 to 12
 3.98 Val. \$1.99

Women's Hi-fashion PANTY HOSE
 100% Nylon-1.98 Val.

SATIN PILLOW SLIP
 100% ACETATE
 White-Pink or Blue.
 1.98 Value
\$1.37 Pr.

Ladies: Save your Hair Do's

The specially designed weave of this luxurious satin pillow slip permits your hair to breathe and glide naturally as you sleep, and prevents your hairstyle from becoming disarranged.

TERRY TABLE CLOTHS
 52X52 52X70
 \$1.67 \$2.57
 Reg. 2.87

All Ladies & Mens' Wrist WATCHES
 Includes Helbras, Gruen, Waltham, Bradley.

1/3 OFF Our Reg. Discount Price

Fireman Of The Month

H. E. Reeder

Fireman of the month is H. E. Reeder, service manager for Ladd Pontiac, who lives at 122 W. Ave. H. He and his wife, Willie Mae, have three children: Eugene 11, Gwendolyn, 9 and Denise, 8. They attend the Trinity Baptist Church. Reeder, who is captain, said he had served with the Muleshoe Fire Department since 1961. Earl Ladd, Fire Chief, cooperates with other merchants in allowing his employees to make business hour fire calls which is greatly appreciated.

COURTESY OF: POOL INSURANCE AGENCY

VOTE "FOR" COUNTY JAIL BOND ISSUE

The Charts show each item of County Income and the manner in which it may be spent. Line 1 is the County Assessed Valuation computed by assessing real estate at one eighth of its actual market value, and Personal Property at one third of its actual market value. Line 2 shows the Constitutional levy of up to 80¢ for the four County purposes. Line 3 shows the levy going into Public Road Maintenance fund which is used in operating the Precincts. Line 4 shows the levy going into Special Road which is used in operating the Precincts. Line 5 shows the levy used to repay Hiway 84 bonds. Line 6 shows the levy used to repay Road District 1A bonds. Line 9 A shows the approximate amount realized by the County from the sale of License plates, which is used in operating the Precincts. Line 9 B shows the amount realized in State Aid which is used in operating the Precincts. Line 9 C shows the projected amount realized from use of County machinery to perform work for rural residents which must go for use of the Precincts. Line 9 D shows the amount realized from court costs, fines, recording fees which by law go into the Officers Salary Fund. Money to repay jail bonds may come from one source only according to state law and that is Line 2 D, the Permanent Improvement Fund. The Total of the Four Constitutional Funds, Line 2, may not be in excess of 80¢ on every \$100.00 of Assessed Valuation. A tax increase will result if either Line 1, County Assessed Valuation, OR Line 7, County Tax Levy are increased.

COUNTY TAX VALUATION & LEVIES		
1. County Assessed Valuation		\$15,295,880.00
2. Const. Levy (Up to 80¢)		
A. General Fund	49¢ -	\$70,956.00
B. Jury Fund	04¢ -	5,776.00
C. Road and Bridge Fund	19¢ -	27,436.00
D. Perm. Improvements	08¢ -	11,632.00
TOTAL	80¢	
3. Public Road Maintenance (Used in Precincts)	15¢ -	21,660.00
4. Special Road (Used in Precincts)	30¢ -	32,775.00
5. Hiway 84 Bonds	20¢ -	28,880.00
6. Road Dist. 1A Bonds	12¢ -	13,560.00
7. Total County Tax		\$1.57
8. State and Water Tax		.52
TOTAL		\$2.09
9. Other County Income		
A. License Plate Fees		\$100,000.00
B. Lateral Road Funds		23,000.00
C. Machine Work		5,000.00
D. Fees of Office		56,000.00

Chart One shows current tax levies going into each fund and other items of County Income. Permanent Improvement Fund levy has been set at 8¢ and will produce \$11,652.00 in revenue for the year 1969. This is not enough money to repay bonds if the bond issue passes.

COUNTY TAX VALUATION & LEVIES		
1. County Assessed Valuation		\$15,295,880.00
2. Const. Levy (Up to 80¢)		
A. General Fund	35¢ -	51,032.00
B. Jury Fund	04¢ -	5,776.00
C. Road and Bridge Fund	19¢ -	27,436.00
D. Perm. Improvements	22¢ -	31,576.00
TOTAL	80¢	
3. Public Road Maintenance (Used in Precincts)	15¢ -	21,660.00
4. Special Road (Used in Precincts)	30¢ -	32,775.00
5. Hiway 84 Bonds	20¢ -	28,880.00
6. Road Dist. 1A Bonds	12¢ -	13,560.00
7. Total County Tax		\$1.57
8. State and Water Tax		.52
TOTAL		\$2.09
9. Other County Income		
A. License Plate Fees		\$100,000.00
B. Lateral Road Funds		23,000.00
C. Machine Work		5,000.00
D. Fees of Office		56,000.00

Chart Two shows a proposed method of raising the levy going into the Permanent Fund by reducing the levy going into the General Fund by 14¢ and adding that 14¢ to Permanent Improvement Fund. There is now enough income going into the Permanent Fund to repay jail bonds and maintain the proposed new building. If this method is selected by the Commissioners Court at the budget hearing in 1969, there will have to be a reduction in some of the programs that are funded from the general fund, such as the audit, bookmobile, election expense, salaries for the County Agent, Home Demonstration Agent, cemetery caretaker, and Veterans Service Officer.

COUNTY TAX VALUATION & LEVIES		
1. County Assessed Valuation		\$15,295,880.00
2. Const. Levy (Up to 80¢)		
A. General Fund	47¢ -	\$68,297.00
B. Jury Fund	04¢ -	5,776.00
C. Road and Bridge Fund	07¢ -	10,171.00
D. Perm. Improvements	22¢ -	31,576.00
TOTAL	80¢	
3. Public Road Maintenance (Used in Precincts)	15¢ -	21,660.00
4. Special Road (Used in Precincts)	30¢ -	32,775.00
5. Hiway 84 Bonds	20¢ -	28,880.00
6. Road Dist. 1A Bonds	12¢ -	13,560.00
7. Total County Tax		\$1.57
8. State and Water Tax		.52
TOTAL		\$2.09
9. Other County Income		
A. License Plate Fees		\$100,000.00
B. Lateral Road Funds		23,000.00
C. Machine Work		5,000.00
D. Fees of Office		56,000.00

Chart Three shows another method of raising the levy going into the Permanent Improvement Fund by reducing the levy to the General Fund by 2¢ and reducing the levy going into the Road and Bridge Fund by 12¢ and adding this total of 14¢ to the Permanent Improvement Fund. If this method is selected by the Commissioners Court in the budget hearing in 1969, there will be enough money going into the Permanent Improvement Fund to repay jail bonds and maintain the proposed new building. Total money used in operating the Precinct comes from Lines 2 C, Line 3, Line 4, Line 9A, Line 9B, and Line 9C, totaling approximately \$210,000.00. The money going into Line 3 has formerly been used to pay for road machinery warrants, and Right-of-way and has not been available to use in operating the Precincts since 1960. These warrants have recently been retired, and the County has been paying cash for road machinery for the past six or seven years, so that the operating funds of the Precinct would not be decreased if the Commissioners Court voted to select this method of placing enough money into the Permanent Improvement Fund to repay the bond issue and maintain the new building.

**YOUR PRESENT COUNTY JUDGE WILL NEVER SUPPORT OR VOTE FOR AN ARBITRARY INCREASE
IN LINE 1, COUNTY ASSESSED VALUATION.**



Cieta Cornelison, . . . bride - elect of Richard Webb

Shower Honors
Cieta Cornelison

Cieta Cornelison, bride elect of Richard Webb, Kress, was honored with a pre-nuptial miscellaneous shower in the home of Mrs. Don Harmon, Tuesday, September 3, at 7:30 p.m. The bride-elect's chosen colors of red and white were carried out in decorations in the home. White lace over red covered the serving table with a floral arrangement of red and white, flanked by red tapers. Devona Bradley and Linda Darnell served refreshments to about 30 guests who called during the evening. Mrs. Weldon Webb, mother of the prospective bridegroom, was a special guest at the shower. The hostess gift was a set of stainless steel. Hostesses were Mrs. W.B. Wagon, Jr., Mrs. Gene Lowe, Mrs. D.L. Thompson, Mrs. J.B. Wright, Mrs. Aubrey Heathington, Mrs. Joe Mack Wagon, Mrs. Billy J. Darnell, Mrs. Joe Smallwood, Mrs. Jim Milner, Mrs. Paul Scott and Mrs. Don Harmon.

Society News

Cieta Creamer Williams Society Reporter
Phone-272-4536

Mr. and Mrs. Allen Smyer
Honored at Longview Church

Mr. and Mrs. Allen Smyer were honored with a post-nuptial shower at the Longview Baptist Church educational building on Tuesday, September 2, at 8 p.m. The couple was married August 17, in the home of the bridegroom's parents, Mr. and Mrs. A.G. Smyer. The honoree, her mother, Mrs. Chester Embry and the bridegroom's mother, Mrs. W.G. Smyer, were presented corsages of small cooking utensils. Rena Lackey registered guests in the bride's book from a table laid with blue satin overlaid with white net. The serving table was laid accented with applique wedding bells and was centered with

blue tapers and featured twin wedding bell cakes on a circular mirror topped with a blue bow with long streamers. 'Carolyn and Allen' was inscribed in silver. Kathy Smyer, sister of the bridegroom, and Rena Lackey served white punch from a crystal punch bowl with small wedding bell cakes. Hostess gifts included an electric skillet and flatware. Hostesses for the occasion included: Audrey Ross, Florence Ruta Lackey, Cleo Seagroves, Doris Lackey, Pearl Killingsworth, Zeffa Shafer, Maxine Ragsdale, Imogene Tiller, Loyce Killingsworth and Berta Kitchens.

Mrs. Glen Dale King Shower Honoree

Mrs. Glen Dale King, the former Barbara Schulz, was honored at a miscellaneous shower at the home of Mrs. Sam Billingsley near Clay's Corner, Thursday, September 5. The honoree, who was presented a corsage of two pink and white dishcloths tied with blue and silver ribbon streamers by Mrs. T.L. Kent, received the guests as they arrived. The serving table was covered with white linen with white lace inserts over blue and centerpiece was an arrangement of shaded pink gladiolas displayed in a low bowl. Refreshments of coffee, punch, white individual cakes topped with green, mints and nuts were served from crystal and silver appointments. Mr. and Mrs. King now reside in Canyon, where both are students at West Texas State University. Hostess gift was a purple bedspread. Hostesses included Mrs. T.L. Kent, Mrs. Zula Rundell, Mrs. Lee Jones, Mrs. R.E. Blankenship, Mrs. Conrad Nelson and Mrs. Sam Billingsley.



Mrs. Glen Dale King

Kathy Williams To Be Installed
Worthy Advisor; Rainbow Girls

Miss Kathy Eileen Williams will be installed as Worthy Advisor of Muleshoe Assembly No. 161, Order of the Rainbow for Girls, at the Muleshoe Masonic Lodge Hall on Saturday, September 14 at 7:30 p.m. Kathy is the 17-year-old daughter of Mr. and Mrs. Alex Williams and a senior in Muleshoe High School. Other officers to be installed are: Worthy Associate Advisor, Rena Lackey, Charlotte Davis; Hope, Annette Williams; Faith, Debbie Burrows; Chaplain, Sue Fylant; Drill Leader, Daria Kendall; Recorder, Martha Jane Chapman; Treasurer, Debbie Kerr and Love, Tracey Cowan.

tism, Cynthia Puckett, Service, Linda Lambert, Confidential Observer, Christy Ford; Outer Observer, Melita King; Choir Director, Kathleen Jennings and

Musician, Treena Bryant. Retiring Worthy Advisor is Lindy Kerr. The installation will be open and all friends of the Rainbow Girls are invited to attend.



Kathy Williams

Y. L. Church
Holds Dinner

The Y.L. Methodist Church met for their monthly family dinner Wednesday evening, September 4, with 52 attending. Following the dinner, the group heard a report from three youths who had attended the Farm Bureau Youth Citizenship Seminar at Waco earlier in the summer. Glenda Calhoun, Tommy Little and Ted Millen gave reports on the purposes and activity of the seminar.

Special GA Service at Bula Church

"Saved to Tell Others" was the theme during a presentation and coronation service of the Girls Auxiliary Sunday night at the Bula Baptist Church. Special honors were bestowed upon five girls taking advancing steps in the Auxiliary. Terry Claunch and Barbara Black were crowned queens. Terry was crowned by a cousin, Carolyn Ann Powell of Littlefield and Donald Black, brother of Barbara, placed the crown on Barbara. Beverley Tiller and Helen Bice received their scepter and Diane Crume

was made queen regent. Each girl, dressed in white, was introduced and given her charge by Elaine Tiller and Diane Crume presented their scepter. A cake was given to the queen regent, Diane Crume. The service opened with the congregation singing, "We've a Story to Tell to the Nation." Following the coronation, the pastor of the church, Eddie Howard, sang "I'll Tell the World That I am a Christian" and benediction was given by J.L. Latham. As each candidate was given her charge, she stood in front of a table laid with white, centered with a white Bible, trimmed in gold and offset with

white burning candles set in an arrangement of greenery. In the background, a gold cross stood beneath gold letters spelling out the them for the coronation. Following the coronation, a reception was given in the Fellowship Hall of the church. The serving table carried out the GA colors with white net over white, centered with a green and yellow floral arrangement. Green punch and white cake squares were served to the guests present. The five honored guests were seated at a table covered in white with green and gold crepe paper streamers.

CCW to Hold
Fall Meeting

Christian Women's Fellowship of the First Christian Church will hold their first fall meeting in Fellowship Hall of the church on September 10 at 12 noon. Preceding the program will be a luncheon served by the hostess for the month of September, Mrs. Edwin Harper. Mrs. J. Pat Wagon will present the study portion of the program and Mrs. Bobby McGee will be in charge of the worship part of the program for the day. CCW meets the second Tuesday of each month from September to May.

Civilized men and women support the church because the church supports civilization.

Introducing

Jean Haskins

BEAUTICIAN

* * *

Jean is a recent graduate of Isbell Powell Beauty School

FOR THE LATEST IN HAIR STYLING

CALL TODAY FOR AN APPOINTMENT.

Jean will take appointments from 4 to 6 Tuesday through Friday and 8 to 2 on Saturday.

Wellborn Beauty Shop

101 Ave. J

EARN WHILE YOU LEARN!

* * *

TRAINING PROGRAM FOR WAITRESSES

If you are interested in earning while learning to be an efficient waitress, apply in person at:

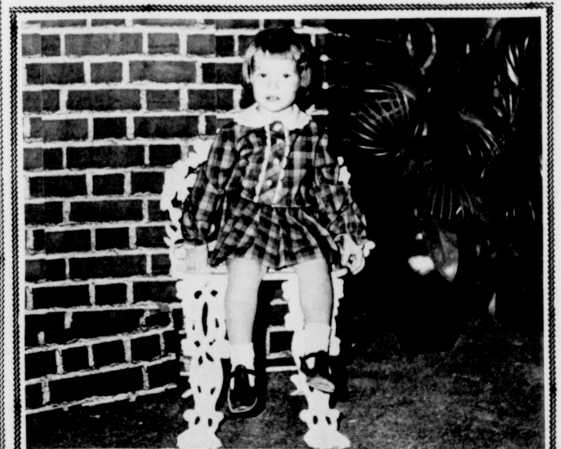
The Corral Drive In

Congratulations TO THE LLANO ESTACADO CIVIC CLUB ON A GRAND SHOW.



Cobb's Models -- Tonya Howard, Monty Dale, Judy White, Elizabeth Barnett, Sherry Moore and Ann Sowder.

We Express Our Thanks To The Models Participating for Cobb's in "THAT NIGHT IN SEPTEMBER" Style Show



Dot's Shop Models -- Melanie Bynum. Models not shown were Kathy Williams and Milabeth Gibson.

We appreciate our models and say "Thanks" for a fine showing.

Congratulations TO THE LLANO ESTACADO CIVIC CLUB

Dot's Shop

W. M. U. Holds Houseparty

"In His Strength" was the theme of the State Woman's Missionary Union Houseparty, held in Waco this past week. Conferences were held for all age-level groups to inform workers and interested persons of the new approach to mission work within the local church. Rev. Jack Taylor from San Antonio was the guest speaker for the general sessions with a number of our State workers leading in the various conferences.

The highlight of the general session on Tuesday was Mrs. Johnny Shelton of Muleshoe telling of the work of the Goodwill Center here. Over 2,000 women were in attendance from Texas with delegations from Minnesota, Wisconsin and Louisiana. Those attending from First Baptist Church, Muleshoe, were: Mrs. Johnny Shelton, Mrs. Douglas DuBose, Mrs. Jack Schuster, and Mrs. J.R. Harris. Mrs. Schuster led in a conference on local missions.

Linda Monk, Monte West
United in Lubbock Rites

Linda Louise Monk, daughter of Mr. and Mrs. Clyde Monk, former Muleshoe resident, now of Lubbock, was united in marriage with Monte Robert West, son of Mr. and Mrs. Floyd West, Monahans, at the Greenlawn Church of Christ, Lubbock, in an evening ceremony on Saturday, September 7.

D.L. Thompson, minister, Church of Christ, Muleshoe, performed the double ring ceremony before an archway of greenery, flanked by arched candleabra.

Entering the church on the arm of her father, the bride was attired in a formal length cage gown in Alencon lace over a fitted sheath of peau de sole. It was fashioned with a bateau neckline, long petal point sleeves, and the empire bodice was crested with pearls. The loose cage had a scalloped hemline extending into a Watteau chapel-length train, and complemented at the shoulders with a large bow. Her headpiece was an Alencon lace spray with pearl clusters. The butterfly veil was of English silk illusion. She carried a cascade bouquet of Stephanotis and feathered mums, centered with a white cattailaya orchid.

Mrs. Susan Minkler, Muleshoe, was matron of honor. She wore a formal length yellow crepe gown with a bateau neckline. It was a loose A-line with back inverted pleat and martingale belt. She carried a bouquet of yellow feather mums fashioned into crescent cascades.

Bridesmaid Jolane West, sister of the bridegroom, and junior bridesmaid Diane McGuire, Muleshoe, were dressed identical to the matron of honor and carried identical bouquets.

Attendants for the bridegroom were Arlen Griffith as best man and groomsman, Paul West, brother of the bridegroom, Marty McGuire, Muleshoe, served as junior groomsman. Ushers were Marty West, both of the bridegroom, and Rod Paine.

Traditional wedding selections were presented by the chorus from the Broadway Church of Christ, Lubbock.

Bible, and flanked by yellow tapers.

At the serving table were Nancy Benson, Brownfield and Linda Pulliam, Hereford.

For a wedding trip to South Texas, the bride chose a two-piece yellow linen, complimented with matching yellow accessories. She wore an orchid corsage lifted from her bridal bouquet.

The bride, a Lazbuddie High School and Lubbock Christian College graduate, is employed by Lubbock National Bank and the bridegroom, who graduated from Monahans High School, is a senior accounting major at Texas Technological College.



TOPS Club

Nineteen members weighed in at the regular weekly meeting of the Jenny TOPS Club Thursday night, September 5. The meeting opened with the TOPS pledge and song at the Bailey County Cooperative Meeting room.

Weekly queen was Beth Boren, with first runner-up, Shirley Cross and second runner-up, Aurora Mata.

Leader June Vinson read a letter from the area TOPS supervisor giving details for the Area Rally Day to be held September 28 at Happy. Several members made plans to attend.

At this meeting, the monthly queen was crowned, Beth Boren was monthly queen, with first runner-up, Mrs. Aurora Mata and second runner-up, her daughter, Aurora Mata.

One guest, Bessie Bessire, was present.

The meeting closed with the TOPS Goodnight song.

Club Discusses
Dried Arrangements

The Progress Home Demonstration Club met in the home of Lucille Cross on Tuesday, September 3.

Opening exercise was "Slow Me Down, Lord" and was given by the hostess.

Special reports were given on the birthday gifts to the Maltbys, the Roming girls and a letter was read from Gristown stating that Janice Ballard, who the club has sponsored for about a year and a half, has now returned to her family.

Each member answered the roll with "What I Have Collected for Arrangements" and Elizada Guiley presented a program on dried arrangements.

As the president of the Progress Home Demonstration Club will be at the state meeting from September 16-20, the next meeting will be on September 24 with a program on "Spanish Foods" to be given by Home Demonstration Agent Robin Taylor.

Those attending the meeting included Veta Self, Adarrab, Judy and Keve Roming, Eunice Crume, Elizada Guiley, Jauree Smallwood, Gertie Meyers, Fern Davis, the hostess, Lucille Cross and her daughter, Linda.



Mrs. Monte West . . . the former Linda Monk

Muleshoe Hobby Club Ribbon
Winner at Curry County Fair

Members of the Muleshoe Hobby Club went to the Farwell Park for a picnic Thursday, September 5. Following the picnic, they went to Clovis to the Curry County Fair where three members of the club had entries in the fair.

Of 16 entries by the three members, fourteen were ribbon winners.

Ina Givens won ribbons on the following: crocheted tablecloth, red ribbon; baby tooties, white ribbon; cross-stitch apron, red ribbon; jar collection, red ribbon; sandhill plum jelly, blue ribbon and pixie doll, red ribbon.

The Muleshoe Mule imprinted an a toss pillow won a blue ribbon for Mabel Colwell and she also won the following ribbons: driftwood arrangement with grapes, white ribbon; driftwood arrangement with petrified wood, red ribbon; old fruit jar collection, white ribbon and wall plaque in plastic, blue ribbon.

May Fattie won three ribbons with her entries and they included: printed tablecloth with matching napkins, white ribbon; pixie doll, blue ribbon and bleach bottle hat with

Many of the Hobby Club members are preparing entries for the South Plains Fair at Lubbock which starts Monday, September 23. All entries are required to be at Lubbock on September 19. Members will meet September 19 at the home of Mrs. Briscoe to finalize plans for the Lubbock fair.

AN AFTERTHOUGHT
It is important to build character. And, sometimes, it is important to rebuild.
-News, Brunswick, Ga.



Sweetheart Lane Models -- Gayetta Gable, Cynthia Gable and Vicki Street.

We're proud of our models and thank them for helping make "That Night in September" STYLE SHOW a success.

We Congratulate
THE LLANO ESTACADO CIVIC CLUB
ON A FINE SHOW.

Sweetheart Lane

Congratulations to the Llano Estacado Civic Club on
"That Night in September" STYLE SHOW



St. Clair's Models -- Brent Burrows, Hope Free, Pam Miller, Lee Ann Yerby, Karen St. Clair and Debbie Burrows.

We wish to thank our models who did so well in showing our Fall Fashions.

St. Clair's

Anthony's
C. B. ANTHONY CO.

Rounded - Square Toe Beauty

New comfort in this new fall fashion

NYLON VELVET

4.99

To see and feel them is to believe. Put your feet forward — pretty and at ease. Imagine adding the one-eyelette to your wardrobe in red, green, black, orange or brown. And that two-eyelette comes in gold, black, rust or brown.

Girls' Sizes 12 1/2 to 3

HOSPITAL News

WEST PLAINS HOSPITAL

ADMISSIONS: Amador Mendoza, Ruben Gonzales, Mrs. Albert Bell, Albert Bell, the Robinson, Mrs. Lois Robinson, Mrs. Eddie Maxwell, Mrs. Felicitas Amador, F.B. Rutland, Dick Steel, E.V. Bartlett, Vernon Singleton, Mrs. Junita Hernandez, Major Wood, Mrs. Josefa Rios, Wilmer Cook, Mrs. Margaret White, Mrs. Carrie Whittle, Mrs. Mary Thomas, Mrs. Hattie Jackson, Leonard Evans.

DISMISSALS: Mrs. Ette Tidwell, Miss Linda Washington, Major Wood, Grady Riley, Mrs. Mamie Richards and baby, Mrs. Josefa Rios, Mrs. Ed McDaniel, Jess Copley, Mrs. Ette Davis, Mrs. Bessie Payne, Ruben Gonzales, Mrs. Danile Amador and baby, Dick Steele, Mrs. Corrine Weeks, Mrs. Geronima Rosas, Mr. Amador

Mendoza, F.B. Rutland, E.V. Bartlett, Mrs. Junita Hernandez and baby, Vernon Singleton.

GREEN MEMORIAL HOSPITAL

ADMISSIONS: Mrs. A.D. McCarty, Leonard Kevans, Jim Lane, Mrs. Jimmy Bynum, Vernon Bryant, Mrs. Harold Weyer, Gary Hanks.

DISMISSALS: Mrs. Glenda Hall, Mrs. W.J. New, Mrs. Jessie Valero, Evaristo Cortez, Mrs. Wesley Hawkins, Mrs. Earnestina Rivas and baby boy, Mrs. Terry Kendall and baby girl, Traci Walker.

Learning Young
Little Nicky, 5 years old, was walking along the street with little Joan, 4. As they were about to cross the street, Nicky remembered his mother's teaching. "Let me hold your hand," he offered valiantly.
"Okay," exclaimed little Joan "but I want you to know you're playing with fire."

Hi, World



Mr. and Mrs. Daniel Amador, Hereford, girl (Carman) 9-1-68, 4:35 p.m., 6 lb. 9 oz.
Mr. and Mrs. Sirilo Hernandez, Muleshoe, Girl (Consuelo) 9-3-68, 4:40 p.m., 7 lb. and 8 oz.

Mr. and Mrs. Terry Kendall, baby girl, 9-1-68, 6 lbs. 12 oz., name: Sharyn Michelle Kendall.
Mr. and Mrs. Antonio Rivas, baby boy, 8-31-68, 7 lbs. 5 oz., name: Marvin Rivas.

NOTHING NEW
Not very convincing is that alibi among congressmen about their nepotism being only kin deep.

ESA Seminar Scheduled

The Epsilon Chi Chapter of ESA sorority held their first business meeting for 1968-69 Tuesday evening, September 3, in the home of Mrs. Jack Renneis with Mrs. David Gibson as co-hostess.

It was announced that a District Nine ESA Seminar will be held here October 20, with two state officers from San Antonio presiding, Marlene Martin and Vicki Young, who are District Nine officers, will be in charge of arrangements for this meeting.

Using a quotation from Abraham Lincoln, Mrs. Ronald Johnson, president, opened the meeting, reminding each member that she has a responsibility to learn as much as she can about her Community, her Town, her State and her Nation.

With "Our America" as the theme for the program and socials this year, Mrs. Ernest Martin, Mrs. Henry Stoneham

Society Has Room for More Adolescence

Society has no more room for real adolescence according to Ed Pope, Extension human development specialist with the U.S. Department of Agriculture, blamed such an attitude for much of the drug use and "youth revolution" today. He said a youth doesn't have time to grow up gradually at his own pace.

"Youth are thrust from childhood into adulthood too fast in our culture," Pope said in an interview at Texas A&M University. "They have no time to discover a real sense of identity."

But youth has always been searching for their place, Pope said. They have just quit swallowing goldfish and wearing raccoon coats.

Many turn to drugs for "kicks" and to help in their search. Although they are not new, drugs are getting the attention today.

Why? Pope said that through modern communications and the nation's emphasis on science, youth know a great deal more a great deal earlier in life than they ever did before.

From this combination of greater knowledge about everything and less time to digest it gradually, arise confusion, conflict and protest in all forms, from drug use to college campus revolts, he said.

"It is difficult for young people to decide who they are and because of this they find all kinds of protest against lack of opportunity to grow up gradually at one's own pace," the human relations specialist said.

"But it is unfortunate that the public is being scared to death of marijuana and LSD," said Pope. "They are scared to such a degree that they fail to learn about the positive achievement in research and therapy accomplished through

Drug use is a medical, psychological and social problem the specialist said. No one is sure of the effects of drug misuse on any of these angles but "we need to work on the problem from all three angles."

In one LSD treatment, called psycholytic, Godfrey found the patient presumably able to see himself in a different and more acceptable way. This treatment is used with alcoholic and psychoneurotic patients.

In another treatment, termed "psycholytic," LSD is thought to lift the forgetting barrier so one may be able to work with the unconscious material brought up during the drug experience.

Godfrey's report said LSD and like drugs may, after sufficient research, prove to be a boon to the psychiatrist in the treatment of mentally ill patients. However, there is no question that this drug is not magical. It is a tool for well-trained individuals to use, Godfrey reported, warning that unwise use is likely to be the vehicle to mental illness.

Pope said the main danger of LSD is having a bad trip with no one on hand to guide the user. "You can't tell how you will react to the drug," he said. "It depends on personal makeup and the type of LSD

he takes."

Job Application Shows Decline

Applications for jobs fell off a bit at Texas Employment Commission local offices in July, as expected at this time of the year.

"Decreases in new applications and testing activities reflecting a return to normal, following the high volume of activity in June, when students, graduates and other summer jobseekers were entering the labor market in large numbers," says R.S. Coffman, TEC Administrator.

"Farm job placements were also down, reflecting the completion of the blackberry harvest in East Texas," Coffman added.

The offices took 62,479 job applications during July, made 47,013 non-farm placements and filled 32,252 farm jobs.

Does anyone in the audience know what is meant by going into a tizzy?



Sears Roebuck & Co. -- Perri Poynor, Betty Harbin and Patti Poynor.

We thank our models who represented Sears Roebuck and... Congratulate The Llano Estacado Civic Club on an outstanding Style Show. Sears Roebuck & Co. CATALOG SALES OFFICE, MULESHOE

Faculty Holds Social

Mr. and Mrs. Ralph Stevenson were hosts Wednesday, August 28, to members of the Muleshoe Junior High Faculty. The back yard of their home, 1905 West Avenue E, was the scene for the ice cream social. Table games and conversation were enjoyed by the group. Homemade ice cream and cake were served to the forty staff members and guests.

Fred Mardis, principal of the Junior High; John Stangle, math teacher; Greg Marconi, reading teacher; Bob Badger,

band director; Mrs. Morris McKillip, reading teacher; June Arnold, language arts teacher; and Jeff Ingham, choir director, were special guests.

Other guests were Mr. and Mrs. Neal Dillman, Mrs. Fred Mardis, Mr. and Mrs. Harold Cowan, Mrs. Jeff Ingham, Miss Jean Schofield, of Brownfield, Mrs. Benny Pasa, Mrs. Eldon Sage, Mrs. John Watson, Miss Leona Patterson, Miss Judith Justice, Miss Rhonda Wagon, Dr. Charles Pummill.

Also Mr. and Mrs. Bob Graves and Terry Lynn, Mrs. Hollie Francis, Mrs. Jack Beddingfield, Kerry Beddingfield, Morris McKillip, Mr. and Mrs. C.E. Moore, Mr. and Mrs. Eldon Davis, Mr. and Mrs. C.E. Fox, Mr. and Mrs. Lewis Scoggin, and Scotty Bill Stevenson.

Vernons Visit In Muleshoe

Mr. and Mrs. Verley Wayne Vernon and their small son Verley Wade, have been visiting relatives in Muleshoe. It was the first time for Mr. and Mrs. D.L. Vernon and Mr. and Mrs. Ernest Gatlin to see their grandson.

Vernon is a Third Class Petty Officer in the electronic division of the U.S. Navy and is stationed at Key West Fla. He attended school in Muleshoe, and both he and his wife, Connie, graduated from Manzana High School in Albuquerque. Prior to entering the Navy, the couple made their home in Muleshoe.

WANTED TO BUY ---
CUCUMBERS
TOMATOES
BELL PEPPERS
PHONE... Business SH 49770
PHONE... Home SW 51494
Vegetable Haven Lubbock, Texas

We're Proud of the Llano Estacado Civic Club on "THAT NIGHT IN SEPTEMBER" STYLE SHOW



Fashion Shop Models -- Bennie Sue Free, Ann Douglass, Jo Anne Bray, Betty Burlsmith, Cookie Bamert and Debra Smith.

Thanks To Our Models For A Fine Performance. The Fashion Shop

This emblem means clean air heating in your home!

TOTAL ELECTRIC HOME GOLD MEDALLION AWARD
LIVE BETTER ELECTRICALLY

CALL YOUR PUBLIC SERVICE MANAGER ■

Total ELECTRIC Living

92-3



Rev. Walker Resigns: Takes New Church

Rev. Troy Walker resigned as pastor to the Trinity Baptist Church to accept the pastorate of the Eastridge Baptist Church in Amarillo. His resignation was effective September 1.

His last serve here marked his eighth anniversary as pastor of the local church.

Trinity Baptist Church has been undergoing continuous growing during the eight years leadership under Rev. Walker, church records reveal.

Comparatively, on the last Sunday in August, 1960, there were 67 in Sunday School. This was almost the total resident Sunday School membership. The annual average attendance for 1967 was 143, which represents only about one-half of the total average resident membership.

The total contributions to the church during 1960 was \$8,437.00 and the increased figure stands at \$21,771.00.

Property value in 1960 was \$25,000 and the total value of church and the 1967 value stands at \$11,000.00. There has been 426 united with the church by letter and 174 by baptism.

The church honored the Walkers with an all-church fellowship and ice cream supper and presented them with a card table and chairs as a token of appreciation.

A pulpit committee has been named with Walter Sain as chairman.

BULA FOOTBALL SCHEDULE

Sept. 13 Southland H
Sept. 20 Union H
Sept. 27 L.C.H.S. T
Oct. 4 Open
Oct. 11 Wellman H
Oct. 18 *Whitharral T
Oct. 25 *Smeyer H
Nov. 1 Loop T
Nov. 8 *Three Way T
Nov. 15 *Cotton Center H
*denotes conference games

MULESHOE NURSING HOME POLICY

It is the policy of the Muleshoe Nursing Home to admit and to treat all patients without regard to race, color or national origin. The same requirements for admission are applied to all and patients are assigned within the home without distinction to color or national origin.

There is no distinction in eligibility for, or in the manner of providing, any patient service provided by or through the nursing home. All facilities of the nursing home are available without distinction to all patients and visitors regardless of race, color or national origin.

All persons and organizations having occasion either to refer patients for admission or to recommend the Muleshoe Nursing Home are advised to do so without regard to the patient's race, color or national origin.

/s/ **Eddie M. Faust**
Administrator

Midge...

Con't from Page 1

Midge by inspecting their fields, which are blooming, at least once each day for adult midge activity, explains Adams. Or they can follow an insurance method. To insure against losses due to the tiny insects, producers can begin an automatic spraying program and follow the schedule of application above.

Population of the sorghum midge has now reached damaging levels in several counties over the area. In addition to Bailey County, Lubbock, Lynn, Terry, Yoakum, Crosby, Hockley and Garza counties as well as damaging populations observed in Floyd, Hale, Lamb and Briscoe Counties.

Fields of grain sorghum in the above mentioned counties which have not yet completed blooming still need insecticide treatment in order to prevent yield losses due to the sorghum midge.

To date, the damaging populations of the sorghum midge have not been detected north of the Bailey-Lamb-Hale county area. However, producers in adjoining counties should continue inspecting their grain sorghum fields which are blooming for adult midge activity.

While the number of midge, based on a 25 head count, in Bailey County figures only 11 over all, three other counties, Lamb, Hale and Floyd, the count is listed as too numerous to mention.

The following insecticides are recommended for sorghum midge control:

Carbaryl (Sevin) (80% W.P.) 1/2 to 2 1/2 lb. per acre. May be applied to forage sorghum without limitations. Allow 21 days between last application and harvest of sorghum grain.

Carbophenothion (Trithion) (4 lb./gal.) - 1 pint per acre. Do not apply more than twice per acre. 21-day waiting period between last application and harvest or grazing.

Diazinon (4 lb./gal.) - 1/2 pint per acre. 14-day waiting period between last application and harvest or grazing.

Ethion (4 lb./gal.) - 1/2 to 1 pint per acre. Allow 30 days between last application and harvest. Do not apply more than three times per season.

Methyl parathion (2 lb./gal.) - 1 quart per acre. Allow 21 days between last application and harvest or grazing. Causes leaf burn on certain sorghum varieties.

Parathion (2 lb./gal.) - 1 quart per acre. 12-day waiting period from last application to harvest.

Endrin (1.6 lb./gal.) - 1 1/4 pint per acre. Must not be applied within 45 days of harvest. Apply only once per season. Do not graze or feed ensilage from treated plants to dairy or meat animals.

Toxaphene (6 lb./gal.) - 1/3 to 1/2 gal. per acre. Apply

Goal...

Con't from Page 1

the same period of 1967. For the month of July, sales totaled \$15,862,130 - an increase of 11 per cent over July 1967.

Sales of both Series E and H Bonds and Freedom Shares throughout the county totaled \$46 Million. Total sales of \$2,996 Million for the seven month period represents 54.4 per cent of the nation's goal.

Broom...

Con't from Page 1

through a community-wide sale of blind-made-products.

"There is a definite need for funds to further this very worthwhile project," he stated, "and it is mostheartening to see the Lions devote so much time and effort to raise these funds."

"We are cooperating to the fullest extent possible with this year's Broom Sale their biggest and best yet."

Three Way

MRS. H. W. GARVIN

Mr. and Mrs. George Tyson, Mrs. H. W. Garvin, John Tyson and Mr. and Mrs. Caton Tyson attended the funeral of their sister, Mrs. Ethel McMillan in Comanche Tuesday.

Tommy Dupier left Friday for Corpus Christi to work the next few months then he will attend A&M college again.

The community received a very good rain Thursday night with as much as two inches in parts of the community.

The Three Way school faculty had a dinner on Thursday evening at the school cafeteria.

Mr. and Mrs. Terry Hutton moved to Lubbock the past weekend to attend Texas Tech this fall.

Mr. and Mrs. Tommy Durham and children spent the weekend with her parents, the George Tysons.

Mr. and Mrs. Paul Powell spent a few days in Detroit, Michigan attending the Co-op Butane meeting.

Mr. and Mrs. A.T. Tyson and children spent the weekend visiting the George Tysons, John Tyson and Mr. and Mrs. H.W. Garvin.

Mr. and Mrs. C.F. Harris and Mr. and Mrs. Glen Harris are on vacation in Central Texas.

We wish to express our sympathy to the family of Sidney Phillips, who was buried Sunday at Muleshoe, Phillips was seriously burned at his shop in Stegal.

W.C. McCelvey has been in Lubbock with his mother who is very ill.

Mr. and Mrs. Cecil Lendsey spent the weekend in Ruidoso, N.M.

Texas Vehicle Inspection Started Monday

Vehicle inspection for 1969 safety stickers started Monday and will continue until midnight April 15, according to Colonel Wilson E. Speir, director of the Texas Department of Public Safety.

More than six million vehicles are expected to receive the compulsory inspection prior to the deadline, Speir said. Inspections may be performed at any of the almost 5,500 vehicle inspection stations in the state of Texas.

Texas law requires inspection of the brakes, lighting equipment, horns, warning devices, mirrors, windshield wipers, front seat belts in vehicles where seat belt anchorages were part of the manufacturer's original equipment on the vehicle, steering (including power steering) on all motor vehicles registered in this state.

Special inspection provisions apply to trailers, semi-trailers, pole trailers or mobile homes having a loaded gross weight in excess of 4,000 pounds.

The minimum fee is \$1.75. This does not include the cost of repairs or adjustments necessary to enable to pass inspection.

Speir said the new vehicle inspection sticker will be a two and one-half inch replica of the DPS Patrolman's badge with a red background.

LAZBUDDIE FOOTBALL SCHEDULE

Sept. 13 New Home T 8 p.m.
Sept. 20 Tatum, N.M. H 8 p.m. (CDS)
Sept. 27 Bovina H 8 p.m.
Oct. 4 Whiteface H (Homecoming) 8 p.m.
Oct. 11 Open
Oct. 18 *Amherst T 8 p.m.
Oct. 25 *Turkey H 7:30 p.m.
Nov. 1 *Nazzareth T 7:30 p.m.
Nov. 8 *Hart T 7:30 p.m.
Nov. 15 Alamo Catholic, Amarillo T 7:30 p.m.
Nov. 22 *Matador H 7:30 p.m.

* denotes conference games

THREE WAY FOOTBALL SCHEDULE

Sept. 13 Patton Springs H 7:30 p.m.
Sept. 20 Dawson H 7:30 p.m.
Sept. 27 Loop T 7:30 p.m.
Oct. 4 Southland T 7:30 p.m.
Oct. 11 Open
Oct. 18 *Smeyer T 8:00 p.m.
Oct. 25 Gall T 7:30 p.m.
Nov. 1 *Cotton Center T 7:30 p.m.
Nov. 9 *Bula H 7:30 p.m.
Nov. 15 *Whitharral H 7:30 p.m.
* denotes conference games

BAILEY COUNTY JOURNAL
Established March 31, 1943
Published by the Publishing Co., Inc.
Every Issue at 30¢ West of Dallas
Muleshoe, Texas
L.L. Hall, Publisher & Managing Editor
Doris Kiser, News Reporter
Cora Cline, Circulation Secretary

MEMBERSHIP
L.L. Hall, Publisher & Managing Editor
Doris Kiser, News Reporter
Cora Cline, Circulation Secretary

SUBSCRIPTIONS
One Year (12 Issues) - \$1.00 per year, \$1.50 per year by mail. Single copies 10¢. Payment in Advance.
Six Months (6 Issues) - \$0.50 per year, \$0.75 per year by mail. Single copies 10¢. Payment in Advance.
Three Months (3 Issues) - \$0.25 per year, \$0.37 per year by mail. Single copies 10¢. Payment in Advance.

Improvements...

Con't from Page 2

A fire sub-station, when needed, is to be located in the west part of the city.

The city's downtown station is adequate except for its location. The distance from this location to some of the area in the west part of town can cause serious damage before the fire fighting equipment can travel the required distance.

A sub-station in the proposed location would give the City a better fire rating. This construction would probably be undertaken in the 1972-73 period.

See sample ballots, this edition for prices of each of the nine phases and the county jail bond issue.

Nearly every man has a remedy for the troubles of everyone but his own.

No. 2

OFFICIAL BALLOT

City of Muleshoe, Texas Bond Election
September 10, 1968

(NOTE: Voter's signature to be affixed on reverse side.)

(Place an "X" in the square beside the statement in each proposition indicating the way you wish to vote.)

PROPOSITION NUMBER 1
"THE ISSUANCE OF \$365,000 WATERWORKS REVENUE BONDS AND PLEDGING THE REVENUES OF THE CITY'S COMBINED WATERWORKS AND SANITARY SEWER SYSTEM TO THE PAYMENT THEREOF"

FOR
 AGAINST

PROPOSITION NUMBER 2
"THE ISSUANCE OF \$50,000 SEWER SYSTEM REVENUE BONDS AND PLEDGING THE REVENUES OF THE CITY'S COMBINED WATERWORKS AND SANITARY SEWER SYSTEM TO THE PAYMENT THEREOF"

FOR
 AGAINST

PROPOSITION NUMBER 3
"THE ISSUANCE OF \$90,000 PARK BONDS AND THE LEVY OF A TAX IN PAYMENT THEREOF"

FOR
 AGAINST

PROPOSITION NUMBER 4
"THE ISSUANCE OF \$40,000 STREET IMPROVEMENT BONDS AND THE LEVY OF A TAX IN PAYMENT THEREOF"

FOR
 AGAINST

PROPOSITION NUMBER 5
"THE ISSUANCE OF \$65,000 SANITARY SEWER SYSTEM BONDS AND THE LEVY OF A TAX IN PAYMENT THEREOF"

FOR
 AGAINST

PROPOSITION NUMBER 6
"THE ISSUANCE OF \$105,000 CITY HALL BUILDING BONDS AND THE LEVY OF A TAX IN PAYMENT THEREOF"

FOR
 AGAINST

PROPOSITION NUMBER 7
"THE ISSUANCE OF \$60,000 COMMUNITY CENTER BUILDING BONDS AND THE LEVY OF A TAX IN PAYMENT THEREOF"

FOR
 AGAINST

PROPOSITION NUMBER 8
"THE ISSUANCE OF \$40,000 LIBRARY BUILDING BONDS AND THE LEVY OF A TAX IN PAYMENT THEREOF"

FOR
 AGAINST

PROPOSITION NUMBER 9
"THE ISSUANCE OF \$20,000 FIRE STATION BUILDING BONDS AND THE LEVY OF A TAX IN PAYMENT THEREOF"

FOR
 AGAINST

IT'S "THAT NIGHT IN SEPTEMBER"

FASHION TIME

Anderson's Montgomery Ward Models -- Wanda Harmon, Pat Macho and Phama Anderson.

We thank our models for Representing us.

CONGRATULATIONS

To the Llano Estacado Civic Club on a **Splendid Style Show**

ANDERSON'S MONTGOMERY WARD SALES AGENCY

No. 10

OFFICIAL BALLOT

Bailey County Bond Election
September 10, 1968

(NOTE: Voter's signature to be affixed on reverse side.)

(Place an "X" in the square beside the statement indicating the way you wish to vote.)

PROPOSITION

FOR
 AGAINST

THE ISSUANCE OF \$175,000 JAIL BUILDING BONDS.

PRESENTED AS A PUBLIC SERVICE BY:

FIRST NATIONAL BANK

MEMBER FDIC

"The Bank with a million dollar bank structure"

Bula News

by Mrs. John Blackman.

Bula School opened Monday morning September 2 with an assembly program. Patricia Gruseudorf, student council president having charge of the meeting, and giving the welcome to all new and old teachers and students. Mr. Willie Hedgave gave the invocation. Superintendent McDaniel introduced all the teachers, bus drivers and cooks. School opened with a full staff of teachers. Recently hired teachers are Mike Warren, math teacher and Mrs. John Merley, first and second grade teacher. Donna Crume gave the benediction.

Rev. Harvey Whittenburg announces the summer revival for the Bula Methodist Church will be September 15 through September 22. Visiting minister will be Don Davidson, representative from Heritage Rest Home, Hereford.

Dewayne Medlin, small son of Mr. and Mrs. Dennis Medlin of Lubbock spent Wednesday until Monday with his grandparents, Mr. and Mrs. L.H. Medlin.

Recent guests in the L.C.

Fred home were their son and family, Mr. and Mrs. Keith Fred and children, Todd and Nikki from Narmal, Ill. Fred teaches in the University there.

Mr. and Mrs. W.T. Thomas attended the Shell Oil Company annual fish fry Friday evening held at the Shell Park in Denver City. Thomas is a retired worker for the Shell company.

Mr. and Mrs. Jerry Cox and daughter, Jammie and Danene, drove, after church services Sunday, to Plainview for lunch with her aunt and uncle, Mr. and Mrs. Masten Phillips, also with another uncle and his wife, Mr. and Mrs. William Phillips from California.

Mr. and Mrs. W.L. Clawson were lunch guests Sunday with Mrs. Perry Fort of the Goodland community.

Eddie Howard is the new pastor for the Bula Baptist Church. Both he and his wife Stella are students of Wayland College and will be commuting this school year. He is a senior student and Mrs. Howard is classified as a junior. Both Mr. and Mrs. Howard are natives of Tahoka. This is his first church to pastor. We welcome them to our community and hope their stay with us will be an enjoyable one.

V.C. Weaver has made much progress from his recent hip surgery. Doctors x-rayed recently and were well pleased

with the work and progress he had made. He is now able to sit up in bed and eat his meals.

Dennis, Darryl and Patti Cash spent Saturday through Monday with their grandparents, Mr. and Mrs. John Blackman and accompanied them to Lubbock Sunday to help their great-grandmother, Mrs. U.T. Dever observe her 88th birthday.

Mrs. Allan Williams and daughter Mellisa from Port Huene, Calif, arrived Friday for the funeral of her brother-in-law and nephew, Mart Bass and son, Robert of Morton. They will probably stay until October and visit with her sister and mother, Mrs. Williams of Morton and also her husband's parents, Mr. and Mrs. C.A. Williams, Bula before returning to their home in California. Her forces in Vietnam and is scheduled to return home in October.

Buddie Wayne Walden of Lubbock visited Saturday with his grandmother, Mrs. Pearl Walden.

Rev. and Mrs. Whittenburg attended the funeral Saturday for his uncle, T.I. Farmer in Purdon, Tex.

Sunday visitors in the Bill Sowder home were her sister and husband, Mr. and Mrs. Homer Pirkle of Edmonson, Mrs. Bob Murphy and baby daughter, Sharron Kay of Houston visited for a short while

Monday morning with her grandparents, Mr. and Mrs. F.L. Simmons.

Recent company for the W.L. Clawson's were two of her daughters, Mrs. James Collings and daughters, Debbie and Darla of Amarillo, and Mrs. Joyce White and children Jimmy and Jodie and Mrs. Clawson's step-son Lavey Sanders from Kemp, Texas.

Mr. and Mrs. W.T. Thomas visited Sunday afternoon in the Lubbock community with some old friends of 42 years, Mr. and Mrs. Luther Hamm, Mr. and Mrs. A.M. McBea have been in Brownwood since Friday. They were called to be with his mother, Mrs. Mary McBea, who had a light stroke and was in the hospital there.

Mr. and Mrs. J.P. Morris, accompanied by her sister, Mr. and Mrs. J.W. Hardin of Littlefield, enjoyed seeing the show "Texas" at Palo Duro Saturday night. The Morris' went Thursday evening and after about 30 minutes were caught in the rain and had to return home, but really enjoyed seeing it Saturday night.

Mr. and Mrs. Wilbur Clawson and daughter, Debbie, Lubbock spent the weekend in the homes of the L.L. Clawsons and J.D. Rowlands.

Mr. and Mrs. Gene Bryan and Mr. and Mrs. John Hubbard are sightseeing in the Colorado Mountains this week.

Mr. and Mrs. Marvin Drake spent several days recently sightseeing in Arkansas, Oklahoma and East Texas.

September 23 to 29 is the date set for the revival for the local Baptist Church, the pastor Rev. Howard announces. Visiting preacher will be the Rev. Tommy Phelps, famous professional wrestler who went from wrestling to the pulpit. The church feels very fortunate being able to secure him. They have been trying for two years to secure him. Song leader will be Ivan Wesencroft of Olton, pianist one of the local girls, services twice daily 10 a.m. and 8 p.m.

In a recent letter Mr. and Mrs. Marion J. McDaniel received from their son David, he stated that he was stationed at Cam Beach Bay, one hundred miles north of Saigon. He is with the 8th engineer battalion, a construction battalion. He was happy to find things much better than he had anticipated, very cool weather. He was real excited about their teare,



55-POUND YELLOW CAT---The big fish did not 'get away' this time. This 55-pound yellow cat was caught by Cecil Jones and Nolan Harlan of Bula at Lake Stamford Friday, August 30. The fish dressed out at 30 pounds. Cecil Jones, left, and Mrs. Jones, and Nolan Harlan, right, and his family spent several days at the lake last week.

Obituaries

Gracie Chitwood

Mrs. Gracie Eleanor Chitwood, 85, Friona, died Wednesday, September 4, in the Southwest Convalescent Center at Amarillo.

Funeral services were at 2 p.m. Friday in the Singleton Funeral Home Chapel of the Chimes with the Rev. Bill Foll, pastor of the First Baptist Church, Friona, officiating. Burial was in Muleshoe cemetery under direction of Singleton Funeral Home.

Mrs. Chitwood was born at Hot Springs, Ark., where she was married to E. C. Chitwood on July 26, 1903. The couple moved to Knox County in 1919. They moved to Bailey County in 1924, traveling in two covered wagons.

When they arrived in Muleshoe, the town consisted of four stores and a post office. They moved to Friona in 1962 when Chitwood retired from farming. Mrs. Chitwood was a member of the Highland Hills Baptist Church.

Survivors include her husband; sons, E. R., Amarillo; E. D., Muleshoe; W. A., Fretolia; I. D., Dallas and A. E., Brownwood; daughters, Mrs. Frank Snyder and Mrs. Verne Snyder, both of Muleshoe; and Mrs. Lucy Jones and Mrs. Joan Mills, both of Friona; a sister, Mrs. W. H. Lambert, Woodward, Okla.; 15 grandchildren, 29 great-grandchildren.

ren and three great-grandchildren.

BIBLE VERSE

"Remember now thy Creator in the days of thy youth."

1. Who is thought to be the author of the above advice?
2. Who was the author's father?
3. What is another name for the book from which the above verse is taken?
4. Where may it be found?

Answers To Bible Verse

1. Solomon.
2. King David.
3. The Preacher.
4. Ecclesiastes 12:1.

ON UNEMPLOYMENT

The Labor Department has reported the U.S. unemployment rate during May remained at 3.5 per cent of the nation's working force for the second consecutive month.

RISE IN MAIL FRAUDS

Postmaster General W. Marvin Watson reports an increase in the number of mail fraud complaints from consumers and others doing business through the mail is 15 per cent higher than the same period last year.

COMMENTS BY:

The secret of economy is to live as cheaply the first days after payday as you did the last few days before it.

NO WAITING - SHOULD WE TRY TO

CALVERT'S DRIVE-IN GROCERY

OPEN 7 AM Till 9 PM
BEST SERVICE IN TOWN
1902 CLOVIS ROAD
MULESHOE



Dana Cockrell, Mgr.

VOTE FOR THE CITY AND COUNTY BOND ISSUES

BAILEY COUNTY DEMOCRATIC PARTY
Harvey Bass, Chairman

Bobby Burge

Prentice Griffiths

J.C. Slaughter

Charles Beamon

Gary Ethridge

Roger Swint

WE WISH THE MULESHOE MULES SUCCESS IN THE COMING SEASON

MULESHOE STATE BANK

Member FDIC

Dennis Beene

Terry Reasoner

Trevor Ford

Chuck Roming, Mgr.

David Gibson, Assistant Coach

Dick Stafford, Head Coach

Royce Barnes, Assistant Coach

Bucky Taylor, Trainer

Editorial

Man Who Wondered

Once upon a time there was a man who lived in a town and spent all his money away from home. He was sure that he could take care of himself and that his town didn't need anything from him.

After a few years, his business wasn't as keen as he had hoped it would be, his friends didn't seem to think he was quite as important as he thought he was and trade seemed to flow by his doors.

The man began to watch his competitor, who was an intelligent advertiser, a contributor to the public purse, a man anxious to give his time and thought to community projects and a believer in the fact that it pays to keep money at home.

After noting all these factors, the man continued to wonder why some of his old customers went to the newcomer and why almost everybody had the idea that he was a tightwad, but that his competitor was a public-spirited leader of community life.

The Sandhills Philosopher



Editor's note: The Sandhills Philosopher on his Johnson grass farm reviews the drawbacks of the Presidency this week.

Dear editor:

There are times, like when my tractor has a flat and my car battery is dead and a neighbor calls and says my cows are in his field and ruining his crops and it's the hottest day of the year and we're four weeks overdue on a rain and the kitchen faucet is leaking and the dog tore a hole in the screen door and insurance rates have gone up and farm prices have come down, when I half-way wish I was doing something else besides farming, but after reading the newspapers for the past few months, especially the last few weeks, I have decided if I ever make a change, it will not be to the Presidency of the United States.

The job has been misrepresented. In farming, when you go to bed at night, you can generally count on sleeping pretty good till you wake up the next morning, but in the Presidency you never know when the phone will ring at 2 A.M. telling you Russia has invaded Czechoslovakia or Saigon has been shelled again or some nation has stolen another one of our ships.

If you do get to sleep the whole night, you wake up to find out Congress has rebelled or some Senator you had to supper last night has thrown a monkey wrench into your plans or 2,000 letters have arrived telling you to get lost and offering to show you the way.

When George Washington was elected the first President, he had 13 states to look after and figured he had his hands full. Now we've got 50 states and a large part of the 200 other nations on earth, and as if that wasn't enough, we're taking on space to boot, not to mention the people who want to colonize the bottom of the ocean.

On second thought, this farm is not for sale.
Yours faithfully,
J.A.



The week of September 9 on the High Plains could appropriately be called "Agricultural Research Week" this year, according to Donald Johnson, Executive Vice President of Plains Cotton Growers, Inc. "Field Days" featuring tours of agronomic research projects, many of which receive PCG grants-in-aid, will be held at each of the area's two major agricultural research centers during that week, Johnson noted.

The 50th annual field day at the South Plains Research Foundation, Halfway, is set for Thursday, September 12. Research projects and displays will be on exhibit from 1 p.m. to 4:45. The evening portion of the program begins at 5 p.m. and will include an address by an outstanding agricultural speaker.

"Of all our activities, PCG's support for agricultural research at these two facilities has provided some of the most profitable returns," Johnson stated, "but our members could get substantially greater benefits from production research if it weren't for the serious lag between the development of new and improved farming techniques and the field application of those techniques by farmers."

"So we are urging our members to avail themselves of these two excellent opportunities to see and study the latest advances in farm technology." At SPREC on September 10, tours will show field plots on cotton varieties and diseases, weed control, soil fertility, irrigation flexibility and sorghum midge control. Other attractions include a large machinery exhibit, the new \$400,000 ginning laboratory, greenhouse and other laboratory displays.

tees, a 20-saw laboratory gin, wild life conservation and a display by Water, Inc. on plans for water importation to West Texas.

Johnson is co-chairman of the HPRF Cotton Commodity Committee along with L.D. (Don) Anderson, PCG President, of Crosbyton.

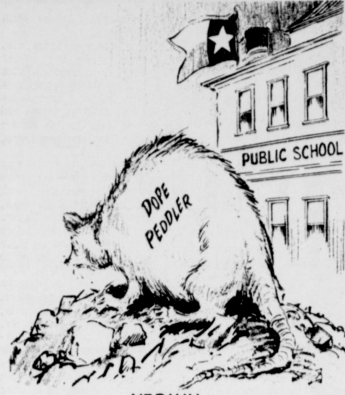
Major research grants from PCG at SPREC this year went to studies of control of cotton diseases, cotton breeding and genetics, a soil moisture survey and an evaluation of cotton strains and varieties for the High Plains with emphasis on fiber quality. At HPRF, PCG is supporting weed control studies in cotton, a comparison of water usage and cotton yields on bench leveled and contoured sloping land, a study of planting design and climatic influence on cotton fiber development.

A.L. (Skinny) Higgins, President, has announced that the annual meeting of Plains Ginners Association will be held on September 14 at the Lubbock Country Club. Activities will begin at 9 a.m.

On the program will be Higgins, of Flatview; Donald Johnson, Executive Vice President of Plains Cotton Growers, Inc. Lubbock; Tony Price, Executive Officer of the statewide Texas Cotton Ginners Association, Dallas; Ray Davis, Lubbock Manager of Plains Cooperative Oil Mill and President of the National Cotton Council; and Roy Baker, Engineer-in-charge of USDA's new \$400,000 ginning laboratory at the South Plains Research and Extension Center.

Also on the program will be a representative of the Texas Employment Commission, who will discuss TEC efforts to alleviate the expected shortage of gin labor this fall.

Featured luncheon speaker will be the well known dentist-humorist Dr. Charles Jarvis of San Marcos, Texas.



VERMIN

Vietnam News

The Marine Corps places such importance on the program, that the general has been given the responsibility of the revolving fund. He is advised by Lt. Col E.J. Black, III MAF Civic Affairs officer and his assistant, respectively.

The money purchases necessary equipment. The work is accomplished primarily by the Vietnamese themselves. For example, soldiers of the Army of the Republic of Vietnam have volunteered to construct a school near Da Nang with materials provided by the Marine Fund.

Funds are being used in the construction of a new Ho Khanh Children's Hospital, the only one in the northern sector of South Vietnam, when finished, it will contain 120 beds, operating rooms, isolation ward, X-ray, dental, pharmacy and an emergency room. It will be completely Air conditioned.

A brick factory supervised by Lance Cpl. Donald L. Van Camp, 20, Phelps, N.Y., produces an average of 1400 bricks a day for constructing and reconstructing. The bricks are made by the Vietnamese for use by the Vietnamese.

The Ha Thanh Dam began last summer through the efforts of

the Seventh Engineer Battalion, First Marine Regiment. A dozen feet high, 20 feet wide and 120 feet long, the dam will provide water for an additional 9,000 acres of land, 7,000 of which will be used for growing rice. This will increase the rice harvest by 40 percent in the Hoa Van District of Quang Nam Province.

The General Walt Scholarship Fund awards money to students in the upper third of their class who could not afford to otherwise continue their schooling. Preference is given to children of Vietnamese soldiers, or those students desiring to become teachers.

The Marine Corps Reserve Civic Action Fund is responsible for a multitude of projects....

How can one measure the health of a child? The grateful tears of an old man who lost his home and tools in the war, who receives a new tool kit with which to begin anew? How does one measure the warmth of a smile from a woman who lost her husband, and her only source of income, who receives a sewing machine and a new start for herself and her three children?

Matters of heresy depend upon the point of view.



A 'Way Out' of Vietnam

BY PAUL HARVEY

Some of us have no sympathy for the violent protests which disrupted the Democratic National Convention in Chicago, but, at the same time, much sympathy for some of the protestors' protestations.

When 3,000 antiwar demonstrators marched on and tried to invade the Hilton and other downtown hotels, they were properly confronted by helmeted police and National Guard troops.

Tear gas turned back some; others had to be beaten with nightsticks, heeded into paddy wagons. In one turbulent night 300 were injured, 300 arrested.

From the convention floor Mayor Richard J. Daley was accused of "police terror tactics," of "Gestapo methods."

Though I heard none of the accusers say how he would subdue an unruly mob—gently.

Mayor Daley tried to explain that militant security was necessary to prevent violence inside the convention hall. "The same forces creating disorder outside are trying to create disorder inside."

So it's possible that some of those delegates and others who so vehemently castigated Daley owe him their lives.

Again: some of us reject the concept of winless wars. Further, some of us believe that to fight communism in Vietnam and tolerate it 90 miles from Florida is abject hypocrisy.

But invading public buildings en masse, disrupting private property, disrupting the deliberations of a convention, profaning our flag and resisting police—these are the un-American tactics of Old World revolutionaries.

I am very sorry that in this next election neither major party platform gives voters a drive-it-or-park-it choice in Vietnam. Republicans and Democrats are officially apparently content to just let our men stand there and bleed.

It could be worse. Neither platform approved a unilateral cessation of bombing which would have placed our men already over there in further jeopardy. Our troops are grateful for that small favor, though it offers no solution to an apparently untenable situation.

Little wonder our frustrated draft-eligible young shout their displeasure. What else can they do to make themselves heard? How can they right the wrong of being forced to fight with less than our best weapons to perpetuate unworthy governments on the other side of the world with a war which we appear ashamed to lose and yet afraid to win?

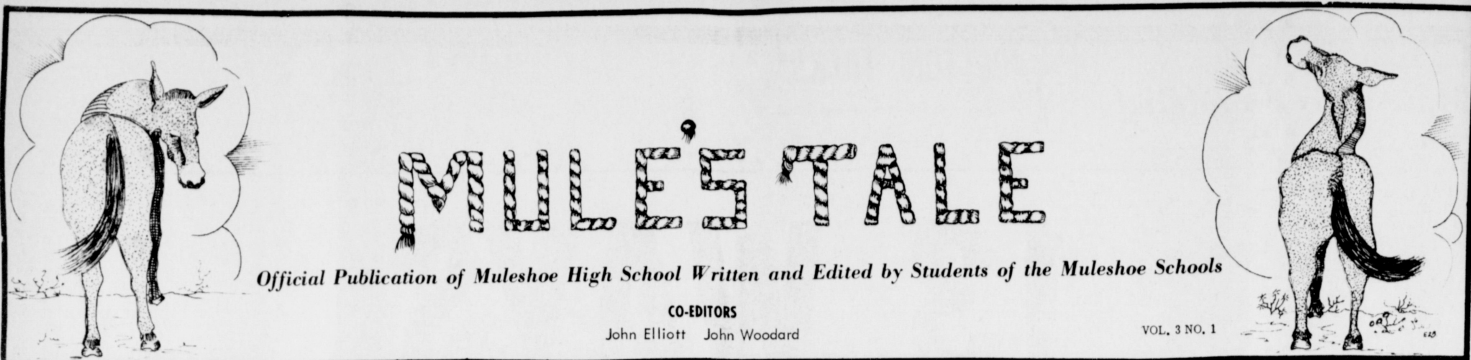
Because I share the indignation of this upcoming generation, what I am about to say may be partly wishful thinking. Also, though, it is based on hard political reality. The party platforms notwithstanding, somewhere between now and November an alternative Vietnam policy will emerge.

As the politicians courting the electorate discover the pertinency of this Vietnam issue with the voting populace of our country, at least one nominee will fight for his political life with a specific proposal for an alternative Vietnam policy. He will be forced to. He will be forced to by George Wallace. Copr. T-M 1968, Gen. Fea. Corp.

LET'S GO TO THE GAMES AND SUPPORT OUR MULESHOE MULES

MULESHOE MOTOR CO.

 MULES 28 Keith Turner	 MULES 16 Ronnie Barrett	 MULES 65 Lance Puckett	 MULES 68 David Williams	 MULES 88 Larry Kitchens	 MULES 53 Joe Pat Riley
 MULES 76 Eusebio Villareal	 MULES 87 Alford Bleeker	 MULES 89 Jesse Clemmons	 MULES 77 Kenneth Carpenter	 MULES 71 David Lee	 MULES 79 Earl Peugh
 MULES 14 Lowry Lewis	 Royce Harris, Mgr. & Trainer				



Official Publication of Muleshoe High School Written and Edited by Students of the Muleshoe Schools

CO-EDITORS

John Elliott John Woodard

VOL. 3 NO. 1

1969 Muletrain, Mules' Tale "On Way"

Band Practices for 1968-69

By Ann Douglass

Muleshoe will be very proud of its band as it enters Dimmitts field Friday, September under the leadership of Delton Bass, junior, drum major. The position of drum major requires an unlimited amount of time, patience, and work.

Twirlers this year include Beverly Ewins, sophomore, Francis, historian. Aside from fulfilling the duties of the office, the officers often work together in planning social activities for the band members.



PRACTICE!--Endless hours of practice go into making a "top" marching band and here a portion of the Mighty 'M' Band is shown stepping high as they get the session for the season underway.

School, School, School

By John Elliott

Registration day for school is always seen from many different viewpoints. For a freshman it's his first year in high school. Not knowing what to expect, and dreading the ridicule of being an underclassman. Freshmen still look forward to being high school students. Registration for the sophomores is seen from another view. Sophomores, having just finished their freshman year are looking forward to giving this year's freshmen the same treatment they received last year. Still another view is seen from the junior class. Juniors begin to feel a little priority over the two classes under them, and begin to look forward to being Seniors next year. The senior view of school is one of leadership. Seniors must set an example for the other classes to follow. Not only must Seniors set an

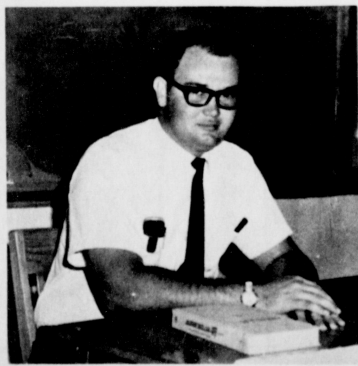
example they must strive to make their senior year as successful as they year of the seniors before them.

One Minute Sports Quiz

1. Who is Buck Baker?
2. Who is the coach of the Baltimore Colts?
3. Who won the Western Open?
4. Where were the Junior Olympics held?
5. What is Cassius Clay's legal status?

The Answers

1. Famous U.S. race driver.
2. Don Shula.
3. Jack Nicklaus.
4. Knoxville, Tennessee.
5. Clay's appeal against a jail sentence will be reviewed by the Supreme Court in its October term.



HIGH SCHOOL--Although this is not the first year for Nikkie Landers to teach in the Muleshoe school system, it is his first year to teach at Muleshoe high school. Students extend a "welcome" to him in high school.

Orientation Program Held

Neal B. Dillman, Superintendent of Muleshoe Schools, opened the orientation assembly with a hearty welcome to students, and faculty. He challenged students to put a best foot forward in the coming school year. He commented on the Vietnam situation and the trials of raising a family. Then he closed by wishing all students and faculty luck throughout the year.

Tom Jinks, principal of the high school, spoke on rules and regulations and why they are so necessary. He introduced all new teachers to the student body and had the football team and band stand to be recognized. He announced the creation of the "Stegall - Muleshoe Opportunity Fund" in memory of Mr. L.R. Stegall. Principal Jinks closed the assembly by saying "Soak it to 'um' Mules."

FT A Plans Special Party

Muleshoe High School's Blackburn - Moore Future Teachers of America Chapter will have its annual back-to-school party Tuesday evening, September 10, at Brenda Scotts house southwest of town beginning at 6:30 p.m.

The chapter officers will be represented along with committee chairmen. The purpose is to encourage membership and participation in the Future Teachers organization.

All high school students are invited to attend who are interested in teaching as a career.

Good Lights Important To School Students

Several lamp manufacturers now are making specially designed higher-wattage study lamps which produce nearly twice as much light over other lamps and spread light over a wider area. They also reduce glare, says Miss Lay. Tags attached to these lamps say, "This is a Better Light Better Sight Bureau Study Lamp."

Miss Lay gives some other suggestions to improve light in a study center.

-Choose a desk with a light-colored, not glossy finish.

-Use a light-colored blotter or desk pad.

-Paint walls in neutral or light colors or select a plain wallpaper or one with a small, quiet design.

-Make sure that the desk does not face a window.

Place the lamp so the center of the lampshade is about 15 inches to the left of the work center and the lamp about 12 inches back of the front edge of the table for a right handed person.

Place the lamp so the center of the lampshade is about 15 inches to the left of the work center and the lamp about 12 inches back of the front edge of the table for a right handed person.

Orientation Program Held

Neal B. Dillman, Superintendent of Muleshoe Schools, opened the orientation assembly with a hearty welcome to students, and faculty. He challenged students to put a best foot forward in the coming school year. He commented on the Vietnam situation and the trials of raising a family. Then he closed by wishing all students and faculty luck throughout the year.

Tom Jinks, principal of the high school, spoke on rules and regulations and why they are so necessary. He introduced all new teachers to the student body and had the football team and band stand to be recognized. He announced the creation of the "Stegall - Muleshoe Opportunity Fund" in memory of Mr. L.R. Stegall. Principal Jinks closed the assembly by saying "Soak it to 'um' Mules."

FT A Plans Special Party

Muleshoe High School's Blackburn - Moore Future Teachers of America Chapter will have its annual back-to-school party Tuesday evening, September 10, at Brenda Scotts house southwest of town beginning at 6:30 p.m.

The chapter officers will be represented along with committee chairmen. The purpose is to encourage membership and participation in the Future Teachers organization.

All high school students are invited to attend who are interested in teaching as a career.

Good Lights Important To School Students

Several lamp manufacturers now are making specially designed higher-wattage study lamps which produce nearly twice as much light over other lamps and spread light over a wider area. They also reduce glare, says Miss Lay. Tags attached to these lamps say, "This is a Better Light Better Sight Bureau Study Lamp."

Miss Lay gives some other suggestions to improve light in a study center.

-Choose a desk with a light-colored, not glossy finish.

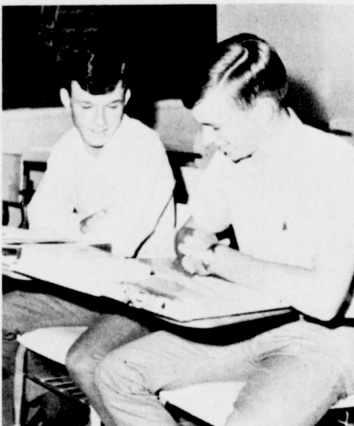
-Use a light-colored blotter or desk pad.

-Paint walls in neutral or light colors or select a plain wallpaper or one with a small, quiet design.

-Make sure that the desk does not face a window.

Place the lamp so the center of the lampshade is about 15 inches to the left of the work center and the lamp about 12 inches back of the front edge of the table for a right handed person.

Place the lamp so the center of the lampshade is about 15 inches to the left of the work center and the lamp about 12 inches back of the front edge of the table for a right handed person.



NEW EDITORS--New editors of the Mules' Tale are John Woodard, left, and John Elliott, right. Woodard is a junior at Muleshoe high school and Elliott is a senior.

News Editors Named. Year's Work Launched

Editors and members of the 1968-69 Annual staff vigorously began preparation this week to compile another edition of "The Mule's Tale." Betty Harbin and Lindy Kerr will serve as editors; other members include Hal Newsum, Mark Francis, Jean Haskins, Kathy Williams, Arlene Brown, and Johanna Shelton. Photography darkroom boys are Danny Shipman and Ricky Hudson. Serving as sports editors as well as editors of the school page, "The Mule's Tale," are John Elliott and John Woodard.

Current plans call for a Spring edition. Students will receive copies of the 1969 book in May before school is out. Events taking place after the final deadline, April 1, will be covered in a summer supplement which will fit on the back endsheet of the book. It

is believed that most students prefer a spring edition so they may enjoy them together as a group rather than get them individually during the summer. Books will sell for \$5.00 plus tax this year. The staff expects to begin sales during the last week of September. Any business or out-of-school establishment wishing to purchase a book may call the high school office and a Muletrain representative will take the order.

Editors Betty Harbin and Lindy Kerr say that although the theme is a secret, it definitely will again be striking, different, and coordinated.

Wayland Ehrhridge, Journalism teacher, stated that this year's staff have good ideas, enthusiasm, and a great desire to top any other year's staff in quality and interesting copy.

Student Insurance Deadline Nears

Friday, September 13, will be the deadline for obtaining student accident insurance, which is offered through the school to each student attending any public school level.

Two plans are offered the student. Plan one is for 12 months, 24 hour coverage for \$16 and the second plan costs \$6 for nine months coverage, at school only.

W.E. Young has been employed as Truant officer for the school year 1968-69. All youngsters between the ages of six and 17, as of September 2, 1968, are required by state law to attend school regularly a minimum of 185 days of the school year.

This officer has been instructed to give one warning to the parent and student, then if they do not enroll in school, and attend regularly, they will be filed on in the County Court.

OFICIAL DE ASISTENCIA: El distrito escolar y independiente de Muleshoe ha empleado un oficial para investigar a los alumnos estan ausentes poro el ano escolar de 1968-69. Este hombre es el senior W. E. Young.

Todos los jovenes entre las edades de 6 y 17, desde el 2 de Septiembre, 1968, soa exigidos por ley del estado que asistara a la escuela regularmente, por lo menos 165 dias del ano escolar.

Este oficial ha sido instruido de dar una advertencia a los padres y al alumno, desde luego, si no se ingresa en la escuela regularmente, se lo presentaran en el tribunal del condado.

Gene Keith Bray, son of Mr. and Mrs. Keith Bray and a member of the Bailey County 4-H Club recently exhibited his young herd of Poland Chinas at the 96th Annual Colorado State Fair in Pueblo, Colo.

He was showing against all exhibitors in the open division and was very successful in bringing home the Reserve Championship on his Poland Gilt.

In addition to this, he won three first places; three second places; and three third places, plus a fifth and seventh place ribbon.

Gene Keith Bray, son of Mr. and Mrs. Keith Bray and a member of the Bailey County 4-H Club recently exhibited his young herd of Poland Chinas at the 96th Annual Colorado State Fair in Pueblo, Colo.

He was showing against all exhibitors in the open division and was very successful in bringing home the Reserve Championship on his Poland Gilt.

In addition to this, he won three first places; three second places; and three third places, plus a fifth and seventh place ribbon.

The young 4-Her is exhibiting his Clovis this week and plans to show in Lubbock Fair later this month.

The young 4-Her is exhibiting his Clovis this week and plans to show in Lubbock Fair later this month.

The young 4-Her is exhibiting his Clovis this week and plans to show in Lubbock Fair later this month.

The young 4-Her is exhibiting his Clovis this week and plans to show in Lubbock Fair later this month.

The young 4-Her is exhibiting his Clovis this week and plans to show in Lubbock Fair later this month.

The young 4-Her is exhibiting his Clovis this week and plans to show in Lubbock Fair later this month.

Today You Asked Me For a Job

Today you asked me for a job. From the look of your shoulders as you walked out I suspect you've been turned down before, and maybe you believe by now that kids out of high school can't find work. But I hired a teen-ager today. You saw him. He was the one with the polished shoes

and you'd better tune in to our wave length. Ever hear of empathy? It's the trick of seeing the other fellow's side of things. I couldn't have cared less that you're behind in your car payments. That's your problem and President Johnson's. What I needed was someone who'd go out in the plant, keep his eyes open, and work for me like he'd work for himself. If you have even the vaguest idea of what I'm trying to say, let it show the next time you ask for a job. You'll be head and shoulders over the rest.

Look, kid the only time jobs grow on trees was while most of the man power was wearing GI's and pulling KP. For all the rest of history you've got to get a job like you get a girl worth having. "Case" the situation, wear a clean shirt and try to appear willing.

You may not believe it, but all around you employers are looking for young men smart enough to go after a job in the old-fashioned way. When they find this kind of young man, and a necktie. What was so special about him? No experience; neither of you had any. It was his attitude that put him on the payroll instead of you. Attitude son, attitude, he wanted that job badly enough to shuck the leather jacket, get a haircut, and look in the phone book to find out what this company makes. He did his best

to impress me. That is where he edged you out. You see, kid, people who hire people aren't "with" a lot of things. We know more about Bing that Ringo, and we have some stone-age ideas about who owes whom a living. Maybe that makes us prehistoric, but there's nothing wrong with the checks we sign, and if you want they can't wait to unload some of their worries on him. For both our sakes, get eager, will you?

In regard to your 1968 football team we feel that we could possibly have one of the better defensive ball clubs that Muleshoe has had in the last few years. We don't have many boys, but those we have given to be dedicated and very aggressive. Our improvement has been very noticeable in the past two weeks, and we feel that with added improvement that we have a good chance against Dimmitt in our first ball game. These boys have given a great deal to have a winning ball club this year. I think it only right that you give as much in supporting your team. Can you measure up to their standards? Lets make this the best year Muleshoe High School has ever had.

Haphazard Moe: You certainly hammer nails like lightning. Blow: You mean I'm really fast? Moe: No, you seldom strike twice in the same place.

Typists--Students who are taking typing at Muleshoe high school are shown hard at work, typing out AGR cards for students during the first days of school for registration.



Coaches Comments
Coach
Dick Stafford



Typists--Students who are taking typing at Muleshoe high school are shown hard at work, typing out AGR cards for students during the first days of school for registration.

13 WAYS TO RUIN MULESHOE

1. Don't pay taxes. Let the other fellow pay his. Vote against taxes. Then fuss because the streets are not kept up.

2. Never attend any of the meetings called for the good of the town. If you do, don't have anything to say. Wait until you get outside then cuss those who made the suggestions. Find fault with everything that was done.

3. Get all the city will give you, and don't give anything in return. Write unsigned letters to the editor demanding more for your tax dollar.

4. Talk cooperation, but don't do any work for your city unless you get paid for it. And by all means refuse to serve unless they make you chairman.

5. Never accept an office. It's easier to criticize than to do things. Accuse everybody who serves in an elected office of being a publicity seeker.

6. Don't do any more than you have to. When others willingly and unselfishly give their time to make a better town, howl because that town is run by a clique.

7. Don't back your fire department or your police department. Don't thank them for endangering their lives that you might have a safer town in which to live. Demand special treatment, raise Cain if anybody expects you to obey traffic and parking laws.

8. Look at every proposition in a selfish way. If you are not the one that gets the most good out of it, vote against it. Never consider what it will do for the town as a whole.

9. Don't do anything for the youth of your town. Criticize them as potential delinquents. Keep your feet on them. Encourage them to move away when they grow up.

10. If you have good town leaders, don't follow them. Take a jealous attitude, and talk down anything they say. Don't work on any committee. Tell them, "I'm too busy."

11. Don't say anything good about your town. Be the first to point up its shortcomings. Pretend that if trouble comes your way it will be residents of some other town who will visit you while you are ill; bring in the fire department if your home is burning; comfort you if you lose a dear one; stand back of you in disaster.

12. Don't support your local retail stores and industries. Claim industry and its payroll hurts the town. But if you need a donation, ask your local stores. Expect them to back you, but don't back them.

13. Fail to exercise your right to vote in a free election.

THIS MESSAGE SPONSORED IN THE INTEREST OF A BETTER MULESHOE BY:

MULESHOE CHAMBER OF COMMERCE

Board of Directors

"Not for Just Community Pride - But for a More Efficient Muleshoe and Bailey County"

PROPOSED CITY-COUNTY IMPROVEMENTS

Through Bond Election Tuesday, Sept. 10

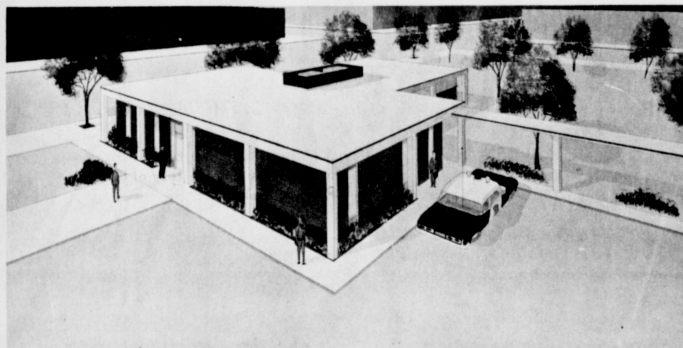
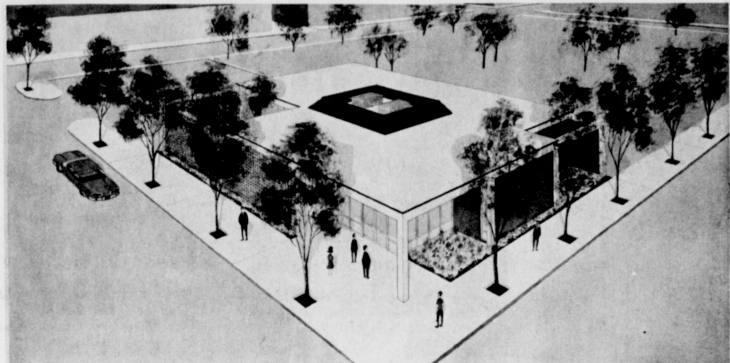
Proposed Library

The present library, located in the industrial section near the railroad, should be replaced by a modern, well designed structure located in the general downtown area. The library in Muleshoe is used, both by patrons at the library and through the bookmobile.

The library now has about 16,000 volumes, including paperbacks and should increase to 30,000 within a few years. At present there is no room for expansion.

The bookmobile accounts for approximately 3,500 volumes monthly in its four-county service area. A new library would provide area for 22,000 hard cover volumes or 30,000 volumes including paperbacks. Parking facilities and a storage area for the bookmobile will be included.

The Federal Government, through the Texas State Library, Austin, has a program of matching funds for library construction.



Proposed Law Enforcement Center

The proposed law enforcement center for Bailey County would solve many problems facing county citizens at this time.

Number one on the list would be the elimination of additional \$9,000 per year which will be needed to transport prisoners to Lubbock or some other jail because the Bailey County jail has been condemned. The law enforcement center would increase the protection of you--the citizen--as the present facilities are out of date, and escapes from the jail increase the hazards to you and your family.

Utilizing an emergency center, which will be established in the basement of the center, would increase the safety of the Muleshoe citizens in case of storm, civil disorders or anything of an emergency nature.

Duplication of radio and other equipment could be avoided as the three county law enforcement agencies would be in the same building and use the same equipment and facilities. Included would be the Sheriff's Department, City Police and Texas Highway Patrol.

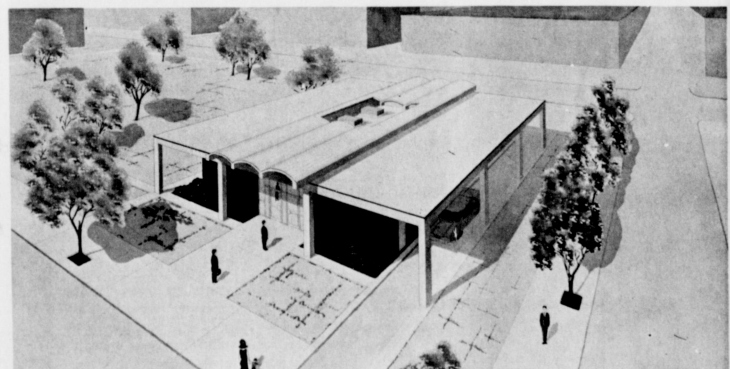
Proposed City Hall

A new, well-designed, functional City Hall located in the general downtown area would unquestionably improve the City's ability to serve its citizens and would be a definite asset to the appearance of the City. The funds asked for will provide money for land acquisition and construction. Adequate areas for parking will be provided.

Three branches of city government are housed in one office in the present City Hall. The tax office, water department and city secretary share one small office.

Seating capacity for city council meetings is very limited. Meetings of any size have to be moved to another location. A new City Hall would eliminate these problems as adequate office space and meeting rooms would be incorporated in the new structure.

Storage space within the present City Hall is filled and overflowing.

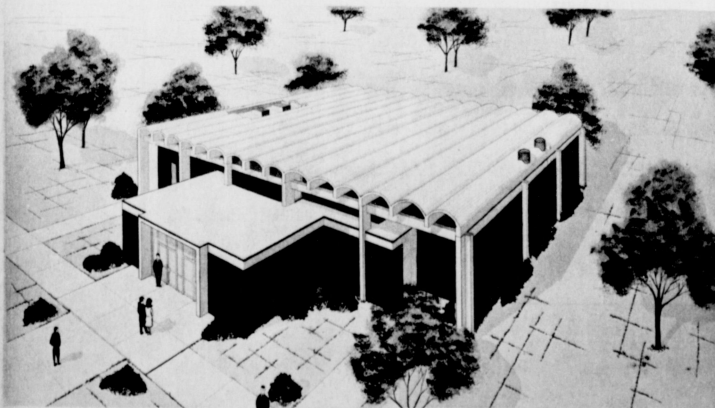


Proposed Community Center

Muleshoe has no community center as such, and no recreational facilities are available except for one room in the old American Legion building or in the churches.

A community center, located in the community park or other suitable site would be of great value to the community through use by youth, civic clubs, and the general public. Certainly it would be very attractive inducement for industry or individuals considering locating in Muleshoe.

Muleshoe is in need of a community center which could serve not only as a public meeting place or a space which might be rented to private groups, but also for various types of indoor community recreation including hobby club groups and study clubs. Civic clubs could hold their luncheon meetings in this type of building. Adequate area for holding elections in the City will be available in this building.



VOTE FOR ALL PROPOSITIONS ON THE CITY BOND ELECTION TUESDAY

REVENUE BONDS

PROPOSITION NUMBER 1

"The Issuance of \$365,000 Waterworks Revenue Bonds and Pledging the Revenues of the City's Combined Waterworks and Sanitary Sewer System to the Payment Thereof"

PROPOSITION NUMBER 2

"The Issuance of \$50,000 Sewer System Revenue Bonds and Pledging the Revenues of the City's Combined Waterworks and Sanitary Sewer System to the Payment Thereof"

- (1) *The City is capable of financing at least \$235,000 additional Waterworks and Sewer System Revenue Bonds at this time, with no increase in water and sewer rates.*
- (2) *Issuance of the remaining \$180,000 Waterworks and Sewer Revenue Bonds around 1973 will require additional net income for coverage purposes. If net income has not increased by this period, a small water and sewer rate increase would become necessary to increase the net up to a level of about \$80,000 - \$85,000 from the present \$60,000 - \$66,000.*

GENERAL OBLIGATIONS BONDS

PROPOSITION NUMBER 3

"The Issuance of \$90,000 Park Bonds and The Levy of a Tax in Payment Thereof"

PROPOSITION NUMBER 4

"The Issuance of \$40,000 Street Improvement Bonds and the Levy of a Tax in Payment Thereof"

PROPOSITION NUMBER 5

"The Issuance of \$65,000 Sanitary Sewer System Bonds and the Levy of a Tax in Payment Thereof"

PROPOSITION NUMBER 6

"The Issuance of \$105,000 City Hall Building Bonds and the Levy of a Tax in Payment Thereof"

PROPOSITION NUMBER 7

"The Issuance of \$60,000 Community Center Building Bonds and the Levy of a Tax in Payment Thereof"

PROPOSITION NUMBER 8

"The Issuance of \$40,000 Library Building Bonds and the Levy of a Tax in Payment Thereof"

PROPOSITION NUMBER 9

"The Issuance of \$20,000 Fire Station Building Bonds and the Levy of a Tax in Payment Thereof"

It is apparent that \$350,000 General Obligation Bonds could be issued at this time and \$70,000 at a later date and the position of the General Fund and General Obligation Bond Interest and Sinking Fund be maintained with an increase of approximately \$0.28 per \$100 Assessed Valuation in the Interest and Sinking Fund tax rate. The overall tax rate would not be increased as the 1% Local Sales Tax will more than compensate the General Fund for its loss of ad valorem taxes to the interest and Sinking Fund.

Mayor W. B. LeVeque and City Councilmen: Irvin St. Clair, Woody Lambert, Alex Williams, Lindal Murry, and City Manager Albert Field endorse and urge all Muleshoe citizens to vote for the above nine propositions. This bond election has been called as a result of the survey - and twenty year comprehensive plan made by Kenneth Larsen & Associates, professional city planners, and recommendations made by your city government & planning commission. The nine propositions contained in this Bond Issue are all vital and necessary in order that our city have the facilities to function properly, in order that our citizens may have adequate library and recreation facilities and in order to create community environment that will be conducive to the growth and progress of our town. Your vote for the nine propositions is hereby respectfully solicited.

/S/ Mayor, W. B. LeVeque

Earth News

By Beulah Newton



MIKE CABRERA COMMISSIONED—Mrs. Mike Cabrera, left, and Mrs. George Cabrera, right, pinned gold bars on Second Lieutenant Mike Cabrera as part of the ceremony designating Cabrera a second lieutenant in the U. S. Army. The ceremony was held at the West Texas State University formal lounge.

Mike Cabrera Gets Degree

Mike Cabrera, son of Mr. and Mrs. George Cabrera, Muleshoe, was among the students graduating from West Texas State University, Canyon on August 22.

Cabrera was also among nine graduates receiving commissions as Second Lieutenant in the U.S. Army. He received a BBA degree majoring in Transportation and Economics.

Cabrera, a 1962 graduate of Muleshoe High School, will leave October 9 for Ft. Eustis, Va. where he will receive nine weeks of Branch Orientation at the Officers School of Transportation. Following completion of the school, Cabrera, his wife, Dianna, and their seventeen-month-old daughter, Michelle Lannette, will make their temporary home at Ft. Bliss, Tex.

WHO KNOWS?

1. Where was the first colonial (U.S.) settlement started?
2. What is the name of the largest lake in the state of Florida?
3. What was the original name for Columbia University?
4. When was New York City incorporated?
5. When did the first non-stop flight from the U.S. to Hawaii take place?
6. Name the Communist country that exploded its first hydrogen bomb June 17, 1967.
7. Representatives from what two world powers met at Glassboro State College in Glassboro, N.J., June 23-25 of last year?
8. Off what Cape did the Andrea Doria Sink?

Answers To Who Knows

1. Jamestown, Virginia.
2. Okeechobee.
3. King's College.
4. June 12, 1665.
5. June 29, 1927.
6. Communist China.
7. Soviet Premier Aleksei N. Kosygin and U.S. President Lyndon B. Johnson.
8. Cape Cod.

Guests last week end in the home of the Dutch Beens was their son and wife, Mr. and Mrs. Jerry Been of Ada, Okla. Beens mother is also visiting her son and family for a few weeks.

Mrs. Bud Lea and daughters of Midland were weekend guests of her parents, Mr. and Mrs. Marcus Messer.

Mrs. J.F. Painter of Sunray, mother of Mrs. Marcus Messer, visited last week in the home of her daughter and family the Messers.

Mrs. Leon Foster spent Monday in Lubbock visiting with her sister and husband, Mr. and Mrs. Hobert Howard and her daughter and family Mr. and Mrs. Walter Elam and Cherril.

Guests in the home of Beulah Newton over the Labor Day weekend were her grandsons, Craig, Coy and Cliff Davis of Pecos and Randy Ball of Sunnyside.

Terrel Ott sustained a broken arm Saturday night in an accident.

Mrs. Lucille Wheat sustained a broken ankle Saturday night in Clovis. She fell and is in the Littlefield hospital.

Mrs. Mary Jones spent several days last week in the Littlefield Hospital. She is at home and doing fine.

Mrs. Willice White of Springlake spent several days last week in South Plains Hospital in Amherst. Mrs. White is at home and much improved.

Mr. and Mrs. Oliver Tunnell spent several days this week vacationing in Ruidoso, N.M.

Jessie Cole of Lubbock spent the Labor Day weekend with their parents Mr. and Mrs. R.S. Cole and Regina.

Mr. and Mrs. Morgan of Ft. Hood were weekend guests of her parents Mr. and Mrs. Homer Starkey and Joyce. They were accompanied by two of Morgans army buddies.

Mr. and Mrs. R.S. Cole visited Sunday afternoon in Olton with their son, Mr. and Mrs. Wayne Cole and baby daughter.

The home of the Ray Axtells was the scene of a farewell party for Mr. and Mrs. Clarence Hamilton. Mr. Hamilton has accepted a position in the faculty of Clarendon Junior College, Clarendon Texas.

Mrs. O.B. Ginn was in Earth

Sunday afternoon visiting her mother, Mrs. Adline Newton and mother-in-law, Mrs. Nanette Ginn.

Pruda Sanders, daughter of Mr. and Mrs. Marvin Sanders was a weekend guest of her parents and friends. Pruda will receive her degree from Baylor at mid term this year.

Mrs. Billy Gwen Davis, daughter of Mr. and Mrs. L.T. Smith has been dismissed from the hospital in Dimmitt following surgery. She is recuperating at home.

Jarvis Angeley is a patient in the Plainview hospital. He is undergoing tests and is much improved at this time.

Bitner Tire and Supply has

moved to a new location. They are now located in the former Ford house. Bitner has been operating his business across the street south from where his former business burned last spring.

The Friendship Sunday School had the first luncheon of the season Tuesday noon, in the home of Mrs. Ida Allen. A lovely covered dish luncheon was served from a table laid with a white cloth. Following the luncheon, Mrs. Roy Neal gave a devotional and there was a short business meeting, after which games of '42' and '94' were played. Those attending the luncheon were, Mrs. Roy Neal, Mrs. Jack Hinson, Mrs. Johnny Williams,

Mrs. Herchel Belew, Mrs. Jane Beavers, Mrs. Bessie Coarley, Mrs. Nannie Ginn, Mrs. Beula Coker, Mrs. Marie Ross, Mrs. Gladys Goodwin, Mrs. R.C. Hyde, Mrs. Beulah Newton, Mrs. Ray Axtell and the hostess, Mrs. Ida Allen.

Mr. and Mrs. Johnny Fowler of Pie Town, N.M. are visiting in the home of the Wayne Rutherford. Mrs. Fowler is scheduled to undergo surgery Monday in a Lubbock hospital.

Mrs. Fowler is a sister of Mrs. Rutherford.

Rev. and Mrs. Walter Driver were in town Monday evening for a little while. Rev. Driver is a former pastor of the United Methodist Church.

Recent guests of the H.S.

Hickmans were their granddaughter and husband, 1st Lieutenant and Mrs. L.F. Lieud. Brunswick, Ga. They were enroute to a new assignment in Hawaii for an indefinite time. Mrs. Abad is the former Susan Hickman.

Mrs. Gladys Goodwin and Mrs. Beula Coker visited with Mrs. Willis White in the South Plains Hospital in Amherst Tuesday afternoon.

Mr. and Mrs. L.Z. Anglin returned home Monday from Ruidoso, where they had spent the summer.

Mrs. Dwane Wheat is still in the Littlefield Hospital. She sustained a broken ankle in an accident last Saturday night. We have several new school

teachers in the Springlake-Earth schools. We welcome all of our teachers in our community.

Mrs. Jim Griffin worked at the City Drug Wednesday morning while the Odams were tending business.

Citizens State Bank of Earth is under new management. A man from Hart, Tex. is to be the new president. We welcome all new people and regret to see the old ones leave us.

Miss Debra Parish has assumed the duties of dental assistant for Dr. Richardson. Debra is a 1968 high school graduate of Springlake-Earth and the daughter of Mrs. Vivian Parish and the late Oran Parish.

MULESHOE ASSEMBLY OF GOD 517 S. First H. D. Hunter, Pastor	FIRST BAPTIST CHURCH 220W. Ave. E. Douglas DuBose, Pastor	PRIMITIVE BAPTIST CHURCH 621 S. First Aton Richards, Elder	TRINITY BAPTIST CHURCH 41 E. Ave. B. Troy Walker, Pastor	ST. MATTHEW BAPTIST CHURCH W. Third Rev. E. McFrazier, Pastor
SPANISH ASSEMBLY OF GOD East 6th and Ave. F. Rev. Hipolito Pecina	CALVARY BAPTIST CHURCH 1733 W. Ave. C. Rev. Billy D. Swope	RICHLAND HILLS BAPTIST CHURCH 17th & West Ave. D. Rev. Leland K. Callaway	SPANISH BAPTIST MISSION 439 E. Ave. F. Larry Henry-Pastor	PROGRESS BAPTIST CHURCH Progress, Texas Sam Soward, Pastor

SHINED AND READY

"And your feet shod with the preparation of the gospel of peace." Ephesians 6:15.

These shoes fairly shine and sparkle and are ready to take their owner proudly any place. Society dictates that we should be well turned out and that our feet be shod with well-groomed footwear. The Bible tells us that we should be clad in the whole armor of God, and that our feet should be shod with the preparation of the gospel of peace. The gospel is this: "There is therefore now no condemnation to them which are in Christ Jesus, who walk not after the flesh, but after the Spirit." Romans 8:1

St. Peter advises, "Be ready always to give an answer to every man that asketh you a reason of the hope that is in you with meekness and fear."

Come to church this week that you might learn of Him and that you might be prepared to give this good news of the gospel to others.



EVERYONE IN THE CHURCH
THE CHURCH IN EVERYONE

The Church is God's appointed agency in this world for spreading the knowledge of His love for man and of His demand for man to respond to that love by loving his neighbor. Without this grounding in the love of God, no government or society or way of life will long persevere and the freedoms which we hold so dear will inevitably perish. Therefore, even from a selfish point of view, one should support the Church for the sake of the welfare of himself and his family. Beyond that, however, every person should uphold and participate in the Church because it tells the truth about man's life, death and destiny; the truth which alone will set him free to live as a child of God.

Coleman Adv. Ser.

- FIRST CHRISTIAN CHURCH 130 W. Ave. G. Walter Bartholf, Minister Sunday Evening Service 7 P.M.
- IMMACULATE CONCEPTION CATHOLIC CHURCH (Fr.) Robert O'Leary Northeast of City
- MULESHOE CHURCH OF CHRIST Clovis Hwy. D.L. Thompson, Minister
- NORTHSIDE CHURCH OF CHRIST 117 E. Birch Street
- CHURCH OF CHRIST West Birch and Chicago Buford Shields, Minister
- JEHOVAH'S WITNESS Friona Highway Boyd Lowery, Minister
- ST. PAUL LUTHERAN Morton Highway Phillip J. Berry, Pastor
- FIRST METHODIST CHURCH 507 W. Second J. Waid Griffin, Pastor
- ST. JOHN LUTHERAN Lariat, Texas Herbert E. Peiman
- LATIN AMERICAN METHODIST MISSION Ave. D. & 5th St. Esteve (Steve) Lara Pastor
- CHURCH OF THE NAZARENE Ninth & Ave. C. Clarence Bennett, Pastor
- FIRST PRESBYTERIAN Morton Highway W. CLINTON EDWARDS, PASTOR

Go To Church Every Sunday

Welcome to Muleshoe



Joel Young

Muleshoe extends a warm welcome to Joel Young, newcomer to our city. He is a patrolman for Muleshoe Police Department. Previously he was with the Clovis Police Department. Young and his wife, Pat, live at 406 Ave. F, Apt. B. They attend the Calvary Baptist Church.

The following firms extend a cordial welcome to the Youngs:

<p>CASHWAY GROCERY</p> <p>402 MAIN Ph. 272-4244</p>	<p>DAMRON DRUG CO.</p> <p>REXALL Ph. 272-4210</p>
<p>JAMES GLAZE CO.</p> <p>INSURANCE REAL ESTATE LOANS</p>	<p>MULESHOE STATE BANK</p> <p>MEMBER FDIC</p>

The Following Business Firms Urge You To Attend the Church of Your Choice This Sunday and Every Sunday

- | | | | |
|--|---|---|--|
| First National Bank
1st & Ave. B | St. Clair's | Fry & Cox
401 S. 1st | Muleshoe State Bank
304 Main |
| Bratcher Motor Supply | Muleshoe Motor
106 S. 1st | Cobb's | L & H Gro.
14 W. American Blvd |
| Western Drug
114 Main | <i>The Fashion Shop</i> | Muleshoe Publishing Co. | Muleshoe Co-Op Gins
Muleshoe |
| Cashway Gro.
402 Main | Cox Drive-In
Theatre, Friona Hwy | Charles Lenau Lumber Co.
202 E. Ash | Western Auto Store
228 Main |
| Dari Delite
210 N. First | Pool Insurance Agency
114 E. Ave. C | Brock Motor Co. | |

TRADE CLASSIFIED AD SELL BUY ADS LEASE

WANT ADS PH. 272-4536

CLASSIFIED RATES
OPEN RATES
 First insertion, per word-6¢
 Second and additional insertions - 4¢

NATIONAL RATES
 First insertion per word-8¢
 Second and additional insertion-5¢
 Minimum charge - 65¢

Card of Thanks - \$1.00 Double rate for blind ads
 Classified Display - 85¢ per col inch
 95¢ col. inch for reverses

DEADLINE FOR INSERTION
 Thursday's Muleshoe Journal - Noon Tuesday
 Sunday's Bailey County Journal - Noon Friday

The Journals reserve the right to classify, revise or reject any classified ad.

Check advertisement and report any error immediately. Journals are not responsible for error after ad has already run once.

I. PERSONALS

Muleshoe Rotary Club
 John Shelton, Pres.

Jaycees
 Monday, 12 Noon
 L.V. CAFE
 Clarence Christian, Pres.

Lions Club
 Wednesday, 12 Noon
 FELLOWSHIP HALL
 Methodist Church
 W. E. Young, Jr., Pres.

BRAS & GIRDLES BY PENNYRICH
 AT MAIN STREET BEAUTY SALON
 1-195-4tc

SALES OF ALL KINDS GRADY MURRY REAL ESTATE and AUCTIONEER FOR Farm or Business SALES call
 CA 4-7139
 Olton Rt., Plainview, Texas 355-143 tfsc

CARD OF THANKS

We wish to express our deepest appreciation to those who were so thoughtful and helped in so many ways during the death of our loved one. We extend our heart felt thanks to the doctor and nurses who worked so faithfully, to our friends and neighbors who were sympathetically and prayers throughout the illness and bereavement in the loss of our precious mother, Anna F. Moeller.

We especially want to thank Dr. Fummill and the nurses in the hospital and nursing home for all their kindness and love bestowed upon our mother. May God's richest blessings go with each one of you.

Anna F. Moeller family

HELP WANTED: Dishwasher, Apply in person, Corral Drive-In Restaurant. 3-364-tfc

HELP WANTED: Day Carhop, Bills Drive-In. Call 272-3905 or 272-4607. 3-364-tfc

HELP WANTED for grain harvest. Need experienced combine operator. Above average wages. Call 965-2379 after 8 p.m. 3-364-3tc

HOUSES FOR RENT
 FOR RENT: 3 bedroom house, 715 Ave. G, Clovis 763-5701. 4-368-tfc

FOR SALE OR RENT: 3 bedroom home, central heating, plumbed for washer and dryer, near elementary school. See house at 1620 Ave C, Ph. 3914. 8-325-tfc

HOUSE FOR RENT: Call 946-2688. 4-274-tfc

FOR RENT: 2 bedroom house, fenced back yard, car port, wired for everything. Phone 272-4932. Lewis Stewart. 4-311-tfc

FOR RENT: 2 and 3 bedroom brick houses. Furnished 1 bedroom apartment, Call D. L. Morrison Jr., 272-3421 or 272-3697. 4-211-tfc

FOR RENT: Unfurnished 2 bedroom apartment. Carpeted and draped with built-in range. Ph. 4209. 5-365-tfc

Furnished apts., large or small. Nice trailer, space or small. Apt. trailers, 5-244-tfc

Want SPC college female roommates to share apartment expenses in Levelland. Contact Donna Beversdorf, 301 W. 7th, Phone 4166 or 4903. 6-275-tfc

HELP WANTED
 Are you looking for a good part time or full time income in Muleshoe? Many Rawleigh Dealers earn \$2.50 and up an hour. Write Rawleigh TXH-270, Memphis, Tenn. 38102. 3-945-6tp

WANTED: Beautician, Main Street Beauty Salon, Phone 272-3448. 3-354-tfc

HELP WANTED: Experienced mechanic Crow Chevy, Muleshoe, Texas. 3-354-tfc

WANTED: Dishwasher, Apply in person, Corral Drive-In Restaurant. 3-364-tfc

HELP WANTED: Day Carhop, Bills Drive-In. Call 272-3905 or 272-4607. 3-364-tfc

HELP WANTED for grain harvest. Need experienced combine operator. Above average wages. Call 965-2379 after 8 p.m. 3-364-3tc

HOUSES FOR RENT
 FOR RENT: 3 bedroom house, 715 Ave. G, Clovis 763-5701. 4-368-tfc

FOR SALE OR RENT: 3 bedroom home, central heating, plumbed for washer and dryer, near elementary school. See house at 1620 Ave C, Ph. 3914. 8-325-tfc

HOUSE FOR RENT: Call 946-2688. 4-274-tfc

FOR RENT: 2 bedroom house, fenced back yard, car port, wired for everything. Phone 272-4932. Lewis Stewart. 4-311-tfc

FOR RENT: 2 and 3 bedroom brick houses. Furnished 1 bedroom apartment, Call D. L. Morrison Jr., 272-3421 or 272-3697. 4-211-tfc

FOR RENT: Unfurnished 2 bedroom apartment. Carpeted and draped with built-in range. Ph. 4209. 5-365-tfc

Furnished apts., large or small. Nice trailer, space or small. Apt. trailers, 5-244-tfc

6, BEDROOMS FOR RENT
BEDROOM FOR RENT: 807 W. 7th, Phone 4166 or 4903. 6-275-tfc

RE-1 ESTATE FOR SALE
FOR SALE: 2 and 3 bedroom home. Bargain 3 bedroom lots of extra. Ranch with some farm land. 30 acre tract well improved, 808 well located and others. Your listings appreciated.

HOLLARD REAL ESTATE
 121 American Blvd. phone day or night 272-3293 8-358-tfc

For a good buy on all types of real estate, 2 and 3 bedroom homes, some V. A. possessions, see Pool Insurance. 8-228-tfc

FOR SALE: 3 bedroom house, carpeted, 2 baths, paneled den and kitchen, double garage. Call D.L. Morrison Jr., 272-3421 or 272-3697. 8-211-tfc.

FOR SALE-160 acre irrigated farm-4 wells 1 1/2 miles north House, N. M. Hi-way 86, 5 room dwelling (modern). Fair value \$225,000 per acre. Owing to health will accept \$160,000 per acre. Terms to be arranged. Will consider trade of equal value, C. R. Elliott, Bovina, Texas, 79009. Ph. 238-2823. 8-348-tfc

***FHA and VA repossessed houses**
 *35 acres grass-terms
 *80 acres irrig. on pavement allot.
 *330 acres cheap
KREBB'S REAL ESTATE
 Phone 3191
 8-325-tfc.

NEW 1968 PICKUP LADD PONTIAC

FOR SALE: 1/2 ton V8 Dodge pickup in excellent condition. Automatic, 1966 model. See it at Dale Gulf Station, 423 W. American Blvd. or call 272-4992. 9-365-2tp

11. FOR SALE OR TRADE
FOR SALE-Mobli home by owner, 10'X55' American home crest, early American, clean, excellent condition, carpeted, all furniture included. Lived in by University couple, Call U. G. Vinzant 356-8050 or see at 501 University Drive at Fortales. 11-348-4tc

12. HOUSEHOLD GOODS
FOR better cleaning, use Blue Luster carpet cleaner. Rent electric shampooer \$1. Higginbotham Bartlett. 12-365-tfc

13. PROPERTY FOR LEASE
FOR LEASE: Shamrock Cafe, in Muleshoe. New equipment. Seats 65. Ideal husband and wife operation. Financing available. 13-288-tfc

15. MISCELLANEOUS
FOR SALE: New and used tires, almost all sizes, Finn's L.P. Gas, phone 272-4678. 15-354-tfc.

17. SEED AND FEED
FOR SALE: Rye seed, Tetra Pectus. Large, hardy, fast growing for winter grazing. Yield 30 to 40 bushels per acre. In bulk \$3 per hundred. Ph. 227-3541, Sudan, Texas. 17-368-2tc

WANTED person with good credit to take over payments on 1968 model Singer sewing machine. Equity buy-balance \$23.75 or 5 payments at \$5.00. Write Lubbock Sewing Center, 114 19th Street, Lubbock, Texas. 15-358-3tp

WANTED person with good credit to take over payments on 1968 model Singer sewing machine. Equity buy-balance \$23.75 or 5 payments at \$5.00. Write Lubbock Sewing Center, 114 19th Street, Lubbock, Texas. 15-358-3tp

WANTED person with good credit to assume balance on late model Dial-and-Sew sewing machine. Full automatic bobbin winder, buttonhold, fancy pattern selector. No attachments, 20 year guarantee. One-half paid out, free home demonstration. Write Lubbock Sewing Center, 114 19th Street, Lubbock, Texas. 15-364-tfc

FOR RENT: Small office space or place suitable for storage. See C.E. Layne at Layne apts. or call 4496. -31S-tfc.

FOR SALE: New and used tires, almost all sizes, Finn's L.P. Gas, phone 272-4678. 15-354-tfc.

FOR SALE: Rye seed, Tetra Pectus. Large, hardy, fast growing for winter grazing. Yield 30 to 40 bushels per acre. In bulk \$3 per hundred. Ph. 227-3541, Sudan, Texas. 17-368-2tc

Texas Crime Rate Soars

AUSTIN—Colonel Wilson E. (Pat) Speir, acting director of the Texas Department of Public Safety, said today the Texas crime rate for the first six months of 1968 is running about 15% over the rate recorded for the same period in 1967. Speir said information provided by sheriffs and chiefs of police and compiled by the DPS indicates an increase in each of the seven major crime categories. For example, murders and homicides were up nearly 3%; rape, up nearly 14%; robbery, up about 14%; burglary, up nearly 22%; aggravated assault, up nearly 6%; theft, up about 12%; and auto theft, up nearly 24%.

"In the January through June period, major crimes occurred in Texas on the average of one every 1 1/2 minutes," Speir noted. "This generally figures out to be a murder every 7 1/2 hours, a rape every 4 3/4 hours, a burglary every 3 1/2 hours, a robbery every 5 1/2 minutes, an aggravated assault every 26 minutes, a theft every 2 1/2 minutes, and an Auto theft every 18 1/4 minutes," he added.

The overall crime rate increased about 15% in the state's urban areas and almost 1% in rural areas. It was up about 17% in cities over 100,000 population, up about 7% in cities between 50,000 and 100,000, up almost 9% in cities between 25,000 and 50,000, up almost 15% in cities between 10,000 and 25,000, up 25% in cities between 5,000 and 10,000, but up only about 1% in cities between 2,500 and 5,000 population.

The largest rural increase came in counties with over 50 rural population per square mile, and was tabulated at almost 24%. The overall crime rate decreased by almost 20% in counties with from 20 to 35 rural population per square mile, and decreased about 3% in counties with under five rural population per square mile.

India removes statue of King George V.

TELEVISION SCHEDULE FOR THE MULESHOE AREA

WESTERN DRUG	KGNC-TV (4) Amarillo Muleshoe Cable 4	KVII-TV (7) Amarillo Muleshoe Cable 5	KFDA-TV (10) Amarillo Muleshoe Cable 6	KCBD-TV (11) Lubbock Muleshoe Cable 2	KLBK-TV (13) Lubbock Muleshoe Cable 3
DAYTIME	DAYTIME	DAYTIME	DAYTIME	DAYTIME	DAYTIME
6:30-7:00-News	6:30-Cartoons	6:30-Cartoons	6:30-Cartoons	6:30-Headlines	6:00-Sun, Sem. 6:30-Cartoons
7:00-Today Show	6:45-Farm & R	6:45-Farm & R	6:45-Farm/Ranch	7:05-Farm/Ranch	6:45-F & R News
7:25-News	7:00-Cartoons	7:00-Cartoons	7:00-Cartoons	7:25-Weather	7:30-Morn. Show
7:30-Today Show	7:00-Dennis	7:00-Dennis	7:00-Capt. Kang.	7:30-Today	8:00-Capt. Kang.
9:00-Snap Judge.	9:30-Cavett S.	9:30-Cavett S.	8:25-Report	8:00-Today	9:00-Cam, Cam.
9:25-News	11:00-Bewitched	11:00-Bewitched	9:30-Hillbillies	9:00-Snap Judge.	9:00-Hillbillies
9:30-Coronet	11:30-Treasure Is.	11:30-Treasure Is.	10:00-Andy G.	9:30-Concen.	10:00-Andy G.
10:00-Personality	12:00-N/W/FAR	12:00-N/W/FAR	10:30-Coffee Time	9:30-Concen.	10:30-D. Van Dyke
10:30-Holly Sq.	11:00-Love of Life	11:00-Love of Life	11:00-News	10:00-Personality	10:30-D. Van Dyke
11:00-Jeopardy	11:25-News	11:25-News	11:30-Holly Sq.	11:00-Holly Sq.	11:00-Love of Life
11:30-Eye Guess	11:30-Search	11:30-Search	11:00-Jeopardy	11:30-Eye Guess	11:25-News
11:55-News	11:45-G. Light	11:45-G. Light	11:55-News	11:55-News	
12:00-News	2:00-General nos.	2:00-General nos.	12:00-N/W	12:00-News	11:45-G. Light
12:30-Shadow	2:30-D. Shadows	2:30-D. Shadows	12:30-Dating Game	12:15-Community	12:00-News
12:30-Dating Game	3:00-Move	3:00-Move	3:00-Dating Game	12:30-Make Deal	12:30-World Turns
12:15-Ruth Brent	5:00-Tuglie	5:00-Tuglie	1:00-Love Is	1:30-Days of Live	1:30-World Turns
12:30-Make Deal	5:30-News	5:30-News	2:00-Tell Truth	1:30-Doctors	1:00-Love Is
1:00-Days of Live	6:00-N/W/S	6:00-N/W/S	2:25-News	2:00-Another W.	1:30-Home Party
1:30-Doctors			2:30-E. of Night	3:00-Don't Say	2:00-Gen. Hos.
2:00-Another W.			3:00-S. Storm	3:00-Match Game	2:30-E. of Night
2:30-Don't Say			3:30-D. VanDyke	4:00-Mr. Minikin	3:00-S. Storm
3:00-Match Game			4:00-Mr. Minikin	3:30-Dating Game	3:30-D. Shadows
3:25-News			5:00-Mr. Ed	4:00-Beaver	4:00-Newlyweds
3:30-Mike Dougl.			5:30-CBS News	4:30-Bewitched	
5:00-News			6:00-N/W/S	5:00-Well's Fargo	
5:30-H & B News				5:30-H. & B. Re.	
6:00-N/W/S				6:00-N/W/S	
MONDAY EVENING	MONDAY EVENING	MONDAY EVENING	MONDAY EVENING	MONDAY EVENING	MONDAY EVENING
6:00-Monday only, Major nos	6:30-Cowboy in AF	6:30-Cowboy in AF	6:30-GunsSmoke	6:00-Monday only, Major	4:30-Cartoons
Lg. Baseball	7:30-Rat Patrol	7:30-Rat Patrol	7:30-Lucy	6:00-Monday only, Major	5:00-George
10:00-Mike D.	8:00-Felony Squad	8:00-Felony Squad	8:00-Andy G.	Lg. Baseball	5:30-CBS News
10:00-News	8:30-Peyton Place	8:30-Peyton Place	9:00-Fam. Affair	9:00-I Spy	6:00-N/W/S
10:05-Weather	9:00-Big Valley	9:00-Big Valley	10:00-Premiere	10:00-News	6:30-GunsSmoke
10:25-Sports	10:00-N/W	10:00-N/W	10:00-CBS News	10:15-Weather	7:30-L. & S. Show
10:30-Tonight	10:25-Background	10:25-Background	10:25-Sports	10:25-Sports	8:00-Andy G.
10:30-Joey Bishop	10:30-U. Pacific	10:30-U. Pacific	10:30-Tonight	10:30-Tonight	9:00-Flying Nun
12:00-Events	11:00-News	11:00-News	10:00-N/W	10:00-N/W	9:00-B. Graham
12:10-Outer Limits	11:05-Movie	11:05-Movie	10:30-Peter Gunn	10:30-Peter Gunn	10:15-Weather
12:25-Outer Limits			11:30-Peter Gunn	11:30-Peter Gunn	10:25-Sports
					10:30-Mannix
					11:30-Peter Gunn
					12:30-Sign Off
					WEDNESDAY EVENING
TUESDAY EVENING	TUESDAY EVENING	TUESDAY EVENING	TUESDAY EVENING	TUESDAY EVENING	TUESDAY EVENING
6:30-Wallace 7:00-Showcase	6:30-Gar. Gorilla	6:30-Gar. Gorilla	6:30-Daktari	6:30-Wallace 7:00-Showcase	4:30-Cartoons
8:00-Movie	7:30-It Takes	7:30-It Takes	7:30-Showtime	8:00-Movie	5:00-Fan, Four
10:00-News	8:30-N. Y. P. D.	8:30-N. Y. P. D.	8:00-Morn. World	8:30-News	5:30-News
10:15-Weather	9:00-Invaders	9:00-Invaders	9:00-CBS News	10:15-Weather	6:00-News
10:25-Sports	10:00-N/W	10:00-N/W	10:00-N/W	10:30-Tonight	6:30-Daktari
10:30-Tonight S.	10:25-Background	10:25-Background	10:30-Panic	7:30-Showtime	7:30-Showtime
12:00-Sign Off	10:30-Joey Bishop	10:30-Joey Bishop	10:30-News	8:00-Flying Nun	8:00-Flying Nun
	12:00-Events	12:00-Events	11:00-News	9:00-B. Graham	9:00-B. Graham
	12:10-Outer Limits	12:10-Outer Limits	11:05-Movie	10:00-News	10:15-Weather
	12:25-Outer Limits	12:25-Outer Limits		10:25-Sports	10:25-Sports
				10:30-Tonight	10:30-Tonight
					11:30-Peter Gunn
					12:30-Sign Off
					WEDNESDAY EVENING
WEDNESDAY EVENING	WEDNESDAY EVENING	WEDNESDAY EVENING	WEDNESDAY EVENING	WEDNESDAY EVENING	WEDNESDAY EVENING
6:30-Virginian	6:30-Avengers	6:30-Avengers	6:30-Loat In Space	6:30-Virginian	4:30-King Kong
8:00-Special	7:30-Dream House	7:30-Dream House	7:30-Hillbillies	8:00-Special	5:00-Beattles
9:00-Run for Life	8:00-Movie	8:00-Movie	8:00-G. Acres	9:00-Run for Life	5:30-News
10:00-News	10:00-News	10:00-News	8:30-He & She	10:00-News	6:00-News
10:15-Weather	10:20-Comment	10:20-Comment	9:00-De Luise	10:15-Weather	6:30-Hogan's
10:25-Sports	10:30-Joey Bishop	10:30-Joey Bishop	10:25-Background	10:25-Sports	7:30-Bewitched
10:30-Tonight S.	2:00-Events	2:00-Events	10:30-Medic	10:30-Tonight	7:30-Hillbillies
12:00-Sign Off	12:10-Outer Limits	12:10-Outer Limits	11:05-Movie	10:00-News	8:30-2nd Hun, Yr.
				10:30-F. Graham	9:00-F. Graham
				10:00-News	10:30-Movie
				12:00-Sign Off	12:00-Sign Off

BUSINESS SERVICES DIRECTORY

Shop With These Firms Who Solicit Your Business

PROTECTION IS OUR BUSINESS

WILL YOU BE CIVIL ENOUGH TO ANSWER ME? DID YOU OR DID YOU NOT GET AUTO INSURANCE FROM

POOL INSURANCE

WILSON DRILLING CO.
 Dial 272-4180
 Mobil Ph. 965-2359
 CLOVIS HWY. MULESHOE

W. Q. Casey
 GENERAL INSURANCE
 Let Our Complete Coverage Take Care of All Your Insurance Problems
 Muleshoe State Bank Bldg. Ph. 272-4571

Save Money On Auto Parts!
BRATCHER MOTOR SUPPLY
 107 E. AVE. B - Dial 272-4288
 CHARLES BRATCHER, Owner

BERRY ELECTRIC CO.
 ELECTRIC WIRING and REPAIRS
 REFRIGERATION SERVICE
 104 E. AVE. B
 Phone 272-3375

EXPERT T.V. REPAIR and ANTENNA INSTALLATION

Gordon Wilson Appliance

ZENITH
 MAYTAG
 TAPPAN
 KELVINATOR

202 Main Ph. 272-3138

SEPTIC TANKS & CESSPOOL SERVICE

DRILLED - REPAIRED - INSTALLED

Cesspools - Pier Holes
 Boot Pits - Storm Cellars
 Concrete Covers & Turkeys
 Jobs Available
 Pump Bases & Spillways

Of All White's Dealer
Tire & Battery Dealer!

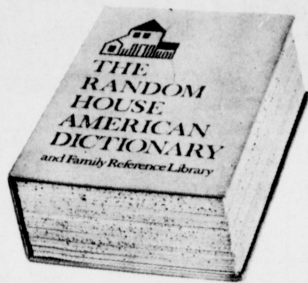
Poynor's White Stores Inc.
 Muleshoe

POOL Insurance Agency
 114 E. Ave. C.
 Ph. 272-2950

Keep up with your HOMETOWN NEWS

WEDNESDAY EVENING

6:30-Wallace 7:00-Showcase



The most useful book your family will ever own ...

- Over 280,000 listings including latest words, scientific terminology and phrases
- Over 1950 pages with large readable type
- 48 page full-color modern Hammond atlas plus gazetteer
- Foreign language dictionaries — French to English, English to French, Spanish to English, English to Spanish
- 64 pages of synonyms/antonyms
- Profusely illustrated with over 1500 drawings
- Complete Etiquette Guide designed for moderns
- Over 50 pages of famous quotations
- Major events of world history
- And much, much more!

• 1968 COPYRIGHT

PERFECT FOR HOME, SCHOOL AND OFFICE

More than just a dictionary of words and meanings ... it's an everyday family "answerbook" ... to help your family with letter writing, social etiquette and so much more. You'll use it again and again!

Random House American Dictionary and Family Reference Library

YOUR 1st SECTION FREE

INTRODUCTORY OFFER WITH COUPON BELOW
Sections 2 through 12 only 99¢ each
One year Cash Binder only \$1.99

THIS COUPON GOOD FOR FREE SECTION #1
WITH ANY FOOD PURCHASE
Random House American Dictionary and Family Reference Library
99¢ Value

THIS COUPON AND A \$2.50 PURCHASE OR MORE, YOU WILL RECEIVE 100 FREE S & H GREEN STAMPS
Expires 9-11-68 Limit One to Family

MAN SIZE PORK CHOP SALE!



DOUBLE WEDNESDAY
WITH A \$2.50 PURCHASE OR MORE.

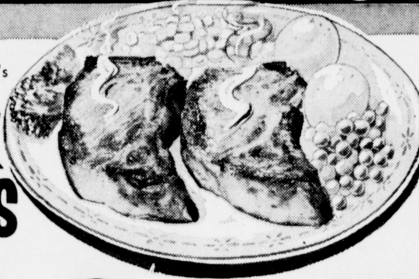
PORK CHOPS

Cut with Pocket for Stuffing
Pound

98¢

- Lean, Country Style Pork Ribs Pound **69¢**
- Farmer Jones, Longhorn, Black Style Cheese Pound **79¢**
- Blue Morrow COUNTRY STYLE Sausage 2# Bag **98¢**

Loin Cut, A Man's Size Pork Chop
PORK CHOPS



Pound **89¢**

Rib Cut, Cut Thick,

PORK CHOPS

Tender, Juicy and Flavorful

Pound **79¢**

BREADED SHRIMP

Singleton, Ready to Fry

79¢

Blue Morrow

- Chicken Fried Steak** Pound **69¢**
- Thick, Boneless, Juicy and Tender
- Pork Chops** Pound **\$1.29**
- U.S.D.A. Choice Valu-Trimmed Beef, Boneless
- Club Steaks** Pound **\$1.09**

OPEN
Mon. thru Fri. 8:00 to 7:00
Sat. 8:00 to 9:00
Closed Sunday

Frozen Selections for Your Freezer!

Meat Pies Morton's 6 8-Oz. Pkgs. \$1.00	Custard Pies Johnston's 34-Oz. Pkg. 59¢
Dinners Patio Combination 12-Oz. Pkg. 49¢	Apple Pies Morton's 20-Oz. Pkg. 29¢

These Values Good September 9-11-68 in Muleshoe
We Reserve The Right To Limit Quantities!

FLOUR Sunlight, Fully Guaranteed 5 Pound Bag 29¢ Flour, Golden West, 5-Pound Bag 43¢	MEDIUM EGGS Ideal Grade A Dozen 39¢ Eggs, Robnett, Grade A Small, Dozen 33¢
PORK & BEANS Van Camp's No. 300 Can 14¢ Pork & Beans, Campfire, No. 300 Can 11¢	CRISCO Pure Vegetable Shortening 3 -Lb. Can 69¢ Bakerite Pure Shortening 3-Lb. Can 49¢
GREEN PEAS Libby's Fancy No. 303 Can 19¢ Sweet Peas, Stokely's, No. 303 Can 18¢	ICE CREAM Cloverlake all flavors 1/2-Gallon 68¢ Mellorine, Cloverlake 1/2-Gallon 39¢

- Ctn. of 6, plus deposit
- Cokes** or Dr. Pepper 39¢
- Folger's **Coffee** 1 lb. Can 69¢
- Libby's Cream Style or Whole Kernel **Golden Corn** No. 303 Can 24¢
- Auxter **Beef Stew** 24-Oz. Can 69¢
- Allen's **Tomatoes** 2 No. 303 Cans 35¢
- Damita, Assorted Colors **Toilet Tissue** 4-Roll Package 29¢
- Bonnebelle, Grape or Red Plum **Jams** 3 18-Oz. Jars \$1.00
- Arrow Household **Aluminum Foil** 25-Ft. Roll 25¢
- Arrow **Instant Coffee** 6-Oz. Jar 69¢
- Keepers **Lunch Bags** 50-Count Package 25¢
- Tabby Treat **Cat Food** 2 8 1/2-Oz. Cans 33¢
- Sunshine **Vanilla Wafers** 12-Oz. Box 37¢

Garden-Fresh Fruits and Vegetables!

Chiquita Brand, Golden Ripe **BANANAS** Pound **9¢**

New Crop, Sweet **Potatoes** Pound 19¢

California, Fresh, 1-Pound Cello Bag **Carrots** Each 19¢

Yellow, U. S. No. 1, Mild **Onions** Pound 12 1/2¢

California, Snow-White **Cauliflower** Pound 39¢

California, Crisp, Green Stalks **CELERY** Pound **12 1/2¢**

- Duncan Hines **Cake Mix** 3 pkgs. **\$1.00**
- Green Giant, Whole **Asparagus** 15-Oz. Can **65¢**
- Wishbone, Hickory Bits **Dressing** 8-Oz. Bottle **45¢**
- Chicken Noodle with Diced Chicken **Lipton Soup** 2-Pack **39¢**

Prell SHAMPOO Regular 65¢ Retail Med. Size Tube 44¢	Colgate, Regular, Menthol or Lime SHAVE CREAM Regular 79¢ Retail Giant 11-Oz. Can 39¢	Seamless LADIES HOSE Sheer Nylon 4 Pair 1.00
---	---	--

