

These Leaders to Conduct Industrial Clinic Here, One of Only Three in West Texas



Joseph S. Clark Jr.



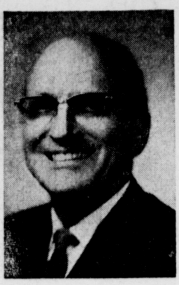
B. B. Story



Roger Owen



Bob Brummal



Harry W. Clark



Larry Milner



George R. Jordan



Don R. Raburn

Clinic to Disclose Industrial Outlook

Three west Texas cities in the Muleshoe size category, are being given the once-over by industrial leaders and by the Texas Industrial Commission this week as clinics, whirlwind, one-day affairs, are conducted in as many towns.

Muleshoe's big day comes Tuesday, a day so important, one leader put it, "that the entire future of Muleshoe may well hinge on movements started that day."

The program is to be a busy one, starting at 9 o'clock Tuesday morning with a tour of the area by program participants. Then at 10 o'clock, the session will open at Bailey County

Electric Co-operative assembly room with Dr. Charles Lewis, president of the Chamber of Commerce, as general chairman.

Opening remarks will be given by Larry S. Milner, industrial development consultant with Texas Industrial Commission who was in Muleshoe earlier this year for one of the opening industrial development discussions.

Harry W. Clark, executive director of the Texas Industrial Commission, will discuss "Organizing for Industrial Development." He is recognized as Texas' most outstanding industrial expert.

George R. Jordan, manager of the industrial development department of the West Texas Chamber of Commerce, is to talk on "Economic Development, a People Thing," and Jim Covell of General Telephone Co. will speak on economic research. The morning program will conclude with a discussion of industrial financing by Don R. Raburn, an industrial development consultant of TIC.

At noon, a mammoth luncheon is planned at Fellowship Hall of First Methodist Church when all civic clubs will meet for a general get-together. Vic Benedict is to be general chairman and Dr. Lewis will serve as master of ceremonies. Judge Glen Williams will give the invocation, and Kenneth Henry the pledge of allegiance. Henry is president of the Muleshoe Jaycees.

Ray Griffiths will lead the singing, and Irvin St. Clair, councilman who will be acting for the mayor in his absence, will give the welcome. Robert Alford, president of Rotary, will introduce the guests, and Frank Ellis, president of Lions, will introduce the speaker, Bob Brummal, division manager of



Dr. Charles Lewis



Muleshoe is aiding Morton civic clubs and other organizations in discussion of a possible United Fund set up in that town. Joe Seagler, temporary chairman, called on the highly successful Muleshoe Area United Fund to help in the deliberations. Roy Davis met with the Morton group Friday for lunch to describe how the Muleshoe United Fund was created in 1963.

For their regular meeting Thursday night, the Jaycees chose the Muleshoe area public library for their site. The group, which has adopted a goal of membership in Friends of the Library as one of their projects, wanted to learn more about the area library operations both fixed and mobile, it was explained.

"Infocade '66" was presented this past week at Tech's Student Union building, and attending from Muleshoe were Robert Blackwood, Roger Gornell and Roy Davis. The infocade presented a number of distinguished speakers. The program is designed to create better understanding of West Texas and public affairs, and is the second annual such presentation.

Muleshoe's Lions club has booked the Lone Star Amusement Co., Amarillo, for rides for a carnival slated for May 9-14 at Boy Scout grounds. George Sultemeier will be in charge. The Amarillo firm provides rides only; all other concessions are operated by local folk.

Ward Goodrich, manager of the Amarillo Sonic Booms baseball team, was the speaker at this past week's Lions Club program. Buddy Peeler and Jack Little were introduced as new members of Lions.

Mrs. Edna Calhoun, 67, mother of C. W. Calhoun, Muleshoe, died last Saturday in Midland, and services were held in the Newton-Edlis chapel in Midland Sunday. Burial was in Fairpark Cemetery, Midland. Other survivors include two sons, E. W. of Monahans, and

See MULESHOE, Page 5

Schools to Host District 1-AAA Play Contest

Muleshoe High School's Drama Department and Thespian Troupe T14 will host District 1-AAA Contest plays Saturday.

The plays will begin at 5:30 p.m. and continue until 1:30 p.m. Each play has a time limit not to exceed 40 minutes. Ronald Schultz, Director of Texas Tech's Drama Department, will be the critic judge.

Admission for the six performances will be 50 cents for students and \$1 for adults.

The plays to be presented are Tulin High School, "Six Who Pass While the Lentils Boil," at 1:30 p.m.; Dumas H. S., "Doctor in Spite of Himself," at 2:00 p.m.; Muleshoe H.S., "Becket," at 2:30 p.m.; Hereford H.S., "John Doe," at 3:10 p.m.; Canyon H.S., "Lullion," at 3:45 p.m.; Perryton H.S., "She Stoops to Conquer," at 4:30 p.m.

The public is cordially invited to see these outstanding performances.

Social Security Steps Up 'Proof of Age' Rules

Bailey county folk who plan to go on Social Security monthly payments will have to offer "stronger proofs" of age before they can join the ranks, Jim Lattimer, area Social Security fieldman said in Muleshoe this past week. Lattimer is in Muleshoe each Wednesday.

He also pointed out again that the deadline for signing up for medical insurance under Social Security (medicare) is March 31. He said the medicare program is being "farmed out" by Social Security to major insurance companies.

On the matter of age proof, Lattimer said:

"The very best proof of age would be a church or public record of birth made before the claimant's fifth birthday. Next best evidence of age would be any other record established before the person's 11th birthday."

"There will be cases," Lattimer explained, "where a person will not be able to present proof of age recorded before his 11th birthday. When this is true, the Social Security Administration will assist them in seeking other proofs."

"Many sources are used for proof of age. The include public school, church and census records. Others that may be considered would include hospital

Troop 620 Scouts Are Registering

Boy Scout Troop 620, sponsored by the Muleshoe Lions club, is re-registering and scouts who would like to sign up were asked to be at the Scout hut next Tuesday evening at 7:30.

Committee men of the troop held a planning session Thursday night with the chairman, V. V. Cavethron, in charge. Other members are Richard Puckett, Connie Dale Gustin, Willard Tibbitts, Dr. H. M. Hinkley and Dr. Theodore Hufford, institutional representative is George Sultemeier. Also present was chairman.

Lions to Sponsor Rubinoff Show Here in April

Muleshoe area residents were assured Saturday of a musical highlight April 29 when Rubinoff and His Violin, internationally famed concert artist, was signed for a one-night engagement here. He will perform at the high school auditorium, under sponsorship of the Muleshoe Lions club, it was announced by Jim Jennings, chairman.

"We feel indeed fortunate in being able to bring such a great artist to Muleshoe," Jennings said in making the announcement, "and we are all aggressively determined to make this one of the outstanding events of the season."

Pointing out that special committees and ticket selling locations would be announced

Temperatures

By J. R. Klump
Official U. S. Weatherman

	High	Low
March 16	83	35
March 17	84	37
March 18	80	28
March 19	69	31
	Sunrise	Sunset
March 20	6:52	6:59
March 21	6:50	7:00
March 22	6:49	7:00
March 23	6:47	7:01

Bailey County Journal

"The Community of Opportunity — Where Water Makes the Difference"

Published Every Sunday At Muleshoe, Bailey County, Texas — 79347

8 PAGES VOL. 4 — NO. 12 SUNDAY, MARCH 20, 1966

Plan to Provide Farm Labor Housing Boosted

Hope for providing badly needed farm labor housing moved a step closer to reality this past week after a subcommittee of the Chamber of Commerce's Farm Labor Housing committee set up a five-man subcommittee to probe further the possibilities.

The new sub-committee, headed by the general chairman, Jim Myrtle, is made up of Horace Hutton, Irvin St. Clair, Jesse Young and Tim Campbell. Their task is to "find out what is necessary to form a non-profit corporation to erect a central labor housing unit and finance it — possibly through Farmers Home Administration."

That was the way the motion read setting up the smaller committee to push a 100-unit housing complex for farm laboring people. The total committee met Thursday morning; the smaller group met immediately afterward for a luncheon.

Black was instructed at the luncheon to contact an attorney to study the legal details, and to consult with Clinton Kennedy on how to create the type of organization that would be eligible for financing through his agency. "Kennedy is Farmers Home Administrator manager for Bailey county."

The group originally had met to study the need and the full committee had decided that the need is urgent. They instructed the subcommittee to "proceed at once to create the housing in some manner."

The overall committee had determined that financing the construction would be a major problem, and that financing through FHA should be considered. It was pointed out that FHA loans for migratory labor housing actually come from private lending sources, but are guaranteed by the Farmers Home Administration.

Several possible types of organizations had been considered, organizations which would be eligible for such loans. Among types considered by the full committee were existing farm labor association, a local housing authority and then, the new non-profit corporation idea.

The greatest part of Thursday meeting was spent in consideration of the local housing authority as one possibility. Homer E. Pace Jr., a Midland architect, discussed the details of how to create and maintain such housing projects. Pace is a Midland architect who has worked with a number of communities in creation of local housing authorities.

The prospect of some delay was raised as an objection to such a plan, since it might take several months even to launch it, thus the decision to follow the plan agreed upon by the sub-

Library's 'Friends' To Name Officers

"Friends of the Library" will stage their first annual banquet Monday night at 7:30 in Fellowship Hall of the First Methodist Church. They'll name officers, present a life membership to an active worker of the organization and list the accomplishments of the young local organization.

And they'll hear one of West Texas' most outstanding librarians, Ray Janeway, librarian at Texas Tech. Tickets at \$2.25 each, are selling briskly, but plates are still available, according to Joe Harbin, general chairman. The organization would appreciate it if persons planning to attend would make reservations at the chamber of commerce by noon Monday; however, if it is impossible to make advance arrangements, tickets may be bought at the door.

Melvin Evans, president of the Friends of the Library here will be master of ceremonies.

Terry Blake, a Bulz teacher, will give the invocation, and Irvin St. Clair, mayor pro tem, will give the welcome and recite the history of the young library organization here.

He also will introduce Ray Janeway.

County Judge Glen Williams will present a life membership certificate to Mrs. Pat Bebo, and election of officers will conclude the program. Guests will be introduced by Gil Lamb.

Heading the decorations committee is Alice Evans, and Mrs. Byron Garter is in charge of the telephone committee.

Muleshoe Study club will be

We're Going Offset

The Muleshoe Journal and the Bailey County Journal are "going offset."

Publisher L. B. Hall announced Saturday that these two publications will start printing by the modern offset method as soon as all new equipment arrives.

Since the offset method uses an entirely different system, all new equipment must be installed at the Journal office to use in the new "cold type" method of printing.

Offset, Hall explained, will make it possible to bring the readers much sharper pictures and type. Offset method offers "much blacker black and much whiter white," it was explained. Much greater use of color also is possible by offset method.

The offset method is the same type of printing as is used by Littlefield, Hereford, Friona and Farwell, to name a few.

The Journals' management hopes to have all the new equipment in place so printing by this method can be started within a very short time.

"We feel certain that our readers and advertisers alike will be greatly pleased by the new product," Hall summed up.

Six From County To Attend State Library Confab

Six from Bailey county and one from Morton will leave Wednesday morning for Austin to attend a state-wide conference on libraries called by Gov. John Connally.

Going from here are Joe Harbin, education director of Bailey county Electric Coop; Ann Camp, librarian; Marion McDaniel, superintendent of Bulz schools; Terry Blake, a Bulz teacher; Roy Davis, manager of the Chamber of Commerce, and County Judge Glen Williams, and Mrs. Hessel Spots, Morton librarian.

Davis is on the program as a discussion leader. The group are expected to return home

See OFFICERS, Page 5

See CONFAB, Page 5

Further Cotton Acreage Cuts Called Likely

Unless something more is done to reduce the cotton carryover, growers will face further cuts in acreage and the entire economy of cotton areas will suffer heavily.

Leading producers across the Belt believe the only solution is to develop better cotton products and to sell them in greater volume, the National Cotton Council points out. This cannot be accomplished without greatly increased funds for research and promotion.

A mechanism to permit growers to build such funds is provided for in the Cotton Research and Promotion Act, developed by producers. Recently passed by the House of Representatives, the measure would allow growers to vote on establishing a uniform assessment of \$1.00 per bale for research and promotion.

Producers point out passage of the bill by the U. S. Senate, and a favorable vote in the referendum, could mean life or death to incomes of farmers and areas dependent upon cotton.

Most areas soon will feel the ill effects of this year's drastic cuts in acreage. There are strong indications this is only the beginning unless something is done to reduce the carryover, which is due to hit a record 16.5 million bales this year.

Cotton now is competitive in

'So This Is Spring' Draws Hundreds To Annual Style Show

Some 250 persons were in the High School Auditorium Tuesday evening at 8 p.m. to view the fifth annual style show sponsored by the Llano Estacado Civic Club. Theme for the show this year was "So This Is Spring".

Proceeds from the benefit will go for improvement of the Girl Scout Little Hut.

Wanda Harmon, mistress of ceremonies, extended a courteous welcome to all attending the style show and Alva Lee Peeler set the mood by singing "Spring Is Here".

Sue DeVaney was the first arrival on the stage attired in a glorious grand-occasion gown with the informed authority of satin fabric glowed in almond

green. A single strand of pearls were added along with her formal white gloves. The gown was Dupont Acetate satin.

So smartly dressed was Cecile Cunningham, next on the scene in a three-part cape look ensemble with emphasis on checks. The long line jacket in a window-pane wool check of black and white featured full

swinging sleeves cut on cape lines. White lapels picked up the white wool on the skirt and shell. For accessories, Cecile chose a black textured cloche with a profile brim and grosgrain trim, black gloves and black patent shoes with adjustable strap sling back by Valentino. She carried a black hand bag.

An afternoon out might find Tommy Gaston dressed for the occasion in a black and white stripe, two-piece dress. It featured a pleated skirt and over-bowse trimmed in white lace and designed by Kabro of Houston. She chose a white straw hat with black veil and added a touch of interest with a red and white grosgrain trim. White leather pump by Charm Wise and a tailored white leather pouch by Marilyn and white nylon gloves completed her outfit.

Kacy and Leisa Sanderlin appeared on the scene in their granny gowns and robes modeling for Dot's Shop. Kacy wore a red bastiste gown with white eyelet ruffles and black bows. Leisa modeled the matching robe of red with white dots trimmed with white eyelet and black bows. Both wore night caps.

Oh yes, Rita Hawkins is ready for an afternoon of bridge in a program trim on an empire waist and long sleeves on a shift. The white cotton lace top was accented with a turquoise

ribbon around the bodice and ties in a string bow in front. The skirt was of turquoise orlon acrylic and she chose white shoes.

Hattie Kinard had shopping in mind when she chose to model a faded blue denim dress and front blouse. The blouse buttoned in the back and the jumper slipped on. White dressy flat shoes of luster calf by Vogue finished her ensemble.

The junior Miss was in mind when Pam St. Clair came out in a three-piece crush-look suit made of 90 percent cotton and 10 percent rayon. Her yellow blouse was a contrast. She picked vivid colors for her shoes to pick up colors.

white leather loafers by Portraits.

"Easter Parade" just around the corner, Becky Miller gets in the mood with a light blue two-piece jumper dress and a way-down neckline that dips to show off the white, tucked-front blouse. The blouse buttoned in the back and the jumper slipped on. White dressy flat shoes of luster calf by Vogue finished her ensemble.

The junior Miss was in mind when Pam St. Clair came out in a three-piece crush-look suit made of 90 percent cotton and 10 percent rayon. Her yellow blouse was a contrast. She picked vivid colors for her shoes to pick up colors.

Josette Frocks designed the outfit Gail Phillips wore. The brown and white check, double-breasted shift featured the ever-popular sailor collar, bow at the neck and flap trim on the front. Her bag, a white leather-shoulder strap tote bag was de-



KACY AND LEISA SANDERLIN MODELING ORIGINALS MADE AT DOT'S SHOP, THE SHOP WHICH SPECIALIZES IN CHILDREN'S WEAR.

WE CONGRATULATE THE LLANO ESTACADO CIVIC CLUB ON THEIR STYLE SHOW AND THANK OUR MODELS WHO REPRESENTED US.

Dot's Shop

signed by Marilyn. Stylish white pumps were chosen for Gail.

Sheri Smith fitted nicely in an outfit of white duck completed with navy stripes. The sailor suit separated into three pieces to wear singly or as a set. A cotton-knit pullover in wonder-wide stripes, and striped bell-bottom pants in cotton duck with jacket featured long sleeves.

Linda Griffiths wore the latest Howard Wolf creation. A lovely navy linen with a sheer cotton dacrone tucked top were chosen for Linda. Her shoes and bag were black patent and she wore white shortie gloves. Her white brimmed straw hat with navy trim was by Mr. John.

Sheri Smith appeared again in capri set of dacrone polyester and cotton voile in light grass green with white flock dots. The top was a pull-over trimmed with white cotton pique yoke, raglan-style, elbow-

white leather loafers by Portraits.

"Easter Parade" just around the corner, Becky Miller gets in the mood with a light blue two-piece jumper dress and a way-down neckline that dips to show off the white, tucked-front blouse. The blouse buttoned in the back and the jumper slipped on. White dressy flat shoes of luster calf by Vogue finished her ensemble.

The junior Miss was in mind when Pam St. Clair came out in a three-piece crush-look suit made of 90 percent cotton and 10 percent rayon. Her yellow blouse was a contrast. She picked vivid colors for her shoes to pick up colors.

Josette Frocks designed the outfit Gail Phillips wore. The brown and white check, double-breasted shift featured the ever-popular sailor collar, bow at the neck and flap trim on the front. Her bag, a white leather-shoulder strap tote bag was de-

white leather loafers by Portraits.

"Easter Parade" just around the corner, Becky Miller gets in the mood with a light blue two-piece jumper dress and a way-down neckline that dips to show off the white, tucked-front blouse. The blouse buttoned in the back and the jumper slipped on. White dressy flat shoes of luster calf by Vogue finished her ensemble.

The junior Miss was in mind when Pam St. Clair came out in a three-piece crush-look suit made of 90 percent cotton and 10 percent rayon. Her yellow blouse was a contrast. She picked vivid colors for her shoes to pick up colors.

Josette Frocks designed the outfit Gail Phillips wore. The brown and white check, double-breasted shift featured the ever-popular sailor collar, bow at the neck and flap trim on the front. Her bag, a white leather-shoulder strap tote bag was de-

white leather loafers by Portraits.

"Easter Parade" just around the corner, Becky Miller gets in the mood with a light blue two-piece jumper dress and a way-down neckline that dips to show off the white, tucked-front blouse. The blouse buttoned in the back and the jumper slipped on. White dressy flat shoes of luster calf by Vogue finished her ensemble.

The junior Miss was in mind when Pam St. Clair came out in a three-piece crush-look suit made of 90 percent cotton and 10 percent rayon. Her yellow blouse was a contrast. She picked vivid colors for her shoes to pick up colors.

Josette Frocks designed the outfit Gail Phillips wore. The brown and white check, double-breasted shift featured the ever-popular sailor collar, bow at the neck and flap trim on the front. Her bag, a white leather-shoulder strap tote bag was de-

white leather loafers by Portraits.

"Easter Parade" just around the corner, Becky Miller gets in the mood with a light blue two-piece jumper dress and a way-down neckline that dips to show off the white, tucked-front blouse. The blouse buttoned in the back and the jumper slipped on. White dressy flat shoes of luster calf by Vogue finished her ensemble.

The junior Miss was in mind when Pam St. Clair came out in a three-piece crush-look suit made of 90 percent cotton and 10 percent rayon. Her yellow blouse was a contrast. She picked vivid colors for her shoes to pick up colors.

Josette Frocks designed the outfit Gail Phillips wore. The brown and white check, double-breasted shift featured the ever-popular sailor collar, bow at the neck and flap trim on the front. Her bag, a white leather-shoulder strap tote bag was de-



EASTER BUNNIES — Diana Jacks, Bobby Nell Dunham, Skeef Bliss and Nelda Hunt handed out programs and served as ushers at the Llano Estacado Civic Club's style show Tuesday evening. The girls also assisted on and off the stage during the show. (Nowlin Photo)

STAMP SPECIAL

MARCH 14 THRU 30

\$10.00 WAVE \$5 plus 1 book stamps
 \$15.00 WAVE \$5 plus 2 books stamps
 \$20.00 WAVE \$10 plus 2 books stamps

ANY TRADE STAMPS
 GIVEN IN MULESHOE

WELLBORN'S BEAUTY SHOP
 101 Ave. J. Ph. 272-3404

St. Clair's **SPRING & SUMMER FASHIONS**

Modeling for St. Clair's are left to right: Georgia Lowe, Jerri Nell Wagnon, Doris McKinney, Pam St. Clair, Debby Bruns, Tammy Bruns and in front, Pam Young.

BOYS & GIRLS... THIS JUNIOR-SIZE MUSTANG ELECTRIC FUN-CAR MAY BE YOURS!

Join the REDDY KILOWATT ELECTRIC CLUB

Imagine the fun you could have with this exciting junior-size car. It's completely equipped with headlights, horn, white wall tires, storage battery and charger and it travels up to 5 miles per hour! Your Mom or Dad can go to any Reddy Kilowatt Recommended Electric Appliance Dealer and make application for your membership in the Reddy Kilowatt Electric Club. A drawing for 5 of these exciting cars will be held in June and your membership application is eligible. A junior-size MUSTANG electric fun-car may be yours to drive and enjoy!

BUY AT THE STORE WITH REDDY KILOWATT ON THE DOOR

REGISTER AT THESE REDDY KILOWATT DEALERS IN MULESHOE...

—HARVEY BASS APPLIANCE —JOHNSON FURNITURE —POYNOR'S WHITE STORE INC. —JOHNSON-POOL FURNITURE & APPL.

SHOW

(Continued From Page 2)
dress of cotton ottoman done in the newest "pink", for summer ahead. The eight gore trumpet skirt flared from a fashionable waist giving it a two piece effect. White lace was chosen for trim. Her accessories were white shoes, and white gloves.

Very masculine is Andy Douz. lass in this suit of wool and silk. It was a green iridescent sharkskin weave and may be worn year-round. His shirt from Van Heusen, his hat, a bottle green by Stevens, and shoes of mellow calf completed the attire.

The Easter Bunny expected at Pam Young's home from the way she was dressed in a dacrone and cotton permanent dot sparkling spring yellow dress and self made matching slip. Puffy sleeves trimmed with lace and bows and white shoes and bag were perfect with the dress.

A smart A-line was worn by Eileen Kinckley. This sleeveless, navy cotton twill was completed with black shoes and white gloves.

Neva Calvert had sports in mind with pairs of turquoise and long print silk blouse. This was certainly an eye-catcher with blending colors of lime, white and shades of blue. Turquoise silk shoes make a perfect match for the set.

Good news appeared on the stage as Ruth Pollock came out in an orange dacrone body glider by R & K Originals. An orange hat is added; also black patent accessories.

Like shifts Andy Kay Thompson came out in a navy fore-trill and cotton with drop shoulder, accented by yellow smoking and stitching. Her shoes were of yellow and added gloves.

A rayon chiffon was worn by Penny Weige. This was trimmed pop-over jacket with an empire-style lined with acetate. A certain masterpiece was modeled by Georgia Love. She wore a knit suit with white trim and accessories. She wore black patent shoes and bag.

Compliments galore were whispered as Audie King stepped out in a three-piece linen suit. The skirt and jacket were becoming navy blue and featured a white blouse. Navy kid shoes and a navy straw bag were chosen. She added white

gloves. A Chico look! Pixie Weige modeled a white jumper of cotton denim accented with adjustable shoulder buckle, self belt, patch pockets trimmed with green stitching. A long sleeve green shirt with dabbly print added, completed the outfit. A three cornered scarf and flat green cotton print shoes matched the shirt.

So dressed up was Wayne Matthews in a rayon and acetate sport coat by Stuart Wells. The polyester and rayon slacks were by Farah and were slaps. A white shirt and rayon tie was also worn. Wayne's shoes of black leather with unionmold sole were added for greater comfort. A little man was he!

Carolyn Mullins chose a low-waist dress of woven tattersall check. The dress was accented with knife-pleated skirt, button cuffs and rows of tiny lace and buttons down the bodice front. Dacrone polyester and rayon was the material chosen. White shoes were added.

Easter in the air again is modeled by Kacy Sanderlin in a blue dotted whip cream. A skirt of blue and a top of white with the coat in blue dotted whip cream. Leisa wore an oyster shell trimmed in the same material only in pink with ecru lace. Interesting sleeves were double ruffled and pink ribbons attached.

How exciting! Debbie Bullock was in an embroidered cape sleeved dress of green bonded knit. This semi-fitted with v-neck and self bow was complemented by pearls, shortie gloves and pumps.

A one piece brown shift was modeled by Debbie Bruns. Her shoes, especially styled for her, added glamour. Also white gloves and a bag were chosen. Johanna Green must have had outing in mind when she appeared in nylon stretch pants in new pink. The coral over-blowse had long sleeves and was of 100 percent arnel. White loafers for comfort were added.

Irresistible was the word for Mary Moore in an all cotton, pique and lace ensemble. The white princess line had a look of coolness. She chose shoes of pink and silk flower hat with

shortie gloves. An asset to any spring wardrobe was Nelda Mullins in a two-piece pink suit of lightly textured rayon fabric. A rayon hat, white gloves and shoes were her accessories. A different combination was worn by Jervi Neil Waggon. The burnt orange and pink number was of rayon and cotton blends. Pink accessories and white gloves were added for glamour also.

Jean Davis looked attractive in a beige acetate linen shift. The lace yoke featured pink velvet ribbons. She wore boneheels and shortie gloves to complete her ensemble.

Keitha Simmons wore bell-bottom pants of burgundy red. The fabric was dacrone and cotton. A blouse of calico print, cotton voile material and long sleeves were featured. She chose white flats.

An Original Jr. was modeled by Pearl Gunstream. The white crepe and silk chiffon formal featured an empire bodice with blue and pink accents. Her accessories were white shoes and long white formal gloves.

A dream indeed was little Tammy Bruns in her lolo cut offs of 100 percent cotton. Her bright yellow and red top with matching tie belt added color.

Cecile looked smart in a two-piece coat and dress done in gray and white. A solid gray shift and white striped trim down the side front and across the top added much to the ensemble.

Another Easter Bunny itself was Hope Free in an orchid dacrone-cotton sheer dress with matching umbrella. White patent shoes and orchid knee-length socks added the finishing touches.

Elizabeth Barnett chose a black costume by Jeanne Durwell. The empire top of beige with matching bow emphasized the high-rise waist. She chose a black straw sailor hat, black patent shoes and long black kid gloves to complete the outfit.

A white three-piece Knit was chosen by Jean Lovelady. She chose white gloves and black patent accessories.

Doris McKinney's white knit shift dress much have been de-

signed for her alone. A rolled collar and the new bell sleeve set off with the black and brown trim completed the outfit. She chose a black wide brim straw hat and black patent shoes.

Strolling on the scene next was Dana Kinard, slack which featured a band front with elastic back waistband.

Another member of the Easter Parade seemed to be Hatie Kinard in a pale aqua, rayon linen two-piece dress. Her white straw pill box hat with a white veil and velvet trim added to the outfit. She chose leather heels and nylon gloves

and bag of white straw. Sue DeVaney wore a pink silk shift and chose a flowered hat in shades of pink. She also wore pink shoes and a strand of pearls. White gloves were added.

A two piece suit was chosen by Rita which was complimented with a pearl necklace and bone accessories.

"Hot pink" appeared again as Tommy Gaston came out in a sheath featuring cut-lace trim on sleeves and bodice. Her hat was an over all flower creation in shades of pink. She also chose white gloves, and white pumps.

Kacy and Leisa are ready for play in their matching shorts. Leisa wore blue shorts, complimented with an hawaiian print top. Kacy's was identical only in red.

Off to swimming will Sheryl go in a yellow swim suit covered with cotton white lace. Her shoes were of leather wedge heels.

Could be Karen Parks was going to church in a aqua blue, basket weave dress with elbow length sleeves trimmed in lace and ribbon. She added bone shoes and a tote bag along with bone gloves.

To the bench again was Pen- See SHOW, Page 4



SPECIAL RECOGNITION — Certainly to be commended for their work was Cralyn Jarmon, pianist, Alva Leo Peeler, solist, and Wanda Harmon, mistress of ceremonies. Mrs. Jarmon's lovely music added tremendously to the show as did the spring songs rendered by Mrs. Peeler and the mistress of ceremonies whose efforts and ability for her job help make the style show a huge success. (Nowlin Photo)

SHOP MULESHOE FIRST

ALL TYPES YARD WORK

- Fertilizing
- Roto Tiller

SEE OR CALL

HARLAN DAVIS

902 W. 6th PHONE 272-3410

WELCOME TO MULESHOE



The Ronnie Karvas Family

A friendly welcome to the Karvases. They moved from Eagle Pass where Karvas was farming. Their home town where Karvas and his wife, Diane, grew up was Anton. The Karvases live at 1015 W. 2nd. He is farming 11 miles south of Muleshoe. They have three children: Kerry, 7; Karla, 6; and Kelli, 4 and attend the First Baptist Church. The following merchants extend a cordial welcome to the Karvases:

CASHWAY GROCERY 402 Main Phone 272-4244	DAMRON DRUG CO. REXALL 308 Main Phone 272-4210
James B. Glaze Insurance - Real Estate - Loans	MULESHOE STATE BANK 304 Main Phone 272-4571
MULESHOE MOTOR CO. "At The Crossroads"	

Congratulations

TO THE LLANO ESTACADO CLUB WHO SPONSORED THIS OUTSTANDING STYLE SHOW



Cobb's Models left to right: Jean Lovelady, Audie King, Ruth Roberts, Linda Griffiths, Judy Elliot, Andy Douglass. Front row: Hope Free and Wayne Matthews.

OUR DEEPEST APPRECIATION TO THE MODELS FOR A SPLENDID SHOW



SHOW

(Continued from Page 3)
Write in a country style swim suit. The candidate top in red and white cotton gingham had front ruffles trimmed in red.
Ever so cute was Gail Phillips in a popular overhouse of 100 percent cotton with an ac-

ate lining and featured a black satin ribbon. The slim black skirt is of acetate. Her boots shoes and tote bag added to the outfit.
Pam must have been a traffic stopper in her sl'm sportswear. The print of sleeve were lined and the sweet heart blouse was made especially for the pants.

Bobby Brooks outfit is worn by Linda Griffiths and Judy Elliott in new sportswear. Judy wore a brown skirt and white blouse and white flats. Linda wore bell-bottom hip huggers. White sneakers finished her outfit.
In came Becky Milner in a cotton shift with blue on black polka-dot.

An aqua blue step-in shift was featured by Norma White. Long sleeves and barrel cuffs were also highlighted with shoes and gloves of black leather.
Johannah Green chose a blue shift of alpaca crepe to complete the line of models. Her accessories were navy blue and white with a rough straw. A bag and open heel shoes were added along with white gloves.
Amid a stage of spring atmosphere the style show came to a close with special recognition to Cobbs, St. Clairs, Fashion Shop, Anthony's, Montgomery Ward's, Dots Shop, Sears, Williams Bros. Office Supply, Bob Stovall, Muleshoe Journal Chamber of Commerce, Western Drug, Elinor Yerby, Barbara Evans, KMUL, King Grain Company, Higginbotham - Bartlett Co., Cecil Davis's and Pat Malone.

Door prizes donated by Henry Insurance Agency and Tri-County Savings and Loan were drawn by Phama Anderson and Beverly Phelps.
The Llano Estacado Civic Club had a very successful show and a lot of hard work went into the style show. On the decoration committee were Skeet Bliss, Vickie Young, Pat King, Shirley Pettit and Polly Oliver. Script committee was composed of Darlene Henry, Mary Watson, Nelda Hunt and Juquita White. Model committee, Wanda Harmon, Shiroa Wolfington and Joy Tibbets and Publicity, Jo Harmon, Lynn Campbell, Clara Sudduth and Bobbie Nell Dunham.

Special thanks go to Elinor makeup and Barbara Evans who was in charge of the hair and changes.
Janell and Sarby Turner were chairman and co-chairman for the show.
Hair styles were done by Dorothy's Beauty Salon, Chubb's Beauty Shop and the Main Street Beauty Salon. Modeling the latest hair fashions were Pearl Gunstrom, Sue DeVany and Audie King.

Providing appropriate music during the style show was Coralyn Jarmon.
To close the show the mistress of ceremonies, Mrs. Harmon, told the crowd "without

Variety Club Sets Luncheon

Following a short business meeting in the home of Mrs. Lee Mason, the Midway Variety Club went to Clovis on a shopping tour Tuesday.
Present for the meeting were: Dee Brown, Mrs. Lora Brown, Mr. Nellie Rannels and the hostess, Mrs. Lee Mason. Mrs. Euella White was a guest.

Next meeting will be April 5 with Mrs. Nell Rannels as hostess and the meeting will be in the Oklahoma Lane Community Building. A salad luncheon will be observed with the Muleshoe Hobby Club as guests.

Plans Completed For Supper

Final plans were made for the upcoming commissioners supper which will be in the recreation room of the First Methodist Church Thursday. These plans were completed at the Progress Home Demonstration meeting Tuesday in the home of Delores Gaddy.

Opening exercise was a bag of tools and roll call was answered with "A Bad Driving Habit I Have".
Lela Mardis gave the council report and Fern Davis took care of THDA business as she has taken a job of THDA chairman of the county for this year.

Highway Patrolman James Freeman gave an informative talk on highway courtesy and brought attention to the law violations which are too common in Muleshoe. The new Texas Code of Criminal Law was discussed and questions were asked Mr. Freeman by the members.

For a hilarious recreation period four members gave a skit called the "Crooked Mouth Family". The family of hillbillies was Ada (Pa) Murrah, Delores (Sue) Gaddy, Phibe (Ma) Grey, July (Zek) Roming, who all

your support, we couldn't support the Girl Scouts, as we do "Thank you" and "Good Night".

Mrs. Goucher Gives Devotion

Mrs. S. E. Goucher gave a devotional on "love" at the meeting of the Christian Woman's Fellowship last Friday. The women enjoyed a luncheon with Mrs. Elsie Stevens and Mrs. Allen Haley as hostesses.

The program was given by Marguerite Whight on "Biblical Basis for Our Concern".
Members present were Mrs. Allan Hanks, Mrs. Marguerite Whight, Mrs. Glenda Haley, Mrs. Sena Stevens, Mrs. Peggy McEwe and Mrs. Edith Goucher. Visitors present were Mrs. Sammy Allison and Mrs. Myrtle Tatum.

Next meeting for the women will be Tuesday at 9:30 a.m. All are asked to bring a sack lunch.

Glen Williams P-TA President

Glen Williams was elected president of the Mary DeShazo P-TA at their meeting Monday afternoon in the Mary DeShazo Cafeteria. Others elected were Mrs. Don Harmon, first vice president; Mrs. Ernest D. Martin, second vice-president; Mrs. Wayne George, secretary; and Mrs. Hugh Yates, treasurer.

Hospitality time was observed preceding the meeting.

Following the business session the program was turned over to Mrs. Horace Blackburn.

Nelda Finley entertained with two piano pieces.

Mrs. Mason Feted At Party

A surprise birthday party was given in the home of Laurette Mason for Mrs. Mason Thursday night.

Following weighing in at the Bailey County Electric Community room the group went to the home of Mrs. Mason where 17 members surprised her with

were cooked facial expression through the skit.

Members present were Ethyl Montford, Veta Self, Myrtle Wels, Ada Murrah, Fern Dwy's, Phibe Grey, Lela Mardis, Gerlie Myers, Delores Gaddy and Judy Roming.

Published each Sunday by the Muleshoe Publishing Co. 304 West Second Street, Muleshoe, Texas

Bailey County Journal

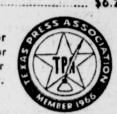
Member of The Associated Press
Entered as second class matter at the Muleshoe Post Office under act of Congress, March 3, 1897.

Subscription Rates
Immediate Territory \$4.00
Outside Territory \$4.50

In combination with the Muleshoe Journal (Published each Thursday) the following rates apply

Both papers in territory \$5.50
Both papers outside territory \$6.21

Advertising Rates on Application
L. B. HALL Publisher
RAMON MARTIN Editor
PAT JOHNSON Woman's Editor
JAY SPAIN Mech. Supt.



These souvenirs are to be sent to the convention where they will be viewed along with pictures, clippings from the Journal and other things of interest. Prizes will be awarded for the best table.

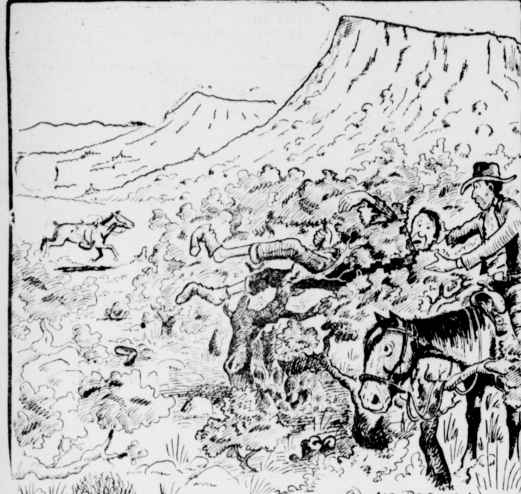
Thursday night will also be measurement and dues night for the club.

The major leagues set a new attendance record in 1965 when 22,411,900 fans paid to see National and American League games.

It was reported that the sides were tied at the present time in the salad contest.

Each member was reminded to bring a souvenir for the state convention to be held in Galveston April 22 and 23, games.

COW POKES By Ace Reid



"Gosh, fer a minute I thought he'd pulled off both my legs!"

MULESHOE MOTOR CO.

American Blvd. at 1st Street Muleshoe, Texas

Congratulations

TO THE LLANO ESTACADO CIVIC CLUB ON AN OUTSTANDING STYLE SHOW



MODELING FOR SEARS ROEBUCK ARE Left to Right: NORMA WHITE, NELDA MULLINS, EILEEN HINCKLEY, CAROLYN MULLINS, HOLLY HINCKLEY, PIXIE WEIGE, PENNY WEIGE AND SHERYL SMITH.

THANKS TO OUR MODELS FOR A FINE PERFORMANCE!

SEARS ROEBUCK & CO.



HURRY- DeKalb Sales are Booming! Make certain You get the right Varieties of DEKALB BREAKTHRU Sorghum

SEE Your Dealer listed below- WESTERN 66 CO., INC, Muleshoe JERRY COX, Bula LOUIS HENDERSON, Goodland CALVIN MEISSNER, Lariat WESTERN 66 CO., INC., Needmore

You save enough to buy 2 MONTHS SUPPLY OF MILK when you DRY WITH GAS Pioneer Natural Gas Company

DON'T WORRY ABOUT... BUGS • PLANT DISEASES FLOOD • DROUGHT FROST AND FREEZE more than 120 risks YOU CAN'T AVOID! INSURE your CROPSTAKE

Rites Conducted For Mrs. Horsley

Funeral rites were held Monday for Chloe Attie Horsley, 81, 302 S. Ave. C, who died March 12, were held at Richland Hills Baptist Church conducted by the Rev. Jack Welch, Lubbock, assisted by the Rev. Ira Waddell, Muleshoe, and the Rev. Bill Hobson, Morton. Burial was in Muleshoe cemetery with Singleton Funeral Home in charge of arrangements.

Bearers of the body were grandson, Bruce Horsley, Bill Sybert, Jim Sybert, Bob Kimbrough, Lee Kimbrough, Charles Gaede and Sig Kimbrough.

Survivors include one son, C. A. Horsley, Muleshoe; four daughters, Mrs. Earl Sybert, Morton; Mrs. Frances Gaede, Limon, Colo.; Mrs. Robert Kimbrough and Mrs. Finis Kimbrough, both of Muleshoe, a sister, Mrs. W. F. Harris, Fort Worth; 11 grandchildren and 29 great grandchildren.

Mrs. Horsley, who died in West Plains Hospital, was born at Emory Oct. 2, 1884 and had

lived here since 1930, coming to Muleshoe from Snyder. She was the widow of Joe S. Horsley.

Services Held For A. J. Bell

Funeral services were held Thursday for A. J. Bell, 69, in Central Baptist Church in Lubbock. Dr. Harold Henderson, pastor of the church, officiated at the services, assisted by the Rev. D. L. Lowry.

Burial was in Resthaven Memorial Park under direction of Sanders Funeral Home.

Survivors include three sons, Dick, Harry, Tom; a daughter, two brothers, a sister, 10 grandchildren of which include Judy Spurgeon and Mrs. Welton Jones; and five great-grandchildren.

McClellan Rites Set For Today

Funeral services will be held at Creleback Baptist Church at 2:30 today for William A. McClellan, 77, who died at West

Dale Simpson Speaks to Group

Dale Simpson was guest speaker introduced by Paul Scott, who talked on "In Search for 5000 Friends".

Alma Monk, president, presided over the meeting of the Lubbock Christian College Associates at their Thursday night meeting.

Dinner was served to 60 members and guests. Special guests from Lubbock Christian College were Mr. and Mrs. Maz Silvey and Mr. and Mrs. Dale Simpson. Silvey is director of developments for LCC and Simpson is assistant director of developments.

Invocation was given by D. L. Thompson, minister of the Church of Christ and benediction was given by Bob Black.

Plains Hospital Friday. Burial will be in Sudan Cemetery with Singleton Funeral Home in charge of arrangements.

McClellan, whose home address was 515 W. Ave. D, had lived in Bailey county for 20 years, coming here from Bearden, Ark. He was born April 14, 1888 in Morgan county, Ind.

wood. Members of the LCC Associates were hostesses.

Current officers of the Associates were Alma Monk, president; Mabel Caldwell, vice-president; Nona Milner, secretary; Bettie Burlsmith, treasurer and Glenda Dale, reporter.

Dearing, Jackson Queen and King

Ambassador Hall of the First Assembly of God Church, was the scene of the Mr. and Miss Christ Ambassador banquet held recently.

Morris Skeets, Lubbock, was the speaker for the evening, Bill special music.

Highlight of the banquet was the crowning of Mr. and Mrs. C.A. A contest was held between two sides on a penny a vote basis, and the winners were Thomas Dearing and Velma Jackson. Runners-up were Jimmy Watson and Sherry Trapp.

Style Show Set For Thursday

Tickets are now on sale for the Spring style show to be presented by the De Algodon Study Club. Tickets may be purchased from members of the club or bought at the door for \$1 per person. The style show will be held at the Three Way Cafeteria Thursday at 7:30 p.m.

Forty models, including children, teenage and women will be showing the latest models. Narrator of the show will be Mrs. Freddie Parkman. Mrs. Mickey Sowder will furnish the background music.

An intermission will be observed.

BOOKMOBILE SCHEDULE

Wednesday: Creleback, 8:45-9:45; Bula I, 10:45-11:15; Bula II, 12 noon until 1 p.m.
Thursday: Amherst I, 9:15-9:45; Amherst II, 9:45-10:15; Springlake I, 11-11:45; Springlake II, 12 noon to 1 p.m.; Earth 1, 1:45-4:45 p.m.
Friday: Pleasant Valley, 10 to 11 a.m.; Sudan I, 12 noon until 1 p.m.; Sudan II, 1-4 p.m.
Saturday: Morton, 9:30-12 noon; Muleshoe, 2-5 p.m.



BUSINESSMEN—Pictured here are two Muleshoe businessmen. Seated is Monroe Lee who has opened Muleshoe Real Estate Agency here at 113 West Avenue D, across the street south of the courthouse. Beside him is his father, M. E. Lee, building contractor who's office is housed in the same building with the Real Estate office.

Joint Real Estate and Building Contractor Office Established

Muleshoe has a brand new business located at 113 West Avenue D. In fact, the new business has been established

in connection with one of long standing. It is known as Muleshoe Real Estate and is owned and operated by Monroe Lee as principal broker in the Real Estate business and his father, M.E. Lee, well-known building contractor.

fastened to driftwood, a suit of clothes for a small boy, sequin fruits and a chenille rabbit and feathered swan.

Visitors present were Bobbie Pittman, Amarillo; Mrs. Robertson, Farwell; Mrs. Autrey and Mrs. Cox, Hereford; and Mrs. Odom, Muleshoe. Twenty members were present.

Hallie Brisco Vice-President

Hallie Brisco was elected to replace Ola Pesch in the office of vice-presidency of the Hobbyists Club when the club held its meeting in the Club house here Tuesday afternoon.

Mable Caldwell read a letter from Pete Witte, who now lives at Clifton, and sent several helpful hints to the club.

Mrs. Autrey thanked those who sent floral offerings for her husband's funeral.

Next meeting the club will visit with the Midway club April 5th.

Several items were shown at present and a doll, high grades

Pete Hens, sophomore soccer player at Michigan State, played for Greenwich, Conn., high when it won the 1962 state title.

For all your real estate needs, farms, ranches and city property or construction of any type call 272-3114.

FARMLAND FUN

"I KEEP MY MONEY IN THAT ONE OVER THERE—I'M SAVING FOR SOME GOOD FARM MACHINERY"

BREAK OUT THE PIGGY BANK!

1 — 1960 F560D **\$2650.00**

"A REAL BARGAIN"

COMPLETE LINE OF TOOLS INCLUDING

KRAUSE FOWLER MOHAWK **FARMHAND BUSH-HOG CONTINENTAL**

Dependable Service at Low Cost

JOHNSON AND NIX
Ph. 272-4294 Muleshoe, Texas

CHESTER SETLIFF, PRESIDENT
OF
Bailey County Farmers Union
ANNOUNCES
SPECIAL OPENING FOR NEW MEMBERS THROUGH THE BAILEY COUNTY FARMERS UNION BLUE CROSS GROUP FOR COVERAGE EFFECTIVE APRIL 1... APPLY TODAY!

For Further Information CALL:
JOHN HUBBARD: Bula Exchange
933-2321 OR
MULESHOE PHONE 272-3305

BUSINESS SERVICES DIRECTORY

REAL ESTATE

CONSULT OUR LISTINGS FOR

- FARMS
- RANCHES
- CITY PROPERTY
- GOOD INVESTMENTS

MULESHOE REAL ESTATE AGENCY
Monroe Lee
113 W. Ave. D.
Phone 272-3114

REAVER'S FLOWERLAND

Real and Artificial Flowers — Corsages
Pot Plants — Banquets
Funeral Designs
570 S. First St.
Ph. 272-3116—Muleshoe

Phone 272-3078

— the number to call to save money on your new office, store, warehouse

INLAND STEEL BUILDINGS

Headquarters for attractive Inland steel buildings. Pre-engineered in any length, any width. Enclosed with colorful metal wall panels, glass, or other materials. Fast erection saves money.

B & C BUILDERS, INC.
217 E. Ave. B Muleshoe, Texas

OFFICE SUPPLY

- OFFICE FURNITURE
- TYPEWRITERS
- ADDING MACHINES
- ART SUPPLIES
- EATON'S FINE LINE STATIONARY

WILLIAMS BROS. OFFICE SUPPLY
319 MAIN
Muleshoe Ph. 272-3113

MULESHOE RACEWAY

- 8 LANES
- DRAG STRIP
- CARS
- MAINTENANCE ITEMS
- TROPHY RACES

"FUN FOR THE ENTIRE FAMILY"

1116 AMERICAN BLVD. MULESHOE

"FIRST IN FASHIONS"

Permanents — Styling
Tinting — Shaping
Revlon Cosmetics

MAIN STREET BEAUTY SALON
Bernice Holdeman
115 Main — Muleshoe
Dial 272-3448

FOR FHA., GI and FARM LOANS AND THE

BEST INSURANCE

SEE—
POOL INSURANCE COMPANY
Phone 272-4531 Muleshoe
W. M. POOL, JR. LEE R POOL

INSURANCE

SEE US FOR YOUR COMPLETE INSURANCE NEEDS

- Auto
- Fire
- Crop

LANE INSURANCE
1101 Hwy. 84 West
Phone 272-4439

Save Money On Auto Parts!

BOVELL MOTOR SUPPLY
107 East Ave. B — Dial 272-4288
W. T. BOVELL, Owner

BERRY ELECTRIC CO.

ELECTRIC WIRING and REPAIRS

REFRIGERATION SERVICE
104 E. AVE. B
Phone 272-3375

MULESHOE COVER SHOP SEAT COVERS

All Types Furniture Work
All Types Auto Work
All Types Canvas Work

CLOVIS ROAD
Phone 272-3586
MULESHOE, TEXAS

SINGLETON FUNERAL HOME
24 HOUR AMBULANCE SERVICE
PHONE 272-4574 MULESHOE

W. O. CASEY GENERAL INSURANCE

Let Our Complete Coverage Take Care of All Your Insurance Problems

Muleshoe State Bank Bldg. — Ph. 272-4571

A & B PLUMBING

WE DO ALL TYPES OF PLUMBING

- INSTALLATION
- REPAIR
- FREE ESTIMATES
- 24 HOUR SERVICE

WE ARE DEALERS FOR PAYNE HEATING & AIR CONDITIONERS
CALL 272-3734

202 E. CEDAR AVE.

Watch for the Big Blue HARVESTORE®

"THE GLASS LINED GOLD MINE"

...going up in your Area!

It's a sign of progress... a sign that a neighbor of yours has taken the step to an insured future in diversified farming. He's diversifying with cattle feeding, one agriculture crop that has no government control and he's doing it thru the newest concept in farming... the Harvestore System. Harvestore can add 80, 160 or even more acres of production to your farm without the purchase or rental of one additional acre! Harvestore is a concept of pushbutton, scientific, diversified vertical farming that involves land, cattle and feed plus living storage of feed that heretofore remained in the field to dry before storing. Harvestore saves you time, labor and enables you to grow two crops of feed where previously you could grow only one! For further information call or write:

BENROY Agri-Systems INC.
P. O. BOX 223
LUBBOCK, TEXAS

TRADE CLASSIFIED ADVERTISEMENTS BUY SELL LEASE

WANT ADS - PH. 272-4536

1 time per word — 4c 3 times per word — 10c
 2 times per word — 7c 4 times per word — 13c
 After 1st issue, 3c per word each additional time.
 Minimum charge \$1.00
 Card of Thanks \$1.00

DEADLINE FOR CLASSIFIED ADVERTISING PAGE:
 For Thursday's Issue: Monday, 12 Noon
 For Sunday's Issue: Thursday, 12 Noon

TO LATE TO CLASSIFY
 Thursday Issue — Tuesday 5 P.M.
 Sunday Issue — Friday 3 p.m.
 Double Rate for Blind Ads.

Personals

AVON, Phone 3510

FOR RENT: 15 ft. camper
 by day or week, call 272-3183.
 1-35c-1fc

WANTED

Baby sitting and sewing
 contact Janette Slayton
 at Muleshoe Journal un-
 til 5:00 call 272-4536 or
 after 5:00, call 965-2140
 1-8s-4fc

Am interested in making
 loans and buying first
 and second liens secured with
 farm and ranch lands.
 J. J. Steele
 Citizens Bank Bldg.
 Clovis, New Mexico
 Dial: 763-4471 Or 763-6455
 1-12s-4fc

Want to buy Oliver cotton
 stripper 1950 model and up.
 Emil Duhler, 506 Grady Dr.,
 Austin, Texas.
 1-12s-5tp

Help Wanted

Help Wanted: Car Hop/Bill's
 Drive In. Ph. 272-4725.
 3-6s-1fc

WANTED — New and used
 car get ready mechanic. Crow
 Chevrolet Co.
 3-11s-1fc

Wanted man to trim trees and
 do plowing. Phone 272-4706.
 1-10s-1fc

Houses for Rent

For rent 1 — 3 bedroom with
 cellar. One 2 bedroom house.
 See Mrs. Jack Lenderson. Call
 227-3988.
 4-2s-1fc

FOR RENT: 2 bedroom house
 and garage. Call 4148.
 4-4t-1fc

FOR RENT: Three bedroom,
 carpeted, draped, gas or electric
 range, washer and dryer
 connections, school bus route,
 ready for immediate occupancy
 located at 502 Dallas St. Call
 3926 or 424 for showing.
 4-7s-1fc

3 bedroom house for rent.
 Richland Hills Addition. Call
 272-3552 after 5:00.
 4-8t-1fc

1 bedroom house with utility
 for rent. Call Mrs. Blaylock,
 946-2888 or 272-4373.
 4-48s-1fc

For Rent: 2 bedroom modern
 house. Call 4080.
 4-10t-1fc

For Rent: Lovely three bed-
 room brick home in Richland
 Hills Addition. Call 272-3552 af-
 ter 5 p.m. or on Saturdays.
 Ready for immediate occupan-
 cy.
 4-11s-1fc

For Rent 3 room furnished
 apt. For rent: 2 bedroom house.
 Call 272-4812 — 323 West Ave.
 E.
 4-12s-1fc

For Rent: 2 bedroom modern
 house. Call 4080.
 4-10t-1fc

For Rent: Lovely three bed-
 room brick home in Richland
 Hills Addition. Call 272-3552 af-
 ter 5 p.m. or on Saturdays.
 Ready for immediate occupan-
 cy.
 4-11s-1fc

For Rent 3 room furnished
 apt. For rent: 2 bedroom house.
 Call 272-4812 — 323 West Ave.
 E.
 4-12s-1fc

For Rent: 2 bedroom modern
 house. Call 4080.
 4-10t-1fc

For Rent: Lovely three bed-
 room brick home in Richland
 Hills Addition. Call 272-3552 af-
 ter 5 p.m. or on Saturdays.
 Ready for immediate occupan-
 cy.
 4-11s-1fc

For Rent 3 room furnished
 apt. For rent: 2 bedroom house.
 Call 272-4812 — 323 West Ave.
 E.
 4-12s-1fc

For Rent: 2 bedroom modern
 house. Call 4080.
 4-10t-1fc

For Rent: Lovely three bed-
 room brick home in Richland
 Hills Addition. Call 272-3552 af-
 ter 5 p.m. or on Saturdays.
 Ready for immediate occupan-
 cy.
 4-11s-1fc

For Rent 3 room furnished
 apt. For rent: 2 bedroom house.
 Call 272-4812 — 323 West Ave.
 E.
 4-12s-1fc

For Rent: 2 bedroom modern
 house. Call 4080.
 4-10t-1fc

For Rent: Lovely three bed-
 room brick home in Richland
 Hills Addition. Call 272-3552 af-
 ter 5 p.m. or on Saturdays.
 Ready for immediate occupan-
 cy.
 4-11s-1fc

For Sale or Rent: 3 bedroom
 house. Call 272-4424.
 8-31-1fc

For Sale by owner: 88 acres
 of dryland, 23.9 acres of cot-
 ton, 51.0 acres feed irrigation
 on 3 sides, 7 miles south 1/2
 east of Muleshoe. Cliff Mardis
 Phone 946-2316.
 8-7s-12tp

For Sale: 160 acre farm on
 located 6 miles east on the
 Plainview Highway. 120 acres
 milo base: 23.4 acres of cotton:
 8" well, underground pipe and
 a 4 bedroom house. Ph. 272-3280.
 8-9s-1fc

For Sale or Rent: Nice 2 bed-
 room carpeted at 304 20th Street.
 Plumbed for washer and dry-
 er.
 12-11t-1fc

3 bedroom living room and
 den carpeted. Double carport
 Storage house — fenced
 yard. South of West Plains
 Hospital.
 Apartments for rent. Call
 4485 or 4886.
 8-10s-1fc

For Sale: Lots 100 x 300' for
 exclusive residential area on
 Clovis highway. Near Pop
 Cafe. See J. T. Shofner. Ph.
 272-4333, Route 2, Box 944
 8-11t-1fc

Most Unusual Opportunity
 — We Need Quick Action To
 Settle This Estate — Livestock
 Farm Opportunity of A Life-
 time.
 Wells pumping up to 1600 gal-
 ons per minute. Each tract has
 cultivated land with some na-
 tive grass. These farms going
 for so little as NO MONEY
 DOWN ON MARKET FOR
 SHORT TIME ONLY.
EDDIE LANE REAL ESTATE
PHONE 272-4439
 Residence
Eddie Lane 272-4368
Buddy Lane 272-3774
Jimmie Pitcock 272-4454
 8-11s-1fc

For rent: nice quiet bedroom
 410 West Second.
 6-10t-1fc

For Sale: 2 bedroom house
 fully carpeted, tile fenced large
 corner lot, landscaped. Call
 4515 or after 5 call 965-2373.
 8-7s-1fc

For Sale: Brick 2 bedroom
 and den — 3 bedroom frame
 house — 2 bedroom frame
 house — All close to school. Call
 272-3985.
 8-43t-1fc

For Sale: Southside Gulf Ser-
 vice Station. Call 272-3571, 506
 South First.
 8-40s-1fc

399A — dryland 92 cot-
 ton, 165 milo, some na-
 tive grass. \$150 per acre.
 \$20,000 down
 1000A — dryland, native
 grass & cultivated land
 with 250 acres of allot-
 ments. \$105 per acre —
 \$25,000 down.
 3-BR & carport. Highland
 Addition, central heating
 carpet. Fenced backyard.
 \$12,500. Small down pay-
 ment.
 Your Listings Appreciated
KREBER'S REAL
ESTATE CO.
 210 S. 1st
 Ph. 272-3191
 8-5t-1fc

Formerly McGee Real Estate
 bldg. for Sale or Rent leaving
 town call 272-4805 or 272-3408.
 8-10t-1fc

For Sale: 3 bedroom brick
 home 1914 West Ave. E. will be
 vacant March 20. Make us an
 offer for our equity. H. H. Mont-
 gomery, Star Rt. 2 Littlefield,
 or call 385-5445.
 8-10t-1fc

FOR SALE: 320 A. tract of
 land 8210 A. Plenty of water
 close in. See Pool Insurance
 Agency.
 8-7s-1fc

Prompt Buyer on this Love
 Nest
 Three and half with 2 car gar-
 age, all the built ins, fenced,
 air conditioned, in Richland
 Hills, 1923 Ave. F. Offered by
 "The Firm That Sells".
Eddie Lane Real Estate
 8-50s-1fc

For sale: 500 feet 7 in. main
 line irrigation 5000 foot sprinkler
 line. Call 227-4871 or write Edd
 White, Box 504, Sudan.
 10-11s-1fc

For Sale: complete 4 gallon
 butane system in good condition
 for pickup. Call 946-2643.
 10-10t-1fc

For Sale: Good 1959 Internat-
 ional Farmal tractor on butane
 for stripper. Good tires
 and has been taken good care
 of.
 No. 15 John Deere stripper
 ready to run. Contact Weldon
 Slayton 965-2140. Can see equip-
 ment 6 miles N of Muleshoe.
 10-44t-1fc

For Sale: Good used "pump"
 — contact Lucile Cherry.
 11-4t-1fc

FARM DISCOUNT
 STORE
BUILDING MATERIALS
FARM SUPPLIES
BARGAINS
 CORRUGATED iron ROOFING
 & SIDING. Heavy 28 gauge per
 Sq. \$9.55. BARBEDWIRE: 12 1/2
 galton 80 rod roll only \$6.70.
 CEMENT regular or masons,
 per sack, \$1.28. 8 x 16 BOX
 NAILS 50 lb. only \$4.98. Best
 buys in LUMBER 2 x 4 & 2 x
 6 — 6 cents per Ft. and up.
 Oak FLOORING as low as 6 1/2
 cents per Ft. Siding No. 305
 1 x 8 only 9 1/2 cents per Ft.
 Something new — Grass weave
 PANELING 4 x 8 sheet only
 \$3.98. Cedar SHINGLES 7"
 clear butt per Sq. \$9.52.
 Located next to Air Port on
 Plainview Hwy.
 11-8s-1fc

For sale: 500 feet 7 in. main
 line irrigation 5000 foot sprinkler
 line. Call 227-4871 or write Edd
 White, Box 504, Sudan.
 10-11s-1fc

For Sale: complete 4 gallon
 butane system in good condition
 for pickup. Call 946-2643.
 10-10t-1fc

For Sale: Good 1959 Internat-
 ional Farmal tractor on butane
 for stripper. Good tires
 and has been taken good care
 of.
 No. 15 John Deere stripper
 ready to run. Contact Weldon
 Slayton 965-2140. Can see equip-
 ment 6 miles N of Muleshoe.
 10-44t-1fc

For Sale: Good used "pump"
 — contact Lucile Cherry.
 11-4t-1fc

FARM DISCOUNT
 STORE
BUILDING MATERIALS
FARM SUPPLIES
BARGAINS
 CORRUGATED iron ROOFING
 & SIDING. Heavy 28 gauge per
 Sq. \$9.55. BARBEDWIRE: 12 1/2
 galton 80 rod roll only \$6.70.
 CEMENT regular or masons,
 per sack, \$1.28. 8 x 16 BOX
 NAILS 50 lb. only \$4.98. Best
 buys in LUMBER 2 x 4 & 2 x
 6 — 6 cents per Ft. and up.
 Oak FLOORING as low as 6 1/2
 cents per Ft. Siding No. 305
 1 x 8 only 9 1/2 cents per Ft.
 Something new — Grass weave
 PANELING 4 x 8 sheet only
 \$3.98. Cedar SHINGLES 7"
 clear butt per Sq. \$9.52.
 Located next to Air Port on
 Plainview Hwy.
 11-8s-1fc

FARM DISCOUNT
 STORE
BUILDING MATERIALS
FARM SUPPLIES
BARGAINS
 CORRUGATED iron ROOFING
 & SIDING. Heavy 28 gauge per
 Sq. \$9.55. BARBEDWIRE: 12 1/2
 galton 80 rod roll only \$6.70.
 CEMENT regular or masons,
 per sack, \$1.28. 8 x 16 BOX
 NAILS 50 lb. only \$4.98. Best
 buys in LUMBER 2 x 4 & 2 x
 6 — 6 cents per Ft. and up.
 Oak FLOORING as low as 6 1/2
 cents per Ft. Siding No. 305
 1 x 8 only 9 1/2 cents per Ft.
 Something new — Grass weave
 PANELING 4 x 8 sheet only
 \$3.98. Cedar SHINGLES 7"
 clear butt per Sq. \$9.52.
 Located next to Air Port on
 Plainview Hwy.
 11-8s-1fc

FARM DISCOUNT
 STORE
BUILDING MATERIALS
FARM SUPPLIES
BARGAINS
 CORRUGATED iron ROOFING
 & SIDING. Heavy 28 gauge per
 Sq. \$9.55. BARBEDWIRE: 12 1/2
 galton 80 rod roll only \$6.70.
 CEMENT regular or masons,
 per sack, \$1.28. 8 x 16 BOX
 NAILS 50 lb. only \$4.98. Best
 buys in LUMBER 2 x 4 & 2 x
 6 — 6 cents per Ft. and up.
 Oak FLOORING as low as 6 1/2
 cents per Ft. Siding No. 305
 1 x 8 only 9 1/2 cents per Ft.
 Something new — Grass weave
 PANELING 4 x 8 sheet only
 \$3.98. Cedar SHINGLES 7"
 clear butt per Sq. \$9.52.
 Located next to Air Port on
 Plainview Hwy.
 11-8s-1fc

FARM DISCOUNT
 STORE
BUILDING MATERIALS
FARM SUPPLIES
BARGAINS
 CORRUGATED iron ROOFING
 & SIDING. Heavy 28 gauge per
 Sq. \$9.55. BARBEDWIRE: 12 1/2
 galton 80 rod roll only \$6.70.
 CEMENT regular or masons,
 per sack, \$1.28. 8 x 16 BOX
 NAILS 50 lb. only \$4.98. Best
 buys in LUMBER 2 x 4 & 2 x
 6 — 6 cents per Ft. and up.
 Oak FLOORING as low as 6 1/2
 cents per Ft. Siding No. 305
 1 x 8 only 9 1/2 cents per Ft.
 Something new — Grass weave
 PANELING 4 x 8 sheet only
 \$3.98. Cedar SHINGLES 7"
 clear butt per Sq. \$9.52.
 Located next to Air Port on
 Plainview Hwy.
 11-8s-1fc

FARM DISCOUNT
 STORE
BUILDING MATERIALS
FARM SUPPLIES
BARGAINS
 CORRUGATED iron ROOFING
 & SIDING. Heavy 28 gauge per
 Sq. \$9.55. BARBEDWIRE: 12 1/2
 galton 80 rod roll only \$6.70.
 CEMENT regular or masons,
 per sack, \$1.28. 8 x 16 BOX
 NAILS 50 lb. only \$4.98. Best
 buys in LUMBER 2 x 4 & 2 x
 6 — 6 cents per Ft. and up.
 Oak FLOORING as low as 6 1/2
 cents per Ft. Siding No. 305
 1 x 8 only 9 1/2 cents per Ft.
 Something new — Grass weave
 PANELING 4 x 8 sheet only
 \$3.98. Cedar SHINGLES 7"
 clear butt per Sq. \$9.52.
 Located next to Air Port on
 Plainview Hwy.
 11-8s-1fc

FARM DISCOUNT
 STORE
BUILDING MATERIALS
FARM SUPPLIES
BARGAINS
 CORRUGATED iron ROOFING
 & SIDING. Heavy 28 gauge per
 Sq. \$9.55. BARBEDWIRE: 12 1/2
 galton 80 rod roll only \$6.70.
 CEMENT regular or masons,
 per sack, \$1.28. 8 x 16 BOX
 NAILS 50 lb. only \$4.98. Best
 buys in LUMBER 2 x 4 & 2 x
 6 — 6 cents per Ft. and up.
 Oak FLOORING as low as 6 1/2
 cents per Ft. Siding No. 305
 1 x 8 only 9 1/2 cents per Ft.
 Something new — Grass weave
 PANELING 4 x 8 sheet only
 \$3.98. Cedar SHINGLES 7"
 clear butt per Sq. \$9.52.
 Located next to Air Port on
 Plainview Hwy.
 11-8s-1fc

FARM DISCOUNT
 STORE
BUILDING MATERIALS
FARM SUPPLIES
BARGAINS
 CORRUGATED iron ROOFING
 & SIDING. Heavy 28 gauge per
 Sq. \$9.55. BARBEDWIRE: 12 1/2
 galton 80 rod roll only \$6.70.
 CEMENT regular or masons,
 per sack, \$1.28. 8 x 16 BOX
 NAILS 50 lb. only \$4.98. Best
 buys in LUMBER 2 x 4 & 2 x
 6 — 6 cents per Ft. and up.
 Oak FLOORING as low as 6 1/2
 cents per Ft. Siding No. 305
 1 x 8 only 9 1/2 cents per Ft.
 Something new — Grass weave
 PANELING 4 x 8 sheet only
 \$3.98. Cedar SHINGLES 7"
 clear butt per Sq. \$9.52.
 Located next to Air Port on
 Plainview Hwy.
 11-8s-1fc

FARM DISCOUNT
 STORE
BUILDING MATERIALS
FARM SUPPLIES
BARGAINS
 CORRUGATED iron ROOFING
 & SIDING. Heavy 28 gauge per
 Sq. \$9.55. BARBEDWIRE: 12 1/2
 galton 80 rod roll only \$6.70.
 CEMENT regular or masons,
 per sack, \$1.28. 8 x 16 BOX
 NAILS 50 lb. only \$4.98. Best
 buys in LUMBER 2 x 4 & 2 x
 6 — 6 cents per Ft. and up.
 Oak FLOORING as low as 6 1/2
 cents per Ft. Siding No. 305
 1 x 8 only 9 1/2 cents per Ft.
 Something new — Grass weave
 PANELING 4 x 8 sheet only
 \$3.98. Cedar SHINGLES 7"
 clear butt per Sq. \$9.52.
 Located next to Air Port on
 Plainview Hwy.
 11-8s-1fc

Household Goods

"Need reliable party in the
 Muleshoe area to take over
 payments on a late model Sing-
 er sewing machine in a 4
 drawer walnut cabinet. Automati-
 c zip-zagger, will buttonhole,
 blind hem, fancy designs, etc.
 5 payments at \$5.49 or \$30.00
 cash. Write Credit Manager,
 1114 19th Street, Lubbock, Tex-
 as.
 12-9t-1fc

For Sale — Reprocessed sew-
 ing machines — portable and
 cabinet. Good buys — Also good
 used machines as low as \$9.95.
 Harvey Bass Appliance.
 12-11t-1fc

1963 ZENITH T.V. CONSOLE
 23" SCREEN LIKE NEW \$100.
 305 West 20th St. Call 272-8111.
 12-10t-1fc

FOR RENT: New Dishwashers
 by week or month. Call 272-
 3030 or go to Harvey Bass Ap-
 pliance.
 12-11t-1fc

Giraifes sleep only a few
 hours a night, usually with
 heads held erect.

Wanda Central Vacuum Clean-
 ers — no noise, cords, bags
 or dust. Works of suction. E-
 conomical. Sold, installed and
 serviced from 312 L.E. Drive,
 Littlefield, Texas. Ph. 385-5555.
 15-9s-10tp

Wanda Central Vacuum Clean-
 ers — no noise, cords, bags
 or dust. Works of suction. E-
 conomical. Sold, installed and
 serviced from 312 L.E. Drive,
 Littlefield, Texas. Ph. 385-5555.
 15-9s-10tp

Wanda Central Vacuum Clean-
 ers — no noise, cords, bags
 or dust. Works of suction. E-
 conomical. Sold, installed and
 serviced from 312 L.E. Drive,
 Littlefield, Texas. Ph. 385-5555.
 15-9s-10tp

Wanda Central Vacuum Clean-
 ers — no noise, cords, bags
 or dust. Works of suction. E-
 conomical. Sold, installed and
 serviced from 312 L.E. Drive,
 Littlefield, Texas. Ph. 385-5555.
 15-9s-10tp

Wanda Central Vacuum Clean-
 ers — no noise, cords, bags
 or dust. Works of suction. E-
 conomical. Sold, installed and
 serviced from 312 L.E. Drive,
 Littlefield, Texas. Ph. 385-5555.
 15-9s-10tp

Wanda Central Vacuum Clean-
 ers — no noise, cords, bags
 or dust. Works of suction. E-
 conomical. Sold, installed and
 serviced from 312 L.E. Drive,
 Littlefield, Texas. Ph. 385-5555.
 15-9s-10tp

Wanda Central Vacuum Clean-
 ers — no noise, cords, bags
 or dust. Works of suction. E-
 conomical. Sold, installed and
 serviced from 312 L.E. Drive,
 Littlefield, Texas. Ph. 385-5555.
 15-9s-10tp

Wanda Central Vacuum Clean-
 ers — no noise, cords, bags
 or dust. Works of suction. E-
 conomical. Sold, installed and
 serviced from 312 L.E. Drive,
 Littlefield, Texas. Ph. 385-5555.
 15-9s-10tp

Wanda Central Vacuum Clean-
 ers — no noise, cords, bags
 or dust. Works of suction. E-
 conomical. Sold, installed and
 serviced from 312 L.E. Drive,
 Littlefield, Texas. Ph. 385-5555.
 15-9s-10tp

Wanda Central Vacuum Clean-
 ers — no noise, cords, bags
 or dust. Works of suction. E-
 conomical. Sold, installed and
 serviced from 312 L.E. Drive,
 Littlefield, Texas. Ph. 385-5555.
 15-9s-10tp

Wanda Central Vacuum Clean-
 ers — no noise, cords, bags
 or dust. Works of suction. E-
 conomical. Sold, installed and
 serviced from 312 L.E. Drive,
 Littlefield, Texas. Ph. 385-5555.
 15-9s-10tp

Wanda Central Vacuum Clean-
 ers — no noise, cords, bags
 or dust. Works of suction. E-
 conomical. Sold, installed and
 serviced from 312 L.E. Drive,
 Littlefield, Texas. Ph. 385-5555.
 15-9s-10tp

Wanda Central Vacuum Clean-
 ers — no noise, cords, bags
 or dust. Works of suction. E-
 conomical. Sold, installed and
 serviced from 312 L.E. Drive,
 Littlefield, Texas. Ph. 385-5555.
 15-9s-10tp

Wanda Central Vacuum Clean-
 ers — no noise, cords, bags
 or dust. Works of suction. E-
 conomical. Sold, installed and
 serviced from 312 L.E. Drive,
 Littlefield, Texas. Ph. 385-5555.
 15-9s-10tp

Wanda Central Vacuum Clean-
 ers — no noise, cords, bags
 or dust. Works of suction. E-
 conomical. Sold, installed and
 serviced from 312 L.E. Drive,
 Littlefield, Texas. Ph. 385-5555.
 15-9s-10tp

Wanda Central Vacuum Clean-
 ers — no noise, cords, bags
 or dust. Works of suction. E-
 conomical. Sold, installed and
 serviced from 312 L.E. Drive,
 Littlefield, Texas. Ph. 385-5555.
 15-9s-10tp

Wanda Central Vacuum Clean-
 ers — no noise, cords, bags
 or dust. Works of suction. E-
 conomical. Sold, installed and
 serviced from 312 L.E. Drive,
 Littlefield, Texas. Ph. 385-5555.
 15-9s-10tp

Wanda Central Vacuum Clean-
 ers — no noise, cords, bags
 or dust. Works of suction. E-
 conomical. Sold, installed and
 serviced from 312 L.E. Drive,
 Littlefield, Texas. Ph. 385-5555.
 15-9s-10tp

Wanda Central Vacuum Clean-
 ers — no noise, cords, bags
 or dust. Works of suction. E-
 conomical. Sold, installed

Epperly Rites Held in Amherst

W. A. Epperly, 83, Littlefield, died Monday in the West Plains Hospital.

Services were held at 3 p.m. Friday at the First Methodist Church in Amherst with the Rev. James Patterson officiating.

Assisting was the Rev. Willie Hazel, Sudan. Interment was

in the Amherst Cemetery under the direction of Payne Funeral Homes.

Epperly, a resident of Littlefield for 20 years, had farmed near Amherst since 1924.

His wife survives him; two sons, three daughters, 17 grand children and 25 grandchildren.

On the gate of the notorious Dachau death camp, the Nazi wrote "Work makes men free."

Three states were once independent nations — Hawaii, Texas and Vermont.



Dr. Roy C. McClung

First Baptists Plan Banquet For MHS Seniors

With the president of Wayland Baptist College, Dr. Roy C. McClung as the speaker, First Baptist church will honor the senior class with a banquet in the church's Fellowship Hall tomorrow night. It was announced Saturday by the pastor, the Rev. Charles Murray.

Dr. McClung has been pastor at First Baptist Church, Plainview, for five years when Wayland trustees invited him to become Wayland's eighth president. Before that he was pastor at First Baptist Church, Arla, Okla., and had served as pastor in Kentucky and Indiana.

Dr. McClung holds the Th. D. degree from Southern Baptist Seminary, which he has served as a trustee. His B.A. degree was earned at Oklahoma Baptist University, which he also served as trustee. In recent years he has served on the Executive Board of the Baptist

Mr. and Mrs. Johnie Harper Celebrate 38th Anniversary

Mr. and Mrs. Johnie Harper, longtime residents of Anton, celebrated their 38th anniversary recently with a "than

Mary Sweatman Golf Winner

Mary Sweatman was the winner in Wednesday's golf tournament at the Country Club.

Hostesses for the meeting were Mary Sweatman, Jeanette Waggon, Jo Wood and Hattie Rae Jones.

Dorothy St. Clair gave reports as did the hi-plains director, Pearl Gunstream.

At the women's previous play day, Mary Francis walked away as winner with low patts. Mary Sweatman was winner of the 18 hole flight with a low net of 74.

Lois Lenu had low putt of 31 and Betty Glaze won in the nine-hole flight with a low net of 40. Tied for second were Doris McKinney and Marlene St. Clair with a 42.

The first tournament for the hi-plains ladies day will be in Tulsa April 13. Those who have not paid their dues can contact Pearl Gunstream.

Next meeting for the women will be April 20 with a noon luncheon, bridge and golf following in the afternoon.

General Convention of Texas and was regional director for the Texas Baptist Christian Education Crusade when he became president.

Dr. McClung has an active interest in Boy Scouts of America, having served as chairman of the Haynes District. He is a member of the Plainview Lions Club.

you" party in the Crescent House Restaurant in Littlefield. It seems Mr. Harper was injured in an automobile accident and wanted to take this means to extend to his many friends his appreciation for the many thoughtful deeds shown him.

Ninety-one guests were present, including three of their four children and their families — Mr. and Mrs. L. C. Anderson, Muleshoe, Mr. and Mrs. Bill Springfield and Mr. and Mrs. James Minton, Lubbock. Their only son, Johnie Jr., Anton, was unable to attend.

A St. Patrick's Day theme was used and following the dinner which included an anniversary cake, entertainment was furnished by John Clayton leading the group in singing songs accompanied by Mr. J. H. Parkman at the piano.

Elmer B. East, president of the Lubbock National Bank and longtime friend of the Harpers, climaxed the evening with a speech.

Out of town guests were from Lubbock, Anton, Littlefield, Levelland and Muleshoe.

Harper moved to Anton in 1928 from Edinburg and Mrs. Harper, the former Naomi Kennedy, Haskell, moved to Anton with her parents a year later. They were married March 10, 1928.



ANNIVERSARY PARTY — Members of the family attending the 38th anniversary party of the Johnie Harpers were top-left L. C. Anderson, James Minton, Bill Springfield and Johnie Harper. Bottom-left are Dorothy Anderson, Francis

Minton, Melba Springfield and Mrs. Johnie Harper Jr. The party was held in the Crescent House Restaurant in Littlefield Thursday night. (Nowlin Photo)

Local Women Attend Preview

Miss Loula Grace Erdman, writer of several popular novels for young people, previewed her latest book "Another Spring" for the Epsilon Delta members of the Delta Kappa Gamma Society Saturday in Olton.

"Another Spring" is about Missourians who were displaced during the Civil War because of a military mandate, Order Number Eleven.

Miss Erdman is a resident of Amarillo and is an instructor in creative writing in West Texas State University, Canyon. Her first novel, "The Years of the Locust" which had a Missouri setting won the Dodd, Mead-Redbook \$10,000 prize in 1947.

Mrs. Ed Johnson, vice-president, introduced Miss Erdman.

Mrs. Dave Tullis and Mrs. Addie L. Abernathy, Littlefield teachers, extended birthday greetings to Epsilon Delta Chapter which has been organized eight years.

Future Teacher members were guests, Miss Sharon Hutton, daughter of Mr. and Mrs. Horace Hutton represented the Muleshoe FTA Chapter.

Olton members served as hostesses for the tea. The spring decor was in table decorations and refreshments.

Muleshoe members attending were Mrs. Ed Johnson, Mrs. Joe Costen, Mrs. Jack Beckingfield, Mrs. Jack Oberhaus and Mrs. John Watson.

You and your bright Ideas!

IT IS A GOOD IDEA to get prompt medication for colds and other infections to prevent more serious illness. A prompt prescription can save dollars and discomfort.

Western DRUG

Your Walgreen Agency

PHONE 3-1060 MULESHOE, TEXAS

all brand-new! not used, not open stock, not floor samples! still in original cartons! buy with no down payment—with established credit! low monthly budget terms! don't miss this outstanding special buy! Sorry, no mail or phone orders.

MAYTAG WASHERS & DRYERS

2-SPEED With Filter

\$6.97

PER MONTH

FAMOUS MAYTAG MULTI-TEMP PUSHBUTTON Halo-of-Heat® DRYERS

\$5.42

PER MONTH

Truly a New Low For a Genuine Maytag Automatic Washer and Dryer

\$149.95

MAYTAG'S WORKHORSE! NEW WRINGER WASHERS

• Gyrate action gently sudas dirt away fast!
• Exclusive firm and flexible rolls for safety!
• Handy release tension bar.
• Push-pull control starts and stops instantly!

OUR PRICES ON NEW MAYTAG WASHERS AND DRYERS INCLUDE FREE PARTS & SERVICE FOR 5 FULL YEARS

NO DOWN PAYMENT NECESSARY!

JOHNSON-POOL FURNITURE & APPL.

MULESHOE

WE CONGRATULATE THE LLANO ESTACADO CIVIC CLUB ON A GRAND STYLE SHOW

Models Left to Right: Gail Phipps wearing 100% cotton overblouse by Kenny Classic. Black satin ribbon emphasizes the long waist line. Slim black skirt is acetate knit. Bone leather shoes by Charm-Wise of Boston small bone bag by Marilyn and bone stretch gloves by Stetson complete her ensemble.

Hattie Kinard modeling pale aqua rayon linen two piece dress by Kabro of Houston which is beautifully trimmed with Italian lace and nail heads. To complete her outfit she has chosen white straw pill box hat by Fashion of Texas, white leather shoes by Miss Wonderful, white stretch nylon gloves by Stetson and bag of white straw and leather trim by Marilyn.

Johannah Green has chosen a navy blue shift of alpaca crepe by John Lane featuring elbow length bell bottom sleeves trimmed in crochet lace. For her accessories she has chosen navy white and blue straw sailor by Fashion of Texas, black patent pouch bag by Marilyn, black patent shoes by Portraits and long white gloves by Stetson.

Tommy Gaston is beautifully attired in this "Hot Pink" sheath featuring cut-lace trim on sleeves and bodice by Kabro of Houston. Her hat by Fashions of Texas is in shades of pink flowers. White leather pumps by Charm-Wise, white leather bag by Marilyn and white gloves by Stetson complete her outfit.

Karen Parks is wearing aqua blue, basket weave dress by Josette Frok. The elbow length sleeves trimmed in ecru lace and ribbon are quite pretty. Her accessories include bone leather shoes by Portrait, bone fabric tote bag by Marilyn and bone gloves by Stetson.

THANKS TO OUR MODELS WHO HELPED
MAKE THIS A SUCCESSFUL SHOW