

Bailey County Journal

"The Community of Opportunity — Where Water Makes the Difference"

8 PAGES

Published Every Sunday At Muleshoe, Bailey County, Texas — 79347

VOL. 4 — NO. 9

SUNDAY, FEBRUARY 27, 1966



GO-GO MULESHOE Business and professional men who attend the monthly meeting Tuesday morning of the Retail Activities Committee of the Chamber of Commerce will be given

"Go-Go" badges. But here Mrs. George Bragg (right) pins one of the badges on Mrs. Derrell Oliver, in a sort of preview. (Journal Photo)

Advance Cotton Payoffs Drop \$1 Million In County; Maximum Reduction Plan Preferred Here

Bailey county farmers are receiving \$1 million in advance payments for the 1966 farm program, County ASCS Manager Charles Daniel said Friday.

They either already have received their payments or they will do so between now and April 1, thus turning loose \$1 million or so in the county. Most payments run from \$750 to \$1500 per farmer.

Under the 1966 program, farmers are able to receive half of the money they will get for reduction of acreage at the time of signing up for the 1966 program, Daniel explained.

Meantime, Daniel said farmers are "flocking into the ASCS office pretty steadily these days, signing up for the 1966 cotton and feed grain program."

He said the vast majority of Bailey county farmers are signing up for the full 35 percent reduction on cotton and the 50 percent reduction on feed grain for the coming crop year.

Daniel said Friday that 99 percent of the farmers entering the program are signing up for the full reduction on both cotton and feed grain.

Daniel said that this office has processed "the paper work for approximately 800 for the cotton program and between 750 and 800 for the feed grain program."

He said the number signing up each day depends somewhat on the weather — "Pretty dry and we have lots of people line up, but if the weather is bad, then the signing is slower."

He added that "in addition to almost everyone signing up

for the full reduction plan, practically every farmer also is taking the 50 percent payment program."

What a sign-up for the cotton and feed grain program has been brisk signing up for the Crop-Land Adjustment Program which takes a crop out of production for a period of at least five years, is showing. Only 25 farmers have signed up for this program which is similar to the old Land Bank program.

He said the ASCS office here has completed payments to farmers who participated in the 1965 feed grain program, and the total figure probably will run to \$2 million. This is a slight increase over the amount paid to farmers who participated in the program a year before.

Another interesting phase of the 1966 farm program is the increase in the diversion payment rate to 50 percent when cash beans are produced. The increase was raised from 30 percent to 50 percent where

Teachers Here To Attend Area TSTA Conclave

Muleshoe teachers will join 400 other South Plains teachers in Lubbock next weekend for the seventh annual convention of District XIII of the Texas State Teachers Association. Theme this year will be "Education for Peace and World Understanding."

Noel Dillman, superintendent of Muleshoe schools, said schools will be dismissed Friday for the convention. General sessions start at 9:30 Friday morning in Lubbock Municipal coliseum. Dr. Charles L. Allen, pastor, First Methodist Church, Houston, will be the first general speaker. He has been pastor of the Houston church with a membership of 7800 since 1960, and was pastor of Grace Methodist Church in Atlanta, Ga., for 12 years prior to 1960. He has written a number of books, and of him Time Magazine says: "He emphasizes Christian living and daily prayer; he is inclined to say simply, 'You'll be happier if you live this way.'"

Luncheons scheduled include: Administrators, Caprock Hotel; Art, Garden and Arts Center; Audio-Visual, Underwood's Cafeteria; Classroom Teachers, Educational Secretaries, Mackenzie Jr. High School; Industrial Arts, 50th St. H.D.-10; Librarians, Johnson House; Science, Underwood's Cafeteria; Spanish, Mesa Room, Texas Tech Student Union Building.

See PAYOFFS, Page 5

New Physician Added To Staff At West Plains

West Plains Hospital Saturday announced the addition of Dr. Ted Hufford, 35, to its medical staff.

He and his family are moving from Odessa this weekend and have bought the home formerly occupied by Dr. and Mrs. W. F. Birdsong, 1024 S. 2nd.

Dr. Hufford, who was born in Ohio, has been practicing in Odessa since July, 1961, and prior to that, served for two years as a doctor in the Army.

Dr. Hufford is married and has five children, the oldest 12 and the youngest 2 years old. The Huffords are members of the Lutheran Church.

Friends Of Library Planning Banquet

Plans were made for the annual Three Way for that particular day night to minister to the people of this area through a program of physical and spiritual education.

The organization will begin this work with a kindergarten for children who will start public school next September. The program will expand, as time progresses, into the teaching of English to those who can not speak English, sewing classes, and into many other areas. All this was announced by the officers of the organization.

Officers of the organization are the Rev. Don Murray, Chairman, the Rev. Calvin Beach, vice-chairman; and Mrs. J. P. Shelton, secretary-treasurer. Five committees were elected by the organization, Jim of faculty, D. K. Patterson, chairman of facilities, Calvin Beach, chairman of transportation, Clinton Kennedy chairman of finance, and the Rev.

Churches To Open Kindergarten For This Area

Refreshments will be served at all the open house programs.

Chambers To Open Kindergarten For This Area

Refreshments will be served at all the open house programs.

Hobbies To Form Senior Citizens' Monday Program

Muleshoe Area Senior Citizens organization, a masco will have its February meeting Monday in Fellowship Hall of First Methodist Church with hobbies and crafts as the theme, Sena Stemmans, president, announced Saturday.

The Rev. J. Frank Peery, coordinator of the program and chairman of the Governor's Committee for the Aging for this county, said group singing, led by Ty Young, refreshments and visiting will be part of the program also.

Mrs. Gordon Murray will conduct a program on hobbies and crafts.

in muleshoe With the Journal Staff

Schedule for High Plains Bookmobile for this week was announced Saturday by Georgia Peery, manager of the bookmobile. The schedule includes:

Wednesday, Circleback and Ball, Thursday, Amberst, and Springlake during the morning. Earth in the afternoon, Friday, Pleasant Valley in the morning, Sudan in the afternoon, Saturday, Morton in the morning, Muleshoe in the afternoon.

M. D. Gunstrom, director in the West Texas Chamber of Commerce, is urging local leaders to attend a WICC community leaders workshop in West Texas State University Student Union building Wednesday from 9:30 a.m. until 2:15 p.m. Among those from here who are to attend are Roy Davis, manager of the chamber of commerce; Kenneth Henry, president of Muleshoe Jaycees, and Harvey Bass, head of the CC's retail committee.

'Go-Go Muleshoe' Ready To Kick Off

"Go-Go Muleshoe" gets its official launching next Tuesday morning, and from all appearances, the idea will go over big.

Go-Go Muleshoe is a promotion idea of the Retail Activities committee of the Muleshoe Chamber of Commerce, and the

Third Candidate Tosses Hat Into School Board Contest

Three candidates for as many positions had tossed their hats into the ring for Muleshoe school board up to Saturday after R. A. Bradley, 1701 West Ave. D., had filed with the school's business manager, Beaulieu is a long-time Muleshoe resident and is employed at Fry & Cox. Meantime, filing deadline neared; Filing deadline will

Library Backed By Study Club

Editor's Note: The Muleshoe Study Club, Muleshoe's only federated club, Saturday swung its endorsement to the library program, and issued the following statement.

The Muleshoe Study Club will soon be observing National Library Week, which brings to mind the fact that we are still enjoying and benefiting from both the Library and Bookmobile. They are appreciated by not only Muleshoe but surrounding communities. There is no substitute for good reading, and our Bookmobile is of inestimable value to everyone. We certainly want continued.

The Club members have written to our Commissioners to that effect and wish to remind every citizen to express themselves by mouth, phone or letter. Please do so at once as your expressions of wishes will determine its continuance.

The Muleshoe Study Club

CC Directors Plan Session; Banquets Set

Muleshoe Chamber of Commerce board of directors will meet Tuesday morning at 6:45 at Paul's restaurant for a breakfast session, and President Charles L. Lewis urged all members to be present.

He said "many important matters relating to Muleshoe's future," are to be discussed.

He said Muleshoe will be represented at three area chamber banquets this week, and those who would like to go may secure reservations at the chamber headquarters here.

Friera is to hold its annual banquet Tuesday night when "The Ambassador of Good Will" will be featured. Parvella's banquet is slated for Thursday night when Amarillo News-Globe editor Wes Ezzard will be the speaker. Brownfield's banquet is slated for that same evening when Gov. John Connally will be the speaker.

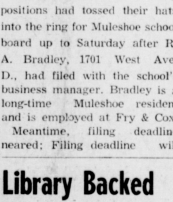
All three banquets are to be held in high school cafeterias, starting at 7:30 p.m.

Temperatures

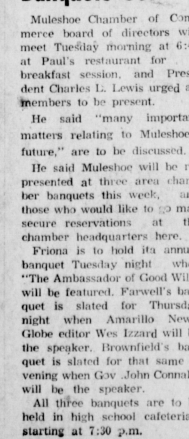
By J. R. Klump
Official U. S. Weatherman

	High	Low
February 23	40	10
February 24	47	11
February 25	56	15
February 26	62	28
	Sunrise	Sunset
February 27	7:19	6:42
February 28	7:17	6:43
March 1	7:16	6:44
March 2	7:15	6:45

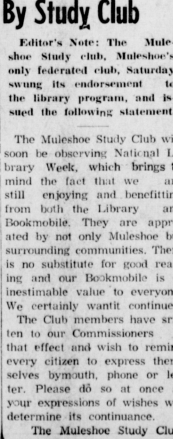
White Way — Downtown Muleshoe is getting a new lighting system, and here the new and the old meet.



WHITE WAY — Downtown Muleshoe is getting a new lighting system, and here the new and the old meet. The big light on the left is the 30,000 lumen job, the old one 30,000 lumen. Boyd Davis, a SWPS company lineman, makes a final connection. The 11 new lights went into use Thursday night. (Journal Photo)



SPEECH SEMI-FINALISTS — These four young people were winners in "Government in Action Youth Tour" semi-final contest here this past week, and then competed again Saturday afternoon for finalists in the



Bailey County Electric Cooperative contest. Left-right are Carol Haire, Muleshoe; Steve Mann, Springlake; John Gulley, Muleshoe, and Joan Dawson, Springlake. (Journal Photo)



MR. AND MRS. TOMMY WHATLEY

Jody Brown, Tommy Whatley Repeat Vows In Bride's Home

Vows were solemnized for Miss Jody Brown, daughter of Mr. and Mrs. F. L. Brown and Tommy Whatley, son of Mr. and Mrs. R. Q. Whatley, last Friday at 4:30 p.m. in the home of the bride's parents. The double ring ceremony was performed by the Rev. Ira Waddell, minister of the Richland Hills Baptist Church.

Given in marriage by her father, the bride was attired in a blue suit trimmed in white. She wore black patent shoes and white gloves. A white pillbox hat sat upon her head. The bride carried a white orchid surrounded by blue feathered carnations atop a white lace covered Bible.

Mrs. Wayne Peterson, sister of the bride served as matron of honor. She wore a blue dress

with white gloves and black patent shoes, complimented by a blue and white carnation corsage.

George Whatley, brother of the groom served as best man.

Mrs. Sam Damron provided traditional wedding music on the piano.

Following the ceremony a reception was given at the bride's home.

A white three-tiered wedding cake with a miniature bride and groom and spiced tea and coffee were served by Mrs. Wayne Peterson and Jackie Jean Kemp. Blue and white carnations and white stock entwined with white candles formed the centerpiece for the table covered with a white outwork cloth done in blue. A silver tea service

[Nowlin Photo]

was used. Napkins bore the names "Jody and Tommy" in silver.

Mrs. Whatley attended Muleshoe and Lazbuddie schools and the groom is a 1953 graduate of Muleshoe High School and spent three years with the United States Army.

The couple are now at home in Muleshoe.

Women Hear Teacher's View

Lois Witherspoon gave a report on "School Dropouts" and Joyeline Costen talked on "The Law and the Mentally Retarded" at the American Association of University Women's meeting. The meeting was held in Elizabeth Watson's office in the Junior High School building.

President, Elizabeth Watson introduced the program "Law and the Incompetent". Refreshments were served

Study Club Will Honor Women At Jubilee Tea

Throughout our nation, the women of Federated clubs are celebrating the 75th anniversary of Federation in various ways. It is the "Diamond Jubilee" year and clubs in the Caprock District are looking forward to their sixth annual convention, as the women from over this district meet in Brownfield March 22-23 and combine their efforts with others across the district in the "Diamond Jubilee" observance. The Muleshoe Study Club also will honor the members of their club who have served the longest number of years in Federation with a public tea at the First National Bank Thursday at 7:30 p.m.

Federation stimulates intellectual growth, cultivates many varied interests, and opens new avenues for worthwhile service. Federation enlarges viewpoints through wider contact. It offers opportunities for the use of special talents and develops leadership.

Federation traits for participation in civic affairs, promotes harmonious helpful relationships.

Federation furthers friendship, good will, and understanding. It fosters co-operation.

Federation is a true sense of Democracy, and is a power in the formation of public opinion.

Federation wages war against prejudice, bigotry, and selfishness.

Federation establishes record of accomplishments, cherishes



STATE CONVENTION — Nine members of the FTA left Thursday for Austin to attend the state Convention which convened Friday morning. The group will return to Muleshoe Sunday night. Making the trip were

Joe Putman, Mike Bryant, Charles Murray, Jeannie King, Vickie Henexson, Judy Elliott, Karen Black, Ruth Ann Duckworth, Sharon Hutton and Mrs. Horace Hutton, Mrs. B. R. Putman and Kerry Moore. (JP)

Reeder, Woods Plan Wedding

Mr. and Mrs. Ray W. Reeder, Carrollton, announce the marriage of their daughter, Debbie, to James Arthur Woods, Dallas, son of Mr. and Mrs. A. W. Woods.

Miss Reeder is a 1964 graduate of Muleshoe High School. Who's Who Home Ec, and a candidate for most beautiful in 1964. She is presently employed at the First National Bank in Carrollton.

Woods is a 1960 graduate of Richardson High School and received his Bachelor of Science from Sam Houston State in 1965. He is presently employed at Riverside Press.

Vows for the couple will be exchanged Wednesday in the home of the bride elect at 7 p.m.

The couple will make their home in Carrollton.

Mrs. Bob Templar, Mrs. John Aduddell, Mrs. James Robinson, Mrs. Alton Morris, Mrs. J. D. Carpenter, Mrs. Quinn Weaver and Mrs. Calvin Embury.

Out of town guests were present from Lockney, Dimmitt, Hereford and Friona.



DEBBIE REEDER

... bride-elect of James Woods

WELCOME TO MULESHOE



Jerry Littau

Muleshoe welcomes Jerry Littau, newcomer. Littau is the new owner of Jerry's Tire Co., 2015 American Blvd., formerly the King Tire Co. He moved from Plainview where he was foreman for Shook Tire Co. Littau and his wife, Janie Sue, have two children: Machel, almost 3 and Melody, who will soon be 2. The Littaus live at 410 E. Dallas and attend the Lutheran Church. The following merchants extend a cordial welcome to the Littaus:

CASHWAY

DAMRON DRUG CO.

GROCERY

REXALL

402 Main Phone 272-4244 308 Main Phone 272-4210

James B. Glaze
Insurance - Real Estate - Loans



MULESHOE STATE

BANK

304 Main Phone 272-4571

MULESHOE MOTOR CO.

"At The Crossroads"

Mrs. Carthel Is Feted With Lazbuddie Church Shower

Mrs. Malcolm Carthel, the former Terri Sue Mabry was feted with a shower in the Fellowship Hall of the Lazbuddie Methodist Church at 2:30 p.m. Tuesday.

The hall was decorated in pink which carried out the bride's chosen colors of pink and white. A centerpiece which formed an archway of silver set upon the serving table covered with pink linen. The pink decorated cake was served by Carolyn Morris and Ramona Espinosa. Attending the silver tea service were Sherry Robinson and Marsha Aduddell. Spiced tea and coffee were served to approximately 55 guests

who were registered by Mrs. Bill Jennings. Mrs. Jennings registered guests upon a table covered with white and centered with pink and white candles. Corsages of white carnations were presented to Mrs. James Mabry, the bride's mother; Mrs. Helen Carthel, the groom's mother and Mrs. O. M. Jennings, grandmother. A pink carnation corsage was presented to the honoree.

A Corning Ware electric skillet was presented by the hostesses: Mrs. Shanks Ivy, Mrs. D. B. Ivy, Mrs. Frank Hinkson, Mrs. Alfred Steinbock, Mrs. Dent Foster, Mrs. Virgil Scott,



STATEMENT OF CONDITION OF PERPETUAL AND IRREVOCABLE FUNDS IN TRUST AS OF DECEMBER 31, 1965

Bailey County
Memorial Park Co.

CASH (SAVINGS)	\$7,025.00
CORPORATE STOCKS	\$9,980.00
REAL ESTATE MORTGAGES	\$2,800.00
TOTAL	\$19,805.00

I HEREBY CERTIFY THAT THE FOREGOING STATEMENT IS TRUE AND CORRECT TO THE BEST OF MY KNOWLEDGE AND BELIEF.
(SIGNED) C. V. SINGLETON, PRES.



KINDERGARTEN

REGISTRATION . . .

413 E. AVE. F

MARCH 1

9 A.M. TO 12 1 P.M. TO 5 P.M.

FOR

CHILDREN WHO WILL BEGIN PUBLIC SCHOOL IN SEPT.

SPONSORED BY

MULESHOE

GOODWILL SERVICE CENTER

FOR TRANSPORTATION

CALL 272-3120 or 272-4711

ALSO 272-4690

Study Club Planning Public Tea To Honor Long-Time Members

The General Federation of Women clubs are celebrating their 75th anniversary this year, thus, the Muleshoe Study Club will have a tea Thursday at 7:30 p.m. in the community room of the First National Bank. At this time the local club woman, teacher and mother of the year will be honored in commemoration of the GFWC Diamond Jubilee.

The club met Thursday in the home of Mrs. W. T. Andrews at 118 W. 15th, as Mrs. Ramon Martin presided over the business meeting.

The refreshment table was decorated with a spring flower arrangement. Snack bread, sweet rolls, coffee and punch were served to the eight members present.

Mrs. Martin gave a report of a meeting of the Friends of the Library encouraging all members to join and help get new members to the Friends. A letter was written and signed by

each member to a commission showing the desire of the club for the continuance of the Bookmobile service and the assistance to the library. A letter of gratitude was read from the Secretary of the Friends of the Library, Mildred Davis, thanking the Muleshoe Study Club for their efforts given the organization.

Mrs. Andrews, the Fine Arts Chairman displayed three paintings done by three art students of Mrs. Black, which are being entered in the Hall Mark art contest. This is a nationwide contest with a \$1000 scholarship being offered for the first place winner. The three students are Jimmy Francis, Germaine Gardner and Joe Adams, School.

New members added to the club were Mrs. Doyle Turner, Howard Carpenter and Lonnie Bass.

Mrs. Cole was director of the program which was on Texas Day. It was mentioned that Texans are neither Southerners nor Westerners, they are Texans which is a God's plenty in itself.

Mrs. Charles Grow led in prayer that the women in the club would be examples of the true American woman and women Texas could be proud of. The pledge of Allegiance to the Texas flag was led by Mrs. Horace Blackburn. Mrs. O. N. Jennings gave a talk on old home and pioneer families.

Texas parks and historical marks was the topic discussed by Mr. Elma Pruitt. Texas Art and Literature was brought by Mrs. S. L. Benefield. Mrs. Martin reminded the club to continue with their plans to attend the district convention in Brownfield March 22 and 23.

Birthday Party Fetes E. Ashford

A surprise birthday party in honor of Mrs. Eva Ashford was held in the community room of the Muleshoe State Bank building Tuesday at 8 p.m. The party was given by members of Mrs. Ashford's Sunday School Class at the Trinity Baptist Church.

The room was decorated in the fairyland motif and featured a large castle topped by a birthday cake in the form of a fairy holding a candle. Tables also carried out the fairyland atmosphere in the form of "three bears", "three little pigs" and humpty dumpty. Centered on the serving table was

a sleeping beauty in a canopy bed.

A gift was presented the honoree and games were played.

Refreshments of sandwiches, coffee and cake were served to the honoree, Mrs. Ashford. Mrs. Ramon Precure, a guest; and Rose Sam, Melba McCamish, Tommy Bratcher, Claudette Roloff, June Vinson, Barbara Crosby, Maudie Speck, Lela Sue Speck, Helen Wright and Nig Williams, members of the class.

Mrs. W. Barnes Teaches Bible

Mrs. Wesley Barnes taught in books of the Bible Tuesday at the meeting of the Mona Towns Circle of the Lubbudde First Baptist Church which was held in the home of Mrs. John R. Harris. Books taught were Job, Psalms, Proverbs, Ecclesiastes and the Songs of Solomon.

Refreshments of coffee, soft drinks and cake were served to Mrs. Harris, Mrs. L. B. Ham-bright, Mrs. Raymond Houston, Mrs. Tom Carroll, Mrs. Jimmy

Boren Services Held Saturday

Funeral services for Milburn L. Boren, 68, who died at his farm home Thursday at 9 a.m., were held at the Muleshoe Muleshoe Church of Christ Saturday.

Ivy, Mrs. Bert Gordon, Mrs. Kenneth Cox, Mrs. Walter Steinbock, Mrs. John Agree, Mrs. Wesley Barnes, Mrs. Juel Treider, Mrs. T. D. Reid and Mrs. A. E. Redwine.

Survivors include the widow, Annie Boren; three sons, David Boren, Amarillo; John W. Boren, Oklahoma City; and M. L. Boren Jr., Pasco, Wash.; and a daughter, Mrs. Harold Wilson, Wilcox, Ariz.; a sister, Mrs. A. C. Moore, Belton; three brothers, Steve Boren, Belton; Lee Boren, Brady; and J. R. Boren, Glenn Rose; and by 13 grandchildren and one great grand-

child.

Funeral services were held at the Singleton Funeral Home in charge of arrangements.

Boren was born in Bell county Sept. 9, 1899 and had lived in Abernathy for 14 years before moving to Bailey county 22 years ago. His widow is the former Annie Wiseman.

A salmon's age is determined by the number of its "earrings." Just as a tree forms concentric lines for each year of growth, the salmon adds a layer to its ear bone every year.

LATE WANT ADS

FOR RENT: 15 ft. camper by day or week, call 272-3163, 1-435-1f6

Baby sitting and sewing contact Janette Slayton at Muleshoe Journal until 5:00 call 272-4536 or after 5:00, call 965-2140 1-8-4f1

SALES TRAINEE
Due to promotions and company expansion we will train 2 men who will work hard to earn above \$600 per month. Complete training with expenses paid while training. Write Mr. Goodwin, 1914 34 St., Lubbock, Texas. 3-7s-8f6

TOY POODLE PUPPIES APRICOTS — BLACKS AKC REG. AVAILABLE FEB. 14 LOS DEBYE
Muleshoe Pub. Company PHONE 272-4538 BOX 40, MULESHOE Shown by appointment only 3s-1f9

For Sale: Good 1959 International Farmal tractor on butane for stripper. Good tires and has been taken good care of.
No. 15 John Deere stripper ready to run. Contact Weldon Slayton 965-2140. Can see equipment 6 miles N of Muleshoe. 10-44-1f6

For rent: 2 bedroom furnished apartment at 709 West Ave. G. phone 272-4109. 5-9s-2f6

Must sell 3 Br. home — carpet now \$8,500 (\$26 W 7th) low monthly payments. Owner Arch Fowler 2115 69th St., Lubbock, Texas. Arch Fowler. 8-9s-1f6

RE-WEAVING — Mrs. Palmer, 202 E. Cedar, Muleshoe, Texas. Phone 272-3734. 1-9s-4f6s

LOOK!
We have in your area an extremely fine Spinnet Piano. No down payment required. Write immediately to: SCHROEDER ORGAN & PIANO CO., Inc. 1436 East McDowell Rd., Phoenix, Arizona 1-9s-11f9

Study Club Sells Books

J. W. Aldridge, principal of the Three Way High School, was guest speaker at the De Algodon Study Club meeting recently. His topic was American Day.

The up coming spring style show was discussed which will be March 18 at the Three Way Cafeteria. Local artists will have their paintings on display.

Seven members and guests, Mr. and Mrs. J. W. Aldridge, were in attendance.

At a previous meeting, with Mrs. Freddie Parkman, Mrs. Dorothy Bowers and Mrs. Bess Edwards talked on material and hot making.

Plans for working on the cook book project were discussed among the nine members.

The club has compiled a cook book of favorite recipes from the women in the community. Proceeds from the book will be to help on yearly projects. Any one wanting a book may contact a member of the De Algodon Study Club.

Lila Dutton Gives Talk

Lila Dutton demonstrated making bows for packages at the Jenny TOPS meeting Thursday night. The meeting was held in the Bailey County Electric Cooperative meeting room with their group leader, Lauramette Mason in charge of the business portion of the meeting.

Seventeen members weighed in and recited the pledge and sang the fellowship song.

Lorraine Gallman was given a gift and will wear the crown for one week, as she was pronounced queen for the week. Her courtesses were Cris Dunlay, Barbara Bush and Nina Riels.

Following the reading of the minutes, Lila Dutton was introduced and presented the program on bows.

It was announced that side

SCHOOL MENUS

- Monday**
Milk
Juicy Burger
Lettuce and Tomato Salad
French Fries — Catsup
Buns
Pineapple Upside Down Cake
- Tuesday**
Milk
Chicken Fried Steak
Green Beans
Fresh Corn on Cob
Lettuce, Carrot, and Raisin Salad
Hot Rolls — Butter
Cherry Cobbler
- Wednesday**
Milk
Turkey and Dressing
Giblet Gravy
Cranberry Sauce
Candied Yams
Cabbage and Apple Salad
White Bread
Cookies
- Thursday**
Milk
Corn Dogs — Mustard
Veg. Beef Soup
Crackers
Cinnamon Rolls
Pineapple Ring on Lettuce, Marshmallow Cherry
- Friday**
No School — TSTA meeting in Lubbock

Hospital Notes

- Green Memorial Admitted**
Sallie Schuster
Fred Graham
J. W. Isham
John Farley
Pearl Cox
Joanna Mathis
Jack Lenderson
Gardner Wainington
Mrs. T. G. Gaddy
Robert Rowe
Mary Whitson
Marvin Davenport
Jac McClarron
Barbra Haley
- Dismissed**
Raymond Gage
Steve Young
Pearlie Fleming
Mrs. Jone Rick
Mrs. Roy Lambert
Raymond Ganjarde
Lloyd Williams
Melvin Easter
M. L. Earen
Mrs. Bob Waide

West Plains

Alton Burton
Nelda Reynolds
Klyde Drebbs
Rita Williams
Mrs. Javier Robledo and baby boy
D. A. Ivy
Mrs. Mack Moore and baby boy
Mrs. Hugo Espino and baby boy
A. C. Bell
Mrs. Carl Burkhardt
Alan Campos
LeRoy Rivers
Randa Sutton

one is now leading in the salad contest.

All members are asked to bring fruit for the basket for the monthly queen Thursday night, according to Frieda Poss.

SHOP MULESHOE FIRST

- Muleshoe Assembly of God**
517 S. First
J.W. Farmer, Evangelist
- Spanish Assembly of God**
East 6th and Ave. F.
Rev. Enock Ramirez
- Calvary Baptist Church**
1733 W. Ave. C.
Rev. Bill Felts
- First Baptist Church**
220 W. Ave. E.
Rev. Don Murray, Pastor
- Richland Hills Baptist Church**
17th & West Ave D.
Rev. Ira Waddell, Pastor
- Primitive Baptist Church**
621 S. First
Afon Richards, Pastor
- Trinity Baptist Church**
314 E. Ave. B.
Troy Walker, Pastor
- St. Matthew Baptist Church**
W. Third
Rev. E. McFrazier, Pastor
- Spanish Baptist Mission**
409 E. Ave F.
- Immaculate Conception Catholic Church**
(Fr.) Clifton J. Corcoran
Northeast of City
- First Christian Church**
130 W. Ave. G.
Charles M. Grow, Minister
- Jehovah's Witness**
Frona Highway
Boyd Lurvey, Minister
- Muleshoe Church of Christ**
Clovie Hwy.
D. L. Thompson, Minister
- Northside Church of Christ**
117 E. Birch Street
Frank Duckworth, Evangelist
- Church of Christ**
West Birch and Chicago
H.R. Stevens, Minister
- First Methodist Church**
507 W. Second
J. Frank Peery, Pastor

St John Lutheran

Lariat, Texas
Herbert E. Peiman

ATTEND THE CHURCH OF YOUR CHOICE THIS SUNDAY

A move to worship GOD in His HOUSE is a **MOVE in the RIGHT DIRECTION**

To attend Church is the first step in finding God.
To attend regularly is to continue in the right direction, and gives one an opportunity to understand God's will in his life. Now is the time to make your move. Choose the way that will lead you to God.
Attend Church Sunday.

The Church is God's appointed agency in this world for spreading the knowledge of His love for man and of His demand for man to respond to that love by loving his neighbor. Without this grounding in the love of God, no government or society or way of life will long persevere and the freedoms which we hold so dear will inevitably perish. Therefore, even from a selfish point of view, one should support the Church for the sake of the welfare of himself and his family. Beyond that, however, every person should uphold and participate in the Church because it tells the truth about man's life, death and destiny; the truth which alone will set him free to live as a child of God.

Coleman Adv. Serv.

- Latin American Methodist Mission**
Ave. D & 5th St.
E.C. Puqueno, Pastor
- Church of the Nazarene**
Ninth & Ave C.
Alvin Keswater, Pastor
- First Presbyterian Church**
Morton Highway
Don Boles, Pastor

WE HAVE RECEIVED ANOTHER SHIPMENT OF SUEDE LOAFERS

LARGE SELECTION OF COLORS
VALUES TO \$10.00

\$2.88 PAIR

Heathington Lumber Co. 814 W. American Blvd.	Higginbotham Bartlett Co. 215 Main	First National Bank 1st. & Ave B	Piggly Wiggly Super Mkt 4th. & American Blvd.
Muleshoe State Bank 304 Main	Muleshoe Antenna Co Muleshoe	Charles Lenau Lumber Co. 202 E. Ash	Brock Motor Co. Clovie Road
Main Street Beauty Salon 115 Main	<i>The Fashion Shop</i> OF MULESHOE	Ben Franklin 128 Main	Tri-Co-Bowl Clovie Road
Western Drug 114 Main	Cashway Gro. 402 Main	Cobb's	Fry & Cox 401 S. 1st.
St. Clair's Muleshoe Motor 106 S. 1st.	Western Auto Store 228 Main	James Jennings Insurance 115 E. Ave. D.	L & H Gro. 414 W. American Blvd.
Bovell Motor Supply	Pool Insurance Agency 114 E. Ave. C.	Bub Shafer Bell Service Clovie Road	Muleshoe Co-Op Gins Muleshoe
			Cox Drive-In Theatre, Frona Hwy.

FOR THE BEST IN PRINTING!!!



CARDBOARD
MANY COLORS AND WEIGHTS

ENNIS BUSINESS FORMS

MANIFOLD BOOKS

MENUS

LETTERHEADS

ENVELOPES

BUSINESS CARDS



We Cover All Social Printing Requirements.
Finest Range of Papers and Type Faces to Reflect Discriminating Taste.

GRADUATIONS

RECEPTIONS

WEDDINGS

PERSONAL CARDS

INVITATIONS

EMBOSSED and ENGRAVED

PARTY PROGRAMS

SHOWER INVITATIONS

We add to every printing order that special sparkle and zing that clinches sales for you and makes your friends sit up and take notice! **TRY US!**

OUR SPECIALTY IS HAPPY CUSTOMERS

Embossed Business Cards Letterheads and Envelopes (to match)

EVERY JOB WELCOME

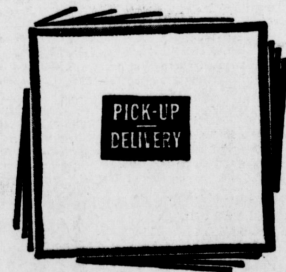
FINEST PRESSWORK

NO JOB TOO LARGE OR SMALL

FREE ESTIMATES

EACH ORDER GUARANTEED

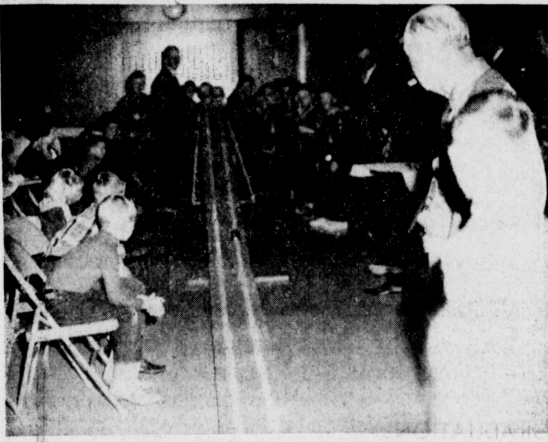
PRACTICAL PRICES



MULESHOE PUBLISHING COMPANY

304 West Second

Phone 272-4536



CUB SCOUT DINNER Cub Scout Pack 622 had its annual Blue and Gold banquet recently, and one of the big features was the "Pinewood Derby," a contest featuring miniature automobiles the lads had built. Top picture shows four of the Cubs admiring the lineup of cars, and bottom pictures the races in action. (Journal Photos)

COURTHOUSE NEWS

Vehicle Registration

Chev. Caprice 4 dr. Crow Chev. Co.
Tom Byars 1965 Pontic Cpe. Cata. Spt.
H. H. Caryle 1966 Ford, Muleshoe Motor Co.
Jimmy Black 1966 Ford Muleshoe Motor Co.
L. L. Luman 1966 Mercury 4 dr. Muleshoe Motor.
1966 Ford Harold Robertson Pickup Muleshoe Motor Co.
Buick 2 dr. Stewart Chev. Buick Inc.
Mrs. Velma Weddington 1966 Chev. 4 dr. Crow Chev.
Elmo Pruitt 1966 GMC Pickup Holloway Imp. Co.
Pebel N. Jennings 1966 Ford Falcon Ranchero Muleshoe Motor.

Marriage Licenses

Tommy Don Whitley to Nel da Jo Brown.
Pedro Vasquez to Dolores Castro.
Ricky Joe Barrett to June Renee Howell.
Harold Pruitt to Lona Elaine Embry.

District Court Criminal Docket

State of Texas vs Lawrence with a deadly weapon.
State of Texas vs Calvin Eddie Young, assault.
State of Texas vs Harrell Tillman, forgery and passing.
State of Texas vs Frank Reyes, removing mortgaged property.
State of Texas vs Marion Howard, theft.
State of Texas vs Roy E. Davis, theft.
State of Texas vs Mike Brodrique, abandonment of children.
State of Texas vs M. E. Cargill, making, drawing, uttering and delivering worthless checks with the intent to defraud.

Warranty Deeds

Van H. Rodges et ux to Raymond H. Akin et ux.
All of lot number 11, in block number 1, Parkland Place Addition to the town of Muleshoe, Bailey County, Texas and located on section No. 39 Block y W.D. and F. W. Johnson Subdivision Number 2 in Bailey County, Texas.
Donald J. Cox et ux to Virgil Wood.
All of the NW quarter of Sec.

MULESHOE

(Continued from Page 1)
Anne Camp, Muleshoe area librarian, and Georgia Pena, librarian for the four-county High Plains Bookmobile.
Since a modern mathematics course is being conducted each Monday night in Richland Hills Elementary school, Dr. Caballero's art classes will be held in DeShazo Cafeteria, according to Arlene Phelps.
Muleshoe will be represented March 15 at WTCC's second "infocade" program at Tech Student Union. A panel of outstanding speakers will discuss problems of interest to all West Texas communities.

Mr. and Mrs. L. O. Norwood returned Friday after spending several days in Las Cruces, N. M., visiting with friends and at Association includes the schools in seventeen South Plains counties and has a current membership of 4,224.
Dr. P. L. Vardy, Jr., Superintendent of Slaton Public Schools is present President of District XIII. Mrs. Mary Beth Dunn, Vice-President; Mrs. Elizabeth Watson, Muleshoe, Secretary; Mrs. Henman Raphael, Post-Treasurer; Mrs. Inez Moore, TSTA Membership Chairman; Dr. Herschel Avinger, Local Arrangements Chairman; G. C. Clapp, Public Relations; Wayland Carroll, Parliamentarian; and Miss Lucile Flowers, Plainview, immediate past President.

Don R. Moore, son of Mr. and Mrs. J. M. Moore, Muleshoe, has received the Air Force Commendation Medal. The citation reads: Airman Second Class Don R. Moore distinguished himself by meritorious service as analyst, deputy commander for maintenance analysis division, 379th bombardment wing, Wurtsmith Air Force Base, Mich., from 10 June 1964 to 6 October 1965. During this period, his exceptional knowledge and initiative were important contributions to the effectiveness of his organization. The distinctive accomplishments of Airman Moore reflect credit upon himself and the United States Air Force.

tion Number 22, in league Number 107, Fisher County School lands, Bailey County, Texas.
V. V. Cawthon et ux to Farmers Co-op Elevator
All of lot 6, Block 3, Highland Addition to the town of Muleshoe, Bailey County, Texas.
Sherman Swatman et ux to Bone Allison
All of that portion of the SE quarter of Sect. 14 Block X W. D. and F. W. Johnson.
Edwin Williams et ux G. D. Anderson Jr. et trustee.
All of the W 1/2 of sect. 67 Block Z. W. D. and F. W. Johnson Subdivision of Bailey County, Texas.
A. W. Howerton et ux to Will by Grogan et ux.
All of N 1/2 of the NE 4 of Section Number 6 Block Z of the W. D. and F. W. Johnson Subdivision Bailey County, Texas.
W. T. Magress et al too Joe W. Magness et ux
The SE 1/4 of lot 286, block 63-2 survey 592 A Taylor, Grant, containing 160 acres of land in Bailey County, Texas.
Oil and Gas Lease
Champion Pet Company to J. R. Lee et ux
Labor 23, league 178, Motley County School land.
Labor 3, league 179, Motley County School land.

Clarence Mason Talks To Group

Clarence Mason showed equipment for grooming and showing a calf at the monthly meeting of the Progress 4-H club Monday night. The meeting was held in the Bailey County Electric Cooperative room with Rhonda Martis, president, presiding over the meeting.
J. K. Adams talked on entering the fat stock show.
Present for the meeting were Bobby Henderson, Rhonda Martis, Ed and Linda Sama, Kathy Pena, Ruth Ramm, Sharlette Wedel, Leon and Terey Wheeler and Barbara Whitte.
Refreshments were served to members present and several parents.

PAYOFFS

(Continued from Page 1)
Castor beans are produced. The increase was raised from 30 percent to 50 percent where castor beans are grown as an alternate crop on acreage diverted for payment. This puts the 1966 level up to 1965's mark.
The programs involved are those for wheat, feed grains and cotton. The 50 percent rate is the same as that paid in the 1965 programs.
It had been announced earlier that the acreage diversion payment rate would be based on 30 percent of the individual farm acreage by the next meeting.
After discussing routine matters and paying of bills allowed, the group adjourned to meet in two weeks.
Those in attendance were: Miss Mildred Davis, Roy Davis, Mr. and Mrs. Mel Evans, Joe Harbin, Neal Arnold, The Rev. J. Frank Peery, Father Clifton Corcoran, Mrs. Mickey Sawyer, Three Way, Mrs. Anne Camp, Mrs. Georgia Pena, and Mrs. Ramon Martin.
Information indicates that acreage of castor beans grown in the United States in 1965 is likely to be somewhat smaller than in 1965 even with the higher payment rate. Production from this acreage is not expected to interfere with the continued orderly reduction of stock-piled castor oil in line with current requirements. Sales of oil from the stockpile are being made gradually at market prices. This decision will not affect such sales.
Castor beans are grown mostly in Texas, with some acreage in Nebraska also. Castor oil has major industrial uses such as in hydraulic systems, paints, fabrics and insulating material.



TEXTBOOK STUDY Teachers are diligently evaluating textbooks in sessions in junior high school each week, and here are five teachers looking over readers. Left-right are Leota Hard-grove, Mary B. Obenhaus, Mary Mardis, Owetha Findley and Ruby Lambert. (Journal Photo)

Textbook Study Under Way

Local teachers and administrators are evaluating the textbooks to be adopted for use in the elementary schools and high schools for the next school year, 1966-67.
In the elementary grades the basal and supplementary reading program in grades 1-3, and the third grade social studies are offered for adoption.
In the high school the English, health, related math, economics, Spanish IV, and trigonometry texts are offered for adoption.
There are five books from which to choose for each subject and it is the responsibility of the local teachers to make a choice. A textbook committee of fifteen teachers and administrators makes a choice by March 1, but the final decision is made by the Board of trustees.

GO-GO

(Continued from Page 1)
Bass said the 10 a.m. session Tuesday will be an open session, and everyone is invited to attend and take part in the discussion of upcoming events to promote business in Muleshoe.
Bass and his committee launched their 1966 season this past week with a Washington Birthday promotion which got splendid results. Sixteen firms carried advertisements in the Journal, pointing out their special bargains for the week.
"We'll want to discuss the splendid results which the Washington's Birthday program achieved," Bass said, "and then we'll go into our next big promotion. This is 30-to-30 year for Muleshoe, and the business men and women are working together to make this a bigger and bigger and better Muleshoe."

CHURCHES

(Continued from Page 1)
Troy Walker chairman of publicity.
The kindergarten school will be open for registration Tuesday, from 9 a.m. until noon and from 1 until 5 p.m. If transportation is needed to and from the Goodwill Service Center on registration day persons interested were asked to call one of the following telephone numbers: 272-3120, 272-4711, or 272-4690.
The Muleshoe Goodwill Center is located at 413 East Ave. F and is sponsored by the following Baptist Churches and Missions:
First Baptist Church, Muleshoe; Spanish Baptist Mission, Muleshoe; First Baptist Church, Lazbuddie; Spanish Baptist Mission, Lazbuddie; and Trinity Baptist Church, Muleshoe.
Mailing address is Box 621, Muleshoe.



U.S. C OF C CHIEF Robert Gerholz (center) president of the United States Chamber of Commerce, spoke in Amarillo this past week, and among those attending the meeting were Spencer Beavers (left) and Roy Davis, manager of the Muleshoe Chamber. They are shown chatting with Gerholz, the picture snapped by Amarillo C of C public relations department.

TEACHERS

(Continued from Page 1)
ing, Texas Business Education, Betty Jay's Restaurant; Texas Elementary Principal & Supervisor's Association, Koko Palace; Personnel and Guidance, Holiday Inn Parkway; School Health Nurses, Holcomb Room, Hemphill Wells Monterey Center; Secondary Music, Texas Tech Student Union Building.
The School Food Service personnel will have a one-day workshop at Atkins Jr. High School beginning at 9:45 and extending through a luncheon.
Glenn Brazzell-Liner, Home Demonstration Agent, Hale County, will present the program.
Four sectional meetings have been scheduled to run concurrently again this year, beginning at 2:30. Addressing Elementary sections will be Dr. Caroline Locke and Dr. Bill Martin, Jr. Dr. Locke's subject will be "Motivation of Students Through Teaching of Social Studies."
This session will be held in the O. L. Slaton Jr. High Auditorium. She is an Elementary

Consultant for the Fort Worth Public Schools, and past President of the Texas Association of Supervision and Curriculum Development. Dr. Martin, famous story teller, has selected the subject, "She Cut Off Their Tails with a Carving Knife: A Theory of our Language." He is a Consultant for Elt. Rinehart Publishing Company, and Editor of Elementary Classroom material.
The Secondary sectional meeting will be held in the auditoriums of Coronado and Lubbock High Schools. Jerry T. Barton, Consultant, Division of Instructional Media, Texas Education Agency, and Jack R. Seals, Curriculum Coordinator in the Beeville Public Schools will present the program in the Coronado High School Auditorium. Their subject will be "Using Program Materials in Freed T. Wilhelm's, Associate Secretary of the National Association of Secondary School Principals, will address a group in the Lubbock High School Auditorium on the subject, "Trends in Secondary Curriculum". District XIII Texas State Teachers

Get in Business as a Firestone Tire Dealer
The Firestone tire line is the most complete in the industry. It's backed up by hard-hitting advertising and merchandising plans. Complete assistance on selection of location, salesroom and service equipment, training of personnel and planning of grand openings.
Small investment required.
Call or write us for complete profit story.
L. L. LOMBARD, District Manager
P. O. BOX 53305 CAPITAL STATION
PHONE JA. 5-9461 OKLAHOMA CITY, OKLA.
The Firestone Tire & Rubber Company
District Office
RALPH C. FIELDS, TERRITORY SALES
1104 PRINCETON DRIVE ROSWELL, N.M.
PHONE 623-0261

WE WILL BE CLOSED TUESDAY MARCH 2
MULESHOE STATE BANK FIRST NATIONAL BANK

IRRIGATION SYSTEMS
Fully Guaranteed — Prompt Service
— PLASTIC
— CONCRETE
— ASBESTOS-CEMENT
— PORTABLE ALUMINUM
Contact the Friendly Folks at STATE LINE IRRIGATION
T. L. TIMMONS, General Manager
General Office and Plant — Phone 385-4487
Box 326 — 1601 Houston Ave. — Littlefield
Don Messer — Phone 762-4557
1916 W. 7th St. — Clovis, New Mexico
Muleshoe — Ph. 272-3109 — John Hammock

Where was I until Two?
You won't be delayed by a medical prescription at Western Drug. Promptness is a feature of our careful compounding. Enjoy prompt prescription service at Western Drug.
Western DRUG
Your Walgreen Agency
PHONE 3-1060 MULESHOE, TEXAS



SPEECH CONTESTANTS — Two boys and five girls competed (boys against boys and girls against girls) in the Bailey County Electric co-op's annual "Government in Action Youth Tour" contests here Tuesday night when two boys and two girls were picked as winners. Left-right are Carol Haire, Mulleshoe; Steve Mann, Springlake; John Gulley, Mulleshoe; Joan Dawson, Springlake; Julia Burkett, Texas Way; Marquita Scaeton, Lazbuddie, and Jan Scoggins, Marton. Another picture on Page 1. (Journal Photo)

Nighttime Fire Heavily Damages Lazbuddie Home

By Mrs. C. A. Watson
LAZBUDDIE — The Mulleshoe fire trucks were called to the Olen Ivy home at Lazbuddie Friday morning about 2 o'clock to put out a fire in their home. The interior of the home was badly damaged. Mr. and Mrs. Ivy were awakened by heavy smoke in the house.

Mr. and Mrs. Bernard Gowans and children, David and Mike, of Friona visited the C. A. Watsons Saturday afternoon. Gowans is a nephew of Mrs. Watson.

Nancy Gleason and Dorothy Anderson returned the first of last week from Dallas where the two beauty operators attended a Beauty School in Dallas.

Mr. and Mrs. Maurice Fred and children from Elkhart, Kansas were in Lazbuddie Friday visiting friends and attending to some business. The Freds moved to Kansas recently from Lazbuddie.

Kelly Mimms and Johnny Marley both of Lazbuddie have en-

rolled for the spring semester at Lubbock Christian College in Lubbock.

Johnny Beth Ivey was home from Levelland Jr. College to visit her parents, Mr. and Mrs. Shanks Ivy.

Pat Weaver was home over the weekend to be with her parents, the Earl Petersons. Pat recently enrolled at the Levelland Jr. College.

The Lazbuddie First Baptist Church held special Bible studies each evening the past week. The studies were on the book of John.

Mr. and Mrs. Raymond Houston to attend the funeral of Mr. Houston's aunt, Mrs. Jennie True, age 86. Mrs. True passed away in a Lockney Hospital after several weeks illness as the result of a fall breaking her hip.

Rev. Bill Curry of Quitman officiated at the funeral services. Burial was in the Fio Monat Cemetery about ten miles from Quitman.

Mrs. Carroll Redwine was honored with a bridal shower Thursday afternoon in the home of Mrs. Leon Smith Sr. Hostesses for the event were Mrs. Dee Brown, Ralph Cox, John R. Harris, Bert Gordon, Dee Clitwood, Earl Peterson, Clarence Mason, Wesley Barnes, Tom Beauchamp, John Little-

field, Euel Barton, and Leon Smith Sr.

Mrs. Carroll Redwine is the former Jeanette Butts from Wauhall. She was assisted in opening the gifts by her mother, Mrs. M. T. Butts and Carroll's mother, Mrs. J. C. Redwine.

Refreshments of strawberry cake, pink punch and coffee were served by Mrs. Harris and Mrs. J. V. Boudin of Friona.

The table was laid with a pink lace cloth over white centered with a floral arrangement and crystal and silver appointments.

Guests were regaled by Mrs. Ralph Cox. The guest book was laid on a table covered with white linen edged in lace.

The honors were presented with many lovely gifts including a set of medicine which was the noxious gift.

Mr. and Mrs. Carroll Redwine are at home in Canyon where Carroll is attending Texas State University.

The late Harold Schultz, one of the world's leading field anthropologists, uncovered a wealth of material on the customs and folklore of the Waura, Suyu, Tukuna and other Amazonian tribes almost untouched by civilization.



Today's Meditation

The Underserving Least
Charles M. Crow

Matthew 25: 34 — 40 (JBP).

"Then the king will say to those on his right: 'Come, you who have won my Father's blessing! Take your inheritance — the kingdom reserved for you since the foundation of the world! For I was hungry and you gave me food, I was thirsty and you gave me drink, I was lonely and you made me welcome, I was naked and you clothed me, I was ill and you came and looked after me, I was in prison and you came to see me there.'

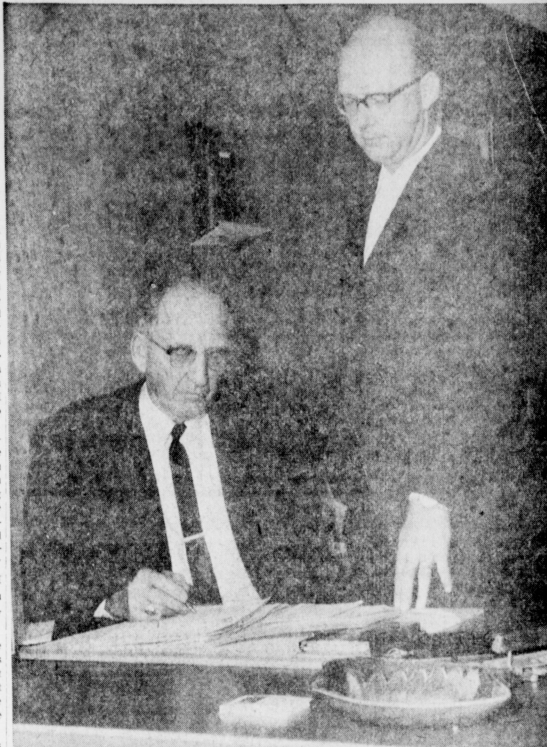
"Then the true men will answer him: 'Lord, when did we see you hungry and give you food? When did we see you thirsty and give you something to drink? When did we see you lonely and make you welcome, or see you naked and clothe you, or see you ill or in prison and go to see you?'"

"And the king will reply, 'I assure you that whatever you did for the humblest of my brothers you did for me.'

It seems to me that the most important truth of this section of the Final Judgment is what our Lord, Jesus Christ left unsaid about compassionate acts toward "the least of these my brethren".

Certainly the world has always had plenty to say about the deserving and underserving poor, the worthy and the unworthy subjects of both personal and collective charities — but not Christ!

The only specific qualifications given by Christ to the good works of feeding the hungry — is that they must be hungry; to the giving of a cup of water — that the receiver must be thirsty; to cheering the lonely — that they must be lonesome; to clothing the naked — that they must be threadbare and in need of clothes; to attending the sick — that he



NEW OFFICES Here are Eddie Lane (seated) and Buddy Lane in the new offices of Lane Insurance Co. on West Highway 84.

Lane Agency Features Both Real Estate and Insurance

Long-time, old-time Eddie Lane Real Estate & Insurance Agency now in new quarters, pointed out that the agency is both a real estate and an insurance agency.

Eddie Lane, founder of the business 28 years ago, pointed to the fact Saturday that "we are in both businesses and are serving our customers' needs in both lines."

Eddie and Buddy Lane recently purchased a former drive-in restaurant at 1101 W. Highway 84, and remodeled it into an attractive office with ample on-the-remises parking space.

Eddie Lane, with his family, moved to Mulleshoe in 1938 and has served the people of Mulleshoe ever since. Buddy was discharged from the U. S. Air Force in March last year and entered business with his father shortly afterward. He served for 11 years in the Air Force in such countries as Korea, Turkey and Greenland.

Buddy is a graduate of Mulleshoe High School and attended Texas Tech and Baylor University. He is married to the former Jo Ann Dalton and they

have two daughters, Brenda, 10, Bridget 8, and a son, Brian Douglas, 4.

For all your insurance needs, we urge you to see Eddie or Buddy at Lane Insurance Co.

Three great charitable organizations have worked unceasingly to reduce the gap between worthy restrictions on acts of compassion and the contrary spirit of Jesus Christ to give full assistance where and when it is really needed.

The National Council of Churches, Church World Service, and the United Church Women are constantly seeking to feed the hungry, supply medicine and clothe the needy, suffering children, men and women throughout the whole, wide world. More than 85 percent of their total program is directed to this end — the relief of suffering!

What a great act of Christian advance it would be for several hundred church women of our own community to rise above the divisions of Christ's Church and form a Council of United Church Women! Such a group could gather thousands of pounds of blankets, clothing and other much needed supplies for deprived children.

"And the King shall answer: 'Inasmuch as ye have done it unto one of the least of these my brethren, ye have done it unto me.'"

— SHOP MULLESHOE FIRST —

JERRY'S TIRE CO.
2015 AMERICAN BLVD.
Finest Dayton
Thorsbred Tires Safest
For Expert "ON THE SPOT" Tire Care . . . CALL
JERRY LITTAU . . . Office Phone 272-3336
Residence Phone 272-4885

BUSINESS SERVICES DIRECTORY

REAL ESTATE
CONSULT OUR LISTINGS FOR FARMS, RANCHES, CITY PROPERTY, GOOD INVESTMENTS.
MULLESHOE REAL ESTATE AGENCY
Monroe Lee
113 W. Ave. D,
Phone 272-3114

BEAVER'S FLOWERLAND
Real and Artificial Flowers — Corsages
Pot Plants — Banquets
Funeral Designs
570 S. First St.
Ph. 272-3116—Mulleshoe

Phone 272-3078
— the number to call to save money on your new office, store, warehouse
Headquarters for attractive Inland steel buildings. Pre-engineered in any length, any width. Enclosed with colorful metal wall panels, glass, or other materials. Fast erection saves money.
B & C BUILDERS, INC.
217 E. Ave. B Mulleshoe, Texas

COTTONSEED DELINTED
Phone 272-3251 — Mulleshoe
WILLIAMS SEED CLEANING CO.
Filter Queen Sales - Service
Call 272-3163 after 6:00 p.m.
J. R. Otwell
Mulleshoe, Texas

FOR FHA, GI and FARM LOANS AND THE BEST INSURANCE
SEE—
POOL INSURANCE COMPANY
Phone 272-4531 — Mulleshoe
W. M. POOL, JR. — LEE R POOL

HEATHINGTON LUMBER COMPANY
Lumber, Paint, Builders Hardware
Clovis Rd.—Ph. 272-4497

MULLESHOE RACEWAY
8 LANES
DRAG STRIP
CARS
MAINTENANCE ITEMS
TROPHY RACES
"FUN FOR THE ENTIRE FAMILY"
1116 AMERICAN BLVD. MULLESHOE

"FIRST IN FASHIONS"
Permanent — Styling
Tinting — Shaping
Revlon Cosmetics
MAIN STREET BEAUTY SALON
Bernice Holdeman
115 Main — Mulleshoe
Dial 272-3448

Save Money On Auto Parts!
BOVELL MOTOR SUPPLY
107 East Ave. B — Dial 272-4288
W. T. BOVELL, Owner

INSURANCE
SEE US FOR YOUR COMPLETE INSURANCE NEEDS
● Auto
● Fire
● Crop
LANE INSURANCE
1101 Hwy. 84 West
Phone 272-4439

BERRY ELECTRIC CO.
ELECTRIC WIRING and REPAIRS — REFRIGERATION SERVICE
104 E. AVE. B
Phone 272-3375

MULLESHOE COVER SHOP
SEAT COVERS
All Types Furniture Work
All Types Auto Work
All Types Canvas Work
CLOVIS ROAD
Phone 272-3586
MULLESHOE, TEXAS

SINGLETON FUNERAL HOME
24 HOUR AMBULANCE SERVICE
PHONE 272-4574 MULLESHOE

W. O. CASEY GENERAL INSURANCE
Let Our Complete Coverage Take Care of All Your Insurance Problems
Mulleshoe State Bank Bldg. — Ph. 272-4571

A & B PLUMBING
WE DO ALL TYPES OF PLUMBING
* INSTALLATION
* REPAIR
* FREE ESTIMATES
* 24 HOUR SERVICE
WE ARE DEALERS FOR PAYNE HEATING & AIR CONDITIONERS
CALL 272-3734
202 E. CEDAR AVE.

USED TRACTORS & EQUIPMENT
4010 LP . . . 62 MODEL NEW RUBBER
4010 LP . . . 63 MODEL
70 LP . . . 56 MODEL
70 LP . . . 55 MODEL
3010 LP . . . 62 MODEL
65 MASSEY FERGUSON DSL.
63 MODEL . . . MULTI POWER
930 COMFORT KING DSL. CASE 63 MODEL
62 FORD 841 LP 8 SPEED
2 MM 5M TRACTOR & EQUIPMENT
1962 . . . REAL CLEAN
1 UB SPECIAL MM 56 MODEL
SEVERAL SETS OF USED 4 & 6 ROW EQUIPMENT
OLIN NIX IMPLEMENT CO.
Sudan, Texas Phone 227-5391

Enochs Couple Visit Relative In Hospital

By Mrs. Jerome Cash
ENOCHS — Mr. and Mrs. J. D. Bayless visited her sister and nephew, Mrs. Grace Swanner and Jimmie in Levelland Friday afternoon.

Jimmie has had surgery and is doing fine. Laddie Sillion of Levelland spent Sunday in the Bradley Robertson home.

Mrs. Curtis Clay and daughters and Mrs. Guy Blanton all of Morton visited in the John Crockett's home Sunday afternoon.

Visiting in the R. P. McCall and families, Mr. and Mrs. Barclay Roberts, and Mr. and Mrs. Donny McCall of Mulleshoe.

Those visiting in the T. A. Thomas home Sunday afternoon were Mr. and Mrs. Ed McCollen, Morton, Mrs. Leon Kerr, Mrs. W. T. Thomas and Mrs. Jerome Cash.

Mr. and Mrs. J. E. Autry spent the weekend in Burkhardt visiting her father, Grandpa Chamber.

Mrs. Alma Altman spent the day with her daughter and family, Mrs. Kenneth Coats.

Mrs. S. C. Sniffler is in the West Plains hospital at Mulleshoe for observation.

J. O. Dane is home after spending several days at the Memorial Hospital at Morton.

Mrs. Lindley Bates of Posenix, Ariz., daughter of Mr. and Mrs. J. O. Dane, underwent surgery on her back last week, and word was received she was doing fine.

Mrs. J. D. Bayless was in Mulleshoe Thursday afternoon to visit Mr. and Mrs. Ed Hulise, her brother and family, Claude Coffman, and Mrs. McCall at the nursing home.

Mr. and Mrs. Leland Findley and children of Lubbock visited her parents Saturday, Mr. and Mrs. J. D. Bayless.

YOU SAVE -- WHEN YOU SHOP IN MULESHOE!



Always plenty of
free parking nearby!

SHOP LOCALLY
Keep home-town
economy moving



HERE'S HOW YOU BENEFIT BY DOING ALL YOUR SHOPPING LOCALLY

When you buy from your hometown merchants you get:

1. HONEST VALUES
2. AMPLE SELECTION
3. INSTANT DELIVERY, SERVICE AND ADJUSTMENT
4. MORE PERSONAL AND FRIENDLIER TREATMENT
5. SAVING OF TIME
6. RELIEF FROM COSTLY TRAVEL
7. FREEDOM FROM ROAD HAZARDS
8. ELIMINATION OF COSTLY PARKING PROBLEMS
9. AVOIDANCE OF JOSTLING CROWDS
10. THE CHANCE TO BUILD A BETTER COMMUNITY BY PUTTING YOUR DOLLARS TO WORK HERE

when buying is also building

Do you ever drive long distances to a BIG CITY to shop for "bargains"?

If so, you're beating yourself for nothing, because the biggest bargains can be had right here from your local merchants.

Here's why: Every dollar you spend in our town does double duty . . . gives you a bonus purchase. For it makes you a partner of our hometown merchants in building a better community for you and your family to live in.

The educational, recreational and health facilities we need for better living come mostly from the taxes paid by local businessmen. The more business they do, the more taxes they pay; the more taxes they pay, the more of the good things of life will be ours.

So doesn't it make sense to keep your shopping dollars at home, especially when the quality, style, selection and price of the merchandise offered are just as favorable?



THIS MESSAGE SPONSORED

IN THE PUBLIC INTEREST

BY THE FOLLOWING MULESHOE

FIRMS:



- White's Cashway Gro.
- Muleshoe Co-Op Gin
- Central Texaco Service
- Black Insurance Agency
- Johnson-Pool Furniture & Appl.
- W.Q. Casey Insurance
- Muleshoe Motor Co.
- Muleshoe Publishing Co.
- Higginbotham-Bartlett Co.
- Hubbard-Warrick Furn. Co.
- Allen Guinn Body Shop



- First National Bank
- Brock Motor Co., Inc.
- Muleshoe State Bank
- Ben Franklin Store
- Bovell Motor Supply
- Perry's
- Beavers Flowerland
- Finn's Gulf Wholesale
- First Street Conoco
- E. R. Hart Co.



- Lenau Lumber Co.
- James Glaze Co.
- L & H Grocery
- Stovall Printing
- D & G Grocery
- Lambert Cleaners
- The Fair Store
- Piggly Wiggly
- Fry and Cox Inc.
- Western Drug
- Ladd Pontiac