

PAGE ONE

A QUICK READ OF THE NEWS

Love is like a box of chocolates

YORK, Pa. —The staff at Manor Care North nursing home had to fulfill an unusual request — for a honeymoon suite. Residents Florine Baublitz, 79, and Robert Weaver, 89, said "I do" and wanted to set up house-keeping.

"You see, she's my everything," said Weaver, who survived two wives before he was rolled up the aisle in his wheelchair. Baublitz, whose first marriage lasted more than 50 years, said she fell in love with Weaver over a box of chocolates.

"She told Bob she had a box of chocolate in her room to share with him," said maid-of-honor Shara Selby. "After that, you couldn't get them apart."

A stinking headache

PORTALES, N.M. — A family of skunks drove a family named Monks out of a house because it stunk.

In October, the stench from skunk spray forced Vernon Monks, 59, and his wife Sandra from their three-bedroom, two-bath, red-brick home about five miles west of Portales.

Several attempts to eliminate the overwhelming smell failed, Vernon told the *Amarillo Globe-News*. On March 5, Monks said his insurance company declared his home of 10 years a total loss.

The house was torn down and the dirt beneath it was hauled off as well. Monks hopes to rebuild the home with the insurance settlement.

Monks, who works for Eastern New Mexico University's printing service, said the smell from chemicals and the skunks caused him to lose his sense of taste for about eight weeks.

SERVICES

The voter registration deadline for the May 1 general election is Thursday, April 1.

Voters must register at the Bailey County tax collectors office.

FAST FACT

Spring began at 7:46 p.m. (CDT) on Saturday.



Drawing date: Wednesday, March 18
Winning numbers: 05-28-38-43-44-45
Estimated jackpot: \$10 million
Winners: None
Next drawing: Saturday, March 21
Estimated jackpot: \$14 million.

On this date in history

March 22 — The Grand Coulee Dam on the Columbia River in the Pacific Northwest begins production of electrical power (1941).

March 23 — Patrick Henry cries out the now famous line, "Give me liberty or give me death!", in a speech before the Virginia Convention (1775).

March 24 — The first bombs ever used were thrown upon the town of Watchendock, Germany (1580).

LOCAL WEATHER

	High	low	Pre.
Tuesday	78	30	—
Wednesday	57	37	—
Thursday	35	33	1.24
Rain to date	3.34 inches		

EXTENDED FORECAST

Chance of showers Monday with a high of 63. Cloudy and warmer Tuesday and Wednesday with temperatures climbing into the 70s.

Managing Editor Rick White can be reached at 272-4536 or ctyankee@fivearea.com

Missed your paper? Call carrier Melissa Flores at 272-6719 or the Journal during normal business hours.

Jennyslippers sponsor college night on Monday

By PATTI DRIVER
 Journal staff writer

College bound high school students and adults will be able to get answers to many financial aid questions Monday night.

The Muleshoe Jennyslippers are sponsoring a financial aid seminar from 7-9 p.m. on March 22 in the Muleshoe High School cafeteria. Representatives from several area schools and financial aid offices

will be at the seminar.

"This is a wonderful opportunity for students and their parents to talk nose to nose and get all the right information they need," said Billie Downing, coordinator of the event.

The evening seminar will start with individual presentations from a panel of the representatives. The students and parents will then be able to gather more information from the individual organization's

table.

"The program is targeted at juniors, seniors, and adults who are out of high school and would like to go to college," Downing said.

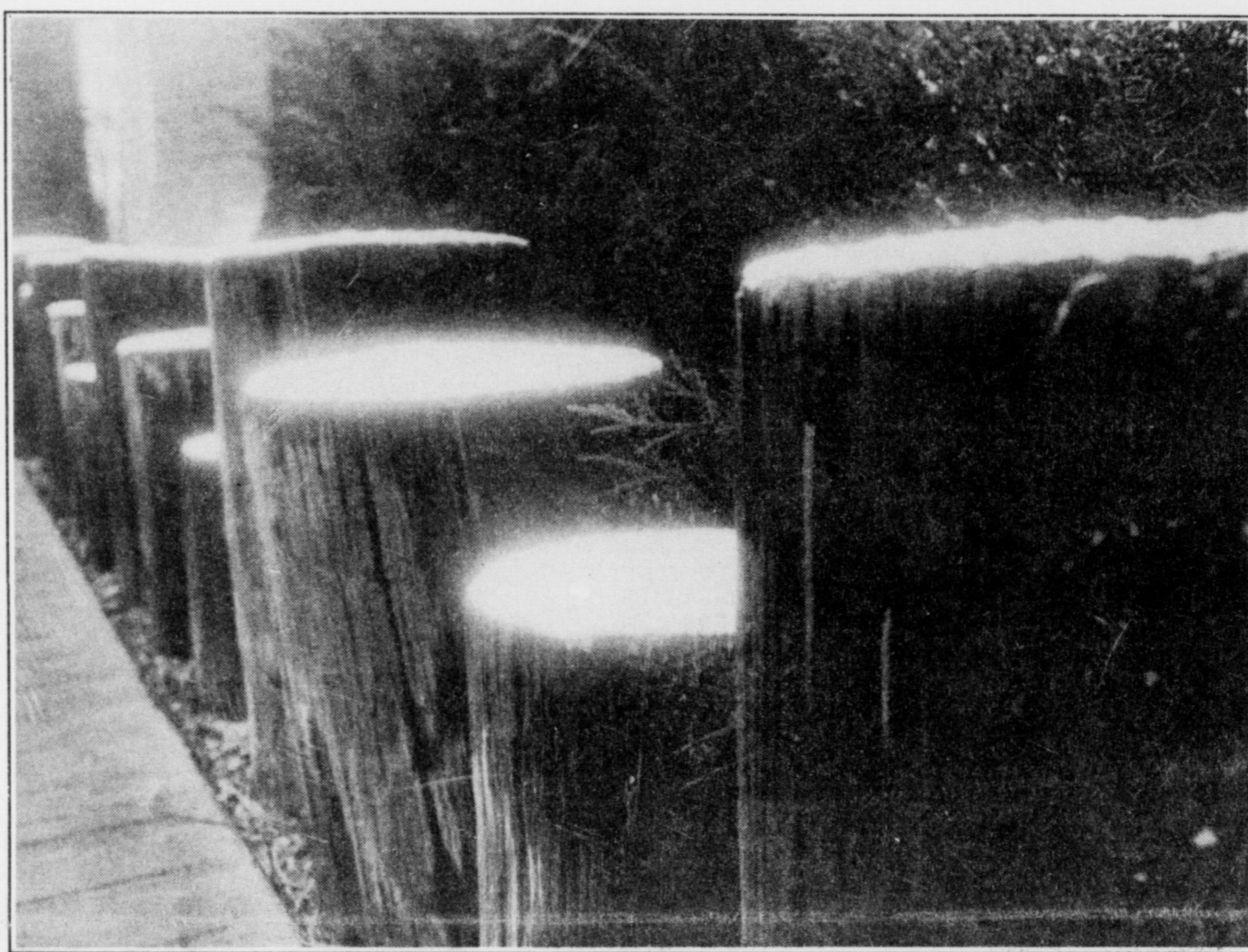
According to Downing, juniors are included so they can get a head start on the process for next year.

"Parents are encouraged to attend the seminar with their

children so they can get the information and see the processes involved first hand," Downing said.

Representatives from West Texas A&M University, Clovis Community College, Eastern New Mexico University, South Plains College and the Marine Corps will be at the seminar. They will be able to tell the students and parents ex-

see COLLEGE on page 3



No show

A thin layer of snow barely covers a row of posts outside the Muleshoe Library Friday morning. A major snowstorm predicted for Thursday night never materialized, leaving just a trace of the white stuff.

JOURNAL PHOTO BY RICK WHITE

Rain welcome relief

■ Late winter storm drops 1 1/2 to 2 inches of much-needed rain

By RICK WHITE
 Managing Editor

A slow, steady rain brought much needed moisture and a sigh of relief to area farmers.

Reports from area cotton gins indicated most of the area received 1 1/2 to two inches of rain from a slow-moving storm that passed through the area late Wednesday night and Thursday.

It was the second time the Muleshoe area received rain in a little more than a week after a bone-dry February. It brought Muleshoe's year-to-date total to 3.43 inches, which is more than an inch above normal.

A snowstorm predicted for Thursday night never materialized because the system drifted just north of the region.

The timing of the most recent rain couldn't have been better with cotton planting less two months

away, according to Muleshoe Co-op Gin manager Darwin Robertson.

"We couldn't have asked for a better rain," Robertson said. "If we get any kind of rain at planting time, we'll be in good shape."

The rain, coupled with 11 inches of snow in January, has put farmers in good shape as far as pre-plant moisture is concerned.

"It was great," said Charles Heffington, manager of the Bula Co-op Gin, after the area was soaked with up to 1.8 inches of moisture Wednesday and Thursday. "The soil profile is pretty good right now and we wouldn't need a whole lot more help before we start planting."

Most fields have already been prepared for planting so farmers can just sit back and let the moisture soak in, according to Maple Co-op Gin manager Marvin McCaul, who reported two inches in the area.

The Pleasant Valley and West Camp areas received right around 1 1/2 inches, while to the north, Lazbuddie received from an inch to an 1 1/2 of a rain/snow

see RAIN on page 3

Forum focuses on future

Journal staff

The issues and concerns of the citizens of Bailey County and how they will affect the quality of life as they move into the 21st century will be the topic of a community forum this Tuesday.

Everyone interested in a better future for themselves, their family and their community is encouraged to participate in the Texas Community Futures Forum at 7 p.m. on Tuesday, March 23 at the Bailey County Coliseum, according to Curtis Preston and Gail Gladden, Bailey County Extension Agents. The forum is being conducted in every county as part of a statewide effort by the Texas Agricultural Extension Service of the Texas A&M University system to bring together a diverse group of individuals, groups and organizations to identify needs, issues and concerns for the future. Once these are identified, focus teams will be organized to develop specific plans of action.

"We hope to have a wide variety of people from across the community participate," Gladden said. "We've invited elected officials, community leaders, business owners, farmers, school personnel and family leaders to participate. Anyone can participate."

"We want to get broad-based input into this process so that a plan can be developed for the future of each county and Texas as a whole," Extension Service deputy director Dr. Chester P. Fehlis said. "We especially

see FORUM on page 3

TxDOT issues warning

AUSTIN — Texas residents who register and title their motor vehicles in other states are being warned that their actions are subject to penalty.

The Texas Department of Transportation is calling on motorists to correct any discrepancies that might exist.

"The law requires Texans to register and title their motor vehicles in their county of residence," said Jerry Dike, director of TxDOT's Vehicle Titles and Registration Division. "Registering and titling a vehicle in a neighboring jurisdiction robs the State of Texas and its counties of valuable transportation dollars."

In Texas, the majority of registra-

tion and titling fees go into a special highway fund that's used for state transportation projects. During the fiscal year 1998, TxDOT deposited \$679 million in registration fees into the highway fund and another \$14 million in titling fees. The state's 254 county tax assessor-collector offices kept \$359 million for being TxDOT's statutory agents for registration and titling, as well as for county roads and bridges.

Individuals aren't the only ones who have been registering and titling vehicles in neighboring states. Some motor vehicle dealers are also engaged

see TxDOT on page 2

Keeping an eye on Texas

Don't plant too soon

Winter's last freeze along the Texas Gulf Coast is as much as 96 days earlier than in the Panhandle.

Average date, last freeze

- Apr. 16-30
- ▨ Apr. 1-15
- Mar. 16-31
- Mar. 1-15
- Jan. 24-Feb. 28

SOURCES: Carole Keeton Rylander, Texas Comptroller of Public Accounts, and Texas State Climatologist.

AROUND MULESHOE

Seminar for seniors

The non-profit Senior Info Center will be sponsoring a free seminar for senior citizens and their caregivers at 1 p.m. on Monday, April 5 at the Muleshoe Heritage Foundation Depot in Muleshoe. Topics to be discussed include how to protect their assets, how to avoid nursing home spend down, and how to safe guard their assets.

This is an informational meeting only. Seating is limited. Reservations will be taken at 1-877-467-5433.

Muleshoe Roadriders hold rally

The Muleshoe Roadriders motorcycle club will be holding their 17th annual Motorcyclist Rally on March 26 and 27 at the Bailey County Coliseum in Muleshoe. There is a full agenda of activities and awards.

For more information call Danny Dickerson at 272-4143 or Albert Ramirez at 272-3818 or by email at dannyd@fivearea.com.

Clark family to sing at local church

The Clark family from Alvarado, Texas will be in concert at the First Assembly of God church in Muleshoe on Sunday, March 28. Services will begin at 10:45 a.m. Come and enjoy the music ministry of the Clarks.

Bailey County RC&D sponsors hold meeting

The Bailey County RC&D sponsors will hold an important meeting at 6 p.m. on Tuesday, March 23 in the Muleshoe Public Library meeting room. Officers will be elected for the local board and a new director will be appointed to serve on the Wes-Tex RC&D board.

Tournament to benefit MADD

The First Annual \$1000 Shoot-out for MADD will be held on March 26-28 at the YC Complex in Denver City. The tournament is for class D and under.

The entry fee is \$150. Participation is limited to the first 18 paid teams. First place team will receive \$1000. For more information call Brent at 799-4894 or Chuck at 791-5708.

SPCAA holds election

The South Plains Community Action Association, Inc. will hold an election the week of March 30, 1999 to elect one alternate for the Target (Client) Sector to the SPCAA Board of Directors representing Bailey County.

Persons wishing to file for a place on the ballot may contact Janie Posadas or Leonor Daniel at the Bailey County Community Action Center at 804 W. American Blvd. in Muleshoe or by calling 272-7537. The filing deadline is 5 p.m. Wednesday, March 24.

Voting will be from 8 a.m. until 5 p.m. beginning Tuesday, March 30 and run through Friday, April 2 at the Bailey County Community Action Center.

Financial aid seminar

The Jennyslippers will sponsor the Annual High School Students/Parents seminar on Monday, March 22, 1999 at 7 p.m. in the Muleshoe High School cafeteria. Area college and university representatives will present information on applying for financial aid to attend college.

The seminar is open to all high school students and adults interested.

Local church sponsors women's retreat

First United Methodist Church of Muleshoe will be sponsoring an overnight women's retreat from 5 p.m. Friday, March 26 to 3 p.m. Saturday, March 27 at the Amherst Retreat Center in Amherst.

The featured speaker for the event is Amy Black. She is a dedicated christian, accomplished speaker and wife of the pastor of the First United Methodist Church in Lamesa.

The fee for the retreat is \$35 and the registration deadline is March 16. Call 272-5517 to register or to get more information.

The deadline for items to appear in *Around Muleshoe* is 5 p.m. Monday for Thursday's edition and 5 p.m. Thursday for Sunday's edition. Items can be mailed (PO Box 449), called in (272-4536) or faxed (272-3567).

NATIVE GRASSES, INC.

Experts in the sowing and harvesting of native grasses of the Great Plains and of the Southwest

- Specializing in native American grasses of the Great Plains and the Southwest
- Most native grass seeds available at wholesale prices with turnkey jobs.
- All work done in compliance with Government specifications

Please Call:

Darwin Simmacher

505-762-7817

FAX 505-763-9115

Email simmacher@3lefties.com

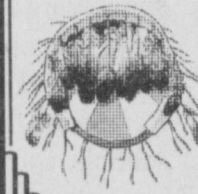
Or

Vince Simmacher

806-946-3461

FAX 806-946-3604

References provided upon request



FACTORY WARRANTY SALE!

1997 Dodge Ram 2500 Club Cab

4x4, Cummins diesel, automatic, Laramie SLT trim, factory warranty

1997 Ford F350 Dually Super Cab

2 wheel drive, 7.3 turbo diesel, 13,000 actual miles, factory warranty

1997 Lincoln Town Car executive series, 22,000 actual miles **\$23,995**

1998 Toyota Corolla LE 4 door, 5 speed, 10,000 actual miles, factory warranty **\$14,995**

1997 Ford F150 Pick Up 3 door, 4x4, XLT trim, factory warranty **\$19,995**

WE BUY QUALITY, CLEAN VEHICLES!

Portales' Premier Pre-Owned Vehicle Headquarters

TRADER HORN MOTOR COMPANY

620 S Ave. C • Portales, NM
(505) 359-0947 or (505) 359-1775

Have A Nice Day!

School lunch menus

FOR WEEK OF MARCH 22-26

MULESHOE

High School & Junior high
Monday

Breakfast — Cherry crisp, fruit or juice, and milk.

Lunch — Burrito, chili, Mexicali corn, fruit cocktail, and milk.

Tuesday

Breakfast — Breakfast pizza, fruit or juice, and milk.

Lunch — Barbeque sandwich, tator tots, pickles/onions, pear halves, and milk.

Wednesday

Breakfast — Sausage biscuit, fruit or juice, and milk.

Lunch — Beef enchiladas, pinto beans, Spanish rice, tossed salad, and milk.

Thursday

Breakfast — Cinnamon toast, fruit or juice, and milk.

Lunch — Corn dog, vegetable soup, cinnamon roll, pineapple tidbits, and milk.

Friday

Breakfast — French toast, fruit or juice, and milk.

Lunch — Fish sandwich with cheese, lettuce & tomatoes, green beans, hot spiced apples, and milk.

Dillman & DeShazo

Monday

Breakfast — Cherry crisp, fruit or juice, and milk.

Lunch — Burrito, chili, Mexicali corn, fruit cocktail, and milk.

Tuesday

Breakfast — Breakfast pizza, fruit or juice, and milk.

Lunch — Hamburger, lettuce & tomatoes, tator tots, pear halves, and milk.

Wednesday

Breakfast — Sausage biscuit, fruit or juice, and milk.

Lunch — Beef enchiladas, pinto beans, Spanish rice, tossed salad, and milk.

Thursday

Breakfast — Cinnamon toast, fruit or juice, and milk.

Lunch — Corn dog, vegetable soup, cinnamon roll, pineapple tidbits, and milk.

Friday

Breakfast — French toast, fruit or juice, and milk.

Lunch — Fish sandwich with cheese, lettuce & tomatoes, green beans, hot spiced apples, and milk.

LAZBUDDIE

Monday

Lunch — Salisbury steak, subs, pizza, noodles, green beans, hominy, fruit, salad, jello, and milk.

Tuesday

Lunch — Stromboli, burritos, tuna, baked beans, broccoli w/cheese, onion rings, fruit, salad, jello, and milk.

Wednesday

Lunch — Chicken nuggets, Rib-B-Qs, egg rolls, rice pilaf, English peas, asparagus, fruit, salad, jello, and milk.

Thursday

Lunch — Pork patties, pizza frito pie, mashed potatoes, okra gumbo, corn, fruit, salad, jello, and milk.

Friday

Lunch — Manager's special.

THREE WAY

Monday

Breakfast — Scrambled eggs w/ toast or assorted cereals, graham crackers, juice, and milk.

Lunch — Spaghetti w/meat sauce, steamed broccoli, garden salad, orange wedges, and milk.

Tuesday

Breakfast — Banana muffins

and ham or assorted cereals, graham crackers, juice, and milk.

Lunch — Nachos grande, lettuce/tomatoes, Spanish rice, apple, and milk.

Wednesday

Breakfast — Breakfast pocket or assorted cereals, graham crackers, juice, and milk.

Lunch — Beef steak w/gravy, mashed potatoes, green beans, wheat rolls, apple crisp, and milk.

Thursday

Breakfast — Pancakes w/syrup and sausage or assorted cereals, graham crackers, juice, and milk.

Lunch — Hot dog w/chili & cheese, french fries, carrots/celery, peaches, and milk.

Friday

Breakfast — Biscuits w/gravy or assorted cereals, graham crackers, juice, and milk.

Lunch — BBQ on a bun, pickle spears, potato salad, corn cobette, pears, and milk.

Deaths from HIV, homicide show downward trend in Texas in 1997

While heart disease, cancer and stroke remained the leading causes of death for Texas residents in 1997 as they have been for nearly two decades, the number of lives claimed by HIV and homicide decreased.

The mortality figures for 1997, the last year for which statistics are complete, from the Bureau of Vital Statistics at the Texas Department of Health show similarities with past years as well as new trends. Since 1950, heart disease and cancer have been the two leading causes of death in Texas; and the two accounted for more than half of all deaths of Texas residents in 1997. Deaths from HIV, however, decreased for a second year (a 42 percent drop in 1997), moving it from ninth in 1996 to 12th the next year.

"In 1997, deaths due to homicide, which demonstrated an increase from 1987 to 1991, continued the decline that began in 1992," said Tom Pollard, director of the bureau's Statistical Services Division. "As a result, homicide is no longer one of the 10 leading causes of death for all Texas residents. It is, however, the seventh and

eighth leading causes among African-Americans and Hispanics respectively," he said.

Deaths due to chronic liver disease and cirrhosis increased 4.3 percent in 1997, moving from 10th in 1996 to the ninth leading cause of death. Also increasing were deaths due to diabetes mellitus and pneumonia and influenza. New in 10th spot is septicemia.

The majority of deaths (28.4 percent) in 1997 to people ages 1 to 44 were due to accidents.

Cancer was responsible for 12.9 percent of all deaths in this age group, and HIV claimed the lives of another 5.4 percent.

"The infant mortality rate of 6.4 infant deaths per 1,000 live births is very near the all time low for the state, which occurred in 1996," Pollard said. "However, the African-American infant mortality rate of 10.9 continues to be considerably greater than the rate of Anglos at 5.6 and Hispanics at 6.0."

Bailey County Journal USPS 040-200

Established March 31, 1963. Published by Triple S Publishing, Inc. Every Sunday at 304 W. Second. Box 449, Muleshoe, TX 79347.

Second Class Postage paid at Muleshoe, TX.

POSTMASTER: Send address changes to the Bailey County Journal, P.O. Box 449, Muleshoe, TX 79347.

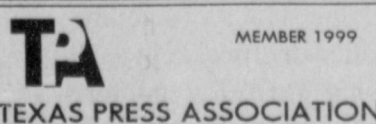
We are qualified members of:

Panhandle Press Association, National Newspaper Association, West Texas Press Association and Texas Press Association

WEST TEXAS PRESS ASSOCIATION

PPA

Panhandle Press Association



Scot Stinnett, Publisher
Lisa Stinnett, Vice-President/Comptroller
Rick White, Editor
Mari Guadalcasar, Classifieds
Leah Bell, Advertising

© 1990

SUBSCRIPTIONS: Muleshoe Journal and Bailey County Journal
By Carrier Yearly - \$22.00
Bailey County — by mail - \$24.00
Elsewhere - \$26.00
Advertising Rate Cards on Application

Advertisers should check their ad the first day of insertion. The Journals will not be liable for failure to publish an ad or for a typographical error or errors in publications except to the extent of the cost of the ad for the first day of insertion. Adjustment for errors will be limited to the cost of that portion of the ad where the error occurred.

BLACK EYE PEAS

Pay Less For Processing Your Open Market Peas

OPEN MARKET OR FIRM CONTRACTS AVAILABLE

Local Delivery

Call Us For Details... **PEAS, INC.** Pleasanton, TX
830-569-2140 or 569-6331

National Home Health Care

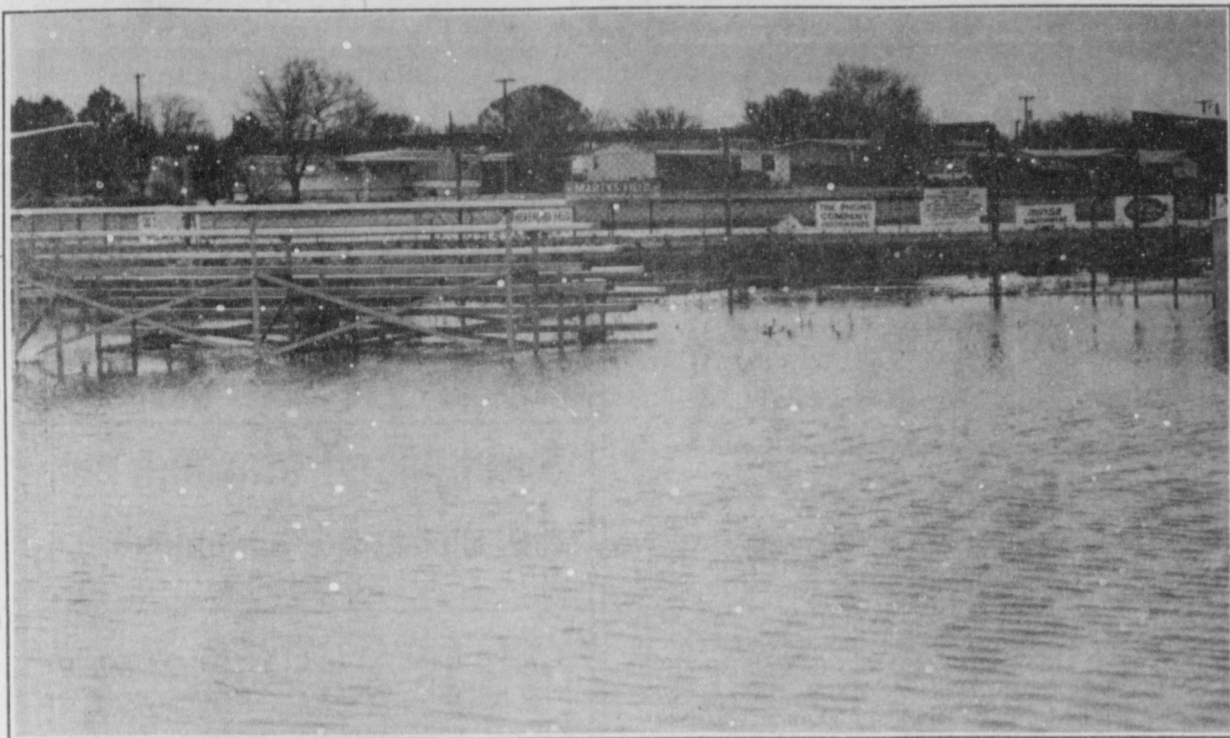
You have a choice in home respiratory providers.

Make a change if yours isn't hitting the mark.

1200 West 21st Street
Clovis, New Mexico 88101

ACCREDITED BY
 Joint Commission
On Accreditation of Healthcare Organizations

Call 1.800.842.8278 and learn how to receive the service you deserve with oxygen, breathing medications and other home medical needs.



Water park

Wednesday and Thursday's rain flooded low-lying areas like Roger Miller Park. A chance of more rain is forecasted for the beginning of the week.

RAIN

from page 1

Despite temperatures hovering near zero Thursday, there were just minor traffic difficulties.

"The (county) roads were pretty sloppy," said Bailey County Sheriff Coy Plott, who almost got stuck on a muddy road Thursday morning while responding to an accident call.

A tractor-trailer skidded off

the road about five miles west on Highway 1760 and knocked down a telephone pole at about 10:30 a.m., according to Plott. There were no injuries.

There were also a few reports of vehicles sliding off the road along U.S. Highway 84 earlier in the morning.

Sheriff's deputies also spent a good chunk of the day helping track down cattle that had gotten loose, including about

50-60 head that had strayed nearly five miles from their pasture and across Highway 84.

The cattle were located later in the afternoon, and with deputies stopping traffic, herded across the highway and back home.

Skies are expected to clear with temperatures in the 60s over the weekend with the next chance of rain on Monday.

TxDOT

from page 1

in the practice.

When a Texas consumer buys a vehicle from a Texas dealer, state law requires that the dealer register the vehicle in the county where it was purchased or financed, or the county where the buyer resides. A dealer may apply for registration in another state only if a customer is a resident of that state.

"We actively enforce the regulations that require dealers to apply for title and registration of vehicles on behalf of their customers," said Betty Bray, director of TxDOT's Motor Vehicle Division. "We will seek additional penalties when we determine that a dealer has registered vehicles outside of Texas in violation of this law."

Several jurisdictions have

stepped up enforcement of motor vehicle registration and titling.

In El Paso, police have set up random checkpoints to ensure compliance. The New Mexico Department of Motor Vehicles is also contemplating a policy that would require motorists to show verifiable proof of New Mexico residency before issuing registration and titling.

FORUM

from page 1

want local, state and federal agencies and organizations to participate with other groups and organizations."

"The Futures Forum process will help the Extension Service develop its long-range plan for the next four years — 2000 to 2003," Fehlis said. However, he emphasized that the true goal is to facilitate the identification of common issues and define a process whereby these issues can be solved to create a better economic, environmental and social situation in communities across the state. He noted that participating agencies, groups and organizations can better focus on issues and programs related to their missions and interests and the needs of the local people.

"We view this as a partnership effort with all of us working together for the future

of Texas," Fehlis said. Although pre-registration is not necessary, those interested in attending should contact the county extension office at 272-

4583 so there will be sufficient materials available for the participants. This will also allow the coordinators to set up small focus groups in advance.

COLLEGE

from page 1

actly what forms and information their institution requires.

Representatives from LEARN, The Opportunity Plan and Panhandle-Plains Higher Education Authority, Inc. will also be available to help parents and students fill out financial aid forms and learn more about the different types of financial aid available, such as grants, scholarships and student loans.

"We hope this seminar will stop the students and parents from thinking that school is too expensive," Downing said.

The Jennyslippers have or-

ganized this event since 1988. Muleshoe High School counselor Gayla Gear has been involved with the seminar for the past several years according to Downing. The Muleshoe ISD also contributed by mailing the invitation letters out to the students.

Funcare Daycare
"Come join the fun!"

Skilled care for
INFANTS & UP
7:30 a.m. to 5:30 p.m.
Monday-Friday
All meals provided.

Contact
Angela Lutz
705 W. Ave. J
Muleshoe
272-5891

Call or come by any time!
Trained Child Care Provider
First Aid & CPR
certified

Combest praises ag funding

WASHINGTON — The House Budget Committee Thursday considered its Budget Resolution for Fiscal Years 2000-2004 which contains a total of \$6 billion in new agriculture funding authority over four years. House Committee on Agriculture Chairman Larry Combest (R-Texas) issued the following statement:

"This is nothing less than a triumph for America's farmers and ranchers. They are in a time of great need and we are working hard to create an adequate safety net to ensure their future prosperity. The \$6 billion contained in the Budget Resolution guarantees us the fiscal means to strengthen the financial safety net for farmers and I'm confident we'll now have the tools to improve the risk management system."

"I'd especially like to thank Saxby Chambliss for his hard work in ensuring that this money was included in the Resolution," Combest said of Rep. Chambliss (R-GA), a member of both the Agriculture and Budget Committees.

In addition to the \$6 billion in new agriculture funding, the Budget Resolution contains up to \$15 billion in tax cuts for FY2000

2000 bug could bite farmers

By **BOB ELLISON**
American Farm Bureau

The Year 2000 computer bug, or Y2K, is described by some as the apocalypse and by others as media hype. But computer experts say while you should not anticipate the four horsemen to come riding over the horizon, you should be ready for a series of annoyances and inconveniences.

Farmers are a prime Y2K bug target, which surprises some who do not see agriculture as especially computerized. But there are computer chips lurking around many an unsuspecting corner. The Canadian Federation of Agriculture's Barbara Warner told an American Farm Bureau Young Farmer and Rancher conference that equipment does not need to be obviously computerized to be affected.

CFA's Warner tells farmers to take precautions now. She says to check the obvious, such as any equipment with a digital readout. Then she says check the not-so-obvious by calling equipment manufacturers. Warner reminds farmers a tractor will not run too well if the computer chip in its engine thinks it is 1900 instead of 2000.

At a recent Senate hearing on the problem, the threat to the nation's food supply was raised if farmers are put out of commission. USDA Secretary Dan Glickman said not too

worry. "Only a fraction of all farmers, less than 3 percent, rely on automated systems in the production process," Glickman said. "Those that do are aware of the Y2K threat."

But Arizona Farm Bureau President Ken Evans expressed doubt concerning Glickman's positive scenario.

NEED A LIFT?

AMERICAN EQUIPMENT & TRAILER
3707 M.L.K. Jr. Blvd.-Lubbock, TX
806-747-2991

Circle & Pets
Your full line pet store & more!

WE CAN GET ALL PURINA FEEDS!

605 W. American Blvd. • 272-4118

CRP GRASSES
Specializing in Native Grass Seed since 1951!

- Buffalograss
- Bluestems
- Sideoats
- Switchgrass

and many others!

We produce our own seed and pay most freight.

Straight from our farm to you!

1-800-262-9892
806-272-5506
BAMERT SEED CO.
Muleshoe, Texas
bamseed@fivearea.com

BERKELEY

RELIABILITY IN AG IRRIGATION

Have "Sand In Your Water"?
Do Your Submersible Pumps Have Brass Bearings?

BERKELEY Submersibles incorporate "ION" hardened shafts with Rubber Bearings throughout, allowing SAND to wash through the Pump, and NOT become "Sandpaper" to your pump's shaft, destroying the life of your pump & motor.

It's Your Money!

Contact Wilson Drilling Co. at 806.272.5521

Thank You from the Luna Family

Ronnie Luna never met a person he didn't like. He was a great man—someone's son, brother, dad and friend. He had such a creative mind for the work he did. Ronnie wasn't just a bricklayer, he was an artist with an outstanding portfolio of his beautiful work. When you walk by something he built, notice his pride in every brick, tile or stone. He left his mark on this community and everywhere he went—not only with his work but with the many smiles he gave. He loved to laugh. He would want us to laugh and dance, tell a joke and share our time with our family and friends. But we grieve for him now out of self-pity. Believing he is in a much better place relieves our minds but does not ease this tremendous sense of loss in our hearts. Out of selfishness, we want him here to love, to hold, to laugh. We miss him. He is laid to rest now beside another great man—Joe T. Gonzales, who loved Ronnie as a son and was loved by him as a father. They are both deeply missed. Ronnie left behind a countless number of good friends, great memories, a broken heart or two and his family: mother, Carolyn; sisters, Sueanne, Jackie, Lizz and Amanda; one brother, T.J.; and son, Matthew. Ronnie will always be remembered. T.J. had a good way of putting it when he said, "Ronnie will live on in every brick he laid, every smile he gave and in every accomplishment achieved by his son." Matthew, he lives on in you. For the rest of us remember—don't take anyone for granted. Ronnie taught us that life is too short.

On behalf of Ronnie Luna, we, his family, wish to send our warmest and sincerest thanks to all of those who came to our aid during such a difficult time. The expression of concern, support and sympathy is very much appreciated. In return, we truly thank you all from the bottom of our hearts. Thank you staff of Ellis Funeral Home for your kindness, understanding, cooperation and patience. Thank you Father Joe for your kind words in remembrance of Ronnie, and the use of the church and center. Also, thanks to Father Patrick for assisting during the mass. Thank you Roy Anzaldua and Noe Anzaldua for providing motel rooms for the family. Thank you ladies of the Guadalupanas for donating your time and assistance with the meal, and to all of those who donated food and drinks. Thank you for the monetary donations, plants and flowers, and prayers. Please forgive us if we have forgotten anyone. There were so many friends wanting to help out. Though we may forget names, we will never forget what you all meant to Ronnie and what he meant to all of us.

BAILEY COUNTY DEVOTIONAL PAGE

BRUCE, INC.
HEATING & AIR CONDITIONING
Hwy. 214 North Muleshoe 272-5114

DAMRON DRUG, INC.
308 Main St. 272-4210
Muleshoe, TX

SAIN IRRIGATION & MACHINES
Complete Pump Service
W. American Blvd. 272-4397
Walt Sain Muleshoe, TX 272-4148

MULESHOE PEA & BEAN, INC.
RR 2 Box 297 272-5589
Muleshoe, TX

NEEDMORE Co-op Gin Company
946-3361 • Sudan, TX

Henry Insurance Agency, Inc.
"Serving You Since 1964"
111 West Avenue B 272-4581
Muleshoe, TX

MULESHOE MOTOR CO.
1225 W. American Blvd. 272-4251

WES-TEX FEED YARDS, INC.
Custom Cattle Feeding
272-7555 Muleshoe, TX

TINO'S
104 W. American Blvd.
272-7528 • Muleshoe, TX
Daily Specials Owners: Tino & Linda Campoya

FARWELL CONVALESCENT CENTER
"In Christ's Love, Everyone Is Someone Special"
305 5th St.
481-9027 • FARWELL, TX

"THE FIVE AREA TELEPHONE COOPERATIVE ORGANIZATION"
West Plains Telecommunications Co.
Five Area Systems, Inc., Plateau Cellular Network
Five Area Long Distance - Five Area Internet
302 Uvalde Muleshoe, USA (806) 272-5533

AMERICAN AVI INC.
West Hiway 84
272-4266
Muleshoe

FIRST TEXAS FLBA MULESHOE
"Serving Farmer & Bailey Counties"
272-3010 • Fax 272-5388
316 Main • P.O. Box 424 • Muleshoe, TX

McCormick Seeds, Inc.
400 East Ash • Muleshoe, Texas
272-3156
A complete line of field seeds

HIGGINBOTHAM-BARTLETT CO.
215 Main Muleshoe
272-3351 FAX 272-6860
Bruce Hartline-Mgr.

Lowe's MARKETPLACE
401 W. American Blvd. 515 W. American Blvd.
Muleshoe 272-4585 Muleshoe 272-4406

MULESHOE FEED BARN
311 W. American Blvd.
Muleshoe, TX
272-5626

The mouth of a righteous man is a well of life: but violence covereth the mouth of the wicked. In the multitude of words there wanteth not sin: but he that refraineth his lips is wise.
-Proverbs 10:11,19

MULESHOE AREA HEALTHCARE Center
"Committed to Caring"
106 W. Ave. H Muleshoe 272-7578

IRRIGATION PUMPS & POWER
ZIMMATIC CENTER-PIVOTS
W. Hwy. 84 272-4483

Facts About The BIBLE BY JOHN LEHTI

FOUR-FOOTED TRANSPORTATION
IN ANCIENT BIBLICAL TIMES, HORSES AND CAMELS WERE A SURE MODE OF TRANSPORTATION. HOWEVER, HORSES WERE USED ONLY IN WARFARE, WHEREVER THE TERRAIN PERMITTED AND CHARIOTS COULD BE MANIPULATED. THE ISRAELITES HAD NO HORSES PER SE, UNTIL THE REIGN OF DAVID. HE ESTABLISHED SOME CAVALRY BUT IT WAS KING SOLOMON WHO IMPORTED THEM FROM EGYPT IN VAST NUMBERS, PAYING ONE HUNDRED AND FIFTY SHEKELS OF SILVER FOR EACH ANIMAL. (1 KINGS 10:28) ON THE OTHER HAND THE CAMEL COULD BE USED FOR TRANSPORTATION AND WAS VALUABLE AS A BEAST OF BURDEN, BEING CAPABLE OF CARRYING LOADS OF FOUR HUNDRED POUNDS OR OVER--ALSO THEIR LIFE SPAN WAS LONGER AND THEY WERE A SOURCE OF FOOD BECAUSE OF THEIR MILK. THE ISRAELITES KEPT CERTAIN HERDS OF CAMELS JUST FOR MILKING. GEN. 32:15 MENTIONS THIRTY MILCH (MILKING) CAMELS--ALSO THEIR HAIR WAS USED FOR TENT MATERIAL AND HEAVY OUTER GARMENTS. WITH ALL THESE ADVANTAGES ON THE SIDE OF THE CAMEL, SMALL WONDER IT WAS PREFERRED OVER THE HORSE!



SAVE THIS FOR YOUR SUNDAY SCHOOL SCRAPBOOK

This devotional & directory is made possible by these businesses who encourage all of us to attend worship services.

- ASSEMBLY OF GOD**
FIRST ASSEMBLY OF GOD
521 South First Street • 272-3017
Jack Stone, Min. • 272-3984
S.S. 9:45 am, W.S. 11 am & 6:30 pm, Wed. 7:30 pm
- EL BUEN PASTOR**
415 E. Ave. F • Pastor Felix Cadena
S.S. 9:45 am, W.S. 11 am & 6 pm; Wed. 7 pm
- BAPTIST**
CALVARY BAPTIST
1733 W. Ave. C. Rev. Jeff Coffman
CIRCLE BACK BAPTIST
Intersection FM 3397 & FM 298
Jessie Shaver, Min • 946-3676
- FIRST BAPTIST**
220 West Ave. E., Stacey Conner, Min.
- FIRST BAPTIST**
Lazbuddie • 965-2126
- PRIMERA IGLESIA BAUTISTA**
223 E. Ave. E, Rev. Greg Guzman
- PRIMITIVE BAPTIST**
621 South First, Elder Cleveland Bass, Min.
- PROGRESS BAPTIST**
Progress, TX
- PROGRESS SECOND BAPTIST**
Arthur Hays, Min.
1st & 3rd Sundays
- RICHLAND HILLS BAPTIST**
17th & West Ave. D, George Malis, Pastor
- ST. MATTHEWS BAPTIST**
Corner of W. Boston & W. Birch
Floyd R. Monroe, Min.
- THREE WAY BAPTIST**
927-5467
- TRINITY BAPTIST**
314 E. Ave. B, Robert Brown, Min.
- CATHOLIC**
IMMACULATE CONCEPTION
CATHOLIC CHURCH
805 E. Hickory, Father Joseph Agustine
- CHARISMATIC EPISCOPAL**
ST. CLEMENTS
1536 W. American Blvd. • 272-5954
Father Sergio Leal
Sun. W.S. 10:30 am
- CHRISTIAN**
THE CHRISTIAN CENTER
Morton Hwy. • 272-5105
Reydon Stanford, Min.
- CHURCH OF CHRIST**
LARIAT CHURCH OF CHRIST
Sam Billingsley, Min.
S.S. 10 a.m.; W.S. 11 a.m. & 6 p.m., Wed. 7 p.m.
- LAZBUDDIE CHURCH OF CHRIST**
Nathan Crawford, Min.
S.S. 9:30 am; W.S. 10:20 am & 5 pm; Wed. 7 pm
- MULESHOE CHURCH OF CHRIST**
22nd & W. American Blvd.
Harry Riggs, Min.
Albert Garcia, Min. (Spanish service)
S.S. 9:30 am; W.S. 10:20 am & 6 pm; Wed. 7:30 pm
- 16th & AVE. D CHURCH OF CHRIST**
Curtis Shelburne, Min. • 272-4619
S.S. 10:30 am & 1:30 pm; Wed. 7:00 pm
- LUTHERAN**
ST. JOHN LUTHERAN
Lariat, TX-David Symm, Min.
S.S. 10:30 am; W.S. 9:30 am
- METHODIST**
FIRST UNITED METHODIST
HISPANIC MINISTRIES
E. 5th and E. Ave. D
Pastor Benito Cavazos
FIRST UNITED METHODIST
507 W. 2nd St.
Pastor Brad Reeves
LAZBUDDIE METHODIST
965-2121
- EL DEVINO SALVADOR**
814 W. Ave. C, Muleshoe, TX
Guadalupe Ballinas, Min.
- NAZARENE**
NEW VISION CHURCH OF THE NAZARENE
814 W. Ave. C • 272-3622
Hugh Hayes, Interim-S.S. 10 & 11 am; W.S. 7 pm
- PENTECOSTAL**
UNITED PENTECOSTAL LIGHTHOUSE
207 East Ave. G • 1-800-454-6051
Pastor McKibben, S.S. 10 am
Thursday, Bible Study 7 pm
- INTER DENOMINATIONAL**
NEW COVENANT
Plainview Hwy. Jimmy Low, Min.
Steve Claybrook, Assoc. Pastor
W.S. 10 am; Wed. 7 pm

Muleshoe Area Medical Center
"Your Hospital"
708 S. First St. • 272-4524
Muleshoe, TX

BAILEY COUNTY ELECTRIC COOPERATIVE ASSN.
Muleshoe — 272-4504 Morton — 266-8600

minsa southwest corporation
P.O. Box 484 272-5545
Muleshoe, TX
FAX (806) 272-5135 (800) 852-8291

PACO FEED YARD, INC.
Commercial Cattle Feeders
P.O. Box 956 265-3281
Frona, TX
Feller Hughes-Mgr.

TEXAS FARM BUREAU INSURANCE CO.
1612 W. American Blvd. • 272-4567 • Muleshoe

Nieman Realty
116 East Avenue C
Muleshoe • 272-5285
George & Dianne Nieman

WESTERN DRUG
114 Main 272-3106 Muleshoe

Springlake Potatoes, Inc.
P.O. Box 280 • Springlake, TX
262-5542

1ST BANK MEMBER FDIC
202 South First 272-4515

WINKLES TRUCKS, INC.
Box 757 (806) 247-2724
Frona, TX

PINNACLE THERAPY SERVICES
Speech/Language, Physical & Occupational Therapies
305 5th St. • Farwell, TX • (806) 481-CARE

1315 W. American Blvd.
272-3333
Muleshoe, TX

MULESHOE LIVESTOCK AUCTION
Muleshoe, TX • Sale Every Saturday
Clayton Myers • 272-4201

BAILEY GIN COMPANY, INC.
946-3397 • Sudan, TX
Peanut Hawkins, MGR

SHERLEY-ANDERSON LAZBUDDIE ELEVATOR
965-2922 Lazbuddie, TX

Leal's Tortilla Factory, Inc.
"Serving West Texas since 1957"
107 E. Ash 272-5772 Muleshoe, TX

MAPLE COOP GIN
927-5501
Maple, Texas

JAMES CRANE TIRE CO., INC.
107 Main 272-4594
Mike Hahn Muleshoe, TX

TERRA DISTRIBUTION
Hwy. 84 • 272-4203
Muleshoe, Texas
Bruce Bruns - Mgr.

CHURCHES
1411 American Blvd.
272-5581
Muleshoe, Tx.
10% Discount for Senior Citizens

HEREFORD FEED INGREDIENTS, INC.
232 Main St. • Muleshoe, Tx.
272-5871

DAVID R. TIPPS — Representative
Dairy Queen
1201 W. American Blvd.
272-3412 Muleshoe

WEST CAMP GIN, INC.
Better Ginning & Courteous Service
Route 2 Box 1000 • 925-6681
Muleshoe, TX
James Shepard / Phyllis Shepard

Shipman's Body Shop
Auto Painting • Wrecker Service • Free Estimates
Tractor Glass & Windshields
410 N. 1st Muleshoe, TX
272-4408 FAX 272-3366

Decorators Floral & Gifts
616 South First 272-4340
Muleshoe, TX

SPORTS BRIEFS

Muleshoe youth basketball registration

Muleshoe youth basketball will be holding registration from 6-7:30 p.m. on Thursday, March 25 at the Muleshoe State Bank. Registration is open to girls in the 3rd through 6th grade.

There will be a second registration in conjunction with the first clinic on Saturday, March 27 at the High School gym. Bring practice gear and shoes. The clinic starts at 10 a.m. for 3rd and 4th grade and at 11 a.m. for 5th and 6th grade.

Registration is \$30 and participants must bring proof of age. There will also be a sign up for those interested in coaching.

Babe Ruth baseball registration

The Muleshoe Area Babe Ruth Baseball League will hold registration on Monday, March 22 from 6-8 p.m. and Monday, March 29 from 6-8 p.m. in the Bailey County Electric Cooperative. Registration is open to players (male or female) who will be 13-15 years of age as of Aug. 1, 1999 and live in the Muleshoe, Lazbuddie, Earth and Sudan areas.

The entry fee is \$35. A certified copy of the birth certificate is required at the time of registration. For more information, call David B. Marricle at 272-4863 after 5 p.m.

Muleshoe Little League registration

The Muleshoe Little League will hold registration from 6:30 to 8 p.m. on Thursday, March 25 at the Watson Junior High School gym. Registration is open to all children currently enrolled in kindergarten through 12 years of age on or before July 31, 1999.

The registration fee is \$25 per player. A certified copy of the child's birth certificate is required at the time of registration. For more information call Cliff Black.

Those interested in coaching can call Leslie Derby for T-ball, Carroll Precure for Minor league, and Curby Brantley for Major league.

Lariat preschool okayed

The finishing touches to plans for a preschool program at St. John Lutheran Church of Lariat are being completed.

As of the March 16 Board of Education meeting, "all systems are go" to open the doors this August to area three and four year old children for a comprehensive preschool.

The Life in Christ Academy will begin pre-registration April 5 in the church fellowship hall.

"We had tried over the last several years to start a preschool program but were not successful due to a variety of obstacles,"

board chairman Gary Haseloff said. "We are now full-steam ahead with the licensing, teaching staff, and curriculum. Come August, the Life in Christ Academy will be off and running!"

The preschool will be operated Tuesday through Thursday with morning sessions. All area three and four year old children are eligible to attend regardless of race or religious affiliation.

For tuition and pre-registration information, please contact Edie Kalbas at 825-3357 or Pastor Dave Symm at 825-2409.

Lazbuddie pair earn All-State and regional honors



Senior
Kia Morris



Sophomore
Laura Jo
Via

Six-man Coaches Association Girls 1998-99

All-state basketball team FIRST TEAM

Kim Moore, Zephyr; Elaine Jones, Walnut Springs; Sarah Dodds, Brookesmith; Valerie Wooten, Borden County; Sara Littlecree, Chillicothe; Lindsey Smith, Borden County; Julie Mayes, Borden County; Amanda Ama, Strawn; Krissy Shipman, Guthrie; Kia Morris, Lazbuddie.

SECOND TEAM

Tiffany Martinson, Meadow; Jennifer Harrell, Abbott; Sara Hilliard, Slidell; Miranda Cornelius, Wellman-Union; Tiffany Murphy, Aquilla; Katie Yates, Grady; Marianna Dobrovolny, Whitharral; Morgan Clements, Ira; Brianna Fryer, Sands; Itaya Jackson, Calvert; Kerna Crawford; Brookesmith.

ALL-REGION I

Tiffany Martinson, Meadow; Kia Morris, Lazbuddie; Krissy Shipman, Guthrie; Marianne Dobrovolny, Whitharral; Rachel Galley, McLean; Jana Gates, Channing; Misty Swartz, New Home; Laura Jo Via; Lazbuddie; Lindsey Weaks, Silvertown; Jessica Stapp, Groom; Stephanie Arnall, Follett.

Lazbuddie's record-breaking run to the state basketball playoffs earned two players state and regional honors.

Senior Kia Morris was a first-team selection on the 1998-99 Six-man Coaches Association all-state girls basketball team while sophomore Laura Jo Via joined Morris on the All-Region I team.

Morris and Via led Lazbuddie to a 23-6 record, a share of the District 11-1A regular-season title, and just its second playoff appearance since 1969. The 23 wins shattered the old school record of 16.

On a team that featured incredible balance, the 5-7 Morris averaged 11 points and seven rebounds per game and was

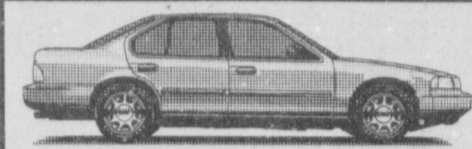
named MVP in 11-1A.

Despite routinely being at a size-disadvantage, Morris was also a solid post defender.

Via, a 5-9 post, led the Lady Longhorns in scoring with 14 points per game and added

seven rebounds. Via was equally adept working in the lane or stepping out for a 15-foot jumper.

All five Lady Longhorn starters average between 9 and 14 points.



Come Check
Our Rates!

**WE HAVE MONTHLY
AUTO INSURANCE**

Delton E. Wilhite & Associates
INSURANCE AND FINANCIAL SERVICES

1631 West American Blvd. • 272-3652 or 272-5988

¡PRESTAMOS!

LOANS!

¡PRESTAMOS!

\$100 to \$446

ALL APPLICATIONS ACCEPTED
Ask for Norma or Yolanda



Open:

Mon. thru Thurs.—9 am to 5 pm
Fri.—9 am to 6 pm

272-3673

Phone Applications Welcome

Continental Credit

206 South Main Street
Muleshoe, TX

GM

Goodwrench Service Plus

PROVIDING
**FREE PICKUP
AND DELIVERY
AT HOME OR
WORK IN THE
LOCAL AREA**

ALL GM VEHICLES

REPLACE FUEL FILTER

\$34.⁰⁰

**ELECTRIC WHEEL BALANCE
WITH TIRE ROTATION**

\$28.⁰⁰

A/C SYSTEM INSPECT AND PREFORMANCE TEST
(FREON IF NEEDED IS EXTRA)

\$28.⁰⁰

**FUEL INJECTION SERVICE
WITH FILTER**

\$63.⁰⁰

SPECIAL INCLUDES CLEAN THROTTLE PLATE
FLUSH FUEL INJECTORS AND TANK ADDITIVES

\$92.⁰⁰

TRANSMISSION FLUSH

SPECIAL INCLUIDES COMPLETE FLUSH OF TRANSMISSION
AND NEW FLUID AND NEW FILTER

\$99.⁰⁰

COOLING SYSTEM FLUSH

COMPLETE FLUSH OF COOLING SYSTEM AND
REPLACE WITH NEW COOLANT AND THERMOSTAT

\$77.⁰⁰

LUBE OIL FILTER

SPECIAL INCLUDES OIL FILTER 24 POINT MAINTANCE CHECK

\$22.⁰⁰
INCLDES TAX

SOME VEHICLES SLIGHTLY HIGHER EXPIRES 3/31/99

The Plus means better.

BENDER CHEVROLET OLDSMOBILE CADILLAC

2500 MABRY DRIVE • CLOVIS, NM • 763-4465



Caldwell — Leal

Dr. and Mrs. Philip B. Caldwell of Duncanville, Texas announce the engagement and approaching marriage of their daughter, Marcie Caldwell, to Abel Leal, son of Mr. and Mrs. Jesse Leal of Muleshoe. Marcie graduated from Duncanville High School in 1992. She earned a bachelor of science degree in family studies from Texas Tech University in 1996 and graduated from Methodist Hospital School of Nursing in Lubbock with a RN diploma in 1998. She is employed as a registered nurse in the Medical Intensive Care Unit at Covenant Medical Center of Lubbock. Abel graduated from New Mexico Military Institute in Roswell, N.M. in 1990 and from Texas Tech University with a bachelors degree in psychology in 1996. He is presently enrolled in his second year of law school at Texas Tech University and is scheduled to graduate in May of 2000. The couple will marry at 7 p.m. on Aug. 7 at the Evangelical Cedar Ridge Church in Duncanville. The reception will take place in Dallas at The Tower Club located in Thanksgiving Tower.

POLICE REPORT

MULESHOE PD

March 8—Gilberto Urquioi Simental, 33, public intoxication.
March 9 — Hilberto Herrera, 23, probation violation, fleeing, evading arrest.
March 11 — Raquel Contreras Posadas, 19, warrant for theft by check.
March 13— Jimmy Guana, 22, driving with a suspended license.
March 14 — Feliciano Marquez Chacon, 28, driving while intoxicated, second offense.
March 14 — Jesus Enrique M. Rios, 41, public intoxication.

Amarillo opera set in Panhandle

Amarillo Opera will prove that laughter and music make a powerful tonic when it stages the grand finale for its eleventh season. Gaetano Donizetti's classic *Elixir of Love* is set for Saturday, March 27 at 7:30 p.m. in the Amarillo Civic Center Auditorium, according to Elaine Damron, Amarillo Opera Outreach Representative. The full length opera, to be performed in English, is produced in association with the Amarillo College Opera Workshop.

As the show's title suggests, a remarkable "love potion" sold by a traveling salesman serves as the catalyst for romance, intrigue, and loads of fun in the light-hearted musical tale. Amarillo Opera founder/director Mila Gibson plans a nostalgic treat for Panhandle audiences by setting the story at a fictitious ranch just outside of Amarillo in the 1890's.

Tickets may be purchased at the Civic Center box office, phone (806) 378-3096, or through season membership in PRAYON by calling (806) 372-

Jennyslippers assist with auction

KENW-TV, the public television station serving Eastern New Mexico and West Texas, announces its 23rd annual Tele-Auction for June 7-12, and promises there will be something of interest for everyone! Whether you're looking for a cellular telephone or a vacation trip, you're sure to find something of interest to bid on during KENW-TV's auction. The annual Tele-Auction has become one of the most exciting and most watched televised events staged each year in Eastern New Mexico and West Texas. The auction has become a tradition among loyal viewers who buy approximately 2,000 items through a live televised bidding process.

Right now the success of the Auction depends on businesses and individuals joining in to provide the exciting merchandise, gift certificates, vacation packages, etc. that the bidders/viewers want to buy. The

Jennyslippers are serving as the local auction coordinator for Muleshoe and the surrounding area again this year, and they are busy soliciting merchandise. Persons interested in donating merchandise, gift certificates or making cash contributions can contact Ruby Green, president, at 272-3733, Nelda Merriott at 272-4071, Billie Downing at 272-5169 or any other member of the Jennyslippers.

The Jennyslippers can provide information on the Auction as well as answer any questions a prospective donor might have. KENW-TV hires one club or organization in each community to help with the Tele-Auction and the monies they raise stay in the local area to help with their on-going community service projects.

Items sold during the Auction range from designer clothing to fine jewelry to deluxe vacations. Heirloom quilts, pot-

tery, celebrity items and thousands of gift certificates from a variety of businesses will also be sold during the exciting six-day event.

The goal for this year's Auction is \$80,000. All money raised will be used to purchase and broadcast programming on KENW-TV.

B&B Agritech

GRASS SEED & DRILLING
 Custom Farming
 Aer-Way Plows
 Kem Bales (806) 272-5400
 Cell # (806) 946-7255
 Doug Bales (806) 272-4419
 P.O. Box 104 • Muleshoe, TX

Journal Classifieds 272-4536

TERMS: CASH, CHECK, MASTERCARD & VISA

ESTATE Auction
 Of Phil Chatlain
 257 Oklahoma, Portales, NM • Saturday, March 27 @ 10:30
 Real Estate Auction will be at 1:00
 10% down day of Auction; balance at closing
 We Have Been Commissioned By the Heir To Auction the Following.
 This is all nice, clean furniture.
 • APPLIANCES • HOUSEHOLD
 • COLLECTIBLES
James Priest & Associates W & J Auction
 OUR KNOWLEDGE IS YOUR SECURITY
 AUCTIONEERS: James Priest, Butch Priest, Gid Priest
 4205 South Prince Clovis, New Mexico
 Las Vegas NM (505) 454-8026 TX LIC. # 11077 & 9474 Clovis NM (505) 763-7311
 1-800-822-1243

OBITUARIES

JESSIE MAE ARNOLD

Jessie Mae Arnold, 86, of Muleshoe died Tuesday, March 16, 1999 at White Dove Nursing Center in Littlefield.

A church service was held Saturday at St. Matthew Baptist Church in Muleshoe with Rev. John Nunley officiating. Burial was held in Muleshoe Memorial Park Cemetery under the direction of McCarty Funeral Home of Littlefield.

Mrs. Arnold was born Nov. 21, 1912 in Groesbeck, Texas. She married P. D. Arnold on Dec. 8, 1938 in Groesbeck. He passed away April 14, 1980 in Muleshoe.

Mrs. Arnold was a homemaker. She moved to Muleshoe in 1945. She was also a faithful member of St. Matthew Church where she held many offices until her health began to fail.

She is survived by one sister, Agnes Chatman of Muleshoe.

She has a brother, John Ryan Isaackson, 2 1/2.

Grandparents are Mike and Pamela Miller of Muleshoe. Great grandparents are Irvin and Dorothy St. Clair of Muleshoe.

ist Church in Muleshoe with Rev. John Nunley officiating. Burial was held in Muleshoe Memorial Park Cemetery under the direction of McCarty Funeral Home of Littlefield.

Mrs. Arnold was born Nov. 21, 1912 in Groesbeck, Texas. She married P. D. Arnold on Dec. 8, 1938 in Groesbeck. He passed away April 14, 1980 in Muleshoe.

Mrs. Arnold was a homemaker. She moved to Muleshoe in 1945. She was also a faithful member of St. Matthew Church where she held many offices until her health began to fail.

She is survived by one sister, Agnes Chatman of Muleshoe.

March 14—George Franco, 35, public intoxication.

March 14 — Larry Darnell Richardson, 42, driving with a suspended license.

March 15 — Belinda Perez Garza, 45, driving with a suspended license.

BAILEY COUNTY SO
March 11 — Emzie Mitchell, 39, driving while intoxicated, second offense.

"Jesus Was a Vegetarian"— Oh, Really?

My sister-in-law is a vegetarian and a very fine lady. She's not militant about it. She cooks meat wonderfully. She has no beef with people who eat meat. She just doesn't.

Aside from an occasional strange look at a restaurant when you order a burger, cut the meat, what she does or does not put into her mouth has never been any problem for me or, for that mat-

Retired Bishop of Amarillo L.T. Matthiesen points out that as a Jew, Jesus ate the Passover meal which included lamb. The Lamb evidently ate lamb.

And he fed multitudes with loaves and fishes. I personally think he treated the fishes ethically, though being eaten may have been inconvenient for them. Of course, I tend to think they were made not only to swim. I think they were made to be eaten.

The PETA folks found some "scholar" who says that the "loaves and fishes" stories probably really just included loaves.

Give me enough time and I'll find you a scholar that says Jesus was a Gentile.

But that won't make it so. Two questions.

#1—Does everybody have a right to his or her opinion on whatever issue? I think so.

#2—Are everybody's opinions on various issues of equal value? Nope. No way.

It matters not how strong my opinion is, how long I've held it, how passionately I hold it, and how many tears I shed expounding it, if my opinion is that two plus two equals five, that opinion will never be as valuable as your opinion that two plus two is four. But if I steadfastly hold on to my foolishness, my checkbook will be as unbalanced as I am. Beliefs have consequences. But you can probably find some "authority" for even the wildest belief.

Be a vegetarian if you want to. Being a gullible idiot is optional. Medium rare. Pass the A-1.

Medium rare. Pass the A-1.

Medium rare. Pass the A-1.

Curtis Shelburne is minister of the 16th & D Church of Christ in Muleshoe.



Focus On Faith
 Curtis Shelburne

ter, any of my business. But PETA (People for the Ethical Treatment of Animals) would like to make what you put into your mouth their business.

I suppose that's why they are putting up a big billboard in Amarillo, on I-27 near the 45th St. exit, proclaiming, "Jesus Was a Vegetarian. Show respect for the rest of God's creatures—follow him."

Vegetarianism is a moral thing with them, you see.

But they have no moral qualms about making stupid statements.

I suppose if you want to pay for it you can erect a billboard anywhere in this state proclaiming that "Jesus Was a Rutabaga" or "Jesus Was a Martian Transvestite" but that wouldn't make it so. And I wouldn't wonder about Jesus. I'd wonder about you.

ENTRY DEADLINE IS APRIL 6, 1999 AT 5 P.M.

ENTER TODAY!
 The Muleshoe Journal's 5th Annual
Cutest Baby Contest

Enter any child *born in 1998* who is special to you—children, grandchildren, nieces, nephews, friends, etc.

Winner Will Receive a \$50 Savings Bond For Being Selected 1998's Cutest Baby!

Kaitlin Hope Foster
 1997 Cutest Baby Contest Winner

This year's contestants will appear in the April 11th issue of the Bailey County Journal. A panel of unbiased judges will pick the most attractive picture to be the 1998 Cutest Baby. All baby pictures will be printed. Babies need not be born in this area.

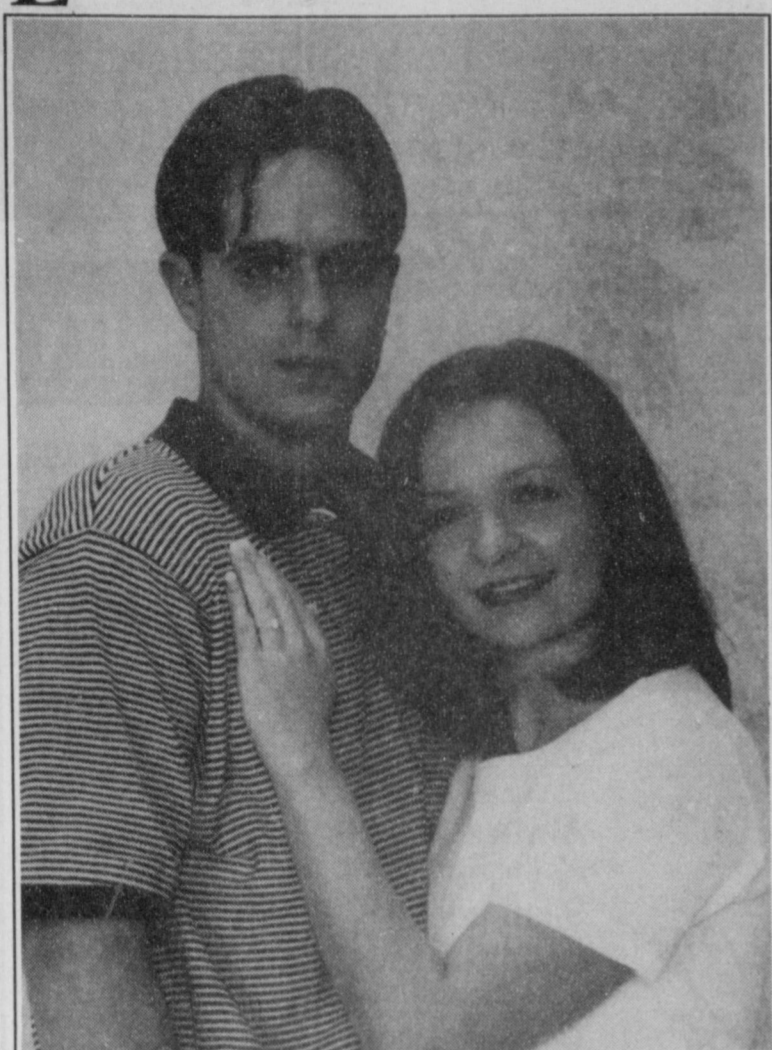
Bring your favorite child's photo along with \$10 to the Muleshoe Journal office at 304 W. 2nd St., Monday-Friday between 8:30 a.m. and 5 p.m. or mail the coupon below with your child's photo and \$10 to Cutest Baby 1998, c/o Muleshoe Journal, P.O. Box 449, Muleshoe, Texas 79347. You may pick up your baby's picture during office hours after Monday, April 12, 1999. Arrangements must be made to return photos by mail!

Please provide phone number or address (it will not be published) so that we may contact you if we need additional information.

Baby's Name: _____
 Date of Birth: _____
 Weight at Birth: _____
 Length at Birth: _____
 Place of Birth: _____
 Mom & Dad's Name: _____
 Grandparent's Name: _____

ENTRY DEADLINE IS APRIL 6, 1999 AT 5 P.M.

ENGAGEMENT



Holt — Kendall

Mr. and Mrs. Cecil Holt of Muleshoe announce the engagement and approaching marriage of their daughter Christy Lyn Holt to Michael Kendall, son of Sherri Kendall-Johnson of Lake Wylie, South Carolina. Christy is the granddaughter of Mrs. Paul Campbell and Michael is the grandson of Alma Turner and the late Doyle Turner. Christy is a Muleshoe High School graduate and is currently a senior at Texas Tech University where she is studying human development. She is employed by Hydromatic Irrigation. Michael is a graduate of Klein Oak High School in Spring, Texas. He is employed by Global Marine Oil Co. of Houston. The couple will marry in late spring at the First Baptist Church of Muleshoe.

HOSPITAL ADMISSIONS

Muleshoe Area Medical Center reported admitting the following patients:

March 11 — Juana Alarcon, Jessie Arnold, Marta Arreola, Jefferson Cook, Doris Meeks, Maria Olivas, Carlos Salas, Jose Salas Jr., Charles Smith, Ellis Sterling.

March 12 — Gumercindo Aguirre, Jessie Arnold, Marta Arreola, R. Bennett III, Jefferson Cook, Joshua Lopez, James Martin, Maria Olivas, Jose Salas Jr., Charles Smith, Ellis Sterling, Brooklyn Beall, Perla Nava.

March 13 — Gumercindo Aguirre, Marivel Barron, Brooklyn Beall, R. Bennett III, Louisa Gonzales, Sharla Hart, Clara Jones, Maria Meza, Baby Montiel, Jennifer Montiel, Baby Nava, Perla Nava, Maria Olivas, Ramon Posada, Baby Sanchez, Linda Sanchez, Maria Sanchez, Ellis Sterling, Josie Toscano.

March 14 — Gumercindo

Aguirre, Marivel Barron, Brooklyn Beall, Louisa Gonzales, Sharla Hart, Clara Jones, Maria Meza, Baby Montiel, Jennifer Montiel, Baby Nava, Perla Nava, Maria Olivas, Baby Sanchez, Linda Sanchez, Maria Sanchez, Ellis Sterling, Josie Toscano.

March 15 — Marivel Barron, Louisa Gonzales, Clara Jones, Maria Meza, Baby Montiel, Jennifer Montiel, Baby Nava, Perla

Nava, Maria Olivas, Baby Sanchez, Linda Sanchez, Maria Sanchez, Ellis Sterling.

March 16 — Marivel Barron, Clara Jones, Baby Mejias, Erica Mejias, Maria Meza, Baby Montiel, Jennifer Montiel, Elizabeth Moran, Adam Rodriguez, Linda Sanchez, Ellis Sterling.

March 17 — Ivana Barron, Marivel Barron, EA Bass, Ett Evans, Clara Jones, Baby Mejias,

Erica Mejias, Maria Meza, Adam Rodriguez, Rosa Ruiz, Linda Sanchez, Ellis Sterling, Miguel Acevedo, Prima Barron.

March 18 — Miguel Acevedo, Ivana Barron, Marivel Barron, Prima Barron, Ett Evans, Clara Jones, Baby Navarez, Elizabeth Navarez, Dennis New, Adam Rodriguez, Linda Sanchez, Ellis Sterling, Teresa Vega.

NURSING HOME NEWS

Bro. David McIntire, Nancy Kidd and Nicole Edwards directed our devotional/reflection time Thursday morning. Thursday afternoon Karen Cook won the Oscar for the most impressive portrayal as Missy in Gone With the Wind. Ruth Kitchens as Scarlett and Terri Brown as Rhett Butler were close runners up. Pat Watson intrigued us with her music, singing and poems

Friday morning. The Snitker Brothers entertained us with their guitar and mandolin and their singing Friday afternoon. Melvin and Wanda Griffin directed the bingo game Saturday afternoon. J.C. Shanks came to give shaves and haircuts to the men Saturday morning.

The Muleshoe singers came Sunday for a singing service. The youth of the Mennonite

Church of Farwell came to visit and sing to the residents Friday evening. Sharon Dale and Bill and Yaunda Martin visited Lora Dale Friday. Nettie Quesenberry was visited Friday by her daughter and son-in-law from Littlefield, and her son Bobby from San Antonio. Tuesday afternoon, the ladies got their hair done at the beauty shop. Among those helping were Pat Watson, Anita Johnson, Lisa Johnson, Misty Johnson, Shannon Chapman, Trini Benham and the activity staff.

At this writing Elzia Darland is in a Lubbock hospital. Please remember her in your prayers. Guy Kendall's son and daughter-in-law from Houston, Mr. and Mrs. Terry Kendall, were visiting this week. Guy, Elsie, his son, and his son-in-law all had lunch on Tuesday.

Teenagers are hormones with feet.
—Marsha Doble

REBEKAH NEWS

Acting Noble Grand Berni Marts called Rebekah Lodge #114 to order at 7:30 p.m.

The opening prayer was given by Acting Chaplain Mary Ann Ramirez. Patsy Chance called the role with 9 members answering. The minutes of the previous meeting were read and approved.

Thursie Reid, Ina Wilemon and Mary Ann Ramirez draped the Charter for Brother Waymon H. Little, he was a past Grand

Master 1992 of the Grand Lodge I.O.O.F. of Texas.

It was reported that Brother Les Lambert's sister died in Lubbock this past week. Ina Wilemon reported that she received a good report from her doctor and she will be getting new glasses soon. Sylvia Lira reported that she has a 5 month old niece that is waiting for a liver transplant in Lubbock.

Tickets for the raffle on May 6 are on sale for a donation of

one dollar each or six for five dollars. Each member is asked to make an item to go with the quilt, which will be the main item of this raffle.

We will be sponsoring skating April 9. With no further business the lodge was closed by Vice Grand Bonita Rainey with the Rebekah Creed, 2 verses of the song an Evening Prayer, and refreshments which were served by Thursie Reid, Sylvia Lira and Joyline Costen.

Journal Classifieds

STOP & SHOP

Deadlines are 5 p.m. Monday and Thursday

Call 272-4536

Deadlines are 5 p.m. Monday and Thursday

FOR SALE

5x5 Aircondition Unit with 5 hp. For more information call (806) 272-5140 or (806) 272-6799

FOR RENT

Ruidoso Condo 3 Bedroom 3 Bath Sleeps 8 Call Debbie at (806) 285-3053

Storage Rooms Available

\$25-\$30 Call Ted Barnhill 272-4903

HELP WANTED

Leal's Restaurant is now taking applications for wait staff, full or part-time. Apply in person. ttc

PANTHER INDUSTRIES, INC. a solid 75-year old Fort Worth, TX manufacturer needs responsible people in the Muleshoe area. Regardless of training call RD Richardson Dept. BF - 79347, (800) 433-7664, fax (817) 831-0028 or write P.O. Box 961001 Fort Worth, TX 76161-0001. 12s-11ch

AVON Representatives needed in this area! For an exciting opportunity, Call Misty 272-3713. ttc

SALESMAN

For farm equipment dealer. Experience preferred, but not a must. Excellent opportunity for the right individual. Apply at C&H Equipment 272-5514

HOMES

HADLEY HOMES, INC.

Family Owned Raymond & Sherry Hadley Se Habla Espanol (505) 763-1788 or 1-888-316-6111

4100 Mabry Drive Clovis, NM Fax (505) 763-0698 Sales Reps: Bowie Howard & Anna Loy

HUNTING LEASE

Three responsible hunters are looking for Mule Deer lease. Please call Mark at (361) 758-2800. 9s-stc

Back the Mules and Lady Mules!

REAL ESTATE

James F. Hayes & Co.

AGRICULTURAL REAL ESTATE SERVICES

• 320 Acres with exceptional 3 or 4 bedroom home. Large barn, 2 center pivot systems, great to above farm. HOUSE, BARN & FENCE CAN BE SOLD SEPARATELY. • 181 Acres, Bailey County. Center pivot, 2 wells, fronts U.S. Highway 84. Joins 320 acre tract above.

• 160 acres of Bailey County on Pavement. • 160 Acres - Southeastern Harlan County. Late Model Sprinkler, Good water, very good, small house and barn.

• 880 Acres in Parmer County North of Clays Corner. Good soil, 5 wells. Good 3 bedroom 2 bath home. * In cooperation with a New Mexico Broker

Vic Coker, Agent

310 Main St. Suite 103 Muleshoe Office 272-3100 Home 965-2468 WHEN LAND INVOLVES COWS AND PLOWS

15 words for \$4.50 Additional runs of same ad \$4.15 Call Mari (806) 272-4536

AUCTION

Friday, March 26, 1999 - - - - - SALE TIME 10 a.m. Located: Muleshoe, Texas 506 West American Blvd (US Hwy 84-70) Formerly James Roy Meat Market - - - Seller

- VEHICLES
- TRAILER
- WALK-IN COOLERS
- REFRIGERATED AND DRY CASES
- MEAT EQUIPMENT
- HEALTH AND EXERCISE EQUIPMENT
- STORE FIXTURES
- HOUSEHOLD
- OFFICE EQUIPMENT

TERMS: CASH

James G. Cruce Plainview, TX (806) 296-5050 Lic # 6704

Cruce & Fletcher Auctioneers and Real Estate Brokers PO BOX 609 - WOLFORTH, LUBBOCK COUNTY, TEXAS 79852

Bobby Fletcher Wolforth, TX (806) 866-4201 Lic # 7131

REAL ESTATE

2-1-1 home, floor furnace, fenced yd., storage building. Call 272-4084. 8s-9tpd

STRAYED

Six (6) 350-550 # mixed heifers and steers. Milliron seven brand on right hip; notch in tip of right or left ear. Missing since Feb. 19 in the Stegall Area. REWARD FOR RECOVERY! Call (806) 946-3617.

VEHICLES

1997 GMC Z71, 3 door, white with red interior, 24,000 miles. Excellent condition! Call (505) 762-6881. 12s-2tpd

Journal Classifieds (806) 272-4536

VEHICLES

1987 Ford Bronco II. Has a.c., cruise, excellent condition. \$2,500 call 272-3951. ttc

1995 Ford F250 XLT, 4x4 regular cab, HD Off Road, AT, AC, 55K miles, ext. warranty. Must see, call 946-3432. ttc

TEAM ROPING

Sunday, March 28 Dusty Rhodes Arena Muleshoe Enter 12:30 p.m. Rope at 1 p.m. #10 4 for \$40 #8 4 for \$40 #7 4 for \$40 #6 4 for \$40 For More Information: Thurman Myers 272-3598



Nieman Realty



116 E. Ave. C • George Nieman, Broker • 272-5285 or 272-5286

RICHLAND HILLS — PARK RIDGE

- We have several single and multi-family lots in this area!!!!
- NICE 3 bdrm. 2 bath w/3 car detached garage/workshop-storage, Elec. Heat Pump, built-ins, FP, 2,380' lv. area, auto. spklr., fenced yd., MORE!!! RH-2
- NICE 3-2-2 Brick, Cent. A&H, built-ins, FP, approx. 2100' lv. area, storage, fenced yd., MORE!!! RH-1
- HIGHLAND - HARVEY AREA
- 3-1-1 carport Home, wall furnace heat, evap. air, large yd., MORE!!! \$20's!!!!
- 3-2-2 Brick, Cent. A&H, built-ins, gas log FP, fenced yd., stor. bldg., MORE!!! Price Reduced!! HL-5
- 2-1-1 carport home, wall furnace heat, evap. air, DW, 5 fans, cov. patio, gas grill, fenced yd., MAKE OFFER!!!
- 3-2-2 Brick Home, corner lot, wall furnace heat, Cent. Evap. Air, fenced yd., stor. bldgs., MORE!!! HL-4
- NICE 2-2-1 + 1 Carport Brick, 2,000 + living area, Cent. A&H, built-ins, fans, den w/WB stove, enclosed heated pool, corner lot, fenced yd., MORE!!! \$80's!!! HL-1
- 2-1-1 Home, Cent. A&H, built-ins, corner lot!!! \$23,500!! HV-1

LENAU - COUNTRY CLUB AREA

- PRICE REDUCED 2-1-1 Carport Home, wall furnace, nice carpet, storm shelter, stor. bldg., fenced yd. \$19K!! CC-3
- 2-1-1 Home, floor furnace, win. ref. air, fenced yd, stor. bldg., \$18,500!! L-1
- 3-2-2 Carport Mobile Home, Cent. A&H, built-ins, nice yd., pecan & fruit trees!!! \$16K!!
- COMMERCIAL
- Six Unit Apartment Complex (4-2 bdrm. & 2-1 bdrm. units)!!!
- 100' x 140' tract, approx. 7,400' business & warehouse building on American Blvd., PRICED TO SELL!!!
- Established Business: Land, Bldg. & Equip., \$75K!!
- 56' x 140' tract, approx. 4700' bldg., \$35K!!
- NICE R.V. STORAGE, 14' X 40' metal bldg. 12' doors, 50X140 corner lot!
- SNACK SHACK - Lot, Buildings, furniture & fixtures!!! HIGH SCHOOL
- Nice 3-2-2 Brick, built-ins, heat pump, 5 fans, nice carpet, stor. bldg., fenced yd., MORE!!! \$60's!!! HS-3

- 2-2-2 BRICK, Cent. A&H, built-ins, corner lot, approx. 1800' lv. area!!! PRICE REDUCED!! MAKE OFFER!!! HS-4
- 3-1/2-1 Home on corner lot, fenced yd., storage bldg., MORE!!! \$20's!!! HS-9
- NEWLY REMODELED 3-1-1 Home, cent. A & H, new carpet & vinyl, fenced yd., MORE!!! \$30's!!! HS-2
- VERY NICE 3-1-1 Brick, Heat pump, DW, nice carpets, fenced yd., MORE!!! \$30's!!! HS-1
- NICE 2-1-1 Brick, Heat Pump, nice carpets, well insulated, storm windows & doors. \$30's!!! HS-6
- VERY NICE 3-1-1 Home, nice carpets and vinyl, heat pump, fans, fenced yd., stor. bldgs., MORE!!! \$30's!!! HS-5
- PRICE REDUCED!!! 3-2-1 Brick, Heat Pump, built-ins, fans, screened porch!!! \$30's!!! HS-7
- JUST LISTED- 2-1-2 CP Home, corner lot, metal siding, storm win. & doors, stor. bldg. \$20K!!! HS-8
- 1-14' x 60' and 1-12' x 40' Mobile Home on a 98' x 75' lot, both have cent. heat, evap. air, stove, & ref., cov. patios, fenced yd.!!!
- 3-2-2 Home, corner lot, floor furnace heat, Cent. Air, auto. spklr., stor. bldg., fenced yd., MORE!!! \$50's!!! HS-10
- PRICE REDUCED!!! 3-1-1 Brick, Cent. heat, evap. air, fans, fenced yd. HS-12

RURAL

- PRICE REDUCED- NICE 3-2 home, 40 acre tract, Geo. Heat Pump, built-ins, 5' irrig. well, Hi-Pres. lines, sprinkler pipe, barn, pens, tractor & equip!!! \$69K!!!
- W. of SUDAN-NICE 3-3-2 Brick Home, 5 acre tract on Hwy. 298, Cent. Air & Heat, built-ins, large Quonset Barn, MORE!!! \$95K!!!
- 5 Acre tract on pavement close to town!
- Approx. 108 acres on Hwy. 70, approx. 2100' office area, 16,900' of commercial bldg. w/loading dock, 3,400' warehouse!!! 2,800' runway!!!
- LONGVIEW - GOOD Dryland Labor, fully allotted, planted in wheat. \$225.00 per acre. 152.8 acres, 15 hp & 20 hp. sub., Lockwood spklr., 85 acres seed brasses & 35 acres wheat. \$475.00 per acre.
- 160 acres, 2 bdrm. home, garage, storage, barn, 8" irrig. well!!!! \$42K!!!

NATIONAL BRANDS Spring Extravaganza

\$20,000 Sweepstakes Giveaway!

- Grand Prize — \$10,000 Cash
- 2nd Prize — 51" Panasonic Big Screen TV & \$500 Cash
- 3rd Prize — 5 Individual \$1,000 Cash Awards

SEE YOUR PARTICIPATING AFFILIATED FOODS MEMBER STORE FOR DETAILS.

PRICES EFFECTIVE MARCH 17-23, 1999

MEAT

Pilgrim's Pride Grade A Whole Fryerlb.	49¢
Preferred Trim Boneless Sirloin Cut Pork Chopslb.	\$1.89
Preferred Trim Boneless Beef Arm Roastlb.	\$1.49
Preferred Trim Boneless Beef Arm Charcoal Steaklb.	\$1.69
Preferred Trim Beef Short Ribslb.	\$1.89
Preferred Trim Boneless Beef Top Blade Steaklb.	\$1.99
Fresh Ground Chucklb.	\$1.79
Jimmy Dean-All Varieties Breakfast Sausage1 lb. roll	\$1.69
Jimmy Dean Regular or Hot Breakfast Sausage2 lb. roll	\$2.99
Hormel Reg., Low Salt or Mesquite Black Label Bacon1 lb. pkg	\$1.89
Hormel 10 oz. Patties or 12 oz. Links Little Sizzlersyour choice	89¢
Hormel Sandwich Maker Chopped Ham5 lb. loaf	\$5.49
Decker Regular or Thick Sliced Meat Bologna12 oz. pkg	89¢
Decker Chopped Ham10 oz. pkg	\$1.29
Farm Raised Breaded Catfish Nuggetslb.	\$1.59
Decker Ranch Brand Smoked Sausage12 oz. pkg	99¢
Advance Breaded Steak Fingers or Patties12 oz. pkg	\$1.39
Wright Brand Sliced Ham1 lb. pkg	\$1.89
Oscar Mayer Meat Cotto Salami or Red Rind Meat Bologna1 lb. pkg	\$1.19
Oscar Mayer Roasted White Turkey, Ham & Cheese Loaf or Chopped Ham1 lb. pkg	\$2.49
Oscar Mayer Cooked Ham1 lb. pkg	\$3.49
Oscar Mayer Link Sausage Little Smokies1 lb. pkg	\$2.19
Oscar Mayer All Varieties Meat Wieners1 lb. pkgs	2/\$3
Oscar Mayer All Varieties Lean Ham6 oz. pkg	\$1.39
Louis Rich All Varieties Variety Pack9-12 oz. pkg	\$1.99
Louis Rich Smoked or Oven Roasted Breast of Turkey Portionlb.	\$2.99
Oscar Mayer Combo Pack1 lb. pkg	\$2.49

Betty Crocker Assorted Pop•Secret Popcorn3 ct. pack	2/\$3
ABC's & 123/Sharks/ Dinosaurs/Ninja Turtles Chef Boyardee Kid's Plain Pastas15 oz. cans	2/99¢
Select Group Peanut Butter Peter Pan17.6-18 oz. jars	2/\$3
Select Group Bugles Snacks6 oz. pkg	99¢

Each Week you may purchase the 5 piece plate setting for only \$3.99 with each \$10.00 minimum purchase.
Affiliated Foods, Inc. presents Chrome Stainless Steel Flatware!

At participating stores only.

PRODUCE

Golden Ripe Bananaslb.	4/\$1
Buy 1 lb. pkg @ \$1.49	
Dole Classic Iceberg Saladget one	FREE
Fresh Crisp Celerystalks	3/\$1
U.S. No. 1 Russet Potatoes5 lb. bag	79¢
Extra Large Bell Peppers3/\$1	
Fresh Tangy Lemons5/\$1	
New Crop Yellow Onionslb.	39¢
Thompson Seedless Grapeslb.	\$1.29
California Hass Avocadoseach	39¢
Asstd. 100 oz. Liquid Ultra or 92-94 oz. Assorted Powder Tide Ultra 2your choice	\$5.69
General Mills • 15 oz. Apple Cinnamon • 14.25 oz. Frosted • 14 oz. Honey Nut • 15 oz. Original • 11.25 oz. Multi-Grain Cheerios Cerealyour choice	2/\$4
Assorted Varieties Spam®	
Luncheon Meat12 oz. cans	2/\$3
Ocean Spray Assorted Wellfleet Farms Cranberry Drinks64 oz. btl	\$2.99
Select Group Ocean Spray Cranberry Blends64 oz. btls	2/\$5
Select Group with Beans Hormel Chili15 oz. can	79¢
For Boys or Girls-Sizes 1-6 Pampers Baby Dry Diapers22-40 ct. pkg	\$5.99
Original Ranch Style Beans15 oz. cans	2/79¢
Select Group Rot Tomatoes10 oz. cans	2/\$1
Heinz Squeeze Tomato Ketchup28 oz. btl	99¢
FAC Colombian Supreme, Regular, French Roast or Gourmet Supreme Folgers Coffee34.5-39 oz. can	\$5.99
Betty Crocker Assorted Fruit Shapes, Roll-Ups or Fruit by the Foot4.5-9 oz. pkg	\$1.69
Assorted Varieties Chex Mix7.75-8 oz. pkg	\$1.19
Culligan Drinking Watergal. jugs	2/\$1
Select Group Automatic Dish Cascade Detergent45-50 oz. box/btl	\$2.29
Hunt's Assorted BBQ Sauce18 oz. btl	79¢
Pretty Boy Wild Bird Seed10 lb. bag	\$1.99
Regular Only Clorox Bleachgallon	99¢
All Types Pepsi-Cola6 pk.-12 oz. cans	\$1.18
All Types-3 Liter Buy One for \$1.99 Pepsi-Colaget one	FREE
Refreshing & Pure Aquafina6 pk.-24 oz.	\$1.99

FROZEN & DAIRY

Price's 14 oz. Regular or 13 oz. Light Pimiento Cheese Spreadyour choice	\$2.39
Meat or Beef Decker Corn Dogs1 lb. pkg	\$1.69
Pepperoni or Deluxe 2 Pack MaMa Rosa's Pizza48 oz. pkg	\$3.99
Oscar Mayer All Varieties Fun Pack Lunchables4.5-13.2 oz. pkg	\$1.89
Colby, Cheddar or Colby Jack Kraft Halfmoon Longhorn Cheese ..10 oz. pkgs	2/\$4
Regular or Light Kraft Velveeta32 oz. boxes	\$3.99
Assorted Kraft Cheez Whiz16 oz. jar	\$2.99
Select Group Light Kraft Singles12 oz. pkgs	2/\$4
Regular or 1/3 Less Fat Kraft Philadelphia Cream Cheese8 oz. pkg	99¢
Regular Only Kraft Ched./Mont. Jack Cubes/ Select Group Regular or Finely Shredded Cheese8 oz. pkg	\$1.99
Regular, Churn Style or Light Country Crock Shedd's Spread48 oz. tubs	2/\$3
Citrus or Mango Tampico Punch128 oz. jug	99¢
Regular, Mini or With Onion Ore-Ida Tater Tots ..28-32 oz. pkg	\$1.99
Ore-Ida Potato Crispers!20 oz. pkg	\$1.99
Assorted Varieties Banquet Pot Pies ..7 oz. boxes	2/\$1
Select Group Select or Value Banquet Meals6.7-11 oz. pkg	99¢
Assorted Mexican Patio Dinners12-13 oz. box	99¢
Assorted Patio Burritos5 oz. pkgs	5/\$2
Plains Orange Juicegal. jug	\$2.99
Plains Choc-O-Cremegal. jug	\$1.49
Assorted Varieties 40 Use Downy Ultra40 oz. btl	\$3.99
Fabric Softener Downy Ultra Refill40 oz. ctn	\$3.49
Downy Auto. Ultra Dosing Balleach	99¢
Assorted Varieties Wesson Oil48 oz. btl	\$1.99
Select Group Potato Crisps Pringles6-7 oz. can	99¢
16 oz. Original, Soap Scum Remover or 32 oz. Fresh Shower Tilex Cleaneryour choice	2/\$4
Select Varieties Ocean Spray Grapefruit Juice64 oz. btl	\$2.99
Van Camp's Regular or Smoked Ham Pork and Beans ..15 oz. can	2/79¢
Reg., Lemon Fresh or Rain Clean Pinesol28-32 oz. btl	2/\$4
Reg., Lemon Fresh or Rain Clean Clorox Clean-Up ...28-32 oz. btl	2/\$4
Oil or Water Chunk Light Star•Kist Tuna6 oz. cans	2/\$1
Outdoor Fresh or Gentle Breeze Bounce Sheets40 ct. box	\$1.99
Assorted Varieties CapriSun Drinks10 ct. pkg	\$1.99

HEALTH & BEAUTY

Select Group Facial Puffs Tissue\$4-175 ct. box	\$1.19
Select Group Angle or Straight Crest Toothbrushesea.	2/\$3
Select Group Crest Toothpaste6.4 oz. tube	\$1.69
Fresh Weave Always Pantliners18 ct.	99¢
Select Group 36 ct. Long Pantliner or Assorted Always Maxi Pads14-24 ct.	\$2.99
Pro-V Pantene Assorted Shampoo or Conditioner10.2-13 oz. btl	\$2.99
Regular Original or Super Tampax Tampons20 ct. box	\$2.99

CLIP & SAVE

Buy Pasta, Get Spaghetti Sauce
FREE!

24 oz. Elbro Roni/Long/Thin Spaghetti
American Beauty Pasta

Buy One Package at Regular Price, Get One 26-26.5 oz. Assorted HUNT'S SPAGHETTI SAUCE Free First 4 Thereafter Regular Price. Only at Affiliated Foods Member Stores. Coupon Effective Through Dates of Ad.

CLIP & SAVE

Buy RTS Frosting, Get Cake Mix
FREE!

Assorted 16-16.6 oz.
Duncan Hines RTS Frosting

Buy One Can at Regular Price, Get One 18.25 oz. Assorted MOIST DELUXE CAKE MIX Free First 4 Thereafter Regular Price. Only at Affiliated Foods Member Stores. Coupon Effective Through Dates of Ad. Not Subject to doubling.

Select Group Grated Kraft Parmesan8 oz. shaker	\$3.39
Select Group • 15 oz. Fruit & Fibre • 24 oz. Grapenuts • 13.5 oz. Blueberry Morning • 13 oz. Cranberry Almond Crunch • 15 oz. Banana Nut Crunch • 16 oz. Great Grains Raisin Date Post Cerealsmix or match	2/\$5
Kraft Assorted Mac & Cheese Deluxe Dinners14 oz. box	\$1.79
Assorted Stuffing Mix Stove Top6 oz. box	99¢
Kraft Assorted Dinners Velveeta Pasta & Cheese9.4-12 oz. box	\$1.79
Assorted Dessert Topping Cool Whip8 oz. tub	99¢
Kraft Assorted Mac and Cheese Dinners5.5-7.25 oz. boxes	5/\$3
Taco Bell Regular or Fat Free Refried Beans16 oz. cans	2/\$1
Kraft Regular or Smoked Barbecue Sauce28 oz. btls	2/\$3
Kraft Regular or Light Miracle Whip32 oz. jar	\$2.19
Regular or Light Kraft Mayo32 oz. jar	\$2.49
Select Varieties Kraft Puddings Handi-Snacks3.5 oz.-4 pk	99¢
Select Group Kraft Reg./ Free/Light Done Right Salad Dressings16 oz. btl	\$1.99
Select Varieties Reg. or Sugar Free Jell-O Gelatin3.3 oz. boxes	3/99¢
Select Varieties Reg./Sugar Free Jell-O Pudding1-3.9 oz. box	69¢
White or Ultra White Charmin Bath Tissue4 roll pkg	99¢
Betty Crocker 6.5 oz. Blueberry Muffin or 10.25 oz. Brownie Pouch Mixyour choice	2/\$1

GRANADA GOURMET COLLECTION

5-Piece Place Setting **\$3.99**

With Two Patterns To Choose From

with each \$10.00 purchase
Reg. Price \$6.99

We are giving you the opportunity to purchase a flatware set to suit your household at a fraction of the regular cost! Each week different completer pieces will be featured at a special feature price with coupon so you may round out your flatware collection. Lifetime Warranty, High Quality Shine, Made in Spain, Dishwasher Safe.

REDEEM YOUR VALUABLE COUPONS! Anytime Before March 27, 1999

WESTERN MONEY
UNION TRANSFERSM
"The fastest way to send money"

**Lowe's
MARKETPLACE**

401 W. American Blvd.
Muleshoe 272-4585

Pay-n-Save

515 W.
American Blvd.

Muleshoe
272-4406

WE RESERVE THE RIGHT
TO LIMIT QUANTITIES
IN TEXAS

WEEK 7
**4 PIECE ICED TEA
SPOONS**
\$4.99

WITH \$3.00 OFF
COUPON.
REG. PRICE \$7.99

W/ \$10.00 PURCHASE
ONLY AT PARTICIPATING AFFILIATED FOODS
MEMBER STORES. ONE COUPON PER
COMPLETE PIECE.