

PAGE ONE

A QUICK READ OF THE NEWS

Have A Safe & Happy 4th of July!



The land of the free and the home of the brave.
-Epithet of the United States
Francis Scott Key (1931)



Layne Kemp during an at bat last weekend at the North-South all-star game at The Ballpark in Arlington.

Kemp singles in 4-1 loss

Layne Kemp of Muleshoe started and went 1 for 2 in the Texas Baseball Coaches Association North/South Class 3A-1A all-star game June 28 at The Ballpark in Arlington.

Playing third base for the first four innings of the North's 4-1 loss, Kemp singled to right in his second at bat. He also recorded two put outs in the field.

Kemp called it the "greatest three days of my life."

Ten family members, Muleshoe baseball coach Brad Hill and several friends attended the game.

Bula post office closed

The Bula Post Office closed June 29 because the building it was in is being sold, according to postal officials.

The rural office, which was located on Highway 54, maintains 30 post office boxes for area residents and is run by a private contractor.

Mail service for Bula area residents will be absorbed by other area post offices, according to Don Jones, manager of Post office operations in Lubbock.

For more information about P.O. boxes or mail routes, contact Littlefield Postmaster Sandy Dinges at (806) 385-4030.

LOCAL WEATHER

	High	low	Pre.
Tuesday	102	69	—
Wednesday	99	67	—
Total to date	3.30 inches		

EXTENDED FORECAST

Partly cloudy throughout the week with high's in the upper 90s and low's in the upper 60s.

It's Moore than a job for Muleshoe school superintendent

By RICK WHITE
Managing Editor

Bill Moore had to make his first decision as Muleshoe school superintendent before he even reached the office.

"It was a snowy morning and I had to decide if we were going to have school or not," Moore remembers of his first day in January of 1990. "I was up all night because I was nervous anyway, and then I had to

start off by making half of the people in Muleshoe mad."

Moore has been making the right decisions ever since while building a reputation as one of the most highly-respected and sought-after superintendents in the state.

Earlier this week, Moore was named Region 17 Superintendent of the Year. He earned the same honor in 1994.

Region 17 is comprised of

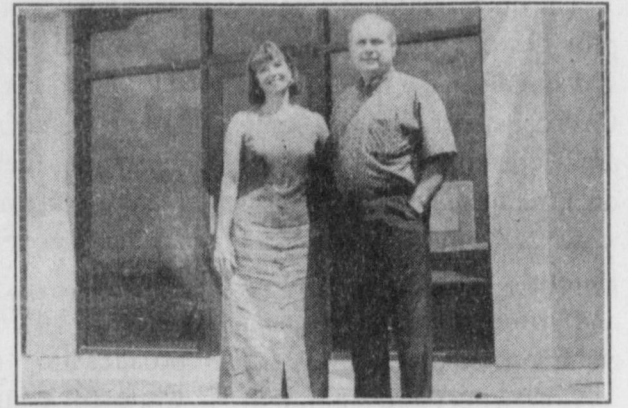
62 school districts in the South Plains.

"I'm flattered anytime I receive an honor," Moore said.

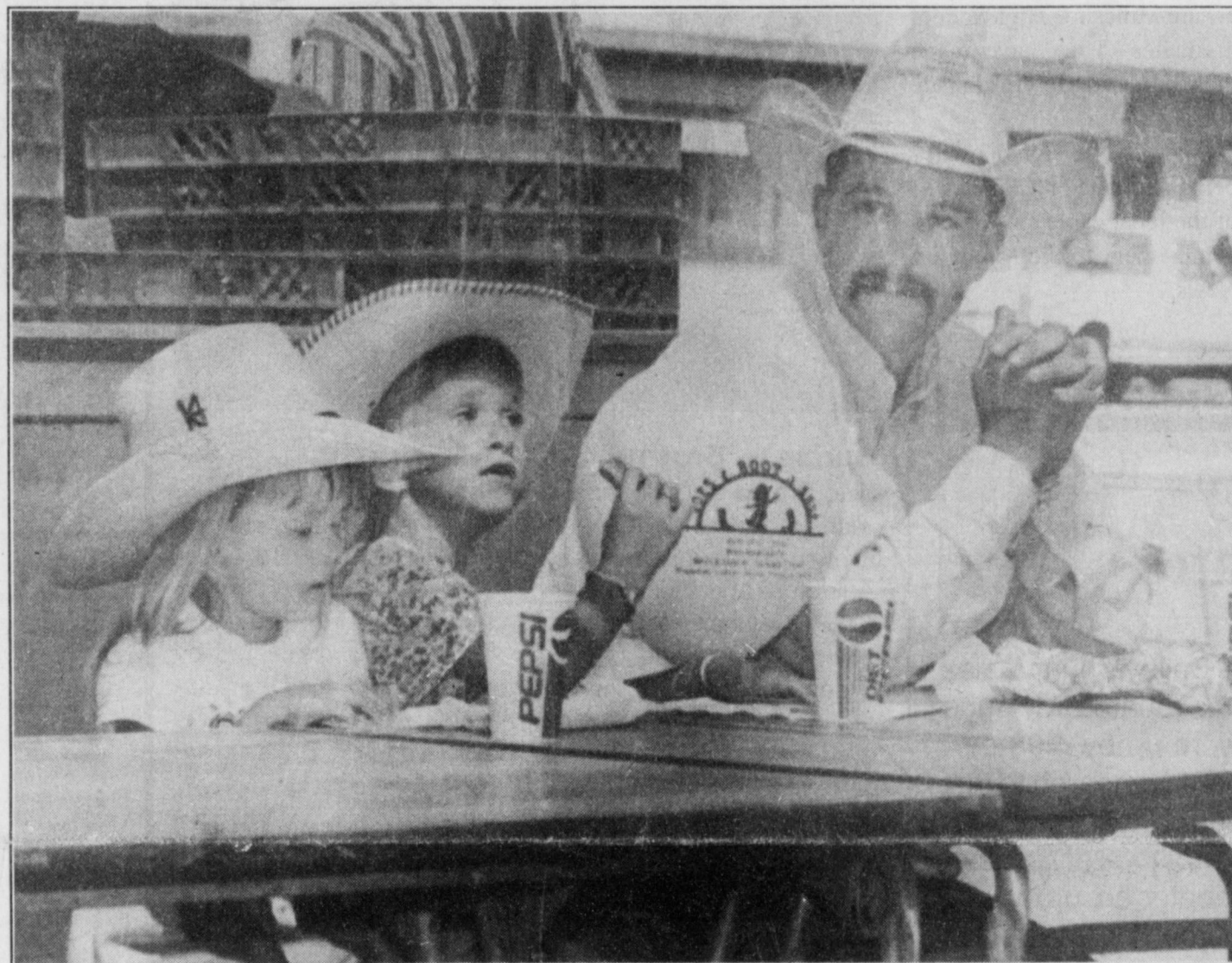
The superintendent was nominated by the Muleshoe Independent School District Board of Trustees.

"We are so pleased that he earned the award," said MISD board president Cindy Purdy.

see MOORE on page 2



MISD board president Cindy Purdy and superintendent Bill Moore



Lunch date with dad

Kevin Harris of Muleshoe and his two daughters, Kelbi (left) and Morgan enjoy lunch Thursday during the 15th annual Joe's Boot Shop Boot Tent Sale.

Muleshoe native enjoys living rustic lifestyle

Dee Buckner slaves over a cast-iron skillet, scrambling eggs over an open mesquite fire.

His well-tanned face is peppered with beads of sweat as he prepares a chuckwagon-style breakfast Thursday morning in the Mule Lot as part of the 15th annual Joe's Boot Shop Boot Tent Sale, which runs through Saturday.

"It's a working vacation," said Buckner, a Muleshoe native and saddlemaker by trade. "It's a sideline to make a little extra money and it gives me a chance to get out and meet

people and maybe sell a few saddles."

By his side are his family, the former Donna Parish of Muleshoe, and their three pre-teen children. His parents, Buddy and Jackie Buckner of Muleshoe, are also helping out this week.

"It really helps bring the family together," said Donna Buckner, in charge of mixing the biscuits.

The hearty breakfast features eggs, sausage, biscuits and gravy. Buckner said he cooks

see CHUCKWAGON on page 2



Dee Buckner scrambling eggs Thursday

Postal Service puts off increase

WASHINGTON, D.C. — The U.S. Postal Service's Board Chairman Sam Winters announced Tuesday there will be no postage rate increase in 1998. The Board's action extends the current rates four full years.

Winters said the Board has set Jan. 10, 1999, to implement new rates.

At that time, the price of a First-Class letter will increase one penny, to 33 cents.

"This penny increase is the right amount at the right time," said Winters at the monthly meeting of the Postal Board of Governors. Overall, the increase across all classes of mail will average 2.9 percent, the smallest in postal history.

The proposal to raise rates, Winters said, always has been about maintaining a solid, strong universal Postal Service.

Winters cited a greater need for automated and robotic technology, improvements in customer and postal information systems, and the need to modernize local post offices for America.

The Board, according to Winters, gave serious consideration to a 1998 implementation date, but several factors persuaded the body to move to a 1999 date. Among these, key considerations included:

Steady mail volume growth, revenue growth, and a positive net income forecast for Fiscal Year 1998; Readiness of postal management to accept new Postmaster General William J. Henderson's challenge to find added cost efficiencies in 1999;

see POST OFFICE on page 2

Kansas grain elevators filling up

With about 68 percent of the Kansas wheat crops are cut this week — compared to 5 percent of the harvest completed at this time last year — reports of full elevators and grain transportation problems are beginning to emerge.

Because many Kansas wheat farmers also are experiencing higher-than-expected yields, the storage problem has been compounded. One elevator near Concordia, Kan., has handled 2.4 million bushels of wheat this season alone and is a day away from reaching full capacity.

"We are within a day of being full. Then we will have to turn it away until we are able to move some out," said elevator manager Darrel Nelson. "We don't store it on the ground."

Farmers can mow, bale forage along Texas highways

Agriculture commissioner Rick Perry announced last week that the Texas Department of Transportation has notified the Texas Department of Agriculture that farmers and ranchers can mow and bale forage along Texas highway rights-of-way. Procedures covering mowing and baling are in place in each TxDOT district office.

Dry conditions across the state have made this forage a source of fuel for potential wildfires.

"Texas farmers and ranchers appreciate TxDOT's cooperation during these adverse conditions," Perry said. "Mowing and baling of these rights-of-way help remove a fuel source for potential wildfires plus allow producers

access to additional forage for their livestock."

The Texas Forest Service has classified more than half of Texas as being under high or extreme wildfire danger.

Farmers and ranchers wanting to mow or bale rights-of-way adjacent to their property should contact the district engineer in the appropriate TxDOT district office. TxDOT

usually limits mowing and baling to areas along rural roads or other areas along highway rights-of-way that will not create a safety hazard to travelers.

Information about current dry conditions, including addresses of the 25 TxDOT district offices, can be found on the Texas Department of Agriculture's website (www.agr.state.tx.us).

Muleshoe natives start Hereford radio station

Buddy and AlvaLee Peeler, owners of Liveoak Broadcasting Corp. of Hereford, have announced that a new Class C2 FM radio station has begun broadcasting activities.

The new station (KNNK) provides one of the strongest FM signals in the Deaf Smith, Castro, Parmer, Bailey County areas, operating at 43,000 watts on a frequency of 100.5 mhz.

KNNK's main studio is in Hereford, with the transmitter and tower site located near Summerfield on Highway 60. Co-owner and manager Buddy Peeler said "KNNK will strive to serve a mainstream audience, focusing on inspirational music," including primarily the categories of Southern Gospel, Praise and Worship, Traditional, and lots of "Gaither music" for followers of the Gaither Vocal Band and Homecoming Friends. Special programming will include "Music Thru the Night," a late

night offering of music, thoughtful comments and timely programs hosted by Mike Kellogg on the Moody Broadcasting Network. It airs from midnight to 5 a.m. seven days a week.

As a slight change of pace, but still in keeping with their "positive and inspiration" programming theme, the Peelers feature light classical and popular instruments from 9 p.m. to midnight.

Buddy Peeler began his broadcasting career in 1957 while still in high school, starting as an announcer trainers at his hometown station (KMUL, Muleshoe.) Both of the Peelers are Muleshoe High School graduates. They have made their home in Hereford since 1968.

The KNNK signal is also being simulate on Channel 17 of the local cable system as a complement to the Muletrain News.

AROUND MULESHOE

Assembly of God youth selling BBQ plates

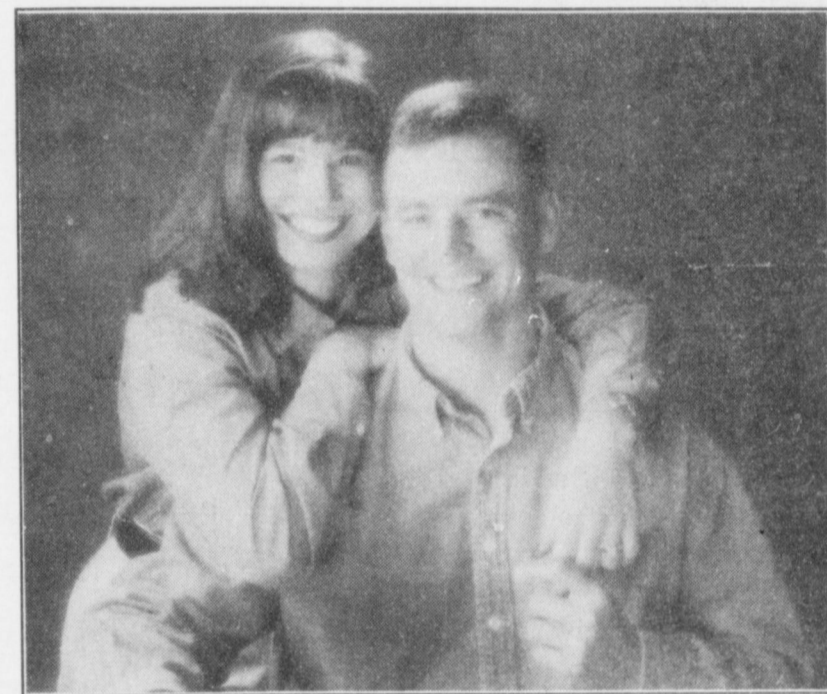
First Assembly of God youth will be selling home-cooked barbecue brisket and sausage plates in front of Williams Bros. on July 4. The plates will consist of brisket/sausage, potato salad, beans, dessert and drink for \$6 for an adult plate. Children under 12 will be \$4 per plate. Also sausage wraps will be available for \$2 each.

Muleshoe class of 1973 holding reunion

The Muleshoe high school class of '73 is holding a class reunion at the Muleshoe Country Club, July 4 from 8:30 p.m. to midnight. Everyone is invited to visit with class members and enjoy the fun.

For more information call Debbie Nickels at 272-7615 or 965-2175.

ENGAGEMENT



Burcie — Brown

Mac Brown of Muleshoe and Sharon Gilbert of Midland, wish to announce the engagement of their son, Russell Brown, to Jennifer Burcie, daughter of Mike Burcie of Arlington, and Vicky Butler of Hurst. The couple will marry Sep. 12, at the First Christen Church of Ft. Worth. The bride-elect is a graduate of Texas A&M and is employed by Freese & Nichols of Dallas. The bridegroom, also a graduate of Texas A&M, is employed by Great American Insurance, crop division. The couple will live in the Dallas area.

CHUCKWAGON

From page 1

for crowds of 60 to 300 people.

Buckner, co-owner of a saddle and chaps shop in Branson, Colo., said it's a lifestyle he's comfortable with and he enjoys the kind of folks he meets while working events.

"Living the old style of life teaches our kids the values we

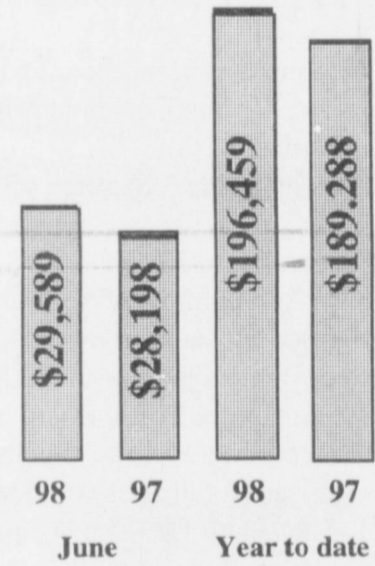
like," Dee Buckner said.

Branson, population 75, is in rural southeast Colorado. The nearest store is 60 miles away and all 12 grades attend the same school.

"We have to go to the store once every two weeks whether we need to or not."

TAKING A CLOSER LOOK

Bailey County June tax rebates



Bailey County sales tax rebates for June were up by 4.93 percent compared to last year.

For the year to date, rebates are up by 3.78 percent to \$196,459.

Rebates delivered in June are based on local sales tax collected in April.

Note: Sales tax rebates are 1.5% of the gross taxable sales. Items like food and medicine are not taxable. SOURCE: STATE COMPTROLLER

MOORE

From page 1

"We think he is the best superintendent in the state."

Purdy described Moore as an excellent communicator, skilled in the political arena and one of Muleshoe's best ambassadors.

"He's the one that put the team together," Purdy said. "He supports and praises them while at the same time holding them accountable."

Moore will be interviewed at the state level in late July or early August.

The winner will be named at a joint State Convention of the Texas Association of School Boards and Texas Association of School Administrators in September.

Under Moore's leadership, the school district has significantly upgraded its facilities and technology and made drastic improvements in student achievement.

The school district has paid for all the improvements from its fund balance.

Moore also helped start Pep High School, an alternative academic school that serves nine area schools. Pep has awarded high school diplomas to 80 Muleshoe students in five years and has become a pilot pro-

gram for the state.

Among the categories on the contest-entry form are school climate, fiscal and financial responsibility, school board-superintendent relationship, academic achievement and community involvement.

Purdy said Moore and the school board have an excellent relationship because "we don't keep secrets from each other, and there's no hidden agendas."

"We're truly interested in what is best for the kids," Purdy said.

A workaholic his first couple

POST OFFICE

From page 1

Feedback from citizens and commercial customers.

Winters, an attorney from Austin, Texas, said the vote by the Governors to accept the rate case — which includes new product features such as delivery confirmation, bulk insurance and package discounts — was unanimous. The Governors did, however, agree to management recommendations to return to the Postal Rate Commission for clarification recommended changes affecting three subclasses: Parcel Post drop-shipped at destination delivery units, Within-County Periodicals, and Library Rates.

The Governors also decided to reject Courtesy Envelope Mail (CEM) and Prepaid Reply Mail (PRM) because they concluded that further study was needed to refine the PRM concept, and because serious questions about administration, enforcement, and public reaction to CEM had been raised.

The Postal Service last increased rates on January 1, 1995.

PUBLIC AUCTION Special! Big! Two Day Consignment Sale!

3 MILES NORTH OF PORTALES ON U.S. HIGHWAY 70
FRIDAY, July 10th & SATURDAY, July 11th — 9:00 AM
If you wish to consign any equipment, vehicles, etc., please contact us as soon as possible so we will be able to properly advertise your merchandise. WE APPRECIATE OUR CUSTOMERS! CALL DAY OR NIGHT!

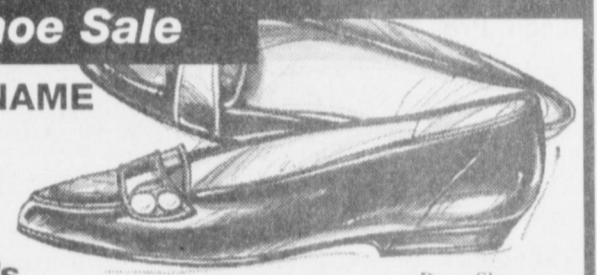
Bill Johnston Auctioneers

Portales, NM
(505) 356-5982 Days
Nights - Mike (505) 760-6195 or Clint (505) 356-5368

Semi-Annual CLEARANCE Shoe Sale

QUALITY NAME BRANDS

- * Women's
- * Men's
- * Children's



20% to 50% SAVINGS

- Dress Shoes
- Casuals
- Fashion Boots
- Athletic Shoes
- Handbags

NOW IN PROGRESS

"The Largest Shoe Sale in Eastern New Mexico & West Texas"
Most Major Charge Cards Accepted

Randy's Shoes Dayhoff Shoes

410 Main
Downtown Clovis

403 Main
Downtown Clovis

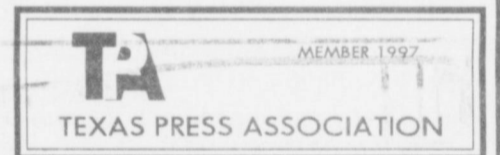
Bailey County Journal USPS 040-200

Established March 31, 1963. Published by Triple S Publishing, Inc.
Every Sunday at 304 W. Second. Box 449, Muleshoe, TX 79347.

Second Class Postage paid at Muleshoe, TX.
POSTMASTER: Send address changes to the Bailey County Journal, P.O. Box 449, Muleshoe, TX 79347.

We are qualified members of:
Panhandle Press Association, National Newspaper Association,
West Texas Press Association and Texas Press Association

WEST TEXAS PRESS ASSOCIATION



PPA Panhandle Press Association

Scot Stinnett, Publisher
Lisa Stinnett, Vice-President/Comptroller
Rick White, Editor
Mary Ann Dominguez, Classifieds
Leah Bell, Advertising

© 1990

SUBSCRIPTIONS: Muleshoe Journal and Bailey County Journal
By Carrier Yearly - \$22.00
Bailey County — by mail - \$24.00
Elsewhere - \$26.00
Advertising Rate Cards on Application

Advertisers should check their ad the first day of insertion. The Journals will not be liable for failure to publish an ad or for a typographical error or errors in publications except to the extent of the cost of the ad for the first day of insertion. Adjustment for errors will be limited to the cost of that portion of the ad where the error occurred.

1997 DODGE NEONS

5 to choose from

\$189 DOWN \$189 MONTH



Every day is sale day!
60 months at 9% APR. \$189 down and \$189 month plus tax, title and license. W.A.C.

1996 DODGE NEONS

10 to choose from

\$161 DOWN \$161 MONTH



or only \$7,900

60 months at 9% APR. \$161 down and \$161 month plus tax, title and license. W.A.C.

97 CHRYSLER LHS

6 to choose from

5
• Power seats
• Power locks
• Power windows
• Leather
• Cruise
• Tilt



NADA retail \$19,495
Bender Disc. -1,500

BENDER SALE PRICE \$17,995

EVERY DAY IS SALE DAY

BENDER DODGE

3400 MABRY • 762-4511 • CLOVIS

Program targets helping students enter workforce

Three area teachers were chosen to participate in the "Get Real Project," a project that develops teaching skills related to the workforce.

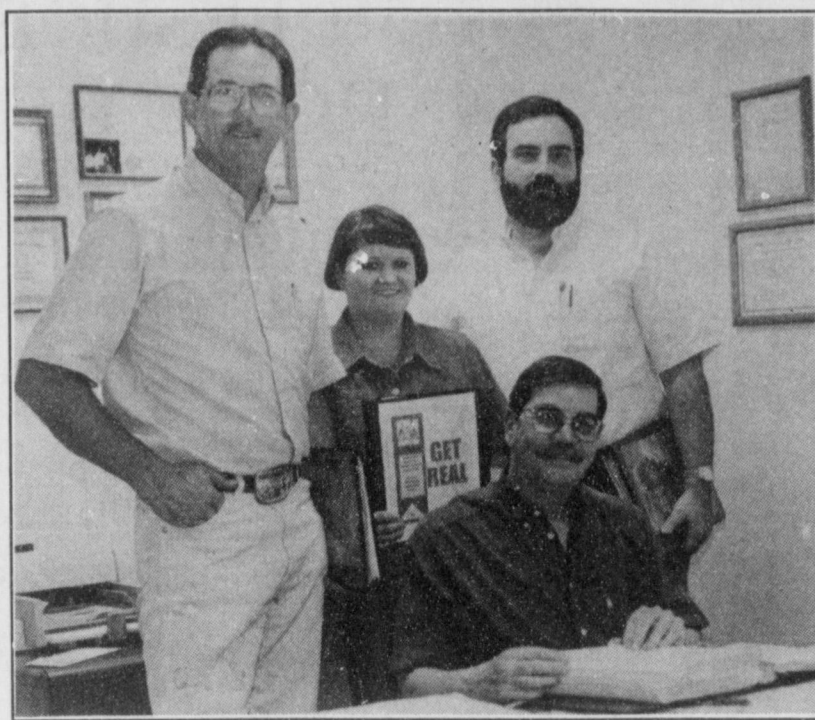
April Smith and Chris Mardis, both of Muleshoe High School, and Michael Nace of Amherst teacher Michael Nace of Amherst administrators at local businesses to find out what companies are looking for in potential employees.

The "Get Real Project" was developed through South Plains Tech Prep/School-to-Work Partnership at the Lubbock campus. The goal of the project is to have area teachers go into the major businesses this summer to do research and interviews and determine what specific skills high school graduates will need to go successfully into the workforce. This will minimize retraining on the part of the businesses.

The group visited the Southwestern Public Service Talk Station, Coyote Lake Feed Yard, Vertical Turbine Systems (Littlefield) and Five Area Telephone.

Sixty teachers were chosen to participate in the project. Teachers were divided into teams and assigned businesses to visit.

Teachers were provided with specific interview questions and interviewed at least three different people at each business: management/human resources, front line supervi-



Summer program

Muleshoe teachers (from left) Chris Mardis, April Smith and Amherst teacher Michael Nace with Hugh Young, subsidiary manager of Five Area Telephone Co.

sor, and an employee. Questions were asked in a number of different areas including: salary, hiring requirements, retraining areas, how schools could help minimize retraining, most valuable skills new employees could bring to the new job, most important things schools could teach students, specific skills employees use daily at work, etc. They also asked each employee and employer interviewed to give specific skills that employees needed in the following areas: communication, math, science, and technical.

All sixty teachers will meet again at Lubbock on July 8-9 to

collate information and work together to develop specific lesson plans to be used in the classrooms this fall that will address the needs of the area businesses.

The project gives teachers the opportunity to do two important things: get out of the classroom and into the work world to see what skills are actually used on a daily basis and to build working relationships with the businesses to possibly develop a "shadowing program" where students can spend time at the businesses and see how the skills they learn at school will be applied in a future job or career.



If You Can't Come To Miracle-Ear, Then We'll Come To You.

Our Hearing Aid Service Center is coming to a convenient location near you. Complimentary Hearing Evaluations. We value your hearing as much as you do... Ask about our low monthly payments

Miracle-Ear
Hearing Systems by Bausch & Lomb

Call 800/808-0188

Thurs. July 9th, 9 a.m. - Noon
Muleshoe Medical Center - 708 S. 1st
Noon - 4 p.m. / In Home Visits

Hot Summer Sales Bring Sizzling Pricing

HOT HOT HOT

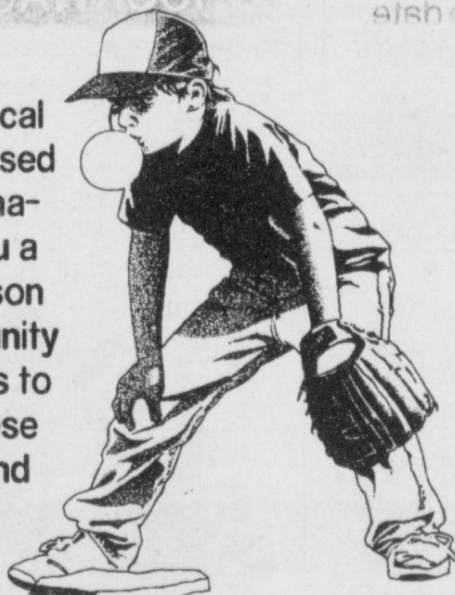
1995 Ford F-150 S/C Conversion ... was \$19,995 ...	NOW \$18,995
1996 GMC S/C - low miles ... was \$18,495 ...	NOW \$17,995
1994 Dodge 3/4 Ton 4x4 Cummins Diesel ... was \$19,995 ...	NOW \$18,995
1990 Ford F-250 - loaded ... was \$9,995 ...	NOW \$8,995
1994 GMC Stepside - loaded, 4x4 ... was \$16,995 ...	NOW \$15,995
1995 Chevy Camaro Z-28 - T-tops, leather seats ... was \$15,995 ...	NOW \$14,995
1996 Chevy Corsica ... was \$9,995 ...	NOW \$8,995
1994 Chevy Cavalier ... was \$6,995 ...	NOW \$5,995
1987 Dodge Daytona ... was \$5,995 ...	NOW \$4,995
1994 Dodge Spirit ... was \$8,995 ...	NOW \$7,995

TRADER HORN MOTOR COMPANY
Portales' Premier Pre-Owned Vehicle Headquarters
620 S. Ave. C • Portales, NM • (505) 359-0947 or (505) 359-1775

A Special Thanks To These Local Businesses For Sponsoring Our Teams

- ROTARY CLUB of Muleshoe
- TERRA DISTRIBUTION
- MULESHOE MOTOR CO.
- MULESHOE FAMILY MEDICINE
- MULESHOE STATE BANK
- AMERICAN VALLEY, INC.
- FIVE AREA TELEPHONE COOPERATIVE, INC.
- FIRST BANK OF MULESHOE

The 1998 Muleshoe Youth Baseball organization would like to thank all the local merchants who sponsored teams, purchased sign advertisements and made other donations to our league this year. We owe you a big debt of gratitude for making our season possible. Our hometown business community has always hit "home runs" when it comes to helping our kids. Remember to thank these merchants when you're in their stores and shop at home whenever possible.



- MAJOR LEAGUE**
- Jarman Seed
 - C&H Equipment
 - Bamert Seed Co.
 - Wailey County Electric Co-Op Assn.
 - Wanda Brown Insurance Agency
 - Mohawk Auto Parts Co., Inc. - CarQuest
 - Muleshoe Co-Op Gin
 - Dale Oil Company, Inc.
 - Shafer Nursery
 - First Bank of Muleshoe
 - Higginbotham-Bartlett Co. - Do It Best
 - Leal's Restaurant
 - Joe's Boot Shop
 - Lowe's Marketplace
 - Pay-N-Save
 - The Phone Company
 - Bailey Gin Company
 - Tino's Mexican Restaurant
 - Muleshoe Journal
 - Irrigation Supply
 - Southside Welding
 - Delton E. Wilhite & Associates
- MINOR LEAGUE**
- Dent & Co.
 - James Crane Tire Co.
 - Texas Garden Design
 - Hi-Tek Automotive
 - Alton Burton Service Center
 - Blackwater Agricultural Association
 - Fry & Cox Lumber
 - Western Drug
 - The Phone Company
 - Bailey County Electric Co-Op Assn.

- Bratcher Motor Supply
- Texas Sesame
- Henry Insurance Agency, Inc.
- Central Compress
- Pestex Extermination
- Wilson Drilling Co.
- Muleshoe Feed Barn
- Muleshoe Trade Center
- Higginbotham-Bartlett Co. - Do It Best
- Precure Electric
- KC Muffler & Mfg., Inc.
- Terry Field Insurance
- Bailey Gin Company
- T-BALL LEAGUE**
- Ag Aviation, Inc.
- Muleshoe Livestock Auction, Inc.
- Winkler Meat Co.
- Wes-Tex Feed Yards, Inc.
- Weird Bug Pest Control
- Muleshoe State Bank
- Hereford Feed Ingredients, Inc.
- Western 66 Co.
- Scoggin Ag Center, Inc.
- The Phone Company
- West Camp Gin
- Minsa Southwest Corporation
- Federal Land Bank
- American Valley, Inc.
- Dale's Quick Oil Change
- Harvey Bass Appliance
- Lonnie & Nelda Merriot
- King Signs
- Barrett Produce
- Del Toro Plumbing

- SCOGGIN AG CENTER, INC.
- DELTON E. WILHITE & ASSOCIATES
- WES-TEX FEED YARDS, INC.
- WINKLER MEAT CO.
- STATE FARM INSURANCE
- RONNIE HOLT INSURANCE WESTERN 66 CO.
- BAMERT SEED CO.
- KIWANIS CLUB of Muleshoe
- DENT & CO.



Minor League all-stars

Members of the 1998 Muleshoe Minor League all-star team are (back, l-r) Coaches Joe Flores, Bill James and Chris Johnson. (Middle) Cody Black, Timothy Conner, Myles James, Bubba Roberts, Dustin Barker, Matthew Barnes and Eric Washington. (Front) Cody Clark, T.J. Brantley, Justin Villegas, Joe Olivas, Rudy Gonzalez and Jarad Flores. Not pictured: Corey Wallace.



Major League all-stars

Members of the 1998 Muleshoe Major League all-star team are (back, l-r) Dagan Provence, Kade Gaston, Chase Winkler, Cody Altman, Robby Bomer and Ryan Marricle. (Front) Matthew Broyles, Tatom Heathington, Bryan King, Fernando Toscano, Tanner Winkler and Miguel Nunez. The all-stars are coached by David Marricle, Bobby Broyles and Bob Bomer.

BASEBALL

Little League all-stars

Texas District 2
All-star tournament
Area 2
MAJOR LEAGUE
(11-12 years old)
July 6-12 at Friona LL
First round
Monday, July 6
Game 1 — Littlefield vs Olton, 6 p.m.
Game 2 — Levelland vs Shallowater, 8 p.m.
WINNER'S BRACKET
Tuesday, July 7
Game 3 — Friona vs Game 1 winner, 8 p.m.
Game 4 — Muleshoe vs Game 2 winner, 6 p.m.
Thursday, July 9
Game 7 — Game 3 winner vs Game 4 winner, 8 p.m.
Saturday, July 11
Championship
Game 10 — Game 7 winner vs Game 9 winner, 7 p.m.
Sunday, July 12
Game 11 — Game 7 winner vs Game 9 winner, 7 p.m. (if necessary)
LOSER'S BRACKET
Wednesday, July 8
Game 5 — Loser of Game 1 vs loser of Game 4, 6 p.m.
Game 6 — Loser of Game 2 vs loser of Game 3, 8 p.m.
Thursday, July 9
Game 8 — Winner of Game 5 vs winner of Game 6, 6 p.m.
Friday, July 10
Game 9 — Loser of Game 7 vs winner of Game 8, 7 p.m.
MINOR LEAGUE
(9-10 years old)
July 6-13 at Levelland LL

First round
Monday, July 6
Game 1 — Friona vs Shallowater, 6 p.m.
Game 2 — Littlefield vs Levelland #1, 8 p.m.
Tuesday, July 7
Game 3 — Muleshoe vs Levelland #2, 6 p.m.
WINNER'S BRACKET
Tuesday, July 7
Game 4 — Whiteface vs Game 1 winner, 8 p.m.
Wednesday, July 8
Game 5 — Game 2 winner vs Game 3 winner, 8 p.m.
Friday, July 10
Game 9 — Game 4 winner vs Game 5 winner, 8 p.m.
CHAMPIONSHIP
Sunday, July 12
Game 12 — Game 9 winner vs Game 11 winner, 7 p.m.
Monday, July 13
Game 13 — Game 9 winner vs Game 11 winner, 7 p.m. (if necessary)
LOSER'S BRACKET
Wednesday, July 8
Game 6 — Loser of Game 2 vs loser of Game 3, 6 p.m.
Thursday, July 9
Game 7 — Loser of Game 1 vs Loser of Game 5, 6 p.m.
Game 8 — Loser of Game 4 vs winner of Game 6, 8 p.m.
Friday, July 10
Game 10 — Winner of Game 7 vs winner of Game 8, 6 p.m.
Saturday, July 11
Game 11 — Loser of Game 9 vs winner of Game 10, 7 p.m.

Buhrman records first ace

A.J. Buhrman of Muleshoe recorded a hole-in-one Wednesday on the ninth hole at Muleshoe Country Club. Buhrman, 14, recorded his first ace using a nine-iron on the 125-yard, par 3 water hole. He was playing with his parents, Rodger and Peggy Buhrman.

Muleshoe Country Club is holding a scramble Saturday, July 4 at 1 p.m. Players must register by noon.

Home Folks Caring For Folks At Home.

MULESHOE AREA HOME HEALTH Agency

Featured Patient

Letha L. Talley was born March 19, 1923 in Chickasha, Oklahoma. She is the eldest of three sibling girls.

Letha attended school in Oklahoma, finishing both her formative and college years in Chickasha. She graduated from Oklahoma College for Women where she chose to major in Elementary Education. Receiving emergency certification, Letha was able to teach around the Chickasha area while she completed her studies.

Miss Talley moved to Muleshoe in August of 1948. On March 18, 1950, Letha became the bride of Alfred Patterson. Mr. Patterson expired in January of 1983.

Before retiring, Mrs. Patterson spent a total of 39 years teaching. Many who have attended school in Muleshoe remember Mrs. Patterson from the 4th grade. Letha spent all but two years of her career teaching the fourth grade. Thirty-three of those 39 years teaching were right here in Muleshoe. Mrs. Patterson believes the key to quality education is discipline. She is proud to be from the "old school" era when teachers had the ability to correct inappropriate behavior.

Mr. and Mrs. Patterson parented five children: Lionel Patterson of Muleshoe, Carl Patterson of Muleshoe, Nancy Patterson of Muleshoe, Sarah Mitchell of Michigan, and Kathleen Stroud of Muleshoe. Mrs. Patterson has four grandchildren.

Despite pain from injuries, Letha still enjoys sewing and plans to do more of it as she heals and feels better.

Mrs. Patterson is a member of the Retired Teachers Association, a statewide organization, and AARP. She attends the First Baptist Church of Muleshoe.

Although she has just recently chosen M.A.H.H.A. as her preferred home health agency, Letha says that they are "very cooperative" and have definitely treated her very well.



Letha L. Patterson

Home Care



Home is where the heart is

Affiliated with:
Lubbock Methodist Hospital Systems

24 Hour # 272-3346
Local Nurse on call 24
hours a day to offer
prompt service.

Out-Of-Hospital Do Not Resuscitate Packets/ Bracelets Now Available. Call us at 272-3346 or come by 623 W. 2nd for information.

We accept Medicare, Medicaid and Private Insurance
It Is Your Right To Choose The Home Health Agency You Prefer.

To receive Home Health Services, talk with your physician or talk with hospital personnel when you are hospitalized.

CLOVIS/CURRY COUNTY CHAMBER OF COMMERCE PRESENTS

1998 Clovis Music Festival

Cool Nights

Hot Country!

Creative Graphics 505-762-4168

Tickets available now!

For more information call
Clovis/Curry County Chamber
(505) 763-3435
1-800-261-7656
www.clovis.org

\$15 ... general admission
\$18 reserved
\$20 box seats
Per night

★ **FIRST ANNUAL** ★
Fun in the Sun
CURRY COUNTY FAIRGROUNDS
Saturday, July 18th starting at 10:00 am
Music for all • Family fun • Food booths
Local talent • Arts & Crafts
FREE!

FRIDAY, JULY 17TH • 6:00 PM



Concerts to be held at Curry County Mounted Patrol Arena

SATURDAY, JULY 18TH • 6:00 PM



Sponsors: Allsup's, Plains Regional Medical Center, Southwestern Public Service, Adair Inc., BNSF Railroad, Citizens Bank, Norwest Bank, Plateau Telecommunications, Pizza Hut/Cotton Patch, PNM Gas & Electric, US West

BAILEY COUNTY DEVOTIONAL PAGE

WES-TEX FEED YARDS, INC.
 Custom Cattle Feeding
 272-7555 Muleshoe, TX

FARWELL CONVALESCENT CENTER
"In Christ's Love, Everyone Is Someone Special"
 305 5th St.
 481-9027 • Farwell, TX

OECIA SUSAN'S PHOTOGRAPHY
 Rt. 1 Box 120 • 2 Mi. N. Hwy. 214
 Susan Kerby
 (806) 272-5153
 Muleshoe, TX (806) 946-9524 mobile

MULESHOE COOPERATIVE
GINS
 P.O. Box 569
 272-4794 Muleshoe, TX

Risinger Plumbing
 Serving Muleshoe Area
 All Plumbing Repairs
272-6772

FIRST TEXAS FLBA MULESHOE
"Serving Farmer & Bailey Counties"
 272-3010 • Fax 272-5388
 316 Main • P.O. Box 424 • Muleshoe, TX

1315 W. American Blvd.
 272-3333
 Muleshoe, TX

SIMNACHER NATIVE GRASSES
 Darwin Simnacher Vince Simnacher
 (505) 762-7817 (806) 946-3461
 Thomas Simnacher
 (806) 285-2491

PACO FEED YARD, INC.
 Commercial Cattle Feeders
 P.O. Box 956 265-3281
 Friona, TX
 Feller Hughes-Mgr.

MULESHOE AREA HEALTH CARE CENTER
"Committed to Caring"
 106 W. Ave. H Muleshoe 272-7578

MULESHOE LIVESTOCK AUCTION
 Muleshoe, TX • Sale Every Saturday
 Clayton Myers • 272-4201

"THE FIVE AREA TELEPHONE COOPERATIVE ORGANIZATION"
 West Plains Telecommunications Co.
 Five Area Systems, Inc., Plateau Cellular Network
 Five Area Long Distance - Five Area Internet
 302 Uvalde Muleshoe, USA (806) 272-5533

MULESHOE MOTOR CO.
 1225 W. American Blvd. 272-4251

BAILEY COUNTY ELECTRIC COOPERATIVE ASSOCIATION
"Serving Our Members Is Our Main Priority"
 1-800-869-7049
 Muleshoe 272-4504 Morton 266-8600

BRUCE, INC.
 AIR CONDITIONING
 Hwy. 214 North 272-5114
 Muleshoe, TX

BAILEY GIN COMPANY, INC.
 946-3397
 Sudan, TX
 Peanut Hawkins, MGR

Muleshoe Area Medical Center
"Your Hospital"
 708 S. First St. • 272-4524
 Muleshoe, TX

Lowe's MARKETPLACE
 401 W. American Blvd. Muleshoe 272-4585

AMERICAN AVI INC.
 West Hiway 84
 272-4266
 Muleshoe

SHERLEY-ANDERSON LAZBUDDIE ELEVATOR
 965-2922 Lazbuddie, TX

Facts About The BIBLE BY JOHN LEHTI

PROPHECY DOOMED ELI

ONE OF THE GREAT EARLY PROPHETS WAS ELI BUT IN HIS OLDER AGE HE BECAME MORE OF A DOT-ING FATHER THAN HE WAS A PRIEST. HIS TWO SONS COULD GET AWAY WITH ANYTHING SHORT OF MURDER IN THE EYES OF OLD ELI. THE SONS, AS LESSER PRIESTS IN THE TEMPLE, USED TO CONFISCATE MEAT THAT WAS FOR SACRIFICES USING IT FOR THEIR OWN MEALS AND WASHING IT DOWN WITH SACRIFICIAL WINE. COMPARED WITH SOME OF THEIR OTHER EVIL DEEDS THIS WAS ONLY A MINOR OFFENSE. ELI, ALTHOUGH HE KNEW OF THESE MISDEEDS, DID NOTHING ABOUT THEM UNTIL IT WAS TOO LATE. FINALLY GOD SENT A PROPHET FROM THE WILDERNESS WHO PROCLAIMED BEFORE ELI THE DOOM THAT HE FACED. (1 SAMUEL 2:27-31)



SAVE THIS FOR YOUR SUNDAY SCHOOL SCRAPBOOK

This devotional & directory is made possible by these businesses who encourage all of us to attend worship services.

ASSEMBLY OF GOD
FIRST ASSEMBLY OF GOD
 521 South First Street • 272-3017
 Jack Stone, Min. • 272-3984
 S.S. 9:45 a.m., W.S. 11 a.m. & 6:30 p.m.,
 Wed. 7:30 p.m.

BAPTIST
CALVARY BAPTIST
 1733 W. Ave. C. Rev. Jeff Coffman
CIRCLE BACK BAPTIST
 Intersection FM 3397 & FM 298
 Jessie Shaver, Min • 946-3676

FIRST BAPTIST
 220 West Ave. E.
 Stacey Conner, Min.
FIRST BAPTIST
 Lazbuddie • 965-2126

PRIMERA IGLESIA BAUTISTA
 223 E. Ave. B Roy Martinez, Min.
PRIMITIVE BAPTIST
 621 South First
 Elder Cleveland Bass, Min.
PROGRESS BAPTIST
 Progress, TX

PROGRESS SECOND BAPTIST
 Arthur Hays, Min.
 1st & 3rd Sundays
RICHLAND HILLS BAPTIST
 17th & West Ave. D
 George Malis, Pastor

ST. MATTHEWS BAPTIST
 Corner of W. Boston & W. Birch
 Floyd R. Monroe, Min.
THREE WAY BAPTIST
 927-5467
 James Sinclair, Pastor

TRINITY BAPTIST
 314 E. Ave. B
 Robert Brown, Min.
CATHOLIC
IMMACULATE CONCEPTION
CATHOLIC
 805 E. Hickory
 Joseph Augustine, Min.

CHRISTIAN
THE CHRISTIAN CENTER
 Morton Hwy. • 272-5105
 Reydon Stanford, Min.

CHURCH OF CHRIST
LARIAT CHURCH OF CHRIST
 Sam Billingsley, Min.
 S.S. 10 a.m.; W.S. 11 a.m. & 6 p.m.,
 Wed. 7 p.m.

LAZBUDDIE CHURCH OF CHRIST
 Nathan Crawford, Min.
 S.S. 9:30 a.m.; W.S. 10:20 a.m. & 5 p.m.;
 Wed. 7 p.m.

MULESHOE CHURCH OF CHRIST
 22nd & W. American Blvd.
 John Knox, Min.
 S.S. 9:30 a.m.; W.S. 10:20 a.m. & 6 p.m.;
 Wed. 7:30 p.m.

16th & AVE. D
CHURCH OF CHRIST
 Curtis Shelburne, Min. • 272-4619
 W.S. 10:30 a.m. & 1:30 p.m.;
 Wed. 7:00 p.m.

LUTHERAN
ST. JOHN LUTHERAN
 Lariat, TX
 Richard Greenhaner, Min.
 S.S. 10:30 a.m.; W.S. 9:30 a.m.

METHODIST
FIRST UNITED METHODIST
HISPANIC MINISTRIES
 E. 5th and E. Ave. D
 Pastor Benito Cavazos

FIRST UNITED METHODIST
 507 W. 2nd St.
 Pastor Brad Reeves
LAZBUDDIE METHODIST
 965-2121

EL DEVINO SALVADOR
 814 W. Ave. C, Muleshoe, TX
 Guadalupe Ballinas, Min.

NAZARENE
NEW VISION CHURCH OF THE NAZARENE
 814 W. Ave. C • 272-3622
 David R. McIntire

PENTECOSTAL
UNITED PENTECOSTAL LIGHTHOUSE
 207 East Ave. G • 1-800-454-6051
 Pastor McKibben, 10 am Sunday Service
 Thursday, 7 pm Bible study

INTER DENOMINATIONAL
NEW COVENANT
 Plainview Hwy. Jimmy Low, Min.
 Steve Claybrook, Assoc. Pastor
 W.S. 10 a.m.; Wed. 7 p.m.

Tell ye your children of it, and let your children tell their children, and their children another generation. -Joel 1:3

MOHAWK AUTO PARTS
 1701 W. American Blvd.
 272-4425 Muleshoe, TX

Bob STOVALL Printing
 The Wells & Janet Hall Family
 221 E. AVE. B • MULESHOE, TX
 (806) 272-3373

WESTERN DRUG
 114 Main 272-3106 Muleshoe

Henry Insurance Agency, Inc.
"Serving You Since 1964"
 111 West Avenue B 272-4581
 Muleshoe, TX

JAMES CRANE TIRE CO., INC.
 107 Main 272-4594
 Mike Hahn Muleshoe, TX

WINKLES TRUCKS, INC.
 Box 757 (806) 247-2724
 Friona, TX

Springlake Potatoes, Inc.
 P.O. Box 280 • Springlake, TX
 262-5542

Since 1957 - The Original
Leal's Mexican Restaurant
 1010 W. American Blvd. 272-3294
 Muleshoe, TX. Victor & Debbie Leal

RONNIE HOLT INSURANCE AGENCY
 Specializing in Crop, Life & Health Insurance
 Western 66 Office Bldg.
 272-3614 Muleshoe, TX

TERRA DISTRIBUTION
 Hwy. 84 • 272-4203
 Muleshoe, Texas

SAIN IRRIGATION & MACHINES
Complete Pump Service
 W. American Blvd. 272-4397
 Walt Sain Muleshoe, TX 272-4148

TIRO'S
 104 W. American Blvd.
 272-7528 • Muleshoe, TX
 Daily Specials Owners: Tino & Linda Campoya

Shipman's Body Shop
 Auto Painting • Wrecker Service • Free Estimates
 Tractor Glass & Windshields
 410 N. 1st Muleshoe, TX
 272-4408 FAX 272-3366

BOBO INSURANCE AGENCY
 108 E. Ave. C 272-4264

MAPLE COOP GIN
 927-5501
 Maple, Texas

Muleshoe Journal
 Local news about local folks!
 304 W. 2nd St. • 272-4536 • FAX 272-3567

O & C OSONS
 Erection Sprinkler Ser. Welding & Repair
 Repair & Assemble Repair
 Lupe Olivarez 272-5018 909 W. American Blvd. 272-3475

Please attend the church of your choice. It's good for the mind, body & soul.

Tortilla Leal's Factory, Inc.
"Serving West Texas since 1957"
 107 E. Ash 272-5772 Muleshoe, TX

Decorators Floral & Gifts
 616 South First 272-4340
 Muleshoe, TX

MULESHOE FEED BARN
 311 W. American Blvd.
 Muleshoe, TX 272-5626

BANK MEMBER FDIC
 202 South First 272-4515

IRRIGATION PUMPS & POWER
ZIMMATIC CENTER-PIVOTS
 W. Hwy. 84 272-4483

NURSING HOME NEWS

The Progress Baptist Church came Sunday for church service.

Harold and Mary Jo Burge directed the bingo bonanza game Saturday afternoon.

The Muleshoe AARP and the Mary Martha Sunday School of the First Baptist Church gave donations to the Healthcare Center this week.

Gladys Wilson made and delivered rice krispies treats Tuesday afternoon.

The birthday party Thursday honored the residents having birthdays in June. Corsages were given by Decorators Floral and Gifts.

Frank Wuerflein visited Rose Sneed, Aline Locke and Katherine Rogers Tuesday afternoon.

Joe Embry and Harold Burge visited the residents Tuesday afternoon.

Clark Price visited the Healthcare Center Tuesday.

What a warm and friendly welcome the activity director received from the residents and volunteers on her return to the Health Care Center after a week vacation in the mountains Tuesday. The volunteers and Karen Cook, Ozell Cherry and Kimberly Dickerson did a wonderful job keeping things going.

Tuesday Beverly Wagon, Claudine Embry, Mary Jo Burge, Nancy Kidd, Pat Kirk, Ozell Cherry, Katye and Kaylee,

Kimberly Dickerson, Karen Cook and Joy shampooed and set the ladies hair and gave manicures.

Michelle and Stephanie visited their grandmother and great grandmother Nettie Quesenberry Tuesday afternoon, Ana B. Lane visited her Wednesday.

Grace Scarbrough was visited by June Conway of Olton Tuesday.

Wednesday morning Jane Reeder, Harold and Mary Jo Burge and Loyce Killingsworth served coffee, juice and donuts. Loyce and Steve Claybrook directed our devotional sing spiration time.

Glenda Jennnings and Jonessa Brockman directed our weekly sing-a-long, puppet show. Jean O'Brien and her grand daughter Brandy, Ruth Clements and Tennie McCormick attended and participated in the event.

Happy July birthday to Cordie Claunch July 12, Mattie Grimoley July 4, Helen Tenskey July 23.

The July birthday party is scheduled for Thursday July 23 at 3 p.m. Please come and help us celebrate.

Angie Castro visited the Healthcare Center Wednesday afternoon.

Betty Ramage visited the Healthcare Center Tuesday and brought us quarters for Saturday's bingo.

HOSPITAL ADMISSIONS

The Muleshoe Area Medical Center reported admitting the following patients.

June 24 — Letha Beach, Antonia Guzman, Mary Johnson, Geneva Lemons, Verna Metcalf

June 25 — Antonia Guzman, Geneva Lemons, Verna Metcalf

June 26 — Marivel Larrea, Baby Larrera, Geneva Lemons, Verna Metcalf, Laura Rosales

June 27 — Cornelius Bradshaw, Fernando Castaneda, Geneva Lemons, Marivel Larrea, Verna Metcalf, Ernestine Steinbock

June 28 — Cornelius Bradshaw, Hazel Hay, Geneva

Lemons, Emiliana Martinez, Verna Metcalf

June 29 — Cornelius Bradshaw, Hazel Hay, Geneva Lemons, Emiliana Matinez, Verna Metcalf

June 30 — Cornelius Bradshaw, Gloria Guillen, Hazel Hay, James Herriage, Geneva Lemons, Emiliana Martinez, Verna Metcalf, Manuel Mota

July 1 — Cornelius Bradshaw, Fernando Castaneda, Anouly Chandara, Sanjuanita Garcia, Gloria Guillen, Hazel Hay, James Herriage, Geneva Lemons, Geraldine Lopez, Manuel Mota, Erwin Nieman

The Muleshoe Housing Authority

APARTMENTS NOW AVAILABLE TO RENT

1 AND 2 BEDROOM APARTMENTS, AND ALSO ONE HANDICAP UNIT AT

HARMON ELLIOTT SENIOR CITIZENS COMPLEX

WE ARE NOW TAKING APPLICATIONS FOR THESE UNITS. TO FIND OUT IF YOU QUALIFY TO LIVE IN THE SENIOR CITIZENS COMPLEX, APPLY AT OUR MAIN OFFICE AT 301 E. 6TH OR CALL 272-5560 FOR FURTHER INFORMATION.

OFFICE HOURS:
MONDAY THRU FRIDAY
9:00 a.m. to 12:00 p.m.
and
1:00 p.m. to 5:00 p.m.



The Muleshoe Housing Authority

APARTAMENTOS LISTOS PARA RENTAR

APARTAMENTOS DE 1 Y 2 RECAMARAS. TAMBIEN UN CUARTO PARA DESABILITADOS. EN EL PROYECTO DE RESIDENTES ANCIANIOS.

ESTAMOS ACEPTANDO APLICACIONES PARA ESTOS APARTAMENTOS. PARA SABER SI CALIFICA PARA VIVIR EN ESTE PROYECTO DE ANCIANIOS, NECESITA APLICAR POR LA OFICINA CENTRAL EN 301 E. 6TH O LLAME 272-5560 PARA MAS INFORMACION.

HORAS DE OFICINA:
LUNES A VIERNES
9:00 a.m. to 12:00 p.m.
y
1:00 p.m. to 5:00 p.m.



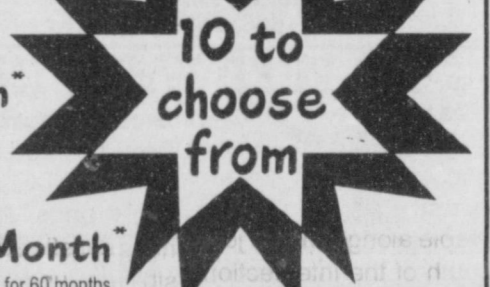
HARD-DRIVING BARGAINS

1996 Chevy Corsica



\$179 Down

\$179 Per Month



SUPER DEALS

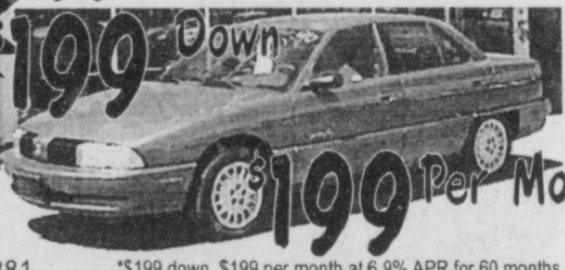
1997 Chevy 2500 Ext Cab



Don't Miss This One!

Sale Price \$24,865

1997 Olds Achieva



4 to choose from

\$199 Down

\$199 Per Mo

Freedom Is Never Free

Freedom is never free. As Americans, we've just celebrated our nation's birthday. Wrapped around all of our thoughts concerning the Fourth of July I hope are thoughts concerning the price that untold thousands of men and women have paid to obtain and perpetuate the freedom we enjoy in this country.

purchase our spiritual freedom. I know, of course, that justification by grace through faith in Christ is the gift of God freely offered to all. It is given as a gift and can only be accepted as such. In that sense, it is most certainly and most beautifully free.

But, like any gift, someone had to buy it, and God's Son paid the price. More costly to Him than we can begin to imagine, salvation, freedom from sin, was anything but free. We have freedom in this nation today because our forefathers were courageous enough to pay the price for it. Our best tribute to them is to never forget what freedom cost as we do our part to keep the dream alive.

As Christians, we have spiritual freedom because the Author of our faith was willing to take the sins of the world to a cross to defeat Hell itself.

As His followers, our best tribute to Him is to live our lives in light of the cross as we reflect to the Father and to our neighbors the unselfish love illustrated by His prayer on the night before He died: "Not my will, but Thine be done."

Freedom. It can only be bought and nurtured by those who care more about what is right than about their rights. No one else will pay the price. And freedom is never free.

Focus On Faith

If you've heard Paul Harvey's account of the historical record concerning the very real price that some of the founding fathers of this nation paid simply by signing their names to the Declaration of Independence, you know what a costly commodity freedom for this nation was and is.

Many of those courageous patriots lost personal fortunes. More important, many lost families and loved ones. All lost their comfort and security at least for a time—if not forever. They paid a high price so that we could live in freedom. Freedom, you see, is never free. It is always very costly.

Christians, of all people, should know that. We serve a Lord who died on a cross to

Curtis Shelburne is minister of the 16th & Avenue D Church of Christ in Muleshoe.

1997 CHEVY TAHOE #5261 \$28,579	1997 BUICK LESABER #5342A • Reg. \$17,995 \$16,995	1997 CHEVY EC 2500 #5329 • Reg. \$24,995 \$23,784	1997 BUICK PARK AVENUE ULTRA #5377 • Reg. \$28,995 \$25,995
1995 CHEVY SUBURBAN #86070A \$21,700	1997 CHEVY EXT. CAB 3 DOOR #5282 \$21,995	1997 CHEVY EXT. CAB 3 DOOR Z71 #86074A \$23,995	1993 GMC 2500 4x4 #4503 \$10,995

PAYMENTS UNDER \$200 • GREAT CARS •

DESCRIPTION	PRICE	DOWN	APR	MO	PER MO	DESCRIPTION	PRICE	DOWN	APR	MO	PER MO
1992 Olds Cutlass Supreme #5311A	\$ 4,837	\$129	12.9%	48	\$129.00	1995 Olds Cutlass #5298	\$ 9,892	\$210	10.9%	66	\$210.00
1993 Mercury Topaz #86238A	\$ 4,995	\$130	7.0%	30	\$130.27	1996 Olds Ciera #5116	\$ 9,995	\$213	10.9%	60	\$212.19
1990 Mercury Cougar #82027A	\$ 4,995	\$162	12.9%	36	\$162.61	1997 Chevy Lumina #5179	\$12,717	\$270	10.9%	60	\$270.00
1993 Mitsubishi Mirage #5116	\$ 6,995	\$167	12.9%	54	\$167.33	1998 Chevy Malibu #5353	\$15,932	\$289	9.9%	72	\$289.00
1996 Chevy Corsica 10 to Choose From	\$ 8,624	\$179	9.9%	60	\$179.00	1997 Chevy 1500 EC #5282	\$19,500	\$500	10.9%	72	\$360.67
1997 Chevy Cavalier 2 to Choose From	\$ 9,828	\$179	9.9%	72	\$179.00	1995 Nissan Maxima #76356A	\$17,995	\$382	10.9%	66	\$382.07
1995 Mercury Mystic #71358D	\$ 8,750	\$185	10.9%	60	\$185.79	1995 GMC Suburban 4x4 #76340A	\$23,500	\$750	10.9%	72	\$459.79

*All vehicles subject to lender approval.

BENDER

You're going to like our family!

CHEVROLET • OLDSMOBILE • CADILLAC
2500 Mabry Drive • (505) 763-4465

We Do A "BANG UP" Job of Selling Your Junk!

After all . . . One man's junk is another man's treasure!
CLASSIFIED ADVERTISING WORKS! Call 272-4536 today!



Journal Classifieds

REAL ESTATE
AUTOMOBILES
HELP WANTED
GARAGE SALES

STOP & SHOP

Deadlines are 5 p.m. Monday and Thursday

Call 272-4536

Deadlines are 5 p.m. Monday and Thursday

LEGAL

COMBINED NOTICE NOTICE TO PUBLIC OF NO SIGNIFICANT IMPACT ON THE ENVIRONMENT AND NOTICE ON INTENT TO REQUEST RELEASE OF FUNDS

TO: All Interested Agencies, Groups and Persons:

Seventeen (17) days after this publication, Bailey County, Texas intends to request the Texas Department of Housing and Community Affairs (TDHCA) to release Federal funds under Title I of the Housing and Community Development Act of 1974 (P.L. 93-383) for Project No 700469.

Exempt Activities Administration Planning and Engineering Water Construction Environmental Assessment Activities

The Bailey County water improvement project is for the community of Maple, Texas. This project will involve the construction of a new water well, well pump, well house, including chlorinator and controls, and 6,000 l.f of 8" transmission line with bore and encasement. Construction of the well and transmission line will take place on County Road 1326, 2 1/2 miles west of FM 596 in Maple, Texas.

The 10,000 gallon storage tank, 1,000 gallon pressure tank, 2 booster pumps, pump house and necessary piping will be constructed north of Maple along FM 596 just south of the intersection of FM 54. Construction of 1,000 l.f of 4" water main and a fire hydrant will be on County Road 1294 by Three Way School. The existing well is located on County Road 75 which is 1 mile west of FM 596 and 1/2 south of County Road 1326. A new well house will be constructed at this site as well as new chlorinating equipment, repiping valves and meter. Two fire hydrants will be installed on FM 596 and two hydrants will be installed on County Road 1326.

Finding of No Significant Impact

It has been determined that such a request of release of funds will not constitute an action significantly affecting the quality of the human environment and accordingly Bailey County has decided not to prepare an Environmental Impact Statement under the National Environmental Policy Act of 1969 (P.L. 91-190). The reason for such a decision not to prepare such a Statement is based upon the fact that all environmental consumes could either be minimized or mitigated.

An Environmental Review Record for the proposed project has been made by Bailey County which documents the environmental review of the project and more fully sets forth the reasons why such a statement is not required. The Environmental Review Record is on file at the Bailey County Courthouse located at 300 South First Street, Muleshoe, Texas 79347, and is available for public examination and copying upon request between the hours of 8:30 a.m. and 4:30 p.m., Monday thru Friday.

LEGAL

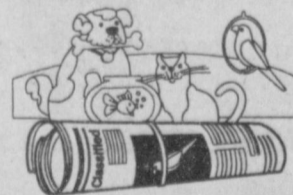
Public Comments on Findings

All interested agencies, groups and persons, disagreeing with this decision are invited to submit written comments for consideration by Bailey County to the address as set forth above. Such written comments must be received at the address specified within sixteen (16) days after this publication. All such comments so received will be considered and Bailey County will not request the release of funds or take administrative action on the project prior to the date specified in the proceeding sentence.

Release of Funds

Bailey County will undertake the activities described above with Community Development Block Grant funds under Title I from its Program Year 1997 under grant number 700469 from the Housing and Community Development act of 1974. Bailey county is certifying to TDHCA that Marilyn Cox in her official capacity as County Judge, consents to accept the jurisdiction the Federal Courts in an action is brought to enforce responsibilities in relation to environmental reviews, decision-making and action, and that these responsibilities have been satisfied. The legal effect of the certification is that upon its approval, Bailey County may use the Block Grant funds and it will have satisfied its responsibilities under the National Environmental Policy Act of 1969. TDHCA will accept an objection to its approval only on one or more of the bases and the procedures described in 24 CFR Part 58.75. Objections are to be addressed to the Texas Department of Housing and Community Affairs, P.O. Box 13941 Austin, Texas 78711.

Objections to the release of funds on bases other than those stated above will not be considered by the TDHCA. No objections received later than thirty-three (33) days after this publication will be considered by TDHCA. Marilyn Cox, County Judge, 300 South First Street Muleshoe, Texas 79347. Published in the Bailey County Journal July 5, 1998.



LEGAL

PUBLIC NOTICE

The Muleshoe Independent School District is accepting sealed bids to sell three (3) school buses. The bids shall be in the Muleshoe School District's business office, 514 West Avenue G, Muleshoe, Texas 79347, no later than Friday, July 10, 1998 at 4:00 p.m. Bids envelopes must be marked in lower left hand corner (School bus Bid, Attention: Richard Hawkins). Specifications are as follows:

- 1985 International diesel buses, automatic transmission, Blue Bird bodies
- 1981 Small bus, GMC, gasoline, automatic transmission, air conditioned, Muleshoe Independent School district reserves the right to accept or reject any or all bids in the best interest of the Muleshoe Independent School District. Published in the Bailey County Journal, July 5, Muleshoe Journal July 9, 1998.

NOTICE TO BIDDERS

The Bailey County Commissioners Court will receive sealed bids until 10 a.m., Monday, July 13, 1998, for gasoline and diesel fuel to be used in all Bailey County vehicles and road equipment for a period of time beginning August 1, 1998, and ending July 31, 1999. Specifications may be obtained, and bids must be submitted to, the County Judge's office, 300 South 1st, Muleshoe, TX 79347, prior to the above date and time. The Commissioners Court reserves the right to reject any or all bids and to waive formalities. Published in the Bailey County Journal June 28, July 6, 1998.

FOR SALE

1991 Chevy S-10 Blazer, 4 wheel drive, Tahoe package, 1 owner-local, 52,000 miles, excellent condition, \$8500. (505) 356-5509

Table and chairs for sale. Excellent condition \$150.00. 965-2693. 211-tfc

1996 Mercury Grand Marquis, loaded, 4 door, white exterior, tan interior, 28,000 miles. \$14,500. Call (806) 227-2375 or (806) 227-2591 or (806) 946-8039 or (806) 946-8411. 271-2tpd

4 piece bedroom with mattress, box springs, glass top table with 4 upholstered chairs, large office disk. Call 965-2929. 28s-1tpd

LOST DOG



Male, chocolate labrador retriever with red collar. Last seen June 6 east of Muleshoe on Hwy. 84. Please, help us find "HERSHEY" Call Ronnie Spies at (806) 965-2720 or (806) 272-4220

SUNSET CONSTRUCTION

- Wall and Floor Tile
 - Concrete work
 - Fence's
 - Remodel's
 - New construction
 - Barns
- (505) 763-8852
27s-4tpd

The following people have announced their candidacy for the

General Election

Tuesday, Nov. 3, 1998

- DISTRICT 287TH JUDGE**
- Gordon H. Green, Democrat
- JUSTICE OF THE PEACE PRECINCT NO. 1**
- Jack Bates, Democrat
 - Sherri Bessire Harrison, Republican
 - Jan Pierce, Democrat
- DISTRICT CLERK**
- Elaine Parker, Democrat
- BAILEY COUNTY COMMISSIONER PRECINCT 4**
- Jerry Damron, Democrat

Paid political advertisement

AUCTION

"THE ORIGINAL"

27th Annual SPECIAL HARVEST EQUIPMENT AUCTION
AUGUST 4, 5, 6, 7 & 8, 1998

Tuesday thru Friday..... Sale Time: 10:00 a.m.
Saturday, August 8..... Sale Time: 9:00 a.m.

Located: Plainview, TX South Side of Town on Interstate
27 Business Route in Hale County
Airport Property Take Exit 45 or 53 off I-27

••• FIVE BIG DAY DAYS •••

CONSIGN NOW!! CALL:

Cruce & Fletcher Auctioneers

PO BOX 609 -- WOLFFORTH, LUBBOCK CO., TX 79382

JAMES G. CRUCE
Plainview, TX
(806) 296-5050
Lic.# 6704

BOBBY FLETCHER
Wolfforth, TX
(806) 866-4201
Lic. # 7131

" WE ARE LOCATED AT THE HALE COUNTY AIRPORT "

HELP WANTED

Need to hire secretary. 20 to 30 hours a week. Computer experience helpful, payroll, accts. receivable, accts. payable. Please send resume to PO BOX 741, Muleshoe, TX 79347. 241-tfc

THE CITY OF MULESHOE IS ACCEPTING APPLICATIONS FOR THE POSITION OF POLICE DEPARTMENT DISPATCHER. APPLICANTS SHOULD HAVE A MINIMUM OF A HIGH SCHOOL DIPLOMA OR EQUIVALENT AND BECOME CERTIFIED AS A DISPATCHER WITHIN 6 MONTHS OF EMPLOYMENT. FOR MORE INFORMATION AND AN APPLICATION, CONTACT DON CARTER, CHIEF OF POLICE, 215 EAST AVENUE B, MULESHOE TEXAS, 79347, (806) 272-4569. POSITION IS OPEN UNTIL FILLED. UPON EMPLOYMENT, SUBJECT WILL BE REQUIRED TO PASS A DRUG TEST. THE CITY OF MULESHOE IS AN EQUAL OPPORTUNITY EMPLOYER. 271-2TCH

HELP WANTED

TC
Town & Country
COME EXPERIENCE THE TOWN & COUNTRY DIFFERENCE.
Now hiring part-time and full-time employees. Excellent benefits, health ins., pd. sick leave, 1st. Yr. 2 wks Pd. Vac., retirement plan. Stock purchase plan and college reimbursement program. Applications are available at your nearest Town & Country Location Drug Testing Required. EOE

RENT

RV/ boat inside storage, office for rent on Main St. C.V. Riley. 272-4775. 251-6tpd

Office building for rent or sale at 224 W. 2nd Muleshoe, TX. Call Kay Wiseman (806) 272-3332 or (806) 946-3996. 27s-4tch

Have a Happy 4th of July from the Journal staff

Herbalife Distributor
Call for products (806) 272-3463.
261-9tch

REAL ESTATE

James F. Hayes & Co.

AGRICULTURAL REAL ESTATE SERVICES

4 Labors in Bailey County, Texas. Heat and cotton base. Good dryland cotton. Good government check. Immediate possession available. **SOLD**

390 Acres with 3 bdrm Austin stonehouse. Stegall area. 70 acres of water. 30 Acres of CRP just renewed for 10 years. \$350 per acre. House and 70 acres can be sold separately. **SOLD**

160 Acres just north of Muleshoe. 2" irrigation well with new pumps. New underground pipe and wire. Late model Valley Sprinkler. Good F.S.A. payment. Immediate possession possible. **SOLD**

3 Labors - Circle 3000. Maize, wheat, and cotton base, 98 possession. **SOLD**

480 Acres northwest of Earth. 3 wells, 1-sprinkler nice farm. 160 Grass Northeast of Muleshoe. Didn't get back in New C.R.P. Call for details

480 acres in stegall area. 100 acres of grass, 380 acres of cultivated. Good soil and lays good. **SOLD**

Vic Coker, Agent
310 Main St. Suite 103 Muleshoe
Office 272-3100 Home 965-2468

WHEN LAND INVOLVES COWS AND PLOWS



Nieman Realty



116 E. Ave. C • George Nieman, Broker • 272-5285 or 272-5286

RICHLAND HILLS — PARK RIDGE

- Price Reduced, 3-3-1 Brick, cent. Heat, Evap. Air, built-ins, 2000' + lv. area, fenced yd., stor. bldg. MORE!! RH-2
- We have several single and multi-family lots in this area!!!!
- NICE 3-2-2 Brick, Cent. A&H, built-ins, FP, cov. patio, fenced yd. \$50's!!
- NICE 3-2-3 Brick, corner lot, Cent. A & H, built-ins, FP, 2 stor. bldgs., storm cellar, fenced yd., MORE!!! \$60k!! RH-1

HIGHLAND AREA

- 3-2-2 Brick, Cent. A&H, built-ins, gas log FP, fenced yd., stor. bldg., MORE!! Price Reduced!! HL-5
- Nicely Remodeled 3-2-1 Brick home, 2100' + lv. area, Cent. A&H, built-ins, large den w/FP, fenced yd., stor. bldg. \$50's!!! HL-3
- 2-1-1 carport home, wall furnace heat, evap. air, DW, 5 fans, cov. patio, gas grill, fenced yd., MORE!!! \$25K!!!

LENAU - COUNTRY CLUB AREA

- PRICE REDUCED 2-1-1 Carport Home, wall furnace, nice carpet, storm shelter, stor. bldg., fenced yd. \$19K!! CC-3
- 3-2-1+2 carport Brick, 2000'+Lv. area, DW, auto. sprinkler, MORE!!!
- 2-1-1 Home, floor furnace, win. ref. air, fenced yd, stor. bldg., \$19,500 !!! L-1
- NICE 3-2-2 CP Mobile Home and lot, Cent. A & H, built-ins, nice yd. with large pecan & fruit trees!!! CC-1

COMMERCIAL

- Established Business: Land, Bldg. & Equip., \$75K!!
- 175' x 140' tract, approx. 8500' bldg. on Main. \$35K!!!
- 56' x 140' tract, approx. 4700' bldg., \$35K!!!
- NICE R.V. STORAGE, 14' X 40' metal bldg. 12' doors, 50X140 carner lot!
- SNACKSHACK - Lot, Buildings, furniture, and fixtures!!!!
- LARIAT - 240 acres, 3 wells, underground tile, good productive land!!!

HIGH SCHOOL

- NEWLY REMODELED 3-1-1 Home, cent. A & H, new carpet & vinyl, fenced yd., MORE!! \$30's!!! HS-2
- VERY NICE 3-1-1 Brick, Heat pump, DW, nice carpets, fenced yd., MORE!!! \$30's!!! HS-1
- NICE 2-1-1 Brick, Heat Pump, nice carpets, well insulated, storm windows & doors. \$30's!!! HS6
- VERY NICE 3-2-2 Brick Home, 2,000'+lv. area, Heat pump, built-ins. lg. cov. patio, storm cellar, back yard man. spktr., fenced yd.!! \$69K!!! HS-4
- 3 Bdrms. in 2 bldgs. w/ 1st floor apartment unit!!! \$20K!!! HS-3

IN-CONTRACT

RURAL

- 3-2-2 Home on .92 acre at edge of town, Cent. Heat, evap. air, DW, storage bldg., fenced yd., & MORE!! \$30K!!!
- PRICE REDUCED-NICE 3-2 home, 40 acre tract, Geo. Heat Pump, built-ins, 5" irrig. well, Hi-Pre. lines, sprinkler pipe, barn, pens, tractor & equip!!! \$69K!!!
- W. of SUDAN-NICE 3-3-2 Brick Home, 5 acre tract on Hwy. 298, Cent. Air & Heat, built-ins, large Quonset Barn, MORE!!! \$95K!!!
- 5 Acre tract on pavement close to town!
- LAZBUDDIE-PRICE REDUCED-NICE 3-2-2 Brick Home on pavement, 2200' lv. area, Cent. A & H, built-ins. FP, large sunroom!! \$70's!!
- FOR BID: Approx. 4,870 acres (Bailey and Lamb Co.), water rights negotiable, 54 wells (only 2 pumps and motors), approx. 33 circles w/center pivot pads, 40' X 86' tile block barn, 40' X 100' quonset barn w/elec., 20' X 30' shop, 3 sets pipe corrals, 2 sets wire corrals!!
- Approx. 108 acres on Hwy. 70, approx. 2100' office area, 16,900' of commercial bldg. w/loading dock, 3,400 warehouse!! Great Commercial-Industrial Facility!!

Round Up Applications
Pipe-wick mounted on high-boy 30" or 40" rows. Cotton, Milo, Soy Beans and Corn. Call Roy O'Brian, (806) 265-3247. 23t-tfc

FOR LEASE

1100 acres Irr. land on Bailey County and Parmer County line good water. Call (806) 272-4208 office, or (806) 272-4743 early or late. 28s-3tch



CALL THE MULESHOE JOURNAL TO SUBSCRIBE TODAY!!!
272-4536

USDA RURAL DEVELOPMENT FORECLOSURE SALE

316 W. AVE. K, MULESHOE
DATE: TUESDAY, JULY 7, 1998
10:00 AM.
SALE TO BE HELD AT THE AREA OF THE EASTERN COURTHOUSE DOOR (BEING THE DOOR FACING STATE HIGHWAY 214 IN BAILEY COUNTY, TEXAS)
MINIMUM BID: \$8,909.00
PAYMENT BY CASHIER'S CHECK, CERTIFIED CHECK OR BANK MONEY ORDER.
FURTHER INFORMATION (806) 785-5644 EXT. 203

REAL ESTATE

Price Reduced, Country Living at it's Best - 6 miles West of Muleshoe on Highway 1760. Approx. 3500 sq. ft. Gorgeous 3-3-3 Brick home with lots of builtins, fireplace, central heat, ref. air, sunroom with hot tub, lots of storage, large family room and utility room, every woman's dream. All on 2 1/2 acres. Also 30x50 metal barn with corrals. If you want it! This place has it!

Just Listed- 32 acres with nice brick home and large steel barn. 6th irrigation well and domestic well. All highway frontage. Call for more details.
Just Listed- 20 prime lots for sale in Country Club addition. Priced to sell.
Great Investment Opportunity- 25 acres with 3 rent houses, 6 complete mobile home hook-ups with electricity, water and cable. Just west of Muleshoe. Reasonably Priced!! Call for more details!!

(806) 481-3846 • Toll Free: 1-888-999-3846

Ronald Byrd, GRI Licensed Broker

Home: (806) 481-9318

Crista Bass, Sales Associate • Home: (806) 925-6464

SAVINGS

THAT LIGHT UP THE SKY

PRICES EFFECTIVE JULY 1-7, 1998

MEAT

LONESTAR PRIDE BEEF BONELESS SOLD ONLY IN 3.5 LB. BOXES OF (8) 7 OZ. STEAKS FOR \$9.99	
RIB-EYE STEAKSPER STEAK	\$1²⁵
LONESTAR PRIDE BEEF NEW YORK SOLD ONLY IN 3.94 LB. BOXES OF (9) 7 OZ. STEAKS FOR \$9.99	
STRIP STEAKSPER STEAK	\$1¹¹
LONESTAR PRIDE BEEF SOLD ONLY IN 3.75 LB. BOXES OF (6) 10 OZ. STEAKS FOR \$9.99	
T-BONE STEAKSPER STEAK	\$1⁶⁷
CRY-O-VAC • LIMIT 2	
BEEF BRISKETLB	75¢
PILGRIM'S PRIDE BONE-IN	
SPLIT CHICKEN BREASTLB	\$1¹⁹
MARKET MADE	
HAMBURGER PATTIESLB	\$1³⁹
HORMEL BONE-IN SMOKED	
PORK CHOPSLB	\$2⁹⁹
HORMEL SLICED	
SALT PORKLB	\$1⁹⁹
WHOLE SLAB	
PORK SPARE RIBSLB	\$1⁵⁹
SHELL-ON	
LARGE SHRIMPLB	\$7⁹⁹
THICK CUT BONELESS	
CHARCOAL STEAKSLB	\$1⁶⁹
GREAT ON THE GRILL	
BEEF BONELESS SHORT RIBSLB	\$1⁹⁹
BAR S SLICED	
MEAT BOLOGNA12 OZ.	89¢
BAR S	
MEAT FRANKS12 OZ. PKGS	3/\$1
CANADIAN VALLEY	
HOT LINKS5 LB	\$5⁹⁹
BAR S	
COOKED HAM12 OZ.	\$2⁶⁹
BAR S REGULAR OR THICK SLICED	
MEAT BOLOGNA1 LB	\$1¹⁹
BAR S	
MEXICAN SAUSAGE3 LB	\$3⁹⁹
BAR S	
CHOPPED HAM12 OZ	\$1⁹⁹
BAR S REGULAR OR POLISH SKINLESS	
SMOKED SAUSAGE1 LB. PKGS	2/\$3
HORMEL ASSORTED	
BLACK LABEL BACON1 LB	\$1⁷⁹
HORMEL CURE 81	
MINI HALF HAMLB	\$2⁹⁹
BAR S	
GROUND BEEF PATTIES3 LB	\$4⁵⁹
HORMEL	
LITTLE SIZZLERS12 OZ.	\$1⁰⁹
GULF LITE	
CHARCOAL LIGHTER FLUID32 OZ.	\$1⁷⁹
SHURFINE CHARCOAL BRIQUETS	
INSTANT LIGHTING8 LB. BAG	2/\$5
ASSORTED FLAVORS	
GATORADE32 OZ. BTL.	88¢
ASSORTED FLAVORS	
CAPRISUN DRINKS10 CT.	2/\$5
SPORT CAP	
LOWE'S WATER16.9 OZ. BTL.	3/\$1
ASSORTED FLAVORS	
LOWE'S DRINKS6 PK-12 OZ. CANS	88¢
ALL TYPES	
PEPSI2 LITER	79¢
ALL TYPES	
PEPSI6 PACK-12 OZ. CANS	\$1⁰⁸
ASSORTED FLAVORS	
ALL SPORT32 OZ.	2/\$1
ALL TYPES	
DR. PEPPER6 PACK-12 OZ. CANS	\$1³⁹
ALL TYPES	
DR. PEPPER3 LITER	2/\$3

PRODUCE

SWEET JUICY	
CANTALOUPESEA.	99¢
FARM FRESH TEXAS	
WATERMELONS	2/\$3
COLORADO	
RUSSET POTATOES10 LB. BAG	99¢
JUMBO ITALIAN	
SWEET RED ONIONSLBS	3/\$1
RED RIPE	
TOMATOESLB	88¢
DOLE CLASSIC	
SALAD MIX1 LB. BAG	88¢
CALIFORNIA	
CRISP CELERYSTALKS	3/\$1
SWEET	
HONEYDEW MELONSLB	69¢

FROZEN & DAIRY

BLUE BELL	
ICE CREAM SANDWICHES OR	
STRAWBERRY FRUIT BARS ..12 CT. PKGS	2/\$5
FROZEN YOGURT OR ASSORTED REGULAR, DIET OR LIGHT	
BLUE BELL ICE CREAM1/2 GAL.	2/\$5
KRAFT	
PARKAY SPREAD48 OZ. TUB	2/\$3
ASSORTED	
MRS. SMITH'S COBBLERS ..24-32 OZ. PKG	2/\$5
ASSORTED	
BANQUET FRIED CHICKEN ..19-25 OZ. PKG	\$2⁹⁹
REGULAR, NON-FAT OR LITE	
DAISY SOUR CREAM16 OZ. TUB	\$1⁰⁹
CRISPERS OR ASSORTED TATER TOTS	
ORE-IDA20-32 OZ. PKG	\$1⁹⁹
GREEN GIANT NIBBLERS	
CORN ON THE COB12 EAR PKG	2/\$3



LOWE'S GIVES YOU MORE BANGS FOR YOUR BUCK!

HEALTH & BEAUTY

SPEARMINT, ACID BALANCE OR CHERRY SODIUM FREE	
ROLAIDS TABLETS75 CT.	\$1⁹⁹
ORIGINAL OR EXTRA STRENGTH	
BENADRYL1 OZ.	\$3²⁹
MAXIMUM STRENGTH PLUS CREAM/OINTMENT OR ORIGINAL	
NEOSPORIN OINTMENT5 OZ.	\$3³⁵
ASSORTED	
COPPERTONE LOTIONS3.75-4 OZ.	\$5⁹⁹
ORIGINAL OR CLEAR	
CALADRYL LOTION6 OZ.	\$3⁹⁹
• UNSCENTED SPRAY • SKINTASTIC KIDS • SKINTASTIC SPRAY • SKINTASTIC FRAGRANCE FREE LOTION • DEEP WOODS AEROSOL	
OFF!YOUR CHOICE-6 OZ.	\$2⁹⁹
TOSTITOS®	
CON QUESO DIP11 OZ. JARS	2/\$4
ASSORTED LAY'S® OR WAVY LAY'S® \$2.99 SIZE	
POTATO CHIPSBUY ONE 14 OZ. & GET ONE	FREE
SHURFINE ASSORTED DECORATED	
PAPER TOWELS2 PLY ROLLS	2/\$1
SOFT & GENTLE	
BATH TISSUE12 CT. ROLLS	2/\$5
DEL MONTE	
KETCHUP23 OZ. SQUEEZE	88¢
KRAFT	
SANDWICH SPREAD16 OZ.	\$1²⁹
RANCH STYLE	
BEANS15 OZ. CANS	3/\$1
SHURFINE	
PORK AND BEANS15.5 OZ. CANS	4/\$1
SHURSAVING	
TOMATOES28 OZ.	49¢
SHURFINE ASSORTED	
BARBECUE SAUCE18 OZ. BTL	2/\$1
EARLY CALIFORNIA SMALL, MEDIUM OR LARGE	
PITTED OLIVES6 OZ. CAN	\$1²⁹
ASSORTED	
DAWN ULTRA LIQUID28 OZ. BTL	\$1⁹⁹
HUNT'S ASSORTED SNACK PACK	
PUDDING OR JUICY GELS ..4 CT. 3.5-5 OZ.	99¢
WHOLE PICKLES OR HAMBURGER SLICES	
BEST MAID DILLS46 OZ. JARS	2/\$3
REGULAR STRENGTH	
DOWNY FABRIC SOFTENER ..64 OZ. BTL.	\$2⁴⁹
PRE-PRICE \$7.99	
COME'N GET IT	
DOG FOOD20 LB. BAG	\$5⁹⁹
SHURFINE	
SALAD MUSTARD16 OZ. BTL.	69¢
SOLO PARTY	
CUPS OR	
PLATES20 CT-16 PZ. CUPS • 15 CT-9" PLATES	88¢
WHITE OR COLOR	
HEFTY FOAM PLATES8 7/8" - 50 CT.	\$1¹⁹
ASSORTED FLAVORS	
LITTLE HUGS DRINKS8 OZ. BTL.	8/\$1
REDUCED FAT, ORIGINAL OR LOW SALT	
NABISCO	
SNACK CRACKERS6.75-10 OZ. PKG	3/\$5
NABISCO ASSORTED	
RITZ CRACKERS14.5-16 OZ	\$1⁹⁹
SHURFINE	
CHARCOAL BRIQUETS10 LB. BAG	2/\$3

See ya at
LOWE'S

WESTERN MONEY UNION TRANSFER™
"The fastest way to send money"

Pay-n-Save

Lowes' MARKETPLACE

401 W. American Blvd. Muleshoe 272-4585

515 W. American Blvd. Muleshoe 272-4406

WE RESERVE THE RIGHT TO LIMIT QUANTITIES IN TEXAS