





# Look Out! Eastland County

## Lawrence Bros. Just Lowered Prices!



LAWRENCE BROS. HAS LOWERED HUNDREDS AND HUNDREDS OF PRICES THROUGHOUT THE STORE. COMPARE OUR NEW EVERYDAY LOW PRICES AND SAVE! SAVE! SAVE!

HERE ARE JUST A FEW OF OUR NEW EVERYDAY LOW PRICES

	WAS	NOW		WAS	NOW		WAS	NOW
Gold Medal Flour.....5 LB. BAG	\$1.59	\$1.19	Del Monte Tomato Sauce.....8 OZ.	30¢	25¢	Miracle Whip.....16 OZ.	\$1.59	\$1.49
Imperial Sugar.....5 LB. BAG	\$2.39	\$2.29	Field Trail Dog Food.....20 LB.	\$4.99	\$4.43	Campbell's Cream of Mushroom Soup..10.75 OZ.	73¢	65¢
Emfamil W/Iron.....13 oz.	\$2.15	\$1.93	Rainbow Shortening.....42 OZ.	\$1.49	\$1.31	Jiffy Corn Muffin Mix.....8.5 OZ. FOR	39¢	38¢
Clorox Bleach.....gal.	\$1.39	\$1.19	Gladiola Yellow Corn Bread Mix.....6 OZ.	45¢	3 FOR \$1	Hunt's Tomato Sauce.....8 OZ.	39¢	3 FOR \$1
Chicken of the Sea Tuna.....6.5 oz.	\$1.29	88¢	Del Monte Cut Green Beans...16 OZ.	69¢	2 FOR \$1	Del Monte Cream Style Corn....17 OZ.	69¢	2 FOR \$1
Crisco Shortening.....3 lb.	\$3.59	\$2.99	Campbell's Cream of Chicken Soup....10 OZ.	69¢	65¢	Gold Medal Flour.....25 LB.	\$9.99	\$8.29
Rainbow Cut Green Beans.....16 oz.	49¢	44¢	IGA Ramen Noodles.....3 OZ.	6 FOR \$1	7 FOR \$1	Rainbow Apple Juice.....64 OZ.	\$1.49	\$1.39
Charmin Bath Tissue.....4 roll	\$1.39	\$1.19	Kraft Mac & Cheese.....7 OZ.	79¢	59¢	Carnation Evaporated Milk.....12 OZ.	69¢	59¢
Campbell's Tomato Soup.....10.75 oz.	69¢	49¢	Miracle Whip.....32 OZ.	\$2.49	\$2.39	Del Monte Sweet Peas.....17 OZ.	69¢	59¢
Hunt's Ketchup.....32 oz.	\$1.89	\$1.75	IGA Sugar.....5 LB.	\$1.99	\$1.89	Folgers ADC Coffee.....13 OZ.	\$2.79	\$2.69
Rainbow Sugar.....4 lb.	\$1.89	\$1.73	Ranch Style Beans.....15 OZ.	59¢	49¢	Rainbow Saltines.....16 OZ.	69¢	65¢
Purina Mainstay.....20 lb.	\$8.99	\$7.79	Starkist Tuna in Water.....6.5 oz.	99¢	88¢	IGA Flour.....5 LB.	\$1.09	97¢
Ranch Style Beans.....15 oz.	59¢	49¢	Texsun Pink Grapefruit Juice.....46 OZ.	\$1.89	\$1.57	Reynolds Wrap.....25 ft.	99¢	75¢
Campbell's Chicken Noodle Soup.....10 oz.	69¢	53¢	Rainbow Cola.....2 LITER	93¢	68¢	Brawny Towels.....ROLL	99¢	85¢
Del Monte Ketchup.....32 oz.	\$1.49	\$1.33	Del Monte Whole Kernal Corn....17 OZ.	69¢	2 FOR \$1	Hamburger Helper.....8 OZ.	\$1.69	\$1.57

AS A BONUS TAKE ADVANTAGE OF THESE SPECIALS WED., THURS., FRI., JAN. 9-10-11

SUNSHINE  
CRACKERS  
KRISPY

Limit 1

59¢

with \$10.00 purchase  
there after price 69¢

HOLIDAY  
CANNED  
SOFTED  
DRINKS

6 pack

6 pk/69¢

with \$10.00 purchase  
Limit 1

RAINBOW  
BRICK  
COFFEE

79¢

with \$10.00 purchase  
Limit 1  
Thereafter Price 99¢

BANANAS

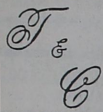
4 LBS./  
\$1.00

300 WEST  
HWY. 80  
RANGER TX.

**IGA Lawrence Bros.**

EAST HWY. 80  
EASTLAND  
TX.





# VILLAGE MARKET

EVERY MONDAY IS SENIOR CITIZENS DAY  
-5% DISCOUNT ON YOUR TOTAL PURCHASES  
EXCLUDING CIGARETTES

WE ACCEPT FOOD STAMPS & WIC CARDS

We Have Money Orders & Postage Stamps

**WEEK LONG SPECIALS**  
SAVE THIS AD, SHOP ANY DAY YOU LIKE - SPECIAL PRICES IN THIS AD EFFECTIVE

**STORE HOURS**  
MONDAY - SATURDAY, 7 A.M. - 8 P.M.  
SUNDAY, 8 A.M. - 7 P.M.  
QUANTITY RIGHTS RESERVED

Phone 725-7131, Cross Plains, Texas

JAN. 9 thru 15, 1991

We Have Postage Stamps & Money Orders



CORN OR VEG.  
**CRISCO OIL**  
**\$1.99**  
48 OZ. BTL.




HORMEL  
**SPAM**  
**\$1.89** ASST. 12 OZ. CAN  
DINTY MOORE  
**BEEF STEW**  
**\$1.89** 24 OZ. CAN



SHURFRESH  
**BONELESS HAMS**  
**\$1.99** LB.  
RED RIND  
**CHEESE** LB. **\$2.49**


HUNT'S  
**KETCHUP**  
**99¢** 32 OZ. SQUEEZE BTL.  
HUNT'S  
**SPAGHETTI SAUCE** 27.5 OZ. ASST. **99¢**



SHURFINE  
**CRACKERS** 1 LB. BOX  
**2/99¢**



HORMEL  
**LITTLE SIZZLERS**  
**\$1.19** 12 OZ. PKG.



SHURFINE  
**MACARONI & CHEESE DINNERS**  
**5/\$1.00** 7 1/2 OZ. PKG.



VIVA  
**PAPER TOWELS**  
**89¢** LARGE ROLL  
CLOROX  
**BLEACH**  
**99¢** GAL. JUG

PURINA  
**CAT CHOW**  
**\$4.49** 4 LB.  
PACKGED IN A FREE CAT CHOW FEEDER

ULTRA  
**CHEER DETERGENT**  
**\$6.99** 42 LOADS 98 OZ. BOX


NEW! SHURFINE NEW!  
**ULTRA DIAPERS**  
**\$7.99** 44 CT. MED. 32 CT. LGE. GIRLS OR BOYS



LARGE VINE RIPENED  
**TOMATOES**  
**59¢** LB.



SUNNY DELIGHT  
**FLORIDA CITRUS PUNCH**  
**\$1.19** 64 OZ. BTL.

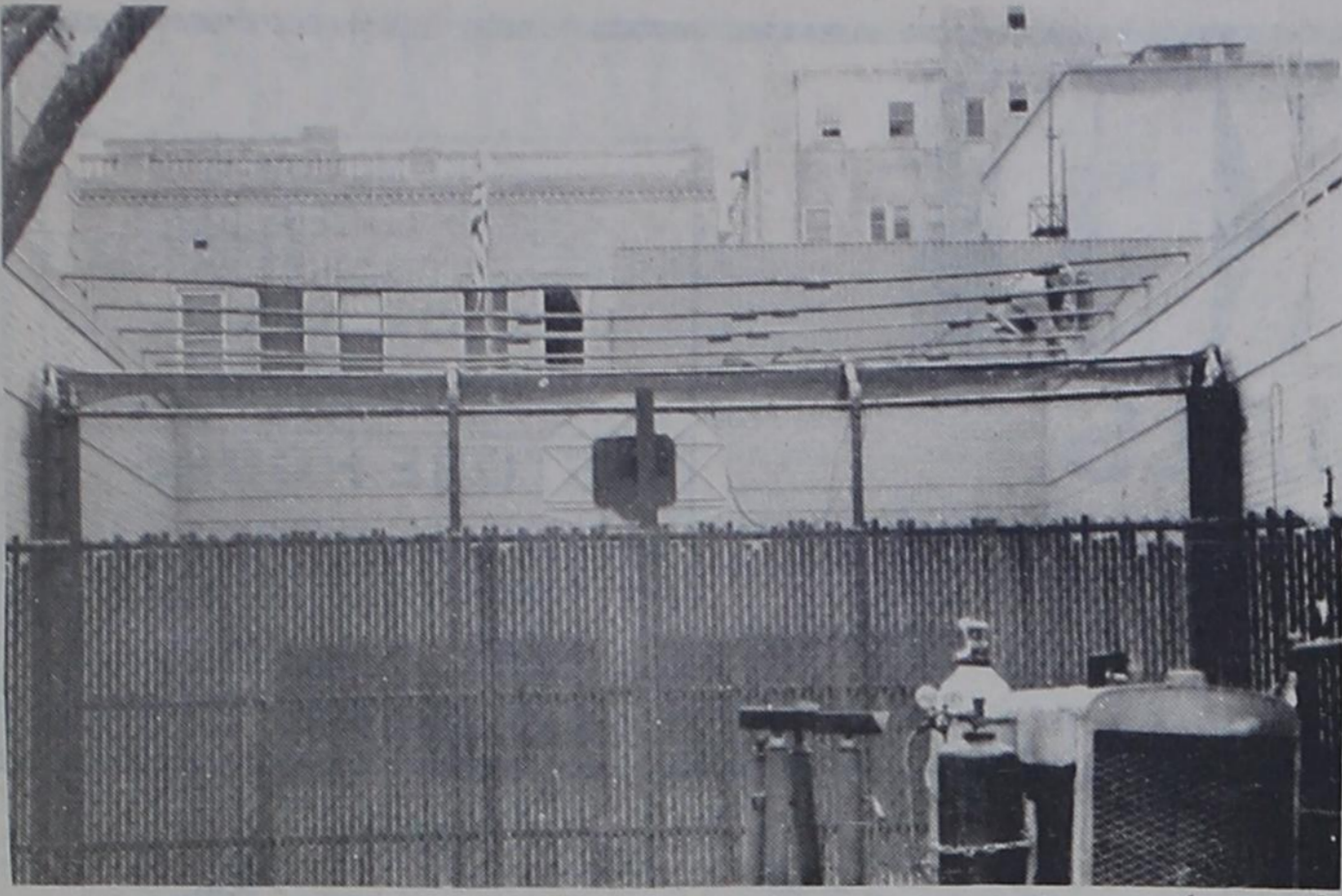


PESI-COLA or DR. PEPPER  
**99¢** ASST. 2 LTR. BTL.



SWEET  
**YELLOW ONIONS**  
**3 LBS \$1.00**

**DOUBLE COUPONS 7 DAYS A WEEK**



A welder is working on a metal grid being installed over the exercise yard at the Eastland County Jail. The yard now has a cage or lid over it to prevent prisoners from escaping by climbing over the 15 foot fence around it.



### Representative To Be In Eastland January 15 To Assist Taxpayers

State Comptroller John Sharp said Monday that a representative from his agency will be in Eastland on Wednesday, January 15th to answer questions about Texas taxes and assist taxpayers with paperwork and problems.

"I don't want to see state taxes turn into a burden for folks who can't get to a field office. Our visits are a service, we're happy to provide to

Texas taxpayers," Sharp said. Royce Manning, Enforcement Officer in the Abilene office, will be at the Eastland County Courthouse, RMB10 (the Social Security Room) from 2:00 p.m. to 3:00 p.m. The public is welcome and there is no charge.

"I'm sending my employees out to help people with questions, filling out forms, and working out problems on

a local, one-on-one basis. There's some things you just can't do as well over the phone or through the mail," Sharp said.

Big Country area taxpayers who can't attend the courthouse workshop can still get individual tax assistance by calling the Comptroller's toll-free telephone number, 1-800-252-5555, from anywhere in Texas.

The Abilene office, headed by James Martin, serves Brown, Callahan, Coleman,

## Eastland County Residents Expect To Attend Governor's Inauguration

Austin is expected to have an overflow crowd Jan. 15 for the Inauguration of Ann Richards for Governor and Bob Bullock for Lieutenant Governor.

A number of people from Eastland County plan to attend the Inauguration and activities surrounding it. Among those making the trip are June Hicks, Ann Murray, Saul Pullman, Barbara Lewis, Mary Webb, Dr. Roger Schustereit, Olin Odom III, Robert Tucker and Jesse Price.

The Inaugural Ceremony will be held at 12 noon on the Capitol grounds. It will begin with Bob Bullock taking his oath of office and making a brief speech.

Then Ann Richards will be sworn in as Governor and make a speech of about five minutes. As she concludes, all the church bells in Austin will chime.

There will be no charge for the public to view this Ceremony, but space around the Capitol is expected to be very limited.

A number of events are scheduled around the Inauguration, beginning with a Democratic Victory Party from 6-8 p.m. on Jan. 14. Anyone interested in attending this should contact Ed Martin, Texas Democratic Party, (512) 478-8746.

From 8-9:30 p.m. the same evening will be the TEXAS OUR TEXAS GALA at the Frank Erwin Center. This will be a musical review, featuring Willie Nelson, Dolly Parton, Freddy Fender, Kris Kristofferson, and a 1,000

Comanche, Eastland, Erath, Fisher, Haskell, Jones, McCullough, Mills, Mitchell, Nolan, Runnels, San Saba, Scurry, Shackelford, Stephens, Stonewall, Taylor and Throckmorton counties.

voice gospel choir. Seating is limited.

Tuesday morning, Jan. 15 will begin with a Prayer Service, by invitation only - in honor of the troops overseas. The Richards and Bullock families will join members of the Legislature.

At 10 a.m. the People's March to the Capitol will begin. People participating in the March will meet at Congress Ave. and Barton Springs Rd. The National Guard will direct the March and provide security. Accommodations have been made for a shorter March than the 11 blocks on the main route.

If the weather is good, about 25,000 people are expected to be in the March. No seating will be provided on the Capitol grounds.

After the Inauguration Ann Richards will have lunch with the outgoing Governor. Guests on the Capitol grounds will be provided with a box lunch. Tickets at \$5.00 will be included with invitations.

At 2 p.m. Richards will address the school children of Texas in live TV coverage from the mansion. She will also address the teachers of Texas.

The pace will quicken when the Inaugural Parade swings down Congress Ave. from 3-4:30 p.m. It will be led by a band from Baylor - Ann Richards' Alma Mater - and next will be the band from Texas Tech - Bullock's school.

As the parade winds down there will be a brief pause in Austin - and then Inaugural

### Farms & Gardens by Tunmire

**PLANT PECAN TREES PROPERLY**  
One of the keys to growing pecans, whether in the backyard or in a commercial orchard, is to plant the trees properly so that they get off to a good start.

Tree planting time is at hand with January and early February being the best times. Here are a few guidelines.

To begin, select a tree 4 to 8 feet tall as soon as nurseries get supplies. Plan as soon as possible, using care not to let roots dry out or freeze.

Dig a hole only as large as the tree's system. If the hole is too deep, the tree will settle and this can cause poor growth or death.

The taproot should sit in the bottom of the hole. If they hole cannot be as deep as the length of the roots, cut back the taproot to fit the hole.

Pack original soil around roots as tightly as possible. Packing the soil in 2 to 3-inch layers is better than watering to pack the soil. Use adjacent soil to complete filling the hole, not light soil, sand or potting soil. The tree can drown in rainy weather if light fill soil is used on clay land.

Plant the tree at the same depth it grew in the nursery row. Look at the colors to determine the soil line: the bark is gray and the root is dark brown.

Cut off the top half of the tree at planting to balance the stem and roots and to force growth close to the soil line.

Wrap the lower 18 inches of trunk with aluminum foil to prevent side shoots, sun scald and rabbit damage. On large plantings, use a mixture of white latex paint and water (one part paint to three parts water).

Build a basin around the tree to hold water and give each tree five gallons of water immediately after planting. Make sure trees do not go longer than 14 days without water.

These are some basic steps in planting pecan trees that can lead the way in getting them into production in a few years.

Balls will break out around the city beginning at 8 p.m. The North Ball will be at the Palmer Auditorium, the South Ball at Erwin Center, with others The Austin Opry House Ball, and the Driskill Hotel Ball downtown.

Each ball will be attended by Richards and Bullock, and each will have three bands: a country and western band, a

swing band, and rhythm and blues band.

These events are supposed to close out at 11 p.m., ending a historic day in the city and

state. There will be TV, Radio and newspaper coverage of many of the events Jan. 15, especially the Inauguration at noon.

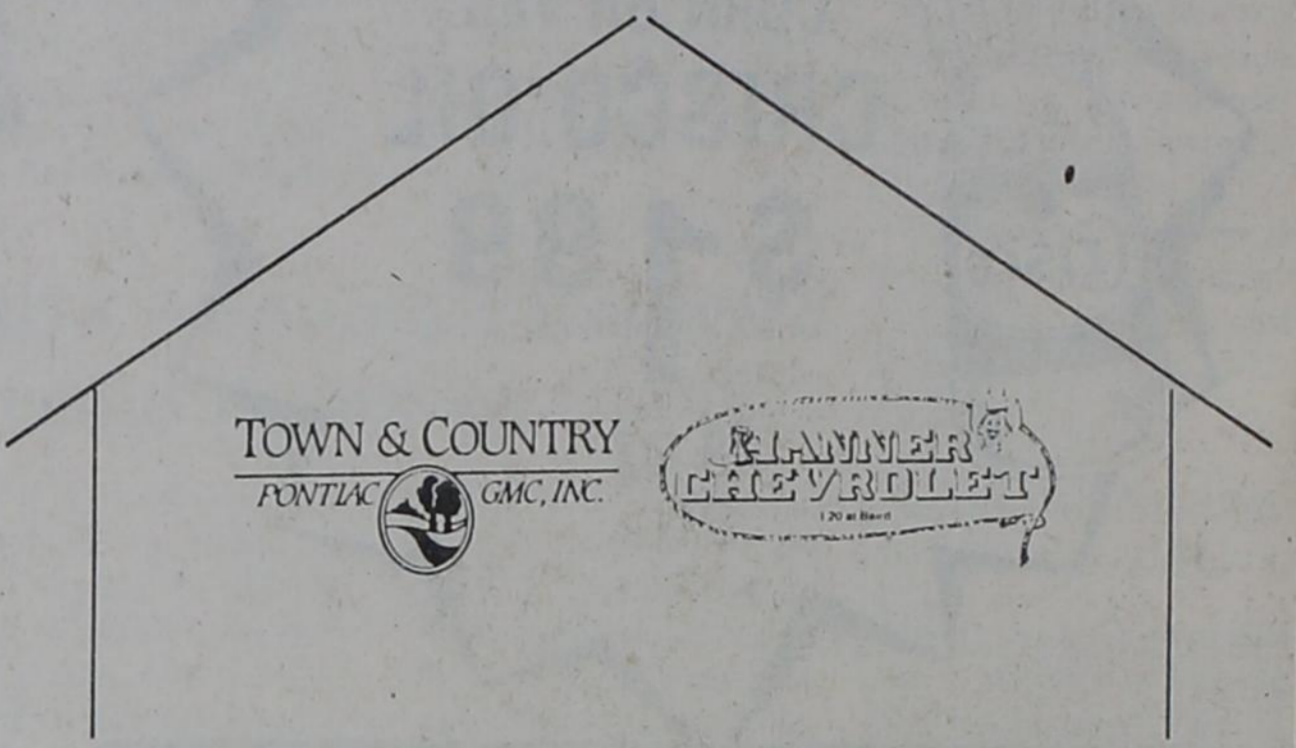
### Cisco Radiator Service

207 E. 6th - Cisco

Cleaning, Rodding and Repairing Radiators Since 1958, here since 1973. All kinds of radiators cleaned, rodded and repaired. Brass-Copper, Copper-Plastic, Aluminum-Plastic. *Quality Guaranteed Work* Call 442-1547

CES104

Your past business has been so appreciated, and in 1991, we are striving to serve you even better. Come see us under one roof.....



Don Barr

Randy Tollett, Mgr.

Curtis Loard

Glen Bolliew, Mgr.

Vernon Willingham

Jay Hanner

P.J. Russ

Mark Hanner

Nobody Beats A Hanner Deal! Come By and Let Us Show You Why.

B2-5

## TOUGH DECISIONS for TEXAS!

Who is going to protect our interests in making decisions concerning...

The LOCAL ECONOMY? PROPERTY TAXES?

HIGH SCHOOL DROPOUTS? SCHOOL FINANCE?

INSURANCE? PRISON REFORM?

RE-DISTRICTING? LOBBYIST INFLUENCE? And many other vital issues?

Ben and his wife (Anne) live and work in West-Central Texas. They have raised six children. Sudderth knows the problems facing Texas and he is prepared to make the Tough Decisions that will provide this District with QUALIFIED representation!



We need a **TOUGH DECISION MAKER!**

**Ben Doyle SUDDERTH**

CANDIDATE FOR STATE REPRESENTATIVE--65th DISTRICT (Brown, Coleman, Comanche, Eastland, McCulloch, and Runnels Counties)

**ASKING FOR YOUR VOTE!**

Paid for by the Committee to Elect Ben Sudderth, Anne Sudderth, Treasurer Rt. 1, Box 237, Zephyr, TX 76890

**WARM UP WITH AN ELECTRIC HEAT PUMP THIS WINTER... THEN STAY COOL WITH THE SAME UNIT THIS SUMMER!**

A heat pump is one complete system that keeps you toasty warm in the winter, and cool and comfy in the heat of the summer.

Plus you'll save money because a heat pump delivers about twice the energy it uses. So when you're building, buying or just replacing your present system, consider the all-in-one system—the electric heat pump.

**WEST TEXAS UTILITIES COMPANY**  
An Equal Opportunity Employer **WTU**  
A Member of The Central and South West System

For more information on the electric heat pump, contact your heating and cooling contractor or West Texas Utilities.



## Youth At Risk Conference Will Be Held January 18-20

Youth at Risk Weekend Training Conference will be sponsored by the Texas Agricultural Extension Service on January 18-20, 1991. The conference will be at the Texas 4-H Center on Lake Brownwood.

Adult and teen volunteer leaders from across the state will be attending the "Catch the Vision" for 1991-1994 youth at risk programming in Texas states Mrs. Janet Thomas, Eastland County Extension Agent.

To "Catch the Vision" of Texas youth at risk programming, Mrs. Thomas states workshops will include: (1) School-age pregnancy prevention, (2) School Drop-Out/Illiteracy, (3) Employment/

Career Development (4) Special Youth Advocate Workshop, (5) After School Child Care and Education, (6) Clover Kids, (7) 4-H A.C.E. (Applying Cross-Age Education) - Teens as Teacher Projects, and (8) 4-H mentors.

The opening assembly will feature "Teen Life" Teen Drama Group from Austin.

Exhibits of resources, curriculums and ideas will further access counties cost of the weekend conference is \$35.00 which includes meals and lodging. Pre-registration and additional information is available by contacting Mrs. Thomas at 629-2222 in Eastland.

## 'Almost An Angel' To Show At Majestic Theatre Friday

Another new release is scheduled to open at the Majestic. "Almost An Angel" will begin Friday, Jan. 11 and show through Monday, Jan. 14. Show time will be 7:30 each evening, with tickets \$3.00 at the box office. This picture is rated PG.

Writer-actor Paul Hogan is the star of the picture, with Linda Kozlowski (his wife) the co-star. Australian-born Hogan became an overnight powerhouse with the "Crocodile Dundee" films, and must

prove that he is more than a one-hit wonder.

"Almost An Angel" is a comedy-fantasy about a petty thief who is hit by a car. His injury causes him to mistakenly come to believe that he has been killed and returned to earth as an angel. Quite a few comic possibilities in that.

This is entertainment to counteract the dismal weather - and the Majestic is warm and comfortable. Take time out for some fun.

## Happy Birthday

JANUARY 11  
Tammy Tatom  
Jim Rutherford  
Rex LeBleu  
Brenda Ezzell

JANUARY 12  
Doris Cox  
Sharon Lassiter  
Kaylon Maynard  
Mandy Holmes

JANUARY 13  
Thomas Bush  
Bret Griffin  
Andrea Alford

JANUARY 14  
Delyn Purvis  
Ruby Murdoch  
Dave H. Tharp  
Ileen Smith

JANUARY 15  
Vicki Vaughn  
Kathy Buckley  
Etta Brown

JANUARY 16  
Art Fisher  
Mrs. C.W. Howard  
Linda Michael  
Melissa Norris

JANUARY 17  
Stanley Alexander  
Joe Ashworth  
Randy Ware

Rising Star  
sells  
RUBBER STAMPS

## Texas Veteran Land Board To Have Seminar

The Texas Veteran Land Board will have a free seminar at 7 p.m. Thursday, January 24, 1991 on Land Hous-

ing and Home Improvement. The seminar will be held at the American Legion Hall at 611 E. Walker in Breckenridge.

Continued

## 4-H News

out and help prepare the grounds for the up coming show.

Bring brooms, rakes and weed eaters if you have them. Fred Keith will be coordinating the clean-up.

Tell the Advertisers you saw their ad The Rising Star. They'll appreciate it!

## RANDALL W. BIBB, CPA

Is pleased to announce the opening of his office for the practice of public accounting.

Nine years experience, with extensive small business and farm and ranch tax experience.

4150 South Danville, Suite 4  
Abilene, Tx. 79605  
(915) 695-7870

# Doug's Lumber & Hardware

200 E. College Rising Star 643-4131



WELLS  
LAMONT  
COWHIDE  
Suede Leather  
Gloves  
Men's Large  
**\$8.99**

ABCO  
100 Watt  
75 Watt  
4 Pack  
LongerLife  
**\$1.85**

90-JO  
HAND  
CLEANER  
18 oz.  
**\$1.99**

COLORTEX  
Bathroom  
Tissue  
**99¢**

## RENEW NOW!

Many Subscriptions  
Expire Jan. 1, 1991

Check the date on your mailing label  
Eastland County \$9.00

Other Texas Counties \$13.00

Out of State  
\$19.00

Mail renewal to:  
The Rising Star  
Box 127

Rising Star, Texas 76471

# THE OLE STORE

Main Street  
Rising Star, TX  
643-2221

STORE HOURS  
Mon. - Sat. 8-6  
Sun. 9-2

Prices Effective:  
Wed., Jan. 9 - Sat., Jan. 12

Crisco  
Vegetable Oil  
48 oz.  
**\$2.69**

Gladiola  
Flour  
5 lb. bag  
**\$1.29**

Campbells  
Chicken Noodle  
Soup  
10.75 oz.  
**2/\$1.00**

Shurfine  
Biscuits  
7 1/2 oz.  
**4/\$1.00**

Charmin  
Tissue  
4 roll pkg.  
**\$1.29**

Shurfine  
Pinto Beans  
4 lb. bag  
**\$1.29**

Shurfresh  
1/2 Moon Horn  
Cheddar  
**\$1.49**

Morton  
Dinners  
Asst.  
**\$1.09**

Del Monte  
Peaches  
Sliced & Halves 16 oz.  
**89¢**

Red Emperor  
Grapes  
**79¢ lb.**

Red Delicious  
Apples  
**69¢ lb.**

Tomatoes  
**59¢ lb.**

Kiwi Fruit  
**3/\$1.00**

Sweet  
Potatoes  
U.S. #1  
**39¢ lb.**

Yellow  
Onions  
**3 lbs./\$1.00**

U.S.D.A.  
Club Rib Steak  
(Reg. Price \$5.99 lb.)  
**\$3.99 lb.**

U.S.D.A.  
T-Bone  
(Reg. Price \$5.99 lb.)  
**\$3.99 lb.**

U.S.D.A.  
Rib Eye  
(Reg. Price \$7.19 lb.)  
**\$4.99 lb.**

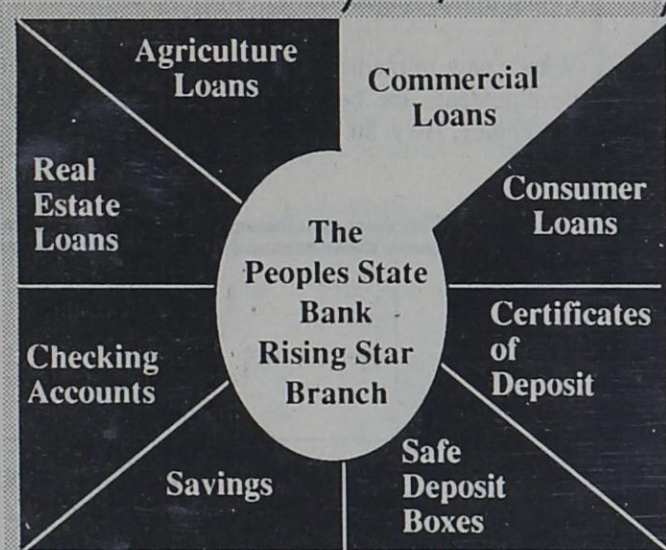
Pepsi &  
Dr. Pepper  
6 pk. cans  
**\$1.99**

Look For Items That Will Be Everyday Low Priced



### COMMERCIAL LOANS

Business Loans  
Industrial Loans  
Equipment



Ask Our  
Friendly People  
About  
Commercial  
Loans

YOUR FRIENDLY  
INDEPENDENT BANK

The  
Peoples State Bank  
of Clyde  
Rising Star Branch



Member

