

THE RISING STAR

Where Three
Good Texas Counties
Get Together

Progress Is—
Making
Good Things Happen

Rising Star, Texas

© 1989 Eastland County Newspaper Co.

Established in 1890

Thursday, February 23, 1989

25 cents

Number 8

Chamber Will Hear Candidates Tuesday

The Rising Star Chamber of Commerce & Agriculture will host the current Miss Rising Star and the girls from the Junior Class of Rising Star High School at a luncheon on Tuesday, February 28 at 10:30 a.m. at The Rainbow.

The Chamber, sponsor of Miss Rising Star, will hear short speeches from the seven candidates from the class. Later all Chamber members will cast ballots to select the next Miss Rising Star and she will be crowned at the annual awards banquet on March 16.

Members of the junior class are Diana Grissom, Camille Harris, Lana Robinette, Kimberly Schwab, Cathy Smoot, Shannon Stuteville and Becky Walker.

Stephanie Long, current Miss Rising Star, continues in the position until the end of the school term.

Awards given at the banquet include outstanding community service, outstanding business person, outstanding farmer and outstanding family.

Recognition is also given to four students from each of the high school classes for academic achievement and to outstanding members of the local 4-H, FFA and FHA.

Ray Stone, a Texan and a dyed-in-the-wool cowboy fan,

will speak at the banquet. Whether you're a Dallas Cowboy fan or not, a "fun" evening will be on tap as Stone combines serious and humorous stories about the Cowboys.

Producer of a radio talk program, Stone is a natural for after-dinner speaking. He does an outstanding job of highlighting the humor, the oddities, the unusual and the many talents of the Dallas Cowboys Football Club.

As soon as the arrangement was made for Ray Stone to speak in Rising Star, he sent a football with signatures of 10 Dallas Cowboys to the Chamber of Commerce for use in promoting the banquet. The signatures include Hershel Walker #34, Bill Bates, Timmy Newsom, Randy White, Ed "Too Tall" Jones #72, Tom Rafferty, Mike Downs, Michael Hagman, Doug Cosbie and Jim Jeffcoat.

Contact a member of the Chamber to insure an opportunity to win this football. Donations of \$1 are being taken.

Tickets for the banquet are on sale for \$8.50. The event will be held at the Activity Building of First Baptist Church March 16 at 7 p.m. Buy your ticket now from a Chamber member.

The meal will be catered by Cook's Fish Barn.

American Legion Plans Free Dinner February 25

The Rising Star American Legion is resuming its past tradition of holding barbecue dinners open to the community.

The barbecue dinner will be Saturday, February 25 at

the American Legion Hall. Serving begins at 5:00 p.m. and the dinner is free to the public.

Post Commander Kenny Rutledge extends an invitation to everyone in the Rising Star area to attend.

Free Hot Dog Supper, Door Prizes

Come to Areawide Meeting March 2

An areawide meeting will be held Thursday, March 2 at 6:00 p.m. at the First Baptist Church Activity Center.

Julia Moake, Director of Office of Community Initiatives, State Department of Commerce will keynote the program.

The program will focus on both the positive and negative aspects of the com-

munity and their relation to business development.

The meeting will include a free hot dog supper beginning at 5:30 p.m. with the program to follow.

A drawing for door prizes will be held at the conclusion of the program.

The survival of Rising Star may depend on your attendance at this meeting.

May Youth Will Hear Capps Speak

Kevin Ray Capps of Bryson will be speaking at the May Public Schools on Friday, February 24, at 10 a.m. and again on Saturday at the First Baptist Church in May to begin at 6:30 p.m.

Mr. Capps has been involved in Gospel Ministry since the age of 18 and is currently the Staff Evangelist at the Gorman First Baptist Church. He attended Midwestern State University, Hardin-Simmons University and Howard Payne

University. The purpose of this ministry is to reach youth with the gospel of Jesus Christ.

He will be speaking to the Jr. High and High School students on the topic of "Achieve Your Dreams". His speech at the First Baptist Church is entitled "Where are the Heroes Now?"

Jay Mayo, a Howard Payne University student will be providing the music.

Everyone is encouraged to come.

Lady Cats Are Bi-District Champs



THE LADY CATS WON their Bi-District playoff game against Cross Plains at Brownwood last Friday night. Pictured here with their trophy and coach are, seated from left, Rachel Coleman, Patty Pavon, Cheryl Robinette and Tami Vandivere; and, standing

from left, Pam Hollis, Becky Walker, Stephanie Long, Shawnah Harmon, Wendy Green, Gherda Williams, Stacey Wright, Juanita Ramirez, Jo Beth Landers, Jomy Clark, Shannon Stuteville and Kim Schwab; and Coach Stuteville.

Congratulations to the team and their coach.

On behalf of the Lady Cat team and Coach Stuteville THANKS!! to the Jr. High Cheerleaders and Maxine for making signs to hang in the Coliseum and for cheering for us at the game; to Mr. Riley, the Band, and the Sr. Boys for the Pep Rally Friday; to the Booster Club and Lady Cat parents for the luncheon; and to all you great Lady Cat fans who came and cheered us on to the Bi-District victory over Cross Plains in the Brownwood Coliseum last Friday night.

The thought of playing in the Coliseum was more than most of the Lady Cats could imagine, but after a short practice there on Thursday, we all realized that we could shoot and run in the Coliseum just as well as we could anywhere else. So, after a day full of exciting

activities, a determined Lady Cat team boarded a bus en route to a Bi-District victory.

As the game got underway, it was obvious that the Lady Cats were very determined to keep the game close and come out on top. At the end of the first quarter, the score was tied at 7 points. The second quarter was just as exciting as the first and the halftime score was RS 15, CP 18.

Starting the second half three points behind the Lady Buffs was an obstacle for the Lady Cats to overcome, but the third quarter score was RS 25, CP 28.

The fourth quarter began with a more determined Lady Cat team coming onto the floor. The game during the 4th quarter was tight. With 16 seconds left to play in the game, the Lady Cats

were the underdog 37-35. Retaining possession of the ball they stalled until the last five seconds when Freshman Jomy Clark sank a bucket to bring the score to 37-37. The buzzer rang signaling the end of regulation play and the 3-minute overtime began.

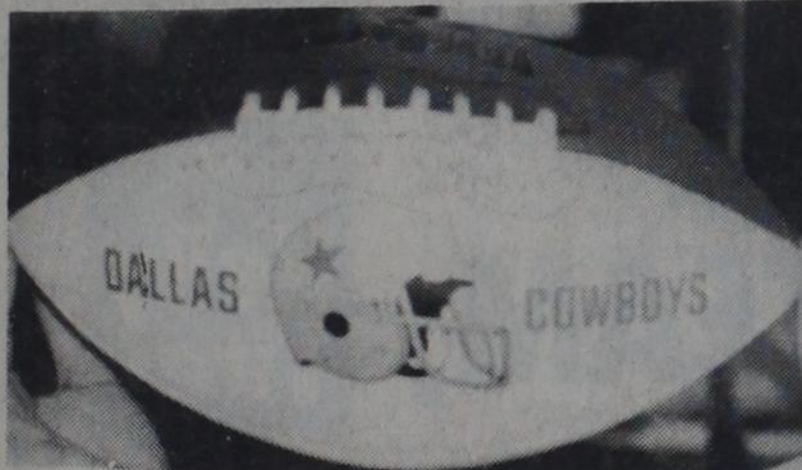
The overtime period of play was just as exciting as the previous four quarters had been. The Lady Buffs were able to score four quick points, but with 51 seconds left a time-out was called by the Lady Cats. At this time the score was RS 37, CP 41. As play resumed the Lady Cats stepped onto the floor more determined than ever.

Wendy Green scored 5 quick points, a 3-point shot and a 2-point shot, putting the Lady Cats ahead by 1 point. With 3 seconds left on the clock Stephanie Long was fouled and made 1 of her 2 free throws making the final score RS 43, CP 41. Congratulations, Bi-District Champs!!

Scoring for the game were Wendy Green with 13, Jomy Clark and Stephanie Long 10, Stacey Wright 6 and Shannon Stuteville 4.

The Lady Cats were to face Lipan for the Area Championship Tuesday night at 7 p.m. in Ranger. Good Luck Lady Cats!

Shannon Stuteville



The football signed by Dallas Cowboys is at Mr. Hill's office at the elementary school this week.

4-H Jr. Leaders and Rec Team Meet Sunday

The 4-H Junior Leaders Association will meet Sunday, Feb. 26, 2:30 p.m. at the Eastland County Livestock Show Grounds. The group

will set up and get ready for the Petting Zoo.

The 4-H Rec Team will also need to be present at that time, and meet with Patti Cozart.

Team Penning Benefit Is Sunday in Eastland

A Team Penning will be held at the Livestock Show Facilities in Eastland on Saturday, Feb. 25th to benefit the Eastland County Livestock Raisers Association.

Books will open at 2 p.m. and the Penning events will begin at 3 p.m., with free admission to the public at the modern indoor facilities located on FM 3101 Northwest of Eastland. Sponsors Brad

Stephenson and Sam Beggs have announced.

Furnishing stock and available for details is Joe McWilliams of Cross Plains who may be contacted at 817 725-6455.

Entry fee is \$60 per three-member team, and there'll be cash prizes for the fastest penning in addition to the payback money.

The event will be held rain or shine, Stephenson said. He may be contacted for details at 817 629-1504.

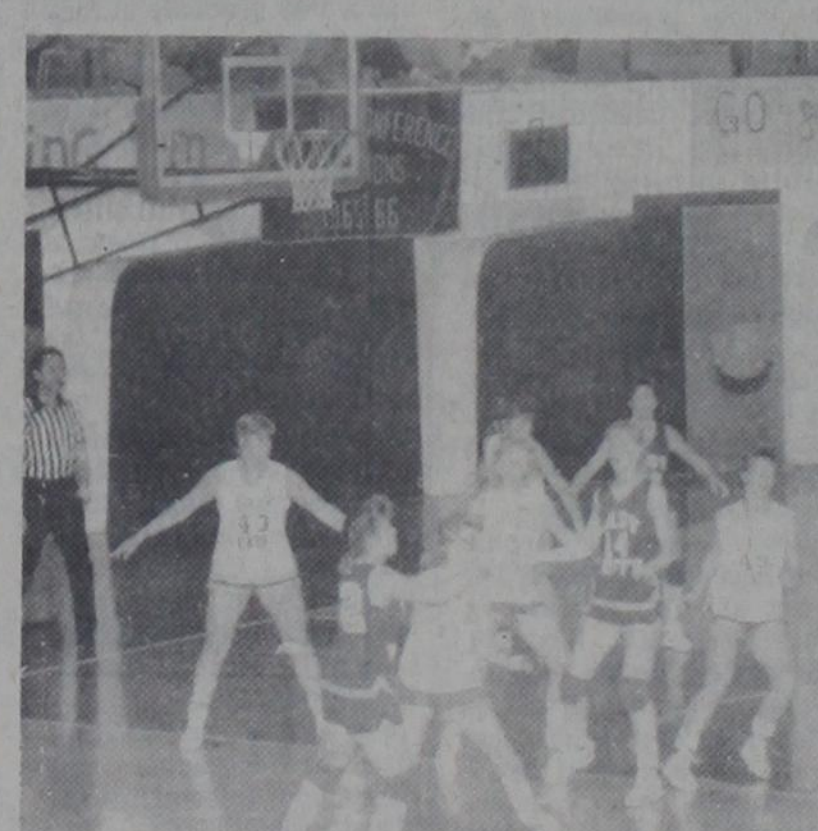
4-Hers Sell Light Bulbs

The Rising Star 4-H Club are now selling Revere light bulbs, 2 for \$1.50 with a 3 year guarantee. All money raised goes to the 4-H Club activities and Rising Star County Livestock Show.

Weather

The weather continued to be wet for several days after last week's report of an inch of rain early Wednesday morning. The total rainfall in Rising Star for the wet days totaled 4.75 inches; 4.6 was reported a few miles west of town and 5 was reported at Okra.

The rainfall was general and very welcome.



CONGRATULATIONS LADY CATS! Bi-District Champs

Shovels Missing From Rural VFD Truck

Help your volunteer firefighters protect our property. Find the missing shovels and replace them on

the fire truck. Handles are red and blue striped and Rising Star Rural Fire Department is engraved on the two shovels.

Livestock Raisers Meet

There will be a meeting of the Rising Star Livestock Raisers Association, Monday, February 27, at 7 p.m. in the Ag. Room. It is important that all members be present and those parents

that will have students showing livestock in the Eastland County Show. All interested parties are also welcome to come and sit in on the meeting. For more information, contact Gene Smith at 643-3521 during school hours.

community calendar...

LAST THURSDAY AMERICAN LEGION, 7 p.m., American Legion Hall

EACH THURSDAY SENIOR CITIZENS

LAST TUESDAY LAKEWOOD DINNER

SATURDAY CLUB The Saturday Club will meet Wednesday, March 1, at the City Library.

1st SATURDAY SIPE SPRINGS MUSICAL at the Community Center, everyone welcome.

EACH SATURDAY BINGO, American Legion Hall

CHAMBER AWARDS BANQUET The annual awards banquet held by the Rising Star Chamber of Commerce & Agriculture will be Thursday, March 16, at 7 p.m. at the Activity Center of First

Baptist Church. Tickets are \$8.50 each and the meal will be catered by Cook's Fish Barn.

Public speaker for the Dallas Cowboys, Ray Stone, will entertain banquet goers with a humorous talk about the Cowboys.

Tickets are available at many local businesses.

SIGNED FOOTBALL A football with signatures of 10 Dallas Cowboys will be given away by the Rising Star Chamber of Commerce & Agriculture. Look for tickets of opportunity at most business places here.

School Calendar Thursday - Saturday February 23-25 Junior Volleyball Tourney Friday, Feb. 24 End of 4th Six Weeks Saturday, Feb. 25 H.S. UIL Band Solos in Stephenville Tuesday, Feb. 28 Seniors ASVAB Pee Wee Basketball Tourney, Srs.



WILDCAT TALES
RISING STAR HIGH
JOURNALISM
FEB. 27-Mar. 3

Band Notes

There will be several people going to UIL Solo and Ensemble Contest on Saturday, February 25, in Stephenville. They will be playing their specially picked solos in front of judges from different areas. They will be judged on the difficulty of the piece and music and the class each performer is in.

Those participating in solo are Juanita Ramirez, Betty Jo Jones, Patty Pavon and Maxine Perales.

Good luck to all those students at Contest and may they all come home with a 1 and possibly a chance at State!!

Maxine Perales

USE THE CLASSIFIEDS



RS School Attendance Check Began Monday

The Texas Education Agency gives the school two times during the year for checking the students' average daily attendance. The first one was during the fall and the spring check will be Monday, February 20 and run through March 17. The attendance of your children during this time will determine how much money the school will receive from the state to help our education program for the school year 1988-89.

Rules from the State Board of Education require that an attendance roll be taken during a designated period each day. The Rising

Star Independent School District has designated 2nd period of the school day, from 9:00 a.m. to 10:00 a.m. as the time roll to be checked. Students present at that time are to be recorded present all day and students absent at that time are to be recorded absent all day.

On behalf of the Rising Star I.S.D., we encourage and stress the importance of having your children here, if at all possible, during the 2nd period for the next four weeks.

Thanks for your help.
Weldon Hill
Robby Stuteville
Donald E. Bryan

Tribute Given to Seniors

The graduating high school seniors in the community will receive a gift book, HAT'S OFF! A Tribute To Graduating Seniors.

Presented as a gift from Higginbotham's to area high school seniors, HAT'S OFF! is an inspirational and practical guide for young people. The book was written and designed especially for high school seniors.

The first section of the book is designed to inspire graduates to live a mean-

ingful life. It deals with topics such as self-respect, trust, respect for others, and community. The second section provides information on the many decisions graduates will face. They include education, interviewing, buying a car, banking, home purchases, and many more challenges the young people will face.

Our community joins many others throughout the Nation participating in this Program.

Lee DeLong Will Scramble in Houston

HOUSTON - Lee DeLong, a 16-year-old 4-H member from Rising Star, will compete in the 1989 Houston Rodeo calf scramble on February 27 in the Astrodome.

The calf scramble is an exciting part of Houston rodeo action, featuring George Strait as part of that evening performance.

Lee, the son of Morris and Susan DeLong, will compete for one of 252 calves to be awarded to the 1989 Show.

Additionally, as many as two youngsters from each of the 18 rodeo performances will be awarded "hard luck" certificates for their hearty efforts in attempting to catch a calf, resulting in 36 more certificates actually given.

An entertaining event whose net proceeds provide educational contributions to Texas students, the Houston Livestock Show and Rodeo ranks as the nation's largest donor of agricultural scholarships. Currently, more than 1,000 students are on Show-sponsored scholarships with more than 30 agricultural research projects funded by the Show.

Equally important is the Show's commitment to youngsters competing at the event itself. The calf scramble is one of the Show's major programs benefiting youth, requiring a yearlong commitment from the winner to the animal project.

Beginning with athletic competition in the Astrodome, the program ends 12 months later with top-notch competition in the Astrodome showing.

The actual calf scramble

event involves 28 energetic youngsters pitted against 14 vigorous calves. Each youngster is committed to capturing a calf, haltering and bringing it to the finish line, but only the successful ones receive a \$600 calf purchase certificate.

The certificate, donated by a generous sponsoring firm or individual, is used to purchase a purebred registered beef or dairy heifer. This year, several companies have strengthened their commitment to the calf scramble program by sponsoring a calf for EACH of the 18 rodeo performances.

The calf is raised by the winner for special showing competition in the Astrodome at the following year's Show. The yearlong project is closely supervised by the appropriate county extension agent or agriculture science teacher.

Additionally, the winners are required to submit financial records, photographs and a scrapbook to the calf scramble office to detail the progress of the venture. The youngsters are encouraged to provide updated reports to their sponsors as well.

Proper livestock evaluation techniques, efficient cattle feeding and production methods, principles in economics and money management are all realistic learning experiences for the youngster who manages to get a firm hold on a calf.

To date, the Houston Livestock Show and Rodeo calf scramble has put 11,030 animals valued at more than \$2 million into the hands of Texas youth.

UIL Public Hearing

The University Interscholastic League cordially invites any interested persons or groups to address a public hearing being conducted by The Committee to Review UIL Policies and Procedures.

-What: This committee will hold a public hearing to listen to any kind of suggestions about the rules, policies and procedures of the UIL, and then to formulate recommendations to the various standing committees of the UIL this summer regarding proposed changes.

-Where: The Doubletree Hotel, 6505 North IH 35, Austin, Texas.

-When: Tuesday, February 28, 1989, beginning at 1:00 p.m. (The business meeting will start at 10:00 a.m., and the public is invited to attend.)

-Why: In January, 1989, the Legislative Council of the University Interscholastic League approved the formation of The Committee to Review UIL policies and procedures in response to legislative concerns expressed during Sunset Commission hearings. Any concern about any facet of the UIL may be addressed at this time, and proposals may be made for rule changes.

-How: Telephone Bonnie Northcutt or Barbara Deмент at (512) 471-5883, or write to the UIL, Box 8028, University Station, Austin, Texas. Your name will be placed on the agenda, and you will be advised of the approximate time you are scheduled to speak. If you

cannot attend, written proposals or comments are welcome.

We look forward to hearing from anyone who is interested in the UIL programs, or who has complaints or suggestions about the programs. NOW is the time to let your voice be heard.

people in the news....

TSTI STUDENT HONORED
(TSTI-WACO - Michael Stone of May, is listed on the Dean's Honor Roll for the fall quarter at Texas State Technical Institute in Waco.

Stone, a student in the Aircraft Pilot Training Technology program, is the son of Anita L. Stone of May, and a 1983 graduate of May High School.

The dean's honor roll is for students with a grade point average between 3.5 and 3.9.

TSTI, the only state-supported vocational-technical school in Texas, is part of a four-campus network with additional facilities located at Amarillo, Harlingen and Sweetwater.

More than 50 instructional programs are offered at the Waco campus ranging from Automotive Mechanics and Building Construction Technology to Commercial Art and Advertising and Laser Electro-Optics Technology.

For more information about the Waco campus, call the Campus Information Office at 1-800-792-TSTI.

Fair Results

The Livestock Show and Fair results are as follows:

ART DIVISION.
OIL: Subjunior- Kory Collins, Red; Kelly Griffin, Blue; Kelly Griffin, White.
Junior- Amy Collins, Red; Amy Collins, Red; Amy Collins, Blue; Kristie Collins, Blue; Kristie Collins, White; Robin Griffin, Blue; Robin Griffin, Blue.
Senior- Tami Vandivere, Blue; Clarissa Atwood, Red; Clarissa Atwood, Red; Clarissa Atwood, Blue.
Adult- Dicie Adams, Red; Dicie Adams, White; Dicie Adams, Blue.
ACRYLIC: Subjunior- Sam Collins, Red.
Junior- Traci Clark, Red.
Adult- Carol Cook, Blue; Carol Cook, Red; Carol Cook, Red.
CRAYOLA: Subjunior- Kristy Hubbard, Red.
MISC.: Subjunior- Kory Collins, Blue; Bridget Claborn, Blue; Holly Butler, Blue.
ARTS AND CRAFTS
NEEDLE WORKING, Afghan: Adult- Dicie Adams, Blue.
CROCHET: Senior- Clarissa Atwood, Red.
Adult- Dicie Adams, Red; Dicie Adams, Blue; Dicie Adams, Blue; Dicie Adams, Blue; Joyce Cottrell, Blue; Joyce Cottrell, Blue; Joyce Cottrell, Blue; Joyce Cottrell, Red; Wayne Callaway, Blue.
Best of Division - Wayne Callaway.
MISC. Subjunior- Kory Collins, White; Blair Bailey, Blue; Courney Ezzell, Blue.
Junior- Amy Collins, Red; Traci Clark, Red.
Senior- Tami Vandivere, Red; Tami Vandivere, Blue; Tami Vandivere, White; Tami Vandivere, Blue.
Adult- Dicie Adams, Red; Kay O'Conner, Blue; Kay O'Conner, Blue.
Best of Show - Tami Vandivere.
Best of Arts & Crafts - Joyce Cottrell.
CLOTHING: DAYTIME: Subjunior- Adam Santellano, Blue; Luis Santellano, Blue; Orlando Santellano, Blue.
Junior- Traci Clark, Blue.
Senior- Joni Clark, Red; Wendy Green, Blue;

HAND STITCHERY:
Subjunior- Kory Collins, Blue.
Senior- Patti Pavon, Blue; Patti Pavon, Red; Clarissa Atwood, Blue; Pam Hollis, White; Pam Hollis, White.
Adult- Joyce Cottrell (6) Blue.
WOODWORKING:
Subjunior- Kory Collins, White; Kelly Griffin, Blue.
Junior- Amy Collins, Blue; Kristie Collins, Blue; Robin Griffin, Blue; Robin Griffin, Blue.
FOODS: CAKES: Junior- Chris Eddison, Red; Samantha Kerr, White; Kristy Hubbard, Blue; Tianay Chambers, Blue; Terry Ware, Blue; David O'Conner, White; Traci Clark, Red; Will Ezzell, Blue.
Senior- Pam Hollis, White; Pam Hollis, Red; Bobby Flores, Blue; Bill Walden, White; Donnie Horton, Red; Matthew Harmon, Red; Patti Pavon, Red; Stephanie Long, Blue; Jimmy Evans, White; Toby Long, White; Patti Pavon, Blue; Stacey Wright, Blue; Stacy Green, White; Wendy Green, Blue; Donny Alcorn, Red; Robby Harding, Blue.
Adult- Geraldine Richter, White; Sandra Hollis, Blue; Elizabeth Chamberlain, Blue; Rose Streibich, Red.
DECORATED CAKES:
Seniors- Tami Vandivere, Blue; Clarissa Atwood, Blue; Larry Hollis, Blue.
Grand Champion - Robby Harding.
Reserve Champion - Clarissa Atwood.
MENS OPEN: Larry Hollis, Blue; Brian Bailey, Blue; Howard Lawrence, Blue.
Grand Champion - Brian Bailey.
Reserve Champion - Howard Lawrence.
PIES: Subjunior- Jackie Hubbard, Blue; Bridget Claborn, Blue.
Junior- Greg Stone, White; Kristy Hubbard, White.
Senior- Michelle Ferbrache, White; Patrick Lee, Blue; Brian Bailey, Blue; Brian Bailey, Blue; Wendy Green, Red; Wendy Green, Red.
Adult- LaJean Lawrence, Red.
Grand Champion - Brian Bailey.
Reserve Champion - Patrick Lee.
COOKIES: Subjunior- Orlando Santellano, Blue; Luis Santellano, Blue; Jackie Hubbard, Blue;

Briana Cooksey, Blue.
Junior- Emily Stuteville, Red; Scott Rutledge, Red; Emily Stuteville, Red; Time Burton, Red; Robert Self, Blue; Steven O'Connor, Blue; Robert Self, White; Kristy Hubbard, Blue; Susan Stone, Red; Tianay Chambers, Red; Rene Rodriguez, Blue; Becky Clay, White.
Senior- Betty Jo Jones, White; Pam Hollis, Blue; Patrick Lee, Red; Bill Walden, Red; Clarissa Atwood, Red; Tricia Fox, Blue; Clarissa Atwood, White; Troy Willis, White; Troy Willis, White; Wendy Green, White; Tricia Fox, White; Patti Pavon, Red; Tommy Rowe, White; Ronnie Wilson, Red; Larry Hollis, Blue; Scotty Wilson, Blue; Bobby Flores, Blue; Tami Vandivere, Red; Shane Ashley, White; Bill Walden, White; Tami Vandivere, White; Chad Hill, Blue.
Adult- Elizabeth Chamberlain, Blue.
Grand Champion - Chad Hill.
Reserve Champion - Scotty Wilson.
CANDY: Subjunior- Adam Santellano, Blue.
Junior- Will Ezzell, Red.
Senior- Tami Vandivere, Red; Jomy Clark, Blue; Brian Bailey, Red; Pam Hollis, Red.
Adult- Elizabeth Chamberlain, Red.
Grand Champion - Jomy Clark.
Reserve Champion - Adam Santellano.
QUICK BREADS:
Subjunior- Judy Ware, Red.
Junior- David Mitchell, Red; Dedria Emert, Red; James Bronson, Red; Jimmy Ayers, White; Josh Adams, White.
Seniors- Clarissa Atwood, Red; Pam Hollis, White; Bill Walden, Blue.
YEAST BREADS: Senior- Larry Hollis, Blue.
Adult- Elizabeth Chamberlain, Red.
Grand Champion - Larry Hollis.
Reserve Champion - Bill Walden.
CANNED FOODS: Senior- Pam Hollis, Blue; Pam Hollis, Blue; Pam Hollis, Blue.
Adults- Elizabeth Chamberlain, Blue.



Brandi Monsey was first runnerup in the third and fourth grade division of the Miss Valentine Parade in Cross Plains last week. The parade is sponsored by Beta Sigma Phi.

Brandi, age nine, is the granddaughter of Annie Ruth Christian of Rising Star.

1989 Rising Star High School TRACK SCHEDULE Boys and Girls

Mar. 4	Goldthwaite
Mar. 11	Cross Plains
Mar. 18	Santa Anna
Mar. 25	Open
Apr. 1	Rising Star
Apr. 8	Gorman
Apr. 14	Cross Plains District

1989 Rising Star Junior High TRACK SCHEDULE Boys and Girls

Mar. 3	Goldthwaite
Mar. 10	Cross Plains
Mar. 17	Open
Mar. 24	Rising Star
Apr. 8	Cisco
Apr. 21	Rising Star District

THE Heartbeat OF AMERICA
TODAY'S CHEVY TRUCK

Special New

BIG COUNTRY CHEVROLET DEALERS

THE HEARTBEAT OF WEST TEXAS

records include detailed in-

(Similar To Picture)

Fullen Motor Co.

305 East Main Eastland 629-2676

NEW STORE

Kelly Tires

TYRE TEAM, INC.

1250 E. Main

629-2012

JOE KENNEDY-Manager

VALENTINE SPECIAL

4 for 3*

Buy 3 Kelly Tires And Get The 4th Tire FREE! A 25% Savings!

*All Car & Truck Tires Thru 15"

Plus Our Service Department Offers Front End Alignment, Brake Jobs & Tune-Ups American Made & Foreign Cars Along With Total Tire Service

Kelly Tires

Dan Hudson-Mechanic on duty with 24 years experience.

Kelly Tires

**PRE-
SPRING
SPECIAL
SAVINGS**

**THROUGHOUT THE STORE:
LOOK FOR SPECIAL SAVINGS TAGS**

- JEWELRY
- LAMPS
- GIFTS
- NAME BRANDS
- NOVELTIES
- COSMETICS
- GLASSWARE
- FIRST-AID
- ART
- STAPLES

And An Up-To-Date Pharmacy
You Can Depend On! With Free
Delivery!

Cards Accepted:
Medicare ACS
Mini-Med BlueCross
& Others

Don Stoner Pharmacy

Downtown Behind
The Beautiful Trees
On The North Side
Of The Square

Worth Looking For!



**CENTRAL
DRUG**

103 W. Main St.
NORTH SIDE OF SQUARE
EASTLAND

629-2681

<p>Contac Capsules or Caplets 10's \$2.57</p>	<p>Lubiderm Lotion 16 oz. \$5.29</p>	<p>Depend \$5.99</p>	<p>Bayer Aspirin Tablets 100's \$3.59</p>	<p>Oil of Olay 4 oz. \$4.66</p>	<p>Ecotrin Tablets 100's \$4.09</p>	<p>Gillette Good News! 10's \$2.25</p>
---	--	--------------------------	---	---	---	--

News Briefs

EASTLAND
The Eastland Chamber of Commerce President John Berry has announced all the Committee appointments for the year. A number of people have agreed to serve on the nine different committees. The Chairmen are as follows: Special Events, Doyle Maxwell, Membership, Clint Ferguson, Retail Trades, Ann Folsom, Finance, Ken Parker, Parade, Lawrence Janecka, Tourism, Dub Hoffmann, Airport, Don Bradshaw, Sports, Larry Vernon, Economic Development, Randy Roper.

Eastland Peggy Robinson, owner, has opened Video One next door to her Beauty Connection, with a doorway between. She plans to manage both businesses. Video One will offer more than 500 tapes, with new tapes coming in weekly. There will also be some TV and VCR accessories. The store will open at 9 a.m. Monday through Saturday, and 2 p.m. on Sunday. It will close at 6 p.m. on Sunday and Monday, 8 p.m. on Tuesday, Wednesday and Thursday, and at 9 p.m. on Friday and Saturday.

CISCO
The Cisco Civic League has donated \$1,000 to the Cisco Public Library. Mary Bob Leveridge, Librarian, says the money will be spent to buy educational materials for the Library. This is money the Civic League made last year from the Cisco Folk Life Festival, and they are giving it to this worthy cause. The Twentieth Century Club established this public library a number of years ago, and have continued to operate it for the benefit of the town.

Cisco Junior College has an all-time high enrollment

of 2015, a 14% increase over the spring of 1988. This is the first time the 2,000 student barrier has been broken, notes Olin Odom, CJC Registrar and Dean of Admissions. The Southern Association of Colleges and Schools reaffirmation committee will visit CJC on March 13-16. CJC President Roger Schustereit has praised the work on the self-study by the steering committee and all of those who have worked to prepare for the visit. Dr. Ken Hammes is Chairman of the Self Study Steering Committee.

The Cisco Junior College Stage Band, directed by Tim Jones, will present the sixteenth annual Nostalgia Night performances on Friday, Feb. 24, and Saturday, Feb. 26. The programs will take place in the Corral Room of the Laguna Hotel, and will begin with dinner at 7 p.m. Dinner will be followed by 30-40 minutes of listening/dancing music, with dessert and coffee being served afterward. After a short intermission the band will return to the stage to present vocal and instrumental solos, medleys, and three select routines by the CJC Wrangler Belles. The Belles are directed by Nicki Harle. Tickets are \$9 per person, and seating preference is by date of reservations. Call Pat Dill at the Cisco Junior College switchboard

for reservations. The phone number is 442-2567.

Ken Martin, city engineer with Jacobs and Martin Inc. has suggested to the City Commission that they meet with the State Water Commission and see if there could be alternatives to making a study to reevaluate the structure of Williamson Dam. Martin said the cost of the study would be from \$69,000

to \$200,000, and that Cisco would probably want to spend that money on the search for more water. He suggested setting up a monitoring program on the dam and bridge to see if there is any movement in a 6 mo., 1 yr. and 2 yr. period. Martin also said the Water Commission wants the city to realize there might be trouble with the dam if a large amount of water comes in. City Manager Mike Moore

noted that the city has put up barricades on the dam and bridge to prevent any traffic going across it.

RANGER

The Ranger Chamber of Commerce Banquet will be held on Thursday, March 9, 7 p.m. at Lone Cedar Country Club. Jerry Hodge, Vice Chairman of the Texas Board

of Corrections, will be the featured speaker. More plans will be announced for this event. Golden Deeds awards will be presented, and Outstanding Students, Teachers, and Farm Family of the Year recognized. A large attendance is expected.

Howard Haber, 21, of Fort Worth has been hired as a

Fireman, replacing Buddy Davis. Haber attended Paschall High School and North Richland Hills Fire School.

Eastland Telegram - Ranger Times - Cisco Press - Rising Star And Callahan County Star
Thursday, February 23, 1989

The new Skinny's Store on East Main St. in Eastland is now open for business. Pat Swinney manages the convenience store which is open 24 hours a day, seven days each week. Grocery items, candy, drinks, ice, ice cream, school supplies, and some hardware, motor oil and pet foods will be available. The store has ten Shell gas pumps, offering four unleaded, four super-unleaded, and two regular. Pat Swinney promises weekly specials and sales, and there will be a Grand Opening soon. The store presently has four employees, and is taking applications.

The State Music Club President, Mrs. W. Lavoy Whitworth is visiting Eastland this Wednesday, Feb. 22. She will be at Eastland High School Band Hall at 4 p.m., where she will attend a program presented by the Eastland Music Study Club. There will be a concert by the Eastland Maverick Jazz Band, and also the presentation of the Anna Barbara Kinniard Scholarship Award to an outstanding music student. The public is invited.

Dr. Paul Duncan, Eastland veterinarian, has been elected to membership in the American Angus Association, with headquarters in St. Joseph, Missouri. The American Angus Association, with over 30,000 active adult and junior members, is the largest beef cattle registry association in the world. Its records include detailed information on nearly 11 million registered Angus.

Video One, a new VCR tape rental store, has opened in the Shady Oaks Shopping Center on East Main in

**Wayne's
Hobby Shop**
Radio Control
Planes, Cars,
Boats
Hand Gliders
979 E. Main Eastland
629-2435

Prater Equipment Co.
Heavy Equipment Contractors
Roads Dams Brush Work
Utilities Dams Developments
Free Estimates
817-842-5878 817-842-5244
No Job Too Small or Too Large

When the time comes...
**LET US LOVE & CARE FOR
Your Loved Ones.**
Providing T.L.C. in I.C.F.
EASTLAND MANOR NURSING CENTER
1405 W. Commerce St., Eastland 817-629-2686
Peggy Pryor, Administrator
Call soon for complete details
and information

**Red's Steakhouse
& Club**
Hwy 80 W. 629-3519 Eastland
**Friday & Saturday
Feb. 24 & 25**
**Larry & Cyndie Mace
of Corpus Christi**
Next door In The Steakhouse...
Thursday - Sirloin For 2 \$9.95
NEW - Catfish!
Open Mon. - Fri. 4 - 12 p.m. Sat. - 4 - 1
Now Open Wed. Closed Sun.

Pierce Ford FORD
1987 F150 XLT Lariat SuperCab
302, Automatic O.D., Air, Windows, Locks,
Tilt & Cruise, AM/FM Cassette, Pretty Red &
Silver, One Owner, Low Miles,
Only.....\$12,900.00
1986 AeroStar Van XLT
V6, Automatic, Dual Air,
AM/FM Cassette, Low Miles
Only.....\$10,300.00
1988 F150 Pickup
6 Cyl., 5 Spd., Air, AM/FM Stereo,
PS, PB, Low Miles
Only.....\$8,995.00
Pierce Ford
Just Down The Road From High Prices!!!
Cisco, Texas I-20
442-1566
We Rent Cars & Trucks
Daily, Weekly, Monthly

**BEATY/TALLEY
TRAVEL**
A Full Service Agency
With Our New Automated
Reservation, We Can Now
Issue BOARDING PASSES!
Maynard Bldg. Suite 1A
Eastland 817-629-8504

BEIL INTERIORS
1706 W. Commerce (Hwy. 80 W.)
Eastland (817)629-1319
Draperies
Custom Made
In Our Shop
The Most Trusted
Name In Window
Covering
Decorator Accessories
Gift Boutique

**HOUSTON'S
FABULOUS
Tides II
MOTOR INN**
6700 SOUTH MAIN
DICK MAAGLE, V.P.
SUMMER
DISCOUNT
\$3995
DBL.
KIDS FREE
12 & UNDER
ASTROWORLD/WATERWORLD TICKETS
AVAILABLE AT FRONT DESK
EXCELLANT BUFFET AT REASONABLE
PRICES
BEAUTIFUL POOL AND GARDEN
AREA
CABANA ROOMS AND SUITES
FREE PARKING
RISING TIDES CLUB
MAJOR CREDIT CARDS ACCEPTED
713-522-2811
HOUSTON, TEXAS
Across From Texas Medical Center
5 Minutes to Astrodome, Astroworld and Waterworld
Rice Stadium - Zoo - Golf Course - Fat Stock Show - The Summit

Bank Repos **AUCTION** Bank Repos
Saturday, February 25 10:00 a.m.
Cross Plains, Texas 1 mile East of Stop Light Hwy. 36
Three area banks have combined all
repos & bankrupt inventory for this
sale to be sold at Public Auction without
minimum or reserve to the highest bidder.
• 7 Trucks incl. Schwartz Roll Back
• 7 Trailers inc. 40' Hobb's conv.
grain trailer, belly dump
• 5 Air compressors - trailer
mounted, some screw-type
• Generators, Welders, Winches
• '84 Suburban Diesel (loaded)
• '83 Ford Super Cab Diesel 4 Speed
• '81 Ford 3/4 ton new motor, trans,
rear end (like new)
• '82 Chevy 1 ton flat bed
• Oilfield equipment
• Farm equipment
• Much, much more - too
numerous to mention
For More Info 915-625-5302
Ideal Auctioneering
Bob Thomasson
L#TXS - 098 - 006166

Senior Center News

Thursday was our Annual "Pile on Lunch". Everyone seemed to enjoy it. After lunch, Dr. Charles Barnes gave a talk on the prison that Eastland County is trying to get. After Dr. Barnes finished his talk, we had our valentine box, exchanging valentines with everyone. We enjoyed it very much. It reminded us of when we were kids in school.

Reba Mooney is still not doing well, also Artie Jaggers. We hope both will soon be better.

Rilla and Walter Richburg had visiting children Saturday and Sunday including Morene, Corky and Bo Dee of Odessa; Rowena Chambers of Boerne; Perry, Stephanie Robinson and Thad Chambers of Irving; Taronna, Judd and Je Tanna

Sewall of Brownwood; and Russel, Dodie and Candace Davis of Rising Star.

Henry and Inez Robertson and Mary Carroll spent Saturday in Abilene visiting Dow and Alice West.

Curtis and Stella Hill spent the weekend in Lancaster visiting Kay and John Brady and family and Marty Hill.

Dean and Pauline Spears spent Tuesday night with Bea and Berna Lee Chick. Paula and Jerrilea Hubble and Lee Ann Whitten spent Sunday with them.

Evelyn reported her brother in Kerrville isn't doing very well. She and her sister, Miriam Adams, visited him Monday.

Joe had a check on his eyes Wednesday. The report wasn't good. He will see another specialist in early spring in Fort Worth.

Rising Star Nursing Center Activity Director

Vickie Majors

Monday: We did in-room activities and exercise, passed out mail and played bingo. Players were Martha Irby 2, Joe Fox 2, Pearl Petty 4, Lela Clark 1, Vera Forbes 3, Elizabeth Robertson 1, Jennye Turner 1, and Buster Rixford 2.

Tuesday: We had exercise, passed out mail and had a Valentine party with cookies and punch. We had a "Valentines" Queen & King, Queen Jennye Turner and King Joe Fox.

We were entertained by Ruby McGowan and son who sang and played the piano.

Wednesday: We made paper weights, passed out

mail and played bingo. Players included Martha Irby 2, Vera Hill 3, Maggie Christian 2, Jennye Turner 2, Pearl Petty 4, Vera Forbes 1, Pauline Hill 1, Joe Fox 3, and Buster Rixford 3.

Thursday: Passed out mail and did in-room activities and exercise.

Friday: We played indoor basketball, passed out mail and played bingo. Players were Martha Irby 4, Lela Clark 1, Vera Hill 3, Vera Forbes 2, Jennye Turner 4, Pearl Petty 1, Pauline Hill 4, Joe Fox 4, Elizabeth Robertson 1, and Buster Rixford 7.

Thanks to the May Baptist Church for Sunday services.



VALENTINE King and Queen were selected at Rising Star Nursing Center last week; they are Joe Fox and Jennye Turner.

The Saturday Club

The Saturday Club met February 15, in the Rising Star Public Library Assembly Room.

The speaker for the day was Dr. Charles Barnes. He gave a very interesting talk on Texas Department of Corrections and gave some interesting facts about our State prison system. He talked about our new project to get a state prison for Eastland County and how it would benefit Rising Star. We all need to support this project. He showed some slides on a prison system in Palestine and invited anyone wishing to go on their next trip to contact him.

After the program, refreshments of sandwiches, nuts, dips, candy, popcorn

cake, punch and coffee were served by the hostesses Geneva Cooper and Olena Ezzell.

Those present enjoyed the fellowship and the beautifully decorated rooms with the Valentine motif of "Hearts and Red Roses".

Prior to the program, a brief business meeting was conducted with President Dicie Adams presiding. Reports were given by various committees. The club voted to give the two Fire Departments a donation. The District Convention in Brownwood was put off until April 14 and 15.

Guests were Mr. R.A. Lamb and C.L. Parker.

Hostesses for March 1 meeting are Betty Fisher and Dorothy Whiteside.

Pioneer Patchwork

The quilting circle was almost complete with 12 of 16 present Tuesday, and we enjoyed the pretty Valentine decoration on the lunch table placed there by Jean Fore.

Three of our husbands ate lunch at the club and a fourth husband's plate was carried to him. Also, our usual guest—a neighbor's—plate was carried to him. We finished a pretty patchwork quilt, quilted with shell pattern. The two quilts in the frames now are of the same pattern—Nine Patch alternated with a design block—but they look quite different because of the color arrangements. Members expressed that they were glad to be back with a good start for '89. Some members also said they were glad Irma was able to do the Patchwork news again.

Jewel Foster's white hound had seven male pups. Well, none of those pups will ever bear any pups of their own!

Nell and Joe Fleming's granddaughter, Lynn Fleming, and her friend, Carol, of Abilene, spent the weekend with Joe and Nell.

Betty Browning came to see Jean Alexander at her home last week.

Frankie Smith and Jean Fore went to Eastland Saturday to visit in the nursing

- home with Frankie's father, Mr. Jerry Vinson.
- HAPPY BIRTHDAY**
- FEBRUARY 24**
Olena Ezzell
Mary Perkins
Edith Bibb
Vickie Elliott Levisay
- FEBRUARY 25**
Cleo White
James Wolf
Opal Hill
Doddie Chambers Davis
Evelynn Donham
Jo Jo Butler
- FEBRUARY 26**
Mary Beard
Russell Owen
- FEBRUARY 27**
Debbie Winfrey
Estella Hudson
Nancy Winchester
David Larrison
- FEBRUARY 28**
Ozzie Burns
Gary Jones
Chris Inglet
- FEBRUARY 29**
Gary Hubbard
- MARCH 1**
Tony Long
John Schlenker
Billy Harmon
Holly Butler
Jim Hook
- MARCH 2**
Douglas Walker
Christi Clark

Lakewood News

Next Tuesday, February 28, we will have our monthly dinner at 7 p.m. Pioneer

ladies will be our hostesses, and we hope to see all members present.



FISHING AT LAKEWOOD: Elgie Crisp is shown here with two of the beautiful fish his wife, Maxine, caught. We wonder if he will leave her at home next time? Fishing has been great lately. The cold weather must have made them hungry.

Stop In & See Our Selections

Grapevine Wreaths
Art Supplies
Paintings
Gifts

Hubbard Gift & Gallery
Rising Star 817-643-6242

Obituaries

Annic M. Franke

CROSS PLAINS - Services for Annic Madeline Franke, 91, were held on Feb. 15 at 2 p.m. at Higginbotham Funeral Home with Rev. Larry Cyr officiating. Burial was in Cross Plains Cemetery. She died Feb. 13 at a Rising Star nursing home.

Born in Coleman County, she moved to Cross Plains several years ago. She was a homemaker and a member of the Sacred Heart Catholic Church.

Survivors include four sons, Edwin Franke of Brownwood and Merlin Franke, Leo Franke, and Raymond Franke, all of Cross Plains; a daughter, Frances Bartek of Coleman; a sister, Agnes Affolter of Dayton, Ohio; 16 grandchildren; and 19 great-grandchildren.

Maude M. Lyon

MASON - Maude M. Lyon, 96, formerly of Rising Star, died Feb. 14 at a local nursing home.

Services were held at 10:30 a.m. Thursday at Mason Funeral Home Chapel with H.L. Bingham officiating. Graveside services were at 3 p.m. at Heritage Cemetery in Rising Star.

Born in Eastland County, she moved to Mason in 1972 from Rising Star. A homemaker and a Baptist, she was the widow of Will P. Lyon.

Survivors include three sons, Lee Roy Lyon of Devine, Herman Lyon of Grandview and Jerry Lyon of Mason; four daughters, Jeanette James of Irving, Virginia Harvey of Stephenville, Carrie Woods and Frances Kent, both of Mason; a sister, Thadia Jo Awalt of Eastland; 17 grandchildren; 31 great-grandchildren; and a great-great-grandchild.

Billy P. Baum

CROSS PLAINS - Billy Parker Baum, 57, a driller, died Thursday in San Antonio.

Services were held at 2 p.m. Saturday at Higginbotham Funeral Home Chapel with Mark Henderson officiating. Burial was in Cross Plains Cemetery.

Born in Callahan County, he moved to Rising Star a year ago. He was a member of Methodist Church and Masonic Lodge.

Survivors include his beloved companion, Eileen Crowder of Rising Star; two sons, Wayland Cave Baum of Longview and Leicester Baum of England; a daughter, Reba Sue Schmidt of San Antonio; his mother, Vera C. Farrell of Weatherford; two sisters, Ann Baum Cross of Mineral Wells and Martha Baum Killough of Weatherford; five grandchildren.

Hulen Erwin

Ralph Hulen Erwin, 74, died Tuesday at a Temple hospital.

Services were at 2 p.m. Wednesday at Higginbotham Funeral Home Chapel with the Rev. Dick Williams officiating. Burial was in Rising Star Cemetery.

Born in Scranton, he was a longtime resident of Rising Star. He was a farmer and rancher. He was a Presbyterian.

Survivors include his wife, Daisy Erwin of Rising Star; a daughter, Sandra Elliott of Rising Star; a brother, W.R. Erwin of Sabanno; two grandchildren, Mackey Elliott of Rising Star and Vicki Levisay of Bangs; and two great-grandchildren.

Roland Atwood

Roland Atwood, 54, died Tuesday at his home. Services are pending.

Alton C. Dorsett

DURANGO, Colo. - Alton C. Dorsett, 84, former Reporter-News employee, died Jan. 19 in Chandler, Ariz.

Memorial services were held at the First United Methodist Church in Durango.

Born in May, he attended Brownwood High School, Howard Payne University and the University of Texas.

He was advertising director of the Daily Texan at the staff of the Reporter-News for 11 years, five of those years as the local display advertising manager.

In 1945, he and another former Reporter-News employee, Harold L. Anderson, purchased the Durango Democrat.

Later he established La Plata Realty and developed Riverview Estates in Durango, Florida River Estates, Easter Heights, Island Cove Mobile Home Park, and Durango's first shopping center, Town Plaza.

He was past president of the Chamber of Commerce, the Durango Rotary Club and the La Plata Board of Realtors.

A life member of the Austin Masonic Lodge, he was a member of San Juan Basin Shrine Club and the First United Methodist Church.

He was the widower of Norma Alberta Wall Dorsett.

Survivors include a son, Terry Dorsett of Glendale, Ariz.; two daughters, Susan (Mrs. Doug) Motz of Durango, Colo. and Carol (Mrs. Jack) Phelps of Tucson, Ariz.; a sister, Helen Burkes of Friendswood; and ten grandchildren.

Rasco Joins Mountain Top Church Staff

Rev. Doyle Rasco joined the staff of pastor John C. Jones as "part of the great team that keeps the ministry side of the church going while the pastor is away on speaking engagements state-side and abroad." The pastor states "it takes a great team of ministers to keep a progressive church moving forward when the pastor is as heavily engaged in overseas evangelism as I am, as well as my speaking engagements here in the states each year.

Doyle Rasco joins the Assistant to the Pastor, Walter Williams; and song co-ordinator, Ron Pipkin. Doyle was born in Coleman and graduated from high school there, and also has attended the Abilene division of CJC with studies in electronics. In the past he has lived in Brownwood and Abilene, Texas. He married Charlotte Ann Cowart, a native of Abilene, and they have four children, Angela 13, Jason 12, Scott 8 and Amanda 3.

He is presently employed by General Dynamics of Abilene.

The pastor states that God has certainly blessed his ministry with some outstanding young men to work with him and the great church, and is expecting a lasting relationship with Doyle Rasco and the church. Doyle has had considerable experience in the field of building and cabinet work and with the church presently building a new sanctuary at 600 E. 8th on the adjoining three acres, and purchasing what was the previous "Spot Restaurant" for a temporary church annex and family center, these skills will be particularly welcomed.

WORSHIP IN THE CHURCH OF YOUR CHOICE THIS SUNDAY

Church Directory

Pioneer Baptist Church	Calvary Assembly Church
May Calvary Baptist	First Baptist Church
Union Center Baptist Church	Bible Baptist Church
Mountain Top Church	Church of Christ
Assembly of Yahweh (7th Day)	United Methodist Church

Higginbotham's "We Have What You Want" 643-2271	Jim Ratliff Welding 500 E. Mill 643-6464	Palace Drug Store Professional Prescription Service 643-3231
Twin Drilling & Well Service John G. Lee, Owner 643-7100	Chambers Grocery 643-5292	Jenkins Insurance Co. Mildred Childers & Juanita Boyett 643-2251
Rising Star Flower Shop N. Main St. Rising Star 643-2023	First State Bank 643-2811	Medley Motor Co. Quality Workmanship 643-6211
Chamber of Commerce Helping Your Town Grow 643-3215	The Rising Star Your Hometown Newspaper 643-4141	SHARE YOUR BLESSINGS
Family Food Store Mon.-Sat. 6:30 Sun. 8-6 643-2221	Butler Texaco 643-3261	Hubbard Gift & Gallery S. Main St. 643-6242
Kizer Insurance Co. All Forms of Insurance: Life, Health, Auto, Fire 643-4421	Jack Hubbard Soil Conservation Contractor 643-6242	

BIG COUNTRY CHEVROLET DEALERS

THE SPIRIT OF WEST TEXAS

FULLEN Motor Co.
305 East Main Eastland 629-2676

HEART STOPPERS

CORSICA
Introducing America's Favorite Couple... Corsica & Beretta, the Best Selling Car Line in America! Wait Til You See What They're Going For At Your Local Chevrolet Dealer! Get \$400 Cash Back & No Payments Til May!

Corsica LT 4-dr. Sedan

BERETTA
Beretta GT 2-dr. Coupe

CJC To Present Sixteenth Annual "Nostalgia Night"

The Cisco Junior College Stage Band, under the direction of Tim Jones, will present the sixteenth annual Nostalgia Night performances on Friday, February 24, and Saturday, February 25, 1989. The programs will take place in the "Corral Room" of the old Victor Hotel, and will begin with dinner at 7:00 p.m. "NOSTALGIA NIGHT" music by the stage band will consist of 40's and 50's listening and show tunes. The

7:00 dinner will be followed by 30-40 minutes of listening/dancing music, which will then be followed by dessert and coffee. After a short intermission, the band will return to the stage to present a floor show featuring vocal and instrumental solos, familiar medleys, and three select routines by the CJC Wrangler Belles. The belles are directed by Nicki Harle. The menu will consist of pineapple glazed ham, can-

ned yams, winter blend vegetables, fresh fruit salad, homemade dinner rolls, cherry pie, ice tea and coffee.

Group and individual table seating is available on a first come, first serve basis, and those planning to attend either night should make their reservations as early as possible.

Tickets are still only \$9 per person, and seating preference is by date of reservations. Reservations for each night may be made by calling Pat Dill at the Cisco Junior College switchboard. The telephone number 817/442-2567.

Cisco Junior College Wrangler Belles Auditions Scheduled For March 5

Auditions for the Cisco Junior College Wrangler Belles are scheduled for March 5, at 2:00 p.m. in the CJC Auditorium. Any students interested in auditioning for the dance/drill team need to call the college for additional details (817/442-2567). Students accepted into the per-

forming team are recipients of an activity scholarship. The Wrangler Belles actively promote the college through numerous appearances around the Big Country year round. The organization also provides a training in professionalism and development of individual charac-

Auditions To Be Held At CJC For "The Sound Of Music" And "Oliver"

AUDITIONS!!!! Auditions for "The Sound of Music" and "Oliver!", two of the productions scheduled at Cisco Junior College this summer, will be held Saturday, March 4, from 2-5 p.m. and on Sunday, March 5, from 2-5 p.m. Auditions will be held at the Hilton Community Center. "The Sound of Music" requires six children from age 5-12 who will be the Von Trapp

children. Also needed are 28 young people from age 12-18 to be chorus members. "The Sound of Music" will be performed June 10-18, 1989. Auditions will also be held for the Mother Abbess on these dates, as well as for all non-singing roles. "Oliver!" requires eight children between 6 and 15, two girls between 12 and 16 and one young male between 12 and 16. "Oliver!" will be

performed August 4-12, 1989. All persons auditioning must be prepared to sing the song of their choice for the audition. A tape player will be provided. All area people are encouraged to audition!!! What a fun and exciting way to spend your summer - meet new people and be on stage in a play.

performed August 4-12, 1989. All persons auditioning must be prepared to sing the song of their choice for the audition. A tape player will be provided. All area people are encouraged to audition!!! What a fun and exciting way to spend your summer - meet new people and be on stage in a play.

National FFA Week To Be Recognized February 18-25

More than 404,500 FFA members will promote FFA, high school agriculture and the food and fiber industry during National FFA Week, February 18-25.

FFA members in more than 7,800 chapters across the U.S., including the District of Columbia, Puerto Rico and

the Virgin Islands, will be organizing events and activities to create awareness of and support for high school agriculture and FFA.

This year's theme for the week, "Agriculture's Leading Edge-FFA," will be seen throughout communities nationwide, not only through

promotional efforts of the local members, but also through a national public service announcement campaign.

FFA activities and high school agriculture classes emphasize leadership skills, innovative practices and the application of both to the

industry of agriculture.

Larry Case, national FFA advisor, said the face of American agriculture is changing rapidly. "The American agricultural industry is competing in a global marketplace, and as a result, new emphasis has been placed on marketing and innovation," Case said. "New occupations are developing rapidly and FFA members are working hard to be on the leading edge of these new fields. Agriscience, biotechnology, communications, marketing, research and computers are just a few of the careers for which FFA members are preparing."

Each year FFA Week is held during the week of George Washington's birthday to recognize his leader-

ship and commitment to American agriculture. Both the National FFA Center and the National FFA Hall of Achievement are located on part of Washington's original Mount Vernon estate near Alexandria, Virginia.

FFA is a national organization of 404,500 students in 7,800 local chapters preparing for over 200 different agricultural careers. FFA activities and award programs complement instruction in high school agriculture by giving students practical experience in the application of agricultural skills and knowledge gained in classes. Developing agricultural leadership, cooperation and citizenship are FFA's major objectives.

Tarleton State University A And B Honor Roll

The A and B Honor Roll and Distinguished Student list for the Fall 1988 semester has been announced at Tarleton State University.

Students listed on the A Honor Roll must have a 4.0 point ratio (GPR) on the 5.0 system and be taking a minimum of 12 hours. Students on the B Honor Roll must have a grade point ratio between 3.00 and 3.99 with no grade lower than B and taking a minimum of 12 hours.

Distinguished Students include freshmen and

sophomore students who have a minimum GPR of 3.25 with no grade lower than C, and junior and seniors who have a minimum GPR of 3.50 with no grade lower than C and are in good standing.

Eastland County students named to the list were as follows:

Cisco- John M. Bailey, A,D; Stacy Trey Douglas, A,D; Laura S. Hutchens, B,D; Daniel S. Keating, B,D; Brenda S. Black, B; Karyn L. Davis, B; Brian M. Fleming, B; Stacy J'Lyn Williamson, D.
Eastland- Jim D. Andrews, A,D; Cathi L. Coan,

FOR SALE
Commercial, Industrial or Retail
Building Site in Pogue Park,
Eastland, TX
\$1000 down \$100 per month
WRITE: Building Site,
Box 29, Eastland, TX 76448

ANN WILLIAMS REAL ESTATE
610 Conrad Hilton Ave., Cisco
442-1880
Business & Home Phone

CISCO HOMES
Bargains! Homes under \$10,000, some with owner fin. Special Interest Group, 2 & 3 BR homes under \$20,000. Close In. Located on 4 lots, 3 BR, 1 3/4 bath home with barn/stables, perfect for animal lovers.
Great Family Home! 3 BR, 1 3/4 baths, 2 living areas, formal DR, CH/CA, 3 lts, detached apt., owner finished.
Refurbished 2 BR brick on 4 lots, oak and fruit trees, water well, fantastic work shop.
Newly painted 3 BR home, nice area, new carpet, many trees, \$19,500.
Fantastic Buy! 3 BR, 2 bath home, sep. den, patio, custom cabinets, & carport.
Touch of Country in Town. 3 BR, 1 3/4 bath, CH/CA, on 13 lots, water well, plus unfinished 2 BR home.
Super Special, 3 BR, 2 1/2 bath, CH/CA, DR/LR comb., Sep Den, fireplace, large fenced yard, many trees.
Extras Galore! Lovely 3 BR home, SOLD place, deck, carport, large storage bldg, beautiful yard.
Good Location. 3 BR 1 1/2 bath brick home, large den, CH/CA, 4 car carport.
Assumable FHASOLD brick home CH/CA, garage nice neighborhood.
Excellent Buy! 3 BR, 1 3/4 bath brick, CH/CA fireplace, cabinets galore, \$27,000.
Country Club Rd. Rock HoSOLD rox. 1 acre, 2 BR, CH/CA, orchard, owner fin. available.
Lovely, RoomySOLD, 3 BR, 1 3/4 baths, CH/CA, double garage, desirable area.
Upstairs and Downstairs, several large older homes with accent on space.
LAKE CISCO AREA: Country Living by the lake. Numerous style homes and prices.
MOBILE HOMES: 2 to choose from, 3 BR, 2 bath on 2 lots starting at \$12,500.
HUD REPOSSESSIONS: Contact us for information.
RESIDENTIAL LOTS: Several to choose from.
FOR RENT: Large older 2 story 4 BR 2 bath brick home.

COMMERCIAL PROPERTIES
Downtown Cisco Building with CH/CA, owner financing available, only \$14,000.
Doctor's Clinic or Large Office Building, like new, with CH/CA, large parking area.
High traffic location! Building and parking area, \$14,900.

ACREAGE AND COUNTRY HOMES
Approx. 40 acres, Interstate Frontage, Westbound Water, 2 tanks, good building site.
South of Cisco, 48.63SOLD partly wooded, \$21,500.
Spacious 3 BR, 1 3/4 bath rock home, LR, den, office, large kitchen, sun room, on 4.07 acres.
Discover Country Living in this 3 BR, 2 1/2 bath brick home, CH/CA, extra features, on 3.64 acres.
Perfect Country Acreage with beautiful 3 BR, 1 3/4 bath brick home, CH/CA, 80 acres, barn, pens, tank, Westbound Water.
Good Hunting, 160 acres, mostly wooded, small field, tank, water well, creek, \$400, an acre.
Large 3 or 4BR, 2 1/2 bath brick home, CH/CA, fireplace, approx. 160 acres, 3 water wells and 3 tanks.

Ann Williams Broker 442-1880
Cathy Wallen Associate 442-2120

BIG COUNTRY R.E. 442-1693
DANA (BRK) 442-3958 1101 1/2 W. 12th

New 3 bd, fire pl, patios, hot tub, secluded, nice. 4 bd Brk, lg rms, cent H/A, carport, corner lot. 100'X25' lot on Beech corner, make offer. 2 Sto Victorian, 1/2blk, total remod, best locale. 80 ac, 2 homes, orchard, elec fences, equipment. 3 bd remod, fire pl, carport, on 5th, Cisco. No down, you finish, owner carry, 3 bd brk 72 ac, brk, fire pl, pool, office S. Cisco. HUD rcpos-Duplex-Commercial bldgs- Lots JEFFREY 643-3129 PENNY 442-1707

PAT MAYNARD REAL ESTATE
WE APPRECIATE YOUR BUSINESS!!
629-8568 MAYNARD BUILDING HWY. 80 EAST EASTLAND, TEXAS
HOMES WITH ACREAGE

Like New! Beautiful 3 BR, 2 1/2 Bath, Brick, Approx. 2,825 sq. ft., CH/CA, Custom Drapes & Blinds, Fireplace, Breezeway & Deck, Many Extras, including 8.65 acres. \$110,000.
3 BR, 2 Bath, Brick, Approx. 2,200 sq. ft., CH/CA, Carpet, Drapes, Fireplace, Sep. Liv/Dining, Big Kitchen, Nice Oak Trees, situated on abt. 10 acres. \$130,000.
3 BR, 2 Bath, Carpet, Builtins, Large Master BR & Living Area, Formal Dining, fenced & crossfenced, 9.3 Acres. \$60,000.
Two-Story, 5 BR, 2 Bath, White Frame, Covered Porch & Balcony, Huge Oak Trees, Situated on 13 1/2 Scenic Acres, Fenced & Crossfenced. \$110,000.
3 BR, 2 Bath, Brick, CH/CA, Fireplace, Formal Dining Rm., Near Eastland & Lake Leon, plus 9.67 Wooded Acres. \$65,000.
Unique Two-Story Cedar Home, Very Modern, CH/CA, Rock Fireplace, Super Sky-Lites, Large Master BR Suite w/Sitting Rm., Abt. 2,376 sq. ft., 9 Wooded Acres. \$85,000.
Brick Two-Story, 3 BR, 2 1/2 Bath, Approx. 3,000 sq. ft., Petrified Wood Fireplace, CH/CA, Good Storage, Good Fences, On Approx. 10 Acres. \$89,000.
Extra Nice 3 BR, 2 Bath Doublewide across from Lakeside Golf Course, CH/CA, Fireplace, Builtins, Carpet, situated on Approx. 1 Acre, EASY TERMS! \$29,000.
5 BR, 2 Bath, Frame w/Siding, Approx. 2,200 sq. ft., CH/CA w/Heatpump, Situated on 5.5 Acres. \$50,000.
3 BR, 2 Bath, Two-Story, Carpet, Fireplace, Large Living Area, Great Location, Needs Some Work. 2 Acres. \$30,900.
3 BR, 2 Bath, Doublewide, CH/CA, Builtins, Fireplace, near Eastland Lake & Lakeside Golf Course, On Approx. 1 Acre. \$43,000.
4 BR, Approx. 2,000 sq. ft., Spacious Kitchen, 2 Tanks, Water Well, plus smaller 3 BR House on Property, Approx. 22 Acres. \$65,000.

EASTLAND HOMES AND LOTS
4 BR, 3 Bath, Two-Story, Brick, Approx. 5,000 sq. ft., Formal Living & Dining, Den, Garamero, Fabulous Kitchen, All the Amenities! \$200,000.
5 BR, 3 1/2 Bath, Brick, Sep. Living Areas w/Huge Den, Fireplace, Double-Size Master BR Suite, Upstairs Studio, Solarium, Garage Apt., & More! \$100,000.
3 BR, 2 Bath, Approx. 2,471 sq. ft., Situated in Exclusive Oak Hollow, 2 CH/CA Units, Fireplace, Builtins, Wet Bar, Garden Tub, Mission Brick, \$99,500.
3 BR, 1 1/2 Bath, CH/CA, Ceiling Fans, Custom Drapes, Formal Dining, Spacious Kitchen, Large Master BR, B-B Court, Detached 3 Rm. Garage, \$60,000.
Brand New 3 BR, 2 Bath, CH/CA, Plush Carpet, Builtins, Ceiling Fans, Corner Lot, Pretty S. Seaman St., \$68,500.
3 BR, 2 Bath, Brick, CH/CA, Custom Drapes, Ceiling Fans, Fireplace, Builtins, Covered Patio, Sprinkler System, Storage Shed, Privacy Fence, \$72,500.
3 BR, 1 1/2 Bath, Brick, CH/CA, Carpet, Builtins, Fireplace, Playroom, Storage Bldg., Corner Lot, PRICED TO SELL! \$48,500.
Extra Large 3 BR, 1 1/2 Bath, Frame, CH/CA, Builtins (including microwave & trash compactor), Carpet, Nice Kit. Cabinets, Massive Den w/Woodburning Heater, \$38,500.
Nice & Affordable! 3 BR, 1 1/2 Bath, Frame w/Siding, 5 Ceiling Fans, Refrig. Window Units, Detached Garage & Storage Rm., \$24,500.
3 BR, 2 Bath, Near Tennis Courts & Track Field, Woodburning Stove, Dishwasher, Extra Insulation, 2 Storage Bldgs., Fenced Backyard, \$28,000.
3 BR, 1 1/2 Bath, Brick, CH/CA, Builtins, Covered Patio, Gas Grill, Electric Garage Door Opener, Part Privacy Fenced, \$34,000.
3 BR, Frame w/Brick Trim, Vaulted Ceiling In Living Rm., Carpet, Fenced Yard, Carport w/Storage, \$15,500.
4 BR Frame on 2 Lots, CH/CA, Cooktop & Oven, Garage, Storage Bldg., Covered Patio, Formal Dining Rm., Carpet, Cyclone Fence, Large Shop Bldg., \$37,500.
Good Deal! Extra Nice Brick Duplex, Valley View Addition Near Schools, 2 BR, 2 Bath on each side, CH/CA, Builtins, Carpet, \$55,000.
Rock Two-Story, 4 BR, 2 1/2 Baths Downstairs & 3 BR, 1 Bath Upstairs, Modern Kitchen, Formal Dining, Sep. Living Areas, Fireplace, 2-Car Garage, & More! \$120,000.
2 BR, Frame w/Siding, Carpet, Storm Windows, New Privacy Fence, Screened Porch, \$29,500.
Large 2 BR, 1 1/2 Bath, Big Den, CH/CA, Carpet, Double Carport w/Rental Unit, Chainlink Fence, Lots of Trees, \$24,000.
2 BR, 1 Bath, Frame w/Siding, Gas Range & Oven, Nice Trees, Garage, Fenced Backyard, \$17,000.
Large 2 BR House to be Moved, \$8,000.
3 BR Frame w/Brick Trim, Beautiful Remodeled Kitchen, New Carpet, CH/CA, Dishwasher, Fenced Yard, Storage Shed, \$33,500.
3 BR, 2 Bath, CH/CA, Carpet, Storm Windows, Ceiling Fans, Fenced Yard, Large Shed, New Plumbing & Wiring, \$33,000.
4 BR, 1 1/2 Bath, Approx. 1800 sq. ft., near major convenience store, \$20,000.
3 BR Brick Two-Story, Approx. 2,000 sq. ft., plus Garage Apt. as an extra bonus, \$39,500.
3 BR on 1 1/2 Lots, Detached Garage, Storm Cellar, Pretty Trees, Close In, Owner Finance, \$18,500.
2 BR, Fireplace, Patio, Corner Lot, big Oak Trees, 4 Lots In All, \$26,000.
2 BR Frame, CH/CA, Carpet, \$28,500.
4 Residential Lots, 50' x 150' ea., Near Convenience Store & Schools, All For \$10,000!
Valley View Addition Near Schools, 2 Nice Residential Lots, 90' x 150' for \$6,500 and 112' x 150' Corner Lot for \$8,500, or Buy Both for \$14,500.

R.G. (BUCK) WHEAT BROKER
KAY BAILEY ASSOCIATE 629-8568
WAYNE CHANDLER ASSOCIATE 734-2782
ROSEMARY PERGUSON ASSOCIATE 653-2375
DEBRA MAYNARD ASSOCIATE 948-3011

HOMES AND LOTS: CISCO, RANGER, OLDEN, CARBON, GORMAN, MORTON VALLEY

Ranger, 3 BR, 2 Bath, Mobile Home to be moved, CH/CA, Builtins, 14' x 76', \$13,500.
Ranger, Approx. 5 ac w/2 Mobile Home Hook-ups and City Water, \$4,000.
Carbon, Like New 3 BR, 2 Bath, Brick, CH/CA, Carpet, Drapes, Builtins, Fireplace, Storage Bldg., Two-Car Garage, Corner Lot, Extra Nice! \$52,500.
Carbon, 3 Room House, Owner Finance, \$25,000.
Cisco, Close In, Large Two-Story w/full Attic and Basement, Ideal Location for "Bed & Breakfast" or Comfortable Family Home!
Olden, 3 BR, 1 1/2 Bath, City Water, Storm Windows, Storm Cellar, Fences, Approx. 2.96 ac., \$36,500.
Olden, 3 BR, 2 Bath, Brick, 2 Living Areas, CH/CA, Covered Patio, Carpet, Carport, City Water, Approx. 1 ac., \$36,500.
Olden, 3 BR, 1 1/2 Bath, Brick, New Carpet, CH/CA, Ceiling Fans, Large Utility Rm., Covered Patio w/Gas Grill, 2 Water Wells, 18 Pecan Trees, 2.2 ac., \$65,000.
Olden, 3 BR, 1 1/2 Bath, Brick, CH/CA, Fireplace, Builtins, Utility Rm., Covered Patio, Storage Shed, Chainlink Fence, Approx. 1 Acre, \$69,000.

LAND: FARMS, RANCHES, & SMALL ACREAGE

741.6 ac, 4 tanks, water well, approx. 155 ac. in cultivation, good to fair fences, shed/barn, some minerals, \$400 per ac.
296 wooded acres, 3 tanks, Westbound water on frontage rd., some minerals, good to fair fences, Ideal Location between Eastland & Cisco, \$400 per ac.
249.3 ac, 2 tanks, Sabana River, 140 ac. Cultivation & rest pasture, oak & pecan trees, 1/2 Minerals, \$500 per ac.
190 ac, mostly wooded, some cultivation, good fences, 3 barns & corrals, 2,000 sq. ft. Austin Stone Home, \$215,000.
166 ac. near Eastland, good road frontage on 2 sides, good fences, some cultivation, lots of trees, excellent hunting, corrals, \$550 per ac.
162 ac, 4 tanks, 100 ac. in cultivation, good fences, owner finance, \$600 per ac.
153 ac, 3 tanks stocked w/cattfish & bass, fenced & crossfenced, small barn, 2 sheds, corral, some coastal, \$550 per ac.
146 ac. pasture land, oak trees, 1 tank, Hwy. frontage, fenced, some minerals, \$550 per ac.
75.5 ac., all wooded, good hunting, near Olden, \$525 per ac.
50.6 ac. near Eastland Lake, some coastal, good fences & set of pens, creek, pecan trees, 3 tanks, \$840 per ac.
40 ac. wooded tract, owner finance, easy terms, can be divided, \$36,000.
26.15 ac., Hwy. 80 between Eastland & Cisco, Westbound Water, 1 tank, mostly all coastal, \$825 per ac.
20 ac. near Lake Leon, 1 tank, mostly kline grass, owner finance, \$27,000.
14 ac. coastal SE Eastland, county road frontage on 2 sides, ideal homesite, \$12,500, Financing available.
7.21 ac. near Olden & Eastland, 1 tanks, road frontage, \$14,420.

COMMERCIAL

Eastland, frame church Bldg. w/Half-Bath, Central Air, Ceiling Fans, Approx. 1,200 sq. ft., Storage Shed, \$15,500.
Cisco Motel w/Living Quarters & Two-Story Shop, Just \$20,000!
1,800 sq. ft. Business Building on Corner Lot, \$48,000.
50' x 100' metal building on 38.693 ac, 1-20 Eastland, \$214,000.
Two Nice Brick Duplexes, Live In One Side & Let Other Side Pay the Payment! \$36,000 & \$55,000.
50 ac. Prime Commercial Property in Eastland, Can be divided.
31 ac. on 1-20 near Olden, water, sewer & electricity, some RV Hookups.
1-20 & Hwy. 6, Eastland, property on 3 different corners, be ready when new truck stop goes in on 4th corner!
Fully Equipped Service Station on W. Main, Eastland, 2 Bays, Office, Shop Building, \$60,000.
1-20 Eastland, Approx. 5,000 sq. ft. metal building on 2/3 ac., Priced To Sell! \$76,000.
Modern Office Building, 1-20 E. Eastland, 8 Offices, Kitchen & Conference Room, 2 Rest Rooms, CH/CA, Carpet, 2,880 sq. ft., \$75,000.
Miracle Mile, 2,875 ac., Perfect Location for Business or Office, Also has a house on it, \$80,000.

Town & Country REAL ESTATE
Barbara Love, Inc. Highway 80 East
629-1725 Eastland, Texas 76448
629-8391

ACREAGE

198 ACRES with early 1900's home - joins Eastland City Limits. EXCELLENT TO SUBDIVIDE! Hwy. frontage, rustic trees. HA8
FIXER UPPER! 2 BR, 1 bath on 1.5 AC, m/l. Nice setting. Large trees. HA16
32 ACRES m/l with 3 BR home, access to Lake Leon. Staff water & well, stock tank, barn, shed, producing gas well, 1/2 royalty. HA17
"NEARLY NEW" 3 BR, 1 1/2 bath brick on 4 acres surrounded by oak trees. A nice place! HA19
CUSTOM 3 BR, 3 1/2 bath with beautiful lake view. Satellite dish, split bedrooms, jacuzzi. MANY EXTRAS! HA4
PRICE LOWERED on 3 BR, 2 1/2 bath brick on 5 acres near Lone Cedar Country Club. HA7
COUNTRY RETREAT! 5 Acres with lovely, large 3 BR, 2 1/2 bath brick home, 2 living areas, 2 fireplaces, many amenities. HA3
CISCO-2 BR on 1 1/2 Acres, City sewer and water makes for country living in the City! HA4
112.1645 ACRES m/l with 3 BR home. Cult., sandy soil, highway. SOLD. REASONABLY PRICED! HA10
NEAR LONE CEDAR COUNTRY CLUB Beautiful Brick house. SOLD. Spacious 3 BR & den or 4 BR, 2 1/2 bath, many extras! HA7
40 ACRES WITH 2 BR HOUSE-needs some repairs. Land is cleared, sandy soil, some coastal, some minerals. Stock tank, city water well. EXCELLENT LOCATION! HA 21
OAK TREES SURROUND 6 1/2 yr. old 2 BR, 1 bath on 7.9 Acres. \$10,000 down & Owner Finance! HA5
ROCK HOME & 10.8 ACRES-Convenient to Eastland, Cisco, Breckenridge. 3 BR, 2 bath. Well, barn, tank. OWNER FINANCE! HA22
OLDEN-"ROOM TO SPARE"-extra large home & 10 ac., 3 garages & more! HA20

COMMERCIAL

LAKE LEON-EXCELLENT RECREATIONAL OR BUILDING SITE! Approx. 4 acres with highway frontage and lake frontage. Trees! A1
SO. OF CISCO, 158 AC, peanut cultivation, pasture & wooded with deer. Highway frontage. A3
OWNER SAYS SELL-239 Acres, some coastal, brush, pasture, 3 tanks. Turkey, Deer & Minerals. A17
80 ACRES W. "SOLD". cult., pasture, bottom land. A10
RANGER, 92.675 ACRES-Scattered trees, some coastal & minerals. 3 Stock tanks, water well & septic system. Good building site! A5
8.9 ACRES, CARBON-excellent location, on pavement. City water, some trees. A6
LAKE LEON-20 ACRES m/l, stock tank, barn, fenced. Adjacent deeded waterfront lot! A8
CARBON, 125 AC, m/l-2 small tanks, fenced & crossfenced. Some improved grasses. Highway frontage. Good building site! A11
N. OF EASTLAND-393.48 ac Various native grasses, oak & mesquite trees. 3 tanks. Deer, turkey and quail. A4
2 ACRES-MORTON VALLEY excellent building site. Water meter available. Highway frontage. A9
EDGE OF EASTLAND, 1/2 acres homesite - oak trees, city utilities available. A2
52922 AC. LAKESIDE COUNTRY CLUB. Nice building site. Owner Finance! A12

HOUSE WITH ACREAGE

SPACIOUS 2 BR, 2 bath home on 1.4 AC, m/l. Central H/A, F/P and more! HA14
PRICE REDUCED-4 BR brick on 225 AC or will

OTHER

LAKE LEON-New 3 BR, 2 bath, brick home on deeded waterfront lot, under construction. BUY NOW and choose carpet. O13
LAKE LEON-Beautiful waterfront lot with large 2 BR home, fireplace, central H/A, Staff water. VERY NICE! O6
RANGER-3 BR, 2 bath Brick on nice lot. F/P, Cen. H/A, Kit built-ins. O5
CARBON cozy 3 BR, 2 bath on nice lot. O22
CISCO, Beautiful remodeled home on corner lot. Privacy fence, above ground swimming pool. Near school. A steal at \$39,000.00! O1
RANGER-COUNTRY ATMOSPHERE & 3 BR, 1 1/2 bath brick on nice lot! O4

HOUSE WITH ACREAGE

BARBARA BOSTICK 442-3822
BARBARA LOVE 647-1397
CINDY FOSTER 629-8227
SHELLY RICHEY 629-3614

CLASSIFIEDS 643-4141

REAL ESTATE

300 ACRES Sipe Springs area, partially timbered, good deer, turkey, sandy loam soil, good fences, \$400 per acre. **1400 ACRES**, 2 sets of improvements, 5 acre lake, 1 1/2 mi. of Sabanna creek, good deer & turkey, \$500 per acre. **238 ACRES**, Sipe Springs. Pavement, 2 tanks, good deer & turkey area, only \$350 ac., 20 percent down. **320 ACRES**, most all Kline grass, excellent fences, 1 mi. of creek, big tank, 2 mi. road frontage. \$500 ac. **5600 ac.** 15 percent down. **80 ACRES** near Carbon, about 20 cultivated, 1 well, tank, big oak trees & road on 3 sides. \$575 ac. **145 ACRES** SW of Rising Star. Steel corral, excellent fences, 75 Coastal & Ermelo, fine hunting, 1/2 off pavement, low taxes. \$550 ac. 1/4 down. **161 ACRES** Lots bottom land, pecans, 60 tillable, well fenced, 1/2 mile Sabanna, good deer hunting, lots big oak, pecans. \$550 ac. Agent owned. **58 ACRES**, Several big trees, 2 tanks, some coastal, most new fences, lots road front. \$550 ac. E-ZZ terms.

Listings appreciated.
34 Yrs. in Business
COGBURN REALTY
893-6666 893-5898
893-2642 DE LEON

ACTION REALTY
WE NEED LISTINGS!!!
Equal Housing Opportunity
915-643-6516
Rising Star

REDUCED, REDUCED 2BR, 1B, dining room, fenced garden, 2 story. All on corner lot. CALL **NEW ON MARKET**, 3 BR, 1B, on highway 183, dining - living room combo, garden area, rock. All this is priced to sell. **STAY WARM** in this 2BR, 2B, carpeted, fireplace, lots more. Large lot with mature pecan trees. Call Stella. **BE THE BOSS!** Working Grocery store, on highway. Call Stella today!
WHAT MORE COULD YOU NEED??? 3 BR, 2B, lots of closets, well-kept, carpeted, laundry room. Call today.
DON'T PASS BY! 3BR, 2B, dining room, carpet, water well, storage buildings.
LOOK, LOOK, LOOK! 2BR, 1B, ceiling fans. Lots more. Call Stella.
BY THE PARK!! 2BR, 1B, metal roof, has major appliances. Out of town owner needs to sell. Call Stella.
NEED ROOM TO EXPAND? 2BR, 1B, dining room, acreage. Call Stella.
LAKE BROWNWOOD! 2 lots at Shamrock Shores. Priced to sell.
CLOSE TO SCHOOL 2BR, 1B, large rooms, fenced back yard on paved street. Priced to sell.

James Smith broker 646-0297
IN RISING STAR
STELLA WARE 643-3591

HOUSE FOR SALE: Remodeled with wood stove. 3 bedroom. Call 915-643-2537. 3-12

SELLING YOUR HOME OR BUYING? Call Stella Ware, 643-3591, your local real estate agent for Action Realty, Brownwood, James Smith, broker. 26-52

FOR RENT

Public Housing Authority has apartments for rent for senior citizens. Equal housing opportunity. 817-643-3812 or 643-6791. RISING STAR

MOBILES For Sale

MOBILE HOMES: Bank foreclosures. Easy terms, all sizes. Call Kay. 817-643-5107. Art's Mobile Homes. 7-9

You can't lose—or get lost—with **THE ROADS OF TEXAS!** Texas Highways Magazine
Get your copy at **THE RISING STAR** 643-4141

FOR SALE

FOR SALE Golf carts & golf cart trailers. To see, come to 3rd house on I-20 west of Union Hill Rd. between Baird & Clyde, or call 915-893-2662 b52

FOR SALE Excellent quality coastal sprigs, 893-2167 or 893-6913 10

COASTAL SPRIGS FOR SALE. Call 643-6251 or 643-5417. 8-17

Good bright **PEANUT HAY** for sale, square bales. 817-259-2626. 8-9

MEN'S LAREDO ROPER Boots in taupe, gray & brown, \$44.99. Polish to match \$2 per pair. Johnson's Dry Goods, Cross Plains 8

SLEEP SAFE TONIGHT with the Chain Alarm. Strong chain prevents entrance, alarm blasts piercing shriek that alerts you and sends crooks running. Easily mounted on doors or windows. Guard yourself, love ones and property. Rush \$9.95 plus \$3.00 shipping and handling to One World Enterprises, 503 Oakwood Dr., Dept. 922, Eastland, Texas 76448. Texas residents add 6 1/2% tax. RS9

SERVICES

CARPET CLEANING Commercial/Residential. Free estimates. Scotchguarding available. We move all regular furniture. Carpet sold, repaired, installed. New or used. No mileage charge within 40 miles of Cross Plains. Dub Meador (817) 725-7720.

Bring your TV, radio, stereo, small appliances to **DAD'S DOO-DADS & REPAIR SHOP** at 300 S. Graves, off W.Hy. 36, Rising Star. New & used merchandise. Ship work only. 817 643-5909

JOHN DEERE TRACTORS NEW AND USED
PEANUT EQUIPMENT LILLISTON-KMC
PLANTERS-DISKS-DRILLS ROLLING CULTIVATORS-CHISELS
SELL OR TRADE

CLARK TRACTOR & SUPPLY INC.
817-643-3921 DE LEON
(815) 356-3922 COMANCHE
Where your business is appreciated.

WE WOULD APPRECIATE YOUR JOHN DEERE, LILLISTON & KMC PARTS BUSINESS
LOWEST PRICES IN AREA ON ADAMS PLOW SHARES AND BALDAN DISK BLADES. IN STOCK SIZES TO FIT MOST BRANDS.

CLARK TRACTOR & SUPPLY INC.
COMANCHE (815) 356-3922
DE LEON (817) 882-2981

BUDDY COOK
Residential, Commercial
Refrigeration & Plumbing
817-643-7312
Rising Star

FAST DEPENDABLE
Film Developing
PALACE DRUG STORE
643-3231 Rising Star

RADIATOR REPAIR
at
Butler Motor Co.
Gerald & Ricky Bailey

WILLIE VANDIVERE TRUCKING
Dirt, Caliche Hauling
Build Lease Roads,
Driveways, etc.
9-5 Call 643-2023
After 5 Call 643-6451

OLIVER WEST, PUMP SALES & SERVICE
817-643-4683
Rising Star, Texas
Complete systems sold & serviced
2 1/2 miles south of town

WANTED

WELDING - Will do ANY TYPE of welding. Corrals, steel buildings, ect. Also dozer work. Call 643-3275 1-12

I BUY HORSES, donkeys, jacks & jennies, anytime day or night. Jerry Coleman 817-643-2411 8

HELP WANTED

NEEDED: LVNs, 6-2 & 2-10 shifts. Salary negotiable. Contact Russell Gray at Rising Star Nursing Center. 643-2691. 49-2

FULL TIME NIGHT R.N. for ICU: Applications are being accepted at the De Leon Hospital for the above position. Night and ICU differentials. Contact the De Leon Hospital for more information. DE LEON HOSPITAL, P.O. Box 319, De Leon, TX 76444 (817) 893-2011 8-9

AUTOS

FOR SALE: 1981 3/4 ton Chev. pick up \$2450.00. Call 647-1182 or 647-1155. RS104

Classified Ads in
The
Rising Star
GET RESULTS

LIVESTOCK

SPECIAL HORSE SALE Special registered sale in conjunction with our regular Horse Sale. Saturday, March 11, 1989. OK Horse Auction, Breckenridge, TX. Call Mel Matthews, 442-1727 or J.W. Guy 817-559-3612. RS10

ANGUS BULLS for sale, James Ratliff bus. 817 647-1260, res. 647-1667, Ranger, TX r14

ANGUS BULLS for sale, 817 647-1155 or 647-1182 r104

SERVICES

JIM RATLIFF WELDING
Oilfield and Farm
817-643-6464
Rising Star

D & R UPHOLSTERY
643-3942 Rising Star
For your upholstery needs.
Country, Continental & Baloon style curtains.
Debbie Jones, owner

LEGAL NOTICE

Sealed bids will be accepted on a poly 200 gallon tank by the Rising Star Rural Fire Department. The tank may be seen during regular business hours at Murphree Oil Company, 310 W. Mills Street in Rising Star. Bids must be received by February 25, 1989. Please mail bids to Rising Star Rural Fire Department, c/o Barbara Murphree, Secretary-Treasurer, Route 1, Box 153, Rising Star, Texas 76471. (Please write BID on envelope.) Bids will be opened on March 2, 1989, at the regular meeting of the Board of Directors of the Rising Star Rural Fire Department reserve the right to reject any or all bids. 7-8

ANNOUNCEMENT

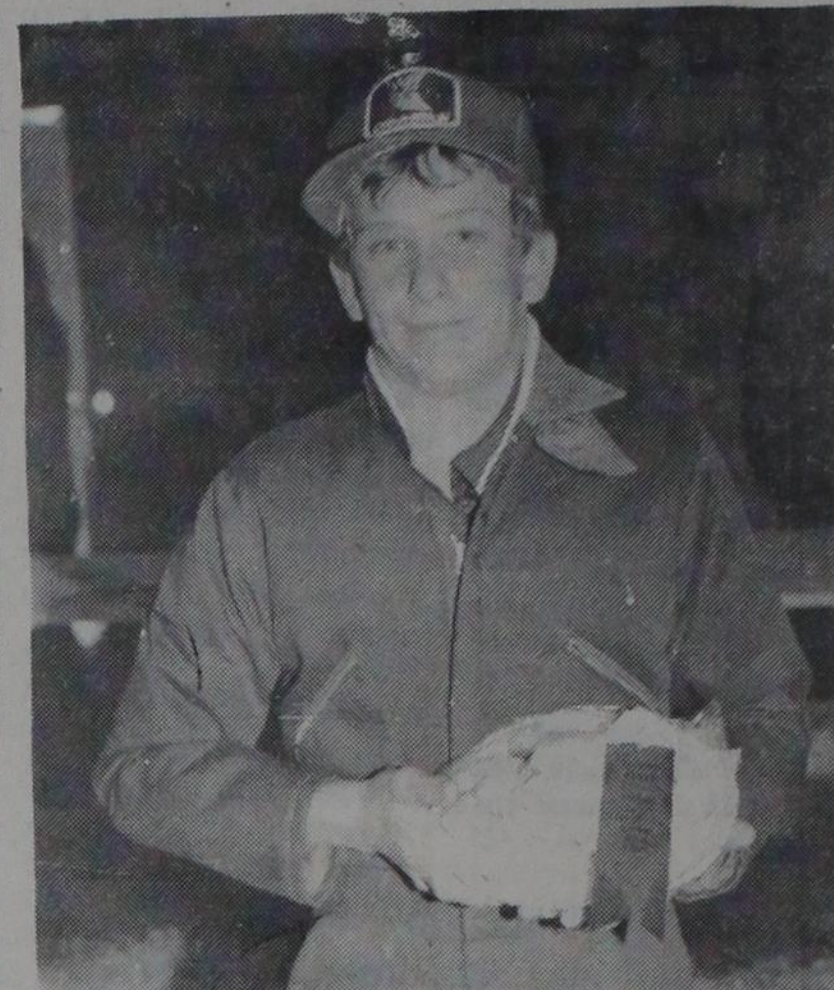
SERVICE OF TRANSPORTATION by appointment. To doctor, shopping, theaters or fun day. 2 or 3 friends share a trip. 817-643-4462 or 643-3034 8-9

OPPORTUNITIES

Own your own apparel of shoe store, choose from : Jean/sportswear, ladies, men's, children/maternity, large sizes, petite, dancewear/aerobic, bridal, lingerie or accessories store. Add color analysis. Brand names: Liz Claiborne, Healthtex, Chaus, Lee, St Michele, Forenza, Bugle Boy, Levi, Camp Beverly Hills, Organically Grown, Lucia, over 2000 others. Or \$13.99 one price designer, multi tier pricing discount or family shoe store. Retail prices unbelievable for top quality shoes normally priced from \$19 to \$60. Over 250 brands 2600 styles. \$17,900 to \$29,900. Inventory, training, fixtures, airfare, grand opening, etc. Can open 15 days. Mr. Loughlin (612) 888-6555



Tami Vandivere's oil painting won a first in the senior division of arts, then was awarded the champion plaque.



Tim Burton's sugar cookies won a second place ribbon in the junior division of foods.



Brionna Cooksey has a first place food entry with her oatmeal cookies in the subjunior division.



Bridget Claborn made a cherry cheese pie which gained her a first place ribbon in the subjunior division of foods.



Medium Wook Cross lambs shown by Toby Long, Stephanie Long and Derrick White are given a close examination by judge Pete McDougal of Comanche.

Holly Butler, a local 4-H member in the third grade, showed her pig

THE RISING STAR
BOX 127 817-643-4141
Rising Star, Texas 76471
104 N. Main

©1989 Eastland County Newspaper, Inc. Publication No. (USPS 466500)

Second Class Postage paid at Rising Star, Texas, under Act of Congress in March, 1870. Published every Thursday. Publishers, Mr. and Mrs. H.V. O'Brien.

Subscription Rates Per Year: Eastland County and 30 mi. radius of Rising Star, \$9; other Texas counties \$13; out of Texas, \$19; No out of U.S. without APO.

POSTMASTER: Send address changes to The Rising Star, Box 127, Rising Star, TX 76471.

Livestock show judge Pete McDougal and FFA advisor Gene Smith give good advice to those showing Fine Wool Cross lambs at the livestock show Saturday.

Hale Trailer Dealer
2 Horse Trailers
Gooseneck Horse & Stock Trailers, Covered & Open Bumper Pull Stock Trailers, Covered & Open Top
Barker's Garage
817-259-2252 May, Texas

Home Phone 643-5742 Gasoline & Diesel
CAREY'S AUTOMOTIVE
Open Mon.- Fri. 7:30 a.m. - 6 p.m.
Sat. 8 a.m. - 12 noon
James Carey, Mechanic
Hwy. 36 East Rising Star
Shop Phone 643-7009 RS52

BROWNWOOD MUFFLER SHOP
Custom Tials
Our Work Speaks for Itself
(915) 646-0716
200 N. Main Owner
Brownwood, Tx 76801 James P. Smith

RADIO EQUIPPED TRUCKS FOR "FAST FRIENDLY SERVICE"
1-800-535-7562
WELLS PROPANE
Rt. 1, Box 82A May TX 76857 817-259-3204
Hwy. 377E Box 425 Comanche, TX 76442 915-356-2516
DISCOUNT FOR CASH

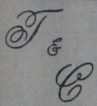
FARM BUREAU INSURANCE CO.'S PERSONALIZED SERVICE
Dee Wilson, Agent
Rising Star Office Now Open
M-W-F 9:00-12:00 Ph. 643-1210
RETIREMENT PLANS
LIFE LIABILITY
AUTO HEALTH
HOME OWNERS BOATS
P.O. BOX 470 EASTLAND, TEXAS 76448
Office 817/629-1704
Home 817/442-3601

Mobil Oil Products **CONOCO**
Texaco Oil Products Pennzoil
Golden West Gulf/Chevron
Farm Fuel Delivered
CROSS PLAINS PETROLEUM (E.S.E. Inc.)
P.O. Box 219, 6th at Ave. F
David and Lenell Sliger Cross Plains Managers (817) 725-6582

REBUILD ENGINES Aluminum Welding AUTO TRANSMISSION
JAKE'S SHOP
GENERAL MECHANICAL & WELDING FABRICATION
Body Work & Painting
OWNER JAKE LANDESS 817-643-3031 404 N. MAIN RISING STAR, TX RS52

Susan J. Schaefer
Certified Public Accountant
9th & Main P.O. Box 501
Cross Plains, Tx. 76443
Office: Home:
817-725-6747 817-442-3784

Main Street Auto Repair
Open Monday - Friday 8 - 5 P.M.
Jackie Palmore - Mechanic
643-1701
Hwy. 183 Rising Star, Texas



VILLAGE MARKET

EVERY MONDAY IS SENIOR CITIZENS DAY -5% DISCOUNT ON YOUR TOTAL PURCHASES EXCLUDING CIGARETTES

WE ACCEPT FOOD STAMPS & WIC CARDS

We Have Money Orders & Postage Stamps

WEEK LONG SPECIALS

SAVE THIS AD, SHOP ANY DAY YOU LIKE - SPECIAL PRICES IN THIS AD EFFECTIVE

FEBRUARY 22 thru FEBRUARY 28, 1989

QUANTITY RIGHTS RESERVED

STORE HOURS
MONDAY - SATURDAY, 7 A.M. - 8 P.M.
SUNDAY, 8 A.M. - 7 P.M.
QUANTITY - DATE RESERVED

Phone 725-7131, Cross Plains, Texas

FREE COFFEE WHILE YOU SHOP

We Have Postage Stamps & Money Orders

DOUBLE COUPONS 7 DAYS A WEEK



BACON
SILVER SPUR
SLICED SLAB
LB.

79c



BEEF PATTIES
PRICE SAVER
10 LB. BOX

\$ 7.99



GERMAN SAUSAGE
12 OZ. PKG.

\$ 1.39

ADVANCE STEAK FINGERS
SHURFRESH FRANKS

LB. **\$1.49**
12 OZ. PKG. **99c**

SHURFRESH BONELESS HAMS
JIMMY DEAN SAUSAGE & BISCUITS

LB. **\$1.98**
8 OZ. BOX **\$1.69**

FRESH PORK STEAK
BOSTON BUTT
PORK ROAST

LB. **\$1.39**
LB. **\$1.29**

FRESH STRAWBERRIES



89c



MICHIGAN RED ROME APPLES

99c

ORANGES
CELERY

CALIFORNIA SEEDLESS RAVEL 4 LB. BAG **\$1.49**
LARGE STALK EACH **39c**

LEMONS
RADISHES

CALIFORNIA DOLE FANCY 6 OZ. PKG. **4/\$1**
CELLO RED **4/\$1**

GREEN ONIONS **4/\$1**
GRAPEFRUIT **4/\$1**
TEXAS RUBY RED 3 LB. FOR **\$1**



TOILET TISSUE
AURORA, 4 ROLL

99c



BRAWNY TOWELS
ROLL

69c



CRISCO SHORTENING
3 LB. CAN

\$ 2.29



CAKE FROSTINGS MIXES
DUNCAN HINES REGULAR PACKAGE

69c

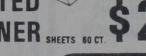
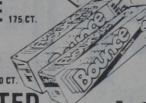


TOP RAMEN
ORIENTAL NOODLES
CHICKEN OF THE SEA
TUNA
PARADE 1 LB.
CRACKERS
RANCH STYLE BEANS
VAN CAMP PORK & BEANS

6/\$1
79c
59c
3/\$1



POSH PUFFS
FACIAL TISSUE
PUFFS
FACIAL TISSUE
PUFFS PLUS
WITH LOTION
BOUNCE SCENTED
FABRIC SOFTENER



79c
89c
79c
\$2.99

PILLSBURY COUNTRY
PLEASING BISCUITS
GANDY'S DELUXE
ICE MILK
GANDY'S MILK
GANDY'S COTTAGE CHEESE



4/99c
\$1.89
\$1.39
\$1.49



PINEAPPLE
CRUSH, SLICED, OR CHUNK, 8 OZ.

3/\$1



MUFFIN MIXES
DUNCAN HINES
BLUEBERRY & OAT BRAN

\$1.49



CORN
DEL MONTE
CREAM STYLE OR
WHOLE KERNAL, 17 OZ.

2/88c



CUT GREEN BEANS
PARADE, 16 OZ.

3/\$1



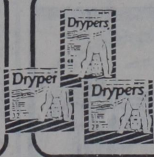
COFFEE
FOLGERS
26 OZ.

\$ 3.99



BABY FOOD
GERBER
REGULAR STRAINED
4 1/2 OZ. JAR

4/\$1



DRYPER DIAPERS

\$ 8.99



TIDE
REGULAR, UNSCENTED,
OR WITH BLEACH
42 OZ.

\$ 1.79



TEDDY GRAHAM'S
NABISCO

\$ 1.39



SANTITAS
BUY 1
GET 1
FREE



COCA-COLA
12 OZ. CANS
6 PACK

\$ 1.79

Gordon Spot

By DeMarquis Gordon, County Agent—

How many fire ants are there in Texas? An estimated 160 trillion—about 2 billion mounds containing an average of 80,000 ants per mound. That's 125 mounds per person or 10 million ants for every man, woman and child.

Fire ants infest 50 million acres in Texas, with an average of 40 mounds per acre. At last 125 counties, including Eastland County, are affected.

If you lined up all the fire ants in Texas end to end (6 ants per inch), they would cover 420,875,421 miles. In other words, they could form a continuous line from the sun almost out to Jupiter or encircle the earth 16,900 times.

All fire ant workers are female, but they're sterile. Only the queen can lay eggs (between 1,000-2,000 eggs per day). A queen produces

between 2 to 4 million eggs in her lifetime.

Fire ants, like honeybees, mate in the air. The males, or drones, die within 24 hours after mating. The queens only mate once, storing the sperm that will be used to fertilize their eggs. Fertilized eggs develop into females. Unfertilized eggs develop into males. The colony will raise males only during the late spring, summer and early fall.

Roughly 90,000 new fire ant queens are produced per acre in Texas every year. That's four and a half trillion new queens for the state of Texas. Luckily for us, only one percent of these new queens will successfully start a new colony.

Fire ant workers come in all sizes. The largest workers in a colony weigh up to 10 times as much as the smallest

worker.

Fire ant workers cannot eat solid foods. They have an elaborate structure in their throats that screens out all but the smallest particles, allowing only liquids to pass. Bits of solid food are given to immature ants (the last larval stage) to digest for the rest of the colony.

Up to 80 percent of the fire ant's diet consists of other insects, but fire ants will eat just about anything they come across, including the material used in highway joints.

The age of a fire ant worker largely determines its job in the colony. The youngest workers take care of the immature ants. The oldest workers look for food. Although colonies seem to be teaming with activity, looks are deceiving. Workers are idle up to 60 percent of the time.

A mound may look permanent, but fire ants pack up and move frequently. It's now believed fire ants occupy up to four mounds on a rotating basis.

prices were somewhat more stable than in previous years, they were still at low levels," he said. "The low prices tended to discourage exploration for new reserves, while the existing reserves simply shrank."

While commercial real estate showed virtually no change in value, commercial personal property rose by over three percent in the 1988 study results and industrial personal property rose by almost five percent. "These figures show that inventories and equipment were growing at the start of 1988," said Patterson. He noted that economic indicators from the State Comptroller's Office show that unemployment in Texas was falling at this time while personal income, retail sales,

"Managing For Ag Profit" Is Shortcourse Topic

A shortcourse to explore income generating and tax saving opportunities in agriculture will be held February 28-March 1 at the Eastland National Bank in Eastland.

The shortcourse, planned by local citizens and Agricultural Extension Service Professionals, is aimed at providing farm and ranch business management training for landowners, operators and managers, points out DeMarquis Gordon, County Extension Agent and Agricultural Program Leader, Eastland County.

"This will be an in-depth shortcourse to help farm and ranch managers, operators, and landowners improve their potential for increasing in-

factory output, and exports were rising.

One property category with the big drop in value for 1988 was multifamily residential property. According to the SPTB study, multifamily residences were worth over seven percent less at the start of 1988 than they were a year earlier, following a nine percent value loss in 1987. "The apartment market was still suffering from overbuilding," said Patterson. He also noted that changes in federal tax law took away many of the advantages of owning apartments that were losing money, further depressing their value.

The SPTB conducts its annual study of school district taxable values in conjunction with a study of the tax appraisals performed by appraisal districts. For the 1988 study, the agency analyzed sales and appraisal information for 185,000 prop-

erties from across the state.

The SPTB conducts its annual study of school district taxable values in conjunction with a study of the tax appraisals performed by appraisal districts. For the 1988 study, the agency analyzed sales and appraisal information for 185,000 properties from across the state.

School and appraisal districts are now reviewing the preliminary results of the 1988 study. They will have the opportunity to challenge the findings for their districts in a series of administrative hearings. The SPTB will issue the final results of the study on May 30.

For more detailed information on the study results, contact the SPTB for a copy of the booklet, *Preliminary Report of the Findings of the 1988 Property Value Study of School and Appraisal Districts*. The price of the book is \$2.16, tax included.

Eastland Telegram - Ranger Times - Cisco Press And Rising Star
Thursday, February 23, 1989

come from their assets," Gordon points out. Members of the agribusiness sector are also welcome.

The shortcourse will begin at 9 a.m. the first day, with opening discussions focusing on the planning process, various management functions, setting goals, production objectives and priorities, and resolving conflicts.

Other discussions the first day will deal with the budgeting process, including enterprise budgets, whole farm and ranch budgets, cash flow projections, partial budgets and financial statements.

Presentations will include how to use financial statements as a tool to evaluate a business' performance and financial condition as well as

alternatives for restructuring the agricultural business, such as refinancing, changing the size or business organizational structure, and partial liquidation. Shortcourse participants will actually develop solutions to a case situation.

Other topics during the seminar include leasing arrangements, income tax management and preview of new Texas A&M Whole Farm Planning and Analysis Software.

Shortcourse speakers include Dr. Danny Klinefelter of College Station, Dr. Ashley Lovell of Stephenville and Jose Pena, Extension Economist from Uvalde.

Individuals in Eastland and surrounding counties who are interested in attending the shortcourse should call the Eastland County Extension Office (817) 629-1093 or contact Dr. Lovell at (817) 968-4144, Route 2 Box 1, Stephenville, TX 76401 for registration information.

CLASSIFIEDS INEXPENSIVE PROFITABLE

MAJESTIC THEATRE

(A Non-Profit Organization)

EASTLAND STEVE MARTIN

629-1322 MICHAEL CAINE



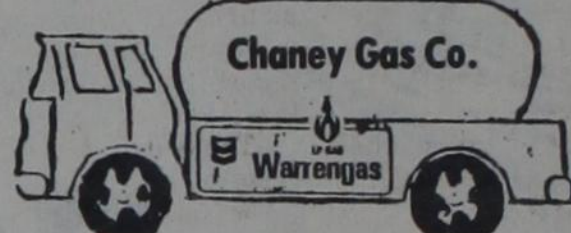
DIRTY ROTTEN SCOUNDRELS

Fri., -Mon., 7:30 pm Fri.-Sun. All Seats \$ 3.00

MONDAY NIGHT IS DOLLAR NIGHT

We Will Meet Or Beat Any Competitive Prices.

Call Us Now For Fill Up Prices. Discounts For Cash Delivery.



Chaney Gas Co.

708 W. Main, Eastland (Across From H & R Lumber)

629-1751

After Hours 5-104
Gayle - 629-2128 Charles - 629-8614

Preliminary Study Shows Slight Drop In 1988 School Tax Base

AUSTIN—The 1988 school district property tax base fell by 1.74 percent from its level of a year earlier, according to the State Property Tax Board (SPTB). The preliminary results of the agency's 1988 Property Value Study, which will be finalized in May, show the taxable value in the state's 1,056 school districts was \$657.1 billion on January 1, 1988.

"This is the third straight year the value of a school district tax base has declined," said Ron Patterson, the SPTB's executive director. He noted that the agency's previous studies showed declines of one-and-a-half percent for 1986 and over three percent for 1987. "Since 1985, school districts have lost more than \$45 billion in taxable value," he said.

"The Education Code requires the SPTB to make annual estimates of the taxable property values in each school district," explained Patterson. "The Texas Education Agency uses our value estimates in the formulas for distributing state aid to the districts. The SPTB values indicates the school district's resources for funding a basic educational program."

The study shows that taxable values declined in 558 school districts and increased in 498 districts.

Patterson believes the preliminary results of the 1988 study reflect a generally weak

real estate market and a state economy that was just beginning a recovery. "Residential property, vacant lots, minerals, and utilities all declined in value from the levels in our 1987 study," he said. "In the real estate market, housing prices were down, it took longer to find buyers, and there were many foreclosures. The lack of growth in real estate tended to discourage growth in utility companies."

In the case of mineral properties, which consist mainly of oil and gas reserves, Patterson said the five percent decline in taxable value was mainly the result of declining reserves. "While oil and gas

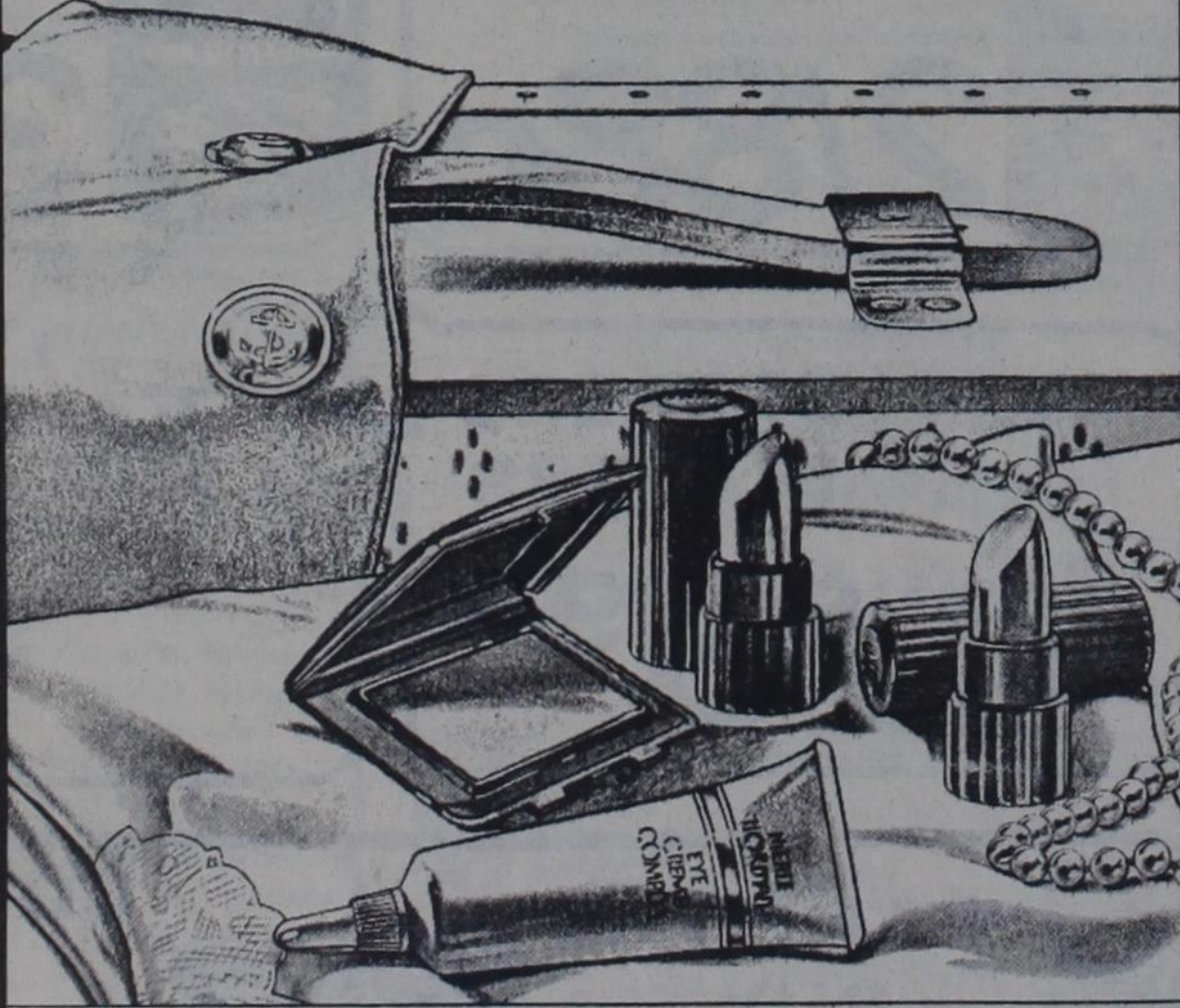
HOOS-GOW FACTS

1. We have a problem.
2. An economic crisis exists in Eastland County.
3. Texas will build several prisons somewhere this year.
4. Permanent jobs and payroll of a prison located here could solve our problem.
5. Support Project Hoos-Gow! Get the prison here.

POSH GIFT FREE.

FOUR "NAUTICAL NECESSITIES," YOUR BEAUTY BONUS WITH ANY \$13.50 MERLE NORMAN PURCHASE.

Merle Norman's spring bonus gift "Nautical Necessities" includes lip and cheek colors, crisp and breezy clear. Plus the beautiful moisture balance of fragrance-free Eye Creme Complex. One per customer while supplies last. Bring this ad to redeem your free gift.



MERLE NORMAN STUDIOS

Eastland Shady Oaks Shopping Center 629-3533

PROJECT HOOS-GOW

JOB SKILL AND EXPERIENCE SURVEY

THE EASTLAND COUNTY ECONOMIC DEVELOPMENT COUNCIL IS CONDUCTING A SURVEY TO DETERMINE THE VARIETY OF JOB SKILLS AND WORK EXPERIENCE THAT CURRENTLY EXISTS IN EASTLAND COUNTY'S WORK FORCE. THE RESULTS OF THIS SURVEY WILL BE USED AS A PART OF THE ORGANIZED EFFORT TO HAVE A STATE PRISON BUILT IN EASTLAND COUNTY.

TO PARTICIPATE IN THE SURVEY, PLACE A CHECK MARK BY ALL THE JOB OCCUPATIONS THAT YOU HAVE HELD OR BY THOSE OCCUPATIONS YOU ARE QUALIFIED BY TRAINING OR EDUCATION TO HOLD.

THIS SURVEY DOES NOT CONSTITUTE A JOB OFFER BY PROJECT HOOS-GOW OR THE TEXAS DEPARTMENT OF CORRECTIONS. THIS IS ONLY A SURVEY.

- | | |
|---------------------------------|-------------------------------------|
| / / ADMINISTRATOR/MANAGER | / / FOOD SERVICE WORKER |
| / / BUILDER/CONSTRUCTION WORKER | / / LAB TECHNICIAN -MEDICAL |
| / / BUYER/ PURCHASING AGENT | / / LAB TECHNICIAN -X-RAY |
| / / CARPENTER | / / LAW ENFORCEMENT OFFICER |
| / / CHAPLAIN | / / LAUNDRY PERSONNEL |
| / / CPA | / / LEGAL CLERK |
| / / CLERK | / / LAW LIBRARIAN |
| / / TYPIST | / / LIBRARIAN |
| / / PERSONNEL | / / EX-MILITARY POLICE |
| / / DATA ENTRY | / / MECHANIC |
| / / FILE | / / AIR COND. REFRIG. & HEATING |
| / / MAILROOM | / / MAINTENANCE |
| / / INVENTORY | / / BUILDING MAINTENANCE |
| / / SHIPPING/RECEIVING | / / MEDICAL RECORDS CLFRK |
| / / STATISTICAL | / / NURSE |
| / / WORD PROCESSING | / / REGISTERED |
| / / COMMISSARY MANAGER | / / LVN |
| / / COMPUTER OPERATOR | / / AID |
| / / COMPUTER PROGRAMMER | / / HOSPITAL ORDERLY |
| / / COMPUTER SERVICE TECHNICIAN | / / PHYSICIAN |
| / / COOK/CHEF | / / PLUMBER |
| / / CORRECTION OFFICER | / / PRISON GUARD |
| / / DENTIST | / / PSYCHIATRIST |
| / / DENTAL ASSISTANT | / / PSYCHOLOGIST |
| / / DENTAL HYGIENIST | / / PHYSICAL EDUCATION SPECIALIST |
| / / DIETICIAN | / / RECREATION SPECIALIST |
| / / ELECTRICIAN | / / SECRETARY |
| / / ENGINEER | / / SOCIAL WORKER |
| / / INDUSTRIAL | / / SOCIAL WORK ASSISTANT |
| / / MECHANICAL | / / SUBSTANCE/ALCOHOL COUNSELOR |
| / / SAFETY | / / TEACHER |
| / / FIREFIGHTER | / / VOCATIONAL COUNSELOR |
| / / FOOD SERVICE MANAGER | / / VOCATIONAL COUNSELOR INSTRUCTOR |
| | / / WASTEWATER TREATMENT OPERATOR |

DO NOT SIGN THE SURVEY:
MAIL TO: PROJECT HOOS-GOW
P.O. BOX 568
CISCO, TEXAS 76437

4-H NEWS

By Crystal Wilbanks, County Agent

4-H CLOTHING PROJECTS PLANNED:

Plans for the 4-H Clothing Projects are underway! We have some exciting county-wide clothing activities coming up.

All 4-H'ers interested in being in a clothing project should sign up with their club managers or contact Mrs. Janet Thomas, County Extension Agent.

A special thanks to the following leaders for helping plan this project. Denise Hubbard, Kathy Stevens, Paula Collins, and Shelly Bailey.

4-H COUNTYWIDE VALENTINE PARTY - A BIG SUCCESS!!

Over 65 youth and 25 adults enjoyed an evening of fellowship, music, and games and celebrated Valentine in a big 4-H way.

Thanks to the 4-H Recreation Team members, John Seaberry, Stephen Maulden, Robbi Daskevich, Amy Logan, P.J. Kea, and Cathi Thomas, and adult leader, Mrs. Patti Cozart.

How Protection Collar Worked Last Year

DEPT. OF AGRICULTURE
AUSTIN - "Texas sheep, goat and lamb producers have once again proved that a little common sense and a willingness to try a few new tricks can go a long way toward solving a huge problem," Texas Agriculture Commissioner Jim Hightower said today.

"We're not saying that the problem of predators attacking sheep and goats is solved, but we are saying that after one year of comprehensive predator control program, we are making a difference," Hightower said.

"Hundreds of Texas ranchers are using guard animals such as dogs and donkeys to reduce livestock losses. At the same time, the judicious use of the livestock protection collar has proven to be an effective supplement to other control methods. Today, we're recommending to the Environmental Protection Agency that our program -- inaugurated in January 1988 -- which includes the livestock protection collar, be continued.

"Texas leads the nation both in the number of sheep and goats and in wool and mohair production, with production of 3.6 million animals and annual sales of more than \$150 million," Hightower said.

"Unfortunately, Texas sheep, goat and lamb producers also lose more than 190,000 animals, valued at more than \$9 million, every year to predators -- many to coyotes.

"Thankfully, Texas now leads the nation in developing and implementing a sensible, comprehensive and effective predator control program -- a program that balances ranchers' valid concerns over livestock losses with the equally valid need to protect wildlife and the environment."

In its report to the EPA detailing one year's use of the livestock protection collar, TDA noted:

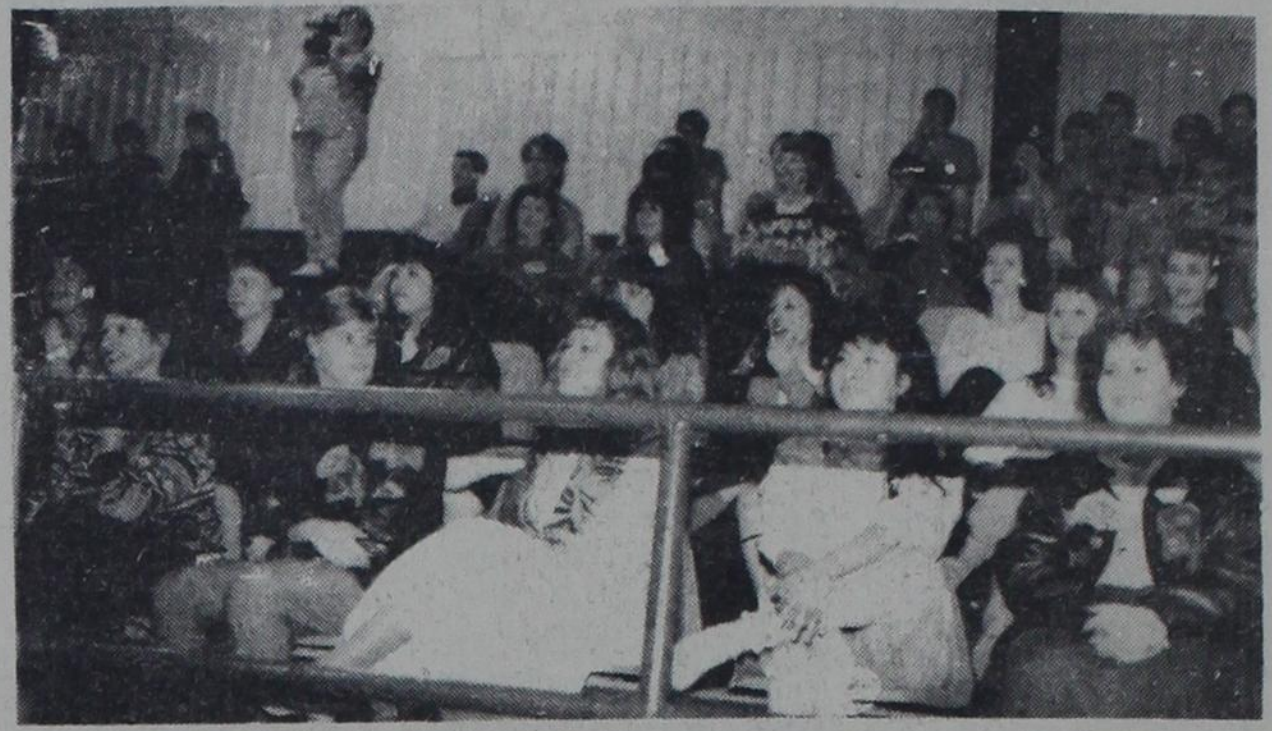
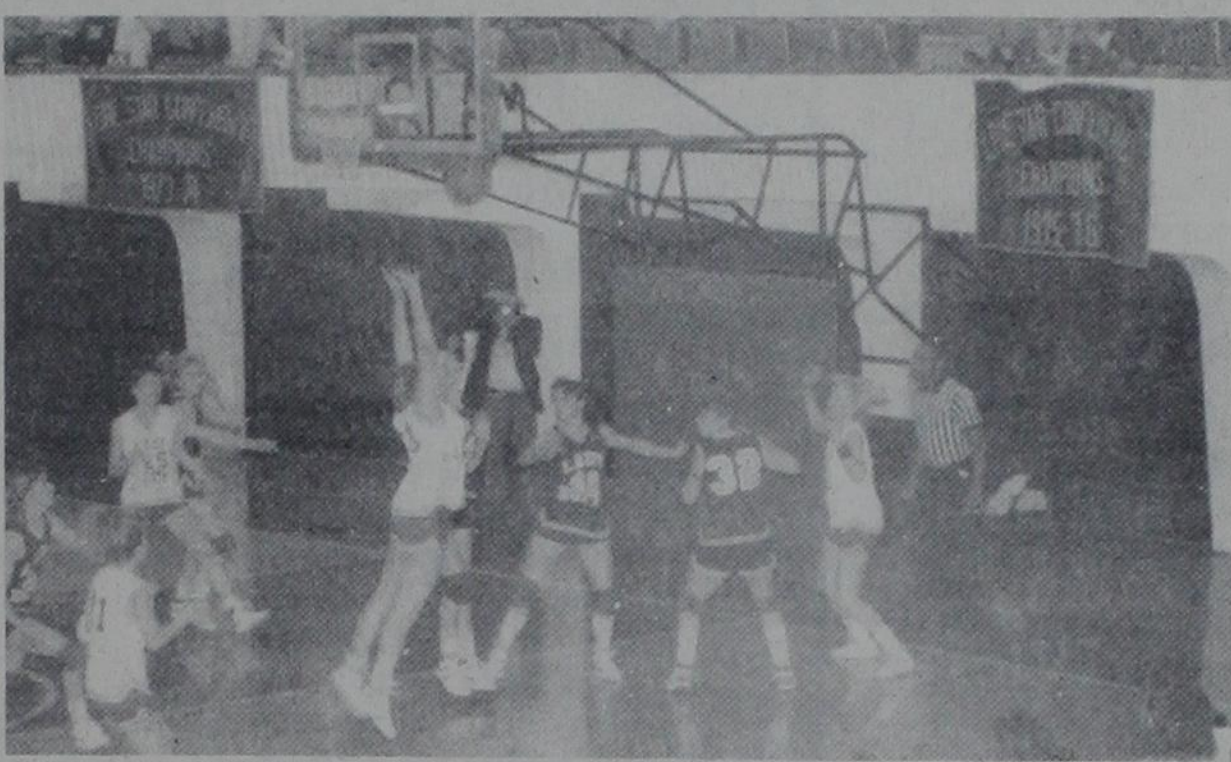
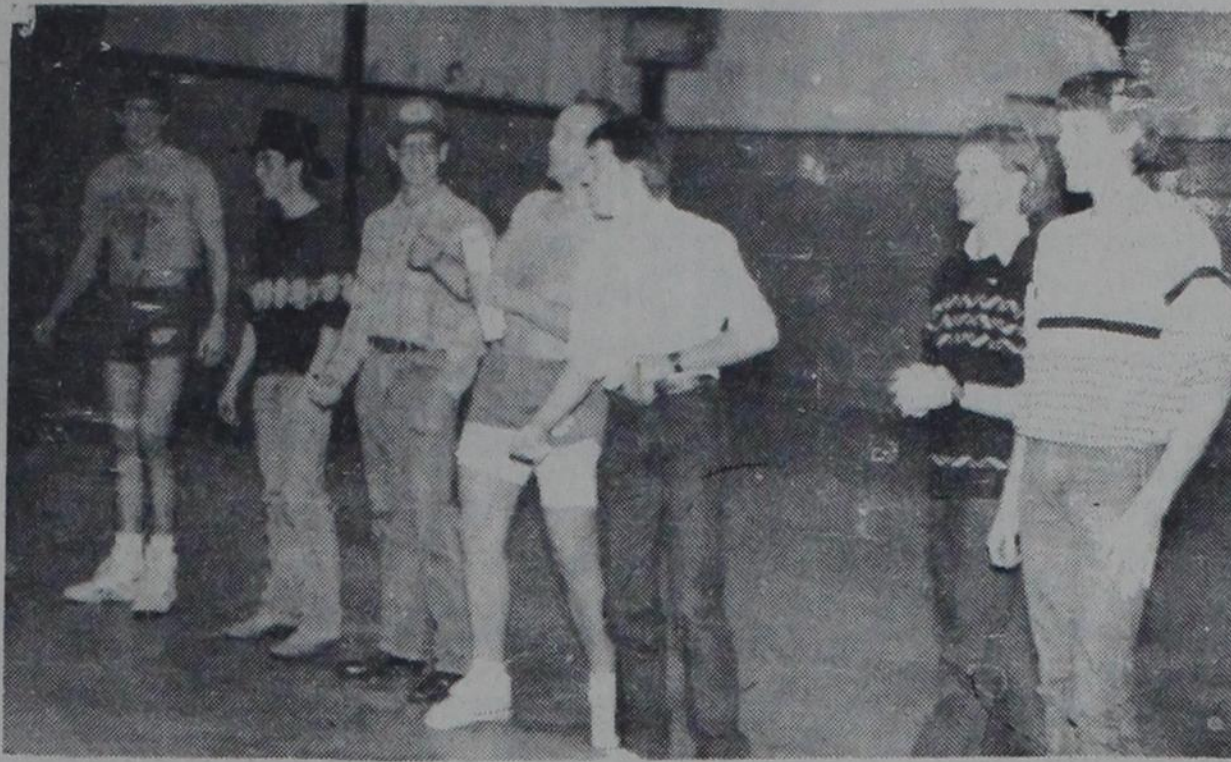
--Forty-three applicators purchased 827 collars.

--Thirty-seven coyotes were believed to have been killed by the collars.

--Only one non-target animal -- a lamb poisoned by a ruptured collar -- was reported killed by the collars.

--Thirty-nine collars were reported lost.

"We found that several applicators were successful in killing coyotes believed to be responsible for thousands of dollars of damage," Hightower said. "Use of collars was effective in some instances where other methods failed."



ASCS News

Long Term Agreement Sign-Up: Requests for cost-shares under the Long Term Agreement program will be accepted beginning February 13, and ending March 3.

The LTA concept of solving conservation problems is to concentrate on a particular area with a contract for conservation work to be done over a three to five year period. Cost-shares are generally based on 50 percent of the average cost and are limited to \$3,500 per person per year.

1989 Farm Program Sign-Up: Sign-up for the 1989 wheat, feed, grain and cotton program will continue through April 14. Acreage reduction requirements are 10 percent for wheat, corn, sorghum, and barley; 5 percent for oats; and 25 percent for upland cotton. The 0/92 provisions will apply.

Haying of ACR and CU payment acreage has been authorized during the seven consecutive grazing months. Haying and grazing of ACR and CU payment acreage is prohibited from May 1 through September 30.

1989 Peanut Quota Notice: Initial 1989 peanut quota notices with 10 percent undermarketings, if applicable, are scheduled to be mailed to farm operators on February 21.

Conservation Reserve Sign-Up: The eighth sign-up for the Conservation

Reserve Program (CRP) continues through February 24. Applicants will submit bids stating the rental rate they would accept to convert their highly erodible cropland to permanent vegetative cover for 10 years.

Change In Farm Operation: If you have changed your farm operation for 1987, please contact your ASCS office so that records may be kept current.

Important Announcement: The Eastland County ASCS office will be closed each Friday in order for employees to complete paper work and issue payments in connection with the livestock feed program and the disaster assistance program.

Emergency Feed Program: Producers are reminded that the final date that an application can include feed production losses is March 31. Eligibility begins on the date of the application.

Disaster Assistance Act of 1988: We are still taking applications for assistance under the Disaster Assistance Act of 1988. The disaster program covers losses on wheat, feed grains, cotton, peanuts, and other nonprogram crops such as hay, melons, rye, guar, pecans, and other commercially grown crops. The final date to make application is March 31.

gram devoted to treating beneficiaries fairly.

Another discussion will center on estate planning tools for agriculture and will deal with corporations, partnerships, selling part of the business to heirs, and oil and gas interests.

The second day of each seminar will be devoted to special estate tax rules for agricultural estates. These include special farm land valuation, deferred estate tax payment rules, life insurance, "flower" bonds and other property.

"Estate planning is a step toward reduced estate and income taxes," says Hayenga. "This process should start when you plan to inherit substantial property, when you have an active and growing business, when you still have time to take tax-saving actions, when you have minor children, and when your children marry or divorce."

For more detailed information about the seminars, contact your local County Extension Agent or Wayne Hayenga in the Department of Agricultural Economics, Texas A&M University, College Station, TX 77843, or call (409) 845-2226.

Estate Planning Seminar Set

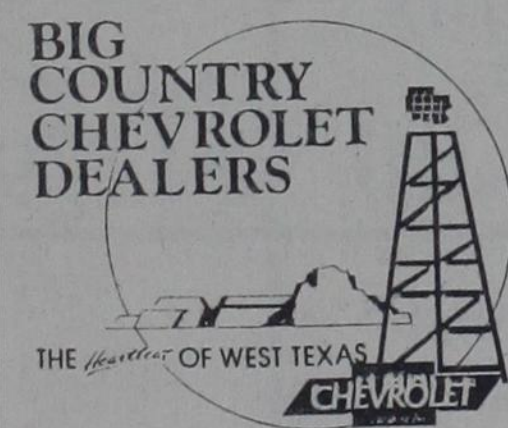
Texas farmers and ranchers have several opportunities in the coming weeks to attend seminars on estate planning.

"The seminars are being conducted by the Texas Agricultural Extension Service, Texas A&M University System, as part of a continuing effort in farm and ranch management," notes Dr. Wayne Hayenga, Extension Economist. "They are designed to help farmers and ranchers learn how to reduce taxable estates and learn new methods for passing their operations to the next generation.

Titled "How to Lower Your Estate Tax Burden," the seminars are slated for Granbury on March 6-7, Austin on March 21-22, Corpus Christi on March 29-30 and Lubbock on April 4-5.

"Of major importance is how every farm estate will be affected by new estate tax rules," points out Hayenga. "The best tax planning of the past may be the worst under the new law," including deductions, expenses and tax rates. Among these are wills, by-pass trusts, gift disclaimers and ways to own property.

There will also be a separate segment of the pro-



Fullen Motor Co.

Specials



1988

SPRINT

For as little as \$7,315⁰⁰ including rebate or 4.9% eligible interest



1988

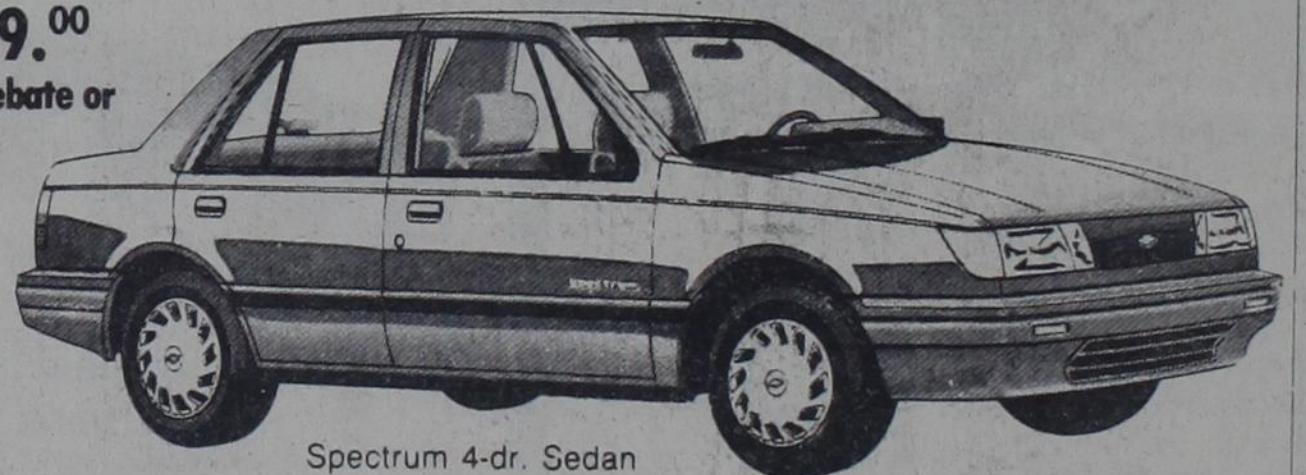
CAVALIER RS

For as little as \$9,535⁰⁰ including rebate or 4.9% interest eligible.

1988

SPECTRUM

For as little as \$8,289⁰⁰ including rebate or 4.9% interest



Spectrum 4-dr. Sedan

1988

NOVA

For as little as \$9,198⁰⁰ or eligible 4.9% interest, including rebate



Nova 4-dr. Notchback Sedan

THE Heartbeat OF AMERICA

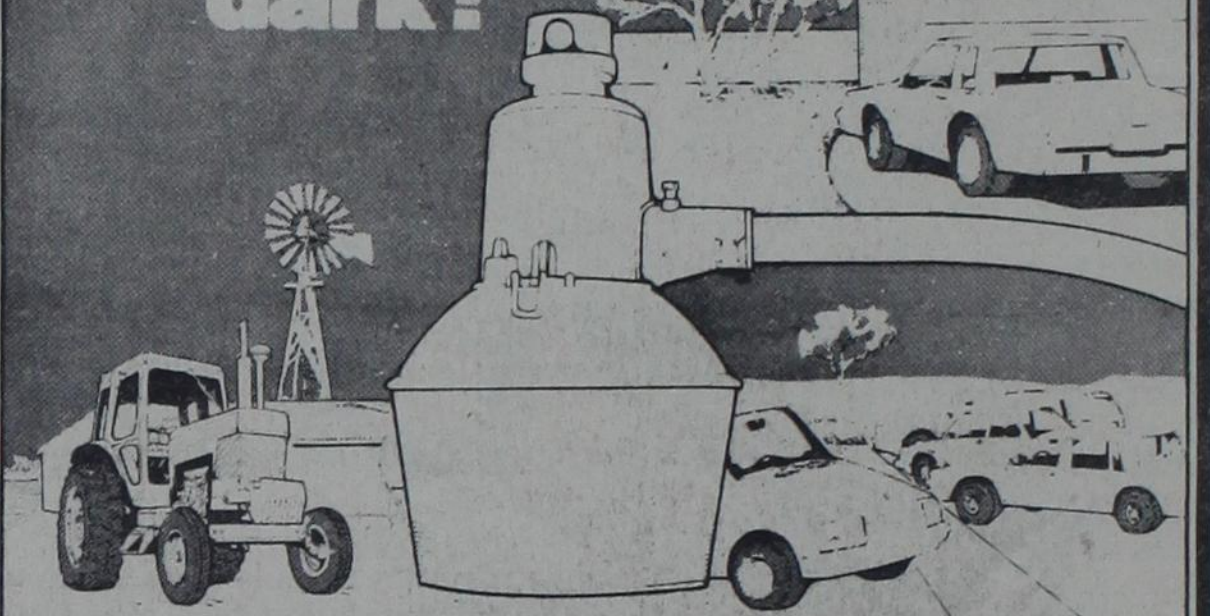
Fullen Motor Co.

CHEVROLET TODAY'S

305 East Main Eastland 629-2676

CHEVROLET

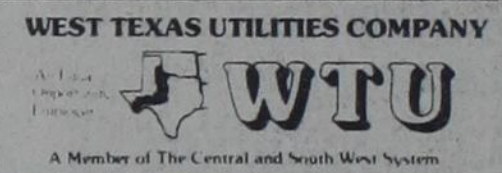
Is your home or business in the dark?



Then light up with a Guard-Lite from WTU.

A Guard-Lite can help make your parking lot safer for you and your customers. It can help protect equipment or vehicles that have been left outside overnight. It can shed light on garages, out buildings and more.

Light up around your business or home. Call WTU and lease a Guard-Lite today.



Serving you with dependable electrical energy from the Red River to the Rio Grande.

Extension Appreciation Dinner

Warmth and good food greeted those attending the annual meeting and appreciation dinner of the Eastland County Extension Program Council at Lone Cedar Country Club on Thursday, Feb. 16.

None of the area farmers and ranchers complained about the rain outside, however. Several were heard to remark that the downpour was "the best thing that ever happened to us." The mood was up-beat as friends greeted each other.

Hosting the annual event were Eastland County Extension Agents DeMarquis Gor-

don, Janet Thomas and Crystal Akers Wilbanks. Donors were the Birdsong Peanut Company, the Eastland National Bank, Production Credit Association, First National Bank, Cisco, and First State Bank, Eastland.

Charles Walker, Chairman of the Extension Program Council, presided over the meeting. Jack Phillips gave the Invocation. The Guest Speaker was Dr. Don Knotts of Tarleton State University, Head of the Department of Agricultural Services and Development.

Judge Scott Bailey and County Commissioner Nor-

man Christian were among local officials attending the gathering.

After greeting Program Council members and guests, Charles Walker summarized the many accomplishments during 1988 in Eastland County Agriculture, Home Economics, and 4-H work. The programs were each planned and directed by local Committees, and addressed critical issues in the County.

Chairman of these area Committees are: Crops Committee, Benny Hagan, Livestock and Forage Committee, Jay Lafferty, Pecan

Growers Committee, Charles Walker, Home Economics, Dorothy Underwood, and 4-H and Youth Committee, Barbara Long.

Walker said that none of the accomplishments would have been possible without the knowledge, dedication and hard work of Eastland County Agents Gordon, Thomas and Wilbanks.

"Their work is superior in every way," he stated.

County Agents (Agriculture) DeMarquis Gordon and Crystal Wilbanks then reported on the special work of the local Agricultural Demonstrators in 1988.

Gordon told how these people "practiced out on farms and ranches with new concepts of doing things ... new varieties of crops." He told of some things they had learned from these new methods.

The Demonstrators were listed as Lin Boch, Lynn Hagan, A.W. Niska, Gene Snider, Jerry Doyle, Benny Hagan, Sid Waynick, Dick Wooley, Jay Grimshaw, Ernest Reich, Agnes Rushing, Cody McDaniel, Wayne Carlile, Dr. Jim Cole, and James and Charles Chesshir.

Guest speaker Dr. Don Knotts by-passed his own honors to take note of this work and optimism. He said he was happy to be among the "heartbeat, the producers and supporters of agriculture." He stated that happy people were of great importance to agriculture or anything else. That, and communicating and exchanging ideas is vital to progress, he said. His prediction was that 1989 would be a good one for agriculture.



Wyleene Davis, center, sacks popcorn for Robert Eichelberger and Sherri murphree.

Popcorn! Popcorn! Get your popcorn here! could have been the call at First State Bank of Rising Star last Friday as employees promoted a new banking service, the Star Account. They also wore blue and gold as a congratulatory message and in support of the Lady Cats who played in a bi-district basketball game that night.

Members of the Star Account have the benefit of eligibility for a reduced rate on installment loans and for cashier's checks at no charge.

Fun Friday or any day, stop by the bank to learn more about this new service.



Barbara Kanady sacks popcorn for Gene Lyon.

Wedding Shower Will Honor The Billy Owens

A wedding shower will honor Billy and Kelly Owen who married January 8. The shower will be Sunday, February 26, from 2 to 4 p.m. at the home of L.T. and Josie Owen.

Gift selections have been made at Higginbotham's, Palace Drug Store and Hubbard's Gift & Gallery. The hostesses invite friends and relatives to attend.

Free Tax Aide for Senior Citizens

Free tax aide to assist senior citizens in the preparation of their income tax returns is available at Rising Star Senior Citizens Center on Mondays from

9:30 a.m. to 1:30 p.m. from February until April 15.

The program is sponsored by the American Association of Retired Persons and is manned by volunteers.

VIDEOS 2 For \$3
Rental Price Effective Feb. 23 - Mar. 1
Max's Quickway
201 W. College 643-1490

L&J CONSTRUCTION
New Const. - Remodels
Add-Ons - Steel Bldgs.
Sheet Rock - Tape & Bed
Acoustic - Texture
Jim Ratliff Lynn Hutton
817-643-6464 Rt. 1, Box 145A
Rising Star Cross Plains, Tx. 76443

\$2,500.00 REWARD

Any person with information leading to the arrest and indictment of the person or persons responsible for the crime may call 643-4261 or 643-3421. Information may be given anonymously and arrangements will be made for the payment of the reward.

Money may be mailed to First State Bank, Rising Star, 76471, to be deposited in the Witt Reward Fund. The account number is 72-360-6. No arrests have been made in the rape/murder case. Era Witt, 87, was found dead in her home on June 7.

1-10x13 30
(Wall Photo)
1- 8x10 COLOR
2- 5x7 PHOTOS
2- 3x5
16-King Size
Wallets
8-Regular
Size Wallets
10⁹⁹
99¢ Deposit
\$10.00 Due At
Pick up
Plus Tax
WE USE KODAK PAPER
AT
Higginbotham Bros. & Co.
208 North Main
Date: Thurs., Feb. 23
Photo Hours 8:30-5
HAVE YOUR EASTER PICTURES TAKEN NOW

Shugart's inc.
GROUP CHARGE COLOR
99¢ per person PHOTOS
Kodak paper. For a Good Look at the Times
of Your Life. TM

FAMILY FOOD STORE

North Main St. Affiliated Food Store Rising Star
NEW STORE HOURS Monday-Sunday 8:00 a.m.-6:00 p.m. Phone 643-2221
Prices Effective: Wed., Feb. 22-Sat., Feb. 25

***** We Make Deliveries *****
★ Support Your Town - Shop At Home ★

We Gladly Accept Food Stamps

Ellis Pecans 8 Oz. Pkg. Pieces and Halves \$1.29	Purex Dry Detergent 42 Oz. Limit 1 99¢	Folgers Can Coffee 13 Oz. Limit 1 Fine, Reg. & ADC \$1.79
Del Monte Green Beans 16 Oz. Cut or French Style 2/88¢	Del Monte Golden Corn 17 Oz. Whole Kernel or Cream Style 2/88¢	Del Monte Spinach 15 Oz. Leaf or Chopped 2/88¢
Del Monte Tomatoes 14 1/2 Oz. - 15 1/2 Oz. Stew, Cajun or Italian 69¢	Del Monte Fruit Cocktail 17 Oz. 79¢	Del Monte Peaches 16 Oz. Sliced or Halves 79¢
Del Monte Pineapple 20 Oz. Crushed 88¢	Del Monte Prune Juice 32 Oz. \$1.29	Breast O'Chicken Tuna Light 6 1/2 Oz. 69¢
El Charrito Mexican Dinners 13.2 Oz. Assorted \$1.39	Parkay Margarine Soft Cups 2-8 Oz. \$1.19	Kraft American Cheese Singles 1 lb. \$2.79
Pillsbury Country Pleasing Biscuits 7 1/2 Oz. 6/\$1.00	Pork Chops Rib Cut \$1.69 Lb. Loin Cut \$1.79 Lb.	Silver Spur Sliced Slab Bacon 79¢ Lb.
Pork Chops Assorted, Family Pack \$1.29 Lb.	Fresh Strawberries 89¢ Pt.	Michigan Red Rome Apples 3 Lb. Bag 99¢
Seedless California Naval Oranges 4 Lb. Bag \$1.49	Large Stalk Celery 39¢ Ea.	Fresh Carrots 1 Lb. Bag 3 Pkg. \$1.00
Cherry Tomatoes 99¢ Pt.	U.S. #1 Russet Potatoes 5 Lb. Bag 99¢	Duncan Hines Cake Mix 18.25 Oz. 79¢
Tetley Family Size Tea Bags 24 Ct. \$1.59	Pepsi, Mountain Dew & Slice All Varieties 6 Pack Cans \$1.69	