

THE RISING STAR

Lady Cats & Wildcats
 Jr. Varsity girls,
 Varsity girls & boys
 vs. Zephyr, there
 Fri., Dec. 18, 5:00



Rising Star, Texas

©1992 Eastland County Newspapers, Inc.

Established in 1890

50 Cents

Thursday, December 17, 1992

Number 51

Rising Star City Council Meeting

Meeting of the Rising Star City Council was held in the offices of City Hall on Tuesday, November 10, 1992 at 7:00 p.m.

All councilpersons were present. Guests included Police Chief Lewey Wyatt, Gorman Welch, Ted Murphree, Bob Lamb, Melba Lamb and Billy Harmon.

James Cook moved and Charles Barnes seconded to move into executive session with District Attorney Leslie Vance concerning legal questions, and an executive session concerning the Rising Star Vineyard. Motion carried 5-0 and council entered executive session at 7:09 p.m.

Council re-entered regular session at 8:23 p.m.

Barnes moved and Cook seconded to authorize the City Administrator to release materials on Ris-

ing Star Vineyard to proper persons as needed and advised by the city attorney. Motion carried 5-0.

Discussion was held on the lease renewal for the city gate. City Administrator reported that she had contacted the Wares about the option of purchasing the 1/4 acre and they were not interested in selling. She also indicated that they were satisfied with the lease arrangement and were not interested in renegotiation of the agreement. Council and city attorney indicated that the \$9,000.00 for the lease without ownership at the end of said lease was prohibitive. Research had indicated that a permanent easement was passed from former owners of lease, Odessa Pipeline, to SO Operating and Rising Star Pipeline for gas serv-

ice and operations. The existing 20 ft. permanent easement would allow the fences to be moved in and the city gate to operate as always. The city attorney and Railroad Commission had given the "OK" to proceed if the council approved.

Cook moved and Barnes seconded to go with the recommendation of the city attorney to pull in the fences and use the easement as needed as soon as possible. Motion carried 5-0.

Discussion was entertained on commercial gas rates for large volume, seasonal commercial accounts. Options were mentioned.

Barnes moved and Randy Goldston seconded to hold the matter under review and have the city administrator look into a few more communities with similar accounts. Motion carried 5-0.

The utility report and treasury report were presented and approved. Monthly bills were presented and approved for paying.

Barnes moved to pass a resolution to extend the existing loan with the Peoples State Bank of Clyde for the purpose of use in the General Fund for operations of the City while reimbursements from the State are being processed. Goldston seconded and the motion passed 5-0.

Police and Court Report were presented to the council for review. Wyatt asked that the council comment on his availability for the driving of the ambulance in emergency

situations. The council commented that, with good judgment, there should be no problem as long as there was no liability or interference with the operations of the Police Department.

Barnes moved and Cook seconded to approve the Police and Court Report as presented. Motion carried 5-0.

Animal Control Report was submitted with comment that the fenced-in area behind City Hall has been used as a temporary confinement area.

Fire Department Report was submitted by Billy Harmon and Fire

Continued inside...

Christmas Community Dinner Set

The Annual Christmas Community Dinner will be held at the Rainbow Restaurant on December 25 from 11:00 a.m. until 2:00 p.m. This event is free to everyone and is sponsored by several local people, along with the Rainbow.

Donations of pies or salads will be welcomed, but the sponsors want you to know that in no way are you obligated to bring food. Just bring yourself!

However, should you plan to bring something, please call 643-3000 or 643-3573 ahead of time and let them know. This will help in the planning of the meal.

We are looking forward to sharing this festive occasion with lots of friends and neighbors.

If you are homebound or know someone who is and unable to come to The Rainbow, just call 643-300 and we will be happy to deliver.

CPR Training Class Will Be on Saturday

The Rising Star Volunteer Fire is sponsoring a CPR (cardiac-pulmonary resuscitation) training class from 1 to 5 p.m. Saturday, December 19, at City Hall for the general public. The fee is \$5 per person.

A CPR training class with advanced material will be held for firemen from 8 a.m. to 12 noon.

Call now before the class limit is met to reserve a space for the training. Call City Hall, 643-4261, or one

of these volunteer firemen: Ted Murphree, 643-2341; Bill Nall, after work at 643-2111; or Bill Harmon at 643-5806.

The class will be taught by a certified Red Cross instructor.

RSVFD Willing to Install Your Smoke Alarms

Would you like to have a smoke alarm but you're just not able to put one up yourself? You can get help from members of Rising Star Volunteer Fire Department.

A special purchase enables the volunteers to offer smoke alarms at the price of two for \$15.00 while supplies last. This includes the installation and a free inspection of your home. When those supplies are sold, the other available alarms are \$12.00 with installation and inspection included. The alarms are approved by Underwriters Laboratory.

The volunteers are also offering to do a free home safety inspections if you wish. They will gladly do this inspection for you, weather you should purchase a smoke alarm or not. This will enable you

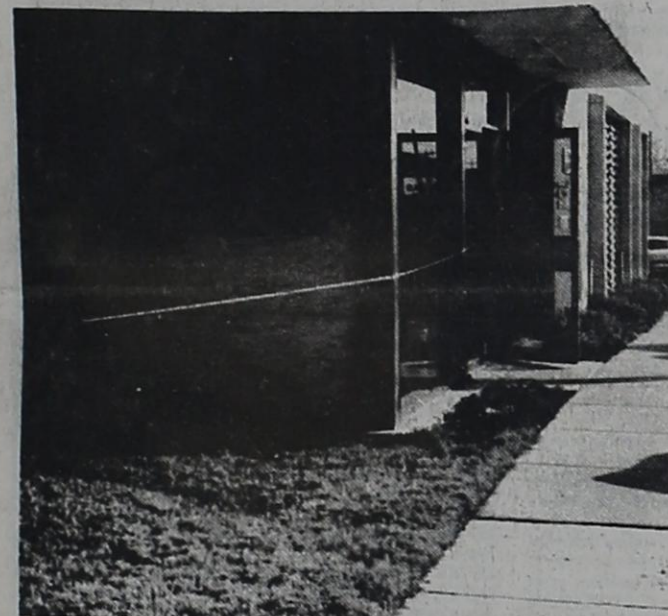
to correct any fire hazards you may have overlooked.

The volunteer firemen have already made some home inspections and found a hazard that had not been noticed. A vent to a gas water heater had come loose in the home and the inspection, and subsequent repair, prevented a potential disaster, said one of the volunteers.

Call City Hall, 643-4261; Bill Harmon, 643-5806; or Ted Murphree, 643-2341 to take advantage of this offer.

Post Office Window Open Saturday A.M.

The Post Office window will be open until 11:00 a.m. Saturday, December 19.



The west side of the foyer of Rising Star Branch of Peoples State Bank, Clyde was given a temporary cover Monday after a vehicle driven by Brenda Williams rammed the window after an apparent failure of the brakes.

County Commissioners Hear Of FM 570 Progress, Other Matters

Eastland County Commissioners Monday considered a number of agenda items. There were also various reports and requests.

Bryan Neaves, Area Texas Department of Transportation Engineer, reported on progress for right-of-way acquisition for FM 570 southeast of Eastland.

Neaves said he had consulted with District Attorney Leslie Vance, who is working with a Title Company on land-

title determinations.

He said the titles should be ready for the Commissioners Court by the middle of this week. The County will then obtain signatures for purchase of land for the right-of-ways. The contract for work on this roadway should be let in May, Neaves said.

There was also a progress report by Randall Logan on establishment of a 'Teen Court' in Eastland County.

Logan is Chief Probation Officer for Eastland County and also Chairman of the Positive Ac-

tion For Youth Organization.

Logan said the Board of Directors for 'Teen Court' would be: Bill Dowell, Chairman (Dowell will also serve as Judge) Richard Watson, Kitty Stovall, Sheriff Ronnie White,

Pam Rose, Gene Kinser, Jim Moylan, Richard McCarron and Logan. Meg Kennedy will serve as 'Teen Court' Coordinator for P. A. Y.

Logan discussed the 'Teen Court' further, saying it would make kids responsible for mistakes by sentencing them to certain hours of Community service.

The Court does not determine guilt or innocence. It takes cases after a juvenile has plead guilty and then determines punishment.

The first session of 'Teen Court' is scheduled in late January, Logan said.

The Commissioners also commented on the 'Teen Court,' and spoke of the possibility of getting Teens to do some cleaning in the cities.

Jayne Jones, Beautification Chairman for the

Eastland Civic League, told the Commissioners that the League would like to hang an 8-ft. Christmas wreath on the Court-house.

The Commissioners said they felt like a contractor should be asked about any possible problems in hanging the wreath.

A motion was approved to install the wreath, requesting that a proper and safe manner be used.

Jayne Jones also spoke about keeping Eastland County money in the County. She said she felt that the Precincts were not looking locally for supplies that were needed.

She stated that she paid taxes here in the County, and a percentage of this was used by the County. Buying out-of-town was not bringing any money to the county, she remarked.

She noted that small businesses are vital to the towns-they are trying to provide goods and services that are needed.

As an example she pointed out Jay-Way

Supply, which has products the County could use, but which is not selling to the County.

In 1992 this small business paid salaries to employees, who generally spent their money locally. It also sent considerable tax money to the State, part of which came back locally. In addition the business paid taxes to the County to help support county government and services.

Mrs. Jones said this didn't even mention the money the many civic organizations whose projects were given support by contributions from Jay-Way Supply, along with the contributions from other small businesses in the area. All this too went to benefit this County.

The Commissioners said they would look into this matter.

On another agenda item, the Commissioners approved early pay for monthly employees for the month of December only. The motion to approve was made by Reggie Pittman, with a second by Pct. 2 Commissioner Calvin Ainsworth.



Rising Star 4th grade students entertain the crowd with Christmas music played on recorders during Hometown Christmas; director is Tim Riley.

Star Pride Enhances Downtown Rising Star

Thanks to the generous support of Bryan Milner, we were able to complete our poinsettia project. Also Floyd Joyce gave to the flag fund, which we will be working on soon.

Our Hometown Christmas was a big success and we have many to thank. Our decorating committee, Janelle Caudle, Judi Butler, Faye and Bill Medley, showed no less than professional qualities in transforming the windows of the old Higginbotham building into a winter wonderland and a traditionally decorated room portraying the love and warmth found in so many homes during this festive season.

We were so fortunate to have the full support of the Foundation in hurrying up and getting the building in order for Santa's visit. An added thanks and appreciation goes to Barbara Kanady, our president. She is doing a good job and she deserves our full support.

Santa letters next week.

Peoples State Bank will close at noon December 24 through Christmas weekend.

Weather
 Rising Star received 1.6 inches of rain Sunday and Sunday night.
 It sleeted briefly Monday evening.

To all those who baked cookies and to those of you who served, you did a great job.

Star Pride has many projects for the new year, so come join us. We make things better! Merry Christmas!

Bank to Close at Noon on Christmas Eve

Peoples State Bank will close at noon December 24 through Christmas weekend.

Bank to Close at Noon on Christmas Eve

Peoples State Bank will close at noon December 24 through Christmas weekend.

Weather

Rising Star received 1.6 inches of rain Sunday and Sunday night.

It sleeted briefly Monday evening.



Santa letters next week.

Eastland County ASCS Peanut Box Score	
Eastland County Peanut Production Summary as of Dec. 9 with harvest 97% complete	
Total acres planted	26,188.8
Total pounds sold	48,412,922
Pounds sold per acre	1,849
1991 Final per acre yeild	1,597

Community Calendar

3RD THURSDAY
4-H, at hut, park, 6 p.m.

Scottish Rite

Dept. of Human Services
 City Hall, 8:30-12:00.

EACH THURSDAY
Kiwanis Club, Rising Star High School at 6:30 a.m.

Senior Citizens Center is open for lunch, activities.

City Library, 9:30-11 a.m.

3RD FRIDAY
Lakewood Ladies Auxiliary, luncheon.

Nursing Home
CHRISTMAS PARTY
 Fri., Dec. 18, 6:30-8 p.m.

EACH SATURDAY
Bingo, American Legion Hall, 205 S. Main

EACH MONDAY
Boy Scouts, First Baptist Activity Bldg, 6:30

4TH TUESDAY
Circuit Writers, Blue Flame Room, Fisk St., Brownwood at 7-9 p.m.

EACH WEDNESDAY
Clothing Supply Room, Church of Christ 9-4.

What's Happening
 by Kristi White
 Dec. 16-17

First Semester Exams.
 Dec. 18

Teacher Workday, Student Holiday.
 JVG-VG-VB B-ball vs. Zephyr. There at 5:00

Dec. 19
 Miss La Estrellita Coronation. High School Auditorium at 7:00 p.m.

Dec. 21 - Jan. 1
 Christmas & New Year Holidays.

Dec. 29
 V-G, V-BB-ball vs Priddy. there 6:30 p.m.

Jan. 4
 JH B-ball vs Blanket home at 6:30 p.m.. Begin 2nd semester.

Jan. 6
 Early dismissal.

City Sales and Use Tax Comparison Summary - December 1992

County/City	Current Rate	Net Payment This Period	Comparable Payment Prior Year	% Change	1992 Payments To Date	1991 Payments To Date	% Change
Eastland	1.000%	\$0.00	\$0.00	U/C	\$3,078.42	\$1,756.64	75.24%
Carbon	1.000%	\$8,507.25	\$7,676.44	10.82%	\$148,663.77	\$144,551.47	2.84%
Cisco	1.000%	\$26,957.09	\$21,098.77	27.77%	\$344,673.42	\$346,786.34	5.16%
Eastland	1.000%	\$1,508.30	\$1,563.43	-3.53%	\$32,130.69	\$37,255.31	-13.76%
Gorman	1.000%	\$8,062.37	\$4,183.65	92.71%	\$94,358.76	\$94,249.33	0.12%
Ranger	1.500%	\$629.37	\$1,040.26	-32.88%	\$17,679.08	\$17,946.68	-1.48%
Rising Star	1.000%	\$629.37	\$629.37	0.00%	\$660,584.14	\$642,545.77	2.81%
County Total		\$45,735.21	\$35,562.57	28.60%			

Comptroller Sends Dec. Monthly Sales Tax Rebates To Cities And Counties

(Austin)—State Comptroller John Sharp today sent a total of \$105.8 million in December sales tax rebates to 918 cities and 109 counties, an 18.1 percent increase over the payments of one year ago.

Another \$146.6 million in quarterly payments went to six mass transit authorities in the state's largest cities and the two city transit departments. Texas cities received \$94.6 million in sales tax payments, up 17.9 percent from the \$80.2 million they received last December. Counties received \$11.2 million, a 20.3 percent increase over the December 1991 rebates of \$9.3 million.

"Service employment grew at the fastest rate, rising by 2.8 percent between October 1991 and October 1992. Aher losing jobs for more than a year, Texas' manufacturing sector has started to improve," Sharp said.

The city of Houston received \$14.4 million, the largest sales tax rebate for December, up 9.2 percent from the city's \$13.1 million in December 1991. Houston was Texas' only

major metropolitan area to experience an employment loss between October 1991 and October 1992.

"The loss has been reflected in stagnant sales tax allocations, which rose only slightly in 1992," Sharp said.

The \$8.9 million December payment to the city of Dallas was the second largest, up 14.5 percent from the \$7.7 million for the same period last year. October 1992 was the first month since December 1990, that manufacturing employment fell by less than one percent.

"Dallas' sales tax allocations for 1992 increased by more than four and a half percent compared with 1991," Sharp said.

Strong employment growth in the year ending October 1992 contributed to the \$5.5 million rebate to San Antonio, the third largest payment in December, and a 20.6 percent increase over the December 1991 payment of \$4.5 million to the Alamo city.

"With trade employment rising between Oc-

tober 1991 and October 1992, city sales tax allocations have also grown substantially, rising by more than six and a half percent for the year," Sharp said.

Austin's payment of \$4.3 million for December ranked as the fourth highest rebate, an 18.5 percent increase from the city's December 1991 payment. Austin added jobs in all industries with the exception of mining, which remained unchanged.

"Austin was the state's only major metropolitan area not to lose jobs in any sector. Austin's 1992 sales tax allocations lead the

state, rising by more than seven and a half percent," Sharp said.

Hospital districts in Baylor, Ector, Nacogdoches, and Reeves counties received payments totaling \$875,611, up 41.6

percent from their total allocation of \$618,202 in December 1991.

This month's sales tax payments include taxes collected on October sales and reported to the Comptroller in November by

Commission Approves Deer Herd Management Tags

Austin—The Texas Parks and Wildlife Commission has approved a pilot program allowing some landowners to take antlerless white-tailed deer under a deer herd management tag system during the 1992-93 open deer season.

The experimental tag

program, to end in February, is designed to provide landowners an additional means to avert habitat destruction by deer whose population size, through department review, has been determined to be in excess of the carrying capacity of the habitat, said Dr. Rudy

businesses filing monthly tax returns. The mass transit payments include taxes collected between July and October and reported to the Comptroller in September, October, and November.

Rosen, director of the Texas Parks and Wildlife Department's fisheries and wildlife division.

"We need to test the concept of this management tool," said. "This proposal is designed to gain an understanding of the acceptability of the tag to landowners."

The tag system will be limited to 20 landowners this year and will be reevaluated before possible implementation next year. Issuance of antlerless deer herd management tags will be determined through investigations by department wildlife biologists or certified biologists with plan review by TPWD biologists.

The program will cost landowners \$750 for an application fee and \$5 per tag. Rosen said the fees are set to recover estimated costs of administering the program. Harvested deer must be processed and delivered to a charitable organization.

Bowling Report

Wednesday Night Ladies 12-9-92	Team Game High scratch
1. Bubba's Liquor Store	1. WNJMS 849
2. WNJMS	2. Bubba's Liquor 791
3. Buck-N-Bull Feed and Seed	3. Bubba's Liquor 758
4. Beaty Travel Agency	Team Series High scratch
5. BJ's Restaurant	1. WNJMS 2346
6. Anderson Well Service	2. Bubba's Liquor 2267
7. Thrift Mart	3. Sonic 2106
8. Sonic	Splits converted
Individual Game High scratch	Van Humphrey 5-7-9
1. Kay Merrifield 234	Edna Stacy 3-10
2. Nickie Horton 202	Yolanda Anderson 5-10
3. Thelma Powell 185	Colene Allen 2-7
Individual Series High scratch	Glenna Clifton 5-6
	Marti Mitchell 4-5
	Juanita Grisham 5-6

Letter To The Editor

I would like to keep our paper LOCAL. Most of us take one other paper at least, either the *Brownwood Bulletin* or the *Abilene Reporter-News*. We can get all the *bad* news from them.

One good local paper each week is just what we need. Once a week is

enough. I wonder how many subscribers who live within a 30 mile radius of Rising Star realize that the *"Rising Star"* costs them 17.3 cents each issue.

Mrs. Weldon Bailey
May

CHILD ABUSE 24 HOUR HOTLINE 1-800-252-5400

Eastland Telegram, Cisco Press, Ranger Times, Rising Star
Thursday, December 17, 1992

Use the classifieds

Town & Country REAL ESTATE

Barbara Love, Inc. 317 East Main
Broker Eastland, Texas 76448
629-1725 629-8391

Moving to Eastland County? Or anywhere in U.S.A. Call Toll Free 1-800-525-8910 Ext. 4365 for information. (No Rentals Please)

BARBARA LOVE, INC. REAL ESTATE

EASTLAND:

CLOSE TO SCHOOLS - Large 4 BR, 1-3/4 bath brick veneer home with 2 living areas. Corner lot, privacy fence. E4
BEGIN OR RETIRE HERE! Ideal for newbies, retirees or investors. 2 BR, 1 bath frame home on tree shaded lot. E26
BUDGET PLEASER 3 BR (could be 4), 1 bath frame home with vinyl siding, large lot. Needs some repairs, but under \$200,000. E27
THE PRICE IS SOLD 1, 1 1/2 bath frame home has corner lot, large yard. Very Affordable. E25
SOUTH SEAMAN STREET LOT! Excellent location, great building site. 100'x200' frontage on 2 streets. ACT TODAY!
PRIDE TO PLEASE! Only \$155,000 for this 3 BR, 1 1/2 bath frame home on large corner lot with trees! E22
QUALITY, GRACIOUSNESS & CHARM describes this lovely 3 BR, 2 bath custom built brick home with 3 car garage nestled amid oak trees in exclusive neighborhood. Split bedrooms, all amenities. Priced to Sell! E32
PRETTY STREET, CHOICE NEIGHBORHOOD! 3 BR, 2 Bath frame home with corner lot. Close to schools. In the 30'x E24
BEAUTIFUL AND ROOMY! 1 1/2 story 3 BR, 2 bath family home with large recreation room, gourmet kitchen & many more amenities! E21
WOULD YOU BELIEVE only \$75,000 for this 2 BR, 1 B in excellent neighborhood! It's true! Needs TLC. E1
SO MUCH FOR SO LITTLE! 2 Bedroom, 2 bath mobile home with garden tub in master BR, open LR/Kit area; large lot. E3
WANTED! A family who needs a large 3 BR, 1 bath frame home with corner lot, fireplace, fenced yard. Here it is! E5
BUY ONE OR BOTH and owner will finance! 2 lots located in commercial/residential area, 2 bks. from downtown. E6
MAINTENANCE FREE! Neat 2 BR, 1 bath home with vinyl siding in one of Eastland's most preferred neighborhoods. Affordable. Tool E8
PRICED TO SELL! 3 BR, 2 Bath frame home on large lot. Lots of extras, and affordable. Just Under \$30,000.00. Call Now! E13
NICE NEIGHBORHOOD! Brick 3 BR, 1 1/2 bath home with corner lot, fireplace, fenced yard. Close to schools. E7
TAKE ADVANTAGE OF PRICE REDUCTION on this 3 BR, 2 bath brick home in Oak Hollow. Fresh paint, new carpet! Don't wait! E16
OWNER FINANCE with small down payment for qualified buyer! Large 3 BR, 1 3/4 bath, stucco home on large lot. Needs repairs, but great potential. E11
CRESTWOOD home reduced! 3 BR, 2 Bath, built-ins, Sauna room. E36
GREAT NEIGHBORHOOD for growing family. 3 BR, 2 bath brick, P/F, drapes, built-ins. Gameroom/sunroom. A well kept home. E17
GREAT FAMILY HOME! Neat 1 1/2 story 4 BR, 2 bath home, shop/stg, fenced yard, beautiful lot with large trees. All for low \$30'x E28
DISTINCTIVE CHARM! Gracious older home has been tastefully remodeled; 3 BR, 1-3/4 bath, fireplace. Cen. HA, storm windows & more. Don't miss it! E9
NO NEED TO WAIT! Ready for immediate possession. Large 2 BR, 1 bath home, built-ins, basement. Pecan & fruit trees, good location. Possible owner finance! E29

OTHER

RANGER - BARGAIN for do-it-yourself person! This 2 BR, 1 bath frame home needs repairs, but priced for only \$23,000! Large lot, outbuilding. O20
LAKE LEON - READY FOR YOU! Completely furnished 2 1/2-3-1/4 bath waterfront home or weekend. Good water, fishing pier, reasonably priced! O16
LAKE LEON - Small frame home on deeded waterfront lot. Large trees, picnic area, Staff water. Great fishing! O10
LAKE LEON - BEAUTIFUL VIEW from this year round lake home in exclusive deep water area; 3 BR, 1-3/4 bath modular home, Staff water, boat dock. O17
RANGER - A BRICK BEAUTY! We proudly offer this spacious 3 BR, 2 bath home in Meadowbrook for under \$40,000. Large fenced corner lot, many extras! O2
LAKE LEON WATER with guest house. Large tree shaded lot, main house, great fishing! O4
OLDEN - RATED G.O. FOR GREAT! Large 3 BR, 1 1/2 bath, LR, DR, TR, privacy & chain link fence. DBL. garage, carport. Room for garden, animals & kids! O6
RANGER - LARGE HOME, SMALL PRICE! This 3 BR, 1 1/2 bath frame home on 3 lots needs repairs. Great potential! O15
LAKE LEON - PERFECT GET-AWAY for fishing, skiing, swimming or just loafing! Frame home on large waterfront lot; appliances, boat dock, Staff water. O9
RANGER - GREAT NEIGHBORHOOD, LOW PRICE! 3 BR, 2 bath rock home in Meadowbrook Area! Needs repairs, but priced to sell! O8
CISCO - YOU'LL LOVE THE PRICE and neat condition of this 2 BR, 1 bath frame home with sunroom, cellar, MORE! O1
RISING STAR - JUST LISTED! 3 BR, 1 1/2 bath brick home on corner lot. Cen. HA, kit built-ins. Possible owner finance or owner carry. O2
RANGER - AFFORDABLE LIVING! Would trade FOR PLACE IN COUNTRY! Ideal for young family or retirees. 2 BR, 1 bath mobile home on pretty lot. MUST SEE! O18

BARBARA LOVE 647-1397 **PEGGY SWAFFORD 629-8028** **ROSEMARY FERGUSON 653-2375**

MAYNARD REAL ESTATE

629-8568 Maynard Building, Hwy 80 East, Eastland, Texas
 Out of Town Callers dial Toll Free (1-800-300-8568)
 WE APPRECIATE YOUR BUSINESS!! Available Nights and Weekends

COMMERCIAL:

\$5,850 - Lot 70' x 94'
 \$10,000 - Approx. 3 acres, I-20 Frontage. WILL OWNER FINANCE.
 \$10,000 - Large building with office upstairs, 1 bath, CH/A, and carpeted.
 \$10,500 - 3.7 acres, located on access road off Interstate 20. WILL OWNER FINANCE.
 \$10,700 - 3BR, 2 bath, approx. 2,500 sq. ft. home on 1 1/2 acres, hook-ups for two mobile homes on back of property.
 \$14,800 - 180' x 150' land on N. Service road. WILL OWNER FINANCE.
 \$25,000 - Large metal commercial building, excellent location. Over 130,000 sq. ft. on 6.3 acres.
 \$30,000 - New commercial building, of Austin Stone on main thoroughfare.
 \$53,600 - New 2500 sq. ft. convenience store on one acre. Enormous walk-in cooler, 3-8000 gallon underground gas tank.
 \$54,000 - Commercial building with residence in rear (3BR 2 1/2 bath) 175' highway frontage.
 \$63,600 - Large commercial building, metal with rock front, approx. 2800 sq. ft., carpet, drapes, CH/A, reception & lounge area, two restrooms. Paved parking on city utilities.
 \$65,000 - Nice "Night Club" in Strawn Texas. Huge cement outdoor recreation area. Is set up for private club and dining area.
 \$73,000 - "H & R Lumber" Large two-story commercial building, approx. 30,000 sq. ft. Fenced, all inventory goes. 150' main street frontage. WILL OWNER FINANCE.
 \$110,000 - 38.693 acres of commercial property on I-20 S. access road. 50' x 100' metal building with partition N. to S. through building. Makes two offices or two living quarters. Approx. 5,000 sq. ft. CH/A. WILL OWNER FINANCE.
 \$150,000 - 11 acres downtown Eastland, Hwy 80 Frontage. POSSIBLE OWNER FINANCE.
 MAKE AN OFFER! Approx. 2230 sq. ft. commercial bldg. on I-20. All food preparation equipment goes with sale.

EASTLAND HOMES AND LOTS:

\$5,000 - For two lots in town, electricity and water available.
 \$7,500 - Four hillside residential lots in exclusive location.
 \$8,000 - Old home and garage. 3 beautiful lots, 16 large shade trees.
 \$12,500 - Two centrally located homes on two adjoining lots. Needs work for great investment possibilities as homes or rental properties.
 \$12,500 - 2 or 3 BR, 1 bath home on large lot. Garage and old barn.
 \$17,000 - NEAT NEAT NEAT 2 BR, 1 bath mobile home on beautiful landscaped lot. CH/A, storage building and carport.
 \$22,500 - 2 BR, 1 bath home. Separate dining area, CH/A, large utility room, 2 car garage, storage room and workshop.
 \$27,500 - 3BR, 2 bath, separate dining area. Ceiling fans, new carpet.
 \$29,500 - 2 BR, 1 bath frame with siding, completely remodeled interior, new carpet, built-in oven and counter top range, superior insulation in walls and ceilings, new plumbing and wiring, double carport, large patio.
 \$30,000 - 4BR, 1 1/2 bath frame home in nice neighborhood. Built-in double oven, large utility room and fenced back yard.
 \$32,000 - 3BR, 1 1/2 bath brick home. CH/A, new carpet, ceiling fans, patio off the kitchen, storage building in back.
 \$38,000 - 2 BR, 1 bath home on two large shady lots, huge kitchen, wood burning stove, fruit trees, grape arbor and attached garage.
 \$40,000 - 2 BR, 2 bath, lavishly remodeled home in elite neighborhood. Double car garage, workshop and storage facilities. Magnificent yard.
 \$49,900 - 3BR, 2 bath home, CH/A, fireplace with heat-o-later. Master bath with walk-in closet. Ceiling fans, kitchen with all built-ins, large utility room, lovely landscaping.
 \$58,000 - 3 BR, 2 bath, beautiful brick home total elec. Double car garage with electric openers. Professionally landscaped, extra building w/plumbing, phone hook-ups, 24' x 34' storage house and 12' x 14' barn.
 \$79,800 - 3 BR, 2 bath large brick home with cathedral ceiling. Excellent location in shady and quiet neighborhood. Large, beautiful game and sun room fireplace and built-in desks, bookshelves and cabinets in den and living area. Storage house. Truly lovely and "perfect condition" home.

LAKE LEON HOMES AND LOTS:

\$10,000 - Beautiful waterfront lot, 100' x 250' deep, great location. Marvelous building site.
 \$15,000 - 3 lots with small recreation building with swing set. Perfect for week-end fun.
 \$15,000 - Best view on lake, deep waterfront lot with cement foundation in place for building site.
 \$20,000 - 2 BR, 1 bath home on deeded lot, large kitchen, pump house with pump.
 \$24,000 - 2 BR, 1 bath, Pre-Fab home on deeded lot. Fruit and Pecan trees. Large covered back patio. Staff meter and well. Storage house. Gorgeous lot on deep water.
 \$48,500 - 2 BR, 2 bath home on beautiful waterfront lot. Staff meter, 500 gal. butane tank. Two storage buildings, two gazebos and lots of trees.
 \$63,000 - 2 BR, 1 bath, frame metal with wood home, overlooking lake, on deeded lot. CH/A, Satellite, large storage house, ceiling fans throughout, breakfast bar with custom chairs, interior is done in master craftsmanship of construction, plumbing and wiring. Built-ins with superior design.
 \$65,400 - 3 BR, 2 bath, total electric beautiful and unique lake home on 125' x 350' lot. Built-ins, range, oven and dishwasher. Cathedral ceiling, large and spacious rooms with walk-in closets. New carpet and fireplace. Two storage buildings, Staff meter and lake pump. Apricot, cherry and many other fruit and native trees. POSSIBLE OWNER FINANCE.
 \$75,000 - Gorgeous 2 BR, home on Lake Leon waterfront. Large kitchen, lots of cabinets and storage, big screened in

porch, double sided fireplace, total electric, built-in bookshelves. Redwood deck, white rail fencing, double carport and guard lights. T. V. Satellite, workshop, 2 horse stalls, paved parking, separate guest house, walk-way and dock. Fruit trees and ducks to go.
 \$82,000 - Brick lakefront home on 2 lots. Large home, 3 BR, CH/A, inground pool, with boat dock.
 \$85,000 - 4 lots and home in LaMancha area complete with studio workshop. 2BR, 2 bath and sunroom. Prime lake frontage, fireplace and staff meter.

HOMES WITH ACREAGE:

\$69,900 - 3BR, 2 bath brick home on silent and secluded 5 acres. CH/A, custom vertical blinds, 2 car garage with electric openers, well insulated, flood lights, city water, two patios and great fences.
 \$76,000 - 3 BR, 1 3/4 bath beautiful brick home on 2.7 acres, CH/A, built-ins, ceiling fans, patio/deck, fireplace, double car garage and fenced yard.
 \$78,000 - FANTASTIC GET-AWAY in Gordon, Texas. A cabin in the country to run away to. Refrigerated air, ceiling fan, good insulation. Sets on 40 acres, fenced and cross-fenced, 2 tanks, creek runs through middle of property, water well, some land in coasts of trees, Burket and Natives.
 \$85,000 - 3 BR, 2 bath home with approx. 3,072 sq. ft. on 6.1 acres. New home with oak parquet flooring, built-ins, large recreation room, 2 car garage and storage building, city water. Excellent hunting and fishing in area.
 \$125,000 - Beautiful 3 BR, 2 bath home on 57 acres. CH/A, ceiling fans, total electric, island range, bar, double oven and dishwasher. Huge utility room. Master bedroom with garden bath and shower. Totally fenced. Windy, work shop, huge vehicle shed. Lots of trees, 5 tanks plus windmill, city water.
 \$126,000 - 3 BR, 2 bath, approx. 3,000 sq. ft. home on 162 acres, located 15 mins. from Eastland, CH/A, sunken den with cathedral ceiling, new built-in appliances in kitchen, 3 car carport, garage workshop, barns, pens, corrals and horsestalls. Creek runs through property, 6 acralake stocked with Bass and Channel Cat. Prime hunting property.
 \$135,000 - Beautiful 3 BR, 2 bath home on 52 acres. CH/A, Cable T.V. large recreation building, 2 fireplaces, hot tub and gazebo. 16' x 36' heated inground pool. Complete additional Bungalow next to pool. All land in coastal, 3 tanks, fenced and cross fenced.
 \$159,000 - 4BR, 2 bath, five year old brick home on 122 acres. Located 8 mins. from Eastland. Approx. 2,000 sq. ft. CH/A, separate dining, utility room, total electric. All land in coastal bermuda. City water plus well and deep tank. New corrals and fencing. 1/2 mineral rights go to buyer. Rock building for barn.
 \$180,000 - 3 BR, 2 bath, brick and siding home with approx. 2,600 sq. ft. CH/A, native pecans and coastal grass. Branch of Leon River runs through this outstanding property. Approx. 1/4 mineral rights go with property. City water, 5 mins. from Eastland. Home is located on 220 prime acres.

LAND, FARMS, RANCHES AND SMALL ACREAGE:

\$7,500 - Approx. 4 acres off Lake Leon road. Fenced, lovely building site.
 \$8,500 - 7.5 acres with small tank surrounded by willows, access to Olden water. POSSIBLE OWNER FINANCE.
 \$16,436 - 24.35 acres. WILL OWNER FINANCE.
 \$23,375 - 42.5 acres. WILL OWNER FINANCE.
 \$25,300 - 40.5 acres, good tank. WILL OWNER FINANCE.
 \$28,100 - 48.87 acres with electricity. WILL OWNER FINANCE.
 \$31,200 - 52 acres, \$600.00 per acre, good hunting and fishing. 20 minutes from Eastland.
 \$35,000 - 56.3 acres with good tank. WILL OWNER FINANCE.
 \$43,000 - 80 Acres in Carbon area, cultivation, water well, stock tank, barn, fences and mineral rights.
 \$43,000 - Approx. 54 acres, excellent fencing all around. Barn, 3 tanks, city water, electricity. Pavement on 2 sides. 4 mins. from town.
 \$74,300 - 167 acres, \$454.00 per acre, good hunting and production land just west of Cisco.
 \$75,000 - 166 acres, \$550.00 per acre, near Eastland Lake. Can be divided into 40 or 80 acre tracts. Good fences, barn and pens.
 \$82,500 - 150 acres, access to city water, fenced and cross fenced. Hwy. 80 frontage. WILL OWNER FINANCE.
 \$188,839 - 360 acres, \$525.00 per acre, 5 tanks, great fences, hand dug well, Branch of Leon River runs through property. Outstanding hills, trees, and pasture. All owners rights go with sale. Over one mile of I-20 Frontage.
 Approx. 200 acres, 60 acres in cultivation, 3 tanks, great fences. Creek runs through property. 1/2 mineral rights go to buyer.
 411 acres at \$550.00 per acre, 3 tanks, stocked with Bass and Catfish, fenced and cross fenced, 1/3 in coastal, building, corrals and loading chue.
 MAKE OFFER!! Approx. 435 acres, \$500.00 per acre. Lake stocked with bass. Plus mineral rights go to buyer.
 Approx. 272 acres, rich coastal, great fences, each pasture individually irrigated. Deep, deep tanks, mobile home, barns, corrals. PERFECT, POSSIBLE OWNER FINANCE.
 FAMOUS FEE RANCH Approx. 1600 acres. \$400.00 per acre.
 PECAN ORCHARDS AVAILABLE.

RANGER:

\$25,000 - 3BR, 1 bath brick home, CH/A, in excellent location. **CARBON:**

\$3,500 - 2 large lots, three large pecan trees on front of lots. Fenced on three sides, hook-ups available for all city utilities.
 \$11,000 - 3 BR, 2 bath mobile home on two lots. Cyclone fenced, 20' x 8' shop, 14' x 14' storage building.
 \$80,000 - 3BR, 2 bath two story home on approx. 2 acres, 2,360 sq. ft. total electric, separate dining area, fireplace, oven, dishwasher and cook top. Metal mini blinds throughout the house, city water.

Kay Bailey Real Estate
 P. O. Box 693 - Eastland, Texas 76448
 R. G. (Buck) Wheat, Broker
 629-2365 629-8514

EASTLAND HOMES AND LOTS

\$100,000 & up

4 BEDROOM, 2 3/4 bath, Two-Story, huge wooded lot, \$110,000.
 \$75,000 - \$100,000

3 BEDROOM, 1 3/4 bath, brick, den, gameroom, \$79,800.
 3 BEDROOM, 1 3/4 bath, Rock Home on approx. 1 ac., \$76,500.
 3 BEDROOM, 2 bath, brick on 1.77 ac., fenced & crossfenced, 14 pecan trees, 8 fruit, city water and well, Nice! \$76,500.
 3 BEDROOM, 2 bath, brick, on 2.77 ac., \$76,000.

\$60,000 - \$76,000

LAKE LEON, 3 bedroom, 2 bath, cedar, Open Living, Deck, Gazebo/Bar, \$72,500.
 OAK HOLLOW, 3 bedroom, 2 bath, brick, Assumable FHA, \$69,500.
 CRESTWOOD, 3 bedroom, 2 bath, brick, corner lot, \$68,500.
 LAKE LEON, Family Home near dam, two lots, Staff Meter, nice dock, \$68,500.
 YELLOW FLOWER Victorian, CI/CA, wood floors, professionally decor., \$68,500.
 MEADOWBROOK ADDITION, RANGER, 3 bedroom, 2 bath, brick, large den w/fireplace, \$62,500.

\$40,000 - \$46,000

3 BEDROOM, 1 3/4 bath, on approx. 5 ac., completely fenced, city water, \$59,500.
 SELLER FINANCE, 3 bedroom, 1 3/4 bath, brick, on approx. 1 ac., \$59,000.
 LAKE LEON, 2 bath, frame w/siding, large rooms, huge closets, good fences, on 5 ac. near Lake Leon, \$55,000.

LOVELY SOUTH SEAMAN, 3 BD, approx. 1877 sq. ft., CH/A, F-pl., \$52,000.
 IMMACULATE 3 BD, 2 B., brick home, Carbon, CI/CA, Fireplace, \$52,000.
 JUST LISTED! Brick home, corner lot, Hillcrest Addition, Nice! \$46,500.
 VERY VERSATILE! Approx. 2.5 ac. w/house, guest house, former motel units, above ground pool, \$50,000.
 3 BEDROOM, Victorian, beautifully decorated, CI/CA, plush carpeting, \$44,000.
 HILLCREST ADDITION, Neat 2 BD on two lg. lots, CI/CA, New Carpet, \$45,000.

LARGE 4 BEDROOM, 1 3/4 bath, frame, CI/CA, fenced yard, trees, corner lot plus extra lot, \$45,000.

\$20,000 - \$40,000

APPROXIMATELY 2,000 SQ. FT. home on large 65' x 250' lot, \$35,000.
 3 BEDROOM, 1 3/4 Bath, frame w/siding, on 2.96 ac., City water, plus 2 wells, \$33,900.

3 BEDROOM, 1 frame w/yellow siding, storm windows, privacy fence, plus 1250 sq. ft. metal garage/workshop, \$33,000.
 LAKE NEW! 2 Bedroom, frame w/siding, 2-car carport, CI/CA, \$32,500.
 LAKE LEON, Cozy Cabin on large Deeded Waterfront Lot, CI/CA, Staff Meter, New Guest House, \$32,000.
 LAKE LEON, Older Cabin situated on two deeded Waterfront Lots, Staff Meter, Beautiful Homeite, \$30,000.
 LAKE LEON, Nice 2 bedroom, 2 bath, mobile home w/80 screened porch, on two lots, Electric Boat Lift, \$35,000.
 SUPER NICE 2 bedroom, 2 bath, Doublewide on 280 wooded ac., CI/CA, fence, storage shed, \$29,500.
 2 BEDROOM, Frame on 4 wooded lots, Assumable Loan, Make Offer! \$29,000.
 3 BEDROOM, 1 1/2 bath, frame w/siding, CI/CA, utility rm., detached garage, chainlink fence, pecan trees, \$28,000.
 MRS. CLEAN, 2 Bedroom, 100' x 150' lot, 2-car carport, storage shed, \$28,000.
 ASSUME Loan, 3 bedroom, 1 3/4 bath, frame w/siding, CI/CA, billings, \$27,000.
 LOW DOWN PAYMENT & assume FHA, Payments under \$200 mo., brick, \$26,000.

2 BEDROOM, 2 bath, frame, on approx. 3 ac., CI/CA, \$25,000.
 LAKE LEON, 2 Bedroom on deep water near dam, long-term lease lot, new paint, \$25,000.
 2 BEDROOM, 1 1/2 bath, frame w/siding, CI/CA, utility rm., detached garage, chainlink fence, pecan trees, \$22,000.
 MRS. CLEAN, 2 Bedroom, 100' x 150' lot, 2-car carport, storage shed, \$22,000.
 ASSUME Loan, 3 bedroom, 1 3/4 bath, frame w/siding, CI/CA, billings, \$22,000.
 LOW DOWN PAYMENT & assume FHA, Payments under \$200 mo., brick, \$26,000.

UNDER \$20,000

2 BEDROOM, 2 bath mobile home, CI/CA, billings, corner lot, \$19,500.
 HORSE/LOVERS take note, 2 bedroom mobile home on 3/4 ac. Central Air, Stairs, & fenced, \$19,500.
 \$4,000 DOWN, Seller Finance, 3 bedroom, frame, corner lot w/additional lots, nice shop bldg., pecan trees, \$18,000.

NEEDS SOME TLC, but priced accordingly, 3BD, frame, "fixer-upper", \$16,000.
 STURDY 2 BD, white frame, aluminum windows, stor. bldg., large lot, \$16,000.
 LAKE LEON, Small Cabin, Staff Meter, Waterfront Lot, \$15,000.
 REDUCED TO SELL! 3 BD, Stucco, attached carport, big back yard, \$12,500.
 3 BEDROOM, 2 bath, Carmo Mobile Home to be moved, \$12,000.
 LAKESIDE COUNTRY CLUB Area, \$29 ac. overlooking golf course, \$8,000.
 BEAUTIFUL WOODED LOT near Eastland Lake, City Water & Electricity already there, \$6,995; W/mobile Home \$12,500.
 LAKE LEON, Deeded waterfront lots starting at \$6,000.

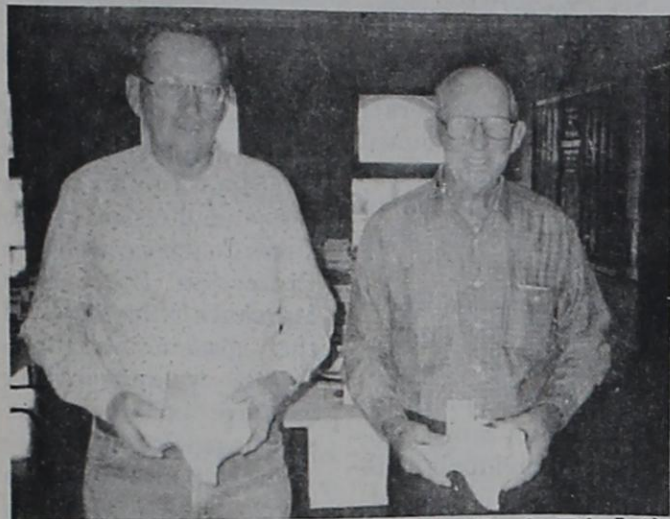
ACREAGE

100 AC., Mostly grass & wooded, excellent fences, 2 tanks, City water, good hunting, nice place, \$75 ac.
 166 AC., Mostly pasture, some cultivation, corner tract, could divide, \$550 per ac.
 6.61 AC. TO 50.3 AC. TRACTS, Good hunting land, Seller will finance!
 12 AC., 1 tank, road frontage on 2 sides, 2 bedroom house, 3-stall garage, 4-stall shed/storage rm., \$22,000.
 160 AC., Rough Pasture Land, 2 tanks, county road frontage, good hunting, \$350 per ac.
 415 AC., 7 tanks, 65 ac. cult., Hwy. frontage, good grass, excellent hunting & fishing, \$450 per ac.

COMMERCIAL

HWY. 80 EAST, Commercial Lot near Pizza Inn, \$30,000.
 NEAR MAJESTIC, Adjoining Buildings, Just \$7,000 & \$12,000.
 TURN-KEY OPERATION, Eastland's newest Laundromat, \$56,000.
 PR

County Pecan Show Entries Reflects Production Status



Division Champions -- (Left-Right) Lin Boch of Ranger and Dan Childress of Cottonwood took top honors in the Classic and Commercial Divisions of the 1992 Pecan Show. David Allsup (not pictured) also of Ranger received top billing in the Native Division.

A large number of entries for the 1992 Eastland County Pecan Show is evidence of a high yielding good quality crop. The show, held December 3rd and 4th attracted fifty-four (54) exhibitors with 142 entries in the largest show since 1985 according to DeMarquis Gordon, County Extension Agent-Emeritus in Eastland County.

This reflects the 40th annual event for Eastland County Pecan Growers according to Davy Vestal, County Extension Agent-Ag, Eastland County. "Eastland is one of the founding counties of Pecan Shows in the state and for 40 years it remains one of the toughest and most participated shows in Texas", Vestal stated.

The pecan entries in the 1992 show also indicates the volume of production in the area. Pecans were entered from the Morton Valley area, Eastland, Nimrod, Cisco, Rising Star, Ranger, Pioneer, Cottonwood, Carbon, Cross Plains and Gorman areas.

Thirty-two of the 142 entries qualified for the Regional Contest to be held in Stephenville on December 15th.

Dan Childress of Cottonwood took top honors in the Commercial Division with his Apache entries while Lin Boch and David Allsup, both of Ranger, took Champion honors in the Classic and Native Divisions respectively. Boch's entry was of the Barton variety.

M & M Gilbert Williams of Cross Plains exhibited the Reserve Champion Commercial pecans entered in the Choctaw variety. Boch of Ranger also exhibited the Reserve Classic pecan with his

historical Mother Tree entry known as "Ranger". D. P. Jones of Pioneer was awarded the reserve honors in the Native pecan division.

Dale Walker of Carbon had an exceptional day as well receiving 5 First Place awards and one Second.

The 1992 Show was coordinated by the Texas Agricultural Extension Service, The Eastland County Pecan Growers Association and the Texas Pecan Growers Association.

Special THANKS to members of the Eastland Chamber of Commerce for their assistance in processing the pecans.

The following is a complete list of winners and other exhibitors:

APACHE — Dan Childress, Champion Commercial class, first; Lin Boch, second; Breck Pruitt, third; D.P. Jones, C&C Farms, and Vera Welch.

BURKETT — C&C Farms, first; Florine Pearson, second; Lin Boch, third; Dan Childress, Rudolph Little and T.E. Robertson.

CADDO — Charles Walker, first; Lin Boch, second and Dan Childress, third.

CHEYENNE — Lin Boch, first; C&C Farms, second; and Dan Childress, third.

CHOCTAW — Gilbert Williams, res. champion commercial, first; C&C Farms, second; Billy R. Adams, third; Bill Phillips, Billy Joe Dennis, Dan Childress, Dale Walker, Mary G. Walker, Breck Pruitt, Rudolph Little, Richard Hopson, Charles Walker, Dr. F.H. Lund, Ronald Hale, T.E. Robertson, Lin Boch and Wayne Webb.



Rocky Maynard, of Eastland, took top honors with his famous Pecan Pie entry. Rocky was 1st Place overall runner up and was presented \$25.00 sponsored by Eastland National Bank. Rocky was 1st Place winner in the Pie Division which has 23 pie entries.

COMANCHE — Dan Childress, first; Billy R. Adams, second; Lin Boch, third; C&C Farms, James Alexander, T.E. Robertson, D.P. Jones, Charles Walker and Breck Pruitt.

DESIRABLE — Lin Boch, first; C&C Farms, second; and Dan Childress, third.

KIOWA — Lin Boch, first; Dan Childress, second; and Dr. F.H. Lund, third.

MAHAN — C&C Farms, first; Charles Walker, second; and Florine Pearson, third.

MARAMEC — Dan Childress, first.

MOHAWK — Gilbert Williams, first; Dan Childress, second; C&C Farms, third; Billy R. Adams, Charles Walker and Lin Boch.

PAWNEE — Dan Childress, first.

SAN SABA IMPVD — Florine Pearson, first; and James Alexander, second.

SHAWNEE — C&C Farms, second; Dan Childress, third; Charles Walker, T.E. Robertson and Lin Boch.

SHOSHONI — Dale Walker, first; T.E. Robertson, second; Dan Childress, third.

SIOUX — Dan Childress, first; C&C Farms, second; Lin Boch, third; Billy R. Adams and D.P. Jones.

STUART — Lin Boch, first; Breck Pruitt, second; T.E. Robertson, third; Dan Childress and Gilbert Williams.

TEJAS — T.E. Robertson, first; Dale Walker, second; Lin Boch, third; and Dan Childress.

WESTERN — Dan Childress, first; Dale Walker, second; C&C Farms, third; and James Alexander.

WICHITA — Lin Boch, first; C&C Farms, second; Dan Childress, third; T.E. Robertson, Charles Walker, Bill Phillips and D.P. Jones.

BARTON — Lin Boch, champion classic class, first; C&C Farms, second; Charles Walker, third; Dan Childress, Breck Pruitt, and Dr. F.H. Lund.

CHEROKEE — Charles Walker, second; and Dan Childress, third.

CHICKASAW — Dan Childress, first.

JOHN GARNER — Dale Walker, first; and James Alexander, second.

MELROSE — Dan Childress, first.

PODSEDNIK — Dale Walker, first.

SCHLEY — James Alexander, second.

SUCCESS — Breck Pruitt, second.

PROLIFIC — Dale Walker, first; Gilbert Williams, second; and James Alexander, third.

TEXHAN — Dan Childress, second.

KNOWN HYBRIDS — Lin Boch, second.

SEEDLINGS — James Chesshir, first; T.E. Robertson, second; and T.E. Robertson, third.

OTHER VARIETIES — Lin Boch, res. champion classic, first; Dan Childress, second; Dan Childress, third; and Rudolph Little.

NATIVE — David B. Allsup, champion native, first; Bill McCleskey, smallest, first; D.P. Jones, second; D.P. Jones, third; Charles Walker, Dan Childress, Bill McCleskey, Rudolph Little, Richard Hopson, Florine Pearson and T.E. Robertson.

Courthouse News

List of new cars from Nov. 1-15.

Ford, Michael D. Vortal, Gorman, 92 PU, Hood King Mtr.

Ford, Manford Lewis, Jr., Desdemona, 92 Pu., Hood King Mtr.

Ford, Pat H. Collins, Ranger, 92 Pu., Hood King Mtr.

Chev., Conquest Development, Inc., Eastland, 93 Sub., Fullen Mtr.

Chev., Phillip H. Arther, Eastland, 93 Sub., Fullen Mtr.

Chev., W. J. Stone, Eastland, 93 Pu., Fullen Mtr.

Ford, Stephen T. Lang, Ranger, 92 3 dr., Pierce Mtr.

Ford, Effie H. Wooten, Cisco, 92 2 dr., Pierce Mtr.

Ford, Jerry D. White, Cisco, 91 Pu., Pierce Mtr.

Chev., Birdsong Peanut Co., Gorman, 92 Pu., Fullen Mtr.

Chev., Birdsong Peanut Co., Gorman, 93 Pu., Fullen Mtr.

Chev., Robert L. Carroll, Inc., Eastland, 93 Pu., Fullen Mtr.

Chev., Cecil Everton, Gorman, 93 Sub., Fullen Mtr.

Chev., R. E. Britt, Eastland, 93 Pu., Fullen Mtr.

Ford, John H. Craven, Olden, 93 Pu., Hood King Mtr.

Chev., Bennie E. Lee, Breckenridge, 93 Pu., Fullen Mtr.

Cad., 4-B Leasing Co., Eastland, 93 4dr., Caldwell Mtr.

Chev., Gerald Petree, Albany, 93 Pu., Fullen Mtr.

Chev., Beverly S. Dudley Sr., Ranger, 93 Pu., Fullen Mtr.

Marriage Licenses Timothy Wade Cozart and Kimberly June Webb.

Steven Randall Milez and Misty Dawn Singleton.

David Allen Nelms and Barbara Lynette Squires.

Daniel Wayne Phipps and Sherry Jean Irwin.

Casey Lee Harvey and Brenda Lea Johnson.

Roger Dale Johnson and Stephanie Michelle Griffin.

Vance Allen Breeden and Paula Ann Langlitz.

Criminal Docket The State of Texas vs. Joe Manuel Valadez - Possession of mari-

juana, 2 ounces or less.

The State of Texas vs. Roger Araujo - Failure to Identify.

The State of Texas vs. Roger Araujo - Possession of marijuana, 2 oz. or less.

The State of Texas vs. Joe Manuel Valadez - Possession of a controlled substance: Alprozolam, less than 200 grams.

The State of Texas vs. Roger Araujo - Possession of a controlled substance: Alprozolam, less than 200 grams.

The State of Texas vs. Herman Maddox - Reckless conduct.

The State of Texas vs. Rene Sanchez Rodriguez - Terroristic threat.

The State of Texas vs. Rene Sanchez Rodriguez - Criminal mischief, \$20.00 or more but less than \$200.00.

The State of Texas vs. Gordon Neal Morgan - Theft, \$200.00 or more but less than \$750.00.

The State of Texas vs. Cody Ray Grissom - Driving while license suspended.

The State of Texas vs. Mary Robles Pineda - Driving while license suspended.

The State of Texas vs. Bobby Ray Freeman, Sr. - Driving while license suspended.

The State of Texas vs. Jody Frank Scott - DWI, 2nd offense.

The State of Texas vs. Jose Juan Gonzalez - Driving while license suspended.

The State of Texas vs. Joseph Andrew Payne - Possession of marijuana, 2 ounces or less.

The State of Texas vs. Clayton D. Smith - DWI.

The State of Texas vs. Allen David Chatham - Driving while license suspended.

Civil Docket Michael Dunn vs. Lisa Dawn Dunn - Divorce.

James Edwin Butler vs. Ramon Calk Butler - Divorce.

Dana Carol Green vs. Michael Dee Green, Sr. - Divorce.

Theresa Jane Thomas vs. James Harold Thomas, Jr. - Divorce.

Supreme Energy Co., Inc. vs. Eugene Perrin, Etal - Receivership.

The State of Texas vs. Deniece Morris - Bond forfeiture.

Read The Classifieds

News Briefs

Neurosurgical Procedure Can Alleviate Parkinson's

HOUSTON - A neurosurgical procedure known as thalamotomy may halt or reduce the tremor of Parkinson's disease.

Thalamotomy stops overactivity in certain cells in the thalamus, a cluster of brain cells that relays nerve impulses associated with movement.

"Thalamotomy is very effective in patients whose main symptom is muscle tremor," said Dr. Robert G. Grossman, a neurosurgeon at Baylor College of Medicine in Houston.

"The standard treatment for Parkinson's disease, a drug called levodopa, gradually loses its effectiveness and can cause severe side effects in some people," Grossman said.

With thalamotomy, a local anesthetic is applied to the scalp and a metal frame attached to the head. An opening the size of a keyhole is made and an electrode inserted into the thalamus. An electrical current stops the targeted nerve cells' activity. The surgery has an 85 percent success rate.

Rubber Stamps
The Rising Star
105 N. Main

New Construction * Add-Ons
Steel Buildings * Remodeling
Tape & Bed * Sheet Rock
Texture * Acoustics

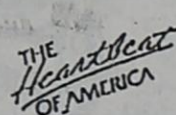
L & J Construction

Lynn Hutton
817/725-7582
Cross Plains

Jim Ratliff
817/643-6464
Rising Star

Fullen Motor Co.

305 East Main Eastland 629-2676



1992 MODEL CLOSE-OUT SALE

V-BLAZER		S-10 PICKUP	
MSRP	\$25,141.95	MSRP	\$10,973.00
Fullen Disc.	(2,786.95)	Fullen Disc.	(1,723.00)
Factory Disc.	(1,200.00)	Factory Disc.	(1,250.00)
SALE PRICE	\$21,155.00*	SALE PRICE	\$9,000.00*



CHEVROLET CONVERSION VAN		ASTRO CONVERSION VAN	
MSRP	\$26,132.00	MSRP	\$24,153.00
Fullen Disc.	(2,073.00)	Fullen Disc.	(1,288.00)
Factory Disc.	(2,000.00)	Factory Disc.	(2,000.00)
SALE PRICE	\$22,059.00*	SALE PRICE	\$20,865.00*

CAPRICE CLASSIC		LUMINA EURO DEMO	
MSRP	\$18,748.00	MSRP	\$17,524.00
Fullen Disc.	(1,898.00)	Fullen Disc.	(1,724.00)
Factory Disc.	(3,000.00)	Factory Disc.	(2,300.00)
SALE PRICE	\$13,850.00*	SALE PRICE	\$13,500.00*



Help Support Eastland County Business. . . . Shop Eastland County
Call Collect 817-629-2676. Open Monday-Friday 8 a.m. till 6 p.m.
Closed Saturday and Sunday



Winning honors at the Eastland County Pecan Bake Show are (left to right): Michael Rabb, winning youth entry, LeAnn Rabb, Grand Champion Winner of the Youth Show; and Mrs. Raymond Hounshell, 2nd place overall runner-up for Adult Bake Show.

Mrs. Hounshell was presented a \$25.00 check from Eastland National Bank. LeAnn was presented an engraved silver tray presented by the Eastland County Extension Homemakers.

The Rising Star's Subscription Rates

WILL INCREASE January 1, 1993

This is the first rate increase since Feb. 1989. Postal rates for mailing newspapers increased 20% in Feb. 1991.

RATES: CURRENT--NEW

In Eastland County & within 30 miles of Rising Star \$9.00--10.00
Other Texas Counties \$13.00--15.00
Out of State \$19.00--19.00

No matter what month your subscription expires YOU MAY RENEW NOW before the rates increase.

Send renewal to:

The Rising Star
P.O. Box 129
Rising Star TX 76471

Festive Goose Makes Christmas Perfect

Memorable holiday meals appeal to all the senses and that accounts for the growing popularity of the Christmas Goose. This glorious golden bird, with its moist, flavorful meat, is both impressive looking and tasting. Adventurous cooks who have never roasted a goose will be impressed by how remarkably easy it is. The layer of fat under the skin makes the bird self-basting, but not fatty when served since the meat doesn't absorb the rendered fat.

If goose is on your shopping list don't delay in placing your order with your supermarket butcher. This will give the butcher time to get sufficient quantities of the sizes desired. Geese range in size from 8 to over 14 pounds, and all are equally tender and flavorful.

To be sure you get the finest available, check the bird for the USDA Grade A Shield on the package. Only federally inspected American geese meet the rigid health and quality standards that merit this designation. Some imported geese also carry grades from their country of origin but these gradings are not equivalent to those of the United States. The goose is said to be

the oldest domesticated fowl. It has been lauded by epicures throughout history, and favored by the people of the western world as the centerpiece of the traditional Christmas celebration. Enjoy its opulence this year and you'll see why Dickens wrote, "There never was such a goose." Thaw and roast the goose according to directions on the package.

Serve with this Apricot-Walnut Stuffing.

Apricot Walnut Stuffing
1 cup canned apricots, drained
1/4 cup butter or margarine
6 cups day old bread, cubed
1 cup chopped walnuts
1/2 cup golden raisins
1 teaspoon salt
1/2 teaspoon poultry seasoning

Dice the apricots. In a bowl, pour melted butter or margarine over bread cubes. Combine with apricots and all remaining ingredients. Toss lightly to mix well. Makes enough stuffing for a 10 to 12 pound goose.

Double the stuffing recipe to serve an extra dish with the goose. Cover stuffing for the first part of the baking period; uncover for the final 10 minutes to brown lightly.

Compulsive Gambling

For the compulsive gambler, the excitement of the big win is as addictive as alcohol or drugs.

"It usually begins with a big winning streak, perhaps half a year's salary or more, and the person thinks maybe he can win a fortune," said Dr. Lauren Pate, assistant professor of psychiatry at Baylor College of Medicine in Houston.

"These gamblers experience a high during the action of gambling which ultimately becomes addicting."

The activities preferred by compulsive gamblers are horse and dog races, cards, casinos, sports betting, slot machines and the lottery.

Compulsive gamblers think they have a way to beat the system, Pate says.

"They spend time, money and energy perfecting their winning technique, but inevitably it fails."

Pate cites the following danger signals of problem gambling:

- Neglect of person, family or job responsibilities in order to gamble.
- Depletion of finances.
- Need for increasingly larger stakes to achieve excitement.
- Gambling to win losses back.
- Frequent attempts to quit or cut down.
- Not being accountable for periods of time.

"People experiencing these problems can get help through treatment programs and support groups like Gamblers Anonymous," Pete said.

These programs help gamblers rebuild self-esteem and avoid involvement in substitute addictive behaviors like alcoholism and drug abuse.

Participants get a better understanding of addiction and how it affects relationships," she said.

Though treatment, the compulsive gambler can gain the tools needed to build satisfying relationships and begin gradual debt repayment.

"Research in this area is limited," Pete said. "But we do know that more men treatment than women. While the problem often begins in the mid-twenties, treatment is seldom sought until age 40 or 50."

During early recovery, a person is able to abstain from gambling, see himself as a gambler and accept that identity. This state can last from a few months to a year or more. "Some people are able to move past being a re-

Hotline Reward Program

A new statewide hotline and reward program could help insurance companies and law enforcement agencies put arsonists out of business.

By telephoning 1 (800) 835-6422, callers can provide information on any fire suspected to be arson or on any instance of insurance fraud. If the information leads to the arrest of a suspected arsonist, the caller will be eligible for a reward of up to \$1,000.

The hotline and reward program was established by the Texas Commission on Fire Protection, the National Insurance Crime

Bureau and a Texas Advisory Council on Arson.

"The Texas Commission on Fire Protection would like to thank the Board of Directors and members of a Texas Advisory Council on Arson for their leadership and guidance in making this cooperative effort possible," said Ernest A. Emerson, Texas State Fire Marshal. A Texas Advisory Council on Arson is a non profit organization of professionals and individuals with an interest in investigating and preventing arson.

"Arson-for-profit is big business in Texas," Emerson said. "The information we expect to receive through the hotline can give local jurisdictions the information they need to prosecute arsonists. The effective use of this information may also assist the

insurance industry in protection against fraudulent claims and in turn reduce the rising cost of insurance protection."

Similar to a crimestopper tip line, the arson hotline will be staffed 24 hours a day. Trained personnel with the National Insurance Crime Bureau will receive the calls and forward information to the State Fire Marshal's Office, a division of the Texas Commission on Fire Protection. State Fire Marshal's Office staff will then disseminate information to appropriate local fire and law enforcement agencies.

The National Insurance Crime Bureau will also administer the arson reward program.

Additional information on the arson hotline and reward program is available through the State Fire Marshal's Office in Austin, (512) 873-1700.

Read The Classifieds

1/2 Price
On All
Winter Color
Paper Napkins

1/2 Price
On All
Pictures

SPECIAL SALE ON
Dining Room Suites
30-50% Off List Price
Bedroom Suites -25-50% Off List Price

Austins Furniture
706 Conrad Hilton • Cisco, TX • 442-2533

FUN SPOT

THE FIRST RECORD TO SELL A MILLION COPIES AND BECOME A "GOLDEN DISC" WAS VESTI LA SUBER BY CARLOS IN 1902.

THE GREATEST NUMBER OF GOLDEN DISCS AWARDED TO AN INDIVIDUAL IS 28 GOLD RECORDS, AND THE RECORD HOLDER IS ELVIS PRESLEY!

THE FIRST SUCCESSFUL PHONOGRAPH WAS INVENTED IN 1877 BY THOMAS ALVA EDISON. THE UNITED STATES HAS THE GREATEST NUMBER OF RECORD PLAYERS IN THE WORLD OVER 61,200,000... AND MORE THAN HALF A BILLION DOLLARS IS SPENT ON 500,000 JUKE BOXES IN THE U.S. LAST YEAR.

TOTAL SALES OF ALL TYPES OF RECORDS AND TAPES REACHED \$2,200,000,000!

Cisco Press - Eastland Telegram - Ranger Times - Rising Star - Callahan County Star
Thursday, December 17, 1992

BRAND NEW!! 1993 SPECIALS BRAND NEW!!

Festiva... 2 to choose from... \$117.67/Mo.*
Ranger XLT... Stk. #3067... \$204.03/Mo.*
Tempo GL... \$190.71/Mo.*
Escort LX... 2 to choose from... \$185.25/Mo.*

Pre-Owned Bargains

1991 F150 P/U, low miles, great cond. \$208.15/Mo.**
1990 Buick Century... Nice car... \$149.43/Mo.+

GUARANTEED TRADE IN VALUE

Ask Us How!

OPEN ON SATURDAYS TILL 3 P.M.

*Rebates assigned to dealer, 20% & TT&L down, 60 mos at 10% APR WAC.
**20% & TT&L down, 54 mos at 12.75 WAC.
+20% & TT&L down, 48 mos at 12.75 WAC.

PIERCE

Ford

CISCO, TX 817-442-1566

DriveRite
Defensive Driving

1-800-460-3508

Classes In:
Abilene
Stephenville
Mineral Wells
Coleman

\$7

With Ad

State Approved Driving Safety Course 6-104*

J.P. Doodles

NEXT YEAR, ALL I WANT FOR CHRISTMAS IS A COZY LAP TO SIT IN AND SOMEBODY ELSE TO CLEAN UP THE MESS!

Sponsored by: Joe Hudspeth's Goodyear
315 E. Main • Eastland, TX • 629-2662

What Better Gift To Give Than The Gift Of Hearing

All in the Ear
Hearing Aid
\$399⁰⁰

Clinton Hearing Aid Center

721 Conrad Hilton Ave. • Cisco, TX
442-2168

ARE YOU PROTECTED?

COLLISION VS PROPERTY INS.

QUESTION: My friend had an auto accident a couple of weeks ago. Evidently, he didn't have enough insurance because it's really going to cost him to repair his own car. He carried property damage insurance but not collision, what's the difference?

ANSWER: If you have collision coverage, that means you're protected from financial loss if your car is damaged by colliding with something (another vehicle, a wall, tree, or some other barrier) or if it overturns. Property damage liability insurance protects you if you damage the cars or property of others. Your insurance company will pay damages up to the limit of your policy.

COLLISION INSURANCE

PROPERTY INSURANCE

King Insurance Agency

207 W. Main
Ranger, TX
817-647-1171

THE BEST OF TEXAS CRAFTERS MALL

A Multi-Dealer Mall
South Side of the Square in Eastland

108 West Commerce
Eastland, TX 76448
817-629-8605

Open Tues.-Sat.
10:00 a.m. - 5:30 p.m.
817-442-2744 Res.

We Welcome Crafts, Gifts, Antiques, Collectibles & Much More - We Offer Low Rental, Free Rental, Pegboard Booths & Many Other Dealer Benefits.

Our Specialty Is Making Your Business Pay

CHIROPRACTIC FOR BETTER HEALTH

DR. STEPHEN G. BARRY

CHIROPRACTOR

MEDICAL RESEARCH SUPPORTS CHIROPRACTIC

The British Medical Journal reports that Chiropractic treatment of low back pain, which affects 75 million Americans, is superior to the standard regimen administered by medical doctors.

The study, published in the summer of 1990, indicated that chiropractic manipulation can relieve severe back pain quicker and at lower cost than medical treatment. Chiropractic patients experienced less pain and disability and missed fewer days work.

In the interest of better health from the office of:

Dr. Stephen G. Barry
- - Chiropractor - -
951 E. Main, Eastland
629-1771

At Barry Chiropractic Clinic

Fishing Outdoors

by Terry Wilson

All too often Anglers, myself included fall into the "I read it was supposed to go like this" syndrome. A prime example is weather and how bass react to it. Take our most recent cold front passage. Rain began early Sunday morning, with some thunderstorms. This portion was accompanied by a stiff east wind. "The fish bite the least when the winds from the east." Fishing was really pretty good during this period at Leon with most anglers reporting catching a few fish. Then shortly after lunch an abrupt weather change came with the wind shifting to the north strong, with more rain. I was unable to check the barometer for Sunday, but I bet it was like a roller coaster till the front hit. As the wind shifted and the front hit Lake Leon Anglers reported an increase in the number of bites they got. The one problem reported by most anglers was once bitten the fish were hard to land. Indicating a very light bite. The fish I was able to find just almost acted as if they really didn't want to bite, but were just bumping the bait.

How was the fishing at days end; two anglers had 5 fish a piece going 14.98 each another 5 fish over 12 pounds, another 3 fish over 7 pounds and a few more single fish strings. Big bass for the day was 5.90. So I would say despite the written law of bass fishing it was a good day.

The really contradictory part was most of these fish were reported coming from as shallow as one foot most around 3 and very few from over 10 foot deep. Hey, its mid-December, can't these fish read there supposed to be near the creek channels in deep water. I guess this is why we must at all times remain versatile.

Citizen Rewarded For Evidence in Eagle Killing

TYLER- Laura Montgomery of Frankston received a \$4,000 cash

award from the U.S. Fish and Wildlife Service for providing evidence that led to the conviction of Kimball Glenn McKinney for killing an endangered bald eagle.

Montgomery was presented the check at the Texas Parks and Wildlife Department law enforcement office on October 30. McKinney, also of Frankston, was convicted of killing the bald eagle earlier this year.

A joint investigation between TPWD game wardens Mike Warren and Mark Davis, both of Athens, and USFWS officials began on December 19, 1989, after a female, immature bald eagle was found dead alongside a road near Lake Palestine in Henderson County and reported to authorities. The eagle had been shot twice with a shotgun and was missing its talons.

In January 1992, Montgomery learned that the eagle killer had not been apprehended and approached Jerry Chilton, TPWD game warden in Tyler, and federal authorities with information that led to McKinney's federal grand jury indictment on two counts of wildlife violations. McKinney was sentenced to four months in a federal correctional facility, one year of supervised release and a \$3,850 restitution payment to TPWD.

"It's a shame that some people have such a disregard for wildlife, but at the same time we are fortunate that there are co-operators like Laura Montgomery who can help us apprehend people like McKinney," said Steve Hamilton, USFWS special agent in Fort Worth. "I hope that offering cash awards for evidence will encourage more individuals to come forward with information needed in wildlife crime cases."

This is the second case in two years that a private citizen has received a cash reward from the USFWS. In 1991, Raena Wharton, a San Saba High School teacher, re-

Drilling Bits

New Tests

Coleman
Jubilee Oil & Gas Corp. Brownwood, will drill 3 wildcats to 1,999 in the Jamison South Field 3 miles west of Gouldbusk on a 160-acre lease in L.M. Biddle No. 284. They are:

- No. 5 Jamison, spots 1,077.2 FSL and 1,856.6 FEL.
- No. 7 Jamison, spots 777.2 FSL and 2,156.2 FEL.
- No. 10 Jamison, spots 1,377.2 FSL and 2,157 FEL.

AOP Operating Corp., Dallas, will drill a wildcat, No. 1 Stevens, to 3,999 in the Coker (Gray Sand) 4 miles northeast of Novice on a 640-acre lease. Spots 1,461 FSL and 3,212 FWL, Section 53, Block 2, GH&H, A-238.

Jones
Hale Oil & Gas Properties, Graham, will drill a wildcat, No. 1 Shields Unit, to 4,999 in the Nann (Canyon Reef) 3 miles north of Stith on a 40-acre lease. Spots 330 FSL and 2,040 FWL, Section 12, Block 17, T&P, A-881.

Ampak Oil Co., Plano, will drill a wildcat, No. 4 Harp, to 3,000 in the Ampak (Flippen Sand) 2.5 miles southwest of Hawley on a 120-acre lease. Spots 900 FNL and 2,600 FEL, Section 7, Block 16, T&P, A-

ceived a \$7,500 cash reward and a plaque from TPWD after reporting the shooting of an endangered whooping crane. Wharton's information was instrumental in leading to the conviction of two suspects.

429.

Palo Pinto
Jackson Energy Development, Fort Worth, will drill No. 1-A Gilbert in the Calabria (Big Saline) and Brazos Grogan (Atoka Bend) 1 miles west of Brazos on a 640-acre lease. Spots 1,500 FNL and 1,625 FEL, Section 39, Block A, T&P, A-741.

Stevens
Mosley Energy Co., Fort Worth will drill No. 29 J.N. Stuart to 2,000 in the Regular 8 miles south of Caddo on a 245-acre lease. Spots 2,680 FSL and 2,060 FEL, Section 70, Block 4, T&P, A-2333.

Shackelford
Gosa Oil Co., Moran, will drill No. 35 Miles to 800 in the Regular 5 miles northwest of Moran. Spots 1,729 FNL and 1,012 FWL, Section 71, LAL.

Oil Completions
Shackelford
Breck Operating Co., Breckenridge, completed No. B301 Cook Ranch in the Cook Ranch (Miss.) 8 miles northwest of Albany. Spots 1,288 FSL and 1,552 FWL, Section 89, Block 10, ETRR, A-73. Elevation 1771 KB.

Daily flowing potential was 40 barrels of 41-gravity oil and no water through a 9/64-inch choke at 350 psi from perfs at 5,055-70. GOR 2,000:1. Total depth 5,205 plug back

5,144; top of pay 4,844; 5 1/2-inch casing set at 5,204 KB. Acidized with 1,500 gallons.

Tops reported: Caddo 4,630; Miss. 4,844

Stevens
First American Operating Co., Breckenridge, completed No. A-7 Flournoy Lease in the Regular 1.5 miles south of Necessity. Spots 330 FSL and 524 FEL, Section 38, Block 6, T&P.

Daily pumping potential was 49 barrels of 40-gravity oil and 15 barrels of water from perfs at 4,012-31. Total depth 4,086; top of pay 4,012; 4 1/2-inch casing set at total depth. Treated with 15 percent acid water.

Tops reported: Strawn Sand 1,813; Duffer Lime 4,011.

Gas Completions
Palo Pinto
Tarpon Oil Co., Fort Worth, completed 2 wells in the Parry (Strawn). They were:

- No. 1X Bleeker, 2 miles northeast of Santo. Spots 660 FSL and 399 FEL, Robert Welters, A-889. Elevation 782 GL.

Absolute open flow was 83,000 cubic feet of dry gas daily from perfs at 1,720-36. Total depth 1,797; plug back 1,760; top of pay 1,720; 27/8-inch casing set at total depth. Acidized with 500 gallons; fraced with 165 sacks sand and 75 percent nitrogen.

Tops reported: Strawn Sand 1,720.

CJC In Cisco Preparing For Spring Semester

"All" new students attending the Cisco campus who are not pre-registered should see the counselor at the Vocational-Technical Building I for placement testing and assignment of an advisor. Beginning Monday, January 11, faculty members will be on campus to advise students.

All returning students who have not conferred with their advisor should do so prior to registration. Regular registration for

the Cisco campus will be Tuesday, January 12. Registration time is assigned by the first letter of his/her last name. Please register at the proper time and help avoid lines. Registration is as follows:

E, F, G and H 9:00 a.m. to 10:00 a.m.
P, Q, R and S 10:00 a.m. to 11:00 a.m.
M, Mc, N and O 11:00 a.m. to 12:00 Noon
T, U, V, W, X, Y and Z 12:00 Noon to 1:00 p.m.
A, B, C and D 1:00 p.m. to 2:00 p.m.
I, J, K and L 2:00 p.m. to 3:00 p.m.

NIGHT REGISTRATION - TUESDAY, JANUARY 12 - 6:00 p.m. to 8:00 p.m.

It should be noted that first-time entering freshmen are subject to a state required placement testing program (TASP) prior to registration. For full information concerning testing arrangements and who is subject to the state requirements, call the

counselor's office at 817/442-2567 in Cisco.

Dormitories will open at 2:00 p.m. on January 10. The cafeteria will open from 4:30-5:30 p.m. on January 10.

Classes will begin January 13.

For more information call 817/442-2567.

Offices will be closed from December 18 until January 4.

WORD of GOD

New Testament

Tell us, when shall these things be? and what shall be the sign of thy coming, and of the end of the world?

And Jesus answered and said unto them, Take heed that no man deceive you.

For many shall come in my name, saying, I am Christ; and shall deceive many.

And ye shall hear of wars and rumors of wars: see that ye be not troubled: for all these things must come to pass, but the end is not yet.

Matthew 24:3-6

Eastland Telegram, Cisco Press, Ranger Times, The Rising Star, The Callahan County Star
Thursday, December 17, 1992

CISCO CHIROPRACTIC

Dr. Margaret E. Cunningham

At Cisco Chiropractic our foremost concern is your health. We strive to offer you the best care available. Some of the conditions we commonly treat are:

Back & neck pain, headaches, pain or tingling into the arms or legs, juvenile bedwetting, infantile colic & various other conditions.

If you feel our services may be of benefit to you, please call and we will be happy to answer any questions you may have.

M-F 8:30-12:00 & 1:30-5:30 Sat. by appointment
1619 Hwy. 80 West - Cisco, TX 76437
(817) 442-1661 (800) 362-8644

BASEBALL CARD SHOW

Saturday, Dec. 19
12 noon to 6 p.m.
Budget Host Inn
Exit 343 at I-20, Eastland

Admission \$1.50. Bring this ad for 50¢ off.

Color Vision INC.
957 E. Main, Eastland 629-1632

Free Service Early Pay Off Plan

Crosley Wash/Dryer \$16.99 Week

RENT TO OWN

Crosley Refrigerator \$16.99 Week

Portable TV's w/Remote \$11.99 Week

Free Delivery No Credit Check

Living Room Sets \$15.99 Week

RANDY GATTIS PLUMBING

Residential & Commercial Repairs
Remodeling & New Construction
Electric Sewer & Sink Cleaning Machines
Water Heaters & Plumbing Fixtures
State Licensed - Master License - M-18038

Free Estimates
Call: 442-1688 24 hrs/day
106 Ave. I Cisco, Texas

Seven big reasons to invest with Edward D. Jones & Co.

1. U. S. Government Guaranteed Bonds. 7.21%*
Guaranteed as to timely payment of principal and interest.
2. Federal Income Tax-Free Municipal Bonds. 6.25%*
Interest may be subject to state and local taxes.
3. Investment Grade Corporate Bonds. 7.93%*
4. Federally Insured Certificates of Deposit. 6.10%-5 Yr.
CDs available from institutions nationwide. Issuer information available on request. Subject to availability. May be subject to interest penalty for early withdrawal. \$5,000 minimum. Annual rate of simple interest.
5. Insured Federal Income Tax-Free Municipal Bonds. 6.25%*
Interest may be subject to state and local taxes.
6. IRAs and Retirement Plans. 8.12%*
Based on A-rated Corporate Bonds.



Call or drop by for more information on how to take advantage of today's high-yield investments.

Jim M. Bruton
Investment Representative
107 W. Main St.
Eastland, TX 76448
(817) 629-3851

* Rate expressed as yield to maturity as of 12-10-92. Subject to availability. Market risk is a consideration on investments sold prior to maturity.

Edward D. Jones & Co.
Member New York Stock Exchange, Inc. and Securities Investor Protection Corporation

FOR SALE OR TRADE: 1984 Luxurious 34' Revcon tag axle motor home with aircraft exterior. 100 gallons fresh water & fuel. Sell below wholesale or trade for ??? or possible terms. 1-817-629-1804

★★★★ Diet Magic ★★★★★
Thermomejics

Lose up to 30 pounds in 30 days for \$30

Connie 725-6318 5-104* Velma 643-4172

MAJESTIC THEATRE
629-1322

STEVEN SEAGAL

In 1992 a battleship's been sabotaged by nuclear pirates out to steal its warheads. Now, surrounded by terrorists, a lone man stands with a deadly plan of attack.

UNDER SIEGE

Fri. • Sat. • Sun. • Mon.
All Shows: 7:30 p.m. - \$3.50
10-Admission Passes - \$30.00
5-Admission Gift Pass - \$17.50
Adults Only Balcony Ticket - \$5.00

Who Really Pays For Child Support

By Dan Morales

Last year, the parents of more than 500,000 Texas children decided to let you bear the cost of raising their offspring.

Why should you pay money out of your pocket to raise the children of absentee parents while they get a free ride? The answer is that you shouldn't.

Failure to provide child support is not only a crime against the child, but ultimately against the society that must bear the cost. All too often, that cost results in discouraged, underprivileged kids who find their way into gangs, drugs and prison.

In most states, child support enforcement is the responsibility of state human service departments. In Texas, the Office of the Attorney General is responsible for child support enforcement. We think this responsibility fits with other law enforcement duties because the stakes are so high for all of us.

The Texas child support program ended state fiscal year 1992 with almost three quarters of a million cases. When you look beyond the staggering caseload and the statistics, you see a whole bunch

of kids without school clothes, school supplies, bicycles or braces. Often, these children live much of their childhoods without the benefit of either parent, because the one responsible parent, typically a woman, often has to work two jobs, or work at night to support herself and her children.

That's why making sure that parents live up to their financial responsibility to their children is one of the most important duties of my office, and the reason we utilize half of all agency staff to perform child support collection services.

I'm proud to say that the dedication of our staff is paying big dividends. We collected \$301.7 million in fiscal year 1992, 28 percent more than we collected in 1991. These efforts represent hundreds of millions of dollars in direct aid to children in Texas, many of whom are forced by the negligence of their non-custodial parent to live on taxpayer supported welfare.

Nationally, the Texas child support program has moved from 14th in 1990 to 10th in 1992, and sixth among states in collections from federal income

tax refunds. Our goal is to continue dramatic improvement in enforcement efforts because we want Texas to be one of the most difficult states to pass the child support buck to taxpayers. If this means giving the state of Texas the power to revoke professional and drivers licenses for those who refuse to pay, or to garnish insurance reimbursement checks, then I say let's do it.

Even though we routinely collect more each month than we did in the entire year before this program was transferred to the Attorney General's office, we are far from satisfied. We think government agencies, like successful businesses, have to change and innovate to make their program work. Currently we are developing a pilot project with the Mexican state of Tamaulipas to allow us to collect child support from parents who flee to Mexico. And we are considering legislation that would improve the State's ability to collect child support.

One area where we've made great strides is establishing paternity. These days, referrals from Aid to Families with Dependent Children (AFDC) account for most of our new cases. These referrals are averaging more than 10,000 new cases each month.

Typically, these cases have no paternity or child support orders established. So our job is not just a matter of collecting money on a court order, but establishing that order in the first place. In a paternity case, this involves four steps: finding the alleged father; establishing paternity through blood tests; establishing a court order for payment; and finally, actually collecting money from the father. This process is time consuming and difficult, but it is necessary.

Again, we're getting results. Each month this year, we have established paternities for more children than we were able to do in all of 1988. In a typical month, we will establish paternities and child support orders for more than 2,000 children!

However, for us to make really significant inroads into this problem of supporting other people's children, we've got to prevent as well as remedy. Texas still ranks first in the number of births to girls 14 years and younger. Not only do teenage pregnancies pose difficult and costly problems for Texas taxpayers, but these pregnancies almost always place the children of teenagers in an at-risk category. Too many at-risk children will suffer from abuse and neglect.

Blackwood Quartet To Perform At McMurry Campus Dec. 17

For those who have heard the legend, the Blackwood Quartet, no explanation is necessary.

For those who haven't, no explanation will suffice.

Too many of these infants will ultimately enter the welfare system and the criminal justice program.

There is growing recognition among government officials that today's failures to maintain effective child support will turn into tomorrow's law enforcement nightmares. That's why we have spent more than a year reorganizing, computerizing and streamlining child support enforcement operations in the Texas Attorney General's Office. And that's why I enthusiastically endorsed the recommendations made by the U.S. Commission on Interstate Child Support this past summer. One key recommendation is the establishment of a national computer net-

work that can effectively track negligent parents across state lines.

Children must come first in our society, not last. Until they do, we will continue to harvest the bitter fruit born of broken families and betrayed childhoods.

The Blackwood possess a name that has won an unprecedented 9 Grammy Awards and have performed with superstars Tayna Tucker, the Cathedral Quartet, Ronnie Milsap, Micky Gilley, Barbara Mandrell, and Kenny Rogers.

The late Elvis Presley stated many times that the Blackwoods were his favorite group. Many well known stars have idolized

the Blackwoods' sound including Larry Gatlin, the Statler Brothers, Larry Stewart of Restless Hearts, Roy Clark, and many others.

Yes! The legend is returning to Abilene for one huge performance! The Blackwoods provide humorous and inspirational family entertainment with voices blending together to excite audiences everywhere they perform. The music of the Blackwoods has been heard around the world and now their music

can touch you.

The Blackwood Quartet is appearing at:

Date December 17, Time 7:30 p.m., Town Abilene, Place Radford Auditorium on McMurry Campus.

All proceeds will benefit the services provided by Hospice of the Big Country.

Hospice of the Big Country serves Taylor and 12 other counties in the Big Country.

Read The Classifieds



LUMP SUM DISTRIBUTIONS? CALLED BONDS? CDs?

We can help you make the right decision for you.

Serving the Big Country's Investment Needs Since 1952.



Call Today
1-800-858-4129
915-672-3223

thePrincipal
Financial Group

Gary L. Smith
401 Cypress
Abilene, TX
79601

The Principal /
Eppler, Guerin & Turner, Inc.
Investment Bankers
Member New York Stock Exchange
SIPC

I-20 MOTORS

19th & I-20
Cisco, Texas
(817) 442-4262 or 442-2161

90 Ford Tempo, Red, 5 Sp.
Air, AM/FM, Tape, Electric
Windows, Locks, Cruise, Tilt,
Nice car. \$3250
Bargain of the Month \$3,995

88 Ford Tempo GLX 4 dr.,
Auto, Air, Extra Nice,
Fully Loaded. \$4250

★★ SPECIAL ★★
88 or 89 Ford Festiva, 4 Sp.,
Air, Nice Cars. \$2495

90 Ford Tempo GL 4 Dr., Auto,
Air, Nice, Nice Car. \$4250

90 Ford Festiva LX,
Automatic, Air, 48,000 miles,
1 owner, like new. \$3750

79 Chev. Chevette
Auto, Air. \$995

91 Dodge Colt,
4 Sp., w/Air, One Owner,
23,000 miles. \$4750

81 Toyota Tercel 5 Sp., 4 Dr.,
Air, Good Car. \$995

88 Ford Tempo Red, 4 Dr.,
Auto, Air, New tires, 67,000
Miles, Nice car. \$3250

1988 Ford Diesel 3/4 Ton LXT
Lariat, auto, cruise, tilt, elect.
windows & locks. \$7495

Other Cars To Choose From

87 Ford Taurus 4 dr.
Auto, air, cruise,
Nice car. \$3250

88 Ford Aerostar Cargo Van
55,000 miles, one owner, Auto, Air,
extra, extra nice. \$5500

90 Mitsubishi PU 5 Speed,
Air, Clean truck. \$4995

89 Hyundai XL GLX Auto, Air,
Power Steering 46,000 miles,
1 Owner. \$2995

88 Ford Escort Wagon, Auto, Air,
Cruise, Tilt, AM/FM Tape, 1 Owner,
46,000 Miles, Nice, Nice car. \$3250

83 Ford Ranger Pickup XLT
Long bed, Auto, Air, AM-FM,
Power Steering, 2 Tanks. \$2250

85 Ford Tempo, Auto, Air,
Power steering, good work
car, must see. \$1350

90 Ford Escort 2 Dr., 5 Sp.,
Air, 40,000 miles, sun roof,
Nice Car. \$3250

2-91 Dodge Dynastys, V6, Auto, Air,
Cruise, Tilt, Price Starts. \$6495

87 Dodge Pickup D50
Longbed. \$2975

83 GMC Suburban
Auto, Tilt, Extra Clean. \$3495

Financing Available
On Most Cars

THE ENESCO PRECIOUS MOMENTS COLLECTION

CELEBRATE THE SEASON

Endearing gifts from The ENESCO PRECIOUS MOMENTS® Collection celebrate the Christmas season in a special way. Artist Sam Butcher expresses the wonder and loving spirit of the Yuletide through the exquisite porcelain bisque Nativity.

Visit our store today to share the joy of Christmas with a beautiful PRECIOUS MOMENTS Nativity set or one of our many other inspirational holiday gifts.

Songs & Psalms Bible Book & Gift Store

Only Precious Moments Dealer in Eastland County.

721 Conrad Hilton • Cisco, TX • 442-3752

©1991 ENESCO CORPORATION. Illustration shown ©1981-1986 Samuel J. Butcher, Lic. Enesco

817/629-3631

OPEN 8:00 - 5:30
SAT. 8:00 - 12:30

EXPRESS PHOTO
SAME DAY PHOTO PROCESSING
COLOR, BLACK & WHITE, PHOTO REPRODUCTION

BILL CULVERHOUSE owner

601 W. Main
Eastland, TX 76448

Wedding
Sports
Studio Pictures
Passports
ID Photos
Immigration Pictures

Serving all your photographic needs

Pharmacy Topics

By Bob Mueller

Heart attack patients seem to fight post-attack depression best when they go back to work. Those who wait seem to remain more seriously depressed, psychiatrists found in a study at the University of Arkansas for Medical Sciences in Little Rock.

Shingles, caused by the same virus as chicken pox, responds to the anti-viral drug acyclovir. Given promptly, the drug can shorten the course of the disease and lessen or prevent pain.

Danish researchers supplemented the diets of pregnant women with 4 Gm. a day of fish oil capsules. It seemed to prolong pregnancy and develop heavier babies, they reported in The Lancet, a British journal.

Yale University research indicates that family history may be the strongest risk factor for stroke, more than high blood pressure alone.

Liver spots, the brownish patches that develop on the skin of older people, can be treated with Retin-A. Spots lighten noticeably within a month of treatment, the New England Journal of Medicine reports.

What's new in medicine? We keep up with the latest developments, the better to serve you at Walmart Pharmacy Hwy 80 East, Eastland, 629-3347. We're your pharmaceutical headquarters.

Lillie's Coffeepot in Ranger

Will be serving Christmas Dinner
Turkey and Dressing with all the trimmings,
also take-out.

Open 6 a.m. - 3 p.m.
647-3171

RICK'S GARAGE

Complete Motor Overhaul
\$199.95 Plus Parts & Materials
All Domestic Automobiles

804 W. Main Eastland

Open 6 Days a Week
8 a.m. - 6 p.m.

629-8814

Subscribe To Your Local Newspaper



20 Good Reasons for Choosing Home Care

1. Home Care is delivered at home: There are many positive associations that are brought about by our home. Our homes are our castles, our refuge from the storm, it's the place we most want to be when we are not feeling at our best. We enjoy the sanctity of our homes and the joy of being near our loved ones.

2. Home represents the American tradition of early health care: Home Care was started as public agencies that would seek out poor and needy clients who would otherwise go without care. No one was turned away and this is still true today for most of America's Home Health Agencies.

3. Home Care helps keep the family together:

There is no more important social value than family unity. It is particularly important when illness invades the family unit.

4. Home Care aids in independent living for the elderly: No one wants to be totally dependent and help less. With some assistance, seniors can continue to function as viable members of society.

5. Home Care postpones/prevents institutionalization: None of us wants to be placed in a Nursing home unless this is the only place where we can receive the 24-hour care we need.

6. Home Care promotes recovery: There is scientific evidence that patients heal faster in the comfort of their own home.

7. Home Care is safer: For all of its lifesaving potential, statistics show that a hospital is a dangerous place. The risk of infection, for example, is high. It is not uncommon for patients to develop new health problems as a result of being hospitalized. These risks are eliminated when care is provided in the home.

8. Home Care allows for individual freedom: Institutionalized care is a regimented, regulated environment. The same is true for nursing homes. Upon admission, an individual is required to give up a significant portion of his/her rights in the name of common good and necessity. Home Care however does not require such sacrifices and the patient's rights are always upheld.

9. Home Care is personalized care: Home Health

Care is tailored to the needs of each individual and delivered on a one-to-one basis.

10. Home Care allows the patient and family to become involved with the plan of care: Patient and family members are taught to participate in their prescribed health care. They are taught how to get well and stay independent in activities of daily living.

11. Home Care reduces stress: Anxiety and stress are common side effects to most forms of health care. Home care has the opposite effect.

12. Home Care is an effective form of health care: Consumers and health professionals agree that health care delivered in the home is extremely effective, and that client satisfaction is very high.

13. Home Care is the most efficient form of health care: With prescribed care brought into the home, the patient does not generate room and board expenses like in institutional care. Technology has developed such

that most any service offered in the hospital can now be offered in the home at significant savings.

14. Home Care is delivered by caring people: By and large, home care is delivered by people who view their job as a calling, not just a profession. They are highly trained and seem to share a certain reverence for life.

15. Home Care reaches people: Home Health roots began in the early 1900's when a method was needed to reach the health needs of the flood of immigrants who populated our major cities. Today Home Health Care reaches those people that may not receive care otherwise, new immigrants, the homeless, and people in rural communities that cannot reach or have health facilities nearby.

16. Home Care does not abuse the health care delivery system: Fraud and abuse has riddled many health care settings in the past. There have been few, if any, scandals related to health care

delivery associated with Home Care.

17. Home Care improves an individual's quality of life: Home care not only adds years to one's life but life to one's years. People who receive home care get along better and recover more quickly.

18. Home Care is less expensive: Overwhelming evidence shows that home care is less expensive to all involved than other forms of health care. Home Care costs one-tenth as much as hospitalization and one-fourth as much as nursing home placement to deal with comparable health care problems.

19. Home Care helps extend life: The US General Accounting Office has established beyond doubt that those people receiving home care lived longer and enjoyed living.

20. Home Care is the preferred choice of health care, even with terminally ill patients: There is a growing public acceptance and demand for hospice care, which is home care for individuals with a terminal illness.

Home Health Care is the oldest form of health care. Health care has been traditionally given in the home throughout centuries. However, it is also the newest form of health care. Modern technology has developed to the point where virtually any service that is available in a hospital can now be provided in the home. There is significant evidence that also points to lower costs than other forms of health care, and that it is the most satisfying form of health care to the American public. Little wonder that the public is demanding that home

Give the Gift of Golf

Trying to find something for that special person who has everything? Want to help a good cause while you're sharing the holiday spirit with friends and family?

Then why not give the 1993 Texas Golf Card?

The Texas Golf Card entitles the bearer too free or discounted greens' fees at golf courses around the state. For \$25, golfers get a ticket to 90 courses throughout Texas - from the Winkler Country Golf Course in Kermit to Bear Creek Golf World in Houston.

And not only does your purchase make a nice gift, you're also helping in the fight against cancer.

For every dollar contributed to the American

Cancer Society, 28 cents go toward research. Another 21 cents help fund the Society's efforts to educate the public about cancer and its prevention. And 16 cents pay for programs to help cancer patients. Most of the remainder pays for other services and programs, while only 2 cents fund overhead costs.

The Texas Golf Card. Give the gift that gives.

For more information about the Golf Card, call the American Cancer Society at 1-800-ACS-2345 or contact your local American Cancer Society office. Checks, Visa, Mastercard and American Express accepted. You may also call 915-692-6446.



Cool Buys in the Classifieds!



care be made more available. Home Health Care... an idea whose time has come... again!

Cisco Press - Eastland Telegram - Ranger Times - Rising Star - Callahan County Star
Thursday, December 17

READ THE CLASSIFIEDS

CHRISTMAS SEALS: THE #1 HOPE FOR THE #3 KILLER: LUNG DISEASE.

Put them everywhere.

AMERICAN LUNG ASSOCIATION
The Christmas Seal People
1-800-252-LUNG
Space contributed by the publisher as a public service.

BFI Waste Systems™

BFI and employees would like to wish everyone a Merry Christmas and a prosperous New Year.

All Friday (Christmas Day) residential routes will be made up on Saturday, Dec. 26. Regular running schedule, New Year's Day.

Order your **SMOKED TURKEY or HAM** for Christmas by Dec. 18.

You can bring your own meat anytime and we will smoke it.

Iron Skillet

205 Chestnut
(1 blk. East of downtown)
Baird, TX
(915) 854-1994

Open 7 days a week 8 a.m. til 8 p.m.
CLOSED CHRISTMAS DAY

AUTOMOTIVE SALES

1471 E. Main Eastland, TX 76437
(Across from Sonic)

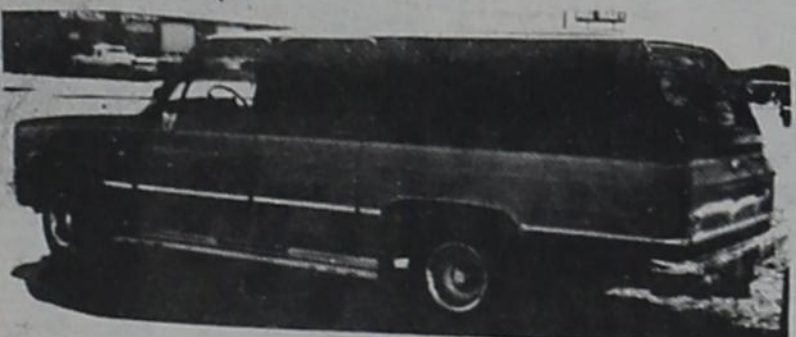
H. E. Austin

Pat Davis

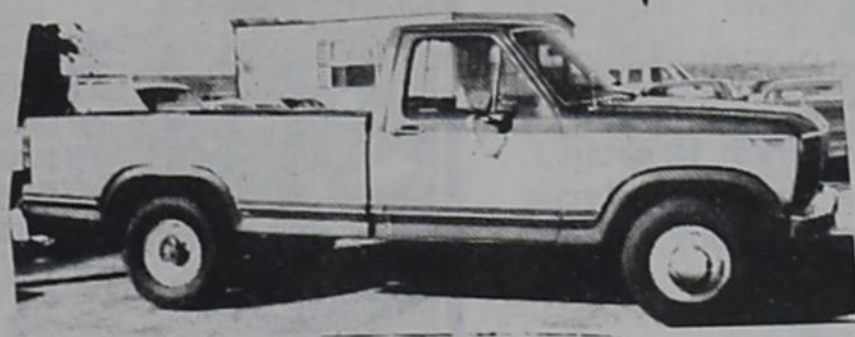
WE FINANCE

50 Automobiles To Choose From

YOUR JOB IS YOUR CREDIT



1986 SUBURBAN
Local owner, dual air, b. seats, loaded, real nice... \$6,450.00



1983 FORD 3/4 TON
All extras, This you must see!
Real scarce... \$650 down... \$3,450.00



1983 GMC SUBURBAN
3 Seater, Front Bucket Seats All extras,
NONE BETTER - Rear Air... \$3,975.00



1986 98 REGENCY OLDS
One owner, real sharp
Has it all... \$4,450.00



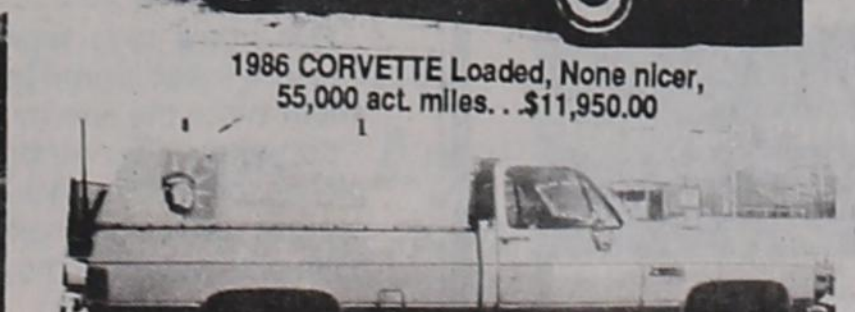
1989 CLUB CAB FORD
Loaded, 5 Sp., One owner
All extras... \$6,975.00



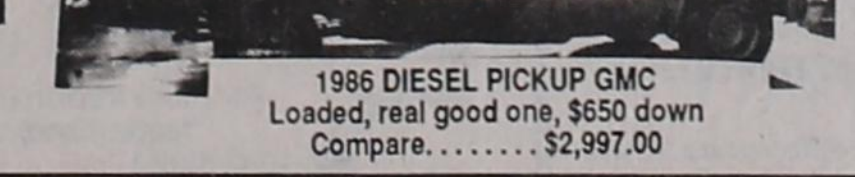
1988 FIFTH AVENUE, CHRYSLER
4 Door, A real looker, has it all... \$4,450.00



1990 TEMPO
32,000 miles (actual), loaded, one owner,
This one you must see! Like NEW... \$5,450.00



1986 CORVETTE Loaded, None nicer,
55,000 act. miles... \$11,950.00



1986 DIESEL PICKUP GMC
Loaded, real good one, \$650 down
Compare... \$2,997.00



EASTLAND FARM & RANCH INC.

301 N. Seaman
Eastland, Texas 76448
(817) 629-2173 or 629-8035

Offering You Only the Best
Feed - Seed - Vet. Supplies - Liquid Feed - Pet Supplies
Lawn & Garden - Herbicides - Insecticides
Dry Fertilizer - Liquid Fertilizer - Custom Application



SANTA AND HIS REINDEER

Collect All Five Ornaments

A different ornament available each week, beginning November 14.

\$4.95 EACH with each \$5 Hallmark purchase, while supplies last.

An offer like this comes along only once!



Santa/Sleigh
Dec. 12-18

Donder/Blitzen
Dec. 5-11

Comet/Cupid
Nov. 28-Dec. 4

Prancer/Vixen
Nov. 21-27

Dasher/Dancer
Nov. 14-20

Heather's Hallmark

Hwy 80 E. • Eastland • 629-3521

Obituaries

Thomas Raymond Ball

CISCO - Thomas Raymond Ball, 86, died Thursday, Dec. 10, 1992 at his home. Services were at 10 a.m. Saturday at the Church of the Nazarene in Cisco with the Rev. Gary Pettigrew officiating. Graveside services were at 2 p.m. at Elmwood Memorial Park in Abilene, directed by Kimbrough Funeral Home.

Mr. Ball was born in Coahoma. He worked in the warehouse and drove a truck for West Texas Wholesale in Abilene, retiring about 20 years ago. He was a member of the Church of the Nazarene.

Survivors include his wife, Edith Ball of Cisco; two daughters, Theda Day of Jacksonville and Carolyn Aiello of Carrollton; a sister, Mary Protzman of Dunellon, Fla.; a stepdaughter, Veda Moore of Rising Star; three grandchildren; four great-grandchildren; one step-grandchild; two step-great-grandchildren; and several nieces and nephews.

Virgil McKinley

MAY - Virgil McKinley, 53, died Friday, Dec. 11, 1992, in a Brownwood hospital. Services were at 2 p.m. Sunday at Salt Creek Baptist Church with Dr. Art Allen officiating. Burial was in Atwell Cemetery, directed by Davis-Morris Funeral Home.

Mr. McKinley was born in Eastland and had been a warehouseman for Kohler Company in Brownwood the past 12 years. He was a member of Salt Creek Baptist Church.

Survivors include a son, Harvey McKinley of Brownwood; a brother, Tommy McKinley of Brownwood; his mother, Roma Lee McKinley of Brownwood; and a nephew.

Ernest F. Patterson

Dr. Ernest F. Patterson, Professor of Economics at Davidson College from 1957 to 1979 and a lifelong fighter against social and economic injustice, died on Friday, Dec. 11, 1992 at the Brian Center in Mooresville. He was 78 years old.

Born in Rising Star, on June 5, 1914, he attended the University of Texas at Austin, but was forced by the depression to leave school and work in the oil fields in South Texas. Here he learned, from the example of his parents and from personal experience in the fields, what the lives of the common people were really like. He became a Jeffersonian Populist and a socialist, because he believed that socialism was fairer, more just, than capitalism.

In 1941 he received his B.S. degree from South West Texas Teachers College, and began a teaching career, but with the outbreak of World War II, he had to face the issue of the draft. Turned down as a conscientious objector because he had not joined a religious group, he served in the U.S. Army from 1941 to 1946, much of it in Belgium, France and Germany.

In 1946 he returned to Texas where, for the next four years, he completed his M.A. and Ph.D. degrees in economics and served as an instructor in the Department of Economics at the University of Alabama and then promoted to Associate Professor with tenure, before leaving Alabama for Davidson in 1957. At Davidson he was Associate Professor of Economics from 1957 to 1966 and finally promoted to full professor in 1966 after the urging of several of his colleagues and the support of the president finally overcame trustee reluctance to promote him because of his political views.

Ernest Patterson, popularly called "Red Ernie" by students because of his socialist views, believed absolutely in the importance of freedom of speech. He was an avowed Marxist living in a conservative Southern town, and he devoted his career to speaking out for what he

fondly called "the other point of view." In 1964 he was the only faculty member to march with Davidson students, under the leadership of YMCA President Joseph Howell, Class of 1964, from Johnson C. Smith University to the downtown Post Office. There they mailed an appeal to Congress to pass the Civil Rights Legislation and Dr. Patterson delivered from the steps a civil rights address. He was the first faculty member to actively oppose U.S. Intervention in Vietnam, and it was in 1965 that he began wearing his most famous article of clothing—Black tie with the peace symbol on it—which he promised he would not take off until the U.S. spent at least half as much money recreating the country of Vietnam as it had spent destroying it. He continued to wear the tie, even after his retirement.

He was a prolific letter writer, and was widely known throughout North and South Carolina during the '60s and '70s as that radical Davidson professor who wrote all those letters to *The Charlotte Observer*. He also had letters published in *The Wall Street Journal*, *The Economist*, *Manchester Guardian Weekly*, *Progressive* and *The Nation*. Throughout his career, he kept up with international social and economic issues not only by studying and teaching but by travel to the Soviet Union, Eastern Europe, India, Pakistan, Nepal and the Far East, including Japan, Thailand and the People's Republic of China. He kept extensive journals on his trips, excerpts from which were printed in the Davidson *Miscellany* during the early '70s.

A man of deep faith, he was an active member of the Davidson United Methodist Church and deeply concerned about people in need, people of other races, and people victimized for their unorthodox views. Perhaps the most meaningful description of Dr. Ernest Patterson's contributions to both the local and wider communities came from a group of friends who thanked him, on the occasion of his retirement:

*For keeping the common touch while achieving academic excellence.

Senior Citizens Center

by Marjorie West

Thursday, Dec. 10 was a beautiful, clear day. It is an ideal day to get out side again.

Thursday, Dec. 17, will be our birthday and Christmas luncheon. We will honor the following: Henry Robertson, Aline Frost and Winnie Armstrong.

Marion and Marjorie West went with the Cisco Rhythm Band to Baird to play for the nursing center Thursday.

Ladell Key was back at the center after not being well for a few days.

Kitty and Lester Mulke of Blanket visited her aunt, Martha Carouth. They had been to the doctor for a new leg for Lester.

Jean Shults was at the

center with Bill Gray Thursday. She will return to her home in Tennessee next week.

Pauline Parson and her sister, Maurine Hellms, from Brownwood visited our center last week. Come again soon.

We are sorry to hear Robert Butler is not feeling well.

Marion and Marjorie West attended the open house at the Peoples State Bank. Everything was lovely. We are proud of our bank. We at the center especially thank them for helping us with finances by paying for the meat for our ambulance benefit luncheon.

Have a good week!

Pioneer Patchwork

by Irma Miller

The Quilting Circle ladies were privileged to have their Christmas party in the home of May and D.P. Jones on Tuesday. Guests at the party were Jewel Foster's daughter-in-law Norma Foster and her mother, Mrs. Eunice Ford of Paris. Almost all of the quilting club were present at the party.

Visiting D.P. and May Jones on Saturday was Randy Wroble of Abilene.

On Thursday Frankie and Oliver Smith and Jean Fore visited Frankie's daddy in Ranger and Thursday night attended the Band Concert in Rising Star. Saturday night the three went to Cisco to the musical. On Sunday all three, with the Smiths' daughter, Shirley Rankin of Rising Star, attended the Christmas concert in San Angelo, where the twin grandsons of the Smiths, Joey and Scott Nance, were singing in the choir. It was a very enjoyable concert, and the children were beautifully dressed.

Jean Fore, Lottie Sooter and Frankie Smith went to the West Texas Rehab brunch on Saturday and saw the quilts displayed there. It was to be telecast on Harry Holt's TV program.

On Sunday afternoon Laverne Hutton and her sister and brother from Clyde visited with their mother in Cross Plains. Laverne entertained the

*For maintaining the quality of childlikeness long after time has robbed it from most people.

*For staying angry at injustice long after most people have made peace with the world as it is.

*For combining the fire of the prophet with the gentleness of the poet.

*For taking seriously the words of Jesus in Matthew 5: 1-11.

*For being our friend.

He is survived by his wife Anna A. Patterson; a son, Ernest F. Patterson Jr. of Chapel Hill, N.C.; four grandchildren, E. Finney Patterson III of Boone, N.C., Edward Reed Patterson of Charlotte, Christopher Patterson of Chapel Hill, Candace Marie Patterson of Chapel; a sister-in-law, Mrs. Genevieve Nabor of Monroe Ohio. A sister, Janet Howard passed away this spring.

A memorial service was held Sunday, December 13, at 2:30 p.m. at the Davidson United Methodist Church in Davidson, N.C. with the pastor, Dr. James C. Howell, officiating.

Hutton family on Sunday night at a sandwich supper in her home. Wanetta was home for the event.

Visiting Joe and Nell Fleming on Wednesday was B.J. Anderson of Rising Star. On the previous Thursday, JoVeda, their daughter of Byrds Store, came and spent the day with Joe while Nell went to visit a friend in Cross Plains. Nell enjoyed this treat very much. Sunday morning visiting the Flemings were Mr. and Mrs. Wayne Overman of Andrews and Sunday afternoon were Jay and Ernestine Rankin, JoVeda and Bill Watson of Byrds Store, Jim and Charlene Fleming and children. Sam Fleming of Cross Plains visited Saturday morning.

Sipe Springs

The community Christmas tree and party last Thursday night was well attended and enjoyed by all. Santa was there to hear the little ones' orders for Christmas.

Relatives and friends received the death message of Arvilla Curtis Morgan of Orange. We extend our sympathy to her family and all relatives.

Melinda Vernon is back from Illinois and visiting her father, A.A. Vernon.

Mrs. Winnie Anderson of Rising Star spent the weekend with Mary Anderson.

Mr. and Mrs. Skippy Morgan and daughter, Julie, of Odessa spent the weekend with their grandmother, Mae Leonard.

Mrs. Kenita Rainer and Mr. and Mrs. Ted Barton attended the wedding of Stacey Jones and Dominic Aguerro at DeLeon Saturday night.

Mrs. Elayne Millwee and Herman Kanady also attended that wedding.

Subscribers Write To Us

Look forward to getting The Rising Star each week. So for another year, Thanks!

Mr. and Mrs. J.D. Wolf Midland



Extension Homemakers (left-right): Arleta Shirey, Rena Kirk, Helen Phillips, Gerry Zummer, Jane Stark, Dois Hodges, and Velma Bennett are enthused with the countywide project entitled "Baby's First Book". Children's books are being collected and will be presented to the Eastland Memorial Hospital. Newborn babies will be presented a complimentary book. This is a literary and community service project by the Eastland County Extension Homemakers.

GFWC Saturday Club

Community Christmas Spirit was the club theme for December. The club house was all aglow with about 100 people enjoying visiting, singing and eating some of the many good foods prepared by club members.

The rooms were beautifully decorated in bright Christmas decorations. Prior to meeting at the club house, the Cisco Junior Choir entertained the audience in the First Methodist Church. There were twenty four strong, beautiful voices led by

Director, Wyley Peebles and accompanied on the piano by Steven Zell. The music was beautiful, lively and seasonally selected for a wonderful Christmas program.

It is such a pleasure to have these talented young college students come to us with Season's Greetings in music and song. We thank each and everyone who attended and/or assisted in any way.

Merry Christmas to all and Happy New Year from the members of the Rising Star Saturday Club.

Rising Star Nursing Center

Vickie Majors, Activity Director

MON: Activity Director absent.

TUE: Did daily visits and some care plans. We had our monthly birthday party. The Assembly of God ladies were our hostesses. Everyone enjoyed the cakes and the music. We want to thank everyone that helped serve.

WED: Did daily visits and exercised. Bingo players were Maggie Christian 2, Addie Green 0, Ruby Booth 1, Bryant Houston 3, Myrtle Burkett 0, Daisy Smoot 0, Opal Gattis 2, Lovester Brown 4, Jenneye Turner 1, Laura Bennie 3, Martin Straub 2, Rose Nichols 2 and Charles Rixford 1.

THU: Daily visits and exercised. The men had exercised and watched a movie.

FRI: Did daily visits and exercised. Bingo players were: Bryant Houston 1, Addie Green 2, Myrtle Burkett 4, Ruby Booth 3,

Happy Birthday

DECEMBER 19
Manon Cox, Angie Bradley

DECEMBER 20
Danny Hughes, Buster Harris, Jackie Bibby

DECEMBER 21
Mary Wheat, Bill Shults, Emma Jean Steel, Elva (Forbes) Thompson, Judy Murphy

DECEMBER 23
Evelyn Coker, Peggy Dennard, Lynn Archer, Chad Hill, Geneva Cooper

DECEMBER 24
Brandy Hutton, Cathy Scheffel, Lance Hutchinson



Jeanette Bureson, of Lake Leon, had the prize winning entry in the Pecan Centerpiece Division held in conjunction with the Eastland County Pecan Show.

Free Consultation
Cosmetics

Jewelry

Rising Star
AVON REPRESENTATIVE

Betty Duggan

643-1209 (After 6:00 P.M. on Mon. & Tues.)

Savings and Comfort
for all Seasons:

The Electric Heat Pump

A heat pump is one complete system that keeps you toasty warm in the winter, and cool and comfy in the heat of the summer.

Plus you'll save money because a heat pump delivers about twice the energy it uses. So when you're building, buying or just replacing your present system, consider the all-in-one system — the electric heat pump.

WEST TEXAS UTILITIES COMPANY
An Equal Opportunity Employer
WTU
A Member of The Central and South West System

For more information on the electric heat pump, contact your heating and cooling contractor or West Texas Utilities.

SPECIAL
Dentures Relines (Sameday)
\$495 per set** \$75 per arch
Offer expires 12-31-92
Gary M. Easley D.D.S.
915-356-5263 Comanche, TX 800-452-1924
* Dental Implants * Snap on Dentures *
* Soft Lines *

Wildcat Tales

Rising Star High School Journalism Class

Stuteville's Stats

by Emily Stuteville

The Lady Cats have been preparing for district and have been very successful in their efforts. They went up against Moran on December 11, and won the intense battle 43-39. Scoring in this game were: Heather Wright 3, Christi Bush 6, Brandi Harris 16 and Olivia West 4.

Abilene Christian was their next opponent. The game was moved to Monday night, Dec. 14, due to scheduling of final exams. The Lady Cats defeated the Lady Panthers 49-32. Point totals for this game were: Heather Wright 2, Christi Bush 8, Brandi Harris 10,

Tianay Chambers 2, Amy Collins 12, Jo Linney 4, Olivia West 9 and Heather Hutchinson 2.

The JV received their first win on the same night against the Abilene Christian Junior Varsity team. They were victorious in the overtime skirmish, 26-25. Scoring for the Lady Cats were: Angelia DeLong 4, Athena Black 8, Samantha Kerr 7, and Andi Ferbrache 7.

The Lady Cats will play again on December 18, against Zephyr there at 5:00 p.m. This will be a great test of their abilities and they need your support.

Catnip

by Christy Hughes

The Jr. Ladycats once again took on Mullin, and this time it was their turn to win! Overall, the girls feel as though they are improving with every game and they are really excited about the start of district.

The dog was there and then it wasn't. Scoring against Mullin were: Melissa Johnson, 10; Kristie Collins, 8; and Traci Clark, 6. The final score in this game was 24-16, Rising Star.

When the girls return from their Christmas holidays, they will play their district opener. The ladies will host Blanket on Monday, Jan. 4, with the game starting at 6:30 p.m.

Nonnie's News

by Tianay Chambers

The Junior High Wildcats played Mullin Monday and came out with a 35-8 win. They hustled all the way through the game. Jeff Harris said, "We work hard and we came out on top once again."

Well the holidays are coming up and the Jr. Cats are looking forward to the time off. I doubt they will quit practicing though.

On January 4, the Jr. Cats will meet the Blanket Tigers in their own gym at 6:30.

Wid's Wide World of Wildcats

by Wid Keeling

Last Dec. 11, the Moran Bulldogs came to Rising Star to take on the Cats. The final score was 65-27 in the favor of the Cats. This was a real good game for the Cats to set up the offense and run the defense.

The next game for the Cats was not as good for the Cats. They played ACHS at Abilene. It was a hard fought game.

The Panthers was only able to score off the fast break. Unfortunately they had many fast breaks, to win the game with a final score of 72-54.

Moran—ACHS
Macky Elliott, 3-8
Chris DeLong, 6-3
Robert Self, 1-0
Michael Perales, 4-2
Gary Stone, 2-2
Josh Adams, 2-0
Jarod Horton, 7-13
Michael Sizmore, 10-1
Wid Keeling, 22-23
Terry Ware, 8-0

Davitorials

by David Fisher

This has been a great week. I hope all of you have a safe trip and have a great Christmas. Be sure to drive safely.

Dear Rutherford

Many of my friends and I have the same problem. It's getting to be Christmas time and none of us have any extra money to buy gifts for our relatives. What should we do?

Broke

You should do something to earn money, maybe you could pick pecans or babysit.

Rising Star Junior High '92-'93 Basketball Schedule

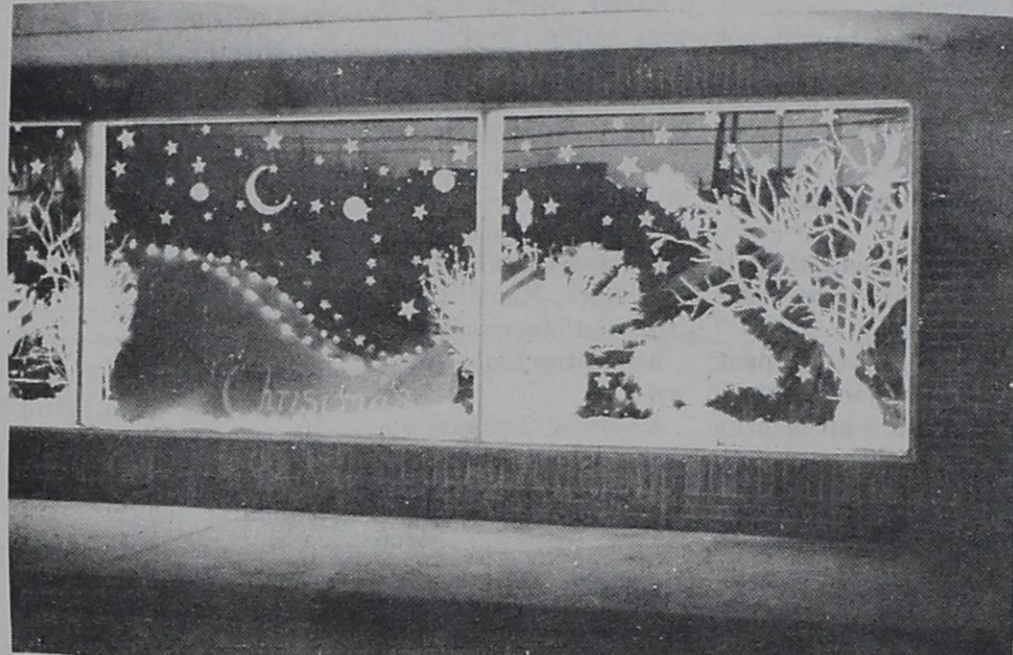
Dec. 14	Gustine	6:00, home
Jan. 4	Blanket	6:30, home
Jan. 11	Sidney	6:30, there
Jan. 16	Rising Star Tournament	
Jan. 18	May	6:30, home
Jan. 25	Blanket	6:30, there
Feb. 1	Sidney	6:30, home
Feb. 8	May	6:30, there
May Tournament: Date to be announced		
Girls Coach: Debbie Bacon		
Boys Coach: Danny Freeman		

Go, Cats!



Skates won't be on the Christmas lists for Jacob Campbell, left, and Stephen Hughes. With their skates already on hand, the boys are discovered how much fun skating can be as they try out the smooth surface of the pavilion in the park here.

Officials at Rising Star City Hall will post notices disclaiming any responsibility in case of accidents and provide waiver forms to any interested persons.



Pictured is part of the winter wonderland scene decorated by Star Pride members. Several businesses and offices in downtown Rising Star have their festive window decorations that add to the enjoyment of the holiday season.

Look for photos of children with Santa in next edition. Santa letters next week.



Window at Gerrie's Beauty Salon & Lingerie Boutique.



Higginbotham Center window decorated by Star Pride.

1992-93 RISING STAR WILDCAT BASKETBALL



SHOOT FOR THE STARS!



'92-'93 Basketball Schedule

Dec. 11	Moran	6:30, home
Dec. 15	Abilene Christian	5:00, there
Dec. 18	Zephyr	5:00, home
Dec. 29	Priddy	6:30, there
Jan. 5	Abilene Christian	5:00, home
Jan. 7, 8, 9	Rising Star Tourney	home
Jan. 12	Santo	5:00, home
Jan. 15	Santa Anna	5:00, home
Jan. 19	Gorman	5:00, TBA
Jan. 22	Mullin	5:00, there
Jan. 26	May	5:00, there
Jan. 29	Blanket	5:00, home
Feb. 2	Sidney	6:30, home
Feb. 5	May	5:00, home
Feb. 9	Blanket	5:00, there
Feb. 12	Sidney	5:00, there

White'sCafe Home Style Cooking 118 S. Main	Gerrie's Beauty Salon & Lingerie Dry Cleaning 101 N. Main 643-4673	Quik Stop 100 E. College at Main 643-1441	Palace Drug Store 100 N. Main 643-3231	Peoples State Bank Rising Star Branch, Member FDIC 206 W. College 643-2811
Green & Associates Insurance Agency 200 S. Main 643-7817	L&J Construction Lynn Hutton 725-7582 Jim Ratliff 643-6464	Rising Star TrueValue Hardware & Lumber 200 E. College 643-4131	Pioneer Farmers Cooperative Pioneer 725-6564	Cooper's Texaco 211 W. College 643-1805
#1 Video Mildred Childers, Owner 200 S. Main 643-1009	Buddy's Plumbing & Appliance Serv. 115 N. Main 643-7312	Winfrey Feed & Peanut Co. E. Hiway 36 643-6251	BFI Waste System 800-683-4234	Chamber/Commerce & Agriculture 515 W. College 643-1209
Leonard, Butler & Goldston Bookkeeping & Tax Serv. 643-7430	Frank Agnew Farm Bureau Agent 104 N. Main 643-1010, 629-1704	Rising Star Nursing Center 409 S. Miller 643-2681	Higginbotham Funeral Home 803 N. Main 643-4321	Dr. B.T. Carpenter 512 W. College 643-3141
Murphree Oil Co. Ted Murphree 308 W. Mills 643-2341	One Stop Automotive Dave Scoville 109 E. College 643-5324	The Rising Star 105 N. Main 643-4141	The Rainbow Cafe Buffet & Salad Bar N. Main 643-3000	Max's Quickway 200 W. College 643-1490

Dry, Warm Indoors May Promote Winter Sickness

While staying in a dry, warm building may seem a perfect protection against getting sick during winter months, a Texas Christian University doctor said the low humidity often present indoors may help spread wintertime ailments.

Overheated buildings lead to dried-out nasal passages, noted Dr. Burton Schwartz, TCU Health Center physician. "That makes viruses only too happy to break into our system," he said.

The warm indoors also often draw people to congregate inside, unlike summer months when people spend more hours outside. Research shows that crowded conditions contribute to the spread of colds and flu viruses in wintertime, he explained.

Schwartz suggested a good defense against becoming sick is to boost the body's moisture level by consuming more fluids and increasing the amount of humidity at home.

Fruit juices and water rank high on the list of drinks Schwartz recommended. Hot tea and soup also can be sipped to increase body fluid levels. He discouraged consump-

tion of diet colas and emphasized that alcoholic beverages are not considered fluids.

Turning down the thermostat at home and turning on a vaporizer or humidifier before going to bed adds healthy moisture to the body's respiratory tract, he noted. Schwartz commented that a lower utility bill is an added benefit of reducing the heat.

For a person who becomes sick with cold or flu, Schwartz encouraged resting as much as possible and flooding the body with fluids. He added that while no medication is available to cure a cold, aches and fever can be relieved by using Tylenol or generic acetaminophen.

Use The Classifieds

IT'S THE LAW!

SEATBELTS Buckle Up for Safety!

Celebrate The Season Coffee Style

America loves its coffee and the holiday season is an ideal time to indulge in coffee that goes beyond the ordinary cup with a little cream and sugar.

The smooth, rich flavors of hot drinks and delicious edibles flavored with coffee and coffee liqueur can be the highlight of a festive winter party or a simple cozy coffee break at home. From the makers of Kamora Coffee Liqueur comes a host of unique and delicious coffee flavored drink and food ideas.

To give a richer flavor to favorite holiday recipes and to liven the taste of pre-prepared foods, Kamora suggests:

*Flavor your best brownie recipe with a dash of Kamora.

*Mix Kamora with hot chocolate

*Drizzle a little Kamora over ice cream or whipped desert toppings (especially good on pumpkin pie).

*Add Kamora to your favorite chili or barbecue sauce recipe.

*Add a splash along with pineapple chunks to give zing to your favorite salsa.

Celebrate New Orleans chef and coffee gourmand

Jerry Amato has developed a delicious holiday drink recipe exclusively for Kamora. Amato's "Holiday Cafe Mothers" combines brandy, coffee, strega and kamora to make a hot flavorful drink.

Holiday Cafe Mothers

Makes 2 cups

2 ounces (1/4 cup) Kamora

Coffee Liqueur

1/2 ounce (1 tablespoon) Strega

1/2 ounce (1 tablespoon) brandy

8 ounces (1 Cup) strong hot coffee

2 ounces (1 cup) whipped cream

2 cinnamon sticks

coffee beans (optional)

Mix Kamora Coffee Liqueur, Strega, brandy and coffee. Divide between 2 cups. Top each with whipped cream and sprinkle with coffee beans, if desired. Add cinnamon sticks.

And for a delicious holiday dessert or after caroling snack, Kamora suggests mistletoe cookies.

Mistletoe Malt Cookies

8 ounces (2 sticks) unsalted butter, room temperature.

3 tablespoons confec-

tioners sugar

1 large egg yolk

2 tablespoons vanilla extract

1 cup (6 cups) chopped milk chocolate or milk chocolate chips

2 cups (9-1/2 ounces) unbleached all purpose flour

1/2 cup (2-1/2 ounces) malted milk power

Topping:

1/2 cup (4 ounces) Kamora coffee liqueur

2 tablespoons (1 ounce) whipped cream or half and half

1/2 teaspoon instant espresso power

1-1/4 (7-1/2) ounces chopped milk chocolate or milk chocolate chips

Cream butter and sugar

3 minutes. Blend in yolk, vanilla and chocolate. Blend in flour and malted milk power. Using a 2-inch wide scoop or a large tablespoon, portion cookies onto ungreased baking sheet. Bake 15 minutes in a preheated 350-degree F. oven, until firm. Cool slightly, about 3 minutes. Place on rack to cook completely. For topping, in a 2 quart saucepan, heat Kamora, cream and espresso powder just to a boil. Remove from heat and whisk in chocolate until smooth. Chill topping until thick. Mound one tablespoon of topping on each cookie.

New Year's Resolutions

Contrary to the way it usually happens, New Year's resolutions are not made to be broken.

"Resolutions can work any time of the year if you go slowly and realize you may not succeed on the first try," said Dr. Michael Cox, a psychologist at Baylor College of Medicine in Houston.

Successful New Year's resolutions begin as reasonable goals with reasonable expectations.

"Make the first step a small one, and take your time," Cox said. "Pick something at which you can be successful, and build on that success."

Cox encourages people to ask, "how can I take better care of myself next year?"

"It may sound self-centered, but working on personal growth makes you more able to take care of relationships," he said.

After choosing a resolution or two, write them down.

Cox says that it will not make the resolutions a reality, but it does indicate that you are serious.

Once New Year's Day arrives, it is time to review the list and to get support.

"Whatever change you want to make, tell other people," Cox said. "Give them your sense of direction, so they can help."

It may be a friend's

encouragement to stick with that new walking program or a co-worker's positive comments that make the difference.

"Take credit for positive changes and accomplishments," Cox said. "As you begin to see yourself

making changes, the attitude truly begins to change."

And, if you do break your resolution?

Try again. There is nothing magical about New Year's. Cox says it is seldom, if ever, too late to make a change.

National Beauty Pageant For Waitresses Seeks Contestants

Food and cocktail waitresses 18 years and older are now being sought to enter America's newest and most unique pageant, "The Prettiest Waitress in the USA."

The unique concept of this beauty pageant is that there is no swimsuit competition or judging. This isn't your typical "bikini type" of pageant for professional circuit girls or dancers, but rather a pageant created for the thousands of hard working waitresses across America.

The contestants simply wear a waitress uniform and evening wear. Beauty, personality and poise are the only judging criteria.

Finally, a "politically correct" beauty pageant for the nineties!

All state winners re-

ceive an all-expense paid trip to Palm Springs, California to compete for a \$10,000.00 cash first prize in the national finals.

The national finals will also be taped for a syndicated television special.

The total number of entrants is limited, therefore finalists will be selected on a first come basis.

Only currently employed food and cocktail waitresses may apply.

For entry form, rules and regulations, or general information, waitresses can send their name, address, day phone, place of employment and a recent photo to: Double-Jay Productions, 989 Regal Drive, Palm Springs, CA 92262 or call (619) 320-9100.

Cisco Press - Eastland Telegram - Ranger Times - Rising Star - Callahan County Star
Thursday, December 17, 1992

Garrett Photography Studio

BOBBY GARRETT
Photographer

Children Portraits • Weddings
Senior Portraits • Family
8 Different poses and backgrounds

Call For Appointment
Mon.-Fri after 5 p.m.
Sat. 10 a.m.-1 p.m.
Sun. after 1 p.m.

442-2285

1011 W. 11th St.
Cisco, TX

Threads 4 U

"Quality Ladies Fashions At Affordable Prices"

Sizes 2-24

12 DAYS OF CHRISTMAS SALE

25% Off

With Sale Items Changing Daily

719 Conrad Hilton Ave. • Cisco • 442-3128
Open Mon.-Sat. 10 a.m. - 6 p.m.

ONE DAY ONLY!

15% OFF

CATALOG SALE

Shop any of our current Catalogs

There is still time to shop our Catalog and pickup your order before Christmas!

Saturday, December 19
SAVE 15%
off any JCPenney Catalog order.

We can deliver to any JCPenney for pickup Thursday, December 24

To get your 15% off, just ask for the "Santa" discount, when you place your order.

SHOP TOLL-FREE ANYTIME
1-800-222-6161

JCPenney
The Choice Catalog

Discount good only on in-stock merchandise ordered on December 19, 1992.

9.5% A.P.R.

HOME REMODELING LOANS

No Application Fees & No Government Red Tape \$100 Total Closing Costs Upon Loan Approval, Up To \$25,000 Loan

T. J. CLARK CONSTRUCTION CO., INC.
(817) 734-2755
P.O. Box 176 - 111 E. Roberts St.
Gorman, TX 76454

General Building Contractors - All Work Guaranteed
Custom Homes - Remodeling - Commercial - Industrial - Farm
Financing - Free Estimates - Design, Engineering & Plan Services

THE CLASSIFIEDS SERVE EVERYONE

Gaines Automotive

Hi Tech Care For Hi Tech Cars

Driveability Diagnosis

Is your power steering stiff in cooler weather?
Let our professionals ease your problems.

Power Steering Repair & Flush Kit
\$89.95

314 W. Main Eastland 629-1008

Kinnaird, Rossander & Perry Agency, Inc.

104 N. Lamar
Eastland, TX 76448

817-629-3933

Serving All Your Insurance Needs

"Better to have & not need than to need & not have"

A-1 BUILDERS

Building & Remodeling Commercial • Residential

- ROOFING
- SIDING
- METAL BUILDINGS
- ELECTRICAL
- CONCRETE

Jerry Maston • Owner 629-8148

11th Court Of Appeals

The following proceedings were had in the Court of Appeals, Eleventh District of Texas:

- AFFIRMED**
11-91-227-CR
Benjamin Perea v. State of Texas. (Opinion by Judge Dickenson) Cherokee
11-92-034-CR
Jackie Barney Hooper v. State of Texas. (Per Curiam Opinion) Palo Pinto
11-92-035-CR
Jackie Barney Hooper v. State of Texas. (Per Curiam Opinion) Palo Pinto
11-92-176-CR
Jerry Bleeker v. State of Texas. (Per Curiam Opinion) Comanche
- MOTIONS SUBMITTED & GRANTED; APPEALS DISMISSED**
11-89-165-CV
Ninfa Gomez v. Duckwell-Alco Stores, Inc.
Joint motion to dismiss appeal. (Per Curiam Opinion) Dawson
11-92-139-CR
M. C. Castleberry v. State of Texas.
Appellant's motion to dismiss appeal. (Per Curiam Opinion) Smith
- MOTIONS SUBMITTED & GRANTED**
11-92-050-CR
George A. Day v. State of Texas. Appellant's motion to supplement the record. Brown
11-92-107-CR
Ray Charles Tennyson v. State of Texas. State's motion for extension of time to file brief. Smith
11-92-112-CR
Freddie Jenkins v. State of Texas.
Appellant's third motion for extension of time to file statement of facts. Houston
11-92-115-CR
Morgan L. Miller v. State of Texas.
Appellant's motion for permission to file late brief. Smith
11-92-120-CR
Sammy Lee Washington v. State of Texas.
Appellant's third motion for extension of time to file statement of facts. Anderson
11-92-124-CR
Ronnie L. Wilson v. State of Texas.
Appellant's motion for extension of time to file brief. Gregg
11-92-136-CR
Garv Don White v. State of Texas. Appellant's motion for permission to file late brief. Smith
11-92-137-CR
Carlton Wayne Harris v. State of Texas. State's motion for extension of time to file brief. Gregg
11-92-170-CR
David Michael McClure v. State of Texas.
Appellant's second motion for extension of time to file brief. Coleman
11-92-172-CR
Antonio DeLeon v. State of Texas.
Appellant's motion for extension of time to file brief. Scurry
11-92-179-CR
Ramon Paul Neeb v. State of Texas.
Appellant's third motion for extension of time to file brief. Eastland
11-92-219-CR
Ronald Ray Brooks v. State of Texas.
Appellant's motion for extension of time to file brief. Smith
- MOTIONS SUBMITTED & OVERRULED**
11-92-020-CR
John Lavert Johnson, Jr. v. State of Texas.
Appellant's motion for rehearing. Taylor
11-92-037-CV
City of Stephenville v. Jerry Walker.

CJC In Abilene Prepares For Spring Semester

Regular registration for Abilene will be held on

Wednesday, January 6, and Thursday, January 7, 1993, from 9:00 a.m. to 3:00 p.m. and from 6:00 to 8:00 each night.

All registration for classes in Abilene will be held at the Abilene Educational Center, 841 North Judge Ely Blvd.

Students may come by the office of admissions to pick up a registration permit during office hours either during the day or at night. This permit will allow the student to register at a pre-set time. Permits will be issued on a first come; first serve basis. You will not be allowed to register without a permit.

It should be noted that first-time entering freshmen are subject to a state required placement testing program (TASP) prior to registration. For full information concerning testing arrangements and who is subject to the state requirements, call the counselor's office at 915/673-4567 in Abilene.

Classes will begin January 13. Students may register as late as January 21.

Appellee's motion for rehearing. Appellant's motion for rehearing. Erath

CASES SUBMITTED
11-90-280-CR
Simon Ortiz v. State of Texas. Taylor
11-91-198-CR
Elisello Usevio Delao v. State of Texas. Scurry
11-92-033-CR
Carla Jan McAnally v. State of Texas. Palo Pinto
11-92-077-CR
Carl Roberts v. State of Texas. Taylor
11-92-163-CV
Darice McKay v. Richard Fenton and wife, Allene W. Williams, and Reed Ingalsbe. Taylor
11-92-178-CV
Charles L. Black Aycock et al v. F. H. Pannill et al. Erath
11-92-183-CV
David Gomez d/b/a Karla's v. Mary Ann Kestermeier. Howard
11-92-212-CV
Joe Hash and Elfreda Hash v. Metropolitan Property and Casualty Insurance Company. Shackelford

Use the Classifieds

Cisco Press - Eastland Telegram - Ranger Times - Rising Star - Callahan County Star
Thursday, December 17, 1992

For more information call 915/673-4567.

Offices will be closed from December 18 until January 4.

Read The Classifieds

State Capital



HIGHLIGHTS

By Lyndell Williams
TEXAS PRESS ASSOCIATION

AUSTIN - The buck stops in the oval office, but policy on the buck will begin with the tall silver-haired U.S. Senator from Texas, Lloyd Bentsen.

Capitol eyes turned to Little Rock last week to watch President-elect Bill Clinton name Bentsen as his U.S. Secretary of the Treasury. Speculation continued that Clinton would select another Texan, former San Antonio mayor Henry Cisneros, to head the Department of Housing and Urban Development.

Meanwhile, in Austin Lt. Gov. Bob Bullock told the incoming class of state lawmakers he planned to get a budget bill passed early in next month's regular legislative session.

No New Taxes

Bullock advised the freshmen legislators he plans to balance the state budget without new taxes: "There will be no tax bill for you to vote on," he said. "And no tax bill for you to run your campaign against."

"I'm not going to even give you a shot at my income tax," Bullock told the bi-partisan group.

Since tax bills originate in the House, Bullock's remarks were a warning to House members not to draft one, and not to get greedy with pork barrel budget items.

Who's Got Momentum?

For the moment, it's uncertain which political party enjoys an edge, or has momentum.

Although Clinton took the White House, he didn't carry Texas and

Republicans made gains in the Legislature and local offices.

At this uncertain and critical time, Bullock wants a session free of turnovers; no more fumbles like the recent special session which produced zilch.

First Exam: School Finance

If Texas Democrats can avoid handing over the issues, they can use the White House on down to leverage their programs, and get voters seeing things their way.

The slipperiest issue is school finance reform, and it awaits the Democratic leadership next month.

They have failed four times; now, with a state district judge threatening to close all schools if they fail again, the stakes are enormously high.

Thumbs Up, Thumbs Down

Voters will tilt the scales for Democrats or Republicans in a special election for Bentsen's Senate seat after he resigns next month.

A coup in this election will set the stage for political party dominance in Texas for the remainder of the decade and into the next century.

For the Republicans, it's a rare opportunity to hold both U.S. Senate slots.

For Democrats, it's a calculated risk, handing the GOP a shot at a vacated seat they could never win from Bentsen.

Although the connection between Bentsen's seat and school finance seems far drawn, both will surface at about the same time before the public eye, where perception is all important.

Bentsen's Successor

The scenario calls for Bentsen to resign after being sworn in as treasury secretary within the next few weeks.

Gov. Ann Richards then must call a special election (no primary) to elect someone to serve out the unexpired term; she also will name an interim senator to serve until the election is concluded.

The governor said she plans to appoint a Democrat who can make a strong campaign to retain the seat. Historically, these short-term elections attract numerous

candidates from both parties.

Ethics Panel Proposal
The Texas Ethics Commission last week unveiled a proposal that would limit the amount individuals may contribute to any one political candidate.

The commission is expected to vote on the proposal next month, and any recommendations would have to be approved by the Texas Legislature before they take effect.

The proposal would limit annual campaign contributions from individuals to \$5,000 for candidates for statewide office; \$3,000 for candidates for Texas Senate or appellate courts; \$1,000 for candidates who are running for district or county courts or justice of the peace.

In Texas, there is no cap on the amount individuals may contribute to political campaigns. The commission's staff noted that 28 states have adopted restrictions on contributions from individuals.

Bonner to Summit

Cathy Bonner, executive director of the Texas Department of Commerce, has been invited to a two-day summit organized to advise President-elect Bill Clinton on economic matters.

More than 100 business leaders, economists and government officials are expected to attend the Dec. 14-15 meeting in Little Rock.

Participants in the televised conference will discuss long-term and short-term remedies for the ailing U.S. economy.

Other Highlights

Driven by low interest rates, Texas banks showed a healthy third quarter profit, according to banking regulators: \$469 million in profits, up 67 percent from the '91 third quarter, fourth behind California, New York and Pennsylvania.

Land Commission Garry Mauro has mailed letters to about 600 Gulf Coast oil facilities notifying them his office will step up inspections of their oil spill contingency plans.

Texas and Louisiana officials last week discussed a bullet train link between Houston and New Orleans, part of a larger concept to link cities in the South by high-speed rail.

"ACTIVELY SINGLE" FOR SINGLE ADULTS

* Next Activity

"CATS"

Broadway National Tour

Sat. - Jan. 16th - Ft. Worth

Adm. \$15.00

Leave F.B.C at 11:45 a.m.

RSVP by Dec. 27th.

* Bible Study

Sunday, 9:45 am

Information Hotline: (817) 629-3355 or 2208
Sponsored by The Singles of First Baptist Church
405 S. Seaman, Eastland



.99 & Above

959 E. Main • Eastland
Shady Oaks Shopping Center

GRAND OPENING

Come in and check out all of our .99 items.

Household Cleaning Items • Toys
Jewelry • Perfumes • Hair Bows

A dollar buys more in our store!



The Kat's

MEOW

629-3433

Open Mon.-Fri.
9:00 a.m. - 5:30 p.m.

After hours appt. available if made in advance

Haircuts • Permanents • Solor •
Moderations • Color Graphics • Manicures
Nail Art • Shampoo-Sets • Sculptured Nails

Full Service, Smoke-Free, Matrix Salon

Retail
Matrix
Products

Kara Ford


Owner/Operator

Walk-ins Welcome

ANTIQUES

Antique Corner

A unique collection of dealers



MON-SAT
9:30-5:30
antiques
collectibles

201 W. Walker Breckenridge, TX 817-559-6653

The Multi-Dealer Mall

Antiques & Collectibles
Crafts & Quilts

Market & Tea Room

Ron Abernathy - Owner
Glenda D. Buck, Mgr.
334 Market Street
Baird, Texas 79501 (915) 854-1997

ANTIQUE'S

MARY'S ANTIQUES
1101 EARLY BLVD.
(FT. WORTH HIGHWAY)
BROWNWOOD, TEXAS 76801

Best to have an appt. Phone 646-9503
Home 646-8213

90

80

70

60

50

40

30

20

10


To advertise in the antique section call 629-1707 for more information.

The Denim Patch

609 So. Daugherty Street
Eastland, TX • 817-629-2506

Antiques - Crafts - Collectibles - Glassware
Originally designed Denim
Apparel and Accessories
Open 9 a.m. - 5:30 p.m.; Tues.-Sat.

Cool Buys in the Classifieds!



Only 9 Shopping Days Left Til Christmas

Why Buy? Rent It!


For your spring lawn care

We've got Lawn Aerators

Grandpaw's Tool Shed
1304 E. Main Eastland
629-3363

6.25%* for you, \$00.00 for the IRS.

No matter how the tax laws change, tax-free investments are one sure way to keep more of your hand-earned money. Let's talk about some investment ideas that will give you more tax-free income this year. Call or stop by today.



Jim M. Bruton
Investment Representative
107 W. Main St.
Eastland, TX 76448
(817) 629-3851

*Rate expressed as yield to maturity on individual tax-free bonds. Effective 12-10-92. Subject to availability. Market risk is a consideration on investments sold prior to maturity. May be subject to state and local taxes.

Edward D. Jones & Co.

Member New York Stock Exchange, Inc. and Securities Investor Protection Corporation

Classified Ads 643-4141

THANK YOU

I want to thank the Rising Star Fire Department for their quick response to the recent fire on the Overman, Conner and Rankin farms on State Highway 36 across from Lakewood.

Jay Rankin

THE RISING STAR 104 N. Main Street Box 127 817-643-4141 ©1992 Eastland County Newspapers, Inc. Publication no. (USPS 46650) Second class postage paid at Rising Star, Texas under Act of Congress March, 1870. Published every Thursday. Publishers, Mr. and Mrs. H.V. O'Brien.

Subscription rates per year: Eastland Co. and in a 30-mile radius of Rising Star, \$9; other Texas counties, \$13; out of Texas, \$19. No out of U.S. without APO.

Advertise in the classifieds.

L & J Const.

- * Add-Ons Remodeling * Acoustics Metal Bldgs. * Texture New Const. * Sheetrock Tape & Bed

CABINETS Kitchen Bathroom Laundry Linen Closet Workshop

FREE ESTIMATES

Lynn Hutton 725-7582 Cross Plains

Jim Ratliff 643-6464 Rising Star

WORK WANTED

I do carpentry, plumbing, yard work, fence building, painting, house repairs, auto detailing, hay hauling, woodcutting, May & Rising Star area. Call Rick, 259-2108. 51-1

WANTED

WANTED: A person with good credit to take on a low monthly payment on a beautiful console piano. No money down. See locally. Call toll free 1-800-635-7611. 51-53

TO GIVE AWAY

FREE CIRCUS DOG PUPPIES One of the dogs traveling with the circus which was here several weeks ago left the excitement of circus life to have her litter of puppies in Rising Star. The dog is very smart and friendly and her 5 puppies now need loving homes. Call Betty Duggan at 643-1209 for a great gift for Christmas--a circus puppy!

NOTICE

Rising Star Nursing Center has vacancies available for both male and female residents. Private or semi private rooms. Call 643-2691 or come by and visit at 411 S. Miller in Rising Star.

SERVICES

CARPET Cleaned, Restretched Repaired, Sold, Installed Scotch Guarding Available No charge for moving furn. Dub Meador Cross Plains 725-7720



Remember To Renew Your Subscription!!

Main Street Auto Repair

Open Monday - Friday 8-5 p.m.

CUSTOM MUFFLER & TAILPIPE WORK

Jackie Palmore - Mechanic 643-1701

Hwy. 183

Rising Star, TX



RETIREMENT PLANS LIFE - LIABILITY AUTO - HEALTH HOMEOWNERS' FARM

FRANK AGNEW AGENT

Rising Star Office 817-643-1010

Home 817-643-3189

P.O. BOX 470 EASTLAND, TEXAS 76448 Office 517-7629-1752

New Construction Remodeling Painting

Repairs Plumbing

Gary Duggan Construction Rising Star

Free Estimates Ph. 643-1209

Highway Work For 1993

Charles W. (Wes) Heald, District Engineer from Brownwood, gave opening remarks at the Texas Department of Transportation Public Hearing at the Eastland National Bank Tuesday.

Also present was Bryan Neaves, Area Engineer for Eastland, Comanche and Stephens Counties, Another official present was Bill Crumley, Director of Planning and Designing for TDOT.

County officials and members of the general public attended, with some of them asking questions when the meeting was opened for public comment.

Heald said that Federal regulations now required "that we go public on program planning."

He mentioned that on most public opinion surveys people stated that "We're not doing a good job keeping people informed."

That was one of the reasons this meeting was being held, he said to inform citizens of projects and to get ideas on future projects important to the public.

Heald stated it was never easy to decide where to allocate scarce funds, and there were strings attached to all the money the Department got from the State and Federal Government.

He said the primary responsibilities of the Texas DOT were:

- 1. To preserve the system we now have. 2. To meet the safety needs of the public. 3. To meet the mobility needs of the area.

Bryan Neaves then

outlined plans for 1993 projects discussed at the first DOT Hearing last summer. He listed these as:

1. A hot mix overlay on the Ranger by-pass, slated to begin in April, 1993. The cost: \$942,000.

2. FM 101 in downtown Ranger, curbs and gutters, sidewalks, interchanges. Will let project in August, 1993. Cost: \$150,000.

3. FM 570 south of Eastland, 2.8 miles widened, improved. This is the first section of a road which will eventually be improved all the way to Stephenville. Deeds for right-of-ways are being checked, the contract should be let in May or June. The cost: \$1.1 million. The bridge at Chock-O-Block will also be widened.

4. Repair of surfacing and base on five Interchanges on I-20. Contracts let in April, 1993. The cost approximately: \$240,000.

5. Placing raised pavement markets from county line to county line on I-20. Scheduled for August, 1993. The cost: \$322,000.

6. Work on FM 2563, Flatwood to Kokomo. Regrade, extend structures, clean pipes. About 8 miles, with a cost of \$800,000.

7. SH 6, Seaman St. in Eastland, from RR bridge downtown, to Burkett, turn, end on SH 6 at Daugherty St. Microsurface, slurry seal. Let contract in April, 1993. The cost of this one will be included with a project in another part of the area.

Neaves also told of projects in Comanche and Stephens Counties, and projects scheduled in Eastland County in 1994.

He also mentioned some unprogrammed projects they were looking at-one mile in Stephens County to a prison, and pavements giving problems from Carbon to Gorman.

Wes Heald then opened the meeting up for comments, and there were quite a few. There was considerable discussion on what could be done about the road leading to EBBA Iron. Not much encouragement was offered by the officials on that one.

Heald did remark that they were going to do a good job on downtown Ranger. Doris Smith, who had worked for this improvement, said: "Ranger has been neglected for so long. We're going to try to clean it up."

She said that more I-20 signs were needed, especially on 101 from Breckenridge. The TDOT officials thanked citizens for attending this meeting, and said there would be another one in a few months.

Industrial Spur Requested

When the public was invited to speak at the Department of Transportation meeting Tuesday several people responded. One of them was Earl Bradley, one of the owners of EBBA Iron, a large foundry and industrial complex at the end of CR 442. This 1 1/2 miles of road is also known as the Old Power Plant Road.

"How can we get that road leading to EBBA Iron made into an Industrial Spur?" Bradley asked the Highway Officials.

He went on to say that the road was currently a County Road. It was once a private road, but was given to the Industrial Foundation. This group turned it over to the County when EBBA Iron moved there around 1972.

Bradley said that 400-500 vehicles went over that road daily to EBBA Iron and other plants on the road. This included around 20-18 wheelers hauling rock and iron.

"The road is dangerous and full of chug holes," he said. "The County has no facilities or equipment for fixing the road."

Bradley reported that EBBA Iron worked on the road some last week, aided by Comm. Ken Lyerla and County employees.

"But all they could do was patch," he said. "That road (that joins FM 570) should be a State Highway."

Wes Heald, District Engineer for the Texas Department of Transportation replied: "You can't have a spur on a road like that." He commented that people did not live on Road 442.

Bradley replied that a lot of people worked there, and asked what the mechanics were to get it made into part of the FM system.

Heald said that Texas FM money is tight. There would be no more FM roads considered in this area for three years.

He said Bradley could go to the County Commissioners and convince the CR 442 was a high priority project. Then they could recommend this road to the Texas Department of Transportation.

"Three years from now?" Bradley asked. "That doesn't make sense. This thing is dangerous. There are three plants on this road."

Heald indicated that there might be more pressure from other parts of the country. "People can't get out at all on some of those dirt roads when it rains," he remarked.

The discussions turned to other parts of the area, then came back to EBBA Iron. There was mention of people who travel over this road, including International buyers for products.

Bradley remarked that he had seen extensive work on the south side of I-20, down a feeder road where nobody lives.

"Something is wrong in the system," he commented. "We are taking care of problems on the existing roads," Heald stated. He said there were strict categories he had to abide by.

"There is something wrong with your priorities," Bradley remarked. Heald told Bradley that he might "talk to your Legislator" and try to get something done.

When asked what it would cost to repair the road to EBBA Iron, one of the officials estimated it would take \$300,000.

The Rising Star's Subscription Rates

WILL INCREASE January 1, 1993

This is the first rate increase since Feb. 1989. Postal rates for mailing newspapers increased 20% in Feb. 1991.

RATES: CURRENT--NEW

In Eastland County & within 30 miles of Rising Star \$9.00--10.00 Other Texas Counties \$13.00--15.00 Out of State \$19.00--19.00

No matter what month your subscription expires YOU MAY RENEW NOW before the rates increase.

Send renewal to: The Rising Star P.O. Box 129 Rising Star TX 76471

REAL ESTATE

95.43 A., 20 cult., 3-1 frame home, 4 mi. of Carbon. Good barn, native grasses, \$70,000, \$14,000 down, 10% int. 47 A. m/l, app. 1/2 coastal, app. 50,000 lbs. peanut quota, 3 wells, buried mainline, wheel roll system. 10 HP lake pump \$45,000.

486 A. app. 1450 improved pecans, timber, bermuda, Wilmon love grasses, rock house, 2-1 1/2 mobile home, new 20x80 steel barn, metal coral, several wells, 3 tanks, pavement, excellent deer, turkey hunting, Trisco area, \$595 a. Might trade. Crisco, farm, pecan equip, available. 21 A., m/l, most all coastal & timber, big nice pond, some big oaks, 7 mi. R.S., good road. \$19,000 cash or 1/4 down, 9% int. 180 A. (m/l) Rising Star, 1/2 mi. U.S. 183, lots good grasses, well fenced, cross fenced, good barn, coral, well, 2 ponds, real good deer/turkey hunting, rolling with scenic views, app. 1/2 timber. \$500 a.

172 A., Gorman, irrig. peanut farm: 145,000 lb. quota, plus 10,000 carryover, 135 A. cult., good coastal, 6 wells, pumps, buried mainline, reservoir, good 3-1 rock veneer home, pavement. This place has a lot going for it. \$700 a.

Nice 3-1 home, Rising Star, app. 1500' with attached office/shop, real big pecan/shaded lot, 2 storage bldgs., carports, fine garden; aluminum windows, ceiling fans, nice kitchen, pretty carpet, vinyl. You won't go wrong here, \$20,000.

Have buyers for timbered, coastal, peanut, retirement & pasture lands. 35 Yrs. In Business

COGBURN REALTY 893-6666 893-5898 893-2642 DE LEON

JONES REAL ESTATE

2 BR, 1 bath, L.R., lots of closets, carpeted, carport, fruit trees. Call today, priced to sell. 2 BR, 1 bath, carpeted, garage, storage bldgs., large fenced back yard, pecan trees. Highway frontage. Call to see! 28.4 ACRES, brush, west of Rising Star.

STELLA WARE 817-643-3591 ROLAN JONES 817-725-7640 Cross Plains

FOR RENT

HOUSE for rent, corner Miller & Mayfield, brick, 3 BR, 2 bath, carport. Call 643-4261 or 643-3241 after 5 p.m. 34-52

PUBLIC HOUSING Authority of Rising Star has apartments for rent for senior citizens or persons with a handicap or disability. Equal housing opportunity. 817/643-3812 or 643-6791. 52

LEASE WANTED

NEED GRASS LEASE, Rising Star area, 160 acres minimum. 643-4004 after 6 p.m. 42-52

LIVESTOCK

FOR SALE: Registered Red Brangus bulls, performance tested. Scott Childress. (817) 725-6866. RS53

FOR SALE

WE HAVE men's, ladies & children's Wranglers, Brush-popper shirts, jackets, drover coats, boots, hats, Rocky Mountain jeans, Silver Lake jeans & shirts, L.A. Gear & Reebok, etc. FREE gift wrap. Johnson's Dry Goods, Cross Plains 51

WE will be OPEN Sun. afternoon Dec. 20, noon to 6 pm. FREE gift wrap. Johnson's Dry Goods, Cross Plains 51

MOBILE HOMES

FOR SALE: 1981 2-bedroom mobile home with 27x7 covered deck. Located in May, \$5,500. 817/259-2415 or 259-3808. 51

HELP WANTED

Rising Star ISD is taking applications for an attendance clerk/elementary secretary until Dec. 17, 1992. Applications can be picked up at the Elementary Principal's office. 50-51

SALES TRAINEE Tour guide position. Must be outgoing and like people. Income \$15K-\$27,000+ for personal, private interview call 817-672-5232. RS1

Newly remodeled 61-bed nursing home in Rising Star seeks leadership of R.N. Director of Nurses. Competitive salary, good benefits and sign-on bonus available. Excellent working conditions. Contact Russell Gray, administrator, 817/643-6700. 24-52

Need R.N. relief for Sats. & Suns., hours 6-2 or 2-10. Salary competitive. Contact Russell Gray, 817/643-6700, Rising Star Nursing Center. 52

Needed: LVNs, competitive salary. Contact Russell Gray, Rising Star Nursing Center, 817/643-6700 7-52

Rubber Stamps at The Rising Star 105 N. Main

SERVICES

JOHN DEERE TRACTORS NEW AND USED PEANUT EQUIPMENT LILLISTON - KMC PLANTERS - DISKS DRILLS - CHISELS ROLLING CULTIVATORS SELL OR TRADE Clark Tractor & Supply, Inc. DeLeon 817/893-2061 Comanche 915/356-2593 Where Your Business Is Appreciated

WILLIE VANDIVERE Dirt, Caliche Hauling Build Driveways, Lease Roads, Etc. 9-5 Call 643-2023 After 5, 643-6451

OLIVER WEST PUMP SALES & SERVICE 817/643-5683 Complete Systems Sold & Serviced 2 1/2 mi. S. of Rising Star

Mobil Oil Products All Other Major Oil Brands Conoco Oil Products We Deliver Bulk Fuel Cross Plains Petroleum (E.S.E. Inc.) P.O. Box 219 6th at Ave. F Cross Plains, Tx. 76443 David and Lenell Sliger Managers Phone (817) 725-6582 We Accept FINA, VISA, MasterCard & Discover. RS52

DeLeon IRRIGATION SUPPLY, INC. Route 1 Box 22-A, De Leon Phone 893-2123 Zimmatic Pivots • Ag Rain Hard Hose Guns • Cornell Pumps and all other types of irrigation equipment Complete Service And Installation K552

Paul Williams Roofing Co. • FREE Estimates • All Work Guaranteed • Hot Tar & Gravel Composition • Shingles • T-Locks • Wood Shingles • 25 Years Experience In Eastland Area Paul Williams Carbon, Texas 817-639-2330 If No Answer call 817-629-1020 RS52

Main Street Auto Repair Open Monday - Friday 8-5 p.m. CUSTOM MUFFLER & TAILPIPE WORK Jackie Palmore - Mechanic 643-1701 Hwy. 183 Rising Star, TX

FARM BUREAU TEXAS RETIREMENT PLANS LIFE - LIABILITY AUTO - HEALTH HOMEOWNERS' FARM FRANK AGNEW AGENT P.O. BOX 470 EASTLAND, TEXAS 76448 Rising Star Office 817-643-1010 Home 817-643-3189 Office 517-7629-1752 RS52

New Construction Remodeling Painting Repairs Plumbing Gary Duggan Construction Rising Star Free Estimates Ph. 643-1209

TEXSCAN Statewide Classified Advertising Network Advertise in 2997 Texas newspapers for \$250. Reach more than 3 MILLION Texans. Call this newspaper for details.

SUPPLEMENTAL INCOME: Local person needed to screen host families and supervise high school foreign exchange students. For more information call Eleanor or Kathy 1-800-472-4005.

INTERESTED IN EARNING \$500 TO \$1,000 part-time in your county selling lubricants? Contact the Support Group, Primrose Oil, Box 29665, Dallas, TX 75229, 214-241-1100.

DEFENSIVE DRIVING OPPORTUNITY. Own an agency offering classes for traffic ticket dismissal and automobile insurance discounts. Low start up costs. State approved course. Complete details 1-800-437-0123.

FOREIGN YOUTH AMBASSADORS, Inc. seeks motivated individuals, part-time positions as representatives. Should have recruiting, counseling, and training skills. Community awareness important! Excellent commissions. Call 1-800-942-2522.

PIZZA INN SEEKING qualified franchisees. "Carry-out/delivery & full-service restaurants. Easy to open & operate. 110 Franchises sold in the last 12 months. For information call 1-800-880-9955.

ARE YOU EARNING 12% on your C.D.'s? We secure your investment with real estate lien notes. We pay you 12% return. Call 214-650-9279 for information.

HERSHEY'S DISTRIBUTORSHIP NATIONAL manufacturing and distributing company seeks qualified local individual to service established route. No selling - restock displays and earn excellent income part time, full time. Training, equipments, established accounts. Minimum investment \$4k to \$12k, call now! Harold 1-800-940-2299.

KING JAMES BIBLE difficult? Others uninspiring? The 21st Century King James Version preserves original basileid, powerful language. Updated; not revised. Accurate, understandable, readable. Modern format, special features. Call 1-800-225-5521. Great gift idea!

35 ACRES SOUTH of Rocksprings, easy access. Join large Ranch. More deer and turkey than you've ever seen. \$1,000 down - \$140/month (7.99%-30%). TX-VET or owner terms. 210-257-5564.

PIONEER STEEL BUILDINGS. 24x30x10, \$3,350; 30x40x10, \$4,350; 30x60x12, \$6,529; 40x75x12, \$8,895; 50x100x14, \$13,295. All size buildings fabricated. Mini-storages/boat storage, quotes available. 1-800-637-5414.

BECOME A PARALEGAL. Join America's fastest growing profession. Lawyer instructed program available. P.C.D.I. Atlanta, Georgia. Free Catalog 1-800-362-7070 Dept.

ARE YOU COLLECTING payments on real estate you've sold? We'll give you cash now for these payments! Call National Fidelity today! 1-800-364-1072.

AIRCRAFT MECHANIC TRAINING: Become FAA certified A & P mechanic. Day/night classes. Financial aid available. Job placement assistance. Rio Aviation 1-800-776-7423 or 713-644-7777.

THE HOTTEST CASINO action between Las Vegas and Atlantic City! Casino Magic, Bay St. Louis, Mississippi! Groups welcome, free admission, RV parking. 1-800-5-MAGIC-5.

WOLFF TANNING BEDS new commercial - home units from \$199. Lamps, lotions, accessories. Monthly payments low as \$18. Call today free new color catalog 1-800-228-6292.

HAROLD IVES TRUCKING hiring drivers. Earn up to 29¢ per mile. Assigned trucks with Motorola Communication, rider program, students welcome, insurance, bonuses, call 1-800-842-0863.

COVENANT TRANSPORT NOW hiring OTR drivers. The best team pay in the industry; 27¢ - 29¢ per mile plus mileage and longevity bonus * motel/layover pay * loading/unloading pay * paid insurance. Requirements: * age 23 with 1yr. verifiable OTR * class A CDL with Haz/mat * students welcome. 1-800-441-4394 or 915-852-3357.

ADOPTION: CALL TALK to us. Feel comfortable, assured in choosing your baby's parents. We pledge unending love, security. Allowed expenses paid. Confidential. Bob/Brenda 1-800-547-7186. It's illegal to be paid for anything beyond legal medical expenses.

ADOPTION: ABUNDANCE OF love, compassion and security waiting for your newborn. Let us be there for you and your baby. Call Diane/Harold 1-800-484-7178 (Code 4682). It's illegal to be paid for anything beyond legal medical expenses.

ADOPTION: TWO TEACHERS with lots of love want to raise your child with a strong sense of family and a life of unlimited promise. Call 1-800-382-2133. It's illegal to be paid for anything beyond legal medical expenses.

Guest Slot

By HVO

WONDERED WHY the "Ice on Bridge" highway signs are staying up this year? It's a new TxDOT policy; they used to put 'em up and take 'em down depending on the icing conditions. No more. Now it's done on schedule: Eastland County -- from Nov. 9 to March 23 -- 14 days before the first and 14 after the last anticipated freezes. Saving and permits employees to do other jobs... Louisiana has a permanent "freeze" sign on every bridge and culvert... Wonder if Texas will ever change the "Slow Traffic Keep Right" signs to "Left Lane for Passing Only" signs used by others?

LAST GO'ROUND on county towns: we learn that FrankL is in Stephens Cnty; It was Julia Worthy who 'fessed up to the neat piece called Footprints in the Sand; AND to cap this fun & games off, we all got up to 85 "communities" in our recent give and take, but guess what? We're all way off. We went to the authority County History Book and the inside cover map and listing shows 113 named places in the county. Granted these are schools, cemeteries, and/or communities; and we suspect, in some cases, just "corners" where a named family happened to live. There's two listed (Allen Mills and Ashburn) that doesn't show what they are.

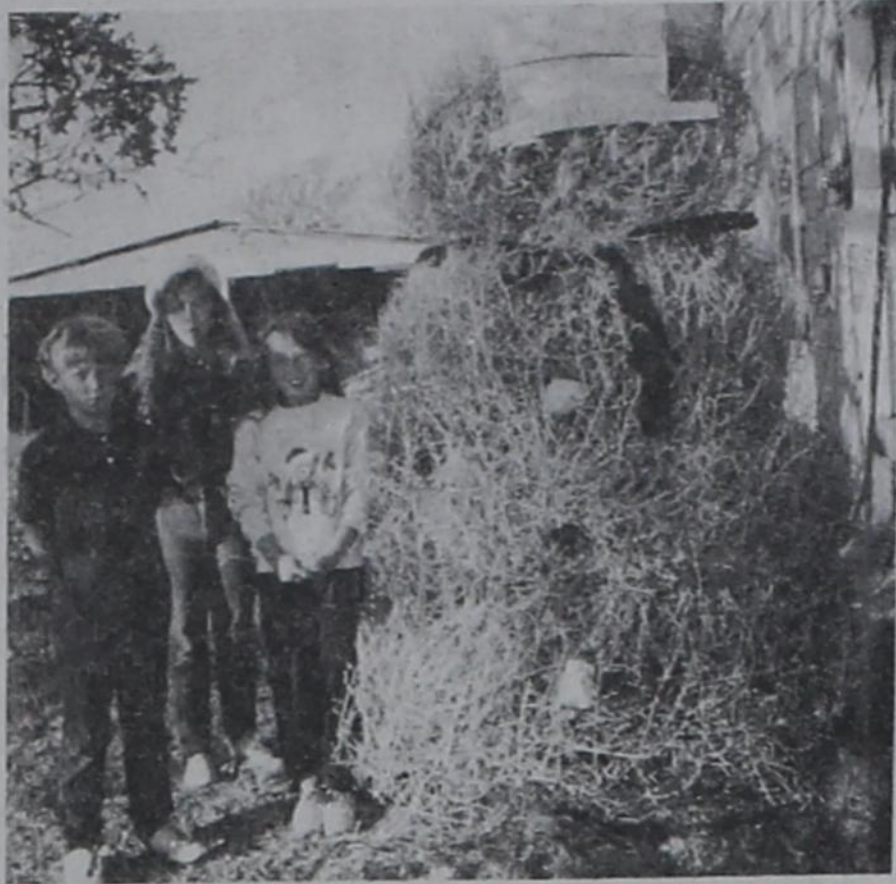
COBBLERS' KIDS go barefoot dept.: Because a friend asked the other day about a service we offer, it dawned on us that we don't utilize the space we have for sale enough to describe and explain the many services that we as your local newspaper have to offer. For example, friend didn't know that we offer a COMPLETE mailing service. We are equipped and regularly mail for customers (either their pre-printed material or material we print for them) to all or any portion of our subscribers in all the towns we serve AND through the use of special mailing permits and computerized lists, can also mail to each postal patron in all the towns and rural areas we serve... It is a viable local business that generates a lot of business for customers, and while the service is not inexpensive, it's certainly cheaper than 29c stamps for bulk mailings... Needless to say, we'd be glad to discuss details. We cover a giant swath on either side of an Int. 20 line from Mingus-Strawn-Gordon to Clyde, through Palo Pinto, Eastland and Callahan Counties with a lot of lop over into the adjoining counties.

SINCE WE'RE getting down to the shopping wire, here's a batch of tips from A&M: make a budget and stick with it; make a list of sizes, etc.; keep your receipts together in case of returns; consider gift certificates or cash; shop at unusual places (grocery stores, specialty shops, craft shops, auto supply, hardware, office supply, book store, beauty shops and supply, florists, etc., etc., etc.); allow time for mail orders; be wary of giving credit card numbers over the phone; keep a record of things you order from specialty catalogs; think about giving others a part of yourself -- a special dinner for an isolated elderly family member at non-holiday time when they are most alone, your children two hours a week of uninterrupted time together and your spouse an evening a month for the two of you to do something "sorta" special together (even if it's just a movie or sports event; in picking food item gifts, think fruit and fiber, not fat and sugar (popcorn, cereal mixes, fresh fruit baskets and gift certificates for meals at a restaurant can help reduce stress on the holiday waistline and the packaging can convey the caring, holiday message; avoid using credit to buy gifts; use newspaper, shopping bags and other recyclables to wrap gifts; and maybe make a New Year's Resolution to begin now to plan for next year's gifts so you can take advantage of bargains. HAPPY, HAPPY HOLIDAYS TO ALL! LET'S KEEP IT SAFE AND SERENE!

Read The Classifieds

REMEMBER TO RENEW YOUR SUBSCRIPTION!!

Check expiration date on top of mailing label.



JUST IN CASE there's no snow here for Christmas, these youngsters did the next best thing: they built a snowman out of a product much in evidence around here - tumbleweeds. Pictured are (L-R) John, Kelly and Jenny McCoy, children of Mr. and Mrs. John McCoy of Olden.

READ THE CLASSIFIEDS

EASTLAND COUNTY ASCS PEANUT BOX SCORE

Eastland County ASCS Peanut Production Summary as of December 09 with harvest 97% Complete
 TOTAL ACRES PLANTED 26,188.8
 TOTAL POUNDS SOLD 48,412,922
 POUNDS SOLD PER ACRE 1,849

Ann Williams REAL ESTATE

610 Conrad Hilton Ave., Cisco
 442-1880

Business & Home Phone

CISCO HOMES

\$4,000. WILL BUY THIS 2BR frame home or \$1,000. down and owner finance balance.
 OTHER 2 AND 3BR homes under \$9,600., some with owner fin.
 NEW CARPET, new roof, freshly painted outside, 3BR home, separate DR, only \$13,500.
 INCOME OPPORTUNITY, 3BR, 2B. mobile home on 10 lots; many extra mobile home hookups, \$17,000.
 SPREAD OUT In this spacious 2 or 3BR, 2 bath home, large closets, lots of storage, near Elem school, \$17,500.
 FHA ASSUMABLE LOAN, large 2BR home, carport, storage bldg.
 NUMEROUS LARGE Pecan Trees Surround this spacious 2 BR home, CH/CA, garage, carport, storage bldg.
 ENCLOSED FRONT PORCH, sep. DR, 3BR, CH/CA, garage, shed and storage bldg., some owner financing, \$19,500.
 SURROUNDED BY Large Oak Trees, 3BR, possibly 4BR home, formal DR, garage, large carport, \$23,000.
 SPACIOUS INSIDE AND OUT, 3BR, 2 bath home, partially remodeled, corner property, workshop, ENERGY EFFICIENT, 2BR brick on 5 lots, CH/CA, fruit, pecan & oak trees, city water plus water well.
 ATTRACTIVE, spacious 2BR, sep DR, CH, garage, storage bldg. above storm cellar, 2 fenced lots, nice yard.
 NEAR ELM. SCHOOL, lg. 3BR, 2 B. home, 2 liv. areas, din. room, 2 lots, carport, shop, \$27,000.
 GREAT KITCHEN - lots of cabinets, eating bar, dining area, 4BR, 2 baths, CH/CA, 2 carports, storage bldg.
 PERSONALITY Plus! 3BR, 1 1/2 bath brick home, CH/CA, fireplace, large closets, storage bldg.
 FAMILY PLEASER - 3 BR, 2 bath brick, 2 family rooms, CH/CA, attached 2 car garage, 3 lots privacy fenced.
 LOVELY 4BR, 2 bath, CH/CA, fireplace in den, double carport, extra storage, large shop, on approx. 1 acre.
 CHARMING CLASSIC Colonial Home, 3BR, 2 baths, 2 living areas, dining room, large rooms, huge attic, carport, insulated shop, beautiful oak trees, corner property.
 VACANT LOTS - Call for details.
LAKE CISCO
 1 BR CABIN on South Shore, carport, only \$6,500.
 NORTH SHORE, 2BR lake home, 2 lots, owner fin., \$19,500.
 SOUTH SIDE near public ramps, 5 A-Frame cabins, bait house, pavillion, income opportunity for the handyman, \$19,500.
 4 LOTS and A-Frame cabin on North Shore, 2 decks, boat dock.
 NORTH SHORE, 3BR, 1 1/2 bath multi-level home, decks on 3 levels, large parking area, owner financing, \$26,000.
 SPACIOUS 4 BR, 2 bath home, great view of lake from large den, fireplace, 2 CH/CA units, lighted covered boat dock.
COMMERCIAL PROPERTY
 SMALL BLDG., large lot, on main traffic drive, \$7,500.
 I-20 ACCESS ROAD frontage - 3 large buildings on 8 1/2 lots, only \$48,500.
SMALL AND LARGE ACREAGE
 SCENIC VIEW, approx. 20 acres, wooded, \$15,500.
 PEACEFUL NICE 3BR, 1 1/2 bath brick, central heat, fireplace, garage, water well, approx. 4 acres, \$39,500.
 LARGE 3BR, 2 bath home, sep LR, den, DR, lots of cabinets, fireplace, CH/CA, 2 car garage with shop, city water, tank, approx. 12 acres.
 93.41 ACRES, nice oak trees, some cultivation, 2 tanks, owner financing, just outside city limits, \$58,000.
 APPROX. 131 acres, cleared and wooded acreage, large barn, spacious 2BR home and 3BR, 2 bath double wide mobile home surrounded by oak trees, fruit and pecan orchard, nice inground heated swimming pool, 4 water wells.

Carbon News

Attendance was down a little at the Baptist church Sunday. Bro. Keith Hensons message was, "don't think negative think Positive and we will all do better. Meagan and Reagan Henson were sick with colds, we missed them and Melinda. We hope they are doing better. Addie Walker of Burkett, was a visitor.

There will be a Christmas program Sunday evening, December 20th at 6 p.m. Everyone bring a gift suitable for a man or woman to put under the tree. Refreshments will be served. everyone is welcome to come and enjoy the fellowship and the Christmas Spirit.

Faye Smith and JoAnn and Janet Girtz attended the funeral service of Fay's brother-in-law Tommy Ball in Cisco, Saturday morning. Our sympathy goes to the family.

J.L. and Mary McDaniel spent the week-end of Dec. 5th with their daughter Jeanette and Durwood Webb, Kris and Danny of Crowley. They were happy to report that Kris was recovering nicely from a broken leg.

Marvin and Gladys Hale were shopping in

Brownwood last Wednesday.

The open house at the Community Center was a huge success. There was a large crowd, and lots of delicious food, and singing Christmas Carols. Santa Claus came and was he ever a jolly good Santa. Thanks Santa for making everyone laugh so much, and thanks to little Nathan Lourie for asking Santa some questions he wasn't prepared for. Thanks to the ones who worked so hard for all of us to have a wonderful get-to-gather at this Christmas time.

There will be a musical Jan. 15th at the Center. So mark your calendar now and be prepared to come for more good fun and fellowship.

Betty Joyner of Austin and Kenneth McDaniel of Athens spent from Wednesday until Sunday visiting their parents J.L. and Mary McDaniel and J.C. On Friday Mary and Betty visited in Santa Ann with her brother Charlie Fleming and family and

her sister Margie Fleming.

Bill and Addie Walker spent the weekend with her parents Collin and Hazel Campbell.

Euell and Jenise Allison attended the Christmas at Tate Springs Baptist Church in Arlington Sunday evening. Alvie Allison is music director of the church. They spent the night with their son Alvie and family.

The Stockholders and Employees of Carbon Agriculture Center had their Christmas Party at K-Bobs Saturday evening. It was enjoyed by all.

Juanita Langlitz of Eastland and Connie Arnold and Derek of Granbury visited Billie Stacy Saturday afternoon.

Doris Jordan of Odessa visited Elaine and Don Bennett last week. She also visited with her sister Charlene Marenger of Carbon.

cash in with a classified ad...

Cisco Press - Eastland Telegram - Ranger Times - Rising Star
 Thursday, December 17, 1992

Jokes corner

Here are a few jokes to share with your friends:

When is a clock on the stairs dangerous?
 When it runs down and strikes one.

How are dogs like trees?
 They both have barks.

How do you keep a fool in suspense?
 I'll tell you next week.

What did the pony say when it coughed?
 "Excuse me, I'm a little hoarse."

Should you eat chicken with your fingers?
 No, fingers should be eaten separately.

What did the pencil say to the eraser?
 Take me to your ruler.

Why don't chickens have trunks?
 Because they don't go swimming.

What would happen if you swallowed your knife and fork?
 You would have to eat with your hands.

Mother: "Why did you put this frog in your sister's bed?"
 Little Boy: "Because I couldn't find a mouse."

What can you serve but not eat?
 A tennis ball.

CHILD ABUSE
 24 HOUR HOTLINE
 1-800-252-5400

Radio Shack

COUNTDOWN TO CHRISTMAS

SALE

\$999

SAVE \$100

25MHz 386SX home PC with 60MB hard drive, software and VGA color monitor

- Tandy 2500 RSX-HD • 3 1/2" 1.44MB floppy drive • Deluxe keyboard
- DeskMate® and DeskMate Home Organizer® are pre-installed and feature 24 easy-to-use, home-oriented applications
- MS-DOS® 5.0 • Built-in digital audio • Super VGA graphics capability • 1MB RAM
- 3 internal expansion slots • 5 1/4" device bay • Serial, parallel and mouse ports built in

Reg. Separate Items 1099.99 #25-#251-4545

Am386/TM Advanced Micro Devices, Inc.

699.95

MEMOREX Video Information System

- A fun, informative learning experience for the whole family
- Includes Compton's MultiMedia Encyclopedia • Connect to any TV

Coming in time for Christmas gift giving—check your nearby Radio Shack for local availability.

#16-376

49.95

Concertmate® 100-sound mini keyboard

- Create holiday music • 5 drum pads
- 12 accompaniments • 19 auto-rhythms

Reg. \$9.95 #42-4015

66.88

DUOFONE® CUT 33%

Feature-packed cordless phone

- Super-CCT circuit for superior sound clarity
- Stores three priority numbers in memory

Reg. \$9.95 #43-571

34.99

Fractrix® crossword puzzle solver

- Instant access to over 250,000 names, places, words, much more
- With battery Reg. \$9.95 #43-634

4.99

REALISTIC Colorful pocket AM Flavoradics®

- Great stocking stuffer • Three colors
- Includes earphone, carry strap Reg. \$ 9.95

Blackberry #12-201, Blueberry #12-202, Strawberry #12-203

TOYS & MORE TOYS AT OUR ELECTRONIC TOYLAND!

149

SPECIAL PURCHASE! Assorted styles

Micro sonic flashers

- Sound/flashing lights
- 1" long #60-1102

7.95

LCD space challenge

- Pilot spaceship to fuel points #60-2457

9.95

Robbie® robot banker

- The fun way to save #60-2261

6.99

Action dinosaur

- Prehistoric fun for kids
- Wire-control #60-2284

9.99

Turbo choppers

- Power launcher sends 'em zooming #60-2503

9.95

LCD sea battle

- Fight off enemy fighters
- Sound effects #60-2245

14.99

SPECIAL PURCHASE! Musical lights

- Plays 21 Christmas tunes #61-2729

13.95

RC police car

- With siren and light
- 27 MHz #60-4104

NOBODY COMPARES! Enjoy last, friendly service plus total support for years to come—Radio Shack is the smart place to shop!

Radio Shack SINCE 1921
 AMERICA'S TECHNOLOGY STORE®
 Eastland Office Supply/
 Radio Shack Dealer
 105 W. Main • Eastland • 629-8942

Most Major Credit Cards Welcome
 Sale ends 12/24/92

... From Page One

City Council

Chief Ted Murphree, with a letter from Assistant Chief Billy Owen. Comments included recent training, condition of hydrants in town, participation in Fire Prevention Week in October and general business of firefighters.

Park Report included information on Tree Grant and status of reimbursements. Dr. Bible is still working on the Park Board membership.

Water Tower Grant Report included comment that Wallace, Winkler, and Rice have agreed to come before the 20th of this month to discuss water tower plans, etc. The Bid Opening is scheduled for the 20th of November, 1992, in the offices of City Hall.

The 1993 Grant Application was discussed and plans were begun for the presentation that will be made in Abilene on November 24, 1992, at the WCTCOG in application for the funding outlined in the application. It was decided that Mayor Bible and Charles Barnes would be the representatives for the presentation.

FEMA Report was presented by Lewey Wyatt including comments on training, correspondence courses and other information gathered by Wyatt.

Community Development was discussed including the comment that the owner of Rising Star Auction Co. had offered his building for fundraising events for the city.

Significant correspondence included a ballot from TML for the Board of Trustee election for the Group Benefits Risk Pool. Barnes moved and Cook seconded to authorize the City Secretary to cast the ballot for Gary Butts, Deputy City Manager, City of Brownwood, for the Trustee election. Motion carried 5-0.

Council Comments included discussion on the procedures to condemn and seize properties due to delinquent taxes and the status of the ballpark land.

Mayor comments included mention of WCTCOG invitation and pleasure to make presentation for the 1993 Grant application.

Administrator comments included information on Railroad Commis-

sion visit scheduled for next week and meetings in Eastland on communications (9-1-1).

Meeting adjourned at 11:20 p.m.

CITY COUNCIL SPECIAL CALLED MEETING

A called meeting of the City Council of Rising Star was held in the offices of City Hall on Thursday, November 12, 1992, at 7:00 p.m.

All councilpersons were present except Edra Butler.

Jed Walker, of Wallace, Winkler and Rice, was recognized to comment on the approved specifications for the new water tower. The new system should simplify operation somewhat and improve overall water pressure. The new tower will be located next to the existing ground storage tank at the park and the fence around the facility will be extended. Mr. Walker explained the alarm systems and the method of switching that will be used.

Bids were opened on November 20, 1992 at the City Hall of Rising Star.

City Administrator presented copies of steps that must be taken to seize or condemn properties within the city. The council held these copies for review.

Information on exemptions from sales tax on gas obtained from the State Comptroller was presented to the council.

Commercial rates were discussed as applicable to high volume, seasonal accounts. Rates were figured at .50 intervals for high consumption for consideration.

Charles Barnes moved and Lorrye Moore seconded to take into consideration large volume users in the community who use above 200 mcf of gas in a one-month billing period and provide a reduction of 16 2/3% off the regular rate billed for gas. Motion carried 4-0.

Meeting was adjourned at 9:15 p.m.

SPECIAL CALLED MEETING OF CITY COUNCIL

A called meeting of the City Council of Rising Star was held in the offices of City Hall on Friday, November 20, 1992, at 2:00 p.m.

Councilpersons present were Edra Butler, James Cook, Lorrye Moore and Charles Barnes; absent were Mayor Jerrell Bible and Randy Goldston. Guests present were Valerie Cox, Rick Herring, Anna Barnes and Jed Walker.

Jed Walker, of Wallace, Winkler and Rice, Inc. was recognized to open sealed bids for the Water Tower Project. Bids were read as follows:

Phoenix Fabricators,

4-H News

Janet Thomas

All 4-H Leaders are asked to attend a called meeting on Wednesday, December 30 at 9:00 a.m. in the Extension Service Office.

The 4-H Teen Leaders will be assembling gift bags "Baby's First Gift" which will be distributed by the Texas Department of Public Health in 1993.

This is a community service project for Eastland County.

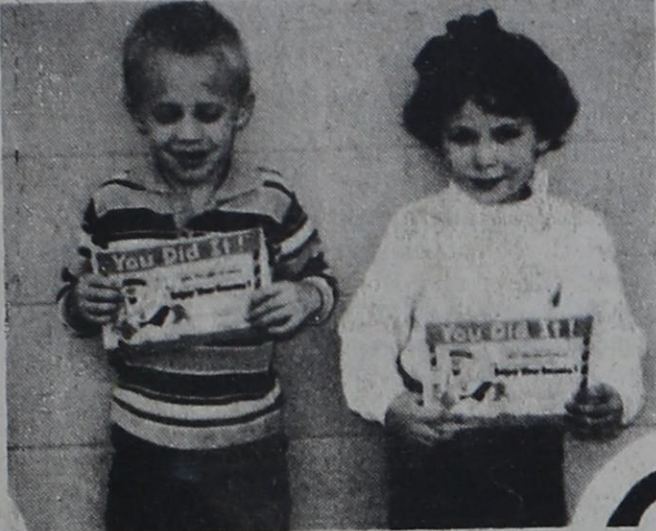
Birth Announcement

JAMES DAVID, JR. James and Karry Holman of Odessa are happy to announce the birth of a son, James David Holman Jr., on November 25, 1992.

He weighed 4 lbs. 6 oz. and measured 17 1/2 inches long.

Grandmother of the newborn is Linda Holman of Rising Star.

Achievement Awards Given to Students



Outstanding achievement in P.E. K-1: Ben Campbell, Lindsey Herring



Outstanding achievement in P.E. 2-3: Tyler Chambers, Sarah Scott



Outstanding achievement in P.E. 4-5: Micah Butler, Katy Scott



Ben and Teency Cook Have 60th Anniversary

The family of Ben and Teency (Elizabeth McGhee) Cook invite you to an open house in honor of the couple's sixtieth wedding anniversary on Saturday, December 26,

1992, from 2:00 to 4:00 at the new home of Ben Cook Jr., one-half mile north of Ben and Teency's lifetime home west of May on Brown County Road No. 425. The couple request no gifts please.

\$199,930.00; Pittsburgh Tank & Tower, \$194,476.00; Caldwell Tanks, Inc., \$172,500.00; Brown Steel Contractors \$193,200.00; and Tank Builders, Inc. \$189,000.00.

All bidders acknowledged the receipt of Addendum #1, and enclosed proof of bond. Mr. Walker stated that he would take the bids back to Waco and review all of them for a recommendation some time next week.

Charles Barnes asked for representative present from Tank Builders, Inc., if the bid procedure met with their approval. Mr. Herring indicated that his company was happy with it.

Council entered executive session at 3:10 p.m. and re-entered regular

session at 4:15 p.m. Meeting adjourned at 4:15 p.m.



The Albert Brinsons Celebrated 50th Year

Mr. and Mrs. Albert Brinson of Odessa celebrated their 50th wedding anniversary with a dinner party at the Barn Door, hosted by their daughter, Kay Robin.

Burnell Townsend married her husband December 15, 1942 in Ft. Walton, Florida. Albert was stationed there in

U.S. Coast Guard. Albert retired 10 years ago from Getty Oil Company. They have lived in Odessa for 32 years. They were both born and raised in Rising Star. Burnell was the daughter of Jack and Pearl Townsend. Albert was the son of Henry and Annie Brinson.

We want to personally wish you a

Merry Christmas

stop in anytime
Dec. 23rd and Dec. 24th
for complimentary
Coffee and Cookies

The Quick Stop Grocery

WE ACCEPT FOOD STAMPS

★ STAR GROCERY ★

112 E. College/Hwy. 36 East
643-2221 For Deliveries On Fridays
Open Mon. - Sat. 8 a.m.-6 p.m.; Sun. 9 a.m.-2 p.m.
SALE GOOD DEC. 17-19

Gandy's Whipping Cream 1/2 pint 79¢	Gandy's Sour Cream pint 59¢	Gandy's Egg Nog quart \$1.29
Gandy's Buttermilk quart 79¢	Almond Bark Chocolate or White \$1.99	Pet Rite Deep Dish Pie Shells \$1.49
Del Monte Fruit Cocktail 99¢	Cool Whip 8 oz. \$1.19	Del Monte Sliced Peaches 99¢
Sugary Sam Yams 99¢	Shurfine Green Beans 2/\$1 16 oz.	Shurfine Whole Corn 16 oz. 2/\$1
Asst. Roasting Pans \$1.50	Reynolds Roasting Bags \$1.19	- COUPON - Gandy's 1/2 Gal. Ice Cream \$1.49 w/Coupon Reg. \$1.99

LOOK FOR IN-STORE SALE ITEMS!

Subscription Rates will increase January 1, 1993

This is the first rate increase since Feb. 1989. Postal rates for mailing newspapers increased 20% in Feb. 1991.

CURRENT RATES:

In Eastland County & within 30 miles of Rising Star **\$9.00**
Other Texas Counties **\$13.00**
Out of State **\$19.00**

Send renewal to:

The Rising Star
P.O. Box 129
Rising Star TX 76471

Genie's Beauty Salon & Lingerie Boutique
101 N. Main 643-4673
Open House
Dec. 15-19, 22, 23, 24
Refreshments
Free Gift Wrapping When You Buy
Fashions by Julia Devers & Felicia Bibby