

Progress Is—
Making
Good Things Happen

THE RISING STAR

Where Three
Good Texas Counties
Get Together

Rising Star, Texas

©1990 Eastland County Newspapers Co.

Established in 1890

Thursday, October 4, 1990

25 cents

Number 40

35th MAY HOMECOMING

October 5 and 6, 1990

Schedule of Events

Friday, October 5

7:30 p.m.-----Football Game-----Tiger Stadium

MAY TIGERS VS. GUSTINE

Half-Time -- Presentation of Homecoming Queen

Saturday, October 6

Early a.m.--Coffee, Registration--Football Field

11:00 a.m.-1 p.m. - Senior Luncheon-Cafeteria

1:00 p.m.-Assembly, Business Meeting-Auditorium

2:30 p.m. -- Parade -- Line up behind football field

5:00-7:00 p.m. -Home Demonstration Club Supper

Wildcats Fall to Greyhounds

Rising Star hosted Throckmorton last Friday night for the first time in several years when it was not a playoff game. The teams appeared to be evenly matched and the first quarter was a defensive stand off. Throckmorton had 35 total yards and Rising Star had 30. One of the key defensive plays of the quarter occurred when Donny and Donnie teamed up for a quarterback sack.

In the second quarter the Cats were unable to put points

on the scoreboard despite several good pass plays from Evans to Bailey. Alcorn had several good pick ups, but the Cats were unable to effectively move the ball. Throckmorton only threw the ball three times the 2nd quarter, but each one was good for the touchdown. The score at halftime was visitors 21 and home 0.

The 3rd qu. was turn over prone. Wildcat Wilson, caused a fumble and Bailey

Continued on back page

RISING STAR HIGH SCHOOL 34th HOMECOMING

Saturday, October 6, 1990

SCHEDULE OF EVENTS

8:00 a.m. ----- Coffee, Register, Visit ----- Gymnasium

9:00 a.m. ----- Assembly, Business Meeting----- Gymnasium

11:30-1:00 p.m.----- PTO Luncheon----- School Cafeteria

2:00 p.m. ----- Homecoming Parade----- Downtown

3:00 p.m. ----- Pep Rally----- Gymnasium

Class meetings following pep rally to be arranged by classes

7:30 p.m. ----- Football Game----- Wildcat Stadium

RISING STAR WILDCATS vs. ABILENE CHRISTIAN PANTHIERS

Half-Time Activities: Crowning of Homecoming King and Queen,

King and Queen - Class of 1940,

Wildcat Sweetheart,

Band Sweetheart and Beau

Rising Star ISD Board Meeting

The Rising Star Independent School District held its regular board meeting September 10, 1990 at 8 p.m. in the board room.

Members present were Larry Wilson, president; Tony Long, vice-president; Larry Chambers, secretary; Gary Wilson, Frances Agnew, Dale Wolf and Joyce Baker.

School personnel present

were Dr. Donald E. Bryan, Robby Stuteville, Randy Mohundro and Penni Mohundro.

Minutes of the regular meeting August 13 and two special meetings on August 20 were accepted as read.

Robby Stuteville reported 120 students enrolled in high school. He presented the present problems of the gym's plumbing and discussed a

possible solution for repairs. He discussed the current class schedules and the advantages of the TI-IN Network.

Randy Mohundro reported 101 students enrolled in elementary and four at KIDS, Inc. in town. Randy supported a program to form an advisory council involving teachers, parents and the community with the elementary school. He reported he was looking into the possibility of starting a Head Start Program for four year olds.

The superintendent discussed graduation requirements. Discussed the resolution passed by the City Council to encourage better cooperation among City Council, Chamber of Commerce and Rising Star ISD. Joyce Baker was appointed to the board, along with one teacher to be named in the future.

Under regular business motions were carried to pay September, 1990 bills and to give reasonable assurance of employment to Kathy Bush.

Motion carried to adopt and rescind TASB policy statements according to the instruction sheet for TASB Localized Update 36.

Approved administrations recommendation of Robby Stuteville and Randy Mohundro as teacher supervisors and Susan Harelson, H.R. Jeffries and Don Bryan as other appraisers with Don Bryan as Chapter I supervisor according to the Calendar of Appraisals.

The meeting adjourned at 10:50 p.m.

Mayor Cancels Agenda

In a surprise move at the City Council Meeting on Tuesday, October 2 Mayor Henry Burk summarily cancelled agenda items published last week in The Rising Star. Burk alluded to the possibility that there was collusion and violation of the Open Meetings Act on the part of Councilmen. Even though all stated there was no meeting to prepare the proposed agenda, he still refused to permit discussion of the items.

At the end of the meeting a motion carried to include the deleted agenda items in the meeting on Tuesday October 9. This meeting will begin at 6 p.m. rather than at 7.

Building Moved Here



The first attempt to move the newly purchased Chamber of Commerce & Agriculture office building from Cisco to Rising Star was rained out. The second attempt last Friday was successful and volunteers are shown unloading the building on a lot owned by Jack Agnew on Highway 36.

On behalf of the Chamber, president Gene Lyon expressed appreciation for all the help and for the use of equipment and the space. Manpower on the first try included Bill Gregg, Norman Chancellor, Willie Vandivere and Lyon. Helping Friday were Willie Vandivere, Norman Chancellor, Al Jones, Martin Robinette, Garry Duggan and Lyon. Equipment used belonged to Vandivere, Chancellor, Eastland County Precinct 3 and D&T Building Supplies.

Thanks also went to M.G. and Jean Morton and to Paul Maxwell and Lyon for mowing the lot on the two occasions.

A good bit of refurbishing is necessary before the building can be used.

Ham 'n' Bean/Stew Supper Is October 12

The Rising Star Chamber of Commerce & Agriculture will have a ham and bean/stew supper prior to the Wildcat-Buffalo football game Friday, October 12.

The supper will be served at the school cafeteria between 5 and 7 p.m. and will serve as a kick-off for the Chamber's membership drive.

Ambulance Fund Donations

The current report of donations and memorials made to the Rising Star Ambulance Fund are as follows:

Memorials have been received for Alyne Siekman, Teresa Fisher and Marc Kizer. Donations have been made by Al and Jo Jones, Colonial Oaks Nursing Home of Cross Plains, Tourtellotte E. Sims, Dorcus Sunday School Class of First Baptist Church, the

Burks family, Horace Witt Jr., Pauline Witt, Marie Alford of May, Saturday Club, C.C. Westerman, Robert and Lela Shults, Elizabeth Burks and American Legion Post 433. Ambulance inspections have been given for several years by Bill Medley.

Should we have accidentally omitted anyone, please call 643-4572.

Dr. Carpenter's Office will be CLOSED for vacation all the first week of October.

Office closes at noon

Friday, Sept. 28.

Opens 9 a.m. Mon., Oct. 8

RS40

PTO Luncheon Is on Saturday

In order to help defer the cost of the food being served at our annual Parent-Teacher Organization (PTO) Luncheon for homecoming, parents of junior high and high school students are asked to donate \$1.00.

The homecoming luncheon will be served at the school cafeteria on October 6 and the PTO extends an invitation to all parents and children to join us on this special day.

All donations may be left at the high school principal's office. Your continued support of this worthwhile project is greatly appreciated.

Lunch to Be Delivered to Disabled

The homecoming luncheon will be delivered to local citizens who are disabled and cannot attend the luncheon at the elementary cafeteria.

For delivery to your home, please call 643-2431 between 8 a.m. and 11 a.m. on October 6. The menu will be roast beef, mashed potatoes and gravy, corn, green beans, rolls and cobbler.

Thank you for your support.

Boosters Meet

The Booster Club met Monday, October 1, with eight present. Members expressed thanks to Betty Fisher and Ruth Green for their time and interest in judging the elementary Blue-Gold day.

The Booster Club sell windbreakers with Wildcat insignia during homecoming celebration this weekend. They will offer lined or unlined windbreakers, along with the "Just do it" T-shirts. The picture buttons and the new signs should be finished this week.

It was voted to pay one-third of the cost of the ice machine for the Athletic Department.

The next meeting will be October 8. See you all at the homecoming activities. Wear your blue and gold.

Weather

Rainfall was 1.27 inches at 7 a.m. Wednesday and it was still raining.



Ada Rhone Mobley, a 1910 graduate of Rising Star High School, plans to attend homecoming activities here Saturday.

See
Story and
Photos
on
Back Page

'70 Class Reunion

Members of the graduating class of 1970 will meet at the home of Danny Hughes following the pep rally on Saturday, October 6.

Location is 1 1/2 miles west of traffic light on Highway 36. Spouses and children are welcome to attend. Call Danny at 643-5021 for information.

Community Calendar

EACH THURSDAY
SENIOR CITIZENS
CENTER is open.

EACH SATURDAY
BINGO, American Legion
Hall, S. Main

EACH MONDAY
RESERVE A MEAL:
Meals on Wheels are provided
Mondays at Rising Star Senior
Citizens Center, 643-5141.
Make reservations by 9:45
a.m., as the meals come from
Cisco.

Wildcat Booster Club
meets in the high school library.

EACH TUESDAY
The Rising Star City Council
meets

1ST THURSDAY
RURAL FIRE DEPT.,
Board of Directors, 5:15 p.m.
at Twin Drilling Co.
FIREFIGHTERS meeting,
training, 6:30
DEPT. HUMAN SERVICES
assistance regarding
food stamps, aid to families
with dependent children and
Medicare, City Hall, 8:30-
4:30

1ST SATURDAY
SIPE SPRINGS MUSICAL,
community center, all
musicians welcome

2ND MONDAY
RSISD SCHOOL
BOARD, 116 N. Main
2ND TUESDAY
CHAMBER OF COMMERCE,
First State Bank, 5:30

2ND WEDNESDAY
LICENSE TAG renewals,
County Precinct offices, Hwy.
36 W

School Calendar

by Donny Alcorn

Thurs., Oct. 4
JrHi, open
Fri., Oct. 5
End 1st Six Weeks
Sat., Oct. 6
Homecoming game, 7:30,
Wildcats vs ACHS
Mon., Oct. 8
Booster Club meeting
Thurs., Oct. 11
JrHi football, vs Cross
Plains, there, 6:30
Fri., Oct. 12
HS football, vs Cross
Plains, here, 7:30

Peanut Harvest Begins



Although peanut harvest began last week, the idle equipment pictured above is indicative of an unsettled market and the possibility of rain affecting farmers.

Jerry Winfrey, owner of Winfrey Feed & Peanut Co., thinks that this year's crop seems to be better than average in dryland fields and about average for irrigated penuts; some late planted crops are not yet mature enough to tell how they will yield. Disease is worse than normal due to the erratic weather the area had this year, Winfrey said.

Approximate national average prices early in the week were \$588 a ton for Spanish and \$635 for runners. Buyers were offering about 119.4% bonus, bringing the figures to about \$702 for Spanish and \$760 for florunners. The fluctuating market is expected to stabilize soon, but the weather turned out to be definitely by wet Wednesday morning.

Meeting Set to Discuss the Care of Show Pigs

There will be a meeting at 7:30 p.m. Tuesday, October 16, in the High School Vocational Ag Room to discuss the purchasing, feeding and general care of show pigs. Mr. Smith is holding this meeting to help prepare those

who are planning to show pigs this coming year.

All 4-H and FFA parents who have students interested in showing pigs either in Eastland or Houston are encouraged to attend.

Texans will elect a U.S. Senator, a Governor, and many other state, county and local officials on November 6.

Many Texans have not registered to vote. If you are unregistered, you must register by October 7 to be able to vote in this important election.

Absentee voting for this General Election will be from October 17 until November 2.

CLASSIFIEDS

REAL ESTATE

FOR SALE

300 ACRES Sipe Springs area. Partially timbered; good deer, turkey; sandy loam soil; good fences. \$400 per acre. 161 ACRES Lots of bottom land, 60 tillable, well fenced, 1/2 mile Sabanna, good deer hunting, lots big oak, pecans, \$550 acre. Agent owned. 58 ACRES Several big trees, 2 tanks, some coastal, most new fences, lots road front. \$550 acre, E-Z terms.

Golf carts, End of year sale, 4 wheels, 3 wheels, plenty to choose from. 915 893-2662, Clyde T104

FAMOUS COPYRIGHTED Stop-Smoking for Good Personal Letter sent direct to you or to a loved one. It's working for thousands. \$5. (total). Write Smoking, Box 29, Eastland, TX 76448. RS52

VALUABLE, HISTORIC Tapestry Paintings in this area? All over Southwest. Book tells story and what to look for. \$17.00 (total). Write Paintings, Box 29, Eastland, TX 76448. RS52

PEANUT COMBINE for sale. Long Super 393. Cheap at \$1400.00! Priced a new combine lately? See at Lynn Hagan's in Carbon. Call 442-2126 or 639-2550. RS40

MEN'S WIDE suspenders, assorted colors in solids & stripes, \$7.50. Johnson's Dry Goods, Cross Plains. 40

LADIES LONG denim coats, 2 pockets, shoulder pads, hurricane wash, \$64.99. Johnson's Dry Goods, Cross Plains. 40

FOR SALE Heavy duty commercial Electrolux vacuum. Baby bed, white. 643-4332. 40

PIANO FOR SALE Wanted: Responsible party to take on small monthly payments on piano. See locally. Call manager at 800-635-7611. 40-42

HOUSE FOR SALE, GARAGE SALE. Large shade trees on 1/2 acre lot, well fenced yard, 2 BR, 2 bath, lg. LR, den, utility, garage. \$29,000. 5-family garage sale: water-bed, sewing machine, Venti-Hood, range, stroller, pictures, stool, desk, desk chair, mattress & springs, lights, new bathroom cabinet, clothing, Hettie Hastings home, 2nd house N or hosp., Oct. 4 thru Sat. noon. 40

Triticale seed, cleaned, treated, & bagged. \$12.00 per 100 lb. Dan Childress 725-6279. RS41

NEEDED-Cooks & dietary help. Apply to Russell Gray, Rising Star Nursing Center. 34-50 Nurses Aides, 2-10 shift; relief nurses aides, any shift. Contact Russell Gray, RSNC, 643-2691. RS39

RN-DON 61 Bed Nursing facility in Rising Star is accepting applications for an RN Director of Nursing. Contact Russell Gray at 817-643-6700. RS52

HELP WANTED

NEEDED-Cooks & dietary help. Apply to Russell Gray, Rising Star Nursing Center. 34-50 Nurses Aides, 2-10 shift; relief nurses aides, any shift. Contact Russell Gray, RSNC, 643-2691. RS39

RN-DON 61 Bed Nursing facility in Rising Star is accepting applications for an RN Director of Nursing. Contact Russell Gray at 817-643-6700. RS52

SPECIAL NOTICES

\$2500 REWARD for information leading to the arrest of person or persons who took air compressor, battery charger, etc. from Sledge property on or about Sept. 18. Call 817/893-5303, early a.m. or late p.m. 39-40

The Middle Eastern Enigma

by Wesley Killion
The problems so evident now in the Middle East are not by any means new ones; The Gulf region has long been a hotbed of unstable, coalition politics and religious strife, creating a tradition of basic differences that have always and still threaten to destroy the foundation of

Middle Eastern society. In order to understand the problems so evident today that plague not only the Gulf region itself, but indeed the world community as a whole, one must first strive to comprehend the confusing myriad of perplexities that have created the fundamental yet dangerous premise upon which modern Middle Eastern society is based.

origins in the centuries, it was further entrenched by the Ottoman Turks, who encouraged religion-based laws for social order during their four-hundred year reign over the Middle-East region. Later, Muslim Fundamentalism expanded further the grip of the Koran on the laws of regional nation-states.

THE RISING STAR 817-643-4141
1990 Eastland County Newspapers, Inc. Publication No. (USPS 466500)
2nd class postage paid at Rising Star, TX under Act of Congress, March, 1870. Published every Thursday. Publishers, Mr. & Mrs. H.V. O'Brien.
Subscription rates per year: Eastland County & 30-mi. radius of Rising Star, \$9; other Texas counties, \$13; out of Texas, \$19. No out of U.S. without APO.
POSTMASTER: Send address changes to The Rising Star, Box 127, Rising Star, TX 76471-0127.

SERVICES

Jim Ratliff WELDING
Rising Star 643-6464

ONE-DAY COLOR PRINTS
(Weekdays except after holidays)
Take your color film in today, pick up your prints tomorrow!
PALACE DRUG STORE
643-3231 Rising Star

WILLIE VANDIVERE
Dirt, Caliche Hauling
Build Lease Roads, Driveways, etc.
9 - 5 Call 643-2023
After 5 Call 643-6451

OLIVER WEST, PUMP SALES & SERVICE
817-643-4683
Rising Star, Texas
Complete systems sold & serviced
2 1/2 miles south of town

CAMPBELL'S CABINET SHOP & CONSTRUCTION
817-842-5875

For All Your Construction Needs: All Types Steel Bldgs. Contract Welding Dozer Work Contract or By Hour Larry Wilson 817-643-3275

JOHN DEERE TRACTORS NEW AND USED PEANUT EQUIPMENT LILLISTON - KMC
PLANTERS-DISKS-DRILLS-ROLLING-CULTIVATORS-CHISELS-SELL OR TRADE
CLARK TRACTOR & SUPPLY, INC.
DELEON (817) 893-2061
COMANCHE (915) 356-3922
WHERE YOUR BUSINESS IS APPRECIATED RS52

The religious strife began around 632 A.D., when the Prophet Mohammed died and his followers splintered into two groups over a disagreement concerning who would succeed him as spiritual and religious leader. These two groups became known as Sunnis and Shiites, two Muslim sects that have been going at one another in various fashions ever since. It is a commonly held misconception that theological differences alone are the major reason for conflict in the Arab world; this is only partially true. One fundamental problem that tends to break the Middle-East along religious lines is the loyalty people in the region have to their specific affiliation and the singular, clannish nature this loyalty produces. This results in social and political affiliation with others who profess the same creed. So, all other things being equal, a particular political problem will invariably divide a group along religious lines, a scenario that has been played out recently in Lebanon, where we saw Sunni and Shiite Muslims, Christian Druse and Phalangists, and Jews all fighting one another...a group of religions who's basic tenets are, and for the most part who's reality has been an amazing tolerance for one another, all shedding each others blood across religious lines for purely social and political reasons. Another consideration that must be examined is how very ingrained in Arab laws the substance of the Koran, and therefore Muslim culture, is. Although this fact finds it's

In addition, to it's effects on laws and social order, Islam has a profound effect on the Individual Arab and his outlook on life. Islam is a religion that demands of it's followers total subservience to God, as an entity and as an idea. One example of this: In 1949, a committee from the Azhar Mosque in Egypt, in order to safeguard the welfare of the people, felt it necessary to issue an official determination that injections and medicine applied to wounds did not constitute a breaking of the ritual fast. In addition, in many Islamic countries, fasting and other Koranic decrees are ordained by law.

In spite of the obvious differences between Islam and Christianity, the doctrines of Mohammed are to a large degree, co-existent with the Teachings of Jesus Christ, in both content and spirit. Muslims regard Christianity to be almost identical to Islam, a "protected religion," as it were, considering the prophet Jesus to have taught the same message as Mohammed and therefore his followers to be "People of the Book," people to be respected and protected. The down-side to this is that Muslims consider the Christians to have corrupted their scriptures by turning their prophet (Jesus) into a God. Islam does not believe in the Crucifixion, the Incarnation nor the Trinity. Nevertheless, there are many points of agreement between Islam and Christianity.

After World War One, with the breakup of the Ottoman empire, the middle eastern region began to split up into religious and secular factions, most of them fervently na-

tionalistic and wishing independence of state and freedom from foreign domination. Due to a major philosophical differences that existed between the religious authorities and the many secular, western oriented governments who unlike the devout Muslim fundamentalists, wanted profitable relations with the west and modernization of their own countries, many rudimentary complications arose that have lingered and even intensified. Many of these problems have led us to the crisis that now exists.

Historically, the major obstacles to unity and peace in the Gulf region are: (1) The Arab world has no geological boundaries to give it Physical unity, only nationalistic boundaries that have largely been drawn by occupying European powers. This, among other things, has hindered the formation of any clear, national consciousness...the Arabs find it difficult to identify with their Western decreed boundaries, laws and economic structure. The result of this is there is no clear, common sense of history from which to base a national consensus on.

(2) The Arab world, due to it's long held and avid loyalty to only faith and family, has not yet devised a mechanism for national unity, no framework on which to build a large political structure. Authoritarian rule, sectarian disunity and secular distrust have prevented this from happening.

(3) Another reason for Arab disunity is the inordinate number of groups competing for leadership; the differences between their political beliefs and their social and economic disparity. One of the most important things that tend to create problems between Arabs is economic differences. This is one of the factors that have contributed to the Largely Western analysis that Islamic culture has gravitated closer to communism than to democratic ideals. This is completely false, Muslims have always had a violent aversion to communism, basically due to their lack of religious beliefs...Islam's economic jealousies are largely due to the considerable gulf they see between rich Arabs and poor Arabs...a typically human reaction.

(4) Misguided and sometimes tragic foreign meddling in regional affairs. To a large degree, the historical record of foreign dealings with middle eastern countries is a litany of shame and racism. It extends from the time when the Crusaders, in an orgy of violence and death, stormed across the region in a misguided quest for converts to Christianity. In later years,

European colonization and the idea of "The noble savage" ruined further any good feelings that still existed for the "civilized world."

As far as America is concerned, military intervention, the excesses of the large oil companies, and the seemingly inherent inability of the United States to stay the course and treat all countries in the area with equality under a stable, understandable foreign policy has doomed us to what could be, without a basic shift in ideas, an eternity of enmity and misunderstanding.

(5) The bizarre conspiratorial mentality that seems an almost quintessential trait of Middle Eastern civilization which tends to make them proscribe to the conspiracy theory in their relations to each other and the outside world. To Westerners who have witnessed this peculiarity first hand, it seems somewhat bizarre and at times, comical. It is in fact, tragic. Not only does this kind of perspective create intramural problems that can and have led to wars, it also stifles the region in a blanket of fear and suspicion that suggests all foreigners are spies and all compatriots traitors, it also creates the kind of twisted logic that led a Bahrain newspaper in 1986 to report that the recent incident where a TWA airplane as blown up by terrorists to be: "The clearest example of the West's enmity to Arabs." Or an Iranian (not Arabic by the way, but Persian) taxi driver to blame the traffic problems in Teheran on a Western plot to sap Iranian confidence and vigor. This kind of thinking, when it is serious in nature, is very dangerous indeed, creating an atmosphere of distrust in which honest business and political negotiation are nearly impossible.

(6) The long held tradition of hate and distrust of foreigners is another factor that, in this modern age of multinational trade and non-isolationism, creates untold problems in Middle Eastern society. For the most part, this hate is institutional in nature...on a personal level it would be hard to find any people more friendly than the Arabs, which is some proof of the almost polar enigma of the Arab mind, one that is not always appreciated by Westerners, that is the overt friendliness and kindness that is their nature, balanced by the bleak specter of terrorism which by now may be the first thought that comes to most Americans minds when they think of Arabs. This perplexity can be seen in the Koran, and therefore Arab tradition...be friendly to your neighbor, but stab him in the

back before he can stab you. It is the paradox between the traditional Arabic greeting: "My house is your house," and the Lebanese proverb: "He killed him and then marched in his funeral procession." Both are integral parts of the Arab mind, an important fact Westerners would do well to remember.

Can we deal with these people in an effective manner? Yes we can, if we deal honestly and with continuity, and when our interests are at stake, with speed and with force...because that is what they ultimately understand. My house is indeed your house, but when you enter, watcher your back at all times. That is what makes men like Saddam Hussein and Hafez Assad of Syria so dangerous and unpredictable: The siege mentality that ferments in the quagmire of secular/religious divisions and the violent jealousies authoritarian rule creates. This mentality can and will strike back with brutality when challenged: Witness that Hussein killed hundreds of his own people with a mixture of mustard and cyanide gas at Halabja...and in 1982, Assad killed anywhere from 10,000 to 25,000 of his own people in the town of Hama, basically because they protested his government policies. We must be very careful in dealing with Hafez Assad, he plays by the very same lack of rules that Saddam Hussein does...getting him into Saudi Arabia to fight against his arch-enemy Hussein is easy, it might not be so easy to get him out, or prevent him from starting a war he can now be assured of winning, considering the forces being placed there by the world community, allied against Iraq. No, Assad will be very difficult to control when he smells blood, and Hussein will be even more difficult to smoke out of Kuwait by humiliation. The main driving force of Middle Eastern politics is one of survival...which creates the one basic conviction that men like Saddam Hussien and Hafez Assad operate under: Rule or die.

T-L Irrigation Co.
Center Pivot, Hydrostatic Drive Can Be Moved In Minutes
Sales and Service At
Buddy's Plumbing & Appliance
112 N. Main Rising Star
817-643-7312 RS52-CE104

FIRE PREVENTION IS SERIOUS BUSINESS

RADIO EQUIPPED TRUCKS FOR "FAST FRIENDLY SERVICE"
1-800-535-7562
WELLS PROPANE
Rt. 1, Box 82A May TX 76857 817-259-3204
Hwy. 377E Box 425 Comanche, TX 76442 915-356-2516

L&J CONSTRUCTION
New Const. • Remodels
Add-Ons • Steel Bldgs.
Sheet Rock • Tape & Bed
Accoustic • Texture
Jim Ratliff Lynn Hutton
817-643-6464 817-725-7582
Rising Star Cross Plains

Home Phone 643-4236 Gasoline & Diesel
CAREY'S AUTOMOTIVE
Open Mon. - Fri. 7:30 a.m. - 5:30 p.m.
Sat. 8 a.m. - 12 Noon
James Carey, Mechanic
Hwy. 36 E. Rising Star
Shop Phone 643-7009 RS52

Paul Williams Roofing Co.
• FREE Estimates •
• All Work Guaranteed •
• Hot Tar & Gravel Composition •
• Shingles • T-Locks • Wood Shingles •
25 Years Experience In Eastland Area
Paul Williams Carbon, Texas
817-639-2330
If No Answer call 817-629-1020 RS52

FARM BUREAU TEXAS
Retirement Plans
Life-Liability
Auto-Health
Homeowners-Farm
FRANK AGNEW
Agent
Rising Star Office 817-643-1010 P.O. Box 470 Home Eastland, Texas 76448 817-643-3189 Office 817-629-1704

REBUILD ENGINES Aluminum Welding AUTO TRANSMISSION
JAKE'S SHOP
GENERAL MECHANICAL & WELDING FABRICATION
Body Work & Painting
OWNER JAKE LANDESS 817-643-3031 404 N. MAIN RISING STAR, TX RS52

MAJOR OIL PRODUCTS Station & Farm Tank Hoses, Nozzles, Filters AT REASONABLE PRICES
Farm Fuel Delivered
CROSS PLAINS PETROLEUM (E.S.E. Inc.)
P.O. Box 219, 6th at Ave. F
David and Lenell Sliger Cross Plains Managers
R43 (817) 725-6582

T & K Tire & Alignment
New & Used Tires.
All Types Front End Repair.
Dean & Goodyear Tires.
Brakes All Types.
Truck & Tractor Flats
901 Main, Cross Plains
817-725-6223 RS26

Main Street Auto Repair
Open Monday-Friday 8-5 p.m.
CUSTOM MUFFLER
7 TAILPIPE WORK
Jackie Palmore - Mechanic
643-1701
Hwy. 183 Rising Star, Texas

FOR SALE: 9.4 acres west of grade school. 303-247-5601. RS37-40

SELLING YOUR HOME or buying? Call Stella Ware, (817) 643-3591, your local real estate agent for Action Realty, Brownwood, James Smith, broker. s52

FOR RENT

Public Housing Authority has apartments for rent for senior citizens. Equal housing opportunity. (817) 643-3812 or 643-6791 RISING STAR

MOBILES

FOR SALE 1984 Fleetwood 14x80 mobile home, to be moved. 3 bedroom, 2 bath, CH/A, large closets, extra nice, low equity, assume loan. Call 643-1676 after 5:30.

643-4141

???? ARE YOU PAYING TOO MUCH ????
Compare These Everyday Low Prices On Genuine JOHN DEERE Ag. & Auto Filters

JOHN DEERE AGRICULTURAL FILTERS

3020-4020 JD Engine Oil Filter (AR26350)	\$7.62
30 Deries JD Engine Oil Filter (AR43634)	\$7.45
40-50 Series JD Eng. Oil Filter (AR101278)	\$10.18
30-40 Series Fuel Filter (AR50041)	\$7.42
20-30 Series Hydraulic Filter (AR75603)	\$4.01
40-50 Series Hydraulic Filter (AR94510)	\$20.05
4230-4240 Outer Air Filter (AR79941)	\$19.91
4430-4440 Outer Air Filter (AR79679)	\$27.21

JOHN DEERE AUTOMOTIVE OIL & AIR FILTERS

Most US Gas Car & P/U Engine Oil Filters	\$2.78
Ford Diesel P/U Engine Oil Filter	\$5.72
All GM Diesel Engine Oil Filters	\$2.78
Most US Gas Car & P/U Air Cleaner Filters	\$3.75
Ford Diesel P/U Air Cleaner Filter	\$6.99
All GM Diesel Engine Air Cleaner Filters	\$5.99

CLARK TRACTOR & SUPPLY INC.
DeLeon: 817-893-2062
Comanche: 915-356-3922

Obituaries

Robert Smith

Robert O. "Bob" Smith, a resident of Austin since 1948, died Monday, September 24, 1990.

Bob was born in Running Water, Texas. He graduated from Rising Star High School, and the University of Texas, where he received his BBA and JD in 1954. He served in the Army Air Corps from 1940 to 1945; the US Air Force from 1946 to 1948, and again from 1951 to 1953.

He was County Attorney, District Attorney and Associate Justice, Court of Civil Appeals, during his 36 years as an attorney in Austin. He was most recently a member of the firm of Salmanson, Smith, Travis and Schrage, and was on the board of directors of the Liberty National Bank. He also participated in many state and local affairs.

His survivors include his wife, Joan; son, Robert; daughters, Sally and Janey; two sisters; one brother; and several nieces and nephews.

A memorial service for Bob was held at 7:00 p.m., Thursday, September 27 at the Central Christian Church.

Arrangements by Harrell Funeral Home in Austin.

Loreta Gibson

Cross Plains - Loreta Golson, 73, died September 25 at an Abilene hospital. Services were held Thursday at Higginbotham Funeral Home Chapel with Michael Hale officiating. Burial was in Burkett Cemetery in Coleman County.

Mrs. Golson was born in Callahan County and was a homemaker and a Baptist.

Survivors include her husband, O'Dell Golson of Cross Plains; a son, Tony Golson of Abilene; three daughters, Venita Bell of Clyde, Vondell Coldwell and Betty Lord, both of Abilene; three brothers, Earl Lee of Cross Plains, Tom Lee of Carlsbad, N.M., and John Lee of Rising Star; two sisters, Stella Thomas of Cross Plains and Corena Crutchfield of Sabanno; 10 grandchildren; and 12 great-grandchildren.

Jason Flippin

Eastland - Jason Ray Flippin, 19, died Thursday at a local hospital of injuries received in an automobile accident. Services were Monday at 10 a.m. at Bethel Baptist Church with the Rev. Dewey Lamb officiating. Burial was in the Eastland Cemetery, directed by Bakker Funeral Home.

He was born in Golden Valley, Minn., and grew up in Oklahoma and Texas, moving to Eastland in 1984. He was a 1990 graduate of Eastland High School and a member of Bethel Baptist Church.

Survivors include his parents, Jodee and Patricia Flippin of Eastland; two brothers, David Flippin and James Flippin, both of Eastland; two sisters, Dawn Flippin and Angela Flippin, both of Eastland; maternal grandparents, Ray and Dorothy Ristesund of Howard, S.D.; his paternal grandparents, Tom and Wanda Flippin of Pioneer; great-grandmother, Winnie Flippin of Pioneer; and several aunts, uncles and cousins.



Edythe Morrow

Edythe Morrow, 69, died Saturday at a Brownwood hospital. Services were held at 3 p.m. Monday at the First Baptist Church, with the Revs. Darrell Dossey and Dick Williams officiating. Burial was in the Rising Star Cemetery, directed by Higginbotham Funeral Home.

Mrs. Morrow was born in Amity. She was a homemaker and a Baptist.

Survivors include her husband, J.R. Morrow of Rising Star; two sons, Bob Morrow and Dick Morrow, both of Rising Star; a daughter, Joy Harris of Rising Star; her stepmother, Cora White of Rising Star; two brothers, Larry White of Rising Star and Oscar White of Putnam; a sister, Mary Lois Dudley of Rising Star; 11 grandchildren; and five great-grandchildren.

Irene Drake

Breckenridge - Irene Drake, 77, died Monday at her residence. Services were at 3 p.m. Wednesday at Morehart Mortuary with the Rev. Charles Hamilton officiating. Burial was in Harpersville Cemetery.

Miss Drake was born in Eastland County and grew up in Parks, where she graduated from high school. She had worked for the Burch Hotel and later for Texas American Bank and TEAM Bank as supervisor for the offices and apartments. She retired in 1986. She was a member of First Christian Church, Women's Forum and Order of the Eastern Star Breckenridge Chapter No. 659.

Survivors include three sisters, Willie Mae Mercer of Brownwood, Melia Kaltenbaugh of Rising Star and Rosalee Barr of Amarillo; and several nieces and nephews.

Bargains in Office Supplies at The Rising Star

Cook Named Assistant in Wildlife Department

The following was taken from the August 1990 edition of *Tracks and Trails*, a publication of Texas Parks & Wildlife Department.

Robert L. Cook was recently rehired by the Department after an 11-year absence while working in the private sector. Effective June 1, 1990 Bob was named Special Assistant to the Acting Director of Wildlife.

A native of Brown County, Bob graduated from Texas A & M University with a B.S. in Wildlife Management in May 1965. He was employed by Texas Parks & Wildlife as a wildlife biologist on the Edwards Plateau Regulatory Project from June 1964 through 1971. He served as Project Leader/Area Manager on the Kerr Wildlife Management Area, 1972-1975. Bob was appointed to be the Division's first Statewide Deer Program Leader in 1975

and initiated the coordination of activities, development of techniques and standardization of data collection and reporting on whitetailed deer in Texas.

In 1979 Bob left the Department and went to work for the Shelton Ranch Corporation in Kerrville. In addition to handling Shelton's wildlife and habitat programs on 177,000 acres in Texas and Montana, Bob supervised and coordinated all ranch divisions and operations, including cattle, quarter-horses, special events, tours, sales, maintenance, security, budgeting and personnel administration.

Bob is a graduate of May High School and is the son of Mr. and Mrs. Ben Cook, longtime residents of the May-Williams community. Bob's wife, Maria, is the daughter of Joyce Geyer and the late H.L. Geyer of the Rising Star community.

Senior Center News

Thursday was a busy day at the center. We celebrated birthdays for September.

Marjorie West, Charlie Chamberlain, Oleta Seal, Marilyn Jones, Ray Hutchinson and Red Hudnall were honored. A big "thank you" to Lolene Claborn for baking the birthday cake.

There are still some unclaimed dishes at the center, left from the Hastings luncheon. You may get them on Mondays or Thursdays when the center is open.

Our special guests Thursday were Douglas Ford, president of Peoples State Bank of Clyde, which is the new owner of the local bank branch, and Fredda Criswell. We appreciate visitors and hope you come again soon.

We were sorry to hear about

the death of Edythe Morrow. Our sympathy goes out to the family.

Jean Shults is getting ready to take a trip to France. We hope you have a lovely trip.

We are sorry Lorin Frost is in the hospital and we do hope he will be better soon.

Weekend visitors in the Joe Ward family were his brother Jack and wife, Olga, of Odessa. They all made a trip to Bend, located near Lamapas on the Colorado River. They then returned to visit another brother and his wife at Lake Brownwood. Sunday they visited with her sister, who was in the hospital in San Angelo. She is doing well after a fall Friday left her with a broken hip.

Have a good week!
Marjorie West

Check out the Coupon Savings on Back Page

Letter To Editor

To the citizens of Rising Star and the surrounding communities:

Over the past years the people of this town and surrounding communities have worked to build and support our ambulance service. This service is not governed by the city, the mayor or the council; it is governed by the Texas Department of Health which, after the ambulances met the license requirements, teaches, trains and certifies our people as EMERGENCY CARE GIVERS.

This is your ambulance and you need to be asked: DID YOU KNOW THAT...

1. there are not enough certified people to work on the ambulance, causing there to be no "on call" schedule?

2. there are not enough drivers, and that the drivers are not required to take a defensive driving course.

3. the supplies are not easily located in the ambulance due to no labeling or listing of their location.

4. the ambulance bay is kept locked and only certain ones have keys! What if you cannot find these "keepers of the keys"?

5. at times there are not enough supplies to handle the emergency!

6. one of our ambulances is taken to a neighboring town when they have a "home" football game, sure, they pay for it going over there, but why does it take an act of Congress to get an ambulance at our home games? Aren't our children just as important? Also, a donation from the game needn't be given either; a lot of parents, grand parents, aunts and uncles have already paid.

7. the service doesn't abide by state requirements stipulating who is qualified as "care givers." I've got a copy of the requirements if you want to read them.

8. there is no public printed statement on the bank account balance. You make the donations, haven't you ever wondered how much they have? Where it goes? Gas isn't the only bill and you have the right to KNOW!

9. that families have been quoted a "set price" before the run was made? that families have been "billed" for ambulance runs and donations? This CANNOT BE DONE LEGALLY! It is clearly understood that the service is volunteer and is operated on donations ONLY! In Webster's Deluxe Edition it defines the following: "Volunteer, A person who undertakes some task or service of his own free will. Donation, A gift, esp. of money to society or institution."

(Those being transported, or their family,) can be reminded that the service operates on donations only and that monies they can donate would be appreciated. This means from one cent to one million. Also if you can't donate monies, then you can't!

If corrections aren't made, I'm very afraid this service will no longer exist. This town and communities can't afford a bigger service to come in and take it. If our present service goes you won't have a choice concerning another service. You know why? You're too far away from the hospitals and in an emergency, your or your loved one's life could depend on it!

Terry Horton C.V.N.
E.M.T.
Rising Star

SSA Travel Schedule

A Social Security representative will be at the following places in Eastland County on the following dates:

Cisco Senior Citizen Ctr., Wednesday, 4 p.m., Oct. 17.
Eastland Courthouse Basement, Tuesday, 9:30 a.m., Oct. 2, 16

MOBILE HOME TRANSPORTING Complete Moves & Setups Moving Throughout Texas

- Tie Downs
- Blocking & Leveling

* Licensed
* Bonded
* Insured

18 Years Experience
817-893-6753

Mitchell Baptist Church to Observe 75th Anniversary

The Mitchell Baptist Church, Rt. 4, Cisco, will observe its 75th anniversary on Sunday, October 14. All former pastors, former members, present members and friends are invited to participate.

Services begin with Sunday School at 10 a.m. and morning worship at 11 a.m. The pastor, Jess Bigbee, will present the message. A covered dish lunch will be served at noon and those attending are invited to bring a covered dish and help with the lunch.

Afternoon services begin at 1:30 with singing and spator at Carbon and a former pastor at Mitchell, will present a history of the church.

Other pastors, music directors and former members will have a part on the program.

Organized in 1915, the church has never had a large membership and it has been "up and down" through the years. The church closed its doors for several years, but since being re-activated has continued to be active. Through this past year Sunday School enrollment has increased by 94%, attendance by 33% and worship attendance has doubled.

"The public has a special invitation to help celebrate this exceptional day in the life of our church," said the pastor.

Pioneer Patchwork

By Irma Miller

Tuesday the quilters finished the Diamond Wedding Ring and put a Lone Star into the frame.

The cooler dry weather has brought on the peanut drying season, or did the peanut season bring on the cooler weather?

The Pioneer community was saddened by the news of the death Thursday evening of Jason Flippin of Eastland, grandson of Wanda Faye and Alvin Flippin and great-grandson of Winnie Flippin. The driver lost control of the car in which Jason was a passenger. We extend our heartfelt sympathy to the family and friends of Jason.

Billie Freeman visited with Nell and Joe Fleming on Thursday afternoon.

Lunching Sunday at Cook's Fish Barn were Lottie Sooter and 12 of her friends from her church.

Jean Fore and Frankie Smith went to Brownwood Sunday afternoon and visited with Winnie Flippin and with Oliver's sister, Mrs. Elva Olive.

To correct the last Patchwork, the names of some of the participants in the Smith reunion at Benbrook were shown as Mr. and Mrs. Dale Huron. It should have been Mr. and Mrs. Dale Hawthorne of Bedford.

Dental Dialogue

by Cone C. Rice, D.D.S.

Protective Cap Useful

Q. What is a pulp cap, and why is it necessary?

A. When the pulp chamber (nerve) of a tooth is in danger of becoming infected, it needs a pulp cap for protection. The pulp cap is a non-irritating, soothing medication (usually calcium hydroxide), which is placed directly over the portion of the nerve affected. The nerve of a tooth can be affected by decay or trauma, or even be nicked by routine operative procedures. To avoid a more lengthy and costly root canal procedure, the dentist may try a pulp cap. The therapy offers a 50% chance of allowing a tooth to continue to develop, as with a baby tooth, or remain healthy and infection-free, as with an adult tooth.



This column is presented in the interest of better dental health. If you have any dental questions you would like answered, please contact the office of Dr. Cone C. Rice, 963 East Main Str., Eastland, Texas. Phone: 817-629-3843

TRI CHEM

Liquid Embroidery Products & Crafts Sales & Service

for information 817-643-1607

Register Now For Fall Classes, Art Workshop

Hubbard Gift & Gallery

105 S. Main Rising Star 817/643-6242

ATTENTION: AARP MEMBERS

Save Up To 50% On Your Prescriptions.

If you are an AARP member and you're not using the AARP Pharmacy Service, you're missing out on one of your most valuable AARP benefits.

With our nationwide pharmacy service, you can order prescriptions by phone or from our catalog at savings of up to 50% on high quality generic drugs, when available. Brand name drugs are also available at significant savings. Your order is filled promptly and safely shipped to your door with no extra charges for shipping or handling.

How much can you save by using the AARP Pharmacy Service? Call our toll free Quick Quote service for a price quote on your prescription. You'll receive a price quote fast, free and

without obligation, and you'll learn just how easy it is to order or transfer prescriptions.

When you call, ask for our free catalog, too. It lists prices on commonly prescribed drugs, as well as savings on hundreds of your favorite health and skin care products.

Today, discover how easy it is to order from the AARP Pharmacy Service, America's largest private, nonprofit home delivery pharmacy.

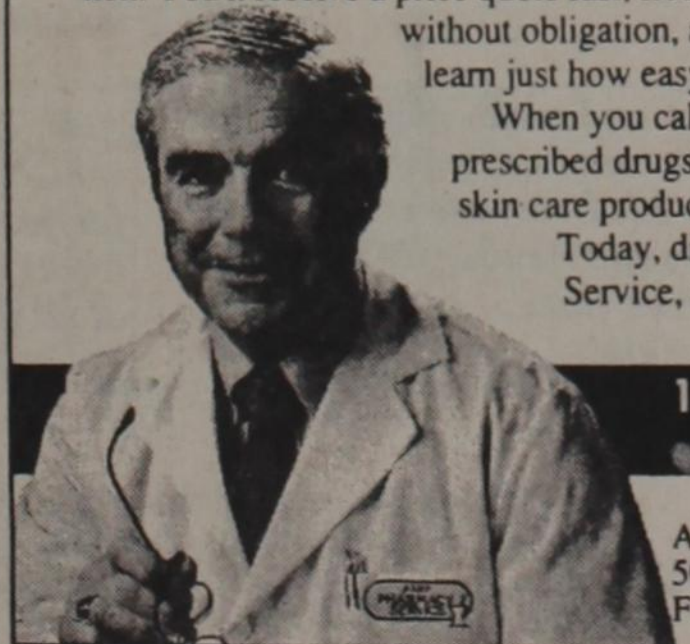
Before you fill another prescription, call

Quick Quote

1-800-777-7686

Ask for Department 100

Call Monday through Friday 9 to 5. It's fast, free and easy!



100% SATISFACTION GUARANTEED

AARP PHARMACY SERVICE

AARP Pharmacy Service 5050 East Belknap Fort Worth, TX 76117

THE DRUGSTORE AT YOUR DOOR

©1990 Retired Persons Services, Inc.



Higginbotham Funeral Home

506 N. Main Rising Star, 76471 817-643-4321

For Information at no Obligation on:

- * PRE-ARRANGED FUNERALS
- * PRE-NEED FUNERALS
- * DISTINCTIVE MONUMENTS
- * VETERANS BENEFITS
- * SOCIAL SECURITY BENEFITS

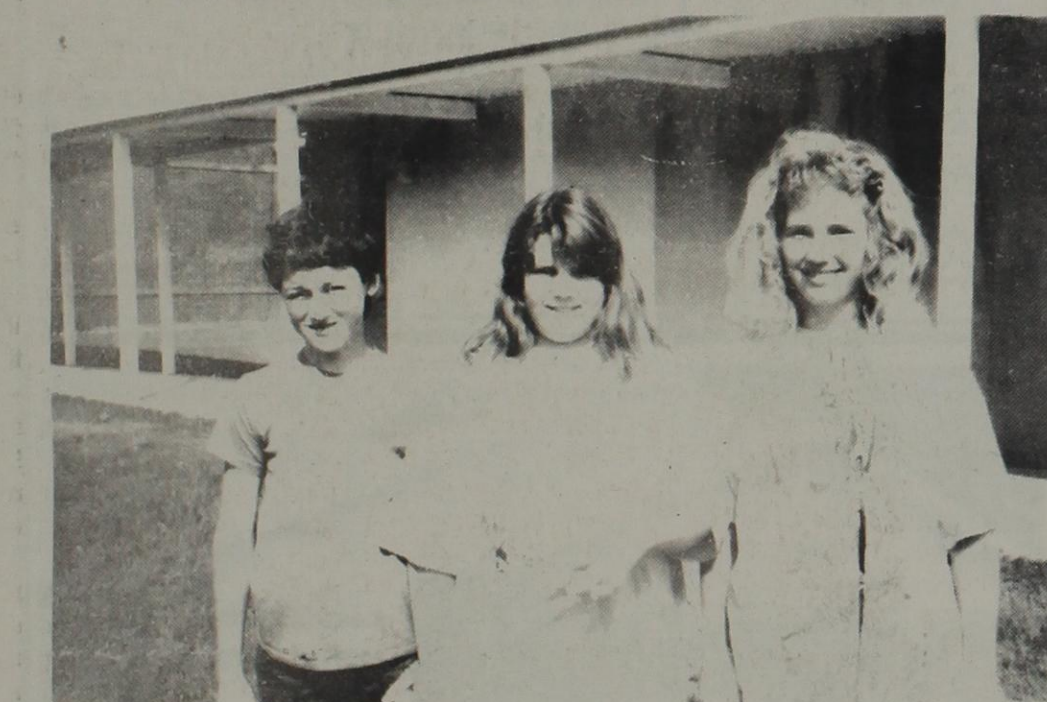
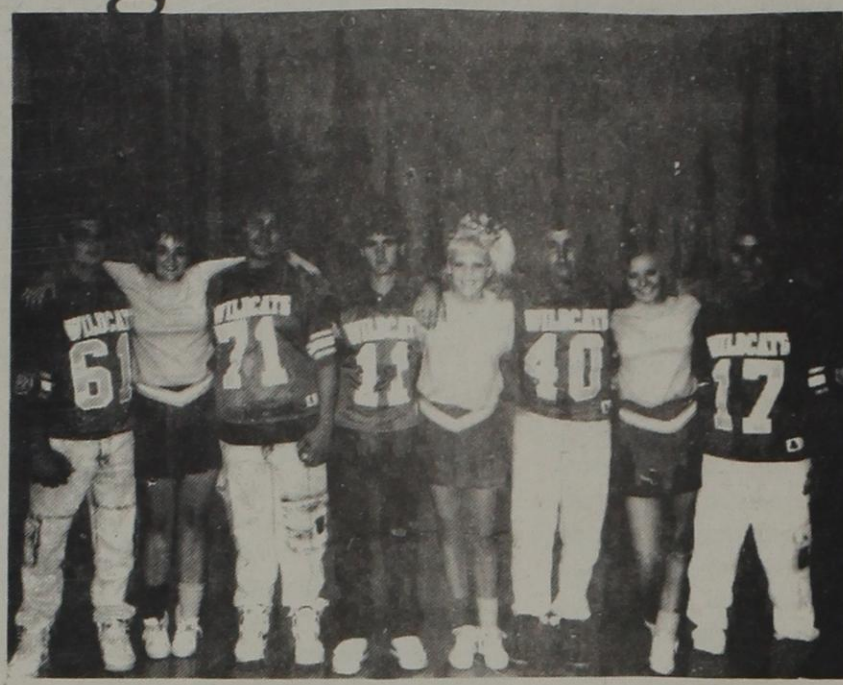
Optional Credit Life Insurance now available to those under age 75 with no major health problems.

You will pay NO INTEREST and NO CARRYING CHARGES and will have up to 100 months to pay.

Contact a member of our Funeral Service Staff

Gene and Reba Lyon

It's Blue and Gold Friday in Rising Star



The Eastland Co. Unit of American Cancer Society, will have a booth at the Eastland Fair, south side of the square.

Volunteers are needed to share free leaflets of information.

A.C.S. has set the date for the year: 1st Monday at 7 p.m. Oct. 1st, next meeting. Thanks to K-Bobs for a nice meeting place.

PREGNANT? WORRIED?

Talk With Someone Who Cares

In Eastland Calling Area - Call 629-8994

Others Call - 1-800-588-8994

CERRS104

Wildcats vs. Buffaloes

Pregame Supper

Ham 'n Beans or Stew \$4.00

5 to 7 p.m. Friday, October 12

Rising Star Chamber of Commerce & Agriculture
Membership Drive Kick-off

Play SCRAMBLR' Every Day WIN CASH

Look for Scramblr' and more in

Abilene Reporter-News

For Subscription Rates, Call Sandra Barnard 643-1301

EARLY MORNING DELIVERY!

Morning, Sunday Morning Only Weekend Only Pay by Month, 4 Months, 8 Months or Year

Homemaking Hints

By Janet Thomas, County Extension Agent

SAVE NOW FOR COLLEGE EDUCATION

Next to buying a house, a college education is the most expensive big-ticket item facing the average family.

Nancy Granovsky, a family economics specialist with the Texas Agricultural Extension Service, suggests that if you have a 10-year-old child, plan on saving roughly \$29,000 by 1998 to cover such costs as tuition, books and room and board.

The estimate assumes that you'll be paying half the costs, and that your child will go to a state university in Texas. But you'll need to save much more if your child doesn't receive any scholarships, doesn't pay part of the college bill, or goes to a private school where tuitions usually run higher.

That amounts to an annual savings goal of about \$2,200 per year, assuming you can get 6 percent on your money after taxes.

If your child is 1 year old, you have 17 years to save, but college costs are expected to be even higher—roughly totaling \$54,000 for parents planning to pay half the expenses.

These figures, based on an estimated inflation rate of 7 percent for college costs, illustrates how important it is to start saving now. College costs of \$7,400 per year in 1990 will be \$16,700 per year by the year 2000.

Today, people use a combination of loans, savings and work-study to pay for college. Many parents pay educational costs out of their current income—some taking additional jobs.

Government bonds are one type of investment that guarantee complete safety. The United States Series EE Savings Bonds for College are good choices for financing education. They can be tax-free and purchased at market-based rates. Interest rates for the bonds vary with the market rate, but go no lower than the market rate set at the time of purchase.

Stipulations for these bonds include:

* When you use EE bonds to pay for higher education and your taxable income is below \$60,000, bond income

is tax free, but the federal tax break phases out at a joint income of \$90,000.

* They must be redeemed in a year the owner pays qualified educational expenses (tuition and fees, but not room and board).

* Interest is fully exempted only if the qualifying tuition and fees paid during the year are equal to, or more than, the redemption proceeds. Otherwise, exemption is proportional to the percentage value used for tuition and fees.

* Certain records must be kept for income tax purposes.

Other options for financing college education include zero-coupon securities, mutual funds, children's custodial accounts and insurance policies. However, there are risks and limitations involved, and a prudent investor should check with a professional who specializes in financial planning for college.

Becoming better informed is part of the financial planning process for college education. Parents and students, especially those who think they can't afford college, need to know what financial aid is available and how to qualify for such options as loans, work-study programs and grants.

High school guidance counselors have a wealth of reference material on college programs and costs. Most public libraries keep current references on U.S. colleges and universities.

The saying that "education pays" is still true. Figures from the U.S. Census Bureau show that what people earn is a direct reflection of their level of education.

In 1987, census figures indicated that high school graduates earned an average income of \$12,000, while college graduates earned \$22,400, and those with master's degrees earned \$30,600.

RECIPE FOR THE WEEK:

Today we look for foods that are not only good, but good for you. Pears measure up on both counts. High amounts of natural sugars, fructose and glucose, are present in pears. At the same time, a 166 gram pear, with

Thursday, October 4, 1990

skin, provides 2.32 grams of crude fiber, of which 41% is pectin.

Another very important nutrient is potassium, and the same 166 gram pear contains 208 milligrams. Potassium is necessary for maintaining heartbeat, muscle contraction, nerve transmission, and carbohydrate and protein metabolism. With only 98 calories in a 166 gram pear, this fruit provides a calorie light, delicious and health snack.

Fresh Pear Cake

- 2 C. sugar
- 3 eggs, well beaten
- 1 1/2 cups salad oil
- 3 C. all-purpose flour
- 1 t. soda
- 1 t. salt
- 1 t. vanilla extract
- 2 t. ground cinnamon
- 3 C. thinly sliced, peeled pears

Powdered Sugar Glaze
Combine sugar, eggs, and oil; beat well. Combine flour, soda, and salt; add to sugar mixture, 1 cup at a time, mixing well after each addition. Stir in vanilla, cinnamon, and pears.

Spoon batter into a well-greased 10-inch Bundt pan or tube pan. Bake at 350 degrees for 1 hour. Remove from pan, and allow to cool; top with Powdered Sugar Glaze. Yield: on 10-inch cake.

Powdered Sugar Glaze:
1 1/4 cups sifted powdered sugar
2 to 4 T. milk
Combine ingredients, blending until smooth. Yield: about 1/2 cup.

Hunting Leases to Be Listed

The Rising Star Chamber of Commerce & Agriculture is encouraging all those with hunting leases available in this area to please let them know.

People looking for leases in the Rising Star area often write to the Chamber for this information. The Chamber secretary and officers would be more than happy to relay to these prospective hunters any information you may make available. The interested parties can then contact you direct for any further details.

To list your information, either write to the Chamber at P.O. Box 189, Rising Star, TX 76471, or call Gene Lyon at 817/643-7600 or Betty Duggan at 643-1209.

Fullen Motor Co.

305 East Main Eastland 629-2676

THE Heartbeat OF AMERICA



TODAY'S CHEVROLET

TRUCKS

1988 - 1/2 Ton Chevrolet Extended Cab 23,000 Miles \$11,250.00

1988 - 1 ton Chevrolet Flat Bed Only 26,000 Miles \$10,750.00

1988 - 3/4 Ton Chevrolet Cheyenne Pickup V8 - Automatic 38,000 Miles \$8,250.00

1976 Ford 1/2 Ton 6-cyl. Manual Transmission \$800.00

CARS

1989 Cutlas Supreme 2-dr Coupe S1 - Red Only 24,000 Miles ---SPECIAL---\$10,500.00

1989 Beretta 2-Dr. Coupe Blue - V6 - Automatic Factory Warranty ---SPECIAL---\$8,025.00

1989 Corsica 4-Dr V6 - Automatic Factory Warranty ---SPECIAL---\$7,500.00

1979 Mercury Marquis 4-Dr. Sedan Only 74,000 Actual Miles \$1,575.000

1980 LTD 2-Dr. Coupe One Owner!!! Only 74,000 Miles \$2,250.00

Be sure and make plans for our new car announcement on September 27. Everyone is invited to come by and view the all new 1991 Chevrolet lineup and have refreshments.

Also, if you do not see the new vehicle on our lot you're looking for just let us know and we will locate one for you within 2 days, if at all possible.

Open Monday - Friday 8 a.m. till 6 p.m. Closed Saturday and Sunday



David Tunmire Is New County Agent

David Tunmire is the new Eastland County Agricultural Extension Agent replacing Dee Gordon, who has retired. He is joining Janet Thomas and Scott Hodges in working out of the Extension Office in the Courthouse basement.

Having worked with Gordon on multi-county projects while in the same office in Comanche County, Tunmire says that he is familiar with Eastland County, which has impressed him. And when the Eastland County job became available, it was an opportunity for him to move up to a job with more responsibility. But at the same time he hated to leave Comanche, which he also liked.

Moving to Eastland, learning the situation here and meeting the people, Tunmire says that he is looking forward to working with the people of Eastland County. Having had a sound program in Comanche County with result demonstration programs increasing to thirty, Tunmire says that he will work to meet local goals, and he foresees having more demonstration programs in this county.

The son of a retired marine, home has been many places for Tunmire, who graduated from China Springs High

Eastland Telegram - Ranger Times - Cisco Press - Rising Star
Thursday,
October 4, 1990

School after two years of school there. His father now lives at Riesel near Waco.

While in the FFA in high school, Tunmire raised rabbits as his project. And he has been judging the rabbit show in Eastland the last couple of years.

David Tunmire and his wife, Diane, who teaches first grade at DeLeon's elementary school, have a four year old daughter Nicole. The Tunmires are members of the First United Methodist Church in Comanche.

"My hobby is my job," says Tunmire, who enjoys working with trees and gardens. He was also an Agricultural Extension Agent in Knox County for four years before moving to Comanche.

EASTLAND COUNTY CRIME STOPPERS

629-TIPS

CONOCO CONVENIENCE STORE & RESTAURANT

I-20 Putnam For Lease

New Gas Tanks, New Air & Heat, New Vault Unit

915-854-1760 or 915-675-6688

The Voting Process: Voting Equipment And Absentee Ballots

Once you've registered to vote, some questions may remain about the process of actually casting your ballot. It can be a bit confusing, if you have never voted before. I hope the following clears up any confusion new voters might have.

Methods of Voting:

In addition to the traditional paper ballot, there are three types of voting systems currently used to conduct elections in Texas. These voting systems are: (1) punch card; (2) optical scan; and (3), mechanical voting machines. The majority of the counties in this state conduct their elections using paper ballots. With a punch card voting system, you insert a computer card into a device provided in voting booth and use a "punch" (stylus) to poke out a hole next to the candidates and propositions you support. You then remove the card and place your voted ballot in the ballot box.

With optical scan ballot, you fill in a "grid" with a lead-based marker next to the candidate you choose to vote for on the ballot. Once you have voted, you deposit the ballot in the ballot box. With voting machine, you flip levers on the face of the machine next to the names and measures you want to vote for. When you've voted for all your choices, you pull a lever that casts all your votes at once. The machines keep running tallies of the votes, although these totals are behind locked doors in the back of the machine. The totals are read after the polls close.

If you have questions about how to cast your ballot, any election official can explain the procedure and demonstrate for you. If you need

help in reading or marking the ballot, you may request assistance or bring someone with you to help you vote.

When and Where:

You must be registered at least 30 days before an election in order to vote.

Polls are open from 7 a.m. until 7 p.m. on Election Day and most are accessible to handicapped voters.

call your county clerk, voter registrar, or elections administrator if you cannot find the location of your polling place. The telephone numbers are listed in the government pages of most phone books. Many Texas newspapers also publish a list of polling places.

Absentee Voting:

One of the most convenient methods of voting is by the absentee ballot. Among the states, Texas has led the way in pioneering a simplified system of absentee voting by personal appearance. Any qualified voter is eligible to vote absentee by personal appearance without having to give a reason for doing so. The procedure is now as easy as that used on Election Day.

The period for absentee voting by personal appearance for the Nov. 6 general election is from Oct. 17 to Nov. 2. I encourage you to take advantage of the generous period of time allowed for in-person absentee voting.

A qualified voter may vote absentee by mail, but must give a reason to do so. Those reasons are absence from county of residence on Election Day and during the absentee voting by personal appearance period; a disability; 65-years of age or older on Election Day; religious beliefs; or confinement in jail. For further information, call our toll free election hotline at 1-800-252-VOTE(8683). An application for an absentee ballot my mail must be submitted to the absentee voting clerk before you can receive an absentee ballot. The application must include your name, signature, permanent address, the address where you want the absentee ballot sent, and your reason for voting absentee. An official application form is not required, but probably help you make a more complete application. Forms are available from your county clerk.

Once you receive the absentee ballot by mail, you can follow the instructions enclosed with your ballot, then

mail it back to the absentee voting clerk in an envelope provided. You must sign this outer envelope for your ballot to be qualified and counted, but it is not in any way used to identify your ballot and how you voted - the ballot and envelope are separated as soon as your signature is verified as belonging to you by comparing it to your application to vote absentee by mail. You must return the absentee ballot to the absentee voting clerk by mail, or by common or contract carrier, before 7 p.m. on Election Day.

If you have any questions about the voting process, you may contact your local election officials, or call the Elections Division toll free at 1-800-252-VOTE (8683).

Oil Production Report From RR Commission

Eastland County produced 74,595 barrels of oil in July. With oil prices around \$40 per barrel, sales of this oil could go to \$2,983,800 or up to \$36 million per year. Oil production for this county has probably increased since this last report, since marginal wells are being cleaned out and put back in production.

Texas crude oil production averaged 1,699,325 barrels daily in July, according to preliminary figures released by Railroad Commission Chairman Kent Hance. July 1989 preliminary production was 1,756,249 barrels daily.

This figure compares with preliminary June production of 1,702,633 barrels daily. Final production reports for June indicated barrels daily. Final production reports for June indicated average production at 1,721,285 barrels daily.

The preliminary Texas oil production figure for July is 52,679,086 barrels, up from 51,638,538 barrels in June. July 1989 preliminary Texas oil production figure was 55,057,782 barrels.

Hance said the state's top producing counties, rank ordered by preliminary July production were: Gaines, 3,589,446 barrels; Andrews, 3,171,934 barrels; Ector, 2,997,446 barrels; Yoakum, 2,740,310 barrels; Hockley, 2,616,149 barrels; Gregg, 2,355,177 barrels; Pecos, 2,152,020 barrels; Crane, 1,472,309 barrels; Scurry, 1,169,119 barrels; and Kent, 951,447 barrels.

Railroad Commission Chairman Kent Hance announced that Texas oil and gas wells produced 447,945,688 Mcf (thousand cubic feet) of gas in July, compared to the June gas production total of 443,712,186 Mcf. July production was down 3.08 percent compared to July 1989 production of 462,213,400 Mcf.

The state's top producing counties, rank ordered by preliminary July production were: Pecos, 26,790,251 Mcf; Webb, 21,929,202 Mcf; Zapata, 20,980,324 Mcf; Panola, 15,953,440 Mcf; Hidalgo, 14,273,999 Mcf; Crane, 12,429,896 Mcf; Crockett, 9,708,555 Mcf; Hemphill, 9,305,230 Mcf; Ector, 9,266,622 Mcf; and Yoakum, 8,361,307 Mcf.

Texas gas production in July came from 180,244 oil wells and 45,875 gas wells.

Gas production in July for Eastland County was 937,968 mcf.

Putnam Musical To Be Friday

The Putnam Musical will be Friday, Oct. 5 with the concession stand opening at 5 p.m. The musical will start at 6 p.m. Admission is free and everyone is invited to attend, especially musicians and singers. For more information call 442-3407, Cisco.

Handicap Awareness Month

MENTAL RETARDATION

Mental Retardation - People with mental retardation are those who develop at a below average rate and experience difficulty in learning and social adjustment. In terms of I.Q. persons with mental retardation usually score 70 or below. Mental retardation is not a disease, nor should it be confused with mental illness. Children with mental retardation grow into adults with mental retardation, they do not remain "eternal children." They do learn, but slowly, and with difficulty.

Mental retardation is four times more common than rheumatic heart disease and nine times more prevalent than cerebral palsy. It affects 10 times as many children and adults as polio did before the Salk vaccine. Mental retardation cuts across the lines of race, educational, social and economic background. It can occur in anyone. As a matter of fact, hereditary components are known to account for only a fraction of the cases of retardation.

Mental retardation can be caused by any condition which impairs development of the brain before birth, during birth or in the early childhood years. Probably the greatest number of children with mental retardation have chromosome abnormalities. Other biological factors include (but not limited to) asphyxia (lack of oxygen), blood incompatibilities between the mother and fetus and maternal infections, such as rebecca or herpes. Certain drugs have also been linked to problems in fetal development.

Many authorities agree that people with mental retardation develop in the same way as people without mental retardation, but at a slower rate. Others suggest that persons with mental retardation have difficulties in particular areas of basic thinking, and learning such as attention, percep-

tion, or memory. Depending on the extent of the impairment-mild, moderate, severe or profound - individuals will develop differently, in academic, social, and vocational skills.

Persons with mental retardation have the capacity to learn, to develop and to grow. The great majority of these citizens can become productive and full participants in society. Appropriate educational services that begin in infancy and continue throughout the developmental period and beyond will enable children with mental retardation to develop to their fullest potential. Children and adults need the same basic services that all people need for normal development. These include education, vocational preparation, health services, recreational opportunities and many more. In addition, they need specialized services for special needs.

If you would like more information, the organizations listed below can help, and if you need to find services I will try to help and there is our parent support group for parents that children (any age) that are handicap (any handicap) that will help, it's called "Special Needs."

I hope you will read the next article which will be on Cerebral Palsy. If you have anything you want added or any input, please give me a call.

Information taken from NICHCY - (National Information Center For Children and Youth with Handicaps) Fact Sheet-9/88.

Organizations-Association for Retarded Citizens of the U.S., (ARC), 2501 Ave. J., Arlington, TX 76006, 817-640-0204.

American Association on Mental Retardation (AAMR), 1719 Kalorama Rd, N.W., Washington, D.C. 20009, 1-800-424-3688.

Pam Tomsy
629-1239
Co-Chairman
"Special Needs"

Sea World Of Texas Shifts To Weekend Operation

Under its revised operating schedule, Sea World of Texas in San Antonio will be open weekends through November 1990.

Regular hours of operation will be 10 a.m. to 6 p.m. Saturdays and Sundays, however closing times will be extended on days when the marine zoological park hosts concerts and other special activities.

Previously the park was on a Wednesday-through-Sunday schedule in the fall, winter and spring months.

Sea World will be open on Thanksgiving weekend - Friday, Nov. 23, through Sunday, Nov. 25 - and then will close during the months of December, January and February. It will resume weekend operations on March 2, 1991, and open daily from Memorial Day through Labor Day.

Upcoming special events include a Diez y Seis celebration featuring music on Sept. 15 by the popular "Texas Tornados" band; the 2nd annual Mum Festival in October, with thousands of blooming chrysanthemums throughout the park; a variety show by comedy stars Jerry Lewis and Carol Channing on Oct. 6; and the "Country Showdown" country-western music talent competition on Oct. 13 and 14, headlined by recording artists Holly Dunn and Dan Seals.

For current information on Sea World of Texas' operating schedule and special events, call toll-free (800) 422-SWTX or (512) 523-3611.

New Arrivals



TYLER RANDALL HART

Tyler Randall Hart was born August 28, 1990, and weighed 6 lbs. 6 oz. Parents are Truet and Toni Hart of Eastland.

Maternal grandparents are Dr. and Mrs. Scot H. Edington of Burkett.

Paternal grandparents are Betty Jo Hart of Eastland and the late R. D. Hart.

Maternal great-grandparents are Mr. and Mrs. C.H. Edington of Burkett and Mr. and Mrs. Oscar Tyler of Cross Plains.

MAJESTIC THEATRE

629-1322

WALT DISNEY'S CLASSIC

The **Jungle Book**



Fri. • Sat. • Sun. • Mon.

Shows: 7:30 p.m. - \$3.00

We Now Offer 5-Admission Gift Passes - \$10

PLUS

2 p.m. MATINEE

SATURDAY & SUNDAY

TRUMAN GREGORY INSURANCE

112 S. Seaman Suite 315
Eastland, Texas 76448
(817) 629-1078



KINDS OF INSURANCE SOLD
Universal - Whole - Term - Life
Accident - Health - Major Medical
Disability Income - Annuities
IRA's - Cancer - Dreaded Diseases
Medicare Supplement
Individual or Goup Rates
Long Term Convalescent Care
Crop Insurance - Farmers
Home Owners - Fire
"All Companies 'A' Rated" CERR-5184

Pharmacy Topics

By Bob Mueller



Even borderline elevations in blood pressure can permanently damage the heart and blood vessels and raise the risk of heart attack, a new study at the University of Michigan found. Researchers suggest more aggressive treatment for high blood pressure than is customary now.

Hormone replacement therapy begun at or near menopause can sharply reduce the risk of a broken hip in the next decade. Study at the University Hospital in Uppsala, Sweden, covered 23,000 women.

Researcher at the University of Texas in San Antonio is working on contact lenses containing melanin, the pigment that colors the skin and acts as a natural sunscreen. The treated lens would filter light and protect the cornea.

Retinoids, synthetic forms of vitamin A, are being tested as a treatment for skin cancer in studies sponsored by the National Cancer Institute. One advantage over surgery: the retinoids seem to heal without scars.

What's new in medicine? We keep up with the latest developments, the better to serve you at Wal-Mart Pharmacy, Hwy. 80 East, Eastland, 629-3347.



"Let's Plant Grazin'"

WINTER PASTURE MIX

Wheat - Oats - Rye - Vetch

Don't Wean'em Without



Preconditioning/Receiving Chow

Keep newly arrived calves alive and avoid setbacks with this Purina stress-fighter.



SAVE \$

Contract Cubes Now Pick Up Now Or Later

CERRS79

CERRS104



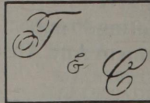
Read The Classifieds

GOLD MEDAL

FLOUR

5 LB. BAG

79c



VILLAGE MARKET

WE ACCEPT
FOOD STAMPS
& WIC CARDS

WEEK-LONG
SAVE THIS AD, SHOP ANY
SPECIAL PRICES IN THIS

Phone 725-7131,
Cross Plains, Texas

QUANTITY
RIGHTS
RESERVED

OCTOBER 3 thru
OCTOBER 9, 1990

DOUBLE COUPON

IN-AD COUPON

FREE QUICK
QUAKER®
OATS

WITH PURCHASE
AT THE CHECKOUT!

BUY: Two 12 oz. Nestlé® Toll House®
Semi-Sweet Chocolate Morsels

PRESENT: This coupon to the cashier
along with purchase

RECEIVE: Quick or Old Fashioned
Quaker® Oats



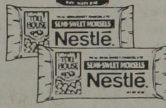
RETAILER MAIL TO: Quaker Oats Company,
848 Springer Drive, Lombard, Illinois 60148.
Cash value .001¢ ©1990 QOC.

Good week of 10/3 - 10/6/90

Only at VILLAGE MARKET

(STORE NAME)

Retail Value \$ (up to \$1.50)



28000 51100



DEL MONTE
TOMATO SAUCE
8 OZ. CAN

5/\$1



NABISCO PREMIUM
CRACKERS
1 LB. BOX

\$1.19

TOP RAMEN
NOODLES
3 OZ.

6/\$1.00



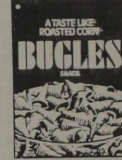
SHURFINE
GREEN BEANS
CUT OR FRENCH STYLE
16 OZ. CAN

3/\$1.00



NABISCO
NILLA WAFERS
12 OZ. BOX

\$1.49



BUGLES SNACKS
6 OZ.

99c



GATORADE
THIRST QUENCHER
32 OZ. BOTTLE

99c



DEL MONTE
PUDDING CUPS
4 PACK

99c



SUNSHINE COOKIES
16 OZ. HYDROX
16 OZ. VIENNA FINGERS
16 OZ. CHEEZ-ITS

\$1.79



KELLOGG'S
CORN FLAKES
18 OZ. BOX

\$1.49



PALMOLIVE
DISHWASHING LIQUID
22 OZ.

99c



AJAX CLEANSER
14 OZ. CAN

39c



FAB DETERGENT
42 OZ. BOX

\$1.49



KLEENEX
BATHROOM TISSUE
4 ROLL PACKAGE

\$1.09

DOUBLE COUPONS
7 DAYS A
WEEK
(UP TO 50c)
(DETAILS AT STORE)



FRISKIES BUFFET
CAT FOOD
6 OZ. CAN

3/\$1.00



TIDY CAT
CAT LITTER
10 LB. BAG

\$1.69



BOUNTY TOWELS
ROLL

89c

FOLGERS
COFFEE

13 OZ. CAN

\$1.89



LIPTON FAMILY SIZE
TEA BAGS
24 COUNT

\$1.99



LIPTON
INSTANT TEA
1 OZ. 3 OZ.

99c \$2.79



FRITO'S
CORN CHIPS
REGULAR \$2.29
12 OZ. BAG

\$1.49



DR. PEPPER
or PEPSI CANS
6 PACK



\$1.89

MARKET

QUANTITY RIGHTS RESERVED

EVERY MONDAY IS SENIOR CITIZENS DAY — 5% DISCOUNT ON YOUR TOTAL PURCHASES EXCLUDING BEER & CIGARETTES

SPECIALS

WHATEVER YOU LIKE — IS EFFECTIVE

We Have Money Orders & Postage Stamps

STORE HOURS
MONDAY - SATURDAY, 7 A.M. - 8 P.M.
SUNDAY, 8 A.M. - 7 P.M.
QUANTITY RIGHTS RESERVED

We Have Postage Stamps & Money Orders

7 DAYS A WEEK

SHURFRESH LUNCH MEAT



BOLOGNA
SALAMI
PICKLE LOAF
SPICED LUNCHEON

99c

12 OZ. PACKAGE



SHURFRESH SLICED BACON
1 LB. PACKAGE



\$1.69

SHURFRESH MEAT FRANKS
12 OZ. PACKAGE



99c

WISCONSIN AMERICAN SLICED CHEESE
LB.

\$2.49

FRESH EXPRESS PIZZA
32 OZ.

\$2.69



STATE FAIR CORN DOGS
10 COUNT PACKAGE

\$2.69

MR. TURKEY TURKEY HAM CHUBS
LB.

\$1.99



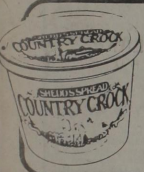
PRICE SAVER BEEF PATTIES
10 LB. BOX

\$7.50



SHEDD'S, 48 OZ. COUNTRY CROCK

\$1.89



PARKAY MARGARINE QUARTERS
1 LB.

69c



2 LB. ORE IDA FRIES

\$1.89



Shurfresh Old Fashioned Biscuits
10 READY TO BAKE

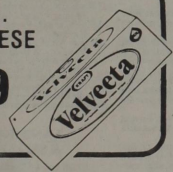
SHURFRESH OLD FASHION BISCUITS

7.5 OZ.

6/\$1.00

KRAFT, 1 LB. VELVEETA CHEESE

\$2.99



SHURFINE CORN ON THE COB

\$1.49

4 EARS



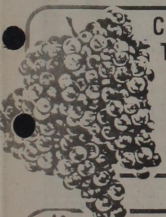
NIGHT HAWK FROZEN BEEF OR CHICKEN FAJITA FEAST
12.8 OR 13.25 OZ.

\$2.49

DOUBLE COUPONS 7 DAYS A WEEK
(UP TO 50c)
(DETAILS AT STORE)

CALIFORNIA RED TOKAY GRAPES
LB.

69c



CALIFORNIA LARGE STALK CELERY

49c



NEW RED POTATOES
LB.

49c



FRESH GREEN ONIONS

4/\$1.00



CELLO RED RADISHES
6 OZ. PACKAGE

4/\$1.00



V05 SHAMPOO/CONDITIONERS
15 OZ. REGULAR \$1.75

99c

BIC LIGHTERS REG. 99c 49c
HI VALUE ALCOHOL 16 OZ. REG. 55c 2/69c
EX-LAX 30 CT. PILLS REG. \$4.79 \$2.89
VASILINE LIP THERAPY REG. \$1.25 59c
REG. & SUNBLOCK .35 OZ. 18 OZ. \$3.49
LISTERINE REG. \$4.35 \$7.99
SHAMPOO REG. \$10.95

ASSORTED SLIM FAST
REGULAR \$6.29

\$4.29



ADVIL TABLETS
50 COUNT REGULAR \$6.05

\$4.49



GRANNY SMITH OR MCINTOSH

APPLES

LB.

69c



Gorman Homecoming To Be Oct. 6

The Gorman Homecoming will be Saturday, Oct. 6. The day's activities will begin at 9:30 a.m. with registration at the high school. Lunch will be served at 12 noon in the school gym, hosted by ex-students.

Business meeting will be held at 1:30 p.m. in school auditorium. The pep rally will begin at 5 p.m. in downtown Gorman.

Dinner will be held at 5:30 p.m. in the school lunchroom, hosted by senior class.

The football game will begin at 8 p.m., Gorman vs. Santa Anna. After game reception will be held at the gym.

County Retired Teachers Assoc. To Meet Oct. 8

Eastland County Retired Teachers Association will meet Monday, Oct. 8 at 11:30 at K-Bob's in Eastland.

The program will be given by Glen Lewis of Abilene. He will review our insurance. All members are urged to attend and prospects are invited.

Mountain Top Church To Have Guest Speaker

Pastor John C. Jones and the congregation of Mountain Top Church invites the public to hear Justo Jordan Chavana at 7:30 p.m. Wednesday, Oct. 3.

Chevana is an ex-\$1,000 a day cocaine addict, an ex-marine and was involved in organized crime, according to Rev. Jones. He was a man who had it all— money, women, cars, yacht, horses and many other material things.

"There was still something that was missing, however, he didn't have the 'peace that

passes all understanding,'" Rev. Jones said. He was always on the run from his family, friends, and of course, the law. His brain was so cooked by cocaine that he wanted to take his own life, but then he got caught by the Man who changed his life, according to Rev. Jones, who invites everyone to come and here the exciting testimony. Bring a friend or neighbor and expect a blessing, the pastor added.

Mountain Top Church is located at 600 E. 8th Street, Cisco.

Legal Notice

Eastland Independent School District Board of Trustees is accepting bids on gasoline products for the 1990-91 school year. Bids will be opened for consideration at the October 8, 1990, Regular Board Meeting. The board reserves the right to accept/reject any or all bids.

Bids should be mailed to Keith Watkins, Superintendent, Eastland ISD, 900 W. Plummer, P O Box 31, Eastland, TX 76448. (9/27,30,10/4,7)

Use The Classifieds

Eastland Telegram - Ranger Times - Cisco Press And Rising Star Thursday, October 4, 1990

CHI REAL ESTATE 24 HOUR HOTLINE 1-800-252-5400

For Rent - 2BR, 705 W. 8th, 165.00-6 month lease 3 BR, Rising Star Hwy-315.00-6 month lease 1-20 E. Commercial Property, paved front, easy access CALL TO SEE Acreage. Approx. 167 acres W. of Cisco, FM2945, owner finance with 1/3 down 530.00 per acre Home on 5 acres 3BR, 1 1/2 bath, fireplace, large game room, Westbound Water, Old Abilene Hwy. 2700.00 Owner/agent Approx. 10 acres Sot Cisco, 2BR Mobile Home, Country Living 18,000.00 Scenic Secluded approx. 157 acres, 4 1/2 miles N of Hwy 183, 4BR, Satellite dish, 2 Metal barns, PEACEFUL VALLEY IN MOUNTAINS, SEE TO APPRECIATE 140,000.00 Homes 1907 Ave. C 1BR house, 2BR mobile home, 8 lots, MAKE AN OFFER Owner/agent Kinglet Dr. 2 Yrs. old, 4BR, 2 1/2 bath, 3 fireplaces, total electric Approx. 3200 sq. ft. Nice Neighborhood REDUCED TO 85,000.00 Lovely two-story house on corner lot, 4BR, 2 1/2 bath, 10,000.00 APPRECIATE 300 W. 5th st. 95,000.00 1004 W. 11th st. 2BR, large backyard CALL TO SEE 20,000.00 Lake Cisco - 1BR, 1 bath, Small Cottage Lot #37 PRICED TO SELL 7,500.00

McMillian Real Estate Yvonne McMillian-Broker 8th & C. Hilton Ave.-Cisco, Texas 442-3846 Nancy Bacon, Associate 442-2679 CER104



James W. Ratliff
REALTOR-BROKER
111 E. Main St. Ranger, Texas
Office 647-1260
Home Phone 647-1667



Brick, three bedrooms, 1 1/2 baths, very large living room, dining room, combination. Kitchen with plenty of cabinets, dishwasher, two storage buildings in back yard. Drapes, curtains, fans, and many other nice things about this home. 1230 Lamar Street. This house should FHA to Qualified Buyer.

On the corner two lots, two bedrooms, one bath well kept home, dining room or den as it is used now. Very attractive home. 616 Young Street. Let us show you this place.

Older home on 1 1/2 lots in Young Addition. you can repair home to rent or clear just for the lots. Make us an offer.

Brick four bedrooms, 1 1/2 baths, living room, separate dining room, kitchen, sun room or office. Double garage, two lots, in very good neighborhood Space heaters and several window refrigerated units.

Rock trim home on Eastland Hill or Morton Valley hwy. 2 bedrooms, 1 bath, living room, storage room, several appliances stay with house. This is a 1/2 lots, approx. 75 X 300 ft.

45 acres with house 12 miles north of Ranger on the Highway. Three bedrooms, one bath, utility room, kitchen living room. This place is on Staff Water, 1/2 minerals go with this place.

LAND FOR SALE


328 acres of land west of Ranger

Two story home with 2 baths, 3 bedrooms, living room, dining room, kitchen with cook top, dishwasher, double wall oven, den. On 3 lots with nice garden spot. This house has new plumbing, new windows, metal roof.

30 acres north of Ranger on Caddo Hwy. Older home with two bedrooms, one bath, kitchen, livingroom, dining room.

Stucco 2 bedrooms, 1 bath, living room, dining room, utility room, garden spot, car port. 710 Cherry St.

Approx. 2 1/2 acres with modular home, 3 bedrooms, 2 baths, 18 X 30 carport, central heat and Air. This is a very attractive place.



Moving to Eastland County? Or anywhere in U.S.A. Call Toll Free 1-800-525-8910 Ext. 4365 for information. (No Rentals Please)

Barbara Love, Inc. Highway 80 East Broker Eastland, Texas 76448 629-1725 629-8391

EASTLAND
FOUR Residential Lots, Only \$10,000.00. E11 ONLY \$10,000.00 3 BR, 1 bath frame on S Seaman. Gen. H. SOLD. Is some work. E7 PRICE has been reduced on this 3BR, 2B Crestwood home. Beautiful kit, sunken LR, E36 DOUBLE WIDE 3BR, 2 bath on corner lot. Cov. patio, attached carport. E2 PERFECT for newlyweds - small 2 BR, 1 B home in nice neighborhood. Only \$12,000.00 E THIS Large 3 BR, 2 bath frame has a lot to offer! Gen. h/a, loads of stg., game room & beautifully landscaped. Only \$45,000. E3 BEAUTIFUL 3BR, 2 bath brick home on 2 acre covered lot. C. SOLD. Add'n. all the Extras! E8 2BR, 1 3/4 bath frame. Small den, enclosed porch. Nice, older neighborhood. E5 VACANT Lot-Commercial Area, near downtown. Frontage on N. Lamar, access from Patterson St. Owner will finance. E30 DRASTIC REDUCTION - 2BR, 1 bath on shaded lot. Can heat, stg. bldg. E6 NEWLY WEDS! 2BR, 1 bath frame home in neat neighborhood. Reasonably priced. E15 OWNER FINANCING on this 3BR, 2 B fixer upper!

rated; bay in DR, patio doors to cov. patio. show place. H45 CARBON 3BR, 1 bath home on 7.4 acres. 2 water wells, fruit & veg. garden. SOLD. H43 CARBON 3.6 acres with frontage to Hwy. 6, a 14X64 mobile home. ONLY \$12,500.00! H420 3 BR Frame ON 11.85 acres, near Lake Leon. Frontage on 3 sides. Some Klein grass. HA22 COUNTRY LIVING on 28 ac. 3BR, 2 bath, 4 yr. old rock home. Loaded with extras. H46 CARBON 3 BR frame home on 36.576 acres. Cultivation with quota; minerals. HA24 2BR, 1 bath frame home on 66 ac. Barn, roping pens, stock tank. HA7 100 acre Pecan Orchard. Highly productive - Burkett & Indian varieties. 2 homes, farm equip.; 23 AC w/drip irrigation. Good Income! HA9 PERFECT Set-Up! 3BR mobile home on approx. 4 acres, edge of Carbon. Beautiful, approx. 34 acres, oak trees, coastal. Affordable! HA10 16 ACRES & 3BR, 1 3/4B mobile home. City water, exc. cond. HA11

ACREAGE

REDUCED TO SELL! 16 AC. NW of Eastland, Pasture, native grass, 16 AC. SOLD. 29 ACRES within city limits of Cisco. Hwy. frontage, oak trees. A10 LAKE Leon-Excellent Recreational or Building Site! Approx. 4 acres highway frontage & lake frontage. (Fees) GORMAN - 82.9 ac. 45ac. coastal w/balance pasture. Stock tank, 2 wells. Minerals! A4 TWO Building Site-Approx. 3 acres each with water meters. Highway frontage. A5A6 EDGE of Eastland, 3/4 acres homestead - oak trees, city utilities available. A7 5.2922 AC. Lakeside Country Club. Nice building site. Owner Finance! A12 CARBON Area: 118.5 ac. Fenced & cross-fenced, 3 tanks, & equip. shed. Some minerals. A19 224 AC So. of Carbon. Part brush, approx. 30 ac. coastal, 2 tanks, fenced & cross-fenced. Some minerals. A20 320 AC. Carbon: improved grasses & cult. Fenced & cross-fenced. 5 tanks. Some minerals. A21 HERE it is! 16 Ac. on pavement near Eastland. Fenced, beautiful oak trees. Be Quick! A11 296 AC North of Cisco-Native pasture with Hwy. & Cnty Road frontage. 3 tanks; good hunting! A26 GOOD Location-2 Ac. tract in Pogue Industrial Park. A9 OF RANGER 61.894 ac with county road frontage. Producing oil and gas; will convey 1/4 minerals. A15 LAKE Front Lots, Lake Leon Four lots to choose from! A30 9 ACRES in the City Limits! Nice building site. A31 5.5 ACES, Approx. 1 mile N. of Olden. Mostly cleared, few trees. Partially fenced. A3 E. of Carbon: 65 ac. with approx. 21 acres in cult. on paved road. Sandy land & some minerals. A7 160 ACRES-NW of Eastland: Approx. 90 acres of improved grasses, remainder native pasture with scattered trees. A9 327 Acres W of Carbon. Approx. 75 ac. in cult. Some improved grasses & wooded pasture. Peanut quota. A13 82 acres NW of Gorman, approx. 1/2 in cult. Small tank, hand dug wells. Minerals. A14 145 ACRES So. of Carbon. Approx. 67 acres in cult., balance in improved grasses. Underground irrigation, large barn w/shed. 12'X70' mobile home on property. Minerals & Quota! A8 COMMERCIAL

VERSATILE commercial Building! Central h/a carpet. \$20,000.00 C2 EXCELLENT Location - Store with 1680 sq. ft., kitchen, Cen. H/A 5 tr. spaces located in back on separate meters w/all utilities. C7 NICE Rental Property: Brick duplex unit. 2BR's & 1 1/2 baths to each unit. Cen. h/a, good location. C3 FANTASTIC Location Next to Skinny's. 24x14 off. bldg. sitting on 60X 160 paved & fenced lot. C1 ON the Square- Two story bldg., in good location. C4 Concrete floor, office in front, 30'X50' stg. bldg. C10 CISC0 - frame office bldg. 3 offices, reception area. On corner lot. C12 CISC0 - Vacant corner lot at E 8th & Ave. C13 CISC0 - Mini-mall. Over 4,000 sq. ft. in metal bldg., located on main thoroughfare. C14 CISC0 - Large, metal bldg. on main thoroughfare. 1st floor has lg. open area w/retrofit & kitchen. C8 120 - 25 Acres, 1 mile from E. Eastland exit. Beautiful homesite permanent & overnight trailer spaces. Some minerals and production. C9 CISC0 - Beauty shop, 4 stations, 8 hairdryers, nice interior. Asphalt parking. C10 CISC0 - frame office bldg. 3 offices, reception area. On corner lot. C12 CISC0 - Vacant corner lot at E 8th & Ave. C13 CISC0 - Mini-mall. Over 4,000 sq. ft. in metal bldg., located on main thoroughfare. C14 CISC0 - Large, metal bldg. on main thoroughfare. 1st floor has lg. open area w/retrofit & kitchen. C8 120 - 25 Acres, 1 mile from E. Eastland exit. Beautiful homesite permanent & overnight trailer spaces. Some minerals and production. C9 CISC0 - Beauty shop, 4 stations, 8 hairdryers, nice interior. Asphalt parking. C10 CISC0 - frame office bldg. 3 offices, reception area. On corner lot. C12 CISC0 - Vacant corner lot at E 8th & Ave. C13 CISC0 - Mini-mall. Over 4,000 sq. ft. in metal bldg., located on main thoroughfare. C14 CISC0 - Large, metal bldg. on main thoroughfare. 1st floor has lg. open area w/retrofit & kitchen. C8 120 - 25 Acres, 1 mile from E. Eastland exit. Beautiful homesite permanent & overnight trailer spaces. Some minerals and production. C9 CISC0 - Beauty shop, 4 stations, 8 hairdryers, nice interior. Asphalt parking. C10 CISC0 - frame office bldg. 3 offices, reception area. On corner lot. C12 CISC0 - Vacant corner lot at E 8th & Ave. C13 CISC0 - Mini-mall. Over 4,000 sq. ft. in metal bldg., located on main thoroughfare. C14 CISC0 - Large, metal bldg. on main thoroughfare. 1st floor has lg. open area w/retrofit & kitchen. C8 120 - 25 Acres, 1 mile from E. Eastland exit. Beautiful homesite permanent & overnight trailer spaces. Some minerals and production. C9 CISC0 - Beauty shop, 4 stations, 8 hairdryers, nice interior. Asphalt parking. C10 CISC0 - frame office bldg. 3 offices, reception area. On corner lot. C12 CISC0 - Vacant corner lot at E 8th & Ave. C13 CISC0 - Mini-mall. Over 4,000 sq. ft. in metal bldg., located on main thoroughfare. C14 CISC0 - Large, metal bldg. on main thoroughfare. 1st floor has lg. open area w/retrofit & kitchen. C8 120 - 25 Acres, 1 mile from E. Eastland exit. Beautiful homesite permanent & overnight trailer spaces. Some minerals and production. C9 CISC0 - Beauty shop, 4 stations, 8 hairdryers, nice interior. Asphalt parking. C10 CISC0 - frame office bldg. 3 offices, reception area. On corner lot. C12 CISC0 - Vacant corner lot at E 8th & Ave. C13 CISC0 - Mini-mall. Over 4,000 sq. ft. in metal bldg., located on main thoroughfare. C14 CISC0 - Large, metal bldg. on main thoroughfare. 1st floor has lg. open area w/retrofit & kitchen. C8 120 - 25 Acres, 1 mile from E. Eastland exit. Beautiful homesite permanent & overnight trailer spaces. Some minerals and production. C9 CISC0 - Beauty shop, 4 stations, 8 hairdryers, nice interior. Asphalt parking. C10 CISC0 - frame office bldg. 3 offices, reception area. On corner lot. C12 CISC0 - Vacant corner lot at E 8th & Ave. C13 CISC0 - Mini-mall. Over 4,000 sq. ft. in metal bldg., located on main thoroughfare. C14 CISC0 - Large, metal bldg. on main thoroughfare. 1st floor has lg. open area w/retrofit & kitchen. C8 120 - 25 Acres, 1 mile from E. Eastland exit. Beautiful homesite permanent & overnight trailer spaces. Some minerals and production. C9 CISC0 - Beauty shop, 4 stations, 8 hairdryers, nice interior. Asphalt parking. C10 CISC0 - frame office bldg. 3 offices, reception area. On corner lot. C12 CISC0 - Vacant corner lot at E 8th & Ave. C13 CISC0 - Mini-mall. Over 4,000 sq. ft. in metal bldg., located on main thoroughfare. C14 CISC0 - Large, metal bldg. on main thoroughfare. 1st floor has lg. open area w/retrofit & kitchen. C8 120 - 25 Acres, 1 mile from E. Eastland exit. Beautiful homesite permanent & overnight trailer spaces. Some minerals and production. C9 CISC0 - Beauty shop, 4 stations, 8 hairdryers, nice interior. Asphalt parking. C10 CISC0 - frame office bldg. 3 offices, reception area. On corner lot. C12 CISC0 - Vacant corner lot at E 8th & Ave. C13 CISC0 - Mini-mall. Over 4,000 sq. ft. in metal bldg., located on main thoroughfare. C14 CISC0 - Large, metal bldg. on main thoroughfare. 1st floor has lg. open area w/retrofit & kitchen. C8 120 - 25 Acres, 1 mile from E. Eastland exit. Beautiful homesite permanent & overnight trailer spaces. Some minerals and production. C9 CISC0 - Beauty shop, 4 stations, 8 hairdryers, nice interior. Asphalt parking. C10 CISC0 - frame office bldg. 3 offices, reception area. On corner lot. C12 CISC0 - Vacant corner lot at E 8th & Ave. C13 CISC0 - Mini-mall. Over 4,000 sq. ft. in metal bldg., located on main thoroughfare. C14 CISC0 - Large, metal bldg. on main thoroughfare. 1st floor has lg. open area w/retrofit & kitchen. C8 120 - 25 Acres, 1 mile from E. Eastland exit. Beautiful homesite permanent & overnight trailer spaces. Some minerals and production. C9 CISC0 - Beauty shop, 4 stations, 8 hairdryers, nice interior. Asphalt parking. C10 CISC0 - frame office bldg. 3 offices, reception area. On corner lot. C12 CISC0 - Vacant corner lot at E 8th & Ave. C13 CISC0 - Mini-mall. Over 4,000 sq. ft. in metal bldg., located on main thoroughfare. C14 CISC0 - Large, metal bldg. on main thoroughfare. 1st floor has lg. open area w/retrofit & kitchen. C8 120 - 25 Acres, 1 mile from E. Eastland exit. Beautiful homesite permanent & overnight trailer spaces. Some minerals and production. C9 CISC0 - Beauty shop, 4 stations, 8 hairdryers, nice interior. Asphalt parking. C10 CISC0 - frame office bldg. 3 offices, reception area. On corner lot. C12 CISC0 - Vacant corner lot at E 8th & Ave. C13 CISC0 - Mini-mall. Over 4,000 sq. ft. in metal bldg., located on main thoroughfare. C14 CISC0 - Large, metal bldg. on main thoroughfare. 1st floor has lg. open area w/retrofit & kitchen. C8 120 - 25 Acres, 1 mile from E. Eastland exit. Beautiful homesite permanent & overnight trailer spaces. Some minerals and production. C9 CISC0 - Beauty shop, 4 stations, 8 hairdryers, nice interior. Asphalt parking. C10 CISC0 - frame office bldg. 3 offices, reception area. On corner lot. C12 CISC0 - Vacant corner lot at E 8th & Ave. C13 CISC0 - Mini-mall. Over 4,000 sq. ft. in metal bldg., located on main thoroughfare. C14 CISC0 - Large, metal bldg. on main thoroughfare. 1st floor has lg. open area w/retrofit & kitchen. C8 120 - 25 Acres, 1 mile from E. Eastland exit. Beautiful homesite permanent & overnight trailer spaces. Some minerals and production. C9 CISC0 - Beauty shop, 4 stations, 8 hairdryers, nice interior. Asphalt parking. C10 CISC0 - frame office bldg. 3 offices, reception area. On corner lot. C12 CISC0 - Vacant corner lot at E 8th & Ave. C13 CISC0 - Mini-mall. Over 4,000 sq. ft. in metal bldg., located on main thoroughfare. C14 CISC0 - Large, metal bldg. on main thoroughfare. 1st floor has lg. open area w/retrofit & kitchen. C8 120 - 25 Acres, 1 mile from E. Eastland exit. Beautiful homesite permanent & overnight trailer spaces. Some minerals and production. C9 CISC0 - Beauty shop, 4 stations, 8 hairdryers, nice interior. Asphalt parking. C10 CISC0 - frame office bldg. 3 offices, reception area. On corner lot. C12 CISC0 - Vacant corner lot at E 8th & Ave. C13 CISC0 - Mini-mall. Over 4,000 sq. ft. in metal bldg., located on main thoroughfare. C14 CISC0 - Large, metal bldg. on main thoroughfare. 1st floor has lg. open area w/retrofit & kitchen. C8 120 - 25 Acres, 1 mile from E. Eastland exit. Beautiful homesite permanent & overnight trailer spaces. Some minerals and production. C9 CISC0 - Beauty shop, 4 stations, 8 hairdryers, nice interior. Asphalt parking. C10 CISC0 - frame office bldg. 3 offices, reception area. On corner lot. C12 CISC0 - Vacant corner lot at E 8th & Ave. C13 CISC0 - Mini-mall. Over 4,000 sq. ft. in metal bldg., located on main thoroughfare. C14 CISC0 - Large, metal bldg. on main thoroughfare. 1st floor has lg. open area w/retrofit & kitchen. C8 120 - 25 Acres, 1 mile from E. Eastland exit. Beautiful homesite permanent & overnight trailer spaces. Some minerals and production. C9 CISC0 - Beauty shop, 4 stations, 8 hairdryers, nice interior. Asphalt parking. C10 CISC0 - frame office bldg. 3 offices, reception area. On corner lot. C12 CISC0 - Vacant corner lot at E 8th & Ave. C13 CISC0 - Mini-mall. Over 4,000 sq. ft. in metal bldg., located on main thoroughfare. C14 CISC0 - Large, metal bldg. on main thoroughfare. 1st floor has lg. open area w/retrofit & kitchen. C8 120 - 25 Acres, 1 mile from E. Eastland exit. Beautiful homesite permanent & overnight trailer spaces. Some minerals and production. C9 CISC0 - Beauty shop, 4 stations, 8 hairdryers, nice interior. Asphalt parking. C10 CISC0 - frame office bldg. 3 offices, reception area. On corner lot. C12 CISC0 - Vacant corner lot at E 8th & Ave. C13 CISC0 - Mini-mall. Over 4,000 sq. ft. in metal bldg., located on main thoroughfare. C14 CISC0 - Large, metal bldg. on main thoroughfare. 1st floor has lg. open area w/retrofit & kitchen. C8 120 - 25 Acres, 1 mile from E. Eastland exit. Beautiful homesite permanent & overnight trailer spaces. Some minerals and production. C9 CISC0 - Beauty shop, 4 stations, 8 hairdryers, nice interior. Asphalt parking. C10 CISC0 - frame office bldg. 3 offices, reception area. On corner lot. C12 CISC0 - Vacant corner lot at E 8th & Ave. C13 CISC0 - Mini-mall. Over 4,000 sq. ft. in metal bldg., located on main thoroughfare. C14 CISC0 - Large, metal bldg. on main thoroughfare. 1st floor has lg. open area w/retrofit & kitchen. C8 120 - 25 Acres, 1 mile from E. Eastland exit. Beautiful homesite permanent & overnight trailer spaces. Some minerals and production. C9 CISC0 - Beauty shop, 4 stations, 8 hairdryers, nice interior. Asphalt parking. C10 CISC0 - frame office bldg. 3 offices, reception area. On corner lot. C12 CISC0 - Vacant corner lot at E 8th & Ave. C13 CISC0 - Mini-mall. Over 4,000 sq. ft. in metal bldg., located on main thoroughfare. C14 CISC0 - Large, metal bldg. on main thoroughfare. 1st floor has lg. open area w/retrofit & kitchen. C8 120 - 25 Acres, 1 mile from E. Eastland exit. Beautiful homesite permanent & overnight trailer spaces. Some minerals and production. C9 CISC0 - Beauty shop, 4 stations, 8 hairdryers, nice interior. Asphalt parking. C10 CISC0 - frame office bldg. 3 offices, reception area. On corner lot. C12 CISC0 - Vacant corner lot at E 8th & Ave. C13 CISC0 - Mini-mall. Over 4,000 sq. ft. in metal bldg., located on main thoroughfare. C14 CISC0 - Large, metal bldg. on main thoroughfare. 1st floor has lg. open area w/retrofit & kitchen. C8 120 - 25 Acres, 1 mile from E. Eastland exit. Beautiful homesite permanent & overnight trailer spaces. Some minerals and production. C9 CISC0 - Beauty shop, 4 stations, 8 hairdryers, nice interior. Asphalt parking. C10 CISC0 - frame office bldg. 3 offices, reception area. On corner lot. C12 CISC0 - Vacant corner lot at E 8th & Ave. C13 CISC0 - Mini-mall. Over 4,000 sq. ft. in metal bldg., located on main thoroughfare. C14 CISC0 - Large, metal bldg. on main thoroughfare. 1st floor has lg. open area w/retrofit & kitchen. C8 120 - 25 Acres, 1 mile from E. Eastland exit. Beautiful homesite permanent & overnight trailer spaces. Some minerals and production. C9 CISC0 - Beauty shop, 4 stations, 8 hairdryers, nice interior. Asphalt parking. C10 CISC0 - frame office bldg. 3 offices, reception area. On corner lot. C12 CISC0 - Vacant corner lot at E 8th & Ave. C13 CISC0 - Mini-mall. Over 4,000 sq. ft. in metal bldg., located on main thoroughfare. C14 CISC0 - Large, metal bldg. on main thoroughfare. 1st floor has lg. open area w/retrofit & kitchen. C8 120 - 25 Acres, 1 mile from E. Eastland exit. Beautiful homesite permanent & overnight trailer spaces. Some minerals and production. C9 CISC0 - Beauty shop, 4 stations, 8 hairdryers, nice interior. Asphalt parking. C10 CISC0 - frame office bldg. 3 offices, reception area. On corner lot. C12 CISC0 - Vacant corner lot at E 8th & Ave. C13 CISC0 - Mini-mall. Over 4,000 sq. ft. in metal bldg., located on main thoroughfare. C14 CISC0 - Large, metal bldg. on main thoroughfare. 1st floor has lg. open area w/retrofit & kitchen. C8 120 - 25 Acres, 1 mile from E. Eastland exit. Beautiful homesite permanent & overnight trailer spaces. Some minerals and production. C9 CISC0 - Beauty shop, 4 stations, 8 hairdryers, nice interior. Asphalt parking. C10 CISC0 - frame office bldg. 3 offices, reception area. On corner lot. C12 CISC0 - Vacant corner lot at E 8th & Ave. C13 CISC0 - Mini-mall. Over 4,000 sq. ft. in metal bldg., located on main thoroughfare. C14 CISC0 - Large, metal bldg. on main thoroughfare. 1st floor has lg. open area w/retrofit & kitchen. C8 120 - 25 Acres, 1 mile from E. Eastland exit. Beautiful homesite permanent & overnight trailer spaces. Some minerals and production. C9 CISC0 - Beauty shop, 4 stations, 8 hairdryers, nice interior. Asphalt parking. C10 CISC0 - frame office bldg. 3 offices, reception area. On corner lot. C12 CISC0 - Vacant corner lot at E 8th & Ave. C13 CISC0 - Mini-mall. Over 4,000 sq. ft. in metal bldg., located on main thoroughfare. C14 CISC0 - Large, metal bldg. on main thoroughfare. 1st floor has lg. open area w/retrofit & kitchen. C8 120 - 25 Acres, 1 mile from E. Eastland exit. Beautiful homesite permanent & overnight trailer spaces. Some minerals and production. C9 CISC0 - Beauty shop, 4 stations, 8 hairdryers, nice interior. Asphalt parking. C10 CISC0 - frame office bldg. 3 offices, reception area. On corner lot. C12 CISC0 - Vacant corner lot at E 8th & Ave. C13 CISC0 - Mini-mall. Over 4,000 sq. ft. in metal bldg., located on main thoroughfare. C14 CISC0 - Large, metal bldg. on main thoroughfare. 1st floor has lg. open area w/retrofit & kitchen. C8 120 - 25 Acres, 1 mile from E. Eastland exit. Beautiful homesite permanent & overnight trailer spaces. Some minerals and production. C9 CISC0 - Beauty shop, 4 stations, 8 hairdryers, nice interior. Asphalt parking. C10 CISC0 - frame office bldg. 3 offices, reception area. On corner lot. C12 CISC0 - Vacant corner lot at E 8th & Ave. C13 CISC0 - Mini-mall. Over 4,000 sq. ft. in metal bldg., located on main thoroughfare. C14 CISC0 - Large, metal bldg. on main thoroughfare. 1st floor has lg. open area w/retrofit & kitchen. C8 120 - 25 Acres, 1 mile from E. Eastland exit. Beautiful homesite permanent & overnight trailer spaces. Some minerals and production. C9 CISC0 - Beauty shop, 4 stations, 8 hairdryers, nice interior. Asphalt parking. C10 CISC0 - frame office bldg. 3 offices, reception area. On corner lot. C12 CISC0 - Vacant corner lot at E 8th & Ave. C13 CISC0 - Mini-mall. Over 4,000 sq. ft. in metal bldg., located on main thoroughfare. C14 CISC0 - Large, metal bldg. on main thoroughfare. 1st floor has lg. open area w/retrofit & kitchen. C8 120 - 25 Acres, 1 mile from E. Eastland exit. Beautiful homesite permanent & overnight trailer spaces. Some minerals and production. C9 CISC0 - Beauty shop, 4 stations, 8 hairdryers, nice interior. Asphalt parking. C10 CISC0 - frame office bldg. 3 offices, reception area. On corner lot. C12 CISC0 - Vacant corner lot at E 8th & Ave. C13 CISC0 - Mini-mall. Over 4,000 sq. ft. in metal bldg., located on main thoroughfare. C14 CISC0 - Large, metal bldg. on main thoroughfare. 1st floor has lg. open area w/retrofit & kitchen. C8 120 - 25 Acres, 1 mile from E. Eastland exit. Beautiful homesite permanent & overnight trailer spaces. Some minerals and production. C9 CISC0 - Beauty shop, 4 stations, 8 hairdryers, nice interior. Asphalt parking. C10 CISC0 - frame office bldg. 3 offices, reception area. On corner lot. C12 CISC0 - Vacant corner lot at E 8th & Ave. C13 CISC0 - Mini-mall. Over 4,000 sq. ft. in metal bldg., located on main thoroughfare. C14 CISC0 - Large, metal bldg. on main thoroughfare. 1st floor has lg. open area w/retrofit & kitchen. C8 120 - 25 Acres, 1 mile from E. Eastland exit. Beautiful homesite permanent & overnight trailer spaces. Some minerals and production. C9 CISC0 - Beauty shop, 4 stations, 8 hairdryers, nice interior. Asphalt parking. C10 CISC0 - frame office bldg. 3 offices, reception area. On corner lot. C12 CISC0 - Vacant corner lot at E 8th & Ave. C13 CISC0 - Mini-mall. Over 4,000 sq. ft. in metal bldg., located on main thoroughfare. C14 CISC0 - Large, metal bldg. on main thoroughfare. 1st floor has lg. open area w/retrofit & kitchen. C8 120 - 25 Acres, 1 mile from E. Eastland exit. Beautiful homesite permanent & overnight trailer spaces. Some minerals and production. C9 CISC0 - Beauty shop, 4 stations, 8 hairdryers, nice interior. Asphalt parking. C10 CISC0 - frame office bldg. 3 offices, reception area. On corner lot. C12 CISC0 - Vacant corner lot at E 8th & Ave. C13 CISC0 - Mini-mall. Over 4,000 sq. ft. in metal bldg., located on main thoroughfare. C14 CISC0 - Large, metal bldg. on main thoroughfare. 1st floor has lg. open area w/retrofit & kitchen. C8 120 - 25 Acres, 1 mile from E. Eastland exit. Beautiful homesite permanent & overnight trailer spaces. Some minerals and production. C9 CISC0 - Beauty shop, 4 stations, 8 hairdryers, nice interior. Asphalt parking. C10 CISC0 - frame office bldg. 3 offices, reception area. On corner lot. C12 CISC0 - Vacant corner lot at E 8th & Ave. C13 CISC0 - Mini-mall. Over 4,000 sq. ft. in metal bldg., located on main thoroughfare. C14 CISC0 - Large, metal bldg. on main thoroughfare. 1st floor has lg. open area w/retrofit & kitchen. C8 120 - 25 Acres, 1 mile from E. Eastland exit. Beautiful homesite permanent & overnight trailer spaces. Some minerals and production. C9 CISC0 - Beauty shop, 4 stations, 8 hairdryers, nice interior. Asphalt parking. C10 CISC0 - frame office bldg. 3 offices, reception area. On corner lot. C12 CISC0 - Vacant corner lot at E 8th & Ave. C13 CISC0 - Mini-mall. Over 4,000 sq. ft. in metal bldg., located on main thoroughfare. C14 CISC0 - Large, metal bldg. on main thoroughfare. 1st floor has lg. open area w/retrofit & kitchen. C8 120 - 25 Acres, 1 mile from E. Eastland exit. Beautiful homesite permanent & overnight trailer spaces. Some minerals and production. C9 CISC0 - Beauty shop, 4 stations, 8 hairdryers, nice interior. Asphalt parking. C10 CISC0 - frame office bldg. 3 offices, reception area. On corner lot. C12 CISC0 - Vacant corner lot at E 8th & Ave. C13 CISC0 - Mini-mall. Over 4,000 sq. ft. in metal bldg., located on main thoroughfare. C14 CISC0 - Large, metal bldg. on main thoroughfare. 1st floor has lg. open area w/retrofit & kitchen. C8 120 - 25 Acres, 1 mile from E. Eastland exit. Beautiful homesite permanent & overnight trailer spaces. Some minerals and production. C9 CISC0 - Beauty shop, 4 stations, 8 hairdryers, nice interior. Asphalt parking. C10 CISC0 - frame office bldg. 3 offices, reception area. On corner lot. C12 CISC0 - Vacant corner lot at E 8th & Ave. C13 CISC0 - Mini-mall. Over 4,000 sq. ft. in metal bldg., located on main thoroughfare. C14 CISC0 - Large, metal bldg. on main thoroughfare. 1st floor has lg. open area w/retrofit & kitchen. C8 120 - 25 Acres, 1 mile from E. Eastland exit. Beautiful homesite permanent & overnight trailer spaces. Some minerals and production. C9 CISC0 - Beauty shop, 4 stations, 8 hairdryers, nice interior. Asphalt parking. C10 CISC0 - frame office bldg. 3 offices, reception area. On corner lot. C12 CISC0 - Vacant corner lot at E 8th & Ave. C13 CISC0 - Mini-mall. Over 4,000 sq. ft. in metal bldg., located on main thoroughfare. C14 CISC0 - Large, metal bldg. on main thoroughfare. 1st floor has lg. open area w/retrofit & kitchen. C8 120 - 25 Acres, 1 mile from E. Eastland exit. Beautiful homesite permanent & overnight trailer spaces. Some minerals and production. C9 CISC0 - Beauty shop, 4 stations, 8 hairdryers, nice interior. Asphalt parking. C10 CISC0 - frame office bldg. 3 offices, reception area. On corner lot. C12 CISC0 - Vacant corner lot at E 8th & Ave. C13 CISC0 - Mini-mall. Over 4,000 sq. ft. in metal bldg., located on main thoroughfare. C14 CISC0 - Large, metal bldg. on main thoroughfare. 1st floor has lg. open area w/retrofit & kitchen. C8 120 - 25 Acres, 1 mile from E. Eastland exit. Beautiful homesite permanent & overnight trailer spaces. Some minerals and production. C9 CISC0 - Beauty shop, 4 stations, 8 hairdryers, nice interior. Asphalt parking. C10 CISC0 - frame office bldg. 3 offices, reception area. On corner lot. C12 CISC0 - Vacant corner lot at E 8th & Ave. C13 CISC0 - Mini-mall. Over 4,000 sq. ft. in metal bldg., located on main thoroughfare. C14 CISC0 - Large, metal bldg. on main thoroughfare. 1st floor has lg. open area w/retrofit & kitchen. C8 120 - 25 Acres, 1 mile from E. Eastland exit. Beautiful homesite permanent & overnight trailer spaces. Some minerals and production. C9 CISC0 - Beauty shop, 4 stations, 8 hairdryers, nice interior. Asphalt parking. C10 CISC0 - frame office bldg. 3 offices, reception area. On corner lot. C12 CISC0 - Vacant corner lot at E 8th & Ave. C13 CISC0 - Mini-mall. Over 4,000 sq. ft. in metal bldg., located on main thoroughfare. C14 CISC0 - Large, metal bldg. on main thoroughfare. 1st floor has lg. open area w/retrofit & kitchen. C8 120 - 25 Acres, 1 mile from E. Eastland exit. Beautiful homesite permanent & overnight trailer spaces. Some minerals and production. C9 CISC0 - Beauty shop, 4 stations, 8 hairdryers, nice interior. Asphalt parking. C10 CISC0 - frame office bldg. 3 offices, reception area. On corner lot



WILDCAT TALES
RISING STAR HIGH
JOURNALISM

Jr. Wildcats
Strike Again

by Racheal Coleman

The junior Wildcats traveled to Throckmorton last Thursday night to play against the Greyhounds. They were planning to come back with a victory, but the Hounds came out on top with the scoreboard reading Hounds 14 and Cats 0.

Seventh grader Robert Hollis says he hopes to improve in the next game. Gary Stone states, "We played a pretty good game, but I think we could do better next time." Travis Butler thinks they should have played better. "I think we will do better next game," Daniel Rodriguez also thinks they played good and should have won. Michael Perales and Coach Browning state, "I hope we continue to improve."

This coming Thursday night is going to be open, but our Jr. Cats will play Cross Plains on Thursday night, October 11, at 6:30.

Hey, Cats! Buff the Buffaloes! Good luck!

Happy Birthday

OCTOBER 5

Taronna Sewalt
Pat Walker
Stephen Hill

OCTOBER 6

Kaycee Rutherford
Jerald Maynard
Barbara White

OCTOBER 7

Gary Wilson
Becky Headrick
Bonnie J. Powell Burcham

OCTOBER 8

Gwynn Tharp
Jody Hook

OCTOBER 9

Flara Westerman
May A. Cook

OCTOBER 10

Johnny Owen
Parker Brown
Charlie Bird

4-H News
By Janet Thomas, Eastland
County Extension Agent

MORE 4-H WEST TEXAS FAIR AND RODEO RESULTS

The Eastland County 4-H did extremely well at the West Texas Fair in August and following is a more complete listing of the Dairy Goat winnings:

Youth Show:
Sr. Nubian under 2 yr., 1st-Kimberly Reich.
Jr. Nubian 8-24 mo., 1st-Telitha Winge.
Jr. Nubian 9-12 mo., 2nd & 7th Karl Winge; 5th & 6th Telitha Winge.
Reserve Grand Champion Nubian-Kimberly Reich.
Grand Champion Nubian-Jessica Keith.
Sr. A.O.P. 2-3 yr., 1st-Stephen Reich.
Jr. A.O.P. 0-6 mo., 1st-Stephen Reich; 2nd-Kimberly Reich.
6-9 mo., 1st-Kimberly Reich; 2nd-Stephen Reich; 3rd-Hannah Reich.
18-24 mo., 1st-Karl Winge.
Grand Champion A.O.P.-Stephen Reich.
Best of Show (44 entries)-Stephen Reich.
Open Ring A:
Jr. Saanen 0-6 mo., 1st-Kimberly Reich; 3rd-Stephen Reich.
6-9 mo., 1st-Stephen Reich.
Grand Champion Saanen Jr. Doe, Stephen Reich.
Reserve Grand Champion Saanen Jr. Doe, Kimberly Reich.
Jr. Toggenburg 0-6 mo., 1st-Kimberly Reich.
6-9 mo. 2nd-Kimberly Reich; 3rd-Stephen Reich.
Sr. Toggenburg 2yr. under 3 yr. 1st-Stephen Reich.

Reserve Grand Champion Toggenburg, Stephen Reich
Jr. Nubian 18-24 mo., 5th-Telitha Winge.
Sr. Nubian under 2 yr., 2nd-Kimberly Reich.
Open Ring B:
Jr. Saanen 0-6 mo., 1st-Kimberly Reich; 2nd-Stephen Reich.
6-9 mo., 2nd-Stephen Reich.

Reserve Grand Champion Saanen Jr. Doe, Kimberly Reich.
Jr. Toggenburg 0-6 mo., 1st-Kimberly Reich.
6-9 mo., 2nd-Stephen Reich; 3rd-Kimberly Reich.
Sr. Toggenburg 2yr. & under 3yr., 1st-Stephen Reich.
Grand Champion Toggenburg Sr. Doe, Stephen Reich.
Jr. Alpines, 18-24 mo., 5th-Karl Winge.
Sr. Nubian under 2 yr., 3rd-Kimberly Reich.

This is a full listing of some of the ones that were not available at the time of the first printing. We are very proud of these 4-Hers and wish them the best on down the road.

Also we need to send out Congratulations out to Tessie Ingram Eastland County Horse Club Member for her winning of the Jr. Rodeo Queen Contest at the West Texas Fair. Tessie shined out above lots of tough competition and is representing Eastland County well. Congratulations and Good luck in the future.

4-H Steer Showing Duo
Win At Summers Shows



April Moylan



Morgan Moylan

After 15,000 miles of traveling to summer steer shows and lots of hard work and dedication the Moylan sisters are now ready to start the Major Show Season. April and Morgan Moylan are 4-H members of Eastland County and when it comes to steer showing the excel into greatness. After the hard long road of 22 shows the total winnings for the Moylan crew was 31 Grand and Reserve

Champions of Show and 55 Breed Champions. The teams motto of "Take No Prisoners" was exercised to the fullest. April due to these wins is currently sitting in the lead of the All-Around Championship in the Texas Club Calf Association and Morgan is sitting second in A.O.B. division. This team have already had large amounts of success and can't wait until the major shows start to continue their winning ways.

The Freshman School Scoop
Child
by Wendy Green

submitted by Michelle Ferbrache

The Freshman Child So shy and coy, Admires and stares At the Sophomore Boy The Sophomore Boy With his head in whirl Turns to look at The Junior Girl The Junior Girl With her stunning tan Boldly pursues The Senior Man The Senior Man Dashing and wild Secretly loves the Freshman Child

SCHOOL SCOOP! by Wendy Green

What junior guy has dates for homecoming? Will he be buying three mums for his long distance beauties? Good luck MH!

What English teacher actually expects her students to do REAL work? Ask the Seniors, their (sic) amazed! If all the students and teachers at RS entered an ugly car contest, guess who'd win! Hint, its not mine or Scotty's Mustang!

"Ware" were Soph. TW and 8th grader going the other night? Together!

Is ex-Lady Cat (SS) still seeing the "Geye"?

We need to start thinking about favors. Who will the next cutest couple be? Keep your eyes peeled!

What hot new romance is beginning (again) out on the farm? Hint, she goes home from school and eats lunch with him everyday.

Mr. Speedy himself spent all day Saturday in defensive driving. He'd better slow down so the girls can catch him!

What two Senior guys had to buy not one but two, count em, two, in different colors. Maybe they should get a discount!

What's the big deal after the homecoming game? Don't worry, we know where everybody's really going!

All students had better start preparing for the RS vs. CP game. CW has informed her classes to watch out if they don't come home the victors!

RC has a new roping partner, the question is: What are they roping?

Who was the mystery man at the pep rally. Did he come to see one of the cheerleaders?

"The Gang" went to the show Monday night. Which ones were too chicken to go to the horror flick?

Well, from last week to this week Mr. Compassion seems to be showing a little more affection!

What Junior girl has straightened up her act? She's even been getting home a few minutes before her curfew!

GO CATS GO

by Cheryl Robinette
The Rising Star Wildcats lost their game against the Throckmorton Greyhounds last Friday, with a score of 34-8.

Brandon Geye expressed this sentiment, "We played a good game, but apparently we need to do better. We'll improve our plays by next Saturday."

The Wildcats will be playing their homecoming game this Saturday against Abilene Christian High School. The game starts at 8:00 and should be an exciting event, so be sure and be there to cheer the Cats on to a memorably homecoming victory!

Kids Korner

by Betty Jones

What do the kids think of pep rallies being held at the elementary campus? They are a certain success.

Brianna Cooksey, fifth grader, and Racheal Bush, fourth grader, definitely like the pep rallies closer to them. Brianna also thinks Keley was very cute.

Mr. Mohundro also likes the pep rallies at the elementary.

Don't forget report cards come out next week. Study Hard!

Cafeteria bills will be going out on Thursday.

Have a great Homecoming!

Tami's Tidbits

by Tami Vandiver

Elections for Miss La Estrellita, Mr. and Miss RSHS, Most Attractive, Most Friendly, Most Likely to Succeed and Most Athletic will be held October 8. Senior students are traditionally selected for these honors.

Other honors will be bestowed on students from grades nine through twelve; these are Best Dressed, Most Dependable, Most Spirited, Biggest Flirt, Biggest Clown, Biggest Gossip, Most Preppy, Most Talkative, Shiest, Biggest Complainer, Biggest Kiss Up and Cutest Couple.

The results of the elections will be reported next week.

Stuteville's Shooters

by Gherda Williams

"The girls have been working very hard, and we are looking forward to a great basketball season!" said Coach Stuteville.

With six weeks of basketball practices out of the way, the high school girls' basketball team is finally getting down the basics. The LadyCats have been doing dribbling drills, shooting drills (lots of shooting!), passing drills and, of course, have been scrimmaging against one another.

Stephanie Sizemore, a Junior LadyCat, concluded, "It's really cool to see us coming together as a team already!"

School Menu

OCTOBER 8-12

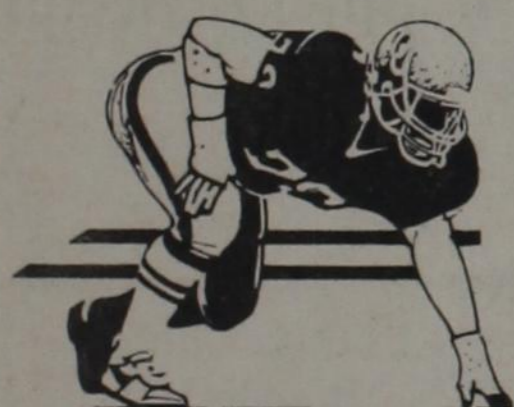
MON: Lunch: Burritos, corn, salad, cake, milk; Breakfast: Cereal, toast, juice, milk

TUE: Lunch: Turkey, potatoes, green beans, rolls, jello, milk; Breakfast: Egg squares, toast, juice, milk

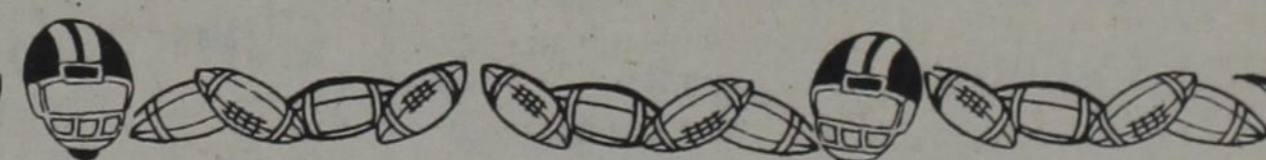
WED: Lunch: Chili beans, French fries, cole slaw, cornbread, crunch, milk; Breakfast: Bacon, toast, fruit, milk

THU: Lunch: Frito pie, mixed vegetables, salad, crackers, milk; Breakfast: Muffins, juice, milk

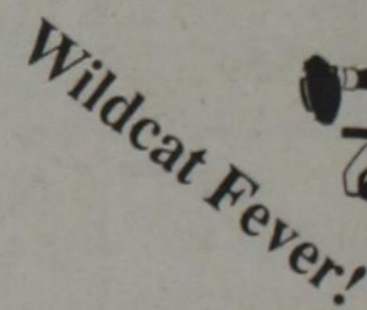
FRI: Lunch: Hamburgers, lettuce, tomato, pickles, onion, chips, cookie, milk; Breakfast: Biscuits, sausage, gravy, juice, milk



Go Cats!



Wildcats vs Abilene Christian High
Homecoming Saturday, October 6, 7:30 p.m.



Wildcat Fever!

Main Street Auto Repair 643-1701
Hubbard Gift & Gallery 643-6242
Pallace Drug Store Spirit Sweat & Tee Shirts 643-3231
Higginbotham Funeral Home 643-4321
L & J Construction 725-7582 643-6464
Nall's Quik Stop 643-1441

Murphree Oil Co. 643-2341
Buttons & Bows 643-5705
Rising Star Chamber of Commerce 643-5754
Rising Star Nursing Center 643-2681
Carey's Automotive 643-7009
D & T Building Supplies 643-4131

Family Food Store 643-2221
Jenkins Insurance Agency 643-2251
Jim Ratliff Welding 643-6464
Cooper's Texaco 643-1805
Dr. B.T. Carpenter 643-3141
Pioneer Farmers Cooperative 725-6564

White's Elite Cafe 643-2417
Winfrey Feed & Peanut 643-6251
Medley Motor Co. 643-6211
The Rising Star 643-4141
Max's Quickway 643-1490
First State Bank Member FDIC 643-2811

RISING STAR HIGH SCHOOL
1990 Wildcat Football

Oct. 6 (Sat)	Abilene Christian	Homecoming	7:30 p.m.
Oct. 12*	Cross Plains	Home	7:30 p.m.
Oct. 19*	Santo	Away	7:30 p.m.
Oct. 26*	Gorman	Away	7:30 p.m.
Nov. 2*	Baird	Home	7:30 p.m.
Nov. 9*	Tolar	Away	7:30 p.m.

*District games

RISING STAR JR. HIGH SCHOOL
1990 Football

Oct. 4	Open		
Oct. 11*	Cross Plains	Away	6:30 p.m.
Oct. 18*	Santo	Home	6:30 p.m.
Oct. 25*	Gorman	Home	6:30 p.m.
Nov. 1*	Baird	Away	6:30 p.m.
Nov. 8*	Tolar	Home	6:30 p.m.

* District games

1910 Ex Will Come to Homecoming

Homecomings and reunions not only bring ex-students and friends together, they bring back many cherished memories.

None was more proud of the Rising Star school system in the early part of the century than the late A.J. Rhone, local grocery-mercantile store owner who later owned the telephone exchange. His visions included a new high school building and adding an eleventh grade to the curriculum (at that time there were only ten grades).

Tireless efforts paid the desired dividends. However, due to the hiring of Rhone's oldest daughter, Beulah Merrill Rhone, as a member of the faculty, A.J. Rhone's was not one of the names of school board members etched in the stone when the three-story ward school was erected. Policy did not permit more than one member of a family to serve the school and Mr. Rhone resigned.



A member of the Rising Star High School Senior Class of 1910 will be in Rising Star for homecoming activities Saturday. Ada Rhone Mobley of Cisco, now 97, was valedictorian of her class. Class members pictured above are, seated, Eustice Cox, Bess McCollum, teacher J.E. Wickham, Ada Rhone and Jalmar Bowden; and, standing, Alta Montgomery, Laura Mayben, Etta Anderson, Mattie Smith, Clara Jacobs, Winnie Gibson and John Joyce.

Ada (Rhone) Mobley, one of the four daughters of A.J., graduated as valedictorian of her 1910 Rising Star class. However, she and the late Mattie Smith returned the next school year for the newly added eleventh grade and again were presented with diplomas in 1911.

Mrs. Mobley, 97, plans to attend the homecoming celebration in Rising Star this weekend and will probably be the oldest living ex-student of the school.

Other Rhone sisters graduating from Rising Star High School were Hallie McDonald, now deceased, in 1913 and Mabel Dill, of Rising Star, in 1917.

ating from Rising Star High School were Hallie McDonald, now deceased, in 1913 and Mabel Dill, of Rising Star, in 1917.

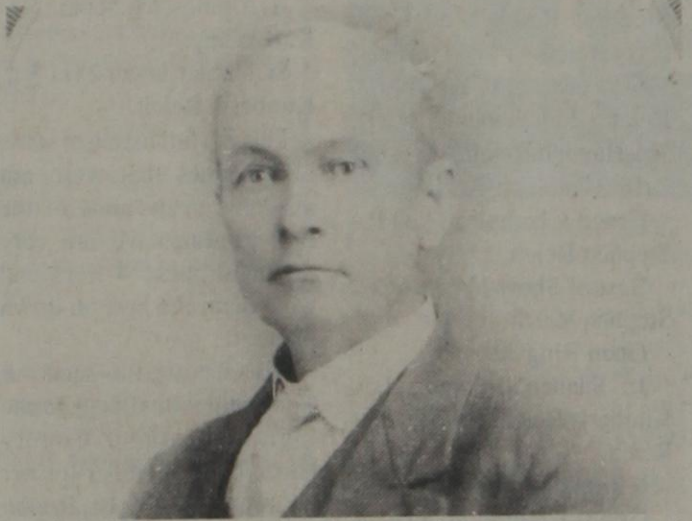


Halley Rhone, seated second from left, was a member of the Rising Star High School Senior Class of 1913. Other class members, not in pictured order, were John Taylor Canafax, Alma Lorena Dry, Annie Eunice Nix, Burette Gray, Olive Gattis, Carl Eugene Joyce, Blanche Helen Gray, Holder Gilbert Pottee, Lorena Ray Busbee, Andrew Jackson Joyce and Myrtle Sarah Armstrong. Superintendent was J.E. Wickham and principal was D.L. Henry.

All of your favorite **WATKINS** products are now available at the **JOY PECAN SHOPPE**

Vanilla Flavorings Salve Liniment Pepper Spices Ointment Barbecue Sauce

If we don't have your favorite, we can get it!
W. Hwy. 36 Rising Star 643-3011



A.J. Rhone was the father of Ada Mobley and three other daughters, including Mabel Dill of Rising Star and Beulah Rhone Brown and Halley Rhone MacDonald, both now deceased.

FAMILY FOOD STORE

North Main St. NEW STORE HOURS Monday-Sunday 8:00 a.m.-6:00 p.m.

Affiliated Food Store
Phone 643-2221

Rising Star
Prices Effective
Wed., Oct. 3 - Sat., Oct. 6

.....*We Make Deliveries*.....

★ *Support Your Town - Shop At Home* ★

We Gladly Accept Food Stamps

<p style="text-align: center;">Best Maid Pickles 32 oz. Whole Dill or Bnd n' Butter \$1.69</p>	<p style="text-align: center;">Bounty Towels 89¢</p>	<p style="text-align: center;">Northern Toilet Tissue 4 roll pkg. 99¢</p>
<p style="text-align: center;">Del Monte Cut Green Beans 16 oz. 42¢</p>	<p style="text-align: center;">Folgers Bag Coffee 13 oz. Fine, Perk/Reg. & ADC \$1.69</p>	<p style="text-align: center;">Gold Medal Flour 5 lb. All Purpose, S/R or Bread 69¢</p>
<p style="text-align: center;">Del Monte French Style Green Beans 16 oz. 42¢</p>	<p style="text-align: center;">Del Monte Golden Corn 17 oz. Cream or Whole Kernel 42¢</p>	<p style="text-align: center;">Shurfine Tall Kitchen Bags 30 ct. \$1.79</p>
<p style="text-align: center;">U.S.D.A. Choice Boneless Chuck Roast \$1.59 lb.</p>	<p style="text-align: center;">Classic Delight Ice Cream 1/2 gal. Reg. & Diet \$1.99</p>	<p style="text-align: center;">Shurfresh Chopped Broccoli 10 oz. 39¢</p>
<p style="text-align: center;">U.S.D.A. Choice Boneless Shoulder Roast \$1.89 lb.</p>	<p style="text-align: center;">U.S.D.A. Choice Boneless Chuck Steak \$1.89 lb.</p>	<p style="text-align: center;">U.S.D.A. Choice Boneless Shoulder Steak \$2.19 lb.</p>
<p style="text-align: center;">California Tokay Red Grapes 69¢ lb.</p>	<p style="text-align: center;">Fresh Ground Chuck \$1.99 lb.</p>	<p style="text-align: center;">Lean & Tender Boneless Beef Stew Meat \$2.29 lb.</p>
<p style="text-align: center;">Large Red Ripe Tomatoes 59¢ lb.</p>	<p style="text-align: center;">Fresh Broccoli 79¢ lb.</p>	
<p style="text-align: center;">Fresh Green Onions</p>	<p style="text-align: center;">Cello Red Radishes</p>	<p style="text-align: center;">Red Delicious Apples 3 lb. bag \$1.39 bag</p>
<p style="text-align: center;">Mix Or Match 4 for \$1.00</p>		

CLIP THESE SAVINGS

LUNCH SPECIAL 11-1
Hamburger Basket.....\$1.75
Cheeseburger Basket.....\$1.85
Bean Burrito......49¢
French Fries......49¢
Tator Tots......49¢

MAX'S QUICKWAY
201 W. College 643-1490

This Coupon Gives You 50¢ OFF 11 oz. Bottle Watkins Vanilla

JOY PECAN SHOPPE
Hiway 36 West 643-3011

Generic Blades (Fit Atra) 10-Pack \$3.49
Toothbrush with Travel Case Buy 1, Get 1 FREE
All Cough, Cold Products 10% OFF
Palace Drug Store
101 N. Main 643-3231
(Prices Good Thru Oct.)

Sharpie Permanent Marker Fine, X-Fine Reg. 99¢ ONLY 69¢
BIC Brite Liner Fluorescent Marker Green, only Reg. 89¢ ONLY 59¢
THE RISING STAR
104 N. Main 643-4141

Shurfine Fruit Cocktail 17 oz. Reg. \$1.01
With Coupon 79¢ Offer good 10-3 thru 10-6
FAMILY FOOD STORE
N. Main St. 643-2221

CAMPBELL'S CABINET SHOP
Full Set of Kitchen Cabinets \$100 Off
Bathroom Vanity \$25 Off
817-842-5875

LEE'S CUTS & CURLS
SPECIAL
Permanent \$20.00
Price good Oct. 4-11
110 E. Ross 643-6001

NALL'S QUIK STOP
At the Traffic Light 643-1441
Taco Plate - \$1.50
Taco Bowl - .99¢
Coke, Dr. Pepper 6-Pk - \$1.99 Plus tax
Rising Star WILDCAT Caps Only \$5.00 each
Best Value Cigarettes \$9.99 carton, plus tax
WELCOME EXES

JOY PECAN SHOPPE
Hiway 36 West 643-3011
Acrylic Yarn Skein, 50¢

Get Ready for Cold Weather!
Pipe Insulation
Caulking Heat Tapes
Weather Stripping
10% OFF Thru Oct. 31
BUDDY'S PLUMBING & APPLIANCES
112 N. Main 643-7312

From page one

Wildcat Game

recovered on the Cats 38-yd. line. Alcorn had a 10-yd. gain, but on the next play the Cats caught up the football and it was the Greyhounds' ball on their own 32. On Throckmorton's first play after the fumble recovery, Alcorn knocked the ball loose and Donny Horton alertly fell on the pigskin, the Cats moved the ball all the way to Throckmorton's 24-yd. line when it was 4th and 2. The run came up short and with 5:19 left in the 3rd the ball went over to the Greyhound on downs. The Cats started moving the ball well as Evans connected with Geyre for two long passing gains, but when Harmon was injured and carried off in the ambulance, the Cats were unable to put points on the board.

The fourth quarter started with the Cats trailing 21-0. The Dogs made another TD with 9:05 left on the clock and then once again ran 49 yds. for the end zone with 4:29 left. Alcorn had a couple of good gains on the ground and Evans picked up 9 scrambling for his life. Evans hit Bailey for 17 yds. and then Burton recovered the on side kick. Evans and Bailey teamed up for 49 yds to set up the only Wildcat touchdown of the game. Alcorn dove one yard for the TD at 4:04 left in the game. Evans' pass for 2 was good to Medley and the final score was 34-8.

Next Saturday we entertain Abilene Christian High for a homecoming crowd. Remember game time is 7:30. See you there!

Game Stats		TM
RS	Score	34
9	Total First Downs	9
25/76	Rushes Yards	61/277
168	Passing Yards	151
244	Total	428
149/22	Comp/Att/Int	34/0
4/27	Punts/Avg	4/36
7/40	Penalties/Yds	7/71
1	Fumbles/Lost	2
Individual Stats		
RUSHING	D Alcorn 18/80 TD	D Alcorn 2/27
	B Geyre 1/3	B Bailey 1/21
	B Bailey 2/-1	TACKLES
	J Evans 5/-6	D Alcorn 10
RECEIVING	B Bailey 4/55	D Horton 9 1/2
	B Geyre 4/43	B Geyre 9
	J Horton 3/19	B Bailey 9
	D Alcorn 1/7	S Wilson 6 1/2
PUNTING	Alcorn 4/27	B Flores 5
	KICK-OFFS	L Healy 4 1/2
	Alcorn 1/45	J Horton 4
	KICK-RETURNS	M Harmon 3
	S Wilson 2/14	K Truett 1 1/2
		J Bible 1
		T Ware 1