

War Board News

A weekly column contributed by members of the Howard county USDA War Board.

A Survey Of The Protein Feed Situation For The Current Year

By O. P. GRIFFIN
County Farm Agent

Many livestock and poultry producers have been concerned recently as to whether they would be able to get the protein feeds necessary for 1943 production of livestock and poultry products. In some cases different figures have come out from different sources to confuse the situation further. Shortages in certain areas have resulted in a feeling of uneasiness if not alarm on the part of some producers.

In a series of meetings during the past few weeks, the feed industry and the Department of Agriculture have surveyed the whole situation, arrived at a common basis of understanding and agreement, and worked out a conservation program designed to spread prospective supplies to the best advantage and insure good nutrition for the various classes of livestock and poultry.

This program will not give all producers all the protein feeds they want. Similarly, it will re-

strict the feed industry in ways not contemplated in normal times. But if it is faithfully carried out, it should insure adequate nutrition without waste for the various classes of livestock and poultry.

On this point livestock nutritionists of the department of agriculture, and those called in as consultants from state colleges by the industry, are agreed.

The faithful carrying out of this program is essential to reaching the livestock goals set for 1943—and the livestock goals are a vital part of the whole food production program, which is geared closely into the war effort.

There is no doubt in the minds of anyone concerned that the farmers of the United States, as well as the feed industry, will do their part.

What Are Prospective Supplies? The upshot of the recent survey, and the checking and rechecking of figures, is that the supply situation is tight but that for the country as a whole there will be enough to go around if we make the best use of all we have.

On the basis of careful estimates, there will be about 16 per cent more protein feed in 1943 than there was in 1942, as compared with an increase of about 18 per cent in the production of meat and livestock products.

The following table shows the estimated supplies for 1943 compared with the amounts available in 1942:

	1942	1943	1943 as a pct. of 1942
1000 tons	1000 T.	1000 T.	100
Oil cake	5,000	6,824	130
Tankage, meat scraps and fish meal	920	970	105
Milk products (dried)	98	98	97
Skim milk fed on farms (dry equivalent)	1,454	1,415	97
Miscellaneous protein feeds	2,164	2,199	102

In this table oilseed cake and meal includes these products from cottonseed, soybeans, flaxseed, and peanuts; milk products include dried skim milk, dried whey and dried buttermilk; and miscellaneous protein includes corn gluten feed and meal, brewers' and distillers' dried grains, copra meal, and alfalfa meal.

The increase in oil cake and meal shown in the table will come principally from larger production

of soybean cake and meal, and much of this increase will occur during the spring and summer months.

When all these feeds are adjusted to a common base to allow for their differing protein content, the estimated 1943 supply as a whole is about 16 per cent higher than the 1942 supply.

The combined production of meat and livestock products, if livestock goals are reached, will be about 15 per cent higher than in 1942. On January, 1943, there were 11 per cent more grain-consuming animal units on farms than on January 1, 1942.

Thus supplies of all protein feeds will be about as large in relation to livestock in 1943 as in 1942, and perhaps a little larger.

The difference is too small to be significant—except that it shows we are not falling behind.

The tightest spot occurs in the case of animal proteins derived from tankage, meat scrap, fish meal, and milk products. Supplies of these animal proteins will be smaller per head of livestock than in 1942. That is an important part of the picture.

Demand Is Enormously Expanded Except for animal proteins, the difficulty in the protein feed picture is not that supplies as a whole are short compared with normal supplies but that demand is vastly increased.

The situation is somewhat like that with human foods. The supplies of many foods available for civilian use in the United States are about as large as we have had in recent years, thanks to the all-out effort of farmers. But we have a greatly increased demand because of the increased purchasing power of consumers.

This means that consumers must share available supplies to insure that one family will not get a great deal while another gets little or nothing. In this case the sharing is carried out by means of rationing. No one enjoys being rationed—but it must be done to make sure that we will all be adequately nourished, so that we can maintain health and the top production needed for the war.

In the case of animal feeds also, there would be enough to go around in normal times, but the demand is much larger than normal. Reports indicate that in some areas farmers want two or three times as much protein feed as they have used in the past. In Iowa, for example, it is reported that 7 out of 10 farmers are asking for special feeds as against 3 out of 10 in former years.

This is especially true in the case of animal proteins, which are highly valued for poultry and hogs.

There are two reasons for this big demand. (1) Feed prices are very favorable in relation to livestock prices; for example, the government has deliberately held down prices on oil cake and meal as one means of encouraging dairy production. (2) Farmers are anxious to reach production goals and are therefore inclined to use protein feeds more liberally than in the past.

So the urgent need in the case

of protein feeds, just as with human food, is to share what we have. Otherwise a few producers will be likely to get a great deal and others little or nothing; or a few might get a great deal for a while and very little later on.

That holds for protein feeds as a whole—it is especially true of the animal proteins, where the demand is biggest and the supply shortest.

How Shall We Share? To put sharing into effect with protein feeds, the Feed Industry Council and the U. S. Department of Agriculture have worked out a program which is to go into effect as rapidly as each member of the industry can make the necessary adjustments. To a considerable extent it is already in effect now. It will remain in effect until the department and the industry determine that it is no longer necessary.

Essentially, this program involves a voluntary limitation on the amounts of animal and vegetable proteins that will be used in mixed feeds and protein supplements.

In the case of animal proteins especially these limitations mean that less than the amounts formerly used will go into the new feed formulas.

All in all, the limitations will result in a very substantial saving. But if the mixtures are used intelligently, they will do a satisfactory job.

Mixed feeds will contain slightly less of the animal protein feeds, but they will contain enough to get good results from feeding them.

In mixing feeds farmers should use slightly less of protein feed, but when the larger supply of soybean meal is available, there will be enough, if only slightly less if used. When fed with grain about one pound of 80% soybean meal to 5 pounds of ground maize will get good results for dairy cattle, if good roughage is fed.

Applications On Housing Changes Being Received

Applications are being received and plans pushed for the Home Owners Loan Corporation lease-conversion project in Big Spring. L. S. Patterson, authorized negotiator, said Wednesday.

The program began shaping up as the speediest through by a federal agency against a housing shortage problem here as several applications for leasing homes and converting them into apartments were passed.

Patterson said that some had advanced far enough that architects had been here to pass on plans.

As yet most of the homes offered have been in the six-room class which are subject to conversion into two apartments. No large places suitable for multi-plex arrangements have yet been placed in the lease program.

Under terms of the project, which has been approved up to 30 housing units, suitable property may be leased to the HOLC for a period of seven years with the government to handle rentals and make necessary improvements and conversion without liability to the owner about the lease to be terminated by the government before its expiration date. Owners may realize stipulated quarterly rentals from property, and in effect they will be amortizing the improvements by deductions in arriving at the payment.

Added Meat Supply For Texas Cities

DALLAS, March 18 (AP)—Four more Texas communities received relief from their local meat shortages today as regional OPA officials swung into action on the basis of new authority granted them this week by national OPA heads to permit additional deliveries in the most critical areas.

Today's order, signed by acting Regional OPA Administrator C. E. Braun, authorizes slaughterers to furnish an additional 300,000 pounds of beef, pork and veal to consumers at Beaumont, Fort Neches, Orange and Fort Arthur between now and April.

WE BUY USED FURNITURE REPAIR WORK DONE RIX'S 401 E. 2nd Phone 688

TAYLOR ELECTRIC CO. Electrical Contractors 213 East 2nd Phone 488

HOOVER PRINTING CO. PHONE 109 206 E. 4th Street

COFFEE and COFFEE Attorneys-At-Law General Practice In All Courts LESTER FINNER BLDG. SUITE 212-16-17 PHONE 681

Here's The Wife Who Measures Up

LONDON, March 18 (AP)—The recipe for an ideal wife as prescribed by Sir William H. Bay-

ridge, author of England's proposed cradle-to-grave social security plan:

"She should be intelligent without being intellectual, keen without being earnest, silent without

being stupid."

Sir William is 64 and last December married his former secretary, Mrs. Jessie Maier. He gave his definition in an answer on a radio quiz program last

night. FOR BETTER GROOMED HAIR MOROLINE (25) HAIR TONIC (25) MONTGOMERY WARD

YOU JUST ROLL IT ON

ANYONE CAN PAINT WITH RESINTONE the amazing new WASHABLE WALL PAINT

You yourself can "do over" any room in the house, quickly and easily, without fuss or muss, or "Wet Paint" signs! Because Resintone dries in 40 minutes, with almost no odor, you can start a room in the morning and entertain guests in the same room that evening! Try one of Resintone's 13 lovely colors on that room that needs "re-doing!" (Your friends will never guess it wasn't a professional job!)



- ROLL OR BRUSH! Use roller applicator! Or brush it on without fear of "marks!"
- COVERS ALL! One coat covers any surface, even patterned wallpaper!
- DRIES FAST! Dries in only 40 minutes without leaving unpleasant odor!
- WASHES 2 WAYS! Water removes it from hand! Washable after 1 week to "set!"
- COSTS YOU LESS! 1 gal. of Resintone, plus 1/2 gal. of water, mixes 1 1/2 gals. of paint!



Super is Best in Tests with 6 "top" House Paints! WARDS BEST HOUSE PAINT In tests with famous nationally advertised house paints, SUPER is best: in coverage (up to 500 sq. ft., 2 coats), in whiteness, and in long life! In the end, the best costs the least, because paint is smallest part of cost for a paint job!



Prices will be cut for four days only! ROOFING REDUCED AT WARDS! Heavy, tough, fire-resistant! Tempered asphalt surfaced with ceramic granules insures you of extra years of protection! Nails and cement are included. HEXAGON SHINGLES. A pleasing design... heavyweight! Cover 100 sq. ft. 5.13

FLUORESCENT FOR THE KITCHEN Sale Price 639 Cool, glareless, fluorescent light at a sale price! Install it yourself in a few seconds. (With bulbs.) FLUORESCENT BRACKET Ideal over stove, sink, or mirror. Bulb included 4.50

GLOSS OR SEMI-GLOSS FOR WALLS 94c You can't buy better! Both these famous Super-quality finishes dry hard in 6 to 8 hours! Both are washable, long-wearing, dirt-resisting! Reduced! 4 days only! 1-coat Flat Wall Paint... Qt. 80c

SASH CORD REDUCED! SALE PRICE 42c Fifty feet of smooth, plant, sash cord at an amazingly low sale price! Get yours today!

CHROME PLATED CABINET HANDLE 20c Smart, streamlined design in chrome plated, rust-resisting steel! Chrome plated hinge... 22c

WROUGHT STEEL INDOOR LOCKSET 88c Prices are cut for this big sale! DOOR HINGE... 3/4-in. 37c DOOR HINGE... 4-in. 43c

PENETRATING FLOOR SEAL... SAVE! Qt. 87c Price cut! Penetrates "no need" to recoat! Just touch up worn spots! Gal. covers 600 sq. ft.!

Youthful Pilots ARE NEVER "GROUNDED" IN WEATHER-BIRD or Deters Diamond Brand SHOES FOR BOYS AND GIRLS

MAKE-BELIEVE IS FUN Not Not When Buying Children's Shoes!

...time hours mean hundreds of "take-offs" and "landings" for youthful "aviators"... stressing the need for shoes that give long wear and foot protection. That's why wise parents choose these nationally famous shoes... shoes made of better quality materials over foot-formed lasts with extra reinforcement in vital hidden parts... the hidden value which means less cost in the long run.

OUR OWN 5-POINT FITTING PLAN Assures a Perfect Fit

1. Checking Toe Length
2. Checking Foot Width
3. Checking Heel Hug
4. Checking for Balance
5. Checking Arch Length

We X-Ray Feet for Perfect Fitting

J & K SHOE STORE

Choc C. Jones 208 Main E. B. Kimberlin

WE BUY USED FURNITURE REPAIR WORK DONE RIX'S 401 E. 2nd Phone 688

TAYLOR ELECTRIC CO. Electrical Contractors 213 East 2nd Phone 488

HOOVER PRINTING CO. PHONE 109 206 E. 4th Street

COFFEE and COFFEE Attorneys-At-Law General Practice In All Courts LESTER FINNER BLDG. SUITE 212-16-17 PHONE 681

USE YOUR CREDIT... Any purchases totaling \$10 or more will open a monthly payment account. SEE OUR CATALOGS... Come to our catalog department for thousands of values not in store stocks.

Montgomery Ward

221 West 3rd Phone 676

Former Baseballer Claimed By Death

FORT WORTH, March 15 (AP)—Dred Cavender, 67, once manager of the Fort Worth Texas league baseball club, who played also with Denison, Sherman, Texarkana, Dallas, Waco and San Antonio, died here yesterday. He worked as a Texas league umpire in the last part of the 1941 season. His playing career ended with San Antonio in 1914. He was an outfielder.

Creighton, Toledo Are Favored Teams

NEW YORK, March 15 (AP)—Creighton's high-scoring quintet, defeated only once this season, and Toledo, victor in 20 out of 22 games, rate as favorites tonight in the opening games of the sixth annual invitation basketball tournament at Madison Square Garden, tonight.

Creighton meets Washington and Jefferson in the first contest, and Toledo opposes Manhattan in the second encounter. The opening games in the lower bracket, matching St. John's and Rice and Western Kentucky and Fordham, will be played next Monday night.

STEAKS LUNCHES
DONALD'S
Drive-In
BUTTER TOASTED SANDWICHES
Corner San Angelo Highway and Park Road

Food Expert Urges Housewives To Use Meats On Unrationed List

By MRS. ALEXANDER GEORGE, AP Food Editor

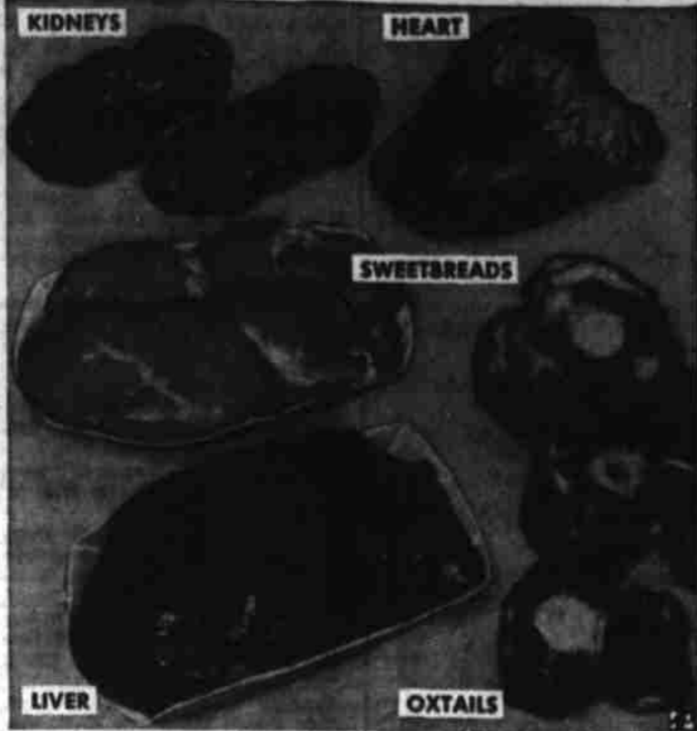
Some of our very best meats from the standpoint of food value and flavor are on the unrationed list. Another advantage of certain of these unrestricted meats is their comparative cheapness.

Livers, of course, has a three-star rating as a blood-building food. Cal's liver, as you know, has been in the high price class for some time, but the thriffter beef, pork and lamb livers, are just as nourishing.

Taking little preparation time are CREOLE LIVER CAKES. Mix together a pound of ground liver (kind depends upon your selection and pocketbook), 2 tablespoons each parsley, 1-2 cup crumbs (dried bread or cracker), 1 egg, beaten, 1-2 teaspoon salt, 1-4 teaspoon pepper and 2 tablespoons cream. Shape into cakes about 1-2 inch thick. Sprinkle with flour and brown on both sides in 3 tablespoons fat, heated in frying pan. Add 1-2 cup condensed tomato soup and 1-3 cup water. Cover and simmer 10 minutes for real liver and 15 for any other kind.

KIDNEY RAGOUT is a company dish. Scald, skin and soak 6 lamb kidneys for half an hour in 3 cups cold water and 1 teaspoon salt. Cut in inch pieces and sprinkle with 3 tablespoons lemon juice. Brown in 3 tablespoons fat, melted in frying pan. Stir in 2 tablespoons flour and cook slowly until well browned. Add 1 cup boiling water with a bouillon cube dissolved in it, 1-4 teaspoon salt and 1-8 teaspoon paprika. Simmer 5 minutes. Serve over hot boiled rice. Garnish with parsley.

I was able to buy half a pound of CHICKEN LIVERS yesterday and fashioned a grand dish with some fresh mushrooms. It made a hit with the family and I am trying it on company soon. Wash the livers in cold water and dry. Sprinkle with 3 tablespoons flour, 1-2 teaspoon salt and 1-8 teaspoon pepper. Brown in 4 tablespoons fat (I used bacon) heated in frying pan. Add 1 cup scraped cubed mushrooms, 1-2 cup diced celery and 2 tablespoons each celery and 2 tablespoons each chopped green peppers (or pimientos), onions and parsley. Cover and simmer 20 minutes. Add 2 cups chicken stock (I saved some from a stewer for this dish). Cook slowly 10 minutes and then add 2 cups cooked noodles. This makes a perfect meal when accompanied by a tossed green salad, hard rolls and baked apples and cream.



Eat More of These: They're plentiful—and good

STUFFED CALF'S HEART is filled with needed vitamins. Wash and discard veins and arteries from the heart—the butcher may do this for you. Stuff with your best savory filling and tie the heart together or peg with skewers. Sprinkle with flour and quickly brown on all sides in a small amount of fat heated in frying pan. Transfer heart to casserole and add 1 cup water and 1-4 cup chopped onions to the frying pan. Boil a minute and then pour over the heart. Sprinkle with 1 teaspoon salt, 1-4 teaspoon each pepper and poultry seasoning. Cover and bake for 2 hours in moderately slow oven—about 325 degrees F. Uncover and bake 10 minutes. Remove heart to serving platter and thicken the dripping by adding 2 tablespoons butter mixed with 3 tablespoons flour. Pour over the heart. Leftover heart can be chopped and made into cakes or meat loaf mixture or combined with vegetables and sauce for scalloping.

Heavy Fire Loss Is Sustained By Knott Farmer

KNOTT, March 15.—Heavy loss was sustained by Charley Bays this week, when fire destroyed a barn, corral and loading chute. Also lost in the fire were a half-grown hog, a good part of Bays' planting seed and two loads of corn just purchased for feeding.

Workers were grinding feed near the barn and it was supposed that either a cigarette or a spark from the machinery ignited some loose feed. The flames were fanned by a stiff wind blowing from the west.

BROTHER IS ILL

WASHINGTON, March 15 (AP)—Speaker of the House Sam Rayburn disclosed last night that he was leaving as soon as he could get away for his home near Bonham, Texas, where his brother, Will, was reported seriously ill.

MAIL COMMENTS

WASHINGTON, March 15 (AP)—A survey of the cost of handling "navalty" mail was recommended to the senate appropriations committee today by a subcommittee which voted to reverse house action cutting off the use of free postal matter by government departments and agencies.

NAZIS PLANE DOWNED

SAIRO, March 15 (AP)—Allied night fighters shot down at least one Junkers-88 Tuesday night when enemy bombers attacked Trinoli, an RAF communique said today.

What You Buy With WAR BONDS

Crucial at tremendous speed, America's PT-Boat fleet is sniping with excellent results at Hirohito's navy in South Pacific waters. These powerful little boats are being manufactured at many cities throughout America and racing down our inland waterways to the sea. They are termed "expedible" but they pack almost half the wallop of a full-sized destroyer and cost only a fraction as much.

Built sturdy from 80 to 110 feet long, carrying four torpedoes, machine guns, depth charges and smoke screen apparatus, they cost up to \$400,000. Your increased purchases of War Bonds helps pay for them. Buy more War Bonds every payday. "You've Done Your Bit—Now Do Your Best." U. S. Treasury Department



Glasscock Co. Stock Show Set Monday

Annual Glasscock county livestock show has been set for Monday at Garden City, Berry N. Duff, county agent, announced here Wednesday.

There will be a mutton barbecue in connection with the event, said Duff, and all Big Spring business and professional men and others interested are urged to attend.

Under current plans, there will be no formal sale at the show. Last year Big Spring business houses and institutions proved the heaviest buyers at the show.

Prospects are that there will be 37 lambs and eight calves, the smallest number to show in the event in years, entered in the judging which will be held just north of the Garden City school.

General superintendent of the show will be Duff with Marvin Scott, vocational agriculture teacher, as assistant. Bud Hanson will be superintendent of the lamb division and John Henry Cox will head up the calf show plans. Finances are being directed by C. M. Sparkman and Ray Hightower will handle arrangements and barbecue plans. Lambie will be judged by Herman Carter, vocational agriculture teacher at Sterling City, while Bill Reed, Sterling City, will place the calves. Lambs will be entered by Stan-

ley Bogard and Leonard Shafter (two each), Leonard Hanson, Leroy Hunt, Tony Wilhite, Leonard Hanson and Jack McCasler (three each), and Jay Cunningham, Jerry Currie and Marlon Wilkerson (five each).

Calves will be entered by George Allen Haley, Jerry Currie, Donald Cox (two each) and by Bill Haynes and James Richard Currie. Most of the animals will be

taken to the livestock classification show at Midland the following day, according to Duff.

SEE YOU SAW IT IN THE HERALD

EXTRA ENERGY FOR ACTIVE YOUNGSTERS!

No wonder Hi Ho Crackers taste "swell"... They're crispier! More flavorful! Besides, they offer 3 important extra values: (1) They are crammed full of energy. (2) They are a nourishing food in handy, compact form. (3) They stay fresh for weeks.

Take advantage of the convenience of these nutritious Hi Ho Crackers... Your grocer has them!

Brown Cracker and Candy Company Division - LOOSE WILES BISCUIT COMPANY

SALT on GRAPEFRUIT

makes it sweeter

Morton's Salt & grapefruit sole novelties at all grocers.

YOUR WARTIME JOB nutrition

There are many good foods which make excellent meat substitutes that ARE NOT RATIONED at Red & White. You can save your precious food stamps for other Red & White delicacies. Buy Red & White spaghetti, macaroni and egg noodles. You can prepare many attractive, complete entrees with these three popular Red & White items on sale this week-end.

1 lb. **CALUMET** 19c

Baking Powder
Red & White
OATS Cup and Saucer 29c

Red & White
GRAPE JUICE 19c

Large Bars
P&G SOAP 5 for 19c

CAMAY SOAP 3 for 25c

OXYDOL large 25c

Red & White
FLOUR
For Perfect Baking
12 lb. 63c
24 lb. 99c

Choice Meats

Baby Beef
SHORT RIBS lb. 20c

Longhorn
CHEESE lb. 31c

Bring Fall
PURE LARD lb. 15c

Nice Lean
PORK CHOPS lb. 35c

RED & WHITE

Bolinger's Gro. & Mkt. Phone 375 300 N.W. 2nd
Whitmire's Food Market Phone 73 1015 Johnson
Tracy's Food Market Phone 137 1001 Scary
Pritchett Grocery Phone 1288 1000 11th Place
Packing House Market Phone 1024 116 Main

SAFETY PRODUCE

Morning Glory OATS 48-Oz. Pkg. 18c
SHREDDED WHEAT 2 Reg. Pkg. 25c
COFFEE STAMP No. 25 NOT GOOD AFTER MARCH 21

Fancy 30 Size CALAVOS Each 10c
U. S. No. 1 Colorado Rural Russet POTATOES 5 Lbs. 19c
Texas Valencia ORANGES Lb. 7c
Texas Seedless GRAPE FRUIT Lb. 5c

Crisp Texas CARROTS 2 Bun. 9c
Lettuce Crisp Heads Lb. 14c
Tomatoes Mexican Lb. 23c
Potatoes Florida NEW 2 Lbs. 15c
Apples Extra Fancy Rome Beauty Lb. 11c
Fancy Small WINESAP APPLES 100-190-216's 2 Lbs. 19c

Robb Ross **PANCAKE FLOUR** 20-Oz. Pkg. 8c
Kitchen Craft **ENRICHED FLOUR** 24-Lb. Bag 1.05

Flour Harvest Blossom 24-Lb. Bag 95c
Flour Swansdown Cake Flour Reg. Pkg. 28c
Bread Julia Lee Wright's Enriched Sliced 24-Oz. Loaf 11c
Margarine Dairwood Lb. 21c

Rationed Values

Peaches 16 Oz. Yellow Cling No. 2 18c Points Per Can 21
Niblets 12 Oz. Corn No. 1 13c Points Per Can 8
Grape Juice Royal Purple 9c 32c Points Per Can 15
Juice Rosewater 22-Oz. Can 25c Points Per Can 15
Juice Sunny Downs 22-Oz. Can 12c Points Per Can 17
V-8 Cocktail 10-Oz. Can 14c Points Per Can 11
Green Beans Bear Cat No. 2 12c Points Per Can 14
Beets Libby's 10 Great No. 2 12c Points Per Can 10
Gerber's Sterilized Fruit 8c 7c Points Per Can 1
Gerber's Sterilized Vegetables 8c 7c Points Per Can 1
Pinto Beans 1-Lb. Cans 9c Points Per Can 4

SPRY 3 lbs. 74c

FRESH FRUITS AND VEGETABLES

Iceberg **LETTUCE** each 10c
BANANAS lb. 7 1/2c
Bunkiet **ORANGES** doz. 39c
Fancy Winesap **APPLES** doz. 25c

What You Buy With WAR BONDS

Crucial at tremendous speed, America's PT-Boat fleet is sniping with excellent results at Hirohito's navy in South Pacific waters. These powerful little boats are being manufactured at many cities throughout America and racing down our inland waterways to the sea. They are termed "expedible" but they pack almost half the wallop of a full-sized destroyer and cost only a fraction as much.

Cherub MILK TALL CAN 9c

Grocery Values

Spread 16-Oz. Jar 26c
Vita-Yam Sterilized 1-Lb. Pkg. 27c
Syrup 8-Oz. Glass 39c

Soap Values

Su-Purb Granulated 24-Oz. Pkg. 21c
Oxydol Soap 24-Oz. 24c
Lifebuoy 3 Bar 20c
Soap 12-Oz. White 24c

Sunny Bank MARGARINE Lb. 17c Not Rationed

Sunsweet PRUNE JUICE 22-Oz. Bot. 25c Points Per Bottle 15

SAFETY MEATS!

Pork Liver Fresh 25c
Corned Beef 35c
Sausage 27c
Sausage 39c
Sausage Country Style 29c
Liver Loaf 33c
Pickled Souse 25c
Pork Loaf 35c
Sliced Codfish 35c
Oysters 55c

Colby Wisconsin CHEESE Lb. 36c

Assorted BAKED LOAVES Tomato Pickle Lb. 29c

COFFEE

Fresh Coffee—ground when purchased to give you more good cups per pound.

Fresh Roasted **Airway 2** 1-Lb. Pkg. 41c
Full Strength **Edwards** 1-Lb. Pkg. 25c
Fine Quality **Nob Hill** 1-Lb. Pkg. 24c

USE COFFEE STAMP NO. 25 NOT GOOD AFTER MARCH 21

SAFETYWAY

Editorial - -

Our Developing Power In Air

Having heard that the airplane program is booming along, that no less than 48,000 planes rolled off accelerating assembly lines last year, that this figure is being multiplied this year, Americans inevitably wonder why it is that reports from the various fronts, England, North Africa, the Solomon, China, always seem to speak in terms of dozens of planes, instead of hundreds, or thousands. Where are the 48,000 planes?

Washington Daybook

Battle Of Sliced Bread One Of Many In Capital

WASHINGTON—What is happening in the Congressional attack on the Administration and "bureaucracy" is one of the better stories of the moment. For example, the war on the anti-bread slicing order issued by OPA.

Discussion Of War Economy— Bedrock Living Levels Can Be Low

By HERMAN ALLEN In the case of non-durable toys and recreation equipment, for instance, the tentative bedrock estimate was more hasty than most others. OCS just took the present situation, as reflected by WPE orders stopping or cutting production of recreation equipment, figured in manpower conservation and transportation restrictions, and came up with 81.5% of 1939 consumption, which they figured about equal present rate of consumption of recreation equipment.

How To Torture Your Husband



Hollywood— She Missed The Cues Until She Learned Better

By ROBBIN COONS HOLLYWOOD — One of the first things Marguerite Chapman did when she came to Hollywood was to fall downstairs at a big movie party. It was a spectacular entrance, not quite as she had planned.

Those were the days when Marguerite, new to Hollywood, was learning the ropes. She doesn't commit faux pas any more. One of her "Wags Sextette," she is now leading lady to Edward G. Robinson in "Destroyer" and to George Sanders in "Appointment in Berlin."

Isolation Island

Chapter 11 The sky to the east was awash with a thin milky light as Landa and Jim came down the path from the hacienda and walked toward the beach. The path threaded upward for a few paces to a knoll and then fell abruptly to the white beach. Before them spread the Pacific. In the hazy background rose the brown cliffs of the mainland. The sea bat was riding quietly at anchor halfway across the channel.

Crossword Puzzle

A crossword puzzle grid with clues. Across clues include: 1. Excitement, 2. Nectar, 3. Employ, 4. Swab, 5. The stream, 6. Egg drink, 7. King of the West Saxons, 8. Drive away, 9. Unit of work, 10. Locomotive, 11. Service cars, 12. Nictitate, 13. Book of the Bible, 14. Uttered words, 15. Fruit of a kind, 16. Singing bird, 17. Symbol for moon, 18. Wild animal.

A collection of comic strips. 'B L O N D I E' shows a man admiring a blonde. 'B A R N E Y & S N U F F Y' shows a man talking about Africa. 'P A T S Y' shows a man talking about corns. 'A N N I E R O O N E Y' shows a man talking about flags and a sunbather.

Comic strip 'Yoo Hoo Blondie!' showing a man admiring a blonde. 'OH, BOY! WHAT A LOVELY CAKE!' 'OH, HELLO DEAR, ARE YOU HOME ALREADY?' 'YEAH, I GOT HOME A LITTLE EARLY.' 'DADWOOD GO OUT IN THE KITCHEN AND SEE THE LOVELY CAKE I BAKED FOR THE CHURCH CAKE SALE'.

Comic strip 'DON'T BE SO IMPATIENT. YOUR BIRD IS IN JUST AS ANXIOUS TO GET TO AFRICA AS YOU ARE - I HAVE A FEW MORE CONFERENCE TO ATTEND AND WE'LL BE ON OUR WAY.' 'BY JEEBERS!! IF I HADNER STAY COOPED UP IN BERMUDDY ANOTHER DAY, I'LL GO STRAY, RAVIN' MAD!!' 'VERY WELL - IF YOU PREFER TO RIDE AN OIL TANKER INSTEAD OF THE CLIFFER, I THINK I CAN ARRANGE IT.' 'WHY, SHORE!! I'LL GO PACK UP MY - UH - WAAL - PLUCK ME FER A JAYBIRD!!' 'HEYOOOOO. GEN'RIL!! JES' FERGIT 'TWHOLE EPPISODE'.

Comic strip 'HERE I AM IN THE WITCH HUT BEING SO GREEDY FOR ACORNS GOT ME INTO THIS!' 'YOU NEEDN'T BE THINKING OF GETTING AWAY - YOU CAN'T ESCAPE!' 'I HOPE NOT CHANGE ME INTO SOMETHING UNPLEASANT - LIKE A TADPOLE!' 'OH, NO, NO-NO!' 'I'M GOING TO TURN YOU INTO HAMS AND BACON, PORK CHOPS AND SPARE RIBS!! I'M VERY FOND OF PIG'S FEET!' 'THEN WHAT?' 'IT'S CORRECTED IN COOK BOOK'.

The Big Spring Herald

Published Sunday morning and weekday afternoon except Saturday by BIG SPRING HERALD, Inc. Entered as second class mail matter at Postoffice at Big Spring, Texas, under act of March 2, 1978.

A collection of comic strips. 'STRIKE UP THE SAND - UNFURL THE FLAGS! VENI, VIDI, VICI - AN OLD LATIN PHRASE WHICH MEANS I CAME, I INVENTED, I'M ON THE SUNNYSIDE OF EASY STREET, TRAVELING LIKE A STARTLED COMET' 'IN OTHER WORDS, I AM HOLDING A PAPER IN MY HAND THAT OUTRANKS THE MAGNA CHARTA AND THE DECLARATION OF INDEPENDENCE - THAT ORDAINS A NEW ERA IN COMMERCIAL PROGRESS' 'THE FIRST ORDER FOR BRASSY'S SYMPHONIC SINGING PILLOW - ONE SINGLE SACRED STRAW - A BEAUTIFUL BAROMETER INFALLIBLY INDICATING THE DIRECTION OF THE GOLD-LADEN FINANCIAL WINDS' 'GLORYSHY! MR. BRASSY, YOU MEAN SOMEBODY WANTS TO BUY ONE OF YOUR SINGING PILLOWS' 'PRECISELY - THIS IS A RED LETTER DAY IN THE HISTORY OF MANKIND - A GLITTERING, GOLDEN SPOKE IN THE WHEELS OF PROGRESS' 'DARELL MERCURE'.

RITZ TODAY ONLY

BIG HITS 2

LADY FROM CHUNGKING -with- Anna Mae Wong Harold Huber

QUEEN OF BROADWAY -with- Rochelle Hudson Buster Crabbe

LYRIC TODAY ONLY

Two Great Stars In A Great Story! IN THIS OUR LIFE Bette Davis Olivia de Havilland

QUEEN TODAY ONLY

IT'S THRILLIFIC! Dr. Renault's Secret



Oil Nominations For April Higher

AUSTIN, March 18. (AP)—Texas crude oil purchasers have submitted nominations for April of 1,654,887 barrels per day, an increase of 60,000 barrels over March nominations, the railroad commission said today.

State TODAY ONLY

Advertisement for State featuring a woman's face and the text 'TOO MUCH MONEY FOR HER Honey' and 'Million Dollar Baby'.

RITZ FRI. - SAT. THEY DARE BREAK CONVENTIONS for local

Advertisement for THE GAY Sisters featuring a woman's face and the text 'THE GAY Sisters'.

Meet The Bombardiers— Cadets Come From Midwest, Great Lakes, New England

From the Great Lakes area, the broad midwest come young Americans to Big Spring to train as bombardiers for Uncle Sam's air force.

ILLINOIS Elmer F. Johnson, Lombard, was an office worker, has a brother at OCS in Maryland, Adam J. Pysna, Chicago, was a spectrophotometrist at a Chicago laboratory.

MASSACHUSETTS Anthony Santomango, Malden, was a wood worker in civilian life. Two of his brothers are in the armed services.

THE MIDWEST Richard W. Morris, Booneville, Indiana, was a survey crew rodmán, whatever that is, and entered the army at Fort Hayes last fall.

Advertisement for RADIATOR SERVICE and PEURIFOY Radiator Service.

The Government Needs Your Dead Animals We Will Pick Up Within 25 Miles Of Big Spring CALL EVIE SHERROD

Advertisement for Silver Wing featuring a bird logo and the text 'A Supper Club For Military Men And Their Guests'.

RADIO LOG Friday Morning

- 7:00 Musical Clock, 7:30 News, 7:45 Musical Clock, 8:00 Morning Devotional, 8:15 Morning Concert, 8:30 Pinto Pets, 8:45 Vocal Varieties, 9:00 Ten Roses Max Pariana, 9:15 Radio Bible Class, 9:40 Chesup Gang, 10:00 Sydney Mosley, 10:15 Karl Zomar's Scrapbook, 10:30 Yankee House Party, 11:00 News, 11:05 To Be Announced, 11:10 KBST Previews, 11:15 Bill Hay Reads the Bible, 11:30 Red Cross Message, 11:35 Edgewood Arsenal Band, Friday Afternoon, 12:00 10-24 Ranch, 12:15 What's the Name of That Band, 12:30 News, 12:45 Dinah Shore, 1:00 Cedric Foister, 1:15 Baron Elliott's Orch., 1:30 Philadelphia Orch. Concert, 1:45 "Unsung Sam Series", 2:30 Themes and Variations, 4:00 Sheila Carter, 4:15 Quaker City Serenade, 4:30 Treasury Star Parade, 4:45 Superman, Friday Evening, 8:00 Minute of Prayer, 8:01 Phillip Keyne-Gordon, 8:15 Rich Hayes and Red Connors, 8:30 Foreign News Roundup, 8:45 Songs for Servicemen, 9:00 Fulton Lewis, Jr., 9:15 The Johnson Family, 9:30 "Halls of Montezuma," 9:00 Where To Go Tonight, 7:15 They're the Barries, 7:30 News, "Bombs A'Poppin'", 8:00 Gabriel Heatter, 8:15 Grace Barrie's Orch., 8:30 Double or Nothing, 9:00 KBST Band Wagon.

John H. Greenwood, Bridgeport, was an administrative man for a Connecticut firm. He has three brothers, Stanley, Thomas and Robert, in the service.

James F. Mortinson, Glendive, Montana, studied at the University of Minnesota, was an accountant. A brother is in the marines, a brother-in-law is in New Guinea.

George L. Amberg, El Paso, studied at Columbia university and the University of New Mexico.

Advertisement for Special! "WATERPROOF" WATCH \$33.75 IVA'S JEWELRY.

Poultry Netting Issued Farmers

Poultry wire netting, indicating Howard county farmers plan to raise more poultry and gardens this year, was the chief item issued by the county Farm Machinery Relicensing committee this week.

Walter Davis, 200 feet and R. L. Franks, 185 feet of poultry wire was approved and J. H. Fuller was given permit for one spool barb wire and one roll of poultry net wire.

Oscar Martin, 600 feet hog wire, two rolls barb wire, J. L. Masters, windmill, M. C. Mitchell, six miles barb wire, H. W. Nell, four rolls poultry netting, C. L. Patterson, one roll poultry wire, Ollie Lee Payne, two rolls poultry wire, W. Luther Poe, four spools barb wire, Manuel Pugh, one spool barb wire, one roll sheep fence, W. J. Ringener, two spools barb wire, Mrs. E. C. Saunders, Mrs. C. W. Shuckley, one roll poultry netting each, J. W. Snelling and Mrs. Clifford Spillman, one roll poultry wire each.

BOMB HITS OUT AT THE

365th Squadron Our condolences to our commanding officer, Major Dewell, in his bereavement.

Four Are Awarded Captain Commissions Four promotions from first lieutenant to captain were announced by the public relations department of the Bombardier School Wednesday.

Frederick D. Collings, of Wabash, Ind., who is a pilot in the second provisional training group; Arthur R. Armstrong of Tuscola, Ill., commanding officer of the 815th squadron; William H. Gann of Chattanooga, Tenn., supply officer in the quartermaster's department; and Harry A. Leonard, station veterinarian.

Yankee Subs Get More Jap Vessels WASHINGTON, March 17 (AP)—The United States submarine score against Japanese ships in the Pacific war zone today stood at 199—including 138 sunk, 23 listed as probably sunk and 38 damaged.

Successful attacks against seven enemy vessels were reported by the navy yesterday in a communique which listed four as sunk and three damaged. These sunk included a destroyer, a large cargo ship, a large transport and a medium-size cargo vessel.

FALSE TEETH That Loosen Need Not Embarrass Many wearers of false teeth have suffered real embarrassment because their plate dropped, slipped or wobbled at just the wrong time.



Working Overtime? Queen Qualities stay on the job every minute... through duty and pleasure alike... keeping you lovely and unbelievably comfortable.

Queen Qualities \$6.95 Queen Quality Shoes

Shop "The Fashion" tomorrow and Buy War Bonds too! The FASHION WOMEN'S WEAR

Piggly Wiggly RATION HEADQUARTERS

- No. 2 Can TOMATOES ... 10c Value Point 18, No. 2 Can PEAS ... 12 1/2c Point Value 18, Libby's KRAUT ... 12c Point Value 5, No. 2 Can Harvest Inn Corn . 10c Point Value 14, No. 2 Can Cut Green Beans 12 1/2c Point Value 14, Pure Lard 4 lb. crtn. . . 69c, 8 oz. Glass Fig Preserves 15c, Everlite Meal . . . 5 lbs. 21c, Barlow's—Chicken Shack Dinner Mix 10c, 1 lb. 4 oz. Can LIMA BEANS . . . 14c Point Value 18, Libby's Pumpkin 12 1/2c Point Value 14, Libby's 14 oz. Can Tomato Juice . . . 7 1/2c Point Value 8, No. 2 Can Pineapple Juice . . 16c Point Value 11, Red Karo White 5 lb. Cat. Syrup 38c, MEAT—STRETCHERS, Short Ribs . . . lb. 22c, Full Cream Cheese . lb. 38c, Sliced—Fresh Catfish . lb. 44c, Seasoning Bacon . . lb. 18c

Advertisement for RINSO and LUX featuring a woman's face and the text 'RINSO More washing power Lg. 23c Reg. 10c' and 'LUX YOUR STOCKINGS THEY'LL LAST LONGER'.