



1990 Bailey County Fair Bigger, Better

around muleshoe

Muleshoe Area Hospital District Board of Directors will meet in a special 'called session' tomorrow, September 10, at 5 p.m. at Muleshoe Area Medical Center.

After calling the meeting to order, the board will meet with the FmHA staff then go into executive session.

Following the executive session, the board will take action resulting from the executive session.

Texas A&M University has named its honor students for the summer semester of 1990, recognizing students for outstanding academic performance.

Among those recognized were Sue Michelle Haire.

Bailey County Electric Cooperative office will conduct a Cholesterol and Health Screening clinic on Thursday, September 20, 9 a.m.-4 p.m. at their offices.

Testing will be done by the field office staff of the Texas Department of Health and the cost is only \$4.

Call 272-5561 for an appointment, although walk-ins will be accepted if time is available.

The event is being co-sponsored by the Texas Rural Electric Women's Association.

Mule Plex Production Co., Inc. will hold their annual meeting September 11 at 7 p.m. in the community room of Muleshoe State Bank.

Officers for the upcoming year will be elected, so all members are urged to attend.

Those interested in the organization are also encouraged to attend the meeting.

DPS Assigns New Trooper To Muleshoe

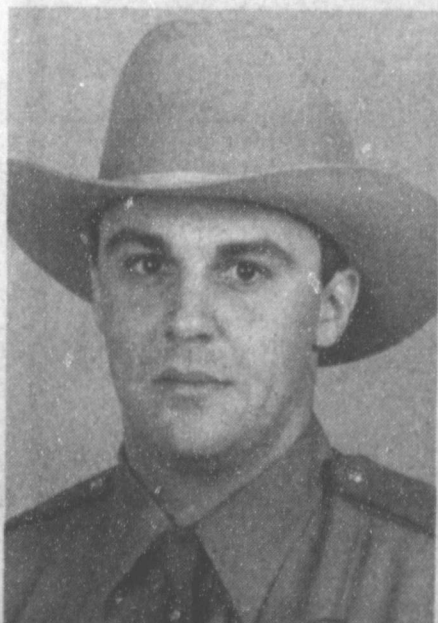
Trooper Brad Harmon, 25, has graduated from the Texas Department of Public Safety Training Academy and has been assigned to the Highway Patrol Service in Muleshoe.

Trooper Harmon was one of 100 cadets recently commissioned as Texas state troopers in graduation ceremonies at the DPS Administrative Headquarters in Austin. Trooper Harmon, a native of Holiday, assumes his new police officer duties in Muleshoe immediately.

Colonel Joe Milner, DPS director, said he's very proud of the new troopers and is looking forward to their service with the Department.

"These men and women received a comprehensive 22-week course extensively covering the many responsibilities of DPS troopers," Col. Milner said. "They have been well-trained to

Cont. Page 6, Col. 2



TROOPER BRAD HARMON



LOOKING OVER THE BEST OF SHOW ITEMS AT THE FAIR--This unidentified woman is interested in the 'Best of Show' display at the annual Bailey County West Plains Fair at the Coliseum in Muleshoe. The fair was open to the public on Friday afternoon and all day on Saturday. Entries were up this year, and many beautiful art items were on display, along with various field crops, vegetables, canned foods and other items. (Journal Photo)

Mules Avenge '89 Loss To Cubs; Defeat Brownfield By 10-7

Now, tell me one more time what it's called!! Believe it's called *Mule Mania* and that's just exactly how the Muleshoe Mules started the 1990 football season Friday night.

After a frustrating and disappointing 1-8-1 record in 1989, and a 28-0 season opener loss to the Brownfield Cubs, the Mules came out fighting in their first game for the 1990 season, and retaliated against the Cubs, bringing home a 10-7 victory.

Thanks to an overpowering defense, and an offense that just didn't give up, the Mules dominated the second half of the game played in Brownfield to take the victory.

Taking the opening kickoff, the Mules moved the pigskin into the shadows of the Cubs

Heritage Group Annual Meeting Slated Monday

By: R. A. Bradley

Don't let "George Do It!! You can keep "George" from doing it by being at the fifth annual meeting of the Muleshoe Heritage Foundation, which will be held at the Depot in the Heritage Center at 7 p.m. tomorrow, Monday.

Letters have been sent out but just in case you have not received yours, here is a personal invitation.

Let us tell you what has been done this past year and our dreams for the next year.

It is time to renew memberships and elect new board members. The nominating committee has been busy, but nominations will be taken from the floor and input is needed and welcomed.

Mark your calendars and make all your plans to be there as this is *your* Heritage Center and the work being done there is for you.

Don't let "George" someone else represent you at this important meeting. Be there yourself. See all of you -- 7 p.m., September 10, Depot!!

goalposts before losing the ball to the Brownfield Cubs on downs.

In their march downfield, the Mules ate up nearly five minutes on the scoreboard clock, much to the dismay of the hapless Cubs.

Then, the feisty Mules took two points with 7:22 left to play in the first, and got on the scoreboard first.

They failed to capitalize on their next possession, and turned the ball back over to the Cubs on a Larry Gonzales punt. But the Cubs ran into foul trouble and worked backward to their own 15, and lost out on several tackles behind their lines.

With 2:07 left in the first, the Brownfield Cubs had not yet managed to maneuver a first down.

Taking the ball again, the Mules recovered their own fumble on the Brownfield 22 yard line, then lost out to the Cubs again on downs, after moving the ball back to the Cubs 15 yard line.

This was followed by another series of carries by the Cubs, which culminated in a couple of

Fine Arts Boosters To Elect New Officers Monday

HELP!HELP!HELP!

The Muleshoe Fine Arts Boosters need your *HELP* now.

Fine Arts Boosters exist to help the band, speech and drama and art departments of Muleshoe High School and Watson Junior High School.

All their funds are used to help these departments obtain materials and to make trips that they could not do otherwise.

If you are a parent of one of these students, and even if you are not, your help is needed to help this very worthy organization.

Attend the meeting for election of officers on Monday, September 10, at 7 p.m. in the fellowship hall of the 16th and D Church of Christ.

first downs for the team before they had to punt the ball away.

With 3:21 left to play in the first half, the Cubs quarterback Noel Garcia broke free from 39 yards out, and raced to the end zone for the Cubs' lone score of the night. The PAT was good and the Cubs took a 7-2 lead over the Mules.

The Mules again started a march upfield and at 1:56 before the half were continuing to keep a drive moving toward the Cubs' end of the field and paid dirt.

But despite valiant efforts, the Mules failed to put any more points on the board and the halftime score was Mules 2 and Cubs 7.

Taking the second half kickoff the Cubs again failed to get much yardage and turned the

Cont. Page 6, Col. 3

County Commission To Adopt 1991 Budget Monday

At 10 a.m. tomorrow, Monday, the Bailey County Commissioners Court will meet in regular session at the Bailey County courthouse.

After routine opening of the session, the commissioners will review county treasurer report for August; pay routine bills; consider budget amendment to the FY1990 budget; consider sheriff's fees; consider investment policy and designate date of month for regular commissioners court meetings for FY1991.

They will also consider a request by Commissioner Rudolph Moraw; consider advertising for bids for new pickup for Extension Service; consider adopting county budget for FY1991; consider and set General Fund and Farm to Market/Flood Control tax rates for 1990 and appoint Sharon Plott as Veterans Service Officer for Bailey County and as the court's representative and project director of the Aging Department.

The verdict is in, and the 'Best of Show' items have been chosen for the 1990 Bailey County West Plains Fair.

This year, a total of 84 adults entered 362 items; and 31 youth entered 106 items for 468 various things to look at at the 11th annual Bailey County West Plains Fair at the Coliseum.

Entries are up from 48 adults and 38 youth last year.

'Best of Show' winners were James Wedel, who won the adult field crop division and Brant Wedel was the top youth in that division.

For horticulture, Delbert Watson won the adult division and again Brant Wedel was the youth winner.

In culinary, Ruby Ward was the adult winner and Rachel Embry the youth winner.

Velta Fyie was the top exhibitor in the canned fruits and vegetables division, and Melissa Bennett was the youth winner.

Paula Tarter had the top textile entry and Payton Rennels had the youth winner.

In fine arts, Betty Embry was top exhibitor and Adam Graves

was the youth winner.

Peggy Dodd won the crafts and hobby top award and Jonathan Bennett had the youth winner.

By division, the top winners in each category were:

- AGRICULTURE
- COTTON
- James Wedel
- HEADS & EARS
- James Wedel
- HORTICULTURE
- VEGETABLES
- Delbert Wedel, adult and Brant Wedel, youth
- FRUITS
- Sherman Inman
- MISCELLANEOUS CROPS
- Linda Low
- CULINARY
- BREAD
- JoAnne Davenport, adult and Rachel Embry, youth
- CAKES
- Ruby Ward

Cont. Page 6, Col. 3

Bailey County

EMS Planning

For Open House

Bailey County EMS will be conducting an open house at the Bailey County Ambulance Service building, 715 West Second Street, on Saturday, September 22, 1-5 p.m., during Texas EMS Week.

During the afternoon, the Bailey County EMS personnel will be displaying the local ambulances, and demonstrating various types of lifesaving equipment for visitors.

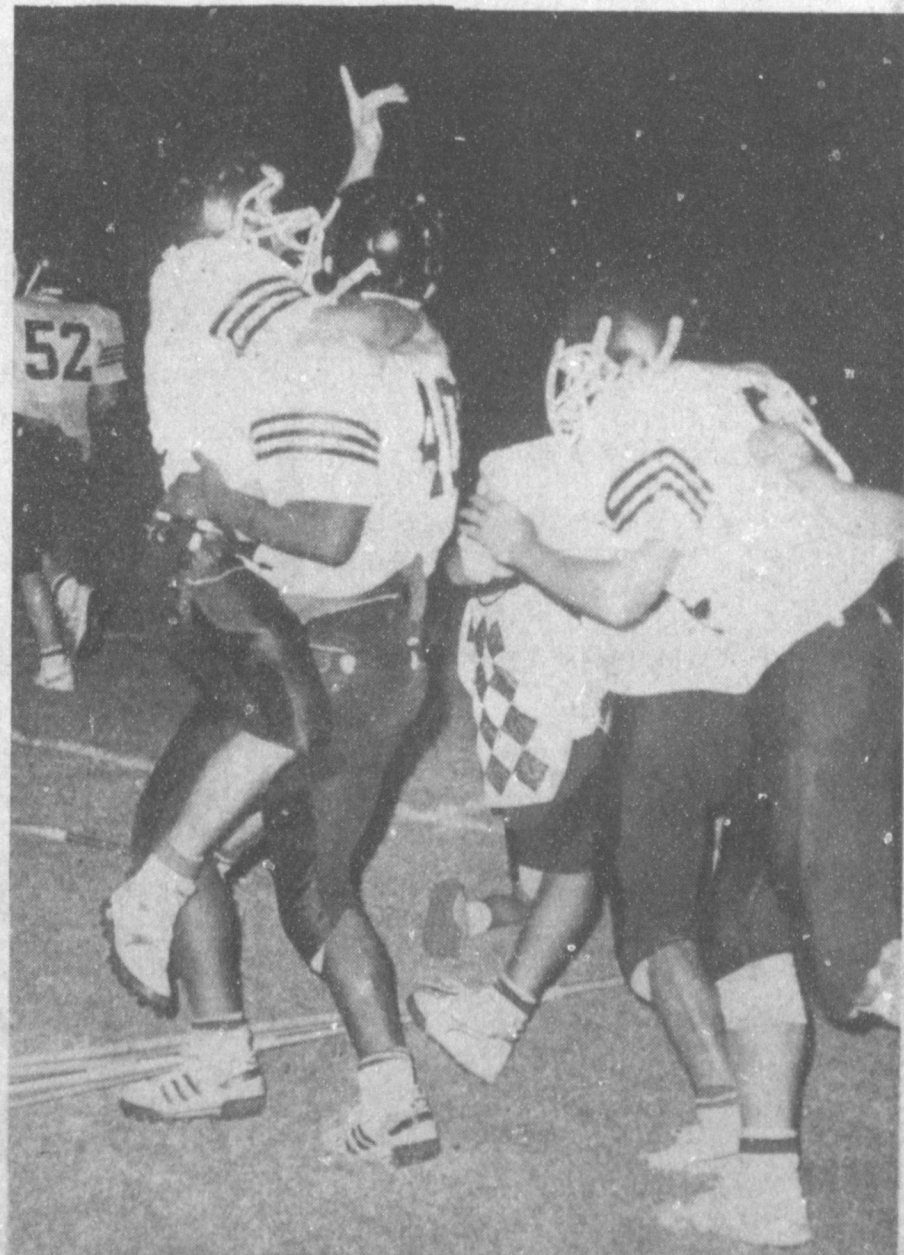
Also, a drawing will be held during the afternoon.

All this week, students from Dillman Elementary will be coloring pictures relating to life saving; DeShazo students will be drawing posters, and grades 6-12 will be writing essays.

Prizes to be awarded will be donated by local merchants. Deadline for entering the contests at the appropriate school will be Friday, September 14.

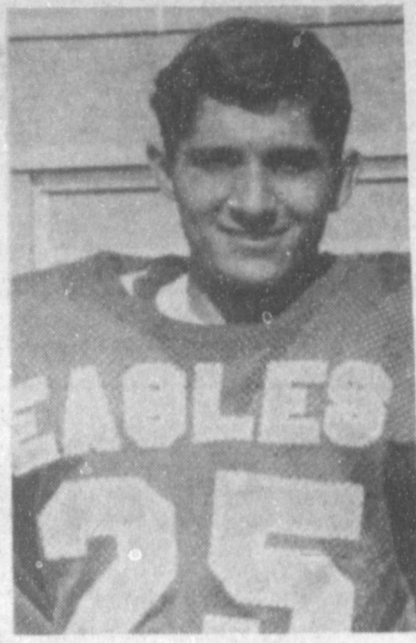
Also during EMS Week, September 16-22, the ambulance will be visiting all four school campuses in Muleshoe with demonstrations and tours for the students.

You are encouraged to visit the EMS building and meet your emergency personnel for Muleshoe and the area.



A HAPPY TIME FOR THE MULES--At the end of the Muleshoe Mule-Brownfield Cub football game Friday night, there was no hesitation in naming the winners. All you had to do was look toward the Mules on the sidelines. They were exhibiting their pleasure in their 10-7 victory. (Journal Photo)

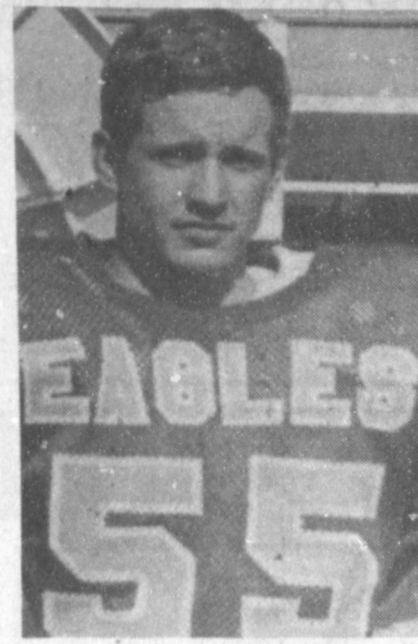
1990 Three Way Eagles



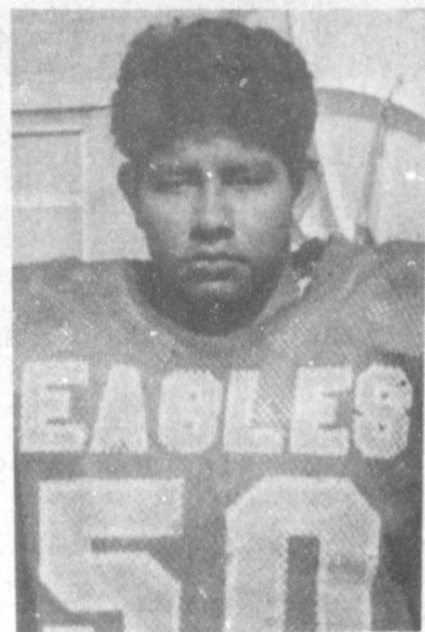
25. Efrain Guillen



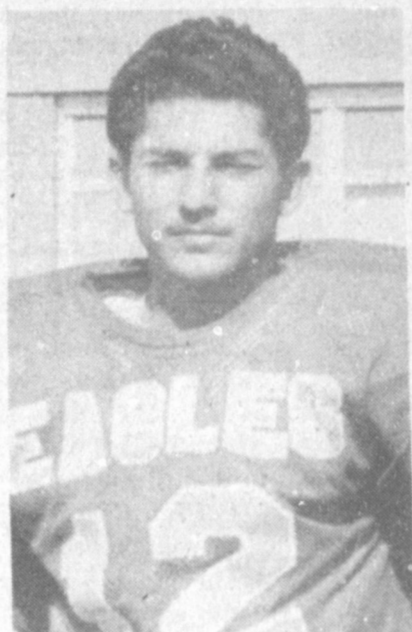
88. Jesus Flores



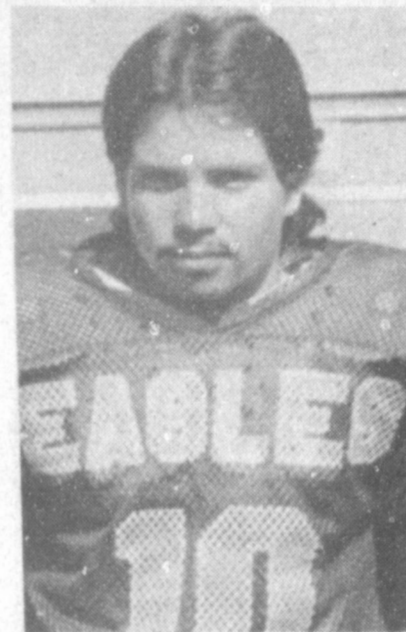
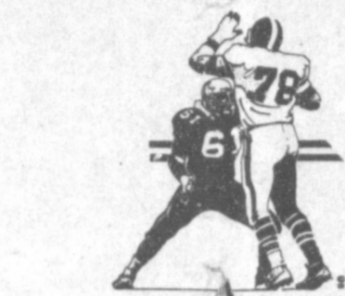
55. Larry Robertson



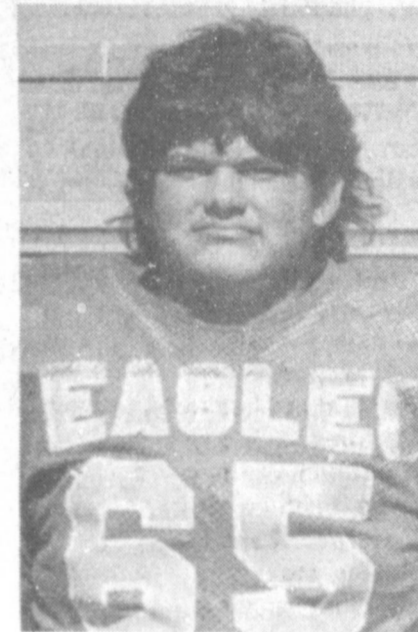
50. Sammy Belez



12. Mario Guillen



10. Bobby Gonzales



65. Jesse Guitierrez



21. Jesse Haros



Coach Jeffcoat



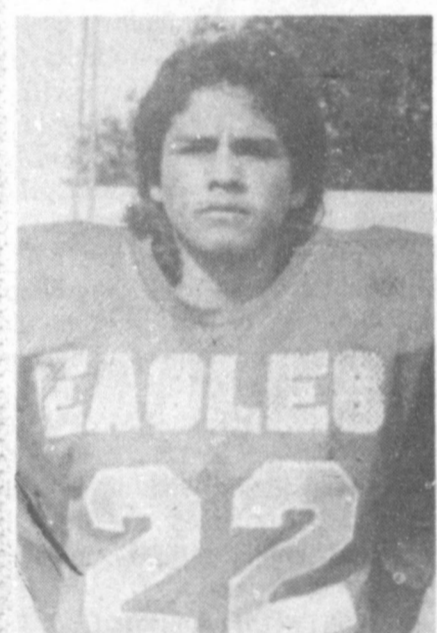
Coach Baldwin



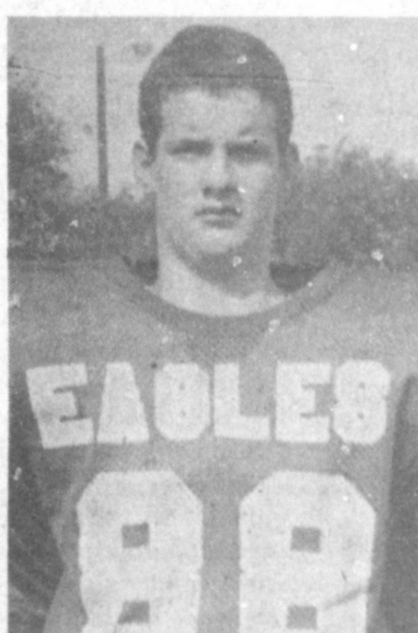
Coach Young



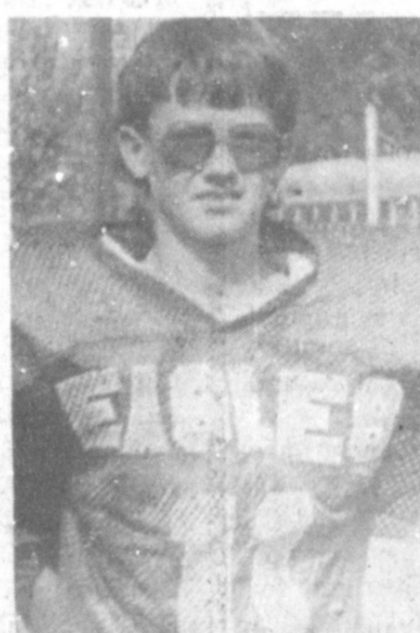
42. Gerardo Guitron



22. Octavio Perez



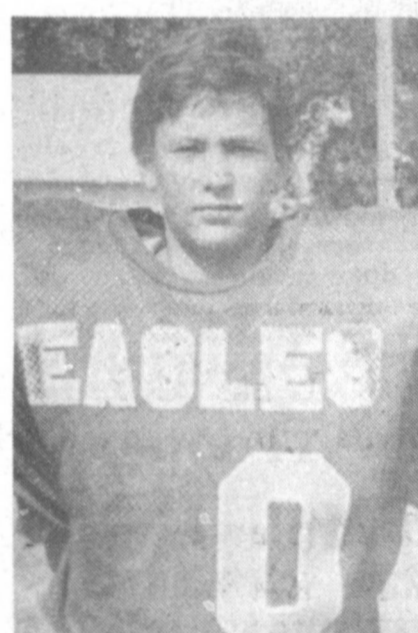
88. Monty Turney



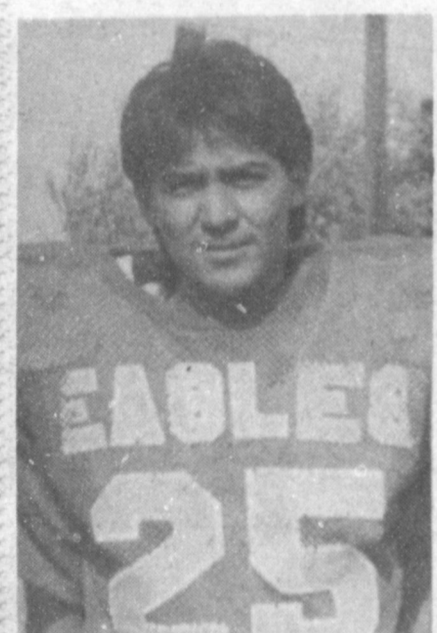
11. Keith Kindle



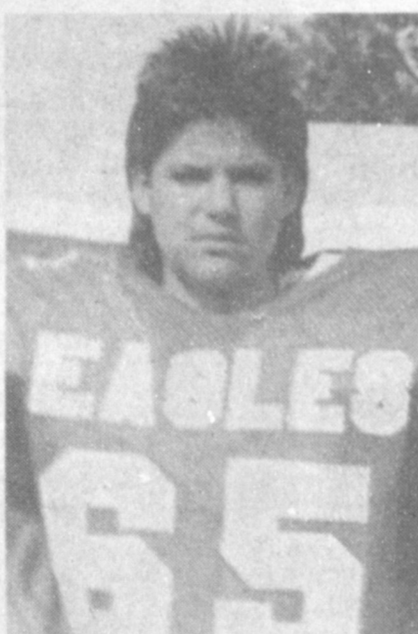
70. Nick Duarte



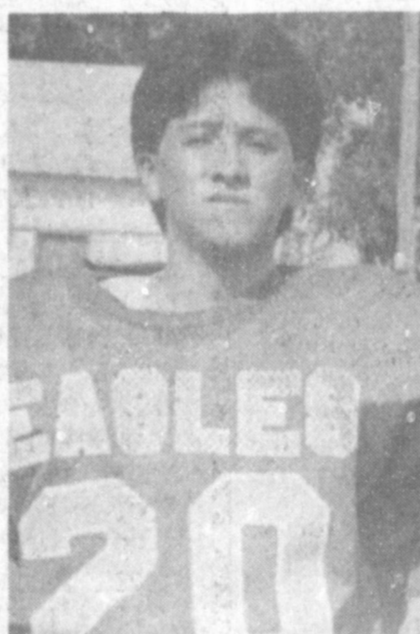
0. Torrey Roberts



25. Carlos Pina



65. Marcelo Rodriguez



20. Jesus Perez



65. Lupe Landeros



12. Chris Solis



Mgr. Roy Martha

This Page Proudly Sponsored By The Following

Three Way Eagle Supporters!

Farmer's Co-Op Elevators

Wilson Drilling Co.

Sunmark Grain of Bledsoe

Five Area Telephone Cooperative, Inc.

Bailey Gin Co.

First State Bank-Morton

Member F.D.I.C.

Maple Co-Op Gin

Steinle's IGA Grocery Store

-Morton



22. Kyle Kindle

Back To School Specials Sandwiched Among Food Sales

Texas consumers will find special sales on back-to-school foods sandwiched among a variety of September supermarket promotions.

Rebekah Lodge

Muleshoe Rebekah Lodge met Tuesday, Sept. 4 in regular session with 14 members answering roll call.

Dorothy Browning Noble Grand called the meeting to order. Ruby Garner and Doris Lambert escorted by Ona Berry presented the flags and Fern Davis, chaplain, gave the opening prayer.

It was reported some of the members are improving, but others are needing the lodge's prayers and cards.

June Green, secretary, read the minutes of the previous meeting and they were approved.

Thursie Reid gave the financial report.

After a short business session Louise Allen Lodge Deputy gave a short school of instructions.

Happy birthday was sung to Ruby Garner. Louise Allen gave the closing prayer.

Refreshments were served by Pat Langfitt and Ona Berry.

Dr. Dick Edwards, a food marketing expert with the Texas Agricultural Extension Service, said promotions by food retailers will include specials for the opening of school, Labor Day and football season.

He said other food items will be featured for the Mexican Independence Day (Sept. 16) and Rosh Hashanah, the Jewish New Year that begins Sept. 20.

"Labor Day officially marks the end of summer," Edwards reminded, "and emphasis will be on food items consumed outdoors."

Most discounts for cookouts will be on hamburger meat and hot dogs rather than the steak cuts, Edwards said. But check for soft drinks, relishes and other food items popular at cookouts.

"Among the auxiliary items, look for specials on catsup, barbecue sauce, mayonnaise, pickles, mustard, relish, disposable plates, cups, spoons and charcoal," he said.

Chicken producers will discount the leg-thigh cuts to about 39-49 cents a pound.

"September foods advertised in back-to-school specials included items for school lunches as well as others promoting better breakfasts and after-school snack items," Edwards said.

"Look for discounts on can-

ned puddings and desserts, cookies, sliced meats, lunch-sized chip packages, drinks and juices."

For older students, Edwards noted, personal grooming products geared to teens also were discounted.

For the football season kickoff, look for specials on prepared salads, sliced meats for sandwiches, fried chicken, cheeses, dips and chips," Edwards said. "Watch for some beverage items to be on sale as well."

Food items discounted for

Rosh Hashanah celebrations will include Kosher roasting chickens, beef franks, matzo, gefilte fish, herring in creme sauce, egg noodles, bagels and wines.

For Mexican Independence Day, food merchandisers will feature tortillas, taco shells, chips, hot salsa, chorizo, mangoes, limes, avocados and other foods.

Through September, meat departments will feature frequent sales on chuck steaks, rump roasts, pork steaks, shoulder roasts and end cut pork chops, Edwards said.



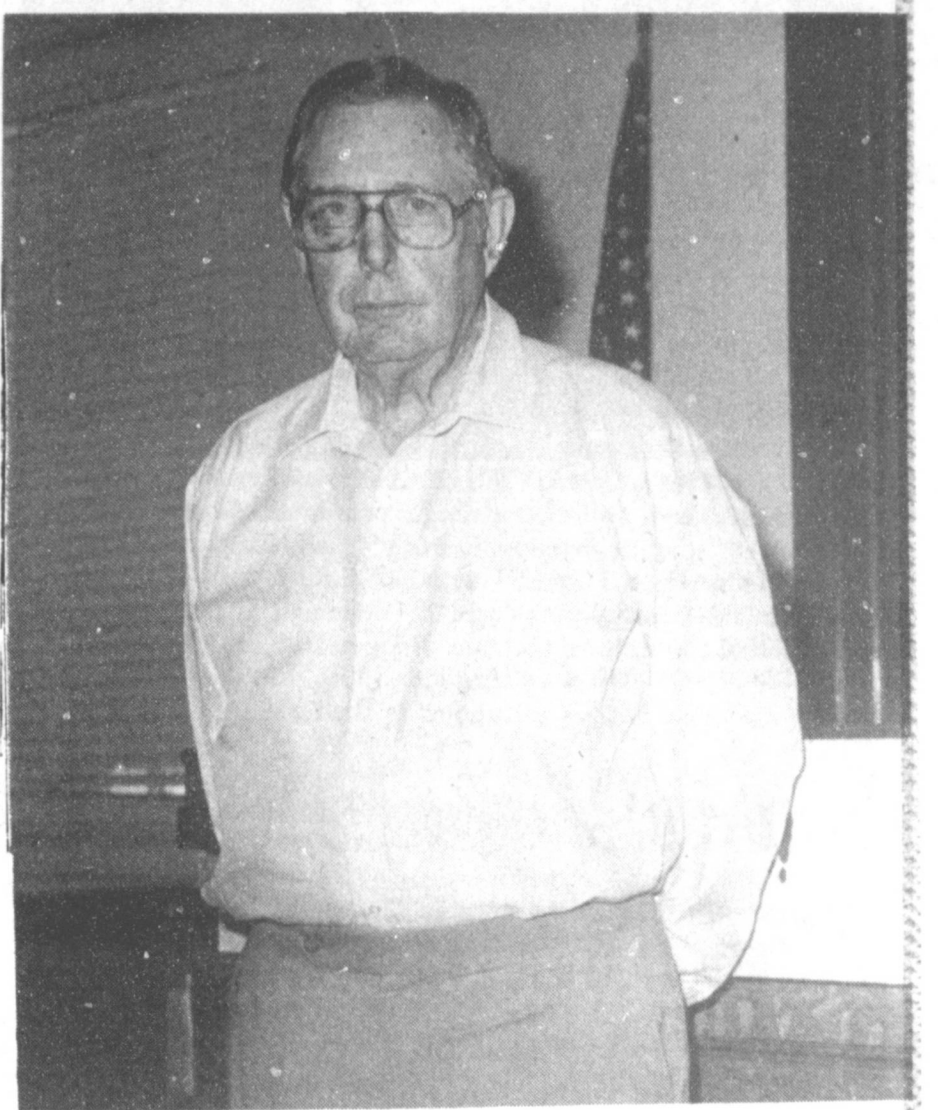
JENNYSLIPPER GARDEN SPOT--As you are driving down Ave. B, between Dr. Charles Lewis and Dr. Robert Lepard's offices and Henry Insurance, take a look at the flowers, which are in full bloom, surrounding a tree. This flower garden was selected this week to be the Garden Spot of the Week by the Jennyslipper judges. (Journal Photo)

"Salmon will be a seasonal seafood product featured at many supermarkets," he said. "Look for whole fish, steaks and fillets to be available in quantity in September. Shrimp will be another good buy, since import supplies remain strong."

Manufacturers of breakfast products are planning deep discounts to get consumers back into the "big breakfast" habit, Edwards said. Bacon and sausage products as well as cereals

will be discounted. Rounding out their season in the produce sections will be cantaloupes, honeydew melons, nectarines, peaches, plums, raspberries and blackberries.

"Making their 1990 debut in September will be new-crop white and sweet potatoes, apples and pears," Edwards said. "Fall melons and squashes also will arrive about the same time."



RETIREMENT PARTY--Co-workers of Glen Williams honored him with a retirement party Friday afternoon, August 31, in the District courtroom of the courthouse. He began working with the Aging Service in 1983 and was instrumental in getting the Meals on Wheels program started in Muleshoe. Williams served as county judge for a number of years prior to working with the Aging Service. (Journal Photo)



SPORTING A NEW BIKE--Brett Clements, 8-year-old son of Mr. and Mrs. Delmer Clements, was the lucky winner of a Mountain Bike in a drawing held Sept. 1 at the Dairy Queen in Muleshoe. (Journal Photo)



Latest Arrivals

Teysha Grace Potter

Mike and Brandi Potter are the proud parents of a daughter, Teysha Grace.

Teysha was born on August 27 at 11 p.m. in Corvallis, Oregon. She weighed six pounds and seven ounces and was 19 inches long.

Grandparents are Rod and Pat Cate of Ames, Iowa.

Great grandparents are Tommy and Elsie Cate of Sudan.

Gabrielle Rose Garza

Gabrielle Rose, daughter of Enrique and Jennifer Garza of Lubbock, arrived at University Medical Center on Aug. 14, weighing eight pounds and four ounces. She was 20 inches long.

The proud grandparents are Leamon and Joy Stancell of Muleshoe, and Felix and Eva Amaro of Brownsville, TX.

Maternal great-grandparents are Asa and Lois Smith of Bovina, TX. Paternal great-grandparents are Lucas Garza of Corpus Christi, TX and Janie Villerreal of Santa Ana, Calif.

I will sit down now, but the time will come when you will hear me.

-Benjamin Disraeli.

ATTENTION

Your only local media of general circulation that qualifies for and has a 2nd class newspaper subscriber's mailing permit. U. S. Post Office Approved.

Bailey County Journal USPS 040-200
 Established March 31, 1963. Published by Muleshoe Publishing Co., Inc. Every Sunday at 304 W. Second, Box 449, Muleshoe, TX 79347. Second Class Postage paid at Muleshoe, TX 79347.

MEMBER 1990
TEXAS PRESS ASSOCIATION

L. B. Hall, Publisher
 Sammie Hall, Vice President/Controller
 Clara Williams-Jacobson, News
 Evelyne Harris, Society
 Holly Millisp, Advertising
 Dora Toscano, Classified

SUBSCRIPTIONS
 Muleshoe Journal and Bailey County Journal
 Bailey and surrounding counties
 Muleshoe Journal and Bailey County Journal
 Elsewhere in Texas \$14.75
 Muleshoe Journal and Bailey County Journal
 Outside Texas, \$18.50
 Yearly By Carrier \$12.50

Advertising Rate Card on Application
 Advertisers should check their ad the first day of insertion. The Journal will not be liable for failure to publish an ad or for a typographical error or errors in publication except to the extent of the cost of the ad for the first day of insertion. Adjustment for errors will be limited to the cost of that portion of the ad where the error occurred.

From: Texico Booster Club
 To: Parent(s) and/or Guardians

This is an urgent request for your help. Larger school systems have Booster Clubs strictly for support of athletic programs, We, ARE NOT, like the larger school systems. Our objective is to support the Texico School System from Elementary thru High School. We try to assist FHA, FFA, BAND, ACADEMIC projects and the Athletic programs.

The few members we have, work hard to help your children as well as our own to attend local, state and some national functions. These projects cost the school system lots of money each year and the Booster Club tries to help when we can.

Booster Club dues are \$5.00 per person for the entire school year, Now please, if you cannot afford to pay the club dues, don't let this stop you from coming to the meetings each month. We need people who care and want to help all our children.

The next Texico Booster Club meeting is scheduled for September 10, 1990 at the Texico High School library at 7:30 p.m. Please plan to attend our next meeting and find out what we are trying to accomplish for ALL our students

Sincerely,

Ben W. Akers
 President
 Texico Booster Club

Happy Birthday

To Our Patients With Birthday In September

- | | | | |
|-------------------|-----------------|--------------------|---------------------|
| AMY ANGELEY | ANA ARZOLA | LYNIAL ASHFORD | JACQUE BAKER |
| LOIS BALDWIN | RITA BARBOSA | IDA MAE BARNETT | JAMES BARRETT |
| MILDRED BARTLEY | FAYE BEASLEY | SYLVIA BUCHENAU | BOBBIE BENHAM |
| JANICE BENNETT | DELIA BERMEA | ROBIN BERRY | BUD BERTRAM |
| JOHNATHAN BRADLEY | KIM BRANSCUM | BUD BRUNS | A. J. BUHRMAN |
| LEROY BURNETT | NORA BURRIS | TERRY BURTON | RUSSELL BYERS |
| BEATRICE CAMPOS | MIKE CARROLL | CRYSTAL CASTORENA | DOROTHY CHANCE |
| MARIA CISNEROS | ROB CLAPP | CASSIDY CLEAVINGER | JAMES CLEWIS |
| TAMMY COOK | TRENT COPELY | JOSEPHINE CORTEZ | JESSIE COSTILLA |
| NORMA CRUZ | R.B. CUNNINGHAM | RICHARD CUNNINGHAM | RICKIE DALE |
| ROBBIE DAMRON | MANDY DANIEL | ELIDA DIAZ | BECKY DONALDSON |
| W.M. DUDLEY | PEARL DUNLAP | TRACI ELLIOTT | BILLIE EMERY |
| CONCHA ESTRADA | CARL EYBERS | ANNE FARRIS | BLAIN FERRIS |
| LENA FLORES | GENE FRANKS | KATHI FRANKS | HOPE FREE |
| LARRY FREE | CATHI FREEMAN | CHANDA FREEMAN | MIKE FRIEND |
| ANTHONY GARCIA | JOSELUIS GARCIA | LETICIA GARCIA | LIZ GARCIA |
| MARY GARCIA | BLAKE GARTIN | STEVE GARTIN | ALBERT GARZA |
| CAPPY GATEWOOD | J.C. GATEWOOD | DAVID GILBREATH | KENNETH GILBREATH |
| JO BETH GILLELAND | LYNN GLASSCOCK | JESUS GONZALES | DAYMOND GOSSETT |
| BETTY GREEN | DOROTHY GREEN | VERBI GRIFFITHS | CHAD GRISWOLD |
| JEANENE GUNSTREAM | TOMMY GUZMAN | MICHELLE GUTIERREZ | JO ANN GUTIERREZ |
| SAMMYE HALL | CHAD HAMILTON | CORY HAMILTON | DAYNA WILLIAMS |
| ERIN HANCOCK | BRET HANKS | CHARLIE HANKS | DJANE HASELOFF |
| BRADLEY HERBER | JOE HERNANDEZ | GLORIA HERINGTON | HERIBERTO HERNANDEZ |
| MAURINE HOOTEN | KIPP JONES | HETTIE HUTCHINSON | ERIN KELLEY |
| JACK KEMP | MARGIE KEY | DEE KING | JAN KING |
| MARK KOENIG | CLEMMIE LADD | EDITH LAMBERT | ABEL LEAL |
| MICHAEL DAN LOPEZ | RAMMA LOPEZ | ROSEMARY LOPEZ | CONNIE LOTT |
| JOE LOZANO | CINDY LUERAS | CUSTODIOS MADRIG | JUDY MARQUEZ |
| LUCY MARQUEZ | DANNA MARTINEZ | AGUSTIN MARTINEZ | JANIE MARTINEZ |
| CHARLES MAYHUE | TIM MCCORMICK | BARBARA MCCAMISH | JAMES MEASON |
| ALFONSO MENDOZA | BETTY MONROW | ED MOORE | TROY MOORE |
| BOB MORRIS | CADE MORRIS | DEE DEE MORRIS | KIA MORRIS |
| ART MURILLO | RENA NEWTON | LONDON NICHOLS | BONZ NORMAN |
| DERRELL NOWELL | MARIA ORNELAR | ESTELLA OROZCO | ROGELIO PACHECO |
| TRENIDAD PALACIO | NOLAN PARISH | ALTON PARKER | J.O. PARKER |
| JOHNNIE PARKER | C.R. PATEL | DIPAN PATEL | ROY PATTON |
| JOSIE PEDROZA | ARTIE PIERCE | JAN PIERCE | SHELLA PITCOCK |
| JORDAN POOL | YIN POOL | JEFFERY POPE | TATE POYNOR |
| BARRY PROCTER | JUDY PUCKETT | TOMMY RECIO | BARBARA REEDER |
| HAZEL REEDER | OPAL RENFROW | JUANITA REYES | LEWIS REYES |
| SYLVIA REYES | LUIS REYNA | MELBA RICHARDS | JANIE RODRIGUEZ |
| PAUL ROSA | ANNA RUJIZ | RACHEL SALAZAR | SANTIAGO SAMARON |
| MARIA SANCHEZ | BECKY SANDOVAL | CORRIE SAVUTO | JUANITA SCARBROUGH |
| LEE SCOTT | TROY SCOTT | LAURA SEALES | JOANN SIENA |
| JANET SHAIN | VIRGINIA SHULTZ | DENNIS SMITH | LEZLIE SMITH |
| MARVELL SMITH | DELLA SNELL | KRISTOL SOTELO | DARLA STAGNER |
| LAURA STANCELL | VICKI STEVENSON | GLYNN STROUD | CLARA SUDDUTH |
| JAN TEMPLAR | FELIPE TERRINEZ | BERTHA TORRES | DORA TRIANA |
| FLORENE UPCHURCH | MARY VILLALOBOS | CHARLES WALKER | LEON WARREN |
| DANIEL WATSON | SARAH WATSON | BECKY WELCH | SHERYL WELCH |
| JEFFREY WHEELER | BRANDY WHITT | DELTON WILHITE | MARY WILLIAMS |
| RICHARD WILLIAMS | RUBY WILMAN | HERSCHEL WILSON | JESSICA WILSON |
| LONNIE WILSON | HAZEL WISEMAN | JANE WISEMAN | CALVIN WISEMAN |
| BETTE WITHROW | LONNIE WOOD | LYDIA WRIGHT | JOHN YOUNG |
| MARILYN YOUNG | BRENDA ZAMORA | EDDIE ZAMORA | HOWIE ZIMMERMAN |
| BETTY BRANT | DENNIS CLEMENTS | MARY GARCIA | |

Tom K. Bonds, D.D.S.

Terry, Tammy, Glenda & Becky

108 W. 2nd

272-5004



SUPPORTING THE ARMED FORCES--Friday morning, Vivian White, center, and Billie Downing, presented Mayor Darrell Turner one of the Jennyslipper badges, which was inscribed "Support Your Armed Forces," with red, white and blue ribbon underneath. The Jennyslippers had a booth at the fair and gave these to persons attending the fair. Badges will also be given at the Bells Across America celebration Sept. 7. All citizens are asked to wear these badges in support of the Armed Forces. (Journal Photo)

Bridal Shower Honors

Miss Lisa Wood

A bridal shower honoring Lisa Wood, bride-elect of Lee Logan, was held in the home of Mrs. Joe Ellison on Thursday, August 23 from 7:30 to 9 p.m.

The serving table was covered with an ecru lace table cloth and accented by a bouquet of fresh flowers using eggplant as the main color.

Finger sandwiches, chips, dips, vegetables and dip, cookies, tea and coffee were served.

Special guests included: Mary Wood, mother of the bride elect; Mable Wood, grandmother of the bride elect; Paula Wood of Littlefield, Von Dee Mears and Loretta Benton, also of Littlefield. Nicki Logan, mother of the prospective groom; Nicole Logan, sister of the prospective groom; Alicea Cerovski of Lubbock, Jana White of Sterling, Virginia, The honoree's aunt, Naomi Wood, and cousin, Jennifer Beech, both of Earth, and Linda Wood, Laura and Ellen of Muleshoe.

Guests from Lubbock were Sheila Summers, Debbie Hill, and Marie Corley.

The hostesses gift was a vacuum cleaner. Hostesses for the occasion included: Susan Baker, Shanda Broadhurst,

Marge Cardwell, Nancy Davis, Winona Dudgeon, Jo Ann Ellison, Josephine Fisher, Frances Gardner, Glyna Harrison, Gloria Humphreys, Pam Humphreys, Patsy Kent, Cynthia King, Mickey Nix, Shawni Nix, Norma Phillips, Mary Powell, Loretta Reid, Martha Taylor, LaDelta Vernon, Jane Wiseman, and Bette Withrow.

SMILES

Bigger'n The Jury

A young lawyer pleading his first case had been retained by a farmer to prosecute a railway company for killing 24 hogs. He wanted to impress the jury with the magnitude of the injury.

"Twenty-four hogs, gentlemen! Twice the number there in the jury box!"

Dad Knows

Son: "What is executive ability, Father?"

Father: "Executive ability, my son, is the art of getting the credit for all the hard work somebody else does."



RECEIVED SPECIAL OLYMPIC AWARDS--At a recent barbecue four Muleshoe residents were recognized for their service to this program. Nancy Kidd, left, was the only one attending to receive a 20 year award. Janet Gracey, right, received a one year award and Mary Nell Bleeker received a five year award. (Journal Photo)

Bells Across America To Be Celebrated Here

The Jennyslippers will once again lead all Muleshoe citizens to join in an observance of the Bicentennial of the United States Constitution during Constitution Week--September 17 through 23. This year, the special focus will be on the Bicentennial of the Judicial Branch of government--created 201 years ago this week when President Washington signed the Judiciary Act of 1789--but actually formed in 1790.

During the five-year observance of this commemoration of the drafting signing of our Constitution, a tradition and high point of the "Bells Across America" celebration in Muleshoe has been when the whole fifth grade class marches to the Court House and joins in the 200-second bell ringing ceremony.

The Jennyslippers urge ALL citizens, to participate in the occasion this year. You should be at the Court House by 2:30 p.m. A brief ceremony will begin at 2:45 and end in time for the children to get back to school and leave for the day in usual manner. This will be on Monday, September 17, Citizenship Day.

"Constitution Week presents the chance to join with our family, friends, and community to salute our governing document, a legacy for the leaders of tomorrow, and also recognize our Judicial governing body.

This year a significant campaign is being conducted to provide every citizen with the

RED/WHITE/BLUE ribboned BADGE to wear in SUPPORT OF OUR ARMED FORCES. The Jennyslippers also had a booth at the West Plains Fair and gave these badges on Sept. 7 and 8.

"Anne Camp, our librarian has informed us that she has a set of four video tapes "Equal Justice Under Law" which are more famous Court cases. They are titled, "US vs. Aaron Burr", "Marbury vs. Madison", "Gibbons vs. Ogden", and "McCulloch vs. Maryland." These might provide a program for civics clubs, or school civics class," said Billie Downing.

"Also, the Kiwanis will provide businesses and city residents with their FLAG SERVICE for \$27.00 a year. They will put your flag in place on special holiday(s) throughout the year then take it down at the end of the day. They encourage EVERYONE to fly the American FLAG. Some of the participants are flying their flag every day during this crisis in the Persian Gulf.

"Possibly the Ministerial Alliance will be hosting a Prayer Breakfast or some other Prayer activity during this special week.

"Muleshoe has always let its American Pride show and we are sure this will be no less. We hope with all of the concern for our military that it will be even BIGGER. Just Do Your Part!"

Tops Club

TOPS chapter No. 34 met at 6:30 p.m. Thursday, Sept. 6 in the Heritage Thrift Shop. Laverne James, leader, called the meeting to order and led the group in the TOPS pledge and a prayer. Alma Robertson led the TOPS fellowship song.

Betty Jo Davis called the roll with 18 members and a new member, Carolyn Stancell, present.

Ruth Clements, treasurer, gave a treasurer's report. Names were drawn for a challenge contest and Mrs. James reviewed some of the challenges.

Lucille Harp was named best loser for the week. Runners-up were Alma Robertson, first, and Mary Edmiston, second.

Monthly best loser was Charlotte Campbell, Runners-up were Alene Bryant, Joy Radford, Alma Robertson and Aurora Mata.

Mrs. Bryant received a gift from the chapter for being best loser last week and losing again this week.

For Your
Mary Kay Cosmetics
Josie Flowers
272-3865
8 a.m. - 12 noon
& after 6 p.m.

Olympic Volunteers Receive Awards

The local and area Special Olympic programs are worked by volunteers. These people come from all areas in a community, but usually parents and teachers are the ones most involved. True, Special Olympics is part of the Special Education program, but many hours that are not school hours are given to the Special Olympics. That is what makes it so "Special".

On August 10, the Area 17 Special Olympics had a BBQ supper and awards were given to honor the volunteers. The Texas Special Olympics State President Denis Poulos was there with Area Director Sharon Donnell to present the following awards.

From Muleshoe was Janet Gracey, One year, teacher at DeShazo Elementary; Mary Nell Bleeker, five years, teaches Special Ed. at Muleshoe High School; and Nancy Kidd was the only 20 year recipient. She is the mother of Cari Ann Kidd. Hubert Kidd received recognition on behalf of the Five Area Telephone Cooperative for the cover of their 1990 directory featuring the Special Olympic emblem and sports.

Special Olympics was created by The Joseph P. Kennedy, Jr. Foundation for the benefit of citizens with mental retardation. Perhaps Eunice Kennedy Shriver, founder and chairman of the program, summarized the

meaning of Special Olympics best: "In a world where poverty war and oppression have often dimmed people's hopes, Special Olympians rekindle that hope with their spiritual strength, their excellence and their achievements. For as we hope for the best in them, hope is reborn in us."

"Let us in Muleshoe not lose that hope" said Nancy Kidd.

Hobby Club News

Muleshoe Hobby Club met Thursday, Sept. 6 at 2 p.m. in the Senior Citizens Complex with thirteen members present.

Glenda Morris served as hostess for the day. The hostess gift was drawn by Blanche Awbrey.

Those present were: Betty Griswald, Edith Fox, Jane Williams, Myrtle Chambless, LaDema Wright, Hazel Reeder, Glenda Morris, Onieta Corneilson, Laura May Stansel, Loma Baker, Blanche Awbrey, Mable Caldwell and Frances Bruns.

The next meeting will be on Sept. 20 at 2 p.m. at the Senior Citizens Complex with Frances Bruns as hostess.

Watt's problems persist 25 years after city's riots.

7.80% Annual Rate

8.03% Yield/1 yr. CD

7.70% Annual Rate

7.93% Yield/6 mo. CD*

Good rates, plus two easy ways to open your Sunbelt CD.

Just stop by the Sunbelt branch nearest you. Or, fill out the Sunbelt CD form below and mail it along with a check for the amount of your deposit.

It's that simple. Because Sunbelt believes in *Uncomplicated Banking*.

Sunbelt Savings FSB
No Excuses. Answers.™

Muleshoe: 304 Main St., 272-5527



*Deposits insured by FDIC to \$100,000. Rate subject to change. \$500 minimum deposit. Annualized yield is calculated assuming all principal and interest remain on deposit for one year at the annual rate. Interest compounded quarterly. Other rates available for balances of \$35,000 or more.



Please open my Sunbelt Savings account using the information supplied on this coupon. Enclosed is my check payable to Sunbelt Savings in the amount of \$_____ to open my six month CD, one year CD.

Name _____ Date _____
Address _____
City _____ State _____ Zip Code _____
Driver's License # _____ Date of Birth _____
Daytime Phone _____ Social Security # _____

Deposit interest to my account quarterly
 I prefer my interest paid by check Monthly Quarterly At Maturity

Signature _____
Mail this coupon and your check to:
Sunbelt Savings, 304 East Carpenter
Freeway, Allen Customer Service Dept.
P.O. Box 109000, Irving, Texas
75010-0900.

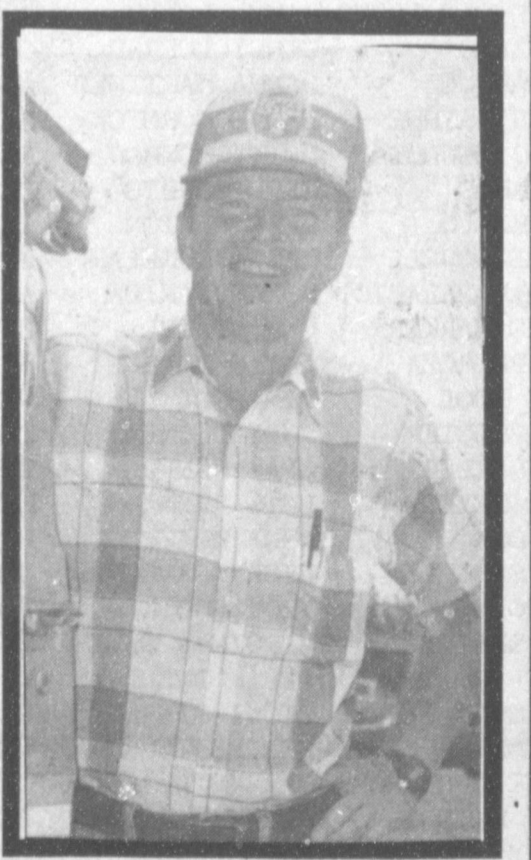
Sunbelt Savings FSB
No Excuses. Answers.™

QUALITY

Meet James Byers, a Customer Equipment Technician at GTE. Some of you already know James, but we wanted to make sure you knew who one of your GTE representatives is in Muleshoe, Texas. James will be happy to visit with you about your service questions as well as adding touch call in your home or business.

Regardless of your need with GTE, James will be here to make sure your telecommunications are taken care of promptly and will also ensure that you receive the highest quality service that GTE is accustomed to providing.

Please feel free to call us anytime.
(806) 637-7641 (Business)
(806) 637-8531 (Residential)



THE POWER IS ON

Miss Fisher, Shultz United In Marriage

Missy Fisher became the bride of Joe Ky Shultz Saturday, August 11 at 7 p.m. in the Sudan First Baptist Church. Cliff Hargrove, pastor, and John Lloyd Shultz, brother of the groom, read the double ring vows.

Parents of the couple are Josephine Fisher of Sudan and Mr. and Mrs. Joe Shultz of Dimmitt.

Church decorations included: greenery, white floral arrangements, and iridescent ribbon accented heart-shaped candelabras and the wedding arch, as well as the church pews.

Leah Kay Lyle, vocalist, sang "Wind Beneath My Wings", and "Vows Go Unbroken" was sung by vocalist Keith Longbotham and accompanied by flutists Suzanne and Jill Reid. Other selections were

"Promises" and "Precious Love" presented by Miss Lyle and Longbotham, and "The Wedding Prayer", sung by Mike Fisher, brother of the bride. Pianist was Walter Maynard of Dimmitt and the organist was Georgeanne Rasco of Sudan.

Given in marriage by her brother, Radney, and her family, the bride wore a full length white gown in regal satin, highlighted with a scalloped "V" neckline and mutton sleeves with bows. The gown had a bodice encrusted with pearls and jewels and an elongated waistline. The skirt was full and flowing and the gown plunged to a low back, centered with a designer bow. The cathedral length train was all edged with double-edged borders of European lace. The

bride wore a simple veil of iridescent pearls and jewels placed at the crown of her head.

She carried a floral spray of white roses and greenery accented with wedding flowers in rainbow colors. She carried her baby Bible and for something old, she carried a handkerchief belonging to her mother. The bride's dress served as something new, the groom's baby ring was worn on her little finger for something borrowed, and something blue was a blue garter. The bride also wore pennies in her shoes representing the year's in which the bride and groom were born.

Serving as matron of honor was the bride's sister, Kathey Granger of Brownfield. Bridesmaid was Sherla George of San Antonio, and maid of honor

was Tanya Fisher of Sudan, niece of the bride. Bridesmaids were Wendi Burns of Canadian, Shanda Broadhurst of Littlefield and Kim Wunderlich of Edina, Minn.

The attendants wore floor-length gowns in summer satin in solid rainbow colors of fuchsia, teal, yellow, purple, royal blue, and red. Each attendant carried a silk bouquet in the same color as her dress. They also wore simple silk wreaths with flowing ribbons on the crown of their heads.

Serving as flower girl was Amanda Annen of Dimmitt, cousin of the bride, and serving as ring bearer was Brett Granger of Brownfield, nephew of the bride.

Joe Shultz, served as his son's best man. Other groomsmen were Kevin George of San Antonio, Justin Shultz of Dimmitt, brother of the groom, Shannon Fisher of Sudan, nephew of the bride, Richard Francis of Plainview, and Brent Gabriel of Dallas.

Ushers were Jeff Watts, Scott Hays, Brad Byerley and Jerry Fisher, cousins of the bride; Corey and Chris Higgins, cousins of the groom, and Burt Noland, cousin of the groom. Angie Carson of Sudan, attended the guest registry.

Following the ceremony, a reception was held in the First Baptist Church fellowship hall. The bride's table was decorated with a white cloth, silver serving pieces and a three-tiered wedding cake, highlighted with "Precious Moments" figurines and fresh flowers, which were made by the bride's sister-in-law, Patsy Fisher.

Serving at the bride's table were Kathy Wilson of Lubbock, Suzy Polk of Levelland, Kristi Schonerstedt of Plainview, and Amy Clark of Houston.

The groom's table was decorated with a royal blue cloth and gold serving pieces and featured a five platform chocolate cake, each with "Precious Moments" figurines representing different

stages of the groom's life. Also on the groom's table, was a buffet-style service of barbecue, and fresh fruit and vegetables. Serving at the groom's table were Kristi Sims of Dimmitt, Kay Lynn Gleghorn of Dimmitt, and Tiffany Gabriel of Plainview.

A house-party, led by Pill Beller, consisted of Sue Chester, Marge Cardwell, Norma Phillips, Barbara Damron, Nancy Lance, Donna Lance, Mary Kay Baker and Tracey Provence.

Rice bags were presented to the guests by Danya and Macie Lance.

Following a honeymoon in San Antonio, the couple will make their home in Plainview.

Missy Fisher and Joe Ky Shultz were honored with a rehearsal dinner on Friday, August 10 at the Plainview Country Club. The dinner was hosted by the parents of the groom, Mr. and Mrs. Joe Shultz of Dimmitt. All members of the wedding party attended. The tables were decorated in royal blue and white with "Precious Moments" figurines accented the table. After the meal and exchanging of gifts, the couple

then were honored with a dance.

The bride was honored with a lingerie shower on Saturday, August 11 in the hospitality room of the First National Bank of Sudan.

The table was decorated with a white cloth centered by a lingerie flower arrangement.

Hostesses for the occasion included: Kristi Hargrove, Tanya Fisher, Brandi Martin, Gayla Rasco, Suzanne and Jill Reid.

The hostesses served cookies and punch to the guests.

Special guests were Josephine Fisher, mother of the bride, and Jere Shultz of Dimmitt, mother of the groom.

Glyna Harrison of Sudan and Sharla George of San Antonio, hosted a bridesmaids luncheon in honor of the bride on Saturday, August 11 in the home of Mrs. Harrison.

Guests attending were: Josephine Fisher, mother of the bride; Jere Shultz, mother of the groom; Kathey Granger of Brownfield, Patsy and Tanya Fisher of Sudan, Shanda Broadhurst of Littlefield, Wendy Burns of San Angelo, and Kim Wunderlich of Edina, Minn.

Shower Honors Mrs Young, Son

The home of Peggy Buhrman was the scene of a baby shower Saturday, Sept. 1 honoring Rebecca Young and son, J.R.

The honorees and Ms. Buhrman greeted the guests as they arrived between the hours of 2 and 3 p.m.

Dani Heathington and Ms. Buhrman served thumbprint cookies and lemon tea from crystal appointments.

The serving table was covered with an ecru linen table cloth and accented with an arrangement of blue silk flowers. The honoree's corsage consisted of blue and white daisies.

Special guests included Billie Beckwith of Clovis, grandmother of J.R.; aunts, Renae Windle of Clovis, Sue Rogers

Lynch, Thurmond

Marriage Announced

Vaneša Lynch Pope of Lubbock wishes to announce the marriage of her sister, Jennifer Lynch to Leo E. Thurmond, III.

The couple were married June 15 in Dayton, Ohio.

Thurmond is a research engineer for IAP Research in Dayton where the couple are making their home.

Defensive Tactics

The Accused--There's the lawyer we stuck up. It's all up with us. He's going to testify against us.

His Accomplice--Not this time, he won't. I've hired him to defend us.

and Venessa of Lubbock, Terry Young of Muleshoe. Leah Turnbow of Portales was also a special guest.

The hostesses gave individual

gifts. Hostesses for the occasion included: Dani Heathington, Peggy Buhrman, Maudie Speck, Louise King, and Louvenia Garlington.



REBECCA AND J.R. YOUNG



Mums
by Doris
at Perry's

For All Your Mum
Supplies Come See
Us For Custom-
Made Mums For
Homecoming!

Get that special girl a mum!

Lay-a-way today!

Plain Garters \$1²⁵ each

PERRYS

303 Main

272-4620

Mr. Corn Farmer

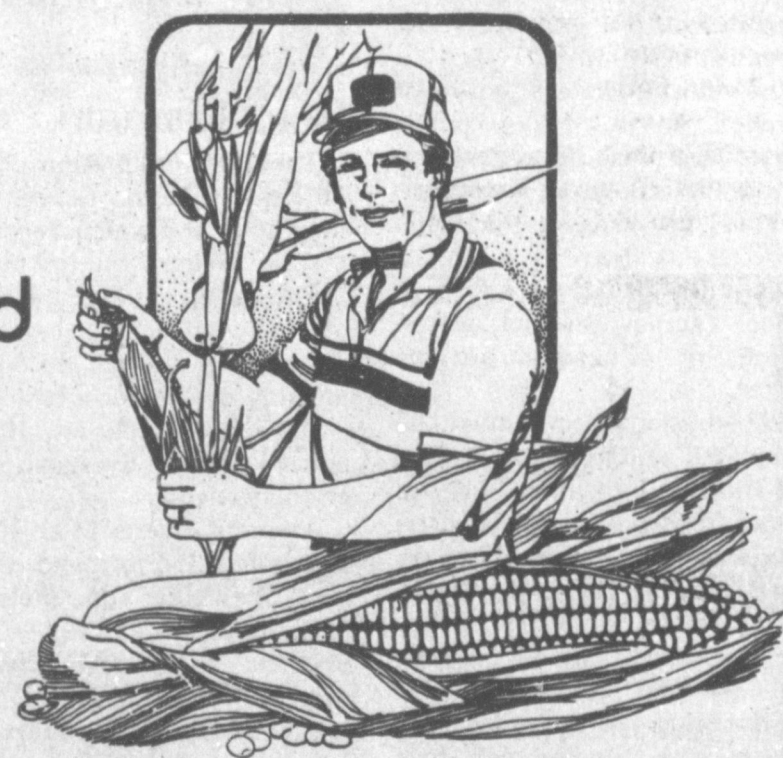
We are now
accepting feed
&
food corn
at

215 E. Amer. Blvd.

or the Main Elevator in Muleshoe.

Come by either location
in Muleshoe and discuss
our food corn program
today.

Farmer's Cooperative
Elevators



Muleshoe

272-4335 or 272-5959

It's An 'Emergency!' Who You Gonna Call

Heavy rains cause a crowded building to collapse in Brownsville. Near Bridgeport, an Army helicopter with several soldiers on board crashes and bursts into flames. The nation worries for three days about a little girl trapped in a West Texas well. Harlingen activates water rescue teams as another hurricane heads for the Texas coast.

Every year, Texas emergency medical services responds to more than a million calls for assistance. Those calls range from multiple-casualty incidents such as a bus wreck or building collapse where victims have to be triaged, or selected, for treatment according to the severity of their injuries to the more common cardiac arrest, motor vehicle accident, near drowning, or fractured leg.

More than 40,000 people in Texas are certified as Emergency Care Attendants, Emergency Medical Technicians, and Paramedics. Twelve hundred groups around the state provide prehospital emergency medical care to their communities.

Ask an EMS person today what is most important to them, and the answer is "quality patient care."

"EMS has come a long way since we started out," said Gene Weatherall, chief of the Texas Department of Health Bureau of Emergency Management. "The old ambulance law

of 1943 required an 8-hour Red Cross certificate, a first aid kit, and a backboard. But since the seventies, all across Texas people voluntarily got training and certification at much higher levels so that they could provide quality prehospital medical care."

EMTs spend a minimum of 120 hours in class learning how to assess and stabilize a patient's condition before transporting them to the emergency department. Twenty hours of clinical observation and three emergency ambulance runs must be completed before State certification as an EMT.

Paramedics perform invasive emergency medical skills such as cardiac defibrillation, airway intubation, and intravenous drug administration. They must complete a minimum of an additional 400 hours of training beyond EMT.

Nearly half of the people who work in EMS are volunteers. "Emergency medical service in Texas could not exist without volunteers," said Weatherall. In July, 541 of the 1,194 ambulance firms in Texas were volunteer organizations. Volunteers -- individuals and organizations -- must meet the same requirements as paid EMS. "Of course, none of us wants anyone involved in an accident," said Weatherall. "But, if they are, you may need emergency medical services to keep them alive. People should know how to call EMS and know what to do before EMS gets there."

TEAMS Test Packet Ready For Study

The out-of-school examinee packets for the Texas Educational Assessment of Minimum Skills (TEAMS) exit level test are now available at the Muleshoe High School.

During each regular exit level test administration, individuals who are no longer enrolled in school and have not previously passed both sections of the TEAMS test, but have met all other graduation requirements, may retake the section(s) not passed.

During the October administration, the English language arts test will be administered on Wednesday, October 17, 1990, and the mathematics test will be administered on Thursday, October 18, 1990.

Individuals who are no longer enrolled in a Texas public school and wish to register to retake the exit level mathematics and/or English language arts test(s) may pick up a registration packet at any high school campus, district central office, or education service center.

Registration forms must be completed and returned in the pre-addressed envelope and are to be received in Iowa City, Iowa, no later than 5 p.m. September 26, 1990.

The Texas Education Agency and National Computer Systems will not be responsible for registration forms that are delayed or lost in the mail. It is suggested that individuals registering for the test make arrangements with the appropriate postal agent for a proof of delivery notice.

Questions concerning out-of-school examinee testing should be directed to Linda Marr, counselor, Muleshoe High School, telephone 272-3080.

PUBLIC NOTICE BRIEF EXPLANATORY STATEMENT OF PROPOSED CONSTITUTIONAL AMENDMENT GENERAL ELECTION NOVEMBER 6, 1990

PROPOSITION NO. 1 ON THE BALLOT

Senate Joint Resolution 2, Sixth Called Session, 71st Legislature, proposes a constitutional amendment to provide that if the Senate, at any special session, does not take final action to confirm or reject an appointee of the Governor made during a recess of the Senate, the appointee is entitled to continue in office until the Senate rejects the appointee at a subsequent session or until the Governor appoints another person to fill the vacancy, but such a nominee whom the Senate does not act to confirm or reject at a subsequent regular session is considered to be rejected when the session ends.

The proposed amendment will appear on the ballot as follows:

"The constitutional amendment to clarify the authority of the senate to consider certain nominees to state and district offices and to provide for filling vacancies in those offices."

Mules Avenge

Cont. From Page 1

ball over to the Mules again.

Under power running by Brent Hernandez and Eric Richardson, along with John Orozco, the Mules kept a drive going again into Brownfield territory.

Taking up most of the third quarter, the Mules continued trying to get into the end zone. The Mules moved the ball to the Cubs' 10-yard line and then inched to the nine before losing out one more time on downs.

Taking over, the Cubs managed another first down before having to punt the ball away one more time. The Mules took over the ball on their own 23 yard line and with 7:32 left in the game managed their 12th first down of the game. Continuing to move the ball, John Orozco slammed straight ahead for 10 yards and paydirt after breaking tackles with 5:19 left in the game.

Eric Richardson made it over for a two point conversion.

Fair...

Cont. From Page 1

CANDIES
Patsy Lindley, adult and Penny Churchman, youth

COOKIES
Janice Johnson, adult and Tandy Townsend, youth

CANNED FRUITS
Naomi Black

CANNED VEGETABLES
Naomi Black, adult and Melissa Bennett, youth

CANNED PICKLES
Ruby Ward

PRESERVES, JELLIES, JAMS
Velta Fyie, adult and Melissa Bennett, youth

TEXTILES EMBROIDERY
Juanita Bruce

CROCHET
Debbie Vaughn

NEEDLEPOINT
Eunice Crume

QUILTS
Paula Tarter

RUGS, PILLOWS AND WALL HANGINGS
Eunice Crume, adult and Kesha Torbit, youth

COUNTED CROSS STITCH
Peggy Dodd

WOMEN'S CLOTHING
Betty Wuerflein

NOVELTY FASHIONS
Barbara Marlow, adult and Payton Rennels, youth

CHILDREN'S CLOTHING
Lillie Ham, adult and Jennifer Patterson, youth

CRAFTS AND HOBBIES HOLIDAY PARADE
Peggy Dodd, adult and William Wimberly, youth

CERAMICS
Jo Anne Davenport

DOLLS, TOYS
Debbie Lovelady

MISCELLANEOUS
Sharon Thomas

FLOWERS
Wesley Hawkins

FINE ARTS
OILS AND ACRYLICS
Betty Embry, professional, adult

CHINA PAINTING
Erald Gross

PHOTOGRAPHY
Rose Sain, adult and Adam Graves, youth.

(Editor's note: All the winners of the divisions will be listed in *The Muleshoe Journal* on Thursday, September 13.)

The Cubs again ran into passing trouble and failed to move the ball and had to turn it over to the Mules again.

With 3:27 left to play, the Mules lost a fumble to the Cubs, but at 1:56 of the fourth, the Mule defense held tight and took over the ball on downs.

The Mules held onto the ball until the clock ran out, taking a very 'sweet' victory over the Brownfield Cubs.

In the game, the Mules had 15 yards in penalties to 25 for the Cubs.

The Mules had 15 first downs, holding the Cubs to five first downs.

In the game, John Orozco had 80 yards; Michael Chavez, 37; Michael Hardwick, 26; Kip McCall, 13 and Eric Richardson, 35 for 181 yards. The Mule defense held Brownfield to 110 yards in the game.

Next Friday night, the Mules will host Idalou in Benny Douglass Stadium.

Come out and watch the rejuvenated Muleshoe Mules and take part in *Mule Mania*.

Thailand, U.S. Pledge.

President Bush and Thailand's Prime Minister Chatichai Choonha Van agreed to a new Cabinet-level committee to defuse trade disputes and promised to press for free election in war-torn Cambodia under the U.N. flag.

**Cash Rewards
Up To \$1,000
For Information!
Call
Bailey County
Crime Line
272-HELP**

Local Youth Awarded \$1,000 Scholarship

A \$1,000 college scholarship has been awarded to Andrew Espinoza of Muleshoe, by the publisher of *Who's Who Among American High School Students*, it was announced today.

Andrew will attend Texas Tech University. He was an honor student at Muleshoe High School and was vice president of Computer Club and the National Honor Society, senior class secretary, salutatorian, and a library aide.

He participated in many other organizations and has received many honors and awards for his numerous achievements.

This outstanding teenager is one of 65 students selected to receive financial awards for college expenses this year by the Educational Communications Scholarship Foundation.

The Foundation, funded entirely by the publishers of *Who's Who*, has funded over \$100,000 for college scholarships this year through three separate scholarship programs.

Who's Who Among American High School Students annually

recognizes some 600,000 of the nation's high-achieving high school students for their leadership in academics, extracurricular activities, community service and athletics.

The largest publication in the field of student recognition, *Who's Who* was created in 1967 to acknowledge the achievements of outstanding young people in America's public, private, and parochial high schools.

All high school students, whether or not they are listed in *Who's Who* are eligible to compete for ECI scholarship awards.

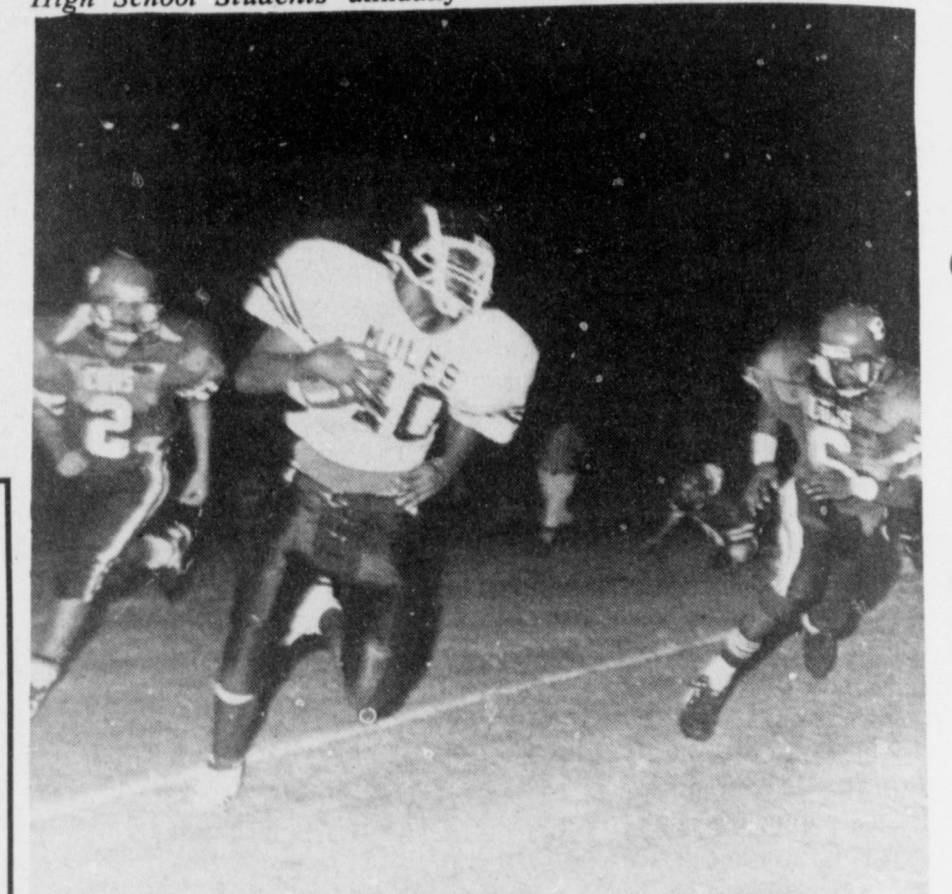
GOLDEN GLEAMS

A good and faithful judge prefers what is right not what is expedient.

-Horace.

When a judge departs from the letter of the law he becomes a law-breaker.

-Francis Bacon.



AND--HE'S THE WINNER!--Eric Richardson heads for the end zone to add two extra points to the TD just made by teammate John Orozco in the Muleshoe Mules' 10-7 victory over the Brownfield Cubs Friday night. Although Richardson appears to be surrounded, he made it into the end zone for those important points. (Journal Photo)

FACTORY AUTHORIZED CLEARANCE

ANNOUNCING THE RETURN OF FINANCING AS LOW AS 0% APR ON SELECT MODELS

\$750 CASH BACK! OR 0%

Dodge Shadow offers nearly four dozen standard features including front-wheel drive. And now it's clearance priced to move! Plus, get \$750 cash back.

\$750 CASH BACK! OR 0%

Dodge Spirit is a sedan with plenty of performance, plenty of room for the family, and plenty of value too. Get \$750 cash back now. Don't miss your chance to save!

\$1000 CASH BACK! OR 0%

Dodge Dynasty is the luxury sedan you can afford to drive. It combines comfort, convenience and style. Plus, you'll enjoy a low clearance price and \$1000 cash back too.

\$2000 CASH BACK! OR 0%

Dodge D150 full-size pickups are tough to beat. With the highest pickup cash back around - \$2000! \$1500 on Club Cab. \$1000 on diesel models. Save big now, before it's too late!

HURRY! TIME TO MOVE ON BIG CASH BACK AND LOW CLEARANCE PRICES.

The '91's are coming soon, so now's the time to move! We're clearing out our inventory to make room. Now you can save big on a full lineup with low clearance prices. And big cash back on most models, too.

*Cash back or low financing for qualified buyers thru Chrysler Credit (0% APR or longer term financing on indicated models). Must buy from stock.

Advantage:

BUCKLE UP... AND PLEASE DRIVE SAFELY.

Muleshoe Motor Co.

1225 W. Amer. Blvd. 272-4251

Prostate Cancer

Get checked.

Men 40 and older need regular exams so that this common cancer can be found early, when cure is more likely.

For more information, call:

1-800-4-CANCER
Cancer Information Service
M. D. Anderson Cancer Center

Texas Worldwide Toast Their States Independence

Scratch a Texan and you'll find a walking encyclopedia of the state's history. Texans can recite the words to "The Eyes of Texas," the script of "Lonesome Dove," and Travis' letter from the Alamo, in addition to the entire history of the Lone Star State. Right?

Well, not quite. In fact, a totally unscientific survey by staffers of *Texas Highways*, the state's travel magazine, found that many Texans don't even know when Texas Independence Day is. (It's March 2.) To old-timers, that's Lone Star blasphemy. With that in mind, the staff determined to establish some sort of special event that would raise Texans' awareness of the day...the day 59 Texans signed their names to a document proclaiming independence from Mexico, even as a few brave souls 150 miles away in San Antonio defended the Alamo against Santa Anna's thousands.

The staff dubbed the event

WTSU Music Faculty

Will Participate In Celebration

Members of the West Texas State University music department faculty who are alumni of the University of North Texas will perform in concert Saturday, Sept. 15 at Mary Moody Northern Recital Hall on the WTSU campus. The 8 p.m. recital is part of the year-long University of North Texas Centennial celebration.

WTSU performers include Joseph Cox, trombone; Bill Evans, piano; Margaret Forrest, soprano; James Gardner, organ and keyboard; Robert Hansen, tenor; and Dave Ritter, trumpet. A reception honoring UNT Chancellor and Mrs. Alfred F. Hurley will follow the recital.

The concert is free and open to the public.

the "Toast to Texas." *Texas Highways* called on Texans throughout the world to join together by taking a few seconds to raise a glass to the Lone Star State at precisely 2 p.m., Central Standard Time on March 2, 1990. A bottler of water from the Texas Hill country, Utopia Spring Water Company, volunteered to provide free bottles of their product as the beverage of choice.

When last December's issue of *Texas Highways* proclaimed the upcoming toast the reaction to call for celebration proved overwhelming. Texans throughout the world wrote in, praising the magazine for championing renewed pride in the state.

On March 2, folks held parties, barbecues, and office gatherings to stage the toast. The September issue of *Texas Highways* describes the solemn as well as the fun events of 1990's Texas Independence Day.

In Washington, D.C., U.S. Congressman Henry B. Gonzalez of San Antonio led the toast among his staff members and several Washington-area Texans in the House Banking Hearing Room of the Sam Rayburn Office Building. Appropriately, Texan Sam Rayburn held the office of Speaker of the House longer than anyone. Texans, of course, love that kind of thing.

In Austin, Congressman J.J. "Jake" Pickle led a toast of several hundred at the annual meeting of the Texas State Historical Association. In attendance were Texas authors, historians, songwriters, politicians, and even a few cowboys.

There were Texans in Saudi Arabia, England, Denmark, Germany, Korea, Australia, Kenya, Egypt, Thailand and Senegal who paused at 2 p.m. Texas time to join with the folks back home for the toast.

Because of time zones, some of these groups raised their

glasses at strange times. In Germany, for example, toast time was 9 p.m. But in Korea, Texans had to toast at 7 a.m. the following morning.

In addition to voicing their approval of the event, readers urged a repeat of the event next year. And if Texans follow their usual style, the event will grow even larger.

Enochs News

by: Mrs. J.D. Bayless

Mrs. Wilma Petree and Mrs. Ima Roberts were visitors at the Baptist Church Sunday night and was a guest in the home of Mrs. Ellen Bayless till after lunch Labor Day. They also visited Mrs. Inez Sanders, Mr. and Mrs. Bill Key and Mr. and Mrs. Clifford Snitker.

Elwood Autry underwent eye surgery in Lubbock Tuesday. Dr. Row did the surgery.

Mr. and Mrs. Stanley Snitker and daughters, Mrs. Dave Freeman, Erica Keley and Cindy Snitker of Midland and Mr. and Mrs. J.C. Snitker were dinner guests in the home of the mens parents, Mr. and Mrs. Clifford Snitker Labor Day.

Melinda Turney of West Texas College spent the holiday with her parents, Mr. and Mrs. Dennis Turney.

Leon Jones visited his mother, Mrs. Lorella Jones and brother, Wendell, during Labor Day holidays.

Adrin Weir from Acuff visited the Dale Nichols Tuesday.

Mr. and Mrs. Maurice Falikberry of Farwell visited the E.N. McCalls last Wednesday afternoon.

Sudan News

By Ann Gaston

Hugh Vincent celebrated his 90th birthday with a reception on Sunday, September 9th. This celebration was held in the fellowship hall at the First United Methodist Church from 2 to 4 p.m.

Ted and Thettie Mae Walker are now living in Hereford.

Mary Williford of Abernathy visited Sunday with her father, J.C. Wells.

Edith Williams and her sister, Lillian Cook, of Littlefield, were in Bovina Sunday to attend the 50th wedding anniversary of Thomas and Janie Mae (Foust) Beauchamp.

Edith hosted the wedding shower for Thomas and Janie in 1940. Upon returning home, they stopped in Muleshoe to visit with their aunt, Lucille Harper.

Olin and Dot Nix, and also Dyke and Ann Gaston, Kade and Kady attended the Nix-Stovall reunion in Lamesa on Sunday. Over 75 attended the reunion.

The June Pierce Scholarship was held on Friday, September 7th at the high school cafeteria.

Sue Edwards is in Methodist Hospital in Lubbock after having surgery.

Ty Hargrove is still in surgical ICU at University Hospital in Lubbock. He will be having more surgery this week.

Clovis Bridwell has been moved to a room at Methodist Hospital but is still not doing very well.

On August 27 at the regular meeting of the Sudan Fire Department the annual election of officers was held and the following officers were elected: President, Rick Hill; vice

president, Damon Provence; secretary/treasurer, Carl Burnett; sargent at arms, Bobby Carson; and public information officer, Rick Walker.

Fire Chief, Theron Hill; first assistant chief, Orville Hill; second assistant chief, Rick Hill; third assistant chief, Bobby Phillips; fire marshal, Carl Burnett; first assistant marshal, Mike Hill; second assistant marshal, Rick Walker; safety officer, Bud Provence; training officer, Bobby Phillips and assistant training officer, Rick Hill.

Emergency Medical Service, E.M.S. chief, Theron Hill; assistant E.M. S. chief, Carl Burnett; training committee, Mike Hill, Damon Provence, and Darren Provence. Food committee: Theron Hill, Haldon Messamore, Greg Lance, Johnnie Richey.

Meat committee: Carl Burnett, Charles Burnett, Bobby Carson, Orville Hill and Rick Walker.

4-H members Regina Pierce, Lauren Ray, and Holly Franks were among 4-H members who helped serve at the Lamb Co. Pioneer Reunion held Tuesday, August 28th at the Ag Center in Littlefield.

Visiting in the home of J.C. and Fern Doty was their granddaughters, Lindsey Robinson of Lubbock and Kimberly Doty of Sudan. Lindsey's mother, Vicki Robinson, came to pick Lindsey up on Saturday.

Students in the Gifted and Talented program include: Second Grade, Kristen Blair, Zachary Chester, Tricia Perez and Kelsey Swart; Third Grade: Sophia Castillo, Erik Edwards, Aaron Maxwell, Rocky Mc-

Adams and Irene Mendoza Fourth Grade: Garrett Flowers, Nick Hall, Danya Lance and Kristy Synatschk; Fifth Grade, Bonnie Hall, Jessica Mendoza and Taylor Whitley; Sixth Grade: Chad Chester and Kyla Morris

Seventh Grade: Justin Bellar, Marjoe Bigbee and Kassie Kinnie; Eighth Grade: Alan Black and Muffin Davis; Freshman, Jacy Lewis; Junior: Queena Bigbee

Shape Up West Texas Classes Begin

Shape-Up West Texas will begin its 12-week fall session of classes on Tuesday, Sept. 11. Course offerings include lap swimming, senior citizens' swim, circuit training, weight training, aerobic dance, water aerobics, rock aerobics and healthy weigh, a medically supervised program with emphasis on weight loss.

Registration is scheduled for 6 p.m. Monday, Sept. 10 in the Activities Center, Room 206, on the West Texas State University campus.

Cost of the program is \$40 regular membership, \$70 husband/wife membership, \$30 faculty/staff/booster membership, \$20 part-time student membership and \$12 full-time student membership. Payment is due at the time of registration.

For more information, contact Craig Clifton, WTSU wellness coordinator/director, at 806-656-2335 or 656-2324.

Poll: Bush's approval rating 75 percent in handling crisis.

Lightening fires destroy more than 200,000 acres in California.

FREE HEARING TESTS FOR SENIOR CITIZENS

MEET AT WESTERN DRUG—MULESHOE
114 MAIN
Wednesday, September 12, 1990
COME BY OR CALL 272-3106 9:30 a.m.-10:30 a.m.
10 DAYS FREE TRIAL 12 BRANDS TO CHOOSE FROM
SATISFACTION GUARANTEED

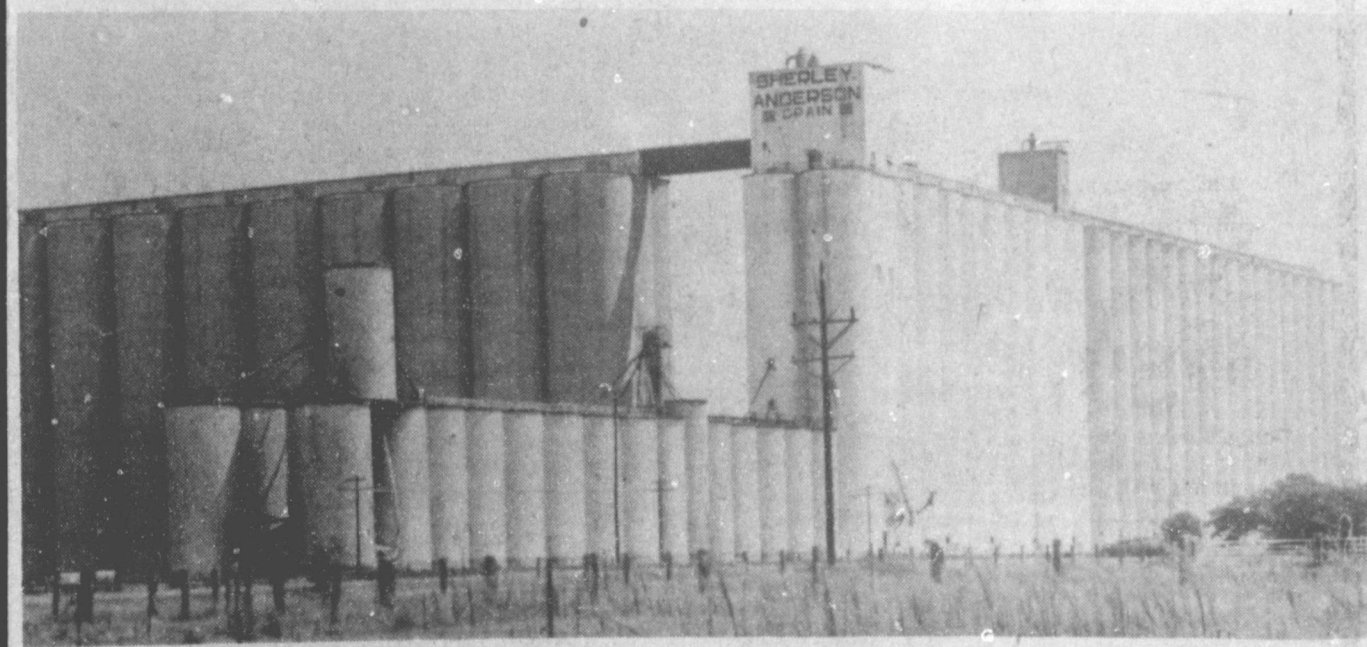
Sponsored by:
LIVINGSTON HEARING AID CENTER

1903 19TH LUBBOCK, TX 79401 79072
806/762-2951 806/293-8874
TOLL FREE 1-800-828-0722

ATTENTION:

CORN HARVESTERS!

We Appreciate Your Business



Sherley-Anderson Grain Co. - Lariat
Lonnie McFarland - Don Gartin - John McFarland



Sherley-Anderson - Lazbuddie
David Anderson - Scott Brown - Ray Stanley

Ready To Serve You This Harvest Season!!

SHERLEY-ANDERSON ELEVATORS

W. H. SHERLEY (1899-1974)
GABE D. ANDERSON, JR.
J. A. PITMAN (1897-1959)

Members
PANHANDLE GRAIN DEALERS ASS'N.
TEXAS GRAIN DEALERS ASS'N.
NATIONAL GRAIN DEALERS ASS'N.

Capacity 600,000 Bushels
SHERLEY-ANDERSON-PIEHL
ELEVATOR
Parmer, Texas
295-3585

Capacity 8,500,000 Bushels
SHERLEY-ANDERSON GRAIN COMPANY
Lariat, Texas
Old Line 825-2545

Capacity 6,000,000 Bushels
SHERLEY GRAIN COMPANY
Bovina, Texas
238-1521 Main Office

Capacity 3,000,000 Bushels
SHERLEY-ANDERSON-PITMAN, INC.
Farwell, Texas
481-3343

Muleshoe Labor Housing Complex

Expanding

To Be Completed By January 1991



LABOR HOUSING EXPANDING--The Muleshoe Farm Labor Housing project is in the process of expanding their facilities. They are adding 24 2-bedroom units on five acres of land on the eastern side of the existing facility in east Muleshoe. The project will cost approximately \$800,000 when completed. They plan to enlarge the offices and laundry room as part of the expansion project. The project is expected to be completed by January, 1991. The Housing Authority Board of Directors include Tim Campbell, chairman; Max King, vice chairman; Charles Isaac, member; Charles Moraw, member; and Noe Anzaldua, member. Shown here are Joe Bara, maintenance; Roseann Gloria, secretary; and Jim Hartline, executive director. (Journal Photo)



Kiwanis News



By R.A. Bradley

Fourteen Kiwanians and three honorary Kiwanians, Lacy Morris, Robbie Clapp and Chad Johnson, met Friday morning at the La Placita Cafe. A good breakfast and fellowship was enjoyed by all.

There was quite a discussion about Larry Parker's and Randy Lewis' pickups as to which one was the best. Larry was heard to say that he tried to trade his pickup off for a gallon of gas but gas had gotten too high and they wouldn't trade with him.

Bryan Morris was telling that they were pushing Larry's pickup out into the street and the temperature gauge went to "hot." Glen Morris was heard saying last Monday evening that Larry's pickup was like the Yellowstone National Park. You could raise the hood and it was like Ole Faithful -- the Geyser would go off. Larry, that sounds to me like a "HOT" pickup. I would save it, one of these days it may be an antique!!!

President Jim Lutz called the meeting to order. Honorary members led the club in the pledge to the flag and the invocation was given by Hugh

Young. Hugh Young also reported that Tish was still in college, Tad was still out of jail and Pat had come home. Hugh, we are proud for you.

Hugh gave the friendship coin to Reggie Johnson just in case Chad might end up in jail.

All kidding aside -- we are proud of our young people.

It was also heard (the last part of a story) that Keith Turner was getting the baby bed and clothes out of the storage. Keith - does Linda know about this? Gee, I hope so.

Don Clapp had the program for the morning. Don showed some slides that he has taken of the Muleshoe Wildlife Refuge. This is the oldest National Wildlife Refuge in Texas.

Don showed views of the Refuge and pictures of duck, sandhill crane and turkey vultures. Don reported that now the refuge was used mostly by the sandhill crane. This year, it seems that the lakes are about dry and he didn't know where they would go. There are usually around 250,000 cranes.

Don has been asked if you count the cranes, you count the legs and divide by two. Don stated that this was the way all right, but it was real hard, because about the time you got about half of them counted, one of the cranes would move and you would lose your place and would have to start over.

Now I know why Don comes to Kiwanis with his eyes

crossed. He has been counting cranes.

Don, thanks for a good program.



Unit activities for the month of August, 1990.

An emergency childbirth and treatment of injuries at several automobile accident scenes were among the 32 calls for assistance handled by the Bailey County EMS during the month of August.

According to the record books of the Bailey County EMS, 20 of the calls were for emergency medical treatment and ambulance service to a hospital, 12 for were transporting patients to other hospitals.

Assistance provided by the Bailey County EMS included emergency childbirth, assorted motor vehicle accidents, plus a major motor vehicle accident, and several major medical calls. Of the total calls, four involved assistance to children, 13 involved assistance to persons aged 18 to 65, and 10 involved assistance to persons over 65.

The Bailey County EMS is a non-profit emergency medical service provided to Muleshoe area residents. Funding comes from Bailey County, and the unit relies heavily on volunteers to provide service.

For more information about the unit or on volunteering, call 272-4390 or attend a meeting on the second Thursday of each month at the Bailey County EMS office at 715 W. 2nd, Muleshoe, Texas.

Cancer rated higher in Chinese-Americans.

Nursing Home News

by: Joy Stancell

We have several of our residents that went out over the week, to visit with their families and enjoy the nice weather. Among those going were Guy Kendall, Minnie Pettyjohn, D.B. Ivy, Mr. Weak, Finis Kimbrough and Jack Knowles.

Thursday afternoon Bro. Reid from the First Assembly of God Church conducted our devotional.

Friday afternoon the Joy Choir from The First Baptist Church came to sing and play gospel music. Refreshments of finger sandwiches and punch were served to those attending and to the residents in their rooms and the staff.

Saturday afternoon Laverne James and Ruth Clements came to play Skip-Bo and Bingo with the residents.

Each Sunday morning The Muleshoe Church of Christ brings communion. Kathrine Sanders comes for Bible Study. Each Saturday J.C. Shanks comes to cut the men's hair and give them shaves. Wednesday mornings Clifton Finley comes to go shopping for us. Wednesday afternoon Barbara Blackman serves juice. Thursday and Monday Clara Lou Jones comes for reading and devotional. Our pastor, Mike Doyle, conducts the devotional each Thursday morning...Glenda Jennings comes each Wednesday afternoon for our Sing-a-Long. We have a wonderful group of volunteers. Our volunteers are

important workers. They show a labor of love.

Sunday afternoon The Calvary Baptist Church came for church services.

We wish to thank Joylene Costen for the nice refrigerator that she donated to activities. We know it will be a great benefit.

We wish to salute our residents and the volunteer work they do in the center, D.B. Ivy, our doorman; Effie Smith, for putting out the place mats at meal time and making us peanut butter and crackers; Ora Roberts, our hospitality hostess; Pearl Cox, for helping with parties; Minnie Pettyjohn and

Bernice Amerson, our encouragers. These are among the many who do volunteer work.

Happy Grandparents Day to all the grandparents from the residents and staff of the Health Care Center.

Lorene Scott was hospitalized in the local hospital Friday. Please join with us in prayer for her behalf. Get well soon Mrs. Scott.

Our Warmest Thanks to Muleshoe Journal for the special tribute they showed our residents honoring them on Grandparents Day. You made us feel special.

Law Enforcement Academy Offers Short Courses

The South Plains College law enforcement academy will offer two short courses in September on domestic violence and child abuse and survival tactics.

The week-long classes are open to all law enforcement officers and will each award credit by the Texas Commission on Law Enforcement Officer Standards and Education TCLEOSE certification.

Survival tactics, which will meet 8 a.m. to 5 p.m. Sept. 17-21, will provide training in response to the increase of assaults on law enforcement officers. The course will include situational studies recreated to acquaint officers with the practical realities of life-and-death situations, building serches and armed and unarmed defensive tactics.

Cost is \$40 a person for each class. Students will meet in Room 115 of the SPC Law Enforcement/Petroleum Technology Building.

Advance registration is needed and enrollment will be limited to 16 persons, said Don Yarbrough, dean of continuing education at SPC.

Registration deadline is Sept. 12.

For more information, contact the SPC Continuing Education Division at 894-9611, ext 341.

**Cash Rewards
Up To \$1,000
For Information!
Call
Bailey County
Crime Line
272-HELP**

Public Invited To Tour Lamesa Research Farm

The first public tour of research being conducted at the new Agricultural Complex for Advanced Research and Extension Systems (AGCARES) in Lamesa will be at 8 a.m. Wednesday, Sept. 12.

AGCARES is believed to be the only such full-scale research farm in the country. It gives agricultural scientists and Extension Service faculty the opportunity to test new technology and to validate and incorporate crop research and extension programs under conditions in which farmers produce crops in the South Plains.

The 160-acre farm is on U.S. Hwy. 87, two miles north of Lamesa. It was established last January in a cooperative effort by the Lamesa Cotton Growers (LCG), Texas Agricultural Experiment Station and Texas Agricultural Extension Service.

The tour will begin with registration, coffee and doughnuts at 8 a.m. at Don's Farm Supply/Sesaco, one mile north of Lamesa on the west side of U.S. Hwy. 87. Wagons will leave there at 8:30 a.m. for the only tour of the farm.

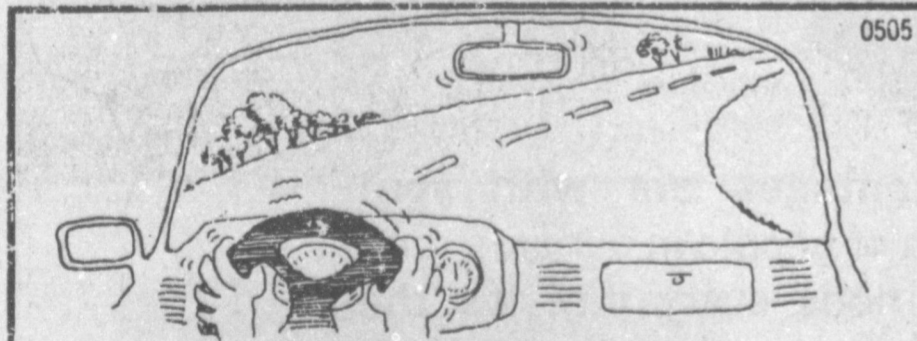
At the first stop, the farm will be dedicated. At additional stops, Experiment Station and Extension Service faculty will explain research being done on chemigation, fertilization, the GOSSYM-Comax computer modeling of cotton, farming systems, cotton varieties and

low energy precision application (LEPA) irrigation.

The program then will move to the Dawson County Community Building in Lamesa. Speakers there will be Kent Nix, LCG president; Dr. Zerle Carpenter, College Station, state director of the Extension Service; Dr. Robert Merrifield, College Station, deputy director of the Experiment Station; Dr. John Abernathy, Lubbock, resident director of research at the experiment station there, and John Farris, Lamesa, Dawson County extension agent for agriculture.

A "poor boy" lunch of beans and cornbread will be served by Texas Utilities and Lamesa Cotton Growers.

AGCARES includes both dryland and irrigated plantings of cotton, grain sorghum, small grains and sesame. Practices being demonstrated on the farm include: Conservation tillage systems that reduce soil and water erosion, protect young crops from wind and sand damage, conserve rainfall and optimize economic returns; water conservation with high frequency irrigations of small amounts of water by low energy precision application (LEPA) systems; sustainability of agriculture in sandyland areas; adaptation and productivity of new crop varieties; computer crop development and economic modeling; and alternative crops.



FIGHTING THE WHEEL?

If your car shimmies at highway speeds, and pulls to the left or right, chances are you need a front-end alignment. Our Mr. Goodwrench specialists will give it a thorough front-end alignment at a special price:

NOW ONLY \$28⁰⁰

Includes:

- Camber adjustment • Caster adjustment • Toe adjustment
- Tire check • Shock absorber check • Steering linkage check
- Visual check of all other components •

GM Cars and Pickups

Robert D. Green, Inc.

2400 W. Amer. Blvd. 272-4588

It's not just a car, it's your freedom.



Mr. Goodwrench

To get no-service-charge checking, just sign here.

C. J. HENDERSON
6204 BROOKHOLLOW
GREENSPRING, TEXAS 76022

129

Pay to the order of _____ \$ _____

_____ Dollars

Sunbelt Savings[®] FSB

For _____

⑆ 43101710⑆ 054912222⑆ 09244

At Sunbelt, you have two ways to get a checking account with no monthly service charge.

No monthly service charges until 1991: Just so you'll try Sunbelt's simple, affordable checking accounts, we'd like you to take advantage of our special offer. Open a checking account before October 19, and pay no monthly service charges in 1990.

No monthly service charges after 1991: Stay with us after this special offer expires and you'll see that Sunbelt makes it easy to continue to avoid monthly service charges.

For example: Open your account with only \$100. Stay above the \$250 minimum balance on regular checking or \$500 on interest checking with cancelled checks held in safekeeping, and you pay

no monthly service charges. Go under the minimum, and you won't get hit with some unreasonable fee. Just \$3 or \$5 a month.

Because we believe a checking account should be a simple thing. Deposit money. Write checks. No "per check" charges. And no shocking service charges.

Sunbelt checking accounts also come with buyer protection (at no extra charge) and the option of overdraft transfer protection. Ask for details.

It's a simple offer, straight across the board, from Sunbelt Savings. The uncomplicated banking bank.

Sunbelt Savings[®] FSB
No Excuses. Answers.[™]



304 Main St.

Muleshoe

272-5527



Texas Commissioner Of Education Retires

Commissioner of Education W.N. Kirby announced today that he intends to retire from his position in January after more than 30 years of service to Texas public schools.

In a letter to State Board of Education Chairman Monte Hasie, Kirby said he plans to retire January 31 after six years as commissioner, adding that he is "looking forward to the opportunities and relaxation that retirement affords."

"Primarily because of the many kind, considerate, and caring people with whom I have had the opportunity to work, my career in education has been personally gratifying and rewarding," Kirby said in the letter, a copy of which was sent to the other 14 members of the

Board. "I cannot begin to express my sincerest appreciation to all of the truly wonderful people to whom I owe so much."

Kirby added that while he plans to leave the Agency in January, he will remain in the position for a short time thereafter if the Board needs more time to find a successor.

"If the board finds that more time is needed to complete the commissioner selection process established by Senate Bill 1, I will agree to a very brief extension," Kirby said. "However, I hope that such will not be necessary."

SB 1, the new school finance bill adopted by state lawmakers earlier this summer, changed the way the state's education

commissioner is selected. Under the legislation, the governor will appoint the commissioner of education to a four-year term beginning March 1, 1991 from a list of one name submitted by the State Board of Education. The governor can either accept or reject the nominee, but the governor is restricted to appointing from the Board's nominees. The appointment also must be confirmed by the Senate. Previously, the commissioner was selected by the Board and served at the will and pleasure of the Board with no gubernatorial or legislative approval required.

"I have every confidence that the board, the new governor, and the Senate will be able to expeditiously and harmoniously complete the process," Kirby said. He also thanked the current and previous boards and others to whom he said he is "deeply indebted."

"I cannot begin to express my sincerest appreciation to all of the truly wonderful people to whom I owe so much," Kirby said.

"To the current board, the previous appointed board, the legislature, the governor and executive branch, the judiciary, the media, the educators, the students, the parents, my colleagues at the agency, my family, and so very many dear friends, perhaps a simple 'thank you' will suffice. My career has truly been a rare privilege and I am deeply indebted to you all."

Kirby has served as commissioner of education since October 1984, when he was named by the appointed State Board of Education to succeed Raymon L. Bynum. As head of the Texas Education Agency, he oversaw the implementation of sweeping reforms mandated by the Texas Legislature in 1984 under House Bill 72.

A native Texan, Kirby graduated from Natalia High School where he was valedictorian, and later, a principal and teacher. He joined the Texas Education Agency in 1965 as a federal programs consultant and worked in a variety of positions. He was deputy commissioner for finance and programs when he was named interim commis-

sioner of education in the fall of 1984 and was named officially to the commissioner's post the following spring.

Kirby holds an associate of arts degree in speech from San Antonio College; a bachelor of science degree from Southwest Texas State University; a master of arts in curriculum and instruction from the University of Texas at Austin; and a doctorate, also from UT-Austin.

Wayland Baptist Offers Floral Design Class

The Lifelong Learning Center on the Wayland Baptist University campus is offering a course in floral design.

The course is scheduled to begin September 18 and will continue on Tuesday nights from 6:30 to 9 p.m. through October 23.

Beth Bramlet, certified as a Texas Master Florist, will be the instructor for the class.

Students will learn how to make wreaths and centerpieces for tables. With the holidays just ahead, students will learn how to make their own festive arrangements, as well as how to add their own touch to accent arrangements.

Pre-registration will be required for the course and is on a first-come, first-serve basis since the class is limited to 15 students. Students may pre-register in room 101-C of the Lifelong Learning Center before 5 p.m. Monday, September 17. Cost for the class is \$43.00 plus supplies.

The Lifelong Learning Center is located at 708 Yonkers.

Three Way News

by: Mrs. H.W. Garvin

Monday Mr. and Mrs. Morris Gant, Mrs. Bob Foley, Mrs. Jack Lane, Mrs. Jack Roberson, Mrs. Elain Foot, and Mrs. Bud Huff honored Granma Gant with her 104th birthday party at the nursing home in Morton.

Mrs. Baxter Vaughn and children from Plainview spent the weekend with her parents, the Adolph Wittners.

Janna Bennett from Abilene spent the weekend with her parents, the Jack Lanes. Saturday the Lanes had their children and Mrs. Lane's mother home. They are Mr. and Mrs. Rodger Hatcher and girls from Clovis, Janna Bennet from Abilene, Mr. and Mrs. Obie Standard and son from Three Way and Nettie Quesenbery from Muleshoe.

Robin Kindie from Lamesa, Stacy Kendle and Mrs. J.T. Lemons from Roswell spent the

weekend with the Bobby Kindles.

The Bill Dolle family returned home Saturday after a Caribbean cruise. They reported a wonderful time.

Mr. and Mrs. Robert Kindie and Mrs. H.W. Garvin were in Lubbock Monday on business.

George Tyson was in Lubbock Thursday on business and visited his daughter.

We wish to express our sympathy to the Hutton family and Bundrant families on the death of Irene Hutton of Muleshoe and Mrs. Bundrant of San Angelo. Both ladies lived in our community many years.

The Zhan children from Littlefield spent the weekend with their grandparents, the Nelson Carlisles.

Mr. and Mrs. Robert Kindie spent Sunday and Sunday night in Seminole visiting her sister, the Ben Nelsons.



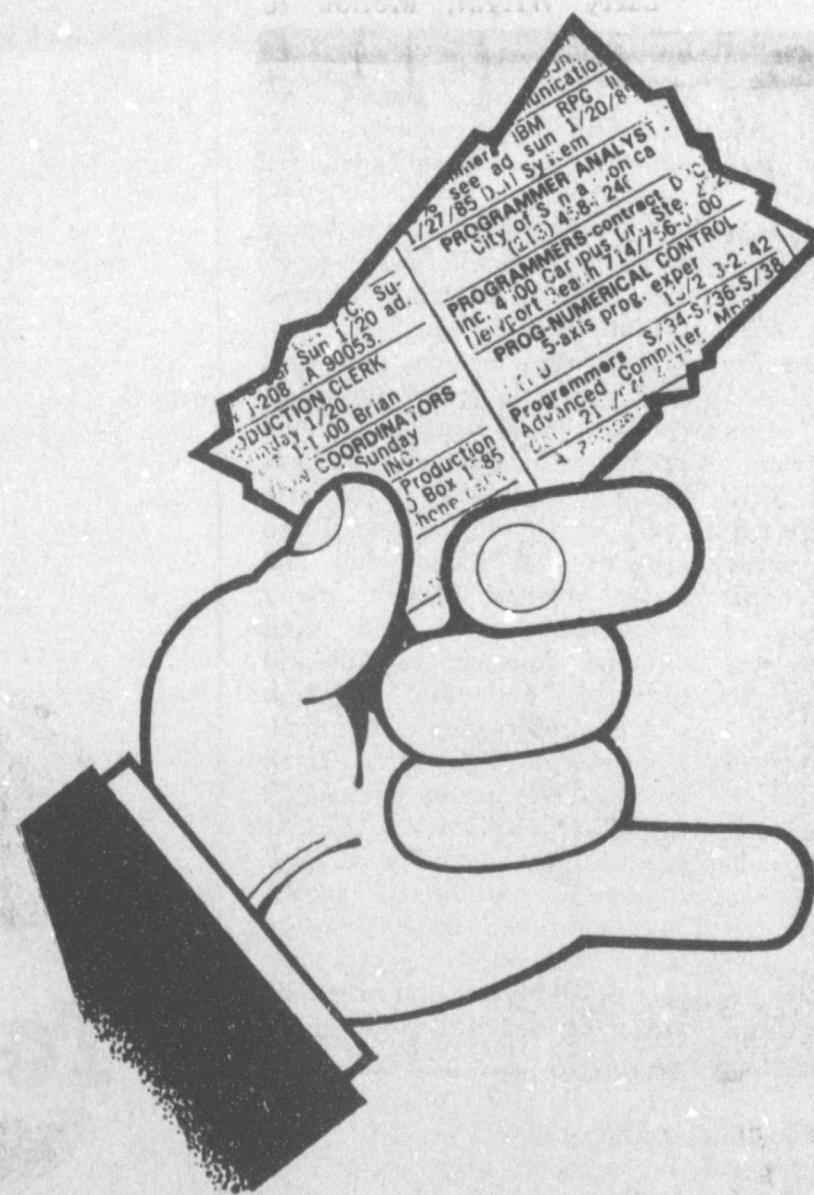
MINI CHEERLEADERS--Helping the Three Way Varsity cheerleaders this year will be these four mini-cheerleaders, Rosa Soliz, Rebecca Robertson, Missy Jeffcoat and Megan Jeffcoat. (Journal Photo)

| 1990 Crop | | 1990 | |
|------------------------|-------------------------|-------------|---------|
| Pool Cash | Flat | Contract | Month |
| Advance | | Basis | |
| Feed Corn..... | Mkt..... 4.21,0.02 | No Bid..... | Dec. |
| White Cobb Yellow..... | 4.50..... 5.00,0.46 | No Bid..... | Dec. |
| Red Cobb Yellow..... | 4.00..... 4.34,0.09 | No Bid..... | Dec. |
| White Food Corn..... | 5.00..... 6.00,1.02 | No Bid..... | Dec. |
| Milo..... | Mkt..... 3.80,-0.21 | No Bid..... | Dec. |
| Soybeans..... | No Pool..... 5.56,-0.70 | -0.95..... | Dec. |
| Wheat..... | No Pool..... 2.39,-0.39 | | KC Dec. |

98%
Prices effective Sept. 7, 1990

Farmer's Co-Op Elevators
272-4335

You Can't Miss With An Ad In The Classified!



The percentages are with you! Thousands of people in our area read the classifieds every day. It's the fastest, most economical way to buy, sell, rent, lease or trade anything. Give us a call today and put the classified ads to work for you!

IF YOU NEED ASSISTANCE
CALL A FRIENDLY REPRESENTATIVE
TODAY: CALL 272-4536

Muleshoe & Bailey County Journals

Muleshoe Pheasant Club

Here's what the MULESHOE PHEASANT CLUB offers you!

- Early and extended ringneck pheasant hunting:
Starting — December 1
Ending — December 30
By special permit (licensed).
- Four (4) birds per day per gun.
- Grass fields and easy walking.
- Guides furnished.
- No dogs necessary—easy to spot fallen birds in grass.



- Birds cleaned, frozen and packed, on your request.
- Safe hunting practices emphasized.

THIS YEAR... HUNT IN MULESHOE AND BE GUARANTEED YOUR LIMIT OF BIRDS TO TAKE HOME.

WHEN OTHER HUNTS FAIL, TRY MULESHOE PHEASANT CLUB FOR SUREFIRE...

R • E • S • U • L • T • S

LIMITED NUMBER OF HUNTERS ALLOWED.

Call now for more information:

Walter B. "Jack" Little

Home:

806-272-4805

(or leave message for call back)

Mobile:

806-272-4086

or write to:

P.O. Box 525

Muleshoe, TX 79347

Courthouse News

MARRIAGE LICENSE

Isauro Rodriguez Vasquez and Maria Reyes Cabrera, Muleshoe

Jose Luis Sital and Socorro Guzman, Sudan

Jose Alberto Martinez and Melissa Zavala, Muleshoe

Julio De La Garza and Yolanda Garcia, Earth

Jose Antonio Tarango and Elizabeth Cano, Portales, N.M.

Jaime Mendoza and Leticia Garcia, Muleshoe

DEEDS

Sunbelt Savings to Mark McClanahan and wife, Robin McClanahan--All of Lots Numbers (92) and (93), Parkridge Addition, Second Installment to the City of Muleshoe, Bailey County, Texas.

Ronald M. Dent and wife, Peggy J. Dent to Robert J. Montgomery and wife, Sharon Montgomery--(The East/21.58') of Lot 194, All of Lot 195, and the (W/6.71') of Lot 196, Richland Hills Addition to the City of Muleshoe, Bailey County, Texas.

Eual D. Jackson and wife, Ava Lee Jackson to James R. Jackson--Tract I: (S/2) of Section (20), Block B, Melvin Blum and Blum Survey, Bailey County Texas. Tract 2: A (7) Acre tract of land out of the N/E corner of tract (23), C.A. Pierce Subdivision No. (1) of the E. Dick Slaughter Lands out of Leagues 99 and 100, Brewster County School Land, Cochran County, Texas.

Fred H. Perley and wife, Blanche E. Perley to Jack Schuster and wife, Cara J. Schuster--Labors 6 and 15, League 188, Ector County School Lands, Bailey County, TX. Containing 354.2 acres.

Les Lambert and Doris Lambert to Bobby Hudson and wife, Dorene Hudson--All of Lot (9), Block (6), Highland Addition to the Town of Muleshoe, Bailey

County, Texas.

Winfred W. Wilson and Joan Wilson to Wilma Magby--All of Lot No. (2), and All of the Northeastly (10) feet of Lot No. (3), Block No. (1), Murrah Addition No. (1), to the Town of Muleshoe, Bailey County, Texas.

Mayme R. Rocky to Melzine Elliott--A rectangular tract of land, 55 feet by 140 feet; the Southwesterly 30 feet of Lot 5, in Block (4), Lakeside Addition to the Town of Muleshoe, Bailey County, Texas.

Maude M. Young to Jim Hartline--All of Lot No. (10), in Block No. (3), of Warren Addition No. 1, to the Town of Muleshoe, Bailey County, Texas.

William Mark Miller to Jim Pat Claunch and wife, Theresa Sue Claunch--All of Labors (19) and (20), in League (170), Hale County School Land in Bailey County, Texas.

Morris B. Hicks and wife, Vivian Hicks and Kenneth W. Hicks and wife, Joyce D. Hicks to Bobby Hudson and wife, Dorene Hudson--All of Lot (8), of Block (6), Highland Addition to the Town of Muleshoe, Bailey County, Texas.

Alyce H. Harlan, Suzanne Ramos, G. Durwood Howell, Janes D. Howell, Heidi Dale Howell, and NCNB Texas National Bank to Clyde Keith Price and wife, Troy Price--A tract of land out of Section No. (24), League (108), Fisher County School Land in Bailey County, Texas, and being all of the (N/2) of said Section (24).

Bobby Edwards and wife, Flossie Mae Edwards to G.V. Fulton and wife, Margaret Fulton--All of Section (10), Block C, Melvin, Blum and Blum Surveys, Bailey County, Texas., together with all permanent improvements located thereon.

COUNTY COURT

Jesse G. Garcia, DWLS, \$200 Fine, Three Days Jail
Guadalupe Junior Olivarez, Motion to Dismiss
Jose Alberto Zamora, Motion to Dismiss

Larry Wright, Motion to

Dismiss

Gilbert Recio, Motion to Dismiss
Luis Davila Daniel, DWLS, \$300 Fine, 10 Days Jail

Jose Luis Diaz, DWI, 60 Days Jail, \$300 Fine, One Year Probation.

Juan Lopez Cruz, DWI, 60 days jail, \$300 fine, One Year Probation.

DISTRICT COURT

Bailey County Appraisal District VS Tony J. Luna, Order of Dismissal

Tommy Darrell Mize and Charlotte Annette Mize, DV
Sharia Wood Clarkson and David L. Clarkson, DV
Gloria Orozco and Ruben Oroco, DV

C&H Equipment Vs Jerry Bertram, Default Judgment
Rhonda Kay Anglin and Ronnie Wayne Anglin, DV
Anita Kay Bass and Edgar Allen Bass, Jr., Order Setting Hearing

Madeleine Knipprath Trust VS Barbara Harper, Motion to Dismiss

Neal Caswell VS Rother Bros. Inc., Notive for Removal

Fire Department News

by: Ralph Sanchez

The Muleshoe Fire Department logged several activities for the month of August. They responded to two grass fires, one vehicle accident, one false call at West Plains Medical Center, fuel wash down at 12th and American Blvd., Mobile home fire East on Hwy 84, one helicopter call, and one investigation in where a tractor struck a high line power pole.

Consumer credit borrowing up in June, but less than May.

Power firms, car clubs endorse plea for fuel conservation.

Moms, Dads Invited To Parents Day

The 1990 Parents' Day at West Texas State University is scheduled for Saturday, Sept. 15. The annual event welcomes and honors parents of WTSU students by inviting parents to visit their children on campus and meet their children's teachers, mentors and friends.

The day's activities begin with registration and a faculty/staff reception for parents and students from 9:30-11 a.m. in the Jack B. Kelley Student Center. A hamburger cookout is planned from 11:30 a.m. to 1 p.m. on the lawn between Terrill Hall and Cornette Library, along with a style show from 12:30 to 1 p.m.

The WTSU-Tarleton State University football game kicks off at 1:30 p.m. in Kimbrough Memorial Stadium. The 1990-1991 Parents of the Year will be announced during halftime ceremonies.

Following the game, residence halls and church centers will have open houses from 4 to 5:30 p.m. From 8 to 10 p.m., Student Activities Council (SAC) will sponsor Graffiti Nite (comedy entertainment) in the Dining Hall.

Parents are also invited to the RHA (Residence Hall Association) Casino Night, an annual residence hall fund-raising event, beginning at 7:30 p.m. Friday, Sept. 14 in the Activities Center Ballroom.

Each year, students nominate their parents for Parents of the Year, a way for students to honor parents since 1978. To nominate parents, students must submit an essay to the Parents of the Year Committee explaining why their parents should be chosen as WTSU's Parents of the Year. The committee reads all nominations and makes a selection based on criteria which include encouragement of college education as well as loyalty, support and interest in WTSU.

Nomination forms are available from the information Desk at the Jack B. Kelley Student Center and should be returned along with an essay by noon

Wednesday, Sept. 12. For more information, contact Frank Castleberry at (806) 656-2394.

Parents of the Year for 1989 were Joe and Georgann Rickwartz of Channing.

Lazbuddie Menu

SEPT. 10-14

MONDAY

BREAKFAST

Toast, Bacon, Juice and Milk

LUNCH

Nachos, Pinto Beans, Green Salad, Pudding and Milk

TUESDAY

BREAKFAST

Cereal, Juice, Doughnut and Milk

LUNCH

Chicken Fried Steak, Potatoes & Gravy, Green Peas, Hot Rolls, Fruit and Milk

WEDNESDAY

BREAKFAST

Waffles, Juice and Milk

LUNCH

Chalupas, Green Salad & Cheese, Corn, Cake and Milk

THURSDAY

BREAKFAST

French Toast, Juice and Milk

LUNCH

Hot Turkey Sandwiches, Potatoes & Gravy, Peas, Fruit and Milk

FRIDAY

BREAKFAST

Cinnamon Rolls, Fruit and Milk

LUNCH

Hamburger, French Fries, Lettuce & Pickles, Cobbler and Milk

SALAD BAR SERVED MONDAY THRU THURSDAY

Muleshoe Menu

SEPT. 10-14

MONDAY

BREAKFAST

Milk, Cereal, Toast, and Fruit

LUNCH

Milk, Pizza, Mixed Vegetables, Pickles and Fruit

TUESDAY

BREAKFAST

Milk, Blueberry Muffins and Juice

LUNCH

Milk, Hamburgers, Lettuce & Tomato, Pickles & Onions, French Fries, Fruit Cobbler

HS/JR High Combo Line Chef Salad

WEDNESDAY

BREAKFAST

Milk, Toast, Peanut Butter, Honey Whip and Fruit

LUNCH

Milk, Tamale Pie, Beans, Sliced Tomatoes, Crackers and Fruit

THURSDAY

BREAKFAST

Milk, Cheese Toast and Fruit

LUNCH

Milk, Hot Dogs, Pork & Beans, Potato Salad and Fruit

FRIDAY

BREAKFAST

Milk, Biscuits, Jelly, Sausage and Fruit

LUNCH

Milk, Fish, Macaroni & Cheese, Eng. Peas, Hot Rolls and Fruit

Here's another necessity for your apartment.



THREE WAY VARSITY CHEERLEADERS--Leading the cheers for Three Way this year are (Top-L-R) Lupe Silva, Gisela Perez and Malisa Guillen. (Bottom-L-R) Melissa Bennett, Carrie Kindle and Denise Duarte. (Journal Photo)



MULESHOE AREA
M E D I C A L
Center

Now Accepting Applications For:

•Accounts Payable/Data Entry Clerk-Computer and Bookkeeping Experience Necessary

•Collections Clerk-Computer and Bookkeeping Experience Necessary; Indigent

HealthCare Experience Preferably

Apply In Person

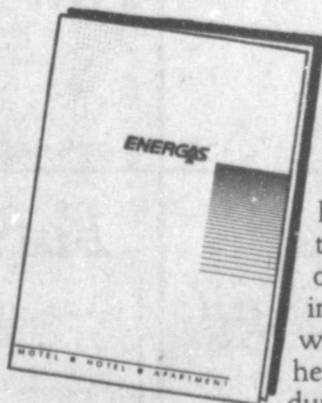
Personnel Office

8:00 a.m. - 12:00 a.m.

and 1:00 p.m. - 5:00 p.m.

Equal Opportunity Employer

708 SOUTH FIRST STREET
MULESHOE, TEXAS 79347



If you are living in an apartment or duplex, this may be the first opportunity you've had to experience the terrific benefits of having natural gas in your home. You will find that for heating your home during cold weather, for hot water, or for cooking, nothing beats natural gas for convenience, economy, and efficiency.

With cooler temperatures just around the corner, here are a few reminders from your friends at Energas Company on the safe and responsible use of natural gas where you live.

Your furnace needs an annual check-up.

Your natural gas furnace has been sitting quietly all summer, waiting for the time it's really needed. And like anything that's been idle a while, your furnace needs a checkup before it starts back to work. You may want to check with your landlord or apartment manager about arranging for an annual inspection by a qualified professional heating contractor. Once it's been inspected, your furnace should require very little attention the rest of the winter.

A closet isn't always a closet.

Your water heater or furnace is probably in a closet all by itself. And that's the way it should stay. As tempting as it may be, don't use the space around a water heater or furnace for storage. Even

if these major appliances sit in the open, the space around them should be kept clear to insure adequate air circulation.

If you smell gas.

We hope that you will never have to deal with a gas leak. If you do smell gas, day or night, exit the building then call your local Energas office immediately. Do not flip light switches or use any other electrical equipment. Do not light a match or a candle. Do not try to find the leak yourself.

For more information.

Get a free folder from your landlord or apartment manager. Or call your local Energas office.

Natural gas is the best energy you can have in West Texas for any home heating job. Just set your thermostat, and have a great winter!

ENERGAS

We're proud to be your gas company

Minnie Mae Beasley Funeral Services Held Saturday

Funeral services for Minnie Mae Beasley, 86, of Hereford were held at 11 a.m. Saturday, Sept. 8 in Ellis Funeral Home Chapel at Morton with the Rev. John Culwell, pastor of the First Baptist Church and W.D. Kay of Fritch, officiating.

Burial was in Morton Memorial Cemetery under the direction of Ellis Funeral Home of Morton. Mrs. Beasley died at 10:08 p.m. Tuesday in Littleton Hospital in Littleton, Colo.

Born May 28, 1904, in Stephens Co., she was a retired federal employee, a member of the First Baptist and the Order of Eastern Star. Her husband, Roger "Q.M." Beasley died in 1945.

Survivors include a son, Ralph Beasley of Enochs; two daughters, Pat Botkin of Pasadena, Calif. and Ann Gunkel of Littleton, Colo.; 13 grandchildren; and 12 great grandchildren.

The family suggests in lue of flowers memorials be made to the American Heart Association or your favorite charity.

Larry Hausmann Services Held At Earth

Funeral services for Larry W. Hausmann, 52, of Earth were held at 2 p.m. Saturday, Sept. 8 in the Earth United Methodist Church with the Rev. Mike Holmes, pastor of St. Martin Lutheran Church of Littlefield and the Rev. Cecil Shirley, pastor of the Earth United Methodist Church, officiating.

Burial was in Lazbuddie Cemetery under the direction of Parsons-Ellis Funeral Home of Earth. Hausmann died at 1:20 p.m. Wednesday in Muleshoe Area Medical Center.

Born Sept. 14, 1937, in Goliad, TX, he was a farmer, a member of the St. Martin Lutheran Church, Disabled American Veterans, VFW, Farm Bureau, and an EMT with the Earth Volunteer Ambulance Service. He graduated from A&M University in 1959. Hausmann married Bettye Nowell on July 3, 1960, in Lubbock.

Survivors include his wife, Bettye; two sons, Glenn Hausmann of Lubbock and Alan Hausmann of College Station; a daughter, Merri Hausmann of Arlington, TX; his mother, Mrs. Viola Hausmann of York Town, TX; a sister, Vanita Homer of Houston; and a brother, Pastor Arlyn Hausmann of Austin.

Edith St Clair Former Muleshoe Resident Dies

Funeral services for Edith Dyer St.Clair, 81, of Spearman were held at 4 p.m. Friday, Sept. 7 in Center Plains Cemetery with John Scott, minister of Spearman Church of Christ, officiating.

Burial was under the direction of Boxwell Brothers Funeral Home of Spearman. Ms. St. Clair died Wednesday in Hansford Hospital in Spearman following a brief illness.

Born in Lipan, she moved from Muleshoe to Spearman in 1987. She married John W. St.Clair Sept. 27, 1928, in Hale Center. He died in 1979. She was a member of the Church of Christ, Pleasant Valley Social Club and the Hobby Club.

Survivors include a son, Johnie of Muleshoe; two daughters, Darlene Pierce of Spearman, and Juanita Hadley of Texico, N.M.; two sisters, Imogene Fisher of Hale Center and Vannamae Elkins of Olton; six grandchildren; and five great grandchildren.

Explain

She-- sometimes you seem so manly and other times absurdly effeminate. Why is it? He--Hereditarily. You see, half my ancestors were men and the other half women.

Patients in Muleshoe Area Medical Center

SEPT. 3-6
MONDAY
Daymond Gassett, Jesus Mendoza, Olene Watts, Lorena Scott and Laura Box
TUESDAY
Daymond Gassett, Tonya Gray, Olene Watts, and Lorena Scott
WEDNESDAY
Daymond Gassett, Armando Rodriguez, Anabel Vargas, Tonya Gray, Olene Watts and Lorena Scott
THURSDAY
Daymond Gassett, Armando Rodriguez, Anabel Vargas, Tonya Gray, Olene Watts and Lorena Scott

Letter To The Editor

September 5, 1990
Miss Clea Williams, Editor
The Bailey County Journal
P.O. Box 449
Muleshoe, Texas 79347

Dear Clea:
Now that much of the dust has settled, I wanted to express our gratitude for your fine assistance in publicizing the 46th Annual Boys Ranch Rodeo.

Close to 10,000 people attended this year's rodeo, a slightly smaller crowd than last year. Since last year was the fiftieth

anniversary of Boys Ranch, we had more alumni who returned for special events. However, few crowds have been more appreciative than those who attended this year and cheered the efforts of our boys and girls.

Without the support of The Bailey County Journal, our rodeo would not have been the fine success that it was. Visitors from the tri-state area attended with their families, and dozens of alumni traveled from cities around the country for a few days of fun and fellowship. Most of those who came were informed and reminded of this event by the publicity provided by you and other members of the media.

Again, we appreciate the good mention you again provided this year. I look forward to seeing

you at the Ranch or Girlstown for a visit and a meal with our youths whenever possible. Thank you for caring.

Sincerely yours,
Carl McMillen

Magellan's exploration of Venus may offer clues to early earth.

Security Council authorizes use of force in Iraqi quarantine.

No Different
Mother: "You were a long time in the conservatory with Mr. Willing last night, my child. What was going on?"
Daughter: "Did you ever sit in the conservatory with father before you married him?"
Mother: "I suppose I did."
Daughter: "Well, mother, it's the same old world."

Dr. A.R. Ploudre

Optometrist

*Family Vision Care *Texas Medicaid *Contact Lenses

(505) 762-2951 1515 Gidding St., Clovis

Hours: Monday through Friday 1-5 p.m.

8:00 a.m. to 12 noon Saturday, 8 a.m.-12 noon

Credit arrangements available upon prior approval.

Immaculate Conception Catholic Church
Father Patrick Maher
Northeast of City

First Baptist Church
220 West Ave. E.
Barry Bradley, Pastor

Emmanuel Baptist Church
Iglesia Bautista Emmanuel
107 East Third
Isaias Cardenas, Pastor

Trinity Baptist Church
314 E. Ave. B.
Rev. Dale Berry

Circle Back Baptist Church
Intersection FM 3397 & FM 298
Pastor, Glen Price
946-3676

Calvary Baptist Church
1733 W. Ave. C.
Rev. Rick Michael

Victory Baptist Church
605 West 8th
James Williams, Pastor

Progress Baptist Church
Charles Fisk, Pastor
Progress, Texas


Richland Hills Baptist Church
17th and West Ave. D.
Allen Petersen, Pastor

St. Matthews Baptist Church
Corner of West Boston & West Birch
M.S. Brown, Pastor

Progress Second Baptist Church
1st and 3rd Sunday
Rev. Arthur Hayes

Primitive Baptist Church
621 South First
Elder Cleveland Bass, Pastor

1st Baptist Church
Lazbuddie, Tx.
Gary Wilcox, Pastor
965-2126




Labour... is honorable

"For thou shalt eat the labour of thine hands: happy shalt thou be, and it shall be well with thee."

It is God's command that man must work and he has promised much to those who labour.

"... to rejoice in his labour; this is the gift of God." "Come unto me, all ye that labour and are heavy laden, and I will give you rest."

Enter the Lord's house at the beginning of each week, receive spiritual comfort to carry you through another week of labour.



© Coleman Adv.

The Church is God's appointed agency in this world for spreading the knowledge of His love for man and of His demand for man to respond to that love by loving his neighbor. Without this grounding in the love of God, no government or society or way of life will long persevere and the freedoms which we hold so dear will inevitably perish. Therefore, even from a selfish point of view, one should support the Church for the sake of the welfare of himself and his family. Beyond that, however, every person should uphold and participate in the Church because it tells the truth about man's life, death and destiny; the truth which alone will set him free to live as a child of God.

The Community Church
Morton Hwy
Mort Cross, Pastor
272-5992

St. John Luthern
Sunday School and Bible
Classes 9:30 a.m.
Church Services 10:30 a.m.
Rev. Mac Bearss, Pastor

Lazbuddie Methodist Church
965-2121
Doug Chapman, Pastor

New Covenant Church
Plainview Hwy
Sunday 10:00 a.m.
Wednesday 7:00 p.m.
Jimmy Lowe, Pastor

Jehovah Witness
Friona Hwy
Jack Tiffin, Minister
Warren Meeks, Minister

Templo Calvario
507 South Main
Sunday 10:00 a.m.
Sunday Evening 7:00 p.m.
Evangelistic Services
J.L. Soto, Pastor

Church Of The Nazarene
9th and Ave. C.
Dennis Hayes, Pastor

Primera Iglesia Bautista
223 E. Ave. B.
Roy Martinez, Pastor

Lariat Church Of Christ
Sunday School 10:00 a.m.
Worship 11:00 & 6:00 p.m.
Wednesday Services 7:00 p.m.
Sam Billingsley, Minister

Muleshoe Church Of Christ
Clovis Hwy
Bret McCasland, Minister
16th & Ave. D.

Church Of Christ
Sunday 10:30 a.m.
Evening 6:00 p.m.
Wednesday 8:00 p.m.
Curtis Shelburne, Minister

Lazbuddie Church Of Christ
Minister, Keith Courmier
Sunday School 9:30 a.m.
Morning Services 10:00 a.m.
Evening Services 6:00 p.m.
Wednesday Night 7:00 p.m.

First Assembly Of God
Rev. G. Dean Reid, Pastor
Sunday School 9:45 a.m.
Morning Worship 11:00 a.m.
Evening Services 6:30 p.m.
Mid-Week Services 7:30 p.m.
272-3984

Spanish Assembly Of God
East 6th and Ave. F.
Mike Doyle, Pastor

First United Methodist Church
507 W. 2nd Street
Richard Edwards, Pastor

El Divino Salvador Methodist Church
5th and Ave. D.
Jose M. Fernandez, Pastor

United Pentacostal Lighthouse Church
207 East Ave. G.
Rev. N.W. Thompson
272-3258

Truth Tabernacle Pentecostal Church
200 E. Ithaca & Fir
Pastor, Les James
272-3391

| | | | |
|--|---|---|--|
| <p>Western Drug</p> <p>114 Main 272-3106</p> | <h2 style="margin: 0;">Attend The Church Of Your Choice!</h2> | | <p>Dairy Queen</p> <p>1204 W. Amer. Blvd. 272-3412</p> |
| <p>Wes-Tex Futures, Inc.</p> <p>1910 W. Amer. Blvd. 272-5585</p> | <p>Serv-All Thriftway</p> <p>401 W. Amer. Blvd. 272-4585</p> | <p>American Valley, Inc.</p> <p>W. Hwy 84 272-4266</p> | <p>Viola's Restaurant</p> <p>2002 W. Amer. Blvd. 272-3838</p> |
| <p>Bob Stovall Printing</p> <p>221 E. Ave. B. 272-3373</p> | <p>Combination Motor & Salvage</p> <p>272-4458</p> | <p>Farmer's Co-Op Elevators</p> <p>Muleshoe 272-4335</p> | <p>Bobo Insurance</p> <p>108 E. Ave. C. 272-4264</p> |
| <p>Main Street Beauty Salon</p> <p>115 Main 272-3448</p> | <p>W.T. Services, Inc.</p> <p>319 E. Amer. Blvd. 272-4888</p> | <p>Bratcher Motor Supply</p> <p>107 E. Ave. B. 272-4288</p> | <p>5-Area Telephone Cooperative, Inc.</p> <p>302 Uvalde 272-5533</p> |
| <p>Irrigation Pumps & Power</p> <p>West Hwy 84 272-4483</p> | <p>Wes-Tex Feed Yards, Inc.</p> <p>272-7555</p> | <p>Muleshoe Lawn & Leisure</p> <p>522 W. Amer. Blvd. 272-3162</p> | <p>Richland Hills Texaco</p> <p>1914 W. Amer. Blvd. 272-4875</p> |

CLASSIFIEDS 272-4536

CLASSIFIED RATES

15 Words & Under
Minimum Charge
\$2.30
Thereafter
\$2.00
16 Words & Over
1st Insertion
15 cents per word
2nd Insertion
13 cents per word

CLASSIFIED
DISPLAY RATES
\$1.75
Per Column Inch

DEADLINES
12 noon Tues.
For Thursday Paper
12 noon Friday
For Sunday Paper

To receive the re-
duce rate after the
first insertion ad
must run continous-
ly.

We reserve the right
to classify, revise, or
reject any ad. We are
not responsible for
any error after ad
has run once.

1. Personals

CONCERNED
About Someone's
Drinking?
HELP IS
AVAILABLE

through Al-Anon
Call 272-2350 or
965-2870 or come to
visit Tuesday and
Thursday nights, 8:00
p.m. and through AA
call 965-2870 or come
visit Tuesday nights,
8:00 at 620 W.
Second, Muleshoe.

2. Lost & Found

Lost

Yellow Lab 6 months
old. Answers to the
name of Amos.
Was last seen Aug.
20th at Allsup's. \$50
reward. Call 272-
5279 after 5:00.

3. Help Wanted

HELP WANTED

SOUTH PLAINS COMMUNITY ACTION
ASSOCIATION, INC., is taking applica-
tions for a Neighborhood Center/Driver.
People interested may apply at the Bailey
County Community Action Center, 804 W.
American Blvd. in Muleshoe, Texas.
Person to contact is Janie Mejia or Debbie
Sisneros.

Criteria for Selection and Qualifications:

- * Resident of Bailey County.
- * Good physical and emotional health.
- * Interested in people-oriented activities
- * Able to establish relationship with people.
- * Able to communicate orally and in written form.
- * Able to gather and record simple facts accurately.
- * Respect for confidential aspects of information.
- * Interested in the purpose and goals of the Community Action Concepts.
- * Valid Texas Drivers License.

SOUTH PLAINS COMMUNITY ACTION
ASSOCIATION, INC., is an EQUAL
OPPORTUNITY EMPLOYER.
S3-36s-3tc

ASSEMBLERS: Excel-
lent income to assem-
ble products from
your home. 504-646-
1700. Dept. P4027.
B-35s-4tp

3. Help Wanted

POSTAL &
GOVERNMENT JOBS
\$23,700 per year to
start, plus full bene-
fits. Federal, state, &
local positions avail-
able now in the Mule-
shoe area. For com-
plete information, call
(219) 662-0306.
C3-36s-3tp

TOWN & COUNTRY FOOD STORES

We are seeking career
minded individuals for
part time and full
time employment.
Must be dependable,
have good customer
relations, work, learn,
and contribute. Appli-
cations available at
both stores. Drug test
required.

9. Automobiles For Sale

AUCTION SALES--
From \$100-Chevys,
Fords, Vans, Jeeps,
4X4s, Mercedes, Cor-
vettes seized by Govt.
Public sales in Mule-
shoe area and Texas
next month. Call (219)
662-7662.
C 9-36s-2tp

NICE '77 Caprice
Classic. 20,700 miles.
272-4696.
9-36s-1tp

11. For Sale Or Trade

PIANO FOR SALE
Wanted: Responsible
party to assume small
monthly payments on
piano. See locally.
Call credit manager
1-800-447-4266.
J11-35s-8tp

PIANO for sale: Spin-
net size. \$500. Call
272-3288 after 6 p.m.
E11-36s-8tc

Two 1979 R-Model
Macks, \$9,500 each.
Two 1972 Hobbs
Hopper Trailers,
\$4,000 each. 285-2127
days, 797-0949 nights.
S11-35t-4tc

3. Help Wanted

WANTED: Exper-
ienced machinist and
gearhead man. Call
(806) 238-1596 days or
238-1328 nights-after
9 p.m.
B3-25s-tfc

15. Misc.

PLAINVIEW RV SHOW

Free Admission!

OLLIE LINER CENTER



PARTICIPATING LUBBOCK DEALERS:

- Pharr RV's, Inc.
- Holiday RV's
- Camper Coaches
- Abbott Trailers
- Billy Sims Trailer Town

Take the Business Exit, South Side of
Plainview, to Ollie Liner Center

Sept. 14, 15, 16th
Fri. & Sat. 10-8, Sun. 12-6

TOMATOES, peppers
and other vegetables
on the 84 bypass in
Littlefield. Call B.E.
Turner at 385-5980.
T15-36s-8tc

FREE puppies to give
away. Call 272-3204.
K15-36t-2tc

17. Seed and Feed

CERTIFIED TAM 200
Seed-Bulk, Scout,
\$2.75. Produced 116
bushels. Under sprin-
kler. James Cowart,
Olton; (806) 285-2569.
C17-34s-8tc

8. Real Estate

HCR REAL ESTATE

3-1 3/4 Brick, 2
ceiling fans, large
den, lots of storage
space, fenced back
yard, large lot.
Thursie Reid
272-5318

8. Real Estate

log homes dealership

EXCELLENT INCOME POTENTIAL
Investment 100% secured by
model home, starting at \$13,416.
Retain your current job.
Call Don Hickman
Toll Free 1-800-633-0670 or
Collect 615-399-1721.

Country Living
LOC HOMES
2711 Murfreesboro Rd.
Antioch, Tennessee 37013

BAILEY COUNTY LAND FOR SALE

Owner will finance the following size
blocks: 2-80 acres, 3-160 acres, 4-320
acres, and 1-277 acres. Wheat, rice and
cotton allotments, 1 1/4 circle of
permanent grass, 7 Center Pivots, A Sweet
Cattle Set-Up.
If interested, contact T.L. Timms
806-385-4487 806-925-6404
(Day) (Night)

FORECLOSED or
seized homes (from
\$10) offered by
Government from fail-
ed Savings & Loans,
HUD, and tax delin-
quent properties. To
be auctioned next
month in Muleshoe
and Texas. Call (219)
662-9507.
C8-36s-2tp

18. Legals

THE STATE OF TEXAS
COUNTY OF BAILEY

By virtue of an Order of Sale issued
out of the Honorable 287th Judicial District
Court of BAILEY County, on the 31st day
of August, 1990 by the Clerk thereof, in
the case(s) styled as follows:

| Cause No. | Styling | Legal Description |
|-----------|--|--|
| 5910 | BAILEY COUNTY APPRAISAL DISTRICT V. JOHN W WILLIAMS, JR. | LOT 10, (NW83' OF 10) BLOCK 1, LAKESIDE #3 ADDITION TO CITY OF MULESHOE, BAILEY COUNTY, TEXAS |
| 5982 | BAILEY COUNTY APPRAISAL DISTRICT V. ERNEST HURTADO | 1.13 ACRES OUT OF PART OF SURVEY 54, BLOCK 7, WD&FW JOHNSON SURVEY, TO THE CITY OF MULESHOE, BAILEY COUNTY, TEXAS. |
| 6024 | BAILEY COUNTY APPRAISAL DISTRICT V. JOSE FRANCISCO REYES | LOT 11, (LOT 11 THRU 12) BLOCK 15, ORIGINAL TOWN ADDITION TO THE CITY OF MULESHOE, BAILEY COUNTY, TEXAS. |

and to me, as Sheriff, directed and
delivered, I will proceed to sell, at 4:00
O'clock P.M. on the 2ND DAY OF
OCTOBER, 1990 which is the first Tuesday
of said month, at the EAST door of the
Courthouse of BAILEY County, in the City
of MULESHOE, Texas.

Levied on the 31st day of August 1990
as the property of said defendants,

to satisfy the judgment rendered in the
above styled and numbered cause,
together with interest, at 10 percent, per
annum, and all costs of suit in favor of
each jurisdiction.

GIVEN UNDER MY HAND THIS 31st
DAY OF August, 1990

Jerry N. Hicks
SHERIFF, BAILEY COUNTY, TEXAS
18-36s-3tc

8. Real Estate

8. Real Estate

Smallwood Real Estate
232 Main Muleshoe 272-4838

On pavement in Country. 3 bedroom, 2
bath, large kitchen and dining area, living
room, large den, and playroom. 1 acre.

Bingham & Nieman Realty

116 E. Ave. C George Nieman, Broker 272-5285 or 272-5286

RICHLAND HILLS
IMMACULATE 3-2-2 Brick, Cent. A&H,
built-ins, FP, sunken lv. area with
cathedral ceiling, ceiling fans, earthen-
tones, storage bldg. \$50's!!!!

NICE RESIDENTIAL LOTS-\$5,000 UP...
3-2-2 Brick, large corner lot, Cent. A&H,
built-ins, basement area, & more!!!!

PRICE REDUCED-Nice 3-2-2 Brick, Cent.
A&H, FP, earhtone carpets, fenced yd.
\$60's!!!!

3-2-2 Home, heat pump, built-ins, FP,
earhtone carpets, fenced yd., & more.
PRICED TO SELL!!!\$30's

3-2-2 Brick, corner lot, Cent. A&H,
built-ins, FP, patio. \$60's..

HIGH SCHOOL
3-2 Home, remodeled, heat pump, storm
win. & doors, fans, stor. bldg., fenced yd.
\$20's!!!!

PRICE REDUCED 3-1-1 Home, earhtone
carpets, workshop, cellar, fenced yd....

IMMACULATE 2-1-1 Home, Cent. A&H,
nicely remodeled, storm win. & doors,
fenced yd., cellar. \$20's!!!!

2-1 1/2-1 Brick, fl. furn., Cent. Air, fenced
yd., & more. \$20's!!!!

FmHA FINANCING to qualified Buyer -
3-1-1 Brick, Cent. heat, earth-tone carpet,
ceiling fans, miniblinds. \$20's!!!!

HIGHLAND AREA
VERY NICE 4-2-1 Brick, Cent. A&H,
built-ins, earhtone carpets, util., encl.
patio, storm win. & doors, grill, spktr.
sys., stor. bldg., fenced yd. \$60's!!!!

3-2-1 Brick, Cent. A&H, built-ins, FP,
fenced yd., stor. bldg. \$40's!!!!

NICE 2-2-2 Brick, built-ins, CH, storm
windows & doors, fenced yd., & more.
\$50's!!!!

3-1-1 Home, corner lot, wall heat, fenced
yd. \$20's!!!!

JUST LISTED - NICE 2-2-1 Brick, Cent.
A&H, built-ins, HEATED POOL, Spktr.
Sys., fenced yd., corner lot, & more.
\$50's!!!! LENAUA ADD.
Nice 4-2-2 carport Home, Cent. A&H,
built-ins, FP, Cent. Vac., Office, Sewing
area, fenced yard. \$30's!!!!

3-1 Home, corner lot, wall furn., fenced
yd. \$20's!!!!

COUNTRY CLUB-3-2-2 Brick, Cent. A&H,
built-ins, FP, 2,000+ lv. area, fenced yd.,
storage bldg., & more.

3-2-3 carport Home on 11 ac. edge of
town, Cent. A&H, built-ins, cellar, barns,
& corral. \$50's!!!!

NICE 3-2-1 Home on 1 acre close to town,
Cent. heat, evap. air, nice carpets,
remodeled. \$30's!!!!

COMMERCIAL TRACT 175'X100' (Hwy.
70 & 84, RR spur access, approx. 1200 sq.
ft. bldg. PRICED TO SELL....

2-1-1 Home on approx. 5 acres, edge of
town, dom. & irrig. well, barns, & more.
\$13,000.00 CASH!!!!

3-2-1 Home, edge of town, Cent. A&H,
DW, FP, Spktr. Sys., fenced yd. \$30's!!!!

2-1 Home, 20 acres, sub. pump, sprinkler,
barns, & corral. \$40's....

8. Real Estate

8. Real Estate

FOR RENT OR SALE:
3 bedroom house in
the country. Call 946-
3417.
K8-34s-tfcs

BY OWNER - House
for sale or rent. 3-1-1
covered patio, big
back yard. Large stor-
age building. 806-272-
3321.

IRWIN REALTORS

806-792-6373 806-879-2348

160 Acres - West of Muleshoe. Lays
perfect, two wells, with lovely home. 3-3-3,
large game room, loads of closets and
storage, sunroom, central heat and
refrigerated air, covered patio, gas grill,
auto-sprinkler, fenced back yard. Nearly
new shop building-much more! On pav-
ment.

Sudderth Realty, Inc. REALTOR

109 Fifth Street Farwell, Texas
Realtors/Certified Appraisers

Sold all our farm land-Call if you have
farm land to sell.

3200 Acres grassland and cultivated with
improvements.

Beautiful Country family home. Room for
animals & pets. 15.4 Acres. 3 Bedroom, 1
3/4 Bath, Brick, 2 Car Garage, Irrigation
Well with Pipe, Domestic Well, TV Dish,
Fruit Trees, Box Cars, Barns, Steel Pens,
Located on Hwy. Owner says sale-priced to
sell.

J.B. Sudderth Broker
Daren Sudderth Broker
Master Senior Appraiser
806-481-3288



SHELF SPECIALS

| | | |
|---|--|---------------------|
| <p>HEAVY GRAIN FED BEEF</p> <p>ROUND STEAK</p> <p>\$1.59</p> <p>LB.</p> | <p>JENNIE-O</p> <p>TURKEY HINDQUARTERS</p> <p>39¢</p> <p>LB.</p> | <p>JENNIE-O HEN</p> |
|---|--|---------------------|

| | | | | |
|---|---|---|--|---|
| <p>HOMOGENIZED</p> <p>SHURSAVING MILK</p> <p>GALLON JUG</p> <p>\$1.99</p> | <p>MINUTE MAID ASST. FROZ.</p> <p>ORANGE JUICE</p> <p>10-12 OZ. CAN</p> <p>\$1.39</p> | <p>ASSORTED BATHROOM...</p> <p>CHARMIN TISSUE</p> <p>4 ROLL PKG.</p> <p>89¢</p> | <p>\$1.50 OFF LABEL</p> <p>CLOROX DETERGENT</p> <p>168 OZ. BOX</p> <p>\$5.99</p> | <p>ALL TYPES</p> <p>COCA-COLA</p> <p>2 LITER BTL.</p> <p>\$1.09</p> |
|---|---|---|--|---|

| | | |
|---|--|--|
| <p>JUMBO ROLL MARDI GRAS</p> <p>PAPER TOWELS</p> <p>59¢</p> | <p>\$1.49 SIZE BAG ASSORTED LAY'S</p> <p>POTATO CHIPS</p> <p>89¢</p> | <p>15 OZ. BTL. CONDITIONER OR</p> <p>VO-5 SHAMPOO</p> <p>69¢</p> |
|---|--|--|

| | |
|--|---|
| <p>KRAFT 1/2 MOON LONGHORN CHEDDAR/ COLBY CHEESE 16 OZ. PKG.</p> <p>\$2.89</p> | <p>PURINA MAINSTAY DOG FOOD 20 LB. BAG</p> <p>\$4.99</p> |
| <p>BANQUET CHICKEN/ TURKEY/ BEEF MEAT POT PIES 7 OZ. BOXES</p> <p>MIX OR MATCH</p> <p>2.99¢</p> | |

LARGE SIZE RED RIPE

TOMATOES

3 \$1

LBS.

NEW CROP CALIFORNIA DELICIOUS

RED APPLES

3 \$1

LBS.

| | |
|---|--|
| <p>FRANCO AMERICAN CIRCUSO'S/ TEDDYO'S/ SPAGHETTIO'S/ SPAGHETTI 15 OZ. CANS</p> <p>2.99¢</p> <p>FOR MIX OR MATCH</p> | <p>CAMPBELL'S REG./ SPECIAL REQUEST CHICKEN NOODLE SOUP 10.75 OZ. CAN</p> <p>2.89¢</p> <p>FOR YOUR CHOICE</p> |
|---|--|

| | |
|--|--|
| <p>ASSTD. 4 COMPARTMENT DINNERS 10.75-14.5 OZ. BOX</p> <p>\$1.79</p> <p>YOUR CHOICE</p> | <p>CAMPBELL'S MICRO. SOUPER COMBOS 11.2-12 OZ. BOX</p> <p>\$1.89</p> <p>YOUR CHOICE</p> |
| <p>ASSTD. DINNERS LE MENU 10.25-11.5 OZ. BOX</p> <p>\$2.49</p> <p>YOUR CHOICE</p> | <p>PEPPERIDGE FARMS LAYER CAKES 17 OZ. BOX</p> <p>\$1.99</p> |

Help Schools SAVE LABELS for FREE Educational Equipment Through the Labels for Education Program

| | | |
|--|----------------|---------------|
| FRANCO AMERICAN TURKEY/ MUSHROOM/ BEEF | 10 1/2 OZ. CAN | 59¢ |
| CAMPBELL'S CHICKEN GRAVY | 46 OZ. CAN | 99¢ |
| CAMPBELL'S TOMATO JUICE | 46 OZ. CAN | \$1.19 |
| CAMPBELL'S COCKTAIL | 46 OZ. CAN | \$1.19 |
| V-8 JUICE | 46 OZ. CAN | \$1.19 |

| | |
|--|---|
| <p>MIX OR MATCH CAMPBELL'S KID'S SOUP 10.25-10.75 OZ. CAN</p> <p>59¢</p> | <p>CAMPBELL'S REG./ SPECIAL REQUEST CHICKEN SOUP WITH RICE 10.5-10.75 OZ. CAN</p> <p>59¢</p> |
| <p>CAMPBELL'S REG./ SPECIAL REQUEST CHICKEN BROCCOLI SOUP 10 1/2 OZ. CAN</p> <p>59¢</p> | <p>CAMPBELL'S REG./ SPECIAL REQUEST CHICKEN CHUNKY CHICKEN 19 OZ. CAN</p> <p>\$1.29</p> |

| | |
|--|--|
| <p>CAPN CRUNCH</p> <p>\$1.99</p> | <p>ASSTD. CAPN' CRUNCH CEREAL 15-16 OZ. BOX</p> <p>\$1.99</p> |
| <p>VEGETABLE CRISCO OIL 32 OZ. BTL.</p> <p>\$1.69</p> | |

thriftway

AT AFFILIATED FOODS INC. MEMBER STORE

WE ACCEPT FOOD STAMPS... WE RESERVE THE RIGHT TO LIMIT

PRICES EFFECTIVE SEPTEMBER 9-15, 1990

| | |
|---|---|
| <p>ASSORTED FLAVORS GATORADE 64 OZ. BTL.</p> <p>\$1.79</p> | <p>ASSORTED FLAVORS SLIM FAST 15 OZ. CAN</p> <p>\$3.49</p> |
|---|---|