

Progress Is—
Making
Good Things Happen

THE RISING STAR

Where Three
Good Texas Counties
Get Together

Rising Star, Texas

©1992 Eastland County Newspapers, Inc.

Established in 1890

50 Cents

Thursday, January 2, 1992

Number 1

Commissioners Were Busy Last Monday

Eastland County Commissioners had a busy session Monday. A number of items were discussed, with some approved.

County Judge Scott Bailey displayed three Certificates of Appreciation given to area people who had contributed much to the community.

Arlin Bint of Cisco was recognized for ten years of service to the Eastland County Appraisal Board. Mr. Bint, educator and rancher, became a Charter member of the Board when it was set up in 1981. Mr. Bint resigned his post this year.

L. E. ("Compound") Clark of Desdemona was recognized for 50 years as Election Judge and Precinct Chairman of the Democratic Party in Eastland County. L. E. Clark, rancher, is resigning from this office.

Another Certificate of Appreciation was signed for Rose Webb, artist, homemaker and musician of Strawn. She was especially for her winning quilt block placed in the Wal Mart "America the Beautiful" National Quilt.

Before they began on the agenda the Commissioners had comments on the recent rains and flooding, each one saying that roads in his Precinct were washed and muddy. Some remained closed.

Pct. 1 Commissioner Richard Robinson said he felt that the Emergency Management people should be contacted about this disaster. He said that more than 30 houses were flooded around Lake

Leon, with water nine feet deep in some houses.

Pct. 2 Commissioner Calvin Ainsworth gave a report on the situation at Lake Leon. He said the water was receding, with FMM 2214 now possible. He knew of two homes that were still under water. A number of people were rescued from the Staff area on Saturday.

On another matter, Texas Extension Service District Supervisor Ron Wooley introduced Michael David (Davy) Vestal, County Extension Agent of Baylor County. He recommended Vestal be hired to fill the position of County Agent (Agriculture) left vacant by the resignation of David Tunmire November 25.

Vestal brought his resume, and appeared to be very qualified for the job. He grew up in Baird and attended schools there. (His father is a retired Vocational Agricultural teacher, well-known for his work in the Baird School.)

David Vestal's College work includes Cisco Junior College, Tarleton State University and a Master's Degree from Texas Tech University.

The Commissioners appeared to favor the hiring of Vestal. This item will go on the agenda of a special meeting to be held Monday, Dec. 30, 10 a.m. A decision will be made at that time.

During Monday's meeting the Commissioners approved a payment of \$4,189 to the Ranger Fire Department on the 1990 Contract, to operate

Emergency Services. Shawn Wells brought the request, saying that a mistake had been made in not claiming the money earlier.

Wells told the Commissioners that in neither the old or new Emergency Services Contracts does the County require the Emergency Services unit to submit bills - he said this was a courtesy and a sound business practice - not a requirement in the contract.

The vote was 3 for, 1 against a motion to amend the budget, declare an Emergency Expenditure, and take the \$4,189 from the General Fund for the Ranger Ambulance Services, stationed at the Fire Department.

Also approved was a Resolution concerning the Texas Department of Criminal Justice Community Corrections. This is apparently a state project to encourage counties to adopt ways of keeping more prisoners in their own localities.

Richard Robinson said he had some reservations about the new plan - before taking Grant Money he would like to know more about what was required of the County.

On local jail matters, Pct. 4 Commissioner Reggie Pittman reported that 21 prisoners were in the county jail. Three were for TDC, 11 waiting trial, 2 doing County Jail time, 1 in on a Bench Warrant, and 4 on "Blue" or state warrants.

Recycle Your Live Christmas Trees

Have you disposed of your live Christmas tree yet? If not, let Star Pride and the City of Rising Star recycle it!

Bring your tree to City Park through the east entrance, just north of Dr. Carpenter's office, at the corner of Mill and Cooper streets. Look for a sign in

the park. There are already some trees at the location.

These live Christmas trees will be turned into chips and used for mulch in our City Park (Colquitt E. Williams Memorial Park).

Thanks for your support and contribution to a beautiful park.

Review of the History of Senior Citizens Center

by Marjorie West

For our news column this week at the close of the year of 1991 I have chosen to give a brief history from the beginning to the present date of the activities of the club.

The Senior Citizens club was organized March 7, 1977. Officers for the first year were Velma Turner, President; Detta Webb, Vice President; Evelyn Chick (now Ward), Secretary/Treasurer, also served as reporter; and Program Chairman, Ruth Smith. Members of committee to Program Chairman were Marjorie West, Pearl Schlaepfer and Nell Maynard.

The motto was Service, emblem was a Star and the color was Blue.

The club was organized at the City Library.

On March 17, 1978 the club met in the Breeding building. New curtains were put up. Bill and Peggy Dennard furnished paint for the interior.

On July 4, 1977 the newly organized rhythm

band, The Star Brides, entered the 4th of July Parade, and won first place in their division.

They received \$50. They were indeed glad to get the money to help do more work on the building.

Elizabeth Chamberlain was the one who gave the band its name. The band continued to play in many places until Luella McKinnerney, our piano player, passed away and we had also lost several other members.

On January 24, 1978 plans were made for our first chili and stew supper. This was planned to help benefit our local ambulance service. The supper was held at the country club building.

Live music was provided by the following people: Bryant Houston, Luella McKinnerney, Geraldine Richter, Deward Maynard, Bill McKinnerney, Beryl McKinnerney and Early Epley. Out of town musicians were Ruby Clark of Goldthwaite,

Star Pride Appreciates Help In Hometown Christmas

Star Pride wants to extend a special thanks to Santa and Mrs. Claus for sharing time with us at our Hometown Christmas. We all know how busy Santa is this time of year. We would also like to thank his helpful elves, Tic, Tac and Toe for coming. They must have had

to work twice as hard and fast helping Santa get back on his schedule when they got back to the North Pole.

We enjoyed working with our Chamber of Commerce & Agriculture in promoting Rising Star's first annual Hometown Christmas.

Star Pride would like to thank Gene Smith and the FFA Class, Faye and Bill Medley, Judi Butler and Debra Stuteville for helping Santa. Thanks, Tonmy, for making the hostess aprons and caps and thanks to the night's hostesses for serving refreshments.

Thanks to Tim Riley and Gail Rutledge and the third grade for performing the program.

Thanks so much to the American Legion Post, H.L. Killion and Mary Frances and Milton Teague for use of the building, speakers, supplies and to Peoples State Bank for refreshment supplies.

Thanks to our Volunteer Fire Department and firemen for use of the fire

truck to transport Santa, Mrs. Claus and his elves into and out of town.

Thanks to area church choir members for adding to the evening's entertainment with carols, to Ron Jones for leading the group in song and to Helen Donham for use of the music books.

Thanks to Kathy Her-ring for preparing flyers and superintendents Don Rhodes of May and Don Bryan of Rising Star for seeing that the flyers are distributed to children from these schools.

Thanks to Sharolyn Cox as photographer and her helper, Evelyn Donham.

A special thanks goes to those who decorated inside the American Legion Hall and the tree inside the building and to those who cleaned up the building after all the activities.

Star Pride wants to thank each and every person who helped make our Hometown Christmas the success that it was.

We all had a good time and are already looking forward to our second annual Hometown Christmas.

May Housing Authority Will Meet on January 2

The Board of Directors of May Housing Authority, Inc. will hold its annual meeting Thursday, January 2. The election of two new board members to fill Places 3 and 4 for the ensuing three-year terms will be held.

Betty Wilson, Place 3, and Marshall Campbell, Place 4, will both seek reelection.

Candidates who wish to file must be paid-up members of the May Housing Authority. Memberships may be secured through the Executive Director, Marion

McDaniel, or through Dorene Burnett, secretary.

Candidates must file ten days prior to the election to have their names listed on the official ballot. Mail or deliver letters of intent to Dorene Burnett, Secretary, May Housing Authority Board of Directors, May TX 76857.

Any paid member of May Housing Authority may run as a write-in candidate.

Marion J. McDaniel
Executive Director

4-H Sets Cleanup Day

By Janet Thomas
County Extension Agent

4-H LIVESTOCK SHOW GROUNDS CLEAN-UP DAY

4-Hers and their parents are urged to come and clean up the Livestock Show Grounds on Saturday, January 11, 1992.

We will begin at 8 a.m. and hopefully with a good turn out we will finish in a couple of hours.

Everyone is asked to bring tools to help you get the job done quickly such as...racks, brooms, trash bags, etc.

Complimentary hot coffee and cocoa will be provided for workers. See you January 11th!

TEXAS 4-H CENTER RE-SOURCE STAFF

Former 4-Hers who have completed a minimum of one year of college are eligible to apply for 4-H Center summer program staff positions.

Applications are available from the Eastland County Extension Serv-

Applications are due March 7th in the local county office.

4-Hers desiring scholarship information should contact the local Extension Service Office for forms.

ice Office and are due to Mr. Mike McKinney, State 4-H Specialist, immediately.

4-H SCHOLARSHIP OPPORTUNITIES

The Texas 4-H Foundation annually awards over \$600,000 in scholarships to graduating 4-Hers. Application forms are due March 16th to the District Extension Service Office.

Also, the Texas Extension Homemaker's Association awards seven scholarships in the amount of \$1,000 each to outstanding 4-H girls. Applicants must have excelled in home economics projects, leadership and personal development for three or more years in 4-H.

RENEW NOW

Rising Star, Eastland County, Towns within 30 mi. of Rising Star
\$9.00 per year
Other Texas Counties \$13.00 per year
Out of State \$19.00 per year

The Rising Star
P. O. Box 127
Rising Star, TX 76471

Community Calendar

1ST THURSDAY
Rural Fire Dept. meets at 5:15 at County Barn.

Rural Fire Board meets at County Barn at 6 p.m.

Firefighters Assn. meets at 7 p.m., City Hall.

Dept. of Human Services assistance regarding food stamps, aid to families with dependent children, Medicare, City Hall, 8:30-4:30

EACH THURSDAY
Senior Citizens Center is open for lunch, activities.

City Library, 9:30-11 a.m.

1ST SATURDAY
Sipe Springs Musical, community center, all musicians welcome

EACH SATURDAY

Bingo, American Legion Hall, 205 S. Main

1ST MONDAY
Eastland Star, 100 N. Main

2ND WEDNESDAY
License tag renewals, County Precinct offices, Hwy. 36 W

2ND THURSDAY
Masonic Lodge, 7:30

2ND MONDAY
Rising Star School Board, 116 N. Main

School Calendar
by Inga Williams

Jan. 23-4
Rising Star Basketball Tourney

Mon., Jan. 6
School starts regular time.


New Year Greetings!

Get ready for

Rising Star Livestock Show & Fair

Coming Soon!

STATE CAPITAL



HIGHLIGHTS

By Lyndell Williams
TEXAS PRESS ASSOCIATION

AUSTIN - Gov. Ann Richards' call for a Jan. 2 special session to redraw Senate and House districts prompted some state officials to predict a delay in the Texas presidential primary.

House Speaker Gib Lewis said it will be virtually impossible to hold the primary March 10, meaning that all contests, including the race for president, might be delayed until May.

Postponement of the March balloting would move Texas out of the 12-state Super Tuesday presidential primary.

Meanwhile, Democrat lawmakers hope that when they convene no hard-won compromise will be necessary.

And they will draw more attention to the fact that their unbridled political greed is unnecessarily costing taxpayers \$1 million.

The partisan house of cards that Democrats built to protect their incumbents was sent crashing down last week by the Texas Supreme Court.

The Court ruled 5-4 that

Gov. Ann Richards and her Democrats stepped outside the Constitution when they positioned Attorney General Dan Morales to remedy the federally-scuttled map weeks earlier.

Morales Wanted Session
Morales had publicly requested then that Gov. Richards call a special session, but she adamantly refused, saying it would cost taxpayers \$1 million, while the court could settle it cheaply.

The court still can settle it cheaper, but it's a GOP-appointed federal court.

Of course, the governor had the Democrat-dominated state courts in mind when she made that statement, so now it's back into

an expensive special session.

Scurry to Court
It's not Morales fault: he publicly warned Democrats the plan probably wouldn't work, just as he now warns that despite what the Legislature does in January, the federal court may still draw its own boundaries.

Democrats must now scurry to get the Legislature to pass the anti-Republican plan so that Morales can hand-carry them to the three-judge federal bench, whereupon sits three Republicans.

Redistricting is a political battle in which no quarter is given and none asked.

Settlement Struck Down
Whatever the Legislature adopts, it'll be better than the Democrats' settlement plan, which some observers said was a disgrace to any common sense of fair play and smelled of "judge shopping."

The substitute plan was crafted post-session by 19 Democrat senators, plaintiff minority group lawyers and Morales, who

submitted it to Edinburg state district judge Mario Ramirez.

The fact that 12 senators were shut out of participation, including all the Republicans, made it smell even worse.

Democrats tried to pawn it off as having the Legislature's stamp of approval, even though 19 votes wouldn't get it to the floor under Senate rules, but the High Court snuffed it.

Supreme Court Opinion

In its majority opinion, the Court spanked the hand of Judge Mario Ramirez for abusing his authority when he adopted it:

- Prior to any court ruling, other than his, the original plan was invalid; and

- The plan was approved without hearing any evidence for or against the settlement plan.

Supreme Court Justice Raul Gonzalez called the plan a "back room deal" and said it "sets a bad precedent."

1 in 5 Texans Uninsured

The Washington-based Public Citizen watchdog group said census data reports one in five Texans lacks health insurance, compared to four percent nationwide.

Only New Mexico had a higher rate of non-insurance, even though the number of uninsured Texans dropped 200,000 between 1989 and 1990.

Gov. Richards, who rode the health insurance issue to the Governor's Mansion in 1990, said some weeks ago she will call a special session on health insurance sometime in 1992.

Assistant AG Resigns

MOBILE HOME TRANSPORTING
Complete Moves & Setups
Moving Throughout Texas
• Tie Downs
• Blocking & Leveling
* Licensed
* Bonded
* Insured

18 Years Experience
817-893-6753

Non-Surgical Cure For Irregular Heartbeats May Be On Horizon

A non-surgical cure for life-threatening irregular heartbeats may be on the horizon, thanks to a computerized cardiac mapping system being developed at The DeBakey Heart Center.

The 1,000-channel system will replace a 128-

channel system developed earlier at the heart center and should be ready for testing in humans in early 1992, according to Dr. Antonio Pacifico, assistant professor of medicine at Baylor College of Medicine in Houston.

Computerized cardiac mapping is used to pinpoint areas of the heart where electrical disturbances affecting the beating rhythm originate.

When the irregular beating, called arrhythmia, is severe, it can cause sudden cardiac death. The new system will provide scientists with a more powerful tool to study ventricular tachycardia, a type of life-threatening arrhythmia involving the heart's pumping chambers. Knowledge gained from that study should lead to a non-surgical cure.

"Increased understanding of the cause and effects of tachycardia will eventually enable us to treat patients using a catheter threaded into the

heart through a vein," Pacifico said. "The new catheter will make it possible to identify the origin of the problem and to cure it with either microwave or laser energy."

Now, the mapping is done by slipping an electrode-studded sock over the heart during surgery. The computer map shows the problem areas and the surgeon destroys them with a laser or by freezing the tissue.

The new system will improve the surgeon's accuracy in identifying the source of the irregular heartbeats, decrease the patient's time on a heart-lung machine and in the operating room, and allow better understanding of the tachycardia's mechanism, Pacifico said.

The promise of a non-surgical therapy also offers hope for improved lifestyles for patients whose irregular heart rhythms are not cured surgically, he added.

"If we can offer these people a less invasive cure

than open-heart surgery, they can go back to a normal life without having to worry about their heart-beat and without having to see doctors all the time," Pacifico said.

Stephen Gardner, the assistant attorney general who headed an aggressive consumer protection division, said last week he has been asked to resign.

Gardner said Attorney General Dan Morales asked for his resignation, effective Feb. 1.

"The priorities I have had and the priorities of the new administration are not the same," Gardner said.

During the seven years he has headed the consumer protection division in Dallas, Gardner has challenged the advertising claims of major manufacturers.

Other Highlights

- Speaker Lewis said he does not want the special session to delay his Jan. 27 trial on misdemeanor ethics charges.

- State Sen. John Leedom, R-Dallas, announced his re-election bid last week.

- The Texas workers' compensation pool reported a big reduction in losses for 1991, \$174 million compared to \$550 million in 1990.

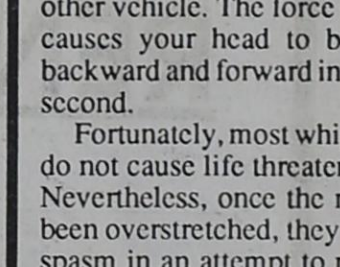
- Agriculture Commissioner Rick Perry reported on-farm water techniques in Texas conserves enough to serve the water needs of 100,000 families.

Cisco Press - Eastland
Telegram - Ranger
Times - Rising Star - Callahan County Star
Thursday,
January 2, 1992

Grandpaw's Tool Shed Rental

WINTER SPECIAL

CHAIN SAWS
\$12⁰⁰ day



1304 E. Main
Eastland
Travis Chapman
629-3363

channel system developed earlier at the heart center and should be ready for testing in humans in early 1992, according to Dr. Antonio Pacifico, assistant professor of medicine at Baylor College of Medicine in Houston.

Computerized cardiac mapping is used to pinpoint areas of the heart where electrical disturbances affecting the beating rhythm originate. When the irregular beating, called arrhythmia, is severe, it can cause sudden cardiac death.

The new system will provide scientists with a more powerful tool to study ventricular tachycardia, a type of life-threatening arrhythmia involving the heart's pumping chambers. Knowledge gained from that study should lead to a non-surgical cure.

"Increased understanding of the cause and effects of tachycardia will eventually enable us to treat patients using a catheter threaded into the

heart through a vein," Pacifico said. "The new catheter will make it possible to identify the origin of the problem and to cure it with either microwave or laser energy."

Now, the mapping is done by slipping an electrode-studded sock over the heart during surgery. The computer map shows the problem areas and the surgeon destroys them with a laser or by freezing the tissue.

The new system will improve the surgeon's accuracy in identifying the source of the irregular heartbeats, decrease the patient's time on a heart-lung machine and in the operating room, and allow better understanding of the tachycardia's mechanism, Pacifico said.

The promise of a non-surgical therapy also offers hope for improved lifestyles for patients whose irregular heart rhythms are not cured surgically, he added.

"If we can offer these people a less invasive cure

than open-heart surgery, they can go back to a normal life without having to worry about their heart-beat and without having to see doctors all the time," Pacifico said.



...that's what you'll get as an American Cancer Society Road to Recovery volunteer driver. Call now and learn how you can help someone down that road. Training and smiles provided.

55 SMILES PER HOUR
Call your local American Cancer Society office for details.
1-800-ACS-2345

EVENING COLLEGE
Over 100 Degree - Related Night Courses
TARLETON STATE UNIVERSITY

REGISTRATION
Tuesday, January 14, 1992 6 PM-8 PM
TARLETON CENTER

Call 817-9121 for Information

From all of us at Ranch House Restaurant, thank you for the continued support you've shown us and we hope you have a Very Merry Christmas and a Happy New Year.

If we can help with your holiday parties give us a call.

Ranch House Restaurant

607 E. I-20 Cisco 442-2855

Gaines Automotive

Hi Tech Care For Hi Tech Cars

Merry Christmas & Happy New Year

Hours: Mon.-Fri.
8:00 till 5:30
Sat. 8:00 till Noon

314 W. Main

State Inspection Station
Eastland

Owner
Blake Gaines
629-1008

DON'T OVERLOOK YOUR INSURANCE NEEDS

Serving Eastland County Since 1919

CONTACT

D.L. KINNAIRD GENERAL INSURANCE

629-2544

629-8606

Sallie Kinnaird

104 N. Lamar

Mike Perry

A-1 BUILDERS

Building & Remodeling

- ROOFING
- SIDING
- METAL BUILDINGS
- PLUMBING
- ELECTRICAL
- CONCRETE

Commercial * Residential

Jerry Maston • Owner 629-8148

CHIROPRACTIC FOR BETTER HEALTH



DR. STEPHEN G. BARRY

CHIROPRACTOR

WHIPLASH TREATMENT BEGINS WITH EARLY CARE

Whiplash injuries commonly result when someone is rear-ended by another vehicle. The force of the impact causes your head to be "whipped" backward and forward in fractions of a second.

Fortunately, most whiplash injuries do not cause life threatening damage. Nevertheless, once the muscles have been overstretched, they often go into spasm in an attempt to protect themselves from further injury.

Occasionally a patient comes to my office complaining of headaches, back, neck or shoulder pain after an accident that occurred several weeks or months earlier. This is often the case when a

patient receives no care, inadequate care or improper care immediately following an accident.

Chiropractic training, which requires a minimum of six years, includes the latest research-proven and clinically tested programs for treating a variety of pain syndromes and musculoskeletal injuries.

In the interest of better health from the office of:

Dr. Stephen G. Barry
--Chiropractor--
951 E. Main, Eastland
629-1771

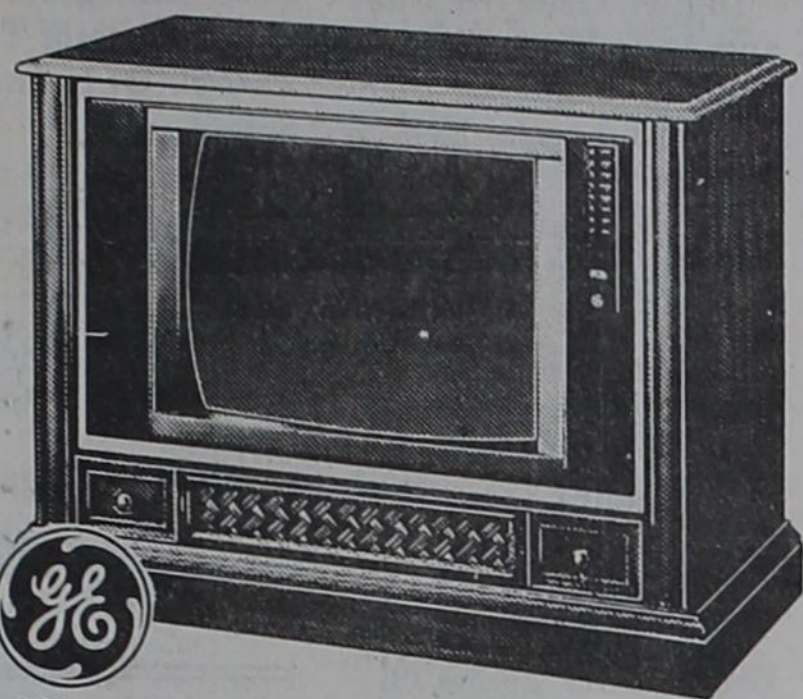


JOE HUDSPETH'S

Tire & Appliance

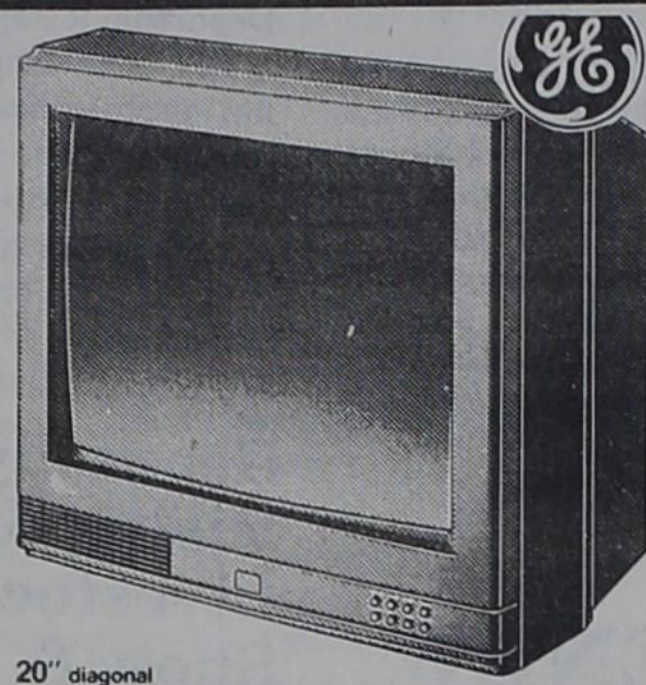
Convenient Terms
MasterCard • Visa

315 E. Main Eastland 629-2662



**26" diagonal
CONSOLE REMOTE CONTROL
STEREO MONITOR-RECEIVER**
MODEL 26GC730
• MTS Stereo Sound System
• 5-Jack Monitor Panel
• GE Unified TV/VCR Remote (36-button)

Reg. \$649
\$599



**20" diagonal
TABLETOP REMOTE CONTROL TV**
MODEL 20GT420
• Digital Remote Control (25-button)
• On-Screen Operating and Status Displays
• On-Screen Time and Channel Number
• Sleep Timer
• Picture Reset
• 147-Channel Capability
• Auto Start AutoProgramming

Reg. \$349
\$319



The quality goes in before the name goes on.®

- Featuring
- MTS Stereo with dbx Noise Reduction
 - Multi-Brand TV/VCR/Cable Remote Control
 - Vanguard Chassis
 - Full On-Screen Menu
 - Remote Source Selection
 - 178 Channel Tuning
 - Auto Channel Search
 - Comb Filter
 - Video Filter
 - Sleep Timer
 - Optional Custom Designed Stands available



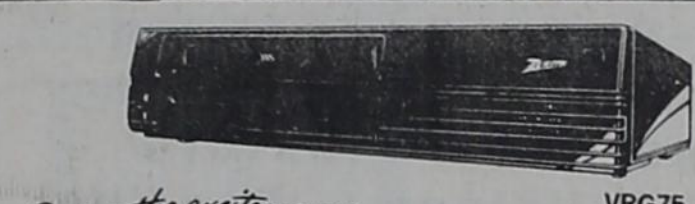
\$539



**25" Diagonal
Model 7571BG**
Contemporary Styling. Black Walnut color finish.



\$569
SS2507N
Early American styling. Pine finish applied to durable wood products on top and sides. Contoured base conceals casters.



Bring the excitement home!
ZENITH VHS VCR with HQ, Remote On-Screen Programming and TV/VCR Unified Remote Control • VRG75
• Easy-To-Read Menus Guide You Through Programming and Set-Up Information Step-By-Step.
• 1 Year, 8 Event Timer.
• 155 Channel Quartz Electronic Tuning System with up to 99 Cable Channels.

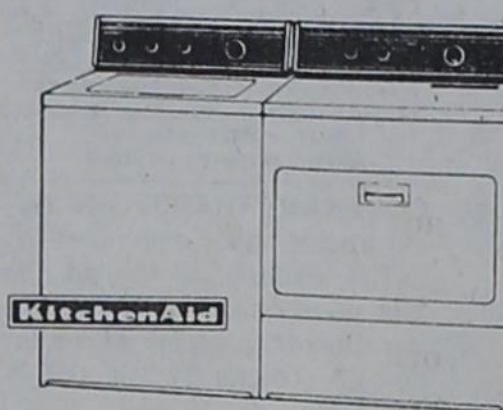
\$289

INVENTORY CLEARANCE SALE!

Sale ends Jan. 11, 1992

KitchenAid® For the way it's made.™

Come in and see our quality KitchenAid Appliances - today!



**\$50 OFF PAIR
WASHER/DRYER**

- Washer Quality Features**
- Quiet Operation
 - 5 cycle selections
 - TriDura® porcelain inner wash basket
 - Self Cleaning Filter
- Dryer Quality Features**
- Large 3 cu. ft. porcelain drum
 - 3 heat select
 - End of Cycle signal
 - Drum light

Model K9WE760 Model KEYE760



30-inch model KECT305S

This KitchenAid 30-inch glass-surface electric built-in cooktop is not only *sensational*, it makes sense!

\$25 Off Our Low Prices

30-Inch Electric Glass Surface Cooktop features:

- Two 6-in. and two 7-in. Even-Heat Cast-Iron Elements with overheat protection.
- Push-to-Turn Infinite-Heat Controls with Power Track Guides.
- "Lower-than-Low" Simmer.
- Extra thick 3/16-in. tempered-glass cooktop.
- Four Power "ON" lights.
- "Universal" overall/cutout size - fits virtually any 30-in. cutout.
- Available in Black, White or Almond colored glass.



**KitchenAid®
CLOTHES WASHER KAWE 460**
• 10 year warranty on transmission
• Super capacity
• Top Rated
• Porcelain Top **\$399**



**KitchenAid®
DISHWASHER KUDM220**
• TriDura® porcelain on steel tank and inner door
• 1/2 HP Gold Seal reversing motor
• 4 wash cycles
• Sure clean water heating system
• 4 way Hydro-Sweep™ wash arm

\$449

KitchenAid® FROST FREE REFRIGERATOR



Model KTRD18KX **\$599**

- 18.1 cu. ft. capacity with 4.8 cu. ft. capacity freezer.
- Fits in a space only 30 in. wide.
- Optional automatic ice maker.
- Separate up-front temperature controls for refrigerator and freezer sections.
- Adjustable refrigerator shelves have handsome, durable PowderKote™ finish.
- Full-width door shelf holds gallon containers.
- Sealed twin crispers with humidity controls and see-through cover.
- Roomy meat locker.



- ZENITH 20" Diagonal SENTRY 2 Remote Control Color TV • SJ2065S**
- Receiver/Monitor.
 - MTS Stereo with dbx Noise Reduction.
 - Multi-Brand TV/VCR/Cable Remote Control.
 - On-Screen Menu Display.
 - Auto Channel Search.
 - 178 Channel Capability.
 - Chromacolor Contrast Picture Tube.
 - Video Sentry.
 - Sleep Timer.
 - Flashback.
 - Telescoping Dipole Antenna.
 - Audio/Video Input and Variable Audio Output Jacks.
 - Euro-Style. Slate color finish.

\$339

**BIG SAVINGS ON
SELECTED MODELS!**



14.8 Cu. Ft. Chest Freezer

Model CB15DN
Temperature Monitor warns if freezer warms. 2 removable sliding baskets. Temperature control. Built-in lock. Defrost drain.

WAS \$409 Save \$30 **Now \$379**

Extra Large Capacity 6-Cycle Washer

Model WWA6600M
6 cycles including Permanent Press. 4 water level selections. 3 wash/rinse temperature combinations.

WAS \$429 Save \$30 **Now \$399**

Heavy Duty Automatic Dryer

Model DDE5100M
2 cycles—Timed regular cycle up to 130 minutes and Permanent Press cycle. 3 drying selections. Removable up-front lint filter.

WAS \$319 Save \$24 **Now \$295**

HURRY... LIMITED TIME OFFER!

Extra Large Capacity 2-in-1 Washer

Model WWA8808M
Mini-Basket™ tub for small loads. 7 cycles including Extra Clean cycle. 4 water level selections. Bleach dispenser.

WAS \$489 Save \$24 **Now \$449**

Large Capacity 6-Cycle Dryer

Model DDE7900M
Automatic dry control dryer. 6 cycles including Automatic Permanent Press. Optional Extra Care. Variable end-of-cycle signal.

WAS \$385 Save \$30 **Now \$355**

18.2 Cu. Ft. Capacity Refrigerator

Model TBX18DP
5.14 cu. ft. freezer. Adjustable shelves. Energy Saver Switch. Equipped for optional icemaker. Two vegetable/fruit pans. Meat pan. Color matched handles.

WAS \$625 Save \$50 **Now \$575**

20.6 Cu. Ft. Capacity Refrigerator

Model TBX21WP
6.31 cu. ft. freezer. Adjustable shelves. Energy Saver Switch. Equipped for optional icemaker. Door shelf holds 6-packs. Color matched handles.

WAS \$759 Save \$60 **Now \$699**

Big 16.0 Cu. Ft. Upright Freezer

Model CA16SM
3 cabinet shelves. Slide-out basket. Built-in lock. 5 door shelves. Interior light. Lock. Defrost drain.

WAS \$470 Save \$35 **Now \$435**

Continuous Clean 30" Gas Range

Model JGB515GEN
Upswept cooktop lifts up for easy cleaning. Extra large oven capacity. Electronic clock/timer. Black glass oven door with window.

WAS \$525 Save \$36 **Now \$489**

30" Gas Range with Extra Large Oven

Model JGB512GEN
Upswept cooktop lifts up for easy cleaning. Extra large oven capacity. Electronic clock and timer. Electronic pilotless ignition.

WAS \$455 Save \$36 **Now \$419**

Turntable Microwave Oven

Model JE1234J
700 watts, 1.2 cu. ft. oven cavity. Easy to use electronic touch controls with digital display and clock. Time and temperature cooking. 5-Stage Programming.

WAS \$229 Save \$36 **Now \$199**

Potscrubber Dishwasher

Model GSD970M
4 cycles/13 options. POTSCRUBBER cycle. Energy saver "heat-off" drying option. Super Upper Rack. 3-level wash action.

WAS \$475 Save \$36 **Now \$439**

3-Cycle Built-In Dishwasher

Model GSD570P
3 cycles/5 options. Energy saver "heat-off" drying option. 3-level wash action. 10-year full warranty on PermaTuf™ tub and door liner.

WAS \$355 Save \$29 **Now \$329**

Black Glass Door 30" Electric Range

Model JBS03GN
Easy to clean upswept cooktop. One 8" and three 6" Tilt-lock Calrod® surface units lift up for easy cleaning. Removable oven door. Full-width storage drawer.

WAS \$395 Save \$30 **Now \$365**

Self-Cleaning Oven 30" Electric Range

Model JBP26GN
Easy to clean upswept cooktop. Black glass oven door with window. Two 8" and two 6" plug-in Calrod® surface units. Automatic oven timer, clock and signal buzzer.

WAS \$589 Save \$40 **Now \$549**

Classifieds Sell

REAL ESTATE

FOR SALE

161 A. Lots of bottom land, 60 tillable; well fenced, 1/2 mi. Sabanna, good deer hunting, lots big oak, pecans. \$550 ac. Agent owned.

80.5 A. 7 mi. NE Rising Star, 30 coastal, app. 1/2 cult., well fenced, lots rd. front, \$560 ac.

95.43 A. 20 cult., 3-1 frame home, 4 mi. of Carbon. Good barn, native grasses. \$70,000, \$14,000 down, 10% int.

62 A. M/L, about 1/2 cult. good peanut/melon land, some coastal, lots road front, with new fence. \$500 a., liberal terms, agent owned.

70.3 A. 7 mi. E. Hy 36, timber, coastal, 3 water taps applied for, well fenced, barn, tanks, \$500 a., cash or equity/GI assumption.

182 A. Desdemona, most native pasture, rolling, live oak, deer, 2BR frame home, FREE nat. gas, barns, corrals, fine well, \$600 A. 1/4 down. LOTS pavement.

54.35 A. E. Carbon, most all good coastal, near pavement, well fenced, good well, 1 tank, minerals, \$750 A. cash or (?) terms.

App. 1.5 A. E. Carbon, 2 BR frame home, clean, big oak trees, small barn, walls insulated, co-op water meter, fruit/pecans, just off hwy. Just \$20,000.

MLS Supplement 46-1
David Holubec
915-286-4284 Melvin
Reggy Stover
817-725-7370 Rising Star

FARM EQUIPMENT

JD 4040, 90 Hp, Quad, 2182 HRS.

JD 4050, 100 Hp, Quad, JD 4055 105 Hp, PS, 69 HRS.

JD 4240, 110 HP, Quad, 3200 HRS.

JD 4430, 125 HP, Quad, JD 4640, 155 HP, Quad, Extra Nice.

Steiger, 325 HP, 3Pt, PTO, \$2,500 to \$3,000 discount on new JD Row Crop Tractors largest inventory of new and used equipment in Texas. Call Donnie or Mark at Bramlett Implement, Inc. Stephenville, TX (817) 968-4118

LEASE WANTED

NEED GRASS Lease in Rising Star area. Please call 643-4004 after 6 p.m. 47-6

HELP WANTED

CANNERY WORKERS/ALASKA. Hiring \$600 weekly. Over 8000 openings. Male/Female. Free Transportation. Room and Board. Call E.I.C. Now! 1-206-736-7000 Ext. 916588 1

NEED RN relief for Sats. & Suns., hours 6-2 or 2-10. Salary competitive. Contact Russell Gray, 817/643-6700, Rising Star Nursing Center. 52

NEWLY Remodeled, 61-bed nursing home in Rising Star seeks leadership of RN Director of Nurses; competitive salary, excellent working conditions. Contact Russell Gray, 817/643-6700. 52

FOR RENT

PUBLIC Housing authority of Rising Star has apartments for rent for senior citizens or persons with a handicap or a disability. Equal housing opportunity. 817/643-3812 or 643-6791. 52

Rising Star sells RUBBER STAMPS SERVICES

TROY WARD CONST. New homes, remodeling, additions, commercial, agri. bldgs., barns, corrals, etc., metal bldgs. For free estimate call 817/725-6695 51-2

OLIVER WEST PUMP SALES & SERVICE 817/643-4683
Rising Star, Texas
Complete Systems
Sold & Serviced
2 1/2 mi. south of town

JOHN DEERE TRACTORS NEW AND USED
PEANUT EQUIPMENT
LILLISTON - KMC
PLANTERS-DISKS-
DRILLS-ROLLING
CULTIVATORS-
CHISELS
SELL OR TRADE

CLARK TRACTOR & SUPPLY, INC.
DELEON (817) 893-2081
COMANCHE (915) 356-3922
WHERE YOUR BUSINESS IS APPRECIATED. RS52

Notice

LEGAL
December 20, 1991
To Whom It May Concern:

The Rising Star I.S.D. is taking bids for insurance on all property and fleet of five buses and one pick-up until 2 :00 p.m. Monday, January 13, 1992. Sealed bids will be opened during the regular school board meeting scheduled at 7:00 p.m. Property descriptions including square feet can be secured upon request from Superintendent Dr. Donald E. Bryan in the Administration Building Offices at 116 North Main, Highway 183, Rising Star, Texas 76471 or by calling (817) 643-2717. The Rising Star I.S.D. reserves the right to reject all bids.

Invitation to Bid

CITY OF RISING STAR is now accepting bids for the relocation of donated trees to the Colquitt Williams City park. Written bids will be accepted at City Hall by mail or hand delivery at 104 N. Miller, Rising Star, TX 76471. 50-6

CITY OF RISING STAR is now accepting bids for the construction of the pavilion to be located at the city park. The approved design consists of laminated wood with steel posts. Written bids will be accepted at City Hall by mail or hand delivery at 104 N. Miller, Rising Star, TX 76471. 50-6

POLITICAL CALENDAR

The following candidates have authorized this newspaper to list their names as candidates for the March 10, 1992 Primary Election.

County Sheriff
R.B. White
(Re-election)

District 17 Representative
Charles Stenholm
(Re-election)

County Commissioner
Pct. 3
Dick Burgess

Home Phone 643-4236 Gasoline & Diesel

CAREY'S AUTOMOTIVE
Open Mon. - Fri. 7:30 a.m. - 5:30 p.m.
Sat. 8 a.m. - 12 Noon
James Carey, Mechanic
Hwy. 36 E. Rising Star
Shop Phone 643-7009 RS52

Main Street Auto Repair
Open Monday - Friday 8-5 p.m.
CUSTOM MUFFLER & TAILPIPE WORK
Jackie Palmore - Mechanic
643-1701 RS52
Hwy. 183 Rising Star, Texas

Mobil Oil Products All Other Major Oil Brands
Conoco Oil Products We Deliver Bulk Fuel

Cross Plains Petroleum (E.S.E. Inc.)
P.O. Box 219 6th at Ave. F
Cross Plains, Tx. 76443

David and Lenell Slinger Managers Phone (817) 725-6582
We Accept FINA, VISA, Master Card & Discover RS52

FARM BUREAU TEXAS

RETIREMENT PLANS
LIFE - LIABILITY
AUTO - HEALTH
HOMEOWNERS - FARM

FRANK AGNEW
AGENT

Rising Star Office 817/643-1010 Home 817/643-3189 P.O. BOX 470 EASTLAND, TEXAS 76448 Office 817/629-1704 RS52

THANK YOU

Words cannot fully express our deep appreciation for the loving kindness and sympathy extended to us by our friends at the loss of our son. Thank you from the bottom of our hearts for the prayers, beautiful flowers, cards and food.

**Gene & Reba Lyons
Paula & Marilyn Royce & Charlie**

TexSCAN
Statewide Classified Advertising Network
Advertisers: 20 Texas papers for only \$250.
Reach 3 MILLION Texans.
Call this newspaper for details.

COVENANT TRANSPORT: Hiring tractor trailer drivers. *1 yr. O.T.R. experience *Single 19-22c *East coast pay *Incentive pay *Benefits package *Minimum age 23 *Teams 27-31c 1-800-441-4394.

WOLFF TANNING BEDS: New commercial-home units from \$199. Lamps, lotions, accessories. Monthly payments low as \$18. Call today. FREE NEW color catalog. 1-800-228-6292.

LONG HAUL TRUCKING: Get into a high demand career as an owner/operator with north American Van Lines! Operate your own tractor. If you don't have one, we offer a lease-purchase program that is one of the best in the industry. No experience necessary. If you need training, we will train you, tuition free! You must be 21, have a good driving record, and pass substance abuse test. Call north American for information package. 1-800-348-2147. Ask for operator 489.

SENTINEL BUILDINGS: All-steel building kits, color walls. Engineer certified plans. 30 X 50 X 12 ... \$4,785;
40 X 50 X 14 ... \$6,127;
40 X 75 X 16 ... \$8,535;
50 X 60 X 14 ... \$8,097;
50 X 80 X 16 ... \$10,765;
60 X 100 X 16 ... \$14,918; Free brochures 1-800-327-0790.

ARE YOU COLLECTING PAYMENTS? On property you've financed? We'll give you cash now for those payments. Call National Fidelity Mortgage, Inc. today! 1-800-364-1072.

SNICKERS MARS: Be a distributor for the most famous brands in America. No selling. Investment required. 1-800-825-4058.

ECONO-MASTER STEEL BUILDINGS: 20 X 40 X 10 ... \$3,241;
30 X 40 X 10 ... \$3,930;
40 X 60 X 12 ... \$7,144;
50 X 100 X 14 ... \$11,995;
24 X 30 X 9 garage special \$2,795. Other sizes available, call Jimmy 8-5 M-F at 1-800-766-6688.

BILL NOLAN CALF FARM is offering 25 head of 10 day-old calves. Delivered directly to you on approval. Free Delivery. Beef Cross - \$180; Holstein - \$160; Guernsey - \$155. Call 715-758-8484. Ask for Bill.

HAVE YOU HAD A SILICONE breast implant? For information on your rights call **Waldman *Smallwood *Grossman ** Carpenter Attorneys at 409-833-9121. **Board Certified. *Not Board Certified.

THE RISING STAR
104 N. Main Street
Box 127 817-643-4141
©1992 Eastland County Newspapers, Inc. Publication no. (USPS 46650) Second class postage paid at Rising Star, Texas under Act of Congress March, 1870. Published every Thursday. Publishers, Mr. and Mrs. H.V. O'Brien.

Subscription rates per year: Eastland Co. and in a 30-mile radius of Rising Star, \$9; other Texas counties, \$13; out of Texas, \$19. No out of U.S. without APO.

POSTMASTER: Send address change to The Rising Star, Box 127, Rising Star, TX 76471.

Sheriff Report

Many subs expire Jan. 1,

RENEW NOW!

Don't let your profits get eaten up.

Protect your income with U.S. AG Multi-Peril Crop Insurance.

Mary L. Anderson
Rt. 5, Box 105 Comanche TX 76442
(817) 842-5239

USAG
Insurance Services, Inc.

Free Estimates
New Construction
Add-Ons * Remodeling
Insulation * Sheetrock
Tape/Bed * Texture
Metal Buildings * Roofing
CABINETS: Kitchen, Bathroom, Workshop, Business
L & J Construction
Lynn Hutton Jim Ratliff
817-725-7582 817-643-6464

Sales and Service at
Buddy's Plumbing & Appliance
112 N. Main Rising Star 817-643-7312

T-L's Quick Tow.
The towable system you move in minutes.

T-L's revolutionary new Quick Tow is the first towable center pivot that you can move in minutes, not hours. Optional hydraulic scissor jacks and a mobile pivot point, which houses all power components, make it possible to increase production on various size and shaped fields in less time, with less labor, and at less cost per developed acre. Choose the standard manual model or combine labor-saving options. The Quick Tow is available in several system lengths and designs to meet your exact irrigation and towing needs.

T-L's new Quick Tow features all the proven benefits that have made T-L the world leader in hydrostatic drive sprinkler irrigation. The continuous movement of T-L's Planetary Gears and hydrostatic drive delivers more uniform water application with less energy than stop-start electric systems. So you get years of trouble-free service with minimum maintenance and maximum performance.

Compare T-L's performance and history of success. You'll see that it pays to tow with T-L.



T-L Irrigation Company
P.O. Box 1047 / Hastings, NE 68901
(402) 462-4128 / TELEX: 438047 TLRG HAST

The choice is simple.

COGBURN REALTY
893-666 893-5898
893-2642 DE LEON

ACTION REALTY
WE NEED LISTINGS!!!
Equal Housing Opportunity
914-643-6516

AT RISING STAR:
3 BR, 2b Corner lot, laundry room, fenced garden, well. Call for details!
Car wash! Ready to go! Covered stalls, new pumps. Main highway!
1 lot for sale. Trees, need to see! Hooked for trailer.
2 lots at Shamrock Shores. Just in time for summer!
First time on market. Close to town! Rock house, needs some inside repair, large tree covered lot, several sheds! Priced to sell. Call for details.
3 BR, 1B Stucco sheds, large yard with trees, 10 acres, stock pond with fish. Call today!
2 BR, 1 B, owner willing to finance! Call.
James Smith, Broker, 915-646-0297
In Rising Star Call STELLA WARE 817/643-3591

PRICED TO SELL Modern 2 BR, 2B home at 416 S. Main. Well built home with good roof, vinyl siding, CH/A, many extras. Sits on 100X80 lot, has good well & pump as well as city water, includes adjacent fenced lot 80X250. Call 817-643-3423 after 5. 52

SELLING YOUR Home or buying? Call Stella Ware, 817-643-3591, your local real estate agent for Action Realty, Brownwood, James Smith, broker. 52

SERVICES

WILLIE VANDIVERE
Dirt, Calche Hauling
Build Driveways,
Lease Roads, Etc.
9-5 Call 643-2023
After 5, 643-6451

CAMPBELL'S
Cabinet Shop
& Construction
817/842-5875

CARPET
Cleaned, Restretched
Repaired, Sold, Installed
Scotch Guarding Available
No charge for moving furn.
Dub Meador
Cross Plains 725-7720

DeLeon IRRIGATION SUPPLY, INC.
Route 1 Box 22-A, De Leon
Phone 893-2123
Zimmatic Pivots • Ag Rain Hard Hose Guns • Cornell Pumps and all other types of irrigation equipment
Complete Service And Installation RS52

Paul Williams Roofing Co.
• FREE Estimates •
• All Work Guaranteed •
• Hot Tar & Gravel Composition •
• Shingles • T-Locks • Wood Shingles •
25 Years Experience In Eastland Area
Paul Williams Carbon, Texas
817-639-2330
If No Answer call 817-629-1020 RS52

Courthouse Report

County Clerk Marriage License-12-16-91

Daniel Gene Kearney and Annie Marie Doty
William Randall Bledsoe and Laura Evelyn Eaton
Melvin Randall Payne and Donna Faye McCafferty
James Ballard Connell and Emily Jean Tyson
William Bud Taylor III and Tamara Lynn Bennett

Criminal Docket
The State of Texas vs. Bobby Earl Johnston - Speeding appealed from J.P. #4.

The State of Texas vs. Stanley Ray McCutcheon - Speeding appealed from J.P. #4.

The State of Texas vs. Thomas Dean Brown - Speeding appealed from J.P. #4.

The State of Texas vs. Charles Dick Harris - Speeding appealed from J.P. #4.

The State of Texas vs. Billy Wayne Sanders - Criminal mischief \$20.00 or more but less than \$200.00.

The State of Texas vs. Mark David Jordan - Speeding appealed from J.P. #1.

The State of Texas vs. Suleiman Alsaleh - Speeding appealed from J.P. #1.

District Clerk Civil Docket 12-17-91
Stuart S. Coleman, Etal vs. Edgar McLendon, Etal

Happy Birthday
JANUARY 3
Chuch Gilliland, Colleen Cannistraci, Lida Mae Howard, Kathy King Ezzell, Daniel Burcham

JANUARY 4
Andi Fox

JANUARY 5
Ray Darnell, Charles Gepfer, Anna Ratcliffe, Brad Barnes, Leon Thompson

JANUARY 6
Mrs. W.C. Brush, Colleen Hook, Loraine Williams, Mavis Hart, Misty Holmes

JANUARY 7
David Grider, Larry McKinnerney

JANUARY 8
Tommy Darnell, Mary Ann Lee, Travis Alfred

JANUARY 9
Gary Burgess, Velma Stewart

RECEIVERSHIP
Patsy Howard vs. Eula Independent School District - To set aside award of Industrial Accident Board.

Lou Ella Mae Steelman, Ind. and as surviving spouse of Billy Ray Steelman vs. West Texas Utilities - Damages; Death.

The State of Texas vs. Patrick O. Bonney - Reimbursement.

Ford Motor Credit Company vs. Jack Simmons, dba Rockin S Ranch - Sequestration.

Alice Mae Prichard vs. Jack Moran Prichard - Divorce.

David Russell Scoville vs. Dianna Marion Scoville - Divorce.

Guest Slot

By H.V.O.

FLORENCE: MY pick for Italy. Old, compact, beautiful and exciting. Books say it's where the Renaissance was born, where Europe's cultural revolution was financed in large part by the banking family of Medici. The city boasts a half dozen museum of their construction and housing their collections. Hometown of Michelangelo where much of his work and the works of other geniuses are on display, it's a city to do on foot, and site for "A Room With a View," Forster's novel and the film. Our little hotel, Nuova Italia, on a little side street just off the main Nazionale is watched over by Signora Elida Vita, her son, Luciano, his Canadian wife, Eileen and granddaughter Daniela. Excellent little restaurant (menostrome, crusty bread and atmosphere) just across the narrow little street, and we learn, much to joy of some, "just around the corner" from Florence's bustling, sprawling, open-air Mercato San Lorenzo, hundreds of pushcarts crowd together along the streets around the San Lorenzo Church and the Mercato Centrale, offering hand-knit wool and mohair sweaters, leather jackets, handbags, wallets, gloves and briefcases, and of course T-shirts, sweatshirts and many other souvenirs. Six blocks of stalls outside, and inside a giant warehouse type building, fresh meat (hanging here, all fowls, pig, goat, beef, etc.), wine, fresh-made pasta, bakeries, and stall after stall of other speciality items. It's their super market, and a beehive of constant activity. Late October was turning cold and drippy, so we ate,

Florence

took a quick preview peek at the market stalls, mapped our next day, and called it a night in Florence.

Armed with guide book and city map we launched out early for Galleria dell'Accademia on foot. A non-descript building with a side entrance, housing some of the world's greatest art treasures: Michaelangelo's David, and seven other pieces, including The Prisoners (slaves emerging from the stone) and the second of his four versions of La Pieta (this one also showing John the Baptist. The David once stood outside in a city plaza, but fear of the Roman's perchance for mischief brought it inside for protection.

And then up a little street to Florence's Duomo which has dominated the city's skyline for five centuries. When it was built it was the largest unsupported dome in the world. It's exterior of white, red and green marble contrast to the dark-stone seen throughout the city. Adjoining is the Baptistry, dedicated to the city's patron saint, John the Baptist, with its highlight the pair of bronze exterior doors known as the Gates of Paradise.

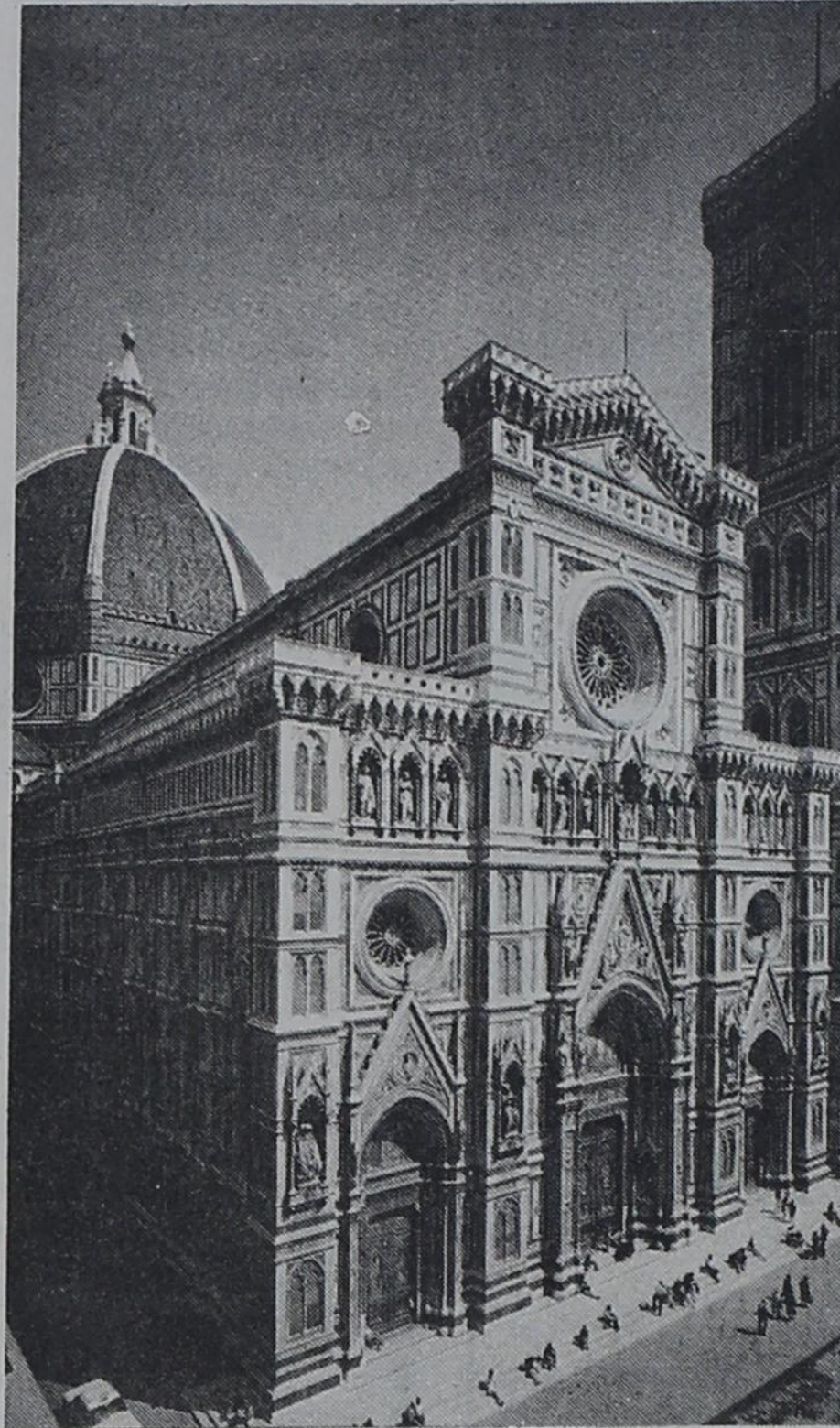
(Restocking on lire, we go into a nearby bank with a unique, safe entry: the revolving-type door will permit only one person at a time to slowly enter the lobby; exit is also at a slow, controlled speed. Here and elsewhere we found that you conduct your paper work at one window, then go to a heavily-guarded booth where a single teller handles the cash.) Our lunch was a pasta dish in a chic downtown pizzeria.

Venturesome, we boarded a city bus the guidebook told us would take us to the Michelangelo Plaza across the Arno River, with a breathtaking

overlook view of the entire city. It was right on both counts. And then we bused back to the Ponte Vecchio (ancient bridge of hundreds of shops) which we crossed, back to the main city and the Uffizi Museum, one of the most important art museums in the world with four centuries of art development. Second only to the Louvre in Paris, the Uffizi offers Botticelli's Primavera (The Allegory of Springtime) and The Birth of Venus, as well as Leonardo da Vinci's unfinished

Adoration of the Magi, Michelangelo's Holy Family, Raphael's self portrait, Titian's Venus of Urviso, Rembrandt's self-portrait, to name just a very few. Entry is up the "Magnificent Staircase," a killing four-flights, followed by hours of strolling-looking called for a taxi back to the hotel, but after a pasta-refueling, there was still a little strength, enough for market-hopping for a short time, and to a nearby pastry shop.

Thanks to a long lunch, 12 to 3, all shops are open late and the folks are out. The newsstands all offer lottery tickets, world newspapers and bold-covered magazines. Tomorrow, we go to Venice, but we'd all gladly come back to Florence.



The Cathedral



The Pieta

your marketplace the
WANT ADS

Cisco Press - Eastland
Telegram - Ranger
Times - Rising Star -
Callahan County Star
Thursday,
January 2, 1992.



Looking At Florence

READ THE
CLASSIFIEDS

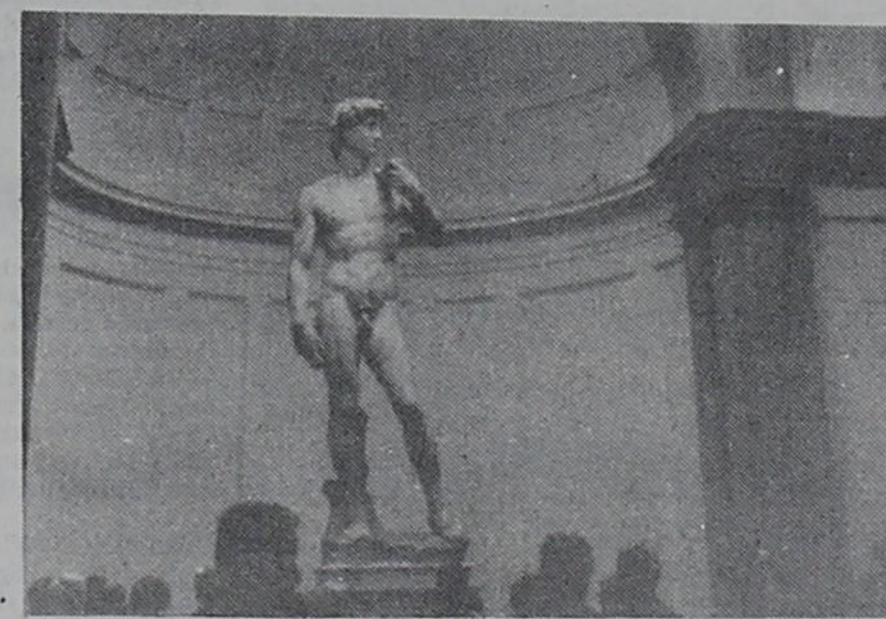
RANDY GATTIS PLUMBING

Residential & Commercial Repairs
Remodeling & New Construction
Electric Sewer & Sink Cleaning Machines
Water Heaters & Plumbing Fixtures
State Licensed - Master License - M-18038

Free Estimates
Call: 442-1688 24 hrs/day
106 Ave. I Cisco, Texas



Symbol Of Florence



David

EVENING COLLEGE
Over 100 Degree - Related Night Courses
TARLETON STATE UNIVERSITY

REGISTRATION
Tuesday, January 14, 1992 6 PM-8 PM
TARLETON CENTER

Call 817-9121 for information

Classic Creations Jewelry

After
Christmas Sale

New Merchandise In Stock

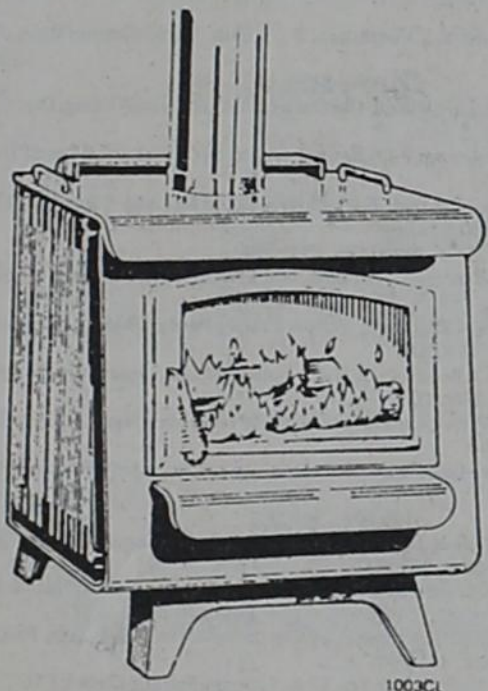
25-50% Off All
Items In Stock

104 S. Seaman Eastland
629-3484



The Earth Stove

Closeout Prices
On All Stoves
In Stock



Model 1003CL Features
* EPA Certified
* Long burning catalytic
* Built in flue by-pass damper
* Gold plated glass door
* Accepts up to 18" log
* Optional blower system

EPA Certified

E.D.C.O.
817-559-2273
FM 3099 #204
Breckenridge, TX

Installation Available
...
Other models to
choose from

EASTLAND GREAT TIMES

I-20 Access, Eastland
629-3921

Special Holiday Hours

Matinees December 26th, 27th, 29th, & 30th
12-5 p.m. \$3

NEW YEARS EVE LOCK-IN

7 p.m.-7 a.m. \$10

Closed Dec. 23rd, 24th, 25th

Fun & Games • Skating • Raquetball

HAPPY HOLIDAYS

from all of us at
EASTLAND FARM & RANCH INC.

Offering you only the best in service & products.
We sure do appreciate you. Thanks for a very successful year.

629-2173

629-8035

k-4

LIQUID & DRY FEEDS • VETERINARY SUPPLIES • HERBICIDES • MORTON SALT • SWEETLIX • GARDEN-LAWN SUPPLIES • INSECTICIDES • ACCO

800 Number Established For Flood Aid, Gramm Says

WASHINGTON - The Federal Emergency Management Agency has established a toll-free "800" number for Texas flood victims to call for help in rebuilding, U.S. Sen. Phil Gramm said today.

"Individuals and business owners who have suffered damage in the ongoing flooding should call 1-800-4462-9029 to contact FEMA and to

make an initial request for assistance," Gramm said.

"FEMA representatives can explain the full range of federal assistance, including direct grants, low-interest loans and temporary housing from FEMA, the Farmers Home Administration and the Small Business Administration," said the senator.

"They can also take the information necessary to apply for all these programs over the phone and route the application directly to the agency responsible," he noted.

Gramm said that FEMA will accept applications not only from the five counties already declared as disaster areas, but from flooded areas throughout the state.

"We expect that 15 to 20 more counties will be added to the disaster declaration list in the coming few days, substantially expanding eligibility for federal assistance," the senator said.

"I intend to assure that the full range of federal help is on line even before the flood water recedes," Gramm said.

Rural Communities Trying Unique Approach To Needed Medical Help

Rural Texas communities, challenged by the need to fill vacancies in all health care professions, can now take advantage of a unique state-supported program, the Outstanding Rural Scholar Recognition Program administered by the Center for Rural Health Initiatives. The Center is accepting applications until February 14, 1992, for the academic year beginning September, 1992.

Under the program an organization in a rural community acts as a sponsor to a student in a health care field. The sponsor agrees to contribute financial support for the student's educational and living costs. In turn, the

student agrees that he or she will work for the sponsor as a health care professional upon graduation.

Students who are selected as an Outstanding Rural Scholar based on academic records and recommendations are also eligible for loans under the Outstanding Rural Scholar Recognition Program. State funds are available through this program to match the rural sponsor's contribution. For each year that the student works for the sponsoring community organization after graduation, one year's principal and interest on the loan is forgiven.

There are now 10 rural Texas communities spon-

soring students in the program in such health care fields as medicine, nursing, occupational therapy and physical therapy.

Many rural Texas communities already subsidize educational expenses for local students pursuing a health career. The Outstanding Rural Scholar Recognition Program can help a commu-

nity ensure a well-trained and committed health care work force for the future.

(For information, contact Bill Lydon, Rural Health Specialist, at the

Center for Rural Health Initiatives, 211 E. 7th St. Ste. 915, Austin, Texas 78701 (mailing address: P.O. Drawer 1708, Austin, TX 78767-1708), or call 512/479-8891.)

817/629-3631

OPEN 8:00 - 5:30
SAT. 8:00 - 12:30



EXPRESS PHOTO
SAME DAY PHOTO PROCESSING
COLOR, BLACK & WHITE, PHOTO REPRODUCTION

601 W. Main

BILL CULVERHOUSE,
OWNER



Wedding
Sports
Studio Pictures
Passports
I D Cards
Immigration pictures

Serving all your
photographic needs

5-104

EVENING COLLEGE

Over 100 Degree - Related Night Courses
TARLETON STATE UNIVERSITY

REGISTRATION
Tuesday, January 14, 1992 6 PM-8 PM
TARLETON CENTER

Call 817-9121 for Information

5-1

D. J.'s Custom Cut Firewood Service

Delivered & Stacked
Cut any size 12" to 24"

\$1 a mile after 10 mile radius.

\$70⁰⁰ Cord
\$40⁰⁰ Rick

Call: 817-629-2805

Oak - Mesquite

Also: Tree Trimming and Removal

5-104*

Pharmacy Topics

By Bob Mueller

The power of positive thinking...audio tape that told patients the operation was going well and that they should be calm and relaxed helped them stay comfortable after surgery with less morphine than those who didn't hear the suggestions, British research reports.

Active exercise -- one or more hours a day -- doubles protection against hip fractures, according to a study of older adults at the University of Southern California School of Medicine. Vigorous walking and jogging were more beneficial than golf and fishing.

Experimental procedure, reported in the journal *Obstetrics and Gynecology*, permits women in labor to control the amount of anesthetic given during the birth process.

For patients with chronic sinus problems, new surgery utilizes a thin fiber-optic scope passed through the nose to view the ethmoid sinus and scrape away any excess tissue very precisely without making incisions. Procedure involves minimal blood loss.

Before considering surgery, try the options in sinus relief we feature at Wal-Mart Pharmacy, Hwy. 80 East, Eastland, 629-3347. Make us your health headquarters.

cersb104

The Kat's MEOW

629-3433 Open Mon.-Fr. 9:00 - 6:00
Sat. 1:00-4:00
Closed Wednesdays

Haircuts • Permanents • Socolor •
Manicures Nail Art • Shampoo-Sets
Sculptured Nails

Kara Ford Owner/Operator
Walk-Ins Welcome

5-1

WAIT!!

Check With Us Before You Buy.
Local Owned Business For 35 Years
Siding: Vinyl - Steel - Aluminum
Windows: Storm - Replacements - Thermal Break
Sun Rooms - Solariums

100% FINANCING AVAILABLE
NO DOWN PAYMENT TO QUALIFIED BUYERS
ON INSTALLED (labor and material) JOBS

For Free Estimates Call 442-2077, or
If Out of Town Call 1-800-772-8532

CERTIFIED TEXAS VETERANS LAND BOARD CONTRACTOR

S & M Supply - Reynolds Manufacturing
105 East Eighth
Cisco, Texas 76437

5-3

Clearance Sale

Everything In Store
25% OFF

Jan. 2-3-4

Songs And Psalms
Bible-Book & Gift Store
721 Conrad Hilton, Cisco
817/3752

5-1



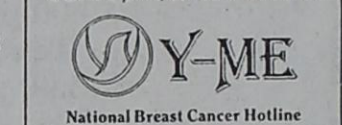
YOU ALWAYS HIT THE MARK WITH THE CLASSIFIEDS

EVERY 3 MINUTES A WOMAN IS DIAGNOSED WITH BREAST CANCER.



EVERY 12 MINUTES A WOMAN DIES FROM BREAST CANCER.

Get the facts. It could save your life. Call (800) 221-2141, weekdays, 9 a.m. - 5 p.m., central time zone.



National Breast Cancer Hotline

Classifieds Get Results!

MAJESTIC THEATRE 629-1322

"A wonderful film... full of clever, human and funny moments. I loved this movie."
- Pat Collins, *WOLFE*

MY GIRL

Dan Aykroyd Jamie Lee Curtis Macaulay Culkin Anna Chlumsky

Fri. • Sat. • Sun. • Mon.
All Shows: 7:30 p.m. - \$3.00

Happy Holiday Season

From Dr. Clute and Staff

F. Brian Clute, D.D.S.
General and Cosmetic Dentistry
1004 W. Main in Eastland 629-8581

Office Hours by Appointment

I-20 MOTORS

19th & I-20
Cisco, Texas
(817) 442-4262 or 442-2161

87 Mercury Topaz, 4 door, all wheel drive, auto, air, cruise.....\$3350	89 Escort, 4 spd., w/air, nice car.....\$3495
87 Ford Ranger Pickup, 5 sp., air, nice pickup.\$3350	85 GMC Cargo Van w/tilt, cruise, auto, air.....\$2995
89 Tempo 4 dr, auto, air, cruise, tilt, AM/FM Cassette, 1 owner.....\$3995	83 Oldsmobile, Delta 88 Royale Brougham, 4 dr., auto, air, extra clean car.....\$2250
81 Chevy Luv Pickup, 5 sp., deisel.....\$2550	87 Plymouth Horizon, auto, air, clean car.....\$1995
88 Chevy Celebrity Wagon, extra clean, fully loaded, auto, air.....\$4550	77 Chevy Blazer, auto, air, 4 WD, excellent condition.....\$2250.
84 Dodge Good Times Van, Fully loaded.....\$5495	89 Tempo, 3500 miles, red, 2 dr.....\$4995
89 Ford Festiva L 5 sp., air, extra nice.....\$2995	89 Tempo blue, low miles, 2 dr, 5 sp., 3500 miles....\$4795
89 Ford Tempo Auto, air, cruise, tilt, wheel, AM/FM, tape.....\$4250	89 Escort Wagon, low mileage.....\$4950
90 Escort Wagon LX Auto, air cruise, tilt, extra nice.....\$4250	89 Ford Tempo, red, auto, air, low mileage.....\$4450

Also For Sale: Lake Cabin South of Lake Cisco.
Other Cars To Choose From

5-104

Pioneer Patchwork

by Irma Miller

The community received another two inches of rain during the week.

Jean Fore went to Frankie and Oliver Smith's for Christmas. They also had other company during the holidays.

Jean and James Alexander were in Corpus Christi Thursday enjoying the holiday with their daughter, Star Appleton, and her family and in Dallas on Wednesday celebrating with their son, Jim Alexander, and his family.

D.P. and May Jones went to Missouri to bring home their grandson, Pate Jones, to spend Christmas here, and were in Abilene on Friday.

Jewel Foster was one of the 22 in her family having Christmas with her children in Clyde, Charles and Lucille Foster. Among the others present were Gene and Norma Foster, a grandson and his family from Nevada and a grandson and family from Dallas. Jewel received phone calls from all over.

Lottie Sooter's children came home for Christmas from Lubbock and from Abilene.

Nine of Nell and Joe Fleming's family had Christmas dinner together at Jim and Charlene's.

Bob and Barbara Powell enjoyed Christmas in Austin with Bob's daughter and family.

Obituary

Beulah Glisson

ABILENE - Services for Beulah Jewel Glisson, 78, were at 2 p.m. Tuesday at Calvary Baptist Church with the Revs. Wayne Oglesby, Doug Watts and Ed Nowell all officiating. Burial was in Elmwood Memorial Park, directed by Elliott-Hamil Funeral Home. She died Saturday at a local hospital.

Mrs. Glisson was born in Mexia in Limestone County. She moved to south Taylor County, between Wylie and Buffalo Gap, as a young girl. She attended Sambo school, which is now Wylie schools.

She was a member of Calvary Baptist Church and Faithful Workers Sunday School Class. She

Christmas Eve night Laverne and Cowan Hutton had their children together at home. Christmas Day they had turkey dinner with all the trimmings with the family gathering including Laverne's mother, Mrs. Ella Dean, and grandchildren, Matt, Jamie, Tabitha and Robbie.

John and Irma Miller were glad to have some of their children home at Christmas. Irma was sick so Becky prepared the traditional turkey and other goodies. All seven of the family who were present enjoyed the feast immensely.

formerly was a member of Monday Night Couples Bowling League at the Veterans of Foreign Wars, which is now Pro Bowl.

Survivors include her husband, Grice Glisson of Abilene; three daughters, Doris (Mrs. Burneal) Watts of Abilene, and Betty (Mrs. Ralph) Gillispie and Nancy (Mrs. Lem) Kennedy, both of Irving; a sister, Ethel Moore of Rising Star; two brothers, Roy Thornton of Abilene and Clarence Thornton of San Angelo; 10 grandchildren; and 20 great-grandchildren.

Rising Star Nursing Center

Vickie Majors Activity Director

MON: We did daily visits, in-room activities, passed out mail and played bingo. Players were Albert Cline 2, Bryant Houston 1, Addie Green 1, Mary Hord 2, Maggie Christian 1, Daisy Smoot 1, Opal Gattis 2, Jennye Turner 2, Laura Bennie 1, Rose Nichols 1, Velma Baker 0, Leona Welch 0, Ruby Booth 0 and Charles Rixford 3.

TUE: We did daily visits, care plans, passed out mail and Ruby McCowen and Bobby Jack sang for us.

WED: We did daily vis-

its, exercises and ring toss, passed out mail and played bingo. Players were Albert Cline 1, Bryant Houston 2, Addie Green 1, Mary Hord 2, Daisy Smoot 2, Opal Gattis 3, Ruby Booth 0, Jennye Turner 3, Laura Bennie 2, Velma Baker 0, Leona Welch 3, Maggie Christian 0 and Charles Rixford 2.

THU: We did daily visits, we exercised and had a snack; we had employ-

ees' Christmas party. Later that night we had residents' Christmas party and Santa Claus was here visiting with everyone. We had snacks and coffee and tea then we passed out presents. We would like to thank Mrs. McGinn for bringing some family and friends to sing for our residents. Everyone enjoyed listening to them.

We would also like to thank the Methodist Church for the gifts they gave to each of our residents.

We also want to thank the Church of Christ for

these gifts they gave to each of our residents.

Also thank the 4-H group for giving our residents angels and oranges. Our residents enjoy having the children to visit them.

FRI: We did daily visits, exercised and watched it rain, passed out mail and played bingo. Players were Albert Cline 2, Bryant Houston 1, Addie Green 2, Mary Hord 4, Maggie Christian 2, Daisy Smoot 2, Jennye Turner 5, Ruby Booth 1, Opal Gattis 5, Leona Welch 2, Laura Bennie 4, Velma Baker 2 and Charles

Rixford 5.

Wilson Carleton's visitor was Sybil Canner from Eastland.

J.N. Childers's visitors were Arnold Pitman and family.

Opal Gattis's visitors were Wilda and Vickie Dennis.

Pearl Petty's visitors were Debbie, Leigh, Lynn and Buddy Beleu.

We would also like to thank the Church of Christ for Sunday services.

We have another resident who's birthday is in December: Velma Baker's is December 30, 1917.

EVENING COLLEGE
Over 100 Degree - Related Night Courses
TARLETON STATE UNIVERSITY

REGISTRATION
Tuesday, January 14, 1992 6 PM-8 PM
TARLETON CENTER

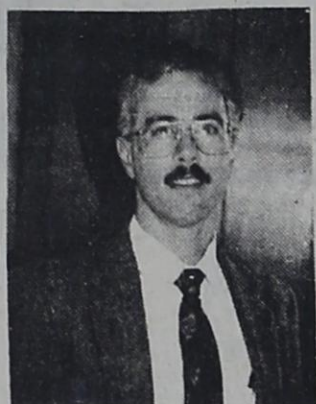
Call 817-9121 for information

RENEW NOW

Rising Star, Eastland County,
Towns within 30 mi. of Rising Star
\$9.00 per year
Other Texas Counties
\$13.00 per year
Out of State
\$19.00 per year
The Rising Star
P.O. Box 127
Rising Star TX 76471

"Why Farm Bureau life insurance?"

"Value. Their rates are competitive and help you get great value for your money. Your agent can help you plan for the future with a wide range of products. Life Insurance, Annuities, IRA's, Mortgage Cancellation, Disability Income, Whole Life ... you name it. No wonder Americans from every walk of life depend on Farm Bureau Insurance."



Frank Agnew
817/643-1010
817/629-1704



Helping You Is What We Do Best.

Southern Farm Bureau Life Insurance Company
Jackson, Mississippi

CISCO JUNIOR COLLEGE

"Serving the Big Country with High Quality,
Low Cost State Support Educational Programs"

1992 SPRING REGISTRATION

ABILENE EDUCATIONAL CENTER

841 North Judge Ely Blvd
January 8th and 9th
9:00 a.m.-3:00 p.m. & 6:00 p.m.-8:00 p.m.
January 10
9:00 a.m.-3:00 p.m.

CISCO CAMPUS

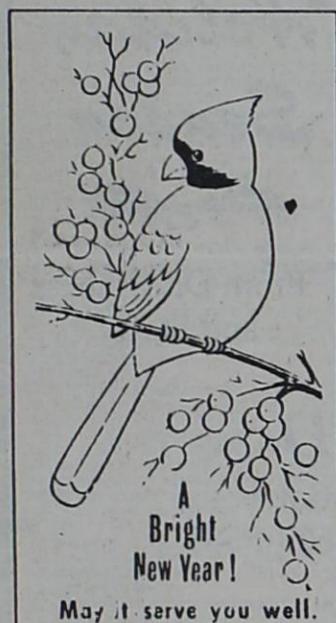
Harrell Fine Arts Building
January 14
9:00-4:00 p.m. & 6:00 p.m.-8:00 p.m.
Advising (Cisco Campus Only)
January 13

**FIRST CLASS DAY
JANUARY 15, 1992**

For Full Information Call
Abilene 915/673-4567
Cisco 817/442-2567

CALL FOR FINANCIAL AID INFORMATION

An Equal Opportunity Institution



Bright New Year!

May it serve you well.

L&J Construction

Lynn Jim
725-7582 643-6464

The Rising Star
Sells
RUBBER STAMPS

BASKETBALL

WILDCAT BASKETBALL '91

Rising Star Tourney
Thur.-Sat., Jan. 2-4

Lady Cats
Wildcats

Lingleville, Here
Tues., Jan. 7, 6:30

BASKETBALL

Go!! LadyCats!!	Chamber of Commerce & Agriculture 515 W. College 643-1209	Peoples State Bank Rising Star Branch, Member FDIC 206 W. College 643-2811	Dr. B. T. Carpenter 512 W. College 643-3141	Palace Drug Store 100 N. Main 643-3231	Go!! Wildcats!!
L & J Construction 430 E. Mill 643-6464	Winfrey Feed & Peanut Co. E. Hiway 36 643-6251	Buddy's Plumbing & Appliance Serv. 430 E. Mill 643-6464	The Rising Star 105 N. Main 643-4141	Waste Systems™ 800-683-4234	Rising Star One Stop J. Bible, Owner J. Burcham, Mgr. 109 E. College 643-7011
Higginbotham Funeral Home 803 N. Main 643-4321	Frank Agnew Farm Bureau Agent 104 N. Main 643-1010	Leonard, Butler & Goldston Bookkeeping & Tax Serv. 643-7430	Green & Assoc. Insurance Agency 200 S. Main 643-7817	True Value Rising Star Lumber & Hardware 200 E. College 643-4131	Rising Star Nursing Center 409 S. Miller 643-2681
Murphree Oil Co. 308 W. Mills 643-2341	Main Street Auto Repair 127 N. Main 643-1701	#1 Video Mildred Childers, Owner 200 S. Main 643-1009	Jim Ratliff Welding 430 E. Mill 643-6464	Max's Quickway 200 W. College 643-1490	The Ole Store 124 N. Main 643-2221