

Progress Is—
Making
Good Things Happen

THE RISING STAR

Where Three
Good Texas Counties
Get Together

Rising Star, Texas

© 1988 Eastland County Newspaper Co.

Established in 1890

Thursday, September 8, 1988

25 cents

Number 36



WILDCAT TALES RISING STAR HIGH JOURNALISM

Band Season Opens

Kittens Starting to Purr

Although the 1988 Wildcat football season is well underway, the Kitten football team is just starting. The Kittens began practice for this year Monday afternoon. About 22 Jr. High kids showed up, including five returning offensive and defensive starters.

After the first practice, Coach Nathan Allen feels that many players are young, inexperienced and not ready to work hard. When asked if they would win their first game against Santa Anna, he replied, "They'll be ready to play." He believes they will have to work hard to win.

He feels the Kittens have

strength in their fullback, Jarod Horton, and the line, but are weak in size, lack of backfield depth and overall lack of experience.

Chris DeLong is being looked at for quarterback and he is confident that he could lead the team to a victory over Santa Anna.

The Kittens will host Santa Anna here September 15, at 6:00 p.m. These kids may be young, but they need your support, too.

Someday these Kittens will be the Wildcats and you surely wouldn't want to miss the "biggest" game of the season. Chris DeLong promises, "We're gonna beat 'em 50 to nothing!"

Roanen Barron

Relatives Live In Cisco

Search Intensifies For Missing Girl



CORTNEY LYNN CLAYTON

Authorities throughout the state were still searching Tuesday morning for Cortney Lynn Clayton of Stamford who has been missing since about 8:45 p.m. Friday.

She is the seven-year-old daughter of Stan and Candice Clayton of Stamford and granddaughter of Ruth Conger of Cisco. She is the niece of Jackie Conger, Johnny Conger and Teresa Martin, all of Cisco.

The little girl's parents and brothers formerly lived in Eastland. Mrs. Clayton was employed as a nurse at Ranger General Hospital, and Mr. Clayton worked at Russell-Newman in Cisco.

Cortney was reported missing after she failed to return home Friday evening after going to a grocery store a block from her home.

Authorities are approaching the disappearance as an abduction.

Crimestoppers and the Clayton family are offering rewards for information leading to the girl's return.

Anyone with any information is asked to call Jones County Sheriff Mike Middleton at 823-3201; Stamford Police Department at 773-3647; or Jones County Crimestoppers at 823-4111. The Abilene office of the Federal Bureau of Investigation is also assisting in the search.

Cortney Clayton is about four feet tall with shoulder-length blond hair, brown eyes and freckles. When she entered the M-System store along State Highway 6 in Stamford Friday night she was wearing a white T-shirt with print on the front, maroon terry cloth shorts and blue tennis shoes with white laces. She has pierced ears and a scar on her right index finger.

This year's Wildcat Marching Band began practices on August 29. The band has showed much improvement already and promises to be even better as the year progresses.

The band put on their first performance of the year at half-time of the Rising Star vs. Santo game. They played several enjoyable tunes, such as "Magnificent 7" and

"Tequila," and ended with the fight song. The Wildcat Band also made the game a little more enjoyable for the fans with their music during the game.

The band will be rehearsing on Tuesday nights for the rest of the football season to prepare for Friday night performances and marching contest.

Maxine Perales

'Pepsi Drop' Is New Homecoming Event

The Rising Star High School Cheerleaders will sponsor a "Pepsi Drop Contest" as a part of the homecoming activities on Saturday, October 1, at 4:00 p.m.

A "Pepsi Drop Contest" is almost exactly what it sounds like. A cow (named Pepsi) will be put on a

numbered field until she leaves a "drop" or "deposit" on a specific number. Whoever has the same number on a ticket wins the prize!

Proceeds will go towards the Athletic Awards Banquet to be held next spring.

Stephanie Long

Festival Entertainment Is Shaping Up

The entertainment schedule is starting to shape up for the Old Rip Festival to be held in downtown Eastland on Saturday, October 1.

Of course the Old Rip Parade, which is to start at ten o'clock Saturday morning, will begin the day's entertainment. And the parade promises to be large again this year with a lot of good sights and sounds.

After the parade, various groups will entertain near the booths to the south and west of the Courthouse. And many items of good and drinks will be available to those viewing or participating in the displays, games and entertainment.

The entertainment schedule is still subject to change but it looks like Ronnie Gill's Bluegrass Band from Buffalo Gap will follow the parade with a concert.

Tumbling is part of the routine of the Eastland County Popovers, a group of children and teens who will entertain next.

And 'on with the dancing girls' as the Jamie Dee Dancers, a talented and well trained group of dancers ranging from small children to adults display their mastery of dances ranging from ballet to jazz.

Mrs. Jeffcoat's Folklife Dancers from Siebert Elementary School in Eastland will demonstrate some of the dance that are a part of our culture and heritage.

Next its 'off to the races'

with twenty cyclists speeding to the finish line in pursuit of a prize. This event sponsored by Edward D. Jones & Company will be limited to contestants ages four to six racing on tricycles.

And then there will be an auction and everyone seems to love auctions, but this won't be just any auction, it will be conducted by the Wrangler Belles. And the Cisco Junior College girls' drill team which often stars on television and has become both a national and an international attraction will entertain until time for the evening event.

School Menu

SEPTEMBER 12-16

MONDAY

LUNCH: Beef Stroganof, green beans, salad, rolls, pudding

BREAKFAST: Muffins, fruit, milk

TUESDAY

LUNCH: Tostados, English peas, salad, cake

BREAKFAST: Eggs, sausage, toast, juice, milk

WEDNESDAY

LUNCH: Chili & beans, corn, coleslaw, cornbread, cobbler

BREAKFAST: Toast, bacon, fruit, milk

THURSDAY

LUNCH: Meat loaf, mashed potatoes, mixed vegetables, salad, rolls, jello

BREAKFAST: Cereal, juice, milk

FRIDAY

LUNCH: Hamburgers, lettuce, tomatoes, onion, pickles, chips, ice cream sandwiches

BREAKFAST: Biscuits, gravy, sausage, juice, milk



Go
Wildcats!

Local Wildcats Allow No Invasion by Santo Species

The Rising Star Wildcats started the season off with a victory as they rolled over the Santo Wildcats 47-0 in front of an enthusiastic home crowd.

The Wildcats kicked off to Santo and forced them to punt four plays later. The Cats were 1st and ten at the 39 yard line, but had a fumble. Santo took over but could not take advantage of the turnover when Alan Havens and Stacy Green teamed up to sack the quarterback.

The first Wildcat touchdown came with 4:49 left in the first quarter when Derrick White scored from the one yard line. Despite a roughing the kicker penalty, Stacy Green's kick for the extra point was good and the Wildcats led 7-0.

On the ensuing kick-off, Brian Bailey tackled the Santo Wildcat on Santo's 10 yd. line. Stacy Green had another backfield tackle and Santo was forced to punt again. Santo faked the punt and made enough for the first down before Cody Wilson made the tackle. Following an offside penalty, Santo had a 1st and 5 yds. to go. The Wildcat defense rose to the challenge and Derrick White came up with a quarterback sack. The next Rising Star score came when Lee DeLong scored on a seven yd. run. Stacy Green's PAT was good and with 9:53 remaining in the first half, the score was 14-0.

On Rising Star's next offensive drive, Derrick White found the end zone, but it was called back on a penalty. Kevin Bond ran a reverse for 12 yards and the touchdown; this time there were no flags. Following a low snap, holder Lee DeLong tried to run the ball in for the two point conversion, but was stopped short of the goal line. With 5:26 left on the second quarter clock, the Cats led 20-0.

The Wildcats' Stacy Green managed to score on the next drive, but again the score was negated with a penalty. Quarterback Jimmy Evans sneaked in on the next play and Stacy Green's PAT was good with only :41 seconds before the half-time buzzer went off. The Cats were ahead 27-0.

The second half started the way the first half ended. Jimmy Evans connected with Reil Barron on a 30 yd. touchdown pass, but once again there was a yellow flag. Instead of a touchdown, the Cats had a 1st and 20. The drive continued to be plagued with penalties as Derrick White had a 30 yd. run called back. However, the Wildcats were determined and this time Evans hit Donnie Alcorn for a 20 yd. touchdown pass. With 9:07 left in the 3rd quarter, Stacy Green's PAT was good and the score was Rising Star 34, Santo 0.

The Wildcats scored again when Cody Wilson sprinted 5 yds. into the end zone. This time Green's PAT was off to the left and the score was 40-0.

On the last drive of the 3rd quarter, Rising Star was forced to punt. The punt was blocked and Santo had their best field position of the

night when they took over on the Rising Star 35 yd. line. The Wildcat defense held as Donnie Alcorn managed to sack the quarterback.

The Wildcats' 4th quarter drive was stalled and they were forced to punt. A roughing the kicker call on punter Stacy Green resulted in a 1st and 10 on Santo's 28 yd. line. Derrick White scored on a 25 yard dash with 6:00 left in the game. Green's PAT was good and the Cats now lead 47-0.

On Santo's next drive, it was 4th and inches and they decided to go for it. The Wildcat defense swarmed and Brian Bailey and Jason Bible teamed up to sack the quarterback for a 20 yd. loss.

Despite a 15 yd. penalty, it was Rising Star's ball. During the next drive, Santo managed to intercept a Brandon Geye pass, but they were unable to capitalize on it when they fumbled and Bobby Flores recovered for Rising Star.

Late in the game, the Wildcats were again in scoring position, but a fumble gave Santo the ball. Time ran out and the final score was Rising Star 47, Santo 0.

Coach Allen was very pleased with the offensive blocking. Our backfield averaged 10.8 yds. a carry and everyone played. He feels a lot of his younger athletes gained some much needed experience.

We should have a much tougher opponent next week when we travel to Santa Anna to take on the Mountaineers, but as long as everyone stays healthy and we work on eliminating our penalties, we should be 2-0. Stats are as follows:

Rushing: Derrick White, 16 carries for 181 yards; Donnie Alcorn, 5/96; Stacy Green, 6/69; Kevin Bond, 7/57.

Receiving: Donnie Alcorn, 1 reception for 20 yards; Derrick White, 1/20.

Passing: Jimmy Evans, 2 attempts, 2 completions, 40 yards; Lee DeLong, 1/0/0; Brandon Geye, 1/0/1

Punting: Stacy Green, 1 attempt, 43 yards

Tackles: Stacy Green, 5 tackles, 6 assists; Toby Long, 4/7; Lee DeLong, 4/2; Derrick White, 2/5

Kick Returns: Reil Barron, 2 returns, 29 yards; Lee DeLong 1/5

R. Star	Santo	
26	1st downs	6
8	Pntrations	0
40/432	Rsh/yds	21/71
40	Pass yds	29
4/2/1	All/comp/int	2/8/0
472	Total yds	100
1/43	Punts/avg	-
2	Fmblost	1
15/135	Pnltes	8/55
SCORES		
7	1st	0
20	2nd	0
13	3rd	0
7	4th	0
47	Total	0

Wildcats Booster Club Elects Officers

A hamburger supper, hosted by the Sports Booster Club was held at 7:30 on August 18. Club President, Ricky Bailey, introduced head coach, Nathan Allen.

Coach Allen thanked the community for its support and emphasized how important the community is to a successful athletic program. He then introduced the football players, the cheerleaders and the assistant coaches, Le Jones and Robby Stuteville.

Anna Ezzell, cheerleader sponsor, and the Wildcat cheerleaders furnished the ice cream for dessert.

Newly elected officers of the Booster Club are president, Debbie White; vice president, Susan DeLong; secretary, Shelly Bailey; treasurer, Debbie Green; and reporter, Barbara Long.

The Booster Club will meet each Tuesday at 7:30 p.m. at the high school library. Everyone is encouraged to come and see the game film.

4-H Bake Sale Is Saturday

The 4-H will have a bake sale on Saturday, September 10, at 9:00 a.m. in front of Family Food Store.

The Rising Star 4-H Club will be hosting a country-wide 4-H Awards Banquet in

October. 4-H members work hard in a variety of project areas to earn these awards. We are planning a very nice banquet, so please support our effort. Thank You.

community calendar...

2nd MONDAY
SCHOOL BOARD

2nd TUESDAY
CITY COUNCIL
CHAMBER OF COMMERCE

2nd WEDNESDAY
LICENSE TAGS, J.P. Office, S. Main

EACH THURSDAY
SENIOR CITIZENS

EACH SATURDAY
BINGO, American Legion Hall

COMMUNITY GARAGE SALE

The Sipe Springs Community is having a garage sale at the community center on Friday & Saturday from 8 to 5.

SCHOOL CALENDAR
THURSDAY, Sept. 8 - School pictures-8:10 a.m. Senior pictures.
FRIDAY, Sept. 9 - 8 p.m. Rising Star vs. Santa Anna, at Santa Anna.
Reil Barron

Benefit Roast Set at Cross Plains

The Callahan County Cancer Society will be hosting its first annual Benefit Roast, honoring Professor O.B. Edmondson, on Saturday, September 10, at

the Cross Plains Community Center from 6:00 to 7:30 p.m.

You can purchase tickets at the door for a donation of \$5 or more, and refreshments will be included.

Elm Cemetery Donors

Memorials and donations to the Elm Cemetery Association for the year of 1988:

Memorials for Margie

Earp: E.A. McBeth and Family, Adele Whitter, David and Mozell Kerr, Paul and Blanch Cawley, Pat and Carolyn Agnew, Ina L. Cowan, Jack and Stella Reed (for Margie and R.M. Earp). Total donations: \$400.

Memorials for E.A. McBeth: Wilma Smith, Adele Whitter, Jean Edwards, Carolyn Agnew and Blanche Cawley. Total donations: \$40.

Other donations: Sam Henry, Willard Rogers, Patsy Weyers, Leta B. Cole, Eddie Mae Burns, Ella Burns, Velda Jean Walker and Elbert E. Hull.

Total memorials were \$440 and total of other donations was \$415 for a grand total of \$855 for the year.

\$2,500.00 REWARD

Money may be mailed to First State Bank, Rising Star, 76471, to be deposited in the Witt Reward Fund. The account number is 72-360-6. No arrests have been made in the rape/murder case. Era Witt, 87, was found dead in her home on June 7.

Any person with information leading to the arrest and indictment of the person or persons responsible for the crime may call 643-4261 or 643-3421. Information may be given anonymously and arrangements will be made for the payment of the reward.

CLASSIFIEDS

Thursday, September 8, 1988

643-4141

THE RISING STAR

FOR SALE

FOR SALE Golf carts & golf cart trailers. To see, come to 3rd house on I-20 west of Union Hill Rd. between Baird & Clyde, or call 915-893-2262 b52

PEAS, PEAS, PEAS Be ready to start picking Sat., Aug. 27. 7 mi. south of May by Hwy. 183. 20 cents a pound you pick, 50 cents picked. Herschel Wheeler (915) 646-5796 34-39

Combine run Russian **BEARDLESS WHEAT**, \$5 bu. (817) 643-2612 34-37

WHEAT SEED Top quality, clean, germ tested. Call after 8 p.m. (915) 624-5245 36-39

PAYING CASH for men's watches made before 1950. Call 1-800-666-3966 Mon.-Fri., ask for Chuck, or 512-492-4961 collect. Will be in town Sept. 9-10. 34-36

LIVESTOCK

LINDLEY & LINDLEY SHOW PIG SALE Sept. 17 at 7 pm at the May Rodeo Arena Barn at May. Hamp., crosses & Chester Whites born 7-5 through 9-5. Larry McDougal, Comanche will be auctioneer. Call Scott or Jerry Lindley. (817) 259-2626 36-37

FOR SALE: BRANGUS BULLS. Call 647-1155 or 647-1182 in Rungler. recrsb104

Brownwood Cattle Auction

The market report for Aug. 31. All feeder cattle & calves were \$1 to \$2 higher, slaughter cows were \$1 to \$1.50 lower, slaughter bulls steady, stock cows steady to \$1 higher, cow & calf pairs steady with instances \$5 higher on large frame No. 1. Demand good, trade active. Run includes around 15 percent slaughter cows, 200 stock cows & pairs, balance mostly feeders. Estimated receipts: 1200 head.

TOP OF THE MARKET: Dale Allen, Goldthwaite, blk str cf, 245 lbs., \$116; Rodney Schoen, Comanche, red cf, 410, 101.50; J.B. Harris, May, spt wf cow, 1150, 54; Dan McClellan, Brownwood, brn wf hfr, 475, 85; L.V. Stewart, May, red wf str, 565, 85; Ben Weiser, Cisco, blk str, 620, 85.50; Kensing & Thomas, Brownwood, red mf str, 585, 88.50; A.C. Snodgrass, Brady, blk hfr, 380, 90; Russell McDaniels, Sidney, blk str, 430, 98; F.E. Thomas, Bangs, Brindle bull, 265, 125; B.D. Deeds, Mercury, 12 blk x str, 597 avg wt, 83.75; Frank Switzer, Blanket, blk wf hfr, 445, 88; George Teeters, Bangs, red wf cow, 955, 540; Jerry Pittman, Brownwood, wf str, 300, 115; Robert Sparkman, May, Bfmstr hfr, 965, 635; Cutbirth Cattle Co., Brownwood, blk bull, 1640, 61.50.

FOR RENT

FmHA non-discrimination APARTMENT FOR RENT. 817-842-5294. rs52

Public Housing Authority has apartments for rent for senior citizens. Equal housing opportunity. 817-643-3812 or 643-6791. RISING STAR

HOUSE FOR RENT OR SALE, rent is \$200 month. 304 N. Anderson in Rising Star. Phone 725-7767 29-39

FOR RENT 3 BR, 1b, DR, kitchen combo, on S. Miller, Rising Star. Call 915-752-7774 in Bangs. 33-36

FOR RENT OR SALE 3 BR, 2 B, LR, DR, kitchen, large yard with fruit trees. In Rising Star. Call after 6 p.m., (817) 643-7002 33-36

LOST & FOUND

LOST OR STRAYED from pasture North of Rising Star. A red whiteface cow. Call 643-4871 36

SERVICES

RADIATOR REPAIR at Butler Motor Co. Gerald & Ricky Bailey

HELP WANTED

HOMEMAKERS EARN over \$10 per hour part time. Earn free Hawaiian trip. Free training. Commission up to 25 percent. Highest hostess awards, no delivering or collecting, no handling or service charge. Over 800 dynamic items: toys, gifts, home decor & Christmas decor. For free catalog call Friendly Home Parties 1-800-227-1510 35-38

NEED LVNs 6 to 2 & 2 to 10, full time. Contact Russell Gray, 643-2691, Rising Star Nursing Center. 34-39

NEED NURSES AIDES, 2-10 shift, 3 days on 3 days off, Rising Star Nursing Center. 34-39

Friendly home parties has openings in this area for managers and dealers. Earn free Hawaiian trip. Free training, commission up to 25 percent. Highest hostess awards, no delivering or collecting, no handling or service charge. Over 800 dynamic items - Toys, gifts, home decor and Christmas decor. For free catalog call 1-800-227-1510 32-38

REAL ESTATE

100 ACRES near Okra, most all in cultivation. Pavement, good fence. \$450 per acre. 238 ACRES, Sipe Springs. Pavement, 2 tanks, good deer & turkey area, only \$350 ac., 20 percent down

320 A. most all Kline grass, excellent fences, 1 mi. of creek, big tank, 2 mi. road frontage. \$500 ac.
80 A. all timber at Sipe Springs, pavement frontage, excellent deer, good tank. \$600 ac. 15 percent down.
80 A. near Carbon, about 20 cultivated. 1 well, tank, big oak trees & road on 3 sides. \$575 ac.

3 BR 1 bath rock house, 2 lots, on N. Main, has attached double garage. \$25,000
145 A. SW of Rising Star. Steel corral, excellent fences, 75 Coastal & Ermelo, fine hunting, 1/2 off pavement, low taxes. \$550 ac. 1/4 down.
161 A. Lots bottom land, pecans, 60 tillable, well fenced, 1/2 mile Sabanna, good deer hunting, lots big oak, pecans. \$550 ac. Agent owned.

34 Yrs. in Business
Listings appreciated.

COGBURN REALTY
893-6666 893-5898
893-2642 DE LEON

ACTION REALTY
WE NEED LISTINGS!!!
Equal Housing Opportunity
915-643-6516

NO FIXING HERE! 2 BR, 1B, breakfast nook, water well, carport with attached storage shed, large yard on corner lot. Call Stella.
BRING YOUR HAMMER! Older 2 story home needs some work. 2 BR, 1B, all on corner lot, close to town. Call today.
OUT OF THIS WORLD!!! 3BR, 1B, carpet, large rooms, water well, garage. Priced to sell. Call Stella.
CLOSE TO PARK! 3BR, 2B, double wide, built-ins, laundry room, garden spot, well kept yard, some fruit trees. Call today.

GREAT BUY-- 2 BR, 1B, some appliances, corner lot, close to doctor office. Call Stella.
OUT OF TOWN OWNER NEEDS to sell!! 3 BR, 2B, carport, kitchen-den combo, laundry room with sink. Just out of city limits on Hwy 183. Call Stella.

LOOK NO MORE! 3 BR, 2B, corner lot, carpet, laundry room, dining room, water well, garden area, some storage bldgs and 2-car garage. Call Stella.
WHAT MORE COULD YOU ASK FOR?! 3 BR, 2B, kitchen with snack bar, carpet, lots of closets, fenced back yard for garden or 4-H projects. Call today.

ACREAGE AND MORE! 2 B, 1B, partially carpeted, nice hardwood floors, water well, dining room, sun room. lots more. All this plus approx. 2 acres. Call Stella.

LIKE TO FISH? 2 lots at Shamrock Shores. Priced to sell.
LIKE TO BE YOUR OWN BOSS?? Grocery store with full inventory, meat market. Lots more! Call today for appointment, priced to sell.
MOVE IN TODAY!! 2 BR, 2B, built-in fireplace, carpeted. Out of town owner needs to sell. Call Stella.
OWNER FINANCED! 2 BR, 2B, carpet, siding, huge closets. Call Stella.

James Smith broker 646-0297
IN RISING STAR
STELLA WARE 643-3591

LAND FOR SALE: 320 acres, 2 miles south of Ranger. Some minerals, pavement, deer, turkey. Owner finance. Call 647-1182 or 647-1155 in Ranger. R-104

PEANUT FARM for sale, 137.5 acres, irrigated, with good poundage, south of Rising Star. ALSO FARM south of Cross Plains, 139.8 acres, 68 acres wheat allotment. (817) 725-6893. 33-36

FOR SALE BY OWNER in Rising Star, 3 BR, 1 1/2 B, CH/CA, fireplace, water well, privacy fence, large pecan trees, lots of nice extras. (817) 643-5021. 35-40

3 BR FRAME HOUSE with fireplace, built in appliances, big oak trees & garage. Located at W. Pioneer, corner lot. \$14,000, \$2,000 down, 10 percent interest. Cogburn (817) 893-6666 or night 893-5898. De Leon. 36-39

REAL ESTATE

For Sale
14'x90'
Warehouse/Office Building, extra large lot, downtown Rising Star. 5 Houses in Cross Plains, lots & land. Call Today 817/725-6489 Dora Smith Real Estate Broker rs/b-39 cer-74

SELLING YOUR HOME OR BUYING? Call Stella Ware, 643-3591, your local real estate agent for Action Realty, Brownwood, James Smith, broker. 26-52

SERVICES

Need things fixed up around the house? or wooden furniture made or repaired? Call Joe Campbell, **CAMPBELL'S CABINET SHOP**, (817) 842-5875 Rt. 5 Box 107B, Comanche, TX 76442 If no answer call (817) 643-2251.

WE WOULD APPRECIATE YOUR JOHN DEERE, LILLSTON & KMC PARTS BUSINESS.

LOWEST PRICES IN AREA ON ADAMS FLOW SHARES AND BALDAN DISK BLADES. IN STOCK SIZES TO FIT MOST BRANDS.

CLARK TRACTOR & SUPPLY INC.

COMANCHE (915) 336-3922 DELEON (817) 882-2061

JOHN DEERE TRACTORS NEW AND USED

PEANUT EQUIPMENT LILLSTON-KMC

PLANTERS-DISKS-DRILLS ROLLING CULTIVATORS-CHISELS SELL OR TRADE

CLARK TRACTOR & SUPPLY INC.
817-882-2061 DELEON
815-358-3822 COMANCHE
Where your business is appreciated.

BUDDY COOK
Residential, Commercial Refrigeration & Plumbing
817-643-7312
Rising Star rs-102

D & R UPHOLSTERY
643-3942 Rising Star
For your upholstery needs.
Country, Continental & Baloon style curtains.
Debbie Jones, owner

Bring your TV, radio, stereo, small appliances to **DAD'S DOO-DADS & REPAIR SHOP** at 300 S. Graves, off W.Hy. 36, Rising Star. New & used merchandise. Shop work only. 817 643-5909

FAST DEPENDABLE
Film Developing
PALACE DRUG STORE
643-3231 Rising Star

RISING STAR EXXON
643-3130
Tires Batteries
All types of tire repair

TREE SPRAYING SERVICE
Residential/Orchards
Fruit & nut tree spraying
Call (817) 643-4871
Certified Applicators
LeRoy Livingston Don Darden

WILLIE VANDIVERE TRUCKING
Dirt, Caliche Hauling
Build Lease Roads,
Driveways, etc.
9-5 Call 643-2023
After 5 Call 643-6451

OLIVER WEST, PUMP SALES & SERVICE
817-643-4683
Rising Star, Texas
Complete systems sold & serviced
2 1/2 miles south of town

GARAGE SALES

SIPE SPRINGS Community is having a garage sale at the Community Center Fri. & Sat. from 8-5. 36

FINAL MOVING SALE: Riding lawn mower, clothes, dishes. North of high school. Sat., Sept. 10. No sales before 9 a.m. 36

BIG 3-FAMILY YARD SALE: Lots of clothes, including children's. At corner of Reed and Brian. Wed., Thurs., Fri. 8-5. 36

INSIDE SALE- Rising Star Housing Project, Apr. 200D. Friday only. 36

OPPORTUNITIES

CASH BUSINESS... Buy this high profit candy vending route. Nationally proven program since 1959. Nice family business - includes training. Requires cash investment of \$4237 to \$14,070. Call 1-800-328-0723 **EAGLE INDUSTRIES** since 1959 36

OWN YOUR OWN apparel or shoe store, choose from: Jean/Sportswear, ladies, men's, children/maternity, large sizes, petite, dancewear/aerobic, bridal, lingerie or accessories store. Add color analysis. Brand names: Liz Claiborne, Healthtex, Chaus, Lee, St Michele, Foreza, Bugle Boy, Levi, Camp Beverly Hills, Organically Grown, Lucia, over 2000 others. Or \$13.99 one price designer, multi tier pricing discount or family shoe store. Retail prices unbelievable for top quality shoes normally priced from \$19 to \$60. Over 250 brands 2600 styles. \$17,900 to \$29,900: Inventory, training, fixtures, airfare, grand opening, etc. Can open 15 days. Mr. Morphis (612) 888-1009. 36

Smell Gas? Call
City Hall 643-4261

Smell Gas? Call
City Hall 643-4261

Cross Plains Medical Clinic
1042 Main Street
Office Hours: Mon.-Fri. 9-5
Sat. 9-12
P. Eksaengsri, M.D.
(817)725-6728 & (817)734-2292

Now taking appointments
Judy A. Harris, O.D.
General Optometry
including contact lens
817-629-3593
Office hours by appointment
711 W. Commerce Eastland
ER82 RS41

You Are Cordially Invited To The
Rising Star Homecoming
On
Sept. 30 - Oct. 1

USE THE CLASSIFIEDS
Home Phone 643-5742 Gasoline & Diesel
CAREY'S AUTOMOTIVE
Open Mon.- Fri. 7:30 a.m. - 6 p.m.
Sat. - Sun. 8 a.m. - 12 noon
James Carey, Mechanic
Hwy. 36 East Rising Star
Shop Phone 643-7009 Rs52

THANK YOU

I want to thank all the individuals and all the fire departments that helped in putting out the fire west of the Union Center store.
Joe Criswell

We would like to say Thank You to a wonderful group of men, the Rising Star Volunteer firemen. They came out both Friday and Saturday to fight the fire that was burning on the Jones place and ours. The weather was so hot those days, but God took care of those good men and no one was hurt.

We also want to give a big Thank You to Jim, Charlene, Alan and Jason. They worked so hard filling a spray tank with water and trying to keep the fire from starting back up.

We thank all of you so much.
Joe & Nell Fleming

County Bass Club To Hold Tourney

Over 15 years ago a group of anglers comprised of citizens from Cisco and Eastland met to discuss forming an organization for bass fishermen in Eastland County.

A short two years after the creation of the Eastland County Bass Club, members decided to host a fishing event and invite other anglers from the area for some friendly competition. In its early years funding was somewhat of a problem, member pledged donations to cover any expenses not covered by the entry fees to make sure this event would continue to grow.

Those seeds planted by early members have grown into one of the premier fishing events in Central and

West Texas. In its 13th year the Eastland County Bass Clubs Open Invitational has grown in numbers from 50 entries to an expected 200 to 250 this year.

Bass tournaments are not only fun, but these events pump hundreds even thousands of dollars into the local economy. An average tournament in our area looks like this on expenses: boat gass \$12.00, vehicle gass \$20.00, fishing equipment \$15.00, motel \$30.00, eats \$15.00, misc. \$25.00.

this is an average of \$120.00 per visiting contestant. Of an expected 200 contestants around 125 of these will be visiting the area. Which its pretty easy to see that a good amount of money will be brought in by this event. And this money will of course be circulated in our area at least three times. S next time you hear someone condemn a fishing tournament, tell them some of the pluses.

Sponsors of this September 11, 1988 event at Lake Leon are in part: NAPA Eastland, American Legion Post 123 Cisco, Greenlight Auto Eastland, Steve's Garage Ranger, Bryan's Auto Eastland, Fullen Motor Co Eastland, Outdoors Unlimited Arlington, Yamaha Co., Berkley Trilene Spirit Lake Iowa, Fishing Outdoors Eastland, and the Keeper Bait Company Bruceton Tennessee.

Prospective Jr. Division entrants of 13 years and under will be competing for cash and prizes. 1st \$250.00, 2nd \$125.00, 3rd \$75.00, 4th \$50.00, 5th \$25.00 and 6th till everyone present who entered will receive prizes sponsored in part by Berkley Trilene and Fishing Outdoors.

All Jr. entrants must fish under the supervision of a paid adult entrant. There will be no entry fee for the Jr. Division.

Str. Division entrants will be competing for a guaranteed first place purse of \$1,000.00. Based on 200 paid entrants second thru twentieth will be paid as follows: 2nd \$600.00, 3rd \$450.00, 4th \$250.00, 5th \$200.00, 13th \$100.00, and 6th-12th and 14-20th will be awarded prizes.

There will also be an optional \$5.00 calculutta for the big fish of the day. This will be a 100% payback with the heaviest fish of the tournament receiving 50% second heaviest 30% and third heaviest 20%.

As a special bonus if the winning angler of the day is using an eligible Yamaha

motor he or she will be awarded an additional \$1000.00 from the Yamaha Company.

Once again this year Saturday, September 10, 1988 beginning at 6:00 p.m. contestants may register and also all paid entrants will receive free Trilene line. The line will be spooled on by Trilene Ambassador James Fullen until 10:00 p.m. Saturday. Contestants may also register Sunday, September 11, 1988 starting at 5:00 a.m. until 6:30 a.m. However these entrants will not receive the free fishing line. All contestants must be registered prior to fishing Sunday.

This will be a 3 fish maximum tournament, and all fish must measure at least 14 inches using the new state measuring system of squeezing the tail.

No contestant may enter the weigh-in line with more than three black bass. Weigh-in will begin at 3:00 p.m. and will close at 4:00 p.m.

The following is a list of rules and regulations for this event.

Entry fee \$25.00, \$5.00 Big Bass pot is optional.

Entry fee must be paid at headquarters before fishing unless pre-registered. Pre-registered contestants must check-in at headquarters prior to fishing.

During the tournament contestants may fish out of a boat or tube. No wade or bank fishing.

No pre-fishing. Lake Leon is off limits to fishing from 12:01 a.m. 9-7-88 until 6:30 a.m. 9-11-88. Motoring is allowed and contestants may be at their chosen location ready to begin fishing at 6:30 a.m. on the 11th.

All fish must be caught on artificial bait only. (no trolling or live bait). Fishing will be done at Lake Leon ONLY. 3 fish maximum - 14" minimum length, large mouth black bass ONLY.

All contestants must wear an approved life vest when the big motor is running.

All state and federal laws must be obeyed.

Fishing hours are 6:30 a.m. to 4:00 p.m., weigh-in time is 3:00 p.m. to 4:00 p.m.

Each contestant must bring their own fish to the weigh-in.

Winning contestant must be present at awards presentation to receive prizes.

From back page...

"Many parents see that their children have new clothes and books but then neglect them when they ride in a car or truck," said Baker. "School-age children should be buckled up securely even if the destination is a shoe store only three blocks away. And little brothers and sisters - state law requires all children under age 2 to ride in a safety seat. Because young children are more apt to be seriously injured in an accident, it's best for them to ride in a safety seat until age 4," Baker said.

A growing list of statistics continues to prove the wisdom of older children and adults using safety belts. Almost four out of five occupants who escaped serious injury in accidents on Texas roads in 1987 were wearing seat belts, according to the Texas Department of Public Safety. There were three times more fatalities in accidents where occupants did not wear safety belts.

Mobil Oil Products
Texaco Oil Products
Golden West
Farm Fuel Delivered
CONOCO
Pennzoil
Gulf/Chevron
CROSS PLAINS PETROLEUM (E.S.E. Inc.)
P.O. Box 219, 6th at Ave. F
Cross Plains
David and Lenell Slinger Managers
(817)725-6582

THE RISING STAR 817-643-4141
Box 127
Rising Star, Tex 76471 104 N. Main St. ©1988 Eastland County Newspaper, Inc.
Publication No. (USPS 466500)
Second Class Postage paid at Rising Star, Texas, under Act of Congress in March, 1879. Published every Thursday. Publishers, Mr. and Mrs. H.V. O'Brien
Subscription Rates Per Year: Eastland County and 30 mi. radius of Rising Star, \$8; other Texas counties, \$11; out of Texas, \$18; No out of U.S. without APO.
POSTMASTER: Send address changes to The Rising Star, Box 127, Rising Star, TX 76471.



FOOTBALL '88



**Wildcats
VS
Santa
Anna
There**

FRIDAY, 8 PM



1988 VARSITY FOOTBALL SCHEDULE

Sept. 2	Santo	Home	8:00 p.m.
Sept. 9	Santa Anna	Away	8:00 p.m.
Sept. 16	Eden	Away	7:30 p.m.
Sept. 23	Tolar	Away	8:00 p.m.
Sept. 30	Rochelle	Home	8:00 p.m.
Oct. 7	Gorman	Home	7:30 p.m.
Oct. 14	Lometa	Away	7:30 p.m.
Oct. 21	Hico	Home	7:30 p.m.
Oct. 28	Evant	Away	7:30 p.m.
Nov. 4	Cross Plains	Home	7:30 p.m.

The homecoming game is Sept. 30, District games begin Oct. 7, and Parents' Night is Oct. 21.

JUNIOR HIGH FOOTBALL SCHEDULE

Sept. 22	Tolar	Home	6:00 p.m.
Sept. 29	Rochelle	Away	6:30 p.m.
Oct. 6	Gorman	Away	6:30 p.m.
Oct. 13	Lometa	Home	6:30 p.m.
Oct. 20	Hico	Away	6:30 p.m.
Oct. 27	Evant	Home	6:30 p.m.
Nov. 3	Cross Plains	Away	6:30 p.m.

District games begin Oct. 6

COACHES: Nathan Allen, Head
Robby Stuteville, Assistant

BAND:
Tim Riley, Director
Jo Beth Landers, Twirler

**Luv
That
Blue!**



**Go
Cats!**

CHEERLEADERS:

Stacey Wright, Drum Major



Maxine Perales



Wendy Green



Becky Walker



Stephanie Long



Pam Hollis

Kountry Kitchen 643-6831	Cooper Texaco 643-1805	Jenkins Insurance Agency 643-2251	Rising Star Chamber of Commerce 643-5754
Palace Drug Store 643-3231	Dr. B.T. Carpenter 643-3141	Jim Ratliff Welding 643-6464	Rising Star Nursing Center 643-2681
Buddy's Plumbing & Appliances 643-7321	Winfrey Feed & Peanut 643-6251	Mike's Fina 643-1902	Carey's Automotive 643-7009
Higginbotham's 643-2271	Medley Motor Co. 643-6211	Chuck Wagon Cafe 643-3025	Susie's Hair Hut 643-3323
Pioneer Farmers Cooperative 725-6564	The Rising Star 643-4141	Rising Star Emergency Number 643-3001	Chambers Grocery 643-5292
D&T Building Supplies 643-4131	Family Food Store 643-2221	First State Bank 643-2811	Nall's Quik Stop 643-1441
MainStreet Auto Repair 643-1701	Kizer Insurance Agency 643-4421	Rising Star Exxon 643-3130	Butler Texaco 643-3261

HAPPY BIRTHDAY

- SEPTEMBER 12
Carter Jones
- SEPTEMBER 13
Mrs. Jim Pittman
- SEPTEMBER 14
Eva Clark
- SEPTEMBER 15
Billy Nail
- SEPTEMBER 16
Franklin Cox
Robert Owen
Eva Woody
- SEPTEMBER 17
Yvonne McCutchen
Mary Lou Anderson
Vera Hill
Ray Hutchinson
Terry Lee Ware
Lois Hardy
- SEPTEMBER 18
Craig Campbell
Paul Maxwell
Mike Hamer
- SEPTEMBER 19
JoAnna Kinsey
Korey Morris
Kobey Morris

MAY HOMECOMING
SEPT. 23-24

RISING STAR HOMECOMING
Sept. 30-Oct. 1

Rising Star Nursing Center Vickie Majors Activity Director

Monday: Had exercise, passed out mail, played bingo. Players were Lena Scott 1, Jennye Turner 5, Pearl Petty 2, Vera Forbes 2, Rada King 0, Maggie Christian 1, Pauline Hill 2, Martha Irby 3, Joe Fox 2 and Buster Rixford 1.

Tuesday: Had in-room activities, exercise and passed out mail. Terry Horton played the piano for us.

Wednesday: We got together for our craft class, passed out mail and played bingo. Players were Jennye Turner 1, Lena Scott 6, Vera Forbes 1, Pauline Hill 2, Joe Fox 1, Martha Irby 2, Maggie Christian 4, Pearl Petty 0, and Buster Rixford 2.

Thursday: We played basketball and passed out mail. Some of our ladies played dominoes.

Friday: We went out on the patio with our residents and played catch, passed out mail and played bingo. Players were Lena Scott 3, Jennye Turner 2, Pearl Petty 2, Rada King 5, Vera

Forbes 3, Pauline Hill 3, Martha Irby 3, Joe Fox 3 and Buster Rixford 3.

I would like to thank the First Baptist Church for Sunday services.

Our residents' birthdays this month are Pauline Hill, September 1, 1906; Della Roberts, September 3, 1900; Tene Nelson, September 7, 1905; Martha Irby, September 19, 1898; Pearl Nunnally, September 21, 1901; Vera Hill, September 16, 1901; and Eunice Norwood, September 26, 1908.

Our employee's birthday is Joyce Walker, September 12.

Martha Irby's visitors were Joan Smith from Mobile, Ala. and Bobbie Wheeler from Eastland. Pearl Petty's visitors were Buddy, Debbie, Leigh and Lynn Belere from Clarksville.

Pauline Hill visited with her daughter, Barbara Wright, on her birthday and had a great time.

Obituaries

Director of Local Bank Dies

Dr. Allan J. Spence

BROWNWOOD - Dr. Allan J. Spence, 59, died Monday at a local hospital.

Services were at 2 p.m. Wednesday at the Coggin Avenue Baptist Church with Dr. Gil Lain and Dr. Leon Aduddell officiating. Burial was in Eastlawn Memorial Park, directed by Davis-Morris Funeral Home.

Born in Yuma, Ariz., he moved to Brownwood 28 years ago. A graduate and longtime board member of Howard Payne University, he was a physician.

He was a member of the medical staff and director of the board of Brownwood Regional Hospital and was the team physician for the Brownwood Lions and the Howard Payne University Yellow Jackets. Medical director of the Texas Youth Commission and the

Brownwood State School, he was acting director of the Brownwood Health Department and a member of the advisory board of Girling Health Care.

A member and deacon of the Coggin Avenue Baptist Church, he was the past president and chairman of the United Way and was a member of the Rotary Club. He was the director of the First Comanche Bank, First State Bank of Rising Star and Olney Saving and Loan Association. He was a member of the Jacket Century Club and was presented the 1987 Nathan Donsky Scholarship.

A member of the Brown-Mills-San Saba Medical Society, he was a member of the Texas Medical Association, the American Medical Association, Texas Association of Family Physicians and the American Association of Family Physicians.

Survivors include his wife, Ladon Graham Spence of Brownwood; and two sons, David Spence of Chico, Calif., and Dan Spence of Dallas.

Memorials may be made to the Coggin Avenue Baptist Church or Howard Payne University.

Eula Belle Folkner

In Service

BROWNWOOD - Eula Belle Folkner, 96, died Sunday at a local nursing home.

Graveside services were at 2:30 p.m. Tuesday in the Rising Star Cemetery in Rising Star with Alvis Fisher officiating, directed by Davis-Morris Funeral Home.

Born in Valley Mills, she moved to Brownwood 53 years ago. She was a homemaker and a member of the Brady Avenue Church of Christ.

Survivors include a daughter, Juanita Snipes Ripley of Brownwood; a sister, Gracie Jenkins of Breckenridge; a grandson, Ronald W. Snipes of Dallas; three great-grandchildren; and two great-great-grandchildren.



AIR FORCE NEWS - Airman M. Renee O'Connor, daughter of Timothy P. O'Connor of Rising Star and Ronda J. Pritchard of Hobbs, N.M., has graduated from Air Force basic training at Lackland Air Force Base, Texas.

During the six weeks of training, the airman studied the Air Force mission, organization and customs, and received special training in human relations.

In addition, airmen who complete basic training earn credits toward an associates degree through the community college of the Air Force.

She is a 1988 graduate of Rising Star High School.

ARMY NEWS

Army National Guard Private Kevin G. Simpson, son of Donna J. Simpson of May, has completed basic training at Fort Benning, Ga.

During the training, students received instruction in drill and ceremonies, weapons, map reading, tactics, military courtesy, military justice, first aid and Army history and traditions.

News Briefs

While their Dad Robert D. Weeks Sr. improves from surgery the Weeks boys - Robert and Brandy - have resumed competition at some Fiddler's Contests.

As usual, the boys have been bringing home awards and trophies.

Raymond Hart of Ranger carried them to Burnett, Texas for the State Fiddler's Association Convention and Contest on Aug. 13-14. Robert won Second and Brandy Third in the ages 12-down Division.

In the Santa Anna Old Fiddler's contest on Aug. 20 Brandy won First in the 10-down Division, and Robert Third in the ages 10-19 group. On Aug. 27 there was a big Old Fiddler's Contest in Denton at the North Texas State Fair. Robert was awarded First Place and Brandy Second in the Children's Division.

Robert Sr. says he has to "hurry and get well" to keep up with these boys.

Draperies
Custom Made
In Our Shop
The Most Trusted
Name In Window
Covering
Decorator Accessories
Gift Boutique

BEIL INTERIORS

1706 W. Commerce (Hwy. 80 W.)
Eastland (817)629-1319

CER104

ALL SUMMER Merchandise 75% off
New Fall Merchandise Arriving Daily
P.J.'s Fashions
708 Conrad Hilton 442-4841 Cisco

One Rack Robes and Gowns 40% Off
Lovely Christmas Gifts
Connie's Beauty Salon
100 N. Main - Rising Star
643-4673

Treat Yourself To Our Royal Gift.

ELEGANT MAKEUP BONUS FREE WITH ANY \$12.50 PURCHASE OF MERLE NORMAN COSMETICS.

Merle Norman's exclusive offer includes a duet of rich Dual Performing Eyeshadows, a gold accented Trimline Eye Pencil, naturally sheer Liquid Makeup and a luminous Lipsick that lasts.

Offer good while supplies last. One per customer. Bring this ad in to redeem your free gift.

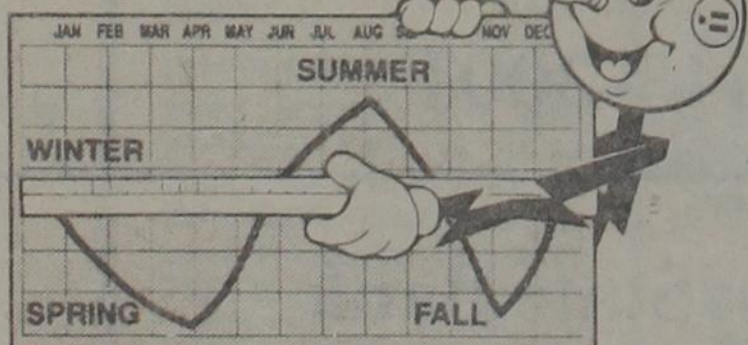
For your purchase, we recommend the jewel toned colors from our Royal Portraits Fall Collection.

"Now you can pay the same amount every month of the year for your electric bill!"

It's easy with WTU's Equal Payment Plan.

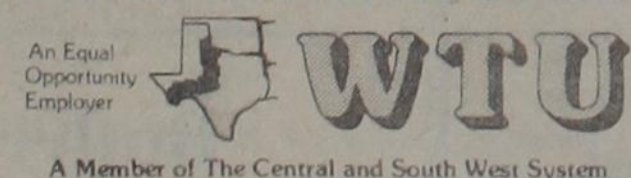
Electric bills peak in the Summer and Winter when demand is up and are lower in the Spring and Fall. With the **Equal Payment Plan**, you can level out your electric bill because the monthly payments are averaged and adjusted over a year.

Any WTU residential customer or church with approved credit and a monthly bill of \$15.00 or more can qualify.



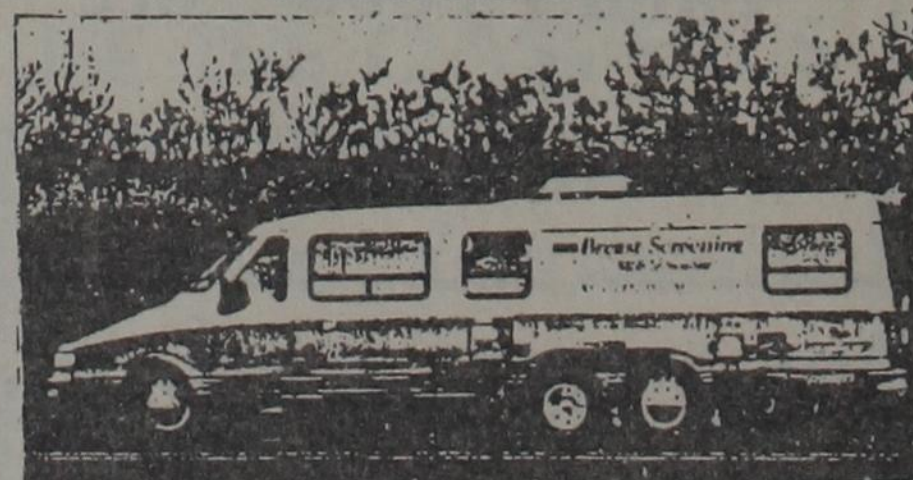
"Level out your electric bills with the Equal Payment Plan."

WEST TEXAS UTILITIES COMPANY



For more information on the Equal Payment Plan, contact your local WTU office.

BREAST CANCER DETECTION UNIT AVAILABLE TO AREA WOMEN



Friday, September 9, 1988
Eastland, Texas

A Service of
Eastland Memorial Hospital
304 S. Daugherty

CALL 629-2601 FOR APPOINTMENT

cer. 72

Fishing Outdoors

By Terry Wilson

Lake Leon Tourney Results

Twelve members of the Eastland County Bass Club met at Lake Leon Saturday, September 3. Anglers were met with a little more water than was expected. Early morning showers and cool front passage were expected to dampen the fishing and the catching. But as always when you think you know what's going on it flip flops. Fishing hours were set at 6:30 a.m. until 3:00 p.m.

The final results were: 1st five fish 10.76 pounds Steve Pennington, 2nd five fish 9.84 Don Flowers, 3rd 4 fish 8.69 Chuck Burgess, 4th 3 fish 7.13 Rick Browder, 5th 3 fish 5.39 Will Johnson, 6th 2 fish 5.00 Terry Wilson, 7th 3 fish 4.97 Tommy Maynard, 8th 1 fish 2.16 Bud Wood, 9th 1 fish 1.96 Jerry King.

Anglers reported buzz baits, worms, crankbaits and grubs being productive. And most of the contestants said there are some larger fish biting, but there hard to

handle.

The standings at present for the T.A.B.C. Top Six Team are; 1st Terry Wilson 38.05, 2nd Jerry King 37.43, 3rd Ron McCullough 34.91, 4th Tommy Maynard 35.68, 5th Don Flowers 34.19, 6th Steve Pennington 29.46.

All member of the E.C.B.C. are requested to attend a clean up day at the Chock-O-Block ramp at Lake Leon. Bring your tools and trash bags. For more information contact Eddie Green at 629-2184.

Recent gillnet surveys by Texas Parks and Wildlife Department fishery crews turned up evidence of a strong population of spotted bass at lake Cypress Springs in Franklin County.

Biologist Mark Webb of Marshall said net surveys ordinarily yield more catfish than bass, but the nets collected 40 spotted bass averaging one pound in weight and more than 12 inches in length. The largest

was an 18 incher that weighed over three pounds.

Webb said the relatively clear water and rocky shorelines at Cypress Springs apparently provide good habitat for the fish, which are not as common to most anglers as largemouth bass. "Spotted bass should provide plenty of light tackle excitement," said Webb, adding that they can be caught on small jigs, crankbaits, spinners and live crawfish.

Lake Cypress Springs is located near Mount Pleasant, and is adjacent to Lakes Monticello and Bob Sandlin.

Officials remind anglers that beginning Sept. 1, spotted and smallmouth bass will be subject to the statewide 14-inch minimum length limit ahead in effect for largemouth bass. For details on all freshwater fishing regulations, obtain the department's 1988-89 Fishing Regulations Guide, now available from department offices and fishing license outlets across the state.

Family Planning Clinic To Be Held September 13

The regular Family Planning Clinic will be held September 13, 1988. Applications are taken from 10 a.m. until 5 p.m. While paternal consent for minors is not required, it is encouraged. All information is held in strict confidence. Family Planning services available in this clinic will include: consultation, physical exam with a Pap test, laboratory examination, appropriate methods of birth control, birth control supplies and education regarding birth

control methods and continuing supervision.

This program provides services to income eligible clients and charges a small co-pay fee. Private patients are welcome to participate.

The clinic is held monthly at 204 N. Lamar, Eastland, and Central Texas Opportunities, Inc. of Coleman, is the provider for the Texas Department of Human Services.

For more information concerning this clinic, please call 817-629-3421.

Registration Continues At Cisco Junior College

Cisco Junior College's Director of Admissions, Olin O. Odom, III, reminds area residents that registration is under way and will continue through September 15 at the Cisco campus and all off-campus centers. Though there will be no problem in registering as late as

September 15, Mr. Odom urges those who wish to take college credit courses to register now in order to begin attending classes. Classes begin on September 6 and a minimum amount of missed time is beneficial to the student.

Mr. Odom said, "Cisco Junior College offers a wide range of opportunities for expanding knowledge. We're anticipating a large enrollment this year, and we invite anyone, college age or older, to enroll in one of the many programs we offer."

Students may register at the main campus in Cisco, at the Clyde Educational Center, or at the Abilene Center in Office Park West, Building B at anytime during regular office hours, 8:00 a.m. to 4:00 p.m., Monday through Friday. Students wanting to register late for the Coleman classes, may do so in Cisco. For more information call the appropriate campus at one of the following numbers: Cisco (817) 442-2567; Clyde (915) 893-5976; Abilene (915) 698-2212; Coleman (817) 442-2567.

Thursday, September 8, 1988

The Next Best Thing -

.....to a clear conscience and a good night's sleep is the feeling of security in owning your own home with a clear title. Peculiar to the real estate field, values are based on land and the improvements thereon, if any. But values on these are based on the title. The title then becomes the most important item to be considered when purchase of real property is contemplated. So be careful to buy good title based on an abstract of title or a policy of title insurance.

Eastland County Abstract Company, Inc.

Eastland, Texas

817-629-1077

CERRS104



PARENTS CAN HELP SMOOTH TRANSITION TO NEW SCHOOL

Moving to a new town and school is always traumatic. After a move, parents and students often go through a grieving process similar to that when a loved one is lost. "Students who move are losing not only friends but a whole way of life," according to John Lucas, director of guidance and counseling at the Texas Education Agency.

But parents can help make the transition easier on their children by discussing the move to a new hometown with them. Let your child know that you are concerned about his or her feelings.

And even though one or both of the parents did not want to move either, parents should put on the best possible face about the move when dealing with their children. "Discuss the reasons for the move," Lucas said. "Look for similarities between the old town and the new town and discuss the differences."

Take your children on a tour of the new town to help them get to know the community. Include your child's new school on the tour. Visit points of community interest. Make contact with the athletic, religious, cultural or scouting groups who may offer youth programs in the town.

And although the new town may not have the same things to offer as the old town, there will be similar things. Assure your children that there will be other children at their school who are the same age and who will become new friends.

Many times, school principals work through the summer. If the principal is in, ask him or her to show the school to both you and your child. Ask about new student orientations programs that might be available.

Many schools have new student clubs. These clubs help new students make the transition into a new school with special activities.

"Your child needs to know that there will be someone at the school to meet their needs just like there was at the old school," Lucas said. "It's just going to be a different somebody."

When it is time to enroll your children in school, make sure to bring an immunization record, birth certificate, report cards or other school records from the old district.

Course credits from an accredited private school will generally be accepted at face value by school district in Texas for students in upper elementary grades, junior high and high school.

Students transferring from an unaccredited private school may be required to take tests for placement. They may also be required to earn credit by examination.

Students who have attended a private kindergarten program and are five years of age but will not be six until after September 1 will probably be required to enroll in kindergarten when they transfer to the public school system.

Students who have attended first grade at a private school and are six years old will probably be enrolled in the second grade when they transfer to the public school system.

BEATY/TALLEY TRAVEL

A Full Service Agency

With Our New Automated Reservation, We Can Now Issue BOARDING PASSES!

Maynard Bldg. Suite 1A

Eastland 817-629-8504

ALL SUMMER Merchandise

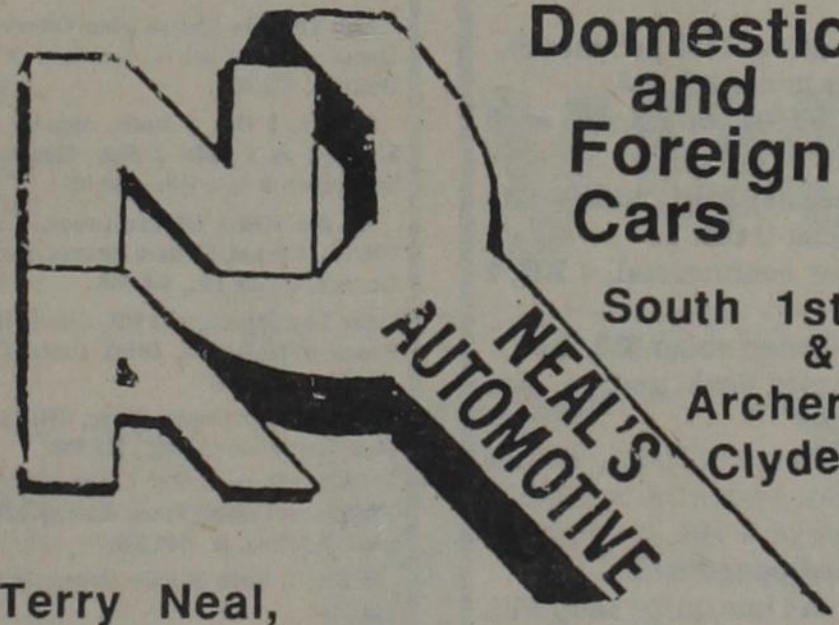
75% off

New Fall Merchandise Arriving Daily

P.J.'s Fashions

708 Conrad Hilton 442-4841 Cisco

Complete Auto Repair On Domestic and Foreign Cars



South 1st & Archer Clyde

Terry Neal, Owner (915)893-2613

Pharmacy Topics

By Bob Mueller

Certain helpful viruses can prevent diabetes in mice prone to the disease, a California scientist found. In tests, the viruses attacked the white blood cells that normally destroy insulin-producing cells.

Extra-sensitive teeth can be relieved with a treatment of a potassium compound, say researchers at the University of Michigan. Dipotassium oxalate seems to combine with the calcium in the tooth to form crystals that protect the teeth.

Free eye-test charts helps spot vision problems. Send a stamped, self-addressed business-size envelope to National Society to Prevent Blindness, 500 E. Remington Rd., Schaumburg, IL 60173.

Experimental procedure uses alcohol injected directly to dehydrate liver-cancer cells, using a CT scanner to localize the tumor. Testing is in early stages of St. Clare's Riverside Medical Center in Denville, New Jersey.

Vitamin E seems to ease symptoms of premenstrual syndrome, a Baltimore obstetrician/gynecologist reports. It takes four to six weeks of 400 IU a day for results to be evident, the doctor says.

When your doctor recommends nutritional supplements, you can depend on the wide selection of vitamins and minerals at Wal-Mart Pharmacy, Hwy. 80 East, Eastland, 629-3347.



HOUSTON'S FABULOUS

Tides II

MOTOR INN
6700 SOUTH MAIN

Dick Maagie, V.P.

SUMMER DISCOUNT
\$39.95 DBL.
KIDS FREE
12 & UNDER

- ASTROWORLD/WATERWORLD TICKETS AVAILABLE AT FRONT DESK
- EXCELLANT BUFFET AT REASONABLE PRICES
- BEAUTIFUL POOL AND GARDEN AREA
- CABANA ROOMS AND SUITES
- FREE PARKING
- RISING TIDES CLUB
- MAJOR CREDIT CARDS ACCEPTED

713-522-2811
HOUSTON, TEXAS

Across From Texas Medical Center

5 Minutes to Astrodome, Astroworld and Waterworld
Rice Stadium - Zoo - Golf Course - Fat Stock Show - The Summit

CREATE-A-SOFA & LOVE SEAT SALE



shuford furniture

Through a special factory authorized sale, you can now create your own sofa and love seat for that special room at substantial savings. Choose from five traditionally designed styles in a selected group of fabrics, and we will build that custom sofa and love seat just for you! A true bargain for today's value conscious homemaker.

Sofa and Love Seat . . . set **\$999⁰⁰**
Regular Retail Values Up To \$1,680⁰⁰

Add A Sleeper To Your Sofa For Just \$199⁰⁰

Sold In Sets Only
Hurry, Limited Quantities Available For Immediate Delivery!

August 13 through October 31

Austin's Furniture Co.

Cisco 706 Conrad Hilton Ave. 442-2533

Remember, Lets All Shop Home First

MAJESTIC THEATRE

EASTLAND (A Non-Profit Organization) 629-1322



Sept. 8, 9, 10, 11 7:30 p.m.



Sept. 8, 9, 10, 11 9:56 p.m.

All Seats \$2.50

News Briefs

RANGER

The Ranger Homecoming will be Sept. 22-24 this year, with lots of activities planned for all. On Thursday at 6 p.m. the classes of 1932, 1933 and 1934 will meet in the Gholson Hotel for a special reunion, and from 6 p.m. to 7:30 the Class of 1938 will meet at Lone Cedar Country Club. On Friday there will be a golf tournament, registration and visiting, a Parade, a barbecue at City Park at 6 p.m., and a football game at 7:30 between the Bulldogs and Hamilton. Events for Saturday include a turkey dinner at the First Methodist Church at 11:30 a.m., with picture taking and class meetings in the afternoon back at the School. In the evening these will be a dance at 8 p.m. in the Recreation bldg., with a social for non-dancers at the Gholson Hotel Meeting Room. All ex-students, teachers and other interested people are cordially invited to take part in these festivities.

Teams of volunteers are contacting area citizens to help raise money for Ranger General Hospital. The immediate amount needed is \$100,000. The Hospital Board of Managers, Administration and employees express appreciation to all who

are concerned about the continued operation of the Ranger Hospital. Hopefully this funding crisis can be passed, thanks to the cooperation of interested citizens.

The Tuesday School at the Mesquite and Rusk Church of Christ now has 44 enrolled, and a waiting list for those who would like to attend. Tuesday School is a non-profit program of the Church, and all finances received are used to staff, enrich and improve the school. The purpose is to provide a day each week where young children can learn about applied Christianity, and develop spiritually, intellectually, physically and socially. The curriculum includes learning centers in Bible, art, music, learning skills, library activities, as well as holiday and patriotic activities.

Several Ranger Volunteer Firemen attended Fire School in Abilene Aug. 29-Sept. 2. Courses taken included hazardous materials, airplane crash, fire and rescue, equipment handling, liquefied petroleum gas fire, transport truck fire, house fire, natural gas fires, and others. Those attending were David Pickrell, Bill Jernigan, Joe Williams, Robert Cherry,

Don Stephenson, Skip Pattenau, and Glenn Dale Burkhauler.

BAIRD

Bill Moore was among those helping paint the inside of the historic Depot last week. The Depot is in need of funds to pay for the paint - the volunteers won't be able to get very far without it. Plans are for a complete renovation of the building, with it someday providing a meeting place and possible a museum and visitor's center. Drive down Market St. and see what a great job has been done on the outside of the building. Then consider a contribution to help finish the work on the inside.

Carl Shouse, bridge inspector for the Texas Highway Dept., has informed Callahan County Commissioners that two bridges have been condemned in the County. One is in Pct. 3 and in Pct. 4. He said the bridges would not be closed at this time, but would need to have load limits posted on them.

The St. Jude Bike-A-Thon is scheduled for Saturday, Sept. 10 at 8:30 a.m. on the north I-20 access Rd. west of 283. It will end at 12 noon. Many Baird businesses have donated funds to sponsor this program, and there will be a number of prizes. There will be a bike safety program at the beginning of the ride, given by the Highway Patrol. Glenita Graham of the Nursing Home will be on hand for first-aid. Sheriff Bill Skinner and his deputies will also be

present to deep the bikes running. Proceeds will go to help fight cancer in children.

EASTLAND

The Ambulance situation is presently called "critical" - with 1700 memberships needed to keep the service running. The next effort by concerned citizens is to try to make the public aware of the situation and danger. Volunteers will be contacting clubs and fliers are being made ready for distribution. On Sept. 10 from 10 a.m. to 4 p.m. Eastland's two radio stations will broadcast a Radio-A-Thon. Taped messages from ambulance users may be played, and people will be able to call a number given on the air.

Mrs. Glen Brown of Stanton, Texas, President of the National Federation of Music Clubs, will be in Eastland on Wednesday, Oct. 5. She will hold a Federation Meeting with Club members at 12 noon at The Crossin' Restaurant on that date.

The Extension Program Council Committee is meet-

ing this Wednesday, Sept. 7 at 12 noon in the TU Electric Reddy Room in Eastland. Program topics for the 1989 Extension Homemakers Club Yearbook will be discussed. Mrs. Twila Lee, Council Vice-Chairman, is also the Committee Chairman. Any Club Vice Presidents who cannot attend are requested to send an alternate member from your Club. Those attending are asked to bring a sack lunch and lots of ideas!

A Tricycle Road Rally for four-to-nine year olds will be one of the many highlights of Old Rip Day in downtown Eastland on Oct. 1. Applicants will be selected for the contest, which will have its start on the corner of Commerce and Lamar Sts. All twenty racers will have tee shirts courtesy of the sponsors, Edward D. Jones and Co. Deadline for entry is Sept. 24, coordinator Cindy Carlton has announced.

CISCO

The Cisco Junior College Board of Regents has accepted a generous donation from the B.B. Owens Trust

for the funding and first stage of development of its demonstration farm. In 1987 the Trust donated four Eastland County tracts of property to the College. These are located east of Cisco on Highway 80, and will be the site of the farm. Roger Schuster, CJC President, said, "Cisco Junior College is proud to be able to initiate this effort to help revitalize agriculture in this area. We owe much gratitude to the B.B. Owen Trust."

The Cisco Wrangler Belles performed on the KTAB Labor Day Telethon Sunday and Monday, Sept. 4-5. They also assisted in answering phones, and went with the KTAB Mobile Unit to help collect pledges in the Abilene area. During the Monday afternoon activities in the Mall of Abilene the group performed in an area in front of

Dillard's. The 1988 dance team consists of 34 young ladies from all parts of Texas, in addition to members from New Mexico and Oklahoma.

A "Get Acquainted" Coffee for the new hospital administrator will be hosted by the E.L. Graham Memorial Hospital Auxiliary on Thursday, Sept. 15. The event, which will honor Administrator Marvin Cole and his family, will be held from 10 a.m. to 12 noon on the 15th in the community Room of the First National Bank. The public is invited.

The Quarterly Chamber of Commerce Breakfast will be held at 7 a.m. on Wednesday, Sept. 21 at the White Elephant Restaurant Meeting Room. This is a time to visit, share information, and make plans for the community. All are encouraged to attend.

Roaring Ranger Days October 15

The Ranger Chamber of Commerce is accepting reservations for Food and Craft Booths at Roaring Ranger Days, October 15, 1988. The booths are approximately 10'x10' and available for \$20.00 each. Electricity is available to the craft booths on a limited basis for an additional \$5.00. (There is no additional charge for food booths.)

Your reservation may be made by writing Ranger Chamber of Commerce, Box 57, Ranger, 7647 or by calling 647-3750, between 9:00 a.m. and 4:00 p.m. Payment should reach us no later than September 30 to assure booth space.

We are looking forward to our most successful Roaring Ranger Days ever. Please come and be a part of it.

PAT MAYNARD REAL ESTATE

WE APPRECIATE YOUR BUSINESS!!

629-8568 MAYNARD BUILDING HIGHWAY 80 EAST EASTLAND, TEXAS

EASTLAND HOMES AND LOTS

Oak Hollow Area, 3 BR, 2 Bath, Brick, CH/CA, Fireplace, Ceiling Fans, Builtins, Privacy Fence, Sprinkler System, Solar-Powered Hot Water Heater, \$62,500.

Unique 3 BR, 2 Bath, Mission Brick, Approx. 2,471 sq. ft., 2 CH/CA Units, Rock Fireplace, Builtins, Wet Bar, Garden Tub, & More! \$99,500.

Magnificent 4 BR, 3 Bath, Brick, Approx. 3,000 sq. ft., Formal Liv/Din. Rm., Modern Kitchen w/Brkfst. Nook, Large Den w/Woodburning Fireplace, Sep. Master BR Suit, Beautiful Wooded Backyard & Patio, \$130,000.

Comfortable 3 BR, 1 1/2 Bath, Approx. 2,000 sq. ft., Situated on Lovely S. Seaman, CH/CA, Ceiling Fans, Custom Drapes, Formal Din. Rm., Big Kitchen, Concrete B-B Court, Patio, 3-Rm. Enclosed Detached Garage, \$60,000.

Attractive 4 BR, 1 1/2 Bath, Yellow Frame, Spacious Liv. Area & Kitchen, Central Heat, Fenced Backyard, Carport, Stor. Shed, Pecan Trees, Hillcrest Addition, \$38,500.

Priced To Sell! Cute 2 BR Frame Home w/Yellow Siding, CH/CA, Formal Din. Rm., New Carpet, Ceiling Fans, Storm Windows, Covered Patio w/Gas Grill, Stor. Shed, Fenced yard, Big Oak Trees, JUST \$29,500!

Luxurious 2-Story Brick Home, Corner Lot, Approx. 5,000 sq. ft., All The Amenities, Exclusive Oak Hollow Area, Call For App. To See!

Huge 5 BR, 3 1/2 Bath, Brick, Sep. Liv. Areas, Formal Din. Rm., Double-size Master BR Suite, Storage Garage, Solarium, Upstairs Studio, Garage Apt., Corner Lot, The Worlds of Space and Livability of this home is indescribable! \$109,500.

Pretty 3 BR, 2 Bath Brick, CH/CA, Custom Drapes, Ceiling Fans, Fireplace, Utility Rm., 2-Car Garage, Sprinkler System, Fenced Yard, Stor. Shed, \$72,500.

Historic White 2-Story situated on 1 1/2 Acre Scenic Area, Stately Oak Trees, CH/CA, New Carpet, Drapes, Formal Din. Rm., 5 BR, 2 Baths, Wide Hallways, Covered Porch and Balcony overlooking Estate, Completely Fenced, Detached Gar. & Stor., \$135,000.

Let's Talk Terms! Price Reduced on this 3 BR, 2 1/2 Bath, Brick, Approx. 3,000 sq. ft., Huge Gameroom w/Wet Bar, Bookcases, Fireplace, CH/CA, Formal Din., Big Kitchen w/Brkfst. Area, Guest House, Pool, & Jacuzzi, \$99,500.

Owner Says Sell! 2-Story, 3 BR Brick, Approx. 2,000 sq. ft., plus Garage Apt. which could be fixed up for more space or Rental Income, \$39,500.

Nice 3 bdrm, 1 1/2 bath, brick, circle drive in front, paved rear entrance drive in back, formal living-dining combo, large den with fireplace, CH/CA, built ins with microwave, beautiful patio, fenced back yard \$68,500.

Still Time To Choose Your Colors on Brand New "Spec" Home situated on S. Seaman! 3 BR, 2 Bath, CH/CA, Builtins, \$72,000.

2-Story, 5 BR, 2 Bath, Approx. 2,500 sq. ft., CH/CA, Situated on 2 Lots, 2 Stor. Houses, plus 1 Older House w/Kitchen & Liv. Rm., \$45,000.

In The Heart Of Crestwood, 3 BR, 1 1/2 Bath, Brick, CH/CA, Carpet, Custom Drapes, Fireplace, Wet Bar, 3-Car Garage, Circle Dr., \$88,000.

See To Appreciate! 3 BR, 2 Bath, Brick, CH/CA, Builtins, Sauna w/Whirlpool, Brick Patio, Corner Lot, Crestwood Addition, \$69,500.

3 BR, 2 Bath Double-Wide, CH/CA, Builtins, Double Carport, Large Stor. Bldg., \$17,500.

3 BR, 2 Bath, Brick, Large Playroom, CH/CA, Builtins, Fireplace, Ceiling Fans, Energy Efficient, Corner Lot, Approx. 1,710 sq. ft., \$48,500.

3 BR, 2 Bath Mobile Home, 14'x80', CH/CA, Builtins, \$10,700.

2 BR Frame, CH/CA, Ceiling Fans, Patio, Garage, Fenced Backyard, \$35,000.

3 BR, 2 Bath, Brick, Large Playroom, CH/CA, Builtins, Fireplace, Ceiling Fans, Energy Efficient, Corner Lot, Approx. 1,710 sq. ft., \$48,500.

3 BR, 2 Bath Mobile Home, 14'x80', CH/CA, Builtins, \$10,700.

2 BR Frame, CH/CA, Ceiling Fans, Patio, Garage, Fenced Backyard, \$35,000.

Fresh Paint! 2 BR Frame, Carpet, Panelling, Ceiling Fan, Carport w/Stor., Fenced Backyard, \$22,000.

Large 2 BR, 1 1/2 Bath, Sep. Liv. Areas w/Huge Den, CH/CA, Carpet, Appliances, Double Carport, Sep. Apt. in Back, Chainlink Fence, \$30,000.

Bright as Sunshine, 3 BR on 1/2 Lots, Detached Garage, Storm Cellar, Pretty Trees, Close in, Owner Finance, \$21,500.

Newest Listing! Like New 2 BR, 1 Bath Mobile Home, Fully Furnished, Builtins, CH/CA, Only Lived in 8 Mo., Small Equity & Assume FHA Loan! Pymts. \$157.97 Mo.

\$500 Down & Take Over Payments, Nice 3 BR, 2 Bath Mobile Home, CH/CA, Builtins, Sunken Tub, Wood Siding, Shingle Roof, Pymts. \$296 per mo.

Extremely Nice 3 BR, 2 Bath Double-Wide situated on approx. 1 ac. overlooking Lakeside Golf Course, CH/CA, Fireplace, Builtins, \$43,000.

3 BR Near Schools, CH, Carpet, Ceiling Fans, Refrig. Air, Stor. Shed, Large Carport, Pretty Trees, \$33,000.

Neat 2 BR Frame/Stucco on W. Main, Dishwasher, Chainlink Fence, \$17,500.

Ideal Starter Home, 2 BR Frame, CH/CA, Carpet, \$28,500.

Attractive 3 BR Frame w/Brick Trim, Good Carpet, CH/CA, Dishwasher, Ideal Kitchen, Fenced Yard, Stor. Shed, \$33,500.

Like New, 3 BR, 2 Full Baths, CH/CA, Storm Windows, New Plumbing & Wiring, 5 Ceiling Fans, Fenced yard, \$33,000.

2 BR Duplex, 2 BR, 1 1/2 Bath on Both Sides, CH/CA, Builtins, Carport w/Stor., \$38,000.

Hilltop View from this 3 BR, 2 Full Baths, Good Location near Schools, \$29,500.

2 BR (Could be 3), corner lot (4 lots in all), Stately Oak Trees, Fireplace, \$26,000.

3 BR Frame w/Siding, Woodburning Stove, Ceiling Fans, Fenced Yard, Fruit Trees, Near School, \$35,000.

4 BR, 1 1/2 Bath, Abt. 1,800 sq. ft., near major convenience store, \$20,000.

2 BR (Could be 3), Frame, on 2 lots, Fenced Yard, Storm Cellar, \$12,500.

2 BR Frame w/Siding, New Carpet, Dbl. Carport w/Stor., Woodburning Heater, Fruit Trees & Garden Spot, \$30,000.

Lake Leon, 3 BR, 1 1/2 Bath Mobile Home under Full Roof, 14'x70', CH/CA, Builtins, Boat House & Dock, Carport, Stor. Shed, Staff Water, Deeded Lot, \$55,000.

Lake Leon, 3 BR, 1 1/2 Bath Brick Home on Deeded Lot, Staff Water, Boat Dock, Deep Water, Furniture can stay! \$45,000.

Lake Leon, 3 BR, 2 Bath Brick, approx. 2,000 sq. ft., CH/CA, Deeded Lots, plus 3 Rental Units (2 BR Mobile Home; 1 BR Frame House; 1 BR Frame/Siding). All for \$92,500. Must See!

Lake Leon, 3 BR Frame, CH/CA, Woodburning Heater, Carpet, Staff Water, Situated on 2 Deeded Lots, plus small guest house, \$40,000.

Residential Lots in Oak Hollow Subdivision, \$7,500 ea. Heavily Wooded Lot near Eastland Lake, Approx. 1/4 Ac. \$9,200.

First Time Ever On Market! Exceptionally nice lot, Hillcrest Addition.

Residential Lots Just Listed, Good Eastland Location, 3 lots in all!

Lake Lots, Lake Leon, La Mancha Area, Please Call For Details!

HOMES AND LOTS: CARBON, GORMAN, CISCO, RANGER, OLDEN

Cisco, Beautiful Victorian 2-Story w/Attic and Basement situated in Nice Neighborhood, Corner Lot, Priced for QUICK SALE!

Cisco, 2 BR Fleetwood Mobile Home, CH/CA, Builtins, Stor. Bldg., Can Assume Lease Purchase on Lot, \$10,500.

Cisco, 2 BR w/Den, New Carpet, New Paint, New Copper Piping, Garage, \$21,000.

Olden, 2 BR (could be 3), 1 1/2 Bath on approx. 2.96 ac., city water, storm windows, storm cellar, fences, \$39,500.

Olden, 3 BR, 1 1/2 Bath Brick on approx. 2.2 ac., New Carpet, CH/CA, Ceiling Fans, Utility Rm., Covered Patio w/Gas Grill, 2 Water Wells, 18 Pecan Trees, \$65,000.

Olden, 3 BR, 1 1/2 Bath Brick on approx. 1 ac., CH/CA, Fireplace, Builtins, Utility Rm., Covered Patio, Stor. Sheds, Chainlink Fence, \$69,000.

Carbon, 3 Room House, Owner Finance, \$2,500.

Carbon, 8.9 ac. due South of Carbon School, part wooded, Hwy. Frontage, \$10,000.

LAND: FARMS, RANCHES & SMALL ACREAGE WITH HOMES

Horse Operation, 51 ac., 3 tanks, 3 water wells, 20 ac. cult., remainder in coastal, good fences, w/3 BR, 1 1/2 BR Brick Home w/all the Amenities! Approx. 2,800 sq. ft., \$197,000.

22 ac. w/4 BR Home, Approx. 2,000 sq. ft., Fireplace, Large Kitchen w/lots of cabinet space, 2 tanks & water well, \$65,000.

26 ac. w/3 BR, 2 Bath Triple-Wide Modular Home, Approx. 2,080 sq. ft., CH/CA, Builtins, Deck w/Hot Tub, Extra Nice! \$79,000.

50.6 ac. Near Eastland Lake, Some Coastal, Good Fences & Set Of Pans, Creek, Pecan Trees, 3 Tanks, \$60 per ac.

20 ac. in Hwy. 80 between Eastland & Cisco, Westbound Water, 1 tank, mostly all Coastal, \$825 per ac.

20 ac. near Lake Leon, 1 tank, mostly kline grass, owner finance, \$27,000.

136.7 ac., 30 ac. cult. & rest in coastal, love, & K.R., good fences, 4 tanks, water well, 20 pecan trees, \$90,000.

249.3 ac., 2 tanks, Sabana River, 140 ac. cult. & rest pasture, Oak & Pecan Trees, 1/2 Minerals, \$650 per ac.

12 1/2 ac., I-20 Frontage, City Water, 1 Tank, Some Coastal, Near Eastland, Owner Finance.

46 ac. near Olden, City Water, 20-25 ac. lake, coastal, oak & pecan trees, good fences, lots of game, \$75,000.

60 ac. w/3 BR, 2 Bath Home, Fireplace, City Water, 2 Tanks, Coastal & Kline, New Fence, Call for details.

40 ac. Wooded Tract, Owner Finance, Easy Terms, \$36,000.

167 ac. W. of Cisco on Old Abilene Hwy., fair fences, 2 tanks, 112 ac. cult., 1/2 minerals, \$454 per ac.

260 ac. near Stanton, approx. 140 cult., spring fed tank, 3 water wells, barn & shed, 1/2 of Seller's Minerals, \$25 per ac.

166 ac. NW Eastland, good road frontage, good fences, excellent hunting, lots of trees, some cultivation, corrals, \$550 per ac.

75.5 ac., all wooded, fair fences, good hunting, near Olden, \$525 per ac.

146 ac. pasture land, oak trees, 1 tank, Hwy. frontage, fenced, some minerals, \$550 per ac.

Approx. 14 ac. coastal SE Eastland, county Rd. frontage on 2 sides, \$16,000.

COMMERCIAL

TURN KEY OPERATION, Service Station, 2 Bays, Office, 2 Restrooms, 20'x26' metal shop bldg., all equipment, busy location, \$60,000.

Bargain! 5,000 sq. ft. Metal Bldg. on Approx. 1/2 ac. I-20 Frontage near Eastland's busiest I-20 Intersection, \$78,000.

Brick Bldg., Approx. 1,800 sq. ft., Situated on W. Main, Eastland, Ideal business or office location! PRICED FOR QUICK SALE! \$42,700.

I-20 & Hwy. 6 Intersection, property on three corners, call for details.

Commercial Lot on Hwy. 80 E., Eastland, REDUCED! \$45,000.

50'x100' Metal Bldg. on 38.82 ac., I-20 Eastland, \$214,000. Hwy. 80 E., Eastland, Ideal Location, 1.275 ac. w/Large Frame House, \$80,000. House can be purchased to be moved also.

50 ac. Prime Commercial Location in Eastland, Reduced Price! \$120,000.

Brick Duplex, 2 BR on ea. side, \$38,000.

1,800 sq. ft. Bldg. on corner lot, well-known business location, \$48,900.

31 ac. RV Park, I-20 Eastland, 10 Overnight Campsites w/water, sewer, & Elec., 1/2 minerals, Let's Talk!

TAKE ADVANTAGE OF THE LOWER INTEREST RATES! WE BUILD NEW HOMES ON YOUR LOT OR OURS.

Prater Equipment Co.
Heavy Equipment Contractors
Dams
Roads
Brush Work
Utilities
Developments
Free Estimates
817-842-5878 817-842-5244
No Job Too Small or Too Large 5-104

BIG COUNTRY R.E.
1101 1/2 W. 12th 442-1693
FEATURING
2bd. Central H/A, 2 lots, good price
3bd. Nice corner, many great futures
HUD Repossitions. We handle them!
Rising Star: Home on 1/2 ac. \$15,000
Acreage: 3 AC and Up- Some with homes.
We Have More-- CALL US
DANA (BKR) 442-3958 PENNY 442-1707
JEFFREY 643-3129 Margaret 643-3313
CERRS104

ANN WILLIAMS REAL ESTATE
610 Conrad Hilton Ave., Cisco
442-1880
Business & Home Phone
CISCO HOMES
Choice of two homes on corner lots, possible owner finance, \$7,500. each.
Investment property, only \$1,000 down, \$150 per month. Call us about our 2 & 3 BR homes under \$12,500.
2 and 3 BR mobile homes from \$9,500. to \$16,500, each have large yards.
Only \$18,000 for this 2 BR home, sep. DR, utility rm., recently painted exterior, large pecan trees.
Many Possibilities! Residential or commercial, 4 BR, 2 bath, rock home on approx. 2 lots.
Have you called about 2 & 3 BR homes under \$20,000?
Energy efficient, 2 BR home, wooden deck, garage, nice landscaped yard. Humbletown area.
Affordable Large 2 BR, 2 bath home, CH/CA, double garage, located on 2 lots, pecan trees, owner fin. available.
Unique older home on 3 lots, large 3 BR, 1 3/4 bath, CH/CA, 2 living areas, plus detached apartment.
Don't Miss this lovely 2 BR home on 4 lots, large shop with 3 phase wiring, beautiful yard, water well.
Affordable! Cozy 3 BR, 1 3/4 bath home, breakfast nook, formal DR, double garage, and workshop.
Victorian style, 2 story home, 5 BR, 2 bath, 2 fireplaces, double carport, on lovely tree shaded property.
Remodeled 5 BR, 2 bath, 2 story home, insulated, storm windows, CH/CA, rewired and replumbed, water treatment system, many extras.
Need Animal Space? Come see this 3 BR 1 3/4 bath home on 14 lots.
Spectacular Buy! Extras Galore! 3 BR 2 baths, DR/LR combination, sep den, privacy fence, carport.
13 Lots make a beautiful setting for this lovely 3 BR, 1 3/4 bath home, CH/CA, also has an unfinished 2 BR, 1 3/4 bath home, all city utilities, plus water well.
Convenient location! Exceptional 3 BR, 1 3/4 bath home, CH/CA, 2 living areas, DR, office space, new carpet, large shaded yard.
Nice selection of 3 & 4 BR brick homes with CH/CA, ranging from \$29,000 to \$48,500. Call for details.
Several Residential Lots available.
HUD REPOSSESSIONS-- Call for information.
LAKE CISCO AREA: Several homes in various sizes, from \$5,000 to \$35,000. Call for details.
MORAN: Triplex, Residential or Commercial.
COMMERCIAL PROPERTIES
Doctor's clinic or large office building, like new, CH/CA, large parking area.
Large metal building on 4 lots, excellent location.
ACREAGE AND COUNTRY HOMES
3 BR brick home on 29.6 acres, mostly wooded, 1 tank, South of Cisco, 48.63 acres, partly wooded, \$21,500.
Approx. 50 acres, mostly wooded, some cultivation, 2 tanks, water well, 3 BR home, good hunting and fishing.
160.7 acres, pasture and farmland, tank, creek, lots of turkey and other game, \$370. per acre.
Approx. 173 acres of peanut land near Rising Star.
Approx. 179 acres, mostly coastal fields, good hunting, 2 water wells, 5 tanks, barn, pens, good fences, many improvements, 2 BR home plus hunting cabin.
Ann Williams Broker 442-1880
Cathy Wallen Associate 442-2120
CERRS104

Town & Country REAL ESTATE
Barbara Love, Inc. Highway 80 Eastland, Texas
629-1725 629-8391
EASTLAND
LOTS AVAILABLE 75'x150'. \$750 down. Owner financing. E14
PRICE REDUCTION! OWNER SAYS SELL THIS 5 yr. old mobile home with many extras on a fenced lot. E17
THIS IS IT! Beautifully landscaped, 3 BR, 2 bath with many extras, approx. 25'x40' swimming pool, satellite, sprinkler system. CALL TODAY!
PRICE REDUCED! 4 BR, 2 1/2 bath brick and frame home. E28
PRICE REDUCED on this neat 2 BR, 1 bath home with fenced yard, 25'x40' steel building. SEE THIS ONE TODAY!
YES, YOU CAN OWN A BRICK HOME for under \$40,900.00! See this 3 BR, 1 3/4 bath home on large lot. Many extras! E22
PRETTY AS A PICTURE! The quality home has it all - prestige location, 3 bedrooms, formal dining, large living room, hot tub, in-ground swimming pool, MORE!! UNUSUAL OPPORTUNITY TO OWN A LARGE 3 BR, 2 bath home for under \$30,000.00! CALL US!
EXCELLENT NEIGHBORHOOD for this 3 BR, 2 bath brick. Covered patio, some built-ins, ceiling fans & storm windows. E3
COUNTRY LIVING IN TOWN! Nearly new large custom home. Heat pump, rock fireplace, office. Beautiful oak covered lot. E23
STOP! Look at this budget S-T-R-E-T-C-H-E-R! 2 BR in nice neighborhood. Under \$15,000.00. E1
"DOLL HOUSE!" perfectly remodeled 2 BR home with warm, homey atmosphere. Beautiful country kitchen, more. E32
PRICED TO PLEASE! Charming brick 3 BR, 1 1/2 bath home in excellent neighborhood. A "must see" home! E7
OAKWOOD BE... 2 bath brick with fireplace, enclosed patio, call for more! E9
BUDGET PRICED! Neat 2 BR, 1 bath frame home, carport, Stg. Nice location, pretty yard. E10
BRICK, 2 BR, 1 3/4 bath. Formal living & dining, Den with fireplace. "Nice" home. E20
BEAUTIFULLY KEPT home for large family, 3 BR, 1 3/4 bath, 2 living areas, 2 fireplaces. Large corner lot. E8
SPACIOUS 3 BR, 1 1/2 bath frame home on large lot. Nice location, beautiful, large trees. E16
VACANT LOT - COMMERCIAL AREA, near downtown. Frontage on N. Lamar, access from Patterson St. Owner will finance. E30
ON A BUDGET? PRICE REDUCED on this affordable 2 BR, 1 bath home - lg. living area, gar./carport. E25
NOTHING OVERLOOKED in making this quality home the ultimate in beauty. 3 BR, 2 bath brick. Many built-ins. Security & sprinkler systems. LOADED WITH EXTRAS! E5
CHARMING DUTCH A... 2 wooded lots - 2 BR, 1 3/4 bath, only 8 yrs. of age. E33
SMALL DOWN, ASSUMPTION... OWNER 2ND makes it easy to buy this cozy 2 BR with insulated siding. Don't wait! E34



RETRACING HISTORY. Emily Gleason Perkins alongside Macy Gotthardt lead a crowd in a horse-drawn sarry through the grand estates of Gleasondale in Stow. (Staff photos by Valerie Williams)

I

By Duncan Adams
I was like a love poem to history, with the click-clack cadence of a horse-drawn carriage, and the epic grace of hirsute memories shared in the dusky glow of a setting sun.

It was a night of lyrical beauty, of living and breathing history, and of looking back. It was a night when Emily Gleason Perkins, the gracious, 93-year-old matriarch of Gleasondale in Stow shared freely of her home, her family, and her memories.

"It really is wonderful to look at all of you who have the courage to walk along with us," she said to the attentive crowd of more than 60 history buffs of all ages gathered to retrace steps in Stow's history. Then she spun a tapestry of mill and village history, telling about Abraham Randall, proprietor of Randall's Mills on the Assabet River, about the Rock Bottom Cotton and Woolen Company's wood frame mill constructed in 1813, and about the Gleason family's long tenure in the village.

As the crowd moved toward the Perkins' grand Victorian estate and gazed across verdant pastureland and grazing horses, those assembled could understand why, as a child, Dorothy Perkins wrote poetry about her parents' Gleasondale estate — "about the fields, the horses, and the stow walk."

And it seemed somehow fitting this night that the only hitch, during an otherwise flawless evening, was technological — a cordless microphone that sometimes spluttered in the wind. The sound system seemed anachronistic, anyway, amidst the compelling, late 1800s ambience so eloquently choreographed by the Stow Historical Society, the Perkins, and some combination of providence and luck.

Chet Jacobs, a lifelong Gleasondale resident and neighbor of the Gleasons and Perkins, has a special familiarity with this idyllic scene.

"Every once in a while we just take a walk across the street, and it's like walking into another era."

Stan Sherman, Historical Society vice-president, joked about the glorious sunset. "We had to pay a lot to arrange that."

Last Thursday's walking talking history of Gleasondale began in the old mill yard alongside the Assabet River, just a few miles south of Stow center along Route 62.

Emily Gleason Perkins was introduced

Walking back to yesteryear

Stow matriarch recalls days of Gleasondale



Emily Gleason Perkins

by Sherman and by Bob Rising, president of the Historical Society. She sat in a Meadowbrook sarry alongside Mary Gotthardt, who held the reins. Gotthardt's husband John supplied a steady hand to the couple's frisky horse Kermit, who was white, not green, and wore black blinkers. A crescent moon rose just above the old mill cupola as Perkins began to speak.

Gleasondale history unfolds

The year was 1849 when B. W. Gleason and Samuel J. Dale purchased the struggling Rock Bottom woolen mill. Gleason and Dale made the mill turn a profit. But a fire soon destroyed the wood frame mill and indirectly led to Dale's death, who succumbed to pneumonia contracted while fighting the fire in cold, wet weather.

In 1854 a five-story brick mill was built on the riverbank. This building remains, now housing the Gleasondale Industrial Park.

The woolen mill was busy and profitable

'Every once in a while we just take a walk across the street, and it's like walking into another era.'

— Chet Jacobs

during the Civil War and World War I. Elbert B. Childs' *History of Stow* records: "During the world war years the mill was very prosperous. One hundred twenty-five men, women, and children were employed there — whole families who lived in the village and walked to work."

The mill declined after World War II, as did most Northern textile mills. Textile companies moved to the South where non-unionized labor was cheaper. The increased availability of electricity had also freed manufacturers from any geographical dependency on hydropower. Use and ownership of the old brick building changed several times during the next two decades, and the structure stood empty for several years. Eventually, the old mill was purchased in 1966 and converted into an industrial complex.

In 1898, Rock Bottom residents had petitioned the Postmaster general of the United States to change the name of their post office to Gleasondale, in honor of Mrs. Gleason and Dale. . . . This name change was granted on April 1, 1898. The old name had made them the butt of jokes and it lacked the dignity residents desired." (From *History of Stow*)

Emily Gleason Perkins demonstrated last week why the Gleason name lent new dignity to this turn-of-the-century village. And with the dawn of a new century less than 12 years away, the still palpable old world charm of Gleasondale helped explain why so many of those born and raised in this village, like Chet and Dorcas Jacobs, Ken Frye, and Claudia Cutler, may never choose to leave.

"We never tire of looking at this view," said Perkins of the timeless vista around and about Gleasondale. "We think it's the best place in town to watch the sunset."

LOCAL ED. NOTE: Mrs. Joseph (Doris) Perkins is also a longtime Eastford resident, sharing her time between her home here and in her native Gleasondale, Mass. She has been instrumental in recording and sharing the history of this city and area since she came here with her late husband many years ago when he was among the first geologists to propose the oil discovery. Mrs. Perkins is noted for her work with Communal Memorial Library and its Archives Division, and could easily give historical findings on many segments of life in Eastford through the years.

'It was a night of lyrical beauty, of living and breathing history, and of looking back. It was a night when Emily Gleason Perkins, the gracious, 93-year-old matriarch of Gleasondale in Stow shared freely of her home, her family, and her memories.'

Reprinted From:

The Beacon

Acton, Mass.

May Lunch Program

May I.S.D. has announced its policy for free and reduced price meals for children unable to pay the full price of meals served under the National School Lunch and/or Breakfast Program. Each school and the office of the May I.S.D. has a copy of the policy, which may be reviewed by any interested party.

Children from households whose income is at or below the levels shown are eligible for free or reduced price meals. Application forms are being sent to all homes with a letter to parents or guardians. To apply for free or reduced price meals, households should fill out the application and return it to the school. The information provided on the application will be used for the purpose of determining eligibility and may be verified at any time during the school year by school or other program officials.

For school officials to determine eligibility, households receiving food stamps or AFDC must list the child's name, their food stamp or AFDC case number and the signature and name of an adult household member. Households not receiving food stamps or AFDC must list: names of all household members, Social Security numbers of all adult household members or a

determine eligibility. Parents or guardians dissatisfied with the ruling of the official may wish to discuss the decision with the determining official on an informal basis. Parents wishing to make a formal appeal may make a request either orally or in writing to Don Rhodes, Box 38, May, TX 76857, 259-2131 for a hearing on the decision.

Households that list a food stamp or AFDC case number must report when the household no longer receives these benefits. Other households approved for benefits are required to report increases in household income of over \$50 per month or \$600 per year and decreases in household size. Also, if a household member becomes unemployed or if the household size increases the household should contact the school. Such changes may make the children of the household eligible for benefits if the household's income falls at or below levels shown above.

In certain cases foster children are also eligible for school meal benefits. If a household wishes to apply for benefits for foster children living with them the household should contact the school for more information.

The information provided by the household is confidential and will be used only for purposes of determining

INCOME ELIGIBILITY GUIDELINES 1988-89

Family Size	Annual:		Monthly:		Weekly:	
	Free	Reduced-Price	Free	Reduced-Price	Free	Reduced-Price
1	\$ 7,501	\$ 10,675	\$ 626	\$ 890	\$ 145	\$ 206
2	10,049	14,301	838	1,192	194	276
3	12,597	17,927	1,050	1,494	243	345
4	15,145	21,553	1,263	1,797	292	415
5	17,693	25,179	1,475	2,099	341	485
6	20,241	28,805	1,687	2,401	390	554
7	22,789	32,431	1,900	2,703	439	624
8	25,337	36,057	2,112	3,005	488	694

Each Additional Family Member:
 \$ 2,548 \$ 3,626 \$ 213 \$ 303
 \$ 49 \$ 70

statement that the household member does not possess one; total household income and the amount and source of the income received by each household member; and the signature of an adult household member certifying that the information provided is correct.

Applications may be submitted at any time during the year.

Under the provisions of the free and reduced price policy the superintendent will review applications and

eligibility and verifying data.

In the operation of child feeding programs administered by the U.S. Department of Agriculture, no child will be discriminated against because of race, color, sex, national origin, age or handicap. If any member of a household believes they have been discriminated against, they should write immediately to the Secretary of Agriculture, Washington, D.C. 20250.

Discounts For Cash Delivery

Gayle & Charles
 Chaney Gas Co
 708 W. Main, Eastland
 (Across From H & R Lumber)
629-1751

After Hours
 Gayle - 629-2128 Charles - 629-8614

Susan J. Schaefer
 Certified Public Accountant

9th & Main P.O. Box 501
 Cross Plains, Tx. 76443

Office: 817-725-6747 Home: 817-442-3784

L&J CONSTRUCTION

New Const. - Remodels
 Add-Ons - Steel Bldgs.
 Sheet Rock - Tape & Bed
 Acoustic - Texture

Jim Ratliff Lynn Hutton
 817-643-6464 Rt. 1, Box 145A
 Rising Star Cross Plains, Tx. 76443

L&J CONSTRUCTION

Bus Safety Rules

AUSTIN - Texas students have returned to school and many of them ride school buses. Texas Safety Association encourages parents to remind their children about school bus safety rules.

While waiting for buses, children should:
 -Line up away from the road and wait for the approaching bus to come to a complete stop before entering the roadway to board.

-Avoid pushing and shoving.
 -Use the grab handle when boarding and move directly to a seat.

While the bus is in motion, children should:
 -Avoid horseplay.

-Refrain from shouting or making loud noises that could distract the driver.

-Remain seated for the entire trip, even when the bus is approaching its destination.

Upon arrival at the bus's destination, children should:
 -Exit the bus in a quiet and orderly manner.

-Walk about 12 feet to the front of the bus so the driver can see them, and wait until the driver signals them before attempting to cross the street.

-Remember that although it is against the law for vehicles to pass a school bus that is loading or unloading passengers, some drivers still

do. Students should check both ways on any street before crossing.

One of the most often asked questions regarding school buses is, "When is it legal or safe to pass a stopped school bus when its lights are flashing?" According to the Texas Motor Vehicle Laws Uniform Act (6701d, Sec. 104b): "The driver of a vehicle upon a highway with separate roadways need not stop upon meeting or passing a school bus which is on a different roadway or when upon a controlled-access highway and the school bus is stopped in a loading zone which is part of or adjacent to such highway and where pedestrians are not permitted to cross the roadway."

In other words: When approaching a stopped school bus from the opposite direction on a highway, a driver need not stop if: 1) the school bus is on a frontage road, 2) the opposing lanes are separated by a median strip 10 feet in width (Turn lanes are not considered median strips!), or 3) the opposing lanes are separated by a permanent barrier. In either case, only vehicles traveling in the same direction as the school bus must stop. Vehicles may pass in the same direction if the bus is in a controlled loading zone adjacent to the traffic lanes, and where pedestrian crossing is prohibited. But it's still safer to stop.

Parents should review other basic pedestrian safety rules with their children in preparation for their daily trips to and from school. Texas Safety Association is a nonprofit, nongovernmental organization whose members work in government, private industry or as individuals to prevent accidents and needless loss of life and property.



USED TRUCK SPECIAL

1987 F-150 S/C XLT Lariat
 302 V-8 EFI, Auto O/D,
 Loaded with Everything, Local 1-Owner
 Sold New Right Here-Better Hurry

Pierce Ford
 Cisco, Texas I-20
817-442-1566

Aflatoxin in Some Corn

(Austin) - Texas Department of Agriculture officials cautioned livestock producers in North and East Texas to be on the lookout for feed corn contaminated with aflatoxin.

"We want to stress that this is not an emergency," said TDA Assistant Commissioner Richard Lowerre. "If producers follow normal precautions, they shouldn't have anything to worry about. But some corn with high levels of aflatoxin has been found and we think producers need to be aware of the dangers."

Lowerre said the possibility of aflatoxin in corn is another symptom of the drought which is hurting the Texas agricultural economy. Fields that are stressed by drought are more likely to be contaminated, he said.

Aflatoxin is a carcinogenic mold found in some agricultural products, including corn and peanuts.

Barry Williams, director of TDA's Tyler district, said that some corn contaminated with aflatoxin has been found in northeast Texas. He said that his conversations with TDA personnel throughout the state and with agents from the Texas Agricultural Extension Service indicate that so far the problem is isolated to Northeast Texas.

Bob Tarrant, assistant director of TDA's Grain Warehouse program, said the aflatoxin appears to be limited to this year's grain crop.

"The people who could be most immediately harmed are dairymen," Tarrant said. "If their cows eat contaminated corn, they run the risk of the aflatoxin being passed to the milk, which could mean that their milk would be quarantined."

Tarrant added that hog and poultry producers should also be on the lookout

for contaminated corn. "The most likely way for a producer to get bad corn would be someone who was trying to save a few dollars and bought corn right off the turnrow," Tarrant said. "Most of those people don't have the capability to dry the corn, which is the best preventive for contamination."

The TDA officials said the situation does not appear to be bad enough for farmers to demand aflatoxin testing on all corn, but instead, urged that farmers buy from reliable dealers.

"Right now, I think that the best thing to do is buy from a reliable grain warehouseman who uses proper drying techniques," Tarrant said. "And I don't think I can stress enough that the worst thing to do is buy right off the field."

The TDA officials said that corn producers should contact their nearest TDA District office or an Agricultural Extension Agent for tips on reducing the possibility of aflatoxin in the corn they are harvesting.

Tarrant said general precautions to be taken include drying high-moisture corn immediately, making combine adjustments that will reduce damage to corn kernels and keeping corn from drought-stressed fields separate from corn from higher producing fields.

WIND

Gone With the Wind: over six billion tons of soil are wind-swept or rain-washed off U.S. farmland, forests, rangelands and streambanks each year. According to National Wildlife magazine, that's enough soil to fill a line of dump trucks stretching from the earth to the moon and three-quarters of the way back.

Remember your loved ones. Help the Rising Star Heritage Cemetery!

Lakewood News



The nice bass pictured here was caught by Floyd Botts of Rising Star. Floyd catches many fish in our lake almost every day.

Last Tuesday, we had a great club dinner with 24 members present; the food and fellowship was fantastic.

Our star of the evening was Lanell Henry's mother,

Mrs. Lela Clark, celebrating her 92nd birthday. We had several birthday cakes and we all sang "Happy Birthday." Lela entertained everyone with her jokes, and no one would guess she was 92 years young.

Ladies, don't forget your meeting and luncheon on Friday, the 16th.

Lenny and Paul Province

May Homecoming
 Sept 23-24

Series 42
9.27%*

*This current return represents the estimated net annualized interest income divided by the public offering price as of 9-1-88.

IRA Straight Talk.

GNMA A fixed portfolio unit trust of GNMA securities backed by the full faith and credit of the U.S. Government.

- Units rated "AAA" by Standard & Poor's
- Low minimum investment of \$250.00 for IRAs and Keoghs.
- Automatic Reinvestment Option.

Call or send coupon to:
KEN GOBER
 Bluebonnet Securities, Inc.
 2016 Coggin Ave.
 Brownwood, Tx. 76801
915-643-4750

Use this coupon to receive your free prospectus containing more complete information about The First Trust GNMA including all sales and other charges and expenses. Read it carefully before you invest or forward funds.

Name _____
 Street _____
 City _____ State _____ Zip _____
 Telephone _____
 Acct. No. or Representative _____

This advertisement is neither an offer to sell nor a solicitation of an offer to buy these securities. The offering is made by the Prospectus. Copies of the Prospectus may be obtained in any State in which this announcement is circulated from only such dealers or brokers as may lawfully offer these securities in such state.

PONDEROSA BALLROOM

3881 Vine Street
 Abilene
 (915)698-2102

PRESENTS

FREE Bar-B-Q Every Sunday
 Plus Two Bands

Billy Thompson 4 p.m. - 8 p.m.
 Cindy Seaman & Breakaway 8 p.m. - Midnight

Admission \$3.00 Per Person
 \$1.00 Admission, Tue., Wed., & Thur.
 With \$100.00 Door Prize Every Wed. & Thur.

Red's Steakhouse & Club
 Hwy 80 W Eastland, Texas

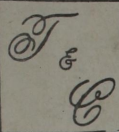
Steakhouse Now Open

To General Public

Memberships

Available for Private Club

Open Daily 4-12:00 p.m. Saturday 4-1 a.m.
 629-3519 Closed Wednesday



VILLAGE MARKET

QUANTITY RIGHTS RESERVED



EVERY MONDAY IS SENIOR CITIZENS DAY
5% DISCOUNT ON YOUR TOTAL PURCHASES.

We Accept
FOOD STAMPS
& WIC CARDS

WEEK LONG SPECIALS

SAVE THIS AD, SHOP ANY DAY YOU LIKE -
SPECIAL PRICES IN THIS AD EFFECTIVE
September 7 thru September 13, 1988

STORE HOURS
MONDAY-SATURDAY 7 A.M.-8 P.M.
SUNDAY 8 A.M.-7 P.M.
QUANTITY RIGHTS RESERVED

Phone 725-7131 Cross Plains, Texas

We Have Postage Stamps & Money Orders

DOUBLE COUPONS 7 DAYS A WEEK

CHUCK ROAST

BONELESS

\$1.39
LB.



BONELESS
CHUCK STEAK
ADVANCE
STEAK FINGERS

LB. **\$1.69**

LB. **\$1.49**

ARM ROAST

BONELESS

\$1.69
LB.



SHURFRESH
CORNED BEEF BRISKET
ARMOUR STAR
SLICED BACON

LB. **\$2.09**

1 LB. PKG. **\$1.49**

SMOKED SAUSAGE

HILLSHIRE FARM

\$1.89
LB.



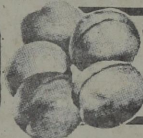
ARMOUR 12 OZ. PKG.
BREADED CHICKEN NUGGETS
HANDY'S WESTERN
BEEF PATTIES

\$1.99

3 LB. BOX **\$3.29**



THOMPSON WHITE SEEDLESS
GRAPES LB. **58c**



CALIFORNIA
NECTARINES LB. **59c**

BELL PEPPER FANCY
CAULIFLOWER CALIFORNIA

6 FOR **\$1** SWEET POTATOES U.S. NO. 1 C. TEXAS LB. **59c**
79c YELLOW ONIONS 5 LBS. FOR **\$1**

MUSHROOMS FRESH WHITE 8 OZ. PKG. **99c**
GREEN ONIONS FRESH **3/\$1**

TOILET TISSUE

NORTHERN
4 ROLL



99c

PAPER TOWELS

BRAWNY
ROLL



69c



SUGAR

IMPERIAL
5 LB.

\$1.69

LOWFAT MILK

GANDY'S DAIRYGOLD
LOWFAT
GALLON



\$1.79

COMET 2 LB.
LONG GRAIN RICE

79c

KELLOGG'S 25 OZ.
FROSTED FLAKES



\$2.99

HERSHEY 74 OZ.
CHOCOLATE SYRUP

\$1.49

6 PACK CANS
COCA-COLA



\$1.49

KITTY WHITE 10 LB.
CAT LITTER



99c

KOZY KITTEN 14.7 OZ.
CAT FOOD

3/\$1

POSH PUFFS 100 CT.
PEANUTS COLLECTION

89c

GLADE 7 OZ.
AIR FRESHENER

\$1.35

SHURFINE .02
FRENCH ONION DIP



39c

SHEDD'S COUNTRY
CROCK MARGARINE 3 LB.

\$1.59

RICH & READY
CITRUS PUNCH GALLON

\$1.59

BIRDSEYE .02
COOL WHIP



89c

11 OZ. BARBASOL
SHAVE CREAM

\$1.39

10 OZ. JERGEN'S
LOTION

\$2.19

4.6 OZ. AIM
TOOTHPASTE

99c

1 OZ. OXY-10
ACNE MEDICINE

\$3.99



KELLOGG'S
19 OZ. RICE KRISPIES
15 OZ. APPLE JACKS
17.6 OZ. HONEY SMACKS
15 OZ. CORN POPS

\$2.49



POP TARTS
KELLOGG'S

99c

SPRAY STARCH
FAULTLESS
22 OZ.

89c

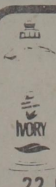


DETERGENT
LEMON DASH
147 OZ.

\$4.99

DISHWASHING
SOAP
IVORY LIQUID

99c



AIRWICK
STICK-UPS
2 COUNT

\$1.29

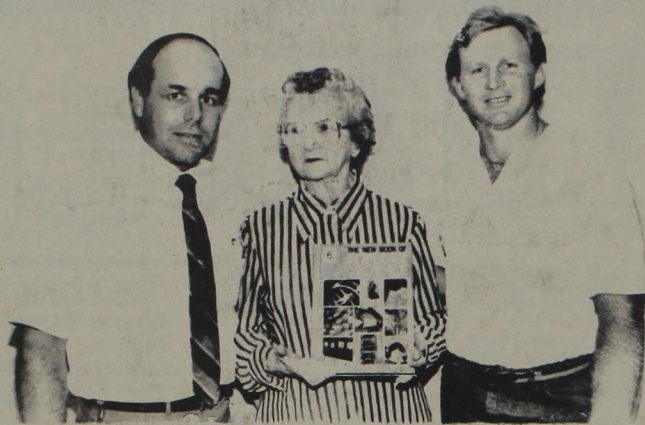
**Buckle Up During
Back-To-School
Activities**

Parents who "buckle up" themselves and their children could save much more than a price discount during back-to-school activities this fall.

Back-to-school means new tennis shoes and notebooks and more cars on the road. Driving through mounting bottlenecks and snarled traffic with the number of vehicles exceeding holiday loads requires every precaution. "Buckling up before driving to the next shopping center or sale can be a major defense against being injured or killed," said Carla Baker, statewide coordinator for the Safe Riders Program at the Texas Department of Health.

The proper use of child safety seats is especially important during this potentially dangerous driving time. "Most accidents happen close to home in town, during peak traffic," said Baker.

Although use of child safety restraints has increased slightly since last year, the 1988 figures are still below 1986, according



AMWAY representative John Hill and Eastland Thrift Mart Store Manager, Clay Bush are shown presenting Mrs. Myrtle Duggan, 80, of Rising Star a volume of *The New Book Of Popular Science*. The book set is published by Grolier, publishers of the *Encyclopedia Americana*.

Mrs. Duggan was thrilled to be picked from more than 400 applicants from the Eastland and Cisco Thrift Mart Stores. According to her, Mrs. Duggan's grandchildren and great-grandchildren will greatly enjoy using the complimentary book set. Congratulations, Mrs. Duggan.

to the latest Texas Transportation Institute survey. After reaching a peak of nearly 60 percent in 1986, the rate of compliance with the state's 1984 child safety seat law declined to 49.9 percent in 1987 and has

risen to 51.9 percent for 1988.

Continued

Cooper's Texaco

Now Open
Sunday Afternoon
12:15 - 5 p.m.
Open Mon.-Sat. 7 a.m.-6 p.m.
Full & Self Service Gas
All Types Flat Repair
Oil Changes

Rs37

**Rising Star Diesel Shop
& Ranch Supply
Now Open For Business**

Specializing in Tractor
& Combine Repair

1 mile south on Hiway 36
We handle Acco feed
643-5109

Owner: Bud Cotter

Rs39

Stop In & See Our Selections



Grapevine Wreaths
Art Supplies
Paintings
Gifts



Hubbard Gift & Gallery

Rising Star

817-643-6242

KOUNTRY KITCHEN

NEW HOURS

Mon.-Fri. 6 a.m.-6 p.m.
Sat. 7 a.m.-2 p.m.

Back to School Specials
Students Welcome!

Orders To Go 643-6831

**The Board Of Directors Of
Comanche County Hospital District
Is Pleased To Announce The Association Of
P. EKSAENG SRI, M.D.**

**WITH COMANCHE
COMMUNITY HOSPITAL**

Dr. Eksaengsri Will Be Officed At

510 E. Central

Comanche, Texas

(915)356-2260

**He Will Begin Seeing Patients In
General Practice, O.B./Gyn. And Surgery
On September 19, 1988.**

**For Appointments Prior To That Time,
You May Call 915-356-5241.**

Rs37

FAMILY FOOD STORE

North Main St.

Affiliated Food Store

Rising Star

NEW STORE HOURS
Monday-Sunday
8:00 a.m.-6:00 p.m.

Phone 643-2221

Prices Effective:
Wed., Sept. 7-Sat., Sept. 10

***** **We Make Deliveries** *****
★ **Support Your Town - Shop At Home** ★

Thompson
White Seedless
Grapes



58¢
Lb.

Fancy
Bell Peppers



6 for \$1.00

Yellow
Onions



5 lbs. \$1.00
for

California
Nectarines



59¢
Lb.

USDA Choice Heavy Beef
Boneless

Chuck Roast

\$1.09 Lb.

USDA Choice Heavy Beef
Boneless

Chuck Steak

\$1.29 Lb.

USDA Choice Heavy Beef
Boneless

Arm Roast

\$1.29 Lb.

Lean Boneless Beef

Stew Meat

\$1.79 Lb.

Lean

Round Chuck

\$1.49 Lb.

Peter Pan

Peanut Butter
Smooth or Crunchy, 18 oz.

\$1.79

Mrs. Baird's Sandwich

Wheat Bread

1 1/2 lb. loaf

85¢

Shurfine Cola

Grape, Orange or Strawberry;
2 liter btl.

65¢

Bold Detergent

42 oz.

\$1.78

Limit 1 w/10 Purchase

Spillmate

Paper Towels

79¢

Imperial Sugar

5 lb. bag

\$1.69

Price Saver

Cut Green Beans

16 oz.

3 for \$1.00

Shurfine

Coffee

1 lb. can

\$1.99

Shurfine Hamburger

Dill Slices

32 oz.

\$1.19

Shurfine

Barbeque Sauce

18 oz.

59¢

Shurfine

**Non-Dairy
Creamer**

11 oz.

79¢

Del Monte Whole Leaf

Spinach

15 oz.

2 for \$1.00

Del Monte

Pear Halves

16 oz.

79¢

Pillsbury "Country Pleasin"

Biscuits

5 oz.

4 for \$1.00

Shurfresh

American Singles

12 oz. pkg.

\$1.59

Shurfresh

Cream Cheese

8 oz.

88¢

Country Crock

Spread Margarine

3 lbs.

\$1.59

Fox Pizza

Asst., 9 oz.

58¢

Limit 3

Mrs. Smith's

Cream Pies

Asst.

\$1.59