

Almeria Inc. Near Their Funding Goal



GETTING READY FOR FOOTBALL—Enthusiasm is high, and the players, cheerleaders, team managers and fans are ready for the 1990 high school football season. Here is such a group at the annual 'Meet The Mules' night Tuesday evening. The Mules are looking good and are ready to play football. (Journal Photo)

TAES Field Day Planned At Lubbock

The 81st annual field day of the Texas Agricultural Experiment Station at Lubbock/Halfway will be Tuesday, September 11, at the Texas A&M University Agricultural Research and Extension Center north of Lubbock International Airport. The center is on FM 1294 just east of I-27 at the Shallowater exit #11.

Principal stops on the motorized tour at Lubbock this year will feature research on irrigation and chemigation in environmentally sound operations; cotton breeding to develop plants which naturally resist insects and have improved fiber qualities; conservation tillage and weed control, and alternative agriculture for the High Plains.

There also will be optional walking tours of grain sorghum research plots, the research vineyard which opened the door to the area's grape industry, Texas Forest Service greenhouses, and the Texas Agricultural Extension Service soil testing laboratory.

Public tours will be from 1-4 p.m. on Tuesday.

The following day, Wednesday, September 12, a field day will be held from 8:30 a.m. until noon at the Agricultural Complex for Advanced Research and Extension Systems (AGCARES) on U.S. Hwy. 87, two miles north of Lamesa. This is the nation's first fullscale research and extension farm.

Muleshoe Lions Set Traditional Pre-Game Meal

On Friday, September 14, the Muleshoe Lions will be serving their traditional Chicken Fried Steak supper before the Mules' first home football game against Idalou.

Tickets are available now from any member of the Lions Club, or will be sold at the door for the supper at the Muleshoe High School cafeteria, 5:30-7:00 p.m. Tickets will be \$5 for adults and \$3 for children.

Carry-outs will be available until 6 p.m. by calling the cafeteria, 272-4360.

On the menu will be chicken fried steak and gravy, mashed potatoes, green beans, homemade rolls, peach cobbler, coffee and tea.

Within less than a year, Walter Schmidt and Dick Clikeman plan to be fully involved with making a 'dream come true,' a dream that will greatly add to local economy.

They are very near acquiring the last of the financing for Almeria Inc. and the new greenhouse operation to be located just south of Muleshoe.

Initially, they will be constructing four 700'x100' greenhouses south of Muleshoe just off Highway 214. They will be employing 67 people to start the operation, up from the earlier projection of 40 people.

The new greenhouses will be by Flexiplant, and are aerodynamically-designed structures with a dome-like inflated roof made of two layers of a specially-reinforced polyethylene fabric. It has been tested as a greenhouse in the wilderness in Australia since 1985, and can resist even hurricane force winds and the largest hailstorms. The lens-shaped roof will diffuse photosynthetic light so that plants always believe the sun is at "twelve o'clock high."

And, what will be grown in the greenhouses.

Starting out, the crops will be Chinese long Bean, Chinese Winged Bean, Chinese Long Cucumber, Japanese Eggplant, Thai Eggplant, Gii Choy, Haricots Verts, Mache, or Lamb's Lettuce, Ku Kwa, or Bitter Melon, Charantais Melon, Moo Qua, or Fuzzy Melon, Tindora Melon, Paak Tim Tsri, Israeli Tomatoes, Baby beets, Baby carrots and Baby Turnips with greens.

With total financing near, Schmidt and Clikeman are looking for one final investor, who is willing to invest \$50,000 in their operation, which will see at least 300 people employed on a year-round basis within three years.

The duo said when the last greenhouse is constructed, they will have a total of 20 of the 700'x100' greenhouses, along with loading docks, cold storage and all other buildings and services necessary to operate and maintain a multi-million dollar ethnic and gourmet vegetable production company.

They have made the following statements, along with David Plant, president of Flexiplant, who has committed to the operation:

Statement by Walter E. Schmidt, Chairman of the Board of The Almeria Group:

Almeria Inc. has, after two months of study and negotia-

tions, decided to adopt use of a new, Australian-designed greenhouse structure. Almeria has today, in connection with these plans, which include substantial first round Almeria Inc. funding voted to make Mr. David Plant, President of Flexiplant U.S.A. Inc., San Luis Obispo, California a Director of Almeria Inc. This decision was taken following Mr. Plant's recent visit to Muleshoe, and his thorough review of Almeria Inc.'s Project.

Mr. David Plant, an Australian businessman and horticulturist, was among Australia's largest flower growers for many years. He has over twenty years experience in growing and operating in a large operation. He is the inventor of the "Flexiplant" structure, a space-age design, and is now dedicating his full time to establishing an American manufacturing and sales organization. He is seeking to expand Flexiplant sales and eventually, perhaps, establish another manufacturing facility--and this is my personal hope--in West Texas near our Almeria facility, which will be a real showcase for his structures.

Statement by Richard W. Clikeman, Senior Director, and President and CEO, Almeria Inc.

Almeria Inc., two months ago, broke off negotiations with a Korean investor group. While we were disappointed then, we believe our new relationship with Flexiplant will quickly lead to the additional investment in Almeria still needed to bring this Project to reality. We are planning construction in the Spring for a June 1, 1991 first planting date. This schedule may be advanced. We will be larger than first planned, with over sixty new jobs in Phase One. Within two years thereafter we hope to expand to employ over 300 people the year round.

We are a vertically integrated company. We will grow, market, and deliver first quality, organic, specialty and exotic high-value produce to retail chains, redistributors, and ethnic specialty wholesalers. We are building on the successful historic precedent of urban truck farming, but with carefully chosen products for a well-defined niche market, and with the entire Midwestern United States, and part of Canada, in an arc from Denver to Washington, D.C., as our area of operations.

Our products, all to be grown Cont. Page 6, Col. 1

Parmer County Schools Place D.A.R.E. Program In Curriculum

Parmer County's four school systems will be participating in the D.A.R.E. project this fall, according to the various school officials. They said D.A.R.E. is a joint project of local law enforcement agencies and local school districts and communities to prevent substance abuse in children and youth.

Karen Britten has been employed as a Parmer County Sheriff's deputy and will be the instructor for Project D.A.R.E. in the Parmer County schools at Farwell, Friona, Bovina and Lazbuddie.

Program emphasis for Project D.A.R.E. is to help students recognize and resist the many subtle pressures that influence them to experiment with alcohol and drugs.

In addition, program strategies are planned to focus on feelings relating to self-esteem, interpersonal and communicative skills, decision making, and positive alternatives to drug abuse.

In order to teach the D.A.R.E. course, a person has to be a licensed, certified police officer. Ms. Britten, a native of Groom,

attended Texas Tech University and Amarillo College, and then enrolled in the Panhandle Regional Law Enforcement Academy, graduating in May of 1988.

She was service as assistant director of security at the Excel Corp. plant at Friona prior to accepting the county's D.A.R.E. assignment.

The program is designed for grades five and six, and has had many positive results in those schools in which it has been implemented.

Teachers and principals report fewer in-classroom disciplinary problems, decreased absenteeism and tardiness, and higher respect for authority. Also, there has been a marked decrease in school vandalism in many of the participating schools.

Ms. Britten's instruction also will focus on resisting peer pressure, building self esteem, Cont. Page 6, Col. 1

Annual Corn Field Day Slated Wednesday

By: Spencer Tanksley
CEA-AG

A multi-county Food Corn Field Day will be held on September 5, at 10 a.m. on the Gene Smith farm. The Smith farm is located two miles north of Lazbuddie and one mile west and one-half mile north.

All area producers from Bailey, Parmer, Castro and Lamb Counties are encouraged to attend this event and view approximately 125 varieties of corn hybrids which are being tested this year.

More than 20 different seed companies have hybrids planted in this years' test which includes 52 white food corn entries; 29 yellow corn food corn entries, with pink, white or red cobs, and 49 feed corn entries.

Some of these entries are experimental varieties which will be the new and improved releases of seed companies in future years.

Seed company representatives will discuss the different characteristics of these hybrids being grown in the test plot. Information to be discussed on each variety will be stability, days to maturity, grain quality characteristics and other important agronomic information.

This field day serves as an excellent opportunity for area producers to see and observe some of the new corn hybrids which are being bred and grown for this area of the High Plains

and to visit with area seed company representatives.

The field day is free and open to everyone. This annual event is being hosted by Mr. Smith, Valley Grain Products and the Extension Ag Committees from the four-county area.

Test plot results will be collected and distributed to area producers by county Extension agents and area seed companies in early 1991. Additional information on the test plots is available at the Bailey County Extension office located in Muleshoe.

Scout Signup Set For Girls On Wednesday

Mary Ann Ramirez said sign up for Girl Scouts will be September 4, 3:30-7 p.m. at the Girl Scout Hut located at 815 W. Second St.

All girls from five years of age are sought to join a branch of the Girl Scouts.

Daisy Scouts are five years old or kindergarten age; 6-8 are Brownies; 9-11, Juniors; 12-14, Cadettes and 14-17 are Senior Girls.

Also, Mrs. Ramirez said Girl Scout adult leaders are needed. You don't have to have a Girl Scout in order to be a leader.

For additional information, call Mary Ann Ramirez at 272-5425.

Bailey Co. Farm Bureau Meet Set September 8

All members of the Bailey County Farm Bureau and other friends of agriculture are invited to the annual county convention on Saturday, September 8.

The meeting will begin with the traditional free Bar-B-Q dinner with all the local grown vegetables at 6:30 p.m. in the Muleshoe High School cafeteria.

The program will convene after the meal at approximately 8 p.m. Sudduth-Field and Company will give the organization's financial report.

There will be reports from the economic services to members and four directors will be elected.

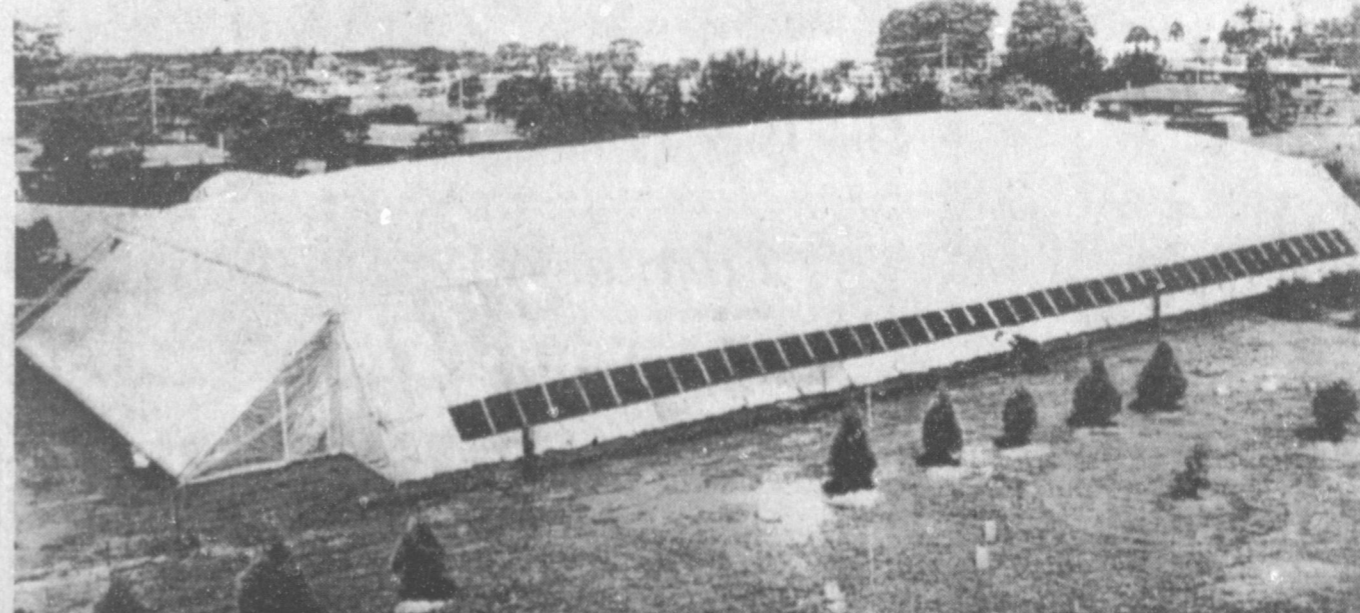
Directors whose terms are expiring are Morris McKillip Gary Hooten, Ronald Scott and Curby Brantley Jr.

Three high school students who attended the Citizenship Seminar in San Angelo this summer will give reports of the seminar. They are Gena Sharp, Blane Ferris and Jill Noble.

There will be drawings for door prizes.

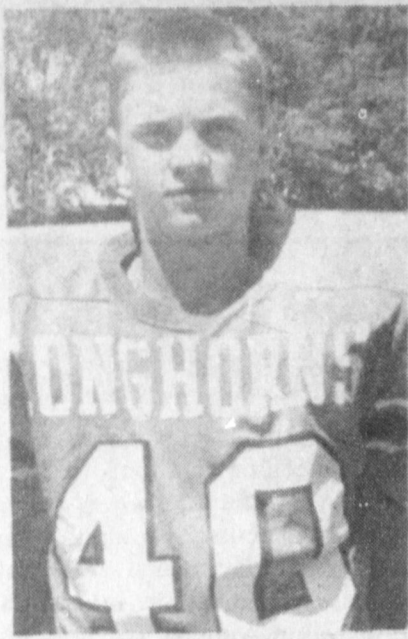


Almeria Inc.

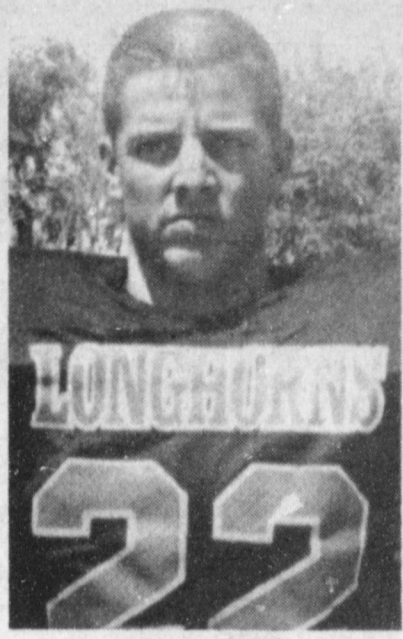


ALMERIA INC. PLANNING HUGE GREENHOUSES--This picture depicts one of the four 700'x100' Flexiplant greenhouses to be constructed by Almeria Inc. south of Muleshoe on the Sanderosa Well Field. By the time construction is completed in three years, with phases two and three, some 20 of the greenhouses are expected to be in place, growing ethnic and gourmet vegetables, and employing 300 people year-round. (Guest Photo)

1990 Lazbuddie Longhorns



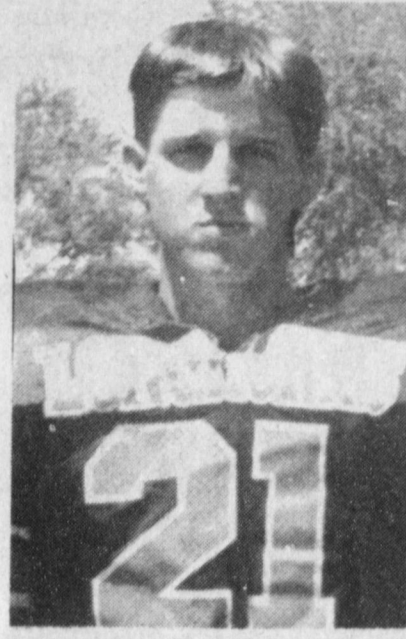
40. Matt Cozbey



22. Doug Barnes



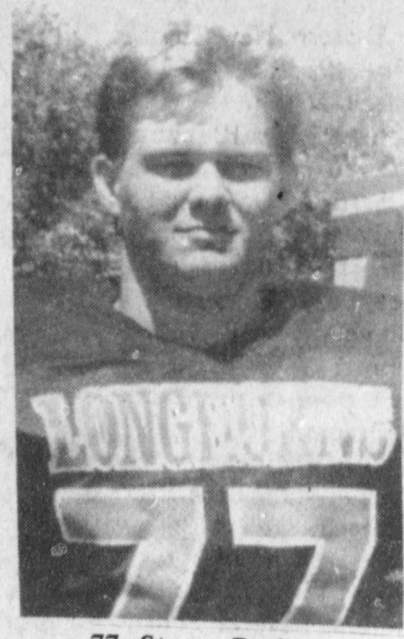
9. Leland Brockman



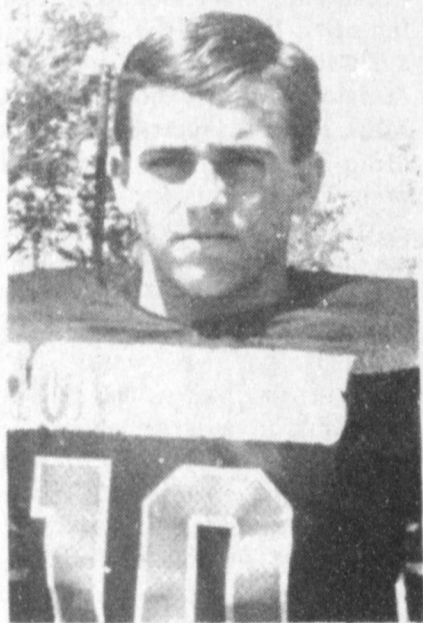
21. Clint Farris



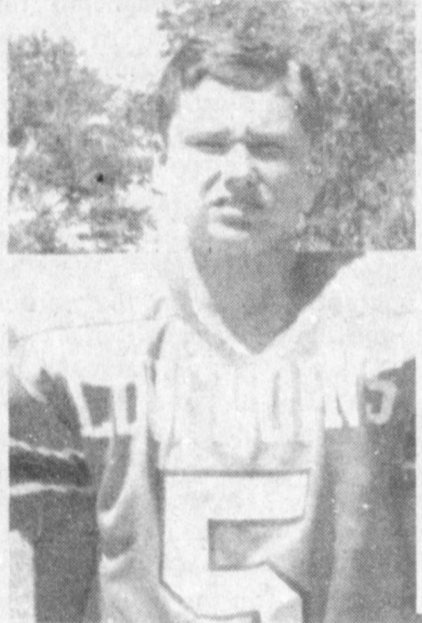
20. Ed Lueras



77. Stacey Barber



10. Paul Williams



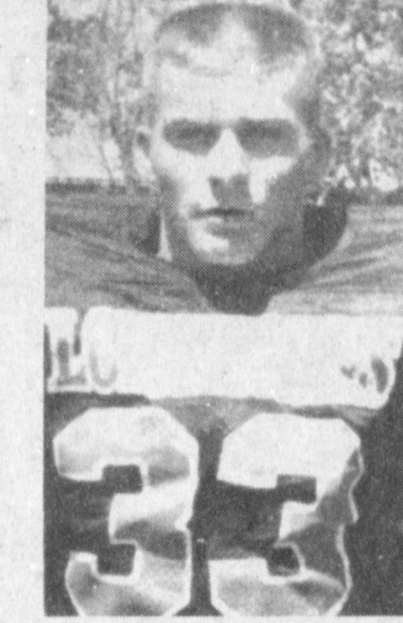
5. Casey Bradshaw



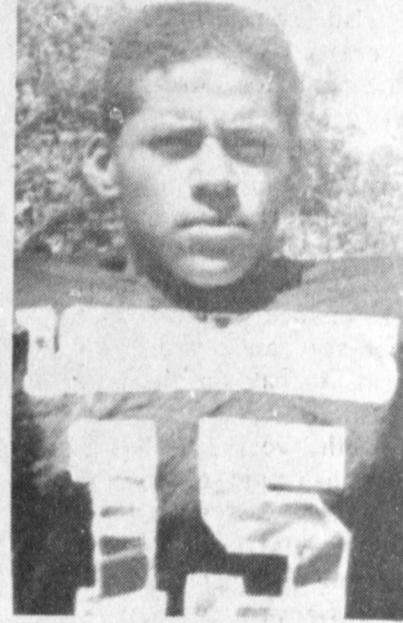
7. Casey Russell



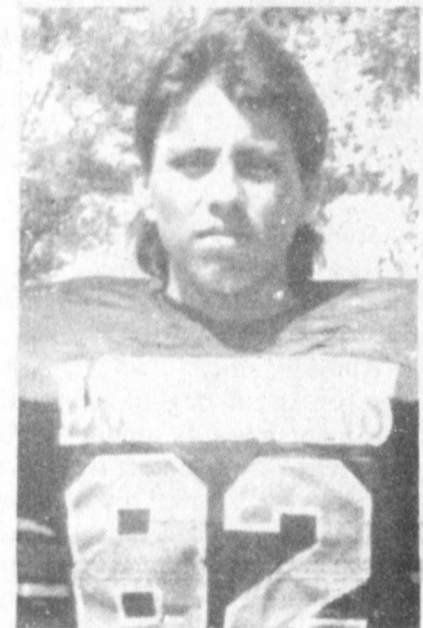
80 Luis Gonzales



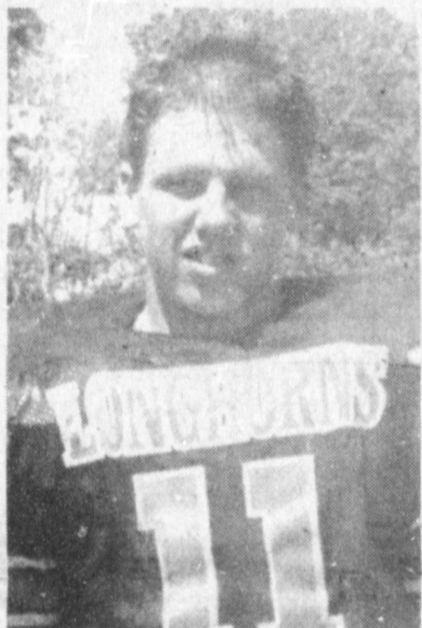
33. Kirk Jesko



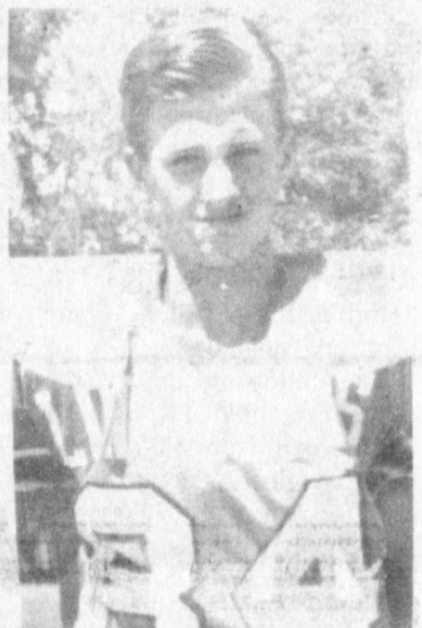
15. Frank Gonzales



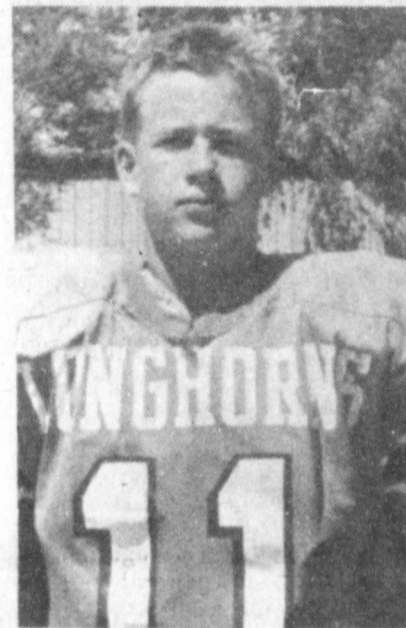
82. Elpidio Pacheco



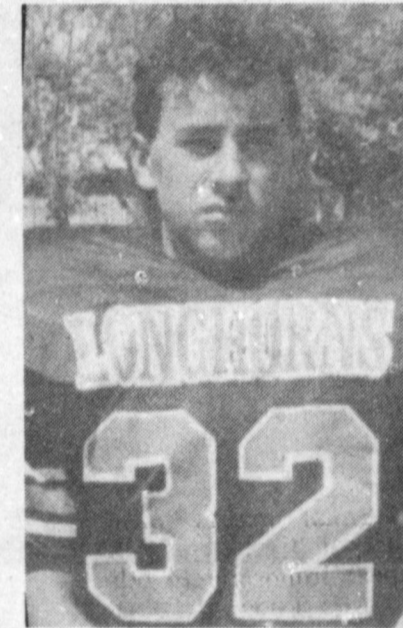
11. Eric Williams



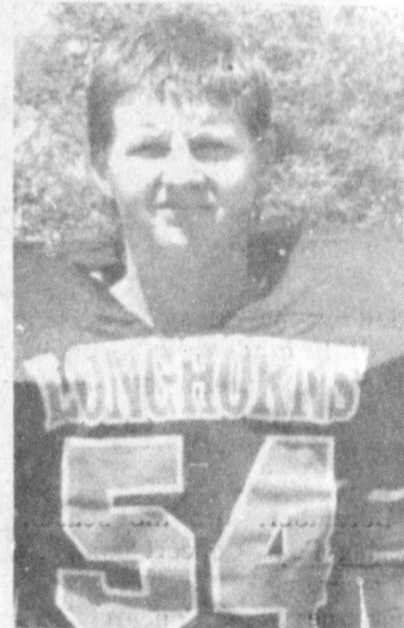
84. Craig Russell



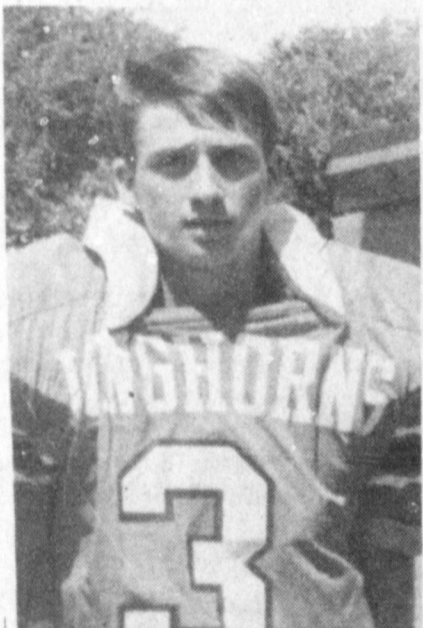
11. Chad Weaver



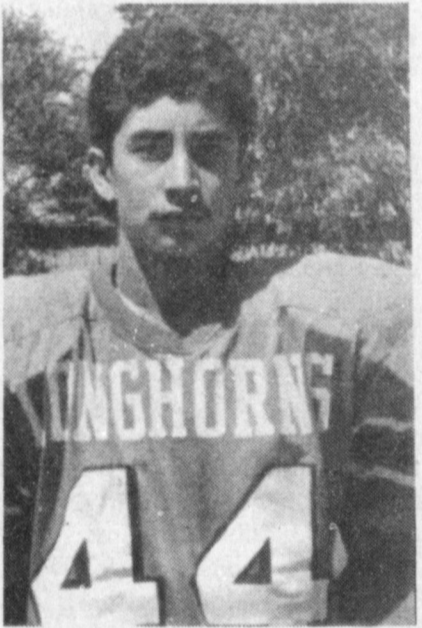
32. Mario Zamora



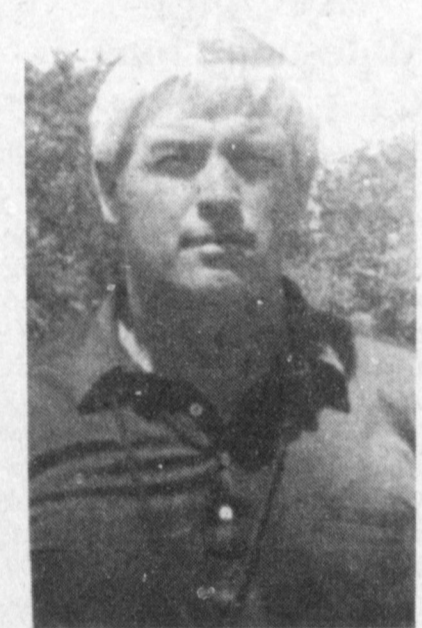
54. Lance Frazier



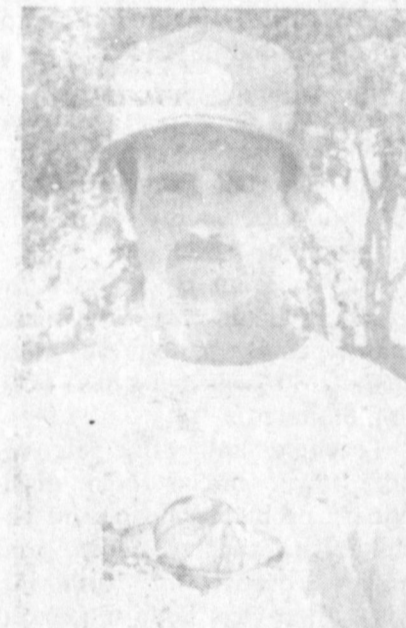
3. Chris Cozbey



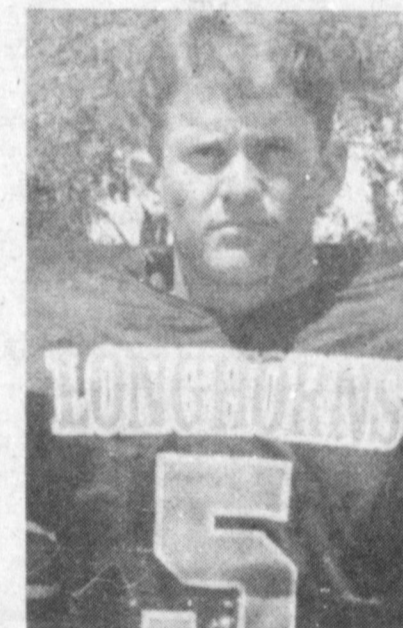
44. Larry Kenny



Coach Williams



Coach Scisson



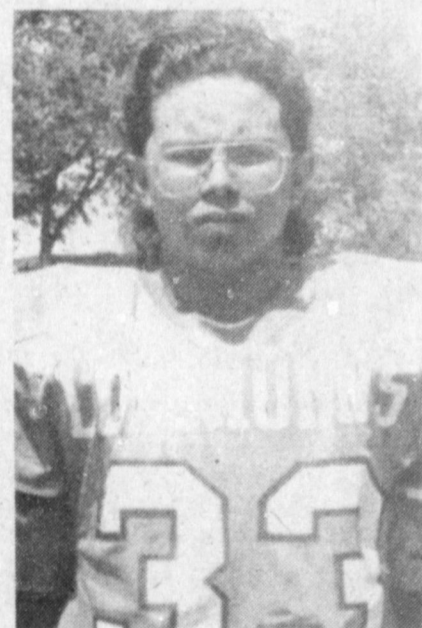
5. Jody Copp



40. Troy McBroom



20. Rudy Bonilla



33. Erams Moran

1990 LAZBUDDIE LONGHORN FOOTBALL SCHEDULE

Date	Team	Where	Time
Sept. 7	Mclean	Here	7:30 p.m.
Sept. 14	Valley	There	7:30 p.m.
Sept. 22	Lake Authur	There	2:00 p.m.
Sept. 28	Agape Christian	Here	7:30 p.m.
Oct. 5	Jesus Chapel	Here	7:30 p.m.
Oct. 12	Whitharral	Here	7:30 p.m.
Oct. 19	Cotton Center	There	7:30 p.m.
Oct. 26	Three Way	Here	7:30 p.m.
Nov. 2	Amherst	There	7:30 p.m.
Nov. 9	Silverton	Here	7:30 p.m.

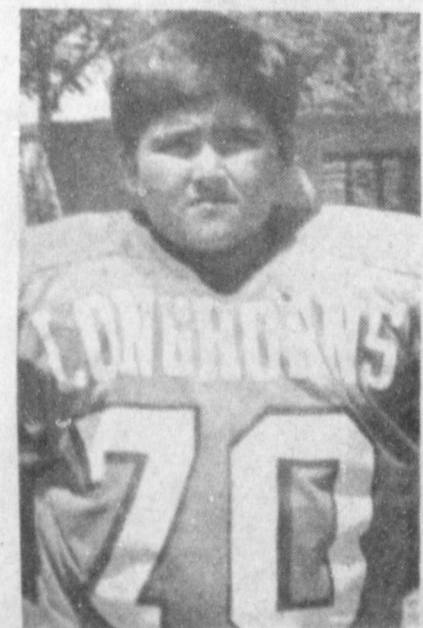
All games are Texas time



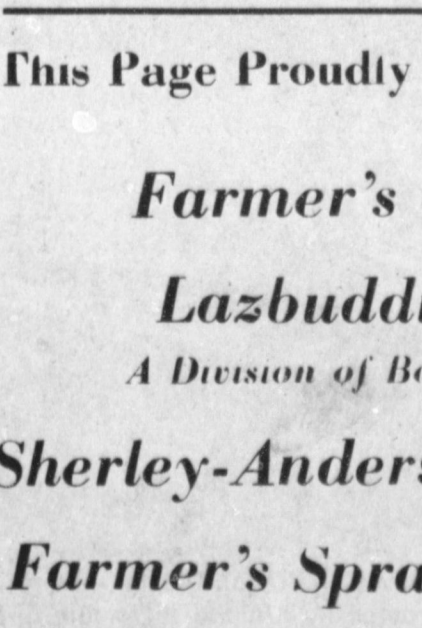
12. Brett Thomas



7. Jonas Hernandez



70. Randy Kenny



84. Chad Michael

This Page Proudly Sponsored By The Following Lazbuddie Longhorn Supporters!

Farmer's Co-Op Elevators

Lazbuddie Feeders

A Division of Bovina Feeders, Inc.

Foster Fertilizer, Inc.

Lazbuddie Garage & Supply

Sherley-Anderson Lazbuddie Elevator North Lazbuddie Gin

Farmer's Spraying Service

Wilbur-Ellis Co. - Tide Division

Five Area Telephone Cooperative, Inc.

Wilson Drilling

1990 Pops Dinner Concert Going Bluegrass

Eastern New Mexico University, Portales--Get out your gingham and dust off your denim! It's Bluegrass time at the Pops.

Saturday, September 22, the University Symphony Orchestra and the University Symphony League at Eastern New Mexico University will present their annual Pops Dinner-Concert at 7:30 p.m. in the Campus Union Ballroom.

The University Symphony League stages the Pops Concert primarily to raise scholarship money each year for orchestra students who, over their college careers, have demonstrated outstanding commitment and service to the symphony. Funds are also contributed to the University Symphony League Endowment for Strings or to other activities which support and promote the orchestra.

In addition, the League sponsors scholarships for other students who can participate in the orchestra and offers financial assistance to local talented elementary and high school students to pay for their music lessons.

Over the years the League's support has paid off. We're in good shape", says Radmer as he begins his third full season conducting and teaching.

He has several veteran players returning for the 1990-91 season and some new students with talent to develop.

The arrivals include a horn player and several string artists, a boon to Radmer's still-developing string program.

The conductor's confidence in his players has led him to expand the Orchestra's season this year to six performances including one for all the fourth and fifth graders in Portales. Orchestral concerts in November, March, and April, a Christmas gala with the Eastern New Mexico University Chorus in December, and the season-opening Pops Concert complete the program.

For the Pops Concert, Red-

mer has drawn a repertoire of folk and popular tunes from the rich sources that make up the American musical idiom.

"Name that Tune" will have a Bluegrass theme. The audience will also enjoy "The Glorious Whitewasher" from Mark Twain's Tom Sawyer, as

Tom tricks his friends into painting a fence for him one fine Saturday mornin' when Aunt Polly means to punish him for skippin' school.

Tickets for the Pops Dinner-Concert are \$15 and go on sale at the ENMU Theatre Box Office September 12-14 and September 17-18. Box office hours are 12 noon to 6 p.m. each day. For more information in Clovis, contact Symphony League President Nancye Gressett at 762-0619. In Portales, contact May Dowlin at 356-5995.



BLUEGRASS POPS DINNER-CONCERT--Rob Radmer will conduct the University Symphony Orchestra when they perform in concert during the 1990 Bluegrass Pops Dinner-Concert, Saturday, September 22 at 7:30 p.m. in the ENMU-Portales Campus Union Ballroom. Tickets go on sale to the general public on September 12, and can be purchased in the ENMU Theatre box office.

(Guest Photo)

Human beings waste a lot of time trying to appear important to others who know they are not important.

Everybody is against inflation in general but anxious for a little of it personally.

Muleshoe Squares News

The Muleshoe Squares danced on their regular dance night Thursday, August 23. Host couple was Ellen and Robert Gallman.

Guests from Portales, Clovis and the members all had a great time.

Special dances for Sept. are: Sept. 1, Federation Dance, Lubbock; Sept. 6, Club, Barn Dance and Watermelon feed, 8:00 p.m. Wilbert and Mary Wilson, caller. Jack and Dale Eight salad supper, James Beckley school 8:00 est, Harmon Wilsom, caller. Jack and Dale Orio, cuer, pre rounds 7:30 p.m., \$6 per couple; Sept. 18, Portales Starlight Swingers, Memorial Building. Sid Perkins, caller. Jack and Dale Orio-Cuer pre rounds 7:30 \$6 per couple, refreshments.

The best way to avoid bills is to pay cash.

THE
FUTURE
IS
CALLING

TEXAS TELEPHONE INDUSTRY WEEK • SEPTEMBER 9 - 15, 1990

Recognizing the importance of the telephone and its providers in today's society. We honor the men and women of this state who are employed in the telecommunications industry, and we express our gratitude to them for their many contributions that benefit all Texans.

71st Texas Legislature, 3rd Called Session

LABOR DAY BONUS!

1-DAY ONLY

40% OFF

WITH COUPON

any one regular price item* from our entire stock including new fall fashions for your entire family and home!

*Excludes Levi's® Jeans and Justin® Roper Boots.

LABOR DAY ONLY!

40% OFF

WITH COUPON

any one regular price item*

Coupon good at any Anthony's store. Coupon is not valid in conjunction with any other coupon or towards existing layaways. One coupon per customer. Coupon valid Labor Day, Monday, Sept. 3, 1990 ONLY. *Excludes Levi's® Jeans and Justin® Roper Boots.

ANTHONY'S

LABOR DAY ONLY!

Open

10:00 a.m. to 4:00 p.m.



ANTHONY'S

We're Good at Making You Look Great!

321 Main

Muleshoe

272-3178

True Value HARDWARE STORES

Now Is The Time To Buy Your
Lawn & Garden Supplies!

We Have A Good Selection Of New & Used Mowers!

- *SAFELY CLEANS AND CONDITIONS FINE LEATHERS.
- *REMOISTURIZES LEATHER TO KEEP SOFT AND SUPPLE.
- *RESTORES LUSTRE - REMOVES SOILING.
- *FORMULATED SPECIFICALLY FOR LEATHER FURNITURE AND LEATHER AUTO INTERIORS.
- *NEW MOUSSE FORM!!

3025 LC2 4 oz. Leather Cleaner & Conditioner

Reg. \$3.99

\$2.49



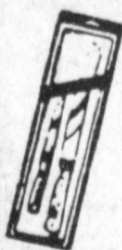
Harvard
CUTLERY

ALL PURPOSE SLICING SET

185
2 Pc. Multi-Purpose Slicing
Knife Set. (169, 574)

Reg. \$24.95

\$18.99



- 20 Gallon Blow Molded Trash Can
- * Molded In Handles
- * Locking Tabs Keeps Lid On Securely
- * Six Year Warranty-Chocolate

Tucker

TUCKER HOUSEWARES

Reg. \$8.99

\$7.99



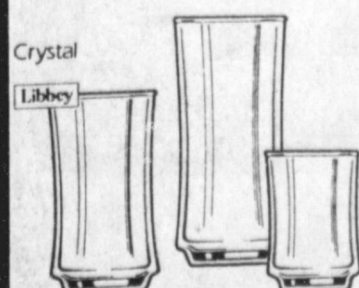
LIBBEY.
AMERICA'S GLASSMAKER™

Bolero 24-piece Entertainment Set

82486 24pc. Crystal Bolero Drinkware Set
Consists of:
8 each 16oz. Cooler Glasses
8 each 12oz. Beverage Glasses
8 each 6oz. Juice Glasses

Reg. \$19.99

\$15.99



Southwestern Bell
Freedom Phone®

Mini Cordless Phone With
Two Way Intercom, Tone/Pulse,
Flash, Two Way Paging, Range
Extending Antenna. (1x2 3/4 x
5 7/8), Red

\$89.99



Fry & Cox, Inc.

401 S. 1st

272-4511

Creative Living

By Sheryl Borden

Information on southwest regional cooking and a consumer update on coffee-making machines will be the featured topics on "Creative Living" on Tuesday, September 4 at 12 noon and Saturday, September 8 at 2 p.m. (All times are Mountain.)

Jane Butel, founder and president of the Pecos Valley Spice Co., in New York is considered the nation's foremost authority on Southwest regional cooking. Ms. Butel will demonstrate how to make the whole enchilada--featuring the traditional Santa Fe style red chili sauce.

Mary Ellen Payne, former Extension Home Economist in Clayton, N.M., will talk about how coffee is processed and grown, and discuss the history of coffee. She will also present some new developments in brewing coffee and share different factors that affect a really good cup of coffee. Ms. Payne will then show some of the newest kinds of equipment on the market for making coffee.

On Tuesday, September 4 at 9:30 p.m. and on Thursday, September 6 at 12 noon, "Creative Living" will present information on using brown paper bags and conducting trunk showings.

Helen Hatton, representing The American Paper Institute, will show a dozen or more household uses for brown paper bags. As recycling becomes more and more important as a means of preserving the environment and preventing the overcrowding of landfills, using paper products will continue to be a good choice for all consumers. Ms. Hatton lives in Toronto, Canada.

Jacqueline Davis, fashion designer for Lady J in Clovis, N.M. will explain how a trunk showing is conducted in stores throughout the country which carry the Lady J line of women's apparel. She will also present one of her original designs called the Wonder Accessory.

"Creative Living" is produced and hosted by Sheryl Borden. The show is carried on more than 100 PBS stations in the United States, Canada, Guam and Puerto Rico and is distributed by Pacific Mountain Network, Denver, CO. Viewers can request copies of materials offered on the show by sending one 25 cent stamp for each handout requested. Send the stamps, along with your name, address and booklets requested to:

"Creative Living" Requests
%KENW-TV Station #52
Eastern New Mexico University
Portales, N.M. 88130

SANTA FE STYLE
ENCHILADAS
Only pure ground chile

peppers can be used to create the authentic flavors of Old Santa Fe. They can be blended to create the flavor YOU prefer for each dish. Use mild California type chiles for a flavor base, adding New Mexico hot chiles for heat, Caribe chile for a hotter sweet rich flavor and the Pequin for punishingly hottest spiciness.

Yield 6 servings
Cooking time: 10 minutes

1/4 cup lard or bacon drippings
1/4 cup flour
1/4 cup pure ground mild California chile
1/4 cup pure ground hot New Mexico chile

generous pinch each ground cumin and Mexican oregano
2 cloves garlic, minced
1 quart well-flavored beef stock
1 teaspoon salt, or to taste
12 corn tortillas, softly fried
2 cups coarsely grated Monterey Jack and Cheddar cheeses, mixed together.
1 medium Spanish onion, finely chopped
4 eggs lightly fried (optional)
1 head leafy lettuce, cut in eights for garnish

1. Melt the lard in a heavy saucepan over low heat, then stir in the flour. When it is lightly browned, remove from heat. When the pan has cooled slightly, thoroughly stir in the ground chiles.

2. Stir in about 1 cup of the beef stock; continue adding until all is added. When well-blended, return to heat. Add the cumin, Mexican oregano and garlic. Season to taste with the salt and simmer for at least 10 minutes--up to 30 minutes over low heat, until the sauce thickens and the flavors are well blended.

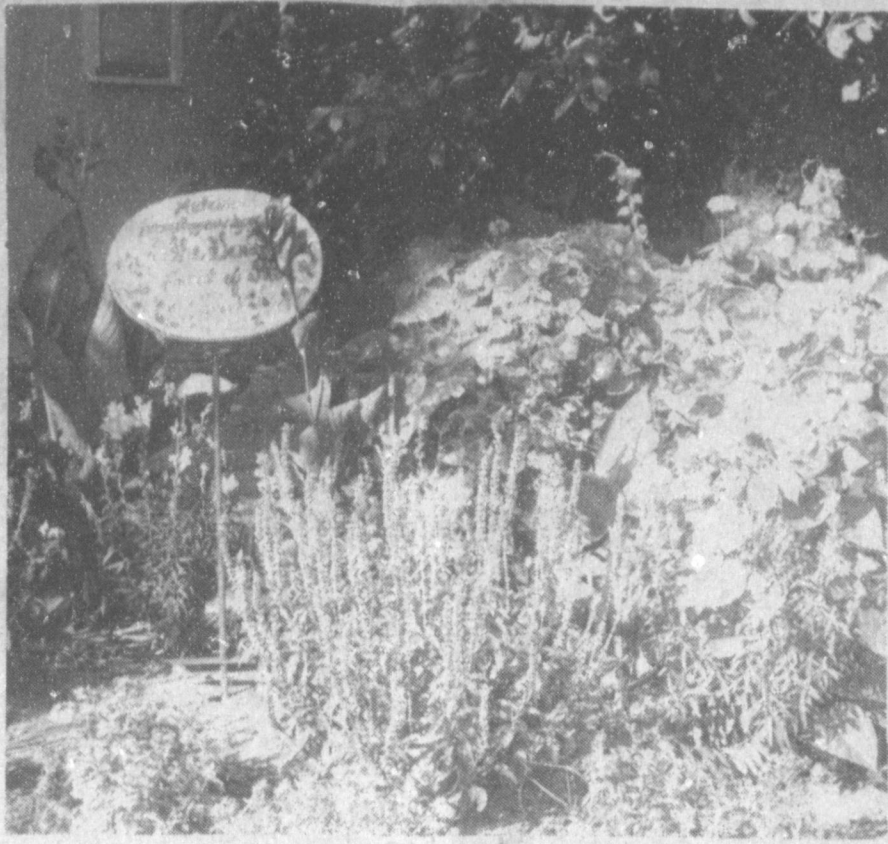
3. For Santa Fe Style Flat Enchiladas: Place a little chile sauce on the plate, then top with a tortilla, followed by sauce, cheese and onion. Top each enchilada with more sauce, cheese and onion. Heat in a 350 F oven until the cheese melts. Top with an egg if desired, and garnish with chopped lettuce and tomato wedges.

4. For rolled enchiladas: Dip the lightly fried tortilla into the sauce and place a strip of grated cheeses and chopped onion down the center. Roll and top with more sauce and strip of cheese and onion. Bake in a 350F oven until bubbly, about 20 minutes. Then garnish edge with lettuce and tomato wedges.

Really cultured persons never mistake vulgarity for originality.

Most adults forget that boys and girls look at things with juvenile minds.

Work may be a great blessing to man but there are times when we have doubts.



JENNYSLIPPER GARDEN SPOT--This garden of mixed flowers at 407 Ithica, home of Charlie and Beatrice Mata, has been named this week's Garden Spot by the Jennyslipper judges.

(Journal Photo)

Ralls Fall Festival Set Nov. 3

The Women's Division of the Ralls Chamber of Commerce and Agriculture announced this week that applications are still being accepted for participation in the Ralls Fall Fantasy 1990.

This arts and crafts festival and sale is set for Saturday, November 3, in the Ralls Elementary School Cafetorium. The event is expected to attract

visitors from throughout West Texas and Eastern New Mexico.

A limited number of spaces are still available, and area artists and craftsmen are encouraged to contact the Ralls Chamber of Commerce and Ag. at Box 807, Ralls, Texas 79357; or Terri Bevel at Box 715, Ralls, Texas 79357; or phone 806/253-2342 or 806/253-2696. The deadline for applications is Friday, October 5th.

Senior Citizens

The Muleshoe Senior Citizens met at the Old Depot Monday, August 27 for a covered dish luncheon.

J.C. Shanks gave the invocation. Twenty-five were present including two new members and two visitors, Sam and Lisa Burgeson.

Clifton Finley had charge of the program. He asked Sam and Lisa to bring the program and Mrs. Burgeson sang four songs and Burgeson, youth director of the First Baptist Church, brought a short message taken from I Timothy 4:12. Let no one despise your youth, but be an example to the believers in word, in conduct in love, in spirit, in faith, in purity.

Katie Roubineck, president, had charge of the business meeting. Minutes of the previous meeting were read and approved.

The birthday song was sung for Mae Wilterding and Lou Knowles.

The meeting was closed with a prayer by Durward Head.

For Your
Mary Kay Cosmetics
Josie Flowers
272-3865
8 a.m. - 12 noon
& after 6 p.m.

Ms Garlington Honored

Louvenia Garlington has just returned from BeautiControl Cosmetics' Celebration '90, the company's annual national conference where she attended business-building workshops and received extensive training on BeautiControl's new product introductions.

The highlight of the 1990 BeautiControl convention was the unveiling of their new "Instant Image Makeover" video. This innovative image tool features makeovers, valuable wardrobe, makeup and hair tips.

Also introduced at the con-

vention were the new Mechanical Pencils for eyes and lips, new eye color collections and all new color-coded fashions and accessories for Fall '90.

BeautiControl Cosmetics, along with Southwest Airlines, has been recognized as "The Best Publicly Held Company" in North Texas. The 1990 BECY award was presented to the company for "The Best Middle Market/High Growth Company of the Year" sponsored by The Dallas Business Journal, Deloitte and Touche and The Business Press.

BeautiControl has also been recognized as one of the best and fastest growing publicly-held companies in the nation by Forbes, Businessweek and Inc. magazines.

While in attendance at the conference, Ms. Garlington was recognized as No. 1 consultant in her Albuquerque unit. This is the second year for her to receive this honor.

The Albuquerque unit includes areas of Albuquerque, Santa Fe, Las Vegas, Las Cruces and Clovis, New Mexico, Phoenix, Arizona, El Paso, Amarillo and Muleshoe.

Ms. Garlington was honored by her Unit Director, Bea Ann Garcia of Albuquerque, at her unit reception at the Loews Anatole Hotel in Dallas.



LOUVENIA GARLINGTON

Annette Bottleman
has joined
Main Street Beauty Salon
Annette specializes in men's,
women's and children's style cuts.
She recently trained in new cutting
techniques. She was formerly with
Pro Cuts in Clovis.

Bernice Holderman
Josie Gonzales and Helen Lopez
115 Main Street 272-3448

it's
School Time

Watch Out For
Those Big Yellow
Buses!

Welcome Back
To All The
Muleshoe Area
Teachers!

1ST BANK
MULESHOE

202 S. 1st Member F.D.I.C. 272-4515

Just Arrived-New Selection
FELT HATS
\$65⁰⁰ and up

Children's HATS \$24⁹⁸ and up

All Hats Hand Creased To Your Specifications

Comfy DOWN COATS
Layaway Special 10% Off

1-800-748-2459

Check our collection from Pendleton.
We have Sportcoats, Navajo Jackets,
Reversible Jackets, Shirts and Dress Pants.

IN TEXICO
314 Wheeler
482-3363

OPEN 8:00 a.m. - 6:30 p.m. C.S.T.

We Accept:



Latest Arrivals

Alyssa Diane Burrows

Daylan Reed Burrows is proud to announce the birth of his sister, Alyssa Dianne, who was born Wednesday, August 8. She weighed seven pounds,

Jon Adam Orozco

Jon Adam Orozco was born at 10:32 a.m. March 18 to Mary L. Orozco and Angel Hernandez.

The young man weighed eight pounds and 13 ounces and was 20 inches long.

Grandparents are Dolores and Robert Orozco, Sr. of Muleshoe. Great grandparents are Clara Castorena and Patricia Orozco, both of Muleshoe.

Rene Luis Orozco

Rene Luis Orozco was born at 12:31 p.m. Tuesday, August 22 in Muleshoe Area Medical Center to Maria Teresa Orozco and Reymundo Falcon.

The young man weighed seven pounds and one ounce. He has a brother, Mark Anthony, four years of age.

Grandparents are Mr. and Mrs. Robert Orozco, Sr., of Muleshoe.

Muleshoe, and Mr. and Mrs. Reymundo Falcon, Sr., also of Muleshoe.

Great grandparents are Clara Castorena and Patricia Orozco, both of Muleshoe.

nine ounces and is 20 and a fourth inches long.

Nancy and Randy Burrows of Lubbock are the parents.

Grandparents are Frances and Olan Burrows and Barbara and Max Bush, all of Muleshoe.

Great grandmother is Viola Calvert of Flomot, TX.

Tops Club

TOPS chapter No. 34 met Thursday, Aug. 30 at 6:30 p.m. in the Heritage Thrift Shop. Laverne James called the meeting to order with the TOPS pledge and a prayer. Alma Robertson led the fellowship song.

Minutes of the previous meeting were read by Aurora Mata and they were approved as read.

Betty Jo Davis called the roll with sixteen members responding with the amount they had lost or gained.

Alene Bryant was named best loser for the week. Runners-up included Evelene Harris, first; and Clea Robertson, second.

The last wrapping of the mystery package was removed by the weekly best loser, Alene Bryant and she got to keep the surprise gift.

Mrs. James read the article "Bake Your Cake and Eat It Too". It included tips for fewer calories, less fat, cholesterol and sodium.

The meeting was adjourned with the good-night song.

What have you done in 1990 to help your church?



TEXAS TELEPHONE INDUSTRY WEEK--The week of September 9-15 has been declared "Texas Telephone Industry Week" by the Texas Legislature and Thursday morning Mayor Darrell Turner signed a proclamation to this effect, as Glenn Morris, representing General Telephone and Hubert Kidd, (left) manager of Five Area Telephone Cooperative Inc. looks on. "The declaration is to honor the men and women of Texas who are employed in the telecommunications industry and express gratitude to them for their many contributions that have and continue to benefit all Texans." "We are pleased the legislature recognizes the importance of telephony to the state and its impact is made possible through the dedication of the 40,000 men and women employed in the industry in Texas." (Journal Photo)

Renegade Theatre Announcing Audition Dates

The Renegade Theatre announces open auditions for "Dracula, the Vampire Play," by Hamilton Deane and John L. Balderston, adapted from the novel by Bram Stoker, to be held Saturday and Sunday, September 8 and 9, 1990, from 2 to 5 p.m. at St. John's United Methodist Church, 1501 University Avenue, in Lubbock. Roles are available for eight adult actors, six men and two women.

This timeless thriller/love story has enthralled audiences throughout the world for generations. It is the story of a fantastic creature who enslaves women with an ominous charm, and of the heroic physician who tries to destroy the vampire's deadly spell.

Anyone, experienced or not, from any walk of life, is encouraged to attend, watch and participate in this audition. The Halloween production of "Dracula, the Vampire Play,"

will be presented October 25, 26 and 27, 1990, at the Lubbock Fine Arts Center, 2600 Avenue P, in Lubbock.

The easy approach in microwaving long-cooking dishes like beef stew, goulash, Irish stew (lamb), etc. is the automatic simmering.

Such dishes can be left on automatic simmering for six to eight hours. It's important to keep the meat in these dishes at the bottom of the casserole, under liquid.

The temperature probe should rest on the bottom of the dish in the center. It's important to add water on top of the stew, curry or goulash mixture, and not to stir--add a cup and a half of water to a stew with two pounds of meat.

Cover the dish tightly with plastic wrap, with a small opening around probe to vent.

Rebekah Lodge News

Twelve members answered roll call when the Rebekah Lodge met Tuesday night, Aug. 28. Dorothy Browning, Noble Grand, called the lodge to order and Mildred Kindred and Ona Berry presented the flags.

Fern Davis, chaplain gave the opening prayer. "Several of the members were ill and we wish them a speedy recovery" said Mrs. Davis.

Following a short business meeting, the group sang Happy Birthday to Velma Howell.

Mrs. Davis gave the closing prayer and Thersie Reid and Mary Ann Ramirez served refreshments.

ATTENTION
Your only local media of general circulation that qualifies for and has a 2nd class newspaper subscriber's mailing permit. U. S. Post Office Approved.

Bailey County Journal USPS 040-200
Established March 31, 1903. Published by Muleshoe Publishing Co., Inc. Every Sunday at 304 W. Second, Box 449, Muleshoe, Tx 79347. Second Class Postage paid at Muleshoe, Tx. 79347.

MEMBER 1990
TEXAS PRESS ASSOCIATION

L. B. Hall, Publisher
Sammy Hall, Vice President/Controller
Cira Williams-Jacobson, News
Evelene Harris, Society
Wally Millag, Advertising
Dora Trosson, Classified

SUBSCRIPTIONS
Muleshoe Journal and Bailey County Journal
Bailey and surrounding counties
Muleshoe Journal and Bailey County Journal
Elsewhere in Texas \$14.75
Muleshoe Journal and Bailey County Journal
Outside Texas, \$16.50
Yearly By Carrier \$12.50
Advertising Rate Card on Application

*Advertisers should check their ad the first day of insertion! The Journal will not be liable for failure to publish an ad or for a typographical error or errors in publication except to the extent of the cost of the ad for the first day insertion. Adjustment for errors will be limited to the cost of that portion of the ad where the error occurred.

BACK TO SCHOOL

B.T.S. SAVINGS

Belts 1/2 price

Jeans 20% off

Large Selection Of
Costume Jewelry

1/2 price

Lookin' Good

206 Main Phone 272-5052
MULESHOE, TEXAS 79347

BACK TO SCHOOL

Guess Who's Turning 3

Love, Mom & Dad,
Nana & Papa,
Nan Nan,
Me Ma & Pa Pa,
Buba, Shelby & Saena

Winkler's Bar B.Q. Wagon is smoking again!



Friday & Saturday
at the Bailey County Coliseum
September 7th & 8th

Featuring:
Sliced & Chopped Bar B.Q.
Sausage-on-a-Stick & Beef Fajita's
Breakfast Burritos
Fresh Lemonade

Let us handle your Parties and Custom Catering!

Winkler's Meat Co.

4011 Main

272-4703

NOTICE

Bailey County Farm Bureau

Will Hold It's

Annual Meeting
Saturday September 8

Dinner of Home Grown Vegetables & B.B.Q. Will Begin At 6:30 p.m.

Meeting will Begin At 8 p.m.

At the
Muleshoe High School Cafeteria

Door Prizes Will Be Given!

See You There!

OK?

Almeria Inc.

Cont. From Page 1

off-season in this controlled environment, will include young produce with greens such as baby turnips and beets, Oriental and ethnic varieties like Chinese winged beans, long beans, bitter and fuzzy melons, and the Indian tindora melon. We will adhere to Texas Organic Certification standards insofar as possible, and we will, in all cases, use a minimum of chemicals in our production. The Flexiplant houses are highly adaptable to biological control strategies. We will be using and constantly refining these.

Statement by David Plant, Director, Almeria Inc.

The senior management of Almeria Inc. is absolutely top-notch. I was impressed by the depth and scope of Mr. Schmidt's and Clikeman's planning. I was also struck by the similarity of West Texas to much of my native Australia. The remarkable soil, water, and natural resources of your region, its central marketing location, and its people, offer a combination which is perfect for this Project. I'm pleased to be part of it.

Four huge 700 by 140 foot interconnected Flexiplant structures will be used at Almeria's Muleshoe Sanderosa Site, making this even in Almeria's Phase One, the largest vegetable greenhouse complex in the High Plains. Sixteen more houses are planned. Flexiplant greenhouses for in-soil vegetable horticulture have already been in use for several years in Australia. Brothers Brothers, Inc., California, among America's largest growers in floriculture, is a Flexiplant user. Flexiplant houses are now also under construction in California, and near Mexico City.

Schools...

Cont. From Page 1
managing stress without taking drugs, alternatives to drug abuse, and taking a stand.

The classes will be 45 minutes in length, and will be a part of the school curriculum. Various classes will devote their class time to the D.A.R.E. project.

The project is to be funded through a joint effort of Parmer County, the city of Friona, and Bovina, Farwell and Lazbuddie through their school districts.

In addition, a grant for the program has been received from the Panhandle Regional Planning Commission (PRPC).

Courage

He who fears to venture as far as his heart urges and his reason permits is a coward.

table greenhouse complex in the High Plains. Sixteen more houses are planned. Flexiplant greenhouses for in-soil vegetable horticulture have already been in use for several years in Australia. Brothers Brothers, Inc., California, among America's largest growers in floriculture, is a Flexiplant user. Flexiplant houses are now also under construction in California, and near Mexico City.

Flexiplant's aerodynamically-designed structure has a dome-like inflated roof made of two layers of a specially-reinforced polyethylene fabric. Tested as a greenhouse in the wilds of Australia since 1985, it is resistant to even hurricane force winds and violent hailstorms. The lens-shaped roof diffuses photosynthetic light so that plants always believe the sun is at "Twelve O'clock High." Fully computer-controlled, the structure maintains optimum temperature and humidity levels with the help of a fogging system without need for expensive and inefficient use of electrical fans. Use of the fogging system can reduce daytime temperatures within the structure dramatically in our climate. On a 100° F. day with a relative humidity of 20 percent, the temperature can be reduced to as low as 69° F. This cooling is achieved because of the dynamics of the fog and the fact that the Flexiplant greenhouse can, even on a still calm day, cause a full air exchange within the greenhouse every two minutes. In the Winter, because of its minimum heat loss area, the Flexiplant structure is over 30 percent more efficient than conventional greenhouses of the same covering and area.

The Flexiplant U.S.A. Inc. greenhouse is so efficient in heating that in California, Pacific Gas & Electric Co. offers energy rebates of twenty cents for each fifty cents natural gas therm cost to purchasers of this greenhouse. Regional utility suppliers will be encouraged to investigate the structure of the PG&E program. Texas Governor William Clements' Energy Advisor, Mr. Auburn Mitchell, has expressed an interest in these rebates.

Texas Lettuce Wedges Into National Market

By Kathleen Davis

When Dr. Brian Scully thinks of lettuce, he's after a wedge.

A nice green wedge with healthy leaves is good. But the real wedge Scully wants puts Texas growers into the highly competitive market between lettuce from California and Florida.

"Competition goes head to head, so to speak," said Scully, a California native who now leads the lettuce breeding project at the Texas Agricultural Experiment Station in Weslaco. "But Texas has cultivars to improve the quality and yields in the Rio Grande Valley. Texas lettuce can meet a higher standard."

Scully recently published information about five new lettuce varieties which stemmed from earlier work by his predecessor, retired professor Paul Leeper. Scully said each variety was specially designed to fit into one of the three Texas lettuce growing seasons.

Within a month, Texas growers will begin planting the first of what likely will be 1,700-1,900 acres of lettuce along the Rio Grande Valley, according to Humberto Garcia, who chairs the lettuce division of the South Texas Onion, Lettuce and Melon Committee.

Garcia said the estimated plantings fall short of the more than 2,500 acres of lettuce harvested last year. Much of that crop suffered icy deaths in the fields after the disastrous freeze of December 1989.

Still, Garcia said, the state's lettuce growers are optimistic about production prospects pending continued variety development at the Experiment Station's Weslaco Unit.

"We feel that Texas lettuce is just as good as California's," Garcia said. "We are optimistic about lettuce, and we are getting some varieties now that can go into competition."

Even though California produces up to 15 times more lettuce than Texas, Scully and the growers believe Texas can grab a market share that approaches more than \$2 million for the state's economy. Texas first produced lettuce commercially on about 400 acres in 1946, but the acreage at one time grew to almost 20,000.

Along the way, Texas lettuce picked up an unwanted perception from lettuce-buying companies as being inferior to the larger crops in California and Florida, the scientist said.

"We suffer here from an unwarranted reputation of not being able to produce high quality lettuce," Scully said. "That's an unfair accusation. But Texas lettuce can meet a higher standard."

He said consumers want a head of lettuce that is large, firm and short stemmed. A head should have a healthy green color with no leaf tip burn, he added.

But tossed into the lettuce breeding program for South Texas, other than the need for top quality produce, are three distinct growing seasons, Scully noted.

"For the first plantings, which begin in September, the season begins warm and is cooler by harvest," he said. "The second, or winter crop, is uniformly cool from planting to harvest. The third planting begins when temperatures are cooler and matures into a warmer harvest."

The five new varieties, each named Val-Tex and accompanied by the number of the plot where they were developed, meet those needs, Scully said.

Val-Tex 39 and 40 are for autumn plantings. These may be planted from mid-September to early October to be harvested from mid-November to early January. Transplanted fields of these varieties do better than direct-seeded acreage, Scully noted.

"Transplanting added some expense to the grower but was offset by savings in irrigation and increased yields," he said.

Val-Tex 41 is a winter variety

for planting from mid-October to mid-November. Scully noted that fields of this variety required fewer harvests than typical varieties.

Normally, fields are harvested once to get about 40-50 percent of the crop and a second time to get additional yields. With Val-Tex 41, however, about 80 percent of the crop is harvested at once, making additional harvests unnecessary unless prices skyrocket, Scully said.

Val-Tex 54 and 55 are for planting in late-November to mid-December and harvesting in March and April. This season requires tolerance at heading during the semi-arid conditions of the valley during this period.

The five varieties prefer to grow in different temperatures, but all have some common traits: bred-in resistance to downy mildew and tip burn. Seed is available from Shamrock Seed Co. in Salinas, Calif., and Peto Seed Co. in Woodland, Calif.

Scully's research will continue to focus on heat tolerance with a goal of developing a variety that can be planted even earlier than the first varieties now planted

Lucky World

The world was created in six days, no Senate confirmation being necessary.
-Gazette, Little Rock.

Cash Rewards
Up To \$1,000
For Information!

Call
Bailey County
Crime Line
272-HELP

the first varieties now planted searcher explained that such a variety would allow for earlier harvests, which could grasp a window of the market not

currently filled by California. In his greenhouse, where assistant George Oerther purposefully mates male and female flowers from selected lettuce plants, Scully said some 1,000 lines of lettuce will be chopped down through years of crossbreeding to perhaps one to five varieties.

"With this crop, it's the survival of the prettiest," Scully said.



ALREADY A BIG CRUNCH!--Thursday night, the Muleshoe Mules took on the Canyon Eagles on Benny Douglass Football field in Muleshoe. The Mules (in the dark jerseys) looked good in this pre-season action. They start the season at Brownfield next Friday night. Gametime is 8:00 p.m. (Journal Photo)



MULESHOE AREA
MEDICAL

Center

Now Accepting Applications For:
• Accounts Payable/Data Entry
Clerk-Computer And Bookkeeping
Experience Necessary

Apply In Person
Personnel Office
8:00 a.m. - 12:00 a.m.
and 1:00 p.m. - 5:00 p.m.

708 SOUTH FIRST STREET
MULESHOE, TEXAS 79347

ANNOUNCING

The Chrysler-Plymouth Advantage CLEARANCE!

0% A.P.R. Financing* or Rebates up to \$1,000**
Option package savings of up to \$750!†



Chrysler New Yorker Fifth Avenue

Luxurious equipped, with features including:
• Air conditioning
• Driver's air bag
• 2.5 liter engine
• 51 standard features.
Regular option package includes:
• Air conditioning
• Power windows and locks and more.

\$22,502 Base price with Popular Equipment Package
- 220 Package Savings**
- 1,000 Rebate**

\$21,282 Start negotiating here

Or choose low financing*

Package Price	20% Down Payment	Total Financed	7.9% for 60 Mos.	4.9% for 48 Mos.	3.9% for 36 Mos.	2.9% for 24 Mos.
\$22,282	\$4,456	\$17,826	\$361 Mo.	\$409 Mo.	\$533 Mo.	\$743 Mo.



Plymouth Acclaim

Well equipped, with:
• Driver's air bag
• 2.5 liter engine
• 51 standard features.
Regular option package includes:
• Air conditioning
• Power windows and locks and more.

\$12,618 Base price with Super B Discount Package**
- 750 Package Savings**
- 750 Rebate**

\$11,118 Start negotiating here

Or choose low financing*

Package Price	20% Down Payment	Total Financed	10.9% for 60 Mos.	7.9% for 48 Mos.	4.9% for 36 Mos.	2.9% for 24 Mos.
\$11,868	\$2,374	\$9,494	\$206 Mo.	\$231 Mo.	\$297 Mo.	\$396 Mo.



Chrysler LeBaron Coupe

The sports 2-door features:
• All-ten cockpit-style interior
• Tinted glass
• Power windows
• Regular package features:
• Air conditioning
• Tilt steering
• Cruise control and more.

\$13,968 Base price with Popular Equipment Discount Package**
- 150 Package Savings**
- 1,000 Rebate**

\$12,818 Start negotiating here

Or choose low financing*

Package Price	20% Down Payment	Total Financed	7.9% for 60 Mos.	4.9% for 48 Mos.	3.9% for 36 Mos.	2.9% for 24 Mos.
\$13,818	\$2,764	\$11,054	\$224 Mo.	\$254 Mo.	\$330 Mo.	\$461 Mo.



Chrysler Imperial

A full complement of luxury features is standard including:
• Ample leather
• 100-hp. motor advanced automatic transmission
• Cruise control and more.

\$25,655 Base price**
- 1,000 Rebate**

\$24,655 Start negotiating here

Or choose low financing*

Base Price	20% Down Payment	Total Financed	7.9% for 60 Mos.	4.9% for 48 Mos.	3.9% for 36 Mos.	2.9% for 24 Mos.
\$25,655	\$5,131	\$20,524	\$415 Mo.	\$471 Mo.	\$613 Mo.	\$855 Mo.

Hurry; Rebate and Financing offers end soon.

Advantage:
Chrysler-Plymouth



Another reason why we're America's Way to Go!

See your Chrysler-Plymouth dealer now!

*Cashback comes w/ dealer stock. See dealer for details. †Savings based on sticker price vs. option package. **Savings based on sticker price, excluding freight, taxes and destination charge. Actual retail price will vary. ††Short term A.P.R. financing for qualified retail buyers through Chrysler Credit on new Chrysler vehicles. Excludes normal maintenance, adjustments, and certain wear items. See dealer for copy of limited warranty, restrictions apply.

Labor Day Sale

Monday Sept. 3rd

9:00 a.m. to 5:00 p.m.

1/2 Price Items 25% to 50% OFF
FREE Merchandise

FREE Mini-Mag-Lite
Given Away Each Hour

Register At Trailer In Yard

Lumber Garden Hose Flashlights
Sprinklers Paint Tools
Building Material Sprayers
Cookware Vacuum Cleaners
Lawn Chairs Yard Fertilizer
...And Lots Of Other Items

Wall Paneling.....As Low As **\$5.95**

15 lb. Roofing Felt **\$8.95**
Covers 4 Sq. Ft. Per Roll

Porch Gliders..... **\$79.95** In Box

Financing Available

\$100.00 to \$10,000.00



HIGGINBOTHAM - BARTLETT CO.

"QUALITY & SERVICE AT THE RIGHT PRICE"

215 MAIN BOX 566

MULESHOE, TEXAS 79347

BUS. 806/272-3351

Muleshoe Motor Co.

1225 W. Amer. Blvd.

272-4251

Letter To The Editor

State Department of Highways
And Public Transportation
11th & Brazos
Austin, Texas 78701-2483
(512) 463-8588

August 29, 1990

Dear Editor:

For the past five years, Texans have gotten the message about "messin' with Texas" from the highly successful "Don't Mess with Texas" campaign that has reduced litter more than 60 percent. We attribute this campaign's effectiveness to substantial research, targeted advertising and Texas celebrities who talked tough to habitual litterers--males between the ages of 18 and 34.

Now, the State Department of Highways and Public Transportation is going after a more serious problem in our state, traffic fatalities and accidents. Last year, 3,361 people died on our highways. The three main causes of these fatalities were driving while intoxicated, driving at unsafe speeds and not wearing a safety belt.

We conducted intensive research to find out what those most frequently responsible for these fatalities--young males 16-30--think about driving and how we might motivate them to drive more safely. In conducting 22 focus groups in five cities, we discovered that they're not afraid of losing their licenses, their cars, or even their lives. But they are concerned about the possibility of harming someone else, especially a young person.

The new traffic safety campaign, "Don't Wreck Your Life," is designed to exploit that fear--having to live with the consequences of reckless driving. We are releasing this statewide public service program just in time for Labor Day, the deadliest weekend of the year for drivers.

The news media were of invaluable help in spreading the Don't Mess with Texas message, and we need your help again to take this message to your community. The enclosed news kit explains the traffic-safety problem and the program in detail.

If you have any questions, please feel free to call me at 512/463-8588.

Sincerely,
J. Don Clark, Director
Travel and Information Division

Editor
Bailey County Journal
Box 449
Muleshoe, Texas 79347

Sir:

It was with great pleasure to receive the news that the Medal of Honor was restored to Billy Dixon and to Amos Chapman.

These men served with distinction as Army Scouts during the Indian Wars in the latter part of the 19th Century. Both men earned the MOH in what became known as the Buffalo Wallow Fight.

I like to feel that my letter writing campaign had something to do with the MOH restoration.

The Congress of the United States is to be commended for their action.

Now it is time to honor these brave men with a commemorative stamp.

I call on the Congress of the United States to support me and to ask the citizens of Oklahoma, Kansas and Texas to support me in this endeavor.

Respectfully,
Delbert Bratcher
3909 Montego Apt. D
Corpus Christi, TX 78415
(512) 854-6743

August 29th

Dear Editor:

I was reading the Bailey County Commissioner's Court report in the paper recently.

It seems to me that our County Judge has a negative reaction to all and any progressive necessities. Higher taxes are not my idea of something wonderful, but it seems to me that some of the "\$1 million reserve funds" could be used to operate until it becomes necessary to increase taxes. It costs money to operate a county equitably.

He seemed to be against Dr. Purdy's being a paid medical director for the ambulance service. Who will determine at the scene of a serious accident whether or not a person or persons need to be immediately transferred to another facility--the EMT's? Are they qualified to make such a decision? I believe that Dr. Purdy or another doctor should make the decision, and I believe they should be paid for the responsibility they must take in being available at any time. Keep Dr. Purdy in this highly important position.

Also, for the number of hours worked or on call, I feel that the paramedic director for the ambulance service deserves much more than the salary mentioned in the paper. If our community wants to maintain and keep a qualified person for this critical occupation, they must make a salary in keeping with its responsibility.

Crime in America is outrageous! To contain it, we must begin at home in Muleshoe and our sheriff and his staff need both staff and equipment to control it. If someone is breaking and entering at my house, or someone is breaking the law whatever it might be, I

want the authorities to be able to be there as promptly as they can be. I believe that Sheriff Hicks will be as frugal as possible with his department, so if he is asking for funds for the department I'm sure he has given it serious consideration and we need to meet his proposal.

The news report stated that "Judge Watson referred numerous times to the county 'reserve fund' and how the commissioners did not want to 'dip into' the reserve fund that is nearly \$1 million." Can the commissioners not speak for themselves? I was under the impression that the commissioners were responsible for running our county and the Judge was only to break ties. It seems to me that for some time the Judge has been "cutting out" everything he can, from maintaining the courthouse to ambulance service and sheriff's department to all in between. It's a good thing we are going to be voting for a new judge soon. Hopefully, we will get one that sees the necessity of paying for what we get in our county!

Yours truly,
Pam Mitchell
Muleshoe, Texas

Senator Phil Gramm Reports

The U.S. Environmental Protection Agency will spend \$53,000 to clean up Superfund sites in Texas, U.S. Sen. Phil Gramm has announced.

The Texas Water Commission will use the funding, which comes on top of \$12 million already invested by EPA, to continue the Superfund Multi-Site Project in Texas.

The money will be used for forward planning, remedial investigation and feasibility studies, management assistance, preliminary assessments and site inspections and corrective actions.

"EPA's continued investment of Superfund cleanup money in Texas is welcome, particularly in light of the fact that Texans are among the heaviest contributors to the Superfund," Gramm said. It has long been a concern that Texans paid more money to operate the Superfund than we have ever received in benefits."

The State of Texas currently has 29 sites on EPA's national Priorities List of hazardous waste sites.

EPA's mission is to control and abate pollution in the areas of air, water, solid waste, pesticides, radiation and toxic substances. The EPA-operated Superfund relies heavily on oil and gas producing states to finance its toxic cleanup activities, both in Texas and nationwide.

Thousands of Soviet Jews living in occupied zones.

Sudan News by Ann Gaston

Sgt. Clifford C. Miller has been decorated with the Air Force Achievement Medal at Holloman Air Force Base, N.M.

The Achievement Medal is awarded to airmen for meritorious service acts of courage, or other accomplishments.

The sergeant is a munition system specialist.

Miller is the son of Clifford S. and Wanda L. Miller of 705 Jefferson, Amherst, Texas.

His wife, Sheila, is the daughter of Terrill and Sandra Moorhead of 201 E. 13th, Littlefield, Texas.

Ty Hargrove is in surgical ICU at University Medical Center in Lubbock suffering head injuries after being kicked by a horse.

Faye Dorsey is in the Lamb Healthcare Center in Littlefield.

Mrs. J.A. Graves is also in the Lamb Healthcare Center in Littlefield.

The following dates are on record for the Sudan Hornet Football team. If anyone has any corrections or additions to this list, please contact Donna Lance at the Sudan High School 227-2336.

Zone Champions, 76,80 and 85; District Champions, 67,68, 75,86,88, and 89; Bi-District Champions, 67,68,75,86,88, and 89; Area Champions, 89; Regional Champions, 67,68, and 89; Quarterfinal Champions, 89; and Semi-Final Champions, 89.

The TEL Sunday School Class had a business meeting and salad supper on Thursday, August 16 at 6:30 p.m. The meeting was held in the fellowship hall at the First Baptist Church. Hosting the meeting were Jean Harvey, Louise Gatewood, and Alva Strudivant.

Alva opened with a prayer followed by the devotional given by Jean. Others present were: Oleta Reese, Elsie Cate, Rene

Cole, Rosie Snow, Idarene DeLoach, Francis Gardner and Libby Mudgett.

Visiting recently with Frank and Nell Lane, was their daughter, Linda Waters and children of Louisiana.

Mrs. Ray Shafer of Beaumont came to visit with her parents, Mr. and Mrs. Marvin Tollett and to be with her mother last Tuesday while Marvin underwent knee surgery. Marvin is in Methodist Hospital in Lubbock. Mrs. Shafer also visited with Burck and Karen Tollett and Zack of Lubbock.

Recent visitors in the Bob Drake home were their grand nephew, Mr. and Mrs. Bill Agee and Chris of Rockwall, TX.

Marilyn Cox of Muleshoe and Marleea Critenden, Jacob and Lindsey of Temple visited with Matt and Mickey Nix on Thursday.

Kathleen Goodwin of Hillsville, VA recently returned to Sudan to stay with her sister, Dorothy Drake. Kathleen has been in San Antonio where she visited last week with her daughter, Lt. and Mrs. Brooks Boye and girls.

Mike and Sandy Nix and Aaron of Belton visited their parents, Matt and Mickey Nix and Frank and Nell Lane recently.

Whenever an individual thinks he is above the law it is time to set him straight.

Pre-Harvest Special

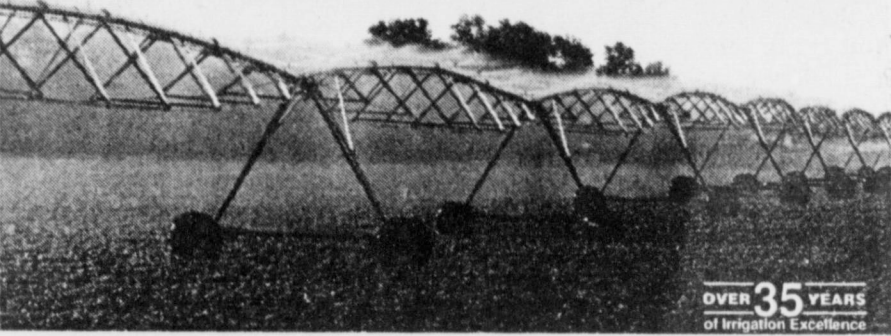
\$2,000 OFF

Hydrostatic Drive 1300' pivot system.

You'll get . . .

- The most uniform water pattern money can buy.
- The lowest maintenance cost of any pivot available.
- A \$1.52/ft. savings on your NEW TEL system.

Act NOW . . . offer expires September 30, 1990!



OVER 35 YEARS of Irrigation Excellence

PARMER COUNTY IMPLEMENT COMPANY, INC.
W. Hwy 60
Frona, Tx. 79035 806-247-2721

SOUTH PLAINS COMMUNITY ACTION DAY CARE BROKERAGE SYSTEM SUB-CONTRACTED WITH RAINBOW DAY CARE HOME (GDCH)

TIME: 7:00am-6:00pm
DATE: MONDAY-FRIDAY
PLACE: 1116 W. AVE C Muleshoe, Tx. 79347
PHONE: 272-3737

HOT MEALS SERVED
BREAKFAST
LUNCH
and SNACK

We will offer a learning environment in a homelike atmosphere.


ELIGIBILITY for the program is based on family size and income.

Parents must also be employed, attending school or a job training program to qualify for the service. Their children will be placed in a Licensed Day Care Center or Group Day Care Home.

Bring with you:
Proof of income
Food Stamp I.D.
Medicaid Cards.
Check stub.

Financial Aid Help Available

For more information call: South Plains Community Action Day Care Broker System and ask for Janie Cisneros or Rachel Martinez at (806) 894-2207 or call your local Community Action Center.



Dodge FACTORY AUTHORIZED CLEARANCE

ANNOUNCING THE RETURN OF FINANCING AS LOW AS 0% APR ON SELECT MODELS



\$750 CASH BACK! OR 0%

Dodge Shadow offers nearly four dozen standard features including front-wheel drive. And now it's clearance priced to move! Plus, get \$750 cash back.



\$750 CASH BACK! OR 0%

Dodge Spirit is a sedan with plenty of performance, plenty of room for the family, and plenty of value too. Get \$750 cash back now. Don't miss your chance to save!



\$1000 CASH BACK! OR 0%

Dodge Dynasty is the luxury sedan you can afford to drive. It combines comfort, convenience and style. Plus, you'll enjoy a low clearance price and \$1000 cash back too.



\$2000 CASH BACK! OR 0%

Dodge D150 full-size pickups are tough to beat. With the highest pickup cash back around - \$2000! \$1500 on Club Cab. \$1000 on diesel models. Save big now, before it's too late!

HURRY! TIME TO MOVE ON BIG CASH BACK AND LOW CLEARANCE PRICES.

- The '91's are coming soon, so now's the time to move! We're clearing out our inventory to make room. Now you can save big on a full lineup with low clearance prices. And big cash back on most models, too.
- *Cash back or low financing for qualified buyers thru Chrysler Credit (0% APR or longer term financing on indicated models). Must buy from stock.

BUCKLE UP...AND PLEASE DRIVE SAFELY.

Muleshoe Motor Co.
1225 W. Amer. Blvd. 272-4251

Advantage: Dodge

Department Of Public Safety Estimates Holiday Death Toll

The Texas Department of Public Safety has estimated that as many as 40 persons could be killed in traffic accidents across the state during the 78-hour Labor Day holiday period.

"Last year during this end-of-the-summer holiday, 48 persons died in traffic accidents, with another four persons dying later of injuries received during that time," said DPS Director Col. Joe E. Milner. "Our estimate for this year is below that final count of 52, and we hope that the actual number of deaths this year will be much lower than this estimate."

The holiday counting period begins at 6 p.m. Friday, August 31 and continues until midnight on Monday, September 3. As it does each Labor Day, and on certain other major holidays, the DPS will have all available Troopers on the highways to ensure that motorists have as safe a holiday as possible.

"Since drinking and driving, along with speeding, are the leading causes of traffic fatalities, we hope we can hold the Labor Day deaths down by our increased presence on the highways," Milner said. "We certainly don't want to discourage people from having a

good time during the Labor Day holiday, we just want motorists to drive safely."

Last year's Labor Day statistics support the Department's concern over drinking and driving and excessive speed. In 1989, 62 percent of those killed in Labor Day holiday traffic accidents died in mishaps connected either to alcohol or driving too fast.

"Something else our Troopers will be watching for during the Labor Day holiday period is whether motorists are wearing their seat belts," said Dudley Thomas, chief of the DPS Traffic Law Enforcement Division. "Last Labor Day, 77 percent of those victims who were occupants of cars or light trucks had not been wearing restraints when they were killed. The message is obvious: Seat belts save lives."

"Helmet use by motorcycle riders has definitely increased since the helmet law took effect in September of last year," Thomas said. "However, there will be some riders who will disregard the statute and wear helmets that do not meet federal safety standards. The Troopers also will be watching for this violation."

As in past years, the DPS will issue periodic reports on traffic fatalities throughout the Labor Day weekend.

Texas Country Music Report

- Top Songs of the Week:
1. Next To You, Next To Me by Shenandoah
 2. Wanted by Alan Jackson
 3. Nothings News by Clint Black
 4. Dont Go Out by Tanya Tucker and T. Graham Brown
 5. Jukebox In My Mind by Alabama
 6. I Meant Every Word He Said by Ricky Van Shelton
 7. I'm Gonna Be Somebody by Travis Tritt
 8. I Could Be Persuaded by Bellamy Brothers
 9. Holdin A Good Hand by Lee Greenwood
 10. Fourteen Minutes Old by Doug Stone

Muleshoe Menu

SEPT. 3-7
BREAKFAST
MONDAY
NO SCHOOL
TUESDAY
BREAKFAST
Milk, Cereal, Toast, and Fruit
LUNCH
Milk, Hamburgers, Lettuce & Tomato, Pickles & Onions, French Fries, and Cookies
HS/JR High Combo Line, Mexican Salad
WEDNESDAY
BREAKFAST
Milk, Toast, Jelly, Hash Browns and Orange Juice
LUNCH
Milk, Enchallada Cass., Pinto Beans, Tossed Salad, Corn Bread and Fruit
THURSDAY
BREAKFAST
Milk, French Toast, Syrup, Sausage, and Fruit
LUNCH
Milk, Pig In A Blanket, Black-eyed Peas, Spinach and Fruit Jello
FRIDAY
BREAKFAST
Milk, Breakfast Corn Dog and Fruit
LUNCH
Milk, Chicken Nuggets, Gravy, Creamed Potatoes, Green Beans, Hot Rolls and Fruit
High School and Jr. High combo line serves hamburgers every day except where noted above.

Enochs News

by: Mrs. J.D. Bayless

Mr. and Mrs. Shorty McCall drove to Roswell recently.

Mr. and Mrs. Elwood Autry spent Friday till Sunday fishing at White River Lake. Their son, Mr. and Mrs. Mitch Autry of Plainview, met them there Saturday to visit and fish with them, and to celebrate Mitch's birthday.

Mrs. Elnita Key and others, Mr. and Mrs. Shorty McCall, Mrs. Birdia Howell, Ellen Bayless, also a granddaughter, Mrs. Peggy Hurley, and children visited Mrs. Inez Sanders the past week.

We express our sympathy to Mrs. Carl Kernell of Morton and her family in the loss of her husband, Carl.

Visiting in the home of Mr. and Mrs. Goldman Stroud Sunday were Mrs. Carlene Stroud of Muleshoe and Mrs. Ann Stroud of Dimmitt and Mrs. Carolyn Kirby and children of Three Way.

I was in Muleshoe Tuesday on business and visited Mrs. Clara Coffman.

Company in the home of Mr. and Mrs. Clifford Snitker Sunday were a son, Mr. and Mrs. Curtis Snitker of Hart, also a granddaughter, Mr. and Mrs. Raymon Spencer and children, Tammy and Logan of Friona, and Shorty and Louise McCall.

Three Way Menu

SEPT. 4-8
MONDAY
NO SCHOOL
TUESDAY
BREAKFAST
Biscuit & Sausage, Juice and Milk
LUNCH
Hot Dogs w/Chili, Corn, Pork-n-Beans, Hot Dog Buns, Jello and Milk
WEDNESDAY
BREAKFAST
Cereal, Toast, Juice and Milk
LUNCH
Taco, Refried Beans, Tossed Salad, Cake and Milk
THURSDAY
BREAKFAST
Waffles, Juice and Milk
LUNCH
Chicken Strips w/Gravy, Mash Potatoes, Yellow Squash, Hot Rolls, Banana Pudding, and Milk
FRIDAY
BREAKFAST
Eggs, Bacon, Juice, Biscuit and Milk
LUNCH
Hamburger, French Fries, Peas, Brownies and Milk

Lazbuddie Menu

SEPT. 4-7
MONDAY
NO SCHOOL
TUESDAY
BREAKFAST
Cereal, Juice and Milk
LUNCH
Pizza, Corn, Green Salad, Pudding, and Milk
WEDNESDAY
BREAKFAST
French Toast, Bacon, Juice and Milk
LUNCH
Pile on Burritos, Pinto Beans, Green Salad, Sour Cream & Cheese, Cake and Milk
THURSDAY
BREAKFAST
Toast & Jelly, Sausage, Juice and Milk
LUNCH
Fish & Tarter Sauce, Macaroni & Cheese, Green Peas, Cheese Rolls, Fruit and Milk
FRIDAY
BREAKFAST
Cinnamon Rolls, Fruit and Milk
LUNCH
Hamburger, Tator Tots, Salad & Pickles, Cookies and Milk
SALAD BAR SERVED
Tuesday, Wednesday, Thursday

The holidays are over for the teachers and children. School started Monday, August 27-1990. Ashley Layton started to school for the first time.

Dinner guests in the home of Mr. and Mrs. J.E. Layton Sunday were their sons, Jarrol and Keith Layton, and their families, and a nephew, Robert Layton of Dell City.

Amanda Newton of Morton and Billy and Tony Newton of Owens, Texas all spent Thursday till Sunday with their grandparents, the Bob Newtons.

Louise and Shorty McCall spent Friday night with their daughter, Mr. and Mrs. Steve Mosser and family at Slaton. They had breakfast with their other daughter, Mr. and Mrs. Robert George at Lubbock.

Mr. and Mrs. Jarrol Layton and children, Ashley and Lauren, went camping at Ruidoso the past week. Robert Layton spent Saturday night with them.

Mrs. Zelma Fred of Morton had all of her children home Saturday night and had a hamburger cook out supper. Present were Mr. and Mrs. Bob Newton of Enochs, Mr. and Mrs. Billy Linsey, Mr. and Mrs. Benny Fry, Mr. and Mrs. Dell Fred, all of Levelland; Mr. and Mrs. Bobby Fred of Denver City; Troy Fred of Houston; Mr.

and Mrs. Keith Fred of Plano, TX; Mrs. Gaylene Cooper from Lubbock; and grandson and great grandchildren, Mr. and Mrs. Tom Newton, Amanda and Barry of Morton and Billy and Tony Newton of Owens.

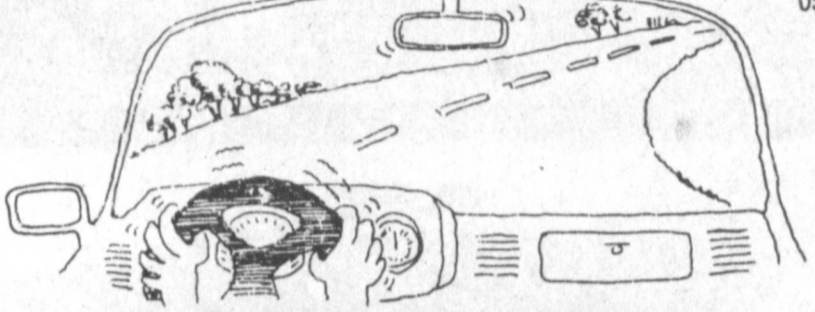
I had lunch with the Morton Senior Citizens Thursday and played 96 with them.

Harold Layton of Dell City visited his brother, Mr. and Mrs. J.E. Layton recently.

Mr. and Mrs. Shorty McCall visited their daughters Mrs. Robert George in Lubbock and Mrs. Steve Mosser at Slaton last Thursday.

Dr. G.O. Smith of Pep underwent surgery at Methodist Hospital in Lubbock last week. He came home Saturday. He will go back today for more surgery. Get well real soon.

**Cash Rewards
Up To \$1,000
For Information!
Call
Bailey County
Crime Line
272-HELP**



FIGHTING THE WHEEL?

if your car shimmies at highway speeds, and pulls to the left or right, chances are you need a front-end alignment. Our Mr. Goodwrench specialists will give it a thorough front-end alignment at a special price:


NOW ONLY \$28⁰⁰


Includes:

- Camber adjustment • Caster adjustment • Toe adjustment
- Tire check • Shock absorber check • Steering linkage check
- Visual check of all other components •

GM Cars and Pickups

Robert D. Green, Inc.
2400 W. Amer. Blvd. 272-4588
It's not just a car, it's your freedom.

 **Mr. Goodwrench**



People who own 'em... love 'em!

Dual Fuel Heat Pump

The number of people who are heating and cooling their homes and businesses with the Dual Fuel Heat Pump continues to grow. In the past five years, sales have increased nearly 800%! Folks love Dual Fuel Heat Pumps for their economy, dependability and cleanliness.


Call your Dual Fuel Heat Pump Dealer.

© 1990 Sunbelt Savings FSB

7.80% Annual Rate
8.03% Yield/1 yr. CD*

7.70% Annual Rate
7.93% Yield/6 mo. CD*

Good rates, plus two easy ways to open your Sunbelt CD.
Just stop by the Sunbelt branch nearest you. Or, fill out the Sunbelt CD form below and mail it along with a check for the amount of your deposit.
It's that simple. Because Sunbelt believes in *Uncomplicated Banking*.

 **Sunbelt Savings FSB**
No Excuses. Answers.™

Muleshoe: 304 Main St., 272-5527


*Deposits insured by FDIC to \$100,000. Rate subject to change. \$500 minimum deposit. Annualized yield is calculated assuming all principal and interest remain on deposit for one year at the annual rate. Interest compounded quarterly. Other rates available for balances of \$25,000 or more.

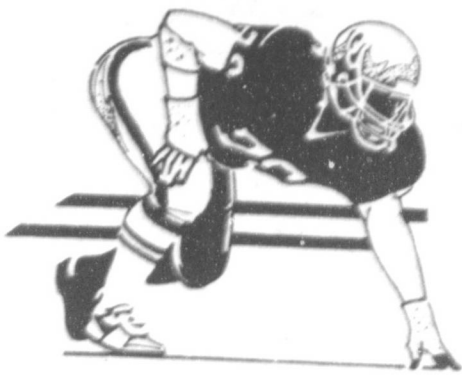
Please open my Sunbelt Savings account using the information supplied on this coupon. Enclosed is my check payable to Sunbelt Savings in the amount of \$_____ to open my six month CD, one year CD.

Name _____ Date _____
Address _____
City _____ State _____ Zip Code _____
Driver's License # _____ Date of Birth _____
Daytime Phone _____ Social Security # _____

Deposit interest to my account quarterly
 I prefer my interest paid by check Monthly Quarterly At Maturity

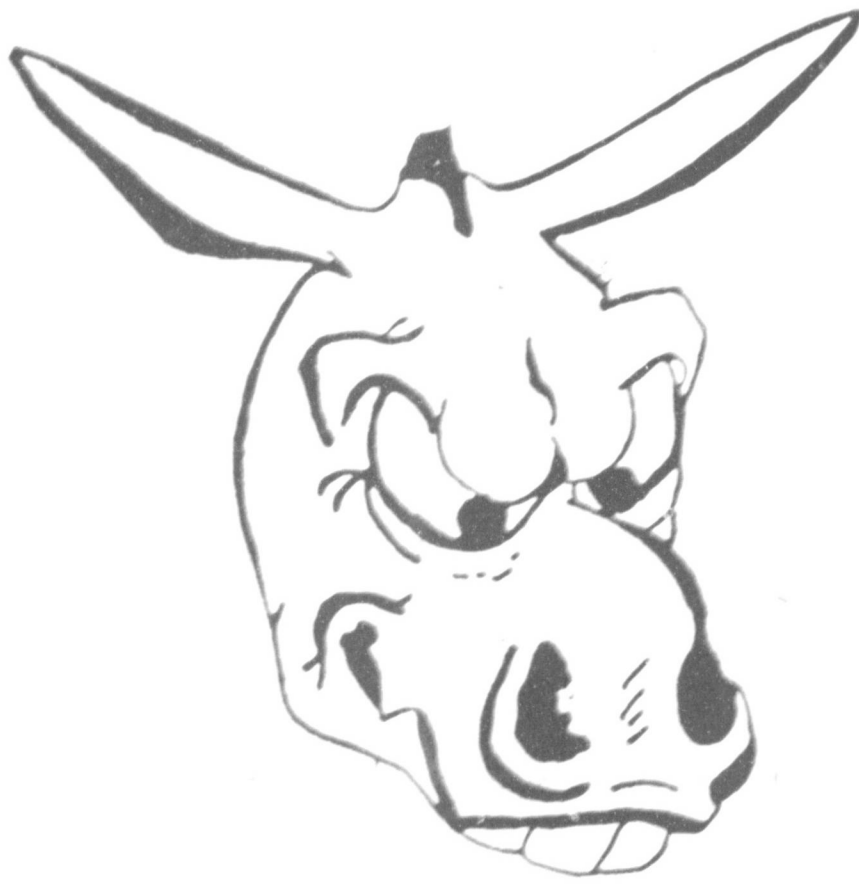
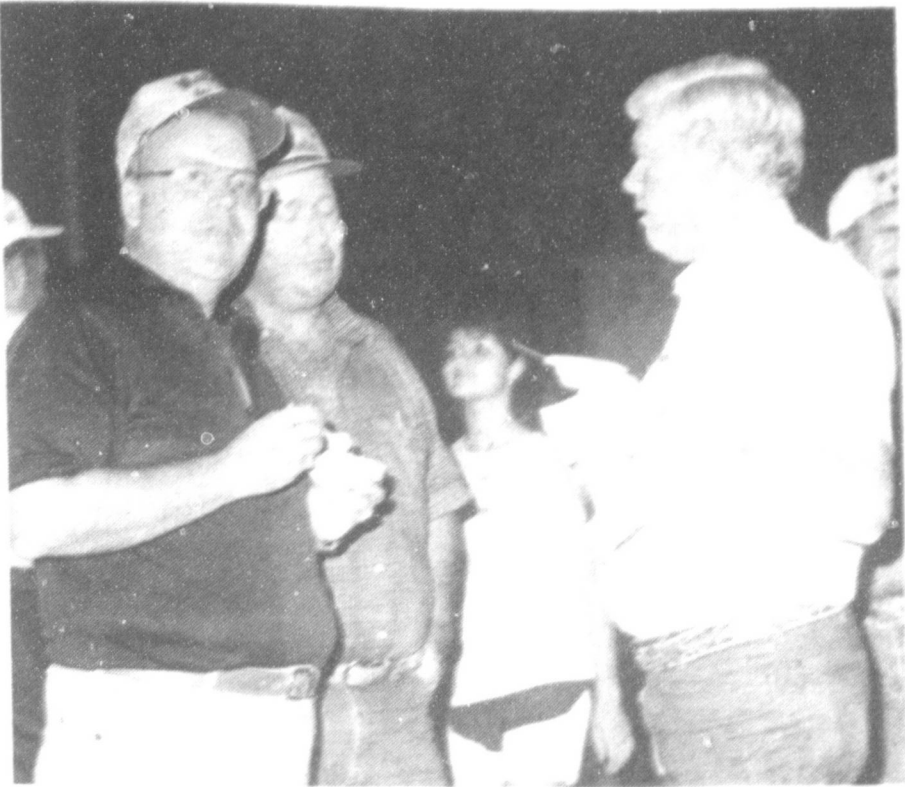
Signature _____
Mail this coupon and your check to:
Sunbelt Savings, 200 East Carpenter
Freeway, Attn: Customer Service Dept.
P.O. Box 100820, Irving, Texas
75010-0820

 **Sunbelt Savings FSB**
No Excuses. Answers.™



Annual Meet The Mules Night

Tuesday, August 28, 1990



Nursing Home News

by: Joy Stancell

Yours truly is happy to be back after being gone for two weeks. It is nice to go to the mountains but there is no place like Muleshoe (home).

Happy Sept. Birthday to Wilmoth Clements, Sept. 10, 1913; Ernest Kerr, Sept. 18, 1914; Stella Morgan, Sept. 28, 1899; Arnold Morris, Sept. 29, 1897; Homer Milsap, Sept. 18, 1908; and Joe Weaks, Sept. 23, 1897.

Among those going out with their families recently were Bernice Amerson guest of her sisters, Juanita and Lorene. D.B. Ivy was the guest of his daughter and her family, Christie Whitt. Finis Kimbrough went out with his wife, Johnnie. Wilma Clements went down to the Beauty Shop with Chubby Douglas.

Our many thanks to Jessie Gray for the nice and delicious watermelons and to the Spudnut Shop for the good spudnuts.

Glenda Jennings and Iva Carpenter came Wednesday for our weekly Sing-A-Long. Special guest for the singing were Mr. and Mrs. D.B. Head, Irene Splawn, Lorene and Juanita, Lucy Faye Smith, and Holly Milsap.

We wish to make welcome two new residents. They are Finis Kimbrough and Jo Weaks. Welcome to our nursing home family.

We are planning a family, resident ice cream social, Thursday, 6 p.m. after the residents supper. We invite our families and friends to attend and to bring a freezer of homemade ice cream or a dessert.

Lona Embry and Helen Free hosted a cheese and cracker tasting party Friday afternoon. It was a real treat to taste all the many different kinds of cheeses and crackers.

Tuesday afternoon Linda Low, Olive Cox, Bonnie Green, Claudine Embry and Laverne James came to shampoo and set

the ladies hair.

Rhonda and Tommy came Wednesday afternoon to shampoo and set the ladies hair. Helen and Shelly gave manicures.

Finis Kimbrough was visited this week by his wife, Johnnie, his daughters, Donna and Wanda.

Among those visiting the Health Care Center this week were Grace Scarbrough, Mike and Nathan Doyle.

Mrs. Scott and Mrs. Rippie have had family visiting them this week.

Ona Coffey and Ella Faubus had family visiting them this week.

If you would enjoy visiting with good and special people, we invite you to come visit with the residents at the Health Care Center. "It is heart warming."

Oneita Wagnon was visited by her daughter, Rhonda Pummill Tuesday.

IN FASHION

Women are purchasing and collecting authentic jewelry reproductions as special pieces of adornment. These costume pieces are dazzling with faux gems and rhinestone.

Butterfly brooches and earrings in gilt metal feature rhinestones and faux gems. Chandelier earrings, that brush the shoulders, are lavishly set with gems.

SPC States Hydrogen Sulfide Classes

The fall schedule of hydrogen sulfide safety classes at South Plains College begins Sept. 10, according to Kim Williamson, chairperson of SPC's occupational training department and assistant professor of petroleum technology.

"SPC regularly offers three-hour courses on hydrogen sulfide safety primarily for the benefit of workers in the oilfields," said Williamson. "The Texas Railroad Commission requires that employees have a knowledge of the deadly gas before working in the oilfields."

The course will cover all aspects of hydrogen sulfide, its detection, safety procedures and the use of safety masks.

One-night classes will meet

6-9 p.m. Sept. 10, Sept. 24, Oct. 8, Oct. 22, Nov. 5, Nov. 19, and Dec. 3 in the SPC Petroleum Technology Building, Room 108.

Cost is \$10 a person.

Interested persons may make reservations in advance by contacting SPC Continuing Education Office at 894-9611, ext. 341.

1990 Crop		1990 Contract Basis		Month
Pool Cash Advance	Flat	No Bid		
Feed Corn.....Mkt.....	4.22,-0.07	No Bid	Sept.	
White Cobb Yellow.....	4.50, 5.00, 0.37	No Bid	Sept.	
Red Cobb Yellow.....	4.00, 4.35, 0.00	No Bid	Sept.	
White Food Corn.....	5.00, 6.00, 0.93	No Bid	Sept.	
Milo.....Mkt.....	3.63,-0.40	No Bid	Sept.	
Soybeans.....No Pool..	5.16,-0.85	-0.95	Sept.	
Wheat.....No Pool..	2.43,-0.19		KC Sept.	

99 1/2 %
Prices effective August 31, 1990

Farmer's Co-Op Elevators

272-4335

Immaculate Conception Catholic Church

Father Patrick Maher
Northeast of City

First Baptist Church

220 West Ave. E.
Barry Bradley, Pastor

Emmanuel Baptist Church

Iglesia Bautista Emmanuel
107 East Third
Isaia Cardenas, Pastor

Trinity Baptist Church

314 E. Ave. B.
Rev. Dale Berry

Circle Back Baptist Church

Intersection FM 3397 & FM 298
Pastor, Glen Price
946-3676

Calvary Baptist Church

1733 W. Ave. C.
Rev. Rick Michael

Victory Baptist Church

605 West 8th
James Williams, Pastor

Progress Baptist Church

Charles Fisk, Pastor
Progress, Texas

Richland Hills Baptist Church

17th and West Ave. D.
Allen Petersen, Pastor

St. Matthews Baptist Church

Corner of West Boston & West Birch
M.S. Brown, Pastor

Progress Second Baptist Church

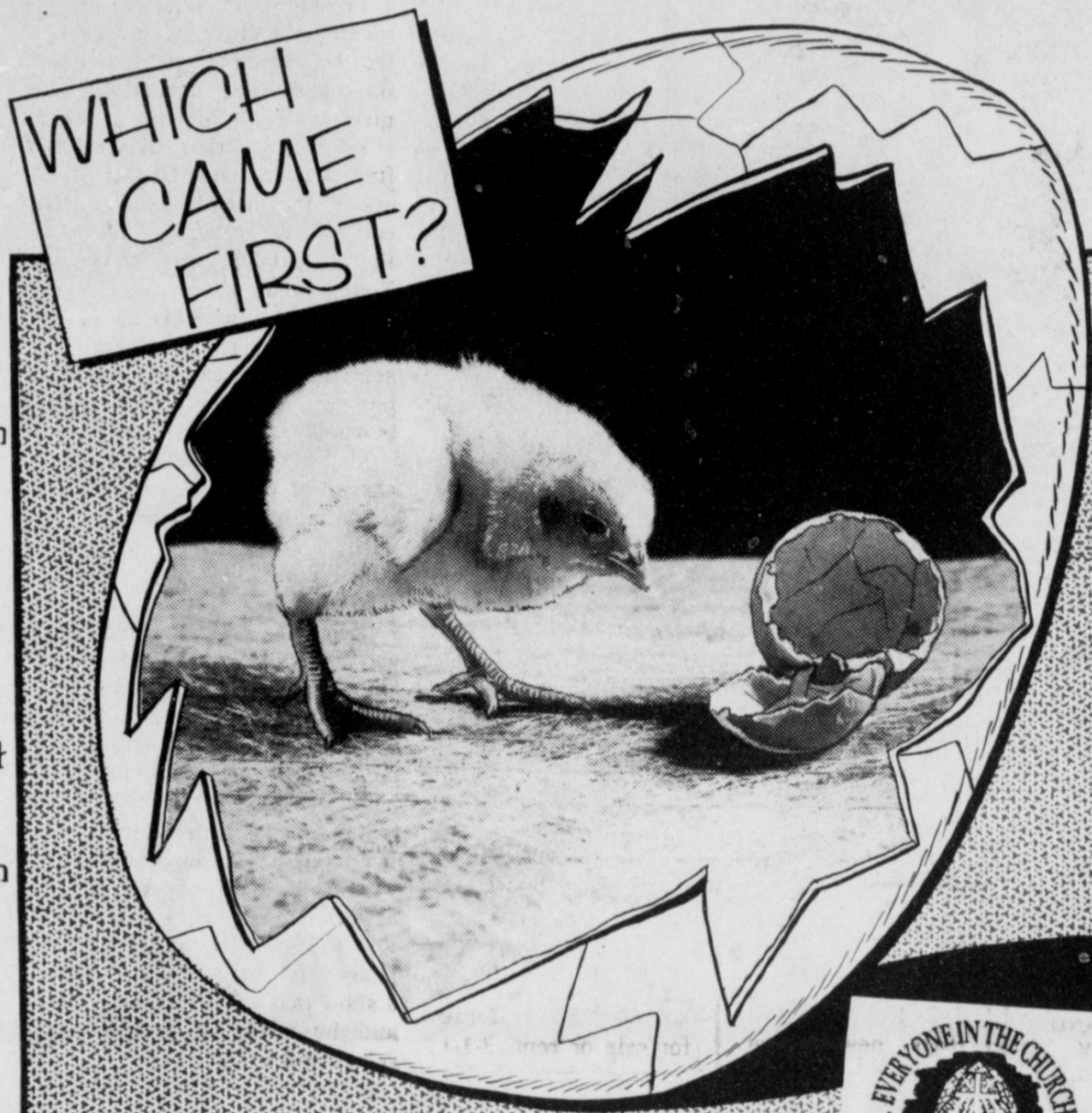
1st and 3rd Sunday
Rev. Arthur Hayes

Primitive Baptist Church

621 South First
Elder Cleveland Bass, Pastor

1st Baptist Church

Lazbuddie, Tx.
Gary Wilcox, Pastor
965-2126



The old question about the chicken and the egg is one that will haunt the minds of men forever. It will never be answered and fortunately need not be, but we do know from whence came life itself and that is of vastly more importance. Life was given by the Creator God who made Himself known to men and about whom we read in the Bible. We are also told in the Bible that our destiny as persons is to receive light and life from God and reflect His splendor into the world; this and this alone will give us the true joy of life.

Let your light so shine that seeing your good deeds men will turn and glorify your Father who is in Heaven.



Is something wrong with your life— an inner restless dissatisfaction? The answer to every human problem comes only from God our Maker. He alone can forgive and reassure. Through the church God has committed the provision and proclamation of His forgiveness and redeeming love. Without a church relation no one is securely related to God. Everyone should be in the Church and the Church in everyone!

Coleman Adv.

Primera Iglesia Bautista

223 E. Ave. B.
Roy Martinez, Pastor

Lariat Church Of Christ

Sunday School 10:00 a.m.
Worship 11:00 & 6:00 p.m.
Wednesday Services 7:00 p.m.
Sam Billingsley, Minister

Muleshoe Church Of Christ

Clovis Hwy
Bret McCasland, Minister

16th & Ave. D. Church Of Christ

Sunday 10:30 a.m.
Evening 6:00 p.m.
Wednesday 8:00 p.m.
Curtis Shelburne, Minister

Lazbuddie Church Of Christ

Minister, Keith Courmier
Sunday School 9:30 a.m.
Morning Services 10:00 a.m.
Evening Services 6:00 p.m.
Wednesday Night 7:00 p.m.

First Assembly Of God

Rev. G. Dean Reid, Pastor
Sunday School 9:45 a.m.
Morning Worship 11:00 a.m.
Evening Services 6:30 p.m.
Mid-Week Services 7:30 p.m.
272-3984

Spanish Assembly Of God

East 6th and Ave. F.
Mike Doyle, Pastor

First United Methodist Church

507 W. 2nd Street
Richard Edwards, Pastor

El Divino Salvador Methodist Church

5th and Ave. D.
Jose M. Fernandez, Pastor

United Pentacostal Lighthouse Church

207 East Ave. G.
Rev. N.W. Thompson
272-3258

Truth Tabernacle Pentecostal Church

200 E. Ithaca & Fir
Pastor. Les James
272-3391

Patients in Muleshoe Area Medical Center

AUG. 27-30
MONDAY

Jaime Whalin, Carrie McCormick, Lala Cook, Kassi Tunnell, Julia Hernandez, Brady Henly and Lucy Galaviz

TUESDAY

Jaime Whalin, Carrie McCormick, Jesus Mendoza, Scott Armstrong, Julia Hernandez, Dorotio Barron, Wayne Tunnell, Brady Henley, Lucy Galaviz and Vivian Johnson

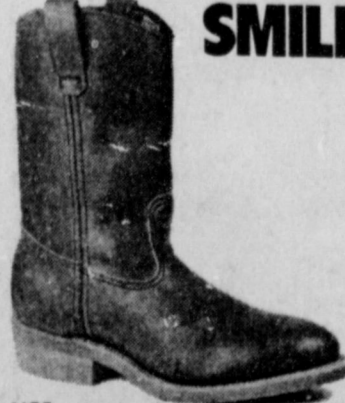
WEDNESDAY

Olicia Galindo, Vivian Johnson, Carrie McCormick, Jesus Mendoza, Maria T. Orozco, Scott Armstrong and Esther Darnell

THURSDAY

Olivia Galindo, Vivian Johnson, Carrie McCormick, Jesus Mendoza, Maria T. Orozco, Scott Armstrong and Esther Darnell

PULL-ON A SMILE!



1155
Anthonys
321 Main
272-3478



Western Drug

114 Main 272-3106

Sparkle Cleaners

114 E. Ave. C. 272-3570

Fry & Cox, Inc.

401 S. First 272-4511

Main Street Beauty Salon

115 Main 272-3448

Irrigation Pumps & Power

W. Hwy 84 272-4483

Attend The Church Of Your Choice!

W. T. Services, Inc.

319 E. Amer. Blvd. 272-4888

Bob Stovall Printing

221 E. Ave. B. 272-3373

1st Bank

202 South First 272-4515

Farmer's Co-Op Elevators

Muleshoe 272-4335

American Valley, Inc.

W. Hwy 84 272-4266

James Roy Meat Market

506 W. Amer. Blvd. 272-4361

Bratcher Motor Supply

107 E. Ave. B. 272-4288

Wes-Tex Futures, Inc.

1910 W. Amer. Blvd. 272-5585

Dairy Queen

1204 W. Amer. Blvd. 272-3410

Robert D. Green, Inc.

2400 W. Amer. Blvd. 272-4588

Lookin' Good

206 Main 272-5052

5-Area Telephone Co-Op

302 Uvalde 272-5533

Richland Hills Texaco

1914 W. Ave. B. 272-4875

CLASSIFIEDS 272-4536

CLASSIFIED RATES

15 Words & Under
Minimum Charge \$2.30
Thereafter \$2.00
16 Words & Over
1st Insertion
15 cents per word
2nd Insertion
13 cents per word

CLASSIFIED DISPLAY RATES

\$1.75
Per Column Inch
DEADLINES
12 noon Tues.
For Thursday Paper
12 noon Friday
For Sunday Paper

To receive the reduce rate after the first insertion ad must run continuously.

We reserve the right to classify, revise, or reject any ad. We are not responsible for any error after ad has run once.

1. Personals

CONCERNED
About Someone's Drinking?
HELP IS AVAILABLE
through Al-Anon
Call 272-2350 or 965-2870 or come to visit Tuesday and Thursday nights, 8:00 p.m. and through AA call 965-2870 or come visit Tuesday nights, 8:00 at 620 W. Second, Muleshoe.

3. Help Wanted

ASSEMBLERS: Excellent income to assemble products from your home. 504-646-1700. Dept. P4027. B-35s-4tp

WANTED: Experienced machinist and gearhead man. Call (806) 238-1596 days or 238-1328 nights-after 9 p.m. B3-25s-tfc

TOWN & COUNTRY FOOD STORES

We are seeking career minded individuals for part time and full time employment. Must be dependable, have good customer relations, work, learn, and contribute. Applications available at both stores. Drug test required.

10. Farm Equip. For Sale

FOR SALE OR RENT: 80 Acres Circle Sprinkler. Call 214-769-3037. B10-32t-4tp

17. Seed and Feed

CERTIFIED TAM 200 Seed-Bulk, Scout, \$3.75. Produced 116 bushels. Under sprinkler. James Cowart, Olton; (806) 285-2569. C17-34s-8tc

CLASSIFY!

11. For Sale Or Trade

Two 1979 R-Model Macks, \$9,500 each. Two 1972 Hobbs Hopper Trailers, \$4,000 each. 285-2127 days, 797-0949 nights. S11-35t-4tc

PIANO FOR SALE
Wanted: Responsible party to assume small monthly payments on piano. See locally. Call credit manager 1-800-447-4266. J11-35s-8tp

15. Misc.

WANTED: Silage cutting. Have 5820 John Deere cutter with Kemper head and supporting trucks. Call 913-567-4513. J15-27t-2m-sc

AUTODRIVERS WITH TICKETS AND SR-22 MOTORCYCLE INSURANCE YOU CAN AFFORD

If you're ready for affordable Motorcycle Insurance, give us a call today.

WILSON AGENCY
302 WEST 2nd ST.
806-272-4159
MULESHOE, TEXAS
DAIRYLAND COUNTY MUTUAL
Good Rates For Good Riders

18. Legals

LEGAL NOTICE
THE THREE WAY INDEPENDENT SCHOOL DISTRICT is accepting bids for a minicomputer. Bid specifications may be obtained from the School District Office at P. O. Box 60, Maple, Texas, 79344, or by calling (806) 927-5531. All bids will be due on or before September 13, 1990. T18-35t-2tc

NOTICE FOR BIDS
Three Way I.S.D. is accepting bids for custodial/janitorial/lunch supplies, maintenance supplies, and equipment including toilet tissue and paper towels. Bids, price lists, or catalogues should be sent to Don Parker, Superintendent, Three Way I.S.D., P. O. Box 60, Maple, TX 79344 by Thursday, September 13, 1990. All bids will be opened 7:30 p.m. on September 13, 1990.

Prices quoted shall be net at your place of business and also a price quoted F.O.B., Three Way ISD.

All products must meet or exceed all standards as established by all regulatory agencies.

Firm Name: _____

Address: _____

Signature
The Board of Trustees of the Three Way Independent School District reserves the right to accept or reject any and all bids. T18-35s-1tc

18. Legals

NOTICE FOR BIDS
Three Way I.S.D. is accepting bids for all school supplies, materials, and equipment including photo-copy paper. Bids, price lists, or catalogues should be sent to Don Parker, Superintendent, Three Way I.S.D., P. O. Box 60, Maple TX 79344 by Thursday, September 13, 1990. All bids will be opened 7:30 p.m. on September 13, 1990.

Prices quoted shall be net at your place of business and also a price quoted F.O.B., Three Way I.S.D.

All products must meet or exceed all standards as established by all regulatory agencies.

Firm Name: _____

Address: _____

Signature

The Board of Trustees of the Three Way Independent School District reserves the right to accept or reject any and all bids.

8. Real Estate

HCR REAL ESTATE
4-2-1-2 Carport Brick new carpet, lots of storage. Storage bldg. 20X48.
Thursie Reid
272-5318

295 Acres Northwest of Muleshoe For Sale. Excellent land owner financing. Call

Patricia Yeager or Ben Yeager

806-655-1040

806-655-3378

The Prudential Ada, Realtor

Bingham & Nieman Realty

116 E. Ave. C George Nieman, Broker 272-5285 or 272-5286

RICHLAND HILLS
IMMACULATE 3-2-2 Brick, Cent. A&H, built-ins, FP, sunken lv. area with cathedral ceiling, ceiling fans, earthtones, storage bldg. \$50's!!!

NICE RESIDENTIAL LOTS-\$5,000 UP...

3-2-2 Brick, large corner lot, Cent. A&H, built-ins, basement area, & more!!!!

PRICE REDUCED-Nice 3-2-2 Brick, Cent. A&H, FP, earthtone carpets, fenced yd. \$60's!!!!!!

3-2-2 Home, heat pump, built-ins, FP, earthtone carpets, fenced yd., & more. **PRICED TO SELL!!!\$30's**

3-2-2 Brick, corner lot, Cent. A&H, built-ins, FP, patio. \$60's..

HIGH SCHOOL

3-2 Home, remodeled, heat pump, storm win. & doors, fans, stor. bldg., fenced yd. \$20's!!!

PRICE REDUCED 3-1-1 Home, earthtone carpets, workshop, cellar, fenced yd....

IMMACULATE 2-1-1 Home, Cent. A&H, nicely remodeled, storm win. & doors, fenced yd., cellar. \$20's!!!!!!

2-1/2-1 Brick, fl. furn., Cent. Air, fenced yd., & more. \$20's!!!!

FmHA FINANCING to qualified Buyer - 3-1-1 Brick, Cent. heat, earth-tone carpet, ceiling fans, miniblinds. \$20's!!!!!!

HIGHLAND AREA

VERY NICE 4-2-1 Brick, Cent A&H, built-ins, earthtone carpets, util., encl. patio, storm win. & doors, grill, spktr. sys., stor. bldg., fenced yd. \$60's!!!!



ONE MINUTE SPORTS QUIZ

By Christian Thorlund

1. Did Abner Doubleday invent baseball?

2. What was the game's origin?

3. What is the only U.S. sport which originated in this country?

4. When did the game begin?

5. What city was the first to have a pro football team?

Answers:

1. No.

2. Baseball evolved from cricket, and Alexander Cartwright of New York, not Doubleday.

3. Basketball.

4. In Massachusetts in 1892.

5. Pittsburgh, in 1896.

8. Real Estate

FOR SALE OR RENT. 3 bedroom brick home with fireplace. Located 3 miles west of Earth on Highway 70. 272-3056. J8-16t-tfc

FOR RENT OR SALE: 3 bedroom house in the country. Call 946-3417. K8-34s-tfcs

BY OWNER - House for sale or rent. 3-1-1 covered patio, big back yard. Large storage building. 806-272-3321. Y8-35t-4tcs

Kiwanis News

By R. A. Bradley

Thirteen Kiwanians and one honorary Kiwanian, Chad Johnson, met Friday morning at the LaPlacita Cafe.

President Jim Lutz called the meeting to order. Keith Turner led the club in the pledge to the flag and the invocation was given by Eddie Morris.

Eddie also tried all week to find a friend and also tried to spend the friendship coin but couldn't do either. Eddie gave the friendship coin to Hugh Young and stated that Hugh needed it because his daughter, Tish, had left for college, his son was in jail and his wife had left him. Well, only part of this is true -- Tish is off to college.

Scott Churchman was in charge of the program but was unable to get anyone up this early to come out so we had a round table discussion over an oblong table.

Monday, Labor Day, the flags will be flying. Be proud of the Stars & Stripes. Our country, with all its faults, is still the best there is. We still have more freedom than anyone. This freedom is not FREE. We have to pay a price for freedom.

For all of our boys and girls who are in the armed forces and are now in Saudi, let us all pray that this conflict can be settled peacefully and this will only be a show that we can mobilize fast and be ready to protect ourselves and friends.

Maybe this can be just an extended vacation. There IS

8. Real Estate 8. Real Estate

Smallwood Real Estate
232 Main Muleshoe 272-4838

On pavement in Country. 3 bedroom, 2 bath, large kitchen and dining area, living room, large den, and playroom. 1 acre.

STUCKO--3 Bdr., 2 Bath, Living Room, Den, Large Kitchen, Dining Area. 1 Car Garage. IN CONTRACT Jack yard. 2,456 sq. feet: Corner lot. 75X140. Priced to Sell.

power in prayer.
Let this be a fair warning to all Kiwanians who have been staying in bed and missing Kiwanis -- you have one week to redeem yourself and be at Kiwanis Club next Friday.

Those missing in two weeks -- I will name all of those who are still asleep and miss the Kiwanis meeting. If you don't make Kiwanis meetings, your name will be in print and everyone in town will walk around and shake their finger at you and say *shame, shame*.

School is in full bloom so let's all get behind our kids and support the Mules and Mule-tes.

Just think, only 116 days until Christmas and 123 days until nearly all day football on TV -- *New Year's*. Can you wait??

Three Way News

Mr. and Mrs. Bobby Sinclair of Monahans are the parents of a baby girl born Wednesday, August 22nd at the Monahan hospital. Grandparents are Mr. and Mrs. Bill Dupler of Maple and Mr. and Mrs. Y.L. Sinclair of Morton. Great grandmother is Marie Sowder of Sundown.

George Tyson was in Lubbock Monday and Tuesday visiting his daughter, the Tommy Durhams, and tending to business.

Mrs. Ben Nelson from Seminole spent part of the week with her sister, the Robert Kindle family.

Mrs. Nettie Ouesenbery from

Muleshoe spent Friday and Saturday with her daughter, the Jack Lane family.

Three Way School started Monday, August 27th with a full staff.

George Tyson visited his daughter, Mrs. D.A. Williams, a patient in Cochran Memorial Hospital Friday evening.

Marcus Huff from Morton spent a few days with his parents, the Bud Huffs.

The farmers in the community have been busy spraying cotton for worms.

Mrs. Bobby Kindle met her daughter, Robbin from Lamesa, in Lubbock Saturday for lunch and shopping.

Mrs. Jerry Damron from Needmore and Mrs. Cliff Heinrich from Maple visited the Robert Kindles Sunday.

Mr. and Mrs. Joe Sowder spent the weekend in Logan, N.M. visiting their daughter, the Jack McCarty family.

George Tyson visited his daughter, the D.A. Williams, in Enochs Sunday.

SMILES

Good Reason
The defendant acknowledged that he hadn't spoken to his wife in five years and the judge put in a question. "What reason have you?" he asked severely. "I didn't want to interrupt her," the husband replied.

8. Real Estate 8. Real Estate

BAILEY COUNTY LAND FOR SALE
Owner will finance the following site blocks: 2.50 acres, 3.160 acres, 3.000 acres, and 1.277 acres. Wheat, milo and cotton allotments. 1/4 circles of permanent grass. 7 Center Ponds. A Sweet Cattle Set-Up.
If interested, contact T.L. Tummons
806-385-4487 (Day) 806-925-6484 (Night)

FOR RENT
2 bedroom house
HCR Real Estate
272-5318
Thursie Reid

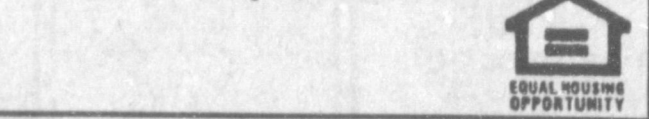
IRWIN REALTORS

806-792-6373 806-879-2348

160 Acres - West of Muleshoe. Lays perfect, two wells, with lovely home. 3-3-3, large game room, loads of closets and storage, sunroom, central heat and refrigerated air, covered patio, gas grill, auto-sprinkler, fenced back yard. Nearly new shop building-much more! On pavement.

REAL ESTATE BROKERS

The Farmers Home Administration (FmHA) has from time to time various inventory Real properties for sale through brokers having executed a listing agreement with the agency. Licensed real estate brokers may obtain additional information by writing or visiting the local FmHA Office located at 115 E. Ave. D, Muleshoe, Tx 79347 or telephone (806) 272-5549.



J.B. Sudderth Realty, Inc.

109 Fifth Street Farwell, Texas

Realtors/Certified Appraisers

Sold all our farm land-Call if you have farm land to sell.

3200 Acres grassland and cultivated with improvements.

Beautiful Country family home. Room for animals & pets. 15.4 Acres. 3 Bedroom, 1 3/4 Bath, Brick, 2 Car Garage, Irrigation Well with Pipe, Domestic Well, TV Dish, Fruit Trees, Box Cars, Barns, Steel Pens; Located on Hwy. Owner says sale-priced to sell.

J.B. Sudderth Broker
Daren Sudderth Broker
Master Senior Appraiser
806-481-3288