

PROGRESS IS—
MAKING GOOD THINGS
HAPPEN

THE RISING STAR

WHERE THREE GOOD
TEXAS COUNTIES
GET TOGETHER

Rising Star, Texas

©1983 Eastland County Newspaper Co.

Established in 1890

25¢

Thursday September 22, 1983

Number 38

Evans Pipe & Gate Co. Marks First Anniversary With New Building



James Evans, left, owner of Evans Pipe & Gate Co., has built a metal building where fabrication of gates and panels will take place.

With Evans are employees; left of the sign are Bobby Burns and Oretha Morris, standing, and

James Evans, owner of Evans Pipe & Gate Co. on E. Mill Street, marked the approaching first anniversary of his business by erecting a new metal building.

Evans first began operation last October in an old garage on West Highway 36. In January he moved to the present location, using the old brick building known as the E. Mill Baptist Church. He later added a mobile building for office space, then recently began construction of the new metal building for use as a fabrication shop. The old brick building will

be used for painting.

Evans Pipe & Gate Co. manufactures livestock equipment; they build portable corral panels, gates and feeders to fit any need. They sell to individuals and dealers, with customers in Texas, Oklahoma, Colorado, Utah, Nebraska and Wyoming. The company also buys and sells all kinds of pipe.

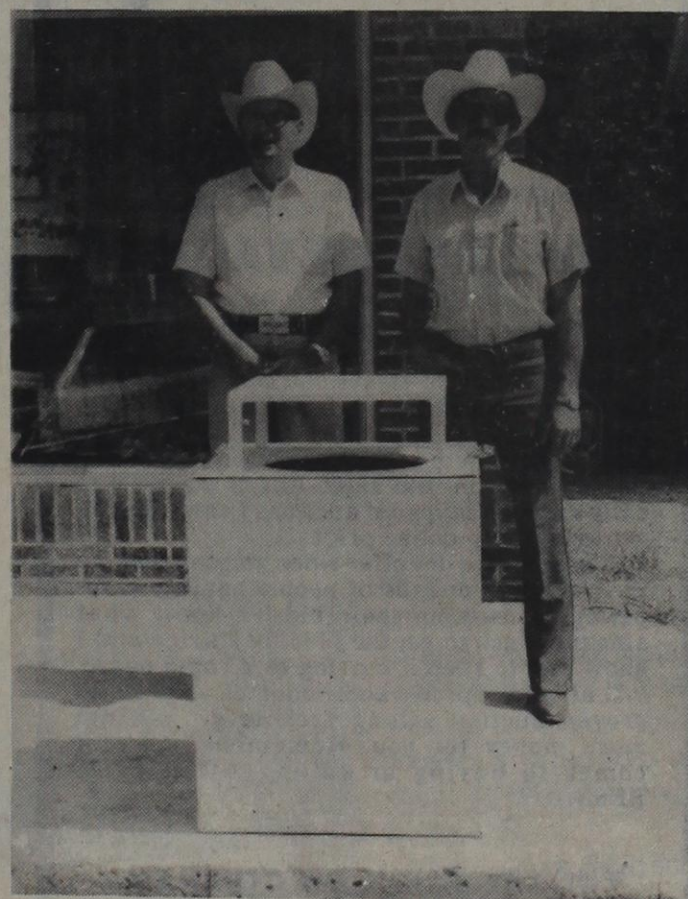
Evans has had about fifteen years of experience in the welding business, he noted.

Employees include Leonard Robertson, Steve White, Kelly Barton, Larry Wheat, Bobby Burns, Robbie Robertson, Lonnie

Kelly Barton and Allen Morris, kneeling. To the right of the sign are Robert Underwood, Lonnie Robertson, Larry Wheat and Steve White, standing, and Dale Cloer, Ronnie Robertson and Leonard Robertson, kneeling.

The office telephone number is 643-1003 and Evans welcomes business from area ranchers and farmers.

Four New Trash Receptacles Placed Downtown



Wayne Merritt and Fenton Smith stand beside one of the four new trash receptacles placed in downtown Rising Star.

The Rising Star Chamber of Commerce & Agriculture is proud to acknowledge the aid they received from local businesses in placing four new trash receptacles in

the downtown area announced Fenton Smith, president of the Chamber.

With the basic materials donated by the Chamber, Evans Pipe & Gate Co., owned by James Evans, manufactured and painted the bins and placed them on Main Street last Saturday.

The four new trash cans inside the bins were donated by Jake's Shop, owned by Jake Landess. Higgin-

botham's, managed by Wayne Merritt, donated the locks. Other donors instrumental in readying the bins for use were D & T Building Supplies owned by Don Claborn and J.W. Wright, and Joyce Texaco, operated by John and Kyle Joyce.

The local trash collection contractor, Kenneth Pyle, has donated the services of his company in emptying the new trash containers.

Shoppers and workers in the downtown area are urged to make use of the new trash bins in a continuing effort to make Rising Star an attractive place to shop, work and live.

27th Homecoming Rising Star High School Saturday, October 1, 1983

SCHEDULE OF EVENTS

8:30 a.m. Coffee-Registration-Visiting
9:30 a.m. Assembly-Business Meeting
11:30-1 p.m. PTO Luncheon, School Cafeteria
1:30 p.m. Parade entries assemble at high school
2:00 p.m. Homecoming Parade
3:00 p.m. Pep Rally, Class Parties following
7:30 p.m. Football Game, Wildcat Stadium
..... Wildcats vs Blanket Tigers

Half-time Activities
Crowning of Homecoming King and Queen
and Wildcat Sweetheart

HOMECOMING ASSEMBLY

"Remembering the Past-Enjoying the Present-
Planning the Future"
Honoring the Class of 1933 - 50th Anniversary
and all classes ending in "-3"
Invocation.....Weldon Hill
Principal of Rising Star Grade School
Welcome.....Gene Williams, Superintendent
Rising Star Schools

Review of Activities, Recognition of Classes
Announcements, Business Meeting
Presentation of Awards
Introduction of Speaker ...Steve Bibb, President
RSHS-Student Association
Benediction.....School Song

1983-1983 OFFICERS

President.....Steve Bibb
Vice-President.....Guy Nell West
Secretary-Treasurer.....Barbara Long
Reporter.....Jeanne Thornhill
Publicity.....Evelynn Donham

PERMANENT BOARD OF DIRECTORS

Mary A. Claborn, Chairman
Jeannine Jacobs Bailey
Lenell Clark Henry
Weldon Hill
Irene Shults Mayfield
Ray Nunnally
James Steel-Honorary

SCHOOL SONG

Joyous and ever loyal
Let us fight for our old High
Let every voice ring,
There's no time to grieve nor sigh
It's ever onward
our course pursuing,
May defeat ne'er our arder cool;
For united we will fight for her
Our old High School.

PARADE

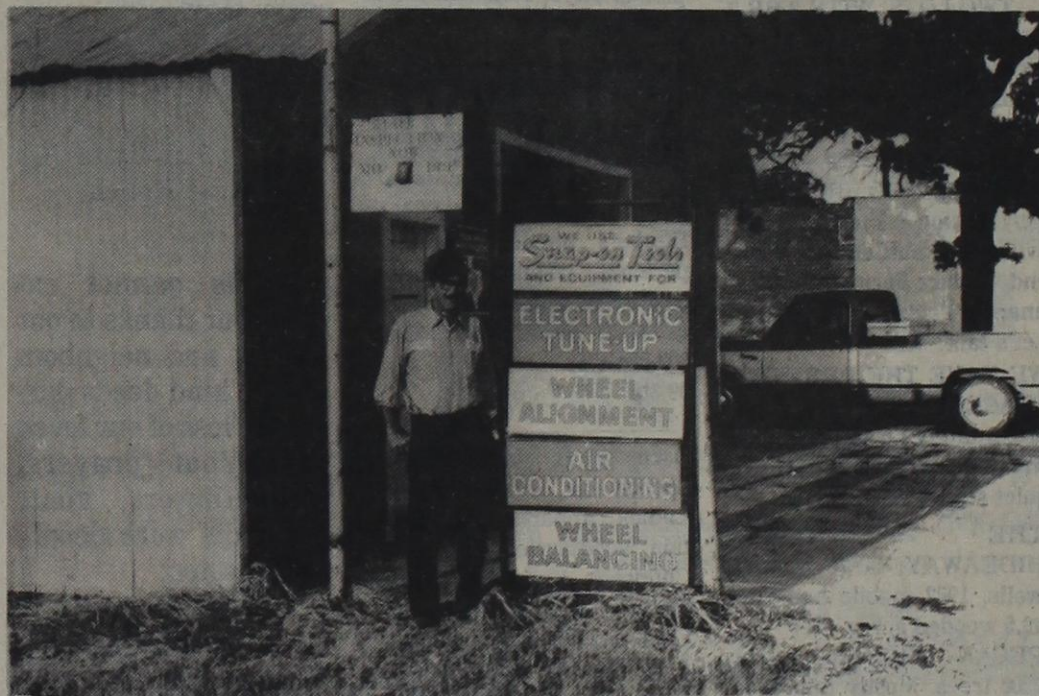
This year the homecoming parade will be extended, announced parade chairman Mark Cooksey. It will travel from the high school south on Highway 183 to Mayfield St. where it will turn west for one block, then turn south on S. Miller to parade in front of Rising Star Nursing Center. The parade will disband at W. Ross St.

automobiles, trucks and tractors, including welding services.

Medley Motor Co. is open five days a week from 8 a.m. to 5 p.m.

Bill and Faye express their appreciation to their customers, "To all our old, new and future customers that have made our livelihood here in the Rising Star area, we thank each and every one of you."

Medley Motor Company Celebrates 20th Year



Bill Medley, owner of Medley Motor Co., celebrates the 20th anniversary of the company.

Bill Medley is celebrating his 20th year in business as Medley Motors Co., general automotive and mechanical repairs, one block west of the traffic light in Rising Star.

Bill has worked in mechanics since 1944, and he came to Rising Star with an impressive background in his field. Among his credentials he was the Rankin district maintenance supervisor for The Western Company of North America in Fort Worth, supervising up to 20 mechanics maintaining a fleet of diesel trucks used for oil field

service.

Although Bill was raised in east Texas, his wife Faye was raised in Rising Star, and they purchased the Boase Radiator and Battery Shop in 1958, and opened as Medley Motor Co. in January 1963.

They own the farm south of town on which Faye grew up, and their two children, Danny Medley and Debbie Medley White, graduated from Rising Star schools and reside here. Bill and Faye have four grandchildren.

Bill is also a deacon and chairman of the building and grounds

committee of the First Baptist Church.

Although cars have changed over the years, Bill and his employee Don Horton offer repairs on early and late model



meeting notices ...

OES

Rising Star Chapter of the Order of the Eastern Star will meet Monday, October 3, at 7:30 p.m. at the

Masonic Temple in Rising Star.

4-H

The Rising Star 4-H Club will meet October 10 at 4 p.m.

**Dr. Carpenter's Office
Will Be
CLOSED**

**Sept. 28th through Oct. 9
Open 9:00 a.m. Oct. 10.**



community calendar...

1st Monday
Eastern Star

1st Tuesday
REACT

Lord's Acre Festival of 1983

A planning meeting for the annual Lord's Acre Festival was held in the Fellowship Hall of the First United Methodist Church on Monday evening.

Co-chairmen, L. E. Allen and Frank Gray, conducted the organization with Festival dates set for Friday and Saturday, November 11 and 12.

The following chairpersons were named: Winnie Armstrong for the country store; Elza Witt for arts and crafts; Dorothy Shook for the bake sale; Jeannie G. Clark for the snack bar; Hazel McCollum for the blood pressure booth; Yvonne Williams and Alene Coleman for Lord's Acre dinner; Mary

Claborn for publicity chairman; Elizabeth Robertson as treasurer; Eli Jacobs for advance tickets;

James Armstrong and Eli Jacobs for contributions; Lee Hughes, Brett Griffin and Glen Henry for take-out orders; and Inez Hutton for take-out calls.

The dinner on Saturday will be served from 11 a.m. to 1 p.m. Tickets will be \$3.50 for adults and \$2 for children 12 and under.

The sales will begin at 9 a.m. on Friday and remain open until 5 p.m.

Each chairman will name persons to help, and all who are interested may call any chairperson.

CLASSIFIED ADS sure to get results

Misc ?

For sale or trade- Sofa sleeper, makes into full size bed \$75, companion sleeper, white fiberglass with tinted bubble windows \$300. Set of New World Encyclopedia; 8 geese, \$6.50 each or \$50 for all 8. Call 259-2065. 38-2tp

For Sale Apples Red & Yellow Delicious, plus canning apples and pears. 817-643-4871 38-2tc

WALLPAPER
Bell Draperies
Eastland
629-1319
1706 W. Commerce

For Sale- Matching couch, chair and rocker. Heavy wood frame with earthen floral cushions. 3 years old. Phone 725-6675 or after 5 p.m. 643-1676. \$175 38-1tc

18-inch 3 hp Sunbeam twin-blade electric mower. Bought new in July. Call 817-643-1515. 39-1tc

Will do hay baling, regular bales, on the halves or by the bale. Any kind. Call 259-2113. 39-1tc

Wanted - Pasture land to lease now or by the 1st of the year, 50 acres up. Call 259-2113, ask for Herman or Katheryn. 39-1tc

Hairy Vetch seed- Cleaned, in 50 lb. bags. Not tested, but good. Call Homer West before 7 a.m. or after 7 p.m. 643-2921. 38-3tp

Upright piano- Possible antique, call 259-3322. 38-2tp

Babysitting available- Large fenced yard with toys and play set. Good neighborhood. Lunch is served. Vickie Majors. Ages 2 and up. Call 643-1414. 38-2tp

Cake Decorating- I'm now decorating cakes with simple designs. Have variety of shaped pans: Yosemite Sam, Strawberry Shortcake, Heart, Halloween, and Christmas, etc. Vickie Majors. Call 643-1414. 38-2tp

SCHOOLMASTER ANTIQUES
639-2228
We will buy one item or an estate. Call for appraisals, items for sale or special items you wish to purchase. TC

* **RADIO STATION KVMX-FM 97** is now super country music! Enjoy 24 hours a day in stereo! * TF

Dorothy's Sunshine Fabrics
Now Open
1010 East 18th
Cisco
442-1578
p-87

BOOKKEEPING SERVICES
It's getting close to the end of the year! If you don't have time to get the books ready, call me. Familiar with farming & oil reports, payroll & quarterly reports. All information in strict confidence.
Mary L. Anderson
Rising Star 817-643-4166

BUDDY COOK
Residential, Commercial
Refrigeration & Plumbing
817-842-5950
Rising Star

Real Estate ?

REAL ESTATE FOR SALE? Let us handle it for you. 25 yrs. selling your area. We have the buyers. Cogburn Realty, 893-6666, DeLeon nights 893-5898 or 893-2642. 6-tfc

502 E. Mill St. 4 Br., 2 bath, den, comb. kitchen and dining, carpeted. Lot 80 X 180. New storage room. 817-643-4073. 21-tfc.

I have a variety of homes and land listed. Let's talk.
Louis A. Mayfield
Broker
817-643-4073

FOR SALE: 114 acres in Palo Pinto County near Santo and Palo Pinto Lake. Fronts on black top county road, city water, and R.E.A. line. Ideal for development. \$1500 per acre. Call 817-442-1303 after 6 p.m. Terms. **TF**

FOR SALE: 4 bdrm. brick house, 2 story, 2 bath, dining rm., all electric, central heat & air. Large lot, water well, 7 large pecan trees & concrete cellar. Call 915-862-6386. 42-tfc

Small acreage for sale- Call Durwood Fussell, home 817-643-1212 or business 817-259-3051. 38-4tc

T BYRD REALTY
1100 EARLY BLVD
EARLY, TEX
915-643-2193 or 643-2317
BUSINESS OPPORTUNITY! Large brick bldg. on main street of Rising Star. Can be purchased with business or property only. A good buy! #281
TWO LOTS WITH 2 BR 2 BATH HOME Nice shady corner lot! Has another house that can be bought and moved. Also has good water well! Barzain! #280
ESTABLISHED BUSINESS Buy station & shop or owner will keep muffler shop tools and reduce price! Owner financed. Priced to sell! Let's talk! #290
WE HAVE THE PERFECT PLACE! 3 BR 1 1/4 bath on approximately 1.6 acres. Water well, barn and corral. All on quiet street. #306

THE PERFECT HIDEAWAY, large tank, 2 wells, 1982 mobile home on 49.5 wooded acres. #310
PECAN ORCHARD- over 2200 trees. Mostly improved varieties. Irrigation system with 5 wells. #311
RESTAURANT IN RISING STAR includes building and fixtures. Profitable business reasonably priced. #314

FOR SALE: 1.1 acres with 6 large pecan trees. 3 bdr., 2 bath with large storage bldg. 817-643-3384 evenings. Days, ask for Fenton Smith at 817-643-2811. 36-tfc

2 Bedroom House, carpet, large lot, water well, fruit trees. 302 Joyce St., 643-5011.

HOMES FOR RENT

For rent - Mobile Home in country, garden space. Water furnished. Prefer retired couple. Connie Hightower, 643-4673. 39-1tc

FmHA non-discrimination apartment for rent. Call 817-842-5294. 16-tfc

Autos ?

FOR SALE: 1977 Dodge Van; five captain chairs and couch, sink and ice box. Low mileage and loaded. Also 1977 Courier pickup with radio and air, loaded and low mileage. See at Scott's Paint and Body or call 629-2372 or 1514. TF

Mustang-1973-V8-Automatic-A good car-\$1850-Johnston Ford 725-6181.

'82 Escort 2 door-Automatic-air conditioner. Only \$4300. Johnston Ford 725-6181.

78 LTD II-2 door-V8-Automatic-air conditioned and more-a very good car. \$3650. Johnston Ford 725-6181.

78 Buick Par Avenue-Loaded-this car has been cared for-\$3995. Johnston Ford 725-6181.

77 Buick Century-2 door hardtop-Blue and white-a very clean car-\$2495. Johnston Ford 725-6181.

82 Bronco-XLS-351 V8-Automatic-air conditioner-we sold it new-\$11,250. Johnston Ford 725-6181.

81 Ford Pickup-1/2 ton-302 V8-automatic-air conditioned-a very good one-\$8000. Johnston Ford 725-6181.

80 Ford F150-Short, wide bed-351 V8 Automatic-Air conditioned-\$5325. Johnston Ford 725-6181.

79 Super Cab F250-one owner-49,000 miles-V8-automatic-air cond. \$4950. Johnston Ford 725-6181.

79 Super Cab F150-We sold it new-A real good pickup-\$4975. Johnston Ford 725-6181.

OPPORTUNITY
SATELLITE ANTENNA Dealers needed. No experience required. Dealer cost for complete unit as low as \$747. Retail \$1395. Call 303-574-4763. 39-3tp

Own your own Jean-Sportswear, Infant-Preteen, Ladies Apparel, Combination, accessories or Quality Childrens Furniture Store. National brands; Jordache, Chic, Lee, Levi, Vanderbilt, Izod, Gunne Sax, Calvin Klein, Esprit, Zena, Ocean Pacific, Britannia, Evan Picone, Healthtex, 300 others. \$7,900 to \$24,500, inventory, airfare, training, fixtures, grand opening etc. Mr. Loughlin (612) 888-6555. -1tp.

HELP WANTED

Wanted Gree Thumb has an opening in Rising Star City Hall. Applicant must be 55 or older and must meet income guidelines. Contact Doris Griffin at 643-4261. An equal opportunity employer. 37-tfc

Hairdresser- Thursdays, Friday and half-day Saturdays. Connie's Beauty Salon, 643-4673. 39-1tc

Rising Star Nursing Home now taking applications for an afternoon part time cook and dish machine operator. Apply to Linda Robertson in person before noon. 38-4tc

CLASSIFIED ADS GET RESULTS

Misc ?

FREE Swap shop on KVMX-FM 97 Radio - twice every Monday through Friday at 7:10 a.m. and 12:30 noon - Call 629-8585 and tell the Micro-Plex what you have to sell, rent, give away are to announce! It's a free community service of KVMX-FM 97 Radio. TF

RUST & SONS FENCING CONTRACTOR
Pipe Line and general fencing construction.
Rt. 1, Box 120, Rising Star, Tex. 76471
PH: 817-643-3137

CARD OF THANKS

We want to thank all the wonderful people of our community for being so kind and thoughtful when we needed you. Your concern, shown by your calls, visits, flowers, cards, memorials, food and prayers, made our loss easier to bear.

Our special thanks are extended to the ministers, Dick Williams and Armo Bentley; those who provided the beautiful music; the ladies who served the delicious food; Dr. Carpenter who was always around when needed; the Nursing Home staff, who were so kind and attentive; those who served as pallbearers, and to Delbert Biggs for doing such a fine job and being so helpful in every way.

May God shower His blessings on each of you.

The Family of Rose Roach

Words cannot express our thanks to our friends and neighbors for the kind deeds during the loss of our loved one. Your prayers, food, flowers, visit, and calls were deeply appreciated.

A special thanks to Dr. Carpenter and the Rising Star Nursing Center staff; you were all wonderful.

Thanks to Pat Walker for playing the soft music.

Thanks to Brother Bentley and Brother Jackson.

Thanks to all the nice ladies for preparing and serving the good lunch.

The Family of L. B. Forbes

Thanks for all the prayers, visits and cards during my stay in the hospital.
Clayton Wilson

RUBBER STAMPS
at the
RISING STAR
643-4141

Misc ?

WELDING
Oilfield and Farm
Jim Ratliff
Ph: 643-6464

Fast, Dependable Film Developing
Palace Drug Store
Rising Star Texas

Need things fixed up around the house? Need a new cabinet, kitchen or bathroom? Or wooden furniture made or repaired? Call Joe Campbell, Campbell's Cabinet Shop, 817-842-5526. Rt. 5 Box 107B, Comanche, Tx. 76442. If no answer, call 817-643-2251. 26-6mo.

YOU WON'T NEED A PUSH with a Continental Battery in your car this winter. Free battery check and free installation.
CENTRAL AUTO PARTS
801 East Central
COMANCHE, TEX.
76442
Ph: 915-356-3925
OPEN 7 DAYS A WEEK

NEW HOMES
On your lot, \$9,500 up. 2 miles east of Rising Star Highway 36.
Sam Justice 817-643-4289
Dave Justice
915-698-8889
35-8tp

Auction's Best (SM)
by Fred Tucker
*1981 Auction Marketing Network

KNOWLEDGE OF VALUES
If you're not sure what your items are worth you may be giving away your dollars when you think you're selling.
My knowledge of values can help you get fair market value when you have something to sell. Many items have gone up in value recently. And some of them are going up faster than the rate of inflation. But since I'm in the market daily selling all types of auctions I can help you get today's top dollar prices.
Why settle for one offer when you can receive the benefit of crowds of people eagerly competing by making their bids. I know what amount to ask to get the bidding started and I know how to keep it moving at a rapid pace.
It all adds up. My knowledge of values and proven auction selling techniques can net more money for you. Remember, when it comes to buying or selling **AUCTION'S BEST (SM)**.

TUCKER AUCTION COMPANY
ROUTE 1, BOX 90
EASTLAND, TEXAS 76448
License number TXS-083-1152
Phone 629-1956 Member NAA and TAA

AUCTION
Sat., Oct. 1, 1:30 P.M.
De Leon City Hall

CONSIGNMENTS OFFERED BY AUCTION INCLUDE:

1980 model KZ1000 Kawasaki motorcycle, Early American maple hide-a-bed (brown tweed) and matching rocker, hard rock maple dining table with 4 chairs, hard rock maple hutch, glassware, heaters, tools, cast iron fireplace set, anchor, scales, log roller, exerciser, punch bowl with cups, brown crushed velvet sofa throw cover, cream colored & blue bedspread with matching curtains, lamps, kerosene lanterns, cricket rocking chair, Proctor Silex 10-cup coffeemaker, electric fence charger.

WILKERSON AUCTIONEERING
Ronald G. Wilkerson TxEA-084-5243
Glenda K. Wilkerson TxS-074-0854

Consignments received between 8 & 11 A.M. Merchandise available for viewing after 11 A.M. Concession stand on premises. For more information call 817-893-6355 after 5 P.M.

Misc ?

OLIVER WEST
Pump and Water Well Service
Valley Aeromotor Pumps
Shop & larger stocked
2 1/2 mi. so. Rising Star
817-643-4683
Call Anytime

Randy Guldry
Drag Line
Large Backhoe Service
Rising Star
817-643-1687
Call Anytime

HUTTON INSULATION
Blown-in Cellulose
Fiberglass Batts
Acoustical Ceilings
Free Estimates
725-6683

Shaklee Products
Do you really get a balanced diet? Let me tell you about Dr. Shaklee's Slim & Trim Plan.
We also carry natural food supplements, concentrated biodegradable household cleaners, toiletry and natural skin care products. 643-5791
Barbara Jo Kanady
Shaklee Distributor

Sand and Caliche Hauling
Willie Ezzell
Phone: 643-5431

REPORT OIL FIELD THEVES
1-800-OIL-COPS
TOLL FREE • REWARD

THE RISING STAR

Publication No. (USPS 466506)
1983 - EASTLAND COUNTY NEWSPAPER CO.
643-4141 105 N. Main St. Rising Star, Texas Box 127 76471

Second Class Postage paid at Rising Star, Texas, under Act of Congress in March, 1870. Published every Thursday.

Publishers-Mr. & Mrs. H.V. O'Brien
Editor-Cisco-Herrel Hallmark
Editor-Eastland-H.V. O'Brien
Assoc. Editor-Eastland-Michelle Lindsey
Editor-Ranger-Betty McGee
Editor-Rising Star-Carolyn Ratliff
Staff-Gary Slade
Office Staff-Margaret Hallmark
Office Staff-Patricia Hallmark
Office Staff-Daisy Rutledge
Columnist-J.W. Siltton
Production Supervisor-Ted Rogers
Production-Raymond McCoy
Production-Wayne McCoy
Adv. Production-Wanda Hallmark
Computer Operator-Kathy Willeford
Feature Writer-Viola Payne
Commercial Printing-Hale Dunsion

SUBSCRIPTION RATES: year; Out of Texas \$12 per year; No out-of-continental countries \$; per year; Other U.S. except APO's. Texas counties \$8.50 per

Thursday, Sept. 29, 1983

For your metal building needs get a Second Opinion Rolson Metal Building Systems 915-698-1721	GROUP HEALTH INSURANCE THE TRAVELERS Eastland County Farm Bureau 643-5951 TC
---	--

THE SALE GOES ON!
NEW MERCHANDISE!

Rug Youth Bed & linens Adding Machine Gas heater Coffee pot Curling Iron Small appliances Movie camera Hot curlers Living room chair Trailer mirrors	Play pen High chair Walker Vaporizer Children's clothes, sizes 3&4 Women's clothes, all sizes Decorative items Hundreds of Miscellaneous Items!
--	--

Sale on Shelled Pecans!
JOY PECAN SHOPPE
8:30 - 3:30

Shellers Too!
W. Hwy 36
Saturday Oct. 1

Dorothy's
Sunshine Fabrics
1010 E. 18th Cisco 442-1578
(Keep this Number, It's UNLISTED)
Same Quality Fabrics and Notions
Closed Wed. Afternoons.
We Welcome After Hour Customers
Watch for Grand Opening.

SPECIALIZING IN SEWER SYSTEM INSTALLATION AND SERVICE

Clovis' Septic Tank & Backhoe Service
CROSS PLAINS, TEXAS 76443

CLOVIS SIMONS
TELEPHONE (817) 725-7484 P. O. BOX 604

CISCO RADIATOR SERVICE
207 E. 6th (Breckenridge Hwy.)
Cisco, Texas 817-442-1547

- Cleaning-Rodding-Repairing
- Auto-Truck-Tractor Radiators
- New-Recorded-Rebuilt Radiators-Heaters
- Exchange Radiators
- Auto Gas Tanks Repaired

Open Monday-Friday 8:00a.m.-5:30p.m.
Over 25 Years Experience Radiators Are Our Business

WATER WELLS
Ray Morworth
Rotary Drilling
Air & Mud
Major Brand Pumps
915/356-2844

Hale Trailer Dealer
Covered Goosenecks 16X6 Bumper Pulls
2-Horse Trailers All Types in Stock
Barker's Garage
817-259-2252 May, Texas

May PTC Plans Annual Halloween Carnival

The May Parent Teacher Club met Monday night with President Mae Palmore calling the meeting to order. Secretary Kathy Alford read the minutes and Sharon Young gave the treasurer's report.

Don Rhodes stated that the laminating machine had been purchased.

The PTC donated \$1000 to the State Champion Livestock Judging team consisting of Darrin Chambers, Shane Crafton and Glen Pittman. The donation will help defray expenses for the team to attend the national contest to be held in November in Kansas City.

Fifth grade won the room count at the meeting, with ten parents present.

The Halloween carnival and coronation will be held Monday, October 31. The carnival will start at 6 p.m. and the coronation will be at 8:45 p.m.

Linda Lancaster was nominated as stage decorating chairman, and Donna Lancaster and Jeannie Hardy were elected to serve as concession stand chairmen. No candy will be sold at the school. Selling of chance tickets will end at 6 p.m.

The crowning can-
Lose Weight Club Formed At May

Get ready for the holidays - lose those unwanted pounds! Come and join us at the Lose Weight Club at the May Homemaking Cottage.

The non-profit club

didates and some of the chance prizes are: for Kindergarten, Jennifer Brown and David Wheeler, a portion of beef; first grade, Tera Ashworth and Ryan Young; for second grade, Cynthia Bates and David Craig Chambers, a clock; for third grade, Raelyn Wheeler and Thomas Foster, a gift certificate; for fourth grade, Laura Lewis and Bryan Greenrock, a hot-air corn popper; for fifth grade, Angela Young and Todd Kilgo; for sixth grade, Angie Hoot and Scott Ashworth; seventh grade, Amy Reno and Robert Holman; for eighth grade, Brenda Hopper and Jason Spencer; for ninth grade, Karen Pittman and Troy Hughes, a spotlighter; for tenth grade, Peggy Holman and Jimmy Crafton; for eleventh grade, Cindy Jessen and Andy Herbert, gas; twelfth grade, Debra Shipman and Charlie Hoot, 20 books of Green Stamps. Any help or donation to these classes will certainly be appreciated.

The PTC membership drive will start tomorrow and end on October 31. Dues are \$2, and parents, grandparents and anyone interested are urged to join and pay their dues at this time.

will meet every Monday night at 7:30 p.m. Monthly dues are very low. Join the fun and contests.

For more information call 259-2113 daytimes, or 259-3514 after 7 p.m.

RSHS Cheerleaders Will Sell Bags and Back Packs

The Rising Star High School cheerleaders are offering School Spirit bags for sale through the school. This is not a door to door campaign.

These bags and backpacks will be in plain royal blue or blue with imprinted wildcat emblem in gold, the school colors. A plain unlettered bag or backpack in beige only may also be ordered at the same price.

The nylon bags without the shoulder straps are \$10.45; the nylon bags with shoulder straps are

\$12.03; the backpack is \$13.60; the campers bag is \$24.10; the "NFL" vinyl bag in all 28 NFL teams is \$13.60; the sports weekender is \$26.19.

Posters showing these bags can be seen at the Quik Stop. If you are interested in purchasing backpacks or bags, please call 643-3362 or send a note to your child's teacher no later than Tuesday, October 4. These bags should arrive in four to six weeks, at which time you will need to pay.

County Hay Show Will Be October 4

The eleventh annual Eastland County hay show will be held on Tuesday, October 4, in the Moylan show barn at the county livestock showgrounds near Eastland. The program will begin at 10:30 a.m.

Dr. George Alston, Extension Service Agronomist, will discuss the hay show results and production of quality hay.

Everyone interested in learning more about hay production is invited to attend.

Extension Agent DeMarquis Gordon reports that there are 32 entries in the hay show. Ribbons and plaques will be presented to exhibitors during the program.

Prior to the program, Dr. Alston will judge the hay entries. The chemical score

(crude protein) will be averaged with the physical score to determine the final classification score. The physical factors will include maturity, texture, leafiness, freedom from foreign material, and color.

Plaques will be awarded to the highest scoring entry in coastal bermuda grass, sudan-sorghum hybrids, other perennials, and oats and other annuals.

The hay show and program will help hay producers do a better job of producing high quality forage for livestock, says Gordon. He also states that the program will help livestock raisers to understand the feed requirements and how to better manage feed supplies for this winter.

Shoemaker-Murphree Engagement Announced 50th Anniversary



Ted Murphree and Sherri Shoemaker have chosen November 5, 1983, for their wedding date.

Mr. and Mrs. C. M. Shoemaker of 3611 Third, Brownwood, announce the engagement of their daughter, Sherri Louise Shoemaker, to Ted Lee Murphree, son of Mr. and Mrs. W. E. Murphree of Route 2, Rising Star.

The wedding is planned for November 5 at Rocky Creek Baptist Church in Brownwood, with Brother Oliver

Southall officiating. Miss Shoemaker graduated from Brownwood High School in 1982, and is attending Central Texas Commercial College in Brownwood.

The groom-elect graduated from May High School in 1979, and is employed as a roustabout at Rapada Energy in Cross Plains.

David Cooper was released from Brownwood Regional Hospital on Monday. He had had surgery for a torn ligament, an injury sustained during the Rising Star-Santa Anna football game on September 16.



Mr. and Mrs. Weldon Lee

Weldon and Mable Lee of Rising Star will be honored with a 50th anniversary reception Saturday, October 8, from 2:00 until 4:00 p.m. in the Holiday Room of the Holiday Inn, Brownwood. The couples children and grandchildren will host the celebration.

The Lees have lived in Rising Star for the past ten years. He is a

retired farmer and Mrs. Lee is a housewife. They married October 8, 1933, in Norton.

"A very special lady, 'our' mother, Mrs. J.P. Hutton, will be an honored guest," Mrs. Lee noted.

Friends and relatives are invited to gift the couple with their presence on this memorable occasion.

Elm Cemetery Association

Contributions of \$810 were received by the Elm Cemetery Association.

Donations were from:

Irene Goodwin	\$10.00
Blanch Cawley	20.00
Kenneth Jackson	40.00
Adele Whitten	25.00
Marjie Earp	125.00
Mrs. C. V. Wheeler	25.00
Mrs. Charlie Jordan	50.00
J. U. Adams	125.00
Annie R. Middleton	25.00
Billy Claborn	25.00
Mrs. James A. Kimmell	50.00
Dr. Wesley Earp	50.00
Mildred Johnson	50.00
Richard Hurdy	50.00
Tom Marsh	25.00
Mrs. Herman Claborn	25.00
Avalon Adams	50.00
Eunice Marsh	25.00
Mrs. Deura Abel	15.00

Yard of the Week



Mr. and Mrs. Bobby Busbee

Honorable Mention



Mr. and Mrs. Mark Cooksey



Mr. and Mrs. W.B. Hastings



Mr. and Mrs. Bill Deunard



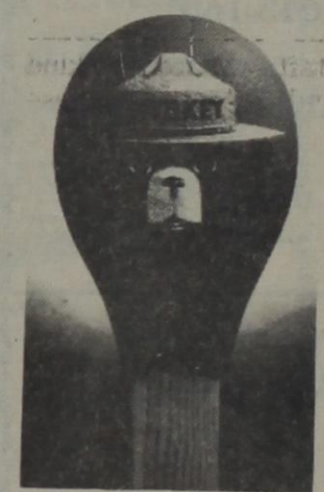
Mr. and Mrs. Freddie Harrell

4-H WEEK

Texas boasts some 22,000 adult and teen leaders in 4-H programs, in a force of some 620,000 volunteer leaders nationwide. These leaders each devote about 220 hours per year to 4-H activities, and the value of the time and out-of-pocket expenses they donate is estimated at about \$1 billion a year in the U.S.

Their contributions deserve special recognition, during National 4-H Week from Sunday, October 2, to Saturday, October 8.

Thursday, Sept. 29, 1983



Think before you strike.

A Public Service of This Newspaper & The Advertising Council

Birthday Greetings

OCTOBER 1

Sara Moore

OCTOBER 2

Mrs. L.D. Bond

Kathleen Hardesty

OCTOBER 3

Lela Mary Shults

Stacey Green

Linda Sue Moreen

Guy Stewart

Chad Barr

OCTOBER 4

Steve Ingram

David White

Debra Brown

Jane Treadwell

Carole Cook

Ina Roberts

Markie Cotton

Lisa Brown

OCTOBER 5

Taronna Sewalt

Pat Walker

Stephen Hill

OCTOBER 6

James Rutherford

Kaycee Eaves

Rex Goss

Jerald Maynard

OCTOBER 7

Gary Wilson

OCTOBER 8

Gwynn Tharp

Curtis Alford

Jody Hook

Best Coffee in Town

STAR PLAZA RESTAURANT

Highway 36 West

Chicken Fried Steak \$2.49

with Choice of 14 Salads, Baked Potatoe or Fries Sept. 29 - Oct. 5.

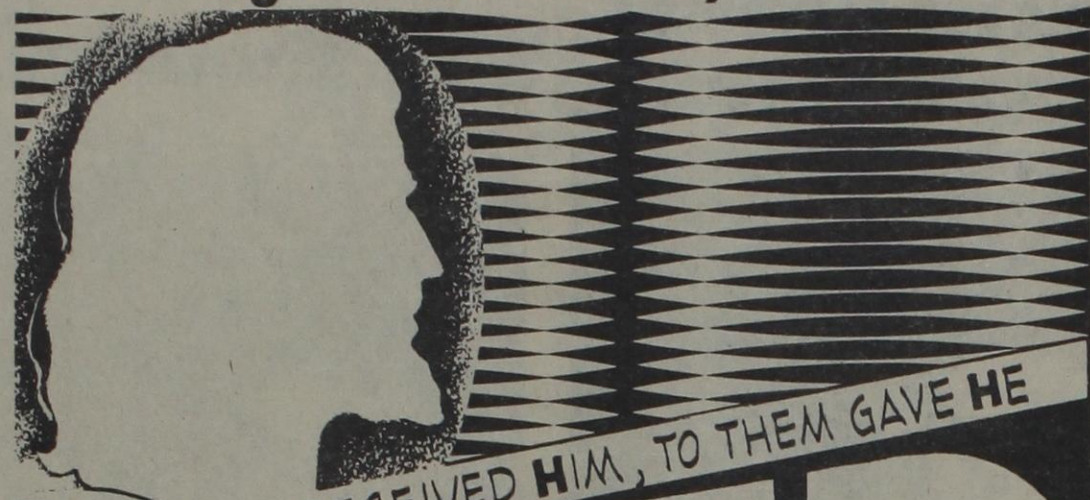
All Orders Can Be Prepared To Go

Don & Jean Farrow 643-6960

Men's Wrangler Denim Jeans \$10.00 Pr. Asst. Styles	Boy's Wrangler's Assorted Styles \$5.00 pair
All Ladies' Blouses 25% Off	Colored Bandanas \$1.39 each
232 Nacona Mulehide Workboots NOW Reg. \$106.95 \$79.95	Red Wing Steel Toe B - D - EE Widths Style 2255 Reg. \$76.95 NOW \$64.95
Nacona No. 4706 Reg. \$147.95 NOW \$79.95	Durango Steel Toe Style 9429 Reg. \$59.95 SALE \$47.95
Large Group Close Out Boots Men's Women's Children's Asst. Brands & Styles Broken Sizes GREATLY Reduced	
No Layaways on Sale Items All Sales Final	
B & H Trading Post, Inc.	
311 N. Seaman Eastland, Texas	

obituaries

Right To The Divine Dynamic



POWER

TO BECOME THE SONS OF GOD, EVEN TO THEM THAT BELIEVE ON HIS NAME"

JOHN 1:12

JACK HAMM

He is survived by his wife; four daughters, Murlene Somerford of Rising Star, Maurie Woods of Brownwood, Murel of Mineral Wells and Elva Thompson of Monahans; a son, Bill of Andrews; 15 grandchildren, 24 great-grandchildren and three great-great-grandchildren.

died September 17 at Rising Star Nursing Center.

The Rev. R. D. Williams, chaplain for Girling Health Care in Brownwood, officiated, assisted by the Rev. Armo Bentley of First Baptist Church of Rising Star. Burial was at Rising Star Cemetery.

Born January 12, 1890, in Paris, she married John M. Roach in July 1910 in Rising Star. He preceded her in death. She was a Baptist.

She is survived by four sons, Lawrence of Breckenridge, Jack of Fort Worth, Eldon of Brady and Merle of Midland; two daughters, Fredra Montgomery of Ponca City, Okla., and Edra Butler of Rising Star; and numerous grandchildren and great-grandchildren.

Pallbearers were Butch Butler, Kenny Butler, Jody Butler, Bernie Roach, Mike Montgomery, Phillip Wacaster, Johnny McGuyer and Bruce Corse.

Honorary pallbearers were C.A. Claborn, J.C. Claborn, Raleigh Darnell, Clifford Watkins, Lafayette Parker, George Steel, C.M. (Mutt) Carroll, Curt Smith and Bobby Busbee.

Wallace Anderson

Wallace P. Anderson, 95, died Tuesday at 10 a.m. in the Rising Star Nursing Center.

Services will be Thursday at 10 a.m. in First United Methodist Church with the Rev. Charles Cox, minister, officiating. Burial will be in the Rising Star Cemetery.

Mr. Anderson was born August 8, 1888, in Eastland County. He parents were among the founders of Rising Star. He was a Methodist and a retired oil field worker.

Survivors include one sister, Edwina Williams of Odessa, and a number of nieces and nephews.

Rose Roach

Funeral services for Rosalie "Rose" Nunnally Roach, 93, of Rising Star, were held September 19 at Higginbotham Funeral Home. Mrs. Roach

Lifting Up Jesus

The story is told of an old Navajo Indian who was easily discouraged. Despite possessing fabulous wealth from oil production, he was especially despondent in hot, dry weather. Every so often, he would show up at the bank and say, "Grass all gone, sheep all sick, water holes dry."

The banker would then lead the old man inside the vault, seat him beside several bags of silver and say, "These are yours."

After spending some time looking at his riches, the Indian would come out and say, "Grass all green, sheep all well, water holes all full." He simply needed to review his resources.

That's good advice for man today. When facing moments of adversity and discouragement, it is helpful to mentally walk into the infinite vault of God's storehouse, review the "unsearchable riches" of God's redeeming grace, and remember,



Gregg Knight

"These are yours." Oh, how man needs to discover the treasures in Jesus Christ. They are looking in other places. Listen, even eternity will not suffice to exhaust "the exceeding riches of His grace to us in Christ Jesus." They can be yours only if you are a Christian. Come ask!

Baptist W M U

Ladies of the Women's Missionary Union of First Baptist Church met Tuesday morning for Bible study. The meeting was called to order by Dorris Harrell. A Christmas project for the nursing home and shut-ins was discussed. Sarah Chamberlain read the prayer calendar, which is a list of Southern Baptist missionaries who have birthdays on this day.

Marie Harding brought the study on the life of Onesimus from the book of Philemon. Lela Clark closed the meeting with prayer.

Celestine Carleton and Juanita Bentley also attended the meeting.

Tommie Crawford

Cleburne-Tommie J. Crawford, 53, a retired nurse from Cleburne, died at 7:15 p.m. Tuesday, September 20, at Johnson Memorial Hospital after a brief illness. Services were at 4:30 p.m. Thursday at Higginbotham Funeral Home in Rising Star.

The Rev. Jimmy Finley, minister of First United Methodist Church, officiated. Burial was at Sipe Springs Cemetery.

Born July 5, 1930, in Sipe Springs, she married L.G. Crawford Jr. August 31, 1947, in Rising Star. She was a member of First United Methodist Church of Cleburne and had worked as a medication nurse until July, 1983.

Survivors include her husband; two sons, L.G. III and Ronald J., both of Cleburne; a brother, Herman Tate Zellars of Pittsburgh, Pa.; three sisters, Mary Jane Sain of Rising Star, Dolse Underwood of Gorman and Norma Merworth of Pecos; and two grandchildren.

The Rev. Armo Bentley, First Baptist Church minister, officiated. Burial was at Sabanno Cemetery.

Born April 10, 1912, in Sabanno, he married Sadie Gales August 6, 1960, in Brownwood. He was a member of First Baptist Church.

Survivors include his wife; a son, Charles of Lemoore, Calif.; four daughters, Sue Mapels of Hanford, Calif., Bobbie Glenn of Fort Worth, Lou Shults of Abilene and Lynda Sillings of Duncanville; a stepson, Kenneth Willett of Rising Star; a stepdaughter, Ina Mae Moore of May; three brothers, Bruce of Brownwood; Hulen of Rising Star and Wordis of Cross Plains; 16 grandchildren; and five great grandchildren.

Luther Forbes

Funeral services for Luther Berton Forbes, 86, a retired grocer in Rising Star, were held September 22 at the Higginbotham Funeral Home.

Mr. Forbes died September 20 at the Rising Star Nursing Home.

Ed Jackson of Hardin-Simmons University officiated. Burial was at Cross Plains Cemetery.

United Methodist Women

Jeri Erwin

Jeri Lowell Erwin, 71, a retired construction worker from Rising Star, died at noon Thursday, September 22, at Eastland Memorial Hospital. Services were at 2:30 p.m. Sunday at Higginbotham Funeral Home.

United Methodist Women

The United Methodist Women of First United Methodist Church met Monday afternoon in the Fellowship Hall.

Eleven members were present for the Bible study of "Luke, the Great Physician". Mrs. James Armstrong presided. The invocation was prayer in unison, led by Jeanie Gracey Clark.

Scriptures were read from Chapters 4, 5, 6, 9 and 10 of Luke, and topics of discussion were "Jesus' Prolific Ministry" by Jeanie G.

Clark; "The Unity of Greek Medicine" by Elizabeth Robertson, "Early Christian Traditions" by Winnie Armstrong, "The Recovery of Unity" by Dickey Adams and "The Wholeness of Life" by Jeanie G. Clark.

The Society benediction repeated in unison was the closing prayer.

Hazel McCollum and Geneva Miller of Mayfield Heights, Ohio, were guests for the study. Mrs. Miller is May Pearl Hull's sister.

Twin Drilling & Well Service John G. Lee, Owner 643-7100	Jim Ratliff Welding 643-6464	Bibby's Creations Winner of the Governor's Expansion Award 643-6691
Hutton Insulation 725-6683	Rainbow Cafe Joyce Baker & Robin Reeves 643-3000	Jenkins Insurance Co. Mildred Childers and Juanita Boyett 643-2251
The Wishing Well Flowers and Gifts Rising Star, Texas 76471 643-2023	Chamber of Commerce Helping Your Town Grow	Trails West "The Way The West Is Clothed" 643-1601
Palace Drug Store Professional Prescription Service 643-3231	Jack Hubbard Soil Conservation Contractor 817/643-6242	Chambers Grocery 643-5292
The Rising Star Your Hometown Newspaper 643-4141	Family Food Store 643-2221 Mon.-Sat. 7:30 - 6:30 Sun. 8 to 6	Butler Motor Company 643-3261
Higginbothams "We Have What You Want" 643-2271	Medley Motor Company Quality Workmanship 643-6211	Kountry Kitchen 643-6831
Kizer Insurance Co. All Forms Of Insurance: Life, Health, Auto, and Fire 643-4421	<i>Count Your Blessings</i> AND BE THANKFUL	

WORSHIP IN THE CHURCH OF YOUR CHOICE THIS SUNDAY

First Baptist Church
643-4451

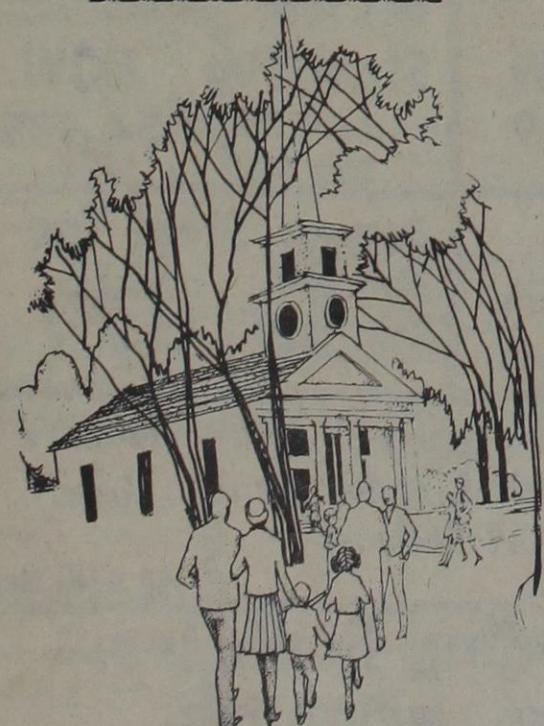
Bible Baptist Church

Calvary Full Gospel Assembly

Church of Christ
643-6162

Mountain Top Church
643-3627

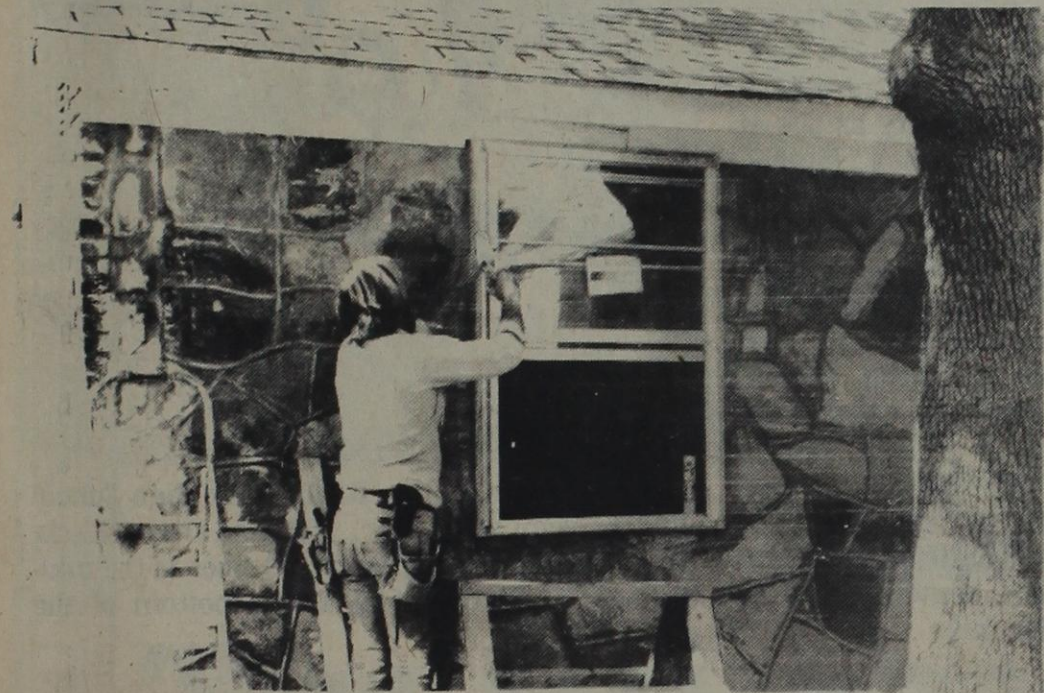
Methodist Church
643-3791



Harvey's APPLIANCE SERVICE
1001 W 8th
CISCO, TEXAS
SERVICING ALL MAJOR BRANDS
12 Years Experience
HARVEY G. HENSON
Owner
442-4072 or 442-4947 T-84

ARRIVING DAILY
Bedspreads-Comforters-Sheets-Mattress Pads
Factory Outlet
Spreads Start At \$20
Twins - Full - Queen - King
The Back Room
Adjoining Beil Draperies
1706 W. Commerce Eastland, Tx. 629-1319

New Room Added To Methodist Parsonage



Wilson Weaver works on the nearly completed addition of a bedroom and bath to the Methodist parsonage on W. College St.

The parsonage of First United Methodist Church has been the scene of much activity as laymen of the church joined carpenters from Williams Ranch to convert a disused garage into an attractive bedroom with an adjoining bath.

Vaughn Williams, Marvin Williams, Wilson Weaver and Toby White were the carpenters and

carpenters helpers from Williams Ranch, located near the Williams community. Williams Ranch also donated building materials.

Other workers include Cecil Joyce, Eli Jacobs, L.E. Allen, Virgil Young, E.L. Gaines, Frank Gray and James Armstrong.

Occupying the parsonage are the Rev. Charles Cox, his wife Jeannine, and their

Rising Star "Spruces Up" For Homecoming



Mark Cooksey, manager of Bramlett Implement Co., used this tractor and a shredder on several weedy lots in Rising Star during the "Clean Up Day" last Saturday.

Although the "clean up day" scheduled for last Saturday, promoted by the Rising Star Chamber of Commerce & Agriculture, was not an unqualified success, the few workers who did show up were happy to note that the overall appearance of the town

was much better than it was prior to the "clean up day" last fall.

Among the "clean up" campaigners were Mark Cooksey, manager of Bramlett Implement Co., who shredded at least a half dozen lots before joining fellow volunteer firemen to fight a brush fire. Fenton

Smith, president of the Chamber and vice president at First State Bank, operated a gasoline weed trimmer and Fox Middleton used his riding lawn mower.

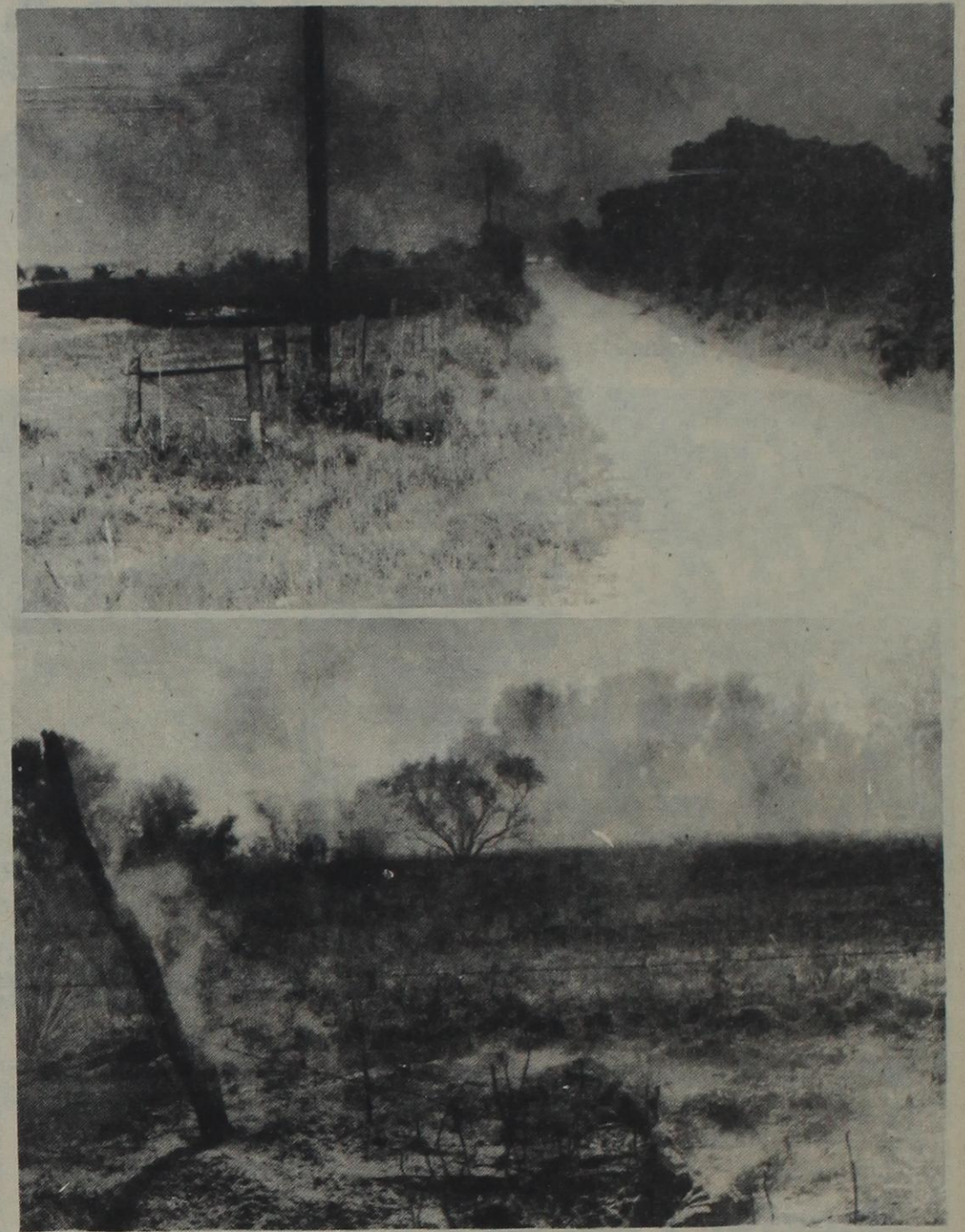
Other workers were James Armstrong, C.A. Claborn, Mutt Carroll, J.T. Morrow, Bart Baker and Jim and Carolyn Ratliff.

parsonage includes a shower. A small storage closet was built in and a new water heater was installed.

The Cox family is not only appreciate but is also very impressed with the way volunteers have joined

together to work on the project to bring it near completion so quickly. The Rev. Cox added that it's his understanding that donations of money had been made before his family moved to Rising Star. Names of the donors were not available.

Wind, Dry Brush Make Fire Difficult To Douse



A brush fire, fanned by a high wind and fueled by drouth dried trees, brush and grass, swept across about 100 acres to the west of Rising Star Saturday.

Trees and brush exploded into flame in a tinder-dry wooded area about a mile west of Rising Star Saturday, just north of Highway 36. With the extremely dry conditions and a stiff southerly wind, the fire quickly spread from a brush fire behind the home of Don Landers to burn approximately 100 acres, brush and trees to the north and a coastal bermuda pasture to the west.

The Rising Star Rural Fire Department responded to the alarm at 11:30 a.m. and brought the fire under control several hours later, aided by fire trucks from Cisco, May and Cross Plains.

A fire break was cleared by Eddy McCarty of Cross Plains using his bulldozer and Jay Ware of Rising Star manning his tractor and plow, and brush was back fired in a successful effort to contain the flames.

The burned area included land owned by Don Landers, John Cooper and George Steel. Steel lost coastal bermuda and a quarter of a mile of fence. Four round bales of hay, owned by Mike Fraley, were also destroyed.

Among the local volunteer firefighters were Douglas Owen, Gregg Knight, James Jackson, Tim O'Connor, David Watson, Darryl Watson,

Toby White, Bart Baker, Mark Cooksey, J.T. Morrow, Franklin Cox, Armo Bentley, Gene Hicks and John Joyce. Their efforts are greatly appreciated.

The Rural Fire Department commends the neighboring fire departments from

May, Cross Plains and Cisco for their help in fighting the fire.

The firefighters expressed thanks, too, to Robin Reeves of The Rainbow Cafe for providing iced tea. "My throat felt parched and I sure appreciated the iced tea," was the comment of every firefighter interviewed.

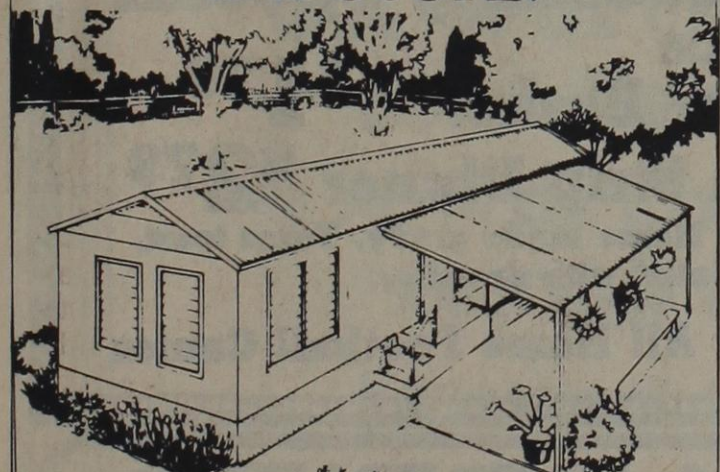
Art Lessons in Rising Star Mondays 3 - 5 P.M.

Call Betty Beggs
725-7235

YORK
Heating and Air Conditioning 629-2251

J & J Air Conditioning
1201 W. Commerce Eastland
Call Now & Have Your Heater Checked Early
Free Estimates

ONDULINE PROTECTS HOMES SUFFERING FROM EXPOSURE.



Onduline's the corrugated roofing sheet that covers your home from top to bottom.

As a roof-over, Onduline not only stops leaks, but it gives you added insulation, too. It's also ideal for roofing a patio.

Used as skirting, Onduline acts as a good windbreak, while keeping plumbing out of sight.

Onduline is easy to install, comes in eight attractive colors, and has a lifetime warranty.

With Onduline, your home will be warm and dry whenever it's under the weather. **\$44⁹⁵ Sq.**

* See your Onduline dealer for full details on warranty.

Onduline
The Lifetime Roofing

Cisco Lumber & Supply Co.

110 Sandler Square Cisco, Texas

STATEMENT OF OWNERSHIP, MANAGEMENT AND CIRCULATION		
(Required by 39 U.S.C. 3685)		
1. TITLE OF PUBLICATION The Rising Star	A. PUBLICATION NO. 466500	B. DATE OF FILING 9-29-83
2. FREQUENCY OF ISSUE Weekly	C. NO. OF ISSUES PUBLISHED ANNUALLY 52	D. ANNUAL SUBSCRIPTION PRICE \$6.00 (adj. cov) \$8.50 other Tx cov \$12.00 out st. no foreign
3. COMPLETE MAILING ADDRESS OF KNOWN OFFICE OF PUBLICATION (Street, City, County, State and ZIP Code) (Not printers)		
110 W. Commerce St., P.O. Box 29, Eastland, TX 76448		
4. COMPLETE MAILING ADDRESS OF THE HEADQUARTERS OR GENERAL BUSINESS OFFICES OF THE PUBLISHERS (Not printers)		
1201 S. Seaman St., Eastland, TX 76448		
5. FULL NAMES AND COMPLETE MAILING ADDRESS OF PUBLISHER, EDITOR, AND MANAGING EDITOR (Title item MUST NOT be blank)		
PUBLISHER (Name and Complete Mailing Address) H.V. O'Brien, 1201 S. Seaman St., Eastland, TX 76448 Gay Nell O'Brien, 1201 S. Seaman St., Eastland, TX 76448		
EDITOR (Name and Complete Mailing Address) Carolyn J. Ratliff, Rt. 2 Box 015, Rising Star, TX 76471		
MANAGING EDITOR (Name and Complete Mailing Address) Carolyn J. Ratliff, Rt. 2 Box 015, Rising Star, TX 76471		
7. OWNER (If owned by a corporation, its name and address must be stated and also immediately thereunder the names and addresses of stockholders owning or holding 1 percent or more of total amount of stock. If not owned by a corporation, the names and addresses of the individual owners must be given. If owned by a partnership or other unincorporated firm, its name and address, as well as that of each individual must be given. If the publication is published by a nonprofit organization, its name and address must be stated. (If item must be completed)		
FULL NAME COMPLETE MAILING ADDRESS		
Eastland Co. Newspapers, Inc. 1201 S. Seaman, Eastland, TX 76448		
H.V. O'Brien 1201 S. Seaman, Eastland, TX 76448		
Gay Nell O'Brien 1201 S. Seaman, Eastland, TX 76448		
8. KNOWN BONDHOLDERS, MORTGAGEES AND OTHER SECURITY HOLDERS OWNING OR HOLDING 1 PERCENT OR MORE OF TOTAL AMOUNT OF BONDS, MORTGAGES OR OTHER SECURITIES (If there are none, so state)		
FULL NAME COMPLETE MAILING ADDRESS		
none		
9. FOR COMPLETION BY NONPROFIT ORGANIZATIONS AUTHORIZED TO MAIL AT SPECIAL RATES (Section 411.3, DMM only) The purpose, function, and nonprofit status of this organization and the exempt status for Federal income tax purposes. (Check one)		
<input type="checkbox"/> HAS NOT CHANGED DURING PRECEDING 12 MONTHS <input type="checkbox"/> HAS CHANGED DURING PRECEDING 12 MONTHS (If changed, publisher must submit explanation of change with this statement.)		
10. EXTENT AND NATURE OF CIRCULATION	AVERAGE NO. COPIES EACH ISSUE DURING PRECEDING 12 MONTHS	ACTUAL NO. COPIES OF SINGLE ISSUE PUBLISHED NEAREST TO FILING DATE
A. TOTAL NO. COPIES (Net Press Run)	1175	1200
B. PAID CIRCULATION 1. SALES THROUGH DEALERS AND CARRIERS, STREET VENDORS AND COUNTER SALES 2. MAIL SUBSCRIPTION	277 752	279 766
C. TOTAL PAID CIRCULATION (Sum of B1 and B2)	1029	1045
D. FREE DISTRIBUTION BY MAIL, CARRIER OR OTHER MEANS SAMPLES, COMPLIMENTARY, AND OTHER FREE COPIES	24	27
E. TOTAL DISTRIBUTION (Sum of C and D)	1053	1072
F. COPIES NOT DISTRIBUTED 1. OFFICE USE, LEFT OVER, UNACCOUNTED, SPOILED AFTER PRINTING 2. RETURNS FROM NEWS AGENTS	83 33	98 30
G. TOTAL (Sum of E, F1 and 2 - should equal net press run shown in A)	1175	1200
11. I certify that the statements made by me above are correct and complete		
SIGNATURE AND TITLE OF EDITOR, PUBLISHER, BUSINESS MANAGER, OR OWNER Carolyn J. Ratliff		

HOME TOWN
COW POKES By Ace Reid

"To think when I paid ole' Wilbur a dollar for a chance on a Mustang, I thought he wuz talkin' about a Ford car!"

DON'T BE FOOLED BY SAVINGS INSTITUTIONS THAT ARE NOT INSURED BY THE F.D.I.C. THE FEDERAL DEPOSIT INSURANCE CORPORATION IS AN AGENCY OF THE FEDERAL GOVERNMENT AND INSURES DEPOSITORS AT FIRST STATE BANK

DRIVE-IN BANKING **STATE ST BANK**
YOUR CONVENIENCE IS FIRST WITH US!
Member F.D.I.C.
RISING STAR, TEXAS 76471

EQUAL HOUSING LENDER



The Kittens, Rising Star Jr. High School's football team, pose with their coaches.

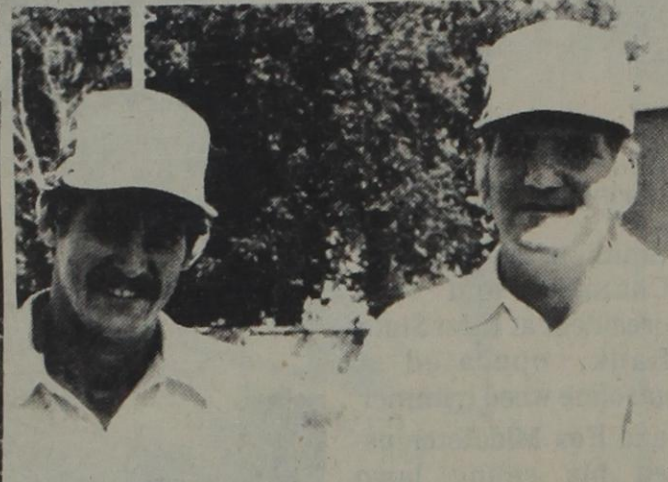


The Big Blue Band cheers the Wildcat team and performs during half time under the field

direction of Jamie Long, drum major. Mrs. Billie Zellman is band director.



Rising Star Jr. High twirlers and cheerleaders are, l. to r., Lori Justice, Cassie Gray, Karmen Hall above Jackie Harris, Kallie Gray and Stephanie Long.



Frank Colvert, left, and Jack Gray are the coaching staff for the Rising Star football teams. Gray is athletic director.

Evant 30 Rising Star 18

The Evant Elks downed the Rising Star Wildcats Friday by a score of 30 to 18. The Elks' first score came after a fumble recovery on the Wildcat 12-yard line. Three plays plus a penalty resulted in the first score, a one-yard quarterback sneak for the six points; the two-point conversion resulted from the same play.

The Elks' second score came midway through the second quarter on a six-yard run. The pass for two points was successful

and the Elks led 16-0.

The Wildcats added a score of their own a short time later when Sam Scott hit Jaral Pannell for a 65-yard scoring pass play. The pass attempt for two points failed and the Cats were down 6-16 at halftime.

First downs 11-20; rushing yards 43-295; passing yards 219-28; total yardage 262-323; passes attempted, completed and intercepted 16,7,1-5,1,2; score by quarters 0, 6, 6 for 18 points and 8,8,8,6 for a total of 30.

Rising Star 6 Evant 6

The Rising Star and Evant junior high football teams each scored a touchdown but failed on their tries for extra points to end the game in a 6 to 6 deadlock last Thursday.

The Evant team scored first in the second quarter of play with the attempt for 2 points failing. The third quarter saw an exchange of punts and good defense by both teams. The Kitten defense was led by Chip Gray, Shane Ford, David White and Devin Sessums.

In the fourth period the Kittens got on the scoreboard. The drive for the score was a result of some good running by Stacey Green, Kerry Hill and

David White. They followed the blocking of Chip Gray, John Flores, Derick White, Shane Ford, Devin Sessums, Corey Atwood and Lupe Pavlon. From the six yard line David White hit Dal Randle with a pass for the touchdown.

The run attempt for two points was successful but called back on a penalty as one of the Kittens jumped before the snap. The second attempt for the go-ahead points failed by inches. This is the second week in a row the go-ahead points have been called back by a penalty infraction.

The next game for the Kittens is Thursday, September 29, at Blanket.



Cheerleaders for the Rising Star High School Wildcat team are, l. to r., Rebecca Owen, Karla White and Sarah Vicars, Sara Benson in the middle and Teri Logerstedt at the bottom of the group.

Booster Club News

Booster Club members led by David Harris and Danny Hughes have purchased a plaque to be awarded each week for outstanding play by a Wildcat team member.

This plaque has spaces for 12 names and will be displayed each year in the gym.

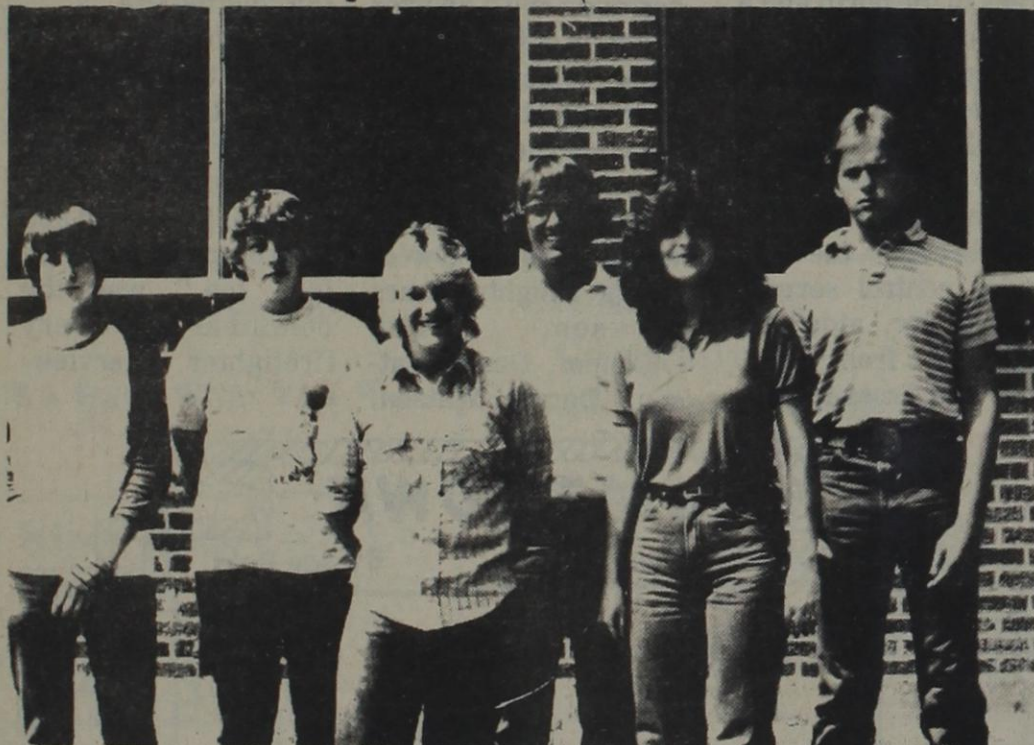
A player will be selected each week for outstanding play, both during practice and

the game. Such qualities as desire, attitude and determination will be considered along with outstanding performance.

The award is called "Bad Cat of the Week".

Winner for the first week was Sam Scott; second week winner was David Cooper, third week Wayne Johnston and for the Evant game Steve Hill.

Local FFA Chapter Elects New Officers



New officers for the Rising Star FFA Chapter are, l. to r., Bubba Lewis, Jerald Barker, Dee Dee Lewis, David Cooper, Kathy Linney and Sam Scott.

The first Future Farmers of America meeting of the year was held recently in the Ag room at the Rising Star High School to elect new officers and plan a fund-raising project.

Dee Dee Lewis was re-elected president and Kathy Linney was re-elected vice president.

New officers are Sam Scott as secretary, Gerald Barker as reporter, Bubba Lewis as treasurer, and David Cooper as sentinel. Gene Smith is the advisor for this year.

The out-going officers for the past school year were Roxann Martinez as secretary, Lanna

Holland as reporter, Doug Sessums as treasurer, Tod Herring as sentinel, and Doug Owen as advisor.

The members agreed to sell fresh fruit for a fund-raising project.

School lunch menu	
Monday 3	NO SCHOOL
Tuesday 4	Pizza Corn Salad Fruit
Wednesday 5	Pinto Beans Spinach Slaw Corn Bread Cobbler
Thursday 6	Stew Salad Crackers Cake
Friday 7	Hamburgers

Lettuce, tomatoes Pickles, onion Cookie	BREAKFAST Monday 3 NO SCHOOL Tuesday 4
Cereal Juice Milk	Wednesday 5 Eggs and toast Sausage Jelly Juice Milk
Oats Toast Jelly	Thursday 6 Juice Milk
Coffee Juice	Friday 7 Cake Milk

TEXAS PRIDE

IN TEXAS SCHOOLS TSTA Tips For Parents

Is your child creative? The Texas State Teachers Association wants to work with you to help you stimulate and encourage creativity in your child. The following is the fourth in an eight part series.

Creative Arts

Keep your child supplied with sheets of paper, crayons, finger paints, modeling clay, burlap, paste, marking pens, scraps of cloth, styrofoam, yarn, scraps of wood and water colors. Provide work space for the child and encourage the creation of works of art.

Proudly display your child's best creations on the wall, door, or bulletin board. Give frequent opportunities for the expression of artistic ability—making valentines and greeting cards. Encourage help with holiday decorations.

Encourage musical activity in the home or on family trips. Family songs are fun for everyone. Let your child make up songs.

A toy piano, drum, tonette, tuned bells or mouth organ can help

teach the rudiments of rhythm and tone.

As soon as your child is old enough to operate a record player, purchase one along with some children's records. Record players are now simplified so that even very young children can operate them.

If your child plays an instrument, help budget practice time. Encourage performance and practice. Genuine praise does wonders. Allow the observance of art forms in nature and surroundings. This opens all doors to confidence. Be positive about the child's attempts and encourage development of interests. Help your child to really "see" the subtle variations in nature. Point out differences in color intensity.

Be subtle in helping your child learn. Keep things light-hearted and fun, never grim or tense. Don't stifle curiosity. Don't brush off questions. After a while you won't be asked.

Next: Social Studies

Office Supplies Are Sold At THE RISING STAR MAIN STREET



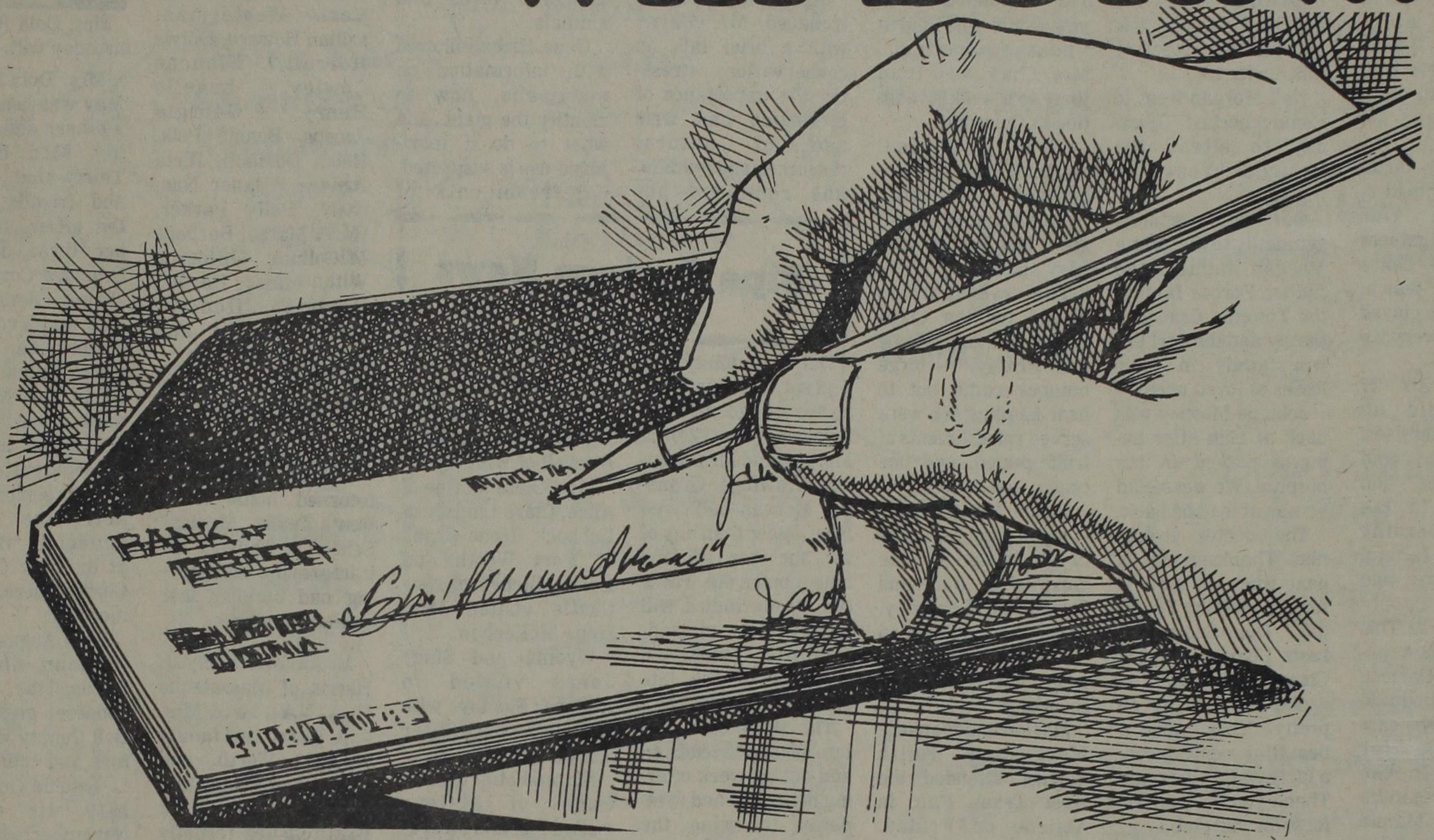
Laura Cox, Sybrinna Killion and Leslie Alford are the majorettes in the school band.

Call in Orders 643-3102 **SNACK SHAK**
Homecoming Special
 Your Choice
Hamburger Basket \$1.79
or Chicken Strip Dinner \$2.79
 Dinner includes Home made gravy, Texas toast, French fries, Salad with dressing.
 Open After All Home Football Games

DRAPERIES DRAPERIES DRAPERIES
 BY Beil's
 1706 W. Commerce Eastland, Tx. 76448 817-629-1319

As far as they can tell, experts say the average dream, even though it may seem to encompass a person's whole life, lasts only a second or two.

CAUTION... Hot Checks Will BURN!!!



**The issuance of bad or hot checks
is punishable by law...**

HERE ARE THE FACTS:

- A worthless check written for less than \$5⁰⁰ could result in a \$200⁰⁰ fine.
- A worthless check written for from \$5⁰⁰ to \$20⁰⁰ could result in a 180-day jail sentence and/or a \$1,000 fine.
- A worthless check written for from \$20⁰⁰ to \$200⁰⁰ could result in a year in jail and/or a \$2,000 fine
- A worthless check written for from \$200 up to \$10,000 could result in a prison sentence of from 2 to 10 years and/or a \$5,000 fine.

**Think Before You Write...
IS IT WORTH
THE RISK?**

Sponsored as a Public Service by Your Local Hometown Newspaper

Rising Star
Nursing Center
 Avis Massey
 Activity Director

MONDAY 19 Today was bingo day. Our big winner was Pauline Hill with four games. Mary Crisp, Buster Rixford and Ora Clark won two each and Ada Foster and Mamie Wells won one each.

TUESDAY 20 In the morning, Avis Massey came in and helped us make octopus dolls in the dining area. Mamie Wells, Estelle Bolding, Pauline Hill, Ada Foster and Maggie Christian all helped.

Our monthly birthday party was held in the evening. Our wonderful volunteers furnished the cakes and made the punch. Cliffogene Witt played the piano and everyone sang.

WEDNESDAY 21 Today we did individualized exercises, including foot and hand exercises, and mind work. In the afternoon, Dorothy Reynolds, a faithful volunteer, came and sang for us.

THURSDAY 22 This morning the new activity director Darlene Harris read aloud to the residents who cannot read for themselves. In the evening we made more octopus dolls. Mamie Wells, Martha Irby, Pauline Hill, Maggie Christian and Mary Crisp all helped.

FRIDAY 23 Today one of our most active volunteers, Mrs. Olive Odom, came and led Bible study.

We had many visitors over the week: Wandine Walker's daughter Wynona Walker from Seminole came to visit her over the weekend.

Martha Irby had special visitors over the weekend.

Dellah Roberts went to church with her daughter, Laverne Lee.

Maggie Christian went to church with Emma Morris.

Charity White's niece and her husband L. D. and Dorothy Metcalf came to visit her.

Esther Corley's niece and her husband from San Antonio came Sunday.

Estell Bolding's brother Gene Hill and his family came to see her.

Mamie Wells took a trip to San Antonio to see her son and family. She stayed several days.

The Gordon Wells family came to visit Lorraine Williams.

Other visitors who signed the register included Jim Cooper, Lula Cox, Henry Etta Hord and J. and Edwina Williams; Rada King; former activities director Avis Massey; Alma Martin; Opal, Dean Montgomery; Myrl Ross; Pease Brown; Estelle Orr; Eva Ashworth; Bill White; Larene Bush; Lillian Michael; Lisa Lewis; Cassie

Senior Center News

We had a large crowd out Thursday. Games of dominoes were played in the morning.

Just before lunch Walter Knowlden from Cisco gave a talk concerning the American Association of Retired Persons and tax aid. Walter is president of the Cisco AARP Chapter and tax aid coordinator for Eastland County. He and his wife Rose ate lunch with us.

Nell Morgan went to Comanche last Thursday to attend the Retired Teachers meeting.

Our club extends sympathy to the Zelma Morgan family, the Luther Forbes family, the Tommie Crawford family and the Jerl Erwin family in their losses of loved ones.

Johnnie Mooney was back at club after being a patient in the hospital. We were glad he was able to be back.

The center looked like Thanksgiving is near when we arrived for our meeting Thursday. Our September hosts Charley and Liz Chamberlain had the center all looking so pretty! They made a beautiful centerpiece, a large basket of fruits. Thank you for your efforts for our club.

Elsie Criswell had Allen; Julie Chamberlain; Amanda Chamberlain; Barbara Lewis; Susie Lewis; Theo and Opal Boyd; Weldon and Arla Hill. LaVerne Carroll and Sula Harris.

All of our sympathy to the families of Mr. Luther Forbes and Zelma "Ma" Morgan. Mr. Forbes passed away September 20, and Mrs. Morgan died the same day at the age of 105.

visitors, Freeda Criswell, Aleta Childers from Brownwood and Judy Childers of Sugar Land.

Berna Lee Chick and daughter Donna Priest spent three days with Lee Ana Whitten and husband on a ranch near Adrian. Lee Ana is a daughter of Mrs. Chick. The Whittens had completed their new home and had a "house warming". Mrs. Chick went from there to a week's vacation in Colorado.

Alvy Bibles' daughter Ruth and her husband James Snyder from Mineral Wells spent last Sunday with Alvy and Dell.

The Starbrites played for the Cross Plains Nursing Home last Friday. A large number came out to hear us play. We were served refreshments of fruit punch and ice cream and cake.

Luella McKinnerney is in Houston for a few days caring for the children of Burl and Shirley McKinnerney. Shirley is scheduled for major surgery. We wish her a speedy recovery.

Marion and Marjorie West and Edith Bostick attended the West Texas Fair in Abilene on Friday. There were a lot of beautiful exhibits, some of the prettiest hand work and art I have ever seen. We congratulate one of our local artists, Linda Lancaster of May, for receiving Best of Show award for her division.

Our recipe for the week is

Pecan Pie
 1 cup pecans (chopped)
 1/2 cup sugar
 2 Tbsp. flour
 3/4 cups of corn syrup
 3 eggs
 1 Tbsp. butter

Saturday Club

The Saturday Club met on September 21 at the club room. Hostesses for the meeting were Gladys Carter and Irene Mayfield. A program on conservation and wildlife was presented, with Kenneth Payne of the Texas Parks and Wildlife Department as guest speaker.

Mrs. Mayfield introduced Mr. Payne with a brief talk on conservation, stressing the importance of protection and wise use of natural resources and wildlife. She reminded her

listeners that they live in a wonderful world that is threatened by man's carelessness and greed that pollute the air, our precious water supply and the very life of mankind.

Mr. Payne narrated slides of wildlife native to our area and to our state, pointing out game birds and endangered birds and animals.

Gene Hicks followed with information on marijuana, how to identify the plant, and what to do if marijuana use is suspected. Refreshments of

punch, finger sandwiches and cookies were served.

Helen Donham and the building committee were recognized for their recent improvements to the grounds at the club.

Members present were Dorothy Shook, Adelia Shults, Lela Clark, Emma Jean Steel, Helen Donham, Olice Jones, Lucille Joyce, Beatrice Kruger, Polly Price, Lottie Mae Roach, Elizabeth Robertson, Bertha Mae White, Vera Westerman, Lillian Howard, Dorris Harrell, Blanche Cowley, Lenelle Henry, Georgia Jacobs, Bonnie Polk, Helen Donham, Illeta Agnew, Eleanor Nunnally, Polly Parker, Hazel Marsh, Barbara McCollum, Cliffogene Witt, Marie Hardin, Pauline Hudson, Karen Knight and guest Mrs. Murphy.

Sipe Springs News

Our community had a great loss this week as we put to rest our beloved Mrs. Zelma Morgan and Mrs. Tommie Crawford. Grandma Morgan had lived here longer than any of us; she was 105 and nine months old. These two lovely ladies will be greatly missed. Tommie was a daughter of the late Mazie Zellars.

The Andersons had family and friends in and out all week offering help, love and sympathy following the death of Winnie's mother Ma Morgan.

Visitors in the N.L. Leonard home have been Jo Leonard of De Leon; Dewie Lewis of Comanche; Eleanor Lewis of California; Mr. and Mrs. Garland

Leonard of Bisbee, Ariz.; Mr. and Mrs. Travis Boswell of Arlington and Mrs. Ruby Boswell of Whitney.

Mrs. Oleta McGee of Alice, Clara Lindsey of Lubbock, Irene Crabb of Fort Worth and Doris Mitchell of New Castle visited Mrs. Irene McKeehan.

Wyoma and Stacy Jones visited in Abilene Sunday with Wyoma's son Roger and her parents.

Mr. and Mrs. Vernon Cagel of Abilene visited Mr. and Mrs. T. A. Weaver.

Mrs. Vicky Crow and daughters of Hico and Mr. and Mrs. Layne Cutter of Baird visited the Millwees.

Personal

Clayton Wilson has returned home from West Texas Medical Center in Abilene. He is improving since having had surgery last week.

Mr. & Mrs. Billy J. Harris of Massatequo Park, N.Y., Mr. & Mrs. J. R. Harris and family of Fort Worth, and Mrs. Gene Foster and grandson of Fort Worth visited recently with aunts Mrs. Wade Byrd and Belle Harris. Other recent visitors for Belle Harris were Mr. & Mrs. E. B. Mitchell of Albany.

Dola Ritchie Is Birthday Honoree



Mrs. Dola Ritchie of May celebrated her 93rd birthday with family and friends.

Mrs. Dola Ritchie of May was honored with a dinner and party for her 93rd birthday. Thirty-nine relatives and friends attended the affair, hosted by her three daughters, Cremora Cox of Cross Plains, Oleta Hunt of May and Yvonne Lancaster of San Angelo.

Mrs. Ritchie has lived in the May area most of her life. She is active in the home demonstration club, attends senior citizens' activities and is faithful in attendance at the May Church of Christ where she is a member.

Born August 28, 1890 to John and Sally Bacon, the birthday honoree grew up in Bell County where she met and married Lee L. Ritchie October 30, 1910. He died in November, 1957. The couple's eldest of their four daughters, Velda Lee Hanes, died in July, 1935.

Mrs. Ritchie has ten grandchildren and

eight great grandchildren.

Family members in attendance, in addition to the three daughters, were Sid Hunt of May, Cheryl and Melonie Key, Janet Ridgeway, Mark, Susan and Lara Beth Woods. Margie Hanes of Fort Worth, Kenneth and Pattie Hussong of Fort Worth and Jane and Ricky Reagan of Abilene.

Friends who called on Mrs. Ritchie to wish her a happy birthday were Mr. & Mrs. James Isabell, Mr. & Mrs. Harry Warren, Mr. & Mrs. Vern Gilmore, Mr. & Mrs. Loyd Tishnor and family, Billie Chambers, Buck Ritchey, Rosalie Glenn, Mae Ribble, Dorothy Harris, Etta Altum, Avis Massey, Eva Ashworth, Dell King, Stella Copeland, and Ludene Michael, all of May, Gussie Cox of Sidney and Lola Feril of Blanket.

Majestic Theatre

Eastland 629-1220

One Showing Only Each Evening
 Open 7:30 Show Starts At 7:50 P.M.

Closed
 Through Oct. 6th

Starting
 October 7th

Smokey's Back!
 And The Bandit is at it again!



Jackie Gleason

A Mort Engleberg Production "SMOKEY and the BANDIT Part 3"

Paul Williams Pat McCormick and Jerry Reed

Written by Stuart Birnbaum & David Dashev Produced by Mort Engleberg

Directed by Dick Lowry Soundtrack available on MCA Records & Cassettes

PG PARENTAL GUIDANCE SUGGESTED

A UNIVERSAL PICTURE

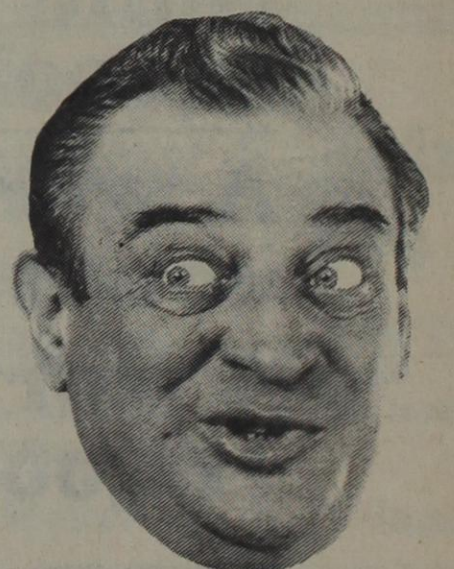
Ranger Drive-In Theatre

Ranger 647-3802

One Showing Only Each Evening
 Open 7:30 Showtime 8:00 P.M.

Closed
 Through Oct. 6th

Starting
 October 7th



EASY MONEY

RODNEY DANGERFIELD
 "EASY MONEY"
 JOE PESCI GERALDINE FITZGERALD CANDY AZZARA and JENNIFER JASON LEIGH
 JOE SCALO BILLY JOEL LAURENCE ROSENTHAL LAURENCE ROSENTHAL ESTELLE ENDLER
 RODNEY DANGERFIELD MICHAEL ENDLER P. J. O'ROURKE DENNIS BLAIR
 PRODUCED BY JOHN NICCOLLETTA WRITTEN BY JAMES SIGNORELLI

R RESTRICTED

PLUS



Caddyshack

ORION PICTURES PRESENTS

**FINALLY...
 AN AUTO LOAN
 THAT WON'T
 BRAKE YOUR
 BUDGET!**

If you've got your eye on a new car, but you're worried about what the payments will do to your budget—come on over to Southern Savings, we're making life better the Southern way!

At Southern, we can help you with an auto loan that will make getting behind the wheel of a new car a lot easier. Our auto loan rates are competitive, plus we give special attention to all those little details to provide quick loan approval on the car of your dreams!

For an auto loan that won't "brake" your budget, come on over to Southern Savings... we're making life better the Southern way!



Cross Plains Branch, 200 N. Highway 36, 725-7724
 Home Office, 501 Center, 646-4561, Brownwood

Branches: Bangs, Brady, Brownwood, Coleman, Comanche, Cross Plains, DeLeon, Goldthwaite, Lampasas, Stephenville

FOOTBALL

**Wishing Well
Flowers
& Gifts**
643-2023

**Rising Star
Chamber of
Commerce**
643-2251

**Medley
Motor Co.**
643-5211

**Palace
Drug Store**
643-3231

**Kizer
Insurance
Co.**
643-4421

**Eddie & Kay
Barker**

**Go
Wildcats!!!**

**Star Plaza
Restaurant
& Truck Stop**
643-6960
643-1000

**The
Rising Star**
643-4141

**Winfrey
Feed & Peanut
Co.**
643-6251

**D & T
Building
Supplies**
643-4131

**Sam Justice
General
Contractor**
643-4289

**Quickway
Gro. & Deli**
643-1490

**Kountry
Kitchen**
643-6831

**Twin Drilling
& Well
Service**
643-7100

Snak Shak
open after games
643-3102

Trails West
643-1601

**Randy Goldston
Satellite Antennas**
643-3077

**Payton
&
Johnnie Scott**

**Bramlett
Implement Co.**
643-4311

**Jim Ratliff
Welding**
643-6464

**All Star
Pump
&
Supply**
643-4300

**Chambers
Gro.**
643-5292

**Dr. B.T.
Carpenter**
643-3141

**Jenkins
Insurance
Agency**
643-2251

**Rising Star
Nursing
Center**
643-2691

1983 Rising Star Football Schedule

Sept. 2 - Friday	Eden	There	8:00
Sept. 9 - Friday	Tolar	Here	8:00
Sept. 16 - Friday	*Santa Anna	Here	7:30
Sept. 23 - Friday	*Evant	There	7:30
Oct. 1 - Saturday	**Blanket	Here	7:30
Oct. 7 - OPEN			
Oct. 14 - Friday	*Lometa	There	7:30
Oct. 21 - Friday	*Goldthwaite	There	7:30
Oct. 28 - Friday	*Rochelle	There	7:30
Nov. 4 - Friday	*Cross Plains	Here	7:30
Nov. 11 - Friday	*Gorman	Here	7:30

**Butler
Texaco**
643-3261

**K & S
Equipment
&
Machine Co.**
643-3177

Higginbothams
643-2271

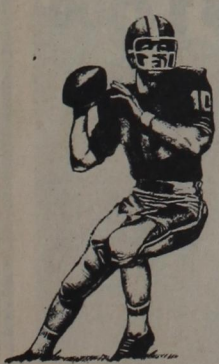
**Jack Hubbard
Soil Conservation
Contractor**
643-6242

RISING STAR JUNIOR HIGH SCHEDULE

Sept. 15	Thursday	Santa Anna	There	6:30
Sept. 22	Thursday	Evant	Here	6:30
Sept. 29	Thursday	Blanket	There	6:30
Oct. 6		Open		
Oct. 13	Thursday	Lometa	Here	6:30
Oct. 20	Thursday	Goldthwaite	Here	6:30
Oct. 27	Thursday	Rochelle	Here	6:30
Nov. 3	Thursday	Cross Plains	There	6:30
Nov. 10	Thursday	Gorman	There	6:30

Athletic Director- Jack Gray

L & C Auto
643-3261



27th Homecoming "Remembering the Past"



Forty seniors, several of whom were not in the above photograph, were graduated from Rising Star High School in 1933. Nearly 20 of those graduates are expected this Saturday to attend homecoming activities where the class will be honored for its 50th anniversary.

The class roll included Burton Bowers, Autry Brawner, Wa de Earl Clark, Orville Bryant, Medford D. Conger, Travis Foster, Calvin E. Foster, Joyce Hancock, Alvis Jones, Carroll King, Glenes Montgomery, Woodrow McIntosh, R.E.

Powell, W.C. Parsons Jr., James Rutherford, Wayne C. Sellers, J. Lee Smith, Glenn Woodruff, Clyde T. Allen, Lee H. Harris, Carmon Anderson, O.T. Carroll, Norman Claborn, Martha Frances Bucy, Beulah Bell, Villa Cawley, Mayme Carter, Martha J. Childress, Lenell Clark, Euna Dillard, Bonnie Lynn Harris, Kitty Sue Lewis, Eunice Lloyd, Mamie Gladys McClure, Jack Powell, Elizabeth Smith, Gertrude Smith, Doris Wilkison, Mary Ida Morton and Mozelle Williams.

Class Reunions

Class of '68

The class of '68 is having their 15th reunion at the Home Ec. Cottage immediately following the pep rally.

Class Of '33

Members of the Class of 1933 are invited to a reunion at the Lakewood Recreation Center clubhouse, six miles west of Rising Star on Route 36, on Friday afternoon and evening. Dinner will be served at 8 p.m.

School teachers who taught during those high school years are invited to attend the class reunion.

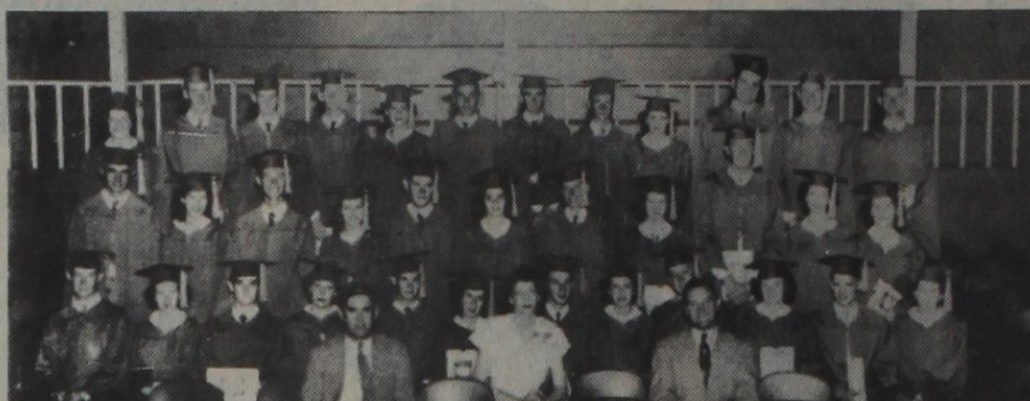
Class Of '57

The class of 1957 will hold a reunion Friday and Saturday, September 30 and October 1, in the Senior Citizens building.

Class of 1953

A party for the Class of 1953 will be held in the Student Activity Center of First Baptist Church on Friday evening.

A coffee will be held in the home of Joe Frank and Barbara McCollum following the football game on Saturday evening.



The class of 1948 will be celebrating its 35th reunion.

Class members included, 1st row, Superintendent Sam Jones, class sponsor Mary Claborn and Principal Ray Nunnally, 2nd row, Wayne Walker, Sue Weatherman, Kenneth Joyce, Ramona Tharp, Herman Boswell, Dorothy Ellis, Dean Bailey, Ann Spenny, Don Morrow, Dorotha Chambers, Jack Hill, Frances Lyon, 3rd row, C.W. Richter, Geraldine McKinnerney, Bobby Mack Harding, Naomi Smith, J.C. Sage, Myrilline Herring, Max Hunt, Margie Jones, Jerry Walker, Betty Watkins, Joyce Tyler, 4th row, Wanda Nay, Kenneth Murdoch, Minter Hardin, Bobby Smith, Marion Carter, Buck Harrelson, Eldon Hardy, Joe Criswell, Connie Hill, Monty Jones, Bennie Smith and Shelby Vandivere.



The graduating class of 1947 included, 1st row, Charlene Vandivere, Serita Allen, Ted Shook, Alameda Smith, Dorothy Green and Betty Conner; 2nd row, Charlene Long, James Nay, Edith Agnew, Vernell Cox, Jimmy Record; 3rd row, Kenneth Morrison, Eloise Rumph, Dalton Jones, Tommie Zellars, Shirley Witt, Gilbert Hefner; 4th row, Sue Graham, Juanita Chick, Martitia Chambers, Valerie Broom, Earlene Phillips; 5th row, Nedie Morris, Billy Charles Harding, G.B. Nichols, L.E. Allen, Jon Cargile, Don Schaefer and Damon Leonard; class sponsor, Mary Claborn stands in front of the group.

**\$Attention:
This Article
Worth \$5.00\$**

Reflexology is America's answer to acupuncture, however, reflexology is not meant to replace medical treatment, but rather to fortify it. No claims are made for cures, but results do speak for themselves. Sufferers of tension headaches, sleeplessness, and pain due to stress may find reflexology a pleasant alternative to sleeping pills, tranquilizers, pain pills or alcohol.

L. M. Wooten, a licensed reflexologist for seventeen years, resides in Gorman, Tx. He is a man dedicated to his clientele, and is available anytime for emergency calls. He invites you to take advantage of this special offer.

This article is worth \$5.00 toward the regular fee of \$15.00 for one treatment that consists of manipulation of reflex points on both the feet and the body. Offer expires October 5, 1983, so call 817-734-2629 for appointment today.



Class of 1953 members pose during the senior trip at Prade Ranch near Leakey. Arlene Jones relaxes in front; from left to right in the next row are Sarnmie Harris, Billy Jack Jenkins, Bruce Stovall (speaker for 1983 Homecoming), and Mary Ann Barton. Others recognized are Mary Ida Jackson, Relda Gattis, Carl Smith, Harriet Spenny, Joe Frank McCollum. Can you name any?

Personal



Mack and Bill Gray recently attended Mack's family annual Aunt Sally Blair reunion at Fort Belknap, on the Brazos River west of Graham.

The restored historic buildings contain early relics and the main building houses a museum. A huge arbor of mustang grapes protect the picnic tables. Many reunions are held there annually.

CLASSIFIED ADS
(SET RESULTS)

Welcome Exes

Homecoming Mums GARTERS

We Carry Jewelry Miniatures
& Gift Items.



The Wishing Well

FLOWERS AND GIFTS
118 N. Main Rising Star
643-2023

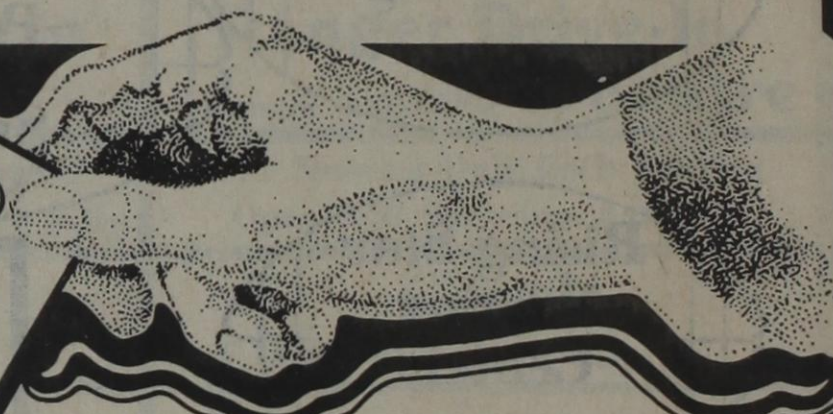


TRAILS WEST

103 S. Main, Mon-Sat 9 to 5 Rising Star.

Welcome Exes

you're
invited
TO OUR VALUE
CELEBRATION



Jo Hardin..... 10% Off
Trace Sport..... 10% Off
Missy's

Calvin Klein Jeans... 10% Off
Lucovici Group.. 20% Off

Organically
Grown Sweaters...

Group Men's Long
Sleeved Shirts..... \$10⁰⁰

Boys Shirts..... 10% Off

Men's Wrangler
Workshirts..... 10% Off

VALUABLE COUPON
\$ 10% OFF
Men's Boots
Except Justin Ropers
With This Coupon
Expires Oct. 12 \$



SUPER HARVEST SPECIALS

September closeout specials on John Deere 40 Series tractors: finance charge waiver to March 1, '84, or up to \$1,850 in lieu of waiver



The supply of new John Deere 40 Series tractors is going, going, and will shortly be gone. So to get the new tractor power size you want at Super Special savings, act real soon. Steeper prices on 40 Series tractors date from 1981, meaning big initial savings for you on a tractor that'll perform with higher-priced 1983 competitors. And you'll get our good deal to boot. Here's more. During September, finance your new tractor with John Deere and you'll save \$100 or even \$1,000! Because purchases made by September 30 are eligible for finance charge waiver to March 1, 1984. Or you can get a cash rebate in lieu of waiver for the amount shown here. More yet. If you anticipate 1983 taxable income, buy your new 40 Series tractor now to take advantage of 83 Investment Tax Credit plus full-year depreciation to reduce your taxes. You'll shield income while greatly reducing actual cost of your new 40 Series. Another option. Lease a new 40 Series tractor and lease payments will be discounted by an amount comparable to the finance charge waiver. Use leasing to get modern power, plus tax advantages, even if your 83 taxable income is low.

Model	September '83 Cash Rebate In Lieu of Waiver	Model	September '83 Cash Rebate In Lieu of Waiver
228-hp 8640	\$1,850	80-hp 4040	\$ 750
178-hp 8440	1,500	80-hp 2940	500
180-hp 4840	1,275	70-hp 2640	450
155-hp 4640	1,150	60-hp 2440	400
130-hp 4440	900	50-hp 2240	325
110-hp 4240	825	40-hp 2040	275

(Offer subject to tractor availability)

*Availability of John Deere financing and leasing subject to approval of credit. This offer may be reduced in value or withdrawn at any time.

Bramlett Implement
Inc. Of Rising Star

Ph: 643-4311 Mark Cooksey, Manager

24 HR. SERVICE - SENIOR CITIZEN DISCOUNT

Sepco

ENTERPRISES

BROWNWOOD, TEXAS
SEPTIC TANKS - SAND TRAPS - GREASE TRAPS
COMMERCIAL / INDUSTRIAL / RESIDENTIAL

BOBBY DEAN THORNHILL, OWNER DAYTIME 915-646-9713 NIGHTS 817-259-2621

For All Your Financial Needs, You Can Believe In Us.

These days with so many ways to invest your money, it's important to have someone you can turn to. Someone who knows the ins and outs of all these new accounts. Someone who can help you decide wisely what's right for you and your family.

We cordially invite you to become a member of our family at Olney Savings. We'll serve you right. And give you all the help you want and need.

Please check our services below. We're ready and willing to serve you. Come see us soon. Or call and we'll come see you. Cause for all your financial needs, you can believe in Olney Savings.

The Olney Savings Checking Account: • No service charge with \$300 minimum balance • Pays 5 1/4% interest • Free checking for

Senior Citizens. **The Olney Savings Check Club:** • No minimum balance • No service charge • Pays 5 1/4% interest • Accidental life and dismemberment insurance • Free checks • Travel and entertainment opportunities • \$5 monthly membership fee. **The Olney Savings Super Checking Account:** • \$2,500 minimum balance • Pays money market rates (pays 5 1/2% if balance falls below \$2,500) • Free checks • Free \$20,000 accidental life insurance. **Daily Money Market Account:** • \$2,500 minimum balance • Pays money market rates, daily (pays 5 1/4% if balance falls below \$2,500) • Insured to \$100,000 by F.S.L.I.C. **Individual Retirement Account:** • Deduct \$2,000 per year from your taxable income • Deduct \$2,250 per year with Spousal IRA • Fixed and variable rates • Rate changes monthly • Interest earned is tax deferred until retirement.

RANGER SAVINGS



EASTLAND SAVINGS



OLNEY SAVINGS-CISCO

Divisions of Olney Savings



The Oil Belt News

Thursday, Sept. 29, 1983

Drilling Bits

Eastland Oil and Gas Pumping 125 barrels of oil per day the No. 2 Duffer was completed successfully in the Adams Duffer Field by Robert E. Bryne of Lubbock. Drillsite is four miles south of Ranger.

It was drilled to 3,544 ft. total depth and will produce from an interval 3,424 to 3,438 feet into the wellbore. Production tests were run on open choke.

The location is in a 520-acre lease in Eastland County's S.N. Mathias Survey.

A 1,400 ft. wildcat well for oil or gas in planned by Central Oil & Gas Co. of Cisco at a drillsite six miles northwest of Rising Star, Eastland County. The location is in a 65-acre lease in the Mary Ann Clark Survey A-51. Well's designation is the No. 2 J.B. Hunt.

AMV Operating Inc. of

Lawton, OK has filed for permit to drill the No. 1-A Maurice Hazzard "A", a 995-ft. developmental well six miles south of Eastland. Location is in a 318-acre lease in Eastland County's McLennan County School Land Survey A-367. The well is in the Eastland Regular Field.

AWS Petroleum Co. of Eastland has finalized two gas wells five miles southeast of Eastland. They are located in an 80-acre lease in Eastland County's H&TCRR Co. Survey, Sec. 15 blk. 2. —The No. 1 D.E. Webb, located in teh Waldrop Strawn Field, indicated ability to flow 143,000 CF gas per day on a quarter-inch choke. It was rated at 480,000 CFD on absolute open flow. Bottomed at 1,266 feet, the well will produce from perforation 1,062 to 1,072 feet into the hole.

—The No. 1-A-D.E. Webb, is in the Eastland Regular Field. On a quarter-inch choke, it indicated potential to yield 124,000 CF gas per day. It was given a 350,000 CFD rating on absolute open flow. The well will produce from an interval 1,232 to 1,237 feet into the wellbore. Total drilling depth was 2,010 feet.

T-Square Petroleum of Rising Star has filed first production figures on a new gas well in the Eastland Regular Field. The No. 5 Taff indicated ability to flow 255,000 CF gas per day on a 3/8-in choke. It was rated at 273,000 CFD on absolute open flow.

The operator has 79 acres leased, with drillsite in Eastland county's ETRR Co. Survey A-1894, one mile southeast of Pioneer.

The well will produce from an interval 2,381 to 2,385 feet into the wellbore. Total drilling depth was 2,500 feet.

The No. 1 C.E. Lowrange has been finalized by Comanche Investments of Cisco. It is a developmental well in the Eastland Regular Field four miles east-northeast of Ranger. Drillsite is in an 84-acre lease in Eastland County's J.M. Griffin Survey A-1845.

Daily potential of 16 barrels was posted with the Railroad Commission. The well went to a 3,615-ft. bottom. Production will be from perforations 3,374 to 3,393

feet into the wellbore.

A 4,200 ft. wildcat well for oil is planned by EnRe Corp. of Cisco at a drillsite four miles east of Cisco, Eastland County The location is in a 117-acre lease in the H&TCRR Co. Survey, Sec. 47, blk. 4. Weell's designation is the No. 1 Rust/Johnson.

Richey & Co. Inc. of Fort Worth has filed for permit to drill the No 1 C.J. Kleiner Estate "A", a 4,300 ft developmental well in the REB Marble Falls Field. Location is in a 40-acre lease in Eastland County's H&TCRR Co. Survey, Sec. 53, Blk. 4. The operator is Ridge Oil Co.

A Breckenridge-based operator has staked location for the No. 2 Higginbotham, a developmental well to be located five miles northeast of Cisco. With projected total depth of 4,100 feet, the well is in a 440-acre lease in Eastland County's Regular Field, H&TCRR Co. Survey, Sec. 53, Blk. 4. The operator is Ridge Oil Co.

The same operator has staked location for the No. 1 Lowrange, a 4,000 ft. developmental well in the REB marble Falls Field. Drillsite is in a 40-acre lease in Eastland County's H&TCRR Co. Survey, Sec. 39, Blk. 4. Location is six miles northeast of Cisco.

Comanche Investments of Cisco has revealed plans to drill a 4,000 ft. developmental well in the Eastland Regular Field. The operator has 26 acres leased, with drillsite in Eastland County's Andrew Bradley A-15 Survey. The venture has been designated at the No. 1 Gloria Ruby. Drillsite is three miles east-northeast of Ranger.

Snow Oil Co. of Ft. Worth has filed for permit to drill

two developmental wells in the Eastland Regular Field, Eastland County.

—The No. 1 Davis, a 4,000 ft. well, is located in a 100-acre lease in the H&TCRR Co. Survey A-1317. Drillsite is five miles northwest of Eastland.

—The No.1 Smith has a proposed total depth of 2,000 feet. It is located in a 180-acre lease in the H&TCRR Co. Survey A-1931 two miles northeast of Eastland.

A 4,100-ft. re-entry try is planned by Leonard Brothers Operation Co. of Ft. Worth at a drillsite four miles north of Eastland, Eastland county. The locations in a 160-acre lease in the H&TCRR Co. Survey A-1994. Well's designation is the No. 1 Simer. It is in the JMJ Marble Falls Field.

An Abilene-based operator has staked location for the Nos. 4 & 5 Otto Schaefer "K", two developmental wells to be located eight miles northwest of Rising Star. With projected total depth of 3,500 feet, the wells are in a 162-acre lease in Eastland County's Regular Field: Moses Allen Survey. The operator is Aries Operating Inc.

Mercury Exploration Co. of Ft. Worth has filed for permit to drill the No. 1 Welch, a 2,500 ft. wildcat for oil 11 miles south of Ranger. Location is in a 311-acre lease in Eastland County's Harvey Kendrick's Survey A-340.

A Grand Prairie-based operator has staked location for the Nos. 1-W and 4-W Ranger West Strawn Unit, two developmental wells to be located six miles north of Ranger. With projected total depth of 2,000 feet, the wells are in an 169-acre lease in Eastland

County's Gipe Strawn Field, R. B. Truly Survey A-652. The operator is North Ridge Corp.

Bokar Oil of Lubbock has revealed plans to drill a 1,990 ft. wildcat well for oil two miles east of Scranton. The operator has 40 acres leased, with drillsite in Eastland County's H&TCRR Co. Survey A-1714. The venture has been designated as the No. 1 Safari.

Eldorado Oil and Gas, Inc. of Dallas has filed first production figures on a new gas well in the Stephens Regular Field. The No. 2 bufkin showed potential to flow 398,000 CF on two-inch choke. It was rated at 6,000,000 CFD.

The operator has 160 acres leased, with drillsite in Stephens County's W.H. Clark Survey, two miles northeast from Crystal Falls. The well will produce from an interval 4,110 to 4,120 feet into the wellbore. Total drilling depth was 4,500 feet.



**CLASSIFIED ADS
FILL THE BILL**

fox OIL & GAS REPORTS

RAILROAD COMMISSION REPORTS
2012 W. COMMERCE (OLD HWY. 80)
ROUTE 1 - BOX 257B
EASTLAND, TEXAS 76448 • (817) 629-8537
**Permits-Completions
Legal Typing
Land Title Search
Notary Public
Copies**
ELAINE FOX
(817) 629-8238
T-18

For Lease

170 acres Mineral rights located 7 Miles

SW Carbon. One Owner

Phone 817-629-1009

Box 225 Eastland, Tx. 76448 T-31

EASTLAND DRILLING INC.

817/629-8512
24 Hour Number

3 Rotary Rigs

Drilling depth from 1500' to 6000'
All Rigs Radio Equipped with 24 hr.
answering service plus phone patch.

Gary Snapp, Vice President & Operations
Mgr.

Res. Phone 817/647-3416
23 Yrs. Oilfield Experience

VIC'S WELDING & MUFFLER SHOPPE

Monday - Saturday - 8 to 5

106 S. Virginia
Eastland
629-2874 TC

S & S DRILLING CO.

OIL & GAS

Route 4
CISCO, TEXAS 76437

BILL GARY
442-3048

LEE STARR
442-3226

**U.S. DEPT. Interior
Geological Survey
Topographic
Quadrangle
MAPS
of Eastland County
now available
at the
EASTLAND
TELEGRAM**

THE
STANDARD
OF
EXCELLENCE

Open
Cased
Hole
Service

STANDARD PERFORATORS
ABILENE, TEXAS PHONE: 673-3482

Snow Oil Plaza

Pipe & Supply

Drilling Corp.

Well Service TC

Off. (817) 629-8521

Linda Nelson

Res. (817) 629-8123

Want To Buy Production

Will Pay Cash for Shallow Production with Additional Development Potential. Must Have Clean and at Least 6 Months Production History. Please Reply to:

ARK RESOURCES, Inc.,
6410 Southwest Blvd., Ste. 101,
Fort Worth, Texas 76109
Phone 817-737-0891 T-82

Oil & Gas Leases Wanted

If You Own Unleased Minerals with Offset or Close-in Production, We Will Pay you Top Dollar for Your Lease. Terms Commensurate with Production Economics in the Immediate Area. Please Reply to:

ARK RESOURCES, INC.
6410 Southwest Blvd., Ste. 101
Fort Worth, Texas 76109
Phone 817-737-0891

One Thing After Another -

... can and may happen to land titles in the passing of moments. During the time it takes you to read this ad, something could happen to your title that would change your whole financial structure, or indeed it could alter your plans and aspirations for generations to come. The abstractor, in a sense, is your land title guardian, for he keeps the records day by day as you or others make them. Advise with him often about your title.

Eastland County Abstract Company

112 W. Commerce,
Eastland, Texas

R. Pat Miller

Annelle B. Miller TC

U-Save Pharmacy

Enjoy Our

Drive-In Window Service

Convenient Call Ahead

Good Parking

Call for
Fast
Prescription
Service



Open 8-6 Weekdays
8-1 Saturday
201 S. Daugherty
629-1166

Kiva inn

MOTOR HOTEL

Year Round Inn-Door Summer Fun
2 Locations

Abilene & Wichita Falls
915-695-2150 817-766-6000

The Library
Restaurant

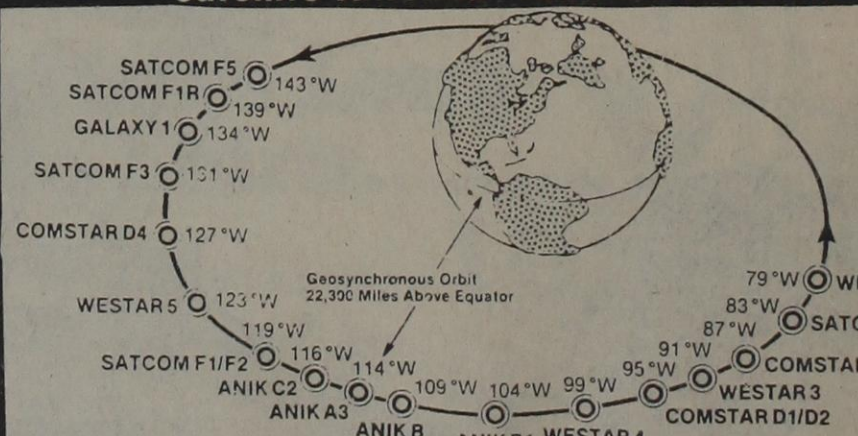
Sidewalk
Cafe

BRUNCH 11 AM-2 PM SUNDAY
LUNCH 11:30 AM-2 PM WEEKDAYS
DINNER 6 PM-11PM WEEKDAYS
& Saturday TC

OPEN 6 AM-10 PM
WEEKDAYS and SUNDAY.
TILL 11 PM SATURDAY

SAT-Tracker III

Satellite Antenna 100 Plus Channels



The World In A Dish

Come by Our Booth at the County Fair
Eastland Electric Supply Co. Inc.

400 S. Seaman Eastland, 629-3315

Hours: 7:30 - 5 Mon. - Fri.

7:30 - 12:00 Sat. TC

Wal-Mart Opens Soon!

WAL-MART

Get ready Eastland

Your cost of living is coming down.

Discover "THE WAL-MART WAY!"

★ Low Prices EVERY DAY
★ Quality Name Brands for Less

★ Guaranteed Satisfaction
★ We Won't Be Undersold

WAL-MART— Moving Forward in the 80's

Wal-Mart Stores, Inc., headquartered in Bentonville, Arkansas, is continuing its rapid growth into 1983. With record sales over the past few years, the company anticipates reaching an all time high in corporate volume of \$4.2 billion this year. Sixty new stores will open in 1983, and approximately 25 former Woolco stores will open under the Wal-Mart name.

At the close of fiscal year, January 31, 1983, Wal-Mart had sales of \$3.4 billion and 552 stores in operation. Over 49,000 associates were employed throughout a fifteen-state territory including Alabama, Arkansas, Georgia, Florida, Illinois, Kansas, Kentucky, Louisiana, Mississippi, Missouri, Nebraska, Oklahoma, South Carolina, Tennessee and Texas.

Wal-Mart Stores, Inc., had its beginning in the small town variety store business. Sam Walton, the company's founder and Chairman of the Board of Directors, opened his first Ben Franklin Variety store in 1945. After expanding into a group of 15 successful stores, Walton and his brother J. L.

Walton (who joined him in 1946) opened the first Wal-Mart Discount City in 1962.

Since its founding, the regional chain has maintained its basic concepts—to provide consumers in mid-America communities and rural areas with a varied selection of quality merchandise at everyday low prices, and to guarantee customer satisfaction. Sticking to these principles has brought spectacular growth and remarkable consumer acceptance. Wal-Mart is recognized today as a leader in the retail discount industry. The key to Wal-Mart's success is efficient management of large, discount department stores in small-town America, always with the customer's best interests and pocketbook in mind.

Wal-Mart is growing, yet always striving to provide better service. It is not unusual for a Wal-Mart store to be the largest non-food retailer in the community. The size of a store will range from 30,000-100,000 square feet with the average store being about 50,000 square feet. A new 900,000 square foot distribution center opened in early 1983 in

Cullman, Alabama, to supplement the five existing centers.

In October, 1970, Wal-Mart Stores, Inc., became a publicly-held corporation, and was listed on the Over-The-Counter Market. The company's common stock began trading on the New York Stock Exchange August 25, 1972.

Caring, Sharing and Growing TOGETHER!

A Joint Message From



SAM M. WALTON
Founder and Chairman of the Board



JACK SHEEMAKER
President and Chief Operating Officer

As Chairman of the Board and as President and Chief Operating Officer of Wal-Mart Stores, we would like to take this opportunity to express our enthusiasm over our company's entry into your community. The addition of a new store is always exciting, and we want you to know how very proud we are to be a part of your county and state. By locating in an area such as yours, we are continuing a long tradition and philosophy of operating stores in healthy and growing communities with a bright future.

Very soon we will have a Grand Opening of the new Wal-Mart Store. Along with a wide selection of quality, name-

brand merchandise at everyday low prices, our store associates will strive to provide a friendly shopping atmosphere and guaranteed customer satisfaction. The manager of the store is very capable and will make every effort to make your shopping experience as pleasant as possible.

Hopefully, our Wal-Mart program of good management and caring associates will be good for the entire area and a positive influence toward the continued development of your community. Again, we at Wal-Mart welcome this opportunity to serve you.

You Must Save-Our Policy Guarantees It

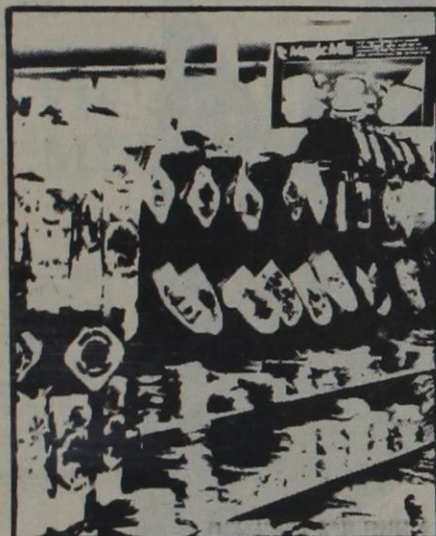
Wal-Mart Opens Its Doors Eastland U.S. Hwy. 80 East



Ladies Fashions - The right look at the right price for the fashion conscious woman. A wide range of styles and sizes from New York, California and several other markets.



Mens Fashions - Whatever your lifestyle, Wal-Mart's Men's Apparel Department has the right clothes for work and leisure. They feature easy care fabrics and timely fashions at the lowest possible price.



Home Fashions - In our domestics department you can find all the furnishings you need to make your home lovely.

Fabrics - A full-line fabric department, featuring the latest in styles and designs at everyday low prices.

Over 35 Departments In The New Wal-Mart Store To Serve You!

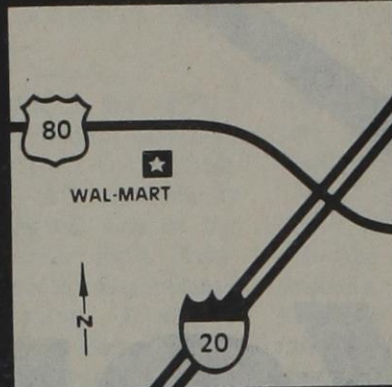
- Candy-Foods-Tobacco
- Health & Beauty Aids
- Stationery-Books
- Household Paper Goods
- Electronics-Records
- Cameras & Supplies
- Toys and Games
- Pet Supplies
- Sporting Goods
- Automotive
- Hardware
- Paint & Supplies
- Household Chemicals & Cleaning Supplies
- Housewares-Luggage
- Small Appliances
- Plants and Accessories
- Lawn & Garden
- Home Furnishings
- Seasonal
- Fabric & Crafts
- Domestics
- Curtains & Drapes
- Bedding
- Mens Apparel
- Boys Apparel
- Shoes
- Baby World
- Hosiery
- Nylon Hosiery
- Lingerie-Underwear
- Foundations
- Fashion Accessories
- Jewelry
- Girls Apparel
- Ladies' Sportswear
- Dresses
- Coats & Jackets

Customer Satisfaction Is Stressed at Wal-Mart.

Wal-Mart stores operate on the firm conviction that the Company's most important asset is the customer. When Wal-Mart says the customer must be satisfied, they mean it! Wal-Mart is dedicated to making this promise more than just another slogan.

With every purchase you make, you can count on complete satisfaction or your money will be refunded. Wal-Mart pledges to offer the finest quality nationally advertised brands at low prices every day. If Wal-Mart runs out of a sale item, you receive a rain check to buy that item at the same low sale price when new inventory is received.

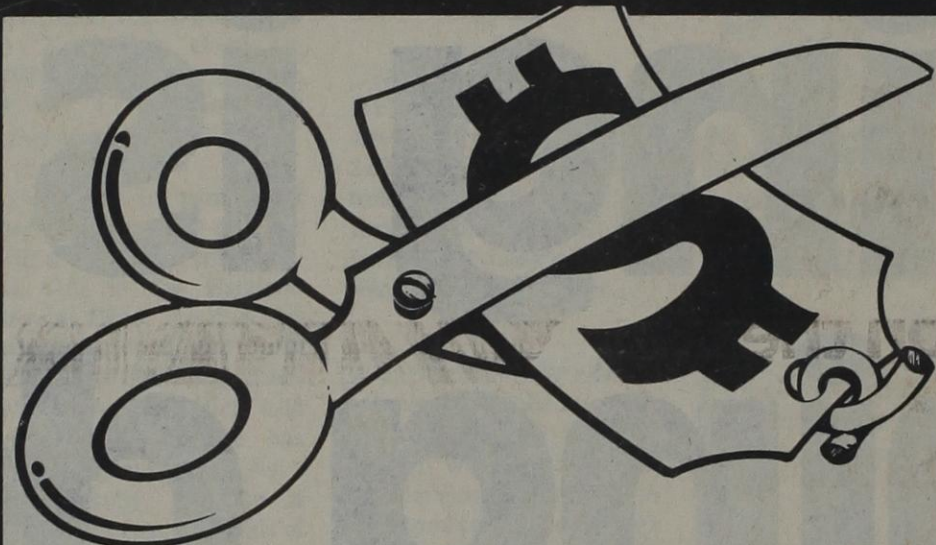
Smart shoppers will join in the familiar tradition of shopping and saving at Wal-Mart. Remember...you always save and you must be satisfied.



U.S. Hwy. 80 East

We Dare To Compete

Quality, Low Prices Discover... "THE



At Wal-Mart We Discount Every item in our store - Every Day!

We're out to save you money by offering you the lowest possible prices every day on every item in our store. Don't take our word for it, come out and see for yourself. We've got what you want for less every day.

Wal-Mart Discounts Thousands of Famous Name Brands Every Day!

Every Wal-Mart store is packed full of name brands you know and trust. Brands like Panasonic, Hoover, RCA, Kodak, Huffy and Many More.



Our People Make The Difference!

One of the most important foundations for Wal-Mart's continued success is the people who work for the Company. Quality, dedication, loyalty and capability are some of the characteristics of the company's more than 49,000 associates.

Caring about their Company means caring about Wal-Mart's growth, success and customers. Wal-Mart associates realize, with continued success comes continued opportunity for advancement and benefits.

Wal-Mart associates are aware continued success depends on "Guaranteed Customer Satisfaction" - a policy based on friendly, reliable customer service.

People helping people is a philosophy Wal-Mart believes in and relies on for continued success in years to come.

Wal-Mart Scholarship to Be Offered Local Students

The Wal-Mart Foundation scholarship program is made available to a high school senior in each community in which Wal-Mart operates. The amount of the scholarship is \$1,000 and is payable to the college of the student's choice. Area students are eligible to participate through their local high school counselors. The scholarship is academic in nature and attempts to recognize those students who excel in that area.

*Note: Stores opening in 1983 will be eligible to participate beginning in 1984.



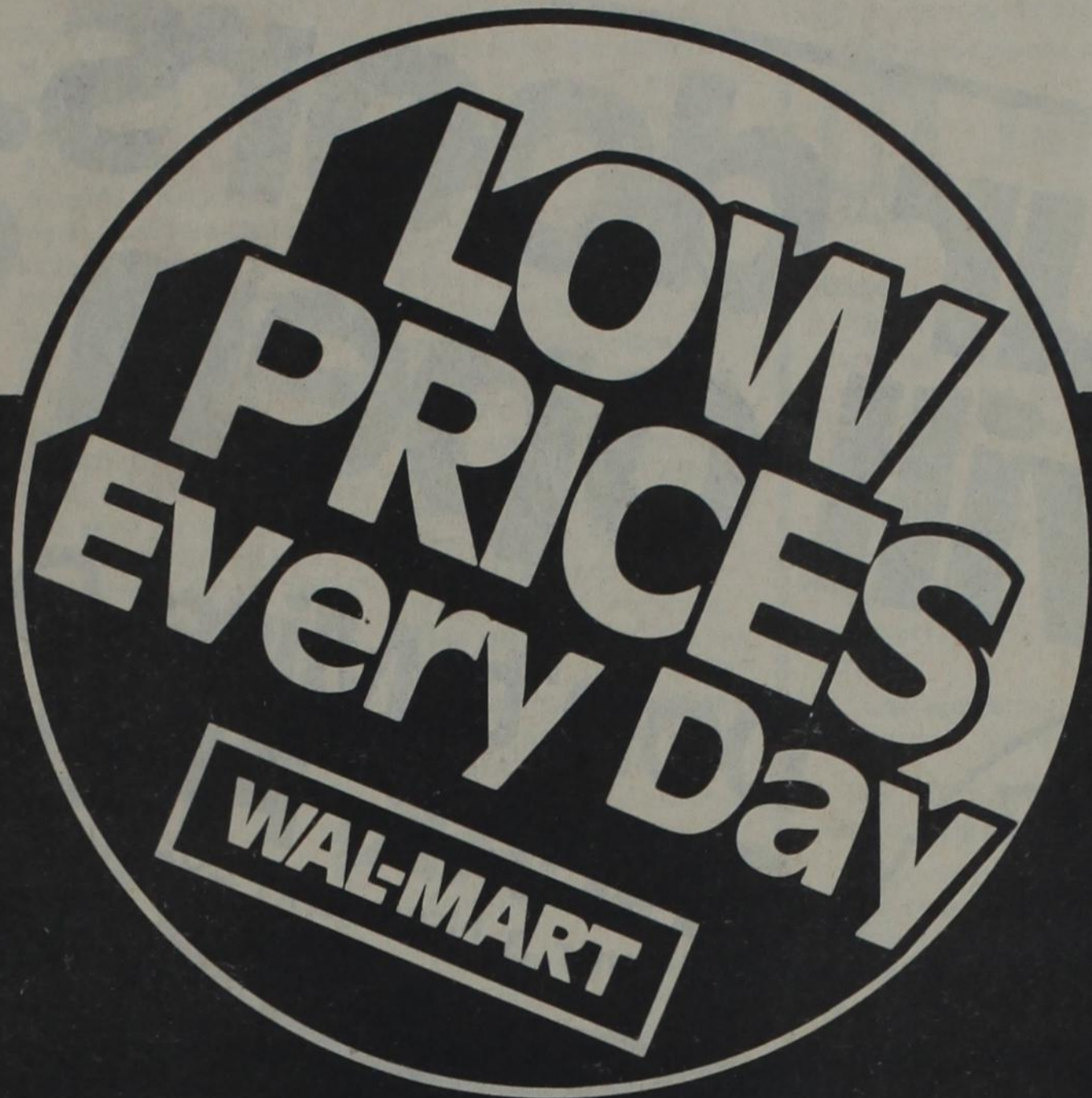
**Wal-Mart's
Team**

It takes a lot of people to run a store. Pictured above are the Wal-Mart employees getting ready for Wal-Mart's grand opening.

Don't Miss Our SNEAK PREVIEW-We Will Prove

...s Soon In

You
are!



es and Selection
WAL-MART WAY!"

**Check These
Wal-Mart Features:**

- ✓ Low Prices Every Day
- ✓ Satisfaction Guaranteed
- ✓ Convenient No-Service-Charge Layaway Plan
- ✓ Time Saving Courtesy Check Cashing Card
- ✓ We Welcome Visa and MasterCard



**At Wal-Mart
you'll find
low prices
every day
on the
latest
fashions!**

You'll discover quality fashions for the entire family every day, including famous labels like L'eggs, Wrangler, Spalding, Garan, Fruit of the Loom, Gerber, Playtex, DeeCee and many, many more.



**Names of Wal-Mart's
"Team" in Eastland**

Chuck Cannistraci
Debbie Fox
Janet Downes
Sherry Henderson
Rose Price
Katherine Dunaway
Frances Hamilton
Patsy Griffith
Wanda Roe
Jackie Murk
Toni Struck
Vickie Bright
Sharon Davis
Stella Wilson
Joel Mejia
Kay Cozart
Pai Betts
Susan Morris
Catherine Bryant
Jay Richie
Toni Rogers
Ruth Thompson
Dennis Powell
Katrin Blabee
Sherry Berthiaume
Dorothy Algood
Deana Gibson
John Mc Kinney
Andy Parsons
Karen Roberson
Les Clark

Joanie Jackson
Jane Sancillo
Betty Webb
David Ruyon
Herman Bennett
Joe Graham
David Nichols
Tommy Smith
Liz Crow
Connie Bray
Gina Swafford
Vanitta Arnold
Sherry Ray
Jane Chapman
Brenda Priest
Glenda Jessup
Christy Renteria
Julianne Chase
Oma Fonville
Debbie Koger
Betty May
Phyllis Culp
Nedra Cotton
Jan Files
Brenda Gilkey
Bea Taylor
Richard Laird
Danny Fox
Cheryl Freeman
Kathleen Stone
Shirley Hennington

Opal Watson
Iris Noska
Hazel Sieddum
Joann Knight
Eather Booth
Angela Brown
Francis Daniel
Patricia Thomas
Wanzle Hilley
Melodee Lockhart
Jane Tankersley
Sharon Sellers
Deborah Turner
Bea Montgomery
Robbie Strengh
Melinda Pence
Mary Mathis
Freda Hill
Geneva Snow
Trudy Nail
Martha Dennis
Michelle Lindsay
Esther Morales
Randy Linn
Terri Duncan
Brenda Cottle
Robert Buerger
Wanda Ingram
Hazel Gouley
Beverly Walls
Bobby Lewis
Sonia Rodriguez

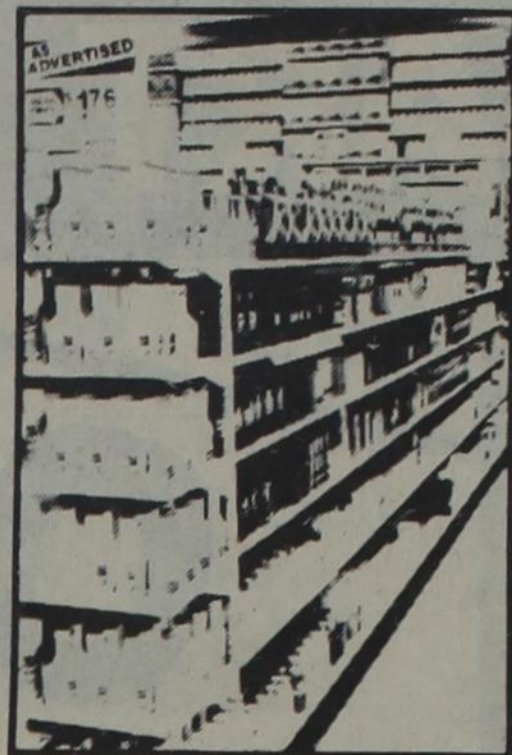
Discover
"THE
WAL-MART
WAY!"

You're invited to our
**GRAND
OPENING**
coming soon!

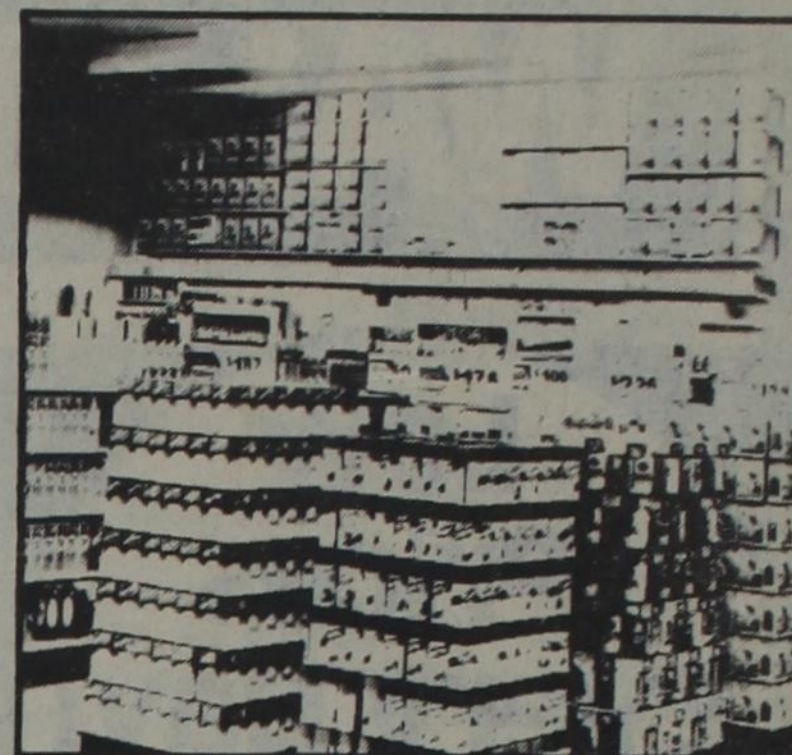
You won't want to miss it. Be one of the first to discover a new and exciting way to shop and save... the Wal-Mart way!

Don't Miss It!

You'll Save More!



Health & Beauty - Wal-Mart has the most complete selection of name-brand health and beauty aids. Not only is the assortment wide-ranging, it's also offered at the lowest possible prices everyday.



Housewares - Wal-Mart not only brings you the best name-brands in housewares but also offers them at outstanding low prices every day!



Sporting Goods—Wal-Mart's Sporting Goods Department features name brand equipment for almost every indoor & outdoor sport. You'll find quality items at super low prices every day. Come in and see our great selection of active sportswear.

Automotive—At Wal-Mart you can give your vehicle the kind of care it needs to run smoothly whether it's an imported car, domestic car or even a motorcycle.

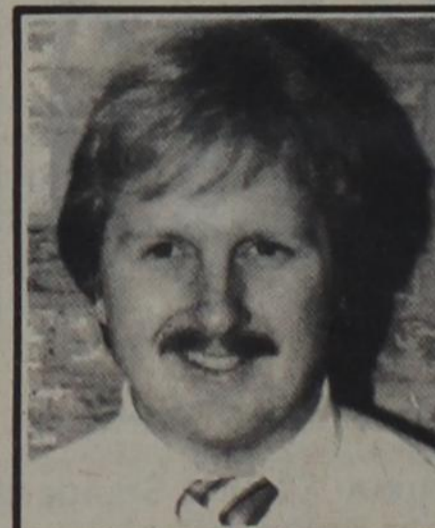
Your Local Wal-Mart Managers

Larry Olbekson is the Manager of the Eastland Wal-Mart store.

Starting as an Assistant Manager in Ardmore, Oklahoma in September of 78, he has been with Wal-Mart for five years.

After serving as an Assistant Manager in both Rockwall and Terrell, and a Manager in Hearne; He, his wife Judy, and their son Robby moved to Eastland from Garland, all in Texas.

Originally from Minneapolis, Minnesota, the Olbeksons are members of the First Baptist Church.

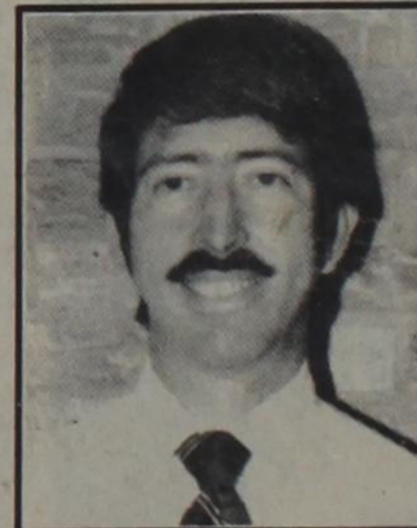


Rod Cox is an Assistant Manager at the Eastland Wal-Mart store.

Responsible for the stores softgoods area, Mr. Cox started with Wal-Mart in June of 1982 at store 92 in Aurora, Missouri.

A native of Pittsburg, Kansas, he transferred to Eastland from store 465 in Floresville, Texas.

He has just recently been married to his wife, Debbie.



Willie Camina is an Assistant Manager at the Eastland Wal-Mart store.

A Wal-Mart employee for two years, he was previously a K-Mart Assistant Manager.

He, his wife Darlene, and their daughter Debbie moved to Eastland from Kerrville, Texas.

A native of San Antonio, Texas, Mr. Camina has a Bachelor's Degree from the International Bible College located there.



Craig Minick is an Assistant Manager at the Eastland Wal-Mart store.

Reared on the Central Coast of California, Mr. Minick is a graduate of Southern Utah State College of Cedar City, Utah.

He, his wife, and their three children aged 2, 4, and 6 came to the area from Salinas California.

He says that they are looking forward to living and working here.

**You Will Save-
Our Policy
Guarantees It!**



Wal-Mart store like the one opening in Eastland. Associates at the new store. They have been working hard for the Grand Opening Celebration.

WAL-MART

Low Prices Every Day! That's... "THE WAL-MART WAY"!

Famous Brands For Less!

Save On Fantastic Unadvertised Specials!

Friendly Service Every Day!

Wal-Mart Will Never Be Knowingly Undersold!

Your Satisfaction Guaranteed On Every Purchase!

You Must Save At Wal-Mart... Our Policy Guarantees It!

Our doors... will open Sat.

Don't Miss Our SNEAK PREVIEW! Discover a New and Exciting Way to shop & save

LOW PRICES Every Day

HERE'S PROOF

Begins Saturday!

SNEAK PREVIEW Now Thru Mon., Oct. 3

Don't Miss Our Big Grand Opening Celebration Coming Soon!



1.26

Everyday Low Price Miss Breck Hair Spray • 9 Ounce • Your choice of regular, super unscented, ultimate hold and soft hold



1.74

Everyday Low Price Flex Shampoo Or Conditioner • 15 Ounce • Normal, dry, extra-body and oily



68¢

Everyday Low Price 100 Count Mr. Coffee® Filters • Designed to remove oils, sediment and bitterness • No. UF-100



1.84

Everyday Low Price Mr. Clean • 28 Ounce bottle



Your Choice

2.17

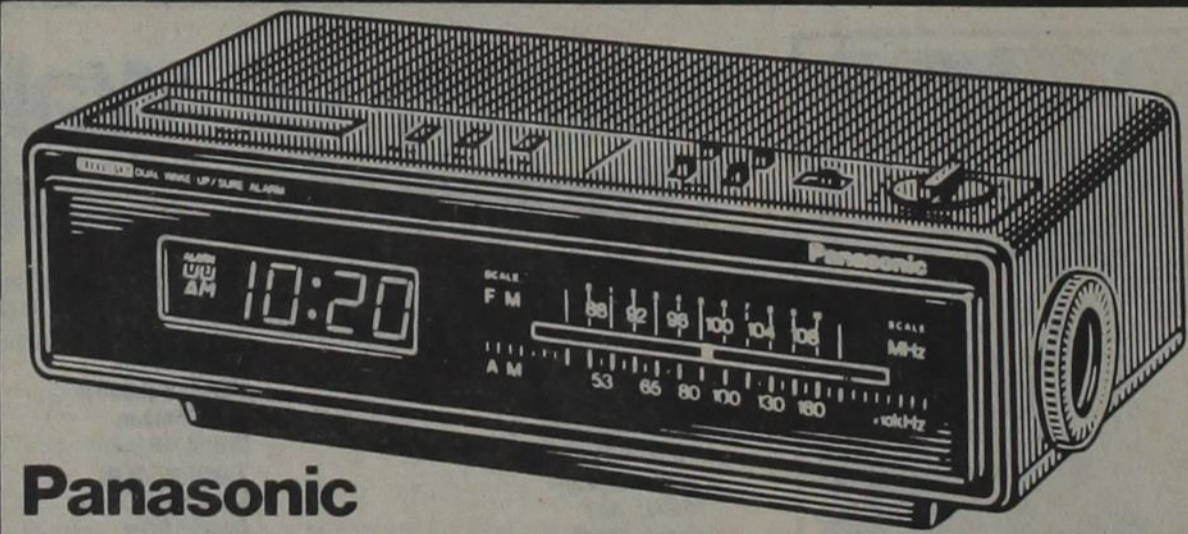
Everyday Low Price M&M's Plain or Peanut Chocolate Candies • 16 Ounce each bag

We Dare You To Shop and Compare!



Everyday Low Price General Electric Standard Light Bulbs-4 Pack • Your choice of 40, 60, 75 or 100 watt light bulbs

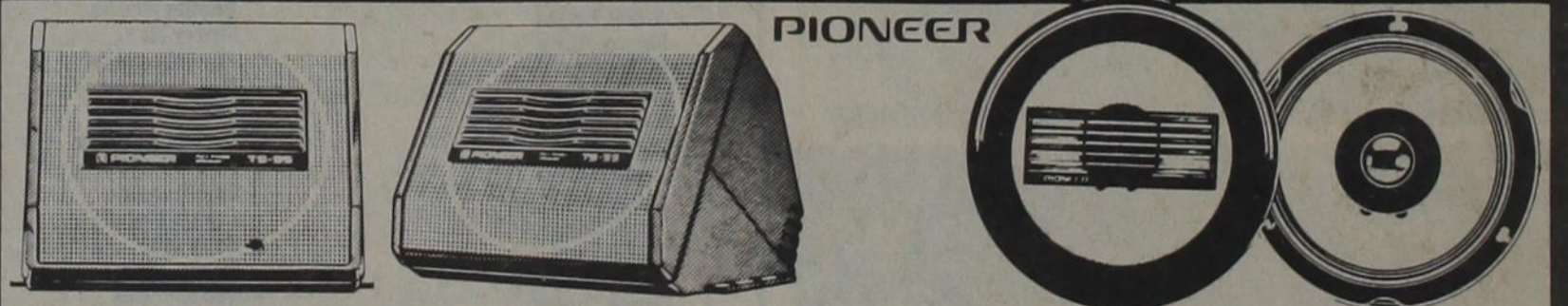
1.48 Your Choice



Panasonic

Everyday Low Price Panasonic FM/AM Electric Digital Clock Radio • Dual wake-up system • Green and orange fluorescent display • Up to 59 minute sleep timer • Doze button • No. RC-6215

32.94



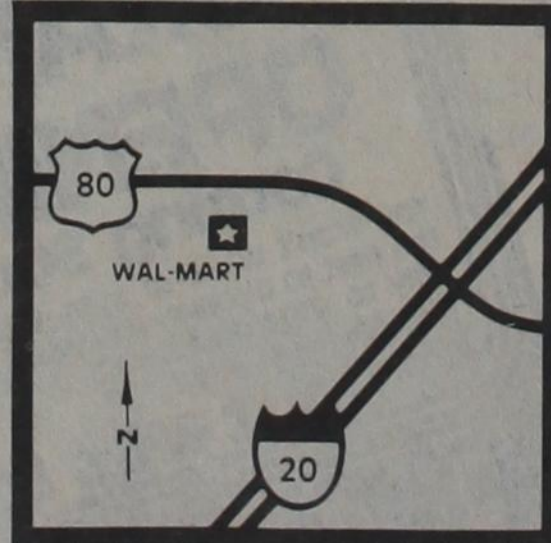
Everyday Low Price Pioneer Maxxial Surface Mount Speakers • 40 Watts maximum music power • 5 1/2" inch full range • Perfect for small cars and trucks • No. TS-55

Your Choice 26.93

Everyday Low Price Pioneer 6 1/2 Inch Maxxial Door Mount Speaker • 30 Watts maximum music power • Strontium magnet • Flush mount • Full range dual cone • No. TS-1611

Compare Quality, Prices and Selections!

WAL-MART'S ADVERTISED MERCHANDISE POLICY—It is our intention to have every advertised item in stock. However, if due to any unforeseen reason, an advertised item is not available for purchase, Wal-Mart will issue a Rain Check on request, for the merchandise to be purchased at the sale price whenever available, or will sell you a similar item at a comparable reduction in price. We reserve the right to limit quantities.



Get Ready! "THE WAL-MART WAY" is coming your way soon in

Eastland U.S. Hwy. 80 East

Texas Land Values Increase

The man was from an adjoining county, and drove over to the Eastland County newspaper offices to put in his advertisement.

"Wanted-" he said, in part - "A small piece of land where I can have a garden and keep a few animals..."

This bit of copy seemed to express not only his own wish, but was actually a universal one. For everybody needs a small

piece of land, a little place where he can grow something and feel at home.

Wars have been fought over less.

But what is that little piece of land costing these days? A glance at current real estate markets indicates that Eastland County land is priced at \$500 an acre up. That may sound high, but it is in line with prices around the state. For rural land values

in Texas have moved steadily forward during the last 10 years. The jump in 1982 was 17%.

However, according to Gary Vaughn, vice president of credit operations and standards at the Federal Land Bank in Austin, this upward trend has not been nationwide. Nationally, the market for rural land in a large number of states is reported to have slowed, and in some cases declined during 1982.

Vaughn, who tracks land values for processing loans through the Federal Land Bank, reports the median price per acre of Texas land reached \$946 in 1982.

"Economic forces behind the demand for rural land in many regions of the state have not been entirely dependent on the net returns from agricultural enter-

prises for many years," Vaughn notes.

He cites the large amount of mineral activity in Texas in the late 1970's and early 1980's as well as urban growth as having a decided influence.

The desire for land as a homesite, for recreation, or just for and investment also helped bring prices up. And on the purchase of land, sentiment plays a part on the decision of which tract to buy. If land "looks" good, or if it is located where a buyer wants to live it will probably bring a premium price.

Foreign land ownership plays a role in prices, more in the south and west than elsewhere. It is difficult to pinpoint everything that is foreign owned, since Americans sometimes make transactions for foreigners.

The latest figures from the USDA show that foreign ownership has increased one million acres over the previous report, with more than one percent of the land foreign owned. This is concentrated in the south (34 percent) and west (31 percent).

The Federal Land Bank has designated a number of Land Market Regions for Texas, and studies them for trends in marketing. The only 1982 exceptions to the general rule of increasing land values were noted in the

Canadian River area of the Panhandle, and the Big Bend area.

Various factors were noted as having a bearing on prices in those areas. In some places little desirable land ever comes up for sale. In others, such as the lower

Rio Grande Valley, there are small tracts for sale - but the median price per acre is among the highest in the state.

People often ask the Federal Land Bank Association if land is still a good investment.

Vaughn does not like to give a blanket answer to this question, due to varying conditions, but he indicates there will be a continued interest in rural land.

"It's a basic, limited natural resource," he says, "And remains an attractive

hedge against inflation." He feels that the upward trend should continue through the next few years, barring any major disaster. And this will continue to provide Texas farmers and ranchers options during severe times for agriculture.

Lone Star Title & Abstract Co.
Joe B. Koonce, Mgr.
 101 W. Main
 Eastland, Texas 76448
 (817) 629-2683

KINCAID REAL ESTATE
 100 S. Seaman
 Eastland, Texas 76448
629-1781

RESIDENTIAL **COMMERCIAL**

ACREAGE

Brick, 3 bedrooms, 2 baths, 1800 sq. ft. fenced, one acre lot, \$42,000. Located in Olden. Some owner financing.

Frame, 3 bedroom, 2 bath, 1800 sq. ft., good neighborhood.

BUILD IT LIKE YOU WANT: New homes to be constructed at hard to beat prices. Now is the time to consider new construction.

Frame, NEW 2 bedroom, 1 bath, 900 sq. ft., 1 car garage, \$38,500. Includes drapes, carpet, dishwasher, stove, vent a hood, garbage disposal and new fence around back yard.

5 Acres & 1750 Sq. Ft. Frame Home 3 Bedroom 2 Bath in Morton Valley Owner's Finance \$58,500

The old Thrift Mart store on E. 80 in Eastland 9,000 sq. ft. owner finance, possible lease with option to buy also.

5 acres with water meter. 1/2 mile out of Ranger. \$10,000. Owner finance.

42.35 acres, owner finance, good pasture land, \$685.00/acre.

142 acres located on the southwest side of Eastland Lake with irrigated coastal fields with two bedroom home and miscellaneous equipment. \$220,000 with owner financing.

35 acres between Eastland and Cisco just off of Hwy 80 on spur with city water, cable tv, will split down to 5 acre tracts.

We have several other listings

If you know what you want, call us and let us find it for it

Robert M. Kincaid (Broker) **Guy Kincaid (817) 629-1804**

EQUAL HOUSING OPPORTUNITIES

BIG COUNTRY REAL ESTATE
 509 E. 8th
 Cisco, Texas 76437
442-1693

HOMES

2 BD. X-tra neat, remodelled, insulated, new siding, fireplace, shop & garage.
 2 BD. large shady corner lot, minor work turns this into great older home.
 2 BD. siding, built-ins, laundry, bar, carport. Cent. HA. large lot.
 Large 2 BD. home on oversized lot, storm cellar, garden, carport, \$19,000.
 3 BD. 1 Bath, new kitchen, dining room, carport, on quiet street, \$23,500.
 3 BD. 2 Bath, 2 fireplaces, needs repair, large metal workshop, REASONABLY PRICED.
 3 BD. corner lot, Cent. HA, live in the country while in town, \$25,000.
 3 BD. Cent. HA. comfortable home on corner. storage garage.
 3 BD. TLC will enhance this home. GREAT LOCATION!
 4 BD. on paved street, spacious kitchen, carport, shade trees, corner lot.
 4 BD. 2 Bath, on 3 lots, modern kitchen, bar, PRICED REDUCED TO \$32,500.
 Brick 2 BD. 1 Ba SOLD yard, garage, cozy starter home.
 Brick 3 BD. 2 Bath, 2 lots, fe SOLD -ins, fireplace, corner lot.
 OLD FASHIONED CHARM 3 BD. 1 Bath Brick, hardwood floors, sunporch, 2 car garage, with plenty of storage. A QUALITY HOME in a FINE NEIGHBORHOOD!
 MOBILE 3 BD. 2 Bath, built on living room and storage, corner \$15,500.
 PUTNAM - partially remodelled, 2 fireplaces, 2 lots, garden spot. \$15,500.

LOTS AND ACREAGES

73 AC. 3 BD. 2 Bath, with office, fireplace, pool, many X-tra features & minerals.
 2.68 AC. fenced, out buildings, carport lovely 2 BD. home with room to expand.
 3 AC. 3 BD. stone, with fireplace, Cent. HA. plus 1 BD guest house.
 116 AC. CROSS PLAINS - BRICK HOME 2 Bath, Cent. HA. patio, extra garage, storage, wells, sheds, paved road, garden. LOVELY FARM.
 51 Ac. Southwest of Scranton. All minerals. ONLY \$30,601.00.

LAKE PROPERTY

NORTHSIDE- 2 BD, 1 Bath, Goodwater, \$16,000. Owner carry with \$3,500 down.
 LANDSCAPED ON SOUTH LAKE CISCO 2 BD Mobile Home with dock, only \$12,500.
 South Side Lake Home with guest house, boat house, many extras, REDUCED!!
 North Side - Lovely home on deepwater, dock, patios, fireplaces, 3 Baths. IDEAL RETREAT!
 Ready to move in!

Penny A. Reay 442-1707 OFFICE 442-1693 Dana Goosen, Broker 442-3958
 Jeffrey Whiteside 643-3129

WE HAVE MORE LISTINGS - CALL US FOR YOUR REAL ESTATE NEEDS!

James W. Ratliff Realtor-Broker
 111 E. Main St. Ranger, Texas
 Office 647-1260 Home Phone 647-1667

Ranger

One of the nicer homes in Ranger. Brick, corner lots, three full baths, two large bedrooms, large den, living room, separate dining room, two storage buildings, beautiful yard. This really is one of the nicer homes in Ranger.

A good brick two bedroom, one bath, central heat, fenced back yard, 1 1/2 lots on the corner. \$32,000. Will FHA finance.

Beautiful three bedroom, 1 1/2 baths, green house, large den, very attractive yard. This house is on 2.6 acres of land.

Three bedrooms, 1 1/2 baths, fenced back yard, garage, utility room, den. This place is priced to sell. \$14,000.

Oak Hill Addition, Brick, three bedrooms, 2 baths, woodburning fireplace, study. Will FHA.

Large spacious home with three bedrooms, separate dining room, large living room, office, fenced back yard. Almost 1/4 block across the street from the house with carport for motor home, boat, and car.

Two bedrooms, 1 bath, new plumbing, garage, pens and shop building.

Two story home with 1 bath and two bedrooms upstairs, two bedrooms, 1 bath downstairs, living room, dining

Just out of Ranger

22 acres with nice brick home, three bedrooms, two baths, woodburning fireplace in living room, very nice kitchen, utility room, den, screened porch, carport. Cut up into several pastures with two barns.

Two acres of land with three bedrooms, two baths, woodburning fireplace, ceiling fan. Utility room, all new plumbing, seven pecan trees, four fruit trees.

Brick three bedrooms, two baths, central heat and air, woodburning fireplace, utility room. This place is on 5 acres of land.

Lake Leon

Very nice two bedroom, three baths, large living area, game room, screened back porch, two storage buildings, garage, carport, fenced front yard. On a very valuable deeded lot.

Out of Eastland

Just out of City limits 4 1/2 acres of land, no improvements. \$10,000.00

Out of Gorman

195 acres of land in Comanche County. About one-half in cultivation and Coastal, the other half in native pasture.

PAT MAYNARD REAL ESTATE
 629-8568 EASTLAND INT. 20 E. NORTH SIDE 442-1880 CISCO

Homes: Eastland, Ranger and Carbon

3 bedroom, 1 bath mobile home (12x65) on nice lot, total electric. \$8,500.
 A large 2 bedroom, 1 bath home on two lots, 2 car carport and storage, several trees. \$28,500.
 3 bedroom, 1 1/2 bath mobile home (14x80) with central Heat/Air, to be moved. \$11,500.
 Beautiful 2 story brick home in Oakhollow, 4 bedroom, 3 baths, 2 half-baths, 3 car garage with automatic door opener, kitchen has center island, 2 cook tops, Jennaire grill, microwave, trash compactor and double ovens, breakfast room, formal dining and living rooms, gameroom and den, assumable loan. Call for appointment.
 In Olden, 3 bedroom, 1 1/2 bath brick home on 1 acre, carport, central heat/air, fruit trees. \$57,500.
 Prestigious 2 story rock home on one of Eastland's finest streets. This is an Exceptional home with approx. 5,000 sq.ft. and has all the extras including CH-CA, built-ins, trash compactor, intercom system, stereo hookups in each room, 2 car garage with electric door opener, drapes, fenced yard, and more. Definitely a quality place. Call for appointment.
 3 bedroom, 1 bath with ceiling fans, refrig. air, big oak trees and nice garden spot, plus a large workshop. \$28,000.
 Attention young couples: Good starter home, beats paying rent. 2 bedroom, 1 bath with detached garage. \$18,000.
 3 bedroom 1 1/2 bath frame home on large lot, living/dining room area with fireplace, large kitchen with separate utility, breezeway between garage, fruit trees. \$30,000.
 3 bedroom, 1 1/2 bath brick home on large lot. Carpet, built-ins with central heat and air. \$41,500.
 3 bedroom, 1 bath 2 story frame home, separate living and den, large master bedroom and kitchen. \$27,500.
 A 3 bedroom 1 1/2 bath brick home in the desirable Crestwood addition, large living area with fireplace, beautiful lot. \$77,000.
 In Ranger, a beautiful stucco 3 bedroom, 1 bath home, detached garage, storage buildings. \$39,000.
 In Gorman, 2 bedroom, 1 bath frame home on 2 1/2 lots with separate garage and storage. \$30,000.
 Reasonably priced lots in nice area: \$4500 to 5500. New homes in the exclusive Oakhollow addition. Call for appointment.
 A 2 bedroom, 1 bath home, formal dining area, CH-CA, carpeted, nice modern cabinets with dishwasher. \$35,000.
 Only 9 months old, this 3 bedroom, 1 bath brick home in exclusive area. Custom made drapes, fireplace, and other extras. \$65,000.
 A nice 3 bedroom, 1 1/2 bath brick home, separate living and den. \$50,500.
 Large master bedroom in this 3 bedroom, 2 bath home on one of our better streets, furnished. Owner finance at 9 percent interest. \$40,000.
 In Olden, we have a 2 bedroom, 1 bath older home that needs some repairs. Priced at \$16,000.
 In Ranger, a nice 3 bedroom, 1 1/2 bath brick home with carpet, drapes, CH-CA, fenced back yard, storage building. \$47,000.

Small Acreage With Homes

Outside Cisco, approx. 15-18 acres with very nice 3 bedroom, bath and a half double wide mobile home. Large carport. Big frontdeck. 1/4 minerals. One water well and two tanks. Owner financing available at 10 percent.
 2 1/2 acres on Staff road near Lake Leon with water well and tool house. Nice place for home. \$6,900.
 In Carbon, 3 bedroom, 1 1/2 bath, rock home on 4 acres, shop barn, fruit trees, \$31,500.
 In Carbon, 9.3 acres with 3 bedroom, 1 1/2 bath mobile home (12x65) located on Hwy. 6, 52 pecan trees, wells, beautiful place. \$35,000. (Will consider small down, remainder over 10 years at 10 percent interest)
 5.3 acres near Lake Leon with a 2 bedroom mobile home (14x70). Carpeted, central heat/air, house type windows, special siding, storage building and city water. \$35,000.
 16 acres near Eastland, with I-20 frontage. \$4,000 per acre. In 4 acre tracts \$4,500 per acre.
 Located near Union Center: 2 bedroom 1 bath home on approx. 38 acres. This house is a dream place in the country. \$70,000.
 A 3 bedroom, 2 1/2 bath, 2 story, approx. 3,000 sq. ft. brick home only 3 years old situated on 10 acres close to Eastland. Unique petrified wood fireplace. \$105,000.
 10 acres northwest of Cisco with city water and mobile home hook-up. Assumable loan. \$12,000.

131 acres southwest of Cisco with 2 bedroom, 1 1/2 bath frame home, cultivation and timber, 4 water wells, barns. Some minerals. Owner financing available. \$160,000.
 40 acres off 2526 out of Carbon, nearly all in love grass, some minerals. \$900 per acre.
 A hunter's dream, the 150 acres south of Carbon. 60 acres of cultivation, good fences and hunters shack. \$600 per acre. Owner will finance.
 40 acres located south of Cisco on 183, native pasture with scattered pecan trees, one well and tank, fenced (3) sides. \$42,000.
 Near Eastland and Lake Leon, 49.6 wooded acres with six tanks and spring, on FM 2214, good place to hunt and fish, assumable loan. \$60,000.
 Near Lake Leon, a 20 acre tract of land. Some cultivation and good hunting area. \$30,000.
 320 acres located between Carbon and Gorman. Some cultivation but mostly wooded. Good fences and hunting, some minerals included: \$500 per acre. Owner financed at 9 percent.
 5 acres near Eastland. I-20 frontage. \$5,000 per acre. Terms can be arranged.
 Located south of Cisco, 50 acres with approx. 35 acres of pecan trees. Owner will consider terms. \$74,200.
 248 acres located on old Abilene Hwy. west of Cisco, mostly cleared with some wooded acreage, good fences, 1/2 minerals with leasing rights. \$530 per acre.
 100 acres between Lake Leon and Desdemona, all in cultivation and coastal. Good 5 wire fence and cross fence, shallow water, \$800 per acre. Owner finance at 9 percent.

Cisco Homes

640 acres approx. 17 miles northwest of Breckenridge with 2 bedroom, 1 bath frame house, 175 acres cultivation with remainder in pasture. 45 percent minerals with leasing rights. \$583 per acre.
 160 acres off of Hwy. 183 eight miles south of Cisco, 100 acres cultivation, remainder trees. \$600 per acre.
 80 acres west of Eastland with 2 bedroom, 1 bath frame home, good grass, beautiful oak trees. 2 wells and tanks, good hunting place. \$70,000.

4 bedroom frame home on corner lot and a half. Plus shop and half bath. \$33,700.
3 bedroom, brick home with CH-CA, new carpet, fenced yard, fruit trees and garage. Assumable loans.
 Nice 3 bedroom 1 1/2 bath brick home in good neighborhood. Has CH/CA, built-ins, fireplace, fenced yard, double garage and other extras.
 A large 2 bedroom, 1 bath home with formal dining and breakfast area. Vinyl siding, garage, storage building, on 2 1/2 lots with large oak trees.
 Large 3 bedroom, 2 bath frame home with fireplace. Metal workshop and other buildings on several lots. Great potential. \$37,500.
 2 or 3 bedroom, carpeted home with central heat and air. Surrounded by beautiful oak trees. Paved street. Also has large shop and garage.
 Nice 2 bedroom, 1 bath frame home. New carpet, large rooms. Nice trees and shrubbery. Owner financing available \$22,500.
 A 4 bedroom, 1 1/2 bath 2 story stone home on 2 big lots; privacy fence around swimming pool. Also has small efficiency rental unit. Reduced to \$29,500.
 Large 2 story with 5 bedrooms, 2 baths, den, separate dining and breakfast rooms, located on 2 big corner lots. Also has a nice roomy apartment attached. Beautiful landscaped yard with lots of trees.
 A new 4 bedroom, 2 bath home on .46 acre lot, CH-CA, large carport and storage room, with fireplace and storm windows.
 A 3 bedroom, 1 bath home with a small apartment, storage building, situated on 2 lots. This nice home had been reduced to \$26,500.
 3 lots with approx. 20 pecan trees. Fenced with water well. \$10,000.

Commercial

Located near downtown: an older, building that would make a good location for a business. \$35,000.
 In Eastland, a new metal building, 2400 sq. ft. with dock area. \$28,000.
 In Ranger, a large 2 story brick building with good sized fenced yard. Located near railroad tracks with spur. \$85,000.
 Valuable I-20 property. Approx 4,600 sq. ft. building, very versatile, easy accessibility. \$77,500.
 For commercial use only. 1 to 5 acres with I-20 frontage.
 Located on Main Street, a 10,000 sq. ft. building. Ideal location for a business. Extra lots go with this one. \$135,000, owner will finance with good terms.

WE HAVE OTHER HOME, LAND AND COMMERCIAL LISTINGS. WE APPRECIATE YOUR BUSINESS!

PAT MAYNARD Broker 629-8063	CINDY FOSTER Associate 629-8195	ANN WILLIAMS Associate 442-1880	WAYNE CHANDLER Associate 734-2782	KAY BAILEY Associate 629-2365	NOLAN BUTLER Associate 629-8106
--	--	--	--	--	--

Fall Fashion Sale

25% to 40% off

Fill your separates closet and save!

If your separates seem to be going their separate ways, here's a terrific chance to get it all together at savings! Take 25% to 40% off our special collection of skirts, slacks, blouses and tops in the most wanted styles. Pick your skirts straight, pleated or full and swingy. Pants, traditionally tailored or with the latest upbeat details. Plus blouses to top it all off with style, in colors from paintbox bright to basic. It's the season's best at our best prices of the season! Juniors' and misses' sizes.

Does not include entire stock. Where percentage off represents savings on original prices, intermediate markdowns may have been taken.



Granddaughter Honored At Baylor

Deborah Smith Takamura, daughter of Mr. and Mrs. Leo C. Smith Sr., on Sept. 10, Saturday, received an Award of Merit for her achievements since her graduation from Baylor University in Waco.

Mrs. Takamura, 27, received a Bachelor of Arts degree with a major in journalism in December 1977 and a Master's in International Journalism in 1979. She is employed by The Associated Press in New York and edits U.S. and foreign news for newspapers abroad. The AP is the world's largest news agency.

She was one of eight alumni from College of Arts and Sciences to be honored at Baylor's first "Young Graduates' Day". Fourteen others from the schools of education, law, nursing, music and business also were given awards. They are among the 20,000 students who received degrees between 1973 and 1983.

The awards were presented in a morning welcome ceremony that included remarks by Dr. John Belew, Senior Vice Presi-

dent and Provost. A barbecue lunch was held afterward on Founder's Mall. On Friday, Sept. 9, Mrs. Takamura spoke to journalism students about her work with the AP, both in the United States and abroad.

Since May, Mrs. Takamura and her husband, Taketoshi, have been living in New York after several years in Tokyo, Japan. She was an editor in the Tokyo Bureau of The AP. Her husband, a former trading company employee in Tokyo begins graduate studies in International politics at New York Bureau of the leading Japanese newspaper, the Asahi Shimbun.

Mrs. Takamura's father is the advertising manager of Tex Tan Western Leather Co. in Yoakum, and her mother, Barbara, is manager of Corral Factory Outlet. They were present at the award presentation along with their son, Leo Smith Jr. Her grandparents are Mr. and Mrs. J.M. Smith of Eastland and Mrs. Lane Carey and the late Mr. Carey of Cisco.

The Garden Editor

Ted Brice

Located in North Louisiana at Many, Louisiana, is one of the most beautiful public gardens, and it is the nation's largest privately operated parkland and wild life refuge. Hodges Garden combines multi-level formal gardens with natural scenic walks and drives, picnic areas, conservatory, greenhouses and a dramatic monument illustrating the Louisiana Purchase.

In the early 1940's, A.J. Hodges, a pioneer conservationist, began a vast restoration project in Northwest Central Louisiana to restore barren, cut-over land. Mr. Hodges planted 39,000 acres of pine seedlings and created a 4,700 acre experimental arboretum. In this area an abandoned stone quarry was found, Mr. Hodges and his wife recognized its potential and planned a unique scenic garden using the natural rock formations. The gardens were first opened to the public in 1956, and at the death of Mr. and Mrs. Hodges a foundation was established to perpetuate their dream of the "Garden in the Forest."

The gardens offer an ever-changing floral panorama throughout the four seasons. Camellias, Pansies, Anemones, Narcissus and other plants lend their beauty to the winter gardens, and spring brings forth an outpouring of Tulips, cultivated and wild Azaleas and Dogwoods. Summer will feature Roses, Day Lillies, Crepe Myrtle and annuals. Fall is very vivid with Roses, Chrysanthemums, along with the colorful fall foliage and the various berried shrubs. The lovely Conservatory and Greenhouse

feature exotic collections as well as old favorites.

You may see interesting wildlife which include deer, elk and wild turkey, as well as many migratory and native birds along the scenic routes at Hodges Gardens. The Dogwood, red bud and crab apple are fantastic in the spring. One of my favorites is the hanging purple wisteria.

To go through the gardens, allow a full day, and wear comfortable walking shoes. For those who would be more interested in particular plant cultivars, they should allow some additional time to enjoy the magnificent beauty of the particular plants they are interested in.

Hodges Gardens is a photographer's delight with all the various colors and shapes of plants gathered together in one location. When you visit Hodges Gardens there are two things to remember to bring—your camera and comfortable walking shoes.

You will find Hodges Gardens located twelve (12) miles south of Many, Louisiana on U.S. Highway 171, which intersects with I-20 at Shreveport. There is a resort hotel located at the entrance to Hodges Gardens, in order to accommodate overnight visitors. Hodges Gardens can be a wonderful weekend trip, but it should be at least a MUST on your vacation plans. If you desire more information about Hodges Gardens write "The Garden Editor" care of this newspaper. GOOD GARDENING UNTIL NEXT WEEK FROM YOUR GARDEN EDITOR. TED BRICE!!!!!!!!!!!!

Now 2 for \$5

Bath

Orig. 3.99. Soak up savings on our thick and thirsty Bonanza towel. Naturally absorbent, fast drying 100% cotton in an array of fashion pastels to complement your bathroom decor. Mylar* metallic piping adds a touch of golden glow. Give your bathroom a splashy new look, and save 2.50 on the set. Hurry, though! At this low price, these plush terries really are a bonanza!

	Orig.	Now
Hand towel	2.99 ea.	2 for \$4
Wash cloth	1.99 ea.	2 for \$3

Does not include entire stock. Intermediate markdowns may have been taken.

\$2 to \$5 off

Our work clothes work hard for you.

Sale \$15

Reg. \$20. Full-cut Big Mac* bib overalls work over time in cotton-poly Denim Extra* Waist sizes 30 to 46

Sale 7.99

Reg. \$11. Work-team shirt of cotton flannel with handy chest pockets, long tails. Yarn-dyed plaid picks in men's sizes S,M,L,XL.

Sale 7.99

Reg. \$10. No-iron blue chambray shirt of poly/cotton. Rough, tough and ready for the job. Men's sizes S,M,L,XL,XXL.

Sale 10.99

Reg. \$14. These full-cut cotton/polyester industrial jeans are the right work partner for the shirt. Waist sizes 29 to 46 for men.

Sale prices effective through Saturday.



Custom Monogramming

Bowling Shirts

P.E. Cloths

Group Discounts

The Wearhouse

800 N. Seaman

779

629-8141

Jax Electric

Residential - Commercial

New Service Installations; Rewiring, Breaker Panels Moved or Replaced; New Range, Drier, Washer Hookups, etc.

Call Jack Taylor 647-5390

Tc



JCPenney

Cisco, Texas