

**SUBSCRIPTION NOTICE**  
 Most subscriptions to Your Local Newspaper expire in January; check your mailing label now, and renew now by mail or in person at your local office. All expired subscriptions will be removed from the mailing list on January 31.  
 Rates: Rising Star: \$8. in county, \$12. in state, \$18. out of state.

Progress Is—  
 Making  
 Good Things Happen

# THE RISING STAR

Where Three  
 Good Texas Counties  
 Get Together

Rising Star, Texas © 1988 Eastland County Newspaper Co. Established in 1890 Thursday, January 21, 1988 25 cents Number 3

## Branch Bank In Eastland To Have Grand Opening

The First State Bank in Eastland located at 317 East Main, will have its grand opening on Sunday, January 24, from 2 to 4 p.m.

There will be a drawing for door prizes. The officers and directors of the First State Bank of Rising Star invite their

many customers and friends as well as other residents of Eastland County to come join with them in this grand opening celebration.

## Drainage Ditches Graded At Cemetery

A committee for Rising Star Heritage Cemetery Association, working with city and county officials and property owners, has attained its goal of having drainage ditches cut around the north and west sides of Rising Star Cemetery. The work was begun Monday to alleviate the problem of having water stand on the cemetery after heavy rains. The water problem was encountered frequently during the 13 months of heavy rains this area received from May, 1986 through June, 1987.

L.G. Swift and Gene Lyon, both members of the committee, were on hand Monday to help move a fence so the county maintainer, operated by Precinct 3 Eastland County Commissioner, L.T. Owen, would have access to the north side of the cemetery, which is adjacent to the Agnew Estate

property. Drainage ditches along the north and west sides will divert the flow of rainwater to a drainage ditch beside East Pioneer Street.

A lane gives easy access to the west side of the cemetery, which abuts property of the White Estate. The lane was being bladed to improve drainage flow toward East Pioneer.

With the work on drainage ditches being carried out, Rising Star Heritage Cemetery Association has plans to make other improvements, such as adding flagpoles. More information about these improvements will be available at a later date.

Appreciation for the work of the committee, county and city officials and for the cooperation of those handling the Agnew Estate and White Estate was expressed by officers of the association.



Gene Lyon and L.G. Swift move a fence to give a county maintainer access to the north side of Rising Star Cemetery Monday afternoon. Drainage ditches were being cut to cause rainwater to flow around the cemetery rather than stand on it. L.T. Owen, County Commissioner for Precinct 3, operated the maintainer.

## Two Wildcats Picked For All-Area Teams



James Holman and David White, both seniors on the Wildcat football team last fall, were selected to the 1987 All-Area teams. James was named lineman on the second team and David was named quarterback, defensive back and kicker on the first team.

## RSISD Board Meeting

The Rising Star Independent School District Board of Trustees met January 11 at 7 p.m. in the board room. Members present were President Larry Wilson, Vice President Doug Owen, Tony Long, Ronnie Green and Bud Vicars. David Harris and Dr. Charles Barnes were absent.

School personnel present was Dr. Don Bryan. No others were present.

The meeting was called to order by President Wilson and the minutes of the regular meeting on December 14 were read and approved.

The court's statement, Edgewood I.S.D. vs. Kirby, was discussed but no action taken.

The board congratulated Jan Clark for being selected by the State Board of Education to serve on Commission of Education William Kirby's State Advisory Committee. This is a committee of 17 selected from throughout the State of Texas. Superintendent Dr. Donald E. Bryan recommended Mrs. Clark for this appointment. Mrs. Clark will attend her first committee meeting in Austin, January 19 and 20.

Superintendent Dr. Donald E. Bryan presented the names of the Superintendent's Advisory Committee as follows: Mrs. Wanda Williams, Mrs. Kathy Wolf, Mrs. Mary Willis, Mrs. Jo Ann Linney, Mr. Danny Hughes and Mr. Ray Nunnally. The purpose of this committee is to draw feedback information in an advisory capacity from parent and patrons of the RSISD. From this information a continuous program of planning and evaluation will be implemented for measuring the performance of our pupils and the efficiency of our structure and processes. This committee is scheduled

to hold its first meeting January 21 at 11:30 a.m.

A motion by Vicars and seconded by Owen to pay bills as presented by the administrator carried 5-0.

A motion by Owen seconded by Green to extend the contract of Dr. Donald E. Bryan through June 30, 1990, carried 5-0.

A motion by Owen seconded by Vicars to accept the 1986-87 Annual Performance Report as submitted by the administration.

A motion by Wilson seconded by Long to order an election to be held Saturday, May 7, for the purpose of electing two board members of the Board of Trustees for three year terms and one member of the Board of Trustees for a two year term carried 5-0.

A motion by Vicars seconded by Owen to appoint Faye Medley as Election Judge, Eleanor Nunnally as Assistant Election Judge and Kathy Herring as Absentee Election Clerk carried 5-0.

A comparison of revenue to budget and a statement of cash in bank was presented by Superintendent, Dr. Don Bryan. No action was taken.

Dr. Donald E. Bryan presented reimbursement claim to School Lunch and Breakfast Programs along with a Luncheonroom Balance Sheet for the month of December 1987.

A motion by Vicars seconded by Long to accept Doug Owen's resignation carried 4-0.

A motion by Green seconded by Vicars to appoint Gary Wilson to serve until the next regular election, scheduled for May 7, 1988, carried 3-0. Wilson abstained.

A special meeting is scheduled for Monday, January 18, at 7 p.m. to reserve bids on school property insurance and fleet insurance.

Two Rising Star Wildcats were chosen for the 1987 Abilene Reporter-News' All-Area Big 33 team. The sports staff and coaches chose players for the team because of their all-around outstanding playing.

David White was selected for the first team as quarterback, defensive back and kicker. He is a 5-11, 165 lb. senior at Rising Star High School. David rushed 97 times for 627 yards and 10 touchdowns, punted 30 times for a 46.6 average. He had a return yardage average of 4.5 yards. He returned 13 kickoffs for 23.8 average and one touchdown. David has not decided which college he will attend. He is the son of Danny and Debbie White.

Mike Holman was selected as a lineman to the second team. The Rising Star Wildcat is a senior.

## Most Subscriptions to This Newspaper Expire January 1

Most subscriptions to THE RISING STAR expire January 1, 1988. Subscribers are urged to renew their subscriptions soon, so that they will not miss any issues of the newspaper.

The first line on mailing labels gives the expiration date.

Subscription rates are slightly lower than the rate which became effective on January 1, 1987 because the state sales tax has been removed from the sale of newspapers.

Subscribers who get their mail in Rising Star,

Eastland County and within a 30 mile radius of Rising Star may renew for \$8 for one year.

Those who live in other Texas counties may renew for \$12 and those who live out of state may renew for \$18 for a year's subscription.

## More Fires In Dry Weather

## 70 Inches In 13 Months Are Just A Memory

Although Rising Star's rainfall for 1987 was 10 inches short of the total for 1986, it was still considered a wet year. According to records kept by John Cooper, Rising Star received a total of 39.5 inches of rain last year.

The rainfall for January was 9, February 5.5, March 1.3, April 9, May 11.6, June 7.9, July 7, August 4.7, September 3.2, October none, November 1.1 and December 1.6.

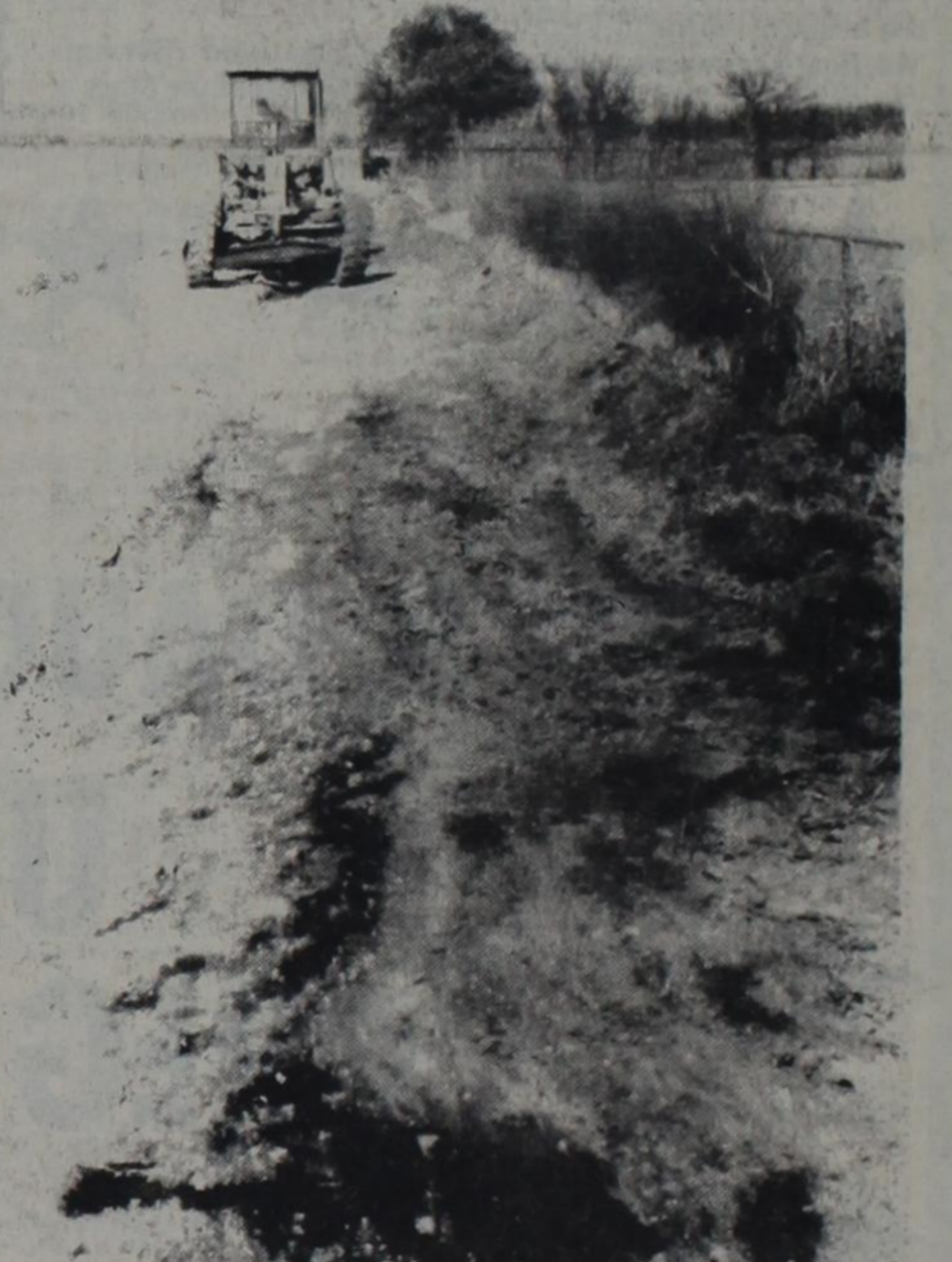
The heavy rains which began May 8, 1986 and continued on and off through June, 1987 amounted to a whopping 70.7 inches for that 13-month period.

However, weeks of high drying winds in June and July and little rain during the past four months have led to very dry conditions. The large amount of foliage produced during the wet months plus the present dry weather contribute to a dangerous

fire hazard. Rising Star Volunteer Fire Department has responded to numerous alarms the past few months. Just recently a 1000 acres of pasture burned in neighboring Callahan County.

Everyone is urged to take extra precautions with any fire or with any work that might spark off a fire as the dry conditions continue to present a fire hazard.

Thanks to John Cooper for sharing his rainfall figures with the newspaper.



## Clark Announces Constable Candidacy

Lynn Clark has authorized this newspaper to announce his candidacy for Constable, Eastland County, Precinct 3, subject to action in the March 8 Democratic Primary.

## Ben Sudderth Is Running For State Education Board

BEN DOYLE SUDDERTH, 55, a resident of Comanche County announced that he will be a candidate

University where she is a candidate for a degree as a registered nurse, in May of this year.

Lynn stated that as Constable of Precinct 3, it would enable him to serve the Precinct as well as the Community of Rising Star.

Your support and vote in the March 8 Primary will be appreciated. A formal statement will be issued at a later date.

for the State Board of Education, District 14 in the March Democratic Primary.

Sudderth has lived in Brown and Comanche Counties all of his life and has practiced Law in Comanche for over 30 years. He served in the State Legislature for 2 terms.

In making his announcement Sudderth said, "Lately the trend has been to increase the costs of operating

Continued back page

## Ambulance Runs

The Rising Star Emergency Medical Service made 13 runs during the month of December. Our volunteer ambulance service operates on donations and all volunteer help and donations are appreciated.

Estelle Hardin from Rising Star to Brownwood, Pope Luncford from Rising Star to Cisco to Abilene, Don Goldman from Rising Star to Cisco to Abilene, Snova Walker from Rising Star to Brownwood.

Nursing Center (RSNC) to Abilene, Dee Hardy from RSNC to Brownwood, Dee Hardy from Brownwood to RSNC, Bill Lewis from Rising Star to Cisco, Floyd Cornett from Abilene to RSNC, Snova Walker from Abilene to RSNC, Elmer Hamby from Brownwood to Cross Plains, Vonnie Ware from Rising Star to Brownwood, Rex Lewis, from May to Brownwood and Gary Robertson from Rising Star to Brownwood.

## Parker Makes Bid For Fourth Term

Jim Parker of De Leon, Comanche County, Texas, has formally announced his bid for re-election as State Representative, District 65, which includes Eastland, Comanche, Brown, Runnels, Coleman and McCulloch Counties, Texas.

Parker, a Democrat, has served three terms in the State Legislature, having been first elected in 1982. Parker is seeking to serve a fourth term and hopes to be named Chairman of the

Continued on back page...

**Dr. Carpenter's Office**  
 Will Be CLOSED  
 All Day Friday,  
 January 29th

**\$2,500.00**  
**REWARD**

Money may be mailed to First State Bank, Rising Star, 76471, to be deposited in the Witt Reward Fund. The account number is 72-360-6. No arrests have been made in the rape/murder case. Era Witt, 87, was found dead in her home on June 7.

Any person with information leading to the arrest and indictment of the person or persons responsible for the crime may call 643-4261 or 643-3421. Information may be given anonymously and arrangements will be made for the payment of the reward.

community calendar...  
 LAST THURSDAY  
 American Legion  
 4th TUESDAY  
 Food Commodities  
 LAST SATURDAY  
 Lakewood Dinner

# Area News Briefs

## CISCO

City Manager Mike Moore told the City Council last Tuesday that he will argue the surcharge placed on Cisco by West Texas Utilities for intervening in a suit against proposed rate increases. Moore said 27 cities in the WTU district were given the surcharge and he would like to make a stand against it. The City Council agreed with Moore and asked him to speak for Cisco. A number of other cities with the surcharge will also appeal this action in the courts.

George Brazell will be the guest speaker at the Chamber of Commerce Banquet on Thursday, Jan. 28 at the Corral Room. The meal will begin at 7 p.m., and will be catered by Oscar's Barbeque. In addition to Brazell's talk, the program will feature a number of awards for community service and one for agriculture. George Brazell has won a number of honors in the fields of education, public speaking, and psychology. He had an outstanding career as a professor of psychology and sociology at Cisco Junior College.

Nine Cisco Junior College students from Eastland County are on the recently released President's List for the fall semester of 1987. These students made a straight "A" record on a 4.0 system. They are: Kyle W. Anderson, Brenda Black, Tracy Jones, Warren Porter and Jana Spangler, all of Cisco. Kendra Lindsey Brown, Jeanna Livingston, and Kevin Wayne Rhodes, all of Eastland. Dennis R. Hagan of Carbon.

The Cisco Junior College Board of Regents has hired two new employees - Jackie Morgan to be the LVN Instructor in Abilene, and Sherral Hoffman to work in the business office in Cisco. The Board also accepted the resignation of Ruth Conner,

LVN Instructor in Abilene. This will become effective on Feb. 12, with Jackie Morgan filling this position.

The Cisco High School Class of 1953 is planning a meeting on Saturday and Sunday, Feb. 27-28 at the Embassy Suites, Highway 183 south of DFW Airport. Those planning to attend must make their own reservations at Embassy Suites, 214-790-0093. Persons making reservations are reminded to ask for the weekend special. Besides the 1953 graduates, other interested classes are invited to attend. Contact Peggy Lane Ober at 817-893-5144 for further information.

## EASTLAND

The First State Bank in Eastland, 317 East Main, will have its Grand Opening on Sunday, Jan. 24 from 2 to 4 p.m. The Bank opened for business in December. There will be a drawing for door prizes at the Grand Opening, with various amounts of cash for savings accounts given away. Officers and Directors of the Bank invite the public to come join with them in this Grand Opening celebration.

A farmers' income tax training workshop will be conducted at the Eastland National Bank Community Room Friday, Jan. 22, from 9 a.m. until 2 p.m., according to DeMarquis Gordon, County Extension Agent. Dr. Ashley Lovell, area Extension Economist, will discuss tax laws and answer questions on tax reporting. Farm records will also be discussed. There will be an hour break at noon, and the workshop will continue in the afternoon. County Agent Gordon invites all interested persons - agricultural producers, their wives, and tax practitioners to attend this educational program.

The Eastland Kiwanis Club will present the Stars of

Gospel Music at the Majestic Theatre on Feb. 20. The program will feature the Crystal River Gospel Group of Lubbock, and the Solid Rock Gospel Group of the Mangum Baptist Church. Tickets in advance at \$5 for adults and \$3 for children, and will be \$1 higher at the door. For your tickets call 629-3407.

Ben Karnes, noted Texas pianist, will present a concert for Eastland Music Club members and "Friends of Music" at the Women's Clubhouse on Saturday, Jan. 23. Dessert will be served at 6:30 p.m., and the program will begin shortly afterward. Karnes, who now lives in Wellington, taught piano in Eastland and Stephens counties from the late 1950 until 1971. After that he taught and performed in Dallas for a number of years. Karnes' program at the Women's Clubhouse will include the music of Jerome Kern and Irving Berlin.

There will be a meeting of the Eastland County Resources Association this Thursday, Jan. 21 at 12 noon at Eastland Memorial

Library. Church and Civic leaders and the general public from throughout the county are urged to come out and participate. This group has been formed to assist with foods, jobs, clothing and other needs of people in this county. The final constitution for the organization will be voted on. Come take part in making this county a place for all.

The Eastland ISD Board of Trustees has moved the site of this year's graduation from Maverick Stadium to the Majestic Theatre. The Baccalaureate Services will be held in the High School Auditorium.

## BAIRD

The Baird Chamber of Commerce has elected new officers for 1988. They are Belinda Davis, President, (succeeding Larry Nehring), Karen Shelnut as Vice President, and Diane Bell the Secretary. The Chamber is planning the traditional Sweetheart Banquet on Feb. 13, and the Directors will be selling tickets for this event during the next few weeks.

New residents of the Baird Nursing Home are Virgil Brown of Putnam and Mrs. Mary Wood of Cisco. Mrs. Wood and Velda Yarbrough of the Home are sisters. These new residents would enjoy having friends from

their communities drop by to see them.

## RANGER

Mayor David Rogers has announced that it appears that all applicants presently qualifying for housing rehabilitation will get some improvements to their homes from the 1987 program. At the beginning of the program it was not thought that all applicants could be served, but several things have changed this. Economical construction prices and cooperation of the clients and contractors has led to more work being completed than earlier believed possible. Homes with the most urgent needs related to health and safety or deterioration are the only ones which qualify. Clients on the lower end of the qualifying list typically have the better homes.

Marilyn Henderson, a teacher of the Social Studies at Ranger High School, is one of 300 teachers from across the state nominated for a Texas Excellence Award for outstanding High School teacher. Ten representatives, who will be announced in March, will receive \$1,000 checks. The Awards are sponsored by the University of Texas Extension Association and UT College of Education. They

## Older Texans Should Take Care In Supplement Medicare Policies

Older Texans should exercise great care before deciding to replace one Medicare supplement policy with another. Some agents will urge prospective customers to cancel their existing policies and purchase new ones the agents tout as superior.

recognize creative teachers who make a special effort to prepare their students for higher education.

The Ranger Garden Club will hold an Arbor Day Observance on Thursday, Jan. 21 at 2 p.m. at the Ranger school grounds. Last year an apple tree was planted in front of the Superintendent's office, and this year a second apple tree will be planted nearby. The public is invited to attend.

The Ranger PTO will host a reception for Glynn Allen Wilson, the new Elementary School Principal, in the School Cafeteria on Sunday, Jan. 24 from 2-4 p.m. Mr. Wilson began his work in Ranger on Jan. 4. The public is cordially invited to come out and meet this new school administrator.

for coverage of pre-existing conditions.)

Should you decide to purchase a replacement Medicare supplement policy, State Board of Insurance rules require the company or agent to give you a special notice. The notice warns you that the new policy may not cover pre-existing conditions that are fully covered by your present policy. If you buy from an agent, he or she must obtain your signed acknowledgement that you received the notice.

The State Board of Insurance has a toll-free telephone line that consumers may call with their insurance questions. The number is 1-800-252-3439.

Thursday, January 21, 1988

## TREE PRUNING TIME IS NOW

For Professional Care of your Long Term Investments as well as Landscaping & Lawn Care, Call Ivan's Tree & Lawn Service. Degreed in Horticulture. 10 Years Experience

817-442-4881

## ROGER'S REPAIR SERVICE

Sewing Machine, Vacuum Cleaner, Automatic Washer & Dryer Repair.

Also Sell Parts.

Call 647-3187 in Ranger. crrsb 13

## CAMBRIDGE COUNSELOR

UNPARALLELED WEIGHT LOSS - LIFETIME NUTRITION - PERSONALIZED COUNSELING

Ralph and Kathy Stevens

416 S. Dixie

Eastland, Texas 76448

629-1187

## Diet Center

The weight-loss professionals.

For Over 17 Years

Lose 17-25 Lbs. in Only 6 WEEKS

FREE WEEK

when you join for 6 weeks

\$10.00 OFF a 2 Week Program.

629-8361

705 W. Main

Eastland

crrsb-9



Draperies

In-House Beauty

Just Call or Come By

1706 W. Commerce (Hwy. 80 West) Eastland (817)629-1319

# U-SAVE PHARMACY

201 S. DAUGHERTY

629-1166

UNDER NEW MANAGEMENT

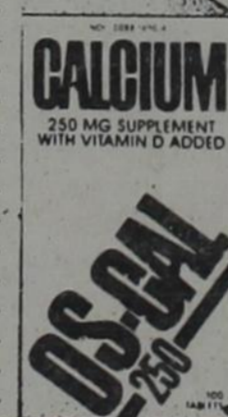
GREG BENNETT R.PH. PHARMACIST

**SUPER SPECIALS!!!**



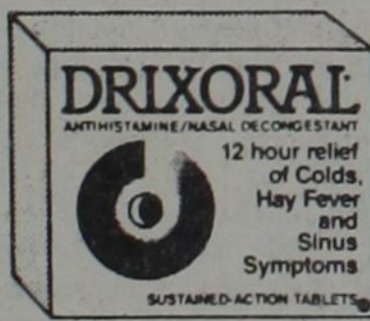
Doxidan 100's

Regular \$11.25  
SALE \$9.00



OSCAL 250 mg. 100's

Regular \$6.65  
SALE \$5.32



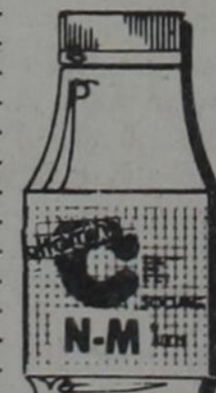
Drixoral 10's

Regular \$3.32  
SALE \$2.65



Gaviscon 100's

Regular \$7.43  
SALE \$5.94



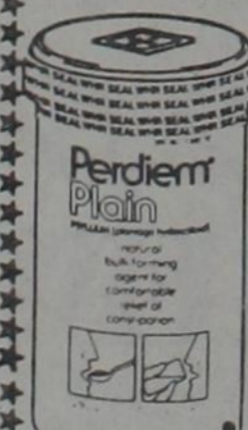
N-M Vitamin C no. 1485

500 mg. 100's  
Regular \$2.41  
SALE \$1.50



Cepastat Lozenges 18's

regular \$2.61  
SALE \$1.79



Perdiem 250grams

Regular \$11.38  
SALE \$6.99



N-M Vitamin E no. 1160

400 iu 100's  
Regular \$4.51  
SALE \$3.49

# Fishing Outdoors

By Terry Wilson

Area anglers meet at Lake Graham for a lovely January days fishing. Contestants stated that the fishing was excellent, but the catching was the hard part.

Only two anglers were able to bring in a 14 1/4 or longer fish. Ron McCullough took the first place honors and big bass with 1 fish. Will Johnson placed second with 1 fish also. We understand there were only 2 other fish caught, but both fell short of the 14 1/4 minimum.

Unfortunately, the chances of the two fish which were weighed in of surviving were not good. These fish were released, but were not chemically treated to help reduce the chance of infection. Studies have shown that fish which are released but not treated will contract bacterial infection. In 1987 a by-law was introduced to treat each days catch at every tournament. E.C.B.C. officials did treat fish in two tournaments, but did not continue this resource-saving practice. These fish can be helped in their release by these treatments. Hopefully these gentlemen will recognize that the fish they destroy are the future of fishing for themselves and all outdoors-minded persons. Remind your E.C.B.C. member that you love fishing, too, next time you see them. Or you may contact E.C.B.C. President Mr. Eddie Green with your comments. Lets shoot for a true live release!

The hunt is on; that's the hunt for the new Texas

state record and possibly a world record. Many anglers will be seeking the depths for those lunkers. February, March and April are the months when dedicated haw hunters put on layer after layer of clothing in hopes of catching that once in a lifetime lunker.

Popular early areas to look are feeder creeks protected from most winds but open to warming sunshine; north banks; northeast shorelines are perhaps the favorite. To take the northeast shoreline one step better, look for one with some rocks to absorb and hold heat. But not so many as to discourage spawning rituals. One note on the feeder creeks: if fresh rains early in the year fall, bypass these areas, unless the rain is an unusually warm one.

Some favorite baits I prefer are: jig and pork; lizards rigged Texas style; large crankbaits worked slow; spinner baits with pork trails worked like a worm-reel, let it fall, reel, let it fall. During this early period, you can work a bait wrong as long as you work it slow.

Next cast we will have the pleasure of introducing some of you to a truly conversationally minded organization designed for all anglers of all species - Black Bass Unlimited. But don't let the name fool you, these gentlemen are fighting for every species that swims. And most of all, for everyone who enjoys our great outdoors.

By Terry L. Wilson

# Wedding Bells



Deloryce and Don Taft were married at 3 p.m. December 19, 1987, at the Church of God in Eastland. The bride is the daughter of Kathy Smith of Eastland. The bridegroom is the son of Patty Taft.

Melanie Richerson was the maid of honor. John Sanders was the best man. The bride was given in marriage by William Isbell. A reception was held following the ceremony hosted by Ruby and Paul Sanders.



Dr. C. Everett Koop

## Cancer: Do You Know The Facts?

As the Surgeon General of the United States, I know the facts about cancer. If you are over 50, as I am, you should KNOW THE FACTS, too.

For a FREE publication, "CANCER FACTS FOR PEOPLE OVER 50", call the Cancer Information Service.

Call toll-free today! 1-800-4-CANCER\*

CANCER INFORMATION SERVICE 1-800-4-CANCER

\*In Hawaii, call 808-524-1234

In Alaska, call 1-800-638-6070

In Washington, D.C., call 202-636-5700

# 4-H NEWS

By Crystal Wilbanks, County Agent

The Ft. Worth Southwestern Exposition and Livestock Show and Rodeo is scheduled to begin this week. Eastland County 4-H members participating in the show include: Beef Heifers-LaDawn Little, Toby Long, Garrett Gerhardt, Kerstin Gerhardt, Brian Bailey, Albany Sargent, Market Steers-April Moylan, Ben Coan, Brian Bailey, Market Swine-Eric McDonald, Amanda Cearley, LaDawn Little, Market Wether Goat-Jessica Keith, Jeremy Keith, Market Lamb-Amanda Cearley. Good Luck to each of you!

last until 3:00 p.m. Lunch is \$3.75 and optional to participants. All parents and leaders are invited to attend. Registration must be sent in on or before February 1, 1988.

## Eastland Kiwanis Club To Present The Stars Of Gospel Music

The Eastland Kiwanis Club will present The Stars of Gospel Music at the Majestic Theatre on February 20 featuring The Crystal River Gospel Group of Lubbock and The Solid Rock Gospel Group from Mangum Baptist Church.

The proceeds will go to Special Olympics Children Youth Programs in Eastland County.

Tickets in advance are \$5.00 for adults and \$3.00 for children. Tickets will be \$1 higher at the door. For tickets call 629-3407.

Thursday, January 21, 1988

**FOR SALE**  
COMMERCIAL, INDUSTRIAL or  
RETAIL BUILDING SITE IN POGUE  
PARK, EASTLAND, TX.  
\$1,000 down, \$100. month.  
WRITE: Building Site, Box 29,  
Eastland, TX 76448

## The Next Best Thing -

.....to a clear conscience and a good night's sleep is the feeling of security in owning your own home with a clear title. Peculiar to the real estate field, values are based on land and the improvements thereon, if any. But values on these are based on the title. The title then becomes the most important item to be considered when purchase of real property is contemplated. So be careful to buy good title based on an abstract of title or a policy of title insurance.

## Eastland County Abstract Company

Eastland, Texas

817-629-1077



Tommy Maynard E.C.B.C. Angler of the Year Chuck Burgess E.C.B.C. High Point Angler.



1987 T.A.B.C. TOP SIX TEAM Front Row (l-r) Tommy Maynard, Steve Pennington. Back Row (l-r) Terry Wilson, Chuck Burgess, James Fullen, not pictured Jim Williamson.

**Breeding Age**  
**Reg. Brangus Bulls**  
442-3369 cer 12  
rb6

**TRAVELING IS EASY**  
When We Do The Planning  
**BEATY/TALLEY TRAVEL**  
A Full Service Agency  
Maynard Bldg., Suite 1A  
Eastland 817-629-8504

**EXPRESS PHOTO**  
One-Hour Photo Finishing  
**ONE HOUR**  
Same Day Service  
601 W. Main - Eastland  
629-3631  
Enlargements - Pass-Port Photos - I.D. Photos -  
U.P.S. Copy Work  
Drop Station  
**WESTERN UNION**

# Majestic Theatre To Present "The Princess Bride"

Looking for something different? Welcome to "The Princess Bride," a comic fairy tale of true love and high adventure. Acclaimed screenwriter William Goldman ("Butch Cassidy and the Sundance Kid") adapts his own novel about a little boy whose grandfather reads to him from the pages of "The Princess Bride." The boy's imagination brings to life this tale of fencing, fighting, torture, revenge, giants, monsters, chases, escapes, true love and - have we left anything out? - oh, yes, miracles. The story is an old-fashioned fairy tale filtered through a hip, cynical consciousness. The screenplay asks you to believe in the integrity of true love, and in the next breath, to snicker at the earnestness of the young lovers.

It begins with a very contemporary boy, bedridden with the flu, who's perplexed when his cheek-pinching grandfather arrives with that most antiquated form of entertainment - a book. At first the kid is impatient, but he eventually gets hooked on the fairy tale - as do the viewers. The luscious Princess Buttercup is deeply in love with the gallant farm boy, Westley. Westley, in turn, is kidnapped by pirates and presumed dead. Against her will, Princess Buttercup is betrothed to Prince Humperdinck, a handsome and evil sort. However, the princess bride is kidnapped by three very hapless abductors. A mysterious figure comes to her rescue and so on. It doesn't matter, it's wonderful. Playing assorted kindap-

pers, wizards, noblemen, and scoundrels are a remarkably colorful group of actors. Cary Elwes, who appeared in the historical drama "Lady Jane," plays the dashing Westley and newcomer Robin Wright is Buttercup. The director is not, as one might expect, a British veteran of the stage and BBC, but Rob Reiner, who keeps getting better and better as a director. Reiner brings a superb sense of balance to this film. There are scenes that are almost as good as anything from the golden age of movie swashbucklers. And there moments that are genuinely funny.

Feature times: Friday, Saturday, and Sunday 7:30 p.m. All seats are \$2.50. It's rated PG for mild violence.

**The Kincaid Co.**  
100 South Seaman Eastland, Texas 76448  
**629-1781** AUBREY KINCAID 629-1804  
GUY KINCAID 629-1352  
629-8709

ATTENTION

All brick, 3 bedroom, 2 bath, approx. 2300 sq. ft. Huge family room with fire place. Big screened in back porch with many ceiling fans through out house. Central H/A. Asking \$55,000.00, will trade for livestock, other real property, Make offer...

5 acres with pecan trees and some fruit. Intersects Patterson and Halbryan.

500 acres, with homesites everywhere. Ranch House - remodeled C/A two wood burning fireplaces, four bedrooms, 2 baths. Bunkhouse, 2 huge barns, could be converted into stables or cow barns quite easily. Garage, several large tanks stocked with a variety of hybrid fish. Live oak and post oak everywhere. Plenty of deer and turkeys for everyone. Will trade all or part of it. Owner finance.

56 acres 3 miles west of Morton Valley on Hwy. 69, 2 stock tanks, excellent hunting, improved grasses. Good building site. Flexible terms. Will Texas Vet.

COMMERCIAL

I-20 2.5 acres with office building, completely fenced. Excellent yard for oil company \$25,000.00

**Town & Country REAL ESTATE**  
Barbara Love, Inc. Highway 80 East  
Broker Eastland, Texas 76448  
629-1725 629-8391

**EASTLAND**  
UNIQUE 2 STORY 3 BATH home in preferred neighborhood. One yd. older's warranty E5 LOTS AVAILABLE \$2150. \$750 down. Owner financing. E14  
GREAT FOR YOUNG FAMILY OR RETIREE! 14x56 mobile home with 2 BR, 1 bath, cen. H/A, kitchen appliances & washer/dryer. Fenced yard. E17  
THIS IS IT! Beautifully landscaped, 3 BR, 2 bath with many extras, approx. 2500 sq. ft. Swimming pool, satellite, sprinkler system. CALL TODAY! E19  
LARGE FAMILY NEEDED TO ENJOY this 1 year-old 4 BR, 2 1/2 bath home in Eastland's newest addition. Storage for Mom, workshop for Dad, plenty of space for the kids. E20  
PRICED REDUCED on this neat 2 BR, 1 bath frame home with fenced yard, 25'x40' steel building. SEE THIS ONE TODAY! E22  
I'M COZY I'M COOL! Energy efficient 3 BR, 1 1/2 bath, brick home priced right. See Me Now! E23  
PRETTY AS A PICTURE! This quality home has it all - prestige location, 3 bedrooms, 2 baths, formal dining, large living room, hot tub, in-ground swimming pool, MORE!! LOCATION! Hillcrest Addition. 3 BR, 2 bath home with 2 living areas, fireplace, on large wooded site. SEE IT TODAY! E27  
PRETTY LOT! 2 BR, 1 bath cottage set among large oak trees. New carpet. OWNER FINANCE! E28  
CLOSE TO SCHOOLS - Perfect for small family, 3 BR, 2 bath, WB fireplace, ceiling fans, beautiful trees. Reasonably priced! E29  
UNUSUAL OPPORTUNITY to own a large 3 BR, 2 bath home for under \$30,000.00! CALL US! E32  
SPACIOUS 3 BR, 1 1/2 bath frame home on large lot. Nice location, beautiful, large trees. E21  
REMODELLED - Neat 3 BR, 1 1/2 bath frame home. New wiring, replumbed, new kitchen. ONLY \$25,000.00! SEE THIS ONE TODAY! E10  
E.Z. TO BUY! Cozy 2 BR bungalow. Nice neighborhood. Low down to qualified buyer. E41  
COUNTRY LIVING IN TOWN! Nearly new large custom home. Heat pump, rock fireplace, office. Beautiful oak covered lot. E23  
ALL THE THINGS YOU WANT! Lovely 3 BR brick home with guest house. Beautifully landscaped lot, privacy fenced. E15  
PERFECT FOR INVESTOR OR COUPLE! 1 BR, 1 bath, quiet area. PRICED TO SELL! E3  
NEED TO BUILD! Lot in prime location, near schools, great neighborhood! E4  
"DOLL HOUSE" - perfectly remodeled 2 BR home with warm, homey atmosphere. Beautiful country kitchen, more. E32

SMALL EQUITY & ASSUME. Nicely remodeled 3 BR, Cen. H/A. Large extra lot, workshop, garage. E18  
VACANT LOT - COMMERCIAL AREA, near downtown. Frontage on N. Lamar, access from Patterson St. Owner will finance. E20  
LOOK! AFFORDABLE BRICK HOME! 7 yrs. old, 3 BR, 2 bath, cen. H/A. Covered patio & fenced yard. E31  
QUIET CUL-DE-SAC - Lovely 3 BR, 2 bath, brick home in desirable neighborhood. Beautiful oak trees. Assumption of new loan. E35  
SMALL HOME - SMALL PRICE! This cozy 3 BR has freshly painted exterior, new fence, and it's REASONABLY PRICED! E10  
ON A BUDGET? PRICED REDUCED on this affordable 2 BR, 1 bath home - lg. living area, gar. (carport). E25  
LOOKING FOR QUALITY! 3 BR, 1 1/2 bath spacious custom brick home in prime location, wooded lot. Many features! E1  
CHOOSING? Then see this well maintained 2 BR older home with Cen. H/A, some remodeling. Nice lot, large trees. E8  
PICTURE PERFECT! Beautiful large oaks frame this immaculate 4 yr. old 3 BR, 1 1/2 bath home on large lot. SEE IT TODAY! E24

**OTHER**

LAKE LEON - BEAUTIFUL PLACE for year-round lakefront living! Almost new 2 BR, 2 bath home, many amenities. Dock, deeded lot, deep water. O18  
RANGER - LOW DOWN, EXCELLENT FINANCING for qualified buyer! 2 1/2 yr. old 2 BR, 1 1/2 bath home. Cen. H/A, large corner lot. LET US SHOW YOU! O9  
CARBON - 2 BR home near school. Large tree shaded corner lot. O3  
MINGUS - 2 story, lots of living area. 3 BR, 2 bath on large lot MUST SEE! O12  
LAKE LEON - Near Country Club! Beautiful wooded waterfront lot with furnished cabin, 1 blk. off pavement. O14  
CARBON-2 LOTS, all utilities, ready for mobile home. Lawn, fruit & per. SOLD, util. bldg. & shop, fenced. O25

**ACREAGE**

28.15 Acres on old Highway 80 West. Close to Cisco. A12  
50.6 Acres 3 1/2 miles NW of Eastland. Scattered trees, on Leon River. A13  
PRICE REDUCED on 75.5 ACRES, OLDEN - Only \$550.00 per acre! Beautiful building site. A4  
50 ACRES - HWY. FRONTAGE, good sandy soil, coastal, timber, water, minerals. Deer & turkey. Mobile home pad with utilities, or bldg. site. A11

LANDOWNER'S DREAM! 630 ACRES at Caddo Scenic, stocked tanks, 2 creeks. New fences, corrals, living quarters. Improved pasture, GREAT HUNTING! Producing well. Owner finance. A18  
319 acres 2 mi. S. of I-20. Good tanks, coastal, native pasture, some minerals. WILL DIVIDE. A9  
62 AC. SO. OF RANGER - Approx. 18 ac. wooded, deer, turkey, quail, bal. cult. Barn, corral, stock tank, minerals. A1  
239 ACRES REDUCED TO SELL! Some coastal, brush, pasture, 3 tanks. Turkey, deer & minerals. A17  
40 ACRES W. GOR. SOLD, water wells, peanut quota. A1  
80 ACRES W. SOLD, cult., pasture, bottom land. A10  
5.29 ACRES, 2 MI FROM DOWNTOWN EASTLAND, beautifully wooded hilltop view, perfect for building, city water. A11  
1/4 ACRE HOMESITE at edge of Eastland. Oak trees, city utilities available. A2

**COMMERCIAL**

SUPER COMMERCIAL LOCATION! N. Seaman near downtown. Corner lot with small building, and vacant lot. Shop, office or business. C10  
PRIME COMMERCIAL PROPERTY - Main Street, near downtown. Large corner lot, old building. C9  
LOOK! EXCELLENT COMMERCIAL PROPERTY! 125 ft. frontage on access road at I-20 exit with 2500 sq. ft. metal building. Inventory optional. C1

HAZEL UNDERWOOD 629-1188 BARBARA BOSTICK 617-1397 BARBARA LOVE 629-8227 CINDY FOSTER 629-8227

# CLASSIFIEDS

643-4141  
Thursday, January 21, 1988

# THE RISING STAR

## FOR SALE

**WRANGLER ROPERS** for children in brown, gray, taupe, red & blue. Infant sizes \$22.99; 8 1/2-3, \$32.99; 3 1/2-6, \$37.99. Johnson's Dry Goods, Cross Plains 3

**MEN'S & LADIES'** Justin Ropers, \$74.99. Johnson's Dry Goods, Cross Plains 3

**FOR SALE--** Australian Shepherd puppies. Call 915-662-3414. RS3

**FOR SALE--** Airstream Travel Trailer, 31 ft., rear bedroom, center bath, 1975 model, real clean. J. W. Sitton, 442-2530, 1101 W. 14th St., Cisco. RS25

**MESQUITE WOOD** for sale. Delivered anywhere local \$65 a cord, you pick it up \$40 a cord. 259-3009 or 259-2903.

**FOR SALE:** New Casio 180ER Electronic Cash Register. Eight Totals, four counters. With tape printer and built-in tax program. See at Eastland Telegram. Many features. T104

**FOR SALE:** Portable Dressmaker Sewing Machine. Like new. Buttonhole dial. \$200. See at Eastland Telegram. TF

## GARAGE SALES

**GARAGE SALE** Trails West building. New jeans to size 50 \$4, dress pants \$5, sweaters, coats, clothes of all types & sizes, misc. household items, new boots at cost sizes to 13. Mon. & Tues. each week rs46

## OPPORTUNITIES

**OWN YOUR OWN** apparel or shoe store, choose from: jeans/sportswear, ladies, men's, children/maternity, large sizes, petite, dancewear/aerobic, bridal, lingerie or accessories store. Add color analysis. Brand names: Liz Claiborne, Healthtex, Chaus, Leo, St Michele, Forenza, Bugle Boy, Levi, Camp Beverly Hills, Organically Grown, Lucia, over 2000 others. OR \$13.99 one price designer, multi tier pricing discount or family shoe store. Retail prices unbelievable for top quality shoes normally priced from 19 to \$60. Over 250 brands 2600 styles. \$17,900 to \$29,900: inventory, training, fixtures, airfare, grand opening, etc. Can open 15 days. Mr. Keenan (305) 366 8606.

## LIVESTOCK

**FOR SALE: BRANGUS BULLS.** Call 647-1155 or 647-1182 in Ranger. recrsb104

## RED BRANGUS BULLS FOR SALE

OAKWAY FARMS Rt. 1, Box 321C Contact Cameron, Tex. (817) 697-4551 (817) 697-4485

## Brownwood Livestock Auction

The market Jan. 13 was \$50 higher on good heavy bred cows and pairs, slaughter cattle steady with last week, stocker calves \$2 higher, feeder yearlings \$2 higher. Estimated receipts, 1420 head. Representative sales: Jamie & Jennifer Smith, Zephyr, Bra bull, 1535 lbs, \$64.75; Diane Brown, May, yellow cow, 995, 58; Betty Keeler, Zephyr, roan hf, 235, 93; Torry Brandt, Sena Anna,

## FOR RENT

FmHA non-discrimination APARTMENT FOR RENT. 817-842-5294. rs52

Public Housing Authority has apartments for rent for senior citizens. Equal housing opportunity. 817-643-3812 or 643-6791. RISING STAR

FOR RENT 3 BR brick house, 1 1/2 bath, clean. Available Feb. 8. Call 643-2817; after 5, 643-3241. 3-6

## HOMES

**SELLING YOUR HOME OR BUYING?** Call Stella Ware, 643-3591, your local real estate agent for Action Realty, Brownwood, James Smith, broker. 26-52

## SERVICES

### DUGGAN CONSTRUCTION

For Remodeling, Repairing or New Construction, call GARRY at 643-1209 in Rising Star 52

### FAST DEPENDABLE

Film Developing PALACE DRUG STORE 643-3231 Rising Star

Bring your TV, radio, stereo, small appliances to DAD'S DOO-DADS & REPAIR SHOP at 300 S. Graves, off Hy.36, Rising Star. New & used merchandise. Shop work only. 817 643-5909

**RISING STAR EXXON** 643-3130 Tires Batteries All types of tire repair 21-52

**WILLIE VANDIVERE TRUCKING** Dirt, Caliche Hauling Build Lease Roads, Driveways, etc. 9-5 Call 643-2023 After 5 Call 643-6451

**OLIVER WEST, PUMP SALES & SERVICE** 817-643-4683 Rising Star, Texas Complete systems sold & serviced 2 1/2 miles south of town

## AUCTIONS

**CISCO HORSE AUCTION** sale every other Saturday. Next sale January 23. Prior to regular sale these items will be sold starting at 10:30 a.m. Horse walker, flat bed trailer 16 ft., hay feeders, feed buckets, water tubs, round bale hay feeder, horse buggy, tool box, saddle racks, used tack and saddles, leather sewing machine, office equipment, outside lights, polo balls and malets, wheel barrows and more. Alfred Green, 1-817-442-2304.

## REAL ESTATE

320 A. most all Kline grass, excellent fences, 1 mi. of creek, big tank, 2 mi. road frontage. \$500 a.

80 A. all timber at Sipe Springs, pavement frontage, excellent deer, good tank. \$600 ac. 15% down.

200A. Sipe Springs, 150 grain land balance timber, excellent deer hunting. 2 BR 1 bath frame house. \$550 ac. 15% down.

3 BR 1 bath rock house, 2 lots, on N. Main, has attached double garage. \$25,000

145 A. SW of Rising Star. Steel corral, excellent fences, 75 coastal & Ermelo, fine hunting, 1/2 off pavement, low taxes. \$550 a. 1/4 down.

240 A-May area, pavement, fair house, well fenced, lots liveoak, small creek, excellent deer area, some tillable, \$550 A.

161 A. Lots bottom land, pecans, 60 tillable, well fenced, 1/2 mile Sabanna, good deer hunting; lots big oak, pecans. \$550 A. Agent owned.

34 Yrs. in Business Listings appreciated. **COGBURN REALTY** 893-6666 893-5898 893-2642 DE LEON

**ACTION REALTY** WE NEED LISTINGS!!! Equal Housing Opportunity 915-643-6516 Rising Star

3 BR 2 B, DOUBLE WIDE, carpeted, ceiling fans, lots of space, porches, carport, fruit and shade trees galore. Priced to sell.

NEAT 3 BR, 1 B in quiet neighborhood. Carpeted, garage, water well. Lots more! Call Stella today. MOVE IN TODAY! 2 BR, 2 B, carpet, 2 car garage. Owner finance available.

FIX IT UP 2 story, corner lot, big yard, close to town. CLOSE TO PARK, 2 BR, 1 B, metal roof some appliances. Priced below appraised value.

HUNTER'S DREAM 50 acres, some pasture, mostly brush, well, tank private road. Deer.

1ST TIME ON market!!! 2 BR 1 b rock home, double carport, wash house, storage shed, fenced yd. Comes with 2 BR 2 b mobile home, all on 2.8 acres. Call today.

2 BR 2 b, carpeted, fireplace, large pecan trees. Price reduced to sell. Call Stella!!! James Smith broker 646-0297

IN RISING STAR **STELLA WARE** 643-3591

40 ACRES with fair home, large oak trees, good well, tank fish, coastal Bermuda. Texas Vets welcome. Farm, ranches of most any size. Extra good Texas Vet tracts. Leland Nabors, broker, DeLeon, 817-893-2371. Several good trailers for sale. 42-52

## SERVICES

**JIM RATLIFF WELDING** Oilfield and Farm 817-643-6464 Rising Star

**BUDDY COOK** Residential, Commercial Refrigeration & Plumbing 817-643-7312 Rising Star rs-102

**PARTS PARTS PARTS** SEE US FOR YOUR JOHN DEERE, LILLISTON & KMC REPAIR PARTS WE NOW STOCK BLUE-CAT Round Baler Twine ADAMS Plow Shares & BALDANDisc Blades. (817) 893-2061 DeLeon (915) 356-3922 Comanche **CLARK TRACTOR & SUPPLY, INC.**

**SELL or TRADE** New John Deere Tractors & Equipment Used Tractors & Equipment KMC & Lilliston Farm Equipment No Till Drill For Lease Pickup & Delivery Part & Service **CLARK TRACTOR & SUPPLY, INC.** (817) 893-2061 in DeLeon (915) 356-3922 in Comanche Where Your Business Is Appreciated

## AUTOS

**FOR SALE - 78 Ford Courier** pickup. Call or come by 110 East Ross, 643-3051, Gary Wilson

## PERSONALS

**ALCOHOL OR DRUG** problem, come meet with us, Sunday 8 p.m., at the American Legion Hall, AA & NA. For more information call 643-3421 or 643-3310. 2-5

In an **EMERGENCY** call 643-3001

**THE RISING STAR** 817-643-4141 Rising Star, Tex 76471 101 N. Main St. © 1988 Eastland County Newspaper, Inc. Publication No. (USPS 466500) Second Class Postage paid at Rising Star, Texas, under Act of Congress in March, 1870. Published every Thursday. Publishers, Mr. and Mrs. H.V. O'Brien Subscription Rates Per Year: Eastland County and 30 ml. radius of Rising Star, \$8; other Texas counties, \$12; out of Texas, \$18 No out of U.S. without APO. POSTMASTER: Send address changes to The Rising Star, Box 127, Rising Star, TX 76471.

## THANK YOU

We would like to take this opportunity to say to you, our friends, neighbors and relatives, a very warm thank you!

My surgery has been so much easier because of all your prayers, visits, calls, cards, flowers, gifts and food. It is a blessing to live in a community with such caring people.

Thanks again and may God richly bless each of you. Naomi & Robert Burns & Family

After being confined 4 1/2 months in the hospital and nursing home, I am happy to report I am at home. I don't have words to express my ap-

preciation to my many friends, relatives and neighbors who have shown your concern by remembering to send me cards, letters, gifts and flowers and your prayers, which helped me so much. Thank you and God bless you all. Irene McKinnerney

We would like to express our sincere thanks to all our friends at the passing of our loved one, Lane B. Wells. We appreciate all the prayers, flowers, food, cards, visits, memorial gifts and other acts of kindness shown to us at this time of sorrow.

A special thanks to Charles and Nelda Rutehrford who were with Daddy until the end. Thanks to the First Baptist Church, Bro. Dick Williams and Bro. Ed Jackson, to Pat Walker and all members of the choir. A special thanks to Mrs. JoAnn Rust of Cisco for singing a very special song so dear to Don and me. Thanks to Gene and Reba Lyon of Higginbotham Funeral Home and to all who assisted in any way. May God bless each and everyone of you. Don & Avelon Wende

I would like to thank the May Community for purchasing my swine at the Brownwood Youth Fair. Tracy Smith

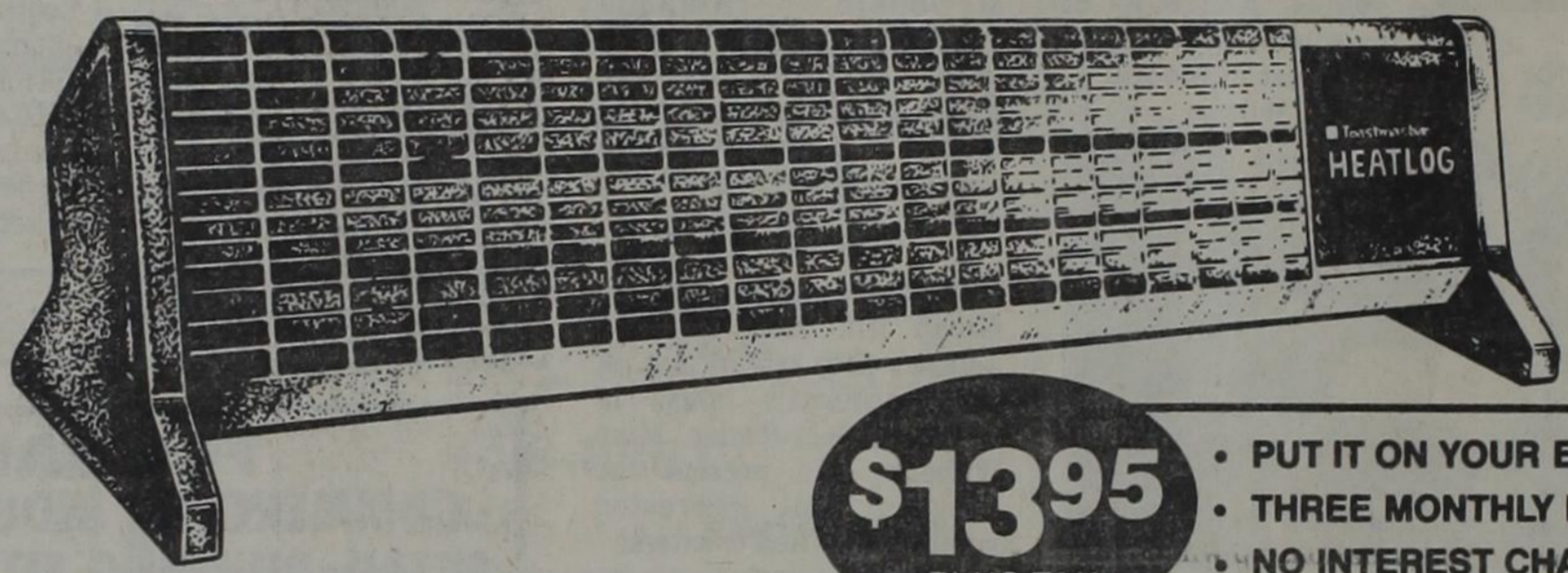
**Pay CITY Taxes** at Rising Star Police Station on Wednesdays and Thursdays, 8-5

**SCORE Rep. Will Be In Brownwood**

On Thursday, January 21, 1988, Cullin Perry and C.B. Maness, SCORE representatives of the Small Business Administration, will headquarter at the Chamber of Commerce in Brownwood. They will be available to discuss programs of the Small Business Administration. Meetings will be by appointment only. Appointments may be made by calling 915-646-9535.

**Re-Elect GENE HICKS** Constable, Eastland County Prec. 3 Vote March 8 Primary Election, City Hall Political ad pd. by Gene Hicks, subject to Democratic Party.

# A GREAT DEAL ON A SAFE BUY!



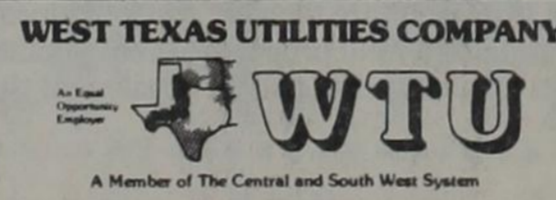
**\$1395** PLUS TAX

- PUT IT ON YOUR ELECTRIC BILL
- THREE MONTHLY PAYMENTS
- NO INTEREST CHARGES

## PORTABLE ELECTRIC HEATERS

You won't find a better bargain than this. This attractive 25-inch Heatlog™ by Toastmaster® is the safe, convenient way to warm up cold spots. Weighing only four pounds, it fits into out-of-the-way places and plugs into any 110-volt outlet. This durable heater has a simulated pecan woodgrain case and grill.

Unlike kerosene heaters, this electric heater eliminates the danger of flammable liquids, odors and fumes. It meets the high safety standards set by Underwriters Laboratories (UL). And, should the heater be accidentally knocked over, it will automatically turn itself off.



PICK IT UP AT ANY WTU OFFICE ... OR ...

IF MORE CONVENIENT, ORDER BY MAIL

Please send me \_\_\_\_\_ portable electric heater(s). (number)

NAME \_\_\_\_\_

ADDRESS \_\_\_\_\_ CITY \_\_\_\_\_

STATE \_\_\_\_\_ ZIP \_\_\_\_\_

- \_\_\_ I agree to pay \$13.95 plus tax.
- \_\_\_ I want to put this on my electric bill and pay for it in three monthly installments.
- \_\_\_ I want to put this on my electric bill and pay for it in one installment.

I understand I am *not* paying any interest or carrying charges.

Signed \_\_\_\_\_

MAIL TO: West Texas Utilities Company P.O. Box 841 Abilene, Texas 79604 Attn: Bill Baxter

Need things fixed up around the house? or wooden furniture made or repaired? Call Joe Campbell, CAMPBELL'S CABINET SHOP, (817) 842-5875 Rt. 5 Box 107B, Comanche, TX 76442 If no answer call (817) 643-2251.

REBUILD ENGINES Aluminum Welding AUTO TRANSMISSION **JAKE'S SHOP** GENERAL MECHANICAL & WELDING FABRICATION Body Work & Painting OWNER JAKE LANDESS 817-643-3031 404 N. MAIN RISING STAR, TX rs52

**Main Street Auto Repair** Open Monday - Friday 8 - 5 P.M. Jackie Palmore - Mechanic 643-1701 Hwy. 183 Rising Star, Texas

## Political Calendar

The following persons have authorized this newspaper to announce that they are candidates for election, subject to the action of the Primaries of March 8, 1988: County Sheriff Don White

Dee Hogan

United States House of Representatives- 17th Congressional District. Charles W. Stenholm (re-election)

Constable, Pct. 3 Gene Hicks (re-election)

Commissioner, Pct. 3 L.T. Owen (re-election)

WHEEL ALIGNMENT - LOF SAFETY GLASS CORNER BELLE PLAIN & MAIN BROWNWOOD, TEXAS 76801 646-0435 **BROWNWOOD GLASS & ALIGNMENT** The Place with the little red car with wobbly wheels. **WHEEL ALIGNMENT** FLOYD WHITE AUTO GLASS JODY KIRKLAND STRUTS • BRAKE • AXLE ALIGNMENT SERVICE DON WHITE ALIGNMENT SERVICE

**Hale Trailer Dealer** 2 Horse Trailers Gooseneck Horse & Stock Trailers, Covered & Open Bumper Pull Stock Trailers, Covered & Open Top **Barker's Garage** 817-259-2252 May, Texas

**Brown's Radio & TV** We service most brand names. FREE in shop estimates. We make service calls to your home - \*20 RS4 May, Tx. (817) 259-3909

**Susan J. Schaefer** Certified Public Accountant 9th & Main P.O. Box 501 Cross Plains, Tx. 76443 Office: 817-725-6747 Home: 817-442-3784



# WILDCAT TALES

## RISING STAR HIGH JOURNALISM

**GO CATS!**

Register At CJC By January 22

Cisco Junior College's Director of Admissions, Olin Odom reminds area residents that registration will continue through Friday, January 22 at the Cisco campus and all off-campus locations. Though there will be no

problem in registering as late as January 22, Mr. Odom urges those who wish to take college courses to register now in order to begin attending classes. Classes are presently in session and a minimum amount of missed time is beneficial to the student.

Students may register at the main campus in Cisco, at the Clyde Educational Center, or at the Abilene

campus at anytime during regular office hours, 8:00 a.m. to 4:00 p.m. Monday through Friday.

Thursday, January 21, 1988

### Bacon, Sausage Still on Offer by FFA

We have 'em both! The Future Farmers of America will have sausage and bacon through February so y'all call on up and support the local chapter. Call 643-3521 for Gene

Smith, Chapter Advisor, or 643-6791 for Howard Lawrence, Chapter President, or any Chapter member will be more than happy to take your order! Stephanie Long

### Lady Cats

Tuesday, January 12, the Lady Cats took the court against the Eula Pirates. Eula, regarded as one of the top teams in District 25-A, thought this game to be one of routine. The Lady Cats set out to prove them wrong. After a 27-20 halftime deficit, the Ladies came out in the second half to prove to themselves that they could beat Eula. In an impressive second half comeback, the Lady Cats handed Eula their first District loss 52-43. With a 2-0 record, the Lady Cats traveled to Moran Friday night. Working mainly on sharpness and new plays, the Ladies came out on top 54-27.

This week the Ladies will host Baird Tuesday night and will travel to Gorman Friday night. Both of these will be exciting games. We hope to see you at the games. Thank you for your support. Jackie Harris

### Menu

JANUARY 25-29  
**MONDAY**  
 LUNCH: Meat loaf, creamed potatoes, green beans, salad, rolls, jello, milk  
 BREAKFAST: Cereal, juice, milk  
**TUESDAY**  
 LUNCH: Shepherd's pie, English peas, sliced carrots, rolls, pudding, milk  
 BREAKFAST: Oatmeal, toast, juice, milk  
**WEDNESDAY**  
 LUNCH: Chili & beans, corn, cole slaw, cornbread, cobbler, milk  
 BREAKFAST: Toast, bacon, fruit, milk  
**THURSDAY**  
 LUNCH: Nachos, baked beans, salad, carrot sticks, brownies, milk  
 BREAKFAST: Rice pudding, fruit, milk  
**FRIDAY**  
 LUNCH: Hamburgers, lettuce, tomatoes, onions, pickles, French fries, cookies, milk  
 BREAKFAST: Biscuits, gravy, sausage, juice, milk

### Dear Penny,

DEAR PENNY  
 There is this guy that I really like. I want to tell him that I like him, but how? Is it uncool to do this?  
 Dear Uncool,  
 There is nothing uncool about telling someone how you feel. Has he given the

message that he likes you? If so, chances are, you have already told him with your body language that you would like to know him better. Show him you like being around him and hopefully he will get the message and your relationship will go farther.

## You're invited to our OPEN HOUSE

Saturday, January 23, 8:30 am.-7 pm.  
 Come see our new 2,800 sq. ft. show room and all the new 1988 boats & motors!

(Boats by Stratos, Fishin' Ski Barge and Galaxie. Motors by Evinrude and OMC Cobra Drive.

Boating Supplies & Parts • Factory Trained Technicians

**FREE!**  
 Soft Drinks  
 Hot Dogs  
 &  
 Valuable Prizes  
 (No purchase necessary)



Pleasant View Estates  
 Hubbard Creek Lake  
 Rt. 1 Box 166, Breckenridge, Tx. 76024  
 Johnny Stoker (817) 550-5763



FINANCING AVAILABLE

## Buddy's Plumbing & Appliances

N. Main Rising Star  
 643-7312 Nights (817)842-5950

Peerless Circulating Space Heaters

Trenching & Backhoe Service

Hardware — Electrical Supplies — Water Heaters

Pipe Wrap & Insulation — Wide Selection Plumbing Supplies

Rheem Central Heating/ Air Conditioning

Fairbanks Morse Pumps — PVC Pipe 1/2" to 6"

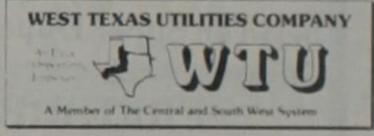


### Extend Your Winter Days With a Guard-Lite From WTU.

During the shorter, winter days, a Guard-Lite provides you with the extra light you need for outdoor activities and chores. In addition, a Guard-Lite helps secure your property from accidents, theft and vandalism.

Guard-Lites automatically come on at dusk and turn off at dawn. WTU will provide normal installation, maintenance, bulb replacement and electricity for your Guard-Lite — all you pay is a low monthly rental fee.

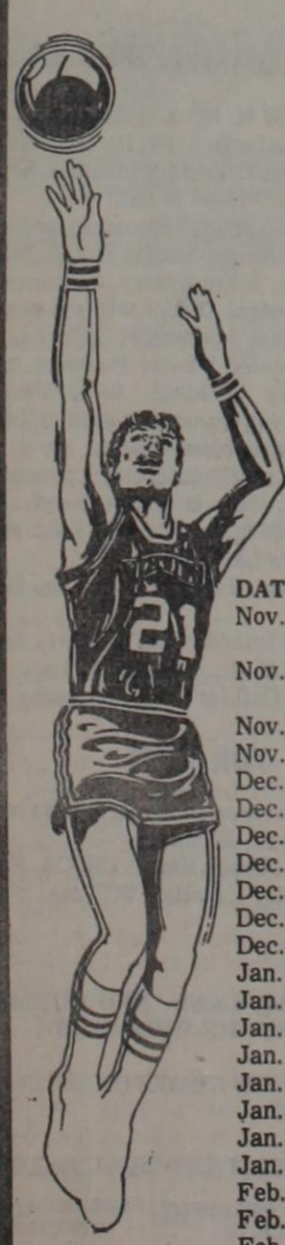
Call your local WTU office for more information on how you can rent a Guard-Lite.



Serving you with dependable electrical energy from the Red River to the Rio Grande.

# Basketball

## Rising Star Teams - Kittens to Cats - and These Businesses Make Winning Combinations



DISTRICT 25-A 1987-1988  
 RISING STAR JUNIOR HIGH BASKETBALL SCHEDULE

DATE	DAY	OPPONENT	PLACE	TIME
11-16-87	Monday	Carbon	Away	6:00 p.m.
11-23-87	Monday	Eula	Home	6:00 p.m.
11-30-87	Monday	Moran	Away	6:00 p.m.
12-7-87	Monday	Baird	Home	6:00 p.m.
12-14-87	Monday	Gorman	Away	6:00 p.m.
1-11-88	Monday	Carbon	Home	6:00 p.m.
1-18-88	Monday	Eula	Away	6:00 p.m.
1-25-88	Monday	Moran	Home	6:00 p.m.
2-1-88	Monday	Baird	Away	6:00 p.m.
2-8-88	Monday	Gorman	Home	6:00 p.m.

TOURNAMENTS  
 May Tournament November 19, 20, 21, 1987  
 Rising Star January 9, 1988

### RISING STAR HIGH SCHOOL 1987-1988 BASKETBALL SCHEDULE

DATE	DAY	OPPONENT	PLACE	TIME
Nov. 10	Tuesday	Early J.V. (scrimmage)	Home	6:30 p.m. (Girls only)
Nov. 17	Tuesday	Blanket	Away	6:30 p.m. (Girls only)
Nov. 20	Friday	Santa Anna	Away	6:30 p.m.
Nov. 24	Tuesday	Cross Plains	Home	6:30 p.m.
Dec. 1	Tuesday	Sidney	Home	6:30 p.m.
Dec. 3-4-5	Thurs/Fri/Sat	RS/CP Tourney	RS/CP	TBA
Dec. 8	Tuesday	Santa Anna	Home	6:30 p.m.
Dec. 10-11-12	Thurs/Fri/Sat	Gorman Tourney	Gorman	TBA
Dec. 15	Tuesday	DeLeon	Away	6:30 p.m.
Dec. 17-18-19	Thurs/Fri/Sat	Santa Anna Tourney	Santa Anna	TBA
Dec. 21	Monday	Sidney	Away	6:30 p.m.
Jan. 5	Tuesday	Rochelle	Home	6:30 p.m.
Jan. 8	Friday	*Carbon	Away	6:30 p.m.
Jan. 12	Tuesday	*Eula	Home	6:30 p.m.
Jan. 15	Friday	*Moran	Away	6:30 p.m.
Jan. 19	Tuesday	*Baird	Home	6:30 p.m.
Jan. 22	Friday	*Gorman	Away	6:30 p.m.
Jan. 26	Tuesday	*Carbon	Home	6:30 p.m.
Jan. 29	Friday	*Eula	Away	6:30 p.m.
Feb. 2	Tuesday	*Moran	Home	6:30 p.m.
Feb. 5	Friday	*Baird	Away	6:30 p.m.
Feb. 9	Tuesday	*Gorman	Home	6:30 p.m.

\*Denotes District Games



Rising Star Nursing Center 643-2681	Pioneer Farmer's Cooperative 725-6564	Family Food Store 643-2221
D&T Building Supplies 643-4131	Chuck Wagon Cafe 643-3025	First State Bank 643-2811
Medley Motor Co. 643-6211	Jenkins Insurance Agency 643-2251	The Quik Stop 643-1441
Main Street Auto Repair 643-1701	Jim Ratliff Welding 643-6464	Winfrey Feed & Peanut 643-6251
Rising Star Exxon 643-3130	Butler Texaco 643-3261	Chambers Grocery 643-5292
Mike's Fina 300 W. College	Higginbotham's 643-2271	Dr. B.T. Carpenter 643-3141
Rising Star Chamber Of Commerce 643-2251	David and Joy Harris	Palace Drug Store 643-3231



## County Court Handles Cases

Reports from the Eastland County Court show that 361 cases were filed there in 1987, and 11 more have been filed in 1988. This number includes 120 cases that were filed right after the Court was reactivated last April.

All of these cases have been disposed of except around 40, and this number includes people who are charged but cannot be located.

County Judge Scott Bailey presides over the Court, and Assistant District Attorney Bill Dowell prosecutes cases. Many people plead guilty and work out fines or restitution. During the year, however, some cases have come up for a trial with a jury.

The total of 372 cases were filed in less than a year of Court activity in felony as well as misde-

meanor cases. On April 14, 1987 the State Legislature enacted a law restoring the co-jurisdiction to try felonies to the County Court, with the 91st District Court.

"Since the first 120 cases we have averaged about 20 cases per month," says Judge Bailey, who is licensed to practice law. The Judge says most County Court cases have been involved with DWI, theft,

bad checks (also considered theft), and assault.

The Court meets for one week each month, beginning on the second Tuesday. The last Court day began January 12, and was concluded before the end of the week.

These court cases have added a large work-load to both the County Judge's office and to that of the County Clerk. About doubled the work for each office, in fact. But the Court has moved with dispatch to settle cases which could overload the dockets in District Court.

mitted to the Commissioners.

The Austin Court gave the opinion that the Commissioners Court was "put on notice" on the bill. The Commissioners Court knew of the Order and refused to pay, the opinion stated.

Brenda Andrews went on trial with three other defendants on May 18. The trial ended June 15, and she was the only one of the defendants the jury found guilty.

George Gray represented her in Court, and then filed another fee request for \$13,250 for his courtroom services. When he submitted this to visiting Judge Herman Fitts of Palo Pinto, the Judge reduced these charges to \$3,500. The Commissioners Court paid this bill.

After the trial Gray filed a Writ of Mandamus with the Austin court concerning the

## Austin Court Rules For Eastland County In George Gray Lawsuit

The Court of Criminal Appeals in Austin has ruled against Attorney George Gray and for Eastland County in a lawsuit brought by the Austin area Attorney against the County Commissioners Court.

Gray sought to collect \$17,010 he claimed the county owed him for defending Brenda Gail Andrews in the Garcia Organized Crime Case.

This amount was for work done prior to Gray's appointment by Judge David Cleveland on April 3, 1987.

Nine Judges in the Austin Court ruled on the case. Seven were against Gray's request, two for, and one Judge voiced the opinion that this type of case should not have come up in that Court at all.

Emory Walton, Eastland County District Attorney,

## Two Injured In Crash

**RISEING STAR**-Two 16-year-old Raising Star students were injured Friday afternoon when one car ran into the back of another outside the eastern edge of the city limits on state Highway 36.

Drivers Douglas Lee Bass and Stacey Wright both were taken by ambulance to Brownwood Regional Hospital, where they were treated and released, a hospital spokesman said.

Bass, who was headed eastbound, had slowed to a stop to make a left turn, said Richard Trece, of the Department of Public Safety. Wright's car struck Bass' car from the rear, Trece said.

**M.H. Perry Insurance**  
101 N. Lamar  
Eastland, Tx.

Phone 629-1566

● Life Insurance

● Universal Life

● Hospitalization

● Group

● Cancer

● Medicare

● Supplement

104

## Peanut Program Comments Due In

Peanut producers and other interested persons are invited to submit comments to USDA's Agricultural Stabilization and Conservation Service on the proposed \$615.87 per-ton national average support level for

1988 quota peanuts. The remarks must be received in Washington, D.C., by February 1st, to be considered.

David Martin, of the Eastland County ASCS Office said the 1988 price sup-

port level is \$8.40 higher than the 1987 level. "The quota support level would increase by this amount based on the current estimates of the cost of producing 1987-crop peanuts". Quota peanuts are those grown on a farm within

the farm's poundage quota.

According to Martin, farm legislation requires that the national average support level for 1988 crop quota peanuts be established at the 1987 crop level, adjusted for any increase in the national average cost of peanut production for the 1987 crop, and excluding any change in the cost of land. However, the law further states that the support level may not be increased more than 6 percent.

Written comments on the 1988 peanut price support program should be addressed to the Director, Commodity Analysis Division, USDA-ASCS, Room 3741-S, USDA-ASCS, Washington, D.C. 20013.

## Signup Dates For 1988 Farm Programs Announced

Secretary of Agriculture Richard E. Lyng has announced that signup for the 1988 wheat, feed grains, and cotton will be from February 16th through April 15th, 1988.

Legislation recently passed by Congress requires that

a number of changes be made to the commodity programs. Accordingly, signup for these programs will not

begin until February and the provisions of these programs will be announced as soon as possible.

## County Special Olympic To Meet

Eastland County Special Olympic will have a meeting Thursday, January 21st at 7:30 p.m. in the Texas Electric Reddy

Room.

All volunteers please be in attendance. All interested parties are welcome to come.

## Game Day

Lone Cedar Game Day will be held Friday, February 5 at 10:00 a.m.

Ladies are invited to meet for a day of games of your choice. A delicious lunch will be served. Bring a partner and join us for a day of fun.

other bill.

Speaking of the Court ruling on the \$17,010, Emory Walton said he was very glad the Court ruled as it did.

"This ruling on retroactive pay for court-appointed Attorneys will save not only Eastland County money - but other Counties in the state money in days to come," he said.

Thursday,  
January 21, 1988

## ANN WILLIAMS REAL ESTATE

610 Conrad Hilton Ave., Cisco

442-1880

Business & Home Phone

### CISCO HOMES

Call for information on HUD REPOSSESSIONS.

2 BR frame, large corner lot, many pecan and fruit trees, possible owner finance, only \$8,700.

Close to school, large 3 BR, CH/CA, owner fin., \$12,950.

Corner 2 lots, 2 BR frame, large building suitable for raising birds, nice yard, only \$15,000.

Lake Area, 3 BR 1 3/4 bath, CH/CA, fireplace, \$15,000.

We have a number of other 2 or 3 BR homes under \$15,000., some with owner financing available.

Neat, cozy 2 BR frame on W. 13th, sep. DR, utility room, ext. freshly painted storage bldg., huge pecan trees.

Cute 3 BR with CH/CA, storm windows, large utility room, fenced backyard, \$19,900.

Partially remodeled, older 4 BR, 2 bath rock home, covered patio, approx. 2 lots, commercial or residential location.

New kitchen cabinets, large 2 BR with CH, room above double garage could be an apartment.

Humbletown area, very nice energy efficient 2 BR home, wooden deck, garage, beautifully landscaped yard.

8 1/2% assumable FHA, 3 BR, sep. DR, vinyl siding, storm windows, large rooms, carport, 1 1/2 lots, on corner.

Country Club Road - spacious 2 BR rock home with CH/CA, garage, workshop, approx. one acre with orchard.

Extra large 2 BR, 2 bath rem. home, CH/CA, 2 lots, huge pecan trees, garage, owner fin. available.

Located on 3 lots, older style home, 3 BR, 1 3/4 baths, interior recently remodeled, owner fin. available.

Spacious 2 or 3 BR, vinyl siding, storm windows, covered deck, double garage, workshop, 2 lots, privacy fenced.

Completely remodeled, very nice 2 BR home on 4 lots, large shop with concrete slab and 3 phase wiring, beautiful yard, fenced, lots of trees, water well, all city utilities.

Quiet neighborhood, roomy 3 BR, 1 3/4 baths, formal DR, breakfast nook, double garage plus workshop.

Large 3 BR, 1 1/2 baths, CH, cabinets galore, numerous closets, FHA assumption available w/\$3,500. down.

Extra nice, roomy 3 BR, 2 baths, large LR, DR combination, den, utility room, pretty kitchen cabinets, lovely wood floors, covered patio, fenced yard, plus carport.

Edge of town, large 2 BR brick with garage and carport.

Beautiful large 2 BR, formal DR, den could be 3rd BR, carport, storage bldg., 3 lots, 18 large pecan trees.

Meticulous 3 BR, 1 3/4 bath brick, 2 living areas, CH/CA, fireplace plus a woodburning heater, new carpet, large tree shaded yard! Truly a family home.

New shop and oak trees add to this charming 3 BR, 1 3/4 bath brick, CH/CA, large LR, sep. den with fireplace.

Price reduced! Extra nice, spacious 3 BR, 1 3/4 bath brick, CH/CA, fireplace in den, sep. LR, gameroom, double carport, 2 storage buildings.

Beautiful custom built 3 BR, 1 3/4 baths, CH/CA, very roomy, lots of kitchen cabinets, balcony off of master BR, double carport, shop building, playhouse, 1 1/2 lots.

GREAT FAMILY HOMES, A nice selection of brick or frame, large 2 story, reasonably priced in various price ranges, please call for more information.

FOR RENT- Large 2 story house, big yard, many oak trees.

### COMMERCIAL PROPERTIES

Business opportunity! Ideal for skating rink or other business, spacious building, approx. 7,800 sq. ft., wood floors, built about 8 years ago, plenty of parking, only \$25,000.

Choice commercial location with a spacious 2 BR home, located on 2 lots.

Large metal building with 4 lots, excellent location.

Busy street, large shop with office space, extra parking.

### ACREAGE AND COUNTRY HOMES

Peaceful country living on 298.5 acres, pasture and farmland, 5 tanks, rural water plus well, large 3 BR home.

Approx. 179 acres, about 35 acres heavily wooded, remainder in coastal, good hunting, 2 water wells, 5 tanks, barn, pens, good fences, many improvements, 2 BR home plus hunting cabin.

Approx. 160 acres, pasture and farmland, tank, water well, creek, lots of turkey and other game, \$435. per acre.

Approx. 50 acres, mostly wooded, some cultivation, 2 tanks, water well, 3 BR home, good hunting and fishing.

About 7 1/2 acres with tank and barn, in Cisco.

4 BR, 1 3/4 bath, 2 story home on approx. 8 acres, barn, and shed, water well, \$27,000.

CALL FOR INFORMATION ON CUSTOM BUILT HOMES AND COMMERCIAL BUILDINGS.

Ann Williams

Broker

442-1880

Cathy Wallen

Associate

442-2120

**The Rib Wagon**  
Hwy. 80 East,  
between Super Duper & Maynard Bldg.  
7 days a week 10:30 - Dark  
**FREE RIB SAMPLE**  
Sandwiches - Plates - Pound - Catering  
Brisket, Ribs, Sausage, Hot Links  
Bar-B-Q Chicken

**BIG COUNTRY REAL ESTATE**  
1101 1/2 W. 12th 442-1693

### ACREAGE

3 Ac. 3 Bd. 1 1/2 Bath mobile home, carport and storage.

13 Ac. Near I-20, stocked tanks, woods and coastal.

169 Ac. Large brick home, Leon River Bottom, excellent hunting, pecans, coastal, stocked tanks.

72 Ac. Brick home with office, pool, trees and minerals.

### CISCO HOMES

3 Bd. 1 1/2 story home with charm, large secluded yard, sunroom, and workshop.

4 Bd. Brick, 2 story on corner lot. Energy efficient. Assumption possible.

3 Bd. 2 Bath Brick, hot tub, fireplace, nice lot.

3 Bd. 2 Bath Custom Brick, game room, double fireplace. Great location.

3 Bd. 2 Bath Brick, like new, privacy fence and storage. Very nice.

2 Bd. frame on 3 lots, needs repairs.

2 Bd. frame on large corner lot. Owner Carry.

3 Bd. frame in need of facelift. Owner Carry.

3 Bd. frame on large corner lot. HUD REPO. Excellent buy!

2 Bd. frame on 4 lots, partially furnished.

2 Bd. frame on large corner lot. Owner Carry.

2 Room frame on one city block. Owner Carry.

Larger Older Home. Price reduced. Low Down.

### EASTLAND

1 Bd. Cottage, secluded setting, 3 car garage. \$8,000.

### RISEING STAR

3 Bd. 1 1/2 bath home on South Main.

3 Bd. frame in good location, spacious and open.

JEFFREY WHITESIDE 643-3129

JODI BRUMFIELD 629-1965

DANA GOOSEN 442-3958

BROKER

**J & D CARPETS**  
Pogue Industrial Park, Eastland  
629-1672  
L. D. Brinkman  
50 oz. Stainmaster Saxony Extraordinaire -  
\$23.79 installed over 1/2" pad  
Exquisite 36 oz. Stainmaster Saxony -  
\$18.79 installed  
La Mirada 28 oz. Stainmaster Cut & Loop -  
\$17.79 installed  
Drop-in ceiling lights & bulbs. Large selection.  
Ceramic tile, floor tile, bathroom tile.  
Large selection of vinyl.

## PAT MAYNARD REAL ESTATE

629-8568 MAYNARD BUILDING HIGHWAY 80 EAST EASTLAND, TEXAS

**EASTLAND HOMES AND LOTS**

HUD & VA REPOS available in Eastland County! We have Keys.

Drastic Price Reduction! Briarwood Beauty, 3 BR, 1 1/4 Bath Brick Home, Many Extras including CH/CA, Carpet, Drapes, Builtins, Gameroom-Sunroom, Sprinkler System, & More! \$89,500.

New Listing, 3 BR, 1 1/2 Bath Brick Home w/2 lots, fenced backyard, carpet, CH/CA, Storage Bldg., \$32,000.

Crestwood Addition, Exciting 3 BR, 2 Bath Brick Home, Carpet, Drapes, Builtins, CH/CA, Sauna w/Whirlpool, Brick Patio, Corner Lot, \$69,500.

Pretty Hillcrest Addition, 2 BR, CH/CA, Carpet, Just Painted, Appliances, Beautiful Wooded Lot, \$38,500.

Great Neighborhood, Outstanding 2-Story on large corner lot, 3 BR, 1 1/4 Bath, Brick, CH/CA, Carpet, Builtins, Privacy Fence, Near Schools, \$69,500.

So Nice To Come Home to, Gorgeous New 3 BR, 2 Bath Brick Home with all the trimmings! Situated in Exclusive Oakhollow, \$72,500.

Move to the Country, but be close to town! Beautiful 3 BR, 2 Bath Double-Wide situated on approx. 1 ac. near golf course, CH/CA, Builtins, Fireplace, & more! \$43,000.

Warm By The Fire, 2 BR Brick, CH/CA, Fireplace, Carpet, 2 Stor. Bldgs., 2-Car Carport, 3 Ceiling Fans, 2 Lots, \$36,500.

Attention Investors, Brick Duplex, 2 BR, 1 1/2 Bath on Both Sides, CH/CA, Builtins, Carport, Stor. Shed, \$36,000.

Must Sell! Large 2 BR, Corner Lot (4 lots in all), Stately Oak Trees, Good Terms, \$26,000.

Ideal Location Near Schools, 3 BR, 1 Bath w/2 Lots, Central Heat, 2 Window Unit Air Conditioners, 3 Ceiling Fans, \$36,000.

Within walking distance to Grocery Store, Hospital, and Town, and PRICE HAS BEEN DRAMATICALLY REDUCED FOR QUICK SALE! Attractive 2 BR with Shingle siding and Brick Trim, \$2500 and Assume FHA Loan, Seller will pay closing costs. \$30,000.

Large 3 BR, 1 1/4 Bath Brick Home, CH/CA, Carpet, Builtins, Corner Lot, Lots of space for the money. \$48,500.

Country Living w/City Conveniences, also ideal commercial location, Nice Home on approx. 1 ac., \$110,000.

Cute 2 BR Frame w/Brick Trim, CH/CA, Carpet, Custom Drapes, Quiet Neighborhood, \$32,000.

Don't Miss This One, 2 BR Remodeled, CH/CA, New Roof, 4 Ceiling Fans, Large Closets, Well Insulated, Like New! \$35,000.

Exceptional 2 BR, 2 Bath Mobile Home, CH/CA, Builtins, Refrigerator, Carport, Stor. Shed, Washer & Dryer, on good lot, \$27,500.

Charming Country Home situated on approx. 3 ac. within minutes from Eastland, Carpet, Drapes, Builtins, Fireplace, and more! \$63,000.

Bright as Sunshine, 3 BR Home on 1 1/2 Lots, Detached Garage, Storm Cellar, Pretty Trees, \$21,500.

Spacious 2 BR, 1 1/2 Bath, Sep. Liv. Areas w/Big Den, CH/CA, Carpet, Appliances, Double Carport, Sep. Apt. in Back, \$30,000.

Neat 2 BR, CH/CA, Carpet, Completely Remodeled, \$28,500.

Lake Leon, 3 BR, 2 Bath Brick Home situated on "Point" w/approx. 300' Waterfront, CH/CA, Staff Water, Large Screened in Porch, \$60,000.

Lake Leon, New 3 BR, 2 Bath Brick Home, Redwood Deck, Staff Meter, Waterfront Lot, \$85,000.

Price Reduction, 3 BR, Sep. Dining Rm., Carpet, Pecan Trees, Garden Spot, plus 6 Lots, \$20,000 cash.

We have several Top-End Executive Homes with all the amenities! Shown by appointment only. Call to see!

Residential Lots in Exclusive Oakhollow, \$7,500 ea.

Owner Finance, 74' x 140' heavily wooded lot, \$3,500.

14 and 16 ac. tracts near Eastland, Owner Finance w/\$500 dn.

### HOMES AND LOTS: CARBON, GORMAN, CISCO, RANGER, OLDEN

Carbon, 3 BR, 2 Bath, Mobile Home situated on 1 1/2 ac., Fruit Trees, Stor. Shed, other outbuildings, \$16,000.

Carbon, 2 BR, 1 1/2 Bath w/3 lots, city water, paved street, \$23,500.

Carbon, 3 BR, 2 Bath Mobile Home, 14' x 80' (covered porch, 3 lots, \$20,000.

R.G. (BUCK) WHEAT BROKER

WAYNE CHANDLER ASSOCIATE

KAY BAILEY ASSOCIATE

ROSEMARY FERGUSON ASSOCIATE

DEBRA MAYNARD ASSOCIATE

734-2782

629-2385

653-2375

629-9663

### COMMERCIAL

Prime Hwy. 80 E. Frontage in Eastland! 2.7658 ac., plus a large 2 BR, 1 1/2 Bath House w/Sep. Liv. Areas. Perfect location for office or business. Priced to Sell!

This is Your Chance to own your own business! Established Ladies Retail Sportswear Business. All inventory & fixtures at a LOW, LOW price! Owner will set you up with all their lines at market! Call Today!

Centrally Located Florist Business, plus Elegant 2-Story Building. Ideal Family Business w/Living Quarters Upstairs. Must Sell Due to Health. Make Offer!

Reduced Price! Commercial Lot next to Maynard Bldg., Hwy. 80 E., Eastland.

1800 sq. ft. Bldg. on Corner Lot, Well-Known Business Location.

Brick Duplexes, 2 BR on each side. Good Investment!

I-20 & Hwy. 6 Intersection, property on all four corners; 2.08 ac., 7.69 ac., 8.79 ac., and 5.03 ac. tracts. Call for prices on each.

### FOR RENT

Office or Business Space in the Maynard Bldg., Hwy. 80 E., Eastland.

3 BR, 2 Bath Mobile Home, CH/CA, Fenced Yard, Country Location, \$275 mo., water paid.

YOUR HOME, LAND, AND COMMERCIAL LISTINGS ARE WELCOMED!

WE BUILD NEW HOMES ON YOUR LOT OR OURS.

# Pioneer Patchwork

Irma Miller

The quilters are proud of the large number who attended and visited at the Club Tuesday. There were 14 quilters, one a former member of late. We finished the President Madison Star quilt. We had six visitors. Fred and Dorothy Zedlitz came by to visit and split some large tree trunk pieces for our wood heater. Another visitor was Gladys Sessums. Norma Foster and John Miller were lunch visitors. John is building a new pump house and was working on it Tuesday. Our smallest, but by no means least important, visitor was little two-year-old Kevin Scott, whose mother, Elizabeth Scott, visited briefly. Lou Wilson was baby sitting little Kevin and the quilters got to enjoy his company all day except while he slept. Lou and Rufus Wilson went Saturday to visit with Terry Wilson in Clyde. The Pioneer Baptist Church will study the book of Malachi Wednesday night. Frankie Smith enjoyed the

ing Sunday night at the church. She and Shirley went to Ranger Saturday to visit Frankie's sister, Mrs Dorothy Rogers. Paul and Juanita Harlowe are visiting with Jean Fore for a few days. Weekend visitors were Vi Harlowe of Marble Falls, Bessie McDaniel and Buddy McDaniel of San Antonio. Visiting Nell and Joe Fleming Sunday were Mr. and Mrs. Earl Bennett of Brownwood and Mrs. Mabel West of Brownwood. Jolena spent the night with them Saturday night. There was a good crowd at the game night (Thursday night). There was plenty of good food as usual, and the fun and fellowship was enjoyed by all. Lottie Sooter went to Stephenville to visit her aged aunt, Mabel Russel. Mabel was doing pretty good and was placed in the nursing home. Irma Miller went to Cisco Monday and Tuesday to attend the AARP tax school.

# Senior Center News

New officers elected Jan. 14 are Marjorie West, president; Edith Bostick, vice president; Stella Hill, secretary and treasurer; and Alene Frost, reporter. We welcome all senior citizens to join us for good meals and fellowship. Meals on Wheels is on Monday at noon. Our sympathy goes out to the family of Margie Earp. She was an active member of the Senior Citizens club and a charter member of the Starbrite Band. She will be missed very much. Ladell Key is able to be up and around after being very ill for several days; she will return to St. Joseph's Hospital in Fort Worth for more tests later. Dell Bible is not feeling very well; hope she is better soon. Curtis Hill's sister of Anson is very ill in CCU at Hendrick Medical Center in Abilene; we also hope she will be better soon. Mr. and Mrs. B.B. Ivie are in Lubbock with his sister who is ill. Marion and Marjorie West attended graveside services for Earl Steel of Cisco at Amity Cemetery Jan. 9. Marjorie and Earl were cousins. Mrs. Mercer and Mrs. Everage of Bangs visited Lila Clark last week. Irene McKinnerney is home from the nursing home in De Leon where she has

been several months recovering from a broken hip. Betty Raybon's mother is not doing very well; she suffered a stroke several weeks ago. We hope she recovers soon. Rilla and Walter Richburg visited in Abilene with a friend in the hospital, also had lunch and spent the rest of the day with granddaughter, Taby Dunn and baby Dustin. Rowena Chambers spent the night with them Friday night. Marion and Marjorie West went shopping in Brownwood Saturday. Edith Bostick spent Friday night with her daughter in Abilene, Beverly Moore. Deward and Willie Leah Maynard attended the wedding of their granddaughter, Casey Maynard, in Brownwood Saturday night. Berna Lee Chick's granddaughter, Jerry Lee Hubble, is much better. Dr. Walker will be at the Senior Citizens Center in Cisco Friday to check eyes. It will be free. Commodities will be given Jan. 26. Blood pressure will be taken Jan. 21; none will be taken after 11:30. Our January birthday party will be Thursday, January 21. This will be my last report as Alene Frost is our new reporter. Edith Bostick

# Rising Star Nursing Center

Vickie Majors

Activity Director

**MONDAY:** Residents played Bingo, our players were, Joe Fox, Pauline Hill, Vera Forbes, Robbie Henderson, Martha Irby, Mary Crisp, Annie Selman, Pearl Petty, Jewell Harrell, Lena Scott and Buster Rixford. **TUESDAY:** Olive Odom and several of her friends gave a party for our residents. They served punch and cakes, cookies. Everyone sang and had a good time. Olive made an announcement that she was retiring after 9 yrs. We are really going to miss her. **WEDNESDAY:** Bingo players were Rada King, Pearl Petty, Joe Fox, Annie Selman, Mary Crisp, Jewell Harrell, Vera Forbes, Pauline Hill, Lena Scott,

Martha Irby, Robbie Henderson, and Buster. We would like to express our sympathy to Hallie Hill's family of their loss. Resident News: Visiting Mrs. Petty were Eddie Bud Petty from Cross Plains and Mrs. C.W. Wyatt from Cross Plains. Paula Kelley, Dorothy Petty from Cross Plains. Hubert and Celia Belevu from Cross Plains. Opal Boyd visited with several of our residents. Rada King, Snora Walker and Ruby Hancock. Dutch Shults visitors were Bob and Lela Shults from Rising Star. Mary Crisp visitors were Todd Crisp, and Gary Wilson both from Abilene. Our thanks to the May Baptist Church for holding Sunday services.

# Eastern Star

Due to extremely cold weather, only six were at the January 4 meeting and we did not open Chapter. Those present were Celestine and Wilson Carleton, Bertha Mae White, Grace Morrison, Sue Gardner and myself. Sue and Bess were to be hostesses. Bess was fogged in and was unable to be there. Sue insisted on our enjoying the refreshments of cookies, sandwiches, coffee and hot tea. They were enjoyed by all. It was good just visiting. My husband, Doyle, was not able to go to the hall and stayed in the motel so he could be comfortable. Worthy Matron, Goldia Lancaster

the piano. "Light for My Path" was the devotional, presented by Bea Kelton. Dink Todd served refreshments. Present in addition to those already named were Opal Erwin, June Bean, Estelle Dickerson and Sis King, and a visitor, Cal Ezzell.

# HAPPY BIRTHDAY

- |   |   |
|---|---|
| <b>JANUARY 24</b><br>Linda Burns<br>Lon McDaniel      | <b>JANUARY 28</b><br>L.T. Owen  |
| <b>JANUARY 26</b><br>Joe Dell Hubbard<br>Aline Morris | <b>JANUARY 29</b><br>Ronnie Green<br>Willie Vandivere<br>David Draper |
| <b>JANUARY 27</b><br>O.J. Crowder<br>Nathan Henson    | <b>JANUARY 30</b><br>Barbara Long<br>Terry Don Bostick                |

**LEE WILSON**  
Welcomes you to visit her  
She specializes in rollups, cuts, perms,  
manicures and much more.  
Walk-ins Welcome  
**SUSIE'S HAIR HUT**  
Rising Star Thur. Fri. Sat. 643-3323

# Obituaries

**Hallie Hill**  
Hallie Veda Hill, 95, died Wednesday, January 13, at 10:25 p.m. at a local nursing home. Services were at 10:30 Friday at Higginbotham Funeral Home Chapel with the Rev. E.B. Elswick officiating. Burial was in the Rising Star Cemetery. Born on August 3, 1892, in Rising Star, she was a lifetime resident. She was a Methodist and a member of Home Demonstration Club. Survivors include three sisters, Mozell Kerr of Cisco, and Eula Goss and Margie Earp, both of Rising Star; and 22 nieces and nephews.

**Margie Earp**  
Margie Ethel Earp, 83, died Friday at an Eastland hospital. Services were at 3 p.m. Sunday at First Baptist Church with the Rev. Dale Jackson officiating. Burial was in Elm Cemetery, directed by Higginbotham Funeral Home. She was a lifetime resident of Rising Star. She was a homemaker and a member of First Baptist Church. She was the widow of Roland M. Earp. She was an active member of the Senior Citizens. Survivors include two daughters, Stella Reed of Rising Star and Cozelle Jordan of Kemp; two sons, Roland M. Earp Jr. of Farmington, N.M. and Larry J. Earp of Hurst; two sisters, Mozell Kerr of Cisco and Eula Goss of Rising Star; eight grandchildren; and nine great-grandchildren.

# Sipe Springs News

Friends received word of the death of Jesse Lane Rachels, a former resident of here. Burial was in Dallas. We extend our sympathy to his relatives. Mr. and Mrs. T.A. Weaver visited his brother, Clyde Weaver and wife, on Sunday afternoon. Mr. and Mrs. Butch Graham and children of Houston visited his parents, Mr. and Mrs. Jack Graham. Mr. and Mrs. George Leonard and Mrs. Mae Leonard were in Arlington Tuesday. Mr. Grady Steel is ill at the V.A. Hospital in Temple. We hope for Grady a speedy recovery. Mrs. Doris Mitchell of Newcastle spent Thursday with her sister and husband, Mr. and Mrs. John McKeehan.

Make Your Valentine  
Gift Selection  
at  
Hubbard Gift & Gallery  
Rising Star 817-643-6242

**STAR PLAZA RESTAURANT & TRUCK STOP**  
Hwy. 36 Mario Farris - Manager 643-1404  
**NOW UNDER NEW MANAGEMENT**  
Catering in Private Dining Area-  
Book Your Bridge, Family, Birthday or Reunion Parties.  
Buffet (Includes Salad Bar, Drink & Dessert)  
Weekdays - \$4.50 Sundays - \$4.95  
Friday Night - Catfish Buffet  
Saturday Night - Mexican Food Buffet  
All You Can Eat \$4.95

# WAL-MART CLEARANCE

 Toddler Dresses sizes 9 mo.-4T Reg. 13.94 <b>7.00</b>	 Girl's Dresses sizes 7-14 Reg. 17.94 <b>7.00</b>	 Blanket Sleepers Reg. 4.68 <b>2.50</b>	 Ladies Dress Pants sizes 3-18 Reg. 15.88 <b>10.00</b>	 Ladies Mini Skirts sizes 3-15 Reg. 15.88 <b>10.00</b>
 Ladies Belts. Assorted Styles Reg. 4.96 <b>1.50</b>	 Ladies Stone Washed Jeans sizes 3-15 Reg. 19.94 <b>18.00</b>	 Ladies Purses Reg. 6.93 <b>5.00</b>	 Men's Dress Pants Reg. 15.94 <b>11.00</b>	

**Savings Store Wide! WHILE THEY LAST!**

 Lay's Potato Chips All Flavors 6.5 oz. size <b>97¢</b> Reg. 1.26	 Windshield Washing Fluid 1 Gallon <b>88¢</b> Reg. 97¢
---	--

THUR.-SUN. Jan. 21-Jan. 24  
9-9 Mon.-Sat. 12:30-5:30 Sun.  
Hwy. 80 East Eastland

# BREAST CANCER DETECTION UNIT AVAILABLE TO AREA WOMEN



**Friday January 29, 1988 Rising Star, Texas**  
A Service of **Dr. Carpenter's Office**

**\$50.00**  
This Price Includes Radiologist's Reading Fee.

According to the American Cancer Society, one out of eleven women in the United States will develop breast cancer sometime in her lifetime. It is currently estimated that over 37,000 women die each year as the result of breast cancer.

Ninety percent of breast cancers are diagnosed by women or their physicians finding a lump in the breast. Women who are diagnosed with a lump large enough to feel have a 50 percent five year survival rate. A woman who is diagnosed as having breast cancer by mammography, before a lump can be felt, has a 97% five year survival rate and a 90% 10 year survival rate.

A mammogram can detect a cancer this small, even before it can be felt.

**Mobile Unit Will Be Parked Beside Dr. Carpenter's Office**

The American Cancer Society has established guidelines for mammography in asymptomatic women. (Women who have no symptoms of disease). Those guidelines have been adopted by the American Academy of Family Physicians, American College of Obstetricians and Gynecologists, and The American College of Radiology. Those guidelines are:

- 35-40 years of age - One baseline mammogram.
- 40-50 years of age - A mammogram every 1-2 years depending on breast type and risk factor.
- 50 years of age and over - An annual physical examination and annual mammogram.
- Asymptomatic women under 50 years of age with significant high risk factors should be examined at appropriate intervals. These risk factors include previous breast cancer and family history of cancer.

V. A symptomatic woman should have a mammogram at any age when she experiences a mass, nipple discharge, skin changes or unexplained breast pain.

A screening mammogram is an x-ray of the breast using extremely low dosages of radiation (usually comparable to dental x-rays) and is designed to find very early cancers.

A female technologist who is highly trained in mammography will perform the examination.

The charge for the screening mammogram is \$50.00. The Unit accepts cash, check, Visa, Mastercard and American Express.

**Appointments Will Be Made From 9:00 a.m. To 7:00 p.m.**

WAL-MART'S ADVERTISED MERCHANDISE POLICY - It is our intention to have every advertised item in stock whenever it is available for purchase. Wal-Mart will accept return of any merchandise for the merchandise to be purchased at the same price whenever available, or will sell you a similar item at a comparable reduction in price. We reserve the right to limit quantities. Limitations apply in New Mexico.

# BIRTHDAY HONOREES



**MAGGIE CLARK,**  
January 13



**IDELL COLLINS,**  
January 20



**LORRAINE WILLIAMS,**  
January 6



**AL CARNLEY,**  
January 12

## Parker Bid

From page one...

Criminal Jurisprudence Committee of the House of Representatives, having served as vice-president of that Committee in the last session of the Legislature.

Jim Parker is married to the former Martha Hamrick of Comanche and they have 2 children, Shane and Kent. Parker has a law practice in Comanche and has a cow/calf operation in De Leon.

## Ben Sudderth

From page one...

the school, but at the same time reduce state funding. It is absolutely necessary that the people of this state, the local school boards, and the school personnel all work together to achieve the common goal of quality education in Texas. As a member of the State Board of Education I would work with the Legislature in an effort to solve some of the perplexing problems facing those trying to carry out present policy. I believe that our schools are doing a good job of getting a dollars worth of education for a dollars worth of funding. It is probably the most cost efficient of all State bodies. Education is a historic issue in this state - one of the reasons Texans declared their Independence from Mexico was the failure of the government to support public education. Education was important in 1836 and it remains a very important part of our government a little over 150 years later. What we do the next 10 years in the field of education will in all probability determine what our state does the next hundred years in the world economic arena. I want to be on the front line working to make our system the best."

Sudderth graduated from Howard Payne University with a major in Business and a minor in Education. He holds a doctor of Law degree from University of Texas School of Law and is well known throughout West Central Texas as a Trial Lawyer. He is married to the former Anne Keith of DeLeon. They have 1 child at home and 5 grown children. Sudderth has served as President of the Chamber of Commerce, President of the Comanche Jaycees, as a Legislative Consultant for Trade and Professional Associations and has held many other offices in local and business organizations.

## Photo Club Meet

The Microplex Photo Club will hold their membership meeting Sunday, January 10, 1988, from 2 to 4:30 p.m. in the Eastland National Bank Community Room.

Many items will be up for discussion including the February Photo Project.

Refreshments will be served.

## New Arrival

James and Kathy Bentley of Eastland are proud to announce the birth of their daughter, Rachel Lynn, born December 31, 1987 at Eastland Memorial Hospital at 7:15 p.m. She weighed 9 lbs. 5 ozs. and was 21 inches.

Maternal grandparents are Pete and Jackie Willeford of Perryton.

Paternal grandparents are Rev. Armo and Juanita Bentley of Vernon.

Maternal great-grandparents are Mr. and Mrs. Clifton Sanders of Iowa Park.

Paternal great-grandmother is Bertha Bentley of Eula.

## NOTICE

### CLARIFICATION

The Hilton Community Center is in no way associated with any company or corporation having the words "Cisco Hilton" as a part of its legal name. This explanation is for the purpose of clarifying any misconception that might have arisen from the Courthouse legal notices appearing in a recent edition of The Rising Star.

**SALE**

Papershells \$1.00/lb.

Shelled Nuts Gift Items, Needlework Kits  
Book 2-3-4/\$1.00 All Reduced

New Hours 9-4, Mon.-Sat.; Closed Sun.  
**Joy Pecan Shoppe**  
W. Hwy. 36, Rising Star, 643-3011

*The Officers and Directors  
of  
The First State Bank  
of Rising Star  
cordially invite you  
to the Grand Opening  
of our New Branch Bank  
Sunday, January 24, 1988  
from 2:00 to 4:00 p.m.  
317 East Main  
Eastland, Texas*

## JANUARY CLEARANCE

### FLOORCOVERING SALE

<p><b>Armstrong Vinyl!</b> No. 63501, beige marble</p> <p><b>\$2<sup>99</sup></b> sq. yd. Reg. \$3<sup>99</sup></p>	<p><b>Armstrong Castilian</b> No. 63470, No wax, lt. gray</p> <p><b>\$4<sup>99</sup></b> sq. yd. Reg. \$10<sup>00</sup></p>
<p><b>Sundial Solarian</b> No. 66731, Octafloral camel, 6' width only. No wax.</p> <p><b>\$7<sup>95</sup></b> sq. yd. Reg. \$13<sup>00</sup></p>	<p><b>Tarkett 5400 series,</b> Brite - Bond Vinyl. No wax. Mesa brown.</p> <p><b>\$6<sup>50</sup></b> sq. yd. Reg. \$14<sup>99</sup></p>
<p><b>Williamsburg Century</b> No. 9546, beige.</p> <p><b>\$8<sup>99</sup></b> sq. yd. Reg. \$12<sup>00</sup></p>	<p><b>Williamsburg Century II</b> No. 9200, Desert Brown</p> <p><b>\$8<sup>50</sup></b> sq. yd. Reg. \$11<sup>00</sup></p>

Sale Ends Jan. 28th

## HIGGINBOTHAM'S

Over 100 Years of Quality and Service

## FAMILY FOOD STORE

North Main St.      Affiliated Food Store      Rising Star  
NEW STORE HOURS      Phone 643-2221  
8 a.m. - 6 p.m.  
Monday thru Sunday

Prices Effective:  
Wed., Jan. 20-Sat., Jan. 23

<p>Dole Golden Ripe <b>Bananas</b> </p> <p style="text-align: center;"><b>4 lbs./ \$1.00</b></p>	<p>Fancy California <b>Navel Oranges</b> </p> <p style="text-align: center;"><b>3 lbs./ \$1.00</b></p>	<p>Fresh <b>Strawberries</b> </p> <p style="text-align: center;"><b>99¢</b> Pint</p>
<p>Extra Fancy <b>Red Rome Apples</b> </p> <p style="text-align: center;"><b>39¢</b> Lb.</p>	<p>US No. 1 <b>East Texas Sweet Potatoes</b> </p> <p style="text-align: center;"><b>39¢</b> Lb.</p>	<p>Decker <b>Bacon</b> </p> <p style="text-align: center;">Sliced, 1 lb. <b>\$1.29</b> Lb.</p>
<p>Fresh Frosted Fryer <b>Leg Quarters</b></p> <p style="text-align: center;"><b>33¢</b> Lb.</p>	<p>Affiliated <b>Ground Beef Chubs</b></p> <p style="text-align: center;">3 lb. pkg. <b>\$1.18</b> Lb.</p>	<p>Krispy <b>Crackers</b></p> <p style="text-align: center;">16 oz. <b>69¢</b></p>
<p>Price Saver <b>Assorted Cookies</b></p> <p style="text-align: center;">6 oz. pkg. <b>3 for 99¢</b></p>	<p>Price Saver <b>Tea Bags</b></p> <p style="text-align: center;">100 ct. <b>99¢</b></p>	<p>Jewel <b>Shortening</b></p> <p style="text-align: center;">42 oz. <b>\$1.29</b></p>
<p>Lucky Leaf <b>Apple Juice</b></p> <p style="text-align: center;">32 oz. <b>89¢</b></p>	<p>Chicken of the Sea <b>Tuna</b></p> <p style="text-align: center;">oil or water, 6.5 oz. <b>79¢</b></p>	<p>Hunts <b>Tomato Sauce</b></p> <p style="text-align: center;">8 oz. <b>4 for \$1.00</b></p>
<p>Gladiola <b>Flour</b></p> <p style="text-align: center;">5 lb. <b>89¢</b></p>	<p>Gladiola <b>Corn Bread Mix</b></p> <p style="text-align: center;">6 oz. pkg. <b>4 for \$1.00</b></p>	<p>Cheer <b>Detergent</b></p> <p style="text-align: center;">42 oz. <b>\$1.99</b></p>
<p>Armour <b>Vienna Sausage</b></p> <p style="text-align: center;"><b>2 for \$1.00</b></p>	<p>Delta <b>Towels</b></p> <p style="text-align: center;">Assorted <b>44¢</b> Limit 3 w/10 Purchase</p>	<p>Delta <b>Toilet Tissue</b></p> <p style="text-align: center;">4 roll pkg. <b>89¢</b></p>
<p>Kraft <b>Mayonnaise</b></p> <p style="text-align: center;">32 oz. <b>\$1.69</b></p>	<p>Campbell <b>Chicken Noodle Soup</b></p> <p style="text-align: center;">10.75 oz. <b>38¢</b></p>	<p>Price Saver <b>Cut Green Beans</b></p> <p style="text-align: center;">16 oz. <b>32¢</b></p>
<p>Price Saver <b>Cream Corn</b></p> <p style="text-align: center;">16 oz. <b>32¢</b></p>	<p>Price Saver <b>Whole Corn</b></p> <p style="text-align: center;">16 oz. <b>32¢</b></p>	<p>Price Saver <b>Tomatoes</b></p> <p style="text-align: center;">16 oz. <b>39¢</b></p>
<p>Banquet <b>Pot Pies</b></p> <p style="text-align: center;">7 oz. <b>5 for \$2.00</b></p>	<p>Classic Delight <b>Ice Cream</b></p> <p style="text-align: center;">1/2 gal. <b>\$1.99</b></p>	<p>Pillsbury <b>Biscuits</b></p> <p style="text-align: center;">7.5 oz. <b>5 for \$1.00</b></p>
<p>Kraft <b>Orange Juice</b></p> <p style="text-align: center;">32 oz. <b>99¢</b></p>	<p>Shurfresh 1/2 Moon <b>Cheese</b></p> <p style="text-align: center;">10 oz. <b>\$1.49</b></p>	<p>Kraft <b>Velveeta Loaf</b></p> <p style="text-align: center;">2 lb. <b>\$3.49</b></p>