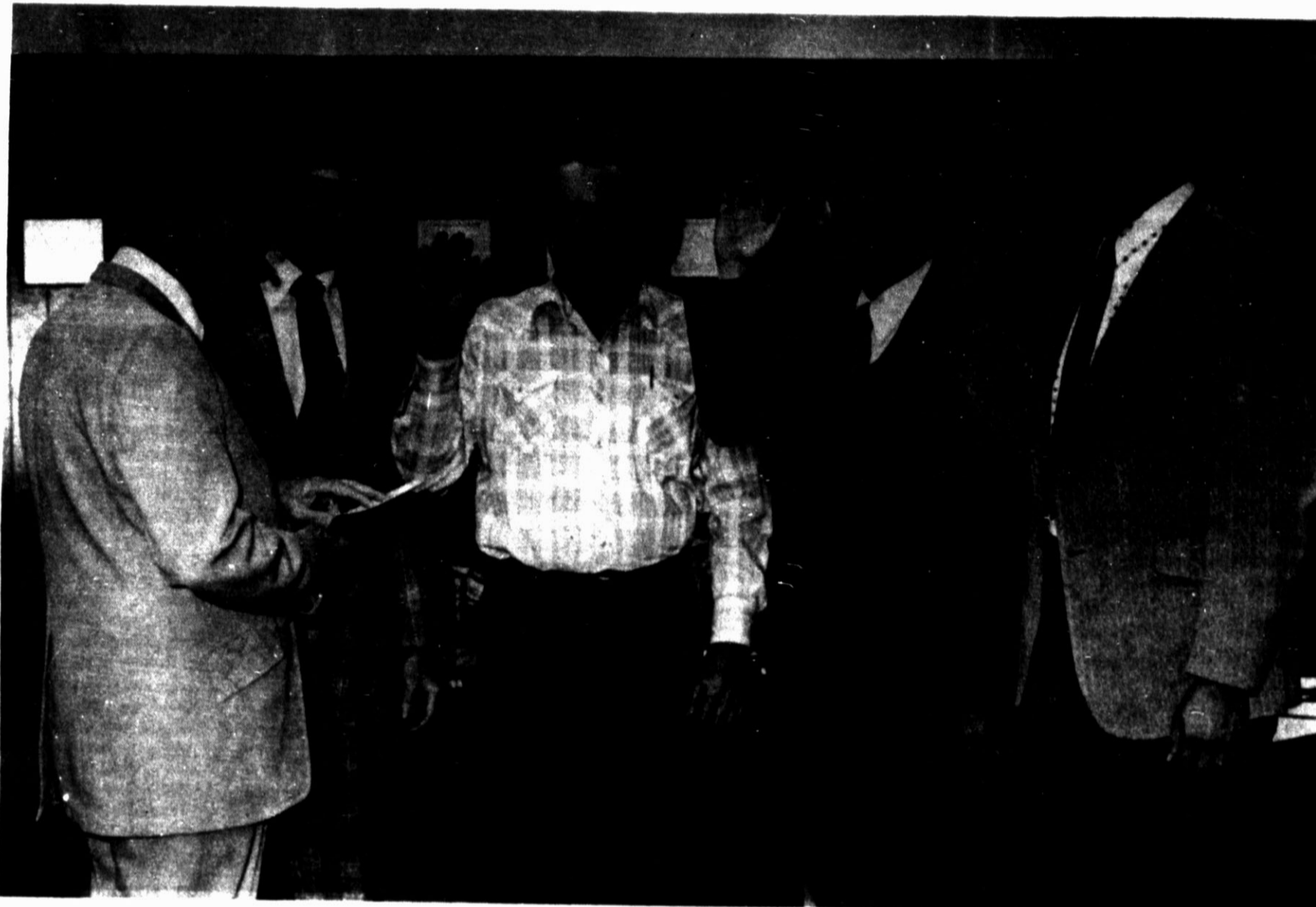


Farmer Suit Mailed in Bridge Incident



Swearing-In Ceremony

County Clerk B.F. Cain swears in newly-elected school board members (from left) Jim Arney, Clark Andrews, James Gentry and Paul Rameriz during a special board meeting Wednesday. Arney, Gentry and

Rameriz ran unopposed in the election, while Clark Andrews was re-elected over hopeful Rumaldo Garcia on Saturday's Hereford Independent School District election. [Brand photo by Paul Sims]

Farm Bill Hope Fades

By JIM STEIERT
Brand Farm Editor

By JIM STEIERT
Brand Farm Editor

and
THE ASSOCIATED PRESS

Hope appeared to be fading fast today for an emergency farm bill which won approval of a House-Senate conference committee earlier this week.

President Carter stressed to congressional leaders again Wednesday that he intends to veto the emergency aid which the legislation would grant to cotton and grain farmers if it passes Congress.

And while the President continued to lobby against the bill, House Agriculture Committee Chairman Thomas S. Foley, D-Wash., an opponent of the measure, told conferees, "We are running into some very serious problems in the House."

Foley pointed out that the measure violates the Budget Act by altering farm income supplement rates, thereby affecting the next fiscal year's budget before the spending targets are set by Congress for that year.

Under those circumstances, the emergency farm measure could be killed on the House floor on a parliamentary point, unless both the Rules Committee and the House agreed to waive the Budget Act before taking up the bill, or unless it is brought to a vote under procedures suspending the rules but requiring two-thirds approval for passage.

Senate Ag Committee Chairman Herman E. Talmadge, D-Ga., said that he would try for a final senate vote today or Friday.

The Budget Act presents no problem in the Senate, because the rules are different in that body.

President Carter told Senate Majority Leader Robert C. Byrd, D-W.Va. at a breakfast meeting yesterday that he would not sign the emergency farm measure.

Carter's strongest objections are aimed at a "flexible parity" provision in the bill which would allow farmers to set their own price for commodities based on the amount of land they set aside.

Farmers would receive a near-parity price if they set aside one acre of land for every two they plant.

The "flexible parity" provision has wide support among farmers, particularly supporters of American Agriculture, who say the measure would help to reduce price-depressing surpluses of commodities while assuring farmers of an

(See FARM BILL, Page 2)

School Board Re-Elects Officers

By PAUL SIMS
Managing Editor

The agenda called for "board reorganization."

Reorganization it wasn't—all three officers on the Hereford Independent School board were re-elected during the special meeting Wednesday night at the school administration building.

James Gentry was re-elected as president, Clark Andrews as vice president and Sallie Strain as secretary during the short meeting in which the school district board members also canvassed election returns, issued

certificates of election and discussed the next step in their two-year long battle with the U.S. Department of Justice.

There were no changes in vote totals from Saturday's board election, with Gentry receiving 1,002 votes in Place 1, Jim Arney 1,002 votes in Place 2, Andrews 908 votes in Place 3, Rumaldo Garcia 257 votes in Place 3, and Paul Rameriz 913 votes in Place 3.

Andrews defeated Garcia to earn re-election to the Place 3 spot on the board.

There were 1,177 votes, including 25 absentee ballots, cast in the election.

Deaf Smith County Clerk Wednesday night administered the oaths of office to Gentry, Andrews, Arney and Rameriz who were officially certified as board members.

The board approved a motion to authorize the school district's attorneys to file briefs concerning the constitutionality of Section 5 of the Voting Rights Act by May 15.

A federal three-judge panel will examine briefs submitted by both the HISD and Justice Department before setting a hearing to study the constitutionality of the section of the act

which deals with pre-clearance.

The Justice Department says that Hereford's place system of voting is illegal because approval was not granted in 1976 after the district changed from an at-large to place system then informed the federal government of the change.

The district changed its voting procedure in 1974. The Voting Rights Act was amended in 1975 to include Texas and was made retroactive to cover any change in election procedures which occurred since Nov. 1, 1972.

The Justice Department refused to

(See SCHOOL BOARD, Page 2)

Boating Safety Activity Set by Chamber, USCG

By JIM STEIERT
Brand Outdoors Editor

More people died in water-related mishaps in 1977 than in 1976, according to the water safety section of the Texas Parks and Wildlife Department.

There were 640 drownings in 1977, 496 in 1976, and a whopping 650 water deaths in 1975—many associated with pleasure boating.

In an effort to prevent Hereford-area boaters from becoming part of these unhappy statistics, the Deaf Smith Chamber of Commerce Health and Safety committee, the U.S. Coast Guard

Auxiliary of Amarillo, and Jack's Marine of Hereford are sponsoring a free boat safety inspection clinic Saturday at Jack's Marine on East Highway 60.

The clinic is slated for 10 a.m. to 2 p.m., and during the clinic, local boaters will have an opportunity to be made aware of any safety violations observed in their pleasure craft.

No reports on violations will be made to any law enforcement body during Saturday's inspection, but boaters will be informed of any safety oversight which

(See BOATING, Page 2)

Caucus Okays SS Tax Rollback

WASHINGTON (AP) — The House Democratic Caucus Wednesday endorsed a cut in Social Security taxes and voted to use income taxes and other general revenues to help finance Social Security.

The vote by members of the party that has nearly a 2-to-1 majority in the House was 180 to 57.

The non-binding resolution adopted by the Democratic caucus does not endorse any particular amount of general treasury funds to be used for Social Security, which now is financed by payroll taxes equally levied on employers and employees.

The resolution neither specified how much Social Security taxes should be cut

nor whether the taxes should be cut more or less than the tax increases voted by Congress last year when the lawmakers adopted a plan to bolster the sagging finances of the system with tax hikes of \$227 billion over 10 years, beginning in 1979.

The caucus resolution favors "use of general revenue funds... with appropriate reductions in Social Security payroll taxes" and asks the Democratic members of the House Ways and Means Committee to prepare legislation for this purpose as soon as possible.

The House Budget Committee Tuesday voted to make room in the tentative budget for a \$7.5 billion reduction in

Social Security taxes during the year beginning Oct. 1.

Rep. Al Ullman, D-Ore., chairman of the House Ways and Means Committee, told the caucus today it would be "not only a mistake, but a disastrous mistake" to simply divert general treasury funds to the Social Security system.

But, as the debate made it evident the resolution would carry, Ullman indicated he might not oppose taking some elements of the present system, probably Medicare hospitalization and disability insurance, out of general Social Security and financing these from general treasury revenues.

(See SS TAX, Page 2)

Water Plan of Sweeping Magnitude a Necessity

EDITOR'S NOTE - In updating the state's farflung water plan experts added this cryptic note: "To fall to plan well, and to fall to develop water resources according to schedule ..., has social and economic costs of practically inestimable magnitudes." This special report, one in a series, explores "The Plan" and the problems.

By MIKE COCHRAN
Associated Press Writer

AUSTIN, Tex. (AP) - On an otherwise humdrum day in 1968, the Texas Water Development Board unveiled a broad, bold scheme to meet the state's long range water needs.

It was called, simply, the Texas Water Plan. "There is not a water resource plan of this magnitude or complexity in the world today," the board said in releasing the 50-year water document a decade ago.

"Yet Texas' water needs for the future can be met with nothing less sweeping."

Seldom, it was noted at the time, had such a document, so vital in nature, so painstakingly conceived, been understood by so few.

"A lesson in frustration," snorted one water planner.

Responding to the challenge, Texas voters rushed right out and rejected a \$3.6 billion bond issue needed to help finance the plan. Many voters thought they shot down the plan itself. They were wrong. The plan lives. It is still the blueprint for meeting the state's projected needs.

But it is not easily recognizable.

In a remarkable document released last year, the water development board spelled out a number of proposals designed to revise and update the plan. "There are two compelling reasons to maintain a current statewide comprehensive water resources development plan," the board said in a prelude to its report.

And then James Rose, the former executive director, quietly disclosed those two reasons:

"First, the quantity of water necessary to meet Texas' large and growing needs is not available from most ground water aquifers and undeveloped flowing streams.

"Secondly, the time required to find, develop and deliver additional quantities of suitable quality

water exceeds the length of time that any areas of the state can survive a severe drought.

"The state's population, currently about 12 million, is expected to be more than 18 million in the year 2000, 25.5 million by 2020 and 30.5 million by 2030."

Although Rose laid out the situation quite clearly, one might paraphrase his analysis this way:

"Texas does not have enough water, a drought would be disastrous and the population explosion is compounding the problem."

Rose said Texas, to meet its economic and environmental needs, which includes water for agriculture and the bays and estuaries, must have 33 million acre-feet of water in 2000, 41 million acre-feet by 2020 and 48 million acre-feet by 2030.

Those estimates, water experts admit, are impractical if not impossible, and the requirements have been revised downward. But for the purpose of comparison, the 33 million figure is roughly twice as much water as the state will use this year.

An acre foot of water is 325,850 gallons and represents the amount of water it takes to cover an

acre of land a foot deep.

In its revised and updated report, the water development board disclosed these facts.

"The major areas dependent on ground water are the High Plains, Trans Pecos, El Paso and Winter Garden areas.

"Without imported water, irrigated acreage on the High Plains is expected to decrease to about 58 percent of the current 6.4 million acre level by 2000. The figure would be 41 percent by 2020.

"Other regions of the state will be limited in terms of growth potential, including jobs, unless water supplies are available.

"The major areas where long range water shortages are projected include the Dallas-Fort Worth Region and all regions west including the Wichita Falls, Abilene, San Angelo, High Plains, Trans Pecos, El Paso, Lower Rio Grande Valley, Middle Rio Grande, Corpus Christi and San Antonio regions.

"The areas capable of meeting their longrange needs-if reservoir sites are developed on a timely schedule-are the Middle Gulf Coast, Houston,

Beaumont, East Texas, Northeast Texas and part of the Dallas-Fort Worth and Central Texas regions.

"A number of out-of-state sources of potential water supplies are now being studied for the import to water-deficit Texas areas, primarily the High Plains. The No. 1 target is Arkansas.

"Water experts, on the brighter side, believe Texas can through proper development of all its available sources meet its need for municipal and industrial water.

And with importation, the rich agricultural potential could be reaped for years to come. The questions that must be answered involve monumental political and economic hurdles jeopardizing importation schemes.

"The failure to plan and implement timely water resources programs, with today's large population and elevated economic level," the development board warned, "is to invite economic and social crises that have a high probability of resulting in disaster for Texans.

And that is why the experts are breathing new life into the Texas Water Plan.

Autograph Party Set By White

Dallas Cowboys linebacker Randy White will be on hand from 3-5 p.m. Friday at the YMCA office at Sugarland Mall for an "autograph party" at which he will pass out autographed photos of himself to the first 500 visitors.

White, co-MVP of the Super Bowl, will also be the featured speaker at the YMCA's Partner of Youth Banquet at the Bull Barn Friday night. The appearance of White will be just one of several attractions at the banquet. The Khiva Shrine Circus clowns will also be on hand to hand out balloons and suckers promoting the YMCA, and demonstrations by participants in several YMCA programs will entertain the crowd as they move through the serving line.

"We hope to have a packed house Friday night," Y general director kick Wood said. "Randy White should be a very big draw, and we are looking for a good talk from him."

Tickets for the banquet, which will begin at 7 p.m., are \$4 for adults and \$1 for children 11 and under. Local Lions Club members are handling advance sales of the tickets.

The local Kiwanians will serve the food

(See AUTOGRAPH, Page 2)



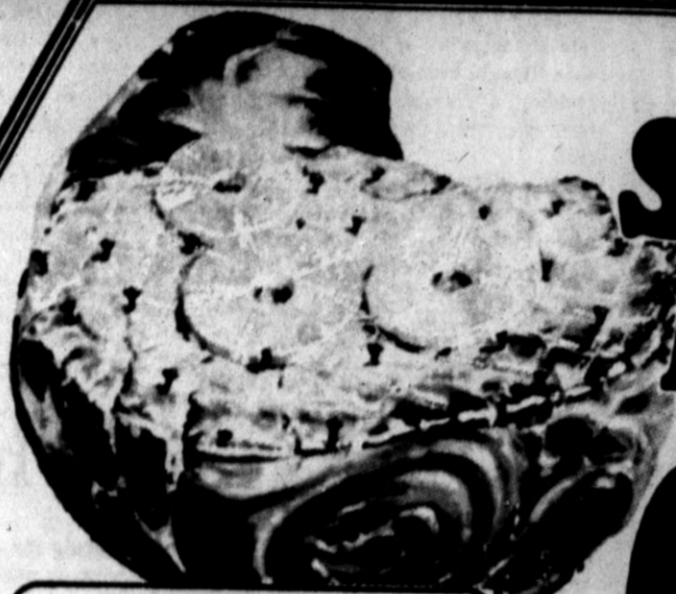
400 Extra

Gunn Bros. STAMPS
 BY REDEEMING 2 COUPONS THIS WEEK AND NEXT WEEK...

Ideal
 FOOD STORES

PRICES EFFECTIVE APRIL 6, 1978
 THRU APRIL 8, 1978.
 QUANTITY RIGHTS RESERVED.
 NO SALE TO DEALERS.

OPEN 9 A.M. TO 9 P.M. SUNDAY
 OPEN 8 A.M. TO 10 P.M. MONDAY
 THROUGH SATURDAY



RATH FULLY COOKED

Smoked Picnics

79¢
 LB.

Sliced
 Smoked Picnics
 RATH FULLY COOKED
 WATER ADDED
89¢
 LB.

6 TO 8 LBS.
 AVERAGE

Boneless Turkey Hams

FULLY COOKED
 BLUE RIBBON
 3 TO 5 LBS.
 AVERAGE
\$1.59
 LB.

BLUE RIBBON Turkey Franks

59¢
 12-OZ. PKG.

MEET TWO NEW HAPPY WINNERS!



Martha French
 \$1000. Winner



Don Bennett
 \$1000. Winner

\$1000 WINNERS

Judy Rose of Alva
 Georgia F. Agullion
 of Garden City

PLAY CASH KING

KOUNTY KIST WHOLE KERNEL Golden Corn

488¢
 12-OZ. CANS

AUNT JEMIMA ORIGINAL Pancake Mix... **69¢**

LINDY EARLY JUNE Sweet Peas

4100
 17-OZ. CANS

HEINZ 57 Steak Sauce... **99¢**

ALL GRINDS Folger's Coffee

1299
 1 LB. CAN

CHUN KING Chow Mein Noodles... **57¢**

GOLD MEDAL Enriched Flour

564¢
 5 LB. BAG

CHUN KING Soy Sauce... **33¢**

FAIRMONT ICE CREAM

ASS'T FLAVORS
98¢
 GAL CTN

FAIRMONT Ice Cream Bars... **98¢**

STAYFREE Mini Pads... **\$1.39**
 30-CT. PKG.

EXTRA DRY Arrid Deodorant... **98¢**

MEDIUM PLASTIC STRIPS Band-aid... **98¢**

REACH Toothbrushes... **79¢**

FRESH DAIRY

Parkay WHIPPED Margarine

64¢
 16-OZ. TUB

CAMELOT Half & Half
29¢
 16-OZ. CTN.

KRAFT MONTERREY JACK Casino Cheese... **98¢**

PILLSBURY BIG COUNTRY Biscuits
239¢
 6-OZ. 5-CT. TUBS

KRAFT SLICED Mozzarella... **77¢**

FROZEN FOODS

Fried Chicken

\$1.98
 2-LB. BOX

BIRDSEYE LITTLE EARS Corn-on-the-Cob
89¢
 6-CT. PKG.

WELCH'S Grape Juice... **73¢**

PATIO BEEF Enchiladas
73¢
 6-CT. 16-OZ. PKG.

PATIO SNACK Beef Tacos... **73¢**

SHOP IDEAL...WHERE THERE'S MORE VALUE IN STORE

200 BONUS STAMPS


JUST CLIP AND REDEEM OUR STAMP COUPONS.
2 COUPONS WILL APPEAR IN OUR
AD THIS WEEK AND NEXT WEEK...
REDEEM ALL FOUR FOR 400 EXTRA STAMPS!

No. 11
THIS COUPON IS GOOD FOR
100 FREE GUNN BROS. STAMPS
AT YOUR IDEAL FOOD STORE.
No Purchase Required

Please fill in your name and city.
Only One Coupon Per Customer-Coupon Expires 4-8-78.

No. 11
THIS COUPON IS GOOD FOR
100 FREE GUNN BROS. STAMPS
AT YOUR IDEAL FOOD STORE.
With the Purchase of \$5.00 or more in Groceries.

Please fill in your name and city.
Only One Coupon Per Customer-Coupon Expires 4-8-78.



Box-O-Chicken
HUDSON'S BUDGET PACK
5 TO 6 LBS. AVG.
LB. **49¢**
FRESH RIBS ATTACHED **\$1.09** FRESH DRUMSTICKS OR **99¢**
Fryer Breasts...LB. Fryer Thighs...LB.



BONELESS Round Steak
BOTTOM ROUND U.S.D.A. CHOICE BUTCHER BLOCK BEEF
\$1.59
LB.

U.S.D.A. CHOICE BUTCHER BLOCK BEEF
Rib Steak
LARGE END RIB BEEF...
\$1.59
LB.

JIMMY DEAN...PURE PORK
Pork Sausage (2-LB. PKG \$3.37) 1-LB. PKG. **\$1.69**
OSCAR MAYER
Sliced Bologna MEAT OR BEEF 8-OZ. PKG. **89¢**
OSCAR MAYER...REG. OR GERMAN
Braunschweiger 8-OZ. PKG. **69¢**

OSCAR MAYER...
Cotto Salami OR LIVER CHEESE 8-OZ. PKG. **99¢**
OSCAR MAYER
Chopped Ham 8-OZ. PKG. **\$1.39**
LAND-O-FROST ASSORTED VARIETIES
Smoked Meats 3-OZ. PKG. **55¢**

WILSON CORN KING MEAT BY THE PIECE
Jumbo Bologna (SLICED LB. \$1.09) LB. **99¢**

WIN UP TO 1000000

ODDS CHART as of March 25, 1978
Scheduled Termination of the Promotion is June 17, 1978

PRIZE VALUE	NO. OF PRIZES	ODDS FOR 1 STAMP	ODDS FOR 4 STAMP	ODDS FOR 8 STAMP
\$1,000.00	18	1:14,844 to 1	28,711 to 1	6,380 to 1
100.00	157	13,187 to 1	3,292 to 1	732 to 1
10.00	292	7,079 to 1	1,770 to 1	383 to 1
5.00	718	2,837 to 1	684 to 1	148 to 1
2.00	2,503	826 to 1	207 to 1	48 to 1
1.00	10,285	327 to 1	82 to 1	19 to 1
TOTAL NO. OF PRIZES	20,033	103 to 1	26.7 to 1	5.7 to 1



PORTS OF ENGLAND DINNERWARE
This Week's Feature
Cup... ONLY 69¢
GET THIS COMPLETE SET
Bonus Value This Week
9" VEGETABLE DISH
SAVE \$1.00 **\$2.98**

Meadowdale Bleach
1/2-GAL. BTL. **39¢**
GLAD Yard & Leaf Bags... 10-CT. PKG. **\$1.89**

TEXSUN UNSWEET PINK
Grapefruit Juice
6-PACK **69¢**
6-OZ. CANS
KRAFT Marshmallow Creme... 7-OZ. JAR **43¢**

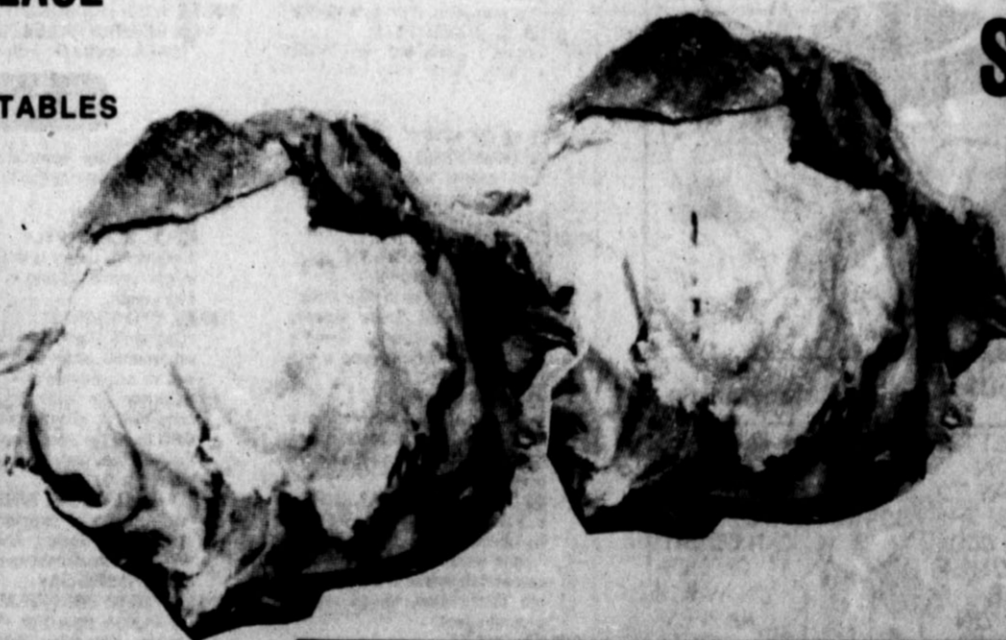
GREEN GIANT CREAM STYLE
Golden Corn 4 17-OZ. CANS **\$1.00**
CHUN KING
Chow Mein ALL VARIETIES 42-OZ. CAN **\$1.49**
KRAFT
BBQ Sauce ONION, SMOKED, PLAIN, HOT 18-OZ. BTL. **58¢**
NABISCO
Fig Newtons 16-OZ. PKG. **88¢**
LIQUID
Era Detergent 64-OZ. BTL. **\$2.29**

VALUABLE COUPON
Cheer Detergent... **\$1.99** WITH THIS COUPON
LIMIT ONE COUPON PER CUSTOMER. COUPON EXPIRES 4-8-78. **Ideal**
CANDY
Kraft Caramels... 14-OZ. PKG. **69¢**
NABISCO
Snack Crackers... 10-OZ. BOX **69¢**



THE IDEAL PLACE TO SAVE...
ON FRUITS & VEGETABLES

CRISP ICEBERG HEAD
Lettuce
LB. **29¢**



CALIFORNIA RED RIPE
Strawberries 2 PINT BOXES **\$1.00**
U.S. #1 COLORADO RUSSET
Potatoes 10 LB. BAG **98¢**

FRESH CRISP
Carrots 2-LB. PKG. **49¢**
GREEN
Onions 2 BUNCHES FOR **29¢**

NORTHERN
Michigan Peat 40-LB. BAG **\$1.59** LANDSCAPING
Rock BAG **\$1.98**

FOR YOU!.....

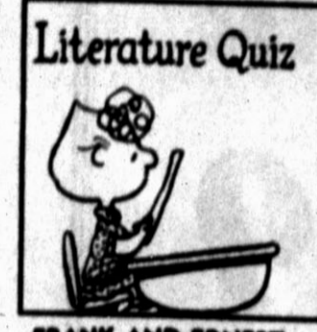


Tas-T-BAKE BAKERIES
FRESH
Glazed Donuts **\$1.09**
FRESH BAKED
Hamburger Buns 8 CT. PKG. FOR **59¢**

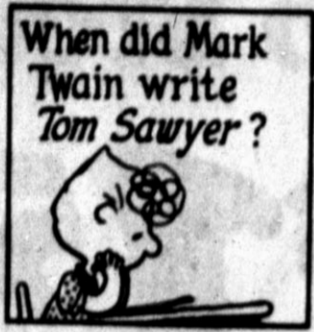


"You've got to learn to follow through on you projects. You can't go through life doing things half way"

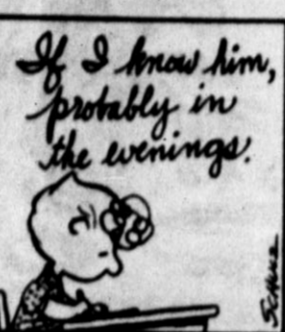
THE HEREFORD BRAND Comics & Television Schedules



Literature Quiz



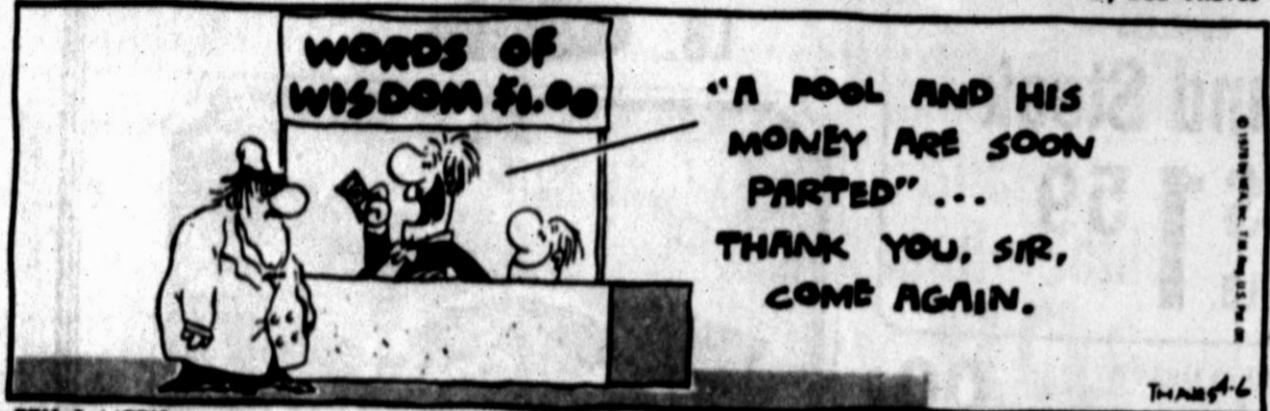
When did Mark Twain write Tom Sawyer?



If I know him, probably in the wings!

FRANK AND ERNEST

by Bob Thaves



WORDS OF WISDOM \$1.00

"A POOL AND HIS MONEY ARE SOON PARTED" ... THANK YOU, SIR, COME AGAIN.

THOMAS

BEK & MEK

by Howie Schneider



THE BORN LOVER

by Art Samson



ALLEY OOP



OUR BOARDING HOUSE with Major Hoople

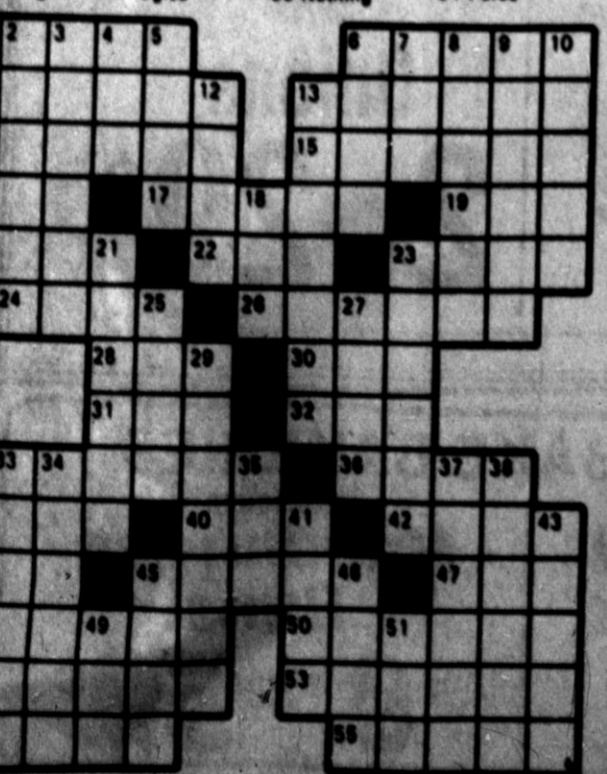
by Art Samson

- ACROSS**
- 1 Employing
 - 6 Useful
 - 11 Besides (2 wds.)
 - 13 More banal
 - 14 Thirty (Fr.)
 - 15 Weather
 - 16 Commit a faux pas
 - 17 Devastation
 - 18 Measure of land (metric)
 - 20 Hardest attachment
 - 22 Tie
 - 23 Shot hole-in-one
 - 24 Places
 - 26 Filament
 - 28 Fortune
 - 30 Spine
 - 31 Individual
 - 32 Environment agency (abbr.)
 - 33 Polynesian
 - 34 Short pencil
 - 38 Branches of learning

- DOWN**
- 1 Enunciate
 - 2 Sour-leaved plant
 - 3 Spanish peninsula
 - 4 Negative prefix
 - 5 Barbarian
 - 6 Of liquid waste
 - 7 Spam
 - 8 New York State city
 - 9 Ogled
 - 10 Made mistake
 - 12 Nipple
 - 13 Proseic foot
 - 18 Dyeing tub
 - 21 Stockings
 - 23 Charge with gas
 - 25 Canto
 - 27 Hits
 - 29 Police weapon
 - 33 Vibration curve
 - 34 Indolent
 - 35 Nothing
 - 37 Release
 - 38 Spring suddenly
 - 39 Alter
 - 41 Egg (Fr.)
 - 43 Polish
 - 45 Lincoln and Fortes
 - 46 Set of three
 - 48 Highway
 - 49 Highway curve
 - 51 Purse

Answer to Previous Puzzle

1	2	3	4	5	6	7	8	9	10
11	12	13	14	15	16	17	18	19	20
21	22	23	24	25	26	27	28	29	30
31	32	33	34	35	36	37	38	39	40
41	42	43	44	45	46	47	48	49	50
51	52	53	54	55	56	57	58	59	60



NEWSPAPER ENTERPRISE ASSN.



"Don't worry, ma'am — it'll most likely derail before it gets to you."



COMMENTARY Donald F. Graff

No more forests?

The good green earth may be considerably less so very shortly if a trend in the developing world continues unchecked.

The World Bank warns that there could be no forests left in less than a century if deforestation continues at the present rate in countries seeking to make the great leap forward into industrialization.

A bank report places the present forested area in developing countries at some 2.5 billion acres, half what it was at the turn of the century.

The bank, putting primary blame on population pressures, is allocating a half-billion dollars over the next five years to projects designed to halt deforestation and renew forests.

Actually, what is happening is an acceleration of a process that has been underway for millennia. Through much of man's civilized history, progress toward ever

higher levels of culture has been accompanied by a denuding of his original natural environment. China, in much of which today trees are notable for their scarcity, was once heavily forested. Likewise Italy and Western Europe.

Changes in climate have also been involved, but human activities — overuse without heed to replacement or wanton wastage — have been a major force in the degreening of the planet.

Fortunately, deforestation need not be an irreversible process. Once much of the original farming population had moved on to the more promising Middle West, large tracts of the Northeastern United States were returned to forest. Modern Germany's prized woodlands are carefully cultivated replacements of the ancient dark Teutonic forests.

Only God, it is true, may be able to make a tree. But man can certainly do a lot to help or hinder its survival.

THURSDAY

- 6:00 NEWS
- 6:30 SWITCHED
- 7:00 THE GROWING YEARS
- 7:30 FISH
- 8:00 POLICE WOMAN
- 8:30 BARNABY RANSOME
- 9:00 THE MISSING FISH
- 9:30 THE POLICE
- 10:00 THE POLICE
- 10:30 THE POLICE
- 11:00 THE POLICE
- 11:30 THE POLICE
- 12:00 THE POLICE

- 12:30 THE POLICE
- 1:00 THE POLICE
- 1:30 THE POLICE
- 2:00 THE POLICE
- 2:30 THE POLICE
- 3:00 THE POLICE
- 3:30 THE POLICE
- 4:00 THE POLICE
- 4:30 THE POLICE
- 5:00 THE POLICE
- 5:30 THE POLICE
- 6:00 THE POLICE

FRIDAY

- 6:00 NEWS
- 6:30 SWITCHED
- 7:00 THE GROWING YEARS
- 7:30 FISH
- 8:00 POLICE WOMAN
- 8:30 BARNABY RANSOME
- 9:00 THE MISSING FISH
- 9:30 THE POLICE
- 10:00 THE POLICE
- 10:30 THE POLICE
- 11:00 THE POLICE
- 11:30 THE POLICE
- 12:00 THE POLICE

- 12:30 THE POLICE
- 1:00 THE POLICE
- 1:30 THE POLICE
- 2:00 THE POLICE
- 2:30 THE POLICE
- 3:00 THE POLICE
- 3:30 THE POLICE
- 4:00 THE POLICE
- 4:30 THE POLICE
- 5:00 THE POLICE
- 5:30 THE POLICE
- 6:00 THE POLICE

TFU Terms Administration's Farm Proposals 'Inadequate'

WACO -- The Texas Farmers Union is terming administration proposals for farm relief "inadequate to meet the dramatic needs of agriculture" and calling upon Texas House members and Senators to push forward with emergency legislation, mustering support to override a Presidential veto if necessary.

TFU President Jay Naman states that the provisions of the combined Talmadge-McGovern-Dole bills now before a Senate-House conference committee offer some much-needed relief for farmers caught in the continuing cycle of depression. The state farm leader, however, says the administration's plan avoid meaningful aid and its strategy offers "minimal net effect which is itself months down the road."

"Farmers would never have taken to the streets if they had not needed immediate, substantial improvements which would affect the current crop year," said Naman. "For many thousands of families 1978 will be their final chance to make it or bust. Certain senators and congressmen have realized this, but President Carter continues to promote a 'hang in there'

approach which covers his entrenched policy to protect the budget regardless of the fate of the family farm. His programs are unacceptable."

Farmers Union has supported the Senate legislation as it contains possibilities for immediate improvement in 1978 farm income and has particularly heralded the adjustment in loan rates for major crops as "a step in the right direction of the very minimum in necessary protections."

The administration announcement on March 29 for small payments to retire limited crop acres is expected to dull efforts of legislation which directs greater expense on larger acreage and also includes improvement in price supports. The threat of a Presidential veto over any action greater than the administration plan will have a definite effect on the work of the conference committee as well as the final floor votes, especially in the House of Representatives.

"There is no question that the House-Senate conferees can work out an acceptable and meaningful compromise," Naman said. "The crucial thing is to retain the highest of the

target and loan rates now provided in the Senate bill.

"While I do not wish to belittle the soybean loan increases to \$4.50 a bushel or the recent milk support increase, there is nothing in the administration's plans which would assure immediate price improvement for wheat, feed grains and cotton. We feel that it would be months before any of

the diversion or wheat reserve actions could have an effect on farm income."

Naman further called talk of food inflation "scare tactics". He pointed to consumer price index increases in housing, medical costs and energy and noted that "it's always a food increase that becomes the spotlighted culprit."

"The consuming public needs

to know that it is a single-digit increase that we're looking at, probably 6 percent at the most. The nation as a whole should recognize Congressional attempts to legislate relief are worthy in the name of food supply at stabilized prices and that family farmers are worth keeping around, even if the administration is less than concerned about their plight."

Emergency Farm Loans Available Through FmHA

Emergency loans for farmers, ranchers, or aquaculture operators are available through county offices of the Farmers Home Administration (FmHA), Melvin L. Hoover, FmHA county supervisor, said today.

Hoover asked that those who need farm credit as a result of drought, high winds, and/or hailstorms make their needs known at the Farmers Home Administration office at 313 West Third, Hereford, or call 364-0530.

Applications for assistance in the disaster stricken counties will be accepted by Farmers Home Administration until September 12, 1978 for physical losses and March 16, 1979 for production losses for Oldham County and until September 28, 1978 for physical losses

and April 3, 1979 for production losses for Deaf Smith County.

FmHA loans covering actual physical and production losses may be used to replace installations, equipment, or buildings, (including homes) lost through this disaster. Funds may be used to buy feed, seed, fertilizer, livestock, or to meet interest and depreciation payments on current real estate and chattel debts. Other loans, beyond actual losses, can be made for annual operating expenses or to make major adjustments in a farming, ranching or aquaculture operation.

"Funds can be used for essential operating and living costs," Hoover said.

Loans covering actual losses are made at an interest rate of 3 and 5 percent and are scheduled

for repayment as rapidly as feasible consistent with the applicant's reasonable ability to pay. Loans beyond actual losses have various maturities, depending upon the purpose of the loan.

The interest rate for short-term loans for farm operating purposes is 8 percent. Long-term loans are being made at an interest rate of 8 percent.

To be eligible for an emergency loan, applicants must have suffered losses from the disaster and be unable to get credit from other sources.

Emergency loans can be used to help the farmer restore damaged farm operations and additional loans based upon the emergency designation can be used to reorganize the farm for greater efficiency and better production.



Grand champion Angus heifer at the 1978 Southern Arizona Livestock Show, Tucson, was this entry of Thunder Valley Ranch, Hereford. Their champion was TVAF Dynamite Evelyn 2066. Photo by American Angus Association)

Thunder Valley Has Top Heifer At Show

TUCSON, ARIZ.--Angus breeders from the Southwest displayed their top heifers and bulls at the recent Southern Arizona Livestock Show held in Tucson. Judging the event was Bill Jacobs, California Polytechnic Institute, San Luis Obispo.

Topping the heifer show was the junior yearling champion, TVAF Dynamite Evelyn 2066 shown by Thunder Valley Angus Farm, Hereford. The firm also showed the intermediate champion heifer, Dynamo Elba of TVAF 1796; intermediate champion bull, TVAF Dyna Shadow 2582; and the reserve junior champion bull, Dynamite Bean TVAF 2416.

Deep Down Ranch, Paluxy, exhibited both grand champions in the bull show and reserve grand in the heifer show. Their grand champion bull was Ankonian Dynamo 72065 and reserve grand was Biffles Emulous 632. Their reserve

grand champion heifer was Biffles Lucy 643. They also showed the junior heifer calf champion, Garney Queen Mother 7061 and won first place in the get-of-sire division with offspring of Black Marshall 482.

Quarter Circle Spear Ranch, Benson, Arizona, exhibited the reserve junior heifer calf champion, Antony B999 Lass 77127 and the reserve junior bull calf champion, Massive of Erica Valley.

George Graham, Wichita Falls, showed the reserve senior heifer champion, Blackcap Queen 6 of 77. He also showed the reserve intermediate champion bull, RF Black Marshall 1796.

Reserve intermediate champion heifer was QCS Flower 676 shown by Yvette Oestreich, Tucson, Arizona. Reserve junior yearling champion was Antony 8F78 Talauris shown by Terry Ohrel, Benson, Arizona.

Other bull show winners were the junior bull calf champion, Rosharons Sport 2254 shown by Roland Burrows, Schulenberg, reserve bull calf champion, UA Rito 332 shown by the University of Arizona, Tucson; and the junior champion, Hinksonite 76220 shown by Frank Hinkson, Muleshoe.

"We stand behind our work. That's Reason No. 5 why you should let us do your taxes."



Henry W. Block
If we prepare your return and the IRS should call you in for an audit, Block will go with you at no extra charge. Not as your legal representative, but to answer any questions about how your taxes were prepared.

H&R BLOCK
THE INCOME TAX PEOPLE

127 W. 3rd.
364-4301
OPEN
9-6 WEEKDAYS
9-5 SATURDAY

MBPXL Elects Priceman

WICHITA, KAN. -- MBPXL Corporation has announced the election of Erving H. Priceman as vice chairman of the board of directors and chairman of the executive committee in addition to his position as executive vice president of the company.

Priceman has been executive vice president of MBPXL Corporation since its founding in 1974. Prior to September of that year, he was president of Kansas Beef Industries, Inc., the firm which merged with

Missouri Beef Packers, Inc. to form MBPXL Corporation, the nation's second largest beef processor.

Priceman has played an active role in community and trade association activities. He is the past president of the National Independent Meat Packers Association and is currently on the board of directors of that organization. He is also a director of Kansas State Network, Inc.

After Lengthy Market Depression

Price of Beef Finally Returns to Higher Level

WASHINGTON (AP) - Retail beef prices as a whole are the highest in almost two and a half years, according to records kept by the Agriculture Department.

However, although retail beef prices have climbed recently, cattle feeders both locally and across the nation are only now beginning to realize profits again, after a period of crushing losses for both the cow-calf operator and the feeder.

The losses date back to 1973, when a consumer backlash, a price freeze on beef, a transportation strike and overproduction all combined to nearly destroy many segments of the nation's cattle production industry.

A shortage of fat cattle has prompted the upturn in the market in recent weeks, and most feedyards are remaining relatively current on their cattle inventories.

The department says that in February the average price of beef sold in retail stores was an all-out average of more than \$1.51 a pound, up from about \$1.48 in January.

According to USDA records, the February average was the

highest since beef averaged almost \$1.59 a pound in October 1975. A year ago beef was \$1.35 a pound.

Pork prices also are going up, averaging more than \$1.38 a pound in February against less than \$1.34 in January. That was the most since pork was \$1.42 a pound in July, 1976, according to USDA. A year ago it was \$1.21 a pound.

The meat price increase was reported earlier by the Labor Department as one of the reasons why USDA has revised its 1978 estimate on food prices, now saying that those will go up 6 to 8 percent instead of the 4 to 6 percent rate predicted earlier.

Most of the reason for the meat price climb is due to a three-year cutback in cattle herds by producers who sold off inventories because of depressed prices. Further, hog farmers are not turning out as much pork as had been indicated a few months ago.

The meat price figures were included in a monthly report on price spreads for food originating in U.S. farms.

In February, it said, the farm value of beef was 89.8 cents a

pound, up from 86.6 cents in January. That is not what producers get for cattle because it takes about 2.3 pounds of live steer to make one pound of store beef. It is, however, the farmers' share of what consumers pay for beef.

The middleman's share last month was 61.4 cents a pound, down slightly from 61.6 cents in January, the report said.

Pork producers got an equivalent of 87.6 cents a pound in February, up from 82.6 cents in January. Middlemen got 50.8 and 51.6 cents, respectively.

With their six legs and flat, oily bodies, cockroaches are able to escape from predators quickly through the smallest opening. Even a slight movement of air registers on the fine hairs of their antennae and triggers sensory nerves in their legs. Threatened roaches have been known to take off in 54-1,000ths of a second.

Amarillo PCA Directors Meeting in San Antonio

AMARILLO--Financing and the agricultural world will get attention when Amarillo Production Credit Association directors meet in San Antonio today through Saturday. They will be among 500 farmer-rancher stockholders and guests attending the 22nd annual meeting of the Federal Intermediate Credit Bank of Houston.

Amarillo PCA directors attending include Gaston Wells, chairman of Dumas; George B. Dohler, vice chairman of Vega; Wesley H. Garnett of Spearman; Billy Chesnut of Dalhart and Howard K. Fuqua of Amarillo. PCA officers accompanying them include James Van Pelt, president and Tommy Thompson, vice president.

According to Van Pelt, those attending represent 30 PCAs and 6 agricultural credit corporations in Texas which obtain their loan funds from the FICB of Houston. These

organizations last year loaned nearly \$1.6 billion to Texas farmers and ranchers. PCAs of Texas and the Houston credit bank are part of the nationwide Farm Credit System which provided nearly \$40 billion last year to the nation's food and fiber producers.

The Hereford Brand
Farm News

COMPILED BY JIM STEIERT, BRAND FARM EDITOR

Plant a Winner!

"P-A-G 5514 Man... that's Sorghum"

HERBERT SCHUELER
FRIONA, TEXAS

"I planted P-A-G 5514 for the second year this year. And I was real pleased with it. In a test field with other varieties P-A-G 5514 was the best. Will plant P-A-G 5514 next year."

FOR MORE INFORMATION CONTACT

Jackie Andrews Hereford, Texas
Carl Kleuskens Hereford, Texas
Westway Fertilizer Westway, Texas

Ask your P-A-G Dealer about the 1978 REBATE PROGRAM. It will save you money on your P-A-G purchases.

PAG P-A-G SEEDS
BOX 10303
LUBBOCK, TEXAS 79408

Performance of this seed may be adversely affected by environmental conditions, mutant strains of insects or diseases, or other factors beyond the control of P-A-G.

A BEAUTIFUL GARDEN...

Grows from Quality seed!
We have your favorites:

- Beans
- Cucumbers
- Peas
- Cantaloupes
- Squash
- Watermelons

-plus many, many others-

FIRST NATIONAL FUEL AND FERTILIZER

Holly Sugar Road 364-6830

Golden Acres BRAND

HYBRID SEED CORN
HIGH YIELDING SINGLE CROSS
WHITE CORN

TE BLANCO

- Medium Maturity
- Extra Disease Resistance
- Good Husk Cover
- Developed For the Southwest
- Strong Stalks
- High Yield Potential

WE RECOMMEND TE BLANCO

Grain Handling Corp
E. Hwy 60, Hereford 364-3811
COME IN NOW FOR YOUR SEED NEEDS

Here comes Spring!

NEW 1978 Colors! and great wall paint bargains

Spring colors can bloom in your home right now, at terrific early-bird savings.

SAVE \$4.00 ON EVERY GALLON

OUR FINEST
A beautiful smooth flat finish. It goes on easily and dries in minutes to a scouring powder tough finish. Hundreds of colors including new 1978 shades.

WASHABLE FLAT
Even at this price, this paint is available in hundreds of colors at no extra cost.

FARM DISCOUNT LUMBER & SUPPLY

STORE HOURS:
MON. - FRI. 7:30 - 5:30
SATURDAY 7:30 - 4:00

Phone 364-6002 Hwy 385 So.

Good merchandisers know why
We
Move
The
Goods!



1. Huge local and trade territory circulation.....
2. Unsurpassed art and ad layouts that "sell" merchandise.....
3. Local news from every corner of Deaf Smith County news of people, activities, events.....

It's a winning combination if you want to move the goods!

THE HEREFORD BRAND

Property Insurance Update Necessary

COLLEGE STATION — Property insurance needs on update to keep pace with inflation, says one family resource management specialist.

Most people have some form of insurance on their property, but few understand what their policies do and do not cover. Linda McCormack with the Texas Agricultural Extension Service, The Texas A&M University System, explains.

Since a family's largest and most important investment is usually the home, they need to insure it against the most common risks.

The amount of property insurance depends on the value of the home and household goods. Some policies require that the dwelling be insured for at least 80 percent of the home's replacement value.

To determine the home's replacement cost, contact an insurance company and ask for a dwelling evaluation worksheet. In most instances, the homeowner can make the analysis and have a satisfactory estimate, she suggests.

However, if the home was constructed before 1930, a professional appraisal may be needed.

If the insurance does not cover the replacement cost, the policy limits may need to be raised, or else, the homeowner must pay some of the replacement cost in event of partial loss.

To keep pace with inflation, ask about the Inflation Guard Endorsement, which increases policy limits by a fixed percent—usually one or two percent quarterly—to assist in keeping coverage current with construction costs, the specialist continues.

Also, personal possessions in the home may not be adequately covered. As a general rule, most household possessions are automatically insured for 40 to 50 percent of the coverage on the home.

As an extra safeguard, insure valuable possessions separately. These might include furs, special collections, paintings, silver, fine jewelry and certain musical instruments, she adds.

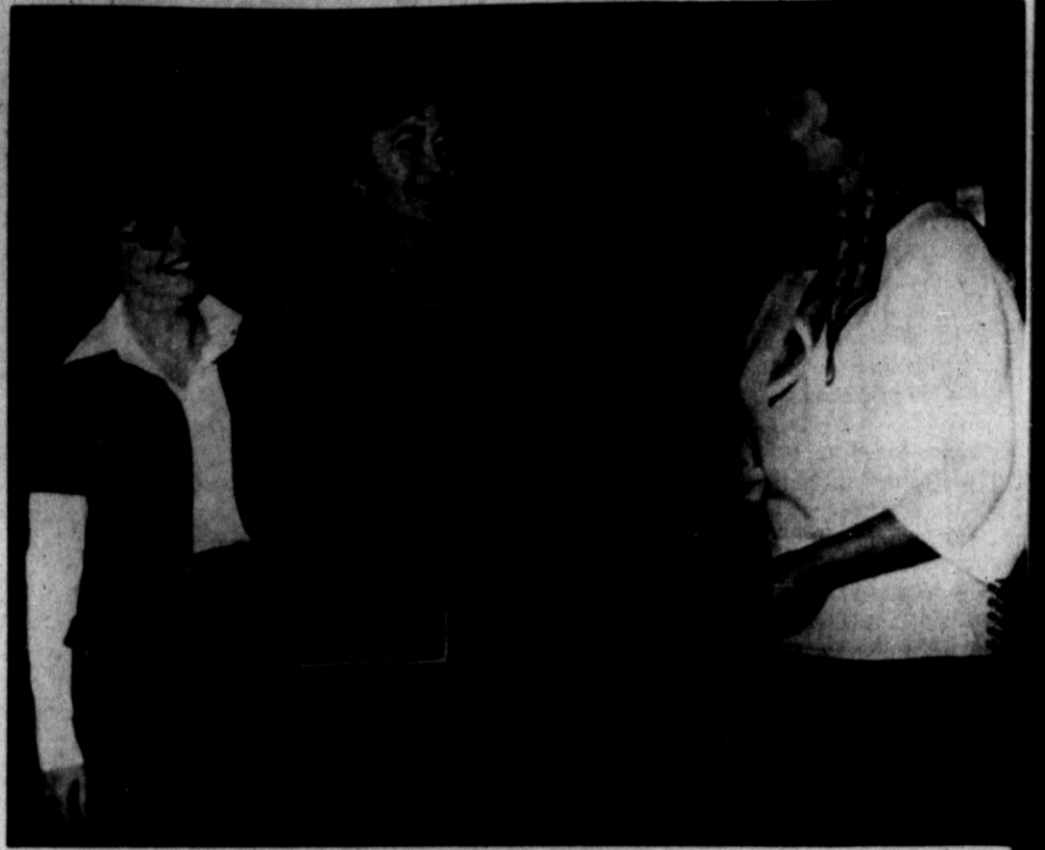
MORTGAGES
WASHINGTON (AP) — Home mortgage foreclosure rates for 1976 were about 30 percent lower than levels four years ago and delinquency rates also were on a generally downward trend, according to a survey by the Mortgage Bankers Association of America (MBA).

LOOK SHARP!
DES PLAINES, Iowa (AP) — When choosing knives, remember three rivets in a knife handle is a sign of quality, advises the Society of the Plastics Industry, some of whose members produce cutlery components.

Carbon steel takes the best edge, but will rust if not dried thoroughly after each use, according to the society. Stainless is easy to clean and looks pretty. But, except for high-priced stainless, it does not keep a good edge.

Serrated knives are a boon for the beginning cook or the pro — they go through even frozen vegetable boxes without difficulty.

WATCH FOR IT!
THE FACE PLACE
Coming April 10



Recruiting Efforts Cited

Carrell Ann Simmons, right, chairman of the membership committee of the Chamber Women's Division congratulates Irene McKinster, left, and Wilma Taylor for enrolling the most new members during the recent membership drive. Mrs. McKinster was awarded a cash prize of \$50 and Mrs. Taylor received \$25. A total of 31 new members were added during the campaign. [Brand photo by Dianne Banner]

Ann Landers Tough Breaks



DEAR ANN: You are like a second mother to me. I know you won't let me down. I'm a junior at Lawrence College in Appleton, Wisconsin. I've decided to write a term paper on Changing Patterns in Marriage over the Last 40 Years.

Will you kindly jot down about 1,000 words on the most common marital problems of our time—the cause and solution? Then, compare them with the problems that were most common 40 years ago. Please rush this to me and save my life. Mother.—Life-Long Admirer.

DEAR LIFE: First, I'm not your mother. Second, if I understand you correctly, all you want is about 1,000 words on the most common marital problems of our time — the causes and solutions. Then you would like me to compare today's marital problems with those that existed 40 years ago.

Every year about this time I receive at least a dozen similar requests from college students who would just love to let me do their work. Sorry, Buster, I've got all I can handle doing my own. Go to the library and start digging.

DEAR ANN LANDERS: You would do your readers a great service if you called to their attention the new Social Security law which says widows, widowers and divorced spouses over the age of 60 will no longer lose Social Security benefits if they remarry.



Clean-up! Paint-up!
Fix-up!
April 8 - 22
Do Your part!

In addition to this, the law reduces from 20 years to 10 years the time that a divorced person need have been married in order to claim benefits based on the ex-spouse's earnings.

It should also be stressed that when a woman divorces, it is important for her to record the Social Security number of her husband and put it away for a later date. She will need it when she is eligible to collect.

A great number of people lose out on benefits to which they are entitled simply because they are not aware of new laws. Educate them, please — M.J.B., Independence, Mo.

DEAR M.J.B.: With pleasure. Thanks for providing me with the opportunity. I say it's about time widows, widowers and divorced spouses were permitted to remarry without losing their Social Security benefits.

I can't tell you how many letters I've received from older folks who hated living together unmarried but were forced to because they couldn't afford to

lose their small compensation. I am delighted to pass the word.

DEAR ANN LANDERS: The office building where I work has a cafeteria for employes. A few days ago, the woman behind me in line was busy talking to her friend ahead and accidentally burned a hole in my sweater. We noticed it at the same moment. She said, "I'm SO sorry. How clumsy of me," but no mention was made about making it right.

Yesterday I took the sweater to a dry-cleaning shop that does weaving. They said they could mend the hole and make the sweater good as new for \$8.00. Do you think the woman should pay for it or was I at fault for not being more alert? Should I send her the bill in the mail?—Fraidy Cat

DEAR CAT: Why hide behind a postage stamp? The woman should have offered to pay for the repair of your sweater the moment she discovered she had burned it. Since she didn't, give the bill to her — eyeball to eyeball.

At Wits End

BY ERMA BOMBECK

One of the questions tall shows hosts frequently ask is, "Do your children show signs of an acute sense of humor?"

I will share with you what I got for my birthday this year and you can be the judge. My daughter bought me an electric can opener (I've already worn out three), one son wired me a bouquet of spring flowers (I've always loved him best), and the other son bought me a bicycle.

The bicycle has two wheels, three gears, and is guaranteed to shorten my life by ten years. I have never been what you would call athletically inclined. I had to repeat showers. According to my son, "You need this, Mom. After all, you don't jog, swim, ski, and you play tennis like you just had a spinal."

Three weeks later, he came over and said, "Why haven't you ridden your bicycle?"

"Get serious," I laughed. "You know I haven't had a chance to buy a bicycle wardrobe."

"What wardrobe? Why don't you just take off in what you're wearing?"

"Do you actually think I'd be caught on the road in public with a waistband that gaps and shows half of my underwear when I bend over the handlebars?"

A few more days passed by before he said, "Why don't you take the bike out of the bedroom and onto the street?"

"I'm trying to find a time when there is room for me out there. Between 6:00 and 7:00, the joggers are out. Then it's time for the workers' traffic of cars until 9:00 a.m. Then the streets are full of dogs until 10:30 and by this time the kids are coming home from school for lunch. When they're back at 2:00, I nap and 3:00 the people are coming from work again."

This morning, he dropped by and found me straddling the bicycle in the driveway. "It was terrible," I whimpered. "My backside has grown around the seat, my legs are cramped, my foot has a kink in it, a dog tore my slacks, the wind from a truck nearly threw me to the ground, my handbag slid from my shoulder and caught in the spokes and I just remembered something important....I'm old."

"Great!" he said. "Maybe tomorrow you can take it out of the driveway."

That kid NEVER had a sense of humor.

G. E. D. TESTS

TESTS 1, 2 & 3 April 24, 2978

TESTS 4 & 5 April 25, 1978

8:30 A.M. Both Days

SCHOOL ADMINISTRATION BUILDING

Robert L. Thompson 364-0843

Save On Winter Heat Protect Your House call on

BONNER'S STORM DOORS AND WINDOWS

Aluminum screens, repair service, installation service
FREE ESTIMATES

364-7174 732 W. 1st.

Intersection of U.S. 385 & 60 next door to Shell service station

The Lighter Side

CHESAPEAKE, Va. (AP) - A Portsmouth man who has been unable to cough up or otherwise produce a stolen diamond ring he swallowed last week has been charged with grand larceny.

A detective who had assumed that a "bodpan watch" would produce the ring in a few days grew weary of waiting for the evidence and served the warrant Wednesday on David Abbott, 24.

The ring was taken from a Churchland area apartment early last week.

Detective Jim Widdifield said that when he approached Abbott to question him last Wednesday, Abbott swallowed the \$1,500 ring.

X-rays taken at Chesapeake General Hospital disclosed the ring had lodged in Abbott's intestinal tract, Widdifield said. Abbott has agreed to have additional X-rays made of his abdomen, and even undergo surgery, if necessary, to remove the ring, Widdifield said.

MARBLE, Colo. (AP) - Voter apathy? That's hardly the case in Marble.

Thirty-seven of this mountain town's 38 eligible voters turned out at the polls this week for the municipal election. Twelve of them were running for office.

Marble, whose quarries supplied the marble for the Lincoln Memorial in Washington, has 47 residents.

GROVE CITY, Ohio (AP) - Charlie Brown, a pet monkey, is making life miserable for Madge Taynor.

The 5-year-old, 70-pound primate has even thrown a knife at her minister, Mrs. Taynor says.

Lately he has been escaping from the house and pestering the neighbors. One of them went to the Grove City Council meeting earlier in the week seeking a solution to the problem.

Mrs. Taynor said she can't seem to find the monkey a good home.

"The Columbus Zoo doesn't want him. I don't want to sell him because he does bite and I don't want anyone to mistreat him, either," she said.

"He's learned how to slide the windows back and get out. He escaped again Tuesday morning but he came back when it started to rain. He doesn't like the rain."

ST. PAUL, Minn. (AP) - Jay Percy Zachary says his daily breakfast fare is a shot of whiskey with bacon and eggs on the side. It seems to agree with Zachary, who celebrated his 106th birthday last month.

Zachary says he tasted his first liquor when he was 9, but has never been more than a moderate drinker.

"I take just one shot a day," he said recently with a chuckle. "Just one shot, some bacon and eggs and I'm set for the day. Whisky is medicine. It's not made to get drunk on."

Zachary admitted, however, that the "one shot," taken about 6 a.m. before he eats, almost fills a coffee cup. "I drink only 100 proof," he added.

Radial Tire Survey Said Waste of Cash

NEW YORK (AP) - The bumpy route of the steel-belted radial tire case continues to produce one blowout after another, partly because of what is now alleged to be a defective government survey.

The survey, said Lester Frankel, former president of the American Statistical Association, was a "waste of money." In general, he said, "it was a bad job, something nobody can be proud of."

Since the survey was finished, a tire company has sued, a judge has ordered the results withheld, a consumer group violated the order, and a cabinet officer has been threatened with contempt.

The survey, by the Department of Transportation, sought to determine the quality of tires installed on new automobiles by mailing questionnaires to owners, asking them if they had complaints.

Possible complaints were listed on a postage-free, pre-addressed electronic computer card, along with the owner's name. The owner was asked to punch a hole beside a complaint that applied to him.

Of the 87,153 cards mailed, 41,441, or 47.54 percent, were sent to owners of cars on which Firestone tires had been installed. The rest went to cars equipped with tires of the other major companies.

Some 5,414 valid responses were received, 1,971 of which indicated problems. The number of valid responses then was divided by the number indicating problems, resulting in the following percentages: Firestone, 46.4, Goodrich 33.04, Goodyear 32.3, Uniroyal 32.23, General 25.6, and Michelin 1.7.

Claiming the survey was biased, Firestone obtained a temporary restraining order, but The Center for Auto Safety, a consumer group, obtained the results and distributed them.

Thereupon, Judge John M. Manos ordered Transportation Secretary Brock Adams to appear in U.S. District Court at Cleveland to show why he should not be held in contempt because the survey results leaked out.

At this point, Frankel, executive vice president of Audits & Surveys, a market research firm that works for scores of companies, including Uniroyal, and a consultant to the U.S. Government, was asked his view.

"It was not professionally done," he said of the survey. "The response rate about 6 percent was too low. You can't make a generalization from that."

In addition, he said, the covering letter conveyed a

feeling the government was interested mainly in hearing about problems, rather than in learning of the recipient's experience, good or bad.

And, he said, since the person's name and address was affixed to the card, a dissatisfied owner might assume that finally he was going to get some remedial action from the government itself.

In contrast, he continued, the satisfied owner had no such motivation for replying. To him or her, it might appear to be just a nuisance from which no real benefits would result.

Moreover, professional surveys almost always avoid using a person's name on the response card, said Frankel, the purpose being to permit expression of an uninhibited opinion.

Mayor Rather Have Tourists Than Convicts

EDINBURG, Texas (AP) - The mayor of this small South Texas city says he would rather have tourists than convicts in his town.

Ronald Case, who originally supported the proposed construction of a state prison near here, said Wednesday that he is against the beleaguered project now.

"Personally, I just hate to see it. I just don't think we need to become known as a prison town. The connotations are not too good," Case said.

He added that the large prison in the vicinity could diminish the annual migration of "winter Texans" to this area. "If we have a prison of that magnitude, it may deter some of our tourists. At first I favored it from an economic point, but the more I thought about it..." the mayor said.

Case asked city commissioners to approve a resolution telling Gov. Dolph Briscoe that the prison is unwanted here. The commissioners all favored the resolution, but the matter was not acted on Tuesday night because it was not on the agenda.

The commission will seek public input on the topic at its next session, Case said.

The state had tentatively agreed to purchase an 8,000-acre tract near here for \$8 million. However, the okay by a three-member approval board was postponed.

The proposed purchase was further clouded by reports that the land was once owned by a convicted felon with Mafia connections.



SUPPORT THE
HEREFORD YMCA
"PARTNER IN YOUTH"
PROGRAM

PRESENTED BY
THE HEREFORD BRAND

The Brogue urges you to support the
YMCA PARTNER IN YOUTH BANQUET
FRIDAY APRIL 7 - BULL BARN
SEE RANDY WHITE - DALLAS COWBOY
FRIDAY AFTERNOON AT THE YMCA!

The Brogue and
Nino Cerruti
Introduce
The Empire Collection

Cerruti puts the dash and derring-do of British colonial officers in this Paddock suit. Bellows patch-and-flap pockets, epaulettes, leather buttons, trousers with double reverse front pleats and tab side buckles. Styled in Camel gabardine, in the classic polyester/wool blend that holds the military precision of fit to perfection.

THIS WEEKEND ONLY!
ENTIRE STOCK
SUITS
25% OFF

THE **BROGUE**

GENTLEMEN'S CLOTHING
SUGARLAND MALL
THE BEST PLACE IN HEREFORD
TO BUY A SUIT!

A SALE SO BIG WE CALL IT...
Sugarland Mall

SUPPORT YOUR YMCA!
RANDY WHITE
DEFENSIVE TACKLE FOR SUPER BOWL CHAMPS
DALLAS COWBOYS
WILL BE SIGNING AUTOGRAPHS FROM 3 TO 5 FRIDAY
AFTERNOON AT THE YMCA IN THE MALL
ATTEND THE YMCA BANQUET FRIDAY NIGHT!

The Chandelier
Hallmark Shop
HAS NOW REOPENED
IN SUGARLAND MALL
Many new and unusual items are arriving daily. You are welcome to come browse
WATCH FOR OUR GRAND OPENING
The New
Chandelier Gift Shop
SUGARLAND MALL


Gaston's SUGARLAND MALL
MEN'S S...
2 & 3 P...
Values to \$16500

Men's Dress & Casual PANTS	\$1390	Men's Dress & Sport SHIRTS	\$...
SHOE DEPARTMENT			
Ladies DRESS SHOES	Values to \$5500 \$1990	SPORT SHOES	\$...
LADIES' READY TO WEAR			
Ladies' PANT SUITS	\$1990	Gowns Robes P.J.'s, etc.	\$...

M.E. MOSES
Sugarland Mall
"SERVES YOU BETTER" - "SAVES"

ALUMINUM LAWN CHAIR	\$599	1: GALLON	\$...
MATCHING CHAISE LOUNGE CHAIR	\$1299	With Shou...	\$...
JUVENILE LAWN CHAIR	\$499	20	PLASTIC
1/2 GALLON PICNIC JUG	All Plastic \$188		
32 QT. COOLER CHEST	With Linear Polyethylene Shell \$1244		
1/2" VINYL GARDEN HOSE	50 Ft. \$333	IMPU SPRIN...	\$...
5/8" VINYL GARDEN HOSE	50 Ft. \$488	TOMATO	\$...
LADIES' SCARF HAT	\$149	Lad...	\$...
STICK PINS	(Silk Flowers, Austrian Stones, Novelty Dangles) \$100 TO \$300	DRESS WE...	\$...
EVERY NEED FOR GARDENING AND YARD WORK, TOOLS, SPRINKLERS, HOSE REPAIR, FERTILIZER, PEAT POTS, PEAT MOSS.		(Dress length: s... included) (ba...	\$...
		STRAW HATS: 1...	WHOLE: FRA...
		STYLISH DR: P...	\$...

Grand Super Bowl SALE!



FRIDAY AND SATURDAY!

RE! Bargains in Every Store Means Value **POINTS**

RUN! On Down to Our BIG SALE

TOUGH DOWN! With BIG MONEY SAVINGS

SUPER DEALS!

Men's Suits
2 & 3 Piece
\$59.90


Men's Dress Sport Suits
\$9.90

Men's Dress Sport Suits
Values to '38.00
\$14.99

Spangler's Diamonds Ltd. reminds you that the YMCA can be instrumental in the growth and development of your child. Now is your chance to

SUPPORT THE YMCA

ATTEND THE PARTNER IN YOUTH BANQUET
FRIDAY - 7 P.M. - BULL BARN



DIAMONDS LTD
SUGARLAND MALL

WOMEN'S WEAR

LINGERIE
1/2 PRICE

DES CO.
"SAVES YOU MORE"



1-GALLON PICNIC JUG
With Shoulder Spout **\$3.66**

20-PIECE PLASTIC PICNIC SET **\$2.29**

IMPULSE LAWN SPRINKLER ON SPIKE **\$4.99**

TOMATO LADDER **\$3.33**

Ladies' Bikini TRIANGLE SCARF
& Cotton: solids, prints, polka dots
77¢

DRESS-WEIGHT SHIRTING & SMOCKING
length: straps
20¢ INCH

RAW HATS FOR THE WHOLE FAMILY
FISH OR PRACTICAL

St Joseph ASPIRIN
100 Count - 5 Grain
Reg. 69¢ NOW **29¢**

Novahistine DMX COUGH SYRUP
4 Oz. Bottle
Reg. \$2.77 NOW **\$1.59**

Fashion KNEE-HI'S
Reg. \$1.75 Pr. NOW **79¢ PR.**

Garden & Flower SEEDS
10 Packages
Reg. 29¢ & 39¢ **99¢**

Myadec VITAMINS
Buy 100 Get 30 FREE
Reg. \$7.49 NOW **\$5.49**

SEA & SKI
Suntan Lotions & Cream
\$2.29

Armstrong Floor Care ONE-STEP
1/2 Gallon
Cleans as it waxes **\$2.45**

DRIP-DRY
Portable Drying Rack Home & Travel
\$1.88

RAID
Rose & Flower Spray
19 Oz. Can
\$2.85

HAROLD CLOSE DRUG
SUGARLAND MALL FOR PRESCRIPTIONS
364-2344 OPEN 9 A.M. - 8 P.M.

FOR YOUR FUTURE DEFENSIVE TACKLE!

TRACK AND ATHLETIC SHORTS
MANY COLORS \$4.00 to \$5.00

AND A WIDE VARIETY OF MATCHING TOPS AVAILABLE

Grandma's Korner Too

If you love tennis you'll love adidas



adidas

Monica
Canvas shoe built on narrow women's last. Blue sole. Hundreds of rubber nubs. Ankle collar padding. Arch support. Terryloft lining.

Traction in action



Stan Smith/Hallett
Soft leather uppers. Durable adidas-multi grip sole. Tiny rubber nubs. Adjustable orthopedic arch.



Love Set
Stylish, comfortable ladies shoe. Perforated nylon uppers. Lightweight with vulcanized soft tread sole.

Try on the shoes that the pros wear at
Gattis Shoe Store
In Sugarland Mall
Hereford, Texas

Anthony's
DOWNTOWN and SUGARLAND MALL
HEREFORD'S FINEST DEPARTMENT STORES

SPRING FABRICS
Choose from sport fabrics and double knits

GROUP I Values to '33" Yard **\$1.27**

GROUP II Values to '11" Yard **97¢**

JR. OVERALLS
Values to '30"
Sizes 3 to 15 **\$9.97**

ENTIRE STOCK MEN'S SUITS
25% OFF

Select Group Ladies' **PANTY HOSE & PANTIES** 3 FOR **\$1.00**

SPECIAL GROUP LONG SLEEVE SHIRTS
\$3.97

Large Selection **DENIM FASHION JEANS**
Values to '20" **\$7.97**

PRICES GOOD IN BOTH LOCATIONS!

FAMILY SHOE CLEARANCE
Infants - Boy's - Girls
Orig. '7" to '12" NOW **\$5.88 TO \$9.88**

MEN'S CASUALS - OXFORDS - BOOTS
Orig. '13" to '46" NOW **\$14.88 TO \$39.88**

WOMEN'S CLEARANCE
Orig. '13" to '25" NOW **\$10.88 TO \$16.88**

Huge selection Women's Sizes 5 1/2 to 10
SUMMER SANDALS
\$3.99 TO \$6.99

Striped Pullover MEN'S KNIT SHIRTS
Acrylic Special Buy! **\$6.99**

Men's Pre-Washed DENIM JEANS
Fashion-Flare
HUGE SELECTION **\$8.99**

MEN'S DRESS & CASUAL SLACKS
Orig. to \$18.00 **\$4.99**

Men's 4-Piece Coat-Vest-2 Pants DRESS SUIT
SPECIAL BUY! ALTERATION EXTRA **\$49.88**

SAVE 42% TO 50% MEN'S DRESS SHIRT CLOSEOUTS
Short or Long Sleeve Solids & Stripes and Prints in Polyester Cotton.
Orig. \$8.00 to \$9.00 **NOW \$4.00 - \$4.50**

Women's PURSE CLEARANCE
SPECIAL GROUP! 1/2 PRICE

Women's Rocky Styled ATHLETIC SHORTS
\$2.99

SPECIAL BUY! Ladies' CASUAL SLACKS
\$7.99

Junior and Misses JEAN CLEARANCE
Orig. to \$16.00 '8" TO '12" **\$4.99**

2 BIG TABLES MANY STYLES WOMEN'S ASSORTED TOPS
2 FOR \$5.00 - 2 FOR \$7.00 OR **\$3.99 EACH**

Blouses - Slacks - Skirts - Tops & Blouses WOMEN'S FASHION CLEARANCE
1/2 PRICE
50¢ ON THE \$1.00

2 BIG RACKS WOMEN'S DRESSES AND PANT SUITS
After Easter clearance from our regular stock. Hurry for the best selections
RACK 1 30% OFF RACK 2 50% OFF

Women's Long DRESSES & JUMPSUITS
1/2 PRICE

Pastel Gauze SUN DRESSES
Size 5 to 13 Juniors
SPECIAL BUY! **\$13.99**

Women's Gauze SMOCK TOPS
Assorted Sizes & Colors **\$5.99**

J.C. Penney Men's Plain Pocket DENIM JEANS
\$10.00

LUGGAGE SPECTACULAR
5-Pieces for as Low As
Rugged Vinyl Soft Side - Heavy Duty Zipper, Wide Buckle Straps, Rollers on 2 Large Bags. **\$99.95**

BED SPREAD SPECIAL
Floral Bouquet **\$18.88**
FULL SIZE **\$22.88**
QUEEN OR KING SIZE

YOUR CHOICE
\$7.99 DRAPES
Fiberglass or Royal Prints Single X 84"

Boy's Athletic SPORT SHIRTS
SPECIAL BUY! **\$2.88**

CLOSEOUT BOY'S JEANS
Pre-Washed Denim **\$6.99**

CARPET REMNANTS
Heavy-Duty-Limited
18"X27" **99¢**
27"X48" **\$3.50**

Electric WEED & GRASS TRIMMER & EDGER
1/2 \$29.99 1/2 \$49.99 HP

Girl's Better DRESSES
REDUCED TO 1/2 PRICE

Just Arrived! Large Group BOY'S AND GIRL'S SPORTWEAR
Shorts - Knit Tops - Tank Tops
ONE LOW PRICE \$1.99 EACH

BATH TOWEL SPECIAL
\$1.99
HAND TOWEL \$1.49
WASH CLOTH 98¢
"Garden Path" Floral

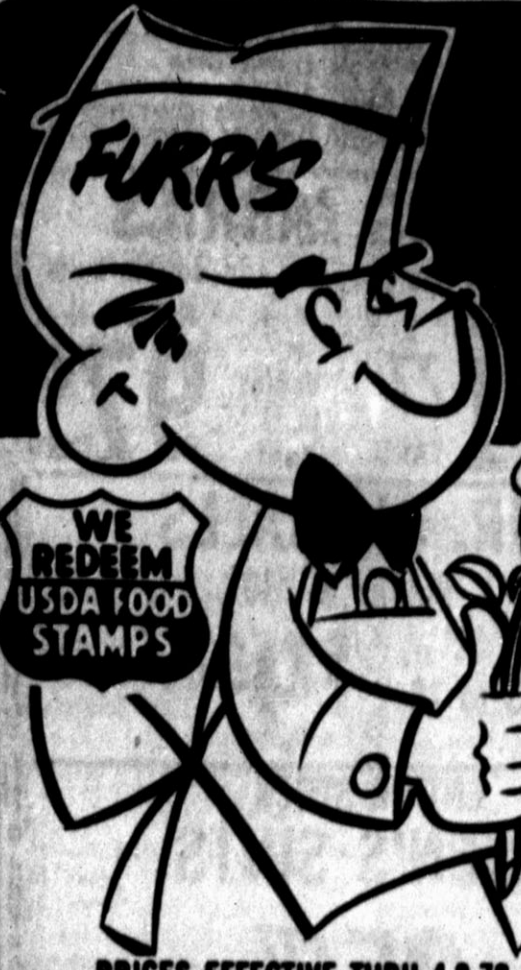
Girl's Polyester KNIT SHORTS
\$1.99

Ladies' Nylon PANTI HOSE
2 PR 88¢

HUGE PIECE GOODS CLEARANCE
HERE'S SOME REAL SAVINGS. SOME AT 1/2 ORIGINAL PRICE
CLOSEOUT THREAD COLORS ALSO 1/2 PRICE

LAY-A-WAY SALE
ITEMS FOR 30 DAYS!

JCPenney **CHARGE IT!**



SPRING SAVINGS

WE RESERVE THE RIGHT TO LIMIT QUANTITIES, PLEASE!
 STORE HOURS
 WEEKDAYS 8 to 10 P.M.
 SUNDAYS 9 to 9 P.M.

AVOCADOS
 CALIF. FINEST EACH.....
4 FOR \$1.00

GRAPEFRUIT
 TEXAS RUBY RED, LBS.....
5 FOR \$1.00

NORFOLK PINE 4" POTS..... **\$2.79**
CABBAGE TEXAS FINEST LB..... **19¢**

CARROTS 1-LB. CELLO PACKAGE..... **6 FOR \$1.00**
PEARS WASHINGTON D'ANJOU LB..... **39¢**

BONUS SPECIALS

LEMONS LARGE SIZE..... **3 LBS. \$1.00**
ORANGES SWEET-N-JUICY 5-LB. BAG EACH..... **\$1.29**

TOMATO JUICE
 FOOD CLUB TOMATO 46-OZ.
FREE
 WITH EACH FILLED S&H BONUS SPECIALS BOOKLET

PEACHES
 DEL MONTE 2 1/2 CAN
FREE
 WITH EACH FILLED S&H BONUS SPECIALS BOOKLET

DINNERS FOOD CLUB MARCARONI & CHEESE 8-OZ. PKG..... **5 FOR \$1.00**

PINEAPPLE JUICE
 DEL MONTE 46-OZ.
19¢
 WITH EACH FILLED S&H BONUS SPECIALS BOOKLET

FRUIT COCKTAIL
 DEL MONTE 2 1/2 CAN
10¢
 WITH EACH FILLED S&H BONUS SPECIALS BOOKLET

SALAD DRESSING KRAFT 1000 ISLAND OR FRENCH, 8-OZ..... **49¢**

TOMATOES GAYLORD 303 CAN..... **3 FOR 89¢**

CRACKERS NABISCO SNACK ONLY..... **69¢**

BRAN CHEX RALSTON CEREAL 14-OZ. BOX..... **75¢**

CATSUP HUNT'S 32-OZ. BOTTLE..... **69¢**

TISSUE SOFT & PRETTY 4-ROLL..... **69¢**

BLEACH CLOROX 1-GALLON..... **69¢**

EGGS FARM PAC LARGE DOZEN..... **62¢**

LIQUID PLUMR
 CLOROX
 32-OZ. BOTTLE **95¢**

CHEER
 GIANT 10' OFF LABEL 49-OZ. SIZE... **\$1.53**

COUNTRY CASUAL
 FEATURE OF WEEK
SAUCER 79c
 COMPLETE PIECE OF WEEK
CHOP PLATE \$7.99

NU VINYL
 PROTECTS-WEATHERPROOFS GIVES LUSTER TO ANY COLOR VINYL CAR TOP & ALL VINYL & LEATHER ITEMS
 NO RUBBING OR BUFFING **\$2.99**

ARROW DUST PANS
 ORANGE, GREEN, YELLOW OR BROWN **79¢**

BATH TOWELS
 EXTRA LARGE AND THIRSTY BEAUTIFUL SOLID COLORS BIG 20"x40" APPROX SIZE
2 FOR \$3.00

AS SEEN ON TV
NU FINISH
 THE ONCE A YEAR CAR POLISH CONTAINS NO WAX SO UNIQUE, YOU CAN APPLY IT IN THE SUN **\$3.99**

PANTY HOSE
 TOPCREST SHEER SUPPORT 2 SIZES FITS ALL REG. '1" **\$1.49**

WASH CLOTHS
 THICK THIRSTY SOLID COLORS SPECIAL PURCHASE 12x12
 REG. 79¢ **3 FOR \$1.00**

BLOSSOM AT FURR'S



fresh dated

RANCH STEAK	FURR'S PROTEN 7-BONE CUT LB.....	\$1 29	Furr's Proten Beef DOUBLE YOUR MONEY BACK GUARANTEE Furr's Proten Beef is cut only from heavy, mature grain fed steers, trimmed of excess fat and Fresh Dated for your convenience. Your satisfaction is guaranteed or you will receive double your money back. That's Furr's Proten Beef guarantee.
RUMP ROAST	FURR'S PROTEN, ADV SPECIAL LB.....	\$1 39	
CHUCK STEAK	FURR'S PROTEN LB.....	\$1 19	
ROUND STEAK	FURR'S PROTEN LB.....	\$1 69	
SMOKED PICNIC'S	4-8-LB. AVERAGE.....	79¢	
DELUXE RIBS	FURR'S PROTEN LB.....	89¢	

SPECIAL SNACK HOT DOG

AND 12-OZ. DRINK ONLY **69¢**

DELICATESSEN

SIRLOIN STEAK	FURR'S PROTEN, LB.....	\$1 69	SWIS STEAK	FURR'S PROTEN, ROUND BONE ARM, LB.....	\$1 59
STEW MEAT	FURR'S PROTEN BONELESS LEAN CUBES, LB.....	\$1 39	CUBE STEAK	FURR'S PROTEN, LB.....	\$1 98
RIB STEAK	FURR'S PROTEN, LB.....	\$1 69	FAMILY STEAK	FURR'S PROTEN BONELESS, LB.....	\$1 59
CLUB STEAK	FURR'S PROTEN, LB.....	\$1 89	T-BONE STEAK	FURR'S PROTEN, LB.....	\$2 09

USDA CHOICE LAMB SALE

LEG-O-LAMB LB.....	\$2 09	LOIN CHOPS LB.....	\$2 29
SHOULDER ROAST LB.....	\$1 79	SHOULDER CHOPS LB.....	\$2 09
RIB CHOPS LB.....	\$2 29	LAMB STEW BREAST, LB.....	79¢

WE GIVE **GREEN STAMPS**

WITH \$2.50 PURCHASE OR MORE

ERA DETERGENT HEAVY DUTY LIQUID 32-OZ... **\$1 29** 128-OZ... **\$5 09**

COFFEE MAXWELL HOUSE ALL GRINDS 1-LB. CAN..... **\$2 79**

PANCAKE MIX LOG CABIN AND WAFFLE 32-OZ. **82¢** **SYRUP** HERSEY'S CHOCOLATE 16-OZ. CAN... **62¢**

SYRUP LOG CABIN COUNTRY KITCHEN 24-OZ. SIZE..... **\$1 06** **JERKY TREATS** CHICKEN 1-OZ. **33¢**

PRUNES LARGE VISIBLE 1-LB. PACK..... **69¢**
 VISIBLE PITTED 12-OZ. PACK..... **75¢**

MARGARINE FLEISCHMANN'S REGULAR, 1-LB. **93¢**
 UNSALTED, 1-LB. **95¢**

GATORADE ORANGE 32-OZ. **53¢** LELI 48-OZ. **79¢**
 LELI 32-OZ. **53¢** LELI 6-12-OZ. **\$1 50**

GLADIOLA MIXES
 YELLOW CORN BREAD 6-OZ. SIZE..... **23¢**
 MEXICAN CORN BREAD 6-OZ. SIZE..... **25¢**
 WHITE CORN BREAD 6-OZ. SIZE..... **23¢**
 CORN MUFFIN 6-OZ. SIZE..... **23¢**
 HERSEY CANDY REESE PEANUT BUTTER CUPS, MILK CHOC. BAR ALMOND BAR, MR. GOOD BAR, SPECIAL DARC, OR KIT KAT BARS, EACH 6-PACK..... **\$1 07**

Frozen Food Favorites

FRIES SHOESTRING	LYDEN FARM 20-OZ.....	3 FOR \$1 00
CHOPPED BROCCALI	TOP FROST CHOPPED 10-OZ.....	37¢
EGG BEATER	FLEISCHMANN'S 16-OZ.....	99¢
MARGARINE	PARKAY STICK 16-OZ.....	2 FOR \$1 00
COCONUT PIE	MRS. SMITH CUSTARD COCONUT 44-OZ. SIZE.....	\$1 49

SAVE ON **Club Aluminum**

BEGIN YOUR COLLECTION NOW AT FURR'S

THIS WEEK'S FEATURE **10" SKILLET \$10 99**

FINAL NET HAIR SPRAY 8-OZ. **\$1 79**

CASHMERE TALCUM 10-OZ. **\$1 09**

SHORT & SASSY CONDITIONER REG. OILY OR DRY. 11-OZ. **\$1 89**

SHAMPOO 11-OZ. **\$1 69**

Colgate COLGATE TOOTHBRUSH **25¢**

SCHICK PLUS PLATINUM RAZOR BLADES **99¢**

DOUBLE EDGE, 5-CT.

ultra brite ULTRA BRITE TOOTHPASTE 6-OZ. **89¢**

BABY MAGIC BABY LOTION 16-OZ. **\$2 08**

NEW Listermint MOUTHWASH 12-OZ. **\$1 19**

SMOKEY DAN GRILL **\$12 99**

SHOP Furr's MIRACLES PRICES

SAFEWAY

Join the best
Bingo party
in town!

WIN UP TO \$3,000!

Thousands and thousands of winning
bingo tickets just waiting to be picked up!

**PLAY
TRIPLE**



**DOLLAR
BINGO**



78	6	WIN	WIN	WIN	WIN	WIN
WIN	WIN	WIN	WIN	WIN	WIN	WIN
1,000	100	50	25	10	5	
		WIN \$3,000		WIN \$300		
		TRIPLE!		WIN \$150		
				WIN \$75		
				WIN \$30		
ODDS CHART						

\$334,674 in cash prizes!

- BONELESS RUMP ROAST** USDA CHOICE Super Saver lb. **\$1.89**
- SLICED BOLOGNA SAUSAGE** SAFWAY MEAT OR TURK Super Saver 12-oz. **99c**
- WAFER SLICED MEATS** SAFWAY Super Saver 3-oz. **49c**
- SLICED BACON** SAFWAY 2-Pk. **\$3.38** **\$1.69**

FRESH FRYERS **45¢**
FAMILY PAK CUT FROM GRADE 'A' FRYERS lb.

Includes:
• 3 Breast Strs. w/ Back
• 3 Leg Str. w/ Back
• 3 Extra Wings
• 3 Drums

USDA CHOICE **SUPER SAVER**

SIRLOIN TIP STEAK **\$1.98**
OR ROAST lb.

USDA CHOICE **SUPER SAVER**

MEAT OR BEEF WIENERS SAFWAY BRAND Super Saver 12-oz. **78c**

CHUNK BOLOGNA BY THE PIECE **STERLING BRAND Super Saver lb. 99c**

PORK ROAST **78¢**
FRESH PICNIC lb.

WHOLE OR HALF **SUPER SAVER**

ROUND STEAK **\$1.38**
BONE IN lb.

USDA CHOICE **SUPER SAVER**

- SMOKED SAUSAGE** SAFWAY BRAND Super Saver lb. **\$1.59**
- CHICKEN FRIED STEAKS** TENDRAGE \$1.19
- PICK OF CHICK** SPLIT BREAST Super Saver lb. **98c**
- HEEL OF ROUND ROAST** SAFWAY BRAND Super Saver lb. **\$1.49**
- BEEF SHORT RIBS** BEEF RIBS Super Saver lb. **.79c**

GOLDEN CORN **25¢**
WHOLE KERNEL & CREAM STYLE TOWN HOUSE BRAND 16 1/2-oz. Can

SUPER SAVER

TOMATOES **29¢**
CANNED GARDEN SIDE BRAND 27-oz. 39c 16-oz. Can

GARDEN SIDE **SUPER SAVER**

PAPER TOWELS **39¢**
HI-DRI BRAND Everyday Low Price! Large Roll

HI-DRI **SUPER SAVER**

JUICE **53¢**
GRAPEFRUIT TOWN HOUSE BRAND 46-oz. Can

Grapefruit Juice **SUPER SAVER**

GRAPEFRUIT **81¢**
RED TEXAS SWEET For

- AVOCADOS** Calif. Fuerte Ea. **49c**
- CACTUS GARDEN** 4" Pot **\$1.59**
- ORANGE JUICE** Safeway Brand 1-Gal. **\$1.39**
- RAISINS** Sun Seed 1-1/2-Pk. **\$1.69**

SUNKIST LEMONS **10¢**
LARGE SIZE Ea.

SWEET PEAS **25¢**
TOWN HOUSE BRAND 17-oz. Can

SUPER SAVER

BOIL 'N BAGS **25¢**
DEL AIR BRAND 8-oz. Frozen Bag

SUPER SAVER

MORTON PIES **33¢**
Morton fruit pies FRUIT TART 8-oz. Pie

SUPER SAVER

FRUIT DRINKS **69¢**
LUCERNE BRAND 1-Gal.

SUPER SAVER

ICE CREAM **99¢**
SNOW STAR BRAND 1/2 Gal.

SUPER SAVER

- LARGE EGGS** LUCERNE FRESH BRAND 12 Ea. **72c**
- MARGARINE** QUARTERS COLGARDEN 1-Pk. **43c**
- BISCUITS** MRS. WRIGHT'S SWEET MILK OR BUTTERFLINE 2-1/2-Gal. **28c**
- STRAWBERRIES** SAFWAY 1-Pk. **58c**

GREEN BEANS SHORT CUT DOUBLE LOCK BRAND 16-oz. Can 25¢	HUNT'S KETCHUP & TOWN HOUSE BRAND Everyday Low Price! 32-oz. Bott. 69¢	NILLA WAFFERS NABISCO SUPER SAVER 12-oz. Box 65¢
HEFTY TRASH BAGS 10-ct. Lawn Clean Up \$1.29 79¢	BLEACH WHITE MAGIC BRAND Everyday Low Price! Gal. 59¢	BATH TISSUE MARIGOLD BRAND SUPER SAVER 4-Roll Pkg. 69¢
PINEAPPLE BOLE BRAND IN JUICE 20-oz. Can 59¢	HLH ALCOHOL Plastic Bottle 16-oz. Bott. 39¢	STIMULEGS PANTY NOSE SAFWAY BRAND Pr. \$2.79

6-PACK CRABAPPLE BRAND COLA Reg. 80c 6x 10-oz. Botts. **79c**

EXTRA STRENGTH TYLENOL 50-ct. Bott. **\$1.99**

SAFEWAY VITAMIN 'C' 100-ct. Bott. **\$1.59**

PIZZA'S JOHN'S SPACE SAVER 13-oz. Pkg. **59¢**

APPLES RED DELICIOUS WASH. EXTRA STATE FANCY lb. **39¢**

- MARGARINE** COLGARDEN BRAND 1-lb. Bar **33¢**
- BROCCOLI SPEARS** DEL AIR FROZEN 10-oz. **51c**
- STEW VEGETABLES** DEL AIR FROZEN 12-oz. **49c**
- STILWELL OKRA** WRAPPED & CUT 12-oz. Pkg. **63c**
- RUSSET POTATOES** All Purpose 10-lb. **89c**
- WHITE ONIONS** New Crop 20-lb. **\$1.09**
- DANJOU PEARS** Wash. State 10-lb. **39c**

MARGARINE **33¢**

SHRUBS ASSORTED VARIETIES 1-Gal. Ctn. **\$1.99**

CLIP & SAVE 5c WITH THIS VALUABLE SAFEWAY COUPON!

VALUABLE SAFEWAY COUPON

24-oz. Loaf SAFWAY PREMIUM BREAD Reg. 80c Save 5c **45¢**

APRIL 8 - APRIL 22 IS THE TIME TO

Clean-Up Fix-Up Paint-Up

The Hereford Brand presents this guide to home improvement in conjunction with Clean Up-Fix Up-Paint Up Time as declared by the Women's Division of the Deaf Smith County Chamber of Commerce.

- **ADD VALUE TO YOUR HOME!**
- **BEAUTIFY YOUR NEIGHBORHOOD**
- **DO-IT-YOURSELF**

A home is a big investment. Proper upkeep and improvements not only add to your home's comfort of living, but protect your investment and add to its value. Inside this section you'll find how to give your home a new look, add improvements and provide practical maintenance. Check the advertisements to find what home improvements services are available, where to buy materials and where to shop for ideas from Hereford merchants.



- **HOME IMPROVEMENT IDEAS**
- **DECORATING IDEAS**
- **PRACTICAL TIPS ON HOME REPAIR**
- **"GREEN THUMB" HINTS**
- **WHERE TO BUY ALL YOU NEED**



Paint Up, Clean Up, Fix Up Time Nears



Time for Lawn Care

Hereford High Coach Aaron Bourland undertakes one of the season's most common pleasures. The Chamber of Commerce Women's Division is asking that other Hereford residents follow Bourland's example in caring for their lawns. [Brand photo]

Editorial

What Will You Do?

Perhaps no chamber of commerce project has the potential to do more for the appearance of our community than the Beautification Time, April 8-22, being sponsored by the Women's Division of the Chamber of Commerce.

While parts of the business district and many of the residences in Hereford look great, one has only to take a casual glance to see that a positive effort is needed to rid ourselves of many eyesores—blowing trash, weeds on unkept lots, junk cars, dirty alleys, dilapidated buildings and fire and safety hazards.

Who's at fault? We are...individually and collectively! We've waited too long for the "other guy" to do his part. We've waited too long for things to just happen, and it's not going to get better by itself.

It really boils down to PRIDE. If things are going to get better, each of us must bear our share of the responsibility to see that our community is "cleaned-up, painted-up and fixed-up." That's the important issue—not finding someone or something to blame.

You can help. Start at home; clean the area up. Pick up the litter and trash, don't wait for the wind to blow it away. Get the weeds before they take over. It won't hurt to clean the curb area in front of your home. Clean up the alley—if you've got a "white monster," keep the lid closed. When using it, sharpen your aim. It may be garbage to you, but it's a banquet for animals and insects of all kinds.

If you own business property, apply the clean-up, paint-up, fix-up slogan to that area. This makes a lasting impression on how visitors view our city, especially the businesses along the major highways.

What we're saying is simply that we've fallen behind on keeping our community tidy. Now let's make a real effort to catch up and stay with it!

This is hustlin' Hereford, your community. What will you do to help during Beautification Time?

By **KERRIE STEIERT**
Women's Editor

In a concentrated community effort incorporating several sectors of the City, Hereford is preparing to wage war against litter and unsightly areas in the annual Clean-up, Paint-Up, Fix-Up campaign, which begins April 8 and continues through the 22nd.

The drive is again being sponsored by the Chamber of Commerce Women's Division and the entire community is urged to participate on an individual and group basis.

The beautification drive, being spearheaded by Laven Nieman, envelopes every facet of improving the city's appearance, including both residential and business sectors. Residents are asked to remove public eyesores, such as junked cars, dead trees, condemned buildings, accumulated trash and weeds.

The City of Hereford is making a dump truck available to assist in the collection of trash. Groups requiring this service may make inquiries with Mrs. Nieman.

In addition to cleaning up overgrown and trashy areas, it is hoped by the Chamber women that residents will make that extra effort by painting buildings and fences, landscaping their properties and grading rough grounds.

"Civic pride is the key to our drive," explained Mrs. Nieman in encouraging local residents to participate in the beautification program. "It is up to each individual to restore Hereford's appearance so that we can truly take pride in our City."

The Chamber Women will be relying heavily on Hereford young people to make this year's drive a success. Among the youth organizations who plan to participate are the Camp Fire Girls, Hereford High

School Student Council, Leo Club, Key Club, Boy Scouts, County 4-H'ers, Big Brothers-Big Sisters and the youth of First Baptist Church.

These youth groups will be assigned to designated areas in the community, where they will conduct massive, general clean-up sessions. Other area groups who would be interested in volunteering to assist with the beautification efforts are requested to contact Mrs. Nieman at 364-2030 or 364-6957.

Another aspect of the campaign will be the collection of newspapers and aluminum cans for recycling. Proceeds of this project will be used by the Camp Fire Girls to purchase shrubbery for the CFG Lodge and Veterans Park.

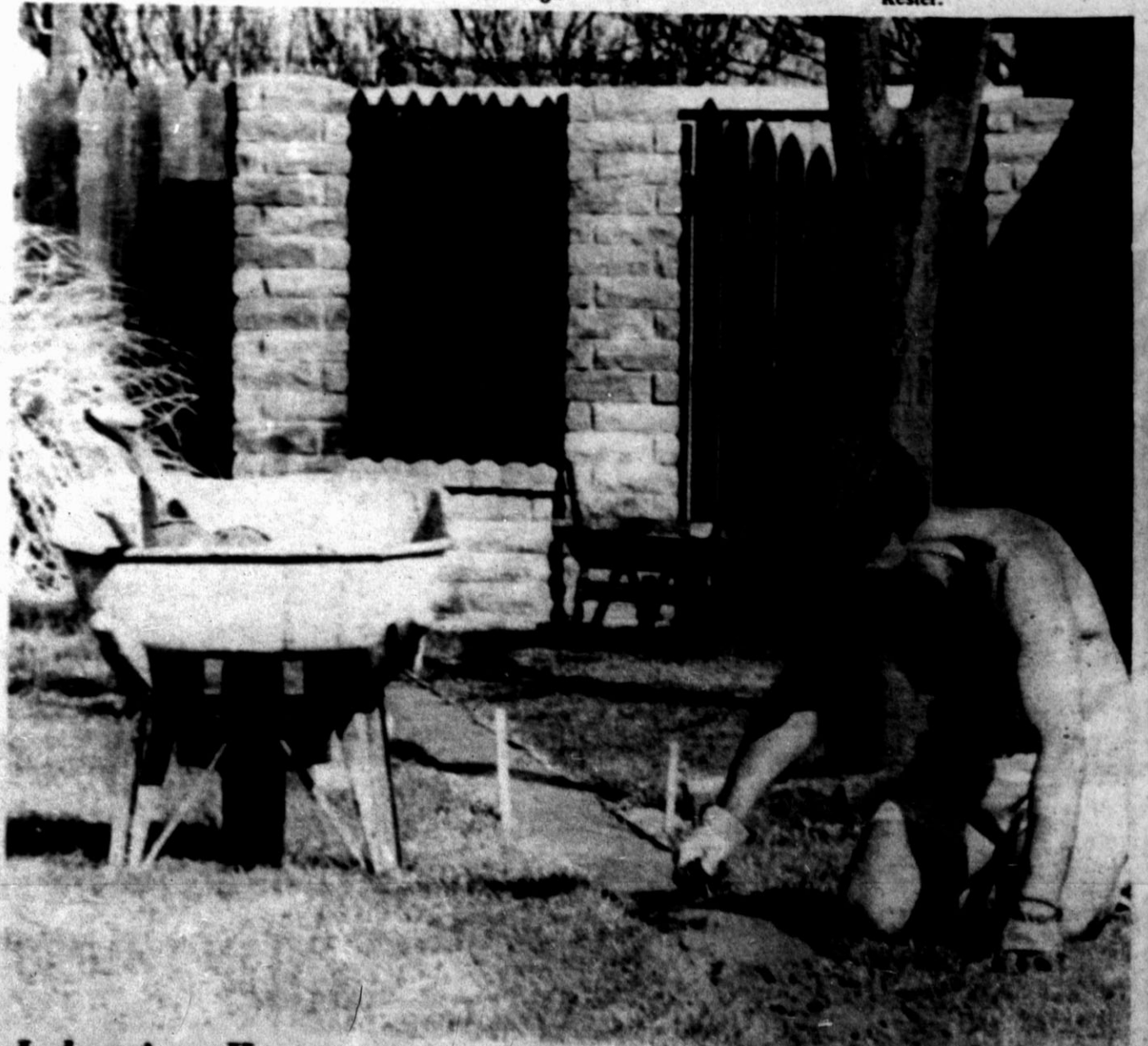
Individuals having newspapers or cans to donate for this cause are asked to telephone 364-0395, 364-1280, Susie Wall at 364-4209, or Dee Dee Drake

at 364-3213. Also, cotton trailers will be stationed at One-Hour Martinizing and the CFG Lodge from April 6-May 1 as receptacles for residents to place their papers and cans.

In conjunction with the clean-up campaign, Women's Division president Margaret Formby announced that the residential and non-residential "Beauty Spots of the Month" will be recognized starting in mid-April and continuing until the first frost. Lynne Carfile is Beauty Spot chairman.

Also, Hereford Kiwanis Club will be holding their annual mop and broom sale April 21-22 here under the direction of Bill Bankston.

Members of the beautification committee are Mrs. Nieman, Glenda Geries, Denise Sims, Wanda Hoover, Mary Garrison, Billie Faye Ham, Rena Duckworth and Katherine Kester.



Industrious Homeowner

A local resident is doing his own cement work prior to Beautification Time in Hereford. The Chamber of Commerce Women's Division, sponsor of the two-week-long project, hopes that all Hereford residents will show their industriousness by upgrading their properties and

assisting in numerous team-effort clean-up projects throughout the city. Information on help in the beautification project may be obtained from Laven Nieman, committee chairman in the Women's Division. [Brand photo by Bob High]

IT'S FIX-UP-PAINT-UP -CLEAN-UP TIME!

CLEAN-UP ON THESE PRICES

WHAT BETTER WAY TO
FIX-UP EVERY ROOM
WITH NEW CARPET!



1 Roll Only
Green & Gold
SCULPTURED SHAG
\$6.99
Installed w Pad

Multi Colored
SCULPTURED SHAG
Be Salem
\$8.99
Installed over Pad

100% Nylon
SAXONY SHAG
\$7.99
Installed with Pad

Multi Colored
SCULPTURED SHAG
\$7.99
Installed With Pad

Lawn Green
PATIO GRASS
\$2.99 Sq. Yd.
Carpet Only

Beautiful
SCULPTURED SHAG
\$8.99
Installed with Pad

100% Nylon
Beautiful
KITCHEN PRINTS
\$5.99
Installed

Earthtones
100% Nylon
SCULPTURED SHAG
Was \$11.95
\$9.99
Install with Pad

Need a Room Done? **ROOM SIZE CARPETS!!**

- 17 X 8 Blue Kitchen Print **\$45.00**
- 12 X 16 Green & Gold Print **\$81.00**
- 12 X 18 Brown & Gold **\$185.00**
- 12 X 17 Commercial Plush **\$100.00**
- 12 X 15 Blue & Green **\$75.00**

Many Many More
Sculptured Shag
and many other sizes to choose from

SUGARLAND MALL

GEMINI
Carpets

364-5932



ON THE HOUSE

By The Associated Press
 Things you might want to know about the care of aluminum:

When the inside of an aluminum pot gets blackish, as it sometimes does after boiling water or cooking certain foods, the discoloration will not harm either the food or the pot. While the color will come out the first time you use the pot to cook acid fruits or vegetables, such as tomatoes, rhubarb or sauerkraut, the appearance of the pot may bother you. In that case, remove the discoloration by boiling a solution of two tablespoons of cream of tartar to each quart of water the utensil holds. To restore the polish, rub with a steel wool pad.

The pitting of aluminum pots and pans can be avoided by not leaving foods (especially those that are highly seasoned) in them for long periods. But if you should do so, the foods will

not be harmed. Aluminum exposed to the elements can be cleaned with a mild soap or detergent, followed by a thorough rinsing and wiping.

For removing medium grime deposits from the surface of outside aluminum, use an abrasive wax applied with a clean soft rag or pad.

Solvents and stronger cleaning agents should not be used on painted aluminum siding, which should be cleaned with water alone or with water and a mild soap.

Aluminum screens are cleaned by rubbing with a stiff brush and washing down with a hose and detergent.

While an aluminum boat doesn't need paint to protect it from either fresh or salt water, some persons paint it for appearance's sake or to keep it from fouling. Be sure to get a paint made especially for appli-

cation on aluminum. Do not use a mercury, arsenic or copper-based anti-fouling paint.

When aluminum and a dissimilar metal are immersed in water, an electrolytic cell is formed that accelerates corrosion. Therefore, don't leave iron parts and pieces of copper wire in the bilge and bottom of the boat. And be sure no dissimilar metal is fastened to the hull below the waterline.

The painted aluminum parts of a camper or mobile home should be cleaned with water and a mild cleaner. Waxing will make cleaning easier. Use the same cleaner or wax as for your car.

Avoid cleaning aluminum that is hot to the touch or when the temperature is below 50 degrees Fahrenheit. Cleaners work too aggressively when it's hot and very poorly when it's cold.

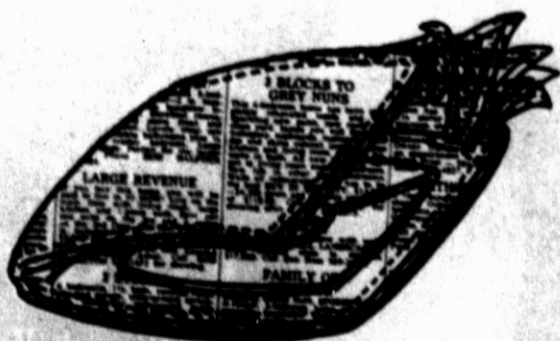


Garden Center Facelift

Hereford Garden Center received its annual facelift recently when members of Hereford Garden Club spruced up the landscape behind the center. Shown from left in the process of planting a tree are Mmes. D.N. Garner, R.L. Ethridge, W.C. Hromas and O.G. Hill Sr. Members of the club are preparing for their annual plant sale, scheduled April 29. [Brand photo by Dianne Banner]

**FIND A LOT OF
 UNUSED ITEMS DURING
 CLEAN-UP?**

FATTEN YOUR WALLET NOW!



**SELL THOSE UNUSED ITEMS
 WITH A CLASSIFIED AD IN**

**THE
 HEREFORD BRAND**

**CALL
 364-2030**

JOIN THE HOME IMPROVEMENT MOVEMENT

NOW WITH PRICES THAT SAY

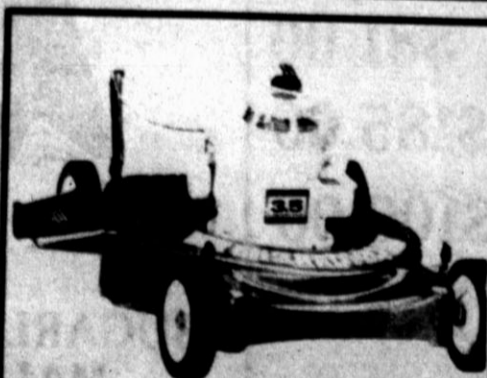
WE'RE ON YOUR SIDE



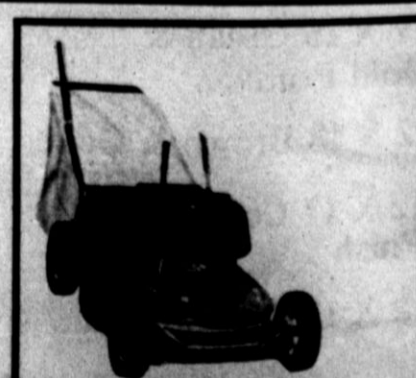
CANNING JARS
EXTRA SPECIAL \$1.79 CASE



**1 GALLON
 CONTAINER
 HONEY-SUCKLE
 \$1.99**



3 1/2 H.P. 20 IN. MOWER
 Save '20" **\$109⁰⁰**



**20" REAR BAG
 TOTAL TRIM MOWER \$169⁰⁰**

WESTERN AUTO

ASSOCIATE STORE

241 MAIN

DOWNTOWN

364-1355

Great
Time
box

HOME IMPROVEMENT

BEAUTIFUL WALL
PANELING
A GREAT VARIETY
OF WOODS AND
STYLES TO
CHOOSE
FROM

EVERY
PLUMBING
AND
ELECTRICAL
SUPPLY
YOU NEED FOR
ANY JOB!

PITTSBURGH
PAINTS



BEAUTIFY YOUR
CEILINGS WITH
ACOUSTICAL
CEILING TILE
BY
ARMSTRONG & CELO TEX

We build custom homes, additions and remodel.



Whether a new home, remodeling or just
adding a garage, bathroom or game room,
See Us For:

- PLANS
- MATERIALS
- SUPERVISION
- ESTIMATES
- CONSTRUCTION
- EXPERIENCE

A BEAUTIFUL LAWN BEGINS HERE:

- Tillers
- Mowers
- Hand Tools
- Spreaders
- Hoses
- Sprinklers
- Ortho Lawn & Garden Products

SCOTTS FERTILIZER -

Scotts has a fertilizer for almost anything that
grows - Grass, Vegetables, Trees and Shrubs.
Come see the complete Scotts line today

Carl McCaslin

LUMBER CO.

COMPLETE BUILDING SERVICE

364-3434

344 E. 3rd. St.

RED
CEDAR
FENCING
AVAILABLE IN
5 FOOT OR 6 FOOT
HEIGHT

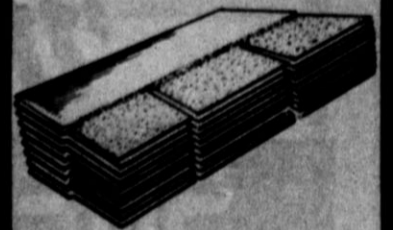
Beautiful
LIGHT
FIXTURES

By Thomas

FASHION LIGHTING
FOR ANY ROOM



GREAT SELECTION
OF
FLOOR TILES
&
LINOLEUM



TIME TO
REPLACE YOUR
ROOF?
FIBERGLASS SHINGLES
&
CEDAR SHAKES

No Law on Cleaning Up, Just Matter of Pride

BY PAUL SIMS
Managing Editor

Pride is not regulated by an ordinance in Hereford, according to City Manager Dudley Bayne, who hopes that the lack of law doesn't quench participation in the Chamber of

Commerce Women's Division beautification project.

"You can't by law make anybody be neat," Bayne said. "You can't by ordinance say that people have got to have pride in their homes."

Bayne said that the Women's

Division project, dubbed "Paint-up! Clean-Up! Fix-Up! Time," scheduled to begin a two-week stint on Saturday, would be a good time for pride to begin.

"We need more individual effort, and this is where this

ladies committee can help. I think carelessness and the lack of pride are the biggest problems we have in Hereford.

"I'm not satisfied with the cleanliness of this town overall. If you go to other towns, I think we do a better job of street

cleaning and taking care of our parks than any town, but we have to have more individual pride.

"When a town's clean, it shows pride. And I think everybody enjoys seeing neat yards, well-maintained homes and businesses and clean streets."

Bayne said that city employees will assist with clean-up groups during the project.

"It's something we always do—we try to furnish what help we can to different groups that are out cleaning and picking up. The group leaders notify us. Like when the Campfire Girls are going to be out, they notify us a few days before, and we try to have a truck and driver out there to help them."

Among Hereford's biggest problems are weeds, Bayne said, adding that it is not the city's responsibility to mow

them unless they are on city property or a vacant lot.

A property owner will not be asked to mow his weeds unless they become an obvious health or fire hazard.

"It's got to be a real hazard before we'll do anything. You can't make people go out and mow weeds unless they've become deleterious growth."

As far as yards being eyesores, there is no ordinance requiring residents to maintain their properties.

"We can't say that people have got to have good-looking yards."

However, the City of Hereford can sometimes require a person to work on his house.

"If a house has reached the point where it's creating health problems to the residents, the home can be condemned. We're always condemning some."

Save \$4 a gal.



Spring Paint Sale!
Last 4 Days

Classic 99™
Our finest interior paint

flat latex	alkyd semi-
wall & trim	gloss enamel
SALE	SALE
\$8.99	\$10.99
<small>a gal. reg. \$12.99</small>	<small>a gal. reg. \$14.99</small>



Save \$3 a gal.
Mello-Tone Washable Latex Wall Paint
in a choice of 680 decorator colors
SALE **\$5.99**
a gal. reg. \$8.99

Satisfaction Guaranteed in the use of these coatings or your purchase price will be refunded.

Save \$4 a gal.
SWP, Our longest lasting gloss oil base house paint
SALE **\$11.99**
a gal. reg. \$15.99



© 1978 The Sherwin-Williams Company

Sale ends April 30



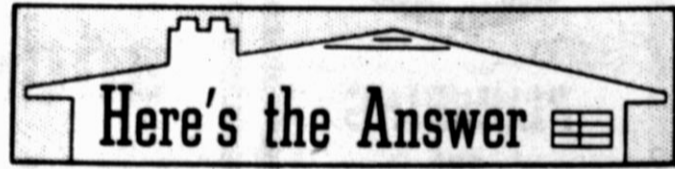
**A paint.
A store.
A whole lot more.**

Free decorating service. Use Master Charge, BankAmericard, Visa, or our extended credit terms. Save on other specials in our stores. 1600 stores including one near you.

Hereford

**Park Plaza Shopping Center
1003 West Park Ave.**

364-4484



Here's the Answer

By The Associated Press

Q. — You recently wrote about the effect of roof colors on the apparent size and shape of a house. Can you do the same thing for me on resilient floor tiles, which I expect to install on two floors of our house in the near future? I haven't quite made up my mind which type of tiles to get, but what I am interested in is getting the right colors. One of the rooms to be tiled is a kitchen, one a bedroom.

A. — No matter what you read here or anywhere else, your own individual taste should play a part in the selection of colors. It is true that tests have shown that the colors of floor materials can have a bearing on the moods of people, but even in these tests, there have been exceptions to the general findings. Having given you that preliminary information, here is what is generally believed about floor colors: Dark colors absorb light, making things look smaller and heavier, but they can be depressing when used extensively. Light colors reflect more light and so make things seem larger than they are. They also make things appear farther away. The so-called warm colors are reds, pinks, oranges, corals, golds, yellows and yellow-greens. The cold colors are blues, blue-greens, blue-grays and violets. When making a choice, remember that the color you select will seem stronger when applied to a large surface. In a kitchen, try to use a tile that will make the room cheerful. In a bedroom, choose something that will enhance and blend with the decor of the room. Avoid garishness, but don't avoid it so much that you wind up with drabness.

builder said they aren't necessary when the overhangs are wide. Is this true?

A. — Wide overhangs help to drop the water from the roof a bit away from the foundation, but there is more to good drainage than that. Some of the factors controlling the flow of water away from the house and the prevention of water inside the house are land that slopes away from the foundation, the water table in your area, the installation of drainage tiles at the bottom of the foundation where required and the type of foundation. Have you tried asking some of your future neighbors whether they think their houses need the gutters and downspouts and — very important — whether they had to have them installed after they moved in?

Q. — The brass doorknobs on the doors of our house are getting a little tarnished. The tarnish seems to come off readily enough when the knobs are polished, but isn't there some way to refinish the knobs so that constant polishing isn't necessary?

A. — The standard finishing material for brass doorknobs is lacquer. Rub the knobs vigorously with a cloth dampened with lacquer thinner, being sure there is plenty of ventilation as you work. Then coat the knobs with a mixture of 50 percent clear lacquer and 50 percent lacquer thinner. Put on three coats. However, it's still a good idea to take a dry cloth and wipe the knobs every few months.

Q. — We are moving into a new house shortly. It has wide overhangs, but no gutters and downspouts. I notice that many of the other custom-built houses in the same neighborhood have gutters and downspouts. Our

**Clean-up!
Paint-up!**

Fix-up!

April 8 - 22

Do Your Part!

Fire Marshal Will Help Check Home For Fire Hazards

It's nearly Beautification Time in Hereford, and Hereford fire marshal Jay Spain says it might be a good time to check your house for fire hazards.

And if you don't know what to look for, Spain will help.

"Anyone can call me and set an appointment on private home inspections," Spain said. "I'll handle as many as I can, and if there's too many, the volunteer firemen will help me."

Spain will check the following areas:

--Garage. "I inspect trash accumulation and make sure there are no flammable liquids in glass containers. It's unlawful to purchase, possess or sell gas in a plastic container--it's got to be a metal container in the state of Texas. If it's in a plastic container and there's a fire, well, you know how

plastic melts."

--Heater closet. "I make sure there's no flammables in there. A lot of people use their heater closets for storage space."

Fuse box--"It shouldn't be overloaded."

--Wiring. "It depends on how old the house is whether I'll check the wiring. If somebody asks me to check their wiring, I'll do it."

Spain also inspects businesses, which are strictly regulated by laws dealing with fire hazards.

Spain added that another chore associated with spring cleaning is disposing of trash and other unwanted items.

"We've had a long winter, and it's time where everybody will be cleaning. There is a city ordinance against trash burning."

"Besides, it's dangerous because it's pretty dry, and it's getting dryer every day."

WEEDERS GUIDE

By The Associated Press

In round figures, 32 million American homes had vegetable gardens in 1977. That was 43 percent, the same as in 1976 and the average for the last seven years.

Gardens for All, a national association for gardening (Box 371, Shelburne, Vt., 05482) noted a two-year stabilization following the record 1975, when 49 percent of American families produced some food. There had been a steady growth from 1971 to 1975. The figures were based on a Gallup Poll commissioned by Gardens for All.

John O. Davies III, of the garden association, said it did not appear likely that there would be much of an increase in the vegetable gardening percentage in the next 10 years. This estimate was based on expansion room and new gardener expectations.

Basically, those who have become more serious about vegetable gardening in the last year have been persons with higher income, better education and business or professional people living in the suburbs.

The median average size of the home or community garden in 1977 was 770 square feet, compared with 560 square feet the previous year. The increase in garden size is the dramatic equivalent of about 12 million more gardens this year than last computed at the 1976 garden size level.

The larger garden size is likely to continue. One out of every four gardeners this year (24 percent) said that next year's garden would be larger (mostly Eastern and far Western suburbanites). Only four percent planned smaller gardens in 1978.

In 1975, when the economy was poor, the number of gar-

dening households reached a record level. When economy and energy problems improved in 1976, gardens declined. And in 1977, only one in 10 gardener was a first-timer, and the main reason for working the soil was more for personal fun and enjoyment than dollar return.

People, the report said, appear to be taking up vegetable gardening more for mental and physical benefits than for economic rewards. And there is considerable interest by parents of school-age children to have their youngsters learn about gardening in school.

Millions of families without land expressed interest in community gardening if land and similar-minded folk can be gathered.

Here are the main reasons first-timers gave for gardening in 1977:

For the fun and joy, 37 percent; helps budget, 23 percent; better-tasting, more healthful food, 13 percent; first time land was available, 8 percent; more time, 6 percent.

Clean-up!
Paint-up!
Fix-up!

April 8 - 22
Do Your Part!



DISCOUNT CENTER

Advertised prices effective
Thursday, April 6, 1978 thru
Thursday, April 13, 1978

YOUR PAINT-UP FIX-UP CLEAN-UP HEAD QUARTERS

Thompson
**ROTATING
SPRINKLER**

Reg.
1999

\$7.99

Carmac
HANG-A-TOOL

50 in Track with sliding
holder

\$3.89



Turf Magic
WEED-N FEED

40 Lb.
Bag

\$4.99

**RING
SPRINKLER**

99¢

Ortho
**WEED-
B-GON**

1 Pint

\$1.99

Wedge
**AUTO
SPEAKERS**

3 Oz.
Set of 2

\$7.99

JUST ARRIVED!
Heavy Duty
**WHEEL BARROWS
and
YARD CARTS**

Here's How

Trying To Save Can Be Costly

By The Associated Press
Learning from the experiences of last year will set the home raft on a good course in 1978.

For example, there were those avoidable accidents caused by poor investment in faulty equipment. A kitchen ladder bought at a tag sale for one dollar was no bargain for one family. The same ladder could have been bought new for only a few dollars more.

The bargain hunter, a large

woman, lost her footing and became entangled in the ladder legs, which had been incorrectly repaired. The result was a painful and expensive catastrophe — a broken ankle.

In buying second-hand merchandise always check it carefully, especially where your safety may be involved.

And if you get interested in doing home repairs ask yourself whether you know how to fix that water faucet or bathroom fixture before attempting

repairs. It could be a more expensive project than getting the services of a plumber in the first place.

And there were last year's over-buys, all those gourmet acquisitions that were thought to give the kitchen personality — only now there are so many on the counter-tops there is little room to prepare food or even to cook.

Microwave ovens and those blenders, food processors, meat grinders, deep fry cookers and the like that overlap in their usefulness have taken the place of art in some "Show-and-Tell" homes.

Pasta makers, espresso pots, ice cream machines, hot dog cookers, crepe makers and other culinary equipment add to the expensive clutter. They could be put on wall shelves or placed on sliding shelves in cabinets that could be pulled out for company viewing, if the idea is to impress visitors.

And remember all the water that was bought because the well was sending up that rusty-looking liquid? One man figured that he paid \$7 a week for seven gallons of water, which he used for drinking water and coffee, soups and in the preparation of other foods.

After he stopped to think one day about the price of the ordinary water available — fancy table water was even more costly — he decided to consider other solutions such as a water filter that attaches to a kitchen faucet. This provides clear, clean water with a filter that requires replacement about every three months. Two hundred gallons of pure water from his own tap makes for a considerable saving.

Clean-up! Paint-up!
Fix-up!

April 8 - 22

Do Your Part!



MR. AND MRS. GARTH MERRICK
...relishing their self-made beauty spot

'Used Cow Dealer' Supporting Clean-Up

By DIANNE BANNER
Brand Staff Writer

The regimen of "cleanliness is next to godliness" was a major part of the upbringing of Garth Merrick in Illinois and he has continued that lifestyle at Hereford Bi-Products which he owns.

Merrick's modernization and landscaping of the local processing plant southeast of Hereford is especially appropriate now during the annual Clean Up, Paint Up, Fix Up campaign sponsored by the Chamber of Commerce Women's Division.

The young businessman and his wife, Susie, have for the last five years purchased trees to plant around their home, which he designed.

"Last year we bought 100 trees. I grew up in Illinois and have lived in Colorado and was used to seeing a lot of trees. This fall I bought 500 pines. We are going to try and start a nursery by next year."

Assisted by his wife, Merrick will own the retail nursery to be managed by Rick Nunley. They will carry a variety of pine trees such as ponderosas, austrians and pinions.

Surrounding the home and business of the versatile "Used Cow Dealer" are irrigated grass pastures, planted with a special type of grass which greens early in the spring and stays verdant until late in the fall.

"We are constantly cleaning up and fixing up around here. That's how we keep the place looking good."

The idea of Hereford Bi-Products originated in 1967 after Merrick read an article in Life magazine about "a small cowtown in Texas called Hereford."

He and his father started the business which processes cattle carcasses for major dog food companies. Alpo, Purina, Kal-Kan and Carnation are among the canning companies for which the plant provides stock.

"People in Hereford don't have any idea how big we are. Last year our business payroll was half-a-million dollars. That is a lot of money that goes back into the local economy," he said.

Merrick and his wife are expecting their first child.

"We like Hereford, but of course we live out in the country," he commented.

Asked if a dead stock removal business was difficult to run, he said, "It is a tough business. Mother Nature is our best friend but she can be our worst enemy during the summer. The hotter it is, the faster the dead animals deteriorate, and we have to pick

them up no matter what shape they are in. It isn't the processing itself that smells, but the deterioration of the stock. That is why it is good for us to be notified of dead stock as soon as possible."

Merrick concluded with a hint for cleaning up: "There isn't a secret formula or a magic touch to attractive property — all it takes is good hard work."

Roof Color Distinguishes

By The Associated Press

One way to keep your house from looking too much like your neighbor's is to install a roof of a different color. This can be done during the original construction or when a new roof is in order.

While this desire to avoid sameness is a laudable objective, the use of color should be considered primarily as an exterior decorating feature. Much has been written about interior decorating, but home owners are less than knowledgeable when it comes to the exterior elements of their houses. Yet it's the face of the home that is seen by more persons than the inside.

The roof is the largest unbroken visual expanse in most houses, so it must be considered the key to exterior decorating. Sidewalls and trim are subject to more frequent color changes, but you can expect to "live with" your roof color for up to 25 years.

Manufacturers of roofing have provided greater flexibility in exterior decorating by producing many new colors and textures in recent years. Asphalt shingles, the most popular type of roofing, offer an extensive range of colors. In addition to all the traditional roof colors, the shingles now come in such earthy colors as browns, buffs, olives and slates.

ENERGY SAVER

We'll Add Insulation

Our loose fill blown in Celulose Insulation saves on refrigerated air conditioning as well as heating in the winter.

Call today for a FREE estimate.

J's INSULATION
517 E. Park
364-7161

ATTICS WALLS

**THINKING OF REMODELING?
WE'VE GOT A DEAL FOR YOU!**

We offer these services to our consumers:

1. We'll figure your heat-loss calculations so you don't buy heating and air conditioning units that are too big or too small.
2. We'll help you arrange contractors to do your work.
3. We'll supply a free service wire to your house.
4. In addition, you may be eligible for up to \$500.00 by making your home Total Electric.

If you're thinking of remodeling, call us at the Deaf Smith Rural Electric Cooperative today. We can help!

CALL 364-1166

Deaf Smith

HELPING TEXAS GROW!



Lot of Greenery

Local nurseries are a popular place this time of year, with residents planning their spring gardens and other landscaping projects. Amidst the multitude of plants at Melrose's Nursery, employee Betty Drake (shown at left) assists Ella Stehr and Mrs. Will Kelinske (right) in their plant selection. [Brand photo by Dianne Banner]

'60 Homes Waste Energy

TOLEDO, Ohio (AP) — Most homes built prior to the late 1960s when energy was cheap and plentiful were not designed for energy efficiency, says the Owens-Corning Fiberglas Corp.

ernment, utility and industry experts agree that new and existing homes should contain a minimum of six inches of attic insulation with an "R" value of 19, the company says that many homes today contain only a few inches of attic insulation

while others have none.

The higher the "R" value, the more thermally efficient the insulation. Walls and floors should contain insulation with a thickness of 3½ inches (R-11) or more.

Pointing out that most gov-

PUT JOY BACK INTO COOKING!



MAKE MEAL PREPARATION LESS OF A CHORE WITH A KITCHEN CUSTOM DESIGNED TO FIT YOUR SPECIFICATION AND NEEDS.

WHETHER REMODELING OR BUILDING A NEW HOME.....

KITCHENS ARE OUR SPECIALITY

FREE ESTIMATES - ALL TYPES WOODWORKING



**DOUG'S
CABINET
SHOP**

SUGARLAND MALL

364-8502

Paint Brushes Necessary For Jobs Rollers Can't Do

By The Associated Press

The amount of attention given to paint rollers and flat pad applicators might make a visitor from another planet suppose that paint brushes had gone out of style.

Far from it. They are still essential for many paint jobs, either on their own or used in conjunction with other types of applicators. And one thing has remained as it was before rollers, pads and other paint spreaders were born: Thousands of brushes are thrown out every year because they became hard when their users neglected to clean them or cleaned them improperly.

Brushes used in oil paint or

varnish should be cleaned in turpentine, mineral spirits or any kind of paint thinner specified on the label of the paint or varnish. One way is to work the brush back and forth on old newspapers, then do the same in a shallow pan containing the solvent. When the solvent has absorbed a lot of the paint, throw it out and repeat the process. This may have to be done several times, after which the bristles must be washed in a mild detergent and warm water.

If a brush has been used with a latex or similar paint, clean with a detergent and water or soap and water. Holding it under a faucet with the water

turned on full will remove a large part of the paint. The rest can be disposed of by brushing back and forth on a flat surface. If there still seems to be some color in the brush, let the bristles soak in soap and water for a couple of hours, then rinse thoroughly.

A brush used with shellac should be cleaned with denatured alcohol. Lacquer thinner does the job on a brush used for lacquer. The best way to handle painting chores is to use a different brush for each type of finishing material and to keep it for that liquid alone. This is especially important when a brush has been used for shellac or lacquer.

BUY THE NEW SPACE AGE MAILER*



●ATTRACTIVE

●SPACE SAVER
Takes 6" of Sidewalk

●SAFE Light Weight,
unlified construction

●CONVENIENT-
EASY TO
SERVICE

●SELF
CONTAINED

Hurry! This is an introductory offer especially for Hereford residents for two weeks only.

We'll give
\$200 for
your old mailbox

COMPLETE
INSTALLED

\$3500

APPROVED FOR CITY DELIVERY

B&R INDUSTRIES
CALL 364-3201

*Patent applied for.

Stop Window Waste

COLLEGE STATION - Window treatments block energy-wasting heat movement if their designer follows one "heat-flow rule" in the save-home-energy game plan, says Pat Seaman, a housing and home furnishings specialist.

Heated air always flows toward cooler air, so to prevent home heat loss in the winter or heat gain in the summer, create window decor that blocks energy-wasting heat passage through windows, the specialist says.

Mrs. Seaman is with the Texas Agricultural Extension Service, The Texas A&M University System.

SUMMER DECOR PLAN

To prevent home heat gain in the summer, install exterior shading devices, the specialist says.

Canvas awnings, louvered-type shutters, commercial "solar screens," and trees can be effective, she adds.

Roof overhang or trellises also provide protection. Use draperies, blinds and shades inside a

window to reduce heat gain in a room.

WINTER DECOR PLAN

To block heat-air escapes during winter months, use shades and separately lined drapes or curtains for window treatments, she suggests.

Draperies or curtains should fit snugly at the sides, center, top and bottom of the glass area.

A closed top cornice also prevents the flow of air around the window treatment, she adds.

**everybody's doing it
adding insulation**



**CALL US TODAY FOR
A FREE ESTIMATE TO
INSULATE YOUR
HOME!**

**IS YOUR HEATING
AND COOLING SYSTEM
UP TO PAR? LET US
CHECK THE WORKING
CONDITION OF YOUR
UNITS!**

**WE SELL, SERVICE &
INSTALL EVAPORATIVE
COOLERS**

**you're cool
& comfortable
with
insulation
this
summer...**

Insulation

**... Can Cut Home Energy
Consumption By Up To 30%**

With the proper amount of insulation in your attic you'll be able to save energy ... and money on fuel bills too! See us about installing it soon

**STAN FRY SHEET METAL
AND INSULATION**

715 E. NEW YORK

364-2465



Armed for Work

Armed with rakes and hoes, members of the Leo Club including Kevin Bunch, Sonja Hacker, Scott Fermby and Kyla Poteet remove leaves and weeds from a garden spot in downtown Hereford. Other youth organizations which will be participating in the Clean-up campaign are Key Club, Camp Fire Girls, HHS Student Council, Boy Scouts, 4-H'ers and RA's and GA's of First Baptist Church. Other groups who would be interested in assisting may contact Laven Nieman, 364-2030 or 364-6957. [Brand photo by Bob Nigh]

Tools Need Care

The tools you use in the care and maintenance of your home will function safely and reliably if you give them proper care.

Hang up your tools instead of dumping them willy nilly into a tool box where they will be hard to find and subject to casual damage.

Keep tools clean and free of rust. Wipe them after use and apply a coat of light oil to the metal to prevent oxidation. The only exceptions to this rule are hammers, files

and wrench handles. Hammers, when slick, can glance off nailheads, files will not cut properly, and wrench handles can slip from your grip.

Metal that has rusted slightly from humidity or condensation can be restored with fine steel wool and kerosene. Turpentine is an excellent solvent for removing wood pitch from saw blades and other metal surfaces.

Keep tools sharp. You can

renew the edges of plane cutters and chisels yourself. However, most saw blades, because of their compound bevels, need the special tools and techniques available only from professionals. So do all drill and router bits.

The Galapagos Islands, 650 miles off the coast of Ecuador, consist of 13 major islands and 47 smaller ones with a total area of more than 3,000 square miles of land. Only five of the major islands are inhabited.

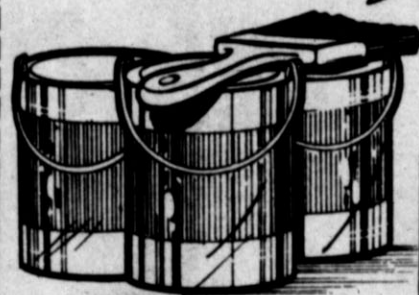


Westgate Project

The garden area at the entrance of Westgate Nursing Home is the object of Bud to Blossom Garden Club's intentions recently as members did their share of community beautification. Shown from left are Mmes. Sam Long, Garth Thomas (kneeling), Bill Gentry (standing), Robert Betzen and Calvin Edwards. [Brand photo by Dianne Banner]

it's HOME IMPROVEMENT TIME

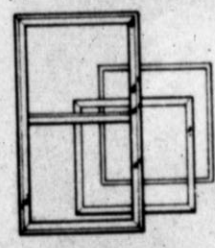
APRIL is Home Improvement Month!



BEST PAINT SOLD
BPS

QUART SALE

- Vina Bond - Interior Latex 75¢
- Satin Lux - Interior Enamel 75¢
- Latex Enamel - Interior Enamel 75¢
- BPS Perma-Kote - Exterior Latex 75¢
- Glosfast - Interior Exterior Enamel 75¢
- Floor Lux - Floor Enamel 75¢



Storm Doors

2 Lite Tempered Glass
\$69.95

Storm Windows
\$19.95

1 Piece White Tempered Glass
\$59.95

CARPET



ONE COLOR
\$2.95 Yd.
IN ROLL LOTS
\$3.95 sq. yd.

Armstrong Linoleum



PANELING PANELING

- Mahogany **\$4.99**
- Med. Mahogany **\$5.95**
- Venus **\$6.95**
- Sugar **\$6.95**
- Bleached Cypress **\$7.99**
- Persian Walnut **\$8.95**

ELECTRIC GARAGE DOOR OPENERS

AS LOW AS
\$149.95



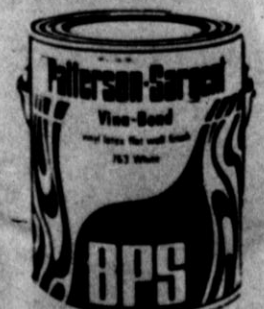
- 1/4 x 6^{FT} Spruce **\$3.99^{FT}**
- 1/4 x 6^{FT} Cedar **\$4.95^{FT}**
- 4 FT HIGH CHAIN LINK
\$1.99^{FT}



Reg. \$9.95
SALE \$3.95



Values to \$10.95
\$3.95



Reg. \$9.95
SALE \$6.95



Reg. \$10.50
SALE \$5.95



Prime Coated 12" MASONITE SIDING
\$24.95
Per 100 Sq. Ft.

LUMBER

- 2/4 Studs- 99¢ Ft.
- 1/6 Siding- 23¢ Ft.
- 1/12 No. 3 YP-... 25¢ Ft.
- 1/8 "D" WP- 29¢ Ft.
- 1/2 W.P. Mould- - 7¢ Ft.

Home Improvements add **VALUE**



69¢ OT.



\$3.95 GAL.

EXTERIOR LATEX
\$7.95 GAL.

ROCKWELL BROS. & Co.

104 N. MAIN

364-0033

Fir Treatment Simple

By The Associated Press

The state tree of Oregon, the Douglas fir, named after a Scottish botanist, is an ever-green with flat needles and cones roughly shaped like eggs. It's also the source of more lumber than any other single tree in North America.

No wonder, then, that when you walk into a lumber yard and ask for a piece of plywood, with no other specification, you're likely to get Douglas fir. The least expensive of the plywoods, it is very strong and thus suitable for most projects. But it is not easy to get a fine finish on it in the conventional

way because of its "wild" grain, so it requires a little extra attention. The treatment is simple and can be used with any wood with a grain that is likely to show through a regular finish after a period of time, including other types of fir.

There are two kinds of sealers made for use with such woods. One is white, the other clear. If you intend to paint the plywood, give it a coat of the white sealer according to the instructions on the container. If the plywood is to be coated with varnish or any other transparent finishing material,

use the clear sealer. Ask your dealer to give you the sealer made especially for use on fir. Then, to be sure, make certain that the label says exactly that.

Once the sealer is on and has thoroughly dried, finish the plywood the same as with any other wood. Incidentally, although plywood usually comes thoroughly sanded, it's not a bad idea to go over it once before putting on any finish. Use a fine grade of sandpaper and then wipe the surface with a cloth moistened in turpentine.

Plywood gets its name because it is made of thin sheets of wood — of plies—glued face to face, with the grains running in alternate directions for extra strength against warpage. One type of plywood has a solid center with veneers glued to both surfaces.

It is the face of the plywood that gives it the designation of fir, pine, spruce, birch, walnut or whatever. Those with hardwood facings are used for fine furniture and are more expensive.

Plywood comes in various grades. It isn't necessary to memorize all of them, but if you intend to use the wood for any special purpose, ask the dealer for his advice. You can get a plywood free of defects,



Camp Fire To Help

Representing the Chamber of Commerce Women's Division, Rena Duckworth (left) and Mary Garrison post beautification signs made by sixth grade Camp Fire Girls at Shirley Elementary School. In further support of the Clean-Up campaign, the Camp Fire Girls of Hereford will assemble more than 400 members on April 22 to tackle a clustered site in the city. (Brand photo by Dianne Banner)

LADIES ...
Have Your CARPETS CLEANED NOW.

- No Shampooing • No heavy scrubbing brushes
- No day-based Cleaning Agents

BE THE FIRST ON OUR WAITING LIST—CALL TODAY!

- HOMES
- APARTMENTS
- RESTAURANTS
- OFFICES
- FEDERAL HOMES
- THEATRES
- DEPT. STORES

RULAND'S
HIGH PLAINS STEAMWAY
 OPEN 24-HOURS A DAY!
 David Ruland, Owner 364-5354

223 Avenue J
364-3578

STEAMWAY
 FREE ESTIMATES

NOW IS THE TIME TO REPLACE THAT BROKEN GLASS AND GET YOUR HOME READY FOR THE SUMMER DAYS AHEAD.

Along with that spring cleaning, let us help you beautify your home, making it more comfortable and attractive!

**Keep Out Cold!
Keep In Heat!**
Thermal insulated windows save on fuel bills!

Thermo Panes

Storm Door Glass

Mirrors

Window Glass

ART SUPPLIES

Brushes, Paints, Canvases

Custom Frames & Ready Made

Picture Frames

HEREFORD GLASS CO. INC.
 1302 Park Ave. 364-2652

one which has a limited number of defects, one with still more, and so on. Some have perfect or almost perfect surfaces on both sides, some only on one, the latter being suitable for an installation where one side will not be visible.

While all plywood is moisture-resistant, it should not be used outdoors unless it carries an "exterior" stamp. The exterior plywood has waterproof glue between the plies as well as other qualities that enable it to withstand outdoor use.

Clean-up! Paint-up!
Fix-up!
April 8 - 22
Do Your Part!

April is Home Improvement Time...
 And what can do more to improve your home than beautiful and luxurious

WALL TO WALL CARPETING

NATIONAL BRANDS
 INDOOR
 OUTDOOR
 CARPETING

BIG CARPET SELECTION

FORMICA
 LINOLEUM
 CERAMIC
 TILE

Don't Go Out of Town...See us first!

C & W CARPET

310 N. 25 Mile Ave. Hereford 364-3448

WE WILL PAY YOU...

FOR ALL KINDS OF SCRAP IRON, TIN, COPPER, BRASS AND ALUMINUM!

During the CLEAN-UP-fix-up-paint-up time, you can improve the appearance of your home and property by selling to us all of the scrap metal which is probably in your way and cluttering up the place.

Clean up your place for both looks and profit! We buy cars, truck, appliances, hot water heaters, barbed wire, baling wire, bed springs, wagons, tricycles, bicycles, and just about any other kind of scrap iron, tin, copper, brass and aluminum that you can name.

We buy old newspapers and car batteries.

Note below that we have a baler which will take all kinds of scrap metal and bale it into approximately 1000 lb. metal bales.



We pick up old cars free!
**HEREFORD IRON
& METAL COMPANY**

364-3350

N. Progressive Rd.

364-3777

Patio Furniture Tips

From the moment winter's snow starts to melt and the trees begin to bud, many people try to spend as much time as possible out-of-doors.

Prepare for outdoor relaxation, before you decide to stretch out and enjoy the growing warmth of spring-

time sun, by making sure your lawn and patio furniture is ready for another season of sunshine.

Out of shape
After a winter's "vacation," outdoor furniture can really be out of shape. Check chairs and lounges for missing, broken or loose slats

and cross-weaves. Make all necessary repairs to avoid possible minor accidents or a week of sore back muscles that can result from relaxing on a too loosely woven chair.

In 1975, there were 14 million sheep, 9 million hogs and 6 million head of cattle in Romania.

WARD

TRUCKLOAD SALE!

SAVE \$40

NOW ONLY
126⁸⁸*

was 166.99 Spring '78 Gen. Cat.



#37100

Side-discharge 3 1/2-HP
20-in. rotary mower

- Briggs and Stratton engine has effortless "Pull and Go" starting
- Automatic choke gets you through the toughest mowing spots
- Throttle control on handle for easy power control
- Lightweight "Vacuum Action" die-cast deck pulls up grass for clean cutting
- Instant action height adjusters let you set precise cutting height

SAVE \$30

NOW ONLY
166⁸⁸*

was 196.99 Farm & Garden '78



#37190

3 1/2 HP 20-in. push
Rear bag mower

- Briggs and Stratton engine with instant "Pull-and-Go" starting
- Automatic choke
- Sturdy, long lasting steel deck
- Folding handle for easy storage
- Rear discharge allows easy trimming along either side of deck
- Instant action height adjusters
- Handle mounted throttle

SAVE \$37

NOW ONLY
149⁸⁸

was 186.99 Farm & Garden '78



#37404

3 1/2-HP 22-in. self-propelled
rotary mower

- Briggs and Stratton engine with easy "Pull-and-Go" starting
- Self-propelled front wheel pinion drive
- Handle mounted throttle control easily sets engine speed
- 5 cutting heights
- Blade/deck action lifts and discharges grass evenly
- Self-propelled mower takes the hard work out of mowing

*Plus transportation and handling.

SAVE \$40

NOW ONLY
256⁸⁸

was 296.99 Farm & Garden '78



#37310

Deluxe 4-HP 22-in. self-propelled
rear bag mower

- 4-HP Briggs and Stratton engine. Automatic choke
- Extended oil fill, dip stick and easy read gas gauge
- Self-propelled with rear wheel drive
- Handle mounted clutch and throttle control
- Strong, lightweight, die-cast deck
- Rear discharge for easy maneuverability
- Instant action height adjusters let you select any of 5 desired heights

SERVICE NATIONWIDE
Prompt service, factory parts

Save at Wards low prices—use Charg-all credit

WARD

114 Park Avenue

364-5801



Beautifying King's Manor

The rose gardens at King's Manor Methodist Home are a pet project of Garden Beautiful Club members, who have been active in recent weeks pruning and weeding the floral spot. Shown here are Bessie Story, left, and Tiny Lee Roberson, who contribute their time and efforts in the name of civic pride. [Brand photo by Dianne Banner]

Incentives For Furniture Refinishers

By The Associated Press

This is a good time of year to think about acquiring a piece of furniture or two: Thrift shops and tag sales are not so crowded, prices are likely to be lower than in the demand days of spring and summer, and the slower pace of the season provides more incentive for refinishing a piece of furniture.

Some folks enjoy the refinishing work; others resent the inevitable mess that goes with such a project. Ideally, the job should be done partially outdoors. But there is no reason why it can't be done indoors if one works carefully and neatly.

Thinking of it as a temporary thing and putting emphasis on the rewards that may be reaped from diligent application of elbow grease will change the outlook.

In fact, paint experts suggest setting up a temporary workshop indoors. Find a little hideaway spot. The corner of a garage? A recreation room? As long as you keep it well-ventilated there should be no danger. If it isn't too cold, a window may be left partially open so that you do not inhale harmful vapors. A fan should be used to circulate the air.

Clear several feet of floor space and cover the spot with a large piece of heavy plastic. Put newspaper over the place where you will put the furniture piece to be refinished. The paper will help to make a speedier clean-up, something to be thankful for after a hard session of removing paint or other finish.

The paint people suggest having at hand a plastic garbage can with a plastic liner into which all the peelings and paper can be thrown.

Many stripping compounds are on the market, but the choice should be a safe, non-

flammable paint and varnish remover. Popular now with the do-it-yourselfer are the non-flammable, waxfree, semi-paste-type removers which do not leave a wax residue. These newer products make an after-rinse or neutralizer unnecessary. No matter, some precautions should be observed. Gloves to protect the hands, for example; and any work done with a paint-varnish remover should be in a well-ventilated room.

As you push the goo with a paint scraper or knife, you might hold a cardboard to catch some of the scrapings if the piece is flat on top. (Another word of caution: wear protective goggles or glasses to protect your eyes from accidental slips of the scraper which may deflect some of the remover into your eyes.) Also, it's a good idea to have an assortment of scrapers of different widths handy. A beer can opener is one which can come in handy. The sharp tip can be used for cleaning out cracks and other crevices around mouldings or carvings on the piece being refinished.

The item should be thoroughly stripped before starting the refinishing project. Care should be taken not to gouge the wood. Wipe the piece well with alcohol or some other solvent to remove all bits and pieces that might be left. If the piece still looks messy, rub with steel wool to smooth the finish. When using steel wool, follow the grain of the wood to prevent scratches which will mar the finish and be very hard to remove later.

You may want a wood finish that is clear, or one that is pretty much the same as the original finish. Several coats of shellac may suffice. Many books, for example Wallace

Nutting's well-known "Treasury of Furniture" books, offer formulas for stains and paints for mahogany, walnut and other wood finishes. These books are available in libraries. One book contains the authentic measurements of furniture stretchers, posts, rails, finials and so on in line drawings.

Spring's Time

To Restore Lawn

Spring is the season of rebirth, but sometimes Mother Nature needs a bit of help.

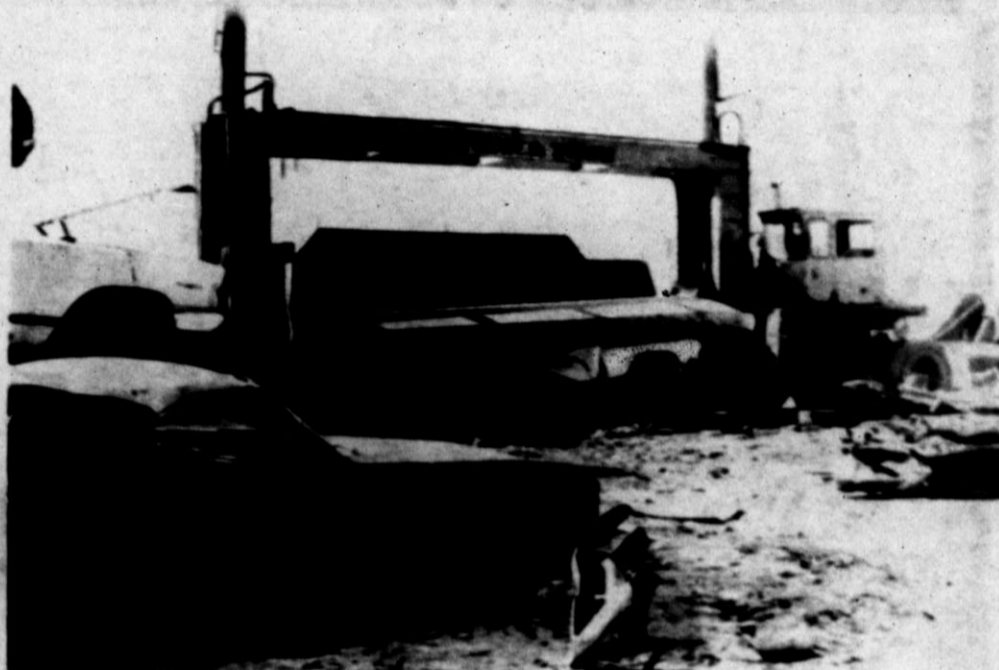
When warm sunshine again becomes a part of our everyday routine, it's time to restore the lawn and garden and repair any damage caused by the harsh winter.

Spread some grass seed to refurbish those "after winter" brown spots dotting the lawn, and prune shrubs to promote growth and keep the yard looking neat and inviting.

Let the whole family get involved in replanting the garden. Whether you opt for flowers, vegetables, or both, it's a mini-course in agriculture everyone can appreciate.

Keep your gardening tools in good working condition, by taking proper care of them after each use. Fertilizer attracts moisture and invites rust, so begin by scraping off any mud build-up. Then wash your hand tools with full-strength Janitor In A Drum* all-purpose cleaner, rinse and let dry.

Don't leave tools out-of-doors, exposed to the elements; when they're not in use, outdoor equipment should be kept in a dry place. Before storing metal tools for long periods of time, coat them with oil to protect them from moisture and rust.



Cars, Cans, Newspapers Recycled

Hereford Iron & Metal Co., N. Progressive Road, will buy junk automobiles, tin or aluminum cans and newspapers for recycling during Beautification Time. Car bodies are mashed flat by machinery at the company, while cans are compressed into a bale. Shredded newspapers are sold for insulation. Anson and June

Dearing own Hereford Iron & Metal Co. and are assisted by their sons, Rodney and Larry. Information on disposing of cans and scrap metal collected during Beautification Time may be obtained from the Gearings.

Upkeep Counts in House Renting

By The Associated Press

Some homeowners fail to consider depreciation when they decide to offer their homes for rent. An owner must keep a good sum available for home repairs and emergency problems — big things like water pumps, boilers and water tanks. A hurricane also can do a lot of damage to roofs. But often it is little things that add up to a big cash outlay.

One family had been renting their former residence for a decade as they lived in another area of the country. When a va-

cancy coincided with their own vacation period, they decided to move back for a few months and refurbish the house.

It became an expensive fix-up, clean-up, paint-up, even though they did a lot of the work. Through the years they kept up with appliance problems, but they assumed that tenants were keeping the place maintained. In reality many inconveniences were being tolerated, and maintenance had fallen behind. Some tenants fear a rent increase if they ask for

service or new equipment.

To begin with, there was a \$5,500 paint job for the 5-bedroom house, indoors and outdoors. Because no tenant had put up the storm windows which had been in a closet through the years, the windows had taken "quite a beating" and a lot of puttying and trim work had to be done, an expensive, time-consuming job. "And why in the world wouldn't tenants use storm windows in these days of high-cost energy?" asked the owner. It may

not have been laziness, it may well have been ignorance.

The kitchen needed a major scrubbing, especially the ceiling which was heavily coated with grease, and three coats of paint were needed to cover the dark green walls, even after several washdowns. A bath wall needed a tile job because tiles had fallen off during the years and had not been replaced. Dogs may have had free reign in the house and several floors needed to be scraped and refinished. Weeds

had come up around bricks on the large patio and a big job was required in that area using weed killer and realigning bricks.

As this owner pointed out, "You can't do a half-way job if you own a house. You must either do repairs regularly and keep everything in condition or you must be prepared to spend larger sums when you get around to general deterioration." That family opts for a regular checkup when a lease is renewed.

Owners of resort houses may have such problems compounded. A variety of tenants throughout a season can make a home particularly vulnerable to disrepair and even abuse. Some people are untidy, but others simply cannot cope with simple household equipment. Owners should have directions for the operation of each thing pasted on the appliance itself.

St. Thomas is 13 miles long and three miles wide.

DEL MAR METALCRAFTED CLASSIQUE BLINDS

Create a beautiful new setting with Del Mar Classique Blinds.

Classique Blinds present a fashionable solution for every decorating situation. Use them to enhance windows of every size and type, either by themselves or with your present draperies. Select from a complete range of colors. Join the fashion revolution in window treatments.

SAVE

20%

ON EITHER OF THESE DEL MAR ORIGINALS

Clark's

SPRING CREST
Custom DRAPERIES

DEL MAR LOOMCRAFTED WOVEN WOOD



One Del Mar window treatment is worth a roomful of redecorating.

Very, very elegant! Del Mar Loomcrafted Woven Woods create unique and dramatic fashion statements and add that designer touch to every room. Fine yarn! Imported woods! Exquisite patterns! See our complete collection of Del Mar Originals. Commission a Del Mar Original for Your Home.

SUGARLAND MALL
364-0493

IT'S SPRING AGAIN!



Fluffy Raffle and Baskets

FERNS 6 Inch Size **\$2.98**
 Reg. '7.95 Value

ROSARY VINES Reg. 98 Value **2 For \$1.00**

JADE TREES Varigated 6 Inch Reg. '5.95 Value **\$2.98**

ARALIA Chicken Gizzard & Befouriana 10 Inch Bucket Reg. '39.95 Value **\$19.95**

Green Light
TOMATO FOOD
 Reg. '1.29 Value
50¢
 While Supply Last

(Tripple Plant) (Big & Pretty)

JANET CRAIG DRACENA Reg. '39.95 Value **\$19.95**

WEeping FIG 6 Inch Pot Reg. '9.95 Value **\$5.95**

AFRICAN VIOLETS Reg. '4.98 Value **\$2.98**

CORN STALK Dracons '9.95 Value **\$5.95**

WACCO Wood & Food Fertilizer 50 Lb. Bag Reg. '9.95 **\$5.95**

ROSE FOOD Green Light '4.29 Value **\$3.50**

Soil Conditioner Great For Flower Beds
BARK MULCH 40 Lb. Bag Reg. '4.98 **\$3.50**

FERTI-LOME Super Phosphate 5 Lb. Box '2.98 Value **\$1.98**

"GROUND COVERS"

ALYSSUM- VINCA MAJOR-
 ENGLISH IVY- TRAILING ICE-
 MOSS ROSE- SEDEN

MALL'S HONEYSUCKLE
 EUCONYMUS COLORATUS

39¢ Each or **3 For \$1.00**

Old Fashion

LILAC'S 5 Gallon Cont. '14.95 Value **\$9.95**

TILLEEZ

DEHYDRATED AND PROCESSED
 SHEEP AND COW

MANURE

40 Lb. Bag **99¢**

"BEDDING PLANTS"

PETUNIAS- PANSIES-
 SALVIA- VERDENIAS-
 CARNATIONS- DIANTHUS-
 LOBELIA- SNAPDRAGONS

25¢ Each or **5 For \$1.00**

ROSE BUSHES

WILL BE HERE
 THIS WEEKEND



MELROSE'S NURSERY

Open 9 A.M. to 7 P.M. MON.-SAT.

220 N. 25 MILE Ave.

364-4012

