

## Mules play Thursday in Amarillo

Muleshoe High School plays District 1-3A champion Perryton in the bi-district baseball playoffs for the second straight year 5 p.m. Thursday at Tascosa High School in Amarillo.

Muleshoe (13-13 overall, 6-3 in 2-3A) beat Littlefield, 2-1, Tuesday, finishing second in District 2-3A and qualifying for the playoffs for at least the fourth-straight year.

Muleshoe won the district title last year and beat Perryton, 11-6, in the bi-district playoffs before losing to Graham, 5-0, in the area playoffs.

Perryton (20-7-2, 8-2) is led by hard-throwing left-hander Pile Landeros, who started against the Mules last year. Landeros was 11-1 with four saves and batted .503 with six home runs. Shortstop Cody Sunday hit .430 and led the team-high eight home runs.

Perhaps the best known former Perryton player actually didn't play baseball in high school.

Cleveland Indians manager Mike Hargrove is from Perryton. He didn't play high school baseball, but was a basketball standout for the Rangers. Hargrove did play Ameri-

Continued on page 4



### One of the James gang

Second-grader Myles James tries his hand at a roping dummy Thursday during Western Day at Dillman. Ten local presenters taught the children about frontier days.

## County Ag reps hosting farm bill orientation May 21

A meeting to discuss the 1996 farm program will be held 7 p.m. Tuesday, May 21 at 7 p.m. in the Bailey County Civic Center.

The meeting will be conducted by Kim Hanlin and Joyce Thompson of the Bailey County Farm Service Agency; Jim Lutz of the National Resource Conservation Service; and Curtis Preston of the Bailey County Extension Service.

Signup for the 1996 Production Flexibility Contract (PFC) begins May 20 and will continue through July 12.

The new farm program is a one-time signup for a period of seven years (1996 through 2002). The only exception will be for expired CRP contracts. CRP contractors are eligible to enter the program when their CRP contracts expire.

All signatures of persons sharing on the farm must be on file by the July 12 deadline. Crops eligible to participate are wheat, corn, grain sorghum, barley, oats, upland cotton and rice.

The contracts are binding. Revisions can be made for changes in producers and

shares. Contract acreage will replace crop Acreage base, and this will remain throughout the seven-year period.

Owners have the option to permanently reduce contract Acres. Contract Acres cannot be increased. All base acres for all crops that the farm has in 1996, will be eligible to enroll as contract acreage. Acres can be permanently reduced at the time of signup, or during the seven-year period. If the operator elects to do this, the consent of the owner is required.

There is no limit to the number of acres that can be planted to wheat, corn, grain sorghum and cotton.

Payments will be calculated as follows: contract acres x 85 percent x yield x rate.

A \$50,000 limit for all seven years will apply to the portion of the payment that will be used to offset the 1995 deficiency overpayments. There is a 40,000 limit per fiscal year for each crop less earned 1994 and 1995 crop deficiency payments in fiscal years 1996 and 1997.

There are no planting re-

Continued on page 12



### Mother of the year

Elida Diaz presents her mother, Eva Mendoza, with the Muleshoe Journal's Mother of the Year award.

## Mom never too busy for quality time with kids

By JOANNA GALLMAN  
Journal staff writer

Eva Mendoza of Muleshoe Thursday was named the Muleshoe Journal's Mother of the Year.

She was nominated by her daughter, Elida Diaz.

Mendoza, 30, is a wife and mother of three children. She is self-employed in Home Interiors.

Mother of the Year nominees were submitted to the Journal by DeShazo Elementary School fourth graders, who wrote letters describing why their mothers deserve the award.

Elida's letter was chosen of the 72 letters submitted in observance of Mother's Day May 12.

Besides being a "good cook" and a "great housekeeper," Elida wrote that her mother was most worthy of the award "because of the way she's nice to me."

Mendoza was pleased to have received the award, and said that

Continued on page 3

## DeShazo students prove bullish on competition

By JOANNA GALLMAN  
Journal staff writer

The Dow Jones industrial average, dividends, and splits in stock are not things that occupy typical fifth graders' minds. However, a five-member team from DeShazo Elementary School recently mastered all the elements of the stock market rat-race to win top awards in the 1996 Stock Market Game contest.

The team claimed the award for the Texas Elementary School Region.

The contest, sponsored by the College of Business Administration and Economics at New Mexico State University, is a computer simulated competition in which student teams buy, trade, and sell stock while building a portfolio.

Four teams from DeShazo elementary were among 5,500 high school, middle school, and elementary students throughout New Mexico and West Texas to participate in the contest. One of the teams, comprised of team captain Shauna Kitchens, Cydni Vandiver, Ryan Powell, Mindy Locker, and Laura Vasquez, gained the largest profit of all the participating teams to take top honors in the contest.

With help from fifth-grade teacher Beth Skipworth, team members learned the specifics of the stock market trade by reading the Wall Street Journal and using informative materials provided by sponsors of the



### Power brokers

DeShazo students (from left) Ryan Powell, Cydni Vandiver, Mindy Locker, Shauna Kitchens and Laura Vasquez scour the stock pages in search of quality stocks. The team finished first recently in a stock market contest sponsored by New Mexico State University.

Stock Market Game. Each team member then began the contest with an imaginary \$20,000 to invest in the stocks of their choice. According to Ryan Powell, the stocks of choice were Nike, Disney, AT&T, and Xerox, for reasons varying from the popularity of Nike to the number of Disney movies released. "Pepsi's not very good," he added.

During the ten-week contest, the team followed the rise and fall of their stocks in all

three exchanges, and made transactions to buy, sell, or trade accordingly.

A majority of the decisions were made by the students, Skipworth said.

"You can advise them," she said, "but they do their own thing." She added that the kids frequently consulted their parents or other relatives for advice on what to sell and keep.

"My uncle watches the stocks," Laura Vasquez said. "He doesn't own any, but he told me what to keep and what

not to." Transactions were recorded on scan sheets and mailed to New Mexico State University, where they were read by an optical scanner and computer. At the end of each week, a summary sheet detailing the value of the stocks and the overall ranking of the team was sent to the participants.

The team accumulated \$99,721 in equity - enough to claim first place in the contest. The other three teams from

Continued on page 3

AROUND MULESHOE

### MISD Board of Trustees meet Tuesday, May 14

The Muleshoe Independent School District will hold a Board of Trustees meeting Tuesday, May 14 at 7:00 p.m. in the Administration Building.

Items on the meeting agenda include swearing in newly elected trustees, reviewing summer school plans, discussing the revised Student Code of Conduct, and considering a waiver application for staff development.

Also scheduled for the meeting are revisions of curriculum and programs for the 1996-97 school year, discussion of payment of first year dues to the Retired Teachers Association for employees retiring from Muleshoe I.S.D., and personnel considerations.

### 16th & D Church's Soup & Sandwich luncheon Thursday, May 16

The 16th & D Church of Christ, at 1600 W. Ave. D, will host a soup & sandwich luncheon meeting Thursday, May 16, from 12:00 to 1:00 p.m. in the fellowship hall. The luncheon will feature minister, author, and Amarillo *Globe News* columnist Gene Shelburne. Shelburne will discuss his recent book *The God Who Puts Us Back Together*.

Community members, business people, and anyone else interested are invited to attend the monthly soup and sandwich luncheon. The meal is offered on a donation basis. Cornbread, stew, and dessert will be served. In addition to the luncheon, other programs have been scheduled for the third Thursday of each month, featuring speakers, special groups, and topics of interest. For more information call 272-4619.

### 1956 graduate interested in possible summer class reunion

Bill Schaefer, an Austin man, is a 1956 graduate of Muleshoe High School and is interested in information about a possible class reunion this year. He requests the date, time, and place of the reunion, should one be held.

Schaefer requests a response as soon as possible, to be mailed to: B.L. Schaefer, 1001 Minda Drive, Austin, TX 78758.

### Lazbuddie graduate receiving Master of Arts for SW Baptist

Brad Scott Johnson of Lazbuddie will receive the Master of Arts in Marriage/Family Counseling and the Master of Arts in Religious Education degrees from Southwestern Baptist Theological Seminary May 18.

Johnson will be one of 400 to receive degrees in theology, religious education and church music. Johnson serves as counselor at Fielder Road Baptist Church in Arlington.

### Muleshoe native is first woman president of Southwestern Public Services

Gwen B. Splawn is the president of Precision Resource Company, a temporary-staffing firm. Splawn is a native to Muleshoe and was educated at Amarillo College and WTAMU. She joined SPS as a clerk-typist in 1981, and in 1988 was named supervisor of administrative services at Utility Engineering. In 1973, Splawn was recognized as an Outstanding Young Woman of the Year. After all she has accomplished, she is now the first woman president in the history of Southwestern Public Services and its subsidiaries.



Gwen B. Splawn

Precision Resource Company will manage a database of qualified professional and technical specialists who are available for short- or long-term assignments with architectural, engineering and environmental firms, utilities, refineries and other investor-owned or public entities. The firm will specialize in filling engineering and technical positions.

### Cannon Air Force Base hosting traveling circus

Cannon Air Force Base will be hosting a fun day May 17-18. The world's largest traveling circus, Carson & Barnes Five-Ring Circus, a travel fair, and flea market are scheduled for the weekend.

The circus is scheduled for performances at 4:30 and 7:30 p.m. on Friday and 2 p.m. and 7 p.m. Saturday. The travel fair and flea market are scheduled to be open May 18 from 10 a.m. to 2 p.m.

In addition to the circus, travel fair, and flea market, Cannon has arranged for food, entertainment, and chances for both military personnel and civilians to win a vacation to Las Vegas, Nevada.

Tickets for the circus will be offered at a pre-performance discount at all Sunwest Bank locations and at Clovis Community College in Clovis, Strebeck Autoplex, Teague Strebeck and Portales News Tribune in Portales, as well as

Continued on page 5

### EMS WEEK, MAY 19TH - 25TH



Jackey W. Burris, EMT-P, EMS Director  
 Kern Bales, EMT-P  
 Brad Gathright, EMT - P  
 Rick Mata, EMT-P  
 Tommy Green, EMT-P  
 Curby Brantley, EMT-I, EMS Crew Chief  
 Heath Scott, EMT-I  
 Alex Garcia, EMT  
 Gena Orozco, EMT  
 Larry Rasco, EMT, EMS Crew Chief  
 Donna Thompson, EMT  
 Gary Don Gartin, EMT, EMS Crew Chief  
 Ralph Sanchez, EMT, EMS Crew Chief  
 Steve Clifton, EMT  
 Polly Bryant, EMT  
 Cliff Heinrich, EMT  
 Kelly Heinrich, EMT

Bailey County  
 Emergency Medical  
 Services  
 Muleshoe  
 & Three Way, Texas

Bud Holmes, EMT  
 Venus Holmes, EMT  
 Ron Foley, EMT  
 Micky Tosh, EMT  
 Benny Parker, ECA  
 Tony Scolley, ECA  
 Bryan Morris, Driver  
 Don Carter, Driver  
 Joe Orozco, Driver  
 Ric Petersen, Driver  
 Kay Brantley, Driver  
 Glenda Powell, Student  
 Tina Davis, Student  
 Starla Ellis, Student  
 Joe Jennings, Student  
 Richard Wills, Student  
 Kenny Evans, Student  
 Ron Lemmons, Student

The above names are of those that dedicate time and effort to serve the citizens of Bailey County and the surrounding areas.

### Bailey County Journal USPS 040-200

Established March 31, 1963. Published by Triple S Publishing, Inc. Every Sunday at 304 W. Second, Box 449, Muleshoe, TX 79347.  
 Second Class Postage paid at Muleshoe, TX.  
 POSTMASTER: Send address changes to the Bailey County Journal, P.O. Box 449, Muleshoe, TX 79347.  
 We are qualified members of:  
 Panhandle Press Association, National Newspaper Association, West Texas Press Association and Texas Press Association

WEST TEXAS PRESS ASSOCIATION



PPA

Panhandle Press Association

Scot Stinnett, Publisher  
 Lisa Stinnett, Vice-President/Comptroller  
 Rick White, Editor  
 Holly Millsap, Classifieds  
 Pat Durben, Advertising

© 1990



SUBSCRIPTIONS: Muleshoe Journal and Bailey County Journal  
 By Carrier Yearly - \$22.00  
 Bailey and surrounding counties: by mail - \$24.00  
 Elsewhere - \$26.00  
 Advertising Rate Cards on Application

\*Advertisers should check their ad the first day of insertion. The Journals will not be liable for failure to publish an ad or for a typographical error or errors in publications except to the extent of the cost of the ad for the first day of insertion. Adjustment for errors will be limited to the cost of that portion of the ad where the error occurred.\*

Subscribe Today!

Call 272-4536 for more information

### Community calendar

To get on the calendar or for more information, call Norma Perez at 272-4248.

The deadline to appear in the Journal's Community Calendar is Thursday at 5 p.m.

#### Monday, May 13

Round Dancing from 8 to 10 p.m. at the Bailey County Coliseum.

#### Tuesday, May 14

Jennyshippers meet at noon, Muleshoe Public Library.

There will be an Alcoholics Anonymous meeting at 7 p.m. at 723 W. Ave. E., call 272-3002.

Rotary Club from noon to 1 p.m. in the Bailey County Coliseum meeting room.

The Masonics meet at 7:30 p.m. at the Masonic Lodge.

The Muleshoe High School Athletic Boosters will be holding a meeting at the High School Cafeteria

starting at 7:30p.m.

The Rebekahs will meet at 7:30 p.m. at the Rebekah Lodge.

#### Thursday, May 16

Chamber meeting from 5:30 to 7:30 at the Chaber of Commerce.

Oddfellows meet at 8:00 p.m. at the Oddfellows Lodge.

Tops meets at the Church of Christ, 6:00 p.m.

There will be an Alcoholics Anonymous meeting at 7 p.m. at 723 W. Ave. E., call 272-3002.

#### Friday, May 17

Kiwanis Club meeting from 6:30 to 8 a.m., at the Snack Shack across

from MHS.

DeShazo's Circle of Champions will be held at Mary DeShazo starting at 9 a.m.

Watson Junior High is holding an awards ceremony at 9 a.m. in the High School Auditorium.

#### Saturday, May 18

Cannon Flea Market will be held at the Cannon Air Force Base. For more information call (505) 784-2563 or 784 2539.

Junior/Senior Prom will be taking place at the Muleshoe High School Cafeteria from 9 p.m. until

Midnight.

Editor's note: The Community Calendar appears in Sunday's Bailey County Journal.

## TAKE ADVANTAGE OF THESE SPRING SAVINGS



GET \$15<sup>00</sup> OFF  
**A GOODWRENCH TUNE-UP**  
 Special includes plugs, filter, check timing, belts, PVC & air filter.

COOLANT SYSTEM SPECIAL  
**\$25<sup>50</sup>**  
 Special includes system check and one gallon anti-freeze.

LUBE AND OIL FILTER SPECIAL  
**\$13<sup>50</sup>**  
 Special includes oil, filter and safety inspection.

GOODWRENCH A/C RECHARGE & COMPRESSOR CHECK  
**\$41<sup>75</sup>**  
 Special includes 1 lb. freon, adjust drive belts, inspect hoses and clamps, check coolant level, test system pressure, check freon (add if necessary), check for leaks, clean condenser, test performance.

WHEEL ALIGNMENT  
**\$56<sup>00</sup>**  
 Adjust camber, caster & toe, check tires, shock absorbers & steering linkage, rotate tires, balance wheels, make visual check of all other components, thrust alignment extra.

GET \$15<sup>00</sup> OFF  
**A GOODWRENCH BRAKE JOB**  
 Special includes pads, shoes, check rotors & drums

GET \$15<sup>00</sup> OFF  
**A GOODWRENCH TRANSMISSION SERVICE**  
 Special includes filter and fluid and check all adjust.

GENUINE GM PARTS? CALL US BEFORE YOU CALL IT QUILTS  
 We do all service and body repairs the way they should be done.

**DOC STEWART**  
 CHEVROLET • GEO • BUICK

2500 Mabry Drive Clovis, NM (505) 763-4465 1800-530-8842

Home Folks Caring For Folks At Home.

## MULESHOE AREA HOME HEALTH Agency

Would Like To Recognize These Employees During National Nursing Home Week



Sitting: Joy Stancell, Terri Brown, Julia Smith, Karen Cook. Standing: Jackie Carlan, Ed Dudley, Keith Harp.  
 Not pictured Robin Dickerson

## Parents play vital role in improved TAAS scores

Students at Muleshoe Independent School District finished the reading and writing sections of the TAAS test last week.

Adrian Meador, assistant superintendent of schools, said that teachers at MISD noted an increase in effort on the part of the students this year. Meador attributes the success of the students during the TAAS test and remaining school year to parental influence.

Results of the test will be provided by the Texas Education Agency in late May or early June. MISD will inform parents of the results when the test information comes available.

Parents are urged to actively participate in evaluating their student's success by inquiring about the results of the test in order to prepare their student for next year.

*This is the second of a three-part series by Muleshoe Independent School District assistant superintendent Arian Meador on the TAAS Exit test.*

## TAX FACTS

by JOHN SHARP  
TEXAS COMPTROLLER OF PUBLIC ACCOUNTS

### To Tax or Not to Tax, That is the Question

If you become confused about what is taxable and what is not when you go to the grocery or convenience store, you are not alone.

Generally, if you buy food that must be prepared before it is eaten somewhere else, you won't pay sales tax on the item. Some of the items on which stores must collect sales tax are beer, wine, soft drinks, diluted juices, flavored or carbonated water, candy, candycoated nuts and popsicles. You don't pay sales tax on rice, flour, beans, cereals, vegetables, fruit and bread.

### Stocks

Continued from page 1

DeShazo took the sixth, seventh, and eighth places in the contest. The winners were presented with plaques and T-shirts, and top team members were given certificates.

The team got more than T-shirts from the contest, however.

"I had lots of fun," Shauna Kitchens said.

Now that the team members have become Wall Street ex-

## Tracking the TAAS Test

### Sample questions for review

#### 8TH GRADE WRITING QUESTION

Read each passage and choose the word or group of words that belongs in each space. Mark the letter for your answer.

My father is captain of a boat named *Dune Buggy*. He (1) tours of coastal wildlife areas. Last weekend I got my big break. I didn't have (2) to do, so my father asked me to be the guide on one of the tours. I (3) over the boat's loudspeaker, telling passengers about the (4) comeback of the whooping crane. At the time the cranes were closest to extinction, they numbered only fourteen. Now, thanks to a save-the-crane campaign, the population has increased (5).

I liked my day as a guide so much that I think I'll ask my father for a job. (6) will make a great team!

- |                           |                 |                 |
|---------------------------|-----------------|-----------------|
| 1. F have been conducting | 3. F will speak | 5. F greater    |
| G conduct                 | *G spoke        | *G greatly      |
| H are conducting          | H have spoken   | H greatest      |
| *J conducts               | J speak         | J great         |
| 2. *A anything            | 4. *A amazing   | 6. A Him and me |
| B nothing                 | B amazed        | *B He and I     |
| C hardly nothing          | C amazingly     | C He and me     |
| D hardly anything         | D amazement     | D Him and I     |

\* indicates correct answer

#### 4TH GRADE READING QUESTION

Elephants are the largest land mammals and some of the strangest looking. Although their appearance is odd, elephants are well suited to life in the wild. Elephants may look strange to us, but their unusual physical features help them to survive.

##### How an Elephant Uses Its Tusks

An elephant's tusks are actually two large teeth that continue to grow throughout its lifetime. An elephant uses its tusks to help it find food and water. It can pry open a tree to get to the soft wood inside or dig for roots. If no other water is available, an elephant can even dig for water.

##### How an Elephant Escapes Danger

An elephant's large size helps to protect it from enemies. Few animals attack something as big as an elephant. Even though an elephant is large, it is agile. An elephant can run 24 miles an hour. That's twice as fast as a person can run. An elephant is also an excellent swimmer. When an elephant swims, its body is under water, but its trunk is in the air. This allows an elephant to swim great distances without coming out to breathe. It can swim like this for hours to escape danger or to find food.

Elephants are amazing animals. They are able to survive in the wild because of their unusual physical features.

- |  |   |  |
|--|---|--|
| 1. In this story the word <i>agile</i> means | 2. What would an elephant probably do if water were hard to find? | 3. How does an elephant use its trunk when its swimming? |
| F heavy                                      | A Stay in the shade until it rains                                | F To paddle faster                                       |
| G clumsy                                     | B Stomp the ground with its feet                                  | G To spray other elephants                               |
| *H quick                                     | *C Use its tusks to dig for water                                 | H To keep its balance underwater                         |
| J steady                                     | D Fight other animals for the water                               | *J To breathe while swimming                             |

### Take Out or Eat In?

If the store has a place where you can sit down and eat, such as a deli, bakery or coffee shop, it will have to collect sales tax on all foods that are sold in that area in individual-sized portions, as well as food that is kept hot or sold with utensils.

If you grab a salad from the salad bar, whether you eat it there or take it home, it is taxable because it too is "prepared," and because it is sold with utensils. If you're looking for a snack, why not try trail mix, dried fruit or the assorted goodies you can buy in the specialty sections of grocery stores. You won't have to pay sales tax on those, unless they are candy coated.

Doughnuts and cookies sold from a restaurant are not taxable if you buy six or more at one time. Ice cream sundries are not taxable in prepackaged boxes of six or more. If they are sold individually, you will pay sales tax.

How about sandwiches? If you buy one that is frozen, you don't have to pay sales tax, but

if it is fresh and ready to eat, you do pay sales tax.

When a coupon is used to buy a taxable item, the grocer subtracts the value of the coupon from the price and collects tax on the lower price.

When you buy things that are sales taxable, the items should be totaled and the tax computed on that amount.

#### Not Food, Not Sure?

Almost all non-food items such as soap, detergent, toothpaste, shampoo, sunscreen, insect repellent, and vitamins are subject to sales tax, as are services such as photo processing and video rentals. Newspapers are not taxable, but you do pay sales tax on single-copy sales or magazines.

#### Service Businesses May Be Taxable

You may have been putting off spring cleaning and getting those odd jobs done around the

house. Time is in short supply so you might be thinking about hiring someone to help.

You could have a cleaning service come in and take care of heavy cleaning, but you will pay a sales tax for the service. If you are looking into hiring a janitorial or custodial service,

they also charge sales tax. This would include having them clean or sweep your drive way or sidewalk.

If you have your carpets cleaned, you'll pay a sales tax. If you get your dog groomed, don't be surprised when you're charged sales tax as well.

If you find the "treasures" around the house and yard are too much to handle, you might want to call someone to haul them away. You will have to pay a sales tax for the service. Any garbage or other waste collection or removal service

Continued on page 5

## Mom

Continued from page 1

having a family and being self-employed is very challenging.

Home Interiors is a self-initiated sale of home decor materials. Mendoza said that selling, displaying and delivering merchandise is time consuming, but she is careful to make time to spend with her family.

"We just can't live without each other," she said. She added that her children help with housework, and that they all enjoy participating in her

Home Interiors business.

Mendoza said that among her favorite family activities is listening to Elida read.

"She reads anything," she said, "so she reads to me, and I'm there just listening."

"I have the best daughter in the whole wide world," she said.

Mendoza received various gifts from area business for being Mother of the Year.

## PUBLIC NOTICE

The Farm Service Agency (FSA) has received an application for financial guaranteed assistance from Brian Boehning, an individual. The specific elements of this proposed action is the refinancing of debt and providing operating credit of a 520 milking cow operation. This operation is located on the south side of US Highway 70, approximately 2 miles west of the intersection of FM 2910 and US 70 in Lamb County, Texas.

FSA has assessed the potential environmental impacts of this proposed action and has determined that it will not significantly affect the quality of the human environment. Therefore, FSA will not prepare an environmental impact statement for this proposed action.

This proposed action is also completed in accordance with Section 106 of the National Historic Preservation Act.

Any written comments regarding this determination should be provided within fifteen (15) days of this publication to JANICE B. POND, AG CREDIT MANAGER, FSA, P.O. BOX 1310, LITTLEFIELD, TX 79339. FSA will make no further decisions regarding this proposed action during this fifteen (15) day period. Requests to review the FSA environmental assessment upon which this determination is based or to receive a copy of it should be directed to the "above address".

\*\*\*  
People insist on confusing marriage and love on the one hand, and love and happiness on the other. But they have nothing in common. That is why, the absence of love being more frequent than love, there are happy marriages.

—Albert Camus

## MR. COTTON PRODUCER, LOOKING FOR QUALITY SEED & DELINTING?

**FOR QUALITY  
DELINTING CALL  
LEVELLAND  
DELINTING.**

Buz Poage and the guys at Levelland Delinting have provided excellent custom delinting for West Texas Cotton producers for 22 years.



**FOR QUALITY  
SEED CALL  
ALL-TEX SEED.**

We want your business!

Call Levelland Delinting today, at 1-806-894-4901 or 1-800-7-ALLTEX

Levelland Delinting, Inc.  
Box 1057, Levelland, Texas 79336

### HIGH PLAINS ANTIQUE DEALERS ASSOCIATION Antiques & Collectibles Show & Sale

Depression & Carnival Glass  
Primitives, Furniture, Glassware & Dolls

May 18th 10 a.m. - 6 p.m.

May 19th 12 - 5 p.m.

Roy S. Walker Community Center

316 W. Grand (where First St. & Hwy. 60 merge into W. Grand Ave.)  
Clovis, NM

ONE FREE APPRAISAL PER PAID ADMISSION  
(\$1.50 donation)

For show information, contact Jerry Radcliff, (505) 762-2562

# Sports

## Confidence boosts production

*Alanis, Mendoza anchor corners of MHS infield*

By RICK WHITE  
Managing Editor

Confidence. It's the maker and breaker of mankind.

Rodney Alanis and Gabriel Mendoza only have look across the Muleshoe High School infield to see the difference it makes.

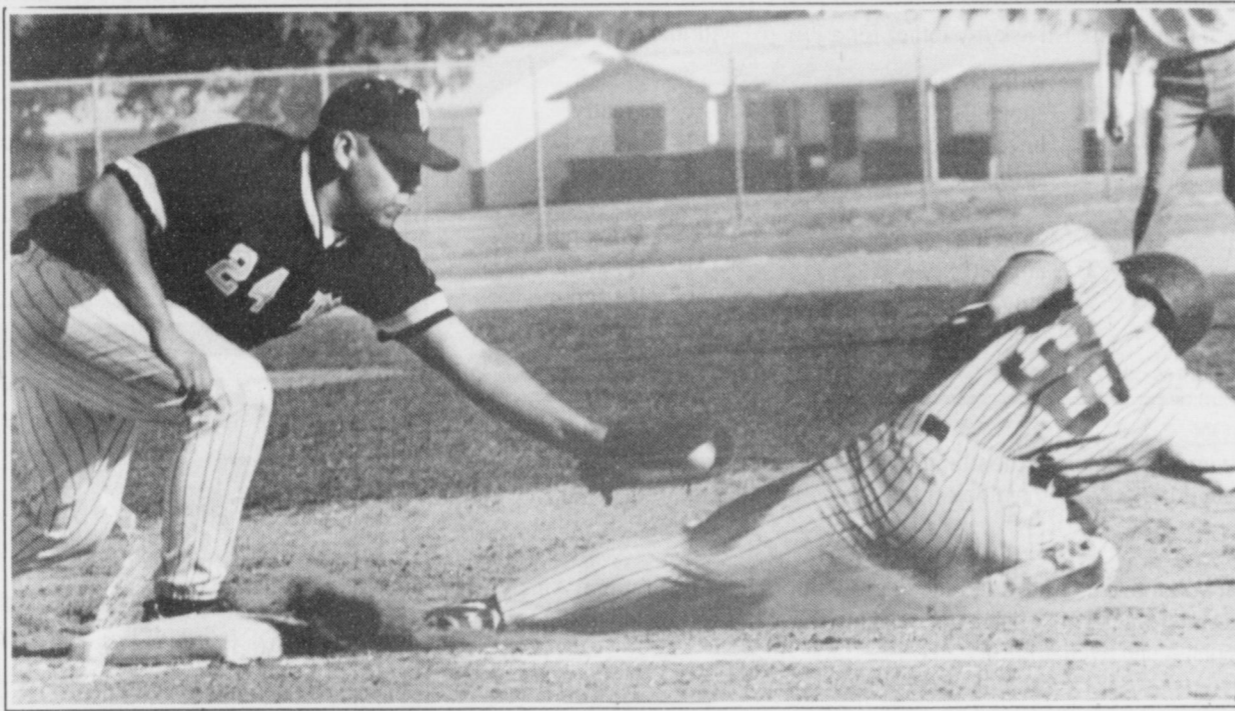
For Alanis, it was self-confidence while Mendoza was just hoping someone would believe in him.

Alanis, a sophomore third baseman, is hitting .338, with five doubles, a home run and a team-high 33 RBI.

"He's worked hard and improved a lot," Muleshoe coach Brad Hill said. "He's a big, strong kid who is going to be a good hitter."

Hill worked with Alanis, getting him to keep his weight back and his arms extended at the plate.

The payoff was a monster game at Friona, which restored Alanis' confidence, snapped Muleshoe's four-game losing streak and propelled the Mules into the state playoffs.



Alanis was 5-for-5 with a double, a home run and eight RBI in the 16-11 win.

Third base is new to Alanis, a part-time designated hitter last year who had played first base most of his life.

Alanis struggled with the move across the diamond to the hot corner, where the ball comes harder and more often.

He had several multiple error games, and it affected him at the plate.

"I wasn't real confident and it carried over to hitting," Alanis said. "I started pressing, trying to make up for my fielding mistakes."

Now the opposite has happened. Alanis started hitting the ball hard, and when he returned to third, he went from a Dirt Devil to a Hoover, from sporadic pickups to sucking up everything hit his way.

Mendoza is in his fourth year as the Mules' first baseman, but his first as a full-time hitter.

"Coach (Ted) Leps never really had confidence in me," said Mendoza, who is hitting .259 and is third on the team with 21 RBI. "I never really got a chance."

One of the reasons Mendoza was hit for was because

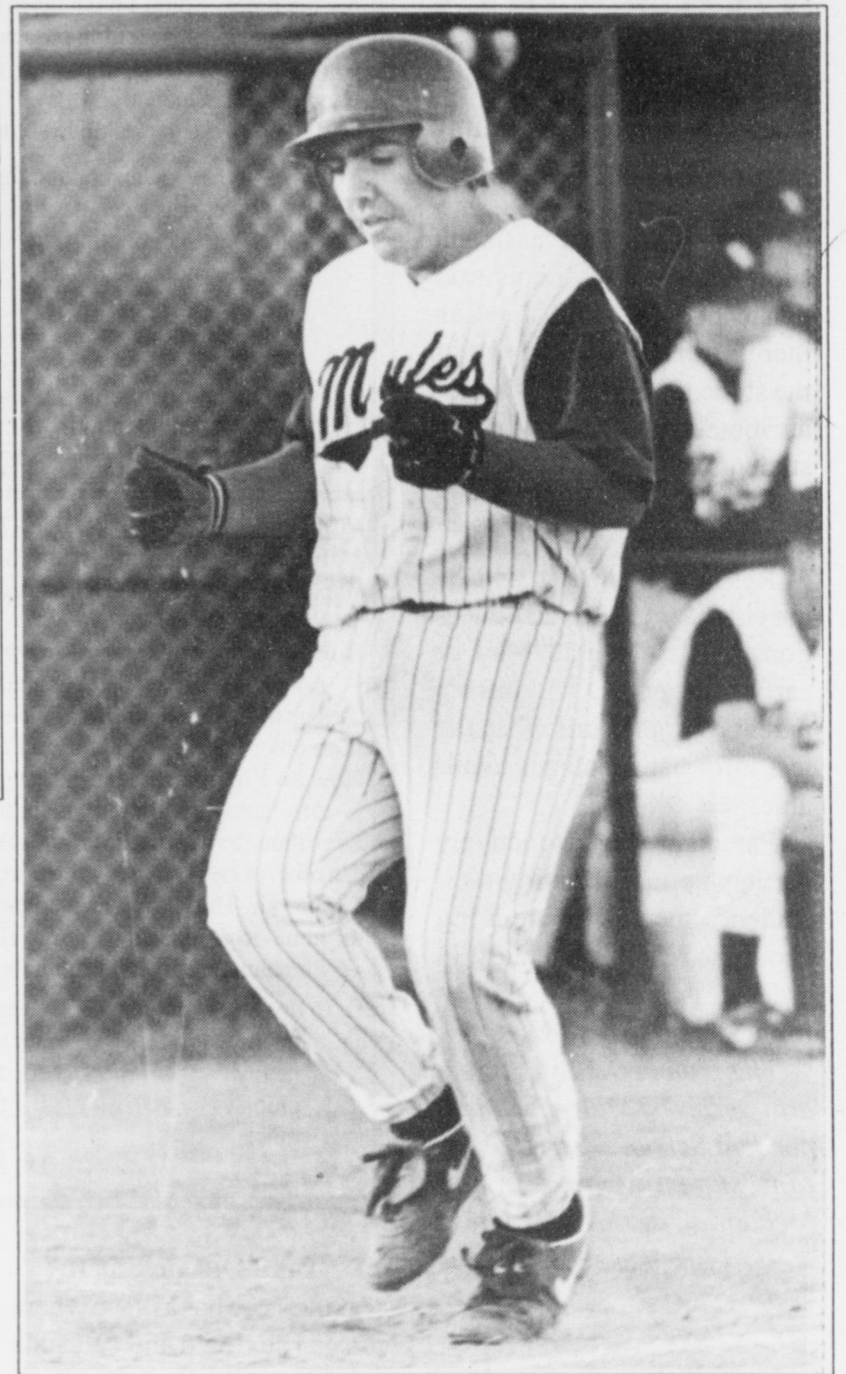
he lacks footspeed. But Hill, who took over for Leps this year, told him from day one he'd get his hacks.

"I feel real confident when I go up to bat," said Mendoza, who hits the ball up the middle and the opposite way. "I've been getting at least one hit every game. I used to be scared to hit."

Mendoza said he feels comfortable hitting eighth.

"I'd rather be at the bottom of the lineup," Mendoza said. "They don't think you're a good hitter when you're down there."

Stationed at the corner of the infield, Alanis and Mendoza were cornerstones of Muleshoe's playoff run.



**Cornerstones of MHS infield**

Third baseman Rodney Alanis (above) and first baseman Gabriel Mendoza (top left) have played a big part in Muleshoe's success this spring.

## Playoffs

Continued on page 4

can Legion ball.

He went to Southwest Oklahoma State in Weatherford on a basketball scholarship, and was a walk-on on the baseball team.

Hargrove was accidentally discovered by a Ranger scout sent to take a look at of his teammates. Hargrove went on to a long major league career with the Texas Rangers, San

Diego Padres and the Indians.

He was known as the "Human Rain Delay" because of a long routine he went through before each pitch.



**Watson 8th grade girls tennis**

Members of the Watson Junior High 8th grade girls tennis team are (back, from left) Kristi Villalobos, Elizabet Lozano, Alisha Gutierrez, Barbara Morales. Front, Bobbie Benham, Lela Hancock, Christy Adrian. Not pictured is Brandi Whitt. The Watson junior high tennis teams are coached by Barbara Mutchler.



**Watson 8th grade boys tennis**

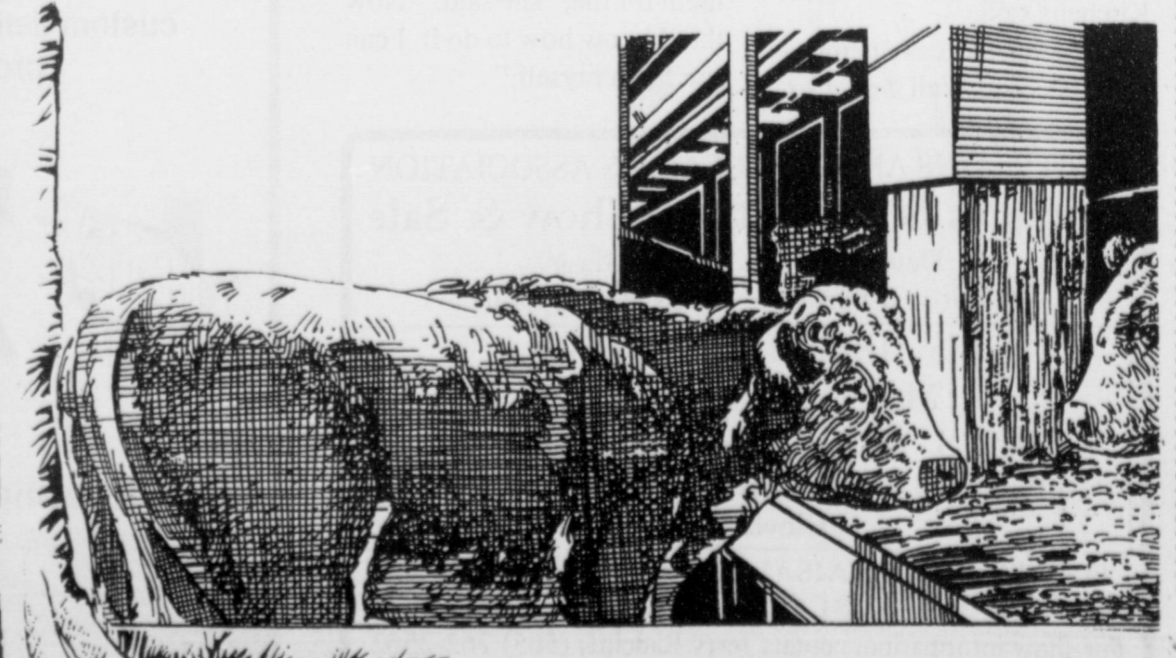
Members of the Watson Junior High 8th grade boys tennis team are (back, from left) Kyle Hahn, Jeffrey Bruns, Clint Black, Beau Henry. Front, Hadley Henderson, Michael Dan Lopez, Delwyn Latham, Eric Posados. The Mules were the district 2-3A team champions. Bruns was the district singles champ, while Latham was the runner-up. The team of Henderson and Posados finished second in district doubles.

**Attention  
Area Farmers!**

**WES-TEX  
FEEDYARD**

of Muleshoe  
**Would Like To Contract  
Your Corn Silage  
For 1996**

**Contact Wayne Tunnell  
272-7555 or 272-4403**





**Watson 7th grade boys tennis**  
Members of the District 2-3A champion Watson Junior High 7th grade boys tennis team are (back, from left) Dan Williams, Rocky DeHoyos, Drew Robinson. Front, Raymond Toscano, Jeffrey Shelburne. Not pictured are Zach Barrett, Moises Garcia and Art Perez. Perez was the district singles champ, while Garcia and Williams were the doubles champions. Shelburne and Zach Barrett were the doubles runners-up.



**Watson 7th grade girls tennis**  
Members of the Watson Junior High 7th grade girls tennis team are (back, from left) Kinsee Estep, Kourtnee Marr, Adrienne Ashford, Liz Torres. Front, Megan Tipps, Stephanie Sharp, Shari Alanis. The team won the District 2-3A championship during the district tournament May 6-7. Torres was second in singles, while Sharp and Marr were the district doubles champions. Tipps and Estep were the doubles runners-up.

**Tax**

Continued from page 3

is taxable.

**Shoe Shine Anyone?**

If you treat yourself to a shoe shine or take your laundry to the dry cleaners you will pay sales tax for these services. A haircut, perm or dye done professionally are not taxable, but if you decide to change your hair yourself, you will pay a tax on the hair care products.

Maybe it's time to clean up the old car. You don't pay sales tax on car washes.

Thinking about installing cable to keep the kids company this summer? You will have to pay a sales tax on the cable television service.

**Muleshoe**

Continued from page 2

all service facilities on Cannon Air Force Base.

Those interested in participating in the flea market should call 784-2563. The cost is \$8 a table. For general information, call 784-2563 or 784-2539.

**WTA&M recognizes Muleshoe graduate**

West Texas A&M recognized more than 100 students, staff and faculty members at the WTAMU's Honor Banquet of May 2 in the South Dining Hall in Canyon.

Mickey Trussell, a senior mathematics and kinesiology major from Muleshoe, was recognized for his service to

Leadership Board and for his appointment as University Sing Chairperson. He is the son of Lanny and Lenda Trussell of Muleshoe.

**FINAL SALE**

Everything Must Go!  
May 18th & 19th

**Ben Franklin's  
Parking Lot**  
2104 W. American Blvd.  
Muleshoe, TX

**Federal Land Bank  
Association**

316 Main St., Muleshoe  
806-272-3010

Long Term Financing for  
Farms, Ranches, Rural  
Housing, Operating and  
Improvements.

**Current Variable Rate**  
8.25%.

**Variable Rate**  
beginning February 1,  
7.8%.

Fixed rates are available.  
Call for quote.  
A Property Rights Advocate  
and Equal Opportunity  
Lender.

**Consignment Auction**

May 25th 10:30

Consignments Welcome

Call NOW 763-7311

Inspection All Day Friday & Saturday Prior To Auction

**James Priest & Associates**

**W & J Auction**

"OUR KNOWLEDGE IS YOUR SECURITY"

AUCTIONEERS: James Priest, Butch Priest, Gid Priest

Clovis, NM (505) 763-7311    Artesia, NM (505) 454-8026    Las Vegas, NM (505) 454-8026    TX LIC #11077 & 9474 1-800-822-1243

If it says Allsup's, **ALLSUP'S** it's guaranteed.

The Allsup's brand stands for quality.

Allsup's has been serving New Mexico and West Texas for almost 40 years. Every product bearing the Allsup's name meets our high standards for quality and value.

**ALLSUP'S**  
**BRAND SALE**

100% guaranteed.\*

If a product says Allsup's, you can trust it because we back it up. With Allsup's branded products, your satisfaction is guaranteed.

\*See stores for details.

 6 pk. cans, 12 oz. <b>\$1.59</b> Coca-Cola	 COMBO MEAL Chimichanga or Beef & Salsa Burrito and Tallsup <b>\$1.69</b>
--	--

 69¢ EACH OR Allsup's Bread <b>2 FOR \$1.09</b>	 SAVE ON Allsup's Ice 8 LB. BAG <b>\$1.09</b>
--	--

Congratulations to Chad Henders of Portales, NM, the lucky winner of a 96 Ford Pickup XL in Allsup's and Frito Lay's Fabulous Pickup Days!

**ALLWAYS...**  
LOW PRICES, GREAT PRODUCTS  
24 HOURS A DAY

It's the Allsup's way. We're always open, serving you with great products at low prices.

SAVE ON Sausage & Egg Biscuit, Hash Brown and 16 oz. Coffee or 22 oz. Fountain Drink COMBO MEAL <b>\$2.09</b>	OZARKA Water 1 LTR. BTL. <b>99¢</b>	ALL VARIETIES Sunny Cookies 5 OZ. PKG. <b>2 for \$1</b>	SHURFINE W.K. CORN, SPINACH, SWEET PEAS, FANCY CUT GREEN BEANS OR WHITE HOMINY Vegetables 14.5-17 OZ. CAN <b>45¢</b>
--	--	--	---

You'll find all this and more at your Allsup's store Store #34 318 W. American Blvd. 272-4862 MULESHOE	SANTA FE Tortillas 10 IN. 12 CT. PKG. <b>\$1.49</b>	LANCE Tube Peanuts 2.125 OZ. PKG. <b>2 for 99¢</b>	BLUE BUNNY Champ Cones EACH <b>59¢</b>
--	--	---	---

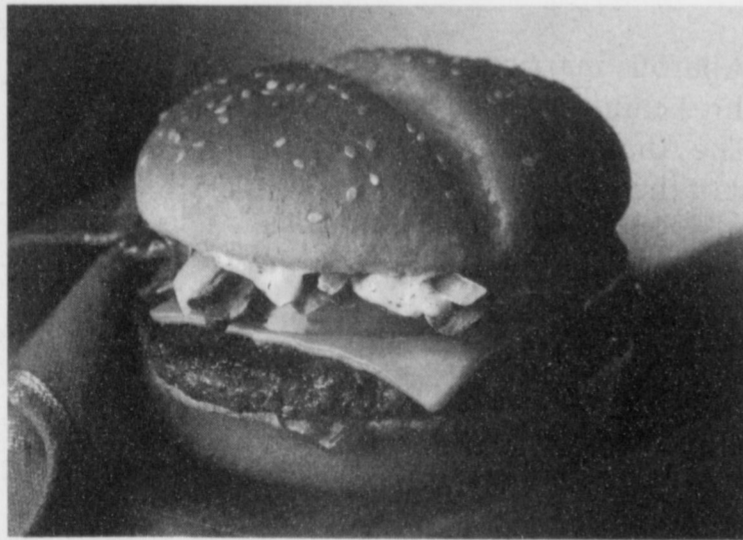
Bolo Dog Food Can <b>3/\$1</b>	Shursavings Bleach Gallon <b>89¢</b>	Shurfine Sugar 4 lb. bag <b>\$1.59</b>
-----------------------------------	---	---

**ALLWAYS...** LOW PRICES, GREAT PRODUCTS 24 HOURS

**ALLSUP'S** Always

PRICES EFFECTIVE 5/12-18/96      OFFER GOOD WHILE SUPPLIES LAST

**THE HAMBURGER THAT WILL MEET YOU ON THE OTHER SIDE OF CHILDHOOD.**



Introducing the Arch Deluxe.

Big, sophisticated, adult.

It's the burger with the grown up taste.



1315 W. American Blvd., Muleshoe

© 1996 McDonald's Corporation

**Classifieds Sell! Call the Journal, 272-4536 Today!**

## Farm Service Agency notebook

Bailey County executive director Kim Hanlin, 272-4538

When final 1996 payments are made, participating producers of wheat, barley, oats and upland cotton will receive an additional payment, based on the amount of the 1995 deficiency payments required to be repaid. Also, participating producers of these commodities who have not repaid their unearned 1995 crop deficiency payment will have the amount due deducted from their final 1996 payments.

For participating corn and grain sorghum producers, the additional payment and deduction of unearned 1995 deficiency payments will be made when producers receive their advance payments in the fiscal year 1997. An advance payment will be made for 1996 no later than 30 days after the contract is approved.

In the years 1997 through 2002, the producer has the option of Dec. 15 or Jan. 25 of the fiscal year. The percentage of the advance payments will be 50 percent. Owners and producers must give advance notice as to which date they prefer and the date may

be changed from year to year. Final payments will be made each fiscal year no later than Sept. 30. We will be taking appointments for signup in the 1996 program. All producers are still required to be in compliance with highly erodible land and wetland provisions.

Plans that have been established by NRCS and producers will still apply.

**IAM Reallocation:** Producers are reminded of the need to update IAM's, if applicable, before 1996 signup ends. After the 1996 signup ends, reallocation of excess IAM will NOT be permitted.

**Power of attorney**  
With the new regulations, we have been notified that some of the powers of attorney now on file in this office will have to be updated. We are in the process of reviewing these forms, and producers needing to submit another power of attorney form to us will be notified, by letter, as soon as possible. Spouses will still have authority to sign for each other unless the office is

### Estimated payment rates for 1996

Estimated payment rates for 1996, and the estimated payment rates based on the amount of the 1995 deficiency payments required to be repaid for 1996-2002, are as follows:

Wheat	.87 per Bu.
Corn	.24 per Bu.
Grain sorghum	.31 per Bu.
Barley	.32 per Bu.
Oats	.03 per Bu.
Upland cotton	.0906 per lb.

notified in writing to deny that authority of signature.

#### Grain certification

Producers are reminded that May 15 is the final date to certify all small grains for harvest, haying, grazing or for cover. If you have not certified your small grain acreage, or have not requested aerial measurement, please call this office for an appointment to do so.

#### Failed crop acreage

This is a reminder to producers to certify any crop acreage that fails before destroying the crop. Please notify your insurance provider prior to destroying the crop.

#### CRP early release

Producers may request early release of CRP Acreage at any time. Certain requirements must be met to be eligible for early release.

Producers whose contracts are approved for early release by May 31 would be eligible for both farm program payments and the 1996 pro-rated CRP payment. Farms with early release land will be eligible to re-bid into the CRP program if acreage is eligible.

#### Office closed

The Muleshoe office will be closed on Monday, May 27 in observance of Memorial Day.

## Production costs may stifle growth in cotton

Cotton has been the star performer among major farm crops by roughly doubling domestic consumption in the last decade. Reasons include friendly consumers, improved fiber quality and spinning technology, colorfast dyes, wrinkle resistant fabrics, and a farm program that enhanced competition with man-made fibers and foreign growers. The keys to maintaining growth for the U.S. cotton industry include industry teamwork and continued technological advances that keep production costs reasonable.

Cost effective insect control programs and Bt cottons

offer to assist growers to better manage costs. But, these developments may not sufficiently lower production costs in all regions across the Cotton Belt. A sizable amount of today's cotton producers have total production costs above 75 cents per pound. These operations are vulnerable to finding an alternative to growing cotton when prices fall below production costs long enough for financial support to erode.

Production costs are largely influenced by yield per acre. One thing that low yields in 1995/96 prove is that "Mother Nature" will not be defied. Essentially, the same growers on

the same land that averaged 700 pounds per acre in 1994/95, harvested a disappointing 540 pounds a year later. For example, if it cost \$400 per acre to produce 700 pounds per acre, the cost per pound was 57 cents. But, in 1995/96, costs were higher at say \$450 per acre to produce 540 pounds for a cost of 83 cents. Thus, the two-year average is about 70 cents per pound.

Farm programs, in the past, have assisted in providing income insurance and rigorous price competition with other fibers and to maintain exports. Without program benefits beyond a CCC loan rate and mar-

keting loan, production may be forced to downsize to boost price. The season's average price received by farmers was below the Farm Program target price from 1981 to 1995. As a result, producer's cash

Continued on page 8

## Hay hotline established to connect ranchers, sellers

AUSTIN — The Texas Department of Agriculture has established a hay hotline, 1-800-687-7564, to connect Texas ranchers - who are facing a severe hay shortage - with hay sellers from across the country.

"Low cattle prices will not put a rancher out of business, but a drought definitely will," Agriculture Commissioner Rick Perry said. "April and May are generally the months we build up moisture to get through the summer. It hasn't materialized, and we are in the midst of a major feed crisis. The entire state is affected."

Perry has contacted all other

state agriculture departments, asking them to forward lists to TDA of hay sellers who can ship feed to Texas. Ranchers who call the hotline will be given a master list of hay suppliers, and suppliers who call will be added to the master list, as well.

"The longer we go without sufficient moisture the more evident it will be come that drought does not just affect ranchers," Perry said. "Drought hasn't and won't stop at city limits or the county line. We're all in this together."

The TDA hotline will be in operation until the drought breaks and pastures once again.

It's Coming  
**The Biggest Traveling Circus Show on Earth**  
*Carson and Barnes*



the 5-Ring Circus will be at  
**Cannon AFB, May 17, 18**  
Fri 4:30 & 7:30 p.m.; Sat 2 & 7 p.m.  
corner of Ranchvale Rd and Highway 60/84  
across from the main gate

Discount tickets at all Sunwest Banks, Clovis Community College, Clovis, Strebeck Autoplex, Teague Strebeck & Portales News Tribune, Portales, and Services facilities CAFB.  
Discount cost \$4 child; \$8 adult.

Call 784-2747

Buy Now and Save \$\$\$

Home Folks Caring For Folks At Home.



**MULESHOE AREA HOME HEALTH**

Agency

### Featured Employee

Maria Alfaro is married to Juan Alfaro and has three children - Josh, Jeremy and Andrea. The Alfaro's have lived in Muleshoe most of their lives.

Maria enjoys playing volleyball and basketball with members of her church, The Spanish Assembly of God.

Maria loves the one on one relationship with her patients and to be able to meet their needs. She enjoys the girls at the Muleshoe Area Home Health Agency.



Maria Alfaro

To receive Home Health Services, talk with your physician or talk with hospital personnel when you are hospitalized.

**24 Hour # 272-3346**  
Local Nurse on call 24 hours a day to offer prompt service.

We accept Medicare, Medicaid and Private Insurance  
**It Is Your Right To Choose The Home Health Agency You Prefer.**



Affiliated with  
**LUBBOCK METHODIST HOSPITAL SYSTEM**

### FREE Information On Advance Directives

Also known as Living Wills or Right To Die Directives.

You may call our agency 272-3346 for these directives. You may also obtain these forms and assistance at 623 West 2nd Street.

A Brand New Video...

## BAXTER BLACK by Himself

BAXTER PERFORMING HIS POETRY, ONE-ON-ONE. JOIN HIM AS HE TAKES YOU TO THE CORRAL FOR *THE SQUEEZE CHUTE* AND *JOSE AND THE HOODOO COW*. OR GO TO THE WOODS WITH HIM IN *SPRINGTIME IN THE ROCKIES* AND *THE WILDERNESS WALL*. AND OF COURSE WE CAN'T FORGET THE ARENA WITH *THE ROPER'S RULE, HEADER OR HEELER?* AND *THE DOG AND THE RABBIT*.

17 in all, and all pure BAXTER...



Yes, send me  copies of **BAXTER BLACK by Himself** at \$22.95 each - \$

More? You want more? ... help yourself!

- NEW  BAXTER BLACK - COWBOY PRIDE (cassette tape) ..... \$ 9.99
- NEW  BAXTER BLACK BUCKS OFF (cassette tape) ..... \$ 9.99
- DUNNY AND THE DUCK (64 pg softcover book) ..... \$12.95
- HEY, COWBOY, WANNA GET LUCKY? (223 pg hardback book) ..... \$21.00
- CROUTONS ON A COW PIE, VOLUME II (208 pg hardback book) ..... \$24.95
- COYOTE COWBOY POETRY (208 pg hardback book) ..... \$24.95
- BAXTER BLACK'S FIRST VIDEO (62 min/video) ..... \$19.95
- BAXTER BLACK LIVE ON PUBLIC TV (78 min/video) ..... \$19.95
- BAXTER BLACK LIVE UPTOWN (cassette tape) ..... \$ 9.99
- BAXTER BLACK LIVE AT THE GRANGE (cassette tape) ..... \$ 9.99
- BAXTER BLACK ON MONDAY (cassette tape - 3 VOLUMES Available) ... \$ 9.99  
(Please select one or more Tape #1 \_\_\_\_\_, Tape #2 \_\_\_\_\_ or Tape #3 \_\_\_\_\_ at \$9.99 each)
- 4 PAK Cassette Collection (4 cassette tape set) ..... \$25.75  
(Baxter Black Live, Baxter Black & Friends, Generic Cowboy Poetry & The Buckskin Mare)

Order total:	Add
Up to \$20.00	\$2.00
\$20.01 to \$35.00	\$3.00
\$35.01 to \$50.00	\$4.00
\$50.01 to \$75.00	\$5.00
\$75.01 & up	\$6.00

Shipping Charges \$  
**Grand Total** \$  
(U.S. Funds)

Please send your check or money order to: **COYOTE COWBOY COMPANY**

NAME \_\_\_\_\_  
ADDRESS: \_\_\_\_\_  
CITY: \_\_\_\_\_ STATE: \_\_\_\_\_ ZIP: \_\_\_\_\_

ATTN: DEPT MULE  
P.O. BOX 190  
BRIGHTON, CO 80601  
MC & VISA

## HECE honors top students, employers

"Reaching for the Stars" was the theme for the Home Economics Education Program Employer Appreciation Banquet held Thursday, May 2, at the Carrousel of Good Food.

Crystal Casto, president of the organization, presided over the banquet, which honored those employers in the community who have worked this year as training supervisors for HECE students.

HECE is a school-work program that allows students to attend school and work part-time while earning pay. A leadership organization called HERO (Home Economics Related Occupations) accompanies the program.

The banquet began with the introduction of officers and the organization's opening cer-

emony. After the meal, a welcome was given by Lisa Rodriguez and special guests were recognized. Special guests included Bill Moore, superintendent of schools and wife Trish; Adrian Meador, assistant superintendent of schools; Al Bishop, Muleshoe High School principal; Dave Jenkins, assistant high school principal and wife Shary; and counselor, Linda Marr. Also attending were Magann and Jack Rennels from Channel 6 TV.

Following the opening ceremony, each student introduced themselves and their supervisor, awarding them with a certificate of appreciation for their time and effort throughout the year. Students

and employers included:

Charles Acosta and Leticia Villalobos — Lowe's Marketplace, supervisors Bill Gilbert and Mart Long.

Yvette Barraz — Pizza Hut, supervisor Vicki Gonzales.

Crystal Casto — Subway, supervisor Diana Lueras.

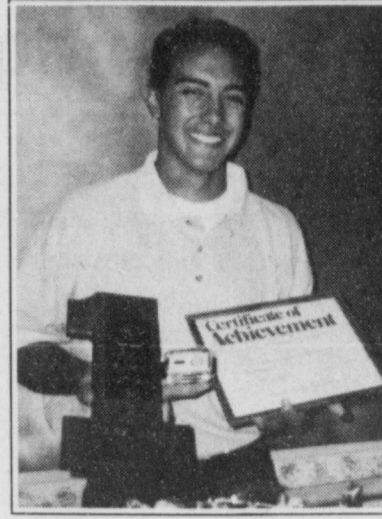
Crystal Castorena — First Bank, supervisor Phil Kent.

Kit Dominguez and Rosemary Franco — DeShazo Elementary School, supervisor Barbara Finney.

Candy Garcia — Ben Franklin's, supervisor Pete Villanueva.

Maria Garcia and Lisa Rodriguez — Dillman Elementary, supervisor Linda Latham and Virginia Bowers.

Bridgett Guzman — Viola's



**HECE top honors**  
Charles Acosta was named Star Student of the Year at the HECE Employer Appreciation Banquet.



**Employer of the year**  
Betty Wuerflein, owner of Decorator's Floral and Gifts, was named HECE Employer of the Year at the annual Employer Appreciation Banquet held May 2 at the Carrousel of Good Food. Presenting the award is Sarah Villareal, HECE student and employee of Decorator's Floral and Gifts.

Restaurant, supervisor Roy Anzaldua.

Mendy Johnson — Muleshoe Area Healthcare Center,

Continued on page 12

# HECE STUDENTS SALUTE OUR EMPLOYERS



*Thanks For Your Help  
& Support During The  
1995-1996 School Year*

Ben Franklin's - *Pete Villanueva*

Decorator's Floral & Gifts - *Betty Wuerflein*

De Shazo Elementary - *Barbara Finney*

Dillman Elementary - *Helen Grigsby*

First Bank - *Phil Kent*

Lambert's Cleaners - *Jim Ella Clemmons*

Lowe's Marketplace - *Bill Gilbert & Mart Long*

Muleshoe Abstract Company - *Marvon Raef*

Muleshoe Area Health Care Center

- *Terri Brown & Joy Stancell*

Muleshoe Area Medical Center - *Kay Swint*

O & C Erection Sprinklers - *Lupe Olivarez*

Pizza Hut - *Vicki Gonzales*

Subway - *Diana Lueras*

Viola's Restaurant - *Roy Anzaldua*

## Treasures from the Heart offers antiques, crafts

Treasures From the Heart, an antique and craft mall, opened April 4.

Operated by Sheila Black of Muleshoe, the shop carries a variety of merchandise, including floral arrangements, antiques, ceramics, decorative clothing, and jewelry.

Merchandise is supplied by 25 individual vendors from areas in Texas and Colorado. Vendors rent, set-up, and maintain a booth in the store for six months or longer.

Black said that the vendors have priced their merchandise reasonably. "They know that times are hard," she said.

Black, who suffers from a chronic illness, said that inspiration for the mall came out of necessity.

"For the past five years, when I had to stay in bed or at home, I would make crafts. I just had boxes and boxes of crafts stacked up," she said.



### New business

City officials and members of the Muleshoe Chamber of Commerce and present Treasures from the Heart owner Sheila Black with a commemorative first dollar during a ribbon cutting ceremony Wednesday.

She added that opening a craft mall seemed to be good way to utilize her hobby.

In February of this year Black ran an advertisement announcing the opening of her craft mall, and by the first

of April had it ready for business. "It was a quick impulse," she said.

The response to the mall has been very positive.

"The most common remarks are how well everything is dis-

played, the amount of merchandise we carry, and how reasonable the prices are," Black said.

Treasures From the Heart is open from 10 a.m. to 5:30 p.m. Tuesday through Saturday.

## Jill Noble enjoys May 5 bridal shower

Jill Noble, bride-elect of Devin Duvak, was honored with a bridal shower Sunday, May 5, in the home Lynne Box. The guests were greeted by Jill and her mother, Deborah Noble, between the hours of 1:30 and 3 p.m.

Special guests included Lisa Gunstream and daughter Devin, of Dimmitt, sister and niece of the bride-elect. Attending from Muleshoe were Nona Griffin, the bride-elect's grandmother, Johnette Marlow and Connie Bruns, aunts of the bride-elect, and Stephanie Marlowe and Amber Bruns, cousins of the bride-elect.

An antique crocheted cloth, featuring a cross-stitch pattern covered the serving table. An arrangement of spring flowers in wedgewood blue, pink and mauve, in a mauve basket enhanced the table. Blue candles in crystal candelabra and a Precious Moments bride and



Jill Noble

groom figurine completed the arrangement.

Refreshments of cookies, mints, and iced tea punch were served from silver and crystal appointments.

The hostess gift was an Oster Kitchen Center. Hostesses included Carol Cox, Judy Cox, Sandi Chitwood, Glenda Copley, Laverne James, Debbie Jo Kemp, Karen Harris, Pat Angeley, Diana Harrison, Pat Watson, Billie Downing, Regina Barrett, Judy Wilbanks, Lynne Box, Annette Bonds, Jan Crawford, Helen Redwine and Carelean Hamilton.

## Cotton

Continued from page 6

flow has been supported by sizable deficiency payments.

The resulting danger looms that a higher cotton prices made fibers could gain substantially in price competition. Further, foreign growers with varying levels of state support and low labor costs would likely claim a larger share of the export market.

Because of the high cost of producing cotton, lackluster forward prices and associated financial risk, U.S. cotton acreage in 1996/97 is expected to drop by some 2 million acres below the 16.9 million last year. Alternative crops, mostly corn, sorghum, and soybeans, will replace cotton acreage — especially in the Delta area and in Texas. Reduced cotton acreage means a direct economic slowdown for those agribusiness firms that service cotton producers.

The future of cotton is fairly bright. The U.S. has the capability to expand cotton production to over 25 million bales by year 2000. However, the challenges to cope with the risks associated with adverse weather, insects, disease, volatile prices, man-made fiber

competition, foreign production, and worldwide farm and trade policies must be effectively anticipated and managed. These challenges require industry teamwork to capitalize on the economic opportunities available to maintain growth. No one segment of the industry can control the risks alone.

Without industry cooperation and support, financial risks could curtail production well beyond current expectations. Producers are limited as to how much risk they can absorb.

## Local McDonald's catering to adults with new burger

McDonald's finally decided to do a little growing up.

McDonald's, the world's largest restaurant introduced the Arch Deluxe, a burger for adults, May 9.

The McDonald's in Muleshoe is one of 12,500 McDonald's restaurants in the U.S. are now serving this "hamburger with the grown-up taste".

Forty people in the Muleshoe area showed up at the McDonald's on American Boulevard to sample the new Arch Deluxe. Cake was served, balloons and stickers were given to the children and buttons were given to all the customers that came into the restaurant that night.

McDonald's Executive Chef Andrew Selvaggio and McDonald's Chairman and Chief Executive Officer

Michael R. Quinlan joined together on stage in New York to reveal the ingredients to the Arch Deluxe. The new hamburger features a buttery homestyle bakery bun, McDonald's famous quarter-pound beef patty, a new "Secret Sauce for Grown-ups", Spanish onions, American cheese, iceberg lettuce, a slice of tomato and ketchup that can be ordered with a slice of hickory-smoked bacon.

The Arch Deluxe is one way McDonald's is involving the adults and not just their children, making it a favorite place for all ages.



WEST PLAINS  
TELECOMMUNICATIONS, INC.

"THE PHONE COMPANY"

P.O. Box 1012 - Muleshoe - 1-800-741-5533

**NEW DIGITAL  
TELEPHONE  
SERVICE**

MULESHOE - SUDAN - EARTH - SPRINGLAKE - OLTON

Call Waiting -- Cancel Call Waiting -- Call Forwarding  
Tone Dialing -- Speed Calling -- Three Way Calling  
Remote Access to Call Forwarding -- Toll Control

(Additional Features available as tariffs are approved)  
Such as Caller ID & Voice Mail

Call our office for details

**Caps N More  
Customized Caps**

**Bulk Orders  
For Businesses  
& Organizations  
Available**

**We Can Do  
Almost Any  
Kind Of Cap**

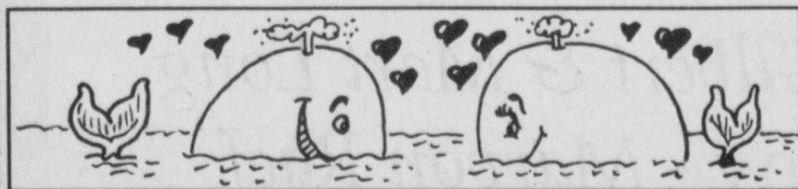
**Logos Printed  
On Aprons &  
T-Shirts**

**Come By & See!**

**806-272-3840**

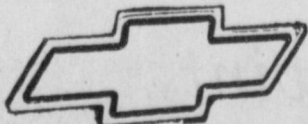
**222 West Ave. H  
Muleshoe, TX 79347**

**BOB & SUSAN COPELAND  
DICKEY GARNER**



A whale's heart beats only nine times a minute.

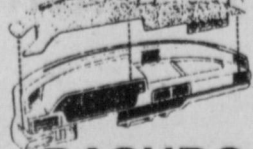
**MOTORSPORT  
APPAREL**



**CHEVROLET**



- Jackets
- Caps
- Decals
- License Plates



**DASH**  
The ultimate dashboard cover

**DASHBOARD COVERS!**

Dress Up Your Vehicle's Interior.\*

**\$35<sup>00</sup>**

- Custom Made For All Vehicles
- Personalize With Monogramming
- Easy Velcro Installation
- Rear Deck Covers
- Wide Color Selection

\*MOST CARS, PICKUPS, VANS, SEMIS  
\*SOME CARS & MOTOR HOMES SLIGHTLY HIGHER.

**DOC STEWART**  
CHEVROLET • GEO • BUICK

2500 Mabry Drive Clovis, NM  
505) 763-4465  
1-800-530-8842



# SAVINGS MOTHER WOULD LOVE

Happy Mother's Day!

ALL TYPES  
• Coca-Cola  
• Dr Pepper • Sprite

**\$1.49**  
3 liter btl.

ALL TYPES  
• Coca-Cola  
• Dr Pepper • Sprite  
**2.59**

**MEAT**

Small Pack lb. **\$1.49**

Value Pack, Fresh Chuck Quality **Ground Beef**  
**\$1.29**  
lb.

Small Pack lb. **\$1.09**

Value Pack, Fresh **Ground Beef**  
**89¢**  
lb.

Wilson **Hot Dogs**  
**49¢**  
12 oz. pkg.

Value Pack, Round Quality Fresh **Ground Beef**  
**\$1.59**  
lb.

Small Pack lb. **\$1.79**

Value Pack, Ultra Fresh **Ground Beef**  
**\$1.89**  
lb.

Value Pack lb. **99¢** Small Pack **Ground Turkey** lb. **\$1.19**

Black Label Original, Mesquite, or Low Salt **Hormel Bacon**  
**\$1.79**  
1 lb. pkg.

Market Cut Red Rind With Green Chillies **Cheese** lb. **\$2.59**

Market Cut **Red Rind Cheese** lb. **\$2.39**

**Asadero Cheese** Value Pack ..... lb. **\$2.39**  
Small Pack ..... lb. **\$2.59**

Decker Meat or Beef **Corn Dogs** ..... 1 lb. pkg. **\$1.99**

Decker **Chopped Ham** ..... 10 oz. pkg. **\$1.89**

Decker **Cooked Ham** ..... 10 oz. pkg. **\$2.59**

Wilson **Variety Pack** ..... 12 oz. pkg. **\$1.49**

Wilson Regular or Polish Smoked **Sausage** ..... 1 lb. pkg. **\$1.69**

Wilson **Beef Franks** ..... 1 lb. pkg. **\$1.69**

Wilson Jumbo **Hot Dogs** ..... 1 lb. pkg. **\$1.09**

Wilson Regular or Thick Sliced **Meat Bologna** ..... 1 lb. pkg. **\$1.19**

**PRODUCE**

Super Select **Cucumbers**  
**3 for \$1**

Low's Russet **Potatoes**  
15 lb. bags **2/\$3**

Large Green **Bell Peppers**  
**3/\$1**

Washington Tender **Asparagus**  
lb. **\$1.29**

Florida New Crop Super **Sweet Corn**  
**5 For \$1**

**Salad Mix**  
BUY ONE 1 LB. PKG., GET ONE **FREE**

**Mother's Day SALE**

Casserole **Pinto Beans** 4 lb. bag **\$1.49**

Angel Soft **Bath Tissue** 12 roll pkg. **\$2.99**

Angel Soft White

Zesty or Kosher **Vlasic Dill Spears** 24 oz. jar **\$1.79**

Assorted **Tostitos** Reg. \$2.99 **2/\$4**

Spaghetti W/Meatballs, Beefaroni, Beef Mini Ravioli, Beef Ravioli or Meat Tortellini **Chef Boyardee Pastas** 15-15.5 oz. can **99¢**

Ultra Boy/Girl, Free, or Premium **Pampers** 18-44 ct. pkg. **\$6.59**

Mazola 100% Pure **Corn Oil** 32 oz. btl. **\$1.99**

SHACKWELL'S FUDGE, STRAWBERRY, APPLE CINNAMON, OR CHOCOLATE OR CRISP ALMOND **Toaster Pastries** 10 pkgs. **\$1.69**

SHACKWELL'S BUTTER BITTERS, CHOCOLATE OR CRISP ALMOND **Granola Bars** 10 pkgs. **\$1.99**

**Frozen & Dairy Specials**

Tombstone Original or Thin Crust **12" Pizza** 19.4-23.6 oz. **2/\$6**

Blue Bunny **Sherbert** 1/2 gal. sq. cnts. **3/\$5**

Regular or Light **Velveeta** 32 oz. box **\$3.99**

Banquet **Family Entree** Banquet Salisbury Steaks or Sliced Turkey **Family Entrees** 28 oz. pkg. **\$1.99**

Minute Maid Country Style, Regular Plus Calcium, or Pulp Free Citified **Orange Juice** 64 oz. ctn. **\$1.69**

Swanson **Meat Pot Pies** 59¢ 7 oz. pkg.

Crunch Bars or Cool Tubes **2/\$3**

Fish Sticks **4/\$5**

**Mom's Specials!**

Pangburn's Millionaires **2** 9 oz. boxes For \$5.99 **FREE** PACKAGE

Large Selection of **Mother's Day Cards** Good Only At Ambassador **FREE**

Buy One Get One Free Wheat, Rice, or Corn Char **FREE**

Buy 3 Get 1 of Equal Or Lesser Value **FREE**

Limit one coupon per customer. Limit one free card per customer.

**NATIONAL BABY WEEK**

Gerber Assorted Baby Food Gerber 2nd Foods **3 89¢** For 4 jars

**SAVE \$1.00 NOW** on any Boost 4-pack

Vanilla, Chocolate or Strawberry **BOOST**

Save \$1.00 on Boost 4-pack with this coupon. Limit one per customer. Expires May 15, 1996. Good only at Lowe's Supermarket.

**Health & Beauty**

TAVIST-D or Tavist-1 **\$2.99**

Cool Mint Listerine Toothpaste **\$1.99**

Anacin Tablets **\$5.99**

WESTERN UNION | MONEY TRANSFER™  
"The fastest way to send money"

**Lowe's MARKETPLACE**

515 W. American Blvd.  
401 W. American Blvd.  
Muleshoe 272-4585

**Pay-n-Save**

515 W. American Blvd.  
Muleshoe 272-4406

WE RESERVE THE RIGHT TO LIMIT QUANTITIES IN TEXAS

PRICES EFFECTIVE MAY 8-14, 1996  
OPEN MONDAY-SATURDAY 7:30 A.M. - 8:00 P.M., SUNDAYS 8:00 A.M. - 8:00 P.M.

# Turner honored with bridal shower May 4

The home of Terry Young was the setting for a bridal shower and brunch on Saturday, May 4, honoring Miss Amy Turner, bride-elect of Todd Keller. Guests called from 10:30 a.m. to noon, and were greeted by Miss Turner, her mother, Janelle Turner of Muleshoe, and Diann Keller, of Sonora, mother of the prospective groom.

Special guests included

Becky Wiggins, of Dallas, sister of the bride-elect, Alma Turner, the bride-elect's grandmother, and Kerma McGuire and Rita Hawkins, aunts of the bride-elect.

The indoor serving table, covered with a tapestry runner, interwoven with shades of hunter green, navy and burgundy, featured chicken salad and a fruit compote. Napkins carried out the color scheme.

An arrangement of iris in shades of purple and white, intertwined with grape leaves and touches of columbine, was the focal point of the table.

The patio setting was arrayed with pots of geraniums and a seating area for the guests. Completing the outdoor arrangements was a wrought-iron serving cart from which guests were served Orange Julius.

Silver and crystal appointments

were used on both serving tables.

The hostess gift was a painted antique chest. Hostesses included: Nancy Barrier, Lynne Box, Dianne Brown, Sandi Chitwood, Carol Cox, Marilyn Cox, Elaine Damron, Sharon Grant, Sammie Hall, Georgette Isaac, Nan Johnson, Pat King, Pat Nickels, Arline Phelps, Joyce Scott, Marsha Watkins, Pat Watson, and Terry Young.



Amy Turner

**Jewelry & WATCH REPAIR**  
 • 7 Day Ring Sizing & Repairs  
 • Remounting & Diamond Setting  
 • Full Line Watch Batteries  
 • Neck Chains Repaired  
 • Jewelry Appraised For Insurance  
 Faster Service  
  
 1908 N. Prince, Clovis  
 762-9376 (Across from K-Mart)

## School menus

For the week of May 13-17

### MULESHOE HIGH SCHOOL & WATSON JUNIOR HIGH

#### Breakfast

**Monday** — Scrambled egg, fruit or juice, milk

**Tuesday** — Peach bread, fruit or juice, milk

**Wednesday** — Breakfast pizza, fruit or juice, milk

**Thursday** — Biscuit w/ gravy, fruit or juice, milk

**Friday** — Cinnamon roll, fruit or juice, milk

#### Lunch

**Monday** — Foot-long chili dog, ranch style beans, sliced pears, milk

**Tuesday** — Lasagna, mixed vegetables, pineapple tidbits, Italian bread, milk

**Wednesday** — Chicken nuggets, mashed potatoes, whole kernal corn, hot roll, milk

**Thursday** — Taco salad, lettuce & tomatoes, Mexican squash, Spanish rice, milk

**Friday** — Chicken-fried steak, mashed potatoes, Italian vegetables, hot roll, milk

### DILLMAN & DESHAZO

#### Breakfast

**Monday** — Scrambled egg, toast, fruit or juice, milk

**Tuesday** — Peach bread, fruit or juice, milk

**Wednesday** — Breakfast pizza, fruit or juice, milk

**Thursday** — Biscuit w/ gravy, fruit or juice, milk

**Friday** — Cinnamon roll, fruit or juice, milk

#### Lunch

**Monday** — Corn dog, tator tots, whole kernal corn, milk

**Tuesday** — Sloppy joe, oven fries, sweet peas, peach cobbler, milk

**Wednesday** — Pizza, tossed salad, sliced apples, birthday cake & ice cream, milk

**Thursday** — Enchiladas, refried beans, fruit cocktail, cornbread, milk

**Friday** — at Dillman, steak fingers, mashed potatoes, whole baby carrots, hot roll, milk; at DeShazo, sack lunches, milk

### THREE WAY

#### Breakfast

**Monday** — Two pancakes, juice, milk

**Tuesday** — Apple spice muffins, juice, milk

**Wednesday** — Cereal or oatmeal, toast, graham crackers, juice, milk

**Thursday** — Eggs, biscuit, juice, milk

**Friday** — Waffles, sausage, juice, milk

#### Lunch

**Monday** — Sloppy joe, peas, corn, pineapple, milk

**Tuesday** — Fajita, refried beans, salad, cherry cobbler, milk

**Wednesday** — Cheeseburger, tator tots, pears, milk

**Thursday** — Lasagna, salad, blackeyed peas, garlic bread, peaches, milk

**Friday** — Corn dogs, macaroni & cheese, raw vegetables, apple, milk



## GOD'S HOUSE IS ALWAYS OPEN

### Proud Love...

... for a precious young life. A life whose care and welfare is completely in your hands. The joy we share in baby's first steps ... the proud love ... when baby first says ... "Mama!" The love for a life that is completely dependent on you for food, clothing, teaching, and spiritual guidance. Teach him his prayers, and take him to church each week where he may grow in love and admonition of the Lord.

The Church is God's appointed agency in this world for spreading the knowledge of His love for man and of His demand for man to respond to that love by loving his neighbor. Without this grounding in the love of God, no government or society or way of life will long persevere and the freedoms which we hold so dear will inevitably perish. Therefore, even from a selfish point of view, one should support the Church for the sake of the welfare of himself and his family. Beyond that, however, every person should uphold and participate in the Church because it tells the truth about man's life, death and destiny; the truth which alone will set him free to live as a child of God.



#### Immaculate Conception Catholic Church

805 E. Hickory  
 Father Joseph Augustine

#### First Baptist Church

220 West Ave. E.  
 Pastor, Stacey Conner

#### Emmanuel Baptist Church

Iglesia Bautista Emmanuel  
 107 East Third  
 Isaias Cardenas, Pastor

#### Trinity Baptist Church

314 E. Ave. B  
 Pastor Robert Brown

#### Circle Back Baptist Church

Intersection FM 3397 & FM 298  
 Rev. Jessie Shaver  
 946-3676

#### Calvary Baptist Church

1733 W. Ave. C  
 Pastor Ben Davis

#### Progress Baptist Church

Progress, Texas

#### Richland Hills Baptist Church

17th & West Ave. D, Brad Gathright

#### St. Matthews Baptist Church

Corner of West Boston & West Birch  
 Pastor, Floyd R. Monroe

#### Progress Second Baptist Church

1st and 3rd Sundays, Rev. Arthur Hayes

#### Primitive Baptist Church

621 South First  
 Elder Cleveland Bass, Pastor

#### 1st Baptist Church

Lazbuddie, Tx. 965-2126

#### Lazbuddie Church of Christ

Minister, Nathan Crawford  
 Sunday School 9:30 a.m.  
 Morning Services 10:20 a.m.  
 Evening Services 5:00 p.m.  
 Wednesday Night 7:00 p.m.

#### First Assembly of God

272-3017 or 272-3984  
 Rev. Jack Stone, Pastor  
 521 South First Street  
 Sunday Services:  
 9:45 & 11:00 a.m., 6:30 p.m.  
 Wednesday Services 7:30 p.m.

#### First United Methodist Church

507 W. 2nd Street  
 Dr. James Bell, Pastor

#### El Divino Salvador Methodist Church

E. 5th and E. Ave. D  
 Guadalupe Ballinas, Pastor

#### St. John Lutheran

Lariat, Texas  
 Sunday School and Bible  
 Church Services 9:30 a.m.  
 Fellowship 10:30 a.m.  
 Classes 10:45 a.m.  
 Rev. Richard Greenthauer

#### The Christian Center

Morton Hwy.  
 Reydon Stanford  
 272-5105

#### New Covenant Church

Plainview Hwy  
 Sunday School 9:30 a.m.  
 Sunday Morning Worship 10:15 a.m.  
 Wednesday 7:00 p.m.  
 Jimmy Low, Pastor

#### Lazbuddie Methodist Church

965-2121

#### Shepherd's Chapel - of the Sacred Heart of Jesus Christ

Non-Denominational Spirit Filled Fellowship Worship:  
 809 E. Fir, Muleshoe  
 Rev. Manuel A. Cruz-Medina  
 Sunday Services:  
 9:00 a.m. - En Espanol  
 - Devine Services  
 11:00 a.m. - In English - Devine Services  
 6:00 p.m. - In English - Devine Services  
 The Doors Are open each day from 9 a.m. to 6 p.m. for whomever needs our Lord, Jesus Christ or to talk with the Pastor.

#### New Vision Church Of The Nazarene

814 W. Ave. C  
 272-3622  
 Pastor David R. McIntire

#### Primera Iglesia Bautista

223 E. Ave. B  
 Roy Martinez, Pastor

#### "Iglesia Pentecostal Unida"

207 East Ave. G  
 272-3636  
 Pastor: Wenceslado Trevino

#### Lariat Church of Christ

Sunday School 10:00 a.m.  
 Worship 11:00 & 6:00  
 Wednesday Services 7:00 p.m.  
 Sam Billingsley, Minister

#### Muleshoe Church of Christ

22nd & W. Amer. Blvd  
 Sunday School 9:30 a.m.  
 Morning Worship 10:20  
 Evening Services 6 p.m.  
 Wed. Night 7:30 p.m.  
 Mark Whitmire, Minister

#### 16th & Ave. D Church of Christ

Sunday 10:30 a.m.  
 Evening 6:00 p.m.  
 Wednesday 7:30 p.m.  
 Curtis Shelburne, Minister  
 272-4619

## How One Woman's Faith Blessed Generations

No man is an island," John Donne writes, "every man is a piece of the Continent, a part of the main; if a Clod be washed away by the Sea, Europe is the less . . . Any man's death diminishes me, because I am involved in Mankind; and therefore never send

several were taken captive, including Catharine DuBois and her baby, Sara.

Ten weeks passed. Search parties combed the forest but, it seemed, to no avail. Finally, the captors, for whatever reason, decided to burn Catharine DuBois and her little child. The logs were piled high. The torch was lit.

But Catharine didn't die. She sang. "She burst into song," Beers writes, "turning the foreboding Catskill forest into a cathedral of praise." She sang a French hymn taken from Psalm 137, "There our captors asked us for songs, . . . They said, 'Sing us one of the songs of Zion!'"

She sang. And as she sang her husband and his search party rushed into the camp, saved Catharine and her baby, and, by the way, all of her descendants.

"No man is an Island." No woman either! "Like individuals," Beers comments, "generations do not stand alone . . . but bequeath their legacy to generations to come."

Catharine DuBois' faith touched generations yet unborn. So does yours.

### Focus On Faith

Curtis Shelburne

to know for whom the bell tolls; It tolls for thee."

We may not often realize just how "involved in mankind" we really are, how dependent we are even on the men and women of our pasts who are long since dead and mostly forgotten. A story V. Gilbert Beers recounted in a recent issue of *Christianity Today* well illustrates this truth. It is the true story of his eight-times-great grandmother, Catharine DuBois.

One day in 1663 the Minnisk Indians swept down from the Catskill Mountains and raided the little settlement of New Paltz, New York. Several of the townspeople were killed, and what was often worse,

Curtis Shelburne is minister of the 16th & Avenue D Church of Christ in Muleshoe.

\*\*\*  
 Every man becomes, to a certain degree, what the people he generally converses with are.

—Lord Chesterfield

**Irrigation Pumps & Power**  
 W. Hwy 84 272-4483

**Western Drug**  
 114 Main 272-3106

**Bobo Insurance Agency**  
 108 E. Ave. C 272-4264

**5-Area Telephone Cooperative, Inc.**  
 302 Uvalde 272-5533

*Attend The Church Of Your Choice!*

**James Crane Tire Co.**  
 322 N. 1st 272-4594

**American Valley, Inc.**  
 W. Hwy 84 272-4266

**Bob Stovall Printing**  
 221 E. Ave. B. 272-3373

**Wes-Tex Feed Yards, Inc.**  
 272-7555

**Bailey Gin Co.**  
 946-3397

**First Bank**  
 Member F.D.I.C.  
 202 South First 272-4515

# Journal Classifieds

Call 272-4536 Deadlines: For Thursday, Noon Tuesday; for Sunday, Noon Friday Call 272-4536

### Notice To Creditors

NOTICE TO ALL PERSONS HAVING CLAIMS AGAINST THE ESTATE OF JEWEL BRUTON, DECEASED

Notice is hereby given that original Letters Testamentary for the Estate of Jewel Bruton, were issued on April 24, 1996 in Cause No. 2078, pending in the County Court of Bailey County, Texas, to: Janice Sue Teel and Judy Ann Griswold.

The residence of Janice Sue Teel and Judy Ann Griswold is Bailey County, Texas and the post office address is:

Janice Sue Teel and Judy Ann Griswold  
c/o Aldridge, Aycock & Atkinson, L.L.P.  
P.O. Box 286  
Farwell, Texas 79325

All persons having claims against this Estate which is currently being administered are required to present them within the time

**Now Is The Time To Spring Clean Those Closets!!**

Advertise In The Journal Classifieds

Call 272-4536 Today

and in the manner prescribed by law.

DATED the 7th day of May, 1996.

ALDRIDGE, AYCOCK & ACTKINSON, L.L.P.  
P.O. BOX 286  
FARWELL, TEXAS 79325

TELEPHONE NO. 806/481-3361

TELECOPIER NO. 806/481-9060

BY Charles F. Aycock  
State Bar No. 01458000

Published in the Bailey County Journal May 12, 1996.

### Help Wanted

**\$200-\$500 WEEKLY**  
Mailing travel brochures. No experience necessary. For information send a self-addressed stamped envelope to: Universal Travel, P.O. Box 610188, Miami, FL 33261  
10s-13 c. sun

Operate fireworks stand just outside Muleshoe, June 24 - July 4. Make up to \$1,500.00. Must be responsible adult. Phone 10 a.m. - 5 p.m., 1-800-364-0136.  
19s-13tc

**WILDLIFE/ CONSERVATION JOBS**  
Game Wardens, security, maintenance, etc. No exp. necessary. Now Hiring. For Infor Call (219) 794-0010 ext. 9689 8 a.m. to 10 p.m. 7 days  
20s-3sun pd

Need Electrician, pump installer and general laborer. Ronald Ashford Electrical Inc. 210 E. 3rd, Muleshoe, 272-4571.  
20s-2tc

AVON \$8-\$15/hr, No Minimum Orders, No Door-To-Door, No Inventory. 1-800-400-8965 ind/sls/rep  
18t-4tpd

### For Sale

For Sale: Diesel powered generators 20, 30, & 40KW. 220 or 440 Single or 3 phase. 915-

773-3705 Days. 915-823-2531, nights.  
19s-4tc

Reduce safe and fast with GoBese Tablets and E-Vap "Water Pills" available at Damron Drug.  
18s-3sun pd

### Pets For Sale

AKC Miniature Schnauzers for sale. Females \$175. Males \$150. Call (806) 272-3568.  
20s-4tpd

### Farm Land For Sale

35.26 ac., \$152 mo., 8.64% int., Bailey Co. Partially fenced. Call Forest America Group 1-800-275-7376 M-F, 9-5.  
20s-6tpd

### Automobile

1994 Chevy extended cab, 350, loaded, 25,000 miles, local owner, \$17,995.00 (505) 359-1775, Portales

1991 Chevy, regular cab, 3/4 ton, 4x4, \$9,995.00 (505) 359-0947, Portales

1991 Chevy Blazer, 4 door, 66,000 miles, \$11,500.00 (505) 359-1775, Portales

1992 Chevy extended cab, Z71, loaded, 60,000 miles, \$16,995.00, (505) 359-0947, Portales

1993 Dodge Dakota, Club Cab, 4x4, 49,000 miles, \$11,295.00 (505) 359-1775, Portales

### Garage Sale

**FINAL SALE Everything Must Go**  
May 17 and 18  
Ben Franklin's Parking Lot  
2104 W. American Blvd.  
Muleshoe, Texas  
20s-2tc

### Real Estate

House For Sale: Nice 3 bedroom, one bath, in Lenau Addition. Call 272-3920.  
16s-4tsun c

3 bdrm, 1 3/4 bath, garage, on 1 1/2 lots in Muleshoe. Has motorhome or trailer cover in backyard. Call 272-5859 after 12 noon.  
20s-2tpd

For Sale 5 lots with trailer hook-ups by owner, corner E. 6th and Ave. C, Muleshoe, 272-3685  
20s-2tpd

### Wanted

Wanted Dryland Farms to rent. (806) 293-9776. Please leave message  
20s-6tc

### J&J Lawn Service

Dethatching is better than scalping. The thatch layer traps the water and fertilizer you apply to your lawn. Not allowing it to reach the root system. For a free estimate on dethatching or yard maintenance and fertilizing. Call J&J Lawn Service  
965-2388  
10s-tfc

### BETTER LIVING MOBILE HOMES

**\$292 month**  
for a 4 bedroom, 2 bath DOUBLEWIDE

Glamor Bath  
Ceiling Fans,  
Fireplace,  
R30 Insulation,  
Dishwasher  
**1-800-404-1321**  
**(505)356-5448**  
Portales

Lic. # D00681  
'Se Habla Espanol'

**\$\$ WANTED \$\$**  
We buy used mobile homes. We pay top dollar, any year, any condition. We need your used mobile home. Please Call 1-800-404-1321.

Wanted  
Lincoln Welder  
Call 946-3623  
18t-4tpd

### MUST SELL! 1991 Chevrolet Suburban

350 Automatic transmission, power windows, power door locks, electric mirrors, dual air conditioning, tilt steering wheel, cruise control, 2 captain chairs, AM/FM cassette and much more. No old contract to assume, no back payments to make, just need responsible party to make reasonable monthly payments.

Contact Ali Robinson  
in the credit dept.  
Friona Motors, 806-247-2701

### MUST SELL 1990 GMC Sierra SLE

Club Coupe, power windows, power locks, tilt, cruise, air conditioning, AM/FM cassette with graphic equalizer, 350 V-8, automatic with overdrive, 2 tone paint, aluminum wheels, tool box, side rails, aluminum running boards, chrome tail gate protector and low miles and much more. No old contract to assume, no back payments to make, just need responsible party to make reasonable monthly payments.

Contact Kim Humphrey  
in the credit dept.  
Friona Motors, 806-247-2701



Ronald Byrd  
Licensed Broker  
Farwell, Texas

Office (806) 481-3846  
Mobile (505) 760-1495  
308 Third St., Farwell, TX

Crista Bass  
Sales Associate  
Home (806) 925-6464

In The Country, 3 bedroom, 1 3/4 bath, 2 car garage. Additional 2 bedroom, 1 bath home. 30' x 80' quonset barn, large domestic well, 20'x60' metal R.V. storage building. Highway frontage. All on 8 acres. Many, Many extras! Call For Details

78 Acres NW of Muleshoe, Highway Frontage. Excellent development property. Owner will sell as one unit for \$40,000 or will divide into 5 or 10 acre tracts at \$750.00 per acre. If you have wanted a small acreage, this is your prime opportunity

DeAnna & Larry  
Rasco  
Muleshoe, TX 79347  
806-272-5269  
20s-5tpd

D&L  
Upholstery  
Farm Equipment  
Auto - head liner  
Residential  
Commercial  
Marine  
Free Estimates  
Non-Smoking Environment

### MUST SELL! 1995 Pontiac Transport

Automatic, 7-8 passenger package, 4 captain chairs, AM/FM cassette, luggage rack, driver side air bag, ABS, custom wheels, front and rear air conditioning, tilt steering wheel, cruise control, power windows, power locks, and much, more. No old contract to assume, no back payments to make, just need responsible party to make reasonable monthly payments.

Call Eddie in the credit dept,  
Friona Motors, 806-247-2701

### James F. Hayes & Co.

#### AGRICULTURAL REAL ESTATE SERVICES

152 Acres West of Muleshoe. Electric Center pivot sprinkler, 2 wells, 1/2 circle of improved grass. Good barbed wire fence. Priced for immediate sale.

120 acres west of Muleshoe. 2 wells. Good soil. Lays good. Immediate possession available. \$250.00 per acre.

**NEW LISTING**  
320 Acres in the Lazbuddie area, 2 wells, 1 sprinkler, 80 acres of C.R.P. PRICED RIGHT

160 Acres Northeast of Muleshoe in Parmer County. Excellent water. Excellent soil. Electric Center Pivot Sprinkler. New set of bowls on pump. Top Notch Farm

2 labors southwest of Muleshoe. i-in C.R.P. 1 with center pivot sprinkler. \$275. per acre.

**NEW LISTING**  
317 Acres in Lamb County on Bailey County line. 3 wells, 1 sprinkler, lays good. Call for details!

**Vic Coker, Agent**  
310 Main St. Suite 103 Muleshoe  
Office 272-3100 Home 965-2468  
WHEN LAND INVOLVES COWS AND PLOWS

NO GIMMICKS, NO HASSLES, WE'LL EARN YOUR BUSINESS!

## Over 170 Quality Pre-Owned Vehicles To Select From!



92 Cadillac Deville  
#45921  
**\$14,900!**



90 Chrysler New Yorker  
#4613  
**\$6,900!**



88 Olds 98 Regency  
#46201  
**\$3,500!**



89 Olds 88 Royal  
#620251  
**\$3,500!**



92 Dodge Daytona IROC  
#4684  
**\$7,900!**



91 Mitsubishi Eclipse  
#47001  
**\$7,900!**



93 Chevy 1500 XCab 4x4  
#46771  
**\$16,200!**



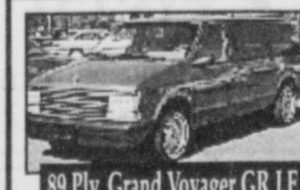
92 Dodge Dakota LE  
#650111  
**\$9,200!**



89 Ford Aerostar  
#46071  
**\$5,900!**



94 Chevy Astro C5 Ext  
#4465  
**\$15,500!**



89 Ply. Grand Voyager GR LE  
#690042  
**\$8,500!**



91 Ply. Grand Voyager SE  
#550331  
**\$9,200!**

NO GIMMICKS, NO HASSLES, WE'LL EARN YOUR BUSINESS!

NO GIMMICKS, NO HASSLES, WE'LL EARN YOUR BUSINESS!

## BENDER AUTOPLEX

3400 Mabry, Clovis, NM • 762-4511 • 1-800-466-4513

NO GIMMICKS, NO HASSLES, WE'LL EARN YOUR BUSINESS!



## Nieman Realty



116 E. Ave. C George Nieman, Broker 272-5285 or 272-5286

### RICHLAND HILLS

JUST LISTED-IMMACULATE 3-2-2 Brick Home, Geo. Heat Pump, Built-ins, FP, Nice landscaped yd., Stor. Bldg., MORE!! \$70's!!! RH3

NICE 3-3-1 Brick, cent. Heat, Evap. Air, built-ins, 2000' + lv. area, fenced yd., stor. bldg., MORE!! \$60's!!! RH-2

VERY NICE 3-2-2 Brick, cent. A&H, built-ins, FP, approx. 2,000' + lv. area, auto, spkrl., storage bldg., fenced yd., MORE!!! \$60's!! RH-1

NICE 3-2-2 Brick, cent. A&H, built-ins, FP, approx. 2150' lv. area, fenced yd., MORE!!! \$70's!!! RH-7

### HIGHLAND AREA

VERY NICE 2-1-1 Home, wall furnace, window air, nicely decorated, storm cellar, stor. bldg. \$20's!! HL-7

2 Bdrm, 1 bath home, fenced yard. \$16,500!!! HL-4

VERY NICE 3-2-2 Brick, Cent. A&H, built-ins, fenced yd., spkrl. sys., MUCH MORE!!! \$60's!!! HL-1

3-2-2 home, Cent. A&H, built-ins, fenced yd., corner lot. \$30's!!! HL-2

VERY NICE 3-2-1 carport Home, heat pump, built-ins, nice carpet, fans, storage-workshop! MUCH MORE!!! \$40's!!! HL-6

### COUNTRY CLUB

2-1-1 carport home, wall furnace heat, nice carpet, storm shelter, storage bldg., fenced yd. MORE!!! \$20'S.

### RURAL HOMES

VERY NICE 3-2 Home on 13.2 acre tract on pavement close to town, built-ins, large shop w/office, large barn, storage bldgs. & MUCH MORE!!! \$125K!!! HR-1

NICE 3-2-2+2 Carport Brick Home on 2.5 acres on pavement, close to town, Heat Pump, built-ins, FP, MUCH MORE. \$70K!!! HR-3

JUST LISTED -3-2-2 Home ac. on pavement, Cent. A&H, built-ins, freshly painted interior & exterior, fans, fenced yd., 31' x 40' barn!!! \$40's!!! HR-2

### LENAU ADDITION

NICE 2-2-2 Brick, on corner lot, heat pump, fenced yard, storage bldg., MORE! \$40's!!! L-1

NICE 3-2-1 carport Home, geothermal heat pump, fenced yd., storage bldg. \$27,500!!! L-3

JUST LISTED-NICE 3-2-1 Brick, Heat Pump, built-ins, fans, fenced yd., stor. bldg., \$30's!!! L2

### HIGH SCHOOL

NICE 3-2-2 Brick, Cent. A&H, built-ins, 2100' + lv. area, fenced yd.

NICE 2-1-1 Brick, Heat Pump, nice carpets, well insulated, storm windows & doors. \$30's!!! HS6

NICE 3-2 Home, Cent. A&H, built-ins, nice carpet, fans, stor. bldg., fenced yd. \$30's HS5

PRICE REDUCED-NICE 3-2-2 carport home, cent. A&H, built-ins, guest cottage or eff. apartment, insul. wkshop-stor. bldg. w/elect., fenced yd., & MORE!!! \$39K HS2

NICE 3-2-2 Brick Home, Cent. Heat, built-ins, fenced yd., large shop & office (ideal for automotive-woodworking, etc.), storage, eff. apartment, MORE!!! \$80's HS-3

2-2-2 carport Mobile Home, Cent. Heat, built-ins, fenced yard, More!!! \$12K HS-1

JUST LISTED -2-1-1 Home, floor & wall furnace, evap. air, siding exterior, stor. bldg., fenced yard!!! \$20's!!!! HS-7

### ASK ABOUT OUR COMMERCIAL LISTINGS!!!

160 acre tract, 8" well, circle spkrl. w/drops, fully allotted!!

PARMER - BAILEY CO. Area-Elevator & Cleaning Facility - 12 million lb. Capacity, Scales, Dryer, & Office on approx. 6.5 acres!!! PRICED TO SELL!!! POSSIBLE OWNER FINANCING!!!

**HECE**

Continued from page 7

supervisor Terri Brown.  
 Marthella Lewis — Muleshoe Abstract, supervisor Marvon Raef.  
 Shelby Murphy — Muleshoe Area Healthcare Center, supervisor Joy Stancell.  
 Jesse Olivas — O&C Erection Sprinklers, supervisor Lupe Olivarez.  
 Jennifer Rojas — Muleshoe Area Medical Center, supervisor Kay Swint.  
 Sarah Villareal — Decorator's Floral and Gifts, supervisor Betty Wuerflein.  
 Rosa Ramirez — Lambert's Cleaners, supervisor Jim Ella Clemmons.  
 Following student and employer recognition was a year in review slide presentation by

Crystal Castorena. The presentation honored students and employers and provided a special send off for the senior students leaving the program.  
 At the conclusion of the banquet, Carolyn Johnson, the organization's advisor, presented awards to top students and employers in the program.  
 Awards included:  
**Star Student of the Year** - Charles Acosta.  
**Top Employer Award** - Betty Wuerflein, owner of Decorator's Floral and Gifts.  
**Leadership Award** - Crystal Casto.  
**Most Improvement Award** - Crystal Castorena.  
**Scholarship Recipient** - Candy Garcia.

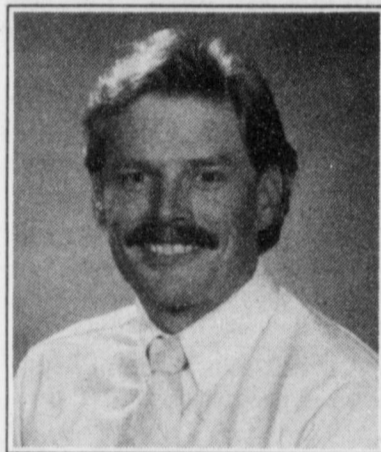


**Rookie and Employee of the year**  
 Rookie of the year award at the HECE Employer Appreciation Banquet was awarded to Maria Garcia, left, and Kit Dominguez, Employee of the Year, right.

**Rookie of the Year** — Maria Garcia.  
**Employee of the Year** — Kit Dominguez.

**West Plains Inc. offers new services**

Muleshoe, Sudan, Earth, Springlake and Olton are now offered new calling services provided by West Plains Telecommunications.  
 Call waiting, three-way calling, call forwarding, and speed calling are a few of the services offered.  
 Call waiting allows people to hear a signal when another call comes in while they are on the phone. People can add a third party to an existing telephone conversation with three-way calling. Call forwarding allows people to program their phone calls to follow them to another phone.  
 "Custom Calling Services let everyone get a little more control," said Hubert Kidd, general manager of West Plains Telecommunications. "While no one questions the value of basic telephone service, sometimes we all wish we could do just a little bit more with our telephone. Custom Calling Services let us do more without it costing a whole lot more."  
 Those who would like to find out more information about these Calling Services can contact the Muleshoe office at 806-272-5533 or toll free at 1-800-741-6925.  
 Interested customers may also come by 302 Uvalde Street in Muleshoe.



Gary Wrinkle

**Wrinkle earns doctorate at Univ. of Houston**

Muleshoe native Gary Wrinkle received his doctorate in education May 10 from the University of Houston.  
 A 1976 graduate of Muleshoe High School, Wrinkle earned a bachelor of science degree from Texas Tech University in 1982. In 1990, he received a master's degree in educational administration from the University of Houston.  
 Since 1994, Wrinkle has been employed as principal of Friendswood High School in Friendswood, Texas.  
 Wrinkle is also active in the Rotary and First Baptist Church in Friendswood, and frequently speaks to classes of prospective teachers at the University of Houston.  
 Wrinkle is the son of Roy and Johanna Wrinkle of Muleshoe.  
 Gary's family includes a wife, Diane, and three sons: Austin, 7, Taylor, 4, and Cameron, 2.

**Farm bill**

Continued from page 1  
 requirements. There are some restrictions on fruits and vegetables.  
 There is no restriction on haying or grazing on contract acreage. Also, there is no required layout. Contract acreage must be maintained in an agricultural or related activity. Cat insurance, or the equivalent of, is required for economically significant crops. If a producer does not wish to purchase crop insurance, the producer may waive all rights to emergency loss assistance.

**"I FEEL LIKE A NEW MAN!"**

A human being sheds skin continually, replacing it with an entire new outer layer once every 28 days.

**MOTHER OF THE YEAR**

*Eva Mendoza*

*The Muleshoe and Lazbuddie 4th grade class wrote letters to why their mother should be Mother Of The Year. Elida Diaz's letter was chosen.....*

Dear Editor,  
 One reason my mom deserves Mother of the Year is that she is a very good cook. She makes delicious pasta everytime we want her to. She will not make pasta if our family does not want some. My mother makes scrumptious rainbow cake on our birthdays. Sometimes she will make wonderful chocolate cakes on special celebrations. Being a good cook was one reason my mother deserves to be the Mother of the Year.  
 Another reason my mom should be Mother of the Year is she is a great housekeeper. My mother cleans my room while I'm at school. She does this most of the time to let me do my homework in a clean room. When I don't have time to iron my clothes in the morning she will iron them for me. While she is doing that I can be brushing my teeth. My mother folds my clothes neatly in my drawer so I can find my clothes quickly. This avoids me from not finding my clothes and missing the bus. Since she is a good housekeeper my mom deserves to be Mother of the Year.  
 My mother is a great Mom!

Sincerely,  
 Elida Diaz



Elida Diaz and Eva Mendoza

Come by to receive your special gift!  
**Muleshoe Art Loft**  
 272-3485

These businesses congratulate Eva Mendoza as the Mother Of The Year!!

A Box of Millionaire Candy  
**Pay-N-Save**  
 515 W. American Blvd. 272-4406

ONE DINNER FOR TWO  
**Pizza Hut**  
 1412 W. American Blvd. 272-4213

Come by to receive your special gift!  
**Decorator's Floral & Gifts**  
 616 S. 1st 272-4340

Meal for Two for the Parents  
**T.J. DONUTS**  
 328 S. Main 272-3542

FREE One Year Subscription  
**Triple S Publishing**  
 304 W. 2nd 272-4536

2 Leal's Specials including Drinks & Tostadas  
**Leal's Restaurant**  
 1010 W. American Blvd. 272-3294

Jewelry  
**The Fig Tree**  
 220 Main, next to Something Special

**Rose Bush**  
**Kristy's Plants**  
 710 E. American Blvd. 272-5536

Potted Note Pad  
**WILLIAMS BROTHERS**  
 322 Main 272-3113

9" Cookie that says Happy Mothers Day  
**Snack Shack**  
 616 South First 272-3840

**Manicure**  
**Jan's Unique Nails**  
 203 S. Main 272-5827

**Hanging Basket**  
**Shafer's Nursery**  
 801 W. American Blvd. 272-5802

Mother's Day Plaque  
**ALCO**  
 1401 W. American Blvd. 272-5525