

# Post office: Repeated vandalism may result in closing

Serving  
The  
Magic Triangle

VOL. 24 — NO. 26

# The Sunday Brand

HEREFORD, TEXAS, 79045, SUNDAY, DEC. 26, 1971

26 Pages  
INCLUDING COLORED  
COMICS  
PRICE 20c

PUBLISHED EVERY SUNDAY



PILE THEM HIGH—Farmers finally got back into their fields recently to begin their sugar beet harvest again. Holly has had its plant shut down for about two weeks and for the past week

has been piling beets in order to get a good start Monday when processing begins.

Photo by Betty Koelzer

## 'No comment' from Wilson officials about opening plant

Wilson Beef and Lamb's local plant manager refused to comment Thursday as to whether the plant would re-open again Monday as was announced two weeks ago when the firm closed its doors.

"No comment, because you'll print what you want to anyway," manager Donald Day said. "You just let your conscience be your guide."

The brief non-committal statement was of the same tone issued when the plant announced

its closing on Dec. 13. At that time Day issued a two-paragraph statement but would not go into any detail about the closing of the plant.

That statement said: "Donald Day, manager of the Hereford Wilson Beef and Lamb, announced that the company's Hereford plant will be closed for a two-week period preceding Christmas and is scheduled to re-open on Dec. 27."

"Mr. Day indicated plant repair work will take place dur-

ing the period and that with slaughter margins unusually narrow in recent weeks, the forthcoming holiday period appears to be the logical time to schedule a short-time closing."

The closing of the plant on Dec. 1 left a reported 200 persons without jobs just two weeks prior to Christmas.

Day apparently refused to comment further on the closing at that time because of mishandling of information by the Amarillo newspaper. The news of

the closing broke over the weekend, prior to the time Day had planned to make the announcement.

He had given the information of the closing to an Amarillo reporter on Friday before the scheduled Monday, Dec. 13 closing. He did so with the understanding the story would not be printed until a formal announcement was made.

The story, however, was published in the Sunday, Dec. 12 Amarillo paper.

## Beet processing will begin again Monday at Holly

Holly Sugar, going through one of its most spasmodic harvests to date, will begin beet processing again on Monday, according to officials of the plant.

The plant has been shut down for several weeks because there were no beets to be processed. The lack of beets was due to the fact that farmers were unable to get into their fields because of wet ground.

"We have started our harvest and are piling," said agricultural manager, Bob Ginn. "But, we won't be able to start processing in the plant until Monday because so much of our help is gone for the holidays plus the fact that we want to get enough beets piled up before we start again."

Ginn said farmers have been hauling beets for about one week now and when Monday rolls around they are expected to have enough on hand to keep the factory running around the clock. He said there should be "in the neighborhood of about 50,000 ton of beets on hand for Monday morning." That 50,000 ton should last about eight days, he said.

Ginn said tests have been taken in a number of fields over the past few weeks and the sugar content of the beet crop is holding steady at about 14 per cent.

"It is pretty much the same as it was when we got through harvesting before that last snow storm," he said.

Harvest now stands at about 45 per cent completed and Ginn said the harvest should be completed by Jan. 15 or 20, provided there is no more bad weather between now and then.

The delay in harvesting caused by late year rains is affecting the growers to the extent that harvesting conditions are not ideal thus making the expense higher. Also, for Holly's local plant, the equipment is having a harder time of processing the beets because they are handling more mud than would normally come with the beets.

## Hughes heads UF committee

Pat Hughes will head the nominating committee to enlist new members to the United Fund Board of Hereford.

Serving with Hughes on this committee will be Joe Shollenbarger, presently chairman of the board; Mrs. O.G. Hill, Sr., Chuck Coper, Aubyn Hodges, Irene McKinster and Gladys Manjeot.

Board members who will retire are Mrs. Hill, Shollenbarger, Calvin Goodin, Mrs. Tommy Carnahan, Pete Curtis, Tom Burdett and Dick Barrett.

Members remaining on the board until 1973 are Bud Eades, Clete Corlis, C.W. Allen, Betty

Koelzer, Mrs. James Higgins, Edgar Lemons, Mrs. Helen Smith and Homer Garrison.

Serving until 1974 will be Melvin Cordray, John Bunch, Don French, Pat Malone, R.C. Hoelshuber, Pat Hughes, Ted Panciera and Bobby Owen.

Drive chairman for 1971, Charlie Riggan, met with board at Tuesday's meeting to report results of the recent drive and to express gratitude for assistance received. This year's drive netted \$31,664.20, falling short of the \$40,000 goal set by the budget committee earlier in the year.

## Herd tabbed 'Cinderella'

The Hereford Whitefaces football team was named by the Harris Rating System as the "Cinderella Team of the Year" among all schools in the state.

The Whitefaces joined Rosebud in class AA as one of two elite teams in the rating. Rosebud was named the "Biggest Surprise in the Playoffs."

John Ferrara, coach of the AAA state champion San Antonio Volunteers, was selected by the system as the "Coach of the Year."

Hereford, picked to finish third in the district 4-AAAAA race, surprised everyone by sharing the loop title in coach Larry Dippel's first year and

the Herd's second year as a AAAA team.

The Whitefaces went into the play-offs by virtue of a win over co-champion Plainview then soundly defeated Pampa in bi-district and El Paso Coronado in regional.

The "Cinderella" role ended in the quarterfinals when the Whitefaces fell to the Wichita Falls Coyotes who finished second in the state in Class AAAA.

San Antonio Lee, by defeating Wichita Falls in the finals, 29-27, wound up the No. 1 AAAA team with a 14-0-1 record. Wichita Falls was second with a 14-1 record.

## Countians are cautious

### Local consumer debt is \$1,410 per family

Although incomes of county residents have gone up in the last year or two, in most cases, enabling them to become more expansive in their spending, they have been more cautious than usual due to their uncertainties with regard to inflation, unemployment and other economic factors.

As a result, they have kept their debt load well within manageable limits and their credit in good shape. According to data from the Federal Reserve Board, the national Consumer Finance Association and others, the amount of consumer debt outstanding in the United States is over \$103 billion. It is equivalent to about \$1,600 per family.

In Deaf Smith County, on the basis of recent national reports and based upon average earnings and expenditures locally, the overall debt load is estimated at \$7,482,000. This includes automobile loan credit extended for the purchase of other consumer goods, personal loans and loans for home re-

pair and modernization. It does not include mortgage debt, charge accounts and single payment loans. The debt load in the local area figures out to \$1,410 per family. That is the mathematical average. However, since many families have no debt at all, the amount owed by those that do is considerably higher.

In general, more than \$1 out of every \$7 that a family has left after paying its personal taxes goes toward the repayment of its debt. In Deaf Smith County, this repayment rate comes to approximately \$118 per month per family, on average.

## Don't have a Christmas tree? Use your imagination

Treeless plains supplied no Christmas trees for early settlers around Hereford, and some of the most picturesque recollections of oldtimers who were children in pioneer families are of makeshifts used as substitutes. A wagon wheel, a ladder, an occasional fruit tree with bare branches, are some of the unlikely materials mentioned to Christmas decorations and gifts.

Tree substitutes figure largely

in stories told by several oldtimers to Roberta Campbell, when she gathered material lately for a club talk on Plains Pioneer Christmases.

Perhaps the most unusual of the improvised trees was described by Bob Fullwood, whose father, E.H. Fullwood, saw that the Summerfield community had its tree one year when snow was too deep for a trip after a cedar.

It was in 1901, Fullwood recounts; his father took a wheel from an old wagon, and by sawing off the rear axle close to the hub, rigged up a spindle to mount it on so it would rotate. Next he put upright pieces of wood at alternate spokes on the

wheel, bringing them together at the top teepee fashion to make a cone about six feet high.

Shelves were put in, a foot apart, decorated with whatever was available. Candles were set on the shelves to make lights. A long piece of sash cord wound around the hub, with the free end slipped through a knothole in the wall and fastened to a windlass outside, could be pulled to revolve the tree.

Bob, then 12 years old, was stationed outside to operate the windlass on Christmas Eve. He did this with such good will that at one point his father dashed outside to slow him up, as he was turning the tree so fast the

candles were blown out.

From the very beginning Christmas in Hereford followed the pattern of most other towns in the area with a community tree at the church and a program made up of recitations and songs, Miss Campbell's story continues.

Then the appearance of Santa Claus (with a suspiciously familiar voice for some) to distribute the big gifts that were usually put on the tree.

Practical jokers had their fun so Santa wasn't particularly surprised at Silverton to find a pig tail or hog bladder blown up for a balloon on the tree from one JA cowboy to another.

Mrs. A.G. Bell recalls walking through the snow to take her children to the community tree at the Christian Church in Hereford.

Corrine Jowell Neely's memory dates back to the early 1900's though some of her family came to the Panhandle as early as 1887.

She recalls one Christmas when they couldn't get a green tree so they brought in a dead one and decorated it with popcorn, cranberries and colored paper.

The crowning achievement was a silver star in the top made of foil salvaged from wrapping. Going to the grandparents was

traditional; there were only coal miners so the children tied their stockings to the backs of chairs.

Clothing was always the main gifts received and sometimes along with candy and nuts they would find an orange. Apples were kept by the barrel in many dugouts.

Sometimes there was home grown, or neighbor grown, turkey along with dried fruits and vegetables, mince and pumpkin pies.

In spite of the predominance of ranching in the area Corinne is convinced that pound for pound the early settlers ate more red beans than they did beef.

Essie Cardwell and Mary

Bourn also share some of the memories of these early Christmas trees and other festivities.

They were always accompanied by their father who carried a lantern and Mrs. Cardwell says everybody knew when the Bourn girls were coming because they could see the light from the lantern in the distance.

An interesting sidelight retold by Mrs. Cardwell, who came from Denton County where high winds meant tornadoes; was her first West Texas sandstorm. She was terrified and convinced with a wind like that everything would be swept clean.

Progressive community, first See TREE Page Nine

# Top personalities named in HHS 'Koobraey' assembly

The annual Hereford High School "Koobraey" assembly, presented by the high school annual staff, was presented Wednesday where top boys and girls were announced.

Joan Grady and Diana Zinser are co-editors of the annual staff.

Mary Wheeler was announced as the winner of the Annual Queen contest, followed by Meredith Wilcox as princess and Nancy Barrett as dutchess.

Cindy Hairgrove was named the "Sophomore Favorite Roundup Girl" while Franklin Higgins was the favorite sophomore boy.

Lilli Lyons was named the sophomore class favorite girl and Jake Northcutt as the favorite sophomore class boy.

Meredith Wilcox was selected as the "Junior Favorite Roundup Girl" and Danny Harris was cited as that classes' favorite boy. Kerry Hall and Wynn Short were named the class favorite boy and girl.

Janice Marnell and Rosie Gonzales were named the "Senior Favorite Roundup Girl and Boy" and Nelda Norton and Richard Sierra were selected as the class favorites.

Rojean Block was named the "Personality Queen" and Eugene Suttle the "Personality King" for the Roundup and Sally Bayne and Jay West were the school "Personality Queen and

King." Becky Dziuk was named Miss HHS Roundup and Ike Graves took the Mr. HHS Roundup title. Miss HHS was Diana Zinser and Charles Allison was Mr. HHS for the school. Carole Newton and David Thomas were selected by the faculty as the "Most Intellectual-Girl and Boy" students and Angela Grubbs and Ike Graves were named the "Most Versatile" by the faculty.

"Most Beautiful" candidates are Mary Wheeler, Brenda Formby and Helen Brorman and "Most Handsome" candidates are John Page, Steve Clark and Chuck Cogdell. Named to "Who's Who" were David Thomas, Charles Ajison, Angela Grubbs, Diana Zinser, Sally Bayne, Eugene Suttle, Ike Graves, Eddie Gage, Carole Newton, David Hicks, Joan Grady, Larry Driver and Caye Clearman.



**HOSTESSES FOR TEA** - Mrs. Raymond White and her daughters, Susan, left, a senior student at Texas Tech, and Sherry, a Tech freshman, received guests throughout Tuesday afternoon in their home where the sisters are spending the Christmas vacation. The front door ornament, its sections lettered to spell Noel,

was tied with red velvet bows and decked with evergreens typical of the red and green decor over the house. Those colors were repeated in the sisters' dresses, with red Harlequin print making gathered skirts and sleeves, and velvet bodices, Susan's green and Sherry's red.

# Forest fires part of life

Death and taxes are often quoted as two of life's certainties but employees of the Texas Forest Service would add a third - forest fires.

Even before this winter's first cold spell or killing frost, fire fighters had given their equipment a final check up and were on standby, ready to answer that call for help which is bound to come.

Texas averages more than 2000 wildfires every year and most are caused by people who are careless, says Paul R. Kramer, director of the Texas Forest Service at College Station. Most of these fires would never start if the persons responsible were more careful and had a higher regard for their environment. Forest fires damage and destroy our most valuable natural resource - trees. Also, homes, wildlife, livestock, and even human life are often threatened by these destructive fires. The cost of controlling these wasteful fires, Kramer added, would be better spent improving Texas' woodlands and improving our environment.

Weeds and grass are particularly heavy, this year, Kramer pointed out, a condition caused by a long growing season and plenty of rainfall. After the first killing frost, when the cold, dry northerly winds sweep over Texas, this material will become an explosive fuel, Kramer stated.

Too often the public is unaware that the very days when trash and fields burn best, often are the most hazardous days when fires will escape in spite of the best precautions, the director emphasized.

All can help to preserve and improve the environment by disposing of trash and debris by means other than outdoor burning, being extremely careful with field burning and campfires, and by reporting malicious woods burners to law enforcement officials.

**ALMOST PERFECT VIENNA (AP)** - Establishment of fatherhood in future will be even more exact, says Dr. Wolfgang Mayr. He said his institute of Blood-Group (Sereologie) investigation was able to detect two entirely new genetic characteristics which enabled them to rule out fatherhood by a 99 per cent certainty.



**CHAIRMAN**—Janice Newsom, junior student from Hereford at West Texas State University, has been elected music chairman of Zeta Tau Alpha fraternity. She is in-charge of music which members learn, and coordinated songs for formal rush parties. Janice is the daughter of Mr. and Mrs. C. F. Newsom, 150 Liveoak, and a Hereford High School graduate.

## The Sunday Brand

Entered as second-class matter July 6, 1948 at the post office at Hereford, Texas under the Act of March 3, 1879.

Second class postage paid at Hereford, Texas.

Established 1948

Published every Sunday at 130 West Fourth St., Hereford, Texas 79045

By The Brand Publishing Co.

Subscription Rates: Zone 1, \$4.00 per year; Zone 2 and above, \$6.00 per year. With the Hereford Brand, both papers Zone 1, \$5.95 per year; Zone 2, \$7.40 per year. Carrier delivery, \$1.00 per month. Single copies 20 cents each.

**CIRCULATION**

Mail 354-2030  
Carrier 354-5819

O. G. Nieman, Publisher  
Marshall Day, News Editor  
Sus Coleman, Women's Editor  
Grady King, Advertising Manager  
R. Traylor, Mechanical Superintendent

**COW POKES** By Ace Reid

"Yep, the same ol' story... they're born in the spring, mortgaged in the summer and fed in the winter."

**Hereford STATE BANK**

GLENN'S FOOTWEAR  
Fashion At Your Feet

401 N. Main

# Shoe Sale

SALE STARTS MONDAY, DEC. 27TH!

DELISO DEBS --	CARESSA --	MAGDESIAN --	FANFARES
WERE	NOW	WERE	NOW
\$14.95	\$8.90	\$22.00	\$14.90
\$14.95	\$9.90	\$22.95	\$15.90
\$15.95	\$9.90	\$24.95	\$16.90
\$15.95	\$10.90	\$26.95	\$16.90
\$16.95	\$10.90	\$26.95	\$17.90
\$16.95	\$11.90		
\$17.95	\$12.90		
\$19.95	\$12.90		
\$19.95	\$14.90		

Fall & Winter BAGS As Low As \$1.90

## You can find lots of 16.88 tires. But Penneys 16.88 tire has a nylon cord body and a wide profile.

- Four plies of nylon cord for a strong, cool-running tire
- Polybutadiene rubber for a long wearing tread
- Wide profile for improved mileage and traction

**15<sup>96</sup>** plus 1.95 fed-tax and old tire C78-13 (replaces 700-13) blackwall tubeless.

**Ground Gainer**  
4 ply nylon cord tire.

Size	Replaces	Fed. tax	Price
A78-15	560-15	1.74	16.88
E78-14	735-14	2.21	19.88
F78-14	775-14	2.38	19.88
G78-14	825-14	2.55	22.88
H78-14	855-14	2.74	22.88
G78-15	825-15	2.64	22.88
H78-15	855-15	2.80	22.88

Whitewalls only \$3 more per tire.

## TRACTOR TIRES

Size	Replaces	Fed. tax	Price
15-5-38-6	\$103 Plus F.E.T. \$7.69		
16-9-34-6	\$109 Plus F.E.T. \$8.91		
18-4-34-6	\$129 Plus F.E.T. \$10.53		
16-9-38-8	\$148 Plus F.E.T. \$11.08		
18-4-38-8	\$156 Plus F.E.T. \$13.05		

AT PENNEYS, IT'S QUALITY, PRICE & SERVICE

## CARGOMASTER SL TRUCK TIRE SALE

Size	Price	F.E.T.
900x20	48.82	
Plus 7.45 F.E.T.		
1000x20	65.60	
Plus 9.19 F.E.T.		
1000x22	70.00	
Plus 10.00 F.E.T.		

OFFICIAL STATE INSPECTION STATION

**Penneys Service**

Foremost® engine tune up. Here's what we do: install new points, plugs, rotor, condenser and cap; adjust distributor points, engine timing and carburetor.

**15<sup>88</sup>** (VW's)

Most 6 cyl. American cars ..... 19.00  
Most 8 cyl. American cars ..... 23.00

**JCPenney The Christmas Place**

# The Wage-Price Freeze

## Questions and Answers



This column of questions and answers on the President's Economic Stabilization Program is provided by the local office of the U.S. Internal Revenue Service and is published as a public service. The column answers questions most frequently asked about wages and prices.

**Q.** Are longevity increases counted as part of the 5.5 per cent standard on wages and salaries set by the Pay Board?

**A.** No. Longevity increases are allowed to go into effect according to the terms of plans, agreements, or established practices in existence prior to November 14, 1971, without regard to the 5.5 per cent general wage standard.

**Q.** Under what conditions are sales of real estate exempt from coverage under the economic

stabilization program?

**A.** Sales of the following categories of real estate are exempt from coverage under the economic stabilization program:

- 1) unimproved real estate;
- 2) real estate with improvements completed prior to August 15, 1971; and
- 3) real estate with improvements completed on or after August 15, 1971 if the sales price is

determined after the completion of construction or the wage rates are known to the builder and are not altered by actions of the Pay Board after the sales price is established.

**Q.** Are profits controlled under the economic stabilization program?

**A.** Price increases are not allowed to raise the rate of profit per dollar of sales above what

it was in the profit margin base period. The term "base period" in this context means the average of any two of a person's last three fiscal years that ended prior to August 15, 1971. The person may select which two fiscal years will apply.

**Q.** Where can I obtain the economic stabilization regulations issued by the Pay Board, Price Commission and the Cost of Living Council?

**A.** All rulings and regulations issued under the economic stabilization program are published in the Federal Register. Subscription rates are \$25 yearly, \$2.50 per month, or \$2.20 per issue. Any specified yearly period may be requested (e.g., August

1, 1971 to August 1, 1971, which would include Register entries from the beginning of the price and wage freeze period). You can subscribe by submitting a written request with your check or money order to the Department of Public Documents, U.S. Government Printing Office, Washington, D.C. 20402. Make checks or money orders payable to the "Superintendent of Documents."

Stabilization rulings and regulations have also appeared in many newspapers throughout the country.

**Q.** In determining whether the allowable 5.5 per cent standard for wage and salary increases set by the Pay Board is met,

are there any restrictions on the amount or frequency of increases that may be paid to any one employee or group of employees?

**A.** So long as the 5.5 per cent annual aggregate limitation is not exceeded, the amount and frequency of wage or salary increases is not restricted.

**Q.** I am retiring from my job this month. During the August

15-November 13 freeze, I was scheduled to receive an increase in retirement benefits. Will this increase now be allowed to take effect retroactively?

**A.** Yes! Employees who would have become eligible for a new or increased benefit during the freeze and who otherwise cannot become eligible for the benefit may be granted the benefit retroactively.

# Our fabulous After Christmas savings.

## Every coat in stock reduced 15% to 40%.

That puts some pretty nice change in your pocket. Lengths from mini to Gibson. Looks from crisp-cut classics to mad, winging capes. Fake furs, imported tapestries, sleek meltons and more. Misses', junior, half sizes in the group.



Entire Stock Men's Winter JACKETS Now Reduced

15% TO 40% OFF Original Price!

### Men's Fabulous SUIT CLEARANCE

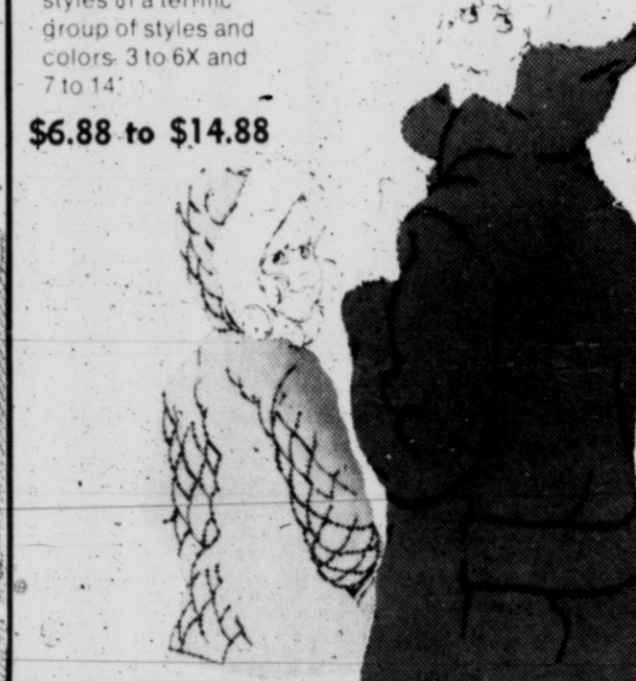
Some Special Purchase. Others Reduced from Regular Stock. Hurry For Best Selection!

Group I	Group II
\$18.88	\$39.88
MEN'S SPORT COATS	
Reduced Now \$18.88	

## Girls' jackets. REDUCED

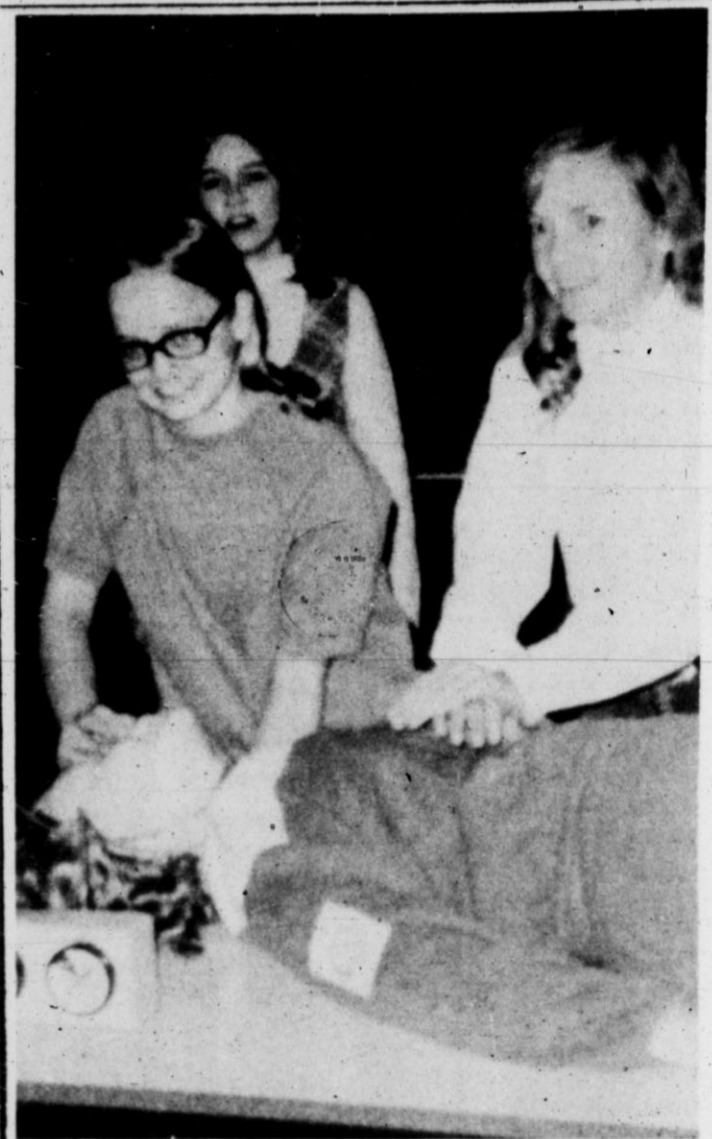
All our best selling styles in a terrific group of styles and colors. 3 to 6X and 7 to 14.

\$6.88 to \$14.88

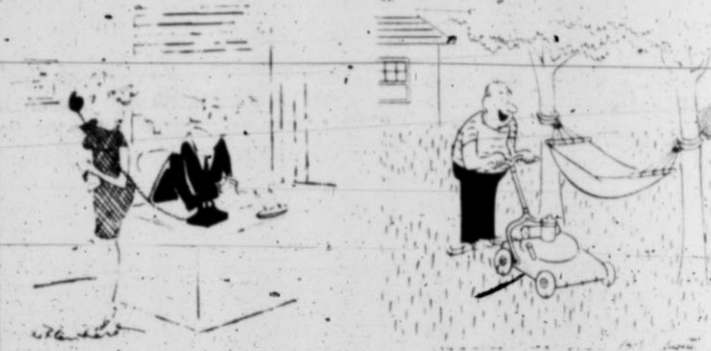


### Entire Stock Boy's Coats NOW REDUCED

Group I	Group II
\$10.88	\$14.88



**FHA SAFETY LESSON** — Using the life size mannikin, Resusi-Ann, Future Homemakers of America practice life saving skills they learned in a recent program by David Pruitt and Albert Farris of Deaf Smith County Electric Cooperative. A film, Pulse of Life, was shown and a demonstration given on mouth-to-mouth resuscitation, for 92 members and advisors of FHA in three schools. From left are Patricia Brownlee of High School FHA, Kim Simpson of La Plata chapter and Debbie Lindsey of Stanton chapter. The program was related to a state FHA project, Safety for Survival.



"I'm sorry, you have the wrong number, but thank you for calling."

"Out of gas... what a strange coincidence!"

### Clearance.

- MISSES WIGS**  
Synthetics Reg. \$19 **\$8.88**
- MISSES PURSES**  
Reduced From Regular Stock **\$1.88**
- Kitchen Assorted HOUSEWARES \$1.66**
- LUGGAGE**  
Beauty Cases 21" Pullman **\$9.88**  
26" Wardrobe
- Women's DRESSES**  
Clearance Prices

### DISCONTINUED STYLES

## REDUCED Clearance!

Shoes from our own stocks at greatly reduced prices.

### Shop early!

First come, first served. We'll have extra sales help for the event. Bring your charge card and stock up.



### Clearance.

- Men's SPORTS SHIRTS**  
Short Sleeve Penn Prest **\$2.50**
- Girls DRESSES**  
Clearance Drastically Reduced
- 11 Only Boys SUITS**  
Reg. \$27.95 Now **\$10.88**
- SWEATER KNITS**  
Acrylic & Orlon Reg. \$5.98 Now **\$3.88 YD.**
- Ladies SWEATERS**  
Large Group **\$5.99**

**JCPenney**  
The values are here every day.

## Sweetbriar's after-christmas clearance... Sale

- ALL of our Fall and Winter **DRESSES**
- special groups of Fall and Winter **PANT SUITS**
- SPORTSWEAR**
- LINGERIE**

reduced  $\frac{1}{4}$   $\frac{1}{3}$   $\frac{1}{2}$  and more

ALL of our Fall and Winter **COATS**... reduced  $\frac{1}{4}$  and more



Nadine Jeter, Mgr.  
Sugarland Mall



# By the Garden Gate with Glad

By Mrs. Art Manjeot

Last night just before I retired, I went to the window, and pulled the drapes apart, and looked into the beautiful sky above. The stars were glistening brightly and the silver moon was gliding swiftly across the sky, as a luminous boat.

As I looked I was awed at the greatness and magnitude, as well as beauty of the wonderful world.

Much has been accomplished this year, men have gone to the moon, new inventions have been perfected for the good of men, science has perfected cures for the sick and afflicted, ect. ect. God has been good to His children. And soon we will celebrate the birthday of the Babe born long ago in the city of David.

The pattern of life will continue. What kind of a pattern are we really weaving?

In 1957 when Art and I toured Europe, I was greatly impressed with the gorgeous, ancient tapestries. There were many treasures, and the beauty and intricate patterns of the weavers was great to look upon. Among the treasures of Reims Cathedral in France, is a set of sixteenth century tapestries known as "The Life of the Virgin." These line the walls of the magnificent cathedral and bring to the gray stone walls warmth of soft rose, a blue that is rich, yet not dark. Gleaming gold threads catch the light and scattered all about are tiny flowers and leaves. In these large tapestries depicting scenes from the life of Mary. There one of great beauty, and significance shows, the birth of Christ. Mary and Joseph kneel to adore the Child of God, born a helpless infant on a night when shepherds and kinds alike set out to follow a star to the manger.

All appealed to me, and I was deeply stirred, being a gardener who LOVES flowers and nature the pretty flowers, birds and animals scattered throughout the beautiful picture into the tapestry. The blending of colors, the intricate patterns woven into the picture, along with scriptural inscriptions (in French and Latin) all caused me to think deeply and gave me a greater appreciation of true beauty so created. All was magnificent, and made one want to be still, think deeply, and ponder upon the ways of men and nature. A

question came to my mind, what kind of tapestry am I weaving in my life's pattern?

As gardeners, we create patterns of beauty, as well as significance. It would then cause us to be glad to have a share in the creation of one beautiful flower, as we work with the soil, and other functions of nature. Think well about the design and colors which we choose to weave into the patterns, which are created in our gardens. Soon it will be time to plan and study, about what we want our gardens to have in them this coming year. Gardening is an art, and a privilege...let us do well and work towards beauty and creativity.

In gardening as in life there will be broken threads, but these will have to be tied together, and woven into the pattern, causing an imperfection, and heartaches, but to the true gardener, whether in life's pattern or in working in the gardening we learn to take the bitter with the sweet, and to keep on guiding the shuttle along and among the threads which have been given us to work with. May we never forget that all are co-workers with the Babe that was born in the lonely stable, and that He will aid us in the weaving of our life's tapestry.

At Christmas time so much beauty is created with colorful lights. The offer evening after a busy day at the store, I decided to drive about town and enjoy the beauty which had been created by the Christmas lights and other decorations. Many have created spectacular scenes with them, others have created small, yet very impressive depictions of the Christmas message. I think I have never seen more participation. There are lights gleaming on the roof tops, in the gardens; at large homes, and numerous, eye catching scenes are at the doors, in the yards, and windows of homes of all sizes. To all I would say "Take time, to drive about town and enjoy the loveliness which has been created. Be sure and see the large Christmas tree on the court-house lawn. Our thanks to those who have made this possible. I hope the community will truly make this unified project, and a thing of beauty to portray to the world the significance of lights at

Christmas time.

A Christmas Prayer. Let us pray that strength and courage abundant be given to all who work for a world of reason, beauty and understanding. That the GOOD that lies in our hearts may day by day be magnified, that men will come to see more clearly not that which divides them, but that which unites mankind. That the true spirit of this Christmas season, its joy, its beauty, its hope and above all its abiding faith. That all may become real, and the blessings of these by ours to build, to garden, to grow, and to live in harmony and sympathy, along with understanding of others. May all be exemplified in our daily living, as we weave our pattern in life.

Let all face the future with confidence, and with a Merry heart, and a thankful spirit, not only at Christmas time, but throughout the days to come.

GLAD-wishes for all, "happiness" and a sincere appreciation of life at this glorious season of the year. May the Christmas lights be lighted by the Star of Hope, and the candles of abiding friendship and love.



**KINDERGARTEN PARTY** — Before the Christmas vacation, pupils of weekday kindergarten at First United Methodist church had a party with a number of parents and church staff members as guests. At left are Melissa Brumley and Jerry Baker in their roles in a dramatization of the Night

Before Christmas, which featured the program. Todd Davis and Craig Gross, right, happily participate in another popular phase of the party, refreshment time. Mrs. Arvell Williams, teacher, was assisted by Mrs. G.T. Gross, who directed games and the serving of refreshments.

## White purchases interest in firm

Raymond White, partner in H & W Implement Company, 1403 E. Park Ave., has purchased the interest in the company which was owned by Dean Herring.

White and Herring have been together since the implement business was purchased in 1950.

"We have enjoyed an outstanding working relationship that has resulted in continued growth," White said. "We will continue to offer the best in John Deere Farm Equipment, parts and service."

White said there will be no major changes in the operation of the company or its policies.

### CARD OF THANKS

Our sincere thanks to all of those who sympathized with us in any way in the loss of our husband and father, J.F. "Jack" Messer. Our special thanks for the food, flowers, and cards; for the donations to the Heart Fund, Cancer Society, and Girlstown; also, to the Riders Club for serving lunch. Thanks for caring.

Mrs. J.F. Messer  
Cecil Messer and Family  
Jimmy Messer and wife  
Jacky Messer and wife  
Roy Dale Messer

### MINISKIRT TRAGEDY

COLOMBO, Ceylon (AP)—A figure-hugging miniskirt was blamed in coroner's court for the death of a 19-year-old girl. The girl was getting on a train when her tight skirt interfered with the freedom of her leg movements. She suffered a heavy fall and died from her injuries.

Read The Classified Want Ads!

### LAUGH TIME



## Cotton transfer limits announced

The Deaf Smith County ASC Committee has determined that out-of-county cotton allotment transfers by sale will not be authorized for 1972.

However, out-of-county cotton transfers by lease will be permitted.

Cotton transfers may begin as soon as producers receive their

1972 cotton allotment notices which were mailed Tuesday, December 21, 1971. The 1972 cotton allotment transfers will be made on the basis of a farm's 1971 cotton payment yield.

As in the past, there are no restrictions on ownership transfer. Ownership transfers may be made to any county within the state.

The transfer of cotton by sale or lease within the county is again permitted.

## Veteran's affairs

Q—I am a veteran with an ordinary life National Service Life Insurance policy. May I surrender it for paid up insurance and still draw dividends?

A—Yes, but your dividends will be smaller.

Q—I am 100 percent disabled from service-connected injuries, and wonder if the Veterans Administration will treat me for a disability I suffered after leaving the service?

A—Yes. Veterans permanently and totally disabled from service-connected causes can be treated at VA outpatient clinics for non-service connected disabilities. You should apply for treatment at the nearest VA office.

Q—Several years ago I elected to receive benefits under the new pension law when I exceeded the \$1,600 annual income limitation, resulting in termination of benefits under the old pension law. Now that income limitation under the old law have been increased, can I go back to drawing pension under the old law?

A—No. Once a pensioner has chosen benefits under the new law, he cannot go back to the old law.

### LAFF-A-DAY



MISTER BREGER

OUTBOARD MOTORS

And, in the lower-price field

HAPPY NEW YEAR

May each day

be like a holiday... carefree and gay!

When you miss your

**HEREFORD BRAND**

OR

**SUNDAY BRAND**

PHONE

**364-5819** or

Mobile Phone **289-5721**

J. R. OGLESBY  
"Home Delivery"

**MAKING NEW YEAR RESOLUTIONS?**

Why Not Resolve to

Open a savings account at the Hereford Texas Federal Credit Union the First Week in 1972 . . .

**YOU'LL BE MONEY AHEAD**

Save with Safety . . . Borrow with Confidence

**NCUA**

HEREFORD TEXAS  
**FEDERAL CREDIT UNION**  
330 Schley Phone 364-1888

# YEAR END CLEARANCE

Save up to \$100<sup>00</sup> WITH TRADE

The RAEBURN - C2983W  
Compact Contemporary styled console in genuine oil finished Walnut veneers and select hardwood solids. 5" x 3" Twin-Cone Speaker. VHF/UHF Spotlite Dials.

**\$478<sup>00</sup>**

The RIBERÁ - C4518  
Mediterranean styled full base console. Casters. Customized Tuning. Chromacolor Picture Tube. Titan 80 Handcrafted Chassis. Super Video Range Tuner. Automatic Fine-tuning Control. Automatic Tint Guard Control. 5" x 3" Twin-Cone Speaker.

**\$578<sup>00</sup>**

The DEGAS - C4030W  
Grained American Walnut color. Titan Handcrafted Chassis. Chromacolor Picture Tube. 19" diag. Super-Screen Picture. Solid State Super Video Range Tuner. 25,000 Volts of Picture Power. Automatic Fine-tuning Control. Automatic Tint Guard Control. 5" x 3" Twin-Cone Speaker.

**\$469<sup>95</sup>**

The LISZT - Model C910W  
Beautifully designed Console in Distinctive Contemporary styling with genuine oil-finished Walnut veneers. 40-Watt peak music power solid-state amplifier.  
• FM/AM/Stereo FM Radio  
• Zenith Stereo Precision Record Changer  
• Quality Six-Speaker Sound System

**\$268<sup>00</sup>**

"Hereford's Oldest Appliance Dealer"

# ROBERTS APPLIANCE

136 W. 3rd 364-1588

# AFTER CHRISTMAS CLEARANCE SALE . . . . . !



**HURRY!**  
SALE PRICES ON  
PRESENT INVENTORY

**PRICES  
SLASHED**

**RCA AccuColor  
GIANT-SCREEN TV**

now only  
**\$499<sup>95</sup>**  
With Trade  
BASE OPTIONAL, EXTRA



DELUXE TABLE MODEL

## RCA AccuColor 60

These models give you the biggest size color picture you can buy. And RCA's finest black matrix tube is powered by a 25,000-volt (design average) chassis for sparkling, lifelike color. AccuTint keeps flesh tones the way you like them and Automatic Fine Tuning locks in the correct signal. Come see these fabulous buys from RCA!



### CONTEMPORARY



now only  
**\$549<sup>95</sup>**  
With Trade

### COLONIAL



now only  
**\$559<sup>95</sup>**  
With Trade

### SPANISH



now only  
**\$569<sup>95</sup>**  
With Trade

## ROBERTS APPLIANCE

136 W. 3rd

"Hereford's Oldest Appliance Dealer!"

364-1588

## Bond sales pass expected goal

Sales of Series E and H United States Savings Bonds in the county passed the \$100,000 goal as a result of November sales of \$12,020.

Deaf Smith County passed the goal with one month left, according to Jim Sears, county chairman. The \$12,020 total of November brought the year's total to

\$107,424, or 107 per cent of the anticipated mark.

During November, Texas purchased \$16,759,888 in Savings Bonds. This represents a 12.3 per cent increase over the same period last year. Cumulative sales for 11 months of this year amounted to \$184,622,944 which is 101 per cent of the state's goal of \$181.9 million.

Nationally, Savings Bonds sales during November totaled \$457 million—22.6 per cent above November of last year. Sales for

the first 11 months amounted to \$5,038 million—7.7 per cent above a year earlier.

**RECORD SALES DROP**  
LONDON (APP)—Producers records by such British stars as Tom Jones and Engelbert Humperdinck report a sharp slump of sales in the United States. A spokesman for EMI (Electrical and Musical Industries), the big distributing company, said, "record sales have been badly hit" by credit restrictions.

## THE CARR RATINGS

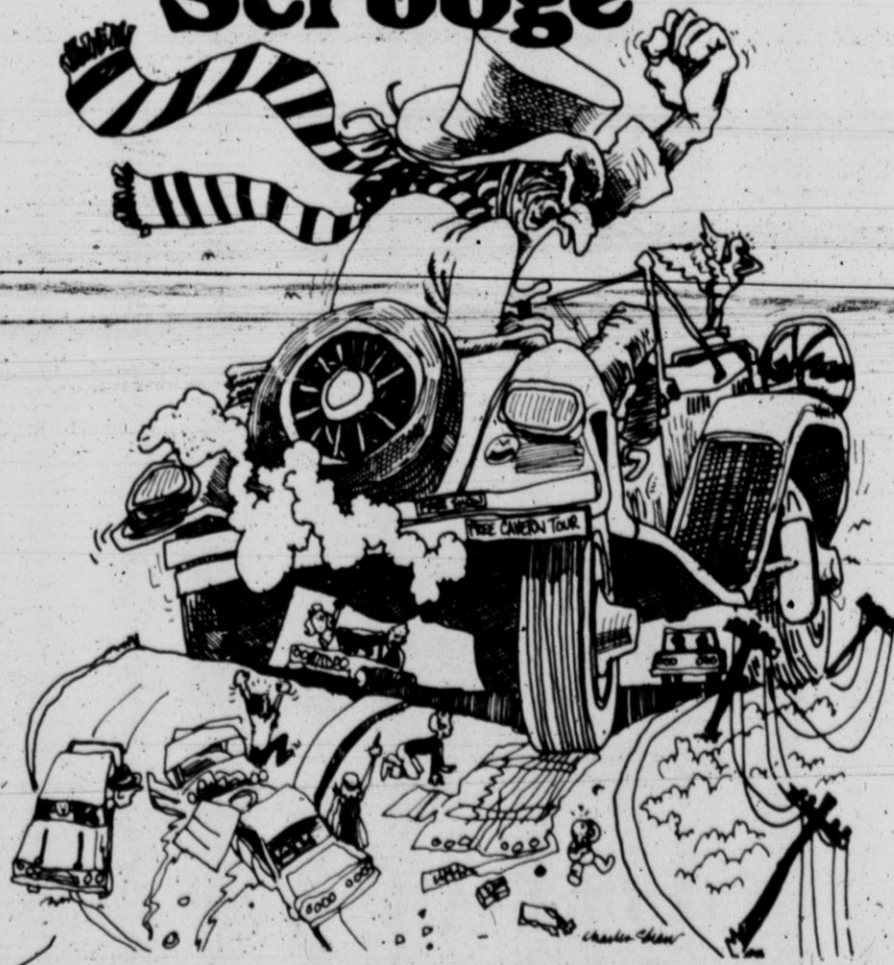
BY DON CARR

TOP TWENTY TEAMS - DECEMBER 19, 1971

1 - U. C. L. A.	99.2	11 - INDIANA	91.1
2 - MARQUETTE	95.7	12 - LONG BEACH STATE	90.2
3 - NORTH CAROLINA	95.6	13 - VIRGINIA	89.9
4 - SOUTH CAROLINA	94.7	14 - MARSHALL	89.8
5 - FLORIDA STATE	94.4	15 - MARYLAND	89.6
6 - LOUISVILLE	93.8	16 - KENTUCKY	89.1
7 - ST. JOHNS-N.Y.	92.1	17 - OHIO STATE	88.0
8 - SO. CALIFORNIA	92.0	18 - PENNSYLVANIA	88.8
9 - S. W. LOUISIANA	91.9	19 - WASHINGTON	88.7
10 - TENNESSEE	91.6	20 - BRIGHAM YOUNG	88.6

FAVORITE	MARGIN	OPPONENT	FAR WEST CLASSIC - 12-27-30-71
GAMES OF 12-27-71:			
ALBANY-GEORGIA	21	WILMUNDER SMITH	DARTMOUTH---76.6
CINCINNATI	12	BUTLER	FLORIDA STATE---94.4
DRAKE	36	CHICAGO STATE	NICHIGAN---76.8
GEORGIA SOUTHERN	13	BUFFALO	NEW MEXICO---76.5
KENT STATE	21	CLEVELAND STATE	QUAKER CITY CLASSIC - 12-27-30-71:
LAKELAND	18	JOHN JAY	BOSTON COLLEGE---77.5
LONG ISLAND	21	MILWAUKEE	FAIRFIELD---73.3
LOUISIANA COLLEGE	15	MISSOURI WESTERN	LASALLE---75.4
LOYOLA-CALIFORNIA	7	SETON HALL	MANHATTAN---66.8
NORTH CAROLINA	19	HARVARD	RAINBOW CLASSIC - 12-27-30-71:
OCCIDENTAL	17	DOMINGUEZ	ARIZONA STATE---88.5
SANTA BARBARA	11	ARIZONA	CALIFORNIA---77.7
TEXAS	12	CENTENARY	HAWAII---87.0
XAVIER-LOUISIANA	3	GRABLING	MINNESOTA---84.0
TOURNAMENTS OF 12-26 & 29-71:			
GAMES OF 12-28-71:			
ALBANY-GEORGIA	11	MONTICELLO	COLUMBIA---63.7
GEORGIA	36	CHARLESTON COLLEGE	ILLINOIS---87.8
HOWARD PAYNE	26	WAYLAND	FLORIDA---83.7
KENTUCKY	12	NOTRE DAME	NO. CAROLINA ST-88.0
NORTHERN ILLINOIS	3	WESTERN MICHIGAN	KODAK CLASSIC:
ST. LOUIS-U.M.	12	WESTERN ILLINOIS	PENNSYLVANIA---88.8
ST. MARYS-CALIF.	22	WYOMING STATE	ROCHESTER---71.2
SHAW-MICHIGAN	59	WATERLOO LUTHERAN	50. CALIFORNIA-92.0
SIMON FRASER	29	VICTORIA-B.C.	LAS VEGAS CLASSIC:
GAMES OF 12-29-71:			
EL PASO	28	MISSOURI WESTERN	BAYLOR---75.0
HOWARD PAYNE	23	SOUTHWESTERN-TEXAS	SO. ILLINOIS---76.3
IRVINE	2	SETON HALL	WEBER STATE---81.1
SANTA BARBARA	36	CHICAGO STATE	LONG BEACH INVITATIONAL:
YOUNGSTOWN	19	WESTERN ILLINOIS	LONG BEACH ST-90.2
GAMES OF 12-30-71:			
CINCINNATI	21	KENT STATE	LOS ANGELES ST-89.7
COLORADO STATE	6	UTAH STATE	SANTA CLARA---79.8
GEORGIA SOUTHERN	26	LEHIGH	OLD DOMINION CLASSIC:
HOUSTON BAPTIST	22	MISSOURI WESTERN	BRIGHAM YOUNG---88.6
IOWA	4	DRAKE	INDIANA---91.1
IRVINE	23	CHICAGO STATE	RICE---69.5
LINFIELD	17	GEORGE FOX	PALMETTO INVITATIONAL:
MARSHALL	10	OHIO U.	AIR FORCE---60.6
MISSISSIPPI	35	CHARLESTON COLLEGE	CITADEL---65.8
SAMFORD	8	BUFFALO	ROADRUNNER INVITATIONAL:
S. W. LOUISIANA	8	LOS ANGELES STATE	MONTANA STATE---69.6
TOLEDO	26	ST. JOSEPHS-IND.	NEW MEXICO ST-74.8
VANDERBILT	10	ST. LOUIS-U.M.	ROSLAND---69.2
WEST GEORGIA	3	RICE	TOURNAMENTS OF 12-29-30-71:
GAMES OF 12-31-71:			
DAYTON	11	EAST CAROLINA	BRUN CLASSIC:
GARDNER WEBB	12	CUMBERLAND	ARIZONA---73.6
MEMPHIS STATE	16	ARKANSAS	OHIO STATE---89.0
PEPPERDINE	8	SETON HALL	U. C. L. A.---99.2
GAMES OF 1-1-72:			
DAVIDSON	9	WILLIAM & MARY	CHARLOTTE INVITATIONAL:
EVANSVILLE	1	UTAH STATE	DAVIDSON---76.1
SAN FRANCISCO	14	OKLAHOMA CITY	GEORGIA TECH---75.5
VANDERBILT	5	MISSISSIPPI STATE	EVANSVILLE INVITATIONAL:
XAVIER-OHIO	3	YALE	EVANSVILLE---77.7
ST. LOUIS INVITATIONAL - 12-27 & 29-71:			
LOVELA-ILL.	88.9	S. M. U.	EVANSVILLE---78.8
ST. LOUIS	87.5	YALE	PACIFIC---84.3
ALL COLLEGE TOURNAMENT - 12-27 & 30-71:			MURRAY---78.8
ARMY	67.2	INDIANA STATE	SEATTLE---74.8
SANTA CLARA	79.8	JACKSONVILLE	GARDEN STATE CLASSIC:
KENTUCKY	84.3	NO. TEXAS ST.	AMERICAN U.---73.2
TEXAS TECH	74.9	OKLAHOMA CITY	GEORGE WASH.---66.4
BIG EIGHT - 12-27 & 30-71:			
COLORADO	73.8	MISSOURI	HOLIDAY INVITATIONAL:
IOWA STATE	76.2	NEBRASKA	CENTENARY---68.6
KANSAS	82.3	OKLAHOMA	N.W. LOUISIANA---71.3
KANSAS STATE	85.8	OKLAHOMA STATE	EAST TENNESSEE---74.0
HOLIDAY FESTIVAL - 12-27 & 30-71:			
DUKE	80.8	PROVIDENCE	MARYLAND INVITATIONAL:
FURDHAN	75.8	ST. PETERS	HARVARD---81.3
LOUISVILLE	91.8	SYRACUSE	ST. JOHNS-N.Y.---92.1
PENN STATE	83.6	UTAH	MARVARD---82.6
SEASONS RECORD - HIT-103 MISSED-LTT FCT-223			

## The Highway Scrooge



The "Highway Scrooge" doesn't know what it means to "Drive Friendly." To Scrooge, the holiday Christmas drive is all take and no give. He never pulls to the right to let someone pass. And if a pedestrian gets in his way, well, too bad. The Highway Scrooge takes the holiday courtesy given by others. He gives back nothing—but heartbreak and misery.

**Don't be a Scrooge. Drive Friendly.**

**drive friendly** The Governor's Committee on Traffic Safety

A public service message by this newspaper. A public service message from the above advertisers.



**STANTON REGIONALS** — Coming home from recent competition with most members in the regional band, are these members of Stanton's School Band; left to right, back row, Tommy Varner, Dennis Evans, and Ricky Fowler; third row; Junior Morales, Becky Noyes, David Kreig, Mike McCutchen, Larry McDonald, Joel Furhman, and

Hank Stringer; second row; Melissa Henry, Debra Jennings, Charlene Williams, Randy Golden, Gloria Mays and Sylvia Gamez; front row, Jenine Bradley, Leesha Sledge, Amal Malouf, Bodie Lyman, and Pat Scroggins. Not pictured is Karen Appling. Photo by Betty Koelzer



**LA PLATA REGIONALS** — Receiving positions on the Regional Junior High School Band at a recent competition are these members of the La Plata School Band; left to right, back row, Billy Word, Ricky Hughes, Patty Emerson, Sue Roberts and

Bill Martin; second row, Don Fortenberry, Paul Grubbs, Debbie Klechak, David Emerson, and David Fish; front row, Sandra Stallings, Cathy Walker and Beverly Phillips. Photo by Betty Koelzer

# Junior highs place 35 in region band

**BY BETTY KOELZER**  
Staff Writer  
Hereford has 35 members in the Region I Junior High School Region Band, resulting from recent tryouts in Amarillo.

Hereford's two junior high schools, Stanton and La Plata, competed with students from Canyon, Borger, Perryton and all of Amarillo's Junior High Schools.

Stanton, who attained the largest number of members, out of 36 students competing, received the second largest number of "first chairs," (top positions). With 3 first chairs, Stanton also

has 19 other members in the regional band.

La Plata, with 20 entries, received four "first chairs," with other members in the regional band.

One school spokesman said there were as many as 40 to 50 musicians competing before judges for each musical section.

These regional band members will attend a clinic in Amarillo at Caprock High School on Jan. 21 and 22, and then present a concert for the public. Bill Dean, director of the Odessa High School Band, will serve as clinician.

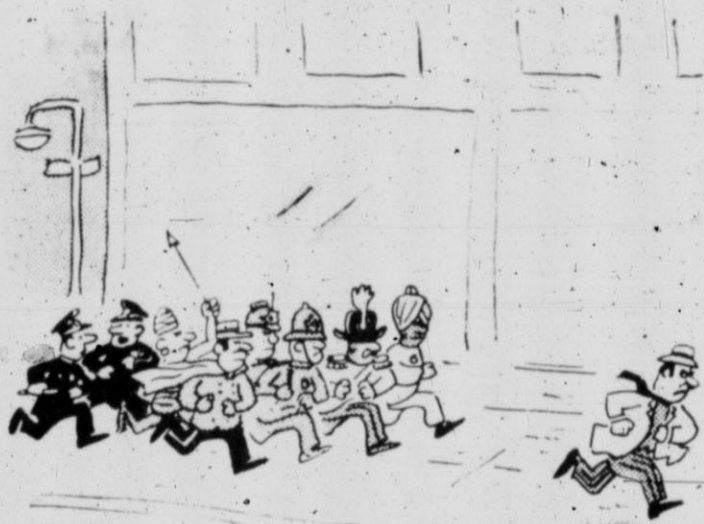
Stanton members in the band

are: Jenine Bradley, first chair, oboe; Randy Golden, first chair, saxophone; Gloria Mays, first chair, bass clarinet; Leesha Sledge, second chair, flute; David Kreig, second chair, baritone; Mike McCutchen, second chair, trombone; Amal Malouf, third chair, flute; Sylvia Gamez, third chair, bass clarinet; Tommy Varner, third chair, tuba; Melissa Henry, fourth chair, clarinet; Becky Noyes, fifth chair, french horn; Larry McDonald, fifth chair, trombone; Bodie Lyman, fifth chair, flute; Ricky Fowler, fifth chair, tuba; Debra Jennings, sixth chair, clarinet; Dennis Evans, sixth chair, drum; Joel Furhman, seventh chair, trombone; Junior Morales, eighth chair, cor-trombone; Karen Appling, eighth chair, flute; Pat Scroggins, 12th chair, flute; and Charlene Williams, 16th chair, clarinet.

La Plata members in the band are: Paul Grubbs, first chair, trombone; Debbie Klechak, first chair, clarinet; David Emerson, first chair, bassoon; David Fish, first chair, baritone; Beverly Phillips, second chair, bassoon; Billy Word, second chair, trumpet; Patty Emerson, second chair, french horn; Sue Roberts, third chair, french horn; Ricky Hughes, fifth chair, cornet; Bill Martin, seventh chair, french horn; Don Fortenberry, seventh chair, trumpet; Cathy Walker, tenth chair, coronet; and Sandra Stallings, eleventh chair, flute.

Read The Classified Want Ads!

### LAFF - A - DAY



"They say he's wanted in six countries!"



## CLASSIFIEDS GET RESULTS



### GATTIS SHOE STORE

# SEMI - ANNUAL SALE

## WATCH THEM GO!

#### FANTASTIC

SELECTION  
For the Ladies  
Belts &  
Scarfs

NOW **1/2** PRICE

This merchandise is taken from our regular stock of fine footwear and accessories. We have grouped together a tremendous selection of styles and patterns --- for the entire family, and we want to pass the savings on to you, our customers, during our Semi-Annual Clearance Sale!

Gattis Shoe Store

- \* No Refunds
- \* No Exchanges
- \* No Returns
- \* All Sales Final

on all Sales Items ...  
**PLEASE!!**

#### ONE GROUP

#### WOMEN'S

### DRESS & CASUALS

Personality - Cobbies - Magdesians  
Values from \$16.99 to \$18.99

NOW **\$14<sup>90</sup>**

#### ONE LIMITED GROUP

#### WOMEN'S

### DRESS STYLES

Florsheim

**\$21<sup>90</sup>** Regular \$25.99

#### ONE LARGE GROUP

### WOMEN'S AND GIRL'S SPORTS & CASUAL

Cobbies - Moxees - Pocos  
Values from \$15.99 to \$17.99

NOW **\$12<sup>90</sup>**

#### ONE GROUP WOMEN'S

### DRESS & CASUALS

Socialites - Florsheim

Values from \$21.99 to \$23.99

NOW **\$18<sup>90</sup>**

we're famous  
for  
fashion  
and  
fit!



#### ONE GROUP WOMEN'S

### DRESS & CASUALS

Socialites - Florsheim - Magdesians  
Red Cross - Cobbies - Ultima

Values from \$18.99 to \$22.99

NOW **\$16<sup>90</sup>**

#### ONE LARGE GROUP MEN'S & BOYS'

### DRESS & CASUAL

Freeman - H.I.S.

All Colors, fine Leather

Values from \$18.99 to \$29.99

NOW PRICED FROM

**\$16<sup>90</sup> TO \$24<sup>90</sup>**

#### ONE GROUP WOMEN'S

### SPORT SHOES

Moxees - Personality - Pocos

Values from \$13.99 to \$16.99 **\$10<sup>90</sup>**

#### CHILDREN'S SHOE STYLES

### LARGE GROUP

Sizes: 5 1/2 to 4, Boys & Girls  
Many Colors & Styles to Choose from  
Values from \$9.99 to \$12.99 **\$6<sup>90</sup> TO \$8<sup>90</sup>**  
NOW

#### ONE GROUP BOYS & YOUTH SIZES HARD TO FIT SIZES FROM 4 1/2 TO 6

### CASUAL & DRESS

Hush Puppies - Jumping Jacks - Bristols

\* Black \* Brown \* Brushed Leather

Values from \$12.99 to \$15.99

NOW PRICED FROM

**\$8<sup>90</sup> TO \$10<sup>90</sup>**

## FANTASTIC SAVINGS DURING THIS FABULOUS SALE

SUGARLAND  
MALL  
Hereford, Texas

# GATTIS SHOE STORE

- \* Women Shoes
- \* Children Shoes
- \* Men's Shoes

NOW IN PROGRESS . . . .

**CONSUMERS FUEL**

**CO - OP'S**

ANNUAL

**OIL SALE**

★ Barrels ★ 5 Gallon Cans ★ Quarts

NOW THRU JANUARY 15th!

**CONSUMERS FUEL CO-OP**

NEW YORK AVE.

364-1146

# W THE ACTION WAY OS

**Phone 364-2030**

**CLASSIFIED ADVERTISING RATES**  
 Reader Ads (Minimum 10 words) 1st insertion per word . . . . . 8c  
 Additional insertions, when paid in advance: per word . . . . . 6c  
 Classified Display (10 pt. type under a specific heading, 1 column width only — no art or signature cuts) per col. inch . . . . . \$2.00  
 Repeat insertion without copy change per col. inch . . . . . \$1.50  
 Display Advertising Not Classified under a heading, but placed on the classified page . . . . . \$1.12  
 Deadline for Classified Advertising in the SUNDAY BRAND . . . . . 5 p. m. Friday

Deadline for Classified Advertising in the HEREFORD BRAND . . . . . 5 p. m. Tuesday

**1. FOR SALE**

**Miscellaneous**

**ATTENTION!!**  
**PLAINS FINANCE CORPORATION**  
 906 SOUTH 25 MILE AVENUE  
 NOW OFFERS FOR SALE New Stereo Consoles from \$129.95 to \$229.95 and new 2 piece living room suites at \$129.95.  
 1-Buck Vinyl love seat . . . \$179.95  
 Recliners . . . . . \$65.95 to \$99.95  
 WE ARE DEALERS OF WESTINGHOUSE, ADKIN AND TOSIBA APPLIANCES.  
 WE FINANCE WHAT WE SELL.  
 PHONE 364-3400. B-1-48-tfc

**TOWN & COUNTRY**

**MOBILE HOME SALES**

HWY 40 East & Myrtle PHONE 364-0149  
 See the 7' x 12' & 14' wide. We sell for less because the overhead is low. B-1-44-8c

**CARPET REMNANTS**

**and**

**ROLL ENDS.**

Southwest Carpet Tile & Floors, 214 North 25 Mile Avenue, Phone 214-1783. B-1-19-tfc

**WILL BUY OR SELL** Taps, Boars, Sows, Pigs and Feeders. C. P. McGee, 500 West Park, Hereford, Texas. Phone 364-1045. B-1-16-2-tfc

**CARPET!!**

**Financing Available**

**C & W CARPET**

PLAINS AND N. 25 MILE AVENUE PHONE 364-3448 B-1-19-tfc

**ORDER YOUR COPY TODAY**

**THE NEW AND UP-TO-DATE**

**1971 ISSUE OF THE**

**CATTLE**

**FEEDLOTS & GRAIN DEALERS DIRECTORY.**

Price \$10.00 Hereford Brand, Box 473, Hereford, Texas 79045. B-1-19-tfc

**CARRIAGE MOBILE HOMES**

**WHERE YOU DO HAVE A SELECTION QUALITY**

**LANCERS AND FRONTIERS.**

**12x48 to 14x70.**

**HWY. 385 NORTH**

**PHONE 364-3811**

**FOR SALE—**

**COMPENSATOR**

**LIQUID FEED**

**DELIVERED AND**

**FEEDERS FURNISHED.**

**CALL**

**MARTIN MOORE, 364-0161**

**1B-1-9-tfc**

**FOR SALE—**

**37 Heavies. Start**

**calling February. 364-5754 after**

**6:00 p.m. B-1-11-49-tfc**

**STATED MEETINGS**

**Second Monday**

**8:00 p. m.**

**Thursday**

**Floor**

**Practice**

**Herman Ford W. M.**

**W. A. Phipps, Sec.**

**Hereford**

**Rotary**

**Club**

**meets every**

**Monday at 12:05**

**Civic Club Center**

**(Jim Hill)**

**Lions Club**

**meets each**

**Wednesday, 12 Noon.**

**Civic Club Center**

**(Jim Hill)**

**WILL PAY CASH FOR** swords, bayonets, helmets or any other military items from World War I, or World War II. Phone 364-4150. B-1-22-51-2c

**SOUP'S on, the rug that is, so** clean the spot with Blue Lustre. Rent electric shampoos \$1. Hereford Hardware. B-1-20-26-2c

**2. FOR SALE**

**Farm Equipment**

**See Us For**

**Parts-Sweeps-Chisels**

**for**

**Graham (Home) Plows**

**DAVIS IMPLEMENT**

**409 EAST FIRST**

**Phone 364-2811**

**B-2-29-tfc**

**FOR SALE—**

**540 FORD BALER**

**Horrell Mays, Friona, Texas 247-3477.**

**B-2-10-47-tfc**

**FLOATING LAKE PUMPS—** electric or gas. Efficient, trouble free. Satisfaction guaranteed. BETZEN MFG. 511 Avenue F. 364-3149. B-2-17-14-tfc

**See Us For**

**Mayrath Grain Augers**

**In Stock**

**Also have parts in stock**

**DAVIS IMPLEMENT**

**409 EAST FIRST**

**Phone 364-2811**

**B-2-35-tfc**

**TAKE OVER PAYMENTS on 8** track stereo. Call 364-4333. B-2-10-23-tfc

**3. FOR SALE**

**Automobiles**

**NEW 18 4x3 eight ply tractor tires** for \$160.00 and 16 9x3 tires for \$111.00, all plus Federal excise tax. Phone 364-4333. B-3-20-8-tfc

**WALKER'S USED CARS**

**AND TRUCKS**

**We buy, sell or trade**

**409 West First**

**Phone 364-2336. B-3-41-tfc**

**FOR NEW BUICKS & PONTIACS.** GM Pickups and Trucks and good trade model used cars. See EARL STAGNER at John Orsborn Buick-Pontiac, 221 North 25 Mile Avenue. Call 364-1222. B-3-30-33-tfc

**REPOSSESSED KIRBY CALL**

**364-0422. B-1-10-22-tfc**

**FOR ALL YOUR FENCING NEEDS:** CALL Burnia Riley, 364-2295. B-1-10-40-tfc

**A-1 used tires. FIRESTONE.** Phone 364-4333. B-1-10-23-tfc

**FOR SALE—** Pleasure horse, 6 year old mare, good for child or small adult. 364-1368. B-1-15-23-tfc

**FOR SALE—** 30-30 MARLIN with scope. Like new. Call 364-6599. B-1-24-tfc

**FOR SALE: A/C Boston Terrier** puppies. Especially good blood line. Phone 364-4056. 364-4229. B-1-14-24-tfc

**CHRISTMAS Kittens to give away.** Phone 364-1749. 130 Kingwood. B-1-10-50-tfc

**FOR SALE—** One membership in Odham County Country Club. Call 806-267-4247. B-1-10-40-tfc

**FOR SALE—** 1970 Honda C-130. 5325.00. Call 289-5848. B-1-10-25-tfc

**FOR SALE—** Four El Tigre Mud Wheels and Hurst Four Speed Shift. 289-5853. B-1-25-49-tfc

**FOR SALE: 1970 KAWASAKI, 90 cc** 1-1/2" bike. Like new. 1400 miles. Bill Reinauer, 127 Mimosa. Phone 364-1221. B-1-19-25-tfc

**FOR SALE: One lighting system: one Atlas portable building. Call** 364-4577 or 364-3109. B-1-10-50-tfc

**CARPETS and tile too can be beautiful** if you use Blue Lustre. Rent electric shampoos \$1. Duckwalks, Sugarland Mall. B-1-21-51-2c

**FOR SALE: Good 36" gas range.** Has rollers and grill. One small electric oven and one large gas oven. Price \$50.00. Call 364-3715 after 6:00 p.m. B-1-51-40-tfc

**FOR SALE—** Barbie doll clothes and Raggedy Ann dolls. 364-2273. 217 Centre. B-1-10-19-tfc

**FULLER BRUSH PRODUCTS.** Call Jessie Fuller. 364-3525. B-1-10-26-tfc

**FOR SALE**

**1969 60x12 AMERICAN HOMEDALE.** 3 bedrooms, 1 1/2 baths, washer and dryer. Party furnished. Located in Hereford. B-1-24-30-tfc

**CALL**

**247-5596 Friona, Texas**

**15-1-24-30-tfc**

**FOR SALE—** A heavy duty 12x20 ft land floor; an electric range; a cotton mattress; a wringer type Maytag Washer. Call 364-3968. B-1-24-51-tfc

**KEEP carpet cleaning problems small** — use Blue Lustre wall to wall. Rent electric shampoos \$1. McCaslin Lumber Company. B-1-19-51-tfc

**ANTIQUE striking wall clocks and Westminster chime clocks.** 3 miles West on 1058 J. E. Sorrells, 289-5836. B-1-15-51-2c

**FOR SALE**

**1968 Chev 2 door 2 door hardtop.** Power steering. Disc brakes. Automatic. Polyglass tires. \$1900.00. Phone 364-0253 after 6:00 p.m. B-3-19-26-tfc

**4. REAL ESTATE**

**For Sale Or Trade**

**3 bedroom brick. Approximately** 2200 sq. ft. Refrigerator, air conditioner, 1 1/2 baths. BARGAIN. \$23,500.00. GIBSON REAL ESTATE. 364-0442. B-4-19-49-tfc

**37.5 acres of land in cultivation,** nice 3 bdr. home, 5 irrigation wells, sump pump, near Hereford, good allottments. High yields. price \$185,000. 20 per cent down, own or will finance at 7 per cent. N. OF HEREFORD. 243 acres in excellent location for \$100,000.00. TERMS AVAILABLE. DRY LAND. 120 acres near Walcott, price below \$100.00 per acre. \$5,000.00 down, 20 year loan at 7 per cent. SMALL TRACTS. We have a good selection of small tracts in good locations. \$50.00 DOWN. On 40 ft. x 120 ft. residential lot, can move in good home or park mobile home on lot, payments \$380 per month. HAMBLY REAL ESTATE 5 Hwy 385 OFFICE 364-3566. 364-3169. 364-3566. J.M. Hamby 364-2553. Harold Hamby 364-4678. Gerald Hamby 364-1534. B-4-25-tfc

**SEE GIBSON REAL ESTATE & INSURANCE**

**FOR COMPLETE REAL ESTATE SERVICE**

**Including AUCTION OF Real Property of any kind:**

**Farms, Ranches, Commercial Property**

**Farm & Industrial Equipment**

**Arvel Williams Auctioneer-Salesman**

**364-5149**

**364-4345**

**Willbur D. Gibson - Broker** 364-2225

**Office - 902 Lee & Hwy. 385** 364-0442

**Hereford, Texas**

**4-2-tfc**

**1520 acres, \$425 per acre, 15 per cent down, 7 per cent interest, 9 full ft. wells, 3 miles underground pipe, natural gas, 1000 acres of alfalfa hay, government payments 2000 head feed lot complete with green chopper equipment, frame-up depreciation, 7 sprinklers. 2 Butte buildings, 4 nice houses, on paved street, 283,000 of improvements 2 miles West of Miles-House on Highway 179. Dist. 806-763-5752 or 727-1716. B-5-24-4c**

**5. FOR RENT**

**APARTMENTS — FURNISHED**

**1 & 2 bedrooms with kitchen, di-**

**nette and bath. Also 2 bedrooms,**

**living room, kitchen, dinette and**

**bath.**

**FOREST AVENUE APARTMENTS**

**PHONE 364-1887. B-5-37-tfc**

**FOR RENT OR LEASE**

**\*Warehousing-Flat or grain produce**

**shed, complete with equipment.**

**\*Tailor shop-Average G & H.**

**\*Storage space (Footage to suit**

**12x24 and up. You keep the key)**

**\*Bueno Vista Apartments & lots.**

**\*Residential lot sales - Hereford**

**Office space.**

**OFFICE 415 MAIN. . . . . 364-1483**

**N.D. BARTLETT JR. . . . . 364-0235**

**364-0235**

**NORMAN D. BARTLETT. 364-3937**

**364-3937**

**B-5-23-tfc**

**FRIONA APARTMENTS**

**1300 NORTH WALNUT**

**FRIONA, TEXAS**

**Now leasing 1, 2 & 3 bedrooms.**

**Unfurnished, fully carpet, refrigerator,**

**range, central heat and cooling,**

**ventilation. Utilities paid. Laundry**

**and recreation facilities available.**

**Children welcome, sorrow no pets.**

**Rent starting \$85.00. Resident man-**

**agement on premises.**

**PHONE 367-3666. FRIONA, TEXAS**

**11B-5-44-tfc**

**FOR RENT—One bedroom apart-**

**ment. Close in. 311 Schley. Call**

**364-0270. B-5-11-55-tfc**

**ONE bedroom furnished apartment.**

**Carpeted, built in, paneling, brick**

**exterior, month plus electricity.**

**Call 364-0038. B-5-15-25-tfc**

**OFFICE FOR LEASE. Ralph Owens.**

**364-2222. B-5-10-14-tfc**

**OFFICE for rent on Hwy. 385. \$50.00**

**per month. J. M. (Hamby). 364-2553 nights.**

**364-3566 days. B-5-19-4-tfc**

**HAVE RENTAL PROBLEMS?**

**Property rental and management**

**service.**

**HAROLD HAMBLY**

**364-3566 or 364-4678. B-5-37-tfc**

**FOR RENT**

**25'x80' Building. Air conditioned,**

**garage, carpet parking. Ideal**

**location for beauty shop. Located**

**North of Shook Tire Company.**

**CALL**

**806-2977**


**MCLAREN, Texas. B-5-14-tfc**

# CLASSIFIEDS GET RESULTS

**HOMES ARE MY BUSINESS**  
**Call Day or Night**  
**Vaughan**  
**Real Estate**  
 116 S. 25 Mile Ave - Hereford  
 Phone 364-2850

**MIKE WALDRIP**  
 Sales Representative  
 Res. 364-4770

Something too... Shout About



**YUCCA HILLS NORTH**  
 "Country Living"

North on 385

**PERFECT HOMESITES - CLOSE IN**  
 — Contact —  
**JAMES GENTRY** 289-5690 Office or 364-4457 After 6 p.m.  
**KEN ROGERS** 364-0555 Office or 364-0094 after 6 p.m.  
**PICK YOUR OWN NEIGHBORS**

**LONE STAR AGENCY**

★ RESIDENTIAL  
 ★ COMMERCIAL  
 ★ FARMS



**NOEL.**

This Holy Season is a time of reverence... a time of reflection... and above all a time of joy. We wish the Spirit of this Holy Season to each and every one of our many wonderful friends.

May "1972" be a prosperous-spiritual year for each of you; Is our sincere wish!

LEE UMSTED 364-6633  
 MELVIN JAYROE — G.R.I. 364-3766  
 LLOYD SHARP 364-2543  
 KEN ROGERS 364-0094

*"Worthy of Public Confidence"*  
 Since 1947  
 601 Main Street Hereford, Texas 364-0555



1 Mile No. Hi-way 385 — Ph. 364-0064 or 364-9629  
**DANCE — Setups Available — DANCE**  
**NOW BOOKING**  
**NEW YEARS PARTIES**

---Let us take care of your Party---


We are booking: Christmas Parties, Family Reunions, Wedding Parties, For any Occasion. Seating for 200 People -- Reservations Welcome!

FOR THE BEST IN...  
**PLUMBING SERVICE**

• **HAVE YOUR PLUMBING CHECKED**  
 Plumbing that is not working properly costs you time, inconvenience and money. Checking can stop trouble before it starts.

We are reasonable and we give fast service.

**JIM'S PLUMBING & HEATING CO.**  
 Jim Clarke  
 803 S. Texas 364-3160



**Vaughan Real Estate**  
 Phone 364-2850  
 116 South 25 Mile Avenue

**"BEAUTIFUL HOME ON HICKORY"**  
 Reasonable payments - low equity - 3 BR - 2 Bath - Kitchen - Den with WB fireplace - fenced yard - Call for an appointment.

**"EASY TO OWN"**  
 Small investment will buy this 3 BR Home on Western St. - with payments you can afford.

**"FOR \$128.00 MO. - YOU WOULDN'T BELIEVE IT"**  
 This 3 BR - 2 Bath Home will surprise you. Well kept - fenced yard - like new - plenty of room. Location?? That will surprise you too!

**"EXTRA LARGE BEDROOMS"**  
 Plus spacious living room - den and kitchen area, over 1800 SF total. Double Garage - Short walk to school - \$148.00 monthly.

**"WILL TALK TERMS"**  
 On this 3 BR home located just 2 minutes from Sugarland Mall: All brick, fenced - \$1500 total move-in cost.

**"NEED AN END-OF-THE-YEAR INVESTMENT?"**  
 Here are 4 Duplex's all in a row - Good location - good rental - can buy one or more - proper financing to qualified buyer - call now for information.

**"DIAL FOR DETAILS"**  
 On these 5 new homes now under const. 3 & 4 Bedrooms - less than \$400 total invest - payments near \$100.00 mo. if you qualify. Be first & get first choice.

After hours please call:  
 Mike Waldrip 364-4770 Denzil Vaughan 364-2146  
 Virgil Justice 364-0670  
 Melinda Duggan 364-2785 Mary French 364-0854

## Small talk

BY SUE COLEMAN  
 Women's Editor

**OF ALL THE Christmas comings and goings among Hereford people this year, probably nobody is going farther than the L.B. Russells, who flew to Hawaii for a holiday visit with their daughter.**

That is, they started; last absolutely definite report on them, they were waiting for a late plane at the Amarillo air terminal. Of course that's a common story during the holiday travel rush and it's a good thing that the general atmosphere of goodwill is in force so there isn't too much fuming about delays.

**CHEERFUL WORDS** at Christmastime: "The whole family will be at home for the day!" You hear it from a lot of people here this year, none of

them sounding any happier than Elizabeth McDowell did.

Visitors in the home and Elizabeth and Ansel McDowell for Christmas were their three sons and families, Dr. and Mrs. Ansel McDowell and children of Perryton, Dr. and Mrs. Dan McDowell of Odessa and the Jim McDowells and children who live here.

**SONS AND FAMILIES**, plus a couple of visiting dogs, had Christmas dinner with the Bill Hatsons, Beq said. One of their sons also is a Hereford resident with his family, the Billy Hutsons. From out of town, one family came from Dallas and one from Seguin.

**VISITORS WITH** Vivian and Charlie Bury on their ran west of Hereford were her bro-

ther, A.C. Miles, and Mrs. Miles from Denton.

**NOTES FROM** holiday parties of recent weeks: The hand somely embroidered cloth used for the Christmas supper for Eastern Star members and guests was made by Junaita Hershey. I was told by the reporter of that event, who added that it was quite the prettiest she had ever seen.

It was simply a matter of convenience that the music which was part of the program at a party in the M.H. Richie home, came from across the hall. The program director was surprised at its effectiveness. Nancy Richie had the party for the United Methodist Guild and seated the guests in her den because the living room is smaller. But the piano is in the living room, and Margaret Hare sang carols there while Opal Bookout talked in the den about Christmas songs. It's an idea that might be borrowed for any other talk-with-music program.

A party plan that was quite popular in past years was revived for Veleda Club's Christmas dinner when members entertained their husbands. It was a progressive dinner, which you don't hear of often nowadays. Easy on all the hostesses, and more fun for the guests who go on to another house for each course of the dinner.

The Harry S. Truman sports complex in Kansas City will open next April 11 when the Kansas City Royals meet the California Angels in a night base ball game.

**100% GUARANTEE**  
**ON SELECTED USED CARS**

'66 PLY. FURY III 4-dr. Sedan, loaded \$575

Dealer financing on other cars, Collision Insurance not required.

**MILLER AUTO SALES**  
 901 E. First Phone 364-0815  
 \* Guaranteed major Components Only!

The Carrier Weathermaker® furnace is just one of the nice things about Carrier TOTAL Air Conditioning. Other nice things:

- the Carrier central humidifier... moistifies winter-dry air... preserves furnishings
- full central air conditioning... adds summer comfort to every room
- the Carrier Electronic Air Cleaner... catches fine staining particles

**BROWND SHEET METAL**  
 Phone 364-3867

Carrier specialist in installation and service

**REALTORS**

**CARMICHAEL REAL ESTATE**



**Carmichael Real Estate, Inc.**  
 508 South 25 Mile Avenue  
 Phone 806.364-1251

**MERRY CHRISTMAS**  
 This one has all the goodies, many green trees with twinkling lights, kiddies with presents and lots of good cheer.

**OWNER TRANSFERRED**  
 Old 1971 leaving for a brand new 1972 with the best ever for you.

**NEW YEAR'S RESOLUTION**  
 The best service and the biggest smile for all you good people.

**SEASON'S GREETINGS**  
 From Troys, Mutt and Paul. Come to see us.

**TROYS CARMICHAEL 364-1082**  
**G.S. WHEELER 364-3798**  
**PAUL SCHROETTER 364-0035**

**You've Never Seen Such Thorough Service STOP IN SOON**

**Phillips "66" Products EAST SIDE "66" Rocky Stewart**  
 1503 E. 1st 364-2644

EXPERT REPAIR  
 • BUICK • PONTIAC  
 • GMC TRUCKS  
 JOHN ORSBORN  
 BUICK PONTIAC  
 Free Pickup  
 Phone 364-0990



**LEE FREEMAN**  
 Realty & Auction Service  
 Box 453 Dumas, Texas ACR06-935-2419

600 Acres Sherman Co. 4 1/2 wells over 1,000 gal each with 1 1/2 gal water system. Good level farm. Established lease. \$100 per acre.

100 Acres Moore Co. 2 1/2 wells. Tall water system. Allocated. Lays perfect on pavement. \$100 per acre.

100 Acres Moore Co. 1 1/2 well. Allocated. Good government check. \$100 per acre.

1 Bedroom Brick home in Stratford. Double garage. 2 baths. Separate living room and plenty of storage. In great condition.

We have several good ranches in Oklahoma.

Our Next Auction Sale is  
**WEDNESDAY, DECEMBER 22 - 10 A.M.**  
 Wagon & Henshaw

**FARM SALE**  
 11 Miles N. of Sunny on Hwy 119  
 IF YOU NEED TO BUY OR SELL  
 Call ACR06-935-2419 or Come by!

**SUBMERSIBLE PUMP**  
**Sales & Service**  
**Control Box Repair & Exchange**  
**Doyle Turner**  
 364-0811

**FOR QUICK REPLACEMENT OF CRACKED SAFETY GLASS**

Call 364-2652

**HEREFORD GLASS Co. Inc.**  
 for all your glass needs

**Insurance claims promptly serviced.**  
 We use nationally advertised  
**LOF GLASS SAFETY GLASS**

**OWENS ELECTRIC**  
**Electric Contracting — Sales and Service of**  
**New and Used Motors and Controls**  
**Magnitos, Starters & Generator Repair**  
**Loan Motors Available**  
**Off. Phone 364-3572**  
 809 E 2nd Hereford, Texas

**RALPH OWENS & ASSOCIATES**  
 311 Park Ave. . . . Realtor,  
**PHONE 364-2222**  
 SUNDAYS AND AFTER 5:30 P.M.

Jeane Coker 364-5439  
 Sam Long 364-0381  
 Ralph Owens 364-2560



**MERRY CHRISTMAS and HAPPY NEW YEAR**  
 From  
**RALPH OWENS and ASSOCIATES, INC. -364-2222**  
 SUNDAYS AND AFTER 5:30 P.M.

Jeane Coker 364-5439 Sam Long 364-0381 Ralph Owens 364-2560

**Let Us Help You Select Just the Right House to Fit Your Needs & Desires!**



**Trees ...**

(Continued From Page One) known as Berve school, also had the usual community tree and program at the school house according to Mrs. Bess Werner, one of its first teachers. Mrs. Werner had come from Missouri where living conditions were more comfortable but where children also hung up long knitted stockings for an orange, an apple and a few

pieces of candy. They usually received one toy such as a doll or drum. A big occasion was coming by sally to shop at the general store where long tables were piled high with calico of all colors. Sometime they had on the Christmas menu antelope, killed by the sheriff because they were eating up the feed for the mules. Mrs. Lester Galley, another early teacher at Askren school northeast of Hereford, remembers one of the outstanding e-

vents as coming into town, across the prairie, with Mrs. Hershey, mother of Horace Hershey, and Mary Mrs. Mary Ella Ricketts. She boarded in their home and she and Mrs. Hershey made the trip by buggy and spent the entire day shopping. They were until dark getting home with a buggy load of packages. Horace Hershey tells about a peach tree they decorated one year with a sheet at the bottom for snow and the usual popcorn for garland.

In the Jumbo Community tree and program at the school was an annual event. Mrs. M.L. Simpson Sr., longtime resident of Jumbo, says the best part of their Christmas was filling the children's stockings. When the Lawrence Johnson family arrived from Iowa by immigrant train in the spring of 1908 to make their home in the Summerfield community, fruit trees were in bloom and it was snowing.

The Robertson boys, Clyde, Jack and Wiley, usually made a four-day trip to the breaks near Glen Rio for the community Christmas tree each year but on a few occasions snow was too deep to make the trip.

Ray Johnson tells about a ladder they decorated one year and another time they brought in a plum tree to decorate.

His parents were Scandinavian so it was a traditional for his mother to have fish on Christmas Eve. They sent north for lutefish which had to be soaked before they were cooked.

They shopped by buckboard in Amarillo taking three days for the trip. They went around by Canyon to what is now South Washington Street and crossed the railroad twice and opened 56 gates.

Ray bought his first long pants at White and Kirk store in Amarillo.

Another old-timer whose family had preceded her to the Plains said the most beautiful sight she could remember was looking down into the family dugout home out on the edge of Tule Canyon to see the fire in the fireplace and the dirt walls covered by white for the holiday.

Every Christmas has its own magic and each family should establish its own tradition to be carried over into the lives of their children.

Christmas magnifies the goodness of man and the conviction we can live thoughtful, generous lives; that, after all, is what Christmas is all about.

Larry Saks of Vancouver, Wash., will captain Army's 1972 soccer team.

Jack Ryan is in his 13th season as swimming coach at the U.S. Military Academy.

Last season the New York Knicks won 32 of their 41 regular season home games in Madison Square Garden.

**Initiates honored with tea**

An orientation tea in the home of Mrs. T.E. Braddy introduced three initiates to Delta Xi Chapter, Beta Sigma Phi, Background information concerning men educators was given in a holiday setting at the Braddy home.

Mrs. Charlie Higgins, Mrs. Roland Hairgrove and Mrs. Richard Sims are the three new chapter members, who were introduced by Mrs. J.D. Neill, president.

Purposes of Delta Kappa Gamma were presented by Mrs. Fred Mercer Mrs. Charles Bell and Mrs. Claude McDougal added information.

Mmes. J.J. Durham, Bob Wilson and Don Waters were hostesses with Mrs. Braddy to serve tea.



TO RETIRE SOON — James Hull, right, Deaf Smith County Electric Co-op manager, congratulates Albert 'Fuzzy' Farris upon completion of 43 years of service with the electrical utility industry. At left is Farris' wife, Susie.

**'Fuzzy' Farris to retire after 43 years of service**

Albert Farris, better known as "Fuzzy," will complete a lifetime of dedicated service to Deaf Smith County REC at the end of 1971.

Altogether, Farris has devoted 43 years to the electrical utility industry serving as apprentice lineman, lineman, trouble shooter, meter reader and shop

man. He would have to be considered the best known employee of the Co-op throughout the area. He went to work as a trouble shooter in 1940, and except for about six years after the war, has continually worked as an employee of the cooperative. Even before 1940, he worked as a line-

man for the construction contractor who built some of the first cooperative lines.

In 1959, Farris suffered a heart attack which forced him to retire from active lineman work. However, he had always taken great pride in being a "jack-of-all trades" and assuming the co-op's shop duties was perfectly suited for his many talents.

Farris admits that he has had very little formal training in the many crafts in which he is proficient. Nearly all of his accomplishments have been taught by old trial and error method. He has that mysterious special knack for being able to fabricate or repair almost anything out of the spare parts and equipment he has accumulated over the years.

When asked if he can make a certain thing, he says, "Show me a picture or tell me what you want and I can make it." In taking inventory of his talents, it is found that he is a pretty fair electrician, carpenter, plumber, painter, metal smith, mechanic, machinist and general all-around repair man.

A large portion of his time is spent in the shop checking and repairing transformers and breakers. However, he is called on to fill in as a meter reader, equipment operator and many other jobs that do not require him to climb poles.

He and his wife, Susie, live at 523 Blevins Street in Hereford. They have a theory that to stay happy one must stay busy. She is an accomplished artist and receives a great deal of pleasure in her painting.

Farris plans to spend much of his time after the first of January tending to his "no-telling" how many hives of honey bees. Much pleasure as well as profit, he says, is derived from his bees. He also is considering opening his own repair shop and share his vast talents that the co-op employees have learned to appreciate with the entire community.

Majestic Prince, 1969 Kentucky Derby winner, was sold by Spendthrift Farm to Frank McMahon for \$250,000 at the 1967 Keeneland yearling sales.

Read The Classified Want Ads!

**Hospital notes**

**PATIENTS IN HOSPITAL**

Mrs. J.J. Clark, 711 25 Mile Ave; Mrs. E.O. Dixon, Rt. 1; Mathias Jesus Castillo, Rt. 4; Mrs. Georgia Rodriguez, 307 Ave. K.

William Roger Metcalf, Box 343; Mrs. Otto Olson, 407 W. 4th; Mrs. Dorcy C. Allmon, 419 Star; Mrs. Charles Vernon Darden, 111 Ave. J.; Mrs. R.A. Fullwood, 206 McKinley.

Mrs. Seale Stevens, 227 Ave. K; Mrs. William J. Thomas, 109 Centre; Della Stagner, 304 Union; William Jesse Thomas, 109 Centre.

James English Black, 508 W. Third; Mrs. Darrell L. Flood, Star Rt; Mrs. Irua Alice Orr, 808 Brevard; Mrs. Fred F. Collett, 118 Aspen; Mrs. Donnie Huckert, 914 Cherokee.

**DISMISSALS**  
Jerry Donald Cooper, Pedro F. Ramirez 12-22.

Teresta Gonzales 12-21. look who's new st hed

Mr. and Mrs. Dognie Huckert are the parents of a daughter, Jena Adele, born Dec. 23. She weighed 7 lbs. 1 1/2 ozs.

**Cattle dipping is requirement now**

Two neighboring states have now placed a dipping requirement of Texas cattle in the fight against sporadic scabies (cattle scab).

Kansas and New Mexico have requested a dipping requirement on all cattle entering these states from the 34 Federal Quarantine Counties and also including Cochrane, Hockley, King, Dickens, Lubbock and Crosby.

These added a buffer zone by Kansas and New Mexico. Anyone shipping cattle to these two states must abide by

the dipping requirements, that have been imposed. Please encourage your producers to check with your state veterinarian for specific requirements for the appropriate state. Cattle will be turned around at the state line of these two states if they do not meet up to the requirements imposed.

California, Colorado, and South Dakota are also reported to have embargoes on Texas cattle.

Another confirmed case was found in Collingsworth and Tillman County in Oklahoma.

**Community calendar**

**JANUARY**  
7—Texas-New Mexico Sugar Beet Growers Assn, annual business meeting, 2 p.m., Community Center.

8—Annual banquet of Texas-New Mexico Sugar Beet Growers, 7:30 p.m. County Bull Barn.

20—Annual Chamber of Commerce Banquet at Bull Barn, 7:30 p.m.

21—Campfire Father-Daughter Banquet, 7 p.m. at Bull Barn.

22—Campfire Mother-Daughter Tea, 2-4 p.m. at Bull Barn.

27-29—Annual Livestock Show, Bull Barn.

**FEBRUARY**  
14—Deaf Smith County chapter TSTA general meeting, 7:30 p.m. at high school auditorium.

17—L'Allegre Study Club musical review featuring Mary Ellen Vincent, 8 p.m. at high school auditorium.

**Supper starts caroling trek**

Carolers who drove to a number of the scattered farm and ranch homes in Northwest Deaf Smith County Wednesday evening, taking the Christmas spirit in song, were entertained before they began their rounds with a fondue supper in the Charles Burk home.

In the party were young members of Bippus Community Church, accompanied by several adults. Some out-of-state visitors, Mrs. Jack Dowd and children, Jackie, Robbie, and Randy, here from Indiana as holiday guests of Mrs. Jack Fortenberry and other relatives including the Jimmie Bradley family, also went along.

Guests helped prepare the fondue which featured the supper

which Mrs. Burk served. The home was brightly decorated for the holiday, and candles in Christmas arrangement centered tables where guests were seated.

Carolers included Mary Ruth, Charlene and Joe Don Weaver; Jerry, Bill and Sahnron Homfeld; Beverly and Jeff Bradley; Glenda and Kevin Sifford, Shelly and James Banks, Debbie Hudson, Donna and Kay Whitson. Adults with the party were Mr. and Mrs. C.F. Homfeld, Mr. and Mrs. Jack Weaver, Mr. and Mrs. Bradley, Mrs. Lou Hall and Mrs. Kenneth Homfeld.

Les Alm of Phillips, Wis., will captain Army's 1972 cross country team. He is 5-foot-7 and 130 pounds.

**Every Week at ...**  
**BIG DADDY'S**  
**RESTAURANT**

— Special —  
**SUNDAY BUFFET**  
Give Mother a Surprise.  
Dine out this Sunday!  
**\$1.85**

Wednesday  
6 P.M. to 10 P.M.  
**FRIED CHICKEN**  
All you Can Eat **\$1.49**

Friday  
6 P.M. to 10 P.M.  
**Mexican Food Buffet \$1.65**

Noon  
**BUFFET**  
Every Day  
Delicious Foods  
Wonderful Selection  
**ONLY! \$1.70**

Home made Hot Biscuits served every morning with Breakfast ...  
"Hwy 60 East of Hereford — at the Big Daddy's Sign!"

**HEREFORD RADIATOR**  
Frame and Axle  
Repair  
116 Avenue K  
**DEPENDABLE SERVICE**

**\$1 Coupon Savings \$1**  
Coupon worth \$1.00  
off your next plumbing.  
Heating Service call.  
**HEREFORD PLUMBING & HEATING**  
364-6500  
24 HR. EMERGENCY SERVICE  
Licensed, Bonded, Insured **\$1**

... NOW SHOWING ...  
MAMMOTH EXCITEMENT!  
THE GREATEST WILD LIFE SPECTACLE OF THE WORLD!  
**WALT DISNEY'S THE LIVING Vanishing Prairie**  
TWO GREAT ACADEMY AWARD WINNERS!  
SHOWTIMES:  
12:45 - 2:05 - 3:20  
4:40 - 5:55 - 7:15  
8:30 - 9:55  
**STAR 364-2037**

This dude gives you the word... while this dude gives you the hustle!  
James Garner Con **Skin Game** tou Gossett  
Susan Clark  
SHOWTIMES:  
1:40 - 3:35 - 5:30  
7:30 - 9:30  
**STAR 364-2037**

Like a Female Mantis, to LOVE her, you have to BITE!  
**MANTIS "LACE"**  
PLUS  
FANDANGO  
GATES OPEN - 6:45  
SHOWTIMES - 7:00  
**TOWER DRIVE-IN**

3 BIG SPANISH NIGHTS  
TUESDAY - WED. - THURSDAY  
**CARLOS PINAR KARLA** A COLORED  
**Cristo 70**  
EL HOMBRE QUE MATO A BILLY THE KID  
GATES OPEN - 6:45  
SHOWTIMES - 7:00  
**TOWER DRIVE-IN**

**A DOUBLE DOSE OF TERRIFYING EVIL!** WATCH! LISTEN!  
**NIGHTMARE ALLEY!**  
TUESDAY DEC. 28th 10 P.M.  
All Seats \$1.00  
LOOK WHAT WE'VE DUG UP FOR YOU... A FULL EVENING OF GHOSTLY DELIGHTS!  
You've Never Dreamed of Such a Wild, Chilling, Terror-Filled Experience!  
HOLIDAY EXCITEMENT  
CAN YOU TAKE IT? WE'LL GIVE YOU A SPECIAL BRAVERY AWARD... IF YOU CAN!  
**VELVET VAMPIRE**  
**2 SCREAM OF THE DEMON LOVER**  
**STAR 364-2037**  
A NIGHTMARE OF TERROR and SHOCK!

**HOLIDAY ENTERTAINMENT FROM COMMONWEALTH THEATRES**  
Come along and meet UNCLE OLLIE, HANSHAL MOUSE, a Crazy Cat named CASPER, THUMBELINA, THE LUGY DUCKLING, THE LITTLE MATCH GIRL, and THE RED SHOES.  
ALL COLOR! ALL NEW! ALL WONDER-FULL!  
**"THE WORLD OF HANS CHRISTIAN ANDERSEN"**  
MON. SHOWTIMES:  
TUES. & WED. 12:30 & 2:00  
**STAR 364-2037**

**NEW YEAR'S EVE -- ALL NIGHT CYCLE-RAMA**  
1 BURY ME AN ANGEL  
2 ANGELS DIE HARD  
3 WILD REBEL  
4 HELL ON WHEELS  
4 Hot Hogs! Cool Babes!  
TURNED-ON WILD ONES!  
Friday Dec. 31  
GATES OPEN 6:30 P.M.  
COME EARLY NOTHING REPEATED  
**TOWER DRIVE-IN**

### Marriage announced

Mr. and Mrs. L.A. Smith are at home in Hereford after their recent marriage in a noon ceremony at the home of Mr. and Mrs. B.B. Breeding, 511 Avenue K. Mrs. Smith was Mrs. Bessie Lindsey before the marriage.

Officiating for the wedding was the Rev. J.L. Bozman, pastor of Temple Baptist Church. Close friends of the couple, both longtime residents of this city, were present for the ceremony and a luncheon afterward.

Included were Mr. and Mrs. Joe Evans, Mr. and Mrs. George Petree and Mrs. Bozman.



### THE INFORMED CONSUMER

BY CRAWFORD C. MARTIN  
Attorney General of Texas



Referral selling is a sales scheme whereby purchases are induced on the representation that the cost to the buyer will be reduced by commissions he will earn by referring the seller to other prospects. In short, it is a method generally used to market an over-priced product or service, and it is designed to induce the reluctant consumer to enter into a contract which legal-

ly obligates him to pay for the merchandise or service.

A prospective customer may be contacted through newspaper advertising, telephone solicitation, or by a door-to-door salesman. The products typically are home fire alarm systems, aluminum siding, some household appliances such as vacuum cleaners, and promotional land sales. The initial approach may consist of an invitation to participate in a money-making opportunity or a chance to receive the product or service at no cost.

The consumer who encounters one of these referral sales schemes would be well-advised to note the following. First, a product or service which is probably over-priced must be purchased before participation in the scheme is allowed. Second, it is common for the salesman to make exaggerated representations of potential earnings to be made by referring other persons to the company who will agree to listen to the sales presentation. Third, the salesman may attempt to convince the consumer that he is getting the merchandise free because the referral commissions will pay for the product. Finally, the market for the product will be-

## Federal Land Bank reduces billing rate

Woodrow B. Wilson, Manager of the Federal Land Bank Association of Hereford, announced today that The Federal Land Bank of Houston will reduce the interest billing rate on variable rate loans to 7 per cent. "This reduction will be effective January 1, 1972 on all variable rate loans and affects more than 177 million dollars in loan volume to more than 5,000 Texas farmers and ranchers," Wilson said.

The variable rate loan plan which was introduced by the Houston Bank in July, 1969, lets the interest rate "float" over the variations in the money market. This is the third time in the

past year that the billing rate has been reduced.

"Continued improvement in money market has made this reduction possible and is in line with the Bank's policy of providing farmers and ranchers of Texas credit at the lowest possible cost consistent with sound business practices," Wilson stated.

The Federal Land Bank of Houston makes long term real estate loans throughout Texas. The Bank has over 573 million dollars in volume of loans outstanding.



Mr. and Mrs. L. A. Smith longtime residents wed

# DUCKWALL'S

SUGARLAND MALL --- HEREFORD, TEXAS

## AFTER CHRISTMAS CLEARANCE

Sale Starts Monday December 27th



**BOUNTY PAPER TOWELS** 3 Rolls For **83¢**  
Jumbo Roll 43¢ Value

**SCOTT TOILET TISSUE** 2 Pkg. For **66¢**  
4 Rolls in Pkg. 51¢ Value

**HANDI-KUPS - 51 Foam Cups** **33¢** Pkg.  
7 oz. Size 49¢ Value

GET THE DEAL THAT BEATS ALL

NEW

1971 Hornet 2 door sedan, 6 cylinder, standard transmission, tinted glass, heavy duty cooling system.

**FOR ONLY \$59.00 MONTH**

Here's How:

LIST PRICE	\$2354.20
LESS DISCOUNT	\$260.20
LESS EX. TAX REF.	\$119.87
DOWN PAYMENT	\$174.13
SALE PRICE	\$1974.13

APR. 11.08 \$1800x36 \$59.00

Hereford's Only Authorized American Motor Dealer come by and see the new '72!

**'69 LINCOLN CONTINENTAL**  
2-dr. Hard top, white with black vinyl roof, loaded, extra nice prestige car. **\$3795**

**'71 AMBASSADOR BROUGHAM**  
4-dr. V-8, auto. trans., air, R & H, tinted glass, yellow/white vinyl roof. Low Mileage. **\$2999**

**'71 CHEVROLET IMPALA**  
4-dr. Hard top. Red with white vinyl roof, 350 V-8, hydramatic trans., Power steering & brakes, factory air, tinted glass. **\$3395**

**'68 OLDS 88**  
4-dr. Sedan, V-8, automatic trans., power steering & brakes, factory air, tinted glass, w/w tires. **\$1995**

**'67 CADILLAC COUPE DE VILLE**  
auto trans., power steering & brakes, air conditioning. A real beauty at only **\$2295**

**'70 MONTE CARLO**  
2-dr. Hard top; 400 engine, hydramatic trans., bucket seats, R & H, power steering & brakes, factory air, whitewall tires, red with black vinyl roof. Only **\$3195**

**'68 CHEVROLET BELAIR**  
4-dr., 327 V-8, powerglide, R & H, power steering and factory air conditioning. **\$1895**

**'69 VOLKSWAGON**  
2-dr. Sedan, 4-speed transmission, radio & Heater. Extra clean car. **\$1595**

**'65 CHRYSLER 300**  
4-dr. V-8, auto trans., power steering & brakes, air. Extra clean car. **\$895**

• BARGAINS •

**'64 PONTIAC GRAND PRIX**  
V-8, auto trans., power steering & brakes, air conditioning. Check this one out-at **\$495**

**'63 PONTIAC**  
4-dr. Sedan, V-8, auto trans., R & H, air conditioning. **\$395**

• OLD DOGS •

**'60 CHEVROLET** 4-dr. Cash **\$145**

**'64 DODGE DART** 4-dr. Cash **\$145**

**BUDGET AUTO SALES**  
Next to Wac Seed -- South of Caison House  
Phone 364-6981



**Ladies' KNIT SHIRTS**  
50% Polyester 50% Cotton. Slightly irregular. **\$1.88**  
Sizes S-M-L \$4.00 Value

**Ladies' SLACKS**  
Flare leg style. Many fabrics and colors. **\$3.33**  
Sizes 8 to 18 Values to \$7.99

**Girls' KNIT TOPS**  
Long sleeves. Patterns & solids. **2 For \$3.00**  
Sizes 7 to 14 \$1.99 Value

**Girls' SLACKS**  
Bonded Acrylic in great colors. **\$2.44**  
Sizes 7 to 14 \$2.99 Value

**Children's TIGHTS**  
100% Stretch Nylon. Many colors. **88¢**  
Sizes 1 to 10 \$1.29 Value

**Ladies' CHAIN BELT**  
Choose a style to accent your fashion. **88¢**  
\$1.49 Value

**Ladies' & Teens' SLIPPERS**  
Crinkle patent vinyl in charming styles & colors. **88¢**  
\$1.00 Value

**POLYESTER THREAD**  
Black or White Size 50. **14¢**  
29¢ Value

**Shredded FOAM**  
1 lb. Bag White. **37¢**  
59¢ Value

**Ladies' PANTY HOSE**  
One Size Fits All. Assorted Colors. **77¢**  
99¢ Value

**No. 1212 Photo. Frame GRAPHICUBE**  
Sparkling clear plastic. Displays 5 photos. **88¢**  
\$1.19 Value

**3 Minute POPCORN**  
A treat for any evening. 4 lb. Bag. **47¢**  
59¢ Value

**CASHEW HALVES**  
14 oz. Bag **83¢**  
99¢ Value

ORNAMENTS  
GIFT WRAP

**1/2 OFF**

**Polaroid COLOR FILM** \$3.77  
Type 108 3 Days Only

**Kodak COLOR FILM** 93¢  
CX 126 12 3 Days Only

**Sylvania FLASHCUBES** 88¢  
3 in Pkg. 3 Days Only

• Hosiery  
• Ladies' Slacks  
• Ladies' Blouses  
• Ladies' Knit Tops  
• Girls' Slacks  
• Girls' Knit Tops  
• Men's and Boys' Sport Shirts

**SAVE SAVE SAVE**

**1/3 OFF**

Not all items in each category included in clearance. Check our clearance counter for hundreds of items reduced to sell. One of a kind overstocks Buyers mistakes and slightly damaged merchandise at big savings.

Sale Starts Monday December 27th

**BATH TOWELS**  
Big fluffy towels. Slightly irregular. Choose from many styles and colors. Stock up now. **\$1.17**  
\$2.49 Value

**TV PILLOWS**  
22" pillow in lovely floral print designs. Soft Celacloth filled. **\$1.77**  
\$2.29 Value

**PUZZLES**  
600 interlocking pieces. Hours of fun for every one. Colorful selection. **2 For 77¢**  
57¢ Value

**Men's & Boys' GLOVES**  
9 oz. brown Cotton Jersey gloves. **33¢**  
44¢ Value

**TOOL ASSORTMENT**  
Grand assortment of tools for your work shop or kitchen. **73¢**  
99¢ Value

**PLASTIC HOUSEWARES**

- 30 Qt. Lift Top Wastebin
- 1 1/2 Bu. Laundry Basket
- 20 Gal. Trashcan • Sink Set

**YOUR CHOICE \$1.66**  
Values to \$3.44

**CARPET REMNANTS**  
Can be used as fatigue mat, door mat or in the car. 18" x 27" **97¢**

**60-Minute BLANK CASSETTES**  
3 hours of recording time. \$1.99 Value 3 in Pkg. **1.27** Pkg.

**STORAGE UNIT BOOKSHELF**  
4 shelves with walnut look finish. Sleek post and end bars have pewter finish. 10" x 30" x 36" Model No. ID002 **\$5.88**  
\$8.95 Value

# The Sunday Brand

Published Every Sunday

Our Slogan: "More People—More Farms"

**17**  
TOP  
FAVORITES

**6**  
PAGES  
FULL COLOR

# THE WORLD'S GREATEST COMICS

SUNDAY, DECEMBER 26, 1971

## Prince Valiant

IN THE DAYS OF KING ARTHUR  
BY HAL FOSTER



**Our Story:** THE LITTLE BIT OF MISCHIEF THE TWINS HAD THOUGHT WOULD BE AMUSING HAS GOTTEN OUT OF HAND AND DRAMA HAS TAKEN ITS PLACE. FOR THE MOTHER OF THE RUNAWAY BRIDEGROOM IS CREATING AN UPROAR.



WHILE THE FATHER OF THE JILTED GIRL QUIETLY HIRES TWO COMPETENT ASSASSINS TO AVENGE THE INSULT TO THE FAMILY HONOR.



THIS PROMISES TO DEVELOP INTO ONE OF THOSE BLOOD FEUDS BETWEEN TWO GREAT FAMILIES. ONE THAT MIGHT LAST A HUNDRED YEARS. THE QUEEN HAS THEM BROUGHT BEFORE HER.



THE MOTHER OF THE BOY TELLS HER TALE OF WOE, DEMANDING THE MISTY MOUNTAINS BE SEARCHED FOR HER MISSING DARLING. THE QUEEN LISTENS QUIETLY JUDGING. SHE ALSO NOTICES THAT HELEN, THE JILTED GIRL, IS MORE INTERESTED IN WHAT AMIENS IS SAYING THAN OBTAINING JUSTICE.



IT IS TIME TO BRING FORTH THE FUGITIVE. HIS SOJOURN IN THE STABLE HAS NOT MADE 'ZANEY' ANY MORE LOVABLE. "YOU COMMONERS DO NOT KNOW HOW THE NOBILITY SHOULD BE TREATED. I DEMAND QUARTERS BEFITTING MY RANK!" "BE QUIET AND FOLLOW US," KAREN ORDERS.



ZANEDON IS UNEASY AS HE FOLLOWS HIS GUIDES. HE HAD EXPECTED BETTER QUARTERS, BUT NOT THE GRANDEUR OF THIS PALACE.



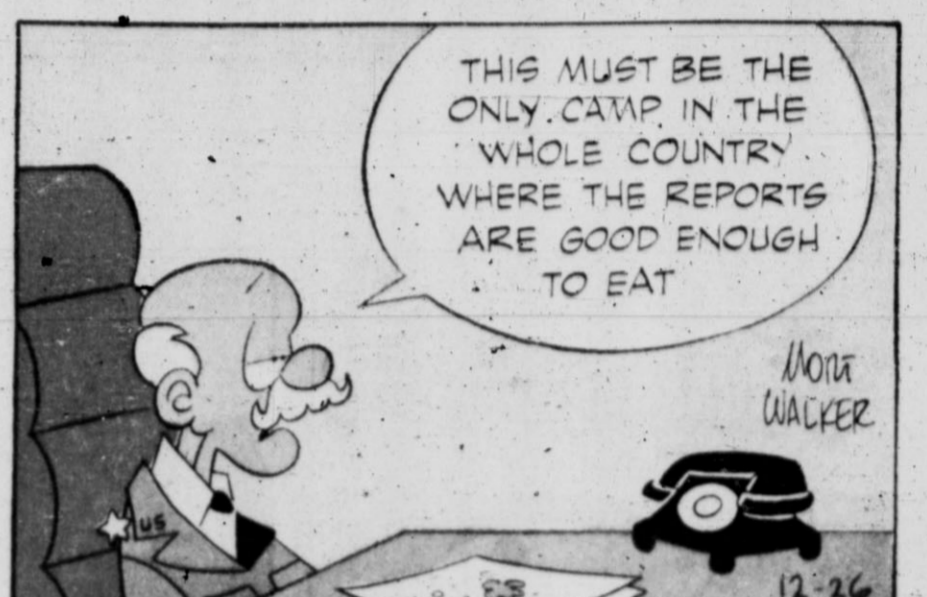
GREAT CURTAINS OPEN AND ZANEDON FINDS HIMSELF IN THE AUDIENCE CHAMBER. THERE SITS THE QUEEN AND BEHIND HER THE GREAT PRINCE VALIANT, WHILE THE TWO LITTLE COMMONERS TAKE THEIR SEATS ON THE DAISY. OH, WHAT HAS CRUEL FATE IN STORE FOR HIM NOW?

NEXT WEEK - The Vital Question 12-26

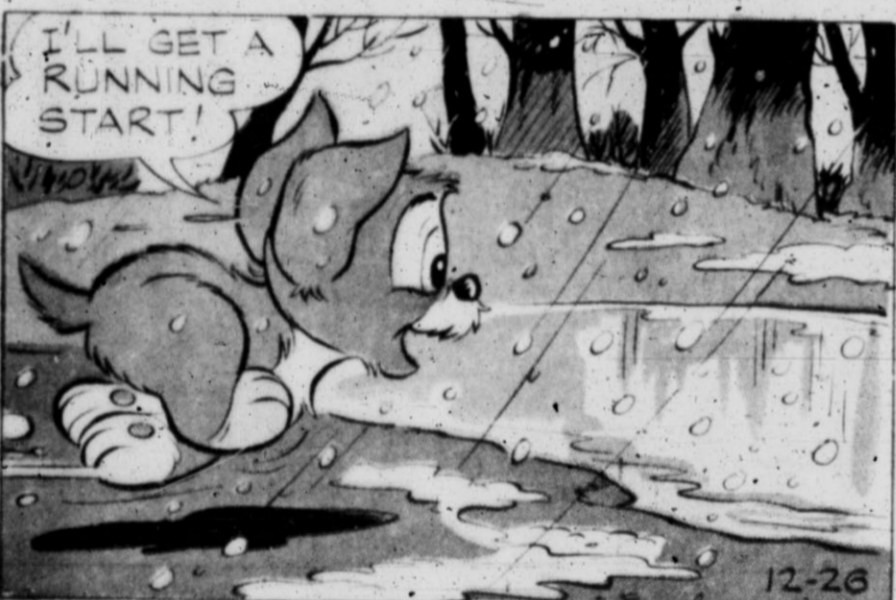


# beetle bailey

by mort walker



# WALT DISNEY'S SCAMP



# BARNEY GOOGLE and SNUFFY SMITH

by FRED LASSWELL



# AIRCHIE

by BOB MONTANA



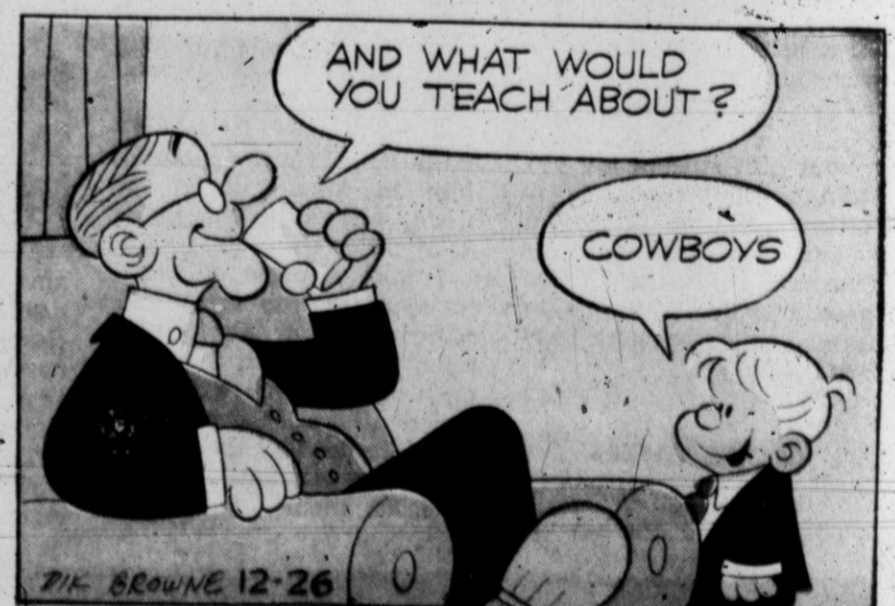
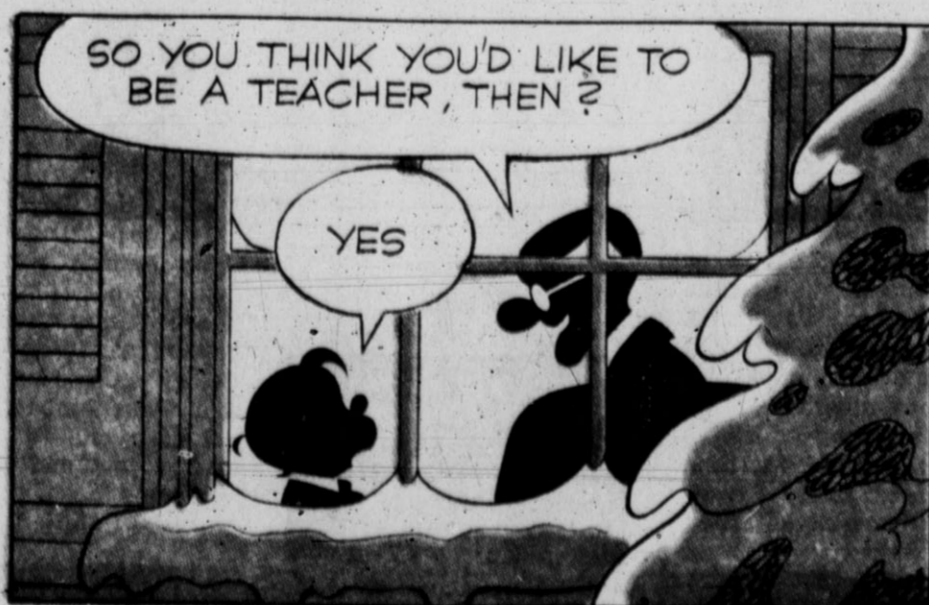
# BRINGING UP FATHER

by BILL KAVANAGH & FRANK FLETCHER



# Hi and Lois

by MORT WALKER and DIK BROWNE



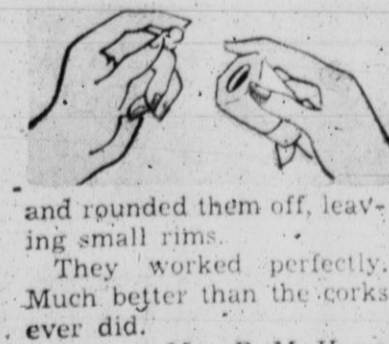


# PONYTAIL BY LEE HOLLEY



## hints from Heloise

**DEAR HELOISE:**  
While I was filling my salt and pepper shakers today, I discovered that the little corks in the bottom had become too small and no longer would stay in place. The salt and pepper leaked out all over the table. I suddenly thought of some old suspender buttons



and rounded them off, leaving small rims. They worked perfectly. Much better than the corks ever did.

Mrs. R. M. Hawn

Your hint started my old brain to clattering and it occurred to me that the supporters off your old girdles would also work for those who don't happen to have any old suspender buttons handy.

Heloise

**COOKIE CAPERS**  
**DEAR HELOISE:**  
I have found another use

for my ever-so-useful melon baller. When making cookies, use the small spoon to mash the top of the cookie for jelly, jam, etc. Makes a uniform size and it's faster than placing a floured thumb to indent the dough.

R. A.

**DOLLY'S PILLOW**  
**DEAR HELOISE:**  
When little girls play with dolls, they sometimes like to have pillows for them. Here's how I make dolly pillows:  
I take a piece of facial tissue and wrap it around some cotton or a piece of foam rubber, then tape the ends of the tissue with cellophane tape in back.  
I like to use the really pretty tissues that have designs on them.

Cindy

**COOK-OUT SPECIAL**  
**DEAR HELOISE:**  
To get your barbecue sauce on your meat evenly, mix up the sauce and put it in an empty plastic detergent bottle.  
This is so handy! You can just squeeze the sauce on the meat, right where you want it.  
(Cleaning the detergent from the plastic bottle with soda and water or vinegar works real well.)

Slim

**CALLING ALL MOMS!**  
**DEAR HELOISE:**  
It's up to mothers to be smart shoppers for the children. Whether it's shorts, shirts or socks, the first and most important qualification is washability. Their clothes lead a rugged life! They will need machine washing after every day of vigorous wear, so they

## HELP FOR HOMEMAKERS

should be selected with durability in mind for survival. Look for the little details of a garment, as well as at the fabric itself... that means the buttons, the stitching, and any trimmings. Sturdy stitching is a must. Be sure that every feature of a garment is washable.

Look to the wonderful knits... and to such sturdy fabrics as denim, cotton twill, and the stretchables. Also, look for the durable press fabrics, since there's no point in anybody getting involved with an ironing board!

Buyer for Children

**LETTER OF THOUGHT**  
**DEAR HELOISE:**  
Here is my recipe for preserving a husband!  
Be careful in your selection. Do not choose one too young and take only such varieties as have been reared in a good moral atmosphere.  
When once decided upon and selected, let that part

remain forever settled and give your entire thought to preparation for domestic use.  
Some insist upon keeping them in a pickle, while others are constantly getting them in hot water.  
Even poor varieties may be made sweet, tender, and good by garnishing them with patience, well-sweetened with smiles and flavored with kisses to taste.  
Then wrap well in a mantle of charity, keep warm with a steady fire of devotion and serve with peaches and cream.  
When thus prepared, they will keep for years.

Mrs. Gisler

**PLUM PERFECT!**  
**DEAR HELOISE:**  
By cutting out the bottom of one of the cone-shaped disposable coffee cups that fit into plastic holders, one can make a marvelous funnel.  
I used one to put plum jam in jars and it worked just fine.

Mrs. Della Heck

**BE A SCOUT!**  
**DEAR HELOISE:**  
I have a daughter who is going out of the Brownies into the Junior Girl Scouts, so I am giving her Brownie uniform and purse to the local children's home.  
Most of these homes have Scout troops, but no uniforms, and they are always eager to receive any and all uniforms possible.  
I'm sure many mothers, if they know of this, would be glad to donate their children's uniforms after they are finished with them... and the children in the homes would be so very grateful!

Another Mother

We all need reminding of this worth cause.

Heloise

**SEAMS O.K.**  
**DEAR HELOISE:**  
I have a must for your "sewing sense" section.  
Save the little short pieces of plastic-covered wires that come on bread packages.  
When shortening a garment (especially when the thread is hard to match) carefully remove the thread from the garment and wind

it around the wire, then secure the wire through a buttonhole or belt loop.  
When you are ready to whip the hem back in, you have got the tight color and amount of thread on hand.  
I have found this very handy, as often I must lay a garment aside and finish it days later.  
This idea works just as well in keeping track of zippers and buttons that are to be put on later.

Doris Ann Love

**BLUE FINGERNAILS!**  
**DEAR HELOISE:**  
Here's a great idea for all the girls who love crazy-colored fingernail polish.  
I was unable to find blue nail polish (extra frosted pearl), so I bought white and added a few drips of blue food coloring.  
It worked great... and it will work for other colors too.  
Now I have different colors of polish to go with all my wardrobe.

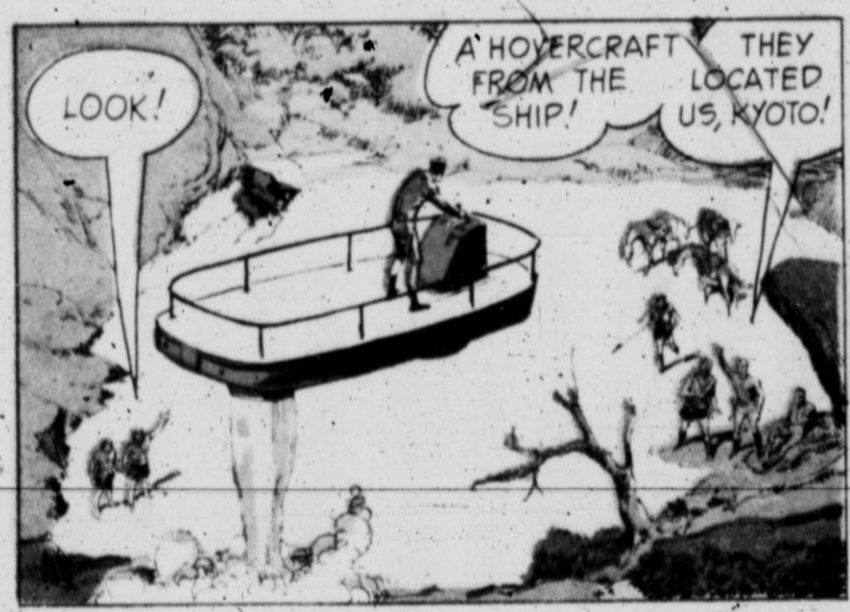
Patricia

# LITTLE IODINE



# FLASH GORDON

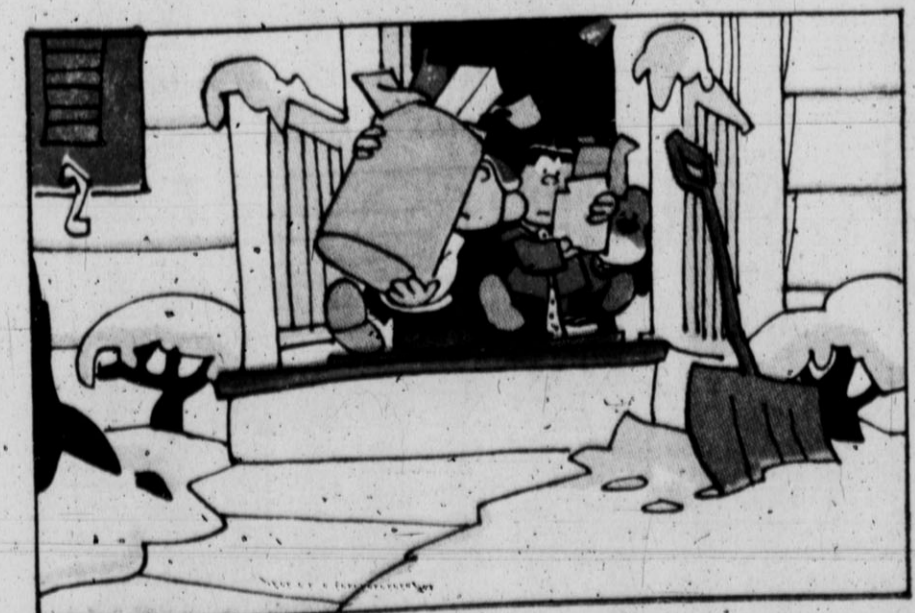
by DAN BARRY



NEXT WEEK, A NEW ADVENTURE

# TIGER

by BUD BLAKE

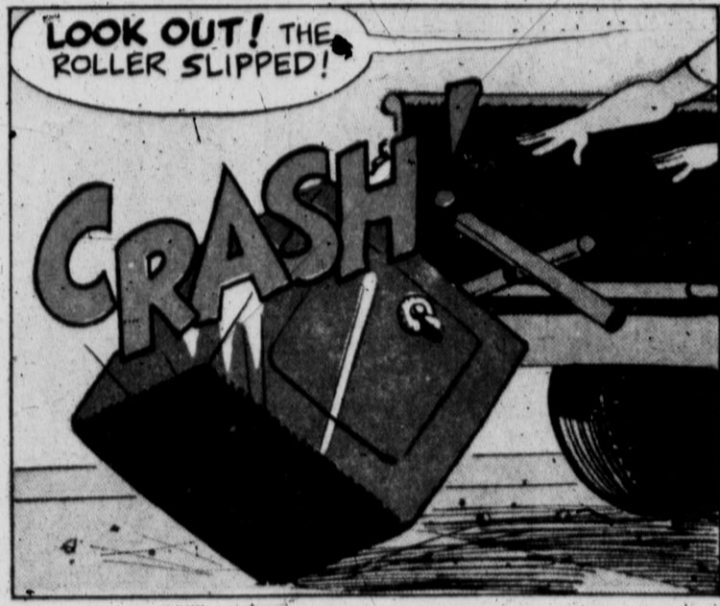


© King Features Syndicate, Inc. 1971. World rights reserved.

# BUZ SAWYER

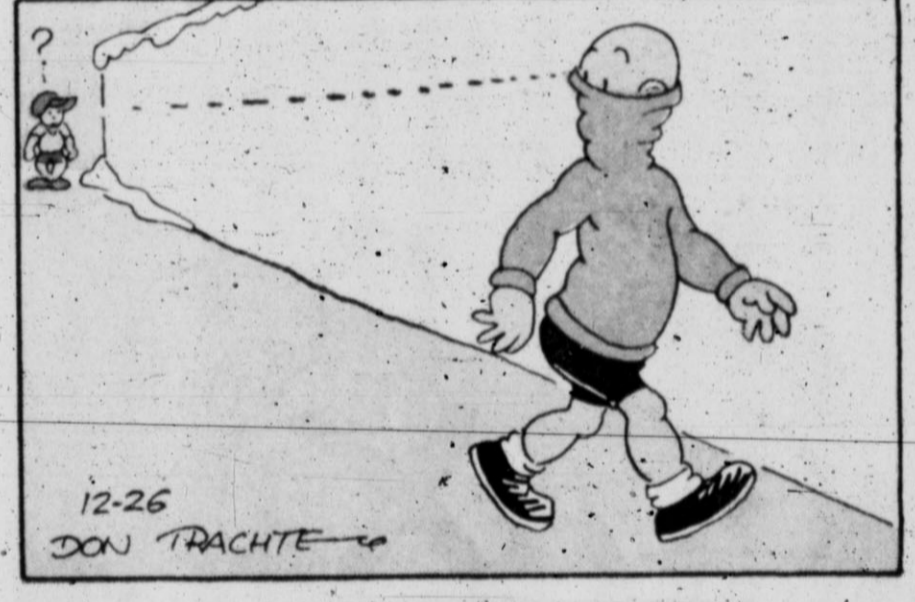
Featuring His Pal Rosco Sweeney

by ROY CRANE



# HENRY

by CARL ANDERSON



## HOCUS-FOCUS



CAN YOU TRUST YOUR EYES? There are at least six differences in drawing details between top and bottom panels. How quickly can you find them? Check answers with those below.

Answers: Move the top figure to the bottom row to the left. 1. Figure in different position. 2. Figure in different position. 3. Figure in different position. 4. Figure in different position. 5. Figure in different position. 6. Figure in different position.

## Hal Kaufman's JUNIOR WHIRL

1, 2, 3, Switch!



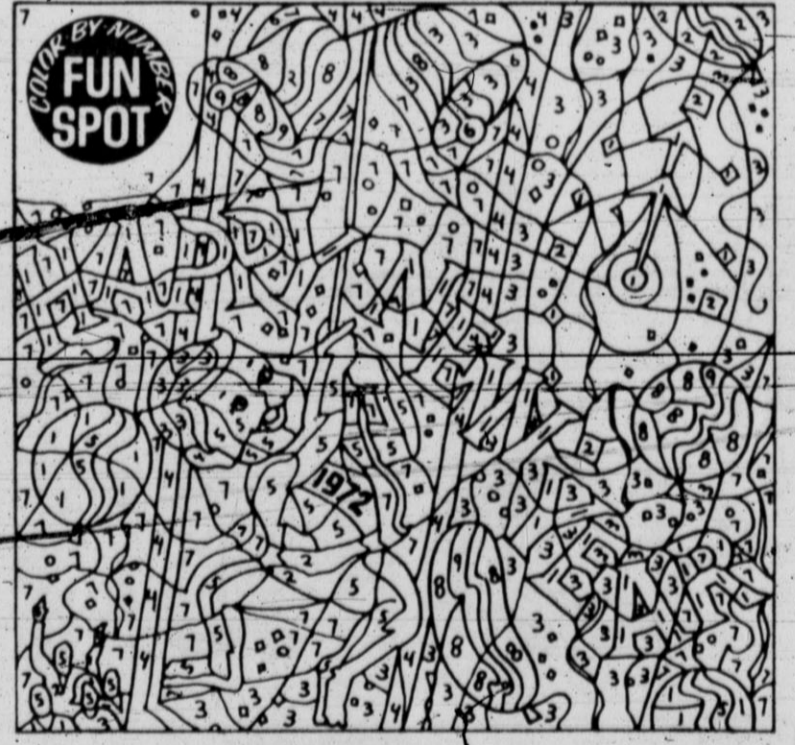
**BULLETIN BOARD**

- FOR AULD LANG SYNE: A Scotchman who wishes to save his 1971 calendar for future use can use it again at the earliest in what year? In 1982.
- Place 17 candy kisses in a row. Ask a friend to pick up 1, 2 or 3; then you do the same. Continue alternately until the one who picks up the last kiss loses. How can you always win? Whatever number your friend picks up, pick up enough more in your turn to make a total of four.
- 'Twas an old New Year's custom for English husbands to give wives enough money to buy for the whole year. Fill blank.



Beat the Band! Trombone, sax, harp, violin, cello, flute, triangle and piano are being played above. Who's playing which?

Answers: A. Cello, B. Flute, C. Piano, D. Trombone, E. Harp, F. Violin, G. Sax, H. Triangle.



IT'S A SWINGER! To join in the New Year fun above, simply add these colors: 1-Red, 2-Lt. blue, 3-Yellow, 4-Lt. brown, 5-Flesh, 6-Orange, 7-Dk. blue, 8-Lt. green, 9-Dk. green.

### SPELLBINDER!

SCORE 10 points for using all letters in the word below to form two complete words:

CALENDAR

THEN score 2 points each for all words of four letters or more found among the letters.

Try to score at least 50 points.

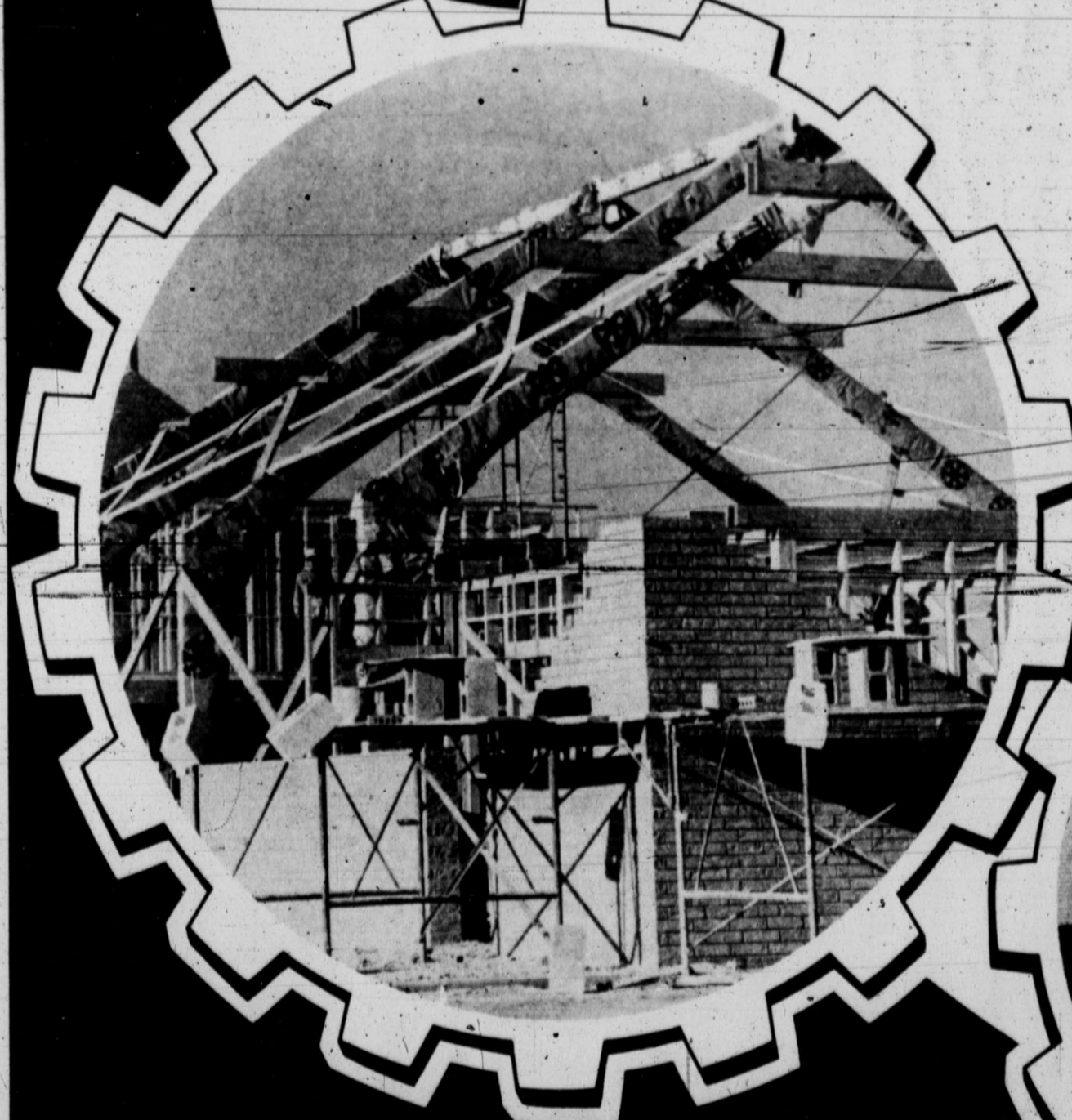
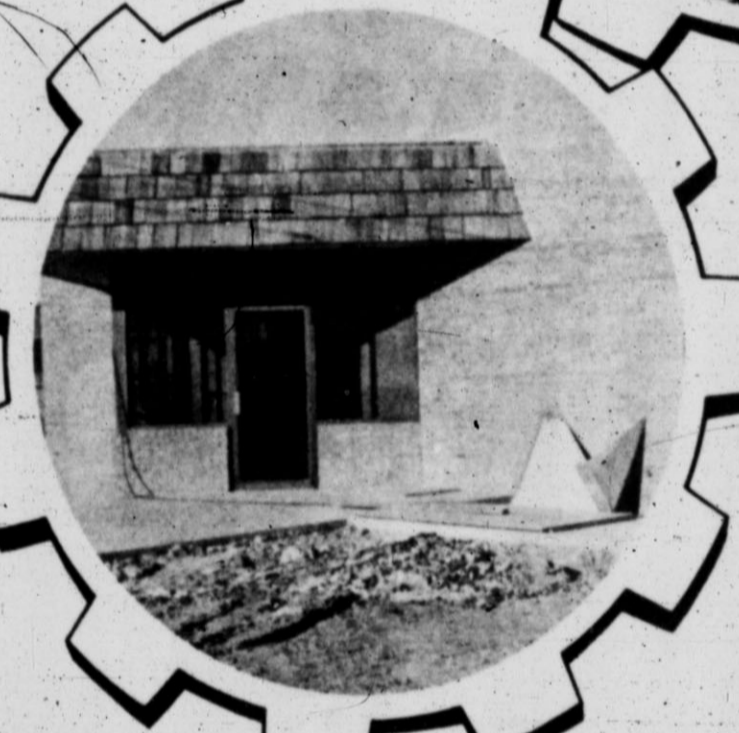
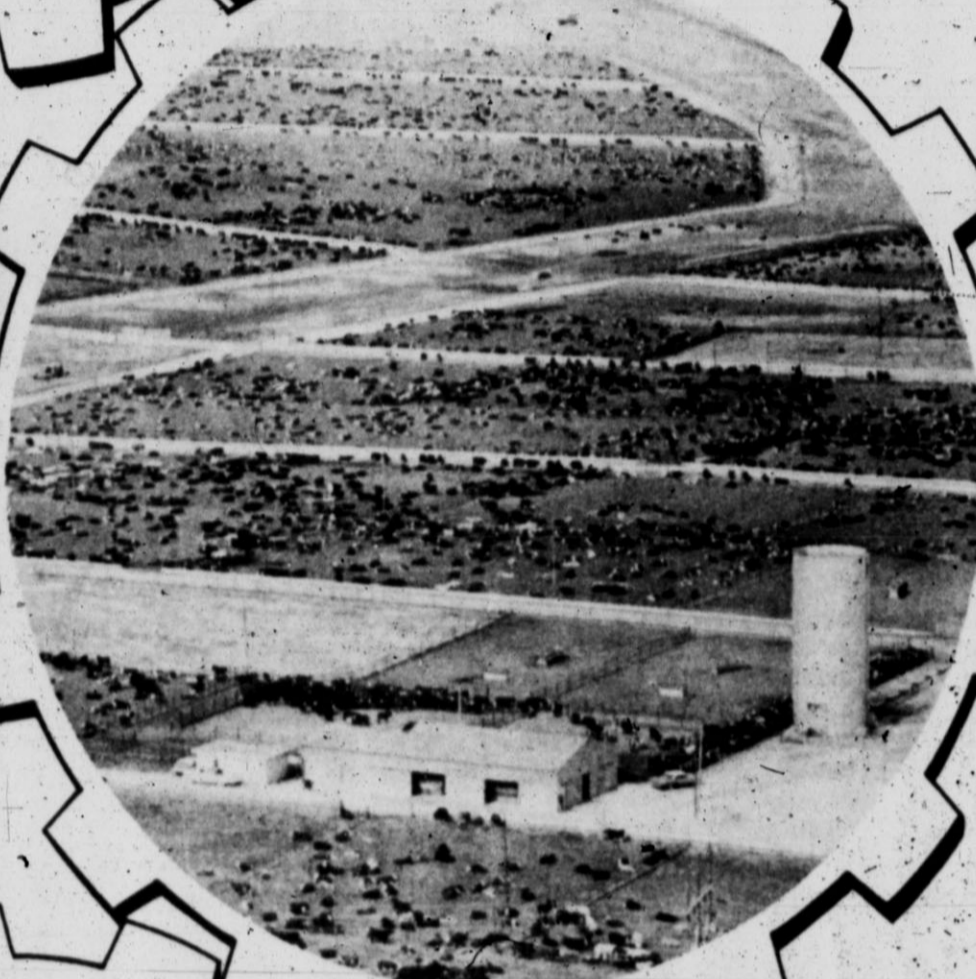
The possible answers: Bear, clam.



**GEARED  
TOWARD**

*The  
Magic Triangle  
faces 1972*

**PROGRESS**

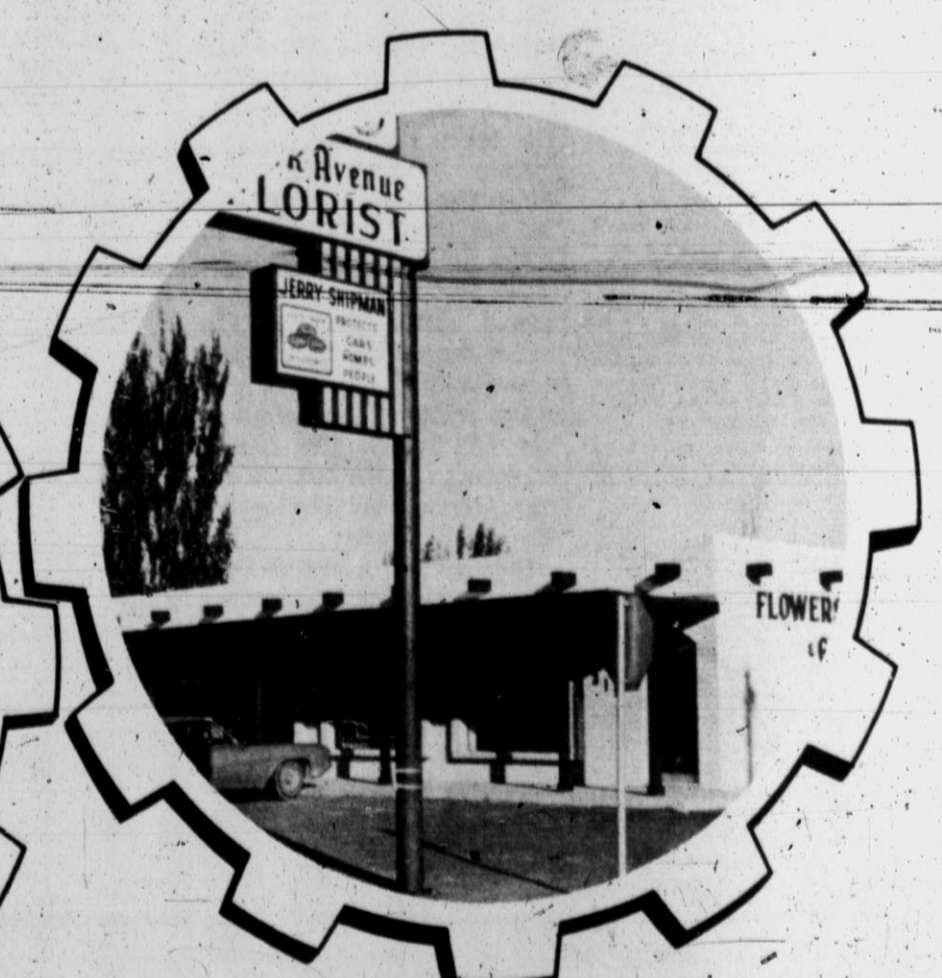


Keyed to expanding agri-business of the entire High Plains region, growth in Hereford, Deaf Smith County and adjoining counties is expected to continue through the new year ahead, as it has with only minor interruptions through the past three decades.

Cattle feeding operations with the demand they bring for more regionally-grown feed grains, are established to the point of serving as a stabilizing factor in agriculture as well as in ranching. More than usual moisture in late months of 1971 promise ample pasture grass as a further boon to the cattleman, and offer the hope of excellent crop conditions in all phases of farming.

Business and industry, which over this area reflect the fortunes of farm-ranch operations, have good reason to view the 1972 prospects with optimism after a busy holiday shopping season. Construction, accepted as an index of prosperity, has maintained a brisk pace the past year with a balance of public, commercial and residential building which goes on into the new year although winter is not the best season for the construction industry.

Plans already under way for school, park and business expansion in the city, with reports of high bank deposits and other indications of the future which is credited with much of past progress in the Magic Triangle, auger a Happy and a Prosperous New Year for all its residents.



# Highlights and sidelights from your state capital

**BY BILL BOYKIN** —

AUSTIN, Tex.—Texas Democrats were scheduled to get their first look last week at a draft of proposed new party rules which are stirring some friction among state party leaders.

State Democratic Executive Committee Chairman Roy Orr of DeSoto said the SDEC rules sub-committee will hold a public hearing on the proposals here January 12 at 10 a.m. Findings will then go to the full SDEC.

Some top-ranking party officers, including National Committeewoman Mrs. Carrin-Patman of Ganado, fear Orr has little enthusiasm for "reform" procedures recommended in the rules draft. Orr insists he has

an open mind and wants a broad-based study. Last month, he added 12 new members to the original 10-member rules-drafting panel.

Among provisions in the new rules draft are these:

- \*Those who accept party office including positions as convention delegates must pledge to support all party nominees or face removal.
- \*Eighteen-year-olds can participate in Democratic conventions.
- \*Conventions must make "every feasible effort" to encourage youth, women and minority group representation on national nominating delegations.
- \*Delegate states should reflect a fair proportion of presidential preferences in line with

the state division.

- \*At least 75 per cent of national convention delegates would be elected by senatorial district caucuses and others at-large by the June presidential-year convention on the basis of a "straw poll" on presidential preferences.
- \*Two alternatives are suggested for precinct convention delegate selection—by slates of candidates backing rival presidential contenders or by "candidate caucus."
- \*At least one third of any delegation at any level must "be of sex opposite to that of the rest of the delegation."
- \*SDEC would include three youth representatives.

**AG OPINIONS**—State Highway Department full-time hour

ly employees are entitled to the same general fringe benefits as monthly employees, but part-time employees cannot get sick leave-with-pay or group health insurance payments, Atty. Gen. Crawford C. Martin has held.

In other recent opinions, Martin concluded:

- \*The State Department of Health can purchase identifying shoulder patches for those operating public and private emergency ambulances licensed by the state.
- \*Athletic coaches not paid as "trainers" may use such devices as ultra-sound, diathermy and whirlpool on athletes without special licenses. A member of the Texas Board of Athletic Trainers may not be employed by the Board in the position of executive secretary.

**CONGRESS' PAY HELP ASKED** — Texas congressmen have been urged by Gov. Preston Smith to give their support to retroactive pay for Texas state employees and teachers.

"It is our hope that the conference committee on the Economic Stabilization Act and the Congress itself recognize the unique situation of the State of Texas with regard to the wage freeze," said Smith. "Pay raises for our state employees and teachers were approved by the Legislature, the necessary funds were appropriated and taxes were levied to support them considerably before the wage freeze went into effect."

**HOSPITAL AID APPROVED** — More than \$5.2 million in retroactive loan guarantee subsidy applications and a \$160,000 Hill-Burton program grant were approved by the State Board of Health for hospital projects.

St. Mary of the Plains Hospital, Lubbock, was cleared for a \$3,250,000 loan, and Wadley Hospital of Texarkana, for \$2 million, subject to unannounced federal guidelines. Under the loan program, the federal government insures the loan and makes a three per cent interest payment.

A \$160,000 Hill-Burton grant was awarded Brazos Valley Rehabilitation Center at Bryan.

The Board also approved a state plan outlining priority areas within the state for construction of hospital and public health centers, long-term care institutions, out-patient facilities and rehabilitation centers. Other hospital applications will be taken up in January.

**AID TO NURSING HOMES HIKED**—The State Board of Public Welfare authorized a 4.5 per cent increase in state aid to nursing homes subject to federal approval under the economic stabilization program.

Cost of the nursing home program is estimated at about \$136 million, with the federal share

at two-thirds. About 44,000 receiving welfare assistance are now cared for in 875 nursing homes.

The Board also adopted controversial federal guidelines requiring participating counties to assume full responsibility for administration of food stamp programs by next Sept. 1. The decision affects most of 29 counties providing food stamps which needy families may exchange for food.

**COURTS SPEAK**—The Court of Criminal Appeals held testimony concerning extraneous crimes involving race hatred may be allowed to establish malice in murder cases.

A Waco burglary conviction was overturned because the state failed to establish firmly that the accused man ever actually entered a warehouse where an alarm system was set off.

A marijuana possession conviction was reversed because a strong issue was raised concerning the defendant's lack of knowledge that the drug was on his property.

The State Supreme Court reversed a trial court judgment that a man injured in an elevator shaft fall was entitled to no damages and ordered a new trial.

**DDT HOUSEHOLD BAN ASKED**—Pesticide Advisory Committee of Texas approved a recommendation to suspend registration of DDT for Texas household use only after August 31, 1972.

Agriculture Commissioner John C. White has the final decision. Use of DDT for agriculture and public health would not be affected by the PACT recommendation. About half of DDT now used in the state is for household purposes. General use has dropped sharply in the last 10 years.

**OIL ALLOWABLE RAISED**—Texas Railroad Commission raised the oil allowable 4.5 per

cent for January—to 67.5 per cent of potential.

Under the January figure, maximum production is estimated at 3,510,035 barrels a day, actual production at 3,148,974. Four of 14 major buyers of crude oil requested an increase. Eight suggested the same amount, and two recommended a cut.

**APPOINTMENTS** — Sterling K. Miller of Lubbock was named by Governor Smith to the board of trustees, Municipal Retirement System, succeeding Clifford L. Davis of Amarillo who resigned.

Smith designated Burton G. Hackney as his liaison with the U.S. Department of Health, Education and Welfare in coordinating enforcement of regulations governing nursing home care in Texas.

Governor picked George F. Rhodes of Port Lavaca to serve on the board of directors of Arts and Industries University at Kingsville. He also reappointed Everett B. Braden of Edinburg and J.C. Martin Jr. of Laredo to the A & I Board.

Other appointments included Henry M. Bell Jr. of Tyler and C.O. Chandler of Victoria to the Teacher Retirement System Board.

**SHORT SNORTS**

The Texas economy has not yet recovered from a 1969-70 recession, Texas Employment Commission says.

Governor Smith dedicated the giant Christmas tree in the capitol rotunda to prisoners of war and those missing in military action.

Department of Public Safety Director Wilson Speir predicted nearly 100 deaths in Texas during Christmas-New Year's holidays.

State Board of Insurance promises the nation's toughest rules for enforcing new Texas insurance holding company systems act.

David T. Lopez of Houston is

the new special assistant for public relations on the AFL-CIO's state headquarters staff.

R.L. Thornton Jr. of Dallas was sworn in as a member of the Texas Alcoholic Beverage Commission last week.

Francis A. Miskell, University of Texas system director of state affairs, died in a Houston hospital at 47.

Governor promised all available help for flooded areas in Northeast Texas.

First meeting of the new Texas Ranger Commemorative Commission was held at Fort Fisher, Waco, December 16, to begin planning for the 150th anniversary of the famed law enforcement force in 1973.

A new public health region will serve El Paso, Hudspeth, Culberson, Jeff Davis, Presidio and Brewster counties.

Texas is in final phases of a four-step hog cholera eradication program. Producers will now have increased markets out-of-state.

Forty-one criminal justice grants totalling more than \$2.2 million received final approval.

Bentzen-Rio Grande Valley Park southwest of Mission has been reopened to the public, though trailer and restroom facilities damaged by floods are still not in service.

The second annual Vince Lombardi award dinner will be held Jan. 14 in Houston. It is sponsored by the Rotary Club of Houston.

## Home is opened en fete

Candles lit in rows across windows upstairs and down in Mrs. Jack Renfro's home on Harrison Highway, welcomed friends she invited for an informal Christmas party Sunday evening after church.

Rooms in the beautiful Georgian style house were gay with reminders of the holiday season as guests gathered for conversation.

Instead of the couples who are usually entertained at evening parties, Mrs. Renfro's list was made up of women who live alone. Congenial groups were formed to look over the rooms or just sit and talk.

Mrs. L.W. Metcalf poured tea and coffee and Hilda Havens served Christmas fruitcake as guests helped themselves to other colorful sweets.

Assisting the hostess were Mrs. Joel Hodges, Marie Cline and Mrs. Joel Hodges, Marie Cline and Hope Martinez.

The 1974 U.S. Open golf championship will be played over the West course of the Winged Foot Golf Club at Mamaroneck, N.Y.

Read The Classified Want Ads!



**HOLIDAY PARTY HOSTS** — Ready to greet guests who called at their home on Harrison Highway Saturday evening, Mr. and Mrs. Edwin Axe stand at the entry doors for the holiday open house at which they were hosts. Frosted green branches, pine cones and shining ornaments like those along the railing of the entry steps decked the big living room with its free-standing fireplace, and the dining room where refreshments were served to more than 100 during the evening.

## Allen Canslers hosts at home

Open house in their home at 533 Willow Lane was hosted by Mr. and Mrs. Allen Canslers Tuesday evening, one of the par-

**BEST DANGED DEAL!**

ALWAYS CLEAN CARS AT FAIR PRICES!

1971 American Motors Ambassador 4dr. Sedan—loaded. Black vinyl top, conery yellow lower, black vinyl trim, very very low mileage, good tires, spare never been out, this is just like new.

1971 Chev. Impala 4dr. H/top, low mileage, copper-tone color, black cloth trim, loaded with equipment, good tires, new spare, only 10 months old, save a bundle.

1971 Ford Galax. 500 2dr. H/top, solid red, with bone color interior, very low mileage, new car looks of a used car price.

1970 Chev. Imp. 4dr. H/top, loaded, black vinyl top, gray lower, black vinyl interior, here is an extra nice 70 model ready to go, ideal family Christmas present.

1964 Ford Galx. 500 2dr. H/top, 289 V8 3 spd std. trans., one owner, solid black, with beige interior, a real cream puff.

Season's Greetings from J.V. Bonnie and Mark!

**J.V. CAMPBELL MOTORS**

321 N. 25 Mile Ave 364-4492

ties which are making a gay Christmas week in Hereford.

Friends calling during the evening were greeted by the Canslers at the door where a holiday wreath was lighted by outside bulbs in seasonal colors.

A white Christmas motif was dominant inside. A flocked tree stood before windows in the living room, and the dining table was centered with a huge white candle and frosted branches. Decoration continued down the hallway to bedrooms where poinsettias and holly brought the red and green of Christmas.

Mrs. Tom Burdett ladled punch and Mrs. Roy Hartman poured coffee from a table where the refreshments added festive color.

Also assisting the hosts were Mrs. Bill Devers, Mrs. Chester Wiggins, and the couple's mothers, Mrs. Lloyd McGee and Mrs. Zearl Canslers.

The Blazers, a quartet comprising Bill Penn, Bill Devers, Dean Kelley and Bobby Boyd serenaded with Christmas songs during the evening.

The hostess was dressed for the party in deep blue velvet, floor length, with gumpes of sheer white, its puffed sleeves gathered to bands at the wrist.

**HAPPY NEW YEAR**

May each day be like a holiday... carefree and gay!

**Family Night Every Sunday at the Pizza Hut**

**BUY TWO PIZZAS (any size) AND GET ONE FREE!**

**PIZZA HUT**

1304 W. First Phone 364-5551

in the hut only! No delivery.

# Put your home on a lead-free diet.

All interior Pittsburgh® Paints are free of lead pigment.

But that's all they're missing. We didn't skimp on any of the ingredients that make our interior paints go on easily, smoothly, and dry to a beautiful, professional-looking finish.

We just left out the lead pigment: to make our paints safer for use in your home. You'll be pleased with everything we put into interior Pittsburgh Paints. And what we left out.

**"A COMPLETE BUILDING SERVICE"**

**1 Block East of the Courthouse**

Phone the Lumber Number 364-3434

**CARL McCASLIN LUMBER CO.**

**Thames PHARMACY**

170 SO. CENTRE, PHONE 364-2300, HEREFORD, TEX.

**HAVE THIS LABEL ON YOUR NEXT PRESCRIPTION**

Read The Classified Want Ads!



# Just for tired Santas...



SAVE WITH  
MIRACLE PRICES!

**TIRED OF TURKEY?  
HOW ABOUT FURR'S BEEF!**  
Furr's tender proten beef is Fresh Dated and guaranteed to please everytime, or double your money back. Shop today for family pleasing Furr's Protan Beef.  
**We Reserve the Right to Limit Quantity.**

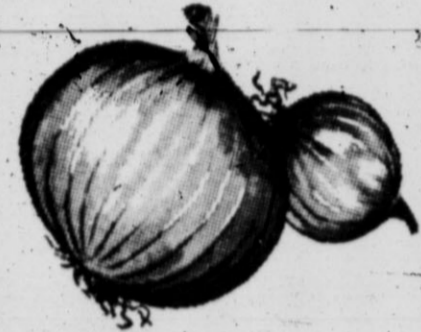
Prices Good thru Wednesday.

**CARROTS** Top Fresh 1-lb. Cello Pkg. 23c  
**GREENS** Fancy, Mustard, Collard Turnip, Mix or Match, Bunch 2 For 37c

**GREEN ONIONS** Ariz. Fancy, 2 Bunch for 25c  
**RADISHES** Florida, 6-oz. Cello Pkg. 2 for 25c  
**SWEET CORN** Florida Fancy, 2 Ear for 25c  
**GRAPEFRUIT** Texas Ruby Red, Fancy, lb. 8 lbs. \$1  
**ORANGES** Sunkist Navels Calif., lb. 4 for \$1  
**TANGERINES** Calif. Zipper Skin, lb. 5 For \$1

**SIRLOIN STEAK**  
**CHUCK STEAK**  
**SHOULDER ROAST**

**ROUND STEAK,** FURR'S PROTEN, LB. **98¢**  
**FURR'S PROTEN,** LB. **98¢**  
**FURR'S PROTEN,** LB. **69¢**  
**FURR'S PROTEN,** LB. **79¢**



**YELLOW ONIONS**  
IDAHO FANCY **3 LB. 29¢**

**FRYERS**  
FRESH DRESSED  
LB. **29¢**

Advertised Prices Good thru Wed., Dec. 29, 1971

**POTATOES**  
**AVOCADOS**

**ALL PURPOSE RUSSET, 10-LB. BAG** 59¢  
**FLORIDA LARGE SIZE** 4 FOR \$1.00

**Cube Steak** Furr's Protan lb. \$1.29  
**Stew Meat** Boneless lb. 79c  
**Short Ribs** Fine for Bar-B-Que lb. 39c  
**Ground Meat** Family Pack lb. 58c  
**Rolled Roast** Boneless No Waste lb. 89c  
**Pork Chops** Family Pack lb. 78c  
**Pork Roast** Extra Lean lb. 69c  
**Bacon** Frontier lb. 69c  
**Halibut** Boneless Fillets lb. 69c  
**Shrimp** Top Frost Breaded lb. 1.59

**Catfish** Boneless Fillets lb. 79c  
**Patties** Extra Lean 8 For \$1.00  
**Delicatessen**  
**Pimento Cheese Spread** lb. 89c  
**Ham Salad Spread** lb. 98c  
**Chicken Salad Spread** lb. 98c  
**Cole Slaw** Fresh Daily Pt. 49c  
**Banana Pudding** Fresh Daily Pt. 59c

**TOWELS**

**TOPCO CREST LARGE ROLL** 4 FOR \$1.00

**DETERGENT**

**TOPCO, WHITE OR BLUE, GIANT PKG.** 59¢

**FABRIC SOFTENER**

**TOPCO 64-OZ.** 69¢

**PRUNE JUICE**

**FOOD CLUB QT. JAR** 49¢

**EGGS**

**FARM PAC, U.S.D.A. GRADED A. MED. DOZ.** 45¢

**CORN**

**FOOD CLUB, CREAM STYLE OR WHOLE KERNEL, NO. 303 CAN** 5 FOR \$1.00

**FLOUR**

**GAYLORD 5-LB. BAG** 39¢

**FOOD CLUB VIENNA SAUSAGE** 4/89¢



**PANCAKE MIX** FOOD CLUB QT. 39¢  
**SNACK CRACKERS** FOOD CLUB 12-OZ. PKG. 29¢

**SUGAR FROSTED FLAKES** FOOD CLUB 18-OZ. 49¢

**COFFEE** FOOD CLUB LB. 75¢

**FAB DETERGENT**

**KING SIZE \$1.53**

**AJAX DETERGENT**

**15c OFF GT. PKG. 74¢**

**Zee Tissue** Assorted 4-Roll Pkg. 39c  
**Mexican Style Beans** Gaylord No. 300 Can 15c  
**Mixed Vegetables** Food Club No. 303 Can 4 For \$1.00  
**Green Beans** Food Club Whole No. 303 Can 24c  
**Instant Breakfast** Food Club Assorted 6-Piece Pkg. 49c  
**Beets** Food Club Sliced No. 303 19c  
**Spanish Rice** Mountain Pass No. 300 Can 23c

**Fresh Frozen Foods**  
**GAYLORD CORN** WHOLE KERNEL FRESH FROZEN 24-OZ. PKG. 39¢  
**TATER TREATS** TOP FROST FRESH FROZEN 2-LB. PKG. 49¢  
**TOP FROST OKRA** CUT FRESH FROZEN 10-OZ. PKG. 25¢  
**Tater Tots** Ore Ida Fresh Frozen 16-oz. 34c  
**5 Course Dinners** Patio Beef, Mexican or Cheese Enchilada Fresh Frozen Each 79c



**TOP CREST BLANKETS** Winter Weight. Arlington, 2 1/2 lb. Gold - Avocado - Blue - Flame 72x90 size. 5 inch nylon binding. \$3.99

**COKES** 6 Btl. Ctn. King Size 2/89¢ Plus Deposit  
**FOOD CLUB INSTANT TEA** 3 oz. 89¢

**SHAMPOO**

**BEACON PROTEIN 16-OZ.** 49¢

**COTTON COETS** 150 Count 69c  
**NOSE DROPS** Rhinall 1-oz. 79c

**SINUS TABLETS** Sine-Off 24's 63c  
**HEAD SCARVES** Nylon, 28x28 Size Ass't Colors 4 For \$1

**LADIES RUBBER GLOVES**

Topco, Blue or Yellow Small - Med. - Large, Reg. 79c 2 For \$1.00

**SCOPE MOUTHWASH** 18-oz. Bottle 79¢



**PRESTONE ANTI-FREEZE** Gal. \$1.49



**SAUCE PAN SET** CHILTON ALUMINUM 3-Pieces 88¢



**STACKING MUGS** Westwood Imported Color Drip 8-oz. Size 6 For \$1.00



**SHOP Furr's MIRACLE PRICES**



	NO. Games	Field Goals Made	Field Goals Att.	F.G. %	F.T. Made	F.T. Att.	F.T. %	Total Points	Point Per Game	Total Reb.	Reb. Per Game	Assist	Steals
KITCHENS	7	65	106	58%	25	30	84%	155	22.1	54	7.6	32	42
VANDERZEE	15	67	141	46%	42	80	51%	176	11.7	152	10.1	9	24
SCOTT	15	70	140	44%	37	63	58%	177	11.8	101	6.8	49	58
HICKS	15	51	118	42%	26	53	58%	128	8.5	123	8.0	11	20
ROBERTS	15	44	95	45%	24	45	53%	110	7.3	107	7.0	11	11
CHAMP	6	11	34	33%	5	8	62%	27	4.5	15	2.0	5	11
MAYBERRY	13	17	55	30%	14	27	52%	48	3.6	46	3.5	26	25
HARRIS	6	8	23	36%	7	10	70%	23	3.8	32	5.2	7	13
HICKS, G.	9	15	37	40%	6	14	42%	36	4.0	54	6.0	1	10
CHAREST	7	3	13	25%	4	7	57%	8	1.0	5	0.5	8	16
CORNELIUS	6	13	21	61%	6	17	34%	34	5.6	39	6.5	11	12
DUVALL	9	10	24	40%	3	8	37%	23	2.5	32	3.1	2	3
ROBERTS, B.	4	6	17	35%	5	10	50%	17	3.4	18	4.5	5	9
GOHEEN	4	0	6	0	0	0	0	0	0	6	1.0	0	0
OTHERS	8	4	8	50%	4	8	50%	12	1.3	8	1.0	0	8
TEAM TOTALS		381	836	46%	206	360	55%						

## Club entertains husbands Sunday

Jaycee-Ettes with their husbands as guests enjoyed a holiday season candlelight buffet supper Sunday evening in the Aaron Hutto home, 705 Country Club Drive.

As each person arrived at the formal affair, he received a evening in a humorous game to exchange Christmas gifts.

Centering the buffet table were red lighted candles on a green Christmas tree. The table was laid with a red linen Persian tablecloth.

Individual tables covered with polonetta-designed table cloths and centered with groupings of snowmen nutcups, were arranged in front of the fireplace which was decked with blue spruce that twinkled in Christmas lights, and a Santa figurine. From the namel-bung Christmas stockings.

Progressive games of cards a dominoes followed the supper.

Attending the holiday party were Messrs. and Mmes. Hutto, Larry Jackson, Dwight McGee, Dan Warrick, Bill McKinney, Bill Johnson, Terry Hill and Perry Ray.

and the Loveless Oil Company was held Saturday night at Tommy's. They all enjoyed dinner and exchanged gifts.

## Herd mashes Dumas, 86-52

The Hereford Whiteface basketballers, before taking their Christmas holidays break, closed to within one game of the 500 mark Tuesday by routing the visiting Dumas Demons, 86-52.

The win Tuesday brought the Whitefaces' season record to 7-8.

They will play Wednesday in the Muleshoe Tournament. The Whitefaces are the defending champions of that tournament.

### Letter to the editor

Dear Sir:

Being a newcomer to Hereford, I was disappointed by the poor attendance at the High School Choir and Band Concert. Nothing can be more magnificent than young voices raised in praise and song, especially this time of year.

I sincerely hope my fellow citizens will wholeheartedly support and encourage the musical inspirations of these young people.

To the Choir, Band and conductors—Thanks for a magnificent evening.

Sincerely,  
Frank Bethune

Read The Classified Want Ads!

Four Hereford players hit in the double figures in Tuesday's contest as they humiliated the Demons. Terry Scott was the high pointer with 20 markers and he was followed by Keith Kitchens with 17, David Hicks with 16 and Alan Cornelius with 13.

Hereford dominated the backboards and took an early 17-2 lead in the first period before Dumas was able to recover. At the end of the first stanza, the Whitefaces led, 19-8.

The Whitefaces outscored the visitors in the second period, 24-12 to take a comfortable 43-20 halftime lead.

The 23 point margin of the second period remained the same at the end of the third quarter when the Whitefaces led, 60-38.

The Whitefaces turned on the power early in the fourth stanza and got 16 quick points before the Demons knew what had happened. Those points completely put Dumas out of the picture and the game ended 86-52.

## Adrian news

BY ANN BEAVERS

Monday and Tuesday were semester test days for the students at Adrian High School.

The Women's Physical Fitness Class will meet in the school gym every Wednesday morning at 8:45. Please come and join us.

Henry Browning the barber from Vega, has started coming to Adrian every Monday and Thursday. He was just here on Thursday.

A wedding shower for Mrs. Neal Bennett, nee Gale Gruhlkey of Amarillo, was held Saturday in the home of Mrs. E.B. Pounds. Other hostesses included Mrs. Earl Brown, Mrs. Jake Fortenberry, Mrs. Ralph Guest, Mrs. Bob Miller, Mrs. Imogene Parker, Mrs. R.L. Pinnell. Also Mrs. R.C. Chism, Mrs. E.E. Allen, Mrs. Ted Boydston, Mrs. W.B. Betts, Mrs. Ted Hale and Mrs. J.M. Boothe.

Sabrina Hill of Vega spent Friday overnight with Mr. and Mrs. Ralph Guest, while her parents Mr. and Mrs. Allan Hill were in Portales.

Mrs. Bobby Speed and children of Vega visited Sunday with Mrs. Claudia Loveless and

Larry. Mr. and Mrs. Tommy Loveless and Craig were there also and they exchanged gifts.

Mr. and Mrs. Russell Rineholt of Friona visited Sunday with her brother and family the G.D. Webbs.

Mrs. Bob Gruhlkey spent Sunday and Monday in Amarillo with her daughter, Mrs. Linda Pond, while she underwent surgery.

Mr. and Mrs. John Horton left Tuesday to spend the holidays with their daughter and husband Mr. and Mrs. Pat Hambrick in San Marcus and their son and wife, Mr. and Mrs. Mike Horton in Carrizo Springs. Also Mrs. Mike Hortons parents Mr. and Mrs. John Rickard of Phillips will be there.

Keith Wood of Boys Ranch and Craig Allen of Amarillo, grandsons of Mr. and Mrs. E.E. Allen are spending the holidays with them.

Mr. and Mrs. Howard Engle spent Friday in Grady, N.M. visiting Mr. and Mrs. Loyd Murphey and also attended the Adrian vs. Grady basketball game there that night. The Adrian girls lost by two points in overtime and the Adrian boys won by three points in overtime.

A family party held in the home of Mr. and Mrs. Jake Fortenberry, Sunday night included Mr. and Mrs. Richard Fortenberry and family of Bellview, and Mr. and Mrs. Roy Fortenberry and family of Ray, N.M., Mr. and Mrs. Donald Fortenberry and Heather of Friona, Mrs. Nannie Fortenberry, Mr. and Mrs. Jimmie Bradley and Jeff and Hugh Fortenberry.

Women Society of Christian Service held its Christmas party, Wednesday night in the home of Mr. and Mrs. Keith Kromer. Instead of exchanging gifts they brought gifts for the Sunday School Classes. There were around 20 ladies attending and enjoying refreshments.

Mrs. Joel Brownlee of Leveland visited Monday with Mr. and Mrs. Shag McCown and Mr. and Mrs. Joe Brownlee at Gelario.

Mrs. Charles Munch and children of Brunswick, Ma. will be here for two weeks during the holidays with her sister and family, the Keith Kromers.

The Brownies held their Christmas party, Thursday afternoon in the Fellowship Hall of the Adrian Baptist Church. There were 17 girls there that exchanged gifts and they had a Christmas tree, and refreshments. Mrs. Helen Cavin, Mrs. Peggy Creitz and Mrs. Annie Briggs helped with the party.

Mrs. Lorin Creitz has been substitute teaching for Mr. George Ochs on Wednesday, Mrs. Alan Scott on Friday and for Mrs. Clara Gruhlkey on Monday.

Miss Brenda Peterson of Waco is visiting the Wilbur Harris family during the holidays.

The Adrian Future Farmers of America boys and Mr. Bob Wood, hauled about 100 loads of

calèche, last week. They were able to fill in all the holes in the streets of Adrian and galached two city blocks. Many thanks to all who helped them.

Charles Harwood of Amarillo and Robert Harwood of Canyon are home during the holidays with their parents, Mr. and Mrs. Fred Harwood and family. Both boys attend West Texas State University and both made the Dean's List.

Mrs. D.P. Doherty and Mrs. Imogene Parker were in Hereford, Monday, shopping.

A bridal shower honoring Mrs. Tommy Loveless was held Monday afternoon in the Fellowship Hall of the Adrian Methodist Church. Mrs. R. Lee Petty and Miss Donna Peterson of Waco, registered the guests. Hostesses were Mrs. Clara Hale, Mrs. Mildred Petty, Mrs. Dorothy Jackson, Miss Angelia Heiselman, Mrs. Pearlene Harris, Mrs. Doriss Pinnell, Miss Linda Pridmore and Miss Theresa Heiselman.

Tuesday night at Adrian the High School played Spade in basketball and Adrian won both games. Girls score was 57 to Spade's 49. Boys score was 67 to Spade's 65.

The Caprock 4-H girls held their Christmas party last Monday in the home of the Pat Blankenships. They exchanged gifts and had refreshments.

Girls attending were Leann Warren, Sherry Webb, Cindy Rohrback, Carol Rohrback, Sherry Blankenship, Jan Cavin, Susanne Rohrback, Susan Webb, Sandra Webb, Julia Cavin, Diana Jacobson, Sharla Webb, Jo Ellen Jacobson, Cherrie Betts, and Martha Morales.

Adults attending were Mrs. Eddie Rohrback, Mrs. G.D. Webb, Mrs. Jim Cavin, the Blankenships and Miss Edith Chambers of Vega.

The annual Christmas party for the employees of Tommy's Cafe, Larry's Service Station

**A. O. THOMPSON**  
**ABSTRACT CO.**  
 Mr. and Mrs.  
 A. J. Schroeter  
**Courthouse**  
**Phone 364-1504**  
 P. O. Box 73  
 Free City Maps  
 Showing Blocks

**Dr. Milton C. Adams**  
**OPTOMETRIST**  
 335 Miles  
 Phone 364-2255  
**OFFICE HOURS**  
 Mon.-Fri: 8:30 to 5:00  
 Saturday 8:30 to 12:00

**DR. E. H. HENDON**  
**OPTOMETRIST**  
 811 WEST PARK AVENUE (Harrison Highway)  
 Hereford, Texas Telephone 364-0987

**Be kind to your skin.**

**DUBARRY Beauty Bargains**



DuBARRY cares...for you


Don't use any kind of facecare unless you want just any kind of result. DuBarry is your kind because they're honest, sensibly-priced, hypo-allergenic beauty treatments that work. Available at your kind of prices.

Penetrating Cleanser 10 oz.	Reg. \$3.25	Now \$2.25
Cleansing Cream 8 oz.	Reg. \$3.50	Now \$2.25
Skin Freshener Lotion 10 oz.	Reg. \$3.25	Now \$2.25
Firming Lotion 10 oz.	Reg. \$3.25	Now \$2.25
Young Promise 4 1/2 oz.	Reg. \$5.00	Now \$3.00
Vibrance Masque 2 oz.	Reg. \$3.50	Now \$2.25
Eye Cream 7/8 oz.	Reg. \$2.50	Now \$1.75

**McDOWELL DRUG**  
 Downtown Hereford 364-1313

**VERSATILE**

**MODEL 700 FOUR-WHEEL-DRIVE TRACTOR**



**ENGINE:** Cummins v/8 diesel . . . 555 cubic inch  
220 Gross Horsepower @ 2800 rpm.

**OPERATING WEIGHT:** 28,000 pounds maximum

**TIRE SIZES:** 30.5 x 32

**CLUTCH:** Spicer 14 inches  
two plate, 1-3/4 x 10 spline

**ELECTRICAL:** 12 volt 58 amp.

**BATTERIES:** Two 204 amp. hour, 000 cables

**TRANSMISSION:** 12 speed, 250 HP full constant mesh  
One in-line shift lever (range).  
One gear shift lever

**FORWARD SPEEDS:**

2.6	6.1
3.1	7.3
3.5	9.7
4.1	11.5
4.7	12.9
5.5	15.4

**FUEL TANKS:** Two 85 gallon (U.S.) each  
Saddle type

**HYDRAULICS:** 24 GPM steering — 2000 psi  
24 GPM implement — 2000 psi

**With Cab & Air Conditioning**

**\$21,880.00**

**NEW HOLLAND**

**HEREFORD**

Hwy 385 South 364-4001



**SHARING TREATS WITH SANTA** — Barbara Jacobs, a former resident of Hereford, received an early visit from Santa Claus while she was a patient of M. D. Anderson Hospital in Houston recently. Following surgery, Miss Jacobs returned to her home in Glendale, Ariz., where she lives with her sister and family, Mr. and Mrs. Jim Lady, also formerly of Hereford.

### Comings and Goings at King's Manor

Mrs. L.N. Cox and Mrs. Beulah Wright entertained with a Christmas tea at the home of Mrs. Cox on Sunset Drive. The home was appropriately festive with the Christmas motif. Guests were the residents of King's Manor. Mrs. John English and Mrs. Don Davidson served while Mes. Winnie Hale, John Heard, Ellen Lloyd, and Flora Lee Fields assisted in the house party. About 48 guests attended.

The Grace Ward Circle of the Womans' Society of Christian Service of Hereford Methodist Church met at King's Manor recently. Mrs. Claude McGowan presided. Plans were made for a sharing with others at this season. Mrs. Don Davidson presented a program entitled Gifts for the King.

Hereford Garden Club came to King's Manor in a group and decorated doors beautifully with Christmas greens. Afterwards, they served tea, sandwiches and cookies. We do thank these ladies for this service.

C.R. Gandy in the guise of Santa (his wife with him) descended on King's Manor one evening recently. He went from room to room visiting each occupant and leaving in his wake much cheer and many "Ho Ho Ho's" and peppermint walking canes.

"Backward turn backward Oh Time in your flight—Make me a child again just for tonight." Well that's exactly what Old Time did Dec. 13, when King's Manor folk celebrated its 10th annual Christmas party.

We were returned to "Golden Rule Days" with Mrs. Don Davidson as teacher. In her usual animated form, Mrs. Don put us through our paces with an arithmetic lesson (estimating peas in a ar). Winnie the Winner (Hale) received a brand new air plane.

Other activities were phonics drill, crazy relays, an I.Q. test (which everyone flunked), an art lesson (modeling bubble gum) which Lottie Hutchins won and a music lesson complete with sound effects by a Rhythm Band under supervision of Maggie Hamilton and Bethany Williams. We paid for our candies in a "Bow Wow, Mew Mew" contest.

Santa, Bob Thomas of Amarillo, burst in and gifts from the tree were distributed. Then "Merry Christmas to all and to all a good night!"

Mrs. Flora Lee Fields entertained the cottage women residents with a Christmas tea December 14, 15 and 16th. Those

## Robinson enters swine in show

Richard Robinson, chester white breeder from Hereford, has entered two gilts in competition at the National Chester

White Spotlight Congress scheduled for January 20, 21 and 22 at the Stephens County Fairgrounds, Duncan, Okla.

## Mike Clark is bowler of week

Mike Clark rolled a 651 handicap to take Bowler of the Week honors recently in the Major League Bowling association.

L.J. Clark had the high single game scratch of 229 and the high three game scratch of 584 while Watts Texaco had the high single game team honors of 1038 and the Athletic Shirts rolled a 2911 for the high three game team tokens.

In play last week, Watts Texaco won four from Arrowhead Mills, Athletic Shirts won four from Sulley's Vending; Worley Garage won three from Sunset Lanes, Ink Spot won three Wilson Beef and Lamb won three from Dickie's Restaurant.

Standings have Athletic Shirts 20-4; Watts Texaco, 17-7; Ink Spot, 14-10; Sunset Lanes, 13-11; Wilson Beef and Lamb, 13-11; Orval Watson Ford, 12-12; Sulley's Vending, 9-15; Worley Garage, 9-15; Dickie's Restaurant, and Arrowhead Mills, 7-17.

The 1974 U.S. Open golf championship will be played over the West course of the Winged Foot Golf Club at Mamaroneck, N.Y.

Competition at this national event will be strong, according to Larry L. Rus, executive secretary of Chester White Swine Record Association, Rochester, Ind., sponsor of this annual white swine conference.

More than 110 top Chester White breeders from 15 states have entered over 400 head of breeding animals for this annual show and sale. "We've had tremendous interest in our annual Spotlight Congress this year, with a record number of breeding animal and market hog entries, and a record number of exhibitors," adds Rus, "and competition promises to be the strongest ever experienced at this event."

Breeding animal show activities begin at 9:00 a.m. Friday, January 21, with Dr. Robert Hines, Kansas State University doing the judging of the seven classes of boars and gilts. Prize winners selected by Dr. Hine will go into the auction ring on Saturday afternoon, January 22.

**POOR PLANNING**  
NOTTINGHAM, England (AP)—A coach trip to the seaside for 90 bus drivers and ticket collectors with wives, children and girlfriends went wrong half way there. Their company's buses ran out of gas.

## Kings, Queens have top players

Pat Stevens, with a 577 handicap, and Ray Lueb, with a 619 handicap, were named Bowlers of the Week in Kings and Queens play.

Lueb had the high scratch series of 556 and the high game of 201 while Alice Lueb had the women's high scratch series of 554 and the high game of 211.

High team series went to Hereford Janitor Supply with a 2353. That team also had the high team game of 811.

Converting splits were Pauline McDonald, 4-5-7; Frank Lopez, 3-4-6-7; Em/le Dettmann, 5-7-9; Ray Lueb, 410; Marlene Roe, 5 6-10; Pat Stevens, 56; and Marilyn Bell, 5-10.

In play last week, E-Z-Way Grocery won four from Ten Pins, Team No. 5 won three from Team No. 8, Hereford Janitor Supply won four from Bob's Hickory Pit, and Vance Hall Sporting Goods won three from Dickie's Restaurant.

Standings have Hereford Janitor Supply, 20-4; E-Z-Way Grocery, 14-10; Bob's Hickory Pit, 14-10; Vance Hall, 12-12; Dickie's Restaurant, 11-13; Team No. 8, 11-13; Team No. 5 9-15; and Ten Pins, 5-19.

## Bank announces four promotions

At the regular meeting of the board of directors of the Hereford State Bank recently, four officer promotions were announced by President Harlan D. Vander Zee and executive vice president Jeff Carlile.

Waldo Baxter was promoted to senior vice president, Wayne

Williams to senior vice president and cashier, Steve Hodges to assistant vice president and Steve Gilbert to assistant cashier.

valuable contribution to the success and growth being experienced by the bank," Vander Zee said. "It is with appreciation for their efforts and admiration for

their abilities that the board and management take pride in being able to make this announcement. Read The Classified Want Ads!

# HALLMARK

# CARDS

# GIFTWRAP

1/2 OFF

SALE!

## McDOWELL DRUG

Downtown Hereford 364-1313

# Gaston's

DOWNTOWN & SUGARLAND MALL

**BONUS**

OFFER

# SALE

**STARTS: MONDAY 27 THRU FRIDAY 31,**  
DECEMBER 1971  
**9:30 A.M. TILL 6:00 P.M.**

# Reduction to 50%

BELOW IS ONLY A PARTIAL LIST OF THE FANTASTIC BARGAINS!

<input checked="" type="checkbox"/> <b>LADIES' PANT SUITS</b> <small>Sug. Only</small> Extra Nice Selection of Colors & Styles Sizes 8-18 Were to \$35.00 NOW <b>\$19<sup>90</sup></b>	<input checked="" type="checkbox"/> <b>ALL WEATHER COATS</b> Sizes 8-14 Values to \$45.00 <b>\$29<sup>00</sup></b>	<input checked="" type="checkbox"/> <b>NYLON FLEECE ROBES</b> Values to \$25.00 Reduced to <b>\$20<sup>00</sup></b> <small>Sugarland Mall Only</small>
<input checked="" type="checkbox"/> <b>CO-ORDINATES</b> Polyester - Mix & Match Pants, Skirts & Tops Reduced <b>1/3 OFF</b>	<input checked="" type="checkbox"/> <b>LADIES DRESSES</b> Special Group Reduced <b>1/3 OFF</b>	<input checked="" type="checkbox"/> <b>JUNIOR DEPARTMENT SKIRTS</b> <small>Sugarland Mall Only!</small>
<input checked="" type="checkbox"/> <b>LONG DRESSES</b> Ideal New Years Party Styles Values to \$25.00 Sizes 8-18 <b>\$19<sup>90</sup></b> <small>Sugarland Only</small>	<input checked="" type="checkbox"/> <b>LADIES KNIT SUITS</b> Fantastic Buy Regular to \$75.00 <b>\$40<sup>00</sup></b> Reduced to	<input checked="" type="checkbox"/> <b>JUNIOR DRESSES</b> Sizes 5-13 Regular to \$14.00 <b>\$10<sup>00</sup></b>
<input checked="" type="checkbox"/> <b>PANT COATS</b> Values to \$50.00 Sizes 8-18 <b>\$29<sup>90</sup></b> Now Only	<input checked="" type="checkbox"/> <b>MISSY DRESSES</b> • Polyester <small>Sugarland Mall Only</small> • Wool Knits • Prints & Solids • Values to \$55.00 <b>\$15<sup>00</sup></b>	<input checked="" type="checkbox"/> <b>JUNIOR SEPARATES</b> Tweeds, Checks and Solids Sizes 5-15 <b>25% OFF</b>

**Happiness is what I sell!**  
 Cash-value life insurance. It gives you freedom from financial worry. You can live a little. That's happiness.

CHARLES BELL  
 PHONE 364-2343  
 Southwestern Life

Sugarland Mall & Downtown Hereford

# Gaston's

All Sales Final Please!

# THE SUNDAY BRAND

## Editorials

Page Six The Sunday Brand, Hereford, Texas, Sunday, December 26, 1971

### A big boomerang

An environmentalist—with an excess of zeal for fighting pollution — was quoted recently as saying:

"We must realize that we are on the brink of the greatest disaster our planet and all living things on it have ever experienced. We are face-to-face with extinction. Nothing less."

This statement is untrue. There is no basis for such a forecast of doom.

There is, however, a need for putting a check on pollution.

The environmentalists are right in their demand that—in the use of the earth's resources for our existence—we must consider carefully everything we do and plan to do. But for some reason, many of these people fail to understand that the same careful consideration is imperative in our efforts to prevent pollution.

In working to bring about environmental reform, good sense must prevail. Otherwise, new problems may be created. Here are a few examples.

—Campaigns to delay the construction of nuclear power plants will result in the construction of more fossil fuel plants, which are less "clean" than nuclear plants.

Pressure against phosphate-containing detergents brought about substitutes far more dangerous than the phosphates.

—Hasty abandonment of DDT has contributed to a resurgence of malaria in some parts of the world.

—Severe restrictions on the use of leaded gasoline in Japan resulted in an increased in hydrocarbons in the air which worsened photochemical smog.

This is no time for members of Congress to be playing around with the old political maxim:

"Make the law promise enough, make it complicated enough, make it cost enough—and turn it over to a federal bureau to interpret and administer."

### Adrift on the docks

Once again a Taft-Hartley injunction is proving totally inadequate as a solution to a transportation strike. This time it's the West Coast dispute between the International Longshoremen's and Warehousemen's Union and the Pacific Maritime Association, and organization of employees.

The workers have just gone through the ritual of rejecting the employers' "last offer," the maritime association's contribution to the play-acting. No one expected the workers to vote otherwise, since union officials had urged a negative vote.

The offer was a hefty one by any

standard, but Taft-Hartley history presumably persuaded the union it could do better. In the past the so-called last offer has usually been no more than a floor on which unions have been able to build.

When the Taft-Hartley injunction expires on Christmas Day, the ILWU will be free to strike; since the government's legal machinery will be exhausted. An immediate walkout is unlikely, though. Union leaders don't relish putting their men out of work over the holidays and, besides, if they wait, a while the Taft-Hartley injunction will run out on the East Coast, setting up the possibility of much greater pressure on the public and the government.

If and when a strike does resume, J. Curtis Counts, the head of the federal Mediation and Conciliation Service, says he will recommend a special federal law to settle it. This is becoming a pattern in transportation: Taft-Hartley fails, so Congress must deal with the resulting strikes on an ad hoc basis.

You would think that Congress would be growing tired of the pattern. Many months ago, however, President Nixon proposed new legislation to deal with transit strikes, and so far Congress has gotten nowhere either with the President's proposal or any alternative of its own.

Maybe a new dock emergency will be enough to make the lawmakers move. It should be apparent by now that present transportation labor policy is little better than no policy at all.

—But—what must be remembered is that not only the money, but also the manpower and technology involved, would have to be diverted from resources urgently needed in municipalities across the country for housing, food, education, energy, transportation and crime prevention.

In a word, we would be devoting too big a proportion of the nation's resources to just one problem.

As a consequence, our overall standard of living would suffer, the quality of life in America would be degraded.

In seeking to control pollution, good sense must prevail. The citizens of America, along with our elected representatives in Washington, have a responsibility here.

## Texas!

Discovering the Lone Star State with...

FRANK OLIVER

Normally you think of a ghost town as a town that slowly died and just left its abandoned buildings, stores and houses to the wind, weather and the curious.

But not Thurber, Texas. Big, bustling, vibrant Thurber, with everything going for it, just cut it off, like that. Its mode of demise has long been the subject of debate, but whether homicidal or suicidal, it was quick and a clean job. Out of hundreds of homes, stores, churches, schools, businesses, and anything else you can imagine that made up this teeming city of 10,000 in the early 1930's, nothing remains. Nothing, that is, but six structures clustered around a tall, handsome brick smokestack that stands like an ornately carved stiletto, plunged to the left into the heart of this potential Houston of the great Plains!

In 1888, the same year the new Capitol was dedicated in Austin, Thurber was founded midway between Ft. Worth and Abilene. The town sat atop the largest deposit of bituminous coal in a four state area and was built and owned, stock and coal pick by one company. Numerous shafts brought high grade fuel from deep in the earth to wide-spread industry. Thurber prospered for over 30 years and grew into the largest city in West Texas next to El Paso. In 1917 the company diversified and brought in the first well in the fabulous Ranger oil

field. With industry switching to the new fuel, the accent was now on oil. To salvage the still huge coal potential of the area, the miners went out on strike in 1921. They never returned. In 1933 the company moved its headquarters to Fort Worth and closed down the town, leaving untouched some 127,000,000 tons of black energy below ground.

Why—nobody seems to know, but Thurber was dismantled brick by brick, house by house, fences, sidewalks, streets, telephone poles, utilities, the works. Everything was sold, destroyed or scattered. Everything except a hardware store, drugstore, the waterworks, a firehouse and the 148-foot high powerhouse stack. Ironically, the city on which darkness fell so early had been the first fully electrified city in the Southwest!

Yet, the spirit of Thurber is alive and well today, thank you. Former Thurberites and their Thurber Historical Society aggressively perpetuate the love for their old home. They nurture the vision of a resurrected Thurber, founded on a new cornerstone and rightfully taking its temporarily interrupted position among the giants of Texas.



MAIN STREET, U. S. A.

## Rejuvenation of rural America can be done

BY BERT MILLS

Washington, D.C.—Rejuvenating rural communities can be achieved in a variety of ways, including transforming a farm-oriented village into a growth center which becomes the core of a bustling satellite community while still retaining the advantages which made it a good place to live.

Gretna, Nebraska, is an example of a rejuvenated community. Entirely rural as recently as 1960, Gretna has undergone a transformation in the last decade. Although still surrounded by farms, Gretna has become a residential community. The

old town remains but a new town has been added, featuring several hundred new homes.

Gretna is only 20 miles from downtown Omaha, and there are good connecting highways. Some of the new residents commute to the city to work. Others are retired farmers who moved to town. Some work in a major industrial plant only four miles away. Some are employed right in Gretna, as expansion created new job opportunities.

Gretna had some advantages to start with, including the proximity of Omaha. Also there were recreational facilities, natural beauty, and a good climate. But

the biggest asset Gretna possessed was civic pride and a desire for growth. Local leadership provided the facilities that new residents demand—schools, water, sewers, jobs, and transportation.

At last count, the population of Gretna was only 1,357. It is sure to grow because all the elements for progress are present.

Industry Helps Bardstown, Ky. Another type of rejuvenation has been achieved by Bardstown, Kentucky, population 5,816. Its problem was underemployment and economic instability. A rural electric cooperative serving the area took the lead in helping Bardstown to form an Industrial-Development Corporation, with local businessmen contributing funds.

IDC took an option on a 47-acre site, convenient to rail and highway transportation. The city installed water and sewer mains to the property. The coop supplied the electricity. Soon the new industrial park had a new \$5 million plastics building materials plant. Next came a \$7 million paper plant, which employed 300 local people.

Other improvements in Bardstown included an airport, a water district, recreation projects, an expanded hospital, a new vocational school, and a consolidated senior high. The tax base has been broadened, local employment has risen, and the entire area has benefited.

Pratt, Kansas, has realized its growth potential in another way. Local leaders converted unused portions of a World War II airbase into cattle feedlots. They formed a development company, borrowed \$1.5 million from local citizens, local banks, and the Small Business Administration.

The feedlots were built initially to handle 10,000 cattle, soon expanded to 35,000, with further growth planned. Benefits to the community include utilization of idle land, increased employment, a broadened tax base, and creation of a market for feed grain beyond the capacity of local growers.

All It Takes Is One Good Idea These success stories are taken from an article in the 1971 Yearbook of Agriculture, an annual book issued by the U.S. Department of Agriculture. The examples come from an article entitled "Rural Towns, Cores for New Communities." The authors are Louis D. Malotky and Donald E. Runyon, both U.S.D.A. officials.

## Talk of Texas

BY JACK MAGUIRE

THE STATE OF PEAS—Strangers visiting Texas this New Year's Day may go away convinced that Texans are pea nuts. Nuts about the black-eyed variety, that is.

The eating of some kind of black-eyed lentil on the first day of the year is an ancient and global tradition practiced by millions to insure good luck the remaining 365 days of the year. But pea-eating on January 1 is a gustatory ritual in Texas.

Athens claims to be the "Black-Eyed Pea Capital of the World." It comes by the title because an Athens plant cans a succulent variety that is shipped all over the globe. The same company even puts out a pickled version for gourmet palates which it calls "Texas Caviar."

Taylor, in Central Texas, is the headquarters of an organization known as the International Black-Eyed Pea Association. It was started in 1950 by a chemurgist named Elmore Rural Torn, who helped to make this lowly lentil a food crop in such faraway places as Viet Nam.

A former Congressman, Lindley Beckworth of Gladewater, once launched a national campaign to have Texas-style black-eyed peas substituted for the hated English peas as the ever-present vegetable on most banquet menus. His crusade didn't succeed, but it helped to publicize a favorite Texas food.

BLIZZARD BOWL—The 1947 Cotton Bowl game was played in some of the coldest weather ever to chill a Texas sports classic.

On Saturday, December 28, the temperature in Dallas was 75. But a norther hit the next day and the mercury dropped to 19 above zero on New Year's Eve. On New Year's Day, two inches of snow and ice blanketed the Cotton Bowl.

Only 38,000 fans showed up in the 76,000-seat stadium to watch Arkansas and Louisiana State battle to a cold 0-0 tie.

TEXANS AT WORK—This state's latest contribution to the welfare of mankind is a machine, sold under the name "Litter Gitter."

The "Litter Gitter" is just that. Designed and built by N.A. Mattison, a Lubbock masonry contractor, the machine picks up bottles, cans, wood, paper and other trash while cruising along at 15 miles per hour. It has no engine, receiving its power from a belt attached to its wheels. It can be towed by any vehicle.

It already is in use in ten states and Canada, replacing crews that used to have to pick up such litter by hand.

WOMEN'S LIB?—Burleson is the only Texas county with a woman sheriff.

She is Mrs. Willie Mae Philp (correct), a 47-year-old grandmother who was appointed to fill out the unexpired term of her husband, Sheriff Reid Philp, after his death in June, 1970. She operates out of Caldwell, the county seat, wearing a star on her dress and carrying a .25 automatic in her purse.

## SENSING THE NEWS

By Anthony Harrigan

EXECUTIVE VICE PRESIDENT

Southern States Industrial Council



Nineteen-seventy-one has been anything but a cheering year for Americans concerned about their country's economic health and the survival of a free society. It was a year in which both economic principles and fundamentals of foreign policy were abandoned.

As the year drew to an end, confidence in the U.S. dollar ebbed rapidly in the world's money markets. The Secretary of the Treasury announced, while on a European trip, that the U.S. government is prepared to devalue the dollar—once the symbol of America's strength.

It was only a short time ago that the United States was the arsenal of democracy, the rebuilder of a free Europe, the hope of captive peoples in the communist world and the strongest nation on earth. All that has changed in a brief historical period.

The U.S. dollar no longer is in demand because people around the world no longer have faith in the future of the United States. They aren't convinced that our people have the staying power necessary for greatness. They see that the American people won't put their fiscal house in order but, instead, are moving very rapidly towards the type of welfare state that proved so disastrous for Great Britain after World War II.

The nations of the world are aware of the deterioration of America's armed forces at a time when the Soviets are increasing their armaments as fast as possible. They take note of the racial strife in the U.S. 7th Army in Europe and the appalling relaxation of discipline and turn to permissiveness throughout the Army. They are aware that the U.S. government places its hopes on negotiations with the Soviet Union, despite the fact that the Soviets arm while they talk.

The decline of the tough, bold American spirit is mirrored in many ways. And the world gets the picture. Contempt for the United States was evidenced most strikingly by the gell at at the United Nations when free China was expelled.

Unquestionably, the most dramatic and disturbing change in foreign policy in 1971 was the Nixon administration's about-face on Red China.

After a quarter-century of containing Chinese communism, U.S. now is seeking an accommodation with one of the most dangerous and brutal regimes in modern history. Almost overnight, American magazines and television channels are overflowing with articles about the "new" China. It is fashionable now to see no evil, hear no evil insofar as Peking is concerned. It is apparent that the United States is moving towards appeasement on a colossal scale. America's long role as the major Pacific power is drawing to an end, Red China is likely to achieve by political firmness and image-building what Imperial Japan could not accomplish at Pearl Harbor.

Truly, the American nation is in disarray. At home, our unwillingness to work as we did in the past is the root of our economic trouble. Powerful unions represent a state within a state, a counter-authority to the authority of government. During our period of greatest economic crisis, our seaports were shut down, President George Meany of the AFL-CIO allowed the President of the United States to address the union delegates but treated him in an insulting manner. On docks and in factories and in many areas of work, unions use what can only be described as privileged violence against business government and workers who do not want to bow to the union bosses. As Arthur Krock said not long ago: "The picket line is now the supreme law of the land."

### The Sunday Brand

Established 1948

Published Every Sunday at 130 West Fourth Hereford, Texas 79045

The Brand Publishing Company

MEMBER

NATIONAL NEWSPAPER

Association - Founded 1885

Entered as second-class matter July 6, 1948 at the post office at Hereford, Texas, under the Act of March 30, 1879. Second-class postage paid at Hereford, Deaf Smith County, Texas. Subscription Rates: Zone 1, \$4.80 per year; Zone 2 and above, \$6.00 per year. With the Hereford Brand, both papers, Zone 1 \$5.95 per year; Zone 2, \$7.40 per year. Carrier delivery, \$1.00 per month. Single copies 20 cents each.

O. G. Nieman Publisher  
Marshall Day News Editor  
Sue Coleman Women's Editor  
Grady King Advertising Manager  
Ronnie Traylor Mechanical Superintendent

—Wall Street Journal

# PRE Inventory CLEARANCE SALE

Entire Stock Ladies' & Teens' **HAND BAGS** Values to \$6.98

NOW **1/3** OFF Gibson's Low-Everyday Discount Price!

Mens & Boy's Long Sleeve **SWEAT SHIRTS** Ass't Colors,

92% Cotton 8% Acrylic  
Boy's G.D.P. NOW \$1.27  
Men's G.D.P. NOW \$1.87  
\$1.69 \$2.49

WHERE YOU ALWAYS BUY THE BEST FOR LESS

**GIBSON'S DISCOUNT CENTER**

ADVERTISED PRICES GOOD THRU WED., DEC. 29th AT GIBSON'S IN HEREFORD, TEXAS

CLEARANCE on all Men's & Boy's **SWEATERS** Short & Long-Sleeve

G.D.P. \$4.49 NOW **\$2.88**

Entire Stock Boy's & Girl's **FLANNELETTE PAJAMAS** Sizes 6-18, Ass't Styles

OFF G.D.P. **25%**

Large Group Men's & Boy's **SHOES** No: 6164 & No: 2019

Boy's Knit **SHIRTS** Short Sleeve, Permanent Press, Wear Dated, with Fibers by Monsanto

Reg. \$2.98 **\$2.19**  
Reg. \$1.98 **99c**

1/3 OFF Gibson's Low Everyday Discount Price!

**The only thing that isn't tough about Dickies work clothes is the price.**

Dickies work clothes are the toughest work clothes you can buy your husband. They're made with a tough, new blend of 65% polyester, 35% cotton and the fabric is impregnated with a lasting finish called Soil Release, so you'll never have any trouble getting them clean. And Dickies even makes them rugged enough to keep their proportioned shape without ironing. Dickies may make the toughest work clothes, but you'll find them easy enough to pay for.

**Dickies**

PANTS Reg. \$5.99 **\$4.99** Pair  
SHIRTS Reg. \$4.99 **\$3.49** Each

Men's Insulated **COVERALLS**

- Wash N' Wear
- 2 Way Zipper
- 2 Zippers
- Chest Pockets
- G.D.P. \$20.97

NOW **\$17.88**

Beacon Electric **BLANKET**

- Double Bed, Nylon Binding
- Dual Finger Tip Control
- 45% Polyester, 35% Rayon
- G.D.P. \$17.99

NOW **\$12.99**

Children's **Cuddle Mate Slip-on SLIPPERS** Animal Slippers

G.D.P. \$1.19 **77c**

Adjustable **CARRY ALL BABY SEAT** Adjusts for Playing - feeding or sleeping. Satisfaction Guaranteed.

Gibson's Low Everyday Discount **\$1.77**  
Price \$2.59

100% POLYESTER **DOUBLE KNIT** In Jacquard & Solids Machine Washable

All 60 Inches Wide  
G.D.P. \$3.98 **\$2.79** YD.  
G.D.P. \$4.98 **\$3.98** YD.

Portable Electric **HEATER** by Superelectric No. 627 G.D.P. \$10.17

**\$7.97**

Under the Bed **STORAGE CHEST** 32 1/4 x 16 3/8 x 6 1/4 Size No. 3376 90

NOW! **77c**

**SHARP!** PRE-INVENTORY CLEARANCE **SILVERWARE SETS** Choice of 2 Patterns Gibson's Everyday Low Discount Price \$31.97

YOUR CHOICE!  
**\$17.57**

**SHARP!** 30-CUP Sunbeam Party Size Electric **PERCULATOR** No. AP40A, G.D.P. \$17.57

**\$12.57**

UDICO Portable Clothes **DRYER** with Gentle Tumble Dry Action

G.D.P. \$29.97

WHILE SUPPLY LASTS ONLY! **\$9.97**

**8-TRACK STEREO TAPES** G.D.P. \$4.77

NOW **\$3.97**

**BANKAMERICARD**

SANKYO **DIGITAL CLOCKS** No. 501 NOW! **\$15.97**

ENTIRE STOCK OF **\$2.00 JEWELRY** Retail NOW **\$1.00**

LADIES - MEEKER **BILLFOLDS** OFF G.D.P. **25%**

KODAK INSTAMATIC **X-30 COLOR OUTFIT** Gibson's Pre-Inventory Low Discount Price! **\$27.97**

REALTONE AM **RADIO WITH CLOCK** No. 3211

NOW! **\$11.97**

60 MINUTE CASSETTE **BLANK RECORDING TAPES**

3 FOR **\$1.27**

REMINGTON **ELECTRIC SHAVER** No. LB26 G.D.P. **\$19.97**

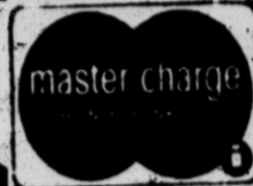
**RECORD ALBUMS** OFF G.D.P. **25%**

# PRE-INVENTORY CLEARANCE

## SALE

STYLE  
HAIR SPRAY  
12-oz. Can  
**39¢**  
SPECIAL

ARRID  
DEODORANT  
Regular or Unscented  
6-oz. Can  
**69¢**  
SPECIAL



ADVERTISED PRICES GOOD THRU DEC. 29

PRUF  
SPRAY STARCH  
22-oz.  
**47¢**

SUPER  
SCOPE  
Oral Antiseptic  
Super Size  
Bottle  
**79¢**

PEPSODENT  
TOOTH PASTE  
Family Size  
Tube  
**47¢**  
NOW **\$4.87**  
Gibson's Low Discount Price

JERGENS  
HAND LOTION  
10-oz. Bottle  
**97¢**

Alka-Seltzer  
ALKA-SELTZER  
25 Ct.  
**47¢**

PRO  
TOOTHBRUSH  
Retail 69¢  
**19¢**

TIDE  
Washing Powder  
Giant Size  
Box  
**69¢**

DELTA  
BATHROOM  
TISSUE  
4 Roll  
Pkg.  
**27¢**

ZEE  
PAPER  
TOWELS  
4 Rolls  
**99¢**

BLAZON  
THE SOFT BODIED  
HORSE  
Gibson's Everyday  
Low Discount  
Price \$10.57  
NOW **\$7.57**

10" TRICYCLE  
by Garton  
Gibson's Everyday  
Low Discount  
Price \$9.97  
**\$6.97**

ENTIRE STOCK  
CHRISTMAS  
DECORATIONS &  
WRAPPING PAPER  
**1/3 OFF**

LARGE  
RED  
WAGON  
by M.T.D. No. 600  
Gibson's Low Everyday  
Discount Price \$12.97! NOW **\$8.97**

DOLL COACH  
No. 5335-80, Completely  
Washable For ages 3-6,  
G.D.P. \$9.17  
**\$5.57**

NESTLES  
QUIK  
2-lb.  
Box  
**69¢**

POPS RITE  
POP CORN  
1-lb.  
Bag  
**13¢**

Ray-O-Vac or Burgess  
SIZE D or C  
BATTERIES  
30c Value  
**13¢**  
Gibson's Low Discount Price!

GIBSON'S **R** pharmacy  
364-4900  
SAVE ON  
PRESCRIPTIONS  
REGISTERED PHARMACIST ON DUTY  
Emergency Phone 364-6680 or 364-4109

BORDEN'S  
BUTTERMILK  
1/2 Gal. Ctn.  
**47¢**

GLADIOLA  
FLOUR  
5-lb.  
Bag  
**53¢**

Check Reverse  
Side of  
THIS PAGE  
For Additional Big  
Pre-Inventory Buys!

CONTAC  
10's  
Reg. \$1.19  
**98¢**

Gibson's Pharmacy Special

1-oz. Size  
Privine  
NOSE DROPS  
Reg. 83¢  
Special **67¢**

1-oz. Size  
Visine  
EYE DROPS  
Reg. \$2.19  
Special **\$1.79**

COFFEE-MATE  
NON-DAIRY CREAMER  
11-oz. Jar  
Gibson's Low  
Discount Price!  
**59¢**

AMERICAN BEAUTY  
ELBO-RONI  
10-oz.  
Pkg.  
**17¢**

ENTIRE STOCK MOTORCYCLE  
CRASH HELMETS  
with Face Shields  
• Choice of Colors  
• \$28.95 Value  
• NOW  
**\$16.50**

KERI LOTION  
6.5 oz. with  
FREE 2-oz.  
Alpha Keri Oil  
Reg. \$3.15  
**\$1.49**



# Washington report—from Cong. Bob Price

Congressman Bob Price has just been notified by the Secretary of Agriculture, Earl Butz, of the selection of Fleming Key off Key West, Florida, as the site for a maximum security animal quarantine station.

Congressman Price expressed his pleasure with this decision because he was one of the original

sponsors of this legislation. Because of his experience as a life long cattleman, Price had a major hand in the development of this needed legislation. The U.S. Department of Agriculture (USDA) has signed an agreement with the Navy Department to use 16.1 acres of the offshore island as a high security quarantine station for animal importations.

The Fleming Key Animal Import Center will be run by the USDA's Annual and Plant Health Service (APHIS). It will be designed to handle animals from countries where foot-and-mouth disease exists that would otherwise be prohibited entry into the United States. Initial importations will be limited to cattle until appropriate qualifying procedures are developed for other species.

A USDA quarantine station in existence at Clifton, N.J. since 1900 is primarily for livestock from countries where foot-and-mouth diseases does not exist. It also handles a larger variety of species including zoo animals. Acquisition, establishment and maintenance of a new station was authorized under Public Law 91-239 (approved May 6, 1970). Animals will undergo a rigid quarantine and testing period of about five months at the station to insure against introduction of exotic diseases. Disease-free stock would then be permitted entry to the U. S. Mainland.

In making the announcement, Secretary Butz said the station will enable the U.S. livestock industry to acquire exotic breeding stock from areas of the world not previously accessible for use in improving U.S. breeds and production efficiency. The Secretary said "Cross-breeding of domestic breeds and exotic animals has long been recognized as a desirable means of improving U.S. livestock. This has not been possible on a wide scale because of our strict importation safe-guards. "The new facility will permit importations previously prohibited, without relaxing our safe-guards for keeping out dread foreign diseases."

Foot-and-mouth disease was last eradicated from the United States in 1929. The 1970 Act authorized establishment of a station on an island within the U.S. territory where maximum animal disease and pest security measures could be maintained. Fleming Key is connected to Key West by a restricted use bridge, is 160 highway miles from Miami and some 60 air miles from the Florida coast. The Act also authorizes the appropriation of funds and the charging of fees to users of the station (importers) to help recover operating expenses. Planning and construction costs are estimated at \$6.7 million. Subject to the availability of funds, the station may be operational by 1974.

# Women host two Christmas teas

Mrs. Bob Hamman and her mother Mrs. C.L. Craig were hostesses for two Christmas parties Sunday afternoon and evening in the Hamman home at 704 Plains.

Forty guests called following evening candlelight services at the First United Methodist Church where the hostesses are members.

Thirty women from Killes Manor Retirement Home were guests for the afternoon tea. They were registered by Mrs. Ellen Lloyd.

On the guest list were members of the handbell and adult choirs and their wives and husbands.

Tea was poured by Mrs. Don Davidson and Mrs. Claude McGowan and served with an assortment of Christmas candies, Apples, served refreshments

The pastor's wife, Mrs. W.A. Appling, served refreshments

## Club sends donation to Girlstown

Rather than the usual exchange of Christmas gifts among members of Lone Star Study Club, a cash donation was sent to Girlstown for Christmas in the club's name.

Mrs. John Jacobsen Jr. was hostess for the Tuesday afternoon meeting and Christmas party when Mrs. Hardy Benson gave a reading on Women of the Bible.

Members of the social committee assisting Mrs. Jacobsen with refreshments were Mmes. Carl Williams, Homer Henslee, and J.J. Durham.

Others in attendance were Mmes. R.G. Blue, Jim Bookout, V.E. Dodson, W.S. Fluit, Jim Higgins, C.D. Kelton, S.A. McCathern, W.O. McCutchen, G.W. Newsom, Ray Suit, Ed Warren, S.S. Williams, Robert Thompson and Miss Mildred Elliott.

## Rebekah audit group appointed

Mrs. George Green, noble grand of Hereford Rebekah Lodge, appointed Georgia Holliman as chairman of the auditing committee at Tuesday night's weekly meeting.

Mmes. Anna Freeman and P.B. Sowell will assist Miss Holliman in auditing books for the year.

Mrs. Leonard Davis, district deputy, announced the installation of officers to be held Jan. 11. She will be assisted in installation services by the Dimmitt Lodge.

Eighteen members were present at the meeting which was hosted by Mrs. Maomi Murrill.

The 1972 U.S. Amateur golf championship will be played at the Charlotte, N.C., Country Club.

Frank Gutierrez, a sophomore from Colombia, is on the NYU soccer team as a halfback.



**INDUSTRIAL STUDENT OF THE WEEK** — Marian Betzen has been named as this week's Industrial Cooperative Student of the Week. Miss Betzen is the 17-year-old daughter of Mrs. Agnes Betzen, 1101 Union. She is employed by Bill Bradley at Bill Bradley Photography.

**TIME TO SAY HAPPY NEW YEAR**

**WARREN BROS. MOTOR CO.**  
"Serving Hereford since 1948."  
1410 Park Ave. 364-1423

# Anthony's WHITE SALE!

**ABLAZE WITH COLOR! JAM-PACKED WITH VALUES!**

**DAN RIVER SALEM STRIPE OR MID-TONE NO-IRON SHEETS**

50% Fortrel Polyester 50% Cotton. They never need ironing. Fine soft luxuriously smooth finish.

TWIN FLAT or FITTED	FULL FLAT or FITTED
2.99 Value Sale Price <b>2.34</b>	3.99 Value Sale Price <b>3.34</b>
42 x 36 Cases 2.14 pair	
5.99 Value QUEEN SIZE <b>5.24</b>	
7.99 Value KING SIZE <b>7.24</b>	
42" x 46" Cases 2.64	

**PACIFIC 50% FORTREL 50% COTTON PERCALE NO-IRON SHEETS**

Lovely new multi-print floral pattern

3.99 Twin Flat or Bottom Contour	4.99 Full Flat or Bottom Contour
<b>2 FOR \$5.</b>	<b>2 FOR \$6.</b>
42" x 36" Pillow Cases 2.50 pair	
QUEEN SIZE <b>\$5. ea.</b>	

**Dantrel No-Iron Fortrel and cotton fine type 180 percale**

TWIN SIZE <b>1.94</b>	FULL SIZE <b>2.54</b>
-----------------------	-----------------------

Also available: 42 x 36 pillow cases (regular 1.59, new 1.44), 4 pr. Queen size sheet (4.29, new 3.74), King size sheet (regular 4.99, new 4.44), King size pillow case (regular 1.39, new 1.14), Flat and fitted styles.

**DAN RIVER BLEACHED SHEETS**

100% Cotton Muslin Regular 2.09 and 2.39 Values

TWIN SIZE <b>1.64</b>	FULL SIZE <b>1.84</b>
-----------------------	-----------------------

42 x 36 pillow cases (regular 1.09, new .94), Flat and fitted styles. Famous Dan River quality in type 128 muslin.

**Bates BEDSPREADS**

10.98 & 12.98 Quality **6.88**

Rich decorator shades make these spreads a must for any bedroom — and they're machine washable and durable — never need ironing. Choose from a nubby knit weave or a snappy horizontal stripe. Twin and full sizes.

**Polyester Filled Bed Pillows**

2 For **4.44**

**PRINTED TERRY TEA TOWELS**

2 For **94¢**

**BIRDSEYE 30"x20" TEA TOWELS**

4 For **94¢**

**3-PC. BATH TOWEL ENSEMBLE**

**\$2. SET**

**60" Wide Sheer Panel Curtains**

**\$2. EA.**

**100% Polyester Mattress Pads**

Twin size flat (reg. 1.79, new 1.44), Full size flat (reg. 1.79, new 1.44), Full size fitted (reg. 1.99, new 1.64), Queen size flat (reg. 1.99, new 1.64), Queen size fitted (reg. 2.19, new 1.84).

## A NEW YEAR RESOLUTION SUGGESTION

FROM

# HAROLD CLOSE

— RX Walgreen Agency Drug  
Sugarland Mall Phone 364-2344

## PRESCRIPTIONS

**can be tax deductible!**

Did you know that pharmaceutical expenses can be included in your income tax deductions? We keep an accurate account here of drug purchases for customers who wish to claim these expenses ask about this service.

**OTHER PRESCRIPTION SERVICES**

- Free Delivery
- 24-Hour Service
- Charge Accounts Available
- Reasonable Prices

Phone the Prescription Number 364-2344

## Loans

Auto-Furniture-Signature

Give us a chance to say yes

**PLAINS FINANCE CORP.**  
906 South 25 Mile Avenue  
364-3400 Hereford Texas

LEE UMSTED  
Realtor

LONE STAR AGENCY  
Phone 364-6433



**PIGGLY WIGGLY PIGGLY WIGGLY WIGGLY PIGGLY WIGGLY PIGGLY WIGGLY PIGGLY WIGGLY**

Advertised Prices Good Mon., Dec. 27th thru  
Wed., Dec. 29, 1971



**One Resolution You'll Be Able to Keep:  
SAVE THRU '72 AT PIGGLY WIGGLY!**

...all year long Piggly Wiggly has the freshest produce,  
finest meats, lowest everyday shelf prices! Resolve to shop  
Piggly Wiggly and you'll have a Very Happy New Year!

**DOUBLE GUNN BROS. STAMPS**  
Every Wednesday with \$2.50 or More Purchase!



- FRYERS** LB. **29¢**
- CUT UP FRYERS** LB. **35¢**
- BREASTS** LB. **79¢**
- LEGS & THIGHS** LB. **59¢**
- GROUND BEEF** LB. **49¢**
- SHORT RIBS** Lean Meaty LB. **39¢**
- DRY SALT JOWLS** LB. **49¢**
- FRANKS** Armour Star 12 OZ. **55¢**
- FAMILY STEAK** LB. **79¢**
- BOLOGNA** Armour Star LB. **59¢**

- BLACKEYE PEAS** RANCH STYLE NO. 300 **2 FOR 25¢**
- BROWN & SERVE ROLLS** TENDERCRUST **4 FOR \$1.00**
- MARGARINE** FOOD KING 1-LB. SOLID **15¢**
- GOLDEN GODDESS** SEVEN SEAS 8 OZ. BTL. **29¢**
- CATSUP** HUNT'S 32-OZ. BTL. **49¢**
- POTATO CHIPS** SHURFRESH TWIN PAC **39¢**

- BEANS** Ranch Style 15-oz. Can **6 For \$1.00**
- GREEN BEANS** Labby's Cut Buttered 10-oz. Can **4 For \$1.00**
- CHERRIES** Shurfine 303 Can Red Pitted **4 For \$1.00**
- GREEN BEANS** Del Monte 503 Can Whole Green **4 For \$1.00**
- CHILI** Ranch Style No Beans 19-oz. CAN **59¢**
- JUMBO PIES** Bremner's 12 to Box Ass't Flavors **39¢**
- TUNA** Chicken of the Sea 6 1/2-oz. Can **2 For 79¢**
- DEODORIZER** Wizard Bathroom Air Freshener 9 oz. **49¢**
- SNACKS** Nabisco 8 & 10 oz. Pkcs Ass't **49¢**

- 7-UP** Regular or Diet 6 1/2-oz. Can **2 For 89¢**
- HI-C** Fruit Drinks 46-oz. Can Ass't Flavors **3 For \$1.00**
- PEARS** Shurfine 16-oz. Can **29¢**
- JELLO** Gelatin Dessert Ass't Flavors 3-oz. **10¢**
- FLOUR** Gladiola Enriched All Purpose 5-lb. Bag **49¢**

**DR. PEPPER**  
King or Regular  
6 Btl. Carton  
**2 For 89¢**

Piggly Wiggly  
1-pound Can of Maryland Club Coffee All Grinds Without Sugar 89¢  
**69¢**

- FROZEN FOODS**
- STRAWBERRY HALVES** **43¢**
  - FISH STICKS** **4 For \$1.00**
  - CREAM PIES** 6 Varieties **29¢**
  - SNACKS** 4 Varieties **75¢**

**PRESTONE or ZEREX ANTI-FREEZE**  
1 Gallon Plastic  
**\$1.49**

- DREAM WHIP** Whipped Topping 14-oz. Pkg. **85¢**
- FRENCH DRESSING** Krafts Chiffon 16-oz. **49¢**
- PUDDING** Hunt's Snack Pack Family Size 29-oz. **59¢**
- FACIAL TISSUE** 200 Ct. Ass't Colors **29¢**
- SNACK PACK** Hunt's 4 Pack Ass't Gel. **3 For \$1.00**
- BATHROOM TISSUE** Zee Ass't Colors 2 Roll Pkg. **19¢**
- COOKIES** Tendercrust Tanco Ass't. **3 For \$1.00**
- TOWELS** Softlin Jumbo Roll Assorted Colors **27¢**
- JELLY or JAM** 3-lb. Jar **79¢**
- ICE CREAM** Cloverlake All Flavors **69¢**

**PHILLIPS MILK OF MAGNESIA**  
12-oz. Btl. **69¢**

WORLD BOOK NO. 17 ON SALE THIS WEEK!

**LETTUCE**  
**19¢** LB.

**LADIES PANTY HOSE** 2 PR. **88¢**  
One Size Fits All

- GRAPEFRUIT** 18-lb. Sack **\$1.19**
- BANANAS** lb. **8¢**
- GREEN ONIONS** Bundle **10¢**
- NO. 2 RUSSET POTATOES** 10-lb. **49¢** BAG

**Pampers for drier, happier babies**

**\$1.69** **89¢** **\$1.49** **89¢**



**WIGGLY PIGGLY WIGGLY PIGGLY WIGGLY PIGGLY WIGGLY PIGGLY WIGGLY**