

## Director Named At King's Manor

Dr. John A. English, First United Methodist Church of Snyder, has been named by Bishop Alsie H. Carleton as the Executive Director for the Northwest Texas Methodist Homes For Older Adults, Inc. King's Manor, effective May 1.

Dr. English joined the Northwest Texas Annual Conference in 1938 and has served at Welbert, Big Spring, Wheeler Vega, Baird, Clarendon, Phillips, Lubbock, Abilene First, Childress District and Snyder First.

He has also served as Camp chairman, chairman for the World Service, with the Jurisdictional Commission on Finance and Education while also being a trustee of McMurry and the Methodist Hospital.

Dr. English and his wife Ferne have one son, Jerry, who, with his wife Carlene teach in the Stamford Schools. Jerry English is assistant football coach and head basketball coach and they have two children, Brad and Terry.

The Northwest Texas Methodist Homes for Older Adults maintains King's Manor of Hereford. Three types of care are available at the King's Manor campus. The Manor provides the resident with dormitory living with private room and bath, maid and linen service, family style meals, lounge areas, television, telephones, music and recreational facilities. Social activities include games, arts and crafts, parties and good visiting.

The cottage resident lives in a duplex apartment, either one or two bedrooms. Kitchen with range and refrigerator and

wall to wall carpeting are provided cottage residents. Their noon meal is provided in the Manor and they take part in all activities available to the Manor residents.

Westgate is the home's nursing facility. Nursing care is provided in private, semi-private, or ward accommodations. Westgate is licensed with the Health and Welfare Department as an ICF II Nursing facility and as such, can accommodate those residents who are Old Age Recipients.

At the present time, the 33 units in the Manor are all occupied. Fourteen residents live in the cottages and the 51 bed nursing unit is operating at full capacity. King's Manor, as a whole, employs about 50 people to take care of the resident's needs.

## Services Held For Father Of J. D. Kirkland

Funeral services for I. W. Kirkland, 83, father of J. D. Kirkland of Hereford, were held Thursday in Waco, where he had made his home for many years. Burial was in a Waco cemetery.

Mr. Kirkland died Jan. 14 in Waco after a long illness. He was born March 1, 1886 in Erath County, Tex. and married Alice Leona Beaman at Gatesville in 1906. She died in 1939.

Mr. Kirkland had been a resident of Lamb and Bailey Counties during the early 1920's.

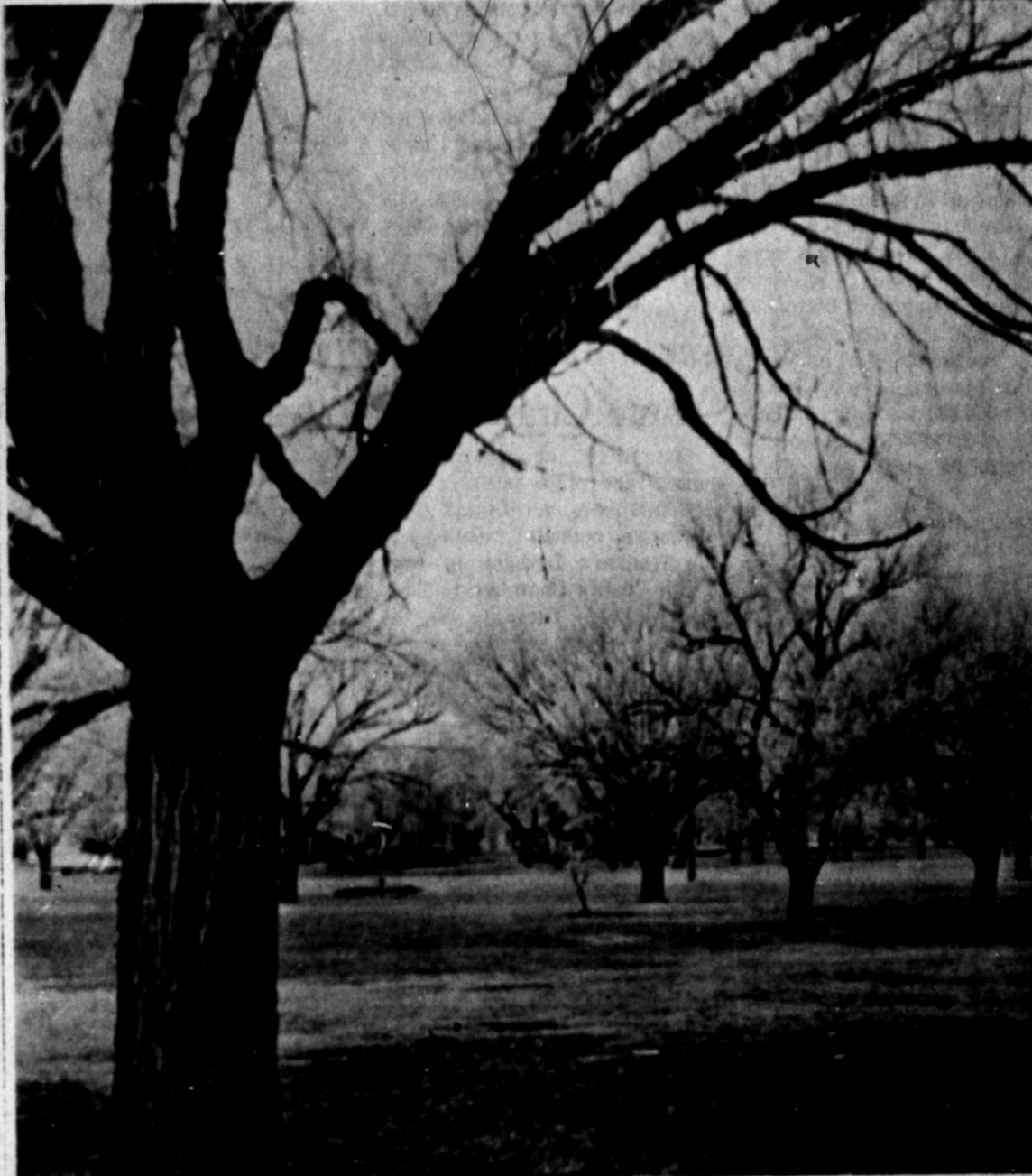
He was a veteran of World War I and was a Baptist. Other survivors include four other sons, I. T. and L. E., both of Vega, Bobby Ray and Leo, both of Waco; two daughters, Mrs. J. J. Herring and Mrs. Lois Parton, both of Temple; 29 grandchildren, 58 great-grandchildren and one great-great-grandchild.

## Banquet Tickets Are Still Needed

Area residents who received tickets through the mail for the Boy Scout District Banquet to be held Jan. 27 at the High School cafeteria, have been asked to either return the tickets or the money for the tickets as soon as possible.

Only a small number of persons have either returned the tickets or money and it is necessary for the scout executives to know as far in advance as possible how many will attend the banquet.

Those who still have tickets out and those who plan on attending the banquet but have not paid for their tickets should send either the money or the tickets to Nolan Grady, Box 414, Hereford.



JACK FROST HIT with full force Wednesday morning in the high plains region, covering trees and shrubs with a white coat. Scenes such as the one above in Dameron Park provided a chilly atmospheric feeling of winter for all who passed by.

## Low Income Housing Project Is Approved

The city commission, in a turn-about move Monday night, approved a request by Bob Pugh and the Knights of Columbus for a low-rent housing complex to be built in South Hereford—a request which was rejected a meeting earlier.

The Knights of Columbus will be the sponsor of the project which is expected to provide between 70 and 100 housing units, depending on the number approved by the Federal Housing Administration.

Commissioners, when they met in a meeting in December of last year, rejected the same or similar proposal by Pugh, but additional information was brought to light in the meeting

last Monday night, and the project was approved. The apartments will contain an estimated 3,120 square feet if a 100-unit complex is approved, and 4,475 square feet if a 70-unit complex is approved.

Intentions of the builders and sponsors is that the apartments be of a modern design, constructed of brick veneer, with the bedrooms and baths upstairs and the living room and dining rooms downstairs. Off-street parking will be provided and the cost of the units is expected to be around \$10,000 each.

In other action, the commissioners accepted a bid from Jones Motors for a 1970 Fury I to be used by the city police department. The bid by Jones was for \$2,752. Other bids submitted were by Orval Watson Ford Company for a 1970 Custom Ford for \$2,885.12 and another by Norwood Chevrolet-Olds, for a 1970 Chevrolet for \$2,947.87.

Commissioners also approved an ordinance to establish a set water rate for commercial and industrial water taps for water mains 16 inches or over only. With a six inch meter, the yearly minimum cost was set at \$20,000 with a four inch meter having a \$10,000 yearly minimum cost. Three inch meters will have a minimum cost of \$6,500 and from there ranging on down to a one inch meter with a yearly minimum cost of \$1,500.

The rate was based on a five-day week over a one year period with the user to pay for all costs of tapping, meter, connections, meter box and pavement repairs, if any. The rate also established that meters will remain the property of the city with city to maintain meter for normal wear only.

## Wilson's Near Starting Date

Nearer and nearer draws the completion date of Hereford's new Wilson Beef and Lamb Packing Plant. Though all operations at the plant will not be in effect for three to four months, February 16 is the set date to begin some phases of work.

Ted Acton, Wilson superintendent, announced this week that Feb. 16 appears to be the most favorable date. He stated, "To start slaughtering cattle on the sixteenth we will start our boilers on the twentieth of January."

"The reason is we will have to bring the temperature of the walls down at a slow rate. We plan to sustain the temperature of our internal walls at around thirty degrees."

"We will also have about two weeks of cleanup to do after we start the boilers."

## Man Found Dead In Cell Sunday

E. James Shea, 52, was found dead of an apparent heart attack in his jail cell Sunday night after he had been placed there on suspected driving while intoxicated charges.

Shea was arrested by city police officers around 5:30 Sunday after he had had an accident in which he struck a parked truck in the 400 block of G. He was still in the vehicle when police officers arrived, and according to reports, had no visible injuries.

Officers stated that Shea requested no medical aid and was then taken to the county jail where he was checked in about 5:30. Around 9:40 officers checked on Shea in his jail cell and found him dead.

An autopsy was ordered by Justice of the Peace Bill Rowland and preliminary tests showed Shea died of an apparent heart attack.

He was born June 1, 1917 at Purcell, Okla. and married Pauline McLaughlin March 4, 1942 in that city. They came here in 1968 from Oklahoma.

He was a member of the Catholic Church.

Survivors include his wife, of the home; two sons, Harold of Hereford and Claud of Oklahoma City, Okla.; one daughter, Patricia Ann Riggle of Purcell; two brothers, Jay of Purcell and Burnice of Noble; one sister, Mrs. Fred Scott of Purcell.

Funeral services will be conducted at 2 p. m. Friday in Purcell Catholic Church with the Rev. John Wade, pastor, officiating. Burial will be in Hillside Cemetery in Purcell.

Local arrangements were handled by Gilliland Funeral Home.

## Simulated Emergency Test To Be Run Here

This Sunday members of the Hereford Amateur Radio Emergency Corps, under the leadership of Bill Carathers, K5CLH, Emergency Coordinator of the American Radio Relay League for Deaf Smith County, will conduct a Simulated Emergency Test of the Deaf Smith County Emergency Communications plan.

The purpose of this plan is to provide the Deaf Smith County area with emergency communications facilities, in the event of a disaster that might damage or incapacitate normal communications facilities.

"The local Amateur Radio Emergency Corps (AREC) is a group of amateur radio operators who have volunteered their time and radio stations to the end that Deaf Smith County will never find itself without communications as a result of failure of telephone, telegraph or power lines, and is part of a nationwide organization known as the Amateur Radio Public Service Corps.

This year's test, as in previous years, will emphasize cooperation with Red Cross chapters and civil defense agencies throughout the nation. Mobility and versatility of the station units taking part will be demonstrated. A number of mobile and portable short-range radio stations will be set up at strategic points around Deaf Smith County in order to provide local communication, and a higher powered long range fixed station will supply contact with distant points. The local network will be tied in with the National Traffic System, division of the ARPSC, for swift communication with points outside the local area.

See TEST, Page 2

## Saturday Is Deadline To Enter Stock Show

Only three days remain in which area young farmers may register for the annual Hereford Young Farmers Junior Livestock Show which is set to begin Thursday, Jan. 29 at the Deaf Smith County Bull Barn. Deadline for returning the entry cards which were mailed out is Saturday of this week, and no animals will be accepted in the show unless entry cards and fees are received prior to Jan. 24.

Entry fees have been set at the rate of \$4 per calf and \$2 per barrow and lamb. Floor price will be set on all animals before the sale on Jan. 31 and animals to be sold at the floor price which are not eligible to be auctioned will be moved from the barn to pens provided on the outside before the auction sale begins.

A complete list of general rules and regulations have been issued and includes that before an entry can be pulled from the sale or floor, the superintendent of that vision must be notified within one hour following judging of that animal.

All animals not pulled from the sale will sell and be delivered to the buyer and any infraction of the rules will be subject to a \$25 fine per animal. Steers entered in the show will be shrunk 3 per cent at the time of weight.

Each exhibitor entering livestock in the show gives permission for these animals to be used in the 4-H and FFA judging contest with the exception of the Grand Champion and Reserve Champion.

All barrows and lambs must be in place by 10 p. m. Wednesday, Jan. 28.

All calves must be in place by 10 a. m. Thursday, Jan. 29, and all animals will be tagged at the time they are weighed.

All livestock entered in the show will have been owned by the exhibitor who under the supervised feeding of the County Agent or Vocational Agriculture teachers as follows: calves, at least six months; lambs, at least two months and pigs, at least two months.

Only two calves, two lambs and two pigs may be shown by one exhibitor in the Four County Show with the same rule applying to the county show.

Steers must weigh 750 pounds and over to be eligible to show. Barrows must weigh 190 pounds and not over 240 pounds to be eligible to show and lambs must weigh 80 pounds and not over 120 pounds to be eligible to show.

There will be three classes for lambs, those being Finewool, Finewool-Crossbreed and Medium wool. Eligible for entry in the Finewool category will be Rambouillet, Delaine or Debouillet breeding or a cross between these breeds and in the Finewool-Crossbreed, a typical first cross of a finewool with a Suffolk, Hampshire, Corriedale or Columbia will be eligible. In the medium wool class, will be Southdown, Shropshire, Montadale or Cheviot grade or crossbreed.

Decision as to how sheep shall be classified will be left up to the Department superintendent. Exhibitor shall be responsible for bringing lambs to classifier at the specified time.

There will be a Champion of each of the three classes and all lambs must be carrying their milk teeth.

Light, medium and heavy class of Herefords will be shown as well light, medium and heavy classes of Angus and other breeds. Crosses will show in class represented by the sire. The first and second place winner of each class will compete for the Breed Champion and Reserve Breed Champion calf and no steer will be allowed in the show that shows wear on permanent incisors.

In the barrow classes, Berkshires, Chester, Durocs, Hampshires, Poland Chinas and all other breeds are eligible to show. See SHOW, Page 2



Dr. John English

## Kiwanis Program Saturdays 5 p. m.

The Kiwanis sponsored program, "You and The Law", has been scheduled to be shown on KGNC-TV, Amarillo, on Saturday instead of the previously scheduled time of 1 p. m.

The Hereford Kiwanis Club, through Kiwanis International, participates in the sponsorship of this program, which deals in various phases of law enforcement, youth and drugs.

## J. S. Bridwell Ranch, A Living Replica Of The Past

By JERRY ODOM  
Staff Writer

When far away visitors arrive in Deaf Smith County from the southern and eastern directions, surprising thoughts usually arise in their minds. What else can be expected? There are no monstrous ranches or tobacco chewing cowboys roaming around the city and its outskirts—except maybe for the few hands in the feed yards.

The fact still remains all that is in immediate sight are towering elevators and such industries as Holly Sugar. You have to admit its not what one would consider as so-called "cow country."

But when one travels to the northwestern section of the county imagination changes to realization. There's a certain region about forty five miles from the city in the northwestern direction where engine powered irrigation wells vanish and the windmill becomes a popular sight.

To get there you just keep going west on Harrison Highway. Grassland thickens as beet fields and patches of lettuce crops thin out. When arrival is made at Bootleg Corner, a right turn is made to approach one sizable ranch still in existence. Beyond the Bootleg and Walcott Community there's a little area known as the Bippus Community. The main landmark there is a small church still in seemingly good shape.

On the other side of this church is the place known as the J. S. Bridwell Ranch. Once a small portion of the famous XIT spread covering a total of three million acres, it has slimmed to approximately 34,800 acres.

The late J. S. Bridwell purchased the ranch from the Landergin brothers' heirs in the late 1930's. Part of the cropland at the time, which is now about

4253 acres, was bought by Mr. Bridwell from individual farmers.

Ed Blackwell, an agent with the local Soil and Water Conservation Service, did some research on the history of the Bridwell range. He said, "The area was originally inhabited by the Comanche, Kiowas, Apaches, and members of other Indian tribes who hunted bison, deer, and antelope."

Settlers began to arrive there in the 1800's. When you first enter the ranch from the eastern gate, nothing unusual appears from the county's farm and small ranches. There are fields of dry land wheat and grain sorghum on the roadside.

On ahead is the ranch's headquarters which is the home of Wayne Sifford, the foreman of the Deaf Smith section of the estate. Behind Sifford's home is a startling sight.

A large, somewhat deep canyon lies a few yards away. Traveling down into the extravaganza everything seems to change. Mesquite trees become a numerous plant.

On the peak of the cliffs are hawks flying and often in the flats can be seen antelope and deer, which are forbidden to hunt. On an ordinary day a person can shut off his vehicle engine and step out into dead silence.

Even the cows staring from behind the trees and the birds flying overhead just look and seldom make a noticeable sound. You and parts of the ranch can sometimes be a bit of trouble.

There are no super-highways or even straight ones. Just narrow dirt roads which wind around and lead off in every direction.

The western border of the ranch lies adjacent to New Mexico. Along this side the grass is excellent, most of it being blue grama, sid oats grama, and a

little blue-stem which is rarely found in Deaf Smith County.

The 34,800 acres in the care of Wayne Sifford is only a segment of the J. S. Bridwell estate. It extends further into Oldham County where there lie 70,000 more. This is cared for mainly by Sifford's father, Herman.

With the price of good land today resting at around \$700 per acre, the price Mr. Bridwell paid is comparatively smaller.

When he purchased the ranch in the '30's he paid between \$7.50 and \$12.00 per acre.

In 1959 he entered the Great Plains Conservation Program. Blackwell stated, "To improve his grassland, Bridwell needed to make improvements on the ranch."

"Through this program, which was practically new in 1959, livestock water has been developed, cross fencing has been done, and assistance has been given on the management of the grassland of the ranch."

Wayne and Herman Sifford think of themselves principally as producers of livestock. They have well-bred herds and some fine animals in which they take a great deal of pride.

He also added, "They are also interested and concerned with the grassland and the plants that grow on it, for they do not need to be told that their livestock depends on these grass plants for livelihood."

They recognize the truth in the statement, taking care of the grass will take care of the stock.

The Siffords rest the range at critical times of the year to maintain and improve the better grasses. They have eliminated competition from some of the undesirable plants such as mesquite trees."

Blackwell simplified the purpose of the Great Plains Program in aiding the Siffords. "It is to improve the grassland so

See BRIDWELL, Page 2



A COST-SHARE PROJECT—This water pond, one of seven on the J. S. Bridwell Ranch, was cost-shared with the local Conservation Service under the Great Plains Conservation Program.—Staff Photo



# Test...

(Continued from page 1)  
This Simulated Emergency Test will be one of the hundreds of similar tests being conducted all over the nation by units of the Amateur Radio Public Service Corps during the weekend of January 25-26, and the criteria of successful planning will be the speed and reliability of communication, under simulated emergency conditions, with other parts of the area, state and nation.

As a part of the test, participating amateurs will originate messages addressed to their Section Emergency Coordinators, civil defense directors will originate messages to civil defense officials at state and federal level and Red Cross chapter executive officers will report by radio to their area and national offices through a amateur radio's National Traffic

System and other nationwide facilities.  
Local amateurs participating in addition to Carathers are Bill Thompson, W5JSM, Marvin Kearns, W5TCP, Steve Castillo, W5TDF and R. L. Ethridge, W5QOV. Thompson is Section Emergency Coordinator for the North Texas Section which includes 144 counties. Many hundreds of messages will be flowing into Hereford from local units over the section. Thompson will be serving as net control station and liaison station to the Northwest Texas Emergency Net, The Texas Traffic Nets, and TEX during the Simulated Emergency Test. Operation will be both on voice (Single Side Band) and by continuous wave (c.w.) — international radio telegraphy.

# Bridwell...

(Continued from page 1)  
as to providing a better distribution of grazing."  
Individual projects by the USDA undertaken on the ranch are "cost-shared" with the Siffords. That is the USDA pays half and they pay half.  
Since 1959 there have been six water storage facilities, seven ponds, three wells for livestock water, 28,703 feet of fencing, 6,032 feet of diversion terraces and 1396 acres of brush control work "cost-shared."

This about summarizes a description of probably the biggest ranch in the county. But there's one thing that can't be left out. That's the mentioning of the rancher's wife who also

# Path To Altar Gets More Crowded Here

The sound of wedding bells will be heard more often in Deaf Smith County from now on. More young couples will be marching to the altar this year and next than in some time.  
This is evident from the sharp increase in the number of young people who will be in the age bracket in which most marriages take place. These potential brides and grooms are the product of the postwar years of the '40s, when the birth rate hit an all-time high.

It appears, from the local population figures and from previous experience, that the marriage rate in Deaf Smith County will reach 15.3 per 1,000 residents this year.

By way of comparison, according to figures from the Department of Commerce and the Department of Health, Education and Welfare, the local rate puts in her hard days work. She rises early in the morning. She cooks, washes, and sews many hours of the day.

And by the way, for all the far away visitors of Hereford it may be interesting to know that there are true-to-life hard working cowboys on the Bridwell ranch. Yes real ones, even though some of 'em don't chew tobacco.

was 12.6 marriages per 1,000 in 1964.  
Throughout the nation, an average of 10.9 weddings per 1,000 is expected this year. The prediction for Texas is 12.4 per 1,000.

Not since the troops came home, in 1946, has the country experienced a marriage boom such as occurred that year when nearly 2,300,000 weddings took place. From then on there was a steady decline to a bottom of 1,500,000 in the late '50s.

Now, however, the curve is moving upward again, with some 2,000,000 weddings in 1968, a total of 2,140,000 in 1969 and about 2,200,000 expected this year.

Examination of the figures shows that the number of marriages in any community is directly proportional to the number of people in the principal marrying ages — 20 to 24.

In that age bracket in Deaf Smith County, at the present time, there are approximately 1,440, well above the 1961 total of 1,130.

With the increase in the number of weddings, there will follow, in due time, a rise in the

birth rate, which has been at a low level for some time.

For the local business man, the picture is a rosy one. Each marriage represents thousands of dollars of spending — for jewelry, clothing, furniture, household necessities, appliances, insurance and, eventually, baby carriages. The initial outlay, in setting up a home, is estimated at more than \$3,000 per couple, on average.

# Chamber Women Name Chairmen

Committee chairmen were named and plans for recruiting new members were made at an executive council meeting of the Women's Division of Deaf Smith County Chamber of Commerce held Tuesday at the Country Club.

Named as committee chairmen by newly appointed president, Mrs. Jack McKinster, were Mrs. Pete Caviness, beautification; welcome and convention, Mrs. Bill Waldrep; Mrs. Milton Adams, public affairs, with sub-committee chairmen, Mrs. John Pitman, Satellite School and Mrs. Tom Draper, education. Other committee chairmen and members will be announced at a later meeting.

Membership dues were explained by Mrs. Bill Lamm and plans for the membership campaign in February were formulated. Dues for the women's division are \$10 if the membership is through a business or the husband is a member of the Chamber. A business membership is \$72 per year.

Individual memberships may be obtained for \$36 plus \$10 for the women's division if the applicant is on an affixed salary or retired, and does not operate a business.

Plans were also made for a telephone canvass by Chamber women urging residents to register for voting. Mrs. Shepard Townsend is in charge of the canvass.

Mrs. McKinster announced a Deaf Smith County Council of Alcoholism workshop scheduled Jan. 28 at the Community Center and urged members to at-



**PLANS MEMBERSHIP CAMPAIGN** — Members of executive council of women's division of Deaf Smith County Chamber of Commerce met at the Country Club Tuesday to formulate plans for the membership drive scheduled in February. Shown from the left is Mrs. Bruce Brown, Mrs. Jack McKinster, president; Mrs. Shep Townsend and Mrs. Milton Adams. — Staff Photo

# Beet Growers Convene Here

Texas-New Mexico Sugar Beet Growers Association, with a membership of approximately 750 growers, including landlords and tenants, will conduct its annual membership meeting and banquet Saturday evening, 7:00 p. m., at the Bull Barn, according to James Witherspoon, executive secretary and legal representative.

Guest speaker for the banquet, Bob Murphy of Nacogdoches is well known for his wit and humor which is presented in the true Eastern Tex style. A lawyer by profession, Murphy also stands as sergeant-at-arms of the Texas House of Representatives, a war time Merchant Marine Officer, country politician, ranch hand,

tend. Registration for the workshop, with Rev. Fred Howard as moderator, will be at 1 p. m. Attending were Mmes. M. C. Adams, John Blocker, Bruce Brown, Jimmie Gilentine, Lynn Kester, Barbara Dryden, Rex Lee, Townsend, Lamm and McKinster.

county attorney, fire captain and district attorney, and thereby feels that he has observed the Texas scene.

In addition to serving as master of ceremonies for the banquet, Jay Boston, president of the association, will conduct a business meeting Friday, 2 p. m., in the Community Center. The highlight of this meeting will be the election of two new members of the organization's board of directors to serve for the next year to replace Directors Donald Kimball of Wildorado and A. L. Black of Friona. Bill Gentry serves as chairman of the nominating committee.

Other officials and directors for the organization include Don Shipley, Vice-President; L. E. Davis, Clovis, N. M.; S. L. Garrison, Raymond Higgin botham, and Virgil Marsh, directors.

There are now about 80 different electrical home appliances compared to only 19 in 1930.

READ THE CLASSIFIED ADS

# POLITICAL CALENDAR

- DEMOCRATIC PRIMARY**  
May 2, 1970
- For County Judge: H. C. "Hank" Williams
  - For Commissioner, Pct. 2: M. R. Latham
  - For Commissioner, Pct. 4: R. Donald Hicks
  - For Justice of Peace: Bill Rowland, Glenn Nelson
  - For State Senator, 31st Senatorial District: Max R. Sherman
  - For District Clerk, 69th Judicial District: Lucille Poscy
  - For County Clerk: B. F. Cain
  - For County Treasurer: Wanda Newman, Nell Williams
  - For District Judge: Archie McDonald
- REPUBLICAN PRIMARY**  
May 2, 1970
- For State Senator, 31st Senatorial District: Malouf Abraham
  - For House of Representatives, 18th Congressional District: Bob Price

# The Hereford Brand

Member National Editorial Association  
Member Associated Press  
Published Every Thursday at 120 W. Fourth Hereford, Deaf Smith County, Texas, 79045

THE BRAND PUBLISHING COMPANY  
Entered as second-class matter at the Post Office in Hereford, Texas under the act of March 30, 1879. Second-class postage paid at Hereford, Texas. Any erroneous reflection upon the character, standing or reputation of any person, firm or corporation, which may appear in the columns of this paper, will be gladly corrected upon due notice of same being given to the editor personally at the office. Subscription Rates: Zone 1, \$3.00 per year; Zone 2 and above, \$4.20 per year. With Classified advertising rates: 4 cents per word first insertion 30 cents minimum; 6 cents per word additional insertion.

The Sunday Brand, both papers, Zone 1, \$5.95 per year; Zone 2, \$7.40 per year. Carrier deliver, 60 cents per month. Single copies 10 cents each.

CIRCULATION  
Mail 364-2030  
Carrier 364-1855

James M. Gilentine, Publisher  
Melvin Young, General Manager  
Marshall Day, News Editor  
Gray King, Advertising Manager  
Barbara Dryden, Society Editor  
Jay Spain, Mechanical Superintendent

HAVE A NICE SPRING THIS WINTER!

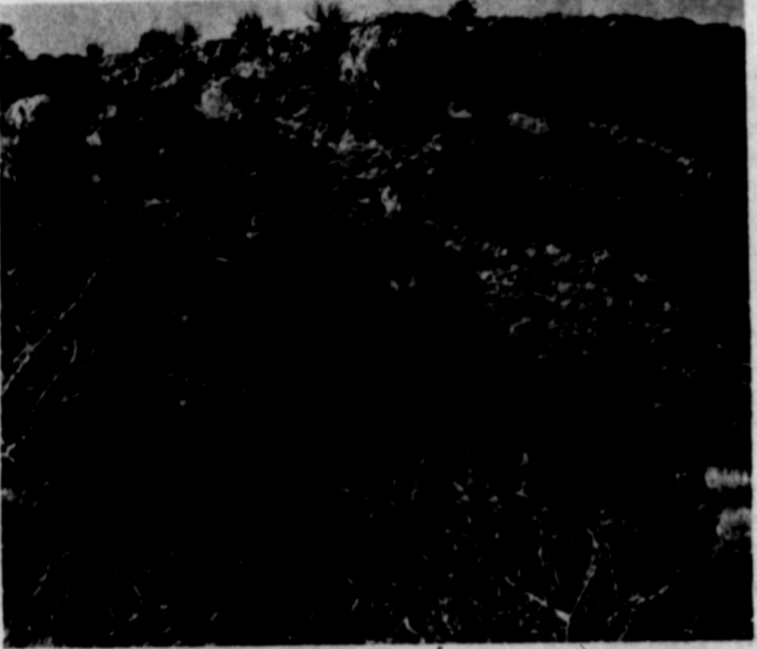


With Healthful Spring-like Comfort Furnished by an

# Aprilaire HUMIDIFIER

Just set the dial in your living area... and the out-of-sight Aprilaire Humidifier automatically furnishes the humidity your home and family need.

MODELS FOR EVERY HEATING SYSTEM  
Walker Refrigeration  
305 E 3rd Street  
Phone 364-0788



**UNUSUAL SCENERY** — For Deaf Smith County, this is a sight which many would proclaim doesn't exist. But it does and it is located on the J. S. Bridwell Ranch forty miles northwest of Hereford. Staff Photo

# KNOW BULL

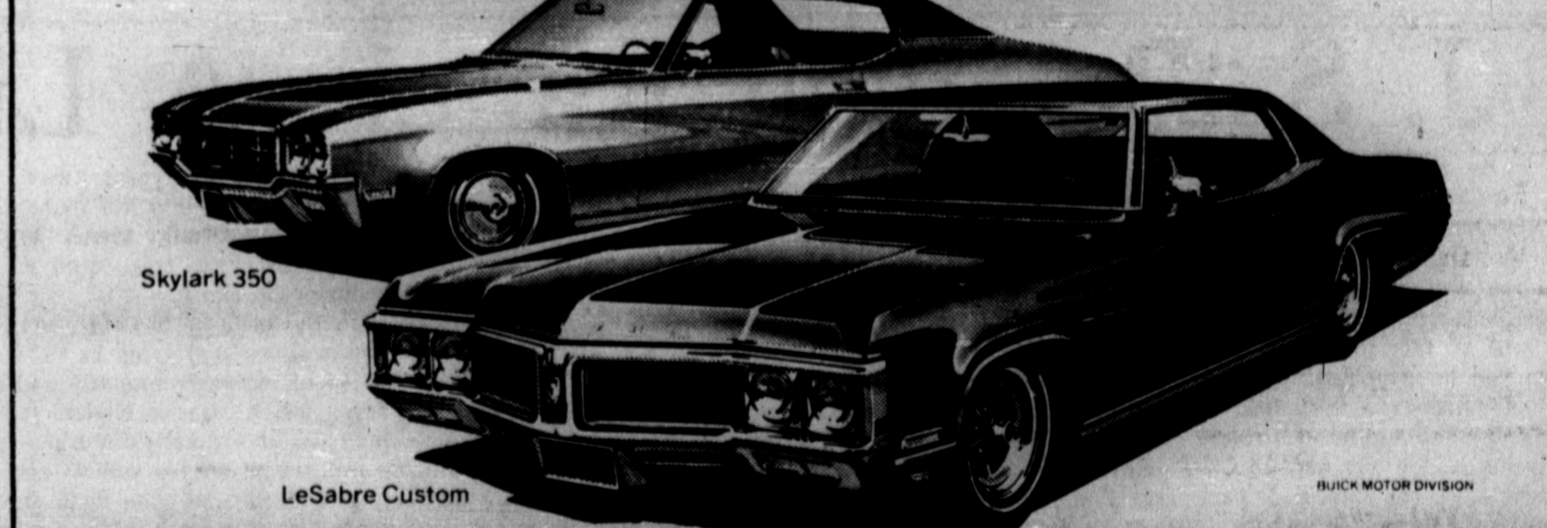


Yes, we want you to KNOW OUR BULL, the symbol of Great Western Tire Co. where you can get the lowest prices on quality GATES® tires in the Golden Spread.

CALL or COME BY and get our...  
**KNOW BULL DEAL!**  
**Great Western Tire Co.**  
801 EAST FIRST PHONE 364-4892

# Two years from now a 1970 Buick should be a little newer than most other cars.

Two years from now a 1970 Buick should be a little newer than most other cars.



Buicks are built that way. Checked and rechecked. Buick drive trains are balanced right on the cars. Buicks have semi-closed cooling systems. They should never overheat. Every Buick has a strong, long-lasting body by Fisher. All Buick V8 engines have carburetor time modulated choke controls for fast, easy starting in any weather. Every time. Every Buick V-8 engine is precision balanced and inspected right on the assembly line by a unique compressed air technique known as air motoring. Buick developed it. It's another Buick exclusive. That, incredibly, is only the beginning.

The final result is lasting value. An integral part of every Buick. Standard equipment on the Buick that's waiting for you at the Buick Value Center. The Buick showroom nearest you. Where you can learn all the facts about the new cars that will stay new longer. Where you can begin enjoying Buick value.

**Buick Value. Something to believe in.**



Hereford, Texas  
**Penneys**  
 ALWAYS FIRST QUALITY

# THURSDAY

The really big one! We'll be closed all morning to reprice our Winter merchandise! Drastic reductions on hundreds of items! Quantities limited! Be Here at 12 sharp for your share of these timely bargains!

starts at 12 O'CLOCK

# 1/2 day clearance

12 A.M. TO 6 P.M. THURSDAY

CLEARANCE CONTINUES THRU SAT.

LIMITED QUANTITIES, BROKEN SIZES ON CLEARANCE ITEMS SO BE HERE AT 12 SHARP.

| LARGE GROUP TOYS |            |
|------------------|------------|
| Tonka Case       | Reg. 7.88  |
| Space Station    | Reg. 8.44  |
| Hot Wheels Case  | Reg. 7.88  |
| Super Eyes       | Reg. 11.88 |
| Western World    | Reg. 13.88 |

**\$3**  
NOW

Prices Slashed On Men's Winter Coats  
**9.88 - 15.88 - 19.88**

Entire Stock Reduced Men's Sweaters  
**7.88**

1 BEACH TOWEL reg. \$4 now 1.99  
 Women's Cotton Flannel Gowns  
 Knit sleepwear, shifts, pajamas and long gowns.  
 reg. \$4 and \$3 NOW **2.88**

Women's Seamless Stretchable Nylon Hose 2 pr. for **2.22**

Women's Knee Socks Reg. \$1 now **50c**

Piece Goods Clearance Cotton Fabrics  
 Reg. 98c to 1.98 NOW **66c**

Draperly Sample Panels **50c** each

Thermal Blankets 6 only **3.99**

Cotton Sheet Blankets **1.99**

Terry Bath Towels **2 for \$1**

Face Towel **3 for \$1**

Wash Cloth **5 for \$1**

Twin Mattress Pad & Cover **\$3.88**

Printed Pillow Cases **2 for \$1**

| PILLOW PAIRS          |               |
|-----------------------|---------------|
| Polyester             | 2 for \$5     |
| Dacron Polyester      | 2 for \$8     |
| Foam Rubber           | 2 for \$8     |
| Dacron Foam Core      | 2 for \$12    |
| White Goose Down      | 2 for \$26    |
| King Dacron Foam Core | 2 for \$20    |
| Sewing Chests         | \$2 to \$3.88 |
| 16 Piece Bowl Set     | \$2           |
| Stereo Albums         | 99c           |
| 3 Towel Sets          | \$3           |

DOUBLE KNIT BOLT ENDS  
 Textured polyester, machine washable, tumble dry in fashion spring colors. 1/4 to 2 yds. both end remnants **4c** an inch

Entire Stock Boy's Winter Jackets **\$5 - \$7**

Girl's Winter Coats and Jackets **\$5 - \$9**

BONDED JERSEY flannel & felt 1.99 yd.  
 Women's Better Slacks Reg. \$5 to \$10 NOW **3.88**

Large Group Better Dresses Reg. \$10 to \$23 NOW **\$4 and \$6**

Women's Winter Gloves Reg. \$4 NOW **\$2**

Women's Quilted Nylon Robes Reg. \$10 \$13 \$16 NOW **7.99**

Men's Dress Gloves **3.66**

Remnants **25% Off**

Gingham Checks **48c yd.**

Men's Better Suits **\$40 - \$55**

Men's Winter Caps Reg. 2.98 NOW **1.99**

Children's Winter Gloves **\$1**

Boy's Western Jeans **2.22**

Boy's Sport Shirts **1.99**

Boy's Canvas Jeans **2 for \$5**

1 Group Percale Sheets 72x108 72x120 Twin Long Boy Extra Long Orchid reg. 8.99 now **2 for \$5**

9x12 Nylon Rugs **\$36**

104"x140" Nylon Braid Rug **\$52**

Fitted Quilted Bedspreads Twin & full \$9.99 Queen & King **\$14.99**

Men's Casual Slacks **4.99**

Men's Pajamas **\$2.99**

Misses Blouses **\$2**

Girl's Flannel Gowns **\$1.99**

Girl's Sweaters **\$1.99**

Look What 50c Buys  
 Boxed pin & earring sets  
 Sunglasses  
 Cosmetics  
 Watch Calendars  
 Head Scarves **50c**

Reduced To Clear Womens' Coats **22.88 - 27.88**

Prices Slashed Womens' Jackets **12.88 16.88 19.88**

BETTER PIECE GOODS 38c yd.  
 Women's All Weather Coats Reg. \$14 now **\$7**

Women's Coordinatates Blouses - Sweaters Slacks - Skirts **4.88**

Prices Slashed On Girl's Coordinatates Sweaters - blouses skirts - dresses - pant sets **2 for \$5**

Girl's 2 Piece Stretch Nylon Set Sizes 2 to 4 **2 for \$5**

Entire Stock Boy's Sweaters reg. 3.98 to 7.99 NOW **2 for \$5**

Men's Hooded Sweat Shirts **1.99**

Men's Flannel Shirts **2.50**

Men's Western Jeans **2.88**

Men's Sport Coats Reg. \$35 to \$40 **\$25**

Men's Thermal Drawers **1.99**

Men's Dress Shirts **1.99**

Men's Sport Shirts **1.99**

Men's Ban-Lon Knit Shirts **2 for \$5**

Family Shoe Clearance **1.99 to 7.50**

Children's House Shoes **1.50**

Women's Purse Clearance **1.99 to 3.99**

Men's Knits Shirts **99c to 1.99**

Men's Sport Shirts **1.99**

Infants Sleepers **3 for \$5**

Infants Caps **\$1**

Women's and Girl's Caps **\$1.99**

Curtain Cleanup **50c**

## Thinking Aloud

By BARBARA DRYDEN

The Brand had a visitor this week from West Concord, Minn., Mrs. Harvey Zeller who is a feature story writer for the Rochester Post Bulletin, Rochester, Minn.

The Zellers were here visiting the Clinton Jacksons, with whom they made a trip to Pakistan last year.

Mrs. Jackson brought Mrs. Zeller to my office and they were taken on a grand tour of the establishment. It's always nice to compare newspapers and we really enjoyed the visit.

Mrs. Zeller has written several stories that have been published in Farm Journal.

The Zellers are Minnesota farmers.

I am assuming that you're as confused as I am.

Give us the benefit of the present thinking: We'll listen to what you have to say as long as it doesn't interfere with what we have already decided to do.

Will advise you in due course: If we figure it out, we'll let you know.

To give someone the picture: A long, confused and inaccurate statement to a newcomer.

Spearhead the issue: You be the goat.

Point up the issue: To expand from one page to fifteen pages.

The issue is closed: I'm tired of the whole affair.

At Christmastime, when the elementary children were painting plates for gifts for their parents, Scot-son made me one which I have hanging on my wall.

Usually, when they paint them, the most usual words used are "God Bless This House."

Not Scot-son, however, I bet I have the only plate in town with the words "God Bless Coach Birdwell."

## Meat Cookery Is Dawn H. D. Club Topic

A program on meat cookery was given by Mrs. Argen Draper, H. D. Agent, to members of Dawn Home Demonstration Club at a meeting held Friday in the home of Mrs. Jerry Halley.

A demonstration of beef fondue, was given as a follow-up with one given in November on cheese and dessert fondue.

She also discussed the selecting and buying of proper cuts of meat.

In a brief business meeting, with Mrs. Leroy Johnson, newly appointed president, presiding, club members voted to meet Jan. 30 at the Dawn Community Center to plan menus for the Dawn Lion's Club and to complete yearbooks.

They accepted the resignation of Mrs. J. B. Caraway, who resigned because of illness.

Others attending were Mmes. Bill Leonard, Ray Stewart, Wallace Shilton Jr., H. V. McCabe, Jim McCabe, Buster Tucker, H. D. Fowler, Orval Galley, R. E. Cox, and Carl Wimberley.

The next meeting is scheduled Feb. 6 in the home of Mrs. Cox.

ADMINISTRATIVE CRACK- FRANKFORT, Ky. —The Finance Department has fixed ceilings for out-of-state travel for all state agencies plus state universities. Finance Commissioner Albert Christen said too many employees are going to national conventions unnecessarily.

ONE DAY TV SERVICE  
 CALL  
 364-4740  
 TOWER T.V.  
 248 N.W. Drive, Hereford.



DIAL 364-5100

Limited Quantities - Broken Sizes - Subject To Prior Sale - Drastic Reductions



# Comeback Farmer Aids Land With Conservation

By JERRY ODOM  
Staff Writer  
Deaf Smith County's Comeback Farmer of the Year — W. L. Edelman of Friona — was selected last week by the Tierra Blanca Soil and Water Conservation District Board. Edelman, who also happens to be the mayor of Friona, farms a quarter section of land six miles southwest of Hereford.

Considered persons for the honor of Comeback Farmer or Rancher are those who have recently bought a piece of land which was abused and through conservation practices, have built it up and increased its value.

Edelman bought this 160 acres in 1962, at which time there were no irrigation wells or pipeline on the place. Much of the sloped land was badly affected by wind and water erosion.

The Mayor stated, "We had to change because it wasn't very profitable."

On May 19, 1967, Edelman entered the Great Plains Conservation Program in an effort to preserve his wasted land. On his sloped land which is a three percent drop (one foot per hundred foot) he has planted a tall wheat grass.

This tall grass helps prevent erosion along with providing better results with cattle production than he was previously getting with crops.

Ed Blackwell, an agent with the local Soil and Water Conservation Service, said this tall wheat grass is a cool season plant. "It is usually planted in the spring or fall and grows real good between the months of March and June."

After Edelman takes his cattle off wheat he can move them to the wheat grass. He also uses it in conjunction with the summer grazing of forage sorghum.

Following the grazing of forage sorghum he moves his cattle to the tall grass until he gets ready to graze them on wheat.

Edelman now has all acres of his sloped land in this tall grass and native grass. Because of his conservation practices on grassland he can run about twice as many cattle.

Edelman has his best land, fifty two acres, in cropland. On this he raises ensilage corn, cane, hybrid sudan grass, potatoes, and beets.

Since his purchase of the farm Edelman has drilled on eight inch, 800 gallon well. He has cost-shared with the Conservation Service 4,072 feet of irrigation pipeline.

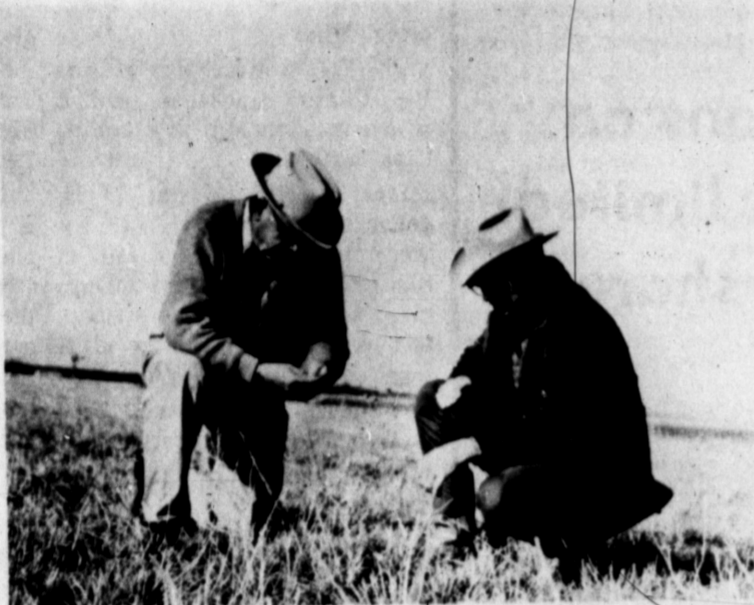
## Registration Deadline Near

Representative Bill Clayton issued an urgent plea from his Austin office, Monday, for the citizens of Texas to register to vote before January 31, 1970. Clayton stated that many issues will be facing the general electorate during 1970. Besides the many candidates for public office to be considered at the primary and general elections, there will also be city elections, school board elections, and several local bond elections.

Also facing the voters in 1970, Clayton said, will be seven Constitutional Amendments to be voted on in the November general election. One of the most controversial and heated issues ever to confront the State of Texas will be decided by the people in November, when they mark their ballot for or against liquor by the drink. To participate in these elections and to express yourselves it is necessary to register to vote by January 31.

Clayton said that the decisions that are made in 1970 could affect Texans for many generations to come, and he encourages everyone eligible to qualify themselves to vote.

**Dead Animal Service**  
Free removal of dead animals daily service . . .  
Phone 289-5215  
**Simms Elevator**  
Westway



**COMEBACK FARMER** W. L. Edelman, left, and Soil Conservation agent Ed Blackwell observe the progress of the tall wheat grass planted on Edelman's farm last year. The planting of this grass and numerous other advised conservation practices on the farm enabled Edelman to be named Comeback Farmer of the Year. —Staff Photo

## Bippus Club Names Mrs. Sifford As Woman Of The Year Nominee

Mrs. Wayne Sifford was voted Home Demonstration Woman Of The Year candidate and Mrs. J. V. Perrin was named club nominee for district office by members of Bippus H. D. Club at a recent luncheon meeting in the home of Mrs. C. F. Homfeld.

The program on selecting grades of beef and meat cooking was presented by Mrs. Argen Draper.

She prepared samples of beef fondue, sour cream sauce, vegetable delight and shrimp dip which was served to club members.

Mrs. Draper said "USDA utility grade beef is produced most

ly from cattle somewhat advanced in age and usually lacking in natural tenderness and juiciness. Cuts of this grade carry very little fat but provide an economical source of lean meat for roast, stewing, boiling, or ground meat dishes. For satisfactory results, long slow cooking by moist heat is essential," she said.

Mrs. Perrin gave a brief history of the song "Amazing Grace" which was sung by the group.

Others attending were Meses. J. G. Fortenberry, Elmo Hall, Charlie Burk, John Hill, C. T. Douglas, Kenneth Homfeld, G. V. Hall and Jimmie Bradley.

Mrs. Burk will host the next meeting Feb. 11.

He has cost-shared another quarter mile of pipeline with the Agricultural Stabilization and Conservation Service (ASCS).

He has also acquired cost-share assistance on his pasture planting.

Conservation practices he is carrying out on his own are conservation cropping systems, crop residue use, irrigation systems, stubble mulching, contour farming, pasture management and proper grazing use of the range land.

Blackwell stated Edelman is carrying out all these practices at the present time and will complete them in his contract which will expire at the end of 1970.

Afterwards he will just maintain the practices that have been installed, "which he realizes are to his own advantage."

**CARD OF THANKS**  
We wish to thank the many friends for their prayers, flowers, memorials, love gifts, cards and the kindness rendered by Dr. Hicks and nurses of Deaf Smith County Hospital. May God's Blessings be with each one.

Mrs. Carl Schroeder  
S. F. C. Carl Schroeder, U. S. Army  
Robert Schroeder & Family, Pampa  
Anna & Clark Vencill, Dallas  
Mr. & Mrs. Henry Miller, Canyon



**Don't tie yourself down to high interest rates.**

Get a variable rate Federal Land Bank loan on your farm or ranch.

**Federal LAND BANK Association**  
Woodrow B. Wilson  
manager  
Hereford,  
407 Main St.

## Canton And Auxiliary Officials Installed

Installation services for officers of the Hereford Canton and Auxiliary 35 were held Friday evening, January 16, at IOOF Hall with Lady Thelma Turner of Amarillo, installation officer; and state past president of Ladies Auxiliary of Patriarchs Militant, officiating for the Auxiliary, and Lt. Ben Conklin installing Canton officers.

Auxiliary officials installed include: Lady Alta Davis, past president; Ora Berry, secretary; Nellie Beauford, treasurer; Polly Ottwell, officer of the

## Sunset Keglers Name Winners

Nance Moore, with 119 pins, was named "Star of the Week" in Sunset Keglers Bowling action last week.

Anne Radney, with a 199, was "High Individual Game" winner and she also took the "High Individual Series" with a score of 555. Hereford Spa won the "High Team Series" with 2701 and also took the "High Team Game" with 927.

Rolling 500-or-better series were Anne Radney, 555 and Nance Moore, 503. Converting splits were Bonnie Baumann, 3-10; Alice Lueb, 4-7-9; Evelyn Crofford, 5-7; Pete Messer, 3-10, twice; Lovilla Cochran, 2-7; Irene Andrews, 3-10 and 4-7-10; Bonnie Jones, 3-10, twice and 3-9-10; Anne Radney, 3-10, twice, and 2-7; Bobbie Riddle, 3-10 and Bertha Arnold, 3-6.

Last week's results show Rutherford and Company won 4 and lost 0; Medics won 0 and lost 4; Justice Realtors won 3 and lost 1; Village Beauty Shop won 1 and lost 3; B. J. Weaver, Chiropractor won 3 and lost 1; Jones Restaurant won 1 and lost 3; Hereford Spa won 3 1/2 and lost 1/2; The Pants Cage won 1/2 and lost 3 1/2; Hereford Insurance won 3 and lost 1 and Hereford Welding won 1 and lost 3.

Standings for the second half show Justice Realtors, 7-1; Hereford Spa, 5 1/2-2 1/2; B. J. Weaver, Chiropractor, 5 1/2-2 1/2; Hereford Insurance, 4-4; Rutherford and Company, 4-4; Village Beauty Shop, 4-4; The Pants Cage, 2 1/2-5 1/2; Hereford Welding, 2 1/2-5 1/2; and Medics, 1-7.

Services will be held on Sundays at the regular time, and at 7:30 p. m., Monday through Saturday.  
The Rev. Sain is pastor of the First Baptist Church, Mancos, Colorado.

Rev. Jerry Haley, pastor of the Dawn Baptist Church, invites everyone to attend this revival.

day, Ada Hollabaugh, chaplain; and Ruth Rogers, musician.

Installed into Canton officers were: E. E. Bishop, clerk, Jerrell Ottwell, ensign; Tom Berry officer of the guard; Joe Weatherford, sentry; A. R. Rogers, chaplain; and Ben Conklin, captain of Canton.

All absent incoming officers will be installed at a later date, it was announced.

A guest present for the evening of dinner and installation ceremonies was Lt. W. F. Turner of Palo Duro Canton and Auxiliary 35, Amarillo.

## Appreciation Granted Red Cross Chapter

Letters have recently been received from soldiers overseas wishing to express their deep appreciation for the Ditty Bags sent them by the local American Red Cross chapter. Listed below are some of the letters sent in.

"Thank you for the thoughtful gift — the socks and the bag — all very useful. . . wise 'southern strategy' and Christmas Southern hospitality. Love and Peace Bruno Diaz, PFC U. S. Army, Vietnam Dear Representative,

I am a serviceman currently serving a tour of duty in Vietnam. A day ago I received one of the Christmas bags you helped make possible for us. I wish to express my gratitude for your service and the thoughtfulness of the First Christian Church there in Hereford, Texas. Please relate my appreciation to them.

Sincerely,  
PFC L. R. Trent  
Hi, just a line to say thank you for the Christmas gift we received from the First Baptist Church of Hereford, Texas. Today is the 24th so they got here in time.

Yours truly,  
Sgt. Don Hodson  
Dear Mary Bradley:

I don't really know how to start this letter because I don't even know you. I really appreciated the Christmas bag you donated to me, as well as the thousands of other GI's that the Red Cross has helped. I would like to express my thanks and wish you a very Merry Christmas season!

Truly,  
John Blazitis



Dolores Betzen

## Dolores Betzen Named Citizen

Recently named as citizen of Hereford High School by the Daughters of American Revolution was Miss Dolores Betzen, daughter of Mr. and Mrs. Mike Betzen of Route 5.

Miss Betzen, exemplifying good and patriotic citizenship by setting an outstanding example for fellow citizens, met the required qualities necessary to be chosen Top Citizen. These qualities include scholarship, patriotism, service, and citizenship.

Activities displaying her leadership and participation in civic endeavors include holding memberships in the Texas Association of Careers in Health, Catholic Youth Organization, Shrine's Children's Clinic, FHA, Junior Red Cross president and vice president, freshman mixed choir, sophomore girls choir, pep squad captain, a Pink Angel, and senior class favorite runnerup.

Miss Betzen plans to attend college and major in a medical career either in nursing or technician duties.

## CB Radio Club Elects Officers

Jerry Hix was elected president of the Hereford Citizens Band Radio Club in an election of officers held recently.

Other officers elected included Roy Messenger, vice president; Bonnie Hix, secretary; Don Daugherty, treasurer; Marlene Daugherty, program chairman; Johnnie Holbrooks, public relations and Darlene Crofford.

## Area Pioneer Resident Dies

Albert Fischbacher Sr. 74, an Umbarger resident for 50 years, died Tuesday afternoon in Nettlet Memorial Hospital in Canyon after a long illness.

A rosary for the longtime Randall County farmer-stockman was said at 7:30 p. m. Wednesday in LaGrone Funeral Chapel at Canyon.

Requiem mass will be conducted at 10 a. m. today in St. Mary's Catholic Church in Umbarger with the Rt. Rev. Msgr. Matthew Schaffle, officiating. Burial will be in St. Mary's Cemetery at Umbarger.

Mr. Fischbacher was born in Mosnang, Switzerland Nov. 19, 1895 and came to the United States in 1920. In 1927 he returned to his native country and married Miss Gertrude Schwager on April 19 of that year at Mosnang.

He was a member of the Knights of Columbus and the Farm Bureau.

Survivors include his wife; four sons, Pete of Canyon, Albert Jr. and Joe, both of Umbarger, and Marcel of Hereford; four daughters, Mrs. Gertrude Walterscheid and Mrs. Tillie Klein, both of Carlsbad, N. M., Mrs. Mary Brozman of Vega and Mrs. Anita Wilhelm of Hereford; a brother, Brother Gosbert Fischbacher of the S. V. D. order in Epworth, Iowa; two

leg twister.

It was also reported that the club spent 22 man hours Monday evening assisting with the Mother's March of Dimes Drive, with five mobile units which drove a total of 55 miles.

Club meetings are the second and fourth Tuesdays of each month and anyone interested in joining the club is invited to attend.

sisters, Mrs. Theresa Strassmann and Miss Dominica Fishbacher, both of Mosnang, Switzerland and 33 grandchildren.

## Kings, Queens Name Winners

Marlene Roe, with 41 pins over her average, and Hap Arnold, with a 581 handicap series, were named "Bowlers of the Week" in Kings and Queens action last week.

Carol Dyer collected the High Game for the women with a 222 with Alice Lueb getting the High Series with a 528. For the men, L. J. Clark had the High Series with a 542 and L. V. Watts had the High Game of 214.

Picking up splits were Leroy McDonald, the 3-10 and 7-8; Ben Lueb, 4-5; Ione Taylor, 3-10 and Wilma Clark, 5-6.

In action last week, Claudes Mobil Service won 0 and lost 4; Hereford Janitor Supply won 1 and lost 3; Team Number One won 2 and lost 2; Stricklands Shell Service won 2 and lost 2; Reeves Chevrolet Olds won 1 and lost 3; Vance Hall Sporting Goods won 4 and lost 0; Cougar Club won 1 and lost 3; Sunset Food Center won 3 and lost 1; Weatherford Gin won 3 and lost 1 and Sunset Lanes won 3 and lost 1.

Standings to date show Sunset Lanes, 42 1/2-17 1/2; Sunset Food, 40-20; Team Number One 38-22; Hereford Janitors, 34-26; Vance Hall Sporting Goods, 33-27; Cougar Club, 32-24 1/2; Weatherford Gin, 23 1/2-26 1/2; Claudes Mobil Service, 19-41; Reeves Chevrolet-Olds, 18 one-third 4 1/2; and Stricklands Shell Service, 17-43.

The Scots first refused to cultivate potatoes because the Bible didn't mention the plant.

READ THE CLASSIFIED ADS

**LARRYMORE DANCE STUDIO**  
BALLROOM FOR COUPLES  
TEENAGE COTILLION  
Boy's Gym Class  
Ballet  
TAP  
JAZZ  
ACROBATIC  
Post office Box 1551  
Veteran's Memorial Park . . . 364-4638

# White Sale comes to Ford Country. Big savings on the whole herd.



**WHITE SALE TORINO**  
Special edition of our lowest-priced hardtop. Includes dual racing mirrors, carpets, whitewalls, and more. And it's waiting for you now!

**WHITE SALE GALAXIE 500**  
Lowest-priced full-size V-8 hardtop anywhere. Special White Sale edition with 302 CID V-8 and special interior trim now means extra savings on the big, quiet Galaxie!

**WHITE SALE FORD EXPLORER SPECIALS** — The pickups with the biggest choice of sale-priced options. Explorer . . . with Ford's exclusive Twin-I-Beam front suspension. Now's your chance to save up to \$197\* on an F-250!

\*Based on manufacturer's suggested retail prices

## ORVAL WATSON FORD SALES

200 W. FIRST HEREFORD, TEXAS

WRITE FOR FREE LITERATURE

Peoples Natural Gas wants to provide Well-Side natural gas for your irrigation needs. Peoples also leases dependable agri-engines. For more information about Peoples gas and engine service contact . . .

**Peoples Natural Gas** Division of Northern Natural Gas Company

WRITE FOR FREE LITERATURE



# Glady's Garden

By Gladys Howton Manieor

"All nature feels the renovating force of winter, only to the thoughtless eye. Is ruin seen . . . Thompson.

Yesterday while listening to programs on TV, I heard the following statement, "If we had all sunshine all the time, with no rain, shadows, or cold, we would have a desert". This is very true, and even though we may not enjoy the extreme cold weather, the mush of the snow, etc, we have the idea of the coming growing season with its fruits and flowers, to look forward to.

In many areas of the U.S.A. they are observing Arbor Day, the results of which will be many trees will be planted. In our area we do not observe this month, because we have learned that the best results can be achieved, to wait until the ground warms up, and then plant our trees.

The last few years, the Garden Clubs, and others have planted trees, and or large shrubs at one of the Convalescence homes . . . either at King's Manor or West Gate. A number of times The Hereford Garden club has planted some at Boy's Ranch, and some have shared their plantings with Girl's Town.

Let me urge you to keep in mind the planting of one or more trees, either on your home grounds, or share with some institution. There is not a better way to share the beauty of God's creation, than by planting a tree, nurture, protect, and give it loving care, God provides the growth and dignity that it adds to the landscape.

While we are writing about trees, may I remind you that soon, if not already, you have been wanting to get outside and work a bit. If so take an invoice of your trees, and shrubs. While they have bare branches. This is the best time to check for bad branches, dead wood, cross branches, defaced bark, signs of borers, broken or wind whipped limbs, and or any other portion that should have attention. As the weather warms up, would be a good time to do pruning and grooming. Where insects have eaten or bored, this should be treated, and if the bark is broken showing signs of detachment or disease, this should be removed and treated and the cross branches pruned out. When this is all done then paint the cut places with tree paint. Add a bit of creosote, this will tend to keep away further infection and insects.

In reading Mrs. Deason's garden column, she mentioned that they were organizing an Organic Garden Group. Wish I was near enough so that I could be a member. I am for organic gardening. Am indebted to my friend Mr. Beene, at the Courthouse for many ideas, and helps on organic gardening. I believe that in time, we as horticulturist will come back to the old fashioned manner of gardening, and use our own compost, (every gardener should make a compost pile) and manure (that is one of the added pollutions in our area) for our soil. If you wish to follow this thought through then have a test made of your garden soil. Check with the Deaf Smith County Agent for further information on soil

testing. It is also possible that some of the seed house in town may give this service. When I had soil tested I took a cup of soil from several areas in the yard and garden, mixed this thoroughly. Then had a test run on it to learn the needs of the soil, and the defects.

It is my experience that

trees, and other plants respond to good and proper treatment. There is value in mulching our trees, and shrubs.

The mulch supplies many of the essential needs of the trees, including trace minerals. It aids in holding moisture where needed protection to the root system and acts as a soil conditioner, aiding to making the soil structure more friable, and therefore moisture will penetrate more easily. Also stabilizes temperature, and will have a tendency to hold back the blooming of the tree, thus preventing freezing of fruit blossoms.

The later can also be done by watering down the trees, as spring approaches. Usually if we loose our fruit, or nut crops, it happens in the late spring freezes.

Some of the trees, which do well here, are: Honey locust, elms (Chinese not recommended if you wish to have flowers and other plants) American Elms, Maples, Burr-oak, Silver Leaf Maple, Willow (both the weeping and the upright, and I have seen some of the Corkscrew type) Mimosa, and cotton-wood, pecans, Black Walnut, and of the fruit trees; cherry, peach,

apricot, apple, (several varieties) crab-apple are nice for decorative effect, and are also good producers, as are the red, purple and green plums. While we are writing of trees,

would like to mention a Tree which has been honored in our part of Texas. It boasts an historical marker, and also the Johnny Applesed emblem. It is inside a fenced enclosure for protection. The enclosure is historically important in that pioneers know it is the first tree to be so protected and marked in Texas, and that someone cared enough to protect and keep it alive. This makes not only the pioneers happy but those of us who are historically minded and are seeking for other such trees, to mark and protect.

It is known as Thomas Cree's Little Tree, and is a bois d'arc about 10 feet tall, it is located 5 miles west of Panhandle. And this location in on what was once wagon trail to Amarillo, which later became U.S. Highway 60. The Little Tree caused quite a furor between Panhandle and the highway department when Panhandle heard that they were going to cut it

down to make way for a new four-lane version of the highway. I happened to sit in on some of the meetings in which of the Little Tree was pleaded. Needless to say I voted a strong eye, to have the TREE kept, and protected. Am GLAD . . . it lives and still brings pleasure to the passers-by.

While writing about this I remember reading in a recent publication where a group in Brooklyn New York are working to preserve a Magnolia tree, which is about 75 feet tall. The area is being cleared for better street conditions. The

youth and other people are fighting for the life of the Magnolia. It is said to be the only Magnolia of its kind this far north . . . and its beauty and its fragrant blossoms are cherished and loved by those who are fighting for its preservation. We should all be alert to the things of nature which are being done away with by what is called progress . . . so many beautiful trees, grasses, and wildflowers are being wantonly destroyed . . . progress is important. . . Let us all be open minded, and study and practice conservation. . . GLAD.

Miss Breck  
**HAIR SPRAY**  
13 oz. can **49¢**

Miss Breck  
**HAIR COLOR**  
complete kit  
**\$1.19**

**TIDE**  
Family size, 10 lb., 10 oz.  
Gibson's Low Discount Price **\$2.19**

Sherbet Cup Set  
four cups  
10" tray  
assorted colors  
NOW **\$2.97**

Fostoria  
4 Slice Automatic  
**TOASTER**  
**\$11.99**

Simoniz  
Master Wax  
New detergent proof for your car pt.  
**99¢**

Fogler's  
COFFEE  
Lb. Can **77¢**

Mr. Good  
**PEANUT BUTTER**  
2 lb. 8 oz. jar **69¢**

# Always LOW PRICES

● OPEN 9 to 9 DAILY ●

GIBSON'S  
**DISCOUNT CENTER**  
WHERE YOU ALWAYS BUY THE BEST FOR LESS  
Prices Good Thru Sat., Jan. 24, 1970

DOVE  
Dishwashing Liquid  
32 oz. bottle **49¢**

Gibson's Maid spray  
**STARCH**  
1 lb., 2 oz. can **43¢**

Breck  
**SHAMPOO**  
15 oz. bottle **99¢**  
new gold formula

Jergens  
Lotion Milk  
**HAND SOAP**  
4 bars **23¢**

## Pampers for drier, happier babies

DAYTIME 30's  
Pampers **\$1.57**

DAYTIME 15's  
Pampers **79¢**

OVERNIGHT 12's  
Pampers **79¢**

NEWBORN 30's  
Pampers **\$1.35**

Pik Pak  
5 gal. Jerry Can  
**\$1.37**

24 kt. gold  
**Towel Rack**  
24" long  
now! **\$1.99**

Ladies  
**PIXIES**  
All Sizes  
Assorted Colors  
**53¢**

Sound design  
Cassette  
Tape  
**Recorder \$34.97**

GIBSON'S **R pharmacy**  
Phone 364-4900  
**SAVE ON PRESCRIPTIONS**  
EMERGENCY 364-

Avds  
REDUCING PLAN CANDY  
3.25 value  
Gibson's Low Price!  
**\$1.99**

White's  
Healing Soothing  
Protective For  
Diaper Rash.  
4-oz. Reg. \$1.35 **83¢**

Box of 12  
Regular **97¢**

Freshlike  
**VEG-ALL**  
16 oz. can **19¢**

Gladiola  
25 lb. **FLOUR**  
**\$1.97**

Duncan Hines  
**BROWNIE MIX**  
23 oz. box **49¢**

Forrester Truck Co.  
of Amarillo  
has installed  
a convenience phone  
for your use  
in Hereford  
\*\*\*\*\*  
So for Parts, Sales  
or Service on  
Cummins Detroit  
Diesel, GMC  
and Chevrolet  
All transmissions  
and Rear Axles  
Call 364-5522



# Adrian News

By ANN BEAVERS

Mr. and Mrs. Joe Brownlee request the honor of your presence at the wedding of their daughter Roxann, to Larry Travis. The wedding is set for Saturday, Jan. 24th at 6:30 p. m. in the Adrian United Methodist Church.

Tuesday night in the Adrian Gym the Matadors lost 3 games

to Friona. The B boys lost by 15 points with the final score of 34 to 49.

The Adrian Girls lost by 14 points in overtime. Their final score was 45 to 59.

The A Boys were ahead all the way until the end of the last quarter and Friona pulled ahead and won the game by two points. The final score was 37 to 39.

Thursday night Channing Jr. High beat Adrian Jr. High, both games in the Adrian Gym. Girls score was 19 to 24 and the

boys score was 14 to 47.

Mr. and Mrs. Chet Kidder of Trinidad, Colorado spent Saturday thru Tuesday with Mr. and Mrs. Jack Fincher and Mrs. Julia Fincher. Sunday visitors were Mr. and Mrs. Jack Kidder of Amarillo.

Mr. and Mrs. Brub Beavers and Dewey were in Levelland, Thursday and visited with Frank Barker and the Joe Ed Crawford family.

Mrs. Billie Morell spent Saturday thru Monday in Levelland with Mr. and Mrs. Frank Barker and Frankie. Also visited with friends from Slaton in Lubbock on Sunday.

The W. S. C. S. met last Tuesday in the Fellowship Hall of the Methodist Church and planned programs for future meetings. There were about 10 ladies attending. Everyone enjoyed refreshments.

Mr. and Mrs. Lorin Creitz and Mrs. Leland Burns visited Mrs. Homer Ehresman in St. Anthony's Hospital in Amarillo, Friday. Mrs. Ehresman was to have surgery on Monday.

Among those attending the Llano Estacado Council Boy Scouts of America dinner and meeting were Mr. and Mrs. Don Morgan, Mr. and Mrs. Pat Blankenship, Mr. and Mrs. Lorin Creitz, Mr. and Mrs. Robert Jacobson and the Rev. and Mrs. Don Travis. Don Morgan received a Silver Beaver Award. The dinner was held at the College Cafeteria in Canyon, Saturday evening.

George Harwood of El Paso is home for two weeks, between semesters.

Mrs. James Cadenhead, Mrs. Floyd Keller and Mrs. Raymond Reynolds all of Dalhart visited Thursday with Mrs. R. C. Chism and children.

Mr. and Mrs. D. P. Doherty and Mrs. Imogene Parker visited in Hereford, Friday with friends.

Mr. Lorin Creitz attended an executive council meeting held at Suppens in Amarillo for the Boy Scouts, Saturday.

Mrs. Keith Kromer and Mrs. Earl Kromer visited in Lubbock with Mrs. Fred Homes, in the hospital and then visited Mr. and Mrs. Henry Holmes and family, Tuesday and Wednesday.

Weekend guests of the Jno Hortons were Dorris Horton of Lubbock, Amy Lemley of Smyer, Texas and Mike Horton and Kristi Richard of Canyon.

Tuesday night at the Friona vs Adrian basketball games at

Adrian, Mr. and Mrs. Russell Patterson and family and Mr. and Mrs. Russell Rineholt of Friona and both former Adrian residents visited with several friends during the games.

Mr. and Mrs. John Heiselman are visiting in Tulsa with their daughter and family Mr. and Mrs. Mike McMahon and family.

Recently this letter came to the Adrian Post Office and finally reached Dick's Garage.

Letter to Adrian Chamber of Commerce

Gentlemen: I would like to Thank your town and especially the gentlemen who own Dick's Garage. Shortly before Christmas, my fiance and my more Adrian to come self were driving to Dallas and our Volks Wagon broke down outside of your town. Everyone was so helpful and extremely nice we wanted to send our thanks to you all for the courtesy way you treated two strangers.

Thank You  
Peggy D. Young, Albuquerque

Mr. and Mrs. John Rickard of Phillips and Mrs. Scott Rickard of Amarillo visited Saturday with Mr. and Mrs. Jno Horton and also attended the wedding shower for Mike Horton and Kristi Rickard.

Jr. Class Spaghetti Supper, Friday night in the school cafeteria. Serving time 5 p. m. before the Dimmitt and Adrian Basketball games. Come and enjoy the games and eat supper with the Jr.'s.

Miss Kristi Rickard of Phillips, bride elect of Mike Horton was honored Saturday evening with a wedding shower in the Adrian Methodist Fellowship Hall. Hostesses were Mrs. Fred Harwood, Mrs. Leland Burns, Mrs. L. E. Garrison, Mrs. Dean Whaley, Mrs. Justin McBride, Mrs. E. E. Whitten, Mrs. M.F. Loveless, Mrs. R. D. Sisk, Mrs. R. L. Pinnell and Miss Linda Pridmore.

**MOVES AROUND**  
DETROIT — Cesar Gutierrez, shortstop for the Detroit Tigers at the close of the 1969 baseball season, was a member of the San Francisco and Phoenix teams.

## Letter To The Editor

Dear Editor,

Mr. Name on File, certainly, neither intended shirking responsibility for views expressed against mass, indiscriminate allotment of ground to men-despite the lands' or prospective farmers' productivity or lack of it; nor was there the slightest thought of protecting private property! She simply was brought up in an antediluvian, pre-pill period when women frowned upon public exposure later on setting their own names in type.

My knowledge of newspapers is sketchy; though I feel quite positive 'Names on File' are not considered classified material and would be available to readers. Should Mr. Larson, Mr. Drury or friends, be truly destitute. I sincerely hope they obtain the address and bring their teapoons. If I work seven nights a week my take home pay totals \$244.76 a month; however, after several unbroken years, antiquity and reduce d spunk make it increasingly difficult to forego a day off. This is most unhandy, now, as my automobile burned to salvage two weeks before Christmas and lacking a necessary down-payment, transportation expenses have been a bit of a burden. Nonetheless, my son and I have never gotten 'too poor' to share with honest need and whenever my boy puts his hand out — I know he is offering something!

It's high time we all stop to take into account that our country is primarily a working-productive people; the 'haves' do not constitute universal greed, now do the 'have-nots' present a uniform segment of persecuted righteousness! Good and Evil, perhaps, the only purely democratic category; any given number of home-sapiens in whatever division—will run the entire scale from Demon to Darling; Saints and Straight Sinners in equally short supply; regardless of the groups religion, color, intelligence or bank balance! If it were otherwise, the world's problems could be solved by a simple rerun of the French Revolution; yet the source of that original

script gives mini-evidence of having established any Hot-Line to Heaven following its first showing.

In these United States, the main requisite for great attainment is still, basically, an individual's personal capacity; not just work or wisdom—the matting of the two; into a crystallized, energized effort. Every religious concept, notably Christianity, stresses the moral obligations of a bloated larder; instructing the blessed to open their plenty to succor those seeking help. Fortunately, our Republic was conceived with sufficient sane sanctity to hail such a debt of success; while also acknowledging human failing and the need to 'permit' a degree of incentive, for pushing that extra mile and expending an additional ounce of effort. We can rightly expect — even demand, that a well-endowed human being welcome needy brethren to his broad; but, incite those guests to begrudge their provider's son an extra lollipop or start-parceling out the household possessions so all can receive their 'equal' share any 'thinking' host is going to return from work; take one look at the empty shelves, close up shop and go out hunting for some other darn fool to provide the provisions of life!

Mrs. Prehn Nanninga  
401 Ave. I

## Register Plea Given

Joe Shollenbarger, Republican county chairman, has urged all persons wishing to vote to register before the Jan. 31 deadline in order to be eligible to vote in the coming elections.

"There are going to be many races of interest to Panhandle voters," said Shollenbarger. The following statement was made by Senator John Tower concerning the privilege to vote: "In this age of automation, mass communications and computers, there are those who feel that the individual has lost his significance. Attempts are constantly being made to number us, categorize us, group us, de-personalize us. Yet there is still one area of life where we as individuals are



**VOE STUDENT OF THE WEEK** — Simona Garcia, 19-year-old daughter of Mr. and Mrs. Jesse Garcia, 320 Avenue I, has been chosen as this week's VOE student of the week. Simona, a senior at Hereford High School, is enrolled in the Vocational Office Education program and is employed at Stanton Junior High School. Miss Garcia plans to attend Draughon's Business College in Amarillo after graduating from high school. Pictured with her is her supervisor, Mrs. Jaquetta Glass, secretary at Stanton. —Staff Photo

taken seriously — are considered of great significance. And that is in the election process. The slogan, "your vote counts" is no cliché. Last year President Nixon won with a margin of less than one vote per precinct. In 1960, he lost by even a smaller margin.

"I am sure you have strong feelings about the work done in the past year in both our state and national legislatures. I am sure legislation was passed on both levels that affected you personally — if not painfully. In November, 1970 you will have an opportunity to express your feelings — tangibly and effectively — by casting your vote. But to be able to do so, you must register no later than January 31."

**TO PRESERVE THE FOREST**  
WALDEN, Colo. — Each year the U. S. Forest Service office at Walden buys about 3,000 bushels of cones from Lodgepole pines picked by mountain hikers. The price is \$3 a bushel. Each bushel produces about a half pound of seed, used to re-plant cutover and burned-over forest lands.



**DE STUDENT OF THE WEEK** is Julia Davis, 17-year-old daughter of Mr. and Mrs. W. L. Davis, Jr. of 202 Northwest Drive. Julia is in the Distributive Education Program at Hereford High School where she is a senior. She is employed at Helen's Dress Shop as saleslady under the supervision of Helen McCauley. Miss Davis plans to attend data processing school upon graduation. —Staff Photo



**EXCITEMENT GALORE** — Hilarious scenes such as this one occurred Monday evening at La Plata Junior High when the Hereford High faculty took on the famed Harlem Stars. Faculty members pictured are athletic director Larry Wartes (far left) and basketball coach Ron Mayberry (third from left). —Staff Photo

## FARM EQUIPMENT SALE

Thursday - January 29, 1970 10:00 A.M.  
Location: 1 mile South of Hereford, Texas on U. S. 385  
at B&B OLIVER CO.

|  |  |   |
|--|--|---|
| <p><b>TRACTORS &amp; PICKUPS</b></p> <ul style="list-style-type: none"> <li>1 - 1966 International 1206 Diesel with cab</li> <li>1 - 1967 International 806 Diesel with cab</li> <li>1 - 1965 International 504 Diesel with wide Front</li> <li>1 - 1962 John Deere 4010 L.P. with cab</li> <li>1 - Oliver L.P. Super 88 with cultivator (new overhaul)</li> <li>1 - Oliver 70 Row Crop</li> <li>1 - 1968 Custom Chevrolet Pickup</li> </ul> <p><b>SUGAR BEET EQUIPMENT</b></p> <ul style="list-style-type: none"> <li>2 - Farmhand Model 350 Digger</li> <li>1 - New Farmhand Model 150 Digger</li> <li>1 - 2 row Gemo Digger</li> <li>1 - Lot new misc. digger parts</li> <li>1 - Lot used misc. digger parts</li> </ul> <p><b>FARM EQUIPMENT</b></p> <ul style="list-style-type: none"> <li>1 - Farmhand grinder mixer</li> <li>1 - Farmhand 3 pt. mixer</li> <li>1 - Vibra Tiller</li> <li>1 - Rebuilt Wakeshaw irrigation engine</li> <li>1 - Used Wakeshaw irrigation engine</li> <li>1 - Used Minneapolis Moline irrigation engine</li> <li>5 - Used combines with good engines</li> <li>1 - Oliver Model 35 combine with cab</li> <li>1 - John Deere wheat drill</li> <li>1 - 5 gang, 3 pt. rotary hoe</li> <li>1 - 4 gang, 3 pt. rotary hoe</li> <li>2 - Jacobsen steel floats</li> </ul> | <p><b>FARM EQUIPMENT CONTINUED</b></p> <ul style="list-style-type: none"> <li>1 - spray rig and boom</li> <li>1 - 2 row Servis Gyro 84 shredder</li> <li>1 - 5 bottom lister tool bar</li> <li>3 - 98" tool bars</li> <li>1 - 3 pt. cultivator tool bar</li> <li>1 - International No. 23 - 16 1/2" - 5 bottom tool bar with gauge wheels and markers</li> <li>4 - Hydraulic markers</li> <li>1 - Bee Line Lister stabilizer</li> <li>2 - Sets gauge wheels</li> <li>100 - 30" joints 8" aluminum pipe</li> <li>3 - 4 row International lister planters</li> <li>1 - John Deere 2 row potato digger</li> <li>2 - Oliver 4 row lister planters</li> <li>3 - 4 row knife sleds</li> <li>1 - 6 row knife sled</li> <li>1 Johnson 3 pt. blade</li> <li>1 - 13' John Deere Tandem disc</li> <li>1 - New 15' Bush Hog tandem disc</li> <li>1 - 14' Schafer tandem disc</li> <li>1 - 2 row vine beater</li> <li>1 - 3 pt. cultivator tool bar</li> <li>1 - Cisco 4 row hydraulic rod weeder</li> <li>1 - 4 row Colorado rod weeder with tool bars and bottoms</li> <li>2 - Eversman V Ditchers</li> <li>1 - Chatten V ditcher</li> <li>8 - Misc. 2 bottom breaking plows</li> <li>1 - International No. 642 14 bottom roller</li> <li>1 - John Deere 14' fertilizer spreader</li> </ul> | <ul style="list-style-type: none"> <li>1 - David White level and trimod</li> <li>1 - International post hole digger</li> </ul> <p><b>SHOP EQUIPMENT</b></p> <ul style="list-style-type: none"> <li>1 - Herc Arc Welder</li> <li>1 - Screw type press</li> <li>1 - portable shop hoist</li> <li>2 - Hydraulic floor jacks</li> <li>1 - portable Electro Magic Steam cleaner</li> <li>2 - 1 ton Yale chain hoists</li> <li>1 - Marquette battery charger</li> <li>1 - lot drills, electric wrenches, timing lights, voltage meters, spark plug cleaners, etc.</li> </ul> <p><b>OFFICE EQUIPMENT</b></p> <ul style="list-style-type: none"> <li>1 - Coke machine</li> <li>1 - Shaw Walker 4 drawer fireproof filing cabinet</li> <li>1 - Remington typewriter and stand</li> <li>1 - 2500 designal steel desk and credenza</li> <li>1 - Paymaster check protector</li> <li>Plus much more</li> </ul> |
|--|--|---|

**PLUS MUCH MORE!!!!**  
Owners: Guy Bagle, Pat Hagon  
Terms: CASH - all accounts to be settled sale day

**CONTINENTAL AUCTION CO.**  
Arvell Williams  
364-5149 Hereford, Texas

## Who is this lady?

A. Little Orphan Annie.  
B. The Jolly Green Giantess.  
C. The Statue of Liberty.  
D. Mae West.

If you picked anything other than C, well, you're in a whole lot of trouble. Sure, you probably picked the Statue of Liberty. Everybody knows who she is and what she stands for. Or do they? It's amazing how many of us take this proud lady of the New York Harbor for granted. We should know that her proper name is "Liberty Enlightening the World." That she symbolizes the triumph of freedom over tyranny. That she is a declaration of our independence. Of course, we need more than statues to remind us of our freedom. We need action, by each and every one of us. And that's where U. S. Savings Bonds come in. They help preserve that thing called freedom.

They help make this country of ours economically stronger to tackle some of the problems that face us. And, buying Savings Bonds can be easy and automatic. All you have to do is join the Payroll Savings Plan where you work, or the Bond-a-Month Plan where you bank. And then you can sit back and forget 'em while the money piles up. So think about the freedoms we enjoy. And think about U. S. Savings Bonds as a way to keep us free. As for Miss Liberty, well, when you're in New York go up and see her sometime.

If they're lost, stolen, or destroyed, we replace 'em.

**Take stock in America**  
Buy U.S. Savings Bonds

## SAVE REAL MONEY ON THESE CARS

- 1969 Chevrolet 2-dr. Impala Hard Top. Like new 8,500 miles, beautiful cream color.
- 1967 GT Dart Burgundy with black vinyl top 2 door Hard top - low mileage Excellent Condition - A REAL BUY
- 1962 Chevrolet 9 passenger Station wagon. Good Solid transportation.
- 1969 Chevrolet Impala 4-dr. Hard Top, only 13,500 actual miles - Green color is spotless - save plenty on this one.
- 1969 Chevrolet Caprice 2 door Hard top Bucket seats Stereo Tape Player, Beautiful Blue Color is spotless - all equipment - less than 24,000 miles
- 1964 Buick Electra 225 custom 4-dr. Sedan. Color light beige, all power, seat wndows, etc., air condition, good tires.
- 1969 Chevrolet 2-dr. Hard Top Impala Color gold - Like new, 9,500 miles.
- 1968 Chrysler New Yorker, fully equipped - white with black vinyl top, this is a real bargain.
- 1967 Oldsmobile Delmont 4-dr. Sedan, power steering, air condition, Low Mileage
- 1970 Grand Prix - 19,000 miles Save over \$1,000 on this one.
- 1960 Pontiac 4 door sedan would make a good work car Good Condition Good Tires.
- 1964 (2) Pontiac Grand Prix, all power & air. Make us an offer.
- 1969 Opel wagon Demonstrator. Color blue - automatic transmission.

**DON'T MISS THESE SAVINGS ON**  
Fine used Cars at . . .

**KINSEY OSBORN MOTORS**

142 N. Miles 364-0990



LET'S COOK SOMETHING

# Spanking New Teacake

By CECILY BROWNSTONE  
Associated Press Food Editor  
DEAR CECILY: I should be grateful for a recipe called Rum Teacake. It requires gelatin and is oh-so-good, but I can't find anyone here who knows how to make it! — PALM BEACH HOSTESS.

DEAR PALM BEACH HOSTESS: We couldn't find the recipe anywhere either. No cookbook, friend, acquaintance or colleague had it. So we had the recipe developed. Hope it's like the Rum Teacake you tasted. If not, let us know and we'll try again. — C. B.

- RUM TEACAKE**  
1 package (18 1/2 ounces) white cake mix  
1 package (3 ounces) lemon-flavor gelatin  
1/2 cup corn oil  
1/2 cup light rum  
1/4 cup fresh lemon juice  
4 large eggs

Empty cake mix into large bowl of electric mixer. Add gelatin, corn oil, rum, lemon juice and eggs. At low speed of mixer, mix only until cake mix is moistened. Beat 3 minutes at medium speed. Pour into ungreased 9-inch angel-cake pan. Bake in preheated 350-degree oven until cake springs back when touched lightly with finger — 50 to 55 minutes. Place pan on wire cake rack to cool for 15 minutes; with a small spatula loosen edges; turn out; turn right side up on wire rack; cool completely. If desired, sprinkle with confectioners' sugar.

NOTE: Some lemon-flavor gelatin are made with natural lemon flavor rather than with synthetic lemon flavor; you may wish to use the natural-flavor variety in this Rum Teacake.

**SALARY INCREASES**  
FRANKFROT, Ky. — Kentucky ranks first in the nation in instructional staff salary increases in public schools in the past decade.



RUM TEACAKE — Requested by a reader and made with cake mix, lemon gelatin, corn oil, rum, lemon juice and eggs.

## Hereford Residents To Participate In Benefit

The Amarillo Alumnae of Zeta Tau Alpha sorority will sponsor a bridge benefit and fashion show Jan. 29 at the Villa Inn with Mrs. Preston Smith, wife of the Texas governor, as honorary chairman.

Members of the hostess committee will include Mrs. Jimmy Janes, former Hereford resident and Misses Regina Hampton and Suzanne Hart of Hereford, members of Delta Eta Chapter of Zeta Tau Alpha at West Texas State University.

The annual affair will benefit the Cerebral Palsy Center which is currently providing physical therapy and special education for 87 children from 22 Panhandle cities.

This spring construction will begin in the Amarillo Medical Center on a unit which will provide services for all physically handicapped children in the region regardless of diagnosis. This new unit will offer physical therapy, occupational therapy, and speech therapy and special education for a maximum of 300 children.

The benefit will open with a 12:30 reception honoring Mrs. Smith to be followed by the presentation of designer Helen Rose and her collection for spring, "Sensational Seventies Spring's Fantasy of Fashion," at 1 p. m. An afternoon of bridge will

## Book Store Browser I-Thou Relations Express Attitude

By Genevieve Miller

Want to know more about the I-Thou relationships of man? The book concerning such relationships is available now at the Christian Book Store. For those elderly persons reaching retirement age, there is a humorous story which will perk up the spirits of the aged. Check into them today.

"THE TASTE OF NEW WINE" by Keith Miller with a foreword by D. Elton Trueblood, is a layman's consideration of the "I-Thou" relationship in the light of interpreting and living the Gospel in one's daily life. This is not a new consideration but a contemporary one expressed in the language of every man.

In reading this book, one might reflect upon his own sensitivity to the "Thou" with whom he talks, works, and lives and question whether or not in these activities he exemplifies his own personal fellowship with the Living God.

Out of the ferment in which he found himself, Keith Miller came face to face with his own attitudes toward himself, his wife, and family, his friends and business acquaintances. He learned that one must accept oneself AS HE IS and also accept others AS THEY ARE.

He found that "Living Christianity" became REAL creative life in which one came to be honest with himself and could

begin at 2 p. m. and will close at 4 p. m. with the awarding of prizes for high, second high and low scores.

Drawing for the door prize will be held preceding the fashion showing.

Tickets are \$2.50 and may be ordered from Mrs. Clyde Walter, 4812 Andrews, Amarillo, 79-106. Reservations for bridge tables should be indicated.

love and accept others. When Keith Miller became interested in sharing the NEW WINE with the people nearest him, he found that it was not "selling" the Gospel that was important but the LISTENING he did to those whom he encountered in his daily round of activity.

This book may leave the reader with an uncomfortable feeling for it is very critical of the tradition-bound institutional church and the "traditional" Christian, but at the same time it may awaken the reader to a new evaluation of himself and set him on a higher path.

It is unlikely that one who has read "THE TASTE OF NEW WINE" will be able to resist "A SECOND TOUCH" by the same author.

"THE PARABLES OF PEANUTS" by Robert L. Short, uses the cartoons by Schulz along with quotations from the insights of Kierkegaard, Barths, Camus and Bonhoeffer to illustrate the needs and problems of the church today.

He quotes Karl Barth as saying that "any Christian who wishes to live responsibly must read two things: The Bible and the daily newspaper — and never one without the other!" and Kierkegaard, who said "... sermons should not be preached in churches but in the street in the midst of life, of the reality of daily life, weekday life."

It is the business of the church to interpret the signs of the times, but how often do men want to see God or "Know the truth?"

Short asks such questions as

"Savior? Who needs a Savior?" and makes such statements as "Where your blanket is there will your heart be also" and "You shall GOD your neighbor as yourself."

Because of the Art-Parable form employed to communicate life-giving truths to God's frozen people this volume was, for this reviewer, difficult to leave because the scintillating thoughts that followed one after another led on and on to greater perspectives.

A little volume of increasing popularity is "Gee Whiz... I'm Old" by Agnes Durant Pylant. (The book has an additional explanation included which says "Not You!", thereby making a perfectly acceptable gift!) The book was written as "a message of hope and encouragement" for those who are nearing retirement age. The soundness of the author's philosophy combined with her delightful humor makes the book a welcome reference for one approaching a certain birthday.

## Rental System To Start Here

MINNEAPOLIS — Bill Swanson, operator of West Park 66 Service in Hereford, Texas, has been appointed a representative of E Z Haul, a one-way truck and trailer rental system and a division of National Car Rental System, Inc.

Swanson stated that as an E Z Haul dealer he will be offering for rental new Chevrolet trucks with power tailgates and luxury features not common to the industry such as deluxe cab interiors, radios and foam seats. Two sizes of closed trailers, dollies, pads, hitches, two bars, car top carriers and other equipment will be available for local or one-way rental throughout the nation.

The new E Z Haul location is at Highway 385 and Park.

## Simms Club Hosts Lunch

A regular business meeting followed by a sampling luncheon was held Thursday by members of Simms Study Craft Club. Hostesses for the occasion were Mmes. Tommy Blasingame, Jerry Roberts and Edgar Hartley, in the Blasingame home.

Each member brought her favorite dish and recipes were exchanged following the luncheon.

Others attending were Mmes.

Tom Bullard, Leland Burns, Dwayne Cassels, Terry Creitz, Willis Duggan, Robert L. Loyd, A. W. Self, Emmitt Young, Lenon Young and Sparkie Stevens. The next meeting will be Feb. 4 hosted by Mrs. Duggan.

A garillon consists of not more than 72 bells and not fewer than 23.

For **COLDS** take **666**

See Florida and Nassau Best on a Continental Trailways Escorted Tour!

16 DAYS FROM AMARILLO DEPARTS MARCH 8, 1970

Per Person Sharing Room **\$435**

Tour Highlights:  
Cypress Gardens, Miami, St. Augustine, Three-Day Cruise To Nassau, Silver Springs, New Orleans, Natchez Pilgrimage and Azalea Trails of the Old South.

**Continental Trailways tours** Inc.

Call: DICK BYNUM 374-5371 or write 700 Tyler St., Amarillo, Texas 79101

Easy To Install... Ideal For Do-It-Yourself Projects

# Prefinished PANELING

4' x 8' - 1/4" Panels First Quality Several Kinds in Stock

**17¢** SQUARE FOOT

ALSO IN STOCK! PREFINISHED MOLDING to compliment panels

## Carl McCaslin Lumber Co.

A Complete Building Service  
1 Block East of the Courthouse Phone The Lumber Number 364-3434

# DRUG SALE

**DRIAL**

CONTAINS MORE HAY FEVER MEDICATION THAN ANYTHING SOLD WITHOUT PRESCRIPTION

**DRIAL** fast relief of HAY FEVER, COLDS, ALLERGIES

45 tablets **\$2.25**

PHONE 364-2344 For Prescription Service

Jergens **HAND & BODY LOTION**

1.59 Reg. **\$1.19** NOW

Gillette **SOFT & DRI** non-sting anti-prespirant

NOW

**SUDDEN BEAUTY HAIR SPRAY** 16.2 oz. can **79¢**

For The Natural Hair-Do Look!

**SERVICES PLUS**

- ★ Postal
- ★ Money Orders
- ★ Fountain Delivery

**QUIET WORLD**

A new and better calmative for relief of simple nervous tension. Non-Habit Forming.

98¢ 12 tablets

**Whitehall** Individually Wrapped **COTTON SWABS**

49¢

• Sterile Until Moment Of Use  
Always Protected And So Are You

**ISODETTE** antibacterial throat lozenges 89¢ reg.

**76¢**

Playtex **Toothbrushes**

89¢ reg. **39¢** NOW

**HAROLD CLOSE**

Rx Walgreen Agency Drug

SUGARLAND MALL  
PHONE 364-2344



### Courthouse Records

Donald Paslay, 67 Dodge; Ronnie Sanders, 63 Chev; Donald Kitterman, 61 Pont; Billy Moore, 68 Chev pcp; Johnny Gonzales, 64 Dodge; Mary Uvalle, 60 Ford pcp; Hayward Glover, 62 Pont; Ernest Barton, 62 diamond T; Dennis Wosnit-sky, 62 Chev; Agapito Trevino, 59 Ford pcp; Johnny Armstrong, 49 Cad; Armstrong Bros, 69, 70 White Freightliner; Big Tex, 69 Chev; J. H. Wheeler, 62 Ford; Candy Poarch, 69 Chev.  
Shur-Gro, 6 9 J&L; Robert Baum, 60 Ford; Florencio Gonzales, 62 Pont; Wanda Ward, 68 Ply; Jane Killough, 70 Ford; Charles Cary, 69 Chry; Glen Nelson, 68 Shelby; Joe McDonald, 63 Ford; Troy Jobe, 67 Ply; Lowell Dean Allen, 67 Ford; Walter McMeans, 69 Cad; Dan Lewis, 67 Ford; Burke Inman, 70 Hobbs; Wilson Simmons, 70 Ford; Taft McGee, 70 Ford pcp; Kenneth Jackson, 70 Ford pcp; Hill Farms, 70 Ford pcp; Brad Johnson, 70 Ford;

Thad Keyes, 64 Olds; Joe Hernandez, 55 Chev.  
Lonnie Richardson, 63 Ford; Anita Rocha, 62 Ford; Juan Guillen, 62 Ford; Willie McDonald, 64 Ford; Jessie Mendoza, 62 Olds; Maria Estrada, 52 Indian Chief; James Bradley, 69 Ford; 63 Dodge; 69 GMC; Barbara Collins, 61 Chry; Joe DeLeon, 63 Chev; O. W. Parris, 66 Chev; Toni Richardson, 56 Catalina; John Schneider, 56 Travelite; Weldon Towes, 64 Rambo; Dick Walker, 70 Chev pcp; Roy and Richard Kuper, 70 Chev pcp; R. W. Jones, 68 Chev pcp.  
Randy Laing, 66 Ford; Jimmie Jesko, 67 Pont; Raymond Williams, 66 Buick; Roy Ble-vins, 64 Ford; Car Lee, 67 Po Jesse Scott, 67 Ford; Eddie Enghrack, 61 Intl; Mary Garcia, 66 Chev pcp; Casper Morales, 61 Ford; Martin Rendon, 59 Chev; J. B. Odum, 70 Chev pcp; W.W. Thomas, 70 Chev pcp; J. R. Allison, 63 Chev pcp; John McCutchen, 63 Ford; Joe Fallwell, 64 Chev; H&W Imp, 70 Chev pcp; W. H. Gentry, 62 Chev pcp.  
Bertha Martinez, 60 Chev; Eddy Monk, 55 Chev pcp; Kathy Jobe, 64 VW; Preston Ryan, 63

Chev pcp; C. W. Pierson, 63 Ford pcp; J. R. Oglesby, 70 Intl; Robert Veigel, 70 Buick; Alfred Oil, 70 Buick; A. M. Hare, 44 Hyde; 5 Dodge; J. R. Allison, 70 Merc; Robert Flores, 63 Chev.  
J. D. Ramos, 70 Ford; Herman Paetzold, 69 Ford; Lewis Lee, 70 Pont; G. W. Good, 70 Ford; John Ferguson, 70 Ford; G. C. Merritt, 70 Ford; Paul Lyons, 53; E. C. Reinauer, 70 Chev pcp; H. M. Haynes, 70 Pont; Randy Martin, 66 Ford; Shirley Smith, 65 Olds; Texus Feed Yards, 69 Ford pcp, 69 Chev pcp.  
**WARRANTY DEEDS**  
Ola Mae Green to Albert Drager et ux part of lot 17, blk. 7, Womble Addition.  
C. C. Ellis et ux to Jacob Diel et ux S. 100 ft. of W. 125 ft. of lot 6, Bluebonnet Addition.  
Land and Homes Inc. to Jacob Diel et ux E. 22 ft. of lot 6 and W. 1 ft. of lot 5 Bluebon-

net Addition.  
J. M. Hamby et ux and G. H. Tubb et ux to W. B. Durham et ux lot 4, blk. 14.  
Eugene Campbell to O. L. Click et ux lot 41 and N. 10 ft. of lot 40, blk. 3, Westhaven Addition.  
Edna Richardson to Wayne, Donald, and Michael Richardson et ux, and Bryce Cook et ux SW 1/4 of Sect. 31, Sect. 29, 32, blk. K-6.  
Glenn O'Dell to Richard Reich et ux N. 25 ft. of lot 68 and S. 55 ft. of lot 69, Green Acres Estate.  
Arthur Schreck, Jr. et ux to Richard Pickens et ux N. 40 ft. of lot 23 and S. 30 ft. of lot 24, blk. 1, Crestlawn Addition.  
Sanford Smith et ux to Cecil Parsons part of blk. 6, Evants Addition.  
Mike Betzen et ux to Cleo Vade et ux Lots 27 and 28, Vest Acres Addition.  
M. L. Hardy, Buck Wood et ux, Truitt Booth et ux, Joe But-

ler et ux to Wayne Carthel lot 16 and S. 35 ft. of lot 15, blk. 31 1/2, Evants Addition.  
G. D. Caison et ux to Hereford State Bank lots 5-9 in blk. 18.  
Melvin Sumner et ux to David Aguilar et ux S. 4 ft. of lot 4 and all lot 5; 20 ft. joining lot 5 and running full length of lot 5 on S. 20 ft. is 1/2 of street closed by City by order; blk. 3, Mabry Addition.  
Howard Gore et ux to Thomas O'Donnell et ux E. 68 ft. of N. 30 ft. of lot 4, blk. 20, White-head Addition.  
Ray Fleming et ux to William Thorne et ux of 5, Suburban Heights Addition.

J. D. Poarch et ux to Deniz Pulliam et ux lot 81 and W. 2.35 gy. og loy 82 Green Acres Estate, Unit II, Sect. 82, blk. K-3.  
**DEEDS OF TRUST**  
Richard Reich et ux to Hi-Plains Savings and Loan Association N. 25 ft. of lot 68 and S. 55 ft. of lot 69, Green Acres Estate.  
Rex Lee and Bobby Owen to Hereford Credit Union .20 acres of NW part of Sect. III, blk. M-7.  
Wayne Carthel to M. L. Hardy lot 16 and S. 35 ft. of lot 15, blk. 31 1/2, Evants Addition.  
Calvin Edwards et ux to H. E. Bippus S. 51 ft. of lot 26 and N. 54 ft. of lot 27, Evants Addition  
Thomas O'Donnell et ux to Mountain States Investment E. 68 ft. of lots 1-3 and E. 68 ft. of N. 30 ft. of lot 4, blk. 20, White-head Addition.  
William Thorne et ux to Hi-Plains Savings and Loan Asso-

ciation lot 5, Suburban Heights Addition.  
O. D. Bingham et ux to Bank of Southwest W. 320 acres of E. 325.18 acres of sect. 27, blk K-3  
Deniz Pulliam et ux to Hi-Plains Savings and Loan Association lot 81 and W. 2.35 ft. of lot 82, Green Acres Estate.

**MUSIC ANYONE?**  
New interesting students interested in piano instruction. Theory and music history included. I have studied at Harbin-Simmons and was member of Harbin-Simmons and under Henry Craig Leedy, former instructor at Juillard. Teaching experience. Call Mrs. Gloria Brown for appointment. 364-2384 or 364-2867.

**DR. E. H. HENDON**  
**OPTOMETRIST**  
Announces The Removal Of His Office  
**811 WEST PARK AVENUE**  
**HEREFORD, TEXAS**  
Mon. thru Fri. 9:00 to 12:00 — 1:00 to 5:00  
Sat. 9:00 to 12:00  
TELEPHONE 364-0987



**EAGLE SCOUT** — Terry Roberts, son of Mr. and Mrs. Ernest Roberts (middle back) is shown receiving the Eagle Scout award from County Judge H. C. (Hank) Williams. The event took place at the quarterly meeting of Troop 52 Monday night in the fellowship hall of the First Methodist Church. Also pictured is Troop Master Frank Ford.



**KIWANIS GUEST**— Guest speaker for the Kiwanis Club of Hereford noon luncheon recently was Paul Stanly of Amarillo, Lt. Governor of District 6. He told of drug problems which begin in the home and spoke of a 26 year-old woman who had been on drugs since the age of 13. She began taking diet pills because of an obesity problem, and from there she went on to hard drugs. She has been off of them for 19 months, now, he said, and speaks to many civic clubs telling her story. —Staff Photo

**Fresh Fryers** Whole Tender Young Fryers-2 to 3-lbs. **EVERYDAY Discount Price** **lb. 29¢**

**Cooked Ham** Fully Cooked Ham-Shank Portion! **EVERYDAY Discount Price** **lb. 53¢**

**Meaty Franks** Safeway All Meat Franks-Everyday Low! **EVERYDAY Discount Price** **12-oz. Pkg. 53¢**

**Ground Beef** Safeway Dependable - Pure Beef-3-lb. Pkg or More! **EVERYDAY Discount Price** **lb. 53¢**

**SAFEGWAY**

**Low Discount Price on Safeway Meat!**

|                      |                                   |    |            |
|----------------------|-----------------------------------|----|------------|
| <b>Sliced Bacon</b>  | Cudahy Gold Coin Lean Trim Slices | lb | <b>69¢</b> |
| <b>Roasting Hens</b> | Mountain Brand 4 to 5-lbs         | lb | <b>49¢</b> |
| <b>Ground Chuck</b>  | Fresh Ground Beef-Everyday Low    | lb | <b>79¢</b> |

|                     |                            |            |            |
|---------------------|----------------------------|------------|------------|
| <b>Cooked Ham</b>   | Fully Cooked Ham-Portion   | lb         | <b>63¢</b> |
| <b>Ham Hocks</b>    | Fully Cooked Ham-Portion   | lb         | <b>59¢</b> |
| <b>Ham Slices</b>   | Thin for Baking            | lb         | <b>59¢</b> |
| <b>Slab Bacon</b>   | Slab Sliced - Everyday Low | lb         | <b>83¢</b> |
| <b>Sliced Bacon</b> | Slab Sliced - Everyday Low | 2-lb. Pkg. | <b>59¢</b> |
| <b>Sliced Pork</b>  | Salt Pork - Center Cut     | 2-lb. Pkg. | <b>59¢</b> |
| <b>Hog Sausage</b>  | Hot Morning White, Plain   | 2-lb. Pkg. | <b>82¢</b> |
| <b>Link Sausage</b> | Hot Morning Sausage Links  | 2-lb. Pkg. | <b>49¢</b> |

|                        |                        |    |            |
|------------------------|------------------------|----|------------|
| <b>Cut-Up Fryers</b>   | Portion                | lb | <b>35¢</b> |
| <b>Fryer Breast</b>    | Lean All White Meat    | lb | <b>69¢</b> |
| <b>Fryer Leg</b>       | Thighs or Drumsticks   | lb | <b>55¢</b> |
| <b>Fryer Wings</b>     | Fresh Dark Meat        | lb | <b>29¢</b> |
| <b>Fryer Gizzards</b>  | Fresh                  | lb | <b>39¢</b> |
| <b>Fryer Livers</b>    | Fresh Dark Meat        | lb | <b>69¢</b> |
| <b>Pork Spleak</b>     | Fresh Lean Pork Spleak | lb | <b>79¢</b> |
| <b>Fresh Spareribs</b> | Country Style          | lb | <b>79¢</b> |

# SAVE... ON EVERYDAY

|   |  |  |
|---|--|--|
| <b>EVERYDAY LOW DISCOUNT</b>                            | <b>Extra Savings-With Safeway's Super Savers!</b>                                    | <b>EVERYDAY LOW DISCOUNT</b>                             |
| <b>Corn On Cob</b> Bel Air Premium Quality 4-oz Pkg 53¢ | <b>CAKE MIXES</b> Duncan Hines Layer Cake Mixes-Asst. Flavors! 19-oz Pkg. <b>29¢</b> | <b>Lucerne Salad</b> Corral Raisin 15-oz Ctn 38¢         |
| <b>Asparagus</b> Bel Air Spears 8-oz Pkg 49¢            | <b>CREAM PIES</b> Bel Air Premium Quality-Frozen Asst. Pies. 14-oz Pkg. <b>25¢</b>   | <b>Cole Slaw</b> Lucerne Bonus Quality 15-oz Ctn 38¢     |
| <b>Margarine</b> Coldbrook quarters 1lb Pkg 17¢         |  | <b>Butter Milk</b> Lucerne Bonus Quality Ctn 2-gal 57¢   |
| <b>Cinnamon Rolls</b> Mrs. Wrights 9-oz Can 25¢         |  | <b>Half &amp; Half</b> Lucerne Bonus Quality Pt. Ctn 41¢ |

|  |  |  |  |  |   |
|--|--|--|--|--|---|
| <b>EVERYDAY LOW DISCOUNT PRICE</b>   | <b>EVERYDAY LOW DISCOUNT PRICE</b>   | <b>EVERYDAY LOW DISCOUNT PRICE</b>                                   | <b>EVERYDAY LOW DISCOUNT PRICE</b>                               | <b>EVERYDAY LOW DISCOUNT PRICE</b>                                       | <b>EVERYDAY LOW DISCOUNT PRICE</b>                            |
| <b>Ice Cream</b> Snow Star-Asst. Flavors To Choose! 1-gal. Ctn. <b>59¢</b> | <b>Potatoes</b> Bel Air Premium Quality Hash Browns! 32-oz Pkg. <b>34¢</b> | <b>Yogurt</b> Lucerne Asst. Flavors To Choose. 16-oz Ctn. <b>49¢</b> | <b>Juice</b> Lalani Pineapple-Everyday Low! 46-oz Can <b>33¢</b> | <b>Vienna's</b> Libby's Vienna Sausage-Everyday Low! 4-oz Can <b>25¢</b> | <b>Tuna</b> Sea Trader Chunk-Tasty Tuna! No. 1 Can <b>31¢</b> |

**• FOR SALE •**

694 AN John Deere 6 row 30 inch corn planter Equipped as follows: 2 set of knife openers, John Deere and Acrocrome, 18 inch traction tread press wheels. 870x15 carrying wheels. 2 - 80 gallon fiberglass fertilizer tanks, 1 - 350 gallon fiberglass tractor mounted herbicide tank, insecticide boxes and attachment (less than 300 acres), 8 units of twin row bunch planters model G-1-N-12-R. Like new. 835 . . . 3 bottom 16 inch John Deere roll over plow (less than 125 acres). New 23B-7 shank John Deere Rippl Chisel with gauge wheels. 301 John Deere spin spreader demonstrator (less than 50 acres). 2 new listers, 6 row, 1 demonstrator 145 versatile diesel tractor.

ALL UNITS PRICED TO SELL  
**Booker Implement Co.**  
Phone 658-2551 . . . Booker, Texas

**Safeway Everyday Low Discount Prices!**

|                          |   |  |
|--------------------------|---|--|
| <b>Why Pay MORE?</b>     | <b>Green Peas</b> Del Monte Sweet Green Peas-Everyday Low! No. 303 Can <b>21¢</b> | <b>COMPARE THESE EVERYDAY LOW DISCOUNT PRICES!</b>                   |
| <b>Shop And COMPARE!</b> | <b>Paper Tissue</b> Northern Bathroom Tissue-Asst. Colors! 4-roll Pkg. <b>39¢</b> | <b>Grain Rice</b> Comet Long Grain 28-oz Pkg. <b>43¢</b>             |
| <b>See The SAVINGS!</b>  | <b>Pork &amp; Beans</b> Van Camp Serve Them Hot or Cold No. 2 Can <b>21¢</b>      | <b>Fluffy Rice</b> Comet Extra Fluffy 28-oz Pkg. <b>43¢</b>          |
| <b>Save Up TO 15%!</b>   | <b>SALAD DRESSING</b> Piedmont Everyday Low! 9-oz Jar <b>32¢</b>                  | <b>Velveeta</b> Tasty Cheese Spread 2-lb. Box <b>59¢</b>             |
|                          |   | <b>Paper Tissue</b> Georgian Bathroom 10-roll Pkg. <b>69¢</b>        |
|                          |   | <b>Crackers</b> National Saltines 1-lb. Box <b>35¢</b>               |
|                          |   | <b>Wagner Drink</b> Assorted Breakfast Drink 32-oz Bott. <b>28¢</b>  |
|                          |   | <b>Golden Corn</b> Kounty Kist Whole Kernel 12-oz Can <b>17¢</b>     |
|                          |   | <b>Plain Chili</b> Wilsons Low Discount Price 26-oz Pkg. <b>69¢</b>  |
|                          |   | <b>Choc Morsels</b> Nestles Morsels 12-oz Pkg. <b>53¢</b>            |
|                          |   | <b>Nestles Quik</b> Chocolate Milk Mix 2-lb. Can <b>79¢</b>          |
|                          |   | <b>Kraft Dinner</b> Macaroni Dinner 7-oz Pkg. <b>19¢</b>             |
|                          |   | <b>Clorox Bleach</b> Brightens & Kills Bots! 2-gal. Bott. <b>32¢</b> |
|                          |   | <b>Cat Food</b> Kal Kan Tuna & Chicken 6-1/2-oz Can <b>17¢</b>       |
|                          |   | <b>Cat Food</b> Kal Kan Tuna & Kidney 6-1/2-oz Can <b>17¢</b>        |
|                          |   | <b>Cat Food</b> Kal Kan Tuna & Liver 6-1/2-oz Can <b>17¢</b>         |
|                          |   | <b>Mushroom</b> Royal Treat Buttons 2-oz Can <b>25¢</b>              |
|                          |   | <b>Toothpaste</b> Gleem Brightens Teeth 4-oz Tube <b>53¢</b>         |
|                          |   | <b>Listerine</b> Makes Your Mouth Feel Fresh 16-oz Bott. <b>89¢</b>  |
|                          |   | <b>Mercurochrome</b> Everyday 1-oz Bott. <b>19¢</b>                  |
|                          |   | <b>Baby Shampoo</b> Johnson & Med <b>72¢</b>                         |

**WE RESERVE THE RIGHT TO LIMIT QUANTITIES!**

**SAFEGWAY**



Highlights And Sidelights

# Welfare Board Predicts Costs May Hit \$1 Billion

**BY VERN SANFORD**  
AUSTIN, Tex. — Skyrocketing welfare costs may hit the \$1 billion a year mark in Texas within a decade, a State Welfare Board member predicts.  
Burton G. Hackney, Welfare Commissioner, sees a very real possibility that his budget for the important "Aid to Families with Dependent Children" program may be exhausted this biennium. If that happens, another cut in AFDC benefits may be necessary.  
"The \$80 million a year welfare ceiling (approved by Texas

voters only five months ago) now seems completely unrealistic (in view of) demands we will have to face within the next four to five years," said Louis R. Sarazan of Fort Worth, Welfare Board secretary.  
Sarazan's comments followed reports by Hackney of rising costs in all the major state assistance programs.  
Total public assistance payments during the past fiscal year came to \$364.3 million, some 25 per cent of which was paid with state funds.  
Welfare rolls have increased

at the rate of 10,262 a month in AFDC since August. Federal court cases and agency rulings relaxing eligibility requirements, together with increased population, account for most of the growth.  
AIRPORT AID — Texas Aeronautics Commission granted five requests for airport construction and improvement grants, each to be matched at least 50-50 by the local entities.  
Granted were the applications from:  
Brenham — for construction of an additional apron and taxi-

ways and extension of the runway, \$27,500 (the maximum allowable grant under the appropriation);  
Dumas — acquisition of additional land and removal of a power line, \$9,900;  
Marshall — restoration of runway lighting and acquisition of additional land for runway extension, \$13,200;  
Rockwall — acquisition of an additional clear-zone easement and resurfacing of the existing runway, \$9,600; and  
White Bluff (Hill County Water Control and Improvement District) — construction of a new airport, \$27,500.  
Application from Beeville for a \$16,000 grant to construct a taxiway and grade a crosswind landing strip was delayed until the town assures the Commission it will eliminate a power line crossing the end of one runway.

Preston Smith designated Dallas attorney Manuel DeBusk chairman of the Coordinating Board, Texas College and University System. He succeeds Tom Sealy, Midland.  
Smith re-established the Governor's Commission on Status of Women in Texas and named Mrs. Margaret Brand Smith, a Dallas attorney, chairman of the 120-member body.  
Governor also made these appointments:  
Judge of new Harris County juvenile court — Sen. Criss Cole of Houston.  
Committee on State and Local Tax Policy — Hulen Marshall of Houston, John McKee of Dallas and Hugh H. Lowenstein Sr. of Amarillo.  
60th District Judge — Former State Sen. J. P. Fuller of Port Arthur.  
Governor's Committee on Aging — Mrs. Louise Massey of Monahans, L. G. Wawter of

Houston and Carl D. Levy of Beaumont.  
Brazos River Authority Board — Hugh (Jack) W. Dobbs of Hillsboro.  
State Board of Tuberculosis Nurse Examiners — Miss Mildred I. Blair of Cisco (reappointment).  
Fine Arts Commission — Gilbert M. Denman Jr. of San Antonio, Mrs. Mary Lou Braymer of San Angelo, Russell R. Waterhouse of El Paso, Harold J. Elias of Longview, Dr. John Biggers of Houston and Mrs. Frances M. Holden of Lubbock (reappointment).  
Chairman, Joint Interim Water Study Committee — Rep. John Allen of Longview.  
Upper Colorado River Authority — Guy C. Jackson, Clyde Parker and Arthur Lochte of Kerrville and Jasper Moore of Ingram.  
Crime and Narcotics Advisory Commission — Dr. Bobby

Gene Smith of Arlington, James M. Ray of Austin and J. Wonne Hande of Dallas.  
State Board of Podiatry Examiners — Dr. Bernard J. Hersh of Dallas and Dr. Joseph Ordile of Fort Worth.  
Canadian River Compact Commissioner — William Andrew Clifford of Lubbock.  
Judge, Domestic Relations Court No. 1 for Harris County — Wells Stewart of Houston.  
OIL PRODUCTION HELD STEADY — Railroad Commission set the statewide oil allowance for February at 88 per cent of potential, highest for the month since 1953.  
Figure is the same as for January. It will permit a maximum production of 3,732,919 barrels a day. Actual production is estimated at 3,250,500 a day.  
None of the 14 major purchasers of crude asked for an increased allowance. Ten recommended the same factor and four saw a declining need for the month. Big buyers suggested a daily allocation of 3,226,192 barrels.

extends only to approval of forms.  
Majority of the members of Burnet County Hospital Authority Board of directors must be appointed by the board and remaining members by the Burnet County Commissioners.  
Architects are excluded from provisions of the Texas Professional Corporation Act but may incorporate under the Texas Business Corporation Act.  
An application for registration as a professional engineer in the state meets legal requirements of the Engineering Practice Act when the applicant changes the affidavit by marking out the words "sworn upon oath" and writes in "affirmed".  
CAR INSPECTION DEADLINE — April 15 is the deadline for motor vehicle inspections.  
Texas adopted the annual inspection program September 1. Vehicles inspected in January will bear stickers with "No. 1" and won't be up for reinspection before January, 1971. All cars which still have old stickers on the right side of the windshield have not been reinspected in compliance with the new law, and owners have until April 15 to visit an approved inspection station.  
DRAFT CALL — February draft call for Texas is \$29. No man will be ordered for induction with a random sequence number higher than 60, says Col. Morris S. Schwartz, state Selective Service director.  
February quota is an increase of 573 from January, which will be filled January 16-30 with men who have random sequence numbers no higher than 30.  
State quota for pre-induction physical and mental examinations in February is 9,330, up from 5,800 in January. In filling the call for examination, draft boards will order I-A and I-A-Q men of 1970 random selection sequence group before men born in 1951. The 1970 group contains men born 1944-1950. National call for February is 19,000.  
SHORT SNORTS — Governor Smith and Lieutenant Governor Ben Barnes will head the delegation of Texas Democrats flying to Miami Beach, Fla., Feb. 5 to participate in the Nationwide Democratic Fund-Raising Gala.  
State Comptroller Robert S. Calvert, 77, has filed for reelection.  
Department of Public Safety completed the first phase of its war on dangerous drugs when 81 officers and officials finished an intensive course on combating the problem in their areas.  
Republican Congressmen George Bush of Houston announced for U. S. Senate pegging crime, fiscal policy and the Vietnam war as foremost issues.  
Governor Smith has approved a \$218,540 community action grant for Starr County, a \$218,626 grant for Hidalgo County, a \$48,893 grant for Jim Wells county (anti-poverty projects) and a regional planning assistance grant of \$106,610 for the Houston-Galveston Area Council (an eight-county area).  
Lt. Gov. Barnes named Sens. A. M. Aikin, Jr. of Paris and Tom Creighton of Mineral Wells to Legislative Budget Board.  
Attorney General Martin deposited \$161,000 in anti-trust suit collections in the state treasury last week.

**Boneless Roast**  
USDA Choice Beef-Shoulder Cut!  
**EVERYDAY Discount Price**  
**lb. 89¢**

**Sirloin Steak**  
USDA Choice Beef-Full Cut Bone In!  
**EVERYDAY Discount Price**  
**lb. 98¢**

**Round Steak**  
USDA Choice Beef-Full Center Cut-Bone In!  
**EVERYDAY Discount Price**  
**lb. 98¢**

**Chuck Roast**  
USDA Choice Beef-Blade Cut Chuck!  
**EVERYDAY Discount Price**  
**lb. 58¢**

**SAFEWAY**

| EVERYDAY LOW DISCOUNT |     |
|-----------------------|-----|
| Skinless Franks       | 63¢ |
| Sliced Bologna        | 78¢ |
| Sliced Salami         | 98¢ |
| Imported Ham          | 59¢ |
| Steak Fingers         | 89¢ |
| Chuck Wagon           | 89¢ |
| Porch Fillets         | 59¢ |
| Fish & Chips          | 59¢ |

| EVERYDAY LOW DISCOUNT |     |
|-----------------------|-----|
| Boiling Beef          | 35¢ |
| Short Ribs            | 39¢ |
| Chili Meat            | 79¢ |
| Stewing Beef          | 89¢ |
| Chuck Steak           | 75¢ |
| Swiss Steak           | 85¢ |
| Round Steak           | 85¢ |
| Cube Steak            | 85¢ |

**Low Discount Price on Safeway Meat!**

**Beef Rib Steak** 99¢  
**T-Bone Steak** \$1.29  
**Spencer Steak** \$1.99

**It's Your Total Food Bill That Counts...Shop And Compare, You'll Find That You Can SAVE UP TO 15% On Your Food Bill At SAFEWAY DISCOUNT!**

# LOW DISCOUNT PRICES

**EVERYDAY LOW DISCOUNT**

Bread Mrs. Wright 24 oz. loaf 25¢

Apple Juice Town House 1-gal. Botl 71¢

Crackers Busy Baker 1 lb. box 29¢

Cragmont Safe Drink Ass't Flavors 2 1-qt. Botl 29¢

**Extra Savings-With Safeway's Super Savers!**

**Cottage Cheese** Lucerne Bonus Quality! 2-lb. Ctn. **59¢**

**P'Nut Butter** Real Roast Tasty Peanut Butter-Extra Savings! 3-lb. Jar **99¢**

**EVERYDAY LOW DISCOUNT**

Dog Food Kan Kan Horse Meat & Gravy 15-oz. Can 27¢

Dog Food Kul Kan Chunk Beef 14-oz. Can 25¢

Dog Food Kul Kan Steak 14-oz. Can 23¢

Pinto Beans Town House 4-lb. Bag 51¢

**EVERYDAY LOW DISCOUNT PRICE**

**Dog Food**  
Pooch Ass't. Meaty Flavors to Choose!  
No. 1 Can **9¢**

**EVERYDAY LOW DISCOUNT PRICE**

**Preserves**  
Empress Strawberry-Everyday Discount!  
20-oz. Jar **53¢**

**EVERYDAY LOW DISCOUNT PRICE**

**Tide**  
Laundry Detergent-10¢ Off Label!  
Gt. Size **72¢**

**EVERYDAY LOW DISCOUNT PRICE**

**Pretzels**  
Party Pride-Stick, Twist or Rod Pretzels.  
9-oz. Pkg. **36¢**

**EVERYDAY LOW DISCOUNT PRICE**

**Joy Liquid**  
Dish Detergent-10¢ Off Label!  
12-oz. Botl. **24¢**

**EVERYDAY LOW DISCOUNT PRICE**

**Detergent**  
White Magic-with Enzymes  
Gt. Size **59¢**

**EVERYDAY LOW DISCOUNT**

Sliced Peaches Del Monte Sweet Peaches No. 2's Can 29¢

Shortening Velkay all purpose 3-lb. Can 53¢

Tomato Catsup Del Monte Rich Catsup 26-oz. Botl 39¢

Crisco Oil Cooking Oil 4¢ Off Label 24-oz. Botl 45¢

Crisco Oil Cooking Oil 8¢ Off Label 48-oz. Botl 81¢

Fresh Crisp Firm Large **HEAD LETTUCE**  
Each **18¢**

**Potatoes**  
White Russet For Creaming 10-lb. Bag 69¢

**Grapefruit**  
Ruby Red Grapefruit-Juicy Tart Flavor!  
20-lb. Bag **99¢**

**Broccoli**  
Fresh Broccoli-Good Eating-No Waste-Icy Fresh!  
lb. **29¢**

**D'AnJou Pears** 4 lbs. \$1

**Apples** Golden Delicious 5 lbs. \$1

**Purple Turnips** 2 lbs. 29¢

**Tomatoes** Red Rippe Cherry Tomatoes! 1-lb. Botl 39¢

**Fresh Mushrooms** Gourmet Delight! 1 lb. 72¢

—NOTICE—  
This is the last week to purchase the Funk & Wagnalls encyclopedias at Safeway - finish your set today.

**SAFEWAY**

Super-Savers Are Effective Thru Sat. Jan. 24 in Hereford

**A. O. THOMPSON ABSTRACT CO.**

Mr. & Mrs. A. J. Schroeter  
Paul B. Schroeter, mgr.

P.O. Box 75  
Courthouse  
Phone 364-1504

**Don't fight over your INCOME TAX**

It's easy to keep a sweet disposition when income tax problems get you down. Just take it to BLOCK where trained tax men know the answers. Quickly, at low cost, your tax return is done with guaranteed accuracy. You keep smiling!

**COMPLETE RETURNS \$5 UP**

GUARANTEE: We guarantee accurate preparation of every tax return. If we make any errors that cost you any penalty or interest, we will pay the penalty or interest.

**H.R. BLOCK Co.**  
America's Largest Tax Service with Over 4000 Offices

**116 S 25 Mile Avenue**  
PHON: 304-4301

Open 9 a.m. to 6 p.m. Mon thru Fri., Sat. 9 to 5  
No appointment necessary



# For God So Loved The World

## INSPIRATION



What makes a champion? What is that extra force inherent in a great leader, teacher, musician, scientist, or a Christian? This extra force, this compelling quality, this something has a current all its own... out-shining our every-day efforts. *It turns the common into the outstanding.* It has been called "inspiration" and surely it must be just that. Want to possess it??? Of course! — then keep an open heart, a clear unprejudiced mind, clean body, and a receptiveness to the will and word of God. Learn of Him through regular church attendance and daily reading of His word. *Only through God may we find this something, — this force, — this inspiration.* "There is a spirit in man: and the inspiration of the Almighty giveth them understanding."



- FIRST BAPTIST CHURCH**  
Rev. Gerald Mann, Pastor  
Fifth and Main Streets
- FRIO BAPTIST CHURCH**  
Rev. Samuel B. Ogan, Pastor  
Frio Community
- WESTWAY BAPTIST CHURCH**  
Rev. Jackie Lee
- MT. SINAI BAPTIST CHURCH**  
H. B. Whitten, Pastor  
302 Knight Street
- SUMMERFIELD BAPTIST CHURCH**  
Rev. L. C. Roots
- TEMPLO DEL CALVARIO ASAMBLEA DE DIOS**  
13th & Ave. H  
Rev. Martin Musquiz, Pastor
- CHURCH OF JESUS CHRIST OF LATTER DAY SAINTS (Mormon)**  
Country Club Drive
- TEMPLE BAPTIST CHURCH**  
Rev. J. L. Bozeman  
Forrest Ave. and Ave. K
- GREENWOOD BAPTIST CHURCH**  
Independent & Fundamental  
Rev. Al Baum
- IGESIA METODISTA SAN PABLO**  
Rev. F. C. Alcala, Pastor  
223 Kibbe Street
- SAN ANTONIO A LA IGLESIA**  
North 25 Mile Avenue
- TEMPLO BAUTISTA MEMORIAL (A. O. Thompson)**  
Herman V. Martinez, Pastor  
N. 385
- LA IGLESIA DE CRISTO**  
Sunset and Plains Ave.  
Abel Ortiz, Minister
- CHURCH OF CHRIST**  
15th and Blackfoot Street  
Robert W. LaCoste, minister
- CENTRAL CHURCH OF CHRIST**  
J. T. Marlin, Minister  
148 Sunset Dr.
- PARK AVE. CHURCH OF CHRIST**  
On Harrison Highway
- BAPTIST MISSION B.M.A.**  
Old Rock Bldg. V.F.W. Park  
J. H. McWilliams, Missionary Pastor
- TRINITY BAPTIST CHURCH**  
Southern Baptist  
Rev. C. E. Powell  
4th and Jackson

- FIRST METHODIST CHURCH**  
Rev. Clifford E. Trotter, Pastor  
501 North Main
- WESLEY METHODIST CHURCH**  
Rev. Robert Williams, Pastor  
410 Irving
- BIPPUS COMMUNITY CHURCH**  
Gene Brock - Pastor  
Preaching: 1, 2, 3, 4 Sundays  
5th Sunday Singing
- AVENUE BAPTIST CHURCH**  
D. K. (Don) Larkin  
130 North 25 Mile Ave.
- CHRISTIAN ASSEMBLY**  
Interdenominational  
Christian Fellowship in the Fullness of the Holy Spirit.  
Rev. Don Farmer, Pastor  
South Main — 364-5398
- ASSEMBLY OF GOD CHURCH**  
Rev. Homer T. Goodwin, Pastor  
Union and Ave. G
- IMMANUEL LUTHERAN CHURCH**  
Rev. Hermon Schelter, Pastor  
Park Ave. and B Street
- THE CHURCH OF GOD IN CHRIST**  
Rev. Calvin Hodge, Pastor  
115 West Norton
- SEVENTH DAY AVENTIST CHURCH**  
Elder J. H. Turner, Pastor  
West Park Addition
- MISSION DA SAN JOSE**  
Labor Camp
- CHURCH OF THE NAZARENE**  
Rev. Bill Ray, Pastor  
10th & Blackfoot
- GRACE GOSPEL CHURCH**  
Rev. H. V. Fields, Pastor  
Thirteenth and Avenue K
- ST. THOMAS EPISCOPAL CHURCH**  
Fred J. Howard, Vicar  
Park Avenue
- ST. ANTHONY'S ROMAN CATHOLIC CHURCH**  
Rev. Simeon Heine, S.A.  
Harrison Highway at 25 Mile Ave.
- FIRST PRESBYTERIAN CHURCH**  
Rev. Russell Wingert, Pastor  
610 Lee Street
- FIRST CHRISTIAN CHURCH**  
Rev. Engene Brink, Pastor  
West Park Avenue
- DAWN BAPTIST CHURCH**  
Rev. Jerry L. Haley
- SAINT JOHN BAPTIST CHURCH**  
400 Mable St.  
Rev. C. W. Allen Pastor

These Hereford Business Firms Make This Page Possible in the Interest of a Christian Community.

**CARL McCASLIN LUMBER CO.**  
\*Carl G. McCaslin

**KELLEY ELECTRIC**  
\*Virgil and Doug Kelley

**McRIGHT GARAGE & SUPPLY**  
\*Mr. and Mrs. A. N. McRight

**FIRST NATIONAL BANK**  
\*Since 1900

**ROCKWELL BROS. & CO.**  
\*D. R. Vandever, Mgr.

**WEST TEXAS DRILLING CO.**  
\*J. D. Kirkland

**OGLESBY IMPLEMENT CO**  
\*Cecil Oglesby

**DAVIS IMPLEMENT CO.**  
\*W. L. Davis, Jr.

**COOPER'S CITY DRUG**  
\*Mr. and Mrs. Fred Cooper

**THE CAISON HOUSE**  
\*Mr. and Mrs. G. D. Caison

**HEREFORD IRON & METAL**  
\*Anson A. and June Dearing

**CONSUMERS' FUEL ASS'N.**  
\*"Bub" Sparks, Mgr.

**THE INK SPOT, INC.**  
\*C. E. Coleman, Jr.

**PHILLIPS & LAWRENCE**  
Guy Lawrence

**HI-PLAINS SAVINGS AND LOAN ASSOC.**  
\*Myron Morgan, Mgr.

**GILLILLAND FUNERAL HOME**  
\*Marlin Gilliland - John Gilliland  
- Charles Watson -

**PIGGLY WIGGLY**  
\*Mr. and Mrs. Gaylord Newell

**PITMAN GRAIN CO.**  
\*John D. Pitman

**HAROLD CLOSE DRUG**  
\*Harold Close

**LOERWALD BROS.**

**FARMERS' DRIVE IN**  
\*Troy Moore

**SUIT'S AUTO SUPPLY**  
\*Ray Suit

**CHEVROLET-OLDS**

**BOYD MACHINE & SUPPLY**  
\*Mr. and Mrs. James J. Boyd

**HER-TEX MILLING CO.**  
\*Charlie Stone

**PARK AVENUE FLORAL**  
501 Park Avenue  
\* Ray Seale

**TAYLOR-EVANS FARM STORE**  
\*Located on Holly Road

**AMERICAN CYANAMID**  
\*Kenneth Haggard

**ONE HOUR MARTINIZING**  
\*Shep and Wilma Townsend

**CASE POWER & EQUIPMENT CO.**  
\*Jimmy Tucker, Mgr.

**WEATHERFORD GIN INC.**  
Charles Weatherford, mgr.  
Summerfield, Texas

**A to Z TIRE & BATTERY**  
\*Troy Rhodes

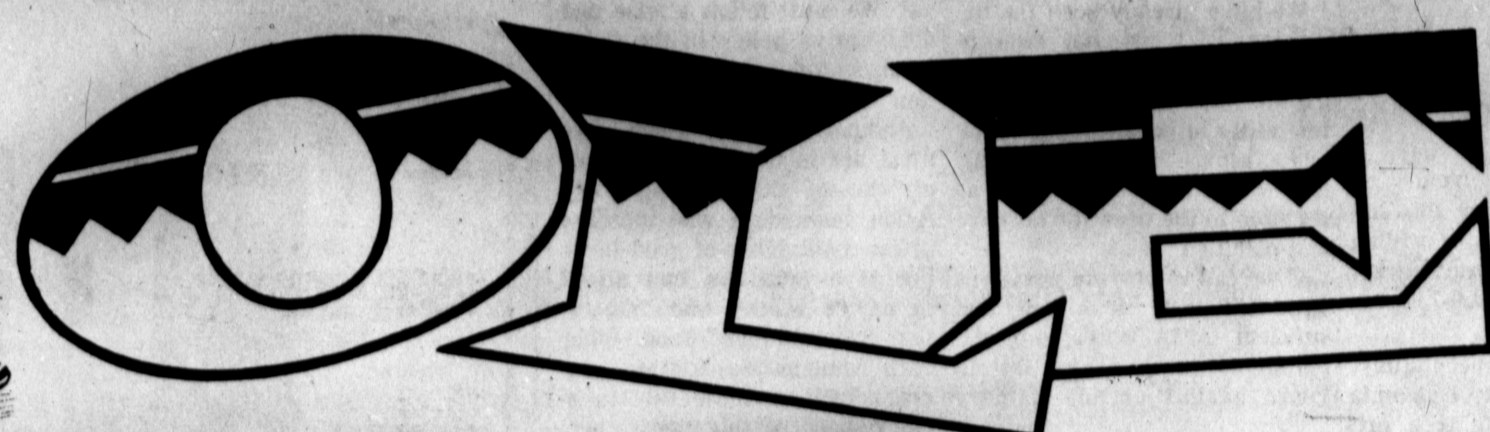
**HEREFORD STATE BANK**  
\*The Friendly Bank

**WAC SEED, INC.**  
\*Hugh Clearman - Armon Lauderback



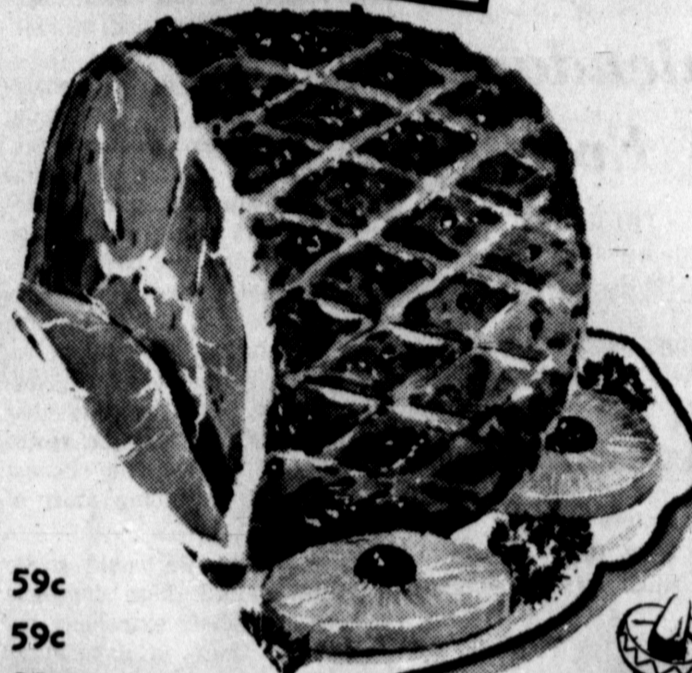
PIGGLY WIGGLY PIGGLY WIGGLY PIGGLY WIGGLY PIGGLY WIGGLY PIGGLY WIGGLY

# Come to our FOOD SAVING Fiesta!



WRIGHTS or GLOVERS

**HAMS**  
69¢  
1/2 or whole Lb.



Tom Scott  
**MIXED NUTS** 13 oz. can Now 59¢  
Soda Pop  
**DR. PEPPER** 6 - 10 oz. bottles 43¢  
Morton  
**CREAM PIES** assorted flavors 4 for \$1

**ROAST PORK** Fresh Lean lb. 59¢  
**BOLOGNA** Armour's all meat sliced lb. 59¢  
**ROUND or SIRLOIN STEAK** Choice U.S.D.A. lb. 98¢



3 Minute  
**POP CORN**  
2 lb. bag 25¢

Gale  
**TOWELS**  
2 roll pkgs. 39¢

## ORANGES

California Sunkist



6 Lbs. \$1

All Kinds **APPLES** 5 lbs. \$1  
Nice & Tender **SQUASH** yellow lb. 25¢  
Salad **BOUL** bunch 19¢  
California **ROMINE** bunch 29¢



**CRISCO**  
pure vegetable  
**SHORTENING**  
3 lb. can 69¢

Doekin  
**TISSUE**  
Extra Soft  
4 roll pkg. 39¢

White  
**POTATOES**  
10 lb. bag 59¢



Family Size Glem  
**Toothpaste**  
Fiesta Price 69¢

Prices good thru Saturday, January 24, 1970

**FREE**

- SHEETS
- BASKETBALLS
- RODS & REELS
- DOLLS
- FOOTBALLS
- LADIES HOSE

WHEN YOU SAVE Shurfresh Coupons.

Delicious  
**FenderCrust Bread & TenderCrust Coupons**

Family Size  
**SCOPE**  
oral antiseptic  
Fiesta Price 98¢

Daytime  
**Pampers**  
"keeps baby drier"  
30 count box  
Fiesta Price \$1.59

**PIGGLY WIGGLY**  
**100 FREE GUNN BROS. STAMPS**  
With The Purchase Of  
\$10.00 OR MORE AT PIGGLY WIGGLY  
Coupon expires Sat., Jan. 24, 1970  
**SPECIAL COUPON VALUE**

- 100 FREE GUNN BROS. STAMPS with the purchase of \$1.98 Versa Check Files
- 100 FREE GUNN BROS. STAMPS with the purchase of \$8.88 Manning-Bowman 2-slice Toaster
- 100 FREE GUNN BROS. STAMPS with the purchase of \$9.88 Udico Electric Can Opener
- 100 FREE GUNN BROS. STAMPS with the purchase of \$6.88 Iona Portable Mixer
- 100 FREE GUNN BROS. STAMPS with the purchase of \$8.88 Manning-Bowman Steam-Dry Iron

Detergent  
**DRIVE**  
Try-Me-Size  
**OXYDOL**  
giant size 69¢  
box 10¢

Kerns  
**Tomato Sauce**  
8 oz. can 10¢

Kraft's  
**FRENCH DRESSING** 8 oz. bottle 33¢

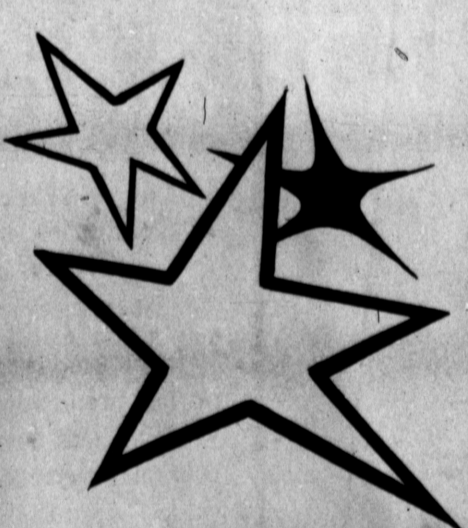
Big Top  
**PEANUT BUTTER** 18 oz. jar 49¢

Kraft's  
**GRAPE JELLY** 3 18 oz. jars 99¢

Holly  
**SUGAR** 5 lb. bag 49¢

**Food King FLOUR** 25 lb. bag  
Fiesta Price \$1.69

**"PAM"**  
keeps foods from sticking 99¢



**GUNN BROS. STAMPS**  
the Super Stars at Piggly Wiggly!

PIGGLY WIGGLY PIGGLY WIGGLY PIGGLY WIGGLY PIGGLY WIGGLY PIGGLY WIGGLY



# Senator Tower Looks At Domestic Scene

Fellow Texans, this is your United States Senator, John Tower, bringing you the first of my weekly radio reports to Texans for this year.

We are embarking upon a new year and a new decade. As we look ahead, it is easy for us to agree that the 1970s may well be the most significant decade for us as a nation and as residents of this world.

Man has probably always had this feeling as he entered a new decade, but the problems before us is the here and now. What we have done in the past has been done. We are now facing the decisions which will govern our future and we must call upon all our wisdom, all our courage and foresight in an attempt to make those decisions which will benefit us all.

Our first goal must be to attain and to keep peace. We must not be willing to follow those who advocate "peace at any price." If the price of peace is domination by another

power, we cannot accept it. We are not striving for world domination ourselves but we must insure our own independence and freedom.

As we enter the new decade, we find ourselves in a nuclear world in which ever more devastating weaponry is becoming available to increasing numbers of world leaders. We must act in such a way as to insure our own survival and at the same time continue to seek ways to reduce world tensions, to de-fuse the timebombs of the world which have hidden their clock faces so that we cannot tell even how much time we have left.

We must also act to keep this nation strong economically. As long as we can attain at least relative peace at the military level, we will find that our struggle for survival, unless our enemies engage in a reversal of their own policy which I fear is unlikely, will evolve to the economic level.

This is desirable from our own point of view for this nation and its people are willing to compete in the world market on a fair and equitable economic basis.

But to compete successfully, we must have our own economic house in order. This is a primary reason why we must devote significant attention this year to the fight against inflation in our own economy. A reduction in the cost of living will benefit each of us. We are paying too great a price in time on the job for the goods and services we purchase. But this is only a personal reason for battling inflation. Worthwhile as this reason is, we must reduce inflation also so our dollar can remain sound enough to compete in the world economy and thus contribute in a very practical way to our national defense.

On the domestic front, we are quite likely to see the decade of the 1970s bring us substantial

gains in the fields of consumer affairs and protection of our natural resources.

We have already seen the beginnings of a national awakening in these areas and we can expect real action in the next few years in behalf of the many and various consumer needs. And we have been aroused as a nation to the need for decisive anti-pollution steps.

If we fail to provide ourselves with sufficient clean air and sufficient clean water, we will perish as surely if we fail to guard against outside military

attack. The same holds true for our other natural resources upon which we depend for survival. We must follow a wise and deliberative policy in the fields of agriculture and oil production to name two of these.

Another field in which we must act in this decade is that of housing. Our growing population demands a vast increase in the availability of good housing at a price we can afford to pay. I believe that "Operation Breakthrough" and other such imaginative housing programs will lead the way to achievement of this most necessary goal. We must go forward rapidly.

We must also devote considerable attention to the nagging problem of crime in our cities. We can not rest in this vital area. We must convince would-be criminals of the old adage that crime does not pay. Delays in our courts and light sentences meted out because of overcrowding in our penal institutions has hinted to a growing cancer in our society that crime does pay and the result is that it is we, the honest citizens, who are doing most of the paying.

I wish that we could move forward on all these domestic issues and others extremely rapidly but there is a primary concern which in all honesty may force us to move slower in the '70s than we would like. I am returning to the need of which I spoke earlier for a national economy.

Much of the actions we need to take on our domestic scene requires the use of money. But just as we can not spend more than we earn as a family, we can not afford to overextend our credit as a nation.

We must maintain a balanced federal budget. We must reduce spending wherever we can in order to devote funds to our most needed problems.

The problems that we face are legion, but they are surmountable if we remain steadfast in our resolve and if we work together to follow courses of wisdom with precision.

To this end I repledge my efforts in the Senate during this year and during this decade.

## Calendar Of Events

### THURSDAY

La Madre Mia Study Club, 8 p. m., Mrs. Norman Hodges, hostess.

Calliope Study Club, 8 p. m., Mrs. Ruth Word hostess.

St. Anthony's Guild at auditorium, 8 p. m.

Kiwanis Club, IOOF Hall, noon.

Toastmasters Club at Chaparral, 7:30 p. m.

VFW Auxiliary at clubhouse, 8 p. m.

First Baptist WMS Night Circles at church.

### FRIDAY

Bud to Blossom Garden Club, 9:30 a. m., Mrs. Sam Long hostess.

Messenger H. D. Club, 2:30 p. m., Mrs. S. N. Thweatt hostess.

Cultural H. D. Club, 2:30 p. m. Mrs. Burke Inman, hostess.

Kiwanis Whiteface Breakfast Club at Chaparral, 6:30 a. m.

Sweet and Fancy Decorating Club at Community Center, 9:30 a. m.

### MONDAY

Music Study Club, 2 p. m.

El Llano Study Club Book Review, hostess Mrs. D. K. Brook.

Hereford Evening Lions Club at Chaparral Restaurant, 7 p. m.

Rotary Club at Jim Hill Hotel, noon.

Whiteface Booster Club at Community Center, 7:30 p. m.

Odd Fellows Lodge at IOOF Hall, 8 p. m.

Paisano Lions at Jim Hill Hotel, 7:30 p. m.

Easter Lions at Easter clubhouse, 8 p. m.

Sugar Blues TOPS Club at Community Center, 7 p. m.

World War I Veterans and Auxiliary at American Legion Hall, 7 p. m.

National Secretaries Association at REC Building, 8 p. m.

### TUESDAY

Lone Star Study Club, 3:30 p. m., Mrs. J. J. Durham hostess.

Hereford Art Guild, 7:30 p. m. in Community Center Art Room.

Veleda Study Club, hostess Mrs. Don Baugous, 8 p. m.

Young Mothers Study Club at First National Bank, 8 p. m.

West Hereford H. D. Club, Mrs. Blanche Hardin hostess.

TOPS Calorie Patrol at Community Center, 9:30 a. m.

Hereford Duplicate Bridge Club at Community Center, 7:30 p. m.

Rebekah Lodge at IOOF Hall, 8 p. m.

Citizens Band Radio Club, REC Building, 8 p. m.

### WEDNESDAY

Avenue Baptist WMU at church, 7 p. m.

Hereford Lions Club at Jim Hill Hotel, noon.

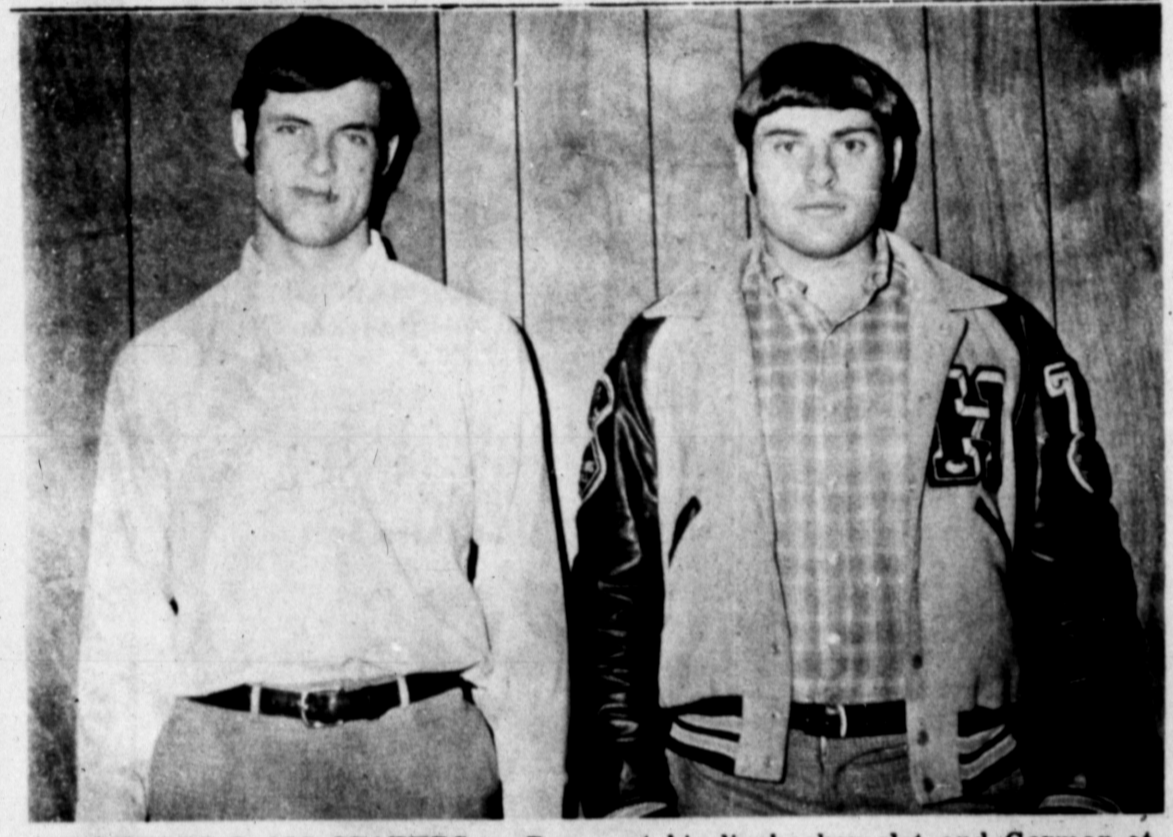
A polar bear is able to paddle hundreds of miles between ice floes.



**UNUSUAL FIRE** — Volunteer Firemen were called to the address of 610 Jowell Street Saturday afternoon to extinguish a fire which had erupted in a sewing machine. On arrival they found the machine had been moved outside. Damage inside the home amounted to a few burnt curtains and a cabinet.



**NEWCOMERS** — Attending the Newcomer's Club luncheon for the first time Tuesday were seated, from the left, Mrs. Tommy Updyke, Mrs. Ben Larsen and Mrs. Gaylon Bryan. Standing are Mrs. Doyle Sains, Mrs. Ted Acton, Mrs. C. O. Taylor and Mrs. Richard Reach. A program on tele painting was presented to the group by Mrs. Jack Wilcox. —Staff Photo



**HEREFORD'S ALL-STATERS** — David Paetzold, left, and Tony Gorman at his linebacker slot and Gorman at the tackle post were a vital part in the Whitefaces' fine defense this season which allowed only 73 points.

## WOMEN'S and CHILDREN'S BOOT SALE at GATTIS SHOES

Leather, Patent Leather, Stretchable Leather Vinyl and Patent Vinyl

| WOMEN'S BOOTS   |            | CHILDREN'S BOOTS                          |            |
|---|------------|---|------------|
| (colors camel tan, black, beige, cordovan, bone, white & green) |            | (colors black, cordovan, bone, camel tan) |            |
| Regular Price   | Sale Price | Regular Price                             | Sale Price |
| 14.99 to 15.99  | \$10.90    | 6.99                                      | \$5.90     |
| 16.99 to 19.99  | \$12.90    | 11.99                                     | \$8.90     |
| 7.99  | \$5.90     | 6.99                                      | \$4.90     |
| 12.99   | \$8.90     | 12.99                                     | \$9.90     |
| 23.99   | \$18.90    |   |            |

In Sugarland Mall

*memo to advertisers*

# ABC

## What is the A.B.C.?

Chatting with a merchant the other day, we mentioned our "ABC figure."

"What," he asked, "is an ABC figure?"

Perhaps what we told him will also interest you.

This newspaper is a member of the Audit Bureau of Circulations, an independent, nonprofit organization of nearly 4,000 advertisers, advertising agencies, and publishers.

Its purpose is to provide accurate and factual reports on the circulations of member publishers. In the advertising and publishing industry, the ABC insignia is often referred to as the "hallmark of circulation values."

At regular intervals, an ABC traveling auditor visits our office to check our records. The findings of this physical audit are embodied in an Audit Report published by ABC — the report literally tells us what our circulation is.

Virtually everything an advertiser should know about our circulation is found in this report, facts and figures without opinions.

Few retailers bother to ask to see a copy of our report, yet we want you to know one is available anytime you are interested in the quality and quantity of our circulation audience — the audience for your advertising messages.

What is an ABC figure?

It is our way of assuring you that you get full measure for your advertising dollar in this newspaper.

## The Hereford Brand

## Everyone Must Register To Vote

Under New Texas Law, EVERYONE, even PERSONS OVER 60, regardless of where you live, MUST REGISTER NOW to be eligible to vote in the 1970 elections.

**Deadline Jan. 31**

COUNTY, TEXAS

**APPLICATION FOR VOTER REGISTRATION CERTIFICATE**

Name of Voter \_\_\_\_\_ Date \_\_\_\_\_ 19\_\_

(Please Print) \_\_\_\_\_ Zip Code \_\_\_\_\_

Home Address \_\_\_\_\_ City \_\_\_\_\_

(If Route and Box No., also show Street or Road)

Sex  Male Age \_\_\_\_\_ years. If under 21 years, give full date of birth \_\_\_\_\_ 19\_\_

Female

Voting Precinct (if known) \_\_\_\_\_ (Name or Number)

I certify that applicant is a citizen of the United States and has resided in Texas more than 1 year and in the county and city (if residing in a city) more than 6 months immediately preceding the date of this application, except as listed under EXCEPTIONS below. I understand the giving of false information to procure the registration of a voter is a felony.

| Exceptions for New Residents  | Mo. | Day | Year |
|-------------------------------|-----|-----|------|
| Show date of arrival          |     |     |      |
| If in Texas less than 1 year  |     |     |      |
| If in County less than 6 mos. |     |     |      |
| If in City less than 6 mos.   |     |     |      |

Signature of Voter or Agent \_\_\_\_\_

Agent's relationship to Voter \_\_\_\_\_

\*Only a husband, wife, father, mother, son or daughter may apply for registration as agent for the voter. \_\_\_\_\_ if not to be mailed to home address above.

Mail Certificate to following temporary address \_\_\_\_\_

Clip this form, fill it out and mail to your County Tax Assessor, or contact your local Tax Assessor for an Application Form.

**TEXANS FOR VOTER REGISTRATION** U. S. SENATOR RALPH W. YARBOROUGH HONORARY CHAIRMAN





**PRESENTATION** — Dick Norwood, owner of Dick Norwood Chevrolet-Olds, Hereford, is presented the keys to a new Toronado by Miss America, Pamela Eldred, during the National Automobile Dealers Association convention in Miami Beach recently.

## At The Library Adventure Reveals Hidden Passions

Like mysteries? Two extremely exciting, adventuresome novels containing much of the same are now available at the Deaf Smith County Library. Look for them today.

### THE GHOSTS' NIGH NOON

by John Dickson Carr  
On Monday evening, October 14, 1912, Jim Blake, reporter and author of the current best seller, The Count of Monte Carlo, was on a train bound for New Orleans. Colonel George Harvey, the president of Harper's, a stately publishing house in Franklin Square, and editor of a magazine called Harper's Weekly, had sent Jim to do a personality story for the magazine on James Claiborne Blake (known as Clay), who was running for Congress from New Orleans.

Jim had accepted the assignment eagerly, and he was enjoying his trip South — particularly because pretty Jill Matthews, who'd tripped into his arms in New York, had turned up on the train.

It was a good train — and many people Jim knew seemed to be riding in that trip. Among them was Leo Shepley, an old drinking companion. The trip was a busy one, but when Jim reached New Orleans things got even busier — mysteriously busy.

A man named Alec Laird told him a good deal about that famed Southern city, and about a famous woman in it, Yvonne Brissard, whose name had been linked with Clay's, and about another woman, Florence Yates, who ran a rather exclusive

House.  
And there were a good many of those splendidly expensive modern toys around — automobiles: the Chadwicks and the Mercers and the Peerlesses, potential weapons of destruction in the hands of their fearless and goggled owners.

New Orleans was a town of enchantment and rumors, and politics and hard deeds, anonymous letters, odd phone calls — and even a sudden death.

### THE SAND ROSE

by Margaret Summerton

Rachel Clement gratefully accepted her brother Raymond's invitation to visit him in Tunisia after the death of their father, but what she found that his villa was far from the restful change of scene she had expected. More a prison than a home, the Villa Jasmine contained hidden mysteries of which Rachel caught only fleeting glimpses. And most mysterious of all was Raymond's Arab wife Suli, a woman as beautiful, brittle, and lifeless as the sand rose, a fossilized flower shape found in the desert.

When Rachel decided to escape from the sinister atmosphere of the villa and join a film expedition into the desert, she began an adventure that revealed the hidden passions in

## Amarillo Man Speaks To Toastmasters

Lloyd Bridges of Amarillo presented a program entitled "Horse Sense About The Automobile" to members of the Toastmasters Club at its weekly meeting held last week at the Chaparral Restaurant.

M. C. Adams spoke on "A Nation In My Zodiac" with Jim Gilliam, club president, speaking on the fishing in Mississippi.

all who were around her — passions that led to sudden terrible violence and an unexpected climax in the dark beggars' caves of Kula.

## McCaslin, Cook To Get Degrees

AUSTIN — The University of Texas at Austin has 246 tentative candidates for the Bachelor of Business Administration degree Saturday at the close of

the fall semester. No public graduation exercises will be held.  
Dean George Kozmetsky made the degree candidate list including two Hereford students. They are William Lynn Cook, Route 2 and Jerry Don McCaslin, 409 East Fifth.

Wendel Heinie of Amarillo was awarded the table topic and best evaluator awards with the best speaker award and most improved speaking trophy going to Jim Gilliam.

J.R. Brown, also of Amarillo, served as table topic chairman. Local guests were Don Cavis and Milton Durham.

Two members of the club traveled to Amarillo Monday morning for the speakers exchange program.

Dr. Milton C. Adams  
OPTOMETRIST

### OFFICE HOURS

Mon. - Fri. 8:30-5:00

Saturday 8:30 - 12:00

335 Miles 364-2255

## Oriental Food Demonstration For L'Allegra

A cooking demonstration on oriental foods was given by Louise Wilson to members of L'Allegra Study Club at a meeting held recently at SWPSC office here.

She prepared Cantonese dishes and served samples of each to the club members. They included prawns and meat sauce, foil wrapped chicken, imperial

salad and almond cookies.

Attending were Mmes. Cameron Gault, John Smith, Dennis Lomas, Buddy Bloomer, Jimmy Carnahan, Walker Parris, Jeff Carlile, Rudy Metz, Danny Martin, Noble Ballard, Alex Schroeter, Gene Cope, Gary McQuig, Bobby Veigel, G. G. Payne, Dennis Farley and a guest, Mrs. Schlicht from Canada.

Mrs. Terrell Hodges was hostess for the meeting.

The caribou is the only deer native to North America in which both males and females carry antlers.

A man named Alec Laird told him a good deal about that famed Southern city, and about a famous woman in it, Yvonne Brissard, whose name had been linked with Clay's, and about another woman, Florence Yates, who ran a rather exclusive

# RED CARPET FOOD VALUES

Name Brands  
Red Carpet  
Service  
Discount Prices

**BUDGET SAVERS!**  
Choice Blade Cut  
**CHUCK ROAST**  
Lb. **49¢**

Choice Center Cut  
**Chuck Roast**  
lb. **59¢**

**SHORT RIBS** of beef lb. **39¢**  
**FRANKS** Swift Premium all meat 12 oz. pkg. **49¢**  
**BACON** Wilson's Certified thick or thin, 2 lb. **\$1.69**  
**CHUCK ROAST** choice boneless lb. **79¢**

Delicatessen  
Specials  
Fresh Daily

**SLOPPY JOE** **10¢**  
SANDWICH ON BUN each  
**Chicken Salad** **15¢**  
SANDWICH each  
**Bar-B-Cue Beef** **19¢**  
SANDWICH ON BUN each

Delicious Favorite  
**HAMBURGER** **19¢**  
each

Choice Family Pack  
**Club Steaks** **98¢** Lb.  
Choice Round Bone  
**Swiss Steak** **75¢** Lb.

**BUDGET SAVERS!**  
Wilson's All Meat  
**COLD CUTS**  
Bologna Olive Loaf Pickle loaf Macaroni & Cheese **3 6 oz. 89¢**

Miss Beck  
**Hair Spray**  
1.3 oz. can **69¢**

**BUDGET SAVERS!**  
Cloverlake  
**ICE CREAM** **69¢**  
1/2 gallon carton

Kimbell  
**Cake Mixes** **29¢**  
assorted flavors box

White Russet  
**POTATOES** **10¢**  
Lb.

**PORK & BEANS** Van Camp No. 300 can **14¢**  
**SANDWICH SAUCE** **29¢**  
**TOMATO SAUCE** **9¢**  
**ONYX'S SNACK** **35¢**  
**BLACK EYE PEAS** **12¢**  
**FLOUR** **\$2.29**

Fresh California  
**TOMATOES** **39¢** Lb.  
California **CABBAGE** **5¢** lb.  
Arizona **PEARS** **19¢** lb.

## DUCKWALL'S

DUE TO OUR CHANGE IN INVENTORY POLICY

These Items Must Be Sold!

### WINTER CLOSE-OUTS ODDS & ENDS

- Toys ● Boys School Shirts ● Men's Sport Shirts ● Ladie's Pajamas ● Handbags
- Plus a Small Group of One-Of-A-Kind Items!

## THURSDAY

**50%** OFF The Original Low Price!

## FRIDAY

**55%** OFF The Original Low Price!

**HURRY!**

## SATURDAY

**60%** OFF The Original Low Price!

**FIRST COME FIRST SERVED**

We're not kidding! These items must be sold by Saturday night. We have grouped all of them on counters next to our check-out stands and each item is individually marked! Hurry!

We Are Open

SUNDAYS

10 A.M. to 8 P.M.

OPEN DAILY 8 a.m. to 8 p.m.

# FOODWAY

FIRST IN HEREFORD WITH LOW, LOW FOOD PRICES!



# WANT ADS

## Phone 364-2030

## Phone 364-2030

**CLASSIFIED ADVERTISING RATES**  
 Reader Ads (Minimum 10 words) . . . 1st insertion per word . . . 8c  
 Additional insertions, when paid in advance: per word . . . 6c  
 Classified Display (10 pt. type under a specific heading, 1 column width only — no art or signature cuts) per col. inch . . . \$2.00  
 Repeat insertion without copy change per col. inch . . . \$1.50  
 Display Advertising Not Classified under a heading, but placed on the classified page . . . per col. inch . . . \$1.12  
 Deadline for Classified Advertising in the **SUNDAY BRAND**. . . 5 p. m. Friday  
 Deadline for Classified Advertising in the **HEREFORD BRAND**. . . 5 p. m. Tuesday

### 1. FOR SALE

**Miscellaneous**  
 NOW AVAILABLE: The Hereford Brand Belle of the Prairie Press by Dudley M. Lynch. Price \$4.98 Hereford Brand, 130 West Fourth St. B-1-53-1fc

**CARPET**  
 Call The 97 East First Phone 364-3448 B-1-10-22-1fc

**CHAIN LINK FENCE**  
 "Twice as strong for much less!" Yard fence, range fence, stockade fence, pens, instant boat ramps, many special uses. B-1-46-1fc

**MADE LOCALLY, CAMPBELL CHAIN LINK**  
 841 E. 1st, Phone 364-0561 e. 364-0972 B-1-46-1fc

**FIREPLACE WOOD**  
 (Dry) Hickory, blackjack, oak. PHONE 364-2780 JIM LOVING 4 blocks east of K on 15th St. B-1-49-17p

**WALKER'S USED CARS AND TRUCKS**  
 We buy, sell or trade. 400 West First Phone 364-2258 B-1-41-1fc

Will buy or sell feeder shoots, weaner pigs and sows. C. R. McGhee, Phone 364-1045. B-1-13-19-1fc

**SEMINOLE RUSSETT POTATOES**  
 DICK BARRETT PRODUCE East New York Street, Phone 364-6955, 364-1680, 364-2648 B-1-12-1fc

**FOR SALE INSURANCE-ALL LINES**  
 We are small enough to know you and big enough to serve you. See Charlie or Fluke at the BELL AGENCY, 364-2340 or 364-1442. B-1-10-1fc

**REPOSESSED KIRBY for sale.**  
 Phone 364-0422. B-1-10-52-1fc

**PARTS & SERVICE** for all makes of vacuum and sewing machines. Phone 364-4901. B-1-10-27-1fc

**REPOSESSED SINGER AUTOMATIC.** "Does it all!" \$5.24 per month. Phone 364-4901. B-1-10-27-1fc

**USED RCA Whirlpool washer.** Phone 364-4333. B-1-10-27-1fc

**TEXAS BLACK BULLS.** Andrews, Hereford, Texas. B-1-28-5p

**REGISTERED Chinese pig puppies.** 6 weeks old. Phone 364-1061. B-1-10-28-1fc

**REPOSESSED ELECTROLUX** with upright. Payments of \$5.56 per month. Phone 364-4901. B-1-27-7

### STATED MEETINGS

**Second Monday 7:30 p.m. Thursday Floor Practice.**  
 W. A. Phipps, Sec. Joe Hysinger, W. M.

**Hereford Rotary Club**  
 meets every Monday at 12:05 Jim Hill Hotel

**Lions Club meets each Wednesday, 12 Noon Hotel Jim Hill**

**KIWANIS CLUB**  
 Thurs. Noon IOOF Hall 207 E. 6th

### FOR SALE

Good grain Atlas Sargo and Tracy bundles. This feed was cut and put up without rain. All feed is dry land. CALL Leslie Robbins, San Jan, N.M. 365-576-2241. HAVE TRUCK WILL DELIVER. B-1-18-28-4p

**SPEEDQUEEN** ringer washer. \$124.00. Phone 364-4333. B-1-10-27-1fc

**KON WEST CAMPER** with stove, icebox. Excellent condition. Priced to sell. Write P. O. Box 2011, Hereford, Texas 79045. B-1-18-29-4p

**TWO bedroom, 2 bath mobile home.** Completely furnished — washer and dryer, dish washer, refrigerated air. Nearly new, used only 3 months. Call for appointment 364-4435. B-1-25-29-2c

**FULL SIZE mattress, box springs.** Good condition. Call 364-3734. B-1-29-2p

**FREIGHT damaged ringer washer.** Phone 364-4333. B-1-10-29-1fc

**SAVE Big!** Do your own rug and upholstery cleaning with Blue Lustre. Rent electric shampooer \$1. Hereford Hardware. B-1-29-29-2c

**MUST PICK UP walnut spinet piano** in Lubbock area, reported in good condition, terms available. If interested write to Briar & Hale Music, 424 N. Kansas, Liberal, Kansas, 67-901. B-1-29-29-4p

**VIOLA MADE** by Eruth Heinrich Roth Germany, Stradivarius Copy 15. 15 inch. Professional instrument, excellent tone. Assisted Alligator case. R. J. Cromer Res. Ph. 364-1225. B-1-23-4-1fc

**AUTOMATIC CALF FEEDER**  
 If you raise calves on buckets or nurse cows, why not change to a NURS-ETTE, the automatic calf feeder and raise better calves with less work? Call or write WORLEY'S GARAGE, 364-1493 or 364-1307, 1221 East First St. Hereford, Texas 79045. B-1-4-2c

**SORRY SAL is now a merry pig.** She used Blue Lustre rug and upholstery cleaner. Rent electric shampooer \$1. Duckwalk's, Sugar and Mail. B-1-23-4-2c

**WANT TO RENT** — Nice house in the country between Canyon and Hereford. Phone 364-5781 between 8:30 and 6:00 P. M. and ask for Clayton. B-1-20-4-1p

**FOR SALE** — Good upright piano. Phone 364-3343. B-1-10-4-2c

**FOR SALE** — Good upright piano. Phone 364-3343. B-1-10-4-2c

**FOR SALE** — Good upright piano. Phone 364-3343. B-1-10-4-2c

**FOR SALE** — Good upright piano. Phone 364-3343. B-1-10-4-2c

**FOR SALE** — Good upright piano. Phone 364-3343. B-1-10-4-2c

**FOR SALE** — Good upright piano. Phone 364-3343. B-1-10-4-2c

**FOR SALE** — Good upright piano. Phone 364-3343. B-1-10-4-2c

**FOR SALE** — Good upright piano. Phone 364-3343. B-1-10-4-2c

**FOR SALE** — Good upright piano. Phone 364-3343. B-1-10-4-2c

**FOR SALE** — Good upright piano. Phone 364-3343. B-1-10-4-2c

**FOR SALE** — Good upright piano. Phone 364-3343. B-1-10-4-2c

**FOR SALE** — Good upright piano. Phone 364-3343. B-1-10-4-2c

**FOR SALE** — Good upright piano. Phone 364-3343. B-1-10-4-2c

**FOR SALE** — Good upright piano. Phone 364-3343. B-1-10-4-2c

**FOR SALE** — Good upright piano. Phone 364-3343. B-1-10-4-2c

**FOR SALE** — Good upright piano. Phone 364-3343. B-1-10-4-2c

**FOR SALE** — Good upright piano. Phone 364-3343. B-1-10-4-2c

**VOLKSWAGEN \$250.00.** See at 438 Avenue G. B-3-10-29-3c

**HEALTHY BEATLE**  
 Clean 1964 Volkswagen. Good mechanical condition with new tires. PHONE 364-2424. B-3-28-1fc

**1967 DODGE Dart 4-Dr.** Installation Loan Department, F.N.B. B-3-10-28-1fc

**INTERNATIONAL TRUCK** — 2 ton, 2 speed, steel bed hoist \$1050.00; 1967 Chev. pickup \$1095.85 Knight Street. B-3-17-3-1fc

**1968 Mustang Loaded.** Low mileage. Exceptional condition. Inquire in installment Loan Dept. F.N.B. B-3-12-4-1fc

**1964 BUICK, 225 Electro.** Clean. Phone 276-5552. B-3-10-4-1p

### 4. REAL ESTATE

**For Sale Or Trade**  
**NEW LAND**  
**NEAR LAMESA.**  
**SUB-DIVIDING**  
 14,000 Acres into farms. Mesquite Catclaw land. Frazen farming area. 4 miles south of Patricia 550 to 990 per acre 25 percent down. CALL John or Marvin McClary 1611 Avenue M Lubbock, Texas 806 765-8816. B-4-46-1fc

**BY OWNER 4 bedroom, two full baths.** For information call 364-0526. B-4-11-28-1fc

**BY OWNER — Two 2 bedroom furnished duplexes.** Nets 20 percent of investment. For information call 364-0526. B-4-11-28-1fc

**FOR SALE BY OWNER**  
 One acre on pavement at edge of town with 3 bedroom house, 2 bathrooms, pool, 54,000 down. For further information, contact Bud Paetzold, 364-3363 B-4-13-4-3c

**4 BEDROOM HOME, 201 Ranger.** \$21,000 loan at 6 percent. Will sell quickly or trade for smaller home. Phone 289-5510. B-4-18-3-4c

**2 BEDROOM BRICK.** Immediate possession. Newly decorated inside and out. New carpet, including bath and kitchen. Back yard fenced. Ideal for retired couple. See Loyd McGee at McGee Furniture. 5-4-27-27-1fc

**FOR SALE**  
 1800 sq. ft. brick home. Good neighborhood. Assume loan on low interest mortgage. Buy equity, \$19,000. FHA or VA financing. New brick kitchen, decorated kitchen, beamed and paneled living room, corner fireplace, 4 car. \$21,500. Only \$24,500 for this lovely 3 bedroom country home w-cathedral ceiling 2 car garage. Sprinkler system. Air conditioner. Brick fence. Pick your colors on this new three bedroom brick home. Builtins. Excellent value. \$16,500.00. Sluice home in west Hereford. 4 bedrooms, den, living room, dining room. Fenced. Good carpet, very large rooms. \$16,500.00. Have two buyers for nice duplex. WE NEED YOUR LISTINGS — "Have two buyers for nice duplex. For rent — efficiency apartment \$80.00. CARTHOL REAL ESTATE 264 N. 25th Mile, Avenue Wayne Carthol, Leola Peters Phone 364-8946 Phone 364-9038 B-4-29-1fc

**3 bedroom house, small house at rear.** Fenced back yard. 364-3225. \$1,500.00. B-4-11-29-2c

**2 BEDROOM house with living room, dining room at 130 Avenue E.** on extra large lot with smaller house in rear. PHONE 364-4553. B-4-23-29-1fc

**IF YOU WOULD**  
 like to own a nice large 3 bedroom, 2 bath house with extras that include:  
 -Central refrigerated air and heating  
 -Large paneled den with fireplace  
 -Refrigerated yard  
 -Backyard tennis  
 CALL 364-4418 for an appointment to see the home at 108 Aspen, or inquire at 112 Aspen. B-4-4-4-1fc

**5. FOR RENT**  
 EFFICIENCY apartments — Bath room, bath, kitchen and dinette. Furnished. All bills paid. Forest Ave. Apts. Phone 364-1887 Days. B-5-21-1fc

**MOBILE HOME OWNERS**  
 Courts 516 miles at Austin Road. 46 x 80 lots. Country Village Trailer \$22.50 per month. Phone 374-5754. Mr. & Mrs. Dan Cavanaugh, Managers B-5-31-1fc

**FOR CASH LEASE**  
 320 acres at Friona, Texas. Two 8" wells. VERNON HYATT, 505.356-5147 or write Box 139, Route No. 2, Portales, New Mexico 88130. B-5-28-4c

**COMPUTER DATA BUILDING, 715 25 Mile Avenue.** Phone 364-1111. B-5-10-28-1fc

**BOOTH FOR RENT, Village Beauty Shop.** Phone 364-1270. B-5-10-28-1fc

**COMMERCIAL storage building, 15x30.** See Del at the Rainbow Drive in, or call 364-2306 or 364-2397. 374-5754. Mr. & Mrs. Dan Cavanaugh, Managers B-5-10-48-1fc

**SMALL FURNISHED HOUSE.** Inquire installment Loan Dept. F.N.B. B-5-10-24-1fc

**BEDROOMS for rent, 613 E. 5th 5th.** Phone Lois Ross, 364-1160. B-5-10-2-7p

**IRRIGATED FARM & RANCH LEASE**  
 Moore County, Texas — 1600 Acres. 1970 Cash lease, Four (4) irrigation wells, underground pipe, natural gas, abundant water supply. Excellent P11 grass and wheat immediate pasture. Two houses, REA, gas, school bus. Good location commercial feed lot. \$36,800 P. O. Box 1061, Amarillo, Texas (806) 372-1700. B-5-3-2c

**OFFICE OR retail space for rent.** 149 North 25 Mile Avenue. B-5-11-29-3c

**FOR RENT:**  
 2 flats, 625 East 1st. Phone 364-1111. B-5-10-29-1fc

**2 BEDROOM furnished house.** Vacant Saturday 507 Irving. Apply 509 Irving or Werley's Garage. B-5-14-4-1fc

**6. WANTED**  
**DEAD ANIMAL REMOVAL**  
 Seven days a week service. Must call soon as possible after animal dies. **HEREFORD BI-PRODUCTS 364-0951 B-6-49-1fc**

**HIGHEST CASH prices paid for scrap iron, metals, batteries, auto wrecked trucks, pickups and cars.** Hereford Iron & Metal Company, Aman & June Deering, North Progressive Road by the City Dump. 364-3777 or 364-3350. B-6-34-32-1fc

**WANTED — CUSTOM FARMING**  
 Call Joel Williamson, 364-1923. B-6-1-46-1fc

**WANTED — baby sitting** by the hour, day or week. Phone 364-4125. B-6-10-40-1fc

**MEN AND WOMEN WANTED TO TRAIN FOR CIVIL SERVICE**  
 We prepare men & women, ages 18 & over. No experience necessary. Grammar school education usually sufficient. Permanent jobs. No layoffs. Short hrs. High pay. Advancement. Free information. Send name, home address, ph. No. & time home to Southern Extension Service, B. O. 673-SES Hereford Brand. B-6-27-9-1fc

**CUSTOM FARMING.** Call Robert Belzer, 364-5568 or Cliff Williams at 364-5687. B-6-10-24-1fc

**ALL KINDS OF MAINTAINER WORK BY HOUR, DAY OR JOB.**  
 CALL BOB CAMPBELL, 364-4261. B-6-2-1fc

**I WILL do ironing in my home.** 235 Avenue A, Phone 364-3528. B-6-28-4p

**TREE TRIMMING, tapping, shaping.** Any type chain saw work. Ancll Greenwood, 364-1118. B-6-12-28-1fc

**WOULD like farm to manage.** Have also experience in hog raising and growing of vegetables, 20 years experience. Phone 364-4164. B-6-20-3-1fc

**WANT TO break, float, fertilize and list corn and milo ground.** Turnkey price. Shep Shepherd, 364-0149. B-6-16-3-1fc

**MATURE WOMAN** to live in and care for semi-invalid woman. Personal references and driver's license. Call 806-364-2451 or 364-3499 or write 517 Avenue K, Hereford, Texas. B-6-26-4-1fc

**HOUSE MOVING**  
 (Free Estimates)  
**BONDED-RRC PERMIT**  
 PHONE BOB CAMPBELL 364-4261. B-11-2-1fc

**AUTO REPAIRS**  
 Automatic Transmission Specialists Engine Overhaul General Auto Repairs  
**KEMP AUTO REPAIR**  
 East Highway 60 Phone 364-3421 B-11-28-1fc

**KIRBY SALES & SERVICE**, Phone 364-5768. B-11-10-1-1fc

**AAA WRECKER SERVICE.**  
 Hereford Wrecking Company Day phone 364-0580; nights 364-4009 and 364-0075. T-11-39-1fc

**13. LOST & FOUND**  
 LOST: 2 heifers-branded E4 on left hip; 3 steers — branded 5B on right hip. David Brumley, 364-1174. B-13-29-8p

**Legal Notice**  
 NOTICE TO BIDDERS  
 The City of Hereford will accept sealed bids until 2:00 P. M., February 2, 1970 in the office of the city manager for ONE 1970 Suburban Wagon for the fire department. Full specifications may be obtained from the office of the city manager, City Hall, Hereford, Texas. The City Commission reserves the right to reject any or all bids, to waive informality and to accept the bid deemed to be the most advantageous to the City of Hereford. James H. Sears, Jr., Mayor T-3-3c

**9. Situations Wanted**  
 WANTED BABY sitting in my home. Call 364-3394. B-9-10-42-1fc

**10. NOTICE**  
 ALCOHOLISM — FOR MATIION: For information on alcoholism, referrals for help, counseling, or programs on the subject of the disease of alcoholism, call 364-4540 from 9 a.m. till 12 p.m. until 5 p.m. Monday through Friday. A UNITED FUND AGENCY B-10-23-1fc

**REPOSESSED HOOVER VACUUM**  
 Take over payments \$5.00 per month. 364-4901. B-10-10-27-1fc

**LONG TERM FARM LOANS. WE REPRESENT THE LARGEST COMPANIES IN THE BUSINESS AND HAVE MONEY AVAILABLE AT COMPETITIVE RATES PROMPT SERVICE TO QUALIFIED PRINCIPLES.**  
 CALL WESTERN INVESTMENT, AMARILLO 806-352-2134. B-10-40-1fc

**GULF SERVICE STATION**  
 Excellent location. Financing available to the right man. PHONE 647-3461 Dimmitt; or 355-7463 in Amarillo. B-10-28-4c

**FIREWOOD**  
 Buy your firewood now during Kiwanis Club annual Pinon firewood sale. Phone 364-0614 or 364-1540 or contact any Kiwanian. This is a public service with proceeds remaining in the Hereford area. B-10-45-27c

**SICK ROOM SUPPLIES**  
 Wheel Chairs, Crutches, etc. McDowell Drug 336 N. Main — Phone 364-1313 B-11-51-1fc

**OWENS & HOLLINGSWORTH**  
 Free Estimate Generator & Electric Motors Rewind Magneto - Starter Residential Wiring Commercial-Industrial Sales and Service 809 EAST SECOND 364-3572 B-11-13-1fc

**PORTABLE DISC ROLLING**  
 Scaled or plain. Jacobsen Brothers. Phone 364-1543. B-11-10-23-1fc

**BEAR Wheel Alignment Complete Front-End Service**  
**DICK NORWOOD CHEV.-OLDS**  
 Phone 364-2160 B-11-2-1fc

**AUCTIONEERS** — Experienced, reliable. Wade Crist, Cletus Callaway. Phone 364-2584 (Daytime) 426-5611 (Night) 364-7246. B-11-13-21-1fc

**KELLY ELECTRIC**  
 Doug and Virgil Electrical Contractors Residential - Commercial All bids and wiring competitive. Phone 364-1345 Night phone 364-2012 or Box 130 364-1345 B-11-46-1fc

**CHAIN SAW WORK.** Tree tapping, shaping, INSURED. For estimation call 364-4160. B-11-11-29-5c

**HOUSE MOVING**  
 (Free Estimates)  
**BONDED-RRC PERMIT**  
 PHONE BOB CAMPBELL 364-4261. B-11-2-1fc

**AUTO REPAIRS**  
 Automatic Transmission Specialists Engine Overhaul General Auto Repairs  
**KEMP AUTO REPAIR**  
 East Highway 60 Phone 364-3421 B-11-28-1fc

**KIRBY SALES & SERVICE**, Phone 364-5768. B-11-10-1-1fc

**AAA WRECKER SERVICE.**  
 Hereford Wrecking Company Day phone 364-0580; nights 364-4009 and 364-0075. T-11-39-1fc

**13. LOST & FOUND**  
 LOST: 2 heifers-branded E4 on left hip; 3 steers — branded 5B on right hip. David Brumley, 364-1174. B-13-29-8p

**Legal Notice**  
 NOTICE TO BIDDERS  
 The City of Hereford will accept sealed bids until 2:00 P. M., February 2, 1970 in the office of the city manager for ONE 1970 Suburban Wagon for the fire department. Full specifications may be obtained from the office of the city manager, City Hall, Hereford, Texas. The City Commission reserves the right to reject any or all bids, to waive informality and to accept the bid deemed to be the most advantageous to the City of Hereford. James H. Sears, Jr., Mayor T-3-3c

**9. Situations Wanted**  
 WANTED BABY sitting in my home. Call 364-3394. B-9-10-42-1fc

**10. NOTICE**  
 ALCOHOLISM — FOR MATIION: For information on alcoholism, referrals for help, counseling, or programs on the subject of the disease of alcoholism, call 364-4540 from 9 a.m. till 12 p.m. until 5 p.m. Monday through Friday. A UNITED FUND AGENCY B-10-23-1fc

**REPOSESSED HOOVER VACUUM**  
 Take over payments \$5.00 per month. 364-4901. B-10-10-27-1fc

**LONG TERM FARM LOANS. WE REPRESENT THE LARGEST COMPANIES IN THE BUSINESS AND HAVE MONEY AVAILABLE AT COMPETITIVE RATES PROMPT SERVICE TO QUALIFIED PRINCIPLES.**  
 CALL WESTERN INVESTMENT, AMARILLO 806-352-2134. B-10-40-1fc

CLASSIFIED ADS MAKE YOU MONEY CAN TODAY



**BSP ROYALTY** — Members of Beta Sigma Phi Hereford City Council entertained Sunday afternoon at the Chaparral Restaurant for Valentine Queen candidates of the three local chapters and members of the Amarillo BSP City Council who judged the nominees. Mrs. Harold Beauchamp, shown second from left in lower photo is Alpha Alpha Preceptor candidate. Shown with her are three of the Amarillo Council members, from the left, Mrs. James White, president; Mrs. Doug Husband and Mrs. Thayne Roberts. Xi Epsilon Alpha candidate, Mrs. Pat Parker and Kappa Iota candidate, Mrs. Joe Frank Huckert, are shown second and third from left in upper photo with Amarillo Council members, Mrs. Arley Bewley, Mrs. Tommy Jones and Mrs. Fred Boatwright. Results of the judging will be announced Feb. 14 at the BSP Valentine dance. —Staff Photo

**Garden Club Therapy Group Makes Plans**  
 Mrs. R. L. Ethridge presented plans made by the therapy committee of the Hereford Garden Club to members at a recent meeting in the home of Mrs. Ben Childers. Mrs. A. M. Stoy was co-hostess.  
 The therapy committee has been working with a class of exceptional children at Shirley Elementary School, taught by Mary Carter.  
 Mrs. R. L. Wilson gave the basic principals of plant propagation as explained in the Lone Star Gardener and Mrs. J. V. Pickens discussed the art of proper pruning.  
 An exhibit of making compost was shown and discussed by Mrs. O. G. Hill Sr.  
 Mrs. Pickens will host the next meeting Feb. 13.

**Nurses Hold Recent Meet**  
 The Hereford Sub-District of Texas Nurses Association met Thursday evening at Deaf Smith County Hospital to view a film on IPPB assisted breathing.  
 The next meeting is scheduled at 7:30 on Feb. 19 at the hospital and each member is asked to bring a guest.<



Hereford, Texas  
**Penneys**

FOREMOST MILEAGEMAKER

Open Weekdays  
8:00 am to 6:30 pm  
Open Saturdays  
8:00 am to 8:30 pm

**CLOSEOUT!**  
FOREMOST MILEAGEMAKER WITH 4 PLY NYLON CORD

**24 MONTH GUARANTEE WITH 6 MONTHS FREE REPLACEMENT**

Guarantee against tread wearout  
If your tire wears out during the first half of the guarantee period, return it with your guarantee certificate and Penney's will replace your tire with a new tire, charging you 50% less than the current selling price including Federal Excise Tax; if your tire wears out during the second half, you pay 25% less than the current selling price including Federal Excise Tax.

Guarantee against failure  
If we replace the tire during the free-replacement period, there is no charge; if we replace the tire after the free-replacement period, you pay 50% or 25% less than the current selling price of the tire including Federal Excise Tax.

Commercial Use  
This guarantee is void where passenger tires are used on trucks, used for business, or driven over 30,000 miles in one year.

Here's how your guarantee against failure works:  
Entire guarantee period..... 24 months  
No extra cost period..... 6 months  
50% off period..... 7-13 months  
25% off period..... 14-24 months

|                           |       |          |  |                            |
|---------------------------|-------|----------|--|----------------------------|
| <b>BLACKWALL TUBELESS</b> |       |          |  | <b>\$11</b>                |
| Size                      | Orig. | Fed. tax |  | <b>NOW</b>                 |
| 650-13                    | 13.95 | 1.79     |  |                            |
| 700-13                    | 14.95 | 1.96     |  |                            |
| 695-14                    | 14.95 | 1.96     |  |                            |
|                           |       |          |  | Plus fed. tax and old tire |
| <b>BLACKWALL TUBELESS</b> |       |          |  | <b>\$13</b>                |
| Size                      | Orig. | Fed. tax |  | <b>NOW</b>                 |
| 735-14                    | 15.95 | 2.07     |  |                            |
| 775-14                    | 16.95 | 2.20     |  |                            |
| 560-15                    | 15.95 | 1.76     |  |                            |
| 685-15                    | 15.95 | 1.89     |  |                            |
| 735-15                    | 15.95 | 2.08     |  |                            |
| 775-15                    | 16.95 | 2.21     |  |                            |
|                           |       |          |  | Plus fed. tax and old tire |
| <b>BLACKWALL TUBELESS</b> |       |          |  | <b>\$15</b>                |
| Size                      | Orig. | Fed. tax |  | <b>NOW</b>                 |
| 825-14                    | 18.95 | 2.36     |  |                            |
| 855-14                    | 20.95 | 2.57     |  |                            |
| 815-15                    | 18.95 | 2.38     |  |                            |
| 845-15                    | 20.95 | 2.57     |  |                            |
|                           |       |          |  | Plus fed. tax and old tire |
| <b>WHITEWALLS</b>         |       |          |  | <b>only \$2 more</b>       |

**BE SURE OF COLD WEATHER STARTS**  
**INSTALL A NEW FOREMOST® CUSTOM BATTERY NOW!**

36 months  
6 & 12 volts  
12 months free replacement  
**\$12<sup>88</sup>**

48 months  
18 months free replacement  
**\$17<sup>88</sup>**

**FOREMOST® CUSTOM 36 MONTH GUARANTEE**  
Should any Foremost Custom Battery fail (not merely discharge, within 12 months from the date of purchase, return it to Penneys and it will be replaced free of charge. After 12 months, but prior to the expiration date of the guarantee, J. C. Penney Company will replace the battery charging only for the period of ownership, based on the current price at the time of return, pro-rated over the stated guarantee months.

|  |  |  |
|--|--|--|
| <p>Custom<br/><b>BRAKE OVERHAUL</b></p> <p>Here's what we do:<br/>We install new bonded linings, rebuild all wheel cylinders, re-surface brake drums, bleed and refill brake system, repack front wheel bearings and install new front seals. Free brake adjustment for life of lining.<br/>most cars<br/><b>\$39.88</b></p> | <p>Complete<br/><b>ENGINE TUNE-UP</b></p> <p>Here's what we do:<br/>We install points, condenser, rotary, distributor cap, and install new spark plugs and adjust carburetor.<br/>Six Cylinder <b>\$18.88</b> V-8 Engines <b>\$22.88</b></p> | <p><b>SERVICE SPECIAL!</b><br/><b>1-2-3 LUBE JOB</b></p> <p>How's this for a Wild Week value! Your car gets an oil change (Foremost®) Heavy Duty Motor Oil, new oil filter and a grease job.<br/><b>\$5.88</b></p> |
|--|--|--|

★ OFFICIAL STATE INSPECTION STATION ★

## District Judge Announces

District Judge Archie S. McDonald has authorized the Hereford Brand to announce his candidacy for a second term as Judge of the 69th District Court. His re-election is subject to the Democratic primary on May 2, 1970.

"It has been both an honor and a privilege to serve as your district judge," says Judge McDonald. "I have appreciated the spirit of cooperation shown throughout the 69th District by the various attorneys, the district clerks, the sheriffs offices, the two District Attorneys who have served during my first term and the various o-



Archie McDonald

ther officials with whom I have worked. The citizens of this district have responded well when called upon to serve as jurors. Their willingness to serve and the conscientious manner in which they have discharged their duty has been most gratifying. Such cooperation has assisted in maintaining current dockets throughout the district at a time when some courts are faced with congested dockets of cases to be tried.

"The experience I have gained during my first term as your district judge will enable me to serve you better during the second term I am now seeking. Therefore I respectfully solicit your support and vote to reelect me as Judge of the 69th Judicial District."

**VERSATILE DEFENDER**  
AIR FORCE ACADEMY Colo. — Cyd Maattala, Air Force defensive end whose name tests sports writers' spelling skills, had a pass-stealing field day against Colorado State University. He pilfered three.

The fisher, a member of the weasel family, is one of the few animals to prey consistently upon the porcupine.

You've Never Seen Such Thorough Service  
**STOP IN SOON**  
Phillips "66" Products  
**EAST SIDE "66"**  
Rocky Stewart  
1303 E. 1st 364-2644

**Submersible Pumps**  
Dempster - Acromotor  
Repairs on all makes  
**Well Drilling**  
D. E. Turner  
Well Service  
364-0811 427 Ave. J

**GLASS IS OUR BUSINESS** —  
Call Us For All Your Glass Needs  
**HEREFORD GLASS CO.**  
1302 Park Ave. INC. 364-3652

**Look to SHOOK**  
For Quality LEE Tires and on the Farm & Road Service  
As Close As Your Phone  
**Shook Tire Co.** 600 WEST FIRST 364-1010

**GOLDEN SPREAD**  
REAL ESTATE

Hereford, Texas  
**Penneys AUTO CENTER**

The busiest season is just ahead of us and in addition to our 16 man staff we desperately need two qualified, experienced skilled men.

- Tire & Auto Accessory Salesman
- Top Grade Mechanic

The Men We Hire Must Be Well Experienced  
Company Benefits Available

- Top Wages
- 40 hour - 5 day work week
- Discount on all purchases
- Two weeks paid vacation
- Hospital & major surgical protection
- Term life insurance
- Disability Insurance
- Profit sharing plan

APPLY IN PERSON  
**PENNEY'S AUTO CENTER**  
AT Sugarland Mall . . . Hereford, Texas

Judge McDonald opened an office for the practice of law in Dumas in January of 1947, following his discharge from the U. S. Army. He has since served as county attorney and county judge of Moore County.

He is a graduate of Texas Tech with a degree in government and received his LL.B. degree from the University of Texas. In 1967, Judge McDonald attended a special 30 day course of study designed for newly elected trial judges at the National College of State Trial Judges.

Judge McDonald and his wife live in Dumas. They have a son in the ninth grade and a daughter who is a freshman at West Texas State University.

**EXPERT REPAIR**  
on  
● PONTIAC  
● BUICK  
● GMC TRUCKS  
and all makes  
KINSEY-OSBORN MOTORS  
free pickup phone 364-9500

**YOUR SINGER DEALER**  
Let us help you with your sewing needs. Guaranteed service on all makes sewing machines and vacuums. . . . Parts and notions.  
Southern Sewing Center  
213 Main 364-3782

**For Better HEALTH**  
for better living All the family can enjoy benefits of soft water . . . cost \$4.00 per month . . . there's nothing to buy!  
**Soft Water Service**  
Home owned - home operated  
Phone 364-3280

**New You Can Rent It!**  
Phone 364-3466  
**Hamby's Rental Service**  
Across the road from Hamby Real Estate

**30 ACRES**  
with 3 bdrm. home, on paving, near Hereford, \$650.00 per A., terms available.  
**\$650.00 DOWN**  
3 bdrms., new carpet, completely redecorated inside and outside, near schools, only \$9,500.00.  
**\$750.00 DOWN**  
2 bdrms., fully carpeted, new paint, single garage, \$7,500.00.  
**NEAR SCHOOLS**  
Fully carpeted 3 bdrm. home with double garage, only \$15,500.00, will trade for smaller home, existing loan can be assumed.  
**3 BEDROOM BRICK WITH DEN**  
2 baths, utility room, double garage, refrigerated air, an exceptional buy at \$20,000.00.  
**5 1/2 PERCENT LOAN**  
Large 3 bdrm. with single garage, nice yard, only \$15,500.00, good terms available.  
**NEAR AIKMAN SCHOOL**  
3 bdrm. brick, single garage, 5 1/2 percent loan can be assumed, only \$12,500.00, reasonable down payment to qualified purchaser.  
**DEAF SMITH COUNTY 1/2 SECTION**  
Fully allotted to wheat, milo & sugar beets, high yields, 2-3" wells, 2 mi. underground tile, nice home, only \$30,000.00 down to qualified purchaser, existing 5 1/2 percent loan can be assumed, possession if purchased in near future, owner will consider trading for other land in Texas Panhandle.  
**NEAR HEREFORD**  
Only \$10,000.00 down on this 1/2 section with wheat, milo & cotton allot, 1-4" & 2-5" wells, 1 mi. underground tile, 3 bdrm. home, only \$210.00 per A.  
**NORTH PLAINS**  
300 A., 2 good 8" wells, approx. 3500 ft. underground tile, 237 A. milo & wheat allot, 1/4 mile off paving. Located in Sherman Co., Texas. \$325.00 per A., \$30,000.00 down or owner will trade for other property.  
**HAMBY REAL ESTATE**  
South Highway 285  
Office 364-3500  
J.M. Hamby 34-253  
Gerald Hamby 364-1834  
Durward Hamby 364-3408

**CARMICHAEL**  
Real Estate, Inc.  
508 South 25 Mile Avenue  
PHONE 364-1251  
FARMS & FARM LOANS

**LOW DOWN** - Owner will pledge - 3 bedroom - 1 1/2 bath - built-in kitchen - den - living room - fenced yard - vacant - immediate possession - \$18,200.00.

**LARGE BASEMENT** - 3 bedroom - 1 bath - living room - dining room - kitchen - double garage - outside storage - good commercial property also - low down - owner will pledge - \$13,800.00 - vacant - immediate possession.

**STAR ST.** - 3 bedroom - 1 bath - living room - family room - dining area - owner will pledge - 207 Star - appointment only. \$15,500.00.

**COUNTRY HOME** - 5 acres of land - 3 bedroom - 2 bath - large den - woodburning fireplace - built-in kitchen - fenced - storage house - very nice - appointment only.

**10% DOWN** - 1750 sq. ft. - 3 bedroom - 2 bath - double garage - fenced yard - 8x12 storage bldg. - refrig. air - nice home - 510 Star - \$20,000.00.

**EXISTING LOAN** - low interest - 3 bedroom - 2 1/2 bath - double garage - fenced yard - nice - clean built-in kitchen - 523 Ave. J - \$22,800.00 - appointment only.

**SMALL HOUSE** - 3 bedroom - 1 bath - fenced - carpet - owner carry paper - \$6,500.00 - 210 Whiteface - low down.

**4 BEDROOMS** - Snuggled onto one acre of ground - large den - double fireplace - built-in kitchen - refrig. air - double garage - sprinkler system - storage house - existing loan - might trade for smaller home - appointment only.

**3 BEDROOM** - 1336 living area - 3 years old - extra low equity - immediate possession - clean, very attractive - payments only \$83.00 a month - Don't miss this one!  
Where Buying and Selling Become a Reality.

Troys Carmichael      Mutt Wheeler  
Harold Kids              Jeane Coker  
(364-0336)              nitephones (364-5439)



The Hereford Benefit Association is a non-profit local insurance plan organized in 1908 by local citizens. A membership in this association can mean as much as \$1000.00 of life insurance. The average cost is less than \$20.00 annually. Frank Ball is membership chairman. Phone 364-3119. Bruce Rose is secretary. Office at 407 North Main. 364-0285

## Shower Honors Sherian Seiver

A miscellaneous bridal shower honoring Miss Sherian Kay Seiver, bride-elect of Roger Gregory, was held Saturday afternoon in the home of Mrs. Wilbur D. Gibson 122 Liveoak. Mmes. Mary Carter, Hugh Clearman, Floyd Coker, Lloyd Crume, L. J. Dirks, Clint Formby, A. T. Frye, Dub Hair, Joe Hamilton, Paul Harvey, Ted Higgins, Joel Hodges, R. B. Hutson, Sam Long, A. L. Manjeot, Danny Martin, Gwynne O-

wen, J. B. Sowell, R. L. Wilson, Frank Zinzer Jr., Mrs. Earl Huckabee of Dumas and Mrs. Clinton Massie of Amarillo. Guests were greeted by Mrs. Gibson and received by the honoree, her mother, Mrs. John Seiver; her fiance's mother, Mrs. D. N. Gregory of Paducah; her grandmother, Mrs. J. F. Wagner of Rosell; and Mrs. Steve Russell of Canyon, who will serve as matron of honor. The silver appointed service table was laid with a lovely lace and linen imported cloth

and decorations carried out the bride's colors of red and white. The center piece featured a golden engagement ring enhanced by an arrangement of red Happiness roses and candy-tuff. Presiding at the table were Miss Sandra Willis and Miss Mona Gibson. Guests were registered by Mrs. Jerry Curry. Out-of-town guests were Mrs. Jack Sides and Mrs. Bill Mjstead, both aunts of the honoree from Roswell. Approximately 65 guests called during the afternoon.

**Loans**

Auto-Furniture-Signature  
**PLAINS FINANCE CORP.**

364-3400  
906 So. 25 Mi. Avenue  
Hereford, Texas

"Give us a chance to say yes"

# Best BEEF!



**RIB STEAK** FURR'S PROTEN lb. **88¢**  
**CHUCK STEAK** FURR'S PROTEN lb. **69¢**  
**SWISS STEAK** FURR'S PROTEN lb. **88¢**  
**SIRLOIN STEAK**

UP TO 170 EXTRA GOLD BOND STAMPS AT FURR'S

Redeem coupons mailed to your home each week for EXTRA Gold Bond Stamps. Redeem your next two coupons at Furr's by January 28. One coupon is for 70 FREE stamps with no purchase necessary and the other is for 100 FREE stamps with the purchase of \$5.00 or more.

## DAIRY DEPARTMENT BUDGET BOOSTERS

|                       |  |                              |
|-----------------------|--|------------------------------|
| <b>BUTTER MILK</b>    | Farm Pac 1/2 gal. <b>48¢</b>                     | Borden's 1/2 gal. <b>48¢</b> |
| <b>Ice Cream</b>      | Borden's Choice of 8 flavors 1/2 gal. <b>66¢</b> |                              |
| <b>Sour Cream</b>     | Borden's Chip 'N Dip 8 oz. <b>3\$1</b>           |                              |
| <b>Ice Milk</b>       | Borden's Lite Line 1/2 gal. <b>79¢</b>           |                              |
| <b>HALF and HALF</b>  | Borden's pint <b>39¢</b>                         |                              |
| <b>COTTAGE CHEESE</b> | Borden's 24 oz. ctn. <b>59¢</b>                  |                              |
| <b>YOGURT</b>         | Borden's assorted flavors 8 oz. <b>25¢</b>       |                              |

**ROUND STEAK** FURR'S PROTEN lb. **88¢**  
**WICKLOW BACON** Sliced 1 lb. pkg. **69¢**  
**PORK CHOPS** Family Pac 1/2 pork loin lb. **79¢**  
**SAUSAGE** Porky lb. **53¢**  
**GROUND BEEF** 3 lb. pkg. or more lb. **53¢**  
**GROUND CHUCK** Fresh ground lb. **78¢**  
**GROUND STEAK** Fresh ground lb. **88¢**  
**BONELESS STEW** lean cubes lb. **79¢**  
**BEEF SHORT RIBS** Fine for braising lb. **38¢**  
**T-BONE STEAK** Furr's Protén lb. **98¢**  
**WIENERS** Farm Pac all meat 12 oz. pkg. **53¢**  
**BOLOGNA** Farm Pac all meat 12 oz. pkg. **59¢**

**DINNERS** Morton's fresh frozen chicken, beef, turkey, Salisbury steak, macaroni and cheese, or spaghetti and meat balls. Each **33¢**  
**PIES** Morton's Fresh Frozen Apple, Peach, or Coconut Custard. Each **35¢**  
**SPINACH** Top Frost fresh frozen chopped or leaf 10 oz. pkg. **15¢**  
**TURNOVERS** Pepperidge Farm assorted flavors pkg. **49¢**

**POTATOES** All Purpose Russets 10 Lb. Bag **59¢**  
**APPLES** Washington Red or Golden Delicious 6 lbs. **\$1**  
**ORANGES** Texas Sweet For Juice 8 Lbs. **\$1**  
**GREEN BEANS** Mexico lb. **40¢**  
**POTATOES** New Red California 2 lbs. **29¢**  
**PEARS** Washington State 4 lbs. **\$1.00**  
**CELERY** Green Pascal large stalk **29¢**  
**RUTABAGAS** **17¢**

**FABRIC SOFTNER** Topco 1/2 gal. **59¢**  
**CRISCO OIL** 48 oz. bottle, 8c off label **79¢**  
**BABY FOOD** Food Club Strained Jar **8¢**  
**TISSUE** Topco 4 roll pkg. **29¢**  
**CRACKERS** Food Club lb. box **19¢**  
**PEARS** Tree Ripe No. 2 1/2 can **29¢**  
**Corn** Food Club cream style or whole kernel No. 303 can 5 for **1.00**  
**Cake Mix** Pillsbury Frostings or Pillsbury assorted flavors pkg. 3 for **1.00**  
**Rice** A Roni Golden Grain assorted flavors pkg. 3 for **1.00**  
**French Dressing** Kraft 8 oz. bottle **25¢**  
**Spaghetti Dinner** Kraft Tangy 8 oz. pkg. **29¢**  
**Soap** Gay Bouquet 6 piece **39¢**  
**Amonia** Bo Peep 3 c off label qt. **21¢**  
**Parkay** Diet Soft lb. pkg. **39¢**  
**Spaghetti or Macaroni** American Beauty 10 oz. pkg. **21¢**  
**Margarine** Parkay 2c off lb. **28¢**

**Health & Beauty Aids**

**HAIR DRESSING** Mennen Protein 29 3 oz. gel. reg. 98c **69¢**  
**TOOTHBRUSH** Colgate Reg. 33c **2 for 29¢**  
**KOTEX** Sanitary Napkins Box of 24 Reg. or Super **57¢**

**10¢ OFF COUPON**

Good on purchase of family size **GLEEM** 57c

WITH THIS COUPON

Good only at Furr's Supermarket Offer expires Jan. 26

**SHOP**

**Furr's**

**MIRACLE PRICES**