

# The Hereford Brand

## Announcing the Arrival OF

### Two Best in Men's Fine Clothes



Copyright 1908 by Hart Schaffner & Marx



HART  
SCHAFFNER  
& MARX  
FINE CLOTHES

75 Suits of the popular Hart, Schaffner & Marx Fine Clothes  
25 Suits Harvard Clothing, and  
17 Dozen Pair Pennant Pants

### Boy's Clothing and School Shoes.



HERCULES

100 Hercules Boy's Fine Suits  
40 Dozen Pair the Celebrated  
Webster School Shoe. Call and  
inspect these two well known lines



A Dictionary with every pair from size 11 up.  
Dainty, Durable, Dependable Footwear for little ladies. Sturdy, Stylish, Snappy Shoes for little men.



## AT HUBBARD & BARNETT'S DEPARTMENT STORE

### NEW RAILROAD FOR HEREFORD

New Road Chartered from Floydada to this City—An Extension of Stamford Road.

A dispatch from Austin under date of February 4th gives out the information that the citizens of Floydada do not propose to wait any longer for a railroad. A few of its most able and enterprising citizens have joined in a charter for a road from that place to Hereford. The first dispatch says:

Austin, Tex., Feb. 4.—The Attorney General today approved the Charter of the Lano Estacado Railway Company of Floydada, Floyd County. The Railroad proposes to build a line from Floydada to Hereford in Deaf Smith County, a distance of 175 miles. Its capital stock is \$200,000.00. The road is incorporated by a number of citizens of the territory through which it will pass.

From other sources we learn that Wm. Massie, president of the Floydada Bank and Dr. Andrews, and other capitalists of Floyd county with a strong Eastern firm is back of the enterprise. The charter calls for the road to run through Floyd, Briscoe, Swisher and Castro counties with its destination at Hereford.

Coupled with the information as to the course of the Stamford and Northwestern railroad, it looks like that the Colorado-Southern interests were at the back of the enterprise.

This, however, is not certain but points in that direction. The Stamford road is now being rapidly pushed as the following dispatch from that place will show:

Stamford, Texas, Feb. 7.—The work on the construction of the Stamford and Northwestern Railway is being pushed with all possible haste and more than five hundred teams are now strung out along the line from Stamford to Dickens county and it is supposed that by the first of April that the construction trains will be put to work. It is known that the orders for the steel and ties have been placed and this material will begin to arrive within the next thirty days.

There has been no official statement given as to the destination of the Stamford and Northwestern Railway, the only official information being that the contract for the first seventy-five miles has been let. This will carry the road to Dickens county. It is believed now that the contract for the Graham extension to Stamford of the Rock Island will be let by the first of April and perhaps sooner. It is known that the contractors have been over the line that has been surveyed and while no official announcement has been given, still it is believed that the contracts will be let by the first of April and it is known that an appropriation has been made. W. A. Butts, president of the Estacado and Gulf Railway, has announced that he will build his line to connect with the Rock Island when the extension is made to Stamford.

With a map before you, draw a line from Stamford to the center of Dickens county, where the Star ranch, owned by the Swenson interests is located. It is this ranch of several thousand acres that is to be reached and colonized and the construction of the Stamford line is for that purpose. The dispatch says

that five hundred teams are at work along the survey of seventy-five miles. It is 40 miles from Dickens to Floydada and 175 miles from Floydada to Hereford. The proposed line passes thru a territory untouched by any line of railroad. Once in connection with the Stamford roads, the line will put Hereford in direct touch with the central part of the state and the gulf ports. This will give a better route for the shipment of grain and feed products which are to become an immediate source of wealth of the Hereford country.

Not to mention the many benefits Hereford will receive in the construction of this line, it will double the population in less than a year from the time the road is started. With three competing lines and six outlets for shipping and passenger traffic, Hereford will become the railroad center of the Panhandle.

The secretary of the Hereford Commercial Club has been in correspondence with the secretary of the Stamford Commercial Club, Mr. Wade, and he assures us that the Stamford road is backed by sufficient capital to complete and equip the line for any length and that the first division of 75 miles will be finished by April 1. This is good news for Hereford and its Club should get exceedingly busy to meet the Floydada and Stamford interest more than half way in bringing about the early completion of the line.

#### Stockmen Attention.

Dr. F. L. Watson, D. V. S. of West-Liberty, Ia., a graduate of Kansas City Veterinary College (a first class and up-to-date institution.) Class of 1908. He can show you his diploma, also give you stockmen, banks and business firms at home as references.

We have decided to join our forces

in your interest. The treatment you will receive at our hands will be as heretofore from mine, with which you are all familiar. We will equip a hospital and run our own motor as soon as possible.

Teeth floated for \$1.00. City calls \$1.00 mileage, 50 cents less for long distance. At present at Culp's wagon yard each day. Day phone 1, night phone 142. 1-2tp F. E. Rowe, V. S.

#### Dry Farming Congress.

The Third Trans-Missouri Dry Farming Congress is to be held in Cheyenne, Wyoming, on February 23, 24 and 25. At the Farmers Institute here last Saturday the question of sending delegates was discussed. H. G. Hays, president announced that he would attend.

The Brittners will entertain you every night next week at the Opera House.

LOOK WHAT IS COMING

THE BIG BITTNER CO.

FOR ONE WEEK COMMENCING

MONDAY, FEBRUARY 15, 1909

Repertoire and  
Polite Vaudeville

TICKETS ON SALE AT PARK'S DRUG STORE.  
PRICES 25c, 35c and 50c

Opening "EBEN HOLDEN" Monday  
Play Night





See J. L. Johnson for Waterproof Building Blocks. Phone 324.  
Factory, Hereford, Texas.

## 1184 IMMIGRANT CARS FOR 1908

Santa Fe in the Panhandle Receives Largest Number in History of the Road.

An official letter to The Brand from D. L. Meyers, Gen. Freight and Passenger Agent, Pecos Valley Lines of the Santa Fe in the Panhandle says:

Dear Sir:—

During the year 1908, we unloaded at our stations on our line in the Panhandle of Texas, 1184 car loads of immigrant outfits. This compares with 1033 for 1907 and 494 during 1906 and shows a remarkable increase in the business and indicates clearly that the reputation of the country from an agricultural standpoint is well and permanently established.

Yours truly,  
D. L. Meyers.

This letter is very gratifying to everybody in the Panhandle. If all other roads in the Panhandle have had the same increase in the immigration business there has been a heavy percentage of increase. Taking the figures for 1907 and adding the increase to the total, the Santa Fe, Denver and Rock Island handled over 3000 immigrant cars in the Panhandle only. The Panhandle is meant to include only that "neck of the woods" from Childress west and

from Plainview north. As soon as the official report is received from the other roads the actual figures will be published.

What does this mean for the Panhandle? It means that the country is to be put to the test by the real farmer, that thousands of acres of land is to be put under cultivation, that millions of feet of lumber is to be put into new houses and barns, that a million miles of new fences are to be built, that train loads of farming implements are to be bought, that hundreds of new schools houses and churches are to be built, that a large number of new towns will spring up on every side, that the success of every new farmer in the Panhandle will count for good and result in bringing others to the country. It means more people and more conveniences of life in the West.

The Brand welcomes these three thousand families into the fold of the Panhandle.

### Notice Modern Woodmen.

You are urgently requested to attend our next meeting Tuesday evening February 16th. We have business to consider which is extremely important to every member of the order. Also applications to be acted on and candidates to adopt.

WALTER NELSON,  
Clerk Camp No. 12058.

### Early Garden Plants.

I will have them, all kinds and an unlimited quantity. The price will be right.

WALTER NELSON,  
South side town.

# CULTIVATION

To Break  
The Soil:

U  
S  
E { A John Deere Double or Triple Disc Plow, or  
A John Deere Gang Moldboard, or  
A John Deere Prairie Gem Rod Plow

To  
Harrow it:

U  
S  
E { A John Deere Disc Harrow, or  
A John Deere Ajax Tooth Harrow, or  
An Acme Pulverizing Harrow

To  
Seed it:

U  
S  
E { The Famous Hossier Drill, or  
The Broadcast,  
the kind you use your arm with

If You Have  
an Engine:

U  
S  
E { Hitch a John Deere 6, 8, 10, 12 or 14  
Bottom to it and show the newcomers  
the Panhandle Way

## GARRISON BROS.

THE HARDWARE AND IMPLEMENT MEN

WILL SHOW YOU

### New Bakery.

Vaughn and Green are having erected a good sized building next to the Photo Gallery in which a new bakery plant will be established. Mr. Green who has a reputation as a fine bread maker, will have charge of the baking department. They will be ready in about ten days for business.

### For Sale.

Two acres in Block 20, Evans addition. C. R. SMITH. 49-1f

Ben F. McCraery, has returned from Missouri and is doing some work near Friona.

John H. Belcher, of Brownfield, was in Hereford this week and talked enthusiastically about his country. He advocates an auto mail route from here to that place, but a railroad would be more thankfully received. He wants the C. H. & G. to hurry up.

I will return in a few days from St. Louis with a full and complete line of millinery goods. Intend to have my opening about March 1st. Call and see the new styles. Mrs. T. N. Heifner, with Hubbard & Barnett. 1-2t

### "The Mansion of Aching Hearts."

Miss Estella Horne, who appeared here as "Dora Thorne" will be seen at the Opera House, Saturday night the 13th, supported by Edwin C. Horne and the following capable cast of home talents: Messrs. Glen Brunk, Eagle Henderson, Orville Brunk, and little Louise Oberthier as the Little Mother.

Specialties between the acts will be introduced by Eagle Henderson, Edgar Inmon and Little Louise Oberthier. The gowns worn by the ladies will be the finest ever worn on your stage. This is a benefit for the Hereford Band and is guaranteed to be equal to any traveling production. Music by the Hereford Orchestra. 1-2t

A DRIVE ON LAP ROBES | "ONE MINUTE" WASHING MACHINES

## A COMPLETE LINE OF HARDWARE AND IMPLEMENTS

OF GENUINE WORTH AND MERIT AT REASONABLE PRICES IS OUR OBJECT

And we shall exert every effort to serve our friends and customers with the best goods that money will buy. In Shelf and Builders Hardware, Carpenters Tools and General Hardware our lines are full and of a quality that appeals to a discerning buyer. We have just received a carload of Baker Perfect Barbed Wire and Farm Fencing, a carload of the Celebrated Emerson Standard Disc Plows, Eclipse Windmills, P. & O. Success Sulky and Gang Plows, a car of Enterprise Buggies, a car of Bain Wagons. In stock we have the Easy Running Florence Wagons, Disc and S Drag Harrows, Superior Drills, The Woodmanse Windmills (the best steel windmill ever made), Steel Towers, Pipe and Casing. A full line of Plumbing Goods are soon to arrive. Our Queensware Department is brim full of bargains. The Great Majestic Ranges and Buck's Enamled Line of Cook Stoves gain friends and customers every day. Come in and see us.

## WARREN HARDWARE COMPANY



**Local and Personal**

The best hair cut at Boone Shop.  
Thinking about Gough's addition. 52-2t  
Sunday morning bath at Boone Shop. 1t  
Best building lots. Gough's addition. 52-2t  
Fay Stocking guaranteed. D. R. Gass & Son. 1t  
Get a good shave at the Boone Barber Shop. 1t  
C. E. Oliver of Bovina was in the city on Wednesday.  
Some of the newest things in Belts at D. R. Gass & Son. 1t  
Best haircut, shave, bath and shine at the Boone Shop. 1t  
Hot water for baths every day in the week at Boone Shop. 1t  
Born.—To Mrs. W. H. Hines Wednesday, February 10, a girl.  
Byrle Elliston left Tuesday for a visit in Collin and Fannan counties.  
Buy lots in Gough's addition for that new home. It's close in. 52-2t  
See our new line of Laces and Embroideries. D. R. Gass & Son. 1t  
For a fine residence at a snap price see O. K. Co's. big display ad on page 3.  
J. G. Callens, proprietor of the always cash store, is in the markets this week.  
For a fine residence at a snap price see O. K. Land Co's. big display ad on page 3.  
For a fine residence at a snap price see O. L. Land Co's. display ad on page 3.  
E. R. Rice of New Mexico, but formerly of Hereford came in Wednesday on business.  
See those fine Percherons at Sherk & Stanek's Barn. For prices and terms see C. O. Lee. 51-tf  
Warren C. Gregg left yesterday for Indiana on business. He will return in a few days.

Miss Nettie Patterson, with J. A. Fox & Co., will leave Sunday afternoon for the Eastern markets.

G. A. F. Parker, president of the Western National Bank was over in New Mexico this week on business.

Kansas bred milk cows from one of the best dairies in the state, for sale at Sherk and Stanek's livery barn. 48-tf

We continue to make horseshoeing a specialty although we are prepared to do light repairing. H. L. Rice. 1t

Give us a fair trial and we will convince you of our ability to do a good job of horseshoeing. H. L. Rice. 1t

J. A. Fox of the firm of J. A. Fox & Co., will leave Saturday for St. Louis and New York where he goes in the interest of the house.

We continue to make horseshoeing a specialty, although we are prepared to do light repairing. H. L. Rice. 1t

Mr. and Mrs. John Estes of Swisher County and Mrs. Claude Estes of Dimmitt were shopping in Hereford this week.

Dr. Rigdon of El Paso, Texas, will be at Coulson's Drug Store one day, Friday Feb. 12, to fit glasses, see him. 1t

Have you seen that new folding go-cart at Irwin & Matthews? It is as handy as a basket and will serve as a bed as well as a cart. 1t

W. A. Cullen President of the Construction Company, returned from a ten days business trip thru the North Wednesday afternoon.

Mesdames Miller and Wagoner who have recently moved from Benton, Miss. to the Panhandle were callers at The Brand office Monday.

Have your flues repaired. Cheaper than having your furniture removed in case of fire. See Bush & Loughmiller. Phone 275. 52-2t

We have some extraordinary bargains in some small homes. Also we have some vacant lots close in which we will sell at a bargain. The Actual Settlers' Association.

C. R. Smith, O. E. Thomas and Messrs Knight and Slaton, attorneys, were in Canyon City Friday and Saturday morning, called there by the district court in the Williams case, which was postponed until the next term of court.

J. W. Batty and J. E. Bedanah have recently arrived in Hereford from Indiana, and are preparing to put up buildings on their farms some 6 and 7 miles south of town. They will each open a farm and will begin at once. As soon as houses are completed they will send for their families to make the home.

Sixteen pages this week on account of the crowded condition of the advertising department. One especially written ad is that of Irwin & Matthews, who are putting on special furniture bargains in unique way, their ad being written in acrostic style. While the ad covers a whole page and the reading matter crowded, the ad fairly represents the crowded condition of their store with bargains.

F. L. Watson, recently of West Liberty, Iowa, and F. E. Bowe have formed a partnership for the practice of veterinary surgery and medicine. Mr. Bowe is well known here having practiced in this community for a number of months. Mr. Watson is a graduate of the Kansas City Veterinary College and comes highly recommended. They will answer calls day or night and would be glad to advise with stock owners at any time.

# 2500 SUBSCRIBERS

This is a large number for a country newspaper but that is the number set by the publishers for The Brand.

The usefulness of a newspaper is measured largely by its circulation. The many encouraging words and letters from the friends justify the publishers to believe that The Brand is serving a useful purpose;

THEREFORE, in order to increase its territory of usefulness, a SIXTY-DAY CAMPAIGN was inaugurated Monday, February 1, in which time an effort will be made to increase the total number of Brand subscribers to Twenty-Five Hundred.

## Sample Copies.

A number of sample copies are being sent out, and if you receive one or two, it means an earnest invitation to become a member of THE BRAND 2500 Club.

It's easy. Fill the blank found below, tear off and mail with your check or money order for \$1.00.

## Friends Help

In this Today Campaign, the friends of THE BRAND are asked to "lend a helping hand," and you too, will feel the joyful enthusiasm of being a member of the The Brand 2500 Club. Send two or three yearly subscriptions back to the old friends and the home folks. The Brand will be a weekly letter to them.

The Brand believes that the Hereford country has many superior advantages and that Hereford is destined to become the leading commercial and educational center of the Panhandle. The success and progress of every enterprise is chronicled by The Brand. The publishers believe in the country and its citizenship. For these reasons they wish to see The Brand go into a five hundred additional homes.

## What One Man Thinks

The Hereford Brand,  
Hereford Texas.

Dear Sirs:—

Please continue The Brand—Can't do without it. One of the best county papers in existence and the greatest simple agency for the development of that country which it serves, at least, in the estimation of one who watches from the outside.

Yours Cordially,

B. M. SHIVE.

## Nothing to Compare

The Brand:

Find enclosed \$1.00, for which send to my address The Brand for one year. I have been in the Hereford country and like it fine. I want to keep up with the country; as my father and myself are thinking of coming out there to settle. We have a good country here but nothing to compare with Hereford country.

Respectfully,

FRANK MILLER,  
Naples, Ky.

If these men a thousand miles away see it that way, why cannot the paper be used to a great advantage to exploit the opportunities offered by this great new country?

Since this ad appeared two weeks ago, two hundred and twenty-five new names have been placed on The Brand 2500-Club. Many friends are sending the paper back to their kinfolks and acquaintances. While no special canvass is being made for subscriptions, they are just coming anyhow. If you like The Brand, there is no better company with which to associate than the big Brand family of over two thousand. The 2500 mark will be reached.

ADDRESS ALL LETTERS TO

# THE BRAND

## HEREFORD, TEXAS

## Subscription.

Please send The Brand to my address for one year. Enclose find \$1.00 by Money Order.

Name \_\_\_\_\_

Postoffice \_\_\_\_\_

State \_\_\_\_\_



## Nail the Dollar

where you can put your hand on it when you want it. If you deposit it to your account at our Bank, you can sign your check for it at will.

A RELIABLE INSTITUTION with a credible showing in its yearly statement is this Bank, and the efforts of the directors to make it high in the financial world are meeting with success. Money loaned on A1 collateral. Accounts invited.

## FIRST STATE BANK OF HEREFORD

W. B. BRACH, President  
H. B. WEBB, Vice-President  
OTHO H. VARDAMAN, Cashier  
J. THOS. WEBB, Assistant Cashier



to unimpro-  
ght we are off-  
If you are  
worth the money,  
Marshall &

# KEEP YOUR EYE ON THE BIG FURNITURE STORE

"WHERE QUALITY COUNTS---WHERE PRICE IS OF MINOR IMPORTANCE"

There is always something doing here that will interest you. If you are an economical buyer it will pay you to watch for our announcements. If you are in need of reliable goods at the lowest possible prices our store will command your attention. We ask you to carefully compare our prices with anyone's quotations. Look them up. If your aim in life is to economize and have for your everyday use dependable goods, we ask you, not for our sake nor for the town's sake, nor for the sake of anything but your pocket book and your bank account to visit our store and see for yourselves THE GREAT BARGAINS WE HAVE FOR YOU. Keep your eye on The Big Furniture Store.

**We Want More Room** We find our space still to limited and in order to get room we are announcing some values that will certainly interest economical buyers. We are anxious to move our stock.

### CHAIRS

Chairs fill an essential part in the furnishing of every home and they form an important part of our stock. We offer wide enough range of dependable patterns to enable you to make the most careful and profitable selection. In buying a chair you must consider Style, Service, Finish and Material. Our chairs combine these elements at prices that make them big values.

Fine Saddle Seat Golden Oak Finish Diner. Made of thoroughly seasoned Oak solid base with heavy reinforcement \$1.25 An exceptional value for

Very Attractive Dining Chair with rich quarter sawed back panels, solid seat, a very comfortable chair, rich quarter sawed oak, high finished. A rare bargain at \$6.50

Beautiful High Back Roll Seat Quartered Oak Rocker. Fine Quartered Oak; large, roomy, strong, massive design, carved top panel, fancy turned post and spindles. Rich Golden Finish. A very choice bargain for \$4.00

American Quartered Oak Finish Rocker; full bent arms, wide back panels, fancy posts, high back and roomy seat. Serviceable and handsome. A value that cannot be duplicated at \$2.75

Very Strong Neat Sewing Rocker with embossed top panel, fancy turned back spindles, stoutly braced; made of carefully selected material. \$1.75

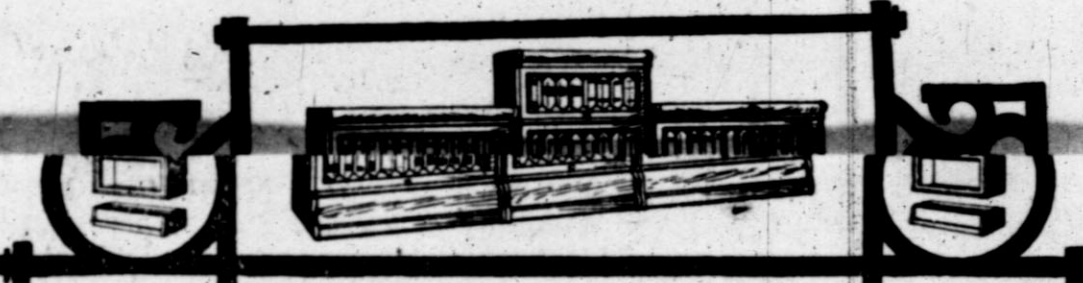
### DAVENPORTS

A nice Davenport adds to the beauty and comfort of a room. We have a very handsome one in Quartered Oak, golden finish. Very massive in appearance; rich leather upholstery with fine high carbon steel springs. A high grade article in every respect, for \$50.00

Other Davenports upholstered in Verona, Plush and Chase Leather. Every one an extra special value.

### BUYING PIECE AT A TIME

Many people delay buying Furniture because they feel they ought to buy for a room or a house all at one time. The purchaser who accumulates the furnishings of a house slowly often imparts a distinctive individuality to her house. We are glad to pay the same attention to the buyer of a single piece that we do to the buyer of large lots, and our stock has been selected so as to make it a pleasure to purchase single pieces at the Big Furniture Store. Call and see.



**The Globe-Wernicke Sectional Book Cases**  
have a distinctiveness of style not approached by any other sectional book case on the market

### YOUR BARGAIN LIST CHANGE

In our buying we occasionally run across articles which we can buy at less than the cost of manufacture. Whenever possible we secure these articles for the benefit of our patrons. Bear in mind that the articles offered below are all good dependable articles in every respect, and ordinarily sell for much more than the price quoted, a price possible only because we give you the benefit of the concession we secured by taking advantage of a favorable opportunity.

- Kitchen Chairs each 65c
- Center Tables each \$1.50
- Iron Beds each \$3.75
- Axminster Rugs each \$1.75
- DINING TABLES each \$4.00

### CHINA CLOSETS

Medium size, Quartered Oak, Golden Finish, Fine Plate Glass. This is a very ornamental as well as serviceable China Closet. Come in and see it. We know it will please you for 14.75

### BUFFET

Moderate price, selected quartered Oak, golden finish, pretty carved legs, bevel plate mirror of fine quality. This Buffet has roomy drawers and compartments for silver and linen. Good value at \$17.50

### DINING FURNITURE

highest degree. Style, Service, Value. See our fine display.

### FINE ART RUGS AND CARPETS

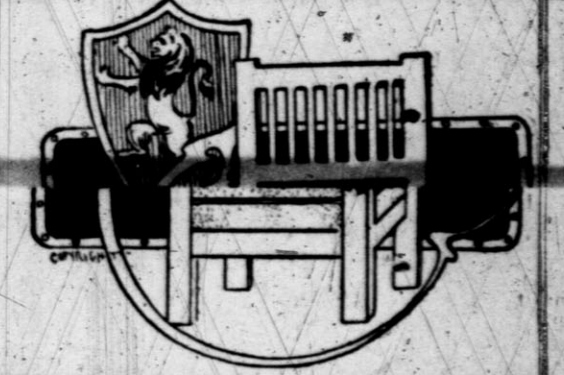
We can save you money on your Rug and Carpet purchases. You have the advantage of selecting from a large display of Fine Rugs before you buy. We have just received a large shipment of Axminsters, Royal Wiltons, Tapestry Brussels, Body Brussels, Utopia and Ingrain Squares, ranging in price from \$4.50 to \$60.00. We positively guarantee every rug and carpet to be as represented or refund your money.

### MATTINGS

Mattings from China and Japan. Best grades of imported goods. We have on hand an immense quantity of the latest and most up-to-date patterns, thus affording a most desirable array to select from.

### WALL PAPER

Let us figure your Wall Paper bill. We can save you "greenbacks".



**Be Wise, Get in Line and Follow the Procession to The Big Furniture Store** where great bargains are offered in Everything in the Furniture Line

We are here to stay and besides giving you the Manufacturer's guarantee on our goods, we stand back of every article we put out. If goods prove to be defective we will consider it a favor for you to let us know about it and we will take pleasure in making them good. Remember we sell on a positive guarantee. Will appreciate a call at any time, and are at your services day or night

WHOLESALE AND RETAIL FURNITURE

# E. B. BLACK CO.

FURNITURE AND UNDERTAKING

O. E. THOMAS FUNERAL DIRECTOR AND EMBALMER



**Professional and Business Cards**

**W. J. ROGERS, M. D.**  
PHYSICIAN AND SURGEON  
Office at Coulson's Drug Store  
Residence Phone 77 Office Phone 105

**WM. M. KNIGHT JNO. P. SLATON**  
**KNIGHT & SLATON**  
ATTORNEYS  
First National Bank Bldg  
Hereford, Texas.

**W. A. PRICE**  
PHYSICIAN AND SURGEON  
Office at El Merito Pharmacy  
Res. Phone 220 Office Phone 300  
HEREFORD, - TEXAS

**Geo. W. Barcus Jno. C. North**  
**BARCUS & NORTH**  
Attorneys at Law  
Hereford, Texas  
Office in First State Bank building

**R. M. JOHNSON,**  
PHYSICIAN AND SURGEON  
CITY HEALTH OFFICER  
Res. Phone No. 109 Office Phone No. 105

**L. GOUGH**  
GENERAL IMMIGRATION  
NOTARY PUBLIC  
Hereford, - - - Texas

**J. W. HICKS**  
PHYSICIAN AND SURGEON  
Office over Coulson's Drug Store.  
Office Phone 298 Residence Phone 217

**G. M. SUGGS A. M. JONES**  
**SUGGS & JONES**  
ABSTRACTERS  
Complete Abstract of Title to Deaf  
Smith County Lands.  
HEREFORD, - - - TEXAS

**DRS. TAYLOR & HUDGINS**  
PHYSICIANS AND SURGEONS  
Office at H. O. Park's Drug Store  
Office Phone No. 16  
Residence Phone: Dr. Taylor 138. Dr. Hudgins 44

**C. G. Witherspoon W. Claude Witherspoon**  
**C. G. Witherspoon & Son**  
Dealers in Panhandle Lands  
Abstracts prepared on short notice. All  
kinds of stenographic work done. Ex-  
clusive agents for Western Union  
Land Co.'s Lands

**DR. G. F. LeGRAND**  
PHYSICIAN AND SURGEON  
Office at El Merito Pharmacy.  
Residence Phone 244 Office Phone 300

**A. P. Murchison J. S. Jones**  
**MURCHISON & JONES**  
Real Estate and Live Stock  
Hereford, Texas

**A. B. COLLINS**  
PHYSICIAN AND SURGEON  
Office over Coulson's Drug Store  
Office Hours 9 to 10 a. m., 1 to 3  
and 7 to 8 p. m. PHONE No. 234

**B. H. Smith D. F. Ashbrook**  
**SMITH & ASHBROOK**  
ALL KINDS OF INSURANCE  
AND LOANS. Phone 273.  
Office 1st door South of First National Bank

**O. E. THOMAS**  
Funeral Director and Embalmer  
With E. B. Black

**O. K. LAND COMPANY**  
We Buy, Sell and Exchange  
Panhandle Land a Specialty  
See us Three Doors East of Post Office  
**A. H. ELLISTON & SON,**  
HEREFORD, - TEXAS

**KING REALTY CO.**  
Lands, Loans and Insurance  
Notary in Office  
Abstracting a Specialty Hereford, Texas

**J. C. BERRY**  
ARCHITECT and  
BUILDING CONTRACTOR  
Room 1 Upstairs Garrison Building  
Phone 335.

**E. F. CONNELL W. D. Kelleher**  
**E. F. CONNELL & COMPANY**  
Real Estate and Live Stock  
Panhandle Farms, Ranches and Hereford  
City Property of all kinds. Also some good  
bargains in Central Texas black land farms.

**B. D. WOODLEE**  
ABSTRACTOR OF CASTRO AND BAILEY  
COUNTY LANDS  
Dimmitt, - - - Texas

**JOB PRINTING**  
The kind we do  
always Pleases

**E. S. Ireland R. A. Holland**  
**DIMMITT ABSTRACT CO.**  
ABSTRACTS OF CASTRO AND BAILEY  
COUNTY LANDS  
Dimmitt, - - - Texas

**Tierra Blanco Herefords**

**L. R. BRADLEY, Owner W. T. WOMBLE, Manager**

...BREEDERS OF...

**Registered Hereford Cattle**  
Herd Headed by Strike Six, No. 156847  
Assisted by Texas Tom, No. 204446  
Will sell a quantity of young  
stock either singly or in car lots

**COAL = GRAIN = HAY**

We are in the market for Wheat, Corn, Oats, Maize and Kaffir Corn. We handle the best grade of Colorado coal. Come and examine our coal and get our prices before buying.

**Hereford Grain Co.**  
Phone No. 160 Free Delivery

Want  Page 15

**College Notes.**

Good honest work is the order of the day for here are to be found opportunities for the most ambitious among us, and earnest efforts are being put forth toward realizing these ambitions. A gold medal has been offered to the member of The Feris Literary Society who, at the close of the year's work, is selected by the members as having put forth the most earnest efforts and accomplished the best work. Miss Haile also makes the offer of a suitable medal to her music pupils and the President will give a year's scholarship to the most worthy student.

The Academy seniors have taken up the study of Sociology lately and are having some interesting lectures on the subject.

Roberta Nance has returned to school after a two weeks absence on account of illness.

Miss Hunt has been out for the past week.

All hail! to the boys and their Anti-Cigarette League. They are going to do something besides "yell" too.

The chapel is now fitted up with lights, goody.

The Fine Arts faculty will give a recital in the chapel Friday evening, February 19th. Those appearing on this occasion will be Miss Ratten, violin; Miss Shirley, voice; Miss Haile, piano; Mr. Brown and Miss Liela Gregg, oratory. A special feature of the program will be a chalk talk by Mr. Brown. You are invited to attend.

A system of electric bells is now being used in the study hall and class rooms and is a great improvement over the old method of ringing the bell for every period. Hereford College grows some every week.

The literary society will render its next program Friday night February 26th. An interesting program is being prepared and the public is invited to come.

**Turkeys Wanted.**

For good bronze stock, fit for breeding purposes, I will pay ten cents a pound if delivered not later than Thursday, February 18th.

WALTER NELSON.

At The Boone Barber Shop.

**The Jr. B. Y. P. U.**

Program for Sunday, Feb. 14th, 1909.

Song.  
Prayer.—Cecil Gilliland.  
Song.

Roll call: answer with Scripture verses.. Unfinished and new business, committee reports and collection.

Song.  
The Lord's Prayer in concert by the members.

Subject.—Jesus the Great Teacher, by Essie Smith, Leader.

Short paper on the introduction to Christ's longest sermon; Mt. 5: 1-2.—Lota Fuqua.

Paper on one great thought Jesus preached to Nicodemus.—Maude Dean.

Paper. What great truth did Jesus teach in Luke 24: 44-47 by Grace Wilson.

Paper. Who is our teacher now; John 16: 13.—Ruth Hammock.

Song.  
Quote passage of Scripture to show that Jesus taught.

1. That we are lost. Luke 3:5.—Jack Mounts.

2. That He came to save us. John 10:10.—Cecil Cook.

3. That all who believe in Him are saved. Mark 15:16.—Deahl Stewart.

4. That the saved have a home in Heaven. John 14: 1-3.—Elvin Taylor.

5. That the saved ought to save others. Acts 1:8.—Willard Taylor.

**..Grab These Quick..**

No. 112—640 acres 8 miles from Hereford, fenced, about 50 per cent tillable, of which 160 acres is sub-irrigated alfalfa land, balance good pasture land. \$4,160.00 cash, balance 1 and 2 years at 8 per cent.

No. 135—10 acres in northeast part of Hereford; 4-room house, barn, coal house and outbuildings; well and mill; nice orchard; net wire fence on two sides. Price \$2750, 1-3 cash, balance 1 and 2 years at 8 per cent.

No. 115—640 acres 4 miles from Hereford, 12-room house, 200 feet sheds, 2 wells and mills, large earth tank, small orchard, 165 acres in farm, all tillable except about 40 acres in lake, all fenced, farm fenced; one-half cash, balance to suit at 8 per cent.

No. 152—640 acres about 10 miles from Happy, all tillable except lake, water from 50 to 100 feet. \$3,840 cash, balance 1 to 6 years at 8 per cent.

No. 116—640 acres 18 miles from Hereford, 8 miles from Dimmitt, 4 miles from new townsite on C. H. & G. R. R., all fillable, water at about 150 feet; one-half cash, balance to suit at 7 per cent.

No. 110—160 acres 3 miles from Hereford, all tillable, about 75 feet to water. \$2880.00 cash, balance 1 to 3 years at 8 per cent.

No. 118—93 acres 11 miles from Hereford, all tillable, water at 75 feet.

No. 126—160 acres 2 1/2 miles from Hereford, 4-room house, sheds and corrals, well and mill, 70 feet to water, 70 acres in farm fenced, all fenced, all tillable except 5 acres in lake.

No. 130—320 acres 10 miles from Dawn, 12 miles from Hereford, all tillable.

No. 134—200 acres 6 miles from Summerfield, 100 acres in farm, all fenced, 14x20 2-room house, 12x40-foot shed. \$2,600.00 cash, balance 1 to 3 years at 6 per cent.

No. 131—640 acres 10 miles from Happy, 10 miles from Nazareth, all tillable, water at about 75 feet; one-half cash, balance in 1 and 2 years at 8 per cent.

No. 144—160 acres 8 miles from Hereford, 2-room house, well, small lake on tract, balance tillable. \$2680.00 cash, balance good terms.

No. 132—Same description as No. 131.

No. 150—160 acres 9 miles from Hereford, fenced on two sides, all tillable. \$1680.00 cash, balance 1 to 3 years at 8 per cent.

No. 133—Same description as No. 131.

No. 153—160 acres 4 1-2 miles from Hereford, new 4-room house, new 20x60 barn, well and mill, outbuildings, fenced, 30 acres sod broke.

No. 139—667 3-5 acres 9 miles from Dimmitt, 60 acres in farm, all but about 10 acres tillable, fenced, 25 feet to water in valley. \$5,000 cash, balance 1 to 4 years at 8 per cent. Will sell 320 acres at same price.

No. 107—320 acres 2 1-2 miles from Dawn, 2-room house, sheds, etc., well and mill, 100-acre farm fenced, all fenced, all tillable, about 75 feet to water. \$3960.00 cash, balance 1 to 3 years at 8 per cent.

No. 140—667 3-5 acres 9 miles from Dimmitt, 3-room house, sheds and corrals, well and mill, 120-acre farm, fenced, water at 50 feet; same terms as No. 139.

No. 108—320 acres 12 miles from Hereford, 100 yards from Dawn, all tillable, about 75 feet to water. \$4060.00 cash, balance 2 years at 8 per cent.

No. 141—506 1/2 acres 9 miles from Dimmitt, two sides fenced. Can sell in 168 3-4 acre tracts at \$1,256.00 cash per tract, balance 1 to 4 years at 8 per cent.

No. 119—320 acres 14 miles from Dimmitt, all tillable, water about 125 feet. \$8.00 per acre cash, balance 1 and 2 years at 6 per cent.

No. 143—665 2-5 acres 9 miles from Hereford, 4-room house, sheds, well and mill, 160-acre farm, all fenced and cross-fenced, all tillable but about 10 acres, has about 80 acres alfalfa land. \$9,000.00 cash, balance 1 to 3 years at 8 per cent.

No. 123—320 acres 8 miles from Hereford, 250 acres tillable, balance good grazing, about 75 feet to water. \$8.00 per acre cash, balance 1 year at 8 per cent.

No. 145—640 acres 8 miles from Hereford, fenced, 20 acres in farm fenced, all tillable, shallow water. \$12.00 per acre cash, balance 1 and 2 years at 8 per cent. Will sell in 320-acre tracts at same price.

No. 124—320 acres 8 miles from Hereford, all tillable, fenced on 3 sides, fine alfalfa valley, about 50 feet to water on upland. \$10.00 per acre cash, balance 1 to 10 years at 8 per cent.

No. 148—640 acres 20 miles from Hereford, 9 miles from Roy (a new town on the C. H. & G. R. R.) 4-room house, sheds, etc., well and mill, 80 feet to water, 135-acre farm fenced. \$5,000.00 cash, balance 1 and 2 years at 8 per cent.

No. 151—320 acres 9 miles from Hereford, well and mill, all tillable. \$3,360.00 cash, balance 1 to 4 years at 8 per cent.

No. 149—640 acres about 10 miles from Hereford on 25-Mile Avenue, school house joins land, part of a lake on south-west corner, balance tillable. \$7,200.00 cash, balance 1 to 4 years at 8 per cent.

No. 103—More picking in a 1280-acre tract near Adrian; small house, well and mill, sheds, corrals, etc.; 200 acres in farm; has fine alfalfa valley; will give good terms.

No. 101—Unimproved 160 acres located near Sherer, the new town on the C. H. & G. R. R.; all tillable; deep loam soil; gradual slope to the north; a bargain and on easy terms. You'll have to hustle.

No. 129—100 acres 2 1-2 miles east from Hereford on south side of railroad; 6-room house, sheds, well and mill; all in cultivation.

No. 157—628 acres, 1 mile of station, well improved, 270 acres in farm of which 215 is sown to wheat and purchaser has landlord's part of crop. \$8,164 cash, balance 1 to 3 years at 8 per cent. An extra fine proposition.

Refer to tract number when writing about above propositions.

THESE WILL GO IN A HURRY. SEE OR WRITE

**O. K. Land Company**  
HEREFORD - - - TEXAS

**The Home Bakery**

For  
**Plain and Cream Bread, Buns, Rolls, Pies and all kinds of Cakes and Cookies**

**W. E. TOMPKINS** - - - - - Proprietor



## Worn Women

Women, worn and tired from overwork, need a tonic. That feeling of weakness or helplessness will not leave you of itself. You should take Wine of Cardui, that effectual remedy for the ailments and weaknesses of women. Thousands of women have tried Cardui and write enthusiastically of the great benefit it has been to them. Try it—don't experiment—use this reliable, oft-tried medicine.

# TAKE CARDUI

## The Woman's Tonic

Mrs. Rena Hare, of Pierce, Fla., tried Cardui and afterward wrote: "I was a sufferer from all sorts of female trouble, had pain in my side and legs, could not sleep, had shortness of breath. "I suffered for years, until my husband insisted on my trying Cardui. The first bottle gave me relief and now I am almost well." Try Cardui. "It will help you."

AT ALL DRUG STORES

## DR. P. M. RIGDON

OF EL PASO, TEXAS

The Specialist on Glass Fitting  
will be here ONE DAY ONLY

FRIDAY, FEBRUARY 12th, 1909

Dr. Rigdon has been coming here for the past four years and we guarantee his work. If you need glasses you will do well to see him.

DRUGS **T. M. COULSON** CIGARS

## HEREFORD

and other points on

## Pecos Valley Lines

best reached by direct connection with the A. T. & S.F. Ry.

### BE SURE

your ticket reads via Santa Fe **all the way.** Full information regarding rates, etc., cheerfully furnished.

D. L. MYERS,

Traffic Manager, Pecos Valley Lines  
Amarillo, Texas

## UP-TO-DATE LIVERY and SALE BARN

When you want a good drive or an up-to-date rig call at our Barn. We have spent a great deal of time and money lately improving and enlarging our premises. We have one of the best barns in West Texas and can give you the best accommodations in any line of livery service. We guarantee courteous and fair treatment to all. Yours to please,

**SHERK & STANEK**

The Brand==\$1 a Year

### Chester.

Our community now has telephone lines in operation built by the patrons during the past week. We are now able to talk to subscribers on the Hereford Telephone Co.'s lines. Call us up and be sociable.

Your correspondent wishes to register a kick, a double loaded, capitalized, italicized kick, in which he believes every farmer's wife and every farmer in the Hereford territory will join. It has become almost impossible for a lady to drive a team to Hereford for the purpose of doing her necessary shopping owing to the fact that no hitching places are provided for her. One of the Chester ladies recently made a trip to Hereford and after driving up and down the alleys, which all will agree are not the most sweet scented places in the Panhandle, found a place to hitch her horse. When she was ready to leave town the alley was so blocked with teams that she was compelled to wait nearly two hours until the blockade was raised and she could get to her conveyance. The heretofore unsatisfactory condition has become impossible since the sewers have been put in the alleys. It is now positively unsafe for anyone not an expert horseman to attempt to reach the only places provided by the city authorities for hitching teams. We have heard several ladies express a determination to shop by mail until the Hereford merchants see fit to see that their comfort and convenience are looked after in this matter. By all means ladies do this. The merchants ask your trade let them see that you have a safe decent place to tie your team while you do your trading or adopt the easier safer plan of shopping by mail.

The Chester neighbors held two very pleasant meetings during the past week, the first at the home of Mr. and Mrs. Herman Cocking on Friday evening, the occasion being a surprise party in honor of the first anniversary of the marriage of Mr. and Mrs. Cocking. Refreshment, were served consisting of coffee and seventeen kinds of pie and cake, all of which were partaken of by your correspondent and pronounced very good. (P. S. He still lives.)

On Saturday evening Mr. and Mrs. Emil Olson were surprised, that being their seventeenth wedding anniversary. Although perhaps the largest home in the community it was filled to overflowing. A good time; salad, cake, coffee, etc., were freely indulged in by the neighbors present, numbering about seventy-five.

Prof. H. W. Campbell visited our neighborhood recently in company with Judge Gough and Mr. T. E. Shirley. We had the privilege of meeting and talking with Mr. Campbell. He impressed us as a big man, physically as well as mentally. We hope to have the pleasure of meeting him again.

### Money to Loan.

We will buy a few good vendor's lien notes on improved country property only. See Smith & Ashbrook. 1t

### Infant Dies.

The infant child of Mr. and Mrs. A. D. Smith died in this city, Tuesday, February 9th. Mr. Smith is manager of the Green Valley Ranch.

### Faculty Recital.

On next Friday evening, Feb. 19, the Fine Arts Faculty of Hereford College will give its annual recital. The program will be rendered in the College chapel and the following members of the faculty will appear: Misses Shirley, Haile, Ratten and Gregg and Mr. Brown.

There will be no admission and a cordial invitation is given to all the Hereford people.

### THE BRAND'S SPECIAL

## CLASSIFIED ADS

Matter for this column and local ads any where in the paper will be inserted at rate of one cent a word or five cents a line for each insertion. Pay in advance unless you can be easily found on the street, or in your office the first of the month.

### LOST AND FOUND

LOST—Somewhere on the road from Dimmitt to Hereford about one month ago, three Hereford calves branded small — on left jaw, unmarked. Reward for recovery. 44-tf F. H. Oberthier, Hereford.

### ROOMS AND BOARD

ROOMERS—Some roomers and boarders. Mrs. P. L. Johnson. 52-tf

BOARD—Roomers and boarders at reasonable rates by the week or month at J. E. Humphreys' one block east of Presbyterian church. 45-tf

### CITY PROPERTY FOR SALE

FOR SALE—The Iowa Hotel for sale or trade. See L. Gough. 34-tf

WE have some choice bargains in well located lots that we will sell on easy terms. C. O. Lee. 50-tf

FOR SALE—My ten room residence. Will make reasonable terms. 52-tf A. P. Murchison.

SIX PER CENT—320 acres in Castro county, very cheap; 1-3 cash, balance 1 and 3 years at 6 per cent. 70-tf O. K. Land Co.

BLOCK—Ten acres, 5-room house, good location near College. One-third cash, balance easy. O. K. Land Co. 50-tf

FOR SALE—By owner, new seven room house, close in; price \$2000. 1-3 cash, balance in monthly or yearly payments. 41-tf C. S. McMillen.

LAND—C. O. Lee will sell you a lot, an acre or a block in the Evants Addition to Hereford. See him for prices and terms. Office opposite First National Bank. 45-tf

NINE ROOM HOUSE—South front, large lot containing one acre land, well and windmill, lots of fruits, conveniently located and will be sold at a bargain, and on easy terms. See or write C. O. Lee for particulars. 1tf

SEVEN ROOM HOUSE—With two acres of ground fenced with woven wire, south front, well and mill with tank, 100 fruit trees, stable 14x16, also other out-buildings. This is one of the best bargains in town. For particulars see C. O. Lee. 1tf

FOR SALE—Good terms, one 7-room house, lot 75x150, close in, \$650 cash, balance in 1, 2 and 3 yearly payments at 8 per cent interest. 32 lots 53x200 feet, North of College, Evants addition. 3 lots 49x200 feet, South of College, Evants addition. 2 lots 56x140, Mabry addition. For further information apply to owner. 53-4t W. A. Price, M. D.

### MISCELLANEOUS

CHICKENS—Full-blooded Langshang hens and one Cockrell for sale, Mrs. I. A. Broden, on Irvin place, 1-2 mile West of town. 53-2t

WANTED—200 acres broke on land 25 miles north of Hereford. Has been broken but idle last year. Bennie R. Smith, Buffalo, Mo. 50-4tp

LAND—Wanted a section of land near Hereford. Will trade good property near Chicago which is paying good revenue. Say what you have and address Advertiser, care of The Brand. 47-tf

WANTED—To sell or exchange 25-000 growing trees, mostly apples on a 120 acre tract of land located near the Santa Fe railroad and adjoining South Hereford. Fine location for a Canning Factory. Will sell cheap or exchange for unimproved land. 51-tf O. K. Land Co.

CASH BUYERS—We have a number of cash buyers who want Panhandle land, also a few who can pay part cash. If you have a section or two which can be bought at the right price, come in to see us. C. L. Davis Realty & Immigration Co. 52-2t

### FOR RENT.

FOR RENT—320 acres 10 miles N. E. of Hereford, Texas. Inquire R. Long, Sr., Le Main, Iowa. 1 2-4

FOR RENT—5-room house with one acre land. 5-room house with 5 acres land. 5-room house with 10 acres land. See O. K. Land Co. -tf

### LIVE STOCK FOR SALE

Three strains of milk cows, Durham, Holstein and Jersey, for sale at Sherk and Stanek's livery barn. Come and get your choice. 48tf

FOR SALE—At Sherk and Stanek's Livery Barn any kind of a milk cow you want, Jersey, Holstein or Durham. These cows have been carefully selected for their milking qualities. If you are in the market for a good milker let us show you herd. 48-tf

### REAL ESTATE FOR SALE

FOR SALE—320 acres close in, will be sold at a bargain. See L. Gough. 34-tf

SMALL TRACT—5, 10, 20, 40 and 80 acre tracts on easy terms. O. K. Land Co. 50-tf

SECTION—Good section in Castro county, has 100 acres fine alfalfa land. The price is a bargain. 52-tf Gough & Russell.

COLONIZE—We have two large bodies of fine land suitable for colonizing. Price right and terms easy. Must go quick. O. K. Land Co. 50-tf

QUARTER—160 acres well improved, 7 1-2 miles from Hereford, 2 miles from Jowell. \$1000 cash closes a deal. 52-tf Gough & Russell.

HALF SECTION—A 1/2 420 acres, 4 1-2 miles from Hereford, at Jowell. \$3,000 cash, balance on good terms at 8 per cent interest. 52-tf Gough & Russell.

FOR SALE—One-half section of land, 8 miles from Hereford. This is the best bargain in the country. Write me for prices and I'll prove it to you. Box 67, Hereford, Texas. 52-4tp

SMALL TRACTS—A section of fine smooth land, with just enough fall for drainage, located one mile south from resident part of Hereford, between South Boulevard and S. 25 Mile Avenue, is offered in 80 and 160 acre tracts. All adjoining quarters are being put under cultivation and good improvements being made. This land can be bought on long time and at a low rate of interest to suit purchaser. It is near enough Hereford to receive the benefit of good schools and to attend church and a fine location for a suburban home. For terms and prices, write C. L. Davis Realty & Immigration Co. 52-tf

FOR SALE—640 acres of fine agricultural land, 10 miles north of Hereford. Very cheap if sold this week.

3 sections of good land, northeast of Hereford, 9 miles south of Wildorado and 9 miles north of Dawn, shallow water, one of these sections is well improved. This is a great bargain, can give terms.

640 acres well improved, 4 miles from town, this is another good bargain, can give terms.

300 acres 4 1/2 miles from town, unimproved, a very desirable location, fronts on main road. Good terms.

640 acres 3 miles south of Vega, good terms.

We have several large tracts in Deaf Smith county, that are very near the new Railroad, suitable for small colony, if interested, it will pay you to investigate this.

Also a number of 1/4 and 1/2 sections unimproved and improved near town, we are offering these at a bargain.

If you are wanting something worth the money, give us a call. Murchison & Jones. 50-tf



# WE ARE HERE STAY!

We want your land business. We offer the very best bargains to our purchasers. More immigrants are coming to the Panhandle than any other section of the whole country. You'll have to hurry if you want a home here while land is cheap.



A Panhandle Farm Scene

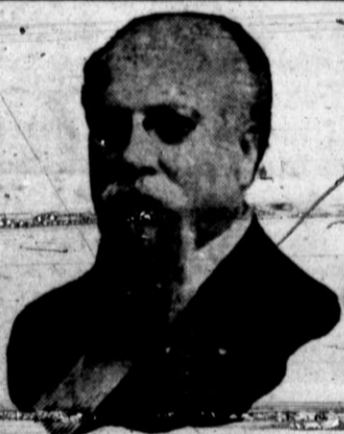
Join one of our special excursions for Hereford, Texas, that leaves St. Louis on Tuesday and Kansas City on Wednesday of the 1st and 3d weeks in each month. Our autos will be at your service to view the country and see for yourself its wonderful possibilities. Write us.

## EDWARDS-O'BRIEN LAND CO. HEREFORD, TEXAS

### ANTI-CIGARETTE LEAGUE

Clubs Formed in All Grades of Public Schools and College Against Habit.

Following the address of Dr. Dora Martin, an active interest has been created among the younger set as well as the older heads and a crusade started against the cigarette habit in the schools of the city. Last Tuesday night a second rally was held at the Opera House where a large crowd heard Mrs. Martin speak in the interest of the girls and boys of the country. As a result of her address and work, anti cigarette clubs have been formed in all the grades of the public school and college. The younger boys have been taught a "yell," which they ring out with vim while going to and from school. On the next day, Wednesday, Mrs. Martin held a special meeting with the mothers of the town at 2 o'clock. Her talk at that time was along the line of helping their



### DR. TERRILL'S BOOK

On the Special and Pelvic Diseases peculiar to the male sex is conceded by every man who has read it to be easily the best and most comprehensive work of its kind ever written. It describes in plain, simple language such diseases as Stricture, Varicocele, Contagious Blood Poison, Lost Manhood, Seminal Emissions, Unnatural Deeds or Development, Hydrocele, Catarrh, Epilepsy, Rheumatism, and all Chronic Diseases of the Stomach, Kidneys, Bladder and Prostate Gland

### FOR MEN

This book tells you HOW to get well HOW to regain your one-time Vim, Vigor and Vitality. Will be sent to your address in a plain, sealed envelope ABSOLUTELY FREE, and don't forget to MENTION THIS PAPER. All Correspondence Sincerely Confidential. Examination with our Mammoth X-Ray and consultation

### IS FREE

Address  
Dr. J. H. Terrill,  
255 Main St., Dallas, Texas

daughters and teaching them to confide in their mothers. Following this, a short meeting was held for school children. A thorough interest was aroused in all present and the work of the clubs will be fostered by the various societies of the town.

Mrs. Martin is a good speaker and carries conviction by her very earnestness. Her work in Hereford has already borne fruit and it is expected to result in much permanent good.

#### Six O'Clock Dinner.

The Horse Shoe Restaurant, beginning next Sunday, will put on a six o'clock dinner in four courses. Everything will be served in good style. Those who do not like to eat cold supper or work over a hot stove on Sunday evening will have an opportunity to get a good meal and keep their Sunday clothes on. It

#### No Court House This Time.

The Commissioners Court in session this week refused the petition asking for an election to determine whether bonds should be issued for the purpose of erecting a courthouse for the county. The sum asked for was \$75,000.00 and a large number of signers were secured, but the court thought that it was an inopportune time to lay the expense of a new building on the tax-payers of the county.

#### A Quarter-Section Snap.

For a short time we can offer one of the choicest of 160-acre tracts at a snap all cash price. This tract is all fenced, has about 40 acres sown in wheat, besides about 80 acres additional is now ready for planting in the spring. A school house will soon be built near this tract, which is 9 1/2 miles from Hereford and 5 miles from Summerford. The first man with the "kale seed" gets it. 1tf  
O. K. LAND COMPANY.

#### For Sale at a Bargain.

A new 4-room house on Dewey Ave., lot 104x208 feet. See O. K. Land Co. 1-tf

#### Hereford Party - A party of

Hereford people visited in Amarillo yesterday including: Mr. and Mrs. Claude M. Witherspoon, Mrs. Collins, Mr. and Mrs. Gibson, Gus Woodburn, Clyde Wright and Mr. Carter. As the guest of Mrs. A. J. Garvin, Miss Beulah Head, is here from Hereford. Miss Head has been visiting in Oklahoma and stopped over en route home.—Daily Panhandle.

J.M. Gilliland, Embalmer and Funerary Director. With Irwin & Matthews, Furniture and Undertaking. 1-tf

D. R. Gass is in the eastern markets this week buying a line of goods for his Hereford friends.

### HEREFORD SOCIETY

Mrs. James Cardwell left Saturday for Clovis to visit relatives for a couple of months.

Mr. and Mrs. H. C. Myrick entertained Mr. J. A. Fox and family at 12 o'clock dinner Monday.

Mr. and Mrs. Oalson of Kansas are guests of Mrs. Oalson's sister, Mrs. Boardman and family.

After a two weeks visit with relatives in Hereford Mr. and Mrs. E. J. Bates returned Saturday to their home at Marshall, Missouri.

Mr. and Mrs. E. W. Morris and little son Edward, returned to their home at Wichita Falls after a few days visit with Mrs. Morris' sister Mrs. J. H. Pitman and family.

Mr. and Mrs. G. N. Irwin and daughters Louise and Georgie, left Sunday for Marlin, Texas. Mrs. Irwin will remain some weeks where she hopes to be benefitted by the hot baths.

Mrs. Boardman entertained at 12 o'clock dinner Wednesday, Feb. 10, the following friends in honor of her guests, Mr. and Mrs. Oalson: Mr. J. A. Fox and family, Mrs. C. P. Estis and Mrs. Galliger and daughter, Miss Edith.

The Hereford people who enjoyed seeing "The Lion and the Mouse" at Amarillo Monday night were Messrs. Wright, Woodburn, Nesbit, Cardwell and Fox; Mrs. Collins, Mrs. Estella Tucker; Mr. and Mrs. A. L. Gibson, Mrs. W. C. Norton and Mr. and Mrs. W. C. Witherspoon.

A church social was tendered the members of the Presbyterian church at the church building Friday evening, Feb. 6, by the ladies of the Presbyterian Bible Study Class. In addition to the members of the church a goodly number of visitors were present and enjoyed the privilege of meeting together and forming new acquaintances. A program of music and readings was rendered. Music by Mrs. Nelson and the church choir with the addition of an instrumental solo by Miss Bertha Witherspoon was highly entertaining. Misses Hammock, Gregg and Meadie Woodburn gave very appropriate and pleasing readings. Light refreshments of coffee with whipped cream, home-made cake and candy were served in the Sunday School room and the evening proved a most enjoyable one to all who were present.

#### Double Page Ad.

The attention of Brand readers is called to the big double page ad of E. B. Black Company. This firm

carries a stock of up-to-date house furnishings that would do credit to the houses of the largest cities of the state. A careful reading of their ad in this week's paper will convince you that they are looking to their interest of their satisfied customers in offering such handsome furnishings at attractive prices. The firm believes in printer's ink and no issue of the paper ever appears without a good share of space devoted to the features of the house.

#### Card of Thanks.

We wish to thank our friends for the assistance and kindly help shown us during the sad bereavement in the loss of our little one.

Sympathy and kindness takes away some of the sting even of death.

MR. and MRS. H. C. CLELAND.

### TOO LATE TO CLASSIFY

AUCTIONER—Buck Roberts, licensed, sells any old thing for money.

WANTED.—Everybody to read the bill boards this week. The Brittners are coming.

FOR SALE—5000 Apple and 5000 Locust trees for sale at a bargain. O. K. Land Co. 1-2t

EGGS.—Rhode Island Reds are winter lays. Setting of 15 eggs \$1. Ask at Brand office. 1tE

FOR SALE—Two Cyphers Model, incubators, 150 egg size. Price \$20 each. L. A. Stroud. 1-tf

COW—Good jersey milch-cow. May be seen 2 miles West of town on Johnson farm. 1-2tp W. M. Mathis.

LOST—In Hereford Wednesday with brilliant. Finder leave at this office and be rewarded. 1tp

FOR SALE.—A complete Ice Cream Parlor outfit, and a fine Soda Fountain and everything complete. Worth \$900.00, all for \$400. 1-2-t J. M. Boone.

FOR SALE OF TRADE—665.4 acres of land nine miles south of Hereford. 160 acres in cultivation, 4-room house. Will trade for unimproved in Kansas, Missouri or Iowa. W. E. Park, Hereford, Texas. 1t

NO. 6812

### Bank Statement.

Report of the Condition of The Western National Bank at Hereford, in the State of Texas, at the close of business, February 5th, 1909:

RESOURCES.	
Loans and Discounts	\$225,425.56
Overdrafts, secured and unsecured	3,488.27
U. S. Bonds to secure circulation	50,000.00
Banking house, furniture and fixtures	6,000.00
Other real estate owned	6,260.00
Due from National Banks (not reserve agents)	1,113.80
Due from State and Private Banks and Bankers, Trust Companies and Savings Banks	145.73
Due from approved reserve agents	29,511.98
Checks and other cash items	1,581.85
Notes of other National Banks	880.00
Fractional paper currency, nickels and cents	112.63
LAWFUL MONEY RESERVE IN BANK, VIZ:	
Specie	\$19,573.00
Legal-tender notes	925.00

Redemption fund with U. S. Treasurer (5 per cent of circulation)	2,500.00
<b>TOTAL</b>	<b>\$347,517.82</b>

LIABILITIES.	
Capital stock paid in	\$ 50,000.00
Surplus fund	50,000.00
Undivided profits, less expenses and taxes paid	3,030.84
National Bank notes outstanding	50,000.00
Due to other National Banks	18,000.00
Individual deposits subject to check	146,323.80
Savings Deposits	1,143.11
Time certificates of deposit	21,500.63
Cashier's checks outstanding	7,519.44
<b>TOTAL</b>	<b>\$347,517.82</b>

THE STATE OF TEXAS }  
COUNTY OF DEAF SMITH } ss.  
I, A. J. Lipscomb, Cashier of the above-named bank, do solemnly swear that the above statement is true to the best of my knowledge and belief.

A. J. LIPSCOMB, Cashier.  
Subscribed and sworn to before me this 11th day of February, 1909.  
N. M. BARTLEY,  
Notary Public.

Correct—Attest:  
G. A. F. PARKER }  
J. L. SMITH } Directors  
HENRY WILKINSON }

**Position on Farm Wanted.**  
Man with 20 years experience wants a position as foreman or helper on a wheat and stock farm. Understands breeding cattle, hogs and horses. Would like to open and improve a field and stock farm for non-resident owner. Call on Forest Parks at Kay's jewelry store. 1-2t

BUY YOUR

# LUMBER

FROM

## Kemp Lumber Co.

LEE CARTER;

Local Manager



# The Hereford Brand

## IRWIN @ MATTHEWS

### FURNITURE AND UNDERTAKING

#### A PRICE LIST THAT WILL STAND COMPARING

**WE** only quote below a few prices of the many bargains we have to offer  
**EVERYTHING** in our store at a greatly reduced price for the Next Ten Days

**ARE** you well supplied? If not, then don't fail to visit this Great Money Saving Sale  
**RELIABLE** Furniture is the only kind you can afford to buy, and that's our kind.  
**EVERY** dollar you spend with us you get one hundred cents in value; and more.

**TABLES**, six to ten feet extension Dining Tables as low as \$6.50 and from that to \$32.50  
**HANDSOME** Buffets and Sideboards as cheap as \$18.50 and up to \$48.50  
**EARLY** English and Golden Oak Dining Chairs, can suit all from \$7.50 per set to \$37.50

**LINOLEUM** in all colors and qualities, from 35c a yard for printed, to inlaid per yard \$1.50  
**OAK** and natural wood finishes in Kitchen Cabinets, from \$11.95 to the best at \$35.00

**WINDOW** Shades for any part of the house, as low as 22 1-2c, the best at 85c

**EARLY** buyers have a chance at Kitchen Tables selling as cheap as \$1.75

**STRIKING** prices on all Kitchen Chairs, the best a cane bottom 55c, a stool bottom 45c  
**TELL** your friends who don't take The Brand not to miss this Money Saving Sale

**IRON** Beds to suit your eye and pocket book, the cheapest at \$1.85, the best for \$22.50  
**NEWEST** Patterns in Brass Beds, now is the time to buy one, from \$28.50 to \$42.50

**Parlor** Suits in Golden Oak and Mahogany, a beauty in three pieces \$37.50, best \$67.50  
**Rarest** bargains ever offered in Library Tables, as low as \$7.50, the best for \$17.50

In this Money Saving Sale we are selling all styles in Book Cases at a cut price

Call and get our prices on goods you do not see advertised in this space

**Each** customer buying a \$16.50 Chase Perfection Mattress, gets a \$4.50 bed spring Free.  
**Some** of the best values ever offered in Mattresses, combination and all cotton.

**Art** Squares, all the newest styles and fabrics, the cheapest in Ingrain for \$3.95

**New** Patterns in Smith Axministers and Wilton Velvet, 9x12 ft. from \$18.95 to \$37.50  
**Davenport**s in Weathered and Golden Oak, the cheapest \$27.50, your choice for \$57.50

**Up-to-date** styles in Bedroom Suits in Golden Oak, Circassian Walnut and B. E. Maple,  
**Prices** on a five piece Suit, the cheapest for only \$37.50, your choice for ten days \$115.00

**Tables**, Center Tables in all styles, the cheapest \$1.75, the best, your choice for \$9.00

**Odd** Dressers, a solid car load, a three drawer, large mirror dresser, for only \$6.95

**During** this sale we will give a discount of 25 per cent on all Dressers. Buy now.

**Are** you needing anything in Carpeting. We are showing the very newest patterns.

**Try** some of the new "Sultana" Carpeting, it is taking the place of Matting.

**Extra** good values in this line, "Sultana" in this sale from 32 1-2c per yd to 40c per yard

It is a pleasure to take a look at our Wall Paper Department, the best stock ever shown  
**Nine** thousand rolls in brand new patterns, the cheapest 2 1-2c, up to 35c per roll.

**Folding** Beds, your choice for the next ten days only \$29.50, the cheapest for \$18.50.

**Upright** Beds, your choice for the next ten days for \$85.00, cheapest \$28.50

**Rocking** Chairs, absolutely the biggest line ever show in the city, as cheap as 95c

**New** shipment of Wicker Rocking Chairs, Can suit any taste in this line

In our Matting Dep't we are making actual wholesale prices, 11c to 29 1-2c for ten days

**Tabouretts** in Birds' Eye Maple and Golden Oak. A good lot to select from

**Utopia** and Axminister Rugs, sizes from 18x36 inches to 36x72 inches. All new styles

**Remember** this sale only lasts TEN DAYS. Don't miss it, it means money to you

**EVERYBODY** SHOULD TAKE ADVANTAGE OF THIS MONEY SAVING SALE



# Chalmers-Detroit "30"

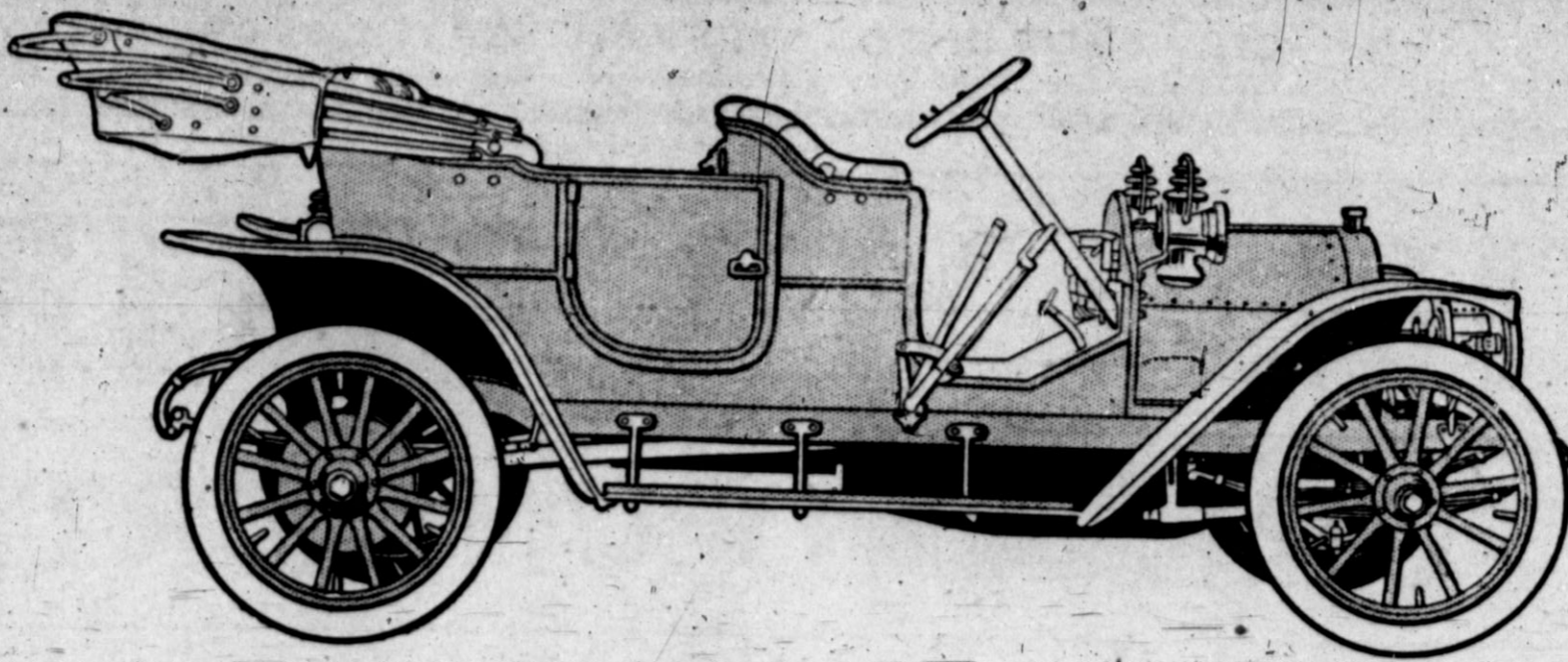
1909 Models Ready Touring Cars, Touring  
abouts, Roadsters

# "It's a Good Car"

No doubt other 4-cylinder cars will be offered around \$1,500. It remains for you to compare them. Here is one that has two years start of all others. It is not a makeshift—not an experiment.

This one has behind it all the reputation—all the skill and experience—we gained in making that incomparable car—the Thomas-Detroit 40.

The car combines the best foreign features with the best American. Yet it copies neither foreign or American.



A high-grade 4-cyl., five-passenger, 24-30 h.-p. car, made by the makers of the Thomas-Detroit Forty.

The Chalmers-Detroit '30' seats five comfortably, has a 110 inch wheel base and it weighs 2,000 pounds. Painting and upholstery are high grade. The motor develops 24 30 h.-p., sufficient to drive the car 40 to 50 miles per hour. The three-quarter elliptic springs, as used on the best foreign cars, give perfect comfort in riding. A car you can take pride in

Compare it with rival cars—with any car costing up to \$2,000. We are willing to abide by your judgment.

Price \$1,600, with lamps, horn and tools, F. O. B. Hereford, Texas.

**Thompson & Daniel**

## PLAINVIEW GETS WATER-SEWAGE

\$28,000 to Be Spent in Modern Improvements.

At a meeting of the city council yesterday afternoon the contract was let to L. E. Dalton of Dallas, for the plans and specifications of the Plainview sewer and water system. In addition to furnishing plans and specifications Mr. Dalton is to supervise the construction of the systems as his bid is as follows: 2 1-2 per cent of the entire cost for the plans and specifications and 1 1-2 per cent in addition to the above to supervise the construction.

Both systems will be installed in a modern way, the same as are now being installed in cities.

It will require about two and one-

half months to complete the plans and get things in shape to proceed with the construction work, but after the preliminaries are justified the actual work will be rushed as fast as is possible.

The water system will be placed only for fire protection and will not extend over other than the business section of town.

The sewerage plans will call for about eighteen miles of sewer but these will not all be laid now, but the plans will be drawn in such a manner that the system can be enlarged without additional expense in the drawing of other plans.

While the bonds have not yet been sold to pay for these improvements, their sale is guaranteed, and they will be sold upon their receipt from the printing house. The bonds for the sewerage system are for \$16,000.00 and the water system bonds are for \$12,000.00.—Hale County Herald.

## SUBMISSION IS OPPOSED

Eighty-Six for, Forty-Four Against; Being Three Short of Number Required to Pass.

Austin, Tex., Feb. 5.—Without delay, except that incident to securing the attendance of members who worked late at committees last night, and who found it inconvenient or impossible to get to the capitol at 8:35 o'clock this morning, the submission resolution was brought to a vote on final passage in the House this morning, where it again showed a strength of 86 votes, as against 44 in the negative, three members being absent. This was three votes short of the number required to pass the measure, and was exactly the number developed when the measure went to engrossment.

The record will show that the vote was 85 to 45, which is due to the fact that Mr. Mobley, an ardent submissionist, voted in the negative in order that he might be able to move to reconsider the vote by which the resolution failed to pass. This motion he made after the vote was announced, asking that it be spread upon the journal. The measure may now be called up at any time for another vote, and the submissionists will call it up at such time as they think they have enough votes in sight, or when they think it may help their cause to have another counting of noses.

While the strength displayed today on the face of things was the same as when the resolution was engrossed, an analysis of the record shows that the submissionists have lost one vote. Speaker Kennedy did not vote upon engrossment of the resolution. Today he voted in favor of the measure. Upon the other hand, Mr. Boswell, who voted in favor of the resolution upon engrossment, today voted against it. Mr. McCallum, who was absent when the resolution was engrossed, and who was counted upon by the submissionists, today voted against the measure.

So, whereas, the submissionists could on Jan. 19 see 87, possibly 88, votes for their measure, today it was made clear that they have only 86 votes. The three absentees are all dyed-in-the-wool anti submissionists.

### Feed and Mules.

50 tons millet and milo maize for sale 10 miles due south of Hereford. Also a few good young work mules worth the money. Come and see. S. J. Sanders.

Senior Epworth League.  
Subject, "Sabbath keeping and the House of Prayer."

Voluntary.—Nellie Black.  
Song: "Yield Not to Temptation."

Prayer.  
Responsive reading.—Psalm XIX.  
Song: "Throw out the Life-Line."  
Scripture reading.—Isa. LVI 1-8, Luke IV 16-21.

Some statements from eminent men concerning the Sabbath.—Frank Monroe.

Paper: "What do the Sabbath and the House of Prayer mean to me?"—Annie Price.

Violin and Piano Duet.—Ina Hammer and Lucy Story.

"What can the League do to promote an improvement in Sabbath observance?"—Mr. Ed Bullock.

Song: "Let the Lower Lights be Burning."

A talk.—Mr. Geo. W. Barcus.  
Song and benediction.  
Leader.—Sam Brunk.

## STATE SETTLES BOOK TRUST CASE

Compromise in Suit for Million With \$15,000.00 Cash.

Austin.—At 11 o'clock today a compromise was effected between the State and the American Book Company and other defendants in the suit brought by the state for penalties aggregating over \$1,500,000 and ouster for alleged violation of the anti-trust laws of the State.

The compromise provides that the defendants shall pay \$15,000 in penalties. The defendants claimed that the American Book Company of New Jersey was defunct and withdrew the permit of the American Book Company of New York, and the State dismisses as to the intervenors, thus settling the ouster.

## HEREFORD GLOVE FACTORY

MANUFACTURER OF

### Fabric Gloves and Mittens

We guarantee our Gloves to be equal or better than those purchased in Northern Markets. They are made of the best Fabric and will not rip. Send in your order.

C. F. HACKER, Proprietor

## The HEREFORD NURSERY

LARGEST and best collection of Choice and Fancy Fruit Trees, etc., grown on the planes. We have ripe fruit every day from May to October, and you can too. Our 18 years' experience has taught us what varieties are hardy and prolific. We want your trade.

L. P. LANDRUM

## P. R. Purcell & Sons

Livery, Feed and Sale Stables

GOOD SADDLERS GENTLE DRIVERS

Special Conveniences for Drummers

HEREFORD TEXAS

The Patronage of the General Public is Cordially Solicited.

## The Hereford Market

We are now in the first building North of the Brand Office. We are going to deserve the continued patronage of our old customers and any one else who wants first-class service in the market line.

Yours for business,

Phone 318 HAWKINS & ARTHUR

## THE RIGHT PLACE

For Lumber and all Classes of Building Material. 100 per cent Pure Paint. Largest Stock of Glass in Town. No trouble to Figure Bills. Prices Right.

Come and See Us.

T. M. PALMER LUMBER CO.

## That Old Buggy

needs painting. Bring it around to my shop and let me make it look like a new one for you. No charges if it don't look like a new buggy. Come and examine my work.

Sign Painting and Piano Dressing a Specialty

Located at rear of Blacksmith Shops.

Willard Griffin



# FOR QUICK SALE

We have for a few days only the new Rat Jowell residence property just west of the College. This is a brand new 12-room excellently built and finished residence, on one of the best locations in the city---lot 180x147 feet on southeast corner---good well, windmill, etc. Priced for a rush sale at \$5,700; \$4,300 cash, balance until 12th of May without interest. This is your chance to get a fine home in a beautiful location at a snap price. SEE US QUICK!

**O. K. LAND CO.**  
HEREFORD, TEXAS



*The*  
**Hereford Brand**

*D. W. Hawkins, Business Manager*  
*A. C. Elliott, Editor*

Address all communications to  
**THE HEREFORD BRAND**

Entered April 17, 1901, as second-class  
mail matter, post office at Hereford, Texas,  
act of Congress of March 3, 1879.

Subscription Price \$1.00 Per Year,  
Strictly in Advance

Any erroneous statement affecting the  
character or reputation of any individual or  
firm which may appear in The Brand, will  
be gladly corrected upon being brought to  
the attention of the publishers.

**NINTH YEAR.**

The Brand will, with this issue, begin the ninth year of its life, old enough to go fishing by itself, but haven't got time. The fact is, The Brand is too busy recording the history and growth of the Hereford country, to think of bent pins and angle worms. While fishing for perch or bass may be a pleasant pastime, there is eminently more profit and pleasure in depicting the glories of the New West, and then when the day's work is done, there is something to show for the labor. This issue is the first number of volume nine and with it The Brand passes the two thousand mark in subscriptions. While the management has no desire to throw bouquets at their shadow in a mirror, there is a feeling of satisfaction which will always come in the heart of any mortal, when friends from every direction send in their well-wishes and God-speeds. So much for that.

The first number of the paper, then known as the Hereford Reporter, was issued on February 23, 1901, and the head line under the caption read: **HEREFORD IS THE MOST PROSPEROUS TOWN ON THE PLAINS.** From the files of the paper, if memory of man should fade, a complete history of the town and country could be written; in fact these files are the only source from which a reliable history of the town could be written. As a matter of interest and to show "how things have changed" a few items from the first number are here-with reprinted:

Joe Killough has replaced the broken glass in his store front with a new one.

The subscription of The Reporter is \$1.50 per year in advance, F. L. Vanderburgh, editor and proprietor.

Real Estate transfers: L. F. Alby to Jack Harwell, the W. half of block 71, town of Hereford, \$175.

Many things of interest might be found in the first numbers of The Reporter. That the father of that paper should wander around the world and come back to Hereford is no wonder. It's the natural thing to do. Hereford has kept its promise and is still **THE MOST PROSPEROUS TOWN ON THE PLAINS.** May the next eight years find the same spirit of push and energy that has characterized the last eight, is the wish of the present management of The Brand.

**WHY THE COMPROMISE?**

A dispatch to the daily papers from Austin states that the suit of over a million and a half against the American Book Company has been compromised for the big sum of \$15,000. The country press of the state wants to know how the State's attorney can figure that out as a compromise—it looks like anything but a compromise. To drop from \$1,500,000 in penalties to \$15,000, just one per cent, indicates that either the state had a very slim case or that the State's attorney is easily called off the track. If the book company was guilty of violating the

anti-trust laws, and the compromise shows that the company admits such to be the fact, then the State's attorney has made an ignominious failure in prosecuting the company. If certain other high officials of supposed violating companies get off that light there is likely to be very slight pierces made at the so-called violators of Texas statutes. Here would have been a good chance to get money with which to run the state government without a revenue tax. The American Book Company has millions to spend and why didn't the state fix it so that a few millions could have been spent in Texas?

**SAMPLE COPIES.**

Did you receive a sample copy of The Brand last week? How did you like it? You will probably receive another this week and this may be the last one. If you like The Brand and want to be imbued with the Hereford spirit, your name should be on the subscription list. Come right along with the rest and add your name to the Brand 2500 Club; it's growing. Remember the rule, "Cash in advance and stop when the time is out." This is a good rule both for the paper and the subscriber. Everybody likes it.

**A Patriotic Election.**

Notice is hereby given that on Feb. 25nd at L. Gough's office in Hereford, Texas. The Ladies Benevolent Club will hold a Patriotic election in which men, women and children can vote.

The ballot will be a silver dollar for men, 50 cents for women, 25 cents for children. Anyone wanting to vote a larger ballot can do so. The funds raised by this election will be used as follows:

One-half to the improvement of the city park, one-half toward a drinking fountain for the public school.

Other clubs and Civic League are requested to aid in this election. The newspapers and the public in general are asked to give this election publicity and heed its call.

Last year on "Tag Day" \$186.00 was raised. \$136.05 was spent for trees and work on park, leaving a balance on hand of \$49.05. Polls will be open from 9 a. m. to 6 p. m.

Respectfully,

MRS. L. GOUGH,  
MRS. R. N. MOUNTS,  
MRS. C. E. WHEELER,  
MRS. T. E. SHIRLEY,  
MRS. E. E. RAMSEY.

After this week I will be in Missouri until about March 1st. I still have 20 fine lots, each 50x200 feet, in Block 39 Evants addition. Will sell on easy terms. I also have two new houses, just being completed, will sell one or both on easy terms, might rent one of them. See L. Baskin, for particulars. J. B. Phillips. 49-1f

**All from Jay County.**

During the last three weeks five families, all from the same town and county, Pennville, Jay county, Indiana, have moved to Hereford and are now full-fledged citizens of the Lone Star State and the new country of the Panhandle. They are: Noah Rip, Ed Ireland, Lynn Heller, H. S. Ramsburg and Warren C. Gregg. These good Hoosiers are welcome to Hereford and trust that their adoption of the name Long Horns, will prove to be wise and profitable.

**Farm for Trade.**

A well improved 220 acre farm in Van Buren Co. Iowa, 3 miles of railroad town, will exchange for land near Hereford. This is one of the best stock and grain farms in the Southern Iowa. If interested see or write. C. O. LEE  
50-1f Hereford, Texas.

**FARMERS INSTITUTE**

Paper Read by the President of That Body at Last Saturday's Meeting.

There was a good attendance at the regular meeting of the Hereford Farmers and Truck Growers Association at the Court House Saturday afternoon. The secretary being absent the chair appointed Mr. Paddock to act as temporary secretary.

Committee on a permanent Exposition reported through its chairman, Mr. Norton that they had not been able up to the present to secure a meeting with the like committee which was to have been appointed by the Commercial Club. Mr. Norton briefly outlined a plan which the committee had under advisement which would call for a demonstration farm in connection with the exposition grounds. Inasmuch as the committee is unable to act until the Commercial Club takes some action the final report of the committee was deferred until the March meeting.

Communication was read by the President from the Secretary of the Dry Farming Congress which meets at Cheyenne, Feb. 23, 24 and 25. The Farmers Association is entitled to two delegates. It was moved that the chair appoint one or more delegates to represent the Association at Cheyenne. Appointment deferred by the chair until names of parties who are able to attend are secured.

Program as announced was then given. Mr. Garrison was present and led the discussion of the subject, "Shall the farmers and the Commercial Club join in building and operating their own elevator."

Owing to the short notice given it was impossible for the speaker to secure the necessary data relative to cost and general practicability of the plan. After some general discussion it was decided to defer the further consideration of the subject to the regular March meeting.

A short discussion was held on the desirability of closer relations between the country and town residents and especially between the Farmer's Association and the Commercial Club.

Mr. Hays read a paper on the subject. "What in your opinion is the most important single thing to be done for the General Betterment of Country Life." After reading the paper it was moved that The Brand be asked to publish same for the benefit of those of the members who were absent. The paper follows:

What in your opinion is the most important single thing to be done for the General Betterment of Country Life?

The problem under consideration is so broad, the ultimate effect of its correct solution so far reaching in the social and moral life of our nation that it is with hesitation that I attempt a discussion of the subject assigned.

So important is the question of the "Betterment of Country Life" considered by President Roosevelt that he has appointed a commission to investigate and report upon the various phases of the problem. When the farmer has come into his own; when from being synonymous with "hayseed," "rough neck," "clod hopper" and the like, the word "farmer" will take its true place besides the words physician, lawyer and other scientific professions; when life on the farm from being a life to be shunned shall become one to be envied, history will record no greater movement inaugurated by President Roosevelt than that looking to the general betterment of farm life.

The congested condition of our

(Continued on Page Eight)

**Satisfied Customers**

are the best advertisement for the business man. This kind of advertising is our chief stronghold.

The best value money can buy in our line is to be found at our store.

We make your watch keep the best time.

**W. H. RAY,** Jeweler and Optician

Something That You Should Consider in the

**Building of a Home**

Good Grades—Right Prices  
We refer you to our long list of satisfied customers.  
You should not fail to see us

**Alfalfa Lumber Company**  
C. M. Miller Local Manager

**WHY NOT TRADE**

at Cardwell Bros., the leading up-to-date Grocerymen. We are carrying a very heavy stock now and can handle our business promptly with our two delivery wagons. Try us one month. We can please you in every particular.

**Cardwell Brothers**

**J. F. COLLUP**

DEALER IN

**COAL, HAY AND GRAIN,  
FIELD SEEDS AND STOCK SALT**

We solicit a share of your business, promising that we will endeavor to sell you goods at as close margin as possible. . . . Telephone No. 1.

**WE HANDLE ALL KINDS OF POSTS.**



# Superior Coal

Coal that burns—burns to ashes.  
 Produces Greater Heat than any other  
 like amount. Coal once bought always  
 bought. That's:

"Niggerhead" Coal is acknowledged by all who burn it to be superior to any coal sold here. Our customers continue with us. We are steadily getting more. Do you burn "Niggerhead"? If so, you realize you get your money's worth. If not, get in line. Once burned, always burned. WE SCREEN IT. PHONE SEVEN-SIX.

RUGBY

# "Niggerhead"

A full line of Feed Stuffs kept in stock. We sell Trico the great cow feed. \$1.00 per 100 lbs.

Fresh Meal and  
 Graham Flour  
 Grinding Done for the Public

## HICKS & HARRISON

OUR MOTTO:  
 Quality first, last and  
 all the time.



### Local and Personal

Where is Gough's addition? 52-2t  
 Keep both eyes on Baskin Heights. 1-tf  
 J. P. Collier of Roswell was in the city this week.

Don't forget "The Britners" at Opera House all next week.

See the Actual Settlers' Association for cheap town lots. 48-tf

Keep your right eye on Baskin Heights. 1-tf

S. J. Pearson of Plainview was in the city this week on business.

If you want cash for your land see Edwards-O'Brien. 51-4t

Figure with us on water tanks and plumbing. Copes & Palmer. 28 tf.

Keep your left eye on Baskin Heights. 1-tf

For fresh Jersey milk, call on the Hereford Dairy. Phone No.9. 24-tf

See Wilson & Cloyd for all kinds of fresh meats and pure lard. 2-tf

Plant now, Potatoes, Onion Sets, Onion Seed. Roswell Seed Co. 52tf

Dr. G. J. Stapleton and wife of Dimmitt were in Hereford last Monday.

L. Gough left Monday afternoon for Waco. He will visit his sons in T. C. U.

The Britners will be the attraction at the Opera House next week. Read the bill boards.

Chas. Coplin of Plainview was in Hereford on Tuesday of this week on business.

W. H. Cox of Denton has accepted a position with the Western National Bank.

A. H. Fretz left Tuesday for a trip to Illinois where he will be for some ten days.

See Luther Hough's buggy for a sample of what I can do for an old one. Willard Griffin. 1t

Edwards-O'Brien want to sell your land. They will have plenty of buyers. 51-4t

Burbank's wonder-berries bear fruit first season. 10c a packet. Wallace C. Cox. 1t

Mr. and Mrs. Geo. W. Irwin left Monday afternoon for Marlin. They will visit old friends while down in the state.

Messrs. Murchison and Simpson were in Amarillo Monday night attending a special session of the Masonic order in that city.

Save a space in your garden for Burbank's wonder-berries. I will sell you the seed for 10c. Wallace C. Cox. 1t

Five, ten, twenty and forty acre improved places edge of town for sale at reasonable prices. Address L. Baskin, Hereford, Texas. 31-tf

We have a well improved 20 acre tract in Welsh addition which we are offering at two thirds its present value. The Actual Settlers Association. 48-tf

C. H. Curl, Vernon Curl and Gus Craig all of Olton, Lamb county, were in the city Tuesday, coming up by auto.

Burbank's famous wonder-berry seed, 10c a packet. Will have plenty next week. Wallace C. Cox. 1t

If you are a nonresident and want to sell your land write Edwards-O'Brien. They give best price and terms in first letter. 51-4t

Veterinary calls answered day or night; phone 142; will be at Warren Grain Co.'s on Saturdays for dental work. F. E. Bowe. 23-tf

I will trade the balance of my lumber, about 200,000 feet for unimproved Hereford property. This lumber is stacked near my new residence adjoining college, where it can be seen. Rat Jowell. 52-tf

Mrs. Emma Hoagland of Amarillo, special officer of the Royal Neighbors is in the city this week assisting in the work of that order and will help install the new officers next Saturday night. She is the guest of Mrs. C. Smith.

Prof. Eugene W. Peterson, of the Amarillo Conservatory of Music, was in Hereford last Monday with a view of securing pupils in voice culture. Mr. Peterson will return next Monday and anyone wishing to take up the work may leave word with Miss Hattie Edwards.

I will be compelled to be in my office the greater part of my time for the next three months on account of city tax collections. So if my services are needed elsewhere please phone office, 222 or residence, 182. City office is with Suggs & Jones abstractors. C. L. Sullivan, City Marshal. 34-tf

Frank Wilson who has held a position with the Western National Bank of this place for several years has resigned his place to accept a position as cashier of the First

National Bank of El Centro, California, of which Mr. Fuller, formerly cashier of the Western National Bank, is president. Mr. Wilson's friends wish him health, wealth and happiness in his new place.

Those wishing to take up work in voice culture may leave word with Miss Hattie Edwards. My plan is to visit Hereford twice each week, giving private lessons in voice building. First visit next Monday. Eugene W. Peterson, Voice Department, Amarillo Conservatory of Music. 1tp

Dr. J. F. McGhee Veterinary Surgeon and Dentist, graduate Western Veterinary College, class 1902, has located in Hereford. Office at Purcell & Sons Livery Barn. He

treats all diseases of all domesticated animals and performs all operations. Dentistry a specialty. Calls answered promptly day or night. Phone 32. 52-2t

J.M. Gilliland, Embalmer and Funerary Director. With Irwin & Matthews, Furniture and Undertaking. 1-tf

Junior Epworth League.  
 Leader, Lelia Patton.  
 Subject, Kindness.  
 Song.—Jessie Glenn and Elizabeth Black?  
 Recitation.—Ruth Myrick.  
 Reading.—Arthur Johnson.  
 Duet.—Lucy and Beatrice Story.  
 Recitation.—Bernadine Price.  
 Solo.—Ralph Smith.  
 Prayer.

**Tax Payers.**  
 I have begun to assess taxes for 1909. All who own city property please be ready with a list of the block and lot numbers so that no time will be lost in obtaining proper data and description.

52-4t J. W. FORD,  
 Tax Assessor of Deaf Smith Co.

**For Sale.**  
 One Aultman-Taylor Separator, nearly new, Weigher, Wind Stalker, self feeder. Cash or terms. 52-2t S. J. Dodson.

**Cotton Seed, Meal and Cake.**  
 Ask us for prices delivered any railroad station. We are also in the market for **KAFFIR CORN, CANE, and MILLET SEED.**  
 EARLY GRAIN & HAY CO.,  
 40-tf Amarillo, Texas.



## ASK ME If you want to sell your Business or Real Estate FOR CASH

No matter where located, if you want to Buy, Sell or Exchange any kind of Business or Real Estate.

Insurance placed in best companies and policies looked after.

Office Opposite First National Bank **C. O. LEE** Phone 310 Hereford, Texas

## THE HAPPINESS OF HOUSE KEEPERS



depends largely on the character of the eating. Let us supply your groceries and they will go a long way toward insuring good eating at your house.

### WE ARE RECEIVING DAILY

Shipments of new goods such as Jellies, Jams, Preserves, Salad Dressing, Evaporated Fruits, Seeded Raisins, Currants, Citron and Lemon

Peel, Codfish, Plum Pudding, Cranberries, Oatmeal, Pickles, Sauer Kraut and many other good things too numerous to mention. Just call at our store or phone us and let us tell you about them.

Yours for Business **HUBBARD GROCERY CO.** Telephone No. 25



## THE SANTA FE RATES

Immigrants Claim Overcharges are Being Made and Collected—Extortion Practiced.

The Brand has no occasion to find fault with any person or corporation or to wrongfully accuse, but, at the same time, feels it a duty to give the public the benefit of any information which may be of vital interest to so many. The question now being asked is concerning the seeming overcharges and demands for overcharges on all classes of freight handled for the Panhandle. The complaints made by several immigrants have brought about an investigation of a few instances and if the statement of facts as given by them is an indication of the general methods of the roads leading into this country, there is something materially wrong with the rate making departments. It appears to The Brand that the methods would rather discourage shipping and immigration rather than encourage.

While a number of cases could be cited upon competent authority and witnesses wherein overcharges were actually demanded and secured and overcharges demanded only one or two instances will be given.

The first case is that of the shipment of a car of posts from Chula, Missouri to Hereford by Shiftet and Cox. The shipment was made about January 27 and consigned to D. B. Shiftet. At Kansas City, the shipper was told that the rate was 49 cents, but when the car arrived at Hereford the Santa Fe demanded \$1.37 per hundred, making over \$600 freight charges. The consignees refused to pay and the road held the car four days trying to collect that amount. On February 2, an attorney for the owners and consignees called upon the agent at Hereford and asked privilege to see the tariffs on file, which were subject to public inspection. The attorney informs The Brand that the agent refused to show him the tariffs, saying that he got his rates from Amarillo; whereupon the attorney wired the Amarillo office as to the rates and tariffs and immediately received word from that office instructing the agent to show the attorney the tariffs, which was done. The attorney being fully acquainted with rate making figured that the rate should have been 47 cents instead of \$1.37 as demanded. The Santa Fe finally, after four days delay, accepted the 47 cents rate in full payment, but before doing so demanded and tried to collect \$4.00 demurrage on the car. The consignees refused to pay the demurrage

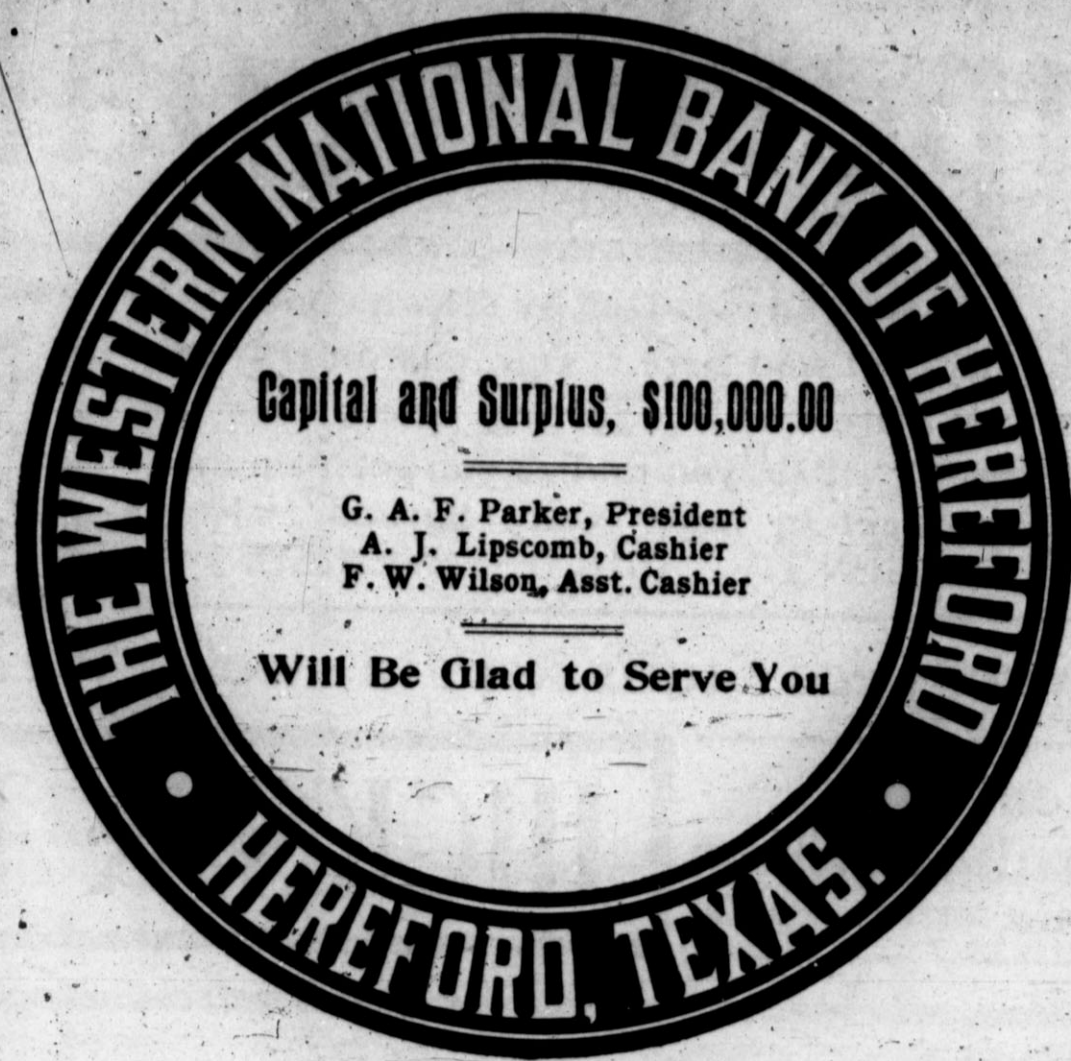
charges, claiming that the road had caused to delay.

This is a case in which the legal charges were about \$200.00 when the road attempted to collect over \$600.00 an overcharge of nearly \$400.00. And there are some other things connected with the shipment which are clearly a violation of the commission orders and the statutes of the State, but these will not be mentioned here. The only point at issue now is this: Is the Santa Fe demanding and collecting more than the lawful rate on shipments into Hereford. The above points in that direction. But here is another.

Only recently two immigrant cars from Greenville, Indiana, were consigned to E. C. Patterson and Irwin Teal, Hereford. The consignor prepaid the freight, \$157.40 on each car. The cars were weighed at St. Louis and also at Kansas City and each car showed to be a little less than the minimum. When the cars arrived at Hereford, Mr. Patterson began to unload, when he was called in by the local agent and told that the cars had been underrated and that he owed \$40.90 additional freight. Mr. Patterson replied that tho he was from Indiana, in this case, he was preeminently from Missouri and that he would have to be shown and would like to see the figures. According to Mr. Patterson's story, he received the reply that he, the agent, had already figured it and that the \$40.90 would have to be paid before the goods were delivered. In the mean time, the cars had been sealed up. Upon learning this, Mr. Patterson consulted an attorney, upon whose suggestion an iron-clad receipt was written out for the local agent to sign upon the payment of the \$40.90 demanded, but under protest, by Mr. Patterson. The agent refused to sign the receipt, whereupon a writ of sequestration was issued and placed in the hands of the sheriff, who proceeded to execute the writ and secure the goods. While all this was being done, it appears that the agent did some more figuring and when the sheriff called on him with the writ, he informed the sheriff that a rebate of \$17.00 was due Mr. Patterson and offered to pay it, but Mr. Patterson refused to accept the tender of money. Mr. Patterson is now in receipt of a letter to his attorney that he is due the Santa Fe \$26.00 additional freight charges. The matter stands in that position to day.

Here in the course of a few hours and days, no less than three different freight charges were demanded. In the first case cited, the charges were dropped from \$600 to \$450, then to \$400, to \$300 and finally to the amount paid, about \$200. In this latter case, first an overcharge was demanded, then a rebate offered and now a less overcharge asked. What's the matter with the railroads? But these two instances are but a beginning of the complaints of overcharges being made. This is certainly not encouraging to the immigration business. If the Santa Fe is demanding unlawful rates, there is a remedy. If all the towns in the Panhandle are suffering the same discrimination at the hands of the railroads, there should be a thorough investigation on the part of those interested.

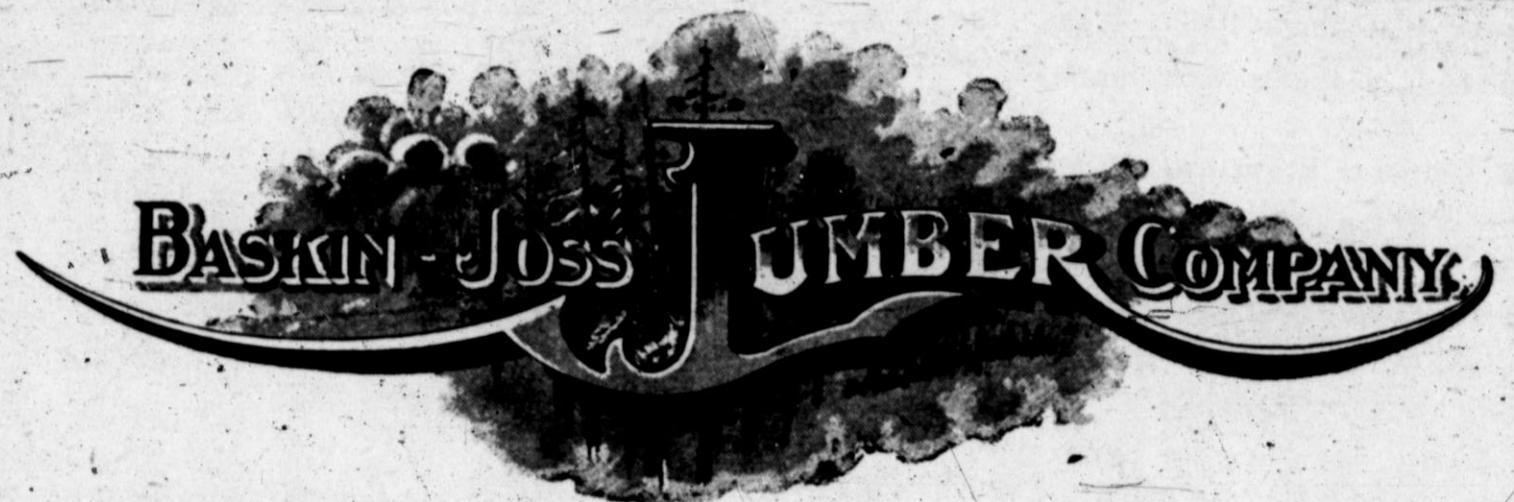
While The Brand believes in the efficacy of a railroad in building up the country and in developing its resources, yet, at the same time, the legally established rates should be adhered to and no attempt should be made or allowed to be made by any railroad to collect more than that rate. If the rates are not sufficient for an ample interest return on the investment, then the rates should be raised; but for a road to collect or even attempt to collect unlawfully freight charges is unreasonable and unlawfully. Let's have fair play.



J. F. JOSS

SEE US BEFORE YOU BUILD

LESLIE BASKIN



HEREFORD YARD IS LOCATED HALF BLOCK NORTH OF NEW SANTA FE PASSENGER STATION EAST SIDE OF STREET

**LUMBER, SASH, DOORS, GLASS, PAINTS, OILS, VARNISH  
FENCE POSTS, LIME, SAND, CEMENT, BRICK**

We aim to carry nothing but the better grades in everything handled; to extend honest, fair and courteous treatment to all our patrons, and promise complete satisfaction in every transaction. Our yard at Scherer, which is 19 miles Northwest of Hereford, will soon be open and we expect to furnish building material to Kelso tract owners at Hereford prices. . . . Give us a trial.

# Ready for Business

We are now located in the Opera House building where we will be pleased to serve you. Our new stock of Hardware has begun to arrive and we expect to have a complete stock in a short time. Call on us when you want anything in our line.

**DON'T FORGET TUCKER Windmill**

A NEW BUILDING, Larger and better than before will be ready for us IN A SHORT WHILE

## Hereford Hardware Co.

## LUMBER CO.

J. F. BARKER, Mgr.

Will sell you anything in the building line and make no effort to please you, as our grades will do that. We are born to do right and deserve no praise for it.

## BRIGHTEN UP

With Sherwin-Williams Paint



## THE STUDY OF CORN

A. M. Teneyck, Professor of Agronomy, Kansas Agricultural College, Before Texas Corn Growers Association, Sherman, January 14.

In a highly interesting paper before the Texas Corn Growers Association, Prof. Teneyck, sets forth some splendid findings in his experiments with the corn plant. After describing the methods used to obtain the information, he proceeds to tell the difference between surface and lister planting, and says:

Naturally corn was one of the first plants which was studied in each of the several states; at first, mainly with the idea of exhibiting the destruction of the roots of corn which may occur by too deep cultivation of this crop. In the study of corn roots in Kansas the purpose has been not only to exhibit the root development of the plant, but rather to compare the root systems produced by the surface and lister methods of planting. The samples taken from the field at different stages of maturity, thirty, sixty, and one hundred and twenty days after planting, show a marked contrast in the growth and development of the root system of listed and surface planted corn.

Roots of surface planted corn—The study of young corn indicates that the first root growth may be very rapid. Thirty days after planting the roots from adjacent hills three and a half feet apart already meet between the rows. At this stage of growth only a few roots have reached the depth of a foot, and the main laterals between the hills lay about four inches beneath the surface. The cultivation during this period could be about three to four inches deep and quite close to the hill without doing harm to the roots.

At sixty days after planting, just at the close of cultivation, when the corn is usually "laid-by," the corn crop has filled the soil with its roots, not only beneath the hills, but between them, until the entire space was fully occupied to the depth of two and a half feet, and some roots reach a depth of more than three feet. The roots are thrown off from the base of the stalks in quite uniform whorls, arranged one above the other, the whole forming a root-

crow which, in the sample, measured ten to twelve inches in diameter near the surface of the ground.

Two classes of roots are easily distinguished: Those that curve out from the crown and strike more or less directly downward into the soil, i. e., the main vertical roots, and those that spread out from the root-stem in a horizontal plane, near the surface of the ground, the main lateral roots. In this sample the lateral roots curve downward as they leave the crown, and then extend out in an almost horizontal plane, the roots from the opposite hills meeting and interlacing, when they curve more or less abruptly downward, often ending two or three feet beneath the opposite hill. In their horizontal course these roots have given off many vertical branches which have penetrated the subsoil and reached a depth almost equal to that of the primary vertical roots directly beneath the hill.

In the sample at this stage, the main roots were about four inches from the surface of the ground midway between the hills, at eight or ten inches from the hill they were three inches beneath the surface, and at four or five inches from the hill the outer roots of the root-crown reached the surface, and many large brace-roots extended two or three inches above the ground. The bulk of the lateral roots lay between three inches and twelve inches from the surface. Some small, fibrous roots were observed above the main lateral growth, showing that the small feeding roots grow upward as well as downward and to the sides. This upward growth was more noticeable in the samples taken at maturity. Some of the main roots strike out at an angle, gradually curving downward with the branches from the horizontal roots. The vertical as well as the horizontal roots give off numerous branches, the branches in turn giving off other branches, and these produce smaller fibers and root-hairs, so that the whole soil at this stage of growth, to the depth of two and a half feet, served as a feeding ground for the crop.

At maturity, one hundred and twenty days after planting, the roots had reached a depth of nearly four feet and some were traced to the depth of five feet. Comparing these samples with those taken earlier in the season it will be observed that the amount of root growth has gradually increased: The arrange-

ment of the roots is much the same as observed in the less mature corn.

In taking the samples at maturity, it was observed both, in the listed and the surface planted corn, that the soil above the roots was filled with a fine growth of fibrous roots to within a half inch of the surface of the ground. Thus the fact that the main roots lie several inches beneath the surface does not necessarily prevent the crop from feeding in the more fertile surface soil.

Roots of listed corn—In comparing the roots of the surface planted corn with the roots of corn planted in a lister furrow, the main difference appears in the location and form of the root-crowns. While the root-crowns of the surface planted corn rises to the surface of the ground in a compact fibrous mass, from which the root-crowns curve downward and outward into the soil, the root-crown of the listed sample is located fully three inches deeper in the ground and is less compact and fibrous, and the lateral roots extend directly from the root stems in an almost horizontal direction, the depth at the hill being midway between the hills. Thus, although the lateral roots of the listed corn were found within four inches of the surface of the ground midway between the hills, yet the average depth of the roots was greater than in the level planted corn, in which the lateral roots rise nearer the surface at the root-crown.

It is the general experience of farmers who practice the lister method of planting, that listed corn stands drouth better than level planted corn. The study of the root system offers a suggestion as to the reason why: It is evident that the listed corn could have been cultivated deeper and closer to the hill at the last cultivation without injuring the roots than the level planted corn. The root-crown forms deeper in the soil and cultivation progresses, the furrow is gradually filled until at the last cultivation the ground is left practically level, with three or four inches of mellow soil over the roots close up to the hill. The root-crown and the main roots of the corn are well covered and the whole surface is completely protected by a deep soil mulch, which conserves the soil moisture and protects the corn roots from the extreme heat of the summer sun more than could be the case if the root-crown rose to the surface, as it does in the surface-planted corn. Although the root-crown and the main lateral system of the listed corn lie deeper in the soil than in the surface-planted corn, yet there is apparently no loss of feeding ground for the roots, since it was observed in washing out the sample, that the soil above the main roots was filled with numerous slender, hair-like roots, branches from the main roots, which seemed to feed almost to the surface of the ground. These small roots were either broken off in washing, or having no support, sank down upon the main lateral roots when the earth was removed.

Later study indicates that when the middles between the listed rows are unplowed and hard, the lateral roots actually rise nearer the surface as they extend outward from the root-crown. Thus the depth of the lateral roots midway between the rows may be less with the listed corn than with the level planted corn, when the latter is planted in a deep, mellow seed bed.

### A Beautiful Hereford Home.

For sale, equipped with modern furniture and fixtures—all new and up-to-date. Possession given in three days after sale. This is a rare bargain. If you want it, you must come quick with the cash. See O. K. Land Co. 50-11.

## "EAT AND BE MERRY"

SAID THE OLD GREEK PHILOSOPHER

You can do this without fear of any pain from the gout if you buy from our well selected stock of groceries. It is our aim to get the best and purest in the market and only give our customers that which satisfies.

GIVE US A CHANCE AT YOUR GROCERY TRADE

# JNO. A. JOHNSON

## CAN YOU PLAY FORTY-TWO

IF SO, ALL RIGHT. IF NOT, THEN LEARN.

We have just made arrangements with the Forty-two Card Company for a limited supply of their NEW CARDS and will send you a pack of "42 Cards", regular price 50c, if you will send us the names of 15 young persons in your vicinity, who are interested in a BUSINESS EDUCATION and 25c in stamps or silver. This is good for only one week from the date of this paper. Mention paper. HURRY. Address:

THE AMARILLO BUSINESS COLLEGE  
AMARILLO, TEXAS

## DRAFT STALLIONS

Two Perchern and Two French Draft

These Horses were shipped from Southern Iowa, and may be seen at Sherk & Stanek's Livery Barn. They are fine bunch, and have Size, Bone, and Style that go to make a first class draft horse.

These horses will be sold to either individuals or companies.

For Prices and Terms see **C. O. LEE**

## Glenwood Sanatorium

A private home for the treatment of Chronic, Nervous and Mental Diseases, and selected cases of Alcohol and Drug Addictions.

Climate high and dry; invigorating air, plenty of ozone. Strictly Ethical, Efficient service and Modern Methods.

Dr. R. L. McMeans, Dr. J. R. Wrather and Dr. A. J. Caldwell; Attending Physicians.

The Land of Sunshine and Cloudless Sky

For Full Particulars Address:

Glenwood Sanatorium,

P. O. Drawer 459

Amarillo, Texas

## MAITLAND COAL

We now have in transit several cars of Genuine Black Diamond Maitland Coal. See us before placing your Storage Orders.

W. L. FALLWELL & SONS

## Hard to Please?

If you are we want to sell you Groceries. Our business is to serve your wants. We are never in too big a hurry to fill your order. Your order is never too small for our attention.

Ph  
o  
n  
e  
81

Jno. D. Jarrott



# BIG YEAR at HEREFORD

## MORE LAND SOLD THAN EVER BEFORE

The Cheap Land is going fast, and everytime it changes hands it goes up. It has advanced from 25 to 50 per cent every year for the last five. Buy now and get the advantage of this continued advance. We handle land in any sized tracts. Make a specialty of large bodies. Write us at

HEREFORD, TEXAS, or  
KANSAS CITY, MO.

# Star Land Company

### FARMERS INSTITUTE

(Continued From Page Four)

cities generating social moral and political corruption. The stream of our best and most ambitious boys and girls into those vast hoppers which turn out their yearly grist of suicides, criminals and worse, are problems very closely allied to that under discussion.

Why do our boys and girls leave the farm for the city? Why are ninety per cent of the farmers wives dissatisfied with their lot? Why does the farmer himself retire to spend his hard earned money and his declining years in town?

The above questions have been answered in many ways by many different people; but while all may be correct in part, we believe that the chief reason for dissatisfaction with farm life by the children, women, and men lies in the lack of attention paid by the farmer in planning, building and caring for the farm home. We would say then that the most important single thing to be done for the betterment of country life is to provide better homes.

A composite picture of the ordinary farm home would reveal a shabby barn like building, needing paint if painted at all—front porch with a broken floor and steps askew—walk if there be one dangerous to life and limb, chimneys cracked and tottering, window panes broken, poor yard, overgrown with weeds and over-run with pigs, geese and chickens, tumble down fence with gate hanging by one hinge. You have all seen places like this. Inside matters are little if any better, for what inspiration is it to the farmers wife to produce an oasis of order in a desert of chaos. If the house were arranged with a special effort to make it inconvenient, the result could not be worse. Floors bare, walls dingy and crooked, rooms poorly lighted, hot in summer, cold in win-

ter. The housewife must make one room serve the purpose of kitchen, dining room, laundry and wash room, must carry water from the well several rods distant, must go up a flight of three or four steps into the main part of the house, must take two steps where she should take but one.

From such a home go the farmers children to visit relatives or friends in the town. Note the difference. Lawn green and well kept, house tasty and newly painted. Attractive without, comfortable and convenient within. Like to many of us the farmer's children compare the effect with the cause. Farm life is cheerless and distasteful, therefore the trouble is with the farm, let us get away from it they reason. Likewise the farmer's wife and the farmer himself, conscious of a difference in the modes of life look forward to the time when they will be financially able to "live in town."

To too many of our farmers the farm house is not a home but a building in which to eat and sleep, a part of a plant with which to provide revenue. Comfort, convenience, attractiveness, none of these are considered. It might cost a little more money, so why make the effort.

To the general rule as above set forth there are a great many exceptions and these are increasing in number to a gratifying degree. Many farmers are seeking to provide the comforts of town life in their farm homes. Stop a moment and ask yourselves what it is that the town dweller can have that you cannot. Well kept grounds? So can you with a trifle more work. This bill of labor will be returned to you a hundred fold if you ever want to sell your place.

Water supply? You can have your own water works as well as your own sewer system for less cost than the town dweller. Lights? The farmer can have his own gas plant at a trifling expense. Heat? It costs no more to equip and feed a heating plant in the country than in the city.

The farmer now has his telephone, daily free delivery and the trolley car is rapidly coming within reach of almost every farmer, making of every farmer a suburbanite.

Recognizing the difficulty, how shall we correct it? Let us first convince the farmer that he can have a home in the true sense of the word in country as well as in town. Next let us do what we can to assist him in planning and building such a home. To this last named end I would offer a few suggestions which may not come amiss. First, plan your farm home and grounds as a home which you intend to spend the balance of your days. Give the matter

the most careful thought and attention, plan it not as you want it now but as you think you will want it ten years from now. Above all give yourself plenty of room, do not crowd your buildings too closely together. Second, make a plat of the farm premises, locate every tree, bush and building to scale on paper, then measure it off on the ground and stake it off as you had it on the plat. Attempt to imagine how it will look when the trees are in full leaf and buildings all in place. You need not be an architect or engineer to do this, a carpenter's square a pencil and wrapping paper will answer. Third, plan your house exactly as you will want it when you have money enough to build your ideal home. Get an architect if you can afford it, it will pay you in the end. If you do not feel you can afford this expense go over the farm and home papers, send off for books of plans, consult a good practical carpenter. Get the idea of the completed house into your head before you start to build. If you cannot build the complete house now build part of it and add to it in the future; but plan if possible so that the present house will look complete and when additions are put on these may not look like excrescences. In planning the interior of your house locate every chair, bed, table, etc.; imagine every step which must be taken in doing the work and reduce these to the minimum. Take plenty of time in planning and deciding,

then adhere strictly to your plan. Don't let your carpenter talk you out of it.

Fourth having planned and completed house and grounds endeavor to keep them in good condition. Take an afternoon when you would make a not strictly necessary trip to town and mow the lawn. Hire a little work done about the premises occasionally. You may urge that all these things require money, true, but if every farmer would do as much as he can afford the result would be amazing. It does not however, take money to think and plan what you will do when you are able, nor to set buildings, trees, etc., in the proper place.

I am thoroughly convinced that if the home life of the farm were made more attractive the farmer's children would be proud instead of ashamed of their homes and anxious to remain in them instead of leave them. The farmer's wife would be content and the farmer's life made worth living. I believe that in no other way can we hope to make the plains life attractive to the farmer's wife. Give the woman a pleasant home to keep and she will be content and happy. From cheerfulness without she will look to cheerfulness within and her home appear that much more pleasant. If however her eye falls upon barren plains without and seeks relief indoors in vain there will be but one result, dissatisfaction and homesickness, for which the country must bear the

blame. As the prairie dog takes his color from the dry grass in which he lives; as the bird of paradise takes his brilliant plumage from the tropical flowers among which he dwells, so the mind and character of each of us is affected by our home surroundings. The cheerful attractive home will be mirrored in the cheerful lives and neat appearance of its inmates. The glum, slovenly, discontented man advertises the condition of his home in his very appearance.

How shall we help the farmer who has the desire to build and keep an attractive home? With the desire and accompanying serious thought on the subject will come to anyone the means to secure the desired end, not the best result probably but good results.

Look over the list of government publications for the assistance of the farmer. There are dozens telling him how to care for his pigs and calves, and but two touching remotely on how to care for his family. Let the government agricultural department establish a bureau on "farm homes," supply plans and answer inquiries, making a nominal charge if necessary. Let this be under the supervision of a competent practical architect and I believe a great step would be taken in the betterment of country life.

See the ad elsewhere in this paper advertising some good registered draft horses. See C. O. Lee for particulars. 51-1f

## SAY, LOOK HERE!

Do You Want to Buy an Improved Farm in the Best Part of the Panhandle of Texas? If so Write Us for Price.

We have a good section of land with 360 acres under plow, 240 acres of it now in wheat, good 4-room house, sheds and corrals, two wells, wind mills and tanks, good young orchard, fenced and cross fenced.

Also a farm of 655 acres with over \$6,000 worth of improvements on it, 240 under plow, all nice smooth land and only six miles from Hereford.

320 acres 2 miles of town, 180 acres in cultivation, 80 acres in wheat, a well improved place.

Also 191 acres, all under plow but 25 acres, with a small house, stable, well, windmill, etc.

820 acres 3 1-2 miles southeast of Summerfield; will sell for 1-3 cash, balance in 1, 2 and 3 years; has 160 acres in cultivation; or will sell in half or quarter sections.

1-2 section 4 miles of Hereford; well improved. This is a bargain if taken at once.

For prices and terms on the above, write us, we have land in all size tracts from a town lot to a league. If you are interested address the

**Scherer Town Lot & Immigration Company**

J. C. Meacham,  
Ed Withauer,  
W. S. Rance

Hereford, Texas



We have 3200 acres in quarter and half section tracts close in to town. We have some on easy payments. Hereford is in the shallow water belt. Write us for particulars. Address Star Land Company, Hereford, Texas.