

# 'Medicare' Contract For Hospital Approved By Commissioners

After presenting to county commissioners a lengthy outline of "problems which may arise," officials of the Deaf Smith County Hospital agreed Tuesday to sign a contract qualifying the local hospital as a "Medicare" approved hospital.

Signing the contract were members of the hospital Board of Managers, who told commissioners that "although there is no question in our mind that

the contract should be signed, we feel it is important that you be made aware of some of the problems this may cause."

Following some four hours of discussion with commissioners, the hospital board asked for and received the commission's endorsement for signing the contract, which makes the local hospital one of the first in the Panhandle to qualify for treatment of patients through medicare.

**THE CONTRACT** with the U. S. Department of Health, Education, and Welfare qualifies the local hospital to receive payment from the federal government for treatment of patients enrolled in the "medicare" Health Insurance for the Aged.

How much effect medicare will have on the local hospital when it comes into effect on July 1 remains to be seen, hospital board members told the commission.

However, several possibilities exist, including:

—As many as 30 percent of the patients entering the hospital after July 1 may be enrolled in medicare.

—Medicare patients can be billed "only for the actual cost of rendering hospital service to that individual patient," with no provision to cover any other factors normally included in hospital bills.

—Deaf Smith County Hospital is among the first in the state to qualify for medicare, and therefore many patients from areas outside the county may utilize the local hospital through medicare. This, plus the fact that it is anticipated that local residents will increase their utilization of the hospital, through medicare, brings the possibility that local hospital facilities may prove inadequate in the not-too-distant future.

—**THE HOSPITAL** last year had gross business in excess of \$350,000 . . . but almost \$60,000 was written off as uncollectable accounts. Despite this fact, the hospital operated "in the black."

When medicare comes into effect to handle some 30 percent of the paying patients, problems will arise in making up for this "charity loss" since medicare will pay only "actual cost of treating each individual patient," with no consideration for other hospital expenses. Result will be that the charity costs must be compensated for elsewhere. Solution is either to charge non-medicare patients who pay their bills more to make up for the charity losses, or to allow the county to pay for these losses from tax revenues. Logical answer is to do the latter, discussion indicated.

—**Forceably**, the hospital could have other financial difficulties related to the fact

will be that the charity costs must be compensated for elsewhere. Solution is either to charge non-medicare patients who pay their bills more to make up for the charity losses, or to allow the county to pay for these losses from tax revenues. Logical answer is to do the latter, discussion indicated.

—**Forceably**, the hospital could have other financial difficulties related to the fact

See **MEDICARE** Page 2

Serving  
the  
Magic Triangle

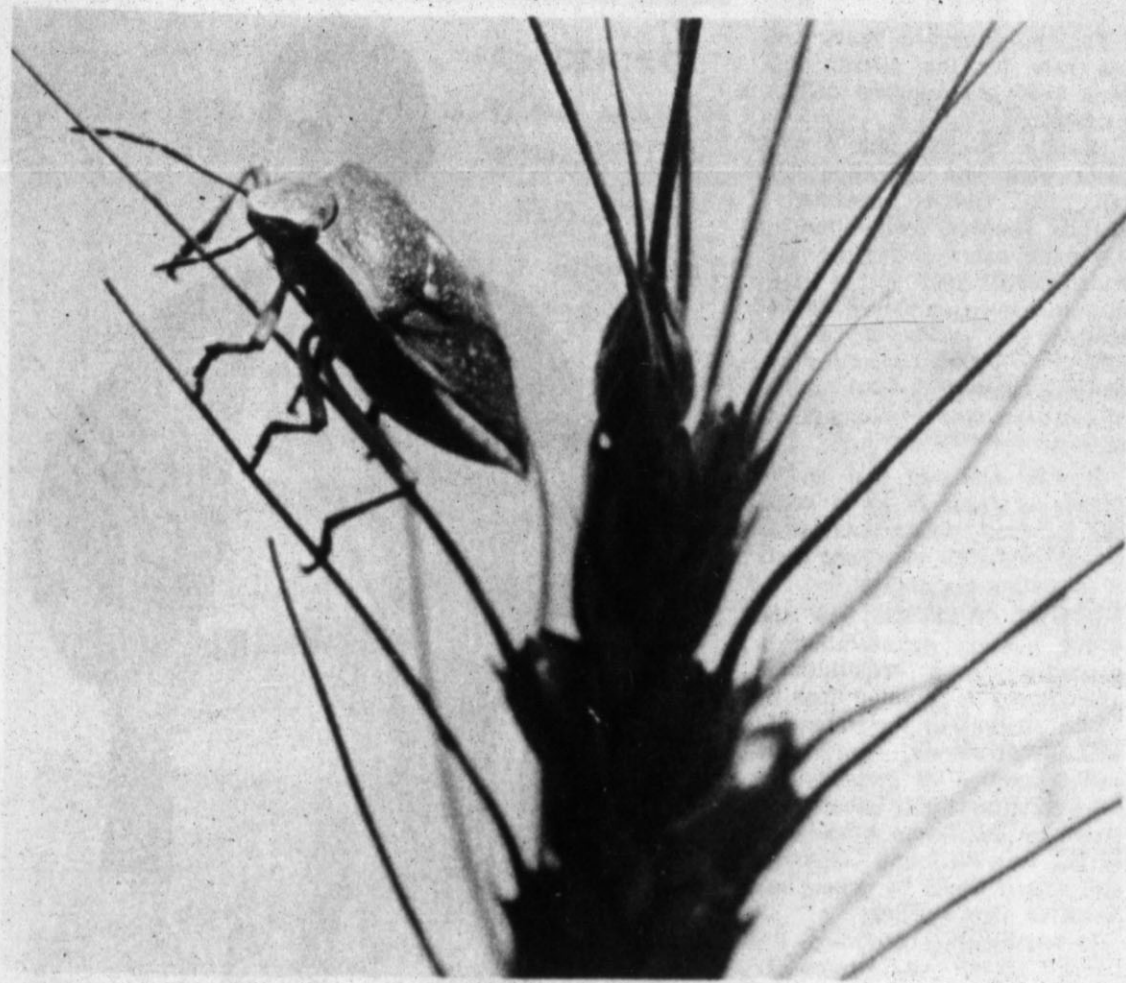
# The Hereford Brand

20 Pages  
...  
Price 10¢

65TH YEAR — NO. 24

HEREFORD, TEXAS 79045, THURSDAY, JUNE 16, 1966

PUBLISHED EVERY THURSDAY



**RELATIVE QUESTION** — Size of Deaf Smith County's wheat crop this year is all in the way you look at it. Some, who have irrigated fields, have good yields; others who

## Welfare Issues Discussed

### FRIDAY FORUM Public Meeting To Discuss Vocational School Needs

A hint of pure democracy will invade Hereford Friday night when citizens gather in an open meeting. Topic under discussion is schools and what the citizens of Hereford feel is necessary for future development in certain areas.

Specifically, members of the school board want to know if the people of Hereford want to extend vocational training in high school and if they do, how do they want to finance the expansion.

Future plans would extend the program to young people who are not regular high school students and a projected possibility is expansion to include adult education in those fields.

School officials explain that two avenues of financing are feasible if citizens decide that the vocational program is to be

pursued. A new bond issue could be placed before voters or funds that remain of the last 2.4 million bond issue could be used.

Originally earmarked for elementary expansion, school officials said this week that enough remains in the bank of these

See **SCHOOL** Page 2

### Long Session Brings Vote On Many Items

By WAIN MILLER  
Staff Writer

County commissioners reached several decisions with far-reaching effects in actions this week concerning aid to low-income families, operation of the county hospital, plans for highway construction and improvements at the Bull Barn.

Finalizing action on several issues pending for some time and setting wheels in motion for others, commissioners met all day Monday, again Tuesday morning and once more Wednesday afternoon.

Actions included:

1 — Denying the commissioner's official endorsement of the recently-organized Hereford Community Council, established recently to bring about improvements at the Hereford Labor Camp and other "poverty areas" in the county.



**FUEL FIRE**—Burning diesel made a lot of smoke as firemen strove to gain entrance to Hereford Welding during Monday's fire.

### Fire Losses Said Heavy For Year

Fire losses this year have exceeded losses chalked up by this time last year. Three calls within twenty-four hours early this week kept firemen on the run, even though all were not considered major fires.

Hereford Butane, who had had a trash fire on Saturday, called in firemen again Monday about noon. A warehouse for oil drums was smoking. Building received some damage but no estimate has been made.

to Farr-Better Feeds where a boiler had exploded. No fire resulted, however.

**FIRES THIS YEAR** have resulted in unusually heavy losses firemen said. Two fires, one at the Case house in March and one at Hacker and Jesko Meat in May are not counted against city fire losses Terry Hale, fire marshal, said.

Hacker and Jesko losses were established as \$51,000.

City losses for January were set at \$2,646, February as \$1,058, March, \$6,000 when the city barn burned; none in April, \$419 in May and of course the recent rash of fires where damage has not been determined exactly.

Monday night, shortly after midnight, firemen were called

Monday's damages were chief.

See **FIRE** Page 2

## Water Pollution Problems To Be Reviewed In Austin

**AUSTIN** — James C. Willmann, regional engineer for the Water Pollution Control Division of the State Health Department, is scheduled to give a full report on the pollution problems on Tierra Blanca Creek to the Water Pollution Control Board when it meets in Austin on June 27.

And from all indications to date, Willmann will be able to say little about progress made, since his conclusions from a water quality survey on Tierra Blanca Creek made April 25 and 26 were:

- (1) There has been no overall improvement in the water quality at the Tierra Blanca Creek between the City of Hereford and Buffalo Lake since the survey completed 1964.
- (2) Additional livestock commercial feeding pens in the area will add an additional organic load on Tierra Blanca Creek.
- (3) There has been no improvement in treatment facilities, including the municipal sewage treatment plant, slaughter houses, or vegetable packers, since 1964.
- (4) A future water pollution study should be considered in the Hereford area when land-run-off is available for evaluation of insecticides, feed

lot contributions and vegetable packing house discharges.

In his report to the State Health Department, Willmann said the same sampling stations were used along the 27 miles of Tierra Blanca Creek between Hereford and Buffalo Lake — where possible — as in the 1964 survey, and at some stations, a poorer water quality than in 1965 was found.

**THE WATER POLLUTION** State Parks and Wildlife report Control Board has received a report on the same area, in which Project Leader Lonnie Peters urged further study and surveillance, and recommended.

"The location and size of all feedlots which contribute residue

See **WATER** Page 2

### SELL CANDY SATURDAY

Little Leaguers don uniforms Saturday morning for one of the most important capers of the season — candy sales.

They will be knocking on doors and will have their candy ready to deliver. No wait-in — instant refreshment and instant encouragement for the little guys.

### STUDIES CO-OP

## REA Hosts Latins

Concentrated lessons in management and technical aspects of operating an electric co-op are being administered to seven men from Central and South America.

Training with the local REA, the men are working closely with Leo Forrest, manager, who has wide experience with the problems that rural electrification is experiencing in South America.

**RECENTLY RETURNED** from a trip to Chile where he served in an advisory capacity to electrification officials there, Forrest said that he felt 25 years progress would be condensed into a few years for our neighbors to the south since the interchange of personnel is extending experience.

The group arrived in Amarillo Saturday and will return this next Saturday. As one of several groups participating in the National Rural Electric Cooperative Association training program, the group will take technical knowledge back to their home countries where electrical

service is being extended into rural areas through a loan program financed by AID.

Training will include assignment to employees of the local office, visiting various installations associated with electrical power use, and lecture sessions where they will become acquainted with responsibilities and obligations of a co-op, Forrest said.

**CO-OP PROBLEMS** in South America seem to stem around finances and unequal opportunity to receive service. In a press

See **REA** Page 2

## Council's Request Denied By County

Movement to provide federal "poverty aid" to migrants and low-income families in the Hereford area may have reached another stumbling block this week.

County commissioners, in action Monday, denied official endorsement of the Hereford Community Council — the organization established earlier this year to spearhead an attack on poverty in the county.

**THE ACTION** came in relation to the Council's request for a letter from the commission to the Federal Housing Administration.

Commissioners unanimously voted not to author such a letter, which, according to the re-

quest, would have officially recognized the Council as a group representative of the citizens of the county.

**WHETHER OR NOT** the commission's rejection of the letter recognizing the Council will have significant effect on the future of the Council and its plans remains to be seen.

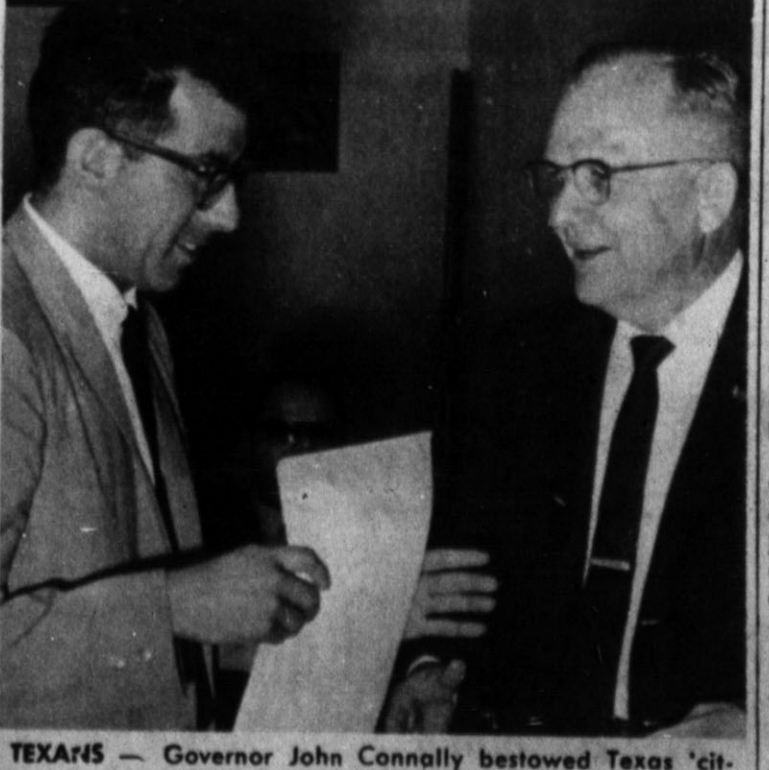
The council was organized in March in cooperation with the Texas Office of Economic Opportunity, which had some months earlier received orders from Washington to investigate reports of poverty in Deaf Smith County and particularly at the Hereford Labor Camp.

Texas OEO officials met with

See **COUNCIL'S** Page 2



**FULL SCHEDULE** — Co-op trainees from Central and Latin America arrived in Amarillo Saturday, ready and willing to pursue the intern phase of their program.



**TEXANS** — Governor John Connally bestowed Texas 'citizenship' on the seven Latin Americans observing Deaf Smith County REA, employees at work this week. Leo Forrest, local REA manager, made the presentations.

## Hereford Man Dies On Outing

Wesley Edward Uselton, 63, of 335 Ave. A, was pronounced dead on arrival at Neblett Hospital, Canyon, Wednesday afternoon at 3:30 p.m. He had been on an outing in Palo Duro.

Brought to the hospital by his wife, Lillian, and son, James, of Decatur, Ga., Uselton apparently suffered a stroke and death was due to a coronary occlusion according to Canyon Justice of the Peace Bill Wilson.

Employed at Shepherd Air Force Base in Wichita Falls, Uselton was home recovering from injuries suffered in an automobile accident at Iowa Park recently.

Arrangements are pending with Gilliland Funeral Home.



make

**RX ROGERS-MILLER**  
SUGARLAND MALL  
Walgreen Drug  
PHONE EM 4-2344

# your FATHER'S DAY GIFT CENTER

We have gifts that will please any Dad on Father's Day -- and you will enjoy the friendly atmosphere of our new store! So, no matter what the gift may be -- we have it, at Rogers-Miller Drug!



## MENS GIFT SETS

- |                                     |                            |
|-------------------------------------|----------------------------|
| FABERGE BRUT<br>for men             | SEVEN SEAS<br>by Faberge   |
| JADE EAST                           | "IT'S CRICKET"             |
| RUSSIAN LEATHER<br>by Royal Argenta | GRAND MARCH<br>KING'S MEN  |
| ITALIAN LIME<br>by Royal Argenta    | OLD SPICE                  |
| SPANISH GALLEON<br>by Royal Argenta | LORD BRIARGATE             |
| CHANEL                              | "HIS"<br>the house for men |
|                                     | ALLERCREME                 |

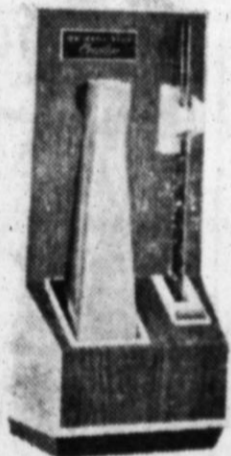
- SPEED SHAVER**
- JUSTIN WALLETS**
- VU-LIGHTERS**
- ZIPPO LIGHTERS**
- GILLETTE KITS**
- DRESSER VALET CASES**

Norelco With Side Trimmer **ONLY \$17<sup>88</sup>**  
 Genuine Leather "The Finest Made!" **From \$3<sup>95</sup>**  
 By Scripto "You See The Fuel Supply" **From \$3<sup>95</sup>**  
 Wind-Proof **From \$3<sup>50</sup>**  
 For Travel & Vacations **ONLY \$1<sup>89</sup>**  
**ONLY \$5<sup>50</sup>**

Great for Dads who hate to carve

THE LIGHTWEIGHT  
**REMINGTON**  
*Cordless*  
**AUTOMATIC KNIFE**

- Energy cells recharge automatically
- No batteries to buy



No cord to tangle or get in the way. Console "reminder" light tells when it's charging. The only electric knife with a brushed-chrome handle -- elegant enough to go with your best silver and china. Hardwood cutting board included.

**\$27<sup>95</sup>**

By the people who make the famous Cordless REMINGTON LEXTRONIC Shaver.

We have  
**KODAK INSTAMATIC**  
Cameras with  
**FLASHCUBE**

DROP IN THE FILM

POP ON THE FLASHCUBE

... AND START SHOOTING



FROM **\$15<sup>95</sup>**

SEE US FOR A COMPLETE STOCK OF KODAK FILM ... QUALITY FINISHING TOO!



-ALSO-  
COMB and BRUSH SETS  
WESTCLOX TRAVEL ALARM CLOCKS  
RONSON BUTANE LIGHTERS

LARGE SELECTION OF  
CUFF LINKS and TIE TACKS  
by Anson - Foster - La Mode

NICE SELECTIONS OF FATHER'S DAY CARDS

**TIMEX**  
AND  
**CARAVELLE**  
**WATCHES**  
FROM **\$9<sup>95</sup>**



We've put a Pitney-Bowes courtesy mailing counter in our store where you can weigh and mail all your letters and packages. You pay nothing for the service. You just pay for your postage. Why do we bother? So you won't have to bother going to the post office.

SHOP "UP-TOWN"  
**Sugarland Mall**  
SHOP IN COMFORT  
CONVENIENT PARKING

THESE PRICES  
EFFECTIVE  
THURSDAY  
FRIDAY  
&  
SATURDAY  
JUNE  
16, 17 & 18  
1966  
AT ...

GENERAL ELECTRIC  
"BIG 10"  
**TRANSISTOR RADIO**

ONLY **\$8<sup>95</sup>**

**NOW REMINGTON**

BRINGS YOU NEW SHAVING COMFORT!

**NEW REMINGTON 300 SELECTRO** Shaver

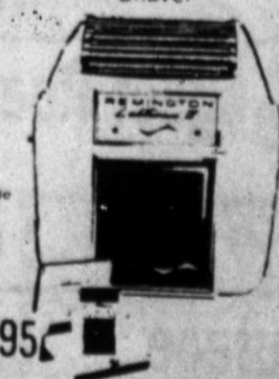


Unique 6 position dial adjusts shaving heads. Now you can get the right position for every area of your face. Heads pop into position for full width adjustment. Flip open for instant cleaning. Guard comes over whiskers into 3 times sharper heads for closer shave. Travel case.

ONLY **\$18.95**

CORDLESS-ADJUSTABLE!  
**REMINGTON LEXTRONIC IV** Shaver

Energy cells recharge from any AC current. Reciprocal cutter action increases comfort. Hear the difference. Quieter. Agitate difference on your face - guides smoother. 3 not 2 shaving heads make thinner for closer shave. Sideburn trimmer. Tough ARMOR SHIELD construction. Carrying case.



ONLY **\$19.95**

## BIG SUMMER VITAMIN SALE!

ALL VITAMINS IN OUR STOCK

**NOW 1/3 OFF**

OUR EVERYDAY LOW-LOW PRICES

This Sale Runs From Thursday, June 16 Through Saturday, June 25, 1966. Don't Miss It!!

- |                                       |                            |
|---------------------------------------|----------------------------|
| VI-PENTA ZESTABS & DROPS              | CLUSIVOL LIQUID & TABLETS  |
| LIVITAMIN                             | CLUSIVETS                  |
| POLY-VI-SOL                           | VI-SOL                     |
| DECA-VI-SOL                           | GERITOL BREAKFAST VITAMINS |
| TRI-VI-SOL                            | UNICAP                     |
| INITIA DROPS                          | UNICAP-M                   |
| ZENTRON                               | UNICAP THERAPUTIC          |
| McKESSON'S BEXEL LINE                 | OPTILETS                   |
| BEMINAL FORTE                         | OPTILETS-M                 |
| VI-DAYLIN                             | SUR-BEC-C                  |
| PALADAC LIQUID                        | VITA CAPS                  |
| PALADAC MINERALS (liquid and tablets) | GERITOL                    |
|                                       | WALGREEN AYTINAL VITAMINS  |

AND MANY-MANY OTHERS!

**RX ROGERS-MILLER**  
SUGARLAND MALL  
Walgreen Drug  
PHONE EM 4-2344



**GIBSON'S DISCOUNT CENTER**  
 "WHERE YOU ALWAYS BUY THE BEST FOR LESS"

ENZACTIN Reg. \$2.29  
**FOOT SPRAY** \$1.67

ENZACTIN Reg. \$1.59  
**FOOT POWDER** \$1.13

**SEA BREEZE** Reg. \$1.79 \$1.21

Bottle of 100 - Reg. \$8.65  
**MYADEC VITAMINS** \$1.99

1-Lb. Reg. \$2.95  
**MASSENGILL POWDER** \$1.99

Folding - Reg. \$4.98  
**TRAVEL SYRINGE** \$3.29

**SAVE**  
 Have Your Physician Call Your Next Prescription To  
**GIBSON PHARMACY**

**GIFTS for FATHER'S DAY**

**SUNDAY JUNE 19**

**"READY-TO-GO" TRIP TRAILER FISHING OUTFIT**

ALL-PURPOSE FISHING OUTFIT

TRUE TEMPER ROD & REEL Reg. Ret. 29.50 \$12.88

**ALGOMA HAMMOCK**

**HAMMOCK & STAND** \$8.88

- ★ LEISURE LOUNGER
- ★ DUCK GREEN WITH FRINGE & PILLOW
- ★ 30"x80" WITH 4 POINT STAND Reg. \$17.95

**JOHNSON CENTURY REEL** \$6.88

★ HAS SPINNING AND BAIT CASTING FEATURES  
 ★ CAN'T BACK-LASH  
 ★ \$17.95 VALUE

MODEL #100B

**Sunbeam Deluxe SHAVEMASTER SHAVER**

Reg. \$26.95  
**GIBSON'S LOW PRICE \$17.88**

**MENS SHORT SLEEVE DRESS SHIRT**

CROWN COLONY  
 100% COTTON  
 FULL RANGE OF SIZES

**2 FOR \$2.88**

**REMINGTON "66" ELECTRIC SHAVER**

Reg. \$26.95  
**GIBSON'S LOW PRICE \$17.88**

**NORELCO SPEED-SHAVER No. 30 with Floating Head & Side Burn Trimmer**

Reg. \$26.95  
**GIBSON'S LOW PRICE \$17.88**

**BARBEQUE GRILL**

★ Deluxe Oven with 8" Door, Full Handle, Vent Control, and Temperature Gauge  
 ★ U.I. Listed Domestic Motor with 4 Cooking Heights  
 ★ Heavy 5/16" Spit Rod has Wooden Handle & 2 Prong Forks  
 ★ 24" Diameter Bowl \$22.95 VALUE

**GIBSON'S LOW, LOW DISCOUNT PRICE \$12.97**

**KODAK ESCORT MOVIE CAMERA**

Reg. \$59.95  
**GIBSON'S LOW PRICE \$33.00**

**GIFTS FOR THE JUNE BRIDE**

*Chef Mate* #7001

**ELECTRIC SLICING KNIFE**

- ★ WITH 2 STAINLESS STEEL SERRATED EDGES
- ★ HOMEMAKERS DREAM
- ★ CARVES AND SLICES PERFECTLY
- ★ INCLUDES CORD—DETACHES

1-YR. GUARANTEE  
 Reg. Ret. \$13.95  
**SPECIAL \$6.87**

**Heddon Spin Pal 100 Reel**

MODEL "100"

32.50 VALUE  
**GIBSON'S PRICE \$9.99**

**COLEMAN CAMP STOVE**

Model 413-A 2-BURNERS  
 Reg. \$26.95

**GIBSON'S LOW PRICE \$13.67**

**FOLDING ALUMINUM LAWN CHAIR**

★ 22 1/2" WIDE 29" HIGH  
 ★ SPUN TUBULAR ALUMINUM  
 ★ HEAVY WEATHER RESISTANT WEBBING 2 1/4" WIDE  
 ★ FLAT ARM CHAIR

**GIBSON'S LOW DISCOUNT PRICE \$2.33**

**FOLDING ALUMINUM CHAISE LOUNGE**

★ EASY FOLDING FOR STORAGE  
 ★ NON TILTING  
 ★ 23 1/2" WIDEST" LONG  
 ★ 2 1/4" WEBBING

**GIBSON'S LOW DISCOUNT PRICE \$4.48**

**27-PIECE EARLY AMERICAN PUNCH BOWL SET**

Reg. Ret. \$6.95  
**SPECIAL \$3.88**

**NEW Beautiful Hair BRECK**

**BRYLCREAM HAIR DRESSING** NOW 88c

6 1/2 oz. Regular \$1.35

**Colgate Instant Shave**

REGULAR & MENTHOL

NO BETTER SHAVING VALUE AT ANY PRICE

11 OUNCES Reg. 79c  
**47c**

**SUAVE SHAMPOO**

Reg. 99c - Plastic Btl. 16 oz.  
**53c**

**PRESTO TEFLON PRESSURE COOKERS**

6 QUART CAPACITY Reg. \$19.95 \$10.88

4 QUART CAPACITY Reg. \$15.95 \$8.88

**MISS BRECK HAIR SPRAY**

Breck Quality for Young Hair  
 REG. RET. \$1.09  
**67c**

**GREAT DAY**

Starter Kit \$2.39 REFILL \$1.97  
 Reg. \$2.95

**KLEENEX TISSUES**

300 COUNT 2 PLY BOXES  
**3 \$83c**

**5-DAY ROLL-ON DEODORANT**

2.3 oz. antiperspirant  
 Regular 79c  
**GIBSON'S LOW PRICE \$43c**

**GRANNY MAY HAND CREAM**

Glycerine & Rosewater  
 Regular \$1.00 Tube  
**2 4 oz. \$1**

**KLEENEX PAPER TOWELS**

White or Colors  
**2 2-Roll Pkgs. \$59c**

**KOTEX**  
 Regulars Box of 48  
 Reg. \$1.59  
**97c**

**Old Spice AFTER SHAVE LOTION**

\$1.25 Size  
**88c**

**GLEEM TOOTHPASTE**

Regular 95c  
 FAMILY SIZE  
**47c**

# Adrian News

By ANN BEAVERS  
Brand Correspondent

Mr. and Mrs. Bill Goodenough and Jackie of Amarillo visited Sunday with Mr. and Mrs. Charlie Pulliam, Charlene and Larry.

Mr. and Mrs. Jess Bradley and Ruth of Amarillo, Gena and Gay Hamilton of El Paso visited Sunday with Mr. and Mrs. Jimmie Bradley, Gena and Gay remained for a week's longer visit.

Mr. and Mrs. Hugh Smith and Debbie of Midwest City, Okla. visited Sunday with Mr. and Mrs. Brub Beavers and daughters.

Methodist young people enjoyed the day at Ute Dam water skiing Sunday.

Mr. and Mrs. Calvin Peters and Troy spent the weekend with Mr. and Mrs. Nolan Maupin and family and Mr. and Mrs. Pat Maupin at Santa Rosa, N. M.

Mr. and Mrs. D. P. Doherty attended a farewell luncheon for Mrs. Royce Nickoloes and children who will join her husband, Staff Sgt. Nickoloes, in Puerto Rico for three years. The luncheon was held at the home of Mrs. Emma Lou Hall in Amarillo Saturday.

Joy and Beth Doherty of Arlington are visiting Mr. and Mrs. D. P. Doherty this week.

Joe Garcia of Logan, N. M. is visiting Mr. and Mrs. Joe Tofoya and children this summer. Visiting over the weekend were Mr. Jim Tofoya of Portales.

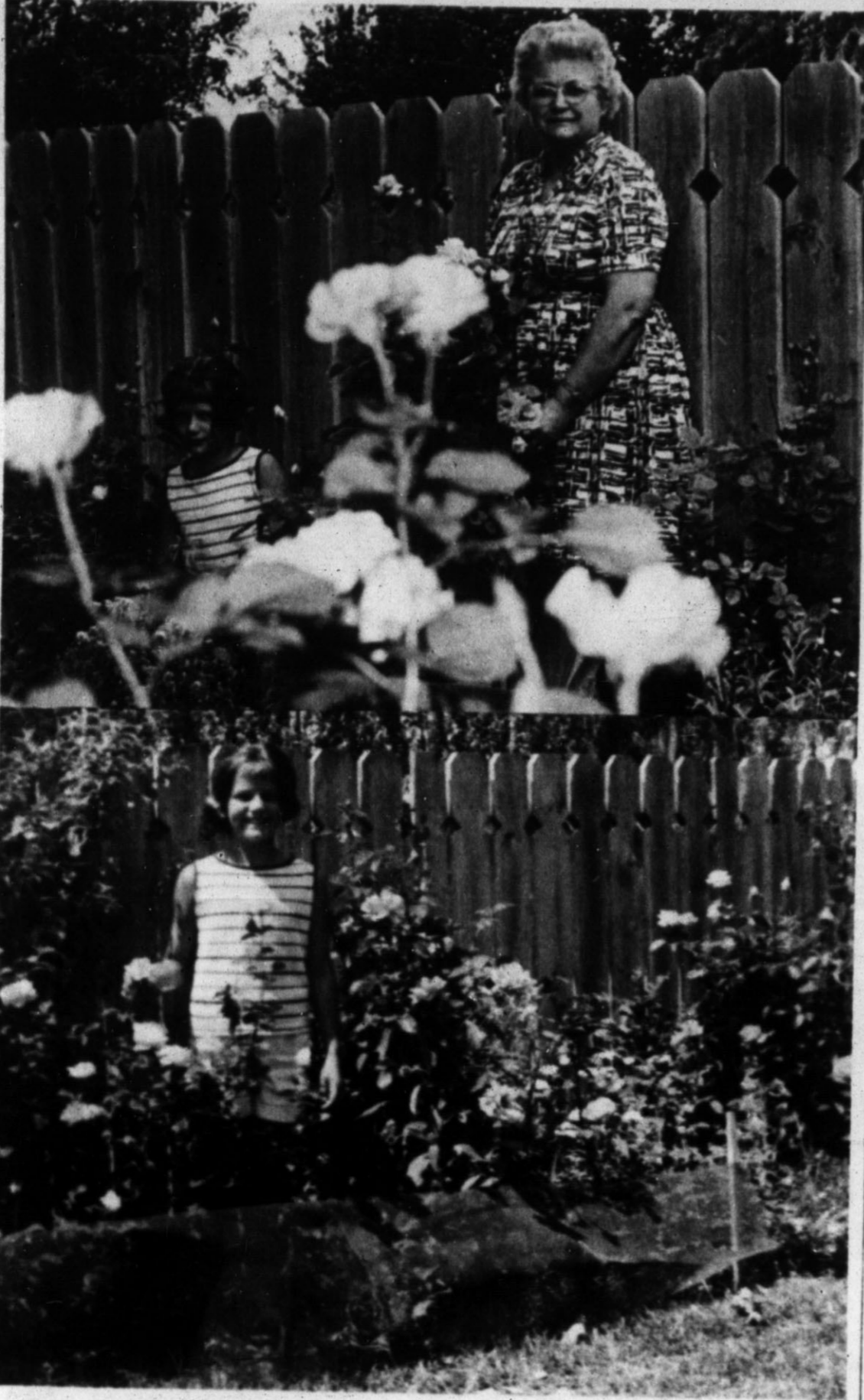
Mrs. Davis Brown visited in Dumas Saturday with Mr. and Mrs. S. P. Vick.

Mrs. Alice Morrell visited Sunday and Monday in Slaton with Mr. and Mrs. Frank Barker.

Mr. and Mrs. R. O. Sellars of Houston visited the Rev. and Mrs. Dave Sellars and sons last week.

Mr. and Mrs. Neil Pounds, Mr. and Mrs. Butch Boydston enjoyed the weekend at Red River and the races at Raton.

Officially, 1966 marks the 25th anniversary of the American Tree Farm program. The South certified its first Tree Farm in 1942. Texas, according



**41 KINDS OF ROSES** — The backyard of the R. L. Wilson home, 125 Star, is a fragrant place with 41 varieties of roses blooming in beds which edge the wide lawn. Although she grows other attractive flowers, roses are the favorites of Mrs. Wilson, who is affiliated with the American Rose Society and is a member of Hereford Garden Club. Mrs. Wilson, in the top picture, is standing beside one of the newer roses in her garden, Champagne, the name denoting its color. Pale yellow buds of a young Peace rose bush can be glimpsed around the head of her granddaughter, Judy Wilson, and the

## Miss Betts Is Married At Adrian

ADRIAN — After a wedding trip in New Mexico Mr. and Mrs. Terry Dean Williams are at home in Adrian for a few weeks, then Airman Williams will leave for military duty in Germany. The bride plans to join him overseas soon and he expects to be stationed three years in Germany.

Mrs. Williams is the former Jolene Betts, daughter of Mr. and Mrs. Horace Betts, Williams is the son of Mr. and Mrs. Leonard Erwin of Vega.

The Rev. Dave Sellars was officiant for the double ring ceremony in which the couple was married Saturday evening in First Baptist Church here. Orchid and white chrysanthemums and gladiolas were flanked by candelabra holding lighted tapers at the altar.

Given in marriage by her father, the bride was dressed in white silk organza with long-sleeved empire bodice of lace embroidered in seed pearls and sequins. The skirt shaped into a chapel train. Her illusion veil was secured by a seed pearl tiara and she carried white roses.

Mrs. Gene Hammit of Holly, Colo., was matron of honor. Candles were lighted by Mike and Donnie Hammit and the rings carried by Stan Hammit, Dania Sue Betts was the flower girl.

Best man was James Whaley of Vega. Butch Betts and David Williams served as ushers.

After the wedding a reception was held in the church fellowship hall, where Mrs. Butch Betts registered guests. The table, laid in white, had a net cloth over silk. Topped with a miniature bridal couple, the three-tiered cake had touches of orchid in the flower decoration.

For travel Mrs. Williams wore an all-white ensemble with a corsage from her bridal bouquet. She and the bridegroom are both graduates of Adrian High School.

## New Yorkers Are Visitors Here

Mr. and Mrs. Ralph Fullwood and children left Tuesday after a few days' visit with his parents, Mr. and Mrs. R. A. Fullwood, 206 McKinley, and other relatives. Their home is in Troy, N. Y., where Fullwood is a teacher in Rensselaer Polytechnic Institute.

He will be employed this summer in Los Alamos, N. M., and the family will live there until time for the school term to begin next fall. The Fullwood children are Bobby, Teddy and Mary.

His sister, Mrs. Mildred Walker of Amarillo, came over the weekend and the entire family had a barbecue supper at the home of another sister, Mrs. Charlie Noland, Fullwood visited a number of friends in this city, where he grew up and completed high school work.

## College News About Students From This Area

FORT WORTH — Mr. Benjamin Franklin Cain, 104 Elm, Hereford has been awarded a renewal of the A. C. Nicholson Scholarship at Texas Christian University for the 1966-67 academic year.

Announcement of the award was made by Logan Ware, TCU's director of scholarships and student financial aid. Scholarships, grants and awards, made on the basis of academic excellence of the student and financial needs, vary in amount from \$100 to full tuition.

## Robinson Meets With Lion Heads

Outgoing Lions District 27-1 Governor, J. W. Robinson, Jr. is in Houston this week attending the state Lions convention.

As part of convention plans, Robinson will meet with the International president, Walter Campbell during the four convention days.

Accompanying Robinson are his wife, Virginia and son, Jay.

**REDUCE FAT**  
If your overweight is due to overeating and you want to get rid of that ugly fat get our tablets called SLIMODEX. Available without doctor's prescription SLIMODEX will help you lose those extra pounds by decreasing your desire for food, eliminating the urge for extra portions. You eat less, weigh less. SLIMODEX costs only \$3.00 and is GUARANTEED to work or get your full money back. SLIMODEX is sold by: GIBSON PHARMACY Mail Orders Filled

THE **DAWN CO-OP ELEVATOR**  
DAWN, TEXAS

Is Now Under New Management!

"A MESSAGE TO THE FARMERS IN OUR AREA!"

We would like to visit with each of you personally but time is too short to do so before this year's wheat harvest. It will be our pleasure to serve you and we will do our best to furnish your farming needs. If we can be of any service to you, please call 258-7206 or come in and see us.

**DAWN CO-OP ELEVATOR**  
E. K. DUDERSTADT, Manager

Classifieds Get Results

# LUCKY TIGER-MONEY SWEEPSTAKES

## Win with free Tiger-Money!

Over 15,000 prizes: 15 Ford Mustangs, 50 RCA Victor Color TV Sets, 50 Johnson Outboard Motors, 50 8-mm Bell & Howell Movie Sets, 150 Orrtronics Car Tape Decks, 750 Rival Electric Knives, 1,000 Thermos Picnic Chests, 1,000 Type Road Race Sets and over 12,000 AMF "High-riser" Bicycles!

Enter now! Enter often! All you do is pick up Lucky Tiger-Money at any participating Enco station. It's free — no purchase is necessary.

Each bill of Lucky Tiger-Money has a special serial number printed on it. The winning numbers will be electronically selected. Then on July 31 a long list of winners will be available at all participating stations.

We've got a special sweepstakes just for children, too. Every participating dealer — all over the country — will be giving away a "high-riser" bike (with Tiger seat and handgrips) to some lucky boy or girl.

There are over 15,000 prizes in all! So come in — get your Lucky Tiger-Money and register your children for a bike. And while you're in the station, why not fill up with High-energy Enco Extra gasoline and "Put a Tiger in Your Tank!" **Happy Motoring!**

**HUMBLE ENCO**  
OIL & REFINING COMPANY  
AMERICA'S LEADING ENERGY COMPANY

Visit Six Flags Over Texas This Summer  
Ask your Enco dealer for a free coupon good for 50c off on a child's ticket.

DISCOVER AMERICA  
BEST BY CAR

### Three Inducted By Local Board

Three men were inducted into the armed services by Hereford Local Draft Board No. 18. Two of the men were from Dimmitt and the third was from Canyon. They were Burris W. McRee and Darryl G. Ball, both of Dimmitt and Alex F. Martinez of Canyon.

Wildfire is Texas' No. 1 forest problem, according to the Texas Forestry Association. More than 99 per cent of the wildfires that ravage Texas forests are man-caused and are preventable.

## Gehl 2-Row Chop-All

**Featuring:**

- NEW! 10,000 RPM Knife Sharpener\*
- Chrome-Edged Knives
- Select-A-Cut Transmission

Chop silage faster with the Gehl 2-Row Chop-All! Chop more tons of fine-cut forage at peak of feed value, too. When quick, in-the-field sharpening is needed... Gehl offers a new, portable 10,000 RPM knife sharpener, electric or gas model. Takes only a minute per knife... right on the machine. Has adjustable guide to insure true-beveling of knife cutting edges. Set Select-A-Cut Transmission for desired forage length: short, medium or long. Six chrome-edged knives deliver fine chopping, stay sharp longer. Stop in today or call for free demonstration.

Financing available.

**GEHL**

Make us Prove it with a Demonstration!

**OSWALT INDUSTRIES**  
HWY. 60 EAST HEREFORD - EM 4-0250

**J&F**

**FATHER'S DAY IS SUNDAY JUNE 19**

**THAT OLD SILK SUIT AIN'T WHAT IT USED TO BE!** It's better than ever, because now, J&F makes an imitation that's better than the original. They blend an exclusive fabric... wrinkle-resistant Dacron® T69 for an elegant look of imported silk, and Kid mohair for a crisp lustre. It's called Mohara®. Elegant, and it looks so much like silk, there's only one way to tell the difference... by its great shape and its ability to shed wrinkles. Hand-somely tailored for an exacting fit in a 2-button model with trim lapels, side vents, hacking flap pockets and plain front trousers. Select your genuine J&F imitation, today.

J&F Mohara Elegant Suits. \$65

**WE GIVE S&H GREEN STAMPS**

**Harman's**  
\*Reg. T.M. Pacific Mills Worsted Co.



INVITES YOU TO PLAY...

# "Let's Go to the Races"

A New And Exciting Way To Win **FREE** Prizes

STARTS JUNE 22

WIN FROM \$5 TO \$250 BY MATCHING WINNING HORSE NUMBERS IN TV SHOW RACES WITH WINNING HORSE NUMBERS OF FREE CARDS GIVEN AT FURR'S



HERE'S HOW TO PLAY:

Pick up your FREE card each week at your nearby Furr's Super Market. No purchase necessary. Cards for each of the weekly races will be a different color.

Five complete races will be shown in color on the channel in your area shown above each Wednesday night. You will enjoy plenty of color and excitement as you watch these races.

After each race the number of the winning horse will be shown on your TV screen. Compare the win number on your card with the number of the winning horse in each race.

If the win number on your card matches the number of the horse winning that race... YOU HAVE A WINNING CARD! Circle the number and take it to your nearby Furr's Super Market for your cash prize.

You do not have to watch the TV show to be a winner. The winning numbers for each of the five races will be posted at your nearby Furr's Super Market each Thursday morning thru Saturday night.

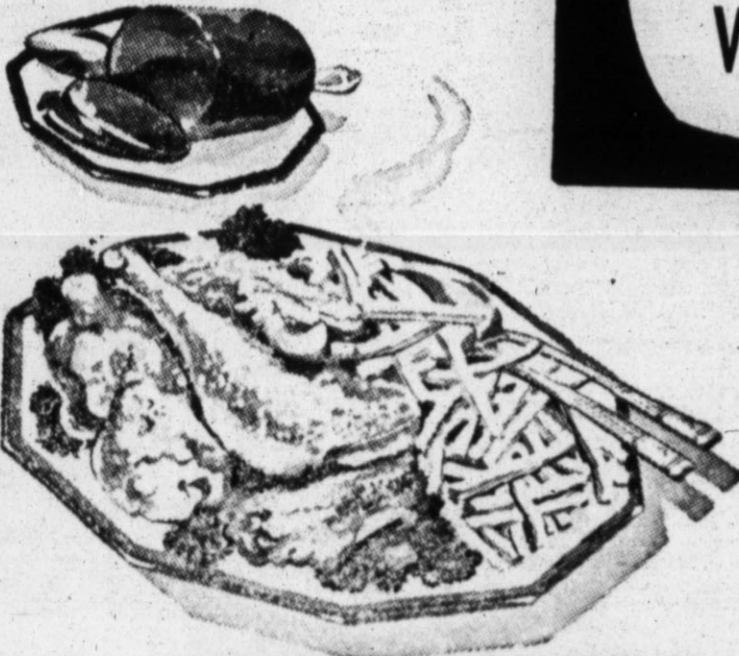
IMPORTANT—Winning cards must be presented to the Furr's manager for verification Thursday, Friday or Saturday following the show.

DOUBLE STAMPS  
Thursday  
Friday  
Saturday

SHOP FURR'S FOR DAD'S DAY

FURR'S NEW COUPON POLICY — PLEASE NOTE: Manufacturers will not pay on coupons unless their merchandise is purchased when coupon is redeemed. Therefore Furr's can only accept coupons in the future in payment for merchandise indicated on the coupon. Please have your coupons ready as you check out — THANKS!

TV POST TIME  
KFDA-TV  
CHANNEL 10  
WEDNESDAY  
8:30 P.M.



**FRYERS**  
FRESH DRESSED U.S.D.A. GRADE "A" WHOLE LB. **33¢**

**BISCUITS**  
Ballards or Pillsbury **3 For 27c**

**Fryer Parts**  
U.S.D.A. GRADE A  
Fryer Thighs 59c  
Fryer Wings 23c  
Fryer Legs 49c  
Fryer Breast 79c



**Cream Cheese**  
Kraft's All Flavors  
5 oz. Glass **3 For \$1**

**CREAM CHEESE VELVEETA**  
Kraft's Philadelphia 8 oz. Foil **33¢**  
Kraft's 2-Lb. Loaf **98¢**

**FAMILY KITCHEN COMPLETE MEAL FOR FOUR:**  
1 lb. Meat Loaf  
1 Pint Cole Slaw  
1 lb. Potato Salad  
**ALL FOR \$1.69**

**Short Ribs** USDA Choice Beef lb. **29c**  
**Beef Roast** Choice Cut lb. **89c**  
**Round Steak** USDA Choice Beef lb. **89c**  
**Cutlets** Tenderized, no waste lb. **\$1.19**  
**Longhorn Cheese** Farm Pac lb. **65c**  
**Franks** All Meat lb. **59c**

**Family Style Hickory Smoked Sliced Bacon** 2 Lb. Pkg. **\$1.59**  
**Sausage** Farm Pac 2 Lb. Bag **\$1.29**  
**Fish Sticks** Sea Star Full Pound **49c**  
**Tartar Sauce** Kraft's 5 1/2 oz. Jar **27c**  
**American Cheese** Individual Sliced Krafts 12 oz. Pkg. **59c**  
**Cheese** Cracker Barrel Mild, Mellow or Sharp 10 oz. Pkg. **59c**

**SUGAR TIDE**  
GIANT PKG. **69¢**  
**Tuna**  
Van Camp's Grated No. 1/2 Can **19¢**

**KRAFT'S FRONTIER DAYS SALE!**

ALL BRANDS 5-LB. BAG **49¢**

**Macaroni Cheese Dinner**  
7 oz. Pkg. **35¢**  
**2 FOR 35¢**

**Baby Food**  
FOOD CLUB STRAINED 3 - JARS **23¢**

**Pork & Beans**  
Van Camp's 2 No. 300 Can **29¢**

**Miracle Whip**  
Salad Dressing Qt. **49¢**

**COFFEE**  
Folger's or Maryland Club Lb. Can **73¢**  
**2-LB. CAN \$1.45**

**PEACHES**  
Hunt's Yellow Cling Sliced or Halves No. 2 1/2 Can **4 For \$1**

**EGGS** Nest Fresh Small **4 Doz. \$1**

**CHARCOAL GRILL**  
25 inch Grill Half Hood Wheels, Elect. Spit **\$8.99**

**CHARCOAL LIGHTER**  
Union Carbide 1-Qt. **25¢**

**GENERAL MERCHANDISE**  
GARDEN HOSE 50 ft. Plastic Brass Couplings **\$1.19**  
ZEE FACIAL TISSUE 200 Ct. Boxes **5 For \$1**  
ICE COOLERS 14 Qt. Size With Handle Reg. **79c** **59c**  
ICE BUCKETS 4 Qt. Size Reg. **29c** **19c**  
TUMBLERS Aqua Ripple 12 oz. Size **2 for 25c**  
HAMBURGER PRESS Do it the easy way, no fuss **59c**  
DISH PAN Plastic, 14 Qt. reg. **59c** **43c**  
LAWN CHAIR Green Webbing alum. **\$2.99**  
CHAISE LOUNGE adjustable 6x14 Webbing **\$5.99**  
LOTION Sue Free Honey and Almond **26c**  
BUBBLE BATH Capri Floral, Lilac Spice **46c**  
DEODORANT Stop, Spary Can 4 oz. **33c**  
TALC Sue Free Bouquet Lavender **29c**  
SHAMPOO Lanolin Plus Egg, Castile and Dandruff **49c**  
CREME RINSE Beacon, 16 oz. Bottle **39c**  
ASPIRIN Beacon 100 Count Bottle **19c**  
MOUTH WASH Sue Free Antiseptic Reg. **33c** **23c**

**COFFEE**  
Food Club All Grinds **2 LB. CAN \$1.37**  
1-Lb. Can **69c**

**FURR'S FROZEN FOODS**  
**DINNERS**  
Morton's Fresh Frozen Chicken - Beef Turkey Salisbury Steak or Meat Loaf Your Choice **3 For \$1**  
**POT PIES**  
Spartime Fresh Frozen Chicken Beef or Turkey 6 oz. Pkg. **12 1/2¢**  
**POTATOES**  
French Fried Top Frost Fresh Frozen 16 oz. Pkg. **25c**  
**BABY LIMAS**  
Mortons Fresh Frozen Top Frost Fresh Frozen 10 oz. Pkg. **5 for \$1**  
**PECAN TWIST APPLE RINGS RAISIN RINGS** **69c**  
**HONEY BUNS** Mortons Fresh Frozen 9 oz. Pkg. **29c**  
**CREAM PIES** Assorted Flavors Pkg. **3 for \$1**

**Margarine** Kraft Parkay lb. **25c**  
**Kraft Oil** 20 oz. Economy Bottle **4 For \$1**  
**Bar B Q Sauce** Kraft 18 oz. Bottle **3 For \$1**  
**Grape Jelly or Plum Preserves** Kraft 18 oz. Glass **29c**  
**Cake Mix** Angel Food Swansdown Pkg. **49c**  
**Crackers** Bremner 1 Lb. Box **21c**  
**Ice Cream** Family Pack Assorted Flavors 1/2 Gal. **49c**  
**Tissue** Aurora 2 Roll Pkg. **25c**  
**Catsup** 20 oz. Economy Bottle Del Monte **4 For \$1**  
**Spinach** Del Monte No. 303 Can **2 For 29c**  
**Preserves** Strawberry Preserves Kraft 18 oz. Glass **49c**  
**Corn** Del Monte Cream Style Golden No. 303 Can **5 For \$1**  
**Dressing** Kraft French 8 oz. Bottle **4 For \$1**  
**Dressing** 1000 Island Dressing Imperial Italian Choice 6 Bottle Ct. **3 For \$1**  
**Coca Cola** Reg. or King Plus D. **2 For 79c**  
**Sandwich Spread** Kraft 24 oz. Jar **49c**

**PRODUCE BUYS**  
U.S. No. 1 Calif. Long Whites 10 LB. BAG **49c**  
HOT HOUSE GROWN, LB. **39c**  
GOLDEN RIPE FRUIT LB. **10c**

**Fertilizer** Bactlife Reg. 2.89 **\$2.29**  
Plant Ads Reg. 2.89 **\$2.29**  
**Rose Spray** Raid **\$1.69**  
**Weed Killer** Raid **\$1.49**  
**Cherries** Calif. Bings lb. **59c**  
**Peaches** Calif. Large Size lb. **29c**  
**Radishes OR Gr. Onions** Bunch **2/15c**  
**Celery Hearts** Calif. Green Pascol **33c**  
**Blackeyed Peas** Texas Fresh lb. **12 1/2c**

**WHIP TOPPING**  
Rich's Regular **49c**  
10 oz. Price  
**BUY ONE GET ONE FREE**  
**BAKERITE SHORTENING**  
3-LB. CAN **59c**









# Harlins To Mark Golden Wedding

Children of Mr. and Mrs. J. B. Harlin will be hosts at a reception to which all the couple's friends are invited Friday afternoon in the Odd Fellows Hall, an advance celebration of their Golden Wedding anniversary. Calling hours are 4 to 6 p. m.

Married in Hereford Nov. 16, 1916, the Harlins are marking the anniversary early while members of Mrs. Harlin's family are meeting here for a reunion. She

was Miss Willie Owen, daughter of the late Mr. and Mrs. A. H. Owen, before her marriage.

The wedding was in her parents' home, "just a simple wedding," she explains, "big church weddings were not so common in those days. After the ceremony we went across the street to my sister's home for the reception."

The Owen family had been living in Hereford four years,

and Harlin had been here a year. His former home was Itasca, in Hill County, and the Owen family came from Wise County.

Mr. and Mrs. Harlin have lived in Hereford all their married life, and now reside at 228 Ave. D. Their children are Kitty, Mrs. George Cameron of Salem, Ore., who is here with her daughters, Cinda and Lynda; Harold Harlin of Sacramento, Calif., and the Rev. J. B. Harlin Jr. of Seagoville, also expected for the anniversary celebration with their families.

The Harold Harlins have a daughter, Pamela, and the other son's family includes three children, Robert, Lynetta and Glinda. Although family members have all visited here at in-

# La Plata Club Meets At Coffee

A post-season coffee for La Plata Study Club members was held Tuesday morning in the home of the new president, Mrs. Phillip Shook. Final business of the year, postponed when the club closed its scheduled programs in May with a party for members' husbands, was transacted.

Intervals, the entire family has not been together in more than 15 years.

Mrs. Lonnie Cardinal was welcomed as a new member. Meeting dates and program suggestions for next year were discussed. A gift was presented to Mrs. Bill Michael, president last season, in appreciation for her leadership.

Mrs. Shook announced the committee list for her administration. Serving with her on the executive committee are Mmes. Kenneth Rogers, Dennie Richardson, Michael and Roy Harris.

Named to work on the year-book and program are Mmes. Michael, Milton Adams, Jay Boston and Raymond White.

On other committees are Mmes. A. J. Schroeter, Emil Dettman and Leroy Aven, hospitality; Louis Woodford, Urlin Streu and Lloyd McGe, telephone; Richardson and Eugene Campbell, finance.

Mrs. Clint Formby is chairman of the projects committee; Mrs. Ansel McDowell will serve as Federation counselor; Mmes. Frank Prowell and Jack Brown form the committee on gifts.

Present for the coffee were Mmes. Campbell, White, Harris E. D. Hopson, Michael, Richardson, Adams, Schroeter and Boston.

The Hereford Brand, Hereford, Texas, Thurs., June 16, 1966

### ROMAN MATCHES

ROME (AP) — Advertising didn't begin to appear on Italian matchboxes until the present century, but in the pre-ad days the boxes were fancied up with earthy jokes or poems.

One matchbox of about 100 years ago bore the line: "You can count on your dog's faithfulness to the bitter end, on your wife's until her first opportunity."

**Classified Get Results**

See The  
**HEREFORD STATE Bank**  
FOR  
AUTO FINANCING

WIGGLY PIGGLY WIGGLY PIGGLY WIGGLY PIGGLY WIGGLY PIGGLY WIGGLY

**PIGGLY WIGGLY'S...  
SUMMER FOOD  
AND FATHER'S DAY  
SAVINGS**

DON'T FORGET:  
PICK UP YOUR FREE  
DISCOUNT SHOW TICKETS  
AT PIGGLY WIGGLY!

**CIGARETTES**  
KING SIZE - FILTERS  
REGULAR  
ALL POPULAR BRANDS CTN. **\$2.99**

Piggly Wiggly presents...  
**STAINLESS TABLEWARE**  
BY TAYLOR SMITH & TAYLOR  
Only Three More Weeks!!

ITEM THIS WEEK!  
**9¢** EACH  
TEASPOON WITH EACH \$5 PURCHASE

Deluxe Smoker  
**WAGON GRILL** **\$22.88**

**PORK & BEANS** Van Camp No. 300 Can **2 for 25c**  
**KINGSFORD CHARCOAL** 20 Lb. Bag **\$1.29**  
**CHARCOAL LIGHTER** Wizard 1/2 Gallon **69c**  
**COCA COLA** King Size or Reg. 6 Bottle Ctn. **39c**

**CHARCOAL BRAZIER** With casters **\$2.98**  
**BRAZIER GRILL** 24 inch motor **\$11.88**  
**ICE CREAM FREEZER** Silex Electric 4 Quart **\$9.88**  
**ELECTRIC DRILL** Manning-Bowman 1/4 inch **\$9.88**

**ICE CREAM** SNOW KING ALL FLAVORS 1/2 GALLON **49c**

**LIPTON TEA** Instant Bonus Pack 6 oz. Jar 1.39 Value **99c**

**PORK ROAST** FRESH - LEAN LB. **49c**

— GRANDMA'S DELICATESSEN —  
Roast Beef AND GRAVY lb. **\$1.29**  
Chicken Dish lb. **69c**  
Goulash lb. **69c**  
Tossed Salad pr. **59c**  
Yellow Squash pr. **49c**  
Fruit Salad with cream pr. **59c**  
Pies - Rolls - Donuts Made Fresh Daily!!!

**SANTA ROSA PLUMS** LB. **29c**

**BACON** Shurfresh Lb. **79c**  
**BISCUITS** Shurfresh Easy Open 6 For **49c**  
**CHEESE** Wisconsin - Longhorn Lb. **59c**

Flour Gladia 10 lb. Print Bag **99c**  
Parkay Kraft's Lb. Ctn. 4 For **\$1**  
Lucky Whip 4 oz. 3 For **\$1**  
Fab Detergent 10c Off Label Giant Box **65c**  
Ranch Style Beans No. 300 Cans 6 For **79c**  
Travel Kits Gillette 1.89 Value **\$1.29**  
Travel Bags **\$2.49**  
Flite Kits 1.29 Value **98c**

California **GRAPEFRUIT** 2 Lbs. For **25c**

ARMOUR'S ASSORTED **LUNCH MEAT** 3 PKGS. **89c**

Kraft's Miracle Whip Salad Dressing Qt. **49c**  
Black Pepper Plymouth 4 oz. Can **35c**  
Birdseye Awake Frozen 9 oz. Can 3 Pk. **69c**  
Coffee Shurfine All Pound Can Grinds **69c**  
Vienna Sausage Van Camp 4 oz. Can 2 For **39c**  
Manning-Bowman Electric Drill 3/8 inch **\$12.88**  
Foam Chest 1.29 Value **98c**  
Eggs Shurfresh Grade 'A' Large **39c**

**KY. BEANS** Lb. **25c**

Texas New Red **POTATOES** LB. **10c**

Kraft's - Reg. & Smoke **BARBECUE SAUCE** 18 oz. Bottles **39c**



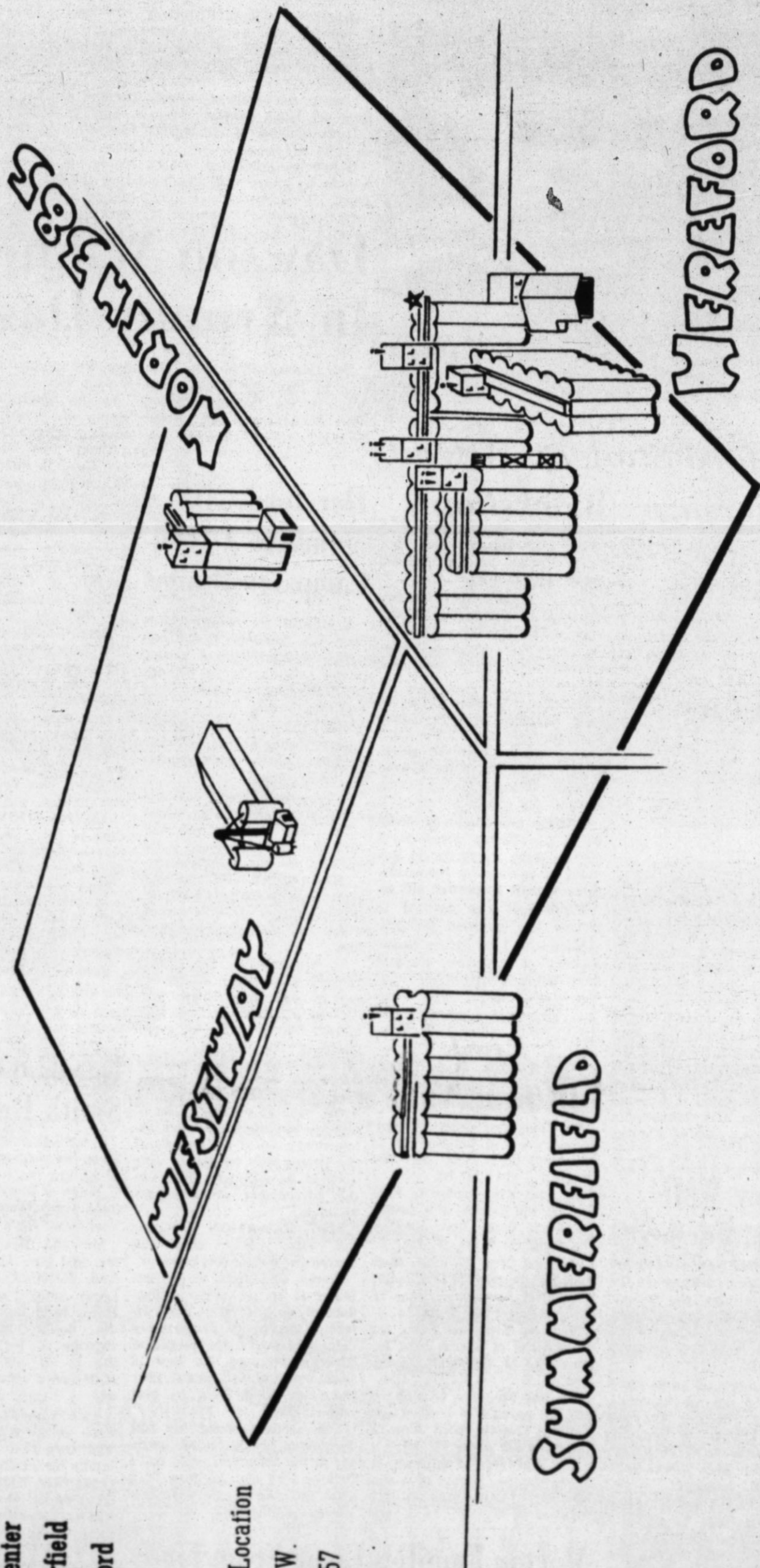
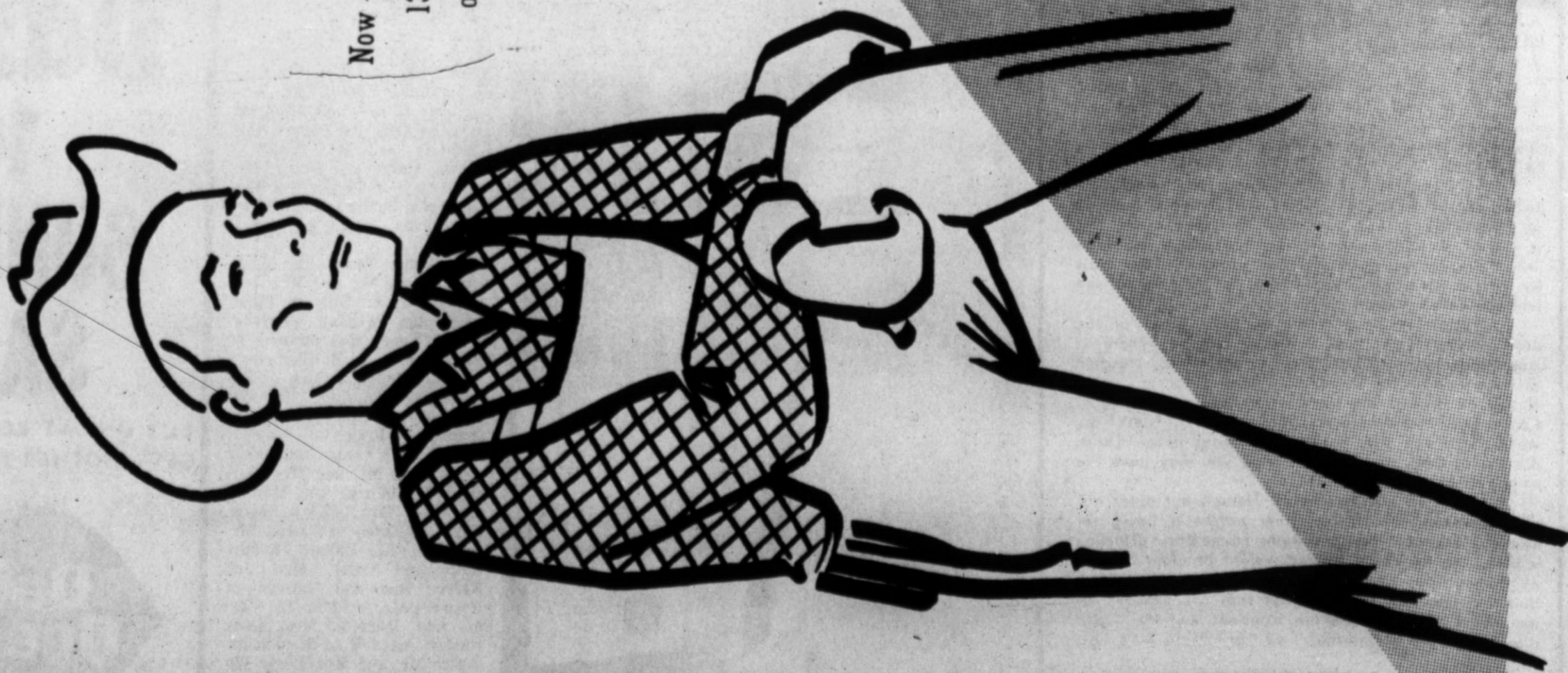
# We're ready for your WHEAT and BARLEY!

Whether you want to store your grain or sell it, you'll find that we're ready to take care of your needs at PITMAN GRAIN COMPANY'S six convenient locations.

No need to haul your grain all over the country . . . . . PITMAN GRAIN COMPANY has a convenient location near you, with friendly, qualified personnel ready to serve you. We always appreciate your business at PITMAN GRAIN COMPANY.

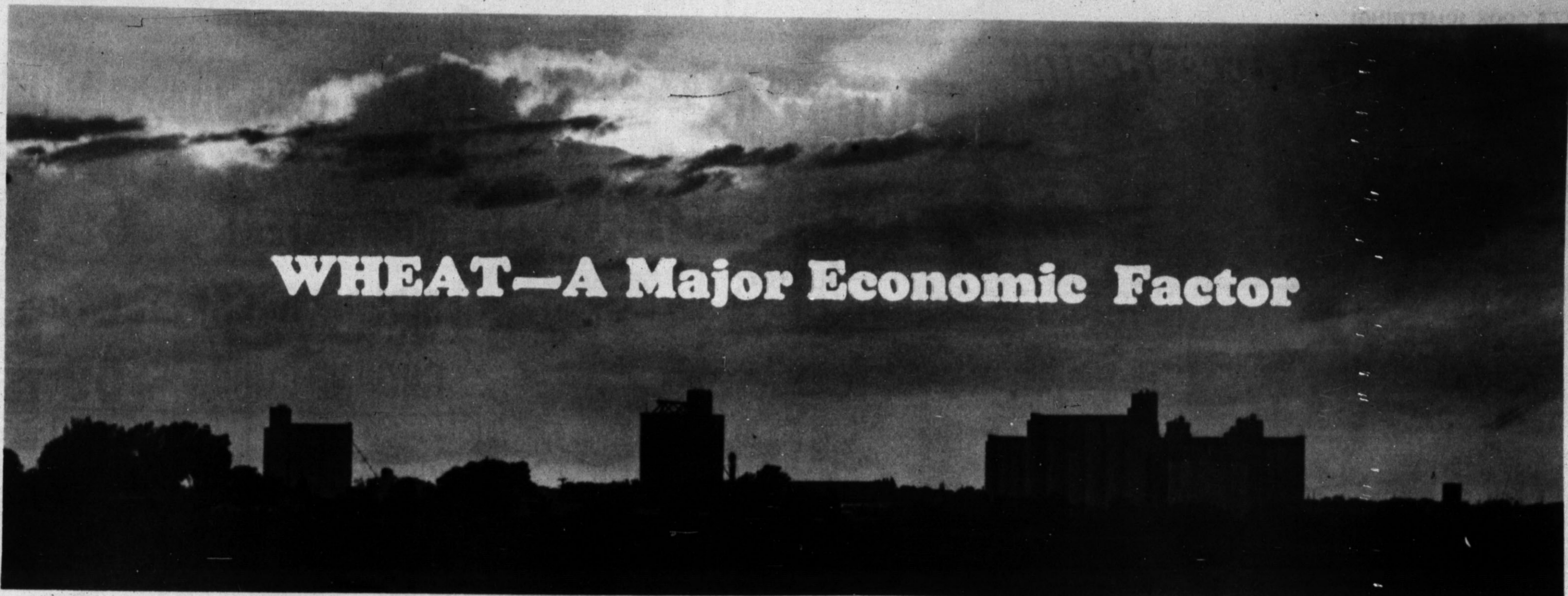
- Simms
- Westway
- Milo Center
- Summerfield
- Hereford

Now - A New Location  
13 Miles N.W.  
on FM - 1057



We Really  
Appreciate Your  
Business

# PITMAN GRAIN CO.



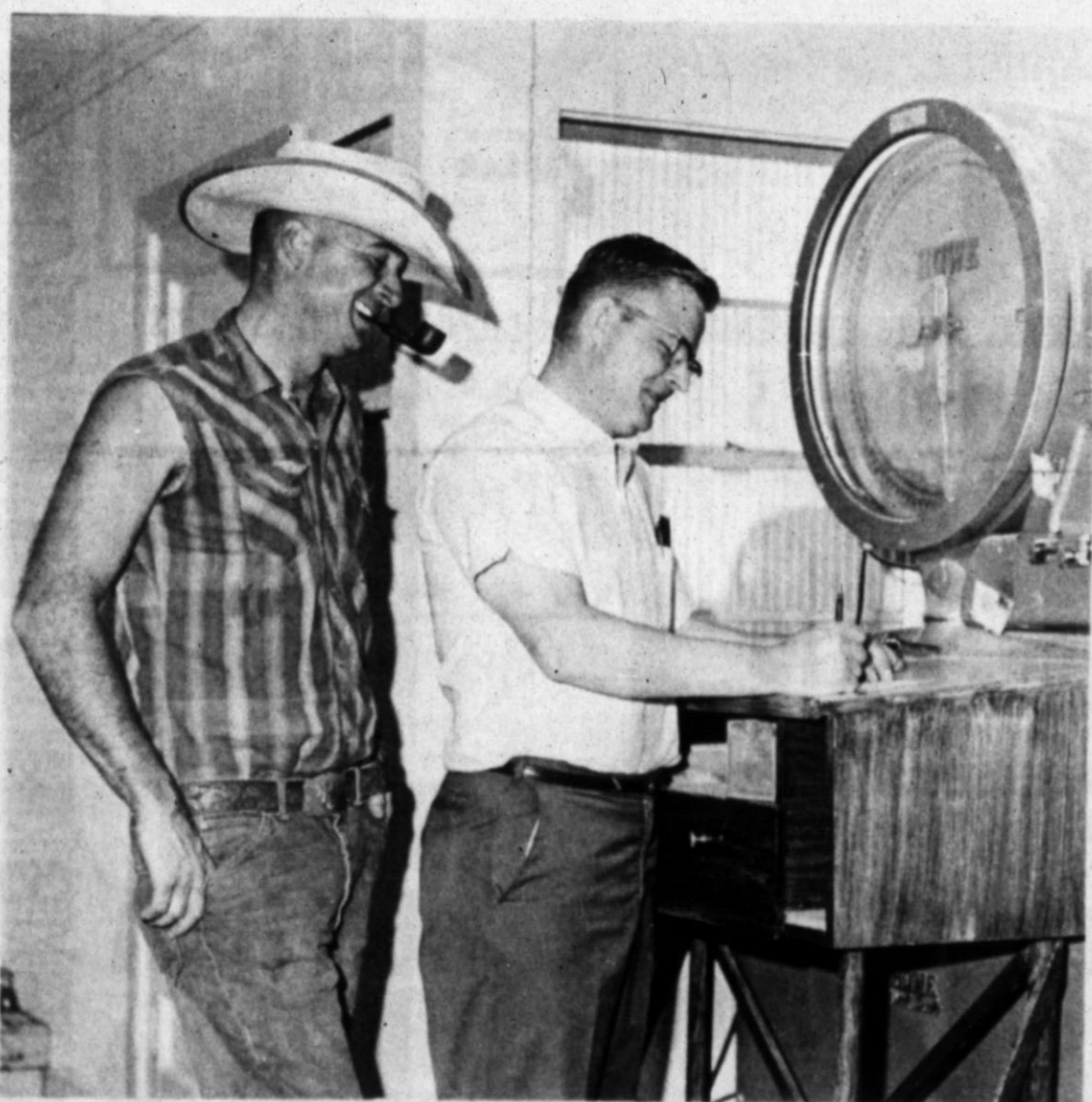
# WHEAT—A Major Economic Factor

## The Hereford Brand

HEREFORD, TEXAS 79045, THURSDAY, JUNE 16, 1966

### INVESTMENT NOT SMALL

## Irrigation Needs Capital Combines Rolling



**ALL SMILES** — Carl Strafuss looks over the shoulder of Joe Artho, manager of Hereford Grain Corp., as the moisture content of 11.80 is recorded. This first load of

Looking over yield records of wheat in Deaf Smith County, it is quite evident that irrigated wheat really steals the show as far as production is concerned. Heavy yields, many over 60 bushels per acre, are the rule rather than the exception. For a dryland crop, an average yield probably wouldn't run much over 14 bushels to the acre. What are the differences in expenses on the two different farms? Dryland farming is profitable in this country, so what advantage does irrigation give to the farmer who is interested mainly in making a good living?

Getting started on an irrigated farm can take considerable amounts of capital, depending on just what land is available. In this area, a person can pay anywhere from \$300 to \$1,000 for just one acre of irrigated land, depending on the amount of water available and the improvements on the land. Cash expenses added onto capital outlays make irrigated farming a pretty expensive business; cash expenses on an acre of irrigated wheat can run pretty high, probably in the neighborhood of \$40, when a farmer waters the crop four times — one preplant soaking and another three after the crop is in the ground.

Fertilizer is a major item in the budget of the irrigation farmer, who may put somewhere in the neighborhood of 120 pounds of nitrogen on an acre before he sows the wheat. Interest, depreciation and labor can possibly add up to something like \$15, making total expense for just one acre of irrigated wheat amounting to about \$55.

Figuring 55 bushels to the acre at \$1.70 a farmer can bring home \$93.50 before he pays his bills. After subtracting cash expenses, he comes out with almost \$55 — a real tidy sum. The cash expenses would include seed, poison, fertilizer, tractor and machinery expense, irrigation costs, combining, hauling and haul insurance. (Statistics from agricultural experiment station estimates.)

But take a look at some of the non-cash and capital expenses and a person will marvel at how an irrigation farmer can get started in his business. Just getting the land paid for can delegate irrigated farming to the man who is making his operations "big business." He has to figure his interest expenses, depreciation expenses on farm machinery and other equipment, and labor. Farm buildings taxes, insurance, etc. all take their toll as the farmer starts handing out the \$93.50, dollar by dollar.

The water really makes the difference; the income and expenses scale all the way down in proportion to the amount of water used on the land; farmers in this area often water their wheat crop as many as three or four times after they have planted to insure greater yields; with three post-planting waterings, a farmer just about

has to make at least 39-40 bushels out of his crop just to break even; a real contrast to the dryland man with his 10-bushel yields.

Dryland farming doesn't require quite as much in capital outlay in this part of the country where such land is available at prices in the neighborhood of \$100-\$150 to the acre. Expenses to get an acre of wheat up and cut don't eat quite as big a percentage of the gross product, compared to the farmer who has given his wheat a total of four waterings.

If a dryland farmer can get 14 bushels out of his crop, he's done pretty well. Cash expenses, including seed, operation of machinery, fencing, combining, hauling and hail insurance, amount to just about \$5 to the acre; after depreciation, interest and labor, he may come out of the deal with just about \$17 in his pocket. A dryland farm, on the average, covers many more acres than an irrigated plot, and can become pretty big business for the farmer who plans for the good years and has learned how to weather the bad, slim ones. Conservation becomes a big factor for him as he learns to take advantage of every drop of rain that might fall in this area once considered a part of the "Great American Desert."

After a year like this one, folks might be tempted to think it has become a part of that desert for sure. But the drylanders will weather it like the other bad ones, and hope for a change in the weather come next year. Their profits amount to some 70 per cent of their gross income, compared to 42 per cent for the irrigation farmer.

Another facet of farm management is coming into view as



**MAKES ESTIMATE** — How much wheat will a bin hold? Area elevators, with an estimated capacity of 23-25 million bushels are ready and waiting. An elevator employe atop one of Hereford's towering concrete structures looks into a bin.

more and more business and "book work" is involved in farming, says Deaf Smith County Agriculture Agent Justin McBride. In diversified farming such as that found on the irrigated farms in the area surrounding Hereford, one crop may technically cost less to raise just judging by the amount of time and expense associated with management. McBride points out that this realization may change plans for some farmers as they consider their long-range farming plans.

Dryland farming in this area holds rewards for the patient worker, who can wait out the dry years and hope for the best. To the irrigation farmer, it takes a lot more to get started in the business, but once he's on top this country holds great rewards with its river of water. Wheat looks good on the irrigated fields, and looks pretty bad on the dryland. This year has been one of the driest in quite a while; it won't stay this way. Just ask a dryland farmer who's been around long enough to know.

### Strafuss Is First

A good irrigated wheat crop and what might be called a "mediocre" dryland crop started on its way to the market this week as trucks and combines rolled into the fields for the harvest at the end of what has been one of the driest years on record.

Irrigation farmers are combining an average to good crop, with yields expected anywhere from 35 to 60 bushels; the harvest will be well underway towards the end of this week and should be finished up by the first of the month, elevator spokesmen have said.

First wheat received in Hereford elevators was from the L. J. Strafuss & Son farm; 15 miles north of Hereford. The first load arrived at the Hereford Grain Corp. on Dairy Road Monday evening, and had a moisture content of 11.80; the yield on the first wheat harvested was 35 bushels per acre.

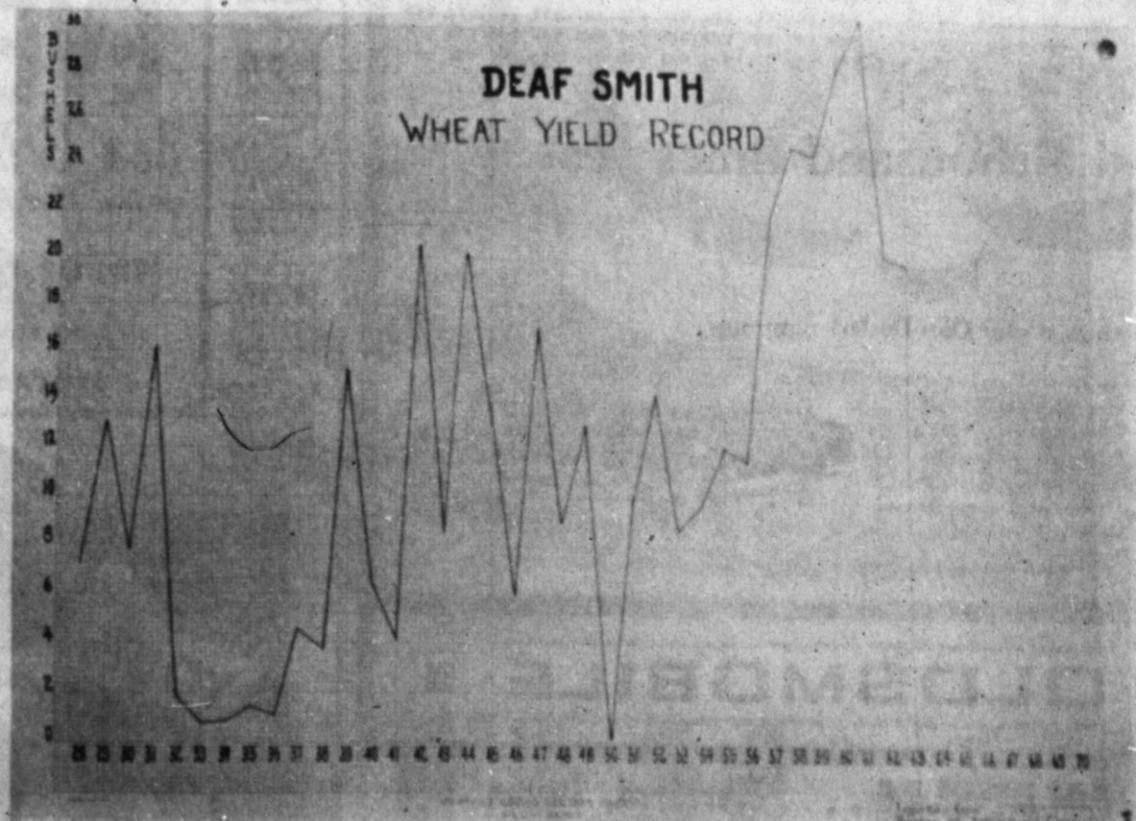
To the south in Parmer County, grain trucks began trickling in this week as they brought in the first loads. There is some doubt as to the extent of the frost damage received in that area some three or four weeks ago, with some patches receiving hail damage besides. Otherwise, most farmers in the Friona area didn't have hail damage amounting to more than about five per cent. Wheat acreage in Parmer County is down somewhat from the figure in that area a year ago, 352,000 acres.

Some 25,000 acres of wheat was diverted in Deaf Smith County this year, leaving 131,000 for harvest. The dryland wheat that is being cut will probably amount to not more than five or six bushels to the acre.

The irrigated crop "looks good," said one elevator spokesman, who predicted an "average" yield this year.



**DRYLAND YIELDS** — One of the Panhandle's driest years sees wheat yields good only in irrigated sections of the county. Fields such as the above do not disturb dry-land farmers unduly because in their planning, they know some years will be like this one.



### County Storage Estimate Made

Even though wheat has had to relinquish its position as king among Deaf Smith County crops, it still maintains an important role in the community harvest picture.

Storage for grain is estimated between 22 and 24 million bushels in the county alone.

Exact amount of storage available cannot be pinpointed because many farms have their own units.

Commercial storage ranges near the 23 million point with storage facilities east of town topping with an estimated 9 million bushel capacity.

Many elevators maintain pick-up stations that hold several million bushels when considered together.

# Newcomer Gives Recipe



Mrs. Graham Jarrell  
new pastor's wife

By SUE COLEMAN  
Women's Editor

Previous homes of Mrs. Graham Jarrell, wife of the new minister of Greenwood Baptist Church, were in far eastern states except for a few months in Amarillo which convinced the Jarrells that they like this plains country.

**BORN IN WEST** Virginia, she went with her family to neighboring Virginia while she was a schoolgirl, then after her marriage which climaxed a high school romance, she lived several years in Florida.

Her husband became a minister some 10 years ago while they were living in Florida, and served a church at Lakeland while he was studying. The family moved here from Springfield, Mo., where Rev. Jarrell was in school and Mrs. Jarrell also attended the Baptist Bible College part of the time.

Moving to different sections of the nation has been a rewarding experience rather than a hardship, Mrs. Jarrell believes.

**"EVEN THE CHILDREN,** whether or not they were in school when we moved, have adjusted well to new homes," she says.

They are happily settled in the big house at 1101 Union bought as a parsonage. Their furniture does not entirely fill the spacious rooms, but Mrs. Jarrell has arranged it for pre-

sent convenience and plans to make additions as she decides just what is needed.

She likes the space and the yard with its shade trees which gives the children a good place to play. Work on the lawn is one of the current family projects.

The children include four-year-old twins, Kathy and Kevin, and three older brothers, Steve, 11, Rodney, 9 and Timmy, 7.

**MRS. JARRELL AIDS HER** husband in his work as pastor of the church, especially with visits. She has had special training in work with visual aids for Sunday School and other church use, and is now teaching leaders of children's classes to make flannelgraphs and other illustrative material.

Sewing is her hobby; she makes clothing for herself and for her daughter. Also, since boy-and-girl twin outfits are not easily found, she sews for both twins when she wants to dress them as a pair.

Housekeeping duties she enjoys, but she says she has had to learn to like cooking because her family all has hearty appetites. She prefers to work with new recipes and try something different.

In that category is her recipe for baked lasagne, made with packaged lasagne with some extra touches for a special Italian-style meal-in-one-dish.

## BAKED LASAGNE

Two 8-ounce packages lasagne  
1 lb. Mozzarella cheese, grat-

ed  
Two 12-oz. cartons cottage cheese, drained, or Ricotta cheese (optional).

1 cup grated Parmesan cheese  
Italian spaghetti sauce (re-

cipe below)  
Cook the lasagne as directed on package. Drain and rinse with warm water. In an oblong baking pan or glass baking dish put a light layer of the sauce, then a layer each of lasagne, Parmesan cheese, Ricotta cheese if desired and then Mozzarella cheese.

Put in another layer of all ingredients, then a third if any remains. Top with remaining Mozzarella cheese and bake in 325-degree oven until cheese melts. Serve hot.

Cut in squares and take it up with a pancake turner. This amount serves six to eight and makes a delicious meal with tossed salad and French bread with garlic butter.

## ITALIAN SAUCE

6 tbs. olive oil  
1 small onion, chopped  
2 small cloves of garlic, chop-

ped, or 1 tsp. powdered garlic.  
2 cans tomato paste and 2 cans water  
2 No. 2½ cans tomatoes  
2 tsp. oregano  
2 or 3 bay leaves  
1 tsp. sugar  
Salt and pepper to taste  
1 lb. ground beef.

Cook ingredients together to blend flavors.

## Local Boy Gets Honor

Rev. Norbert Kinen, O. S. B., Headmaster of the Abbey School Canon City, Colorado, announced today that Michael Engler, son of Mrs. and Mrs. Paul F. Engler, Hereford, has been elected to membership in the Golden Key Society, an academic honor society.

Michael completed his freshman year this month. The Abbey School is a private boarding school for 250 young men maintained by the Benedictine Monks of Holy Cross Abbey. Michael ranked sixth in a freshman class of 67.

Membership in the Golden Key Society, the honor society of the Abbey School, is determined by the faculty of the school. A student must gain an A-average for one semester before he becomes eligible for membership, and must have excellent character references.

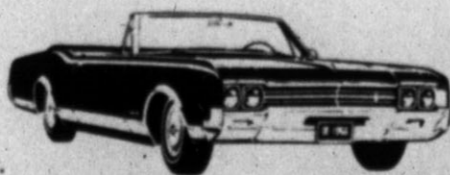
## Typewriter Ribbons THE INK SPOT



yes! yes! a thousand times yes!

You can get summertime savings at your Olds Dealer's right now!

Oldsmobile's saving season is in full swing! And every day, new owners by the thousands are Rocketing into an Olds-filled summer of driving fun! Get on over to your Olds Dealer's and test drive the Olds you like best. Discover how much Oldsmobile cares about the things you care about. Your comfort. Your safety. Your driving satisfaction.



See your nearest Olds Dealer... the man who has everything for you!

**STEP OUT FRONT**  
...in a Rocket Action Car!  
**OLDSMOBILE**  
GREAT TIME TO GO WHERE THE ACTION IS... SEE YOUR NEAREST OLDSMOBILE QUALITY DEALER NOW!

**ORSBORN CHEVROLET-OLDS . . . Hereford, Texas**

# FOOD FOR FATHER PAY LESS for the BEST HERE

## T-BONE STEAK

USDA CHOICE

**\$1.09** Lb.

USDA Choice

## ROUND STEAK

Lb. **89c**

USDA Choice

## SIRLOIN STEAK

Lb. **98c**

Fresh

## GROUND CHUCK

Lb. **69c**

CLOVERLAKE

## ICE CREAM

**69c** 1/2 GALLON

Ham Salad, Chicken Salad or Pimento Cheese

## SANDWICHES

Saturday Only **10c**

SHURFINE FLOUR 10-Lb. Bag **79c**

PARKAY OLEO 1-Lb. Carton **27c**

CRISCO 3-Lb. Can **71c**

MIRACLE WHIP Quart Jar **49c**

SHURFINE TEA 1/4-Lb. Pkg. **29c**

SHURFINE COFFEE 1-Lb. **69c**

TIDE

GIANT BOX **83c**

BOLD

GIANT BOX **73c**

Joy Liquid

QUART BOTTLE **69c**

ZEST

2 BATH BARS **47c**

OXYDOL

GIANT BOX **85c**

IVORY

4 PERSONAL BARS **33c**

COMET

LARGE CAN **25c**

SALVO

GIANT BOX **83c**

Gulf Aerosol

Bug Bomb Regular 98c **69c**

Gulf Charcoal Lighter **27c**

Styrofoam

Ice Chest 30 Qt. Capacity **79c**

Chocks Chewable

Vitamins Bottle of 100 **\$1.99**

**FOLGER'S COFFEE**

3-Lb. Can **\$2.19**

GREEN ONIONS

BUNCH **5c**

LEMONS fresh & juicy Lb. **17c**

APRICOTS honey-sweet Lb. **29c**

BANANAS golden 2 Lbs. **25c**

**BRAND NEW IDEA FROM FROM**

**GREEN STAMPS**

YOURS FOR ONLY 18% S&H BOOKS

KAY ELECTRIC GUITAR. Handsome hardwood body topped with exclusive THIN-LITE neck with adjustable truss rod. Produces a true, "solid" sound.

SEE IT IN THE NEW 70th Anniversary **S&H IDEABOOK**

SPECIALS GOOD THURSDAY, FRIDAY & SATURDAY, JUNE 16, 17 & 18, 1966

**FREE-FREE-FREE**

**OVER 5-MILLION (5,000,000) STAMPS**

**EVERYONE WINS!!**

Be a **GRAND PRIZE** winner! IN TAYLOR & SONS **GRAND PRIZE GIVEAWAY**

get your "NEW ROUND" grand prize punch card TODAY!

**WIN UP TO 25,000 STAMPS ABSOLUTELY FREE**

GET YOUR CARD TODAY WHEN SHOPPING TAYLOR & SONS

**-EVERY CARD IS A WINNER- GET COMPLETE DETAILS**

**TAYLOR & SONS FOODS**

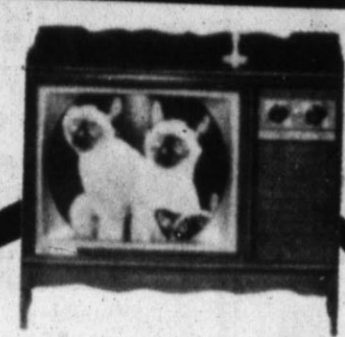
LOW, LOW EVERYDAY SHELF PRICES PLUS S & H GREEN STAMPS

YOUR HOME TOWN BOYS

CASH AND SAVE



# TIGER A-GO-GO



Come in and register for  
**21" CATALINA  
 COLOR TV**  
 to be given away free!  
 No purchase necessary —  
 No obligation!



stock No. 53  
**BONNEVILLE  
 4-DOOR**  
 • Push Button Radio • Turbo-Hydromatic  
 • Custom Foam Cushions • Power Steering  
 • Mirror Group • Power Brakes  
 • Custom Seat Belts • Tilting Steering Wheel  
 • Tinted Glass • Whitewall Tires  
 • Air Conditioning  
 NOW  
**\$3759<sup>00</sup>**

**3  
 BIG DAYS!**  
 AT  
**HI-WAY PONTIAC**  
 600 W. 1st.  
**THURSDAY-FRIDAY**  
 and  
**SATURDAY**



EXECUTIVE CAR!  
**CATALINA  
 4-DOOR**  
 • Power Steering • Hydromatic  
 • Power Brakes • Fender Skirts  
 • Decor Group • Air Conditioning  
 • Custom Foam Cushions • Tinted Glass  
 • Custom Seat Belts • Whitewall Tires  
 • Electric Clock  
 NOW  
**\$3199<sup>00</sup>**

Come in and  
 register for  
**AM/FM RADIO**  
 to be given away free!  
 No purchase necessary —  
 No obligation!



stock No. 111  
**TEMPEST  
 2-DOOR SPORT COUPE**  
 • Push Button Radio • Whitewall Tires  
 • Tinted Windshield • Carpet  
 NOW  
**\$2199<sup>00</sup>**

EXECUTIVE CAR!  
**GTO**  
 2-DOOR HARD-TOP  
 • HD Springs & Shocks • Tinted Glass  
 • Floor Mats • Push Button Radio  
 • Transistor Ignition • Rear Seat Speaker  
 • Automatic Transmission • Door Edge Guards  
 • Custom Steering Wheel • Custom Seat Belts  
 • HD Fan & Clutch • Performance Gauges  
 • Rally Wheels  
 NOW  
**\$2795<sup>00</sup>**

**FREE**  
 2-Lb. Bag  
**HOLLY  
 SUGAR**  
 to each gal  
 who brings  
 her sweetheart (boyfriend  
 or husband) to our sales  
 lot during this 3-day,  
 sales spectacular!




## HI-WAY PONTIAC-GMC

600 WEST FIRST      HEREFORD, TEXAS      EM 4-0501

# FOR GOD SO LOVED THE WORLD

**First Methodist Church**  
 Rev. Herschel L. Thurston  
 Pastor  
 501 North Main

**Wesley Methodist Church**  
 Rev. Noah Arnpriester, Pastor  
 410 Irving

**Bippus Community Church**  
 Eugene L. Nangle each first and third Sunday and R. D. Evans each second and fourth Sunday.

**Church Of Jesus Christ of Latter Day Saints (Mormon)**  
 Country Club Drive

**Kingdom Hall Of Jehovah's Witnesses**  
 319 Ave. I

**Assembly Of God Church**  
 Rev. V. W. Marcontell, Pastor  
 Union and Ave. G

**Immanuel Lutheran Church**  
 Wm. Remmert, Vacancy Pastor  
 Park Ave. and B Street

**The Church Of God In Christ**  
 Rev. Calvin Hodge, Pastor  
 115 West Norton

**Seventh Day Adventist Church**  
 Pastor - Elder J. H. Turner  
 West Park Addition

**Mission De San Jose**  
 Labor Camp

**Church of the Nazarene**  
 Rev. K. Dwight Southworth  
 Pastor  
 16th & Blackfoot

**Grace Gospel Church**  
 Rev. H. V. Fields, Pastor  
 Thirteenth and Avenue K

**St. Thomas' Episcopal Church**  
 Rev. S. P. Hackley, Vicar  
 Harrison Highway

**St. Anthony's Roman Catholic Church**  
 Father Angelus, Pastor  
 Harrison Highway at 25 Mile Ave.

**First Presbyterian Church**  
 Rev. Russell Wingert, Pastor  
 610 Lee Street

**First Christian Church**  
 Rev. Eugene Brink  
 Pastor  
 West Park Avenue

**Dawn Baptist Church**  
 Eugene Suttle, Pastor

**First Baptist Church**  
 Rev. B. L. Davis, Pastor  
 Fifth and Main Streets

**Frio Baptist Church**  
 Rev. Samuel B. Ogan, Pastor  
 Frio Community

**Avenue Baptist Church**  
 Ronald A. Harpster, Pastor  
 130 N. 25 Mile Ave.

**Mt. Sinai Baptist Church**  
 H. B. Whitten, Pastor  
 302 Knight Street

**Summerfield Baptist Church**  
 Rev. James Arnold, Pastor

**Calvary Baptist Church**  
 Rev. Clarence F. Powell  
 Pastor  
 205 E. Sixth Street

**Westway Baptist Church**  
 Rev. James G. Martin

**Temple Baptist Church**  
 Rev. Tommy Phelps Pastor  
 Forrest Ave. and Ave. K

**Greenwood Baptist Church**  
 Independent & Fundamental  
 Pastor - Rev. Graham Jarrell  
 Moreman Dr. and Greenwood

**Iglesia Metodista San Pablo**  
 Rev. Gilbert Diaz  
 Pastor  
 223 Kibbe Street

**Thompson Memorial Mexican Baptist Mission**  
 Herman V. Martinez  
 Ministro  
 215 Norton Street

**San Antonio A La Iglesia**  
 North 25 Mile Avenue and Highway

**Templo el Calvario Assamblea de Dios**  
 Pastor, Martin Musquiz  
 Calle Ave. H & 13th

**La Iglesia De Cristo**  
 Sunset and Plains Ave.

**Central Church Of Christ**  
 L. E. Fooks, Minister  
 148 Sunset Dr.

**Park Ave. Church Of Christ**  
 On Harrison Highway

**Baptist Mission B.M.A.**  
 Old Rock Bldg. V.F.W. Park  
 Missionary Pastor,  
 J. H. McWilliams



## Father's Day

In the memory of every child is enshrined the thoughtful and devoted, self-sacrificing, happy comradeship of a GOOD FATHER. It doesn't make any difference what your trade is, you are all the FATHER your child knows. Dad doesn't ask for a special day but let's give him one... pour on the attention and season it with tenderness. Surprise him! Catch him with the guards of age and dignity down. Let him be the center of all your plans on this one big day... Father's Day. He may be gruff, and steady, and firm but he is an easy victim of love's attack. An x-ray picture of his heart would reveal true concern you never dreamed could be there. Take him to church this Father's Day. Gladden his heart this one day by making all your plans his plans.

**YOU IN THE CHURCH THE CHURCH IN YOU**

Character is a by-product of the church. It is here that young and old alike are showered with benedictions that fortify and influence for a better citizenship and a stronger democracy. In the church the ministerial are molding religious character. Statesmen today declare that the church alone can furnish leadership to handle the affairs of state in these perilous times. Then we with our children should go to the church of our choice on Sunday. "You in the Church and the Church in you" form a combination for good. Be a regular "CHURCHGOER" and a daily BIBLE READER.

C. WILLIAMS NEWSPAPER FEATURES  
 Fort Worth, Texas

These Hereford Business Firms Make This Page Possible in the Interest of a Christian Community. Go to Church Sunday.

**HEREFORD INSURANCE AGENCY**  
 323 N. Sampson

**KELLEY ELECTRIC**

**McRIGHT GARAGE & SUPPLY**  
 Mr. and Mrs. A. N. McRight

**FIRST NATIONAL BANK**  
 Virgil Hennen

**ROCKWELL BROS. & CO.**  
 D. R. Vandever

**BIG T PUMP CO., INC.**  
 Hilrey and Leroy Aven

**HEREFORD GRAIN CORP.**  
 Joe Artho, Mgr.

**HEREFORD LAUNDRY & DRY CLEANERS**  
 Ernest Kendall

**BUDGET FINANCE OF HEREFORD, INC.**

**KINSEY OSBORN MOTORS**  
 D. C. Kinsey Glen Osborn

**PIGGLY WIGGLY**  
 Mr. and Mrs. Gaylord Newell

**DAVIS IMPLEMENT CO.**  
 W. L. Davis, Jr.

**MASTER CLEANERS**  
 Mr. and Mrs. C. D. Fitzgerald

**CITY DRUG STORE**  
 Mr. and Mrs. Kenneth Coker

**CAISON HOUSE**  
 Mr. and Mrs. G. D. Caison

**HEREFORD STATE BANK**  
 Russell E. Carver, Pres.

**WESTERN WRECKING**  
 Anson A. and June Dearing

**CONSUMERS' FUEL ASS'N.**

**THE INK SPOT, INC.**

**HI-WAY PONTIAC, INC.**  
 605 S. Main  
 J. L. Marcum

**PHILLIPS AND LAWRENCE**

**HI-PLAINS SAVINGS AND LOAN ASSOCIATION**

**BRYANT BROS. PIPELINE**

**HEREFORD TEXAS FEDERAL CREDIT UNION**  
 Mrs. Dyalitha Benson

**ED SKYPALA**  
 Your Borden's Distributor

**GILLILLAND FUNERAL HOME**  
 Marlin Gilliland

**PITMAN GRAIN CO.**

**ROGERS DRUG**  
 Mr. and Mrs. Grady Rogers

**GWYNNE OWEN**

**LOERWALD BROS.**  
 Ed, George, Gene and Harold Loerwald

**FARMERS' DRIVE IN**  
 Troy Moore

**SUIT'S AUTO SUPPLY**

**ORSBORN - CHEVROLET OLDSMOBILE**  
 Your Chevrolet-Oldsmobile Dealer

**BOYD MACHINE & SUPPLY**  
 Mr. and Mrs. James J. Boyd





### Voice-Piano Recital Is Presented

A joint recital by Rebecca Hickman, piano pupil of Mrs. Joe Hacker, and Terri Carter, who studies voice with Mrs. Frances Parker, was presented Saturday evening in the Hacker home for family members and friends of the two girls.

Refreshments were served after the program to guests who heard a program which varied from selections of the early classic period to current musical show airs. Rebecca is the daughter of Mr. and Mrs. Robert Hickman, Terri of Mr. and Mrs. Doc Carter.

The piano student played Minuet and Bourree (Bach), Clementi's Vivace, a Polonaise by Mozart, a Haydn Scherzo, Allegro non Troppo (Burlitt), Fur Elise (Beethoven) and modern pieces, Dreams (Bloch), My Mother Used to Lullaby (Villa-Lobos) and Dancing Twins (Kabelvsky.)

Terri's songs included Home-ly Doll (Rosen), Wobblin' Goblin (Pascal), Moon Marketing (Weaver), Going on Seventeen, Edelweiss, and Climb Every Mountain (Rodgers) Go Way From My Window (Niles) and Morning Wind (Branscombe.)

Their duo piano number was especially interesting because it was the first time either had tried playing a two-piano arrangement. Judging by audience reaction, it shouldn't be the last time they play together. They just might become the successors to Ferrante and Teicher.

OF COURSE YOU'VE given a book of trading stamps for Brother Chrys' bus? If you haven't gotten around to it yet, don't let yourself forget. You no doubt know about his plan to collect enough stamps, 3200 books in all, to buy a new bus for use at St. Joseph's Mission.

It takes quite a bit of collecting to gather that many stamp books, and it is an ambitious project the bouncy lay brother has undertaken. Big thinking like that deserves support, and the mission surely needs a new bus. If everybody in Hereford who saves stamps would give just one book, it would be more than enough.

And here's another suggestion: If you have assorted odd stamp or pieces of books of kinds you know you'll never collect for an entire book, or if you have stamps from another city of a kind not given here, round them up and put them in one of the boxes at the banks for Father Chrys. He will be happy to separate, organize and trade them.

More than 10,000 board feet of lumber are used in the construction of the average home, according to the Texas Forestry Association.

### ANTELOPE COUNT IN PROGRESS

MARFA, June — The annual Trans-Pecos antelope census is

now underway by personnel of the Texas Parks and Wildlife Department. Jack Parsons, wildlife supervisor of Region 1, said the job would not be completed until next month.

Antelope numbers have fluctuated since 1963 with a low population of 4,963 head recorded in the spring of 1964.

In 1965, despite a severe die-off in the Marfa Flat area, the pronghorns bounced back to a population of 6,259 head.

This was attributed to improved range conditions from rainfall in the eastern half of the region that resulted in a 50 percent fawn crop, compared to 35 percent fawn crop in 1964.



STORE HOURS:  
THUR. & SAT.  
9:30 a.m. - 9:00 p.m.  
Mon., Tues., Wed., Fri.  
9:30 a.m. - 6:00 p.m.

## FATHER'S DAY IS SUNDAY JUNE 19th TOWNCRAFT SHIRT SAFARI

Every kind of shirt he'll need for summer! All Towncraft—Penney's exclusive brand. Short sleeve white dress shirts and sports shirts in fine polyester-cotton blends that are Penn-Prest . . . never need ironing

when tumble dried! Handsome wash-and-wear knits! Luxurious cotton velours! All made to Penney's exacting specifications for unexcelled quality at the price. Surprise Dad with several. COMPARE!



100% Pima cotton, stay-collar. Semi-tapered convertible cuff. White. 3.25



65% Dacron 35% cotton Penn Prest, stay collar, convertible cuff. White. 5.00



Penn-Prest Dacron®-polyester-cotton oxford: snap tab collar. White. 3.98



100% Fortrel® polyester never-iron tricort: short point collar. White. 3.98



Penn-Prest Dacron®-polyester-cotton oxford: button down collar. White. 3.98



### IS IT A FIT?

Are you big enough to wear this shirt? If it fits it's yours AT NO CHARGE, compliments of Penney's Mens Dept. Come in and try it today. It's on display in our shirt department.

our CONGRATULATIONS to JOHN DUPNIK, first person to receive his FREE SHIRT.



"Grand Vino" Company wide no. 1 in new dark shades - featuring Penn Prest. 5.00



Penn-Prest Fortrel® polyester-combed cotton plaid: assorted tones. 3.98



Ban-Lon 100% nylon knit placket collar. Solid tones.

### JUST SAY CHARGE IT!



'Towncraft Plus'. Luxurious year-around weight wool worsted and silk blend suit is handsome and then some . . . tailored to perfection with quality features: 2-button with the new shorter coat, smart side vents, custom-look 1/4-inch edge stitching. Trim plain front trousers. Regal sharkskin weaves in solids, fancies or new iridescents. Try one on. Discover the wealth of good looks 'Towncraft Plus' adds to your wardrobe . . . and at Penney-low low price. Compare \$65



PENN-PREST DACRON®-COTTON SHORT PAJAMAS 'Towncraft Plus' Dacron® polyester-combed cotton pajamas never need ironing when tumble dried! 3.98



CASUALS FOR DAD! 100% cotton duck uppers, crepe rubber sole Elastic gore assures good fit. Sizes 6 1/2 - 12 B & D Also Boys 3 1/2 to 6.

PENN PREST CASUALS 50% Fortrel 50% cotton plain front, cuffed bottoms — belt loops. Huge assortment of colors — 5.98

## Small Talk

By SUE COLEMAN, Women's Editor

Golden wedding anniversaries are not so unusual nowadays, when more people are living more years, but it isn't common for three couples here to be celebrating the fiftieth year of their marriage on the same weekend.

ALL THREE WILL hold open house — separately, of course — inviting their friends to call without the formality of a written invitation.

First to celebrate will be the J. B. Harlins, whose children will be hosts for a reception in the Odd Fellows Hall from 4 to 6 p. m. Friday.

Their anniversary will not actually occur until this fall, but they are observing it while Mrs. Harlin's family, the Owens, are holding a reunion and there will be relatives here from faraway cities.

MR. AND MRS. H. C. Baird

Dr. Milton C. Adams  
OPTOMETRIST  
OFFICE HOURS  
Mon. - Fri. 8:30-5:00  
Saturday 8:30 - 1:00  
335 Miles EM 4-2255

## CONFIDENT COOLING



with GAS AIR CONDITIONING

For confident cooling . . . join the swing to GAS. With economical GAS Air Conditioning you can be sure your home will be comfortably cool regardless of outside heat. In addition to having the lowest operating cost, GAS Air Conditioning gives you the assurance of low maintenance since there are no moving parts in the cooling cycle to wear out. However, should the need arise, you can rely on fast, efficient service from Pioneer because they service every unit they sell. For confident cooling this summer . . . and for years to come . . . call Pioneer Natural Gas Company and get the facts about air conditioning.

JUST \$2.00 A MONTH  
Ask any GAS Company employee how you can add a charming Gas Light for nothing down and just \$2.00 a month.

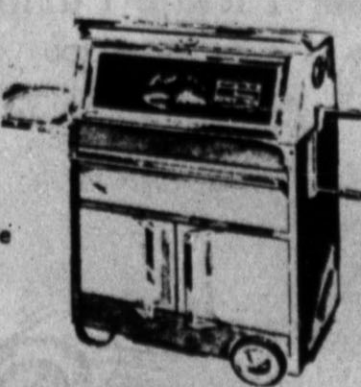
Pioneer Natural Gas Company

### LAST THREE DAYS - PRICES REDUCED! Just In Time For Father's Day!

#### FOREMOST FAMILY-SIZE SMOKER-WAGON GRILL

Reg. 32.88 **\$27.88**

- NOW
- No Down Payment - \$5 a mo.
- 310-sq. in. cooking surface
- 5 position lever
- UL listed motor
- Heavy duty spit
- Heat proof glass
- Fully enclosed body



REMEMBER . . . YOU CAN CHARGE ALL FATHER'S DAY GIFTS AT PENNEY'S SUGARLAND MALL!

#### FOREMOST 24-INCH BLAZER

Reg. 9.95 **\$7.88**

CHARGE IT!!

#### BETTER FOREMOST GRILL WITH HOOD

Reg. 14.95 **\$11.88**

#### FOREMOST 24-INCH DELUXE MOTORIZED BRAZIER WITH HOOD

Reg. 24.95 **\$19.88**

NOW

No Down Payment \$5 per mo.

- Inside hood reflector
- Built-in fire starter
- 19" high hood
- 7" high warming oven
- Wood side tray
- Heatproof glass
- . . . much more!



## Music Club Is Hostess At Post-Recital Party

A post-recital reception honoring Jerry McCathern, student musician who was presented in a program at Hereford High School Sunday afternoon, was hosted by the Music Study Club in First National Community Room.

The large group of friends

and music lovers who heard the recital was invited to meet the young piano and trumpet soloist who had presented a varied program with the aid of Nicky Osborn, second in a duo-piano selection; Jim Gardener of Amarillo, who joined McCathern for trumpet duets accom-

panied by Mrs. Joe Hacker, and members of Hereford High School Wind Ensemble with whom he played a Haydn trumpet concerto under Ben Gollhon's baton.

His piano teacher, Mrs. Ellis Coombes, a member of Music Study Club greeted guests and introduced McCathern, his parents, Mr. and Mrs. J. E. McCathern Jr., and his sister Joy.

Mrs. Bill Bradley, club president, served punch. Mrs. Bill Dameron, chairman, and Mmes.

Jesse Stanford, Lowell Sharp, Steve Clements and W. E. Dameron of the hospitality committee arranged for the party and served the refreshments.

The table, covered with lace over a pink cloth, had a center arrangement of roses in shades of pink.

McCathern was applauded in two groups of piano solos and in the first movement of Hindemith's Sonata for Trumpet and Klavier, which he played with Mrs. Hacker at the piano, in

addition to the ensemble numbers on the recital program. He is a 1966 graduate of Hereford High School.

Out-of-town relatives and friends who came for the recital and reception afterward were the soloist's great-grandmother, Mrs. F. M. McCathern of Pampa; his mother's aunt, Mrs. Sterling Parrish of Shamrock with her daughters, Janice, Ann, Vicky and Carol; his father's aunt, Mrs. Lloyd Sanderson of Portales; and friends, Mr. and

## College News About Students From This Area

Patty A. Schulte, a student at Oklahoma State Tech, Okmulgee, from Hereford, Texas is among the 1,168 enrolled in vo-

Mrs. Alvin Wilson and daughters, Darlene and Diana, of Friona.

ational-technical training during the summer trimester.

She is the daughter of Mr. and Mrs. Joe Schulte.

Oklahoma State Tech is a post-high school vocational-technical branch of Oklahoma State University.

Students learn in industrial-type shops from 131 craftsmen-instructors who are specialists and have been successful in the various fields themselves.

Office Furniture THE INK SPOT

### KAPP ELECTED

NEW YORK (AP) — David Kapp, who founded Kapp Records 13 years ago and is president of the company, has been elected president of the Record Industry Association of America.

He succeeds Goddard Lieberman, president of Columbia Records, who has been president for the past two years.

The association certifies million-selling recordings for the Gold Record awards.

# BABY HIM

## It's Father's Day!



## and Baby Your Budget too!

- CRISCO** Shortening 3 Lb. Can **69¢**
- FLOUR** Gold Medal 5 Lb. Bag **49¢**
- CHARCOAL** Energy 10 Lb. Bag **39¢**
- OLEO** Parkay Lb. Carton **4 For \$1**
- ICE CREAM** Snow King 1/2 Gallon **59¢**

Dad's a good egg so coddle him on Father's Day. Serve him all his favorite foods as only YOU can cook 'em. And while you're at it — baby your budget, too, by purchasing all the quality foods you need at COOPER'S. Our STOREWIDE LOW PRICES on everything from appetizers to desserts will give you a ROYAL FEAST for the very least. Come on over and make Dad DOUBLY GLAD — baby his palate with fine foods and his wallet with CASH SAVINGS.

**Delicatessen**

**Bar-B-Que CHICKEN**

Cooked Weight lb. **69¢**

Cream Pot Salad	pt. 49¢
Ham Salad	pt. 98¢
Cole Slaw	pt. 39¢
Baked Beans	lb. 49¢
Fruit Salad	pt. 49¢

- JUNE IS DAIRY MONTH
- COTTAGE CHEESE**  
Borden's 2 Lb. Ctn. **49¢**
  - WHIP CREAM**  
Borden's 1/2 Pt. **3 for \$1**

## STAMP

# A

## RADE

BEING PLAYED EACH WEEK!!

- Tuna** Starkist Green Label Chunk Style Flat Can 3 For **\$1**
- Salad Dressing** Shurfine Qt. Jar **39¢**
- Instant Tea** Tenderleaf **69¢**
- Cut Green Beans** Shurfine 303 Can 5 For **\$1**
- Orange Juice** Shurfine Frozen 6 Oz. Can 6 For **\$1**
- Breaded Shrimp** Blue Plate 10 Oz. Pkg. **59¢**
- Neat Hair Remover** Reg. 69¢ **49¢**
- Insect Repellant** 6-12 Spray Reg. 98¢ **67¢**
- Crest Toothpaste** Extra Large Tube 2 For **97¢**
- Lanolin Shampoo** Reg., Egg or Dandruff Reg. 99¢ **47¢**
- Rinso Detergent** Giant Box **63¢**
- Liquid Detergent** Gentle Pink 32 oz. **29¢**
- Pledge Furniture Polish** 7 oz. Aerosol **69¢**

- BUTTERMILK** 1/2 Gal. **39¢**

### Farm Fresh PRODUCE

- SQUASH** Texas Yellow Lb. **10¢**
- CABBAGE** Texas New Crop Green Lb. **5¢**
- ONIONS** Texas Yellow Lb. **7 1/2¢**

**Quality MEATS**

## SIRLOIN STEAK

U.S.D.A. Choice Lb. **89¢**

- PURE PORK SAUSAGE** Made In Our Ranch Kitchen Lb. **59¢**
- KRAFT VELVEETA CHEESE** 2 Lb. Box **98¢**
- LONGHORN FRANKS** All Meat Lb. **59¢**
- GROUND BEEF PATTIES** Fresh Lean Pkg. of 12 **98¢**

SHOP WHERE YOU ALWAYS RECEIVE THE RED CARPET TREATMENT!!



- PEANUT BUTTER** Big Top 18 oz. Jar **49¢**

- COFFEE** Maryland Club Lb. Can **73¢**

# COOPER'S MARKET

BEST MEAT IN TOWN



IT'S THAT TIME AGAIN — Summer is almost here and farmers can awake to the insistent drone of a lone spray plane in the crisp morning air. As the time for potato harvest draws closer, spray plane activity becomes accepted as part of the standard vegetable farm scene. (Staff Photo)

### Owen Descendants Are Staging Family Reunion Next Two Days

Descendants of Mr. and Mrs. Albert H. Owen, with their families, will hold a reunion here Thursday and Friday, the first get-together for the entire family in 20 years. Relatives are

still live in Hereford, as do several grandchildren and great-grandchildren of the couple who came to Hereford in 1912. Reunion meetings will be in the Odd Fellows Hall, where registration will begin at 2:30 p. m. Thursday. More than 70 persons registered at the last family gathering here, and more are expected this year. They include all five of the

A. H. Owens' surviving children, Mrs. George Hunter of Shawnee, Okla.; A. Hope Owen of Lubbock, T. Dee Owen of Duncan, Okla. and the two daughters who live here. Programs featuring a stunt night when each family unit is to present a part of the entertainment, devotional periods, singing and games are planned for the two days, along with time for reminiscences and informal visiting. A. Hope Owen, a Baptist minister for many years and president emeritus of Wayland Baptist College, will be master of ceremonies. Preachers and other active workers in the Baptist Church have come from the family. The late A. H. Owen served as a deacon in First Baptist Church here after he came to this county from Wise County, where he owned a general store and was postmaster. The family lived in the Wyche Community until a move to town in the 1920's. Mr. Owen operated a day service which hauled the brick used in the first street paving in Hereford, as well as that which built First Methodist Church and some business buildings here. Grandchildren of the early-day residents who live here now include members of the Manjeot, Stagner, Clark and Lawrence families, who are preparing to play host to the visitors from other cities.

Some isolated areas of loblolly and shortleaf pine are found in Bastrop, Fayette and Lavaca counties and are known as the "Lost Pines" because of their isolation from the normal pine-growing area about 100 miles to the east.

Office Furniture  
**THE INK SPOT**

### Rotarians Hear International Report At Luncheon Meeting

True international flavor was injected into this week's Rotary luncheon meeting when Leo Forrest introduced his Central and South American guests. In Hereford as a part of an inter-continent study program, the group will work each day this week with various departments of the local REA. Raul Sanchez, Puerto Varas, Chile, spoke to the group with the aid of Carlos Guetara, state department interpreter. He outlined the purpose of the interchange of managers and technicians. Methods and techniques of various co-ops are being studied with an eye to adopting some of the ideas in their won countries, Sanchez said. Sanchez stated that he was particularly happy to be in the group coming to Texas since it is one of the most talked about states in his country. Another goal of the interchange is the tightening of existing ties between North and South America, he said. Forrest reported to the club on activities of Rotarians he visited while in South America. He displayed club banners and cited some of the problems encountered by citizens in the agricultural areas of Chile where he has been working as a consultant for the past month. "Texans and Chileans are alike in several respects," Forrest said... one being that both like to exaggerate about the merits of their own country."

### Recitals Present Piano Students

A series of recitals this month has been given in First Christian Church fellowship hall as Mrs. Joe Hacker presented her piano students in programs for parents and friends. The latest was a double recital in the evening. Playing the first hour were Linda Blackburn, Linda Dickerson, Bonnie Jobe, Billee Goetsch, Monty Morton, Kathy, Susie and Jerry Roberts, Beverly, Cheryl and Jana Cole. Appearing in the second program were Rebecca Hickman, Angela Grubbs, John Nelson, Brenda Jolly, Jane Zinser, Melinda Watts, Paul Grubbs, Mary David Hicks, Layne Young, Suzanne Smith, Susie Hickman, Lisa Williamson, Cindy Cavness, Ralph Knox, Judy, Dale and Kent Hollingsworth and Shelly Hacker.

In a previous recital, pupils presented were Martha Kate Aiken, Linda Carter, Nancy Fisher, David Thomas, David Kelly, Joy McCathern, Nancy Barrett, Elizabeth and Jane Lyons, Rojean Block, Charlotte Williams, Lise, Leigh Ann and Laurie Allen.

### Lake Meredith Tagged Fish 'Fair Game' Til Labor Day

BORGER — A bounty which collective totals \$1,000 has been placed on tagged fish swimming in the waters of Lake Meredith it was announced Saturday by a spokesman for businessmen and individuals in Borger, Fritch and Sanford. The fish are left from the recent Lake Meredith Festival fishing rodeo and each one bears a tag in his mouth or gill worth \$100 to the fisherman who comes up with one of them. Judges have been named to verify all catches filed for reward. The big six pound channel catfish worth \$1,000 during the festival rodeo is not carrying a price on his head, it was explained in the announcement. Any angler who hooks one of the big tagged fish between now and Labor Day may claim his prize by exhibiting the catch at any one of the participating firms and have the fish verified by one of three judges according to E. L. (Bud)Hollar, guiding hand behind the reward project and spokesman for the participants. "WE DECIDED after the rodeo that this would be a good

way to keep fishing at Lake Meredith before the people of the region," Hollar explained. Six of the fish were "adopted" by individual firms who contributed \$100 each. These are popular Supply, Coors Beer, Budweiser Distributing Co. all of Borger; Canadian Breeze Motel, Fritch, Ole Buddy's Bait House in Sanford and Overton Construction Co., Dumas. Teaming up on a fish per each two are Lake Meredith Worm Yarn, Fritch; Fuzzy's Radiator Shop, Borger; A & B Service Station of Fritch. Other contributors to the reward fund are H&W Pharmacy, Whaley and Compton, Fritch Hardware, Matthews Gulf Service, Bob's Grocery and Market, Kites Shamrock, all of Fritch along with River Cafe and Wayne's Bait House of Sanford. Hollar said the rewards were good until midnight Labor Day. The spokesman indicated that the practice might be carried on each year, if arrangements can be made with the Lake Meredith Festival committee and other officials and interested parties.

### Fast Boats Join State Water Patrol

AUSTIN, June — The Texas Parks and Wildlife Department soon will receive delivery of fourteen patrol boats to augment the fleet now patrolling Texas lakes. The low slung, grey craft were specially designed by the Department for its share in helping enforce the new state water safety code. The boats, powered by 100 horsepower outboard motors, were made by an Austin boat manufacturer under competitive bids submitted to the State Board of Control. Each boat will bear the Department's decal in a conspicuous place and will be equipped with radio, first aid kit and rescue equipment. The Department announced, in connection with special aquatic training, that game wardens stationed along the Gulf coast have been awarded certificates of training for attending US Coast Guard Schools at Brownsville, Sabine and Galveston.

# BIG PAINT SALE

## PITTSBURGH PAINTS

**SAVE \$1.60**

**Pittsburgh Sun-Proof® Oil-Base House Paint**

• Special oils for maximum durability

Now only **\$5.98** Gal.

White and ready-mixed body colors only. Maestro and trim colors extra.

**SAVE \$1.40**

**Pittsburgh Cementhide® Rubberized Masonry Paint**

• Ideal for stucco, brick, asbestos siding, etc.

Now only **\$5.98** Gal.

White

**SAVE \$2.49**

**Pittsburgh Sun-Proof® Latex House Paint**

• Dries in 30 minutes... easy clean-up with warm water

Now only **\$6.49** Gal.

White and ready-mixed colors.

**CARL McCASLIN LUMBER COMPANY**  
A Complete Building Service  
1 Block East of the Courthouse  
Phone the Lumber Number EM 4-3434  
**PITTSBURGH PAINTS**  
keep that **JUST PAINTED** look longer

**HEREFORD, TEXAS**  
**Penneys**  
ALWAYS FIRST QUALITY  
AUTO CENTER

**CENTER HOURS: SAT. & THURS.**  
7:30 a.m. - 8:30 p.m.  
Mon., Tues., Wed. & Fri.  
7:30 a.m. - 6:00 p.m.

**FOREMOST® MILEAGEMAKER**  
24-Month Guarantee With 12-Mo. Free Replacement  
**\$16.88**

Size	Fed. Tax	and old tire.
775x14	2.20	Whitewalls \$2
825x14	2.36	extra.
735x14	1.86	

**HERE'S HOW IT WORKS**

Length of Guarantee	24-mos.
Free Replacement	12-mos.
50% Replacement Charge	13-18 mos.
75% Replacement Charge	19-24 mos.

Every Foremost tire is guaranteed against defects in material and workmanship and road hazards for the number of months stated. This guarantee covers all tire injuries with the exception of ordinary repairable punctures. If the tire fails, return it and Penney's will, at our option, 1) repair it free of charge or 2) replace it with a new tire, or give you a refund. Changing an amount based on the guaranteed months and the current exchange price including Federal Excise Tax at the time of return. This guarantee is reduced to 50% stated time period for passenger tires used commercially and is void where passenger tires are used on trucks.

**Foremost Reliant \$166**  
No down payment, \$8 a month  
• 6 ball-louver air directors  
• Close-to-driver fingertip controls  
• Quiet, twin, jet-air rotary blowers

**Foremost Custom \$189**  
No down payment, 8.50 a month  
• Instant 'chill' pre-cools car in seconds  
• 6 deluxe ball-louver air directors  
• Superb wood grain paneling

**Foremost Premium \$229**  
No down payment, \$10 a month  
• 'Chill' feature for instant cooling  
• Thermostatic car climate control  
• Slim-line wood grain paneling

**PRICES REDUCED ON OUR FINEST LUXURY SEAT COVER!**

**THRU SATURDAY ONLY!**

**PREMIUM CASTLE**  
reg. 28.88 Now **24.88**  
No down payment, \$5 a month!

Iridescent luxury in handsome cascade, bucket-seat styling. No back-battering cross seam. Smooth grained vinyl panels add the 'extra' luxury touch. Water and stain resistant too! Hurry, save thru Saturday only!

EM 4-0465  
**Drive in! Charge it! No Down Payment!**

Now... just "touch and talk"

**TOUCH-TONE® PHONES** are new... different... and so easy to use. You'll enjoy the extra convenience of pressing buttons instead of spinning a dial to make a call.

Call the telephone business office about Touch-Tone phones, or ask any telephone service man about them. Order yours today.

**Southwestern Bell**

# Here's the sale you've been asking for... Come in and stock up!

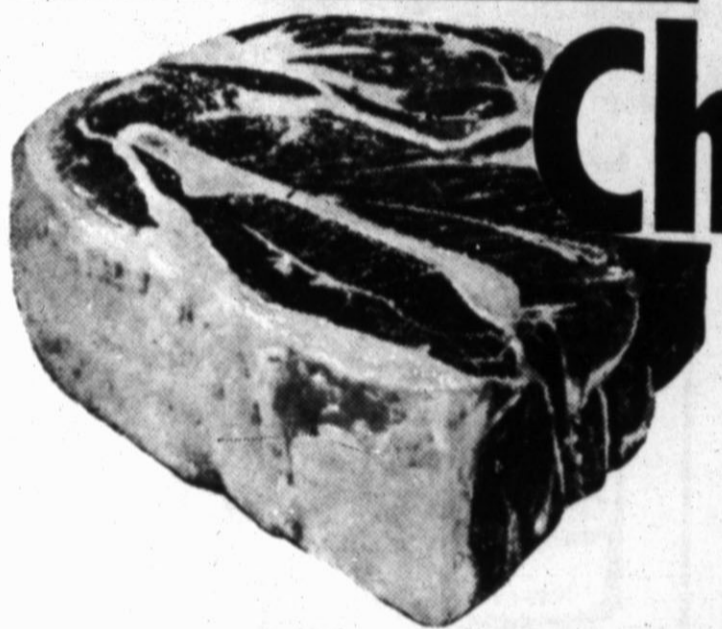


PRICES ARE GOOD THRU  
SAT., JUNE 18th AT YOUR  
SAFEWAY IN HEREFORD.

<b>FRENCH FRIES</b> Bel Air Frozen Potatoes			
5	9 oz. Pkgs.	\$1.00	Case of 24 \$3.49
<b>FROZEN WAFFLES</b> Bel Air Premium Quality			
6	5 oz. Pkgs.	\$1.00	Case of 24 \$2.59
<b>CREAM PIES</b> Bel Air Frozen - Choice of 4 Flavors			
14 oz. Pkg.	39c	Case of 6	\$1.69
<b>STRAWBERRIES</b> Scotch Treat Fresh Frozen			
10 oz. Can	29c	Case of 24	\$5.95

STOCK UP YOUR FREEZER NOW WITH THESE FROZEN FOODS!

<b>CORN</b>	Bel Air Cut Corn	5	10 oz. Pkgs.	\$1	Case of 24	\$4.98
<b>OKRA</b>	Bel Air Whole Okra	5	10 oz. Pkgs.	\$1	Case of 12	\$2.29
<b>PEAS</b>	Bel Air Green Sweet	5	10 oz. Pkgs.	\$1	Case of 24	\$3.49
<b>JUICE</b>	Bel Air Orange Juice	5	6 oz. Cans	\$1	Case of 48	\$9.48
<b>BEANS</b>	Bel Air Cut Green	5	9 oz. Pkgs.	\$1	Case of 24	\$4.98



## Chuck Roast

U. S. CHOICE HEAVY BEEF BLADE CUT CHUCK ROAST **49¢** LB.

U. S. GOOD BABY BEEF BLADE CUT CHUCK ROAST **47¢** LB.

SAVE ON THESE SPECIALS AT YOUR SAFEWAY STORE!

<b>SUGAR</b>	Holly or Imperial 5 LB. BAG	<b>49¢</b>
<b>MELLORINE</b>	Joyette 5 Flavors	<b>3 1/2 Gal \$1</b>
<b>COFFEE</b>	Folger's Maryland Club All Grinds 1 LB.	<b>73¢</b>
<b>TIDE</b>	Powdered Detergent For Your Laundry Save 14c Per Box	<b>69¢</b>
<b>FLOUR</b>	Gold Medal White Flour Save 14c 5-Lb. Bag	<b>49¢</b>

REMEMBER! SAFEWAY MEATS ARE GUARANTEED WITH A MONEY BACK OFFER!

<b>ROAST</b>	U S Choice No. 7 Cut Shoulder	<b>55¢</b>	US Good Baby Beef Shoulder	<b>53¢</b>	Manor House Stewing Hens	Grade 'A' Cut Up	lb. 39c
<b>ROAST</b>	US Choice Round Bone Roast	<b>65¢</b>	US Good Baby Beef Round Bone	<b>63¢</b>	Skinless Franks	Safeway or Wilson	lb. 59c
<b>BACON</b>	Roth Black Hawk Sliced Tray Packed 1st. Grade Bacon	<b>79¢</b>			Short Ribs	Lean Tender Beef Ribs	lb. 33c
					Sliced Bacon	Thick Sliced 2-Lb. Pkg.	\$1.59
					Breaded Shrimp	Fantail 1-Lb. Box	\$1.33
					Perch Fillets	Captain's Choice 1-Lb. Pkg.	49c
					Pork Steak	Lean and Tender Juicy Steak	59c

<b>GROUND BEEF</b>	Safeway's Dependable	<b>49c</b>
<b>LUNCH MEATS</b>	Safeway Mix or Match	<b>79c</b>

OTHER GROCERY BUYS!

French Bread	Skylark Fresh 16 oz. Loaf	29c
Fruit Drinks	Lucerne Tasty 3 Pt. Cins.	25c
Eggs	Breakfast Gem Med.	3 Doz \$1
Sugar	Holly Powdered 1 lb.	2/29c
Busy Baker Snaps	Four Kinds 2 2-lb. Pkgs.	89c
Kotex Regular	Sanitary Napkins 48 ct. Box	\$1.39

JUNE IS DAIRY MONTH!

Lucerne Milk	Homogenized Sweet 1/2 Gal. Ctn.	55c
Skim Milk	Lucerne Low Calorie 1/2 Gal. Ctn.	53c
Cottage Cheese	Lucerne Tasty Cins.	49c
Macaroni Salad	Lucerne Tasty 3 for \$1	
Cream	Lucerne Whipping 1/2 Pt.	3/\$1
Lucerne Yogurt	32 oz. Ctn.	69c

<b>VIENNAS</b>	Van Camp's Sausages 2 4 oz. Cans	<b>39c</b>
<b>VELVEETA</b>	Kraft Cheese Fine Quality Save 21c 2-Lb. Box	<b>98c</b>



## CANTALOUPE

TEXAS VINE RIPE  
**4 FOR \$1**

Hot House Grown Tomatoes	lb. 39c
Calif., Italian Sweet Red Onions	lb. 19c
A Little Goes A Long Way Garlic	Pkg. Ea. 15c
Daily Sun Pure Juice Orange Juice	Qt. Btl. 43c

Firm Fresh Heads

**LETTUCE**

Western Iceberg **2/29c**

SHOP SAFEWAY FOR YOUR DETERGENTS!

White Magic Laundry Detergent	King Size Box	89c	<b>PERMANENT</b>	LILT HOME EA.	<b>\$2.59</b>
White Magic Dishwasher Detergent	20 oz. Pkg.	\$1	<b>SHAMPOO</b>	PRELL LIQUID	Medium Size Btl. <b>59c</b>
Zippy Kosher Dill Spears	Fresh Pack 26 oz. Jar	35c	<b>CASCADE</b>	DETERGENT	20 Oz. Box <b>47c</b>

OTHER GROCERY BUYS!

Nabisco Cookies		
Oreo Cookies	2 1-lb. Pkgs.	89c
Preserves	Garden Club 18 oz. Strawberry Jars	49c
Chunk Tuna	White Label No. 1/2 Can	49c
Chunk Tuna	Green Label No. 1/2 Can	41c
Chunk Tuna	Green Label 9 1/2 oz. Can	57c
Chunk Tuna	Red Label No. 1/2 Can	47c
Instant Potatoes	Borden's Tasty 15 1/2 oz. Pkg.	59c

## REDEEM THESE COUPONS FOR 700 EXTRA GUNN BROS. STAMPS

<b>100 BONUS STAMPS</b>	3 Cans METRECAL LIQUID	<b>50 BONUS STAMPS</b>	22 oz. White Magic LIQUID DETERGENT	<b>50 BONUS STAMPS</b>	1 Gallon White Magic Bleach	<b>100 BONUS STAMPS</b>	4 Bottles Town House Catsup
<b>100 BONUS STAMPS</b>	5 Boxes Truly Fine Facial Tissue	<b>50 BONUS STAMPS</b>	10 lb. Hi Country Charcoal	<b>50 BONUS STAMPS</b>	22 oz. White Magic Spray Starch	<b>100 BONUS STAMPS</b>	12 Cans Cragmont Canned Beverage

