

Hartman's Contract Renewed

By DON RICHARDS
Brand News Editor

Hereford School lunchroom prices were raised 10 cents per student and Supt. Roy Hartman got a year's extension on his five-year contract in major action at the Board of Trustees Tuesday night.

Trustees also set April 6 as date for the school trustee election for the two places presently occupied by members Hilrey Aven and Dr. A.T. Mims. Last date for filing for the offices was set at March 7.

The hike in lunch prices was made after school officials reported the cafeterias were \$11,000 "in the red." A total of \$25,000 was reported lost in school cafeterias over the past four months.

Trustees had been contemplating the raise since before school began last August, but had delayed the action to study the effect of food price rises on the cafeteria system.

Hartman reported that almost all lunch programs in school in the area were losing "tremendous" amounts of money this year because of rising food costs to the school. He said many school boards are being forced into raising prices per student.

The price hike will become effective Feb. 1 and will raise lunch prices at the elementary level from 40 cents per student to 50 cents per student. Prices in the two junior highs and high school were raised from 50 cents per plate to 60 cents.

Trustees decided to allow teachers to continue to eat at the same price that is charged for students in the school building in which they teach. However, the board raised the price to \$1 per plate for any non-school personnel who eat in school cafeterias.

Hartman said the school is due to receive \$18,000 in refunds from the federal government to go toward the cafeteria deficit. He said this refund and the rise in prices would put the cafeteria account "back in the black" by the end of the school year in May.

THE BOARD took up Hartman's contract as the last item on the agenda and went into executive session for the

discussion. Trustees remained in the session almost an hour and a half before announcing the renewal.

Vote on the one year extension for the contract was 4-3. Majority in the vote were Board Chairman Hugh Clearman, Hilrey Aven, Dr. A.T. Mims and Bobby Veigel. Voting against were Danny Martin, Jim Arney and Ron Zimmerman.

Hartman previously had a five-year contract and the board added another year's extension to again make it five years. It is presently due to expire in 1979. The superintendent's salary was left the same at \$6,000 per year above the state minimum requirement with monthly travel expenses of \$350.

IN OTHER major action at the board Trustees appointed Larry Wartes to second term to the County Juvenile Board; approved school facility use for the Little Dribblers Program; and discussed school discipline problems

with the principals and assistant principals of Hereford High School and two junior highs.

Wartes recently completed his first two-year term to the board and told the trustees that he felt the juvenile board would "work out much better."

Deaf Smith Criminal Dist. Atty. Andy Shuval was at the board meeting and briefly discussed the juvenile position with board members. Shuval said District Judge Archie McDonald was unable to meet with the board and had asked Shuval to appear for him. McDonald is now the juvenile judge under new provisions in state law.

Wartes said he felt the juvenile board would function properly if it can quickly appoint a new juvenile officer. The post is presently vacant after Leon Gorrell resigned the position to return as a deputy under Sheriff Travis McPherson. The school finances one third of the

See TRUSTEES Page 4



73rd Year - No. 2 Hereford, Texas, Thursday, Jan. 10, 1974 24 Pages



Sunrise, Or Sunset

With the time shown at 8:47, Hereford cars driving down Main Street with their lights on and city street lights burning brightly, one might guess that the sun has just set over the city. However, the time is 8:47 a.m. in this view of downtown about five minutes before sunrise. The

new Daylight Savings Time plan which went into effect nationwide Sunday has confused many and brought complaints from people throughout the Panhandle who "don't like going to work in 'he dark.'"

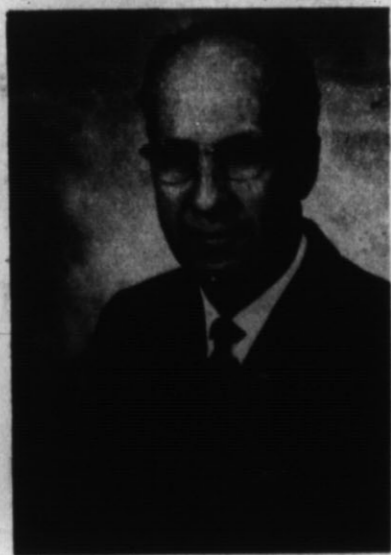
Incumbents File For Re-Election

Four incumbents filed for re-election to their offices this week to re-open the political scene in Hereford and Deaf Smith County for next year's primary elections.

Filings with Deaf Smith County Clerk B.F. Cain this week for re-election were County Judge H.C. Williams, Cain, County Treasurer Veste Mae Nunley and District Clerk Lola Faye Veazey.

Other offices up for election in which no filings have been made include the criminal district attorney post presently held by Andy Shuval; Justice of the Peace position held by Glen Nelson; county precinct commissioner positions held by Marcus Latham and Donald Hicks.

Latham announced last week he will not seek re-election, but no other candidates have made known their feelings.



H. C. WILLIAMS



B. F. CAIN



LOLA FAYE VEAZEY



VESTE MAE NUNLEY

Dippel Fourth In State Ballot

Hereford Whiteface Football Coach Larry Dippel finished in fourth place in balloting this week for the Texas High School Coach of the Year.

In the poll, which was conducted by the Texas Sports Writers Association, winning the Coach of the Year honors was Dan Gandy of Angleton.

Dippel had previously been awarded the District 4-AAAA Coach of the Year and South-Plains Coach of the Year.

City Pushes For 'Useful' Juvenile Board

In an effort to revive the county juvenile board into a "useful" organization, Hereford's City Commissioners Monday night appointed Commissioner Paul Abalos to the board and armed him with a resolution requesting that District Judge Archie McDonald appoint a juvenile officer.

The action came after a long discussion of the juvenile officer position and whether the city should withdraw its one-third share of the funds used to operate the post. The post has been vacant since the first of the year after

Leon Gorrell submitted his resignation to return as a deputy in the Deaf Smith County Sheriff's Department.

Commissioners questioned the "usefulness" of the juvenile board and the limited authority it has, before deciding to appoint Abalos in an attempt to make the idea "work."

McDonald, judge of the 69th judicial district of which Deaf Smith County is a member, is in charge of juvenile cases according to a recent law passed by the Texas Legislature. The cases had for-

merly been under the authority of the county judges.

IN OTHER action at the meeting commissioners approved a "cost of living" increase for the 70 city employees. The pay increase was made retroactive to Jan. 1. The pay hike was expected to come in May of this year, but City Manager Dudley Bayne requested it now after he said about \$22,000 will be left over in the payroll budget at the end of the city's fiscal year in May.

The raise is expected to cost the city

about \$13,000 between now and May leaving commissioners still about \$9,000 below their payroll budget.

IN OTHER MAJOR action at the regular meeting, the city approved the widening and paving of the intersection of Park Avenue and U.S. 385, the 100-block of Avenue A and the 100-300-blocks of Avenue B.

The plans for the Park Avenue-U.S. 385 intersection widening have been studied by the commission for several months. All four corners of the in-

tersection will be cut back to allow for four lanes of traffic down Park Avenue plus a protected left turn lane.

The four city blocks to be widened on Avenues A and B is expected to cost about \$100,000. However, the street improvements are expected to greatly relieve traffic congestion off 25-Mile Avenue for local residents going north and south in the city.

In other action:

—COMMISSIONERS tabled action on the lease of the municipal airport at the request of Mr. and Mrs. John Smith, who presently have the lease. The Smiths had requested an amendment to the present lease, but the commission said no amendment can be added without placing the lease up for bids again.

—TABLED action on the approval of retirement system procedures pending study by an outside company. Commissioners had already approved a retirement plan for city employees, but are postponing approval of details of the plan until a full study and report is made.

—APPROVED a special use permit by Caviness Packing Company to expand their present facilities. The company is located outside the city limits and normally would not need city approval. However, the plant is within 5,000 feet of the city limits and therefore needs the city's request to expand.

—RECEIVED a report from Bayne concerning the building permits for the city. The report showed a total of \$4,232,202 issued through permits during 1973. A total of \$1,500,300 of the permits were for new residences and another \$1,533,000 were for tax exempt buildings

which include the new school additions and building and new church buildings.

IN APPROVING the resolution to Judge McDonald asking for appointment of a juvenile officer, the commission expressed hope that the Hereford School Board might jointly endorse in the resolution.

Mayor Jim Sears telephoned school Supt. Roy Hartman during the commission meeting and informed Hartman of the action being taken by the Commission and requested that Hartman bring the subject before the school trustees during the trustee meeting the next night (Tuesday).

Other commissioners also told Abalos to push for a similar resolution from the Juvenile Board at the next meeting.

THE JUVENILE officer position is presently funded by the Hereford School system, the City of Hereford and Deaf Smith County. Each of the governmental agencies pay one-third of the cost.

"I think we need to determine first if we can really get some good out of the juvenile officer post," said Sears. "I don't think there is any doubt that we need such a position in the county, but under the present setup I wonder if anyone could do a very good job at the position."

Commissioners worded the resolution to the judge to request that McDonald appoint a juvenile officer for the county and make the position "answerable to the district judge with advice from the Juvenile Board."

Attending the Commission meeting were Bayne, Sears; Commissioners Abalos, H.A. Cavness, Dub Boyd, Frank Barrett; Mr. and Mrs. John Smith and newsman Don Richards.

Banquet Planned Saturday

Dr. James Blakely, "America's No. 1 intellectual humorist", will be guest speaker when the Texas-New Mexico Sugar Beet Growers Association holds its annual banquet in Hereford's Bull Barn Saturday night.

The event, which traditionally attracts one of the largest banquet crowds of the year, will begin at 7 p.m. All growers are guests at the event, and tickets are on sale to the general public. Tickets are \$4 each and can be purchased at both banks or the Chamber office.

THE SUGAR beet growers will hold their annual business meeting Friday at 2 p.m. in the Community Center, it was announced by James W. Witherspoon, executive secretary.

The election of three directors is scheduled at the business meeting. Terms expiring are those of Jay Boston, president, and Virgil Marsh and Don

Shipley. Other directors include Bill Cleavinger, A.L. Black, L.E. Davis, S.L. Garrison, and Ed Wick.

DR. BLAKELY, the principal banquet speaker, is listed nationally with Knife and Fork Clubs, Associated Clubs, Executive Clubs and Metropolitan Clubs as "America's No. One intellectual humorist." He is an associate professor in agricultural chemical technology at Wharton Junior College.

Born in Rush Springs, Okla. in 1934 and reared in Duval County, Texas since the age of two, Dr. Blakely is a graduate of Sam Houston State University. He earned his master's and Ph.D. degrees in agriculture at the University of Missouri. His military service was highlighted by a tour as a helicopter crew chief in Salzburg, Austria.

His occupations also include traveling, ranching and flying. Blakely earned his pilot's license in order to fly

himself to speaking dates. He is a member of the official board of First United Methodist Church of Wharton and is a past president of the Rotary Club in that city. He is also a member of the Wharton Chamber of Commerce.

BLAKELY holds the distinction of being the only professional humorist in Texas with a Ph.D. His speaking career began in 1965 after an impromptu performance, and his talents became so much in demand that he turned professional in 1967.

Probable emphasis of the business meeting Friday afternoon will be for more beet acreage in 1974. Boston, association president, is urging growers to consider increased acreage this year. In a letter informing members of the business meeting, Boston listed advantages of the beet crop and called 1974 "a crucial year" in the Texas-New Mexico area.



DR. JAMES BLAKELY

Bank Acquisition Approved

Harlan D. Vander Zee, president of the Hereford State Bank of Hereford and Walter F. Johnson, president of First Abilene Bankshares, Inc. of Abilene, jointly announced Wednesday the approval by the Board of Governors of the Federal Reserve System of the application of First Abilene Bankshares, Inc. to acquire the Hereford State Bank.

VanderZee and Johnson said "We are delighted to receive approval by the Federal Reserve Board and shall now proceed with the steps necessary to finalize the acquisition as rapidly as possible." The initial Letter of In-

tent for the acquisition was filed in June, 1973.

First Abilene Bankshares, Inc. is an Abilene based multi-bank holding company. It owns all of the stock of First National Bank of Abilene and 28.7 per cent of the stock of Bank of Commerce of Abilene. The holding company and Bank of Commerce have filed a Letter of Intent to acquire the remaining shares of Bank of Commerce.

At year-end the First National Bank of Abilene had deposits of \$110,802,783 and Hereford State Bank had deposits of \$24,611,277.



Fire Hits Home

The neighbors and family of Juan Pena watched at 11 a.m. Tuesday as Hereford Volunteer Firemen brought the blaze under control which damaged a bedroom and hallway of the house.

Letters To The Editor

Suggests School Policy Changes

Dear Editor,

I would like to elaborate on Gary Hicks' remarks in Thursday's edition of The Hereford Brand. Unlike Gary, I was not refused admittance to the gym, but thrown out.

A group of boys, including myself, had been playing in the girls' gym during sixth period on a school day and continued to

play while the basketball team worked out in the big gym.

Shortly after school, one of the janitors came into the gym and told us that we would have to leave because we were not under supervision of an adult. A school official then came and said the gym rule was that all students had to be supervised in order to use the gym.

As an example of what might happen to the gym without supervision, he pointed to some ceiling lights which were broken out. He then advised us to leave the gym. In argument to the example, I would like to point out that it is approximately 20 feet from floor to ceiling in the girls' gym. After playing volleyball during P.E. the last six weeks of this semester, I have discovered it is very hard to play with such low ceiling without breaking or damaging the lights—even with adequate supervision.

Especially now, during the energy crisis, I know that students should try to conserve energy. I am not convinced that the energy crisis is natural, rather than man-made, but I will comply with the rules—just as I do with the school rules. These, like anything else, should be subject to change, however.

Rule changes enabling students to use school facilities and community action would wipe out much of the walking of streets, patrolling of the drag, and juvenile delinquency by the future leaders of our great nation.

Sincerely yours,
David C. Hutchins
Senior HHS, '74

Hereford Man Killed In Turnover Near Amarillo

One Hereford businessman was killed and another seriously injured when the car in which they were riding on Tascosa Road just north of Amarillo left the road and rolled over about 6 p.m. Saturday. Jesse Earl Jackson, 40, was pronounced dead at the scene, of head injuries.

Henry Bryan, brother-in-law and business partner of Jackson, was in the intensive care unit of an Amarillo hospital several days, but was able to be brought to his home Wednesday. The two men owned Hereford Irrigation Co.

Funeral services for Jackson were conducted Tuesday afternoon in Avenue Baptist Church with the Rev. Ron Harpster of Dalhart, former pastor, officiating. Burial in West Park Cemetery was

directed by Gilliland-Watson Funeral Home.

Born Dec. 30, 1933, at Erick, Okla., Jackson came to Hereford from that city in 1953. He married Doris Craig here Sept. 21, 1967. He served two years in the U.S. Army, 1956-1958.

Surviving him are his wife; a daughter, Tracie; five sons, Russell, Barry, Michael and Eric of Hereford and Loye of Maud, Okla.; his parents, Mr. and Mrs. Henry Jackson of Hereford.

Other survivors are three sisters, Torenna Bryan of Hereford; Dorothy Basheaw of Sayre, Okla., and Bonnie Meeks of Winnemucca, Nev.; five brothers, Johnny of Hereford, Walter of LeFors, James of Sanger, Calif., Garlon of Rialto, Calif. and Charlie of San Bernardino.

LTV To Own Wilson & Co.

Wilson & Co., Inc. announced that a plan whereby the LTV Corporation will acquire 100 per cent ownership of Wilson through a distribution of Wilson debentures to holders of the Company's common stock was approved by shareholders at a special meeting in Oklahoma City.

Under terms of the plan, Wilson common shareholders will receive for each of their shares, \$13 principal amount of a new Wilson 9-1/2 per cent, 10 year sinking fund debenture. Shareholders will be notified by letter concerning the procedure for exchanging their stock.

Although a wholly-owned subsidiary, Wilson will remain a separate corporation with its operations and management unchanged.

4-H Project List Is Announced For Coming Months

Mrs. Corkey Paetzold was elected reporter of Deaf Smith County 4-H Parent-Leaders Association Monday evening.

She is replacing Mrs. Bruce Terry.

A catalog of dates was set during the business meeting. Heading the agenda was the Tri-County Livestock Show scheduled Jan. 23-26. Money from the concession to be operated by the association will go to help support 4-H projects in the county.

Also the 4-H Booster Club report was given, regarding support of the sale of livestock.

Other project dates set were the foods project Feb. 9, county food show March 23 with Margarette Cole as chairman and County Elimination Contest April 5 with Jigger Rowland and Corkey Paetzold as chairmen.

Members decided to coordinate its projects by the use of car pools and combining project meetings during the energy crisis.

The older one grows, generally speaking, the more he appreciates order, manners, and friendships.

Community Center At Dawn Set

A \$36,000 bid was let to an Amarillo contractor recently for the construction of a community center at Dawn.

Scotter Walker represented A and B Construction Co. of Amarillo, who will begin building the center Jan. 15, according to Pat Smith of Dawn.

The community center was proposed in Nov., 1972, plans were drawn up and it was accepted by the people of Dawn in Nov., 1973. The bid was accepted Dec. 23, 1973.

The 40 feet by 120 feet building will be located in front of the old community center, Smith said.

The Hereford Brand

Published Every Thursday
MEMBER National Editorial Association
Member Associated Press
at 130 W. Fourth
Hereford, Deaf Smith County,
Texas, 79445

THE HEREFORD BRAND, INC.
Entered as second class matter at the Post Office in Hereford, Texas under the act of March 30, 1957. Second-class postage paid at Hereford, Texas. Any erroneous reflections upon the character, standing or reputation of any person, firm or corporation, which may appear in the columns of this paper, will be gladly corrected upon due notice of same being given to the editor personally at the office. Subscription Rates: Zone 1, \$2.00 per year, Zone 2 and above, \$4.20 per year. With Classified advertising rates: 8 cents per word first insertion 80 cents minimum; 4 cents per word additional insertion.

The Sunday Brand, both papers, Zone 1, \$5.95 per year; Zone 2, \$7.50 per year. Carrier delivery, \$1.00 per month. Single copies 10 cents each.

O.G. Nieman Publisher
Don Richards News Editor
Sue Coleman Women's Editor
Lynn Britten Advertising Manager
CIRCULATION 344-2030



PRICES GOOD JAN. 10 THRU JAN. 19

When you Compare, We gain a Customer!

315 Main St. Hereford, Texas.

JANUARY COLORFUL WHITE SALE

BIG SELECTIONS FAMOUS NAME BRANDS FABULOUS SAVINGS

JUMBO VELOUR BATH TOWELS

2 FOR \$3

Solids or prints. Slight irregulars.

HAND TOWELS 2 FOR \$1

WASH CLOTHS 3 FOR \$1

IRONING BOARD PAD & COVER SET

2 SETS \$1

Scorch resistant silicone treated cover.

VINYL LACE TABLECLOTH

\$1.77

Choice of colors. Slight irregulars.

PLASTIC DRAPES

2 FOR \$1

Fully lined, 84 inch length.

WOMEN'S WHITE DUTY OXFORDS

\$2 PR.

OUR REG. 2.50 Full foam cushion insole. Cushion crepe wedge soles. Sizes 6-10

FAMOUS MAKER NO-IRON SHEETS

\$2 TWIN SIZE

DOUBLE.....\$3 EA.
KING...2 FOR \$9.00
QUEEN...2 FOR \$7.00

Solids or picture pretty prints. Slight irregularities will not mar serviceability.

PILLOWCASES...PKG. OF 2 FOR \$1.25

FOAM FILLED BED PILLOW...\$1

BEDSPREADS

DOUBLE OR TWIN

Polyester tufted popcorn bedspread, woven jacquards, better cotton chenilles and others. Slight irregulars.

YOUR CHOICE \$5 EA.

24 IN. X 36 IN. RUG RUNNERS

\$1

THROW RUGS 2 FOR \$1

DISH CLOTH OR DISH TOWEL

PKG. 88¢ PKG.

Your choice of our wide assortment of pkgs. at this low price.

1974 HOUSEWARES 74¢ BONANZA!

PLASTICWARE ASSORTMENT. 2 FOR 74¢

Utility tub, Round dishpan, Cutlery tray, Laundry basket, Wastebaskets, Bucket of sponges, 3 piece bowl set, Dust pan and sponges, screw top decanter, and more.

RUBBER QUEEN BATH MAT. 74¢

LP STEREO ALBUMS... 74¢

ADORN SELF ADHESIVE SHELF PAPER, 18 IN. X 3 1/2 YDS... 74¢

PLASTIC HOUSEHOLD GADGET ASSORTMENT... 8 FOR 74¢

Measuring cup, butter dish, napkin holder, bowls, divided plates, tumblers, bread basket, dust pan, plus many other items.

TREND LAUNDRY DETERGENT BY PUREX, 33 OZ. 2 FOR 74¢

LIQUID DETERGENT, 32 OZ. PINK OR LEMON 3 FOR 74¢

SPRAY STARCH, 20 OZ. 3 FOR 74¢

JIFFY PLASTIC WRAP, 12 IN. X 100 FT. 4 FOR 74¢

ALCOA ALUMINUM FOIL, 12 IN. X 25 FT. 4 FOR 74¢

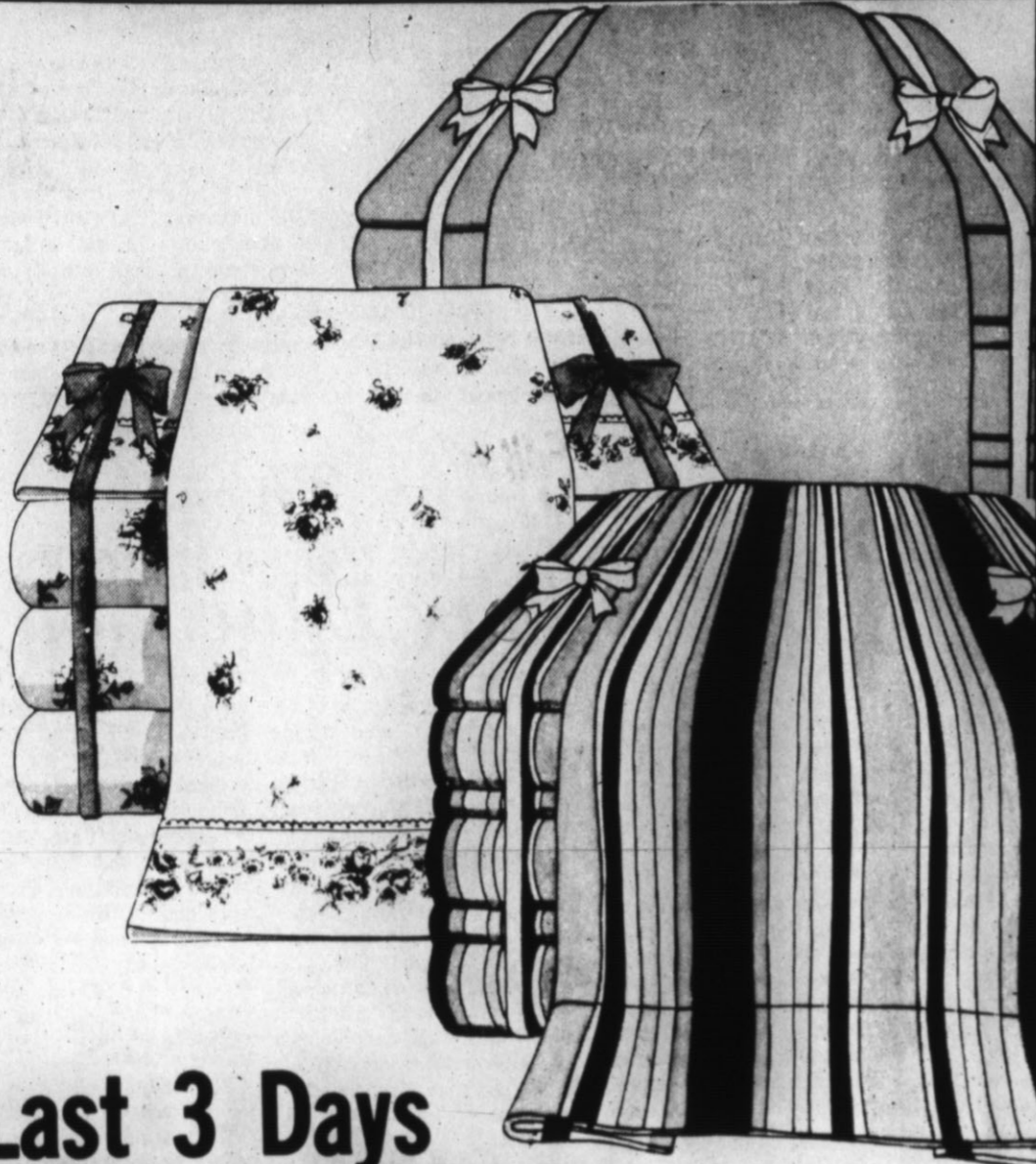
FABRIC SOFTENER 32 OZ. 4 FOR 74¢

ENVELOPES, WHITE, 28 COUNT BOX... 5 BOXES 74¢

SYLVANIA LIGHT BULBS, 60, 75, 100 WATT... 6 FOR 74¢ or 3 pkgs. of 2

Penneys great Half-day Clearaway.

Starts today at 11 a.m. So all you late-rising bargain hunters get the same chance as early-birds



15% off draperies.



Made-to-measure drapes are a smart idea. A custom look for ready-made prices. Choose from over 70 patterns, 700 colors, from antique satin, jacquards, prints, sheers. Drapes have deep 4" hems and headers, the corners are weighed and tiebacks are available. So are top treatments: pinch pleated, Austrian pouf, side jabot. Follow the measuring instructions below, bring us the measurements and we'll have your draperies made to fit.

To measure: Width: measure from (G) to (H), or simply the width you want to cover. Length: for ceiling to floor length, measure (A) to (B). For regular floor length, measure (C) to (D). For sill length, measure from (E) to (F). Add three inches if you want below-sill length.

Last 3 Days of our wildest white sale ever. Hurry in for savings.

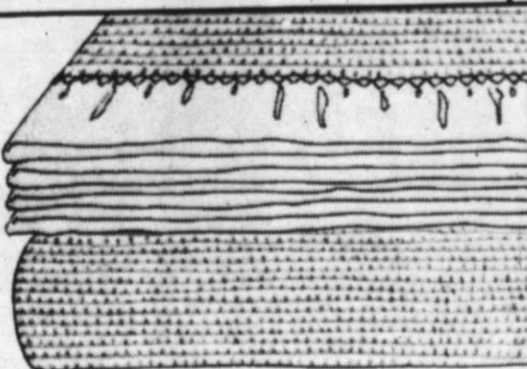
Sale prices effective through Saturday. Every Sheet in Stock on Sale. Terrific Selection of King and Queen Sizes!

Sale 166 twin size, flat or fitted
Reg. 2.19. Soft white muslins of polyester/cotton
Full size sheets, reg. 2.79. Sale 2.26
Pkg. of 2 standard pillow cases, reg. 1.39. Sale 1.26

Sale 222 twin size, flat or fitted
Reg. 2.99/3.49. Muslins with the decorator look in long wearing polyester/cotton in solids, stripes, prints and checks.
Pkg. of 2 standard pillow cases, reg. 2.49/2.99. Sale 2.12

Full size Reg. \$3.99/\$4.99..SALE \$3.22
Queen Size Reg. \$6.49/\$7.49..SALE \$5.32
King Size Reg. \$8.49/\$9.49..SALE \$6.32

ELECTRIC BLANKETS
Single Control \$13⁸⁸ Dual Control \$16⁸⁸



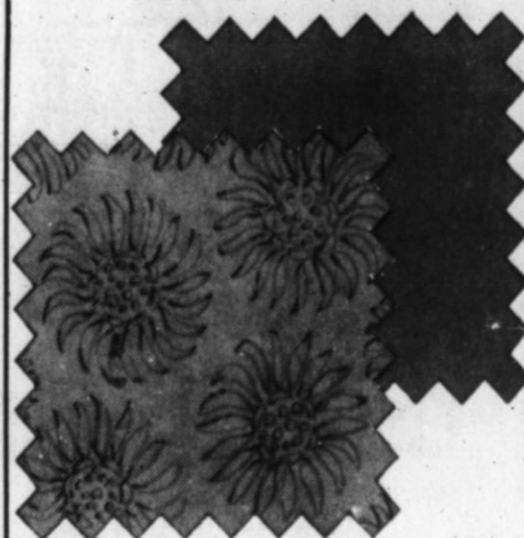
Sale 5⁹⁴ twin size
Reg. 5.94 Our acrylic thermal blanket has a nylon binding and a vinyl zippered carrying case. It's machine washable.
Full size, reg. 8.99, Sale 7.64
Queen size, reg. \$11, Sale 9.35
King size, reg. \$13, Sale 11.90

SAVE 15% OFF

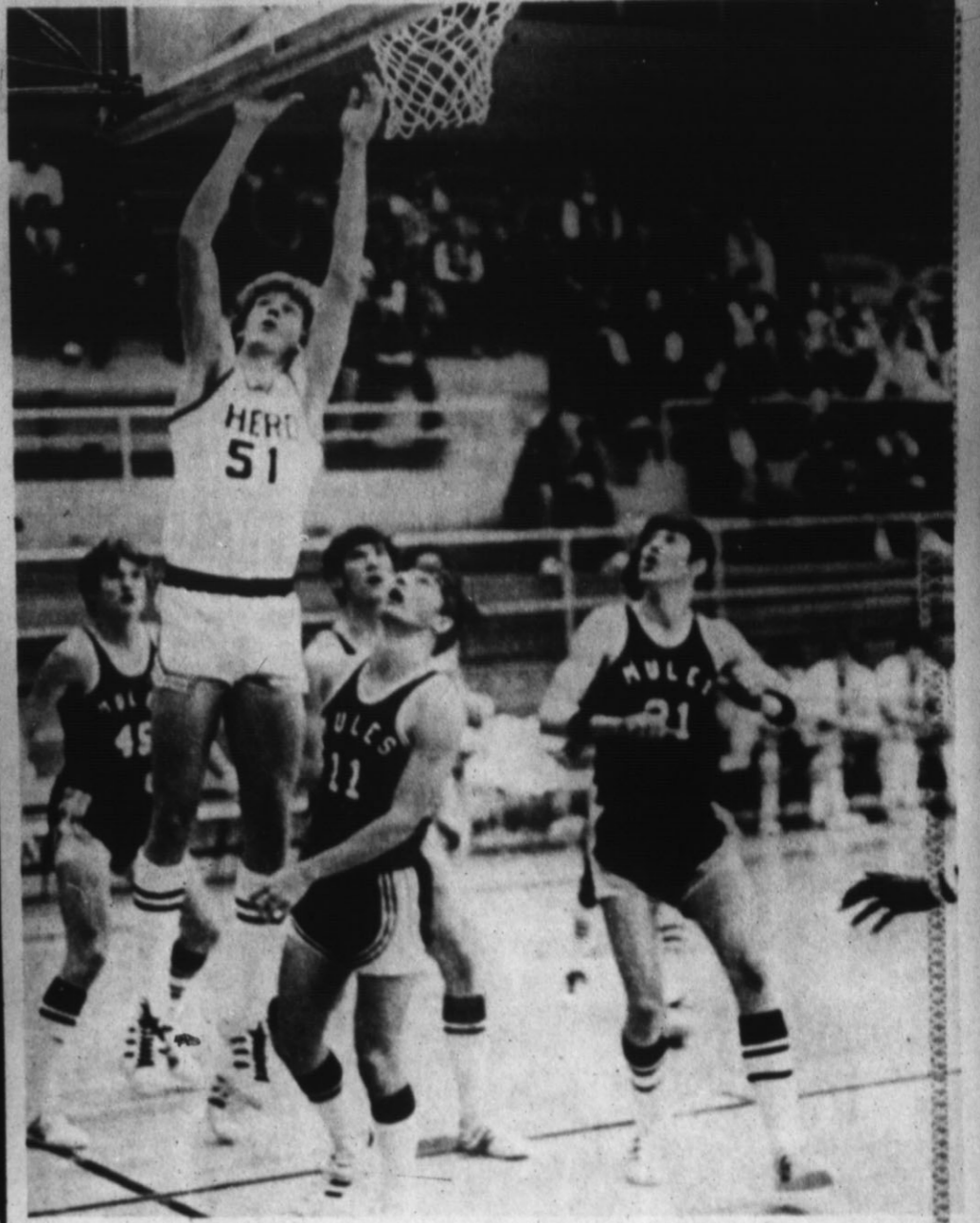


Sale 2 FOR \$3⁸⁸
Large size pillow with Soft Polyester Fill plain colors only!

PIECE GOODS REDUCED BLEND FABRICS NOW 50¢ to \$1⁶⁶ YD.



Sale 2⁹⁹ yd.
Polyester double knit
Reg. 3.99 yd. Solids, jacquards and crepes. Machine wash, tumble dry, no iron.



Two For Dan

Dan VanderZee, 51, goes for the easy two points under the basket in action here against the Muleshoe Mules. Hereford won the game 69-38. The Herd is now 14-7 for the season.

Red Cross Operation Is Back On Full-Time

Full-time duty for the executive secretary of Deaf Smith County Red Cross Chapter was restored by action of the board of directors at its January meeting Tuesday morning in Community Center, but as an energy conservation measure the office will be open only three days a week, from 10 a.m. to 4:30 p.m. Curtailed office hours and duty hours for Genevieve Miller, executive secretary, have been in effect several months because funds were short since the 1973 United Way quota was not met. Full funding was made possible for 1974 when the recent United Way campaign went over the top. Energy conservation was a topic for the board when communications from national headquarters were read, asking local chapters to save on light and heat in offices, and on travel.

A citation was presented to H.L. Newman for 22 years of service as an authorized first aid instructor for the State Highway Department maintenance division in this county. Newman lately retired from Highway Department employment. Don Shipley, Mrs. Emil

Dettman and Duane Albracht were appointed on a committee to nominate officers for next year. John Poindexter presided for the meeting. Other directors present were Lee Umsted, Mmes. H.F. Neely, Tommy Blasingame, Richard Zinser and Curtis Roach.

Simms Lions Plan To Buy Trapshoot Meet Equipment

Purchase of an electric trap to use in trapshooting meets which the Simms Lions Club sponsors, was authorized at the club's first 1974 meeting, when Roy Blevins, Larry Harris and Jerry Roberts were named a committee to find one. Members decided the electric equipment was needed for meets, which raise funds for club service projects. A

volleyball tournament was also discussed. Bob Wood, vocational agriculture teacher in Adrian Schools, gave the program on Pregnancy Testing of Cows.

The next Ladies Night dinner was set for the third Thursday in March at an Amarillo restaurant. Ronald Ott was winner of the Tail Twister's pot.

STORE WIDE CLEARANCE IN EVERY DEPARTMENT HURRY!!!! Only a small portion of items on SALE are listed Limited quantities, broken sizes

Entire Stock WINTER JACKETS Reduced 20% to 30% Men's, Women's Girl's and Boy's	Men's Polyester DRESS SLACKS Orig. to \$19, NOW \$8 ⁹⁹ Sport Coats \$28 ⁸⁸ all WEATHER COATS \$38 ⁸⁸	Women's Better PURSES REDUCED \$2 ⁸⁸ - \$5 LADIES NYLON GOWNS \$1 ⁹⁹	2 Big Racks Ladies DRESSES and PANT SUITS Reduced 20% to 60% From Regular Stock	GIRL'S FASHIONS REDUCED 20% to 50% DRESSES, BLOUSES, SKIRTS, SWEATERS and BODY SHIRTS
Factory Shoe CLOSEOUTS Women's \$4 ⁹⁹ to \$8 ⁹⁹ Men's \$6 to \$14 Children's \$4 ⁹⁹ to \$5 ⁹⁹	MEN'S BUSH JEANS 2 For \$7 MEN'S DRESS GLOVES \$5 MEN'S WINTER CAPS \$1 ⁹⁹	Women's Better WINTER ROBES \$7 ⁸⁸ - \$12 ⁸⁸ PANTI-HOSE 88¢	2 Big Racks Women's FASHIONS REDUCED Blouses, Sweaters, Slacks, Pants and Blazers SAVE 20% to 50%	40" x 63" Polyester Curtain Panels 99¢ Each THERMAL BLANKETS \$4 ²⁹

CHARGE IT AT PENNEY'S

JCPenney
We know what you're looking for.

USE OUR CONVENIENT LAY-A-WAY PLAN.



Steel belted whitewall. Special 29.99

Ground Gainer® steel belted tire in the wide profile 78 series. Four full plies of polyester with two belts of steel. In whitewall. No trade-in required.

Tire size	Price	Plus tax	Tire size	Price	Plus tax
G78-14	30.99	2.99	H78-15	35.99	3.27
H78-14	31.99	3.24	L78-15	36.99	3.48
G78-15	34.99	3.08			

25% Off

Save 25% Reg. \$11.95, Sale \$8.96
Survivor 60 battery. Available in sizes 24, 27F, 24F, 27 and 27F.

PENNEY'S BATTERY GUARANTEE
Should any Penney Survivor 60 battery fail (not merely discharged) within 24 months, return it to Penney's and it will be replaced at no extra charge. After the Replacement Period but prior to the expiration date of the guarantee, J.C. Penney Company will replace the battery charging only for the purpose of recharging. Based on the current price at the time of return, plus return over the stated guarantee months.



\$13⁸⁸

Tire-Life Saver.

To prolong the life of your tires, we check the suspension, set camber, caster and toe-in, static balance & wheels and inspect and adjust brakes. Spin Balance, each wheel, 3.66

Sale prices effective through Saturday.

See your JCPenney catalog for more automotive values.

JCPenney

auto center
We know what you're looking for.

Trustees Raise School Lunch Price, Extend Contract

Continued From Page 1

juvenile officer post as does the city and county. The other representative to the juvenile board from the school is Ruth Ward.

HEREFORD Jaycees Harvey Milton, John Bunch and Steve Slagle told the Board about the local Little Dribblers program and then requested use of school facilities for this year's program.

Slagle told trustees the program had been a five-week program in the past, but was cut to four weeks this year and one tournament eliminated in an effort to save energy. He said fewer games will be played each night, also in an effort to save energy.

Slagle said about 500 local boys participated in the program each year

with a fee of \$3.50 charged to each. The cost includes insurance for each participant and gives each boy a numbered T-shirt for playing. Slagle added that the Jaycees pay the school janitors \$125 at the end of the season for help in opening gymnasiums and cleaning.

Trustees commended the Jaycees on the fine program and then approved the request for the high school and Stanton gymnasiums.

TRUSTEES had asked Hartman at the last meeting of the board if he could invite the principals to the board meeting to discuss discipline problems.

Questioned by the board and discussed at length, principals said discipline is a definite problem in Hereford schools, but said it has not been

more of a problem this year than in years past.

"I think we are having a pretty good year," said Jerry Don George, high school principal. "Sure we are having our share of discipline problems, but it is not more than in the past, and I really feel it may be less this year."

Gene Barkowsky, assistant high school principal, said he felt the major problem was in areas of "disrespect for authority and disrespect for property. I also deal a lot with problems involving vulgar language and truancy and tardy problems. But I feel these are problems being experienced everywhere and year year."

Don Martin, principal at Stanton Junior High, said he felt the main problem at the junior high level was also lack of respect for authority. Pat Hughes, La Plata

Junior High Principal, agreed and said he had had no major problems of violence in respect to teachers and students.

Several trustees questioned the principals about specific instances at the school that they had heard about, but agreed that many had been "blown out of proportion."

IN OTHER ACTION:

—Richard Robinson, vocational coordinator at the school, told Trustees about the basic adult education program being taught each Monday and Thursday nights at Tierra Blanca. Robinson said the program has been a "real satisfying one" and that 131 local residents are enrolled. The program is to teach basic education to persons who do not have a high school degree. It included non-English speaking persons and prepares all for the GED test, which will give persons the equivalent of a high school diploma.

Mrs. Elaine Rowan, a teacher in the basic education program, said the people enrolled are "very enthusiastic" and very eager to learn. She said they continually want to learn more and progress very fast.

—TRUSTEES learned that total enrollment presently is about 190 students below its level at this time last year. Total enrollment at Hereford is presently 5,226 compared to 5,418 last year.

—RECEIVED a report from the state listing the five school buses recently ordered by the school. Prices of the five buses were listed at just over \$50,000. Hartman said five buses used to cost the school about \$40,000, but that inflation had caused the drastic rise in price.

—HEARD a report from Hartman concerning the 4-4A district meeting held Tuesday morning in Lubbock. Hartman said action at the meeting was to conserve energy during spring UIL activities. He said the baseball travel program had been cut by 50 per cent because each of the schools would be playing double headers instead of four separate games. He also said 10 per cent of all other spring activities would be cut including track, tennis, golf, debate, forensics, speech, volleyball and all other UIL activities.

Hartman also said the two basketball games next year that would normally be played with Snyder would not be

replaced by any of the district schools. Snyder will be dropping out of the 4-4A schedule next year because the school returns to 3-A classification. Hartman said no plans have been made so far to effect the football season.

—SCHOOL tax collector Orpha Click said collections are up to \$7.81 per cent compared to \$5.41 at this time last year.

—SET Trustees election at April 6. Final filing date is March 7. Voting will be at the Community Center with Jerri Jackson and Robbie Seed as election judges. Click will be election clerk.

—TRUSTEES decided to make plans for the annual past board members dinner in May.

—RESIGNATIONS were accepted from Teresa K. Phillips at Central; Bajean Williams and Connie Sublett at Aikman; and Eveline C. Kennedy at high school.

—NEW teachers hired were Janice Galley, Orinda Eikman and Veda Sligar all at Aikman; Tom Saul at La Plata; Roy Shipp at high school; Martha Layman at high school; Judy Marcum at Central; and Sherry Kerr at Central. Approval was also granted to move Betty Mercer to the position of vocational counselor.

Hereford Schools Have Three Phases Of Community Education

Hereford Schools are presently sponsoring three phases of community education, according to Richard Robinson, vocational coordinator.

The Adult Basic Education program (ABE) is presently underway at Tierra Blanca school and is for those local residents who have not finished high school and are seeking a GED certificate, which is the equivalent of a high school degree.

Robinson said the classes meet each Monday and Thursday

from 7 to 9:30 p.m. and that persons may enroll at any time. There is no charge for admission and persons can work on any level, including those who cannot speak English to those who are ready to take the GED test.

The Adult Education program will begin Jan. 28 with fees for classes and class times to be released later along with registration times and location.

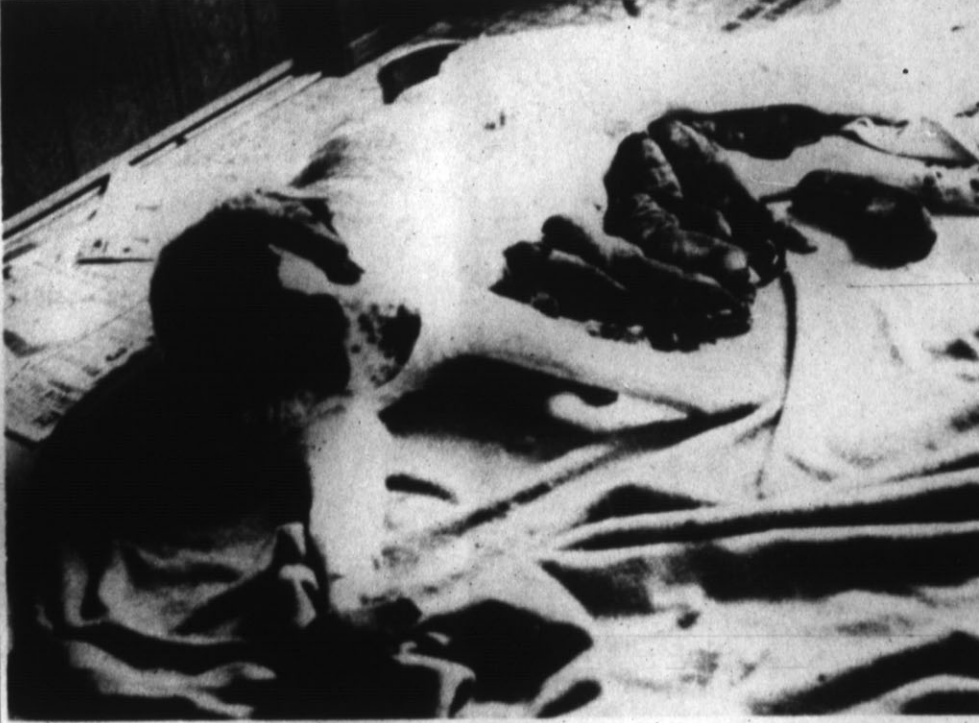
Classes to be offered under the adult education program will include: real estate; bookkeeping; conversational

Spanish; beginning and advanced typing; auto engine tuneup; business office machines; shorthand; income tax preparation; conversational English; Commodities; Beginning Bridge; Advanced Bridge; Womens Recreation; Mens Recreation; water coloring; bricklaying; and parliamentary procedure.

The third phase of classes will be the college credit courses to be offered by Amarillo College

to begin Jan. 14. Registration will be at 6 p.m. in the high school cafeteria.

Courses to be offered are: Principles of accounting; Freshman Composition; History of the U.S.; College Algebra; Conditional exercises and charm; Mid-management seminar; Human Relations and Management; Law Enforcement Terminology; Criminal Investigations; and Police-Community Relations.



Emily, a registered St. Bernard at Hereford Bi-Products, boasts 10 pups which were born between the late hours of New Year's Eve and 4 a.m. New Year's Day. Garth Merrick, owner of Hereford Bi-Products, and of Emily, said the pups would be given to anyone interested.

Give the gift of love

A perfect Keepsake diamond backed by our written guarantee of perfect quality, fine white color and correct modern cut. Come in today to see our exciting collection of Keepsake Diamond Rings.

Keepsake
REGISTERED DIAMOND RINGS

Serving Hereford Since 1927

KESTER'S JEWELRY

ACROSS FROM THE POST OFFICE IN DOWNTOWN HEREFORD

Merchants Elect Officers

In a special meeting Wednesday to elect new officers, the Downtown Merchant's Association rounded out last

year's business and readied for 1974.

President Jim McDowell opened the session, reporting the existing sum of \$570 in the organization's treasury.

All 1974 officers were chosen by acclamation vote and will serve one year terms. Ed Coplen of Western Auto was designated as president, Bill Kester of Kester's Jewelry is vice-president and Helen Higgins of Helen's Youth Shop will serve as secretary-treasurer.

Commenting on the Merchant's Association activities in

1973, member James Welch said, "I think we had a successful year because of the good cooperation."

The Loney Heart



Courthouse Records

WARRANTY DEEDS
Ralph Owens and Associates, Inc. to Robert H. Veigel, all of lot 3 and S. 10 ft. of lot 2 of block 3 of Ralph Owens Add.
David M. Vines et ux to Gerald Hamby et al, all of lot 5, of Events Add.
Gerald Hamby et al to David M. Vines et ux, all of lot 29 of Welsh Add.
Arvel L. Baker et ux to James R. Marnell, N. 1/2 of sect. 83, block K-4.

J.D. McCaslin to First Presbyterian Church of Hereford, S. 100ft of W. 140 ft. of block 44.
J.M. Hamby Jr. et al to Alfonso Games et ux, N. 2 1/2 acres of S. 15 acres of E. 42 acres of W. 80 acres of N.W. 1/4 of sect. 66, block M-7.
J. Marlin Gilliland et ux to Allen C. Eubank et ux, N. 20 ft. of lot 4 and all of lot 5, of Events Add.
Great Plains Homes Inc. to Edward D. Jessup et ux, 518 ft. of lot 42 and N. 54 ft., lot 43, block 7, Westhaven Add.
Barton Spencer et ux to David Lewis Nelson et ux, all of lot 37, and W. 1/2 of block 3, and E. part of block 16, Welsh Add.
Tom Brooks Boyd et al to Tom J. Boyd, all those certain lots, tracts or parcels of land lying and being situated in Deaf Smith County.
Ruth McDaniel et vir to Carl L. Straffuss et al, being all of S. 1/2 of sect. 96 in block K-5 and all of S.E. 1/4 of sect. 5, in block K-6 in Oldham and Deaf Smith Counties, and all of sect. 96 in block K-5 and all of sect. 66 in block K-6.

Youth Earns BSE Degree

Betty Reddell, daughter of Mr. and Mrs. B.A. Reddell, Rt. 1, Hereford, has fulfilled requirements for a BSE degree and was a December graduate from Mary Hardin-Baylor College in Belton, Tex.

Miss Reddell is a physical education major and is a 1970 graduate of Hereford High School.

While attending Mary Hardin-Baylor, Miss Reddell was a member of Student Life, Historical Phila, Phi Epsilon Mu, and the Women's Recreational Association.

Mary Hardin-Baylor College is a co-educational Baptist college with a current enrollment of 876 students. Dr. Bobby E. Parker is president.

Registration Set For Police Classes

Deputy Art Burton said officers wishing to enroll for police science classes offered here by Amarillo College should do so at 6 p.m. Jan. 14 at Hereford High School.

The law enforcement classes are scheduled to begin that night, Burton said. Money for tuition and books are required at registration time.

He said applications are available at the Deaf Smith County Sheriff's Office, and that no physical will be required.

PEN PALS MEET

ST. ALBANS, W. VA.—After 11 years of correspondence, Pamela Dodson and Mituko Kashitani, pen pals, met recently when Miss Kashitani, a Japanese university student came to the United States on an exchange program.

MONEY OR PANTS

MIAMI—When Charles Wrinkle refused to give up his money as he was accosted in a hamburger shop, it cost him his pants. The assailant fled with the pants, wallet inside, but Mr. Wrinkle caught and held the man, the police said.

25 Years Service

A.R. Foster, 212 Douglas, Hereford retired from Pitman Grain Elevator Dec. 31, after 25 years service. His employer, John Douglas Pitman presented him an engraved gold wrist watch upon retirement. Foster's future plans are to work some and fish and hunt a lot.

Corn Meeting Held Wednesday

George Watson, president of Watson Seed Company, was the guest speaker Wednesday night at a barbecue in the Bull Barn concerning the raising of seed corn in the Hereford area.

Watson showed slides on corn production and answered questions about planting and raising corn crops.

Watson Seed Company, which sponsored the dinner meeting, has its Watson Hybrids planted over a wide area locally.

Ellis TAMALES

GIVES YOUR BUDGET A BREAK!

Prima!

COMING JANUARY 13, 1974
DINING DELIGHTS
SUNDAY-FRIDAY EACH WEEK
SERVED 5-10 P.M. MONDAY-FRIDAY
11 A.M.-9 P.M. SUNDAY

Monday	Chicken and Dumplings or Ham and Lima Beans, Salad, Hot Biscuits, Tea, or Coffee	\$1.90	seconds on the house
Tuesday	Mexican Plate with Cheese, Enchilada, Meat Enchilada, Tamales, Spanish Rice, Refried Beans, Tostados, Hot Sauce, Tea, or Coffee	\$1.90	
Wednesday	Fried Chicken, French Fries, Cole Slaw, Hot Biscuits, Creamy Gravy, All you can eat.	\$2.50	Children under 12 1/2 price
Thursday	Spaghetti and Meat Sauce, Pizza and Green Salad, Garlic Bread, All you can eat.	\$2.25	Children under 12 1/2 price
Friday	Fish, French Fries, Cole Slaw, Hush Puppies, All you can eat.	\$2.50	Children under 12 1/2 price
Sunday	Turkey and Dressing, Salad, 2 vegetable, Tea, or Coffee,	\$1.90	
	Child's Plate (under 12)	\$1.25	

ORD-INNS 364-0152
E HWY 60

LEON RICHARDS SUGGESTS

Consolidate ...and get your bills under full control

Gather up those nagging bills, those dragging charge accounts, your lagging expenses...bring them to *financial house!* Let us show you how to add them all together (consolidate!), pay them off in one convenient loan. Your payment may be less than your total monthly payments!

Come in...call us. Consolidate to a larger loan... \$1000...\$1500...\$2000 or more. Act today!

Leon Richards, Branch Manager
615 So. 25 Mile Ave.
364-4432

financial house
INTERSTATE SECURITIES COMPANY

INCOME TAX SERVICE

no-waiting
accurate, complete, confidential...by trained consultants
low-cost... as low as \$5
call, come by...the year round tax service!

TAX MASTERS
financial house
615 S. 25 Mile Ave. Hereford 364-4432

A.O. THOMPSON ABSTRACT CO.

Mr. and Mrs. A. J. Schroeter

Courthouse
Phone 364-1504
P. O. Box 73

Free City Maps Showing Blocks

Professional Cowboy To Enter Rodeo



Many of the top cowboys in professional rodeo plan to enter the Amarillo Stock Show Rodeo in Amarillo Jan. 18-21, the Rodeo Cowboys Association said.

Larry Mahan of Dallas, is among those cowboys expected to compete at the Amarillo rodeo. The 30-year-old cowboy won a record sixth all around championship in 1973 and also set a new high for rodeo earnings in a single season with \$64,447.

Six performances at the Tri-State Fairgrounds are set for Friday thru Monday evenings and Saturday and Sunday afternoons. They will feature saddle bronc, bareback, bull riding, calf roping and steer wrestling, according to rodeo manager Rex Baxter. Cowboys will add their entry fees to another \$3,000 purse. Last year at the rodeo, with 338 entries, prize money topped \$15,200. This was part of the nearly \$5 million won by pro cowboys at 600 association-sanctioned rodeos throughout the United States and Canada.

Entries for the rodeo, which is being produced by Elra Beutler and Son of Elk City, Okla., will close at 4 p.m. Jan. 16.

Stock Show Expects Variety

Combining scattered increases from livestock breeds which showed last year and a good representation from exhibitors of first-time breeds, plus an anticipated good entry among rabbits, pigeons and poultry, predictions are for another outstanding 10-day run for the Southwestern Exposition and Fat Stock Show.

The 78th edition of the Stock Show is scheduled Jan. 25 through Feb. 3. Entry deadlines for rabbits, pigeons and poultry are Jan. 15. Other livestock entries have closed and are being processed and counted.

"We are encouraged, with an anticipated good showing in the small stock division, that entries this year could exceed the record-breaking 13,000 head catalogued during our 1973 show," said W.R. Watt Jr., Stock Show general manager.

The Brown Swiss breed, new this year in the dairy division, will be well represented, Watt commented. "Adding these cattle to other dairy breed increases, in both junior and open classes, this division is showing quality and strength."

Gains in junior beef breeding heifers entries have expanded judging in this division to two days each. A strong showing also is indicated in junior steers, barrows, breeding sheep and lambs. "Having so many young people exhibiting their animals is an encouragement to what the future holds," Watt said. "We are glad to provide a competitive showcase for these farmers and ranchers of tomorrow."

Strong showings are apparent for Brangus breeding cattle, returning to the Stock Show after several years of absence; and for the National Centennial Angus Show, noting the 100th year since the black English breed's introduction into North America. Turnout among returning beef breeds appears mixed, Watt said.



KESTER'S JEWELRY
Across from the Post Office
in Downtown Hereford

January Clearance



GIBSON'S DISCOUNT CENTER

WHERE YOU ALWAYS BUY THE BEST FOR LESS

Prices effective Thursday Jan. 10 through Saturday Jan. 12 at GIBSON'S in HEREFORD

Bounty PAPER TOWELS
NOW 2 ROLLS
79c

Charmin TOILET TISSUE
8 ROLLS
95c

Potted RED AMARYLLIS
Some in bloom, some ready to bloom
\$1.88

COLEMAN PROPANE LANTERN
With 16.4 oz. Propane Bottle
Reg. '17"
NOW **\$12.97**

COUPON GIBSON'S HEREFORD
1-LB. CAN of FOLGER'S COFFEE
ALL GRINDS SPECIAL PRICE WITH THIS COUPON
87c

COUPON GIBSON'S HEREFORD
10-oz. Jar of INSTANT FOLGER'S COFFEE CRYSTALS
SPECIAL PRICE WITH THIS COUPON
\$1.27



100% Polyester
PRINTS
"60 wide Machine Wash Tumble Dry
SALE
Retail \$3.99 yd. **\$2.19** yd.

Polyester
DOUBLE KNIT
Jacquards & Solids
SALE
Retail up to \$4.98 yd. **\$2.98** Yd.

100% Polyester
KNITS
Retail up to \$4.98
NOW **\$1.79** Yd.

100% Cotton
PRINTS
Asst. Patterns Retail up to \$2.49 yd. **79c** Yd.

Spundee Polyester Gibson's Discount Price
THREAD
225 yds. Retail 35' **23c**

BIG BEN TARGET SET
by Ben Pearson
Lifetime Bow Guarantee
60" Fiberglass Bow
6-28 Target Arrows
Belt Quiver, Arm Guard,
Leather shooting Tab, Target Face-"How to Shoot" Booklet
Ret. Value '16.00
NOW **\$8.97**

Skilshop No. 1715
7 1/4" POWER SAW
NOW
Reg. \$24.97 **\$16.97**

Capehart AM/FM DIGITAL CLOCK RADIO
No. DC-10 NOW Reg. '34"
\$24.97

Sunbeam-Hot Shot BEVERAGE MAKER
No. H51 Makes 2 cups boiling water in 90 sec.
Gibson's Discount Price '15"
SALE **\$10.99**

Solid State BLENDER by Regal
No. 90010 NOW (10 Speed) G.D.P. '21"
\$18.97

All Purpose Bake Cook & Serve LAZAGNA DISH
Small Family Size 8 1/2 x 15" overall
Heavy Gauge Aluminum, Teflon 11 Interior G.D.P. '73
SALE **\$5.29**

A.O.K. STARTING FLUID
Quick smooth starting
14.6 oz. Aerosol can
Reg. 77" NOW **49c** a can

2" x 60 yards HEAVY DUTY DUCT TAPE
NOW
Retail Price \$3.99 **\$1.99**

HUMUS ORGANIC PRODUCTS OF TEXAS

Hereford, Texas

What is Humus Organic Products?

Humus is defined in the Webster Dictionary as; Decayed vegetable matter, important to the fertility of soil.

Organic is defined as-to or derived from plant and animal matter, containing carbon.

Humus is more of a soil conditioner than a fertilizer. It is as important to soil as nitrogen, Phors., potash. Soil with a good content of Humus of 4 to 5% is usually good fertile soil.

The following is why the soil needs Humus:

1. Natural Organic Chelating. Humus releases elements "locked up" in the soil and forms biological complexes with minerals and traces elements so plants can pick them up.
2. "Crumbles" Soil. Humus flocculates and opens heavy soil to give better penetration of water and oxygen. It offsets the packing of soil caused by running heavy equipment in the field.
3. Decomposes Stalks. Stalks, leaves, or manures which have been spread in the field, will break down rapidly when Humus is applied.
4. Develops Roots. Provides greater, healthier and cleaner root structure than "Commercial" alone.
5. Conserves Water. Soil improved with Humus holds water better and longer. It activates the bacteria of sponges.
6. Improves Crop Quality. Humus improves the firmness, color and sheen of crops. Vegetables will ship and "carry" better.
7. Tree Crops. Trees respond rapidly with better color and growth to produce larger yields of better fruit.
8. Easily Applied. Humus is applied with a dry spreader like the dry commercial fertilizer.

"But never forget, chemical fertilizers can neither add to the Humus content nor replace it."

HUMUS ORGANIC PRODUCTS

Robert Brown
Phone 364-5194

Box 851
Hereford, Texas

HEREFORD BRAND

Sports

Thursday
January 10, 1974

ONE MINUTE SPORTS QUIZ

1. Who won the recent North Carolina State-UCLA basketball game?
2. Name the winner of the recent Earnie Shavers-Jerry Quarry bout.
3. Who broke Jim Brown's NFL record in the NFL?
4. What is the new record?

Answers To Sports Quiz

1. UCLA 84-North Carolina State 66.
2. Jerry Quarry.
3. O.J. Simpson of the Buffalo Bills.
4. 2003 yards.

The Hereford Whitefaces jumped to a 20-4 lead in the opening period and went on to blitz the Muleshoe Mules by a 69-38 score here Tuesday night, and Coach Barry Arnwine used all 10 players on his bench as the Herd recorded its 14th win of the season against 7 defeats.

Dan VanderZee, Dennis Noggler and Mike Albiar combined for 55 points to spark the scoring attack for Hereford. The Whitefaces host Amarillo Tascosa tonight in closing out the non-district slate. Hereford travels to Lubbock next Friday to open 4-AAAA action against the Monterey Plainsmen. A junior varsity dash opens action at 6:15 tonight, and the varsity game with Tascosa

follows at 8 p.m. Hereford tangled with Tascosa in the Amarillo Tournament earlier, and escaped with a 54-51 decision.

In the game here Tuesday night, the Whitefaces were in control from the start and Arnwine substituted freely. Noggler took scoring honors with 20 points, and VanderZee and Albiar were close behind with 18 and 17 points, respectively. Albiar and James Harris recorded a number of 'steals' in the contest, converting many to easy lay-ups.

It was a fast-moving game with relatively few fouls called by the officials. Hereford was whistled down only 12 times, and Muleshoe was called for 13

fouls. Hereford was 5 of 8 at the free-throw line, and the Mules hit on 6 of 10.

After taking a 20-4 lead in the initial period, Hereford moved to a 34-16 advantage at halftime and led by 55-30 going into the final stanza.

The Hereford JV also raced to an easy decision over the visiting Mules, taking a 65-24 triumph. Four Hereford players scored in double figures with Craig Nieman taking scoring honors with 16 points. Mike Hull added 13, and James Arney and Dave Charest had 10 each.

The JV held a 31-6 lead at halftime. The JV played Stratford for third place in the Stratford tourney Saturday night, and lost a close 45-41

decision. Arney led the scoring in that game with 10 points. The JV now has a 10-12 season record.

Hereford's sophomores also played here Tuesday night against Canyon and scored a 38-19 victory in the preliminary game. Mike Artho led the scoring for Hereford with 14 points. The soph now have a 4-6 record.

Muleshoe	4	12	14	8-38	
HEREFORD	20	14	21	14-69	
HEREFORD - Noggler	9-2	20	VanderZee	9-0-18	
Albiar	7-3-17	Harris	3-0-4	Tarr	2-0-4
Mummerlyn	2-0-4	Totals	32-5-69		
MULESHOE - Locker	7-0-14	Stockard	3-2-8	Richardson	3-0-6
Wisian	2-2-6	Long	1-2-4	Totals	16-6-38

Boosters Meet; District Games To Start At 7:30

The Whiteface Booster Club was introduced to the three high school basketball teams during the organization's first meeting of 1974 Monday night.

The boosters will sell team and individual poster photos to business firms as a fund-raising project for the basketball season. The club also voted to meet each Monday night until the district schedule is completed. The regular meetings start next Monday at 8 p.m. in the high school cafeteria.

Dick Montgomery, vice president, presided at the booster meeting Monday night and introduced head basketball coach Barry Arnwine. The Whiteface mentor introduced the members of the varsity, junior varsity and sophomore teams.

Arnwine said he was "extremely pleased" with the progress of all three squads this season. Joe Tubb coaches the JV, and Dempsey Alexander is the sophomore team coach.

District play starts Jan. 18 in Lubbock, and all three teams will play complete District 4-AAAA schedules.

The district voted to start league games 30 minutes early this season in an effort to conserve some energy at nights. Sophomore games will start at 4 p.m., followed by the JV game

at 5:45, and the varsity clash at 7:30.

Coach Arnwine reported that there is no intention of reducing the number of varsity games next year, due to the energy problems, but distances of trips will be considered when making out the schedule. JV, soph and

junior high games may be reduced some next year.

Montgomery invites interested fans to join the booster club and attend the weekly meetings. Films of some of the games are to be shown. Memberships are \$5 for a family or \$3 for an individual.

La Plata Loses Two, 7th Wins

La Plata's 7th grade team again was the only one of La Plata's three teams to cart away a victory in three games against Canyon.

The 7th grade team won over Canyon 7th 30-13 with Greg Dement tossing in 7, Richard Olson 6 and Brent Allen 6.

In the 9th grade game Canyon won 57-43. La Plata was ahead by five at the half, but a Canyon rally in the final period beat the Hereford team. For Hereford Roy Martinez hit 15, Rowan Alexander got 11 and Archie Crim hit for 10.

The La Plata 8th grade lost

their third game—all by a total of five points, as they fell to Canyon 30-26. Kent Ellis hit for 12 and Lane Allen added 7.

The 8th and 9th grade teams at La Plata will host Dumas here today and then all three teams will clash with Stanton Junior High Monday.

Areas Begin Dove Hunts

For those hardy souls known as wintertime dove hunters, the Parks and Wildlife Department is making three of its wildlife management areas available for public dove hunting.

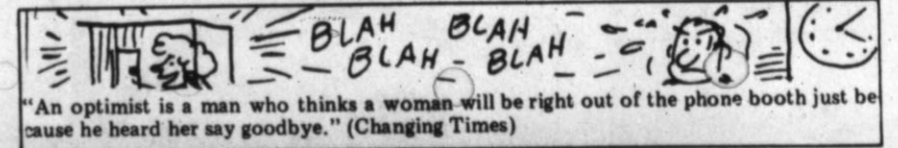
The Pat Mayse Area in East Texas near Paris will be open

Jan. 5-20. Farther to the south in somewhat warmer climes the Chaparral Area in Dimmit and LaSalle Counties reopens to dove hunting Jan. 5-6 and 19-20.

The Black Gap Area in Brewster County will be open Jan. 5-6 and 12-13.

At each area a \$1 fee per hunter will be charged for each day hunted.

Hunting hours are from noon to sunset and all hunters are welcome with no restrictions on the number of hunters or the number of return trips.



You can make a five-minute call to New York for:

\$3.94 A three-minute person-to-person call costs the same, no matter when you phone. But rates for extra minutes are lower between 5 p.m. and 8 a.m. Monday through Friday and all hours Saturday and Sunday.	\$2.54 That's the rate for a credit card, third number or collect call Monday through Friday, 8 a.m. to 5 p.m. The same rate applies on calls from coin phones or hotels.	\$2.19 Dial your call One-Plus Monday through Friday between 8 a.m. and 5 p.m.
\$1.80 Make a credit card, third number or collect call—or phone from a coin or hotel telephone—Monday through Friday, 5 p.m. to 8 a.m. or any time Saturday or Sunday.	\$1.25 Just dial the One-Plus way Sunday through Friday evenings between 5 p.m. and 11 p.m.	\$1.05 Rates are lowest when you dial One-Plus between 11 p.m. and 8 a.m. daily, Saturday between 8 a.m. and 11 p.m. or Sunday, 8 a.m. to 5 p.m.

Take your choice

Any way you go, it's a bargain. So travel by Long Distance... and stay awhile.

Like to have more information about Long Distance rates? Fill out and mail the coupon. We'll send you a free guide that shows you the best times to call and gives examples of rates to major cities.

Southwestern Bell
P.O. Box 787
St. Louis, Missouri 63188

Name _____
Address _____
City _____ State _____ Zip _____



One-Plus rates are not available on calls from coin telephones. Rates above do not include tax.

DUCKWALL'S

SUGARLAND MALL



Renuzit Asst. Scents

Our Reg. 68¢

44¢

FABRIC CLEARANCE

Final clearance of many short length piece goods

NOW

1/2

Price or Less



So strong You can boil



Playtex

DISPOSABLE BOTTLES

55 - 8 Fl. Oz. Bottles to Pkg.

33¢

Brach's PICK-A-MIX CANDIES

10 Varieties

Our Reg. 59¢ Lb.

47¢ Lb.

Eveready BATTERIES

D or C Cell

Pkg. of 2

Our Reg. 47¢

31¢



Ecology Stirs Local Essays

EDITOR'S NOTE: The current natural resource shortages have unearthed conflicts between ecology advocates and industry financiers. The following contributions from LaPlata Junior High students center around this theme and depict the mood of today's youth.

"Leo And The Factories"
Once upon a time in a little forest there lived a lion. He ran everything. In the forest there was a beautiful clear stream where the animals drank. One day Leo the Lion decided he needed some factories. So he, ordering the other animals how to build it, built factories close to the stream. They went along great, but he forgot one thing — The waste from the factories went down the stream and polluted it.

Each day it got worse and worse. Leo didn't seem to care. It killed a lot of the fish and the animals could no longer drink the water. They knew they had to do something so when Leo was taking a nap the animals sneaked in and turned off the factories.

Leo was very upset and when he ordered the animals to go back to work they refused. Since he did not know how to run the factories he had to give up.

Finally the forest turned back to its once beautiful place and the animals lived happily.

Moral: Think about the things and people around you and not just yourself. Everything will be much better.

Micki Merritt

"America"
America the Beautiful, your not so beautiful any more. Your people who are so proud to live in your cities, towns and communities have destroyed you.

Those people who stand and pledge allegiance to your flag are really your enemies. And then when someone says let's keep America Beautiful and raises taxes so that Highway crews may go out and pick up trash, where's all that American support? Where are those fine outstanding citizens who love your beauty so much? America's people fade away and seem to really not care. Shall we just change our saying or change our ways? America the Beautiful?

Frankie Wells

"Water Pollution"
Is there a solution,
To water pollution?
It's in the rivers,
It's in the lakes,
It's in the heavens,
It's even in space.

Is there a solution,
To water pollution?
We can clean up,
Or we can use up.
We will see,
In the future to be,
The fish will die,
And the animals will flee.

Is there a solution,
To water pollution?
The answer you see,
Is in your future to be.
It depends on you,
And your future family.

Steven Hoover

"2001"
Diary
March 28, 2001

The year is two thousand and one.

The place is planet called earth. I am a visitor from another planet called Ada.

I landed on this forbidden planet for repairs, and I had no other choice but to land in the state they used to call Texas.

There is nothing here but trash and waste land.

All people here are dead.

My father used to tell me about how the Earth had once been such a productive and prosperous planet, and now there is no one because they all died of stupidity.

Stupidity, because they didn't have enough sense to clean up. Now that I have repaired my ship I must leave before I get sick to my stomach.

Joe Hysinger

Anthony's
C. R. ANTHONY CO.

**SUPER SAVINGS
IN EVERY
DEPARTMENT**

WAREHOUSE

WE'VE BOUGHT 1,000'S OF DOLLARS WORTH OF NEW MERCHANDISE FROM OUR OKLAHOMA CITY WAREHOUSE FOR THIS SENSATIONAL SALES EVENT WE HAVE BARGAIN BUYS IN ALL DEPARTMENTS FOR THE FAMILY AND HOME

100% COTTON
**BLUE DENIM
CUFFED JEAN**
Reg. \$8.
\$5.88
Sizes 28-38 - S-M-L

**MEN'S
Long Sleeve
Dress and
Sport Shirts**
\$4.00

100% COTTON
WHITE SHEETS
TWINS Reg. 2.39 **1.77**
FULLS Reg. 2.69 **1.97**
42x36 CASES **1.07** PR.
Reg. 1.39 pr.

**MEN'S BROWN
HARNES BOOT**
MEN'S 6 1/2-12 Reg. 26.99 **17.88**
BOYS' 3 1/2-6 Reg. 16.99 **12.88**
YOUTH'S 8 1/2-13 Reg. 13.99 **10.88**

**SHOP NOW AND SAVE
BIG
BUYS**

58/60" 100%
**POLYESTER
KNITS**
1 to 7 Yd. Pieces
1.67 YD.

**LET'S PUT
IT ALL
TOGETHER
FOR
SPRING!**

Ladies' Shells
Easy to wear season after season... ladies' random rib sleeveless shells to match and layer up with all your favorite outfits. Made of easy care, no ironing, 100% polyester. In white, black, red, navy, pink, light blue. Sizes S-M-L. Regular \$4.
2.88
2 FOR \$5.

Ladies' Pants
Ladies' 100% polyester, stitch crease center, flare leg, pull-on pant. Available in black, navy, red, brown, white, light blue, and pink. Sizes 10-20. Buy several and coordinate them with the shells to make a lovely wardrobe and at a big savings too!
\$5.50

Ladies
Better
BLOUSES
Lg. Grp.
**1/3 or better
Off**

**Ladies'
PANTY
HOSE**
3 FOR \$1.

**BOYS'
CUFFED
JEANS**
Reg. 7.50
4.97

Select group of boys' cuffed chambray or cuffed denim jeans. In solid colors or plaids. Sizes 6-18 slim and regular.

**MEN'S POLYESTER
SPORT COATS**
Reg. \$35.
\$25.

Choose from a variety of new spring patterns to coordinate with solid colored slacks. Expertly tailored, popular two button front with deep center vent. Sizes 36 to 48 regulars and 40 to 48 longs.

**MEN'S POLYESTER
KNIT SLACKS**
VALUES TO \$18.
\$9.
Assorted Solids and Fancies

**SELECT GROUP OF
CHILDRENS' SHOES**
Values To 8.99
2.97 ASSORTED STYLES, SIZES AND COLORS.

**ALL
MEN'S
COAT**
1/3 off

Rugged uncut corduroy makes for a zesty addition to your winter wardrobe. For added warmth a deep pile collar and lining. Our colors for this year are bronze, duffle green, vicuna and cornhusk. Sizes 36 to 46.

A-1 PILLOWS
2.99

21"x27" Pillowtex pillows in striped ticking fabric, 100% polyester filled. 20 oz. — so they're easily cared for and so comfortable for sleeping.

SUPER SAVINGS

LAE Club Names '74-75 Officers

Officers were elected for 1974-75 by members of the La Alflatus Estadio Club at a make-up meeting Tuesday afternoon in the home of Mrs. A.N. Hopson. First scheduled for Jan. 1, the meeting was postponed because of bad weather that day.

Mrs. Marlin Gilliland was named president, Lottie Clark, vice-president; Mrs. A.B. Higgins, secretary-treasurer; Mrs. Sam Morgan, parliamentarian.

The Po-Ne-Whush Horizon Club presented a program in

song and motion to members. Horizon Clubs are Campfire Girls organizations for older girls.

Mrs. Lewis Lea, campfire girl executive secretary and a longtime Campfire leader here, was honored as a guest.

Members present included Della Stagner and Mmes. Cecil Braly, Clark, A.H. Cook, Gilliland, Emmitt Hale, Hopson, Walter Johnson, B.F. Markham, Morgan, Ira Ott, S.C. Ramey, Claude Ricketts, Higgins, T.W. Roberson and George Suggs.



Mr. & Mrs. Al Vermillion

Silver Anniversary Reception Scheduled

Open house from 2 to 4 p.m. Sunday afternoon will celebrate the 25th wedding anniversary of Mr. and Mrs. Al Vermillion, with friends invited to call at their home, 613 South 25 Mile Ave. Hosts will be daughters of the couple and their families.

Residents of Hereford since 1969, the Vermillions are both natives of the Texas Panhandle.

She is the former Shirley Ringo, who was born and grew up in Dalhart. Vermillion's birthplace is Mobeetie.

Actual date of their silver anniversary is today; they were married Jan. 10, 1949, in Clayton, N.M.

Their daughters are Terry, Mrs. Ralph D. Murray of Ruidoso, N.M.; Lu Lynn, Mrs. Kenneth Bratcher of Albuquerque, and Jo Ann, Mrs. Gene Cassidy of Alamogordo. The Vermillions have three grandsons, Joe Bob and Todd Murray and Jay Lee Bratcher. Vermillion is an employee of Whitfield Tank Lines and Mrs. Vermillion of K-Bob Steak House.

Europeans seek alternatives to Arab oil. Auto makers begin raising prices.

Hostess To Extension Club

Two guests met with West Hereford Extension Club Tuesday afternoon, when Mrs. U.V. Pierce was hostess in her home. Mrs. Pierce, the club president, welcomed Mrs. Ed Cobridge and Mrs. R.A. McLaughlin as visitors.

Argen Draper, county extension agent, gave the program on the topic, Obtaining

Citizenship. Mrs. Roy Boyd read Ten Commandments For Parents and Mrs. Blanche Hardin a Prayer For Parents.

The hostess gift went to Mrs. Robert Boyd. Others present were Mmes. W.E. Cox, A.C. Flowers, John Jacobson Sr., Louis Keyser; and Miss Evelyn Bell.

Newcomers Schedule Sweetheart Dinner

Plans were discussed for the Newcomers Club Sweetheart dinner at their luncheon Tuesday at Community Center.

The dinner, with members' husbands and newcomers in the Hereford area as guests, is scheduled for 7:30 p.m. Feb. 14 in the House of Wong. There will be an admission charge.

The club will sponsor a birthday party Jan. 25 at the Mental Health and Retardation Center. Also, scheduled is an open covered dish luncheon to be held Feb. 12 at the Community Center with featured speaker, Don Elwell, director of the mental health center.

Tentative plans were made for the Cutest Kid Contest to be held in the spring.

Campfire Council To Meet

The annual meeting of Hereford Campfire Girls Council is scheduled at 8 p.m. Friday in the Campfire Girls Lodge, where senior girls in the program will present the program installing 1974 officers of the Council board. Ted Panciera is currently the board president.

In addition to board members, all leaders of groups, assistant leaders and adult sponsors are being urged to attend this annual meeting, to hear reports of the past year and plans for the coming year. Parents and others interested in the organization for girls are also invited.

Overall plans for the Campfire Girl program in Hereford, comprising groups for girls from first grade through high school, are framed by the Council which is made up of adults.

Private initiative seems to function best when liberally supported by public funds.

Good Watches deserve Good Care!



all others need it!

Top Quality WATCH REPAIR SERVICE

Your watch is a precision mechanism. It needs more skill to service than any other mechanical device you may own. And you depend on it so much. Trust it only to a professional.

FREE ESTIMATES Cowan Jewelers 217 Main



member AMERICAN GEM SOCIETY



SAFeway Prices Effective Thru Sat., Jan. 12 in — HEREFORD, TEXAS

FOR QUALITY FOODS, USDA CHOICE BEEF CUTS, FRESH CRISP PRODUCE AND A WIDE SELECTION OF DAIRY AND FROZEN FOODS. COME SHOP SAFEWAY WHERE YOU CAN GET IT TOGETHER EVERYDAY!

FRYER BREASTS 79¢
Fryer Legs lb. 75¢

SAFETY Fryer 12-oz. Pkg. 99¢

SLICED BACON 99¢
1-lb. Pkg.

SAFETY Bacon 2-lb. Pkg. 1.19

Sliced Bologna 99¢
Danish Hams 79¢
Sausage \$1.49

PORK SAUSAGE 99¢
Lb.

Variety Pack 12-oz. \$1.19
Franks Oscar Mayer Meat or Beef \$1.19
Bologna Oscar Mayer Meat or Beef 8-oz. Pkg. 65¢

GET IT TOGETHER

White Flour Kitchen Craft 5-lb. Bag 89¢	Listerol Disinfectant Aerosol 7-oz. 89¢	Com Meal Kitchen Craft 5-lb. Bag 65¢	Gelatin Mix Jell Well 3-oz. Pkg. 10¢	Crackers Melrose 1-lb. 29¢
White Flour Kitchen Craft 10-lb. Bag \$1.57	Liquid Bleach White Magic 44¢	Shortening Royal Satin Pure Veg. 3-lb. Can \$1.29	Instant Tea Canterbury Tea 3-oz. Pkg. \$1.09	Soda Pop Cragmont Beverages 2-lb. 33¢
Crackers Ruby Bites Graham 6-oz. Pkg. 39¢	Softener White Magic Fabric 33-oz. Bott. 45¢	Marshmallow Puffs Brand 3-7-oz. Pkg. \$1	Nestle Quik Choc. Mix 2-lb. Pkg. 89¢	Dill Pickles Zopy Whole Kosher 22-oz. Jar 49¢

DEL MONTE SWEET PEAS

24¢

17-oz. Can

SAFETY SUPER SAVER

SEA TRADER CHUNK TUNA

43¢

6 1/2-oz. Can

EVERYDAY LOW PRICE!

KRAFT MAC. & CHEESE DINNERS

23¢

7 1/4-oz. Pkg.

SAFETY SUPER SAVER

HUNT'S QUALITY TOMATO SAUCE

11¢

8-oz. Can

EVERYDAY LOW PRICE!

SAFeway FROZEN FOOD BUYS

MORTON DINNERS

Frozen Morton Meat Dinners! (Except Beef Dinners) 11-oz. Pkg.

59¢

EVERYDAY LOW PRICE!

Strawberries Bel Air 20-oz. Pkg. 89¢	Onion Rings Bel Air Quality 7-oz. Pkg. 49¢	Lemonade Bel Air Pkg. 12-oz. Can 29¢
Orange Juice Bel Air 12-oz. Can 43¢	Shoestrings Bel Air Potatoes 20-oz. Pkg. 43¢	Grape Juice Bel Air 8-oz. Can 31¢
Orange Juice Scotch Treat 8-oz. Can 22¢	Cut Fries Scotch Treat Crockpot Cut 5-lb. Pkg. \$1.10	Cauliflower Bel Air 10-oz. Pkg. 35¢
Grapefruit Bel Air Juice 12-oz. Can 48¢	Hash Brown Bel Air 2-lb. Pkg. 45¢	Drumsticks Everyday Low Price 6-oz. Pkg. 69¢
Asparagus Bel Air Spears 8-oz. Pkg. 68¢	Meat Pies Manor House 8-oz. Pkg. 28¢	Sandwiches Long Treat 6-oz. Pkg. 69¢
Broccoli Bel Air Spears 10-oz. Pkg. 33¢	Dinner Swanson Frost Chicken 11 1/2-oz. Pkg. 69¢	Ice Cream Lucerne Butter Stick 1-lb. 89¢
Com On Cob Bel Air 8-oz. Pkg. 69¢	Cherry Pies Bel Air 20-oz. Pkg. 65¢	Whole Okra Bel Air 10-oz. Pkg. 37¢
Cut Corn Bel Air Quality 2-lb. Pkg. 69¢	Cheese Pizza Bel Air 16-oz. Pkg. 85¢	Orange Plus Borden's Quality 9-oz. Can 59¢

SAFeway REFRIGERATED FOODS

COLDBROOK MARGARINE 48¢
Coldbrook Soft Spread Margarine-Low Price! 1-lb. Tub

MRS. WRIGHT'S BISCUITS 12¢
Buttermilk Biscuits 8-oz. Can

Margarine Sunnybank Regular 1-lb. 42¢	Real Butter Lucerne 1-lb. \$1.09
Margarine Empress Soft 2-8-oz. Ctns. 53¢	Cheese Safeway Half Moon Longhorn 1-lb. \$1.47
Margarine Coldbrook Solid 1-lb. Pkg. 38¢	Margarine Coldbrook Quarters 1-lb. 39¢
Margarine Sunnybank Corn Oil 1-lb. Pkg. 49¢	Butter Me Nots Mrs. Wright's 9-oz. Can 22¢
Margarine Coldbrook Soft Corn Oil 1-lb. Pkg. 51¢	Sliced Cheese Lucerne American 8-oz. 69¢

Campbell TOMATO SOUP 13¢ Everyday Low Price! 10 3/4-oz. Can	GRAPEFRUIT JUICE 45¢ Town House Quality! 46-oz. Can	POOCH DOG FOOD 12¢ Everyday Low Price! 15 1/2-oz. Can
---	---	---

But All Have Common Goal

Hereford Police Officers Have Varied Backgrounds

By STEVE CONNELLY
Staff Writer

Officers of the Hereford Police Department come from

varied backgrounds, but with the one common goal of "trying to make the people feel they have good law enforcement in the city of Hereford."

Here are six of the 16 officers on the Hereford Police Department, the other ten to be in The Sunday Brand. Chief of Police Don Brush

began as a police officer in Hereford when there were only seven patrolmen and a chief in September 1961. In 1969 he became Chief of Police.

BRUSH said he had "always wanted to be a policeman," and he became one when he answered an advertisement in a Lubbock newspaper in 1961.

Born in Milford, Tex., and graduated from high school in Slaton, Brush attended police school at West Texas State University.

The 39-year-old chief said "it has been a good job; I've enjoyed it. There are good people here and we have appreciated their cooperation and support." He and his wife, Sunny, have three children, Lesly, Steve and Traci.

Vietnam for two years, two years in California, and four years in Kansas City, Kan., and Omaha.

A graduate of Higgins High School, he attended West Texas State University for one and one-half years and received his police training at the Omaha Police Academy.

OFFICER Richard Elsheimer, born in Pampa, began with the Hereford Police Department Aug. 16, 1973. He said the reason he moved to Hereford was to "Get my kids out of the big city."

Elsheimer lived in Omaha, Neb., a city of about 360,000 people, before he came to Hereford last year.

He served in the U.S. Marine Corps for seven years before becoming involved in law enforcement. He served in

BILL McCLENNEY served at the sheriff's office in San Berardino County, Calif. for two years before coming to Hereford Sept. 16, 1973.

The San Diego-born officer calls Dimmitt his hometown because he said "all my relatives live in Castro and Hale Counties."

McClenney said he came to Hereford to escape the smog of California.

He graduated from high school in California and attended two colleges there for two years. He received law enforcement training at the Sheriff's Academy in San Berardino.

The 27 year-old officer specializes in criminal investigation and is a qualified Sergeant in California, and has received a letter of commendation from the FBI.

While with the sheriff's office in San Berardino, he covered 29 Palms, Calif., an area of 5,000 square miles. He said there was one man for every eight-hour shift.

He and his wife Pamela have one child, Tina.

VERNON HOPE began at the Hereford Police Department in Nov., 1972 and came from the Hardman County Sheriff's Office in Oklahoma.

Born in Vian, Okla., he graduated from high school in Quannah and attended the Wichita Falls and Vernon police academies.

He is now enrolled with the Institute of Applied Science and expects to graduate within the next month.

He and his wife Linda have two children, Sandra Lynn and Steven Ray.

OFFICER Phil Sciumbato was born in Clovis, N.M., but he and his family moved to Hereford after about one year and he has lived here since then.

He is a 1965 graduate of Hereford High School and attended WTSU for two years, with a major in business.

He attended police school at Amarillo College and has taken courses in narcotics, the new penal code, and said he will enroll in other classes Jan. 14.

He was dispatcher at the police department for two months before he became an officer in August, 1973.

The 27 year-old officer and his wife Lynn live at Frio.

OFFICER Dave Stocker came to Hereford Oct. 1, 1973 and said he plans to "make a career out of police work." Stocker was born in Tillamook, Ore., and first worked for Armour Meat Packing Co. here.

A farmer all his life, the 23 year-old officer turned to law enforcement and has taken narcotics and search and seizure courses at Amarillo College.

He and his wife Mary attend Grace Gospel Church and have one child, Scott. His wife is expecting another child this month.

Honesty is more often a policy than a principle.

Truth is the last thing that some educators want to teach.

The mercy of God isn't to be purchased by cash contributions.

Wise people know how to save time by not being in a hurry.

Selfish individuals contribute very little toward a better world.



CHIEF DON BRUSH



RICHARD ELSHEIMER



BILL MC CLENNEY



VERNON HOPE



PHIL SCIUMBATO



DAVE STOCKER

TURBOT FILLET lb. **89¢**
EVERYDAY LOW PRICE!
Greenland Northern Waters

BEEF ROAST lb. **\$1.49**
SUPER SAVER
Boneless Cross Rib Cross Rib Steak lb. \$1.49

BEEF STEAK lb. **\$1.49**
SUPER SAVER
Boneless Bottom Round Bottom Round Roast lb. \$1.49

GROUND BEEF lb. **93¢**
EVERYDAY LOW PRICE!
Regular 100% Beef Premium lb. \$1.23

- Perch Fillet Captain Choice \$1.09
- Cod Fillet Captain Choice \$1.29
- Chunkees Thunderbolt Brand 2 lb. \$2.98

HAM SLICES \$1.59
Smoked Center Cut Boneless Super Saver lb. Water Added

- Beef Patties Chicken Fried 99¢
- Steak Fingers Fully Cooked Tenderloin 99¢
- Burritos Senior Blues Beef & Bean 89¢

- Stewing Beef Boneless Cubes \$1.19
- Chili Meat Fresh Ground Beef \$1.23
- Eye of Round Steak or Roast \$1.79

CORNED BEEF \$1.39
Safety Point Cut Flat Cut 9" x 11"

- Chuck Roast U.S. Choice Blade Cut 78¢
- 7-Bone Roast U.S. Choice Center Cut 98¢
- Beef Roast U.S. Choice Round Bone \$1.18

at SAFEWAY

- Tomato Catsup Town House 32-oz. 54¢
- Peanut Butter Real Roast 3-lb. \$1.45
- Edwards Coffee All Grinds Can 93¢
- Hi C Drinks Fruit Drinks 48-oz. 37¢
- Fruit Drinks Creamtop 48-oz. 33¢
- Tomato Juice Town House 48-oz. 41¢
- Toilet Tissue Brocade Bathroom 4-roll Pkg. 43¢
- Facial Tissue Truly Fine 200-ct. 25¢
- Trash Liners Kitchen Craft Can Liners 10-ct. Pkg. 65¢
- Cocktail Town House Fruit 17-oz. Can 31¢
- Green Beans Town House Cut 16-oz. Can 23¢
- Spinach Town House 16-oz. 22¢
- Shortening Valkey All Purpose 2-lb. \$1.17
- Soup Town House Cream or Mushroom 10-oz. Can 18¢
- Cake Mix Betty Crocker Layer 18-oz. Pkg. 47¢

DEL MONTE GOLDEN CORN 17-oz. Can **23¢**
EVERYDAY LOW PRICE!

KITCHEN CRAFT ALUMINUM FOIL 12" x 25' Roll **25¢**
EVERYDAY LOW PRICE!

WHITE MAGIC DETERGENT 49-oz. Box **65¢**
EVERYDAY LOW PRICE!

NU-MADE SALAD OIL 48-oz. Botl. **\$1.29**
SUPER SAVER

HEALTH & BEAUTY AIDS
DIAL ANTI-PERSPIRANT 6-oz. Size **99¢**
EVERYDAY LOW PRICE!

- Deodorant Dial Spray 7-oz. \$1.29
- Shampoo Every Night 8-oz. \$1.39
- Mouthwash Scope Brand 18-oz. \$1.19
- Deodorant Sure Anti-Perspirant 14-oz. \$1.99
- Mouthwash Scope Brand 16-oz. 99¢
- Creme Rinse Saven Lemon 16-oz. 85¢
- Bromo Seltzer Super Saver 4 1/2-oz. 99¢
- Mouthwash Safeway Brand 16-oz. 39¢
- Deodorant Body All Powder Spray 5-oz. \$1.29
- Hair Creme Alberto VO 5 1.5-oz. 98¢

FRESH PRODUCE AT SAFEWAY

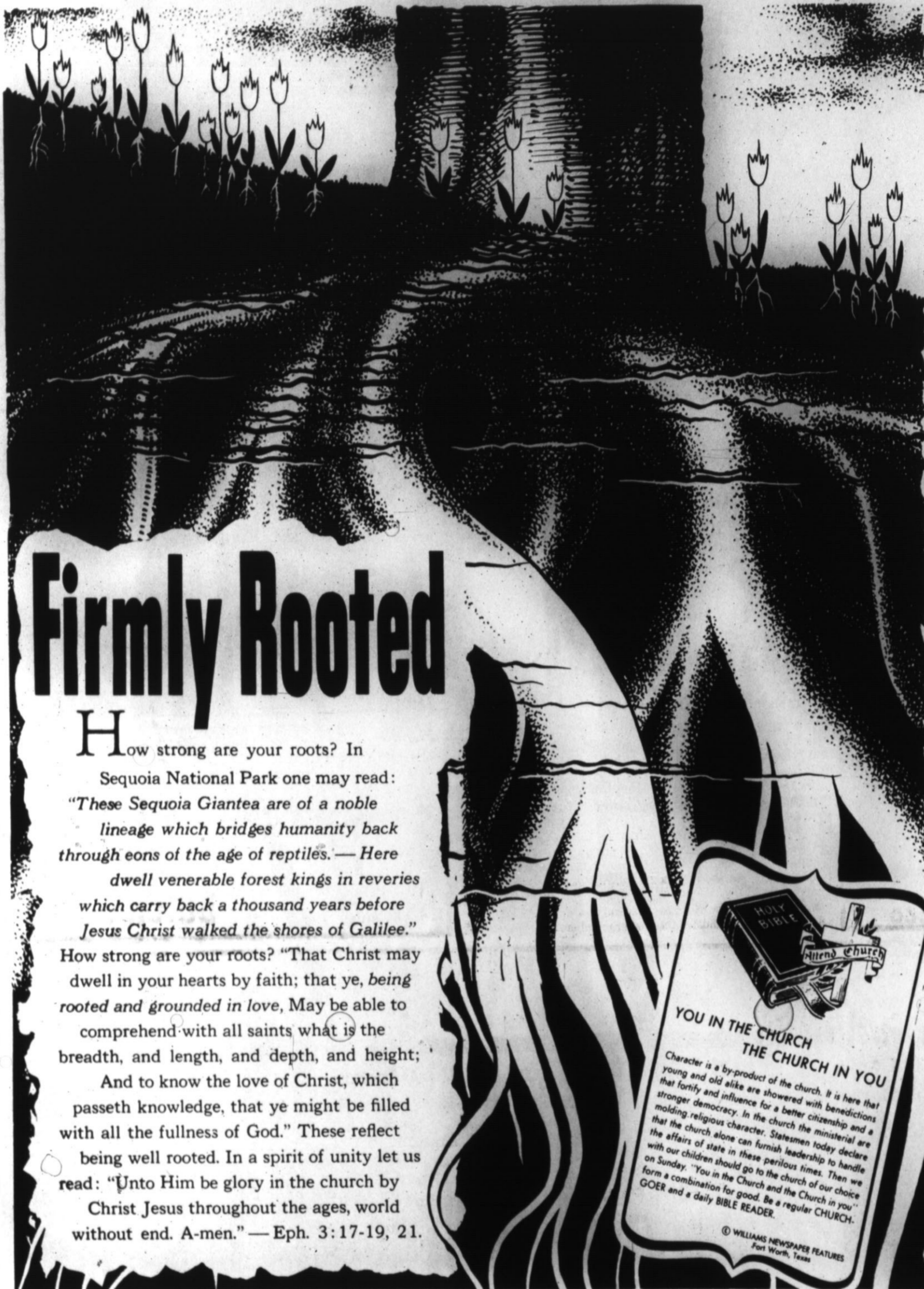
- LETTUCE** Large Firm Crisp Heads! **2 FOR 39¢**
- GRAPEFRUIT** Ruby Red Sweet Fruit! 5-lb. Bag **59¢**
- BANANAS** Golden Ripe Fruit! **lb. 12¢**
- D'Anjou Pears** Wash State 4 \$1
- Potatoes** All Purpose 10-lb. Bag 89¢
- Pineapples** Grown in Hawaii 69¢
- Avocados** 1-lb. Florida Grown 39¢
- Grapefruit** Ruby Red Grapefruit **5 For \$1**
- Carrots** Sweet & Tender 2-lb. Bag 39¢
- Red Grapes** Empire Grapes 39¢
- Eggplant** Firm & Fresh 39¢
- Broccoli** Firm & Tender 37¢

DUET FINE CHINA DINNERWARE
BREAD & BUTTER DISH **59¢** GRAY BOAT **\$3.49**

THIS COUPON WORTH 40¢
Toward The Purchase Of a 10-oz. Jar of **INSTANT FOLGERS**
One Coupon Per Customer Coupon Expires Sat. Jan. 12 Redeemable Only At Safeway

For God So Loved The World

- FIRST BAPTIST CHURCH**
Doug Manning, Pastor
Fifth and Main Streets
- FRIO BAPTIST CHURCH**
Rev. Samuel B. Ogan, Pastor
Frio Community
- WESTWAY BAPTIST CHURCH**
Rev. Dick Hollis
- MT. SINAI BAPTIST CHURCH**
Rev. C. H. Frost, Pastor
302 Knight Street
- SUMMERFIELD BAPTIST CHURCH**
Rev. Niel Foster
- TEMPLO CALVARIO
ASAMBLEA DE DIOS**
13th & Ave. H
Rev. Ralph J. Molina
- CHURCH OF JESUS CHRIST OF
LATTER DAY SAINTS**
(Mormon)
Country Club Drive
- TEMPLE BAPTIST CHURCH**
Rev. J. L. Bozeman
Forrest Ave. and Ave. K
- GREENWOOD BAPTIST CHURCH**
"A Bible Baptist Church"
Rev. Prentice D. Smith, Pastor
- IGLESIA METODISTA
SAN PABLO**
Rev. Thomas Balderas, Pastor
- SAN ANTONIO A LA IGLESIA**
North 25 Mile Avenue
- TEMPLO BAUTISTA MEMORIAL**
(A.O. Thompson)
Robert Foster, Pastor
- LA IGLESIA DE CRISTO**
Sunset and Plains Ave.
Pete Reyna, Minister
- CENTRAL CHURCH OF CHRIST**
J.T. Marlin, Minister
148 Sunset Dr.
- PARK AVE. CHURCH OF CHRIST**
On Harrison Highway
- TRINITY BAPTIST CHURCH**
Southern Baptist
Rev. C.F. Powell
4th and Jackson
- SAINT JOHN BAPTIST CHURCH**
400 Mable St.
Rev. C.W. Allen, Pastor
- PENTECOSTAL CHURCH
OF JESUS CHRIST**
So. Miles and Gracy St.
364-5119
Rev. Joseph A. Myers



Firmly Rooted

How strong are your roots? In Sequoia National Park one may read: "These Sequoia Giantea are of a noble lineage which bridges humanity back through eons of the age of reptiles. — Here dwell venerable forest kings in reveries which carry back a thousand years before Jesus Christ walked the shores of Galilee." How strong are your roots? "That Christ may dwell in your hearts by faith; that ye, being rooted and grounded in love, May be able to comprehend with all saints what is the breadth, and length, and depth, and height; And to know the love of Christ, which passeth knowledge, that ye might be filled with all the fullness of God." These reflect being well rooted. In a spirit of unity let us read: "Unto Him be glory in the church by Christ Jesus throughout the ages, world without end. A-men." — Eph. 3:17-19, 21.

**YOU IN THE CHURCH
THE CHURCH IN YOU**

Character is a by-product of the church. It is here that young and old alike are showered with benedictions stronger democracy. In the church the ministerial are molding religious character. Statesmen today declare that the church alone can furnish leadership to handle the affairs of state in these perilous times. Then we with our children should go to the church of our choice on Sunday. "You in the Church and the Church in you" form a combination for good. Be a regular CHURCH-GOER and a daily BIBLE READER.

© WILLIAMS NEWSPAPER FEATURES
Fort Worth, Texas

- FIRST METHODIST CHURCH**
Dr. Jordan Grooms, Pastor
501 North Main
- WESLEY UNITED
METHODIST CHURCH**
Rev. Don McWhorter, Pastor
410 Irving
- BIPPUS COMMUNITY CHURCH**
Gene Brock, Pastor
Preaching 1,2,3,4 Sundays
5th Sunday, Singing
- AVENUE BAPTIST CHURCH**
Rev. Norman MacDonald
130 North 25 Mile Ave.
- CHRISTIAN ASSEMBLY**
Interdenominational
Christian Fellowship in the Fullness
of the Holy Spirit
Rev. Tom Starcke,
South Main — 364-5556
- ASSEMBLY OF GOD CHURCH**
Rev. Homer T. Goodwin, Pastor
15th and Ave. F
- IMMANUEL LUTHERAN
CHURCH**
Rev. Hermon Schelter, Pastor
Park Ave. and B Street
- SEVENTH DAY ADVENTIST
CHURCH**
Elder Hollis A. Morel, Pastor
West Park Addition
- MISSION DA SAN JOSE**
Labor Camp
- CHURCH OF THE NAZARENE**
Rev. Max Jetton, Pastor
16th & Blackfoot
- GRACE GOSPEL CHURCH**
Thirteenth and Avenue K
- ST. THOMAS EPISCOPAL
CHURCH**
William A. Laag, Jr. Vicar
601 West Park
- ST. ANTHONY'S ROMAN
CATHOLIC CHURCH**
Rev. Bernard McGorry, Pastor
Harrison Highway at 25 Mile Ave.
- FIRST PRESBYTERIAN CHURCH**
610 Lee Street
Rev. Roger B. Knapp
Minister
- FIRST CHRISTIAN CHURCH**
Rev. Eugene Brink, Pastor
West Park Avenue
- DAWN BAPTIST CHURCH**
Rev. Gene Meacham

These Hereford Business Firms Make This Page Possible in the Interest of a Christian Community.

CARL McCASLIN LUMBER CO.
Carl G. McCaslin

KELLEY ELECTRIC
Virgil and Doug Kelley

McRIGHT GARAGE & SUPPLY
Mr. and Mrs. Clyde Oldham

FIRST NATIONAL BANK
Since 1900

ROCKWELL BROS. & CO.
Ray Chambliss, Mgr.

OGLESBY IMPLEMENT CO.
Cecil Oglesby

**THE SUNDAY BRAND
THE HEREFORD BRAND**
Phone 364-2030

DAVIS IMPLEMENT CO.
W.L. Davis, Jr.

HEREFORD IRON & METAL
Anson A. and June Dearing

CONSUMER'S FUEL ASS'N.
"Bud" Sparks, Mgr.

THE INK SPOT, INC.
C.E. Coleman, Jr.

HI-PLAINS SAVINGS & LOAN ASSOC.
Myron Morgan, Mgr.

GILLILLAND - WATSON FUNERAL HOME
Marlin Gilliland-John Gilliland
Charles Watson

PITMAN GRAIN CO.
John D. Pitman

HAROLD CLOSE DRUG
Harold Close

FARMERS' DRIVE IN
Troy Moore

SUIT'S AUTO SUPPLY COMPANY

DOYLE JOHNSON CHEVROLET - OLDS
Doyle Johnson

BOYD MACHINE & SUPPLY
Mr. and Mrs. James J. Boyd

COIN OPERATED MAYTAG LAUNDRY
Two Locations: 213 13th
1009 Park Ave.
Herb and Dennis Edwards, Owners

CASE POWER & EQUIPMENT CO.
L.B. Herring, Mgr.

A to Z TIRE & BATTERY
Troy Rhodes

HEREFORD STATE BANK
The Friendly Bank

LOERWALD BROS.
231 W. 2nd

WAC SEED, INC.
Hugh Clearman-Armon, Lauderback

Mothers March Is JC-Ette Topic

Leadership in the local Mothers March for the National Foundation March Of Dimes was planned by Hereford Jaycee-Ettes at a meeting Monday evening in the home of the president, Mrs. John Bunch. As it did last year, the Jaycee-Ette group here has accepted the task of conducting this fund drive.

As a preliminary to the Mothers March on Jan. 28, a kickoff meeting is scheduled at 7:30 p.m. Jan. 15 in Community Center, open to all interested persons in the community.

Mrs. Bill Johnson and Mrs. Ronnie Collier are co-chairmen of the project, and all members

of the Jaycee-Ettes are working on the plans.

Funds raised in this annual drive go to the National Foundation for research and treatment of birth defects. Mrs. Collier quotes the Foundation's statement on the average doctor's part in preventing these defects:

"Someday all babies may be born healthy but right now, here in America, over a quarter of a million babies are born with birth defects every year. When you give to the March of Dimes, you help prevent birth defects.

"You help support more than 100 birth defect treatment centers.

"You help support brilliant medical scientific investigators, including those at the Salk Institute for Biological Studies.

"You help support a massive health education program aimed at getting the best possible medical care for every mother-to-be.

"So, make it a happier New Year. Give to the March of Dimes and someday maybe every baby will be born healthy."

INTEREST & BONDS

President Nixon has raised the interest rate on U.S. Savings Bonds from 5.5 to 6 per cent. The higher yield applies to the full amount of all bonds purchased after Dec. 1 and to the remaining life of bonds bought before that date.

Marshall of Expos traded for Davis of Dodgers.



The One That Didn't Get Away

Mrs. Carl Sevier proudly displays the 24 pound "whopper" which she and her husband captured during a recent fishing expedition. The Seviers of Siloam Spring, Ark., reported that their boat was nearly capsized by the record fish.

Book Review Is Valeda Program

The world's largest foundling hospital is the setting for the book, *Children of Hope*, by Elsie Vigne, which was reviewed by Mrs. J.D. Gilbert for Valeda Study Club's program Tuesday evening. Mrs. Bill Walden was hostess in her home.

The author writes of her personal experiences as a volunteer working with the children in New York Foundling Hospital, which was established in 1870, Mrs. Gilbert said. She related incidents of triumph, humor and heartbreak which are told in this first-person account.

Valeda Club members are working this month on the transportation committee for residents of Kings Manor retirement home, serving as chauffeurs for shopping trips.

This is a community service activity in which the club customarily takes part.

Refreshments were served to Mrs. Laurence Ruther, John Poindexter, Gwynne Owen, Hugh Clearman, Bill Brady, George Olson, Frank Zinser Jr., Howard Birdwell and Richard Ottesen.

Young Extension Club Selects Its Woman Of Year

Candidates for county titles were chosen in Young Homemakers Extension Club at a meeting Tuesday morning in the home of Mrs. Richard Patzig. Mrs. Marvin Welty was picked as the club's Woman of the Year, to compete with other nominees as the County Home Demonstration Woman of the Year.

Mrs. Don Daugherty was selected as a candidate for

county delegate to the District Home Demonstration Association meeting, with Mrs. Sam Mazurek as alternate.

Sewing Lingerie was the program subject, with Mrs. Allen Evers and the hostess explaining ways of using new fabrics and methods. The program was repeated from last year for the benefit of several new members and also other members

Women's Division Dinner Is Today

A new president will take office, three new directors will be elected and a Woman Of The Year named at the winter membership dinner of the Women's Division, Deaf Smith Chamber of Commerce, this evening in the House of Wong.

All members are invited to the dinner; no reservations are necessary.

Mrs. O.G. Nieman is the new president, succeeding Mrs. Rex Lee who will become parliamentarian for next year.

Mrs. Milton C. Adams, a past president, will conduct the installation.

With the directors chosen this evening, Mrs. Eugene Sparks and Mrs. Joel Newman will continue to serve on the board during 1974.

Mrs. Darny K. Martin is chairman of arrangements for the dinner. For entertainment, La Botique will present a style show directed by Jeanie Caison. Women's Division members will model midwinter-into-

spring fashions. Featured models will be Sandy Caison, Miss Hereford, and Cindy Hairgrove, Miss Teenage Hereford, who were selected in the Miss Hereford Pageant sponsored by the Women's Division last spring. Dinner will be served buffet style, with directors and officers of the Chamber of

Commerce as special guests. Women's Division members have lately received letters from the president-elect, asking each one to designate the committee she prefers to serve on this year. Mrs. Nieman asks that these preferences be noted as soon as possible so appointments may be announced and work of the year begun.

Mrs. Barton Makes Dean's Honor Roll

It was announced this week that Mrs. Richard Barton appeared on the Dean's Honor Roll of Southwestern State College in Weatherford, Oklahoma. To qualify for the honor, a student must carry 15 or more hours and maintain an average of 3.5 or better.

Mrs. Barton is the former Colleen Sanders, the daughter of Mr. and Mrs. Clayton W. Sanders of Route 5, Hereford. She is a 1967 graduate of

Hereford High School. Mrs. Barton will graduate in May with a B.S. in Accounting and a minor in Math and Home Economics.

AGNEW'S PROTECTION

Secret Service protection for former Vice President Spiro T. Agnew is continuing at the direction of President Nixon for an indefinite period, the White House reports.

HEREFORD MONUMENT COMPANY
"YOUR LOCAL MONUMENT DEALER"

UPRIGHT MONUMENTS  GRASS MARKERS

MEMORIALS OF EVERY SIZE AND COLOR CARVED OF THE FINEST STONES REFLECTING BEAUTY AND DIGNITY AT LOWEST PRICES.

RECEIVE COMPLETE INFORMATION, PICTURES & PRICES 364-5351

GET THE JUMP ON THE JUMP.

GET THE JUMP ON THE PRICE INCREASE, SINCE THESE ARE THE LAST CARS TO BE SOLD BEFORE THE PRICE INCREASE, NOW IS THE BEST TIME TO BUY A NEW BUICK OR PONTIAC.

1974 BUICK
Le Sabres
Centurys
Apollo



1974 PONTIAC
Grand Prix
Bonneville
Catalina

ALL IN STOCK AT
JOHN ORSBORN
BUICK-PONTIAC-GMC

364-0990
142 N. Miles

364-1222
N. 25 Mi. Ave.

PENS AVAILABLE AT SUGARLAND FEED YARDS

Running short on Wheat pasture? Bring your cattle into Sugarland Feed Yards—While the pens are still available. New Pens—Experienced Personell—Competitive gains—and cost... Space available for 2500 Head

CALL
Tom Sims 357-2221
Residence 364-5228

Young Extension Club Selects Its Woman Of Year

Candidates for county titles were chosen in Young Homemakers Extension Club at a meeting Tuesday morning in the home of Mrs. Richard Patzig. Mrs. Marvin Welty was picked as the club's Woman of the Year, to compete with other nominees as the County Home Demonstration Woman of the Year.

Mrs. Don Daugherty was selected as a candidate for county delegate to the District Home Demonstration Association meeting, with Mrs. Sam Mazurek as alternate.

Sewing Lingerie was the program subject, with Mrs. Allen Evers and the hostess explaining ways of using new fabrics and methods. The program was repeated from last year for the benefit of several new members and also other members

SPECIAL SAVINGS **DOUBLE STAMPS ALL WEEK**

PRIZE DRAWINGS **CELEBRATION BUYS**

STAMPS **GRAND** **OPENING** **STAMPS**

DOUBLE GUNN BROS STAMPS FOR EVERY PURCHASE THRU SATURDAY

FREE DRAWING!!!!!!!!!!!!

1. REGISTERED PUPPY
2. 50,000 GUNN BROS STAMPS
3. 20,000 GUNN BROS STAMPS

DRAWING FOR EACH PRIZE SATURDAY, JANUARY 12

1,000 GUNN BROS STAMPS GIVEN TO SOME LUCKY PERSON IN THE STORE EACH HOUR

SEE THE SUNDAY BRAND FOR ALL OF THRIFTWAYS SUPER BARGAINS.

THRIFTWAY

"A BETTER WAY TO SAVE"

5th AND MAIN  5th AND MAIN 

Let's Cook

Family Hobby Is Riding Cycles On River Sands

By SANDY INMAN
Brand Staff Writer

MOTORCYCLE riding has become an increasingly popular sport nationwide as well as locally during recent years. The Donnie Welty's of 238 Hickory and their two sons, Shane and Donnie Jr., take advantage of

the dirt tracks at Canadian River whenever possible. "My husband bought a couple of bikes last summer and taught me how to ride on the highway and straight stretches of land before taking me to ride on the sand dunes," says Mrs. Welty. "I'M STILL a little frightened at times when cycling, but for the most part, it's a lot of fun and a hobby the entire family can participate in."

The Welty's have lived in Hereford for over four years and are members of the First Baptist Church. Welty is employed as a foreman at Dale Johnson Chevrolet Body Shop. Although many hours are taken up by children she keeps during the day, the pretty brunette finds time to sew professionally as well as for herself.

DURING THE Christmas holidays she made a suit for her

father and is currently in the process of completing several garments for her customers.

Her most recent endeavor is enrolling in sewing classes at Amarillo College where she hopes to learn varied techniques and short-cuts in sewing.

An easy recipe she likes to prepare for cold winter days is Beef Stew.

BEEF STEW

- 2 lbs. stew meat or beef cuts
 - 2 tsp. salt
 - 1/2 tsp. pepper
 - 2 cups canned tomatoes
 - 4 med. potatoes
 - 2 med. onions
 - 3 med. carrots
 - 2 tsp. minced garlic
 - 1 bay leaf
 - 1/2 tsp. basil
- Brown meat in large pan. Add remaining ingredients. Cover and simmer for 4 1/2 hours or pressure cook for 1 1/2 hours.



Mrs. Donnie Welty
... with sons

Small Talk

By SUE COLEMAN
Women's Editor

FEELING much better, he says, Alfred Smith of the Dawn community is back at home after heart surgery in St. Luke's Hospital at Houston. He was one of the smart, and lucky, patients who discovered some time ago that there was something wrong with his heart, and kept having it checked occasionally.

When doctors advised surgery, he and Corene went to Houston early in December. He was dismissed from the hospital just after Christmas, only a few days after the operation, but stayed in Houston a while longer. Then the Smiths spent a few days in Amarillo before they came home this week.

experience any way you do it, Katherine Kester agrees with the Brinks. The Lynn Kesters are another of the Hereford families who picked the end of 1973 for a time to move into new places.

They got closer into town than the house out near the city limits on South Main, where they have lived a good many years. It had too much yard, greenhouse and other hobbies that mean work, Katherine and Lynn decided.

Another move brought Faye and Earl Holt from their attractive farm residence southeast of town into city living.

LOTS OF Hereford homes that have been extra lively during the college holidays are getting back to normal — shall we say dullness? — this week with the students going back to campus. For instance, the Mack Ragsdales.

Daughter Alesia left Tuesday for WTSU at Canyon, just a day after daughter Rhonda went to Houston.

That is a change for Rhonda, who is studying for a career in health services. She has just completed academic work at Texas Woman's University in Denton, and will now do the clinical work in the TWU branch at Houston Medical Center.

NOT ONLY college students and other family members gathered at the First Christian parsonage home of Dorothy and Gene Brink, but there was other excitement.

Their son, David, who teaches at Berger, married a fellow teacher, Mary Jane Williams, at Rockwall just before Christmas, and Mrs. Brink's parents celebrated their golden anniversary.

As if that were not enough, the Brinks have just finished moving into a new home the church has built.

MOVING is a traumatic

BACK TO the reports of back to school, Genevieve Miller is seeing her family scatter again this week. Dion from College, Jon David and his family from school and work in Austin, Audri and her husband, Paul Beach, from teaching and work in Columbus, Ohio, were all holiday visitors in the family home northwest of Dawn.

An added guest she enjoyed, Genevieve says, was Beach's mother, whose home is in Sandusky, Ohio. Lots of neighbors, friends from Hereford and Canyon dropped in while the visitors were here to make happy holidays.

Mothers March To Begin January 28

The Mothers March of Dimes campaign is set to begin in Hereford Jan. 28.

The drive, sponsored by the Hereford Jaycee-Ettes, is to aid the fund for birth defects, and will have its first organizational meeting Jan. 15 at 7:30 p.m. at the Community Center.

Officers this year are John Aikin, chairman; Myron Morgan, treasurer; and Elmore Rains, campaign chairman.

Mrs. Eades Gives Program to YHT

Christian Environment was the program presented by Mrs. Bud Eades to members of Young Homemakers of Texas Tuesday evening in the Flame Room of Pioneer Natural Gas building.

Mrs. Eades stressed the importance of maintaining a Christian environment in the home and how it affects not only

Rodriguez Jr. are the parents of a daughter, Consuelo S., born January 4. She weighed 7 lbs.

Mr. and Mrs. Ernest Dean Riley are the parents of twins, a daughter, Carrie Lin who weighed 4 lbs. 10 1/2 oz, and a son, Eddie Dean, who weighed 5 lbs. 2 oz. They were born December 22.

the family but the world.

During the business meeting in which Mrs. Ronald Rayburn presided, plans were made to participate in the Mothers March Jan. 28. The club also decided to assist in the Meals

On Wheels program Jan. 21-25.

Due to the energy crisis, the club's scheduled meeting Feb. 5-8 at La Plata Junior High School was changed to its regular meeting time Feb. 5 in the Flame Room. A guest speaker will talk to members about Girlstown.

Mrs. Larry Bell was recognized as a guest as was the club's advisor, Mrs. M.T. Burelsmith.

Hosting the meeting were Mmes. Connie Urbanczyk, Rayburn and David Hill. Members present included Mmes. Larry Alley, Jackie Stallings, Ray Baron, Jim Culpepper, Charles Weatherford, Johnnie Brownlow, Lewis Montano, Gerald Nunley, Allen Dunning, Terry Russell and Charles Wood.

ARMY & DOCTORS

Amy Secretary Howard H. Callaway has suggested that the Army consider abolishing uniforms and regimentation demanded of its young doctors to keep more of them in the service.

CAR PRICES UP

The Cost of Living Council has lifted wage and price controls from the auto industry after three of the big four auto makers agreed to limit their price increases on 1974 models.

Casa Ramirez

RESTAURANT

206 N. SCHLEY 364-6791

MEXICAN FOODS

OPEN EVERY DAY EXCEPT TUESDAYS

11 A.M. - 2 P.M. and 5 P.M. - 10 P.M.

Friday Special - GIANT BURRITOS

Tostados, Salad

\$1.00 FRIDAY ONLY!

Look Who's New

Mr. and Mrs. Kenneth Nolan Tarlton are the parents of a daughter, Morgan Camille, born January 8. She weighed 7 lbs. 10 1/2 oz.

Mr. and Mrs. Trinidad Martinez Murillo are the parents of a son, Trinidad Cervantez, Jr., born January 7. He weighed 8 lbs.

Mr. and Mrs. Teddy Ray Cochran are the parents of a son, Jason Daniel, born January 5. He weighed 8 lbs. 1/2 oz.

Mr. and Mrs. George Luis Luna are the parents of a son, Andrew Luis, born January 5. He weighed 6 lbs. 13 oz.

Mr. and Mrs. Pablo Gonzales

The best-tasting coupons in America.



\$1.00 Off

on a Barrel of Kentucky Fried Chicken. Take this coupon to your participating Kentucky Fried Chicken store and get \$1.00 off on a 21-piece Barrel, either Original Recipe or Extra Crispy. Offer good through Jan. 14, 1974. Limit one Barrel per coupon.



75¢ Off

on a Bucket of Kentucky Fried Chicken or a Kettle of H. Salt Fish and Chips. Take this coupon to your participating Kentucky Fried Chicken store and get 75¢ off on a 15-piece Bucket, either Original Recipe or Extra Crispy. Or save on a 10-piece Kettle of H. Salt Fish and Chips. Offer good through Jan. 14, 1974. Limit one Bucket or Kettle per coupon.



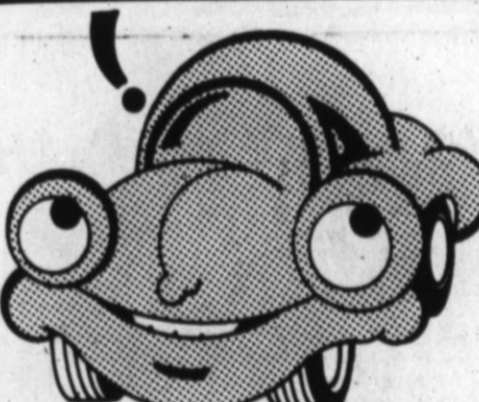
50¢ Off

on two Dinner Boxes of Kentucky Fried Chicken or H. Salt Fish and Chips. Take this coupon to your participating Kentucky Fried Chicken store and get 50¢ off on the purchase of two Dinners of the Colonel's chicken, either Original Recipe or Extra Crispy. Or save on two Dinners of H. Salt Fish & Chips. Offer good through Jan. 14, 1974. Limit two Dinners per coupon.



Kentucky Fried Chicken.

Offer good at Amarillo, Canyon & Hereford Stores.



HAPPINESS IS A PREVIOUSLY-CARED-FOR USED CAR PICKUPS

1973 Chevrolet Cheyenne 1/2 Ton Pickup	\$3495 ⁰⁰
1970 Chevrolet 3/4 Ton Pickup	\$1595 ⁰⁰
1971 Chevrolet 1/2 Ton Short Wheel Base	\$2195 ⁰⁰
1971 Ford 1/2 Ton Pickup Blue / White	\$1595 ⁰⁰
1969 Ford 1/2 Ton Pickup Green / White	\$995 ⁰⁰
1971 Ford 1/2 Ton Pickup Red	\$1695 ⁰⁰
1973 GMC 1/2 Ton Short Wheel Base	\$2695 ⁰⁰
1969 Chevrolet 1/2 Ton Yellow / White	\$1395 ⁰⁰
1967 Chevrolet 1/2 Ton Red / White	\$995 ⁰⁰
CARS	
1972 Impala, 4 Door, Blue / White	\$2325 ⁰⁰
1973 Impala, 4 Door Green / White	\$3395 ⁰⁰
1970 Impala, 2 Door, Brown / White	\$1750 ⁰⁰
1971 Pontiac Catalina, Red / Black	\$2695 ⁰⁰
1969 Ford Station Wagon, Blue	\$1045 ⁰⁰
1966 Chevrolet Impala 4 Door Brown / White	\$495 ⁰⁰

COME IN AND GET HAPPY AT DOYLE JOHNSON CHEVROLET - OLDS

Hwy. 385 N. 25 Mile Ave. FREE PICKUP AND DELIVERY 364-2160

5 Initiated At Dinner Program

Five members added this year to Delta Xi Chapter, Delta Kappa Gamma Society, were initiated at a dinner Monday evening at Dickies Restaurant. Phyllis Gerdson, Betty Sue Robinson, Mmes. George Chapman, Gene Huntsinger and Clinton Logan are the new members.

Mrs. Claude McDougal directed the initiation ceremony, which included songs by a quartet comprising Nancy Richie, Mrs. J.D. Nell, Mary Hale and Mrs. Dick Montgomery. Mrs. Rodney Laubhan was piano accompanist.

Escorts for the candidates were Della Stagner, Mmes. Clifford Kerr, Fritz Christman, Bob Hammond and Charles

Bell. Betty Mercer, chapter president, assisted in the program, with Mmes. Don Shipley, O.Z. Golden, Fred Mulkey and J.J. Durham.

On the hostess committee were Mmes. John Heard, Tandy Legg, Reuben McGilvary, Kerr and Mulkey.

Dinner was served to 43 members, including Mmes. C.R. Higgins, Bill McCauley, Earl Holt, Don Waters, Eleanor Hudspeth, Bob Lamsiter, Audrey Powell, Harold Wester, Richard Sims, Sam Ratcliff, Gary Billingsley, Roland Hairgrove, Joe Bradley, Earl Springer, Jim Bookout, H.V. Crawford, Merlin Kaul and Lawrence Carlson; also Caudie Ola Brown, Elizabeth Wills, and Erma Walker.



NEW MEMBERS INITIATED—Delta Xi Chapter of Delta Kappa Gamma held an initiation dinner for new members Monday evening at Dickie's Restaurant. From left is Mrs. George Chapman, Phyllis Gerdson, Mrs. Gene Huntsinger, Mrs. Clinton Logan, Betty Sue Robinson and initiation chairman, Mrs. Claude McDougal.

Dealers Will Bring Antiques For Show

Sale of antiques by dealers from half a dozen cities will be conducted in the three-day show and sale which L'Allegre Study Club will sponsor Jan. 18-20 in Community Center.

This will be the club's main fund-raising event of the year to support a local service project. Proceeds this year will be given to Deaf Smith General Hospital for special equipment.

Mrs. Wesley Gulley, general chairman of the show, emphasizes that the large variety of antiques on display will be

offered for sale, and collectors of antique china, glass or other items will find a wide selection to choose from. Small objects and also furniture will be on sale.

Not only shoppers, but those who simply wish to visit the display and look at the antiques are invited. Tickets are priced at one dollar, and the purchaser may use the ticket during the entire show.

Opening hour is 1 p.m. on each of the three days. The show will remain open until 10 p.m. Friday and Saturday, closing at 6 p.m. Sunday.

Three door prizes will be given each day. Prizes have been donated by Arrowhead Mills, McCaslin Lumber, Clarks House of Flowers, Harold Close Drug, Park Avenue Florist, Chandelier Shop, Spangler's Jewelers, Brogue Men's Store, and Pants Cage Plus.

Mrs. Cameron Gault is ticket sale chairman, and members of the club have tickets for sale in advance.

OIL ALLOCATION BILL

President Nixon has signed a bill requiring him to impose across-the-board allocation of all petroleum products. It directs the President to implement mandatory allocation within 30 days.

Lethargy of Skylab3 crew is studied.

Britain and Soviet agree on more cordial ties.

CALENDAR OF EVENTS

THURSDAY
Womens Division of Deaf Smith County Chamber of Commerce installation dinner, House of Wong, 7:30 p.m.
Hereford Riders Club, Community Center, 8 p.m.
St. Anthony's Women's Organization, parish school auditorium, 8 p.m.
Mon Amis Study Club, home of Mrs. Ray Bates, 9:30 a.m.
La Madre Mia Study Club, home of Mrs. G.C. Merritt, 8 p.m.
Westway Extension Club, home of Mrs. Orville Williamson, 2:30 p.m.
Kiwanis Club, Civic Club Center, noon.
Jaycees, Dickie's Restaurant, 8 p.m.

FRIDAY
Sweet 'n' Fancy Decorating Club, Community Center, 9:30 a.m.
Hereford Garden Club, home of Mrs. S.S. Williams, 3:30 p.m.
Kiwanis Whiteface Breakfast Club, Dickie's Restaurant, 6:30 a.m.
Cultural Extension Club, home of Mrs. Ira Scott, 102 Elm, 2:30 p.m.

MONDAY
4-H Teen Leaders Assn., Community Center, 7:30 p.m.
Hereford Community Players, Community Center, 8 p.m.
Music Study Club, home of Mrs. J.R. Allison, 113 N. Texas, 2 p.m.
Beta Sigma Phi Council, Hospitality Room of Hereford State Bank, 7:30 p.m.
VFW Auxiliary, VFW Clubhouse, 7:30 p.m.
Masonic Lodge, Masonic Hall, 7:30 p.m.
Easter Lions Club, Easter Clubhouse, 7:30 p.m.
Women's Division of Deaf Smith County Chamber of Commerce, work night for Chamber banquet decorations, Bull Barn, 7:30 p.m.
Rotary Club, Civic Club Center, noon.

TUESDAY
La Afflatus Estudio Club, home of Mrs. Walter Johnson, 3 p.m.
Alpha Alpha Chapter of Beta Sigma Phi Sorority, Community Center, 8 p.m.
La Plata Study Club, home of Mrs. Jay Boston, 7:30 p.m.
BPOE Lodge, Lodge Hall, 8:30 p.m.
Weight Watchers, First Baptist Church, 10 a.m. and 6:30 p.m.
Calorie Patrol TOPS Club, Community Center, 10 a.m.

WEDNESDAY
CowBelles Luncheon and installation of officers, Hereford Country Club, 11:45 a.m.
Merry Mixers Square Dance Club, Community Center, 8:30 p.m.
CFW, First Christian Church luncheon in church fellowship hall, 12:30 p.m.
Knights of Columbus, KC Hall, 8 p.m.
Noon Lions Club, Civic Club Center, noon.

Club Meets In Home Of Mrs. Baer

Stressing spiritual growth, the program topic for Lions Star Study Club Tuesday afternoon was Stay Alive As Long As You Live. Mrs. G.W. Newsom gave the discussion, adapted from a lecture by Dr. Walter Underwood of Wichita Falls.

Mrs. Gaston Baer and Mrs.

W.S. Fluit were hostesses for the meeting in Mrs. Baer's home. Mrs. Dale Tinnin conducted business, which included a report of the club's Christmas basket project.

Other members present were Mildred Elliott, Mmes. W.O.

McCutchen, C.O. Phillips, Jim Higgins, J.E. Shirkey, H.E. Henslee, Ed Warren, Virgil Dodson, J.C. Williams, C.B. Womble, Jim Bookout, Ray Suit, S.S. Williams, J.J. Durham, R.G. Blue, M.H. Wiseman and Hardy Benson.

Hospital Notes

PATIENTS IN HOSPITAL

Bryan Bartels, Route 4; Mrs. Mary Glass, Vega; Severo Garcia, 314 Ave. I; Pedro Fasier, P.O. Box 1896; Mrs. Ken Rogers, 32 Yucca Drive.

P.L. Burrell, 208 Ave. K; Belton Bryant, 415 Ave. J; Mrs. Delores Christi, Summerfield; Mrs. Gertrude Pradasco, 510 Sampson; Mrs. C.R. Walser, 425 Star.

Mrs. Mary Woolery, Westgate; Mrs. Allie Fullwood, 206 McKinley; Walter Hodges, 402 W. Park Ave.; Hugh Smith 208 Cottage; Edwin Stewart, 707 Blevins.

John Trew, Canyon; Mrs. R.W. Thuet, 326 Centre; Mrs. G.E. Muller, 221 Ave. D; Mrs. Leola Moore, 205 B. Cottage Drive.

Mrs. Barbara Tucker, 1605 17th; Mrs. Ken Talton, 505 S. 25 Mile Ave.; Mrs. Mable Jones, Friona; Mrs. Martha Schueter, Friona; Mrs. Thelma Snow, 320 Star; Mrs. Trinidad Murrillo.

PATIENTS DISMISSED
Ramiro Davalos, January 9. Michael J. Kester, Mrs. Diane Cordero, Mrs. Barbara Cochran, Mrs. Ellen Robbs, January 8.

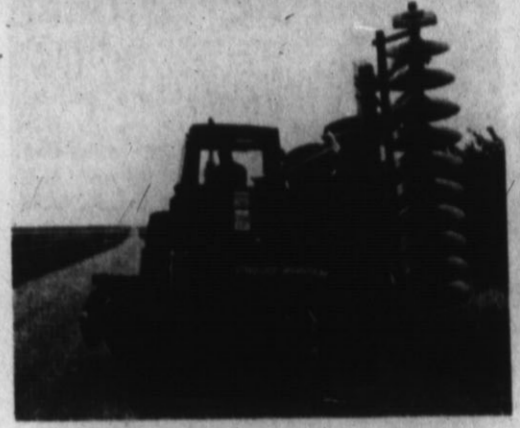
Edgar Blakney, Mrs. E.G. Spring, George Jones, Mrs. Esther Luna, Pedro Gonzales, January 7.

Mrs. Troy Moore, Joseph Reinart, Tollie Shubert, Rosario Rodriguez, Rev. Jim Scott, Mrs. Margarita Barrios, Mrs. Glenda Tiner, January 6.

Mrs. Leona Packard, January 5. Damon Tarck, January 4.

CRUST BUSTER

FLEXIBLE OFFSET DISC



The Down The Road Disc For The Down The Road FARMER

17 1/2' Units In Stock

24" - 6 Ga. Blades 9 x 9 Spacing
4" x 8" Tubular Steel Construction

WEIGHT: 7100 Lbs.
144 Lbs. Per Blade

SPERRY RAND

NEW HOLLAND
HEREFORD

S. HWY. 385

806-364-4001

HEREFORD, TEXAS

THERE IS NO FERTILIZER SHORTAGE!

While the principal business of our feedlot is the production of beef for a hungry world, there are certain byproducts of our operations which are available to help in the operations of other segments of agriculture. One such product is nutrient-rich manure, offering unique fertilization potential.

Through tests conducted at the U.S.D.A. Southwestern Great Plains Research Center at Bushland, Texas, we have learned specific facts relating to the use of our solid wastes as fertilizer. For example, application of only ten tons of solid waste material to an acre of moderately irrigated crop lands has been sufficient to obtain maximum yields. There is a residual effect available through manure fertilization: the process of decomposition continues to provide nutrients, at a reduced level, through the second and even third years after application!

There are definite economic advantages to the crop producer using the manure fertilization system. Initial cost, of course, and also the economies of the methods of application. No special equipment is required: the material is deep plowed into the field and application can be made at the time of working fields prior to planting (the farther in advance of planting the better). Thus, fertilization occurs as a course of normal operation, with standard plowing equipment, resulting in fewer man hours required and, particularly important in light of the energy crisis, less fuel consumption.

The table below lists the nutrient content of manure sampled from 23 feedlots on the Texas High Plains, giving the range, average percentages and average pounds of nutrients present in ten tons.

	RANGE	AVERAGE	AMT. IN 10 TONS
			lb
Nitrogen	1.16 - 1.96	1.34	268
Phosphorus (P2O5)	.73 - 1.95	1.21	243
Potassium (K2O)	.90 - 2.83	2.17	362
Sodium	.29 - 1.43	.74	148
Calcium	.81 - 1.75	1.30	260
Magnesium	.32 - .66	.50	100
Iron	.09 - .55	.21	42
Zinc	.005 - .012	.009	1.8
Water	20.9 - 54.5	34.5	6,900

HERE ARE SAMPLE YIELDS IN POUNDS PER ACRE:
Grain Sorghum Yield in Lbs/A

	No Treatment	Manure 10 T/A	Manure 30 T/A	Fertilizer 240 lbs. N/A 100 lbs. N/A
4-yr. average	4735 lbs./A	6366 lbs./A	6232 lbs./A	6156 lbs./A

Corn Silage Yield in Tons/A (70% water)

	No Treatment	Manure 10 T/A	Manure 20 T/A	Fertilizer 200 lbs. N/A
3-yr. average	19.9 T/A	21.7 T/A	22.7 T/A	21.0 T/A

THERE CAN BE A DEFINITE ADVANTAGE TO YOU THROUGH FARMING WITH MANURE FERTILIZATION. PLEASE TALK TO US. WE'LL BE GLAD TO HELP YOU REALIZE THE ECONOMICS AS THEY APPLY TO YOUR OWN OPERATION!

CONTACT YOUR LOCAL FEED YARD.

Made for each other!

MICHELIN RADIALS AND YOUR...



<p>COMPACT</p> <p>MICHELIN XWW Tubeless whitewalls for domestic cars. Radial for safety, comfort, mileage. 40,000 mile Warranty.</p>	<p>FAMILY CAR</p> <p>MICHELIN ZX Precision control, fast braking and resistance to wear. Built to last. For imported cars.</p>	<p>SPORTS CAR</p> <p>MICHELIN XAS Makes the most of your high-performance imported sports car. Asymmetric tread keeps car on track when taking corners.</p>
<p>CAMPER</p> <p>MICHELIN XC Built for heavy load capacity on campers, travel trailers, pick-up coaches, etc. Road stability even on rough terrain, winding roads.</p>	<p>PICK-UP</p> <p>MICHELIN XY Heavy tread and special construction gives protection from rocks, rough terrain. Ideal for off-the-road camping, light trucks.</p>	<p>SMALL TRUCK</p> <p>MICHELIN XZZ Gives long wear, flat protection on long trips. An economy tire with a proven performance record.</p>

Michelin's Warranty for X Radial Highway Tubeless Whitewall Tire shown here covers tread life, normal road hazards (excluding repairable punctures) and defects in workmanship and materials for 40,000 miles, when tire is used on domestic passenger vehicles in normal service in continental United States, except Alaska. Credit or refund (at Michelin's option) is equal to current actual selling price multiplied by percentage of warranted mileage not run on tire.

MICHELIN

Our radial specialist will help you select the right tire for your vehicle.

Hereford's Complete Tire Center

SHOOK TIRE CO.

600 W. FIRST

Farm And Truck Service.

PHONE 364-1010

Mature lady desires live-in companion job for elderly lady. 364-5235. B-9-10-2c

10. NOTICE

For the convenience of you, our customers, we now have truck scales to weigh your scrap iron — One mile North of Big Daddy's Truck Stop. HEREFORD IRON & METAL North Progressive Road by City Dump Anson A. & June Dearing Phone 364-3350 or 364-3777 1 1/2 B-10-34-tfc

ALCOHOLISM INFORMATION
For information on alcoholism, referrals for help, counseling, or programs on the subject of the disease of alcoholism, Call 364-4540 from 8:00 a.m. 'till 12, 1:00 p.m. until 5:00 p.m. Monday through Friday. A UNITED FUND AGENCY B-10-12-tfc

ENROLLING NOW FOR LESSONS IN OIL PAINTING
Beginning JANUARY 14th Small classes, Individual attention PETERSEN STUDIO Phone 364-3198 B-10-14-c

REWARD OFFERED
For arrest of person responsible for theft of items from car at 608 Union on the night of December 29th. If you have any information, please notify Hereford Police. Billy Vick B-10-28-2p

11. BUSINESS SERVICE

KELLY ELECTRIC DOUG AND VIRGIL
Electrical Contractors Residential Commercial All bids and wiring Call-bids and wiring competitive. Phone 364-1345 Night phone 364-2012 or 364-1345 Box 130 B-11-46-tfc

APPLIANCE REPAIR
We repair all makes and models of appliances. All work guaranteed. MONTGOMERY WARD & CO. 114 East Park Phone 364-5801 B-11-52-tfc

B.L. Jones CONCRETE CONTRACTOR
We will do your finishing or give you a turnkey job. Free Estimates. 266 18th Street Phone 364-6617 B-11-21-tfc

DICKEY'S DOZER SERVICE
Dirt Work — All Kinds
Bull Dozer — Scrapers
Back Hoe — Dragline
Motorgrader
See or Call FLOYD DICKEY S.E. 4th & Belsher Dimmitt, Texas Business Phone 647-4553 Residence Phone 647-4565 B-11-29-tfc

WILL PICK UP JUNK CARS. FREE.
Call 364-3350 or 364-3777 B-11-28-tfc

HOME APPLIANCE REPAIRS
Guaranteed work on all makes and models. 10 years experience. Available for night-time emergencies. JOE'S HOME APPLIANCE REPAIRS 343 N. Main Ph. 364-5751 B-11-45-tfc

KIRBY VACUUMS
Rebuilt with genuine Kirby Parts. \$59.95 & up, two year guarantee. Your only authorized Kirby Distributor. Kirby Sales & Service 522 Irving Ph. 364-0422 B-11-35-tfc

WANTED
100 to 150 watches a week to repair by latest approved methods. COWAN JEWELERS B-11-15-29-tfc

Tree Trimming and Topping.
Call Cliff's Tree Service 364-2111. B-11-10-46-tfc

DRAGLINE SERVICE
TAILWATER
PIT CLEANING
DUMP TRUCKS
30 TON CRANE
BOBBY GRIEGO
Day Phone 364-0574
Night — 364-2322
B-11-14-tfc

FRANK WESTER CEMENT CONTRACTOR
107 BRADLEY
Residential-Commercial
Turnkey job
Straight finish
Phone 364-5169
B-11-39-tfc

DON'T TOSS IT — REGLOSS IT.
Furniture repaired and refinished. Call Tom Tompkins, 806-287-5831 collect. B-11-27-10p

AAA WRECKER SERVICE HEREFORD WRECKING COMPANY
Day Phone 364-2380
NIGHTS 364-4099 and 364-0075
T-11-39-tfc

CARD OF THANKS
We deeply appreciate all the kindnesses shown to us after the home-going of our loved one. We extend a special thanks to Dr. Hicks and the staff at Westgate. Dr. & Mrs. Clyde Rush & Family The O.W. Clarks

CARD OF THANKS
We, the family of Harry L. Coffin, Jr., wish to express our heartfelt appreciation and gratitude for all the kindness and friendship shown us in the passing of our loved one. A special thanks to the local VFW Post and the VFW Ladies Auxiliary. Mrs. Harry L. Coffin, Jr., and Children Mr. & Mrs. H. Leon Coffin, Sr. Mr. & Mrs. Bert Coffin

THE FAMILY LAWYER
Confessing While Asleep

Situation comedies often depict a hapless husband, confessing — while sound asleep — to some sort of indiscretion. His wife, of course, is scandalized. But in real life, how reliable is such a statement? Would it stand up in court?

In a homicide case some years ago, a "sleeping confession" did indeed help to convict the defendant of murder. The court said his statement, "though in sleep, was but the divulgence of truth springing from the soul, the half-conscious man revealing secrets which, if fully awake, he would fain have suppressed."



Modern courts, however, have generally refused to allow this kind of evidence. Thus, in a more recent murder case, incriminating exclamations by the defendant during sleep were held not admissible.

The court did not deny that his exclamations might be truthful. But it found other grounds for rejecting the evidence.

"Only the voluntary statements of the accused can be used against him," said the judge. "If the defendant was not conscious, the statement was not voluntary."

Not only sleeping words but also sleeping deeds are usually considered beyond the concern of the law. For example: A weary hunter was dozing in a hotel lobby, his gun in his lap, when a hotel employee gave him a rough shake. Startled, the hunter grabbed his gun and fired a shot that killed the other man.

Charged afterward with manslaughter, he was able to convince the court that he had still been asleep at the moment he pulled the trigger. Accordingly, the court found him not guilty.

"Our law punishes only for acts done by responsible moral agents," explained the judge. "If the prisoner was unconscious when he killed the deceased, he cannot be punished for that act."

Joke: "Now, this is just between you and me." ***** Dollars and sense lay the foundations for big fortunes. ***** Nature is a great teacher, if you care to take lessons.

STATE CAPITAL Highlights AND Sidelights
by Bill Boykin

AUSTIN, Tex. — Legislative leaders expressed optimism for success of the state Constitution Convention which opened at noon Tuesday (Jan. 8).

Planning committees have worked out a fast-paced 81-day schedule which may, or may not, hold up. Optimists see at least a 50-50-chance of success, noting that of 12 constitutions offered voters in other states during the last 12 years, half were rejected, frequently on a single issue.

House Speaker Price Daniel Jr., projected presiding officer of the historic convention, the first since 1875, hopes to have committee hearings started by January 16.

Preliminary briefings by corresponding committees of the 37-member Constitutional Revision Commission will precede the committee hearings. Daniel claims the convention, composed of 181 legislators, will be successful because delegates have a down-to-business attitude and are the best prepared group (thanks to work of the Revision Commission) ever to undertake such a task.

Such controversial issues as right-to-work inclusion in the constitution, legislative pay raises and appointive appellate judges, under Daniel's plan, would be submitted to voters as separate issues. That procedure, the speaker maintains, would prevent jeopardizing a largely non-controversial document because of a handful of hot potatoes.

Eight substantive committees and five procedural committees are proposed to handle the initial hearings and study starting next week.

POLITICAL SEASON ON — Major candidates are getting in place for the 1974 primary races.

Attorney General John Hill announced for a second term. Agriculture Commissioner John White announced for a 13th.

Gov. Dolph Briscoe revealed his plans (back in late October) to seek a second term. Lt. Gov. Bill Hobby will be doing the same. Others already on the starting blocks include Railroad Commissioners Jim Langdon and Mack Wallace, Land Commissioner Bob Armstrong and Treasurer Jesse James (although some haven't announced formally).

Comptroller Robert Calvert remains a question mark. Whether or not he retires, former Secretary of State Bob Bullock is running for his office, and State Sen. Jim Wallace of Houston is a probable.

Republicans have fielded in the governor's race Henry Grover, Jim Cranberry, State Rep. Ray Hutchison and Odell McBrayer.

SPEED LIMIT CHANGE DUE — With President Nixon's signature of the nationwide 55 miles per hour speed limit law, Texas has no choice but to follow suit.

The State Highway Commission, under a new law passed in special session last month giving it authority to establish new speed limits to meet emergencies, scheduled a January 8 public hearing.

Result of the hearing was clear in advance: the limit will be lowered to 55 mph — probably enforceable by late January or early February. The alternative: losing some \$240 million a year in federal highway assistance.

regularly scheduled. * A person who spends in excess of \$200 per calendar quarter by paying another to communicate directly with a legislator would not have to register under the new lobby act. * Texas Rehabilitation Commission can act on behalf of the state in entering an agreement with the Secretary of Health, Education and Welfare to carry out provisions of the Social Security Act. The commissioner of TRC is the proper official to execute the agreement.

APPOINTMENTS — Gov. Briscoe appointed Ralph Durden of Corpus Christi to the Texas A&I University board of directors, succeeding William H. Atkinson of Kenedy. Briscoe picked Edwardo Marquez of El Paso to be 65th district judge, replacing the late Judge Jack Fant.

Blake Allen of Corsicana was named by Briscoe to the Trinity River Authority. Joe Sage of San Antonio was appointed chairman of a new permanent House subcommittee on military and veterans affairs.

Frank Hildebrand, Texas Tourist Development Agency executive director, is new first vice-chairman of the National organization of the U.S. travel industry, "Discover America Travel Organization."

COURTS SPEAK — U.S. Fifth Court of Appeals held the housing authority of Hidalgo County should not have been allowed to seize belongings of a migrant farm worker's wife for non-payment of rent.

The state's authority to prohibit public use of the term "engineering" by unlicensed persons or firms was upheld by the Second Court of Civil Appeals in Fort Worth.

TEXAS SUPREME COURT approved Lipscomb County school trustees' plans to annex most of Lipscomb ISD.

FOOD STAMP CARDS SENT — Three hundred thousand needy Texans received cards authorizing food stamps for them early this month. Welfare Commissioner Raymond Vowell, meanwhile, alerted his field offices to give special handling to stamps for the aged, blind and disabled whose federal assistance checks are late or incorrect.

Vowell said steps were taken to assure that none of these go without food stamps this month because they do not have cash for bonus stamps or because of errors or late deliveries of supplemental security income checks.

SHORT SNORTS
Internal Revenue has set up a toll-free long distance line by which Texans in the southern half of the state can get guidance on their income tax problems. The number is 1-800-252-1000.

Texas Aeronautics Commission set a January 11 hearing on application of Trans Western Airlines to provide five DC-3 round-trip daily flights between San Antonio and Corpus Christi. On the same agenda, TAC will consider Southwest Airlines' request to suspend weekend flights between San Antonio and Houston due to fuel shortages. Another application, by Maverick Airways, proposes two round-trip flights daily between San Antonio and San Angelo.

La Raza Unida party apparently will place its main emphasis on local races this year, although it is also considering some statewide races, according to leaders. We're of the opinion there are too many leaders for the followers available. ***** The first sign of intelligence is to appreciate those who don't agree with you. ***** People who violate the sound laws of nature will pay the penalty without fail. ***** Someone should invent a dry-cleaning process for some jokes and some joke-tellers.

What the world needs today is millions of honest, average citizens. ***** Can anyone explain why a citizen gives a politician a valuable gift? *****

You've Never Seen Such Thorough Service STOP IN SOON
Phillips "66" Products EAST SIDE "66" Rocky Stewart 1303 E. 1st 364-2844

FOR QUICK REPLACEMENT OF CRACKED SAFETY GLASS
Call 364-2652 HEREFORD GLASS CO. INC. For All Your Glass Needs Insurance claims promptly serviced. We use nationally advertised SAFETY GLASS

MANNING PLUMBING
Specializing in Repair Call 364-0931

Look to SHOOK
For Quality LEE Tires and on the Farm & Road Service As Close As Your Phone Quality With Price - MAY WE SERVE YOU Shook Tire Co. 364-1010

BELL ELECTRIC
ELECTRICAL CONTRACTOR
New Construction and Repair — Residence and Commercial 364-6841 Larry Bell 803 S. Texas

I TURNED AROUND AND IT WAS SOLD!
We don't intend to make whirling dervishes of our clients, but we DO put all of our experience and facilities to work right now when you delegate the selling job to us. \$25,000. to \$35,000. HOME LISTING NEEDED NOW...CONTACT or CALL... Ralph Owens & Associates, Inc. 311 Park Avenue REALTORS Phone 364-2222

FOR THE BEST DEALS ON NEW or USED CARS
Come in and talk with one of the Men at JOHN ORSBORN BUICK-PONTIAC-GMC at 142 N. MILES or 221 N. 25 Mi. Ave. 364-0990 364-1222

This may sound old-fashioned but it still pays to buy at home. ***** Inflation, like some disease, is dangerous because of its after-effects.

EXPERT REPAIR ON BUICK PONTIAC GMC TRUCKS JOHN ORSBORN
Free Pickup phone 364-0990 HOME OWNED

DANCE MOONLIGHTER
Each FRIDAY & SATURDAY NIGHT ADULTS ONLY
Ice and Setups Available No liquor for sale MUSIC-POOL-DANCE Arrangements made for private parties, for every occasion. For reservations call Days 364-0964 or 364-1760. Nites 364-9629 1-mile north of Hereford Hwy 385

MANNING PLUMBING
Specializing in Repair Call 364-0931

Look to SHOOK
For Quality LEE Tires and on the Farm & Road Service As Close As Your Phone Quality With Price - MAY WE SERVE YOU Shook Tire Co. 364-1010

BELL ELECTRIC
ELECTRICAL CONTRACTOR
New Construction and Repair — Residence and Commercial 364-6841 Larry Bell 803 S. Texas

I TURNED AROUND AND IT WAS SOLD!
We don't intend to make whirling dervishes of our clients, but we DO put all of our experience and facilities to work right now when you delegate the selling job to us. \$25,000. to \$35,000. HOME LISTING NEEDED NOW...CONTACT or CALL... Ralph Owens & Associates, Inc. 311 Park Avenue REALTORS Phone 364-2222

FOR THE BEST DEALS ON NEW or USED CARS
Come in and talk with one of the Men at JOHN ORSBORN BUICK-PONTIAC-GMC at 142 N. MILES or 221 N. 25 Mi. Ave. 364-0990 364-1222

WESTERN WRESTLING
NO WRESTLING THIS SATURDAY!
WRESTLING RETURNS with a Big Card of Top Athletic's
SATURDAY JANUARY 19th
HEREFORD BULL BARN

COMMONWEALTH THEATRES MOVIE MARQUEE
NOW SHOWING!
American Pie!
RICHARD NADER'S ORIGINAL ROCK REVIVAL!!
"LET THE GOOD TIMES ROLL!"
CALL THEATRE FOR SHOWTIMES

Starts SUNDAY
It took him 20 years to find out who he was and 2 laps to let the world know
THE LAST AMERICAN HERO
PLUS!
Billy Jack was tough wait'll you meet TOM BLACK BULL!
When The Legends Die
Sunday Only 4:00-9:00 7:45-9:45

Starts TONIGHT!
A LOCKER ROOM LOOK AT THE TOUGHEST BROADS IN THE WORLD!
UNHOLY ROLLERS
CLAUDIA JENNINGS PLAYBOY MAGAZINE PLAYMATE OF THE YEAR
GATES OPEN 7:00 P.M.
CHROME AND HOT LEATHER
TOWER DRIVE-IN

BE SURE TO REDEEM COUPONS FROM YOUR GOLD BOND MAILER FOR UP TO 200 EXTRA GOLD BOND STAMPS. Double Gold Bond Stamps Thursday, Friday, Saturday with *2nd Purchase or More.



SACK UP ALL THE SAVINGS AT FURR'S

... HOME OF THE LOWER TAKE TOTAL

PRICES IN THIS AD ARE EFFECTIVE THRU 1-13-74

BANANAS
FANCY GOLDEN RIPE LB. **12 1/2¢**

APPLES
WASH. STATE, RED DELICIOUS, GOLDEN DELICIOUS, RED ROME 4 LBS. **\$1.00**

CELERY GREEN PASCAL EA. **2 FOR 33¢**

ORANGES NAVEL, FANCY CALIFORNIA, 4 LBS. **88¢**

GRAPEFRUIT RUBY RED TEXAS FINEST, LB. **14¢**

CARROTS TOP FRESH, 1-LB. CELLO BAG, EA. **15¢**

BACON
FARM-PAC FRONTIER OR SLICED SLAB, LB. **99¢**

SWISS STEAK
FURR'S PROTEN LB. **\$1.13**

CHUCK ROAST
55¢ LB.

Delicatessen
Free 1 Pt. Pinto Beans With 1 Whole Fried Chicken Serves 4
1 Pt. Cole Slaw for only \$3.19
Macaroni Salad Pt. 69¢
Fruit Salad Pt. 69¢

SHOULDER ROAST FURR'S PROTEN, LB. **98¢**
SIRLOIN FURR'S PROTEN, STEAK, LB. **\$1.19**

RANCH STEAK FURR'S PROTEN LB. **\$1.09**
TURBOT FROZEN FILLETS LB. **89¢**

CUBE STEAK FURR'S PROTEN LB. **\$1.49**
BONELESS STEW FURR'S PROTEN LB. **\$1.14**

GROUND BEEF FURR'S PROTEN LB. **89¢**
PATTIE MIX FURR'S PROTEN LB. **69¢**

CAKE MIX BETTY CROCKER ASSORTED BOX **3 FOR \$1.00**

CORN FOOD CLUB, WHOLE KERNEL OR CREAM STYLE GOLDEN, NO. 303 CAN **4 FOR 88¢**

CHILI WITH BEANS, AUSTEX, 24-OZ. CAN **79¢**

GREEN BEANS FOOD CLUB CUT, NO. 303 CAN **4 FOR 88¢**

WESSON OIL 24-OZ. SIZE BOTTLE **69¢**

BEEF STEW AUSTEX, 24-OZ. CAN **79¢**

FRUIT COCKTAIL FOOD CLUB, NO. 303 CAN **29¢**

PORK & BEANS KOUNTY KIST, NO. 300 CAN **5 FOR \$1.00**

DOWNY FABRIC SOFTENER, 15' OFF LABEL KING SIZE. **\$1.49**

DOUBLE GOLD BOND
TUESDAYS AND WEDNESDAYS With \$2.50 or more purchase
NO SALES TO DEALERS, PLEASE.

Frozen Food Favorites
DINNERS PATIO, FRESH FROZEN, MEXICAN, BEEF ENCHILADA, COMBINATION, OR CHEESE ENCHILADA, PKG. **49¢**

STIWELL COBBLERS APPLE, PEACH, OR STRAWBERRY, 32-OZ. **\$1.06**

CHERRY 32-OZ. **\$1.17** **BLACKBERRY** 32-OZ. **\$1.20**

HAWAIIAN PUNCH FRUIT JUICY RED, FRESH FROZEN, 6-OZ. **25¢**

ART LINKLETTER'S MONEY-SAVING SUGGESTION!

TOPAZ STONWARE

Regular Price 79¢
49¢ each

THIS WEEK SOUP/CEREAL BOWL

Safe in oven and dishwasher...and so smart!

WE RESERVE THE RIGHT TO LIMIT QUANTITIES

TOMATO SAUCE FOOD CLUB, 8-OZ. CAN **12¢**

AIR FRESHENER Wizzard Asst. Scents 9-Oz. **59¢** **TOWELS** Viv Asst or Decorated Lg. Roll **45¢**

WOOLITE Liquid 8-Oz. **71¢** **PEARS** Food Club No. 2 1/2 Can **55¢**

POTATOES Food Club Instant 13-Oz. Pkg. **39¢** **COCA COLA** 6 PACK 16-OZ. **63¢**

VALUABLE COUPON

THIS COUPON ENTITLES YOU TO

SAVE 20¢

MARYLAND CLUB COFFEE, 1-LB. ALL GRINDS

WITH COUPON **89¢**
WITHOUT COUPON **\$1.09**

EXPIRES 1-12-74
LIMIT ONE COUPON PER FAMILY

Furr's SUPER MARKETS

DURAFLAME FIREPLACE LOGS **\$4.39**
Each Log Burns 3 Hours in color, Case of 6

TISSUE Northern Facial 200 Ct. Box **4 FOR \$1.00**
SECURE NAPKINS Sanitary Napkins Reg. or Super 40 Ct. **\$1.19**
SCARFS Nylon Asst. Colors 28x28 Reg. 59¢ **3 FOR \$1.00**

BIC PENS Med. Point Blue Black Red Ea. **13¢**
COTTON SWAB J & J 400 Ct. **83¢**
VITAMIN C Squibbs 100 Pkg. **57¢**

WESTMINSTER MEN'S SOCKS Sizes 10 - 13 Ass't. Colors **49¢** Pair

ANTI-FREEZE AND COOLANT

TOPCO, ONE GALLON, PLASTIC CONTAINER

\$1.49

KNEE HOSE KNEE HIGH STOCKINGS

SPRINGCREST, 4 COLORS, ONE SIZE FITS ALL. REG. 69¢

39¢

PANTY HOSE AMPLON

NYLON, 5 COLORS, 2 SIZES FIT ALL

59¢

VAPORUB

VICK'S 3.1-OZ. JAR

91¢

SHAMPOO

PROTEIN 21 7-OZ. SIZE REG. OILY, DRY

\$1.09

SHOP Furr's MIRACLE PRICES

Save More on Food in 74

at Hereford Meat Market, Inc.

Hormel 12 Oz. Pkg.
LITTLE SIZZLERS 79¢

Fresh
GROUND BEEF 77¢
Lb.

All Meat
BOLOGNA 99¢
(Sliced) Lb.
Center Cut
SIRLOIN STEAK \$1.29
Lb.
Fresh Florida
CORN 49¢
5 Ear Pkg.

Pure Pork
Market Made
SAUSAGE 98¢
Lb.
Smoked in Our Own Smokehouse
SLICED BACON \$1.19
Lb.

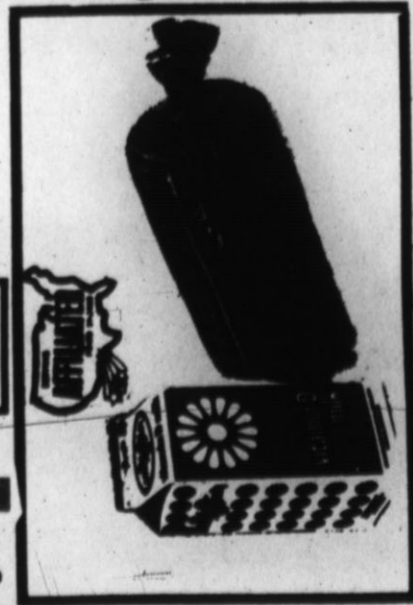
Fresh
Crisp
California
LETTUCE 29¢
Head
4/\$1.00

Vega
Hot
House
TOMATOES 39¢
Lb.
3/\$1.00

The Perfect Salad Maker
AVOCADOS Each 20¢
Norgold 6/\$1.00
POTATOES \$9.00
100 Lb. Bag

Colorado Thunderbird Brand No. 1

PINTO BEANS \$9.95
25 Lb. Bag
5 Lb. \$1.99 49¢ A Lb.



Acrylic Floor Finish
FUTURE
Trial Size 39¢
White They Last

Jumbo 30' Off Label
DASH \$2.59
Lb. 19¢
Family Size
TIDE \$2.87
Pkg. 39¢
GREEN ONIONS 10¢
Bunches
Kotex 40 Ct. Reg. or Super
TAMPONS 99¢
Special Offer
Big Family 48 Oz.
IVORY \$1.19
LIQUID 30' Off Label

HEREFORD MEAT MARKET INC.

At the Sign of the WHITEFACE BULL

HWY 35N. OPEN DAILY 8:00 A.M. to 8:00 P.M.

Weekly Television Magazine

The Hereford Brand

Thursday, January 10, 1974

Tel-Aire



Winter Fun - Hereford Cablevision

- Three Independent Stations
- Static-Free Reception
- Three Major Networks
- 8 Big Stations
- Public Broadcasting Service
- 24 Hour Weather and FM Music
- *10" Installation Charge
- *5¢ Per/Mo. Service Charge

126 E. 3rd **HEREFORD CABLEVISION** 364-3912
You Get It All On Cable

The GREAT Lineup - PITTSBURGH PAINTS



McCaslin Lumber

334 E. 3rd

364-3434

MONDAY THRU FRIDAY

CHANNL	4	7	7	10	10	11	13	13	39	3
CABLE	KONC	KVII	KVC	KIDA	KCS	KVI	KERA	KPS	KXIX	IND
20	Today Show	Pro News	Pro News	CBS Morning News	CBS Morning News	Sum Bang Theatre	New Top Feature	Waterfront	Midnight	Weather and Public Service
21	Today Show	Pro News	Pro News	CBS Morning News	CBS Morning News	Sum Bang Theatre	New Top Feature	Waterfront	Midnight	Weather and Public Service
22	Today Show	Pro News	Pro News	CBS Morning News	CBS Morning News	Sum Bang Theatre	New Top Feature	Waterfront	Midnight	Weather and Public Service
23	Today Show	Pro News	Pro News	CBS Morning News	CBS Morning News	Sum Bang Theatre	New Top Feature	Waterfront	Midnight	Weather and Public Service
24	Today Show	Pro News	Pro News	CBS Morning News	CBS Morning News	Sum Bang Theatre	New Top Feature	Waterfront	Midnight	Weather and Public Service
25	Today Show	Pro News	Pro News	CBS Morning News	CBS Morning News	Sum Bang Theatre	New Top Feature	Waterfront	Midnight	Weather and Public Service
26	Today Show	Pro News	Pro News	CBS Morning News	CBS Morning News	Sum Bang Theatre	New Top Feature	Waterfront	Midnight	Weather and Public Service
27	Today Show	Pro News	Pro News	CBS Morning News	CBS Morning News	Sum Bang Theatre	New Top Feature	Waterfront	Midnight	Weather and Public Service
28	Today Show	Pro News	Pro News	CBS Morning News	CBS Morning News	Sum Bang Theatre	New Top Feature	Waterfront	Midnight	Weather and Public Service
29	Today Show	Pro News	Pro News	CBS Morning News	CBS Morning News	Sum Bang Theatre	New Top Feature	Waterfront	Midnight	Weather and Public Service
30	Today Show	Pro News	Pro News	CBS Morning News	CBS Morning News	Sum Bang Theatre	New Top Feature	Waterfront	Midnight	Weather and Public Service
31	Today Show	Pro News	Pro News	CBS Morning News	CBS Morning News	Sum Bang Theatre	New Top Feature	Waterfront	Midnight	Weather and Public Service
32	Today Show	Pro News	Pro News	CBS Morning News	CBS Morning News	Sum Bang Theatre	New Top Feature	Waterfront	Midnight	Weather and Public Service
33	Today Show	Pro News	Pro News	CBS Morning News	CBS Morning News	Sum Bang Theatre	New Top Feature	Waterfront	Midnight	Weather and Public Service
34	Today Show	Pro News	Pro News	CBS Morning News	CBS Morning News	Sum Bang Theatre	New Top Feature	Waterfront	Midnight	Weather and Public Service
35	Today Show	Pro News	Pro News	CBS Morning News	CBS Morning News	Sum Bang Theatre	New Top Feature	Waterfront	Midnight	Weather and Public Service
36	Today Show	Pro News	Pro News	CBS Morning News	CBS Morning News	Sum Bang Theatre	New Top Feature	Waterfront	Midnight	Weather and Public Service
37	Today Show	Pro News	Pro News	CBS Morning News	CBS Morning News	Sum Bang Theatre	New Top Feature	Waterfront	Midnight	Weather and Public Service
38	Today Show	Pro News	Pro News	CBS Morning News	CBS Morning News	Sum Bang Theatre	New Top Feature	Waterfront	Midnight	Weather and Public Service
39	Today Show	Pro News	Pro News	CBS Morning News	CBS Morning News	Sum Bang Theatre	New Top Feature	Waterfront	Midnight	Weather and Public Service
40	Today Show	Pro News	Pro News	CBS Morning News	CBS Morning News	Sum Bang Theatre	New Top Feature	Waterfront	Midnight	Weather and Public Service
41	Today Show	Pro News	Pro News	CBS Morning News	CBS Morning News	Sum Bang Theatre	New Top Feature	Waterfront	Midnight	Weather and Public Service
42	Today Show	Pro News	Pro News	CBS Morning News	CBS Morning News	Sum Bang Theatre	New Top Feature	Waterfront	Midnight	Weather and Public Service
43	Today Show	Pro News	Pro News	CBS Morning News	CBS Morning News	Sum Bang Theatre	New Top Feature	Waterfront	Midnight	Weather and Public Service
44	Today Show	Pro News	Pro News	CBS Morning News	CBS Morning News	Sum Bang Theatre	New Top Feature	Waterfront	Midnight	Weather and Public Service
45	Today Show	Pro News	Pro News	CBS Morning News	CBS Morning News	Sum Bang Theatre	New Top Feature	Waterfront	Midnight	Weather and Public Service
46	Today Show	Pro News	Pro News	CBS Morning News	CBS Morning News	Sum Bang Theatre	New Top Feature	Waterfront	Midnight	Weather and Public Service
47	Today Show	Pro News	Pro News	CBS Morning News	CBS Morning News	Sum Bang Theatre	New Top Feature	Waterfront	Midnight	Weather and Public Service
48	Today Show	Pro News	Pro News	CBS Morning News	CBS Morning News	Sum Bang Theatre	New Top Feature	Waterfront	Midnight	Weather and Public Service
49	Today Show	Pro News	Pro News	CBS Morning News	CBS Morning News	Sum Bang Theatre	New Top Feature	Waterfront	Midnight	Weather and Public Service
50	Today Show	Pro News	Pro News	CBS Morning News	CBS Morning News	Sum Bang Theatre	New Top Feature	Waterfront	Midnight	Weather and Public Service
51	Today Show	Pro News	Pro News	CBS Morning News	CBS Morning News	Sum Bang Theatre	New Top Feature	Waterfront	Midnight	Weather and Public Service
52	Today Show	Pro News	Pro News	CBS Morning News	CBS Morning News	Sum Bang Theatre	New Top Feature	Waterfront	Midnight	Weather and Public Service
53	Today Show	Pro News	Pro News	CBS Morning News	CBS Morning News	Sum Bang Theatre	New Top Feature	Waterfront	Midnight	Weather and Public Service
54	Today Show	Pro News	Pro News	CBS Morning News	CBS Morning News	Sum Bang Theatre	New Top Feature	Waterfront	Midnight	Weather and Public Service
55	Today Show	Pro News	Pro News	CBS Morning News	CBS Morning News	Sum Bang Theatre	New Top Feature	Waterfront	Midnight	Weather and Public Service
56	Today Show	Pro News	Pro News	CBS Morning News	CBS Morning News	Sum Bang Theatre	New Top Feature	Waterfront	Midnight	Weather and Public Service
57	Today Show	Pro News	Pro News	CBS Morning News	CBS Morning News	Sum Bang Theatre	New Top Feature	Waterfront	Midnight	Weather and Public Service
58	Today Show	Pro News	Pro News	CBS Morning News	CBS Morning News	Sum Bang Theatre	New Top Feature	Waterfront	Midnight	Weather and Public Service
59	Today Show	Pro News	Pro News	CBS Morning News	CBS Morning News	Sum Bang Theatre	New Top Feature	Waterfront	Midnight	Weather and Public Service
60	Today Show	Pro News	Pro News	CBS Morning News	CBS Morning News	Sum Bang Theatre	New Top Feature	Waterfront	Midnight	Weather and Public Service

On The Cover

Award-winning composer-conductor Burt Bacharach headlines a special combining music and comedy, "Cherwell Presents Burt Bacharach," which will be broadcast on the NBC Television Network Thursday, Jan. 10 (9:00-10:00 p.m.). It was announced by William F. Storke, Vice President, Special Programs, NBC TV.

Sandy Duncan, Jack Jones, Roger Moore and those wizards of the basketball courts—the Harlem Globetrotters—are Bacharach's guest stars.

Highlights of the hour will include performances of hit tunes composed by Bacharach, a medley of melodies written by George Gershwin and some lighthearted singing by the Globetrotters, who also offer a demonstration of their formidable skills with a basketball.

Gary Smith and Dwight Hemion are the producers; Hemion is the director. Bob Ellison and Marty Ferrell are the writers. Jack Farnell is music director. The show, taped in London, is an ATN Color Presentation for ITC Worldwide Distribution.

During his career, Bacharach has been honored with two Academy Awards, three Grammy Awards and an Emmy Award.

THURSDAY

CHANNL	4	7	7	10	10	11	13	13	39	3
CABLE	KONC	KVII	KVC	KIDA	KCS	KVI	KERA	KPS	KXIX	IND
20	Newsweek	Pro News	Pro News	CBS Morning News	CBS Morning News	Sum Bang Theatre	New Top Feature	Waterfront	Midnight	Weather and Public Service
21	Newsweek	Pro News	Pro News	CBS Morning News	CBS Morning News	Sum Bang Theatre	New Top Feature	Waterfront	Midnight	Weather and Public Service
22	Newsweek	Pro News	Pro News	CBS Morning News	CBS Morning News	Sum Bang Theatre	New Top Feature	Waterfront	Midnight	Weather and Public Service
23	Newsweek	Pro News	Pro News	CBS Morning News	CBS Morning News	Sum Bang Theatre	New Top Feature	Waterfront	Midnight	Weather and Public Service
24	Newsweek	Pro News	Pro News	CBS Morning News	CBS Morning News	Sum Bang Theatre	New Top Feature	Waterfront	Midnight	Weather and Public Service
25	Newsweek	Pro News	Pro News	CBS Morning News	CBS Morning News	Sum Bang Theatre	New Top Feature	Waterfront	Midnight	Weather and Public Service
26	Newsweek	Pro News	Pro News	CBS Morning News	CBS Morning News	Sum Bang Theatre	New Top Feature	Waterfront	Midnight	Weather and Public Service
27	Newsweek	Pro News	Pro News	CBS Morning News	CBS Morning News	Sum Bang Theatre	New Top Feature	Waterfront	Midnight	Weather and Public Service
28	Newsweek	Pro News	Pro News	CBS Morning News	CBS Morning News	Sum Bang Theatre	New Top Feature	Waterfront	Midnight	Weather and Public Service
29	Newsweek	Pro News	Pro News	CBS Morning News	CBS Morning News	Sum Bang Theatre	New Top Feature	Waterfront	Midnight	Weather and Public Service
30	Newsweek	Pro News	Pro News	CBS Morning News	CBS Morning News	Sum Bang Theatre	New Top Feature	Waterfront	Midnight	Weather and Public Service
31	Newsweek	Pro News	Pro News	CBS Morning News	CBS Morning News	Sum Bang Theatre	New Top Feature	Waterfront	Midnight	Weather and Public Service
32	Newsweek	Pro News	Pro News	CBS Morning News	CBS Morning News	Sum Bang Theatre	New Top Feature	Waterfront	Midnight	Weather and Public Service
33	Newsweek	Pro News	Pro News	CBS Morning News	CBS Morning News	Sum Bang Theatre	New Top Feature	Waterfront	Midnight	Weather and Public Service
34	Newsweek	Pro News	Pro News	CBS Morning News	CBS Morning News	Sum Bang Theatre	New Top Feature	Waterfront	Midnight	Weather and Public Service
35	Newsweek	Pro News	Pro News	CBS Morning News	CBS Morning News	Sum Bang Theatre	New Top Feature	Waterfront	Midnight	Weather and Public Service
36	Newsweek	Pro News	Pro News	CBS Morning News	CBS Morning News	Sum Bang Theatre	New Top Feature	Waterfront	Midnight	Weather and Public Service
37	Newsweek	Pro News	Pro News	CBS Morning News	CBS Morning News	Sum Bang Theatre	New Top Feature	Waterfront	Midnight	Weather and Public Service
38	Newsweek	Pro News	Pro News	CBS Morning News	CBS Morning News	Sum Bang Theatre	New Top Feature	Waterfront	Midnight	Weather and Public Service
39	Newsweek	Pro News	Pro News	CBS Morning News	CBS Morning News	Sum Bang Theatre	New Top Feature	Waterfront	Midnight	Weather and Public Service
40	Newsweek	Pro News	Pro News	CBS Morning News	CBS Morning News	Sum Bang Theatre	New Top Feature	Waterfront	Midnight	Weather and Public Service
41	Newsweek	Pro News	Pro News	CBS Morning News	CBS Morning News	Sum Bang Theatre	New Top Feature	Waterfront	Midnight	Weather and Public Service
42	Newsweek	Pro News	Pro News	CBS Morning News	CBS Morning News	Sum Bang Theatre	New Top Feature	Waterfront	Midnight	Weather and Public Service
43	Newsweek	Pro News	Pro News	CBS Morning News	CBS Morning News	Sum Bang Theatre	New Top Feature	Waterfront	Midnight	Weather and Public Service
44	Newsweek	Pro News	Pro News	CBS Morning News	CBS Morning News	Sum Bang Theatre	New Top Feature	Waterfront	Midnight	Weather and Public Service
45	Newsweek	Pro News	Pro News	CBS Morning News	CBS Morning News	Sum Bang Theatre	New Top Feature	Waterfront	Midnight	Weather and Public Service
46	Newsweek	Pro News	Pro News	CBS Morning News	CBS Morning News	Sum Bang Theatre	New Top Feature	Waterfront	Midnight	Weather and Public Service
47	Newsweek	Pro News	Pro News	CBS Morning News	CBS Morning News	Sum Bang Theatre	New Top Feature	Waterfront	Midnight	Weather and Public Service
48	Newsweek	Pro News	Pro News	CBS Morning News	CBS Morning News	Sum Bang Theatre	New Top Feature	Waterfront	Midnight	Weather and Public Service
49	Newsweek	Pro News	Pro News	CBS Morning News	CBS Morning News	Sum Bang Theatre	New Top Feature	Waterfront	Midnight	Weather and Public Service
50	Newsweek	Pro News	Pro News	CBS Morning News	CBS Morning News	Sum Bang Theatre	New Top Feature	Waterfront	Midnight	Weather and Public Service

Thursday Program Notes

7:00...ABC...JOURNEY TO THE OUTER LIMITS
This is the second of four seasonal documentaries which will recount the dramatic and adventurous experiences of a mixed team of explorers as they attempt to scale the Peruvian Andes. This special focuses on the young people of diverse social and ethnic backgrounds, each of whom in his own way hopes to "find" himself in the critical challenge ahead.

7:00...CBS...THE FLIP WILSON SHOW
Leslie Nielsen's guests are Bobby Sander, Roy Clark and his family, Baby Laurence's group of the World's Greatest Percussionists and Melba Moore.

7:00...CBS...THE WALTONS
The Honeymoon with 40 objections, that they would go on the honeymoon married 19 years ago. Olivia is anxious to go but is reluctant to leave her children. The rest of the family persuades her that they will be all right but as soon as she leaves, things start going wrong.

8:00...CBS...ONE MORE TIME
Musical comedy special featuring Carol Channing, Pearl Bailey, and an all-star cast. Other guests, in alphabetical order, include Pat Boone, George Burns, Diahann Carroll, George Gobel, the Jackson Five, the Mills Brothers and Pointer Sisters. Gene Sheldon, of the Tim and the Blue Brothers, will also appear on the show.

8:00...ABC...KUNG FU
"The Book," with guest stars Robert Foxworth and Slim Pickens. The price of justice comes high when Cain and a Texas lawman find themselves outside the law and accused of killing a man.

8:00...NBC...IRONSIDES
"Ironside and a Three Man Band" is a three-man band with 300,000, one dies, and one (guest star) Paul Burke gets caught.

Tuesday Program Notes

7:00...NBC...ADAM-12
"Trouble in the Bank," Officer Reed walks into a bank to make a car payment and becomes a hand-cuffed hostage of two villainous days.

7:00...ABC...THE COMEDY SERIES
A nostalgic look at some of the most famous faces of the 1950s and early 1960s as seen through the eyes of the Cunningham family. Howard Cunningham and his wife, Marion, strive to bring up Uncle Charlie during an era when the children were a household name, when the new music came and when kids let the current to get together for a burger and milk. Starring are Tom Bosley as Howard Cunningham, Marion Ross as his wife with Ronnie Howard, Anne Williams and Donnie "Red" Mitchell. The comedy series is a warm, nostalgic look at a time when life was simpler, when his best friend in the neighborhood was a kid named Richie. "Premiere" Monday, 7:30 p.m. (Premiere) Monday, 7:30 p.m.

7:30...ABC...TUESDAY MOVIE OF THE WEEK—"MKS SUNDANCE"
Starring Elton and G. Jones, "The Mobster" of the Sundance Kid finds herself in deadly jeopardy from bounty hunters when she hears Sunday is waiting for her at the old-fashioned gold mine by the infamous town.

7:30...NBC...TUESDAY MOVIE OF THE WEEK—"THE WASHING CHALLENGE"
Starring George Peppard as Barnack. A one-of-a-kind ancient Greek challenge disappears from a closely guarded room in the Boston Museum and Barnack tries to find out how it happened.

8:30...CBS...NBA BASKETBALL ALL-STAR GAME
Summertime will provide the play by play, Elgin Baylor will provide the analysis and commentary, and "How Rod Hundley will host the pregame.

Wednesday Program Notes

3:30...ABC...THE ABC AFTER-SCHOOL SPECIAL—"PSSST...SPEAK TO ME"
An original premise, 11-year-old boy how to cope with violence as a part of life. Starring are Christian Juttner, Lance Kerwin and Jim Sage.

7:00...ABC...SPECIAL WEDNESDAY DOUBLE-FEATURE MOVIE OF THE WEEK—"THE NIGHT STITCH"
Starring Darren Lynley and Barry Oskoff. An unusual suspense drama about a down on his luck newsman who acquires a partnership from his boss and the police to prove that Las Vegas is being terrorized by a vampire. (R)

7:00...CBS...THE SONNY AND CHER COMEDY HOUR
Guest stars: Danny Thomas, Ken Berry and several appearances.

8:00...CBS...CANNON
"Duel in the Desert," Cannon becomes an amnesia victim in the blazing hot Southern California desert while delivering a kidnapped child.

8:00...NBC...NBC MOVIES—"SOME NIGHTS IN THE CITY"
Starring Dick Van Dyke and Angie Dickinson. A bank employee comes under fire from his superiors for refusing to shave off his newly acquired beard. United Artists.

8:30...ABC...SPECIAL MOVIE OF THE WEEK—"SCREAM OF THE WOLF"
Starring Clint Walker, Peter Graves and Tom Tully. A once famous and to come out of retirement to hunt a wolf that appears to be a mad killer who discovers that it is no

HAROLD CLOSE
R WALGREEN AGENCY DRUG
We're More Than Just A Pharmacy
Sugarland Mall
364-2344

TEMPERATURE STATE BANK
For Time & Temperature Call 364-5100

CHANNL	4	7	7	10	10	11	13	13	39	3
CABLE	KONC	KVII	KVC	KIDA	KCS	KVI	KERA	KPS	KXIX	IND
20	Newsweek	Pro News	Pro News	CBS Morning News	CBS Morning News	Sum Bang Theatre	New Top Feature	Waterfront	Midnight	Weather and Public Service
21	Newsweek	Pro News	Pro News	CBS Morning News	CBS Morning News	Sum Bang Theatre	New Top Feature	Waterfront	Midnight	Weather and Public Service
22	Newsweek	Pro News	Pro News	CBS Morning News	CBS Morning News	Sum Bang Theatre	New Top Feature	Waterfront	Midnight	Weather and Public Service
23	Newsweek	Pro News	Pro News	CBS Morning News	CBS Morning News	Sum Bang Theatre	New Top Feature	Waterfront	Midnight	Weather and Public Service
24	Newsweek	Pro News	Pro News	CBS Morning News	CBS Morning News	Sum Bang Theatre	New Top Feature	Waterfront	Midnight	Weather and Public Service
25	Newsweek	Pro News	Pro News	CBS Morning News	CBS Morning News	Sum Bang Theatre	New Top Feature	Waterfront	Midnight	Weather and Public Service
26	Newsweek	Pro News	Pro News	CBS Morning News	CBS Morning News	Sum Bang Theatre	New Top Feature	Waterfront	Midnight	Weather and Public Service
27	Newsweek	Pro News	Pro News	CBS Morning News	CBS Morning News	Sum Bang Theatre	New Top Feature	Waterfront	Midnight	Weather and Public Service
28	Newsweek	Pro News	Pro News	CBS Morning News	CBS Morning News	Sum Bang Theatre	New Top Feature	Waterfront	Midnight	Weather and Public Service
29	Newsweek	Pro News	Pro News	CBS Morning News	CBS Morning News	Sum Bang Theatre	New Top Feature	Waterfront	Midnight	Weather and Public Service
30	Newsweek	Pro News	Pro News	CBS Morning News	CBS Morning News	Sum Bang Theatre	New Top Feature	Waterfront	Midnight	Weather and Public Service
31	Newsweek	Pro News	Pro News	CBS Morning News	CBS Morning News	Sum Bang Theatre	New Top Feature	Waterfront	Midnight	Weather and Public Service
32	Newsweek	Pro News	Pro News	CBS Morning News	CBS Morning News	Sum Bang Theatre	New Top Feature	Waterfront	Midnight	Weather and Public Service
33	Newsweek	Pro News	Pro News	CBS Morning News	CBS Morning News	Sum Bang Theatre	New Top Feature	Waterfront	Midnight	Weather and Public Service
34	Newsweek	Pro News	Pro News	CBS Morning News	CBS Morning News	Sum Bang Theatre	New Top Feature	Waterfront	Midnight	Weather and Public Service
35	Newsweek	Pro News	Pro News	CBS Morning News	CBS Morning News	Sum Bang Theatre	New Top Feature	Waterfront	Midnight	Weather and Public Service
36	Newsweek	Pro News	Pro News	CBS Morning News	CBS Morning News	Sum Bang Theatre	New Top Feature	Waterfront	Midnight	Weather and Public Service
37	Newsweek	Pro News	Pro News	CBS Morning News	CBS Morning News	Sum Bang Theatre	New Top Feature	Waterfront	Midnight	Weather and Public Service
38	Newsweek	Pro News	Pro News	CBS Morning News	CBS Morning News	Sum Bang Theatre	New Top Feature	Waterfront	Midnight	Weather and Public Service
39	Newsweek	Pro News	Pro News	CBS Morning News	CBS Morning News	Sum Bang Theatre	New Top Feature	Waterfront	Midnight	Weather and Public Service
40	Newsweek	Pro News	Pro News	CBS Morning News	CBS Morning News	Sum Bang Theatre	New Top Feature	Waterfront	Midnight	Weather and Public Service

