

Serving  
the  
Magic Triangle

# The Hereford Brand

16 Pages

Price 10¢

HEREFORD, TEXAS, 79045, THURSDAY SEPTEMBER 30, 1965

64th YEAR—NO. 39

PUBLISHED EVERY THURSDAY

## United Fund Drive Starts Friday

### 9 Member Groups Contributions Aid

Deaf Smith County's 1965 United Fund Drive officially gets underway at 10 a. m. Friday with a kick-off coffee for workers in the first of a series of events aimed at raising \$30,160 to support the nine UF participating agencies.

Final organization assignments for the drive will be in the Hereford Community Center. And a "mass demonstration" in support of the drive will be held at 10 a. m. Saturday along Hereford's Main St.

United Fund chairman Clint Formby—who termed this year's drive "a crucial one"—urged that all UF workers be present for the meeting.

Also invited to attend are, as Formby put it, "anyone who has any time to help with the United Fund drive." At least 100 volunteer workers are expected to be present.

Several items of importance are scheduled for the session, which will be held this year for the first time in the Community Center.

Among these are: —A QUESTION—and—answer period in which anyone may ask questions concerning the operation and goals of the UF.

—ANNOUNCEMENT of winners of an essay contest among students in Hereford elementary schools.

—A description of some new tactics being employed by UF officials for the first time on this year's drive.

SATURDAY's mass demonstration to show support of the UF will consist of members of the Camp Fire and Bluebirds, Little League, Pony League, Boy Scouts, and Cub Scouts—all of which are participating agencies in the United Fund.

Members of these organizations are asked to convene at the Main St. side of Dameron Park at 10 a. m. to show support of the UF—which makes operation of these agencies possible.

SEVERAL changes are being incorporated in this year's UF drive in an attempt to make it more successful, according to Ed Skypala, drive chairman.

Skypala said that increased emphasis will be placed on businesses whose employees participate 100 per cent in the drive.

FIRMS who have 100 per cent participation in the drive will be recognized through the local radio and newspaper and will be listed on a large billboard to be located on the Post Office lawn.

"Be United, Give United"—this year's drive slogan—will be illustrated on the billboard via a colorful drawing of a space capsule in orbit.

Further details of the drive will be announced at Friday's meeting, according to Dale Young, publicity chairman.

WINNERS in the United Fund essay contest will also be announced at the Friday coffee. The winning essay will be read. Contestants were asked to describe their views of the importance of the UF in 150-word essays.

"In light of the growth of the See UNITED Page 2"

### A NEW UF MEMBER

## Disease Treatment Center Aids Many

One of the two agencies participating this year for the first time in the Deaf Smith County United Fund is the Amarillo Cerebral Palsy Center, Inc. which treats many county residents annually.

The Amarillo treatment center was included in the budget for this year's UF drive after it was pointed out that almost a tenth of the patients treated at the center are residents of Deaf Smith County.

IN 1964, seven of the Amarillo center's 84 active patients were from the Hereford area.

The center—which accepts patients regardless of race, creed, or ability to pay—collected only \$267 from Hereford

patients during the year. COST OF treating these patients was some \$763, officials said, leaving some \$516 to be paid by the Amarillo center.

The Amarillo center is a member of the Amarillo United Fund, therefore, officials felt it "only fair" to seek aid from the Deaf Smith UF, since the patient load from this county represented a more than \$500 cost to Amarillo citizens.

As a result, the local UF has budgeted \$500 to be allocated to the Amarillo treatment center.

IN 1960, the total budget request for the Amarillo center is \$41,000, of which \$500 is Hereford's share, based on a pro-rata share, based on a pro-rata

See DISEASE Page 2

## Three Are Killed In Collision Here Wednesday Night

### Two From Plainview, Nazareth Man Claimed

Three persons were killed as a result of a grinding head-on collision between two autos on a curve on U. S. Highway 60 south of Hereford Wednesday night.

The crash—which occurred about 8 p. m.—killed a Plainview man and woman instantly and claimed the life of a Nazareth man moments later.

KILLED at the scene were William Thomas Cain, 59, of Plainview; and Josephine Smith Mayes, 55, also of Plainview. Pronounced dead in the emergency room at Deaf Smith County Hospital was Ronald Charles Dobmier, 23, of Nazareth.

The two autos met almost head-on while rounding a long curve on the highway some two miles south of Hereford. INVESTIGATING Highway Patrolmen said the crash occurred after a 1965 Oldsmobile driven by Cain had passed a third auto.

The Mayes woman was a passenger in the Smith auto. Dobmier was alone in the 1964 Plymouth he was driving.

Smith and the Mayes woman were apparently dead when investigators arrived.

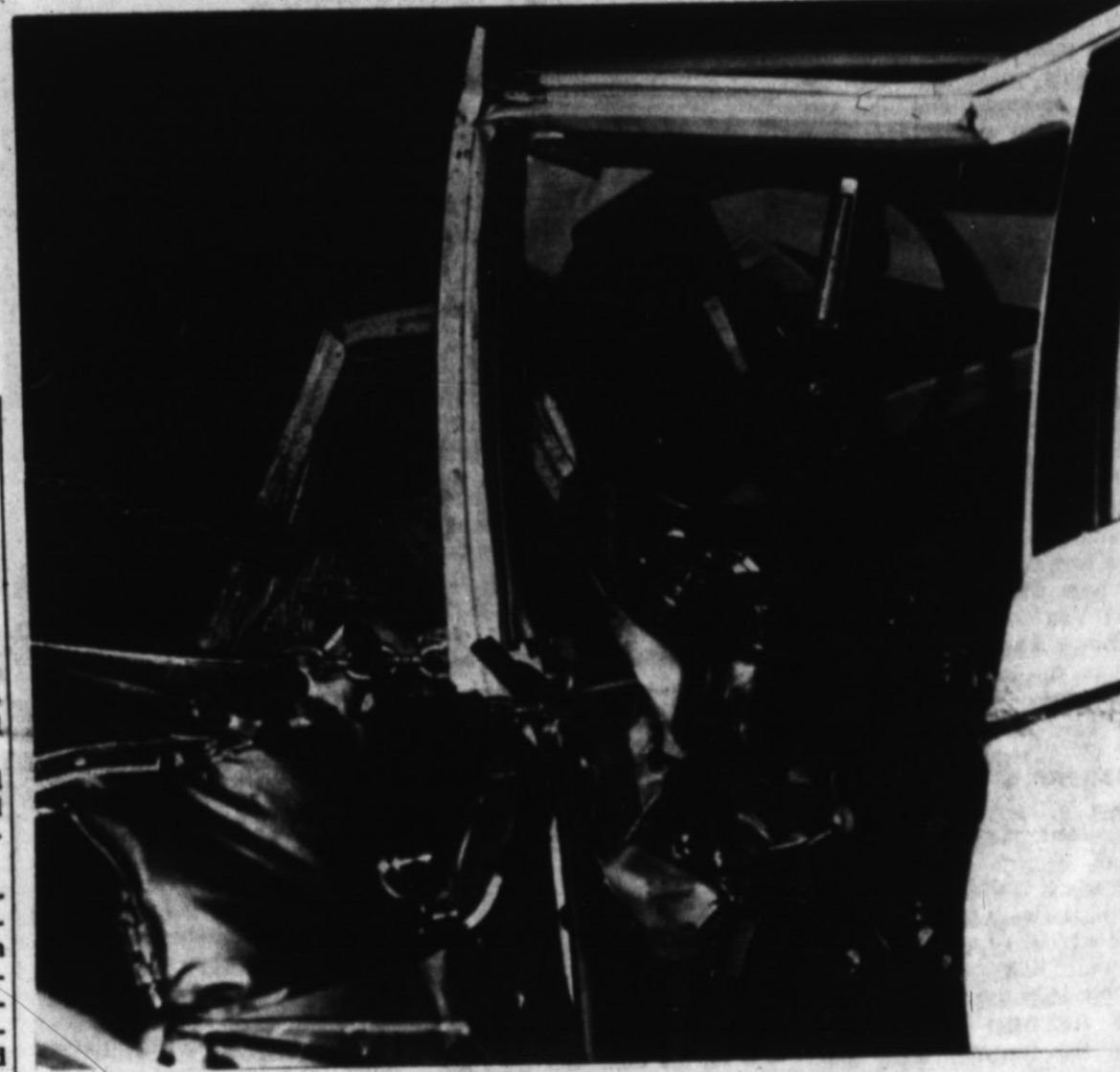
Dobmier, taken unconscious to the hospital, died moments after arriving.

Investigating officers and ambulance attendants from Gilliland Funeral Home were unable to remove bodies from the Smith auto until after a wrecker arrived to unpin the bodies.

Two units from the Hereford Fire Department were also called to the scene, as a leaking gas tank from one of the demolished autos spilled fuel onto the highway.

The accident occurred on a curve which had recently been resurfaced and there was no line marking the center of the two-lane highway.

Traffic was tied up for about half an hour before the highway could be cleared. See THREE Page 2



WHERE THREE DIED — Three persons were killed in a head-on crash three miles south of Hereford on U.S. Hwy. 60 about 8 p. m. Wednesday when these two autos collided head-on at high speed. One man died in the auto pictured in the top photo, and a man and woman were killed in the bottom car. A wrecker was used to remove bodies from the auto pictured at bottom. (Staff Photos by David Butler)

### IN CHAMBER DRIVE

#### Membership Increase Noted At Report Meet

Team Captains in the continuing Chamber of Commerce effort to increase its financial base reported at a special meeting Tuesday to compare notes on progress.

Team Captains Wendall Maloney and Oliver Streu were found to be in a virtual tie for rounding up the most new members in the drive.

It was agreed that all captains would be permitted to turn in additional cards towards winning the team prize through the end of December and that the winning team would then be announced at the annual Chamber banquet along with the individual member winner.

EFFORTS to date have produced increased support in excess of one half of the announced goal but many prospects remain to be contacted. The following firms and individuals have joined the Chamber of Commerce since the drive began:

Bravo Smokes, Soft Spru Car Wash, Kelley Electric, Rainbow Drive In, Chandelier Gift Shop, Kenneth Harper, Paul's Air Speed Service, Hi-Plains Land Co., Artistic Receptacles, Ward Gin, Robert Thompson, Rev. B. L. Davis, Rev. Don Davidson, Joe Solin Masonary, S & J Electric, Kay Insurance Agency, Bill-Lise Beauty Salon, Early Bird Restaurant, Hereford Trading Post, Wayne B. Stark Jr., Dr. Gale J. Page, Christian Book Store, Daniel's Builders See MEMBERSHIP Page 2

### Figures Show 'Medicare' Aids Many In County

(Special To The Brand)

What proportion of Deaf Smith County's population will be affected by the recently-enacted medicare bill?

How many local residents will qualify for hospital care and for the financial and other benefits that it provides?

APPROXIMATELY one person out of every 18 in the local population will come within its scope, according to government figures that show the number of people in each community in the over 65 ranks and the number of them who are now receiving pensions under social security.

The basic program of health insurance for the elderly will take care of some 757 men and women in Deaf Smith County when it starts operating on July 1, 1966. Included in this total is practically everyone who is 65 or older.

IT WILL provide them with hospitalization, except for the first \$40 of costs, with free care in a nursing home for 30 days and with up to 100 visits at home by nurses or technicians within a one-year period.

Locally, an estimated 5.7 percent of the population will be entitled to these basic services. In part of the country, due to variations in the age distribution, the proportion is different. Nationally, the average is 9.2 percent.

As to what part of the costs of an illness medicare would absorb, figures are given for a See FIGURES Page 2

### WHERE THE UF DOLLAR GOES

## Helps Those In Need

(Editor's Note: The article below and two other stories on this page describe work of agencies which participate in the Deaf Smith County United Fund, which launches its annual drive Friday).

The Salvation Army and the Deaf Smith County Council on Alcoholism are agencies which offer a helping hand to those in need.

Both are participating agencies in the Deaf Smith County United Fund and rely solely on contributions to the UF to carry on operations here.

THE SALVATION ARMY—known throughout the world for its humanitarian work—receives more than \$3,000 from the local UF's \$30,160 budget.

And the Council on Alcoholism is allocated \$500 for its opera-

tions during the coming year. What do these agencies do with this money?

The Salvation Army uses about a third of this allocation for "emergency aid" to persons

who would not otherwise qualify for welfare aid from county and state agencies here.

The other two-thirds? It is sent to the national Salvation Army for distribution to: 1,280 corps and outposts, 5,331 service units, and 80 transient units, 111 men's service units, 34 homes and hospitals for unwed mothers, three general hospitals;

Two clinics, eight children's homes, 16 evangelist homes for working girls, 14 nurseries, eight foster homes, 59 summer camps; 124 county centers, 14 Salvation Army operated USO centers; and 157 district canteens.

Or, a total of 6,611 service outlets for the Salvation Army, located throughout the nation.

The more than \$1,000 spent locally by the Hereford Salvation Army Committee goes to aid persons who have no other means of financial aid while in Hereford.

Many of these are just passers-by, who would otherwise seek aid from churches and other See HELPS Page 2

Deaf Smith County pays 32 percent of all District official's salaries; Moore County picks up 26 percent of the tab, and Dallam County, 15 percent. The remaining 17 percent is paid by Hartley, Sherman and Oldham. The county percentage is based on county population figures according to the last census.

The court also approved the purchase of a special cushion-type tile to be used behind the counter in the tax office at a cost of \$182 and authorized the bi-annual audit of the Deaf Smith County Hospital. The books are audited every other year, according to T. E. Seigler, hospital administrator.



### HAVE HIT SOUND

## Local Man's Tunes Take Musical Spin

A Hereford man apparently got in too big a rush to discard his guitar.

Don Chaney, salesman and announcer for radio station KPAN, recently sold his guitar. Then he had to borrow an instrument to record a song which may someday reach the nation's hit tune charts.

Chaney, who four years ago co-authored a song entitled "Don't You Know," had long since packed away ideas that the tune would capture anybody's liking.

And some weeks ago he sold the guitar he had used to pick out the melody for the number.

BUT TWO weeks after the instrument was discarded, Chaney received an offer "from out of the blue" to record the song—along with three others which he had had a hand in writing—at a top-notch Dallas sound studio.

So he borrowed a guitar, practiced up the almost-forgotten tune and went to Dallas for a session in the Summit Sound Studio.

AND NOW the song is being aired regularly on several Dallas and Fort Worth radio stations, a good indication that the tune has what it takes to catch on in the popular music world.

So far, things are looking good for the Hereford musician who had long ago decided the chances for getting anywhere in the music world were not worth the effort.

"Doncha know it's wrong to kiss and run..." begins the song sung by Chaney.

BACKED by a professional recording band "Don't You Know" comes out with a sound styling resembling a cross between Buddy Holly and Bobby Bare.

On the flip side, Chaney sings "Put My Things Away," a See LOCAL Page 2



DON CHANEY

Three ... (Continued from Page 1) The crash was the latest in a rash of traffic mishaps in a Hereford area.

and Lee. The accident involved a 1969 model sedan driven by William E. Rogers, 22, of Hereford, and a 1965 model sedan driven by Stephen Oscar Wilson, 79, 110 Kibbe St.

bumper of Mrs. Shackelford's car. DURHAM was cited for improper start from a parked position.

Figures ... (Continued from Page 1) typical case. It is of a man, over 65, who has cancer.

Helps ... (Continued from Page 1) local groups. The local Salvation Army committee is headed by Sheriff Lowell Sharp, chairman, who along with other members of the group have charge of distribution of the funds.

THE DEAF SMITH County Council on Alcoholism channels its services toward another category. Goals of the council were summed up by its chairman, the Rev. Joel Treadwell.

Receives Aid From Adventists Nine pieces of bedding and 913 articles of wearing apparel were loaded on Seventh-Day Adventist Disaster Unit trucks from the Hereford church's Health and Welfare Center recently to be taken to hurricane victims in the New Orleans area.

tributed by residents of the Hereford community in response to an appeal, says Mrs. Jewell Elliston, director of the center. They will help make up a total of 10,000 pieces of clothing and bedding sent through the Adventist Disaster Unit to the storm area.

Also listed in good condition following a two-car collision in downtown Hereford last week was Mrs. Emma Byers, 85. Slightly injured in a Monday afternoon mishap was Gregg Richards.

WILSON was cited for failure to yield the right of way, according to investigating officers. Another accident occurred at 1:24 p.m. at the intersection of Park Ave. and Main St.

Local ... (Continued from Page 1) tune featuring more of a country flavor. Chaney teamed up with Johnny Hathcock in 1961 to scribe "Don't You Know," when the two were associated with a radio station in Amarillo.

Deasease ... (Continued from Page 1) rate basis in comparison to the number of patients treated. Fees for treatment at the center are on a sliding scale.

Teachers Attend District Meeting In Amarillo Teachers from Deaf Smith County schools were among members of the Texas State Teachers Association who attended a drive-in conference of local officers from over District 9 Monday at Tascosa High School, Amarillo.

Helps ... (Continued from Page 1) The local Salvation Army committee is headed by Sheriff Lowell Sharp, chairman, who along with other members of the group have charge of distribution of the funds.

Receives Aid From Adventists Nine pieces of bedding and 913 articles of wearing apparel were loaded on Seventh-Day Adventist Disaster Unit trucks from the Hereford church's Health and Welfare Center recently to be taken to hurricane victims in the New Orleans area.

tributed by residents of the Hereford community in response to an appeal, says Mrs. Jewell Elliston, director of the center. They will help make up a total of 10,000 pieces of clothing and bedding sent through the Adventist Disaster Unit to the storm area.

The Hereford Brand Member National Editorial Assn. Member Associated Press Hereford, Deaf Smith County, Texas, 79045

Two accidents occurred Monday with the first happening at 4 p.m. The first accident occurred when a 1960 model sedan driven by Dan Bob McWhorter, 18, 210 N. Texas, and a 1959 model sedan driven by Mrs. Jean Allen Easton, 19, 326 2nd, collided at the intersection of Moreman and Sunset.

United Fund ... (Continued from Page 1) area-plus the fact that we have added two agencies to the United Fund this year while increasing our goal by only \$200-

Deasease ... (Continued from Page 1) rate basis in comparison to the number of patients treated. Fees for treatment at the center are on a sliding scale.

Teachers Attend District Meeting In Amarillo Teachers from Deaf Smith County schools were among members of the Texas State Teachers Association who attended a drive-in conference of local officers from over District 9 Monday at Tascosa High School, Amarillo.

IS YOUR CAR GETTING OLD? LET US HELP YOU BUY A NEW ONE Trade now with a new car loan

Table with columns: DAY, TIME, SCHEDULED, LEAGUE STARTS. Lists bowling league events from Monday to Sunday.

James M. Gilentine Publisher Melvin Young General Manager Robert J. Awtry Mech. Supt. CIRCULATION Mail EM 4-2630 Carrier EM 4-1855

THE SECOND accident Monday occurred at 6:05 p.m. when a 1968 model sedan driven by Filomeno Ortiz, 36, Rt. 2 Hereford, and a 1965 model convertible driven by Ronnie Mac Hathaway, 40, 404 1st and Main St., collided at the intersection of east 1st and Main St.

United Fund ... (Continued from Page 1) area-plus the fact that we have added two agencies to the United Fund this year while increasing our goal by only \$200-

Deasease ... (Continued from Page 1) rate basis in comparison to the number of patients treated. Fees for treatment at the center are on a sliding scale.

Teachers Attend District Meeting In Amarillo Teachers from Deaf Smith County schools were among members of the Texas State Teachers Association who attended a drive-in conference of local officers from over District 9 Monday at Tascosa High School, Amarillo.

100 Commercial Cows - Right Ages - Right Kind - Sat. Oct. 2 BROWNWOOD CATTLE AUCTION 12:00 Noon Brownwood, Texas

100 Commercial Cows - Right Ages - Right Kind - Sat. Oct. 2 BROWNWOOD CATTLE AUCTION 12:00 Noon Brownwood, Texas

THE ROAD RUNNER OF THE Plumbing Industry NOW DEALERS FOR LENNOX HEATING & Air Conditioning The Greatest Advance in Heating & Cooling in over 30 years

United Fund ... (Continued from Page 1) area-plus the fact that we have added two agencies to the United Fund this year while increasing our goal by only \$200-

Deasease ... (Continued from Page 1) rate basis in comparison to the number of patients treated. Fees for treatment at the center are on a sliding scale.

Teachers Attend District Meeting In Amarillo Teachers from Deaf Smith County schools were among members of the Texas State Teachers Association who attended a drive-in conference of local officers from over District 9 Monday at Tascosa High School, Amarillo.

100 Commercial Cows - Right Ages - Right Kind - Sat. Oct. 2 BROWNWOOD CATTLE AUCTION 12:00 Noon Brownwood, Texas

100 Commercial Cows - Right Ages - Right Kind - Sat. Oct. 2 BROWNWOOD CATTLE AUCTION 12:00 Noon Brownwood, Texas

WRESTLING Saturday Oct. 2 8:45 P. M. BULL BARN DORY JR. DON McCLARITY Girls - Senioritas - Girls KAY NOBLE JEAN ANTONE RENE GOULET EL MEDICO RINGSIDE \$1.50 - GEN. ADM. \$1.00 CHILDREN 6-12 50¢ Sponsored by Hereford Lions

Membership ... (Continued from Page 1) Suppy, Rev. Joel C. Treadwell, Phillip Shook, Jerry Don George, Jesse L. Gerun, D. C. Marlin Ray Todd, and Alex Schroeter.

100 Commercial Cows - Right Ages - Right Kind - Sat. Oct. 2 BROWNWOOD CATTLE AUCTION 12:00 Noon Brownwood, Texas

YOU ARE INVITED TO ATTEND THE PREVIEW OF THE 1966 LINE OF FORD MERCURY COMET CARS FRIDAY & SATURDAY ALSO SEE THE NEW BRONCO FREE COFFEE & DONUTS WILL BE SERVED THESE TWO DAYS AS YOU LOOK THE NEW LINES OVER ... AND ALSO OUR NEW SERVICE FACILITIES! STEPHENS-HUDSON MOTOR CO. "Herefords Friendly Ford & Mercury Dealer" 1st. at Miles Phone EM 4-2727

# Hereford High-Jinks

by Randy Hopson

School seems official now... the Senior class had its first meeting Tuesday afternoon. That really made all of the Seniors feel "old"? From the way things went at that meeting you would have thought it was the Freshman rather than the Seniors. The meeting proved that people fill out forms and then read the directions.

Quite a few of the graduated Seniors (they are now called Freshman) were in town last week end. George Muse over did his first home-coming a little. Saturday night he had an appendicitis attack and had to have his appendix removed. He is planning on staying in Hereford over next week end to recuperate.

When Barbie Rhodes and I visited him he didn't even look under the weather. All he did was complain about the hospital food. He had some cookies hidden for when hunger overcame him. That's a sure sign he's on the road to recovery.

**THE COMMON** expression when you see someone is a casual "hi" or simply hello. Gwyn Cargo causes you to think twice. Every time she sees one of her friends she says "Hi so-and-so bug". Now I don't know why she uses that expression but it does cause a few concerned looks among her friends.

The B-team boys will be playing Canyon tonight and that should prove to be an interesting game. The Varsity will play Canyon on Homecoming so it might pay to see what type of players the Eagles have on their B-team.

**HAVE YOU NOTICED** Coach Brooks bright red tie? If you see him wearing it be sure to compliment him. Then he'll have the chance to tell you all about his red socks that match. It never fails.

Mr. Don Jackson's selected Girls' Choir took time out from singing last week to elect their officers for the coming year. These officers won't have many duties until that time of year when the choir will be needing money. Chosen a president for this year was Donna Clark. I was elected as vice-president, Cynthia McMinn as secretary, and Debbie Ogan as treasurer.

Another band dance! The V-counts will be playing Saturday night at the Community Center from 8 til 12. Mary Frances

Lemons really does a great job of making everyone feel welcome at the Center. Drop by and let her know she's appreciated sometime.

Hereford High School is ever improving with school spirit but there has been a lot of comment lately on the attitude of the athletic boys. Fellas we're behind you all the way so don't let us down with those attitudes. The cheerleaders spend nearly all of their time working on signs, locker tags, and all of the other things that boost school spirit. They can't do much more work. I know they appreciate all of the help they can get.

Finally! The scripts for the All-School Play have arrived. The play is going to be a very interesting production this year. If you're interested try-outs for "The Night of January 16" will be held sometime this week. There are a lot of capable actors in school so lets see you there.

The sound you are hearing around the halls at school is **THE BATTLE CRY**. Beat Levelland! See you at the game Friday night!

## Council Officer Speaks To Club On Alcoholism

Mrs. O. G. Hill, Sr. vice chairman of Deaf Smith County Council on Alcoholism, was guest speaker to West Hereford Home Demonstration Club at a meeting Tuesday in the Flame Room with Ms. Hubert Duncan and Mrs. Lola Manasco as hostesses.

Mrs. O. G. Bell, program chairman, introduced Mrs. Hill, who discussed alcoholism as a disease, and the studies in recent years which have revealed causes and methods of preventing and controlling it. She also spoke of function of the county council in informing the public.

Mrs. Vern Witherspoon presided for business. The next meeting will be in the home of Mrs. John Jacobsen Sr. Oct. 12, with Mrs. W. A. Waters as co-hostess.

In addition to the speaker, Mrs. Albert Flowers was a guest. Other members present were Misses Mary Brady and Evelyn Bell; Mmes. W. H. Aw-

# Adrian News

By Ann Beavers  
Brand Correspondent

Kathy Garrison, an Adrian 4-H'er won a blue ribbon on her heavy weight division calf at the Tri-State Fair in Amarillo. Showing calves in the light-weight division were Kathy Garrison and Junior Whaley and in the Medium weight division, Kris and Kirk Garrison.

Mrs. Vincent Topia was in the Tucumcari hospital last week. She is home now and feeling better.

Sunday dinner guests of the Charlie Pullium family were Mr. and Mrs. Bill Goodenough and daughter of Amarillo, Mrs. Ann Beavers and Vickie.

Mr. and Mrs. Mora Pounds of Clinton, Okla. are the parents of a boy, John David, born Sept. 22. Paternal grandparents are the E. B. Pounds of Adrian.

Mrs. Butch Boydston and Scott visited in Clinton, Okla. this week with the Moran Pounds family.

Mrs. Francis Speed honored her son Dude on his twelfth birthday with a party Friday. Attending were Colin Lane, Timmy Jobe, Kirk Garrison, Sammy Betts.

Mrs. S. C. Schilliam of Quanah, Mr. and Mrs. E. C. Gilliam and Lester of Enoch visited the Lester Gilliam family recently.

Miss Marsha Burns, president of the Adrian F.H.A. went to Vega Saturday night to install the 1965-66 Vega F.H.A. officers.

Adrian F.H.A. held a workshop Saturday and members made decorations for the style show which will be held Nov. 20. They want to borrow 12 five gallon cans and 12 seven foot sticks to use in show decorations.

Lester Gilliam is in Calumet, Okla. working on the Liner for the Rock Island Railroad this week.

The Methodist Church had an outing in Ceta Canyon Methodist Camp Sunday. A large crowd attended the services and dinner.

Friday Mrs. Joe Brownlee and daughter went to Clovis to meet Mrs. Fred Brownlee, who was returning home from Temple where she went through a clinic.

Mrs. Donna Gudgell and baby and Mrs. Joe Brownlee and baby visited in Amarillo Wednesday with Dr. and Mrs. U. S. Roach.

Mr. and Mrs. P. N. Johnson attended the Golden Spread Hunt in Amarillo at Cliffside last weekend and brought home four trophies, a first in line, second in tree, second in barrel and third in hole.

Caprock 4-H club met Wednesday afternoon in the Home Ec. room. Those attending were Patty Zaring, Jan Cavin, Gale Gruhkey, Susan Webb, Betty Whitten, Mary Glass, Kim and Debbie Ivy, Donna Harwood, Cindy Foster, Robbie Sisk, Kim Garrison, Jackie Loveless and Patty Fortenberry. Two groups made fudge and the larger group talked on demonstrations. Mothers attending were Mrs. Eibert Whitten and Mrs. G. D. Webb.

trety, Wilma Pierce, A. G. Gresham, Obe Wilson, Boyd Collins, Carlos Vaughn, Arlie Frost Carl Schroeder, N. E. Gass, Blanche Hardin, Alice Bradley and the Home Demonstration Agent, Mrs. Argen Draper.

## CAP Launches Girl Cadet Group Here

A Civil Air Patrol cadet group for girls age 13 through 17 will be organized at the regular meeting of the Hereford Composite Squadron of the CAP Monday night.

It will mark the first time Hereford area girls have had the opportunity to participate in the CAP—a program designed to stimulate and maintain interest in aviation and space. GIRLS interested in the program are invited to attend the meeting, which will be held at 7:30 p. m. Monday in North-West Elementary School.

The cadet program for girls includes three phases of study in the aerospace field, according to W. T. (Bill) Thompson, the Hereford squadron's deputy in charge of cadets.

Included are an introduction to aerospace, which will be concluded with an orientation flight; a detailed study of aviation and space technology; and study of military officers' assignments. GOAL of the program—which is geared for the average or above-average student—is introducing young people to opportunities available in the field of aerospace.

Girls will learn of opportunities in military and civilian careers.

It was emphasized, however, that the CAP is not a "reserve" unit of the air force, and participation in the CAP program carries with it no military obligation.

TWELVE boys are currently active in the cadet program for boys. The Hereford Composite group also includes 11 active adult CAP members.

Advisor for the newly-formed girls' cadet group is Mrs. W. P. Hagar, Commander of the Hereford squadron is Dr. M. C. Adams.

Additional information concerning the Civil Air Patrol may be obtained from the Chamber of Commerce office or by attending the Monday night meeting.

## Calendar Of Events

**THURSDAY**  
County Federation of Women's Clubs, luncheon in Community Center, 10:30 p. m.

**FRIDAY**  
Bud to Blossom Garden Club, workshop on flower arranging at home of Mrs. Fran Battenfield, 605 Star, 9:30 a. m., with salad luncheon.  
Center, Colorado former residents of the community visited the Orval Galley family last Sunday.

On Sunday Mr. and Mrs. Orval Galley and family visited the Water Pierson family of Hereford.

Mrs. Gracie Allred of Wildorado visited Mrs. Susie Curt-singer on Tuesday afternoon.

Last week Mr. and Mrs. Eldon Owens made a fishing trip to El Dorado and Hot Spring, Arkansas and Menden, Louisiana.

Mr. and Mrs. Leroy Johnson and boys visited his parents, the J. A. Johnsons of Muleshoe on Sunday.

**MONDAY**  
Women's Club at Community Center, 7:30 p. m.  
Jaycee-Ettes at Community Center, 7:30 p. m.

**TUESDAY**  
Mrs. T. W. Robertson hosts to La Estudio Affatus Club, 3 p. m.  
Model meeting of Kappa Iota Chapter, Beta Sigma Phi, at Community Center, 8 p. m.  
American Legion Auxiliary at Rock Club House, 8 p. m.

**WEDNESDAY**  
Presbyterian Women's Association, covered dish luncheon at the church, 12 noon.  
First Methodist Woman's Society, general meeting at luncheon in church fellowship hall, 12:15 p. m.  
Simms Study Craft Club with Mrs. Edwin Morrison, 2:30 p. m.

## TIME GOES ON

Mishawaka, Ind. (AP) Father time hasn't stopped in Miss Barbara Wilklow's family for more than 400 years.

She claims to have a grandfather clock made in Zug Switzerland, 400 years ago, which still ticks.

She said she has records showing the solid cherry timekeeper was first repaired in 1803 after her family carried it from its homeland to Pennsylvania where they settled.

## Music Club Presents Federation Day Topics

Federation Day was marked by Hereford Music Study Club Monday with a program reviewing histories of the National and Texas Federations of Music Clubs and the local organization. This was the first program of a study course for the year which began with the annual Past Presidents' luncheon Sept. 13.

Hospitality committee members, Mmes. Bill Dameron, Jesse Stanford, Lowell Sharp, Steve Clements and W. E. Dameron, made arrangements for luncheon Monday at the Caison House.

Mrs. Dale Young discussed the National Federation of Music Clubs, and also the Texas Federation and Mrs. H. K. Fox presented the history of the local group. The Music Study Club, organized in 1916, has been federated since 1920.

The Federation Hymn was sung by the group with Mrs. Dick Godwin as leader. She also sang, as a solo, the hymn of the month, Be Still My Soul, set to music from Sibelius' tone poem, Finlandia.

Mrs. Bill Brady presided for business and introduced two guests, Mrs. Bob Wert and Mrs. D. W. Palmer.

Other members present were Mmes. T. W. Carmichael, Frances Parker, J. T. Gilbreath, Ellis Coombes, B. Y. Crosthwait, W. S. Fisher, J. C. McCracken, Ray Conaway, A. J. Schroeter, A. O. Thompson, Joe Hacker, Glenn Snyder, Carl Mountz, T. W. Roberson, J. R. Allison, Cliff Estes, Bill Langford, Joe Frank Clark, S. O. Wilson and Miss Frances Dameron.

## ADRIAN GIRLS TAKE CONTEST HONORS

ADRIAN—Miss Judy Harle, 17 Vega High School senior, has been selected Miss Oldham County, in a pageant sponsored by the Vega Junior Chamber of Commerce. Two girls from Adrian were runnersup.

They are Miss Jolene Betts, 17, daughter of Mr. and Mrs. Horace Betts, and Miss Rita Speed, 16, daughter of Mrs. Francis Speed.

Miss Harle will represent the county in Miss Grain Sorghum, Miss Wheatheart of the Nation and Miss Texas contests next summer. Her parents are Mr. and Mrs. Taylor Harle of Vega.

West German camera manufacturers produced a total of 42 million cameras between 1948 and 1964.



## NEWS

### FAIR ENTRIES WIN

Ribbons were won on Tri-State Fair entries by two Deaf Smith 4-H Club girls who competed in the junior open division. Patsy Paetzold took a blue ribbon and received a special award from the Holly Sugar Corp. for drop cookies entered in the culinary exhibits. Sharon Bartles was winner of a red ribbon for a plaid shift, one of two she displayed in the textile division. Thelma Warren also entered a shift, Miss Paetzold a dress, Judy Bartles a shift and skirt.

In the 4-H Wheat Show, Charles Atchley of this county received a \$5 cash award as ninth place entrant.

### WESTWAY CLUB

Officers were elected at a Monday meeting of Westway 4-H Club in the George Turrentine home. Rebecca Jesko was chosen president, James Jesko vice president, Linda Paetzold secretary-treasurer.

Patti Turrentine was named song leader, Deborah Jesko drill leader, Karen Jesko reporter, Janice Turrentine, Council Delegate. Carol Turrentine is in charge of recreation.

Janice presided for the meeting, when plans were made to sell sandwiches. Mrs. Turrentine, adult leader, and Mrs. Jimmie Jesko and Bernadette, visitors, were present.

Attendance Totals  
28,900 At Theatre

While fishermen, campers, and water sports fans packed state parks in record numbers this year, persons interested in the state's cultural background likewise were making attendance history.

This was reflected in the comparatively modest installation at the Palo Duro Canyon Park amphitheater near her.

Despite substantial enlargement of the theater's seating capacity from 1,000 to 1,300 standing-room-only-crowds several times were present. This occurred twice on the weekend of Sept. 3-5, with a Friday night at

tendance of 1,418 and a Sunday night count of 1,591.

Total summer patronage was 35,938, including many visitors from Oklahoma and New Mexico as well as from places around the world.

The seasonal production—"Thundering Sounds of the West"—was conceived and presented under sponsorship of the Panhandle Heritage Foundation.

The Salvation Army stands ready to aid transients that others cannot help. Give a United Fund gift as a big as your heart.

Quality Printing, at the Ink Spot

**The Chandelier Gift Shop**

ANNOUNCES

**OPEN HOUSE**

Mrs. Jack Renfro and Miss Alma Paetzold cordially invite you to our open house, Sunday October 3, 1965, 1:00 p. m. to 6:00 p. m., 603 N. Main St.

We are looking forward to showing you our carefully selected, beautiful and unusual gifts.

**Hotel Adolphus**

H. H. "Andy" ANDERSON  
Managing Director

The Distinguished Hotel  
in DALLAS

Coming to Dallas for business?  
Shopping? Entertainment?

**Be Your Own Boss**

**WHIRLPOOL CORPORATION**

offers opportunity to own a coin-operated laundry, dry cleaning center. Location available; excellent business opportunity. Deal direct with Whirlpool Corporation. Complete business counseling. 90% equipment financing.

Call or write:  
Lynn Ray, 1545 Lyles St., Amarillo, Texas  
Fleetwood 6-5506

Make One Stop Do It All — Cleaning & Laundry Wise

at **FAMILY COIN LAUNDRY**

NOW OFFERING

**COIN-OPERATED**

**DRY CLEANING**

—Attendant On Duty To Spot Clean—

**8** POUNDS OF DRY CLEANING **\$2**

—BEHIND TAYLOR & SONS GROCERY—

EM 4-9022

Complete stock Office Supplies  
**THE INK SPOT**

**COMET**

Introducing the lively new driving machines: the big, new-generation Comets.

Listen to the roar of the '66 Comets. They're bigger, wider, up to 8 inches longer than any Comet before. They make driving other cars seem like walking. Comet's new fire and spirited luxury come in 11 roomier models.

For a sample of Comet's style, take the Caliente. Notice the smart upholstery... the handsome, simulated wood-grain panels. For spine-tingling action try Comet's new Cyclone GT. Its new 390 4-barrel V-8 delivers the kind of go that can shove you right back in your bucket seat. Whatever you want — action cars with pure excitement, 3-speed or 4-speed, manual transmissions or automatics, inviting interiors — Comet's got it.

Plus a long, tempting list of options that includes built-in air conditioning, power windows, power brakes, and power everything. All this in the most exciting parade of Comets ever. Drive a real driving machine at your Mercury dealer's today.

**Mercury COMET**

**STEPHEN-HUDSON MOTOR CO.**

"Hereford's Friendly Ford & Mercury Dealer"

1st. at Miles Phone EM 4-2727



**DuPONT LUCITE WALL PAINT**

- Quick Easy Way To Paint
- No STIR - No DRIP - No - RUN - No MESS
- Rollers Brushes

Clean with Soap & Water

- 20 Decorator Colors

**\$4.44**

Gal.



*CUE... a remarkable new toothpaste can give your family a lifetime of fewer cavities*



**BUY NOW** - FAMILY SIZE  
Reg. Ret. 89c  
**only 43c** Tube

**BURMA SHAVE**

Whatever happened to **Burma Shave?** **IT GOT RICH!**

Blotter tests at a leading independent laboratory show: New rich Burma Shave soaks rings around other lathers. Burma releases its wetness faster—the first step in soaking for really smooth close shaves. For stainless blades, or any blades. Regular or Menthol. 11 oz.



**Tru Magic**

**THE RUG SHAMPOO**  
REMOVES SPOTS FROM CLOTHING; GREASE - CRAYON COFFEE - HAIR OIL BEVERAGES - INKS BLOOD - LIP-STICK TEA - SHOE POLISH & OTHER STAINS



Reg. Ret. 98c  
**49c** Pt.

**NOW!! Georgian BATHROOM TISSUE**

**10 ROLL PACK** only **57c**  
White or Assorted Colors

AT GIBSON'S

**BAYER ASPIRIN** 100's Bottle **53c**

**CALGON BATH OIL** Beads Reg. Ret. \$1.00 **53c**

Cutex Dily Reg. Ret. 49c  
**NAIL POLISH REMOVER** 27c Bottle

**SAFEGUARD SPRAY ON BANDAGE**  
Complete First Aid Treatment  
Reg. Ret. \$1.50 **73c**

Stopette Rollon **DEODORANT**



Twice the size of other leading brands you pay no more  
Reg. Ret. 69c  
**2.57c**



REG. RET. \$1.50  
**TOP MODEL HAIR SPRAY**

**2.97c**

**TOWEL SET**

By "Joy" 5 piece Asst. Colors

**\$3.67**

AT GIBSON'S SAVE

Mens **WESTERN COATS** Grey & Tan Plaid Size 34-36  
**WEATHER JACK** Reg. Ret. \$19.95

**\$14.97**

Ladies By Snowden **NYLON SLEEP WEAR**

Matching Sets • Sizes 32-40 Egg Shell & Red

**PAJAMAS** \$5.37

**COAT** \$5.37

Reg. Ret. \$9.50 each.

**GIRLS BLOUSES**

- Sailor • Sport • Dress
- Sizes 3 to 6 x - 7 to 14
- Asst. Colors
- Long and Short Sleeve

**NOW ONLY \$1.97**

**WOMENS BLOUSES**

COTTON DRESS & SPORT Long & Short Sleeve Sizes 32-38

**\$2.77**

AT GIBSON'S

**HAIR DRYER**

By Westinghouse

Reg. Ret. \$28.50

**\$17.37**

Shop Gibson's Discount Pharmacy Quality Economy Robert Miller Gradi Rogers

Babys **BOTTLE BAG**

By Glamour House • Asst. Colors Fully Insulated

**NOW ONLY \$3.25**

AT GIBSON'S

Mens White **DRESS SHIRTS**

- 100% Cotton • Reg. Collar • Size 14-17

Reg. Ret. \$5.00  
**NOW ONLY \$2.97**

Mens **RAIN SUITS**

- Heavy Duty • All Sizes Sport/ or Industrial

**\$4.77**

Mens **WOOLSHIRE SHIRTS**

- Hand Washable • Asst. Plaids S • M • L

Reg. Ret. \$9.98

**\$5.97**

AT GIBSON'S

Electric **SOCKS**

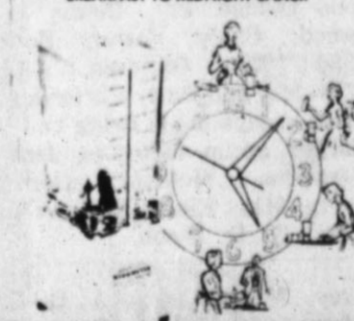
- Battery Powered • All Sizes Football Games • Camping

Reg. Ret. \$14.75  
**NOW \$8.67**

**ILEX DRINK MIXER Blendette**

A REAL TIME-SAVER FROM BREAKFAST TO MIDNIGHT SNACK

\$14.45 Reg. Ret.



**\$8.95**

AT GIBSON'S YOU SAVE!

**GIBSON'S DISCOUNT CENTER**

WHERE YOU BUY THE BEST FOR LESS

**PHARMACY**

**CLOSED SUNDAY**

**SPECIALS GOOD**

OPEN 9:00 A.M. — 9:00 P.M.

REMEMBER OUR TOY LAY-A-WAY

### All H. D. Clubs Are Represented At County Council's Luncheon

All the 11 Home Demonstration Clubs in Deaf Smith County were represented when the County Council held its first fall meeting Monday with a covered dish luncheon in Community Center. Committee reports and plans for a new year featured the business session. Members who went to the Texas Home Demonstration Association meeting in Austin Sept. 21-22 presented an interesting luncheon program as they reported highlights and side-lights of their trip. They told amusing incidents of the state convention as well as summarizing informative addresses and workshop sessions.

The delegates were Mrs. Paul Hoff, Mrs. Viola Williams and Miss Mary Bradley. Mrs. A. E. Hodges, district THDA Director, and Mrs. O. L. Williams, county THDA chairman-elect, also made the trip and assisted with the reports. Mrs. Oval Galley, present county chairman presided.

Six clubs reported 100 percent attendance. Several visitors were present and council members registered as follows:

Bippus Club, Mmes. Jimmy D. Bradley and Homfield; Cultural Club, Mmes. J. D. Love, Viola Williams and Gandy; Ford Club, Mmes. A. L. Hollingsworth and A. J. Jamerson; Messenger Club, Mmes. N. A. Brown and S. N. Thwaitt; progressive Club, Mmes. Gilbert, Hammett, H. L. Mershey and McGee.

Also North Hereford Club, Mmes. C. L. Williams, A. E. Hodges and Hoff; West Hereford, Mrs. W. J. Frost; Westway Club, Mrs. Bess Werner; Wyche Club, Mrs. C. F. Newman; Young Homemakers Club Mrs. Lowrie; Dawn Club, Mrs. Galley.



**REPORT STATE MEETING**—Five members who attended a Texas Home Demonstration Association convention in Austin last week gave reports at a luncheon of the County H. D. Council Monday. Seated, from left, are Mrs. A. E. Hodges, THRA Director for this district; Mrs. E. C. Hammett, Council president who was in charge of the business meeting after the luncheon; and Mrs. O. L. Williams, chairman-elect of the county THDA. Standing are Miss Mary Bradley, Mrs. Viola Williams and Mrs. Paul Hoff, delegates to the convention, and Mrs. Oval Galley, county THDA chairman who preside for the reports.

### Oldhams Attend Wedding Of Kin

Mr. and Mrs. L. Z. Oldham attended the recent marriage in San Fernando, Calif., of their granddaughter, Miss Sharon Lynn Oldham, daughter of Mr. and Mrs. Clyde E. Oldham of Newhall, Calif., to Gerald Eric Allenbaugh, son of Mr. and Mrs. Donald Allenbaugh of San Fernando.

The newlyweds are at home in Northridge, where they are students in San Fernando Valley State College. The bride is majoring in elementary education and Allenbaugh in hospital administration.

Mr. and Mrs. L. Z. Oldham were accompanied to California by Mr. and Mrs. Orville Deaver of Amarillo, second cousins of the bride. As heirloom pieces with her lace wedding costume, the bride carried a handkerchief belonging to Mrs. Oldham and a white Bible given to her by Mr. and Mrs. Oldham in 1955.

Church decorations were in pink and white and the bride's attendants wore pale pink. The couple traveled up the California coast to San Francisco on their honeymoon.

### Children, Families Visit in Story Home

Children of Mr. and Mrs. Joe Story and their families have been recent visitors in the Story home. They included Mr. and Mrs. Roy Mustian and daughter, Lisa, Mr. and Mrs. Dan McDowell of Lubbock; Mr. and Mrs. Ron Downing and sons Kevin and Scott, of Abilene. Another visitor with the Storys was Mrs. Lula Nance of Lockney.

Mrs. Story, with Mrs. J. B. Noland and Mrs. Harry Lookingbill, will leave Thursday for Houston to enter the M. D. Anderson Hospital.

### Western Supper Opens Club Year

Tall Texas tales initiated a year's program stressing folklore of the state, when El Llano Study Club opened a season with a western costume party Monday evening in the home of Mrs. Jack Meredith, president. The tales were told at roll call.

A camp fire blazed in the back yard where a barbecue supper was served, saddles and colorful blankets were scattered about it.

Members were in western dress with boots and ten-gallon hats much in evidence. Mrs. Bill Michael's red calico dress and lifelike rag doll which marked her as a pioneer mother supplied a contrast which won her the costume prize, a troll doll in western outfit.

Hostesses were members of the social committee, Mmes. Labry Ballard, Pete Caviness, Cecil Hart and R. C. Winget, who planned the supper of barbecue, beans, salads, fruit cobblers and coffee.

Mrs. Meredith presided for a business period in which the club voted to sponsor again the Lu-Tu-Ko-Ki Camp Fire group. Mrs. Ivan Block, a club member, is the group's guardian.

Marshmallows were roasted over the campfire coals to end the evening.

Guests of the club were Mmes. O. G. Hill Sr., Johnny Clark

and Floyd Coleman. Other members present were Mmes. Jim Bookout, Ben Childers, R. A. Daniel, Boyd Foster, Jesse Geron, John Jacobsen Jr., Elmer Kimball and Don. Paris.

### Guest Speaks To Calliopian Club Of Student Year

Glimpses of life in Vienna as seen by an American student were given by Miss Suzanne Langley, guest speaker to the Calliopian Club at its recent meeting in the home of her parents, Mr. and Mrs. Earnest Langley. Mrs. Langley, a member of the club, was hostess.

The Hereford student told of her year in the Austrian capital, conditions for students and her observations of Viennese residents and their homes. She showed colored slides to illustrate her informal talk.

The program was one of several by guests which will vary the club's study course for the year on The Great Southwest.

Mrs. C. J. Crump presided for business, which included election of Mmes. Clyde Cave and Gene Parsley to membership.

A number of guests heard the program with 16 members.

### Program Given In Westway Club

Statistics were quoted by Mrs. Jimmie Thomas in leading a discussion on Teenage Marriage in Westway Home Demonstration Club last week. Mrs. Jimmie Jesko was hostess in her home. Mrs. Thomas said most teenage marriages occur at the ages of 17 and 18.

Divorce rate is high in such marriages, she said, because the youngsters are unformed mentally and physically, their potentials are unknown and they do not know what they want of life. Views of other members included the comment that statistics sometimes give the impression that all teenage marriages are doomed.

Roll call was answered with suggestions for keeping youngsters in school, Mrs. Paul Rudd presided for routine business.

Also present were Mmes. Homer Rudd, George Turrentine,

### Small Talk

By SUE COLEMAN  
Women's Editor

Of all the things to leave out of a cake recipe the sugar is probably the most vital, and so that was the line that was dropped from the list of ingredients in Mrs. Gene Fook's super-special fudge cake recipe in Sunday's paper -- of had you already noticed?

To compound the confusion, instructions for mixing the cake told you to "add half the sugar, 1 cups" when it should have said 1 1/2 cups. That's the sort of thing which logical minds insist cannot happen but newspapers writers, proof-readers and printers can assure you that it does, often enough to give them gray hairs if not ulcers.

There is such a thing as a sugarless cake, but it fits into the recipe section devoted to low-budget cookery. Mrs. Fook's recipe, from the Waldorf-Astoria dining room, is frankly in the luxury division, with no skimping.

Here is the correct list of ingredients: 4 tbs. butter, 2 tsp. vanilla, 2 tsp. baking powder, 3 eggs, 2 1/2 cups sugar, 1 cup or more chopped nuts, 4 squares melted chocolate, 2 1/2 cups cake flour, 1 1/2 cups milk. There are nine separate ingredients for this cake if you want to check them, and it needs two and a half cups of sugar.

AS ONE of the recent-comers to Hereford, I've paid more than usual attention to announcements from women's organizations which have open membership. There are a number here which welcome all women and offer good opportunities for new residents to get acquainted faster.

Sometimes moving to another town is disturbing experience, especially to a woman who has spent practically all her life in one community.

Some feel that they must be invited into the new town's activities, but they know no one to invite them, and they have no opportunity to become acquainted until they are invited.

J. B. Odom, Kenneth Rudd, Bess Werner, J. C. Morrison, W. W. Thomas, Jimmy Thomas, Bill Drake and the County H. D. Agent, Mrs. Argen Draper.

It's a vicious circle, but it's easy to break.

Of course membership in some clubs is by invitation because their number must be limited. And some are for special interest groups, or have restriction on memberships such as the Jaycee-ettes, who are the wives of Jaycees.

Those the newcomer can pass up for a time, unless she is one of the restricted group and so has no problem.

Recent announcements have been made here by the Red Cross and the County Federation of Women's Clubs, that they have a place for any interested woman. The former is a service organization with several types of community work open to volunteers. The latter enrolls individual members as well as the women in member clubs.

Home Demonstration Clubs are also open, and if one has its limit of members there is another with room for one more.

No church organization for women turns down members, so far as I've ever heard; most greet them with open arms. You certainly need no invitation to them. Your church is yours, in whatever city.

Of the special interest groups, the Women's Bowling Association and the Duplicate Bridge Club are two which have

announced that they want more members with their respective interests.

Clubs with state or national affiliations always welcome contact with persons who have been members in other places. Some such are the Business and Professional Women, Beta Sigma Phi, Delta Kappa Gamma American Legion and VFW auxiliaries, Order of Eastern Star and Rebekah Lodges.

There are probably others, but any lonesome newcomer can go out and join something without any trouble, and find herself meeting a lot of the friendly Hereford women who will begin to make her feel at home.

### Public Invited To Dimmitt Flower Show

Cavalcade of Tables is the title of a flower show to be presented by the Dimmitt Garden Club from 2:30 to 6 p. m. Saturday, in the Fellowship hall of the Methodist Church at Dimmitt.

The public is invited to see the display, an announcement from Mrs. Sid Sheffy of the hostess club says.

**QUALITY NURSERY STOCK**  
*Armstrong*  
305 W. Park EM 4-1864

**ONE STAR AGENCY**  
601 N. Main EM 4-0555

**INSURANCE . . .**  
Fire  
Auto  
Commercial  
Life

**LOANS . . . Conventional — FHA**  
Residential  
Commercial

We will make loan commitments from plans and specifications (Individuals or Contractors)



### WE PAID MR. RAY'S BILLS!

Back in 1930, the year S.I.C. started in the consumer finance field, Mr. Ray was a man who was really going places. Then suddenly he found himself pressed with bills. S.I.C. was the answer to his problem. Since 1930, many people have solved many different financial problems through S.I.C. If more money can solve your problems, visit your S.I.C. office. Trained S.I.C. specialists have had a third-of-a-century of experience. Whether it's \$100 or \$5,000, apply for the loan you want . . . today.

**SIC SOUTHWESTERN INVESTMENT COMPANY**  
35 YEARS  
700 South 25-Mile Ave.  
Hereford, Texas  
Phone: EMerson 4-1394

**Grand Opening Sale**  
Only 3 Days to Register for Grand Prize  
Drawing Will Be Held Saturday For \$25, \$10, \$5 in Merchandise  
Winners of Blouses: Monday-Gladys Bryson; Tuesday-Mrs. C. R. Waiser

**COTTON KNIT Misses and Juniors 2-PIECE DRESSES** Few Sizes Left \$7.75 to \$8.75

**2 Pc. SUIT** 100% Acrylic Misses Sizes 20% Wool-80% Arlon Reg. \$15.95 **\$12.75**

**NYLON HOSE** 1st Quality Pair 2 Per Pkg. **85¢**

**SUIT** With Scarf \$8.75

Wear Anywhere **DRESSES** Misses & Half Slips \$5.75 • 2 For \$11

20% Wool — 80% Orlon **Bonded-Knit Dress** Reg. \$12.95 Sizes 10-18 **\$9.75**

Store Hours During Sale 9 a.m. 'til 9 p.m.

**Turner Fashions**  
606 S. 25 Mile Avenue Hereford, Texas

**To America with love... The 1966 Chrysler**

Could be we're getting too emotional. But it isn't very often you get a chance to follow an all-time sales record year with a new Chrysler like this one.

Sure, our '65 was great. But the '66 is even better.

It looks better. Moves quicker. It's got a beautiful new front end and a very dramatic new rear.

It's got a bigger and more zesty group of V-8 engines. From a 383 cubic inch to a 440 TNT with twin exhausts and twin snorkels. (A "snorkel" is an air intake horn for the carburetor — does great things for performance.)

The interiors, all up and down the line, are more luxurious and comforting. Take our new shell bucket seats, for example. It's almost as if they had been custom-fitted for you.

One thing we didn't even think about changing. It has to do with money. Five of our Newport models (real Chryslers — not junior editions) are priced just a few dollars a month more than the most popular smaller cars with the same equipment. This includes features like power steering, power brakes, a 383 cubic inch V-8, automatic transmission, radio and many standard items like safety door handles and seat belts.

Move up to Chrysler . . . it's getting easier by the minute.

**CHRYSLER**

**On display now.**

**Dishman-Hale Chrysler-Plymouth, Inc.**  
345 E. FIRST

# FOR GOD SO LOVED THE WORLD

## First Methodist Church

Rev. Herschel L. Thurston  
Pastor  
501 North Main

## Wesley Methodist Church

Rev. Noah Arnpriester, Pastor  
410 Irving

## Bippus Community Church

Eugene L. Nangle each first and third Sunday and R. D. Evans each second and fourth Sunday.

## Church Of Jesus Christ of Latter Day Saints (Mormon)

Country Club Drive

## Kingdom Hall Of Jehovah's Witnesses

319 Ave. I

## Assembly Of God Church

Rev. V. W. Marcontell, Pastor  
Union and Ave. G

## Immanuel Lutheran Church

Fred Beversdorf, Pastor  
Park Ave. and B Street

## The Church Of God In Christ

Rev. Calvin Hodge, Pastor  
115 West Norton

## Seventh Day Adventist Church

Pastor - Elder J. H. Turner  
West Park Addition

## Mission De San Jose

Labor Camp

## Church Of The Nazarene

Rev. K. Dwight Southworth, Pastor  
Fourth and Jackson

## Grace Gospel Church

Rev. H. V. Fields, Pastor  
Thirteenth and Avenue K

## St. Thomas' Episcopal Church

Rev. Joel Treadwell, Vicar  
Harrison Highway

## St. Anthony's Roman Catholic Church

Father Angelus, Pastor  
Harrison Highway at 25 Mile Ave.

## First Presbyterian Church

Rev. Russell Wingert, Pastor  
610 Lee Street

## First Christian Church

Rev. Eugene Brink, Pastor  
West Park Avenue

## Dawn Baptist Church

Eugene Suttle, Pastor



# DEEP YEARNING

...for God, or is it hero-worship, or is it a desire to be shown the way... is it a dream? Well, heroes are God's occasion for awakening in His children a yearning to be one. Dreams are the doorsteps up which one must climb to reach this higher elevation. *Be it hero-worship or a longing for God, it is his dream and a child is at his best when he dreams.* His dreams are his prayers. God and your son, together, can do great things. But they can do better if a father joins God and his son in the dream-prayer. Here a father meets, face-to-face, one of the finer experiences of life... his own son in fervent prayer. Scenes like this cause a father to be interested in things that have to do with life rather than just a living. *A prayer life is the result of church teaching and good raising...* has your child learned to pray??? To be good and kind and patient are fine but add church attendance to the list and you'll have the ingredients which go into every good man.



# the CHURCH in you

These Hereford Business Firms Make This Page Possible in the Interest of a Christian Community. Go to Church Sunday.

HEREFORD INSURANCE AGENCY  
323 N. Sampson

E. B. BLACK CO.  
Dick Barnard - Jesse Stanford

McRIGHT GARAGE & SUPPLY  
Mr. and Mrs. A. N. McRight

FIRST NATIONAL BANK  
Virgil Hennen

ROCKWELL BROS. & CO.  
D. R. Vandever

BIG T PUMP CO., INC.  
Hilroy and Leroy Aven

HEREFORD GRAIN CORP.  
Joe Artho, Mgr.

HEREFORD LAUNDRY & DRY CLEANERS  
Ernest Kendall

MASTER CLEANERS  
Mr. and Mrs. C. D. Fitzgerald

HEREFORD FERTILIZER & INSECTICIDE CO.  
Norman Moore

PIGGLY WIGGLY  
Mr. and Mrs. Gaylord Newell

DAVIS IMPLEMENT CO.  
W. L. Davis, Jr.

HEREFORD OFFICE SUPPLY  
Bob Huddleston

CITY DRUG STORE  
Mr. and Mrs. Kenneth Coker

WESTERN WHEEL INN  
Mr. and Mrs. G. D. Colson

HEREFORD STATE BANK  
Russell E. Carver, Pres.

WESTERN WRECKING  
Anson A. and June Dearing

CONSUMERS' FUEL ASS'N.

HEREFORD TEXAS FEDERAL CREDIT UNION  
Mrs. Dyalithia Benson

ED SKYPALA  
Your Borden's Distributor

GILLILLAND FUNERAL HOME  
Marlin Gilliland

PITMAN GRAIN CO.

ROGERS DRUG  
Mr. and Mrs. Grady Rogers

GWYNNE OWEN

LOERWALD BROS.  
Ed, George, Gene and Harold Loerwald

FARMERS' DRIVE IN  
Troy Moore

SUIT'S AUTO SUPPLY

ORSBORN - CHEVROLET OLDSMOBILE  
Your Chevrolet-Oldsmobile Dealer

## First Baptist Church

Rev. B. L. Davis, Pastor  
Fifth and Main Streets

## Frio Baptist Church

Frio Community

## Avenue Baptist Church

Ronald A. Harpster, Pastor  
130 N. 25 Mile Ave.

## Mt. Sinai Baptist Church

H. B. Whitten, Pastor  
302 Knight Street

## Summerfield Baptist Church

Rev. James Arnold, Pastor

## Calvary Baptist Church

Rev. Clarence F. Powell, Pastor  
205 E. Sixth Street

## Westway Baptist Church

Rev. James G. Martin

## Temple Baptist Church

Forrest Ave. and Ave. K

## Fellowship Baptist Church

Independent & Fundamental  
Pastor - Kenneth Irwin  
Moreman Dr. and Greenwood

## Iglesia Metodista San Pablo

Rev. Gilbert Diaz, Pastor  
223 Kibbe Street

## Thompson Memorial Mexican Baptist Mission

Herman V. Martinez, Ministro  
215 Norton Street

## San Antonio A La Iglesia

North 25 Mile Avenue and Highway

## Templo el Calvario Asamblea de Dios

Pastor, Martin Musquiz  
Calle Ave. H & 13th

## La Iglesia De Cristo

Sunset and Plains Ave.

## Central Church Of Christ

L. E. Fooks, Minister  
148 Sunset Dr.

## Park Ave. Church Of Christ

Abel Ortiz, Minister  
On Harrison Highway

## Lone Star Club Learns Of Laboratory Research

Operation of the medical research laboratory here was explained to Lone Star Club members by O. Z. Golden, manager, at a club meeting Tuesday in the home of Mrs. R. G. Blue. Mrs. Thelma Chisum was co-hostess.

Mrs. Jim Bookout was program director, who introduced the speaker. Golden told of the start of the research laboratory in the early 1930's, as a dream of Dr. L. B. Barnett who practiced medicine here for many years.

Its equipment is among the best in West Texas, he said, as he described machines added lately. Golden told of experiments on foodstuffs produced on the land here, along with tests of mineral content of the soil and water. Effect of the foods on teeth and bones has been noted in the series of experiments, he added.

The speaker answered questions after his talk. Opening the program Mrs. Baker Womble presented the thought for the day, a brief talk on Youth.

In the business period with Mrs. S. S. Williams presiding members discussed cooperation in the United Fund drive starting Friday. Announcement was made of a change in hostess plans for the next meeting, Oct. 12. It will be in Mrs. G. W. Newson's home.

Misses Mary Ann Cobb and Sandra Wright, Texas Tech seniors who are practice teachers in Hereford High School home economics classes, were introduced as guests.

Other members present were Mmes. J. J. Durham, Ray Suit, Mildred Elliott, H. E. Henslee,

C. O. Phillips, Vivian Major, Jim Higgins, C. D. Kelton and John Jacobsen Jr.

## Hospital Notes

### Patients In Hospital

Eugene Loerwald, 715 Bleivins; Martin Villareal, 138 N. Main; Mrs. Charles Mullens, Mark IV Trailer Court; Mrs. Howard L. Hunter, Rt. 3, Friona; Mrs. Charles G. Davis, 113 Ave. C; Valerie Bridges, 601 Bleivins; Ernest Ybarra, General Delivery.

Mrs. Owen J. Stagner, 132 Ave. D; Raymond Villa, General Delivery; Mrs. Clifford L. Hutson, Rt. 5; Herman E. Welty, Rt. 1; Mrs. Neil Cooper, Rt. 4; Miss Georgia Holliman, 823 S. Texas; Mrs. Robert E. Lee Jr., 103 Fir; Fernando Villanueva, Rt. 2.

Mrs. A. N. Hopson, Box 815; Mrs. Edna Culver, King's Manor; Mrs. Kenneth Christie, Summerfield; Mrs. Willie A. Gentry, 109-A E. Sixth; Mrs. Arnulfo Limas, 307 Ave. D; Mrs. Willie A. Mandrell, Dimmitt.

### Patients Dismissed

Mrs. Sabino Suarez, Lillie Lee, 9-29.

Mrs. Tom Barclay, Jack E. Henry, George Muse, Silvia Anguiano, 9-28.

Mrs. Don Bush, Mrs. Tommy G. Harbin, Mrs. Ora Nunnally, Mrs. C. A. McCathern, Ruby Haney, 9-26.

Mrs. Alfonso Reyes, Miss Adifa G. Mungia, Mrs. Victor M. Carabajal, Mrs. Raymond Hughes, 9-25.

## Assembly Of God Revival Series Continues Here

A revival is in progress at the Assembly of God church, located on Union and Ave. G. Services are being conducted at 7:30 p. m. each night except Saturday.

Speaker for the revival is the Rev. E. B. Crump of Waxahachie. He is a veteran minister of the Assemblies of God denomination, having spent many years in pastorates in Texas, as well as having served as the District secretary-treasurer of the Texas District, and North Texas District of Assemblies of God for more than two decades.

The Rev. Crump will bring his message each night from the book of Revelation, outlining prophecy in the light of present day world conditions.

The public is cordially invited to hear him. The revival will close Sunday night. Rev. V. W. Marcontell is the pastor.

In early 1965 there were 24, 186 board members directing county government affairs in the United States. That's an average of eight per county.

Dr. Milton C. Adams  
OPTOMETRIST

### OFFICE HOURS

Mon. - Fri. 8:30-5:00  
Saturday 8:30 - 1:00

335 Miles EM 4-2255

# Food Favorites



GRADE A

## FRYERS

Lb. **29¢**

### CUT-UP

Lb. 35¢

#### CHICKEN PARTS

THIGHS	Lb. <b>59¢</b>	BREAST	Lb. <b>69¢</b>
LEGS			
DRUM STICKS			

T-BONE STEAK	Lb. <b>98¢</b>	RIB STEAK	Lb. <b>79¢</b>
--------------	----------------	-----------	----------------

### Umberger Special

Slice of Cheese & Slice of Bologna on a bun

Sold Saturday

ONLY **10¢**



PICK 'EM UP TODAY  
Tendercrust BREAD  
Shurfresh MILK



Shurfine COFFEE  
1-Lb. Can **69¢**

## SHORTENING

Food King

3-Lb. Can

**59¢**

### FISH STICKS

Sea Star 8-Oz. Pkg. **19¢**

### COOKIES

Tender-Crust Large Cello Pkg. **49¢**



Gold Medal FLOUR

10-Lb. Bag **98¢**

Del Monte TUNA  
2 Chunk Style Flat Cans **59¢**

### PEACHES

Del Monte 2 1/2 Can Yellow Cling **25¢**

BISCUITS  
Shurfresh 8 Cans **59¢**

STARCH  
Faultless 24-Oz. Cons **49¢**



Shurfine Frozen ORANGE JUICE  
6-Oz. Can **15¢**

Miracle MARGARINE 1-Lb. **33¢**  
Roxey DOG FOOD 5-Lb. Bag **49¢**  
Northern NAPKINS **13¢**

Shurfine SOFT DRINK 12-Oz. Cans **\$1.13**

FRUIT COCKTAIL  
Del Monte 303 Can **25¢**

FACIAL TISSUE  
Doeskin 400 Ct. Box **19¢**

Cloverlake MELLORINE 1/2 Gal **39¢**

Shurfine CAKE MIXES **25¢**

Reynolds FOIL 25'x12" Roll **29¢**

Shurfine CANNED MILK **13¢**

PRODUCE  
Tomatoes **12 1/2¢** Lb.  
Cucumbers **10¢** Lb.  
Winesap Apples **\$3.25** 8 Bushel **79¢** Lb.  
Celery **15¢** Stalk  
Blue Bonnet Shelled Pecans **59¢** 10-Oz. Pkg.

See Carl McCaslin Lumber Co. For Your

## STOCK TANKS

5' to 12' Sizes and All Your

# ELECTRIC FENCE SUPPLIES

Including

- Chargers
- Batteries
- Wire
- Posts
- Insulators, Etc.

If it's for an electric fence,  
we have it !!

**Carl McCaslin Lumber Co.**

Complete Building Service  
1 Block East of the Courthouse  
Phone the Lumber Number EM 4-3434

# TAYLOR & SONS

YOUR HOME TOWN BOYS

105 PARK FOODS EM 4-0068

CASH AND PAVE

LOW LOW EVERYDAY SHELF PRICES PLUS S & H GREEN STAMPS



By Melvin Young

The man who enters a cage of ferocious lions impresses everyone but a school bus driver.

Area football fans had quite a weekend as underdog West Texas State University clobbered favored Bowling Green while further south, Texas A&M University surprised Georgia Tech with a 4th period rally that netted a 14-10 victory over the engineers. And on the local scene, the Hereford Whitefaces laid it on Littlefield with a whipping 18-2 defeat.

And boy, did that tear up the Brand's football contest. In making a spot check of 25 football entries pulled from the top of the pile seventeen had chosen the Falcons from Bowling Green to defeat West Texas State, and twenty three picked Georgia Tech over the Cadets. Most fans remained loyal to Hereford and landed on the winning side by doing so. Only four of the twenty five checked picked the Wildcats from Littlefield.

Actually, the Hereford victory was a surprise only in the

amount of the score. At least that's the opinion of most fans. West Texas State has topped two mighty tough opponents. Adding topping to the pudding, the Buffs left their opposition scoreless.

Could be the Buffs will post a better record in 1965 than in 1964.

Aggie fans were elated too. Texas A&M has had a long dry run — and Aggie exes have taken more than their share of kidding—but the Cadets came through with flying colors Saturday by slipping past Georgia Tech with a 14-10 score.

Hereford, on the other hand, was probably due to out distance the Littlefield Wildcats, but the Herd thrilled the fans by adding a burst of speed in the last 2 minutes of the game to chalk up an additional 12 points. The 18-2 score left no doubt in the mind of the fans as to which team was the strongest.

Now there may be people in Littlefield who will disagree with this, but we're betting we have a lot of support in Hereford. All in all, it was a pretty

good football weekend.

Byrle Ellison will be going to the state fair again this year. This will be the 58th consecutive year that Ellison has made the Dallas event, and his 18th year as an honored guest of the Fair Association.

For years, Byrle was responsible for the Deaf Smith County Agricultural display at the fair. This year, he will again take a load of produce down state, but it won't be for display. He plans to pass it out to the members of the working press at the Fair.

If anything is rarer than a day in June, it's a paycheck without any deductions.

To all Campfire Girls, Bluebirds, Little Leaguers, Pony Leaguers, Boy Scouts and Cub Scouts:

Come to Main Street side of Dameron Park at 10 o'clock, Saturday morning, October 2. Your help is greatly needed to support the United Fund.

You are needed to march in the big United Fund Demonstration Saturday morning, after which there will be free refreshments and a free movie from 11 to 12 a.m.

Well, it kinda slipped up on us.

Four new automobiles will go on display this week. Showing at Dishman-Hale Chrysler-Plymouth will be the new 1966 Chrysler and the 1966 Plymouth, while Stephens-Hudsons Motor Company will display the new

1966 Ford and Mercury lines. And we'll bet you will be able to find free coffee and donuts too. They usually have both.

Dr. Roy Grubbs dropped by the office Tuesday after the announcement of the erupting volcano in the Philippines. Dr. Grubbs, then Captain Grubbs with the Army Air Force, was stationed in Manila during the latter part of World War II (1944-45) and visited many times in the area of the volcano. In fact, he even had a cloth map of the region.

Mt. Taal, a 984 foot volcano, has been dormant since 1911. It is located on an island in the middle of Lake Taal about 40 miles south of Manila. This mountain has been a tourist attraction for many years, and during the latter days of World War II there was an army rest area in the vicinity.

But we'll bet that Dr. Grubbs is just one of the many who have seen the volcano, since many local residents served in the Philippines during World War II and afterwards. We wonder just how many?

Congratulations to John Lesly and Tyler Thompson, semifinalists in the National Merit Scholarship impetitions.

John is now a student at Wentworth Military Academy, Lexington, Missouri. Tyler is a senior student in Hereford High School.

We understand by the way, that these two boys were the 2nd and 3rd youngsters ever to hit the semi-finals in this rugged competition.

Business merges aren't the only kind. Lady across town says she has consolidated spring and fall house cleaning.

Read The Classifieds

### Offices Filled In Guild Rite

Officers headed by Mrs. Alfred Reinart as president were installed in St. Anthony's Guild at its initial fall meeting Sept. 23 in St. Anthony's School auditorium. Mrs. Henry Wilhelm conducted the installation, using flowers as the motif.

Mrs. Reinart was given a red rose, symbolizing desire; Mrs. Elbert Vance, vice president, a pink rose for joy; Mrs. Robert Bétzen, treasurer, pansies for worthiness; Mrs. Ed Loerwald, secretary, violets for simplicity; Mrs. A. J. Bezner, parliamentarian, white carnation for love; Mrs. Ray Wilhelm, reporter, lily-of-the-valley for happiness.

Welcomed as new members were Mmes. William Gilliland, Quinton Conn, Charles Scheatz, Louis Orleans and Walter Spinerne. There were 31 present. It was announced that Edgar Skypala will discuss The Eye Bank at the next meeting, Oct. 28.

### Look Who's New

Mr. and Mrs. Howard L. Hunter are the parents of a daughter, Lauri D'Neene, born Sept. 28. She weighed 8 lbs. 3 ozs.

Mr. and Mrs. A. N. Hopson are the parents of a daughter, born Sept. 27. She weighed 6 lbs. 7½ ozs.

Mr. and Mrs. Sabino-Surez are the parents of a daughter, Susa, born Sept. 26. She weighed 6 lbs. 4 ozs.

Mr. and Mrs. Roberto Delgado are the parents of a son, Carlos Martin, born Sept. 25. He weighed 7 lbs. 3 ozs.

### Area Group Will Host DKG Region

Delta Xi Chapter of Delta Kappa Gamma Society International, which includes Hereford members, will be hostess to the fall regional meeting at Dimmitt Oct. 9. The regular meeting of the chapter which would fall on Oct. 2, has been canceled because of the convention.

Miss Hazel Merritt of Dimmitt is president of Delta Xi C Chapter and Mrs. W. T. Legg of Hereford first vice president. Members are from Deaf Smith, Castro and Parmer Counties. Comprising the region are

The Hereford Brand, Hereford Texas, Thursday, Sept. 30, 1964 chapters at Amarillo, Pampa, Borger, Hale Center, Dumas, Canyon and Spearman. The organization is a professional society of women teachers. Registration and a coffee at 9 a. m. in the Dimmitt High School will open the regional meeting. Theme of the day's program is You Have the Key. Dr. Madge Davis of Wichita Falls, former professor at Midwestern University, will give the main address at a luncheon. She and Mrs. Evelyn Laney of Amarillo will serve at a as the regional directors. Mrs. Laney is a primary teacher at Oak Dale School and a past president of both Beta Sigma and Leta Delta chapters of DKG in Amarillo.

### Place Your Booking Early Supply Limited

Bulk Certified Improved Triumph Wheat Seed and Will Barley, grown from foundation seed. Also bulk Tascosa seed one year from certification.

**HEREFORD GRAIN CORP.**  
EM 4-3755

eager to please



so come in today about

**A LOW COST, NEW CAR LOAN**

**FIRST NATIONAL BANK**

of HEREFORD

## SUNSET FOOD CENTER

GO TO CHURCH SUNDAY

Double Frontier Stamps On THURSDAY with \$2.50 Purchase

**CLOSED SUNDAY**

CHOCOLATE MILK Plains 2 Qts. 49¢  
SERVED IN THE STORE SATURDAY

Sour Cream & Dip Dressing Plains 8-Oz. Ctn. 29¢

BORDEN'S BISCUITS Can 8¢

MILK — All Brands — Gal. 79¢

—GARDEN FRESH PRODUCE—

TURNIPS 2 Lbs. 19¢

PEARS Barlett Lb. 19¢

SWEET POTATOES 2 Lbs. 29¢

APPLES Delicious Golden Extra Fancy Red 19¢

PEACHES Colorado Lb. 15¢

FRYERS USDA Grade Meats Whole Lb. 25¢

CHUCK ROAST Lb. 49¢

ARM ROAST Lb. 59¢

CLUB STEAK Lb. 79¢

HAMBURGER MEAT Lb. 45¢

FREEZER PACK \$12.95

For the freshest meat in Hereford stop and shop our well-stocked meal market.



Totally new Plymouth VIP. A new high in luxury...well within your reach.

# Let yourself Go Plymouth '66

They're here now! Come see all the new '66 Plymouths including the totally new, elegant Plymouth VIP. And a brand-new line of beautiful Plymouth Belvederes featuring the sleek, high-performance Satellite. Something for everyone... at your Plymouth Dealer's!



Bold Plymouth Fury... a great big beauty in a great big hurry.



Hot new Plymouth Satellite... spirited leader of the all-new Belvedere line.



Fast new version of the car that got America thinking fastback... Plymouth Barracuda.



Plymouth Valiant. The car that really lets you live... within your budget.

See Plymouth in action on the World Series, NCAA Football, AFL Football and The Bob Hope Show, NBC-TV.

PLYMOUTH DIVISION CHRYSLER

**DISHMAN-HALE CRYSLER-PLYMOUTH, INC.**

345 E. 1st. St.

Let yourself go... *Plymouth*



SHOP AT SAFEWAY . . . . SAFEWAY SAVES YOU MORE . . . .

# It's STOCK-UP TIME



<b>DEL-MONTE</b> Tomato <b>SAUCE</b> 10 8-Oz. Cans <b>\$1</b>	<b>DEL-MONTE</b> Fruit <b>COCKTAIL</b> 4 303 Can <b>\$1</b>	<b>DEL-MONTE</b> Sliced <b>PINEAPPLE</b> No 2 Can <b>43¢</b>	<b>DEL-MONTE</b> Tomato <b>JUICE</b> 2 46-Oz. Can <b>69¢</b>	<b>DEL-MONTE</b> <b>PEACHES</b> 4 2½ Can <b>\$1</b>
--	--	---	---	---

### FROZEN FOOD BUYS

Bel-Air Florida Orange Juice 5 6-Oz. Cans <b>\$1</b>	Lucerne Ice Milk 59¢
Bel-Air Florida Orange Juice 2 7-Oz. Cans <b>79¢</b>	Vanilla-Chocolate Strawberry-Triple Treat Lemon Custard 59¢
Bel-Air Frozen Blended Juice 2 6-Oz. Cans <b>49¢</b>	½ Gal. Ctn. <b>59¢</b>
Egg Noodles Reams Frozen 8-Oz. Pkg. <b>35¢</b>	
<b>BLUE STAR CREAM PIES</b>	<b>Patio Dinners</b>
Coconut Lemon Chocolate 4 14-Oz. Pkgs. <b>\$1</b>	12-Oz. Western Style 16-Oz. Mexican 12-Oz. Enchilada 12-Oz. Combination <b>59¢</b>

### Bel-Air Frozen Vegetables

- 10-Oz. Broccoli Spears
- 10-Oz. Cut Corn
- 10-Oz. Cauliflower
- 10-Oz. Black Eyed Peas
- 8-Oz. Brussels Sprouts
- 10-Oz. White Okara

4 Pkgs. For **\$1**

### FROM OUR DAIRY CASE

## FRESHE EGGS

Breakfast Gem Large A Eggs 2 Doz. For <b>89¢</b>	Lucerne 'AA' Large Eggs Doz. <b>61¢</b>
--	---

Margarine Sunnybank Corn Oil 4 Lb. Pkgs. <b>\$1</b>	Lucerne SALADS 49¢
Sweet Milk Lucerne Homogenized ½ Gal. Ctn. <b>49¢</b>	Potato Salad-Cole Slaw Carrot Raisin-Macaroni 3 16 Oz. Pkgs. <b>\$1</b>
Buttermilk Lucerne Best ½ Gal. Ctn. <b>49¢</b>	
Sour Cream Lucerne 8 Oz. Ctn. <b>37¢</b>	

## CORN BEANS BEETS CATSUP

Del-Monte Whole Kernel or Cream Style 6 303 Cans <b>\$1</b>	Del-Monte Fancy Cut Green Beans 4 303 Cans <b>\$1</b>
Del-Monte Sweet Pickle Sliced 4 303 Cans <b>\$1</b>	Del-Monte Spicy Tomato 3 20-Oz. Btls. <b>79¢</b>

## DEL-MONTE SPINACH KRAUT

7 303 Cans <b>\$1</b>	2 303 Cans <b>37¢</b>
-----------------------	-----------------------

## DEL-MONTE PICKLES

Whole Dill 22-Oz. Jar <b>39¢</b>	Sweet Chips 12-Oz. Jar <b>35¢</b>
----------------------------------	-----------------------------------

Del-Monte Light & Sweet 303 Cans <b>59¢</b>	Scamper Liquid 10c off 22-Oz. Btl. <b>55¢</b>
Town House Hash 12-Oz. Can <b>57¢</b>	Detergent Brocade Complexion 4-Box Pack <b>29¢</b>
Dog Food Pouch Dry 10-Lb. Box <b>\$1.20</b>	White Magic Detergent Dishwasher Pkg. 22-Oz. <b>35¢</b>
Apple Butter Empress 14½-Oz. Jar <b>\$1</b>	White Magic Detergent 10c off 49-Oz. Pkg. <b>59¢</b>
Strained Honey Empress 24-Oz. Jar <b>67¢</b>	Betty Crocker Biscuits 2 10-Ct. Pkg. <b>19¢</b>
Nu Made Creamy Peanut Butter 29-Oz. Jar <b>79¢</b>	Biscuits Puffin 2 10-Ct. Pkg. <b>19¢</b>
Cragmont Reg.-Low Cal. Beverages 12 12-Oz. Cans <b>\$1</b>	

## PLAY MAKE-MONEY at SAFEWAY-WIN UP TO 500 00 CASH

**NOTHING TO BUY NO OBLIGATION**  
Get ½ of the Make-Money Bill each visit at Safeway. Collect matching bill and you are a winner. There are 6 ways to win Recent Winners Are

- There Are 6 Ways To Win Cash Prizes**
- Collect both halves of \$500 bill, Win \$500
  - Collect both halves of \$100 bill, Win \$100
  - Collect both halves of \$20 bill, Win \$20
  - Collect both halves of \$10 bill, Win \$10
  - Collect both halves of \$5 bill, Win \$5
  - Collect both halves of \$1 bill, Win \$1
- Store Employees and their families are not eligible. Limited to adults 16 years of age. No Purchase Necessary. Winning Bills have to be verified offer expires 15 days after closing date in our ad.

Empress Marmalade 3 16-Oz. Jar <b>\$1</b>	Empress Jelly 3 16-Oz. Jars <b>\$1</b>	Empress Relish Zippy Sweet 13-Oz. Jar <b>29¢</b>	Empress Snaps Busy Baker Ass't. Snaps 2-Lb. Pkg. <b>49¢</b>	Wolf Plain Chili 15-Oz. Can <b>53¢</b>	Wolf's Chili With Beans 15-Oz. Can <b>39¢</b>	Appian Way Pizza Plain 12½-Oz. Pkg. <b>43¢</b>	Appian Way Pizza Cheese 12½-Oz. Pkg. <b>55¢</b>
---	--	--	---	--	---	--	---



## FRYERS

USDA Grade A Whole Fryers Good Eating Any Time

# Lb. 29¢

### FRYER PARTS

Breast	lb.	79¢
Legs	lb.	49¢
Thighs	lb.	59¢
Wings	lb.	29¢
Backs & Necks	lb.	19¢

### GROUND BEEF SLICED BACON CREAM CHEESE

Safeway's Finest Quality Meats	Lb.	49¢
Safeway or Armour Sliced Bacon	Lb.	89¢
Lucerne Cheese	8-Oz. Pkg.	33¢

### CUT-FRYERS

USDA Grade A **35¢**

### Safeway's LUNCH MEATS

Olive Pickle & Pimento Bologna Mac. & Cheese 2 8-Oz. Pkgs. **79¢**

### Manor House STEW HENS TURKEY HENS

U. S. D. A. Grade A Cut-Up-Hens	Lb.	29¢
U. S. D. A. Graded 10-14 Lb. Avg.	Lb.	39¢

### BAKERITE Shortening

3-Lb. Can **69¢**

### Shampoo

Head & Shoulders Med. Cleans Hair Jar **85¢**

### Detergent

Oxydol Laundry Gt. Size **83¢**

### Detergent

Joy Liquid 32-Oz. Btl. **98¢**

### White Magic BLEACH

½ Gal. Jug **29¢**

## BANANAS

Golden Ripe Central American

# Lb. 10¢

### POTATOES

US No. 1 All Purpose Reds 10-Lb. Bag **39¢**

Apples Wash. State Jonathans	2 Lbs.	29¢
Squash Straight Neck Yellow	2 Lbs.	29¢
Fertilizer Turf Magic 10-5-5	50-Lb. Bag	3.35
Holland Bulbs Fall Assortment	Pkg.	69¢

### CIGARETTES

Regular or King Size **\$2.98**

Dixie Re Fills 50 Ct. 5-Oz. Cups **39¢**

Dixie Dispenser 40-Ct. 5-Oz. Cups **79¢**

Register at your neighborhood Safeway for a 5-PIECE SLIVER SERVICE to be given away Saturday Oct 2nd Nothing to buy-No Obligation! You need not be present to win!

### Folgers Coffee

4c Off All Grinds	69¢	10c Off All Grinds	2-Lb. Can <b>\$1.37</b>
Instant Coffee	20c Off		10-Oz. Jar <b>\$1.49</b>

## SAFEWAY

These prices are good thru Sat. Oct. 2.

Page Ten  
ENTRIES TOTAL 160

# Upsets And Ties Lower Scores In Grid Contest

Two tie ballgames and West Texas State University's 34-0 upset of Bowling Green — plus some other surprises — combined to bring scores down in the second week of the Brand's football contest.

It also made the race for prize money a close one as first, second, and third place winners all posted 14 correct prognostications on the outcome of last week-end's football games.

BUT MRS. Shirley Paris of 117 Emma St. came up with the closest scores on the "tiebreaker" games to earn the 7.50 award for first place.

Second went to Bill Callaway, a Hereford resident who is now working in Harlingen, Tex. Prize for second is \$3.50.

A consistent winner in the Brand's football contest for many years, Mrs. A. H. Schroeter of 603 Union, earned third place money of \$1.50.

AND AFTER two weeks of competition, three persons are tied for top scores in the season totals. Top three winners at the end of the ten-week contest will receive tickets to the Cotton Bowl.

Tied with 29 apiece for the two weeks total are Ronald Bridges, Mrs. Zula Arney, and LaVerne Kimbell.

BRIDGES and Mrs. Arney have yet to win prize money for their individual week's entries, but were consistent in being among top contestants both weeks.

Miss Kimbell was first place winner during the first week of the contest.

Only three persons had 14 correctly pegged in last week's event, while 13 persons correctly predicted outcome of 13 of the 20 games involved.

Contest sponsors pointed out that persons may enter the contest at any time for a crack at weekly prizes. Some 36 new

entries were received this week from persons who did not participate in the first week's event.

This brings the total number of entries thus far in the Brand's football contest to 160.

IN ORDER to more easily determine prize winners in the weekly contests, rules have been changed beginning this week.

Twenty games will be used to determine finalists.

In addition, three different "tie breaker" games will be graded to determine prize winners. All contestants must supply scores in the "tie breaker" blanks, but these will not be counted except to determine prize winners.

IN LAST week's contest, Auburn and Tennessee played to a tie, as did Navy and Stanford. Games which result in ties will not be counted.

The three top entries — which all correctly predicted 14 games — proved almost as close in their "tie breaker" predictions.

Mrs. Paris, first place winner, predicted Hereford over Littlefield by 20-13, West Texas over Bowling Green by 16-7, and Arkansas over Tulsa by 24-14.

ACTUAL outcome of the games was Hereford 18, Littlefield 2; WT 34, Bowling Green 0; and Arkansas 20, Tulsa 12.

Thus, Mrs. Paris missed the total of points spread between the teams by only 34 points.

Second place winner, Callaway was 40 points away and Mrs. Schroeter missed by 42 points.

Listed below are names of contestants, followed by scores in last weeks contest and totals for the two weeks.

Name	Week	Total
Bob Adams	11	25
Duane Albracht	11	27
Theresa Albracht	10	24
Ada Aae Anderson	10	24
Jim Arney	11	26
ZULA ARNEY	13	29

Pleasant R. Baker	11	24
Terry Battey	12	23
W. C. Beene	10	23
Ed Blackwell	10	22
Mrs. Joe Blakney	11	26
James J. Boyd	11	26
Edwin Bridges	9	22
RONALD BRIDGES	13	29
Arthur Brock	13	26
Mrs. Ray Brorman	10	22
Emory Brownlow	10	22
Cawthon Bryant	11	23
Mrs. Cawthon Bryant	13	26
John David Bryant	11	25
Wendell Burdine	10	23
B. F. Cain	10	27
Bill Callaway	14	26
Phillip Callaway	--	15
Herman Cherry	12	24
Chris Clark	10	23
Jim Clark	11	25
Jean Collard	8	20
Benny Cooper	--	14
J. H. Craver	--	15
Joe Don Cummings	11	25
Jerry Curtsinger	11	27
Jim Curtsinger	12	27
Ronda Curtsinger	11	24
Bill Dirks	9	22
Don Dorman	--	12
David Dowell	11	25
W. B. Dowell	10	21
Opal Elliston	13	23
Betty Ferguson	--	11
Chip Formby	--	13
James Genry	12	24
Joe Mack Hale	13	28
James D. Hamilton	10	23
Leonard Haney	12	25
John Hoover	8	19
Dave Hopper	11	27
Joan Hopper	12	25
Jimmie Howell	--	15

LAVERNE KIMBELL	12	29
Keith Kitchens	9	24
W. H. Kitchens	9	24
James Lanier	11	24
Dennis Lomas	8	19
Larry Lomas	8	19
E. H. Loerwald	10	25
George Loerwald	10	25
Raymond Lueb	11	24
Mal Manchee	9	23
Pat Manchee	9	23
Bud Martin	--	13
Rita Martin	--	14

L. J. Matthews	11	19
Muri May	12	25
Dorothy Mercer	13	24
James Mercer	13	27
G. C. Merritt Jr.	8	19
Dion Miller	11	25
L. A. Morkovsky	--	12
Joy Morton	9	20
Leon McCutcheon	9	20
Mary McCutcheon	11	26
Ansel McDowell	--	14
Jim McDowell	10	23
Mrs. Taft McGee	12	24
Ronnie Osborn	12	27
Roger C. Owen	10	23
W. G. Owen	13	26
Don Paris	9	22
Buck Parsons	12	24
Dallas Phillips	11	23
Bessie Prickell	--	11
Bob Reinauer	9	21
Gregg Richards	--	10
Ronnie Roberts	10	24
Clyde C. Schmer	7	19
Don Schmer	11	21
Mrs. A. J. Schroeter	14	29
Charlotte Schroeter	13	25
Ed Schroeter	9	24
Paul Schroeter	12	23
Dorothy Schumacher	9	22
Clyde Sherrieb	--	8
Mildred Simmons	10	20
Mrs. Edgar Skypala	13	24
Mrs. Edgar Skypala	13	24
Ellwood Skypala	10	22
Robert W. Smith	13	26
Margaret Stephens	11	23
Gary Story	12	24
Nancy Templeton	10	26
Tom Templeton	9	25
W. T. Thompson	9	20
Leon Vandergriff	11	22
Gene Waits	11	23
Patricia Waits	11	20



COMING UP QUICK—Three Hereford seventh grade Dodge football players are coming up quick on this player against Friona in a game here Tuesday. The seventh graders began the game with a 22-0 win over the Friona Braves. In the second game of the afternoon the eighth graders ran away with a 48-8 win over the Friona eighth grade. The eighth grade ended up in a 0-0 tie with the Canyon Eagles in its first game of the year and the seventh grade dropped their game to the Eagles. (Staff Photo)

# Freshman, Bees Tackle Canyon In Games Tonight

Both the Freshmen and the B-team football teams will see action today starting with the Freshmen who play a game at 6 p.m. followed by the B-team game at 7:30 p.m. when both teams clash with the Canyon Eagles in Canyon.

Freshmen coach Harold Sides said he expects Canyon to have a pretty rough ball club.

"They have a new coaching staff over there and the boys

are pretty fired up," said the coach.

STARTING in the backfield for the Frosh will be either Bill Cole or Bill Russell, quarterback; Ollie Williams, left halfback; Donnie Fangman, fullback; and Tom Lesley, right halfback.

On the line will be Allen Clark center; Dusty Duncan, guard; Jerry Crume, guard; Sheldon Alexander, tackle and Larry Guinn, tackle.

IN ACTION last week the Frosh beat the Plainview Coronado team 16-6, giving Here-

ford a 1-1 record after dropping its opener to Muleshoe.

Coach Don Dorman, mentor for the B-team, also expects the Canyon B-team to be a tough ball club.

Starting for the B-team in the backfield will be Randy Kreighshauer, right halfback; Karl French, fullback; Gary Goodin, left halfback; and Jimmy Childers, quarterback.

STARTING on the line will be Walter Baker, center; Mike Higgins, guard; Max Bridges, guard; Charlie Stone, tackle; and Johnnie Cornelius, tackle.

Lennie Pretree and Bennie Leigh will be starting in the end positions.

## SEEK THIRD WIN

# Whitefaces Host Levelland Friday

Whiteface head Coach Jack Meredith began Monday preparing Hereford players for their second home game of the year Friday with the Levelland Lobos.

Meredith said he hopes to acquaint the Hereford team with Levelland's strategy.

Levelland, picked to win the district 2-AA title, will be bringing a 1-2 record to Hereford Friday after dropping games to Seminole and Denver City and taking one win from Canyon.

The Lobos had the Denver City game won till the last two minutes Friday, but the Denver City Mustangs, on a last ditch attempt, hit paydirt to come out on top with a 35-23 score.

The Lobos gained 147 yards passing, while the Mustangs could only manage 26 yards. Denver City outgained the Lobos on the ground, getting 161 yards to the Lobo's 110. Levelland compiled 17 first downs while DC had 10.

Levelland completed 13 of 22 passes with Denver City completing only 3 of 12.

PROBABLE starters for the Lobos include ends Clay Krueger, 206; and Phil Guerry, 171; and tackles Elmer Hinson, 181, and Larry Waters, 209.

Guards will be Frank Hamilton, 164 and Ronnie Williamson, 166, and center will be

The B-team dropped a game to Plainview last week, 6-0, giving them a 1-1 season record.

"We were well pleased with the boys effort, but they made some vital mistakes which cost them the game," said coach Dorman.

THE HEREFORD team carried the ball to the Plainview 10 on the first series of plays, only to have their effort killed by a penalty.

The team fumbled the ball four times and lost the ball each time.

Plainview's only score came in the fourth stanza when Hereford dropped a punt on the 50 and drove it home for paydirt.

Gary Gray, 177. Backs will be Joe Tubb, quarterback, 154; Micky Parkinson, halfback, 171; Keith Yeager, fullback, 194; and David Whitsett, wingback, 164.

PARKINSON failed to see action last week against the Mustangs due to injuries and Jack Geffken, 154, stood in for him and may substitute again this week if Parkinson is not able to play.

On defense Larry Crawford, Kenny Pirtle, Larry Waters and Dale Wilamson will be some of the player's to watch.

Coach Harold Barrett plans to use pretty much the same strategy on offense against Hereford as he has used in the past three games.

LEVELLAND, although picked to win its district title this season, has failed to show a great deal of strength thus far.

In other key action last weekend the Tulia Hornets walked away with a 48-0 win over the Dimmitt Bobcats.

LOVINGTON and Goddard High School of Roswell played to a 0-0 tie Friday in the Land of Enchantment. Goddard's David Martinez made a 45-yard run to paydirt, but the score was called back on a clipping penalty.

Dalhart popped Perryton for a 24-0 defeat Friday. The Rangers were off in their passing completing only one of 12 passes during the evening. The Rangers gained 154 yards rushing while the Wolves gained 181.

Neither team made a spectacular showing in passing with Dalhart gaining 23 yards and Perryton gaining 10.

The undefeated and untied Dumas Demons remained on top of the state AA list this week after taking a 25-7 win over Monahans Saturday.

Two of the Demon scores came after Monahans fumbles early in the game.

Want to see Little League and Pony League continue? Give to the United Fund.

## NAT NAST

GIVES YOU THE BOWLING SHIRT WITH ROOM TO STRIKE AND COMFORT TO SPARE!



Dear Bowler:  
Your Nat Nast dealer has the most exciting selection of bowling shirts you've ever seen. We've gone all out to give him the newest styles, and most popular colors in new miracle fabrics. He'll be happy to show you the entire Nat Nast line, and he can offer you prompt delivery and complete lettering service. See him today!

Yours with XXX's,  
*Nat Nast Jr.*

### SUNSET LANES

Ask us about bowling for a \$1,000.00 bond

Joe Walker	11	24
Mrs. Ross Wallace	12	27
L. V. Watts	11	26
Henry Weems	11	21
Clyde Whitaker	9	19
I. L. Whitfield	10	22
John Willoughby	10	21
Jim Wood	10	19
Jimmy D. Adams	11	24
Mrs. W. C. Beene	9	26
Christine Bridges	12	26
Lucas Cabrera	11	21
Phillip Cain	12	26
Don Cherry	10	27
Pattie Dirks	12	26
Max Goforth	10	26
Bernardo Griego	10	26
Toni Hale	13	26
Chris Hutcherson	10	26
Bobbie Kitchens	11	26
Karen Kitchens	9	26
Bill P. Knox	10	26
Rodney Laubhan	11	26
M. J. Layman	10	26
Steven Leasure	9	26
Jimmy Marchman	11	26
Jim Monroe	12	26
L. A. Morkovsky Jr.	12	26
Roger McQuigg	11	26
Nonnie Asborn	10	26
Shirley Paris	14	26
William Penn	9	26
W. C. Russell	11	26
Tex Rhodes	10	26
Hermon Schumacher	10	26
Erwin Scott	10	26
Mrs. John Selver	11	26
Jane Shelton	10	26
Bob Shelton	10	26
Charles Smyrl	11	26
Roger Suttle	11	26
John Tomas	13	26
Vincen Walterscheid	9	26
Ross Wallace	12	26

## Announcing: Mercury for 1966

a new definition of driving pleasure



MERCURY PARK LANE 4-DOOR HARDTOP

This is the year to move ahead to the new Mercury year. Your year. And just look at all the news there is! Ride news: the way Mercury moves is unique. Smooth, substantial, hushed — the finest ride this side of the Lincoln Continental. Style news: clean, classic lines — the only car in its class with a look all its own. Power news: engines range up to a muscular 428 cu. in. V-8. Luxury news: options such as the Stereo-Sonic Tape System that uses plug-in cartridges. Safety news: helpful options such as cornering lights that show you the way when turning into dark driveways. Exclusive options such as rear doors that lock automatically at 8 miles per hour. And in every Mercury, without extra cost, you get 12 important safety features, including back-up lights, emergency flasher, padded dash and visors, four seat belts, front and rear, and outside rear-view mirror. Model news: the widest choice of Mercurys ever 17 models in 4 series — sedans, hardtops, convertibles, and 2 wagons with the new Dual-Action Tailgate that turns into a door. Now's the time to see your Mercury dealer — and move ahead with

**Mercury**

**STEPHENS-HUDSON MOTOR CO.**  
Hereford's Friendly Ford & Mercury Dealer  
1st and Miles EM-2727 LINCOLN-MERCURY DIVISION OF

## OFFICIAL ENTRY BLANK

Plainview at Borger	Georgia at Michigan
Lawton, Okla. at Dumas	Mississippi at Alabama
TCU at Arkansas	UCLA at Penn. St.
Baylor at Florida St.	Colgate at Yale
Duke at Rice	Princeton at Columbia
Purdue at SMU	Bowling Green at Dayton
Indiana at Texas	Kansas at California
Stanford at Air Force	Northwestern at Notre Dame
Boston Col. at Army	Iowa at Wisconsin
Navy at Oklahoma	Vanderbilt at Wake Forest

### TIE BREAKER

To be used only in determining 1st 2nd & 3rd place winners when required.

Levelland	.....
Hereford	.....
Arizona St.	.....
WTSU	.....
Texas A & M	.....
Texas Tech	.....

PLEASE PRINT

Name \_\_\_\_\_

Address \_\_\_\_\_

# 1st ANNIVERSARY CELEBRATION

STARTS THURSDAY, SEPTEMBER 30th.

Truly the greatest money saving offers during our Anniversary Celebration — extended to you, our friends and customers, to show our deep appreciation for your patronage during the past year. We have enjoyed our first year in Hereford—and we're pleased with the business we've received from our many customers. We extend a welcome for you to shop our store—or come in and just browse around—during this celebration and during the months to come.

Mac and Arlene McNeil

## 504 COIL MATTRESS & BOX SPRINGS

Regular \$119.00 **\$69.50** SET

## — BEDROOM GROUPS — 3-Pc BEDROOM SUITE

Solid Rock Maple Reg. \$595.00  
12 Drawer Triple Dresser  
6 Drawer Chest 5" Poster Bed **\$369.50** W. T.

## Tripple Dresser with Mirror

Solid Oak Reg. \$136.30 **\$99.95** W. T.

## 2-Pc BEDROOM SUITE

Solid Maple by Ballman Double Dresser Reg. \$279.50  
Poster Bed **\$179.50** W. T.

## 3-Pc Provincial B. R. Suite

White With Gold Trim Reg. \$277  
Large Triple Dresser  
2-3/3 Twin Beds **\$199.00** W. T.

## Italian Provincial B. R. S.

Solid Cherry Wood Large Triple Dresser  
2-Pc. Queen Size Bed Reg. \$289.30 **\$199.50** W. T.

## 5-Pc. Modern Walnut B. R. S.

1-Large Triple Dresser  
2-Mirror-Full Size Bed  
5 Drawer Chest Reg. \$299 **\$189.50** W. T.

## 3-Pc. BEDROOM SUITE

In Walnut Large Dresser With Mirror  
Book Case Bed Reg. \$237.50  
Night Stand **\$169.50** W. T.

## 2 Pc BEDROOM SUITE

**\$149.50**

## 2-Pc BEDROOM SUITE

Solid Cherry Spanish Provincial Double Dresser Reg. \$238  
King-Size Bed **\$169.50** W. T.

## 3-Pc. Cherry Bedroom Suite

French Provincial by Bassett Large Double Dresser Reg. \$506  
w/Large Scope Mirror • Chair • Bunk Bed • 5 Drawer Chest **\$339.50** W. T.

## Mediterranean B. R. Suite

3-Pc. Genuine Oak by Ballman Reg. \$309.50  
Triple Dresser w/framed Mirror  
4/6 Bed & 5 Drawed Chest **\$235.00** W. T.

## LAMPS

$\frac{1}{3}$  TO  $\frac{1}{2}$  OFF

## — CHAIRS & ROCKERS — ONE GROUP

### E. A. Rocking Recliner

Beautiful Heavy Tweed Cover Reg. \$159.50 **\$99.95** W. T.

### E. A. Rocking Recliner

Red-Brown-Blues with Maple Trim Reg. \$179.50 **\$129.50** W. T.

### E. A. SWIVEL ROCKERS

Several Colors To Choose From. Reg. \$96.50 **\$69.50** W. T.

### Wing Back Swivel Rocker

White Maple Trim Reg. \$123.00 **\$99.95** W. T.

### ROCKING RECLINER

French Provincial Gold-Green Nylon Upholstery Reg. \$225 **\$169.50** W. T.

### Oak Arm Rocking Recliner

by Fort Smith Chair Co. Red Gold Copper Browns Reg. \$189.50 **\$139.50** W. T.

### OCCASSIONAL CHAIRS

PROVINCIAL Hand Carved & Hand Made by Fagle Fine Furniture Reg. \$110.00 **\$85.00** W. T.

### BEAUTIFUL COMTEMPORY CHAIRS

In Quilted Nylon Reg. \$171 **\$129.50**

### T-Bird Rocking Recliner

By National Reg. \$169.50 **\$129.50** W. T.

### • STEP • END • LAMP TABLES

$\frac{1}{3}$  TO  $\frac{1}{2}$  OFF

## — LIVING ROOM GROUP —

### SLEEPER SOFA

Mediterranean Style Reg. \$339.50 **\$199.95** W. T.

### 2-Pc. Living Room Suite

French Provincial by National 3 Cushion Sofa-Softed Back Beautiful Nylon Malelase Upholstery Reg. \$559.50 **\$299.95** W. T.

### 2-Pc. PROV. L. R. SUITE

Rose Nylon Upholstery White Wood Trim Reg. \$478.30 **\$299.95** W. T.

### King Size Sleeper Sofa

With Foam Mattress Early American. Quilted Reg. \$395.90 **\$289.50** W. T.

### 2-Pc. STUDIO SUITE

Couch Makes Bed Platform Rocker Reg. \$169.50 **\$127.95** W. T.

### 3 CUSHION SOFA

Early American Wood Trim Arms Wings & Backs Reg. \$269.50  
Copper Color Nylon **\$149.50** W. T.

### 4 SEAT SOFA

**\$199.00**

### 2-Pc. E. A. SUITE

Wing Back Sofa Chair Brown Figure Reversible Cushions Reg. \$315 **\$175.00** W. T.

### EARLY AMERICAN SOFA

Brown Nylon Tweed 3 Cushion Sofa Reg. \$198 **\$119.95** W. T.

### COMTEMPORY SOFA

Quilted in Off White Nylon Reversible Cushions Reg. \$399 **\$271.00** W. T.

### 2-Pc. E. A. Living Room Suite

Wing Back Wood Trim Nylon Tweed 3 Reversible Cushions Gold & Brown Reg. \$429 **\$199.95** W. T.

### 4 CUSHION E. A. SOFA

Nylon Freeze Gold Brown Tweed Reg. \$327.50 **\$199.95** W. T.

### 2-Pc. MODERN L. R. SUITE

Nylon Freeze Rose Beige Color Reg. \$216 **\$139.50** W. T.

## PICTURES & MIRRORS

$\frac{1}{3}$  TO  $\frac{1}{2}$  OFF

## — DINING ROOM GROUPS — 50-inch CHINA HUTCH

Early American Solid Oak Salem Maple Finish Reg. \$238 **\$169.50** W. T.

## 60-inch CHINA HUTCH

Solid Oak Salem Maple Finish Reg. \$349.50 **\$249.50** W. T.

## 5 Pc. E. A. DINETTE

**\$119.95**

## 5-Pc. E. A. DINETTE

Pedestal Table & 4 Captains Chairs Reg. \$176.90 **\$129.50** W. T.

## DROP LEAF TABLE

48" Round Rock Maple 2-Leaves Reg. \$199.95 **\$149.50** W. T.

## DEACONS BENCH

Rock Maple Reg. \$89.50 **\$59.95** W. T.

## — OPEN STOCK —

### Dining Room Chairs

Maple **25% OFF**

### Bar Stools

## 7-Pc. Classical D. R. Suite

Beautiful Cherry Wood 6-Hi Backs Chairs 42" Round Table w/ 2 Leaves Reg. \$329.50 **\$229.95** W. T.

## 7 Pc. WALNUT D. R. SUITE

48" Round Table w/ 2 Leaves Reg. \$336 **\$249.50**

## — CLOSE OUT — 16-CU. FT. REFRIGERATOR

Gibson Deluxe Frost Free Reg. \$548 **\$299.95** W. T.

## — CLOSE OUT — 14CU. FT. REFRIGERATOR

Gibson Frost Free Reg. \$379.50 **\$269.50** W. T.

VISIT OUR USED DEPARTMENT

E-Z TERMS TO FIT YOUR BUDGET

# McNEIL FURNITURE

209 Park Ave NORTH END OF MAIN STREET EM 4 3784

LET'S COOK SOMETHING!

# Mixes Take To Dress Up

By SUE COLEMAN  
Women's Editor

When Mrs. Bobby Shelton was hostess recently to Kappa Iota Chapter of Beta Sigma Phi, the cake she served was a sensation of the evening. Tasty with lemon and orange juices and of an appetizing gold color, it stood high and handsome and tasted as good as it looked.

trip to California and passed it on to her daughter, Mrs. Shelton is willing to share it, too.

**LEMON-ORANGE CAKE**  
1 box yellow cake mix  
1 box instant lemon pudding mix  
4 eggs  
3/4 cup oil  
3/4 cup cold water

Combine all ingredients and beat for two minutes. Bake in loaf or tube pan one hour. Put the icing on while cake is still warm.

**ICING**  
2 cups confectioners sugar, sifted  
2 tsp. butter or margarine  
1/2 cup orange juice  
2 tsp. warm water

Mix well. When cake is done, use a toothpick to make holes all over cake. Brush and pour on the icing mixture.  
Pineapple juice may be used instead of orange juice.

bones about it; like many a busy young homemaker she likes to use packaged mixes and ready-prepared foods to prepare meals. But she also likes to add something extra, as in this cake, to avoid that out-of-the-box taste.

She has learned to cook mostly by experience, since her marriage, and a good deal of that time she was employed as a bookkeeper with Pioneer Gas Company so that her home-making time was limited and she welcomed all short cuts.

Born in Hereford, she married soon after graduation from the city's schools. Her basic knowledge of housekeeping was gained as she lent a hand to her mother while she was growing up.

Now the pretty, brown-eyed young matron has two pretty daughters, Leslie is five years old and Angela six months. The family lives at 106 Ave. B.

MRS. SHELTON makes no

## B&PW Members Attend District Weekend Meet

President of the Hereford Business and Professional Women's Club, Kathleen Baker, was chosen alternate from District 9 to the state nominating committee in an election held at the 37th annual district conference in Lubbock Sunday.

District member on the nominating committee is Jewel Hodges, Lubbock Club president, and Mrs. Baker will serve if she is unable to attend the meeting for selection of a state ticket.

Ruby Lee Hickman and Margaret Ann Durham are other members of the Hereford Club who went to the district conference in Holiday Inn East last weekend. In addition, Hereford High School students who attended the recent Attorney General's Youth Conference in Austin under sponsorship of the B&PW Club, went to Lubbock to appear on the program.

They conducted a symposium in the workshop on Public Relations, one of the workshops on various phases of B&PW activity which filled the Sunday morning program after a devotional period.

Registration and an informal reception for visitors was conducted Saturday afternoon, when there was also a meeting of club presidents from over the district. The conference banquet was held Saturday evening.

Jo Ann Clements of Plainview was elected as the new District Director to succeed Katie Glasscock of Shamrock, who presided at business sessions. Plainview will be hostess to the next annual conference.



Mrs. Bobby Shelton slices tangy cake



Mrs. Wain Miller opens shower gift

## Bridal Shower Is Event To Honor Mrs. Miller

Mrs. Wain Miller, a bride at home in Hereford since her recent marriage at Pearsall, was presented gifts from a large group of friends at a shower in the Flame Room Monday evening. The honoree is the former Jo Anne McDowell.

Hostesses for the party were Mmes. Dale Barkley, Marti Mason, Bill Wall, A. W. Self, J. K. Fore, Don Houle, G. W. Duncan, Donald Waters and Bob Cagle.

Callers were greeted by Mrs. Cagle and invited to register in the bride's book, then were received informally by the honoree who was assisted by the hostesses in opening gift packages.

Mrs. Duncan poured punch at the table where finger sandwiches and cookies were served.

The opening of Ross Melton's new drugstore in Mt. Sterling, Ky., was hardly a success. Burglars robbed him first night of \$130.

Typewriter Ribbons  
THE INK SPOT

A. O. THOMPSON  
ABSTRACT CO.

Mr. & Mrs. A. J. Schroeter,  
Mgns.

Courthouse  
P. O. Box 73  
Phone EM 4-1504

## Rummage Sale Set By VFW

Proceeds are earmarked for the Veterans Relief Fund in a rummage sale which the Ladies Auxiliary to VFW Post 4818 will sponsor here Saturday, Mrs. David Rettman, sale chairman, announces.

The sale will be conducted Saturday afternoon on the Justice Real Estate Lot. Mrs. Ada Hollabaugh, Auxiliary president, is working with Mrs. Rettman in completing plans.

Red roses in a white bowl centered the table, which was covered with a drift of white net over red.

Guests included these from other cities: Mrs. O. D. Williams and Mrs. Scott McDowell of Amarillo, Mrs. Henry Hamblen of Wayside, Mrs. Glenn McDowell, Mrs. Jess Dodson and Mrs. Jim Lindsey of Canyon.



## YOU CAN START LOSING WEIGHT THIS WEEK!

IT'S EASY WITH  
SLENDER-X® by P.D.A.

This amazing, slenderizing formula, available with no prescription necessary, can help you become the slim and trim person you want to be! Simply take a small Slender-X tablet before each meal. Slender-X goes to work immediately to put an end to your excessive food craving. As Slender-X helps you stop your extra food intake, it starts you on the way to a more attractive self.

IT REALLY WORKS!

How many pounds do you want to lose... 10, 20, 30, even 45 pounds... or more? You can do it with Slender-X just like people are discovering all over the country. You have nothing to lose except those unsightly pounds. And if you aren't completely satisfied, you'll get your money back. So set on the road to a better-looking you this week!

GET IT TODAY AT YOUR DRUG COUNTER

**SLENDER-X** By P.D.A.  
Or Just Mail This Coupon To:  
Roger's Drug  
241 N. Main  
Hereford, Texas \$3.00  
I want to start losing weight this week. Mail me a full 31-day supply of Slender-X (3 Weeks Supply) Box of 63 Tablets (15 Weeks Supply)

NAME .....  
ADDRESS .....  
CITY ..... Zone ..... State .....  
 Charge  C.O.D.  Payment Enclosed

# ANNOUNCING THE '66s FROM FORD!

**FORDS:** new quiet, ultra-luxurious LTD's, new high-performance 7-Litre models with 428-cu.in.V-8. **FAIRLANES:** lively new XL's, GT's, convertibles. **FALCONS:** new flair for the economy champ. **MUSTANGS:** more fun-filled than ever. **FEATURES:** from a new stereo tape player option...to a new Magic Doorgate for wagons (swings out for people and down for cargo).



7 New Falcons



3 New Mustangs



13 New Fairlanes



19 New Fords

PRODUCTS OF  
**Ford**

See them! Drive them! The '66s at your Ford Dealer's: • 19 new Fords—offering one of the world's quietest rides. New Stereo-sonic Tape Player option—provides over 70 minutes of music. New station wagon Magic Doorgate—swings out for people and down for cargo. New V-8 power up to 428 cu. in. New 7-Litre high-performance series. • Seven new

Standard Safety Package features (on all '66 cars from Ford) including emergency flasher system. • 13 new Fairlanes—new looks, liveliness, luxury. New convertibles, wagons, XL's, GT's and GT/A's. GT/A's have new "Sport Shift" Cruise-O-Matic—its automatic or manual • 7 new Falcons—now America's Economy Champ is

smoothest, smartest, the most spacious Falcon ever. Lively 170-cu. in. Six. • 3 new Mustangs—more fun than ever in America's Favorite Fun Car. New stereo tape player option, new 5-dial instrument cluster, 200-cu. in. Six, bucket seats, sporty floor shift, carpeting—all standard. Come try Total Performance '66.



NEW station wagon Magic Doorgate swings out for people and down for cargo. Standard on Ford, Fairlane; low-cost option on Falcon.

America's  
Total Performance Cars  
**FORD**  
MUSTANG-FALCON-FAIRLANE-FORD-THUNDERBIRD

**STEPHENS-HUDSON MOTOR CO.**  
Hereford's Friendly Ford & Mercury Dealer

1st. & Miles

Phone EM 4-2727



## OOPS... ALL OUR HOMES WERE BOUGHT OUT FROM UNDER OUR WORKMEN!

AND YOU WILL KNOW WHY WHEN YOU SEE ALL THE ADVANTAGES YOU GET WHEN YOU BUY ONE OF OUR HOMES.

COME SEE ONE.

FOR SALE — NOW UNDER CONSTRUCTION ONLY

\$350.00 — TOTAL DOWN \$80.00 PER MONTH

**PANHANDLE MESA HOMES**

FOR PLANS OR INFORMATION CALL ...

DENZIL VAUGHN

EM 4-2146

The Hereford Brand, Hereford Texas, Thursday, Sept. 30, 1965

# ONLY LOW PRICES RUNG UP HERE!



Have shopping list - WILL SAVE! You can be sure of it when you buy ALL your food needs at COOPERS because ALL our prices are LOW PRICES! Our market's full of them - from front to back and side to side... with plenty of SUPER SAVER SPECIALS in between. And when only low prices are rung up at the checkout, you're bound to get MORE CASH SAVINGS in the LOW total cost of a big cartful of your favorite foods.



ELLIS  
**CHILE** NO BEANS 24-Oz. CAN **49¢**

**GRADE A WHOLE FRYERS**

**29¢**

CUT UP FRYERS Lb. 35¢  
Thighs & Drumsticks Lb. 59¢  
Wishbones & Breasts Lb. 79¢

HAPPY PIG SAUSAGE 2 Lb. Bag 1.29  
CHOPPED SIRLOIN STEAK Lb. 69¢

Carnation INSTANT BREAKFAST Box 69¢	3-Lb. Bag SHURFINE FLOUR 39¢
Liptons INSTANT TEA 3-Oz. 59¢	Hersheys CHOC. SYRUP 16-Oz. 19¢
Honey Boy SALMON Tall Can 39¢	Shurfresh MILK 1/2 gal. 49¢ Gal. 97¢
Del Monte W.K. GOLDEN CORN 303 Can 4 For 89¢	Green Star PINTO BEANS 50-Lb. Bag \$4.59
2 1/2 Can ELLIS TAMALES 29¢	Blue Plate BREADED SHRIMP 10-Oz. 59¢
Shurfresh CRACKERS Lb. Box 21¢	Prell Liquid SHAMPOO Family Size Reg. \$1.39 98¢
Shurfine LAYER CAKE MIX 4 For \$1	Capri Foam BATH OIL Reg. 69¢ 59¢
Del Monte TUNA Flat Can 3 For 89¢	Purex Bubble Club BUBBLE BATH 49¢
Ranch Style BEANS 300 Can 2 For 29¢	Lysol 7-Oz. Aerosol Can SPRAY DISENFECTANT 69¢

**DOUBLE GUNN BROS STAMPS WED.**



POWDERED OR BROWN  
**HOLLY SUGAR**

**2 FOR 29¢**

PENN CHAMP  
**ANTIFREEZE**

**\$1.29**  
GAL.

DELSEY 4 ROLL PACK  
**BATHROOM TISSUE**

**39¢**

**COLORADO CABBAGE** Lb. **5¢**

YELLOW ONIONS Lb. 5¢  
Texas Carrots Pkg. 5¢

**BUDGET MEAT BUYS**

*Tempting Produce*



**THIS IS YOUR OPPORTUNITY**

TO OWN THIS EXQUISITE PREMIUM QUALITY HEAVY STAINLESS STEEL TABLEWARE FOR.....

**ONLY 9¢**

1ST WEEK - TRAYWARE  
2ND WEEK - DINNER PLATE  
3RD WEEK - DINNER PLATE  
4TH WEEK - ICE TEA SPINNER  
5TH WEEK - SOAP SPINNER  
6TH WEEK - TABLE FORK

THIS OFFER WILL BE REPEATED AT THE END OF THE 6th WEEK.

With a \$5.00 Purchase

THE LATEST PATENTED 16 PLACE, 16 DINNER TRAYS, 16 PLACE TABLEWARE - THIS IS GREAT, PREMIER QUALITY, HOME, DO NOT CONFUSE THE LOWLY HOME WARE, CHEAPER BRAND.

DASH

**DETERGENT**

30¢ OFF  
9-Lb. 13-Oz.

**\$1.79**

**COOPER'S**

# Phone EM 4-2030 WANT ADS Phone EM 4-2030

### PINTO BEANS

Today Paying \$9.00  
(Subject to Market Change)

**FRASER MILLING CO.**

### REPAIRS

Commercial or Residential  
Repairs, Extra Rooms, All type yard fences, patios.

FREE ESTIMATES  
Financing Available

See or Call  
**HAROLD HALLFORD**  
615 Union  
Phone EM 4-3822

Kwanis Club  
Thurs. Noon

**K** IOOF Hall  
207 E. Sixth

**Hereford Rotary Club**

meets every  
Monday at 12:05

**FLOYD'S RESTAURANT**

### STATED MEETINGS

Second Monday

Thurs.  
8:00 p.m.  
M.M.\*

**Ray Simpson, Jr., Sec.**  
Troy Stambaugh, W.M.

## DENTON PARK

### Development and Construction

North of Alkman School

### Split Levels

A most elegant home-built for family living - 3 large bedrooms - 3 bathrooms. Den with fireplace, living room, dining room, kitchen, patio with built-in bar-b-que area. Automatic garage door. 1400 E. 16th. Built with the family in mind this lovely 4 bedroom is a real buy. Featuring cedar paneled den with fireplace, 3 baths, carpeted and all built-in. Come by 1405 E. 16th Street.

### Outside Denton Park

Very comfortable all brick 3 bedroom 1 1/2 baths, 1200 sq. ft. of living area. Nice fenced yard, see at 824 Ave. K or call Denton Park office.

3 bedroom priced to sell. Large closets, living room, dining room and kitchen. Laundry area and pantry. 501 Ave. H or call Denton Park office.

**TONY RAVIZZA**  
CUSTOM BUILDER  
Office: 16th & Blewins  
EM 4-1350

### PERSONALIZED SERVICE IN...

PLANNING DESIGNING FINANCING

GENERAL INSURANCE HOMES THAT WILL OUT LAST YOUR MORTGAGE LET US PLAN WITH YOU

### FOR SALE

Miscellaneous

23" HOFFMAN TV with remote Control. Light oak console. Students desk. Phone EM 4-1364.  
B-1-13-36-tfc

### NOTICE OF SALE

THE BOARD OF TRUSTEES OF THE HEREFORD INDEPENDENT SCHOOL DISTRICT IS OFFERING THE BUILDING LOCATED AT 109 AVE. G FOR SALE. THE SUCCESSFUL BIDDER WILL BE REQUIRED TO REMOVE THE BUILDING FROM THE PREMISES WITHIN THIRTY DAYS FROM THE DATE OF THE SALE, REMOVE THE FOUNDATION, SIDEWALKS, FILL AND LEVEL AREA. FOR ADDITIONAL INFORMATION CALL DILLIE M. KELLEY, BUSINESS MANAGER, PHONE EM 4-0606.  
B-1-39-2c

### HARVEST TIRE SPECIAL

New FIRESTONE truck tires 8.25 x 20 10-Ply Nylon \$42.95, plus tax. Limited quantity

**BEETEX SUPPLY CO.**  
N. Westway  
Ph. 289-5313  
B-1-39-tfc

**GENERATORS** and starters for cars and trucks. Hereford Wrecking Co. Phone EM 4-0580.  
T-1-12-18-tfc

### FOR SALE

Distilled water, Ozarka water, Soft Water Service. Home owned softeners. See, or call,  
**SOFT WATER SERVICE**  
216 N 25 Mile Ave., Hereford, Texas. Phone EM 4-3280  
B-1-33-tfc

**Lions Club meets each Wednesday, 12 Noon**  
Hotel Jim Hill

### BOYD'S HUMBLE SERVICE

COMPLETE CAR CARE  
**EM 4-1110**  
741 W. 1st EM 4-9056

### OUR SERVICE DEPARTMENT

is equipped and staffed to give you the service you are entitled to.

We Appreciate Your Business

- Buick • Rambler
- Johnson Boat Mtrs.

**KINSEY - OSBORN**  
Motors  
142 N. Miles EM 4-0990

### MARK IV REALTORS

"HALLMARK OF SERVICE" **MLS** EM 4-2220

## OUR NEW ADDRESS

214 EAST 3rd. St.  
ACROSS THE STREET  
FROM THE COURTHOUSE  
SAME PHONE - SAME SERVICE

EVENING & SUNDAYS  
Oliver Stone EM 4-2857 Francis Nordwick EM 4-2241  
Mrs. Shelby Rogers EM 4-3266 Harold Rauld 289-5639

### INSULATION

For new and old homes  
**SHEET METAL NEEDS WALKER SHEET METAL**  
305 E. 5th EM 4-0788  
B-1-12-tfc

### SILVERTONE CONSOLE

All Channel 21 inch Color TV. \$429.88. Sears, Hereford, EM 4-3854.  
B-1-12-35-9p

### STOP!

Before you buy an automobile, of any kind, check with  
**HIWAY AUTO SALES**  
600 West First  
B-1-11-tfc

### WANTED RESPONSIBLE Party

to take over payments on late model Singer sewing machine in Hereford area. Will Zig-Zag, fancy stitches, etc. Five payments at \$4.96 or \$25.00 cash. Write Credit Department, 1114 19th Street, Lubbock, Texas.  
B-1-36-34-TFC

### EXCELLENT KING 3-B TROMBONE

Would make good horn for high school or junior high student. Luxurious box case. Almost new. Reasonable. Call Larry Fuhrmann, EM 4-2030 or EM 4-0799.  
B-1-7-tfx

### IHC TRUCKS, 1963 to 1958 models.

19 1/2 Chevrolet trucks for sale. Also 13 gravel trailers.  
1959 IHC pickup  
Call DR 4-5487 or DR 4-7050  
Amarillo, Texas or come to  
**MOOREHEAD'S ANTIQUES**  
3 miles east of City limits on Hiway 287 to Dallas  
B-1-12-4c

### NEW FALL COLORS

In all imported and domestic yarns. Christmas gifts, and crew embroidery. Free knitting instructions.

**KNIT HOUSE**  
319 N. McKinley  
B-1-11-tfc

### FOR SALE

Used Power Poles.  
Lots 1 to 49, \$5.00 each.  
Lots 50 or more, \$4.00 each.  
**DEAF SMITH COUNTY ELECTRIC CO-OP, INC.**  
HIWAY 60 EAST, EM 4-1166  
Box 753.  
B-1-12-tfc

### ALMOST NEW Bundy Clarinet.

\$90.00. EM 4-2502.  
B-1-10-38-4c

### Reliance HOMES

FOXWORTH GALBRAITH  
NO DOWN PAYMENT  
NO CLOSING COSTS

### SPECIAL Water Heaters

10 Year, Glass Lined  
30 Gal. Installed  
Only \$59.95  
CALL NOW 276-5226  
For Complete Plumbing and Heating  
**FRANK HANSLIP**  
EASTER STORE

### FOR SALE New Motoria Verba

Sonic sound system for car. \$30.00 Call EM 4-1577 after five.  
B-1-15-37-tfx

### NEW SHIPMENTS of Needlepoint

tapestries, Crewel kits and Christmas kits. Dan's of Canyon.  
B-1-13-37-5c

### YOU SAVED and slaved for wall to wall carpet.

Keep it new with Blue Lustre. Rent electric shampooper \$1. Hereford Hardware.  
B-1-21-13-2c

### FOR SALE 105 stocker heifers.

Phone 258-7337.  
B-1-10-13-2c

### FOR SALE 38 choice 450 pound

Hereford calves. Phone EM 4-3559.  
B-1-10-13-2c

### FOR SALE Mahogany Packard

Grand Piano 6'. Mrs. S. O. Wilson. Phone EM 4-2185.  
B-1-13-13-3c

### PURE CADDO wheat seed.

\$2.00 bushel. F. H. King, EM 4-3886.  
B-1-10-38-4c

### FOR SALE Border Collie Pups.

\$15.00 a piece. Write or call Katrina Donnell, Rt. 1 Tullia, Texas, WY 5-3637.  
B-1-13-2x

### FOR SALE HOUSE TRAILER.

Five room and bath, 57' x 10'. A-1 condition. Carpeted, air conditioned. Will sell reasonable. Can be seen at COLE TRAILER PARK, Space 7. East Austin Road and McKinley Streets.  
B-1-13-tfc

### TWO RESERVE seat tickets to

Texas Tech game Saturday, October 2nd, \$11.00. Inquire at Brand Office.  
T-1-16-39-tfc

### OKRA and hot peppers.

1022 South Main. Phone EM 4-3827  
T-1-10-39-tfc

### FOR SALE

223 JOHN DEERE BEET HARVESTER BARNES BEET TOPPER  
Picks up and winds in one operation. Both machines almost new.  
Call No-8-2587  
Tullia, Texas  
B-2-13-4c

### TRUCK TIRE SALE

Close out on quality FIRESTONE tires-HD Transport Nylon 10-Ply. 8.25 x 20 \$58.95; 9.00 x 20 71.95. Plus tax.

**BEETEX SUPPLY CO.**  
N. Westway  
Ph. 289-5313  
B-2-39-tfc

### FOR SALE

6' P.T.O. AC COMBINE, with pickup attachment. Good condition. This machine would combine beans.

**DAVID BRUMLEY**  
Phone EM 4-1174  
B-2-35-tfc

### All Channel TV in rich hard-SILVERTONE

One dial 23 inch wood veneer cabinet, \$179.95  
Sears, Hereford, EM 4-3854  
B-2-17-35-9p

### FOR SALE IHC two row binder.

Phone EM 4-0640.  
B-2-10-9-tfc

You've Never Seen Such Thorough Service  
**STOP IN SOON**  
Phillip "66" Products  
**EAST SIDE "66"**  
Rocky Stewart  
1303 E. 1st. EM 4-2644

### FOR SALE

One 40-HP and one 50-HP electric motors with switch boxes. J. B. Culp, Route 1 Hereford, Texas Phone 258-7568.  
B-2-38-9c

### NEED \$5,000 to \$40,000 worth of equipment?

Investigate our leasing plan before you finance any other way. Mark IV Realtors, EM 4-2220.  
B-2-21-14-tfc

### TOP QUALITY Irrigation Dams

as low as \$3.25  
**DAVIS IMPLEMENT**  
144 W 2nd EM 4-2811  
B-2-18-tfc

### ONE SUPER 92 60 model Massey-Harris.

Wasn't run until '61! See Lofton Jamison, Elm Courts.  
B-2-16-13-2p

### 1958 IHC truck.

Grain bed, hoist. New engine. Phone 225-4674. Sharp Exchange.  
B-2-12-36-tfc

### GOOD USED Trucks.

Grain, beet, King Sales, North Hiway 385 EM 4-3886.  
B-2-11-38-4c

### WE ARE DEALERS

for Peerless Grain Rollers and Feeding Equipment  
**DAVIS IMPLEMENT**  
144 W 2nd EM 4-2811  
B-2-18-tfc

### FOR SALE Sugar beet harvester.

Two row with topper. Never used. Make offer. Call Morris Easley EM 4-3806.  
B-2-17-38-4c

### FOR SALE 1964 Corvair.

Coupe. Red. Four speed, White side-walls. Call EM4-1139 or inquire 126 Avenue C.  
B-3-17-34-TFC

### KENMORE ZIG-ZAG Sewing Machine

with cabinet. \$92.88. Sears, Hereford, EM 4-3854  
B-3-10-35-9p

### MILBURN MOTOR COMPANY

We Pay Cash For Used Cars  
225 N. Sampson  
Phone EM 4-0077  
B-3-33-TFC

### 1958 CHEVROLET Station Wagon,

standard shift, overdrive. Air Conditioned, EM 4-1456 or EM 4-3505.  
B-3-12-10-tfc

### 1965 DODGE Palara, hard-top coupe.

Loaded. SAVE! 600 West First.  
B-3-10-11-tfc

### 1956 CHEVY V-8 four door station wagon.

\$195. 600 West First.  
B-3-11-11-tfc

### 1965 MUSTANG 289 automatic.

Power steering. EM 4-2636 after 5 p.m. 130 Ave. D.  
B-3-12-39-2c

### 1965 Ford Galaxie 500 LTD.

Low mileage. Call L. B. Wortham 276-5688  
B-3-12-13-tfc

### \$\$\$ ONE MILLION DOLLARS

To lend on irrigated land in Deaf Smith, Castro and Parmar counties. And... We have expanded our territory to include the upper Pan-handle.

### PRUDENTIAL

America's Largest Farm Lender!

### SAM NUNNALLY

EM 4-0555 EM 4-2814  
**LONE STAR AGENCY**  
B-4-11-10-4p

### 3 irrigated section near Stratford.

1/2 minerals, possession, good set of improvements, good loan. Will sell one section or three. Priced to sell.  
**PLAINS REAL ESTATE**  
Littlefield, Texas  
B-4-11-6c

### IRRIGATED LAND

16. \$135,000.00 for this beautiful vegetable farm only 4 1/2 miles from Hereford. Will take reasonable down payment. 240 acres with 2 good wells. Approx. 40 A. wheat, and 20 A. cotton.  
24. \$48,000.00 with small down payment will buy this excellent vegetable farm. About 110 A. cultivated, an ocean of water in approx. 40 A. lake. . . and a good well. Has lake pump and aluminum pipe available. Cultivated land cash leased and tenant wants it for 1966. This is a real deal.

28. Approx. 157 acres south of Hereford with 2-6" wells . . . approx. 10 A. cotton, 100 A. wheat, 45 A. milo, land is rented for 1966. . \$425 per acre.

43. 40 acres right close to town for \$25,000.00. Has 6" electric well . . . G.I. Loan can be assumed.

### FOR SALE Automobiles

490 acres in our best water strata, 3 wells, nat. gas, small house, and 100% Johnson Grass allot. One of our best farmers has just cash leased this land and over a 5 year period he will clean it up for you. . . Under priced.  
99. One of the most choice quarter sections anywhere with 2 wells, tile, old but very good improvements on pavement close to Hereford. If you have dry land northwest or west, this is the place for you. You can move right in.

185. Beautiful section, well improved, worlds of water, good improvements. Rented to very good farmer. You need to look at this one to appreciate it.

Call us for all your PRUDENTIAL farm loan needs. . . buying, selling improving.

### SAM NUNNALLY

**LONE STAR AGENCY**  
601 Main  
EM 4-0555 Days, Home EM4-2814  
B-4-38-tfc

### FRONT END ALIGNMENT

Factory Specifications  
**Western Alignment & Brake Service**  
138 N. Sampson EM 4-0515

### Colorado Rod-Weeders

PTO or hydraulic drive.  
Cisco Rod - Weeder with hydraulic drive.  
Dempster Planters, Cultivators and Rotary Moes.  
Lilliston Shredders & Blades.  
See the new M-F Diesel tractors. We have several GOOD used Combines.

SEE:  
**LESLEY MOTOR CO.**  
For the finest in farm machinery.  
West Hi-way 60  
Phone EM 4-1600

### LOW LOW PRICES

1/2" Sheetrock  
4x8 sheets each .89

3/8" Sheetrock  
4x8 sheets each 1.08

No. 15 Builders  
Felt 432' roll 1.75

25 lb. USG Joint  
System bag 1.79

### TAYLOR & SONS

Discount Lumber Co.  
CANYON, TEXAS  
Phone OL 5-2133 Canyon  
Phone DR 2-9031 Amarillo

### GLASS IS OUR BUSINESS

Call Us For All Your Glass Needs  
**HEREFORD GLASS CO.**  
1302 Park Ave. INC. EM 4-2652

### COUNTRY LIVING

One acre with large 3 bdrm. brick, den dble. garage, pressure system and built-ins., 4% loan.

### NORTHWEST HEREFORD

New 3 bdrm. brick, den, dble. garage, built-ins, 2 baths, will consider trade, Call for details.

### AVENUE J

Large 3 bdrm, frame. \$9,500. good terms.

### HANSFORD COUNTY

320 A., 1200 gal. well, nat. gas, 155 milo, 155 wheat, \$375.00 A., good terms available.

Good Section, 3-8" wells, 8200 ft. of underground tile, \$365.00 per A., \$114,000.00 loan. Owner will trade for 1/2 in this area.

### SHERMAN COUNTY

We have land in Sherman County priced from \$160.00 per acre and up with water potential. Also several developed farms.

### DALLAM COUNTY

640 A., in soil bank until 12-3-65, test hole privileges, \$160.00 A., 30% down.

800 A., all cult, guar. 8" water, \$175.00 per A., drill 2 wells and pay 5% dn., carry bal. on good terms.

### DEAF SMITH COUNTY

160 A., near town, 2 wells, \$450.00 A., 29% down.  
320 A., 2-6" wells, tile, 90.1 wheat, 186 milo, 21 barley, 7 cotton, \$275.00 A. 29% down.

648 A., 583 cult., 3-8" wells, tile, 178 wheat, 303, milo, 9.8 cotton, lots of improvements \$400.00 per A., has good loan.

### HAMBY REAL ESTATE

South Hwy. 385  
Hereford, Texas  
EM 4-3566  
J. M. Hamby EM 4-2553  
Gerald Hamby EM 4-1534  
Durward Hamby EM 4-3466  
Buddy Rogers EM 4-2150

Ceramic Tile  
Cabinet Tops  
Floor Covering  
Free Estimates

### C&W Tile & Tops

847 E. 1st St. EM 4-3448  
Hereford, Texas

### HEREFORD BAKERY

519 Park Ave. EM4-0177  
HOME OF  
Deaf Smith County  
Bread and Pastries

### MEAT

Specializing in  
CUSTOM SLAUGHTERING  
WHOLESALE - RETAIL  
**HACKER - JESKO**  
Rt. 3 - Hereford  
EM 4-3390

4 sections of dryland in Deaf Smith County. Good allotments, unimproved. \$100 per acre. Low down-payment. Balance 20 years at 6%. F-457

320 acres north of Black, Texas. Three good wells on natural gas, and full allotments. Two feet of fall from one end of farm to the other. \$525 per acre. 29% down. F-359

Section with 3 good wells on natural gas. Lays near perfect for irrigation. No improvements. 263.5 acre wheat. 101 acres Mile allotment. \$350.00 per acre. 29% down. F-421

160 acres with nice brick home. 96 acres milo and 45 acres wheat. One excellent 8" well on natural gas. Lays perfect. Consider trading for home. in Hereford. F-224

### THE CREATORS OF OWNERSHIP.

Residence Phones  
Mike Justice EM 4-0544  
Ralph Owens EM 4-2560  
Frank Wington EM 4-2028  
Jerry Huchabay EM 4-2636

## Hereford Insurance Agency

• To be sure! Don Baugous - Manager EM4-0850

**Classifieds...**

**FOR SALE**  
Office Building on Hiway 60 with 640 square feet floor space, corner lot, central heating and refrigerated air. Priced below cost of comparable. VACANT lot. Might consider long-term lease. Call EM 4-0972 or EM 4-0789. B-4-12-TFC

**RENTERS WANTED!**  
Color steel buildings built to your specifications, 2 acre lots, located north of B & B Oliver, Patterson Chemical and Merchants Fast Freight.

**SOUTH PARK INDUSTRIAL SUBDIVISION**  
Sam Nunnally  
EM 4-0555 — Days  
Home — EM 4-2814  
B-4-1-fc

**FOR SALE**  
THREE BEDROOM, 2 baths, lots of built-ins. Wood burning fireplace. 1800 feet, brick veneer. Good loan commitment. Located 120 Emma. For appointment to see, call EM 4-3479.

**E. E. BISHOP**  
B-4-10-fc

**STRIKING**  
Colonial designed brick home, tiled entry, completely private master bedroom with separate dressing room and bath, lovely kitchen, storm windows and doors plus a good storm cellar. Priced under \$23,000. A-16

**CORNER LOT**  
Neat frame home, 3 bedrooms, pretty kitchen with pantry, utility room. Priced to sell under \$11,000 to qualified buyer. A-18

**NEAR SCHOOL**  
Spacious 3 bedroom brick in excellent condition, nylon carpeting, large kitchen, lovely cabinets, drop-in range, fenced yard. Can be financed FHA. A-12  
HI-PLAINS LAND COMPANY  
600 West 1st EM 4-0713  
Gwen Lesterman EM 4-1650  
G. S. Wheeler EM 4-3798  
B-4-12-fc

**FOR SALE BY OWNER**  
129 Avenue C  
Two bedroom, den, large living room. Central heat, carpet, storm windows. Nice yard, grass, shrubs and shade trees. Small work shop and storage. Back yard completely fenced. Double garage. Will take in trade, lot or car. Shown by appointment.

**D. C. KINSEY**  
Phone EM 4-1300 or EM 4-0990. B-4-12-4c

**EXCLUSIVE LISTING**  
Lots very reasonably priced in Unit 1 of Bluebonnet Addition. FHA Loans available on Cherokee Drive and on 16th across the street from Bluebonnet School.

**HICKMAN REAL ESTATE**  
EM 4-3275. 115 15th Street. B-4-12-fc

**BY OWNER**  
EXTRA NICE 4 BEDROOM, 3 baths, large den-kitchen and dining area combination with fireplace. Large playroom, covered patio, redwood fence. Might take small house as trade-in. Located in Sunset Addition in Hereford. Phone 247-3001, Friona from 8:30 AM to 5:00 PM. B-4-12-fc

**KENMORE Automatic washer**  
2 speed, 3 cycle, 3 water temperatures, with lint filter and safety switch. \$174.88 Sears, Hereford, EM 4-3854. B-4-20-35-9p

**IRRIGATED LAND**  
\$325.00 per acre and up. 1440 ACRES, irrigated, \$175.00 per acre.  
**BROWN REAL ESTATE**  
Vega, Texas Ph. 267-5776 B-4-36-7c

**FOR SALE OR TRADE** — My 3 bedroom brick home in Littlefield on farm land in Deaf Smith or Castro County. Contact I. D. Onstead, Littlefield, Phone 385-3211 or 385-3009. B-4-11-fc

**FOR SALE** 1/4 Section land. Dallas County. \$200 per acre. Phone EM 4-0656. B-4-12-37-fc

**FOR RENT**  
MRS. H. M. BENEFIELD house for rent. Two bedroom, furnished. \$125.00 per month. Whites only. 811 North Main. Call M. S. Benefield EM 4-2500 B-5-23-35-TFC

**FOR RENT**  
New two bedroom duplexes, 500 block Avenue H and G. **D & R BUILDERS**  
EM 4-3780  
I. D. Rhodes 289-5217  
Neil Spradley EM 4-1813 B-5-47-TFC

**OCT. 1st.** — modern three room, garage. Whites only. Phone EM 4-0095. B-5-10-39-2p

**1 1/2 STORY deluxe duplex.** Two bedrooms, two baths. Call EM 4-3453 or inquire at 307 East 5th. No pets. B-5-18-39-fc

**FOR RENT:** Two bedroom unfurnished house. Carpeted, air conditioned, furnace, fenced. Call 894-6834, collect level-land. M. M. Gardner. B-5-18-39-2c

**QUIET ONE bedroom furnished apartment.** Adults. Close to town. 108 West 8th. B-5-12-13-fc

**THREE BEDROOM home** near Aikman school. Call 647-3121 days, 647-3394 nights in Dimmitt. B-5-13-13-3c

**NICE THREE room furnished apartment.** Whites only. Apply 232 West Third. B-5-11-13-fc

**FENCED grassed trailer space** on school bus route. Available October 1st. Louisa Packard, EM 4-3897. B-5-14-13-3c

**TWO BEDROOM trailer;** James Brown Tire Service. Hiway 60 West. B-5-10-13-fc

**ONE BEDROOM furnished apartment.** Call EM 4-3486 or inquire at 213 West Park. B-5-12-13-4c

**MATCHING Electric Dryer,** 2 cycle. \$109.95. Sears, Hereford, EM 4-3854. B-5-10-35-9p

**NORTHWEST MOBILE LODGE**  
Mobile Home spaces. 42'x70'. One block north of King's Manor. Call EM 4-1108 Jesse Scott or EM 4-1277. B-5-11-fc

**FOR RENT to retired couple.** 3 room house. Some house and yard work available. Call 276-5333 after 7:30 p.m. or Sundays. B-5-21-3-TFC

**UNFURNISHED HOUSE.** White couple only. No pets. 303 Ave. H. B-5-10-28-TFC

**AUTOMATIC LAUNDRY for lease or sale.** Call 276-5333 after 7:30 p.m. or Sunday. B-5-13-3 TFC

**TWO BEDROOM, 2 bath apartments.** Dishwasher, garbage disposal, carpeted. Furnished and unfurnished. **THUNDERBIRD APARTMENTS**  
Phone EM 4-2646 B-5-10-10-fc

**TWO BEDROOM unfurnished, no garage.** One block from Post Office. Contact Hap Cavness, 129 West 5th. Phone EM 4-2213. B-5-18-10-fc

**BUSINESS SPACE**  
Park Avenue Shopping Center  
515 Park Avenue  
\$50.00 Month  
EM 4-1103 B-5-11-fc

**THREE ROOM furnished apartment.** Also bedroom. Whites only. 711 East Third. Phone EM 4-1498. B-5-13-12-fc

**WANTED**  
WANTED BEGINNERS, Piano and accordion. Mrs. A. L. Williams, 701 East Third Street. B-4-13-34-TFC

**WANTED**  
Custom Mowing, Raking, Baling.  
**DON JACKSON**  
Phone EM 4-1941 B-9-7-fc

**NOTICE**  
WRINGER WASHER with Vital-Matic wringer and lint filter. \$129.88. Sears, Hereford, EM 4-3854. B-10-12-35-9p

**NEW FALL COLORS**  
In all imported and domestic yarns. Christmas gifts, and crew embroidery. Free knitting instructions.  
**KNITTING HOUSE**  
319 N. McKinley B-10-11-fc

**30 CHEVROLET pickup.** \$100. 606 Ireland, Apt. A. B-10-30-3p

**WANTED GOOD used piano for choir instruction** at Hereford Migrant Ministry Building. Call Virgil Dodson, EM 4-3639; Eunice Vasquez, EM 4-2563. B-4-19-13-3p

**GAS Classic. Two full oven with smokeless broiler oven below.** Electric clock with four hour timer. White or copper-tone. \$259.88. Sears, Hereford, EM 4-3854. B-6-23-35-9p

**WILL DO ironing in my home.** EM 4-3528, 235 Avenue A. B-7-11-10-8c

**IRONING**  
WILL DO ironing in my home. EM 4-3528, 235 Avenue A. B-7-11-10-8c

**IRIGATION WELL ACIDIZING**  
This is not a new gimmick or secret formula. Used extensively on the South Plains for over fifteen years, treatment with inhibited Muriatic (liquid) acid has shown excellent results in cleaning perforations, removing algae, dissolving clay and drilling mud, and loosening packed water sand, thus allowing all available water to be pumped. This service made available by local area farmer who understands the necessity of maximum water and minimum treatment. For more information call or write:  
**WALLIE GRAVITT**  
RT. No. 2, HAPPY, TEXAS 806-764-2462 B-11-39-2c

**Are you looking for a good part time or full time income in Deaf Smith County or Hereford?** Many Rawleigh dealers earn \$2.50 and up per hour. See E. Gidden, Box 705, Canyon or write Rawleigh, TXI 160 26, Memphis, Tenn. T-8-23-39-1c

**BOY to deliver Lubbock paper.** Must have own transportation. EM 4-0387 B-8-10-39-2p

**Has local route openings in the following areas:** Hereford, Friona, Bovina, Clovis for mature married man or woman, 25 to 45, with car. \$100 a week average to start. Permanent, secure. Fringe benefits. Some part time opportunities in these areas. For interview appointment, see local dealer Glenn Williams, 1400 3rd. Ave., Canyon, Texas or write 1624 Jordan, Amarillo or phone FL 6-5663. B-8-40-TFC

**MAJOR INSURANCE Company** wants debit agent in Hereford. \$100 week guaranteed for 16 weeks. Send resume to 1919 Fannin, Amarillo. B-8-20-38-4p

**HAIR STYLIST and shampoo girl.** Continental Coiffeurs. EM 4-1744. B-8-10-47-Tfc

**Local Representative Wanted Man or Woman.** Full or Part Time. No investment required. Protected territory. Complete Company Financing. Exceptional earnings. Incentive plan. Full training provided. National advertising program. Representative will handle our complete line; The Book of Knowledge "America's Favorite since 1911". The new Min-Max Teaching Machine-Program Learning at its Best", and other educational products. All replies kept confidential; write; C. V. Foster 4215 E. Cliff Denver, Colorado 80222. B-8-13-8c

**REWARD offered for return of female boxer puppy to 507 Irving** or call EM 4-1896. B-13-14-38-4p

**NOTICE TO ALL PERSONS HAVING CLAIMS AGAINST ESTATE OF ALBERT CARL SALTZMAN**  
Notice is hereby given that original Letters Testamentary upon the Estate of Albert Carl Saltzman, were issued to me, the undersigned, on the 24th day of September, 1965, in the proceeding indicated below by my signature hereto, which is still pending, and that I now hold such letters. All persons having claims against said Estate, which is being administered in the County below named, are hereby required to present the same to me respectively, at the address below given, before suit upon same are barred by the general Statutes of Limitation, before such Estate is closed, and within the time prescribed by law. My residence and post office address are 121 East 6th Terrace, Kansas City, Missouri, 64113, but claims may be presented to me at Box 473 in Hereford, Deaf Smith County, Texas, 79045. DATED this 24th day of September, 1965.  
Katherine Q. Sevier  
Katherine Q. Sevier, Independent Executrix of the Estate of Albert Carl Saltzman, No. 1816 in the County Court of Deaf Smith County, Texas. 39-1c

**SEARS 30 Gallon Gas Water Heaters with 2 stage flame with a brain", glass lined, 15 year guarantee. Installed, \$85.60 Sears, Hereford, EM 4-3854. B-13-23-35-9p**

**REWARD offered for return of female boxer puppy to 507 Irving** or call EM 4-1896. B-13-14-38-4p

**NOTICE TO ALL PERSONS HAVING CLAIMS AGAINST ESTATE OF ALBERT CARL SALTZMAN**  
Notice is hereby given that original Letters Testamentary upon the Estate of Albert Carl Saltzman, were issued to me, the undersigned, on the 24th day of September, 1965, in the proceeding indicated below by my signature hereto, which is still pending, and that I now hold such letters. All persons having claims against said Estate, which is being administered in the County below named, are hereby required to present the same to me respectively, at the address below given, before suit upon same are barred by the general Statutes of Limitation, before such Estate is closed, and within the time prescribed by law. My residence and post office address are 121 East 6th Terrace, Kansas City, Missouri, 64113, but claims may be presented to me at Box 473 in Hereford, Deaf Smith County, Texas, 79045. DATED this 24th day of September, 1965.  
Katherine Q. Sevier  
Katherine Q. Sevier, Independent Executrix of the Estate of Albert Carl Saltzman, No. 1816 in the County Court of Deaf Smith County, Texas. 39-1c

**REWARD offered for return of female boxer puppy to 507 Irving** or call EM 4-1896. B-13-14-38-4p

**NOTICE TO ALL PERSONS HAVING CLAIMS AGAINST ESTATE OF ALBERT CARL SALTZMAN**  
Notice is hereby given that original Letters Testamentary upon the Estate of Albert Carl Saltzman, were issued to me, the undersigned, on the 24th day of September, 1965, in the proceeding indicated below by my signature hereto, which is still pending, and that I now hold such letters. All persons having claims against said Estate, which is being administered in the County below named, are hereby required to present the same to me respectively, at the address below given, before suit upon same are barred by the general Statutes of Limitation, before such Estate is closed, and within the time prescribed by law. My residence and post office address are 121 East 6th Terrace, Kansas City, Missouri, 64113, but claims may be presented to me at Box 473 in Hereford, Deaf Smith County, Texas, 79045. DATED this 24th day of September, 1965.  
Katherine Q. Sevier  
Katherine Q. Sevier, Independent Executrix of the Estate of Albert Carl Saltzman, No. 1816 in the County Court of Deaf Smith County, Texas. 39-1c

**REWARD offered for return of female boxer puppy to 507 Irving** or call EM 4-1896. B-13-14-38-4p

**NOTICE TO ALL PERSONS HAVING CLAIMS AGAINST ESTATE OF ALBERT CARL SALTZMAN**  
Notice is hereby given that original Letters Testamentary upon the Estate of Albert Carl Saltzman, were issued to me, the undersigned, on the 24th day of September, 1965, in the proceeding indicated below by my signature hereto, which is still pending, and that I now hold such letters. All persons having claims against said Estate, which is being administered in the County below named, are hereby required to present the same to me respectively, at the address below given, before suit upon same are barred by the general Statutes of Limitation, before such Estate is closed, and within the time prescribed by law. My residence and post office address are 121 East 6th Terrace, Kansas City, Missouri, 64113, but claims may be presented to me at Box 473 in Hereford, Deaf Smith County, Texas, 79045. DATED this 24th day of September, 1965.  
Katherine Q. Sevier  
Katherine Q. Sevier, Independent Executrix of the Estate of Albert Carl Saltzman, No. 1816 in the County Court of Deaf Smith County, Texas. 39-1c

**REWARD offered for return of female boxer puppy to 507 Irving** or call EM 4-1896. B-13-14-38-4p

**NOTICE TO ALL PERSONS HAVING CLAIMS AGAINST ESTATE OF ALBERT CARL SALTZMAN**  
Notice is hereby given that original Letters Testamentary upon the Estate of Albert Carl Saltzman, were issued to me, the undersigned, on the 24th day of September, 1965, in the proceeding indicated below by my signature hereto, which is still pending, and that I now hold such letters. All persons having claims against said Estate, which is being administered in the County below named, are hereby required to present the same to me respectively, at the address below given, before suit upon same are barred by the general Statutes of Limitation, before such Estate is closed, and within the time prescribed by law. My residence and post office address are 121 East 6th Terrace, Kansas City, Missouri, 64113, but claims may be presented to me at Box 473 in Hereford, Deaf Smith County, Texas, 79045. DATED this 24th day of September, 1965.  
Katherine Q. Sevier  
Katherine Q. Sevier, Independent Executrix of the Estate of Albert Carl Saltzman, No. 1816 in the County Court of Deaf Smith County, Texas. 39-1c

**REWARD offered for return of female boxer puppy to 507 Irving** or call EM 4-1896. B-13-14-38-4p

**NOTICE TO ALL PERSONS HAVING CLAIMS AGAINST ESTATE OF ALBERT CARL SALTZMAN**  
Notice is hereby given that original Letters Testamentary upon the Estate of Albert Carl Saltzman, were issued to me, the undersigned, on the 24th day of September, 1965, in the proceeding indicated below by my signature hereto, which is still pending, and that I now hold such letters. All persons having claims against said Estate, which is being administered in the County below named, are hereby required to present the same to me respectively, at the address below given, before suit upon same are barred by the general Statutes of Limitation, before such Estate is closed, and within the time prescribed by law. My residence and post office address are 121 East 6th Terrace, Kansas City, Missouri, 64113, but claims may be presented to me at Box 473 in Hereford, Deaf Smith County, Texas, 79045. DATED this 24th day of September, 1965.  
Katherine Q. Sevier  
Katherine Q. Sevier, Independent Executrix of the Estate of Albert Carl Saltzman, No. 1816 in the County Court of Deaf Smith County, Texas. 39-1c

**REWARD offered for return of female boxer puppy to 507 Irving** or call EM 4-1896. B-13-14-38-4p

**NOTICE TO ALL PERSONS HAVING CLAIMS AGAINST ESTATE OF ALBERT CARL SALTZMAN**  
Notice is hereby given that original Letters Testamentary upon the Estate of Albert Carl Saltzman, were issued to me, the undersigned, on the 24th day of September, 1965, in the proceeding indicated below by my signature hereto, which is still pending, and that I now hold such letters. All persons having claims against said Estate, which is being administered in the County below named, are hereby required to present the same to me respectively, at the address below given, before suit upon same are barred by the general Statutes of Limitation, before such Estate is closed, and within the time prescribed by law. My residence and post office address are 121 East 6th Terrace, Kansas City, Missouri, 64113, but claims may be presented to me at Box 473 in Hereford, Deaf Smith County, Texas, 79045. DATED this 24th day of September, 1965.  
Katherine Q. Sevier  
Katherine Q. Sevier, Independent Executrix of the Estate of Albert Carl Saltzman, No. 1816 in the County Court of Deaf Smith County, Texas. 39-1c

**REWARD offered for return of female boxer puppy to 507 Irving** or call EM 4-1896. B-13-14-38-4p

**NOTICE TO ALL PERSONS HAVING CLAIMS AGAINST ESTATE OF ALBERT CARL SALTZMAN**  
Notice is hereby given that original Letters Testamentary upon the Estate of Albert Carl Saltzman, were issued to me, the undersigned, on the 24th day of September, 1965, in the proceeding indicated below by my signature hereto, which is still pending, and that I now hold such letters. All persons having claims against said Estate, which is being administered in the County below named, are hereby required to present the same to me respectively, at the address below given, before suit upon same are barred by the general Statutes of Limitation, before such Estate is closed, and within the time prescribed by law. My residence and post office address are 121 East 6th Terrace, Kansas City, Missouri, 64113, but claims may be presented to me at Box 473 in Hereford, Deaf Smith County, Texas, 79045. DATED this 24th day of September, 1965.  
Katherine Q. Sevier  
Katherine Q. Sevier, Independent Executrix of the Estate of Albert Carl Saltzman, No. 1816 in the County Court of Deaf Smith County, Texas. 39-1c

**REWARD offered for return of female boxer puppy to 507 Irving** or call EM 4-1896. B-13-14-38-4p

**NOTICE TO ALL PERSONS HAVING CLAIMS AGAINST ESTATE OF ALBERT CARL SALTZMAN**  
Notice is hereby given that original Letters Testamentary upon the Estate of Albert Carl Saltzman, were issued to me, the undersigned, on the 24th day of September, 1965, in the proceeding indicated below by my signature hereto, which is still pending, and that I now hold such letters. All persons having claims against said Estate, which is being administered in the County below named, are hereby required to present the same to me respectively, at the address below given, before suit upon same are barred by the general Statutes of Limitation, before such Estate is closed, and within the time prescribed by law. My residence and post office address are 121 East 6th Terrace, Kansas City, Missouri, 64113, but claims may be presented to me at Box 473 in Hereford, Deaf Smith County, Texas, 79045. DATED this 24th day of September, 1965.  
Katherine Q. Sevier  
Katherine Q. Sevier, Independent Executrix of the Estate of Albert Carl Saltzman, No. 1816 in the County Court of Deaf Smith County, Texas. 39-1c

**REWARD offered for return of female boxer puppy to 507 Irving** or call EM 4-1896. B-13-14-38-4p

**NOTICE TO ALL PERSONS HAVING CLAIMS AGAINST ESTATE OF ALBERT CARL SALTZMAN**  
Notice is hereby given that original Letters Testamentary upon the Estate of Albert Carl Saltzman, were issued to me, the undersigned, on the 24th day of September, 1965, in the proceeding indicated below by my signature hereto, which is still pending, and that I now hold such letters. All persons having claims against said Estate, which is being administered in the County below named, are hereby required to present the same to me respectively, at the address below given, before suit upon same are barred by the general Statutes of Limitation, before such Estate is closed, and within the time prescribed by law. My residence and post office address are 121 East 6th Terrace, Kansas City, Missouri, 64113, but claims may be presented to me at Box 473 in Hereford, Deaf Smith County, Texas, 79045. DATED this 24th day of September, 1965.  
Katherine Q. Sevier  
Katherine Q. Sevier, Independent Executrix of the Estate of Albert Carl Saltzman, No. 1816 in the County Court of Deaf Smith County, Texas. 39-1c

**REWARD offered for return of female boxer puppy to 507 Irving** or call EM 4-1896. B-13-14-38-4p

**NOTICE TO ALL PERSONS HAVING CLAIMS AGAINST ESTATE OF ALBERT CARL SALTZMAN**  
Notice is hereby given that original Letters Testamentary upon the Estate of Albert Carl Saltzman, were issued to me, the undersigned, on the 24th day of September, 1965, in the proceeding indicated below by my signature hereto, which is still pending, and that I now hold such letters. All persons having claims against said Estate, which is being administered in the County below named, are hereby required to present the same to me respectively, at the address below given, before suit upon same are barred by the general Statutes of Limitation, before such Estate is closed, and within the time prescribed by law. My residence and post office address are 121 East 6th Terrace, Kansas City, Missouri, 64113, but claims may be presented to me at Box 473 in Hereford, Deaf Smith County, Texas, 79045. DATED this 24th day of September, 1965.  
Katherine Q. Sevier  
Katherine Q. Sevier, Independent Executrix of the Estate of Albert Carl Saltzman, No. 1816 in the County Court of Deaf Smith County, Texas. 39-1c

**REWARD offered for return of female boxer puppy to 507 Irving** or call EM 4-1896. B-13-14-38-4p

**Summerfield News**

By DEBORAH BAKER  
Grand Correspondent  
Jerry Don Lance escaped injury Monday when the car he was driving hit a cow on the highway as he was returning home from Dimmitt. The animal was killed.

David Hutchens and J. G. Davis of Dimmitt returned Tuesday from a fishing trip to Falcon Dam which was cut short by bad weather.

A group from Summerfield which attended the Tri-State Fair last week included the Billy Bells, the David Hutchens, the R. B. Bakers and daughter, Mrs. Jack Duhan and her family.

The David Hutchens, Kenneth Fryes, Cliff Almons and Roy Botkins joined residents of Easter community at the recent barbecue honoring Congressman Walter Rogers.

Mrs. Margaret Lookingbill was hostess for a houseware party in Dimmitt recently.

Summerfield Study Club had its first meeting last Tuesday in the home of Mrs. David Hutchens.

Mrs. Kenneth Frye and daughter, Shelly, visited Mrs. Fry's parents and grandmother in Saton recently.

Mr. and Mrs. Jack Streun spent a few days in Houston last week for medical treatment.

Mr. and Mrs. Billy Baker and daughter, Brittney, have returned from a visit in Oklahoma City, Weatherford, Lubbock and Hale Center. With the R. B. Bakers, they attended a family reunion at Plainview recently.

Mr. and Mrs. Andy Rule and daughter, with Mrs. Rule's parents, Mr. and Mrs. Elam, recently made a trip to Falcon Dam to camp and fish.

Summerfield Baptist Sunday School Class met in the home of Mrs. J. D. Greeson for installation of officers. Present were Mmes. Roy Botking, Jim Lookingbill, Jack White, Cliff Almon, Gene Bean, Billy Bell, L. H. Lookingbill, Billy Gene Cotton, Reese Dawson, Kenneth Christi, Jamie Clearman and a visitor, Mrs. Kenzie Bates.

Mrs. R. R. Rule and her sister, Miss Almarene Bristol of Harlingen, returned from a vacation trip to Colorado, Arizona and Old Mexico.

Mr. and Mrs. Jim Lookingbill attended the football game in Hereford Friday night.

Mr. and Mrs. Fate Shannon had as guests Sunday Mr. and Mrs. Lloyd Veazey, Mr. and Mrs. Pat Veazey of Amarillo; Mrs. Robert Leinen, Dale, Kathy and Shirley Leinen, Mr. and Mrs. V. E. Sinclair of Dimmitt; and Mr. and Mrs. John Stork of Nazareth. They were celebrating the birthdays of Mrs. Leinen and Mrs. Lloyd Veazey.

Kinnie Walsler, a student in West Texas State University was at home for a visit Saturday. Visitors in the Guy Walsler home Sunday were Luther Foust of Plainview, Mrs. J. C. Pracker from California, Mr. and Mrs. Donald Walsler of Hereford.

Mrs. Robert Bowlen and daughter of Amarillo visited in the home of Mr. and Mrs. George DeLozier recently.

The names of the parties to the cause are as follows: Gail Rapp are Plaintiffs and Earl Henry Rapp are Defendants

A brief statement of the nature of this suit is as follows, to wit: For divorce upon statutory grounds of cruel treatment, as is more fully shown by Plaintiff's Petition on file in this suit.

If this citation is not served within ninety days after the date The officer executing this pro- tured unserved.

of its issuance, it shall be re- cess shall promptly execute the same according to law, and make due return as the law directs.

Issued and given under my hand and the Seal of said Court, at office in Hereford, Texas, this 17 day of August A. D. 1965.

Attest:  
Lucille Posey Clerk  
District Court  
Deaf Smith County  
By Juanita Owen Deputy  
Seal T-36-4c

Mr. and Mrs. Jim Lookingbill attended the football game in Hereford Friday night.

Mr. and Mrs. Fate Shannon had as guests Sunday Mr. and Mrs. Lloyd Veazey, Mr. and Mrs. Pat Veazey of Amarillo; Mrs. Robert Leinen, Dale, Kathy and Shirley Leinen, Mr. and Mrs. V. E. Sinclair of Dimmitt; and Mr. and Mrs. John Stork of Nazareth. They were celebrating the birthdays of Mrs. Leinen and Mrs. Lloyd Veazey.

Kinnie Walsler, a student in West Texas State University was at home for a visit Saturday. Visitors in the Guy Walsler home Sunday were Luther Foust of Plainview, Mrs. J. C. Pracker from California, Mr. and Mrs. Donald Walsler of Hereford.

Mrs. Robert Bowlen and daughter of Amarillo visited in the home of Mr. and Mrs. George DeLozier recently.

The names of the parties to the cause are as follows: Gail Rapp are Plaintiffs and Earl Henry Rapp are Defendants

A brief statement of the nature of this suit is as follows, to wit: For divorce upon statutory grounds of cruel treatment, as is more fully shown by Plaintiff's Petition on file in this suit.

If this citation is not served within ninety days after the date The officer executing this pro- tured unserved.

of its issuance, it shall be re- cess shall promptly execute the same according to law, and make due return as the law directs.

Issued and given under my hand and the Seal of said Court, at office in Hereford, Texas, this 17 day of August A. D. 1965.

Attest:  
Lucille Posey Clerk  
District Court  
Deaf Smith County  
By Juanita Owen Deputy  
Seal T-36-4c

Mr. and Mrs. Jim Lookingbill attended the football game in Hereford Friday night.



Miss Nancy Boyer honored as bride-elect

### Miss Boyer Is Honoree At Pre-Nuptial Shower

Miss Nancy Boyer, whose marriage to Fred J. Mulkey Jr. is to be solemnized in First Presbyterian Church Saturday, was complimented with a shower Monday evening in the home of Mrs. P. E. Hagans, 504 Ave. I.

Wearing a gold silk shift with the neckline outlined in green and gold braid, Miss Boyer received guests with her mother, Mrs. L. R. Boyer; Miss Carole Coffey, who is to be her maid of honor; her fiance's mother, Mrs. Fred Mulkey, and two aunts, Mrs. Joe Evans and Mrs. Herbert Wilkes of Happy; and her grandmothers, Mrs. J. J. Lindsay and Mrs. Pearl Boyer. Mrs. Hagans greeted callers at the door. Misses Jean Ann Gore and Sharon Hagans presided in turn at the registry. Serving punch and petit fours were Misses Patti Roach, Judy Summers and Barbara Buck and Mrs. Gary Tyler.

Touches of pale gold in the flower arrangement highlighted the white and silver table setting. The all-white net cloth was trimmed with ribbon scrolls and glittered wedding bells. Flowers were white and yellow mums. Gifts were displayed on white-covered tables in the den. Hostesses with Mrs. Hagans were Mrs. Charlie Bell, Andrea Alexander, Charlie Holt, G. D. Caison, Johnny Morris, Jack Nunley, Erika Durham, B. Y. Crosthwait, Howard Gore, John Schneider, Chuck Laing, Larry Summers, Jack Mitchell, Debert Bainum, Pete Gooch, J. B. Sowell, Erving Ward and James Edmonson.

If a bride pitches her bouquet to the bridesmaids, she's copying her sisters of medieval France. Gallic lasses originally threw garters.

Olivetti-Underwood Adding Machines & Typewriters at The INK SPOT

### COWAN JEWELRY

Proudly displays their AWI emblem showing that their store is accredited and recognized by AWI



Certified Master Watchmaker

Genuine watch material plus guaranteed workmanship assures Cowan's customer satisfaction.

Accutron Certified Service

HEREFORD WATCH HOSPITAL

217 MAIN

# GLASSWARE

EXQUISITE "BOUTONNIERE" PATTERN

BY WORLD-FAMOUS TAYLOR, SMITH AND TAYLOR COMPANY

This GLASSWARE offer will enable you to obtain a complete and beautiful table setting as these glasses match the DINNERWARE offer which just ended

#### FOLLOW THIS WEEKLY SCHEDULE FOR 12 WEEKS

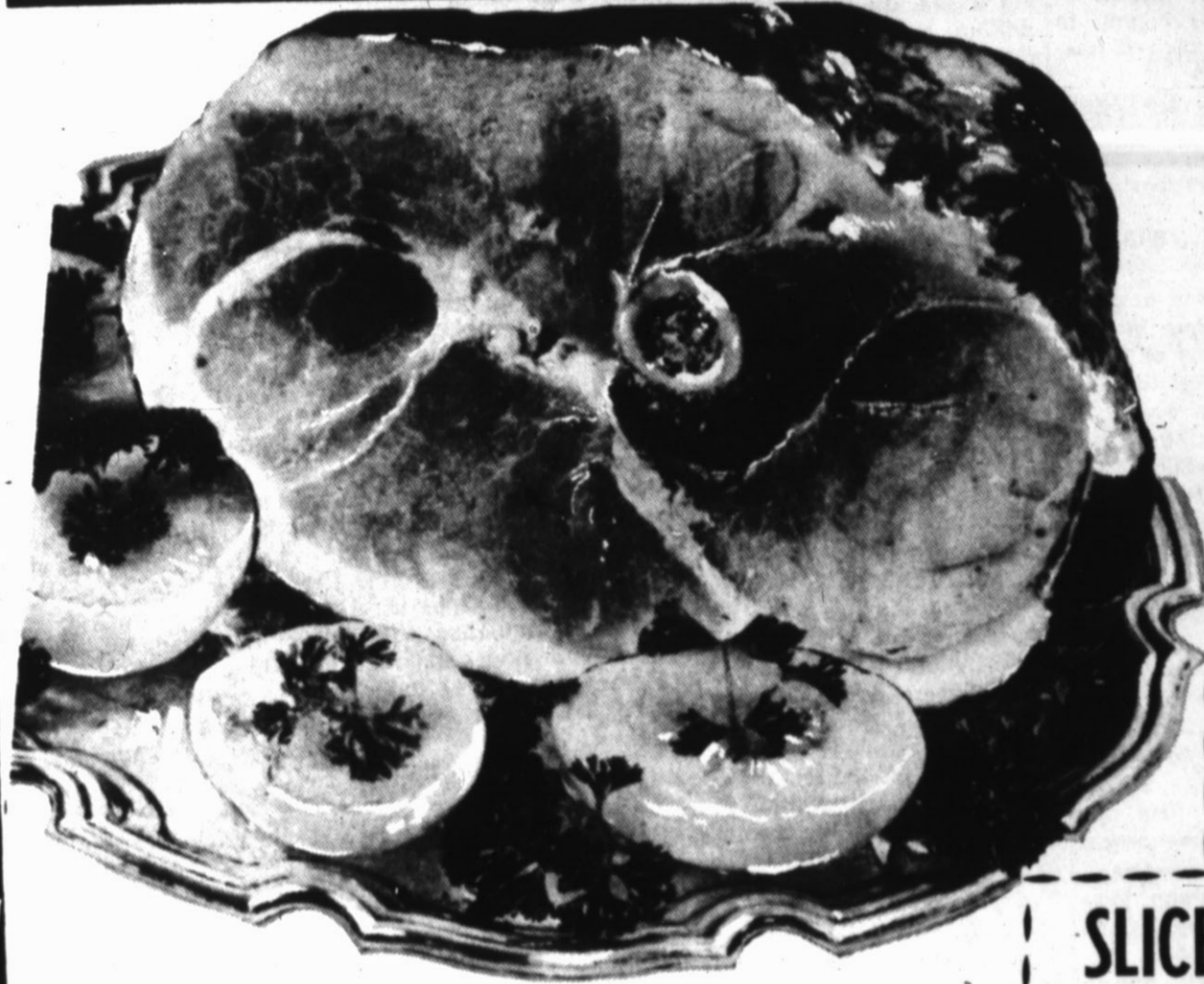
A different glass will be featured each week in the following sequence. Don't miss a single week! You can build a service for Six . . . Eight . . . Twelve or more

- 1st. Week: ICE TEA
- 2nd. Week: JUICE
- 3rd. Week: OLD FASHION
- 4th. Week: TUMBLER

FEATURED THIS WEEK: ICE TEA GLASS



**9¢** WITH EACH \$5.00 PURCHASE



WRIGHT'S FULLY COOKED

## HAMS

1/2 or WHOLE

Lb. **49¢**

Armour Star FRANKS

All Meat 12-Oz. Pkg **45¢**

Wisconsin Longhorn CHEESE

Lb. **49¢**

SLICED CHEESE

Krafts 12-Oz. Pkg.

**45¢**

## ICE CREAM

Sealtest First Quality All Flavors

1/2 Gal. **59¢**

## BEEF TAMALES

Austex With Chili Gravy

4 No. 300 Cans **\$1**

## APPLE BUTTER

Western Maid Big 3-Lb. 10-Oz. Jar

**69¢**

## PURINA DOG CHOW

10-Lb. Bag

**65¢**

## COOKIES

Tender Crust All Flavors

Big 59c Bag

**49¢**

## PECANS

Ellis Fresh Shelled

10-Oz. Pkg.

**69¢**

## SUGAR

Holly Beet

5-Lb. Bag

**49¢**

WIZARD LIGHTER FLUID . . . . . Qt. Can 49c

## CHARCOAL

Engery Briquettes

10-Lb. Bag

**39¢**

## IVORY FRITOS

4 Bar Beauty Personal Bundle **33¢**

Corn Chips Regular & King Size 49c Bag

**39¢**

GIVE THE UNITED WAY

### IVORY SNOW

Giant Box Size **39¢**

### CHEER

Giant Size **71¢**

### TOP JOB

**69¢**

### COMET

2 Reg. Size 14-Oz. Can **29¢**

#### REGISTER FOR THE FREE POODLE

To Be Given by the Downtown Variety Park Members. Drawing will be next Monday Oct. 4, 1965

Denzil PULLIAM-Hereford-Winner of 4th Typewriter



White POTATOES 10-Lb. Bag **59¢**

Missouri JONATHAN APPLES 1-Lb. Pkg. **15¢**

Hereford CARROTS 1-Lb. Pkg. **15¢**

ONE MINUTE, PLEASE

GENE LOOKS

GET ACQUAINTED SUNDAY OCTOBER 3, 1965

WE WANT TO GET BETTER ACQUAINTED WITH YOU. AND WE HOPE YOU WANT TO GET BETTER ACQUAINTED WITH US. THIS IS OUR CHANCE AS FRIENDS AND NEIGHBORS, TO KNOW AND APPRECIATE ONE ANOTHER MORE. FOR THE SERMON SUNDAY MORNING AND SUNDAY EVENING I SHALL ANSWER QUESTIONS YOU ASK. SAMPLE QUESTIONS:

- Do you think Christians should work for the Ecumenical movement?
- Do you believe there are good people in all churches?
- What do you think about the Social Gospel of today?
- Why don't you use instrumental music in worship?
- Does the church of Christ believe in closed communion?
- Do you believe only members of the church of Christ are going to heaven?
- What do you mean when you say the church of Christ is not a denomination?
- Why do you make such a big point about baptism?

After the morning and evening services are dismissed, I shall remain to answer any additional questions any one wishes to ask that deals with Christian principles.

ALL ARE INVITED TO:

Sunday School 9:30 to 10:15  
Average attendance for 1965-497  
Attendance goal for Oct. 3-600  
Worship and Sermon  
Morning 10:25 to 11:30  
Evening 8:00 to 8:45

YOU ARE ENCOURAGED TO STUDY THE BIBLE & WORSHIP

CENTRAL CHURCH OF CHRIST  
PLAINS & SUNSET DR., HEREFORD