

TEMPERATURES

Moisture	High	Low
Sunday	93	66
Monday	96	68
Tuesday	98	68
Wednesday	95	65
Moisture this month	90	
Moisture this year	5.08	
Moisture last year	13.6	

The Hereford Brand

16 pages

SINCE 1901

Sixty-two Years Of Service

Published Every Thursday

Our Slogan: "More People — More Farms"

63RD YEAR — NO. 32

HEREFORD, TEXAS 79045, THURSDAY, AUGUST 6, 1964

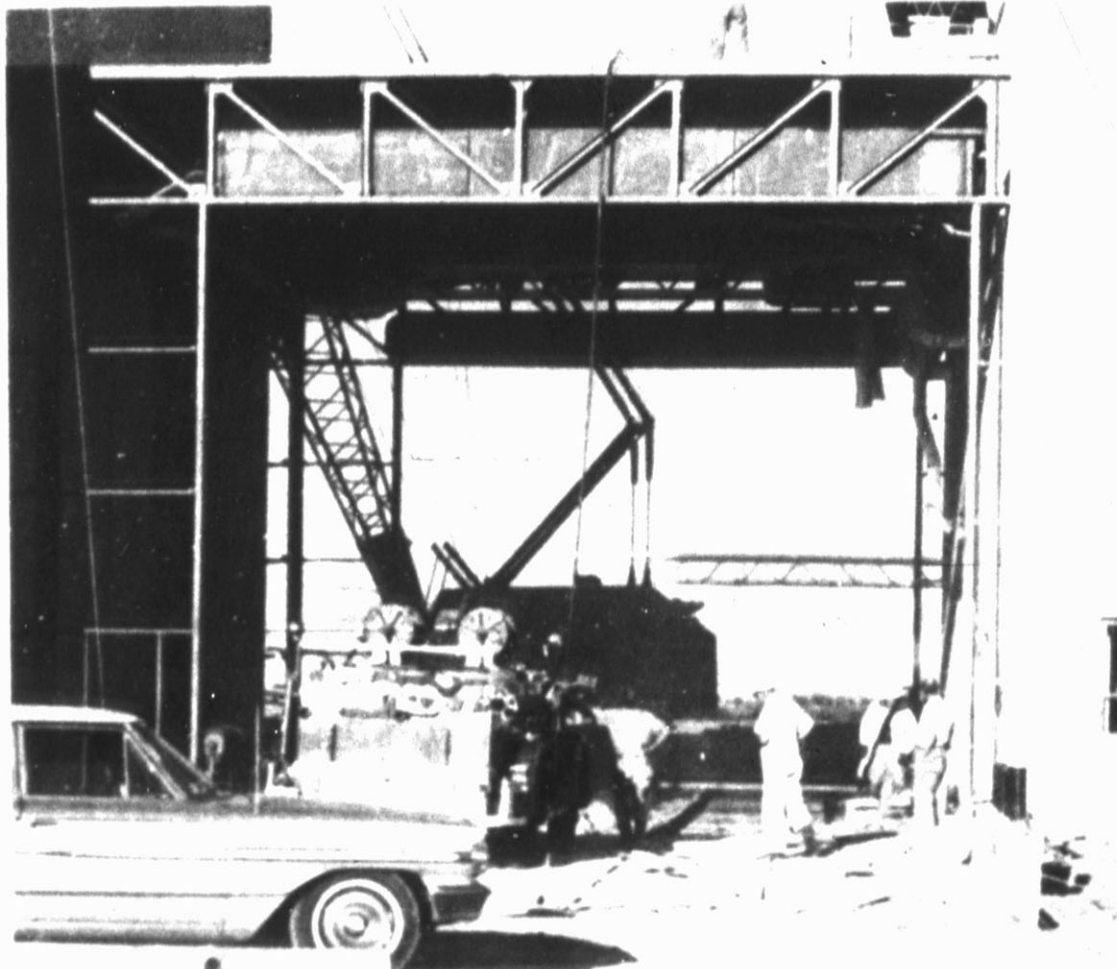
PRICE 10c PER COPY

Around Town

With The Brand Staff

The Hereford Board of Directors met last night at 8 p.m. in the office of the city manager. The meeting was held in the city manager's office. The board members present were: Mayor R. L. Pinnell, City Manager R. L. Pinnell, and Board Members: J. H. ...

With the Hereford district commander, Hereford, as an ...



MINOR BLAZE — Hereford Volunteer Firemen are shown here as they finish extinguishing a minor fire that started at the ...

'Tarpaper' Fire At Holly Causes Minor Damage

A fire that started in a tarpaper shed at the Holly Sugar Plant ...

Zoning Changes Made By Council

The Hereford City Council has approved zoning changes ...

100 Pipe Fitters Walk Off Jobs At Holly, Strike Looms

First Try Fails, Thieves Lift Safe

Deaf Smith County Sheriff Officers are busy investigating the burglary of West Texas Equipment and Supply Monday evening ...

Picket Line Likely; Shutdown Possible

More than 100 pipefitters working at the Holly Sugar Plant, being constructed by H. K. Ferguson Co., west of the city, walk off the job site late yesterday afternoon.

The pipefitters, represented by Plumbers and Steam Fitters Local No. 196, Amarillo, left the job after rumors of a strike threatened the construction site during the day.

'Miss Sorghum' Contest Slated; 18 Are Entered

'Miss Grain Sorghum of the Nation' will be named at a beauty pageant to be held Saturday night in the new air-conditioned Dimmitt High School Auditorium ...

Grand Jury Has 'Busy' Session

The 69th Judicial District Grand Jury, presided over by District Judge Harry Schultz, began another closed-door session at 9 a.m. Wednesday ...

High School Band

Hereford High School "Sweepstakes Band" has started its 1964-65 season ...

Freeman Says Controls Essential To Economy

Agriculture Chief Speaks at Vernon

By Ray Martin

A rich man may buy three cars, a half-dozen homes, six boats, and 120 suits of clothes, and if he has the money, he won't be hurt one way or the other, but when he starts eating 10 meals a day, he's not long for this world.

Dimmitt Sets Aircraft Show

Dimmitt Jaycees are sponsoring a barbecue and air show Sunday when the famous Fort Hood Skydiving Club will present diving acts, G. R. Hufkines, chairman, said Thursday.

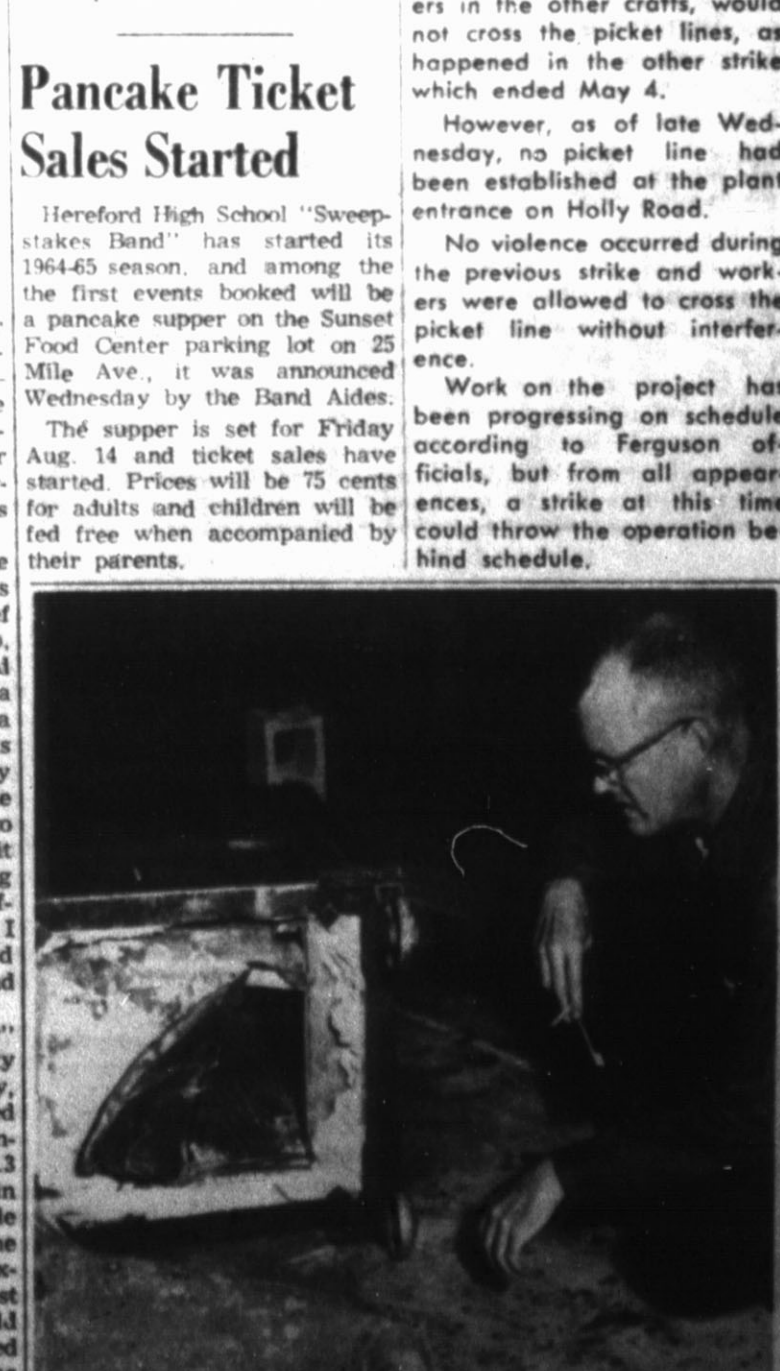
Pancake Ticket Sales Started

Hereford High School "Sweepstakes Band" has started its 1964-65 season, and among the first events booked will be a pancake supper on the Sunset Food Center parking lot on 25 Mile Ave., it was announced Wednesday by the Band Aides.



APPRECIATION PLAQUE — Wheat growers of three Texas and Oklahoma organizations held an appreciation banquet last Saturday at Vernon for Cong. Graham Purcell, and Leo Witkowski, Hereford (left) presented the congressman with a plaque in appreciation for his work for the wheat program. Witkowski is president of the Texas Wheat Growers' Association. (Brand Staff Photo)

EXAMINES SAFE — Deputy sheriff Ed Roberson is shown examining a safe that was stolen from West-Tex Equipment and Supply Inc. Monday evening. (See story above) The safe was recovered Tuesday morning, but the more than \$200 cash that was in it was gone. (Brand Staff Photo)



EXAMINES SAFE — Deputy sheriff Ed Roberson is shown examining a safe that was stolen from West-Tex Equipment and Supply Inc. Monday evening. (See story above) The safe was recovered Tuesday morning, but the more than \$200 cash that was in it was gone. (Brand Staff Photo)

Freeman...

(Continued from Page 1)

for feed grains and wheat would decline from about \$2.5 billion a year to \$1.2 billion, and the total cost to the public food would be slightly lower.

"However, this gain for consumers would be at the expense of extreme hardship among farmers, a 40 percent decline in net farm income below the current level. It would risk severe damage to the farming industry, bringing unfavorable consequences to the productivity of agriculture in the long run."

"... And general recognition of the potential for farm disaster put everyone — or nearly everyone — in the mainstream of opinion that commodity programs are essential not only to farm welfare, but to the national welfare. This Administration and the Congress of which Graham Purcell is a part, have established and operated such programs."

"Of surpluses, the Secretary of Agriculture made this statement: 'I would point out that we have succeeded in reducing the 84-million ton feed grain surplus this administration inherited down to 70-million tons. The wheat carryover has been reduced from 1.4 billion to under 900 million bushels. And the resulting savings to taxpayers amount to \$275 million a year. But we must have commodity programs until the day comes when there's a better method of protecting our family farms and our national economic and physical health.'

"And so we have a wheat program for 1964-65 — a good program."

He termed the wheat program "purely voluntary," explaining it this way:

"Wheat growers, at planting time, were free to put seed into as many or as few acres as they wished. They were free to choose between two price structures — one related to the world market alone, the other related to the world market plus price support payments, or certificates."

"The grower who wanted price guarantees diverted a part of his acreage to other uses than wheat production; he traded fewer acres for a guarantee of better income. The grower who didn't want to make the trade gets what he was trading for at the time of seeding decision. Had there been no choice offered, every producer would have been in the same world price boat. The result of offering a choice is between \$400 and \$500 million on the plus side rather than the \$600 million on the minus side. This program does not deny freedom to the farmers, nor does it depress farm income."

James E. Kirbys Visit In Hereford Area

Mr. and Mrs. James Kirby and daughter Rebecca, College Station, are the houseguests of Mr. Kirby's mother, Mrs. J. W. Kirby, 801 East 4th. They arrived Friday.

Former Hereford residents, the James Kirbys will be visiting also other relatives in the Hereford area during their vacation here.

Read The Classifieds Classifieds Get Results

The Hereford Brand



Our Slogan: "More People—More Farms"

Member National Editorial Assn. Member Associated Press

Hereford, Deaf Smith County, Texas—Phone EM 4-2030

Published Every Thursday at 130 W. Fourth

Entered as second-class matter at the Post Office in Hereford, Texas under the act of March 30, 1879 Second-Class postage paid at Hereford, Texas. Any erroneous reflection upon the character, standing or reputation of any person, firm or corporation, which may appear in the columns of this paper, will be gladly corrected upon due notice of same being given to the editor personally at the office. Subscription Rates: Zone 1, \$2.50 per year; Zone 2 and above, \$3.50 per year. With the Sunday Brand, both papers, Zone 1, \$4.95 per year; Zone 2, \$6.15 per year. Carrier delivery, 60c per month. Single copies, 10c each.

Classified advertising rates: 6c per word first insertion (60c minimum); 4c per word additional insertion.

JAMES M. GILLENTE Publisher
 MELVIN YOUNG Managing Editor
 RAY MARTIN News Editor
 BILL PENN Advertising Manager
 LEE BROWN Mech. Supt.



PROGRAM DEFENDED — Secretary of Agriculture Orville Freeman, as principal speaker at last Saturday night's appreciation dinner for Cong. Graham Purcell, Freeman, shown here speaking, defended the farm

program and was high in his praise of Purcell and Texas and Oklahoma wheat growers' groups who have supported the new program.

(Brand Staff Photo)

HDA Profiles — No. 1

No Summer Slowdown For This HD Leader

Editor's Note: This is first in a series of profiles on presidents of Deaf Smith County Home Demonstration Clubs. Each president will continue in office until December 31, official end of the county home demonstration club year.

By Carma Thomas
 If walls could talk, at least the ones in Mrs. Jimmie D. Bradley's home, they would proclaim their owner's good taste and quality of workmanship, her industry and untiring effort on behalf of her family.

To Bippus Community those newly redecorated walls would tell much Mrs. Bradley's neighbors and friends already know:

That her work as president of Bippus Home Demonstration Club did not end with summer vacation;

That improvement of her house, yards, and home property extends into beautification of Bippus Community House and grounds.

That orderly procedures and planning, even music and recreation, in her home are reflected in Mrs. Bradley's community and county endeavors.

As president of the Bippus club, she is a member of the county home demonstration council. She has been sure that her club is well represented at group meetings, county-wide schools of instruction, or forums that could offer leadership training for future use in Bippus Community.

This summer she has been an active participant for her club in cooperating with the American Veterans Hospital. She will see that Bippus is again represented at the August 20 Auxiliary Home Demonstration Clubs picnic for the veterans.

She has made plans for Bippus club's program of work through autumn to her term's end at the New Year. In her own study, special time is to be given to fabrics, time manage-

ment, sewing skirts, and holiday menus.

As a neighbor and club associate says of her, "Mrs. Bradley will have business and programs will in hand. All will be in order and readiness. She keeps perfect records. She is prompt, faithful, ready to help."

To meet this year's special responsibilities, Mrs. Bradley has drawn upon her past experience as alternate council delegate, member of 4-H council committee, member of club recreation committee, sponsor of Walcott 4-H club, and secretary of Bippus Sunday School and Community Church.

Important, too, she feels was her "basic" early training and work that led to her being a 4-H Gold Star Girl. She realizes also how helpful has been her training in business college and her six years of bookkeeping and secretarial work for Amarillo business firms before she returned to Bippus to make her home.

These skills she has used to good advantage in her home management, club work, and volunteer typing and secretarial duties for service organizations.

She enjoys flower gardening and music and church work. She has taught her children music and regularly has led singing at Sunday School. She

Letter To The Editor

The TV commentators have gone to considerable lengths in explaining Goldwater's sources of political strength to the American people. As one who attended the Republican National Convention, I would like to submit a minority report in favor of this species, these people who worked hard to nominate Barry while the septic scuffed that it couldn't be done.

In foreign policy, Goldwater's support comes from people who believe that world peace can only be won by firmness of purpose. They have taken the trouble to understand international communism, from its illegitimate beginning when Lenin overthrew the Democratic Kerensky Government in Russia by force of arms until the present, during which time it has murdered more people, caused more destruction, enslaved more people, and crushed more hopes for human dignity than any other tyranny in the history of the world. Goldwater people believe that Democrat foreign policy, or lack of it, has been responsible for the enslavement of Eastern Europe (Poland, Yalta), the Korean War (Dean Acheson's statement that Korea was outside "our sphere of defense"), and the war in Viet Nam (the "neutralization" of Laos). So they want to help develop a foreign policy that the enemies of Freedom will respect and that the millions of people who desire limited government and dignity under God can afford to trust.

On the domestic front, Barry's support comes from people who believe that large, planned deficit spending is morally wrong, especially in times of prosperity; it comes from people who have realized that the bulk of federal income taxes is paid by those in the \$3,000 — to \$6,000 brackets, who know that the "little people" are the victims, not the beneficiaries of the something-for-nothing policies of the current administration and its wheeler-dealer friends; it comes from people who believe the Constitution of the United States is an inspired document that has served well in the protection of the people from



Mrs. Jimmie D. Bradley (Bippus Club) (Brand Staff Photo)

promotes Bippus Fifth Sunday All Day Singing — and the cook-out dinners on each such occasion.

Best hobbies of all she is sure are her home, her family of four: Beverly (11), Jeffrey (4), her farmer husband, Jimmie, and herself.

For these nearest her she enjoys her home demonstration club experiences most. She points out that her club work keeps her family informed on the latest trends in homemaking and helps the family set goals toward which all can work.

Next Profile: Mrs. Clyde Smithers.

Zoning...

(Continued from page 1)

the location in the park would be subject to the commission's approval and the present buildings would be moved at no expense to the city, when the new building is completed.

All commissioners, Mayor Ray Cowsett, City Manager Dudley Bayne and City Attorney Earnest Langley, were present at the regular meeting.

the Great Oppressor throughout history — Big Government; it comes from people who believe that all Americans have responsibilities in our society, and that the Democrat coalition of corrupt big-city machines, subsidy-seekers, and "minority groups" is a dangerous way to play politics because it destroys the individual and creates government by pressure group.

Yes, the hundreds of thousands of Americans from all walks of life who contribute \$1. and signed petitions asking Barry Goldwater to seek the nomination, who worked tirelessly for him in neighborhoods all over America, who ask nothing in return but honest, responsible government — these are the people who have made possible for all of us a clear-cut choice between the genuine liberalism of Constitutional, limited government or the continued drift toward stagnating authoritarianism.

I am proud to support Barry Goldwater for President of the United States. He has earned the respect and admiration of all who know him during twelve years in the Senate. He has stood almost alone at times but his courage and dedication has never wavered and his political judgment on many controversial issues over the years has stood the test of time, which is the "severest critic of them all."

J. Frank Ford, Jr.

Read The Classifieds Classifieds Get Results

J. G. Robinson Rites Are Held

Services for J. Garland Robinson, 33, 123 Ave. I, were held Wednesday afternoon at the First Christian Church. Officiating was the Rev. Eugene Brink, pastor of the church assisted by the Rev. Noah Arnsprester and the Rev. V. W. Marcouffell.

Robinson died Monday afternoon in Deaf Smith County Hospital after a long illness.

He was a member of the First Christian Church, an aircraft illustrator, and veteran of the Korean War. Graduate of Hereford High School, Robinson was graduated from West Texas State University in 1957 and later from a school of art in California. He was employed by Lockheed as an illustrator of aircraft.

Surviving him are his parents, Mr. and Mrs. Ervin Robinson, 123 Ave. I; one brother, Ervin, Jr., 313 Ave. B; two sisters, Eva Pearl Spurgeon, Columbus, Ohio; and Seletta Gholson, 117 Ave. J.

Bearers were Jim Phillips, Amarillo, Bill Brady, Reese

3 Plead Guilty In County Court

Three persons appeared before Deaf Smith County Judge H. C. Williams, this week, to answer to a charge of driving while intoxicated and two separate charges of contributing to the delinquency of a minor.

Guadalupe Losoya Baezel entered a plea of guilty to a charge of driving while intoxicated and was fined \$175 and cost and sentenced to six days in the county jail.

Baezel was arrested by Texas Highway Patrolmen and charged with the DWI over the weekend.

According to Judge Williams, Baezel's drivers license will automatically be suspended for a six months period.

Mauricio Flores entered a plea of guilty to a charge of contributing to the delinquency of a minor and was sentenced to 45 days in the county jail.

Whittington, Tommy D. Carnahan, Bob Morgan, and Bill Hutson.

Interment was in West Park Cemetery, under direction of Gilliland Funeral Home.

Jays in the county jail.

Guadalupe Guadiana Ramirez was sentenced to five days in the county jail, after entering a plea of guilty to a similar charge, before Judge Williams.

Owen To Attend 3-Day Course On Palsy Study

Dr. Wesley Owen, Hereford, will attend a three-day postgraduate course, "Dentistry for Children with Cerebral Palsy," sponsored by United Cerebral Palsy of Texas and the Baylor University College of Dentistry, Aug. 6, 7, and 8, in Dallas.

F. E. Garrison, D.D.S., president of United Cerebral Palsy of Texas said, "Following the successful initiation of this course last year, dentists throughout the Southwest Region requested that it be repeated for the benefit of their colleagues."

The course is planned to give dentists a basic understanding of cerebral palsy including the

medical, psychological and social aspects in addition to the dental aspects."

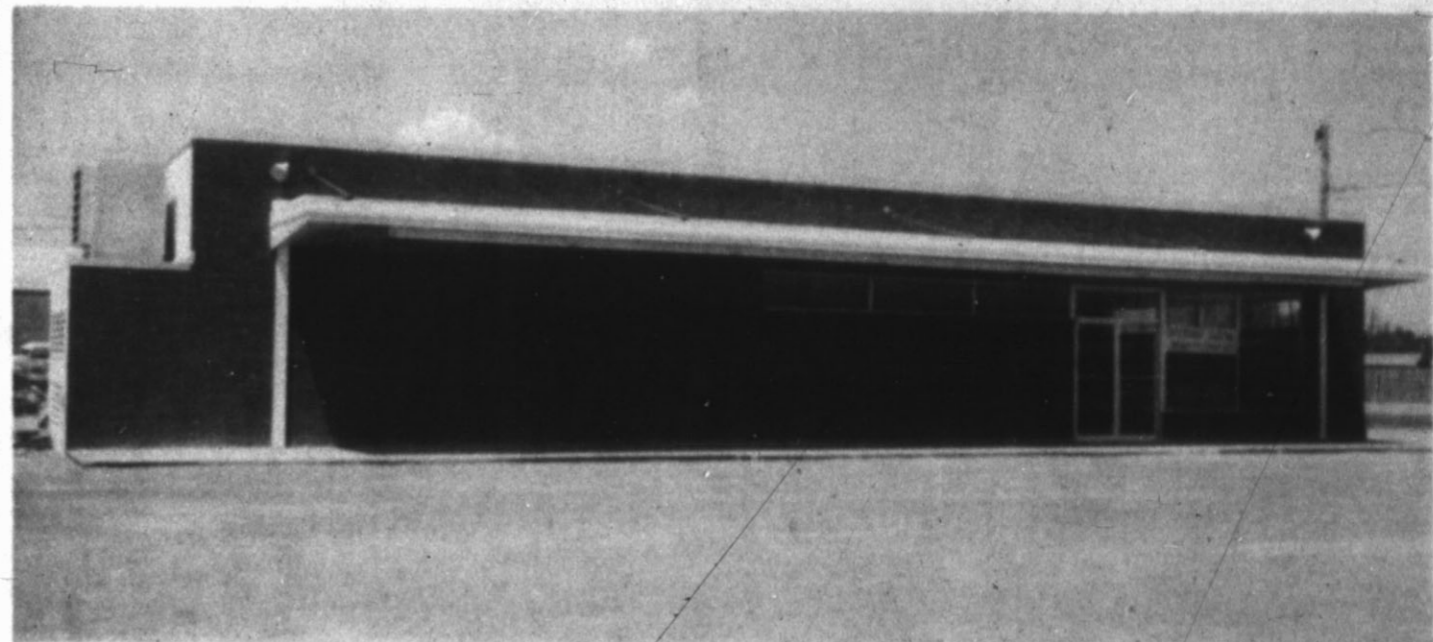
The course is approved for 20 hours credit by the Academy of General Dentistry and is endorsed by the American Academy of Cerebral Palsy.

CLASSIFIEDS

GET

RESULTS

GRAND OPENING



205 S. 25 Mile Ave.

FREE

Register For The FREE GIVE-AWAY Anytime You're In The Store!

SATURDAY, AUG. 8

Drawing 10:30 a.m. 5 p.m. Must Be 16 Yrs. or Older

- *Bicycle
- *Elec. Toaster
- *Elec. Mixer
- *Elec. Coffee Pot
- *6 Stuffed Elsie Cows
- *25 Baskets of Groceries

*First 50 Women in store Saturday Morning Get Free Pair Nylon Hose With 2.50 Purchase or more.

*Free Hot Dogs Cokes, Choc. Milk Sat. 10 a.m.—5 p.m.

*Free Gift for All Kids

*Clown and County Fair

3 Lbs. Pure Lard	45¢	All Meat Bologna	lb. 39¢
4 Lbs. Pinto Beans	39¢	Lettuce	Head 15¢
Melorine	3 1/2 Gal. \$1	Tomatoes	lb. 19¢
Eggs	3 Doz. 97¢	Avacados	2 For 23¢
King or Reg. Cigarettes	Cin. \$2.59	Borden's — 12 Oz. Can	2 For 25¢
Flour	25 Lb. \$1.65	Cottage Cheese	25¢
Fryers	lb. 29¢	Bacon	2 Lb. Pkg. 47¢
Pork Chops	lb. 69¢	Borden's — Qt. Choc. Milk	2 For 29¢

These PRICES GOOD FRI. - SAT. ONLY

BOYNTON GROCERY

205 25 Mile Ave.

Hwy. 385

EM 4-3287



By Melvin Young

Tried cleaning out your desk lately? If you don't have all day to spare, don't try it.

It's amazing however, the number of "priceless" objects that one comes across, saved from the last desk cleaning spree, and returned for safe keeping, not to be seen again until the next time one decides to clean out the desk. Which, if you're average, will be in two or three years.

James Jamerson said recently that Lyndon Johnson was the only presidential candidate he could recall who had both poverty and prosperity working for him at the same time.

After Tuesday's naval engagement off the shores of North Vietnam, we think perhaps he also has war and peace working for him at the same time.

By the way, Mr. Johnson's action concerning the above issue, has been met with a great deal of enthusiasm in all circles around this area. In visiting with many local citizens in Hereford Wednesday, we failed to turn up one decenting vote. Apparently the folk around here have just about had enough of our past policy of "turn the other cheek".

Someone suggested recently that we ought to nominate Bob Hope for president and Red Skelton for vice-president.

Summer is fast fading away, and it won't be long until the school bells ring again. Which means — if you haven't taken that vacation, you'd better hurry. Not much time left.

Understand that Slim Wester has installed an air conditioner on his boat. Operated by a treadmill, we're told, but they didn't make it too clear as just who would peddle the treadmill.

The United Fund board of di-

rectors will meet today (Thursday, August 6) at 10:00 a.m. at the board room of the Hereford State Bank, according to Dean House, president.

"The 1965 campaign chairman will be named at this meeting," House said, "and it is very important that all board members be present."

The first candidate that will run on a platform of "rain-fall for all" will have our whole-hearted support.

The loss of the dryland wheat crop, plus the prospects of more of the same for the dryland milo, puts a crimp in the budget of many an area farmer.

Although the county is famous for its fine irrigated farms, it still hurts when the dryland boys miss a crop. And it hurts worse when they miss two in the same year.

Irrigated crops are generally looking fine, but we hear the same story every where we go. "You just can't keep 'em wet". Lack of rainfall has placed a heavy burden on the irrigation wells and adjoining counties and farmers are finding that it is almost impossible to keep sufficient water on their crops.

Austin Rose Jr. says it's "quit for sure". Anytime the Rider's Club Rodeo isn't rained out at least one night, there is no hope left.

Doc Kirby called to report a homing pigeon that has taken up residence at their home. The pigeon is banded, Doc says and has the markings of URC 663-8887. Of course that was Greek to us, but we referred him to Stan Sigmam, who happens to be a pigeon enthusiast.

Pack London dropped by the office Wednesday to let us know that this was his 48th wedding anniversary. "We're not celebrating the occasion," Pack said, "Just enjoying it."

Pack said the entire 48 years of married life has been spent right here in Hereford. "And



MULES — NOT BURROS — A recent parade in Hereford included a stagecoach drawn by two animals which a Brand photographer, more familiar with foreign cars than with animals, called "burros." The Brand this week received a letter which said, "Any jackass should know that these aren't burros." He's right. They're mules.

WSCS Delegates Attend Meeting In Lubbock

Mrs. Pete Caviness and Mrs. Grant Hanna last week attended Northwest Texas Conference, 15th Annual School of Miscellaneous and Christian Service for Women's Society of Christian Service and Wesleyan Service Guild.

The conference met in Saint John's Methodist Church, with all meetings emphasizing the theme, "That All May Have the Spirit of His Love." Presenting a Bible lecture and study on the general conference theme, the Rev. Charles R. Britt, pastor of the First Methodist Church, Brewton, Ala., was the principal speaker.

Another divisional study was centered on Purpose and Progress in a New Age, conducted by Mrs. Cecil R. Matthews, Secretary of Spiritual Life Cultivation, South Central Jurisdiction of the Methodist Church.

Mrs. Caviness and Mrs. Hanna representatives of Hereford First Methodist Church, also attended clinics on special areas when the fiftieth rolls around, we're going to have a hootenany," he said.

of the general subject and challenges that Methodist women will be facing in their studies of the forthcoming year.

Among them was the clinic on missionary education conducted by Mrs. Kenneth Wyatt, conference secretary of Missionary education of Northwest Texas Conference WSCS.

A final clinic for presidents of the different divisions Methodist women's work was conducted by Mrs. J. T. Elms, president of Northwest Texas Conference WSCS.

Some 400 delegates attending this conference from the nine districts of the South Central Jurisdiction of the Methodist Church.

The symbol of the Fourth of July is fireworks; of Memorial Day, flowers.

Dr. Milton C. Adams
OPTOMETRIST

335 Miles EM 4-2255

OFFICE HOURS
Mon. - Fri. 8:30-5:00
Saturday 8:30 - 1:00

Open 9 till 6 Weekdays
9 till 9 Saturdays
Penney's
ALWAYS FIRST QUALITY

REDUCED

LAST THREE DAYS — THURSDAY, FRIDAY & SATURDAY

NATION-WIDE®

Penney's long-wearing cotton muslins. All perfect! Laboratory-tested! Three generations have counted on Penney's Nation-Wide sheets for outstanding value. Famous for their firm, balanced weave, smooth finish and flawless quality, they're a big buy any time, sensational now! Compare! Come in. Stock-up now and save!

149
WHITE

twin 72" x 108" flat or ELASTA-FIT bottom sheet
full 81" x 108" flat or ELASTA-FIT bottom sheet
cases 42" x 36" — 2 for 78¢

PENCALE®

Penney's fine, combed cotton percales! All perfect! Laboratory-tested! Yes, these are the Penney percales woven of selected long-staple cotton, combed to extra silky smoothness, that homemakers prize for fine quality and value! A famous buy year around, extraordinary at these prices! See what beautiful colors, too.

178
WHITE

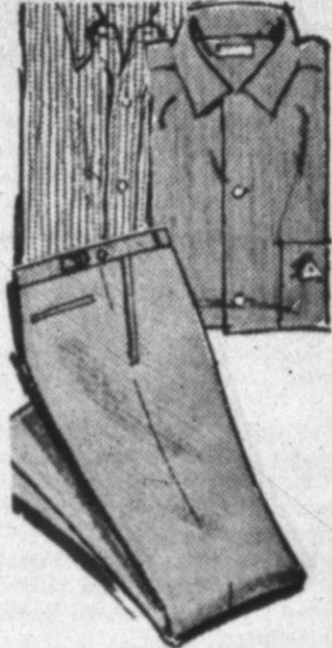
twin 72" x 108" flat or ELASTA-FIT bottom sheet
full 81" x 108" flat or ELASTA-FIT bottom sheet
cases 42" x 38½" 2 for 99¢

PENCALE FASHION COLORS

Pastels: lilac, seafoam, green, aqua, yellow, pale pink, milk chocolate. Deep tones: raspberry ice, blue, honey gold, avocado, orange ice.
twin 72" x 108" flat or ELASTA-FIT bottom sheet ... 2.47
full 81" x 108" flat or ELASTA-FIT bottom sheet ... 2.73
cases 42" x 38½" ... 2 for 1.21

NATION-WIDE PASTELS

Light lilac, pink cloud, sky blue, pastel yellow, opaline green.
twin 72" x 108" flat or ELASTA-FIT bottom sheet ... 1.99
full 81" x 108" flat or ELASTA-FIT bottom sheet ... 2.32
cases 42" x 36" ... 2 for 99¢



MEN'S SPORT SHIRTS AND SLIM SLACKS

any 2 for \$5

Every popular shirt style and pattern—in cotton or Dacron® polyester-cotton. Heavyweight Avril® rayon-cotton slacks; 2-trim styles.

PIECE GOODS BONANZA!

Plaids Run Riot in Penney's Cottons

50¢ Yd.

Go back to school in Penney's Gingham Plaids Little or no iron

UNBLEACHED COTTON MUSLIN

5 yds. for \$1

Stock up on this sewing necessity, now so low priced at Penney's! Its uses are infinite!

PINWALE COTTON CORDUROY

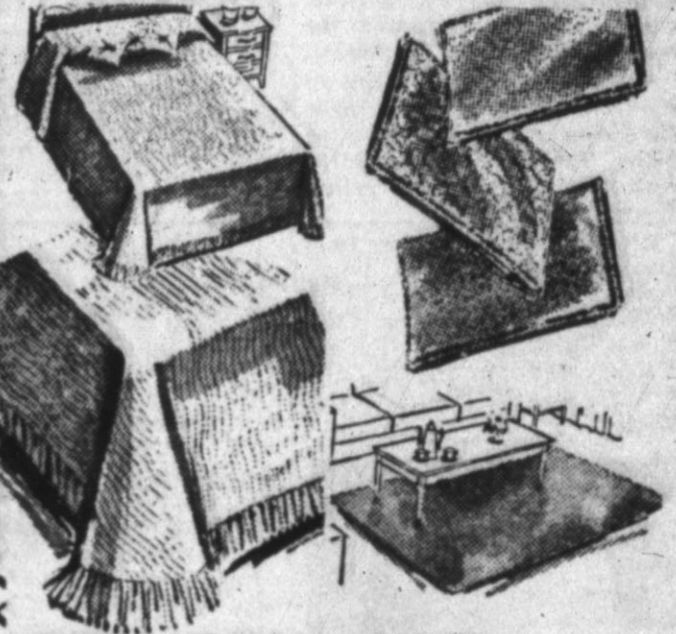
68¢ yd.

School wardrobes thrive on sturdy corduroy... machine washable, irons in a flash! Many colors!

QUALITY FALL COTTONS

44¢ yd.

Combed satin in broadcloth, yarn dyed, textured, more cottons! Machine wash 'n wear!



TUFTED SPREADS IN 9 FASHION COLORS!

2 for \$5

Superb Penney value... thick, long wearing cotton tufted all over and bullion fringed. Machine washable in lukewarm water.

CARPET REMNANT SPECIAL!

2 for \$5

Axminsters, velvets, wiltons, tufted finishes with serged edges, rounded corners. Wools, nylons, Acrilan® acrylics, other fibers.

Charge It At Penney's In Hereford 313 N. Main Hereford, Texas

FURNITURE CLOSE OUT

Mr. and Mrs. Fish are retiring from the furniture business -- Everything to the bare walls must be sold!

147.80 — 2-piece Modern Living Room Suite Brown Nylon \$99.50	374.50 King Size SLEEPER SOFA \$249.50	One only GE Automatic DISHWASHER \$189.50
Two 147.80 2-piece Modern LIVING ROOM SUITES, Brown Nylon \$99.50	280.00 96 Inch Brown Nylon Tweed Early American SOFA \$149.50	389.50 Matching WASHER & DRYER — GE \$229.95
274.50 2-piece Modern LIVING ROOM SUITE, foam seat, back, nylon \$199.95	349.95 Brown Nylon over Foam LIVING ROOM SUITE 2-piece Provincial \$289.50	One Only GE Electric Clothes DRYER \$149.50
232.00 2-piece Modern LIVING ROOM SUITE, Brown nylon over foam \$189.50	292.20 Sandalwood Beige Nylon over foam PROVINCIAL SOFA \$199.95	169.95 — One Only — Stand Free GE PORTABLE TV \$139.50
240.00 — Reinforced plastic over foam LIVING ROOM SUITE, 2-piece Modern \$169.50	451.00 triple dresser, bar bed, chest, 2 n/stands BEDROOM SUITE 5-piece Modern \$299.95	229.50 23" Table Model Base Free GE TV \$179.95
211.00 — Gold & Brown Nylon over foam LIVING ROOM SUITE, 2-piece Modern \$169.50	237.40 Triple dresser, bar bed, chest BEDROOM SUITE 3-piece modern \$149.50	349.95 23" GE Lo Boy HI-FI and TV — dual speakers \$249.95
289.50 2-piece Modern—Foam seat and back LIVING ROOM SUITE Rose Beige Nylon \$149.50	219.50 double dresser, bar bed, chest COLONIAL BEDROOM SUITE solid oak \$159.50	319.95 23" Early American GE TV \$239.95
205.00 2-piece Modern Extra heavy construction LIVING ROOM SUITE Turquoise Nylon over foam \$169.50	290.00 double dressed, bar bed, chest, n/stand MODERN BEDROOM SUITE Cinnamon Ma'gany \$189.50	319.95 23" Italian Provincial GE TV \$239.95
287.50 2-piece Modern—Beige Nylon SUIT 220 coil mattress \$199.50	249.50 double dresser, bar bed, chest BEDROOM SUITE Rock Maple/formica top \$189.50	CASH & CARRY — Three Used CLOTHES DRYERS — Good Shape \$35.00
319.50 Brown Tweed Metallic over foam LIVING ROOM SUITE 2-piece Modern \$199.50	389.50 Triple Dresser, chest on chest, bed, N.S. BEDROOM SUITE Rock Maple/formica top \$229.50	One only — New BABY BED & MATTRESS \$22.25
269.95 Brown Nylon over foam SLEEPER SOFA 220 coil mattress \$189.50	421.45 4-piece Genuine Cherry BEDROOM SUITE Provincial \$299.50	33.95 Cosco BABY PLAY PEN \$24.95
199.50—Heavy Metallic cover over foam 100-Inch MODERN SOFA \$149.50	383.00 4-piece Genuine Cherry BEDROOM SUITE Provincial \$289.50	16.84 BABY HIGH CHAIR \$12.95
257.80—Expandable vinyl over foam MODERN SLEEPER \$189.50	407.45 5-piece Early American BEDROOM SUITE Maple \$299.50	12.95 BABY HIGH CHAIR \$6.95
239.50—Brown Tweed—10 yr. Innersp. Matt. Early American SLEEPER SOFA \$169.50	280.00 3-piece Early American BEDROOM SUITE—Solid Maple \$229.50	Unfinished CHESTS of DRAWERS \$12.50
261.90 Brown figured uphol. 10 yr. matt. Early American SLEEPER SOFA \$189.95	224.00 2-piece Early American BEDROOM SUITE solid Rock Maple \$189.50	ICE TRAYS \$1.00
329.50 100-inch—Brown Nylon—MODERN SLEEPER SOFA \$199.50	One only 129.50 7-piece DINNETTE Bronze \$79.50	299.95 King Size MATTRESS & BOX SPRINGS \$189.50
229.55 light Br. Tweed, 10 yr. matt. Early American SLEEPER SOFA \$169.50	One only Large UPRIGHT FREEZER \$225.00	Several Lamp Tables, Step Tables and Coffee Tables 1/2 Price
One Only Used Sofa Cash & Carry 99¢	One Only CHEST TYPE FREEZER \$180.00	
One Only USED 2-PIECE Living Room Suite Cash & Carry \$1.99	One Only 30-Gal. HOT WATER HEATER \$59.50	
	One only Deluxe MAYTAG SQUARE TUB WASHER \$175.00	
	One Only ROUND TUB MAYTAG WASHER \$145.00	
	249.95 30" GAS RANGE \$179.50	
	289.95 36" GAS RANGE \$189.50	
	229.95 36" GAS RANGE \$159.50	
	One only GE Automatic DISHWASHER \$129.50	

Ma and Pa Fish is quittin' — The Buy-Rite Furniture will close forever. Everything in the store must go — and it is moving on out. There are still lot of good buys left, but if you want a bargain that won't be duplicated, better hurry!

BUY-RITE FURNITURE

209 Park Ave. — North End of Main Street

Auxiliary Plans Annual Harvest Dinner Aug. 18

Annual Harvest Dinner August 18 served by American Legion Auxiliary will be the organization's biggest money-making event for their scholarship fund during the year.

On that date from 11:30 a.m. to 2 p.m. Auxiliary Unit 192 will serve in American Legion Hall a buffet dinner of foods grown in the county. This dinner will feature roast beef, home-grown vegetables in great variety, homemade breads—white loaf bread, whole wheat rolls, and cornbread—homemade des-

serts, and beverage.

Announcement of this county-wide favorite dinner, especially among merchants and business people, is made by Mrs. Ira Ott, auxiliary president.

Purpose of this project is maintenance of the scholarship fund Auxiliary Unit 192 established last October. Original plan called for a scholarship of \$150 to be awarded a graduating se-

nior, a veteran's child. This year Linda Lemons received the scholarship. She will be using it to further her education at Hardin-Simmons University. A bilene.

Tickets for this event went on sale Wednesday morning with sales being directed by Mrs. Hazel Sparks, 405 Lawton, chairman, Mrs. C. R. McGhee, 500 West Park, and Mrs. Mable Wagner, 137 Beach, Or. tickets can be bought at \$1.50 each from any member of the auxiliary.

Mrs. C. A. Sauley is chairman of the foods committee. Assisting her are Mrs. W. J. Frost, Mrs. Frank Smith, Mrs. Ira Ott, and Mrs. Hazel Sparks.

Mrs. Alice Swigert heads the kitchen detail with Mrs. Carl Schroeder as chief assistant.

Chairman of the serving committee is Mrs. Grant Hanna, also chairman of all junior activities of the auxiliary. She will have as her assistants all members of the Junior Auxiliary.

Known for their ability to cook good meals, the American Legion Auxiliary have served holiday dinners for merchants for the last ten years. Their plans are being put into action for repeating this Harvest Dinner on August 18.



FOR HARVEST DINNER — Mrs. C. A. Sauley, Sparks, who checks list of county-grown foods available and quantities needed. Standing at right, Mrs. Ira Ott offers suggestions for making this the best ever scholarship fund-raising event undertaken by the auxiliary.

Billy Wall Hosts Birthday Event

Billy Joe Wall celebrated his 16th birthday Sunday, July 26, with a back yard cookout at the home of his parents, 519 Ave. J.

Barbecue hamburgers with all the trimmings plus home made ice cream and cake were on the menu. The cake was decorated with mocha icing and yellow flowers.

Attending the party were Dannie Kemp, Mike Kemp, Larry Brown, Lee Robinson, Jerry Blackburn, Mr. and Mrs. Clois Kemp, Mrs. D. R. Grimes, Johnnie Wall, Mr. and Mrs. Billy Wall, and the host, Billy Joe Wall.



LEADER

Charles Bell, Jr.

receives a Southwestern Life salute for winning two of the highest honors in life insurance—membership in the Texas Leaders Round Table and the National Quality Award. Membership in the Texas Leaders Round Table, honor group of the Texas Association of Life Underwriters, is limited to those who meet high standards in volume and permanence of business produced. The National Quality Award is granted by the National Association of Life Underwriters and the Life Insurance Agency Management Association to agents whose service to the public has been deemed superior.

Our congratulations to Charles Bell, Jr.—your Southwestern Life Agent—your friend for life.



Southwestern Life
INSURANCE COMPANY • DALLAS • SINCE 1902
1st & Main EM 4-2343

NOW YOUR MONEY EARNS MORE AT FIRST FEDERAL

4 1/2%
ANTICIPATED
DIVIDENDS

PAID QUARTERLY

Save by the 10th - Earn from the 1st

First FEDERAL
Savings & Loan Association
of Amarillo

DOWNTOWN: 406 Polk - DR 2-3247
SUBURBAN: Wolflin at Duniven Circle - FL 5-3375

EASTER NEWS

Out-Of-Town Guests Visit Epperson Home

By Ruby Stone

Mr. and Mrs. T. E. Pryor, Olessa, Mr. and Mrs. Les Han, Corpus Christi and Miss Glenda Pryor, Lubbock, spent the weekend with Mr. and Mrs. W. A. Epperson.

Ruby Epperson and Joe Pryor visited Uman Hunter in the Veteran's Hospital in Amarillo Tuesday.

Mr. and Mrs. H. H. Smith visited in the W. A. Epperson home Saturday afternoon.

Mr. and Mrs. Roland Lanis, Ben and Lynn of Franklin, La., spent the week in the home of their daughter, Mr. and Mrs. Trent Downing and Laura.

Kippy Lanis is returning to her home in Franklin, La. with her parents after spending four weeks with her sisters and brother-in-law, Mr. and Mrs. Trent Downing.

Mr. and Mrs. Trent Downing and Laura, Mr. and Mrs. Roland Lanis, Kippy, Ben and Lynn spent Wednesday afternoon at Palo Duro Park.

Mrs. William Moss and son, Jeffery visited Mrs. W. A. Epperson Wednesday afternoon.

Mrs. Bannell Landers returned home from Oklahoma where she had been caring for her mother, Mrs. Rachel Knight. Mrs. Knight returned home with her daughter for an extended visit.

Bannell Landers was in Plainview on business Saturday.

A party was given by Mrs. Lefty Thomas in the home of Mrs. Charles Frye Tuesday afternoon. Those attending were: Mrs. Bill Strue and Kita, Mrs. Houston Frye and Hilton, Mrs. Jai Andrews and Elizabeth, Mrs. John Smith, Mrs. Virgil Walker, Mrs. Howard Hunter and children, Mrs. Charley Springer and children, Glenda Mincher, Mrs. Shirley Garrison, Mrs. Owen Andrews and Mrs. Bernice English, Earth. A demonstration was given to show the use of paints.

Refreshments were served by the hostesses at the end of the meeting.

Charles Frye attended youth church camp at the Episcopal Camp at Amarillo last week.

Mrs. Charles Frye and Traci visited the Camp Friday afternoon.

Mr. and Mrs. Charles Frye and Traci were supper guests in the home of Mr. and Mrs. Strue Tuesday night.

Mrs. J. L. Givins, Dallas, visited last week with Mr. and Mrs. Fred Walton.

Mr. and Mrs. J. A. Flood were Sunday dinner guests in the home of their son and family, the Ernest Floods, Westway, Reba Hall spent Wednesday

ADRIAN NEWS

Jimmy Brown Wins Amarillo Gun Contest

By Ann Beavers

Jimmy Brown, Adrian, took high honors Sunday at the Amarillo Gun Club by breaking 271 out of 300 targets in a trapshoot.

Ray Shults of Pampa led Brown by four targets after the singles and handicap events were completed, but Brown came in with 87 in the doubles to Shults 81 to win.

Brown was Class A winner with a 93 in the 16 yard event. Class B honors went to Tommie Tucker, Memphis, who defeated Art Riddle Jr. of Pampa in a shoot off, after they had tied with 93. Jimmie Brown was winner of the Class A trophy in the doubles competition with a 87, Art Mast of Bovina broke 83 to win Class B and Shults won Class C with his 81.

The event drew 35 shooters.

Ted Hale left Saturday for Albuquerque to attend Coaches School for a week. Ted has his clothes locked in the car trunk as last year while attending coaches school in Ft. Worth, he had his clothes in the back seat of the car everything was stolen.

John Henry Grulhkey is home on a two-week furlough from San Antonio.

Mr. and Mrs. R. Lee Petty and children from Brownfield visited over the weekend with the Wilbur Harris family and the Har-

night with Darcill Oldham, Dimmitt.

The Oldham family and Reba Hall left Thursday morning for a few days vacation at Taos and Red River, N.M.

Mrs. Fred Walton visited Mrs. Oscar Lanier in the Deaf Smith County Hospital Wednesday. Mrs. Lanier lives at Boys Ranch.

Mr. and Mrs. Bill Strue and Kita visited with Mrs. Strue's mother, Mrs. Eula Whitford, Earth, Sunday afternoon.

Mr. and Mrs. Jimmy Dawson left Sunday afternoon for a week's vacation in the Pike Peak area.

Mr. and Mrs. Tom Tyrer and children from Panhandle visited in Adrian Saturday.

Mrs. Mary Gill from Wichita Falls visited her daughter and family, the Horace Betts, this over the weekend.

A bridal shower honoring Mrs.

NEED PLUMBING REPAIR?

- Complete Plumbing Repair Service
- Electric Sewer Machine Cuts roots out of Sewer Lines.

DEALER FOR

Payne

Heating and Air Conditioning Equipment

Eljer

Plumbing Fixtures

• Fast • Dependable



JIM'S PLUMBING & HEATING CO.
610 Jackson
EM 4-3163

JIM CLARKE

HEREFORD, TEXAS

Hospital Notes:

Patients in Hospital
Reginaldo Salazar, 325 Ave. C; William Wulff 315 Star; Rogelio Esquivil, General Delivery; Mrs. Bobby L. Roberson, 126-25 Mile Ave.; Mrs. Frank D. Cox, Box 783; Mrs. Floyd M. Campbell, 401 Ave. K; Mrs. Mary M. Click, 129 N. Texas; Mrs. Bessie E. Givan, 505 N. Lee; Howard Armstrong, Box 814; Mrs. Donald M. Sylvia, 116 Hereford St.

Also Mrs. George J. Larson, Star Route, Vega; Mrs. Mary

Kippy Morgan was held Thursday the 6th of August in the home of Mrs. Lorin Creitz from three to five o'clock in the afternoon. Hostesses were Mrs. N. L. Jacobsen, Mrs. R. L. Pinnell, Mrs. Bob Grulhkey, Mrs. Ray Bawn, Mrs. P. H. Grulhkey, Mrs. George Lotspeltch, Mrs. E. N. Jacobson, Mrs. George Grulhkey and Mrs. Lorin Creitz.

Rice, 501 W. 4; Mrs. John E. Jackson, Box 1005; Mrs. Kenneth A. Walterscheid, Route 5; Mrs. Preston Davis, Route 1, Vega; Dale Tackett, 1401-13; Mrs. Oscar O. Lanier, Boys Ranch; Mrs. Robert Lohr, 401 Knight; Mrs. James M. Edlemon, 209 Fuller; Mrs. Robert E. Collier, Box 28, Friona.

Also Mrs. Francis Smith, 120 Ave. H; Mrs. Camilla Tjerfna, 311 Norton; Mrs. Israel Moreno, 106 Hereford St.; Mrs. Esther Rowland, 103 Beach; Sam A. Lynch, Route 4; Lavonne Thompson, Route 3; Arthur A. Marquez, 326 Ave. E; Mrs. Carlos B. Cavazos, 110 Monte Vista; Mrs. Felix N. Zapeta, 701 S. Texas; Mrs. C. R. Damon, Route 3; Mrs. Lloyd D. Payne, 235 Ave. A.

Also Mrs. N. D. Sanders, Route 1; Mrs. Stanley C. Kropff, 238 Ave. J; Mrs. James N. Cochrum, 241 Ave. I; Mrs. J. J. Culp, 211 W. 4, Apt. B; Larry D. Bain, 502 Ave. K.

Patients Dismissed
Mrs. Coy E. House, Jimmy West, Alton O. Branch, 7-31.
Mrs. B. M. DeBord, Mrs. Ver-

RED BARN BALANCED FERTILITY PROGRAM FOR GREATER FARM PROFITS

Anhydrous Ammonia -- 82% N

- ★ Less Labor Needed for Handling
- ★ Resists leaching
- ★ Apply during winter—available when crop needs Nitrogen

URAN -- 32% Nitrogen Solution

Red Barn Liquid NPK Fertilizer -- 10-34-D & 6-18-6

- ★ Contain major plant nutrients
- ★ 100% available — Fast acting and economical.
- ★ Special applicators reduce phosphate fixation
- ★ NPK will help stabilize the anhydrous ammonia even when applied under adverse conditions.
- ★ No heavy sacks ★ Less labor ★ Add other elements in needed amounts

Red Barn Chemical is also Equipped to Serve You:

- ★ Herbicides — for cotton, sugar beets, grain sorghum
Dowpon — For Johnson grass control.
Trysben — For Bindweed control
Dow General Weed Killer — Fence rows, ditches & non-crop land
- ★ Insecticides
Complete line of insecticides including Red Barn Insecticides for all your insect problems

DDT — STROBONE — PARATHION — SEVIN — KORLAM — LIVESTOCK SPRAY

LARRY KAUL, Mgr. 289-5611 or TROY GANDY EM 4-3431

Located at Deaf Smith County Gin
Route 2, Hereford

JIM NORTHCUTT

EM 4-3896

WESTWAY — 15 mi. west & 2 mi. south
on Harrison Hgy.

289-5641



Below 600 feet in the Black Sea the water contains so much hydrogen sulfide that only a few bacteria can survive.

Today's Watchword



Don't let an outfielder
Bat
your watch
around!
BRING YOUR
WATCH
TO A SPECIALIST FOR
repairs

FREE
inspection!
Get our
estimate!

You'll find it usually costs less for precision service than for ordinary service. If not in the actual, certainly in the long run. We guarantee all work unconditionally!

Your Watch Hospital
Cowan Jewelry
217 Main

JOHN DAVID HAMBLIN D.D.S.

Announces The Opening of Offices

For The Practice Of

GENERAL DENTISTRY

907 PARK AVE.

Office Hours 8-5

Office — EM 4-2701

Res. — EM 4-167

It's BEEF ROUND-UP TIME

Copr. G. Doppel 1964

Pardner, put your brand on the most mouth-watering beef that ever melted under a fork. You'll find all your favorite cuts at COOPER'S Sirloin, porterhouse, club, round, chuck or chopped — the finest beef we could lasso, at prices that will have you tossing your ten-gallon hat in the air! And you won't find any excess bone or fat on COOPER'S beef! It's trimmed away BEFORE your meat is weighed and priced. All you get is fine eating—and fabulous value ALWAYS—at COOPER'S

MAGIC NUMBER

1. Bring card with you each time you visit our store.
2. Every card is a winner — Yours may be worth \$500.00
3. Bring your card to our office when completed — void if bleach process applied by unauthorized person.
4. Employees at Cooper's Market and their families not eligible.

START NOW — PICK UP YOUR CARD TODAY
ASK FOR A CARD IF YOU DO NOT HAVE ONE.



Quality MEATS



USDA Graded
CHUCK ROAST Lb. **39¢**

USDA Graded
CHUCK STEAK Lb. **49¢**

Affiliated Food
BACON
Affiliated Food
FRANKS

Armour Star
LUNCH MEAT 6 Oz. Pkg. **4 For \$1**
ARM SWISS STEAK USDA Graded Lb. **65¢**

GROCERIES

Maryland Club
Coffee Lb. Can **69¢**
Assorted Flavors
Kool Aid 6 For **19¢**
Hersheys
Chocolate Syrup 16 Oz. Can **19¢**
Del Monte
Pineapple Crushed No. 2 Can **29¢**

OLEO Shurfine **6 For \$1**

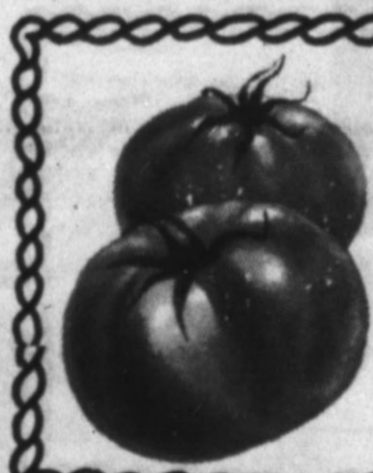
TISSUE Delsey 4 Roll Pkg. **45¢**

CAKE MIX Shurfine Layer Cakes **4 For \$1**

SHORTENING Crisco 3 Lb. Can **69¢**

ORANGE JUICE Shurfine Frozen 6 Oz. **4 For \$1**

Farm Fresh PRODUCE



Pick-O-Morn
TOMATOES Lb. **15¢**

21¢ Pkg.
Cantaloupe Lb. **7¢**

Mr. Clean
Liquid Cleanser 28 Oz. **59¢**
Kingsford — 10 Lb. Bag
Charcoal Briquets **69¢**

Final Touch
Fabric Softner 32 Oz. **69¢**
Haased
Manz Olives Twin Pack **59¢**

Ivory
Liquid Detergent 22 Oz. **59¢**
Honey Boy
Salmon Tall Can **49¢**

Brylcreem
Hair Dressing Reg. 87c 4 Oz. Tube **69¢**
Shurfine
Sliced Beets 303 Can **2 For 25¢**

Morton's
Honey Buns Frozen Pkg. **25¢**
Shurfine — All Green Cut — 300 Can
Asparagus Spears 2 For **49¢**

Van Camp — 300 Can
PORK & BEANS **8 For \$1**

Hunts — 8 Oz. Can
TOMATO SAUCE **3 For 29¢**

Roxey — Tall Can
DOG FOOD **4 For 29¢**

Reg. 59c
ALKA SELTZER **49¢**



PENNY WISE SAYS—FOLLOW THE CROWD TO COOPER'S

I JUST DISCOVERED **HONEY** HOW WE CAN SAVE A LOT OF MONEY! LET'S GO!

I CAN'T— I'D LOSE MY JOB!

LEAVING EARLY SURE LOOKS FUNNY, BUT WE'VE GOT TO SAVE SOME MONEY!

SHOPPING'S FUN FOR EVERYONE! AT COOPER'S

PENNY WISE 123

COOPER'S

Expert Looks at the Grocery Bill

Efficient Marketing Can Improve Grower Returns

Editor's Note: The following article, released by Agricultural Marketing Service, USEN DA, from its Dallas office, was written for the national publication, "Agricultural Marketing," a monthly magazine circulated among agricultural leaders.

By Lew Ray, Chief, Division of Markets, Colorado Department of Agriculture Denver

If 10 consumers were to read the title of this presentation, eight of them would say, "Why do we want to improve grower returns? We go into a grocery store today and come out with one small sack of groceries that cost almost 10 dollars."

If this word "groceries" were analyzed a little for the benefit of the public, the consumer might better understand her food bill.

The consumer doesn't stop to realize that the bottle of special shampoo and the jar of "Wave Set" that makes you glamorous in spite of yourself, is included in the grocery bill. Neither does she consider the hundreds of other items that are included in her grocery bill.

If the consumer could only look at her grocery bill as far as food alone is concerned, and see what a really good value food is in terms of her purchasing power, she would be the first one to say that the farmer is entitled to a living wage.

When we see the most efficient producer in the world gradually paying a little more for what he buys while his products are netting him a little less each year, we know we need to do something about the problem.

If we win this battle for the farmer, we must do it through more efficient marketing. This efficiency must begin with production and extend through all the marketing channels.

Our farmers must grow the varieties that are wanted; they must space their plantings so that they will have product for a longer period of time; they must harvest it at the right time; they must harvest it at the right maturity, pack it as the merchandiser wants it, and get it delivered while the product is at its best.

Only through organization can our growers do these things. We think there are only two or three avenues open for farmers to organize—effectively. These are marketing orders, co-operatives, and bargaining associations.

While marketing orders are very effective in many areas, such as quality control, volume control, pack and package control, and while they furnish the vehicle for collection of funds for marketing research and development, they are lacking in one major area. They don't get the product sold.

We believe a co-operative with a very rigid marketing contract is the best single self-help tool available today for

marketing most farm products.

As an example of what we are doing with co-ops, I would like to tell you a little about one we helped organize in northern Colorado in 1960.

Prior to 1960, a group of owners, mostly Japanese, around Ault, Colorado, grew onions. These young farmers are very intelligent, college trained men. They were intelligent enough to study price reports from receiving areas. They saw the tremendous spread between what they were getting and the wholesale price at these terminal markets. They finally decided that if they were going to stay in the onion business they had to do something.

At our first meeting with them, after they had heard our story we knew that they meant business. Onion Growers, Inc., was formally launched in June 1960.

Their articles called for a \$1000 investment for membership. Fifteen members were signed up during the organizing period. They are a two-way co-op. They are organized to market their members' products and purchase farm supplies for their members.

After they were organized, they arranged to purchase a warehouse which could be used for packing and sorting, as well as provide some storage space. They have since added another larger warehouse at Lucerne, Colorado, about twelve miles



WAITING FOR TRANSPORTATION — These N. M. Monday for the week long Camp-Horizon Girls wait for cars and busses which fire outing. Sixty-five girls attended the year-transported the Campfire Girls to Capitan, (Brand Staff Photo)

south, which more than doubled their storage capacity.

The officers then hired a good manager who knew and believed in the co-op principle.

They arranged for a potato marketing organization with extensive trade territory, the Colorado Potato Growers Exchange, to serve as their mar-

keting agent. The marketing agency also underwrote the loans the co-op needed to buy grading machinery and other facilities. All onions are marketed through this one agency.

The co-op has a very tight marketing contract. All onions must be sold through the co-op. A penalty of \$1. per hundred-

weight is assessed against the producer if he sells onions elsewhere.

This organization is able to furnish its customers top-grade onions from late September to mid-March. This kind of arrangement is what it takes to hold customers. Each grower must deliver

his onions to the co-op when they are needed. The members are paid an advance payment on the onions delivered and, at the end of the season, each grower gets the same price for the same quality, no matter when his onions were sold.

Ten cents per hundredweight is retained by the co-op on all onions sold and goes into preferred stock. The money is used to retire the indebtedness of the Association.

While onions are not one of the crops in Colorado under compulsory inspection, this group believes that official inspection is a must, not only as a basis for paying its members but because, more important, it guarantees uniform quality for the buyer. So, every sack of onions is inspected and graded by the Federal-State Inspection Service.

All onions are packed under their own labels. By packing a top quality product, the association has built an enviable reputation for its onions and is marketing them in 15 states.

We believe the record proves the success of this organized marketing venture.

This gives you a rough idea of what one small organized group is doing in Colorado. The members are loyal, they are satisfied that they have a good organization. We think they are doing a good job.

We have many other co-ops in Colorado, some good, and some not so good. The "not-so-good" ones are the ones whose members have very little loyalty to their co-op — usually a very small membership fee, usually no penalty for selling their product outside of their organization. These are the co-ops that need to take a good look at their organizational structure.

The name Idaho comes from the Shoshone Indian greeting, "We-dah-how," which means "Look, the sun is coming down the mountains." It was greeting for morning.

ATHLETE'S FOOT GERM HOW TO KILL IT. IN 3 DAYS.
If not pleased with strong, instant-drying T-6-L, your 48¢ back at any drug store. Watch infected skin slough off. Watch healthy skin replace it. Itch and burning are gone. TODAY at ROGER'S DRUG

HEREFORD STATE BANK

FOR YOUR

AUTO FINANCING



COTTON GROWERS OFFICERS—Pictured are the new 1964-65 officers of Plains Cotton Growers, Inc., elected last Tuesday at a meeting of the 23-county, 25,000 member cotton producer organization's board of directors. From the left are the Vice President, John D. Smith, Littlefield cotton producer; President Roy Forkner, Lubbock grower and farmer, and Secretary-Treasurer L. D. (Don) Anderson, Crosbyton farmer and seedsman.

PAINT-UP FOR SUMMER WITH PITTSBURGH



FAMOUS PAINTS!

HUNDREDS

of today's most wanted colors including:

WALLHIDE rubberized wall paint

WALLHIDE alkyd type flat wall paint

SATINHIDE Enamel

WALLHIDE Glass Enamel

PITTSBURGH maestro colors

Pittsburgh is famous for quality paints the nation-over. Always plan on the best... and you always get the best. Come in and let us show you the wonderful world of color by Pittsburgh.



Whatever your decorating problems... you can count on us for the help and planning you need.

Call EM 4-3434

CARL McCASLIN

Phone The Lumber Number EM 4-3434

One Block East Of Courthouse



CHRYSLER DEALERS ARE CLEARING '64 STOCK AT THE HOTTEST SPOTS IN TOWN!

CIDAA

- SUMMER SHIPMENTS JUST ARRIVED — WE'RE OVER-STOCKED
- \$2885 ALL PRICES SLASHED
- WE'VE GOT THE MODEL YOU WANT
- BIG 18-FOOT, TWO-TON VALUE AT A SMALL CAR PRICE
- NOBODY MATCHES OUR TRADE-IN ALLOWANCES
- WE'LL DEAL ON YOUR TERMS
- FAST LOW-INTEREST FINANCING
- SHOP A HOT SPOT — SAVE HUNDREDS OF DOLLARS

See your Chrysler dealer—the best of the big car men

McCULLOUGH MOTOR COMPANY • 345 EAST FIRST • HEREFORD

North Dakota Choral Director Visits Here

By Mrs. Merlin Kaul

A musical personality from North Dakota has been the guest of the Keith Jorde and Dick Godwin homes this week. She is Mrs. Kathlee Sihler Palmer, Cado, noted director and teacher of voice who has gained recognition with the Cado Community Choir, Cado, in the heart of the Durum area, has from its earliest heritage earned a reputation for fine music. In this tradition the Cado community chorus was conceived to give farmers, business and professional men and housewives an opportunity to enjoy musical fellowship and offer community service.

The chorus was organized in 1957 under the direction of Mrs. Palmer to present a minstrel show as a public school benefit. Their Christmas concert, a gift to the community in song, became an annual event.

In Cado's Jubilee Year, 1959, the chorus presentation of "Jubilee Revue" was the highlight of a very successful Diamond Anniversary celebration. Locally written, produced and directed, it was presented to an appreciative audience of more than 4000.

In succeeding years "The Invitation to Dream", "The Mikado", "Caravan" and "Around the World with Stitch Riler" earned the group a reputation for talented and inspiring performances both locally and in nearby cities.

Mrs. Palmer, director of the chorus, is a graduate of Bryn Mawr College where she studied voice under Mildred Fass and drama and theatre under Otis Skinner. She continued her musical studies in Europe at the Paris Conservatoire in voice, piano, organ and spent two years at the Royal Academy in London.

While in London, she was



Kathlee Sihler Palmer

twice gold and silver medalist in the London Festival of Music (voice) and winner of the Presidents Challenge Cup, highest festival award.

Back in New York, Mrs. Palmer won a Juilliard scholarship and studied with Madeline Walker for three years. She was soloist at the Paramount theatre, a member of the Knickerbocker Light Opera Company and served as music director at Echo Hill in New York for two summers. She was the New York representative to the National Federation of Settlements where her original musical plays and sketches were on display.

In addition, Mrs. Palmer attended workshops by Robert Shaw, Fred Waring and Paul Christenson. She headed the voice and choral department of Olivet College in Michigan for three years and is a member of

the National Association of Teachers of Singing.

Mrs. Palmer's husband was the late Doison Palmer, physician and surgeon in Cado. Dr. Palmer was fatally injured in a car accident last September.

This summer she has spent some time at the family summer home at their island in "Lake of the Woods" in Ontario, Canada. She has been a friend of the Jorde family for many years — in fact, two members of the Jorde family — Mr. and Mrs. Jim Jorde of Cado — are members of her community chorus. So when invited by the Keith Jordes and Dick Godwins who were on a trip to Minnesota to visit Texas — and Hereford — she accepted.

"I found the sight interesting," said Mrs. Palmer, "and Texas IS BIG and different. I am enjoying my visit here."

Unwanted Shrubs Invade State's Grazing Land

TEMPLE, (AP) — Over four-fifths — 88.5 million acres — of Texas grazing land is now infested with various kinds of undesirable or low-value shrubs or trees, the U.S. Soil Conservation Service reports.

State Conservationist H. N. Smith says on half of the infested area — 54 million acres — the better forage plants on which the livestock industry relies are unable to make satisfactory yields.

On 24 million acres there is so much brush of medium density — with 10 to 20 per cent of the range shaded by the brush canopy — it soon will crowd out the better grasses and forage plants, Smith said the survey showed.

Soil Conservation Service technicians found that, in the 17-year period since an earlier survey, brush has moved onto nearly 5 million acres not previously infested. Existing stands have grown thicker in that time. This is in spite of the efforts of many ranch operators to control the brush, Smith said.

The survey showed an increase in mesquite to a new total of 56 million acres of this doggedly stubborn plant. Rangelands occupied by cedar now total 21 million acres, an increase of 3.5 million acres since the 1947 survey.

Whitebrush, a fast spreading, defiant plant has fastened its grip on 6 million acres, and post and blackjack oak, with associated species, have so thickened on another 6 million acres that grass production has been sharply reduced.

SCS range conservationists now estimate that 75 per cent of Texas' once-famed grasslands now have less than half of the better forage plants that once made its livestock industry so profitable.

Smith pointed out that a consequence of the invasion of the grasslands by brush is lower production and higher production unit costs. Brushy plants are usually water hogs and, although some have a degree of grazing value, they use three and four times as much water to produce a pound of dry matter as the better grasses.

North America has about 700 species of butterflies and more than 7000 species of moths.

VAPORETTE BAR

KILLS FLYING INSECTS WITH VAPOR ACTION

VAPORETTE BAR

FILLS THE AIR WITH INSECT KILLING VAPORS. LASTS FULL SEASON

USE IN

HOMES — RESTAURANTS — MOTELS

MILK ROOMS — ANIMAL SHELTERS

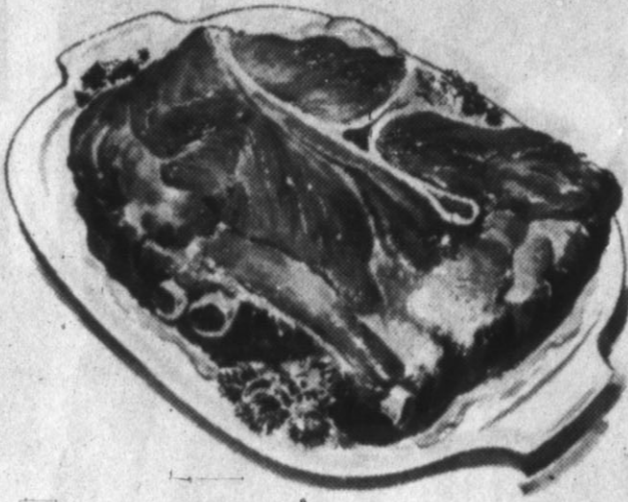
Vapona

PACKARD MILLING

122 S. Main EM 4-2676



Hot Dogs
SOLD SATURDAY ONLY
10¢



Chuck Roast
U.S.D.A. Good Lb.
39¢

Rath Blackhawk
BACON
Lb. **59¢**

T-BONE STEAK 89¢
SIRLOIN or ROUND STEAK Lb. 89¢
GROUND BEEF 3 Lbs. 98¢
RIB STEAK USDA Good Lb. 79¢

Instant COFFEE



6 Oz. **99¢**

Blue Plate—Breaded—Frozen—10 Oz.
Shrimp 49¢

Colgate — Family Size
Toothpaste 69¢

Food King — Lb.
Oleo 3 For 39¢

Shurfine — Canned — 12 Oz.
Soda Pop 13 For \$1

Campbell's — Meat Varieties
Soup 6 For \$1

Schilling — 2 Oz.
Vanilla 35¢

Folgers
Coffee Lb. 79¢

Tender Crust — Lg. Cello
Cookies 49¢

Shurfine — Cut
Green Beans 5 For \$1

Del Monte — Crushed — No. 2 Can
Pineapple 29¢

DINNERS

Banquet Frozen **39¢**

Snowdrift — 3 Lb.
SHORTENING 59¢

Philadelphia — 6 Oz.
CREAM CHEESE 33¢

Hunts — 14 Oz.
CATSUP 6 For \$1

MELLORINE

Swift's Honeycup 1/2 Gal. **39¢**

Alcon — 25' x 12" Roll
FOIL 29¢

Doeskin — 400 Ct. Box
FACIAL TISSUE 5 For \$1

Gerber — Strained Fruits & Veg.
BABY FOOD Jar 10¢

FLOUR

Food King **25 LBS \$1.69**

Specials Good Thurs., Fri., & Sat., Aug. 6, 7, 8

ONIONS

5 Lb. Bag **19¢**

CUCUMBERS
CORN
PLUMS

lb. 15¢
Ear 5¢
Lb. 19¢

Santa Rosa



TAYLOR & SONS

FOODS

LOW LOW EVERYDAY SHELF PRICES PLUS S & H GREEN STAMPS

★ YOUR HOME TOWN BOYS ★

★ CASH AND SAVE ★

BARBERS? Plenty!!
PARKING? Plenty!!
METERS? NO!!
Golden Spread
Barber Salon

FOR GOD SO LOVED THE WORLD

St. Anthony's Church

Harrison Highway at 25 Mile Ave.
 Father Angelus, Pastor
 Sunday Masses — 6:30 a.m., 8 a.m., 10 a.m., & 12 noon.
 Daily Masses — 6:30 a.m. & 8 a.m. during summer months & other school holidays. 6:30 a.m. & 11 a.m. during school days.
 Evening Masses are — Every Tuesday at 8 p.m. & first Fridays 8 p.m.
 Holidays of Obligation Masses — 6:30 a.m., 8 a.m., & 8 p.m.
 First Saturday Masses are — 6:30 a.m. & 8 a.m.
 Confessions are Tuesday during school year 12 — 1 p.m. & Thursday 12 — 1 p.m.
 Confessions every Tuesday evening at 8 p.m.
 Confessions the eve before First Fridays and Holy days of obligation 8 p.m.
 Confessions Saturdays 4 — 5 p.m. and 8 — 9 p.m.
 Confessions Sunday a.m. 7:30 — 8 a.m.
 Confessions Sunday a.m. 7:30 — A.M.
 Any other time by calling the Rectory.
 Baptisms Sunday 4 p.m. or any time by arrangement.

First Baptist Church

Rev. B. L. Davis, Pastor
 Fifth and Main Streets
 Sunday: Sunday School, 9:45 a.m.; Morning Worship, 10:55 a.m.; Training Union, 6:30 p.m.; Evening Worship, 6:55 p.m.
 Wednesday: Sunday School teachers and officers meeting, 7 p.m.; Mid-Week Prayer Service, 7:45 p.m.; Church Choir rehearsal, 8:30 p.m. Junior GA's, Intermediate GA's, Young Women's Auxiliary Crusader RA's and Pioneer RA's meet at 7 p.m. WMS visitation, first Wednesday, 9:30 a.m.; WMS luncheon and business meeting, second Wednesday, 12 noon; WMU circle meetings, fourth Wednesday, 9:30 a.m. or 3 p.m. WMU night circle meeting, second Thursday, 4 p.m.
 Nursery is provided for all church-wide activities.
 Sunday morning worship services broadcast over KPAN.
 Listen to the "Baptist Hour" at 8 a.m. Sunday over KPAN.

San Antonio A La Iglesia

North 25 Mile Avenue and Highway
 Vd. Es Catolicos? Pues, Tienen La Obligacion De Asistir A La Santa Misa Todos Los Domingos!
 Horas De Misa En Los Domingos: 6:30 a.m.; 8 a.m.; 10 a.m. y 8 p.m.
 Durante La Semana: 6:30 a.m. y devocional services at 7:30 p.m. Wednesday.

Frio Baptist Church

Rev. G. W. Fine, Pastor
 Sunday School is held at 10 a.m. each Sunday followed by Worship Services at 11 a.m. Training Union is held at 6:30 p.m. Sunday and Evening Worship Services begin at 7:30 p.m. On Wednesday, a Prayer Service is held at 8 p.m.

Mission De San Jose LABOR CAMP

El Domingo es el dia del Senor. Tenemos que adorarlo. No hay mejor modo que la Santa Misa: El sacrificio de Calvario.
 Horas de Misa los Domingos: 8 a.m.; 10 a.m.; 8 p.m.
 Bautismos despues de la misa de las 10 a.m.

Templo el Calvario Asamblea de Dios

Pastor, Martin Musquis
 Bien venidos.
 Calle Ave. H & 13th.
 Los servicios durante la semana y el Domingo.
 Como siguen: 7:30 de la noche Martes, Jueves.
 Domingo, 10 de la mañana, escuela dominical, a las 11:30 predicacion.

First Christian Church

Rev. Eugene Brink, Pastor
 West Park Avenue
 Sunday School is held at 9:30 a.m. Worship service will begin at 10:50 a.m.
 Chi - Rho and CYF meets at 6 p.m. Sundays and vesper services are at 7 p.m.
 Functional Departments first Wednesday at 8 p.m.
 General Church Board, second Wednesday at 8 p.m.

In His Hand

What high company; What a privilege to be held in the palm of the strong hand of God. No man dare trying to stand alone... to walk without Him. Just as surely, no man can fail when God is with him. "My Father, which gave them me, is greater than all; and no man is able to pluck them out of my Father's hand."
 John 10:29. *He has everybody in His Hand.* He who would be wise should step upon the strong hand of God this day and take Him at his word. He said, "My grace is sufficient for thee."
 Only trust Him. Help support His cause. Attend church every week and may the Lord ever be with thee.

You In The Church The Church In You
 — form a combination for good. Every man, woman and child needs the influence of the church. So, come let us go into the house of the Lord. Let us support her program of service to humanity, be a faithful worker, a daily bible reader and attend services regularly.

St. Thomas Episcopal Church

Rev. Joel C. Treadwell, Vicar
 Harrison Highway
 SUNDAY: Morning Prayer and Sermon, 10 a.m.; Holy Communion first and third Sundays, 10 a.m.
 The Bishop's committee meets the first Sunday of each month immediately following morning worship.
 This is the summer schedule.

Central Church Of Christ

L. E. Fooks, Minister
 Marvin Crowson, Minister
 Sunday Services: Bible Study, 9:30 a.m.; Morning Worship, 10:25 a.m.; Evening Worship, 6 p.m.
 Mid-Week Services: Ladies Bible Study, 10 a.m. Wednesday; Mid-Week Classes for all.

Jehovah's Witnesses Church

317 Ave. I
 Sunday: Public Bible Lecture, Study, 4:15 p.m.
 Tuesday: Congregation Bible Study, 8 p.m.
 Friday: Service Meeting, 7:30 p.m.; Theocratic Ministry.

The Church Of God In Christ

Rev. Calvin Hodge, Pastor
 115 West Norton
 Sunday School 9:45 a.m.; Morning Worship 11 a.m.; Evening Worship 8 p.m.
 Monday, Bible Band meets 7 p.m.
 Wednesday, Prayer Meeting 8 p.m.

First Presbyterian Church

619 Lee Street
 Rev. Russell Wingert, Pastor
 Sunday School is held each Sunday at 9:45 a.m. followed by worship service at 11 a.m. Morning Devotional at 9 a.m. Tuesday.
 Choir Rehearsal, 8 p.m. Wednesday, Prayer meeting Friday at 7:30 p.m.

Summerfield Baptist Church

Rev. James Arnold, Pastor
 Sunday: Sunday School, 10 a.m. Morning Worship, 11 a.m. Training Union, 6:30 p.m. Evening Worship, 7:30 p.m. Wednesday: Beginner and Primary Sunbeams; Junior G.A.'s and Pioneer R.A.'s; W.M.U. and Brotherhood — 7:30 p.m.
 Prayer Meeting, 8:30 - 9 p.m. 1st. Monday of each month, Brotherhood Breakfast, 6:30 a.m.

Park Ave. Church Of Christ

On Harrison Highway
 Worship Services 10:30 a.m. Sunday. Prayer meeting 7 p.m. Wednesday.

Church Of Jesus Christ of Latter Day Saints (Mormon)

EM 4-1905
 The Mormon Church meets in Gilliland Funeral Home, Sunday School, 10 a.m. Sunday, Sacrament Meeting, 11 a.m. Sunday.

Westway Baptist Church

Rev. Kenneth Lowry, Pastor
 Sunday School 10 a.m. Morning Worship 11 a.m. Training Union 7 p.m. Evening Worship 8 p.m. Midweek Prayer Services Wednesday, 8 p.m. WMU Circle Meetings Each 2nd and 4th Tuesdays at 3 p.m.

First Methodist Church

501 North Main
 Rev. Herschel L. Thurston, Pastor
 Sunday, Sunday School, 9:45 a.m.; Morning Worship, 10:55 a.m.; Junior High and Senior High MYF, 6 pm.; Worship Service, 7 p.m.
 Tuesday, Woman's Society of Christian Service Prayer Group, 9:30 a.m.; Homebuilder's Prayer Group, 8 p.m. Wednesday, Choir Rehearsal, 8 p.m.

These Hereford Business Firms Make This Page Possible in the Interest of a Christian Community. Go to Church Sunday.

ELIZABETH WITHERSPOON INSURANCE
 ● 148 N. Main St.

E. B. BLACK CO.
 ● Dick Barnard - Jesse Stanford

McRIGHT GARAGE & SUPPLY
 ● Mr. and Mrs. A. N. McRight

FIRST NATIONAL BANK
 ● Virgil Hennen

ROCKWELL BROS. & CO.
 ● D. R. Vandever

BUY-RITE FURNITURE
 ● J. H. Fish

BIG T PUMP CO., INC.
 ● Hilrey and Leroy Aven

HEREFORD GRAIN CORP.
 ● Curtis O. Roach, Mgr.

HEREFORD LAUNDRY & DRY CLEANERS
 ● Ernest Kendall

SUIT'S AUTO SUPPLY

HEREFORD FERTILIZER & INSECTICIDE CO.
 ● Norman Moore

PIGGLY WIGGLY
 ● Mr. and Mrs. Gaylord Newell

DAVIS IMPLEMEN. CO.
 ● W. L. Davis, Jr.

HEREFORD OFFICE SUPPLY
 ● Bob Huddleston

CITY DRUG STORE
 ● Mr. and Mrs. Kenneth Coker

JONES TEXACO SERVICE
 ● Mr. and Mrs. J. P. Jones

WESTERN WHEEL INN
 ● Mr. and Mrs. G. D. Calson

PITMAN GRAIN CO.

HEREFORD STATE BANK
 ● Russell F. Carver, Pres.

Western Wrecking
 ● Anson A. and June Dearing

HEREFORD TEXAS FEDERAL CREDIT UNION
 ● Mrs. Dyalitha Benson

ED SKYPALA
 ● Your Borden's Distributor

GILLILLAND FUNERAL HOME
 ● Marlin Gilliland

MASTER CLEANERS
 ● Mr. and Mrs. C. D. Fitzgerald

ROGERS DRUG
 ● Mr. and Mrs. Grady Rogers

GWYNNE OWEN

LOERWALD BROS.
 ● Ed, George, Gene & Harold Loerwald

FARMER'S DRIVE IN
 ● Troy Moore

PLAINS FERTILIZER CO.

ORSBORN - CHEVROLET OLDSMOBILE
 ● Your Chevrolet-Oldsmobile Dealer

CONSUMER'S FUEL ASS'N

CHURCH...

(Continued from page 8)

Thompson Memorial Mexican Baptist Mission
TEMPLO BAUTISTA MEMORIAL
 Alex O. Thompson Memorial Mission
 215 Norton Street
 Guillermo Enrique Benitez, Ministro

LA SEMANA QUE PASA por la CRUZADA BAUTISTA NUEVA VIDA todas las mananas a las 7 a.m.
 Viernes 7:
 Reunion Semanal de Oficiales y Maestros 8 p.m.
 Sabado 8:
 Noche de la Juventud en el Centro de Buena Voluntad
 Domingo 9:
 Entrenamiento Para el Testimonio Personal 11 a.m.

ANTE DE JEHOVA NUESTRO Escuela Biblica Dominical 9:45 a.m.
 Lecion: EL PUEBLO DE DIOS APRENDE A ADORAR
 Texto para Memorizar: VENID, ADOREMOS Y POSTREMOS. OSARODILEMONOS DEL ANTE DE JEHOVA NUESTRO HACEDOR. Salmo 95:6.
 Culto de Adoracion 11 a.m.
 Sermon: ADOREMOS A DIOS EN ESPIRITU Y EN VERDAD
 Texto: Mas la hora viene, u ahora es, cuando los verdaderos adoradores adoraran al padre en espiritu y en verdad; porque tambien el Padre tales adoradores busca que le adoren. Juan 4:23
 Union de Preparacion 6 p.m.

FOR SALE
 At Less Than Dealer Cost
 1964 model 16 foot Custom Deluxe Boat. Equipped with Glide-Ride Seat, Speedometer and other desirable accessories. Latest type Drive-On Boat Trailer. Powered by 100 Horse Power 1964 Mercury Outboard Motor. Drive by and see this at—
 107 Ave H
 KIRBY SALES CO

Topico: Que Tan Urgentes Son las Necesidades de mi iglesia? Texto: Porque nosotros somos colaboradores de Dios, y vosotros sois labranza de Dios, edificio de Dios. I Corintios 3:9.
 Culto de Predicacion 7 p.m.
 Sermon: LA CRUZADA BAUTISTA NUEVA VIDA
 Lunes 10:
 EL MENSAJE DEL EVANGELIO (KPN, 860 k.c.) 7:12 p.m.
 Sermon: Cuando la Tragedia Perturba Nuestra Paz
 Solo de Canto por Ray Robles: Hay Un Mundo Feliz
 Uniones: Femenil y Varonil 8 p.m.

Miercoles 12:
 Culto de Oracion y Estudio Biblico 8 p.m.
 Si Usted Desea Obtener una Copia del NUEVO TESTAMENTO DE NUESTRO SENOR JESUCRISTO acuda a nuestros cultos de oracion (cualquier dia) a las 7 a.m. y se le obsequiara.

Seventh Day Adventist Church
 West Park Addition
 ELDER JAMES MEADE, PASTOR

"Guiding Our Young People," is the subject of daily lessons on study and class discussion Sabbath-August 1.
 Memory verse: Eccl. 12:1
 Study Helps: "The Adventist Home", pages 455-530.
 Lesson Aim: To enable parents to guide their adolescent youth into a mature Christian experience.
 Lesson Outline:
 1. Moral Responsibilities Begin Early. Romans 14:7; Eccl. 11:9-10.
 2. Examples of Youthful Waywardness. Luke 15:17-20.
 3. Genuine Pleasure. Ps. 119:11; Prov. 1:10-15.
 4. Respect for Authority. Eph. 6:1; Matt. 22:21.
 5. Choice of a Life Partner. Deut. 6:7.
 Services:
 Meditation 9:30 a.m. Saturday
 Sabbath School 9:45 a.m. Saturday
 Worship Service 11 a.m. Saturday.

Iglesia De Cristo

BIENVENIDOS a los Servicios de la IGLESIA DE CRISTO, en ESPANOL. Ubicado en SUNSET & PLAINS Hora de servicios en Espanol: Domingo, Estudio de la Biblia, 9:30 a.m.; Adoracion, 10:30 a.m. y 6 p.m. Miercoles, 8 p.m., Clases de Biblia para todos. Viernes, 8 p.m. La entrada es por el lado sureste del edificio.

Assembly Of God Church

Union and Ave. G
 Rev. V. W. Marcell, Pastor
 Sunday School held at 9:45 a.m. Morning worship service convenes at 11 a.m.
 C. A. service begins at 7 p.m. Junior C. A.'s meet at 6 p.m. and worship service begins at 8 p.m. each Sunday evening.
 Prayer meeting and Bible Study will be held Wednesday at 8 p.m.

Bippus Community Church

Eugene L. Nangle each first and third Sunday and R. D. Evans each second and fourth Sunday.
 Sunday School is at 10 a.m. every Sunday and Preaching is at 11 a.m. and 7 p.m. All Day Singing each Fifth Sunday.

Immanuel Lutheran Church

Park Ave. & B Street
 Hereford, Texas
 Fred Beversdorf, Pastor
 July 12
 8:30 a.m. Friona Worship Services
 9:15 a.m. "Call to Worship" KPN
 9:45 a.m. Sunday School & Bible Classes
 11 a.m. Divine Worship Service
 6:30 p.m. Lutherans Womens Missionary and Lutheran Laymens League
 9:15 a.m. Daily "Moments With Jesus"
 7 p.m. Daily - Prayer meeting at Church. Public is invited.

Wesley Methodist Church

410 Irving
 Rev. Noah Arnpriester, Pastor
 Sunday School, 9:45 a.m.; Sunday morning worship, 10:55 a.m.; Sunday evening worship, 7:30 p.m.; MFY 6:45 p.m.; Primary Fellowship, 6:45 p.m.; Bible Study: Wednesday, 7:30 p.m.
 Choir Practice: Wednesday, 8:30 p.m.
 W.S.C.: 2nd and 4th Mondays, 3 p.m.
 Methodist Men: 1st Saturday, 6:30 a.m.
 Commission on Membership and Evangelism: 2nd Friday, 8 p.m.
 Commission on Education: 4th Thursday, 8 p.m.
 Official Board: 1st Monday, 7:30 p.m.
 Commission on Missions: 2nd Friday, 3:30 p.m.
 Commission on Worship: 3rd Wednesday, 8:30 p.m.
 Commission on Social Concerns: 4th Monday, 7:30 p.m.
 Commission on Stewardship and Finance: 4th Monday, 8:30 p.m.
 Music night every 4th Sunday night.

Avenue Baptist Church

Rev. Clarence F. Powell, Pastor
 Sunday School is held at 9:45 a.m.; Worship Service at 11 a.m.; Training Union, 7 p.m.; Evening Worship Service, 8 p.m. Wednesday Evening Prayer Service, 7:30 p.m.

Fellowship Baptist Church

Independent Fundamental Odd Fellow Hall
 265 E. 8th
 Rev. Kenneth Irwin, Pastor
 Sunday School is held at 9:45 a.m. each Sunday, followed by Worship Services at 11:00 a.m. Evening Service at 7:45 p.m. Mid-week prayer Service, Wed. 7:30 p.m.
 For transportation, call EM4-3101.

Church Of The Nazarene

Fourth and Jackson
 Rev. Burl M. DeBord, Pastor
 EM 4-1375
 Sunday School is held at 10 a.m.; Junior and Youth Services at 6:15 p.m. Evening Service at 7 p.m.
 Prayer meeting Wednesday will begin at 7 p.m.
 The first Wednesday of each month a Missionary meeting is held at 7 p.m.

Temple Baptist Church

Rev. Bill Ware, Pastor
 Forrest Ave. and Ave. K
 Sunday: Sunday School, 9:45 a.m.; Morning Worship, 11 a.m.; Training Union, 6:30 p.m.; Evening Worship, 7:30 p.m.
 Tuesday: Beginner Sunbeams, 9:30 a.m.; Primary Sunbeams, Junior Girls Auxiliary, and Intermediate Girls Auxiliary, 4 p.m.
 Wednesday: Prayer Meeting, 7:30 a.m.; Choir Rehearsal, 8:15 p.m.

Mt. Sinai Baptist Church

302 Knight St.
 Sunday Services are Sunday School, 10 a.m.; Morning Worship Services, 11 a.m.; Evening Worship Services, 7:30 p.m.
 Mid-week Prayer Service is held at 7:45 p.m. Wednesday, Choir Rehearsal is held at 8 p.m. on Thursday. A teachers Meeting is held at 7 p.m. on Friday.

Iglesia Metodista San Pablo

223 Klibbe Street
 Rev. Gilbert Diaz, Pastor
 Los Servicios de nuestra nueva Iglesia. Seran de la Siguenta manera los Domingos y los dias de la semana, Escuela Dominical, a las 10 a.m.; Servicio de Adoracion, a las 11 a.m.; Domingo en la noche Predicacion 7 p.m.; Los jueves serviran de oracion 7 p.m.

Letter To The Editor

Dear Editor:
 Well this is another election year and I am wondering what the results will be.

I have voted the Democratic ticket most of the time but did vote a split ticket 2 or 3 times and I am not ashamed of that.

I voted straight Democratic ticket for Roosevelt, and he brought prosperity to this country but I am not so sure that the way it came about is anything to be proud of.

I don't know how true it was, but I was either told or read in some paper that Roosevelt had said he liked war because it brought prosperity.

Well we have had war and many a boy has sacrificed his life to that prosperity.

The Roosevelt administration made the manufacture and sale of alcoholic beverages legal which license to sell brought revenue to the U.S. Treasury. Well,

that may be called a help to prosperity.

But if we visit the drinking man's home and see what that prosperity has done for his wife and children, I don't think they reflect much prosperity.

We have had war and whiskey most of the time since.

During the war in Korea, McArthur wasn't allowed to fight to a finish. Just go so far then stop. The enemy got reinforcements and came back time and again. While playing that game surely more boys lost their lives than would have if they had fought to a finish. I don't know who's fault it was but it was during a Democratic administration.

Also Parr at Duval, Billy Sol Estes and Kennedys assassination.

I don't know if the Democrats are to blame for all that but now the biggest mess of all according to reports running Lyndon for President. If we can't do any better than that by voting the Democratic ticket, then I think we should have sense and courtesy enough to give the Republicans a chance at it. They can't make a bigger mess and they might do better.

I talked with a party a few days ago who said it seemed to be getting to where it wasn't safe to talk. If so, then what will it be for your children and grandchildren. If it isn't safe for us to talk and express our views, then it is high time we do some talking and see if we

can do something to make it safe for the younger generation before it is too late.

Texas has been a one party state too long. We better support the Republican Party. Competition calls for improvement. Let's give the stubborn Democrats something to work for. They need improvement bad.

I am voting Republican.

Yours Truly,
 Ole T. Larson

Story Children Home Over Weekend

Guests in the home of Mr. and Mrs. Joe Story, Harrison Highway, this past weekend have been all of their children. They are Mr. and Mrs. Ron Downing and Kevin Story, Abilene; Mr. and Mrs. Roy Mustian, Lubbock; and Mr. and Mrs. Dan McDowell, Lubbock. They also attended the wedding of Miss Jerie Beal Noland and Joe Shultz while here.

A. O. THOMPSON ABSTRACT CO.

Mr. & Mrs. A. J. Schroeter, Mgrs.
 Courthouse
 P. O. Box 73
 Phone EM 4-1504
 Free City Maps
 Showing Blocks

Complete Educational Plan For All Ages
THE WORLD BOOK ENCYCLOPEDIA
 Call EM 4-1410 for Local Representative
D. C. MARTIN 130 Ave. J
 Easy Terms

SUNSET FOOD CENTER

We Give Frontier Stamps

Double Frontier Stamps On THURSDAY with \$2.50 Purchase

Lovely New "Moss Rose" DINNERWARE BY "UNIVERSAL"

FREE WITH YOUR PURCHASES

MILK	Gal.	99¢
CHOCOLATE MILK	2 Qts.	49¢
COFFEE	Hills Bros.	Lb. 79¢

GARDEN FRESH PRODUCE

BELL PEPPERS	Lb.	19¢
CARROTS	2 Pkgs.	
LETTUCE	Head	
TOMATOES	Pkg.	
PEACHES	Lb.	

MEAT - MEAT - MEAT

Pork Chops	Center Cut	Lb. 49¢
Arm Roast	U. S. Good	49¢
Fryers		Lb. 29¢
Ground Beef		3:98¢
Chuck Roast	U. S. Good	Lb. 39¢

BEEF GOING UP A FEW LEFT AT THIS PRICE

1/2 Beef	47¢
Hindquarters	57¢
Forequarters	37¢

FREEZER PACK
 7 LBS. STEAK - 7 LBS. ROAST
 7 LBS. HAMBURGER
 4 LBS. SHORT RIBS
\$12.95



MR. REILEY USED THE

ECONOMASTER PLAN

Hilmar Reiley is a typical Texas wheat farmer. He raised his spring wheat profits six ways by using the Economaster Plan. So can you. Here's how Economaster used in the fall paid off for Mr. Reiley:

- Higher yields.** Mr. Reiley's 125 acres of wheat produced a substantial yield increase using the Economaster Program. But that's not what made the dollar and cents difference.
- More grazing...** in addition to an outstanding wheat yield, Mr. Reiley was able to graze 90 head of cattle for 110 days without supplemental feed. The Economaster Plan made this possible.
- Premium prices** — tests prove that wheat fertilized with Anhydrous Ammonia has a higher protein and sedimentation value. The Economaster Plan allows you to market your wheat for premium prices.

- Fast start for winter wheat.** The Economaster Plan helps young wheat cover the ground early in the fall. This fast start saves soil losses due to sandstorms.
- Strong plants from the start!** Healthy plants resist winter kill. The quickly available phosphate of the Economaster Plan promotes strong root development early in the season.
- Lowest cost fertility program...** the Economaster program is the lowest cost of plant food materials... pound for pound... of any other program you can buy... anywhere! Add it all up. You'll come to the same conclusion Mr. Reiley did. Economaster is the fertility plan for your wheat! Here's why:
 • Economaster uses anhydrous ammonia... made right here in Texas... for the most

concentrated source of nitrogen money can buy.

- Economaster uses a high analysis ammonium phosphate. It is even spreading and water soluble. Ready to go to work immediately.
- Economaster paid dividends to Hilmar Reiley six ways. It can help you too.

We are the exclusive Economaster dealer in this area. Our personnel are trained in soil testing and interpretation. They are ready to explain the advantages of the Economaster Plan. They can determine the most profitable application of Economaster for your wheat operation.

And remember, we're ready to serve you with custom application or tip-top rental equipment delivered to your farm. Inquire about wheat profits today... Inquire about Economaster!



City Building Permits Again Climb To New All-Time High

\$2,379,400 Total For First 7 Months

Hereford's building boom, which started 18 months ago, continued at a brisk pace during July to boost the total for the first seven months of 1964 to \$2,379,400.

At the same time last year the figure stood at \$2,307,930. Thus the 1964 figure is \$71,470 more than for the first seven months of 1963, city records showed.

July's total was \$274,600 with residences continuing to dominate the picture. No exceptionally large projects were started, the records indicate.

Several major projects are yet to be started, including two possible shopping centers and industrial buildings which are expected to rocket the total for 1964 well beyond last year's final mark.

One city official pointed to these proposed projects as "further indications" of Hereford's healthy growth. "We probably will wind up with the biggest year in history, even without these proposed major construction programs."

In addition to permits for new structures, a number of alterations permits were issued, reflecting a remodeling trend keeping pace with new construction.

July permits were as follows: Ervin Ward, alter residence, lot 2, block 2, Allison addition, \$500.

Joe Moody, move in garage, part of lots 22 and 28, block 8, Womble-Higgins addition, \$200.

Lindsey Construction Co., brick veneer residence on part of lot 9 block 2, Crestlawn addition, \$17,000.

Clifton Holman, move in frame residence, lot 38, block 37, Evants addition, \$800.

Panorama Homes, part of lots 28 and 29, block 5, Westhaven addition, brick veneer residence, \$25,000.

C. E. Russell, frame with siding residence part of lot 4, block 43, Hereford, \$900.

Otto Mossie, alter residence, frame with siding, part of lots 7 and 8, block 4, Whitehead addition, \$300.

Jessie Barrett, frame with siding residence, part of lots 11 and 12, block 2, Southlake addition, \$4000.

W. F. Findley, move in 20 x 50 mobile home, part of lot 2, block 27, Evants addition, \$7500.

Donald Chaney, brick veneer residence, lot 10, Hare addition, \$12,000.

J. M. Hagler, move in storage building, lot 35, block 2/17, Mabry-Burke addition, \$200.

Bob Pugh, brick veneer residence, part of lots 61 and 62, block 6, Westhaven addition, \$17,500.

Genevive West, construct trailer court, part of lots 5, 6, 7, and 8, block 33, Evants addition, \$16,500.

Gene Barton Builders, brick veneer residence, part of lots 59 and 60, block 6, Westhaven addition, \$15,000.

Gene Barton Builders, brick veneer residence, part of lots 60 and 61, Westhaven Addition, \$16,000.

Chris M. Jacobsen, move in and alter building, part of lot 1/2, block 27, Evants addition, \$3000.

Chris M. Jacobsen, move in and alter building, part of lots 3 and 2, block 27, Evants addition, \$3000.

C. P. Wortham, patio, lot 25, Russell addition, \$700.

Guyrene H. Carter, storage building, part of lots 13 and 14, block 11, Engler addition, \$200.

Bradley Investment Corp., frame with siding residence, part of lot 6, block 2, Southlake addition, \$7500.

C. W. McQuenta, move in and alter frame with siding, lots 3 and 4, block 12, Evants addition, \$7000.

J. Robert Bradley, brick residence with siding, part of lots 29 and 30, block 1, Southgate addition, \$7500.

C. N. McClure, construct car wash, lot 15, block 12, Evants addition, \$3000.

Pat Newell, residence, part of lots 17 and 18, block 31, Evants addition, \$7000.

E. W. Miller, add onto frame with siding residence, part of lots 8 and 9, block 3, Engler addition, \$500.

Ernest Gilmore, car port on part of lots 7 and 8, block 3, Engler addition, \$200.

Ignacio Pena, storage building, part of lot 48, block 2/17, Mabry Burke addition, \$100.

Frank Garcia, move in and alter frame building, block 12, DeAtley addition, \$10,000.

Marshall Wilson, brick veneer residence, lot 3, block 53, Hereford, \$12,400.

Don T. Martin, brick veneer residence, part of lot 28, Russell addition, \$16,000.

Agnes Sorel, a famous beauty of the French court who lived in the time of Joan of Arc, was one of the first women to wear diamonds lavishly.

Diamond Valley Grain Co., brick veneer building, lot 37, Hare addition, \$16,000.

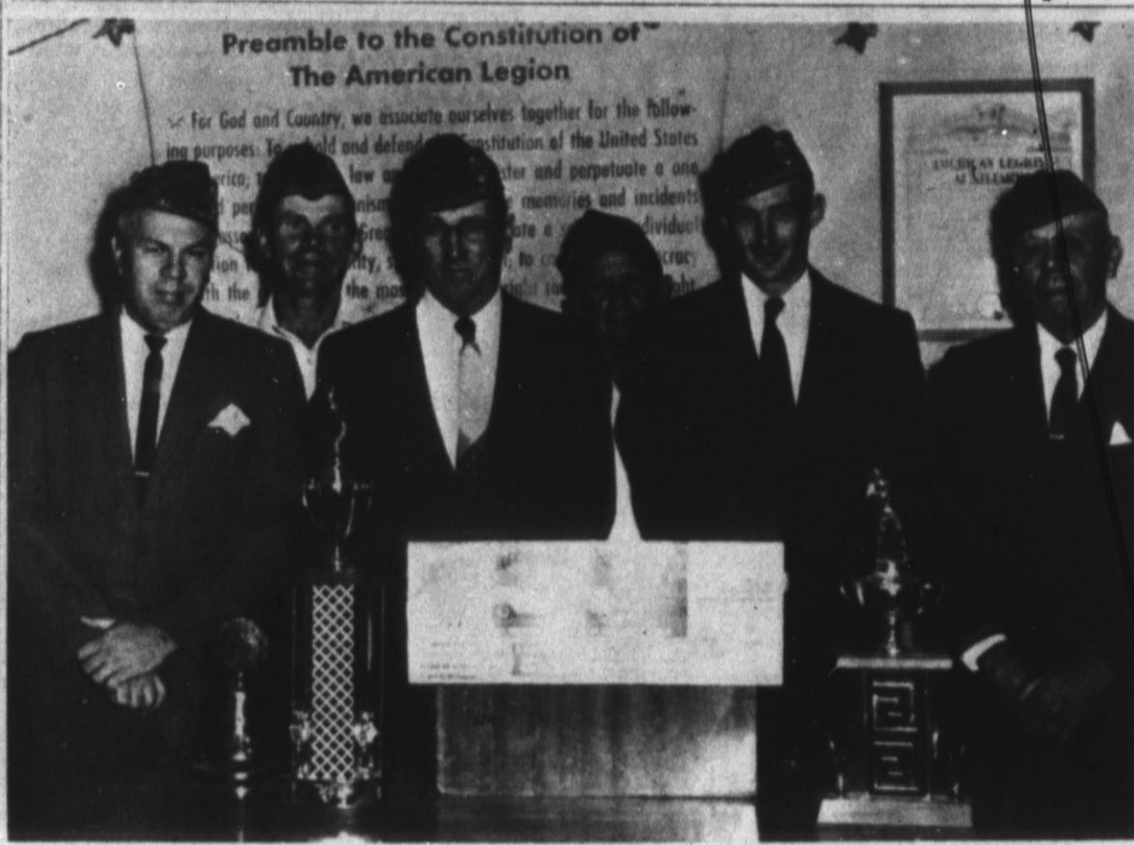
Palmer Norton, garage, part of lots 4 and 5, block 3, original township, \$2500.

Bradley Investment Corp., frame with siding residence, part of lots 6 and 7, block 2, Southlake addition, \$7000.

John Jacobsen Jr., frame with siding, part of lot 2, block 47, Hereford, \$1000.

Bradley Investment Corp., brick veneer residence, lot 30, Sowell addition, \$11,400.

Clementa Oliveira, add onto residence, lot 10, Evants-Brock addition, \$500.



AMERICAN LEGION ROSTER — Serving on arms; LeRoy Williamson, first vice-commander; Mike McCutchen, adjutant; Charles Wright, second vice-commander; and Ira Ott, chaplain.

AUSTIN HIGHLIGHTS

State Court Recesses After Busy Final Week

By Vern Sanford Texas Press Association

AUSTIN — State Supreme Court took a recess last week after handing down a heavy volume of new rulings including one which in effect upheld the 1959 open beaches law.

High court declined to hear arguments attacking the law guaranteeing free access to the beaches and oceans. It left standing a Houston Court of Civil Appeals decision stating the public is entitled to use Gulf Coast beaches from the water to the vegetation line.

In other cases, the court: Permitted Texas Liquor Control Board to continue regulation of liquor exporters along the Mexican border during court attack on a law authorizing such control.

Set down arguments by State Board of Optometry Examiners to force Judge Dallas Blankenship of Dallas to rule Dr. Ellis Carp's suit challenging its ethical practices order of 1959.

Overtured a contempt judgment against the city manager and mayor of Hurst, Tarrant County, in connection with a condemnation case involving land for drainage easements.

Agreed to review an Austin district court decision denying a state savings and loan charter to Metropolitan Savings Association of Houston.

Refused review of a \$1,000,000 lawsuit in Hutchinson County brought by union members who claimed they were fired for following orders of their officials in a 1958 strike at Phillips Petroleum Company plants in the Texas panhandle.

Refused a state AFL-CIO request to enjoin alleged "pro-employer lobbying" by Texas Employment Commission, leaving in effect lower court opinions.

Third Court of Civil Appeals overturned a district court ruling blocking Upshur Rural Electric Co-Op from building a \$9,000,000 power plant near Ore City. However, it held the co-op cannot sell power to non-members.

APPOINTMENTS — Gov. John Connally appointed James S. Naismith of Corpus Christi and Donald C. Klein of Odessa to the State Board of Registration for Professional Engineers. Col Thomas C. Green of Austin was reappointed executive secretary.

Connally also reappointed Edwin Bucek, Edmund Hajovsky and Alfred Neumeyer Jr. of Hallettsville to the Board of Directors of Lavaca County Flood Control District No. 3. He selected James Bozka, Hallettsville banker, to fill the unexpired term of Robert Gindler, resigned.

SCHOOL TRANSFER — Hockley County school board's approval of the transfer of 25 students from Witharral Independent School District to schools in Levelland, Littlefield and Anton was upheld by Education Commissioner J. W. Edgar.

Witharral authorities asked the commission to prohibit the transfer which had been requested by parents of the children.

"WORST YET" — Sen. George Moffett of Chillicothe believes redrawing of state congressional districts is the hardest job ever to face the Texas Legislature.

Moffett is chairman of a special committee studying the problem.

Moffett, who holds the all-time record for continuous service in the Legislature (34 years), spoke out on the eve of his committee's fourth hearing in San Antonio.

This action followed a hearing by the State Burial Association Rate Board at which State Insurance Department actuaries expressed alarm that many small local mutual and burial associations were not collecting large enough premiums to pay all potential claims.

Many associations already have voted to increase rates and two have obtained board approval.

Under the order, each of the 528 associations must appear before the Insurance Board between now and July 1, 1965, and prove they have rates in effect which will bring mortuary funds up to the reserves required by law.

INTERNS — Seven State government trainees who will participate in the 1964-65 program to interest qualified persons in government careers have been appointed by Speaker of the House Byron Tunnell.

Program is co-sponsored by the State of Texas and the Ford Foundation.

First-year "interns" are Charles William Hoehne, Schulerburg; William G. Reid, San Marcos; Jo Ann Pankratz Stiles, Comfort; Hubbard Scott Caven and Mrs. Clarice J. Davis, both of Austin; Jonathon S. Day, Houston; and Edward Lamar Farley, Delhi, La.

ALAMO HIGHWAY — State Highway Commission heard requests from a group of Texans representing cities from Texarkana to Round Rock. They asked that a route through their area be called "the Alamo Highway" and sought recommendations on ways to bring it to top condition by 1968.

Alamo Highway Association is made up of prominent boosters from cities and villages along U.S. 59 from Texarkana to Marshall; S. H. 43 from Marshall to Henderson; U. S. 79 from Henderson to Round Rock, and I.H. 35 from Round Rock to San Antonio.

F. B. Elliott of Jacksonville, president of the association said "1968 will be a banner year in which to attract people from all over the east and the north to follow the Alamo route to the HemisFair in San Antonio and to the Olympics in Mexico City. Highway Commission did not grant the request immediately.

But its members, Herb Petry of Carrizo Springs, Hal Woodward of Coleman and Jack Kulgen of Waco, expressed interest in the tourist attraction idea.

WATER AID — Texas Water Commission has been busy trying to help communities suffering from the extreme drought.

In little more than a week's time, the Commission sent one of its members, H. A. Beckwith, to Brackettville to help that city drill a water well when Las Moras Spring went dry; granted Thorndale a permit to pump 20 acre feet of water from the San Gabriel as an emergency measure; and secured a Kerr County court order restraining irrigators in the county from using water from the Guadalupe River and its tributaries for anything except domestic, municipal and livestock purposes.

NEW DIRECTOR — Texas Animal Health Commission has picked Dr. S. B. Walker to replace Dr. R. G. Garrett as Executive Director of the commission when the latter retires to his Taylor farm in October.

Dr. Walker now is a supervising veterinarian for the Animal Health Commission. He received a bachelor's degree from Texas A&M in 1955, and his doctor of veterinary medicine degree in 1959. He's a native of Hillsboro.

CLINIC SET — Atty. Gen. Waggoner Carr's department will sponsor a three-day seminar on the trial of condemnation cas-

es November 5-7. Carr is extending invitations to district, county and city attorneys, district and county judges and all attorney who represent condemning authorities.

Among the speakers will be State Highway Engineer DeWitt C. Greer, former Atty. Gen. John Ben Sheppard, Supreme Court Justice James R. Norvell, George Thompson of Sweetwater and Carr.

EXTRADITION — Secretary of State Crawford Martin will recommend to Gov. Connally whether the governor should grant extradition of Melvin Lane Powers to Florida to face murder charges.

Martin conducted an extensive hearing on the request of Florida Gov. Farris Bryant to extradite Powers, 27, who is charged with the stab-slaying of his wealthy uncle-by-marriage, Jacques Mossler, 69, Defiance Counsel Percy Foreman fought the request.

SHORT SNORTS Parks and Wildlife Commission granted a special October archery season on buck deer in 28 counties.

GOP congressional candidates Des Barry of Houston plans to appeal a State Board of Insurance ruling that his truck line, Galveston Truck Line Corp. must pay an extra-high rate for insurance because it is licensed by Federal permit only, and not by the Railroad Commission. . . 1964 is a meas-

les year for Texas according to the State Health Department which reported 68,914 cases so far this year, compared to 17,978 in 1963. . . State Securities Board granted applications this week from eight firms to sell \$2,800,000 worth of stocks. . .

Attorney General Carr ruled that county mutual insurance companies qualified to write casual insurance statewide may write all lines of automobile insurance on all motor vehicles. . . Carr also held that under certain conditions, a request to a charitable nonprofit corporation may be exempt from State inheritance taxes. . . Governor Connally and Education Commissioner J. W. Edgar are being flooded by form letters (some mimeographed), protesting the teaching of evolution in high school biology classes. . . Bill Hayes of Temple, Republican candidate for Congressman at Large, opened a State Campaign office in Austin.

AUSTIN, — State Board of Control is willing to go only half-price tourists to the top of the way in the drive to take energy-dome. State purchasing and house-keeping agency asked for \$16,950 to open the dome to the fifth floor. Sightseers now must stop at the fourth floor landing. Board of Control looks with dis-

(Continued on Page 12)

COLLEGE STUDENTS

Take The Brand at School

Grand Opening SATURDAY

from 8 a.m. 'til 6 p.m.

In New Location

on

DAIRY ROAD

(Formerly Hopson Meat Co. Building)

GRAND OPENING SPECIALS

- 1/2 BEEF Lb. 47¢
- HIND QUARTER Lb. 57¢
- FRONT QUARTER Lb. 37¢

PRICES GOOD THRU SATURDAY ONLY

SPECIAL RATE THURSDAY and SUNDAY

9 MONTHS ANY WHERE IN U. S. \$4⁸⁵

Keep Up With

Hometown News!

THE HEREFORD BRAND — THE SUNDAY BRAND

Phone Orders Gladly Accepted . . . Just Call

EM 4-3390

Hacker & Jesko

Meat Company

Wholesale — Retail

East on Dairy Road

EM 4-3390

Letter To The Editor

These postage stamps we get these days honoring the memory of Montana's cowboy artist, Charles M. Russell of Great Falls, remind me of the time, I, myself, lived in that City while being with the U. S. Department of Agriculture (Forest.) I met this man on the street most every day; a nice appearing man — never without the fascinating sash he wore about his waist — the ends hanging to one side. I passed his studio many times but was never inside. Montanans were mighty proud of Charlie Russell.

Also in the little town of Fromberg, where my sister lived, was the home of Miss Corinne Goodnight, the young woman who came to Texas and lived at the home of Col. Charles Goodnight, at Clarendon. Miss Corinne and her brother lived together and worked at the depot, both being telegraph operators, and passed my sister's home every day on their way to and from work.

Miss Corinne later wrote the life story of Col. Goodnight — which I had the pleasure of reading at our Library here.

Another thing that might be of interest to some of Hereford's older residents, is the fact that the late Mr. and Mrs. Charlie Paddock had visited this little Montana town of Fromberg occasionally. An older brother of Mrs. Paddock — together with his son — lived here for many years and owned an apple orchard — this being quite an apple country.

On one visit to her brother they had with them their son, Faye. Mrs. Paddock had another brother who lived out his years at the Oddfellows' Home in the Lutheran town of Northfield, Minn., the home of St. Olaf's College.

My sister now lives in Billings, and often wonders what has become of her one-time neighbor, Corinne Goodnight, but I am unable to answer that question. I wonder if anyone can.

— Mrs. John Gaetz

Look Who's New!

Mr. and Mrs. Kenneth Aloysius Walterscheid are the parents of twin daughters, Cheryl Jeanne and Carole Suzanne. Cheryl was born July 31 at 3:41 p.m., and Carole was born at 3:42 p.m.

Mr. and Mrs. Silverio Espinosa Hernandez are the parents of a daughter, Martha, born Aug. 1 at 11:06 a.m. She weighed 6 lbs. 8 ozs.

Mr. and Mrs. Stanley Carl Kroppf are the parents of a daughter, Rhonda Rachell, born Aug. 1 at 11:40 p.m., weighing 7 lbs. and 1/2 oz.

Mr. and Mrs. Franklin David Cox are the parents of a daughter, Pamela Jean, born Aug. 2 at 12:42 p.m. She weighed 4 lbs. 8 1/2 ozs.

Mr. and Mrs. James Neal Cockrum are the parents of a son, James Todd, born Aug. 2 at 1:14 p.m., weighing 8 lbs. 13 ozs.

Mr. and Mrs. Donald Manuel Sylvia are the parents of a son, James Donald, born Aug. 3 at 2:08 a.m. He weighed 4 lbs. 2 ozs.

Mr. and Mrs. Lloyd Derald Payne are the parents of a daughter, Kim Cheve, born Aug. 3 at 12:16 a.m. She weighed 7 lbs 6 ozs.

Mr. and Mrs. John Emstey Jackson are the parents of a daughter, Caroline Frances, born Aug. 4 at 3:42 a.m. She weighed 6 lbs. 6 ozs.

CLASSIFIEDS

GET

RESULTS

BARBERS?
Plenty!!
PARKING?
Plenty!!
METERS?
NO!!
Golden Spread
Barber Salon

Safeway's **the** place to buy Chuck Roast



3 REASONS YOU CAN ALWAYS DEPEND ON SAFEWAY MEATS

- 1 USDA CHOICE BEEF AND LAMB**
Finest quality, pork and calf, too.
- 2 ALL CUTS TRIMMED BEFORE WEIGHING**
Excess bone and fat removed.
- 3 UNCONDITIONAL GUARANTEE**
Your money cheerfully refunded if any cut fails to please. Meat needn't be returned.

U. S. Choice Beef — Blade Cuts

Lb. 39¢

SWISS STEAK
CHUCK STEAK
SHORT RIBS
SLICED BACON

U. S. Choice Beef Arm Cuts **Lb. 49¢**
U. S. Choice Beef Lean & Tender **Lb. 49¢**
Beef Ribs For Barbecuing **Lb. 23¢**
Wilson's Certified **2 Lb. Pkg. \$1.19**

NECK CUT ROASTS? NEVER AT SAFEWAY!

Safeway never sells neck cuts as chuck roasts. (But some other markets do.) If you have been getting tough "chuck roasts" that are full of hidden bones, you've probably been getting neck cuts. At Safeway, we bone and sell this part of the beef as stewing meat or ground beef.

Pork Steak
Lean & Tender **Lb. 53¢**

Link Sausage
Blue Marrow **12 Oz. Pkg. Ea. 39¢**

Manor House Hen

TURKEYS

U.S.D.A. Grade 'A' 10 to 14 Lbs. New Crop

Lb. 39¢

Soft Drinks Cragmont Ass't'd Flavors **12 12 Oz. Cans \$1**

FLOUR

BEANS

EGGS

FRUIT DRINK

Kitchen Craft White Enriched Flour

SAVE 40c **25 Lb. Bag \$1.59**

Big Chief Quality Pinto Beans

SAVE 10c **4 Lb. Bag 39¢**

Breakfast Gem Grade 'A' Medium

SAVE AT Safeway **3 Doz. \$1**

Cragmont Orange & Grape Non-Carbonated

3 46 Oz. Can 89¢

Canned Milk

Lucerne Quality **8 Tall Cans \$1**

ICE CREAM LEMONADE RANCH STYLE BEANS SHORTENING

Snow Star Assorted Flavors **1/2 Gal. Ctn. 49¢**
Scotch Treat Frozen **6 Oz. Can 10¢**
Velkay Vegetable **8 No. 300 Cans \$1.00**
3 Lb. Can 59¢

Pure Lard **3 Lb. Ctn. 39¢**
Tomato Sauce **Mountain Press 13 3 Oz. Cans \$1.00**
Edwards Coffee **2 Lb. Can \$1.37**

100 GUNN BROS. STAMPS!
with the Purchase of 2 1/2 Quart
SWISS CHALET MIXING BOWL

100 GUNN BROS. STAMPS!
with the Purchase of 6 1/2" x 10 1/2"
SWISS CHALET UTILITY PAN

100 GUNN BROS. STAMPS!
with the Purchase of 8 inch
SWISS CHALET SQ. CAKE PAN

100 GUNN BROS. STAMPS!
with the Purchase of 1 1/2 Quart
SWISS CHALET MIXING BOWL

100 GUNN BROS. STAMPS!
with the Purchase of 5" x 9"
SWISS CHALET DEEP LOAF PAN

Libby's Vienna
SAUSAGE
SAVE 15c **5 4 Oz. Cans \$1**

Mrs. Wrights
BISCUITS
SAVE 4c **4 8 Oz. Cans 29¢**

Safeway Fresh Fruits & Vegetables
WINESAP APPLES
Washington State **10 Lbs. \$1**

Mix or Match
California Seedless **Grapes**
California Tree Ripened **Peaches**
California Santa Rosa **Plums**
California Tree Ripened **Nectarines**
4 Lbs. \$1

FREE
15 Oz. Ctn. Lucerne
MACARONI SALAD
With The Purchase of 15 Oz. Ctn. Of Lucerne Cole Slaw For 39c

MARGARINE
Coldbrook Solid Rolls **2 1-Lb. Pkg. 25¢**

Margarine Kraft Deluxe Corn Oil **1-Lb. Pkg. 35¢**
Saltine Crackers Supreme **1-Lb. Pkg. 31¢**
Pillsbury Flaky Biscuits **28 Oz. 33¢**
Pillsbury Biscuits **2 8 Oz. Cans 19¢**
Ballard Biscuits **2 8 Oz. Cans 19¢**
Parkerhouse Rolls Pillsbury **10 Oz. Can 35¢**
Sunshine Krispy Crackers **1-Lb. Pkg. 31¢**
Vanilla Wafers Nabisco **18 Oz. Pkg. 39¢**

These Prices Good Thru Sat., Aug. 8th in Hereford



We Reserve The Right To Limit Quantities

LET'S COOK SOMETHING!

Nectarines Star In Summer Menus

Tempting is definitely the word for almost anything having to do with fresh nectarines. Whether you eat them out-of-hand or enjoy them with main dishes or breakfast cereal, in salads or desserts, fuzzless red-and-gold skinned nectarines are unmatched in their appeal to all tastes at all times of day. They'll be plentiful into September—enough said!

Most often served to eat out of hand, nectarines are also delectable in "made" desserts. Try them in fruit cups and compotes and in cake-and-pudding combinations. Here's a recipe for one of the latter.

Nectarine Pudding Cake
1 package (3 1/4 ounces) vanilla pudding and pie filling
9-inch square sponge cake
3 or 4 nectarines
1 can (6 ounces) frozen pineapple-raspberry concentrate, undiluted
1/4 cup granulated sugar
1/8 teaspoon salt
1/4 cup cold water
2 tablespoons cornstarch

Make up the vanilla pudding according to package directions but use only 1 1/4 cups milk. Cool to room temperature, stirring occasionally. Split cake horizontally to make two layers. Spread pudding on bottom layer; top with other layer. Sprinkle top with confectioners sugar. Chill for 1 or 2 hours.

Sauce
Rinse and slice enough nectarines to make 2 cups. In a saucepan stir together the undiluted pineapple-raspberry concentrate, granulated sugar and salt; add 1/2 cup of the cold water; bring to a boil. Add sliced nectarines; boil gently for 2 or 3 minutes. Add the cornstarch (mixed until smooth with the remaining 1/4 cup cold water), cook and stir constantly until sauce is thickened and clear; cool.

Cut cake into squares and serve with sauce. Makes 9 to 12 servings.
Fillet mignon, 1-bone* steaks, club steaks, and other meats become exotic fare when you serve

them with "Quick Nectarine Chutney," a zippy homemade chutney to captivate warm-weather appetites.

Quick Nectarine Chutney
1 tablespoon butter or margarine
1/2 teaspoon curry powder
1 cup finely diced celery
1/2 cup finely chopped onion
1/4 teaspoon salt
1/2 cup brown sugar, packed
1 jar (2 oz.) sliced pimiento
1 teaspoon lemon juice
1/4 teaspoon cayenne

2 cups diced fresh nectarines
1/4 teaspoon each ground cinnamon, allspice, nutmeg and ginger

Melt butter in saucepan. Blend in curry powder; simmer 1 minute. Add celery, onion, salt, brown sugar, pimiento, lemon juice and cayenne. Simmer 3 minutes. Add Nectarines and spices; cook 2 minutes longer. Let stand several hours or overnight.

Serve with steaks or other meats. Makes 1 1/4 cups.



NECTARINE SPECIALS — Fruit of the rose family, nectarines spark summer menus. Easy hot weather dessert is made of cake squares filled with vanilla pudding and topped



ped with nectarine sauce. As a new meal-mate, nectarine chutney is second to none. (ASR Photos)

Here and There

with Mrs. Merlin Kaul

Keith Jorde went to Bimidi, Minn., last week where he played in a golf tournament. Friday Mrs. Jorde and Mr. and Mrs. Dick Godwin flew to Bimidi. They visited there and in East Grand Forks and then went to Cando, N.D. where they spent two nights. At Cando they visited with Mrs. Kathlee Palmer, who flew back to Hereford with them to visit for a few days.

Miss Peggy Little, daughter of Mr. and Mrs. E. H. Little formerly of Texline and of this vicinity won second place in the district dress revue held in Amarillo last Saturday. Peggy has been in 4-H work a number of years and has won several honors. Her mother is the former Marcia Robbins, once a teacher at Westway. Her grandparents are Mr. and Mrs. H. D. Robbins.

Mrs. and Mrs. Cleo Lee went to Albuquerque, N.M., Saturday where they spent the weekend in the home of their daughter, Mrs. Clinton Johnson. They took their granddaughter Shirley Ann Johnson back to her home there after she had spent a month here with her grandparents.

Mr. and Mrs. Cleo Lee recently attended a reunion of the Lee family in Corpus Christi. It was the first time many of the members of the family had been together in 22 years. Mr. Lee did some fishing while at Corpus Christi and reports that luck was good. Lee is custodian at Aikman School.

A little daughter who they have named Melanie Gaynell arrived this week to live with Mr. and Mrs. Melvin Lomenick. She was born July 31 and weighed 5 pounds, 4 ounces. Mrs. Lomenick teaches the kindergarten on E. 3. She formerly taught in the public schools.

Mr. and Mrs. Cecil Wilkins went to Tulsa, Okla. last week where they visited her sister, Mrs. O. W. Thomson. Mrs. Thompson was in a hospital in Tulsa where she had undergone surgery. She formerly lived here with Mr. and Mrs. Wilkins and was known as Bertha Jea.

Miss Jan Mitchell, Memphis, is spending the summer here in the home of her sister, Mrs. Helen Solomon. She is presently employed at The Vogue.
Mr. and Mrs. Pete Vaughn, Anthony, N.M., were guests one night last week in the home of Mr. and Mrs. Guy Lawrence. They also visited his mother, Mrs. Ida Vaughn. They missed seeing his brother Carlos and his wife as they were on a trip to Colorado. Mr. Vaughn and his wife work in El Paso, he at the federal prison and she at the telephone office.
Mr. and Mrs. Jim Wiman and Bobby left Monday for Clovis, N.M., where they will make their home. Wiman, employed by Gifford-Hill Western, has been transferred to Clovis. The family has been in Hereford for 11 years and have been active in church and civic affairs in the community. Mrs. Wiman has been one of the fine first grade teachers at Shirley school.
The Wimans have three daughters who have grown up here — Sylvia, Mrs. John Cranford, now of Denver, Colo.; Joy —

needed medical services. The payments for such medical assistance on behalf of such needy individuals shall be in such amounts as provided by the Legislature; provided, however, that the amounts paid out of state funds for such purposes shall never exceed the amount that is matchable out of Federal funds; provided further, however, that such medical care, services or assistance shall also include the employment of objective or subjective means, without the use of drugs, for the purpose of ascertaining and measuring the powers of vision of the human eye, and fitting lenses or prisms to correct or remedy any defect or abnormal condition of vision.
"AGAINST the Amendment to the Constitution giving the Legislature the power to authorize vendor payments for medical care on behalf of needy individuals sixty-five (65) years of age and over who are not recipients of Old Age Assistance, and who are unable to pay for needed medical services; providing for the acceptance of financial aid from the Government of the United States for such medical payments; providing that the amounts paid out of state funds shall never exceed the amount that is matchable out of Federal funds for such purposes; providing that certain means relating to the correction or remedying of abnormalities of vision shall be included within such medical care service or assistance; providing for the necessary election, form of ballot, proclamation, and publication.
BE IT RESOLVED BY THE LEGISLATURE OF THE STATE OF TEXAS:
Section 1. That Section 51a of Article III of the Constitution of the State of Texas be amended by adding thereto a new Subsection to be known as Subsection 51a-2, which shall read as follows:
"Subsection 51a-2. The Legislature shall have the power to provide by General Laws and to make payment for same, under such limitations and restrictions as may be deemed by the Legislature expedient, for direct or vendor payments for medical care on behalf of needy individuals sixty-five (65) years of age or over who are not recipients of Old Age Assistance, and who are unable to pay for

Austin Highlights

(Continued from page 10)

favor on tourists going 41 feet higher, to the tip-top.

"Structurally," said the Board, "the capitol dome is thoroughly safe for its intended and original purpose — which was not a tourist attraction."

Cost of opening the dome to public — complete with guide service, security, repainting and janitorial service — was estimated at an additional \$52,000.

Even opening the fifth floor landing is complicated enough, said the Board.

Including in its recommendations were \$4,000 for a grill to catch objects dropped from the lofty landing; \$3,000 for a ventilation system in the stairwell areas "to keep people from dropping out from exhaustion while climbing"; \$2,000 to run a water line and install a fountain; \$2,500 for annual repainting to hide the work of slogan-writers; and \$350 for a first aid kit.

COURT SPEAK — Texas Supreme Court has declined to reconsider an earlier decision holding off pipe shipping rates set by the Railroad Commission in 1962 while they are in contest. High court refused the Commission's request for rehearing. Oil field truckers called for suspension of the new rates, claiming they give railroads an unfair advantage.

In another case heard by the Supreme Court, a Railroad Commission production formula for Fairway Field in East Texas, largest U. S. Oil discovery in the last eight years, is under attack. W. L. Pickens brought the action to void the formulas for the field in Anderson and Hend-

erson Counties. Pickens claims the formulas would allow neighboring leases to drain oil from under his property. Under the Commission order, allowables should be based 50 per cent on tract size and 50 per cent on acre feet of oil-bearing sand beneath. District court here has upheld the order.

Finance companies won a major battle with the State when the Third Court of Civil Appeals in Austin refused a Regulatory Loan Commissioner Frank Miskell's motion for rehearing on the State's case against Templon, Texas Public Finance, Beneficial Finance and Consolidated Credit.

Court affirmed the opinion of the 53rd District Court in Austin that the 1963 Texas Loan Act section which says a loan company cannot be licensed unless 51 per cent of its stock is owned by Texas is unconstitutional.

EDUCATION JOB — Texas Department of Public Safety is offering educational opportunities along with jobs for young men who can qualify.

Fifty will be selected between August and October for the DPS Law Enforcement Academy here. Graduates of the four-month school, covering 800 hours of instruction in 95 subjects, will fill vacancies in the highway patrol, license and weight, motor vehicle inspection or driver licensing divisions.

Young men 21 to 35 who can meet physical and mental requirements will be given qualifying examinations on August 8, September 12 and October 10. School will begin on November 19. Students earn \$375 a month while in training and \$438 to \$453 a month on graduation.

REDISTRICTING — Fourth in a series of public hearings held by the Legislative Council Study Committee of Congressional Redistricting will be held in San Antonio. Legislators seek public opinion on the way to draft redistricting to conform with the U. S. Supreme Court edict. It's a matter which must be settled during the 1965 session.

Speaker of the House Byron Tunnell says he believes redistricting should be handled at the end of the session, after higher education proposals and tax matters are out of the way.

His idea conflicts with those of Governor Connally and Atty. Gen. Waggoner Carr who have said redistricting should be the first item on the Legislature's agenda.

PASSENGER TRAIN HEARING SET — Railroad Commission issued notice that it will hold hearings on the Texas and Pacific Railway's request to discontinue operation of two passenger trains now operating between Fort Worth and El Paso.

Fort Worth hearing will be held on September 15, and the El Paso hearing on September 17. Railroad claims it has suffered a net loss of \$200,000 on these trains over the past year.

FOOD STAMP PLAN — William M. Herndon, who administers the commodities distribution program for the State Department of Public Welfare, says the Federal Food Stamp Program, just passed by Congress, will take at least five years to filter down into all counties which otherwise would participate in the surplus commodities distribution program.

Under the proposed program,

low-income and no-income families may trade federally-supplied stamps for food at any grocery store, instead of limiting their supplies to those items declared surplus commodities and distributed on a county-agent basis. Luxury and imported items will be exempt from the plan. Barred from the stamp "shopping" are bananas, coffee, cocoa and tea.

But the switch must be gradual because current surpluses must be used up, and its has not been determined yet how much Congress will appropriate for the program.

YARBROUGH ASKS FUNDS — Sen. Ralph Yarborough's Austin office announced he has urged the Senate Subcommittee on Agriculture Appropriations to earmark \$5,500,000 to continue the screwworm eradication program in the Southwest.

Unless a barrier zone is established along the Mexican border, Yarborough said, reinfestation of "free" areas will occur and a \$12,000,000 investment in the program will be lost.

PARKS OVERCROWDED — All state parks in Texas are overcrowded, says Director W. M. Goddin.

Goddin pointed out that 47,944 persons visited Corpus Christi State Park on Easter weekend and the level has held up through mid-summer. Other areas (Continued on page 15)



PUBLIC NOTICE

Proposed CONSTITUTIONAL AMENDMENT NUMBER ONE ON THE BALLOT

PROPOSED CONSTITUTIONAL AMENDMENT TO BE VOTED ON AT AN ELECTION TO BE HELD ON NOVEMBER 3, 1964.
SENATE JOINT RESOLUTION NO. 6 proposing an amendment to Section 5 of Article VII of the Constitution of the State of Texas so as to remove the authorization to transfer not exceeding one per cent annually of the total value of the permanent school fund to the available school fund.

BE IT RESOLVED BY THE LEGISLATURE OF THE STATE OF TEXAS:

Section 1. Section 5 of Article VII of the Constitution of the State of Texas is amended to read as follows:

"Section 5. The principal of all bonds and other funds, and the principal arising from the sale of the lands herebefore set apart to said school fund, shall be the permanent school fund, and all the interest derivable therefrom and the taxes herein authorized and levied shall be the available school fund. The available school fund shall be applied annually to the support of the public free schools. And no law shall ever be enacted appropriating any part of the permanent or available school fund to any other purpose whatever; nor shall the same, or any part thereof ever be

appropriated to or used for the support of any sectarian school; and the available school fund herein provided shall be distributed to the several counties according to their scholastic population and applied in such manner as may be provided by law."

Section 2. The foregoing Constitutional Amendment shall be submitted to a vote of the qualified electors at an election to be held on the first Tuesday after the first Monday in November, 1964, at which election all ballots shall have printed thereon the following:

"FOR the Constitutional Amendment to remove the authorization to transfer not exceeding one per cent annually of the total value of the permanent school fund to the available school fund."

"AGAINST the Constitutional Amendment to remove the authorization to transfer not exceeding one per cent annually of the total value of the permanent school fund to the available school fund."

Section 3. The Governor of Texas shall issue the necessary proclamation for the election and this amendment shall be published in the manner and for the length of time as required by the Constitution and laws of this State.

PUBLIC NOTICE

PROPOSED CONSTITUTIONAL AMENDMENT TO BE VOTED ON AT AN ELECTION TO BE HELD ON NOVEMBER 3, 1964.

SENATE JOINT RESOLUTION NO. 10 proposing an Amendment to Section 51a of Article III of the Constitution of the State of Texas by adding a new Subsection to be known as 51a-2; giving the Legislature the power to provide, under such limitations and restrictions as may be deemed by the Legislature expedient, for direct or vendor payments for medical care on behalf of individuals sixty-five (65) years of age or over who are not recipients of Old Age Assistance and who are unable to pay for needed medical services; providing for the acceptance of financial aid from the Government of the United States for such medical payments; providing that the amounts paid out of state funds shall never exceed the amount that is matchable out of Federal funds for such purposes; providing that certain means relating to the correction or remedying of abnormalities of vision shall be included within such medical care service or assistance; providing for the necessary election, form of ballot, proclamation, and publication.

BE IT RESOLVED BY THE LEGISLATURE OF THE STATE OF TEXAS:

Section 1. That Section 51a of Article III of the Constitution of the State of Texas be amended by adding thereto a new Subsection to be known as Subsection 51a-2, which shall read as follows:
"Subsection 51a-2. The Legislature shall have the power to provide by General Laws and to make payment for same, under such limitations and restrictions as may be deemed by the Legislature expedient, for direct or vendor payments for medical care on behalf of needy individuals sixty-five (65) years of age or over who are not recipients of Old Age Assistance, and who are unable to pay for

Proposed CONSTITUTIONAL AMENDMENT NUMBER THREE ON THE BALLOT

needed medical services. The payments for such medical assistance on behalf of such needy individuals shall be in such amounts as provided by the Legislature; provided, however, that the amounts paid out of state funds for such purposes shall never exceed the amount that is matchable out of Federal funds for such purposes; provided further, however, that such medical care, services or assistance shall also include the employment of objective or subjective means, without the use of drugs, for the purpose of ascertaining and measuring the powers of vision of the human eye, and fitting lenses or prisms to correct or remedy any defect or abnormal condition of vision.
"The Legislature shall have the authority to accept from the Government of the United States, such financial aid in the form of medical assistance on behalf of the needy individuals sixty-five (65) years of age or over who are not recipients of Old Age Assistance, and who are unable to pay for needed medical services, as such Government may offer not inconsistent with restrictions herein set forth."

Section 2. The foregoing Constitutional Amendment shall be submitted to a vote of the qualified electors of this state at the General Election to be held on the first Tuesday after the first Monday in November, 1964, at which election all ballots shall have printed thereon the following:

"FOR the Amendment to the Constitution giving the Legislature the power to authorize vendor payments for medical care on behalf of needy individuals sixty-five (65) years of age and over who are not recipients of Old Age Assistance, and who are unable to pay for needed medical services; providing for the acceptance of funds from the Federal Government for the purpose of paying such medical assistance; and providing that the amounts paid out of state funds for such purposes shall never exceed the amount that is matchable out of Federal funds; provided further, however, that such medical care, services or assistance shall also include the employment of objective or subjective means, without the use of drugs, for the purpose of ascertaining and measuring the powers of vision of the human eye, and fitting lenses or prisms to correct or remedy any defect or abnormal condition of vision."

Section 3. The Governor of the State of Texas is hereby directed to issue the necessary proclamation for said election and have the same published and held as required by the Constitution and the laws of the State of Texas.

viding that the amounts paid out of state funds for such purposes shall never exceed the amount that is matchable out of Federal funds; provided further, however, that such medical care, services or assistance shall also include the employment of objective or subjective means, without the use of drugs, for the purpose of ascertaining and measuring the powers of vision of the human eye, and fitting lenses or prisms to correct or remedy any defect or abnormal condition of vision.
"AGAINST the Amendment to the Constitution giving the Legislature the power to authorize vendor payments for medical care on behalf of needy individuals sixty-five (65) years of age and over who are not recipients of Old Age Assistance, and who are unable to pay for needed medical services; providing for the acceptance of funds from the Federal Government for the purpose of paying such medical assistance; and providing that the amounts paid out of state funds for such purposes shall never exceed the amount that is matchable out of Federal funds; provided further, however, that such medical care, services or assistance shall also include the employment of objective or subjective means, without the use of drugs, for the purpose of ascertaining and measuring the powers of vision of the human eye, and fitting lenses or prisms to correct or remedy any defect or abnormal condition of vision."

Section 3. The Governor of the State of Texas is hereby directed to issue the necessary proclamation for said election and have the same published and held as required by the Constitution and the laws of the State of Texas.

PUBLIC NOTICE

Proposed CONSTITUTIONAL AMENDMENT NUMBER TWO ON THE BALLOT

PROPOSED CONSTITUTIONAL AMENDMENT TO BE VOTED ON AT AN ELECTION TO BE HELD ON NOVEMBER 3, 1964.
HOUSE JOINT RESOLUTION NO. 8 proposing an amendment to Section 59 of Article XVI of the Constitution of the State of Texas establishing certain requirements relative to the enactment of laws affecting particular conservation and reclamation districts; providing for an election and the issuance of a proclamation therefor.

BE IT RESOLVED BY THE LEGISLATURE OF THE STATE OF TEXAS:
Section 1. That Section 59 of Article XVI of the Constitution of the State of Texas be amended by adding thereto a new Subsection which reads as follows:

"(d) No law creating a conservation and reclamation district shall be passed unless notice of the intention to introduce such a bill setting forth the general substance of the contemplated law shall have been published at least thirty (30) days and not more than ninety (90) days prior to the introduction thereof in a newspaper or newspapers having general circulation in the county or counties in which said district or any part thereof is or will be located and by delivering a copy of such notice and such bill to the Governor who shall submit such notice and bill to the Texas Water Commission, or its successor, which shall file its recommendation as to such bill with the Governor, Lieutenant Governor and Speaker

of the House of Representatives within thirty (30) days from date notice was received by the Texas Water Commission. Such notice and copy of bill shall also be given of the introduction of any bill amending a law creating or governing a particular conservation and reclamation district if such bill (1) adds additional land to the district, (2) alters the taxing authority of the district, (3) alters the authority of the district with respect to the issuance of bonds, or (4) alters the qualifications or terms of office of the members of the governing body of the district."
Section 2. The foregoing Constitutional Amendment shall be submitted to a vote of the qualified electors of this State at an election to be held on the first Tuesday after the first Monday in November, 1964, at which election all ballots shall have printed thereon the following:
"FOR the Constitutional Amendment establishing certain requirements relative to the enactment of laws affecting particular conservation and reclamation districts."
"AGAINST the Constitutional Amendment establishing certain requirements relative to the enactment of laws affecting particular conservation and reclamation districts."
Section 3. The Governor of Texas shall issue the necessary proclamation for the election and this Amendment shall be published in the manner and for the length of time as required by the Constitution and laws of this State.



Will you lose one out of five pounds to midge? Not this year. Not with Diazinon.

Midge damage can cost you 900-1600 pounds per acre in sorghum planted to yield 4500 pounds. That's like losing one pound or more out of every five pounds you counted on at harvest. This year, you don't have to pay that price. This year, you can use Diazinon® insecticide.

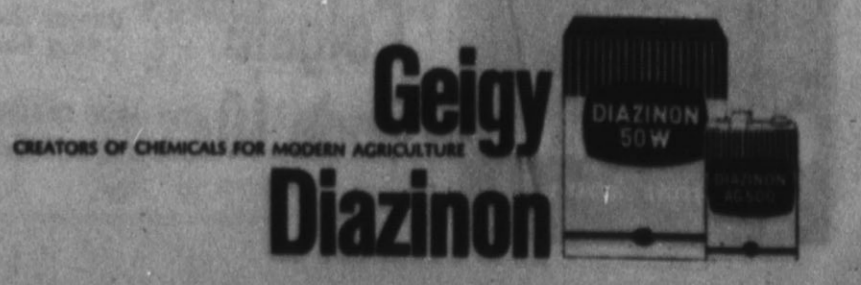
Extra advantages of Diazinon
You can harvest or feed your sorghum to livestock 14 days after spraying with Diazinon. Diazinon is easy to work with—you don't need any special clothing or equipment. And, accidental spray drift to nearby forage causes no milk or meat residue problems.

Ask your supplier for Diazinon... the newest and best in midge control. Geigy Agricultural Chemicals, Division of Geigy Chemical Corporation, Saw Mill River Road, Ardsley, N. Y.

TEXAS COLLEGE TEST RESULTS:
Two Texas colleges tested Diazinon for midge control in 1963. Results? Effective control. An 80% increase in yield. Now, USDA acceptance of Diazinon for control of sorghum midge means you can expect a similar yield increase.

Spray Diazinon after 90% of the

heads have emerged from the boots. Then, four days later, spray again. You'll knock out the second wave of larvae and complete the control job.



REP. ROGERS WRITES

Congressman Discusses Panhandle Oil Industry

The Panhandle continues to grow and prosper. A keynote of our area's economic activity is the oil and gas industry. This report is the first of several I will make to you on the makeup of our Panhandle-area economy. For a number of months I have been compiling data from reliable sources in and out of Government — from business and industrial firms and organizations. State and local government sources, and from statistics compiled in Government agencies.

I believe this compilation of data will be extremely helpful to businessmen, farmers and ranchers, to chambers of commerce and boards of development, to labor organizations, the press and radio and television, and to citizens generally who wish to be informed on the great economic strength now realized and potential, of the Texas Panhandle.

A major factor in the economy of the 28 counties comprising the 18th Congressional District is the development and production of oil and natural gas resources.

According to the latest available information from the Texas Mid-Continent Oil and Gas Association, the value of oil and gas produced is \$269 million annually. The U.S. Bureau of Mines reports that in 1961 the 28 Panhandle counties produced 39.9 million. Natural gas production totaled about 1.2 trillion cubic feet, with a value of \$150 million.

From this oil and gas activity comes a \$72.7 million-a-year industry payroll for more than 11,000 employees, according to the Texas Employment Commission. In addition, the Texas Mid-Continent Oil and Gas Association estimates a distribution of some \$33.6 million annually among the district's farmers, ranchers, and other landowners in payment for production from their acreages.

The Oil and Gas Journal reports that 1,056 wells were drilled in the 28 counties in 1962 — and 109 of them were wildcat exploratory wells. Some \$64 million was spent in the district in 1962 for drilling and about \$12 million was lost to dry holes. Major oil companies have more than 5 million acres under lease in the 18th District — approximately 30 percent of the total land area. In addition to the royalty money distribution cited above, millions of dollars more are paid out in lease rentals and bonuses.

The district has three refineries with a total capacity of 131,000 barrels of crude oil a day. These are located in Hutchinson, Moore, and Potter counties. The natural gasoline plants which extract liquid products from natural gas total 30, and handle some 3.6 billion cubic feet of gas a day. Seven carbon black plants in the district process about 143 million cubic feet of gas daily.

The 18th District includes nine of the top 100 Texas counties (there are 254 counties in all) ranked according to the value of oil and gas production.

With state rankings shown in parentheses, they are: Hutchinson (16), \$36 million from crude oil and \$13 million from natural

COMMUNIST DETECTIVE STORY

BERLIN — Crime authors in Communist East Germany have been told to dream up a "socialist Sherlock Holmes."

The spirit of the famous detective created by Sir Arthur Conan Doyle should be revived in the person of "a farsighted, wise officer of the People's Police," the authors were told at a writers' convention in East Berlin.

Stories about the new super-detective must have a socialist moral, however. They must not describe crimes that can be imitated, but contribute to reduction of crime, the authors were warned.

But crimes committed in West Germany can be described, so as to "expose the way the West German police apparatus operates in the interest of the imperialist state," the official Communist party newspaper Neues Deutschland reported.

Within a given year, almost 20 per cent of U.S. citizens change address.

BARBERS? Plenty!!
PARKING? Plenty!!
METERS? NO!!

Golden Spread Barber Salon

gas; Gray (19), 37 million oil and \$9 million gas; Hansford (33), \$7 million oil and \$24 gas; Sherman (37) \$53,000 oil and \$26.5 million gas; Carson (44), \$13 million oil and \$12 million gas; Ochiltree (50), \$13 million oil and \$9 million gas; Potter (65), \$16.5 million gas; Roberts (86), \$4 million oil and \$8 million gas.

Also important is the Helium conservation program, a national program to conserve the limited and irreplaceable resources of helium gas. Congress has authorized obligating \$47.5 million a year for the

acquisition of helium.

In 22-year contract with four companies — a milestone of partnership between Government and private enterprise — helium is being extracted from natural gas at five plants, two of them in the Panhandle at Dumas and in Hansford County. The main storage of the extracted helium is in the Cliffside Field northwest of Amarillo. An estimated 62.5 billion cubic feet of helium will be delivered during the life of the program.

WALTER ROGERS
MEMBER OF CONGRESS
18TH DISTRICT OF TEXAS



AUXILIARY OFFICERS — New officers for American Legion Auxiliary are shown above as they were installed by Mrs. Jack Flynt of Dimmitt. They are, from left to right, back row, Mrs. Carlos Vaughn, assistant sergeant-at-arms; Mabel Wagner, chaplain; Mrs. Terry Williamson, secretary-treasurer; Mrs. Ha-

zel Sparks, second vice-president; Mrs. Lawrence Carlson, parliamentarian. Front row, left to right, Mrs. W. J. Frost, sergeant-at-arms; Mrs. F. S. Smith, reporter-historian; Mrs. Alice Swigart, first vice-president; Mrs. Ira Ott, president, and Mrs. Flynt. (Brand Staff Photo)

FISH STORY
RUSSELLVILLE, Ky. — Hanging above the courthouse is a large copper weathervane in the shape of a fish.

Visitors are told the bullet hole in the fish was put there by Jesse James when he left town in 1868 after robbing the bank. But that's a fish story. After the Civil War, a Union Army soldier passed through here, spotted the fish and drilled

it with one shot. When the new courthouse was built in 1904, officials decided to keep their unique weathervane.

QUALITY NURSERY STOCK
Armstrong
NURSERY AND GARDEN CENTER
505 W. Park EM 4-1868

Dr. E. H. HENDON
OPTOMETRIST
136 E. Third ACROSS FROM JIM HILL HOTEL
EM 4-0987



IT'S TIME FOR 'BACK TO SCHOOL'

Woven Cotton
SPREADS
First Quality woven cotton bedspreads in a grand array of patterns and colors. Use at home or ideal to brighten the bedroom of any college boy or miss. Back to school sale priced. Full or twin sizes.

3.99
• Fulls
• Twins
Values up to 12.95

First Quality — Solid Color
CORDUROY
37 - 41 Inch Widths
68¢ yd.

You'll save on every yard of this fine pinwale, first quality, solid color cotton corduroy. Easy to work with, makes up beautifully into skirts, dresses, slims, jims, shirts, etc. Choose from autumn's most popular colors of red, gold, green, blue, bitersweet, black, beige, rum brown and royal blue. Comes in 15 to 25 yard pieces.

"Dan River"
GINGHAMS
One of the most exciting collections of fine, Dan River woven cotton gingham we have ever presented. Choose from a breathtaking selection of the newest fall patterns and color combinations. Amazing features in every yard, needs little or no ironing, washes easily, needs no starch ever, wrinkles hang out, never shrinks out of fit, easy to cut and sew. First Quality, thrifty Anthony priced.

79¢ yd.
DRI-DON FINISH

MEN'S & BOYS' PANTS
Fine Combed Cotton Twill

Here is top quality and style at a real money saving price. Men's, Youngmen's and boys' handsome combed cotton satin finish twill, tailored 100% like dress pants. Matching inside trim, neatly cuffed, Ivy model with seven belt loops. Choose from popular colors of black or taupe. A pant you can wear almost everywhere. Special sale priced for back-to-school.

MEN'S SIZES 28-38 **3.99**

BOYS' SIZES 6-18 **2.99**

SAVE 1.07
BOYS' VINYL JACKET
Regular 9.95
8.88

A jacket any boy will enjoy wearing all winter long. Durable, smart looking expanded vinyl with warm Orlon Acrylic pile lining. Zip-off hood. Bulky knit collar and cuffs. Two slash pockets, heavy duty zipper front. Choose from natural color or blue. Sizes 4 to 12.

JUNIOR PETITES
Full skirt or sheath styles for the junior petite in sizes 3 to 11. Styled and detailed for the new season in the smartest fabrics. Wonderful colors and combinations she will love. Thrifty Anthony priced too, see them.

6.95 to 10.95

Anthony's
C. R. ANTHONY CO.

Women's & Girls'
"eiderlon" BRIEFS
The wonder blend fabric of rayon with combed cotton. They fit better, more comfortable, wear longer. Petal soft, extra absorbent. White and pastel shades. Ladies' sizes 5 - 8, Girls' 4 - 14.

Women's 3 Pair 1.25
Girls' 3 Pair 1.00

Use Our Lay-away Plan

Junior Hi "DOGGIE" Sweat Shirts \$2.98	Hi School "WHITEFACE" Sweat Shirts \$3.98	Boys — White Gym Shorts \$1.00	Athletic Supporter \$1.00
--	---	--------------------------------	---------------------------

Phone EM 4-2030 WANT ADS Phone EM 4-2030

CUSTOM FEEDING
Growing - Finishing Rations
CHARLIE STONE
EM 4-2224

Reliance HOMES
FOXWORTH GALBRAITH
NO DOWN PAYMENT
NO CLOSING COSTS

SERVICE ON
Black & White & Color
TELEVISION
Any Make or Model
SUNSET APPLIANCE
906 Lee EM 4-3472

Kiwanis Club
Thurs. Noon
IOOF Hall
207 E. Sixth

Lions Club
meets each
Wednesday, 12 Noon
Hotel Jim Hill

Hereford Rotary Club
meets every
Monday at 12:05
RANEY'S RESTAURANT

STATED MEETINGS
Second Monday
Thursday
7:30 p.m.
Practice
Tröy Stambaugh, Sec.
Wm. S. Powell W. M.

ALL TYPES
ELECTRICAL WIRING
PHONE EM 4-0910
BILL DRUMMOND
BILL'S ELECTRIC

FHA - GI - Conventional
LOANS
Can Be Arranged
Prompt, Fast Action
For Sale: Some of the finest homes in Hereford.
See Us for Commercial Properties
LLOYD POOL
Pool-Sigman Agency
801 S. 25 Mile Ave.
EM 4-0758

MEAT
Specializing In
CUSTOM SLAUGHTERING
WHOLESALE - RETAIL
HACKER - JESKO
Rt. 3 - Hereford
EM 4-3390

OUR SERVICE DEPARTMENT
is equipped and staffed to give you the service you are entitled to.
We appreciate your business.
●BUICK ●RAMBLER
●Johnson Boat Motors
Kinsey-Osborn
MOTORS
142 N. Miles EM 4-0990

FOR SALE Miscellaneous

FOR SALE
1200' new 6" Carrier pipe, 80c per foot.
1,000' new 7" carrier pipe.
Contact
E. D. or Layton Sawyer
12 Miles West of Hereford
B-1-4-3c

FOR SALE or trade 1964 1/2 T Chevrolet pickup and Camper. Singer sewing machine, treadle type. Good condition. Phone EM 4-3829. B-1-19-5-2c

HEREFORD BAKERY
519 Park Ave. EM 4-0177
HOME OF
Deaf Smith County
Bread and Pastries

FOR
● Gas ● Wash ● Grease
● Wheel Balancing
● Minor Repairs
BOYD'S HUMBLE SERVICE
EM 4-1110
Hiway 60 & 385

Colorado Rod-Weeders
PTO or hydraulic drive.
Cisco Rod - Weeders
with hydraulic drive.
Dempster Planters, Cultivators and Rotary Hoes.
Lilliston Shredders & Blades.
See the new M-F Diesel tractors. We have several GOOD used Combines.
SEE:
LESLEY MOTOR CO.
For the finest in farm machinery.
West Hi-way 60
Phone EM 4-1600

MATTRESSES
● New ● Renovated
● Remanufactured
FREE PICKUP & DELIVERY
Your Mattress Remade \$14.90
New Springs \$24.90
Call or Write
ANDERSON
Mattress & Upholstering Co.
Box 802 - 205 N. Tyler
Amarillo DR3 - 8313

Call EM 4-0555
If You Are In
The Market For
A Home
Lone Star Agency

You've Never Seen
Such Thorough Service
STOP IN SOON
Phillip "66" Products
EAST SIDE "66"
Rocky Stewart
1303 E. 1st. EM 4-2644

NOW LEASING
Office space or space for business in 800 Block on Park Avenue. Plenty of parking. Will Build to Suit.
Don Martin Agency
809 Park Avenue EM 4-0925

FOR SALE OR TRADE
13' Star Fire Vacation Travel Trailer. Butane stove and light. Sleeps 5 persons. Price \$645.00.
6' Aeromotor windmill with steel tower, 100' 2 inch pipe, succor rod and cylinder. \$275.00
J. C. REESE
Phone EM 4-3518
B-1-5-2c

AERMOTOR 4" submersible is guaranteed unconditionally. Call D. E. Turner, EM 4-0811. B-1-2-tfc

FOR SALE: 12 inch and 15 inch concrete pipe. See at Wes-Tex Equipment on East Highway 60. B-1-15-25-tfc

FOUR FEMALE and two male Siamese kittens. 905 Lafayette, EM 4-2219. B-1-10-5-2p

FOR SALE 8' x 45' trailer house, small equity See at 351 North Street, behind Roller Rink on Hiway 60 B-1-18-5-2p

Chrysler - Plymouth AUTOMOBILES
CHRYSLER IRRIGATION ENGINES
New & Used
McCULLOUGH MOTOR CO.
Sales & Service
345 East Highway 60
Phone EM 4-3150
B-1-43-TFC

WATCH CRYSTALS: \$1. for waterproof round watch. 3000 fancy Hi-Dam crystals \$2.50 at Lamm Jewelry. B-1-17-52-tfc

FOR SALE
Line coupled irrigation engine coolers. \$30.00. Guaranteed. Also truck beds and dumps.
BETZEN MACHINE & WELDING
607 Avenue F Ph. EM 4-3149
B-1-36-tfc

FOR SALE
46x10 Cheyenne Mobile Home. Storm windows, washer, two bedrooms, carpet and new drapes.
Call EM 4-1238
Six miles east on Hiway 60, three north.
B-1-46-tfc

We Need Listings or Dwellings, Farm Property, And Business Property
Call EM 4-0555
Lone Star Agency

SERVICE ON ALL Washers & Dryers
SUNSET APPLIANCE
906 Lee EM 4-3472

RENT A CAR
BY DAY, WEEK or MONTH
Campbell Pontiac
815 E. 1st EM 4-2283

Johnson Outboard Motor or Arkansas Traveler Boat, or for a used boat or motor, see **KINSEY - OSBORN MOTORS**
142 MILES AVENUE
B-1-26-TFC

ALFALFA HAY See Charlie Holt 1/4 Miles West on Clovis Highway. EM 4-0402 or 289-5599. B-1-14-8-110p

We have Distilled water and Ozark water. For more information see soft water service.
J. O. Miller, Owner
B-1-29-tfc

FOR SALE: King 3-B trombone, box case. Like new. (It almost is.) \$200. EM 4-0799 at night. B-1-16-41-tfx

BIG RED BARN
We Buy - Sell - Trade for anything of value.
Used Furniture, Appliances and Junk.
EM 4-3552
West Edge Of Hereford Highway 60
B-1-1-TFC

TO BETTER SERVE YOU
We now have more room, some more equipment. We service all makes of lawn mowers and small engines. Equipped to sharpen mowers. Pick up and deliver in City limits, no extra charge.
POOR BOY'S GARAGE
Shop - EM 4-3509
Johnny McIver - EM 4-2130
If no answer, call EM 4-2799
B-1-50-tfc

WE HAVE Tascos, Kaw, Concho, Triumph, Bison and Wichita Wheat seed for sale. Also Rogers and Cordova barley, Elbon and Tetra-petkus rye. 146 East 2nd. Call EM 4-0560. B-1-27-32-4p

CERTIFIED and non-certified wheat seed. 146 East 2nd St., EM 4-0560 B-1-10-32-4p

FOR SALE: Siamese Kittens \$5 each. Phone EM 4-2219. B-1-8-32-1p

FOR SALE: Leblanc Clarinet. Good condition. Used only six months. Call EM 4-0487. B-1-12-32-2c

FOR SALE: Male Keeshond. 5 months old. Registered. Phone EM 4-2789. B-1-10-32-2c

PLAINSWAY TRAILER HAVEN
Park and Sales. Buy and sell, new and used. Phone CA 4-5722, Highway 194, Plainview, Texas B-1-32-7c

SINGER DRESSMAKER No. 503 Siantneedle. Cash or take up payments \$9.17 monthly or \$40. cash. Write Credit Manager, Box 1011, Amarillo Texas. B-1-21-30-4c

PIPE ANY SIZE: New or used. D. E. Turner. EM 4-0811. B-1-10-2-tfc

MINIATURE SHETLAND ponies for sale. 3 months to 3 years old. 1 1/4 miles west on Harrison Hiway. Jorde Potato Co. B-1-20-3-tfc

NEED SOMEONE
With good credit to take over payments on re-possessed automatic sewing machine. Write Credit Manager, 4118 34th St., Lubbock, Texas. B-1-4-3c

AKC REGISTERED Pug puppies, fawn color. Ideal pets. EV3-2323, Amarillo, Texas. B-1-11-31-2p

FOR SALE: Bulldog puppies. Call EM 4-3887 or see 818 Ave. K. B-1-11-31-2c

FOR SALE: 425 gallon ball type propane tank. See at Hereford Butane. B-1-12-49-tfx

1958 SPACECRAFT Trailer house, 8' x 35'. Air Conditioned. See at Grand "E" trailer park No. 30. Will consider furniture as trade in. B-1-20-31-3p

FOR SALE: 200 pound Scotsman Ice Maker. Perfect condition. Wade's Steak House. Phone EM 4-3565. B-1-14-31-2c

GENERATORS and starters for cars and trucks. Hereford Wrecking Co. Phone EM 4-0580. T-1-12-18-tfc

FOR SALE
TOP QUALITY
Irrigation Dams as low as \$3.25
DAVIS IMPLEMENT
144 W 2nd EM 4-2811
B-2-18-tfc

AGENTS FOR KMP LAKE PUMP
Self priming.
Easy to move.
600 to 1900 GPM
See demonstrator 6 miles west, 12 north of Hereford.
GARY or C. R. McQUIGG
Phone 289-5330 or EM 4-3485
T-2-20-tfc

FOR SALE: Nice red and white 1961 Falcon 2-dr. stick shift at 141 Emma after 6 p.m. or Phone EM 4-1726. B-2-19-52-tfc

WE ARE DEALERS
for Peerless Grain Rollers and Feeding Equipment
DAVIS IMPLEMENT
144 W 2nd EM 4-2811
B-2-18-tfc

EQUIPMENT FOR SALE
Model 50-T IHC twine tie baler. Good tires. Overhauled in 1963, not used this year. Good shape. No. 31 Tractor mower, drag type, hydraulic lift. 2 years old. Two row lister, planter for IHC tractor. One John Deere steel wheel hay rake 7'. One in good shape, one to use for spare parts.
One 8' Tandem disc harrow, hydraulic lift.
BILL McIVER
POOR BOY'S GARAGE, One Mile West on Moreman Ave., Off 385. Ph. EM 4-3509
B-2-2-tfc

CUSTOM SEED Cleaning and treating with modern equipment. Call EM 4-0560. B-2-10-32-4p

AERMOTOR 6" submersible 5 HP, 3" pump \$595.00. 3 to 15 HP. Call D. E. Turner EM 4-0811. B-2-2-tfc

FOR SALE: '55 Four door Ambassador, factory air, \$250.00. Also '55 Buick Station Wagon. \$95.00. EM 4-3149 or see at 607 Avenue F. B-3-21-1-tfc

SELL, OR TRADE: 1958 Chrysler. New Yorker Station Wagon. All Power. Phone EM 4-2450. B-3-13-2-tfc

3. FOR SALE Automobiles
MILBURN MOTOR COMPANY
We Pay Cash For Used Cars
225 N. Sampson
Phone EM 4-0077
B-3-33-TFC

1962 MONZA. Good condition. Just overhauled. Priced for quick sale. Call EM 4-1061 after 5 p.m. week days and Saturday and Sunday. B-3-23-5-3c

FOR SALE: '55 Four door Ambassador, factory air, \$250.00. Also '55 Buick Station Wagon. \$95.00. EM 4-3149 or see at 607 Avenue F. B-3-21-1-tfc

4. REAL ESTATE For Sale Or Trade
THREE bedroom stucco near 3 schools. Priced for quick sale. \$850. Ideal rent property. 319 Avenue H. EM 4-2847. B-4-18-32-2c

FOR SALE
THREE BEDROOM house, completely furnished. Ready to move in. Well located, close in. Has 14x28 basement, double garage. Lot on corner, 85x130 feet. Priced to sell. E. H. Norton, 443 McKinley. Phone EM 4-0083. B-4-32-8c

FOR SALE: NOW READY
Beautiful 4 bedroom house with family room, in new Green Acres Addition. Refrigerated air conditioning, carpeted, built-ins, fireplace, Heavy shake roof, patio. Membership in Green Acres swim club included. Must be seen to be appreciated. Terms to suit. Call EM 4-0750. Evenings EM 4-0554 for appointment. B-4-32-tfc

Debt free income property, leased \$12,700.00 net per year. Trade for land. Box 27 Hereford, Texas. B-4-32-4c

FOR SALE
1497A Dallam Co., Texas. On pavement. Good tight land. 160A cultivation. Strong 8" well. Balance grass. Guaranteed water. Natural gas line. Price \$300,000. 10% down, 20 years on balance at 6%. One half minerals.
MILLER and MILFORD
Eufaula, Oklahoma
B-4-32-3c

FOR SALE,
To be moved: 9 room, 2 bath house. Bargain priced. We still make Travelers Ins. Co. loans on farms and ranches, giving fast and best appraisals.
T. J. Carter Realty Co.
341 No. Main St.
EM 4-0188 - EM 4-0469
B-4-32-3c

FOR SALE BY OWNER
THREE BEDROOM MEDALLION HOME with family room and fireplace. Completely paneled and acoustical tile. Stockade fenced and planted. Refrigerated air, dishwasher, electric range. Furnished or unfurnished. 111 Star. Phone EM 4-0854 or EM 4-0770 B-4-31-3c

TWO BEDROOM HOUSE, attached garage. Fenced back yard. Near Aikman school. Good neighborhood. 602 Blevins. Reasonable price. Call EM 4-2365. B-4-31-tfc

J. M. Hamby Real Estate
1/2 Mile South of Underpass on Highway 385 EM 4-3566
J. M. Hamby EM 4-2553
Durdward Hamby EM 4-3466
Gerald Hamby EM 4-1534
Harold Hamby EM 4-3454
B-4-5-tfc

FOR SALE: 6-room Modern House to be moved. Call EM 4-2723. B-4-10-25-tfc

LOANS FARM & RANCH
FAST SERVICE
DWARD HAMBY
EM 4-3566
NIGHT - EM 4-3466
B-4-35-TFC

FOR SALE: 6-room Modern House to be moved. Call EM 4-2723. B-4-10-25-tfc

FOR SALE: 6-room Modern House to be moved. Call EM 4-2723. B-4-10-25-tfc

FOR SALE: 6-room Modern House to be moved. Call EM 4-2723. B-4-10-25-tfc

FOR SALE: 6-room Modern House to be moved. Call EM 4-2723. B-4-10-25-tfc

FOR SALE: 6-room Modern House to be moved. Call EM 4-2723. B-4-10-25-tfc

FOR SALE: 6-room Modern House to be moved. Call EM 4-2723. B-4-10-25-tfc

FOR SALE: 6-room Modern House to be moved. Call EM 4-2723. B-4-10-25-tfc

FOR SALE: 6-room Modern House to be moved. Call EM 4-2723. B-4-10-25-tfc

FOR SALE: 6-room Modern House to be moved. Call EM 4-2723. B-4-10-25-tfc

FOR SALE: 6-room Modern House to be moved. Call EM 4-2723. B-4-10-25-tfc

FOR SALE: 6-room Modern House to be moved. Call EM 4-2723. B-4-10-25-tfc

FOR SALE: 6-room Modern House to be moved. Call EM 4-2723. B-4-10-25-tfc

FOR SALE: 6-room Modern House to be moved. Call EM 4-2723. B-4-10-25-tfc

FOR SALE: 6-room Modern House to be moved. Call EM 4-2723. B-4-10-25-tfc

FOR SALE: 6-room Modern House to be moved. Call EM 4-2723. B-4-10-25-tfc

RENTERS WANTED!
Color steel buildings built to your specifications, 2 acre lots, located north of B & B Oliver, Patterson Chemical and Merchants Fast Freight.
SOUTH PARK INDUSTRIAL SUBDIVISION
Sam Nunnally
EM 4-0555 - Days
Home - EM 4-2814
B-4-1-tfc

TWO BEDROOM brick. Over 1000 sq. ft. Will carry FHA or GI loan. Will sell or trade for home in Hereford close to same equity. W. J. (Bill) Smith, 4117 So. Washington, DR 4-4240, Amarillo, Texas. B-4-33-30-4p

163 ACRES
135 in cultivation. One good 8" well. 49A wheat 38A milo, 8 barley. 2 bedroom house, 40' x 60' barn with shed on side. Some underground tile. Price \$250,000 per acre. Approximately \$18,000 down. Would consider \$10,000 cash, trade on balance.
3 1/2 section near Hereford will sell or trade for land on North Plains.
4. 40 acres on paving, you dig irrigation well or put house on it clear of debt. Party will carry full price on 10 equal yearly payments plus interest.
5. 20 acres, all cult. city water and sewer on adjoining land, with extra good 6" well, will sell or trade on a larger farm.
6. Business building and large lot on corner of Irving Street and 60 Hiway, will sell on small down payment or trade on farm.
9. 2 bedroom brick house \$500.00 down you get loan, seller will carry second lien.
10. 2 bedroom frame house, single garage. \$500.00 down.
11. 3 bedroom brick house, single garage, cellar, fenced yard. Will sell or trade for cheaper 2 or 3 bedroom home.
Four bedroom brick house on highway. Double garage. Approximately 1 acre land. \$35,000.00. Good land established on it now.
12. We have some large homes, some new, check us to see these.

FOR SALE: 9 room, 2 bath house. Bargain priced. We still make Travelers Ins. Co. loans on farms and ranches, giving fast and best appraisals.
T. J. Carter Realty Co.
341 No. Main St.
EM 4-0188 - EM 4-0469
B-4-32-3c

FOR SALE BY OWNER
THREE BEDROOM MEDALLION HOME with family room and fireplace. Completely paneled and acoustical tile. Stockade fenced and planted. Refrigerated air, dishwasher, electric range. Furnished or unfurnished. 111 Star. Phone EM 4-0854 or EM 4-0770 B-4-31-3c

TWO BEDROOM HOUSE, attached garage. Fenced back yard. Near Aikman school. Good neighborhood. 602 Blevins. Reasonable price. Call EM 4-2365. B-4-31-tfc

J. M. Hamby Real Estate
1/2 Mile South of Underpass on Highway 385 EM 4-3566
J. M. Hamby EM 4-2553
Durdward Hamby EM 4-3466
Gerald Hamby EM 4-1534
Harold Hamby EM 4-3454
B-4-5-tfc

FOR SALE: 6-room Modern House to be moved. Call EM 4-2723. B-4-10-25-tfc

FOR SALE: 6-room Modern House to be moved. Call EM 4-2723. B-4-10-25-tfc

FOR SALE: 6-room Modern House to be moved. Call EM 4-2723. B-4-10-25-tfc

FOR SALE: 6-room Modern House to be moved. Call EM 4-2723. B-4-10-25-tfc

FOR SALE: 6-room Modern House to be moved. Call EM 4-2723. B-4-10-25-tfc

FOR SALE: 6-room Modern House to be moved. Call EM 4-2723. B-4-10-25-tfc

FOR SALE: 6-room Modern House to be moved. Call EM 4-2723. B-4-10-25-tfc

FOR SALE: 6-room Modern House to be moved. Call EM 4-2723. B-4-10-25-tfc

FOR SALE: 6-room Modern House to be moved. Call EM 4-2723. B-4-10-25-tfc

FOR SALE: 6-room Modern House to be moved. Call EM 4-2723. B-4-10-25-tfc

FOR SALE: 6-room Modern House to be moved. Call EM 4-2723. B-4-10-25-tfc

FOR SALE: 6-room Modern House to be moved. Call EM 4-2723. B-4-10-25-tfc

FOR SALE: 6-room Modern House to be moved. Call EM 4-2723. B-4-10-25-tfc

FOR SALE: 6-room Modern House to be moved. Call EM 4-2723. B-4-10-25-tfc

FOR SALE: 6-room Modern House to be moved. Call EM 4-2723. B-4-10-25-tfc

FOR SALE: 6-room Modern House to be moved. Call EM 4-2723. B-4-10-25-tfc

FOR SALE: 6-room Modern House to be moved. Call EM 4-2723. B-4-10-25-tfc

FOR SALE: 6-room Modern House to be moved. Call EM 4-2723. B-4-10-25-tfc

FOR SALE: 6-room Modern House to be moved. Call EM 4-2723. B-4-10-25-tfc

GLASS IS OUR BUSINESS
Call Us For All Your Glass Needs
HEREFORD GLASS CO.
1302 Park Ave. INC. EM 4-2652

Hallmark of Service
MARK IV REALTORS
230 N. 25 Mile Ave. EM 4-2220
HOMES

Excellent two bedroom brick with den, or 3 bedrooms. Fence, storage house. Easy payments. \$11,000. H-223

In northwest Hereford, 3 bedroom brick, den, fireplace, built-ins, sprinkler, fence, carpets, drapes, terrazzo entrance. Will trade. H-326

Two bedrooms; double garage, carpet, fence. 13th and Ave. J. Less than \$1000 down, immediate possession. H-218

FARMS
1331 acres. 304 acres in Soil Bank with 3 years to go. 500 acres milo, 10" well pumping over 1200 gallons per minute, 3 bedroom modern home, storage tank, pressure pump and windmill. Corral, shop building, machinery shed and 36x60 grainery. One-fourth mile Valley Sprinkler surface pipe, trailer goes. No loan closing costs - owner will carry papers. F-53D

640 acres, 580 acres milo. Guaranteed 8" well, sandy soil. \$250 an acre, 20% down balance 15 years at 6%. F-52D

EVENINGS & SUNDAYS
Don Metcalf EM 4-2857 - Oliver Streu EM 4-2857
Mrs. Shelby Rogers EM 4-3266 - Francis Hardwick
Harold Rudd 289-5639 EM 4-2241

DENTON PARK
JUST NORTH OF AIKMAN SCHOOL

Featuring Holiday Living in Hereford's First Complete Planned Community
SHOPPING CENTER - SWIMMING POOL & PARK
-Personalized Service in Planning - Designing - Financing-
Office at 16th & Blevins Show Home 1607 Blevins
EM 4-1350 Open Every Day - Sunday 1-6 p.m.
TONY RAVIZZA - CUSTOM BUILDER
Register for

Classifieds...

(Continued from page 14)

12 ACRES irrigated; lovely 3 bedroom brick home, mosaic tile floors, draperies, beautiful lawn, trees. Plenty good water, 1 1/2 mi. south Weslaco, Texas, on pavement; fenced, part Star grass, 17 head cattle, 7 acres cotton allotment, tractor, equipment, minerals, other items. Sacrifice complete, \$22,500 or will sell acre with home.

Henry J. Ollis Box 804 Donna, Texas Phone Weslaco, W08-2937 B-4-60-30-4p

FOR SALE

By owner, Wheat & Cattle ranch. Seven section, all fenced, wheat allotment 800 acres, 100 acres irrigated alfalfa other crops irrigated, four irrigated wells with ample pipe. 2300 acre under cultivation, balance good pasture, fine improvements, with three modern homes, feed lots for 250 steers, no sand or brush. To old to operate it, fine deal for father and sons, located southwest of Burlington, Colorado. Sell for under a hundred per acre, some terms.

Dwight J. Wilson (Owner) 800 Biting Bldg Wichita 2, Kansas B-4-3-6p

\$\$\$\$\$

ONE MILLION DOLLARS To lend on irrigated land in Deaf Smith, Castro and Parmer counties. For

PRUDENTIAL

America's Largest Farm Lender!

SAM NUNNALLY

EM 4-0555 EM 4-2814 LONE STAR AGENCY B-4-11-10-4p

5. FOR RENT

FOR RENT: 1011 East First. 40' x 90' building. Ample parking. Call EM 4-2108 after 6 p.m. B-5-14-32-tfc

FOR RENT? 3-room furnished apartment near schools. Whites only Bills paid. No pets. Call EM4-2256. B-5-15-5-tfc

SMALL FURNISHED apartment bills paid. Man and wife. Come see. Carl Mountz, 106 West 7th. B-5-15-5-tfc

6. WANTED

COUPLE WANTED to rent 2-bedroom house furnished. Call EM4-2763. B-6-10-5-tfc

WANTED To buy: Baled alfalfa hay. Hereford Feed Yards, Inc. Call EM4-0172. B-6-12-22-tfc

WANTED: Baby sitting. Experienced. Contact at 326 Ave. F. B-6-10-31-2p

NEED YOUR wheat seed cleaned and treated? See us - 146 East 2nd St. EM 4-0560. B-6-14-32-4p

PERMANENT COUPLE would like to lease space from private party for modern mobile home. Call EM 4-0725 B-6-2-tfx

WORK WANTED: Painting, perfa-taping, textoning, sheet-ripping, any carpenter repairs. Ted Oldfield, EM 4-0235 or EM 4-2212. B-6-14-42-tfc

8. HELP WANTED

WANTED Waitress, Cooks, Cooks' helpers. Top wages paid. Phone 267-4231. V e g a, Texas. B-8-12-32-2e

Man over 24, vacancy in Deaf Smith & Castro Co.'s for Rawleigh dealer. Full time preferred. Will consider ambitious part-timer. Many now earning \$3 per hour and up. See E. Gidden, Box 705, Canyon or write Rawleigh, TXF-160-1170 Memphis, Tenn. B-8-5-3p

WANTED

Two women between the ages of 35 and 45. One to be assistant manager and one part-time. Assistant manager must be alert and very efficient. Good salary to right person. Apply to Jo White at

MONTGOMERY-WARD 147 N. Main B-8-32-1c

Mechanic full time, experienced rebuilding, servicing, diesel-trucks, semi-trailers, vans, tankers, EM 4-0484, Hereford, Texas. B-8-32-4c

Experienced cash sales, truck loads, lumber, steel products, brick, building materials, livestock-feeds. Box 27, Hereford. B-8-32-4c

Year around employment, house and utilities furnished, for productive irrigation farmer, experienced with livestock and construction of farm buildings. EM 4-0484, Hereford, Texas. B-8-32-4c

HELP WANTED

Secretary-Bookkeeper. Prefer male, age 19-30 yrs. Typing & general bookkeeping. No dictation. Contact L. W. Combs, Big T Pump Co., Inc. Ph: EM 4-0353. B-8-5-tfc

WANTED

Experienced automotive bookkeeper. Two secretaries who know bookkeeping, shorthand, typing. Permanent positions. Salaries depend on ability and experience. Call Edwin Axe, EM 4-1786 for appointment, for interview. B-8-31-tfc

WANTED

Lady experienced in operating posting machine, typing, bookkeeping and clerical work. Salary open. Write Box 673, Hereford for interview. B-8-5-tfc

WANTED Lady to do bookkeeping and office work. Call EM 4-1722. B-8-10-5-2c

WANTED: Experienced irrigator. Year around job. Call Donnie Thoreson, FI 7-2714 in Gruver, Texas. B-8-13-28-tfc

9. Situations Wanted

COUPLE WANTS to manage apartments or motel. Phone EM4-2763. B-9-10-31-tfc

10. NOTICE

NOT RESPONSIBLE for any debts or checks other than my own. E. R. McCracken. B-10-14-32-3p

FULLER BRUSH PRODUCTS Cosmetics, household cleaning aids, chemicals. Call Jim Manning EM 4-2102. Appointment at your convenience. B-10-5-9c

GET A NEW crystal for your watch. Men's round water proof, \$1 and fancy Hi-Dome Ladies \$2.50 at Lamm Jewelry. B-10-20-52-tfc

11. Business Service

FOR SALE: 1958 Ford Station Wagon Country Sedan. \$550. Call EM 4-2349. B-3-11-32-2p

LET US clean and treat your seed wheat. EM 4-0560. B-11-10-32-4p

ROTOTILLING Lawns, Beds, gardens. T. A. Rhodes. EM 4-0119 or EM 4-3848. B-11-10-3-8p

LEAVE YOUR JANITORIAL Problems to Superior Janitorial Service. Expert service, guaranteed workmanship. We bid on any job no matter how large or small. Call EM 4-3165 and talk to Bob Duncan. B-11-5-9c

FOR YOUR CONCRETE irrigation pipe repairs Call Rocky Landin, EM4-1497. S-11-10-5-3p

CUSTOM HAULING and moving. Pick up and delivery. Call EM 4-1033 or EM4-3362. Butch Freeman and Lee Loflin. B-11-17-5-tfc

PORTABLE DISC ROLLING Scalloped or plain. Jacobsen Brothers. Phone EM 4-1543. B-11-10-23-tfc

FOR LAWN Mowing and Clean-Up jobs call EM 4-2879. Johnny Martin. B-11-11-4-4p

WATER

Water softening and conditioning has been our business for the past twenty years, and will be our business for the next twenty years. We have paid taxes in Hereford and Deaf Smith county for the past twenty years. We have all types and sizes of softeners in stock and can make immediate delivery at any time. We sell home softeners and have a softener that will serve your need whether it be for home or industry at a price you can afford to pay. Terms to suit purchaser, we also will install a permanent type fully automatic softener in your home on a service basis. We have the exchange softener on the service basis. We are as near as your telephone for soft water service. 216 North 25 Mile Ave. Home Owned and Operated. B-11-29-tfc

Austin...

(Continued from page 13)

for parks such as Garner, Inks, Goose Island, Brownwood and Fort Parker are handling capacity crowds.

A \$160,000 expenditure at Huntsville State Park provided only a third of the facilities that could be utilized, reports the parks chief.

New expansion projects at Falcon, Lake Whitney and Dam B will help take care of next year's visitors but probably won't come close to meeting the demand for park facilities, Gosdin said.

APPOINTEE - Tom E. Beard, County Attorney for Hill County, has been appointed by

NEED NEW-EQUIPMENT or vehicles? Why not lease it? Call Mark IV EM 4-2220. B-11-13-47-tfc

T & H DRILLING COMPANY 4" to 12" casing. Gravel pack or screen. Nathan Hopson EM 4-2332 D. E. Turner EM 4-0811 B-11-2-tfc

NOW OPEN: Steam baths, Massages. Clovis Hotel, Suite 302. Clovis, New Mexico. B-11-12-31-4p

CECIL L. COKER CRANE SERVICE

Steel Erection Pit Cleaning Dirt Moving Custom Anhydrous Application Custom Paving EM 4-2579 Day or Night B-11-28-9c

SERVICE ON ALL MAJOR APPLIANCES AND REFRIGERATORS S & R APPLIANCES

209 Miles EM 4-1302 B-11-42-tfc

OWENS & HOLLINGSWORTH

EM 4-3572 Commercial - Industrial Residential Wiring 809 EAST SECOND Magneto - Starter Generator & Electric Motors Rewind Sales & Service B-11-13-TFC

Melvin, Doug and Virgil FOWLER AND KELLEY Electrical Contractors Residential and Commercial. All bids and wiring competitive. Phone EM 4-1345 Nights phones EM 4-2012 or EM 4-1828; EM 4-1345 B-11-21-tfc

HOWARD'S SERVICE: For all major appliance service call EM4-1524. B-11-10-5-9p

Tower Dr. In

Open Nightly at 7:45 Show Starts at Dusk!

Now... Thru FRI.

"INVINCIBLE GLADIATOR" with Richard Harrison Plus Co-Hit!

"GIANT OF METROPOLIS" with Gordon Mitchell

SATURDAY ONLY!

STAGE TO THUNDER ROCK TECHNICOLOR

Plus ROBINSON CRUSOE ON MARS TECHNICOLOR A PARAMOUNT RELEASE

STARTS SUNDAY Come Franco's LOOKING FOR LOVE WITH JIM RUTTON Plus Co-Hit!

Plus Co-Hit!

Plus Co-Hit!

Plus Co-Hit!

Plus Co-Hit!

Plus Co-Hit!

Attorney for the 66th Judicial District. Beard, a Baylor University law graduate who is also the Democratic nominee for the position he was appointed to, succeeds the late Jerry E. Clarke.

RETAIL SALES ON RISE - UT Bureau of Business Research's seasonally-adjusted index of retail sales in Texas show a two per cent rise in June. Bureau reports that in the first six months of 1964 retail stores recorded a rise of five per cent over the first half of 1963.

Biggest increases over the 19-63 period were made by automotive dealers and stores dealing in women's ready-to-wear. But every retail category showed a rise, except meat-less grocery stores.

SHORT SNORTS

State Education Commissioner J. W. Edgar still is looking into complex legal angles of an Eagle Pass school controversy in which former Odessa W. T. Paulos was dumped as superintendent two weeks after he was hired, in the wake of a school board election.

The highway and heavy construction industry in the U. S. cut its industrial accident rate in half between 1948 and 1961, according to Hugh McMillan, president of the Texas Highway-Heavy Branch, Associated General Contractors.

Yorktown Community Bank, DeWitt County, and Security

STAR

Boxoffice opens Sat. & Sun. at 1:45 p.m. Matinee Mon. - Fri. at 8 p.m. Even Mon. - Fri. at 6:45 p.m.

Now thru Sat.

Here comes Flipper

the fearless...



M-G-M presents AN IRVING THOMPSON PRODUCTION

Flipper's new adventure

LOUIE HALLPIN - PAMELA FRANKLIN TOM HELMREICH - BRIAN KELLY - FLIPPER in METROCOLOR

STARTS SUNDAY

WHAT A CAST!

WHAT A PAST!

WHAT A SHOW!

WHAT A WAY TO GO!

20th Century-Fox presents Shirley MacLaine and Robert Mitchum and Paul Newman and Dean Martin and Gene Kelly and Bob Cummings and Dick Van Dyke

Plus Co-Hit!

Plus Co-Hit!

Plus Co-Hit!

Plus Co-Hit!

Plus Co-Hit!

Plus Co-Hit!

Plus Co-Hit!

Bank of Spring, Harris County, were chartered by State Banking Board.

Texas Employment Commission announced it had selected 200 youth counselors to work in the intensive Federal-State effort to rehabilitate unskilled and unemployed youth.

The Rosenberg twins, former Witham, Mass., high school track stars, will be running against each other when North-eastern and Brandeis compete in the future. Steve is at North-eastern and Art at Brandeis

Danny Villanueva of Los Angeles holds the 1963 National Football League record for most punts 81. Villanuevas total is six less than his league high of 87 in 1962. The record for a season is 92 by Howard Maley of the Boston Yanks in 1947.

The leading money-winning owner at one meeting of Hollywood Park is Rex Ellsworth, \$521,125, in 1962.

Michigan State sophomore Jim Garrett leaped 24.7 to win the 1964 Big Ten indoor broad jump title and keep the championship at MSU for the third straight year. Spartan Sherman Lewis captured the honors in the event in 1962 and 1963.

Jimmy Patton, dean of safety-men in the National Football League, is in his 10th year with the New York Giants.



DOLLAR DAY SCENE - Downtown offered money. This shows shoppers were lined up Dollar Day bargains galore Monday to get inside before the doors opened. (Brand Staff Photo)

Everyone in your Community benefits



Shop in HEREFORD

and keep local dollars circulating in the community. They will support local institutions such as schools, churches, civic projects. Everyone benefits!



CONGRESSMAN HONORED — Wheat men from throughout the Panhandle and southwestern Oklahoma staged an appreciation banquet for Cong. Graham Purcell at Vernon last Saturday with 500 persons in attendance. Graham is shown at the right. Principal speaker was Secretary of Agriculture Orville Freeman (shown at left), who was introduced by David Williams (speaking), president of Rolling Plains Wheat Growers. (Brand Staff Photo)

Hearing Ills Hit Thousands In Dallas Area

DALLAS, (AP) — Possibly 300,000 persons in the Dallas — Fort Worth area have some impairment of hearing.

That's the estimate of Dr. Aram Glorig, director of the Callier Hearing and Speech Center in Dallas.

He says the noises of civilization degrade hearing, with male losses being higher than female because employment conditions.

Dr. Glorig went to Europe this year to try to set up world criteria for noise levels.

He said he would expect a 100 per cent incidence of hearing loss in newspaper pressmen who work unprotected five years with the high-speed presses.

Of course, jet airplanes are a problem. He currently is consulting with the Air Force in studying a half million servicemen.

Loss of hearing in servicemen — and he said it was the rule with long service rather than the exception — comes from the sounds of weapons.

Dr. Glorig said jungle fighters have used a hearing trick to sneak up on lonely outposts: "The men are sitting quietly in the outpost and the enemy sends one man to get them to fire their machine guns."

"This causes a temporary change in hearing during which the rest can come up unheard."

The answer, he said, is for one man at the outpost to wear earplugs and take them off immediately after the firing.

Earplugs or muffs help in a great number of cases where noise is a problem.

His rule is: "If you have to shout to be heard because of the noise, then the noise is loud enough to produce a hearing loss."

He doesn't think his sets are any problem because: "By the time you're old enough to afford the kind which would produce that kind of sound, you can't hear it anyway."

Although factory and life produce their noise levels, the city dwellers are not much better off

than their country counterparts. The reason is that farmers drive tractors.

MURDER, YOU SAY

NEW YORK (AP) — Mystery fans are the special theatrical concern of a new off-Broadway producing organization called Whodunit Company.

The group plans to put on seven melodrama. Included would be revivals of "The Cat and the Canary," "Ten Little Indians" and "The Thirteenth Chair," plus four not previously seen here.

THREE SYNAGOGUE POSTS

BEXLEY, Ohio (AP) — At 62, Philip H. Gellman still is taking singing lessons twice a week.

For 29 years, the Russian-born Gellman has been the cantor who sings the prayers at Agudas Achim Synagogue in this Columbus suburb. He also is a shofet, performing ritualistic slaughter of animals and poultry to qualify it as kosher food, and a mohel, wielding the knife in the circumcision rite.

CLASSIFIEDS

GET

RESULTS

NEW, LOW PRICES PREMIUM FEATURES

GENERAL NYLON SPECIAL TRACTOR TIRE



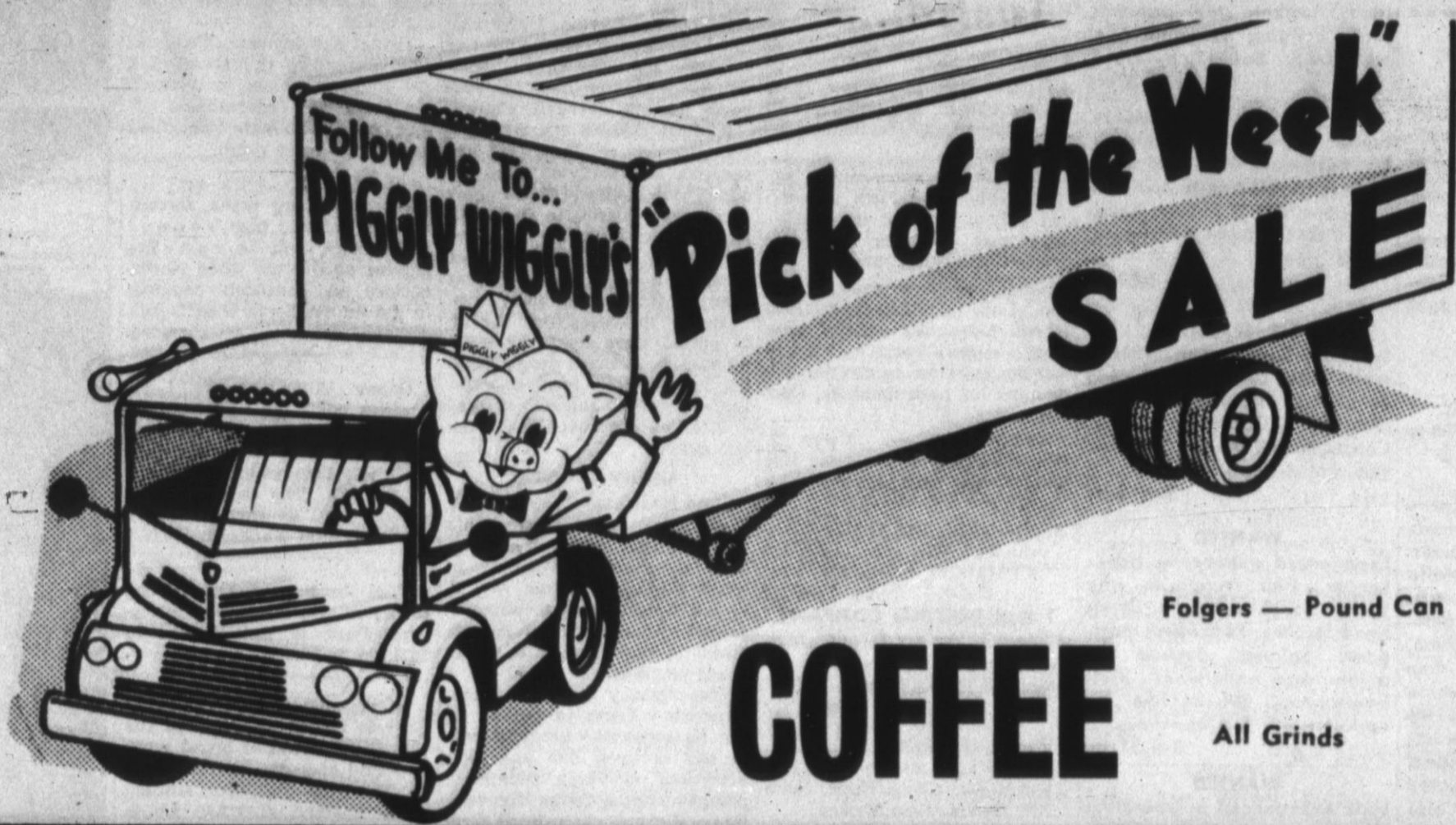
- Nylon Cord—for strength and moisture proofing.
- More Rubber—where it counts to cushion shock.
- Double Cured Cleat—keep clean—dig deeper—pull better.

PLUS 36 Months Field Hazard Guarantee protects your investment.

36 MONTH GUARANTEE
The General Tire & Rubber Company guarantees to the original purchaser the All Grip Traction Nylon Special and All Grip Traction-Hygro-Jumbo Lug against failure resulting from break and forrow breaks, snagging, or cutting for a period of 36 months from date of purchase when used in normal farm service.

Hereford Butane INCORPORATED

Veterans Park Road 1 EM 4-3367



Folgers — Pound Can
COFFEE All Grinds **79¢**

Mrs. Tuckers Shortening 3 Lb. **59¢**

Arrow Pinto Beans 2 Lb. Bag 25¢	Mountain Pass Tomatoes Peeled 303 Can 6 For \$1	Nabisco Crackers Pound Box 31¢	Roxey Dog Food 3 Cons 27¢
---	---	--	---

PUREX BLEACH 1/2 Gal. Liquid **39¢**
GLADIOLA FLOUR 10 Print Bag **89¢**

Home Permanent Lili 1.59 Special 99¢	Hand Cream Melrose 1.00 Size 2 For \$1	Soflin Toilet Tissue 4 Roll Pkg. — White 29¢	Cut-Rite Waxed Paper 125 Ft. Roll 29¢
--	--	--	---

OPEN EVERY MORNING AT 7 A.M. — CLOSED SUNDAY

ENCHILADA DINNERS

Patio Beef 12 Oz. Frozen **39¢**

Shurfine — 300 Can **CHILI with Beans** 3 For **89¢**

CANTALOUPE
Pecos — Tender Melting Meat

5 FOR \$1

BACON

Cudahy Chuck Wagon **49¢** LB.

FRANKS Armour Star **49¢** lb.

PORK SAUSAGE Pinkneys **2 lbs. 49¢**

LUNCH MEAT Armour Assorted **4 Pkgs. \$1**

PEARS Calif. — Bartlett **lb. 19¢**

CUCUMBERS Calif. **lb. 15¢**

HOLLY SUGAR 10 Pound Bag **99¢**

Schillings — 4 Oz. Can **BLACK PEPPER** **39¢**

PIGGLY WIGGLY

WIGGLY PIGGLY WIGGLY PIGGLY WIGGLY PIGGLY WIGGLY