

BUSINESS

Agriculture Highlighted

See Page 9

LOCAL

AARP At Workshop

See Page 2

CELEBRATION

Bradley Recognized

See Below

WEATHER

March 16	64	32	.00
March 17	61	21	.07
March 18	33	12	.00
March 19	50	16	.00

BAILEY COUNTY JOURNAL

'The Community Of Opportunity-Where Water Makes The Difference'



Vol. 26, No. 11

12 PAGES TODAY

Published Every Sunday At Muleshoe, Bailey County, Texas 79347

20° Mar 20-88

Wintry Blast Nips Buds On Area's Fruit Trees



Muleshoe Elementary PTA will meet Monday, March 21, at 7 p.m. in the DeShazo gymnasium.

A music program will be presented by the DeShazo music students.

All parents are encouraged to attend and support your local PTA.

Individuals who have not previously passed both sections of the TEAMS test, but have met all other graduation requirements may retake the sections not passed.

These individuals may pick up a registration packet at the Muleshoe High School counselor's office.

Registration forms must be completed and returned in the pre-addressed envelope no later than April 12, 1988.

Marine Corps Pvt. Joseph E. Ward, son of Kathy Ward of Muleshoe, has graduated from the U.S. Air Force law enforcement specialist course at Lackland Air Force Base, Texas.

Graduates of the course studied general law enforcement duties, tactics, weapons training, physical apprehension and restraint, and earned credits toward an associate degree in applied science through the Community College of the Air Force.

The private was an honor graduate of the course.

He is a 1984 graduate of Muleshoe High School.

Wednesday, March 23, is the Cont. Page 6, Col. 3



ANOTHER SURE SIGN OF SPRING--Friday morning, with most of Wednesday night's snow melted, it became another good sign that spring -- and yard work -- can't be far behind. Albert Wentz, employee of Clarkson's Sodbuster Farms, is pictured raking up the debris after he had just finished scalping a lawn in Muleshoe. Most local residents are beginning to get their lawns ready for spring and summer. Today, Sunday, March 20, is the first day of spring. [Journal Photo]

It's sure not nice for Mother Nature to fool the area! She sneaked in some bright, sunny, warm days, totally fooling fruit trees. They started budding out, and many had literally burst into bloom -- when she leveled a wintry blast at the area Tuesday night, Wednesday and Thursday.

As a result, the temperature dipped into the single digit mark, freezing drizzle turned to a light snow cover, and the poor blooms on fruit trees just shriveled up and died.

Heralded by a sandy, windy Tuesday, the drizzle started falling after another very windy day on Wednesday.

Shortly after dark, the temperature skidded downward, quickly turning the light drizzle to ice that coated everything it touched.

The drizzle played havoc with rural electrical lines, and workmen from Bailey County Electric Cooperative, Inc., labored well into the night, restoring electricity to rural homes and businesses.

No major accidents were reported because of the ice glaze, as most travelers wisely slowed down on the glare ice and avoided that type of mishap.

As the highways iced over, the Bailey County Ambulance Service was summoned to West Plains Medical Center to transfer a patient to Lubbock.

They made the transfer without incident, and arrived back safely in Muleshoe.

Very little was noted in the way of postponements or cancellations, and school continued on regular schedules throughout the area.

By Friday morning, bright sunshine was again in the picture, and by early afternoon, the temperature had nudged upward to the mid-40's.

By Saturday, with a full day of outside activities, such as the all day track meet at Benny Douglass stadium and the

annual Muleshoe Roadrider's Bike Rally, the weather was expected to move into the high 60's.

By Sunday, the temperature was predicted to be in the mid to upper-70's.

Robert Montgomery Receives Promotion

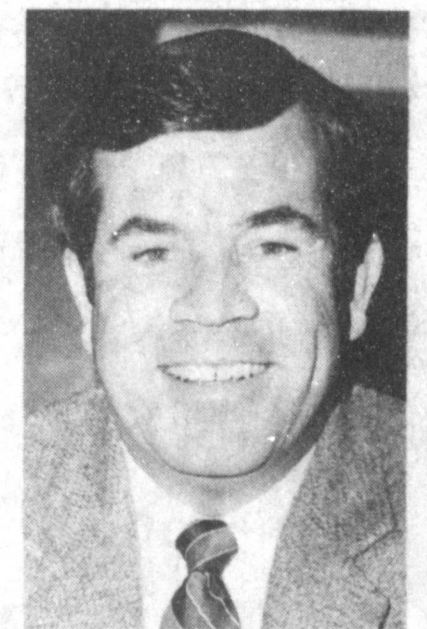
Robert Montgomery of the Muleshoe State Bank has recently been promoted to the position of Executive Vice President.

He has been associated with Muleshoe State Bank since 1977 holding the positions of Cashier, Vice President and Senior Vice President.

Robert Montgomery attended West Texas State University and is a graduate of the New Mexico School of Banking.

He is past president and director of the Muleshoe Chamber of Commerce; past president and director of the Muleshoe Kiwanis Club and past president of the Bailey County unit of the American Cancer Society.

He and his wife, Sharon, are the parents of two children, Amy, 16 and Chad, age 12.



[Journal Photo] ROBERT MONTGOMERY

Agriculture Week Recognizes All Farmers And Ranchers

National Agriculture Day is being observed today, March 20, which officially ushers in the 1988 spring season. Agriculture Week is scheduled March 20-26, with the theme of "Honoring America's Providers."

"These observances provide a good time to recognize the people, organizations and businesses responsible for producing the abundant, high quality food and fiber supply for today's consumers," says Dr. Carl G. Anderson, economist with the Texas Agricultural

Extension Service, the Texas A&M University System.

"A healthy agriculture keeps the wheels of the economy turning. The food and fiber system not only provides reasonably priced nutritious diets and beautiful clothes, but it also means jobs and payrolls," Anderson explains.

These jobs stem from the production, storage, processing plants, transportation, offices, wholesalers, retailers, and supermarkets needed to move food and fiber from farm or

ranch to consumer, Anderson emphasizes.

"Agricultural producers and consumers depend on each other for products and services that are vital to modern businesses and lifestyles. Even though only one out of every 40 Texans is a farmer or rancher, about 25 percent of the state's retail trade business is directly associated with the selling of food and fiber products," Anderson says.

Cont. Page 6, Col. 3

In Profile

Community Worker Deserves Recognition

(Editor's note: This week, *In Profile* reaches out into the community to make you better acquainted with a resident who is very busy, very dedicated, and unique in community service. This week, *In Profile* proudly spotlights R. A. 'Brad' Bradley.)

Modest, unassuming R. A. 'Brad' Bradley can be found at the forefront of any project worth doing in the Muleshoe area. For the almost 40 years he has lived in Muleshoe, he has been a firm believer in contributing to the community.

However, he is very quick to say, "If I have done anything, it has been with the help of my wife. Without her, I wouldn't have anything, wouldn't be anything. I wouldn't be an elder in the church (Muleshoe Church of Christ), or anything else without her."

Her is Marie, his wife of 40 years, who is very active and community-spirited in her own right.

Immediately before stopping in *The Journal* offices Thursday evening for an interview, Brad went by the Mule Memorial to take down the United States and

Texas flags, as he does each day.

He explained that the Muleshoe Kiwanis Club started putting up and taking down the flag each day, but got weary of that job, so Brad added, "It's not a chore for me, so I do it on my own." He laughed a bit as he told about Thursday's high wind which wound the Texas flag around the pole, and it had to be carefully loosened before being lowered for the night.

When he was a youngster growing up in Dora, N.M., "everyone came to Muleshoe," he said, but while he was serving in the military, his family moved to Brownfield.

On his return from the military, he stopped over in Brownfield for a short while, married Marie, and they moved to Muleshoe on November 15, 1948, where he was employed by Fry and Cox, Inc. as parts manager, a position he holds 40 years later.

"I always worked in parts," said Brad. "I got it so messed up they thought it would be cheaper to keep me on, so I have just stayed there. I started to work for Fry And Cox on a trial basis -- I'm still on trial

there."

When asked why he contributes so very many hours to community service projects, and has continued to do so over the years, R. A. Bradley commented, "Somebody else made this a good town to live in. I think it's my job to keep this a good town."

He continued, "Muleshoe has not dwindled away because it's been a service center -- that's why it's (Muleshoe) alive today. You stop service and you lose everything."

"Service is all you have to sell. Other stores have the same merchandise, but it's the store, or town, that sells itself that survives. Big towns don't have personal touches like little towns. People in Muleshoe go back at night, and on weekends to do things for the people around here."

"You make the people feel you appreciate them. Even if you want to wring their neck, you smile, say Thank You, and come back."

R. A. Bradley is a living example of the word "Service." He is active in his church, and for the 40 years he has lived in Muleshoe, has continued, as he

does today, to put service to work to personally help the entire community.

He has a way to relax -- his hobby is "The Gospel Notes," an acapella quartet formed by himself and Jacque Baker. They started singing together about 13 years ago. Then Jeanine Gable moved back to Muleshoe from Australia, and joined the group as alto. At this time, Duane Lloyd is with the group as lead singer.

They not only perform locally, but have performed at Clovis, Portales, Rosedale, all in New Mexico. They will be performing at the Caprock Theatre north of Clovis this year.

They have also performed at Olton, Littlefield, Hereford, Big Spring, Lubbock, and Meadow.

They were the first white singers to be invited to join a two day acapella singing by Black churches at Big Spring. Unfortunately, they had conflicting dates, but will be joining the Big Spring group for the two day celebration.

Practicing once a week, the group mixes up old songs, songs people know, and songs people don't usually hear.

Fifteen years ago, Brad was

charter president when the Muleshoe Kiwanis Club was formed. He is still very active today in Kiwanis, and you can read his report of the Friday

morning meeting each weekend in *The Bailey County Journal*.

Very active with the Kiwanis Club, he has worked with the Cont. Page 6, Col. 1



R.A. 'BRAD' BRADLEY

[Journal Photo]



RETURNING FROM AN AARP WORKSHOP AT PLAINVIEW--Tuesday afternoon, this group of American Association of Retired Persons, had just returned from an all-day workshop at Wayland Baptist University. Making the trip are from left, Ed Harp, Leon Lewis, Mrs. Leon Lewis, Maud Young, Clara Lou Jones, Lena Hawkins, Myrtle Creamer and Sammie Ethridge.

AARP Attends 'Long Term Care '88' Workshop

On Tuesday morning, March 15 eight members of A.A.R.P. No. 3169 went to Plainview to the Wayland Baptist University (Roy McClung University Center) where they joined 75 other leaders from the area to plan projects and priorities for "Long Term Care '88."

group went into the meeting room where prayer was given by C.L. Abernathy of Plainview, after which the Pledge of Allegiance was led by Jess Sparkman of Lubbock. A letter about the purpose of the workshop was read by Sidney B. Ward, associate State Director from Hurst. Sessions directed by leaders in Texas AARP focused on a comprehensive range of medi-

cal, personal and social services coordinated to meet the physical, social, emotional needs of chronically ill or disabled persons. Under consideration were projects designed to raise concern about long term health care to a priority issue in the upcoming political campaigns. The impoverishment of a spouse in order to finance the care of an institutionalized spouse is one of the most serious problems facing older couples today. Long term care offers a number of options, such as medical and therapeutic treatment, homemakers' services, nutrition programs, home-delivered meals, or telephone reassurance. The uncertainty about the support of home and community-based long term care continues to represent the major gap in our health care system.

The American Association of Retired Persons believes that the reform of the health care system must be comprehensive, addressing the current imbalance between institutional care and home and community based services, with a financing system that will prevent the impoverishment of individuals requiring long term care.

Eighty-three national organizations, including AARP, Church Women United, and National Conference of State Legislatures, have launched "Long Term Care '88" to give the public information about this issue of concern to Americans of all ages, of all economic and social backgrounds, long term care is not an issue for the elderly only. It is a concern for society.

Roy V. Carter, coordinator from Cisco, presented a slide show about making wise decisions on Long Term Life Care. It was reported that everyone enjoyed the slide show which was followed by a question and answer period. Dr. Wesley Rogers spoke to the group about community resources. He was from the University in Plainview.

Judge McMeekan, Jr., member of the State Legislature Committee from Slaton, gave a message on State Legislative Priorities.

The group enjoyed a lunch consisting of chicken, creamed potatoes, carrots, green beans, vegetable salad, fruit salad, apple pie, tea and coffee.

Returning from lunch, M.B. Baldwin, assistant State Director, talked to those present about "What Can I Do." Carter gave the group some ideas of what they could do for the betterment of their community.

Local A.A.R.P. members attending were Mrs. Lena Hawkins, Mrs. Sammie Ethridge, Clara Lou Jones, Maud Young, Mr. and Mrs. Leon Lewis, Myrtle Creamer and Ed Harp.

Child Care Provides Register For Conference

Several child care providers from Bailey County will take part Saturday (March 26) in a professional conference in Lubbock to learn new ideas and gain additional resources for their programs here.

The objectives of the con-

ference are to help operators of registered and licensed child care facilities provide the best possible care for children, better cope with the problems of such a service and strengthen their businesses, said Kandy K. McWhorter, Bailey County Extension home economist.

Registered for the conference are:

- Eva Dell Carpenter, 208 West 20th, Muleshoe, TX. 79347.
- Frankie Carpenter, Rt. 2, Box 1335, Muleshoe, TX. 79347.
- Sandy Saldana, 411 E. 4th, Muleshoe, TX. 79347.
- Jeremy Carpenter, Rt. 2, Box 1335, Muleshoe, TX. 79347.
- Sandra Sutton, 910 W. 9th, Muleshoe, TX. 79347.

- Jackie Harris, HCR 5 Box 154, Muleshoe, TX. 79347.
- Dora Gonzales, Rt. 3, Box 29, Muleshoe, TX. 79347.
- Netta Haney, Rt. 4, Muleshoe, TX. 79347.
- Pearlie Fluellen, 622 W. 2nd, Muleshoe, TX. 79347.
- Judy Stevenson, 217 E. Elm, Box 227, Muleshoe, TX. 79347.

The conference is being conducted by District 2 Extension home economists of the Texas Agricultural Extension Service. It will be held at the Texas A&M University Agricultural Research and Extension Center north of Lubbock International Airport.

Nursing Home News

By: Joy Stancell

Welcome Spring!

We are excited about our food and Bake Sale Thurs. We are busy making preparations.

Sunday morning the Muleshoe Church of Christ brought communion. Earl Peterson from The First Baptist Church directed the Bible Study.

Conner Burford was visited by Mr. and Mrs. Joe Smallwood, his wife, Willie Burford, Della Hutchins of Hereford and Fay Dorsey of Sudan.

Bailey County Journal USPS 040-200
Established March 31, 1963. Published by Muleshoe Publishing Co., Inc. Every Sunday at 304 W. Second, Box 449, Muleshoe, Texas. 79347. SECOND CLASS POSTAGE paid in Muleshoe, Texas. 79347. U.S. Post Office approved.

Member NATIONAL NEWSPAPER ASSOCIATION WEST TEXAS PRESS ASSOCIATION

L.B. Hall - President & Publisher
Sammye Hall - Vice President & Controller
Cleta Williams - News
Dorsett Bunch - Advertising
Muleshoe Journal and Bailey County Journal
Muleshoe by Carrier \$12.50
Muleshoe Journal and Bailey County Journal
Bailey County & Surrounding Counties By Mail \$14.75
Muleshoe Journal and Bailey County Journal
Elsewhere in Texas \$16.50
Advertising rate card on application

Ben Franklin
Better quality for less

2104 W. Amer. Blvd. Mon. - Sat. Sun.
272-3855 8 a.m. - 8 p.m. 12 p.m. - 5 p.m.

Easter Basket SAVINGS

Dr. Pepper
6 pk. 12 oz. cans
\$1.77

Hollow Milk Chocolate Bunnies
Niper, Skipper, Chopper Hopper, Bikin' Bunny, Peter Candytail, Bunny Rosebud, Willie Wacket, Briarpatch Bunny and many more starting at **99¢**
"Free Personalizing"

Cadbury's
Creame Eggs
3 for **\$1.00**

Easter Grass
non-flammable
33¢ 2 oz. bag.

BLAZERS
Poly-Wool
Navy, Blue, Tan, Gray
Sizes 34S to 50L
\$69.95 reg. \$105.
52L & 54L available.
BOB'S M R. shop
502 Main

Bells Deluxe
Easter Baskets
filled with goodies
\$1.99 each

Easter Baskets
Asst. Colors
.49-\$1.59

Paas Egg Coloring Kit
99¢ each

Thank You
Thank you for your votes and support in the Primary Election.
I earnestly ask for your vote and support in the run-off election
April 12th.
Thank You,
H. E. Newsom

PROPERTY TAX RENDITIONS

31 Monday March 1988
file tax renditions!

HELP YOU PROTECT YOUR RIGHTS AS A TAXPAYER

A rendition is a report to the appraisal district that lists all the taxable property you own or control on January 1, 1988. You may also give your opinion of the property's value, if you wish.

You must file a rendition if you own tangible personal property used to produce income such as the machinery and equipment used by a business.

The appraisal district may require any taxpayer to file a rendition by sending the taxpayer a written notice and a rendition form.

You may want to file a rendition, even if you aren't required to file, to preserve some of your rights as a taxpayer:

- You put your correct mailing address on record so your tax bills will go to the right address. Even if your bill goes to the wrong address, the law still holds you responsible for paying your taxes on time or else paying extra charges for late payments.
- You can put your own opinion of your property's value on record. If the appraisal district then places a higher value on your property, it must notify you in writing of the higher value and explain how you can protest that value to the appraisal review board.
- By filing a special type of rendition called a *report of decreased value*, you can notify the appraisal district of significant damage to your property that occurred in 1987. The district will send someone to verify the damage and take it into account when assigning a 1988 value to your property.
- File renditions** with your local appraisal district at the address shown below. Forms are available at this office.
- The new deadline** for 1988 renditions is March 31. You can get an extra 30 days if you ask for it in writing before the March 31 deadline.
- For more information, get a free copy of the pamphlet, *Taxpayers' Rights, Remedies, Responsibilities*, at your appraisal district office or from the State Property Tax Board in Austin.

Bailey County Appraisal District
104 E Ave C

Baldrige Satellite Systems of Clovis is proud to announce its association with **George M. Mitchell** of Muleshoe.

George will be running a special on the **G. I. Satellite Receiver & Descrambler**, an all in one unit. **Remote control, 10 ft. black mesh dish fully installed \$1949.00** plus tax. (1 year parts and labor warranty)

1 YEAR FREE - CNN, Headline News, WGN, KTVT, WPIX, & WOR.

Video Cipher II 2400R Receiver

FEATURES:

- Integrated Receiver and Descrambler
- Parental Supervision - Two Methods
- Wireless Remote Control
- Complete Optional Antenna Controller
- Automatic Descrambling of Authorized Signals
- Stereo Sound - Digital Audio on VideoCipher II Channels Only
- 70 MHz Loop Thru
- Spectra-Sat Recall
- C-Band and Ku-Band Ready

Baldrige Satellite Systems offers a complete welding shop for frame and dish repairs, ram repairs, and a full line of new and used equipment.

Call (806) 925-6771 (505) 762-6551
George, Alan, Steve, Paul or Bill Baldrige - owner

The trouble with spring gardens is summer grass.
It's easier to make a contract than to break one.
You can best be someone by always being yourself.

Art Association Pays Tribute To Matilda Slemmons

Muleshoe Art Association is presenting a collection of art work, done by Matilda Slemmons, at the Muleshoe Public Library instead of having an Artist of the Month this month. Some of Mrs. Slemmons work will be on display at the library all month.

The following is a tribute paid to Matilda Slemmons by the Muleshoe Art Association.

Born Matilda Martin in January of 1907, in Medford, Wisconsin, her first language was German. Her parents owned a variety store and her mother, Tillie, was a milner;

she designed hats for the ladies in Medford and surrounding communities. This was Matildas' beginning in artistic endeavors. As a child she sewed pearls, beads, and flowers on these hats.

She graduated from high school at 16 and entered nurses training in Marshfield, 32 miles away. After completing her training, she met a handsome doctor, Theodore Slemmons, they fell in love and married on October 16, 1929.

After five years as a small town doctor and wife, they had a daughter, Letitia, and five years later a son, Senn. During these years they moved to Waupun, where the state penitentiary was located. Ted spent four years as prison physician and cared for some interesting men with strange tales to tell. Living behind bars was another challenge for Matilda.

In 1941, these four Slemmons moved to Panama, Canal Zone, for the duration of the WWII. Ted was working in a Dispensary for the Civil Service. In '43 Matilda heard of a need for woman to spot planes on radar and she joined the W.A.S.P. (Womens Air Spotters Patrol). Their life in the tropics was an adventure and a time for Matilda to use her talent to make do with what was available due to war shortages. No Christmas Trees were available, see what can be done with a branch from a mango tree.

With the wars end another move was made, not back to Wisconsin, but to a warmer climate. First, nine years in Amherst, Texas, then to Muleshoe in 1954. During those years in Amherst there was 4-H Girl Scouts, Boy Scouts, P.T.A., basketball, FFA, calves, FHA, Lions Club and during those years she learned to drive so she could become school nurse at Sudan and Hartschamp.

After the move to Muleshoe, Matilda started painting. She took lessons from instructors who came to town as well as going to some summer workshops in New Mexico, including Blanche Lenderson of Muleshoe, Dr. Emido Caballero of Amarillo and Raymond Fromoa of Cloudcroft, N.M. With much interest in art in Muleshoe, the Muleshoe Art Association was formed in 1960, and she was a charter member.

In 1963, Ted died, but Matilda continued with her art and civic interests. As first president of "The Friends of the Library" she helped find a building, books and support for the beginning of a metropolitan library system in Bailey County.

At about the same time several women were looking for a place to paint. They aquired the apartment above the lumber yard on American Blvd. They thought it would be fun to have an art gallery there too, and soon "The Art Loft" was born. Matilda was one of those women.

She was an active member of the United Methodist Church, the Sewing Club, a bridge player and a loving grandmother of five. Her creativity was always at work entertaining those five as well as all her friends and her community.

She died last January just four days after her eighty-first birthday. She left a memory of a happy, hard working woman with a sense of humor and love of all around her. There's a part of her in each of her paintings a legacy to those who knew and loved her.

Essay And Art Contest Deadline Draws Near

Time is running out for students to get their entries in, in the Chamber of Commerce and Agriculture Essay and Art Contest. Billie Downing, committee chairman, notified the Journal Thursday afternoon that all entries must be in the principal or counselor's office of the students respective school by the close of the school day tomorrow, Monday, March 21.

"The First 70 Years In Bailey County" is the topic of this years Essay and Art contest, which is open to all school age students in the Muleshoe business area.

This year's scholarship will be

Xi Omicron Xi Sorority Meets

In Liles Home

Xi Omicron Xi Sorority met Tuesday, March 15 in the home of Alice Liles, who served a frosted carrot cake before the business meeting.

Marilyn Riley, president, called the meeting to order with the following members in attendance Annette Bonds, Dawn Williams, Kathy Franks, Vicki Black, Diana Harrison, Debbi Hutto, Alice Liles, Debbi Nickels, Lindy Schuster, Gayla Gear, Gayla Toombs, Rayniel Bamert, Ginger Caldwell and Barbara Mutschler.

Election of officers for the upcoming year were elected and include: Annette Bonds, president; Dawn Williams, vice-president; Gayla Gear, recording secretary; Jo Beth Edwards, extension officer and corresponding secretary; and Rayniel Bamert and Ginger Caldwell, City Council Representatives.

awarded in memory of the late Roy Farley, in recognition of poster (no larger than 12x24) or a visual project to expand the theme.

Junior High and High School students were asked to write an essay or provide an art entry. Essays could be either historical or literary.

A separate category was added this year for art work in Junior High and High School, and students were asked to keep in mind the fact that the winning entry may be selected as a building or window mural.

"Please do not put your name on the front of the entry" said Mrs. Downing.

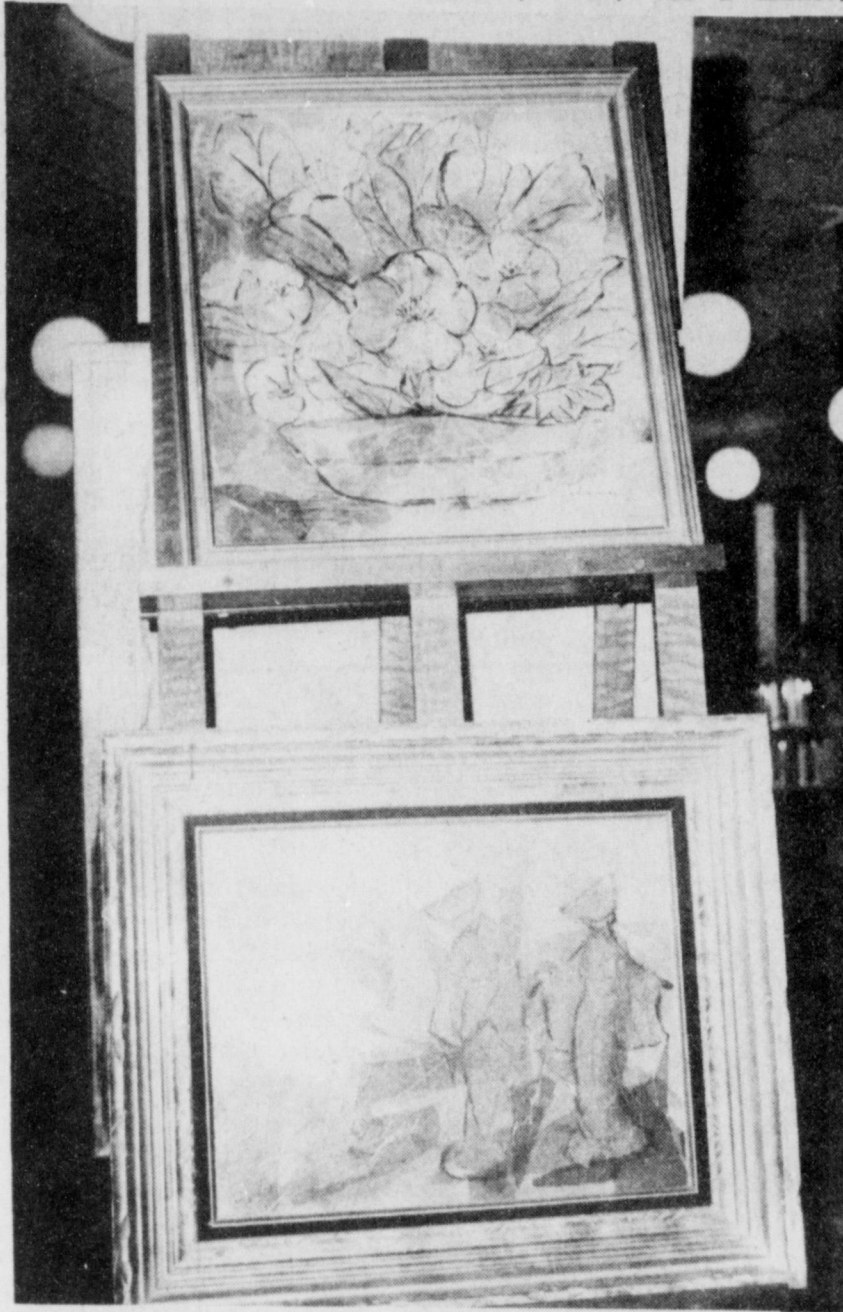
Two awards will be awarded in each grade level. Students in kindergarten through fifth grade will be awarded a \$5 gift certificate for first place and two free Mule Putt miniature golf fames for second place.

First place winner in the 6-8 grade level will receive a \$20 gift certificate and second place will receive one meal at a local restaurant.

A \$200 scholarship will go to the first place winner in the 9-12 grade level and the second place winner will receive a \$100 scholarship.

The high school student submitting the first place entry in the Art Division will be awarded a \$300 scholarship. The Junior High student submitting the winning entry will receive a \$20 gift certificate.

Mrs. Downing also stated that the scholarship committee will meet at 7:30 p.m. tomorrow night, Monday, March 21 at the Muleshoe State Bank community room.



PAINTINGS BY MATILDA SLEMMONS

(Journal Photo)

Thank You

We would like to thank everyone for their prayers, cards, visits and flowers, when Bob was in the hospital during his surgery and since he's been home. It sure helps to know you have friends that care.

Bob & Pat DeLoach

Shawni & Chip

Mike & Kelly DeLoach

Kristin & Justin

NOTICE TO MULESHOE AND SURROUNDING AREA RESIDENTS

LITTLEFIELD MEDICAL CENTER

waives medical deductibles on all in-patient hospital admissions.

accepts 80% commercial insurance coverage as payment in full for all hospital admissions.

Out of pocket expense is virtually eliminated.

Littlefield Medical Center is a full service hospital with a 14 day in-patient chemical dependency rehabilitation program "The IMPACT Program".

We're making it possible for you to obtain that needed medical care and ease your financial burden.

Staff Physician Access:
(806) 385-4421

For More Information Call:
Nadine Foley, Business Office Manager

Littlefield Medical Center
(806) 385-6411

NOTES... COMMENTS

Work hard and complain less.

Go to church next Sunday—it's a good habit.

Some people stay mad over little things.



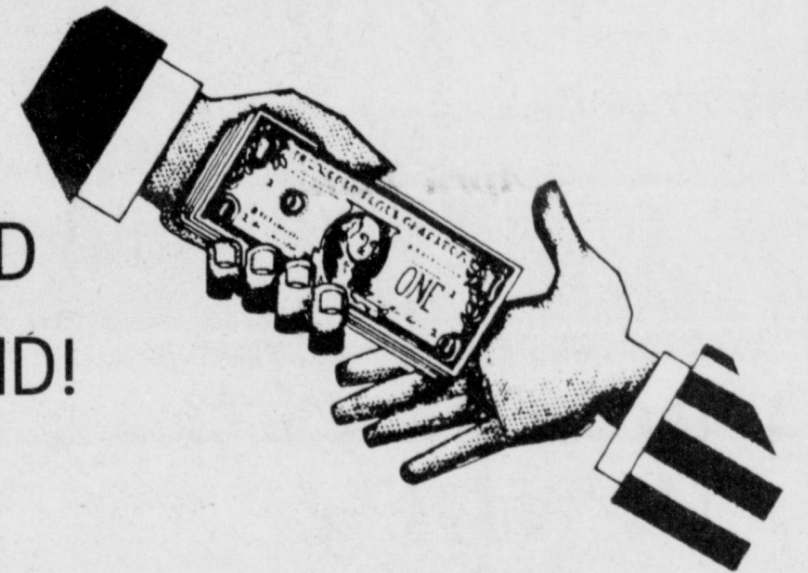
There's A Big World Out There For You To Conquer!

Happy First Birthday,

Stefani

Mom & Dad

CALL US WHEN YOU NEED A HELPING HAND!



Sometimes our intentions are greater than our cash. That's when you need a helping hand, a bit of additional incentive to accomplish that long-out-of-pocket project.

If you're planning to fix-up, repair, replace, buy, or even vacation, talk to our loan officer about that needed cash.

Remodeling or making new purchases no longer need to take a back seat. Call us today about the money you need.

1ST BANK MULESHOE

202 S. 1st

Member FDIC

272-4515

SUPER TUESDAY 19th CONGRESSIONAL DISTRICT

McCathern—35,203
Combust—34,210

THANKS! BAILEY COUNTY FRIENDS & SUPPORTERS

Political Pd. By McCathern for Congress Committee

Candlelight Ceremony Unites Miss Rebecca Byerley, Frierson

Miss Rebecca Lynn Byerley became the bride of Kevin Dowell Frierson in a candlelight ceremony Saturday, March 5 in the Prestonwood Baptist Church in Dallas. Larry Tardy, pastor of the First Baptist Church of Lubbock, read the double ring vows.

Parents of the couple are Mr. and Mrs. Elray Rasco of Sudan and Mr. and Mrs. Doyle Frierson of North Little Rock, Ark.

Baskets of pink and white flowers enhanced the steps leading to the platform where

the ceremony was held in front of a brass candelabra flanked on either side by smaller candelabras holding white tapers surrounded with greenery.

Given in marriage by her parents, and escorted by her father, the bride chose a gown designed by "Jena" made of ivory taffeta and re-embroidered Alencon lace, featuring a bateau neckline and V-back with an elongated torso, embellished with re-embroidered Alencon lace, jeweled with pearls and sequins.

The long court-sleeves fea-

tured a flange of taffeta and lace on each shoulder. The full ballroom skirt was edged with a border of Alencon lace. A bow adorned the back-dropped bodice. The skirt spilled into a cathedral length veil, scattered with seed pearls.

She carried a cascading bouquet of ivory lillies, ivory stephanotis and freeze, ivory sweetheart roses, baby's breath and mixed greenery.

Following tradition, for "something old" the bride wore pennies minted in the year of their births; "something new" was her wedding dress, "something borrowed" was a Bible being given to her mother as a gift at the age of four years of age; "something blue" was the traditional blue garter made by a family friend.

As the bride entered the sanctuary, she presented her mother a longstemmed white rose and during the recessional, she presented one to her mother-in-law.

Karen Ives of Houston served as maid of honor. Bridesmaids were Judy Smith and Tammy Kirk, both of Dallas, Chris Peters of Burlington, Ontario and Gayla Rasco of Sudan, sister of the bride.

They wore dusty rose taffeta tea length gowns featuring a full skirt, V-back and bow. They carried arm bouquets of pink mini-carnations, bridal pink sweetheart roses, hot pink

gerbers, mixed greenery and shades of pink streamers.

David Frierson of Mt. Vernon, Mo., brother of the groom, served as best man. Groomsmen were Tim Woodrige of Dallas, Steve Bowman of Little Rock, Mark Stallings of Mountain Home, Ark. and Mike Treadway of Ft. Smith, Ark.

Lorraine Pankratz of Vancouver, B.C. registered the guests. Guests were seated by Bert Byerley and Brad Byerley, brothers of the bride, and Jimmy Brown.

The unity candle was flanked on either side by tapers that were lit by the parents of the couple at the beginning of the ceremony. As the couple lit the

unity candle, Sherri Edkert sang "Sweet, Sweet Spirit". Other musical selections were "Somewhere in the World", "The Lord's Prayer", sung by Bert Byerley, and Sherri Edkert accompanied Bert in singing "Household of Faith".

Following the ceremony, a reception was held at the church atrium by the fountain. The bride's table was covered with an ivory lace-edged table cloth. The three tiered pink and ivory wedding cake and punch were served from crystal appointments by Glenda Rasco, cousin of the bride, and Lisa Tardy, both of Lubbock, and Teresa Smith of Dallas.

The groom's table was decorated with a chocolate "bow" cake and was served with coffee by Lorraine Pankratz of Vancouver, B.C.

A rehearsal dinner was hosted by the groom's parents at "2001 Club" in downtown

Dallas. The centerpiece was an ice sculpture of a cowboy boot. The menu consisted of a Tex-Mex buffet.

Following a honeymoon trip to Ruidoso, N.M., the couple will make their home in Mesquite where they are both employed by the schools there.



MRS. KEVIN DOWELL FIERSON
(nee Rebecca Lynn Byerley)

TOPS CLUB

Muleshoe TOPS Club chapter No. 34 met Thursday night, March 17 in the Heritage Thrift Shop. Laverne James called the meeting to order and the TOPS pledge was recited and the fellowship song sung. She led the group in prayer.

Evelene Harris called the roll with six members answering with the amount they had lost or gained.

Theresa Davis read the minutes of the previous meeting and they were approved as read.

Orddie Burris was named best loser for the week. She received a gift from the White Elephant box.

Mary Edmiston read an article on a Bread Diet. A discussion was held on different diets.

Laverne James celebrated her birthday and the club sang happy birthday to her. She also received a gift from the Birthday Box.

Everyone was reminded that officers for the upcoming year will be installed next week and the meeting was closed with the singing of the goodnight song.

Rebekah Lodge News

It was reported Tuesday night, March 15, during the regular meeting of the Rebekah Lodge, that several of the local lodge members will be attending the Rebekah Assembly state meeting on March 19, 20, and 21 in San Antonio, Texas. Adele Tompkins is the representative from Muleshoe. Sandi Robinson and June Green will be installed as part of the presidents team members for next year.

Novella Price, Noble Grand, presided over the business meeting.

It was reported that there was a good turn out for skating Friday night with Samatha Wolfe and Chad Parker winning the door prizes.

An invitation was read from the Panhandle Association which is to be held in Borger, Texas on April 23 and 24.

Fern Davis said "We had several members reported as ill and our prayers go out to them and hope they will be back with us soon."

Pat Langfitt gave the closing prayer and refreshments were served to 18 members by Sandi Robinson and Novella Price.

Don't Start
Easter
Without Us!

We have the latest Spring
fashions. All the newest styles, colors,
and textures.

In stock now for your Easter shopping
needs.

Lookin' Good

206 Main Phone 272-5052

Thank You

The family of Dora Chaney would like to express their heartfelt thanks to their friends and neighbors for the food, cards, visits, flowers and prayers during the time of our sorrow.

Ruth & Dee Clements
Mae & Ted Chambers

IT'S COMING!

THE NEW MULESHOE TEXAS CITY DIRECTORY RESIDENTIAL EDITION

THE MOST COMPLETE TELEPHONE INFORMATION SOURCE A CITY AND ITS PEOPLE CAN HAVE!

The Muleshoe City Directory Residential Edition is this source. This edition includes a complete ALPHABETICAL listing of all families and businesses in the area. The family information includes husband and wife's name, children, address and telephone number. Each person 18 and over has their own listing unless the husband and wife are in one listing. The business information includes the name of the business, principals of the business, address and telephone number.

DAYCO CORPORATION	
Gene Sanders, pit. mgr.-Alliance Division, Dayco Corporation- PO Box 618 Hwy #2 E	762-3255
DAYLIGHT DONUT SHOP 316 Box Butte Av	762-3410
DEAN Randy (Linda) 518 Errebo Pl Ch Marty, Angie, Mitch, Jeremy, Keith	762-2776
DEANS Rick 1406 Belair Av	762-8588
DEAVER GRAIN CO Wayne Deaver, pres. elevator 100 Emerson Av PO Box 764	762-2590
DEAVER GRAIN & OIL CO Wayne Deaver pres PO Box 764 Bera	762-3078 or 762-2465
DEAVER OIL CO Bruce Shaver PO Box 5 (H)	487-5312
DEAVER Pat J (Kathy L) HC Box 16 Ch Lisa, Patrick, Jennifer, Elizabeth, Marie Ann	762-3926

762	
<small>Numbers are provided by phone prefix</small>	
5075 ALLIANCE CITY UTILITIES OFC	
5075 CITY LIGHT & WATER OFFICE	
5078 DRIML Loan	
5079 LAUER Betty	
5083 ROE BUCK M L	
5085 CORDELL Lourd	
5085 JOHNSON Deb	
5088 KENNEDY Leonard E	
5089 LUCAS Paul	
5090 CRAWFORD Jeff	
5091 COBB John R	
5092 ALLIANCE CITY SCHO. HIGH SCHOOL PRINCIPAL	

This directory also includes a numerical TELEPHONE LOCATOR, with numbers arranged in numerical sequence from the lowest to the highest number. The locator takes the "guess work" out of a situation where only the telephone number is known.

The directory also includes a complete YELLOW PAGE CLASSIFIED section, plus civic information about the Muleshoe area. We're sure you can readily see the value of this directory - let us send you one! The cost of the residential edition is \$7.00 plus appropriate sales tax. Billing will be on delivery of the directory.

Contacts for update information and orders will be made by phone soon!

U S WEST Marketing Resources
Johnson Directory Division
One Directory Place, Loveland, CO 80539-0455

Rip's

WESTERN WEAR IN TEXICO

482-3363

YOUR ONE STOP EASTER SHOP

THIS WEEK'S SPECIALS

The Finest Menswear Anywhere

ALTERATIONS

GIFT WRAPPING

SUITS AND BLAZERS \$39.98 & UP

BEAUTIFUL PASTEL DRESS SHIRTS

SPRING STRIPES III ROPER SHIRTS

SHORT SLEEVE SHIRTS

ALL SHIRTS 20% OFF

HATS \$39.98 & up

BOOTS \$49.98 & up

LAYAWAYS WELCOME

WE ACCEPT:

Unbelievably Low Prices!

Carmen Espinoza Named AAUW Girl Of Month

Miss Carmen Espinoza, daughter of Mr. and Mrs. Camilo Espinoza, has been selected as the A.A.U.W. Girl of the Month for March. Each month of the school year, the American Association of University Women selects a young lady who they consider to have high moral character who shows outstanding leadership abilities

in school, church and community activities.

Carmen is a senior student at Muleshoe High School and has been outstanding in marching band, concert band, and jazz band, as a freshman, sophomore and senior student. She was chosen as a member of the All-Region Band her sophomore, junior, and senior years. She was awarded the Child Development Award as a junior student.

She is a member of the Student Community Action Club and as a member is active in improving relations between the community and the school. This club works with the Muleshoe Heritage Foundation to preserve some of this areas heritage.

A member of the Immaculate Conception Catholic Church, is active in the CYD class of that church. She plans to attend Texas Tech University after graduation, majoring in music.



CARMEN ESPINOZA

Jazzercisers

Raise Funds

For AHA

Jazzercisers will be sweating it out to raise funds for the American Heart Association when more than 30 people are expected to dance their way through a 100 minute workout at the Watson Junior High Gym, Monday, April 11 from 6:15 to 8:15 p.m.

Each participant will be collecting pledges or donations from as many sponsors as they can enlist, all of which will be donated to the American Heart Association.

Highlights of the Jazzercise Fundraiser include a free dinner for two for the most money collected by a participant. An added feature of the evenings events will be tumbling demonstrations by the Muleshoe Gymnastic classes.

The event is open to the public and non-jazzercisers are encouraged to participate, according to the Jazzercise instructor and event coordinator Terri Precure. For more information you may call 272-5073.



OFFICERS PRESENT PROGRAM--Thursday afternoon Muleshoe Police Officers Julian Dominguez, DeAnna Poe and Don Carter presented a program for students at Mary DeShazo Elementary

Police Presentation At Mary DeShazo Elementary

By Dacia Stewart and
Samanth Caswell

Tuesday and Thursday of this week the Muleshoe Police Department presented a program to the fourth grade students at Mary DeShazo Elementary. Sergeant Julian Dominguez, Officer Don Carter and DeAnn Poe, the juvenile probation officer, were the presentors.

The program began with a video about shoplifting and what happens to you when you shoplift. Following the video, the officers told what procedure they follow when they are called about a shoplifter and it involves a juvenile offender. The Juvenile Probation Officer then explained what could happen to you once she was called into the case. The officers then answered questions from the group.

The children felt some of the interesting facts that were brought up were:

(1) When you are picked up, if they can't contact your

parents the juvenile officer will take you to the Juvenile detention center in Lubbock.

(2) Running away is against the law and can be treated in the same manner as a crime.

(3) If a child damages property, parents are held responsible for paying for it.

(4) The Police discussed types of things juveniles do that are considered crimes, even stealing a pencil from someones desk is a crime.

The officers closed with a video called "Who Do You Tell" which told about people the children can trust and tell their problems to.

All the children found the presentation interesting and very informative. The classes will be walking to the police department Monday to view the holding areas in jail cells.



Latest Arrivals

Nicholas Wade Edwards
Mr. and Mrs. Pete Edwards are the proud parents of a son, Nicholas Wade, who was born at 5:27 p.m. Wednesday, March 9 in the South Plains Hospital at Amherst.

Nicholas Wade weighed eight pounds and five ounces and was

22 inches long. He has an older brother, Johnathan, who is almost six years.

Grandparents are Mr. and Mrs. Dale Hanna and Mr. and Mrs. Bobby Edwards, all of Sudan.

Great grandparents are Mr. and Mrs. Raymond Hanna of Ft. Worth, Thelma Gage of Littlefield and Evaline Edwards of Amherst.

Best of Press

Over the Fence

Never waste household scraps—open the windows and let the neighbors hear them.

—News, San Diego

Try It

If you think fascism can rule America try telling your wife that your first duty is to the Sate instead of her.

—Times, Louisville.

JOES BOOT SHOP

106 E. American Blvd. 272-5074

Old St. Clair's Building Muleshoe

&
Country Junction
New Arrivals
Straw Hats
15% Off Suggested Retail Price

Long Sleeve Western Shirts
Some 100% Cotton

Tony Lama Boots
Over 200 Pairs

"Just In Time For Easter"

Fox Movie Rentals

Has The Latest Releases Including:

Stake Out

Big Shots

The Big Hurt

Beverly Hills Cops II

The Living Daylights

For Your Family Entertainment :

Fox Movie Rentals

803 W. American Blvd.

272-5981

Alpha Zeta Pi Sorority Elects

New Officers

Alpha Zeta Pi met at 7 p.m. Tuesday, March 15 in the home of Mr. and Mrs. Gary Dale with Monice Henry serving as hostess.

Members present were served a meal of Hawaiian Pile On with several different toppings and banana split dream pie for dessert.

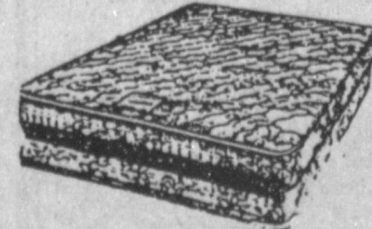
Election of officers was held and the following members elected: Rhonda Myers, president; Pam Atwood, vice-president; Cindy Barrett, recording secretary; treasurer, Stephanie Barrett; corresponding secretary, Starla Ellis, Extension Officer, Monica Henry; assistant, Shelli Carpenter; and City Council Representatives, Yolanda Bell and Jolene Rupe.

Those attending were: Pam Atwood, Cindy Barrett, Stephanie Barrett, Yolanda Bell, Shelli Carpenter, Shelley Carver, Lori Davison, Starla Ellis, Pam Gamble, Monica Henry, Kay Leopard, Rhonda Myers, Jolene Rupe and Lyn Vandiver.

It takes a wise man to be satisfied with what he deserves.

We would like to know where the statisticians get their comparisons.

1/2 PRICE MATTRESS SALE



STARTS AT \$99
2 pc. set

Built by
PALO-DURO MATTRESS, INC

Discount Furniture
272-5023

IRA's & the Tax Law

Information on Individual Retirement Accounts

As long as you are under 70½ years, employed and have taxable income, you may contribute up to \$2,000 each year. If you or your spouse are covered by a retirement plan, how much you can deduct depends upon income.

The following chart will help determine if you may deduct your contribution.

Yearly Income	If You or Your Spouse are Covered by a Retirement Plan	If You or Your Spouse are not Covered by a Retirement Plan
Married \$40,000 & under Single \$25,000 & under	Full Deduction	Full Deduction
Married \$40,000 - \$50,000 Single \$25,000 - \$35,000	Partial Deduction	Full Deduction
Married \$50,000 & above Single \$35,000 & above	No Deduction	Full Deduction

Remember, all interest earned in an Individual Retirement Account is deductible by everyone

Ask us about your IRA this week!

MULESHOE STATE BANK



MEMBER FDIC
101 West American Blvd. Phone 806/272-4561
MULESHOE, TEXAS 79347

Beat The April 15th Deadline!

Call us today to find out about your crop insurance options.



David Tipps — Rickey Barrett
Your hometown representatives!

Farm Bureau now offers Multi-Peril Crop Insurance in addition to crop hail coverage.

Bailey County Farm Bureau



1612 W. American Blvd.
Muleshoe
272-4567

Community Worker

Con't. From Page 1

flag project; the fireworks stand and has helped build two fireworks stands.

A few years ago, then the very small group attempting to build the Miniature Golf Course wore down, and with no help, Brad convinced the Kiwanis Club to step in to help.

On Tuesday nights, one group would remove and set forms and on Thursday night, another group would pour concrete. Dirt was hauled in by the county, and Brad found his Kiwanis help slowly dwindling away, so he said, "I decided I wasn't going to quit," so he moved dirt and leveled it.

He is very proud of the golf course, and said if it had not been for Wayne and Joyce Holmes, the project would have never gotten as far as it did.

As it all ended up, members of the Muleshoe Lions Club also helped with portions of the construction.

Brad found a windmill, and he and some helpers moved it to the golf course, where Wayne Holmes re-built it, and it is the focal point of the operation.

"One thing that makes me so proud of the golf course," said Brad, "is that it is for young people, dating couples, older people, and families. Everyone can enjoy the golf course."

He formerly worked with the Muleshoe Independent School PTA, he is a former president of the Muleshoe Fine Arts Boosters, and he and Owen Jones drew the plans for the concession stand at Benny Douglass Stadium.

He has worked with both Boy Scouts and Girls Scouts, and for many years was very active in youth baseball. "I thought more should be taught that just how to play baseball," he said, "I believed in teaching sportsmanship, and how to lose, along with how to play baseball. Any youngster that attended practice got to go onto the baseball field and play, not matter how bad they played," he added.

He was instrumental in helping the Chamber of Commerce Ambassadors get started. He took the CofC Ambassador-

ettes to parades and entered floats at Morton, Littlefield, Earth, Friona and Amarillo, where the popular young representatives of the CofC made quite a hit.

His most recent 'big' project is the Muleshoe Heritage Center. He asked to fill in a term on the board of directors for someone who was moving away. He served out that term and was re-elected to the board.

With the remodeling of the old Santa Fe Depot into a senior citizen center, he said he saw what work was to be done, so coordinated the efforts, and with a lot of people willing to work, he was the one person, most of the time accompanied by his wife, Marie, who was there night after night, working diligently until the remodeling was completed, and the building was opened.

Next will be completion of the renovation of the Janes Ranch House at the Heritage Center just east of the Bailey County Civic Center.

"Just as soon as the weather is warm, we'll start again on the ranch house," he said, "But, first we have to find some money from somewhere -- we're broke."

This will be followed by the reconstruction and renovation of the Muleshoe Ranch cookhouse, which has been moved to the Heritage Center, and is also awaiting renovation.

Brad gives credit to his wife, Marie, who is very busy in her own right. And, he is very proud of the two Bradley children, Rick, who lives with his wife and daughter in Albuquerque; and daughter, Devona Collier, who resides with her husband and two sons in Aurora, Colo., a suburb of Denver.

R. A. Bradley is another of those persons who just "keeps plugging along" unnoticed and seeking no notice, for the services they provide the community they call home.

Around Muleshoe

Con't. From Page 1

final date to sign up as a candidate for the Lazbuddie Independent School District for the board of trustees, according to Joe Hall, superintendent.

Incumbents Bobby Redwine, Nicky Nickels and Phil Brockman have all signed up for re-election for three year terms.

Also, Mike Miller, who was appointed to an unexpired term has signed up for the one year remaining on that term.

The school trustee election will be held Saturday, May 7, 7 a.m.-7 p.m. in the Lazbuddie School cafeteria.

It is time to plan the Junior-Senior Prom!

Parents of juniors and seniors are asked to attend a planning meeting on Friday, March 29, at 5 p.m. at the Old Corral.

If you need more information, call Janine Gunstream at 272-5545 or 272-3004; or Venida Collins at 272-5239 or 272-5308.

Manuela Valdez and Sandra Cox were graduated from Texas State Technical Institute recently during commencement ceremonies at the Amarillo Civic Center.

Valdez, daughter of Mr. and Mrs. Bernardo Valdez of Muleshoe, is a 1986 graduate of Muleshoe High School.

She received a certificate of completion in Saddle and Tack Making.

Cox, daughter of Mr. and Mrs. Alvin Allison of Muleshoe, is a 1959 graduate of MHS. She received an associate degree and professional certificate in Interior Design Technology.

An organizational meeting for the coaches of the upcoming Girls' Little Dribbler basketball will be Wednesday, March 23, at 7:30 p.m. in the Muleshoe State Bank Community Room.

All parents and interested coaches are encouraged to attend.

Marine Staff Sgt. Jimmy Garcia, son of Erasmo and Antonia Zamora of Lazbuddie,

has reported for duty at Marine Corps Base, Camp Butler, on Okinawa. Additionally, he was recently promoted to his present rank and received the Navy Achievement Medal.

Garcia was awarded the decoration for professional achievement as the Primary Marksmanship Instructor and General Military Subjects Coordinator for the S-3 Section, Headquarters Service Battalion.

Demonstrating superb leadership and applying sound training management techniques, he improved marksmanship and essential training courses within the command. Under Garcia's supervision, nearly 1000 Marines qualified with the rifle and over 500 qualified to shoot the pistol.

His outstanding efforts contributed greatly to the accomplishment of the command's mission.

A 1983 graduate of Lazbuddie High School, Lazbuddie, he joined the Marine Corps in March 1985.

Various Items

To Be Considered

By School Board

On Monday, March 21, the Board of Trustees of the Muleshoe Independent School District will meet in regular session at the MISD administration offices at 7 p.m.

Under business items, the board will consider: approval to ratify the textbook committee report; accepting bids on playground equipment; approval of department and campus budgets for the 1988-89 school year; approval of Phase I of MultiPro for the 1988-89 school year; approval of the 1988-89 School Calendar and approval of an agreement on Asbestos work.

Under personnel considerations, will be professional evaluations and contracts.

Special reports will be given by the School Board President and Superintendent of Schools.

Agriculture Week

Cont. from Page 1

In Texas during 1987, cash receipts to producers from farm marketings alone amounted to an estimated \$10 billion, Anderson reports. Another \$750 million was generated from the expanding agriculturally-related industries of timber, fish and fishing, hunting leases, horses and outdoor recreation.

"Agriculturally, Texas ranks third nationally behind California and Iowa. Texas is traditionally number one in the sales of cattle and calves, cotton, grain sorghum, sheep and wool, goats and mohair, cabbage and spinach," Anderson says.

In addition, farm real estate values in Texas are estimated at \$64 billion. With 160,000 farms and ranches in the state, assets average \$401,000 per farm, although many commercial family farms have far more than a million dollars invested in their farm or ranch businesses, Anderson explains.

Many of today's farmers are professional, college-educated, business people with high dollar value assets and capital needs. Farming requires a broad range of skills to operate complicated machinery, use a variety of chemicals properly, and manage animal nutrition, crop production, genetics and marketing with sophisticated computer technology, Anderson notes.

Food is still a bargain, Anderson contends. Because of the U. S. farmer's productivity, Americans can buy their food for less of their disposable income today than even a few years ago.

Presently, the average American spends about 15 percent of his income on food. Just over a century ago, food spending in the U. S. accounted for 61 percent of income in 1869, when average income was \$791 a year and \$479 went for groceries. Today's spending for food in China amounts to 52 percent of income, 36 percent in Korea, and 32 percent in Mexico, explains Anderson.

"One U. S. farm worker today supplies enough food and fiber for 80 people, 21 of whom

live abroad. Producing an abundance of high quality food and fiber is inherent to American agriculture," he contends.

As the world's largest exporter, the U. S. has the greatest stake in the changing world market, he adds.

"Developments in any major importing country ultimately affect U. S. agricultural exports and the economic health of related industries," Anderson says.

Patients At West Plains Medical Center

MARCH 14
Teresa Garcia, Stephen Reed, Manuel Garcia, Jr. and Trey Pederson.

MARCH 15
Teresa Garcia, Marcelo Vidana and Mylessa Thompson.

MARCH 16
Charles Tiller, Marcela Vidana, Mylessa Thompson and R.L. Clark.

THE HEIGHT OF COMFORT. PECOS BOOTS



1155
Fair Dept. Store
120 Main 272-3500



Kiwanis Hosts Clovis Members At Meet

By: R. A. Bradley

Sixteen Kiwanis members, five guests and Sweetheart, Sue Haire, met Friday morning at the Old Corral.

The meeting was called to order by President Max Crittenden, James Roy Jones led the club in the pledge and R. A. Bradley gave the invocation.

Four of the guests were from the Clovis, N.M. Kiwanis Noon Club. They were Bill McDaniel, Roy Ingram, Philip Crystal and Walt Conners. The other guest, Randy Huckaby, is the younger brother of Kiwanian Lyndon Huckaby and a resident of Tarzan, TX.

Scott Churchman started the program telling about the upcoming Fire School that will be at Lubbock April 4-7.

Scott and J. O. Parker will be instructors on LPG fires. Scott will instruct on LPG fires in vehicles and J. O. will be the instructor for LPG tank fires.

There is more to fighting fires than just putting water on it. Some fires should not have water.

Volunteer firemen take many hours of training. They start off by training on the nozzle without water, because you can cut the nozzle on and off quickly and by a quick adjustment, go from stream to all different patterns of spray.

You have to even learn how to drag the water hose so as to not hinder the man on the

nozzle and it is his job to protect the men with him.

Then, they go to training on the hoses with water with pressure from 100 pounds to 175 pounds. Quite a difference.

J. O. and Scott will hold five classes each night, as well as the other instructors on other kinds of fires.

There are also classes on rescue.

We are very proud that we have men in the Muleshoe Fire Department that are far enough along that they are now instructors.

The Muleshoe Fire Department has been quite busy this past week, with burr fires at Muleshoe Co-op Gin and Paco Feed Yard.

Nick Bamert, who does not have a new member to his family, gave the friendship coin to Lyndon Huckaby, who had brought a guest - his brother.

Panama Chief Replies

Panamanian dictator Manuel Noriega says U.S. officials told him the U.S. would invade Nicaragua, that he refused to allow U.S. military staging base to be located in Panama. Reagan officials deny recently-indicted Noriega's claims, suspect he is retaliating for indictment in federal court on drug-smuggling charges

Don't face the new tax laws alone.



The tax laws have changed dramatically. And the forms have changed, too. Our experienced preparers know the new laws and how to use the new forms. We'll find you the biggest refund you have coming.

H&R BLOCK IF THERE'S EVER A TIME FOR H&R BLOCK, IT'S NOW.

224 West 2nd.
272-3332

Weekdays 9 - 6 Sat. 9 - 5

HOMESTEAD EXEMPTIONS



CAN LOWER THE PROPERTY TAXES ON YOUR HOME

A homestead exemption

lowers the property taxes on forms are available at this your home by lowering its office.

If you received a homestead exemption on your present home in 1987, you won't need to apply again for 1988 unless the chief appraiser requires you to reapply.

You qualify

for a homestead exemption if you owned your home on January 1 and used it as your primary residence on January 1. It doesn't matter whether your home is a house, a condominium or a mobile home.

Exemptions are available

to all homeowners on their school taxes. Additional exemptions are available to homeowners who are disabled or age 65 and over. Other exemptions may be offered to homeowners by school districts, counties, cities, and special districts. All taxing units offer exemptions to disabled veterans.

Apply to

your local appraisal district office at the address shown below for all exemptions you may qualify for. Application

However, if you passed your 65th birthday or became disabled before January 1, file a new application to receive the additional exemptions.

If you haven't received an exemption on your present home, or if you've moved to a new home, make a new application for 1988.

The deadline

for applications is April 30, 1988. Contact your appraisal district before then if you need more time.

For more information, get a free copy of the pamphlet, *Taxpayers' Rights, Remedies, Responsibilities*, at your appraisal district office or from the State Property Tax Board in Austin.

Bailey County Appraisal District

104 E Ave C

272-5501

Green Thumb, Inc. is taking applications for those persons 55 years of age and older who meet Department of Labor income eligibility requirements to work with local non-profit organizations. Interested applicants should contact Green Thumb, Inc., P. O. Box 7898, Waco, Texas 76714. Green Thumb is an Equal Opportunity Employer


John Deere Disk Parts... The Real Thing at Real Savings
Well-known John Deere quality... made in America. Cross-rolled disk blades resist breakage. Carefully controlled heat-treating assures uniform hardness where it counts.

ANTI-FRICTION DISK BEARINGS  29 ⁴¹ PART NO. AB12603 4-lip seal keeps dirt out for dependability and long life.	DISK BLADES  16 ⁷⁷ PART NO. B31316 20 in. Made from cross-rolled high-carbon steel for long wear, resistance to breakage. Custom heat-treating for uniform hardness.
---	---

John Deere disk parts... quality and price.
Dent & Co.
West Hwy. 84 Muleshoe 272-4296

Lazbuddie Menu

MARCH 21 - 25
BREAKFAST
MONDAY
Donuts, Applesauce, Milk.
TUESDAY
Bacon, Biscuits, Juice, Milk.
WEDNESDAY
Oatmeal, Toast, Milk.
THURSDAY
Cereal, Juice, Milk.
FRIDAY
Cinnamon Rolls, Juice, Milk.
LUNCH
MONDAY
Pile on Burritos, Pinto Beans, Green Salad, Fruit, Milk.
TUESDAY
Corn Dogs, French Fries, Pickles, Pudding, Milk.

Three Way Menu

MARCH 21 - 25
BREAKFAST
MONDAY
Cereal, Juice, Milk.
TUESDAY
Bacon, Juice, Biscuits, Milk, Jelly, Gravy.
WEDNESDAY
Juice, Cinnamon Toast, Milk.
THURSDAY
Juice, Toast, Milk, Jelly.
FRIDAY
Juice, Waffles, Milk, Syrup.
LUNCH
MONDAY
Burritos, Corn, Salad, Cheese Sticks, Milk, Pineapple Pudding.
TUESDAY
Rotini and Cheese, Black Eyed Peas, Mix Salad, Hot Rolls, Milk, Cake.
WEDNESDAY
Macaroni and Tomatoes, Pinto Beans, Spinach, Corn Bread, Milk, Cobbler Relish.
THURSDAY
Natcho Supreme, June Peas, Salad, Milk, Jello.
FRIDAY
Hamburgers and Cheese, Lettuce, Tomatoes, Onions, Pickles, Fries.
WEDNESDAY
FRIDAY
Hamburgers and Cheese, Lettuce, Tomatoes, Onions, Pickles, Fries, Buns, Milk, Cookies.

Muleshoe Menu

MARCH 21 - 25
BREAKFAST
MONDAY
Milk, Cooked Cereal, Toast, Fruit.
TUESDAY
Milk, Whole Wheat Muffins, Fruit.
WEDNESDAY
Milk, Biscuits, Jelly, Fruit.
THURSDAY
Milk, Honey Buns, Juice.
FRIDAY
Milk, Cooked Cereal, Toast, Fruit.
LUNCH
MONDAY
Milk, Skillet Dinner, Potatoes, Blackeyed Peas, Corn Bread, Fruit.
TUESDAY
Milk, Juicy Burgers, Lettuce & Tomato, Pickles & Onions, Tater Tots, Cookies.
WEDNESDAY
Milk, Lasagna, Corn, Beans, Corn Bread, Fruit.
THURSDAY
Milk, Corn Dogs, Veg. Beef Soup, Crackers, Cinnamon Rolls, Fruit.
FRIDAY
Milk, Ham & Cheese on Bun, Pork & Beans, Tater Tots, Fruit.
COMBO LINE
MONDAY
Milk, Bar-B-Que'd Franks, Potatoes, Blackeyed Peas, Corn Bread, Fruit.
TUESDAY
Milk, Hamburgers, Lettuce & Tomato, Pickles & Onions, Tater Tots, Cookies.
WEDNESDAY
Milk, Chalupas, Salad, Cheese, Corn, Crackers, Fruit.
THURSDAY
Milk, Corn Dogs, Veg. Beef Soup, Crackers, Cinnamon Rolls, Fruit.
FRIDAY
Milk, Hot Dogs, Pork & Beans, Tater Tots, Fruit.

WEDNESDAY
BBQ on Bun, Potato Salad, Baked Beans, Potato Chips, Pickles, Chocolate Drop Cookies, Milk.
THURSDAY
Fried Chicken, Mashed Potatoes, Gravy, Green Beans, Hot Rolls, Fruit, Milk.
FRIDAY
Hamburgers, Tator Tots, Lettuce, Pickles, Cake, Milk.
Salad Bar Will Be Served Daily

BIBLE VERSE

"To every thing there is a season, and a time to every purpose under the heaven."
1. Who made the above statement?
2. Whose son was he?
3. What was the theme of the book from which it was taken?
Answers to Bible Verse
1. Most scholars agree that it was Solomon.
2. The Son of David
3. How may we obtain substantial happiness

Kathrin Wilkins Funeral Services Held Friday

Funeral services for Kathrin Wilkins, 62, were held at 2 p.m. Friday, March 18 in the Muleshoe Church of Christ with Bret McCasland, minister, officiating, assisted by Joe Embry, elder.
Interment was in Bailey County Memorial Park under the direction of Ellis Funeral Home of Muleshoe. Mrs. Wilkins died at 6 p.m. Wednesday in the Methodist Hospital at Lubbock following a lengthy illness.
Born April 16, 1925, in Farwell, she had been a lifetime resident of Bailey County. She was a housewife. She married William P. Wilkins on Sept. 10, 1950, in Clovis N.M.
Survivors include her husband, William "Bill" Wilkins; two daughters, Janis Wilkins

Muleshoe and Treva Kay Morrison of Hereford; a sister, Mrs. Lillie McMahan of Muleshoe; and two brothers, Ernest Gatlin of Amarillo and James Gatlin of Lubbock.

Edgar Ward Services Held At Morton

Final rites for Edgar Pershing "Buzzy" Ward, 69, of Morton, were conducted at 2 p.m. Saturday in the Morton First Baptist Church with Rev. Dale Hartley, pastor of First Missionary Baptist Church, officiating. Interment was in Morton Memorial Cemetery under direction of Ellis Funeral Home of Morton.
He was pronounced dead at his home at 2:30 p.m. Thursday by Justice of the Peace Carl Kernell. Justice of the Peace Kernell pronounced him dead of natural causes.
He was a retired fifth grade teacher from the Morton Independent School System.
He was born February 24, 1919 in Grant, Okla. and moved

to Cochran County in 1926 from Flomot.
He was a member of the First Baptist Church of Lubbock and of the Morton Senior Citizens. He served in the U. S. Navy in World War II.
He is survived by two sisters, Vivian Griffith of Portales, N.M. and Lorena Ward of Hereford. He was preceded in death by three brothers, Otis, Everett and Kermit; three sisters, Nina Lou Curry, Iva Willis and Lessie Willis. He was also preceded in death by his parents, Mr. and Mrs. J. R. Ward.

Golden Gleams

Come, gentle spring, ethereal mildness, come!
—James Thomson.
Spring makes everything young again, save man.
—Jeane Paul Richter
Spring is sooner recognized by plants than by men.
—Chinese Proverb.

Immaculate Conception Catholic Church

Father Patrick Maher
Northeast of City

First Baptist Church

220 West Ave. E.
Barry Bradley, Pastor

Emmanuel Baptist Church

Iglesia Bautista Emmanuel
107 East Third
Isaias Cardenas, Pastor

Trinity Baptist Church

314 E. Ave. B.
Rev. V.L. "Buster" Huggins

Circle Back Baptist Church

Joel E. Stafford
Intersection FM 3397 & FM 298
946-3676

Calvary Baptist Church

1733 W. Ave. C.
Rev. Darrel Martin

Muleshoe Baptist Church

8th and Ave. G.
Bob Dodd, Pastor

Progress Baptist Church

Paul Brigham, Pastor
Progress, Texas

Richland Hills Baptist Church

17th and West Ave. D.
David McAdams, Pastor

St. Matthews Baptist Church

Corner of West Boston & West Birch
M.S. Brown, Pastor

Progress Second Baptist Church

1st and 3rd Sunday
Clifford Slay, Pastor

The Community Church

Morton Hwy.
Jim Cope, Pastor, 272-5992

IN MOTHER'S FOOTSTEPS



What joy in life is seen in those eyes. That smile is given freely to everyone. Now look at them both. Which one am I talking about? Aren't they both the same? No, she's not an exact, carbon copy, of her mother — for when you look again, you see that there is a generation between them. She wears the bright colors in her dress with the cute designs. Her dreams are different than her mothers. She is more outgoing. Yet in the mother you can see a quiet humor and in her closeness to her daughter, a gentle protectiveness. Her mother's dreams are sometimes too ambitious, but in the "Encouragement Department" she works just fine.

There is one dream and ambition they both have, however; and that is to be like our Lord and Saviour Jesus Christ, and to be of service to the church. Their goodness is of God.

"For the eyes of the Lord are over the righteous, and his ears are open unto their prayers; but the face of the Lord is against them that do evil." 1 Peter 3:12.

EVERYONE IN THE CHURCH
THE CHURCH IN EVERYONE

The Church is God's appointed agency in this world for spreading the knowledge of His love for man and of His demand for man to respond to that love by loving his neighbor. Without this grounding in the love of God, no government or society or way of life will long persevere and the freedoms which we hold so dear will inevitably perish. Therefore, even from a selfish point of view, one should support the Church for the sake of the welfare of himself and his family. Beyond that, however, every person should uphold and participate in the Church because it tells the truth about man's life, death and destiny; the truth which alone will set him free to live as a child of God.

©Coleman Adv.

Longview Baptist Church

965-3413
B.C. Stonechipper, Pastor

Primera Iglesia Bautista

223 E. Ave. E.
Roy Martinez, Pastor

Lariat Church Of Christ

Sunday School 10:00 a.m.
Worship 11:00 & 6:00 p.m.
Wednesday Services 7:00 p.m.
Sam Billingsley, Minister

Muleshoe Church Of Christ

Clovis Hwy.
Bret McCasland, Minister

16th & Ave. D. Church Of Christ

Sunday 10:30 a.m.
Evening 6:00 p.m.
Wednesday 8:00 p.m.

First Assembly Of God

Rev. David C. McCune
9:45 Sunday School
11:00 Morning Worship
6:30 Evening Services
7:30 Mid Week Services
272-3984

Primitive Baptist Church

621 South First
Elder Cleveland Bass, Pastor

Spanish Assembly Of God

East 6th and Ave. F.
Luis Campos, Pastor

First United Methodist Church

507 W. 2nd Street
Richard Edwards, Pastor

El Divino Salvador Methodist Church

5th and Ave. D
Jose M. Fernandez, Pastor

1st Baptist Church

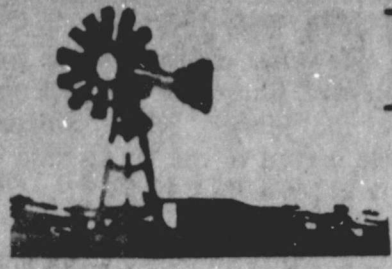
Lazbuddie, Tx. 965-2126
Gary Wilcox, Pastor

Lazbuddie Church Of Christ

United Pentacostal
Lighthouse Church

207 East Ave. G.
Rev. J.A. Torres

Western Drug 114 Main 272-3106			Dairy Queen 1204 W. Amer. Blvd. 272-3412
Little Gulf 202 W. Amer. Blvd. 272-4918	Baker Farm Supply 1532 W. Amer. Blvd. 272-4613	American Valley, Inc. Hwy. 84 W. 272-4266	Robert D. Green, Inc. 2400 W. Amer. Blvd. 272-4588
Farmers Spraying Service Lazbuddie 965-2624	Bob Stovall Printing 221 E. Ave. B. 272-3373	James Roy Meat Market 506 W. Amer. Blvd. 272-4361	Lookin Good 206 Main 272-5052
Main Street Beauty Salon 115 Main 272-3448	1st Bank 202 South First 272-4515	Bratcher Motor Supply 107 E. Ave. D. 272-4288	Five Area Telephone Cooperative, Inc. 302 Uvalde 272-5533
Irrigation Pumps & Power West Hwy. 84 272-4483	Farmers Co-Op Elevators 113 N 1st 272-4490	Foster Fertilizer Lazbuddie 965-2921	Richland Hills Texaco 1914 W. Amer. Blvd. 272-4875



How Does Your Garden Grow? Beautifully...with our

Sale Good Through
March 26, 1988

GREEN THUMB SPECIALS

HYPONEX
THE HOME FIELD ADVANTAGE

COW MANURE
40# Bag

TOPSOIL
40# Bag

ORGANIC PEAT
40# Bag

Double Rebate!

*Send in this ad with on-bag coupon (40¢) for DOUBLE the value (80¢)

SNAPPER
ALL AMERICAN SPRING SAVINGS
BUY THE BEST, NOW AT AN AFFORDABLE PRICE!

21" 3 1/2 HP Lawn Mower

FREE ATTACHMENT: FREE Grass Catcher Kit when you buy a SNAPPER 35HP Walk Mower.

Only: **\$299⁹⁵**

No. 21351D

NO DOWN PAYMENT AND LOW MONTHLY PAYMENTS WITH SNAP-CREDIT!
JOIN THE MILLIONS OF SATISFIED SNAPPER USERS.
HURRY! OFFER ENDS SOON.

Precision Structural
Broadcast
Spreader

Just **\$21⁹⁹**

58-50

Featuring a Non-Corrosive, Structural Foam, 50¢ Cap Hopper
8" x 150 Rubber Tired semi-pneumatic wheels
4" x 8" Spreading width
Totally enclosed Gear Box with Nylon Gears
1/2" Plated Steel Tubular Hand and Leg Stand

Your Choice:
On Peat, Topsoil, or Cow Manure

Sale Price **\$1.79**
Less Consumer Rebate **-0.40**
Doubled when Accompanied by this Ad **-0.40**
Your Cost After Rebate **99¢**

Lawn Sprinkler "SALE"
Your Choice:
\$5⁹⁹

Rotary Sprinkler
Covers a diameter up to 60". Includes accessory adapter and connector with automatic water stop. No. 2532

or
Impulse Sprinkler
Covers a diameter up to 80". Includes accessory adapter and connector with automatic water stop. No. 2533

reg. \$9.99

Chunk Style Dog Food For: **\$7⁴⁹**

50# Bag

Five Point

ALLTRADE PROFESSIONAL

The Box

You never run out of uses for this one.

Tools, Jewelry, odds & ends, sewing, you name it.

Just: **\$89⁹⁹**

#722-C-1

- 100% American Oak
- Unique locking lid secures on drawers
- Tongue & groove construction

Water Softener Pellets

only: **\$3²⁹**

50# Bag Super Soft

CARGILL SALT PUTS THE SOFT TOUCH ON HARD WATER AND A QUICK MELT TO ICE AND SNOW.

3 Gal. Poly Sprayer

At Just: **\$21⁹⁹**

Reg. \$24.99

No. 2503

Super Lawn Food

Now: **\$6⁴⁹**

40-4 Plus Iron and Sulfur
SIZE: 40 LB. BAG

Formulated especially for alkaline soils of the Southwest, Turf Magic Super Lawn Food supplies all the essential nutrients to keep plants green, healthy and growing vigorously. The high percentage of nitrogen and iron combine to give a double shot of greening power. Sulfur is provided to help counteract the high pH of our soils. This highly available source of plant food is easy to spread and can be used around trees and shrubs. A 40-lb. bag covers 3000 square feet.

Oscillating Sprinkler

Now Just: **\$4⁹⁹**

reg. \$6.99

Covers an area up to 2,400 sq. ft. Adjustable spray pattern. Includes accessory adapter and connector with automatic water stop. No. 2534

12 HP 38" 7 Speed Lawn Tractor *

Only: **\$899⁹⁹**

* Twin Grass Catcher Available for Only **\$179⁹⁹**

Shown with Twin Grass Catcher No. 138-652 No. 190-064

38" Side Discharge 7-Speed Transmatic Transaxle Electric Start 652: 12 HP I/C engine

No. LT16-332

NO DOWN PAYMENT AND LOW MONTHLY PAYMENTS WITH SNAP-CREDIT!
JOIN THE MILLIONS OF SATISFIED SNAPPER USERS.
HURRY! OFFER ENDS SOON.

UNION. "Garden Tool Sale"

LHP Irrigating Shovel, #2 size, 8 1/4" x 12" blade. Rolled step 9" socket 47" handle.
401 072

Now: **\$8⁹⁹**

Bow Rake, 14 teeth, 13 1/4" x 2 1/4" welded head, 3/16" thick 54" handle.
631 076

Just: **\$10⁹⁹**

Garden Spading Fork, Light pattern, 4 welded tines, 10" long, 4" ferrule, 29" Big Fist™ D-Grip handle.
721 077

Only: **\$13⁹⁹**

FIVEPOINT Sports Power Lawn Tractor Battery

Your Choice of Style: **\$19⁹⁹**

reg. \$29.99

90 day free replacement warranty

Dependable, durable starting power. No. C6331 or No. C6321

SNAPPER

16HP33" Lawn Tractor

For Only: **\$2,975⁰⁰**

Picture with 33" Hi-Vac Deck and optional Twin Bag Catcher.

NO DOWN PAYMENT: And low monthly payments with SNAP-CREDIT.

FREE MOWING DECK: Choose a 33" Hi-Vac™ or 41" or 48" side discharge when you buy a Lawn Tractor at the regular retail price.

NO DOWN PAYMENT AND LOW MONTHLY PAYMENTS WITH SNAP-CREDIT!
JOIN THE MILLIONS OF SATISFIED SNAPPER USERS.
HURRY! OFFER ENDS SOON.

Water Softener Solar Crystals

Just: **\$2⁹⁹**

50 Lb. Bag

Can be used in most all units.

A Bag

The Rain Train

Rebate Time!

Sale Price **\$49.99**
Mfg Rebate **5.00**
Your Cost After Rebate **\$44⁹⁹**

Reg. Price **\$61.99**

NELSON RAIN TRAIN® 200 metal traveling sprinkler

- Maximum coverage 16,000 sq. ft.
- Adjustable arms give coverage width from 15 to 55 ft.
- Follows pattern laid out by hose
- Extra powerful - pulls hose easily up grades, around corners
- 2 forward speeds and a neutral for stationary use

THE ONLY LADDER YOU WILL EVER NEED!

16' Heavy Duty Fold-Up Ladder

Now: **\$129⁹⁹**

reg. \$149.99

No. FL-Pro16

Super Holding Push-Lock Hinge... This exclusive feature assures positive locking. To change positions simply push the release button. For visible assurance that the locking pin is in place, the pin is seen through the "lock-hole".

The FLEX-O-LADDER II will serve your ever ladder need... what ever the job it is light in weight, but, super strong and holds firmly in place.

FLEX-O-LADDER folds to an ultra compact size for easy storage... even in the most compact auto. It weighs only 30 lbs. (12.5') and the 16.5 foot size weighs only 35 lbs. Meets OSHA-ANSI requirements for type II ladders.

HYPONEX
SPREAD THE WORD

All Purpose Potting Soil

Sale Price **\$1.29**

Less Consumer Rebate **-0.50**

Your Cost After Rebate **79¢**

20 Lb. Bag

A&M
Farm & Ranch Supply

The Place Where You Pay Less and Get The Very Best

"Ask Us!"

WE'RE LAWN & GARDEN EXPERTS!

We Have 3 Great Locations To Serve You.

2600 Mabry Dr. Clovis, N.M.
1-505-762-7717

1601 S. Ave. D, Portales, N.M.
1-505-356-8543

1302 W. American Blvd., Muleshoe, Texas
1-806-272-5571

All Are Welcomed

All Stores Open Monday-Saturday 7:30 A.M. - 6:00 P.M.

Sundays 12:30 - 5:00 P.M.

Honoring America's Providers

Farmers are efficient producers

U.S. farmers today produce over 80 percent more crop output on an acre of land than did their fathers. Today, one hour of farm labor produces 16 times as much food and other crops as it did in the 1919-21 period.

New technology has made these gains possible. The productivity of the land now depends upon the skill and knowledge with which capital is applied. The bigger the volume that farmers can raise and sell, the lower the product cost per item. So U.S. consumers gain from the increase in farm production efficiency.

The following chart on productivity indicates how labor requirements have changed since the beginning of the 19th century.

Labor required to produce wheat, corn, and cotton.

	hours	1935-39	1955-59	1980-84
Wheat (100 bushels)	1800	67	17	7
Corn (100 bushels)	373	108	20	3
Cotton (1 bale)	601	209	74	5

Yield per acre were 15 bushels for wheat, 25 bushels for corn, and 154 pounds for cotton.

And the following chart shows yield changes since 1800.

Yields per acre of wheat, corn, and cotton.

	1800	1940	1960	1985-86
Wheat (bu)	15	15	20	34
Corn (bu)	25	29	55	118
Cotton (pounds)	154	253	446	630

In 1790, 3,000 bales of cotton were produced. With the advent of the cotton gin in 1793, production rose to 73,000 bales by 1800. Other crops produced at this time include 160 million bushels of grain products, 22 million bushels of wheat, 107 million pounds of tobacco, and 300 million board feet of lumber.

Food prices rise less than other consumer prices

Food prices rose 3.2% in 1986, slightly higher than the 2.3% increase in 1985, according to the Consumer Price Index.

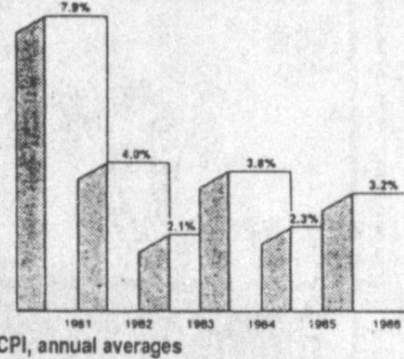
The farm prices of food products, that is, the value of the farm goods that go into the food product, went down for a second consecutive year making the 1986 farm value of food the lowest since 1979. Following a 7.1% decline in 1985, the farm value of food fell 1.3% lower.

The farm value averaged 30% of the retail cost for a "market basket" of foods purchased in grocery stores, down from 31% in 1985 and 34% in 1984.

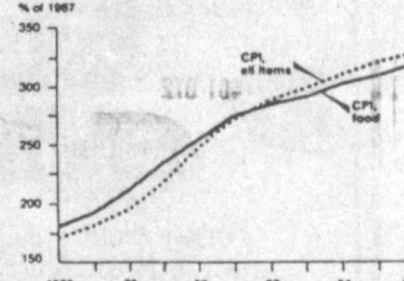
The farm share of the food dollar has declined recently because abundant food supplies have held down farm prices while rising costs to processors and distributors have boosted retail prices.

About 25 percent of last year's food spending went back to farmers, who received about \$89 billion. This share is lower than the 30 percent farm value share for the market basket of food because it includes the much lower 16 percent farm share for away-from-home food spending.

Food prices rise moderately



Food prices rise less than other consumer prices



Source: Consumer Price Index, Bureau of Labor Statistics, U.S. Department of Labor

A Farmer Comparison.

An American farmer provides food and fiber for 114 people.

Compared with a farmer that provides food and fiber for:

- 3.5 in China
- 3 in Japan
- 8 in Argentina
- 4 in Brazil
- 11 in the U.S.S.R.

Skill combined with technology make this production miracle possible.

Join us on **NATIONAL AGRICULTURE DAY**, March 20, 1988 -- in honoring America's providers: the 21 million men and women who make up the food and fiber industry.

Agriculture Council of America Education Foundation



Honoring America's Providers

National Agriculture Day -- 1988

U.S. Department of Agriculture - Office of Governmental and Public Affairs.

AGRICULTURE IS MORE THAN FOOD

We depend on farmers for our food - and a lot more besides.

We count on farmers for obvious non-food items: wool and cotton for our clothing; leather for our shoes, belts, luggage, and other "leather goods"; pulp for paper and wood for our homes, other buildings, and furniture; and fiber for sacks, bags, and boxes. The American Paper Institute reports that paper and paperboard production averaged two pounds per person per day in January 1986.

Farmers produce our tobacco, another nonfood product. The greenhouse and nursery business, which is predominantly nonfood agriculture, has grown in dollar volume until it generates more cash farm income, \$5.8 billion, than either the \$1.9 billion for tobacco or the \$2.7 billion for cotton. Forest products add \$1.4 billion to farm cash income; wool adds \$55 million.

Agricultural mining is an \$18 billion industry directly employing more than 100,000 people.

Then there are common non-food items we might not readily think of as "agricultural": there's grass seed for lawns, bird seed for the birds, and how about pet food for dogs and cats? People spent \$6 billion last year for dog and cat food, nine and one-half billion pounds of it, says the Pet Food Institute.

The more exotic agricultural products are something to contemplate as you relax and go fishing, maybe to bait your hook with a worm or other bait from a bait farm. That's an agricultural product, too. You'll find agricultural products in gasohol fuel, industrial alcohol, adhesives, cosmetics, fragrances, soap, candles, paints, chewing gum, utility poles, lead pencils, and pesticides containing substances such as nicotine and pyrethrum.

Next time your doctor gives you a shot, try to take your mind off the needle by concentrating on the fact that the vaccine may have been cultured in an egg. (an agricultural product.) About one-fourth of all prescription drugs contain agricultural products.

We've come a long way from old nonfood agricultural standbys such as straw mattresses, feather dusters, mustard plasters, leather chaps, and six-shooter holsters, but nonfood agriculture is still all around us. It's big business, not to be swept under the rug, especially if the broom is made from broom corn. Yep, that's agriculture.

Food and fiber industry

There are 21 million people working in agriculture. Each additional \$1 billion of agricultural or food and fiber demand creates 30,000 to 35,000 additional jobs and adds a total of \$2 billion to the Nation's Gross National Product.

Each \$1 billion earned from farm exports in 1986 created another \$1.51 billion of output in the U.S. economy, for a total of \$2.51 billion. In 1986, 0.8 million (or 781,000 full-time jobs) related to agricultural exports. Nearly 450,000 of those were non/farm jobs assembling, processing, and distributing farm products for export.

Activity	Number Workers (In millions)
Farming	2.1
Services	4.1
Manufacturing	1.3
Food	1.4
Textiles	1.6
Distribution	
Wholesaling and Retailing	6.2
Food Service	3.8
Transportation	.5
TOTAL	21.0

Facts on agriculture and the hungry

The U.S. is the world's largest food donor.

In 1985, the U.S. exported \$1.3 billion under PL 480, the Food for Peace program. African drought relief accounted for this higher-than-usual level of food aid. In 1986, world food needs weren't as great. Weather still drives world agriculture, however, and is increasing estimates of world food shortages for 1988. Severe drought in India and Ethiopia and inadequate rainfall in many African countries have increased world food needs to 26 million tons.

FY	World Food Needs	U.S. Shipments
84/85	11.7 mil. tons	7.5 mil. tons
85/86	8.8 mil. tons	6.7 mil. tons
86/87	6.6 mil. tons	6.5 mil. tons (est.)
87/88	26.0 mil. tons	6.1 mil. tons (est.)

A growing portion of the USDA budget goes to feeding the hungry in America.

The number of Americans facing hunger in 1986 was 20 million, according to the Physicians Task Force on Hunger. That number continues to grow. More and more families are standing in soup lines, whereas in the 1970's the hungry was largely made up of single men. Although many programs were cut in 1980, USDA costs for these programs have increased 42% (not adjusted for inflation). The total cost for various food distribution programs was 20 billion in 1986. Programs include: the Food Stamp program, Women, Infants and Children program, Child nutrition programs and other. Funding is also provided by private organizations and some state and local organizations mostly in the form of "emergency food assistance."

The food problem in some Third World countries has prompted Lloyd Timberlake in his book *Only One Earth* to remark that "the average British cat eats twice as much animal protein every day as the average African citizen." Further, the estimated cost of maintaining a British cat is \$260 per year; a figure that is "more than the average annual income of the one billion people who live in the world's 15 poorest nations," he says.

We can't attest to the cost of feeding a cat in Britain. The British spend about \$900 per person annually on their own food, beverages, and alcohol. To take nothing away from the desperate need of poor countries for protein, it still can be said that the kind of animal protein in cat food wouldn't cause very many people to salivate, nor would it likely send very many to the stump to advocate that we kill the cat and send the cat food to the "poor people around the world."

This Special Ag Day Message Sponsored By These Companies ...



GMC TRUCK
IT'S NOT JUST A TRUCK ANYMORE.

...And These Supporters Of Area Agri-Business...

<p>Member FDIC</p> <p>202 S. First 272-4515</p>	<p>Valley Grain Products Inc.</p> <p>Food & Corn Processors & Buyers</p> <p>Hwy 84 E Muleshoe 272-5545</p>	<p>Sherley-Anderson</p> <p>Lazbuddie Elevator</p> <p>Lazbuddie 965-2922</p>	<p>Grain Merchandisers & Certified Wheat Seed</p> <p>Goodland Bledsoe Portales</p> <p>505-356-4485</p>
<p>5 Locations To Serve You!</p> <p>Clays Corner Enochs Muleshoe Pleasant Valley Old Griffith</p> <p>Farmer's Co-Op Elevators</p>	<p>Keith Stephens Location Manager Res. 806-481-9253</p> <p>Terra International, Inc. Box 527 West Highway 84 Muleshoe, Texas 79347 806-272-4203</p>	<p>Foster Fertilizer Inc.</p> <p>Lazbuddie 965-2921</p>	<p>LIFE - AUTO - FIRE - CROP HAIL - RETIREMENT - HEALTH</p> <p>DAVID R. TIPPS AGENCY MANAGER</p> <p>P.O. BOX 408 MULESHOE, TEXAS 79347 OFFICE 806/272-4567</p>
<p>-AG AVIATION INC.-</p> <p>SPECILIZING IN AERIAL APPLICATION</p> <p>Friona Hwy Mlsh 272-3534</p>	<p>RONNIE M. DENT</p> <p>LEADERSHIP YOU CAN COUNT ON</p> <p>DENT & CO. OF MULESHOE Hwy. 84 West Muleshoe, TX 79347 806-272-4296 Home 806-272-5749</p> <p>"Where Customer Satisfaction Is Our Goal"</p>	<p>Muleshoe/Bailey County Journals</p> <p>Box 449 Muleshoe 272-4536</p>	<p>Galante & Bobby Free Farms</p> <p>Muleshoe 965-2131</p>

Courthouse News

MARRIAGE LICENSE

Douglas Scott Williams and Roxanne Bernice Richards, Muleshoe

Joe Mendoza and Margarita Navejar, Muleshoe

Adrian Perez, Muleshoe and Danna Ann Martinez, Labuddie Martin Mendoza and Evangelina Rodriguez, Muleshoe

WARRANTY DEEDS

R.O. McCarty and wife, Lois McCarty to Van H. Rogers and wife, Katherine H. Rogers---All of Labors Number (6), (7), (8), (13), (14), and (15), League Number 176, Montley County School Land in Bailey County, Texas.

Howard Watson and wife, Judy Watson to J.R. Carter and wife, Maxine Carter---All of the (SW/4) of Section Number (58), Block "Y", WD&FW Johnson Subdivision Number (2), in Bailey County, Texas.

Eva Atwood to Lee Atwood--A Tract of Land out of Section (54), Block Y, WD&FW Johnson's Subdivision No. 2, Bailey County, Texas.

Jimmy Espinoza to Susan Mary Espinoza---All of Lot (1) and the Northeasterly 10 feet of Lot (2), in Block (1), Hilltop Addition to the Town of Muleshoe, Bailey County, Texas.

Lewis Scoggin to Joe Shipman and wife, Edna Shipman---All of Lots 2, 3, and 8 of Block 7, of the Northside Addition to the City of Muleshoe, Bailey County, Texas.

Gary R. Hugg and wife, Rhonda Hugg to Mario Dehoyos and wife, Sonovia Dehoyos---All of Lot Number (17), in Block Number (24), Country Club Addition to the City of Muleshoe, Bailey County, Texas.

COUNTY COURT

Herbert Harold Rietz, Order Discharging Defendant from Probation

Richard Alarcon, DWI Second Offense \$500 Fine 20 Days Jail

Richard Alarcon, Work Release

Sharlene Pearl Korsun, DWI \$250 Fine 2 Years Probation

Enrique Toscano, DWI \$250 Fine 1 Year Probation

Robert Gonzalez, DWI \$300 Fine 5 Days Jail

DISTRICT COURT

Maple Butane Company VS Claunch Gin, Order of Dismissal

Paula Kay Tarter and Joe

Neal Tarter, DV

Susan Mary Espinoza and Jimmy Espinoza, DV

Vicki Lynn May and Daniel Scott May, DV

Tammy Ann Elder and Orville Lee Elder, DV

Muleshoe State Bank VS Rick Wilcox, Default Judgment

R.J. Montgomery and wife, Sharon Montgomery VS American Fidelity Insurance Company, Order of Dismissal

Bailey County Appraisal District VS H.D. Ramage, Plaintiff's Motion To No Suit

A.R. McGuire VS Madison Charles Evans and Velma McGuire, Order Granting Motion For Non Suit Without Prejudice

Golf Course Makes New Weekend Rule

A new rule has been instituted at the Muleshoe Golf Course due to heavy weekend play on the golf course.

According to the new rule, the "Foursome &" rule will be in effect for the remainder of the golf season.

On weekends, between the hours of 11 a.m.-6 p.m., players must have at least a foursome and no more than a sixsome unless permission is obtained from the Pro Shop.

It was explained that this is necessary in order to accommodate the maximum number of players possible on the golf course.

All members are also asked to take a few minutes to reread and familiarize themselves with the local rules and regulations, displayed adjacent to the Number One teebox.

The fourth annual Kickoff Classic will be held April 9-10; and deadline to enter the City Tournament is April 15.

Call the Pro Shop at 272-4250 for details, and to enter the tournaments.

New Directors To Be Chosen For Organization

Bailey County cotton producers and agribusinessmen will elect a Businessman Director to Plains Cotton Growers, Inc. at an 8 p.m. meeting on Monday, March 28, in the Bailey County courthouse in Muleshoe.

Announcement of the election comes from Charles Moraw of Muleshoe, Bailey County Producer Director to the 25-county cotton organization, and Bennie Claunch of Bula, current Businessman Director.

Each of the counties in PCG territory has two directors, one a businessman and the other a cotton producer. They are elected on alternate years for two-year terms. Each is eligible for re-election every second year.

All producers and businessmen are invited to the meeting.

However, under PCG by-laws, only current dues-paying members of PCG will be eligible to be elected a director or to vote in the election. This provision of the by-laws will be fully explained at the meeting.

A PCG staff member will conduct the election and review and answer questions about recent and planned PCG activities.

Ricky Flores Named President Of FCA Group

Watson Junior High School Fellowship of Christian Athletes (FCA) met at 7 a.m. on Friday, March 4, in the 16th and Ave. D Church of Christ, with guest speaker Rev. Bret McCasland.

Breakfast was served the FCA by Mr. and Mrs. Terry Field, Jean Richardson, Mr. and Mrs. Terry Hutton, James Brown, Rhonda Hugg, Iva Noble and Rhonda Roberts.

Coach Roy Donaldson, who is sponsor of FCA, made announcement of plans to meet bi-monthly through the remainder of this school year and the upcoming selection of officers.

March & Death

March is not a safe month for Americans. More people die in March than in any other month. Bitter cold alternates with teasing spring; the long winter is taking its toll.

The guide for every individual, then, especially the elderly, is to take extra care of one's health in March. Avoid over-exposure and too much exertion.

The WJHS FCA group met Tuesday, March 8, for a short meeting. It was conducted after school in the junior high school gym.

Highlighting the meeting was the election of the following officers:

Ricky Flores, president; Jill Noble, vice president; Tiffany

Angeley, secretary and Jill Foster, program director.

Next meeting will be Tuesday at 6:30 in the First Baptist Church.

Guest speaker will be Joe Cearley.

The members will be making a record-size banana split.

Sain Irrigation & Machine
New pumps, pulling & repair all makes, bail wells, re-perforate casing in well, gearhead repair, machine works, domestic well service. Located in 1900 block American Blvd. Gene Lowe building Phone 272-4397
Walter Sain

15. Misc.

15. Misc.

15. Misc.

....State Farm
Good Service, Good Coverage, Good Price...
That's State Farm Insurance
See Me For Savings On...
Homeowners, Auto, Health, Life and Business
F.L. Newton, Agent
128 East 10th 385-3055
Littlefield, Texas

15. Misc.

NEEDING drummer, guitar player and bass player to join form a band. Must have own equipment call 272-3902.
f15-11s-3tc

18. Legal

NOTICE OF PUBLIC HEARING

The Commissioners Court of Bailey County will hold a public hearing on Thursday, March 31, 1988, at 10:00 a.m. in the Commissioners Courtroom of the Bailey County Courthouse, Muleshoe, Texas, regarding the establishment of load limits on the county road known as the West Camp pavement. The proposed regulation is as follows:

"No commercial motor vehicle, truck, tractor, trailer or semitrailer, nor combination of such vehicles, shall be operated over, on, or upon the West Camp pavement having an overall gross weight in excess of 60,000 pounds."
c18-12s-1tsc

Our new riders won't leave you lurching in the clutch



Forget about rolling back while clutching on hills. In fact, you can pretty well forget about clutching at all except when you want to reverse. New John Deere RX and SX Riders let you shift through seven forward speeds without clutching... and let you slow down by depressing a pedal. Other new features: an adjustable tilting seat. Easy-reach controls. 17-inch turning radius. And high torque 9- and 12 1/2-hp engines. Come choose from five models, 30- or 38-inch cut.

Nothing Runs Like a Deere®

Dent & Co.

West Hwy. 84 Muleshoe 272-4296

Leadership Where It Counts:
Service. Products. Quality. Value.

Corn Hybrids

With Excellent Standability

And Fast Dry Down

SG8215 NEW SG8333

NEW SG8333 preformed well in the Halfway '87 test. It was ranked first out of 60 hybrids yielding 13,989 pounds/acre.

Grain Sorghums

Bred Specifically For Texas' High Plains

NEW SG600 a short, strong early-yielder

SG922

SG932

Native Grass Seed

For All Your Grass Needs

Sideoats Gramma

Switch

Lovegrass

Blue Gramma

Buffalo



Wiedebush & Co.

1620 W. American Blvd.

Muleshoe

272-4281



A GIFT TO GIRL SCOUTS---Donna Noriega, left, presented the Muleshoe Girl Scouts with a complete set of china, during Girl Scout. Pictured (not in order) Kimberlee Vaughn, Yolanda Dehoyas, Carissa Buie, Scouts, and Rhonda Buie, leader. Not pictured Tawna Ward, leader.

[Journal Photo]

It's Time To Look At Crop Insurance

Call Today

Ronnie Holt

Office 272-4581 Night 965-2842

Multiple Peril Crop Insurance Has Sale Closing Date Soon! Talk To Us About Your Coverage Today!

There Is a Difference In Crop Insurance, Call Ronnie Holt For Information About Your Own Protection.

Call Or Come By Western 66!!
Earth Hwy. & Talk To Ronnie Holt



15,000 MILES

GOODWRENCH TRANSMISSION CHECKUP

Maintain maximum driving performance by regularly having your transmission checked. Let our GM-trained Service Technicians check and service your vehicle's transmission. We will:

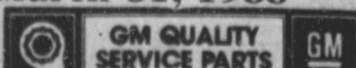
- Drain the transmission fluid
- Replace transmission filter
- Adjust the throttle linkage
- Replace the pan gasket
- Clean the pan
- Replace/refill transmission fluid
- Check the vacuum system
- Conduct a thorough road test.

ALL FOR ONLY:
\$47.95

*Additional parts extra if required
OFFER GOOD UNTIL March 31, 1988

Robert D. Green
2400 W. American Blvd.
272-4588

Mr. Goodwrench



"NO ONE KNOWS YOUR GM VEHICLE BETTER... NO ONE!"

Bailey County Journal

Classified

Call 272-4536

CLASSIFIED RATES
Per Word.....\$15
Minimum Charge \$2.30

Consecutive Insertions
Minimum Charge \$2.00

CLASSIFIED DISPLAY RATES
\$1.75
Per Column Inch

DEADLINES
12 noon Tues.
For Thursday Paper
12 noon Friday
For Sunday Paper
We reserve the right to classify, revise, or reject any ad. Not responsible for any error after ad has run once.

1. Personals

FRANK'S
Refrigeration & Appliance Service Parts & Repairs
817 Gum Muleshoe, Texas 79347
Phone Business 272-5090 Home 272-3822. fl-6s-tfc

WANTED TO BUY:
10 used side rolls. Top prices paid. Day phone 385-4487, night phone 925-6484. sl-10s-tfc

HOUSEKEEPING
Service Muleshoe Area. References. Call Vivian at 965-2496. 1-12s-2tp

INDIVIDUAL will buy land in CRP contact W.O. Watts or J.K. Ryan. 512-884-3255 or mail to 1124 American Bank Plaza Corpus Christi, Tx 78475. n1-11s-3tc

STORAGE ROOMS & office space for rent call 272-4754. sl-53t-stfc

MARY KAY COSMETICS Josie Flowers 272-3865, tube lipstick available. fl-49s-tfc

STORAGE
Rooms Available For Storage \$25.00-\$30.00 per month
Ted Barnhill 272-4903
bl-42s-tfc

CONCERNED About Someone's Drinking? **HELP IS AVAILABLE** through Al-Anon Call 227-2350 or 965-2870 or come to visit Tuesday nights, 8:00 p.m. or Saturday mornings at 11:00 a.m. at 1116 W. American Blvd., Muleshoe.

3. Help Wanted

DIST. MANAGER
Person to supervise others in this area.. Salary Comm. could total \$40,000 first year...no exp. necessary, no age limit. Selected person flown to Dist. Office for orientation. Need \$2,900 (refundable) deposit to cover supplies. For details call: Toll Free PAT MURPHY 1-800-346-4475. 3-12s-1tpts

3. Help Wanted

GET PAID for reading books! \$100.00 per title. Write: PASE-C883, 161 S. Lincolnway, N. Aurora, IL. 60542. 3-11t-9tp

TELEPHONE SURVEYORS NEEDED for 3 to 4 weeks to update the new Muleshoe City Directory. Must have neat, legible handwriting, a pleasant telephone voice and enjoy contact with the public. Requires at least 25 hours per week, working in your own home. Job requires calling from a private telephone line. If this is the job for you, send name, address and telephone number in your own handwriting, to: Box 449, c/o Bailey County Journal, 304 W. Second, Muleshoe, TX 79347. EOE 3-10s-3tsp

5. Apts. For Rent

APTS. FOR RENT good location. Nice 2 bdrm., furnished, water paid. 272-7575. p5-4t-tfc

8. Real Estate

FOR RENT, lease or sale, 2 bdrm, 1 bath house near school. Terms available. Call 817-663-5857 or 817-663-2084. b8-11t-4tc

FOR SALE BY OWNER, Richland Hills 3-2-2 Central A/H lots of storage, nice location. 272-5194. f8-9s-8tc

FOR SALE 3 bdrm., house. Large corner lot. \$12,000. For information call 272-5410 after 4.30. 424 W. 9th g8-6s-stfc

FOR SALE 3 bdrm, 1 1/2 bath, 2 car garage home on 2 1/2 acres 8 mi. West of Muleshoe on the West Camp road. Call Jeff Price 624-2303. p8-10t-tfc

FOR SALE 1983 Mobile home, 2 bdrm, 2 bath, central air, must see to appreciate reasonable, lots of extras. Contact Jim at 272-7555 Ext. 12 Days or 965-2722 evenings after 6:00 p.m. h8-12s-2tc

NICE 3 bedroom, 2 bath house, 2 miles west of Muleshoe. With large barn. Nice location. Call 946-3340. d8-12s-1tc

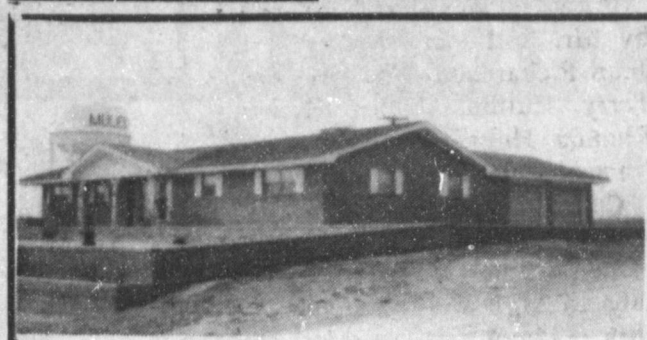
9. Automobiles For Sale

750 **SUZUKI** motorcycle for sale call 965-2711. c9-11t-4tc

10. Farm Equip. For Sale

LOCKWOOD Sprinkler with 13 towers, hydraulic oil driven with booster pump. Good condition. Call Paul Koeltzow 505-762-1324 in Clovis. k10-11t-6tc

8. Real Estate 8. Real Estate



FEATURED THIS WEEK BY:

Whitt-Reid Real Estate

One of the most attractive homes in Muleshoe. It has the highest elevation, overlooking the city to the front, and with a beautiful Western Ranch View of green wheat and cattle to the rear. It has 3 bedrooms, 2 full baths, double garage, and much more in over 2100 Square feet of living space, and over 600 feet in the garage. Let us show you this home that would cost \$110,000 to duplicate, and it can be yours for only \$79,500.00.

201 Main Street 272-3611
Roy Whitt Thursie Reid
Broker Sales People
Certified Appraiser

SMALLWOOD REAL ESTATE

232 Main Muleshoe 272-4838

3-Bedroom, 1-bath, 1 car garage, Brick \$700.00 includes down payment and closing cost for qualified buyer. ***

2-Bedroom, 1 bath, \$500.00 down, \$160.00 per month. Located at 823 S. First. ***

2-Bedroom, 1-Bath mobile home, \$500.00 down, \$160.00 per month. Located at 901 W. Ave. B. s8-8s-stfc

116 W. Ave. C BINGHAM & NIEMAN REALTY 272-5285 or 5286

We have homes for as little as \$600.00 total move in cost, with payment scheduled according to income for qualified buyers!!!!

RICHLAND HILLS
IMMACULATE 3-2-2 Brick, corner lot, Cent. A&H, built-ins, FP, loads of storage & closet space, much more! ***

PRICE REDUCED-3-1-1 Brick, Cent. heat, Evap. air, built-ins, fenced yard.... ***

MAKE OFFER 3-1 1/2-1 Home, Cent. heat, evap. air, built-ins, fenced yard, detached storage-garage. Nice locations. \$30's ***

HIGHLAND & STEWART
JUST LISTED-VERY NICE-3-2-2 Brick, Cent. A&H, newly remodeled kitchen with built-ins, storm windows, fenced yard, storage bldg. and much more!!!! ***

SPACIOUS 3-2 1/2-2 Brick Home on corner lot, Cent. A&H, built-ins, fireplace, loads of storage, 2900 plus sq. ft. of LV. area lots of extras, undgrd. sprinkler sys., fenced yard. A GREAT BUY!! ***

NICE 3-2-2 Brick Home (2 story), on corner lot, Cent. A&H, built-ins, and much more. LET'S LOOK TODAY!!!! ***

JUST LISTED-2-1-1 home, wall heat, carpet, & more. LET'S LOOK TODAY!!!! ***

NICE 3-2-2 home, Cent. A&H, utility, large fenced yard with lots of trees. \$40's!!!! ***

HIGH SCHOOL
3-2-1 Brick+2 carport, Cent. A&H, built-ins, fenced yard, Eff. Apt. or workshop & storage area. \$40's!!!! ***

JUST LISTED- Very well kept 3-1 1/2 Home, Cent. heat, nice carpets, storm windows, storage bldg. & more. \$40's!!!! ***

3-1-1 home, corner lot, Cent. A&H, built-ins. \$30's..... ***

3-1-1 home, nice carpets, floor furnace, evap. air, built-ins, storage & more. \$30's!!!! ***

IMMACULATE-3-2-1+2 carport, Brick Home, Cent. A&H, built-ins, nice finished basement with fireplace, sprklr. sys., & much more!!!!

DIANNE NIEMAN, BROKER

8. Real Estate 8. Real Estate 8. Real Estate 8. Real Estate

JAMES F. HAYES & CO.
AGRICULTURAL REAL ESTATE
Vic Coker-Agent
(806) 965-2468

* 160 ACRES South of Clovis lays good, good water, good soil, Center Pivot Sprinkler Fully Allotted. A nice one! ***

2 LABORS SOUTH OF MULESHOE Longview Area, Good Soil, fully allotted Call for more details. ***

460 ACRES WEST OF BOVINA on State Line. 300 gallon water, good soils, 70 Acres of grass, good allotments, terms available! ***

313 ACRES on Parmer County-Castro County line. 2 wells, 2 tailwater pits, good allotments, steel barn, terms available. ***

* In cooperation with a New Mexico Broker.

11. For Sale Or Trade

BUFF Cocker Spaniels for sale. 2 months old. \$50 each. Call 965-2488 after 5 p.m. w11-11t-2tc

PIANO FOR SALE
Wanted: Responsible party to assume small monthly payments on piano. See locally. Call credit manager 1-800-447-4266. 11-10s-8tp

80 Acres of good land for sale. North of Muleshoe. Call 946-3340. d11-12s-1tc

18. Legal

PUBLIC NOTICE
The Muleshoe Independent School District is accepting bids for three Modular Play Systems. Plans and specifications are available from Tom Jinks at the School Business Office at 514 West Avenue "G", Muleshoe, Texas, 79347.

Sealed bids must be received by 2:00 PM Monday, March 21, 1988. Bids received after stated time will not be considered.

The Board reserves the right to reject any or all bids and to waive formalities.

4506 Acres Ranchland - ready for cattle, North of Grady, N. Mexico. **SOLD**

314 Acres irr. No. Bovina, 5 wells. **SOLD**

320 Acres irr. N. Lazbuddie. **SOLD**

417 Acres Irr. Sou. Farwell on Hwy. **SOLD**

180 Acres irr. Circle, wht goes, Oklahoma Lane. **SOLD**

480 Acres dryland \$300.00 per acre. North of Grady, N. Mexico. **SOLD**

WE NEED FARM LISTINGS NOW - SOLD OUT

Sudderth Realty, Inc. REALTOR

BOX 887 109 5TH
PHONE (806) 481-3288 - RES. (806) 481-9149
FARWELL, TEXAS 79325
"SALES AND LOANS ARE OUR SERVICE"
REAL ESTATE AUCTIONEER LICENSED IN TEXAS, NEW MEXICO & OKLAHOMA
CERT. APPRAISER

FmHA Farmers Home Administration Homes for Sale Financing Available

PRICE RANGE - \$28,500.00 to \$33,000.00
ALL 3 BEDROOM, 1 BATH
303 W Avenue K
305 W Avenue K
309 W Avenue K
311 W Avenue K
313 W Avenue K
315 W Avenue K
317 W Avenue K
319 W Avenue K
321 W Avenue K
323 W Avenue K

ELIGIBLE INTEREST RATE - 9.5% for 33 years
INELIGIBLE RATE - 10% for 10-30 years

HOW TO VIEW AND PURCHASE

CALL OR VISIT YOUR FARMERS HOME ADMINISTRATION FOR A LIST OF QUALIFIED REAL ESTATE AGENTS

115 E Ave D
Muleshoe, Tx 79347
PHONE: 272-5549



15. Misc. 15. Misc.



Contemporary Conditioners & Brokers of Old World
Bluestem, Legumes & Native Grasses

SPRING SALES NOW
Old World Blue Stems
Native - "Blends"
drills available
Blending to suit your needs

10000 #16 Ready to drill
2 1/2" Little Blue
1 1/2" Big Blue
1 1/2" Little
1 1/2" Sand Bar
2 1/2" Blue Stem

5000 #16 @ \$10.50 / 1000
5000 #16 @ \$12.00 / 1000

3000 #16 @ \$10.50 / 1000
3000 #16 @ \$12.00 / 1000

Grasslands
LAWSONIA TRADING

GRAIN PRICES
YELLOW CORN...3.66 cwt
YELLOW FOOT CORN...3.80 cwt
WHITE FOOD CORN...4.75 cwt
MILO.....3.05 cwt
SOYBEANS...5.46 cwt
NEW WHEAT.. 2.69 cwt
COMMODITY CERTIFICATES
101 1/2
Prices-March 18, 1988
MARKETS COURTESY OF
FARMERS CO-OP
ELEVATORS
272-4335 Muleshoe, Texas

Think Classified!