

WEATHER

Table with weather forecast: Sunday 93/55, Monday 69/45, Tuesday 74/45, Wednesday 85/60. Includes moisture for month, year, and last year.

The Hereford Brand

16 Pages

Fifty-Nine Years of Service SINCE 1901

Published Every Thursday

Our Slogan: "More People — More Farms"

60TH YEAR — NO. 36

Hereford, Texas, Thursday, September 7, 1961

Price 10c Per Copy



ANOTHER MYSTERY CAR baffled area law officers for a short time Wednesday morning. The car was discovered at 6 a.m. about three miles east of Black on U. S. 60. Investigating highway patrol officer Carl Parker said that although no occupant was found at the time, Byron Russell Work, 41, 3424 Sunlight St., Amarillo, reported to the local highway patrol office at 7:30 Wednesday claiming the vehicle. According to Parker, Work left the scene because he did not want to bother anyone so early in the morning. (Staff Photo)

County Lowers Valuation, Rate For Its 1962 Budget

Reveal Details On Barley Feed Grain Program

More details on the 1962 winter barley feed grain program were announced today by Faust Collier, office manager of the Deaf Smith County Agricultural Stabilization and Conservation Office. Community Committees will begin setting farm indexes this week and should finish next week. Notices will be mailed to area farmers at the last of next week or the first of the following week. Collier explained that barley producers diverting a share of their acreage will receive payments for the diversion and they also will qualify for price support. At the same time, they will be making an important contribution to the Nation in adjusting grain supplies and reducing Government costs. A barley producer can forego the diversion payments and still qualify for price support if he elects to devote the diverted acreage to one or more of these crops: Castor beans, guar, safflower, sunflower, or sesame. Adjustment in the diversion payment can be made if only a part of the diverted acreage is so used. Special program provisions enable growers of acceptable varieties of maturing barley to qualify for price support without participating in the barley feed program. Payments will be made to those barley growers who devote the diverted acreage to an approved conservation use. Such growers must also maintain an acreage in soil-conserving crops or practices, including summer fallow and idle cropland, equal to their 1959-60 average acreage in such uses. According to Collier, only those barley producers who participate in the program with at least 20 per cent diversion (Continued on page 2)

Good news is in the making for many tax payers in Deaf Smith County. During a called meeting Monday, the Commissioners' Court voted to adopt a tax rate of 17 1/2 per cent of actual valuation. This is a drastic reduction from the previous rate of 25 per cent of actual value. The Court also voted to lower the applied rate from \$1.72 per \$100 tax valuation to \$1.62 on each \$100 of taxable value. For example, under the new tax structure, a person with a house having an actual value of \$10,000 would pay taxes on \$1,750 taxable value instead of \$2,500. And the tax payment would be \$28.35 at the \$1.62 rate on 17 1/2 per cent instead of \$43 at the \$1.72 rate on 25 per cent.

Reason for the two adjustments, members of the Court said, was the equalization of property valuations made recently in the county. The county's share of the total tax rate will be \$1.20 this year, instead of \$1.30 previously. The remaining 42 cents is collected on state taxes. Taxable property valuation is based upon 17 1/2 per cent of 100 per cent actual value, is estimated at \$28,200,000. The proposed budget will become effective immediately after its adoption. The public hearing on the budget is set for Thursday, Sept. 14, at 11 a. m. in the Commissioners' Courtroom. All interested persons are invited to attend the hearing. There are no significant changes in the proposed budget of about \$855,851.70, according to County Judge Don Zimmerman. The proposed budget is slightly lower than the \$860,682.15 estimated and actual for 1961 operations. In 1960, the budget reached \$1,177,693.88 actual expenditures. Omitting the 42 cents which will be collected for the state, the tax levy shows several items reduced within the budget, while the general fund share will be increased. The Levy Fund is slated for 1962 next year, compared with .03 in 1960 and .025 in 1961; the Road and Bridge Fund will be cut to .20 cents, compared with .30 cents in 1960 and .20 in 1961.

The Road and Bridge Warrant Fund will be .045 cents, as in 1961, with nothing allocated in 1960; the General Fund is set at .54 cents for 1962, as in 1961, while it was .37 cents in 1960. The General Improvement Fund, which was .03 in 1960, is dropped to nothing; the Hospital Maintenance Fund will be .035 cents as in 1961, while it was .05 cents in 1960; The Hospital Interest and Sinking Fund was .02 cents in 1960, raised to .05 in 1961 and will be down to zero in 1962. The Permanent Improvement Fund will be .015 in 1962, while it was .01 cents in 1961 and .02 cents in 1960; the Jail Interest and Sinking Fund will be .06 cents, as in 1961, while it was .08 cents in 1960; The Courthouse Interest and Sinking Fund will be .03 cents in 1962 as in 1961, while it was .05 cents in 1960. This makes a total of 95 cents for each year. To this is added .07 cents for Right Of Way Interest and Sinking Fund. This is the same as 1961, but lower than the .10 cents in 1960. Allocation for the El Plains Underground Water Conservation District is stable at .05 cents, but the Road District Interest and Sinking Fund, at .20 cents in 1960, has been lowered to .13 for 1961 and 1962. Judge Zimmerman emphasized that the budget was being set up to take care of all necessary and foreseeable expenditures. (Continued on page 2)

Boosters Okay Film Projector For Grid Staff. The Whiteface Booster Club, an ever-growing organization, held its third meeting of the new school year Monday night and praised Hereford football coach Jack Meredith and the Whitefaces for their efforts against Brownfield. Booster president Ed Skypala urged all Hereford football fans to attend the Hereford - Canyon game, which will be played in Whiteface Stadium at 8 p.m. Friday night. The boosters voted to purchase a film projector for use by the Whiteface coaches. The projector will be purchased by Hereford and the boosters. Meredith thanked the boosters about the upcoming Canyon contest. He stated that Canyon can be expected to go to the airways in an effort to score their second victory. According to Meredith, several changes have been made in the Hereford pass defense and the Herd hopes to be ready and waiting on Friday. Films of the Brownfield ballgame were shown to the 50 boosters attending and plans were made to show the Canyon films at next Monday's meeting.

Empties Aren't To Throw, Four Men Discover. Beer cans aren't to throw in ditches, four local residents learned the hard way last weekend. A Deaf Smith County deputy sheriff found four Latin-Americans parked on a county road, busily engaged in emptying beer cans and throwing them out of the car. After a consultation with Sheriff Lowell Sharp, the men decided they would rather pick up their empties than be charged with littering. Bright and early Monday, the four men, and a pick-up reported to the sheriff and were detailed to fill the vehicle with cans and bottles alongside a county road. It took just two hours and two miles of road, covering both ditches, to fill the vehicle. The sheriff was satisfied, since he hadn't had the expense of hauling and feeding them; the workers had learned their lesson. Moral of the story: If you don't want to pick up your empties, and a few more, don't throw cans out beside the road. P. S.: As a small consolation, the four men told a deputy that of all the cans and bottles they picked up, only one was still full. They opened and divided it during a brief break... then carefully threw the empty into the pick-up! (Continued on page 2)

Herd Tackles High-Flying Canyon Eagles Here Friday

Around Town

We are highly pleased, and think most everyone will feel the same, about the percentage and tax rate placed on property by the County Commission this week. Some will be paying more tax, while others will be paying less. But the most important thing is that taxes and property valuations are on an equal basis. One national wire press service rated the Hereford Canyon tilt here Friday night as one of the state's top games. They didn't make a favorite of either team, although Putt Powell of Amarillo gives the nod to Canyon on the strength of its slaughter of Slaton last week. Canyon folks have assured us they will be here in record numbers, so you'd better get your tickets early if you haven't already bought them. The Hereford Rebekah Lodge will sponsor a breakfast for the public at the IOOF Hall on East Sixth from 6-10 a.m. Sunday, Sept. 10. Just bring your appetite and a little money for a fine meal. Downtown Hereford and the outlying business district generally does look nice on special occasions with all the American flags flying. The American Legion Auxiliary, like all women, just isn't satisfied, however. They want to see flags in front of every home in Hereford. If you would like to buy a flag for your home, call their Flag Chairman, Mrs. Hazel Sparks, or any member of the American Legion Auxiliary. Henry Aycock has been named chairman of the Deaf Smith County March of Dimes drive. He will announce his committees and plans later. Children's choir enrollment day at the First Baptist Church has been set for 4 p.m. Tuesday, Sept. 12. All beginners, primaries and juniors are asked to meet in the Conkright Building for a general meeting, which will be followed by separate meetings. Refreshments will be served. Again, all you former Cooke County residents are reminded of the county reunion that is scheduled for Sunday, Sept. 10. It will be held in the Pleasant Valley American Legion hall, 307 East Hastings, Amarillo. Registration is at 10 a.m. with a (Continued on page 2)

The Canyon Eagles, the top rated class AA football team in the Panhandle, come to Hereford Friday night heavily favored to take their second straight victory of the season. The high-flying Eagles will tangle with Hereford's young Whitefaces at 8 p.m. Friday in Whiteface Stadium. Leading the Canyon team to battle will be the now famous Harry Lisle, a 150-pound halfback. Lisle was the downfall of Canyon's first opponent, Slaton, last week as he made three runs of over 50 yards for touchdowns and intercepted one pass, returning it 94 yards for a tally. Lisle and Co. will hold a definite weight advantage over the Whitefaces. The Canyon line will average 178 pounds per man while the backfield will hit the scales at 165. Hereford has a 173 pounds per man line average and the Whiteface backs average 162. Canyon, a member of district 2-AA, will run its offensive attack from a split-T using flankers and split ends. Junior quarterback Davis Price, son of former West Texas State basketball coach Borden Price will call signals for the Eagles. Price is an excellent passer and is expected to be at his thriving best Friday. Aiding Price and Lisle in the backfield will be Elmer Oberst, a junior fullback, and Gall Cox, a senior halfback. Against Slaton last week, the Eagles made most of their yardage around the ends using laterals and pitch-out plays. Canyon downed the weak Slaton squad 50-6. The Whitefaces, also victors last week as they topped Brownfield 13-0, are expected to play the underdog role for the second straight week. (Continued on page 2)

Fine 3 Minors For Possession

The Hereford Police Department arrested three Latin-American youths Saturday night and charged them with illegal possession of alcohol. Arrested were Raul Gonzales, 18, 219 West Second, Dionisia Castillo, 18, 825 Knight and a 15-year-old youth whose name was withheld. The 15-year-old and Gonzales were fined \$35 and costs by city judge Henry Benson. Castillo was released on \$50 bond which had not returned at press time Wednesday. The youths were arrested by city officer Pete Cole. According to Cole, the car they were driving was stopped for investigation of a leaky muffler. Upon checking the occupants, the city decided to file possession charges. The arrest was made at the intersection of East First St. and Park Avenue at 8:25 p.m. Saturday. (Continued on page 2)

LINDSEY WINS MUNICIPAL

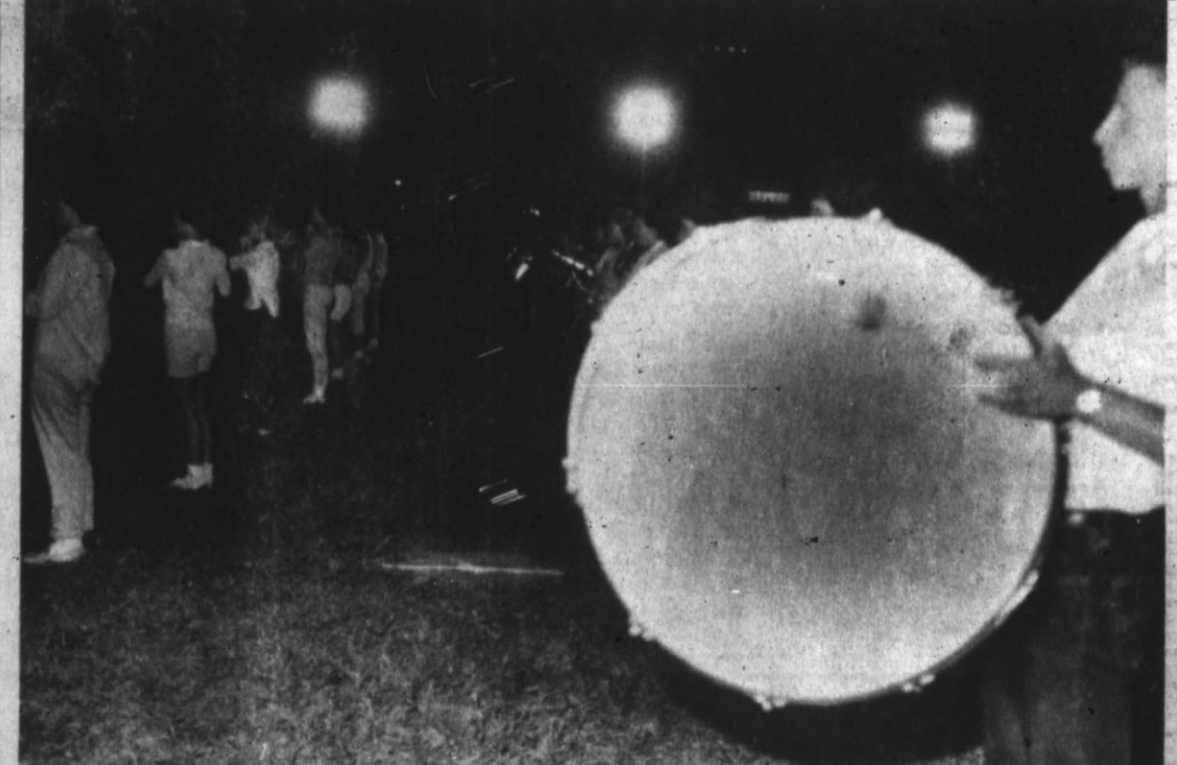
10th Invitational Opens On Friday

The tenth annual Hereford Invitational Golf Tournament will begin a three-day stint here at the John Pitman Municipal Course on Friday Sept. 8. Approximately 120 golfers are expected to enter the local tourney which will be held Friday, Saturday and Sunday. According to local pro Bud Posey, entry deadline is 6 p.m. Thursday. Posey stated that defending champion Ben Lane Jr. of Amarillo had not yet entered the tournament. Top golfers who have entered are Charles Seed, Hereford; Bob Lindsey, Dimmitt; Bob Richmond, Plainview; Russell Haber, Muleshoe; and John Shackelford of Lubbock. There will be no qualifying rounds and entrants will be placed in 16-man flights. Flights will be determined according to handicaps. The linksters will tee off Friday for the first 18 holes with the second round scheduled for Saturday. On Sunday, the four championship semi-finalists will play 36 holes of medal play. Semi-final and final matches will also be held. In the Municipal Golf Tournament which was held Sunday and Monday on the local links, Dimmitt's Bob Lindsey edged out Charles Seed of Hereford in the last round. Lindsey won the championship flight with a 141 for the 36 holes. Seed was second in the flight with a 144, and John Renner of Friona was third with a 146. In the first flight, Hereford teacher Don Martin finished on top with a 151. Frank Cogdell and Ben Blocker, both of Lubbock, took the second and third places with a 152 and a 153. Frank Latimer of Dimmitt won the second flight. Latimer finished with a 158. Dimmitt golfers also tied for second place in the flight with a 36-hole score of 165. Earning second place honors were Sam Griebel and Gene Sealy. Dr. C. E. Hanks of Hereford took fourth (Continued on page 2)

UNDER THE GLARE OF stadium lights, the Whiteface Big Domino Marching Band attempts to live up to the sparkling splendor of its new uniforms. (Staff Photo)

New Uniforms Call For New Half-Time Band Maneuvers

Proud 'n pretty in their flashy new fashions, the Hereford Whiteface Big Domino Marching Band will make its first home appearance for the season during halftime activities Friday night in the Hereford - Canyon clash. Unveiling a new show, modern music, and sparkling new bright maroon and white uniforms, the Big Domino Band will sport an updated theme during its many half-time performances this season. Going through its high-stepping paces under the direction of Director Ben R. Gollehon, the 55-piece band will be featuring hit tunes from famous Broadway musicals, along with modern-styled marches with a touch of swing. With only one week rehearsal with the new uniforms, the director is extremely pleased with the new show shown by the band members. "The band's spirits are good because everybody is excited about having a new band," stated Gollehon. "We want to play to match our beautiful uniforms." Almost bursting their seams with pride, band members are extremely thankful for their new attire, which they had waited so long to receive. With their first exhibition at Brownfield, many favorable comments were heard concerning the uniforms. Described as flashy maroon trimmed in white and black, the suits add much color to the performance and appearance of the band. It takes eight hours or more a week to prepare halftime shows at Hereford Whiteface games, so fans sit up and take notice when the Hereford High School band swings on to the gridiron. Although the band had little opportunity to prepare a routine at the Brownfield game last Friday, the Big Domino delegation has prepared a fast moving show for Friday night. Highlighting Friday's performance will be a salute to the Hereford Whitefaces, and also to the new faculty at H. S. Such hit tunes of the past as "Everything's Coming Up Roses" and "Steppin' Up the Band" will conclude the show. (Continued on page 2)



UNDER THE GLARE OF stadium lights, the Whiteface Big Domino Marching Band attempts to live up to the sparkling splendor of its new uniforms. (Staff Photo)

Arrest Man On Hot Check Case

Milton Dale Trotter, 26, was being held in Deaf Smith County Jail this week in lieu of \$1,000 bond. Bond was set for Trotter by Justice Of The Peace C. B. Miles after charges of swindle with worthless check had been filed. Trotter, who lists his address as General Delivery, Hereford, was arrested by county deputy Ed Roberson in Crosbyton, where he was being held. The arrest was made at 5:25 p.m. on Monday Sept. 4. Trotter was returned to the county jail the same day.



FINALISTS IN THE HEREFORD municipal golf tournament posed for this picture before entering the final round. From left are Bob Lindsey, Dimmitt; Charles Seed, Hereford; John Renner, Friona; and John Gribble, Dimmitt. Lindsey won with a 141 for the 36 holes. Seed was second with a 144. (Staff Photo)



SPEAKING AT THE KIWANIS CLUB recently was Hereford Police Chief Henry Aycock. Aycock, at left in this picture gave a "lie detector" test to H. A. Cavness, also shown. Aycock stated that the test is an invaluable aid in crime investigation. (Staff Photo)

City Police Add Two New Men

The Hereford Police Department this week announced the hiring of two new police officers. The men were hired to fill gaps in the police department's staff.

Hired were Don Brush, 27, who now lives at 109 East 6th St., and Acie Austin, 30, now residing at 510 Roosevelt.

Brush came to Hereford from Slaton where he was employed by the Ceco Steel Co. He has had no experience in police work.

Austin moved here from Amarillo where he worked for National Trailer Co. He has had two and one-half years of law enforcement work at Westminster, Cal. Austin is married and has one son.

Around...

(Continued from page 1) basket lunch set for 1 p.m.

You shouldn't gripe or frown about county taxes, up or down. For a change, you must agree. They're as equal as can be.

Legal Notice

The Deaf Smith County Commissioners' Court hereby gives notice that its annual budget hearing will be held on Thursday, September 14, 1961, at 11 a.m. in the Commissioners' Courtroom, Deaf Smith County Courthouse, Hereford, Texas. All interested persons are invited to attend.

S. D. Zimmerman
County Judge
Deaf Smith County
T-39-1C

County...

(Continued from page 1) es. He pointed out that normal replacement items are included in the budget estimate.

He added that if items are not included in the budget, they will not be purchased by the county. "If it's a worthwhile thing, we'll be glad to include it in our next budget," he said. "But the law requires that we budget our operations and live within the framework of the budget... We intend to do this."

McDANIELS VISIT
Mr. and Mrs. Grady McDaniel and two-year-old son, Jim, of Wichita Falls visited over the Labor Day weekend with her parents, Mr. and Mrs. George Bumpass, 1013 Grand Ave.

Burr Blake of Friona finished in first place with a 176. Behind Blake were Martin Moore of Hereford with a 192, Ed Schrecker of Hereford with a 193 and R. L. Layman also of Hereford with a 208.

Burial For Infant Held On Wednesday

Funeral services for Andrew Fangman, son of Mr. and Mrs. Sylvester Fangman of Hereford, were conducted Wednesday at 2 p.m. Father Nathaniel Madden officiated.

Burial was in West Lawn Cemetery under the direction of LaGrone Funeral Chapel of Canyon.

He died Tuesday, Sept. 5, in Neblett Hospital in Canyon. Survivors include the parents; five sisters, Sylvia, Rosemary, Dianne, Doris and Mary; three brothers, Richard, Donnie and Clifford; and his maternal grandmother, Mrs. Iva Mae Saltzman, all of Hereford.

'Sully' Gleaton Dies Wednesday

Funeral services for Earl D. (Sully) Gleaton, 1209 Grand, will be held at 1:30 p.m. Friday with the Rev. Russell Winger, pastor of the Presbyterian Church, officiating.

Interment will be in the Rest Lawn Cemetery under the direction of Gilliland Funeral Home.

Mr. Gleaton died at 5 a.m. Sept. 6 in Deaf Smith County Hospital after a short illness. He was 52.

He was born Nov. 24, 1908 in Sidney, Tex., and married Estalene Scott on March 24, 1938 in Grand Prairie, Tex. They moved to Hereford in 1945 from Beaumont, Tex. Mr. Gleaton was a member of the Methodist Church.

Survivors include his wife, his father, George Gleaton of Brownwood; six brothers, Clinton of Seminole, Elbert of Littlefield, Terry of Reseda, Cal., Hugh of Amarillo; Nat of Abilene and Ray of Brownwood; four sisters, Mrs. Naomi Ivy, Mrs. Gilbert Metcalf and Mrs. Tobe Davis, all of Brownwood, and Mrs. Ran Sewell of San Antonio.

Cecil Coker Succumbs At 48

Funeral services for Cecil Coker, 48, of Albuquerque, N. M., were conducted at 10 a.m. Sept. 6 in Albuquerque. He is the brother of Kenneth Coker of Hereford.

Mr. Coker died Monday morning in his home. He was a member of the Baptist Church. Survivors include two brothers, Kenneth of Hereford and Frantz of Sacramento, Cal., and one sister Mrs. Bill Grigby of Claremont, Cal.

VISIT AT FT. WORTH

Mr. and Mrs. C. R. Allison, Glenda and Charles, have returned from a vacation trip to Ft. Worth and other points in that area of the state.

Domino bandmen have prepared an edition of the band this year that is described by the director as being modernized to match their colorful new uniforms.

Garden Club To Meet Friday

Members of the Hereford Garden Club will meet Friday morning at 9:30 in the home of Mrs. O. G. Hill Sr., 801 N. Main. Mrs. S. S. Williams will serve as co-hostess.

The first program of the club year will be presented from a study entitled "The Universality of Flowers." Mrs. A. J. Manjeet, leader, will introduce Mrs. Emmitt Hale and Mrs. Hugh Clearman, who will give the program.

FREELoadERS

LAURELTON, N. J. (AP) — No one along Rancan Drive is surprised these days when Mike and Sophie arrive for a free meal.

But a stranger might take a second look when the two—a pair of wild ducks—come quacking along at mealtime.

The ducks live across the road, in Beaverdam Creek, and according to Mrs. Gertrude Tevis, have been dropping around for free handout for about three years.

"They just waddle up to the steps, quack a couple of times and invite themselves in," she says.

The ducks are seldom seen flying anymore and apparently have forgotten the meaning of migration. Everyone along the road knows them and they seldom get turned away when they come to call.

ATTEND WEDDING

Mr. and Mrs. Ray Sefcik were in Denver City over the weekend where they visited relatives and attended the wedding of friends. Mr. and Mrs. Sefcik were honor attendants at the wedding.

Bumble Bee, Ariz., an old gold mining ghost town, is becoming a tourist attraction. An old trading post has been made a museum, and other old buildings are being restored.

Call 25 For Exams, 12 For Induction

Registrants being sent to the Armed Forces Examination Station for physical examination on Sept. 12, 1961, are Billy R. Harrison, Glenn R. Reeves, Roy L. Vanlandingham, Clarence Birkenfeld, Bobby D. Samuelson, Edward G. Hardage, Arthur W. Peterson, Freddie L. Wesley, Carl E. Faith, James C. Gilmore, Brian L. Tolliver, Donald Black.

Joe R. Smith, William E. Childers, Roy L. Crofford, David Wertenberger, Donald R. Hix, David W. Kettman, Glenn E. Tucek, Troy A. Rhodes, Larnie G. Blake, Glenn H. Mutter, Wilson M. DiCuffa, Frank G. Lopez and Ronald L. Alexander.

Registrants being sent to the Armed Forces for induction on Sept. 12 are Garry R. Hathway, Joseph L. Birkenfeld, Ladie J. Evan, Joe D. Carlisle, Roger R. Owen, Ross J. Landers, Edward L. Vaught, Jack T. Campbell, Billy L. Parker, Jimmy D. McBroom, Harold M. Simons and Donald L. Walsler.

RAPID RISE

COLUMBUS, Ohio (AP) — The new commander for the Air Force Reserve Officer Training Corps (ROTC) program at Ohio State University had a rapid rise through the ranks.

He's Col. Donald D. Renwick, who became a second lieutenant then first lieutenant at 22, captain at 23, major at 24, lieutenant colonel at 25 and full colonel at 32. A native of Marion, Ohio, he enlisted in 1941 as an aviation cadet.

SEPARATED BY DEGREES

ASHLAND, Va. (AP) — Nancy, wife of David Earl Blevins, couldn't attend her husband's graduation at Randolph-Macon College here. She was getting her own degree at Mary Washington College, at Fredericksburg, some 35 miles away.

Have you read the Classifieds?

RURAL HOUSEWIVES?

Dawn and Ford Elevator communities. Christmas starts in September with Avon, start now. Good Avon Cosmetics and Toiletries needs salesladies in earnings plus U.S. Savings Bonds. Write Avon, Box 1083, Amarillo, Tex.

Herd...

(Continued from page 1) Hereford coach Jack Meredith stated this week that the Whiteface coaching staff was pleased with the showing the Herd made against Brownfield. Meredith said that the Whitefaces would have to improve by about 10 per cent this week if they expect to beat Canyon.

He also stated that several changes had been made in the offensive and defensive line-ups in an attempt to prepare for the rough and tough Eagles.

Meredith praised Butch Walterschied for his play against Brownfield. The 190-pound end and defensive linebacker got 13 tackles as he helped hold the Cubs scoreless.

Also lauded for their efforts against Brownfield were John Bob Drake, Troy Don Moore, Dennis Hodges and Mack Cansler.

In preparation for the expected Canyon passing attack, Meredith has moved 140-pound junior Charlie Kelly to a defensive halfback replacing Hodges, who has been moved to an outside linebacker. Meredith also announced that sophomore Jim Haney has been moved to a defensive linebacker.

Listed as probable offensive starters for Hereford are Joe Mack Hale, quarterback, 150-pound senior; Jim Haney, fullback, 190-pound sophomore; Mack Cansler, left halfback, 165-pound senior; Dennis Hodges, right halfback, 145-pound senior;

Butch Walterschied, right end, 190-pound senior; Bill Steele,

10th...

(Continued from page 1) in the flight with a 167.

Tops in the third flight were Bruce Woodell of Dimmitt with a 170. Following Woodell was Frank Thornton of Dimmitt with a 179 and Glyn Bilibrey of Hereford with a 182.

John McCleskey and Troy Moore both of Hereford tied for first place in the fourth flight. McCleskey and Moore finished the 36 holes with a 166.

In the fifth and final flight,

Reveal...

(Continued from page 1) will be eligible for 1962 price support. Further, they will not be eligible for barley support if they exceed their corn and grain sorghum base acreages (1959-60) average. Support will be limited to the normal yield of their 1962 barley acreages. (Corn and grain sorghum producers who intend to plant barley this fall must not plant more than their base acreage of barley if they want to participate in the 1962 feed grain program and be eligible for price support on these two crops.) A producer cooperating in the program who has an interest in the barley, corn, or grain sorghum on another farm must not produce more acres of these crops in 1962 than the 1959-60 average on such other farms.

right tackle, 195-pound junior; Troy Don Moore, right guard, 160-pound senior; Joe Schultz, center, 165-pound senior; John Bob Drake, left guard, 170-pound senior; Darrell Garrett, left tackle, 185-pound senior; and David Dowell, left end, 155-pound junior. Garrett replaces Virgil Kuykendall, who is out for two weeks with an injured knee.

The probable starters for Canyon and coach E. J. "Jeep" Webb are Davis Price, quarterback, 175-pound junior; Elmer Oberst, fullback, 180-pound junior; Harry Lisle, left halfback, 150-pound junior; Gail Cox, right halfback, 155-pound senior;

Wayne Rutherford, right end, 170-pound senior; Jess Sheets, right tackle, 190-pound senior; Ralph Cabe, right guard, 175-pound senior; Ronny Harris, center, 195-pound senior; Terry Funk, left guard, 175-pound senior; Tim White, left tackle, 185-pound junior; and Warren Rutherford, left end, 155-pound senior.

RUFFY TWINS



LIABILITY INSURANCE HELPS PROTECT LITTLE GIRLS LIKE IT DOES LITTLE BOYS—ASK THE LONE STAR AGENCY "We insure everything but the hereafter" Ph. EM 4-0555 - 6th & Main

We Have A Complete Line Of LAWN FERTILIZER
Wide Selection
LAWN SEED

DELMO'S Farm & Garden SUPPLY

211 S. 25 Mile EM 4-2172

PITTSBURGH PAINTS

2 BIG PAINT BARGAINS

Interior LATEX FLAT WALL PAINT
SALE PRICED \$3²⁹ GALLON
WHITE and MANY COLORS

RANCH & HOME Outside white HOUSE PAINT
SALE PRICED \$4⁴⁹ GALLON

CARL McCASLIN LUMBER COMPANY

Block E. of Courthouse EM 4-3434
PITTSBURGH PAINTS keep that look longer

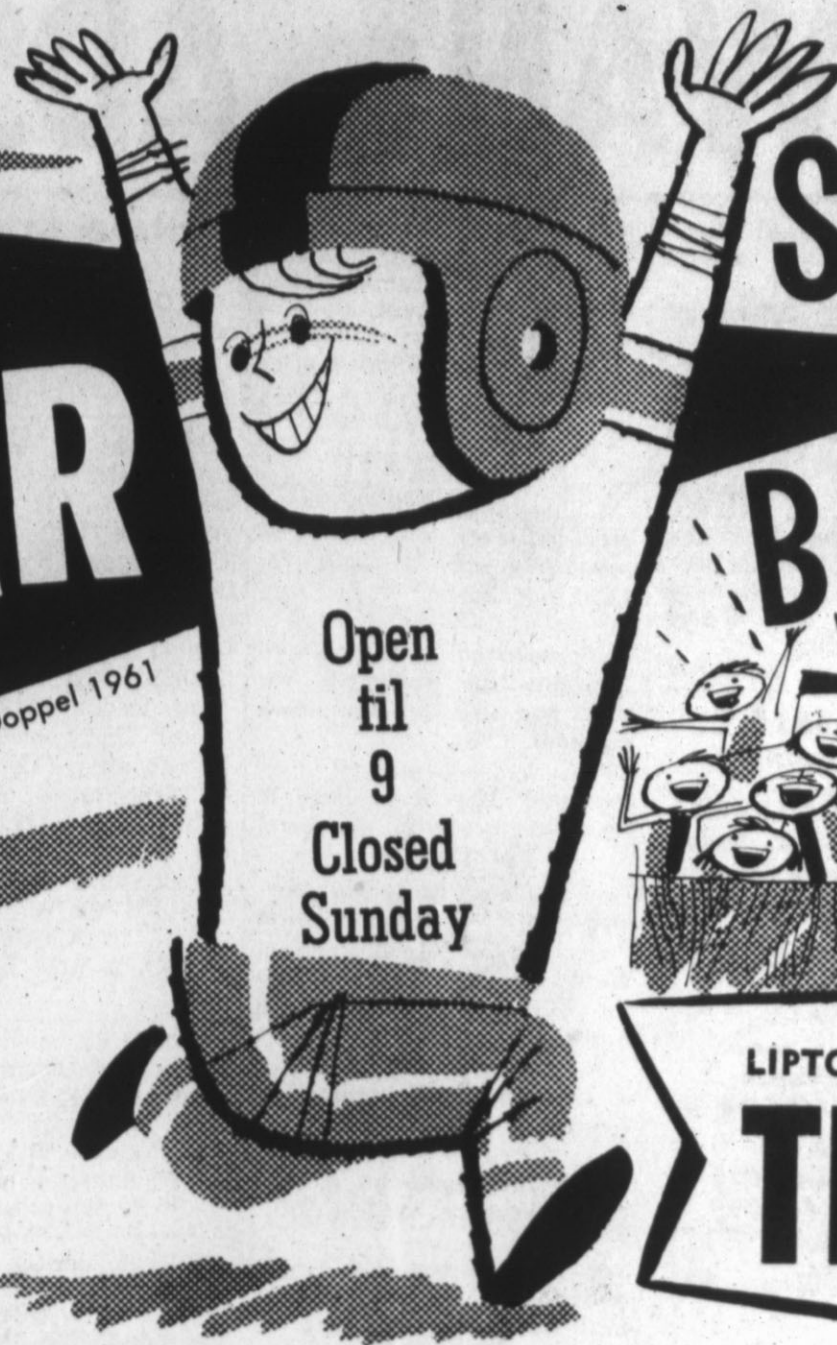
Sunday is for Rest and Worship

We take this opportunity to commend the many Hereford worshippers who close each Sunday in order that their employees may worship at the church of their choice.

The Hereford Ministerial Alliance

All-American Brands SPECTACULAR Values!

Copr. G. Doppel 1961



Open
til
9
Closed
Sunday

SIS-BOOM BARGAINS



You'll give three cheers for our SPECTACULAR VALUES in All-America's favorite foods! And what a star-studded lineup of SUPER SPECIALS we have to run up the score in savings for you. So team up with COOPER'S and shop the "T" System — "T" for Thrift and Tempting foods.

USDA FEDERALLY GRADED BEEF
USDA GOOD OR CHOICE

STEAK
ROUND
OR
SIRLOIN
79^c

LEAN — FRESH
PORK STEAK lb 39^c

FRESH PORK — PICNIC CUT
ROAST lb 33^c

SAUSAGE PURE LEAN PORK **lb 45^c**

COFFEE SHURFINE POUND CAN **69^c**

OLEO FOOD KING 7 lbs. \$1.00	SHORTENING SHURFINE 3 LB. CAN 65 ^c	OYSTERS BLUE PLATE COVE - 8 OZ. CANS 39 ^c
Green Beans SHURFINE CUT BLUE LAKE — 5 FOR \$1.00	PEAS APRIL SHOWER NO. 303 2 FOR 35 ^c	Applesauce NO. 303 CANS 2 FOR 29 ^c

CANDY

NESTLE'S GIANT BARS
• ALMOND, CRUNCH
• MILK CHOCOLATE
• FRUIT AND NUT

3 FOR \$1.00

HI-C

DRINK
• GRAPE OR
• ORANGE

46 OZ. CANS

29^c

QUIK

NESTLE'S GIANT CAN

69^c

BAMA 18 OZ. TUMBLER

PRESERVES

• APRICOT
• PEACH
• PINEAPPLE

3 FOR \$1.00

LIPTON'S

TEA 1/4 Lb. Box **39^c**

GRAPE NUTS FLAKES

Post's 12 Oz. Box

25^c

POST'S TOASTIES

12 Oz. Box

25^c

SUNSHINE'S — 10 OZ. BOX

CHEEZ-IT
TASTY CHEESE CRAX

25^c

FRESH — HOME GROWN — VINE RIPENED

TOMATOES lb 19^c

VEL

LIQUID DETERGENT, 22 OZ.

49^c

FAB

GIANT SIZE BOX

65^c

AJAX

21 OZ. CANS

2 FOR 39^c

PARD

TALL CANS

2 FOR 25^c

ANACIN

100 TABLETS
REG. \$1.19

89^c

MICRIN

MOUTHWASH
REG. 69^c

49^c

STARCH
FAULTLESS 16 OZ. SPRAY ON **59^c**

ORANGE JUICE FROZEN 6 OZ. CANS SHURFINE

6 FOR \$1

Cooper's MARKET
Fine Foods

EM 4-2030 WANT ADS

FOR SALE Miscellaneous
McCULLOUGH MOTOR COMPANY
 345 E. Hiway 60
 Phone EM 4-3150
CHRYSLER IRRIGATION ENGINES
 Sales & Service
 B-1-49-TFC

BIG RED BARN
 We Buy Sell - Trade for anything of value. Used Furniture, Appliances and Junk.
 EM 4-3552
 West Edge of Hereford
 Highway 60
 B-1-1-TFC

HEREFORD GRAIN CORP.
 FOR
 ● Lawn Grass Seed
 ● Bulk Garden Seed
 ● Ground Corn Cobs for Chicken Litter
 ● Place Your Order Now For Baby Chicks
 Phone EM 4-3755
 B-1-32-TFC

DEMPSTER PLANTERS, LISTERS AND CULTIVATORS
 Sales and Repair Parts
LESLEY MOTOR CO.
 West Highway 60
 Phone EM 4-1600
 B-1-33-TFC

HEREFORD GLASS CO.
 Expert Car Glass Installation
 Table Tops and Window Glass
 Picture Frames
 392 Park Ave. Ph. EM 4-2652
 B-1-25-TFC

BUY-RITE FURNITURE
 North End of Main Street
SPECIALS
 Reconditioned used Maytag automatic washers, 90 day warranty, parts and service
 \$79.50
 A-1 used Maytag wringer washer, late model. . . . \$50
 Good Used TVs.
 1 OK used Iron-Rite ironer. Must see to appreciate. Several good used refrigerators.
 B-1-44-TFC

MOVIE CAMERA sets, Eastman Kodaks, Polaroids. We have a complete selection and will sell you a camera with a small down payment. Inquire at Roger's Drug.
 B-1-26-31-tfc

TOP QUALITY Irrigation dams as low as \$3.25. Davis Implement Co., 144 West Second.
 B-1-14-39-tfc

FOR SALE Tascosa Seed Wheat, \$2.50 per bushel. Subject to State certification. H. L. Hershey, CL 8-4387.
 B-1-16-7-TFC

FOR SALE or Rent: Portable onion and potato grader. 821 South 25 Mile Avenue. EM 4-0577.
 B-1-15-29-TFC

FOR SALE: Fire dog. Dalmatian pup, 3 1/2 months old. Floyd Messenger. EM - 4-2126.
 B-1-12-34-TFC

SEED FOR SALE Tascosa, Bisson wheat, Kearney Barley, Certified. R. C. Godwin Farms. EM 4-1756. Box 1026 Hereford.
 B-1-17-8-13C

One Warehouse 60 x 100 feet. Two barracks 14 x 60 feet, each. All three \$5000. Phone EM 4-2872.
 B-1-14-35-8P

S-M Self Service Shoe Money Maker - Other Business in Amarillo Reason for Selling. Only Qualified Buyers Inquire.
S. A. MAPLES
 FL 6-2323
 AMARILLO
 B-1-10-TFC

GENERATORS and starters for cars and trucks. Hereford Wrecking Co. Phone EM 4-0580.
 T-1-12-18-tfc

SEED WHEAT, Tascosa, \$2.25 bushel. F. H. King. EM 4-3886.
 B-1-9-10-TFC

BEAUTY Counselor Cosmetics, call EM 4-3578 for a try before you buy presentation, trained beauty counselor, Goldie Criswell.
 B-1-17-10-TFC

FOR SALE Wheat Seed, Tascosa; Early Triumph. Frank Beznar.
 B-1-9-35-10P

FOR SALE Twentieth Century Beauty Salon. Good business. Six to eight operator shop. Phone EM 4-0366 or EM 4-3406. 116 West Second.
 B-1-20-35-4C

FOR SALE Excellent New Mexico Barley Seed \$1.20 per bushel. Francis Hill, 3 miles North on 385 and 1/2 Mile West. Phone EM 4-1933.
 B-1-23-8-8C

2. FOR SALE Farm Equipment
WE ARE DEALERS for Peerless Grain Rollers. Davis Implement Company, 144 W. 2nd St., Phone EM 4-2811.
 B-2-35-TFC

FOR SALE Lilliston Roto Speed Cutter and Repairs LESLEY MOTOR COMPANY
 West Highway 60
 Phone EM 4-1600
 B-2-3-TFC

FOR SALE High Clearance Machine to rogue milo. Ivan Block EM 4-0296.
 B-2-11-10-TFC

FOR SALE 1-1955 GLEANER WITH CAB AND MAIZE ATTACHMENT. GOOD HEC MOTOR.
 1 - 1957 GLEANER WITH MAIZE ATTACHMENT. GOOD HEC MOTOR.
 4 - 1958 GLEANERS WITH MAIZE ATTACHMENTS. READY TO GO. BUDA MOTORS.
 1-1958 GLEANER WITH CAB, FACTORY. BUTANE. WITH MAIZE ATTACHMENT. EXTRA GOOD.
HEREFORD FARM SUPPLY
 621 E. 1ST EM 4-1120
 B-2-9-TFC

3. FOR SALE Automobiles
 We Pay Cash For Used Cars
MILBURN MOTOR COMPANY
 225 N. Sampson
 Phone EM 4-0077
 B-3-33-TFC

4. REAL ESTATE For Sale or Trade
WESSON REAL ESTATE
 Now located in the little RED office building, at 201 South 25 Mile Ave. Hereford, has cast. buyer for One or Two section of dry land, also buyer for choice 1/2 section irrigated land.
 TO BUY, SELL OR TRADE ANY KIND OF REAL ESTATE, you can depend on our services.
WESSON REAL ESTATE
 201 25 Mile Ave. Hereford
 Ph EM 4-2528, EM 4-2860
 B-4-35-TFC

HOMES
 Lovely Brick home in NW Hereford, 3 BR & Den, 3 Baths, large living Rm, 2 car garage. Must see to appreciate. Shown by appointment only.
 Real nice 3 BR Stucco, central heat, living rm. & dining rm. has new carpeting. 2 car garage, corner lot, central heat, trees, shrubs & lawn. Owner leaving town, will sacrifice for \$11,500.00, will carry \$9,700 FHA loan.
 New 3 Br. Brick in NW Hereford. Central heat; built-in Kitchen, 2 baths, 2 car garage, Fire place. Immediate possession. See us for details.
 3 BR Brick, in NE Hereford. Corner lot, yard fenced, beautiful lawn & shrubs. Only \$14,000 with FHA loan of \$8,400 @ 4 1/2 % with Mo. Pay of \$74.00.
 We now have quite a nice selection of Homes ranging in price from \$3,500 to \$40,000. If you are in need of a Home give us a call. We will be happy to show you.
HUGH BOOKOUT REALTY
 511 Schley
 Hereford, Texas
 Phone EM 4-3161
 B-4-31-TFC

NEW IRRIGATION AREA
 Unusual opportunity. Very low price on highly productive land for POTATOES and other COMMERCIAL VEGETABLES. We cooperate with brokers.
JOHN E. HILL LAND COMPANY
 Box 96 San Luis, Colorado
 B-4-9-4P

FOR SALE In Dimmitt, Texas, six months old three bedroom brick, 1 3/4 Ceramic baths. Wall to wall carpet. Double garage. By owner. See at 710 SW, 6th and in Dimmitt after 6 p.m.
 B-4-33-35-4C

REAL ESTATE FARMS
 Well improved 400 acres on pavement with 3 wells for \$300 per acre.
 Well improved 1/2 section with 2 wells, on pavement for \$225 per acre with low down payment.
 Improved 300 acres close to Hereford for \$225 per acre.
HOUSES
 Two bedroom home with furnished apartment on J worth the money.
 Very nice 3 bedroom home for \$8750 with low down payment.
 3 bedroom brick house on Avenue J for \$13,750.
 2 bedroom home on Avenue J with GI Loan for \$11,500.
 We need listings on homes and farms. We handle FHA and John Hancock Loans.
BOOZER REAL ESTATE
 439 North Main
 Phone EM 4-1755
 Nite EM 4-3249
 Joe Boozer Leo Ohlig
 B-4-34-TFC

\$\$\$ \$\$\$\$ \$\$\$\$ ONE MILLION DOLLARS
 To land on irrigated land in Deaf Smith, Castro and Pecos Counties.
SAM NUNNALLY
 EM 4-0555 EM 4-2814
LONE STAR AGENCY
 B-4-51-104P

LOOK AT THESE
 653 A-472 cultivated, 1-8" well, natural gas. 126 A wheat base for 1962. House, large barn and grainary. Located on paving. Price \$157.50 per acre. Includes rent on maize.
 960A, 600 A. cultivated. 4 irrigation wells, 1 1/2 miles of underground file, 3 bedroom brick home, tenant house, large grain elevator and other improvements. Approximately 225 A. wheat allotment. Located on paving and land is free of Johnson grass. Price \$200 per acre. 29% down, balance terms.
 315 A. 4 irrigation wells. 1 and 1/3 mile of underground file. 73A wheat base. Two 2 bedroom homes, double garage and other improvements. Located on paving near Hereford. Price \$100,000. 29% down, balance terms. Nice 162 acres. All cultivated. 1-8" well, 1/2 mile off paving. 22 wheat, 14 cotton allotments. Priced in line at \$310 per acre. 20% down, balance 15 years.
 3 bedroom brick with den. Fenced back yard, nice storage building, patio, carpet in living room and den. Price \$10,500. Will sell on FHA or GI loan.
 Nice 3 bedroom home with single garage, central heat, air conditioner, fenced back yard. One of the best buys in town. Price \$9,000. Consider \$1,000 down, or will sell on GI or FHA.
 September 1st is the deadline on this 2 bedroom brick with single garage. Carpeted in living room and hall. Has fenced back yard and a nice storage building. Interior redecorated this year. 2 air conditioners go with sale of house. Price \$11,500. Has \$8,800 4 1/2 % loan, payable \$80 per month. Please call for appointment.
 We have many other listings to choose from. Call us for all your Real Estate needs. We have buyers and traders for all types of property. Your listings will be sincerely appreciated. WE SPECIALIZE IN SALES AND TRADES.
WHY NOT TRADE WHAT YOU HAVE FOR WHAT YOU WANT?
J. M. HAMBY REAL ESTATE
 CALL US OR COME BY OUR NEW LOCATION, 1/2 MILE SOUTH OF THE UNDERPASS ON THE EAST SIDE OF HIGHWAY 385.
 Office EM 4-1345
 J. M. Hamby Res. EM 4-2553
 Gerald Hamby EM 4-1534
 B-4-34-TFC

THREE BEDROOM
 Bath and 1/2, 2 car garage. Built-in oven and range. Large lot. Now under construction.
 EM 4-0239
MORGAN CONSTRUCTION CO.
 B-4-10-TFC

Two Lumber Yards Will Build You A Home With No Money Down.
WE WANT TO FURNISH THE LOT!
 3 Blocks West of Aikman school on 1st. 50' unpaved lot. . . \$650 . . . No down payment. . . \$36.12 monthly for 18 Mo.
LONE STAR AGENCY
 6th & Main
 EM 4-0555
 B-4-35-TFP

OWNERS MUST SACRIFICE
 These homes must be sold. Immediate occupancy, low down payments.
 3 BR Brick, attached garage, large kitchen and living room, \$12,500.
 2 BR. Nice backyard, newly redecorated. Garage, with apartment now rented for \$65.00 a month. Low, low down payment.
 3 BR Brick, double garage, built-ins, carpets. Must sell. Make us an offer.
 NICE 3 bedroom brick. Double garage. All modern built-ins. Large living room, will sell this at a sacrifice price as owner is leaving town.
NEW HOMES
 In N. W. Hereford
 Two 3 bedroom brick, 2 baths, den, double garage.
 One 3 bedroom brick, family room. Large corner lot.
 SEE US FOR A HOME to fit your pocketbook. \$6,000 to \$65,000.
JUSTICE REAL ESTATE
 EM 4-1757 EM 4-2857
 B-4-28-TFC

TWO BEDROOM Home for sale, 231 Avenue F. Attached garage. Near schools. Small equity will handle. Call Mrs. Bill McCarver, EM 4-2400 or em 4-0456 at night.
 B-4-25-10-3C

BUILDING Lots for sale. See owner, 511 Lawton Avenue. DESIRABLE furnished apartment.
 B-4-9-10-2P

FOR SALE Le Coiffeur Beauty Salon. Located in Jim Hill Hotel. Very reasonably priced. All new equipment. EM 4-3107.
 B-4-17-10-TFC

TWO BEDROOM home for sale on Avenue J. EM 4-1814.
 B-4-9-10-TFC

5. FOR RENT
NEW OFFICE SPACE FOR RENT
 Building converted into office space on ground floor and paved parking area. Located at 115 E. Highway 60. Call John or Lola Moody
 EM 4-1700 or EM 4-3583
 B-5-43-TFC

FOR RENT 20 x 60 building on Highway 60. Two offices. Storage space in front and rear or convert to other offices. Plenty parking. Call Lyle Blanton, EM 4-0472 or EM 4-0221.
 B-5-28-26-TFC

BEDROOM for rent 219 Avenue D. Phone EM 4-2158.
 B-5-9-36-TFC

FHA & GI HOME LOANS
LONE STAR AGENCY
 601 MAIN
 EM 4-0555
 B-4-51-104P

HOUSE HUNTING
 This lovely brick home is priced \$1,750 below FHA Valuation.
 3 Bed Rooms Utility Room Den Electric Kitchen Living Room Central Heat Double Garage & Air Conditioning.
 Just Under 2,000 Sq. Ft. of living area
 Located 712 Blevins
 To See House Get Key at 713 Blevins -
 For more information write ORVILLE ATKINSON
 1708 W. 16th
 PLAINVIEW
 Ph. CA 3-3924 after 6 p.m.
 B-4-8-TFC

FOR SALE: Lovely two - bedroom brick home with garage and redwood fence. Large living room adjoins spacious kitchen and dining area. Only \$1000 down. GI's move in with no down payment. Call tall Charlie Bell at EM 4-2343.
 B-4-37-9-TFC

FOR RENT Unfurnished duplex. Private bath. Furnace heat. 109 Union Avenue. Phone EM 4-2714.
 B-5-13-36-TFC

FOR RENT Five room house for permanent family. Whites only. Jewel Elliston, 905 Lafayette.
 B-5-14-36-1P

FOR RENT Unfurnished duplex. Private bath. Furnace heat. 109 Union Avenue. Phone EM 4-2714.
 B-5-13-36-TFC

FOR RENT Unfurnished duplex. Private bath. Furnace heat. 109 Union Avenue. Phone EM 4-2714.
 B-5-13-36-TFC

FOR RENT Unfurnished duplex. Private bath. Furnace heat. 109 Union Avenue. Phone EM 4-2714.
 B-5-13-36-TFC

FOR RENT Unfurnished duplex. Private bath. Furnace heat. 109 Union Avenue. Phone EM 4-2714.
 B-5-13-36-TFC

FOR RENT Unfurnished duplex. Private bath. Furnace heat. 109 Union Avenue. Phone EM 4-2714.
 B-5-13-36-TFC

FOR RENT Unfurnished duplex. Private bath. Furnace heat. 109 Union Avenue. Phone EM 4-2714.
 B-5-13-36-TFC

FOR RENT Unfurnished duplex. Private bath. Furnace heat. 109 Union Avenue. Phone EM 4-2714.
 B-5-13-36-TFC

FOR RENT Unfurnished duplex. Private bath. Furnace heat. 109 Union Avenue. Phone EM 4-2714.
 B-5-13-36-TFC

FOR RENT Unfurnished duplex. Private bath. Furnace heat. 109 Union Avenue. Phone EM 4-2714.
 B-5-13-36-TFC

FOR RENT Unfurnished duplex. Private bath. Furnace heat. 109 Union Avenue. Phone EM 4-2714.
 B-5-13-36-TFC

FOR RENT Unfurnished duplex. Private bath. Furnace heat. 109 Union Avenue. Phone EM 4-2714.
 B-5-13-36-TFC

FOR RENT Unfurnished duplex. Private bath. Furnace heat. 109 Union Avenue. Phone EM 4-2714.
 B-5-13-36-TFC

FOR RENT Unfurnished duplex. Private bath. Furnace heat. 109 Union Avenue. Phone EM 4-2714.
 B-5-13-36-TFC

FOR RENT Unfurnished duplex. Private bath. Furnace heat. 109 Union Avenue. Phone EM 4-2714.
 B-5-13-36-TFC

FOR RENT Unfurnished duplex. Private bath. Furnace heat. 109 Union Avenue. Phone EM 4-2714.
 B-5-13-36-TFC

FOR RENT Unfurnished duplex. Private bath. Furnace heat. 109 Union Avenue. Phone EM 4-2714.
 B-5-13-36-TFC

FOR RENT Unfurnished duplex. Private bath. Furnace heat. 109 Union Avenue. Phone EM 4-2714.
 B-5-13-36-TFC

FOR RENT Unfurnished duplex. Private bath. Furnace heat. 109 Union Avenue. Phone EM 4-2714.
 B-5-13-36-TFC

FOR RENT Unfurnished duplex. Private bath. Furnace heat. 109 Union Avenue. Phone EM 4-2714.
 B-5-13-36-TFC

FOR RENT Unfurnished duplex. Private bath. Furnace heat. 109 Union Avenue. Phone EM 4-2714.
 B-5-13-36-TFC

FOR RENT Unfurnished duplex. Private bath. Furnace heat. 109 Union Avenue. Phone EM 4-2714.
 B-5-13-36-TFC

FURNISHED duplex. Two large bedrooms. Private bath. Bills paid. No children between 2-10 years old. Call EM 4-0014 after 6 p.m. and Sundays.
 B-5-22-10-TFC

BEDROOMS for rent, 511 North Lawton Avenue.
 B-5-9-10-2P

DESIRABLE furnished apartment for couple. Whites only. Bills paid. 514 Union.
 B-5-11-10-2C

NICE house rent or sale. Call EM 4-1051.
 B-5-9-10-2P

UNFURNISHED two bedroom house. Whites only. 303 Avenue H
 B-5-8-34-TFC

TO RENT Building back of Hereford Laundry. 1800 square feet. Formerly occupied by Body Shop. See Ernest Kendall. Phone EM 4-0685.
 B-5-20-6-tfc

FOR RENT Unfurnished apartment. New furniture, ceramic tile bath, refrigerated air conditioning, 503 25 Mile Avenue. Phone EM 4-2569.
 B-5-18-7-TFC

FOR RENT Unfurnished duplex. Private bath. Furnace heat. 109 Union Avenue. Phone EM 4-2714.
 B-5-13-36-TFC

FOR RENT Unfurnished duplex. Private bath. Furnace heat. 109 Union Avenue. Phone EM 4-2714.
 B-5-13-36-TFC

FOR RENT Unfurnished duplex. Private bath. Furnace heat. 109 Union Avenue. Phone EM 4-2714.
 B-5-13-36-TFC

FOR RENT Unfurnished duplex. Private bath. Furnace heat. 109 Union Avenue. Phone EM 4-2714.
 B-5-13-36-TFC

FOR RENT Unfurnished duplex. Private bath. Furnace heat. 109 Union Avenue. Phone EM 4-2714.
 B-5-13-36-TFC

FOR RENT Unfurnished duplex. Private bath. Furnace heat. 109 Union Avenue. Phone EM 4-2714.
 B-5-13-36-TFC

FOR RENT Unfurnished duplex. Private bath. Furnace heat. 109 Union Avenue. Phone EM 4-2714.
 B-5-13-36-TFC

FOR RENT Unfurnished duplex. Private bath. Furnace heat. 109 Union Avenue. Phone EM 4-2714.
 B-5-13-36-TFC

FOR RENT Unfurnished duplex. Private bath. Furnace heat. 109 Union Avenue. Phone EM 4-2714.
 B-5-13-36-TFC

FOR RENT Unfurnished duplex. Private bath. Furnace heat. 109 Union Avenue. Phone EM 4-2714.
 B-5-13-36-TFC

FOR RENT Unfurnished duplex. Private bath. Furnace heat. 109 Union Avenue. Phone EM 4-2714.
 B-5-13-36-TFC

FOR RENT Unfurnished duplex. Private bath. Furnace heat. 109 Union Avenue. Phone EM 4-2714.
 B-5-13-36-TFC

FOR RENT Unfurnished duplex. Private bath. Furnace heat. 109 Union Avenue. Phone EM 4-2714.
 B-5-13-36-TFC

FOR RENT Unfurnished duplex. Private bath. Furnace heat. 109 Union Avenue. Phone EM 4-2714.
 B-5-13-36-TFC

FOR RENT Unfurnished duplex. Private bath. Furnace heat. 109 Union Avenue. Phone EM 4-2714.
 B-5-13-36-TFC

FOR RENT Unfurnished duplex. Private bath. Furnace heat. 109 Union Avenue. Phone EM 4-2714.
 B-5-13-36-TFC

FOR RENT Unfurnished duplex. Private bath. Furnace heat. 109 Union Avenue. Phone EM 4-2714.
 B-5-13-36-TFC

FOR RENT Unfurnished duplex. Private bath. Furnace heat. 109 Union Avenue. Phone EM 4-2714.
 B-5-13-36-TFC

FOR RENT Unfurnished duplex. Private bath. Furnace heat. 109 Union Avenue. Phone EM 4-2714.
 B-5-13-36-TFC

FOR RENT Unfurnished duplex. Private bath. Furnace heat. 109 Union Avenue. Phone EM 4-2714.
 B-5-13-36-TFC

FOR RENT Unfurnished duplex. Private bath. Furnace heat. 109 Union Avenue. Phone EM 4-2714.
 B-5-13-36-TFC

FOR RENT Unfurnished duplex. Private bath. Furnace heat. 109 Union Avenue. Phone EM 4-2714.
 B-5-13-36-TFC

FOR RENT Unfurnished duplex. Private bath. Furnace heat. 109 Union Avenue. Phone EM 4-2714.
 B-5-13-36-TFC

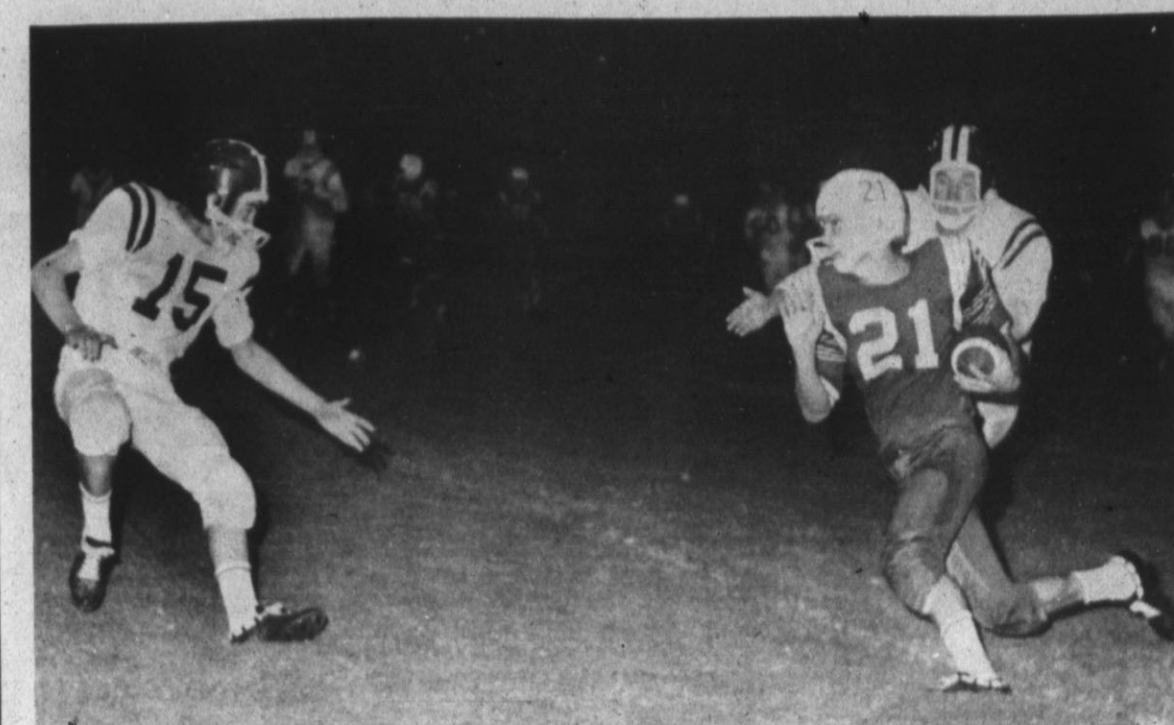
FOR RENT Unfurnished duplex. Private bath. Furnace heat. 109 Union Avenue. Phone EM 4-2714.
 B-5-13-36-TFC

FOR RENT Unfurnished duplex. Private bath. Furnace heat. 109 Union Avenue. Phone EM 4-2714.
 B-5-13-36-TFC

FOR RENT Unfurnished duplex. Private bath. Furnace heat. 109 Union Avenue. Phone EM 4-2714.
 B-5-13-36-TFC

FOR RENT Unfurnished duplex. Private bath. Furnace heat. 109 Union Avenue. Phone EM 4-2714.
 B-5-13-36-TFC

FOR RENT Unfurnished duplex. Private bath. Furnace heat. 109 Union Avenue. Phone EM 4-2714.
 B-5-13-36-TFC



CLOSING FOR THE KILL, Charlie Kelly, Fenton in the second quarter of the Hereford (15) Hereford defensive halfback, and Ford-Brownfield tussle Friday night. Butch Walterschied, Hereford linebacker, prepare to pounce on Brownfield's Ronnie (Staff Photo)

CLINTON Sales & Service
 Complete Service and Repairs on all air cooled Engines & lawn mowers.
HICKS OIL AND GAS INC.
 Phone EM 4-0220
 B-10-23-TFC

NEW POLAROID CAMERAS
 One minute finished pictures. Pay a small down payment and enjoy your camera. Now at Roger's Drug.
 B-10-19-3-tfc

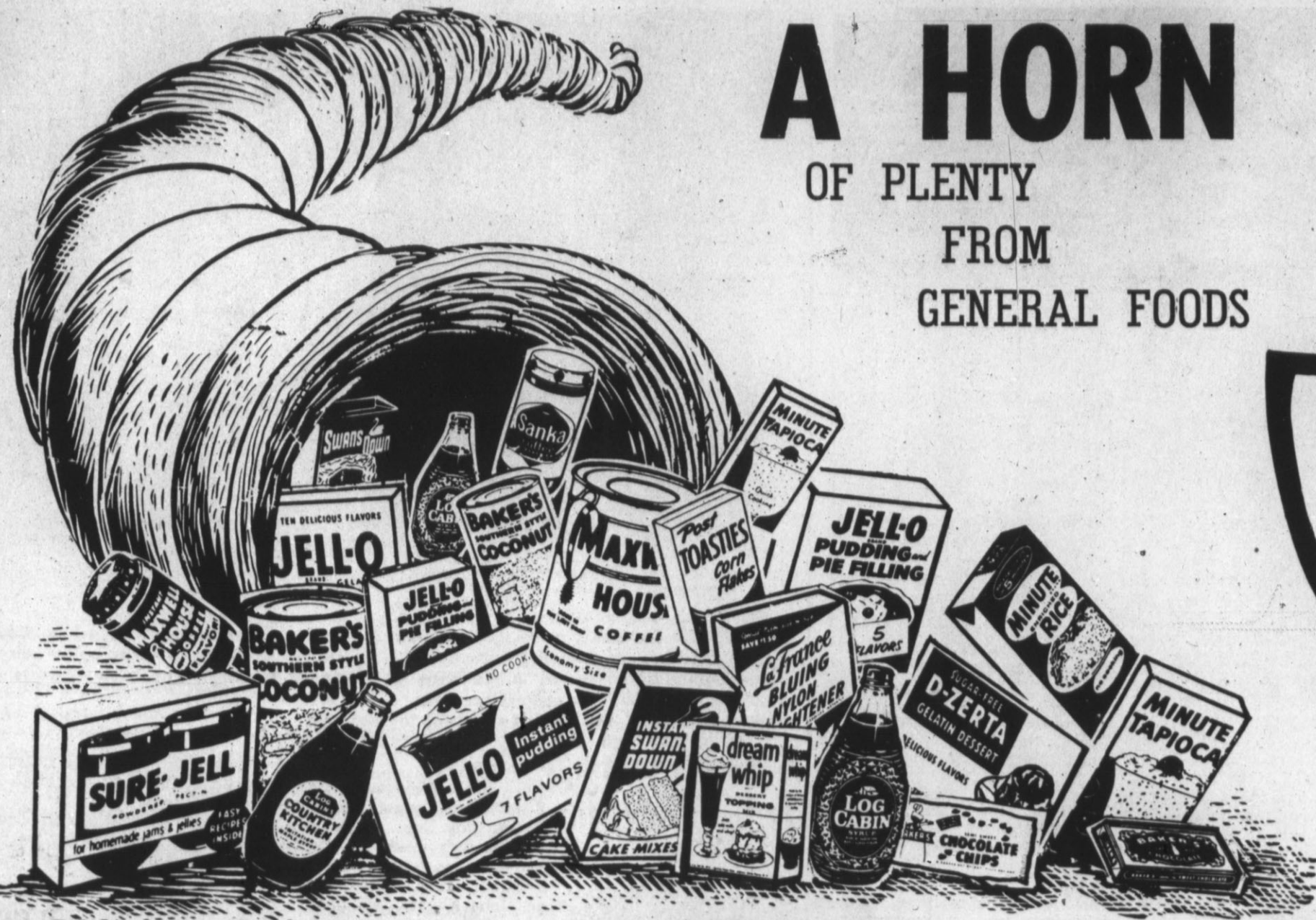
SHORTY'S SHOE SHOP
 Will Be Closed
 SEPT. 11 thru SEPT. 16
DON'T FORGET YOUR SHOES
 B-10-10-2C

11. Business Services
PORTABLE DISC ROLLING
 Scalloped or plain. Jacobsen Brothers. Phone EM 4-1543.
 B-11-10-23-tfc

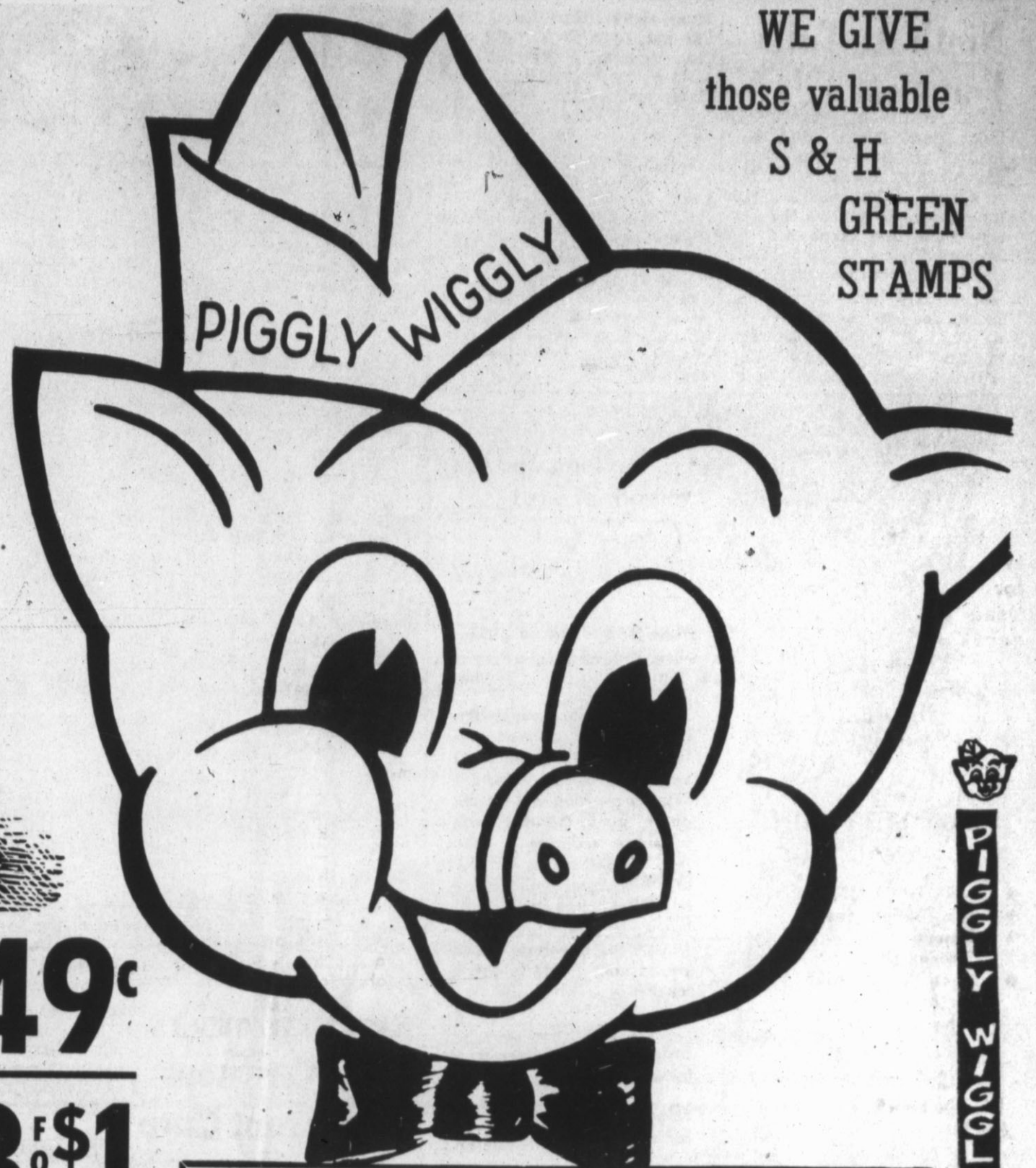
Magneto - Starter motors rewind generator & electric Sales & Service
OWENS & HOLLINSWORTH
 EM 4-3545
 EM 4-3572
 Commercial - Industrial Residential Wiring
 307 East Third
 B-11-13-TFC

CITY TELEVISION
 124 W. 4th EM 4-1516
 Service all makes and models of TV's, radios, etc. City and country calls. Registered and Bonded by Raytheon Co.
 B-11-8-TFC

A HORN OF PLENTY FROM GENERAL FOODS



WE GIVE
those valuable
S & H
GREEN
STAMPS



GLADIOLA FLOUR 5 LB. BAG **49^c**

ORANGE JUICE SHURFINE FROZEN 12 OZ. CAN **3^F\$1^{OR}**

MEXICAN DINNERS PATIO FROZEN COMPLETE 16 Oz. **39^c**

MAXWELL HOUSE POUND CAN 7c OFF DEAL **COFFEE** **62^c**

JELLO ALL FLAVORS 3 OZ. BOX **12^F\$1^{OR}**

DOG FOOD GAINES TALL CANS **8^F\$1^{OR}**

SYRUP LOG CABIN 4c OFF Deal 24 Oz. Bottle **49^c**

Sanka INSTANT COFFEE 5 OZ. 10c OFF DEAL **79^c**

RICE MINUTE Large Box 23 1/3 Oz. **59^c**

FRESH PRODUCE

GRAPES
TOKAY



Lb. **15^c**

FLUFFO THE GOLDEN SHORTENING 3 LB. CAN **75^c**

Black Pepper SCHILLINGS 4 OZ. CAN **39^c**

Meadowlake MARGARINE LB. CTN. IN QUARTERS **4^F\$1^{OR}**

PRESERVES SHURFINE 20 OZ. JAR APRICOT & PEACH **39^c**

CREST TOOTH PASTE LARGE SIZE 53c VALUE **45^c**

WAX PAPER CUT-RITE 125 FT. ROLL **29^c**

ENERGY LIQUID 22 OZ. CAN **2^F\$1^{OR}**

BACON

1ST GRADE
Glover's LB. **59^c**

FRANKS GLOVERS LB. **49^c**

Velveeta KRAFT'S CHEESE FOOD 2 LB. BOX **89^c**

Tomatoes lb **19^c**
Chuck Wagon Cello Pkg.

APPLES 4 LB. BAG **59^c**
DELICIOUS

Bell Peppers FRESH GREEN LB. **15^c**

PANTIES

ADOLA'S 98c Val. **79^c**
2 TO PKG.
Long Wear - Drip Dry

NYLONS

"SUPERMORE"
ANY SIZE (With Coupon) ANY KIND
BUY 2 PAIR GET ONE FREE

Post Cereals

MIX'UM OR MATCH'UM **4^F\$1^{OR}**
ALPHA-BITS 8 1/2 Oz.
BRAN FLAKES 11 Oz.
GRAPE NUTS 10 1/2 Oz.
KRINKLES 10 Oz.
RAISIN BRAND 9 1/2 Oz.
POST TOASTIES 12 Oz.



People who shop carefully
...shop
Piggly Wiggly
regularly!

Gladiola Meal WHITE OR YELLOW 5 LB. BAG **35^c**

Pound Cake Mix GLADIOLA 18 OZ. BOX **3^F\$1^{OR}**

COFFEE MAXWELL HOUSE 2 LB. CAN **\$1³⁷**

Ninth At Tulia For First Tilt

Stanton Junior High School's ninth grade Dogies open their football season in Tulia Thursday night at 6 p.m., according to Coach Alex Glass. With nine games on tap for the season, their first home tilt will be here Thursday, Sept. 14, as the Doggies entertain Dimmitt. There are only 32 freshmen out for football this season. Coach Glass listed probable starters for Thursday's non-conference game as follows: George

Muse, center; Gary Robertson, left end; Lynn Cook, right end; Stan Sigman, left tackle; Dick Rogers, right tackle; Frank Cain, quarterback; Dan Thomas, left end; and Terry Hill, right half.

Either Gary Stagner or Larry Minks will start at the fullback slot for the Dogies. At right end will be John Pool or Robert Higgins, and either Charley Brownlow or Lewis Barnett will start at left guard.

Most of these freshmen played on the eighth grade Stanton squad last season, which compiled four wins, four losses, and tied one.



THE FIRST OF ITS TYPE, this ribbed or corrugated valley has been installed at the intersection of Fourth St. and Witherspoon. It has been placed at the intersection by the city in an effort to disperse traffic more smoothly and control excess water. (Staff Photo)



MISS VERITA SANDERS, bride-elect of Dennis Silvertooth, was honored recently with a miscellaneous shower-tea in the home of Mrs. Lynn Kester. The centerpiece was a silver candelabra with epergne holding an elaborate arrangement of white Bouquet roses, while gladioli, white spider chrysanthemums and lace vine. Appointments were in crystal and silves. (Staff Photo)



the long and the smooth of you!

Silf Skin

Knee-length pantie girdle with detachable garters

Today's fashions demand a NEW YOU... firmed and fitted... so altogether right for the all-together! And Silf Skin's new long leg pantie girdle goes together with all these fashions... like peaches and cream. It molds and holds you—all of you in full-fashioned comfort... keeps you in trim, from your waist to just a whisper above your knees. Come in for a try on—you'll buy one.

Style 208 (in rayon elastic for average waist) \$7.50

Style 28 (in nylon elastic for long waist) \$8.95

Available in small, medium, large... white only. Extra large slightly higher

Rutherford & Co.

Arrest Brothers After Car Stops Upon Front Lawn

Two Latin American brothers were arrested by city police Saturday morning after their car missed a corner and stopped on the front lawn of a home.

Alvin and Tony Montoya were arrested by Hereford Police officer Marshall Padgett after they failed to make the corner at Third and Gough.

Alvin, 21 and Tony, 18 were charged with being drunk, vagrancy and held for investigation. Alvin was issued a traffic ticket for driving in a manner likely to endanger lives and pro-

perty. Alvin was fined \$50 and costs, while Tony was fined \$35 and costs. The youths appeared in Corporation Court before city judge Henry Benson.

TULSA HOUSEGUESTS

Mr. and Mrs. L. H. Lange and son, Larry, of Tulsa, Okla. have been visiting here in the homes of Mrs. Cornelia Scoggin and Mr. and Mrs. Emmett Milburn and Nick.

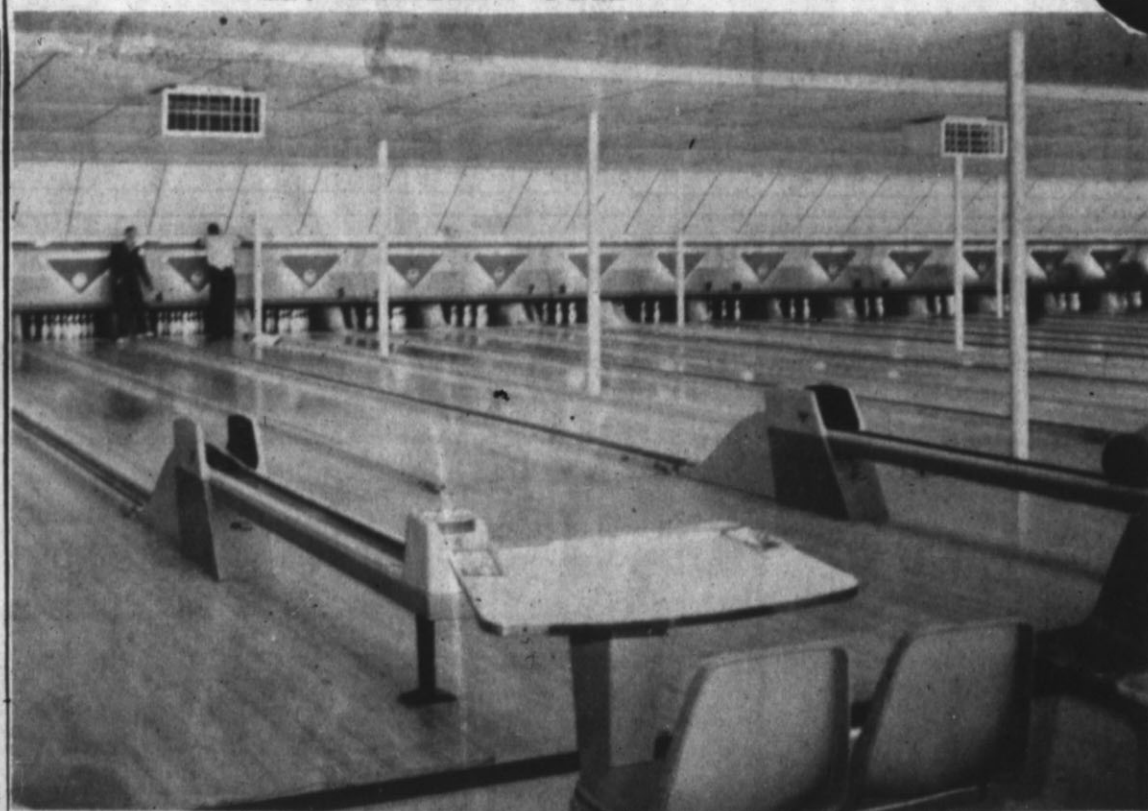
VISIT MOTHER, SISTER

Mr. and Mrs. Robert A. Bell and two sons of Dallas and Lt. Col. and Mrs. Charles A. Bell and children of Montgomery, Ala., visited recently in the home of their mother, Mrs. A. G. Bell, and sister, Miss Evelyn Bell.

Have you read the Classifieds?

Congratulations SUNSET LANES

on opening of Your New Plant IN HEREFORD



Attend the

GRAND OPENING

SAT., SEPT. 9th

-- AND OFTEN

FOR EXERCISE AND FUN!

CONGRATULATIONS from DURA-BILT PRODUCTS CLOVIS, N. M.



TO HAYS IMPLEMENT COMPANY ON YOUR NEW BUILDING IN HEREFORD

WE ARE PROUD TO HAVE FURNISHED AND CONSTRUCTED THIS MODERN, COLORFUL STRAN-STEEL BUILDING.

DURA BILT PRODUCTS CO.

2110 Marby Drive — E. Texico Highway — Clovis, N. M. — Phone PORTer 3-4487 GET OUR FIGURE BEFORE YOU BUILD

CROWE-GULDE CEMENT CO.

Highway 60 At Gough

FOXWORTH-GALBRAITH LUMBER CO.

Owens & Hollingsworth Electric Wiring

POARCH BROS. Machine Shop - Steel Work

More Than 55% Of County Motorists Save On Insurance

Approximately 55 per cent of the private passenger automobiles in Deaf Smith County can now be covered for basic limits public liability insurance for only \$6 more than the same insurance cost in 1938. This is due to the use of insurance classification plans, including the Texas Safe Driving Insurance Plan, according to the State Board of Insurance.

To give a specific illustration: basic limits public liability insurance (bodily injury and property damage combined) on a private passenger car, used only for family purposes, and not towed or operated by a male under 25 years of age, and principally garaged in town in such county now costs \$36. If the owner and his co-resident operators are accident and conviction free under the Texas Safe Driving Plan (sub-class 0) a 20 per cent differential is allowed which would reduce the rate to \$29.

In 1938 the same insurance on a private passenger car in town in Deaf Smith County would have cost \$23. Approximately 55 per cent of the non-farm private passenger cars in such county are entitled to this reduced rate.

Farm automobiles carry a lower rate because they are not exposed to hazard in the same degree as non-farm cars. In most counties in Texas farm cars will enjoy about the same ratio of benefit from the Safe Driving Plan in relation to former costs as the non-farm cars will receive.

The purpose of insurance classification plans is to allocate more of the cost of insurance to the class of risks which result in the most losses.

Classification begins with type of motor vehicle. If a private passenger car, then classification for liability insurance is by territory where principally garaged, use of the vehicle and driver characteristics. On physical damage, including collision, fire, theft and comprehensive insurance, the list price of the insured automobile and its age are also considered.

Rates are made separately on commercial types of motor vehicles from private passenger cars, and on private passenger cars according to the use made of them. The State is now divided into 26 statistical territories and 10 rating territories. Large metropolitan counties are separate territories since there are a sufficient number of cars in such counties to afford a sound basis for separate rating. Smaller counties are grouped with other counties having a reasonably similar loss experience for rating purposes. Each rating territory can largely control its own rates by reducing accidents and consequently the number of insured losses.

Automobile rating classes pertaining to use as private passenger automobiles and driver characteristics are as follows:

Class 1A
There is no male operator under 25 years of age, the automobile is not used for business and the automobile is not driven to or from work.

Class 1B
There is no male operator under 25 years of age, the automobile is not used for business and the automobile is driven to or from work.

Class 2A
There are one or more male operators under 25 years of age and each such male operator is either (1) married or (2) unmarried and not an owner or principal operator of the automobile. (Regardless of whether the automobile is used for business.)

Class 2C
There is a male operator under 25 years of age and he is unmarried and is an owner or principal operator of the automobile. (Regardless of whether the automobile is used for business.)

Class 3
There is no male operator under 25 years of age and the automobile is used for business.

Class 4
The automobile is owned by a farmer and there is a male operator under 25 years of age.

Class 5
The automobile is owned by a farmer and there is a male operator under 25 years of age and he is unmarried and is an owner or principal operator of the automobile.

The above classes are further modified by the sub-classifications of the Texas Safe Driving Plan. Under this plan points are assigned for any accident sustained by the owner or any co-resident operator within a three year period ending three months before policy date resulting in property damage in excess of \$25, personal injuries or

death, or convictions within the same time for traffic violations made a felony by law, and for convictions within such time for violation of speed laws, no passing zone law or operating a car without ever having had a driver's license or with driver's license suspended.

If the owner-operators are point free, the automobile is allowed a 20 per cent reduction from average rate; if the owner-operators between them have one point, then at average rate, and for two to six points surcharges are of 20 per cent, 40 per cent, 60 per cent, 80 per cent, and 100 per cent, respectively.

Carefully compiled statistics are used to determine the average rate and the differential from average rate necessary to allocate more cost to those classes and sub-classes, which as a group, produce the greater losses. This is done by rating territory in order that only ex-

perience in such territory will control classification results and excludes results in other areas.

The State Board of Insurance also points out that most of the complaints regarding automobile rates originate from the application of the classification plans. Those who find themselves in groups to which higher rates are charged, often not being informed as to the reason, react by complaining about the rates generally.

Insurance has long been recognized as the contribution by the many to a fund from which are paid the losses of a few. The inducement is that no one really knows when he may be one of the "few" and by insurance wards off a crippling economic loss. The principle of classification simply means that the groups defined in accordance with their exposure to hazard to which the "few" belong will pay a higher percentage of the cost of the protection than those

who belong to the group which has not caused a loss within a reasonable period of time.

The credits and surcharges which result from classification are carefully balanced by rating territory in order that no greater premium income will be received by the companies than if all cars were written at an overall average rate. With some four to five million insured motor vehicles it is not possible to rate each vehicle, and the grouping of vehicles by rational relationship to cost of the coverage as established by statistics is the most equitable way yet devised to distribute the cost of insurance.

It is self-evident that the more dollars paid out for the "few" the more the "many" must pay in. The complexities of rating are caused by the effort to more equitably allocate these contributions among the "few" and "many" involved.

who belong to the group which has not caused a loss within a reasonable period of time.

The credits and surcharges which result from classification are carefully balanced by rating territory in order that no greater premium income will be received by the companies than if all cars were written at an overall average rate.

With some four to five million insured motor vehicles it is not possible to rate each vehicle, and the grouping of vehicles by rational relationship to cost of the coverage as established by statistics is the most equitable way yet devised to distribute the cost of insurance.

It is self-evident that the more dollars paid out for the "few" the more the "many" must pay in.

The complexities of rating are caused by the effort to more equitably allocate these contributions among the "few" and "many" involved.

who belong to the group which has not caused a loss within a reasonable period of time.

The credits and surcharges which result from classification are carefully balanced by rating territory in order that no greater premium income will be received by the companies than if all cars were written at an overall average rate.

With some four to five million insured motor vehicles it is not possible to rate each vehicle, and the grouping of vehicles by rational relationship to cost of the coverage as established by statistics is the most equitable way yet devised to distribute the cost of insurance.

It is self-evident that the more dollars paid out for the "few" the more the "many" must pay in.

The complexities of rating are caused by the effort to more equitably allocate these contributions among the "few" and "many" involved.

who belong to the group which has not caused a loss within a reasonable period of time.

The credits and surcharges which result from classification are carefully balanced by rating territory in order that no greater premium income will be received by the companies than if all cars were written at an overall average rate.

With some four to five million insured motor vehicles it is not possible to rate each vehicle, and the grouping of vehicles by rational relationship to cost of the coverage as established by statistics is the most equitable way yet devised to distribute the cost of insurance.

It is self-evident that the more dollars paid out for the "few" the more the "many" must pay in.

The complexities of rating are caused by the effort to more equitably allocate these contributions among the "few" and "many" involved.

who belong to the group which has not caused a loss within a reasonable period of time.

The credits and surcharges which result from classification are carefully balanced by rating territory in order that no greater premium income will be received by the companies than if all cars were written at an overall average rate.

With some four to five million insured motor vehicles it is not possible to rate each vehicle, and the grouping of vehicles by rational relationship to cost of the coverage as established by statistics is the most equitable way yet devised to distribute the cost of insurance.

It is self-evident that the more dollars paid out for the "few" the more the "many" must pay in.

The complexities of rating are caused by the effort to more equitably allocate these contributions among the "few" and "many" involved.

who belong to the group which has not caused a loss within a reasonable period of time.

The credits and surcharges which result from classification are carefully balanced by rating territory in order that no greater premium income will be received by the companies than if all cars were written at an overall average rate.

With some four to five million insured motor vehicles it is not possible to rate each vehicle, and the grouping of vehicles by rational relationship to cost of the coverage as established by statistics is the most equitable way yet devised to distribute the cost of insurance.

It is self-evident that the more dollars paid out for the "few" the more the "many" must pay in.

The complexities of rating are caused by the effort to more equitably allocate these contributions among the "few" and "many" involved.

death, or convictions within the same time for traffic violations made a felony by law, and for convictions within such time for violation of speed laws, no passing zone law or operating a car without ever having had a driver's license or with driver's license suspended.

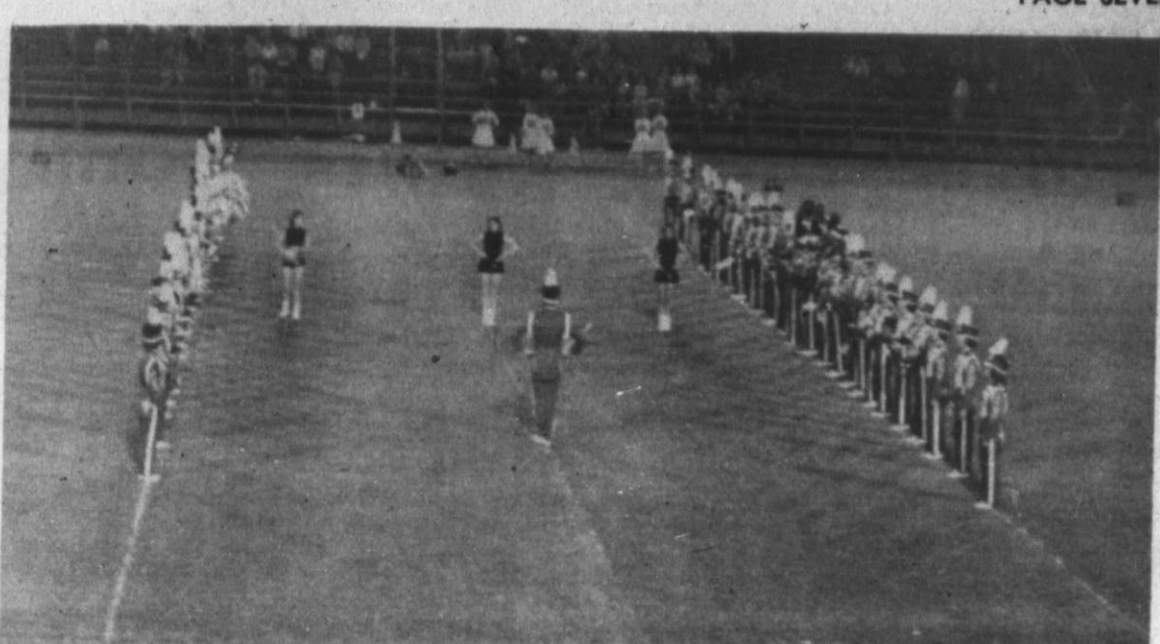
If the owner-operators are point free, the automobile is allowed a 20 per cent reduction from average rate; if the owner-operators between them have one point, then at average rate, and for two to six points surcharges are of 20 per cent, 40 per cent, 60 per cent, 80 per cent, and 100 per cent, respectively.

Carefully compiled statistics are used to determine the average rate and the differential from average rate necessary to allocate more cost to those classes and sub-classes, which as a group, produce the greater losses. This is done by rating territory in order that only ex-

perience in such territory will control classification results and excludes results in other areas.

The State Board of Insurance also points out that most of the complaints regarding automobile rates originate from the application of the classification plans. Those who find themselves in groups to which higher rates are charged, often not being informed as to the reason, react by complaining about the rates generally.

Insurance has long been recognized as the contribution by the many to a fund from which are paid the losses of a few. The inducement is that no one really knows when he may be one of the "few" and by insurance wards off a crippling economic loss. The principle of classification simply means that the groups defined in accordance with their exposure to hazard to which the "few" belong will pay a higher percentage of the cost of the protection than those



ATTIRED IN THE LATEST FASHION in band forms add much color to the 53-piece band's performance and drew many favorable comments from viewers. Bright maroon and flashy white, the uniforms, the Hereford Whiteface Big Domino Band made its first public appearance in new apparel at Brownfield Friday night. (Staff Photo)

HUNTER'S

Phone EM 4-0350 219 Sampson

DOUBLE Western Stamps
Every Wednesday With
\$2.50 Cash Purchase or More
Prices Effective
September 7 - 8 & 9th

WESTERN STAMPS

Van Camps Regular Size	5 Cans	\$1.00
White Swan Fancy Halves	5 Cans	No. 303 1.00
Concho Quart		39c

CHECK OVER
Our Redemption Items

COFFEE	White Swan Lb.	59c	PIZZA PIE MIX	Plain Or With Sausage Ea.	49c	
CHEESE	Krafts Deluxe Sliced	8 Oz. Pkg.	32c	TEA	White Swan 1/4 Lb. Pkg.	25c

MONTECA	De Puerto	3 Lb. Ctn.	45c	SALAD DRESSING	Full Quart	39c
SALAD BOWL	By Krafts.			TOMATO-JUICE	46 Oz. Cans	4 for \$1.00

FLOUR	Pur-A-Snow	25 LB. BAG	\$1.89	BEANS	No. 300 Cans	7 for \$1.00
SHASTA-DRINKS	Assorted Flavors	46 Oz.	389c	OLIVES	White Swan Stuffed 6 Oz. Jar	39c

SAVE VALUABLE WESTERN STAMPS
Double On Wednesday With \$2.50 Cash Purchase Or More

DOG-FOOD	Big Mike	3 TALL CANS	25c	SALT	Wapco 26 Oz. Round Box	219c
PANCAKE MIX	2 LB. BOX	39c	MACRONI	AMERICAN BEAUTY OR SPAGHETTI 6 Oz. BOX	10c	

CHILI	No. 2 Can	59c	BEEF ROAST	U. S. D. A. Graded Good	lb.	49c
--------------	-----------	-----	-------------------	-------------------------	-----	-----

CELERY	Fresh Crisp - Large Stalks	14c	T BONE STEAK	U. S. D. A. Graded Good	lb.	89c
---------------	----------------------------	-----	---------------------	-------------------------	-----	-----

YAMS	Golden Sugar	2 LB. S	25c	STEWING BEEF	Lean Boneless	lb.	69c
-------------	--------------	---------	-----	---------------------	---------------	-----	-----

FAB	GIANT SIZE	69c	ROUND STEAK	U. S. D. A. Graded Good	lb.	89c
------------	------------	-----	--------------------	-------------------------	-----	-----

PEANUT-BRITTLE	KRFTS - Fancy Old Fashioned 14 OZ. BOX	34c	ENCHILADA	PATIO - 12 Oz. Frozen	DINNERS EACH	49c
-----------------------	--	-----	------------------	-----------------------	--------------	-----

Inquirer's Classes To Be Conducted

A series of Inquirer's Classes will begin Sunday, Sept. 10, at St. Thomas' Episcopal Church, at 4 p.m. The classes will be held on following Sunday afternoons and will last for an hour and a half.

The subject of the first class will be "Why have a religion?" The following classes will cover Scriptural Interpretation, History, Doctrine, Discipline and Worship of the Protestant Episcopal Church. The Rev. Joel C. Treadwell, Vicar of St. Thomas' Church will lead the course.

The classes are open to the general public and there is no obligation on the part of those who attend to worship at the Episcopal Church or become members of the Church. It is for all who would like to know about the Episcopal Church.

Hospital Notes

Patients in Hospital

James D. Masters, Gould, Okla.; Rosemary Sterling, Muleshoe; Mrs. O. L. Bybee, 134 Star; Nora Medina, Gen. Del.; A. J. Jones, Jal, N. M.; Donna Carr, Box 74; P. H. Luck, 120 Higgins; Mrs. Tom Nance, Rt. 5; Mrs. L. N. Thomas, Gen. Del.; Mary A. Sears, 201 Ave. B; Mrs. W. G. Beene, Rt. 5; J. H. Hutcheson, 434 Mable; Aurgorgonio, Rt. 4; Guadalupe Garcia, Gen. Del.; Mrs. H. T. Wedel, Box 146; Tom E. Bugbee, Goodnight; Juan Chavez, 405 Grand; Mrs. Garland M. Cox, Rt. 4; Mrs. Markham Waddill, 315 S. 25 Mile Ave.; Antonio DeLa Paz; Herbert H. Duncan, 107 W. 8th; Maria Garcia, Gen. Del.; Gloria Contreras, Gen. Del.; Mrs. A. F. Roberts, Rt. 4; Mrs. H. M. Thomas, 145 Sunset; Mrs. J. B. Elliston, 615 Grand; Edward L. Tiefel, 336 East 4th; Dick Walker, 421 Schley; George Gutierrez, 200 Blewins.

Patients Dismissed

Carroll Hagar, Mrs. James Bradford, 9-1.
Joseph Murray, John William Smith, Mrs. B. L. Merchant, 9-2.
Mrs. Baser London, Mrs. J. L. Rogers, Ray E. Eldridge, Mrs. J. E. Andrews, Ab Harper, Mrs. Julio Gonzales, Mrs. Ernest Gaston, 9-3.
Vickie Ann Urbanczyk, Jim Robert Marnell, Mrs. Adelo Y. Garcia, 9-4.
Ruben Ramirez, Manuela Flores, J. B. Taylor, Arthur C. Inklebarger, T. N. Lawson, Mrs. John R. Ethridge, Mrs. Eliza Warrick, 9-5.

Look Who's New!

Mr. and Mrs. John R. Ethridge are the parents of a girl born September 2 at 3:03 p.m. She weighed 7 pounds, 4 ounces.

Mr. and Mrs. Lloyd N. Thomas are the parents of a girl born September 3 at 5:31 a.m. She weighed 5 pounds, 12 ounces.

Mr. and Mrs. Max Cox are the parents of a boy born September 3 at 10:08 a.m. He weighed 8 pounds, 6 1/2 ounces.

Mr. and Mrs. W. C. Beene are the parents of a girl born September 3 at 12:01 p.m. She weighed 8 pounds, 1 ounce.

Mr. and Mrs. Tommie Nance are the parents of a boy born September 4 at 2:11 a.m. He weighed 7 pounds, 14 1/2 ounces.

CHICAGO GUESTS

Mr. and Mrs. Marvin A. Swanson and daughter, Mrs. Sharon J. Roxan, and Mrs. Roxan's little son, Craig, from Chicago, Ill., were guests in the home of Mrs. Swanson's sister, Mrs. Glenn Boardman, last week.

MISS DAVIS VISITS

Miss Sheri Davis of Canyon and Amarillo spent the weekend visiting friends in Hereford.

ATTEND SIMS WEDDING

Attending the wedding of Taylor Sims and Miss Sally Beck at Roby Saturday evening were Mr. and Mrs. John T. Sims Sr., Mr. and Mrs. Ivan Block, Mr. and Mrs. Harry McCauley, Mr. and Mrs. Gaylord Newell and Mrs. W. L. Davis Sr.

LET'S COOK SOMETHING!

Mrs. Story Finds Some Recipes Easy, Even Holding Grandson

Before Mrs. Joe Story, Harrison Highway, succeeded in "feeding, clothing and sheltering" her own children, young Kevin Story Downing had come along last week, is a source of constant joy for the Storys but sometimes complicates matters a little with such chores as cooking. Mrs. Story declares the following recipe is a "cinch" to make with a baby in one arm.



KEVIN STORY DOWNING, two-month-old grandson of Mr. and Mrs. Joe Story, Harrison Highway, interrupts his grandmother's preparation of family meals long enough to be sure he has his own supper first. (Staff Photo)

Refrigerator Cookies

- 1 cup shortening
- 2 cups brown sugar
- 2 eggs
- 3 1/2 cups sifted enriched flour
- 1/4 tsp. salt
- 1 tsp. soda
- 1 tsp. cream of tartar
- 1 cup chopped walnuts
- 1 tsp. vanilla

Melt shortening, sugar and eggs. Mix dry ingredients together and stir into shortening mixture. Add nuts and vanilla. Shape into two rolls and wrap in waxed paper. Store in refrigerator until cold, about 6 hours. Slice 1/4 inch thick and place on ungreased baking sheets. Bake in moderate oven, 375 degrees, about 5 minutes, or until lightly browned. Makes 6 dozen cookies.

Here is a good "busy day" dish: fix it in the morning, bake it in the evening.

Tuna Chip Casserole

- 2 tbsps. shortening
- 2 tbsps. flour
- 2 tbsps. flour
- 1/2 tsp. salt
- 1/2 tsp. pepper
- 2 cups milk

Melt shortening in saucepan. Blend in flour, salt and pepper. Add milk and Worcestershire sauce and cook until thick and smooth, stirring constantly. Lightly rub 1 1/2 quart casserole with shortening and cover bottom with 1/4 cup potato chips.

Melt shortening in large skillet or Dutch oven. Cook meat over low heat until tender but not browned. Add onions, spinach and bamboo shoots. Cover and cook 5 minutes, stirring occasionally. Combine remaining ingredients and add to meat and vegetables. Cook 15 minutes longer. Serve with rice. Makes 6 servings.

Top with 1/3 of the tuna fish. Repeat layers and top with potato chips. Pour sauce over all and bake in a moderate oven, 350 degrees, about 30 minutes. Makes 4 servings.

Sukiyaki

- 1/4 cup shortening
- 1 lb. round steak, sliced thin across the grain.
- 2 med. onions, sliced thin
- 1/2 lb. fresh mushrooms, sliced
- 2 cups celery cut in 1" pieces
- 1 bunch green onions or scallions, chopped fine
- 2 cups fresh spinach coarsely chopped
- 2 5-oz. cans bamboo shoots (optional)
- 1/2 cup water
- 1 beef bouillon cube
- 1/3 cup soy sauce
- 2 tbsps. sugar

Melt shortening in large skillet or Dutch oven. Cook meat over low heat until tender but not browned. Add onions, spinach and bamboo shoots. Cover and cook 5 minutes, stirring occasionally. Combine remaining ingredients and add to meat and vegetables. Cook 15 minutes longer. Serve with rice. Makes 6 servings.

Hungarian Goulash

- 1 1/2 lbs. lean beef cut in 1" cubes.
- 1/4 cup flour
- 1 tbsps. salt
- 1/4 cup shortening
- 3/4 cup onion, finely chopped
- 1/4 cup green pepper, finely chopped
- 2 1/2 cups tomatoes
- 1/4 tsp. red pepper
- 1 tsp. paprika
- 1/2 cup celery, finely chopped
- 1 cup carrot strips

Dredge meat in seasoned flour. Melt shortening in large deep skillet or Dutch oven and brown meat with onion and pepper. Add tomatoes, red pepper and paprika. Cover and cook over low heat about 20 minutes or until meat is tender. Add vegetables and cook another 20 minutes. Add and cook paprika dumplings. Makes 6 servings.

Paprika Dumplings

- 1 cup sifted enriched flour
- 1/2 tsp. double acting baking powder

- 1/2 tsp. salt
- 2 tbsps. melted shortening
- 1/2 cup milk
- Paprika

Mix dry ingredients, except paprika. Add melted shortening and milk. Drop from tablespoon on simmering goulash and sprinkle lightly with paprika. Cover. Steam about 15 minutes.

Upside-Down Coffee Cake

- 1/3 cup shortening
- 2 cups sifted enriched flour
- 3 tbsps. double acting baking powder
- 1 tsp. salt
- 1/4 cup sugar
- 1 egg
- 1 cup milk

Cut shortening into mixed dry ingredients until mixture resembles coarse meal. Add egg and stir just enough to moisten all dry ingredients. Spread in 8" square pan cover with one of the following toppings. Bake in moderately hot oven, 400 degrees, 35 to 40 minutes.

Blueberry Topping

Combine and place in an 8" square pan which has been rubbed with shortening: 2 cups blueberries, well drained; and 2 tablespoons grated orange rind.

Apricot Topping

Soak 1 cup dried apricots in water until soft. Drain well and arrange in bottom of an 8" square pan which has been rubbed with shortening. Sprinkle with 1/2 cup sugar.

Cherry Topping

Drain 2 cups (1 lb. can) sour cherries and place in an 8" square pan and sprinkle with 1/2 cup sugar.

STAR THEATRE

Sun. Mon. Tues. Wed.

RACE FROM OUTER SPACE TO SEVEN MILES BELOW THE SEA...
WITH AMAZING AQUANAUTS OF THE DEEP!

VOYAGE TO THE BOTTOM OF THE SEA
COLOR BY DE LUXE

WALTER PIGEON JOAN FONTAINE
BARBARA EDEN PETER LORRE
ROBERT STERLING MICHAEL ANSARA
FRANKIE AVALON

TOWER DRIVE IN

FRI. SAT. SUN.
The story of a man, a land, a love!

They don't come any bigger, or any bolder, than this story of a violent man in a raw and reckless land... Cimarron!

CIMARRON
CinemaScope and MetroCOLOR

GLENN FORD - MARIA SCHELL
ANNE BAXTER - ARTHUR O'CONNELL

Always a Good Show
STAR Theatre
LET'S GO OUT TO THE THEATRE

Thursday Friday Saturday

GEE WHIZ!

TWO EXTRAORDINARY PICTURES COMBINED ON ONE PROGRAM!
BIG STARS...
ON OUR BIG BIG BIG Theatre Screen!
TWO EXTRAORDINARY PICTURES COMBINED ON ONE BIG LAUGH-FILLED... ACTION-PACKED PROGRAM!

WHAT FUN YOU'LL HAVE... AND WHAT A FAMILY YOU'LL FEEL AS IF YOU ARE A PART OF IT... OR WOULD LIKE TO BE!

FRIENDLY PERSUASION
COLOR BY DE LUXE
WITH ROBERT BRIDGEMAN-PHYLLIS LOVE
RICHARD EYER-WALTER CATLET
From the book by ROSAMUND WELLS - Movie conceived and produced by DANIEL THOMSON - An Allied Artists Picture

WICHITA
CINEMASCOPE AND TECHNICOLOR
WALLACE FORD-EDGAR BUCHANAN
KEITH LARSEN
Story and Screenplay by DANIEL B. ULLMAN - An Allied Artists Picture

SEPTEMBER is Manager's Appreciation Month AT YOUR THEATRE

FALL-FESTIVAL **HAPPY-TIME HIT PARADE**

Something WONDERFUL happens when you go out to The Movies! Watch for these HITS!

Come September

Francis of Assisi
CINEMASCOPE COLOR BY DE LUXE

GREGORY PECK-DAVID NIVEN
THE GUNS OF NAVARONE

His name is **PARRISH** More than a boy... not yet a man!

JULES VERNE'S **MASTER OF THE WORLD**
MAGNACOLOR VINCENT PRICE

ALL NEW! **DAVID AND GOLIATH**

FANNY
TECHNICOLOR

MARION BRANDO
KARL MALDEN
ONE OF US

BE HAPPY go to the THEATRE TONITE!



YOU CAN BE TIME AND DOLLARS AHEAD

READ AND USE BRAND CLASSIFIED ADS

Sit back in your easy chair and shop all over town! Finding a bargain, or selling something yourself, it's as easy as that... through our classified columns. And, you are always dollars ahead when you buy or sell in this great marketplace. Find out for yourself this very day!

YOU GET MIGHTY BIG RESULTS WITH OUR LITTLE CLASSIFIED ADS!

CALL EM 4-2030 or 4-2031
The **HEREFORD BRAND**

Courthouse Records

Vehicle Registrations
Bernard Oberbrocking, 1955 Plymouth; E. W. Messer, 1952 Chevrolet; Reddell Water Well Service, 1961 International Tank Truck; Francisco P. Tjerina, 1962 Chevrolet Pickup; George Meives, 1962 Chevrolet Pickup; James L. Paetzold, 1959 GMC Pickup; James Pierce, 1955 DeSoto; Roy Evans, 1957 Chevrolet; Associated Growers of Hereford, 1961 Mack Truck Trailer; Dan Jones, 1955 International; 9-1.

Warranty Deeds

Nora C. Schultz to Ronald M. Matthews, a part of Block 4, Evans Addition.
Pat Robinson to Jack L. Goodman, Section 88, Block K-6, G. B. and C. N. G. Railway Company survey, abstract no. 1112, patent no. 456, volume 55, dated May 21, 1918.
Jack L. Goodman to Glen Bullock, Section 88, Block K-6, G. B. & C. N. G. Railway Company survey.
William J. Stanford Jr., et ux, to C. W. Graves, the south 40 feet of Lot No. 1, and the North Half of closed Heiback Street lying south of and adjacent to said Lot No. 1, Block 31 1/2 of Renfro and Price Subdivision of Block 31, Evans Addition.
P. M. Houser, et al, to Floyd McGee, all of the North 35 feet of Lot No. 6 and the South 50 feet of Lot No. 5, Block no. 5, Westhaven Addition.
Alan B. Claude and wife to Ismael Gamez, all of Lot 47 of Brownlow Addition.
C. D. Hardesty to Floyd Dunavant, all of the South 53 feet of Lot 16 and the North 7 feet of Lot 15, Block No. 4, Engler Addition.

Deed of Trust

Ronald M. Matthews, et ux, to Gulf Coast Investment Corporation, a part of Block 4, Evans Addition.

Marriage Licenses

Kenneth Ross Stacy and Juanita Ann Roach, 9-5.
Adolfo Serrato Garcia and Amelia Garcia Hernandez, 9-5.

ATTEND GIFT SHOW

Mr. and Mrs. Lynn Kester have returned from Dallas where they went to attend the Allied Jewelry Gift Show. They were accompanied by her sister, Mr. and Mrs. Weldon Findley of Littlefield.

VISIT LEVELLAND

Mr. and Mrs. John Anders and Larry visited Labor Day in the home of her parents, Mr. and Mrs. M. M. Gardner at Levelland.

VISIT AT WINTERS

Mr. and Mrs. Bill McIver have returned from a trip to Winters, Tex., where they visited with relatives.

Elect Latin Fiesta Queen



Mike Benavides blows a hot saxophone with the Palmera Band from Odessa that furnished music for the dance.

The Hereford Brand

Hereford, Texas, Thursday, September 7, 1961 Section Two



Miss Adela Gomez, left, was named Latin Fiesta Queen here Saturday night and will be crowned on Sept. 15. Her court includes Sylvia Renosa, center, and Dora Gomez. At rear 'are Mike Castro and Ernest Tijerina of the sponsoring organization.



Even though too old or too young to dance, many came to watch and applaud during the festivities. Held at the little Bull Barn,

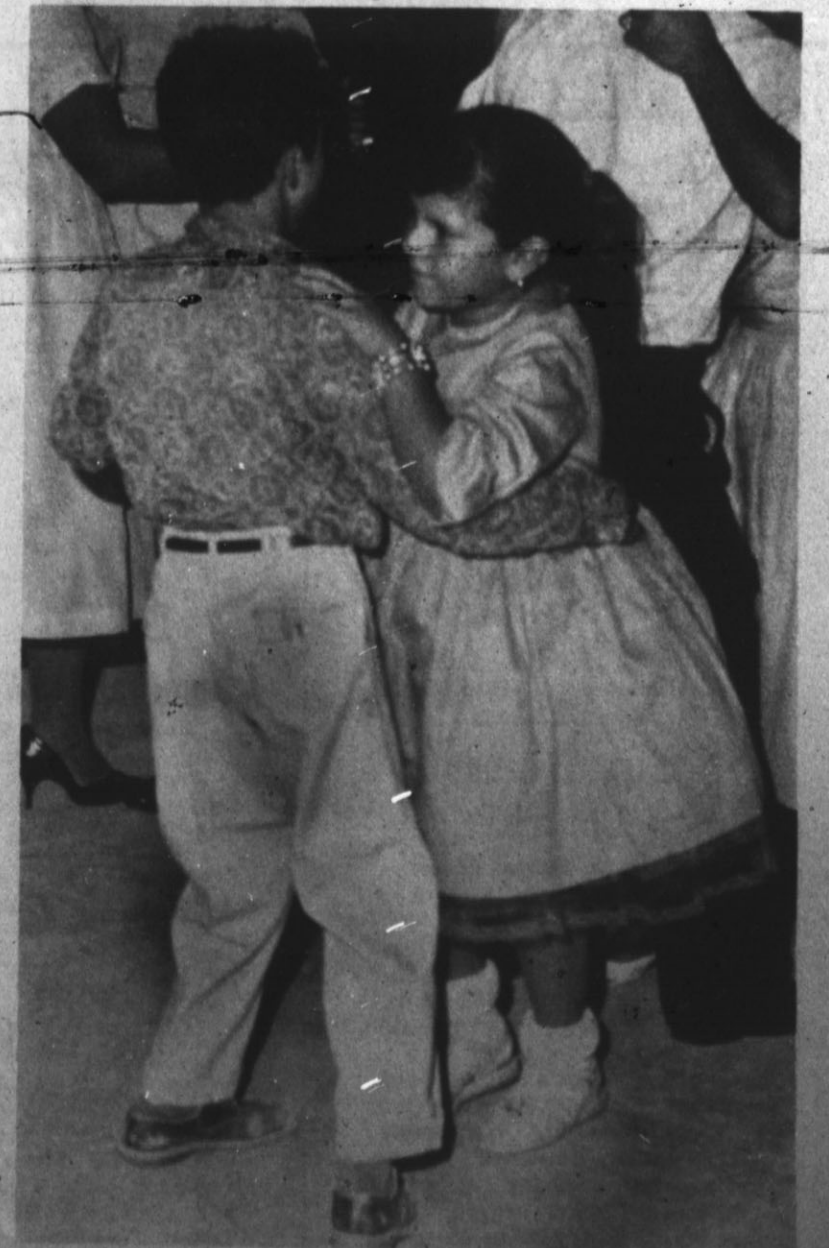


The officials' table was crowded about midnight when the voting closed and judges counted the votes for each girl in the contest. More than \$2,000, earmarked for charity, was received during the balloting.



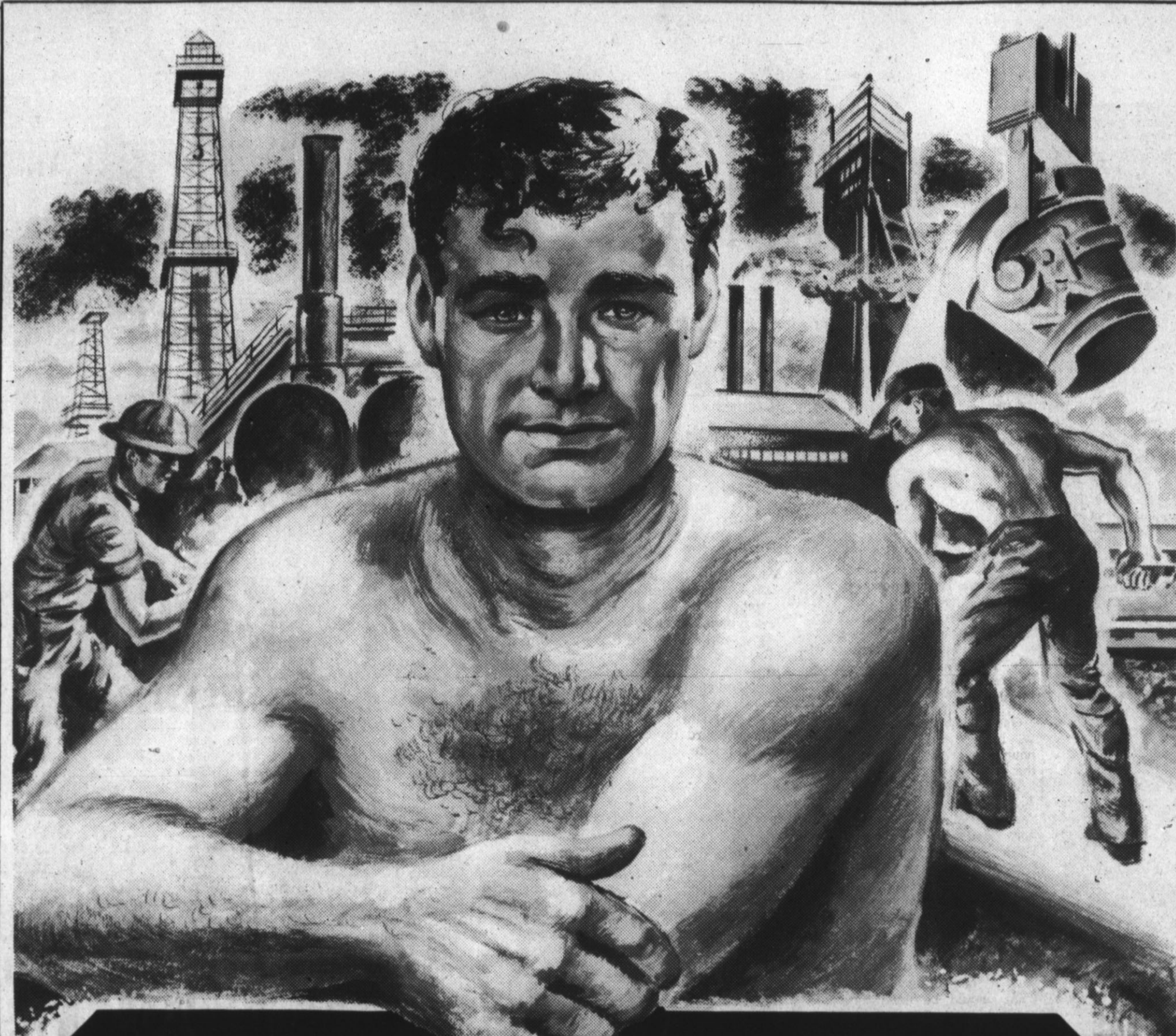
A mass of humanity crowded the floor during each of the band's numbers. While many danced, others just congregated and visited while excitement mounted during the final hour of the contest.

Brand Staff Photos



Even pre-teen couples took to the floor and whirled with the adults, learning, not the Latin dances, but American-type rock 'n roll and jitterbug.

ETERNAL LIFE THROUGH JESUS CHRIST

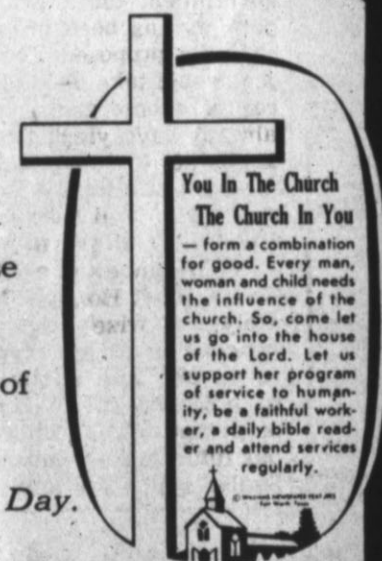


- HEREFORD CREAMERY**
● Mr. and Mrs. Elton Malone
- FARM & HOME SUPPLY**
● W. A. DeBusk
- FIRST NATIONAL BANK**
● Virgil Hennen
- HUNTER'S FOOD MARKET**
● Mr. and Mrs. Russell Hunter
- McLEAN - HUTSON INS. AG.**
● John McLean Buddy Hutson
- PLAINS FERTILIZER CO.**
● Glenn O. Edwards
- MASTERS CLEANERS**
● Mr. and Mrs. C. D. Fitzgerald
- SUIT'S AUTO SUPPLY**
- HEREFORD FERTILIZER & INSECTICIDE CO.**
● Norman Moore
- ROCKWELL BROS. & CO.**
● D. R. Vandever
- BLANTON BUTANE, INC.**
● Lyle Blanton
- BUY-RITE FURNITURE**
● J. H. Fish
- HEREFORD GRAIN CORP.**
● Curtis O. Roach, Mgr.
- ORSBORN-NORWOOD CHEV.-OLDS.**
● Your Chevrolet-Oldsmobile Dealer
- CLOWE & COWAN INC.**
● The Best - Pomona Pumps
- ELIZABETH WITHERSPOON INSURANCE**
● 148 N. Main St.

- LOERWALD BROS.**
● Ed, George, Gene & Harold Loerwald
- GILLILLAND FUNERAL HOME**
● Marlin Gilliland
- E. B. BLACK CO.**
● Dick Barnard - Jesse Stanford
- PIGGLY WIGGLY**
● Mr. and Mrs. Gaylord Newell
- ROGERS DRUG**
● Mr. and Mrs. Grady Rogers
- BIG T PUMP CO., INC.**
● Hilrey and Leroy Aven
- PITMAN SERVICE STATION**
● Odice and Ed Bulls
- FARMER'S DRIVE IN**
● Troy Moore
- HEREFORD STATE BANK**
● Russell E. Carver, Pres.
- DEARING WRECKING CO.**
● Anson A. and June Dearing
- McRIGHT GARAGE & SUPPLY**
● Mr. and Mrs. A. N. McRight
- CONSUMER'S FUEL ASS'N.**
● Louie LeGrand
- PITMAN GRAIN CO.**
- DAVIS IMPLEMENT CO.**
● W. L. Davis, Jr.
- HEREFORD LAUNDRY & DRY CLEANERS**
● Ernest Kendall

... and every man

shall receive his own reward, according to his own labour; for we are labourers together with God." Those lines from Corinthians, might well be the inspiration for the holiday America observes... a special day set aside to pay respect to those who labor to make our nation great and, consequently, keep it free. *This is Labor Day*... when each man and woman whose work helps keep the bulwark of Democracy strong, receives "his own reward" in the satisfaction of a job well done. It is not just another day for looking back on past accomplishment — *this Labor Day*. In a strange new scientific world which taxes comprehension, it is a time for looking ahead... for rededicating ourselves. We must need those Corinthian lines which asks us all to be "labourers together with God."



You In The Church
The Church In You — form a combination for good. Every man, woman and child needs the influence of the church. So, come let us go into the house of the Lord. Let us support her program of service to humanity, be a faithful worker, a daily bible reader and attend services regularly.

Visit Church Sunday and Take a Friend Along. This Is the Best Way To Prepare for Next Week.

First Methodist

501 North Main
Rev. Herschel L. Thurston, Pastor

Sunday, Sept. 10, Sunday School, 9:45 a.m., Morning Worship, 10:55 a.m., Senior Youth Prayer Meditation, 6 p.m., Junior High MYF, 6 p.m., Senior MYF, 6:15 p.m., Worship Service, 7 p.m.

Tuesday, Sept. 12, Bible Study, 7 p.m., Boy Scouts, Fellowship Hall, 7:30 p.m., Homebuilder's Prayer Group, 8 p.m.

Wednesday, Sept. 13, Choir Rehearsal, 7:45 p.m., Official Board, 8 p.m.

Thursday, Sept. 14, Victory Class Fellowship, 7-10 p.m.

First Baptist Church

Rev. B. L. Davis, Pastor
Fifth and Main Streets
Glendon Sanders

Minister of Music Education
Sunday School, 9:45 a.m.; Morning Worship, 10:55 a.m.; Evening Worship, 7 p.m.; Training Union, 6:30 p.m.

Superintendent's Cabinet Wednesday, 7 p.m.; Teachers and officers meeting, Wednesday, 7:15 p.m.; Mid-Week Prayer Service, Wednesday, 8 p.m.; Sanctuary Choir rehearsal, Wednesday, 9 p.m. (Wednesday evening services 30 minutes earlier October through March).
Graded Choir Rehearsals, 4

p.m. Tuesday; WMS visitation, first Wednesday, 9:30 a.m.; Monthly luncheon and business meeting, second Wednesday, 12 noon; Circles meet third and fourth Wednesday's, 9:30 a.m.; Junior G.A.'s meet Tuesday at 5 p.m.; Intermediate G.A.'s Wednesday, 7:15 p.m.; Sunbeams, Wednesday, 7:15 p.m.; Junior Royal Ambassadors, Saturday, 9:30 a.m.; Truett Brotherhood, Monday, 6:30 a.m.

Sunday morning worship Services broadcast over KPAN. Listen to the "Baptist Hour" at 8 a.m. over KPAN.

Jehovah's Witnesses

North Ave. E. Converted Residence
Wednesday at 8 p.m. there will be the Congregation Bible Study.

Friday at 7:30 p.m. is the Service Meeting Ministry School.

Community Mission Of A La Mision De San Jose

LABOR CAMP
Horas De Misas Los Domingos: 8 a.m. y 10 a.m.
El Domingo Es El Dia Del Senor. Tiene Que Adorable. No Misa: El Sacrificio De Calvario Hay Mejor Modo Que La Santa Continuada.

Seventh Day Adventist

Elder J. D. Simmons, Pastor
Harrison Highway

"Jesus and the Last Supper" is the subject for daily lesson study and class discussion Sabbath, Sept. 3.
Lesson Scripture: John 13:1-35.
Memory Verse: John 13:34, 35.
Study Helps: "The Desire of Ages" pages 642-661; "Evangelism" pages 273-278; "The Adventist Bible Commentary" Vol. 5, pages 532-537 and on Lesson Scripture, "The Seventh Day Adventist Bible Dictionary."
Aim: To help us to perceive and to respond to the spirit of humility and service revealed by Jesus during the Last Supper.
Lesson Outline:
1. The Master Servant.
2. Jesus and Peter.
3. Jesus and His Betrayer.
4. Jesus's Concern for His own.
Services: Meditation, 9:30 a.m. Saturday.
Sabbath School, 9:45 a.m. Saturday.
Worship Service, 11 a.m. Saturday.

The Church Of God In Christ

118 West Norton
Rev. Calvin Hodge, Pastor

Sunday School 9:45 a.m.; Morning Worship 11 a.m.; Y.P.-W.W. Meeting 7:30 p.m.; Evening Worship 8 p.m.

Monday, Bible Band meets 7 p.m.

Wednesday, Prayer Meeting 8 p.m.

Central Church Of Christ

Sunset Drive and Plains Ave.
Earnest Highers, Minister
Bible School is held each Sunday at 9:30 a.m. with morning worship at 10:30 a.m.

Worship service begins at 6 p.m. each Sunday evening.
Ladies Bible Study held each Wednesday morning at 10 a.m.
Wednesday prayer services are held at 7:30 p.m.

A La Inglesia San Antonio

North 25 Mile Avenue and Highway

V. D. Es Catolico? Pues, Tiene La Obligacion De Asistir A La Santa Misa Todos Los Domingos!
Horas De Misas En Los Domingos: 6:30 a.m.; 8 a.m.; 10 a.m. y 8 p.m.
Durante La Semana: 6:30 a.m.

Church of The Nazarene

Fourth and Jackson
Rev. Stewart Downey, Pastor
EM 4-1881

Sunday School is held at 10 a.m.; Worship Service at 11 a.m.; Evening Worship Service at 7:30 p.m.

Prayer meeting Wednesday will begin at 7:30 p.m.

Church of God

H and 15th Street
Rev. W. L. Sims, Pastor
Sunday School will begin at 10 a.m. Worship service is at 11 a.m. Sunday evening worship begins at 7:30 p.m.
Thursday Young Peoples' Endeavor, 7:30 p.m.

Bring your burden and carry away a smile.
"The Church that is large enough to serve you and small enough to know you."
For transportation call EM 4-3809.

Wesley Methodist

410 Irving
Rev. John Ferguson, Pastor
Sunday: Church School, 9:45 Harlon Voyles, Superintendent. Morning Worship, 11 a.m. Methodist Youth Fellowship, 6:30. Evening Worship, 7:30 p.m.
"See You In Church Sunday"

Asemblea de Dios Templo el Calvari

Pastor Fidel Alcalá
Bienvenidos. Cuidicada en la Calle 128 E. 5th.

Las servicios durante la semana y el Domingo.
Como siguen: 8 de la noche Martes, Jueves, Sabado y Domingo.
Domingo, 10 de la manana, escuela dominical, a las 11:30 predicalon.

Church Of Jesus Christ of Latter Day Saints

(Mormon)
EM 4-1905

The Mormon Church meets in Gilliland Funeral Home. Sunday School, 10 a.m. Sunday, Sacrament Meeting, 11 a.m. Sunday.

First Presbyterian

610 Lee Street
Rev. Russell Wingert, Pastor
Sunday School is held each Sunday at 9:45 a.m. followed by worship service at 11 a.m. Morning Devotional at 9 a.m. Tuesday.
Choir Rehearsal, 8 p.m. Wednesday. Prayer meeting Friday at 7:30 p.m.

AUSTIN HIGHLIGHTS

Confusion Clouds Clerks, Customers On Sales Tax

AUSTIN — Storm clouds of protest boiled up quickly among consumers, clerks and merchants during the first week of application of Texas' almost-general sales tax.

Reaction was not so much against the cost of the new tax, but more to the principle, inconvenience and confusion. Natural resistance to any new levy always is evident. And there's certainly nothing "hidden" about a sales tax. Noticeable were strange new surpluses of pennies in pocket and purse. They were bothersome. Arguments also ensued over what is subject to tax, and what isn't.

Although State Comptroller Robert S. Calvert issued bulletin after bulletin explaining what is covered by the tax, it was evident that much time will have to pass before everyone concerned clearly understands the new law.

No one would venture a guess as to how many telephone calls were received by the Comptroller's office during the first week. The multitude of business-

men converging on the Capitol to seek information or lodge complaint gave Comptroller Calvert not a moment's peace.

Meanwhile at the other end of the line — the direct contact point for collection of the extra pennies — clerks, especially those in supermarkets, were equally harried. There had been so little time for them to bone up on the many exemptions and intricacies of the new way of taxing Texans.

Probably the most universal scheme to beat the tax emerged in coffee shops across the state. If the coffee tab for the group came to 25 cents or more, there was no sense in one person picking it up and having to pay an extra penny.

Chicken Prices Fixed?

Texas chicken eaters who have been enjoying their favorite fare at phenomenally low market prices this summer have been given something to think about by Atty. Gen. Will Wilson.

"I want to determine if there is an effort to price the Texas poultry producer out of busi-

ness," he said as he launched an investigation into the matter. "If our Texas broiler raisers are squeezed out of the market with below-cost prices, the ultimate result will be scarcity and sky-rocketing retail chicken prices."

Wilson said that since August, 1960, there has been a decline of some six cents per pound in the price paid broiler producers in Texas, to a low of 12 cents or less. He pointed out that 14 to 16 cents per pound is the usual cost of raising broilers.

The Attorney General is invoking a court of inquiry to investigate the possibility of anti-trust violations.

Drivers Slow Down

State Highway Department survey indicates a continued slow-down in average speed on Texas highways. This year the study indicated an average of 55.3 miles per hour for passenger cars clocked by hidden radar at 25 locations over the state. This compares with 55.9 MPH in 1960, and 56.2 MPH in 1959. Average speed for trucks was 50.1 MPH, compared with 51.2 MPH last year. Buses slowed down slightly from 60.7 MPH last year to 60.5 MPH in the recent survey.

Lieutenant Governor's Race Shaping

Many eyes of Texans are beginning to look in the direction of the Lieutenant Governor's office, vacated by Ben Ramsey's appointment as Railroad Commissioner.

One candidate, Republican O. W. Hayes of Temple has announced he definitely will be in the race. Other definite possibilities include House Speaker James A. Turman of Gobeer, Sen. Crawford Martin of Hillsboro, Sen. A. M. Alkin Jr. of Paris, Sen. Preston Smith of Lubbock, Sen. Bob Baker of Houston and Don Yarborough of Houston. Yarborough ran against Ramsey last time.

New Idea For Padre Island

Land Commissioner Jerry Sadler tossed a new idea into the breach of controversy over what should be done with the playland potential of beautiful Padre Island.

The beaches, he said, should be turned into a state park — not turned over to the Federal government for a National park as has been proposed. He said the proposed Federal project would take about 200,000 acres of submerged lands which already have yielded more than \$12,000,000 for the state's permanent school fund, and which have a potential of at least \$1,000,000,000 in oil and gas development.

"It is imperative that the School Land Board act immediately and wisely to set aside beaches as state recreational areas and affirm our intention to hold the full billion dollars of potential mineral wealth for our future school generations," Sadler said in a letter to Gov.



HOW'LL I GET OUT OF THIS MESS? wonders Hereford halfbacks Mack Cansler, (22) and Dennis Hodges. down are Hereford halfbacks Mack Cansler, (22) and Dennis Hodges. as he sweeps end in the third quarter of the Hereford-Brownfield game. Bringing him

Price Daniel

He requested appointment of a statewide committee to study feasibility of his proposal.

Institutional Work Week Out

More than 9,000 state hospital and special school employees, forced to work longer hours than other state workers for several years, got the break they had been waiting for when the Hospital Board invoked the 40-hour week throughout the system.

Legislature had given the board the option of hiring additional employees and reducing the 44-hour week to 40, or of retaining the longer work week and giving present employees pay raises. The money was provided to do it either way.

"This new work schedule will make it possible to retain and attract more qualified personnel," board chairman French Robertson of Abilene said.

Tougher Security for Gatesville

Recent serious trouble at the Gatesville State School for Boys has led to tighter security measures.

Dr. James Turman, Executive Director of the Texas Youth Council, reports that horses and jeeps will soon be placed in service for patrol purposes, and men will be equipped with walkie-talkies.

"We want to give evidence of authority," he said.

Although guards will not be armed, he pointed out that "every man knows he can use physical force to control his company." He also noted that many problems will be eliminated with completion next year of a maximum security unit to be known as Mountain View School, one and one-half miles from the Gatesville school. A double

fence with barbed wire on top will surround this unit.

"We are not dealing with Boy Scouts or Sunday School classes," said council member Robert W. Kneebone.

Automatic Tax Check Due

Internal Revenue Commissioner Mortimer M. Caplin, on a recent visit to Austin, dropped the hint that automation in the processing of income tax returns may ultimately eliminate spot-checks and permit scrutiny of every return in detail.

He said an automatic processing system soon will be put into service that will quickly spot individuals and business firms, failing to file returns, check mathematical accuracy and other data.

Center of the tax accounting system will be in Martinsburg, West Virginia, where a master file of business and individual taxpayers will be contained. Returns from district offices will be sent to nine regional centers where data will be magnetic-taped to be sent to the computer center for processing.

SHORT SNORTS

Watch out for "bootleg" oysters, warns the State Health Department. Traffic in these items is "troublesome and dangerous." Buy only those oysters known to be produced in Texas under State Health Department certification.

Twenty University of Texas scientists will be touring Texas junior and senior high schools

this year, giving lectures, demonstrations, guidance and serving as members of panel discussions.

Sharp decline in gambling stamps issued by the Federal government in Texas has been noted. Record shows Corpus Christi, 11; Galveston, 9; Houston, 7; Victoria, 7; San Antonio, 7; Austin, 2; Waco 1.

Two deaths due to bubonic plague were reported in a neighboring state during June and July. No cases have been reported in Texas since 1920, although State Health Department says the disease is widespread among extreme West Texas prairie dogs, mice, etc.

State's red ink amounts to \$72,000,000, according to State Treasurer Jesse James. Impact of resumed school payments will be offset somewhat by new sales taxes.

UT Ex - Students' Association will honor U. S. Navy Secretary John B. Connally with distinguished alumnus award in November. He will deliver the principal address at a November 10 banquet prior to homecoming activities.

CONSTANT VISITOR

NORFOLK, Va. — Patrolman Fred Childress is getting to be well known in Norfolk hospitals. He has been hospitalized for treatment three times in six months. Twice he was in automobile accidents and once he fell through a roof.

Legal Notice

U. S. Treasury Department Internal Revenue Service NOTICE OF PUBLIC AUCTION SALE

September 7, 1961

Pursuant to authority contained in Section 6331 of the Internal Revenue Code, the following described property has been seized for nonpayment of delinquent internal revenue taxes due Carl M & Mary Stapp from Rt. 4, Hereford, Texas Later: 711 Main, Hereford, Texas. The property will be sold in accordance with the provisions of Section 6335 of the Internal Revenue Code, and the regulations thereunder, at public auction on the 21 day of September, 1961, at 10 A.M., at the south door, Deaf Smith County Courthouse Hereford, Texas.

Description of property

The south 4.55 acres of Block 11, Welsh Addition to the town of Hereford, Texas, including that part of street abandoned lying west of the said portion of said Block 11 and being described by metes and bounds as follows:

Beginning at the southeast corner of said block 11, thence west with the south line of said block 1260 feet the southwest corner of said block at 1290 feet to a point, thence north to the center of said abandoned street 133.5 feet to a point, thence east parallel

PAGE THREE with the south line of said block, 1290 feet to a point in the east line of said block, thence south with said east line 133.5 feet to the place of beginning.

The fifteen acres of Block 11, Welsh addition to the Town of Hereford, Texas including that part of street abandoned lying west of said block 11, described by metes and bounds as follows:

Beginning at the northeast corner of said block 11, thence west with the north line of said block at 1260 feet the north west corner of said block, at 1290 feet to a point, thence south with the center of said abandoned street 506.5 feet to a point, thence east parallel with the south line of said block 1290 feet to a point in the east line of said block, thence north with said east line, 506.5 feet to the place of beginning.

Only the right, title, and interest of Carl M & Mary Stapp in and to the property will be offered for sale.

The terms of payment will be payment in full upon acceptance of the highest bid.

For further information contact J. Winston Hughes, Box 270, 14-14 W 8th, Amarillo, Texas. Telephone DRake 2-6516.

Ellis Campbell Jr. District Director of Internal Revenue By J. Winston Hughes Revenue officer.

T-364C

CHECK WITH

INSURANCE HEADQUARTERS

Because INSURANCE is our business, we spend much time preparing ourselves in order to do a thorough reliable job for you . . .

George McLean
Buddy Hutson

McLEAN - HUTSON

AGENCY

Phones: EM 4-0544 — EM 4-0054
EM 4-3410 127 W. THIRD



TELEPHONE TALK

by Gene Adkisson, Manager

TO EACH HER OWN "PRINCESS"

The ladies of Hereford seem to have taken to the "Princess" telephone as though it were designed just for them. And in many ways, I guess it was.

For instance, it's little, light and easy to handle. It's styled to add a smart touch to any room in the house. And it lights up at night when you lift the receiver. This makes it especially attractive and practical as a night phone next to the bed. The "Princess" is available in five beautiful colors to suit every lady's good taste.

To make the princesses in your home even happier, give them a Princess phone for their bedroom. To order, simply call the telephone business office or ask any telephone service man.

HEREFORD TELEPHONE "PIONEERS" OBSERVE 50TH ANNIVERSARY

This year marks the 50th anniversary of the Telephone Pioneers of America. Back in 1911 the Pioneers' organization was founded. Telephone people with at least 21 years service with the telephone company were members then as they are now.

Today, membership in the association is just as exclusive. But the Pioneers have grown into a nationwide organization devoted to three things — loyalty to the telephone industry, devotion to community welfare and Christian responsibility.

Here in Hereford we have four active Telephone Pioneers who have worked to bring you better telephone service through the years. Perhaps you know some or all of them.

Mrs. Marie Sears — Chief Operator-Traffic Dept.
Mrs. Ruby Daub — Assistant Chief Operator-Traffic Dept.
Mrs. Virginia Thomas — Operator-Traffic Dept.

Mr. R. L. Ethridge — Telephone Repeaterman-Plant
Telephone Pioneers are proud of their service over the years but take even greater pride in the group's service to the community.

BACK TO SCHOOL REMINDER

It's the responsibility of every one of us to drive safely the year 'round. But it's a good idea to be especially careful at this time of year, particularly around school neighborhoods.

During their vacations, our children here in Hereford may have been so busy playing and having a good time that they may have forgotten some of the safety rules about crossing at corners, waiting at stop signs or traffic lights and other precautions.

So, while the kids are getting the hang of safety rules again, let's all be extra careful when we drive.

Call by number. It's twice as fast.

SOUTHWESTERN BELL TELEPHONE COMPANY



the BEST way to BEAT HEAT is with year 'round

GAS air conditioning!

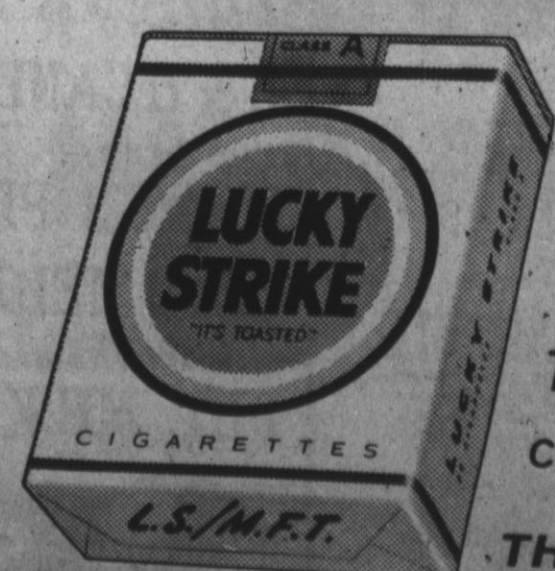
* Cools in summer for little more than the cost of winter heating. Available in two types — a compact, dual unit for pre-planned installations, and an add-on cooling unit for existing central heating systems.
* Call us tomorrow for all the facts.

LIVE MODERN . . . FOR LESS . . . WITH GAS!

Pioneer Natural Gas Company

REMEMBER HOW GREAT CIGARETTES USED TO TASTE? LUCKIES STILL DO

LUCKIES DON'T SKIMP



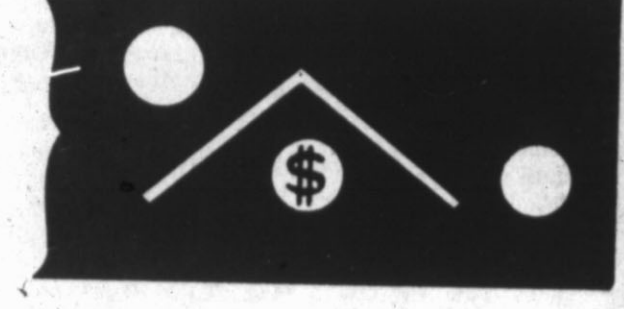
They're so round, so firm, so fully packed — so free and easy on the draw. They're fully packed with fine tobacco. They're firmer than any other regular cigarette. And Luckies smoke longer.

THAT'S WHY THEY TASTE SO GREAT.

Get Texas-size taste ★ Get Luckies today!

THE AMERICAN TOBACCO CO.

This means risk!




Above, the moon; Beneath the roof of your darkened place of business, your day's cash receipts; Out of the murk, the flashlight of a thief.

Ask about our service designed to help you avoid this risk:

This means SAFETY!

OUR NIGHT DEPOSITORY

THE FIRST NATIONAL BANK



REP. WALTER ROGERS WRITES

Partical Embargo On Trade With Cuba Not Successful

TO THE PEOPLE OF THE 18TH DISTRICT:
Last week I discussed pending investigations of trade policies concerning Red bloc countries in Europe. This week I want to discuss some problems that are very close to our shores and which I feel should be made known to the American people.

On January 3, 1961, this government severed diplomatic relations with the Castro regime in Cuba. For years the Cuban economy had been measurably subsidized because of an agreement under which this country was buying approximately 30 percent of our domestic sugar

needs. This purchase amounted to approximately three million tons of sugar per year from Cuba. At a price of \$100 per ton, this would mean that this country was spending over \$300 million a year for Cuban sugar. This Cuban sugar quota allocation had been withdrawn on July 6, 1960. This constituted a partial economic embargo. Subsequently, restrictions on exports to Cuba were laid down which prevented the shipment to Cuba of any goods unless classified as foodstuffs or medical supplies.

ported from Cuba goods in the amount of \$4,142,768. We exported to Cuba goods under the restrictions above referred to in the amount of \$338,791. Hence, you can see that our present policy, outside of the sugar embargo, is not hurting Castro in the least. In fact, he may not be hurting because of the sugar embargo, for the following reason: it will be remembered that the three million tons of sugar taken away from Cuba was reallocated to other foreign countries. A substantial amount went to Brazil, which is presently in the news. A substantial amount went to British Guiana and the Federation of West Indies, which is also in the news because of the recent election of a man alleged to be an extreme left winger. Other portions went to other Central and South American countries, many of whom are doing business with Castro.

Area Antelope Hunt Permits Being Issued

Texas Game and Fish Commission officials have announced that the annual antelope hunt in the Panhandle will be divided into two sections this year.

The first sections will be in Dallam, Hartley and Moore counties, plus Oldham county north of the Canadian River on Oct. 14, 15 and 16. The second section of the hunt will include Roberts, Hutchinson and Potter counties and Oldham County south of the Canadian River on Oct. 18, 19 and 20.

For the Panhandle area, there will be 425 buck permits issued. These permits are issued to landowners, who in turn issue them to hunters on their properties. These hunts are conducted under the supervision of the landowner, although the state game wardens and biologists will be present in the general areas for the study of hunting conditions and evaluations of hunter success.

However, between October, when these restrictions were invoked, and January 1, 1961, it appears that the United States imported from Cuba \$7.5 million worth of tobacco and manufactured tobacco products; \$5.3 million was imported in foodstuffs such as lobsters, fruits, vegetables, and so forth; and \$2.2 million worth of metals.

This means that although exports to Cuba other than foodstuffs and medical supplies were prohibited, imports from Cuba were not prohibited. The result was that Castro was obtaining American dollars with which he could purchase any American goods he wanted to buy from other countries.

How are we to know that the sugar imported into this country to replace that formerly acquired from Cuba is not in fact Cuban sugar transhipped through the other countries?

Between January and April 1, 1961, the United States imported \$3.8 million worth of foodstuffs, 6.7 million worth of tobacco, \$2.2 million worth of metals and manufactured metal products and so forth. In other words, Castro has continued to get American dollars.

The Congress is presently considering legislation which would prohibit the shipment in interstate commerce of any goods, wares, or merchandise imported from Cuba. It has been argued that the most effective action that could be taken would be a simple bar of any imports into this country from Cuba. This could be done by specific legislation, or it could be done by this government invoking the provisions of the Trading With the Enemy Act.

The record shows that between July 1, 1961, and August 1, 1961, the United States im-

ported into the United States in the first instance; that any importation of the goods into the United States will be in violation of the law; and that if any of the goods do come into the United States illegally; then a transportation of them within a State or across State lines will be in violation of the law.

WALTER ROGERS
18TH DISTRICT OF TEXAS
MEMBER OF CONGRESS

CHECKERS CASUALTY
MCALESTER, Okla. (AP) — A Scout leader George Clewlow suffered a sprained ankle while playing checkers at camp. His foot was elevated and went to "sleep." When he banged it on the floor to restore circulation, he twisted his ankle.

PENNIES' WORTH OF TROUBLE
TOLEDO, Ohio (AP) — A batch of thin pennies bought plenty of trouble for three Toledo men. Secret Service agents said Robert D. Miller, 21; his brother, Charles, 23, and Stanley Smith, 22, admitted using a grinding machine to file down pennies, which were used in dime-operated vending machines.

The matter is being studied now by a Committee of which I am a member, and you can rest assured that if I have my



CHEERING THE HEREFORD WHITEFACES to victory are the 1961-62 cheerleaders for Hereford High. All seniors at H.H.S., they are from left, Joyce Ann Johnson, Joyce West, Toni Parker, head cheerleader; Jan Reese, and Joy Story. Yelling for all the athletic events of Hereford High School, the cheerleaders were elected by the student body last spring. (Staff Photo)

The Hereford Brand, Hereford, Texas, Thurs., Sept. 7, 1961

ALL GIRLS
AKRON, Ohio (AP) — Machinist Frank Marchand's family included eight girls — seven daughters and a niece who came to live permanently about a year ago — when his wife had another baby. It was a girl.

Says Marchand: "A boy just isn't in the cards for us."

Says Mrs. Marchand: "Just think, I'll never have to worry about daughters — in — law."

FREE KODACOLOR PRINT
Discover the high quality and jet speed return of Color-Magic. Send Negative and receive

FREE JUMBO PRINT
Kodacolor, 8 exp. \$2.20, 12 exp. \$3.00
Kodachrome, 20 exp. \$1.00; 35mm \$1.00

Free mailer on request
COLOR-MAGIC OF ST. LOUIS
P.O. Box 2553 • St. Louis 14, Missouri



Phone EM 4-0455
for
• FAST • DEPENDABLE
SERVICE
BUTANE-PROPANE
PLAINS FERTILIZER CO.

way there will be no doubt but that the goods cannot be imported into the United States in the first instance; that any importation of the goods into the United States will be in violation of the law; and that if any of the goods do come into the United States illegally; then a transportation of them within a State or across State lines will be in violation of the law.

WALTER ROGERS
18TH DISTRICT OF TEXAS
MEMBER OF CONGRESS

MOONLIGHT SALE!



at...YOUR HEREFORD SAFEWAY
FRIDAY NIGHT FROM 8 P. M. 'till 10 P. M.

BRING THE FAMILY AND ENJOY AN EVENING OF FUN!

- COTTON CANDY!
- SNOW CONES!
- BALLOONS & CANDY!
- ICE COLD DRINKS!
- HOT COFFEE!
- FREE CARROUSEL

Be Sure To Get A Key And Try It In Our Treasure Chest You May Win A Valuable . . .

- FREE PRIZE!**
- Moonlight Specials!
- CAKE MIXES
Betty Crocker 3 14 Oz. \$1.00 Pkg.
 - MIRACLE WHIP SALAD DRESSING BY KRAFT 49¢ 32 OZ.
 - Tonights Best Meat Buy!
 - PORK SHOULDER ROAST PICNIC CUT LB. 27¢ only

LOOK! REAL **HOT DOGS** for 10¢

HEY! KIDS, SEE 'BO BO' THE CLOWN at Safeway's Moonlight Sale!

- REG. 43¢ - Save 4¢ LIPTON'S TEA 1/4 lb. Pkg. 39¢
- C & H CANE SUGAR 10 LB. BAG 98¢
- YELLOW CLING HUNT'S PEACHES 4 No. 2 1/2 Cans \$1
- GOLD MEDAL FLOUR 5 lb. Bag 39¢
- EVAPORATED CANNED MILK - Special Low Price PET MILK 3 Tall Cans 43¢
- MACARONI SKINNER'S 2 7 Oz. Pkgs. 23¢
- FAB DETERGET 10c Off GIANT 59¢
- SPECIAL PRICE MY-T-FINE PUDDING 3 PKGS. 25¢
- CHEESE FOOD - SPECIAL KRAFT VELVEETA 2 LB. PKG. 79¢
- MOONLIGHT SPECIAL COCA COLA 6 Bl. Ctn. 29¢
- PARTY PRIDE ICE CREAM 1/2 Gal. Cn. 59¢

SAFEWAY FRESH PRUNE PLUMS 1/2 BUSHEL CARTON \$2.95

WE RESERVE THE RIGHT TO LIMIT QUANTITIES

Big Savings Clean-Up

on sedans and wagons in '61's year-end

Rambler American Custom 4-Door Station Wagon

Trade Parade to Rambler

Rambler American Custom 2-Door Sedan

And Still They're Joining RAMBLER'S TRADE PARADE
(as all these did in just 12 months!)

164,183 Chevrolet, Ford, Plymouth Owners
82,814 Buick, Olds, Pontiac, Mercury, DeSoto, Dodge Owners
6,540 Cadillac, Chrysler, Lincoln Owners

Trade-in figures furnished by a leading automotive statistical company.

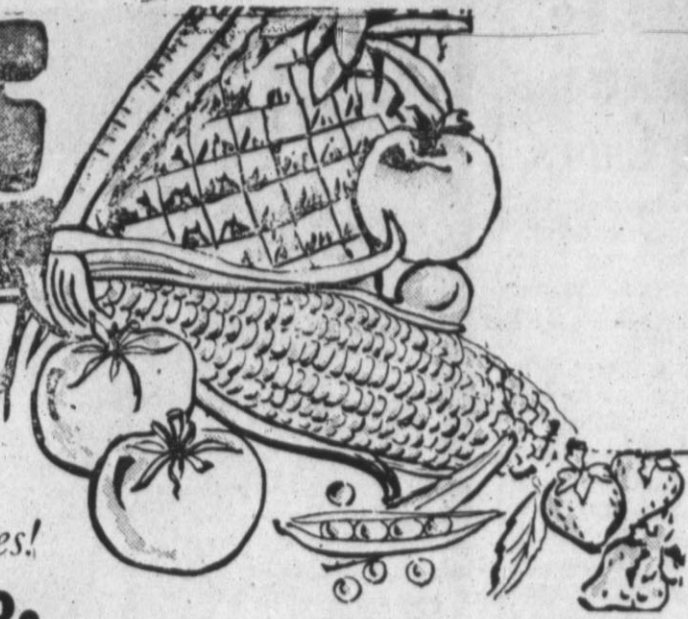
NOW BUY AND SAVE—while we've got 'em! Join the TRADE PARADE to '61 Ramblers—your opportunity for big year-end values! Get your wagon, sedan or convertible while the choice is high, wide, and handsome—and we'll allow you top dollar for your car. Come in—join the TRADE PARADE. Rambler Americans, Rambler Classics, and Ambassador V-8's—sedans, wagons, convertibles—are waiting to save you honest dollars if you act now!

AMERICA'S LOWEST PRICES
Make no mistake about it. Every Rambler American, model for model—convertible, sedan, or station wagon—is priced way below any other compact. And Rambler Classic models cost way less than comparable models in the old "low-price field."

RAMBLER—World Standard of Compact Car Excellence

KINSEY - OSBORN MOTORS, 142 N. MILES, HEREFORD

CANNING SALE



Prices in This Ad Good Through Sept. 9th At Your Safeway Store in

HEREFORD

HOME CANNING HEADQUARTERS

Kerr Jars and Lids

Pint Jars Wide Mouth Save 15c Doz. **\$1.19**

Quart Jars Wide Mouth Save 14c Doz. **\$1.39**

Kerr Lids Regular Save 5c **2 Doz. 29c**

Kerr Reg. Pint

JARS

Save 17c

Doz. **\$1.00**

Kerr Reg. Quart

JARS

Save 15c

Doz. **\$1.19**

Save On Kordite Freezer Supplies!

Freezer Tape White Tape 90' Roll **98c**

Quart Bags Freezer Bags 30-Ct. Pkg. **69c**

Quart Bags Freezer Bags 50-Ct. Pkg. **98c**

Pint Bags Freezer Bags 75-Ct. Pkg. **98c**

Pint Bags Freezer Bags 30-Ct. Pkg. **49c**

Quart Containers Plastic Pkg. of 2 Pkg. **79c**

Pint Containers Plastic Pkg. of 3 Pkg. **79c**

C&H PURE CANE

SUGAR 98c
10 POUND BAG

Safeway Meats . . . Your Best Buy!

PICNICS

29c

Mohawk Brand Sugar Cured 6 to 8 Pound Average Low Price!



Chuck Roast Top Grades Mature Beef lb. **45c**
Chunk Bologna 1 1/2 to 2 lb. Piece lb. **29c**
Ground Beef 100% Pure Ground Beef 3 lbs. **\$1**

FRANKFURTERS

Swift's Premium Skinless Franks 12-oz. Pkg. **39c**

Save On These Specials At Safeway!

Grade 'A' Eggs Breakfast Gems Medium Size Doz. **39c**
Pillsbury Donuts Save 4c 10-oz. Pkg. **29c**
Frozen Rolls Mrs. Wright's Save 6c 24-oz. Pkg. **19c**
MEXICAN DINNERS PATIO — 16 OZ. 6-oz. Pie **39c**
Lucerne Dry Milk Save Now! 8-Qt. Pkg. **69c**
Eagle Brand Milk Save 4c 15-oz. Can **29c**

PIEDMONT White VINEGAR Gal. Jug **59c**

PIEDMONT Pure Cider VINEGAR Gal. Jug **79c**

FAB DETERGENT 10c Off Label Giant Pkg. **59c**

HARVEST BLOSSOM FLOUR 25 Lb. BAG **\$1.59**

BRAND NEW 16 Magnificent Volumes

THE GOLDEN TREASURY OF KNOWLEDGE

Book One Only **49c**

All Other Volumes ea. **99c**

PEACHES

Colorado Elberta—Orchard-Fresh For Canning, Freezing or Eating Fresh

2 Pounds **25c** or **\$3.49** Per Bushel



FRESH PRUNE PLUMS

Idaho Orchard—Fresh—For Canning! 2 lbs. **25c** 1/4 Bushel Carton **2.95**

AVOCADOS California Hass Variety Buttery Smooth Flavor Ea. **23c**
POTATOES All Purpose Red Potatoes 10-lb. Bag **35c**

We Reserve The Right To Limit Quantities



Pinto Beans Big Chief 4 lb. Pkg. **49c**
Skinner's Macaroni or Spaghetti 2 7-oz. Pkgs. **23c**
Liquid Bleach White Magic 1/2-Gal. Jug. **29c**
Preserves Garden Club Strawberry 18-oz. Jar **45c**
Potato Chips Morton's Pkg. **39c**

Your Money's Worth More At Safeway!

PURE LARD Wright's 3 Lb. Can **39c**

DETERGENT White Magic Save 10c Giant Pkg. **49c**

FRESH COFFEE Edwards All Grinds Save 6c lb. Can **59c**

MARGARINE Coldbrook Colored Save 9c 2 1-lb. Ctns. **29c**

Lava Soap 2 Lg. Bars 25c	Kirk's Soap 2 Lg. Bars 21c	Ivory Soap 2 Small Bars 15c	Ivory Soap 2 Med. Bars 21c
Chunk Tuna Star-Kist Light Meat 6 1/2-oz. can 33c	Camay Soap 2 Bath Bars 31c	Camay Soap 2 Reg. Bars 23c	Ivory Soap Large Bar 17c



Jan McNeill

Jan McNeill To Give Exhibitions At Sunset Lanes

Professional bowler Jan McNeill will be a feature attraction Friday and Saturday, Sept. 8 and 9, when Sunset Lanes has its grand opening of a larger bowling establishment.

Sunset Lanes has just finished doubling its size — from eight lanes to 16 — remodeled its spectator area and added a complete restaurant service.

Miss McNeill first got her bowling start in her hometown of Fort Smith, Ark., where she bowled for three years. Termed "a natural," she was Single's Champion there for two years and was named All Events Champion for one year. She won her first tournament title after only three months of bowling.

While in Hereford, Miss McNeill will be busy with bowling exhibitions and instructions.

Upon moving to Dallas in 1956, she gave up bowling for a couple of years, but returned to the lanes in 1958.

Since that time she has won the Tex-O-Falls Invitational Tournament in Wichita Falls, has teamed with Robbie Frey for the Dallas Ladies Doubles crown, has bowled a perfect 300 games in open play and has been selected the 1960 All-Star by bowling fans.

She currently carries an average above 180 and has a lifetime average of 175. Her highest series for three games is 682, an average of 227.6 per game.

VISIT MOTHER

Mr. and Mrs. Donnie Gaetz have returned to their home in Wichita Falls after a weekend visit in the home of his mother, Mrs. John Gaetz.

Michigan is the 33rd state to legalize blood tests for drunken driving.

Dr. Milton C. Adams

OPTOMETRIST

Office Hours

8:30 5:00

335 Miles Avenue

Phone EM 4-2255

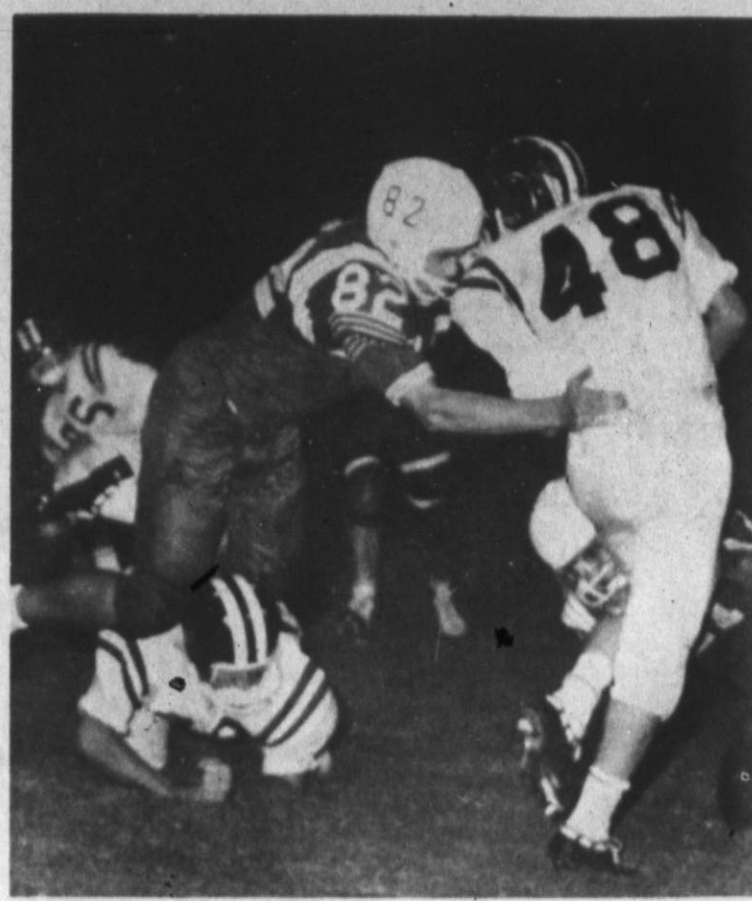
Hereford, Texas

WE SELL and INSTALL

- CARPET
- FELT BASE LINOLEUM
- CABINET TOPS
- INLAID LINOLEUM
- TILE OF ALL CLASSES



E. B. Black Co.
Factory Trained Mechanics
Since 1901



PREPARING FOR A SHOCK, Hereford halfback Dennis Hodges came to an end of his rope on a short run in the second quarter of the Hereford-Brownfield football contest. Brownfield end Jim Childress is moving in for the tackle. (Staff Photo)

She was runner-up in the Texas Bowling Proprietors Association All-Star tourney. A tall, attractive redhead, Jan says bowling is both her career and her main hobby.

LIBRARY BENEFACTOR

WAYNESVILLE, Ohio — Dr. Mary L. Cook, 92 and one of the oldest living women physicians in the nation, says her greatest thrill has been: "Watching little children march into the library and take out books."

This town of about 1,200 has one of the best public libraries in Ohio because of her efforts, residents claim. She organized the first library board in 1917, badgered township officials into allocating tax money to get a library started, promoted fundraising projects for books and headed the board for 43 years.

In gratitude, the board has decided to give the library a new name: The Mary L. Cook Public Library. Says Dr. Mary: "I was flabbergasted. I don't think they should do it."

CROWDED BEACHES

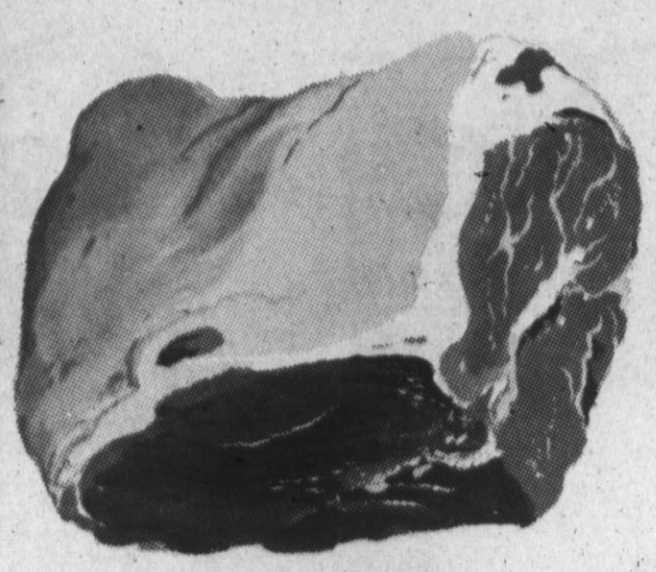
HONOLULU — Oahu island beaches are pressed for space, according to a survey. And unless there is rapid expansion, Hawaii's tourist trade may be the loser.

A private survey warns that when beaches become overcrowded, "visitors begin to go elsewhere to spend their vacations." One solution, the study suggests, might be establishment of controls on beach use at peak periods, particularly in the Waikiki area.

The survey of Oahu beaches was conducted in conjunction with a proposal to expand beach area at Ala Moana Park on the fringe of Waikiki.

The report notes that suitable beach use allows 150 square feet of space per person. Cutting that by 50 feet creates crowded conditions, it said. The survey shows that Waikiki Beach averages 44 square feet per person.

The grizzly bear has poor eyesight. To find food, it depends on a highly sensitive nose.



PORK ROAST

Nice And Lean

lb **39¢**

HAMS

Swiss Cooked Boneless

5 Lb. Can **\$3.95**

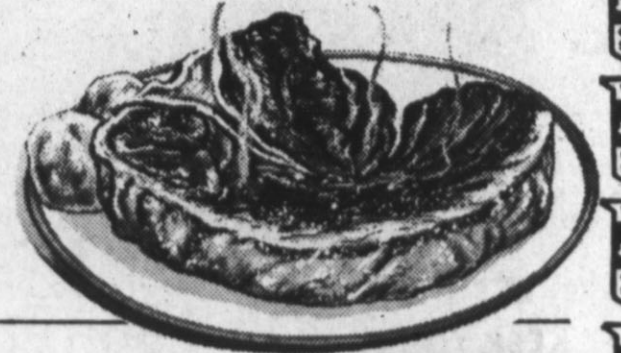
CURED PICNICS

lb. **35¢**

T-BONES

USDA Good -- Lb.

98¢



OLEO

Parkay 1 Lb. --

29¢

FOOD KING

SHORTENING

3 lbs. **59¢**

12'S

KOTEX

2 FOR **69¢**

SHURFINE

FLOUR

10 lb. Bag **69¢**

SHURFINE

INSTANT COFFEE

5 oz. **59¢**

SUNSHINE

FIG BARS

1 lb. **35¢**

LIPTON'S

TEA

¼ LB. **39¢**

BLUE PLATE BREADED

FROZEN SHRIMP

10 oz. **49¢**

DUNCAN HINES EARLY AMERICAN

CAKE MIX

PKG. **35¢**

SHURFRESH CANNED

BISCUITS

3 FOR **25¢**

SWIFT HONEY CUP

MELLORINE

½ GAL. **39¢**

COFFEE

Folger's Lb. --

65¢

COKES

6 For

29¢

Reg. Size — Plus Def

IVORY PERSONAL
4 for **29¢**

D U Z
Reg. Size
35¢

LAVA SOAP

Reg. Size

11¢

Camay Soap

Reg. Size

3 for **31¢**

ZEST

Reg. Size

21¢

JOY

Giant

69¢

OXYDOL

Reg. Size

35¢

T I D E

Reg. Size

35¢

SPIC & SPAN

Reg. Size

31¢

MR. CLEAN

Reg. Size

39¢

IDAHO ITALIAN

PRUNE PLUMS

2 Lbs.

23¢

Calif. Vine Ripened

TOMATOES

lb. **19¢**



Golden Ripe **BANANAS**

2 lbs. **25¢**

25¢



Early American Style Rugs
at special Anthony low prices

"The Williamsburg" OVAL RUGS

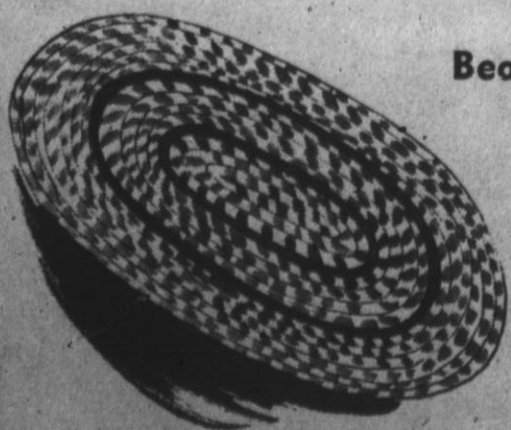
ROOM SIZE OVALS

Full Size 102 x 138

29⁹⁵

- BROWN • RED • BLUE
- CHARCOAL • GREEN

A beautifully basic addition to your period furnishings. Reversible for longer beauty and wear. Handsome, durable construction.



Beauty...
Charm...

and enviable luxury for your living room, dining room, bed room.

20" x 32" OVAL 1.49

26" x 44" OVAL 2.99

42" x 66" OVAL 5.90

66" x 102" OVAL 14.95

Use Anthony's Easy Lay-Away Plan

A small deposit will hold your selection. Never any extra charges at Anthony's.

TAYLOR & SONS FOODS

LOW, LOW EVERYDAY SHELF PRICES
PLUS S & H GREEN STAMPS



TWIRLERS for the 1961 Hereford High School Big Domino Band are from left, Miss Noland and Miss Holt are juniors. Head twirler for the season is Jerre Bea Noland. Miss Boston is a sophomore, while

(Staff-Photo)

CHURCH...

(Continued from page 2)

Immanuel Lutheran

Park and Avenue B.
Sunday School 9:30 a.m.
Worship Service 10:30 a.m.
"Call to Worship" over KPAN (860 kc) at 9:15 a.m. Sunday.
Lutheran Hour over KPAN at 1:15 p.m. on Sunday.
A most cordial welcome to all.

St. Anthony's

Harrison Highway at 25 Mile Ave.
Father Angelus, Pastor
Sunday Masses at 6:30, 8 and 10 a.m.
Sunday evening mass at 8 p.m., Daily mass at 6:30 a.m. and 7:30 a.m.
Confessions are Saturday afternoon from 4 p.m. to 5 p.m. and Sunday evening from 8 p.m. to 9 p.m.
Mass Wednesday evening at 8:30 p.m.

First Christian

West Park Avenue
Rev. Gilbert Davis Jr., Pastor
Sunday School is held at 9:30 a.m. Worship service will begin at 10:50 a.m.
Chil-Rho and CYF meets at 6 p.m. Sundays and vesper services are at 7 p.m.
Functional Departments first Wednesday at 8 p.m.
General Church Board, second Wednesday at 8 p.m.

San Pablo Iglesia Metodista

223 Kibbe Street
Rev. Vicente T. Moreno, Pastor
Los Servicios de nuestra nueva Iglesia. Seran de la Siguiente manera los Domingos y los dias de la semana. Escuela Dominical, a las 10 a.m.; Servicio de Adoracion, a las 11 a.m.; Domingo en la noche Predicacion 7 p.m.; Los jueves servicion de oracion 7 p.m.

Avenue Baptist Church

Rev. Clarence F. Powell, Pastor
Sunday School is held at 9:45 a.m.; Worship Service at 11 a.m.; Training Union, 6 p.m.; Evening Worship Service, 7 p.m. Wednesday Evening Prayer Service, 7 p.m.

Apostolic Pentecostal Church

Myrtle and Blevins
Rev. Wilbur E. King, Pastor
Sunday School begins at 10 a.m. Morning Worship starts at 11 a.m. Evangelistic services are held Sunday evening at 8 p.m.
Wednesday evening Bible study is at 8 p.m.
Friday evening at 8 p.m. the young people meet.

Park Ave. Church Of Christ

On Harrison Highway
Worship Services 10:30 a.m. Sunday; mid-week services 8 p.m. Wednesday.

Grace Gospel Church

Thirteenth and Avenue K
Rev. H. V. Fields, Pastor
Sunday School is at 9:45 a.m. and worship services convene at 11 a.m.
Bible Study is held each Sunday at 7 p.m. and preaching service at 8 p.m.
Wednesday prayer meeting held at 8 p.m.

Thompson Memorial Mexican Baptist Mission

Norton and Texas
Rev. James E. Timmons, Orden De Cultos
Domingo Por La Manana, 10 a.m.; Escuela Dominical, 11 a.m.; Culto De Adoracion, Domingo Por La Noche, 7 p.m.; Union De Preparacion, 8 p.m.; Culto Evangelistico, Miercoles Por La Noche, Culto De Oracion Y Estudio Biblico.

Temple Baptist Church

Forrest St. and Ave. K
Rev. Arthur Brewer, Pastor
Sunday School begins at 9:45 a.m. and Training Union is in the evening at 7 p.m. Worship services are at 10:50 a.m. and 8 p.m.
Wednesday prayer service

will be held at 8:30 p.m. The teachers and officers meeting will be held at 8 p.m. Wednesday.
Mid-week prayer services are on Wednesday at 8 p.m. At 8:30 p.m., there will be choir practice.

St. Thomas Episcopal

Harrison Highway
Rev. Joel C. Treadwell, Vicar
Vicariate, 416 Star Street
Sunday: Holy Communion, 8 a.m.; Church School, 9:45 a.m. Morning Prayer and Sermon, 11 a.m.; Holy Communion the first Sunday of each month at 11 a.m.
Wednesday: Holy Communion, 10 a.m.
Women's Division is held the first and third Tuesday of each month at 3 p.m. in homes.
The Bishop's Committee meets the first Sunday of each month at 2 p.m. in Mission Hall. Choir Rehearsal at 7:30 p.m. each Wednesday.

Assembly Of God

Union and Ave. G.
Rev. V. W. Marcontell, Pastor
Sunday School is held at 9:45 a.m. Morning worship service convenes at 11 a.m.
C. A. service begins at 7 p.m. Junior C. A.'s meet at 6 p.m. and worship service begins at 8 p.m. each Sunday evening.
Prayer meeting and Bible Study will be held Wednesday at 8 p.m.

CHECK TROUBLES

DAYTON, Ohio — Forged checks apparently are easier to cash than those backed by Uncle Sam. A deputy U. S. marshal tells this story:
"A girl forged numerous checks and cashed them successfully. She was caught, put on probation in the custody of her parents. She was given a ticket to California and a \$40 check for food and incidentals on the train.
"I accompanied her to the station and on the way she asked to stop in a supermarket and get the check cashed. They wouldn't cash the government check until I established my identification and hers and verified the check's authenticity."

Beauty At Home

Q. My collars and the dark suits of my dates always seem to bear traces of my makeup, no matter how carefully I apply it. How can I stop leaving my mark this way?

A. Try moistening some cotton with ice water or astringent, and patting this over your face after your makeup job has been allowed to set for a few minutes.

Q. Please, what can I do about the extra chin I've acquired the last few months?

A. Best weapon against double chin is, of course, the habit of always keeping head and chin high. Massage is the best physical antidote. The roll of fat under the chin is produced by fat that is deposited just outside

the tissues enclosing the muscles. Attack these large deposits by pinching them gently between thumb and fingers. Then, with the backs of the fingers, draw the skin upward and backward toward the ears.

Sea lilies are really animals, but they look like the plant for which they are named.

A. O. THOMPSON ABSTRACT CO.

Mr. & Mrs. A. J. Schroeter, Mgrs.
Courthouse
P. O. Box 73
Phone EM 4-1504
Free City maps showing blocks.

How Much Could You Lose...

and still continue a healthy prosperous business?



Could a "fall", "injury", "food poisoning", "cut" or other mishap on your place of business mean total set-back to you. Protect yourself through adequate LIABILITY INSURANCE.



JNO. H. PATTON
MARVIN COFFEY
BILL PATTON
PLAINS INS. AGENCY
SINCE 1926
213 MAIN EM 4-1150

LET US KEEP YOUR CAR LOOKING AND RUNNING LIKE NEW!



There's no better way to keep your car looking like new than to have it washed and waxed regularly. And, there is nothing quite like our professional results. See the difference!

HALE'S GULF

Corner 385 Hiway and Park Ave.
Phone EM 4-0010

Judy Crume Has Japanese Party

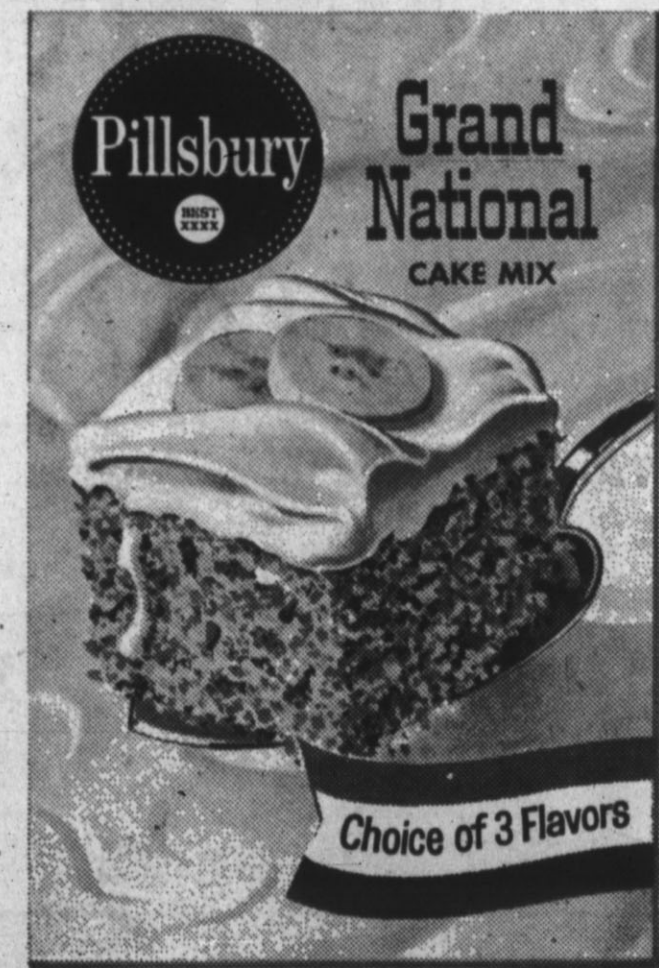
Miss Judy Crume entertained Monday night with a Japanese party while working for the Torchbearer rank in citizenship for Campfire Girls.
The theme was holidays abroad and she concentrated on a Japanese festival of dolls. The guests all came in costume. Present were Helen Davis, Barbara Langley, Linda London, Nancy Boyer, Sharon Buckalew and Judy Crume.
Judy attended camp this summer at Ceta Glen, where she was assistant to the counselor.

IN RED RIVER

Mr. and Mrs. Vance Crume and Judy spent the Labor Day weekend in Red River, N. M. They reported that most of the tourists left earlier than planned because of a heavy snow. The Crumes left there Sunday afternoon after snow had fallen all day.

Have you read the Classifieds?

Get your free package of Grand National Cake Mix with mail-in certificate inside 5 or 10-lb. sacks of Pillsbury's BEST Flour



Why the free cake mix? To introduce you to the great new mixes that began with Pillsbury's BEST Flour at the Grand National Bake-Off!

There's Banana Nut, filled with ripe banana flavor and chopped nuts. Chocolate Nut, crunchy with fresh-shelled nuts. And Date Nut, chewy with chunks of sun-ripened dates and nuts.

To get your free cake mix, mail in the certificate from specially marked 5 or 10-lb. sacks of Pillsbury's BEST Flour. We'll send you a coupon good for a free Grand National Cake Mix... your flavor choice. So get the flour that made cake mixes this good come true in the first place... Pillsbury's BEST!

Free Cake Mix in 25-lb. sacks, too!
Free Grand National Banana Nut Cake Mix is packed right inside!

PRE-SIFTED, YES! Pillsbury's BEST will give you the best results whether you sift or not.

...and because only the best will do: Pillsbury's BEST Flour

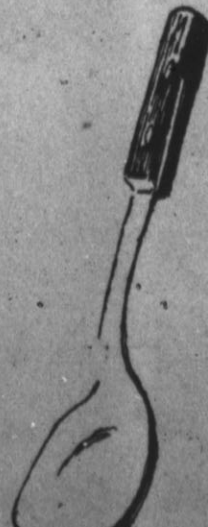


Grand Opening
HIWAY 60 TRUCK STOP
WEST ON HIGHWAY 60 — HEREFORD — EM 4-2611
SATURDAY, SEPT. 9TH

FREE COLD DRINKS FOR EVERYONE!!
YOUR CHOICE
ICE COLD COCA-COLA OR BORDEN'S CHOCOLATE MILK

ALSO FREE!
A \$2.00 VALUE STAINLESS STEEL
Rose Sandalwood Handle

Ice Cream Scoop
with every fill-up of 8 gallons or more of Phillips 66 Gas



HEY, KIDS!

SEE **BOZO THE CLOWN** for FREE BALLONS and BUBBLE GUM



O. R. SANDERS, DEALER

YOU'RE INVITED

TO OUR

GRAND OPENING

**SATURDAY,
SEPT. 9th**

FREE DONUTS & COFFEE SATURDAY
ICE CREAM FOR THE KIDDIES

Welcome To
SUNSET GRILL
CALL EM 4-0211 FOR ORDERS TO GO

ALA CARTE

MEDIUM T-BONE 14 Oz.	\$2.50
MEDIUM CLUB STEAK 10 Oz.	\$2.50
1/2 SOUTHERN FRIED CHICKEN WITH CREAM GRAVY	\$1.40
1/2 SOUTHERN FRIED CHICKEN (All White)	\$1.50
CHICKEN FRIED STEAK WITH CREAM GRAVY	\$1.40
BREADED VEAL CUTLET WITH CREAM GRAVY	\$1.40
HAMBURGER STEAK WITH CREAM GRAVY	\$1.40
2 GRILLED PORK CHOPS WITH CREAM GRAVY	\$1.40
VIRGINIA HAM STEAK WITH PINEAPPLE RING	\$1.75

SERVED WITH INDIVIDUAL SALAD. CHOICE OF DRESSING, FRENCH FRIED POTATOES, THICK FRENCH BREAD AND HONEY

SEA FOODS

1/2 DOZEN FRIED JUMBO SHRIMP WITH TARTAR OR COCKTAIL SAUCE	\$1.40
1 DOZEN FRIED JUMBO SHRIMP WITH TARTAR OR COCKTAIL SAUCE	\$2.15

SERVED WITH INDIVIDUAL SALAD. CHOICE OF DRESSING, FRENCH FRIED POTATOES, THICK FRENCH BREAD AND HONEY

DESSERTS

HOMEMADE PIE	.20c
ICE CREAM—1 DIP	.05c
SHERBET—1 DIP	.05c

CRISP SALADS COCKTAILS

AND ALL KINDS OF
**SANDWICHES &
SOFT DRINKS**

Emmett And Dell Sherman

FREE DOOR PRIZES

**BOWLING BALL
BOWLING BAG
BOWLING SHOES
FREE GAMES**

SUNSET LANES

**Has Been Completely Remodeled
And Is Now TWICE AS LARGE**

Featuring 16 Gorgeous Lanes



Carol Christensen, the AMF Bowling Girl

Complete With AMF Pinspotters!

In order to bring the people of the Hereford territory one of the finest bowling alleys in the Southwest, we have doubled the size of Sunset Lanes, adding eight new alleys and a complete grill section. NOW . . . you can come out and start bowling without delay and, better still, you will be bowling on some of the finest lanes and using equipment second to none in the Panhandle.

**None Finer - Come Out
And Join the Fun!**

WITH THESE NEW LANES, WE CAN OFFER YOU

OPEN BOWLING

AT ALL TIMES - - COME ON
OUT AND JOIN THE FUN!

**Bowling Leagues
And Teams Are Now
Being Formed**

Call EM 4-1560 FOR DETAILS

In Person..



**FRIDAY &
SATURDAY**

JAN McNEILL
CHAMPIONSHIP BOWLER
Will Hold Clinics
And Appear In
Exhibitions At
SUNSET LANES

2 P.M. Friday — Bowling Clinic
8 P.M. Friday — Bowling Exhibition
10 A.M. Saturday — Special Clinic
For Students and Junior Bowlers
2 P.M. Saturday — Bowling Clinic
8 P.M. Saturday — Exhibition

For Bowling at its Best

BOWL WHERE YOU SEE THE



SUNSET LANES

Just North of Park Ave. Intersection On Hiway 385