

WEATHER

Table with 3 columns: Day, Mo. High, Low. Rows for Sunday, Monday, Tuesday, Wednesday.

Moisture for July: 1.71
Moisture for year: 9.65
Moisture last year: 14.87

The Hereford Brand

18 Pages

Published Every Thursday

Our Slogan: "More People — More Farms"

Fifty-Eight Years of Service SINCE 1901

Hereford, Texas, Thursday, July 16, 1959

Price 10c Per Copy

Around Town

After some confusion, discussion and such, the Harvest Festival Committee peacefully agreed to change the Festival Barbecue to Dameron Park...

If it keeps on raining every night around here, we're going to see about raising some rice. That seems to be the next logical step in diversification...

A representative of Harbin Decorating Company is in Hereford this week, contacting merchants for the Harvest Festival banners...

Services Slated For Mrs. Layman

Funeral services for Mrs. Ethel Decker Layman, 50, will be conducted Thursday afternoon at 2 p.m. in the Avenue Baptist Church of Hereford...

Burial will be in West Park Cemetery under direction of Kreig-Marum Funeral Home. Pallbearers will be Billy Hudson, Kenneth Brock, D. C. Martin, Bill Amrey, Errel Brashear, Tom Draper, Coleman Wright and Dick Hagar.

Mrs. Layman was pronounced dead on arrival at Deaf Smith County Hospital about 7:30 a.m. Tuesday. She had become ill a few minutes after arriving for an adult swimming class at the Hereford Municipal Pool...

She was born Feb. 19, 1909, in Castro County, near Hereford, and had been a life-long resident of this area. At the time (Continued on page 2)

DWI, Theft Cases Decided

A Hereford man charged with driving while intoxicated, first offense, and a Brownwood man charged with theft under \$50 entered guilty pleas in County Court Tuesday afternoon and were assessed fines and jail sentences.

Juan Cantu, 25, of Hereford was charged with driving while intoxicated after his arrest by city police Sunday in the 100 block of E. Third. His bond was set at \$1,000, pending trial. Arrest was made by Patrolman Ken Morris.

Cantu was fined \$75 and court costs and sentenced to 15 days in Deaf Smith County Jail. Sam Teague, 52, of Brownwood was sentenced to 30 days in the County Jail and assessed court costs after pleading guilty to theft under \$50.

City police arrested Teague in Hereford Saturday, after C. E. Anthony Co., 225 N. Main, and Dub's Man's Shop, 303 N. Main, reported articles of clothing (Continued on page 2)



SILHOUETTED against the sky, an electric company serviceman installs an overhead traffic light at the intersection of Highway 60 and U. S. 385 Tuesday. Included in installation were four post-mounted two-way signals and four overhead signals. Posts were installed early in May. (Staff Photo)

NO 'CUSHION'

Trustees Reject Balanced Budget

A balanced budget which did not provide enough "cushion" for a million-dollar operation was turned down by trustees of the Hereford Rural High School District during their Tuesday night meeting.

After more than six weeks of work, the board finally was presented with a budget for the 1959-60 school year which showed less expenditure than income. However the net margin on the budget was about \$5,000.

Cardinals Lead LL All-Star Squad With Six

Announcement of the All-Star team climaxed the Little League season finale Saturday night during a heavy drizzle. Cardinals led the All-Star listing with six players, while the Yankees earned five spots.

Cardinals named to the post-season play-off team were Steve Coneway, Lynn Cook, Frank Cain, Mike Ranspot, Ed Mims and Gary Stagner. Yankees representing their team include S. D. Balze, Steve Hodges, Charlie Moreno, Robert Strange and Robby Lemons.

Two Dodgers, Lynn Warren and Iley Barton, and one Giant, (Continued On Page 2)

Timmons Construction Gets Courthouse And Jail Jobs

\$354,034 Total Work Contracts

Timmons Construction Company of Amarillo was awarded the general contract Wednesday night for construction of a new county jail and renovation of the courthouse.

Deaf Smith County Commissioners split two-two on the voting with County Judge Homer E. Henslee casting the deciding vote in favor of the successful bidder.

Timmons Construction submitted the low bid of \$282,800 for the complete job. The Southern Steel Company was awarded the contract for supplying and installing the steel jail equipment. Southern's bid was \$71,234.

The total bid for the combination job was \$354,034, as the commission accepted two small alternates asked of the general contract bidders.

Hereford Riders Capture Honors

Hereford Riders Club and its newly-affiliated Junior Riders teamed to win honors in practically every contest in the District II of American Association of Sheriffs' Poses and Riding Clubs competition in Amarillo Sunday.

The playday contests were held at the Will Rogers Range Riders Arena west of Amarillo. The Hereford team collected 23 points to capture trophy for the club receiving the most points. Other clubs and overall points included Amarillo Will Rogers Rangers, 12 points, Dalhart XIT Rangers, 10 points, Fritch Saddle Club, 10 points, White Deer Roping Club, four points, McLean Riding Club, three points, and Castro County Sheriff's Posse, two points.

Clifford Johnson of Hereford was high individual in horseback competition with eight points. Hereford also took six counters to collect high point team honors. (Continued On Page 2)

Truck Driver's Body Discovered

A 39-year-old Atmore, Ala., truck driver was found dead in a parked semi-truck trailer Wednesday evening southwest of the Highway 60 - U. S. 385 intersection.

Found dead at the rear of the empty trailer was A. R. Melton, an independent trucker from Atmore. His truck was one of three in a convoy which was to have been loaded with potatoes and onions and transported to Alabama.

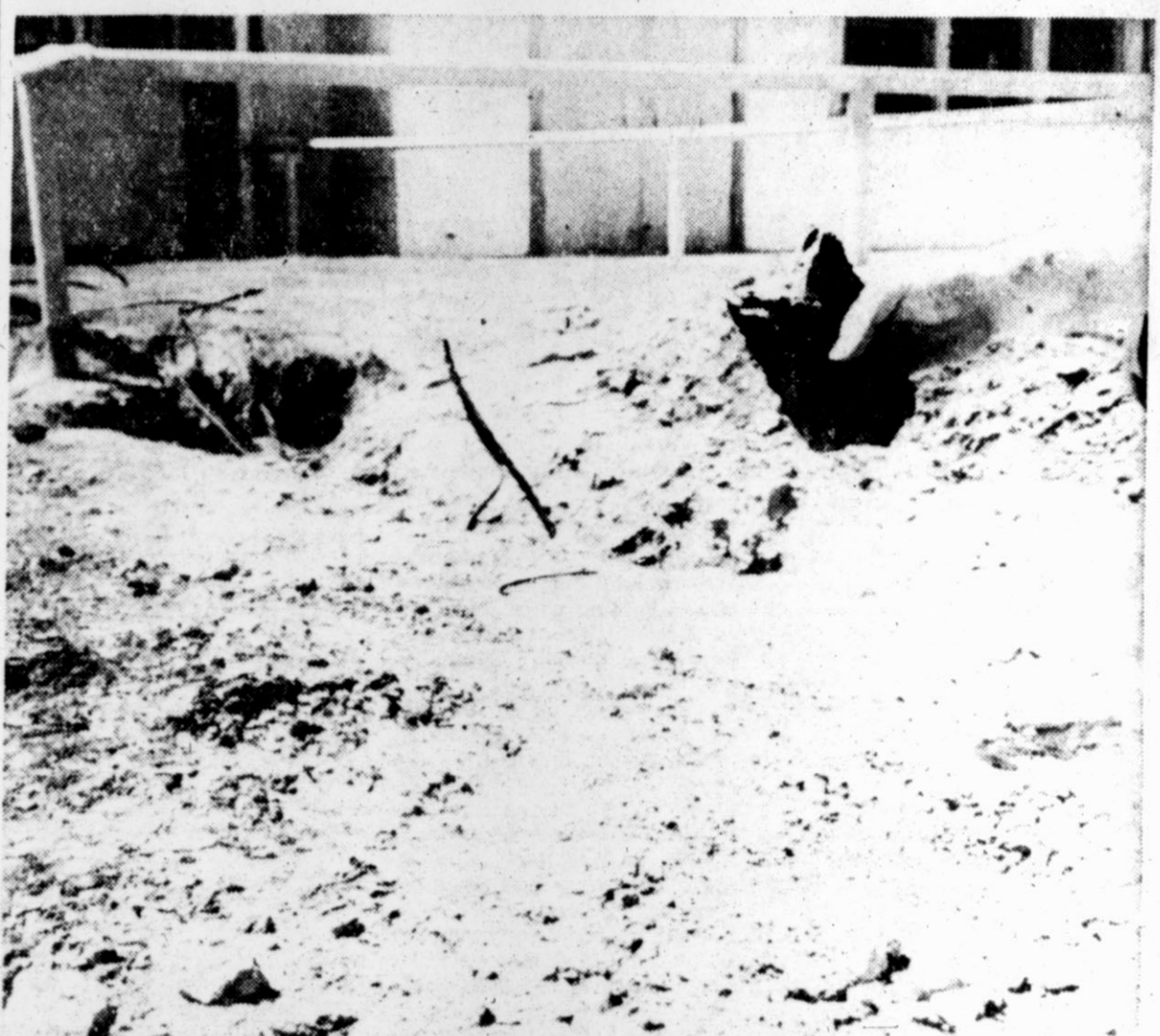
Melton's body was found by (Continued on page 2)

County Approves Pipeline Route

Deaf Smith County Commissioners Monday gave permission for a 24-inch natural gas pipeline to cross county roads and right-of-way.

Two representatives of Transwestern Pipeline Company appeared before the Commission to discuss certain aspects of the pipeline, which will enter the county just south of Dawn and leave it just south of Hereford.

Total distance inside the county is an estimated 17.5 miles. The line will originate in the Panhandle field, with gathering lines from northeast Texas and the Oklahoma panhandle. Another 24 inch line will originate in West Texas. The two lines will form a Y at Roswell, N.M., and continue to Needles, Calif., as a 30 inch line. (Continued on page 2)



LIGHTNING FUSED four separate insulated underground cables 20 feet south of the Tower Drive-In Theatre concession stand at about 6:30 p.m. Monday, cancelling the scheduled movie for the night. A 10-foot strip of cable running from the main switch box under the screen to the concession stand and projection booth a foot underground was fused together. Shown above is a chunk of rock, soil, copper conductor and insulation which was baked together by the bolt. Damage was estimated at \$75 to \$100. (Staff Photo)

VOTE JULY 23

Set Committees, Polling Places On Wheat Controls

POLLING stations and referendum committees were announced this week for the July 23 wheat referendum, when Deaf Smith County wheat growers decide the type of marketing control program for next year's crop of wheat. Eligible voters and their wives from four community classifications will cast ballots at five polling places, according to Faust Collier, county Agricultural Stabilization and Conservation office manager.

Polling places will be set up in the County Treasurer's office and Commissioners' Courtroom in the county courthouse, Walcott Schoolhouse, Sims Community (Continued on page 2)

Boy's Livestock Program Started

Approximately 30 applications were given to members of the FFA and 4-H Clubs of Deaf Smith County for participation in a livestock feeder program at a meeting in the Hereford High School auditorium Saturday night. A program giving breeding animals to members of the two agricultural clubs was explained to the members and their fathers in the Saturday night meeting and applications were (Continued on page 2)

Storms Disturb Communications, Power, Harvest

Rainfall ranging from one-fourth to 1 inch or more hindered communications, power service and vegetable harvest in sections of Deaf Smith County Wednesday morning.

Rain hit the county every day this week, but no extensive damage was reported until Tuesday night. Marble-size to golfball-size hail hit northwest of Hereford Tuesday, but lack of high wind velocity prevented damage.

High winds east of Progressive Community, however, left nearly 400 farm homes without power service for nearly three hours Tuesday night, when a substation was put out of service. Four power line poles near the community were uprooted by winds.

Kenneth Rudd, nine miles west and one mile north of Hereford, reported hailstones the size of golf balls, but no extensive damage resulted.

Clarence Morrison, six miles west of Hereford, reported 1.1 inches of rain and scattered hail. L. J. Straffuss, 14 miles north of Hereford, said hail damaged his cucumbers.

Rains this week necessitated one-way traffic on the Frio Road from U. S. 385. (Continued on page 2)

Set Safflower Field Day Inspection For Saturday

The 70-acre safflower test tract on the Bill Gentry farm, 17 miles northeast of Hereford, will be open to all persons interested in the production of the oilseed crop Saturday at 2 p.m.

In-Service School For Area Policemen

Police officers in Hereford and the surrounding area will attend an in-service training school here July 20 through July 24, according to Hereford police chief Henry Aycock. Classes will be held from 7 to 9 p.m.

Instructor at the school will be Ed Powell, instructor at the Texas A & M Police School.

Farmers Oil Seed Mills, Inc., formed by Farmers Union in cooperation with International Safflower Corporation, is host of the demonstration.

Expected to inspect the tract will be Ted Lord, president of International Safflower, Charles Corn, irrigation and crop specialist for International Safflower, Alex Dickey, Texas State Farmers Union president, and County Agent J. W. "Lety" Thomas.

Gentry said 10 test plots were planted to register the rate of seeding and irrigation needed.

Three plots were pre-irrigated, but were not irrigated again. Three plots were irrigated once after breaking through the ground, and three plots were irrigated twice.

Another plot was planted 30 days after the main field was seeded. The tract has been sprayed for chinch bug once, about three weeks ago.

At the present time, Gentry said, plants are standing from 30 to 35 inches high. The safflower blossomed recently and (Continued On Page 2)

Refreshments will be served to children at the Center. The church council asks donation of workers, fruit juice, cookies, (Continued On Page 2)



HIGH WINDS blew down four poles of a power line east of Progressive School about 9:20 Tuesday night disrupting service to nearly 400 farm families and putting a substation out of service for three hours. High water and mud delayed crews in getting to the lines and repairing them until Wednesday morning. (Staff Photo)



# DOLLAR-A-MINUTE

of SUPER-SAVER FOOD BUYS



Libby's 303 Can **FRUIT COCKTAIL** 4 FOR \$1.00 **PEACHES** 4 FOR \$1.00  
 Libby's Fancy Sliced Halves or Sliced 303 Can

Libby's 303 Can Cut Green **BEANS** 6 FOR \$1.00 Libby's 303 Can **Green Limas** 4 FOR \$1.00 Libby's 303 Can **PEARS** 4 FOR \$1.00

6 Bottle Ctn. Plus Deposit **DR. PEPPER** 29¢ Park Lane Assorted Flavors **ICE CREAM** 1/2 GAL. 59¢

Seedless **GRAPES** 20¢  
lb

Gold Medal **FLOUR** 5 LB. BAG 49¢

Shurfine **Shortening** 3 LB. CAN 65¢

Swift's Premium **BACON** 59¢  
Lb. Pkg.

Santa Rosa **PLUMS** 20¢  
lb

Libby's, Whole, 303 Can **Green Beans** 4 FOR \$1.00

Libby's Frozen, 6 oz. **Orange Juice** 4 FOR \$1.00

Libby's, Whole Kernel or Cream Style **CORN** 6 FOR \$1.00

Libby's, Cut, 303 Can **BEETS** 8 FOR \$1.00

Whole or Short Halves of **HAMS** 49¢  
lb

Yellow **Squash** 10¢  
lb

Libby's 303 Can **PEAS** 6 FOR \$1.00

Libby's 303 Can **SPINACH** 7 FOR \$1.00

Libby's 22 oz. Sour or Dill **PICKLES** 3 FOR \$1.00

Libby's 303 Can **KRAUT** 6 FOR \$1.00

USDA Good Beef Short Ribs of **BEEF** 49¢  
lb

Libby's 22 oz. **Sweet Pickles** 2 FOR \$1.00

Libby's Kasher 22 oz. **PICKLES** 4 FOR \$1.00

Libby's 46 oz. **Tomato Juice** 4 FOR \$1.00

Libby's Sliced, pt. **Dill Pickles** 4 FOR \$1.00

Personal Size Ivory 4 for 29c Liquid Detergent Ivory 43c Cascade 51c Reg. Size Tide 35c Reg. Size Zest 2 for 29c Reg. Size Drift 53c Giant Size Spic & Span 97c

**WE GIVE S & H GREEN STAMPS WITH EVERY PURCHASE**  
 DOUBLE on Wed. with a \$2.50 purchase or more.

**TAYLOR & SONS FOODS**  
 LOW, LOW EVERYDAY SHELF PRICES PLUS S & H GREEN STAMPS

These Specials Good Thurs., Fri. & Sat. July 16, 17 & 18 Only  
 Free Parking





# FEASTIN' FOODS for Picnic Parties

What fun it is to feast outdoors—and for picnics packed with pleasure . . . for the best barbecues . . . for perfect patio parties—shop COOPER'S for all the family's favorite feasting foods. They're all here—and they're all low, low priced to give you super values by the picnic basketful. Yes—hundreds of happy families know—"It's a picnic to shop and save at COOPER'S—the buy-word for quality, variety and economy!"



Lean - Fresh - Sliced  
**PORK STEAK**  
lb **39<sup>c</sup>**

Fine For Picnics  
**FRANKS**

Korn Kist  
Big 2 1/2 lb. Bag  
**89<sup>c</sup>**

**PIES**

Banquet Apple or Cherry  
24 oz. Frozen

**29<sup>c</sup>**

Guaranteed Ripe!  
**MELONS**

Charleston Gray's Large Size Watermelons

Ea. **59<sup>c</sup>**

**Coca Cola**

KING Size 6 Bottles

**29<sup>c</sup>** Plus Deposit

SUNRAY or MOHAWK

**HAMS**

Hickory Smoked Half or Whole

lb **49<sup>c</sup>**

**ICE CREAM** HALF GALLON

Borden's Glacier Club

All Flavors - Delicious

**45<sup>c</sup>**

LIBBY'S  
**SWEET PICKLES**

Enjoy These!  
22 oz. Jar

**49<sup>c</sup>**

**CLEARANCE** All Summer Items **COSTUME JEWELRY**

\$2.20 Items  
\$1.39 tax incl.  
\$1.10 Items  
79c tax incl.

**SHURFINE SHORTENING** 3 lb. Tin **65<sup>c</sup>**

Supreme Town House  
**CRACKERS** lb. **29c**

Maxwell House — 6 oz.  
**Instant Coffee** . . . **79c**

Gleem — Push Button  
**TOOTH PASTE**  
98c Size **79<sup>c</sup>**

**JERGEN'S LOTION**  
Reg. 59c **49<sup>c</sup>**

Thompson Seedless  
**GRAPES** . . . lb. **19c**

**CELERY HEARTS**  
2 Cello Pkg. **35<sup>c</sup>**

Calif. Pound Bags  
**CARROTS** . . . 2 for **25c**

**MARYLAND CLUB COFFEE** lb. Can **69<sup>c</sup>**

**CANNED MILK** Shurfine Tall Cans **3 FOR 39<sup>c</sup>**

California Haas  
**AVOCADOS** Each **10<sup>c</sup>**

**OLIVES** RIPE Tall Can **29<sup>c</sup>**

LIBBY'S — No. 303  
**FRUIT COCKTAIL** 4 for **\$1.00**

LIBBY'S — Halves — No. 303 Cans  
**PEARS** . . . . . 4 for **\$1.00**

LIBBY'S — All Green Spears — No. 303 Cans  
**ASPARAGUS** . . . . . 3 for **\$1.00**

LIBBY'S — No. 303 Cans  
**GREEN BEANS** . . . . . 2 for **35c**

LIBBY'S — Cream Style Golden  
**CORN** . . . . . 2 for **39c**  
Whole Kernel Golden — No. 303 Cans

LIBBY'S — Garden Sweet — No. 303 Cans  
**PEAS** . . . . . 6 for **\$1.00**

LIBBY'S — 12 oz. Can  
**LUNCHEON MEAT** . . . . . **45c**

Roxey  
**DOG FOOD** 5 Tall Cans **39<sup>c</sup>**

**PINE SOL** Quart Bottle **69<sup>c</sup>**

**WE GIVE GUNN BROS. STAMPS**

LIBBY'S - FINE!  
**VIENNA SAUSAGE**  
3 CANS **59<sup>c</sup>**

# COOPER'S



INSTALLATION of new officers and members was held by Carnation Theta Rho Thursday evening in the I. O. O. F. Hall in Hereford. Installed in the formal ceremony were, kneeling, from left, Wanda Cornelius; Melba Gay Lawrence, president; Priscilla Vines; standing, from left, Patricia Houle; Kay Bishop; Gay Bowen; Ann Sheppard; Nona Marie Strange, installing marshal; Rosa Lee Strange, installing officer; Judy Hoff; Barbara Jacobs; Gail Bishop, vice-president; and Mrs. C. D. Fitzgerald, advisor. (Staff Photo)

REP. WALTER ROGERS WRITES:

## Interest Rate Ceiling Issue Bitter Debate

To the people of the 18th District: The demand of the Administration that the interest rate ceiling on long-term marketable government bonds be lifted has caused one of the most bitter, behind-the-scenes debates in many years. The President

wants the authority to ignore the interest rate ceiling fixed by law and permit the interest rate on these long-term government bonds to be determined by whatever the money markets require. An indication of what will happen can be seen in the disclosure by the Treasury last week that it would pay an interest rate of 4.728% on a two billion dollar issue of one-year bills. This is the highest interest rate on any Treasury issue since 1920.

As most of you know, money is a very complex subject. One fellow said he could never keep any of it long enough to really study it. But, complex or non-complex, the fact remains that continued tampering with the interest rates, as has been done by this Administration, will produce more inflation and more burden on the already sorely pressed taxpayers of this nation.

There has been a great hue and cry about the devaluation of the dollar because of inflationary practices; yet, those who decry the inflationary trends support the proposed interest rate increases. The fact of the matter is that money is like any other commodity. Those who are producing the daily needs of the citizens of this country utilize money in carrying on their businesses. When the price for that money is increased, it simply means that the producer of the products sold to the general public must, in turn, increase the price of the products he sells in order to absorb the additional cost of the money he has had to borrow. This is inflation at work.

Not only must the individual pay more for the products he needs in his daily living, but he must also assume a larger tax burden, because the amount of interest to be paid on the national debt increases. Between the years 1955 and 1958 the amount of money required from the taxpayers as interest on the public debt increased by several billions of dollars, simply because of increased interest rates.

Should the President be granted the authority to pay higher interest on long-term government obligations, it will follow as a matter of course that all interest rates will be increased on all transactions in lending agencies from the smallest to the largest. This could mean an extended period of curtailed activities, insofar as the expansion of the economy is concerned, and the complete control of the economy of this nation by those who control the big money.

If this continues, the chances are the government will be called upon to step in and force the lowering of interest rates. Should the government do that, it would mean the creation of much distress property and an economic upheaval that could be disastrous.

You may watch for some fireworks in the present Committee investigation of the activities of certain retired military personnel presently employed by business concerns doing business with the government. The people generally are heartened by the long-needed investigation of the practices of military personnel who, upon retirement, obtain fat paying jobs with corporations and groups transacting business with the government.

Some of the business runs into the billions of dollars. Corporations.

(Continued On Page 2)

## Meet Your Neighbors

THE HERFORD BRAND

Hereford, Texas, Thursday, July 16, 1959 Section Three

H. D. CHATTER

### Insecticides: Are They Friends Or Enemies?

By ARGEN DRAPER

It is almost like a fairytale, the accomplishments and the progress the last few years in the development of insecticides in the chemical world. Anyone can go to the store and buy many, many kinds of powders and sprays to protect vegetable and flower gardens from the onslaught of the insects that attempt to destroy plant life faster than we can grow it.

As good as it is to be able to protect our gardens from pests, there are some dangers. Insecticides are poisons and must be handled with due caution. Poisons are available to people for specific purposes only, and it's a good idea to restrict their uses to those that are recommended by following the precautions on the label.

Nobody need suffer from the effects of insecticide poisoning if (and this small word has a lot of significance) the proper precautions are observed. Using the food and misusing the handling of the chemicals can get you into serious trouble with insecticides.

Peas, beans, corn and other vegetables and fruits where the peel or covering is taken off is not so dangerous as vegetables that are used without peeling and greens. Rotenone, sulphur and nicotine sulfate are exempt on restrictions for spraying as they are not so dangerous.

Some of the recommendations and tolerances apply to vegetables:

Do not apply DDT or toxaphene to beet, broccoli, carrots, leaf lettuce or turnips after the first appearance of leaves, stems or heads that are to be eaten and marketed.

Do not use parathion, TEPP, Phosdrin, demeton, in the home garden. These are extremely poisonous.

Do not apply chlordane to leafy vegetables past the seedling stage of growth or after the appearance of foliage that is to be eaten or marketed.

Do not use lindane in fields to be planted later to potatoes or other root crops, as it may adversely affect their flavor.

(Continued On Page 2)

(Continued On Page 2)

### WHEN WHEAT STUBBLE BURNS:

## Dollars Can Go Up In Smoke

"Smoke costs farmers money", says Luther Lesly, chairman of the Tierra Blanca Soil Conservation District. This statement was made last Wednesday when several wheat stubble fires were sighted around Hereford.

Eager farmers wanting to get the next crop planted following a good wheat crop are the cause but in their eagerness, they have failed to evaluate the benefits of the wheat residue. Dollars as well as long time soil improvement goes up in smoke he said.

It takes about 60 pounds of nitrogen, 30 pounds of phosphorus, and 40 pounds of potash to grow a 40-bushel wheat crop. Much of these chemicals are in the stalk after the grain harvest. "Would a farmer burn his commercial fertilizer if he had some left over?" asks Lesly. "Or would he store it for the following crop?"

Maybe farmers "destroying" fertility use the excuse that wheat stubble will make the next crop deficient in nitrogen — only partly true, Lesly said.

Local Soil Conservation Service technician Don Newman explains that the nitrogen bacteria are still there, but are at work breaking down the straw into organic matter. This is only a temporary condition that can be eliminated by merely adding 100 pounds of commercial nitrogen per acre. Then the temporary shortage is corrected and the organic matter is the natural fertility required

for top production, he said.

Expert gardeners add decaying leaves and trash to improve the garden plot. Yet vegetable growers, gardeners on a large scale, burn the trash just to make seedbed preparation easier, he pointed out. No better seedbed can be prepared than one in a good conditioned soil full of organic matter.

Soil Conservation Service technicians state that the long time soil improving benefits received from wheat stubble are moisture holding capacity, fertility holding capacity, increased microorganisms, more or-

### Clerical Course Offered In WAC

Lt. Deloris L. Browning, Women's Army Corps recruiter for the Panhandle area, announces that the Army now has openings for women in its Clerical and Typing Procedures School. This school offers courses in typing, shorthand, business machines, and Army Administration.

High school graduates possessing a secretarial background or aptitude and otherwise qualified are now being considered for enlistment. Anyone interested is urged to contact the local Army recruiter, SFC Carl J. Fussell, 213 W. Seventh, Amarillo, Phone DR 3-4214, immediately as this is a highly selective school and classes are filled rapidly.

ganic matter, and better soil tilth. These mean a more active and more productive soil.

Surface crusting is something every farmer must avoid. Otherwise, small seed will break their necks trying to sprout, he said. Baking and burning the ground is another description of crusting. The cause can be a fire, hot sun on bare ground, or both. Naturally, when all vegetation is burned off both are the cause, Newman said. "Does this make wheat stubble burning advantageous?"

The type of farming equipment we use means a lot in the best utilization of crop residues, adds Lesly. Shredding or disking will chop wheat straw. Or another piece of machinery found on the John Smith farm 16 miles north of Hereford is a roto-tiller. This machine pulverizes straw into small pieces no more than one inch long. Turning residue under with a moldboard plow will only "can" it just like putting it in a silo.

Wind erosion is most commonly thought of as occurring during years of drought. But bare ground, stripped of its cover by burning, will blow just like it did during the dust bowl days.

Nature is continuously providing the earth with vegetative cover, he said. We can vary nature's land use from grassland and call it cropland, but we still must furnish the cover. Otherwise we will deplete the soil of its productive state, he concluded.

### AUSTIN HIGHLIGHTS

## There's Lots Of Heat Left In Summer Battle On Tax

By VERN SANFORD

AUSTIN — Whatever the outcome of the summer tax battle, when the smoke has all cleared, the fire won't be out. Like live coals banked in ashes, the tax issue will be ready to flame up again when new fuel is added.

Sources of new fuel are easily foreseeable. Every member of this Legislature, by his voting record, expressed a tax view-point. Many of them will have to face opponents attacking this viewpoint in the 1960 elections. Since a new law moves primaries up by two months, campaigning will begin long before the dogwood is out. . . maybe while the Christmas lights are up.

Many candidates may be wary of lighting into an issue on which it's almost impossible to take an all-around popular stand. But whoever gets elected and comes to Austin in 1961 will find the old tax monster waiting, bigger and fiercer than ever.

This Legislature will likely enact just barely enough new taxes, mostly on "old favorite" sources, to cover the budget. But the 1961 budget will have to be bigger. For some time population growth and other factors have kept budgets going up by about 10 per cent every two years. Additionally, there will be, as always, demand for new pro-

grams, new buildings, new spending. Hale-Aikin school improvement program alone would call for at least a \$100,000,000 tax bill.

Only hope for avoiding an even hotter tax battle in '61 is for 1960 voters to give their elected officials clear instructions on what they want and how they're willing to pay for it.

Show-down fight of the second called session came on a \$90,000,000-a-year tax bill based on about three-fourths selective sales taxes, one-fourth business taxes.

It was in line with expressed sentiments of the Senate, but many House members regarded it as "another insult". All the five Senators and five House members on the conference

committee that worked out the bill signed the report and recommended adoption.

It was designed to get revenue from these sources over a 2-year period:

TOBACCO - Cigarettes up 3 cents a pack (for two years - then back to one cent) to raise \$60,000,000. Other tobacco products, except snuff, a 25 per cent tax to raise \$13,500,000.

NATURAL GAS - raise in the production tax from 7 to 8 per cent to bring in \$12,000,000.

CORPORATION FRANCHISES - increase of 75 cents per \$1,000 capital to May, 1960, 50 cent increase thereafter, to raise \$32,000,000.

UTILITIES - a 20 per cent increase in gross receipts tax except for telephone and telegraph, for \$3,000,000.

MOTOR VEHICLES - increase in sales tax from 1.1 to 1.6 per cent, for \$20,400,000.

BEVERAGES - liquor up from \$1.48 to \$1.68 a gallon, wine up 20 per cent, for \$6,000,000.

BOATS, MOTORS, AIRPLANES - a new 1.6 per cent sales tax, for \$3,250,000.

RADIOS, TELEVISIONS, PHONOGRAPHS - a 2.2 per cent sales tax, for \$6,000,000.

CAMERAS - temporary 10 per cent sales tax for \$6,000,000. Provisions for more vigorous tax collecting would bring an estimated \$4,000,000 more.

Out of the House-Senate conflict over the State Board of Insurance came a reorganization bill aimed at getting rid of at least some present officials.

Sen. Floyd Bradshaw of We-

(Continued On Page 2)

### Brown Receives ROTC Training

Cadet Finis W. Brown, 20, son of Mrs. Irene B. Brown of Adrian is receiving six weeks of training at the Reserve Officer Training Corps summer camp at Fort Hood. The training is scheduled to be completed July 31.

Cadet Brown is a 1956 graduate of Adrian High School and is a student at West Texas State College in Canyon. He is a member of Lambda Chi Alpha fraternity.

## Harvest Festival Days Proclaimed

(EDITOR'S NOTE: Bill Decker and Bill Thompson of Hereford, representing the Deaf Smith County Chamber of Commerce, visited Senator Andy Rogers in Austin last Thursday when Sen. Rogers acted as Governor. While serving in that capacity, Sen. Rogers signed the following proclamation.)

FROM THE OFFICE OF ACTING GOVERNOR ANDY ROGERS. WHEREAS, the Hereford Harvest Festival will be held in Hereford, Deaf Smith County, Texas, this year July 30, 31 and August 1; and

WHEREAS, this celebration will be filled with entertaining events for area residents and the thousands of visitors who are attracted from throughout the State; and

WHEREAS, the City of Hereford, aided by the chamber of commerce Aviation Committee, will formally dedicate the Hereford Municipal Airport with appropriate ceremonies, static displays and a jet fly-over; and

WHEREAS, the important vegetable industry will be honored with an appreciation dinner for its valuable contributions to the area economy; and

WHEREAS, other weekend attractions include a Pioneer Day in recognition of the old settlers and senior citizens, a parade, barbecue, harvest exhibit and home show, rodeo, beauty contest, wrestling, and carnival attractions; and

WHEREAS, this occasion is a worthwhile show of civic and agricultural accomplishment and an event deserving of the support of all citizens;

NOW, THEREFORE, I, Andy Rogers, Acting Governor of Texas, do hereby designate July 30, 31; and August 1, 1959, as

HEREFORD HARVEST FESTIVAL DAYS in Texas, and commend the citizens of this community and area for their role in the progress and development of our state.



ACTING GOVERNOR of Texas for a day, Sen. Andy Rogers is shown signing a proclamation making the Hereford Harvest Festival official as Rep. Jefe Osborne looks on. The proclamation was signed July 9 by Sen. Rogers, president pro tempore of the senate. The Harvest Festival will be held here July 30, 31 and Aug. 1.



BUSILY CLOSING the last lesson Friday of the Basic Dress Making sewing course sponsored by Hereford High School's homemaking department are, left to right, Joyce West, Mrs. J. C. Nucet, Mrs. Merlin Kaul, Mrs. Howard Hunter and Mrs. Pat Webb. The classes were conducted Tuesdays, Wednesdays, Thursdays and Fridays from 9 a.m. to 12. Mrs. Dorothea Prowell was the instructor. (Staff Photo)

**CROSSWORD** • • • By A. C. Gordon

1	2	3	4	5	6	7	8	9	10
11				12	13		14		
15		16	17				18		19
20	21	22		23			24		
25	26	27	28				29		
30	31		32			33			34
35		36		37			38		
39	40		41		42	43			44
	45		46		47		48		
49	50		51		52	53		54	55
56		57		58		59		60	
61	62		63			64	65		
66						67			

- ACROSS**
- 1 - A great many
  - 6 - Capers
  - 11 - Merit
  - 12 - Circle part
  - 14 - Detail
  - 15 - Male title
  - 16 - Of motion
  - 19 - Perform
  - 20 - ...-track mind
  - 22 - Biblical division (abb.)
  - 23 - Belonging to
  - 24 - Constellation
  - 25 - Behold!
  - 27 - Attention
  - 29 - Musical note
  - 30 - Pine
  - 33 - Strand
  - 35 - Preposition
  - 36 - Erbium (chem.)
  - 37 - Senator's "yes"
  - 38 - Zeus' beloved
  - 39 - Set of steps
  - 42 - Stitch
  - 45 - First part of obedience
  - 46 - Felton talk
  - 48 - Accomplish
- DOWN**
- 49 - Leathery treatment
  - 51 - Parent
  - 52 - Printer's measure
  - 54 - Beta
  - 56 - Abraham's birthplace
  - 57 - Meals
  - 60 - Area unit
  - 61 - E-side
  - 63 - Hew
  - 64 - Stag
  - 66 - Indigenous
  - 67 - Quantities
  - 1 - Reminiscence
  - 2 - Tale
  - 3 - Public conveyance (abb.)
  - 4 - Black as ...
  - 5 - Italian writer
  - 6 - Thespian
  - 7 - Twitching
  - 8 - Pronoun
  - 9 - Grant
  - 10 - Suable
  - 13 - Regarding
  - 17 - Ionium (chem.)
  - 18 - Provided that
  - 21 - Exaltation
  - 24 - Connecting link
  - 26 - Either
  - 28 - Like
  - 29 - Pronoun
  - 31 - Sup
  - 32 - Beta
  - 33 - Baby's napkin
  - 34 - Sleeping device
  - 39 - Heavenly body
  - 40 - Weight unit
  - 41 - All of us
  - 43 - Public notice
  - 44 - Put forth
  - 46 - Tree
  - 47 - Sheds tears
  - 50 - Flat surface
  - 51 - Greek letter
  - 53 - Mister
  - 55 - Work for
  - 57 - Snow slider
  - 58 - Italian river
  - 59 - Pronoun
  - 62 - Latin "and"
  - 65 - Slath



**NAUTICAL MISS TEXAS CARELGEAN DOUGLAS** of Corpus Christi will represent the Lone Star State at the Miss USA Contest to be held at Long Beach, Calif., July 18-24. Carelgean, 20, is a sophomore at Southern Methodist University studying commercial art. (AP Photo)

**Austin...**  
(Continued From Page 1)  
Hereford introduced the bill calling for organization of a new three-member, full-time Board of Insurance.  
One member would be designated Commissioner at a \$20,000 salary. One would be the chairman at \$15,000; another, a member at \$15,000. Nothing in the bill says present members could not be appointed, but all appointments would be subject to Senate confirmation.

**POLICEMAN FLUSTERED**  
SAN DIEGO, Calif. (AP) - Marine Sgt. Harold Cutler was rushing his wife to a hospital for the expected birth of twins when he was pulled to the curb by a young police officer.  
After hearing the story, the officer transferred the Cutlers to his patrol car. With red lights flashing, he raced them through town and pulled up at the University of California's Scripps Institution of Oceanography.  
Mrs. Cutler told the policeman that she was going to have babies, not fish, and please get her to the nearby Scripps Memorial Hospital.

The officer, more badly shaken by now than the Cutlers, got them to the hospital on his next try - and on time. Murmured one hospital nurse: "We're used to the sight of panicky fathers. But the face of this young policeman was something to study."

**THE COST HURTS, TOO**  
BISBEE, Ariz. (AP) - It costs \$50 to spank your wife in Bisbee.  
At least that's what a Ft. Huachuca soldier was fined on a charge of assault for applying a belt to his wife during a family argument.

**ON PLANNED PARENTHOOD**  
PHILADELPHIA (AP) - A Lutheran clergyman says that planned parenthood is "just good Christian common sense."  
Writing in the current issue of a church youth organ, Luther Life, he said indiscriminate procreation is "A blight, not a blessing." But many Christians, he added, have "stored up unnecessary guilt feelings" about birth control.

**HE HAS 'T TROUBLE**  
FORTVILLE, Ind. (AP) - Undaunted by a broken "I" key on his typewriter, editor Herb Cary pounded out his usual column for the weekly Fortville Tribune and concluded: "Maybe next week the eyekey on my typewriter will be fixed."

Senators tried to oust present Commissioner William A. Harrison two years ago, were balked by Board Chairman Penn Jackson and an Attorney General's ruling that they lacked this authority.  
Since then Senate hostility toward Jackson and Harrison has been open and frank. Senate appropriation bill slashed salaries to one-third time for Board members. House held out for full-time Board.  
Senate's counter-offer was the reorganization bill, with a full-time Board to please the House and a chance to name new members to please the Senate.

A group of West Texas ranchers won another round in their court fight to force a cloud-seeding firm to leave the weather alone.  
Texas Supreme Court upheld an injunction to stop a "weather modifying" program by Southwest Weather Research, Inc.

Weather Research had been hired by a group of Fort Stockton cotton farmers to drop silver iodide pellets into clouds that threatened to bring crop-destroying hail storms.  
Water-loving ranchers brought suit. They contended the cloud seeding not only chused off the hail but moisture of all kinds.  
State Board of Insurance has ordered reductions in auto insurance rates ranging from 10 to 15 per-cent in some parts of the state.

Effective date is Aug. 1.  
Most of the cuts will stem from a reduction in expenses, such as agent commissions, rather than low accident rates. State-wide the cuts will amount to about \$26,000,000, saving some drivers as much as \$20 a year.  
In some areas, mostly larger cities, the drop will be smaller, and in a few counties the rate will rise.

Have you read the classifieds?  
A. Your eyes will seem to recede if you use brown or gray eyeshadow over the entire lid, beginning with a thin line near the lashes and spreading up.  
Q. Does the kneading and squeezing of excess flesh on the body really help to remove it?  
A. According to most experts, yes. No matter how stubborn excess flesh may be, by kneading and squeezing hard, you can break down the fat cells and stimulate the circulation so that the broken-down cells can be speedily removed in the blood current. This works everywhere on the body, except with the breasts and abdomen.  
Q. Will you please give me some shampooing advice?  
A. Shampooing the hair is easiest under the shower. The cream shampoos are very good, because they're easy to rinse out. Shampoo twice, and rinse until your hair squeals with cleanliness. Lemon juice for blondes, vinegar for brunettes, will guarantee your rinsing every bit of soap out of your hair, and will add highlights besides.  
Q. Large pores are beginning to appear on my face. What is the cause of this?  
A. Usually, improper cleansing methods. Extremely hot water should never be used to wash the face. Water should be warm, followed by two or three rinsings in clear water. Soap should be mild and super-fatted, and stimulation should be invited through the use of a medium-bristle face brush. Friction should be sufficient only to bring a gentle glow to the skin. Follow your cleansing with a skin freshener.

**Rep. Walter**  
(Continued From Page 1)  
tations feeding at this lush taxpayers' trough are headed, in some instances, by former high-ranking military personnel. In other instances, retired Generals, Admirals, Colonels and others are employed by these corporations primarily because of their knowledge of how these government contracts are handled, their friends located in strategic positions, and their ability not get to them.  
6. Keep insecticides clearly labeled.  
7. If you become dizzy, sick at your stomach, have a headache or blurred vision, quit work instantly and see a doctor. Remember - always treat insecticides like poisons.

**H.D. Chatter**  
(Continued From Page 1)  
Do not apply DDT or toxaphene to cabbage or to head lettuce after the heads begin to form if any of the outer leaves are to be left on them at harvest. DDT or toxaphene may be applied up to 7 days before harvest if all outer leaves are stripped from the heads at harvest.  
DDT, Malathion, Methoxychlor, and Toxaphene have a high degree of tolerance-meaning parts per million that it is thought the human body can tolerate without noticeably harmful effect. These insecticides can be used within one week of harvest, if vegetables are washed. Texas Agricultural Extension Service has a publication L-255 "Texas Guide for Controlling Insects on Vegetable Crops." This gives the insect, insecticide, amount of spray per acre, tolerance and the most important to you from a health standpoint is the number of days between the last application of insecticide and harvest.  
Sprays that cannot be used more than 15 days before harvest: parathion, dieldrin, endrin, lindane, heptachlor, and aldrin.  
Demeton should not be used more than 21 days before harvest.  
Thoroughly wash vegetables that you are not sure of the origin. Wash in an abundance of water and wash briskly up and down to help in getting spray off the vegetables.  
More precautions:  
1. When filling sprayer or duster do not spill insecticides on body or clothing; if insecticide is spilled on clothing, bathe and change clothing immediately.  
2. Wear rubber gloves to keep insecticides off your hands.  
3. Do not smoke or eat while handling insecticides. Wash hands thoroughly before eating or smoking.  
4. Destroy all empty insecticide containers.  
5. Store insecticides where children or farm animals can-

ties to open doors that are closed to others. This nation has been very generous with the officers in the military - a great deal more generous than with enlisted personnel.  
In fact, arguments have been made on the Floor of the House that good retirement programs and higher salaries were necessary in order to retain military personnel. These retirement payments and the salaries are paid by the taxpayers of this nation. It does not seem quite "cruel" for those who have requested these additional benefits to utilize the information, the knowledge, and the friendships they have acquired during their service, to aid in the procurement of contracts - the cost of which must also be borne by the taxpayers.  
WALTER ROGERS  
Member of Congress  
18th District of Texas

**"BILL DING'S" Business**  
is  
**BUILDING Business**

YES, LOTS OF QUESTIONS COME OUR WAY. DO YOU HAVE ONE OR TWO TODAY?

WHAT CAN I DO FOR YOU?

BILL DING

**ROCKWELL BROS. & Co.**  
Lumbermen  
D. VANDEVER, Manager  
Phone EM-4-0033  
104 S. MAIN - HEREFORD, TEX.

**Beauty At Home**

Q. What is a becoming hairstyle for the girl with an egg-shaped head?  
A. Probably best is a three-and-a-half-inch, all-over cut, with the hair tapered in length in the back and at the nape of the neck, from a part that runs completely across the top of the head. Start this parting at the top of either ear, and go across the head just back of the actual crown. The hair in back of the part is set in soft pin curls. When combed out, they provide a balancing fullness to the front, so that the so-called "egg-shape" is effectively camouflaged.  
Q. What can I do about eyelashes that have become quite brittle?  
A. Exercise them, whenever you think of it, by tugging gently at them. Massage them with cream. And refrain for awhile from using lash coloring on them.

Q. I have rather large teeth and thin lips. How should I lipstick my mouth?  
A. Rather than confine yourself to the natural outline of your mouth, increase the width of both upper and lower lips a bit beyond their outline, and this will seem to minimize the appearance of your teeth.  
Q. What is the formula for an oatmeal facial beauty mask?  
A. Three ounces of oatmeal, the juice of one lemon, and some witch hazel, mixed to a paste. Apply to face and throat, let remain 30 minutes, or longer, then wash off.  
Q. How can I get some mustard stains out of one of my washable frocks?  
A. Sponge with cool water, rub with warm glycerine, then wash out in hot suds.  
Q. What is a good "home-made" underarm deodorant?  
A. Bicarbonate of soda diluted with water is quite good. You can also add a little soda to your regular bath water as an extra treatment.  
Q. What is a good makeup correction for eyes that are overly prominent?

**PLAINS INSURANCE AGENCY**  
John H. Patton Wm. H. Patton  
213 N. Main St. Since 1926 Phone EM4-1150  
All Forms of Insurance  
INSURE IN SURE INSURANCE

**Your money goes further**  
during our Ford Summer Swapping Bee!

**STOP** throwing money down the drain repairing your present car and burning extra gas and oil as older cars do. **STOP** watching your car go down in resale value before your eyes... missing the comfort, fun and safety of a new Ford on your vacation trip.

**SWAP** while our tremendous sales let us give the most tremendous trade-ins in our history. **SWAP** before your vacation... when you can get the most pleasure out of a new car. **SWAP** on a car that will stay in style... stay worth more... the world's most beautifully proportioned car.

**SAVE** on first equipped cost... up to \$55 a year on gas and oil... with an aluminum muffler that lasts longer. **SAVE** with no-wax Diamond Lustre Finish... with a long-lasting standard 66-plate battery. **SAVE** on a honey of a deal during Ford's Summer Swapping Bee.

Every Ford has SAFETY GLASS in every window

**1,000,000 SOUND WAVES PER SECOND**

**ULTRASONICS**

We use the McKenna Ultrasonic watch cleaner. One million vibrations of sound per second removes even microscopic particles of dirt and old oil actually from within the blind holes and crevices of the watch.

Let us show you this new Ultrasonic watch cleaner and explain its operation.

Kenneth (Doc) Cowan  
Your Doctor of Sick & Deceitful Watches  
Phone EM 4-3821

**COWAN JEWELRY**

**AMMO-PHOS FERTILIZERS**

**ARE HIGHLY WATER SOLUBLE**

Experiments prove that crops take up more phosphate from water soluble AMMO-PHOS fertilizers than from ordinary mixed fertilizers.

Let us demonstrate this easy test.

AMMO-PHOS fertilizers are highly water soluble and we can prove it by simply placing a small amount of AMMO-PHOS in water and placing the same amount of an ordinary fertilizer in another equal amount of water. You'll be able to see how water soluble AMMO-PHOS GOES INTO SOLUTION while the ordinary fertilizer collects at the bottom of the glass. You'll know then why AMMO-PHOS fertilizers give the quickest response to crops.

**COME BY... Let Us Help Increase Your Profits With AMMO-PHOS ASSOCIATED GROWERS OF HEREFORD**

Clovis Hwy EM 4-1527

**MATHIESON**

Come in and get a honey of a deal on the **59 FORDS**

THE WORLD'S MOST BEAUTIFULLY PROPORTIONED CARS

**Charlie Seeds Motor Co., Inc.**  
146 E. Second Hereford Phone EM 4-2727





# GOD WILL NEVER LEAVE or FORSAKE US

## CHURCH

(Continued from page 4)

**First Methodist**  
Fifth and Main  
Rev. H. L. Thurston, Pastor  
Thursday, July 16: Group  
Quarterly Conference, First  
Methodist, Vega, Canyon, Ad-  
rian, Wesley, Friona, Westway,  
7:30 p.m.  
Friday, July 17: Homebuild-  
ers Prayer Group, 8 p.m.  
Sunday, July 19: Church  
School, 9:45 a.m.; Morning Wor-  
ship, 10:55 a.m.; Intermediate  
and Senior MYF, 6:30 p.m.;  
Evening Worship, 7:30 p.m.  
Monday, July 20: Methodist  
Men Regular Meeting, 8:30 p.m.  
Tuesday, July 21: Prayer  
Group, 9:30 a.m.  
Wednesday, July 22: Choir Re-  
hearsal, 8 p.m.

**Church of God**  
H and 13th Street  
Rev. Clarke E. Goodman, Pastor  
Sunday School will begin at  
10 a.m. Worship service is at  
11 a.m. Sunday evening worship  
begins at 7:30 p.m.  
Tuesday, Bible Study, 7:30 p.  
m. and Friday, Young Peoples'  
Endeavor, 7:30 p.m.  
Bring your burden and carry  
away a smile.  
"The Church that is large e-  
nough to serve you and small  
enough to know you."  
Be sure to hear the Church of  
God national broadcast, "For-  
ward in Faith," on KPAN Ra-  
dio at 6 p.m. every Sunday.

**Temple Baptist Church**  
Forrest St. and Ave. K  
Rev. Robert Laceywell, Pastor  
Sunday School begins at 9:45  
a.m. and Training Union is in  
the evening at 6:15 p.m. Wor-  
ship services are at 10:30 a.m.  
and 7:15 p.m.  
Wednesday prayer service will  
be held at 8 p.m.  
The teachers and officers  
meeting will begin at 7:30 p.m.  
Wednesday.  
Mid-week prayer services are  
on Wednesday at 7:30 p.m. at  
8:15 p.m. there will be choir  
practice.

**Assembly of God**  
Union & Ave. G.  
Rev. V. W. Marcontell, Pastor  
Sunday School is held at 9:45  
a.m. Morning worship service  
convenes at 11 a.m.  
C. A. service begins at 7 p.m.;  
Junior C. A.'s meet at 1 p.m.,  
and worship service begins at 8  
p.m. each Sunday evening.  
Prayer meeting and Bible Stu-  
dy will be held Wednesday at 8  
p.m.  
By ED LOPAT  
In order to pitch properly, a  
youngster must know what he  
is about to do. Don't get into  
the bad habit of looking at the  
sky, at the ground or to the  
sidelines. Look at your target.  
That would be the catcher's  
mitt.  
The sooner you school your-  
self to the good habits, the soon-  
er you will learn good control.  
Don't try to pick up the tar-  
get when the pitch is halfway  
home. Get your eyes on the  
target when you come to the  
set pitching position, and stay

## harvesttime

The "lost coin" was out of circulation. The "lost sheep" was away from the fold. The "lost son" was far from the Father's house. But what a day in history as we see the Prodigal return, put on his old clothes, get his fork and go to the field to do harvest. What a challenge the fields offer this man. *It is that way too, with spiritual things — eternal goods — God's work — His church.* There is plenty for us to do but so very few who can be depended on to do it. Perhaps it is time for us to start gathering up some of the "fruits-of-the-spirit," love, joy, peace and long-suffering. These are not material, Sir. *They are elements or constituent parts of every aspirant of Heaven.* Harvest time is a grand time of year. All the granaries need filling, but we must not forget our responsibility to harvest souls.

You In The Church  
The Church In You

— form a combination  
for good. Every man,  
woman and child needs  
the influence of the  
church. So, come let  
us go into the house  
of the Lord. Let us  
support her program  
of service to human-  
ity, be a faithful work-  
er, a daily bible read-  
er and attend services  
regularly.

**United Pentecostal**  
Myrtle and Blevins  
Sunday school, 10 a.m., Morn-  
ing worship, 11 a.m.  
Evangelistic, 7:45 p.m.  
Wednesday night is prayer  
service.

**Church of Jesus  
Christ of Latter Day  
Saints**  
(Mormon)  
Xendon O. Anderson, super-  
intendent  
The Mormon Church meets in  
the American Legion Hall. Sun-  
day School services are at 10  
a.m.

**Thompson Memorial  
Mexican Baptist  
Mission**  
Norton and Texas  
Rev. Ernest E. Atkinson, Pastor  
Sunday, Sunday School, 10 a.  
m.; Morning Worship, 11 a.m.;  
Training Union, 7 p.m.; Even-  
ing Worship, 8 p.m.  
Wednesday, Bible Study and  
Prayer, 7:45 p.m.  
"La Iglesia que presenta el  
Mensaje del Cristo Vivo."

**First Presbyterian**  
610 Lee Street  
Rev. Russell Wiegert, Pastor  
Sunday School is held each  
Sunday at 9:45 a.m. followed  
by worship service at 11 a.m.  
Morning Devotional 9 a.m.  
Tuesday.  
Choir Rehearsal, 8 p.m. Wed-  
nesday. Prayer meeting Friday  
at 7:30 p.m.

**First Christian**  
West Park Ave.  
Rev. Gilbert Davis Jr.  
Sunday School is held at 9:30  
a.m. Worship service will begin  
at 10:50 a.m.  
Chi-Rho and CYF meets at 6  
p.m. Sundays and vesper ser-  
vices are at 7 p.m.  
Functional Department's first  
Wednesday at 8 p.m.  
General Church Board, second  
Wednesday at 8 p.m.  
Choir rehearsal meets each  
Wednesday at 8 p.m.  
Groups one and two meet on  
the a.m. on the second Tuesday.  
Young Matrons meet on the  
second Wednesday at 9:30 a.m.  
Friendly visitation on Monday,  
Tuesday, Wednesday, Thursday,

**Jehovah's Witnesses**  
North Ave. E., Converted  
Residence  
Wednesday at 8 p.m. There  
will be the Congregation Bible  
Study.  
Friday at 7:30 p.m. is the  
Service Meeting Ministry  
School.

**Central Church of  
Christ**  
Knight St. and Plains Ave.  
Russel Ingalls, Minister  
Bible School is held each Sun-  
day at 9:30 a.m., with the morn-  
ing worship at 10:25 a.m.  
The young people meet Sun-  
day evening at 7:10 p.m. with  
worship service beginning at 6  
p.m.  
Wednesday prayer services  
are held at 7:30 p.m.

(Continued On Page 5)

**These Hereford Business Firms Make This Page Possible in the Interest of a Christian Community. Go to Church Sunday.**

<b>HEREFORD CREAMERY</b> Mr. and Mrs. Elton Malone	<b>HEREFORD FERTILIZER &amp; INSECTICIDE CO.</b> Norman Moore	<b>ORSEBORN-NORWOOD CHEV.-OLDS</b> Your Chevrolet-Oldsmobile Dealer	<b>CROWE-GULDE CEMENT CO.</b> R. L. Layman	<b>HEREFORD STATE BANK</b> Russell E. Carver, Pres.
<b>FARM &amp; HOME SUPPLY</b> W. A. DeBusk	<b>SANDER'S HUMBLE STATION</b> O. R. Sanders	<b>JIM HILL HOTEL</b> Mr. and Mrs. Dick Ross	<b>PIGGLY WIGGLY</b> Mr. and Mrs. Gaylord Newell	<b>DEARING WRECKING CO.</b> Anson A. and June Dearing
<b>FIRST NATIONAL BANK</b> Virgil Hennen	<b>ROCKWELL BROS. &amp; CO.</b> D. R. Vandever	<b>CLOWE &amp; COWAN INC.</b> The Best - Pomona Pumps	<b>ROGERS DRUG</b> Mr. and Mrs. Grady Rogers	<b>McRIGHT GARAGE &amp; SUPPLY</b> Mr. and Mrs. A. N. McRight
<b>HUNTER'S FOOD MARKET</b> Mr. and Mrs. Russell Hunter	<b>HEREFORD HARDWARE</b> Mr. and Mrs. Don Zimmerman	<b>ELIZABETH WITHERSPOON INSURANCE</b> 148 N. Main St.	<b>BIG T PUMP CO., INC.</b> Hilrey and Leroy Aven	<b>CONSUMER'S FUEL ASS'N.</b> Louie LeGrand
<b>JOHN McLEAN INS. AGENCY</b> John McLean	<b>BLANTON BUTANE, INC.</b> Darrell Blanton	<b>GILLILLAND FUNERAL HOME</b> Matt Gilliland - Marlin Gilliland	<b>PITMAN SERVICE STATION</b> Odice and Ed Bulls	<b>PITMAN GRAIN CO.</b> Mr. and Mrs. J. A. Pitman
<b>PLAINS FERTILIZER CO.</b> Glen O. Edwards -	<b>BUY-RITE FURNITURE</b> J. H. Fish	<b>SUIT'S AUTO SUPPLY</b> Mr. and Mrs. Ray Suits	<b>HEREFORD IMPLEMENT CO.</b> Herman Neff	<b>DAVIS IMPLEMENT CO.</b> W. L. Davis, Jr.
<b>MASTER CLEANERS</b> Mr. and Mrs. C. D. Fitzgerald	<b>HEREFORD GRAIN CORP.</b> Curtis O. Roach, Mgr.	<b>E. B. BLACK CO.</b> Dick Barnard - Jesse Stanford	<b>LOERWALD BROS.</b> Ed, George, Gene, & Harold Loerwald.	<b>HEREFORD LAUNDRY &amp; DRY CLEANERS</b> Ernest Kendall - Clinton West
<b>B. F. GOODRICH</b> Don Little			<b>FARMER'S DRIVE IN</b> Troy Moore	





# San Francisco Ranks As Zany Bank Robber Capitol

By ALAN CLINE  
SAN FRANCISCO — Mark Zany bank robber... Stand up comics may have vanished from the television screen but there's no local lack of holdup comedies in the banking business. The types performing here so far this year include the patient, the tough, the bleary-eyed, the contrite and the tenderly young.

She turned her back on the supposedly armed gunman and asked the advice of her supervisor. As the confidant robber waited, the supervisor advised her to "hand it over." The hold-up man's patience was rewarded with \$280. Earlier, a bandit with a guilty conscience walked out of another B of A branch with \$530. He left a sealed note with the teller saying he really wasn't a bad guy and explaining it was the first time he'd robbed a bank. The note was signed "In Trouble."

### A. O. THOMPSON ABSTRACT CO.

Complete Tract Index of all land and town lots in Deaf Smith County. Write us for information. Managers Mr. & Mrs. A. J. Schroeter. Box 73. Phone EM 4-1504

### WE SELL and INSTALL

- Carpet
- Felt Base
- Linoleum
- Cabi-Tops
- Inlaid Linoleum
- Tile of all Classes

## E. B. Black Co.

### Factory Trained Mechanics

Since 1901

## Long Time Ago

45 Years Ago  
As is well known Hereford took a number of good premiums at the Amarillo State Fair last year. This was done despite the fact that nothing was done towards making up an exhibit until a few days before the date of the fair. Now that all kinds of crops are promising, it has been suggested that the Chamber of Commerce begin now to arrange for an exhibit. First, a number of photographs should be made of the fields and growing crops; then sample bundles of wheat and oats should be carefully selected, wrapped and put away for use in the exhibit. Seeds of all kinds should be gathered, and where possible, fruits should be put in jars and preserved.

25 Years Ago  
Deaf Smith county's shortest wheat harvest since the grain became the leading product has just been completed. Estimates of grain dealers here place the yield at approximately 250,000 bushels. This production comes from almost 300,000 seeded acres.

The yield does not equal the seed planted, averaging less than a bushel per acre throughout the county. The county's biggest crop was harvested in 1931, when the production exceeded six million bushels. A normal crop has not been made since that year. Prospects of a good feed crop this fall, while not entirely ruined yet, are poor due to the continued dry and hot weather. The temperature has been around 100 degrees every day since early in June, with only scattered local showers falling.

### HOT (GOLF) MATCH

PONCA CITY, Okla. — For a time anyway, T. R. Boggess was the hottest golfer on the course. His trousers caught fire, apparently from matches in his pocket.

money? somebody asked.

"I just robbed a bank, he answered.

Everybody laughed.

When he got home, his wife couldn't see the joke. She called the cops. He had robbed a bank.

1	2	3	4	5	6	7	8	9	10	
E	A	R	N	A	R	C	H	I	T	E
M	A	R	K	I	N	E	T	I	C	S
O	N	E	O	F	L	I	G	O		
R	E	D	E	A	R	M	I	T		
V	E	R	E	K	S	I	O			
S	T	I	L	E	M	E	S	T	E	
L	O	M	E	M	E	D	O			
T	A	N	A	M	U	S				
K	E	E	K	S	U	P	E	R	E	
K	E	E	K	L	O	P	M	A	R	
N	A	T	I	V	E	S	I	N	G	

### BEST ENGINES!

One of 7 Big Bests Chevy gives you over any car in its field

You've got more to go on than our say-so: *Every* motor magazine has given Chevy's standard passenger car and Corvette V8's unstinted praise. SPORTS CARS ILLUSTRATED says it this way: "... surely the most wonderfully responsive engine available today at any price." And if you want the thrill of a six, you still get the best of it in a Chevy.

### BEST ECONOMY

No doubt about this: a pair of Chevy sixes with Powerglide came in first and second in their class in this year's Mobilgas Economy Run—getting the best mileage of any full-size car, 22.38 miles per gallon.

### BEST BRAKES

Not only bigger, but built with bonded linings for up to 66% longer life. Just to prove what's what, Chevy out-stopped both of the "other two" in a NASCAR\*-conducted test of repeated stops from highway speeds.

### BEST RIDE

A few minutes behind the wheel will leave no doubt about this. MOTOR TREND magazine sums it up this way: "... the smoothest, most quiet, softest riding car in its price class."

### BEST TRADE-IN

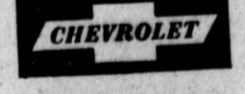
Check the figures in any N.A.D.A.\* Guide Book. You'll find that Chevy used car prices last year averaged up to \$128 higher than comparable models of the "other two."

### BEST ROOM

Official dimensions reported to the Automobile Manufacturers Association make it clear, Chevy's front seat hip room, for example, is up to 5.9 inches wider than comparable cars.

### BEST STYLE

It's the only car of the leading low-priced 3 that's unmistakably modern in every line. "In its price class," says POPULAR SCIENCE magazine, "a new high in daring styling."



NO WONDER MORE PEOPLE ARE BUYING CHEVROLETS IN '59 THAN ANY OTHER CAR!



Open invitation to excitement, the Impala Convertible... and America's only authentic sports car, the Corvette.

Try the hot one—visit your local authorized Chevrolet dealer!

# Orsborn - Norwood Chevrolet

2nd at Schley

Hereford

EM 4-2160

### Miss Sue Springer Attends Convention

Sue Springer left Friday for East Lansing, Mich., where she will represent the Wheatridge Social Work foundation at the International Walther League convention. Miss Springer holds a Wheatridge Social Work scholarship at the University of Valparaiso, Ind., where she will be a junior this fall.

Excellent combination for a fruit salad: grapefruit and orange sections plus chunks of pineapple.

### FIGHT FILMS!

FLOYD PATTERSON vs INGEMAR JOHANSSON

ACTION THRILLS IN SLOW MOTION!

OFFICIAL WORLD'S HEAVYWEIGHT CHAMPIONSHIP FIGHT FILMS!

Fri. & Sat.—July 24 25

# TOWER DRIVE-IN THEATRE

Showtime 8:20

YES, SIR... or NO, SIR?  
CARY GRANT  
SOPHIA LOREN  
MARTA FIER

# "HOUSEBOAT"

TECHNICOLOR • VISTAVISION

THURSDAY  
FRIDAY

### REBEL ON A RAMPAGE!

VICTOR MATURE

# "ESCORT WEST"

CINEMASCOPE

ELAINE STEWART • FAITH DOMERGUE

Presented by UNITED ARTISTS

### SUNDAY MONDAY

He's The "Mother" of The Year!

JERRY LEWIS

ROCK-A-BYE BABY

MARILYN MAXWELL • REGINALD GARDNER

BACALONI • CONNIE STEVENS

VISTAVISION

### FRIDAY

BING and WALT team up on the headless horseman to give you a wonderful EXTRA ATTRACTION!

WALT DISNEY Presents

# the LEGEND of SLEEPY HOLLOW

told and sung by BING CROSBY

TECHNICOLOR

### SATURDAY

THE MIRACLE THAT HAPPENS ONLY ONCE TO THE VERY YOUNG... AT HEART!

YOU'LL THRILL... to a whole new magic world of enchantment!

# HANSEL and GRETEL

FULL LENGTH FEATURE MUSICAL FANTASY in FAIRYLAND COLOR by TECHNICOLOR

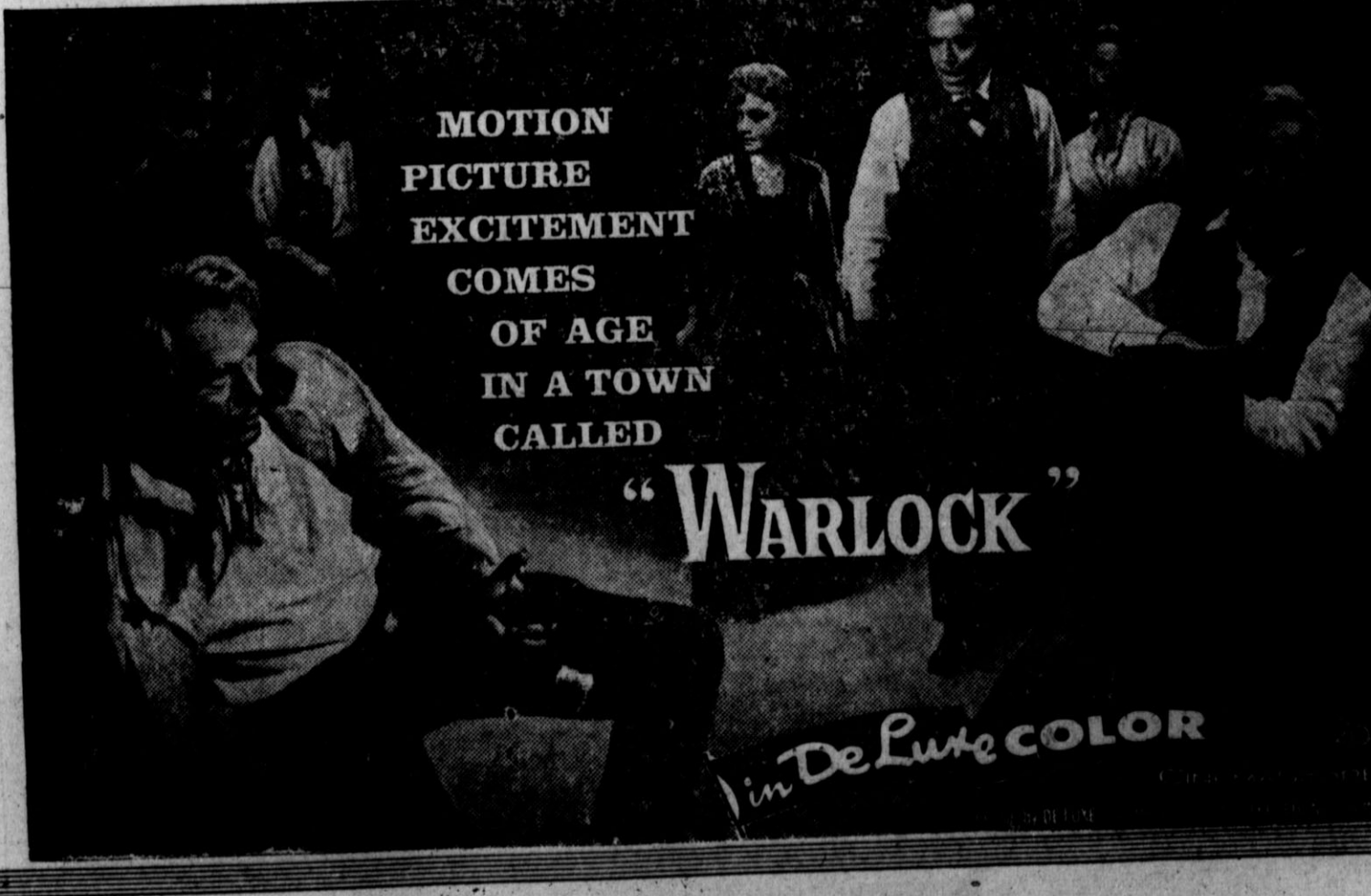
Adult - 65c Children - 25c

### SUNDAY MONDAY TUESDAY

Regular Admission

# RICHARD WIDMARK • HENRY FONDA • ANTHONY QUINN • DOROTHY MALONE • DOLORES MICHAELS

THE WOMEN WATCH, GRIPPED IN SILENCE... THE MEN WAIT, NERVE-TAUT WITH EXCITEMENT! WARLOCK IS THE STORY OF A TOWN AT WAR WITH ITSELF... LOCKED IN THE COLD GRIP OF VIOLENCE! WARLOCK IS THE KIND OF MOTION PICTURE THAT MADE THE SCREEN THE GREATEST ENTERTAINMENT MEDIUM IN THE WORLD!



MOTION PICTURE EXCITEMENT COMES OF AGE IN A TOWN CALLED

## "WARLOCK"

In DeLuxe COLOR

# Little League Ends Season With Ceremony



DODGERS TEAMMATES include Brad Johnson, David Evans, Warren, Dean Crofford, David L. Marcontell, Roger Owen, Gary Story, Billy Watts, Douglas Watson, Gregory Johnson, Daniel Loerwald, Gilbert Sims, Johnny Gilbert, Lynn Warren, Iley Joe Barton and Dornan Duggan. Coaches are Gene Loerwald, P. T. Clark and Ken Loerwald. (Staff Photo)



LINEUP OF THE champion Yankees includes Terry Hill, Robbie Lemons, Bill Jack Gilliland, S. D. Baize, Danny Baize, Joe Don Edelman, Gene Duvall, Wynn Buck, Johnny Mac Dowd, Robert Strange, Charles Moreno, Steve Hodges, Danny Lester, Jimmie Allison and Felix Alviar Jr. Yankee coaches are Roy Hartman, Duane Baize and Robert Howell. (Staff Photo)

## The Hereford Brand

Hereford, Texas, Thursday, July 16, 1959

Section Two



THE ALL-STAR ball team, announced Saturday night, includes, from left to right, Steve Hodges, Gary Royal, Frank Cain, S. D. Baize, Lynn Warren, Mike Ranspot, Iley Barton, Ed Mims, Lewis Barnett, Steve Coneway, Robert Strange, Lynn Cook, Danny Loerwald, Robby Lemons, Charlie Moreno and Gary Stagner. (Staff Photo)



MEMBERS OF THE Cardinals include Steve Coneway, Gary Stagner, Lewis Barnett, Jerry Mudrock, Jerry Collier, Frank Cain, Gary Payne, Mike Ranspot, Edward Mims, Jerry Fowkes, Lynn Cook, Phillip Cain, Dan McWhorter, Lee Robinson and Larry Brown. Cardinal coaches are Raymond Lueb and David Miles. (Staff Photo)



ON THE ROSTER of the Giants are Jerry Don McCaslin, Robert Thompson, Gene Drummond, Eugene Sparks, Andrew Channer, Alex Guerrero, Mike Moore, Kenny Justice, John Pool, Frederick Miller, Terry Hulsey, Robert Higgins, Gary Royal, Tony Castillo and Johnny Chatham. Coach is W. G. Drummond. (Staff Photo)



# OFF THE Shelf

By H. A. TUCK  
 Irving Shulman has written another novel about the inhabitants of Hollywood, *The Velvet Knife*. It is now on the seven-day list at Deaf Smith County Library.

Dick Fleming was a film writer down on his luck, divorced, in New York to try other jobs. During a drunken stupor, he outlined a wonderful film story to producer Alex Norstrom, who hired him to write it.

He met and went to California with Phil Hammerschlag and Phil's father. Dick managed to do well, but Phil was doing even better, handling some smooth publicity deals and building up his friends.

But, secretly, Phil was insanely in love with singing star Mary Scott. While building up Mary's fiancé, actor Bruce Dunlop, he was carrying on a vicious secret plot to destroy him with a deadly weapon — scandal.

Dick Fleming, his former wife, Hilda, and Phil's father were the only ones who knew of Phil's terrible obsession about Mary and of his determination to marry her or to ruin her life and that of her fiancé.

Shulman's climax is one of the best in recent novels, with a sharp twist that hits the reader like an unexpected wet towel in the face.

Summary: *The Velvet Knife* is a perfect title for this novel, which lives up to the name given it. . . smoothly written as velvet and as sharp and shocking as a knife.

### Legal Notice

Notice is here given that the Board of Equalization of the Hereford Rural High School District will meet on Monday, July 27th, 1959, at 9:00 a.m., in the school tax office, second floor of the county court house, for the purpose of equalizing school tax assessments for the year 1959. Any property owner who feels that an adjustment should be made of the taxable value now assigned to his property, is invited to meet with the Board of Equalization on that date and to show why such value should be lowered.

W. R. Hair, President,  
 Board of Trustees,  
 Hereford Rural High School District.

T-29-1c

## How Can I?

By Anne Ashley

Q. How can I remedy some shallow scratches on my furniture?

A. You can remove shallow scratches or hairline cracks by softening the finish so it runs together. Flow on some turpentine (for varnish) or denatured alcohol (for shellac). Let this dry for 48 hours, then rub smooth with rottenstone, clean and wax.

Q. How can I wash an electric blanket?

A. The best and safest way of doing this is to wash them by hand in detergents or soap, because dry-cleaning fluids damage the insulating materials on the fine electric wires in the blanket.

Q. How can I soften shoe polish that has dried and hardened in its container?

A. Try adding a few drops of turpentine to the polish.

Q. What is an easy way of adding life to my window screens?

A. Equal parts of spar varnish and turpentine, well mixed, will give protection to the screens that'll often outlast paint. Apply this with a well-cleaned old blackboard eraser.

Q. How can I make a glass cement?

A. Just melt some common alum in a glass spoon — and you'll have a very efficient cement for mending glass, china, or metal objects.

Q. How can I improvise a "magnetic" hammer for driving carpet tacks?

A. Rub the striking face of your hammer over a cake of bar soap, and your tacks will cling to it as they do to the regular magnetic hammers.

Q. How can I eliminate some ant hills in my yard and garden?

A. One good way is to place a flower pot over the ant hill, and then pour in about a teaspoonful of carbon tetrachloride. The fumes from this liquid will sink to the ground and cut off the insects' oxygen.

Save the necks and backbones from broiler-fryers for stock.

# FAMOUS BRANDS SALE



**SUMMER HOURS**  
 Mon. Tues. Thurs.  
 8:00 A.M. - 7:00 P.M.  
 Wed. Fri. Sat.  
 8:00 A.M. - 9:00 P.M.  
 603 Park Ave.

**PEACHES**  
 Libby's, Sliced or Halves,  
 Elberta Freestone  
 303 Can  
**4 FOR \$1**

**MAZOLA OIL**  
 Made From Corn  
 Quart  
**49¢**

**TISSUE**  
 Scott Roll  
**10 FOR \$1**

PLUS VALUABLE

## GUNN BROS. STAMPS

With All Purchases

YOUR BONUS FOR SHOPPING SAFEWAY

Lowest Prices On All Items  
Extra Savings For You

**PRESERVES**  
 SAFEWAY SPECIAL  
 Par "New Crop"  
 Fancy Strawberry  
 18 oz. jar  
**29¢**

**FRUIT PIES**  
 SAFEWAY SPECIAL  
 Banquet - Apple or  
 Cherry 22 oz.  
**29¢**

**CIGARETTES**  
 SAFEWAY SPECIAL  
 All Popular Brands  
 Reg. Size Ctn.  
**\$2.23 \$2.33**  
 King & Filter

**WAX PAPER** Cut Rite 125-Ft. Roll **29¢**  
**KLEENEX** 400's **4 FOR \$1.00**  
**PEAS** Green Giant 303 Can **5 FOR \$1.00**  
**PEACHES** Del Monte Sliced or Halves, 2 1/2 Can **3 FOR \$1.00**  
**PORK & BEANS** Van Camp's All Green No. 1 Can 300 Can **8 FOR \$1.00**  
**ASPARAGUS** Niblet's No. 1 Can 4 **FOR \$1.00**  
**GREEN BEANS** Kumer's Whole 303 Can 4 **FOR \$1.00**  
**BEANS** Libby's Dark Brown No. 2 Can 5 **FOR \$1.00**

**PICNICS** Swift's Premium Hickory Smoked Sugar Cured **29¢**  
 Lb.

**ROAST** Boneless Beef Shoulder for Slicing **79¢**  
 Lb.

**CHEESE** Longhorn Full Cream **49¢**  
 Lb.

**SLAB BACON** **39¢**  
 Lb.

**FISH STICKS** Captain's Choice Fresh Frozen 8-Oz. Pkg. **33¢**

**CABBAGE** Texas Crisp & Fresh Large Heads **10¢**  
 Each

**POTATOES** Texas New Crop Reds 10 Lb. Poly Bag **59¢**  
 Each

**DETERGENT** Lux Liquid 11c Off Deal Giant Can **89¢**  
**BUTTER** Shady Lane Lb. **65¢**  
**LUNCH MEAT** Spam 12-Oz. Cans **47¢**  
**SALAD DRESSING** Kraft Miracle Whip Qt. **59¢**  
**ICE CREAM** Snow Star, New Pack, Choc., Vanilla Strawberry 1/2 Gal. **49¢**  
**TOMATO JUICE** Libby's 46-Oz. Can **4 FOR \$1.00**  
**CORN** Kounty Kist Whole Kernel 12-Oz. Cans **4 FOR 69¢**  
**HOMINY** Van Camp's 300 Can **10 FOR \$1.00**  
**POTATOES** Kobey's 300 Can **8 FOR \$1.00**  
**TOMATO SAUCE** Hunt's 8-Oz. Can **12 FOR \$1.00**

**WELCH'S GRAPE JUICE** 24-Oz. **3 FOR \$1**  
 TOMATO PASTE Hunt's 6-Oz. Can **10 FOR \$1.00**  
 CATSUP Highway 20-Oz. **4 FOR \$1.00**  
 VIENNA SAUSAGE Libby's 1/4 Can **5 FOR \$1.00**  
 COFFEE Edwards, All Grinds, Lb. **59¢**  
 PICKLES Alabam Girl, Sliced or Whole Dill 1/2 Gal. **49¢**  
 GRAPE NUTS Post 14 1/2-Oz. Box **33¢**

**SAFEWAY**  
 603 Park Ave.  
 Prices Good Thursday through Sat., July 16-18  
 Right To Limit Quantities . . . Please.





ADRIAN NEWS

Harvest Almost Completed In Spite Of Rain And Hail

By MRS. R. L. PINNELL Harvest is practically over despite the rains and hail that have constantly harassed the farmers.

However, the rains are of great benefit to the young feed crop and grass lands. Varying amounts fell Sunday night from .6 of an inch at Sims to 4 inches on parts of the Brindwell Ranch.

The A. D. Williams Sr. family of 11 children gathered July 4 in McKenzie State Park at Lubbock for the annual reunion. All but a daughter, Mrs. Paul McGuire of Petersburg, attended.

Attending were Mr. and Mrs. H. D. Williams and family of O'Donnell; Mr. and Mrs. M. J. Williams and family of Petersburg; the Rev. and Mrs. Johnnie Williams and Marlene of Adrian; the Rev. and Mrs. Milard Williams and family of Anton; Mr. and Mrs. Leon Williams and family of Lorenzo; Mr. and Mrs. A. D. Williams and family of Plainview; and Mrs. O. B. Scott and family of Lubbock; Mrs. Joe King and family of Lubbock; Mr. and Mrs. Clifton Newton and family of Abernathy; and Mr. and Mrs. Carl Newton and family of Petersburg.

Johnnie Brent Briggs, son of the Jim Briggs of Abilene, returned home with his grandmother, Mrs. Johnnie Williams.

from the reunion for a week's visit.

Mrs. Fred DeBose of the Mansfield Ranch, who recently underwent heart surgery in St. Luke's Hospital in Houston, is reported to be recovering well.

Mr. and Mrs. E. N. Jacobson and Mr. and Mrs. E. R. Jacobson of Amarillo left on a vacation Friday. They plan to stop in Pueblo, Colo., with the Robert Crenshaws and in Denver, Colo., with Mrs. E. N. Jacobson's sister, Mrs. Jerry Hance.

Mr. and Mrs. Joe Speed left this week for a Colorado vacation. They spent the weekend in Raton, N. M., and were to go on to Loveland to visit the Jack Monhans, formerly of Adrian.

Mr. and Mrs. R. L. Moore of Amarillo visited Monday evening with the John Skaggs. Mr. and Mrs. Eddie Nyquist of Muskegon, Mich., stopped by to visit overnight with the Earl Crofts Tuesday night en route to Albuquerque, N. M.

Mr. and Mrs. Robert Buzbee and family of Gilmer and Mr. and Mrs. Billy Milam and family of Longview visited with the ladies' parents, the L. E. Wagners, from Saturday to Wednesday of last week.

Mr. and Mrs. Wesley Story, Debra and Gene of Woodward, Okla., arrived Sunday afternoon to visit his mother, Mr. and Mrs. Ernest Frank and sisters, Twilla and Mr. and Mrs. Arthur Jewett for several days.

Mr. and Mrs. Frank Woods, Linda and William of Dallas visited Tuesday with their niece,

Mr. and Mrs. George Gruhlkey and family. Her parents, Mr. and Mrs. W. H. Woods, and sister, Mrs. L. E. Wade of Amarillo, joined the party for the day.

Mr. and Mrs. R. L. Pinnell and Linda visited overnight Monday and Tuesday in Pampa with their parents, Mrs. M. E. Wells and Mr. and Mrs. G. Pinnell. They joined Mrs. Pinnell's

brother from Stedman, N. C. Mr. and Mrs. F. J. Wells, Cathy and Judy, at her mother's home.

Visitors in the Ray Fisher home Friday night from Los Angeles, Calif., were their sister-in-law, Mrs. Ethel Fisher, Mr. and Mrs. Aspen and Mrs. Anna Jones.

Mr. and Mrs. "Duke" Waldorf and children visited overnight Tuesday in the Lloyd Heaton home from San Angelo. They returned Phyllis Heaton to her home after a three-week visit with her aunt and family.

Finis Brown, son of Mrs. Irene Brown, who is with the ROTC Co. D in training at Camp Hood reports he was extended a three-day pass over the Fourth. He spent it at Austin with the Roger Gruhlkeys and

Neil Pounds, who are attending school there.

James Sessions, high school English teacher, who has been helping out at the elevator during harvest, left Monday to enroll at Baylor University at Waco for graduate work.

Mr. and Mrs. J. D. Jones and son, David, of Dallas visited Tuesday and Wednesday in the home of his brother, Mr. and Mrs. A. P. Jones and Raymond.

The E. B. Pounds' son, Moran, is now Pvt. Moran Pounds, as of Monday morning when he reported to Camp Leonard Wood in Missouri. His orders changed suddenly and he is now in the Army artillery.

Mrs. E. R. Barnet, Mrs. Cecil Hill and children, Diana and

Kevin, of Amarillo visited Saturday in the home of their daughter and sister, Mrs. Ernest Frank.

Mrs. Nell Morgan is having her home remodeled this week by her son, D. W. Morgan.

Mr. and Mrs. Chet Kidder and Jackie returned to their home in Fort Worth this weekend after an extended visit here with relatives.

Mrs. Cal Jackson, Mrs. Percy Gruhlkey and Mrs. Grace Baker were in Amarillo visiting relatives Wednesday. They saw the Bobby Banks and Mary Jean Jackson.

Mr. and Mrs. Y. C. Garrison, Johnnie and Lee of Channing were Sunday visitors of her parents, Mr. and Mrs. John Proctor.

Mr. and Mrs. Cal Jackson

visited last weekend in Ruidoso, N. M.

Mrs. Leon Williams and son, Mike, of Lorenzo, arrived this weekend for a visit with her husband's family, the Rev. and Mrs. Johnnie Williams. Her husband is in Alaska, serving as a lay speaker from the Baptist Brotherhood of his home church for a month. Their daughter, Linda Kaye, has been visiting Marlene all week.

The local MYF were guests of the Vega MYF Thursday night for a social under the direction of their new sponsor for the summer from Nashville, Tenn., Searitt College. Attending were Marlene and Linda Kaye Williams, Jeanie Crenshaw, Twilla Story, Paula Creitz and the sponsor, Mrs. Robert Jacobson.

Mrs. Nannie Fortenberry

returned this week from an extended visit with her children. In California she visited in the Olaf Bohannon home in Hollywood, her daughter, In Nevada she visited Roy for a month before returning home.

Mr. and Mrs. P. H. Gruhlkey visited Sunday in the R. L. Pinnell home.

YOUTHFUL ENTERPRISE LANDRUM, S. C. (P) - Chalk up another small businessman as a failure.

Jerry Clark, 5, strung up a barricade with his fishing tackle at a small bridge leading to his mother's beauty parlor.

He had cleared 21 cents - one per customer - when Mom, Mrs. Wayne Clark, put him out of business.

Advertisement for meat products featuring 'FINEST MEATS' and '...at Real Savings!' with an illustration of a ham.

ARMOURS BACON 3 LBS \$1.00 BO SR

Fresh - Lean - Made from Fresh Hams SAUSAGE L B 59c

Fresh Lean Pork Roast L B 37c | Fresh - Hot Barbecue L B 59c

Government Inspected Good Beef ARM ROUND STEAK L B S 67c

WHITE SWAN Deluxe Halves No. 2 1/2 Can Peaches 33c | HILLS BROS. Finest COFFEE L B S 69c

MORTON HOUSE Fancy BAKED BEANS 17 oz. Cans 2 F O R 39c

ROSEDALE Garden Peas No. 303 Cans 2 F O R 29c | ROSEDALE Whole Kernel Golden CORN 12 oz. Cans 2 F O R 35c

ZEE For Quality Toilet TISSUE 4 Rolls Carton 34c

TABLE - Assorted Colors NAPKINS 2 PKGS. 25c | Giant Roll Paper TOWELS Roll Ea. 27c

KUNERS Mile High SWEET PICKLES Full Quart 39c (Includes illustration of a woman)

California Sun Kist ORANGES 2 L B S 25

Colorado Fancy Green ONIONS 2 15c

Eagle Brand Fancy CELERY 14c

Fresh Fancy Yellow SQUASH 3 L B S 25c

U. S. No. 1 Red Chuck Wagon POTATOES 10 Pound Polythene Bag 59c

SALAD BOWL By Kraft Salad Dressing Pint Jar 25c

KUNERS Fancy Quality TOMATOES No. 303 Cans - Ea. 17c

STEELES Fine Foods Sweet Potatoes No. 303 Can 15c

WILSONS Finest - No Beans CHILI Large 24 oz. Family Size Can 59c

OFFICIAL STATEMENT OF FINANCIAL CONDITION Savings and Loan Association

Of the Hi-Plains Savings and Loan Association of Hereford, Texas, State of Texas, as of the close of business on the 30 day of June, 1959.

Table with columns for Assets and Liabilities. Assets include mortgage loans, accrued interest, second mortgage loans, etc. Total Assets: 1,497,971.97.

Table with columns for Capital and Liabilities. Includes withdrawable shares, secured real estate loans, borrowed money, etc. Total Capital and Liabilities: 1,497,971.97.

STATE OF TEXAS, COUNTY OF DEAF SMITH We, Jimmie Allred as President, and Ray Cowsert as Secretary of the Hi-Plains Savings and Loan Association located at Hereford, Texas, each of us do solemnly swear that the statement above is true to the best of our knowledge and belief.

CORRECT-ATTEST

JIMMIE ALLRED, President RAY COWSERT, Secretary V. M. Decker, H. Osborn, E. Roberson, Steve Taylor, B. Buske, Directors

Subscribed and sworn to before me this 30th day of June, 1959. Mary Jean Gore, Notary Public, Deaf Smith County, Texas.

Hunter's Food Store Double Pride Stamps Every Wednesday with \$2.50 Cash Purchase JULY 16 - 17 - 18 Phone EM 4-0350 219 Sampson St.



SAVE WHILE YOU SPEND WITH S&H GREEN STAMPS

# Piggly Wiggly's

## STORE-WIDE WALWUES!

### CRISCO

3 POUND CAN

79<sup>c</sup>



### Fresh CORN

ON THE COB

Golden Sweet Large Tender Ears

12 FOR 39<sup>c</sup>

USDA Good & Choice Beef BONELESS

### CLUB STEAKS

lb 89<sup>c</sup>

Mortons 16 oz. Bottle New . . Spicy

### BARBECUE SAUCE 2 FOR 59<sup>c</sup>

### MIRACLEADE Curtis All Flavors 12 FOR 39<sup>c</sup>

Save on Gov't. Graded

FINE QUALITY MEATS

**Bacon** Wilson's Certif. First Grade lb. **59<sup>c</sup>**

MOHAWK — LEAN — NO WASTE

**Canned Picnics** 4 lb. CAN **\$1.79**

FRANKS

Edwards & Reeds

3 L B O S R \$1.09

Pinkneys Pure Pork

SAUSAGE

2 L B O S R 49<sup>c</sup>

## COKE'S

KING SIZE

OR REGULAR

6 BOTTLE CARTON

# 29<sup>c</sup>

... and dozens more money-saving values in nationally advertised foods shop PIGGLY WIGGLY Get the BEST!

**KERR FRUIT JARS**

Regular — Complete

QUARTS . . . . . Dozen \$1.29

PINTS . . . . . Dozen \$1.09

JAR LIDS, - Reg. 2 Doz. 29<sup>c</sup>

Sure-Jell or Pen-Jell 2 FOR 29<sup>c</sup>

**SUGAR** \$1.09  
PURE 10 lb. BAG CANE

**Canada Dry** All Flavors 23 oz. Bottle **10<sup>c</sup>**

**Bar-B-Que Beef** Underwoods 1 lb. pkg. **69<sup>c</sup>**

**Worth Syrup** Maple Flavor No. 5 Pail **59<sup>c</sup>**

**Vienna Sausage** Libbys 5 CANS \$1.00

**Tomato Juice** Hunts 46 oz. can 2 FOR 49<sup>c</sup>

**CHICKENS** Swifts Premium Fully Cooked 3 1/4 lb. can **89<sup>c</sup>**

HEINZ SWEET PICKLES 22 oz. Jar **39<sup>c</sup>**

OLIVES Shurfine No. 8 Jar Stuffed Spanish **39<sup>c</sup>**

COFFEE Hills Bros. Instant 5 oz. Jar **79<sup>c</sup>**

MILK Shurfine Tall Cans 4 FOR 50<sup>c</sup>

OLEO Meadowlake 2 L B O S R 45<sup>c</sup>

CAKE MIX Duncan Hines All Flavors 3 Boxes For \$1.00

COFFEE Food King 1 L B N 59<sup>c</sup>

## GRAPES

Calif. Thompson Seedless Really Nice 2 L B S 39<sup>c</sup>

## LEMONS

Calif. Sunkist Large Juicy 6 FOR 19<sup>c</sup>

Shop PIGGLY-WIGGLY for the Biggest & Freshest Produce Variety in town!

## PYREX

Bake, Serve, Freeze — All in same dish!  
Cake Dish . . . Reg. 89c val. 69c  
Loaf Dish . . . Reg. 89c val. 69c  
Utility Dish . . . Reg. \$1.00 val. 79c

You Save MORE At



Plus S & H Green Stamps

**TIDE**  
GIANT SIZE! **68<sup>c</sup>**

**DOG FOOD** Roxey Tall Cans 5 FOR 39<sup>c</sup>

**ROCKET POPS** Mickeys T-V Special **77<sup>c</sup>**

Melrose — Reg. \$1 size  
Lotion or Shampoo 2 for \$1.00

Heavy Duty Liquid Detergent 16 oz cans  
**SUN** 4 FOR \$1.00

SAVE WHILE YOU SPEND WITH S&H GREEN STAMPS

SAVE WHILE YOU SPEND WITH S&H GREEN STAMPS

SAVE WHILE YOU SPEND WITH S&H GREEN STAMPS

SAVE WHILE YOU SPEND WITH S&H GREEN STAMPS

# Piggly Wiggly's

## STORE-WIDE VALUES!

### CRISCO

3 POUND CAN

79<sup>c</sup>



USDA Good & Choice Beef BONELESS

### CLUB STEAKS

lb 89<sup>c</sup>

### Fresh CORN

ON THE COB

Golden Sweet Large Tender Ears

12 FOR 39<sup>c</sup>

Save on Gov't. Graded  
**FINE QUALITY MEATS**  
**Bacon** Wilson's Certif. First Grade lb. **59<sup>c</sup>**

MOHAWK — LEAN — NO WASTE  
**Canned Picnics** 4 lb. CAN **\$1.79**

**FRANKS** Edwards & Reeds **3 L B O S R \$1.09**  
**SAUSAGE** Pinkneys Pure Pork **2 L B O S R 49<sup>c</sup>**

## COKES

KING SIZE OR REGULAR

6 BOTTLE CARTON

29<sup>c</sup>

Mortons 16 oz. Bottle New .. Spicy

### BARBECUE SAUCE

 2 FOR 59<sup>c</sup>

### MIRACLEADE

 Curtis All Flavors 12 FOR 39<sup>c</sup>

... and dozens more money-saving values in nationally advertised foods shop PIGGLY WIGGLY Get the BEST!

**KERR FRUIT JARS**  
Regular — Complete  
**QUARTS** . . . . Dozen \$1.29  
**PINTS** . . . . . Dozen \$1.09  
**JAR LIDS**, - Reg. 2 Doz. 29c  
**Sure-Jell or Pen-Jell** 2 FOR 29<sup>c</sup>  
**SUGAR** \$1.09  
PURE 10 lb. CANE Bag

**Canada Dry** All Flavors 23 oz. Bottle **10<sup>c</sup>**

**Bar-B-Que Beef** Underwoods 1 lb. pkg. **69<sup>c</sup>**

**Worth Syrup** Maple Flavor No. 5 Pail **59<sup>c</sup>**

**Vienna Sausage** Libbys **5 CANS \$1.00**

**Tomato Juice** Hunts 46 oz. can **2 FOR 49<sup>c</sup>**

**CHICKENS** Swifts Premium Fully Cooked 3 1/4 lb. can **89<sup>c</sup>**

**HEINZ SWEET PICKLES** 22 oz. Jar **39<sup>c</sup>**

**OLIVES** Shurfine No. 8 Jar Stuffed Spanish **39<sup>c</sup>**

**COFFEE** Hills Bros. Instant 5 oz. Jar **79<sup>c</sup>**

**MILK** Shurfine Tall Cans **4 FOR 50<sup>c</sup>**

**OLEO** Meadowlake **2 L B O S R 45<sup>c</sup>**

**CAKE MIX** Duncan Hines All Flavors Boxes For **\$1.00**

**COFFEE** Food King **1 L B O S R 59<sup>c</sup>**

**GRAPES** Calif. Thompson Seedless Really Nice **2 L B S 39<sup>c</sup>**

**LEMONS** Calif. Sunkist Large Juicy **6 FOR 19<sup>c</sup>**

Shop PIGGLY-WIGGLY for the Biggest & Freshest Produce Variety in town!

**PYREX**  
Bake, Serve, Freeze — All in same dish!  
**Cake Dish** . . . . Reg. 89c val. 69c  
**Loaf Dish** . . . . Reg. 89c val. 69c  
**Utility Dish** . . . . Reg. \$1.00 val. 79c

You Save MORE At  
**Piggly Wiggly**  
Plus S & H Green Stamps

# TIDE

GIANT SIZE! **68<sup>c</sup>**

**DOG FOOD** Roxey Tall Cans **5 FOR 39<sup>c</sup>**

**ROCKET POPS** Mickeys T-V Special **77<sup>c</sup>**

Melrose — Reg. \$1 size  
**Lotion or Shampoo 2 for \$1.00**  
Heavy Duty Liquid Detergent 16 oz cans

**SUN** **4 FOR \$1.00**

SAVE WHILE YOU SPEND WITH S&H GREEN STAMPS

SAVE WHILE YOU SPEND WITH S&H GREEN STAMPS

SAVE WHILE YOU SPEND WITH S&H GREEN STAMPS