



WEATHER

September 5	86	41
September 6	87	44
September 7	87	48
September 8	92	56

# BAILEY COUNTY JOURNAL

'The Community Of Opportunity-Where Water Makes the Difference'

Vol. 22, Number 37

12 Pages Today

Published Every Sunday at Muleshoe, Bailey County, Texas 79347

Sunday, September 9, 1984



**OUCH, IN A BIG TIME WAY**--Smiley Orozco, No. 30, finds himself in a whole 'heap 'o trouble,' as he appears to be going down on the bottom during the Muleshoe Mules loss to the Portales Rams on Friday night. Although the Mules lost the opener to the Rams, they gained a lot of very valuable experience for upcoming games.

## Mules Fall To Mistakes In '84 Season Opener

★★  
**Six Indicted In Five Cases**

### By Grand Jury

Last Wednesday, the 12 members of the Bailey County Grand Jury indicted six persons on five cases filed in district court.

Dwayne L. Wendt and Patricia A. Wendt were indicted for theft. They waived a trial and pleaded guilty to the charge. The couple was placed on three years probation and assessed court costs.

One person, not presently in custody, was indicted for forgery and passing. Andres Morin Salazar was shown to be released on bond following his indictment for driving while intoxicated, subsequent offense.

David Flores was indicted for unauthorized use of a motor vehicle. He was bonded. Another individual was indicted on a charge of theft, but was not in custody.

Members of the grand jury included Danny Noble, foreman; Marcia Henry, Sherry Embry, Kay Harris, Archie Snyder, Walter Sain, Betty Harrison, J.D. Smith, Harry Hutto, Garry Pierce, Dwayne Lloyd and Troy Stegemoeller.

With recent publicity statewide, on an effort to collect child support, Bailey County District Clerk Nelda Merriott said she has four current cases filed by the Texas Department of Human Resources, involving child support.

Mrs. Merriott also said she currently has her first order for "Involuntary Assignment of Earnings." This, she explained, is filed when the employer will be instructed to withhold a portion of a person's wages to pay back child support.

She added that many more cases of this type are expected to be filed in this county.

### School Board Slates Meeting Monday Night

Members of the Muleshoe Athletic Booster Club will meet with the Board of Trustees of the Muleshoe Independent School District on Monday night to explain the proposal to remodel the track around the football field at MHS.

In other informational reports to the board, the 1983-84 Inservice Report will be read, along with a presentation on the junior high athletic program.

To be reviewed are the bank balances in each school fund; expenditures in each function of the school budget and approval of payment of current bills.

Under business items, members will consider a hardship transfer; consider soliciting bid proposals for ceiling insulation and air circulation at Dillman Elementary, DeShazo Elementary and Junior High School; consider district policies relating to school interruptions; consider a policy regarding tutorial program for the 1984-85 school year and consider early dismissal approval for September 21.

Following the tax collection report will be personnel considerations and the superintendent's report.

### Three Way Slams Midland Christian

Oscar Guillen received three passes from Three Way Eagle quarterback Bret Stegall for a part of the 51 points tallied by the Eagles against visiting Midland Christian school Friday night.

Adding to the score were another three touchdowns by Jose Rubalcava. Midland Christian fell 51-6 to the school in southwest Bailey County.

### Knee Injuries, Leg Cramps Add To Mules' Woes

It was not a 'good' night for the Muleshoe Mules on Friday night. They dropped their season opener to the Portales Rams by a score of 20-7, but more importantly, lost two of the Mules' with injuries.

After only seven plays in the game, Mule Greg McCarty went out with an injury to his left knee. He was out the entire first half, and made only one play in the second half before going down again with the knee. It is not known at presstime the extent of his injury.

Also injured early in the game was guard Hector Flores. He also went down with an injury to his left knee. He did not come out in his uniform following the halftime intermission. Leg cramps also fell several players on both teams.

Taking a Portales punt on his own 20, Mark Moton scampered downfield behind a solid wall of

blockers for 30 yards and paydirt for the first and only score by the Mules.

Moton made his play look easy as the clock read 7:06 of the opening period of the game. Going into the end zone looked easy the way he did it, and the true toe of Ray Vinson added the extra point.

Rocking back and forth, and both teams being bugged by mistakes, no scoring occurred again until 9:31 was left to play in the first half. Tony Pena showed a re-play of Moton's dash when he, too, ran an 80 yard touchdown. An attempt to add two points on a pass from Rams' quarterback Rodney Emerson to Von Buzard failed and the Mules went into the half with a very slim 7-6 lead.

Following the intermission performance by a very 'sharp' looking and sounding band and flag corps in their new uniforms, the action again got underway.

Portales added points with 10:33 left in the third after Lee Walker intercepted a Todd Jones pass attempt and ran it in from the 25 yard line. Mark Poyner failed on a two point conversion try, as he was trapped behind the line of scrimmage.

Portales added their final TD on a 22 yard pass from Emerson to Von Buzard. Two points were also added on a pass from Emerson to Chad Payne.

For Muleshoe, Moton was held by the Rams after his 80 yard ramble to paydirt, and managed 13 carries for 63 yards; Jerry Gleason carried 11 times for 46 yards; Todd Jones was minus 21 yards for five carries; Michael Del Toro carried 10 times for 10 yards. Con't Page 6, Col. 1.

### Lazbuddie 'Horns

#### Blank Out Smyer

#### To Start Season

Lazbuddie's Longhorns found the winning combination to open their 1984 football season Friday night as they scampered around Smyer, 21-0.

All three of the 'Horns TD's were on short runs by Todd Daniels.

Failing to score in the first quarter, Daniels put the first score in from the one in the second stanza of the game. This was followed by a one-point boot by Ben Williams.

Daniels went on to score from the two in the third quarter, following this with another one yard plunge to pay dirt in the final chapter. Williams added the points after each of the following touchdowns.

## Fair Entries 'Over' Total

As soon as the doors opened Friday afternoon at the Bailey County West Plains Fair for the general public, people were flocking into the annual fair at the Bailey County Coliseum.

This year, the fair is larger than ever, with a total of 146 exhibitors. One hundred five adults entered exhibits, along with 26 youth and 15 4-H youth, according to Bailey County Extension Agent Spencer Tanksley.

Friday morning exhibits were judged, with most of the ribbons and rosettes being in place by the time the doors were opened to the general public.

In this issue of The Journal, we will be listing "Best of Show" awards, and will have the first through third place winners listed in the Muleshoe Journal next Thursday.

- BEST OF SHOW AGRICULTURE**  
COTTON-Clarence Kube, adult.  
HEADS AND EARS-Jessie Gray, adult; Sue Haire, youth.  
VEGETABLES-James Wedel, adult; Lupe Rejino, youth and Courtney Tanksley, 4-H.  
FRUIT-Sherman Inman, adult.  
MISCELLANEOUS - Janie Moraw, adult.  
**CULINARY**  
BREAD - Martha Kent, adult.  
CAKES - Patsy Lindsey, adult.  
CANDIES - Charlotte Davis, adult.  
COOKIES - Martha Kent; PIES

- Lela Copley; and **DECORATED CAKES** - Lela Copley. All the culinary events were

### Richland Hills

### Church Slates

### Special Speakers

Today, Sunday, Jack and Latrelle Bateman, missionaries to Taiwan (Formosa), Republic of China, since 1953, will be speaking at Richland Hills Baptist Church during the 11 a.m. worship hour, according to the minister, Brock Sanders.

Jack and Latrelle Bateman were pioneer missionaries to the strife torn island shortly after Chang Kai Check and the Nationalist Chinese escaped from mainland China and the forces of Mao Tse Tung, added the local minister.

"Over the past 30 years, the Batemans, along with scores of national pastors who were led to Christ by them, have established well over 100 mission churches on the island of Taiwan," said Bro. Sanders. "These churches and mission points have been responsible for witnessing and leading to Christ countless thousands of men, women and children."

The Batemans are currently on furlough and staying in Con't Page 6, Col. 4

won by adults, at least for best of show.

- CANNED**  
FRUIT - Lela Copley, adult.  
VEGETABLES - Naomi Black, adult and Carrol Copley, 4-H.  
PICKLES - Lela Copley, adult and Courtney Tanksley, 4-H.  
JELLIES - Rose Sain, adult; Maureen Jesko, youth and Donae Parker, 4-H.

**TEXTILES**  
EMBROIDERY - Vivian White, adult; Sue Haire, youth and Holly Huckaby, 4-H.

**CROCHET** - Fran Hamilton, adult; Lynette Rogers, youth.

**KNITTING** - Polly Clark, adult.

**NEEDLEPOINT** - Izetta Shain, adult.

**QUILTS & COMFORTS** - Mrs. B.H. Black, adult.

**RUGS & PILLOWS** - Charlotte Davis, adult.

**WOMEN'S CLOTHING** - Betty Wuerflein, adult; Maureen Jesko, youth and Donae Parker, 4-H.

**CHILDREN'S CLOTHING** - Cindy Cargile, adult.

**FINE ARTS**  
OILS & ACRYLICS - Betty Embry (Professional adult).

OILS & ACRYLICS - Wilda Eldibee (Non-Professional adult), Terry Graves, youth and

Melissa Burnett, 4-H.

**WATERCOLORS** - Terry

## Olton By Sudan As Miscues

### Mar Opener

Mistakes and miscues cost the Sudan Hornets in their season opener Friday night, as they hosted the Olton Mustangs on their home field.

Costly mistakes contributed to a 21-6 victory for the Mustangs, and left the Hornets buzzing.

Olton's Michael Saldivar led the drive for the Mustangs, with 21 carries for 205 yards during the game. He also started the scoring for the game with a 20 yard run, capping a 48 yard drive by the Mustangs.

In the second, The Hornets came back with a 40 yard touchdown scamper by tailback James Clay. A two point conversion attempt failed and the Mustangs led by 7-6.

After failing to convert a fumble, the Hornets gave up the ball to the Mustangs, who again scored on a 20 yard run by Stan Stroebel, and the Mustangs maintained a 14-6 lead at the midway point of the game.

In the second half, Sudan got inside the Olton ten yard line two times, but failed to capitalize on the opportunity and came away without adding points.

Olton scored late in the game on a 19 yard run by Saldivar to add the final points of the game.



**HE'S PROUD OF HIS RIBBON**--Brandon Copley, son of Joe and Lela Copley, was ready to check it all out Friday afternoon at the Bailey County South Plains Fair. He was very pleased to find that his own painting won a blue ribbon in the youth division.



**LIONS TO GIVE AWAY SHOTGUN**--Lions Chuck Smith, chairman, left, and Les Irvin, president, of the Muleshoe Lions, are pictured with a Winchester shotgun and case to be presented some lucky winner during the annual Pheasant Hunt Breakfast by the Lions early in December.



# Diane Dot, Wrinkle Wed At Midland



MRS. GARY WAYNE WRINKLE  
(nee Diane Jo Dot)

In an afternoon candlelight ceremony at 4 p.m. on July 21, Diane Jo Dot exchanged wedding vows with Gary Wayne Wrinkle in the First Baptist Church of Midland. Officiating at the double ring ceremony was Dr. Daniel Vestal.

Parents of the couple are Mr. and Mrs. Joe W. Dot of Midland and Mr. and Mrs. Roy Wrinkle of Muleshoe.

Given in marriage by her father, the bride entered the church to a setting of two candelabra holding white tapers with greenery and white carnations. Pews were marked with violet bows. Focal point of the decorations was a unity candle, flanked by two tapers.

The bride was attired in a chapel length gown of white satin and alencon lace. The fitted bodice of the gown was accented with a band collar and deep overlay of alencon lace, sprinkled with seed pearls. The full sleeves, also inset with lace and ending in a point at the wrist were highlighted with pearls. The lace bodice dipped slightly in the back to a highlight a satin bow.

Appliques of alencon lace, scattered with pearls, enhanced the satin skirt. The gathered fullness at the back wrist emphasized the full sweep of the chapel length train. Alencon lace encircled the lower edge of the gown.

The bride carried a cascade bouquet of phalaenopsis orchids, excicum blossoms, stephanotis blossoms with violet streamers.

Her fingertip length veil of silk illusion fell from an alencon lace and pearl encrusted cap.

In keeping with tradition, the bride wore her mother's wedding petticoat for something old; something new was her dress; pearl earrings were borrowed from Laura Gafford, a friend and of the bride and something blue was her garter. She wore a newly minted penny in her shoe.

The groom was attired in a pearl gray cutaway tuxedo with pleated shirt with violet bow tie and cummerbund.

Attending the bride as maid of honor was her sister, Darlene

Dot of Midland. Bridesmaids were Karen Mille of Lubbock; Martha Dunn of Houston; Laura Gafford of Garland and Ann O'Connor of Midland.

Candlelighters were cousins of the bride, Kent Jow, Long Beach, Calif. and Kelly Jow, Fort Worth.

Best man was Dr. Sidney A. Smith, brother-in-law of the groom, from Friendswood. Groomsmen were Mark Foldv, of Columbus; Martin Brown, of Austin and Terry Burton and John Colburn, both of Muleshoe.

Ushers were Bill Bolding, brother-in-law of the groom from Midland; and Kent Jow and Kelly Jow, cousins of the bride.

A reception was held in the Holiday Inn Holidome. Upon entering the guests registered by signing their names to a violet table cloth centered with a gold Chinese wedding symbol, signifying double happiness.

The wedding party and parents of the couple sat at the head table decorated with candelabras, holding violet tapers and violet silk flower arrangements. The bride's bouquet graced the area before the couple.

Guests sat at round tables with floor length cloths enhanced with baskets of ivy.

At the reception, Susan Layton of Midland registered guests and Emily Chen of Houston and Lisa Jow, cousins of the bride of Fort Worth, served the bride's cake. Mrs. Sidney Smith of Friendswood and Mrs. Bill Bolding of Midland both sisters of the groom, served the groom's cake.

A graduate of Midland Lee High School, the bride is a 1983 graduate from Texas Tech with a BFA Design Communications degree and received an educa-

tion certificate in July, 1984.

The groom is a graduate of Muleshoe High School, and graduated from Texas Tech University in 1982 with a BS in Physical Education with teaching field in History. He is a member of Kappa Sigma, social fraternity and Phi Epsilon Kappa. He accepted a teacher-coach position with 5-A South Houston High School.

Pre-nuptial courtesies included a bridesmaid luncheon at Blue Star Inn.

A rehearsal dinner was co-hosted by the groom's parents, and sisters and husbands, Mr. and Mrs. Bill Bolding and Dr. and Mrs. Sidney Smith on Friday night in the home of Mr.

and Mrs. Bolding.

Out of town relatives attending the wedding included Mr. and Mrs. F.S. Laing, New York City, T.P. Kwong, San Francisco, Mr. and Mrs. Roy Chen and Dennis, Houston, Lisa Jow, Fort Worth, Kent Jow, Long Beach, Calif., and Kelly Jow, Fort Worth.

Also, Mrs. Emma Schuster, Tulia, Mr. and Mrs. Elmer Schuster, Tucumcari, N.M., Mr. and Mrs. Robert Brown, Tennyson, Tx., Wilburn Wrinkle, Bonte, Hellen Rae Barham, Lubbock, Mr. and Mrs. Wilford Schuster, Priddy, Tx., Mr. and Mrs. Hawk Jow, Fort Worth.

## Lingerie Shower Honors Miss Jon Ann Williams

Jon Ann Williams was honored with a lingerie shower on Friday, Aug. 24 in the home of Mechele Edwards.

The serving table was covered with a blue linen cloth and

accented with a centerpiece consisting of blue and white socks shaped into flowers with accents of greenery and white silk daisies. The centerpiece was presented to the honoree as a gift.

Following opening of the gifts that included several gag gifts, refreshments were served to the guests. Punch was served from a large crock with cookies, cake, crackers, chips and dips served from china appointments.

Special guests were Mrs. John Williams, mother of the honoree, and Mrs. Robert Ford of San Angelo, mother of the prospective groom. Other guests included: Lisa Wood, Janet Nix, Laura Powell, Gena Gustin, Debbi Hill, Ginger Gore Harper, Donna Lance and Evelyn Gillit of Baird; Pam Kent Dawson of Westbrook, Janie Brown of Lubbock and the hostess.

### Journal Society Policy

A processing charge of \$3 is made when a photo accompanies any wedding, engagement, or anniversary with the exception of anniversary of 50 years or more.

Five dollars will be charged for any shower picture taken by the Journal and \$3 charged for any shower picture accompanying a story. Pictures may be picked up after the article appears in the paper.

Wedding, engagement, and anniversary stories must be in the Journal office by Monday noon for the Thursday paper, and by Thursday noon for the Sunday paper.

After that time, stories will be run on a space available basis. Any wedding more than two weeks old, when received, will be edited and only the basic information will be included.

Shower pictures will not be taken without a 24 hour notice and copy must be in the office by 5 p.m., Monday for the Thursday paper and 5 p.m. Thursday, for the Sunday paper.

### Portales Childrens Home Associates

#### To Make Corsages

The Muleshoe Associates of the Portales Christian Childrens Home met Monday, Sept. 3 in the home of Ethel Julian to quilt for the home and cut quilt blocks. There were 11 present including the hostess, Ethel Julian. Others present included: Bernice Amerson, Nan Gatlin, Mae Provence, Blanche Aubrey, Mattie Smith, Lillie Barnhouse, Onedia Cornelison, Freda Locker, Vickie Hendricks and Mabel Caldwell.

The hostess served refreshments of apple pie and ice cream and cold drinks.

The next meeting will be Tuesday, Oct. 2 in the home of Mabel Caldwell at which time a demonstration will be given on pillow corsages. The club will make these to sell for the benefit of the home.

The club will attend a workshop on pillow corsages at the Portales Home on Tuesday, Sept. 18. These corsages will be sold for \$1.50 each.

### GIVE YOURSELF A RAISE



...with new competitive-rate U.S. Savings Bonds ★ America's favorite way to save!

### Electrogator® 60 Series

The time-proven Reinke Electrogator is now available with economical galvanized mainline pipe in both 6" and 6-5/8" O.D. sizes. Both systems deliver Reinke reliability and innovation at the most affordable price.

In addition, 8" O.D. galvanized pipe is available on the Electrogator Model 88.

### Electrogator 600 Series

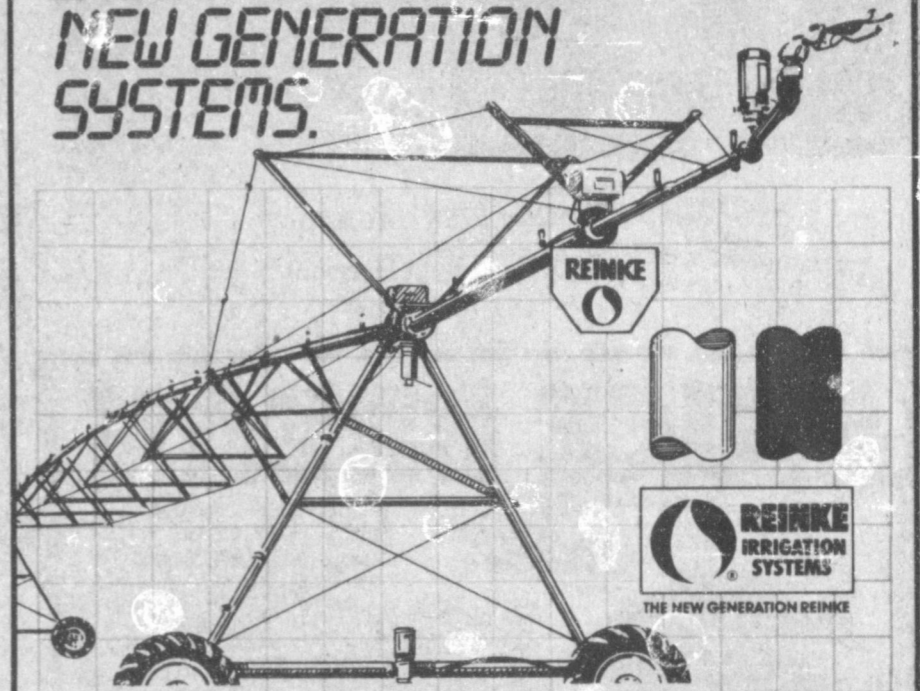
This family of Reinke Electrogators features Cor-Ten A steel mainline pipe,

the optimum steel for corrosion resistance and strength. Cor-Ten A has passed the test of time in irrigation fields and other demanding applications all over the world. Systems are available with 6" or 6-5/8" O.D. mainline pipe.

### A New Generation of Value.

Through refined engineering, the new 1984 Reinke Irrigation Systems set new standards of reliability and value. Talk to us soon about our new line of Reinke Electrogators.

## DISCOVER REINKE'S NEW GENERATION SYSTEMS.



Boss Irrigation  
P.O. Box 5695  
Lubbock, Tex  
79417



Gary Morris  
272-3891  
763-9591

### Art Association Meeting Set For Tuesday

The Muleshoe Art Association will meet Tuesday, Sept. 11 at 2 p.m. in the community room of the Muleshoe State Bank. Charlotte McMurry, water colorist, will give a demonstration and everyone is ask to take a picture to critique.

# JOIN THE ASTOUNDING WEIGHT WATCHERS® PROGRAM!

NOW ONLY

### Featuring the Amazing Quick Start Program.

THOUSANDS OF PEOPLE ARE LOSING WEIGHT FASTER THAN EVER...AND SO CAN YOU!! LOSE WEIGHT 20% FASTER IN THE FIRST 2 WEEKS!!

Now you can discover the wonders of QUICK START™ that makes losing weight faster and easier than ever before. And you can do it at a price that may never be offered again.

If you ever considered joining Weight Watchers...there's never been a better time than right NOW!!

Meeting Fee ..... \$7.00  
Registration Fee . \$13.00  
TOTAL \$20.00  
YOU PAY ONLY... \$ 7.00  
YOU SAVE \$13.00

### MEETING SCHEDULE:

MULESHOE CHURCH OF CHRIST  
16th and Ave. D  
Tues.

5:30 pm



Sheila Aron  
Area Director

**CALL WEIGHT WATCHERS® NOW!**  
1-800-692-4329

Offer valid thru September 30, 1984. Offer valid in locations listed (areas 27, 96, 107) only. Offer valid for new and renewing members only. This offer cannot be combined with any other offer or special rate. ©Weight Watchers International, Inc. 1984 owner of the Weight Watchers® and Quick Start® trademarks.

<p><b>TOOL VALUE OF THE MONTH</b></p> <p>Master MECHANIC® While Supplies Last <b>649</b></p> <p>Propane Torch Ideal for soldering, hobbies, more. With brass tip. MM555-65 Quantities Limited</p>	<p><b>HARDWARE VALUE OF THE MONTH</b></p> <p>Buy 2 Get rebate coupon good for \$2 Scotchgard® Fabric Protector Repels dirt, grease, stains &amp; water. 3M While Supplies Last <b>344</b></p> <p>16-Oz. Scotchgard® Fabric Protector Repels stains, water from upholstery, more. FC-4101-CR Quantities Limited</p>	<p><b>BARGAIN OF THE MONTH</b></p> <p>While Supplies Last <b>899</b></p> <p>SPARTUS® L.E.D. Alarm Clock With snooze alarm, battery back-up. Woodgrain case. 1140-61 Quantities Limited</p>
---	--	--

**Fry & Cox Inc.**  
401 S 1st



# Candlelight Ceremony Unites Miss Harmon, Jackson



MR. AND MRS. KIRK JACKSON  
(nee Belinda Beth Harmon)

Miss Belinda Beth Harmon became the bride of Randall Kirk Jackson in a candlelight ceremony Friday, August 10 at 7:30 p.m. in the Muleshoe Church of Christ. Kirk Willis of Edmond, Okla. read the double ring vows.

Parents of the couple are Bill and Jo Harmon of Muleshoe and Ted and Martha Jackson of Seminole.

Vows were repeated before a double brass arched candelabra entwined with greenery and lavender silk flowers with lavender bows, on each side double rings. Single brass candelabras were placed on each end.

Kent Jackson, brother of the groom; Elizabeth Burcham of Lubbock and Roenne Foster, a group of acapella singers from Lubbock Christian College, sang "He Made You For Me", "Sunrise Sunset", "Annie's Song", "Wedding Song" and "The Lord Bless You And Keep You."

Escorted by her father and given in marriage by her parents, the bride wore a white organza gown designed by Mori Lee of New York. The scoop neckline was accented with a ruffle flounce outlined with Alencon lace. The bodice featured pearl beaded Alencon lace and a natural waist. Victorian sleeves were accented with Alencon lace and a lace ruffle at

the elbow. The skirt fell to floor length and swept to back fullness. The skirt was adorned with Alencon lace appliques. Alternating layers of lace and crystal pleated ruffles accented the hemline.

The bride's bouquet was a cascade of lavender and shades of mauve silk flowers with lace ribbon on top of a Bible.

As a family tradition something old was a Bible given to the bride's maternal grandmother as a child. The Bible was covered with satin and lace. This Bible has been carried by the bride's mother, her mother's twin sister and cousins. In the Bible was a lace trimmed handkerchief belonging to the groom's maternal grandmother for something borrowed. Something new was the wedding dress and pearl necklace given to her by her mother.

The bride gave her mother a long stem silk mauve rose accented with dark mauve baby's breath with ribbon and lace identical to ribbon used in bride's bouquet, and groom's mother when leaving.

Mrs. Jim (Charli) Bruner of San Antonio served as matron of honor. Bridesmaids were Sherri Ellis of Snyder and Keva Jackson of Seminole. Amy Hutton of Muleshoe was flower girl.

Berry Odell of Canyon served as best man. Groomsman were Kent Jackson of Seminole, brother of the groom, and Ben Harmon of Muleshoe, brother of the bride. Ringbearer was Shawn Long of Plainview. Ushers were Mario Munoz and Loren Fleming, both of Seminole.

Following the ceremony a reception was held in the reception hall of the church. Members of the houseparty included: Mr. and Mrs. Gordon Wilson, Mr. and Mrs. Butch Vandiver, Mr. and Mrs. Don Harmon, Mr. and Mrs. Gary Dale, Mr. and Mrs. Glen Fleming, Mrs. Cozette Blackwood and Mrs. Betty Burlesmith.

The bride is a 1983 graduate of Muleshoe High School. Jackson is a graduate of Seminole High School and attended South Plains College. He is employed by Texland Petroleum in Levelland.

A rehearsal party was held at the church, hosted by the groom's parents. A bridesmaid luncheon was held on Thursday at the home of Sherri Carpenter, hosted by Rita Hawkins, Brenda Hawkins, Charli Bruner and Shelli Carpenter. A bridesmaid brunch was held on Friday at the home of Bobby Nell Dunham. Co-hostesses were Rhonda Myers and Shelli Dunham.

Out of town relatives attending the wedding included: Mr. and Mrs. Don Harmon, Ruidosa, N.M.; Mark Harmon, Waco; Mr. and Mrs. Robert Templeton and Rebecca, Lubbock; Mr. and Mrs. Vernon Lemon, Mr. and Mrs. Max Duncan, Mr. and Mrs. Richard Jackson and Many and Kendra Jackson, Jan Fleming and Lori

King, all of Lubbock; Mrs. E.D. Jackson, groom's grandmother, Syble Sheppard, Mr. and Mrs. Jimmy Lemon, Mr. and Mrs. E.D. Jackson, Jr., Mr. and Mrs. Keith Duncan, Mr. and Mrs. Rex Jackson and Lance Jackson of Slaton.

And Mr. and Mrs. George Jackson and Coke Jackson, Mr. and Mrs. Glen Fleming and Jana Fleming, Mr. and Mrs. Gary Duncan, Ty, Trey and Kristi Duncan, all of Seminole and Mr. and Mrs. Greg Fleming of Robert Lee.

Other out of town guests were registered from Dallas, Levelland, Lubbock, Seminole, Idalou, Plainview, Ruidoso, N.M., Levelland and Robert Lee.



The first pinball game machine was the "Whoopee Game," manufactured in 1930 in Chicago.

**Rebekah Lodge**  
**Weekly Meeting**  
**Held Tuesday**

Pledge Rush for Alpha Zeta Pi was held Thursday night, Aug. 30 in the home of Paula McMeans. Members and new pledges went dressed in Hollywood attire or as their favorite star. Awards for the best costume were awarded to Traci Mastler as Dolly Pardon, and Sue Rogers as Al Jolson. Waitresses for the evening were the membership committee.

The meal consisted of grilled steaks, baked potatoes, tossed salad and red soda pop cake.

New pledges attending were Roxie Johnson, Helen Adrian, Sue Rogers and Susan Wedel.

Members present included: Jan King, Khristi Phelps, Rhonda Myers, Gina Smith, Tammy Black, Traci Mastler, Barbara Young, Paula McMeans, Gwyn Murray, Debbie Cowley and Annette Bonds.



**Hershel Dyer**  
**Preaching God's Word**  
**Muleshoe Church of Christ**  
**Sept. 9-12**  
**8 p.m. Mon-Wed**  
**Sunday: 9:30 Bible Class & 6 p.m. Evening Worship**  
**You Are Invited To Attend**

**PRICE BREAK**

ARTCARVED SILADIUM® HIGH SCHOOL CLASS RINGS

Every ring is backed by the Art-Carved Full Lifetime Warranty. This offer expires November 30, 1984 and is to be used only for the purchase of ArtCarved Siladium® high school class rings.

PLUS up to \$36 worth of custom features FREE!

**\$74.95** NOW ONLY WITH THIS AD

**ARTCARVED CLASS RINGS**

**Lindsey Jewelers**  
202 Main 272-3355  
873 J-1238 BRING THIS AD

**Flat Fold Velour**

**Sale**

Save 45% on Rich, Plush 60" Velour!

sale **97¢** yd.

Reg. 1.77 yd. This luxurious fabric is made of Arnel® Triacetate and polyester for easy washability. Sew some up for the warmest robes or velvety soft fashions! A beautiful selection of rich Fall colors.

OPEN 8:00 A.M. To 6:00 P.M.

**ANTHONY'S**

**Wiedebush & Company**

Five Area Systems Is Proud To Serve Their Telecommunication Needs. Another Satisfied Customer Who Believes In "People Helping People"

L-R John Espinoza, Orvis Burris, Donald Jones, Jerri Wiedebush, Sandy Robinson, Shelly Dunham.

Ask Them About Their New Criterion 3x8 Phone System -- Then Call Five Area Systems About Yours.

**More business phone system for less Money.**

**That's American Know-how.**

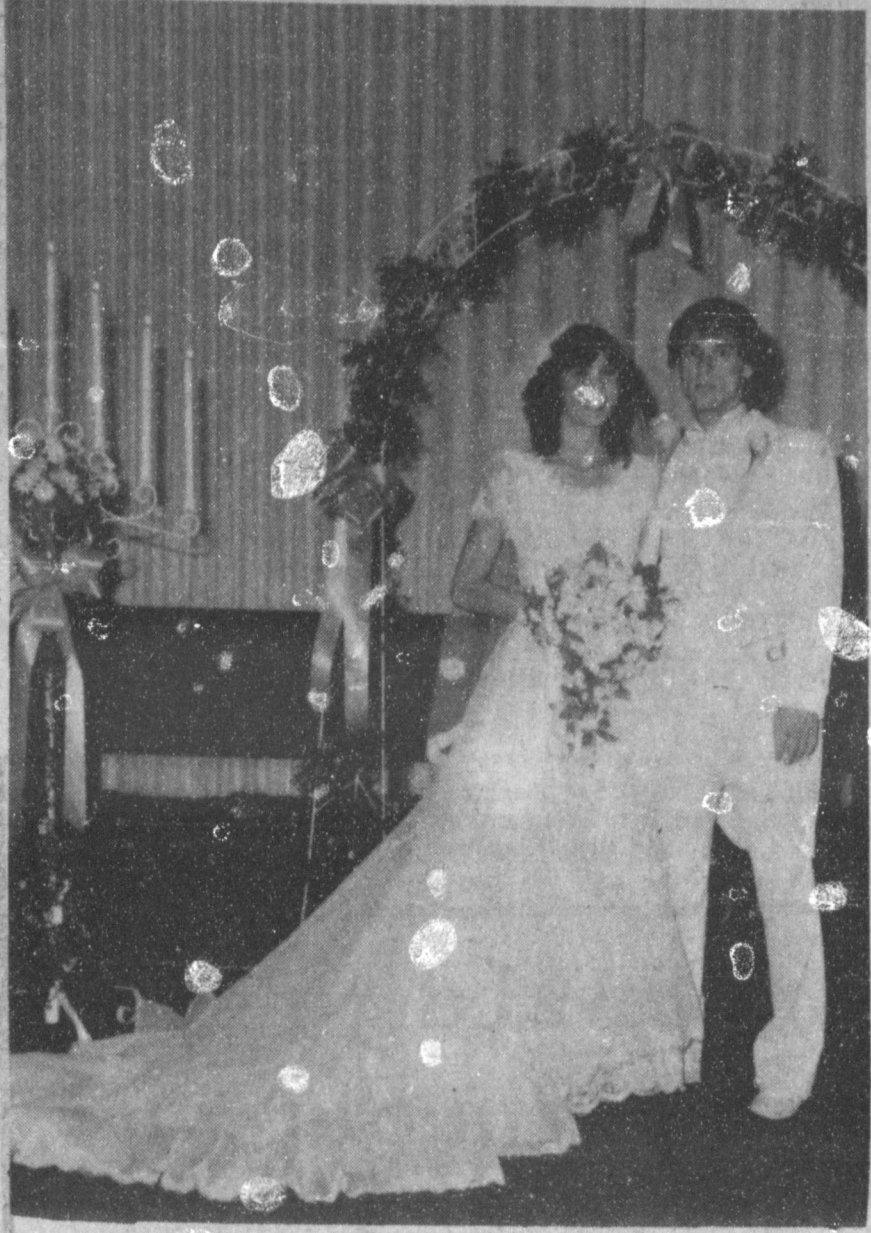
Sales -- Installation -- Service  
Its All By  
**Five Area Systems, Inc.**  
302 Uvalde  
Muleshoe, Texas  
272-5533

**Business - Residential**  
**Call Today**

**Criterion 3x8**  
PHONE SYSTEM



# Miss Kinard, Claunch United In Doublering Ceremony



MR. AND MRS. MICA SHANE CLAUNCH  
(nee Sherri Kinard)

In a double ring ceremony Friday, Aug. 3 at 7 p.m. Sherri Diane Kinard of Muleshoe and Mica Shane Claunch of Bula were united in marriage at the First Assembly of God Church in Muleshoe with Steve Davis, pastor, officiating.

The bride is the daughter of Mr. and Mrs. Bill Kinard of Muleshoe and Claunch is the son of Jim Pat Claunch of Bula and Jane Claunch of Port Isabel.

The couple stood before an altar centered with an arch and candelabras entwined with greenery and tiny orchid and purple flowers and orchid satin bows. In the center of the arch stood the unity candle which was specially made for the bride and groom. The candle was created with whipped wax and tiny purple flowers encircling the wedding invitation.

Escorted and given in mar-



KRISTI CAMPBELL  
Kristi Campbell  
Named AAUW  
Girl Of The Month

riage by her father, the bride wore a formal gown of white organza fashioned with a scoop neckline edged in Chantilly lace that formed a wide lace ruffle. The bodice had motifs of lace encrusted with seed pearls, and the sleeves were lace ruffles.

The skirt had a wide band of Chantilly lace from which extended a flare ruffle at the hemline and around the chapel train. The headpiece was a Juliet cap of matching lace with a fingertip length veil of lace edged illusion. The bride carried a cascade of white orchids and grape leaves accented with white satin ribbon, lace and streamers.

For something old, she wore a gold necklace belonging to her mother. Something new was her earrings that she received as a gift from a special friend. Something borrowed was her dress. She also wore the traditional blue garter.

Pat Watson and Bridgett Davis played selected music on the piano and organ. Clifford Watson sang "The Wedding Song" and "Flesh Of My Flesh". During the lighting of the unity candle, Janet Nix and Clifford Watson sang a duet "Our Love."

Miss Karen Kelton of Muleshoe served as maid of honor. Bridesmaids were Lauri Kinard, sister of the bride and Denna Burris, both of Muleshoe.

Bestman was Larry Beene of Needmore. Groomsman were Johnny Puckett of Canyon and Michael Davenport of Muleshoe.

LeeAnn Altman of Muleshoe and Becky Welch of Maple, served as flower girls. Brandon Kindard, cousin of the bride, served as ring bearer. Jimmy Gleason and Gary Cox both of

Muleshoe lit the candles before the ceremony and served as ushers.

Julie Claunch, sister of the groom, of Port Isabel registered guests.

Following the ceremony, a reception was held in the fellowship hall of the church. Lana Brockman of Lazbuddie and Shonda Morrison of Muleshoe served at the bride's table. Julie Claunch served at the groom's table.

Members of the house party were Mrs. Larry Combs, Mrs. Butch Cox, Mrs. Jerry Gleason, Mrs. Burl Mardis, Mrs. Keith Taylor, Mrs. Bill Welch, Mrs. W.T. Watson, Mrs. Jim Young and Ms. Jan Kinard.

Jacen Claunch and Beanda Kinard and Becky Welch handed out rice bags.

Special guests were Mr. and Mrs. George Backouesky of Lamesa, Mrs. LaVader Kinard of Floydada, Mr. and Mrs. Roy Kinard and Sherry of Lockney, Jane and Julie Claunch of Port Isabel, Mr. and Mrs. Jim

Claunch of Bula, Mr. and Mrs. Courtney Sanders of Morton, Mrs. Fanny Tighe of Slaton, Mrs. Myrtle Tighe of Slaton, Mr. and Mrs. Bennie Claunch of Bula, Robert Claunch of Bula, Mr. and Mrs. Bill Tafp of Pecos, Gene Lyns and Joan White of Enid, Oklahoma and Mrs. Guy Beavers of Spring.

A rehearsal dinner was hosted by Mr. and Mrs. Jim Pat Claunch of Bula in the fellowship hall of the First Assembly of God Church on Aug. 2.

The bride is a 1984, graduate of Muleshoe High School and is presently employed at West Texas State Bank in Canyon.

Claunch is a 1981, graduate of Muleshoe High School and is employed at Texas Commerce Bank in Amarillo and is a senior at West Texas State University.

\*\*\*\*

By the time the average man has learned the value of study, he has lost his eyesight.

## Creative Woman

by Sheryl Borden

Topics to be presented on "The Creative Woman" show on September 11 and 15 include making desserts and drinks in the microwave oven, using a clock thermostat and a recipe for making coconut creme pie.

Marcia Conc, co-author of "French Microwave Cooking" will be a guest on the show and will talk about preparing special desserts and beverages in the microwave oven. The dessert is Gateau au Chocolate, and Marcia will discuss pan preparation, power settings, baking times as compared to conventional oven cooking times, doneness test and the importance of standing time.

She will also talk about the basics of heating liquids, suggested containers and how to flambé beverages in the microwave oven.

Vickie Willis, home economist with Southwestern Public Service Company in Roswell will discuss the advantages of a clock thermostat for our heating systems. She says that the convenience of a clock thermo-

### Rebekah Lodge

Noble Grand Sandi Robinson was in charge of the regular meeting of the Rebekah Lodge Tuesday night, with Dorothy Chance, Chaplain, giving the opening prayer. Twenty members were present.

Acting secretary, Patsy Chance read the minutes of the previous meeting and Adell Tompkins, treasurer, gave the financial report.

Ruby Green, advisor to the table committee gave her report on what she found in Muleshoe. The members voted to purchase the table from Williams Bros. Office Supply.

It was reported that Chad Fitzgerald of Hereford will speak at the Rebekah Hall Tuesday, Sept. 11th, at 7:30 p.m. Chad is a delegate to the United Nations and the public will be welcome reported a spokesman for the group.

Refreshments were served by the hostesses, Opal Talley, Mildred Kendrick and Ruby Green.

stat may be worth the cost to the home owner. Other factors will also be presented.

Everyone probably has their favorite coconut creme pie recipe, but Sarah MacDonald-Smith, nutrition consultant with the Associated Milk Producers Inc. in El Paso, Texas says her recipe is especially good for last minute guests. The reason it's called "Deluxe Coconut Creme Pie" is from the addition of the vanilla ice cream, which also makes the dessert richer and more nutritious.

On September 13, Mary Johnson from Portales will demonstrate the art of decorating Ukrainian Easter Eggs. Easter egg decorating has been handed down through generations of Ukrainian people. They are famous the world over for their colorful Easter eggs (pysanky). The hand decorated art dates back to antiquity. Pysanky are not made to be eaten. They are given as gifts, exchanged with friends and used as decorations all year round. Mary Johnson has been doing this art for many years and will give a step-by-step demonstration to show how to create your own Easter basket filled with pysanky decorated by you.

\*\*\*\*

It's never too late to start driving carefully--especially on your vacation.

\*\*\*\*

\*\*\*\*

\*\*\*\*

\*\*\*\*

\*\*\*\*

\*\*\*\*

\*\*\*\*

\*\*\*\*

\*\*\*\*

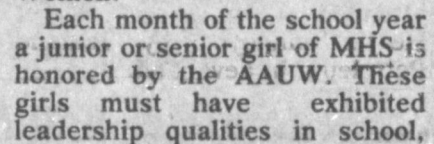
\*\*\*\*

\*\*\*\*

\*\*\*\*

## Attention Farmers - We Have TAM 105 Wheat Seed For You!

Bulk ..... \$4.00 bu  
Sacked ..... \$4.50 bu



Ask About Our Hybrid Bounty Wheat Seed

Ray Griffiths & Sons, Inc.

215 E. Amer. Blvd. 272-4585

## ANTHONY'S FALL FASHION SALE

We Accept  
AMERICAN EXPRESS VISA

Use Our No Charge Layaway Plan.

Men's Parachute Pants  
Made of 100% Nylon.  
Regular 22.00 Colors  
Red - Black - Navy - Grey  
**\$18.97**

Womens LEVIS BENDOVER PANTS  
Reg. \$19.95  
Sale Price **\$16.97**

Basic Colors And Fall Colors To Choose From  
Sizes 8 - 20

Select Group Of Mens Haggar Dress Slacks. Sizes 28-42  
Values to 28.00 **14.97** pair or 2 FOR 28.

Samsonite Garment Bags  
Get Free Tote Bag. **\$36.97**  
Reg. \$45.97

Men's - Women's - Juniors Children's - Infants Coats  
**20% Off** Reg. Price

Select Group of Boys Short Sleeve Knit Shirts  
Values To 11.99 **\$6.97**  
Sizes 8-20

Sheet Sets By Pacific, Canadian, Sunset, Kensington Plaid, Colonial.  
Full \$14.97 Queen \$23.97 King \$29.97  
Size Size Size

Entire Stock Ladies Dress And Casual Shoes **20% Off**

Biederlack Animal Throws  
Reg. 21.99 **\$16.97**

Junior Edition, Pleated Dress Pants. Come In Fall And Basic Colors With Coordinating Belts.  
Reg. 16.00 **\$12.97**

Bobbie Brooks Coordinates Sweater - Vests - Pants - Skirts - And blouses. Smart looking For The Juniors. **20% Off**

Sewing Kits For Homemakers, Students, Seamstresses, And Beginners  
Reg. 5.99 **\$4.44**

Store Hours  
8:00 A.M. To 6:00 P.M.  
Mon - Sat.

We'll Keep You Looking Good for Less!

# ANTHONY'S

**Bailey County Journal** USPS 750-300  
Established March 31, 1963. Published by Muleshoe Publishing Co., Inc. Every Sunday at 304 W. Second, Box 449, Muleshoe, Texas, 79347. Second Class Postage paid at Muleshoe, Texas 79347.

**MEMBER 1984**  
TEXAS PRESS ASSOCIATION

L.B. Hall - President  
James Woods - Vice President  
Cleta Williams - News  
Evelene Harris - Society  
Holt Millsap - Advertising  
Lillian Zimo - Circulation - Classified  
Sammye Hall - Bookkeeper

**SUBSCRIPTIONS:**  
Muleshoe Journal and Bailey County Journal  
Bailey and surrounding counties \$11.95  
Muleshoe Journal and Bailey County Journal  
Elsewhere in Texas \$12.95  
Muleshoe Journal and Bailey County Journal  
Outside of Texas \$13.95  
Yearly by Carrier \$11.50  
Advertising rate card on application.



## Game Department Sets

### Geese, Duck Limits

The Texas Parks and Wildlife Commission has adopted dates and bag limits for hunting waterfowl during the 1984-85 hunting seasons.

Meeting in Austin late last month, the commission approved an extended hunting season for snow, blue and Ross' geese in the eastern portion of the state and added two species of tree ducks as legal game birds for the upcoming season.

The hunting season for 'light' geese (snow, blue, Ross') east of U.S. Highway 81 will be November 3, 1984, through January 27, 1985.

Hunting season for dark geese (Canada, black brant, white-fronted) in that region will be November 3-11, 1984 and November 19, 1984, through January 20, 1985.

Daily bag limits east of Highway 81 are unchanged from last year, five light geese and one Canada or black brant and one white-fronted goose. Possession limit is twice the daily bag limit.

West of Highway 81, the season for all those goose species is October 30, 1984, through January 20, 1985. Daily bag limit is five geese, not to include more than two dark geese. Possession limit is 10, not to include more than four dark geese.

Duck seasons for 1984-85 are basically unchanged from last year, with a three-segment split season in most of the state, with the exception of the High Plains Mallard Management Unit in West Texas.

### Farwell Nursing

### Home Schedules

### An Open House

Farwell Convalescent Center will have an open house on Tuesday, September 11, commemorating Grandparent's Day, which is being celebrated nationally on Sunday, today, September 9. Open house will be from 2-7 p.m. and entertainment is planned.

A photographer will be on hand and awards will be presented for the oldest grandparent and to the grandparents with the most grand children.

Entertainment will be two bands, one singer and square dancing.

### Mules...

Cont. from Page 1

ried two times for nine yards and Sean Shipman had six yards for two carries.

For Portales, Rodney Emerson was minus eight yards for six carries; Tony Pena had 76 yards on 18 carries; Chad Payne carried four times for 10 yards; Mark Richards had two carries for 11 yards and Mark Poynor had 56 yards on 11 carries with Mike Polanos carrying one time for four yards.

Mules	Rams
First Downs	7
Rushes-yards	33-103
Passing yards	15
Passes	2-4-1
Punts-avg.	5-35
Fumbles-lost	3-3
Penalties	9-86

In the High Plains area, the duck season is October 30, 1984, through January 20, 1985. In the remainder of the state, the season is November 3-11, 1984; November 19-25, 1984; and December 8, 1984, through January 20, 1985.

The 100-point system of duck bag limits remains unchanged from last year, except that black-bellied whistling (tree) ducks and fulvous whistling ducks have been added as

### New Taxes

### Expected To Take Bite

Long before April showers bring you May flowers, October will have brought you higher taxes on your garden.

New tax laws passed by the Legislature and signed by Governor Mark White go into effect October 2. For the first time, fertilizer used for non-agricultural purposes will be taxed.

For you, that means the cost of growing your gardens or taking care of your lawn will go higher.

Other than fertilizer, bedding plants bought at nurseries and plants bought at the grocery store are subject to the higher tax rate. Exempt from the tax are annual plants that die after a growth year or that yield food for human consumption.

The tax goes up 1/8 of a cent across the state, but it translates into a four-1/8 percent tax hike for items such as fertilizer. In some cities that have local sales taxes and special taxes for mass transit, the cost may balloon by as much as 1/8 percent.

A bag of fertilizer, then, that costs \$8.99 would cost \$9.35 in most of the state, but \$9.54 in some cities with the add-on taxes.

Fertilizer used for agricultural purposes remains exempt. Farmers and ranchers do not have to pay the tax on fertilizer if it is used for their agricultural production.

Questions concerning the new tax on fertilizer can be answered by calling State Comptroller Bob Bullock's office toll free on 1-800-252-5555 or on the regular number, 512/475-1931.

### Commissioners

### Will Consider

### Budget, Tax Rate

Bailey County Judge Gordon H. Green said one of the items for the Bailey County Commissioners Court to face when they meet at 10 a.m. tomorrow, Monday, will be the resignation of Dr. Jerry Gregory as County Health Officer.

Other items will include to meet with representatives of the Muleshoe Cemetery; consider the fiscal year 1985 county budget; set the county tax rate for 1984; review the county treasurer report for August; pay routine bills; consider revenue sharing regulations and miscellaneous items.

70-point birds. Shooting hours are 30 minutes before sunrise to sunset statewide, except sunrise to sunset for the September 15-23 teal season.

### Three Way Test Shows Competency

### For All Students

According to test results from the Three Way School, who administered the Metropolitan Achievement tests to 125 students, they ranged from 100 percent in "Mastery Percentile" for reading, math and writing in the third grade to slightly lower percentages for the fifth and ninth grades.

In the fifth grade, reading was 92 percent, math, 100 percent and writing was 92 percent. Ninth graders showed a 78 percent mastery in reading, 100 percent in math and 64 percent in writing.

Lowest score recorded was 40 percent mastery in reading for the 11th grade students; and 38 percent mastery of math for 12th graders. Second graders were lowest in language at 50 percent mastery and 44 percent mastery of social studies.

Only six students at the school in southwest Bailey County failed to demonstrate mastery of minimum exit level competencies, according to the test results.

### Three Way School

### Has Full Range

### Of Fall Programs

According to officials from the Three Way Schools, the school offers vocational programs in Vocational Agriculture and Home Ec.

They said it is the policy of the Three Way Schools not to discriminate on the basis of sex, handicap, race, color, and national origin in its educational and vocational programs, activities or employment as required by Title IX, Section 504 and Title VI.

Three Way Schools will take steps to assure that lack of English language skills will not be a barrier to admission and participation in all educational and vocational programs, they added.

For information about your rights or grievance procedures, the school official said to contact the Title IX Coordinator, Thomas Johnson at Box 87, Maple, Texas 79344. Phone 927-5315, or section 504 coordinator, Jack Lane, at St. Rt., Goodland, Texas 79327. Phone 927-3688.

\*\*\*\* Silence is an underplayed virtue.

### Nursing Home News

by Joyce Stancell

Wed. afternoon Barbara Lust and Jackie Johnson came to have a Sing-A-Long with the residents. Residents attending were Lois Ethridge, Cleo Beilar, Alva Shofner, Edith Bruns, Rose Sebring, Claudia Cannon, Jewel Tipton, Rosa Holland, B.B. Street. Special guest attending were Doc Goucher, Minnie Berry and Mrs. Walter Sebring.

\*\*\*\* Thurs. afternoon Mack Bellar,

### Church...

Cont. from Page 1

Lubbock, which is Mrs. Bate-man's hometown.

"Everyone is cordially invited to come, hear, and worship with some of God's truly 'called-out' servants, missionaries to a foreign land," concluded the minister from the Richland Hills Baptist Church.

J.E. Embry and Laverne James came to play Skip-Bo and 42 with the residents.

Friday morning the residents played Bingo in the dining room. Cleo Bellar was our champion Bingo player. She bingoed 3 times. Mrs. Lois Ethridge 1 time, B.B. Street 1 time.

Friday afternoon the J.O.Y. Choir from the First Bapt. Church came to sing with the residents. Everyone attending

### Fair...

Cont. from Page 1

Graves, youth.

PHOTOGRAPHY Sue Haire, youth. CRAFTS & HOBBIES HOLIDAY PARADE Heather Hutton, youth.

PICTURES - Myra Copley, adult and Trent Copley, youth.

OLE PAINTING - Victoria Hendricks, adult.

CERAMICS - June Gore, adult. MISCELLANEOUS - Jeanette Rogers, adult; Samantha Rogers, youth and Neal Watson, 4-H.

enjoyed singing old favorite hymns. Refreshments of finger sandwiches & punch were served to residents and staff.

\*\*\*\* J.C. Shanks came Sat. to give the men shaves and haircuts.

\*\*\*\* E.B. Wilson came Sunday morning for Bible Study.

\*\*\*\* The Calvary Bapt. Church came to sing Sun. afternoon.

\*\*\*\* Tues. the Hospital & Nursing Home aux. came to shampoo & set the ladies hair, give manicures and play Skip-Bo.

\*\*\*\* Mr. Scoggins visited Emmett Dean Wed. they went out for a cup of coffee.

\*\*\*\* Ruth Hall came Wed. morning to visit and read special things to the residents.

\*\*\*\* Clara Weaver went out to her home in Lazbuddie over the weekend. Barbara Lust visited her Wed.

\*\*\*\* A special thanks to Mrs. Wayland Ethridge for all the nice tomatoes. They were so good.

## You Are Invited To Bailey County Farm Bureau's

## Annual Meeting

Saturday, Sept. 15, 1984

General Meeting  
7:30 p.m.

### High School Cafeteria

400 Blk. W. Ave. G.

A Meal Of Home-Grown Food Will Be Prepared & Served By The Directors At 6:30 p.m. New Policies Will Be Adopted & New Directors Elected.

Come To The Convention & Let Your Ideas Be Heard

**One Day Only!**

**ALL**

**Guns & Ammunition**

**25 - 50% Off**

Sat, Sept 15  
9 - 6 p.m.

Browning  
Colt  
Winchester

Smith -  
Wesson  
Barcotta  
Remington

Register For A New  
Smith & Wesson 38  
Special To Be Given  
Away At 6 p.m.  
(Valued At \$250)

**Muleshoe  
Pawn Shop**

213 S. 1st  
272-5105

Your local independently owned True Value® Hardware Store has national chain-buying power.



**TRU-TEST PAINTS**

**'84 Fall Paint Savings**



**Latex Flat Wall Finish**

998 Gal.



**Latex Semi Gloss**

1198 Gal.



**Latex Flat Enamel**

1298 Gal.

Paint Sale Ends Saturday, September 15

Sat-N-Hue® Latex Flat Wall Finish: This velvety-smooth, no-sheen finish is ideal for walls in living rooms, dining areas and bedrooms. Fully washable to stay fresh-looking longer. Great on drywall, plaster, primed metal and wood.

Marvelustre® Latex Semi Gloss: Mirror-smooth latex is perfect for walls and woodwork in kitchen and bath because it resists water, grease, soil and steam. Usually covers in just one coat. Completely washable to keep its good looks longer.

E-Z Kare™ Latex Flat Enamel: Super-scrubbable wall and trim finish for use in any room in the house, especially high-traffic areas and kids' rooms. Dries fast to a flat, long-lasting finish. Also good on primed metal, brick concrete.

Fry & Cox, Inc.

401 S. First
272-4511



## At Muleshoe Junior High



# FBI

— FEEDBAG INFORMATION —



## Six New Teachers Welcomed

MRS. M. JONES

Mary Jones is the new reading lab teacher at Watson Jr. High. She is the wife of Jerry Jones and has three kids, Kyle 15, Craig 12, and Michelle 6. All of them attend the Springlake-Earth school which is near their home in Springlake.

Mrs. Jones went to Texas Tech University and majored in Elementary Education. She is currently working on her master's Degree in Education at Tech.

When asked how she liked being a reading lab teacher, Mrs. Jones replied, "I enjoy working with the students who come to the reading lab. As my classes are small, I have an opportunity to work with them on an individual basis."

In high school, Mrs. Jones was a church secretary for two years and worked at the Knox County Tax-Assessors office for a summer.

Well, as far as comments about Watson Jr. High, she says, "The faculty and students at Watson have made this a very enjoyable year."

Welcome to Watson Jr. High Mrs. Jones!!!

KHRISTI PHELPS

Khristi Phelps is the new 7th grade girl's Athletic Coach at Watson Junior High. She originally lived in Spearman, Texas where she attended high school. Coach Phelps attended West Texas State University in Canyon. She majored in Physical Education. Coach Phelps is married and has one son, Ches, who is 2 years old.

When asked what she thought about her 7th grade athletic girls, she commented: "The 7th grade girl athletes have put forth a great amount of effort, I am looking forward to a year full of fun. The girls are proving to me that I can expect all they have to give. With this dedication, I know they are going to be winners."

Coach Phelps also added, "Muleshoe, Texas is a wonderful place to live! There are so many opportunities for growth, I can't imagine living anywhere else."

CARREN GIBSON

Carren Gibson is the new math lab teacher at Watson Junior High. Her husband, Anthony Gibson, has taught the high school band for two (2) years. Mrs. Gibson grew up in Lubbock and graduated from Monterrey High. She received a degree from Texas Tech in Elementary Education With a specialization in math; she also received an endorsement in Kindergarten.

Mrs. Gibson says that she

picked math as profession because of the wonderful feeling one gets when he finally understands. She says that in the time she has taught she has enjoyed it very much and that she wants each student to enjoy math as well as to see the importance of math.

Mrs. Gibson plans to meet some individual needs as she gets to know each student.

MRS. JANE RAINES

Mrs. Jane Raines is a newcomer to Watson Junior High. She is an art teacher. Mrs. Raines grew up in Kansas City. At the age of fourteen, she gave a puppet show at the Nelson Gallery.

She studied art at the University of Texas in Austin, the University of Barcelona, the University of Virginia, and George Masons University in Arlington, Virginia. Mrs. Raines also studied in Spain. Her art has taken her around the world to places like Norway, Denmark, Switzerland, and even Rome.

Mrs. Raines has settled in Muleshoe and hopefully will stay.

MRS. JODY LYLE

Mrs. Jody Lyle is one of the many new teachers at WJHS. She is a resident of Sudan. She is married and has one child. Mrs. Lyle has previously taught 4th grade, 3rd grade, and kindergarten. She chose Muleshoe because of the quality of the schools. Mrs. Lyle teaches 6th grade directed study, 7th grade speech, 8th grade reading, and 8th grade reading improvement. Mrs. Lyle enjoys the teachers & the

students of Watson Junior High.

MRS. DORIS SCOGGIN

Mrs. Doris Scoggin has come back into teaching this year after a rest(?) from teaching. She is married & has four children. She attended Eastern New Mexico University. She teaches 7th & 8th grade Science. She previously taught 6th & 7th grade science and 7th grade math. She decided to teach because she enjoys working with kids and seeing their progress.

NORMA JEAN AT THE SCENE

It has already been two hectic weeks of school. The halls of Watson Junior High are flooded with excited students. It is known to everyone that this is going to be a great year.

Though school has changed tremendously over the summer, students are adjusting. Most students enjoy the eight period day. They also enjoy the exciting new classes that are offered this year: Math lab, Directed study, and Computer Literacy. Though many great teachers have left Watson Junior High, the new teachers are just great. The '84-'85 school year is going to be FARILLOUS!!!!!!



When Columbus discovered America, he found the Indians playing ball games.

## Watson Junior High Institutes New Rules

There are many new and good rules in Watson Junior High this year. "No running in the hallways" keeps those big guys from running over the poor defenseless 6th graders (& a few more). The rule about "not coming into the building during the noon hour" gives the teachers time to think. It also keeps students out of trouble in case something gets stolen.

One of the new rules concerning "passing 4 solid subjects in order to participate in extracurricular activities" has made many students work a

little harder on those subjects.

The rule "no gum or candy allowed in the school building" is very good. If everyone was allowed to bring candy & gum into the school, sticky, used candy & gum would be everywhere: on the desks, in the water fountains, on the floor, in books, or on other classmates.

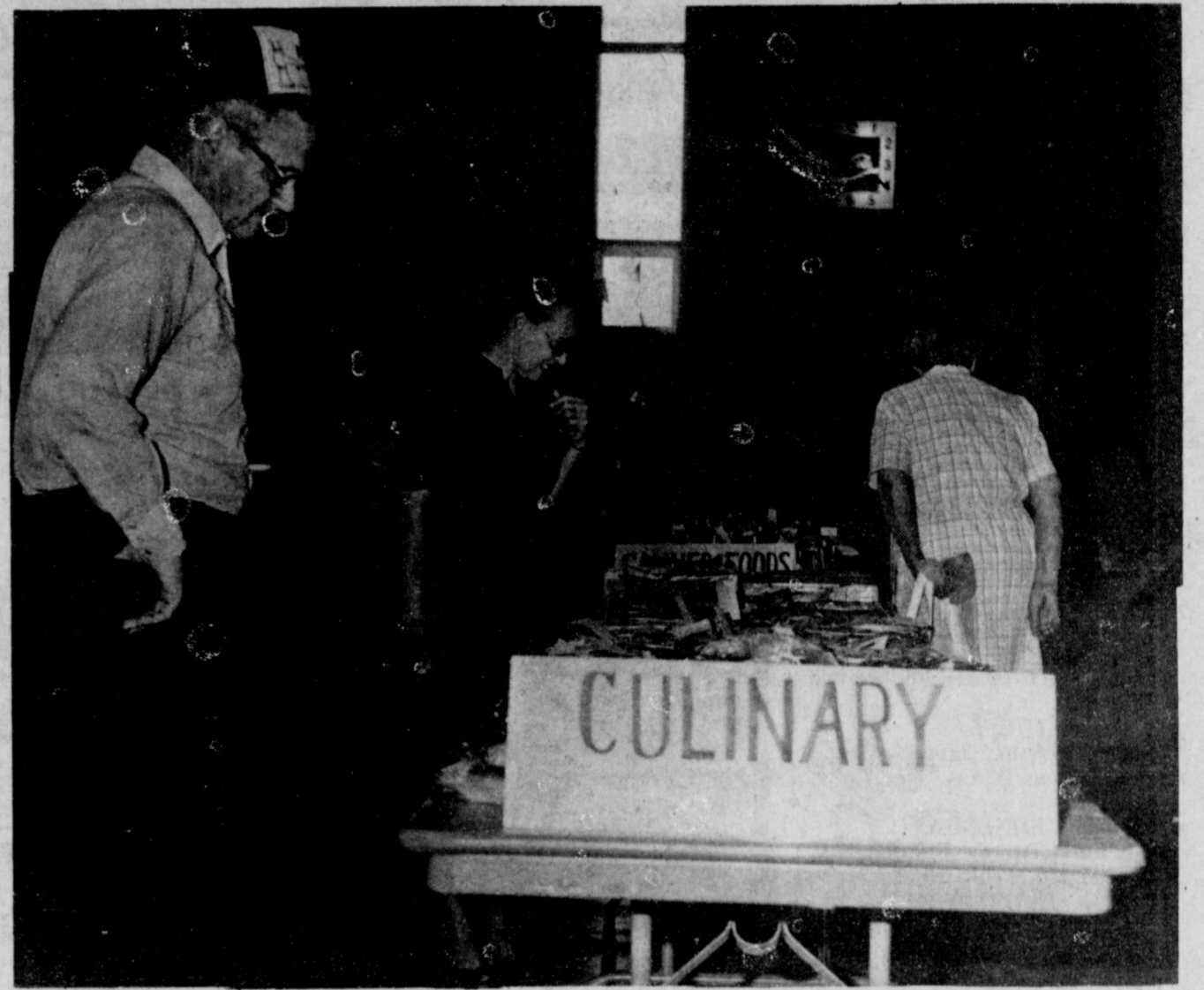
"No social promotions" seems to be fairer. Personality conflicts would not be a grading factor. Students would not think "Oh, they'll pass me!" Having "parents to sign report cards and return to the school" keeps

parents better informed as to their child's progress.

If a student is failing the teacher can have a conference with the parent in hopes of getting help for the student. Student tardiness has also been addressed this year. "If a student has 3 unexcused tardies in one 6 weeks period, he will have 3 days in noon time suspension." This may help to keep late students from disturbing the class he is going to.

"Not leaving the class for anything except emergencies" keeps students from making up excuses for getting out of a class.

Many consider "rules" as bad, but always look at the good they can do for you!!!



CHECKING OUT THE EXHIBITS--As soon as the doors opened for viewing Friday afternoon at the Bailey County West Plains Fair, people started flocking in to see the many exhibits at the Bailey County Coliseum. Here, a few of the people are shown checking out the culinary and canned food divisions. The fair was expected to last until 8 p.m. on Saturday. All types of displays are ready at the fair, including various booths by civic groups and commercial booths.

## New Programs Are Added For This Year

Many new and interesting programs are being taught at Watson Junior High this year. They really seem to be getting off to a good start. The math lab, taught by Carren Gibson, is to help those students who need extra drill in math concepts. Computer literacy, taught by Mike Richardson and Stephanie Barrett, teaches the students basic facts and operations of the computer. Directed Study, taught by Jody Lyle and Twila Albertson, is a course to help students learn study skills.

These programs in W.J.H.S. are being of help as of now, and they are going to be much more helpful as students take advantage of them.

## If you knew

what SPS is doing to keep your cost of electricity as low as possible

### ...You'd be impressed.

For example, the way we build power plants

SPS builds its coal-fired power plants for a lot less than most other utility companies. How? With careful management, good workers, and by using our own engineers to design and oversee construction. And you get the benefit.

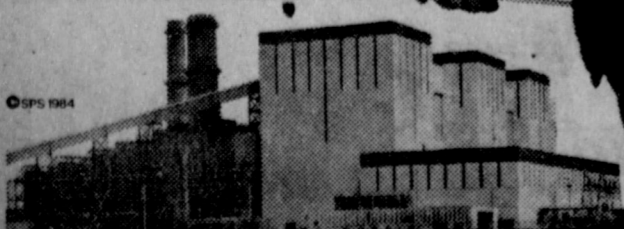


Bert Ballengee, President

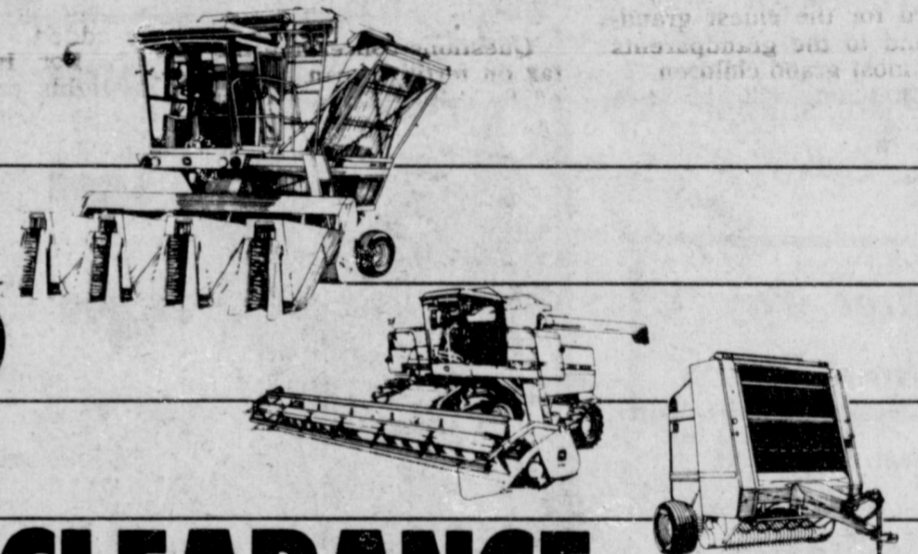
Working to justify your trust



SOUTHWESTERN PUBLIC SERVICE COMPANY



# JOHN DEERE FACTORY AUTHORIZED HARVEST EQUIPMENT CLEARANCE



John Deere factories are offering us special allowances and interest-free financing periods on every combine, stripper, hay tool and forage harvester on our lot. And we're passing the savings on to you. We're offering interest-free financing periods on most used equipment of the same type, too!

**NEW COMBINES.** Save many \$1000's on new combines and headers. Plus, finance with John Deere and pay no interest until January 1, 1985\*, or take a big discount in lieu of waiver. (See chart.)

### HAY AND FORAGE EQUIPMENT.

**OFFER #1**—Pick-A-Team cash rebates up to \$1600 on new John Deere hay and forage tools. Buy one now and receive a cash rebate PLUS a certificate entitling you to a double cash rebate if you purchase a second tool anytime before April 30, 1985.

Then save even more with these additional financing offers.

**OFFER #2**—Finance any new or used forage tool, including forage wagons, with John Deere and pay no interest until September 1, 1985\*. Or take a discount in lieu of the waiver. (See chart.)

**OFFER #3**—Buy any new or used hay tool and finance with John Deere, and you pay no interest until July 1, 1985\*. Or take a big discount in lieu of the waiver on new tools, except rakes or mowers. (See chart.)

**COTTON STRIPPERS.** Take advantage of fantastic allowances on 484 SP and 283 Mounted Strippers. But new and used strippers are now specially priced. And when you finance any new or used stripper with John Deere, you pay no interest until March 1, 1985\*. Extra discounts are available in lieu of finance waiver on new strippers. (See chart.)

### DISCOUNTS IN LIEU OF WAIVER \*\*

COMBINES Model	DISCOUNT	
	During Sept.	During Oct.
4420	\$1200	\$ 850
6620	1450	1050
SlideHill 6620	1525	1100
6601 PTO	525	375
6622 Hillside	1950	1400
7720	1675	1200
7721 PTO	850	600
8820	1900	1375

FORAGE EQUIPMENT Model	DISCOUNT	
	During Sept.	During Oct.
PTO Forage Harvester	\$ 750	\$ 700
SP Forage Harvester	5500	5025
Forage Wagons	425	400

HAY EQUIPMENT Model	DISCOUNT	
	During Sept.	During Oct.
Square Balers	\$ 500	\$ 450
Round Balers	650	575
Mower/Conditioners	475	425
SP Hay Windrowers	1600	1425

COTTON STRIPPERS Model	DISCOUNT	
	During Sept.	During Oct.
283 Stripper	\$ 425	\$ 350
740 Mounted Stripper	850	700
484 SP Stripper	1525	1250
7440 SP Stripper	1625	1325

\*Availability of John Deere financing subject to approval of credit. These offers may be withdrawn at any time.

\*\*Available from participating dealers to the extent passed on by such dealers.

The time to upgrade your equipment is right now. These great deals won't last long. See your John Deere dealer today!

Combines, Strippers, Hay and Forage Equipment - They're all priced to move fast!



## Dent - Rempe Inc.

1516 W. Amer. Blvd.

272-4296



**Local Man's  
Brother Dies**

**At Amarillo**

Funeral services for Ralph Harbin, 60, of Canyon were held at 2 p.m. Saturday, Sept 8 in University Church of Christ at Canyon with John Featherston, minister of North Davis Church of Christ at Arlington, officiating, assisted by Bob Shepard of the Church of Christ Bible Chair of Canyon.

Interment was in Dreamland Cemetery in Canyon under the direction of Gordon Herring Funeral Directors of Canyon. Harbin died Thursday in High

Plains Baptist Hospital in Amarillo.

A native of Farmers Branch, Harbin was born Feb. 18, 1924, and married Vernell Campbell in 1952, in Muleshoe. He was a member of University Church of Christ in Canyon. He was a retired agriculture professor of West Texas State University. He was a local builder and cabinet maker and a veteran of World War II serving in the U.S. Navy.

Survivors include his wife, one son, David of the home; three daughters, Clarissa Ham of San Antonio, Cassi Harbin of Amarillo and Pam Lewis of Canyon; one brother, Joe of Muleshoe; one sister, Robin Taylor of Muleshoe; three grandchildren and two great grandchildren

**Mary Marler  
Services Set  
At Earth**

Services for Mary Marler, 67, of Spring Valley, Calif. will be held at 2 p.m. Monday, Sept. 10 in the Earth Church of Christ with Dwight Faulk, minister, officiating.

Burial will be in the Earth Memorial Cemetery under the direction of Parson-Ellis Funeral Home of Earth. She died

Thursday in National City, Calif. A native of Paducah, Mrs. Marler was born Oct. 21, 1916, and moved to Spring Valley from Earth where she had lived from 1944 until 1950. She was retired from an electronics firm and a member of the Church of Christ.

Survivors include one daughter, Mrs. Joan Pepper of Spring Valley, Calif.; one son, Waldo Lone of Roswell, N.M.; four sisters, Mrs. Lucy Lewis and Mrs. Virgil Lewis, both of Earth, Mrs. Lela Whitener of Amarillo and Mrs. Virgie

Springer of Las Gatos, Calif.; one brother, Dick Goldston of Rising Star; nine grandchildren; and one great grandchild.

It is difficult to keep quiet if you have nothing to do.  
-Arthur Schopenhauer.

Jacques Delois, French Finance Minister, on summit conference: "U.S. interest rates were the most difficult issue of the 3-day conference..."

Saudi prince buys 1,100-acre island off South Carolina coast.

**Lazbuddie  
School Menu**

Sept. 10-14, 1984

**BREAKFAST**

- MONDAY  
Milk, Cereal, Juice
- TUESDAY  
Milk, Cheerios, Honey, Juice
- WEDNESDAY  
Milk, Buttered Toast, Ham, Jelly, Juice
- THURSDAY  
Milk, Hot Cereal, Buttered Toast, Juice
- FRIDAY  
Milk, Blue Berry Muffins, Bacon, Juice

**LUNCH**

- MONDAY  
Chili Dogs/Mustard, Buttered Corn, French Fries, Applesauce Cake, Milk
- TUESDAY  
Spaghetti/Meat Sauce, Green Salad, Green Beans, Hot Rolls, Fruit, Milk
- WEDNESDAY  
Barbequed Turkey, Pinto Beans, Potato Salad, Fruit, Milk
- THURSDAY  
Meat/Cheese Nachoes, Spanish Rice, Green Salad, Cookies, Milk
- FRIDAY  
Hamburgers, Pickles & Lettuce & Onions, French Fries, Fruit, Chocolate or White Milk

**SALADS**

- MONDAY  
Chef
- TUESDAY  
Tuna
- WEDNESDAY  
Fruit
- THURSDAY  
Chicken
- FRIDAY  
Chef

**Three Way  
School Lunch**

Sept. 10-14, 1984

**MONDAY**

- BREAKFAST  
milk, Cooked Cereal, Juice
- TUESDAY  
Milk, Cheese Toast, Juice
- WEDNESDAY  
Milk, Toast/Jelly, Juice
- THURSDAY  
Milk, Biscuit 'N Bacon/Jelly, Juice
- FRIDAY  
Milk, Waffles/Syrup, Juice

**LUNCH**

- MONDAY  
Milk, Burritos Cheese Sticks, Corn & Carrot Sticks, Fruit
- TUESDAY  
Milk, Green Chili Casserole, Blackeyed Peas & Mashed Potatoes, Hot Rolls, Honey
- WEDNESDAY  
Milk, Pizza, Green Beans, Whole Potatoes, Salad, Cake
- THURSDAY  
Pigs in a Blanket with Chili, Corn, Lettuce Wedges Milk, Jello
- FRIDAY  
Cheeseburgers, Fries, Picles / Onions, Lettuce, Tomatoes, Buns, Milk, Cookies

West Plains  
Ambulance  
**272-3449**

**Auction**  
Sunday September 23, 1984  
Time: 2:00 pm Call 272-3187  
Knowles Auction  
516 North First Muleshoe Texas  
Consignment Welcome  
Consignment Will Be Advertised If Consigned In By  
Sept. 10, 1984 TxE-025-0969

**A&M FivePoint**  
Hi-Protein  
**Dog Food**  
50 lb. Bag  
**\$975**



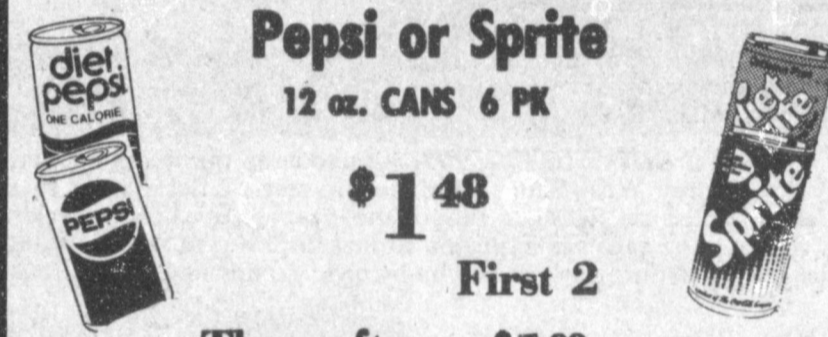
**Ben Franklin** 2104 W. American Blvd  
Better quality for less 272-3855  
Open 9 a.m. - 8 p.m.

**September Savings**

**BARGAINS! BARGAINS! BARGAINS! BARGAINS!**


No Rainchecks - Limited Quantities - Shop Early

**Pepsi or Sprite**  
12 oz. CANS 6 PK  
**\$1.48**  
First 2  
Thereafter **\$1.99**



**Live Plants**

**\$9.99** 10 inch  
**\$4.99** 6 inch



**Yarn -A-Plenty**  
Great for those big jobs! 4-ply worsted weight yarn in convenient 12-oz. pull skeins. Choice of colors.  
**2.66** each



**New Arrivals Jewelry**  
Pierced Earrings **\$3 & up**



**Wind Machine** **\$13.33**  
Reg \$23.97

**Whites Assorted Decorated Scott Paper Towels**  
First 3 **57¢**  
Thereafter **66¢**

**Air Conditioning Pads**  
Assorted Sizes  
24x30 **99¢** 28x34  
30x36


**20 Lb. Bag Potting Soil** **\$1.67**

**100 Sheets Composition Sheets** **47¢**

**Summer Tops**  
**99¢**

**Childrens**  
**99¢**

**Ladies**  
**\$1.49**



**Aida Cloth**  
Evenweave fabric for your counted cross-stitch.  
**99¢**




**1000 Ct. Wooden Craft Sticks**  
4-inch size can be used for so many projects... great for school, church and scouting groups.  
**1.66** box



**Student Portfolios**  
**5/\$1.00**

**The Original DOLL-BABY** by Martha Nelson Thomas

**Heads \$6.88**  
**Bodies \$4.88**



**150 Count Filler Paper** **47¢ each**



**Craft Kits**



**Make It For Christmas**  
Decorator Designed Kits -  
Counted Cross Stitch  
Needle Point  
Candlewicking  
Embroidery

Master Game • Genus Edition  
**Trivial Pursuit Game** **\$29.97**

**NO EXPERIENCE REQUIRED**

The Air Force has plenty of good positions. And best of all, we don't require experience. We'll teach you the skills you need to compete in our modern world. And we'll pay you a good salary while you learn. See an Air Force recruiter today.

CALL TSGT ISON AT (505) 762-2000





**Courthouse News**

**MARRIAGE LICENSE**  
Arthur Villalobos and Irma Luisa Villarreal, Muleshoe  
William Melvin Daniell and Frankie May Williams

**WARRANTY DEEDS**  
Eugene Wittner to Gary McDaniel and wife, Jennifer McDaniel---All of Lots Numbers (1) and (2), both in Block Number (18), Country Club Addition to the Town of Muleshoe, Bailey County, Texas.

West Texas Warehouse Company to the Trinity Company---TRACT 1: The South (35) acres of the West (40) acres of the (NE/4) of Section 40, Block Y, WD&FW Johnson's Subdivision's Number 2, Bailey County, Texas. TRACT 2: The E/2 of the NW/4 of Section 40, Block Y, WD&FW Johnson's Subdivision Number 2, Bailey County, Texas. TRACT 3: The North (5) acres of the W/2 of the NW/4 of the NE/4 of Section 40, Block Y, WD&FW Johnson's Subdivision No. 2, Bailey County, Texas. TRACT 4: That part of Section 40 in block Y, of WD&FW Johnson's Subdivision Number 2, in Farmer and Bailey Counties, Texas. TRACT 5: A tract or parcel of land, lying and being situated in Bailey County, Texas. TRACT 6: Being (1) acres of land out of the (SE-1/4) of Section (40), in Block "Y", WD&FW Johnson's Division No. 2, Bailey County, Texas.

Soilo Fabela, Jr. and wife, Antonia Fabela to Gilbert Fabela---All of Lot (18), Block (35), Original Town of Muleshoe, Bailey County, Texas.

Elias Noe Anzaldua, Jr. and wife, Viola S. Anzaldua to Ramon M. Sanchez---All of Lots Numbers (3) and (4), Block Number (2), Lakeside Addition Number (3), to the Town of Muleshoe, Bailey County, Texas.

H.T. Totten and wife, Flois Totten to Frances Bland, Carolyn Collis and Theresa Jones---All of Lots Numbers (23) and (24), in Block Number (19), of the Original Town of Muleshoe, Bailey County, Texas.

Douglas W. Crozier and wife, Debra Joy Crozier to Richard

R. Lewis and wife, Melody A. Lewis---A 3.06 acre tract of land out of the Northeast corner of Section 58, Block Z, WD&FW Johnson Subdivision, Bailey County, Texas.

Ruby Elder to L.E. Elder and wife, Kim J. Elder---All of Lot Number (13), in Block Number (2), Harvey Addition to the Town of Muleshoe, Bailey County Texas.

Jerry Don Gregory and wife, Linda Gregory to Ronald Montgomery and wife, Michiko Montgomery---All of Lot (19), Parkridge Addition, First Installment, to the City of Muleshoe, Bailey County, Texas.

Nannie Mae Savage Williams and Clara Savage Simmons to Floyd Davis---The (W/2) of Tract Number (9), Aylesworth Acres Subdivision of a part of Tract Number (32), Block 4, WD&FW Johnson's Subdivision Number 2, in Bailey County, Texas.

Bernardo Salcido to Dolores Salcido, wife of Bernardo Salcido---An undivided one-half interest in a 60 feet wide by 140 feet deep tract of land out of Section No. 54, Block Y, WD&FW Johnson's Subdivision Number 2, in Bailey County, Texas.

Helen Coomer to J.M. Flowers and wife, Josie Flowers---All of Lots (38) and (40), Block (4), Apple Street to the Town of Progress, Bailey County, Texas.

Roy L. Farley and wife, Charlene Farley to Teresa R. Farley---All of Lot (4), Block (23), Country Club Addition to the City of Muleshoe, Bailey County, Texas.

Scotty B. Farley to Teresa R. Farley---All of Lot (4), Block (23), Country Club Addition, to the City of Muleshoe, Bailey County, Texas.

Billy J. Reese and wife, Virginia Sue Reese to Tommy D. Brown and wife, Cindy D. Brown---Lot (44), Richland Hills Addition to the City of Muleshoe, Bailey County, Texas.

June Buhman to Anthony Glenn Holmans and wife, LaDonna Faye Holmans---All of Lot No. (11), and the Westerly (4) feet of Lot No. (12), in Block No. (4), Highland Addition to the City of Muleshoe, Bailey County, Texas.

Winona Mae Massingill to Roy Lee Harper and wife, Anita Harper---All of Lot Number (88), Richland Hills Addition to

the Town of Muleshoe, Bailey County, Texas.

**COUNTY COURT ORDER DISCHARGING DEFENDANT FROM PROBATION**

David Lee Maddos, Lexi Hardwick, Fedesio Viacuma, and Luis Rivera

Robert Horace Gardner DWI License Suspended 90 Days.

Bailey County Electric Cooperative Association VS James M. Shafer Judgment

Brendon Keith Sehorn DWI 30 Days Jail \$250 Fine

Porfirio Vela Hinojosa Driving While License Suspended \$50 Fine

Abraham Garza, Falcon DWI 30 Days Jail \$250 Fine

Johnny Ray Rowton Driving While License Suspended 10 Days Jail \$150 Fine

Joe Manuel Tovar DWI 30 Days Jail \$400 Fine

Jerry D. Hutton Order of Dismissal

**DISTRICT COURT**

Scotty B. Farley and Teresa R. Farley DV

Jeryl M. Bellar and Norma Bellar DV

Three Way Independent School District ET AL VS Leovingeldo Ruvalcaba Romers ET AL Motion For Dismissal

Bravo Pipeline Company VS Dorothy Choate, ET AL Order of Dismissal

Sharon Comardelle VS Gary Wilson Davis Judgment

Riverside/Terra Corporation, Plaintiff VS J.W. Williams, Defendant Default Judgment

Reimundo Suarez and Santos Munez Suarez DV

**NEW VEHICLES**

Gene Paul Jarman, 1984 GMC Sub, Robert D. Green, Inc.

Ima Lee Roberts, 1984 Chev PU, Robert D. Green, Inc.

Derrell Matthews, 1984 Chev Sub, Robert D. Green, Inc.

Jeff Skipworth, 1984 GMC Sub, Robert D. Green, Inc.

Larry Baker, 1984 GMC PU, Robert D. Green, Inc.

Jerry Johnson, 1984 Buick 2dr, Robert D. Green, Inc.

Three Way Ind. School District, 1984 Ford SW, Muleshoe Motor Co., Inc.

Leon Ovale, 1984 Chev Blazer, Robert D. Green, Inc.

Robert C. Bloom, 1985 Buick 4dr, Robert D. Green, Inc.

David Gallman, 1984 Chev PU, Robert D. Green, Inc.

Brad Poyner, 1984 Merc 2dr, Muleshoe Motor Co., Inc.

Margaret Williams, 1984 Pont

4dr, Robert D. Green, Inc. Len P. Allemand, 1984 Dodge PU, Muleshoe Motor Co., Inc. Rickey McDonald, 1984 Ford PU, Muleshoe Motor Co., Inc. and Jack Foster, 1984 Chev Blazer, Robert D. Green, Inc.

**West Plains Hospital Report**

Aug. 31- Celia Flores, Flois Totten, Mary Obenhaus, Elaine Burgess, Alma Bevers, Morris Douglass and Marita Smith.

Sept. 1- Flois Totten, Alma Bevers, Morris Douglass, Greg Actkinson and Rosa Toscano.

Sept. 2- Flois Totten, Alma Bevers, Morris Douglass, Greg Actkinson and Rosa Toscano.

Sept. 3- Flois Totten, Randolph Johnson, Alma Bevers, Morris Douglass, Greg Actkinson and Rosa Toscano.

Sept. 4- Manuela Serrano, Rosa Toscano, Flois Totten, Randolph Johnson, Alma Bevers, Morris Douglass and Greg Actkinson.

Sept. 5- Manuela Serrano, Rosa Toscano, Flois Totten, Nancy Cordelia Cochran, Joshua Brown, Randolph Johnson, Alma Bevers, Morris Douglass, Greg Actkinson and Tracy Autrey.

Sept. 6- Manuela Serrano, Rosa Toscano, Flois Totten, Nancy Cordelia Cochran, Cindy Davis and Baby Boy, Eules B. Wilson, Vickie Wilcox, Randolph Johnson, Morris Douglass and Traci Autrey.



**NINETY YEARS YOUNG**---J.E. Embry celebrated his 90th birthday Thursday with a party in the coffee room of Muleshoe State Bank, hosted by the bank. Those attending were the regular coffee drinkers, "Doc" Goucher, Austin Floyd, Harold King, Neil Dillman, Sherman Inman and Jack Lambert, as well as numerous drop-ins. Embry was born in Villa Rica, Georgia and moved to Texas, Cook County, in 1902, and to Muleshoe in 1929. He married Lula Wright in 1920, in Oklahoma. He has four sons, one daughter, 12 grandchildren and numerous great grandchildren.

Mr. and Mrs. Rayford Masten spent Sunday visiting Mr. and Mrs. Leon Dupler who lives in Andrews.

Mr. and Mrs. Joe Sowder went to Logan N.M. Friday. Attended revival services at First Baptist Church and visited their children, the McCarleys.

Mike Sowder led the singing at First Baptist Church in Logan N.M. last week.

The members of Maple Church of Christ honored their pastor Nat Cooper with a farewell lunch Sunday in the home of Mr. and Mrs. Freddie Parkman.

Guests in Mike Sowders home Sunday were Mr. and Mrs. A.G. Taylor from Muleshoe, Mr. and Mrs. Guss Taylor from Amarillo, Mr. and Mrs. Ovel Waller, Mr. Buck Gregory and Olga Whalen all from Farwell.

**Three-Way News** by Mrs. H.W. Garvin

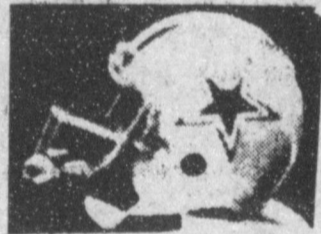
Farmers in community have crops laid by and are plowing wheat land.

Mrs. Garvin Long and Mrs. Beulah Toombs attended Senior Citizens luncheon Thursday.

Jay Boyce had surgery on his wrist on Lubbock last week.

**Ellis Funeral Home**  
Pre-Need Funeral Plans  
Supervised By Texas Department Of Banking  
Price Frozen At Time Of Purchase

**Dallas Cowboy Weekend Package**



Package includes:

- Deluxe room for 2 for 1 night
- 2 tickets to the game
- Transportation from Love Field to Hotel and to the stadium by Regent bus (5 minutes from hotel).
- Cocktails before or after the game, which ever is appropriate.
- Price includes all taxes.

- ★ \$125 Package Per Couple 2 Adults 1 Child
- ★ \$160 Package 2 Adults or 3 Adults
- ★ \$195 Package 2 Adults, 2 children

Air Fare is Extra  
Cowboys home schedule:

Date	Opponent	Kickoff (Dallas Time)
Sun., Sept. 16	Philadelphia	3 P.M.
Sun., Sept. 23	Green Bay	3 P.M.
Sun., Oct. 7	St. Louis	12 Noon
Sun., Oct. 21	New Orleans	8 P.M.
Sun., Oct. 28	Cities	12 Noon
Sun., Nov. 4	New York Giants	12 Noon
Thurs., Nov. 22	New England	3 P.M.

**Travel Center**

121 WEST 7th ST. CLOVIS

For All Your Travel Needs

- ★ TICKETS & RESERVATIONS
- ★ ONE CALL DOES IT ALL
- ★ HOTELS - CAR RENTAL - AIR & SEA

FREE FAST & EFFICIENT SERVICE

1-505-762-4566

**LATEST ARRIVALS**



**Candice Shae Randolph**

Mr. and Mrs. LynEldon Randolph are the proud parents of a daughter, Candice Shae, born at 1:57 p.m. Saturday, Sept. 1 in the Methodist Hospital at Lubbock.

The young lady weighed seven pounds and three ounces and was 21 inches long. Candice Shae has an older brother, Brandon, two years of age.

Grandparents are Mr. and Mrs. C.W. Dale of Muleshoe and Mr. and Mrs. Dale Randolph of Friona.

Great grandmother is Mrs. Grace Kanaga of Friona.

**Derick Rolando Garcia**

Mr. and Mrs. David Garcia of Ft. Worth are the proud parents of a son, Derick Rolando, who was born at 8:28 a.m. Sept. 3 in John Peter Smith Hospital at Ft. Worth.

Derick Rolando weighed seven pounds and four ounces and was 20 inches long. He has a sister, Desiree, who is one year and 11 months old.

Grandparents are Juan and Gloria Quesada of Mercedes and Mike and Irene Garcia of Muleshoe.

Great grandparents are Mr. and Mrs. Julian Dominguez of Muleshoe.

**Wesley Jeff Davis**

Mr. and Mrs. Wesley Davis of Farwell are the proud parents of a son born at 3:57 a.m. Sept. 6 in West Plains Medical Center.

The young man weighed eight pounds and four ounces and has been named Wesley Jeff. The couple have one other child, Candy, three years of age.

Grandparents are Cyrus and Freda Dale and R.C. and Verna Davis, all of Farwell.

Great grandparents are Mr. and Mrs. R.D. Dale, Mrs. Rosie Martin of Muleshoe, Mr. and Mrs. Claude Boyett of Oklahoma and Mrs. Robbie Davis of Lazbuddie.

**GRIZZLY**  
NOTHING WARMS YOU LIKE GRIZZLY

**FEATURES**

- INTERCHANGEABLE DOOR PANELS Corning Glass, Decorative Cast Iron or Solid Brass Door Panels are available and may be interchanged as desired.
- HEAVY STEEL Constructed of thick steel with solid welds everywhere. All edges ground smooth
- FIREBRICK LINED Firebrick allows extended radiant heat output and prevents burn-out of steel walls.
- PATENTED AIR INTAKE SYSTEM Allows fine tuning of rate of burn. In the event of a chimney fire, draft flaps have a tendency to close automatically.
- VERY SAFE Grizzly Stoves are very safe with proper installation and use, complying with national standards for radiant heaters. Laboratory tested and labeled to safety standards for wood-burning stoves.

**BIG BLAZER/GRIZZ**

The **BIG BLAZER/GRIZZ** Fireplace features a unique hollow baffle system allowing an optional thermostatically controlled blower to be attached if a forced-air system is desired. This unique baffle design increases square footage of heat transfer area, delivering more heat efficiently to your home. Fully gasketed doors make the units airtight and safe. The firebox is sized for big long-lasting loads.

**GRIZZLY**  
Designed to be the best!!

**Fans & Fancies**  
1609 N. PRINCE CLOVIS, N.M. PH. 762-5704



## Sudan News

by Evelyn Ritchie

1984-85 twirlers for the Sudan Hornet Marching Band are Sherri Powell, Kathy Powell, daughters of Mr. and Mrs. Dwayne Powell; Danette Provence, daughter of Mr. and Mrs. Damon Provence; Cheri Ford, daughter of Mr. and Mrs. Jimmy Ford and Tammy Gore, who is head twirler and daughter of Mr. and Mrs. James Gore.

Weekend visitors with Mr. and Mrs. Wayne Rogers were her sister, Mr. and Mrs. Rufus Hamilton of Pampa and his aunt and uncle, Mr. and Mrs. Loyd Simons of Melrose, N.M.

Claudia Cooke has been transferred from the Methodist Hospital to the Amherst Hospital where she remains in serious condition.

Sterling Reece was a patient in the Amherst Hospital last week. He was to be in Lubbock Wednesday for a check up. Visiting with the Reece family during the weekend were their grandchildren, Steve Nelco and Nicky and Travis all of Diana and Denise Evans of Longview. Other family members here with them are their daughter, Mr. and Mrs. Albert Thomas and Mrs. Steve Nelco all of Diana.

Kenneth Noles of Throckmorton was a Sudan visitor Tuesday.

Mr. and Mrs. Bob Drake have returned from visiting their daughter, Mr. and Mrs. Bill Meyer and girls in Houston and also friends and relatives in Virginia and Miss.

Sherribob Taylor, Dale and David Harper and Janet Nix are among college students returning to Tech this semester.

Roy Graves remains a patient in the Veterans Hospital in Amarillo.

Visiting in the home of Mr. and Mrs. Tommy Cate recently were their son, Dr. Rodney Cate and daughters, Brandi and Shani of Corvallis, Oregon. Also visiting with them was a friend Evette Lee.

Chester Knox of Seagraves visited on day this week with his parents, Mr. and Mrs. R.B. Knox.

Mr. and Mrs. Dennis Lowe, Chris and Clay of Snyder visited during the weekend with Mr. and Mrs. John Williams and were here to attend the wedding of his cousin, Jon Ann Williams and Jay Ford. They also visited his grandmother, Mrs. Estelle Lowe.

## SANDHILLS PHILOSOPHER

Editor's note: The Sandhills Philosopher on his Johnson grass farm on Sandy Creek discovers a startling piece of news this week.

Dear Editor: Congressmen are always being accused of voting in favor of what's good for right now, with no regard for what's going to happen down the road.

I have discovered some evidence that this is not always true.

Congressmen, when it comes to Congressmen, have looked far down the road and made sure it's paved all the way.

There are now about 900 living former members of Congress, and they are rather well provided for. In many cases, according to a study made by the National Taxpayers Union, their yearly Congressional pensions are far greater than the yearly salaries they got while they were in office.

For example, one Congressman's pension is \$87,864, compared with the \$65,000 he got the last year he served. Another Congressman retired in 1969 when his salary was \$30,000, and since then, at a rate of \$70,000 a year, he has received a total of \$671,724 in Congressional pensions.

When it's remembered that those handsome pensions were voted by the Congressmen themselves, you have to discard the notion that Congressmen don't look far down the road.

And when you stop to think Congressmen out of office are costing us more than they did when they were in office, you have to scratch your head and wonder if it's financially wise to ever vote against any of them.

Yours Faithfully,  
J.A.

Coach and Mrs. David Quisenberry visited in Tahoka during the weekend with her parents, Mr. and Mrs. Jerry McKibbin.

Cliff Black of Cliff's Frame and Gallery, was in Austin this weekend to attend an art show and sale.

Ronald Gatewood has been released from the Methodist Hospital and is recuperating at the home of his mother, Mrs. Earlene Akin in Tulia.

Homecoming Activities will be held Oct. 12 & 13 and will be honoring classes of 1924, 1934, 1944, 1954, 1964, 1974, & 1984. No invitations are being mailed locally and you do not have to be a Sudan graduate to attend. All former students of Sudan schools at any time are invited to attend.

R.D. "Bear" Kamp is a surgical patient in the Methodist Hospital in Lubbock where he underwent surgery Tuesday.

Missy Fisher has enrolled and is attending classes at Wayland Baptist College in Plainview.

Jerry Fisher has enrolled at Tech where he will be attending classes this fall.

Jamie Cox and Laura Powell are among students enrolling at West Texas State this fall.

Danene Cox is attending South Plains College as is Donald Doty.

Mr. and Mrs. John Chester, Troy Moss, Derwin Beauchamp and Jimmy Williams were at Lake McKenzie during the weekend. Tara Chester visited her grandmother Earlene Akin in Tulia while her parents were at the Lake.

Mr. and Mrs. Carrol Gillett and Dana of Baird visited during the weekend with their daughter and sister, Mr. and Mrs. Bo Lance and Danya. Danya returned home with them for a visit this week.

Overnight visitors Thursday with Mr. and Mrs. G.C. Ritchie were her brother, Rev. Don Corley and J.D. of Bloomfield, N.M. and Jim and Darral of Farmington N.M.

George Lowe of Socorro N.M. brought his mother, Mrs. Estelle Lowe home after she had been there for a visit and he remained here for the wedding of his niece, Jon Ann Williams and Jay Ford on Saturday.

Visiting this week with Mr. and Mrs. Bobby Carson and Angie are her brother, Johnny Cunningham, Cody and Justin of Ecko, Nevada.

Martha Markham of Wedjets has been in Midland this week to attend an art show.

Marie Withrow is among the college students who have returned to their respective colleges. She is attending ACU in Abilene.

## Right Bicycle Should Fit The Young Rider

Buying the right bicycle so that it fits the rider correctly is an important step that could prevent many of the bicycle accidents that occur in Texas each year.

Last year 50 persons were killed and 3,085 injured in bicycle accidents reported to the Texas Department of Public Safety.

"Many parents purchase bicycles that are too large for their children, hoping they will grow into them," said Dan Sowards, Chief of the Hazardous Products Branch with the Texas Department of Health. "This is a dangerous practice because the child may not be able to handle the bike."

He said a rider should be able to straddle a bicycle with both feet flat on the ground, while leaving no less than one inch between the crotch and the bike frame's top tube.

There should be at least three and one-half inches of clearance between the pedal and the front fender or tire to prevent a toe from getting caught between

Mr. and Mrs. Wayne Doty were in Hobbs, N.M. during the weekend to visit their daughter, Mr. and Mrs. Doyle Mapp.

Mr. and Mrs. B.A. Beauchamp have been vacationing in Mansfield, Ohio with their daughter, Mr. and Mrs. Gene Vickers and girls.

Rev. and Mrs. Jerry Dobson and boys of Dora, N.M. moved to Sudan this week and will be making their home at the Baptist parsonage. Jerry has accepted the position as pastor of the FBC in Sudan.

Weekend visitors with Mr. and Mrs. Pat Kent were their daughter, Mr. and Mrs. Larry Dawson of West Brook. Mrs. Dawson was a member of the wedding party for Jon Ann Williams and Jay Ford.

Mr. and Mrs. Burnice May have moved back to Sudan from Amarillo where they spent the past few months.

Martha Hensley, head twirler at Texas Tech University in Lubbock, taught a private twirling camp for the Sudan Twirlers from July 30 through Aug. 3.

The week consisted of three hours a day learning new dance and line routines for the upcoming football season.

In turn, the Sudan twirlers held a twirling clinic for local girls ages 10-17 on August 13 & 14. Trophies were awarded to Kay Lynn Gordon, Most Improved; Ambyr Donnell, Most Spirited; with first place trophies going to Gayla Rasco and Dawn Gaston.


## Encephalitis Being Found On South Plains

The Texas Department of Health and Lubbock City Health Department have recently alerted area physicians that the Western Equine Encephalitis virus is currently present on the South Plains.

This mosquito-borne viral disease has long been known to occur here at this time of the year, and the recent rains have provided a favorable environment to dramatically increase the Mosquito population.

Human Western Equine Encephalitis is milder than most other mosquito-borne forms of encephalitis and many cases go unrecognized. In more severe cases, symptoms range from fever and headache to meningitis and encephalitis. Severe disease is more common in infants and young children. Individuals who develop fever and headache should promptly consult their private physician.

Individuals should practice personal protective measures against mosquito bites. This includes avoiding areas heavily infested with mosquitos, or if that is not feasible, wearing long sleeves and using repellent.


  
**ROBE. T D. GREEN, INC.**
  
 2400 W. AMERICAN BLVD. — MULESHOE, TEXAS 79347
   
 — HOME OF THE GREEN MACHINES —
   
 BUS. PH. 806 272-4588
   
 TERRY YELL SALESMAN
   
 HOME PH. 806 272-4948

# Adoption Of Local Property Tax Rate Underway In Texas

Local governments in Texas are in the middle of one of the most crucial steps in the annual tax process -- adoption of property tax rates for the 1984 tax year.

The "truth-in-taxation" laws contained in the Texas Property Tax Code ensure that taxpayers will be informed of proposed tax increases through public notices and can become involved in the tax rate adoption process through public hearings.

These laws also provide a limited form of initiative and referendum by which voters in some instances can reduce the amount of tax increase adopted by a taxing unit's governing body.

Many tax assessors are now taking the first step in the truth-in-taxation process by calculating and publicizing the "effective tax rate."

The effective tax rate is a key element of truth in taxation, a benchmark by which any tax rate changes are measured. It is a tax rate that will generate the previous year's level of tax revenue for maintenance and operation, based on the current year's property values for the property that was taxed in the previous year. It also includes the tax rate necessary to pay the taxing unit's debt obligations for the upcoming fiscal year.

The tax assessor calculates the effective tax rate after the unit's appraised property values are certified by the appraisal review board and the chief appraiser. He must then publicize the effective rate, along with the calculations for the rate and an estimate of uncommitted tax revenues left over from the previous year (called "unencumbered fund balances"). This is normally done by August 7 or as soon thereafter as possible.

If the members of a school board, city council, commissioners' court or other governing body decide to adopt a tax rate that exceeds this effective rate by more than three percent, they must publicize their intent and hold public hearings. If the tax rate they finally adopt exceeds the effective rate by more than eight percent (with certain exceptions for school districts), the voters can petition for an election to roll back the tax increase.

The effective rate, by using

current-year property values to generate prior-year operating revenue, prevents tax bills from rising automatically because of rising property values or re-appraisals. Thus, according to Ron Patterson, executive director of the State Property Tax Board, "Rising values on existing properties cannot create new tax dollars; only action by the unit's governing body can do that, and the taxpayers must be notified and given the chance to comment before that action is taken."

The effective tax rate also contains adjustments for newly granted tax exemptions and productivity valuation. As a result, says Patterson, the effective rate offsets the shift of tax burden to other classes of property caused by new exemptions or new productivity values.

Properties on the tax roll for the first time (such as new buildings, new homes or newly annexed territory) do not figure at all in the effective tax rate calculations. Thus, adding new properties to the tax roll creates new tax revenues. Deleting properties or deleting part of the taxable value of property (by exemptions, productivity valuation, or deannexation) causes a loss of tax revenue.

After the effective rate is publicized, the next step in truth in taxation lies with the governing bodies of the taxing units as they decide what level of services to budget for and what tax rate will be needed to provide those services.

If the decision is to keep the tax rate within three percent of the effective tax rate, the governing body is not required to notify the public.

However, if the governing body intends to raise taxes by more than three percent above the effective rate, it must announce its intentions in a quarter-page newspaper ad and hold a public hearing to listen to the taxpayers' opinions on the proposed tax hike. A second quarter-page ad is required to announce the public hearing at which the final tax rate will be adopted.

If the tax rate is set more than eight percent higher than the effective tax rate, the voters can challenge the tax increase by petitioning for an election to limit the increase.

After a successful election, any taxing unit other than a school district would have its tax rate reduced immediately to eight percent above the effective tax rate. A school district would have its tax rate limited to the eight percent level in the following year.

As a result of new laws enacted in this summer's special legislative session, school districts will be able to increase taxes in certain instances by more than eight percent before facing the possibility of a rollback election. Between now and 1987, voters may not limit a school district's tax increase that offsets the amount of lost state education aid or that increases the district's enrichment equalization funds.

Patterson pointed out that the property tax system in Texas gives all property owners several opportunities throughout the year to influence the amount they pay in property taxes.

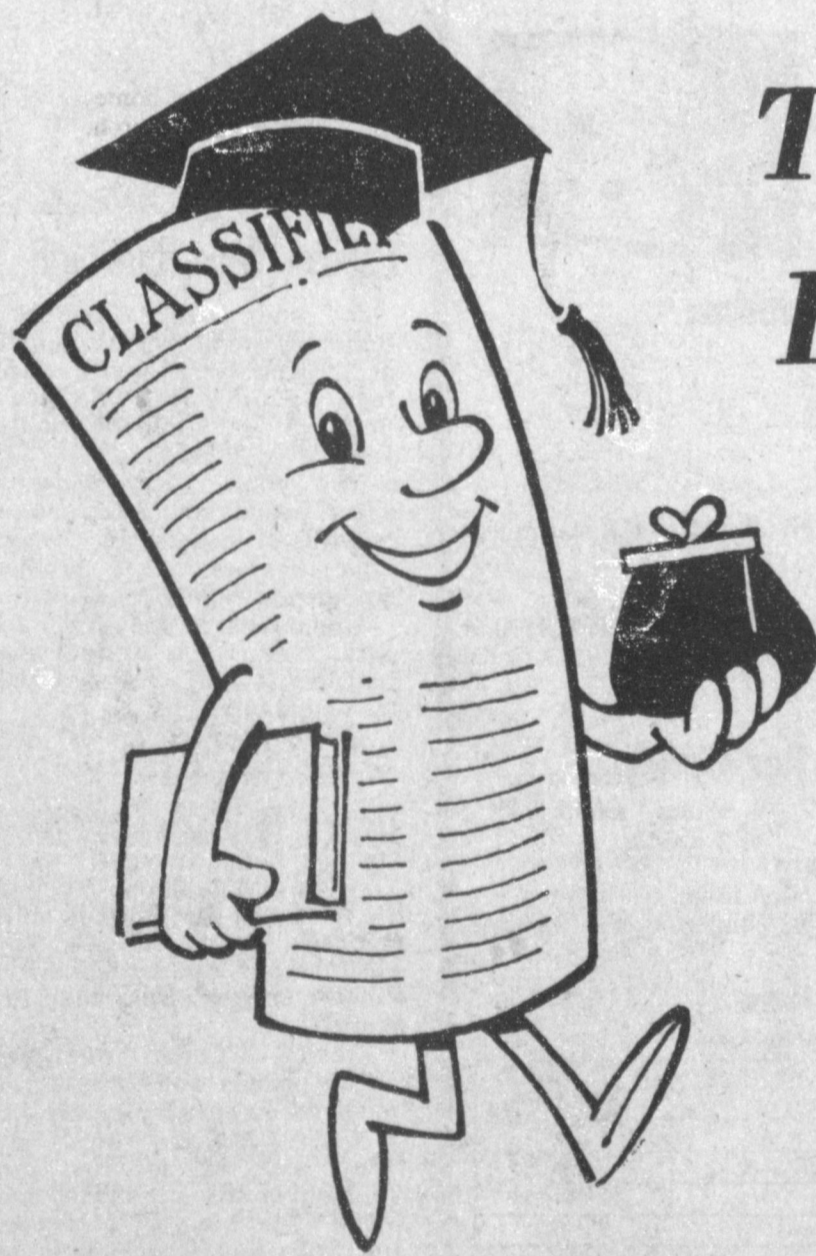
"Open meetings and budget hearings allow a taxpayer to express his opinion about how his tax dollars are spent," said

Patterson. "Appraisal review board hearings allow him to ensure that the value placed on his property for tax purposes is fair and in line with other values in the jurisdiction. And, truth in taxation and the rollback election process then gives him the chance to have his say about tax-rate proposals that may increase his final tax bill."

Taxpayers can find more detailed information on their role in the Texas property tax system through a pamphlet entitled "Taxpayers' Rights, Remedies, Responsibilities!" Copies are available at local tax offices or from the State Property Tax Board in Austin.



The idea of awarding degrees dates from the 1200s when schools in Europe won the right to examine a license their graduates.



## Take A Friend To College

Take Along A Little Home When You're Away From Home. Subscribe To The Journals & Keep In Touch With The Local & County News Of Friends, Family & Community. Our Special Student Rate Is Only \$10.00.

Name \_\_\_\_\_  
Address \_\_\_\_\_  
City \_\_\_\_\_ State \_\_\_\_\_ Zip \_\_\_\_\_

**Muleshoe & Bailey County Journals**  
Box 449